

Supplementary Material

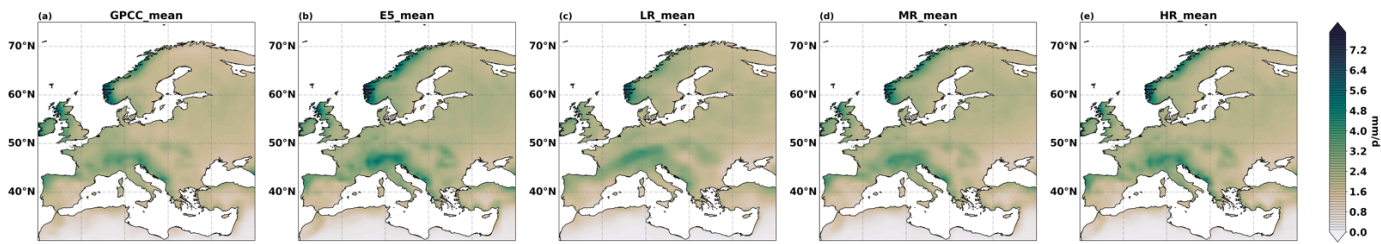


Fig. S1 Annual mean precipitation over Europe during 1982-2019 from (a) GPCC, (b) ERA5, (c) LR, (d) MR, (e) HR. Unit is mm/d.

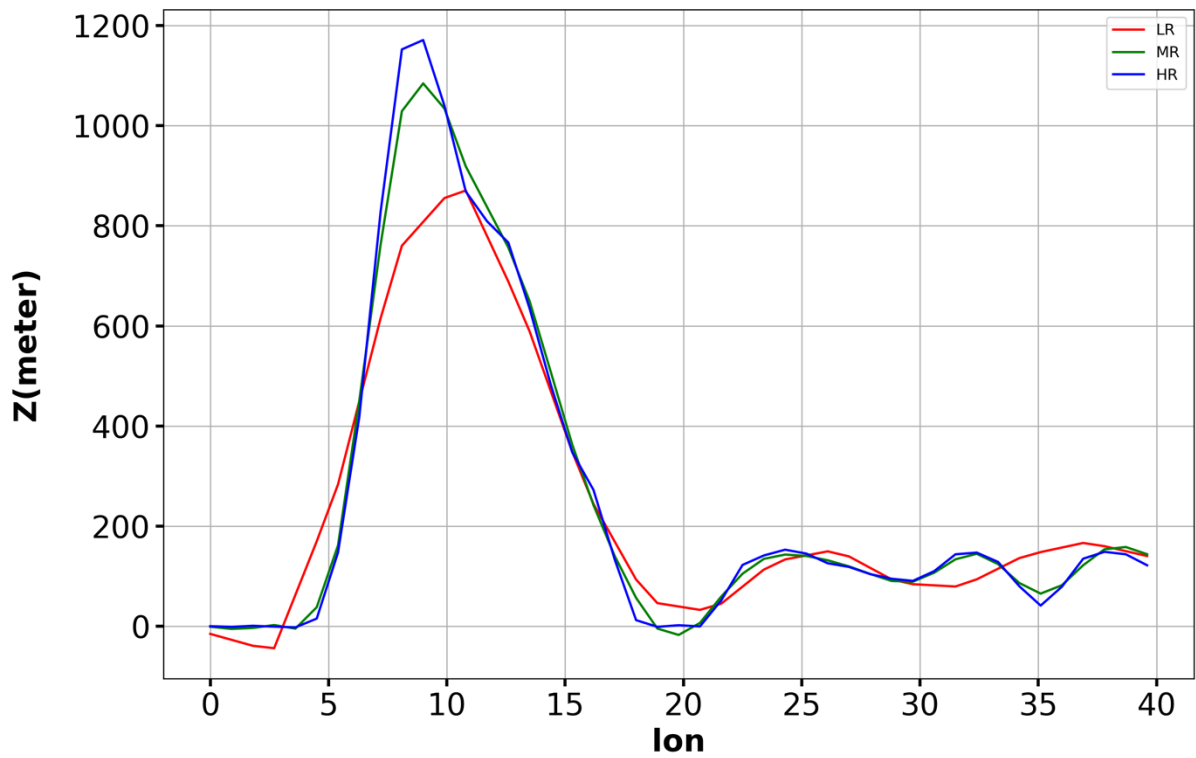
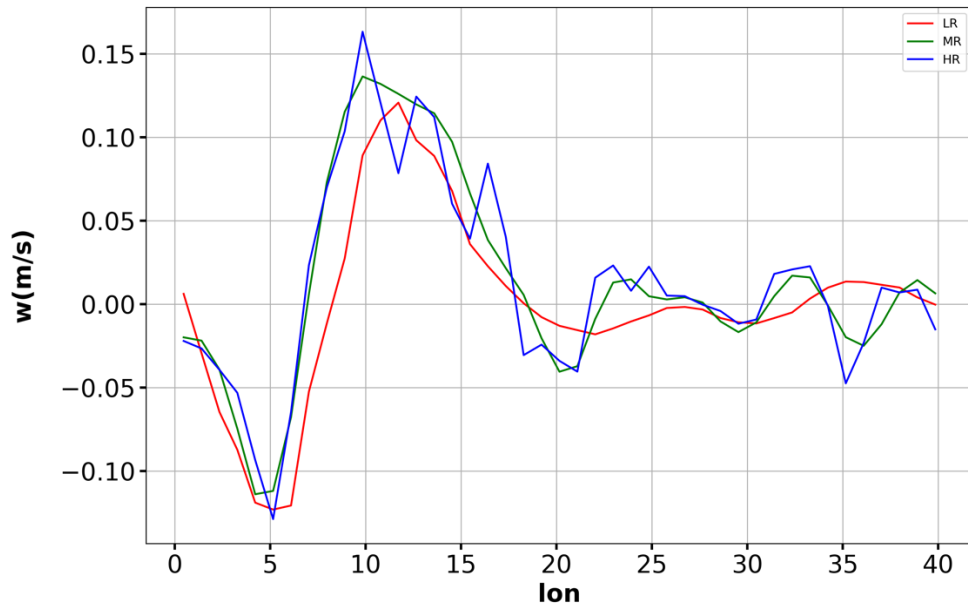


Fig. S2 The surface height (0 – 40° E, 62° N) in OpenIFS LR (red), MR (green) and HR (blue). Unit is meter.

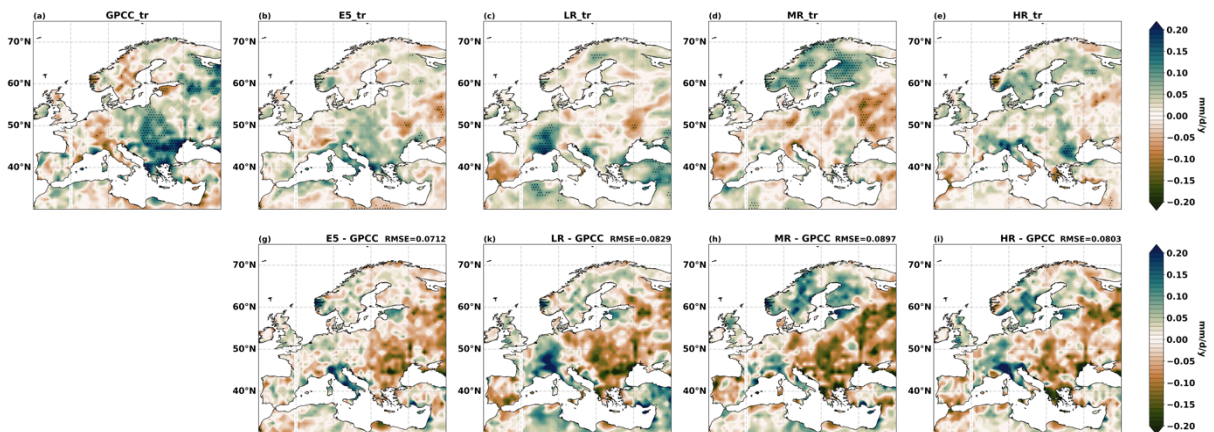
19
20
21
22
23
24



25
26
27
28
29
30

Fig. S3 The annual mean vertical velocity (0 – 40° E, 62° N) at 850 hPa in OpenIFS LR (red), MR (green) and HR (blue). Unit is m/s.

31

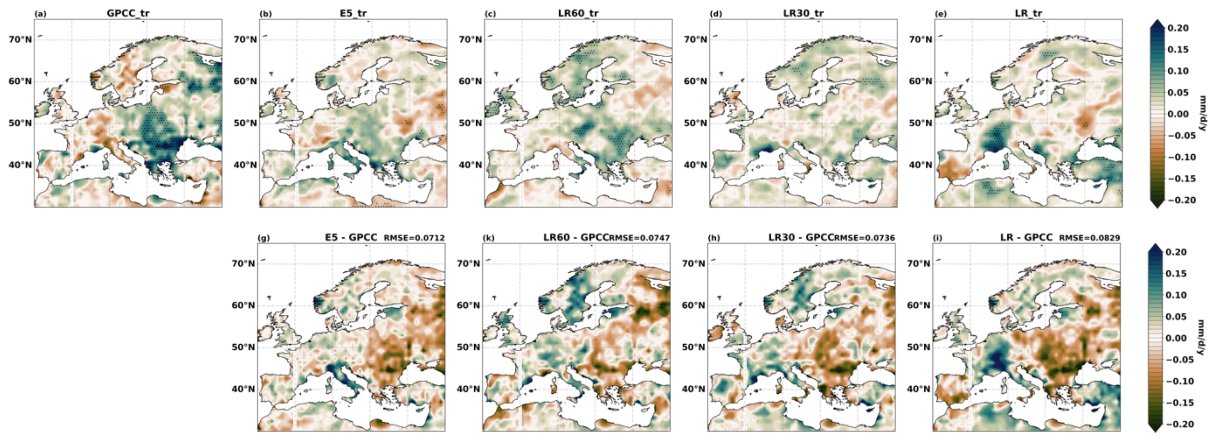


32
33

Fig. S4 The linear trends of annual 99th percentile precipitation over Europe during 1982-2019 from (a) GPCCC observations, (b) ERA5 reanalysis, (c) LR, (d) MR, (e) HR, and the corresponding biases and RMSEs in (f) ERA5, (g) LR, (h) MR, (i) HR. The shadings are trends at 95 % significance levels.

38

39



40

41

42

43

44

45

46

47

48

Fig. S5 The linear trends of annual 99th percentile precipitation over Europe during 1982-2019 from (a) GPCC observations, (b) ERA5 reanalysis, (c) LR60m, (d) LR30m, (e) LR, and the corresponding biases and RMSEs in (f) ERA5, (g) LR60m, (h) LR30m, (i) LR. The shadings are trends at 95 % significance levels.