

# Quantitative Sub-Ice and Marine Tracing of Antarctic Sediment Provenance (TASP v1.0)

James W. Marschalek<sup>1</sup>, Edward Gasson<sup>2</sup>, Tina van de Flierdt<sup>1</sup>, Claus-Dieter Hillenbrand<sup>3</sup>,  
Martin J. Siegert<sup>1,2</sup> and Liam Holder<sup>1</sup>

<sup>1</sup>Department of Earth Science and Engineering & Grantham Institute – Climate Change and the Environment,  
Imperial College London, Exhibition Road, London, SW7 2BP, UK; j.marschalek18@imperial.ac.uk

<sup>2</sup>Department of Earth and Environmental Sciences, University of Exeter, Penryn Campus, Cornwall, TR10 9EZ,  
UK.

<sup>3</sup>British Antarctic Survey, High Cross, Madingley Road, Cambridge, CB3 0ET, UK.

*Correspondence to:* James W. Marschalek (j.marschalek18@imperial.ac.uk)

**Abstract.** Ice sheet models should be able to accurately simulate palaeo ice sheets to have confidence in their projections of future polar ice sheet mass loss and resulting global sea-level rise. This requires accurate reconstructions of the extent and flow patterns of palaeo ice sheets using real-world data. Such reconstructions can be achieved by tracing the detrital components of offshore sedimentary records back to their source areas on land. For Antarctica, however, sediment provenance data and ice sheet model results have not been directly linked, despite the complimentary information each can provide on the other. Here, we present a computational framework (Tracing Antarctic Sediment Provenance, TASP) that predicts marine geochemical sediment provenance data using the output of numerical ice sheet modelling. The ice sheet model is used to estimate the spatial pattern of erosion potential and to trace ice flow pathways. Beyond the ice sheet margin, approximations of modern detrital particle transport mechanisms using ocean reanalysis data produce a good agreement between our predictions for the modern ice sheet/ocean system and seabed surface sediments. These results show that the algorithm could be used to predict the provenance signature of past ice sheet configurations. TASP currently predicts neodymium isotope compositions using the PSUICE3D ice sheet model, but thanks to its design it could be adapted to predict other provenance indicators or use the outputs of other ice sheet models.

## 1. Introduction

### 1.1 Motivation and aims

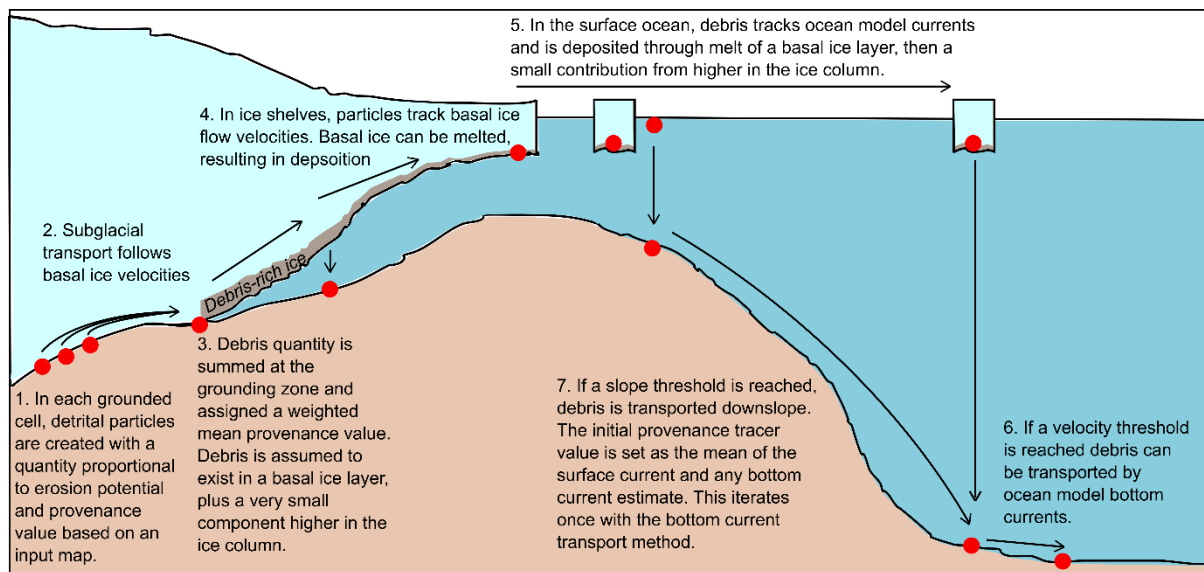
Ice flow pathways and ice sheet extent in the geological past have been inferred using sediment provenance studies, which trace marine detrital sediments to their constituent source rocks on the continent (e.g. Cook et al., 2013; Licht and Hemming, 2017; Wilson et al., 2018; Marschalek et al., 2021). However, conclusions about ice sheet extent and flow patterns drawn from such data are typically not constrained by quantitative analysis. This is because, when viewed in isolation, sediment provenance records can only predict where subglacial erosion was taking place, but cannot distinguish between changes in ice extent, changes to subglacial conditions which influence erosion rates, or changes to glacial marine sediment transport processes (e.g. Wilson et al., 2018; Golledge et al., 2021). Following Aitken and Urosevic (2021), provenance ( $P$ ) over time ( $t$ ) and space ( $\Omega$ ) can be expressed formally as a probability density function, where the product of geological variation in a source region ( $G_i(\Omega)$ ), erosion of that source region ( $E_i(t, \Omega)$ ) and transport potential ( $T_i(t, \Omega)$ ) are summed over all contributing source regions (a, b, ... n):

$$P(t, \Omega) = G_a(\Omega) \cdot E_a(t, \Omega) \cdot T_a(t, \Omega) + G_b(\Omega) \cdot E_b(t, \Omega) \cdot T_b(t, \Omega) + \dots G_n(\Omega) \cdot E_n(t, \Omega) \cdot T_n(t, \Omega) \quad (1)$$

Although erosion and debris transport processes are often considered when interpreting sediment provenance records, interpretations are typically limited to a ‘nearest-neighbour’ type approach, where changes in provenance are attributed to a simple advance/retreat of the ice sheet margin in the vicinity of the core site (e.g. Cook et al., 2013). Unless other processes that influence provenance signatures can be eliminated, these records may be misinterpreted. Numerical modelling offers the potential to make more quantitative estimates of the ice sheet state required to generate observed sediment provenance signatures by predicting the expected provenance of detritus at the ice sheet margin (Aitken and Urosevic, 2021). In this study, we develop an algorithm (Tracing Antarctic Sediment Provenance, TASP) to predict geochemical sediment provenance data at offshore core sites from the outputs of numerical ice sheet modelling. The overall aim of TASP is therefore to provide more quantitative information on past ice sheet configurations by predicting the provenance signature of these ice sheets.

### 1.2 The structure of TASP

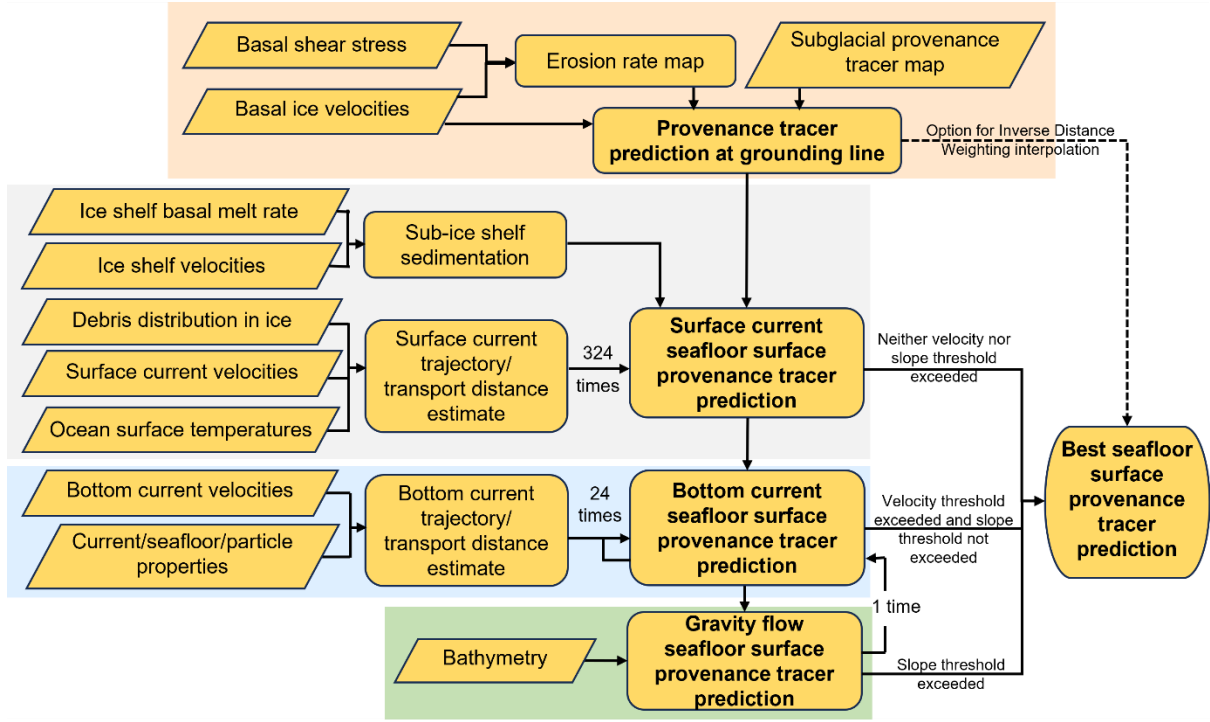
TASP estimates relative erosion potential and reconstructs the transport pathways of debris from beneath the ice sheet to the seafloor surrounding the continent. This includes representations of the approximate trajectories of debris at the base of the ice sheet, below/in ice shelves, in icebergs/ocean surface currents, in ocean bottom currents and in gravity flows. Our inclusion of detritus transport in the ocean is a critical component controlling sediment provenance, as most sediment core records are not directly located at the ice sheet margin today and their distance from the ice sheet margin likely varied significantly in the past. Transport of glaciogenic detritus in the ocean must therefore be considered. TASP approximates methods of marine detritus transport by splitting them into three key, interacting processes: iceberg rafting/transport in surface currents (Section 2.2), bottom current transport (Section 2.3), and gravitational downslope processes (Section 2.4) (Figs. 1&2).



**Figure 1. Schematic diagram showing the basic process of debris transport in TASP from source to sink.**

In summary, TASP is structured in a broadly similar way to how a debris particle might travel from source to sink (Figs. 1&2):

1. Debris is generated by glacial erosion, with the relative amount of debris incorporated into basal ice at any location proportional to the product of the basal shear stress and basal ice velocity. Areas with higher basal shear stresses/velocities will incorporate more debris. Debris is assigned a provenance tracer value based on a geology-based map of the subglacial source rocks (e.g., Appendix 1). Sediment is transported to the grounding zone using basal ice sheet velocities and a flowline algorithm. Because of the time integration of ocean sediment cores (typically  $10^3$ - $10^5$  years), we ignore deposition and remobilisation along the flowline.
2. As results are compared to marine sediment cores, debris movement from the ice sheet grounding zone to marine sediment core locations must be determined. Assumptions are therefore made regarding the distribution of debris in the ice column and the rate this debris is released from icebergs/ice shelves. These are combined with ice shelf velocities and ocean surface current trajectories to suggest how debris is initially moved from the grounding zone to marine sites.
3. Ocean bottom current velocities are used to determine where these may redistribute debris and the likely trajectories these currents take.
4. If a slope threshold is reached, downslope transport of debris is allowed for. This method is iterated once with the bottom current method, so debris transport can be a combination of all three processes.
5. These different estimates are combined to make a 'best estimate' map of seafloor provenance tracer values.



**Figure 2. Flowchart outlining the structure of TASP. Coloured boxes indicate the components contained in the ‘terrestrial.m’ (orange), ‘surf\_currents.m’ (grey), ‘bot\_currents.m’ (blue) and ‘grav\_flows.m’ (green) subfunctions.**

Beyond this overall structure, it is important to understand at the outset that:

- TASP does not make any attempt to quantify absolute amounts of debris/sediment. This is because, for provenance purposes, relative amounts of debris are all that is required; for a given offshore sediment sample, the fraction sourced from each rock type in the catchment is what is measured.
- TASP does not step through time simulating debris transport. Samples from sediment cores typically integrate provenance signatures over long timescales, making time-evolving particle tracking at a continental scale unfeasible. Instead, TASP takes a ‘snapshot’ approach throughout, assuming the system is in steady state.
- TASP is written in MATLAB and is external to the ice sheet model code. This approach provides flexibility, with the opportunity to apply it to various existing model experiments. TASP is not model-specific and could be applied to any ice sheet model output, providing key variables (bed elevation, basal shear stress and basal ice velocities with horizontal directional components) are saved.

## 2. Model description

### 2.1 Subglacial debris generation and transport

The starting point of the TASP algorithm is an ice sheet model output, which is used to estimate the generation and subglacial transport of debris (Fig. 2). Following the approach of Pollard and DeConto (2019), TASP approximates erosion potential ( $E$ ) as proportional to the product of basal velocity ( $u_b$ ) and basal shear stress ( $\tau_b$ ) from the ice sheet model:

$$E = \tau_b u_b k \quad (2)$$

The ‘quarrying’ coefficient  $k$  is a parameter dependant on properties including the erodibility of different rock types and other parameters which are unaccounted for. Here, a spatially uniform value of  $5.1 \times 10^{-10}$  was used for  $k$  as suggested by Pollard and DeConto (2019). As we are concerned only with relative, and not absolute, quantities of detritus the value used will not impact results.

There are continuing difficulties in quantifying processes of erosion and entrainment of subglacial debris, despite extensive study of these topics (Alley et al., 2019). This means that various erosion laws have been employed to recreate glacially eroded landscapes, typically also using an erodibility constant and the ice velocity raised to an exponent, often  $\sim 2$  (e.g. Herman et al., 2015). We also note that more sophisticated methods have been previously applied to model erosion beneath alpine glaciers (e.g. Ugelvig et al., 2018; Magrani et al., 2022). Here, we opt to use the erosion law in Equation 2 as it has been proven to reproduce reasonably accurate modern Antarctic topography starting from a pre-glacial landscape (Pollard and DeConto, 2019), and because using a different erosion law would be unlikely to result in a significantly different pattern of erosion potential, which broadly scales with basal ice velocity and increases towards the ice margin.

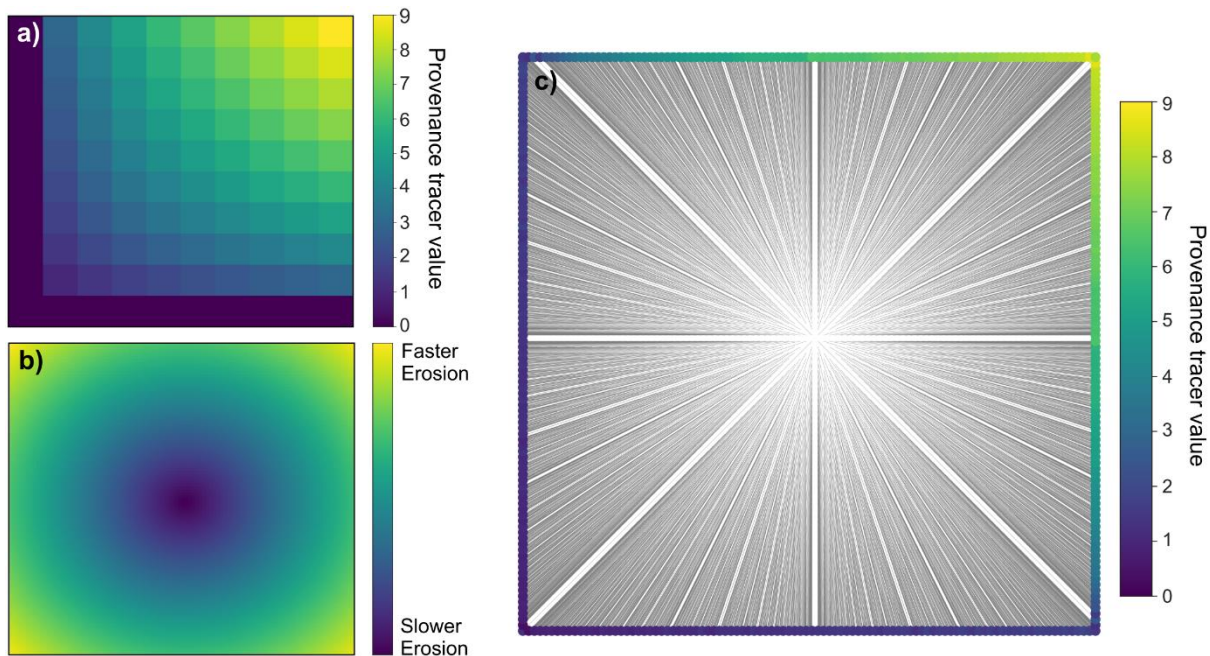
We note that where till is present at the ice sheet bed, this will shield the underlying substrate from erosion (Pollard and DeConto, 2003). However, the thickness, distribution and original provenance of a till layer will vary as a function of time and is increasingly uncertain in the past. Accounting for this in TASP would therefore involve incorporating the debris tracing into a time-evolving ice sheet model run, requiring significant extra computational time and negating the strength of TASP as a post-processing tool compatible with any ice sheet model output. Knowing the composition of subglacial sediments to make this useful would also require knowledge of subglacial geology at a far higher resolution than is currently possible. Because of these considerations, in its current form TASP effectively assumes that any till at a given location would be comprised of the bedrock directly beneath it.

From the site of debris generation at each grid cell, sediment packages were traced to the grounding line using the MATLAB ‘streamline’ function and the directional components of basal ice velocity (e.g. Fig. 3c). The ‘streamline’ function calculates curves tangential to the velocity vector field (i.e., streamlines) using an Euler integration method from input seed locations. Seed locations were selected based on a user-defined erosion potential threshold, which is set to 0 to include all cells beneath grounded ice. Increasing this threshold would lead to faster run times, at the expense of neglecting erosion in areas with low erosion potential. The streamline function is also used in the marine components of TASP (see Sections 2.2 and 2.3) and is responsible for most of the computational demand.

Using default settings, 8 CPUs and 64 GB of memory required a run time of  $\sim 6$ -8 hours on the Imperial College London HPC cluster (AMD EPYC 7742 2.25 GHz processor). Randomly selecting a subset of ocean streamline locations was investigated as a method of reducing this computational cost. However, it was found that any reduction in seed locations notably worsened the match with surface sediment measurements.

Once the streamlines were calculated, provenance tracer values at the grounding zone end locations were set using the provenance tracer values at the streamline start locations defined by a subglacial input map for the given provenance proxy and an erosion potential map. The provenance tracer input map is a critical part of TASP and, given significant uncertainties in the subglacial geology of Antarctica, likely comprises the largest source of error in the results.

Typically, multiple streamlines arrive at a given grounding zone end cell. The final provenance tracer values of grounding zone end cells were therefore calculated as a weighted mean by multiplying the provenance tracer values of each streamline start location by the erosion potential value ( $E$ ) of the start location, then summing this for all streamlines at a grounding zone end cell. This was then divided by the summed erosion potential of all the streamlines arriving at the grounding zone end cell (i.e.,  $\sum(E_{i,j} \cdot \epsilon N d_{i,j}) / \sum E_{i,j}$ ), where  $i,j$  represents all streamline start locations feeding into the grounding zone cell. The provenance tracer values at a given cell in the grounding zone thus reflect integration of the subglacial detritus at all locations upstream weighted to the relative erosion potential. To verify that the terrestrial component of TASP is functioning correctly, an experiment was performed with a square synthetic ice sheet flowing radially outwards. The provenance tracer input was a synthetic grid with values varying between 0 and 9 (Fig. 3a) and erosion potential was set to increase radially from the domain centre (Fig. 3b). As expected, provenance tracer values at the synthetic ice sheet margin reflect the detritus eroded at all areas upstream, weighted to the erosion potential so that cells near the edge of the domain dominate the provenance signature (Fig. 3c).



**Figure 3. Synthetic model test for the terrestrial component. This includes (a) a synthetic provenance tracer input map and (b) an erosion potential map, created using basal shear stress/basal ice velocities that increase away from the centre. Absolute values are not shown as only relative erosion potential is relevant for provenance tracing. (c) shows the radial streamlines in grey, as well as the calculated provenance tracer value at the ice sheet margin.**

Particle transport has been included in many previous studies seeking to examine glacier flow or validate models (e.g. Clarke and Marshall, 2002; Jouvét and Funk, 2014). However, these studies typically focus on tracing ice movement within the ice column for ice core dating (e.g. Clarke and Marshall, 2002), or on alpine glaciers which have a very different spatial scale and topographic/climatological setting to the continental scale ice sheets which are the focus of TASP (e.g. Jouvét and Funk, 2014). As we are primarily concerned with debris generated at the ice sheet bed, we neglect vertical transport. TASP also assumes all debris generated is advected

to the ice sheet margin (i.e., no significant subglacial sedimentation occurs). Furthermore, steady-state ice flow is assumed, allowing any change to ice flow trajectories to be neglected. TASP does not, therefore, account for transient phenomena such as the centennial stagnation and reactivation of Siple Coast ice streams (Hulbe and Fahnestock, 2007). The time between debris entrainment and deposition offshore may in reality be hundreds to thousands of years, depending on ice velocities. However, the primary goal of TASP is to reproduce long-term, large scale provenance patterns, such as interglacial ice sheet configurations smaller than that at present; for these, ice flow will be broadly consistent for thousands of years. At the temporal and spatial scales of interest here, the approximations used are considered sufficient to capture the broad-scale trajectories of debris under the ice sheets.

TASP does not account explicitly for detritus transport in subglacial hydrological networks. For ice sheets where there is a general lack of surface melt, such as present-day Antarctica, only basal meltwater feeds subglacial hydrological networks. This steady generation of water results in low water flow speeds and consequently very low sediment fluxes, even during episodic subglacial lake drainage events (Hodson et al., 2016; Alley et al., 2019). Subglacial hydrological networks will, however, evacuate some small amount of sediment beneath such an ice sheet. We suggest this debris transport method can be safely neglected in TASP as the trajectories of this detritus are unlikely to deviate significantly from ice flow vectors at the continental scale of interest here (Willis et al., 2016).

However, in a system with significant surface melt, such as the modern Greenland Ice Sheet or potential palaeo Antarctic ice sheets, subglacial hydrological networks, or even proglacial rivers, could be more important for transporting detritus. Such debris transport is not yet accounted for in TASP, but subglacial fluvial transport could potentially be incorporated through interfacing with complementary modelling specifically targeting fluvial transport of subglacial sediment (e.g., Delaney et al., 2019; Aitken et al., 2024).

## **2.2 Ocean surface currents and iceberg/ice-shelf rafting**

### **2.2.1 Debris distribution in the ice column**

Before predicting how debris is deposited in the marine realm, it is important to consider the distribution of the debris concentration in the ice column as this is a primary control on marine debris transport. If debris is incorporated further from the edge of an iceberg, more melt needs to occur for it to be released, potentially allowing for a longer transport distance. Observations fully penetrating the ice column are rare but show that for continental-scale ice sheets, at least outside of mountainous regions, most glaciogenic debris is concentrated in the basal layers of the ice column, typically the lowermost 2-15 metres (Gow et al., 1979; Christoffersen et al., 2010; Shaw et al., 2011; Pettit et al., 2014). Empirical relationships of the distribution of debris within this basal ice layer have been formulated, showing – from the base upwards – a constant debris content for several meters followed by a sharp exponential decay (Yevteyev, 1959), but very few data are available to suggest how typical this relationship is (Drewry and Cooper, 1981). Indeed, it can be assumed to vary significantly between localities depending on factors such as how the debris is incorporated (i.e., shearing and ice deformation vs. basal freeze on; Drewry and Cooper, 1981). Ice sheet basal conditions, including melting/freezing rates and the vertical component of ice flow, thus govern the thickness and nature of this debris-rich basal ice layer (Licht and Hemming, 2017). Conditions at the ice sheet bed are therefore critical (Dowdeswell and Murray, 1990), and

result in substantial variations in the distribution of debris in basal ice around Antarctica before the ice reaches the grounding zone.

Above this debris-rich basal ice layer, the debris concentration is strongly influenced by the glaciological setting. For instance, due to a relatively high number of rock outcrops, smaller icebergs calved from glaciers draining through mountainous regions carry more supraglacial debris and englacial debris higher in the ice column than larger tabular icebergs calved from major ice shelves, which may predominantly carry basal debris (e.g., Anderson, 1999). These significant and poorly understood complexities mean estimating a variable debris distribution down the ice column for different regions is beyond the scope of this study. Debris distribution in TASP is simplified by assuming it is the same in all icebergs, although we acknowledge that accounting for a variable debris load would improve the accuracy of the results.

To reflect the potential for limited concentrations of debris higher in the ice column, we include a very low minimum englacial debris content. This is included because for large ice sheets: (i) supraglacial debris is very rare, but occasionally present (e.g., Evans and Ó Cofaigh, 2003); (ii) englacial debris above basal debris-rich layers has been observed in multiple locations (Nicholls et al., 2012; Winters et al. 2019; Smith et al., 2019); and (iii) iceberg rafted debris (IBRD) can be transported for hundreds to thousands of kilometres offshore (e.g. Dowdeswell and Murray, 1990; Dowdeswell et al., 1995; Gil et al., 2009). This background debris concentration is set to  $10^{-5}$  times the maximum debris load at the base of the ice column based on an assumption of a  $\sim 10\%$  debris concentration in basal ice vs.  $\sim 0.001\%$  higher in the ice column (Dowdeswell and Murray, 1990). We find TASP is insensitive to the precise quantity of debris higher the ice column used.

To summarise, TASP assumes debris in the ice column at the grounding zone is distributed predominantly in a debris-rich basal layer, above which there is a very small, but finite debris concentration. From an initial debris content at the ice-bed interface ( $D_0$ ), the debris concentration in the ice ( $D$ ) at a given height above the ice base ( $Z$ ) is assumed to decay linearly up the ice column, reaching a minimum ‘englacial’ concentration ( $D_e$ ):

$$D = \max(D_e, D_0 \left(1 - \frac{Z}{Z_0}\right)) \quad (3)$$

Where  $Z_0$  is the debris-rich basal ice thickness in metres. A value of 4 m was selected for  $Z_0$  based on tuning within the approximate range of observed thicknesses (Section 3.2). TASP was found to be relatively insensitive to the value chosen. As summed erosion potentials from the terrestrial component of TASP are saved at the end cells of ice flow trajectories,  $D_0$  is set based on the amount of eroded material reaching these grounding zone cells.  $Z$  is a cumulative product of melt rate and the amount of time elapsed, as described in Section 2.2.4.

Other options beyond a linear decay in distance from the bed (Equation 3) were also explored. These included an exponential decline in debris yield:

$$D = \max(D_e, D_0 \left(-\lambda \frac{Z}{Z_0}\right)) \quad (4)$$

Where a decay coefficient  $\lambda = 5$  was selected for rain-out of basal debris over a length of time which agrees closely with more in-depth studies of iceberg rafting (e.g. Hopwood et al., 2019). Experiments were also performed with constant basal debris yield from the basal ice (i.e.  $D = D_0$  while  $Z < Z_0$ ). However, these changes to debris distribution within the ice had a negligible impact on results.



### 2.2.2 Representation of ice shelves

Once in contact with the ocean, ice may begin to melt, releasing debris from the ice column. Melting of basal ice may begin before icebergs calve due to the presence of floating ice shelves. Melting at the grounding zone can lead to high accumulation of previously frozen-on basal debris or deforming subglacial till in sedimentary landforms, such as a till delta or grounding-zone wedge (e.g., Alley et al., 1989; Batchelor and Dowdeswell, 2015). Important influences on sub-ice shelf sedimentation include the seaward extent and morphology of the ice shelf, the presence of pinning points which can allow freeze on of new sediment, and the temperature of ocean water reaching the base of the floating ice which governs basal melt/freezing rates (e.g., Smith et al., 2019). These processes often lead to basal detritus being deposited, although debris near the base can also rise in the ice column if net freezing and/or surface ablation occur (Kellogg & Kellogg, 1988; Kellogg et al., 1990; Nicholls et al., 2012).

Beneath ice shelves, debris frozen into the ice will continue to follow ice-flow trajectories, so are set in TASP by the ice sheet model. Ocean currents beneath ice shelves are very difficult to observe, thus poorly constrained. TASP therefore assumes that there is no debris transport by ocean currents beneath ice shelves, with debris instead following modelled ice flow trajectories and melting out (or refreezing debris-free ice) at a rate controlled by the estimated sub-ice shelf melt rate. In the code, ice flow velocities are effectively treated as very slow ocean current velocities, allowing a realistic pattern of melting (thus sedimentation) and freezing beneath ice shelves.

### 2.2.3 Surface current trajectories

Once calved, iceberg trajectories are a function of surface ocean current velocity, wind velocity and iceberg size; dedicated iceberg models account for such complexities (e.g. Bigg et al., 1997; Hill and Condron, 2014). However, surface current velocities dominate, particularly for large icebergs (Rackow et al., 2017; Wagner et al., 2017). We therefore here use an ocean velocity reanalysis dataset to approximate the pathways that icebergs would be expected to take after calving. This velocity field was used as an input for the MATLAB streamline function, with the end cells of the grounded ice sheet streamlines (i.e., the grounding zone) used as seed locations for the ice shelf/ocean streamlines.

Whilst it is reasonable to assume the velocities of debris beneath an ice shelf are constant through time, using a single snapshot of ocean velocities is not accurate. This is because sea ice variability and weather patterns create substantial seasonal and interannual variations in iceberg pathways estimated from ocean surface current velocities. To account for this effect, debris trajectories are calculated for multiple monthly mean velocities. Debris transport was assumed to follow the trajectories produced by each velocity field.

As we seek to approximate many debris transport mechanisms in a single framework, the method of ocean model particle tracking described here is relatively simple compared to code designed specifically for this task such as Parcels (Lange and Seville, 2017) or ROMSPATH (Hunter et al., 2022). Such tools are more sophisticated than required for the purposes of TASP, for instance operating in 4D and accounting for particle dispersion. TASP does not, therefore, seek to replace them; they are instead a potentially useful complement.

#### 2.2.4 Debris distribution along surface current trajectories

Once the trajectories of surface currents have been determined, the debris distribution along each trajectory can be predicted. This is important because where multiple trajectories cross the same ocean cell, there must be a realistic weighting to the different source locations. To achieve this, the subglacial erosion potential values from the terrestrial component feeding into each cell at the grounding zone are summed and used to weight the initial debris concentration in each ocean surface current starting cell.

In the ocean, modern melt rates in TASP are calculated using sea surface temperatures ( $T_s$ ) corresponding with the monthly ocean surface velocity data used (Zuo et al., 2019; Copernicus Climate Data Store, 2021). Melt rate ( $M_b$ ) will vary as a function of ocean temperature; we parameterise this from the empirical equation of Russell-Head (1980):

$$M_b = 2.08 \times 10^{-7} (T_s + 1.8)^{1.5} \quad (5)$$

$M_b$  is calculated for every ocean cell for each month in the ocean dataset. Although this does not account for the many complexities associated with calculating iceberg melt which are represented in dedicated iceberg models (e.g. Bigg et al., 1997; Hill and Condron, 2014), it is considered a sufficient simplification for the purposes of TASP.

TASP then loops over each cell in each surface current trajectory, calculating  $Z_{(n)}$  (the thickness of basal ice melted in cell  $n$ ) as:

$$Z_{(n)} = Z_{(n-1)} + M_{b(n)} \cdot \frac{\Delta d}{v_{mag(n)}} \quad (6)$$

Where  $Z_{(n-1)}$  is the thickness of ice already melted from the ‘iceberg’ in the previous cell,  $\Delta d$  is the distance travelled from the last cell, and  $v_{mag(n)}$  is the magnitude of the velocity in the given cell. The debris yield for the given cell is then given by Equation 3. In this way, debris from icebergs more proximal to their source location will dominate the provenance signature, but where more local icebergs are absent, there is the potential for far-travelled icebergs to influence provenance tracer values.

The relative amount of debris release over time from individual icebergs will, in reality, depend on iceberg size and frequency of overturning, and as such may be episodic (Drewry and Cooper, 1981; Dowdeswell, 1987; Dowdeswell and Murray, 1990). However, we verify that our equations accurately represent iceberg melt by inputting typical Southern Ocean values for  $T_s$ ; this produces debris yields over time comparable to those of studies with a more rigorous treatment of iceberg movement and melt (Dowdeswell and Murray, 1990; Hopwood et al., 2019).

To convert this relative debris amount into an estimate of the provenance tracer value for each ocean cell, the provenance tracer value of glaciogenic debris at each ice sheet grounding zone cell was projected along the iceberg paths and weighted based on the debris content of the grounding zone cell and the amount of basal ice melted. Each ocean cell is therefore assigned two values for each streamline: a) a provenance tracer value, and b) a relative debris amount. For each month in the surface ocean velocity/temperature dataset, a map of provenance tracer values is then calculated based on the debris amount saved for each streamline and the

grounding zone provenance tracer value. A mean is then taken of the monthly estimates to produce the final ‘surface current’ provenance value estimate.

Areas with no iceberg tracks over them, but within 40 km of an iceberg track, were filled using interpolation. This interpolation somewhat accounts for the potential for variations in ocean surface currents which are unresolved here. Furthermore, it is likely that over the centuries integrated within most sediment samples of centimetre-scale thickness, there would be transport of icebergs over more of the seafloor than captured in the years of data feasible to use in TASP. A given ‘iceberg’ is not, therefore, modelled in a true time-evolving manner as its trajectory is calculated based on a single month’s surface current velocity data. Although unrealistic, this simplification was necessary to avoid detailed modelling of icebergs which would need to include additional factors, such as morphology, wind stress etc. (e.g. Rackow et al., 2017).

Sea ice conditions impact iceberg movement and melt, leading to seasonally changing detritus transport in surface currents. We do not explicitly account for sea ice movement but note that the far lower sea surface temperatures in the winter months, when icebergs usually calve less frequently and are frozen into sea ice, will weight our results near the coast towards the summer months.

### **2.2.5 Suspended sediment**

Until now, it has been assumed that debris is transported entirely within ice. This is not realistic, as fine-grained detritus can also derive from meltwater plumes rising from beneath the ice shelf base at the grounding zone (e.g. Lepp et al., 2022). Meltwater plumes can deposit sediment tens of kilometres away from the grounding zone and will track ocean currents (e.g. Smith et al., 2019, and references therein). Furthermore, once melted out of the ice shelf/icebergs, very fine grained IBRD will not instantaneously fall out of the water column. Instead, silt particles (on the order of 5-50  $\mu\text{m}$ ) with slower settling velocities will be transported horizontally as they sink down through the water column over periods of days to months, leading to potential transport distances of tens to thousands of kilometres, depending on grain size and current speed (Azetsu-Scott and Syvitski, 1999).

Meltwater plumes (and fine-grained debris melted out of icebergs) can travel at varying heights in the water column, depending on the relative densities of the plume and surrounding ocean water. Although not explicitly represented in TASP, we argue these debris transport mechanisms will track ocean flow patterns and hence are somewhat represented by the use of both surface and bottom current approximations (see also Section 2.3).

Given that our provenance tracer value estimate using ocean surface currents represents not only IBRD that immediately settles, but also potential settling of fine-grained detritus derived from icebergs and/or meltwater plumes, we refer to the estimate derived from tracking surface currents as the ‘surface current’ method rather than the IBRD method.

### **2.3 Bottom currents**

Iceberg rafting and surface currents are not responsible for all transport of glacimarine detritus. One key process operating, especially on the continental rise, is the transport and deposition of predominantly silt- and clay-sized detritus by bottom currents. These currents typically flow parallel to the continental slope where they can influence the movement of detrital particles already in suspension. Bottom currents do not only deposit

sediments as “contourites” but can also erode and redistribute particles from the seabed surface if their velocities are sufficiently high. As well as in the deep ocean, bottom current velocities can occasionally be sufficiently high to remobilise sediment on the continental shelf (Ha et al., 2014; Jenkins et al., 2018).

In TASP, bottom currents are defined as the deepest ocean velocity layer. As TASP seeks to represent transport of the <63 µm grain size fraction, it assumes that a current velocity in the range of ~0.12-0.18 m/s is needed to start the resuspension and redistribution of the finest sediment particles (McCave and Hall, 2006; Gross and Williams, 1991). This threshold can vary significantly depending on properties such as the mean grain size, sorting and cohesivity of the sediment, but tuning this parameter within this range suggested a best match with seafloor surface sediments when a threshold of 0.16 m/s is used (Section 3.2).

The ocean reanalysis velocity data are unlikely to capture the full variability in bottom current dynamics, which include significant changes in current speed and orientation on timescales as short as hours (e.g. Camerlenghi et al., 1997; Giorgetti et al., 2003). This poses the question as to whether the sedimentary record reflects predominantly an integrated mean of long-term bottom-current flow variability, or whether it is dominated by episodes of peak current speed and current direction at these times. Here, it is assumed the latter case applies and, to account for the temporal variability in bottom current strength, peak flow velocities are assumed to be 2.5 times the monthly mean in the ocean reanalysis product. This relationship is based on measurements of bottom current strength at mooring sites around a contourite drift on the western Antarctic Peninsula continental rise (Camerlenghi et al., 1997; Giorgetti et al., 2003), which record peak velocities approximately two to three times greater than mean velocities. The bottom current speed record from the Antarctic Peninsula drift is also comparable with other bottom current records (Gross and Williams, 1991). It is therefore suggested that, in areas where mean monthly flow velocity exceeds 0.064 m/s in the reanalysis product, the aforementioned 0.16 m/s threshold speed for the start of resuspension and winnowing is exceeded during times when currents are strongest.

Consequently, all areas where bottom current velocities exceed 0.064 m/s are used as source locations for debris. Our approach is supported by the fact that the sortable silt mean size of seafloor surface sediment from another Antarctic Peninsula drift, recovered at a comparable water depth as the mooring measurements, suggests formation under a bottom current with a flow velocity matching the peak speed recorded in the mooring data (Hillenbrand et al., 2021). Detritus entrained in bottom currents is again routed using the MATLAB ‘streamline’ function.

As suspended particles will not be deposited uniformly over a given streamline, deposition over a streamline must be approximated. Although detailed modelling of bottom current erosion, transport and deposition is beyond the scope of this study, an approximation produces a realistic exponential decay in suspended particle concentration ( $c$ ) over time ( $t_s$ , seconds):

$$c = c_0 \exp \left( -\frac{pt_s v_s}{y} \right) \quad (7)$$

Here,  $p$  is the probability of a particle sticking to the ocean floor,  $v_s$  is settling velocity, and  $y$  is the thickness of the layer with suspension load in metres (Einstein and Krone, 1962). As we are not concerned with absolute amounts of sediment, the initial particle concentration ( $c_0$ ) is irrelevant and set to 1. A value of  $3.3 \times 10^{-4}$  m/s is

used for the settling velocity, which is within the range expected for fine-grained detritus (Einstein and Krone, 1962; McCave, 2005). Suspended particle layer thickness ( $y$ ) is highly variable and uncertain and was therefore tuned against seafloor surface sediment data, with a value of 15 m selected (Section 3.2).

The probability of the particle sticking to the bed ( $p$ ) in Equation 7 can be calculated from bottom shear stress,  $\tau_w$  ( $\text{N m}^{-2}$ ), using a critical depositional stress,  $\tau_c$  ( $\text{N m}^{-2}$ ):

$$p = 1 - \frac{\tau_w}{\tau_c} \quad (8)$$

(Einstein and Krone 1962).  $\tau_c$  is set to  $0.08 \text{ N m}^{-2}$ , in line with observed estimates for different classes of sediment which vary between  $0.05$  and  $0.1 \text{ N m}^{-2}$  (Shi et al., 2015; Lumborg, 2005; McCave, 2008). In turn,  $\tau_w$  can be approximated as a product of vertically averaged velocity ( $\bar{U}$ ) and water density ( $\rho$ ) using a quadratic law (Mofjeld, 1988; Garcia and Parker, 1993).

$$\tau_w = \rho C_d \bar{U}^2 \quad (9)$$

At the deep-sea water depths of interest here, the drag coefficient,  $C_d$ , can be estimated using:

$$C_d = \kappa^2 / [\log\left(\frac{H}{z_0}\right) - 1]^2 \quad (10)$$

Where  $H$  is water depth and  $z_0$  is the roughness length. Here we use  $5 \times 10^{-4} \text{ m}$  for the roughness length, which is a reasonable approximation given that the drag coefficient is insensitive to relatively small changes in water depth in the deep-sea (i.e.,  $H \gg z_0$ ) (Mofjeld, 1988).  $\kappa$  is the von Kármán constant,  $0.41$ . This approximation yields a spatially-variable drag coefficient in the order of  $\sim 10^{-3}$ , which is a magnitude consistent with observations (Umlauf and Arenborg, 2009). For simplicity, the bottom current velocity is assumed to be approximately equal to the depth-averaged velocity.

To set the initial provenance tracer value of detritus mobilised by bottom currents, we use the output from the surface current method. To account for any seasonal changes in bottom current velocity, we then iterate the current tracing (24 months suggested), using the output from the previous month to set the provenance tracer value of sediment eroded where possible. Similar to the surface current estimate, the results for detritus moved by bottom currents are interpolated for 40 km around trajectories to account for unresolved pathways and for the fact that there is relatively little data to constrain modelled bottom current velocities in the ocean reanalysis product.

This approach to bottom current transport assumes the transport along a given monthly mean trajectory occurs under steady-state conditions and does not account for changing currents during the duration of a detrital particle being suspended. This approach is by necessity a major simplification of the treatment of particle transport and sediment remobilisation by bottom currents. Nevertheless, the areas subject to sediment remobilisation are captured, alongside the provenance of detritus reaching a given location through bottom current transport.

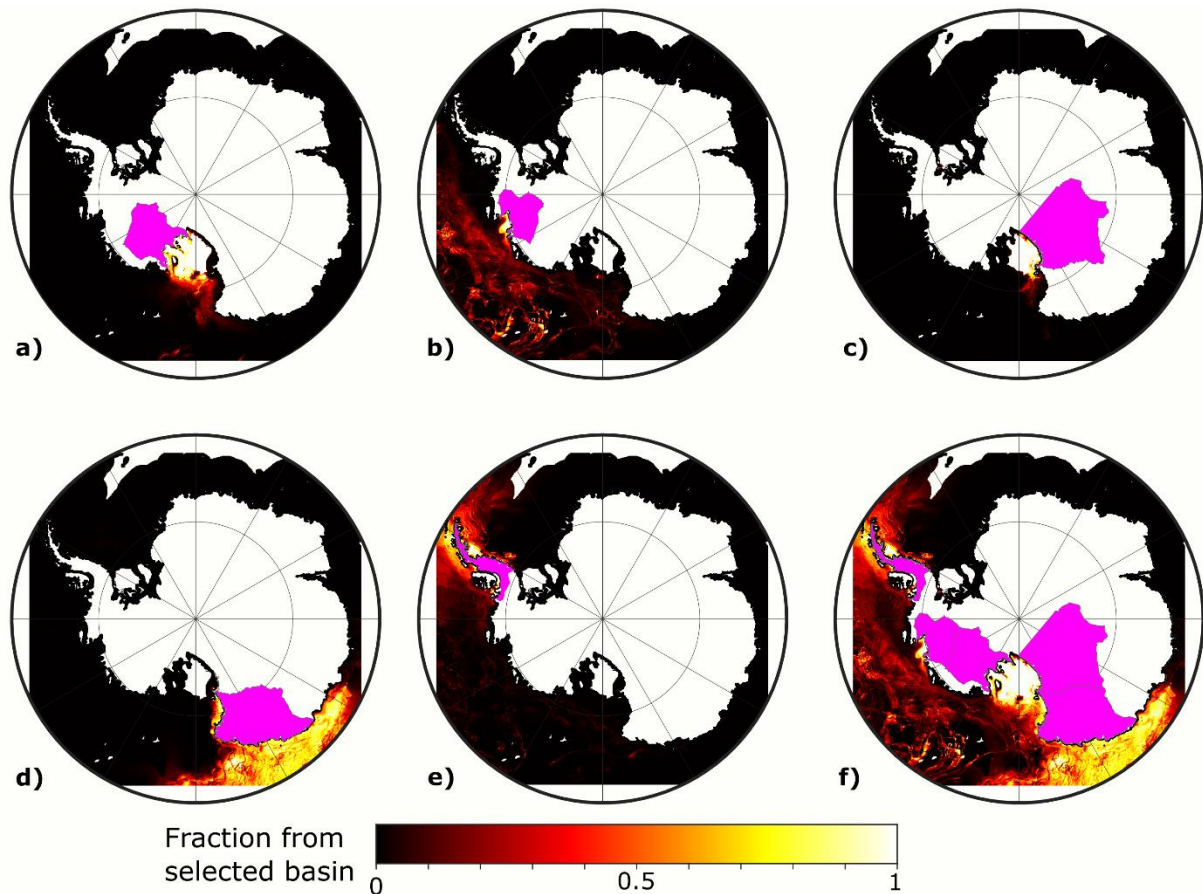
## 2.4 Gravitational downslope transport

Substantial volumes of glacial-marine detritus can be moved through gravity-driven downslope processes, such as turbidity currents, slumps and debris flows. To represent these transport mechanisms, the mean provenance tracer values from the surface and bottom current methods at all locations with a slope of  $>1^\circ$ , mostly confined to the continental slope, are selected. This slope threshold was selected by tuning within a range of feasible values (Stow, 1994; Section 3.2). These grid cells are used as start locations from which the direction of gravitational transport is calculated using the D8 algorithm (O'Callaghan and Mark, 1984), which iterates until a cell is repeated (i.e., an upwards slope is reached). TASP makes no attempt to account for variations in debris load over travel distance along a gravitational transport pathway. This is deemed reasonable, as unlike ocean currents, such paths are unlikely to cross as the direction of travel will usually be approximately perpendicular to the coast (on the shelf) or the shelf break (on the continental slope). Thus, calculation of the relative quantity of sediment is unnecessary.

Unresolved bathymetric features mean gravitational flows are likely to carry detritus beyond the constraints of the approximate gravity flow paths. The gravitational transport provenance estimate is therefore interpolated. Gravity flows do not necessarily shed their load once the slope falls below a threshold; turbidity currents, for example, can carry particles over 1000 kilometres (e.g. Mulder, 2011). As our gravity flow paths were already typically 300-600 km long, we interpolate a further 300 km at all locations beyond the shelf break.

Theoretically, the relief on the continental shelf can be sufficient in places for gravity flows to redistribute sediment (e.g. Anderson et al., 1983; Hillenbrand et al., 2005). However, these processes are unlikely to transport significant amounts of sediment at the spatial scales (10's-100's km) considered here, and recent gravitational downslope deposits have only been identified in Antarctica locally on the very rugged, over-deepened inner continental shelf (e.g., Smith et al., 2009; Hogan et al., 2020). Thus, we do not interpolate the gravitational transport provenance estimate on the continental shelf, defined as water depths  $<1200$  m. Although this depth threshold is significantly deeper than the true average water depth of the continental shelf, which varies predominantly between ~400 and 500 m in Antarctica, using 1200 m avoids inclusion of most over-deepened areas on the innermost shelf close to the present ice sheet margin, where interpolation should be avoided.

Turbidity currents flowing perpendicular to the shelf break down the continental slope can carry suspended particles to locations on the continental rise where they are captured by bottom currents flowing parallel to the margin, i.e., approximately parallel to the shelf break (e.g., Rodrigues et al., 2022a; Hillenbrand et al., 2021). To account for this interaction between gravitational downslope processes and bottom current transport, the output of the gravity flow method was iterated once with the bottom current method described above. Although this approach does not explicitly represent suspended material supplied by gravitational processes which is subsequently captured by bottom currents, using an iterative method does account for particle transport both parallel and perpendicular to the continental margin in both the bottom current and gravitational provenance tracer value estimates.



**Figure 4. The predicted fraction of offshore sediment originating from five IMBIE drainage basins shown in pink (a-e) and the total fraction from all 5 selected basins (f).**

To ensure that TASP transports particles to sensible areas offshore, we use an idealised provenance tracer map for the IMBIE Antarctic drainage basins (Zwally et al., 2012). Each basin was set to a provenance tracer value of 1 and elsewhere set to 0, and this repeated for five major drainage sectors in Antarctica: a) the Siple Coast, b) the Amundsen Sea, c) the central Transantarctic Mountains, d) Victoria/Oates/George V Land and e) the Antarctic Peninsula. This produced maps of the fraction of sediment derived from each basin (Fig. 4). This demonstrates that TASP captures a pattern of sediment dispersal offshore where sedimentation is concentrated close to the grounding zone and broadly diminishes with distance from the source (e.g. Smith et al., 2019).

## 2.5 Relative contribution of transport mechanisms

To produce a ‘best estimate’ seafloor provenance map, it is necessary to apportion the relative contribution of the three marine transport mechanisms (Sections 2.2-2.4) around the Antarctic continental margin. The TASP ‘best estimate’ map uses the value for gravity flows where they are present, bottom currents where gravity flows are absent, and surface currents where there is neither a gravity flow nor a bottom current estimate (Fig. 2). Assigning one method to each grid cell is not physically accurate, as all marine transport mechanisms may interact at a given location. However, TASP accounts for this as it uses the surface current estimate as the source of the bottom current estimate, and the bottom current and surface current estimate maps as the source for the gravity flow estimate. A major strength of this approach is that it does not require an estimate of the absolute

quantity of detritus transported by each mechanism, which is useful given that the rates of these processes are very poorly constrained.

In some settings, marine transport processes can be estimated given observations of geomorphological features (e.g., contourite drifts, channels eroded by turbidity currents), grain size parameters (e.g., content of coarse-grained clasts indicative of IBRD supply, percentage and mean of sortable silt as a proxy for bottom current vigour) and sedimentary structures (e.g., normally graded turbidites, winnowed layers of residual coarse-grained sediments). However, making these inferences requires good coverage with high-resolution bathymetric and seismic data and the collection of numerous sediment cores from targeted locations. Even then, however, it often remains difficult to determine the fraction of the sediment transported by different mechanisms (e.g., Rodrigues et al., 2022a, 2022b). The approach used by TASP is therefore considered a necessary and appropriate simplification.

### **3. Results when applied to present-day Antarctica**

#### **3.1 Selected provenance tracer, study site and input data**

An ability to accurately represent the modern system is a pre-requisite for reconstructing sediment provenance in the past. Furthermore, most ice sheet sediment provenance studies focus on Antarctica (e.g. Cook et al., 2013; Wilson et al., 2018; Marschalek et al., 2021). With these considerations in mind, we here apply TASP to the modern Antarctic ice sheets (i.e., East Antarctic Ice Sheet, West Antarctic Ice Sheet (WAIS) and Antarctic Peninsula Ice Sheet). For this case study, the performance of TASP can easily be evaluated because the spatial distribution of provenance proxy measurements in marine sediments is far more complete in recent (i.e., late Holocene to modern) surface sediments than in older, more difficult to date, sediments (e.g. Simões Pereira et al., 2018). This is accompanied by the ability to directly measure ice surface velocities and ice thicknesses; ice flow drainage pathways and erosion potentials are therefore far more precisely constrained than is possible for past ice sheets. Modern oceanographic data mean marine processes transporting glaciogenic detritus can also be more accurately simulated at the present day. By predicting the provenance signature of the modern Antarctic ice sheets and comparing this to measured seafloor surface sediments, we demonstrate the accuracy of TASP and show that applying it to past ice sheets should produce useful results. Palaeo ice sheet simulations can be input into the current version of TASP, selecting the “palaeo” option to reduce outputs by not comparing results of the provenance tracing to seafloor surface sediment measurements.

To trace debris transport, a sediment provenance proxy is required. TASP could be adapted for any sediment provenance tracer, such as clay minerals (e.g. Ehrmann et al., 2011), heavy minerals (e.g. Hauptvogel and Passchier, 2012), elemental concentrations (e.g. Monien et al., 2012), clast petrography data (e.g. Sandroni and Talarico, 2011) or detrital mineral ages (e.g. Licht et al., 2014). Each provenance proxy would require a map of its subglacial distribution. In the case of the categorical data (e.g. clast types) or binned distributional data (e.g. specific detrital mineral age populations), TASP would require adapting to account for multiple input maps and saving of multiple output maps, with the associated extra memory demand.

However, for this case study TASP targets detrital neodymium (Nd) isotopes, which are expressed simply as a single number, for which TASP is currently designed. Nd isotope compositions are a powerful sediment provenance proxy as all rock-forming minerals incorporate Nd and Sm into their structure, meaning all rock



types will be accounted for and are integrated in the provenance signal. Furthermore, Nd isotope compositions are generally unaffected by grain size sorting (Garçon et al., 2013). These factors mean Nd isotope compositions have seen widespread application in Antarctic sediments (e.g., Farmer et al., 2006; van de Flierdt et al., 2007; Roy et al., 2007; Pierce et al., 2017; Simões Pereira et al., 2018). For instance, the proxy has provided evidence for East Antarctic Ice Sheet retreat in the Pliocene and Pleistocene (Cook et al., 2013; Wilson et al., 2018) and marine-based WAIS growth in the Early Miocene (Marschalek et al., 2021).

The  $^{143}\text{Nd}/^{144}\text{Nd}$  ratio is typically reported in epsilon notation ( $\epsilon_{\text{Nd}}$ ); i.e., in parts per 10,000 compared to the modern Chondritic Uniform Reservoir (CHUR; Jacobsen and Wasserburg, 1980):

$$\epsilon_{\text{Nd}} = \left( \frac{(^{143}\text{Nd}/^{144}\text{Nd})_{\text{sample}}}{(^{143}\text{Nd}/^{144}\text{Nd})_{\text{CHUR}}} - 1 \right) \times 10^4 \quad (11)$$

Analytical errors for  $\epsilon_{\text{Nd}}$  values are typically reported between ~0.2 and 0.3 epsilon units (e.g. Farmer et al., 2006; Marschalek et al., 2021).

Geographically, we examine the region offshore of West Antarctica and adjacent areas of East Antarctica (from approximately 60°W to 140°E; Fig. 5). This spans the location of many existing detrital Nd isotope provenance studies (e.g. Cook et al., 2013; Marschalek et al., 2021) and compilations of the  $\epsilon_{\text{Nd}}$  values of continental rocks (e.g. Simões Pereira et al., 2018; Marschalek et al., 2021). Although TASP estimates provenance all around Antarctica, useful results are limited to this extent of compiled literature  $\epsilon_{\text{Nd}}$  values. Expanding the useful area of the domain would require additional compilation of bedrock literature data and assumptions regarding subglacial geology (Appendix 1). Application of TASP to other ice sheets, such as the Greenland Ice Sheet, is possible, but would require some modifications to the model code to account for the different geographic setting. As TASP focuses on marine transport processes and does not represent fluvial sediment transport, it is most applicable to ice sheets with predominantly marine-terminating glaciers.

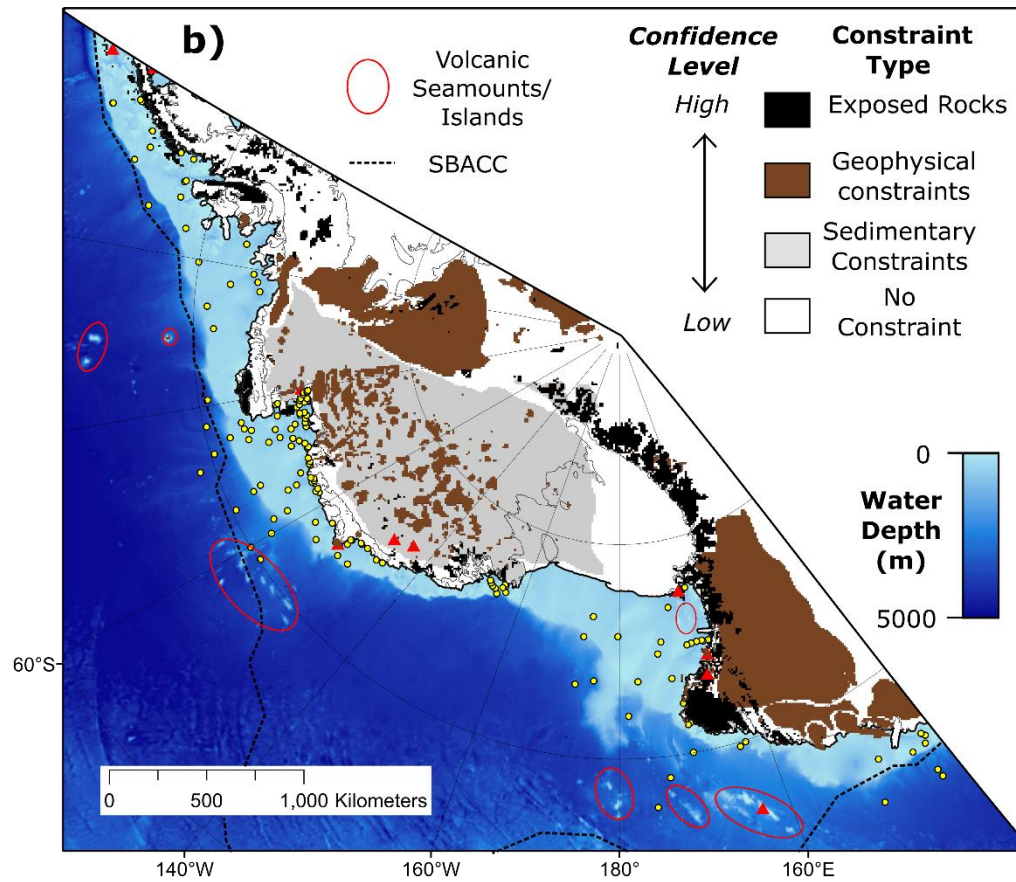
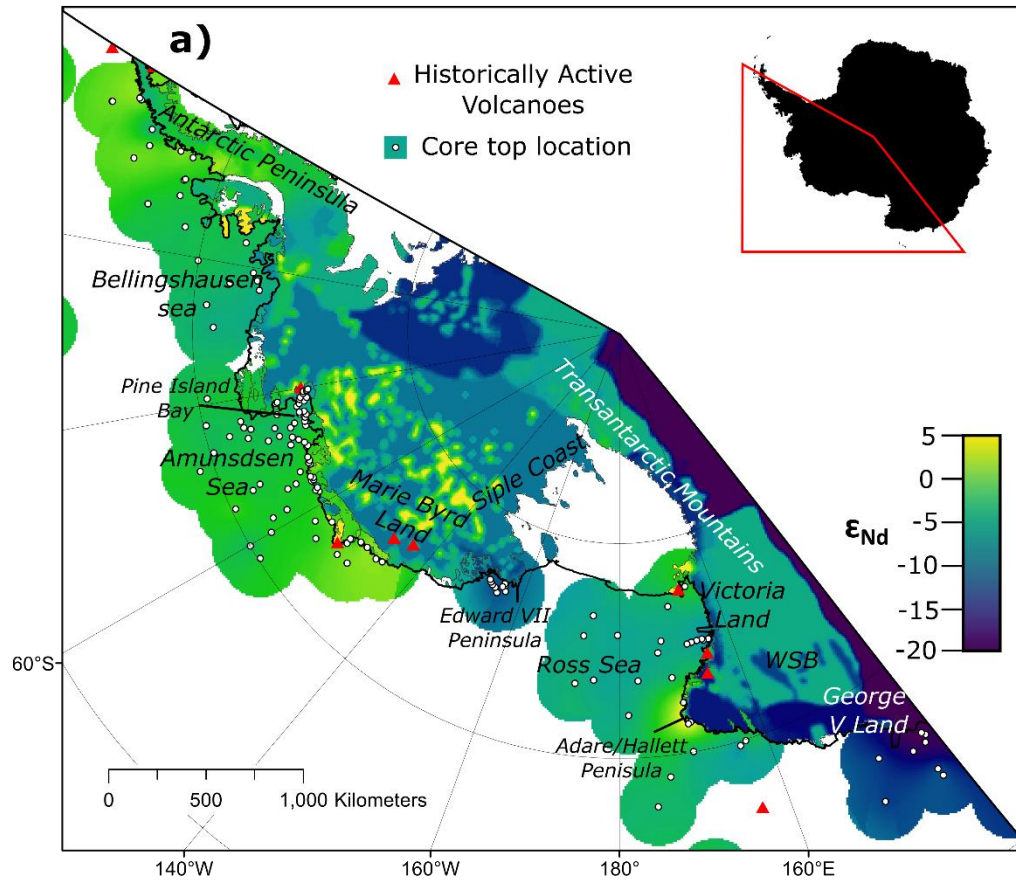


Figure 5. a) Map of inland  $\epsilon_{Nd}$  values used as an input for the provenance tracing (Appendix 1) and interpolated  $\epsilon_{Nd}$  values within 200 km of a marine surface sediment sample with a measured  $\epsilon_{Nd}$  value. Seafloor surface sample locations are shown as white circles and volcanoes with reported subaerial eruptions in the historic record are shown as red triangles (Patrick and Smellie, 2013). The MEaSUREs grounding line and modern ice (shelf) fronts are indicated using solid grey and black lines, respectively (Rignot et al., 2013; Mouginot et al., 2017). b) The confidence level of  $\epsilon_{Nd}$  value estimate, displayed on BedMachine bathymetry (Morlighem et al., 2020). Uncertainty levels are classified either as: exposed rock with  $\epsilon_{Nd}$  data (black); areas with subglacial geology constrained by gravimetric/magnetic/geomorphological etc. data (brown); areas with few direct constraints, limited to isolated subglacial samples obtained by drilling through the ice (grey); and areas without any rock type constraints, filled using Kriging (white). Volcanic seamounts and islands (e.g. Lawver et al., 2012; Kipf et al., 2014) are circled in red. These features are displayed because they potentially supply additional radiogenic detritus to marine sediments which is unaccounted for in our algorithm. The Southern Boundary of the Antarctic Circumpolar Current (SBACC) is shown as a black dashed line (Orsi et al., 1995).

To assign eroded detritus an  $\epsilon_{Nd}$  value for comparison with offshore records, the first requirement is a spatially continuous estimate of  $\epsilon_{Nd}$  for the study area below grounded ice (Fig. 5a). Constructing this map required the compilation of literature  $\epsilon_{Nd}$  data for different rock types (see Appendix 1 for a detailed description). This process was aided by an existing compilation of  $\epsilon_{Nd}$  data from the Pacific sector of West Antarctica (Simões Pereira et al., 2018, 2020), extended to the Ross Sea sector (Marschalek et al., 2021). Using a different provenance proxy would require construction of another map for the given provenance tracer.

To assess the accuracy of our sediment provenance tracing algorithm, results were compared to  $\epsilon_{Nd}$  values measured in recent seabed surface sediments (Fig. 5a). These data were compiled from all known literature sources in our study domain (Walter et al., 2000; Roy et al., 2007; van de Flierdt et al., 2007; Pierce et al., 2011; Cook et al., 2013; Struve et al., 2017; Simões Pereira et al., 2018, 2020; Carlson et al., 2021; Shao et al., 2022). New seafloor surface sediment  $\epsilon_{Nd}$  data from the Ross Sea were also included to improve spatial coverage in this area (Table A2).

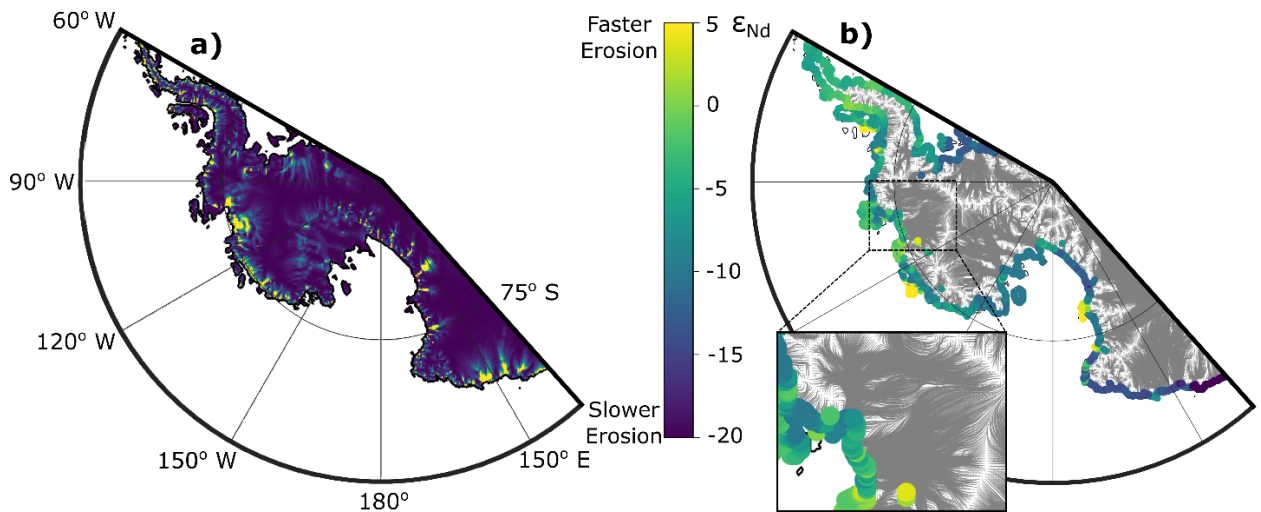


Figure 6. a) Erosion potential map used to seed start locations. Absolute erosion potential is not given as this is uncertain and not required to predict offshore provenance. b) Grounded ice streamlines (grey), with points at the end

of each streamline coloured according to the  $\epsilon_{Nd}$  value at the streamline start point. A dashed box indicates the location of the inset, which shows more detailed flowlines in the Amundsen Sea Embayment. The colour bar in the centre shows both the erosion potential in panel a) and the  $\epsilon_{Nd}$  values in panel b).

To simulate the generation and transport of debris subglacially (Fig. 6), we use a simulation of the modern ice sheet from the model PSUICE3D, which is a finite-difference numerical model with hybrid ice flow dynamics (Pollard and DeConto, 2012). The simulation used (DeConto et al., 2021) closely matches modern observations. It was run at 10 km resolution, although TASP automatically adjusts to match coarser resolutions. Ice shelf melt rates are set by observation over the 2010-2018 period (Adusumilli et al., 2020).

The ORAS5 ocean velocity reanalysis dataset was used to provide temperatures and ocean currents for 324 months spanning January 1993 to December 2019 (27 years; Zuo et al., 2019; Copernicus Climate Data Store, 2021). Experiments with fewer months data showed that at least 20 years of data are required, with 27 years accurately capturing most annual/interannual variation in iceberg trajectories around Antarctica. However, the ORAS5 ocean velocity reanalysis dataset only extends to 80°S, which does not reach the calving front along parts the Ross and Filchner-Ronne ice shelves. This produced a gap in the velocity field. Simply interpolating available surface ocean velocities did not produce plausible flow directions near the ice sheet margin in the regions not covered by the reanalysis product. Consequently, the mean of the interpolated ocean velocity data and extrapolated ice velocities beyond the ice sheet margin was used, after scaling the latter to the mean of local ocean velocities so they are a consistent order of magnitude.

We verify that our iceberg pathways are traced broadly correctly by comparison to observations of iceberg movement. Our results are broadly similar to observed iceberg tracks and studies modelling iceberg drift and distribution (Fig. 7; Stuart and Long, 2011; Rackow et al., 2017). In addition, the spatial distribution of smaller icebergs observed from ships matches with the distribution we produce (Orheim et al., 2021). Trajectories are not consistent from ~90°E westward to ~60°W because the path of the Antarctic Coastal Current strays outside of our model domain (and study area) at ~90°E (Fig. 7). A larger domain would therefore be required to study areas between 90°E and 60°W (e.g. Iceberg Alley in the Weddell-Scotia confluence).

Due to very sparse in-situ measurements, knowledge of bottom current flow around ice sheets is mainly derived from shallower oceanographic data, but we suggest the ORAS5 ocean reanalysis product provides the best estimate available. Data used span 24 months (2018-2019).



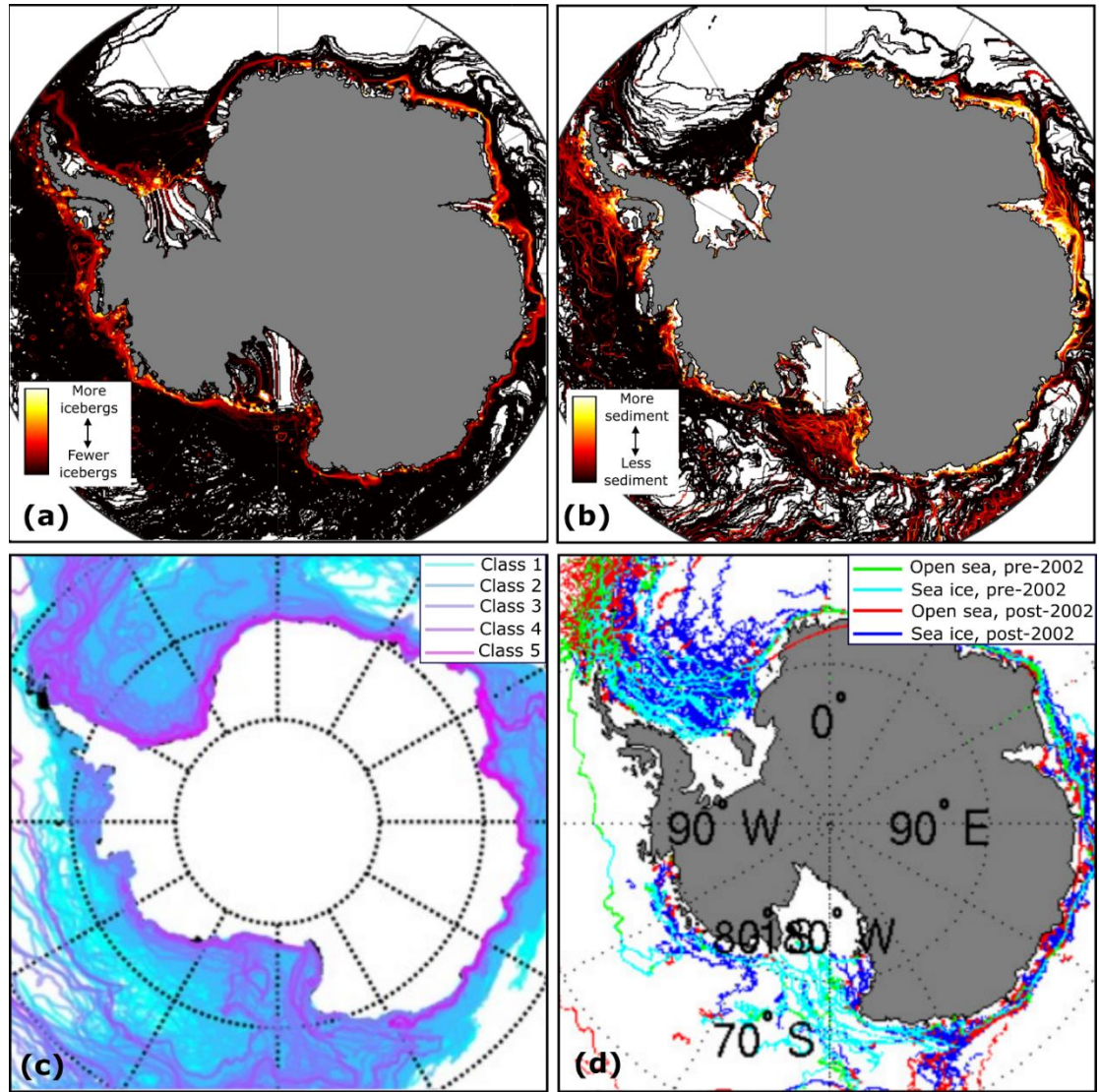


Figure 7. a) Heatmap of ocean surface velocity paths, which are assumed to approximate iceberg paths. ‘Hotter’ colours highlight areas where icebergs pass through more frequently. b) The relative quantity of iceberg-rafted sediment deposited by our representation of icebergs (unitless). c) Modelled iceberg trajectories accounting for additional influences such as wind velocities and sea ice (Rackow et al., 2017). Colours represent different iceberg size classes (1 = 0-1 km<sup>2</sup>, 2 = 1-10 km<sup>2</sup>, 3 = 10-100 km<sup>2</sup>, 4 = 100-1000 km<sup>2</sup> and 5 = 1000-5000 km<sup>2</sup>). d) Observed trajectories of large (>5 km across) icebergs from the U.S. National Ice Centre and Brigham Young University (Stuart and Long, 2011), presented in Tournadre et al. (2016). The broad pattern of iceberg movement produced by our algorithm in (a) agrees well with modelled (c) and observed (d) iceberg trajectories in our study area.

### 3.2 Parameter tuning and sensitivity tests

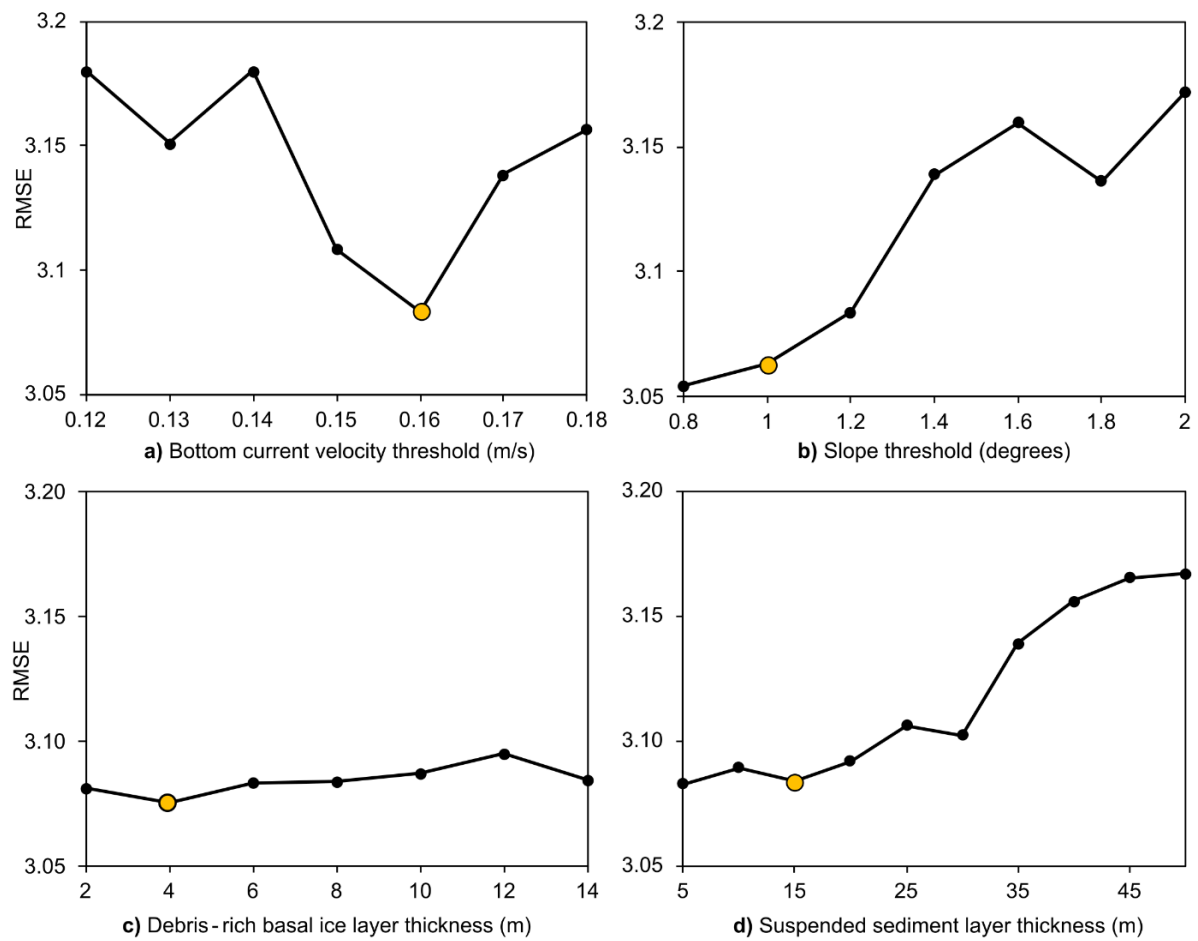
Table 1. Parameters used in TASP.

Parameter	Symbol	Unit	Value (if constant)	Tuning range (if applicable)
Erosion potential	$E$	mm/yr	-	-
Ice basal shear stress	$\tau_b$	Pa	-	-
Ice basal velocity magnitude	$u_b$	m/yr	-	-
‘Quarrying’ coefficient	$k$	1/Pa	$5.1 \times 10^{-10}$	-
Debris concentration	$D$	-	-	-
Debris yield above basal ice	$D_e$	-	$10^{-5}$	$10^{-6}$ to $10^{-3}$
Initial debris concentration	$D_0$	-	1	-
Basal ice thickness	$Z$	m	-	-
Initial basal ice thickness	$Z_0$	m	4	2-12
Iceberg basal melt rate	$M_b$	m/day	-	-
Ocean Temperature	$T_s$	°C	-	-
Magnitude of surface current velocity	$v_{mag}$	m/day	-	-
Distance travelled since last cell	$\Delta d$	km	-	-
Suspended sediment concentration	$c$	-	-	-
Initial suspended sediment concentration	$c_0$	-	1	-
Probability of particle sticking to bed	$p$	-	-	-
Time	$t_s$	second	-	-
Settling velocity	$v_s$	m/s	$3.3 \times 10^{-3}$	-
Suspended sediment layer thickness	$y$	m	15	5 to 50
Bottom shear stress	$\tau_w$	Pascal	-	-
Critical depositional stress	$\tau_c$	Pascal	0.08	-
Seawater density	$\rho$	kg/m <sup>3</sup>	1025	-
Drag coefficient	$C_d$	-	-	-
Vertically averaged velocity	$\bar{U}$	m/s	-	-
von Kármán constant	$\kappa$	-	0.41	-
Water depth	$H$	m	-	-
Roughness length	$z_0$	m	$5 \times 10^{-4}$	-
Sediment decay coefficient	$\lambda$	-	5	-
Bottom current velocity threshold	-	m/s	0.16	0.12 to 0.18
Gravity flow slope threshold	-	degrees	1.0	0.8 to 2
Gravity flow depth threshold	-	m	-1200	-
Surface current estimate interp. distance	-	km	40	-
Bottom current estimate interp. distance	-	km	40	-
Gravity flow estimate interp. distance	-	km	300	-
Number of monthly mean surface current velocities used	-	months	324	-
Number of monthly mean bottom current velocities used	-	months	24	-

605 Estimating the provenance of debris generated beneath the ice and transported in the ocean requires assumptions regarding, and simplifications of, a highly complex and often poorly understood series of systems. We explore parameter sensitivity and tune the most poorly constrained parameters used. This is done by comparing the

TASP prediction to seafloor surface sediments and calculating the root mean square error (RMSE) and coefficient of determination ( $R^2$ ). We note that no parameter tested was able to change the RMSE by more than  
610 ~10% (Fig. 8); this suggests the input  $\epsilon_{Nd}$  map is likely the major source of discrepancies between TASP's results and measured seafloor surface sediments. Here, we do not formally explore parameter interdependence and recommend that TASP users explore the model parameter space for their own use cases.

For the terrestrial component, experiments were performed with spatially variable  $k$  ('quarrying' coefficient) values for different ice drainage basins as in Pollard and DeConto (2019). However, this revealed a negligible  
615 impact on results. This is most likely because the map of  $k$  used only varied over very large-scale basins (Pollard and DeConto, 2019). A finer resolution, lithology-based estimate of 'erodibility' might lead to different rock types being represented to greater and lesser extents offshore, improving the accuracy of modelled provenance signatures.



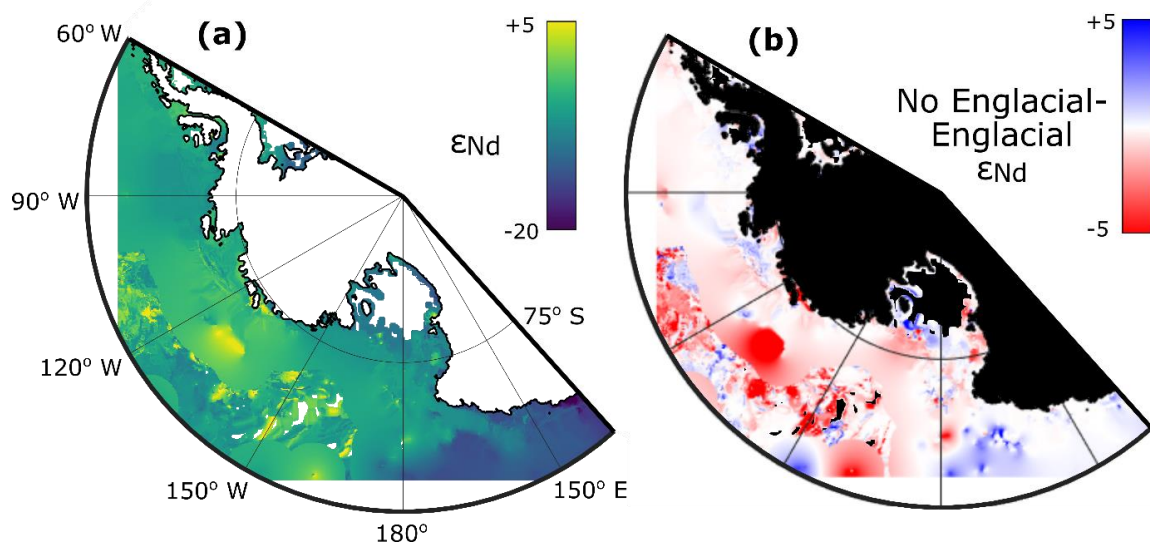
**Figure 8. Best estimate Root Mean Square Error (RMSE) results of tuning a) bottom current erosion threshold, b) slope threshold, c) debris-rich basal ice layer thickness, and d) suspended sediment layer thickness parameters. The parameter value selected is highlighted in yellow. Experiments were conducted using initial assumptions of a 1.2 degree slope threshold, 0.16 m/s bottom current velocity threshold, 6 m basal ice thickness and 15 m suspended sediment layer thickness.**

Firstly, experiments varying the thicknesses of the debris-rich basal ice layer were run (Fig. 8c). This parameter was varied between 2 and 14 metres, in line with the observed range of thicknesses (Gow et al., 1979;

Christoffersen et al., 2010; Shaw et al., 2011; Pettit et al., 2014) and results compared with seafloor surface sediment data. This revealed that the overall result is relatively insensitive to the chosen basal debris-rich ice layer thickness, with an optimal value of 4 m (Fig. 8c).

The amount of englacial debris relative to the basal debris concentration is another poorly constrained parameter. It was by default set to  $10^{-5}$  times the maximum debris load at the base of the ice column based on Dowdeswell and Murray (1990), but experiments were conducted varying it between  $10^{-6}$  and  $10^{-3}$ . These results revealed TASP is insensitive to this parameter, although excluding this englacial debris entirely (i.e., setting the relative concentration to 0) does have a significant impact on the results (Fig. 9).

The sediment transport method selected at a given seafloor location will be influenced by the thresholds used to determine where marine transport mechanisms are active; in other words, the slope threshold for gravity flows and velocity threshold at which bottom currents can transport sediment. Given this importance, these parameters were varied over a range of feasible values (Fig. 8a&b). These results show that a velocity threshold of 0.16 m/s and slope threshold of 1.0 degrees produce the optimal results.



**Figure 9. Impact of assuming all debris is contained in a basal layer. a) The result assuming there is no englacial debris. White areas offshore lack data. b) Difference between the best match estimate  $\epsilon_{Nd}$  values assuming englacial debris is absent (panel a) or present (Fig. 10g). Black offshore areas lack data.**

The treatment of bottom currents described in Section 2.3 requires estimates of several parameters, including the bottom current threshold required to resuspend sediment, the relationship between mean and peak bottom current velocities, critical depositional stress and roughness length. Most of these parameters can be estimated with some degree of accuracy based on theory and/or empirical data, but the suspended particle layer thickness is subject to significant uncertainty. This is because particles are unlikely to exist as a layer with a clearly defined upper surface. The thickness of the nepheloid layer on the Antarctic margin varies between less than 10 m and  $\sim 10^2 - 10^3$  m (e.g. Tucholke, 1977; Gilbert et al., 1998; Gardner et al., 2018). This parameter was therefore tuned against seafloor surface sediment  $\epsilon_{Nd}$  values measurements (Fig. 8d). Note that this effectively tunes the other constants used in Equations 7-10.



Very thin suspended particle layer thicknesses ( $\leq 5$  m) led to very short transport distances, which are unlikely to capture bottom current transport. Using an increasingly thick suspended layer thickness resulted in transport over longer distances, but a poorer match with seafloor surface sediment measurements (i.e. higher RMSE; Fig. 8d). A 15 m layer thickness was therefore used as a compromise, achieving some transport without significantly worsening the match with seafloor surface sediment measurements. Although 15 m is less than the thickness of the nepheloid layer in several sectors of the Antarctic margin (Gardner et al., 2018), we argue it is physically plausible given that nepheloid layer thicknesses there have been measured in austral spring-summer, when the nepheloid layer probably contained remnants of plankton blooms that took place just prior to these measurements. Furthermore, suspended particle concentrations are not uniform and are highest nearest the seafloor, and we are only concerned with bottom currents, which only comprise the lowermost part of the water column. Transmissometer data also suggest that suspended sediment concentrations increase markedly in the lower tens of metres of the water column (Tucholke, 1977; Gilbert et al., 1998; Gardner et al., 2020).

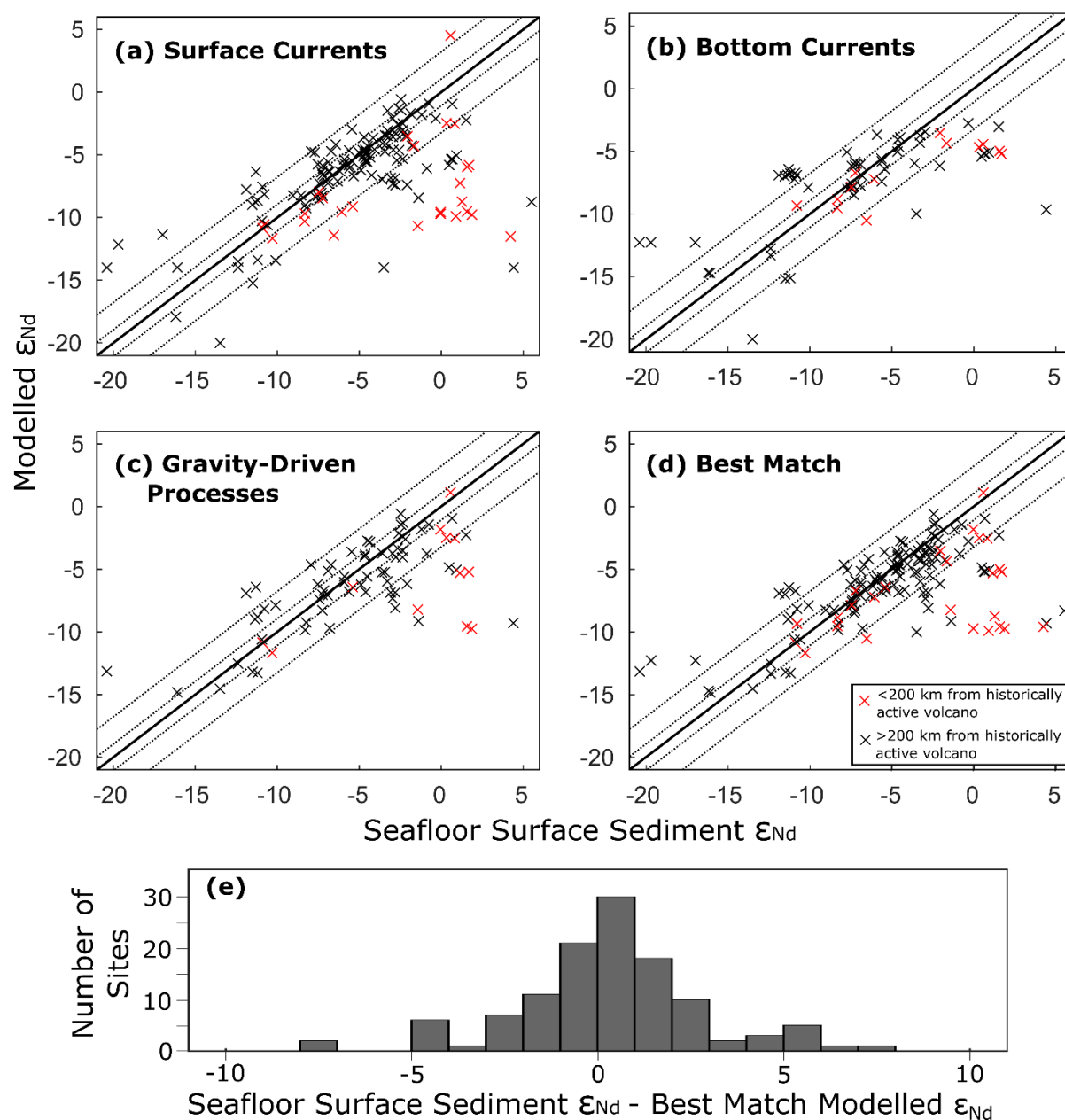
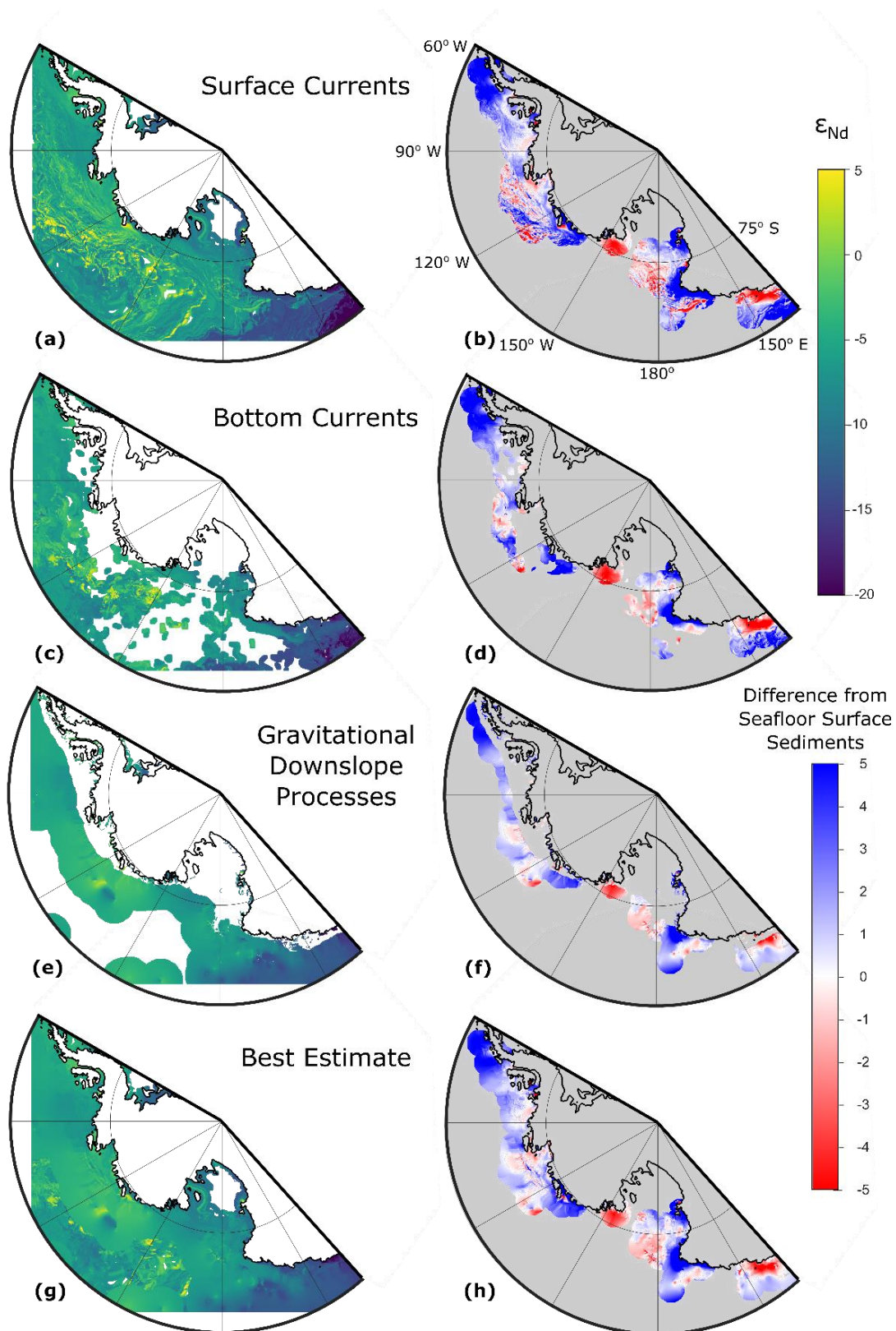


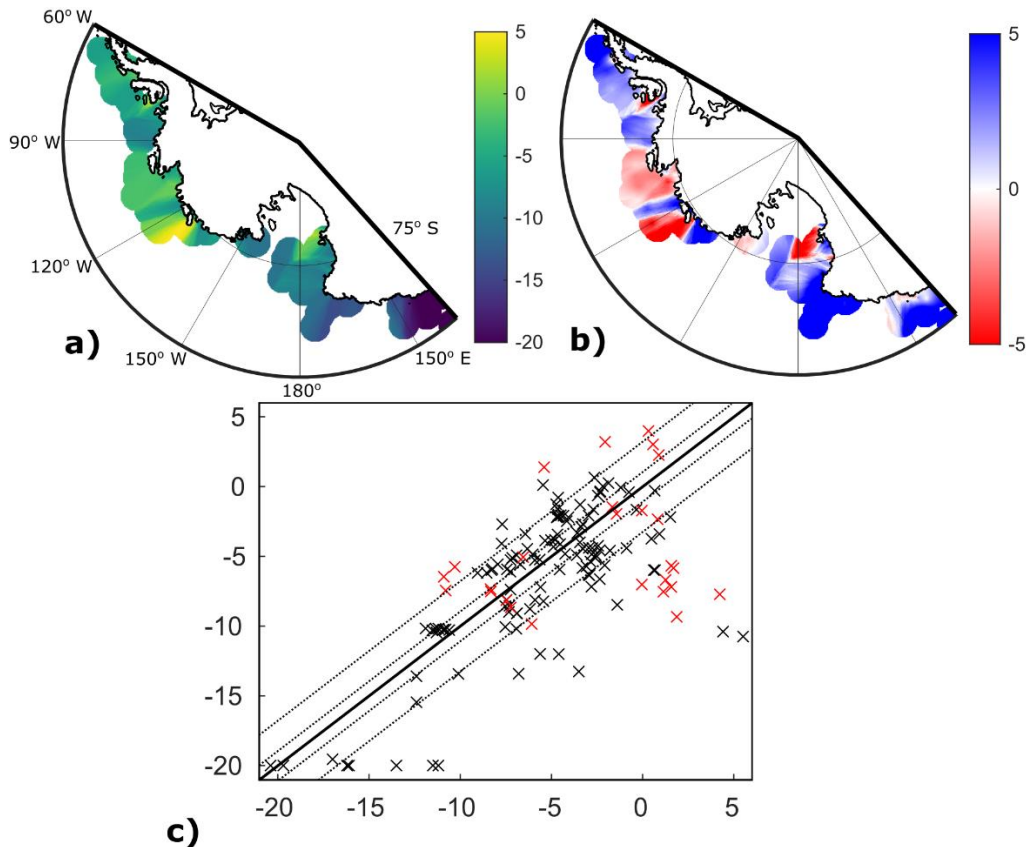
Figure 10. Comparison between observed and modelled  $\epsilon_{Nd}$  values in seafloor surface sediments. Results are shown individually for each transport mechanism of glaciogenic detritus in the marine realm (a-c), plus selection of the nearest matching method (d). The solid 1:1 line is flanked by dotted lines indicating 1 and 3 epsilon unit deviations, respectively. Red crosses mark samples within 200 km of volcanoes which have been active in the historical observational era; these samples may (or may not) be influenced by volcanic material with a high ( $\sim +5$ )  $\epsilon_{Nd}$  value. The difference between the measured and modelled (best match)  $\epsilon_{Nd}$  values of seafloor surface sediments (d) is also shown as a histogram (e).



675 **Figure 11.** Simulated  $\epsilon_{Nd}$  values around the West Antarctic margin including the absolute values (a, c, e, g) and difference from the seafloor surface sediment data interpolation (b, d, f, h). The predicted  $\epsilon_{Nd}$  provenance of seafloor surface sediments by modelled surface current (a & b), bottom current (c & d) and gravitational downslope (e & f) transport are shown, as well as the result when the closest matching method (surface current, bottom current, gravitational) to the interpolated core top  $\epsilon_{Nd}$  values is selected for each grid cell (g and h).

TASP's results can be compared to the observed  $\epsilon_{Nd}$  values of seafloor surface sediments to evaluate the accuracy of the algorithm (Figs. 10&11). This produces a map of  $\epsilon_{Nd}$  values where the most radiogenic (least negative) values are found around the Antarctic Peninsula and along the Marie Byrd Land coast (Fig. 11g). Slightly less radiogenic values are found in the Bellingshausen and Ross seas. The East Antarctic coastline offshore of George V Land produces the least radiogenic values, although the influence of more radiogenic debris transported from the east is clear (Fig. 11g). This general pattern agrees well with surface sediment sample measurements (Fig. 5a), with an overall RMSE of 3.05 and  $R^2$  of 0.580. We suggest that uncertainty in underlying geology (Appendix 1) is the main source of this discrepancy.

TASP's predicted  $\epsilon_{Nd}$  values match 43% of surface sediment values within 1 epsilon unit and 81% within three epsilon units. The  $\epsilon_{Nd}$  signals in sediment provenance records off East Antarctica and in the Ross Sea exceed three epsilon units (e.g. Cook et al., 2013; Wilson et al., 2018; Marschalek et al., 2021). We achieve a close match to surface sediments from specific core sites with down-core records, including International Ocean Discovery Program Site U1521 (Marschalek et al., 2021; measured = -7.7, TASP prediction = -8.0), Integrated Ocean Drilling Program Site U1361 (Cook et al., 2013; measured = -11.5, TASP prediction = -13.3) and Site PS58/254 (Simões Pereira, 2018; measured = -3.0, TASP prediction -3.7). TASP can, therefore, reproduce observed seafloor surface sediment  $\epsilon_{Nd}$  values to a sufficient degree of accuracy to provide useful predictions of past ice sheet configurations.



**Figure 12. Results when using inverse distance weighting from the ice sheet margin for predicting  $\epsilon_{Nd}$  values of seafloor surface sediments, including a) the extrapolated  $\epsilon_{Nd}$  values and b) the difference between  $\epsilon_{Nd}$  values predicted by this method and those measured on the surface sediments. c) Shows the scattered relationship between measured and modelled seafloor surface sediments.**

Regionally, model-data match is particularly good, and nearly always deviates by less than one  $\epsilon_{Nd}$  unit, in the central Ross Sea and the Bellingshausen Sea (Fig. 11h). TASP also performs better in deep water locations than for continental shelf sites. Furthermore, the Amundsen Sea embayment offers a dense offshore sample network to compare TASP's results to (Simões Pereira et al., 2018; 2020; Fig. 5). The modelled  $\epsilon_{Nd}$  values do not resolve finer-scale provenance features, but the match is good close to the terminus of both Pine Island and Thwaites glaciers and in the central Pine Island-Thwaites paleo-ice stream trough (Fig. 11). TASP also broadly captures the mixing of the distinct detritus supplied by each of these two major WAIS outlets (Simões Pereira et al., 2020).

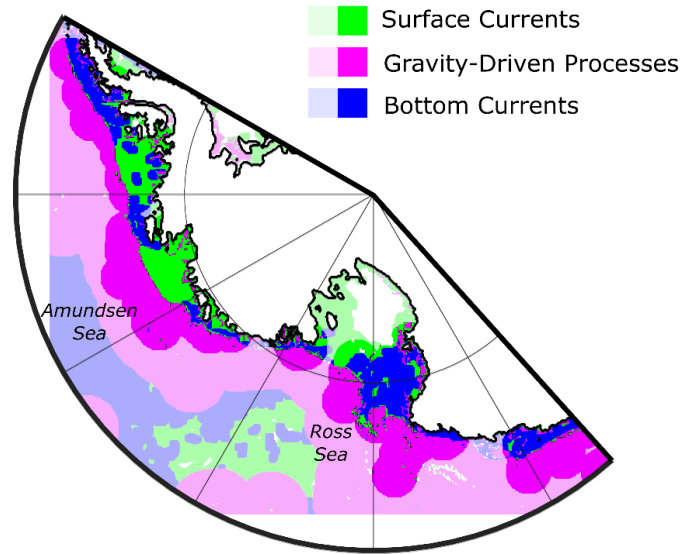
If marine transport processes are neglected, offshore provenance signatures can be estimated from the subglacial component alone (Section 2.1). To investigate TASP's performance compared to assuming that debris is simply advected approximately perpendicular to the coast, an inverse distance weighting interpolation was used to extrapolate the provenance signature of the glaciogenic detritus supplied to the ice sheet margin offshore (Fig. 12). The number of neighbours (16) and distance weight (1) were tuned to optimise results. This resulted in a RMSE of 3.70, worse than TASP's prediction incorporating marine processes (RMSE = 3.05) even when considering the full range in parameter choice within the range of plausible values, for which the RMSE remained below 3.19 (Fig. 8). TASP's incorporation of marine detrital particle transport mechanisms therefore results in a closer match to  $\epsilon_{Nd}$  values at seafloor sample sites. This is because an inverse distance weighting method does not reflect transport of detritus approximately parallel to the coast by ocean currents/icebergs.

## 4. Discussion

### 4.1 Distribution of different sediment transport processes

An output of TASP's approach is a map showing the regions where surface currents, bottom currents, or gravity flows are expected to be the primary debris transport mechanism to a given point on the seafloor (Fig. 13). On parts of the continental shelf, low bottom current velocities mean the surface current estimate often provides the only estimate of  $\epsilon_{Nd}$  values (Fig. 13). The results for the Amundsen Sea and eastern Ross Sea continental shelf suggest a particularly strong influence of surface currents/IBRD on the provenance of the sediments deposited in these regions.

The threshold for bottom current influence on fine-grained sediment provenance is reached in many locations on the continental shelf and parts of the continental slope and rise (Fig. 13). These areas are particularly concentrated along the western Ross Sea continental shelf, Antarctic Peninsula, Marie Byrd Land coast, Victoria Land coast and George V Land coast. In the Ross Sea, this may reflect sediment transport along Ross Sea Bottom Water export pathways (Orsi and Wiederwohl, 2009).



**Figure 13. Transport mechanisms for glacial marine detritus selected for the best estimate  $\epsilon_{Nd}$  value map. Colours are intense within 200 km of seafloor surface sample  $\epsilon_{Nd}$  constraints, and pale away from these constraints. White areas indicate grounded ice or a lack of sedimentation. Small black areas away from the grounding line denote where two or more methods predict an identical  $\epsilon_{Nd}$  value.**

Beyond the continental shelf, gravitational downslope processes dominate in nearly all locations (Fig. 13). Compared to the other sediment transport mechanisms, sediment core sites in these regions typically provide the closest match with TASP's predictions, with an RMSE of 3.20 (Figs. 10&11). Substantial model-data mismatch for the gravitational downslope mechanism is limited to sites with special, localised environmental settings, which are discussed in detail below (Section 4.3). The close agreement between TASP and the measured seafloor surface sediments suggests that sediment transport perpendicular to the shelf break is dominant further offshore, and that the amount of detritus moved by gravitational downslope processes typically exceeds that of detritus solely supplied by ocean currents in these areas.

#### 4.2 Volcanic detritus

Wind-blown dust from other continents reaches Antarctica and could influence the provenance signature of marine sediments (Neff and Bertler, 2015), particularly during full glacial periods (e.g. Sugden et al., 2009). However, such sources are minor in most Antarctic continental margin settings used for sediment provenance studies (e.g., Walter et al. 2000; Wengler et al. 2019) and are therefore neglected.

However, volcanic material/tephra erupted above the ice surface and carried offshore, either by wind, in layers within icebergs, or on sea ice, could be present in the seafloor surface sediments in areas close to and downwind of volcanoes (e.g. Chewings et al., 2014). This detritus could substantially influence  $\epsilon_{Nd}$  values, as Cenozoic volcanic material in West Antarctica and Victoria Land is highly radiogenic ( $\sim +5 \epsilon_{Nd}$ ) and has a high Nd concentration (Goldich et al., 1975; Aviado et al., 2015; Futa and LeMasurier, 1983; Hart et al., 1997). TASP does not attempt to account for the influence of this volcanic material. Indeed, areas where predicted  $\epsilon_{Nd}$  values are less radiogenic (lower) than those observed include the coast of Victoria Land, part of the Hobbs Coast of Marie Byrd Land and the area around the northern tip of the Antarctic Peninsula (Fig. 11), and this mismatch is

likely attributable to volcanoes in these areas that are either still active or have been active in the recent past (e.g., Dunbar et al., 2021; Patrick and Smellie, 2013; Fig. 5). The explanation for mismatch in these areas is supported by evidence from grain size distributions and visual observations (Kellogg et al., 1990; Atkins and Dunbar, 2009) as well as clay mineralogy (e.g., Hillenbrand and Ehrmann, 2005; Hillenbrand et al., 2021; Wang et al., 2022) indicating that volcanic detritus forms a significant component of the sediments near these active volcanic provinces. Neodymium isotope records from these areas should therefore be interpreted with caution.

Three samples collected adjacent to the Adare and Hallett peninsulas on the Northern Victoria Land coast recorded particularly radiogenic  $\epsilon_{Nd}$  values which are also not captured by TASP (outliers in Fig. 10; Table A2). Visual mineralogical composition and  $\epsilon_{Nd}$  values of  $>+4$  suggest they consist almost entirely of detritus derived from the late Cenozoic volcanic rocks constituting these peninsulas. However, as the source volcanoes have not been active for at least  $\sim 2$  million years (LeMasurier et al. 1990), this discrepancy cannot be attributed to recent tephra deposition but must result from the supply of locally eroded volcanic material. These results instead highlight a limitation of our 10 km model resolution, which is not able to resolve such localised areas of a particular rock type (Fig. 5). If such sites close to the shore were of interest for sediment provenance tracing, a more localised, higher resolution modelling approach would need to be pursued to yield more accurate results.

To visualise the locations of seafloor surface sediment samples which are in the vicinity of recently active volcanoes and therefore potentially influenced by significant volcanic deposition, sites within 200 km are highlighted in red in our scatter plots and excluded from our statistics (Fig. 10). This distance was chosen based on visual inspection of areas of obvious discrepancy with seafloor surface sediment measurements (Fig. 11). We emphasise that the exclusion of these sites does not imply that sediment provenance data here are not useful; instead, the provenance data in these areas are viewed as having the potential for unaccounted-for volcanic influences. One exception is the recent volcanic activity suggested in the Hudson Mountains near Pine Island Bay in the eastern Amundsen Sea embayment (Patrick and Smellie, 2013; Corr and Vaughan, 2008), which we do not use to exclude data. Any volcanic input to marine sediments here is likely very local and minor given both the restricted geographical distribution of this tephra on land (Corr and Vaughan, 2008) and the rare and locally restricted occurrence of tephra in marine sediments from the area (Herbert et al., 2023).

Volcanogenic detritus could also reach sample sites from volcanic seamounts and islands (Fig. 5b). These are widely distributed and range in age from the early Cenozoic to recent (Johnson et al., 1982; Prestvik and Duncan, 1991; Hagen et al., 1998; Hagedorn et al., 2007; Panter and Castillo, 2007; Rilling et al., 2009; Lawver et al., 2012; Kipf et al., 2014), with radiogenic isotope compositions that are similar to other Cenozoic volcanic rocks (Kipf et al., 2014; Panter and Castillo, 2007; Prestvik and Duncan, 1991). These seamounts and islands are not accounted for in TASP's predicted  $\epsilon_{Nd}$  values for seafloor surface sediments as the spatial extent and magnitude of the influence of such features is uncertain.



### 4.3 Localised impact of grounded icebergs and sea ice

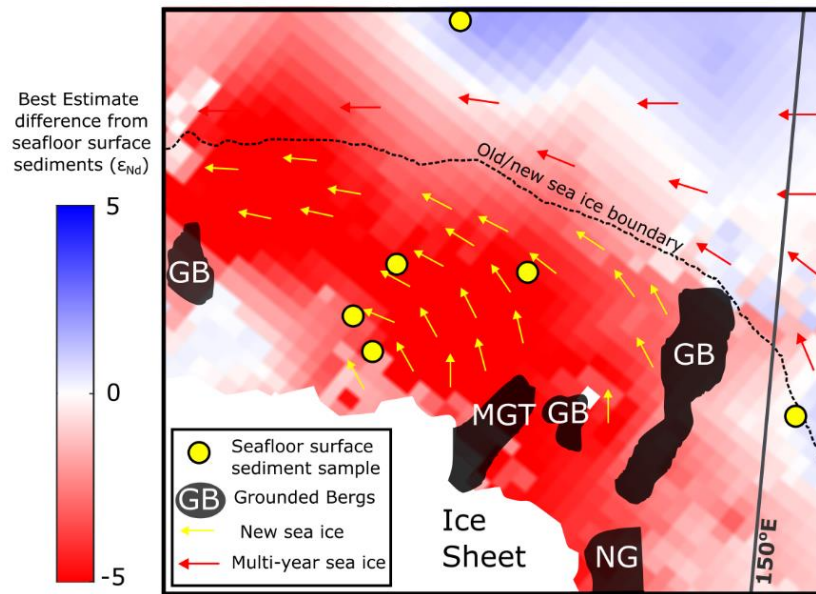


Figure 14. Close up of the Mertz Glacier Tongue (MGT) region imaged in June 1999, adapted from Massom et al. (2001) and Marsland et al. (2004). Location of map shown in Appendix Fig. A1. Red-blue colours indicate the discrepancy between the modelled and core top  $\epsilon_{Nd}$  values as in Fig. 11h. Overlain is a map of old (multi-year) and new sea ice trajectories (red and yellow arrows, respectively), which are deflected to the north due to grounded bergs (GB) and fast ice. Note that the MGT had undergone a major calving event in 2010 but since then another seaward extending tongue consisting of floating glacial ice protruding from Ninnis Glacier (NG) and Mertz Glacier and amalgamated by fast ice has established (e.g., Wang et al., 2018). Seafloor surface sample measurement locations are shown in yellow.

Offshore of the Wilkes Subglacial Basin and adjacent to the King Edward VII Peninsula, predicted  $\epsilon_{Nd}$  values are more radiogenic (higher) than those measured in the seabed sediments (Fig. 11). A key factor influencing  $\epsilon_{Nd}$  values in these regions is the supply of relatively radiogenic detritus via the westward flowing Antarctic Coastal Current, which in both these areas appears to deliver a greater fraction of radiogenic detritus in our model than in the real world. This is most likely a consequence of icebergs remaining closer to the coast in the simulation compared to reality. In these areas, we suggest that the ocean reanalysis product may not be resolving local factors - such as local ocean currents and the presence of grounded icebergs and fast ice - which lead to more far-travelled icebergs carrying relatively radiogenic detritus being diverted north, away from the coast. Offshore from Wilkes Subglacial Basin, for example, high-resolution modelling of sea ice trajectories around the Mertz Glacier area shows that icebergs coming from the east are deflected north by a melange of fast ice and grounded icebergs (Marsland et al., 2004), allowing locally derived debris (with more negative  $\epsilon_{Nd}$  values) to be more dominant in the lee side of this “promontory” (Orejola et al., 2014). This area of deflection matches well with the area where TASP’s results and observations differ (red and blue areas in Fig. 14). Similarly, a gyre offshore from King Edward VII Peninsula deflects icebergs, which drift within the Antarctic Coastal Current westwards along the Amundsen Sea shelf, to the north before injecting them into the eastward flowing ACC (Keys, 1990; Rackow et al., 2017). This implies that grounded bergs, sea ice and unresolved ocean currents are a key control



on the provenance of continental shelf sediments in these regions and should be carefully considered when interpreting sediment provenance records.

At some sites, observed mismatch may also be linked to uncertain dating of seafloor surface sediments. To achieve a good spatial coverage, we group all available measurements on samples likely to be late Holocene to modern in age, but difficulties in radiocarbon dating of often carbonate-free Antarctic sediments mean these samples may vary in age throughout the Holocene on a site-by-site basis.

## 5. Conclusions and future direction

We present TASP, the first algorithm to predict offshore sediment provenance using the results of ice sheet modelling and ocean modelling. Debris is incorporated and routed at the ice sheet bed based on ice sheet model results and an erosion law. Marine detrital particle transport mechanisms include representations of surface currents, which are used to approximate iceberg trajectories. Bottom currents redistribute sediment if a velocity threshold is reached, and gravity flows transport material downslope. These estimates are then used to make a provenance proxy map across the seafloor, thereby directly predicting sediment core data for a given modelled ice sheet extent.

To demonstrate that TASP produces useful results, it is applied to estimate Nd isotope compositions around West Antarctica and the East Antarctic George V Land margin. Comparison of our results to seafloor surface sediment measurements show that most (81%) core sites differ by less than three epsilon units, which is less than the signal typically seen in down-core records. This application of TASP to modern Antarctic Nd isotope compositions also helps understand the modern sedimentary system. For instance, our findings show that westward flowing ocean currents control deposition on the continental shelf, whilst a good model-data match in deeper waters indicates gravity-driven processes are the dominant sediment delivery mechanism there. Furthermore, our results help suggest regions where local factors such as geological uncertainty, recent volcanism or sea ice are likely impacting present day deposition, with implications for interpreting sediment provenance data in these locations. The TASP algorithm is particularly powerful beyond the continental shelf, where it produces a close match when using a simulation of the modern ice sheet to predict  $\epsilon_{Nd}$  values of seafloor surface sediments. This is likely because greater integration of provenance signals makes our approach less reliant on precise mapping of uncertain subglacial geology.

The development of TASP as presented here will permit future application to palaeo ice sheet model simulations. Model output from smaller-than-present ice sheets can be directly input to the framework provided here, although use of high-resolution modelled palaeo ocean currents would be highly beneficial. Results from applying TASP this way will help interpret existing and new sediment provenance records by suggesting what ice sheet configurations could produce the changes in  $\epsilon_{Nd}$  values (and potentially other provenance proxies) recorded at any given core site. Tighter coupling of numerical ice sheet model simulations and provenance data offers the potential for the advancement of both fields; results of numerical modelling can be directly compared to real-world constraints, and interpretations of geochemical and mineralogical data can be tested, visualised and quantified in terms of ice sheet volume and extent. TASP also has the potential to better target potential sediment core sites for provenance studies, as the regions with the greatest sensitivity to a provenance proxy can be identified.

Improved knowledge of subglacial geology, particularly in the West Antarctic interior, would enable TASP to produce even more useful and accurate results. Future geophysical surveys, as well as drilling campaigns targeting subglacial sediments and bedrock, will reduce uncertainty in our  $\epsilon_{Nd}$  map and thus predictions offshore. Additional insights could be achieved by expanding our Antarctic case study to different parts of the Antarctic continent. Our method could also be adapted for numerous provenance proxies, such as detrital mineral dating, major and trace element geochemistry, clay and heavy mineralogy, or clast petrography. Each of these proxies offers a different sensitivity to changes to erosion patterns and thus different precision and insights in different regions and at different times in the past (Licht and Hemming, 2017).

## **Code and Data Availability**

The TASP code is available under a GPLv3 licence. The version of TASP used to produce the results in this paper was run using MATLAB version R2022a and is archived on Zenodo (Marschalek, 2023; <https://doi.org/10.5281/zenodo.11449956>). An example ice sheet model output used to produce the results in this paper is also available in the TASP repository (DeConto et al., 2021). The sub-ice shelf melt rate data (Adusumilli et al., 2020) can be found here: <https://doi.org/10.6075/J04Q7SHT> and the ORAS5 ocean reanalysis product files used (velocity and sea surface temperature) can be downloaded here: <https://doi.org/10.24381/cds.67e8eeb7> (Copernicus Climate Data Store, 2021). As these are published datasets, it is not appropriate to copy these data in our TASP repository as it could lead to confusion about the original source of the data. However, the files are freely accessible in these archives or can be provided by the corresponding author on request.

The new neodymium isotope data published here are available here: <https://doi.org/10.5281/zenodo.7548284>.

## **Author Contributions**

JM, EG and Tvdf designed the study. JM developed the code with assistance from EG. CDH and MS advised on sedimentological and glaciological aspects of the manuscript, respectively. LH collected the new Nd isotope data to complement existing published datasets.

## **Competing Interests**

The authors declare that they have no conflict of interest.

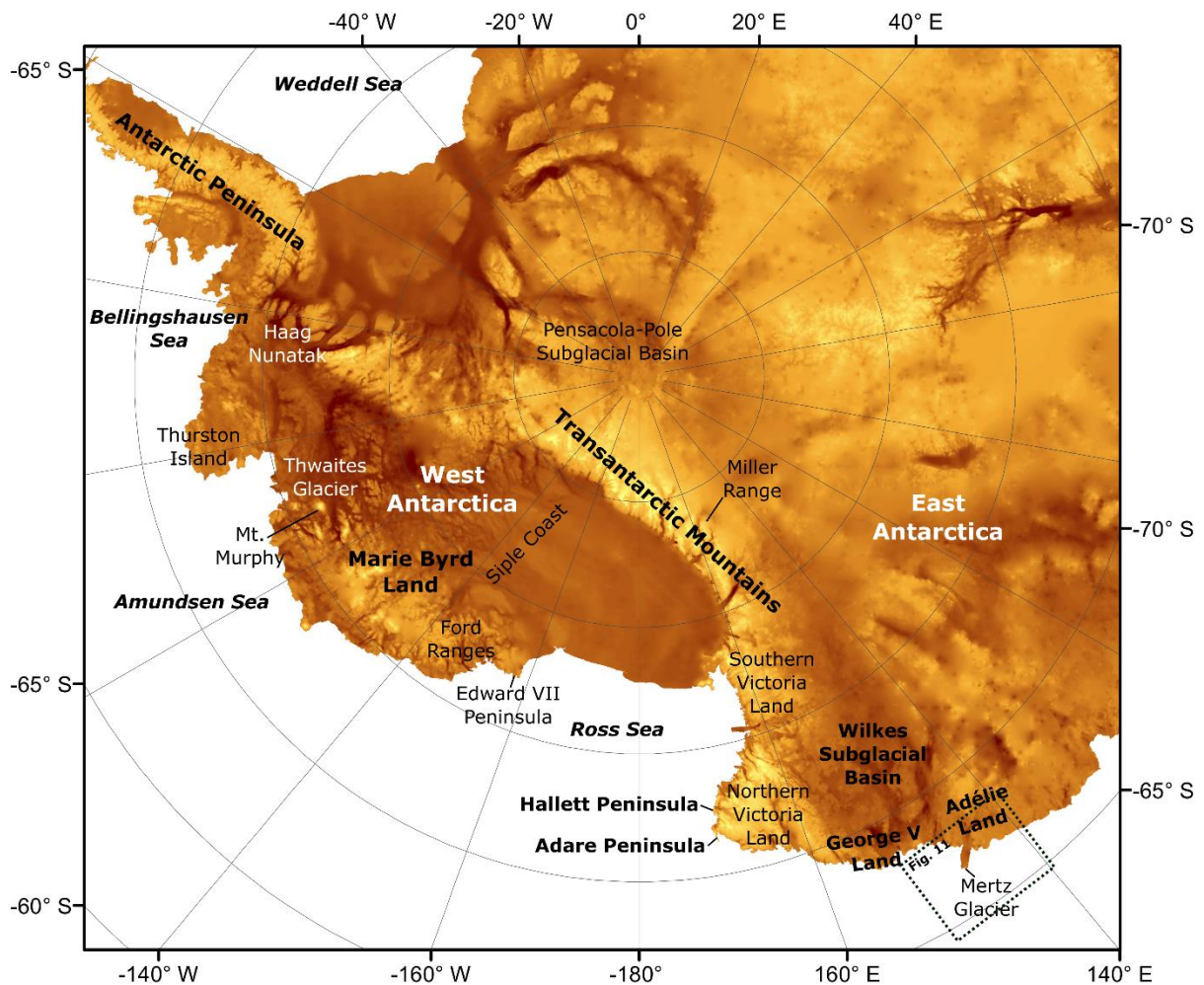
## **Acknowledgements**

JM and Tvdf acknowledge funding from the NERC (DTP scholarship to JM, NE/L002515/1, and grants NE/R018219/1 and NE/W000172/1 to Tvdf). The Ross Sea surface sediments, from which new Nd isotope data were collected, were supplied by Helen Bostock from NIWA, Wellington, New Zealand.

## Appendix 1 - Regional Description of the Neodymium Isotope Composition Map

### A.1.1 Approach

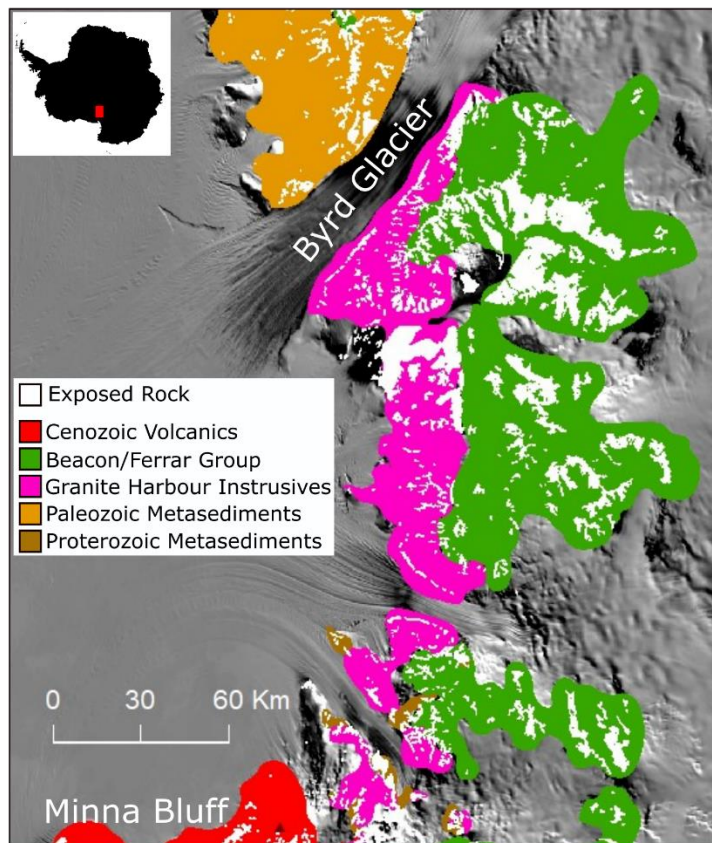
Here we present a region-by-region summary of the sources used to define the extent and Nd isotope composition of the bedrock of West Antarctica and adjacent areas of East Antarctica. A description of geological formations, lithologies and the tectonic framework of the study area is not relevant to this study and so is not discussed here. For reviews of East Antarctic, West Antarctic and Transantarctic Mountain geology, see Boger (2011), Jordan et al. (2020) and Goodge (2020), respectively.



**Figure A1.** Geographical locations mentioned in the supplementary and main text displayed on BedMachine topography (Morlighem et al., 2020). The area covered by the map shown in Fig. 11 is marked by the box with the black dotted outline.

The  $\epsilon_{Nd}$  value map (Fig. 5a) was based on measurements of rock  $\epsilon_{Nd}$  values from published literature sources which had been previously compiled (Simões Pereira et al., 2018, 2020; Marschalek et al., 2021). These datasets were extended across the domain used here. Where coordinates for the locations of rock samples were not given in the original publication, they were taken from the SCAR Antarctic Digital Database Map Viewer (<https://www.add.scar.org/>) based on the location name.

To convert these literature ‘point data’ into a continuous map, outcropping rocks were grouped. This was facilitated by the recent digital geological mapping of Antarctica from the SCAR GeoMAP project (Cox et al., 2023). To simplify this map, which comprised polygons at a resolution far beyond that required for this study, adjacent outcrops were grouped where subglacial continuity between exposures was deemed reasonable (see example in Fig. A2). For each major rock type, the point  $\epsilon_{Nd}$  values were then interpolated and masked to the area of the simplified polygons. A resolution of 10 km was used, which is sufficient given the uncertainties resulting from the ice cover and matches the resolution used in the ice sheet model. These areas of exposed rock can be considered as having a high level of confidence in the final map, particularly when  $\epsilon_{Nd}$  values for the outcropping rock group have been measured at numerous localities.



**Figure A2.** Example of the high-resolution rock polygons from GeoMAP (white; Cox et al., 2023) versus the simplified polygons used to construct the  $\epsilon_{Nd}$  value map (coloured). The latter are better suited to the  $>\sim 10$  km resolution of interest here. The region shown is a section of the Transantarctic Mountains between Byrd Glacier and Minna Bluff. The geology is overlain on MODIS imagery (Haran et al., 2014). The location within Antarctica is indicated in the upper left inset.

Most of the study area is covered by ice, making direct geological observations impossible. Pertinent airborne and on-ice geophysical (i.e., gravity, magnetic, subglacial geomorphology obtained by radar) studies were therefore used to inform  $\epsilon_{Nd}$  values beneath the ice by making interpretations regarding the subglacial geology (e.g. Jordan et al., 2013a; Goodge and Finn, 2010; Studinger et al., 2006; van Wyck de Vries et al., 2018; Paxman et al., 2019). In some regions, this approach can produce reasonably robust inferences. However, in other areas, relationships between exposed and subglacial geology are more obscure. Even in areas where

geophysical constraints are good, the subglacial bedrock there may be hundreds (or thousands) of kilometres away from the nearest comparable outcropping rocks. Consequently, using interpolation from the nearest outcrops to assign  $\epsilon_{Nd}$  values, as described above for exposed rocks, could lead to bias towards only the geographically nearest measurement. Interpolation may therefore fail to reflect the true variability of the subglacial geology in such areas. To avoid this, areas where a subglacial rock type was predominantly ‘geophysically’-defined were uniformly assigned a mean  $\epsilon_{Nd}$  value based on all suitable measurements of the rock type.

The sources used to determine the extent of subglacial geology and to estimate the  $\epsilon_{Nd}$  value for each rock group are discussed in detail below. To keep the initial offshore  $\epsilon_{Nd}$  value estimate as independent as possible, an inverse approach was specifically avoided when constructing the subglacial  $\epsilon_{Nd}$  map (i.e., using offshore values to predict onshore ones). In a few locations where virtually no geophysical or geological data were available, unconsolidated sediment samples from subglacial sediment coring (Farmer et al., 2006) were used to estimate the isotopic composition upstream. A formal inversion for subglacial geochemistry, similar to that recently applied to fluvial provenance (Lipp et al., 2020), would undoubtedly provide a much-improved match with modern observations as well as insights into subglacial geology to apply to simulations of past ice sheets. However, further development would be required to implement a formal inverse approach in a glacial setting, as additional information beyond an offshore measurement near the ice sheet margin is required to give structure to interior  $\epsilon_{Nd}$  values and avoid uniform values along a flow line.

To indicate the approximate uncertainty in the map produced, areas are classified with confidence levels 1-4 (Fig. 5b):

- 1) Exposed rocks (high confidence; black) – exposed rock with  $\epsilon_{Nd}$  data. The quantity and spatial distribution of  $\epsilon_{Nd}$  measurements varies between rock types and, in some instances, sparse data meant that the number of data points used in the interpolation across a rock group was low.
- 2) Geophysical constraints (moderate confidence; dark grey) – areas with subglacial geology constrained by gravimetric/magnetic/geomorphological etc. data. Epsilon Nd values inferred for rock groups are based on the nearest equivalent exposures, but  $\epsilon_{Nd}$  values may be different away from the rock outcrop with  $\epsilon_{Nd}$  data, or certain rock groups may be over- or under-represented. For instance, in Marie Byrd Land outcrops of Neogene volcanic rocks dominate, but Palaeozoic basement and Cretaceous plutonic rocks are much more widespread (e.g. Rocchi et al., 2006).
- 3) Sedimentary constraints (low confidence; light grey) – areas with few direct constraints, limited to isolated subglacial samples obtained by drilling through the ice. Epsilon Nd values are determined from these limited samples interpreted in the context of surrounding rock exposures.
- 4) No estimate made (white) – these areas are without any rock type constraints, filled using Kriging.

Different rock types have different concentrations of Nd, meaning some rock types will contribute disproportionately to the  $\epsilon_{Nd}$  values of subglacial detritus. This effect is not accounted for here due to the uncertainty in Nd concentrations of different rock types, making quantitative assessments challenging.

Assuming constant Nd concentrations still yields useful results, but the inclusion of variable concentrations in future work would improve the accuracy of our results. Our approach also neglects any pre-glacial sedimentary strata, marine and other sediments deposited when ice sheets were more retreated than today (e.g. under the

WAIS, Wilkes-Adélie Land sectors of the East Antarctic Ice Sheet), or allochthonous subglacial till overlying in-situ bedrock at the base of grounded ice. However, subglacial mixing of detritus is to some degree accounted for by the interpolation of  $\epsilon_{Nd}$  values between regions with assigned  $\epsilon_{Nd}$  values, as well as assumptions of mean  $\epsilon_{Nd}$  values of the surrounding rock types in regions where pre-glacial/marine sedimentary strata or till sheets are likely present under the ice. These simplifications have the effect of smoothing the bedrock  $\epsilon_{Nd}$  values. Fully accounting for reworking of subglacial sediments would require a full integration of  $\epsilon_{Nd}$  values in time-evolving ice sheet model runs.

Some regions – particularly the interior of the WAIS towards Marie Byrd Land, the southernmost Transantarctic Mountains and the hinterland of the Bellingshausen Sea – lack reliable geophysical constraints. In these regions, initial estimates were made by simply interpolating the map produced over the remaining gaps. However, this led to some obvious discrepancies between the  $\epsilon_{Nd}$  values of rocks on land and coastal marine sediments. This effect was particularly pronounced in regions of West Antarctica, where geophysical bedrock studies typically focus on detecting comparatively radiogenic subglacial igneous bodies. The lack of constraint on surrounding rock biases  $\epsilon_{Nd}$  values. To account for this, most large areas of the study area with unassigned  $\epsilon_{Nd}$  values were prescribed a value informed by sparse subglacial till samples (e.g. Farmer et al., 2006) and surrounding rock types, which markedly improved agreement with marine surface sediment  $\epsilon_{Nd}$  values. As spatial variability in  $\epsilon_{Nd}$  values is unknown in these regions, the assigned  $\epsilon_{Nd}$  values were assumed to be uniform.

#### **A.1.2 George V Land and the Wilkes Subglacial Basin**

The extent of pre-Cambrian East Antarctic rocks is mapped according to Goodge and Finn (2010), which is broadly consistent with ADMAP2 magnetic anomalies (Golynsky et al., 2018). The coastal extent of these pre-Cambrian rocks is based on interpretation of these data in Bertram et al. (2018). Limited measurements of this rock group give spatially variable  $\epsilon_{Nd}$  values, spanning approximately -33 to -11 in the Miller Range of the central Transantarctic Mountains (Borg et al., 1990; Borg and DePaulo, 1994), -24 to -22 along the Adélie Land coast (Peucat et al., 1999), and -16 to -15 at the bed of the EPICA Dome C ice core (Delmonte et al., 2004). The pre-Cambrian rocks are assigned a uniform  $\epsilon_{Nd}$  value of -20, which is considered reasonable given the limited exposure of these rocks. Beyond the edge of the area studied, no attempt was made to compile literature  $\epsilon_{Nd}$  values as erosion rates are low (e.g. Jamieson et al., 2010; Fig. 6a) and the Antarctic Coastal Current will carry any detritus reaching the coast westwards out of the study area (e.g. Fig. 7). Rocks in other parts of Antarctica are thus unlikely to substantially impact the provenance signature of the regions studied offshore here, although some ice flowlines do cross beyond the edge of the study area. Based on the assumptions described above, the rest of East Antarctica was also assigned a uniform  $\epsilon_{Nd}$  value of -20.

Exposures of the late Neoproterozoic to Ordovician Wilson, Bowers and Robertson Bay Terranes are widespread throughout Northern Victoria Land. For these three respective rock groups, measured  $\epsilon_{Nd}$  values range from -22.6 to -11.1 (Talarico et al., 1995; Henjes-Kunst and Schussler, 2003; Estrada et al., 2016), -19.9 to -10.5 (Tonarini and Rocchi, 1994; Henjes-Kunst and Schussler, 2003) and -15.6 to -12.3 (Henjes-Kunst and Schussler, 2003). However, most measurements cluster around a mean  $\epsilon_{Nd}$  value of approximately -14, which is assigned uniformly to these groups.

1000 Granite Harbour Intrusive rocks are exposed in Victoria Land and, although these have relatively uniform  $\epsilon_{\text{Nd}}$  values with a mean of  $\sim -12$  (Cox et al., 2000; Armienti et al., 1990; Dallai et al., 2003; Rocchi et al., 1998; 2009), their  $\epsilon_{\text{Nd}}$  values are allowed to vary spatially in our  $\epsilon_{\text{Nd}}$  map. These granitic rocks are also suggested to be present in the Wilkes Subglacial Basin, but the southern and northern extent and depth of these subglacial granitic bodies are subject to significant uncertainty (Ferraccioli et al., 2009).

1005 The youngest rocks in the Wilkes Subglacial Basin are Ferrar Group dolerites and basalts, which intrude and overlay Beacon Supergroup siliciclastic rocks. The extent of these rock types beyond their very limited outcrops is estimated using the previous interpretation of geophysical data in Bertram et al. (2018), with more southern limits mapped according to Jordan et al. (2013a). Jordan et al. (2013a) show a greater extent of Beacon/Ferrar Group rocks compared to the interpretations of Studinger et al. (2006) in Southern Victoria Land; we favour this

1010 more recent interpretation. Ferrar Group dolerites and basalts are isotopically well-constrained and consistent, with mean  $\epsilon_{\text{Nd}}$  values of  $\sim -6$  (e.g. Elliot et al., 1999; Hergt et al., 1989; Molzahn et al., 1996). The  $\epsilon_{\text{Nd}}$  values in Beacon Supergroup rocks are much more varied and sparsely measured, with mean values around  $-12$  (Fleming, 1995; Bertram, 2018; Marschalek et al., 2021). Given that (i) the relative abundance of these rocks is uncertain but Ferrar sills are common through the Wilkes Subglacial Basin (Ferraccioli et al., 2009), (ii) concentrations of

1015 Nd are approximately twice as high in Ferrar Group rocks than Beacon Supergroup rocks (Bertram, 2018), and (iii) the uppermost Beacon Supergroup rocks have a Ferrar-like isotopic composition (Elliot et al., 2017), we assume an  $\epsilon_{\text{Nd}}$  value of  $-7$  is reasonable for a typical mixture detritus originating from Beacon and Ferrar Group rocks.

Areas between the coast and Beacon/Ferrar Group rocks are assumed to be a mixture of Lower Palaeozoic rocks

1020 (i.e., Wilson Group, Bowers Group, Granite Harbour Intrusive and Robertson Bay Terranes), which are known to be present subglacially based on Miocene sediments recovered at Integrated Ocean Drilling Program (IODP) Expedition 318 Site U1359 (Pandey et al., 2018). Based on the most unradiogenic  $\epsilon_{\text{Nd}}$  values measured in nearby seafloor surface sediments ( $\sim -15.5$ ; Cook et al., 2013), this local endmember may be slightly more unradiogenic than the  $-14$  to  $-12$  described above; we therefore opt for an  $\epsilon_{\text{Nd}}$  value of  $-15$  here. Sedimentary

1025 basins in the Wilkes Subglacial Basin (Frederick et al., 2016) are ignored, as these are assumed to be comprised of mixtures of relatively local bedrock and are therefore accounted for using mean  $\epsilon_{\text{Nd}}$  values for each rock type.

### A.1.3 Southern Victoria Land and Transantarctic Mountains

The central Transantarctic Mountains provide some of the most extensive rock outcrops in Antarctica (Goodge, 2020). Neodymium isotope composition measurements are also plentiful for many rock types, making this a

1030 well-constrained region. We use the mapping of Cox et al. (2023) and isotopic data compiled and referenced in Marschalek et al. (2021) to produce the  $\epsilon_{\text{Nd}}$  value map here. In the Transantarctic Mountains, there are outcrops of the pre-Cambrian and Beacon Supergroup/Ferrar Group rocks discussed above. Other rock types with  $\epsilon_{\text{Nd}}$  measurements include the Neoproterozoic to early Paleozoic metasedimentary Skelton, Byrd, Beardmore and Liv groups (e.g. Borg et al., 1990; Borg and DePaulo, 1994; Cox et al., 2000; Goodge et al., 2008) and

1035 Palaeozoic Granite Harbour Intrusives (e.g. Goodge et al., 2012; Borg et al., 1990; Borg and DePaulo, 1994; Cox et al., 2000).



On the East Antarctic side of the southern Transantarctic Mountains, we extend the Ferrar Group and Beacon Supergroup into the Pensacola-Pole subglacial basin based on interpretations by Paxman et al. (2019). The Precambrian East Antarctic craton, the extent of which is defined by Goodge and Finn (2010), is prescribed an  $\epsilon_{Nd}$  value of -20 as described above. In the area between rock exposures in the southern Transantarctic Mountains and geophysical data around the South Pole, relatively little is known about the subglacial geology due to a lack of data; thus, the gap was initially simply interpolated across. However, predicted  $\epsilon_{Nd}$  values at the ice sheet margin for this portion of the Transantarctic Mountains were consistently too radiogenic ( $\sim -5$ ) compared to  $\epsilon_{Nd}$  values of recent sediments recovered from beneath Whillans Ice Stream ( $\sim -8$  to  $-9$ ; Farmer et al., 2006). This may be due to a bias towards exposures of the Granite Harbour Intrusive rocks, which have a mean  $\epsilon_{Nd}$  value of  $-4.6$  ( $n = 10$ ) in this region (Borg et al., 1990; Borg and DePaulo, 1994). These rocks are likely to be more resistant to erosion than the surrounding sedimentary rocks, such as those of the Liv Group and Beacon Supergroup, meaning they may outcrop a disproportionate amount. There may also be bias towards exposure or measurement of more radiogenic beds in the Liv Group (e.g. Wareham et al., 2001).

To combat this bias, we assigned a uniform  $\epsilon_{Nd}$  value of  $-9$  around rock outcrops, based on the limited measurements of Beardmore and Liv Group metasediments, which likely comprise the bedrock between the Granite Harbour Intrusive batholiths (Marschalek et al., 2021). An  $\epsilon_{Nd}$  value of  $-9$  is also comparable to two measurements of the Beacon Supergroup in the southern Transantarctic Mountains (Marschalek et al., 2021).

To the north, the youngest rocks in this region belong to the Cenozoic McMurdo Volcanic Group in Victoria Land. These are extensively sampled and allowed to vary spatially in our map, but are generally consistent with a mean  $\epsilon_{Nd}$  value of  $+5.3 \pm 0.6$  (e.g. Awaido et al., 2015; Martin et al., 2013; Phillips et al., 2018).

#### A.1.4 Siple Coast and central West Antarctica

Ice cover is extensive and geophysical data are limited in the West Antarctic interior, making it difficult to constrain the sub-ice geology there. However, till samples from beneath ice streams and in the Ross Sea provide some guidance to the likely subglacial lithologies (Farmer et al., 2006; Licht et al., 2014). Underlying much of this region are subglacial sedimentary basins, which range in age from the opening of the West Antarctic rift system in the mid-Cretaceous through to the Pliocene or Pleistocene (LeMasurier and Landis, 1996). Studies of sediment provenance suggest which rocks may be contributing (Farmer et al., 2006; Licht et al., 2014), including:

- A late plutonic phase of the Ross Orogeny towards the Transantarctic Mountains (i.e. Granite Harbour Intrusives, see references above);
- Cretaceous to Triassic granitic rocks (e.g. Weaver et al., 1992; Craddock et al., 2017; Pankhurst et al., 1998);
- Palaeozoic (meta-)sedimentary rocks such as the Swanson Formation in western Marie Byrd Land and equivalents in the Whitmore Mountains (e.g. Korhonen et al., 2010; Yakymchuk et al., 2015); and
- Palaeozoic granitic rocks such as the Ford Granodiorite in westernmost Marie Byrd Land (e.g. Weaver et al., 1992; Yakymchuk et al., 2015; Korhonen et al., 2010).



Potential mixture of these lithologies in the sedimentary bed based on adjacent exposed rocks suggests an  $\epsilon_{Nd}$  value of  $\sim -10$  (Table A1). This value agrees well with that of the most unradiogenic sediments beneath the Siple Coast ice streams (Bindschadler Ice Stream), so is thought to be representative (Farmer et al., 2006). A uniform  $\epsilon_{Nd}$  value of  $-10$  was therefore assigned to the entire West Antarctic interior. The magnitude and extent of contribution from Granite Harbour Intrusive rocks is difficult to constrain, but as these rocks have a mean  $\epsilon_{Nd}$  value of  $\sim -10$  (Borg et al., 1990; Borg and DePaulo, 1994; Goodge et al., 2012), they may not influence the overall composition very much, so they are neglected (Table A1).

**Table A1. Endmember assignment for central West Antarctica. The term “West Antarctic sediments” refers to our approximation for all sediments likely to underlie the WAIS since the opening of the West Antarctic rift system, including pre-glacial sediments, marine and other sediments deposited during ice-free periods, and subglacial till. It is assumed the surrounding rock types forming the source rocks for these sediment types have probably remained the same throughout the Cenozoic.**

Rock Group	Mean [Nd]	Fraction	Mean $\epsilon_{Nd}$
Palaeozoic (meta)sedimentary rocks	41	0.55	-11.3
Palaeozoic Granitoids	29	0.225	-6.8
Mesozoic Granitoids	12	0.225	-7.0
Mixture (West Antarctic sediments)	32	-	<b>-10.0</b>

It is generally agreed that some Cenozoic volcanic rocks also exist beneath the WAIS. The locations of these Cenozoic volcanic rocks were initially set based on exposed volcanoes, the subglacial volcano inventory of van Wyk de Vries et al. (2017) and the survey of Luyendyk et al. (2003). Preliminary application of the algorithm also found their presence is required to explain sufficiently radiogenic  $\epsilon_{Nd}$  values offshore, assuming surrounding rocks have values of  $-10$  as described above. The extent of these volcanic rocks is subject to some uncertainty (Andrews and LeMasurier, 2021) and volcanic rocks comprise only a small fraction of gravel-sized detritus in the eastern Ross Sea, but it is possible these rocks have been crushed to finer grain sizes by a combination of physical weathering and glacial comminution (Perotti et al., 2017).

Even when these potential volcanic rocks were included,  $\epsilon_{Nd}$  values were not radiogenic enough to match offshore provenance observations. This may be linked to the uniform  $\epsilon_{Nd}$  value of  $-10$  applied for West Antarctic sediment. More radiogenic granitic rocks, potentially similar to the most radiogenic granitoids in the Ford Ranges (Korhonen et al., 2010) or on Thurston Island (Pankhurst et al., 1993), may be widespread in some areas beneath the WAIS, as unexposed Mesozoic-aged rocks are clearly present based on detrital zircon ages (Licht et al., 2014; Marschalek et al., 2021). However, without data to constrain the extent and isotopic composition of these rocks, we favour the addition of extra Cenozoic volcanic rocks to improve the match with observations.

Behrendt (2013) correlated magnetic anomalies in the WAIS interior to subglacial late Cenozoic volcanic rocks. We assume that such rocks occur at sites with high magnetic anomalies based on the ADMAP-2 compilation (Golynski et al., 2018). Although this is a crude approach, new detailed mapping of possible volcanic material or more radiogenic granitic rocks beneath the WAIS is beyond the scope of this study. Indeed, understanding the mixture of rocks beneath the central WAIS would be greatly beneficial for future sediment provenance studies seeking to study potential past WAIS collapse events.

A uniform  $\epsilon_{Nd}$  value of +5.3 was selected for Cenozoic volcanic rocks based on the consistent isotopic signature of such rocks throughout Marie Byrd Land and Victoria Land (Avaïdo et al., 2015; Martin et al., 2013; Phillips et al., 2018; Futa and LeMasurier, 1983; Hart et al., 1995). We emphasise, however, that the Kriging interpolation and 10 km spatial resolution used in our map implies that small areas of volcanic material will not result in such a high value. This was an intentional effect to partially account for the uncertainty in the presence of these subglacial volcanic rocks.

Adjacent to the Edward VII Peninsula, where outcropping rocks are sparse, the model consistently predicted  $\epsilon_{Nd}$  values that were too radiogenic in comparison with seafloor surface sediment values which reach a mean of  $-11.1 \pm 0.4$  ( $n = 8$ ) (Simões Pereira et al., 2018; Carlson et al., 2021). This was likely a result of an underrepresentation of the Swanson Formation on the Edward VII Peninsula in western Marie Byrd Land, as this rock group shows a close geochemical affinity with the glacialine shelf sediments in this area and may be widespread beneath the WAIS here (Simões Pereira et al., 2018). It was therefore assumed that the Swanson Formation, with an  $\epsilon_{Nd}$  value of  $\sim -12$  (Korhonen et al., 2010; Yakymchuk et al., 2015), lies beneath most of the ice on the Edward VII Peninsula.

#### **A.1.5 Amundsen and Bellingshausen Sea drainage sectors**

Rock exposures around the Amundsen Sea embayment are particularly limited. Granites inferred to be present are assumed to be extensions of Mesozoic outcrops along this coast (Jordan et al., 2023). Cenozoic volcanics are extended, largely under Thwaites Glacier, using interpretations of magnetic, gravimetric, and topographic data (Jordan et al., 2023) as well as airborne radar data that indicate enhanced subglacial melting due to elevated geothermal heat flux (Schroeder et al., 2014). Mafic rocks are assumed to include gabbros of Cenozoic age (Simões Pereira et al., 2020; Jordan et al., 2023), similar to Dorrell Rock near Mt. Murphy (Rocchi et al., 2006). The bedrock surrounding these intrusions is assumed to be a mixture of typical West Antarctic rocks and assigned an  $\epsilon_{Nd}$  value of -10 as described above.

A lack of rock outcrops and geophysical data translate to large uncertainties in the Bellingshausen Sea drainage sector of the WAIS (Fig. 5b). The Mesozoic granites and Antarctic Peninsular Volcanic Group present in the Antarctic Peninsula region, including the coastal region of the eastern Bellingshausen Sea, are extended based on continuation of magnetic anomalies, but there are no outcrops to confirm this assumption is correct. Values are predominantly set to -10 as described above for the WAIS interior, assuming a similar mixture of rock types present. This matches with the  $\epsilon_{Nd}$  values of sediments from beneath the floating terminus of Pine Island Glacier, which drains part of this region into the SE Amundsen Sea embayment (Simões Pereira et al., 2020).

#### **A.1.6 Antarctic Peninsula**

Rocks are relatively well exposed along the Antarctic Peninsula, with lithological extrapolation between outcrops possible using geophysical data (Golynski et al., 2018) and geological mapping (Burton-Johnson and Riley, 2015). The  $\epsilon_{Nd}$  values of many rock types are, however, relatively poorly constrained (see references in Simões Pereira et al., 2018 for available measured rock  $\epsilon_{Nd}$  values). Fortunately, there is relatively little variation in Nd isotope compositions in this geologically young region, with  $\epsilon_{Nd}$  values commonly ranging from  $\sim -6$  to  $-2$ , although some rocks have  $\epsilon_{Nd}$  values clustered around  $\sim -10$  to  $-8$  and  $\sim +1$  to  $+3$  (Simões Pereira et al.,

2018 and references therein). However, a relative lack of variation means uncertainty here is unlikely to substantially influence our results.

#### **A.1.7 Western Weddell Sea (West Antarctic side)**

The extent of the Haag nunatak block is taken from Jordan et al. (2020). It is possible this is overlain or intruded by rock types representing a continuation of Jurassic volcanic/magmatic activity recorded in rock outcrops on the Antarctic Peninsula. Furthermore, provenance data suggest that old (meta)sediments may be present on top of the Haag nunatak block as the mean  $\epsilon_{Nd}$  value of  $\sim -7.4$  for these rocks (Storey et al., 1994) is more radiogenic than that for seabed sediments recovered offshore from this part of the Ronne Ice Shelf (Williams et al., 2017).

Most rocks around the western Weddell Sea embayment are Cambrian-Permian sedimentary rocks, Cambrian volcanics or Mesozoic granites. Exposures are extended based on Jordan et al. (2013b), assuming outcrops are broadly representative of rocks present beneath the ice. The Cambrian volcanics and Mesozoic granites have been isotopically characterised, with respective mean  $\epsilon_{Nd}$  values ( $\pm 2SD$ ) of  $-3.5 \pm 4.3$  (Curtis et al., 1999) and  $-6.6 \pm 3.4$  (Pankhurst et al., 1991; Borg and DePaulo, 1994; Craddock et al., 2017), but no known  $\epsilon_{Nd}$  measurements of the widespread Cambrian-Permian sedimentary strata have been performed. An  $\epsilon_{Nd}$  value of  $-13$  is assumed to be representative of these rocks, based on temporal equivalents in the southern Transantarctic Mountains, such as the Byrd Group and non-volcanic beds of the Liv Group (Borg et al., 1990; Goodge et al., 2008; Marschalek et al., 2021). Neodymium isotope compositions of offshore sediments agree with this hypothesis (Williams et al., 2017). Beacon Supergroup and Ferrar Group outcrops in the Weddell Sea drainage sector follow the published mapping by Paxman et al. (2019) (see Section A.1.3). The extent of the Dufek intrusion (part of the Ferrar Group) is based on Ferris et al. (1998). Although we include the Weddell Sea drainage sector of the WAIS in our mapping, we do not include predictions for Weddell Sea offshore sediments in our results as these will also be influenced by supply of glacial debris from East Antarctica; i.e., from sources which lie outside of our compilation area.

#### **A.1.8 New seafloor surface sediment data**

To evaluate whether TASP produces accurate results, we compare the model predictions with seafloor surface sediment  $\epsilon_{Nd}$  values. To improve the spatial coverage of these measurements, we include ten new measurements from the Ross Sea (Table A2).

**Table A2. Neodymium isotope data for new surface sediment samples in the Ross Sea.**

Site	Sample depth	Latitude	Longitude	Water depth (m)	$^{143}\text{Nd}/^{144}\text{Nd}$	$\epsilon_{\text{Nd}}$	$\pm 2\sigma$ S.E.	$\pm 2$ S.D.
G837	Surface grab	-67.70	175.33	3430	0.512341	-5.80	0.000010	0.29
Procedural replicate					0.512358	-5.47	0.000011	0.27
Procedural replicate					0.512363	-5.37	0.000010	0.27
Procedural replicate					0.512339	-5.84	0.000010	0.29
A524	Surface grab	-73.33	187.20	3566	0.512336	-5.90	0.000008	0.29
A461	Surface grab	-73.53	171.37	564	0.512326	-6.08	0.000011	0.29
A452	Surface grab	-75.58	186.70	1253	0.512283	-6.92	0.000010	0.29
A523	Surface grab	-73.57	184.22	2762	0.512252	-7.53	0.000009	0.29
E194	Surface grab	-71.30	170.00	106	0.512921	5.51	0.000010	0.29
E196	Surface grab	-71.37	169.67	320	0.512864	4.41	0.000010	0.29
E183	Surface grab	-72.31	170.19	146	0.512855	4.23	0.000009	0.29
IODP U1521	4-6 cm	-75.68	-179.67	562	0.512243	-7.70	0.000009	0.26
IODP U1522	2-5 cm	-76.55	-174.76	558	0.512252	-7.53	0.000006	0.29

The methods used to generate these new data are identical to those described in Simões Pereira et al. (2018) and Marschalek et al. (2021). Briefly, the <63  $\mu\text{m}$  fractions were leached to remove authigenic coatings, digested and subject to standard ion exchange chromatography to isolate the Nd. The  $^{143}\text{Nd}/^{144}\text{Nd}$  ratio was measured on a Nu instruments HR-ICP-MS in the MAGIC laboratories at Imperial College London. Measurements of BCR-2 processed alongside samples were consistently within error of the published value (Weis et al., 2006) and blanks were 13 pg.

1175

## References

- 1180 Adusumilli, S., Fricker, H. A., Medley, B., Padman, L., and Siegfried, M. R.: Interannual variations in meltwater input to the Southern Ocean from Antarctic ice shelves, *Nat. Geosci.*, 13, 616-620, doi:10.1038/s41561-020-0616-z, 2020.  
  
Aitken, A. R. A., and Urosevic, L.: A probabilistic and model-based approach to the assessment of glacial detritus from ice sheet change, *Palaeogeogr., Palaeocl.* 561, 110053. doi:10.1016/j.palaeo.2020.110053, 2021.
- 1185 Alley, R. B., Blankenship, D. D., Rooney, S. T. and Bentley, C. R.: Sedimentation beneath ice shelves—the view from ice stream B, *Mar. Geol.*, 85, 101-120, doi:10.1016/0025-3227(89)90150-3, 1989.  
  
Alley, R. B., Cuffey, K. M. and Zoet, L. K.: Glacial erosion: status and outlook, *Ann. Glaciol.*, 60, 1-13, doi:10.1017/aog.2019.38, 2019.  
  
Anderson, J. B. *Antarctic marine geology*. Cambridge University Press, doi:10.1017/CBO9780511759376, 1190 1999.  
  
Andrews, J. T., and LeMasurier, W.: Resolving the argument about volcanic bedrock under the West Antarctic Ice Sheet and implications for ice sheet stability and sea level change, *Earth Planet. Sc. Lett.*, 568, 117035, doi:10.1016/j.epsl.2021.117035, 2021.
- 1195 Armienti, P., Ghezzo, C., Innocenti, F., Manetti, P., Rocchi, S., and Tonarini, S.: Isotope geochemistry and petrology of granitoid suites from Granite Harbour intrusives of the Wilson Terrane, North Victoria Land, Antarctica, *Eur. J. Mineralogy*, 2, 103-124, doi:10.1127/ejm/2/1/0103, 1990.  
  
Aviado, K. B., Rilling-Hall, S., Bryce, J. G., and Mukasa, S. B.: Submarine and subaerial lavas in the West Antarctic Rift System: Temporal record of shifting magma source components from the lithosphere and asthenosphere, *Geochem., Geophys., Geosy.*, 16, 4344-4361, doi:10.1002/2015GC006076, 2015.
- 1200 Azetsu-Scott, K. and Syvitski, J. P.: Influence of melting icebergs on distribution, characteristics and transport of marine particles in an East Greenland fjord, *J. Geophys. Res-Oceans*, 104, 5321-5328, doi: 10.1029/1998JC900083, 1999.  
  
Batchelor, C. L., & Dowdeswell, J. A.: Ice-sheet grounding-zone wedges (GZWs) on high-latitude continental margins, *Mar. Geol.*, 363, 65-92, doi:10.1016/j.margeo.2015.02.001, 2015
- 1205 Bertram, R.A.: *Reconstructing the East Antarctic Ice Sheet during the Plio-Pleistocene using Geochemical Provenance Analysis*, Ph.D. thesis, Imperial College London, doi:10.25560/83552, 2018.  
  
Bertram, R. A., Wilson, D. J., van de Flierdt, T., McKay, R. M., Patterson, M. O., Jimenez-Espejo, F. J., Escutia, C., Duke, G.C., Taylor-Silva, B.I. and Riesselman, C. R.: Pliocene deglacial event timelines and the biogeochemical response offshore Wilkes Subglacial Basin, East Antarctica, *Earth Planet. Sc. Lett.*, 494, 109-1210 116, doi:10.1016/j.epsl.2018.04.054, 2018.
- Bigg, G. R., Wadley, M. R., Stevens, D. P., and Johnson, J. A.: Modelling dynamics and thermodynamics of icebergs, *Cold Reg. Sci. Technol.*, 26, 113–135, 1997.  
  
Boger, S. D.: Antarctica—before and after Gondwana, *Gondwana Res.*, 19, 335-371, doi:10.1016/j.gr.2010.09.003, 2011.
- 1215 Borg, S. G., & DePaolo, D. J.: Laurentia, Australia, and Antarctica as a Late Proterozoic supercontinent: constraints from isotopic mapping, *Geology*, 22, 307-310, doi: 10.1130/0091-7613(1994)022<0307:LAAAAA>2.3.CO;2, 1994.  
  
Borg, S. G., Depaolo, D. J., and Smith, B. M.: Isotopic structure and tectonics of the central Transantarctic Mountains, *J. Geophys. Res-Solid Earth*, 95, 6647-6667, doi:10.1029/JB095iB05p06647, 1990.
- 1220 Burton-Johnson, A. and Riley, T. R.: Autochthonous v. accreted terrane development of continental margins: a revised in situ tectonic history of the Antarctic Peninsula, *J. Geol. Soc. London*, 172, 822-835, doi: 10.1144/jgs2014-11, 2015.

- Camerlenghi, A., Crise, A., Pudsey, C. J., Accerboni, E., Laterza, R., and Rebesco, M.: Ten-month observation of the bottom current regime across a sediment drift of the Pacific margin of the Antarctic Peninsula, *Antarct. Sci.*, 9, 426-433, doi:10.1017/S0954102097000552, 1997.
- Chewings, J., Atkins, C., Dunbar, G., and Golledge, N.: Aeolian sediment transport and deposition in a modern high latitude glacial marine environment, *Sedimentology*, 61, 1485–1882, <https://doi.org/10.1111/sed.12108>, 2014.
- Christoffersen, P., Tulaczyk, S. and Behar, A.: Basal ice sequences in Antarctic ice stream: exposure of past hydrologic conditions and a principal mode of sediment transfer, *J. Geophys. Res-Earth*, 115, doi:10.1029/2009JF001430, 2010.
- Clarke, G. K. and Marshall, S. J.: Isotopic balance of the Greenland Ice Sheet: modelled concentrations of water isotopes from 30,000 BP to present, *Quaternary Sci. Rev.*, 21, 419-430, doi:10.1016/S0277-3791(01)00111-1, 2002.
- Cook, C. P., van de Flierdt, T., Williams, T., Hemming, S. R., Iwai, M., Kobayashi, M., Jimnez-Espejo, F.J., Escutia, C., Gonxalez, J. J., Khim, B.-K., McKay, R.M., Passchier, S., Boharty, S.M., Riesselman, C.R., Tauxe, L., Sugisaki, S., Galindo, A.L., Patterson, M.O., Sangiorgi, F., Pierce, E.L., Brinkhuis, H., Klaus, A., Fehr, A., Bendle, J.A.P., Bilj, P.K., Carr, S.A., Dunbar, R.B., Flores, J.A., Hayden, T.G., Katsuki, K., Kong, G.S., Nakai, M., Olney, M.P., Pekar, S.F., Pross, J., Rohl, U., Sakai, T., Shrivastava, P.K., Stickley, C.E., Tuo, S., Welsh, K. and Yamane, M.: Dynamic behaviour of the East Antarctic ice sheet during Pliocene warmth, *Nat. Geosci.*, 6, 765-769, doi:10.1038/ngeo1889, 2013.
- Copernicus Climate Change Service, Climate Data Store: ORAS5 global ocean reanalysis monthly data from 1958 to present. Copernicus Climate Change Service (C3S) Climate Data Store (CDS), doi:10.24381/cds.67e8eeb7 (Accessed on 29-09-2021), 2021.
- Corr, H. F. and Vaughan, D. G.: A recent volcanic eruption beneath the West Antarctic ice sheet, *Nat. Geosci.*, 1, 122-125, doi:10.1038/ngeo106, 2008.
- Cox, S.C., Parkinson, D.L., Allibone, A.H. and Cooper, A.F.: Isotopic character of Cambro-Ordovician plutonism, southern Victoria Land, Antarctica, *New Zeal. J. Geol. Geop.*, 43, 501-520, doi:10.1080/00288306.2000.9514906, 2000.
- Cox, S. C., Smith Lyttle, B., Elkind, S., Smith Siddoway, C., Morin, P., Capponi, G., Abu-Alam, T., Ballinger, M., Bamber, L., Kitchener, B., Lelli, L., Mawson, J., Millikin, A., Dal Seno, N., Whitburn, L., White, T., Burton-Johnson, A., Crispini, L., Elliot, D., Elvevold, S., Goodge, J., Halpin, J., Jacobs, J., Martin, A.P., Mikhalsky, E., Morgan, F., Scadden, P., Smellie, J. & Wilson, G.: A continent-wide detailed geological map dataset of Antarctica. *Sci. Data*, 10, 250, doi:10.1038/s41597-023-02152-9, 2023.
- Craddock, J. P., Schmitz, M. D., Crowley, J. L., Larocque, J., Pankhurst, R. J., Juda, N., Konstantinou, A. and Storey, B.: Precise U-Pb zircon ages and geochemistry of Jurassic granites, Ellsworth-Whitmore terrane, central Antarctica. *Geol. Soc. Am. Bull.*, 129, 118-136, doi:10.1130/B31485.1, 2017.
- Curtis, M. L., Leat, P. T., Riley, T. R., Storey, B. C., Millar, I. L. and Randall, D. E.: Middle Cambrian rift-related volcanism in the Ellsworth Mountains, Antarctica: tectonic implications for the palaeo-Pacific margin of Gondwana, *Tectonophysics*, 304, 275-299, doi:10.1016/S0040-1951(99)00033-5, 1999.
- Dallai, L., Ghezzi, C., and Sharp, Z. D.: Oxygen isotope evidence for crustal assimilation and magma mixing in the Granite Harbour Intrusives, Northern Victoria Land, Antarctica, *Lithos*, 67, 135-151, doi:10.1016/S0024-4937(02)00267-0, 2003.
- DeConto, R.M., Pollard, D., Alley, R.B., Velicogna, I., Gasson, E., Gomez, N., Sadai, S., Condon, A., Gilford, D.M., Ashe, E.L., Kopp, R.E., Li, D. and Dutton, A.: The Paris Climate Agreement and future sea-level rise from Antarctica, *Nature*, 593, 83-89, doi:10.1038/s41586-021-03427-0, 2021.

- Delmonte, B., Petit, J. R., Andersen, K. K., Basile-Doelsch, I., Maggi, V. and Ya Lipenkov, V.: Dust size evidence for opposite regional atmospheric circulation changes over east Antarctica during the last climatic transition, *Clim. Dynam.*, 23, 427-438, doi:10.1007/s00382-004-0450-9, 2004.
- 1270 Dowdeswell, J. A.: Processes of glaciomarine sedimentation, *Prog. Phys. Geog.*, 11, 52-90, doi:10.1177/030913338701100103, 1987.
- Dowdeswell, J. A., Maslin, M. A., Andrews, J. T., and McCave, I. N.: Iceberg production, debris rafting, and the extent and thickness of Heinrich layers (H-1, H-2) in North Atlantic sediments, *Geology*, 23, 301-304, doi:10.1130/0091-7613(1995)023<0297:IPDRAT>2.3.CO;2, 1995.
- 1275 Dowdeswell, J. A. and Murray, T.: Modelling rates of sedimentation from icebergs, *Geo. Soc. S. P.*, 53, 121-137, doi:10.1144/GSL.SP.1990.053.01.07, 1990.
- Drewry, D. J. and Cooper, A. P. R.: Processes and models of Antarctic glaciomarine sedimentation, *Ann. Glaciol.*, 2, 117-122, doi:10.3189/172756481794352478, 1981.
- Dunbar, N. W., Iverson, N. A., Smellie, J. L., McIntosh, W. C., Zimmerer, M. J. and Kyle, P. R.: Active volcanoes in Marie Byrd Land, *Geol. Soc. Mem.*, 55, 759-783, doi:10.1144/M55-2019-29, 2021.
- 1280 Einstein, H. A. and Krone, R. B.: Experiments to determine modes of cohesive sediment transport in salt water, *J. Geophys. Res.*, 67, 1451-1461, doi:10.1029/JZ067i004p01451, 1962.
- Ehrmann, W., Hillenbrand, C. D., Smith, J. A., Graham, A. G., Kuhn, G. and Larter, R. D.: Provenance changes between recent and glacial-time sediments in the Amundsen Sea embayment, West Antarctica: clay mineral assemblage evidence, *Antarct. Sci.*, 23, 471-486, doi:10.1017/S0954102011000320, 2011
- 1285 Elliot, D. H., Fleming, T. H., Kyle, P. R. and Foland, K. A.: Long-distance transport of magmas in the Jurassic Ferrar large igneous province, Antarctica, *Earth Planet. Sc. Lett.*, 167, 89-104, doi: 10.1016/S0012-821X(99)00023-0, 1999.
- Elliot, D. H., Larsen, D., Fanning, C. M., Fleming, T. H. and Vervoort, J. D.: The Lower Jurassic Hanson Formation of the Transantarctic Mountains: implications for the Antarctic sector of the Gondwana plate margin, *Geol. Mag.*, 154, 777-803, doi:10.1017/S0016756816000388, 2017.
- 1290 Estrada, S., Läufer, A., Eckelmann, K., Hofmann, M., Gärtner, A. and Linnemann, U.: Continuous Neoproterozoic to Ordovician sedimentation at the East Gondwana margin—Implications from detrital zircons of the Ross Orogen in northern Victoria Land, Antarctica, *Gondwana Res.*, 37, 426-448, doi:10.1016/j.gr.2015.10.006, 2016.
- 1295 Evans, J. and Cofaigh, C. Ó.: Supraglacial debris along the front of the Larsen-A Ice Shelf, Antarctic Peninsula, *Antarct. Sci.*, 15, 503-506, doi:10.1111/j.1502-3885.2003.tb01443.x, 2003.
- Farmer, G. L., Licht, K., Swope, R. J. and Andrews, J.: Isotopic constraints on the provenance of fine-grained sediment in LGM tills from the Ross Embayment, Antarctica, *Earth Planet. Sci. Lett.* 249, 90–107, doi:10.1016/j.epsl.2006.06.044, 2006.
- 1300 Ferraccioli, F., Armadillo, E., Jordan, T., Bozzo, E. and Corr, H.: Aeromagnetic exploration over the East Antarctic Ice Sheet: a new view of the Wilkes Subglacial Basin, *Tectonophysics*, 478, 62-77, doi: 10.1016/j.tecto.2009.03.013, 2009.
- Ferris, J., Johnson, A. and Storey, B.: Form and extent of the Dufek intrusion, Antarctica, from newly compiled aeromagnetic data, *Earth Planet. Sc. Lett.*, 154, 185-202, doi:10.1016/S0012-821X(97)00165-9, 1998.
- 1305 Fleming, T. H.: Isotopic and chemical evolution of the Ferrar Group. Beardmore Glacier region, Antarctica. Ph.D. thesis, Ohio State University, [http://rave.ohiolink.edu/etdc/view?acc\\_num=osu1487929745335032](http://rave.ohiolink.edu/etdc/view?acc_num=osu1487929745335032), 1995.
- Frederick, B. C., Young, D. A., Blankenship, D. D., Richter, T. G., Kempf, S. D., Ferraccioli, F. and Siegert, M. J.: Distribution of subglacial sediments across the Wilkes Subglacial Basin, East Antarctica, *J. Geophys. Res.-Earth*, 121, 790-813, doi:10.1002/2015JF003760, 2016.
- 1310



- Futa, K. and LeMasurier, W. E.: Nd and Sr isotopic studies on Cenozoic mafic lavas from West Antarctica - another source for continental alkali basalts, *Contrib. Mineral. Petr.*, 83, 38-44, doi:10.1007/BF00373077, 1983.
- Garcia, M. and Parker, G.: Experiments on the entrainment of sediment into suspension by a dense bottom current, *J. Geophys. Res.-Oceans*, 98, 4793-4807, doi:10.1029/92JC02404, 1993.
- 1315 Garçon, M., Chauvel, C., France-Lanord, C., Huyghe, P. and Lavé, J.: Continental sedimentary processes decouple Nd and Hf isotopes, *Geochim. Cosmochim. Ac.*, 121, 177-195, doi:10.1016/j.gca.2013.07.027, 2013.
- Gardner, W.D., Mishonov A.V. and Richardson M.J.: Global Transmissometer Database V3, Ocean Data View, <https://odv.awi.de/data/ocean/global-transmissometer-database/>, 2020.
- 1320 Gardner, W. D., Richardson, M. J., and Mishonov, A. V.: Global assessment of benthic nepheloid layers and linkage with upper ocean dynamics. *Earth Planet. Sci. Lett.*, 482, 126-134, doi:10.1016/j.epsl.2017.11.008, 2018.
- Gil, I. M., Keigwin, L. D. and Abrantes, F. G.: Deglacial diatom productivity and surface ocean properties over the Bermuda Rise, northeast Sargasso Sea, *Paleoceanography*, 24, doi:10.1029/2008PA001729, 2009.
- 1325 Gilbert, I. M., Pudsey, C. J. and Murray, J. W.: A sediment record of cyclic bottom-current variability from the northwest Weddell Sea, *Sediment. Geol.*, 115, 185-214, doi:10.1016/S0037-0738(97)00093-6, 1998.
- Giorgetti, A., Crise, A., Laterza, R., Perini, L., Rebesco, M. and Camerlenghi, A.: Water masses and bottom boundary layer dynamics above a sediment drift of the Antarctic Peninsula Pacific Margin, *Antarct. Sci.*, 15, 537-546, doi:10.1017/S0954102003001652, 2003.
- 1330 Goldstein, S. L. and Hemming, S. R.: Long-lived isotopic tracers in oceanography, paleoceanography, and ice-sheet dynamics, *Treatise on geochemistry*, 6, 453-489, doi:10.1016/B0-08-043751-6/06179-X, 2003.
- Golledge, N. R., Clark, P. U., He, F., Dutton, A., Turney, C. S. M., Fogwill, C. J. Naish, T.R., Levy, R.H., McKay, R.M., Lowry, D.P., Bertler, N.A.N., Dunbar, G.B. and Carlson, A. E.: Retreat of the Antarctic Ice Sheet during the Last Interglaciation and implications for future change, *Geophys. Res. Lett.*, 48, e2021GL094513, 10.1029/2021GL094513, 2021.
- 1335 Golynsky, A. V., Ferraccioli, F., Hong, J. K., Golynsky, D. A., von Frese, R. R. B., Young, D. A., Blankenship, D., Holt, J.W., Ivanov, S.V., Kiselev, A.V., Masolov, V.N, Eagles., G., Gohl, K., Jokat., W., Damaske, D., Finn, C., Aitken, A., Bell, R.E., Armadillo, E., Jordan, T.A., Greenbaum, J.S., Bozzo, E., Caneva, G., Forsberg, R., Ghidella, M., Galindo-Zaldivar, J., Bohoyo, F., Martos, Y.M., Nogi, Y., Quartini, E., Kim, H.R. and Roberts, J. L.: New magnetic anomaly map of the Antarctic, *Geophys. Res. Lett.* 45, 6437-6449,
- 1340 doi:10.1029/2018GL078153, 2018.
- Goodge, J. W.: Geological and tectonic evolution of the Transantarctic Mountains, from ancient craton to recent enigma, *Gondwana Res.*, 80, 50-122, doi:10.1016/j.gr.2019.11.001, 2020.
- Goodge, J. W., Fanning, C. M., Norman, M. D. and Bennett, V. C.: Temporal, isotopic and spatial relations of early Paleozoic Gondwana-margin arc magmatism, central Transantarctic Mountains, Antarctica, *J. Petrol.*, 53, 2027-2065, doi:10.1093/petrology/egs043, 2012.
- 1345 Goodge, J. W. and Finn, C. A.: Glimpses of East Antarctica: Aeromagnetic and satellite magnetic view from the central Transantarctic Mountains of East Antarctica, *J. Geophys. Res.-Earth*, 115, doi:10.1029/2009JB006890, 2010.
- Goodge, J. W., Vervoort, J. D., Fanning, C. M., Brecke, D. M., Farmer, G. L., Williams, I. S., Myrow, P.M. and DePaolo, D. J.: A positive test of East Antarctica-Laurentia juxtaposition within the Rodinia supercontinent, *Science*, 321, 235-240, doi:10.1126/science.1159189, 235-240, 2008.
- 1350 Gow, A. J., Epstein, S. and Sheehy, W.: On the origin of stratified debris in ice cores from the bottom of the Antarctic ice sheet, *J. Glaciol.*, 23, 185-192, doi:10.3189/S0022143000029828, 1979.
- Gross, T. F. and Williams, A. J.: Characterization of deep-sea storms, *Mar. Geol.*, 99, 281-301,
- 1355 doi:10.1016/0025-3227(91)90045-6, 1991.

- Hagedorn, B., Gersonde, R., Gohl, K. and Hubberten, H. W.: Petrology, geochemistry and K/Ar age constraints of the eastern De Gerlache Seamount alkaline basalts (Bellingshausen Sea, southeast Pacific), *Polarforschung*, 76, 87-94, doi:10.1007/epic.28876.d001, 2007.
- 1360 Hagen, R. A., Gohl, K., Gersonde, R., Kuhn, G., Völker, D., & Kodagali, V. N.: A geophysical survey of the De Gerlache Seamounts: preliminary results, *Geo-Mar. Lett.*, 18, 19-25, doi:10.1007/s003670050047, 1998.
- Haran, T., Bohlander, J., Scambos, T., Painter, T., and Fahnestock, M.: MODIS Mosaic of Antarctica 2008-2009 (MOA2009) Image Map, Version 1, NASA National Snow and Ice Data Center Distributed Active Archive Center [data set], doi:10.5067/4ZL43A4619AF, 2014, updated 2019.
- 1365 Hart, S. R., Blusztajn, J., LeMasurier, W. E. and Rex, D. C.: Hobbs Coast Cenozoic volcanism: Implications for the West Antarctic rift system, *Chem. Geol.*, 139, 223-248, doi:10.1016/S0009-2541(97)00037-5, 1997.
- Hauptvogel, D. W. and Passchier, S.: Early–Middle Miocene (17–14 Ma) Antarctic ice dynamics reconstructed from the heavy mineral provenance in the AND-2A drill core, Ross Sea, Antarctica, *Global Planet. Change*, 82, 38-50, doi:10.1016/j.gloplacha.2011.11.003, 2012.
- 1370 Henjes-Kunst, F. and Schussler, U.: Metasedimentary units of the Cambro-Ordovician Ross Orogen in northern Victoria Land and Oates Land: implications for their provenance and geotectonic setting from geochemical and Nd-Sr isotope data, *Terra Ant. Reports*, 10, 105-128, 2003.
- Herbert, L.C., Lepp, A.P., Munevar Garcia, S., Browning, A., Miller, L.E., Wellner, J., Severmann, S., Hillenbrand, C.-D., Johnson, J.S. and Sherrell, R.M.: Volcanogenic fluxes of iron from the seafloor in the Amundsen Sea, West Antarctica, *Mar. Chem.*, 253, 104250, doi:10.1016/j.marchem.2023.104250, 2023.
- 1375 Hergt, J. M., Chappell, B. W., Faure, G. and Mensing, T. M.: The geochemistry of Jurassic dolerites from Portal Peak, Antarctica, *Contrib. Mineral. Petr.*, 102, 298-305, doi:10.1007/BF00373722, 1989.
- Herman, F., Beyssac, O., Brughelli, M., Lane, S. N., Leprince, S., Adatte, T., Lin, J. Y. Y., and Avouac, J. P.: Erosion by an Alpine glacier, *Science*, 350, 193–195, 2015.
- 1380 Hill, J. C. and Condron, A.: Subtropical iceberg scours and meltwater routing in the deglacial western North Atlantic, *Nat. Geosci.*, 7, 806–810, <https://doi.org/10.1038/ngeo2267>, 2014.
- Hillenbrand, C. D., Baesler, A. and Grobe, H.: The sedimentary record of the last glaciation in the western Bellingshausen Sea (West Antarctica): implications for the interpretation of diamictos in a polar-marine setting, *Mar. Geol.*, 21, 191-204, doi:10.1016/j.margeo.2005.01.007, 2005.
- 1385 Hillenbrand, C. D., Crowhurst, S. J., Williams, M., Hodell, D. A., McCave, I. N., Ehrmann, W., Xuan, C., Piotrowski, A.M., Hernandez-Molina, F.J., Graham, A.G.C., Gorbe, H., Williams, T.J., Horrocks, J.R., Allen, C.S. and Larter, R. D.: New insights from multi-proxy data from the West Antarctic continental rise: Implications for dating and interpreting Late Quaternary palaeoenvironmental records, *Quaternary Sci. Rev.*, 257, 106842, doi: 10.1016/j.quascirev.2021.106842, 2021.
- 1390 Hillenbrand, C. D. and Ehrmann, W.: Late Neogene to Quaternary environmental changes in the Antarctic Peninsula region: evidence from drift sediments, *Global Planet. Change*, 45, 165-191, doi:10.1016/j.gloplacha.2004.09.006, 2005.
- Hodson, T. O., Powell, R. D., Brachfeld, S. A., Tulaczyk, S., Scherer, R. P., and WISSARD Science Team: Physical processes in Subglacial Lake Whillans, West Antarctica: inferences from sediment cores, *Earth Planet. Sci. Lett.*, 444, 56-63, doi:10.1016/j.epsl.2016.03.036, 2016.
- 1395 Hogan, K.A., Larter, R.D., Graham, A.G., Arthern, R., Kirkham, J.D., Totten Minzoni, R., Jordan, T.A., Clark, R., Fitzgerald, V., Wåhlin, A.K. and Anderson, J.B.: Revealing the former bed of Thwaites Glacier using sea-floor bathymetry: implications for warm-water routing and bed controls on ice flow and buttressing, *The Cryosphere*, 14, 2883-2908, doi:10.5194/tc-14-2883-2020, 2020.
- 1400 Hopwood, M. J., Carroll, D., Höfer, J., Achterberg, E. P., Meire, L., Le Moigne, F.A.C., Bach, L.T., Eich, C., Sutherland, D.A. and González, H. E.: Highly variable iron content modulates iceberg-ocean fertilisation and potential carbon export, *Nat. Commun.*, 10, 1-10, doi: 10.1038/s41467-019-13231-0, 2019.

- Hulbe, C. and Fahnestock, M.: Century-scale discharge stagnation and reactivation of the Ross ice streams, West Antarctica, *J. Geophys. Res.-Earth*, 112, F03S27, doi:10.1029/2006JF000603, 2007.
- Hunter, E. J., Fuchs, H. L., Wilkin, J. L., Gerbi, G. P., Chant, R. J., and Garwood, J. C.: ROMSPATH v1.0: offline particle tracking for the Regional Ocean Modeling System (ROMS), *Geosci. Model Dev.*, 15, 4297–4311, <https://doi.org/10.5194/gmd-15-4297-2022>, 2022.
- Jamieson, S. S., Sugden, D. E. and Hulton, N. R.: The evolution of the subglacial landscape of Antarctica, *Earth Planet. Sc. Lett.*, 293, 1–27, doi:10.1016/j.epsl.2010.02.012, 2010.
- Johnson, G. L., Kyle, P. R., Vanney, J. R. and Campsie, J.: Geology of Scott and Balleny Islands, Ross Sea, Antarctica, and morphology of adjacent seafloor. *New Zeal. J. Geol. Geop.*, 25, 427–436, doi:10.1080/00288306.1982.10421508, 1982.
- Jordan, T. A., Ferraccioli, F., Armadillo, E. and Bozzo, E.: Crustal architecture of the Wilkes Subglacial Basin in East Antarctica, as revealed from airborne gravity data, *Tectonophysics*, 585, 196–206, doi:10.1016/j.tecto.2012.06.041, 2013a.
- Jordan, T. A., Ferraccioli, F., Ross, N., Corr, H. F., Leat, P. T., Bingham, R. G., Rippin, D.M., le Brocq, A. and Siegert, M. J.: Inland extent of the Weddell Sea Rift imaged by new aerogeophysical data, *Tectonophysics*, 585, 137–160, doi:10.1016/j.tecto.2012.09.010, 2013b.
- Jordan, T. A., Riley, T. R. and Siddoway, C. S.: The geological history and evolution of West Antarctica, *Nat. Rev. Earth & Environment*, 1, 117–133, doi:10.1038/s43017-019-0013-6, 2020.
- Jordan, T. A., Thompson, S., Kulesa, B. and Ferraccioli, F.: Geological sketch map and implications for ice flow of Thwaites Glacier, West Antarctica, from integrated aerogeophysical observations, *Sci. Adv.*, 9, eadf2639, doi:10.1126/sciadv.adf2639, 2023.
- Jouvet, G. and Funk, M.: Modelling the trajectory of the corpses of mountaineers who disappeared in 1926 on Aletschgletscher, Switzerland, *J. Glaciol.*, 60, 255–261, doi:10.3189/2014JoG13J156, 2014.
- Kellogg, T. and Kellogg, D.: Antarctic cryogenic sediments: biotic and inorganic facies of ice shelf and marine-based ice sheet environments. *Palaeogeogr., Palaeoclimatol.*, 67, 51–74, doi:10.1016/0031-0182(88)90122-8, 1988.
- Kellogg, T., Kellogg, D. and Stuiver, M.: Late Quaternary history of the southwestern Ross Sea: evidence from debris bands on the McMurdo Ice Shelf, *Antar. Res. Ser.*, 50, 25–56, doi: 10.1029/AR050p0025, 1990.
- Kipf, A., Hauff, F., Werner, R., Gohl, K., van den Bogaard, P., Hoernle, K., Maicher, D. and Klügel, A.: Seamounts off the West Antarctic margin: A case for non-hotspot driven intraplate volcanism, *Gondwana Res.*, 25, 1660–1679, doi:10.1016/j.gr.2013.06.013, 2014.
- Korhonen, F. J., Saito, S., Brown, M., Siddoway, C. S. and Day, J. M. D.: Multiple generations of granite in the Fosdick Mountains, Marie Byrd Land, West Antarctica: implications for polyphase intracrustal differentiation in a continental margin setting, *J. Petrol.*, 51, 627–670, doi:10.1093/petrology/egp093, 2010.
- Lange, M. and van Sebille, E.: Parcels v0.9: prototyping a Lagrangian ocean analysis framework for the petascale age, *Geosci. Model Dev.*, 10, 4175–4186, <https://doi.org/10.5194/gmd-10-4175-2017>, 2017.
- Lawver, L., Lee, J., Kim, Y. and Davey, F.: Flat-topped mounds in western Ross Sea: Carbonate mounds or subglacial volcanic features?, *Geosphere*, 8, 645–653, doi:10.1130/GES00766.1, 2012.
- LeMasurier, W. E. and Landis, C. A.: Mantle-plume activity recorded by low-relief erosion surfaces in West Antarctica and New Zealand, *Geol. Soc. Am. Bull.*, 108, 1450–1466, doi:10.1130/0016-7606(1996)108<1450:MPARBL>2.3.CO;2, 1996.
- LeMasurier, W. E., Thomson, J. W., Baker, P. E., Kyle, P. R., Rowley, P. D., Smellie, J. L. and Verwoerd, W. J.: Volcanoes of the Antarctic plate and Southern Ocean, *Antar. Res. Ser.*, 48, American Geophysical Union, pp. 487, doi:10.1029/AR048, 1990.
- Lepp, A.P., Simkins, L.M., Anderson, J.B., Clark, R.W., Wellner, J.S., Hillenbrand, C.D., Smith, J.A., Lehrmann, A.A., Totten, R., Larter, R.D. and Hogan, K.A.: Sedimentary Signatures of Persistent Subglacial

- Meltwater Drainage From Thwaites Glacier, Antarctica, *Front. Earth Sci.*, 10, 863200, doi:10.3389/feart.2022.863200, 2022.
- 1450 Licht, K. J. and Hemming, S. R.: Analysis of Antarctic glacial sediment provenance through geochemical and petrologic applications, *Quaternary Sci. Rev.*, 164, 1-24, doi:10.1016/j.quascirev.2017.03.009, 2017
- Licht, K. J., Hennessy, A. J. and Welke, B. M.: The U-Pb detrital zircon signature of West Antarctic ice stream tills in the Ross embayment, with implications for Last Glacial Maximum ice flow reconstructions, *Antarct. Sci.* 26, 687–697, doi:10.1017/S0954102014000315, 2014.
- 1455 Lipp, A. G., Roberts, G. G., Whittaker, A. C., Gowing, C. J. and Fernandes, V. M.: River sediment geochemistry as a conservative mixture of source regions: Observations and predictions from the Cairngorms, UK, *J. Geophys. Res.-Earth*, 125, e2020JF005700, doi:10.1029/2020JF005700, 2020.
- Lumborg, U.: Modelling the deposition, erosion, and flux of cohesive sediment through Øresund, *Journal of Marine Systems*, 56, 179-193, doi:10.1016/j.jmarsys.2004.11.003, 2005.
- 1460 Luyendyk, B. P., Wilson, D. S. and Siddoway, C. S.: Eastern margin of the Ross Sea Rift in western Marie Byrd Land, Antarctica: Crustal structure and tectonic development, *Geochem., Geophys., Geosy.*, 4, doi:10.1029/2002GC000462, 2003.
- MacAyeal, D. R.: The basal stress distribution of Ice Stream E, Antarctica, inferred by control methods, *J. Geophys. Res.-Sol. Ea.*, 97, 595-603, doi:10.1029/91JB02454, 1992.
- 1465 Magrani, F., Valla, P. G. and Egholm, D.: Modelling alpine glacier geometry and subglacial erosion patterns in response to contrasting climatic forcing, *Earth Surf. Processes*, 47, 1054-1072, doi: 10.1002/esp.5302, 2022.
- Marschalek, J.W., Zurli, L., Talarico, F., van de Flierdt, T., Vermeesch, P., Carter, A., Beny, F., Bout-Roumazielles, V., Sangiorgi, F., Hemming, S.R., Perez, L.F., Colleoni, F., Prebble, J.G., van Peer, T.E., Perotti, M., Shevenell, A.E., Browne, I., Kulhanek, D.K., Levy, R., Harwood, D., Sullivan, N.B., Meyers, S.R., Griffith, E.M., Hillenbrand, C.-D., Gasson, E., Siegert, M.J., Keisling, B., Licht, K.J., Kuhn, G., Dodd, J.P., Boshuis, C., 1470 De Santis, L., McKay, R.M. and the Expedition 374 Science Party: A large West Antarctic Ice Sheet explains early Neogene sea-level amplitude, *Nature*, 600, 450–455, doi:10.1038/s41586-021-04148-0, 2021.
- Marsland, S. J., Bindoff, N. L., Williams, G. D. and Budd, W. F.: Modeling water mass formation in the Mertz Glacier Polynya and Adélie Depression, east Antarctica, *J. Geophys. Res.-Oceans*, 109, doi:10.1029/2004JC002441, 2004.
- 1475 Martin, A. P., Cooper, A. F. and Price, R. C.: Petrogenesis of Cenozoic, alkalic volcanic lineages at Mount Morning, West Antarctica and their entrained lithospheric mantle xenoliths: Lithospheric versus asthenospheric mantle sources, *Geochim. Cosmochim. Ac.*, 122, 127-152, doi:10.1016/j.gca.2013.08.025, 2013.
- Massom, R. A., Hill, K. L., Lytle, V. I., Worby, A. P., Paget, M. J. and Allison, I.: Effects of regional fast-ice and iceberg distributions on the behaviour of the Mertz Glacier polynya, East Antarctica, *Ann. Glaciol.*, 33, 391- 1480 398, doi:10.3189/172756401781818518, 2001.
- McCave, I. N.: Deposition from suspension, *Encyclopedia of Geology*, Elsevier Science Ltd., Amsterdam, pp 759-770, doi:10.1016/B978-0-08-102908-4.10992-0, 2005.
- McCave, I. N.: Size sorting during transport and deposition of fine sediments: sortable silt and flow speed, in: *Developments in Sedimentology*, 60, edited by: Rebesco, M. and Camerlenghi, A., Elsevier Science Ltd., 121- 1485 142, doi:10.1016/S0070-4571(08)10008-5, 2008.
- McCave, I. N. and Hall, I. R.: Size sorting in marine muds: Processes, pitfalls, and prospects for paleoflow-speed proxies, *Geochem., Geophys., Geosy.*, 7, doi:10.1029/2006GC001284, 2006.
- Mofjeld, H. O.: Depth dependence of bottom stress and quadratic drag coefficient for barotropic pressure-driven currents, *J. Phys. Oceanogr.*, 18, 1658-1669, doi:10.1175/1520-0485(1988)018<1658:DDOBSA>2.0.CO;2, 1490 1988.

- Molzahn, M., Reisberg, L. and Wörner, G.: Os, Sr, Nd, Pb, O isotope and trace element data from the Ferrar flood basalts, Antarctica: evidence for an enriched subcontinental lithospheric source, *Earth Planet. Sc. Lett.*, 144, 529-545, doi:10.1016/S0012-821X(96)00178-1, 1996.
- 1495 Monien, D., Kuhn, G., von Eynatten, H. and Talarico, F. M.: Geochemical provenance analysis of fine-grained sediment revealing Late Miocene to recent Paleo-Environmental changes in the Western Ross Sea, Antarctica, *Global Planet. Change*, 96, 41-58, doi: 10.1016/j.gloplacha.2010.05.001, 2012.
- 1500 Morlighem, M., Rignot, E., Binder, T., Blankenship, D., Drews, R., Eagles, G., Eisen, O., Farraccioli, F., Forsburg, R., Fretwell, P., Goel, V., Greenbaum, J.S., Gudmundsson, H., Guo, J., Helm, V., Hofstede, C., Howat, I., Humbert, A., Jokat, W., Karlsson, N.B., Lee, W.S., Matsuoka, K., Millan, R., Mouginot, J., Paden, J., Pattyn, F., Roberts, J., Rosier, S., Ruppel, A., Seroussi, H., Smith, E.C., Steinhage, D., Sun, B., van den Broeke, M.R., van Ommen, T.D., van Wessem, M. and Young, D. A.: Deep glacial troughs and stabilizing ridges unveiled beneath the margins of the Antarctic ice sheet, *Nat. Geosci.*, 13, 132-137, doi:10.1038/s41561-019-0510-8, 2020.
- 1505 Morlighem, M., Seroussi, H., Larour, E. and Rignot, E.: Inversion of basal friction in Antarctica using exact and incomplete adjoints of a higher-order model, *J. Geophys. Res.-Earth*, 118, 1746-1753, doi:10.1002/jgrf.20125, 2013.
- Mouginot, J., Scheuchl, B. and Rignot, E.: MEaSUREs Antarctic Boundaries for IPY 2007-2009 from Satellite Radar, Version 2, NASA National Snow and Ice Data Center Distributed Active Archive Center, doi:10.5067/AXE4121732AD, 2017.
- 1510 Mulder, T. : Gravity processes and deposits on continental slope, rise and abyssal plains, in: *Developments in Sedimentology*, 63, edited by: H. Huneke and T. Mulder, 25-148, Elsevier, doi:10.1016/B978-0-444-53000-4.00002-02011.
- Neff, P. D. and Bertler, N. A.: Trajectory modeling of modern dust transport to the Southern Ocean and Antarctica. *Journal of Geophysical Research: Atmospheres*, 120(18), 9303-9322, 2015.
- 1515 Nicholls, K. W., Corr, H. F. J., Makinson, K. and Pudsey, C. J.: Rock debris in an Antarctic ice shelf, *Ann. Glaciol.*, 53, 235-240, doi:10.3189/2012AoG60A014, 2012.
- O'Callaghan, J. F. and Mark, D. M.: The extraction of drainage networks from digital elevation data. *Comput. Vision Graph.*, 28, 323-344, 1984.
- 1520 Orejola, N., Passchier, S. and the IODP Expedition 318 Scientists: Sedimentology of lower Pliocene to Upper Pleistocene diamictites from IODP Site U1358, Wilkes Land margin, and implications for East Antarctic ice sheet dynamics, *Antarct. Sci.*, 26, 183-192, doi:10.1017/S0954102013000527, 2014.
- Orheim, O., Giles, B., Moholdt, G., Jacka, J. and Bjørndal, A.: The SCAR International Iceberg Database, Norwegian Polar Institute [Data set], doi:10.21334/npolar.2021.e4b9a604, 2021.
- 1525 Orsi, A. H., Whitworth III, T. and Nowlin Jr, W. D.: On the meridional extent and fronts of the Antarctic Circumpolar Current. *Deep-Sea Res. Pt. I*, 42, 641-673, doi:10.1016/0967-0637(95)00021-W, 1995
- Orsi, A. H. and Wiederwohl, C. L.: A recount of Ross Sea waters. *Deep-Sea Res. Pt. II*, 56, 778-795, doi: 10.1016/j.dsr2.2008.10.033, 2009.
- 1530 Pandey, M., Pant, N. C., Biswas, P., Shrivastava, P. K., Joshi, S. and Nagi, N.: Heavy mineral assemblage of marine sediments as an indicator of provenance and east Antarctic ice sheet fluctuations, *Geo. Soc. S. P.*, 461, 95-111, doi:10.1144/SP461.2, 2018.
- Pankhurst, R. J., Millar, I. L., Grunow, A. M. and Storey, B. C.: The pre-Cenozoic magmatic history of the Thurston Island crustal block, West Antarctica, *J. Geophys. Res.-Earth*, 98, 11835-11849, doi:10.1029/93JB01157, 1993.
- 1535 Pankhurst, R. J., Storey, B. C. and Millar, U.: Magmatism related to the break-up of Gondwana, edited by: Crame, J. A. and Thomson, J. W, *Geological evolution of Antarctica, Volume 1*, Cambridge University Press, 573-579, 1991.

- Pankhurst, R. J., Weaver, S. D., Bradshaw, J. D., Storey, B. C. and Ireland, T. R.: Geochronology and geochemistry of pre-Jurassic superterrane in Marie Byrd Land, Antarctica, *J. Geophys. Res.-Earth*, 103, 2529-2547, doi:10.1029/97JB02605, 1998.
- 1540 Panter, K. S. and Castillo, P.: Petrogenesis and source of lavas from seamounts in the Adare Basin, Western Ross Sea: Implications for the origin of Cenozoic magmatism in Antarctica, in: *Antarctica: A Keystone in a Changing World*, Online Proceedings of the 10th ISAES X, USGS Open-File Report 2007-1047, Extended Abstract 69, 2007.
- Patrick, M. R. and Smellie, J. L.: Synthesis A spaceborne inventory of volcanic activity in Antarctica and southern oceans, 2000–10, *Antarct. Sci.*, 25, 475-500, doi:10.1017/S0954102013000436, 2013.
- 1545 Paxman, G. J., Jamieson, S. S., Ferraccioli, F., Jordan, T. A., Bentley, M. J., Ross, N., Forsberg, R., Matsuoka, K., Steinhage, D., Eagles, G. and Casal, T. G.: Subglacial Geology and Geomorphology of the Pensacola-Pole Basin, East Antarctica, *Geochem., Geophys., Geosy.*, 20, 2786-2807, doi: 10.1029/2018GC008126, 2019.
- Perotti, M., Andreucci, B., Talarico, F., Zattin, M. and Langone, A.: Multianalytical provenance analysis of Eastern Ross Sea LGM till sediments (Antarctica): Petrography, geochronology, and thermochronology detrital data, *Geochem., Geophys., Geosy.*, 18, 2275-2304, doi:10.1002/2016GC006728, 2017.
- 1550 Pettit, E. C., Whorton, E. N., Waddington, E. D. and Sletten, R. S.: Influence of debris-rich basal ice on flow of a polar glacier, *J. Glaciol.*, 60, 989-1006, doi:10.3189/2014JoG13J161, 2014.
- Peucat, J. J., Ménot, R. P., Monnier, O. and Fanning, C. M.: The Terre Adélie basement in the East-Antarctica Shield: geological and isotopic evidence for a major 1.7 Ga thermal event; comparison with the Gawler Craton in South Australia, *Precambrian Res.*, 94, 205-224, doi:10.1016/S0301-9268(98)00119-3, 1999.
- 1555 Phillips, E. H. Sims, K.W.W., Blichert-Toft, J., Aster, R.C., Gaetani, G.A., Kyle, P.R., Wallace, P.J. and Rasmussen, D.J.: The nature and evolution of mantle upwelling at Ross Island, Antarctica, with implications for the source of HIMU lavas, *Earth Planet. Sc. Lett.*, 498, 38-53, doi:10.1016/j.epsl.2018.05.049, 2018.
- 1560 Pierce, E. L., Williams, T., Van De Flierdt, T., Hemming, S. R., Goldstein, S. L. and Brachfeld, S. A.: Characterizing the sediment provenance of East Antarctica's weak underbelly: The Aurora and Wilkes sub-glacial basins, *Paleoceanography*, 26, PA4217, doi.org/10.1029/2011PA002127, 2011.
- Pollard, D. and DeConto, R. M.: Description of a hybrid ice sheet-shelf model, and application to Antarctica, *Geosci. Model Dev.*, 5, 1273-1295, doi:10.5194/gmd-5-1273-2012, 2012.
- 1565 Pollard, D. and DeConto, R. M.: Continuous simulations over the last 40 million years with a coupled Antarctic ice sheet-sediment model, *Palaeogeogr. Palaeocl.*, 537, 109374, doi: 10.1016/j.palaeo.2019.109374, 2019.
- Prestvik, T. and Duncan, R. A.: The geology and age of Peter I Øy, Antarctica, *Polar Res.*, 9, 89-98, doi:10.3402/polar.v9i1.6781, 1991.
- 1570 Rackow, T., Wesche, C., Timmermann, R., Hellmer, H. H., Juricke, S. and Jung, T.: A simulation of small to giant Antarctic iceberg evolution: Differential impact on climatology estimates, *J. Geophys. Res.-Oceans*, 122, 3170-3190, doi: 10.1002/2016JC012513, 2017.
- Rignot, E., Jacobs, S., Mouginot, J. and Scheuchl, B.: Ice-shelf melting around Antarctica, *Science*, 341, 266-270, doi:10.1126/science.1235798, 2013.
- 1575 Rilling, S., Mukasa, S., Wilson, T., Lawver, L. and Hall, C.: New determinations of  $^{40}\text{Ar}/^{39}\text{Ar}$  isotopic ages and flow volumes for Cenozoic volcanism in the Terror Rift, Ross Sea, Antarctica, *J. Geophys. Res.-Earth*, 114, doi: 10.1029/2009JB006303, 2009.
- Robinson, S., Ivanovic, R., van de Flierdt, T., Blanchet, C.L., Tachikawa, K., Martin, E.E., Cook, C.P., Williams, T., Gregoire, L., Plancherel, Y. and Jeandel, C.: Global continental and marine detrital  $\epsilon\text{Nd}$ : An updated compilation for use in understanding marine Nd cycling, *Chem. Geol.*, 567, 120119, doi:10.1016/j.chemgeo.2021.120119, 2021.
- 1580

- Rocchi, S., Di Vincenzo, G., Ghezzi, C. and Nardini, I.: Granite-lamprophyre connection in the latest stages of the early Paleozoic Ross Orogeny (Victoria Land, Antarctica), *Geol. Soc. Am. Bull.*, 121, 801-819, doi:10.1130/B26342.1, 2009.
- 1585 Rocchi, S., LeMasurier, W. E., and Di Vincenzo, G.: Oligocene to Holocene erosion and glacial history in Marie Byrd Land, West Antarctica, inferred from exhumation of the Dorrel Rock intrusive complex and from volcano morphologies, *Geol. Soc. Am. Bull.*, 118, 991-1005, doi:10.1130/B25675.1, 2006.
- Rocchi, S., Tonarini, S., Armienti, P., Innocenti, F. and Manetti, P.: Geochemical and isotopic structure of the early Palaeozoic active margin of Gondwana in northern Victoria Land, Antarctica, *Tectonophysics*, 284, 261-281, doi:10.1016/S0040-1951(97)00178-9, 1998.
- 1590 Rodrigues, S., Hernández-Molina, F. J., Hillenbrand, C. D., Lucchi, R. G., Rodríguez-Tovar, F. J., Rebesco, M. and Larter, R. D.: Recognizing key sedimentary facies in mixed depositional systems: the case of the Pacific margin of the Antarctic Peninsula, *Sedimentology*, 69, 1953-1991, doi: 10.1111/sed.12978, 2022b.
- 1595 Rodrigues, S., Hernández-Molina, F. J., Larter, R. D., Rebesco, M., Hillenbrand, C. D., Lucchi, R. G., and Rodríguez-Tovar, F. J.: Sedimentary model for mixed depositional systems along the Pacific margin of the Antarctic Peninsula: Decoding the interplay of deep-water processes, *Mar. Geol.*, 445, 106754, doi:10.1016/j.margeo.2022.106754, 2022a.
- Russell-Head, D. S.: The melting of free-drifting icebergs, *Ann. Glaciol.*, 1, 119-122, doi:10.3189/S0260305500017092, 1980.
- 1600 Sandroni, S. and Talarico, F. M.: The record of Miocene climatic events in AND-2A drill core (Antarctica): Insights from provenance analyses of basement clasts, *Global Planet Change*, 75, 31-46, doi:10.1016/j.gloplacha.2010.10.002, 2011.
- Schroeder, D. M., Blankenship, D. D., Young, D. A. and Quartini, E.: Evidence for elevated and spatially variable geothermal flux beneath the West Antarctic Ice Sheet, *P. Natl. Acad. Sci. USA*, 111, 9070-9072, doi:10.1073/pnas.1405184111, 2014.
- 1605 Shao, H., He, J., Wu, L. and Wei, L.: Elemental and Sr–Nd isotopic compositions of surface clay-size sediments in the front end of major ice shelves around Antarctica and indications for provenance, *Deep-Sea Res. Pt. II*, 195, 105011, doi: 10.1016/j.dsr2.2021.105011, 2022.
- 1610 Shaw, T. J., Raiswell, R., Hexel, C. R., Vu, H. P., Moore, W. S., Dudgeon, R. and Smith Jr, K. L.: Input, composition, and potential impact of terrigenous material from free-drifting icebergs in the Weddell Sea, *Deep-Sea Res. Pt. II*, 58, 1376-1383, doi:10.1016/j.dsr2.2010.11.012, 2011.
- Shi, B., Wang, Y. P., Yang, Y., Li, M., Li, P., Ni, W. and Gao, J.: Determination of critical shear stresses for erosion and deposition based on in situ measurements of currents and waves over an intertidal mudflat, *J. Coastal Res.*, 31, 1344-1356, doi:10.2112/JCOASTRES-D-14-00239.1, 2015.
- 1615 Simões Pereira, P.: Insights into West Antarctica's geology and late Pleistocene ice sheet behaviour from isotopic sedimentary provenance studies. Ph.D. thesis, Imperial College London, 2018.
- Simões Pereira, P., van de Flierdt, T., Hemming, S. R., Frederichs, T., Hammond, S. J., Brachfeld, S., Doherty, C., Kuhn, G., Smith, J.A., Klages, J.P. and Hillenbrand, C. D.: The geochemical and mineralogical fingerprint of West Antarctica's weak underbelly: Pine Island and Thwaites glaciers, *Chem. Geol.*, 550, 119649, doi:10.1016/j.chemgeo.2020.119649, 2020.
- 1620 Simões Pereira, P., van de Flierdt, T., Hemming, S. R., Hammond, S. J., Kuhn, G., Brachfeld, S., Doherty, C. and Hillenbrand, C. D.: Geochemical fingerprints of glacially eroded bedrock from West Antarctica: Detrital thermochronology, radiogenic isotope systematics and trace element geochemistry in Late Holocene glacial-marine sediments, *Earth-Sci. Rev.*, 182, 204-232, doi:10.1016/j.earscirev.2018.04.011, 2018.
- 1625 Smith, J. A., Graham, A. G., Post, A. L., Hillenbrand, C. D., Bart, P. J. and Powell, R. D.: The marine geological imprint of Antarctic ice shelves, *Nat. Commun.*, 10, 1-16, doi:10.1038/s41467-019-13496-5, 2019.



- Smith, J. A., Hillenbrand, C. D., Larter, R. D., Graham, A. G. and Kuhn, G.: The sediment infill of subglacial meltwater channels on the West Antarctic continental shelf, *Quaternary Res.*, 71, 190-200, doi:10.1016/j.yqres.2008.11.005, 2009.
- 1630 Storey, B. C., Pankhurst, R. J. and Johnson, A. C.: The Grenville Province within Antarctica: a test of the SWEAT hypothesis, *J. Geol. Soc. London*, 151, 1-4, doi:10.1144/gsjgs.151.1.0001, 1994.
- Stow, D.A.V.: Deep sea processes of sediment transport and deposition, *Sediment Transport and Depositional Processes*, edited by Pye K., Blackwell Scientific Publications, Oxford, 257-291, 1994.
- 1635 Struve, T., van de Flierdt, T., Burke, A., Robinson, L. F., Hammond, S. J., Crocket, K. C., Bradtmiller, L.I., Auro, M.E., Mohammed, K.J. and White, N. J.: Neodymium isotopes and concentrations in aragonitic scleractinian cold-water coral skeletons-Modern calibration and evaluation of palaeo-applications, *Chem. Geol.*, 453, 146-168, doi:10.1016/j.chemgeo.2017.01.022, 2017.
- Stuart, K. M. and Long, D. G.: Tracking large tabular icebergs using the SeaWinds Ku-band microwave scatterometer, *Deep-Sea Res. Pt. II*, 58, 1285-1300, doi:10.1016/j.dsr2.2010.11.004, 2011.
- 1640 Studinger, M., Bell, R. E., Fitzgerald, P. G. and Buck, W. R.: Crustal architecture of the Transantarctic Mountains between the Scott and Reedy Glacier region and South Pole from aerogeophysical data, *Earth Planet. Sc. Lett.*, 250, 182-199, doi:10.1016/j.epsl.2006.07.035, 2006.
- Sugden, D., McCulloch, R., Bory, AM. and Hein, A.S.: Influence of Patagonian glaciers on Antarctic dust deposition during the last glacial period, *Nat. Geosci.*, 2, 281-285, doi:10.1038/ngeo474, 2009.
- 1645 Talarico, F., Borsi, L. and Lombardo, B.: Relict granulites in the Ross Orogen of northern Victoria Land (Antarctica), II. Geochemistry and palaeo-tectonic implications, *Precambrian Res.*, 75, 157-174, doi:10.1016/0301-9268(95)80004-2, 1995.
- Tonarini, S. and Rocchi, S.: Geochronology of Cambro-Ordovician intrusives in Victoria Land: A review, *Terra Ant. Reports*, 1, 46-50, 1994.
- 1650 Tournadre, J., Bouhier, N., Girard-Ardhuin, F. and Rémy, F.: Antarctic icebergs distributions 1992-2014, *J. Geophys. Res.-Oceans*, 121, 327-349, doi:10.1002/2015JC011178, 2016.
- Tucholke, B. E.: Sedimentation processes and acoustic stratigraphy in the Bellingshausen Basin, *Mar. Geol.*, 25, 209-230, doi:10.1016/0025-3227(77)90053-6, 1977.
- Ugelvig, S. V., Egholm, D. L., Anderson, R. S. and Iverson, N. R.: Glacial erosion driven by variations in meltwater drainage. *J. Geophys. Res.-Earth Surface*, 123, 2863-2877, doi:10.1029/2018JF004680, 2018.
- 1655 Umlauf, L. and Arneborg, L.: Dynamics of rotating shallow gravity currents passing through a channel. Part I: Observation of transverse structure, *J. Phys. Oceanogr.*, 39, 2385-2401, doi:10.1175/2009JPO4159.1, 2009.
- van de Flierdt, T., Goldstein, S. L., Hemming, S. R., Roy, M., Frank, M. and Halliday, A. N.: Global neodymium-hafnium isotope systematics—revisited, *Earth Planet. Sc. Lett.*, 259, 432-441, doi: 10.1016/j.epsl.2007.05.003, 2007.
- 1660 van Wyck de Vries, M., Bingham, R. G. and Hein, A. S.: A new volcanic province: an inventory of subglacial volcanoes in West Antarctica, *Geo. Soc. S. P.*, 461, 231-248, doi:10.1144/SP461.7, 2018.
- Wagner, T. J., Dell, R. W. and Eisenman, I.: An analytical model of iceberg drift. *J. Phys. Oceanogr.*, 47, 1605-1616, doi:10.1175/JPO-D-16-0262.1, 2017.
- 1665 Walter, H. J., Hegner, E., Diekmann, B. and Kuhn, G.: Provenance and transport of terrigenous sediment in the South Atlantic Ocean and their relations to glacial and interglacial cycles: Nd and Sr isotopic evidence, *Geochim. Cosmochim. Ac.*, 64, 3813-3827, doi:10.1016/S0016-7037(00)00476-2, 2000.
- Wang, R., Williams, T. J., Hillenbrand, C.-D., Ehrmann, W., Larkin, C. S., Hutchings, A. M. and Piotrowski, A. M.: Boundary processes and neodymium cycling along the Pacific margin of West Antarctica, *Geochim. Cosmochim. Ac.*, 327, 1-20, doi:10.1016/j.gca.2022.04.012, 2022.

- 1670 Wang, X., Holland, D. M. and Gudmundsson, G. H.: Accurate coastal DEM generation by merging ASTER GDEM and ICESat/GLAS data over Mertz Glacier, Antarctica, *Proc Spie*, 206, 218-230, doi:10.1016/j.rse.2017.12.041, 2018.
- Wareham, C. D., Stump, E., Storey, B. C., Millar, I. L. & Riley, T. R.: Petrogenesis of the Cambrian Liv Group. A bimodal volcanic rock suite from the Ross orogen, Transantarctic Mountains, *Geol. Soc. Am. Bull.*, 113, 360–372, doi:10.1130/0016-7606(2001)113<0360:POTCLG>2.0.CO;2, 2001.
- 1675 Weaver, S. D., Adams, C. J., Pankhurst, R. J. and Gibson, I. L.: Granites of Edward VII Peninsula, Marie Byrd Land: anorogenic magmatism related to Antarctic-New Zealand rifting, *T. RSE Earth*, 83, 281-290, doi:10.1017/S0263593300007963, 1992.
- Weis, D., Kieffer, B., Maerschalk, C., Barling, J., De Jong, J., Williams, G.A., Hanano, D., Pretorius, W., Mattielli, N., Scoates, J.S. and Goolaerts, A.: High-precision isotopic characterization of USGS reference materials by TIMS and MC-ICP-MS. *Geochem., Geophys., Geosy.*, 7, doi: 10.1029/2006GC001283, 2006.
- 1680 Wengler, M., Lamy, F., Struve, T., Borunda, A., Böning, P., Geibert, W., Kuhn, G., Pahnke, K., Roberts, J., Tiedemann, R. and Winckler, G.: A geochemical approach to reconstruct modern dust fluxes and sources to the South Pacific. *Geochim. Cosmochim. Ac.*, 264, 205-223, doi: 10.1016/j.gca.2019.08.024, 2019.
- 1685 Williams, T., Hemming, S. R., Licht, K., Agrios, L., Brachfeld, S. A., van de Flierdt, T., Hillenbrand, C.D., Ehrmann, W.U., Zhai, X., Cai, Y. and Corley, A.D. and Kuhn, G.: Insights into the Geographic Sequence of Deglaciation in the Weddell Sea Embayment by Provenance of Ice-Rafted Debris, AGU Fall Meeting, New Orleans, 11-15<sup>th</sup> December 2017, C21E-1168, 2017.
- Willis, I. C., Pope, E. L., Gwendolyn, J. M., Arnold, N. S. and Long, S.: Drainage networks, lakes and water fluxes beneath the Antarctic ice sheet, *Ann. Glaciol.*, 57, 96-108, doi:10.1017/aog.2016.15, 2016.
- 1690 Wilson, D. J., Bertram, R. A., Needham, E. F., van de Flierdt, T., Welsh, K. J., McKay, R. M., Mazumder, A., Riesselman, C.R., Jimnez-Espejo, F.J. and Escutia, C.: Ice loss from the East Antarctic Ice Sheet during late Pleistocene interglacials, *Nature*, 561, 383-386, doi:10.1038/s41586-018-0501-8, 2018.
- Yakymchuk, C., Brown, C. R., Brown, M., Siddoway, C. S., Fanning, C. M. and Korhonen, F. J.: Paleozoic evolution of western Marie Byrd Land, Antarctica, *Geol. Soc. Am. Bull.*, 127, 1464-1484, doi:10.1130/B31136.1, 2015.
- 1695 Zuo, H., Balmaseda, M. A., Tietsche, S., Mogensen, K. and Mayer, M.: The ECMWF operational ensemble reanalysis–analysis system for ocean and sea ice: a description of the system and assessment, *Ocean Sci.*, 15, 779-808, doi:10.5194/os-15-779-2019, 2019.
- 1700 Zwally, H.J., Giovinetto, M.B., Beckley, M.A., and Saba, J.L.: Antarctic and Greenland Drainage Systems, GSFC Cryospheric Sciences Laboratory, [http://icesat4.gsfc.nasa.gov/cryo\\_data/ant\\_grn\\_drainage\\_systems.php](http://icesat4.gsfc.nasa.gov/cryo_data/ant_grn_drainage_systems.php), 2012.