

The Vlasiator 5.2 Ionosphere – Coupling a magnetospheric hybrid-Vlasov simulation with a height-integrated ionosphere model

Urs Ganse¹, Yann Pfau-Kempf¹, Hongyang Zhou¹, Liisa Juusola^{1,2}, Abiyot Workayehu¹, Fasil Kebede¹, Konstantinos Papadakis¹, Maxime Grandin¹, Markku Alho¹, Markus Battarbee¹, Maxime Dubart¹, Leo Kotipalo¹, Arnaud Lalagüe¹, Jonas Suni¹, Konstantinos Horaites¹, and Minna Palmroth^{1,2}

¹Department of Physics, University of Helsinki, Helsinki, Finland

²Finnish Meteorological Institute, Helsinki, Finland

Correspondence: Urs Ganse (urs.ganse@helsinki.fi)

Abstract. Simulations of the coupled ionosphere-magnetosphere system are a key tool to understand geospace and its response to space weather. For the most part, they are based on fluid descriptions of plasma (magnetohydrodynamics, MHD) formalism, coupled an electrostatic ionosphere. Kinetic approaches to modeling the global magnetosphere with a coupled ionosphere system are still a rarity.

- 5 We present an ionospheric boundary model for the global near-Earth plasma simulation system Vlasiator. It complements the magnetospheric hybrid-Vlasov simulations with an inner boundary condition that solves the ionospheric potential based on field-aligned current and plasma quantities from the magnetospheric domain. This new ionospheric module solves the ionospheric potential in a height-integrated approach on an unstructured grid and couples back to the hybrid-kinetic simulation by mapping the resulting electric field to the magnetosphere's inner boundary.
- 10 The solver is benchmarked against a set of well-established analytic reference cases, and we discuss the benefits of a spherical Fibonacci mesh for use in ionospheric modeling. Preliminary results from coupled global magnetospheric-ionospheric simulations are presented, showing formation of both Region 1 and Region 2 current systems.

Copyright statement.

1 Introduction

- 15 The ionosphere is the upper part of Earth's atmosphere (in an altitude range of about 80 to 1000 km), in which a significant fraction of gas exists in an ionized state and hence electrodynamic effects are part of the atmospheric dynamics (Palmroth et al., 2021). At the interface between magnetospheric space plasma phenomena and atmospheric physics, the ionosphere plays a key role in space weather effects (Pulkkinen, 2007), such as geomagnetically induced currents (Marshalko et al., 2023), Joule heating (Ahn et al., 1983; Billett et al., 2018; Palmroth et al., 2004) and auroral phenomena. Modeling ionospheric physics and its interaction with the magnetosphere in a global context (including the solar wind, magnetosphere and ionosphere) is
- 20 therefore a research focus of computer simulations. Multiple well-established simulation systems based on fluid modeling of

plasma flows (Magnetohydrodynamics, MHD) exist, such as SWMF (Gombosi et al., 2021), GAMERA (Lin et al., 2021) or GUMICS-4 (Janhunen et al., 2012).

The large-scale morphology of ionospheric current systems is characterized by the presence of two regions of field-aligned currents (Iijima and Potemra, 1976a, b): Region 1 forms a more poleward circumpolar oval structure, whereas Region 2 is located on the equatorward side of the auroral oval. MHD-based approaches have difficulties representing the Region 2 currents with high fidelity (Ridley et al., 2002), as they are unable to model ring current drift kinetics (Wolf et al., 2007) and overlapping multi-temperature plasmas and are hence underrepresenting the required pressure gradients (Zhang et al., 2011). Kinetic simulation treatment of magnetospheric plasma promises to improve upon this state of the art (Lin et al., 2014; Yu et al., 2022), but comes with massively increased computational requirements. Coupled fluid-kinetic approaches such as MHD-(A)EPIC (Chen et al., 2020; Shou et al., 2021), which embed kinetic simulation boxes inside an MHD domain find a middle ground between accuracy and computational costs, but there is currently no implementation directly coupling their kinetic parts with the ionosphere. Thanks to new simulation techniques and ever-growing computational capabilities of supercomputing facilities, going beyond the MHD approximation in global modeling has been an ongoing effort (Nishikawa et al., 2021; Palmroth et al., 2018) and opens novel ionospheric-magnetospheric coupling possibilities beyond the current methods.

Common to all coupled simulation approaches irrespective of their concrete plasma representation is the disconnect between the magnetospheric and ionospheric domains, which needs to be bridged by a coupling mechanism. This mechanism transports quantities from the magnetospheric domain into the ionosphere (“downmapping”), which usually encompasses information about field-aligned currents in the magnetosphere, precipitating particle fluxes, Poynting flux or other inputs to the ionosphere solver (Zhang et al., 2015), depending on the physics represented. Transport between the two domains can be modeled through first-principles or empiric formulas (Knight, 1973), but an adiabatic approach, in which further transport effects are neglected, is common (Paul et al., 2023). In the opposite direction, the coupling mechanism acts back onto the magnetospheric domain and affects plasma flows on the ionospheric boundary. Electromotive effects of ionospheric current closure get included by mapping ionospheric potential gradients to electric fields on the magnetosphere simulations’ inner boundary (“upmapping”). The cross-polar cap potential (CPCP) is a commonly used diagnostic quantity, that subsums the strength of this feedback effect in a single scalar parameter for each hemisphere (Gordeev et al., 2011). Plasmasphere corotation (Vickers, 1976; Maus, 2017) can be introduced by the same upmapping mechanism through inclusion of a motional electric field contribution. Outflow of ionised atmospheric constituents (Strangeway et al., 2005) likewise find their way into the magnetospheric simulation domain in the upmapping process. The Space Weather Modeling Framework (Gombosi et al., 2021) and the Multiscale Atmosphere-Geospace Environment Model (Lin et al., 2021) present the current state of the art for many of the processes listed here, by coupling multiple advanced modelling approaches into a common dataspace, centered around the MHD paradigm.

Vlasiator (Palmroth et al., 2018; von Althaus et al., 2014) is a hybrid-Vlasov simulation system employed to model plasma processes in near-Earth space. Recent simulations (Palmroth et al., 2023; Juusola et al., 2018; Palmroth et al., 2017; Grandin et al., 2019) encompassing Earth’s solar wind - magnetosphere system have shown that the employed hybrid kinetic approach has become computationally viable for high-fidelity studies of the magnetosphere. However, past Vlasiator simulations were

constrained in their treatment of the ionospheric boundary, as the simulations' earthward boundary model was built to treat Earth as a magnetic obstacle sphere that absorbs all infalling plasma (Palmroth et al., 2018). This proved to be a sufficient model for the initial development goals (Palmroth, 2022) to construct a viable global ion-kinetic model, first in two spatial and three velocity dimensions (2D3V, Palmroth et al., 2018) and then in six-dimensional phase space (3D3V, Ganse et al., 2023) and for the initial science goals of foreshock (Turc et al., 2018), magnetosheath (Grandin et al., 2024) and magnetospheric (Palmroth et al., 2023) dynamics. For all of these results, however, the studied effects could be well investigated without inclusion of ionospheric interaction. To fully represent global dynamics, a proper two-way magnetosphere-ionosphere coupling is required.

In this paper, we outline the newly implemented ionospheric boundary model in Vlasiator. While it shares no code with earlier codebases, it builds on concepts and experiences from the GUMICS-4 (Janhunen et al., 2012) simulation system. The goal throughout the process was to provide a practical, physically motivated system for current closure of the inner magnetosphere, so that global effects of magnetospheric transients and their interplay with the ionosphere can be studied in a kinetic manner. The solver architecture was chosen, where possible, to avoid semi-empirical models and work from first principles, but deliberately simplifies many aspects of atmospheric physics in its current form, for which much more comprehensive modeling approaches would need to be considered (such as Qian et al., 2014; Marchaudon and Brelly, 2015; Codrescu et al., 2012). The model can best be seen as a starting point for coupled hybrid-Vlasov and ionosphere modeling, in which proven mechanisms were combined to further investigate the possibilities that kinetic simulations offer in geospace modeling.

Section 2 describes the numerical setup, including mesh construction, coupling processes and ionosphere solvers. Specifically, in Subsection 2.3, three options for the height-integrated conductivity model that have been implemented in this framework are outlined. It concludes and explains our choice of the model in which longitudinal conductance is neglected. Section 3 presents verification test results of the ionospheric model and solver against known analytically solvable test cases. Finally, Section 3.3 presents an example Vlasiator magnetospheric run with the new ionosphere model enabled, highlighting the global-scale effects that a two-way coupled ionosphere model enables in the dynamics of a hybrid-Vlasov simulation of Earth's entire magnetosphere.

2 The model

In a global magnetospheric simulation, an ionosphere model provides the inner boundary condition for the simulation domain, through which the ionospheric current systems are affecting the global magnetospheric plasma system. In general, inflowing current and plasma properties are provided as an input to the ionosphere and the solver supplies a predefined set of quantities back to the encompassing magnetospheric model, based on which the outflowing plasma properties are affected by the ionospheric electric potential Φ . This outflow is fed back into the magnetospheric simulation model. Additional direct outputs of the model are ionospheric observable quantities. Some can be compared to ground-based observations, such as charge carrier concentrations and large scale magnetic field fluctuations. Others are of interest because they are not easily obtainable from measurements, such as conductivity maps (Laundal et al., 2022).

90 Coupling an ionosphere model to a hybrid-Vlasov simulation is unexplored territory, for which no thorough previous experience exists, due to the small amount of Vlasov simulation codes employed in space plasma simulations to date (Palmroth et al., 2018), mostly due to their high computational costs. Global hybrid-Vlasov simulations typically consume multiple millions of core-hours per run on current supercomputing systems. The closest relatives to this approach, hybrid-PIC simulations (Lin et al., 2014), similarly to advanced coupled MHD simulations such as MAGE (Lin et al., 2021), handle their ionosphere
 95 inputs and outputs as macrophysical quantities, such as moments of the distribution function and electromagnetic field bulk quantities. This stems naturally from the formulation of these models, since MHD equations themselves are constituted from macroscopic state variables. In a (hybrid-)Vlasov simulation, on the other hand, the ion kinetic distribution function $f_i(\mathbf{x}, \mathbf{v}, t)$ is the primary actor in the simulation domain. The ionosphere potential needs to directly influence its behaviour at the inner magnetospheric boundary.

100 Irrespective of the precise nature of the simulation’s plasma model, electric currents relate to the magnetic field through Ampère’s law,

$$\nabla \times \mathbf{B} = \mu_0 \mathbf{j}, \tag{1}$$

hence the field-aligned current (FAC) density j_{\parallel} can be deduced from a simulation’s magnetic field \mathbf{B} state (μ_0 being the vacuum magnetic permeability). Note the formal difference between the three-dimensional current density \mathbf{j} and the height
 105 integrated current density \mathbf{J} , used below. The implementation of the Vlasiator ionosphere is therefore able to take the same approach as the model employed in the GUMICS-4 MHD simulation system (Janhunen et al., 2012): it couples the field-aligned currents determined from the magnetospheric simulation’s \mathbf{B} onto a spherical shell ionosphere grid. The ionosphere is modeled as electrostatic and the third dimension (altitude) of the system is removed by treating all conductivity and current quantities as integrals from ground level up to an altitude of 200 km. Formally, it thus constitutes a height-integrated model. In
 110 practice, this means that ionosphere electrodynamics are solved on a two-dimensional spherical mesh surface. The ionospheric potential corresponding to the tangential surface currents is solved by using a conductance tensor model that integrates the atmospheric density and ionisation columns. Any transient or travelling wave effects in the atmosphere are neglected in this process.

At the end of the ionosphere solver process, the electric potential Φ is obtained by solving Ohm’s law in the ionospheric
 115 solver (see section 2.4). Φ is mapped upwards along the (equipotential) magnetic field lines to affect the source terms in the magnetospheric inner boundary, thus closing the loop with the magnetospheric simulation. In the case of Vlasiator, the Vlasov simulation’s boundary cells dynamically affect their velocity distributions through the upmapped ionospheric potential (see section 2.5).

2.1 The ionosphere grid

120 The ionosphere is modelled on a spherical shell grid with a radius of $R_i = R_E + 100$ km (where $R_E \approx 6371$ km is Earth’s radius), which acts as the effective ionospheric altitude in this model. The grid topology is a triangle mesh, structured as a spherical Fibonacci lattice (Keinert et al., 2015). The mesh resolution can be arbitrarily chosen from a minimum of 16 mesh

points on the sphere up to a theoretical maximum of 2^{24} mesh points. The paramount property of Fibonacci meshes is that they discretise the spherical surface into exactly equal-area triangle elements e_i , for any number N of mesh nodes. The resulting effective mesh resolution for an ionospheric Fibonacci mesh with N nodes is thus obtainable by equally dividing Earth's surface area and taking the square root: $l_{\text{eff}} = \sqrt{4\pi R_i^2/N}$.

As the ionosphere exhibits small-scale spatial structures especially at the auroral latitudes, one or multiple levels of mesh refinement can be performed by consecutively replacing one triangular mesh element by four smaller ones with double resolution, the process of which is outlined in Figure 1. At refinement boundaries, cell stitching (Schäfer et al., 2014) is employed to maintain a watertight mesh geometry. Figure 2 exemplifies the refinement process with a low base mesh node count of $N = 256$, corresponding to an effective base grid resolution of $l_{\text{eff}} = 1368$ km. This is subsequently refined in two stages.

The results in this paper were obtained from simulations based on a Fibonacci mesh (base $N = 2000$, $l_{\text{eff}} = 489$ km) with three refinement stages around the auroral oval: All elements in the latitude range $\theta = 40^\circ \dots 90^\circ$ were refined once ($l_{\text{eff}} = 244$ km), elements with $\theta = 50^\circ \dots 90^\circ$ were refined a second time ($l_{\text{eff}} = 122$ km) and elements in $\theta = 60^\circ \dots 80^\circ$ got a third refinement level ($l_{\text{eff}} = 62$ km). Figure 3 presents the resulting mesh geometry around the northern polar cap.

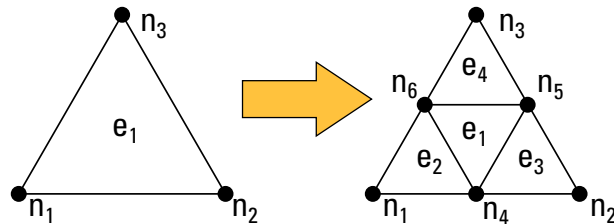


Figure 1. Mesh refinement step of the ionospheric triangle mesh. Each triangular element e_i chosen for refinement is replaced by 4 elements of double resolution, and three additional mesh nodes $n_4 \dots n_6$ are introduced at the edges.

2.2 Downmapping of magnetospheric parameters

To obtain a bijective association between magnetospheric and ionospheric mesh cells, ionosphere mesh node coordinates are the starting points for stepping upwards along the field lines with an adaptive Euler tracing algorithm (Press et al., 1992) (compare Figure 4). Within the magnetospheric simulation domain, the magnetic field values are interpolated using the reconstruction method of Balsara (2017). In the gap region between the magnetospheric and ionospheric simulation domain, the field lines are traced along an ideal dipole field without a tilt. Each field line starts from the ionosphere grid radius and continues until the coupling radius r_C is reached. r_C is a user-configurable parameter that is typically chosen to lie at least two full magnetospheric simulation cell sizes ($\Delta x = 1000$ km) outside of the Vlasov simulations' earthward boundary, to both prevent incorrect application of the finite difference scheme that calculates j_{\parallel} from eq. (1) and to smooth out any possible artefacts from the effectively non-spherical shape of Cartesian grid discretization (“staircasing” the spherical inner boundary). The traced cell coordinates do not in general hit the centres of magnetospheric cell locations. Hence the magnetospheric down-

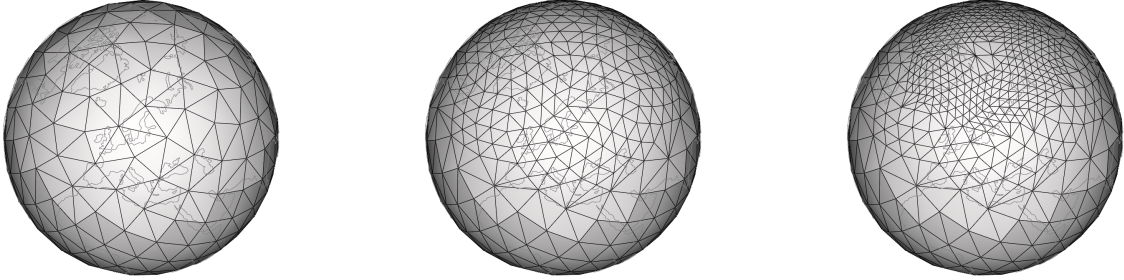


Figure 2. Ionosphere mesh geometry. **Left:** Spherical Fibonacci mesh with $N = 256$ nodes, without refinement of the polar region. **Centre:** One level of mesh refinement above 40° latitude. **Right:** A second level of mesh refinement between 60° and 80° latitude. Compare Fig. 3 for the full mesh resolution that is employed in global magnetospheric simulations.

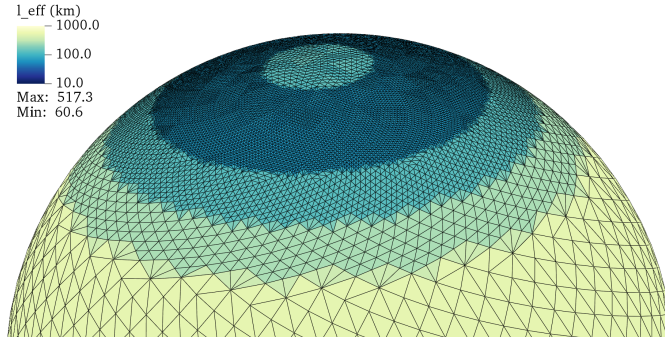


Figure 3. Resulting mesh structure near the northern polar cap after three levels of mesh refinement have been applied between $\theta \in [40^\circ, 90^\circ]$, $[50^\circ, 90^\circ]$ and $[60^\circ, 80^\circ]$, respectively. The colour shows the effective mesh resolution $l_{\text{eff}} = \sqrt{2A_{\text{cell}}}$ of each triangular grid cell.

mapping quantities are interpolated onto the upper endpoint of the fieldline using Balsara reconstruction (Balsara, 2017) before they are transported to the ionosphere mesh.

Field-aligned current density j_{\parallel} produced in the magnetosphere, electron number density n_e and temperature T_e are input quantities to the ionosphere model. To couple these magnetospheric quantities with the ionosphere model, they are transported from the magnetospheric grids (Ganse et al., 2023; Papadakis et al., 2022) onto the triangular ionosphere grid.

As Vlasiator simulations only carry full kinetic information about the particle distribution functions of ions and simplify electron dynamics to that of a massless fluid (thus making it a hybrid-Vlasov model), electron precipitation fluxes need to be inferred indirectly in a two-step process: First, a proxy for the precipitating electron velocity distribution function is calculated from the magnetospheric boundary values that are downmapped from the Vlasov simulation cells, field-aligned current density j_{\parallel} , electron density n_e and temperature T_e . We employ a fixed temperature ratio of $\frac{T_i}{T_e} = 4$ in the same way as Janhunen et al.

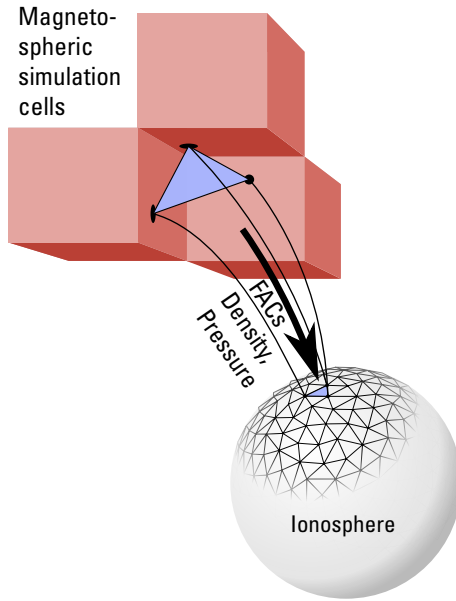


Figure 4. Downmapping of magnetospheric simulation parameters (electron density n_e , temperature T_e and FACs J_{\parallel}) is performed along magnetic field lines towards the ionospheric mesh node locations. The magnetospheric simulation cell data is linearly interpolated onto their cell surface locations.

(2012). We assume the electron distribution to be a Maxwellian,

$$f_e(v) = n_e \left(\frac{2\pi k_B T_e}{m_e} \right)^{-3/2} \exp\left(-\frac{m_e v^2}{2k_B T_e}\right), \quad (2)$$

where k_B is the Boltzmann constant, yielding a differential number flux DNF_e per energy E of

$$160 \quad \text{DNF}_e(E) = \frac{n_e E}{\sqrt{2m_e}} (\pi k_B T_e)^{-3/2} \exp\left(-\frac{E}{k_B T_e}\right). \quad (3)$$

For lack of a model describing the precipitating electrons' pitch angle (ϑ) distribution in a hybrid simulation, we assume a cosine dependence in pitch angle (similar to Rees (1963), and further motivated by the results of Ergun et al. (2000)), thus getting to an angle-resolved differential number flux of

$$\text{DNF}_e(E, \vartheta) = \text{DNF}_e(E) \cos(\vartheta) \quad (4)$$

165 in the velocity half-space where particles move earthward, with $\text{DNF}_e(E, \vartheta) = 0$ for $\vartheta > \pi/2$. Integration over the downwards-facing half sphere ($\vartheta = [0 \dots \pi/2]$, $\varphi = [0 \dots 2\pi]$) yields the omnidirectional differential energy flux:

$$\text{DEF}_{\text{omni}}(E) = \iint E \cdot \text{DNF}_e(E, \vartheta) d\varphi \sin \vartheta d\vartheta = \frac{n_e E}{\sqrt{2m_e \pi}} (k_B T_e)^{-3/2} \exp\left(-\frac{E}{k_B T_e}\right). \quad (5)$$

As the coupling radius r_C is typically situated outwards from the ionosphere by multiple Earth radii ($r_C \sim 5.6 R_E$ in recent simulation runs), transport delay of j_{\parallel} and plasma quantities through this gap region to ionosphere needs to be modelled. Since

170 the dynamic timescales of the inner magnetosphere (typical Vlasiator simulation timesteps are $\Delta t \approx 12$ ms) are much faster than ionospheric dynamics, the downmapped quantities are temporally smoothed by an exponential filter with a smoothing half-time of $t_{\text{smooth}} = 4$ s. The choice of this value is motivated by the approximate Alfvén travel time from the magnetospheric inner boundary to the ionosphere and back. In the literature, similar effects have been achieved by the choice of solver time interval between 1 s (Janhunen et al., 2012) and 15 s (Paul et al., 2023). In addition to smoothing of high-frequency signals
 175 in the downmapped quantities, this filter causes an effective transient propagation delay of $t_{\text{smooth}}/2 \approx 2$ s. This process also numerically stabilizes the method, as otherwise instantaneous information transport across the entire magnetospheric inner boundary could occur, leading to unphysical feedback loops.

2.3 Ionospheric conductance tensor

The field-aligned current density j_{\parallel} feeds a charge imbalance inside the ionospheric shell, so an in-plane electric field $\mathbf{E} =$
 180 $(E_{\perp 1}, E_{\perp 2}) = -\nabla\Phi$ forms to counter this charge imbalance. The Ohm’s law

$$\mathbf{J} = \Sigma \cdot \mathbf{E}, \quad (6)$$

where Σ is the conductance tensor and $\mathbf{J} = (J_{\perp 1}, J_{\perp 2})$ is the height-integrated current density on the sphere, can be used to calculate this field. With it, the ionospheric potential can be obtained, if a suitable model for the anisotropic conductance tensor (in a coordinate system where $\hat{\mathbf{e}}_z \parallel \mathbf{B}$) is available:

$$185 \quad \Sigma = \begin{pmatrix} \Sigma_{\text{P}} & -\Sigma_{\text{H}} & 0 \\ \Sigma_{\text{H}} & \Sigma_{\text{P}} & 0 \\ 0 & 0 & \Sigma_{\parallel} \end{pmatrix} \quad (7)$$

A significant part of an ionosphere model’s physical content lies in the modelling choices for Pedersen conductance Σ_{P} , Hall conductance Σ_{H} and field-aligned conductance Σ_{\parallel} . The values of these three conductance components are affected by multiple physical processes in Vlasiator’s ionosphere model:

On Earth’s dayside, photoionisation from sunlight is dominating. Its magnitude can be obtained from radar observations,
 190 and Moen and Brekke (1993) modelled it as a function of solar zenith angle χ and 10.7 cm solar radio flux $F_{10.7}$ given in solar flux units ($1 \text{ sfu} = 1 \times 10^{-22} \text{ Wm}^{-2}$):

$$\Sigma_{\text{P}}^{UV} = F_{10.7}^{0.49} (0.34 \cos \chi + 0.93 \sqrt{\cos \chi}) \text{ S m}^{-1} \quad (8)$$

$$\Sigma_{\text{H}}^{UV} = F_{10.7}^{0.53} (0.81 \cos \chi + 0.53 \sqrt{\cos \chi}) \text{ S m}^{-1}. \quad (9)$$

The $F_{10.7}$ value is a user-definable input parameter to the simulation. For quiescent solar conditions, it is typically chosen to
 195 be $F_{10.7} = 100$ sfu.

UV photoionisation by starlight is assumed as an isotropic background, and is added as a constant value of $\Sigma_{\text{H,P},\parallel}^{\text{Star}} = 0.5 \text{ S m}^{-1}$.

In high-latitude regions, conductivity caused by particle precipitation ionisation is a further dominating factor. In nature, this ionisation is predominantly caused by precipitating electrons colliding with neutral atoms and molecules.

200 Using the electron scattering profile model from Sergienko and Ivanov (1993), the differential energy flux is used to calculate an altitude-dependent ion production rate q in the altitude range of $h \in [60 \dots 200]$ km, corresponding to the ionospheric region of high conductivity caused by precipitating particle ionization (Palmroth et al., 2021). Neutral density profiles going into this calculation are obtained from the NRLMSIS00 model (Picone et al., 2002), from which a single representative atmosphere profile has been exported to 70° degrees northern latitude at midnight during spring equinox (Precise run parameters: Daily
 205 $AP = 25$, $F_{10.7} = 100$, $Lat = 70^\circ$, $Lon = 0^\circ$, Date is 2022-03-21, 12:00 PM Solar Local Time, height profile from 60 to 200 km with a step size of 1 km). The user can choose to supply a different NRLMSIS00 output file to model specific events or situations.

The resulting production rate q is assumed to be in balance with neutral atom recombination rate $\alpha \approx 2.4 \times 10^{-13} \text{ m}^3 \text{ s}^{-1}$ (Schunk and Nagy, 2009, Table 8.5), leading to a stationary solution to the balance equation for the ionospheric E region,

$$210 \quad \frac{\partial n_e}{\partial t} = q - \alpha n_e^2 = 0. \quad (10)$$

We assume time-independence and obtain $n_e = \sqrt{q/\alpha}$. The conductance values $\Sigma_{\text{H,P},\parallel}^{\text{Precip}}$ are then calculated as a result of electron and ion contributions: (Schunk and Nagy, 2009):

$$\sigma_{\text{P}} = \frac{n_i e^2}{m_i \nu_i} \frac{\nu_i^2}{\nu_i^2 + \Omega_{ci}^2} + \frac{n_e e^2}{m_e \nu_e} \frac{\nu_e^2}{\nu_e^2 + \Omega_{ce}^2} \quad (11)$$

$$\sigma_{\text{H}} = -\frac{n_i e^2}{m_i \nu_i} \frac{\nu_i \Omega_{ci}}{\nu_i^2 + \Omega_{ci}^2} + \frac{n_e e^2}{m_e \nu_e} \frac{\nu_e \Omega_{ce}}{\nu_e^2 + \Omega_{ce}^2} \quad (12)$$

$$215 \quad \sigma_{\parallel} = \frac{n_e e^2}{m_e \nu_e} \quad (13)$$

where the ion and electron collision frequencies $\nu_{i,e}$ are taken from Tables 4.5 and 4.6 in Schunk and Nagy (2009), respectively. Ω_{ci} and Ω_{ce} are the larmor frequencies of electrons and ions. Ion densities n_i are assumed to be in charge balance with the electrons. The ion contribution to σ_{\parallel} has been neglected. Figure 5 shows an example of the resulting precipitation-based conductivity profiles. Height integration yields precipitation-based conductance contributions:

$$220 \quad \Sigma_{\text{P,H},\parallel}^{\text{Precip}} = \int_0^H \sigma_{\text{P,H},\parallel}(h) dh, \quad (14)$$

numerically integrating through the NRLMSIS00 model output in an altitude range of $H = [60 \dots 200 \text{ km}]$ at a step size of 1 km.

Since the photoionization effects of sun- and starlight are mostly affecting the ionospheric F-layer, whereas precipitation effects most dominant in the E-Layer, overall height-integrated Hall and Pedersen conductivities are obtained by summing the
 225 individual components in quadrature, meaning

$$\Sigma_{\text{H}} = \sqrt{(\Sigma_{\text{H}}^{\text{Star}})^2 + (\Sigma_{\text{H}}^{\text{UV}})^2 + (\Sigma_{\text{H}}^{\text{Precip}})^2} \quad (15)$$

$$\Sigma_{\text{P}} = \sqrt{(\Sigma_{\text{P}}^{\text{Star}})^2 + (\Sigma_{\text{P}}^{\text{UV}})^2 + (\Sigma_{\text{P}}^{\text{Precip}})^2}. \quad (16)$$

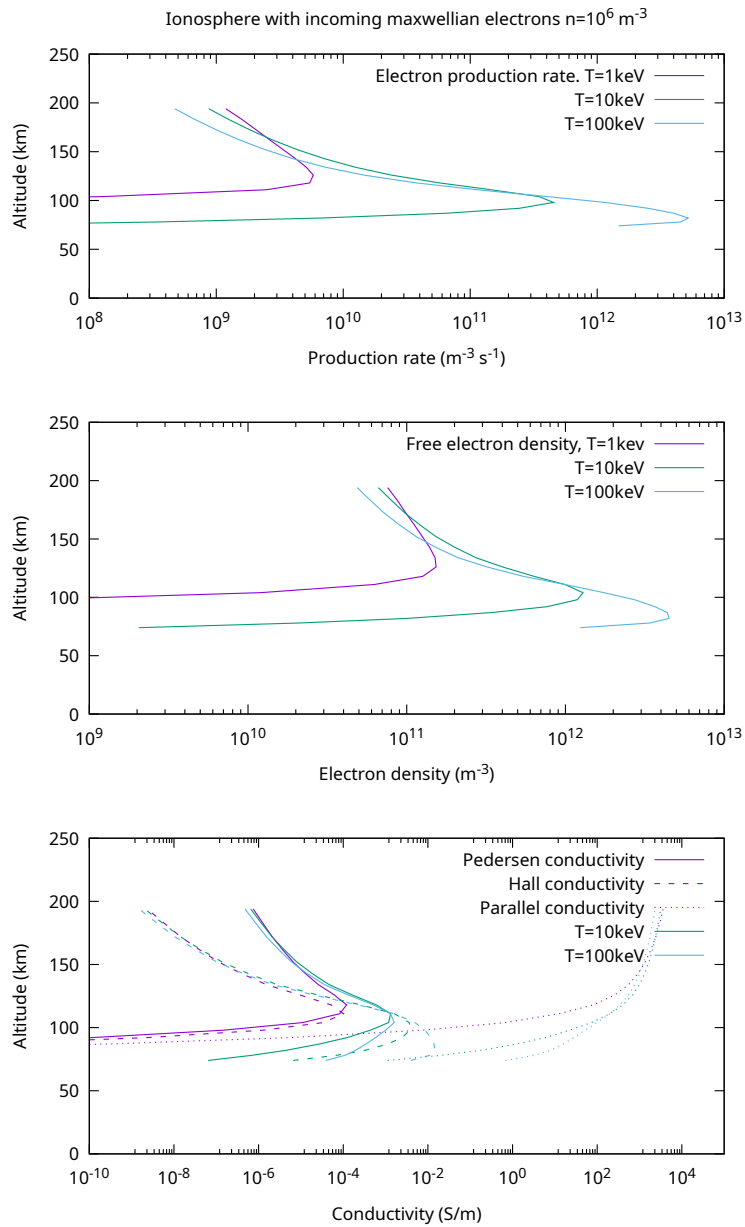


Figure 5. Ionization rate, charge carrier density and conductivity profiles for the three components of the ionospheric conductivity tensor obtained by equations (11) – (13). The shown profile is an example for a grid cell at latitude 70° north, with a precipitating electron density of $n_e = 10^6 \text{ m}^{-3}$ and temperature of $T_e = 1, 10, \text{ and } 100 \text{ keV}$, respectively. Note that photoionisation contributions are not shown here, as they get added separately in the height-integrated conductivity terms of equations (15) and (16).

This leaves the actual conductance tensor Σ to be assembled. This choice is affected by the orientation of the coordinate system for the solution of the ionospheric potential. Vlasiator’s ionosphere model currently implements three different alternative
 230 formulations for this process:

1. In the style of (Janhunen et al., 2012) or Paul et al. (2023), the local magnetic field direction at each grid node is assumed to be exactly radial to the sphere’s surface, $\mathbf{B} \parallel \mathbf{r}$. The in-plane currents of the ionosphere are hence only affected by the two perpendicular conductance components, Σ_H and Σ_P , while Σ_{\parallel} is effectively infinite, making $E_{\parallel} = 0$.
- 235 2. It would seem reasonable to employ the actual dipole magnetic field in the calculation of Σ . In this case, Σ_{\parallel} obtains a finite value. Analogous to Ridley et al. (2004), its value can be simply chosen to be an arbitrary high conductance value, such as $\Sigma_{\parallel} = 1000 \text{ Sm}^{-1}$, which is motivated by the assumption that parallel charge separations neutralize near-instantly.
3. The full conductance tensor, using all components as outlined above, and rotated according to the local magnetic field vector.

The fact that the conductance tensor gets employed only in a height-integrated fashion makes inclusion of the parallel
 240 conductance problematic: Height integration along a fieldline would effectively mix parallel and perpendicular conductivities in the solution plane. The parallel conductance contribution would vanish at the poles, and become increasingly dominant at more equatorial latitudes. Our experiments have thus shown that both options 2 and 3 result in unphysically large conductivities at low latitudes, favouring current closure over the equator and hence greatly reduced polar potential values. Other models, formulated in polar coordinates, solve this issue by introducing a magnetic field dip factor (Goodman, 1995; Merkin and Lyon,
 245 2010; Paul et al., 2023), but this approach does not readily translate to the spherical Fibonacci grid employed here. In the following, results will only be shown using the conductance model 1.

2.4 Potential solver

The purpose of the ionosphere solver is to find an electric field \mathbf{E} that solves equation (6) two-dimensionally on the ionospheric sphere, given a field-aligned current distribution j_{\parallel} . The two additional horizontal current components are forming the tangential
 250 current vector $\mathbf{J} = (J_{\perp 1}, J_{\perp 2})$. The electric field can be expressed as the gradient of the ionospheric potential, $\mathbf{E} = -\nabla\Phi$ and thus the equation to solve becomes:

$$\mathbf{J} = \Sigma \cdot (-\nabla\Phi). \tag{17}$$

On the surface of the height-integrated ionosphere model sphere, the field-aligned currents can be substituted in the ionospheric continuity equation $\nabla \cdot \mathbf{J} = -j_{\parallel}$. By taking the divergence of equation (17), it can be rewritten as

$$255 \nabla \cdot \mathbf{J} = \nabla \cdot [\Sigma \cdot (-\nabla\Phi)] = -j_{\parallel}. \tag{18}$$

In our implementation, the solution to this equation is obtained via a finite element approach using Galerkin’s method (Ern and Guermond, 2004), in which the individual triangular mesh elements of the ionosphere grid are used to build trapezoidal

test functions for $\nabla\Phi$. The resulting sparse matrix equation is solved with a modified conjugate gradient solver (Press et al., 1992). Since the spherical ionosphere mesh forms a compact manifold with no boundary, the potential Φ on the sphere has a gauge degree of freedom, which causes the finite element solver matrix to be positive semidefinite (with an eigenvalue $\lambda \approx 0$ corresponding to the gauge freedom). This makes naïve implementation of a conjugate gradient solver numerically unstable. To fix this instability, a gauge constraint to the potential is introduced such that the potential of mesh nodes near the equator, at a configurable shielding latitude of $\theta_{\text{Shield}} \in [0^\circ \dots 70^\circ]$ are pinned to zero potential.

2.5 Upmapping

The potential Φ produced by the ionosphere solver is upmapped to the magnetospheric simulation grid along the same magnetic field trajectories as the downmapping in section 2.2. At this point, the effect of Earth’s rotation is taken into account, as the potential was solved without regard for any motional electric field caused by corotation. At the magnetospheric inner boundary cells, an effective electric field is hence calculated as a sum of ionospheric potential and motional electric field from ionospheric corotation,

$$\mathbf{E} = -\nabla\Phi - c(L)(\boldsymbol{\Omega}_E \times \mathbf{r}) \times \mathbf{B} \quad (19)$$

with Earth’s rotation vector $\boldsymbol{\Omega}_E = \hat{\mathbf{e}}_z 2\pi/24\text{h}$ and the corotation factor $c(L) \in [0 \dots 1]$ as a function of L-shell parameter:

$$c(L) = \begin{cases} 1 & \text{for } L \leq 5 \\ 0 & \text{for } L > 5. \end{cases} \quad (20)$$

The threshold value of $L = 5$ has been chosen to roughly match the plasmopause location, which forms a discontinuous boundary between corotating and convecting plasma (Maus, 2017).

The electric field thus obtained affects the ion distribution function $f_i(\mathbf{x}, \mathbf{v}, t)$ in each inner boundary cell of the Vlasov simulation. As a first simple approach, the inner boundary cells are set up to contain a shifted Maxwellian distribution with a bulk velocity given by the $\mathbf{E} \times \mathbf{B}$ -drift $\frac{\mathbf{E} \times \mathbf{B}}{B^2}$:

$$f_i(\mathbf{x}, \mathbf{v}, t) = n_i \left(\frac{m_i}{2\pi k_B T_i} \right)^{3/2} \exp \left(-\frac{m_i \left(\mathbf{v} - \frac{\mathbf{E} \times \mathbf{B}}{B^2} \right)^2}{2k_B T_i} \right). \quad (21)$$

We further impose the same $\mathbf{E} \times \mathbf{B}$ drift velocity on the first layer of cells adjacent to the magnetosphere’s inner boundary, where the existing (potentially non-thermal) velocity distribution functions are shifted so that the first moment (\mathbf{v}_{bulk}) of their distribution coincides with the drift speed. These distribution functions then participate in Vlasiator’s global magnetosphere dynamics and influence near-Earth plasma flows, pressure balance and wave dynamics. As Vlasiator is a kinetic simulation model, the choice of f_i in the boundaries is in no way limited to Maxwellians though. Future investigations will study what other outflow distribution functions are sensible here, and investigate their effects on the overall magnetospheric system.

Verification and validation of the ionosphere model were performed using a number of test cases. In the following, we check correctness of the numerical implementation of the potential solver by benchmarking the solver against spherical harmonics-shaped j_{\parallel} patterns and an literature-established analytically-solvable distribution of j_{\parallel} that is close to a real convective pattern (section 3.1). Finally, we perform an integration test of the whole coupled magnetosphere-ionosphere model by performing a
 290 Vlasiator global run with the included ionosphere model, and validate the resulting ionospheric phenomenology in section 3.3.

3.1 Solver verification and convergence

Verification of the potential solver was performed in a test setup, in which the ionospheric conductance tensor Σ was set to identity \mathbf{I} . With this choice, equation (18) reduces to the Laplace equation,

$$\Delta\Phi = j_{\parallel}. \quad (22)$$

295 On a spherical surface, the eigensolutions of this equation are the spherical harmonic functions $Y_m^l(\theta, \phi)$ with degree l and order m . Given an input j_{\parallel} distribution that is composed of a single spherical harmonic, the solver should thus produce a potential Φ with the same shape. Figure 6 shows a selection of spherical harmonic (up to $l = 6$) j_{\parallel} distributions. The colour scale of the potential plots was chosen quite narrow to particularly highlight how finite grid resolution leads to small discrepancies in regions of polarity change, while the overall potential morphology matches the expected spherical harmonic shape.

300 To systematically test how well a given Fibonacci mesh with node count N resolves a given spherical harmonic j_{\parallel} distribution, a parameter study was conducted. Defining a correlation product of two functions X and Y over the full sphere S evaluated on the Fibonacci point set sites with N points as

$$\langle X \cdot Y \rangle = \frac{1}{\|X\| \|Y\|} \int_S X \cdot Y \, dS, \quad (23)$$

where $\|X\| = \int_S X^2 \, dS$ is the norm of X on the sphere, we expect a value of $\langle \Phi \cdot Y_m^l \rangle = 1$ for a numerically correct solution
 305 of the test case. Any deviation from this values indicates numerical error, in this case due to insufficient resolution of the mesh. Figure 7 presents this for a set of spherical harmonic numbers up to $l = 13$ and mesh node counts in the range $N = 20 \dots 500$. It can be seen that low grid point numbers only resolve low orders l of spherical harmonics, but the solver converges by increasing the node count N . Note that the result for high-order spherical harmonics are entirely dominated by aliasing for low values of N , and hence the curves for $l = 8$ and $l = 13$ are only shown for $N > 189$ and $N > 198$, respectively.

3.2 Physically-motivated analytic test case

For a second test case that is more closely representative of the physical situation in Earth's ionosphere, we replicate the verification test proposed in Merkin and Lyon (2010). In this test case, a longitude-dependent field-aligned current ring, specified

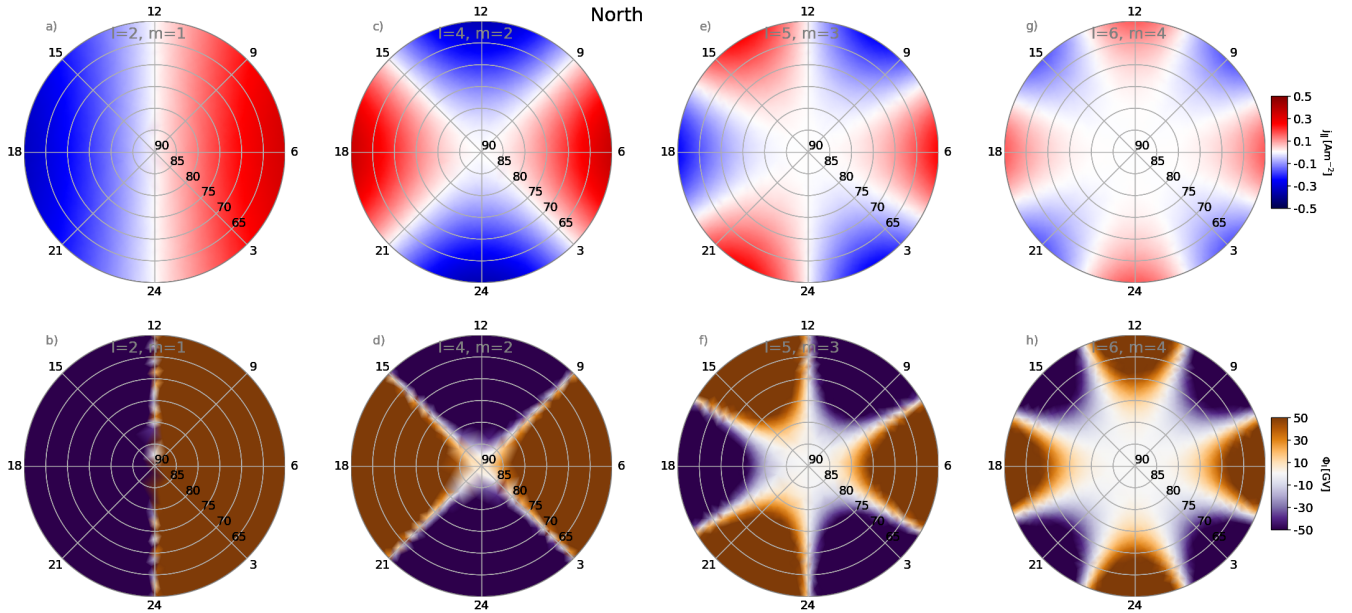


Figure 6. Top row: Spherical harmonic j_{\parallel} distributions with $(l = 2, m = 1)$, $(l = 4, m = 2)$, $(l = 5, m = 3)$ and $(l = 6, m = 4)$, respectively. **Bottom row:** The corresponding potential patterns, when solved with $\Sigma = \mathbf{I}$, showing that the ionosphere solver correctly reproduces the eigensolutions of the system.

by

$$j_{\parallel} = j_0 \begin{cases} \sin \theta \sin \phi, & \text{if } \theta_0 \leq \theta < \theta_0 + \Delta\theta \\ 0, & \text{otherwise,} \end{cases} \quad (24)$$

315 is used as the solver input, where $j_0 = 1 \mu\text{A}/\text{m}^2$, $\theta_0 = 56^\circ$, $\Delta\theta = 12^\circ$. Note that Merkin and Lyon (2010) give these angles as colatitudes measured from the pole instead. Solving with a constant ionospheric conductance of $\Sigma_H = 0$, $\Sigma_P = 10 \text{ S}$ and an equatorial shielding latitude $\theta_{\text{Shield}} = 45^\circ$, the resulting potential is presented in Figure 8. As eq. (24) specifies j_{\parallel} to be completely symmetric wrt. longitude ϕ , and since $\Sigma_H = 0$ in this test, the resulting map of Φ shows the same symmetry. In fact, $\Phi(\theta, \phi)$ factorizes into a purely θ -dependent function $\hat{\Phi}(\theta)$ and $\sin \phi$,

$$320 \quad \Phi(\theta, \phi) = \hat{\Phi}(\theta) \sin \phi. \quad (25)$$

The right panel of Figure 8 plots the values of $\hat{\Phi}$ in a scatterplot as a function of latitude. Merkin and Lyon (2010) provide an analytic solution for the potential in this test, which is shown as a solid line. There is excellent agreement between our solution and the analytic prediction, with the only significant deviation of the two close to the shielding latitude, in the area of coarse mesh resolution (compare Figure 3).

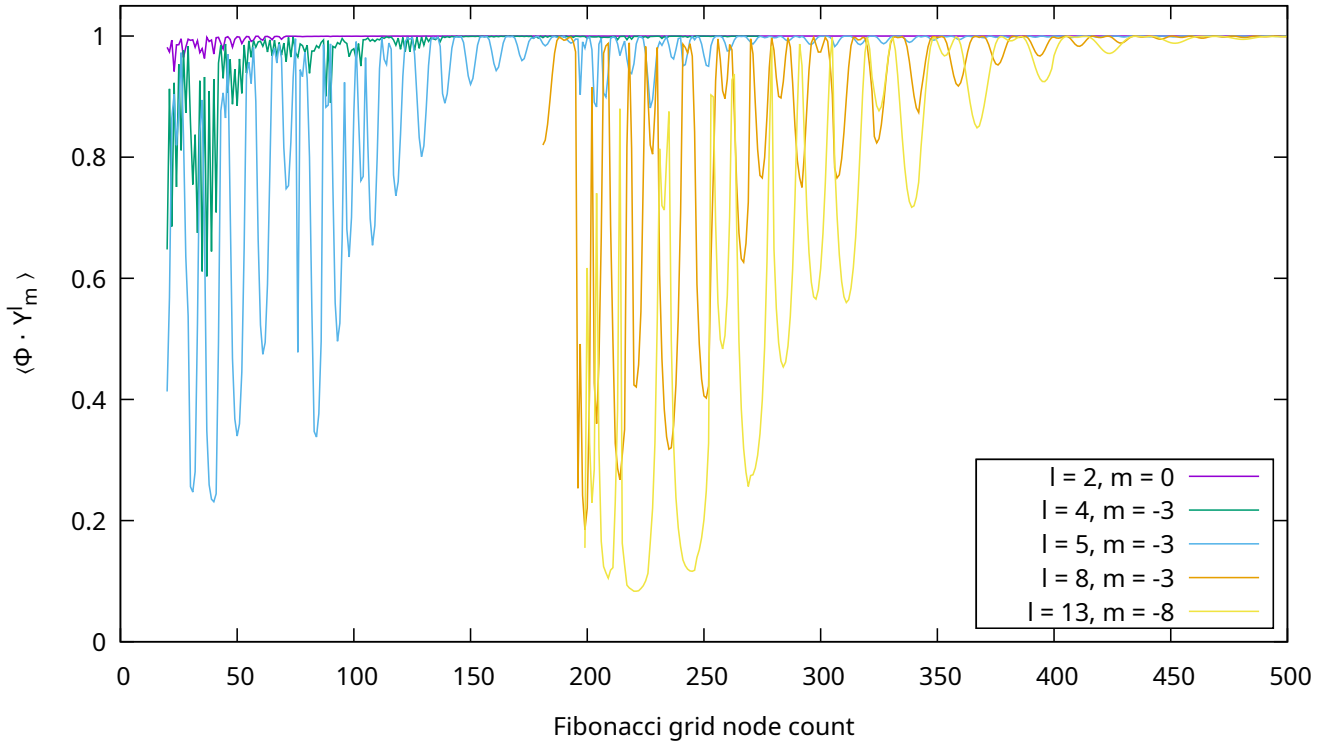


Figure 7. Spherical harmonic solver convergence test for different mesh resolutions N : An FAC distribution $j_{\parallel} = Y_m^l(\theta, \phi)$, with given l and $m \in [-l \dots l]$ is solved to give the potential $\Phi(\phi, \theta)$. The normalized spherical function correlation $\langle \Phi \cdot Y_m^l \rangle = 1$ ((23)) acts as a measure how well Y_m^l is an eigenfunction of the solver at resolution N . Low harmonics l are easily resolved, even with low N . For higher orders l , the Fibonacci mesh point number N needs to be increased.

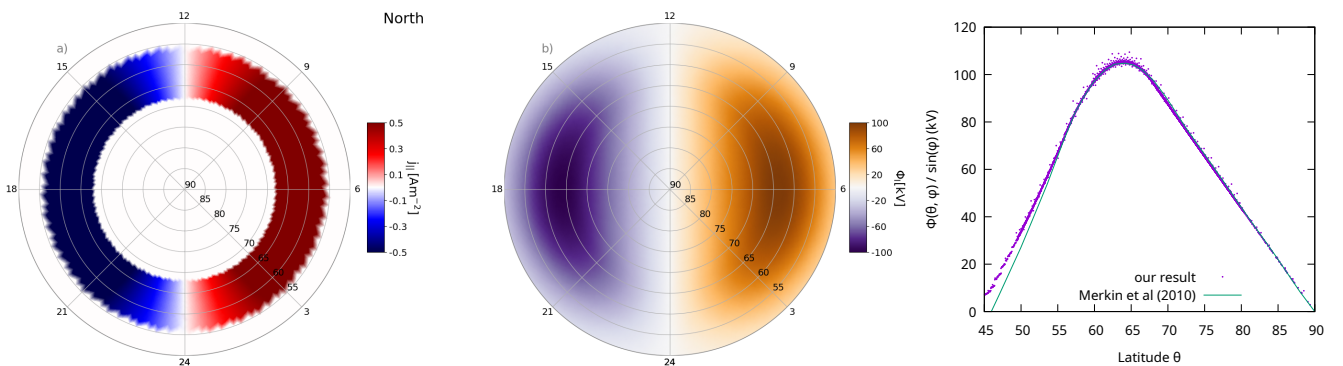


Figure 8. Ionosphere solver test case proposed by Merkin and Lyon (2010). **Left:** Input is an longitude-dependent current ring between $\theta = 56^\circ$ and 68° . **Centre:** Solved with a constant ionospheric conductance of $\Sigma_H = 0$ and $\Sigma_P = 10$ S yields the presented ionospheric potential. **Right:** Comparison of the potential with the analytic solution from Merkin and Lyon (2010).

325 3.3 Coupled global magnetosphere - ionosphere simulations

To verify and validate the new magnetosphere-ionosphere coupling in Vlasiator, a large-scale global simulation run was performed, in which the ionosphere model presented above was coupled to the magnetospheric simulation. In this manuscript, we present only the initial states of the simulation up to $t = 500$ s, to verify the formation of a physically reasonable coupled magnetosphere-ionosphere system and check the run's stability. Proper scientific analyses of the resulting phenomena with a
330 fully-formed magnetosphere will be subject of upcoming publications.

3.3.1 Simulation setup

The simulation domain is spatially 3-dimensional, with simulation box extents of $x = [-110 \cdots + 50] R_E$, $y, z = [-57.8 \cdots + 57.8] R_E$ in the GSM (Geocentric Solar Magnetic) coordinate frame. Earth's dipole was initialized with its nominal strength of $8e15 \text{ Tm}^3$ and no tilt. The inflowing solar wind conditions were chosen with a proton density of 10^6 m^{-3} and a purely
335 antisuward velocity of $v_x = -750 \text{ km s}^{-1}$ as the centre velocity of an isotropic 3D Maxwellian velocity distribution with $T = 5 \times 10^5 \text{ K}$. The interplanetary magnetic field was chosen to lie purely southward with a strength of $B_z = -5 \text{ nT}$. Figure 9 shows an overview plot of the simulation at $t = 500$ s. A more thorough discussion of the same setup of the magnetospheric domain is available in Palmroth et al. (2023); the critical difference to the run presented here is the inclusion of the ionosphere model as inner boundary of the magnetospheric simulation, situated at $r_M = 3 \times 10^4 \text{ km}$ ($\approx 4.7 R_E$). The coupling radius is
340 at $r_C = 35.7 \times 10^3 \text{ km}$ ($\approx 5.6 R_E$), which is linked to the ionosphere at $R_i = 6471 \text{ km}$ ($= 1 R_E + 100 \text{ km}$). The spherical Fibonacci mesh is refined with the strategy outlined in section 2.1, resulting in $N_n = 4958$ nodes and $N_e = 9912$ elements.

The downmapping process described in section 2.2 results in ionospheric solver input quantities shown in Figure 10, namely j_{\parallel} (panel a), precipitating electron population density n_e (panel b), temperature T_e (panel c) and precipitating energy flux $W_{\text{precipitation}}$ (panel d).

345 3.3.2 Field-aligned current patterns

In the beginning of the simulation, where the simulation box is filled with homogeneous plasma flowing at solar wind velocities, the ionospheric field-aligned current pattern is a smooth hemispheric convection shape. Figure 11 shows the evolution of field-aligned currents in the northern polar region for multiple snapshots of the global simulation at $t = 50$ s, 100 s, 250 s and 500 s. The initial convective pattern gradually transforms into a ring of multiple overlapping current regions. Region 1 and 2 current
350 patterns (Iijima and Potemra, 1976a, b) establish themselves in the later simulation stages (for example at $t = 250$ s). The fully formed current system state at $t = 500$ s shows a clear qualitative improvement over earlier Vlasiator investigations of j_{\parallel} without a feedback mechanism to the magnetosphere, such as Horaites et al. (2023, Figure 3 of which shows no fully-developed Region 2 current system). Inclusion of the ionosphere in the Vlasiator simulation apparently strengthens the Region 2 system by ensuring current balance around the magnetosphere-ionosphere boundary.

t=500.0 s – origin at (0, 0, 0) [R_E]
Tick every 10 R_E

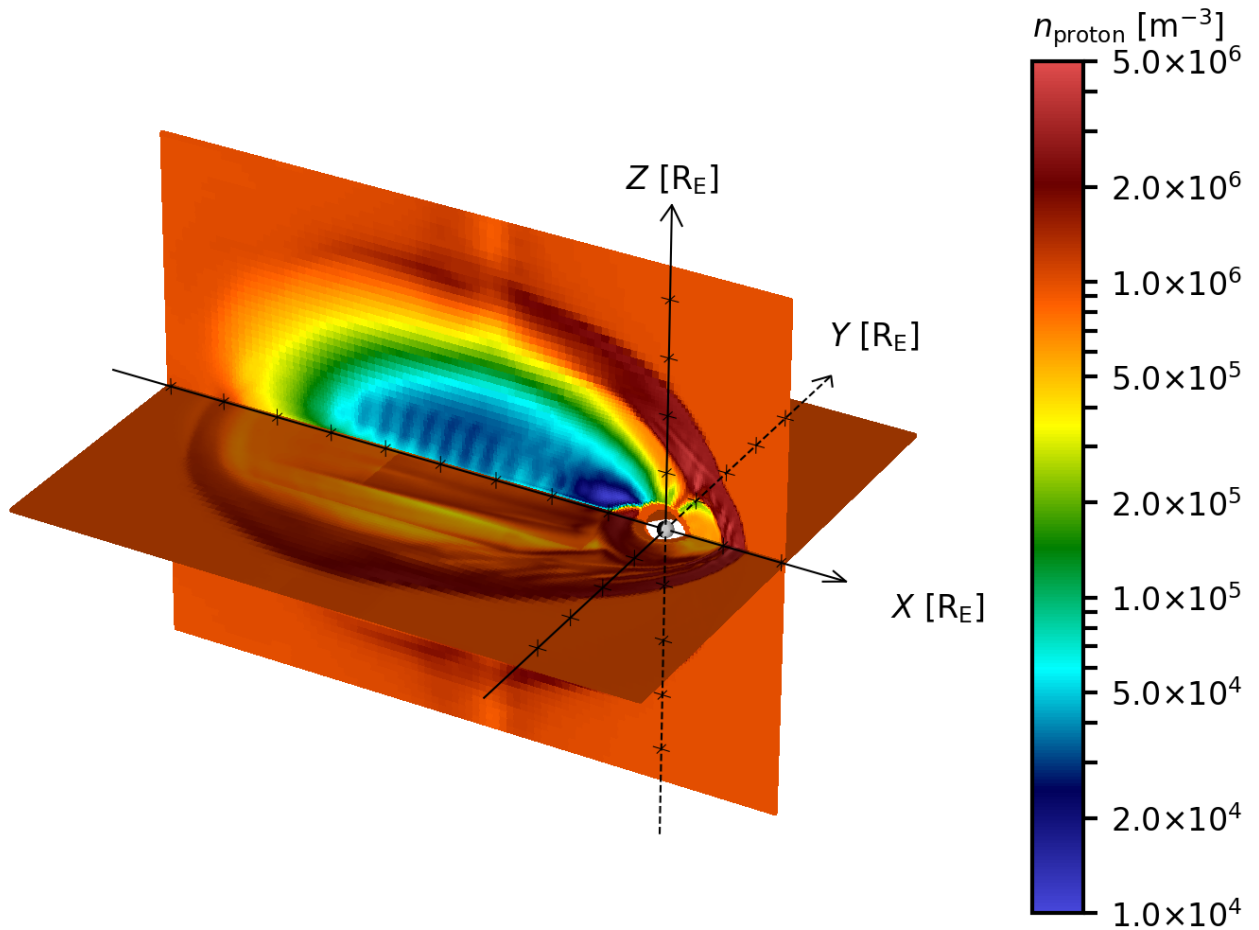


Figure 9. Large-scale overview of the magnetospheric simulation setup. Earth’s magnetosphere selfconsistently forms in a simulation box with extents of GSM $x = [-110 \cdots +50] R_E$, $y, z = [-57.8 \cdots +57.8] R_E$. Solar wind inflow from the boundary in $+x$ direction forms the bow shock and affects ionospheric dynamics. State of the simulation at $t = 500$ s, showing the magnetosphere and magnetotail.

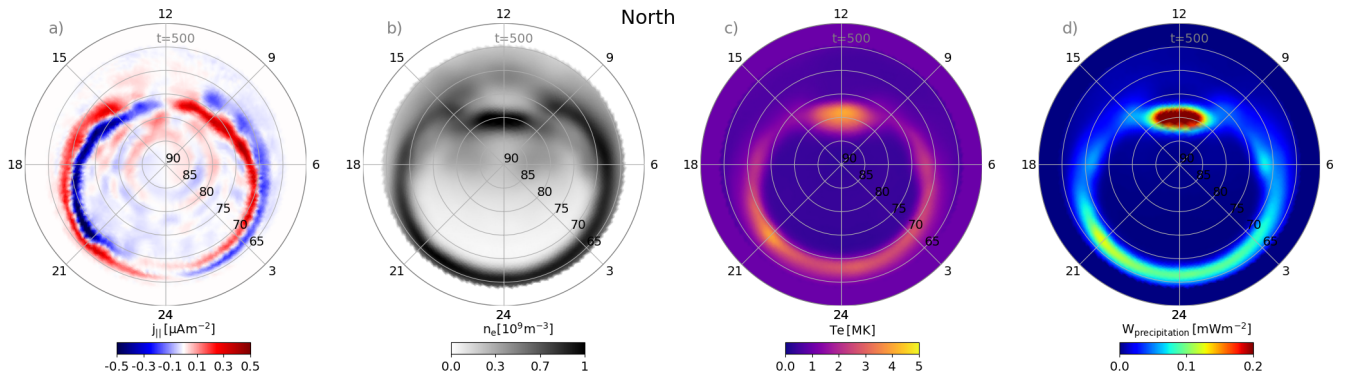


Figure 10. Magnetospheric simulation quantities from the global magnetosphere simulation presented in Figure 9, downmapped onto the ionospheric mesh. **a)** Field-aligned current density j_{\parallel} **b)** effective precipitating electron number density n_e **c)** temperature of the precipitating electron population T_e . **d)** electron precipitation flux $W_{\text{precipitation}}$. At $t = 500$ s, these show patterns consistent with a fully formed magnetosphere, including cusp precipitation and circumpolar precipitating electrons at auroral latitudes.

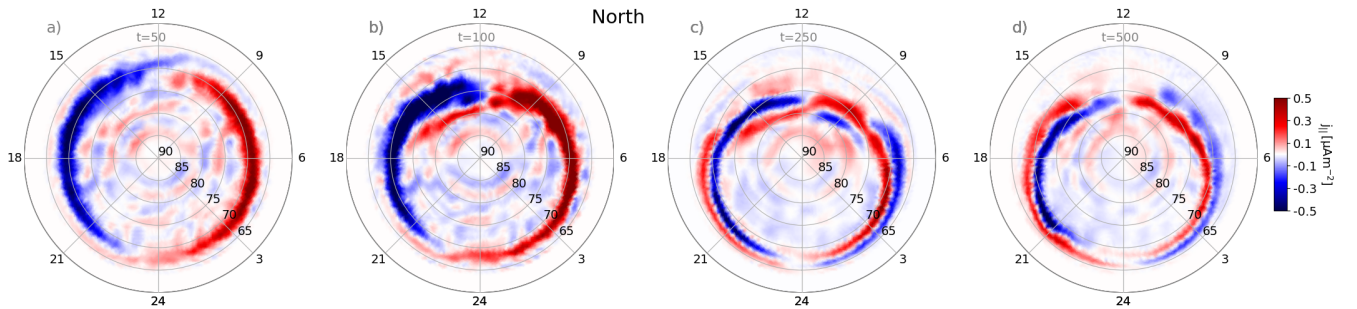


Figure 11. Evolution of field-aligned current density j_{\parallel} in the northern polar region in a global hybrid-Vlasov simulation coupled to the ionosphere model. The states at $t = 50$ s **(a)**, 100 s **(b)**, 250 s **(c)** and 500 s **(d)** are shown, demonstrating how the simulation initializes from a purely convective flow pattern to a properly-formed ionosphere with Region 1 and 2 current systems.

355 3.3.3 Ionospheric conductivity

The solar (Eqs. 8 and 9) and starlight UV ionisation contributions are causing dayside conductivity enhancement right from the start of the global simulation run. Precipitating particles form structures of enhanced conductivity in the auroral regions as the magnetosphere forms, and have established a steady state by $t = 500$ s. Figure 12 shows conductance maps in Σ_P and Σ_H at $t = 500$ s in the global simulation.

360 The sunward halves of both Σ_P and Σ_H are dominated by UV-ionization, plus a clearly visible peak feature at the approximate location of the polar cusp. At auroral latitudes between $\sim 63^\circ$ to 70° , conductivity enhancement due to particle precipitation is apparent. As neither the dayside nor nightside reconnection region had time to develop transient outflow features at this point of the simulation, the auroral oval remains still mostly smooth. Some inhomogeneity of conductance is visible on the night side, with local peaks in both the dusk sector (around MLT = 21 h) and dawn (around MLT = 3 h). The auroral region's oval has a sharp equatorward cutoff, as the magnetospheric inner boundary radius of $R_B = 4.7 R_E$ does not allow any downmapping from lower latitudes. This phenomenon is expected to improve, as the magnetosphere boundary radius gets decreased in future Vlasiator simulations.

365

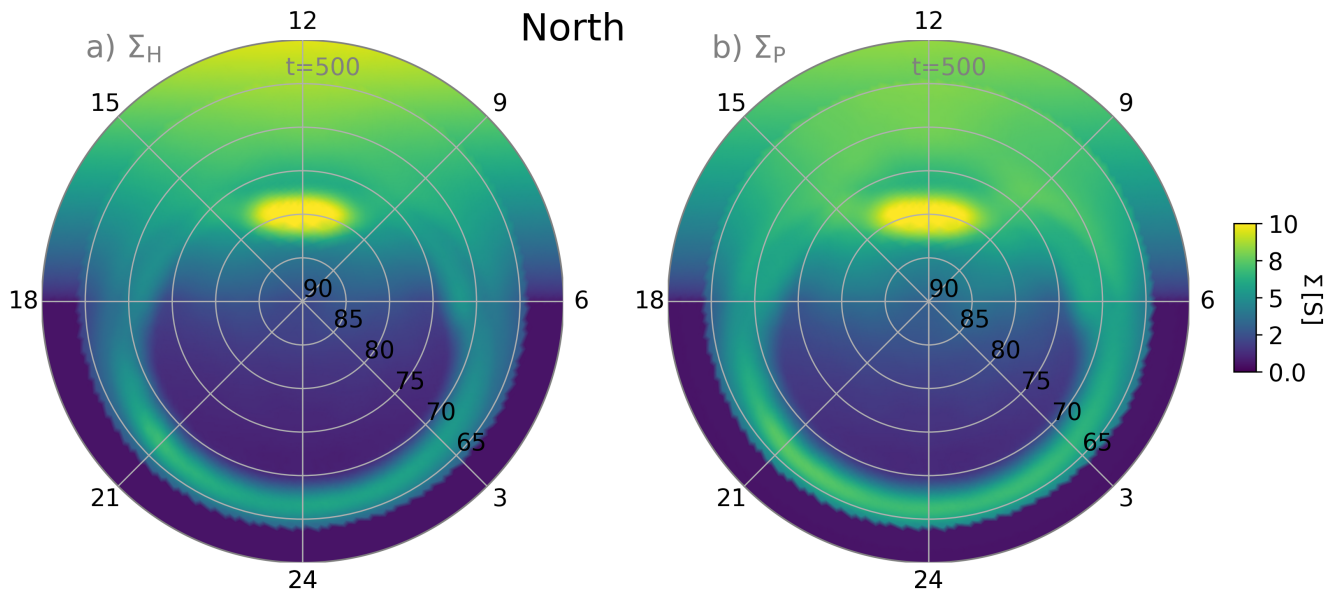


Figure 12. Ionospheric Hall Σ_H and Pedersen Σ_P conductances in a global magnetosphere-ionosphere simulation ($t = 500$ s). Only the northern polar region is shown. The sunward direction (MLT = 12h) is on top, where conductance enhancement from UV radiation dominates. Particle precipitation further leads to enhanced Hall conductance in the auroral oval. High amounts of cusp precipitation lead to strongly enhanced conductance on the dayside at around $\theta \approx 80^\circ$.

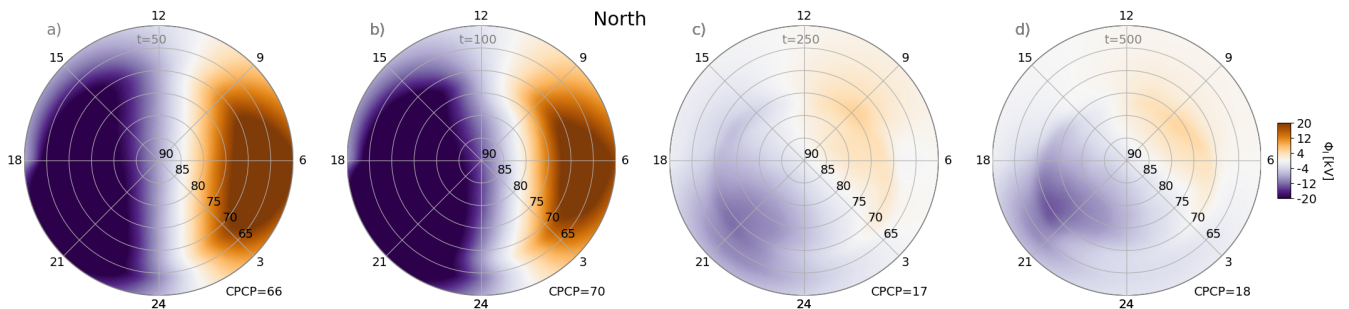


Figure 13. Ionospheric potential at $t = 50$ s (a), $t = 100$ s (b), $t = 250$ s (c) and $t = 500$ s (d) in the global magnetospheric simulation. The initial, hemispherical potential distribution caused purely by convective effects slowly develops into a more complex pattern, as precipitation and magnetospheric structure effects form.

3.3.4 Evolution of ionospheric potentials

The ionospheric potential Φ , at the very start of the simulation, is likewise dominated by a pure convection pattern phenomenology, and shows a fully symmetric, hemispheric cross-polar cap potential distribution. The panel a) of Figure 13 presents this state at $t = 50$ s in the simulation. We calculate the CPCP by taking the maximum and minimum value of Φ in each hemisphere, and taking their difference. An initial peak of CPCP of ~ 70 kV quickly dissipates, and settles into a latent stable state with $\text{CPCP} \approx 18$ kV by $t = 500$ s (Figure 13 d).

As the simulation progresses further, the magnetosphere undergoes the physical processes expected from a southward IMF setup, including dayside reconnection and formation of flux transfer events (FTEs), magnetotail reconnection and tail disruption (Palmroth et al., 2023) with bursty bulk flows towards Earth. Upcoming publications will study these phenomena as modelled in Vlasiator global simulations in more detail.

4 Discussion

We have implemented a new ionospheric conductivity and current systems solver, for the first time coupling a global hybrid-Vlasov simulation to a height-integrated ionosphere model. The solver implementation was verified by benchmarking against a set of analytic test cases (section 3) and checking physical validity in a global, magnetosphere-coupled simulation setup (section 3.3). The spherical harmonic tests in section 3.1 served to verify the mesh geometry and solver convergence behaviour under different resolution constraints. We have demonstrated that a spherical Fibonacci mesh forms a suitable and versatile base grid for ionospheric simulations, allowing fine control over the desired mesh resolutions, especially when combined with a mesh refinement mechanism. The mesh resolution N can be chosen in order to resolve physical phenomena at the scale lengths of a specific spherical harmonics function $Y_m^l(\theta, \phi)$, as presented in Figure 7.

The current ring test (section 3.2) then specifically addressed the solver fidelity when calculating the potential Φ resulting from a semi-realistic distribution of j_{\parallel} . The result in Figure 8 shows overall correctness of our solver implementation, but also

highlights the importance of grid resolution, as a mismatch between our solution and the analytic curve is visible in the low
390 latitude regions where a lower mesh resolution was chosen. The low latitude shielding boundary ($\theta_{\text{Shield}} = 45^\circ$ in this test) is
implemented as a Dirichlet boundary condition in the ionospheric potential finite element solver (Ern and Guermond, 2004),
which makes the solution sensitive to even small variations of the boundary location due to mesh element placement resolution.
In actual physics runs, the shielding latitude is chosen far enough away from the auroral regions, so discretisation errors are
confined to regions with little or no contribution to the actual ionospheric current dynamics. Note that both the spherical
395 harmonic and ionospheric current ring tests are run as specified with a Hall conductivity $\Sigma_{\text{H}} = 0$, in order to be analytically
tractable. A suitable, well-established analytic test case for verification of ionospheric solvers that includes a nonzero Σ_{H} is
still missing, and would complement physics-based validation studies such as Chartier et al. (2023).

The resulting first output from global simulation run data shows satisfactory fidelity in representation of the ionospheric
current structures. The global run results show that the CPCP magnitude is in line with those of the GUMICS-4 MHD sim-
400 ulation (Gordeev et al., 2013). In our results, it seems that Region 1 currents appear as soon as the magnetosphere has fully
formed. After initialization transients of the simulation have passed and pressure gradients in the inner magnetosphere establish
themselves, Region 2 currents also become apparent. Hence we conclude that after about $t \approx 500$ s, the ionospheric model's
reproduction of current systems becomes sufficiently realistic to study their effects on global magnetospheric phenomena. The
observed simulation behaviour of the downmapped j_{\parallel} values has shown to be very sensitive to the choice of coupling radius
405 R_{C} from the magnetospheric domain. If chosen too close to (within ~ 2 simulation cells of) the inner simulation boundary, the
resulting j_{\parallel} patterns are strongly affected by simulation edge artefacts and the strength of current patterns in the ionospheric
domain is decreased. Similar safety distance between inner boundary and coupling radius has likewise been reported by Ridley
et al. (2004).

To facilitate verification against MHD simulations (e.g., Palmroth et al., 2006), as the first step the Vlasiator ionospheric
410 precipitation was decided to mimic the choices for electron precipitation in MHD simulations (Janhunen et al., 2012). The
choice of precipitation only makes use of magnetospheric simulation data on the macroscopic level, that is, through the mo-
ments of the ion distribution function, even though kinetic information is available. While the magnitude of the conductivities
are aligned with those in MHD simulations (Palmroth et al., 2006), reliance on ion population data to infer electron precipi-
tation leads to misplacement of ionospheric conductivity structures in longitude. This is because the drift motions of ions and
415 electrons, which should be oppositely directed, cannot currently be taken into account separately. In some locations, such as
the polar cusps, electron precipitation fluxes may be overestimated, as they are directly tied to proton fluxes in the current
implementation. Work is ongoing to develop a more sophisticated precipitation model that takes the plethora of kinetic simu-
lation data from Vlasiator more effectively into account and to provide for a more realistic precipitating distribution function
(e.g., Zhang et al., 2015). One option would be the implementation of a conductance model that bypasses modeling of electron
420 precipitation and semi-empirically constructs the values of Σ_{H} and Σ_{P} as functions of MLT and j_{\parallel} (such as Robinson et al.,
2020; Wang and Zou, 2022). In the meantime, studies of proton precipitation from Vlasiator (Grandin et al., 2019, 2020), for
which full kinetic data is available in the simulation, have been carried out, and showed good agreement with satellite observa-
tions (Grandin et al., 2023). Including ionospheric conductivity contributions from proton precipitation, through a model such

as Fang et al. (2013), promises interesting future avenues of research for studying kinetic interactions of ion-scale phenomena and their ionospheric correlates, such as dayside reconnection and FTE processes.

The magnetic field dipole model that Vlasiator employs is a simple, untilted dipole with the magnitude matching Earth's magnetic field. As such, it neglects many intricacies that proper empirical magnetic field models such as Tsyganenko and Andreeva (2015) would provide. This is partially by design, as the Vlasiator philosophy is to start investigation of phenomena on a clean background, and to increase complexity in a second step. Analysis of a more complete magnetic field model in a hybrid-Vlasov simulation is an interesting avenue of research in itself and will be part of future investigations. The example global simulation run presented here, with its steady solar wind speed and fluctuation-free southward IMF, is likewise an idealisation that served to verify the nominal behaviour of all simulation components. Performing runs with a time-varying inflow condition, as in Zhou et al. (2022), will allow the study of resulting magnetospheric and ionospheric transients in kinetic physics.

5 Conclusions

We have implemented a new ionosphere solver for Vlasiator, a hybrid-Vlasov plasma simulation code targeting global magnetospheric dynamics. The coupling of a hybrid-Vlasov magnetospheric simulation with an ionospheric current model employs similar methods established through global MHD modeling, but requires careful consideration in the coupling process.

Section 2 presented our chosen spherical Fibonacci mesh structure, motivated and described our downmapping and precipitation models and outlined the solver mechanism. The numerical implementation was verified through a set of test cases in Section 3. Mesh and solver behave as expected, and pass the standard test cases well. Preliminary results from a global magnetosphere-ionosphere simulation were shown in Section 3.3, in which the overall ionospheric response to the magnetosphere simulation was confirmed to be consistent with results from fluid-based modelling efforts. Analysis work of new kinetic-physics features is ongoing, and will be topic of future publications.

The model presented here provides a solid foundation for further studies of kinetic plasma simulations coupling to ionospheric modeling.

Code availability. The Vlasiator simulation code is distributed under the GPL-2 open source license (Palmroth and the Vlasiator Team, 2024). The ionosphere model discussed here has been included since the Vlasiator release version 5.2 (Palmroth and the Vlasiator Team, 2022).

Data visualisation was performed using the Analysator toolkit (Battarbee et al., 2021), which is likewise available under an open source licence.

Data availability. Full simulation data for the presented analysis is stored in the University of Helsinki Datacloud. Data presented in this paper can be accessed by following the data policy on the Vlasiator website <https://helsinki.fi/vlasiator>.

Author contributions. UG conceptualized the study. UG, YK and AL implemented and verified the ionosphere model. UG wrote the original
455 manuscript UG and AW implemented and performed the visualisations. UG, YK, KP, MG, MA, HZ, MB and LK contributed to Vlasiator
code development. MG, KH, LJ, AW and FK contributed to the derivations of solver mechanisms and analysis of ionospheric results in
reference to physical observations. UG, YK and JS performed the simulation runs presented here. MP is the Vlasiator PI, and she participated
in conceptualisation of the study, and supervised the work. All authors reviewed and commented the paper.

Competing interests. No competing interests are present.

460 *Acknowledgements.* This work was performed as part of the European Research Council Consolidator Grant 682068-PRESTISSIMO. The
Academy of Finland supported this work through the “Carrington” (grant number 339327), “ICT-SUNVAC” (grant number 335554),
“AERGELC’H” (grant number 338629) and “KIMCHI” (grant number 339756) projects, as well as the PROF14 grant (grant number
3189131).

The Finnish Centre of Excellence in Research of Sustainable Space, funded through the Academy of Finland grant 352846, supports
465 Vlasiator development and science as well.

EuroHPC is supporting code development, optimization and portability of Vlasiator through the “Plasma-PEPSC” Centre of Excellence
(Grant number 4100455).

The simulations for this publication were run on EuroHPC’s “LUMI” supercomputer in project EHPC-REG-2022R02-238 and the “Car-
rington” Cluster of the University of Helsinki. The authors wish to thank the Finnish Grid and Cloud Infrastructure (FGCI) for supporting
470 this project with computational and data storage resources.

We acknowledge the Community Coordinated Modeling Center (CCMC) at Goddard Space Flight Center for the use of the NRLMSISE00-
model.

The authors would like to thank Pekka Janhunen for helpful discussions about various aspects of ionospheric simulations and Benjamin
Keinert for insightful input about spherical Fibonacci mesh construction.

475 References

- Ahn, B., Akasofu, S., and Kamide, Y.: The Joule heat production rate and the particle energy injection rate as a function of the geomagnetic indices AE and AL, *Journal of Geophysical Research: Space Physics*, 88, 6275–6287, <https://doi.org/10.1029/ja088ia08p06275>, 1983.
- Balsara, D. S.: Higher-order accurate space-time schemes for computational astrophysics—Part I: finite volume methods, *Living Reviews in Computational Astrophysics*, 3, <https://doi.org/10.1007/s41115-017-0002-8>, 2017.
- 480 Battarbee, M., Hannuksela, O. A., Pfau-Kempf, Y., von Althaus, S., Ganse, U., Jarvinen, R., Kotipalo, L., Suni, J., Alho, M., Turc, L., Honkonen, I., Brito, T., and Grandin, M.: Analysator: python analysis toolkit, <https://doi.org/10.5281/zenodo.4462515>, 2021.
- Billett, D. D., Grocott, A., Wild, J. A., Walach, M. T., and Kosch, M. J.: Diurnal Variations in Global Joule Heating Morphology and Magnitude Due To Neutral Winds, *Journal of Geophysical Research (Space Physics)*, 123, 2398–2411, <https://doi.org/10.1002/2017JA025141>, 2018.
- 485 Chartier, A. T., Steele, J., Sugar, G., Themens, D. R., Vines, S. K., and Huba, J. D.: Validating Ionospheric Models Against Technologically Relevant Metrics, *Space Weather*, 21, e2023SW003590, <https://doi.org/10.1029/2023SW003590>, e2023SW003590 2023SW003590, 2023.
- Chen, Y., Tóth, G., Hietala, H., Vines, S. K., Zou, Y., Nishimura, Y., Silveira, M. V. D., Guo, Z., Lin, Y., and Markidis, S.: Magneto-hydrodynamic With Embedded Particle-In-Cell Simulation of the Geospace Environment Modeling Dayside Kinetic Processes Chal-
490 lenge Event, *Earth and Space Science*, 7, e2020EA001331, <https://doi.org/https://doi.org/10.1029/2020EA001331>, e2020EA001331 10.1029/2020EA001331, 2020.
- Codrescu, M. V., Negrea, C., Fedrizzi, M., Fuller-Rowell, T. J., Dobin, A., Jakowsky, N., Khalsa, H., Matsuo, T., and Maruyama, N.: A real-time run of the Coupled Thermosphere Ionosphere Plasmasphere Electrodynamics (CTIPe) model, *Space Weather*, 10, <https://doi.org/10.1029/2011sw000736>, 2012.
- 495 Ergun, R. E., Carlson, C. W., McFadden, J. P., Mozer, F. S., and Strangeway, R. J.: parallel electric fields in discrete arcs, *Geophysical Research Letters*, 27, 4053–4056, <https://doi.org/10.1029/2000gl003819>, 2000.
- Ern, A. and Guermond, J.-L.: Theory and Practice of Finite Elements, vol. 159 of *Applied Mathematical Sciences*, Springer, New York, ISBN 978-0-387-20574-8, <https://doi.org/10.1007/978-1-4757-4355-5>, 2004.
- Fang, X., Lummerzheim, D., and Jackman, C. H.: Proton impact ionization and a fast calculation method, *Journal of Geophysical Research: Space Physics*, 118, 5369–5378, <https://doi.org/10.1002/jgra.50484>, 2013.
- 500 Ganse, U., Koskela, T., Battarbee, M., Pfau-Kempf, Y., Papadakis, K., Alho, M., Bussov, M., Cozzani, G., Dubart, M., George, H., Gordeev, E., Grandin, M., Horaites, K., Suni, J., Tarvus, V., Kebede, F. T., Turc, L., Zhou, H., and Palmroth, M.: Enabling technology for global 3D + 3V hybrid-Vlasov simulations of near-Earth space, *Physics of Plasmas*, 30, 042902, <https://doi.org/10.1063/5.0134387>, 2023.
- Gombosi, T. I., Chen, Y., Glocer, A., Huang, Z., Jia, X., Liemohn, M. W., Manchester, W. B., Pulkkinen, T., Sachdeva, N., Al Shidi, Q., Sokolov, I. V., Szente, J., Tenishev, V., Toth, G., van der Holst, B., Welling, D. T., Zhao, L., and Zou, S.: What sustained multi-
505 disciplinary research can achieve: The space weather modeling framework, *Journal of Space Weather and Space Climate*, 11, 42, <https://doi.org/10.1051/swsc/2021020>, 2021.
- Goodman, M. L.: A three-dimensional, iterative mapping procedure for the implementation of an ionosphere-magnetosphere anisotropic Ohm's law boundary condition in global magnetohydrodynamic simulations, *Annales Geophysicae*, 13, 843–853,
510 <https://doi.org/10.1007/s00585-995-0843-z>, 1995.

- Gordeev, E., Facskó, G., Sergeev, V., Honkonen, I., Palmroth, M., Janhunen, P., and Milan, S.: Verification of the GUMICS-4 global MHD code using empirical relationships, *Journal of Geophysical Research: Space Physics*, 118, 3138–3146, <https://doi.org/https://doi.org/10.1002/jgra.50359>, 2013.
- 515 Gordeev, E. I., Sergeev, V. A., Pulkkinen, T. I., and Palmroth, M.: Contribution of magnetotail reconnection to the cross-polar cap electric potential drop, *Journal of Geophysical Research: Space Physics*, 116, <https://doi.org/10.1029/2011JA016609>, 2011.
- Grandin, M., Battarbee, M., Osmane, A., Ganse, U., Pfau-Kempf, Y., Turc, L., Brito, T., Koskela, T., Dubart, M., and Palmroth, M.: Hybrid-Vlasov modelling of nightside auroral proton precipitation during southward interplanetary magnetic field conditions, *Annales Geophysicae*, 37, 791–806, <https://doi.org/10.5194/angeo-37-791-2019>, 2019.
- 520 Grandin, M., Turc, L., Battarbee, M., Ganse, U., Johlander, A., Pfau-Kempf, Y., Dubart, M., and Palmroth, M.: Hybrid-Vlasov simulation of auroral proton precipitation in the cusps: Comparison of northward and southward interplanetary magnetic field driving, *Journal of Space Weather and Space Climate*, 10, 51, <https://doi.org/10.1051/swsc/2020053>, 2020.
- Grandin, M., Luttkhuis, T., Battarbee, M., Cozzani, G., Zhou, H., Turc, L., Pfau-Kempf, Y., George, H., Horaites, K., Gordeev, E., Ganse, U., Papadakis, K., Alho, M., Tesema, F., Suni, J., Dubart, M., Tarvus, V., and Palmroth, M.: First 3D hybrid-Vlasov global simulation of auroral proton precipitation and comparison with satellite observations, *Journal of Space Weather and Space Climate*, 13, 20, <https://doi.org/10.1051/swsc/2023017>, 2023.
- 525 Grandin, M., Connor, H. K., Hoilijoki, S., Battarbee, M., Pfau-Kempf, Y., Ganse, U., Papadakis, K., and Palmroth, M.: Hybrid-Vlasov simulation of soft X-ray emissions at the Earth's dayside magnetospheric boundaries, *Earth and Planetary Physics*, 8, 70–88, <https://doi.org/10.26464/epp2023052>, 2024.
- 530 Horaites, K., Rintamäki, E., Zaitsev, I., Turc, L., Grandin, M., Cozzani, G., Zhou, H., Alho, M., Suni, J., Kebede, F., Gordeev, E., George, H., Battarbee, M., Bussov, M., Dubart, M., Ganse, U., Papadakis, K., Pfau-Kempf, Y., Tarvus, V., and Palmroth, M.: Magnetospheric Response to a Pressure Pulse in a Three-dimensional Hybrid-Vlasov Simulation, *Journal of Geophysical Research: Space Physics*, <https://doi.org/10.1029/2023ja031374>, 2023.
- Iijima, T. and Potemra, T. A.: Field-aligned currents in the dayside cusp observed by Triad, *Journal of Geophysical Research*, 81, 5971–5979, <https://doi.org/10.1029/ja081i034p05971>, 1976a.
- 535 Iijima, T. and Potemra, T. A.: The amplitude distribution of field-aligned currents at northern high latitudes observed by Triad, *Journal of Geophysical Research*, 81, 2165–2174, <https://doi.org/10.1029/ja081i013p02165>, 1976b.
- Janhunen, P., Palmroth, M., Laitinen, T., Honkonen, I., Juusola, L., Facskó, G., and Pulkkinen, T.: The GUMICS-4 global MHD magnetosphere–ionosphere coupling simulation, *Journal of Atmospheric and Solar-Terrestrial Physics*, 80, 48–59, <https://doi.org/10.1016/j.jastp.2012.03.006>, 2012.
- 540 Juusola, L., Hoilijoki, S., Pfau-Kempf, Y., Ganse, U., Jarvinen, R., Battarbee, M., Kilpua, E., Turc, L., and Palmroth, M.: Fast plasma sheet flows and X line motion in the Earth's magnetotail: results from a global hybrid-Vlasov simulation, *Annales Geophysicae*, 36, 1183–1199, <https://doi.org/10.5194/angeo-36-1183-2018>, 2018.
- Keinert, B., Innmann, M., Sängler, M., and Stamminger, M.: Spherical fibonacci mapping, *ACM Transactions on Graphics*, 34, 1–7, <https://doi.org/10.1145/2816795.2818131>, 2015.
- 545 Knight, S.: Parallel electric fields, *Planetary and Space Science*, 21, 741–750, [https://doi.org/10.1016/0032-0633\(73\)90093-7](https://doi.org/10.1016/0032-0633(73)90093-7), 1973.
- Laundal, K. M., Reistad, J. P., Hatch, S. M., Madelaire, M., Walker, S., Hovland, A. O., Ohma, A., Merkin, V. G., and Sorathia, K. A.: Local Mapping of Polar Ionospheric Electrodynamics, *Journal of Geophysical Research: Space Physics*, 127, <https://doi.org/10.1029/2022ja030356>, 2022.

- Lin, D., Sorathia, K., Wang, W., Merkin, V., Bao, S., Pham, K., Wiltberger, M., Shi, X., Toffoletto, F., Michael, A., Lyon, J., Garretson, J.,
550 and Anderson, B.: The Role of Diffuse Electron Precipitation in the Formation of Subauroral Polarization Streams, *Journal of Geophysical Research: Space Physics*, 126, <https://doi.org/10.1029/2021ja029792>, 2021.
- Lin, Y., Wang, X. Y., Lu, S., Perez, J. D., and Lu, Q.: Investigation of storm time magnetotail and ion injection using three-dimensional global hybrid simulation, *Journal of Geophysical Research: Space Physics*, 119, 7413–7432, <https://doi.org/10.1002/2014ja020005>, 2014.
- Marchaudon, A. and Blelly, P.: A new interhemispheric 16-moment model of the plasmasphere-ionosphere system: IPIM, *Journal of Geophysical Research: Space Physics*, 120, 5728–5745, <https://doi.org/10.1002/2015ja021193>, 2015.
555
- Marshalko, E., Kruglyakov, M., Kuvshinov, A., and Viljanen, A.: Three-Dimensional Modeling of the Ground Electric Field in Fennoscandia During the Halloween Geomagnetic Storm, *Space Weather*, 21, e2022SW003370, <https://doi.org/10.1029/2022SW003370>, e2022SW003370 2022SW003370, 2023.
- Maus, S.: A corotation electric field model of the Earth derived from Swarm satellite magnetic field measurements, *Journal of Geophysical Research: Space Physics*, 122, 8733–8754, <https://doi.org/10.1002/2017JA024221>, 2017.
560
- Merkin, V. G. and Lyon, J. G.: Effects of the low-latitude ionospheric boundary condition on the global magnetosphere, *Journal of Geophysical Research: Space Physics*, 115, <https://doi.org/10.1029/2010ja015461>, 2010.
- Moen, J. and Brekke, A.: The solar flux influence on quiet time conductances in the auroral ionosphere, *Geophysical Research Letters*, 20, 971–974, <https://doi.org/10.1029/92GL02109>, 1993.
- 565 Nishikawa, K., Duřan, I., Köhn, C., and Mizuno, Y.: PIC methods in astrophysics: simulations of relativistic jets and kinetic physics in astrophysical systems, *Living Reviews in Computational Astrophysics*, 7, <https://doi.org/10.1007/s41115-021-00012-0>, 2021.
- Palmroth, M.: Daring to think of the impossible: The story of Vlasiator, *Frontiers in Astronomy and Space Sciences*, 9, <https://doi.org/10.3389/fspas.2022.952248>, 2022.
- Palmroth, M. and the Vlasiator Team: Vlasiator 5.2, <https://doi.org/10.5281/ZENODO.6628655>, 2022.
- 570 Palmroth, M. and the Vlasiator Team: Vlasiator: Hybrid-Vlasov Simulation Code, <https://doi.org/10.5281/zenodo.3640593>, 2024.
- Palmroth, M., Pulkkinen, T. I., Janhunen, P., McComas, D. J., Smith, C. W., and Koskinen, H. E. J.: Role of solar wind dynamic pressure in driving ionospheric Joule heating, *Journal of Geophysical Research: Space Physics*, 109, <https://doi.org/10.1029/2004ja010529>, 2004.
- Palmroth, M., Janhunen, P., Germany, G., Lummerzheim, D., Liou, K., Baker, D. N., Barth, C., Weatherwax, A. T., and Watermann, J.: Precipitation and total power consumption in the ionosphere: Global MHD simulation results compared with Polar and SNOE observations,
575 *Annales Geophysicae*, 24, 861–872, <https://doi.org/10.5194/angeo-24-861-2006>, 2006.
- Palmroth, M., Hoilijoki, S., Juusola, L., Pulkkinen, T. I., Hietala, H., Pfau-Kempf, Y., Ganse, U., von Alfthan, S., Vainio, R., and Hesse, M.: Tail reconnection in the global magnetospheric context: – Vlasiator first results, *Annales Geophysicae*, 35, 1269–1274, <https://doi.org/10.5194/angeo-35-1269-2017>, 2017.
- Palmroth, M., Ganse, U., Pfau-Kempf, Y., Battarbee, M., Turc, L., Brito, T., Grandin, M., Hoilijoki, S., Sandroos, A., and von Alfthan, S.:
580 Vlasov methods in space physics and astrophysics, *Living Reviews in Computational Astrophysics*, 4, 1, <https://doi.org/10.1007/s41115-018-0003-2>, 2018.
- Palmroth, M., Grandin, M., Sarris, T., Doornbos, E., Tourgaidis, S., Aikio, A., Buchert, S., Clilverd, M. A., Dandouras, I., Heelis, R., Hoffmann, A., Ivchenko, N., Kervalishvili, G., Knudsen, D. J., Kotova, A., Liu, H.-L., Malaspina, D. M., March, G., Marchaudon, A., Marghitsu, O., Matsuo, T., Miloch, W. J., Moretto-Jørgensen, T., Mpaloukidis, D., Olsen, N., Papadakis, K., Pfaff, R., Pirmaris, P., Siemes, C., Stolle, C., Suni, J., van den IJssel, J., Verronen, P. T., Visser, P., and Yamauchi, M.: Lower-thermosphere–ionosphere (LTI) quantities:
585 current status of measuring techniques and models, *Annales Geophysicae*, 39, 189–237, <https://doi.org/10.5194/angeo-39-189-2021>, 2021.

- Palmroth, M., Pulkkinen, T. I., Ganse, U., Pfau-Kempf, Y., Koskela, T., Zaitsev, I., Alho, M., Cozzani, G., Turc, L., Battarbee, M., Dubart, M., George, H., Gordeev, E., Grandin, M., Horaites, K., Osmane, A., Papadakis, K., Suni, J., Tarvus, V., Zhou, H., and Nakamura, R.: Magnetotail plasma eruptions driven by magnetic reconnection and kinetic instabilities, *Nature Geoscience*, 16, 570–576, <https://doi.org/10.1038/s41561-023-01206-2>, 2023.
- 590 Papadakis, K., Pfau-Kempf, Y., Ganse, U., Battarbee, M., Alho, M., Grandin, M., Dubart, M., Turc, L., Zhou, H., Horaites, K., Zaitsev, I., Cozzani, G., Bussov, M., Gordeev, E., Tesema, F., George, H., Suni, J., Tarvus, V., and Palmroth, M.: Spatial filtering in a 6D hybrid-Vlasov scheme to alleviate adaptive mesh refinement artifacts: a case study with Vlasiator (versions 5.0, 5.1, and 5.2.1), *Geoscientific Model Development*, 15, 7903–7912, <https://doi.org/10.5194/gmd-15-7903-2022>, 2022.
- 595 Paul, A., Strugarek, A., and Vaidya, B.: Global-MHD Simulations Using MagPIE: Impact of Flux Transfer Events on the Ionosphere, *Journal of Geophysical Research: Space Physics*, 128, <https://doi.org/10.1029/2023ja031718>, 2023.
- Picone, J. M., Hedin, A. E., Drob, D. P., and Aikin, A. C.: NRLMSISE-00 empirical model of the atmosphere: Statistical comparisons and scientific issues, *Journal of Geophysical Research: Space Physics*, 107, SIA 15–1–SIA 15–16, <https://doi.org/10.1029/2002JA009430>, 2002.
- 600 Press, W. H., Teukolsky, S. A., Vetterling, W. T., and Flannery, B. P.: *Numerical recipes in C. The art of scientific computing*, Cambridge: University Press, second edn., 1992.
- Pulkkinen, T.: Space Weather: Terrestrial Perspective, *Living Reviews in Solar Physics*, 4, <https://doi.org/10.12942/lrsp-2007-1>, 2007.
- Qian, L., Burns, A. G., Emery, B. A., Foster, B., Lu, G., Maute, A., Richmond, A. D., Roble, R. G., Solomon, S. C., and Wang, W.: The NCAR TIE-GCM, chap. 7, pp. 73–83, American Geophysical Union (AGU), ISBN 9781118704417, <https://doi.org/10.1002/9781118704417.ch7>, 2014.
- 605 Rees, M. H.: Auroral ionization and excitation by incident energetic electrons, 11, 1209–1218, [https://doi.org/10.1016/0032-0633\(63\)90252-6](https://doi.org/10.1016/0032-0633(63)90252-6), 1963.
- Ridley, A. J., Hansen, K. C., Tóth, G., De Zeeuw, D. L., Gombosi, T. I., and Powell, K. G.: University of Michigan MHD results of the Geospace Global Circulation Model metrics challenge, *Journal of Geophysical Research: Space Physics*, 107, <https://doi.org/10.1029/2001ja000253>, 2002.
- 610 Ridley, A. J., Gombosi, T. I., and DeZeeuw, D. L.: Ionospheric control of the magnetosphere: conductance, *Annales Geophysicae*, 22, 567–584, <https://doi.org/10.5194/angeo-22-567-2004>, 2004.
- Robinson, R. M., Kaepler, S. R., Zanetti, L., Anderson, B., Vines, S. K., Korth, H., and Fitzmaurice, A.: Statistical Relations Between Auroral Electrical Conductances and Field-Aligned Currents at High Latitudes, *Journal of Geophysical Research: Space Physics*, 125, <https://doi.org/10.1029/2020ja028008>, 2020.
- 615 Schäfer, H., Nießner, M., Keinert, B., Stamminger, M., and Loop, C.: State of the Art Report on Real-time Rendering with Hardware Tessellation, in: *Eurographics 2014*, EG, <https://niessnerlab.org/projects/schaefer2014star.html>, 2014.
- Schunk, R. and Nagy, A.: *Ionospheres: Physics, Plasma Physics, and Chemistry*, Cambridge Atmospheric and Space Science Series, Cambridge University Press, 2 edn., ISBN 9780511635342, <https://doi.org/10.1017/CBO9780511635342>, 2009.
- 620 Sergienko, T. I. and Ivanov, V. E.: A new approach to calculate the excitation of atmospheric gases by auroral electron impact, *Annales Geophysicae*, 11, 717–727, 1993.
- Shou, Y., Tenishev, V., Chen, Y., Toth, G., and Ganushkina, N.: Magnetohydrodynamic with Adaptively Embedded Particle-in-Cell model: MHD-AEPIC, *Journal of Computational Physics*, 446, 110 656, <https://doi.org/10.1016/j.jcp.2021.110656>, 2021.

- Strangeway, R. J., Ergun, R. E., Su, Y.-J., Carlson, C. W., and Elphic, R. C.: Factors controlling ionospheric outflows as observed at intermediate altitudes, *Journal of Geophysical Research: Space Physics*, 110, <https://doi.org/10.1029/2004JA010829>, a03221, 2005.
- 625 Tsyganenko, N. A. and Andreeva, V. A.: A forecasting model of the magnetosphere driven by an optimal solar wind coupling function, *Journal of Geophysical Research: Space Physics*, 120, 8401–8425, <https://doi.org/10.1002/2015ja021641>, 2015.
- Turc, L., Ganse, U., Pfau-Kempf, Y., Hoilijoki, S., Battarbee, M., Juusola, L., Jarvinen, R., Brito, T., Grandin, M., and Palmroth, M.: Foreshock Properties at Typical and Enhanced Interplanetary Magnetic Field Strengths: Results From Hybrid-Vlasov Simulations, *Journal of Geophysical Research: Space Physics*, <https://doi.org/10.1029/2018JA025466>, 2018.
- 630 Vickers, G. T.: The corotation of the plasmasphere, *Journal of Atmospheric and Terrestrial Physics*, 38, 1061–1064, [https://doi.org/10.1016/0021-9169\(76\)90034-9](https://doi.org/10.1016/0021-9169(76)90034-9), 1976.
- von Alfthan, S., Pokhotelov, D., Kempf, Y., Hoilijoki, S., Honkonen, I., Sandroos, A., and Palmroth, M.: Vlasiator: First global hybrid-Vlasov simulations of Earth’s foreshock and magnetosheath, *Journal of Atmospheric and Solar-Terrestrial Physics*, 120, 24 – 35, <https://doi.org/10.1016/j.jastp.2014.08.012>, 2014.
- 635 Wang, Z. and Zou, S.: COMPASS: A New COnductance Model Based on PFISR And SWARM Satellite Observations, *Space Weather*, 20, <https://doi.org/10.1029/2021sw002958>, 2022.
- Wolf, R., Spiro, R., Sazykin, S., and Toffoletto, F.: How the Earth’s inner magnetosphere works: An evolving picture, *Journal of Atmospheric and Solar-Terrestrial Physics*, 69, 288–302, <https://doi.org/10.1016/j.jastp.2006.07.026>, 2007.
- 640 Yu, Y., Cao, J., Pu, Z., Jordanova, V. K., and Ridley, A.: Meso-Scale Electrodynamic Coupling of the Earth Magnetosphere-Ionosphere System, *Space Science Reviews*, 218, 74, <https://doi.org/10.1007/s11214-022-00940-0>, 2022.
- Zhang, B., Lotko, W., Wiltberger, M., Brambles, O., and Damiano, P.: A statistical study of magnetosphere–ionosphere coupling in the Lyon–Fedder–Mobarry global MHD model, *Journal of Atmospheric and Solar-Terrestrial Physics*, 73, 686–702, <https://doi.org/10.1016/j.jastp.2010.09.027>, 2011.
- 645 Zhang, B., Lotko, W., Brambles, O., Wiltberger, M., and Lyon, J.: Electron precipitation models in global magnetosphere simulations, *Journal of Geophysical Research: Space Physics*, 120, 1035–1056, <https://doi.org/10.1002/2014ja020615>, 2015.
- Zhou, H., Turc, L., Pfau-Kempf, Y., Battarbee, M., Tarvus, V., Dubart, M., Grandin, M., Ganse, U., Alho, M., Johlander, A., George, H., Suni, J., Bussov, M., Papadakis, K., Horaites, K., Zaitsev, I., Cozzani, G., Tesema, F., Gordeev, E., and Palmroth, M.: Magnetospheric Responses to Solar Wind Pc5 Density Fluctuations: Results from 2D Hybrid Vlasov Simulation, *Frontiers in Astronomy and Space Sciences*, <https://doi.org/10.3389/fspas.2022.984918>, 2022.
- 650