

DCMIP2016: the tropical cyclone test case

Justin L. Willson¹, Kevin A. Reed¹, Christiane Jablonowski², James Kent^{3,*}, Peter H. Lauritzen⁴, Ramachandran Nair⁴, Mark A. Taylor⁵, Paul A. Ullrich⁶, Colin M. Zarzycki⁷, David M. Hall^{8,9}, Don Dazlich¹⁰, Ross Heikes¹⁰, Celal Konor¹⁰, David Randall¹⁰, Thomas Dubos¹¹, Yann Meurdesoif¹¹, Xi Chen^{12,13}, Lucas Harris¹², Christian Kühnlein¹⁴, Vivian Lee¹⁵, Abdessamad Qaddouri¹⁵, Claude Girard¹⁵, Marco Giorgetta¹⁶, Daniel Reinert¹⁷, Hiroaki Miura¹⁸, Tomoki Ohno¹⁹, and Ryuji Yoshida²⁰

¹School of Marine and Atmospheric Sciences, Stony Brook University, Stony Brook, NY, USA

²Department of Climate and Space Sciences and Engineering, University of Michigan, Ann Arbor, MI, USA

³School of Computing and Mathematics, University of South Wales, Pontypridd, Wales, UK

⁴National Center for Atmospheric Research, Boulder, CO, USA

⁵Sandia National Laboratories, Albuquerque, NM, USA

⁶Department of Land, Air and Water Resources, University of California, Davis, Davis, CA, USA

⁷Department of Meteorology and Atmospheric Science, Penn State University, University Park, PA, USA

⁸Department of Computer Science, University of Colorado, Boulder, Boulder, CO, USA

⁹NVIDIA Corporation, Santa Clara, CA, USA

¹⁰Department of Atmospheric Science, Colorado State University, Fort Collins, CO, USA

¹¹IPSL/Lab. de Météorologie Dynamique, École Polytechnique, Palaiseau, France

¹²Geophysical Fluid Dynamics Laboratory (GFDL), National Oceanic and Atmospheric Administration, Princeton, NJ, USA

¹³Institute of Atmospheric Physics, Chinese Academy of Sciences, Beijing, China

¹⁴European Centre for Medium-Range Weather Forecasts (ECMWF), Bonn, Germany

¹⁵Environment and Climate Change Canada (ECCC), Dorval, Québec, Canada

¹⁶Department of the Atmosphere in the Earth System, Max Planck Institute for Meteorology, Hamburg, Germany

¹⁷Deutscher Wetterdienst (DWD), Offenbach am Main, Germany

¹⁸Department of Earth and Planetary Science, Graduate School of Science, The University of Tokyo, Tokyo, Japan

¹⁹Atmosphere and Ocean Research Institute, The University of Tokyo, Kashiwa, Japan.

²⁰Division of Natural Environment and Information, The Yokohama National University, Kanagawa, Japan

*Now at Met Office, Exeter, UK

Correspondence: Kevin A. Reed (kevin.reed@stonybrook.edu)

Abstract. This paper describes and analyzes the Reed-Jablonowski (RJ) tropical cyclone (TC) test case used in the 2016 Dynamical Core Model Intercomparison Project (DCMIP2016). ~~The~~ This intermediate complexity test case analyzes the evolution of a weak vortex into a TC in an idealized tropical environment. ~~Simulations~~ Reference solutions from 9 general circulation models (GCMs) with identical simplified physics parameterization packages that participated in DCMIP2016 are analyzed in this study at 50 km horizontal grid spacing, with 5 of these models also providing ~~simulations~~ solutions at 25 km grid spacing ~~for an analysis on the impact of finer grid spacing~~. Evolution of minimum surface pressure (MSP) and maximum 1 km azimuthally averaged wind speed (MWS), the wind-pressure relationship, radial profiles of wind speed and surface pressure, and wind composites are ~~documented~~ presented for all participating GCMs at both horizontal grid spacings. While ~~results are generally similar between all models, some GCMs~~ all TCs undergo a similar evolution process, some reach significantly higher ~~storm~~ intensities than others, ultimately impacting ~~specific characteristics of~~ their horizontal and vertical structure. TCs

simulated at 25 km grid spacings retained these differences, but reach higher intensities and are more compact than their 50 km counterparts. These results indicate dynamical core choice is an essential factor in GCM development, and future work should be conducted to explore how specific differences within the dynamical core affect TC behavior in GCMs.

1 Introduction

15 Tropical cyclones (TCs) are among the most dangerous meteorological phenomena in the world, causing billions of dollars in damage annually and significantly impacting both coastal and offshore regions (Emanuel, 2003). TC behavior is expected to change with global warming, with the most confident projection being increased storm surge and flooding due to higher sea levels (Knutson et al., 2020). There is ~~also medium-to-high confidence that the evidence that TC~~ global average intensity ~~and precipitation rates of these storms will increase,~~ precipitation rates, and the proportion of ~~TCs reaching a high~~ intensity storms reaching high intensities (categories 4 and 5 on the Saffir-Simpson scale) ~~is expected to increase as well~~ (Knutson et al., 2020). ~~It is possible that anthropogenic signals in past observational data have already been observed in some cases, such as the increase may increase in the future~~ (Knutson et al., 2020). Increases in the proportion of category 4 and 5 TCs ~~in recent data and an increase in~~ and the global average intensity of ~~the strongest TCs since the beginning of the 1980s~~ (Knutson et al., 2019). ~~Since TCs pose a significant risk to society, a risk that will likely increase in the future, it is important to understand them~~ these high intensity TCs in past observational data signal that anthropogenic signals may have already been observed (Knutson et al., 2019). Simulating TCs accurately in general circulation models (GCMs) ~~accomplishes this through a better understanding of TC dynamics, changes in their future behavior, and how they interact with other processes on climate~~ seals allows current and future risks to be better understood, allowing society to mitigate these risks.

Simulating TCs in GCMs is complicated and requires both extensive computational power and sophisticated simulations. 30 Although the typical CMIP-class GCM grid spacing is around 100 km, TCs are not well resolved when the grid spacing is coarser than ~~50km. This is due to the small size of TCs and the sophisticated~~ 50 km due to their small size and the complex physical processes that cause their formation and propagation (Reed and Jablonowski, 2011a). ~~Simulated TC characteristics in GCMs such as TC~~ intensity, size, and genesis generally become more accurate with increasing horizontal resolution (Reed and Jablonowski, 2011a, c), a trend that has also been shown in decadal, climate-scale simulations (Wehner et al., 2014; Stansfield et al., 2020; Roberts et al., 2020). ~~Reed and Jablonowski (2011a) describes the initialization of an initially weak warm-core idealized vortex into a TC during a 10 day period in a GCM with an environment conducive for storm development. The simulated TC~~ This trend has also been shown for the TC test case developed in Reed and Jablonowski (2011a, 2012), hereafter referred to as the Reed-Jablonowski (RJ) TC test case, since it increases in intensity and becomes more compact with increasing horizontal resolution (Reed and Jablonowski, 2011a). The ~~TC test case developed in Reed and Jablonowski (2011a), hereafter referred to as the Reed-Jablonowski (RJ)-RJ~~ RJ TC test case ~~is a moist deterministic TC test case of intermediate complexity test case~~ designed to be used in simple physics experiments with ~~complexities~~ intermediate complexity (between dry dynamical core and full physics aquaplanet simulations). This test case provides a less complex regime to study how the dynamical core

and moist physical parameterizations interact without having to conduct a computationally expensive simulation (Reed and Jablonowski, 2012).

45 There are several studies that demonstrate the usefulness of studying the RJ TC test case formulation. Reed and Jablonowski (2011b) found that the RJ TC test case increases in strength and size while having an earlier onset of intensification in the Community Atmosphere Model (CAM) version 4 (CAM4), developed by the National Center for Atmospheric Research (NCAR), compared to its predecessor CAM3 due to the presence of a dilute plume convective available potential energy (CAPE) calculation in CAM4. Additionally, Reed and Jablonowski (2011c) illustrates how uncertainties in the RJ TC test case simulations
50 can be structural, parameter based, or initial-data based, with structural uncertainties being the most prominent when CAM4 and CAM5 were compared. This study did not take into account structural differences in the dynamical core of the models, the component that integrates the Navier-Stokes equations ~~that describe fluid motion in the atmosphere~~, likely underestimating structural uncertainty (Reed and Jablonowski, 2011c). Reed and Jablonowski (2012) investigated how the dynamical core choice impacts the RJ TC test case structure and strength-intensity in simple physics simulations and complex CAM5 full-
55 physics aquaplanet simulations with grid spacings of approximately 50 km or less. This work indicated that simple physics experiments can provide meaningful insight into how dynamical core characteristics ~~including resolution~~ impact simulated TC behavior. In CAM5 comprehensive climate-scale simulations, the spectral element dynamical core produces more TCs that tend to have stronger intensities than those produced in a simulation using the finite volume dynamical core (Reed et al., 2015). This result was consistent with the RJ TC test case analysis in Reed and Jablonowski (2012), demonstrating further confidence
60 for the use of idealized test cases and intermediate complexity simulations for better understanding the impact of GCM design on simulated TC characteristics.

Other GCM characteristics have been shown to have a significant impact on the resulting behavior of the RJ TC test case. The grid spacing of the model is critical to simulating certain characteristics in the ~~RJ-TC~~ test case, with higher resolution models creating increasingly intense and compact TCs that can even demonstrate non-physical intensity due to the physics
65 parameterization behavior at small time steps (Reed et al., 2012). He et al. (2018) uses Sobol's variance-based sensitivity analysis to analyze input/output relationships that are multivariate in nature, and demonstrates that resolution significantly impacts sensitivities to control factors, with coarse resolution simulations unable to produce an accurate TC. This study also found non-linear relationships between factors that control precipitation rate, cloud content, and radiative forcing in the idealized RJ TC test case ~~described previously~~. He and Posselt (2015) demonstrates how the parameterized physical processes in cloud
70 formation, convective development, and moist turbulence impact the simulation of TC intensity, precipitation rate, and other characteristics during the evolution of this RJ TC test case in CAM5, with ~~none of the model output variables having a linear response~~ nonlinear relationships occurring between certain parameters and output variables. In CAM5, the precipitation and intensity of the simulated TCs are sensitive to the physics-dynamics timestep time step, with the magnitude of the sensitivities dependent on the dynamical core and horizontal resolution used (Li et al., 2020).

75 The 2016 Dynamical Core Model Intercomparison Project (DCMIP2016) ~~described in Ullrich et al. (2017)~~ (Ullrich et al., 2017) aims to increase knowledge about how the dynamical core of ~~the climate model impacts the resulting a GCM impacts the~~ behavior of various meteorological test cases. The test cases used in DCMIP2016 (Ullrich et al., 2016) include simplified moist

physics and build upon the previous sets of test cases developed for DCMIP2012 (Ullrich et al., 2012) and DCMIP2008 (Jablonowski et al., 2008). These test cases include a moist baroclinic wave, a splitting supercell (Zarzycki et al., 2019), and the RJ TC test case, ~~which will be documented in this study. More information about the RJ TC test case used will be given in Section 2.1. Climate models, especially high-resolution GCMs, are computationally expensive and many model development groups have found computational methods and algorithms to reduce this complexity; therefore, there are many formulations of the dynamical core that exist. While~~. While past studies have explored ~~such processes in the past~~dynamical core impact on TC behavior, they largely focus on ~~the effects of changing certain parameters in one model. This model intercomparison study allows extensive~~a single model. A model intercomparison facilitates detailed comparison and documentation of TC behavior among different GCMs, which have differences in their dynamical core design such as ~~the~~ horizontal and vertical discretization, time stepping, native grid, and grid staggering (Ullrich et al., 2017). ~~Detailed reference solutions to prescribed test cases among models with varying characteristics~~Reference solutions provided by model intercomparison contribute to the improvement of GCMs and ~~the simulation~~lead to more accurate simulations of TCs. This study provides an intercomparison of RJ TC test case behavior among the DCMIP2016 models. The goal of this analysis is to provide a library of solutions that serve as a benchmark for modeling groups to compare against and does not aim to link differences in results to specific numerical differences in the models. ~~The~~There is no ground truth to this test case, and the RJ TC test case ~~is~~and other DCMIP test cases are in wide use among modeling groups, ~~and many of these groups regularly utilize DCMIP test cases for internal use. Standardized test suites are essential for model development, and specific use cases for these tests include verifying the performance of dynamical cores in their operational states and providing assessments of convergence at finer grid spacing and uncertainty between solutions of several models.~~ Further, ~~some~~several DCMIP test cases are ~~members~~implemented as part of the Community Earth System Model (CESM) Simpler Models framework, ~~indicating their importance to the community which allows researchers to gain insight into atmospheric phenomena through simple, often idealized, model frameworks~~ (CES).

Section 2 provides a detailed explanation of the initialization of the RJ TC test case along with the analytical and computational procedures used throughout this study. Section 3 catalogs similarities and differences of the RJ TC test case behavior among ~~DCMIP2016~~participating GCMs. Specifically, we analyze the evolution of maximum 1 km (measured from the surface) azimuthally averaged wind speed (MWS) and minimum surface pressure (MSP), radial profiles and vertical composites of wind speed and surface pressure, and the wind-pressure relationship ~~in the TC~~. Differences between the 50 km and the 25 km simulations are ~~also~~then discussed for models that submitted simulations at both grid spacings. Section 4 summarizes important results from the model intercomparison and provides a motivation for future work in this area.

2 Methods

2.1 Description of ~~Tropical Cyclone~~ Test Case

The ~~idealized~~ RJ TC test case ~~used here~~ is based on the work of Reed and Jablonowski (2011a, 2012). A weak balanced vortex is initialized in an environment conducive to ~~rapid intensification~~, ~~and this initial vortex~~intensification and evolves into a TC over a ~~period of 10 days. One of the goals of the RJ TC test case is to explore the impact of physics-dynamics coupling and~~

Table 1. List of DCMIP2016 symbols used in [model-the RJ TC test case](#) initialization (Ullrich et al., 2016).

	Symbol
	λ
	φ
	z
	p_s
	Φ_s
	z_s
	u
	v
	w Vertical velocity ω Vertical pressure velocity δ Divergence ζ Relative vorticity p
	ρ
	T
	T_v
	Θ Potential temperature Θ_v Virtual potential temperature q
	P_{ts} Large-scale precipitation rate q_c Cloud water mixing ratio q_r Rain water mixing ratio q_{CT} Singlet chlorine mixing ratio q_{CT2} Chlorine gas mixing ratio

Table 2. A list of physical constants used in DCMIP2016 (Ullrich et al., 2016).

Constant	Description	Value
a_{ref}	Radius of the Earth	6.37122×10^6 m
Ω_{ref}	Rotational speed of the Earth	7.292×10^{-5} s ⁻¹
X	Reduced-size Earth reduction factor	variable (default = 1)
a	Scaled radius of the Earth	a_{ref}/X
Ω	Scaled rotational speed of the Earth	$\Omega_{\text{ref}} \cdot X$
g	Gravity	9.80616 m s ⁻²
p_0	Reference pressure	1000 hPa
c_p	Specific heat capacity of dry air at constant pressure	1004.5 J kg ⁻¹ K ⁻¹
c_v	Specific heat capacity of dry air at constant volume	717.5 J kg ⁻¹ K ⁻¹
R_d	Gas constant for dry air	287.0 J kg ⁻¹ K ⁻¹
R_v	Gas constant for water vapor	461.5 J kg ⁻¹ K ⁻¹
κ	Ratio of R_d to c_p	2/7
ε	Ratio of R_d to R_v	0.622
M_v	Constant for virtual temperature conversion	0.608
ρ_{water}	Density of water	1000 kg m ⁻³

Table 3. List of constants used for the Idealized Tropical Cyclone test (Ullrich et al., 2016).

Constant	Value	Description
X	1	Small-planet scaling factor (regular-size Earth)
z_t	15000 m	Tropopause height
q_0	0.021 kg/kg	Maximum specific humidity amplitude
q_t	10^{-11} kg/kg	Specific humidity in the upper atmosphere
T_0	302.15 K	Surface temperature of the air
T_s	302.15 K	Sea surface temperature (SST), 29 C°
z_{q1}	3000 m	Height related to the linear decrease of q with height
z_{q2}	8000 m	Height related to the quadratic decrease of q with height
Γ	0.007 K m^{-1}	Virtual temperature lapse rate
p_b	1015 hPa	Background surface pressure
φ_c	$\pi/18$	Initial latitude of vortex center (radians)
λ_c	π	Initial longitude of vortex center (radians)
Δp	11.15 hPa	Pressure perturbation at vortex center
r_p	282000 m	Horizontal half-width of pressure perturbation
z_p	7000 m	Height related to the vertical decay rate of p perturbation
ϵ	10^{-25}	Small threshold value

115 ~~grid resolution sensitivities on TC simulation in GCMs~~. In DCMIP2016, the RJ TC test case is one of 3 test cases, and it was run for each of the models using a day period. GCMs with identical simplified physical parameterization package packages simulated this test case in a controlled testing environment to allow for the analysis of ~~physics-dynamics interactions and other characteristics~~ dynamical core impact on TC structure and intensity (Ullrich et al., 2016). For reproducibility, lists of DCMIP2016 model initialization symbols, physical constants, and RJ TC test case constants are shown in Table 1, Table 2, and Table 3 respectively. The complete mathematical description of the initialization and axisymmetric vortex of the RJ TC test case is in the subsequent sections.

2.1.1 Environmental Background

120 The RJ TC test case is initialized in the following manner. It contains a background state that consists of three profiles: prescribed specific humidity, virtual temperature, and pressure. The initial profile is in an approximate gradient wind balance state by definition. The vertical sounding is chosen to approximately resemble an observed tropical sounding (Jordan, 1958). The background specific humidity profile $\bar{q}(z)$ as a function of height z is

$$\bar{q}(z) = q_0 \exp\left(-\frac{z}{z_{q1}}\right) \exp\left[-\left(\frac{z}{z_{q2}}\right)^2\right] \quad \text{for } 0 \leq z \leq z_t$$

$$\bar{q}(z) = q_t \quad \text{for } z_t \leq z \tag{1}$$

The specific form of the background virtual temperature sounding $\bar{T}_v(z)$ is dependent on its location in the atmosphere. In this case, there are two different representations, one for the lower atmosphere and another for the upper atmosphere. It is given by

$$\begin{aligned}\bar{T}_v(z) &= T_{v0} - \Gamma z && \text{for } 0 \leq z \leq z_t, \\ \bar{T}_v(z) &= T_{vt} = T_{v0} - \Gamma z_t && \text{for } z_t < z,\end{aligned}\quad (2)$$

with the virtual temperature at the surface $T_{v0} = T_0(1 + 0.608q_0)$ and the virtual temperature at the tropopause level $T_{vt} = T_{v0} - \Gamma z_t$. The background temperature profile can be obtained from the equation:

$$T_v = T(1 + M_v q) \quad (3)$$

The background vertical pressure profile $\bar{p}(z)$ of the moist air can be calculated using the hydrostatic balance and (2). The profile is given by:

$$\begin{aligned}\bar{p}(z) &= p_b \left(\frac{T_{v0} - \Gamma z}{T_{v0}} \right)^{\frac{g}{R_d \Gamma}} && \text{for } 0 \leq z \leq z_t, \\ \bar{p}(z) &= p_t \exp \left(\frac{g(z_t - z)}{R_d T_{vt}} \right) && \text{for } z_t < z.\end{aligned}\quad (4)$$

The pressure at the tropopause level z_t is continuous and given by

$$p_t = p_b \left(\frac{T_{vt}}{T_{v0}} \right)^{\frac{g}{R_d \Gamma}}, \quad (5)$$

This value is approximately 130.5 hPa for the set of parameters used in the test case initialization.

2.1.2 Axisymmetric Vortex

The pressure equation $p(r, z)$ for the moist air is composed of the background pressure profile (4) and a 2D pressure perturbation $p'(r, z)$,

$$p(r, z) = \bar{p}(z) + p'(r, z), \quad (6)$$

where r symbolizes the radial distance (or radius) to the center of the prescribed vortex. On the sphere r is defined using the great circle distance (GCD)

$$r = a \arccos(\sin \varphi_c \sin \varphi + \cos \varphi_c \cos \varphi \cos(\lambda - \lambda_c)). \quad (7)$$

The ~~perturbation pressure~~ pressure perturbation is defined as

$$\begin{aligned}p'(r, z) &= -\Delta p \exp \left[- \left(\frac{r}{r_p} \right)^{3/2} - \left(\frac{z}{z_p} \right)^2 \right] \left(\frac{T_{v0} - \Gamma z}{T_{v0}} \right)^{\frac{g}{R_d \Gamma}} && \text{for } 0 \leq z \leq z_t, \\ p'(r, z) &= 0 && \text{for } z_t < z.\end{aligned}\quad (8)$$

There are multiple pressure differences that impact several contributions to the pressure perturbation. These include the pressure difference Δp between the background surface pressure p_b and the pressure at the center of the initial vortex, the pressure change in the radial direction r_p and the pressure decay with height within the vortex. The parameters r_p , the horizontal half-width of the pressure perturbation, and z_p , the height related to the vertical decay rate of the pressure perturbation, describe the shape of the pressure perturbation in these directions. The moist surface pressure $p_s(r)$ is computed by setting $z = 0$ m in (6), which gives

$$p_s(r) = p_b - \Delta p \exp \left[- \left(\frac{r}{r_p} \right)^{3/2} \right]. \quad (9)$$

The axisymmetric virtual temperature $T_v(r, z)$ is calculated using the hydrostatic equation and ideal gas law

$$T_v(r, z) = - \frac{gp(r, z)}{R_d} \left(\frac{\partial p(r, z)}{\partial z} \right)^{-1}. \quad (10)$$

Again this equation takes the form of a sum of the background state and a perturbation,

$$T_v(r, z) = \bar{T}_v(z) + T'_v(r, z), \quad (11)$$

where the virtual temperature perturbation is defined as

$$T'_v(r, z) = (T_{v0} - \Gamma z) \left\{ \left[1 + \frac{2R_d(T_{v0} - \Gamma z)z}{gz_p^2 \left[1 - \frac{p_b}{\Delta p} \exp \left(\left(\frac{r}{r_p} \right)^{3/2} + \left(\frac{z}{z_p} \right)^2 \right) \right]} \right]^{-1} - 1 \right\} \quad \text{for } 0 \leq z \leq z_t, \\ T'_v(r, z) = 0 \quad \text{for } z_t < z. \quad (12)$$

The axisymmetric specific humidity $q(r, z)$ is set to the background profile everywhere

$$q(r, z) = \bar{q}(z). \quad (13)$$

Consequently, the temperature can be written as

$$T(r, z) = \bar{T}(z) + T'(r, z), \quad (14)$$

with the temperature perturbation

$$T'(r, z) = \frac{T_{v0} - \Gamma z}{1 + 0.608\bar{q}(z)} \left\{ \left[1 + \frac{2R_d(T_{v0} - \Gamma z)z}{gz_p^2 \left[1 - \frac{p_b}{\Delta p} \exp \left(\left(\frac{r}{r_p} \right)^{3/2} + \left(\frac{z}{z_p} \right)^2 \right) \right]} \right]^{-1} - 1 \right\} \quad \text{for } 0 \leq z \leq z_t, \\ T'(r, z) = 0 \quad \text{for } z_t < z. \quad (15)$$

The upper troposphere has a small specific humidity value (10^{-11} kg/kg for $z > z_t$); therefore, the virtual temperature approximately equals the temperature for this portion of the atmosphere. The formulation introduced here is equivalent to the one explained in Reed and Jablonowski (2012).

170 In some cases, the density of the moist air needs to be initialized as well. The ideal gas law forms the basis of this initialization and the density of the moist air is initialized in the following manner

$$\rho(r, z) = \frac{p(r, z)}{R_d T_v(r, z)} \quad (16)$$

which utilizes the moist pressure (6) and virtual temperature (11). The surface elevation z_s and thereby the surface geopotential $\Phi_s = gz_s$ are set to zero.

175 Finally, gradient-wind balance, a function of pressure (6) and the virtual temperature (12), allows for the definition of the tangential velocity field $v_T(r, z)$ of the axisymmetric vortex. The tangential velocity is given by

$$v_T(r, z) = -\frac{f_c r}{2} + \sqrt{\frac{f_c^2 r^2}{4} + \frac{R_d T_v(r, z) r}{p(r, z)} \frac{\partial p(r, z)}{\partial r}}, \quad (17)$$

where $f_c = 2\Omega \sin(\varphi_c)$ is the Coriolis parameter at the constant latitude φ_c . Substituting $T_v(r, z)$ and $p(r, z)$ into (17) gives

$$v_T(r, z) = -\frac{f_c r}{2} + \sqrt{\frac{f_c^2 r^2}{4} - \frac{\frac{3}{2} \left(\frac{r}{r_p}\right)^{3/2} (T_{v0} - \Gamma z) R_d}{1 + \frac{2R_d(T_{v0} - \Gamma z)z}{gz_p^2} - \frac{p_b}{\Delta p} \exp\left(\left(\frac{r}{r_p}\right)^{3/2} + \left(\frac{z}{z_p}\right)^2\right)}} \quad \text{for } 0 \leq z \leq z_t, \quad (18)$$

180 $v_T(r, z) = 0$ for $z_t < z$.

The tangential velocity is then separated (18) into its zonal and meridional wind components $u(\lambda, \varphi, z)$ and $v(\lambda, \varphi, z)$ (18). Similar to Nair and Jablonowski (2008) these are calculated in the following way,

$$d_1 = \sin \varphi_c \cos \varphi - \cos \varphi_c \sin \varphi \cos(\lambda - \lambda_c) \quad (19)$$

$$d_2 = \cos \varphi_c \sin(\lambda - \lambda_c) \quad (20)$$

$$185 \quad d = \max(\epsilon, \sqrt{d_1^2 + d_2^2}), \quad (21)$$

which are utilized in the projections

$$u(\lambda, \varphi, z) = \frac{v_T(\lambda, \varphi, z) d_1}{d} \quad (22)$$

$$v(\lambda, \varphi, z) = \frac{v_T(\lambda, \varphi, z) d_2}{d}. \quad (23)$$

$\epsilon = 10^{-25}$ is utilized to avoid divisions by zero. In this case, the vertical velocity is set to zero.

190 2.2 Simulation Design

The 9 GCMs provided reference solutions for the RJ TC test case was simulated in 9 GCMs as part of DCMIP2016. CSU submitted two versions of their model, CSU-CP and CSU-LZ, which differ in the vertical coordinate. CSU-LZ uses the Lorenz (Lorenz, 1960) staggering of variables in the vertical, with potential temperature and advected scalars co-located with horizontal winds at mid-layer. CSU-CP used the Charney and Phillips (Charney and Phillips, 1953) staggering of variables

Table 4. Information about models that submitted RJ TC test case simulations in DCMIP2016 and were analyzed in this study.

Abbreviation	Full Name	Modeling Center/Group
ACME-A	Energy Exascale Earth System Model	Sandia National Laboratories and University of Colorado, Boulder, USA
CAM-SE	Community Atmosphere Spectral Element Model	National Center for Atmospheric Research, USA
CSU	Colorado State University Model	Colorado State University, USA
DYNAMICO	DYNAMical core on the ICOSahedron	Institut Pierre Simon Laplace (IPSL), France
FV ³	GFDL Finite-Volume Cubed-Sphere Dynamical Core	Geophysical Fluid Dynamics Laboratory, USA
FVM	Finite Volume Module of the Integrated Forecasting System	European Centre for Medium-Range Weather Forecasts
GEM	Global Environmental Multiscale model	Environment and Climate Change Canada, Canada
ICON	ICOSahedral Non-hydrostatic model	Max-Planck-Institut für Meteorologie, Germany
NICAM	Non-hydrostatic Icosahedral Atmospheric Model	AORI/JAMSTEC/AICS, Japan

Table 5. ~~Additional information~~ [Information](#) about the models used in this study. Three dynamical cores are present: spectral element (SE), finite difference (FD), and finite volume (FV). More information [on dynamical cores and model specific processes](#) can be found in Ullrich et al. (2017).

Abbreviation	Native Grid	Horizontal Grid Spacing (km)	Dynamical Core	Hydrostatic
ACME-A	Cubed sphere	50,25	SE	No
CAM-SE	Cubed sphere	50,25	SE	Yes
CSU	Geodesic	50	FV	Yes
DYNAMICO	Geodesic	50	FV	Yes
FV ³	Cubed sphere	50	FV	No
FVM	Octahedral	50,25	FV	No
GEM	Yin-Yang	50,25	FD	No
ICON	Icosahedral triangular	50	FV	No
NICAM	Geodesic	50,25	FV	No

195 with potential temperature and advected scalars co-located with the vertical velocity at the layer interfaces. Information about these models the GCMs studied can be found in Table 4. Models submitted test case runs solutions prior to 2016 and all results are for iterations of the models represent their state at that point in time. The GCMs have likely been updated since 2016, but it is still important to provide a set of benchmark solutions for the modeling community. For all models, a simulation with a horizontal grid spacing of 50 km, the default in DCMIP2016, was analyzed. For select models, intercomparison also took
 200 place at a finer horizontal grid spacing of 25 km. The models that completed a 25 km simulation are ACME-A, CAM-SE, FVM, GEM, and NICAM. The computational efficiency of each model, that is its the total time to give produce a solution at a particular resolution, is not considered here but is nonetheless important since certain models can operate at a higher effective resolution for with the same computational cost. Some Certain models are hydrostatic while others were non-hydrostatic, although this is unlikely to have a significant effect on the simulation (Liu et al., 2022). Additional simulation information
 205 is Information about the GCMs studied including dynamical core and native grid are summarized in Table 5 with further information available in Ullrich et al. (2017).

Simulations were performed over All models submitted a 10 day period with 30 vertical levels on an interpolated latitude-longitude grid simulation with a horizontal grid spacing of 50 km, the default in DCMIP2016. ACME-A, CAM-SE, FVM, GEM, and
 210 NICAM contributed a 25 km simulation and additional intercomparison also took place at this horizontal grid spacing for these models. The model configuration is a full aqua-planet setup with prescribed sea surface temperatures (SSTs) set to a constant 302.15 K. This initialization follows the analytic framework described in Sections 2.1.1 and 2.1.2. Models submitted identical simulation runs output from a single simulation run on their native grid given in Table 5 and an interpolated latitude-longitude grid with co-located (Arakawa-A type) data and grid spacing comparable to that of the native grid model run (Ullrich et al., 2016). Since all models submitted interpolated latitude-longitude runs, this grid was used for analysis. The vertical levels were
 215 simulations contained 30 vertical levels, either pressure-based levels (pressure or hybrid vertical coordinates) or height levels, with the lowest height level being vertical level corresponding to a height of 60-70 m above the surface. Models that used a pressure-based vertical level system In the intercomparison, height levels were used for analysis. Pressure-based vertical levels were converted to a height scale height levels by first converting to pressures pressure coordinates if the model utilized hybrid coordinates. The pressure at level k , p_k , was obtained using the equation

$$220 \quad p_k = a_k p_0 + b_k p_s \quad (24)$$

where a_k and b_k are conversion constants at level k , then converting the pressure levels at each latitude and longitude point to height values p_0 is the reference pressure (table 2), and p_s is the surface pressure at every point ($k = 0$). Then, the pressure levels were converted to height levels using the hypsometric equation. The height levels and corresponding variables of all models

$$225 \quad h = z_2 - z_1 = \frac{RT_v}{g} \ln \left(\frac{p_1}{p_2} \right) \quad (25)$$

where z_1 (p_1) and z_2 (p_2) are height (pressure) values at adjacent levels and \bar{T}_v is the mean virtual temperature between the two levels, calculated by the equation $\bar{T}_v = \bar{T}(1 + M_v \bar{q})$. All relevant quantities were then interpolated to desired height values

using linear interpolation. ~~The model configuration is a full aqua-planet setup with prescribed sea surface temperatures (SSTs) set to a constant 302.15 K. This initialization follows the analytic framework described in Sections 2.1.1 and 2.1.2.~~

230 The ~~simple physics package used in these simulations~~ same simple physics parameterization package was used across all models, and it is identical to the package described in Reed and Jablonowski (2012). It has several key features. First, the large-scale condensation does not incorporate a cloud stage; therefore, there is no carrying of any condensates and no re-evaporation at lower vertical levels as excess moisture is removed instantaneously. This configuration also allows all condensed water vapor to be removed as precipitation at the surface. Second, the surface fluxes determine the atmosphere-ocean interactions and eddy diffusivities in the boundary layer parameterization in the simulation (Reed and Jablonowski, 2012). In total, the physics package describes four surface fluxes: zonal velocity, meridional velocity, temperature, and specific humidity. The planetary boundary layer is ~~the third major component of the simple physics package. The planetary boundary layer is~~ defined as all levels with a pressure greater than 850 hPa, which gives an approximate boundary layer depth of 1-1.5 km. Potential temperature is used for the boundary layer parameterization ~~in this case~~ since its vertical profile effectively indicates static stability (Reed and Jablonowski, 2012). The boundary layer here represents Ekman-like profiles characterized by turbulent mixing with a constant vertical eddy diffusivity. These boundary layer diffusivities are simplified in nature as they ignore eddy diffusivity dependence on complicated static stability indicators and represent a first order coupling to the dynamic conditions. ~~All processes in Physics-dynamics coupling is dynamical core dependent and can either be process-split, where T and q are values at the current (previous) time level for two (three) level time schemes, or time-split, where these variables are~~ partially updated prior to physical forcings by the dynamical core's time tendencies. All processes within the simple physics package are coupled using the time-splitting method. ~~This simple physics configuration is identical to the one described in Reed and Jablonowski (2012)~~ (Reed and Jablonowski, 2012). Certain parameterizations are not included in order to maintain an intermediate complexity scheme. These parameterizations include radiation, which is not the main driver of cyclogenesis in these short simulations, and shallow and deep convection, which are not necessary in this case since large-scale condensation can form the basis for accurate simulation of ideal TCs at fine horizontal resolution (Reed and Jablonowski, 2012).

2.3 Analysis Approach

We utilized TempestExtremes (Ullrich et al., 2021) to ~~identify and gain extract relevant~~ information about the TC ~~in each model using the following TempestExtremes commands~~ including its trajectory and radial profiles of wind and pressure.

1. DetectNodes ~~-in_data_list \$input_files -out \$detectnodes_output -closedcontourcmd "PS,200,0,5.5,0" -mergedist 6.0~~
255 ~~-searchbymin PS -outputcmd "PS,min,0;_VECMAG(U,V),max,2"~~
2. StitchNodes ~~-in_fmt "lon,lat,PS,wind" -range 8.0 -mintime 10 -maxgap 3 -in \$detectnodes_output -out \$stichnodes_output~~
~~-out_file_format "csv" -threshold "wind,>=,10.0,10;lat,<=,50.0,10;lat,>=,-50.0,10"~~

The above commands perform the following functions. DetectNodes first ~~finds the MSP~~ locates a local minimum of sea level pressure and keeps the candidate point if there is not a lower pressure within 6° GCD and there is a 200 Pa increase in surface pressure within 5.5° GCD ~~of the minimum~~. The command also records the MSP and MWS value at that timestep time step.

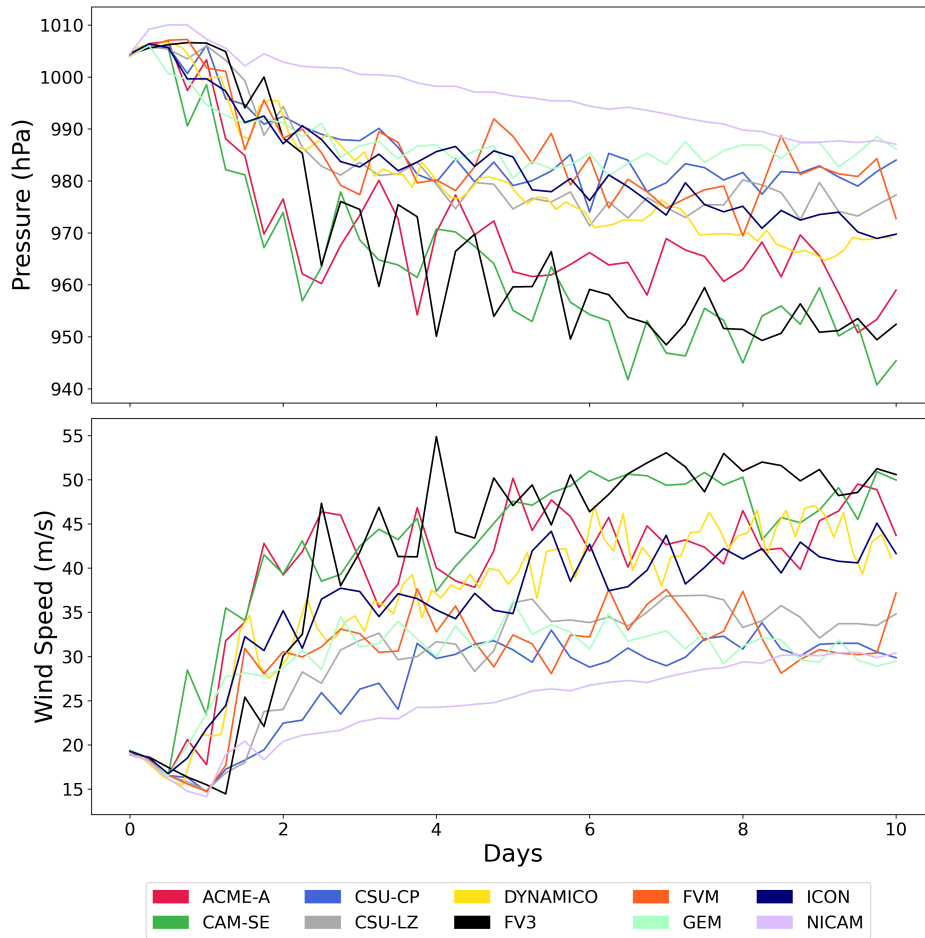


Figure 1. Evolution of MSP and MWS over the 10 day simulation period for the 50 km grid spacing.

StitchNodes is used to stitch candidates throughout time into a trajectory. Candidate points are only stitched together if they are within 8° GCD at subsequent time steps, have a center latitude magnitude less than 50° , and have a lowermost model level wind speed greater than or equal to 10 ms^{-1} . The maximum gap between points is 3 time steps. Given the RJ TC test case environment, the TC trajectories are similar between all models as expected (not shown).

265 From this analysis, the time evolution of MWS and MSP along with the wind-pressure relationship of the TC were analyzed. Subsequently, radial Radial profiles of 1 km wind speed and surface pressure were calculated using the following set of TempestExtremes commands:

```

1. NodeFileEditor --in_data_list $input_files --in_nodefile $stichnodes_output --out_nodefile $wind_radprof_file
   --out_nodefile_format "csv" --calculate "rprof=radial_wind_profile(U,V,159,0.25);rsize=lastwhere(rprof,>,8)" --out_fmt
270 "lon,lat,rsize,rprof"

```

This command calculates the radial wind profile in the following manner. Using the StitchNodes output as input, the azimuthally averaged radial wind profile is obtained by first splitting the wind values into radial and azimuthal components, as determined by the TC's center point, and then calculating the average based on the binning criteria. When calculating the surface pressure radial profiles, the radial_wind_profile function was substituted for the radial_profile function. In this case, there are 159 bins, each with a size of 0.25° , in the radial profile. The resulting radial profile values were plotted at the midpoints of these bins beginning ~~around~~ approximately 14 km from the TC's center. Wind composites were ~~also constructed using TempestExtremes~~ constructed by running the above commands at a range of height levels, 0.1 km to 16 km in this case, to identify similarities and differences in TC vertical structure between the models. ~~This process was conducted by running the same command for creating a radial wind profile at a series of height values. The wind composites are therefore azimuthally averaged wind radial profiles at various heights, 0.1 km to 16 km for this analysis.~~ Detailed descriptions of the algorithms used by TempestExtremes are found in Ullrich et al. (2021).

Both the radial profiles and the vertical wind composites were constructed during the ~~semi-steady~~ steady state period of the simulation, defined as the time when the TC MWS and ~~precipitation rate~~ MSP were no longer undergoing a significant intensification and any changes in their values were largely due to fluctuations within each model. The beginning of this steady state period was estimated using a finite difference method combined with examination of the evolution of MWS and MSP. ~~The evolution of these quantities is shown in Figure 1. The rapid intensification of the TC (Figure 1). The TC intensifies quickly during days 1-4 of the simulation period is clearly seen in this figure, consistent with previous analysis of the RJ TC test case as previously analyzed (Reed and Jablonowski, 2011b, 2012). While the intensity initially decreases, these trends reverse and the TC rapidly intensifies. This intensification process continues until approximately day 4, when most DCMIP models appear to vary randomly around a fixed mean MWS or MSP. The beginning of (Reed and Jablonowski, 2011b, 2012), and its intensity remains relatively constant at subsequent times. Therefore,~~ the steady state period ~~was therefore determined to be day 4 of the simulations. Taking this into account, the radial profiles and the vertical wind composites were averaged of this simulation was from days 4-10 of the simulation document the TC's structure during its stable period with its maximum intensity.~~

The wind-pressure relationship within each TC was analyzed by plotting the corresponding MWS and MSP values at each time step. A second-order polynomial function was then fit using a least squares method to each set of points ~~to quantify this relationship.~~ This method has been used in several prior studies, including Reed et al. (2015) where it was used to quantify the wind-pressure relationship in multiple CAM simulations and IBTrACS data, Knaff and Zehr (2007) where it was used to fit observational aircraft pressure data and best-track wind data, and Kossin (2015) where it was used to fit the wind-pressure relationship during eyewall replacement cycles seen in low-level aircraft reconnaissance data.

300 3 Results

The following section describes the results from the intercomparison, with the intent of highlighting differences in the resulting TC behavior across the DCMIP ensemble. Although various model details were briefly mentioned in section 2.2 (and in more detail in Ullrich et al., 2017), this analysis will not try to attribute individual model characteristics as the reason for the

differences in simulated TC behavior. Instead, we aim to provide an overview of the RJ TC test case results in DCMIP2016,
305 as well as discern characteristics of model groups based on similar TC behavior or highlight differences between one or more
models in certain areas; ~~in order to provide~~. This form of analysis ultimately provides a catalog of solutions that serve as a
benchmark for modeling groups to utilize in future work.

3.1 Time Evolution of Wind Speed and Pressure

The evolution of the MWS and the MSP is shown in Figure 1. All MSP and MWS values are physically viable in the
310 simulations, with MSP remaining above 940 hPa and MWS ranging from tropical storm to category 3 strength on the Saffir-Simpson
scale. The MSP initially increases in all models, a sign of weakening of the vortex which ~~was also has been~~ seen in simple
physics simulations in Reed and Jablonowski (2012) as well as more complex full physics simulations in Reed and Jablonowski
(2011b, 2012). All models then begin to intensify as the MSP decreases, and 3 model groups form shortly after day 2. NICAM
retains the highest MSP, and ~~consistently decreases in pressure throughout the simulation without much variation~~ decreases
315 linearly throughout the remainder of the simulation. CSU-CP, CSU-LZ, DYNAMICO, GEM, FVM, and ICON decrease to
values in between 970 hPa and 990 hPa and vary within this range at subsequent time steps. The models increasingly diverge
~~in the latter portion of the simulation, especially~~ during days 7 to 10, and by day 9 NICAM enters this pressure range and
becomes part of this model grouping. ACME-A, CAM-SE, and FV³ continue decreasing until approximately day 4, 1-2 days
later than the previous group of models, and then generally remain in the 950 hPa to 970 hPa range. These models all contain
320 high variation in MSP changes compared to the other models, with differences in 5 hPa or above routinely seen at adjacent
time steps. ~~All MSP values are physically viable in the simulations, with none decreasing below 940 hPa.~~

Similarly, all models initially experience a decrease in their MWS during the first 1-2 days of the simulation. ~~Then, all~~
~~models undergo a rapid intensification until approximately~~, quickly intensify until around day 4 ~~after which they~~, and
enter a steady state ~~; behavior quantified in Section 2.3 for the remainder of the simulation~~. There are exceptions to this trend; for
325 example, ~~NICAM continually~~ the MWS in NICAM linearly increases throughout the simulation period with little variation.
The models again split into groups, in this case after day 5 of the simulation. ~~The models that occupy the lower MWS range~~
~~are~~ CSU-CP, CSU-LZ, FVM, GEM, and NICAM ~~. After the intensification period, they generally have MWS values~~ tend to
be less intense with MWS values ranging between 25 ms⁻¹ and 35 ms⁻¹. The second group of models, ACME-A, CAM-SE,
FV³, DYNAMICO, and ICON, have MWS values generally between 35 ms⁻¹ and 55 ms⁻¹. ~~The groupings of models were~~
330 ~~slightly different than the evolution of MSP, with~~, in some cases significantly more intense than the other set of models. Model
groupings were not identical to those seen in MSP evolution since DYNAMICO and ICON ~~being among the models that~~
~~had increased MWS values despite the fact that they were among the models~~ are included in the higher ~~MSP range~~ intensity
group for MWS. In all models except NICAM, the variability was approximately equal, with the majority of MWS changes
in adjacent ~~timesteps~~ time steps being under 10 ms⁻¹ ~~after day 4. MWS values were physically possible as their maximum~~
335 ~~magnitude corresponds to tropical storm to category 3 strength on the Saffir-Simpson scale~~ during the steady state period.

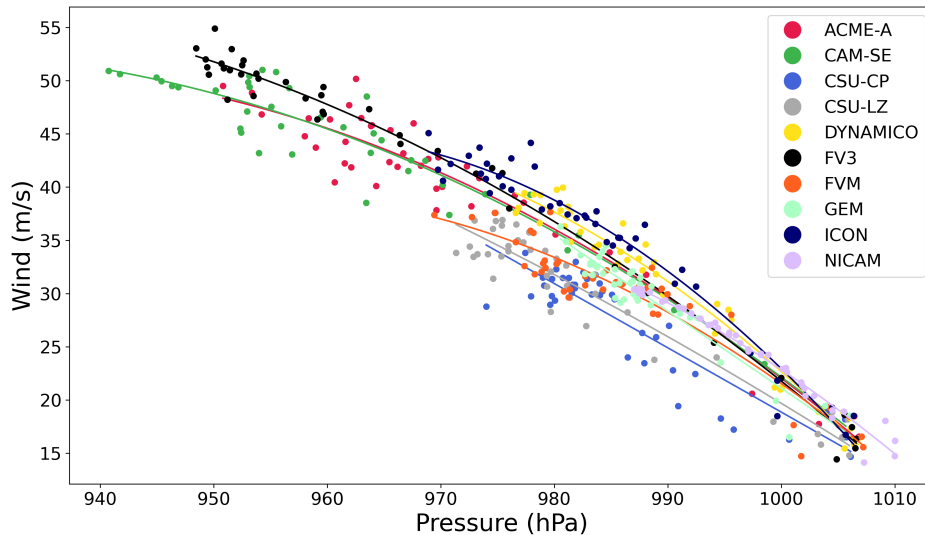


Figure 2. Wind-pressure relationship in the simulated TC at all time steps for the 50 km grid spacing. MWS and MSP from Figure 1 were used in this calculation. Second-order polynomial functions are fit using a least squares method.

3.2 Wind-Pressure Relationship

Figure 2 displays the MWS against the MSP at all time steps in the TC's evolution. ~~In all models, MWS increases as MSP decreases, and this increase is nonlinear in most cases, especially at high intensities. As in the analysis of the evolution of MSP and MWS, there are groupings of the models that display similar wind-pressure relationships, and these groupings generally~~
 340 ~~map to groupings seen in Figure 1.~~ The wind-pressure relationships of all the models were physically possible, since the MSP and MWS were within the observed ranges of these variables. These ranges are seen in plots of observational data in Knaff and Zehr (2007) and Reed et al. (2015), which show MSP has an approximate range of 870-1015 hPa and MWS has an approximate range of 8-85 ms^{-1} . ~~The models with the largest MWS values and the smallest MSP values in Figure 1 tended to have the largest range.~~
 345 ~~In all models, MWS increases as MSP decreases, and this increase is generally nonlinear, especially at high intensities. As in the analysis of the evolution of MSP and MWS since all models initially start at the same surface pressure and wind speed, there are groupings of the models that display similar wind-pressure relationships, and these groupings tend to map to groupings seen in Figure 1.~~

ACME-A, CAM-SE, and FV³ all ~~display these characteristics. They have relatively low numbers of occurrences in the areas of large MSP and small MWS, indicating again have few points at low intensities, indicating~~ how they quickly intensify in the
 350 first 1-2 days of the simulation. ~~This intensification occurs with low variability, the range of MWS seen at a particular MSP. The majority of points occur in areas high intensity fluctuation of points around the fitting curve, but high intensity points tend to vary more.~~ The next group of models, DYNAMICO, FVM, and ICON, ~~comprise contain~~ members that were part of both the high intensity and low intensity model groups in Figure 1. The wind-pressure relationships of these models are similarly non-

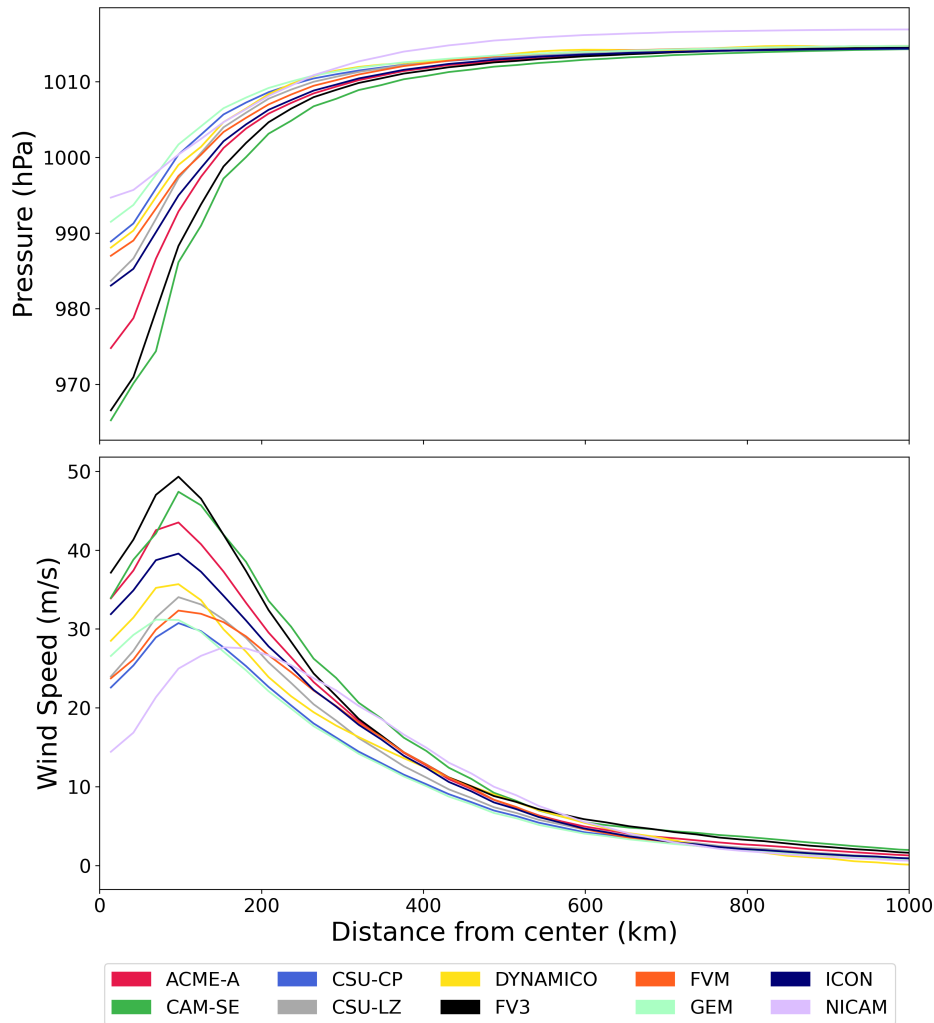


Figure 3. Radial profiles of 1 km wind and surface pressure averaged from days 4-10 of the 50 km simulation. Values in the radial profiles are azimuthally averaged.

linear with most of the points also occurring in the high intensity region. In this case, the variance among the points variability is more evenly distributed among the entire range. The final group of models, CSU-CP, CSU-LZ, GEM, and NICAM, are the models that tended to have the lowest intensities and be the most linear most linear wind-pressure relationships, in part due to relatively weak intensities. NICAM has very little variability except in areas of low intensities, which was expected based on the smoothness of the evolution curves in Figure 1.

3.3 Horizontal and Vertical TC Structure

360 The horizontal ~~and vertical~~ structure of the simulated TCs ~~are is~~ analyzed using radial profiles of 1 km wind speed and surface pressure (Figure 3) ~~and radial wind composites (Figure 4), all,~~ both of which were azimuthally averaged. The wind speed ~~rapidly increases~~ quickly increases with increasing radius until it reaches its maximum value of 25-50 ms^{-1} depending on the model. For all models except GEM and NICAM, this maximum occurs at an approximate radius of 100 km. The maximum wind speed for GEM occurs slightly closer to the TC center while NICAM's maximum wind speed occurs at a radius of
365 approximately 200 km. After the radius of maximum wind speed the wind speed decreases exponentially in all models, slowly approaching 0 ms^{-1} at large radii. All models have wind speeds below 10 ms^{-1} at radii greater than 600 km, ~~and behavior~~ likely linked to the identical physical environment TCs are initialized in. The results shown here are similar to theoretical and observed azimuthally averaged surface wind radial profiles given in Chavas and Lin (2015) and Chavas et al. (2017). While the observed radial profiles in Chavas and Lin (2015) tend to have smaller radii of maximum ~~winds~~ wind speeds, the general
370 structure of the radial profile is in agreement.

~~In all models, the MSP value occurs at the storm center, as expected, and ranges~~ MSP values range from approximately 965 hPa to 995 hPa. The most intense models ~~with the lowest minimum pressures are are again~~ ACME-A, CAM-SE, and FV³ which have minimums in the 965-975 hPa range, while all other models have minimums in the 985-995 hPa range. The pressure values in all models then rapidly increase until an approximate radius of 200 km, after which they ~~continue to increase~~
375 ~~at a slower rate until around a 400 km radius. This is a likely reason for the radius of maximum wind being under 200 km in almost all cases. At greater radii, the pressures~~ remain relatively constant and approach the ~~prescribed~~ background surface pressure value of ~~1013-1015~~ hPa consistent with Section 2.1.1 and the initialized environment. This behavior occurs in all models except NICAM, which plateaus at a pressure ~~slightly above 1013~~ above 1015 hPa, possibly due to an initialization error. The radial surface pressure profiles in Chavas et al. (2017) have ~~very similar general radial structure for more realistic~~
380 similar radial structure, indicating that the intermediate complexity simulations produce behavior seen in more complex GCM simulations.

The ~~simulated TCs all have similar vertical composites~~ 2D structure of the TC is analyzed using azimuthally averaged radial wind composites (Figure 4). Starting from the TC center, the azimuthally averaged wind speeds ~~are very low (as expected) and then quickly increase with~~ quickly increases with increasing radius. The region of most intense TC winds is ~~usually generally~~
385 centered around a 100 km radius ~~where they tend to reach,~~ reaches a maximum altitude of ~~around 5-10 km, depending on the model, and a maximum width in the radial direction~~ and has a maximum radial width of 100-200 km. There are some exceptions to this as NICAM's wind field has a flat top and no significant peak while FV³ has a maximum altitude above 10 km. The most intense winds occur in ACME-A, CAM-SE, FV³ and to a lesser extent ICON, where wind speeds are greater than 40 ms^{-1} compared to 30-35 ms^{-1} for the ~~other remaining~~ models. Similar results are seen in more ~~comprehensive complex~~
390 GCM simulations analyzed in Moon et al. (2020), where the wind fields of simulated TCs in GCMs have similar ~~structure,~~ specifically with respect to the 2D shape of the most intense structure in their most intense winds.

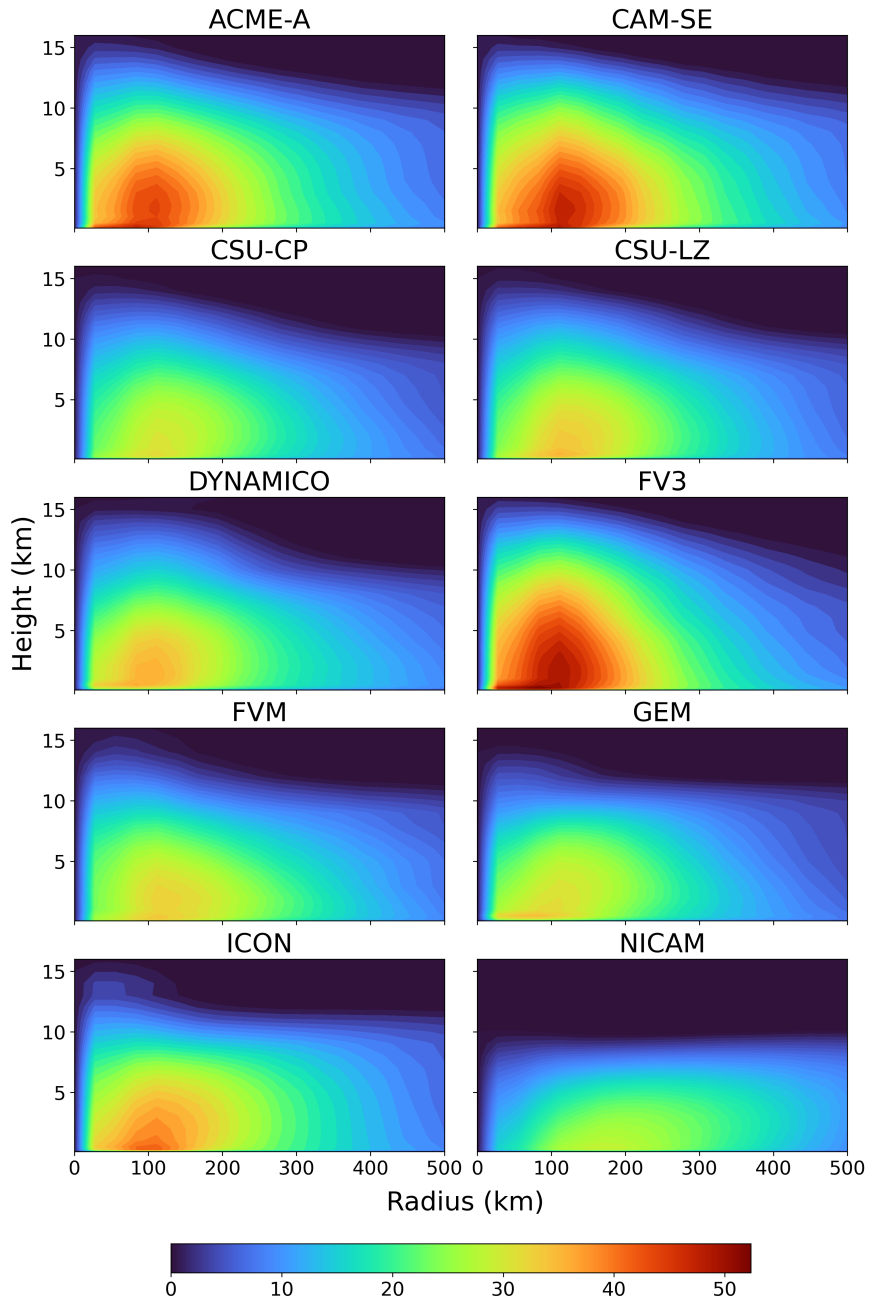


Figure 4. Azimuthally averaged vertical wind composite of the simulated TC from days 4-10 of the 50 km simulation.

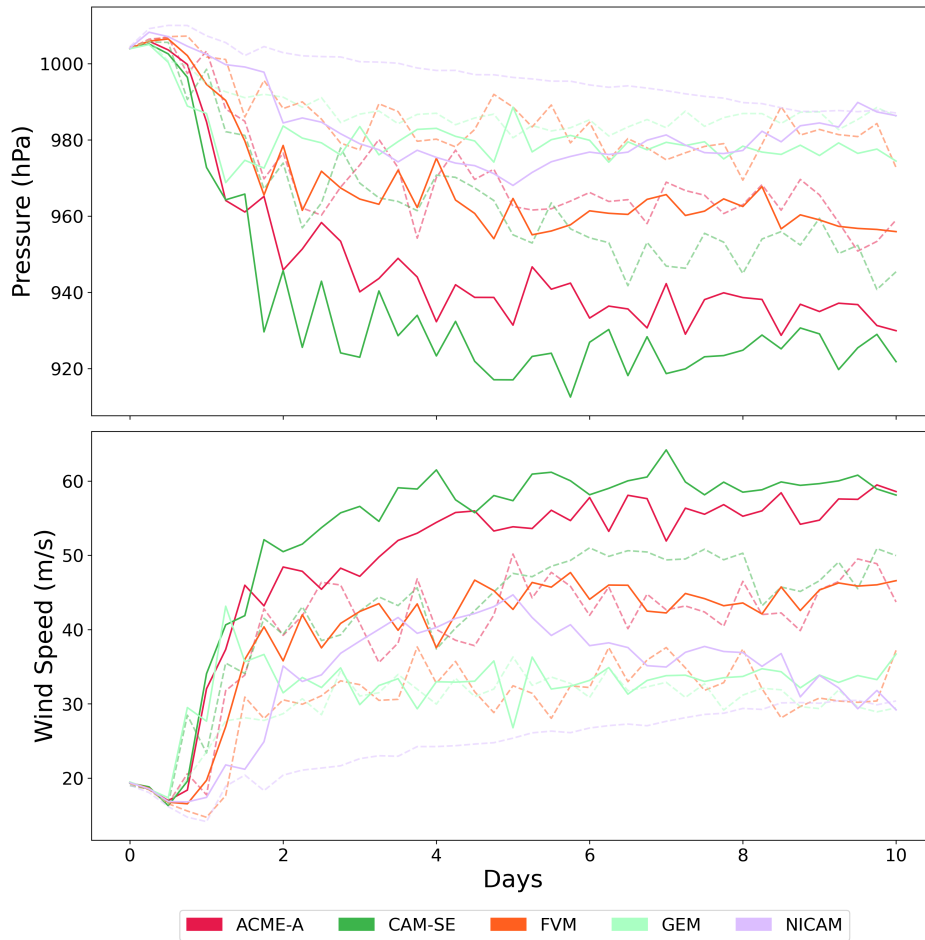


Figure 5. Evolution of MSP and MWS over the 10 day simulation period. 50 km (dashed line) and 25 km (solid line) grid spacing are shown for participating models.

Based on the structural properties of the wind composites, the models can be placed into similar groupings seen in Figures 1, 2, and 3. The most intense models are again ACME-A, CAM-SE, and FV³. DYNAMICO and ICON have regions of strong winds; however, they did not form at the same altitude, width, shape, or intensity as the previous three models. CSU-CP, CSU-LZ, FVM, and GEM only show small signs of intense wind formation, and are largely unable to simulate winds above 35 ms^{-1} in the wind composite. In some cases, the structures present in the intense models are replicated at a weaker scale. Overall, the general structure of the wind composites is similar, with the exception NICAM, indicating that even with the differences, a variety of GCM dynamical cores produce a TC with consistent characteristics.

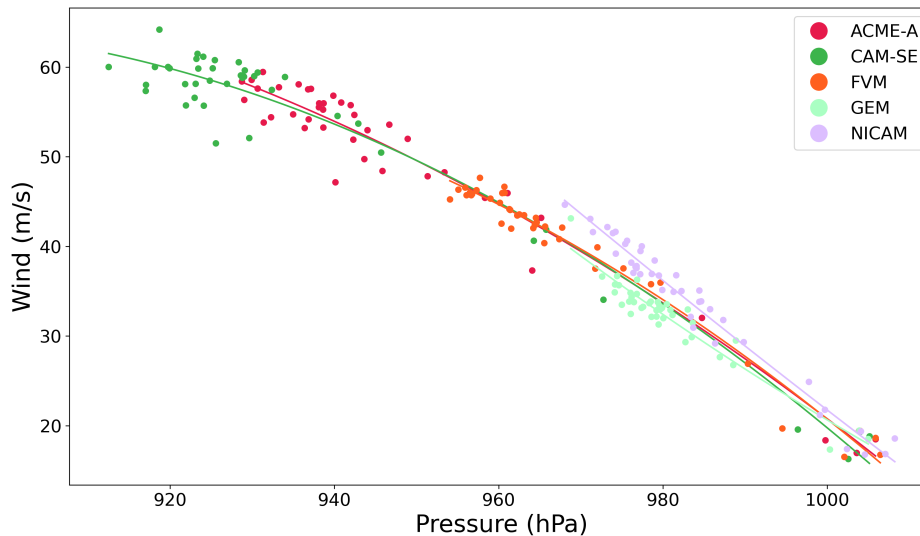


Figure 6. Wind-pressure relationship in the simulated TC at all time steps for 25 km simulations of participating models.

3.4 Impact of Finer Grid Spacing

400 The previous analysis is now repeated at 25 km grid spacing for participating models (Table 5) ~~that submitted a 25 km horizontal~~
~~grid spacing simulation. This analysis allows us to document how grid spacing impacts the behavior of an idealized TC in an~~
~~intermediate complexity environment across GCMs.~~ The time evolution of MSP and MWS is first examined ~~;~~ and results
are seen in ~~figure~~ Figure 5. For both MWS and MSP, the evolution largely resembles the coarser grid spacing case from ~~1~~
~~with~~ Figure 1. There is a period of rapid significant intensification in the first 4 days followed by ~~an approximate steady~~
405 ~~state region~~ a steady state time period. In almost all cases, the 25 km simulations are more intense than their 50 km coun-
terparts, and the most intense models in the 50 km simulation are also the most intense in the 25 km simulation. ACME-A
and CAM-SE are the most intense models in both grid ~~spacing~~ spacings, with their MWS increasing from 40-50 ms^{-1} to
50-60 ms^{-1} and their MSP decreasing from approximately 950-970 hPa to 920-940 hPa with ~~decreased~~ the change to 25
km grid spacing. An increase in TC intensity in the CAM model with finer grid spacing is shown in several studies includ-
410 ing ~~Reed and Jablonowski (2011a, e); Reed et al. (2012).~~ This increase in intensity can be ~~Reed and Jablonowski (2011a, c)~~
and Reed et al. (2012), likely related to implicit and explicit diffusion ~~being weaker at finer grid spacing becoming weaker~~
(Jablonowski and Williamson, 2011). FVM and GEM are again models with intermediate intensity, and FVM tends to have
a larger increase in intensity than GEM by approximately 10-5 ms^{-1} for MWS and 20-15 hPa for MSP ~~compared to under 5~~
 ~~ms^{-1} and around 5 hPa for GEM.~~ NICAM is unique in this analysis because of its substantial increase in intensity, upwards of
415 15 ms^{-1} for MWS and 30 hPa for MSP, but these large changes only occurred during days 2-8 of the simulation.

The wind-pressure relationships (Figure 6) have a larger MSP and MWS range for all models, which was expected ~~since~~
~~Figure 5 demonstrated higher~~ due to larger intensities at 25 km grid spacing. As in the 50 km simulations, most of these

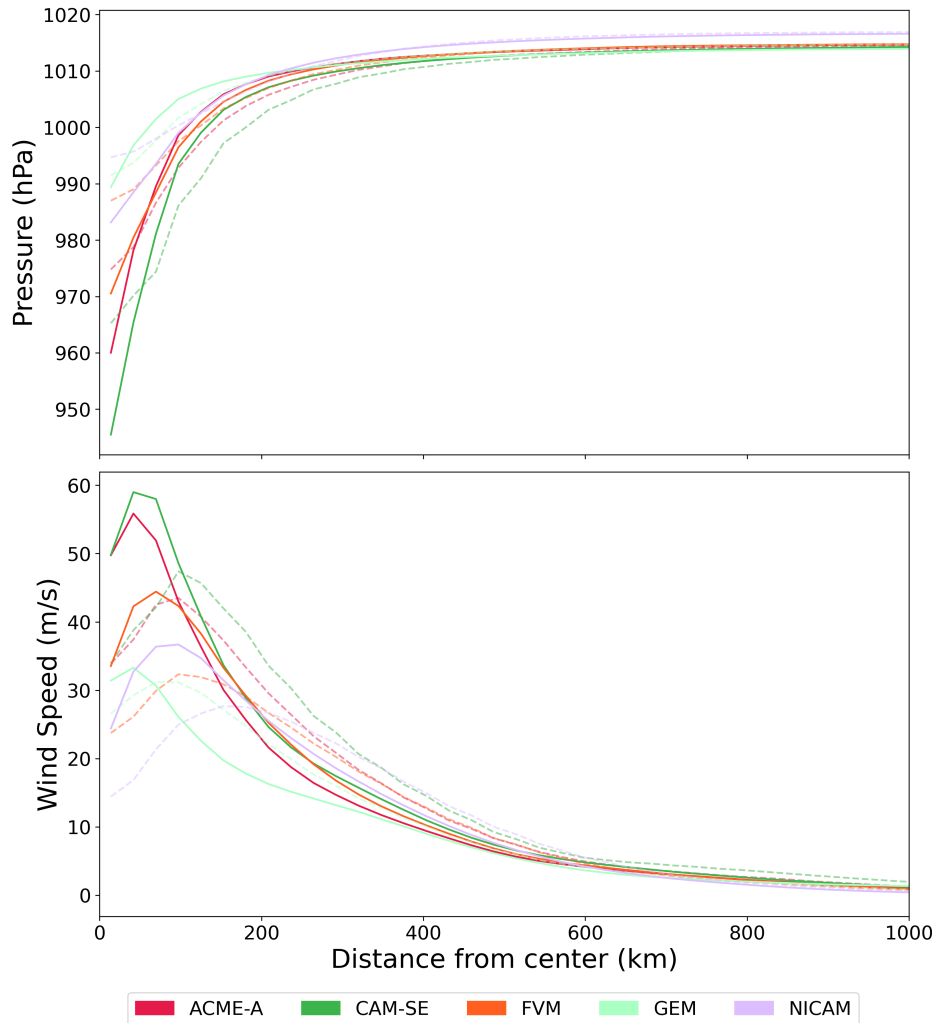


Figure 7. Radial 1 km wind and surface pressure profiles averaged from days 4-10 of the simulation. Values in the radial profiles are azimuthally averaged. 50 km (dashed line) and 25 km (solid line) values are shown for participating models.

relationships are non-linear since the rate of increase in MWS tends to decrease at lower MSP. Additionally, a majority of the points occur at the high intensity region as before due to the longer period of the simulation spent by the TC at high intensity. The MSP and MWS values seen in this analysis are within observed ranges for TCs, reaching up to category 4 on the Saffir-Simpson scale.

Radial profiles of 1 km wind speed and surface pressure (Figure 7) are used to determine how TC horizontal structure changes at finer grid spacing. Again as in the coarser grid spacing simulations, the wind speed increases rapidly with radius until it reaches a maximum, and subsequently decreases exponentially and reaches an asymptotic value of 0 ms^{-1} , as in the coarser grid spacing simulations. At finer grid spacing, this maximum wind speed value occurs at a smaller radius, approximately 50

km compared to 100 km, and has a larger magnitude. All models significantly increase in intensity, often by 10 ms^{-1} or greater, in the core region.

Surface pressure radial profiles at finer grid spacing also have similarities to those at coarser grid spacing. In both cases, the minimum surface pressure values at the center rapidly increase at relatively small radii, and the rate of increase eventually slows and surface pressure reaches the prescribed value (Section 2.1.1) at large radii. The minimum pressure values decrease in all models by 10-20 hPa. ~~The At 25 km, the~~ surface pressure profiles, similar to the wind profiles, are more compact. ~~The 25 km simulations tend to have a more rapid increase that slows since they tend to plateau~~ at a smaller radius ~~than the 50 km simulations~~, consistent with the larger magnitude and smaller radius of maximum winds. Results converge at radii greater than 400 km for all models.

As with the previous quantities, grid spacing has an impact on the wind ~~vertical composites, which are shown in figure 8~~ composites (Figure 8). The overall 2D structure of the 25 km TCs remains similar to that of the 50 km TCs, but there are key differences. As before, there is a narrow region of weak winds by the TC center at all heights followed by a stronger wind field that extends to a radius of approximately 300 km and a height at or above 10 km. In ~~the models that produce the most intense TCs (ACME-A and CAM-SE), the most intense models~~, there is a region of intense winds that is more compact ~~in the at~~ 25 km simulations grid spacing, extending to around a 100 km radius ~~(versus compared to a 200 km radius in the 50 km simulations), and with. This region contains~~ stronger winds that are routinely greater than 50 ms^{-1} . This ~~compaction decrease~~ in the radius of maximum winds is seen in the remaining models as there is a 50-100 km decrease in GEM, FVM, and NICAM. ~~GEM, in particular, In particular, GEM~~ becomes much more compact, especially at altitudes greater than 5 km, and has a profile with a different ~~shape overall. This phenomenon also occurs in Moon et al. (2020) when GCM horizontal grid spacing was reduced in more comprehensive GCM simulations overall shape. Wind composites also become more compact at finer grid spacing in the more complex GCM simulations analyzed in Moon et al. (2020).~~

4 Conclusions

The RJ TC test case results demonstrate that ~~simulations solutions~~ vary between DCMIP2016 models with different dynamical cores ~~initialized in the same physical environment at the same horizontal grid spacing and identical simple physics~~ parameterization packages and physical environments, building on the work of Reed and Jablonowski (2012). ~~All participating models produce relatively consistent results; however, there are important differences in the evolution of~~ Most participating GCMs produce a TC with similar MWS and MSP, the evolution, wind-pressure relationship, radial profiles of wind and pressure, and wind composites ~~of the TCs; however, there were important differences between them.~~ Certain models ~~tend to be were~~ more intense overall, and that is reflected in their MWS, MSP, and horizontal and vertical structure. These intensity differences are likely tied to the *effective resolution* of the dynamical core, which is the shortest wavelength which is accurately simulated in the model (Kent et al., 2014). ~~More intense models also show unique characteristics in their wind composites, such as regions of intense wind speeds not seen in the other models~~ GCMs also have relatively large intensity spread, possibly due to thermodynamic structures (Moon et al., 2020) or dynamical core choice (Reed et al., 2015). Similarly, numerical weather

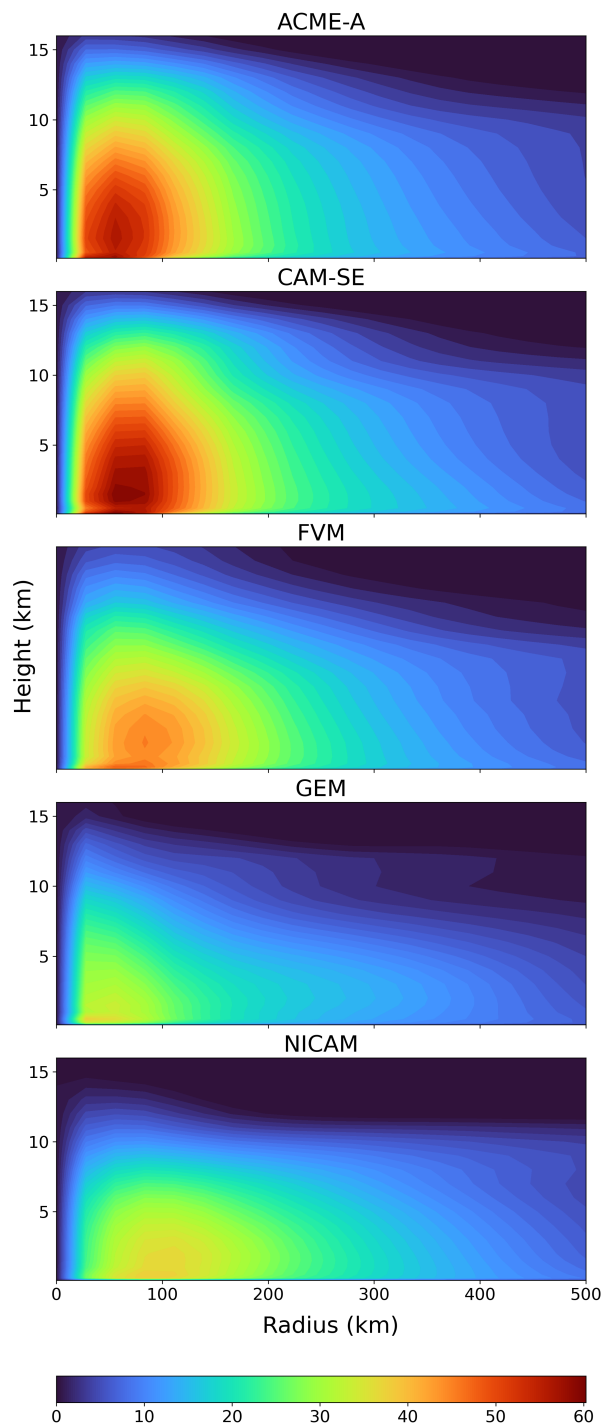


Figure 8. Azimuthally ~~average-averaged~~ vertical wind composite of the simulated TC from days 4-10 of the 25 km simulation.

prediction (NWP) models have large TC intensity root-mean-square errors, often on the order of $2.5\text{--}8\text{ m s}^{-1}$ depending on lead time (Zhang et al., 2023), although they are smaller in magnitude than the intensity spread seen in this study. Additionally, the physics-dynamics coupling is a further source of uncertainty in this test case (Gross et al., 2018). TC behavior among participating models also changes when the horizontal grid spacing becomes finer. TCs simulated at 25 km grid spacing tended to be noticeably more intense and compact than those simulated at 50 km grid spacing. Models that produced the most intense TCs at 50 km also ~~produce~~ produced the most intense TCs at 25 km, indicating that some differences between the models are were preserved at finer grid spacing. In the intercomparison, NICAM was an outlier, possibly due to an initialization error.

It is evident that the dynamical core has an essential role in determining the resulting TC behavior in GCMs. While the impact of the dynamical core has been investigated thoroughly in studies of one or two models, the intercomparison of a larger group of models illustrates this role and related sensitivity to horizontal grid spacing. The dynamical core choice should be carefully considered in the GCM development process, and more work can be done to better quantify its effects when all other parameters are held constant. The goal of this study was to present a general intercomparison of TC behavior among a grouping of models that differed in dynamical core. In doing so, this work provides a library of solutions that can serve as a benchmark for modeling groups to compare against during the model development process, similar to other non-TC focused intercomparison efforts (e.g. Blackburn et al., 2013; Zarzycki et al., 2019). This is especially important since the RJ TC test case and other DCMIP2016 test cases are widely used in the community and some test cases are readily available in CESM. Future work could examine differences between specific dynamical core characteristics and how those differences impact TC simulation in intermediate complexity simulations.

Code and data availability. Information on the availability of source code for the models featured in this paper can be found in Ullrich et al. (2017). For this particular test, the initialization routine, microphysics code, and sample plotting scripts are available at <https://doi.org/10.5281/zenodo.1298671> (Ullrich et al., 2018). Data used in this study are available at <https://doi.org/10.5061/dryad.ftdz08z5>.

Author contributions. JLW and KAR prepared the text and corresponding figures in this paper. KAR, CJ, JK, PHL, RN, PAU and CMZ led the DCMIP2016 workshop. Data and notations about model-specific configurations were provided by all co-authors representing their modeling groups.

Competing interests. The authors declare that they have no conflict of interest.

Acknowledgements. DCMIP2016 is sponsored by the National Center for Atmospheric Research Computational Information Systems Laboratory, the Department of Energy Office of Science (award no. DE-SC0016015), the National Science Foundation (award no. 1629819), the National Aeronautics and Space Administration (award no. NNX16AK51G), the National Oceanic and Atmospheric Administration Great

Lakes Environmental Research Laboratory (award no. NA12OAR4320071), the Office of Naval Research and CU Boulder Research Computing. This work was made possible with support from our student and postdoctoral participants: Sabina Abba Omar, Scott Bachman, Amanda Back, Tobias Bauer, Vinicius Capistrano, Spencer Clark, Ross Dixon, Christopher Eldred, Robert Fajber, Jared Ferguson, Emily
490 Foshee, Ariane Frassoni, Alexander Goldstein, Jorge Guerra, Chasity Henson, Adam Herrington, Tsung-Lin Hsieh, Dave Lee, Theodore Letcher, Weiwei Li, Laura Mazzaro, Maximo Menchaca, Jonathan Meyer, Farshid Nazari, John O'Brien, Bjarke Tobias Olsen, Hossein Parishani, Charles Pelletier, Thomas Rackow, Kabir Rasouli, Cameron Rencurrel, Koichi Sakaguchi, Gökhan Sever, James Shaw, Konrad Simon, Abhishekh Srivastava, Nicholas Szapiro, Kazushi Takemura, Pushp Raj Tiwari, Chii-Yun Tsai, Richard Urata, Karin van der Wiel, Lei Wang, Eric Wolf, Zheng Wu, Haiyang Yu, Sungduk Yu and Jiawei Zhuang. We would also like to thank Rich Loft, Cecilia Banner,
495 Kathryn Peczkowicz and Rory Kelly (NCAR), Perla Dinger, Carmen Ho, and Gina Skyberg (UC Davis) and Kristi Hansen (University of Michigan) for administrative support during the workshop and summer school.

References

- CESM Simpler Models, <https://www.cesm.ucar.edu/models/simple>.
- Blackburn, M., Williamson, D. L., Nakajima, K., Ohfuchi, W., Takahashi, Y. O., Hayashi, Y.-Y., Nakamura, H., Ishiwatari, M., McGregor, J. L., Borth, H., et al.: The aqua-planet experiment (APE): Control SST simulation, *Journal of the Meteorological Society of Japan*. Ser. II, 91, 17–56, 2013.
- Charney, J. G. and Phillips, N. A.: Numerical integration of the quasigeostrophic equations for barotropic and simple baroclinic flows, *Journal of Meteorology*, 10, 71–99, 1953.
- Chavas, D. R. and Lin, N.: A Model for the Complete Radial Structure of the Tropical Cyclone Wind Field. Part I: Comparison with Observed Structure, *Journal of the Atmospheric Sciences*, 72, 3647–3662, <https://doi.org/10.1175/JAS-D-15-0014.1>, 2015.
- Chavas, D. R., Reed, K. A., and Knaff, J. A.: Physical understanding of the tropical cyclone wind-pressure relationship, *Nature Communications*, 8, 1–11, <https://doi.org/10.1038/s41467-017-01546-9>, 2017.
- Emanuel, K.: Tropical Cyclones, *Annu. Rev. Earth Planet. Sci.*, 31, 75–104, <https://doi.org/10.1146/annurev.earth.31.100901.141259>, 2003.
- Gross, M., Wan, H., Rasch, P. J., Caldwell, P. M., Williamson, D. L., Klocke, D., Jablonowski, C., Thatcher, D. R., Wood, N., Cullen, M., Beare, B., Willett, M., Lemarie, F., Blayo, E., Malardel, S., Termonia, P., Gassmann, A., Lauritzen, P. H., Johansen, H., Zarzycki, C. M., Sakaguchi, K., and Leung, R.: Physics–Dynamics Coupling in Weather, Climate, and Earth System Models: Challenges and Recent Progress, *Monthly Weather Review*, 146, 3505–3544, <https://doi.org/https://doi.org/10.1175/MWR-D-17-0345.1>, 2018.
- He, F. and Posselt, D. J.: Impact of Parameterized Physical Processes on Simulated Tropical Cyclone Characteristics in the Community Atmosphere Model, *Journal of Climate*, 28, 9857–9872, <https://doi.org/10.1175/JCLI-D-15-0255.1>, 2015.
- He, F., Posselt, D. J., Narisetty, N. N., Zarzycki, C. M., and Nair, V. N.: Application of Multivariate Sensitivity Analysis Techniques to AGCM-Simulated Tropical Cyclones, *Monthly Weather Review*, 146, 2065–2088, <https://doi.org/10.1175/MWR-D-17-0265.1>, 2018.
- Jablonowski, C. and Williamson, D. L.: The pros and cons of diffusion, filters and fixers in atmospheric general circulation models, *Numerical Techniques for Global Atmospheric Models*, pp. 381–493, 2011.
- Jablonowski, C., Lauritzen, P. H., Taylor, M. A., , and Nair, R. D.: Idealized test cases for the dynamical cores of atmospheric general circulation models: a proposal for the NCAR ASP 2008 summer colloquium, *Tech. rep.*, 2008.
- Jordan, C. L.: Mean soundings for the West Indies area, *Journal of Meteorology*, 15, 91–97, 1958.
- Kent, J., Whitehead, J. P., Jablonowski, C., and Rood, R. B.: Determining the effective resolution of advection schemes. Part I: Dispersion analysis, *Journal of Computational Physics*, 278, 485–496, 2014.
- Knaff, J. A. and Zehr, R. M.: Reexamination of Tropical Cyclone Wind-Pressure Relationships, *Weather and Forecasting*, 22, 71–88, <https://doi.org/10.1175/WAF965.1>, 2007.
- Knutson, T., Camargo, S. J., Chan, J. C. L., Emanuel, K., Ho, C. H., Kossin, J., Mohapatra, M., Satoh, M., Sugi, M., Walsh, K., and Wu, L.: Tropical Cyclones and Climate Change Assessment: Part I: Detection and Attribution, *Bulletin of the American Meteorological Society*, 100, 1987–2017, <https://doi.org/10.1175/BAMS-D-18-0189.1>, 2019.
- Knutson, T., Camargo, S. J., Chan, J. C. L., Emanuel, K., Ho, C. H., Kossin, J., Mohapatra, M., Satoh, M., Sugi, M., Walsh, K., and Wu, L.: Tropical Cyclones and Climate Change Assessment: Part II: Projected Response to Anthropogenic Warming, *Bulletin of the American Meteorological Society*, 101, E303–E322, <https://doi.org/10.1175/BAMS-D-18-0194.2>, 2020.
- Kossin, J. P.: Hurricane Wind–Pressure Relationship and Eyewall Replacement Cycles, *Weather and Forecasting*, 30, 177–181, <https://doi.org/10.1175/WAF-D-14-00121.1>, 2015.

- Li, X., Peng, X., and Zhang, Y.: Investigation of the effect of the time step on the physics–dynamics interaction in CAM5 using an idealized
535 tropical cyclone experiment, *Climate Dynamics*, 55, 665–680, <https://doi.org/10.1007/s00382-020-05284-5>, 2020.
- Liu, W., Ullrich, P., Guba, O., Caldwell, P., and Keen, N.: An assessment of nonhydrostatic and hydrostatic dynamical cores at seasonal time
scales in the Energy Exascale Earth System Model (E3SM), *Journal of Advances in Modeling Earth Systems*, 14, e2021MS002 805, 2022.
- Lorenz, E. N.: Energy and numerical weather prediction, *Tellus*, 12, 365–373, 1960.
- Moon, Y., Kim, D., Camargo, S. J., Wing, A., Sobel, A., Murakami, H., Reed, K. A., Scoccimarro, E., Vecchi, G. A., Wehner, M. F., Zarzycki,
540 C. M., and Zhao, M.: Azimuthally Averaged Wind and Thermodynamic Structures of Tropical Cyclones in Global Climate Models and
Their Sensitivity to Horizontal Resolution, *Journal of Climate*, 33, 1575–1595, <https://doi.org/10.1175/JCLI-D-19-0172.1>, 2020.
- Nair, R. D. and Jablonowski, C.: Moving vortices on the sphere: A test case for horizontal advection problems, *Monthly Weather Review*,
136, 699–711, 2008.
- Reed, K. A. and Jablonowski, C.: An Analytic Vortex Initialization Technique for Idealized Tropical Cyclone Studies in AGCMs, *Monthly*
545 *Weather Review*, 131, 689–710, <https://doi.org/10.1175/2010MWR3488.1>, 2011a.
- Reed, K. A. and Jablonowski, C.: Impact of physical parameterizations on idealized tropical cyclones in the Community Atmosphere Model,
Geophysical Research Letters, 38, 1–5, <https://doi.org/10.1029/2010GL046297>, 2011b.
- Reed, K. A. and Jablonowski, C.: Assessing the Uncertainty in Tropical Cyclone Simulations in NCAR’s Community Atmosphere Model, *J.*
Adv. Model. Earth Syst, 3, 1–16, <https://doi.org/10.1029/2011MS000076>, 2011c.
- 550 Reed, K. A. and Jablonowski, C.: Idealized tropical cyclone simulations of intermediate complexity: A test case for AGCMs, *J. Adv. Model.*
Earth Syst, 4, 1–25, <https://doi.org/10.1029/2011MS000099>, 2012.
- Reed, K. A., Jablonowski, C., and Taylor, M. A.: Tropical cyclones in the spectral element configuration of the Community Atmosphere
Model, *Atmospheric Science Letters*, 4, 303–310, <https://doi.org/10.1002/asl.399>, 2012.
- Reed, K. A., Bacmeister, J. T., Rosenbloom, N. A., Wehner, M. F., Bates, S. C., Lauritzen, P. H., Truesdale, J. E., and Hannay, C.: Impact
555 of the dynamical core on the direct simulation of tropical cyclones in a high-resolution global model, *Geophysical Research Letters*, 42,
3603–3608, <https://doi.org/10.1002/2015GL063974>, 2015.
- Roberts, M. J., Camp, J., Seddon, J., Vidale, P. L., Hodges, K., Vanniere, B., Mecking, J., Haarsma, R., Bellucci, A., Scoccimarro, E., Caron,
L. P., Chauvin, F., Terray, L., Valcke, S., Moine, M. P., Putrasahan, D., Roberts, C., Senan, R., Zarzycki, C., and Ullrich, P.: Impact of
Model Resolution on Tropical Cyclone Simulation Using the HighResMIP–PRIMAVERA Multimodel Ensemble, *Journal of Climate*, 33,
560 2257–2583, <https://doi.org/10.1175/JCLI-D-19-0639.1>, 2020.
- Stansfield, A. M., Reed, K. A., Zarzycki, C. M., Ullrich, P. A., and Chavas, D. R.: Assessing Tropical Cyclones’ Contribution to Precipitation
over the Eastern United States and Sensitivity to the Variable-Resolution Domain Extent, *Journal of Hydrometeorology*, 21, 1425–1445,
<https://doi.org/10.1175/JHM-D-19-0240.1>, 2020.
- Ullrich, P., Lauritzen, P. H., Reed, K., Jablonowski, C., Zarzycki, C., Kent, J., Nair, R., and Verlet-Banide, A.: ClimateGlobalChange/D-
565 CMIP2016: v1.0, <https://doi.org/10.5281/zenodo.1298671>, 2018.
- Ullrich, P. A., Jablonowski, C., Kent, J., Lauritzen, P. H., Nair, R. D., and Taylor, M. A.: Dynamical core model intercomparison project
(DCMIP) test case document, Tech. rep., 2012.
- Ullrich, P. A., Jablonowski, C., Reed, K. A., Zarzycki, C., Lauritzen, P. H., Nair, R. D., Kent, J., and Verlet-Banide, A.: Dynamical Core
Model Intercomparison Project (DCMIP2016) Test Case Document, Tech. rep., 2016.
- 570 Ullrich, P. A., Jablonowski, C., Kent, J., Lauritzen, P. H., Nair, R., Reed, K. A., Zarzycki, C. M., Hall, D. M., Dazlich, D., Heikes, R., Konor,
C., Randall, D., Dubos, T., Meurdesoif, Y., Chen, X., Harris, L., Kühnlein, C., Lee, V., Qaddouri, A., Girard, C., Giorgetta, M., Reinert,

- D., Klemp, J., Park, S.-H., Skamarock, W., Miura, H., Ohno, T., Yoshida, R., Walko, R., Reinecke, A., and Viner, K.: DCMIP2016: a review of non-hydrostatic dynamical core design and intercomparison of participating models, *Geosci. Model Dev*, 10, 4477–4509, <https://doi.org/10.5194/gmd-10-4477-2017>, 2017.
- 575 Ullrich, P. A., Zarzycki, C. M., McClenny, E. E., Pinheiro, M. C., Stansfield, A. M., and Reed, K. A.: TempestExtremes v2.1: A community framework for feature detection, tracking and analysis in large datasets, *Geosci. Model. Dev*, 14, 5023–5048, <https://doi.org/10.5194/gmd-14-5023-2021>, 2021.
- Wehner, M. F., Reed, K. A., Li, F., Prabhat, Bacmeister, J., Chen, C.-T., Paciorek, C., Gleckler, P. J., Sperber, K. R., Collins, W. D., Gettelman, A., and Jablonowski, C.: The effect of horizontal resolution on simulation quality in the Community Atmospheric Model, CAM5.1, *J. Adv. Model. Earth Syst*, 6, 980–997, <https://doi.org/10.1002/2013MS000276>, 2014.
- 580 Zarzycki, C. M., Jablonowski, C., Kent, J., Lauritzen, P. H., Ramachandran Nair, R., Reed, K. A., Ullrich, P. A., Hall, D. M., Taylor, M. A., Dazlich, D., Heikes, R., Konor, C., Randall, D., Chen, X., Harris, L., Giorgetta, M., Reinert, D., Kühnlein, C., Walko, R., Lee, V., Qaddouri, A., Tanguay, M., Miura, H., Ohno, T., Yoshida, R., Park, S. H., Klemp, J. B., and Skamarock, W. C.: DCMIP2016: the splitting supercell test case, *Geosci. Model Dev*, 12, 879–892, <https://doi.org/10.5194/gmd-12-879-2019>, 2019.
- 585 Zhang, Z., Wang, W., Doyle, J. D., Moskaitis, J., Komaromi, W. A., Heming, J., Magnusson, L., Cangialosi, J. P., Cowan, L., Brennan, M., Ma, S., Das, A. K., Takuya, H., Clegg, P., Birchard, T., Knaff, J. A., Kaplan, J., Mohapatra, M., Sharma, M., Masaaki, I., Wu, L., and Blake, E.: A review of recent advances (2018–2021) on tropical cyclone intensity change from operational perspectives, part 1: Dynamical model guidance, *Tropical Cyclone Research and Review*, 12, 30–49, <https://doi.org/https://doi.org/10.1016/j.tcr.2023.05.004>, 2023.