

Supplementary figures

Observation-based sowing dates and cultivars significantly affect yield and irrigation for some crops in the Community Land Model (CLM5)

5 List of Figures

	S1	Sowing date bias: Corn, temperate	2
	S2	Sowing date bias: Corn, tropical	3
	S3	Sowing date bias: Cotton	4
	S4	Sowing date bias: Rice	5
10	S5	Sowing date bias: Soybean, temperate	6
	S6	Sowing date bias: Soybean, tropical	7
	S7	Sowing date bias: Sugarcane	8
	S8	Growing season length bias: CLM Default, all crops	9
	S9	Growing season length bias: Corn, temperate	10
15	S10	Growing season length bias: Corn, tropical	11
	S11	Growing season length bias: Cotton	12
	S12	Growing season length bias: Rice	13
	S13	Growing season length bias: Soybean, temperate	14
	S14	Growing season length bias: Soybean, tropical	15
20	S15	Growing season length bias: Sugarcane	16
	S16	Maturity requirements: Corn	17
	S17	Maturity requirements: Cotton	18
	S18	Maturity requirements: Rice	19
	S19	Maturity requirements: Soybean	20
25	S20	Maturity requirements: Sugarcane	21
	S21	Production difference: Corn, soybean, wheat	22
	S22	Country changes in production	23
	S23	Country changes in changing yield bias	24
	S24	Production bias: CLM Default relative to EarthStat	25
30	S25	Sowing dates: Rice	26
	S26	Irrigation demand changes: Decreasing and increasing crops	27
	S27	Irrigation demand changes: All crops	28

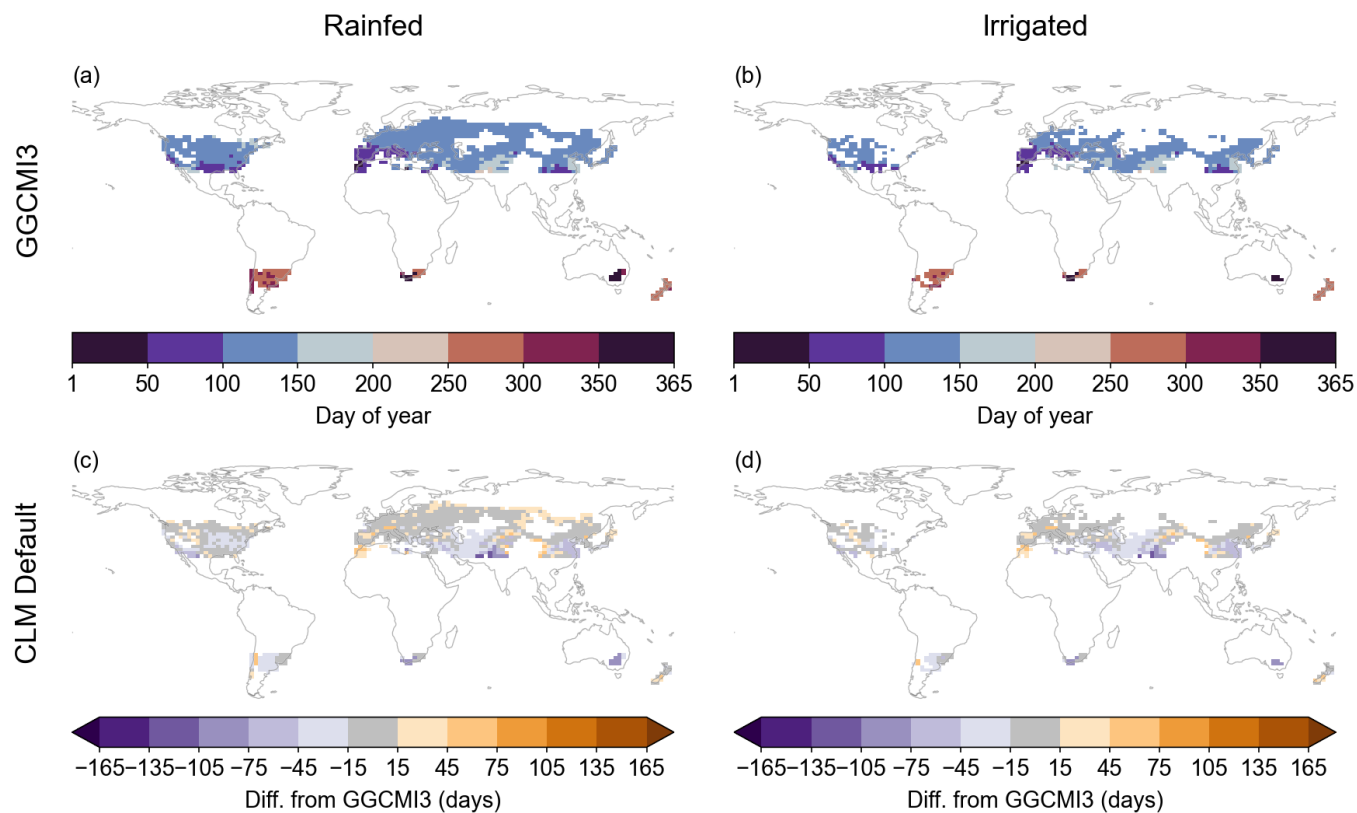


Figure S1. Sowing date for temperate corn in GGCM13 prescribed calendars (a–b); differences in mean 1980–2009 sowing date from prescribed value for CLM Default run (c–d). Prescribed Calendars dates match GGCM13 exactly and are thus not shown. Equivalent of Fig. 2 in main text (wheat).

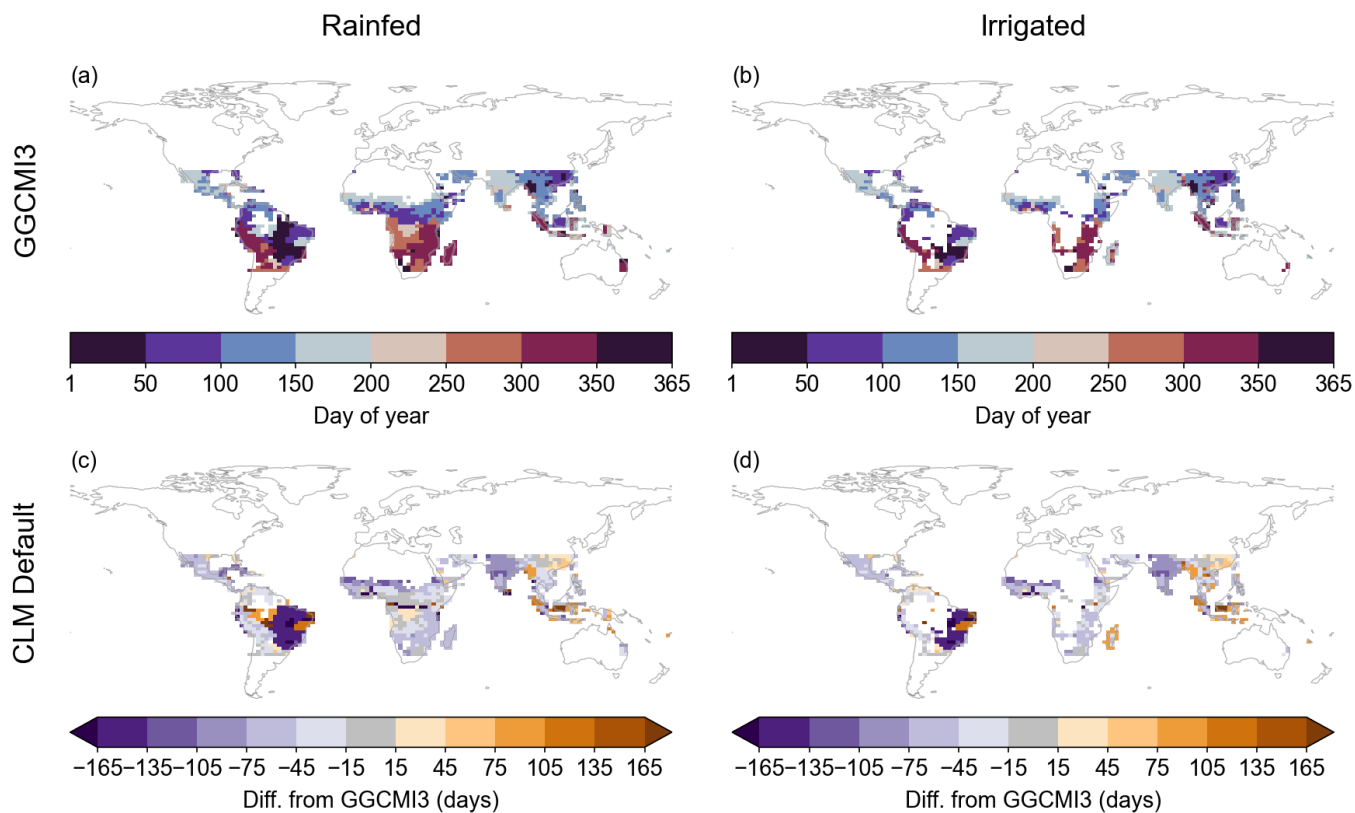


Figure S2. Sowing date for tropical corn in GGCM13 prescribed calendars (a–b); differences in mean 1980–2009 sowing date from prescribed value for CLM Default run (c–d). Prescribed Calendars dates match GGCM13 exactly and are thus not shown. Equivalent of Fig. 2 in main text (wheat).

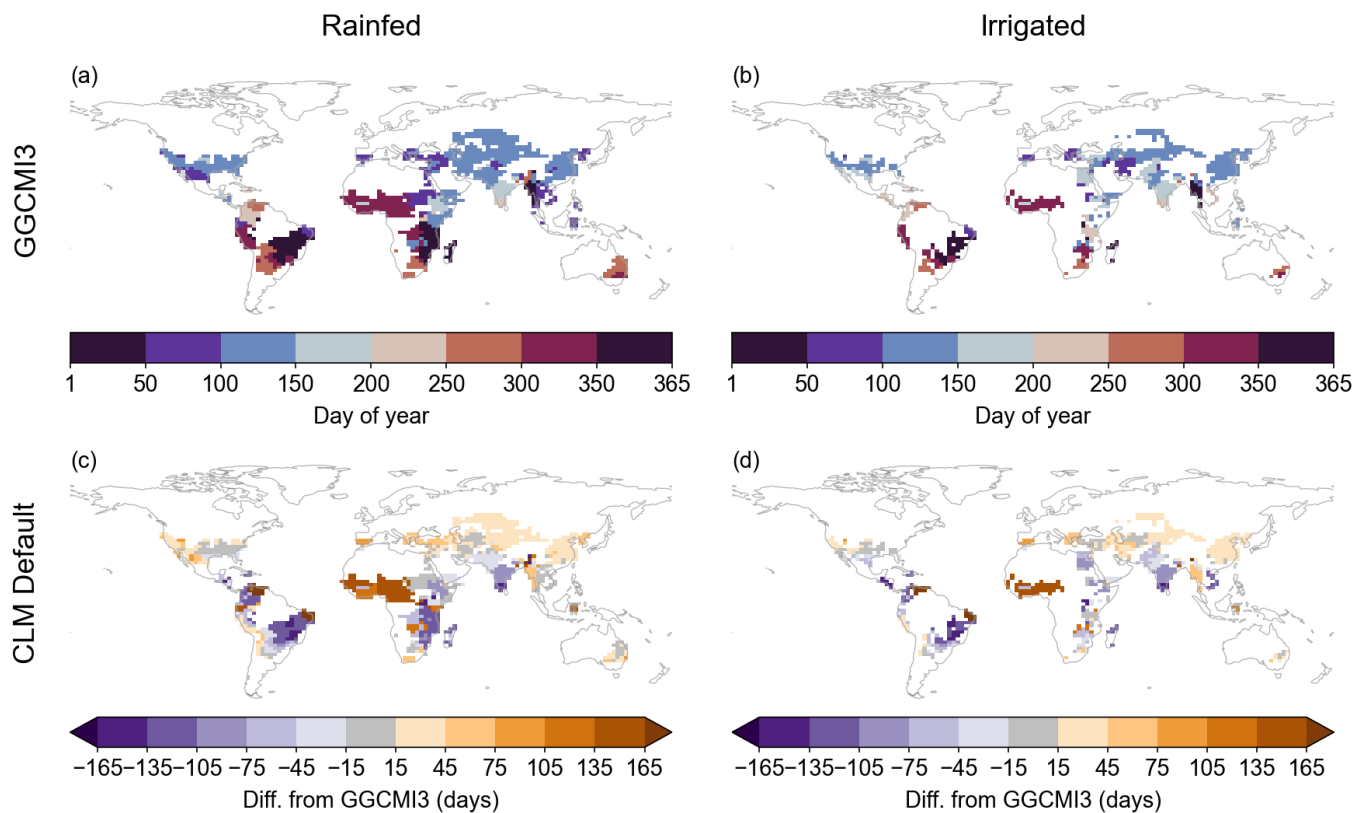


Figure S3. Sowing date for cotton in GGCM13 prescribed calendars (a–b); differences in mean 1980–2009 sowing date from prescribed value for CLM Default run (c–d). Prescribed Calendars dates match GGCM13 exactly and are thus not shown. Equivalent of Fig. 2 in main text (wheat).

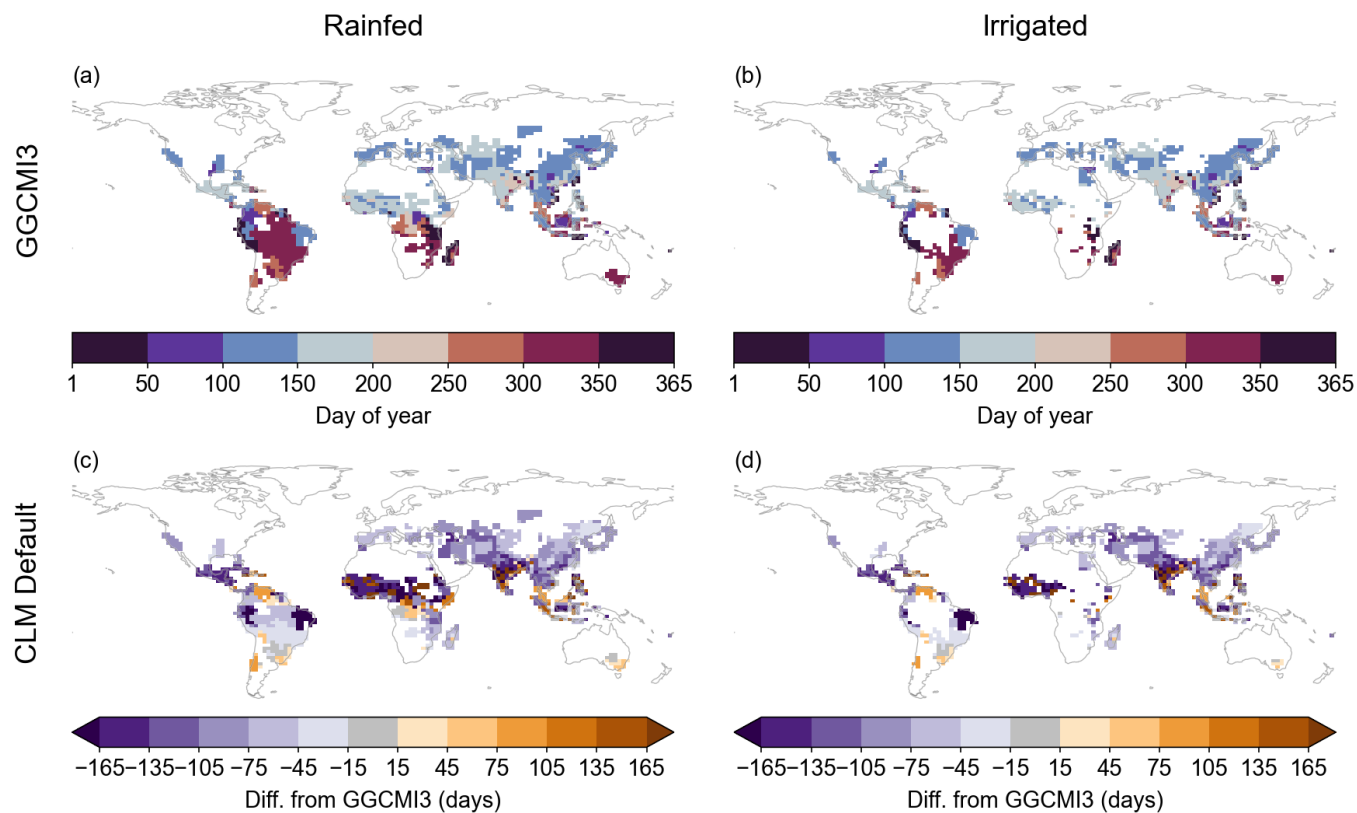


Figure S4. Sowing date for rice in GGCM13 prescribed calendars (a–b); differences in mean 1980–2009 sowing date from prescribed value for CLM Default run (c–d). Prescribed Calendars dates match GGCM13 exactly and are thus not shown. Equivalent of Fig. 2 in main text (wheat).

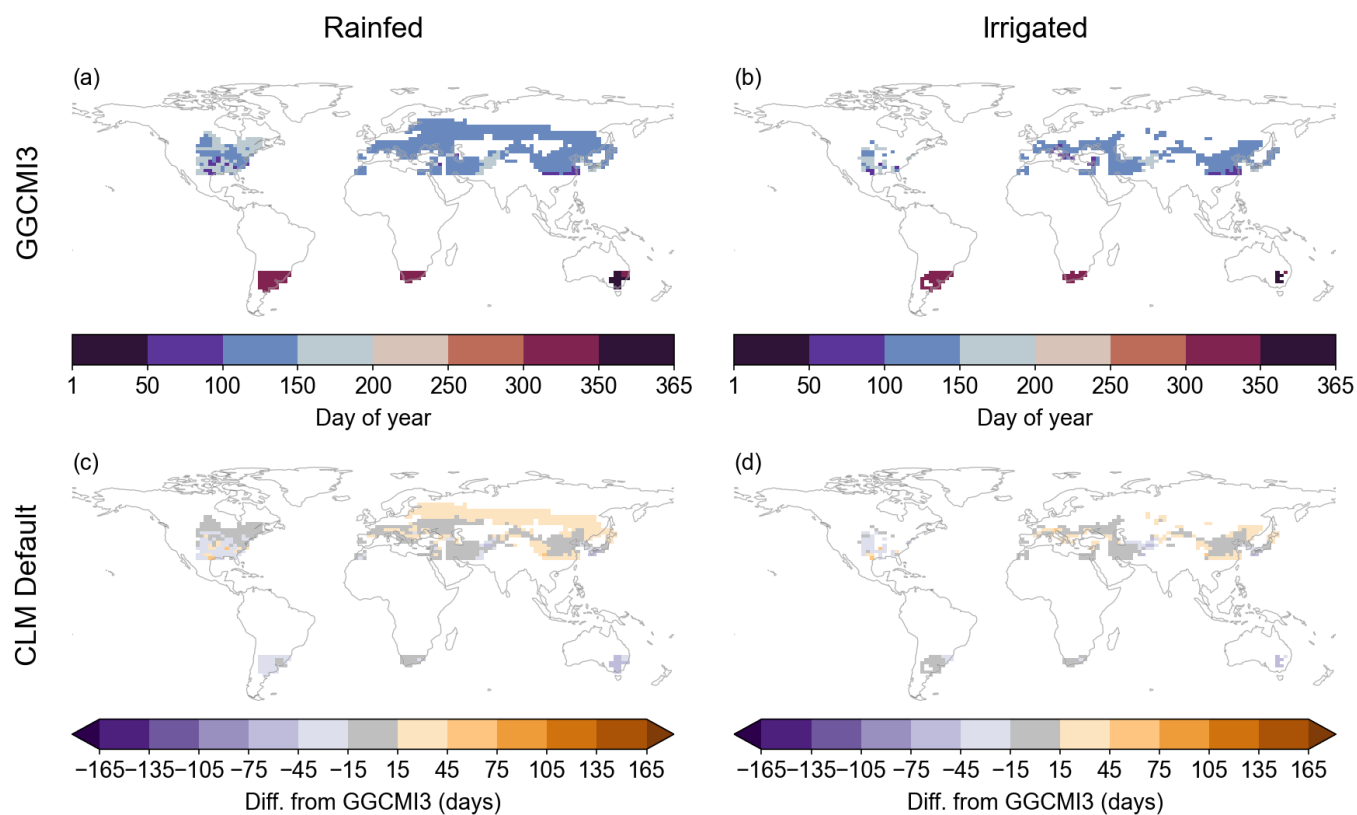


Figure S5. Sowing date for temperate soybean in GGCM13 prescribed calendars (a–b); differences in mean 1980–2009 sowing date from prescribed value for CLM Default run (c–d). Prescribed Calendars dates match GGCM13 exactly and are thus not shown. Equivalent of Fig. 2 in main text (wheat).

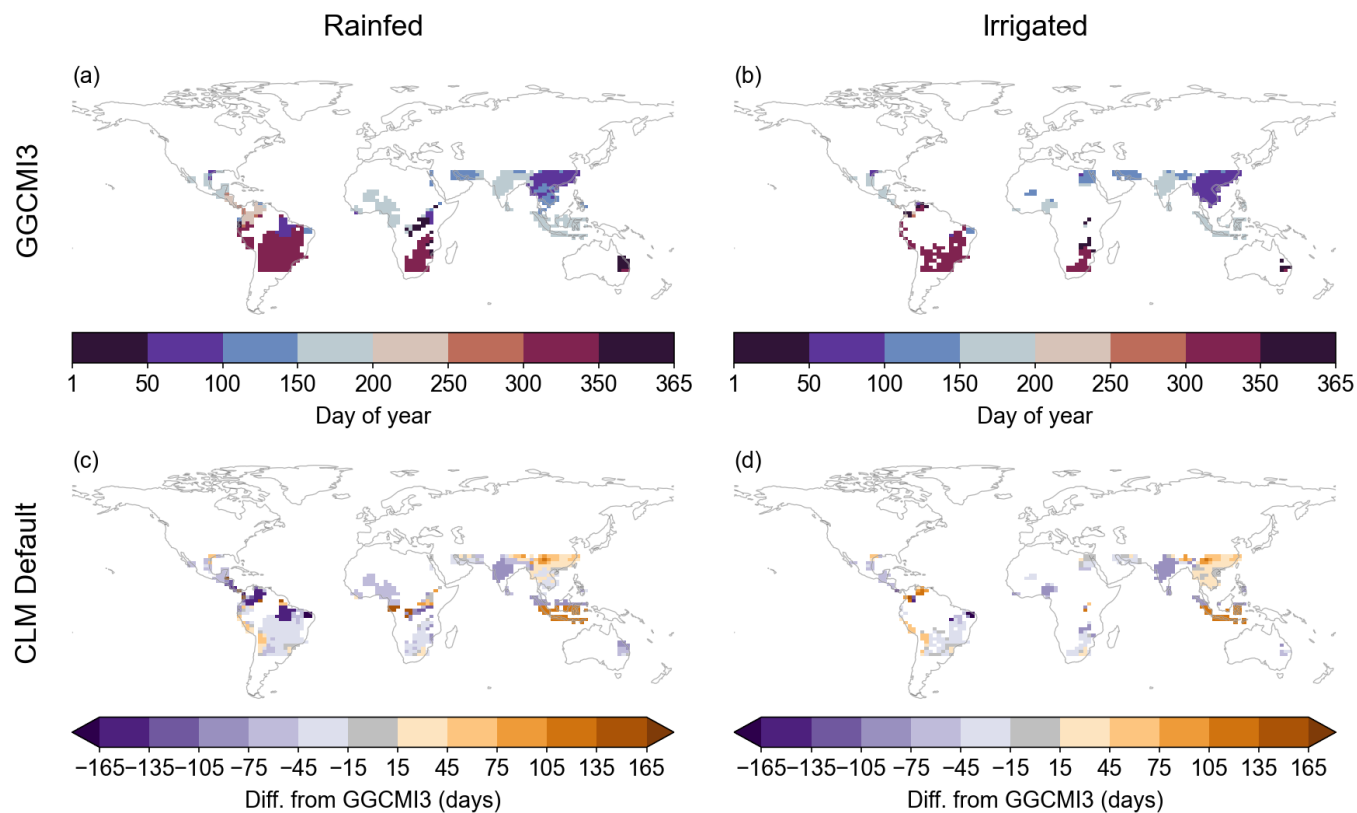


Figure S6. Sowing date for tropical soybean in GGCM13 prescribed calendars (a–b); differences in mean 1980–2009 sowing date from prescribed value for CLM Default run (c–d). Prescribed Calendars dates match GGCM13 exactly and are thus not shown. Equivalent of Fig. 2 in main text (wheat).

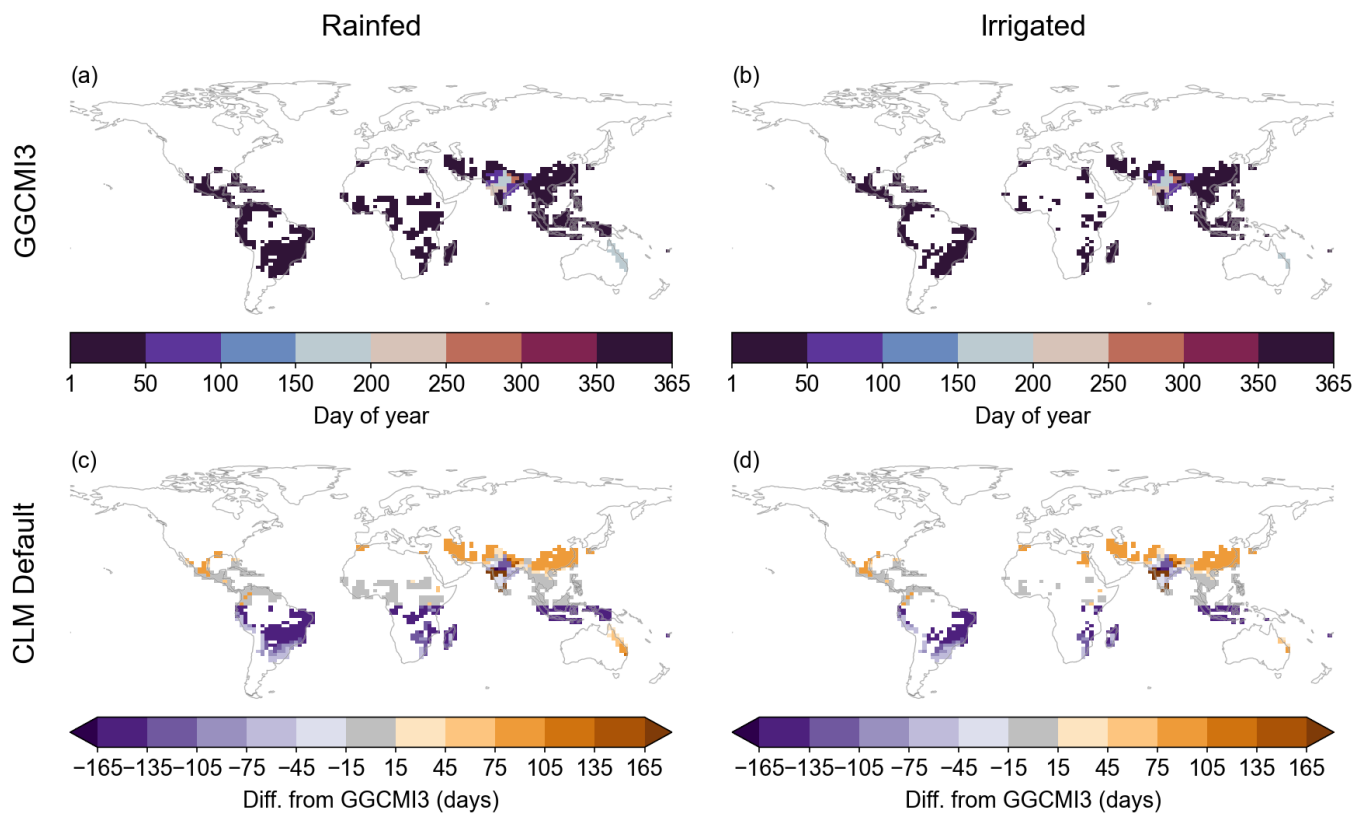


Figure S7. Sowing date for sugarcane in GGCM13 prescribed calendars (a–b); differences in mean 1980–2009 sowing date from prescribed value for CLM Default run (c–d). Prescribed Calendars dates match GGCM13 exactly and are thus not shown. Equivalent of Fig. 2 in main text (wheat).

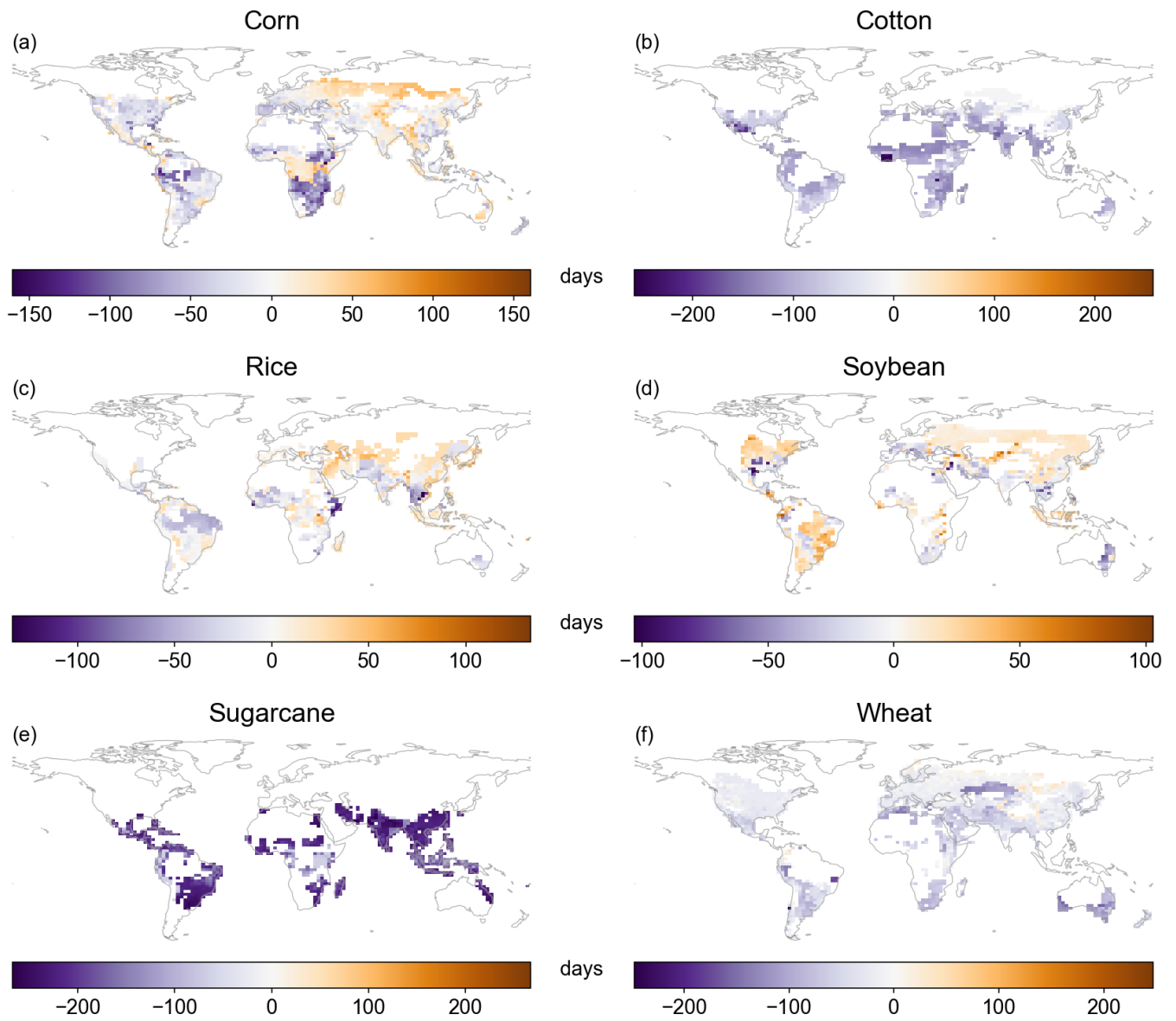


Figure S8. Mean 1980–2009 growing season length bias for CLM Default relative to GGCM13 dataset. Value in each gridcell is the area-weighted average of rainfed and irrigated (for corn and soybean: also temperate and tropical) instances of each crop.

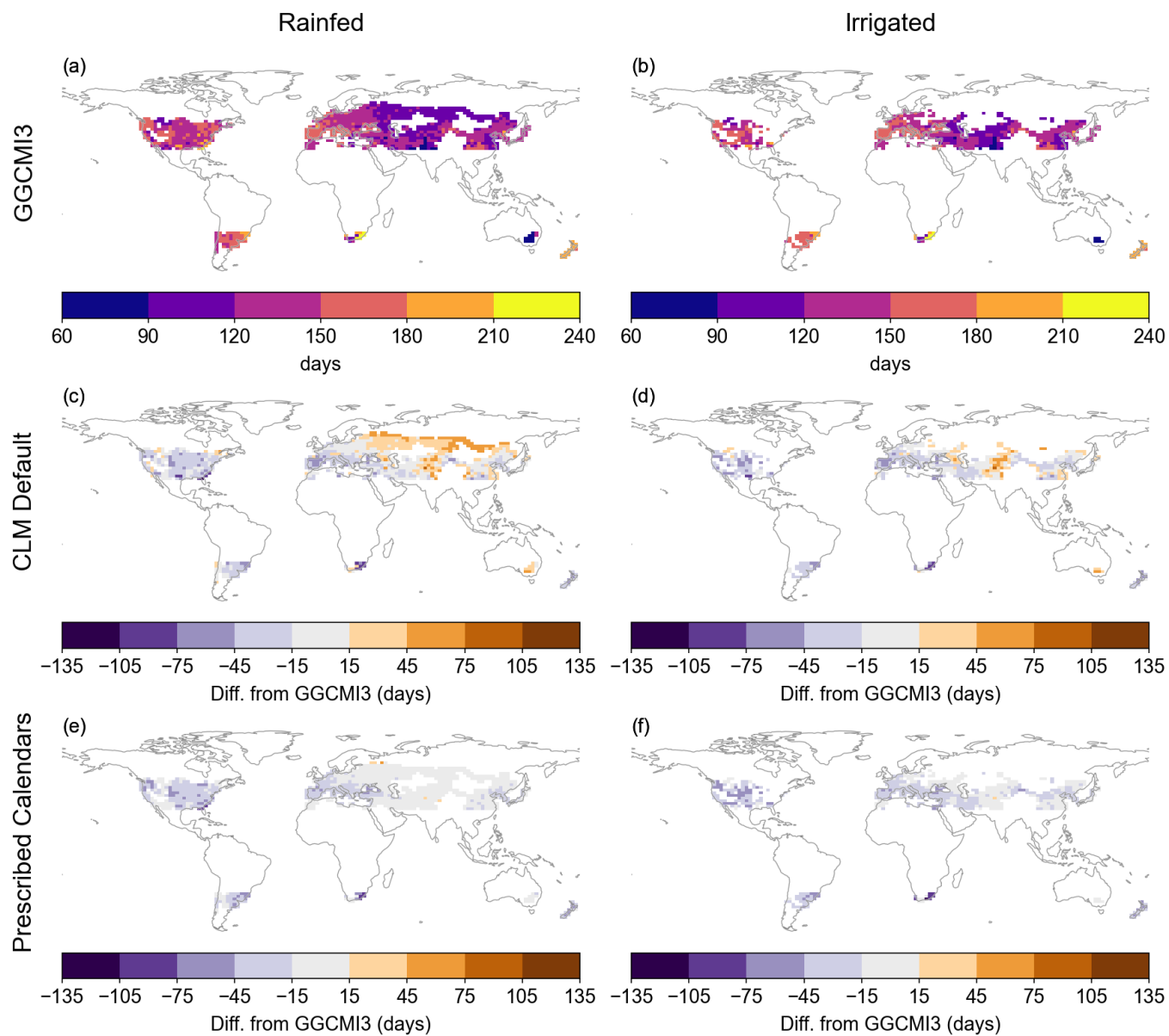


Figure S9. Growing season length for temperate corn in GGCM13 prescribed calendars (top row); differences in mean 1980–2009 sowing date from prescribed value for CLM Default run (c–d) and Prescribed Calendars run (e–f). Equivalent of Fig. 3 in main text (wheat).

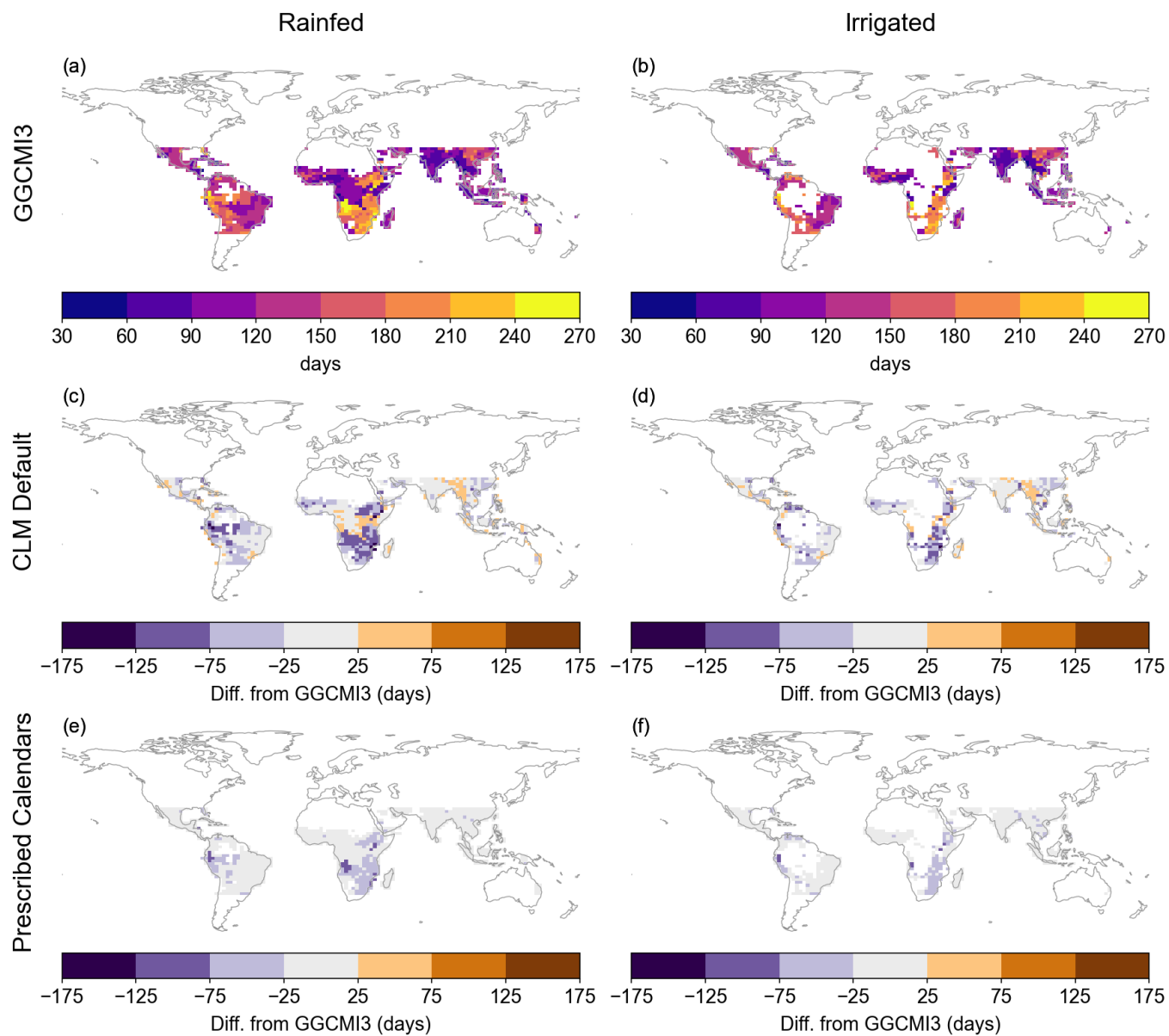


Figure S10. Growing season length for tropical corn in GGCM13 prescribed calendars (top row); differences in mean 1980–2009 sowing date from prescribed value for CLM Default run (c–d) and Prescribed Calendars run (e–f). Equivalent of Fig. 3 in main text (wheat).

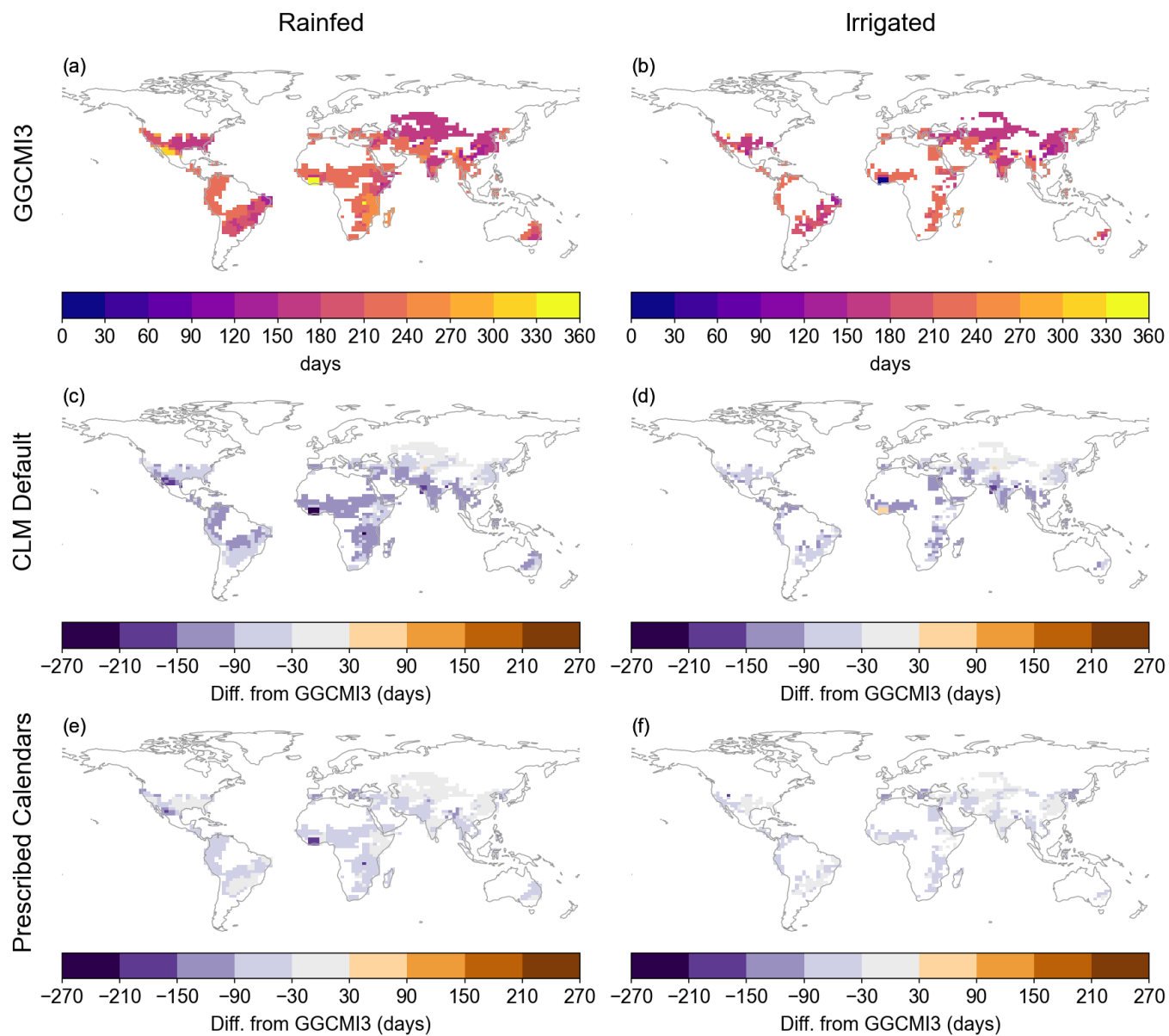


Figure S11. Growing season length for cotton in GGCM13 prescribed calendars (top row); differences in mean 1980–2009 sowing date from prescribed value for CLM Default run (c–d) and Prescribed Calendars run (e–f). Equivalent of Fig. 3 in main text (wheat).

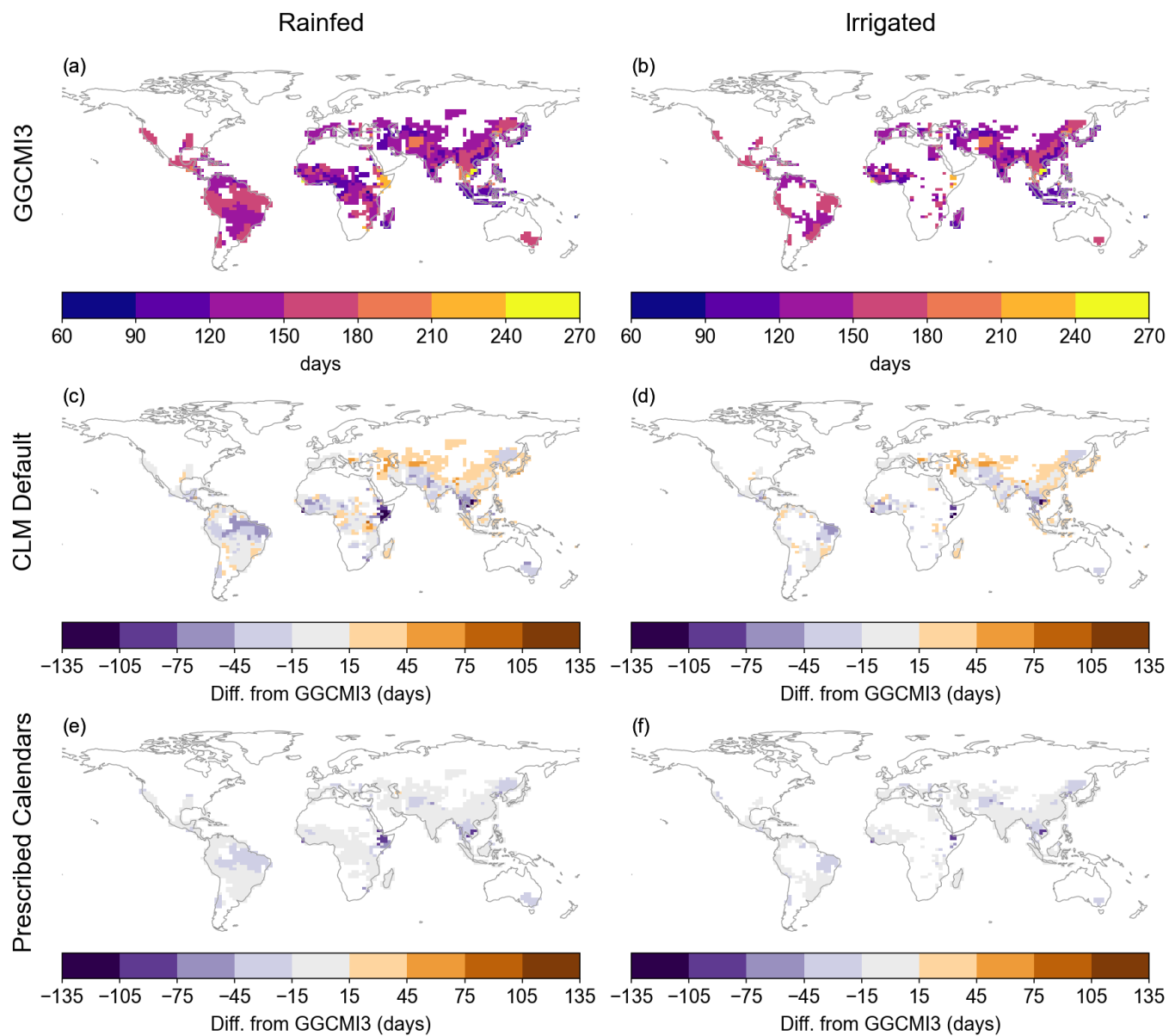


Figure S12. Growing season length for rice in GGCM13 prescribed calendars (top row); differences in mean 1980–2009 sowing date from prescribed value for CLM Default run (c–d) and Prescribed Calendars run (e–f). Equivalent of Fig. 3 in main text (wheat).

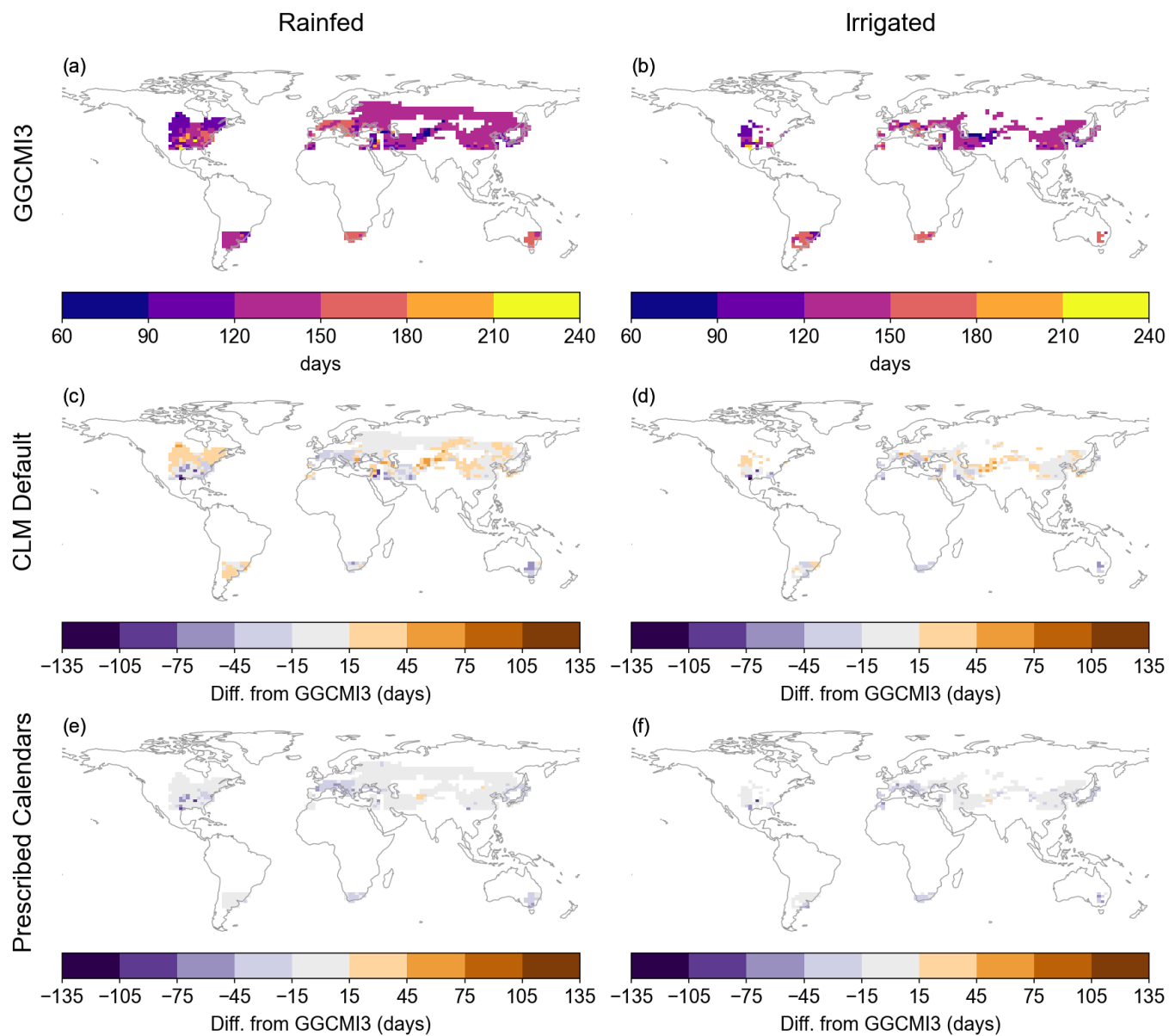


Figure S13. Growing season length for temperate soybean in GGCM13 prescribed calendars (top row); differences in mean 1980–2009 sowing date from prescribed value for CLM Default run (c–d) and Prescribed Calendars run (e–f). Equivalent of Fig. 3 in main text (wheat).

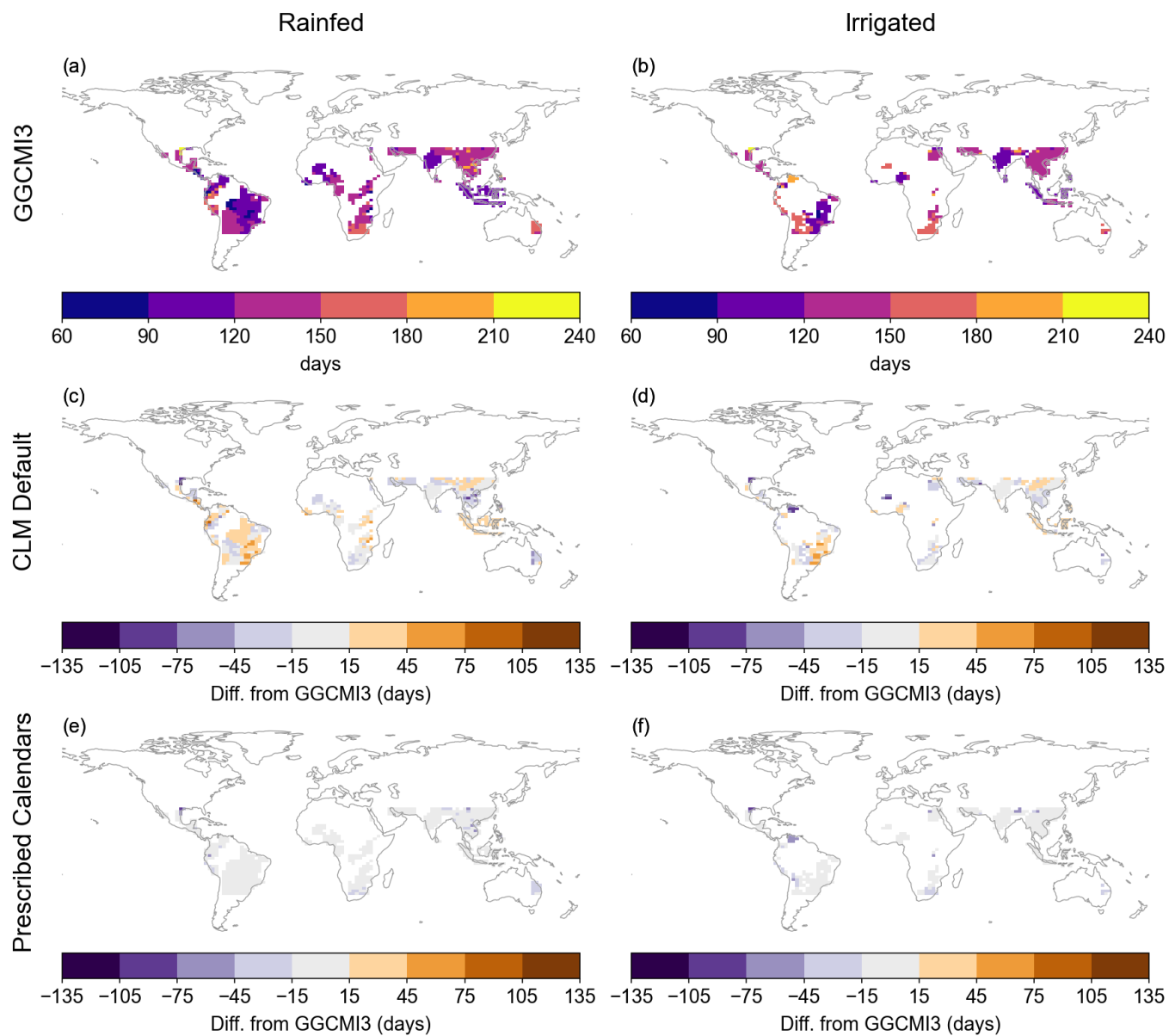


Figure S14. Growing season length for tropical soybean in GGCM13 prescribed calendars (top row); differences in mean 1980–2009 sowing date from prescribed value for CLM Default run (c–d) and Prescribed Calendars run (e–f). Equivalent of Fig. 3 in main text (wheat).

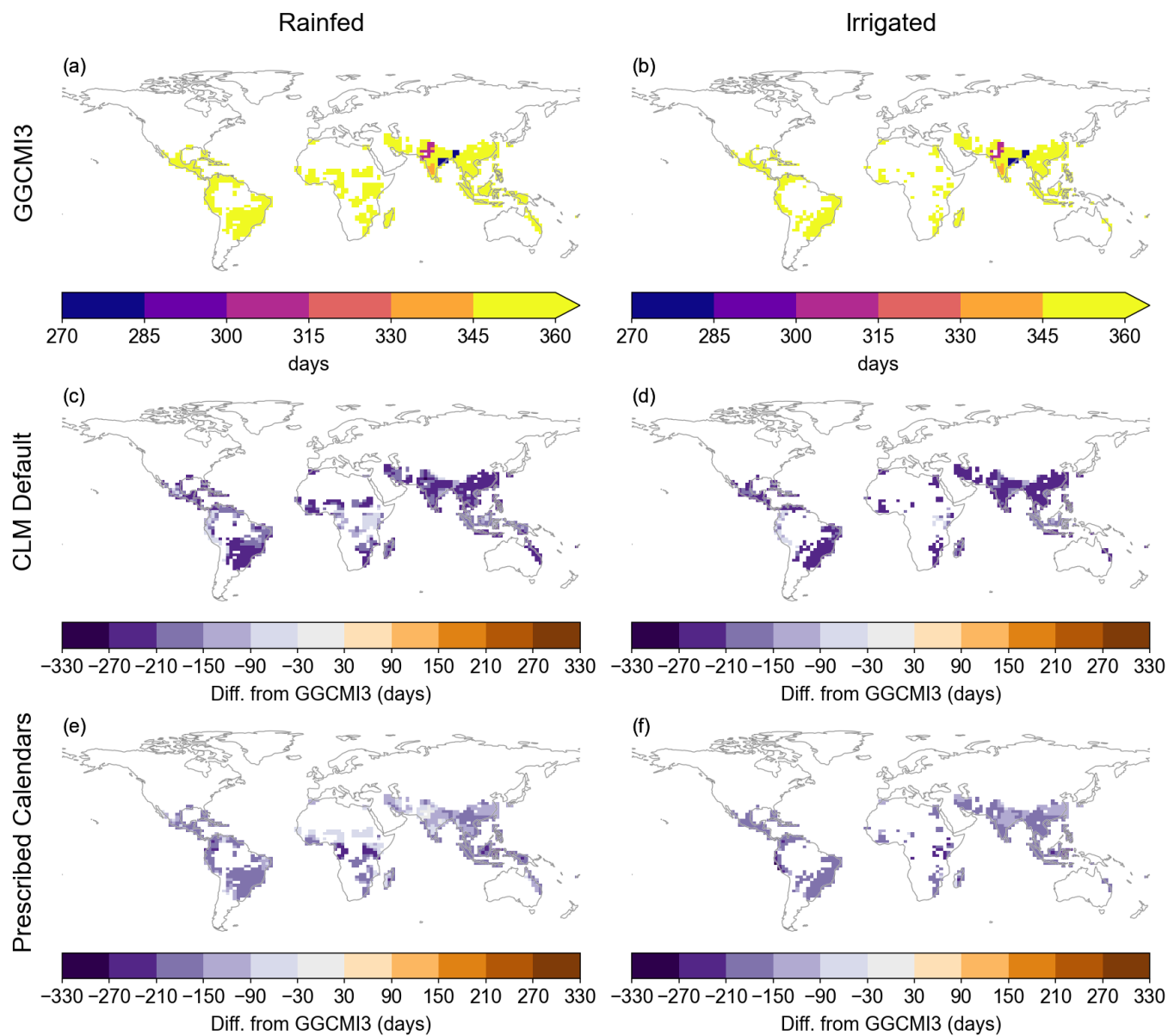


Figure S15. Growing season length for sugarcane in GGCM13 prescribed calendars (top row); differences in mean 1980–2009 sowing date from prescribed value for CLM Default run (c–d) and Prescribed Calendars run (e–f). Equivalent of Fig. 3 in main text (wheat).

Maturity requirements: Corn (masked by 1980-2009 area)

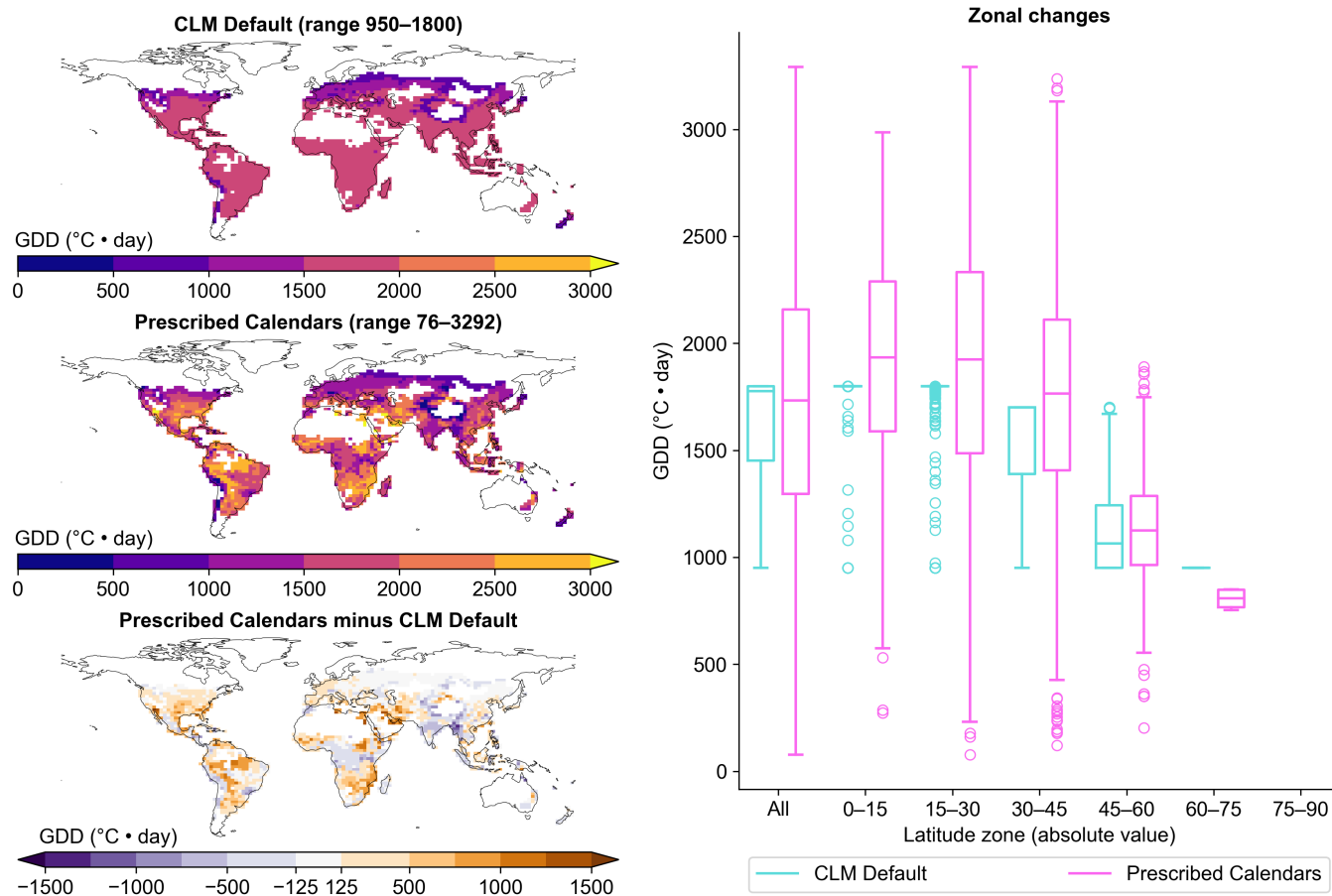


Figure S16. Maturity requirements for corn (area-weighted average of rainfed and irrigated, temperate and tropical). Box plots compare, at different latitude zones, distributions of maturity requirements for CLM Default (cyan) and Prescribed Calendars (pink). Boxes' central lines are medians, box edges are 25th and 75th percentiles, and whiskers extend to the minimum and maximum of the data excluding any outliers (points outside the median \pm 1.5 times the interquartile range; circles). Equivalent of Fig. 4 in main text (wheat).

Maturity requirements: Cotton (masked by 1980-2009 area)

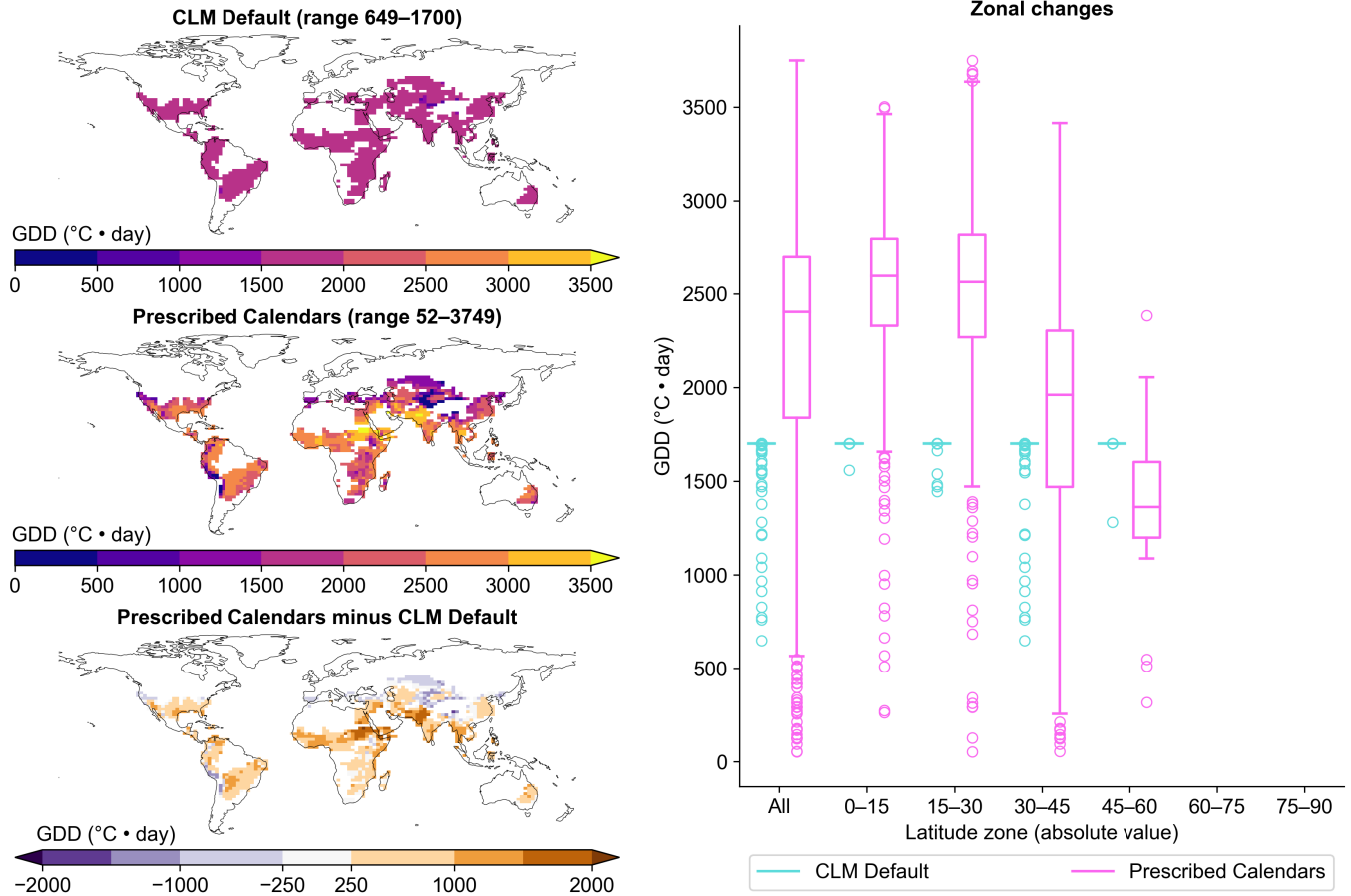


Figure S17. Maturity requirements for cotton (area-weighted average of rainfed and irrigated). Box plots compare, at different latitude zones, distributions of maturity requirements for CLM Default (cyan) and Prescribed Calendars (pink). Boxes' central lines are medians, box edges are 25th and 75th percentiles, and whiskers extend to the minimum and maximum of the data excluding any outliers (points outside the median \pm 1.5 times the interquartile range; circles). Equivalent of Fig. 4 in main text (wheat).

Maturity requirements: Rice (masked by 1980-2009 area)

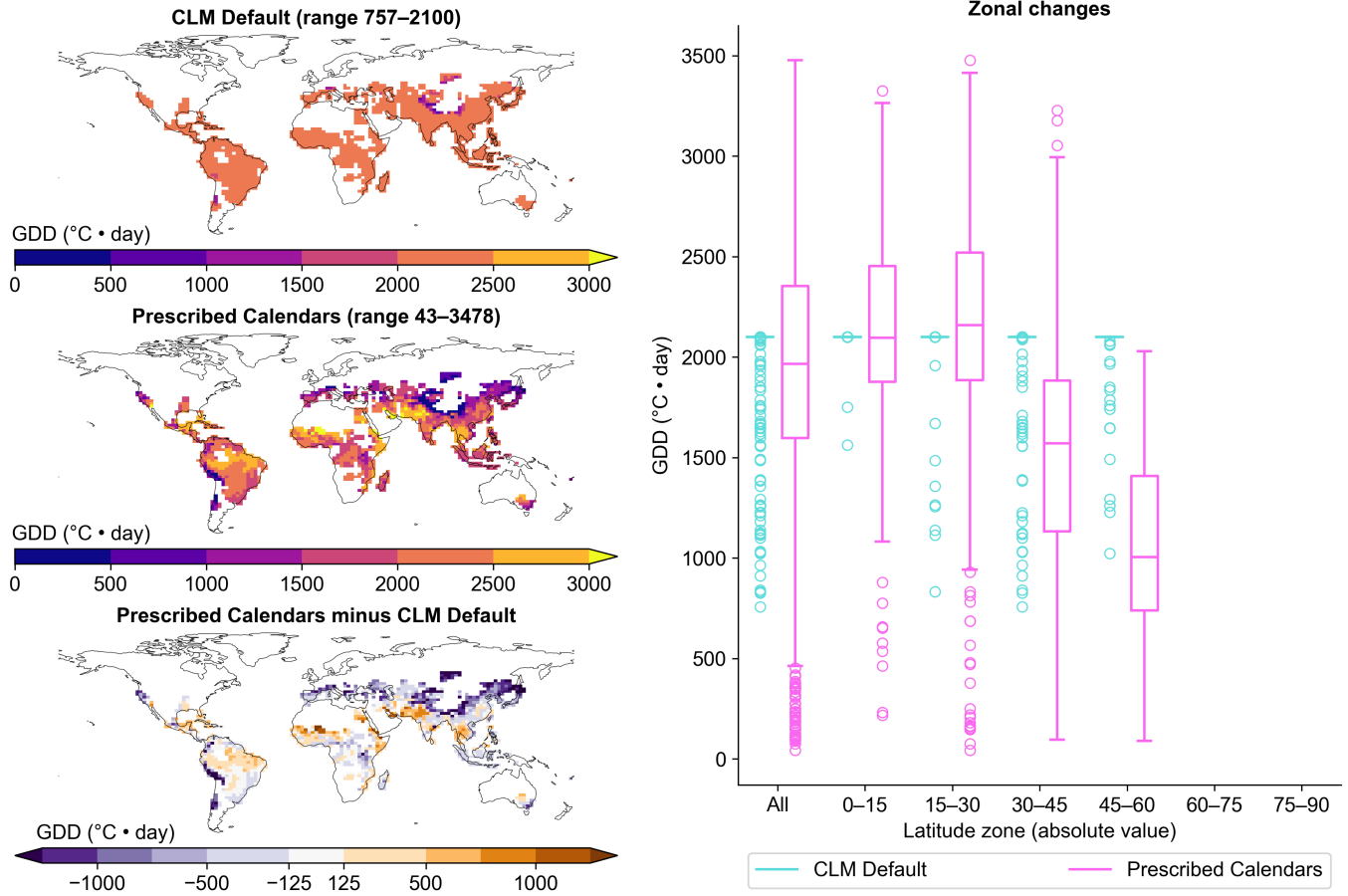


Figure S18. Maturity requirements for rice (area-weighted average of rainfed and irrigated). Box plots compare, at different latitude zones, distributions of maturity requirements for CLM Default (cyan) and Prescribed Calendars (pink). Boxes' central lines are medians, box edges are 25th and 75th percentiles, and whiskers extend to the minimum and maximum of the data excluding any outliers (points outside the median \pm 1.5 times the interquartile range; circles). Equivalent of Fig. 4 in main text (wheat).

Maturity requirements: Soybean (masked by 1980-2009 area)

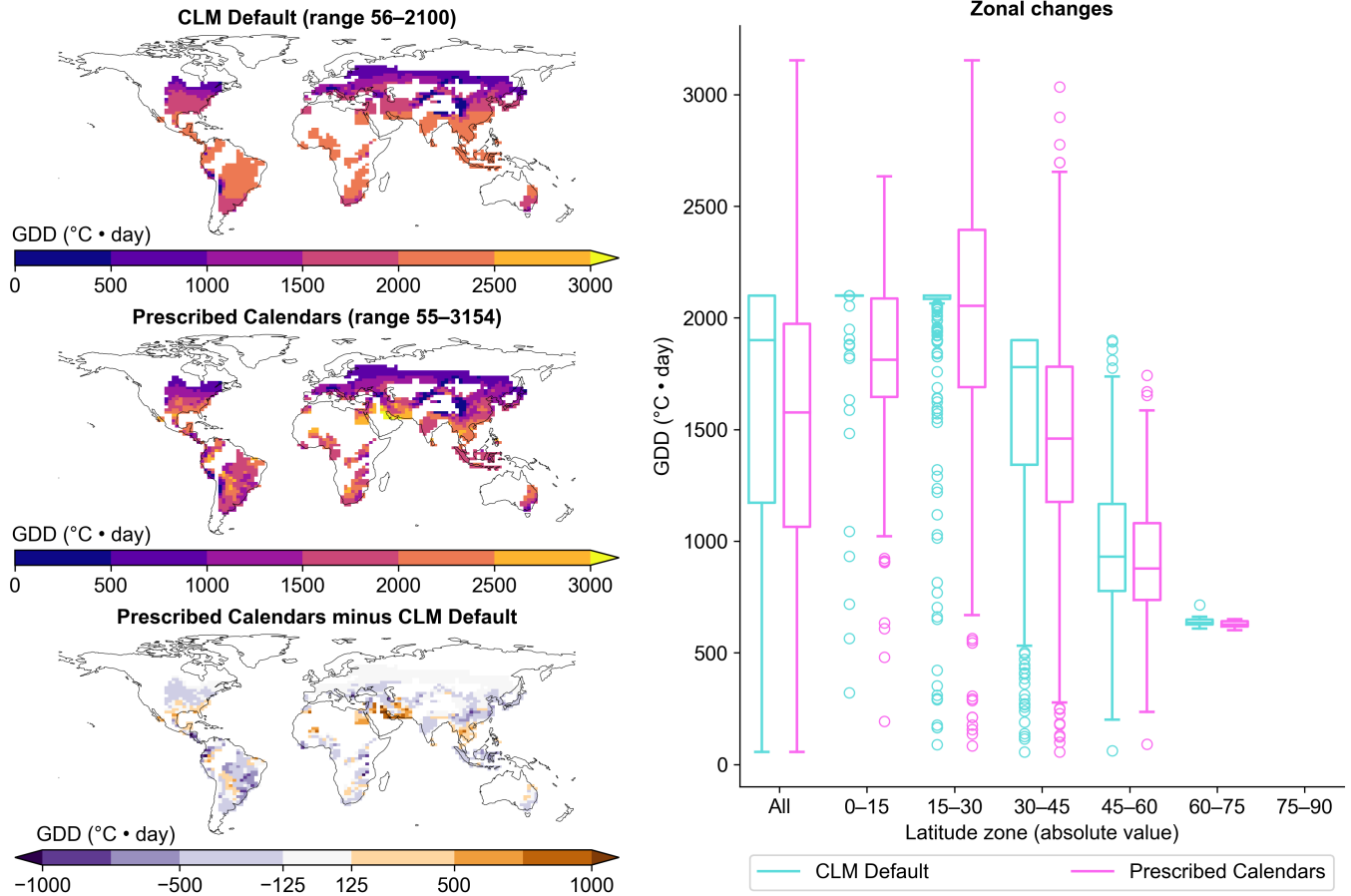


Figure S19. Maturity requirements for soybean (area-weighted average of rainfed and irrigated, temperate and tropical). Box plots compare, at different latitude zones, distributions of maturity requirements for CLM Default (cyan) and Prescribed Calendars (pink). Boxes' central lines are medians, box edges are 25th and 75th percentiles, and whiskers extend to the minimum and maximum of the data excluding any outliers (points outside the median \pm 1.5 times the interquartile range; circles). Equivalent of Fig. 4 in main text (wheat).

Maturity requirements: Sugarcane (masked by 1980-2009 area)

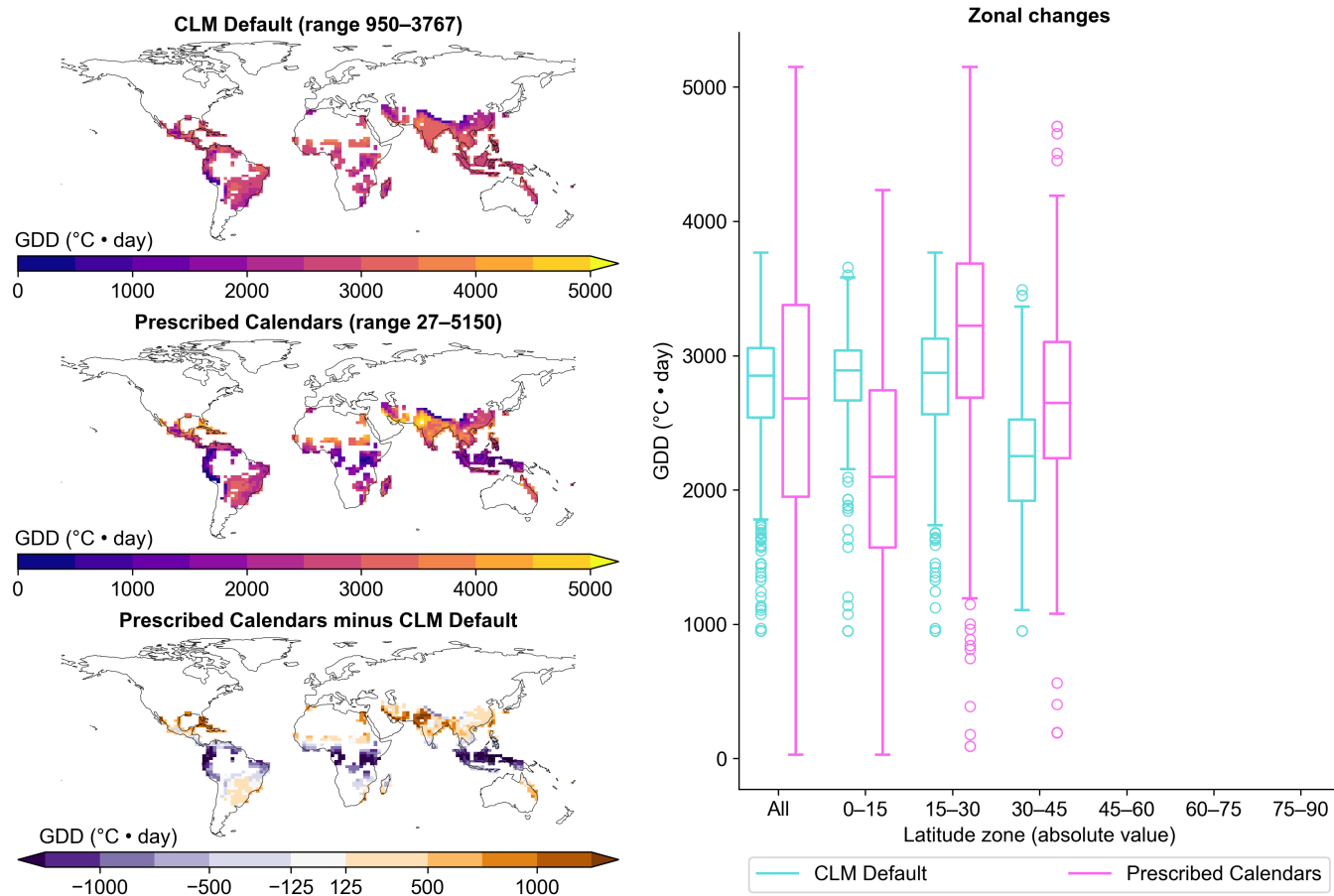


Figure S20. Maturity requirements for sugarcane (area-weighted average of rainfed and irrigated). Box plots compare, at different latitude zones, distributions of maturity requirements for CLM Default (cyan) and Prescribed Calendars (pink). Boxes' central lines are medians, box edges are 25th and 75th percentiles, and whiskers extend to the minimum and maximum of the data excluding any outliers (points outside the median ± 1.5 times the interquartile range; circles). Equivalent of Fig. 4 in main text (wheat).

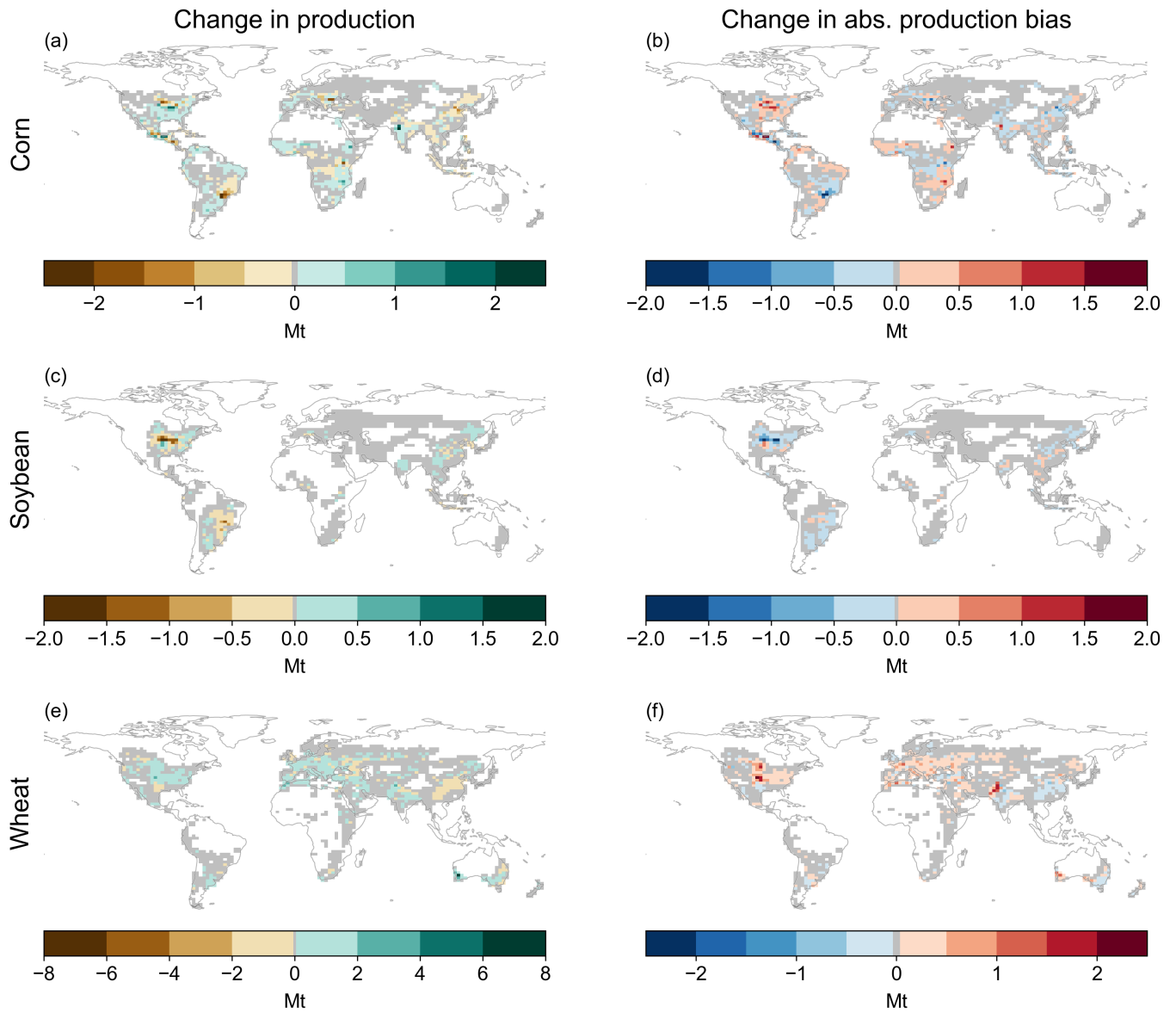


Figure S21. Spatial distribution of mean (1980–2009) difference (Prescribed Calendars minus CLM Default) in (a, c, e) production and (b, d, f) absolute production bias relative to EarthStat for corn, soybean, and wheat. Corresponds to Fig. 6 in main text (cotton, rice, and sugarcane); see that figure’s caption for more details.

**Production (1980-2009):
Prescribed Calendars minus CLM Default**

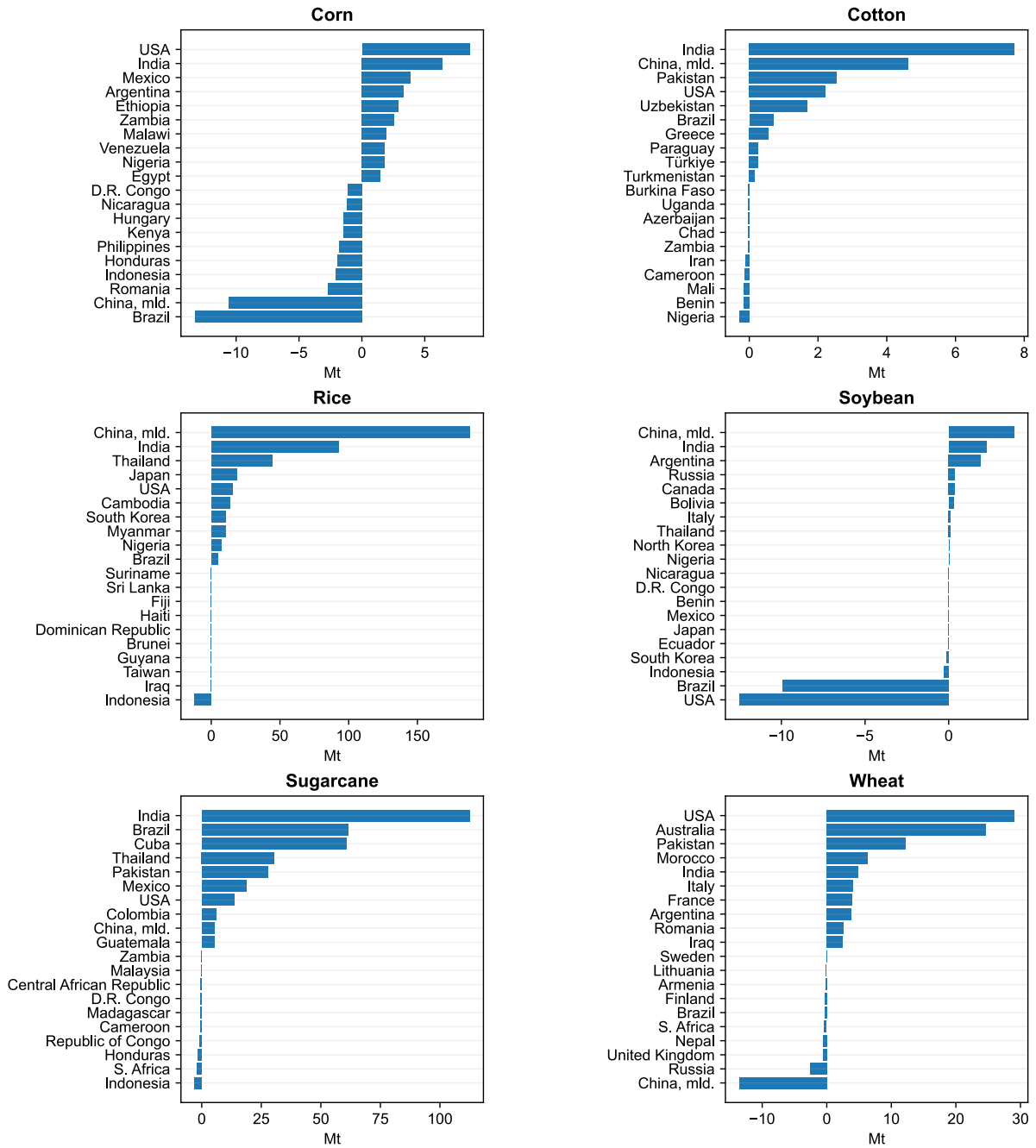


Figure S22. Countries contributing the most to change in mean 1980–2009 production of each crop when moving from CLM Default to Prescribed Calendars. Plots show the 10 most positive (production higher in Prescribed Calendars) and negative (production higher in CLM Default) countries.

**Absolute yield bias (1980-2009):
Prescribed Calendars minus CLM Default**

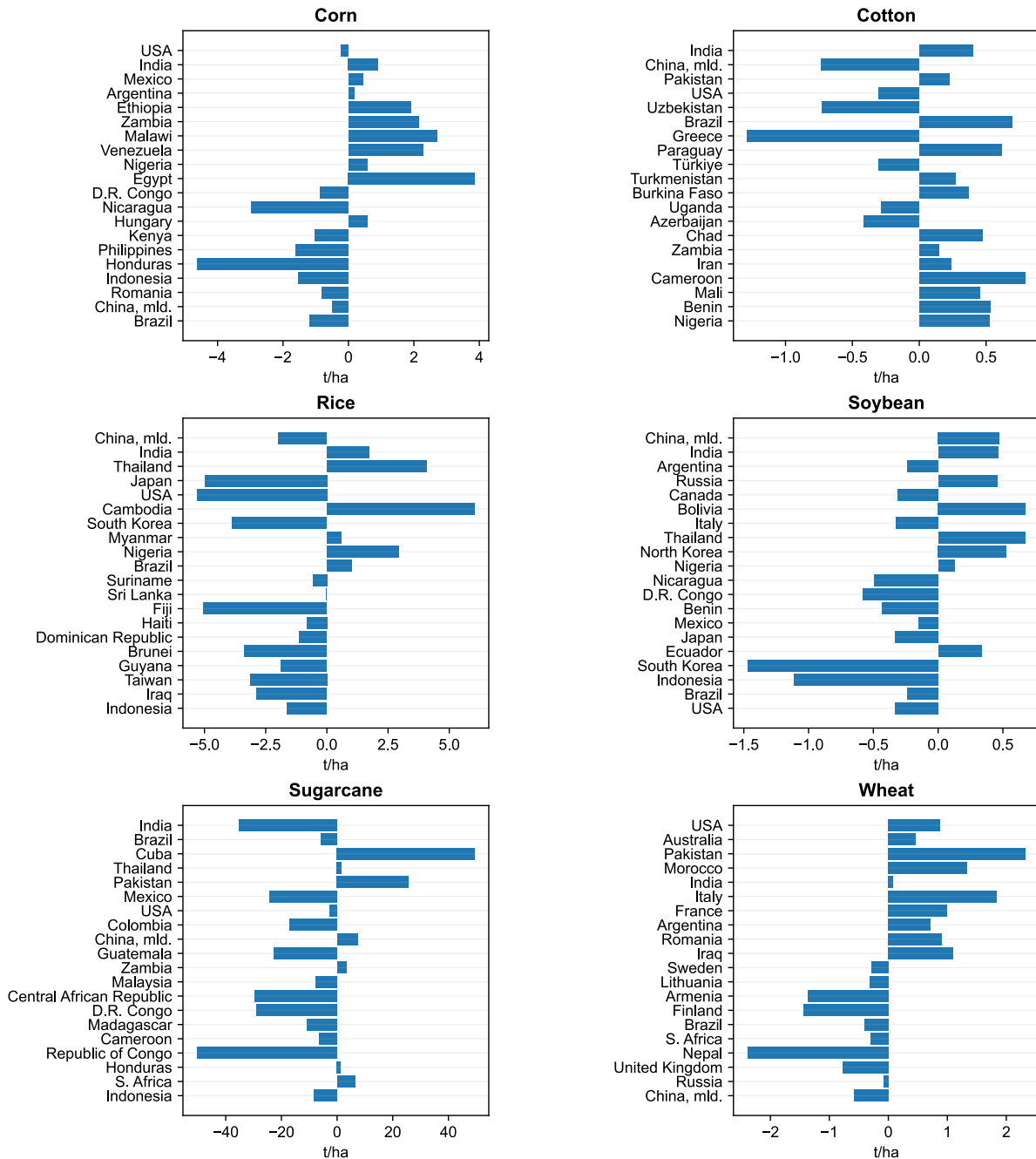


Figure S23. Change in mean 1980–2009 absolute yield bias (relative to FAOSTAT) for each country in Fig. S22 when moving from CLM Default to Prescribed Calendars. Negative values indicate improvement in Prescribed Calendars.

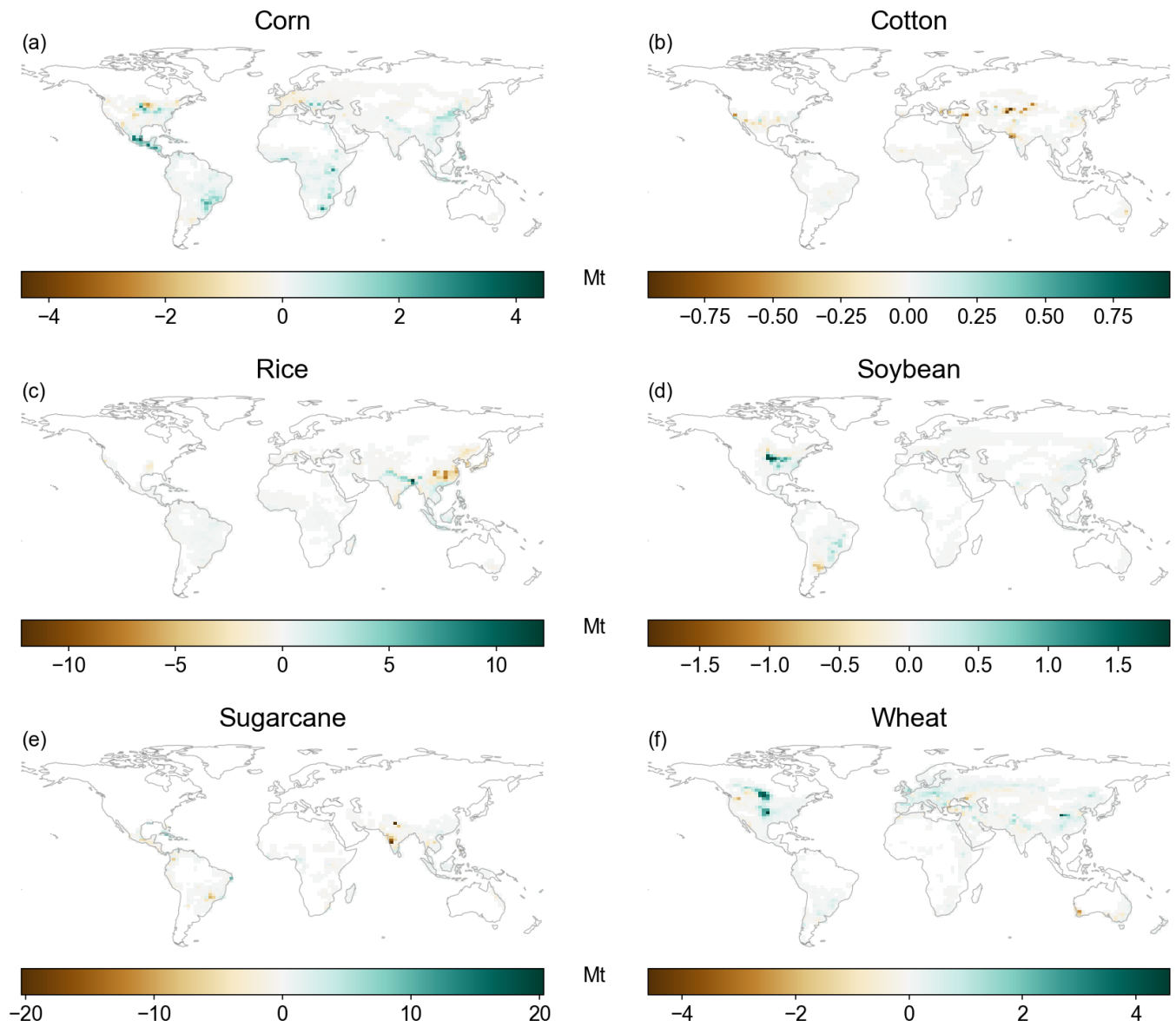


Figure S24. Bias of CLM Default mean 1980–2009 production relative to EarthStat. Positive values indicate overestimates in CLM Default.

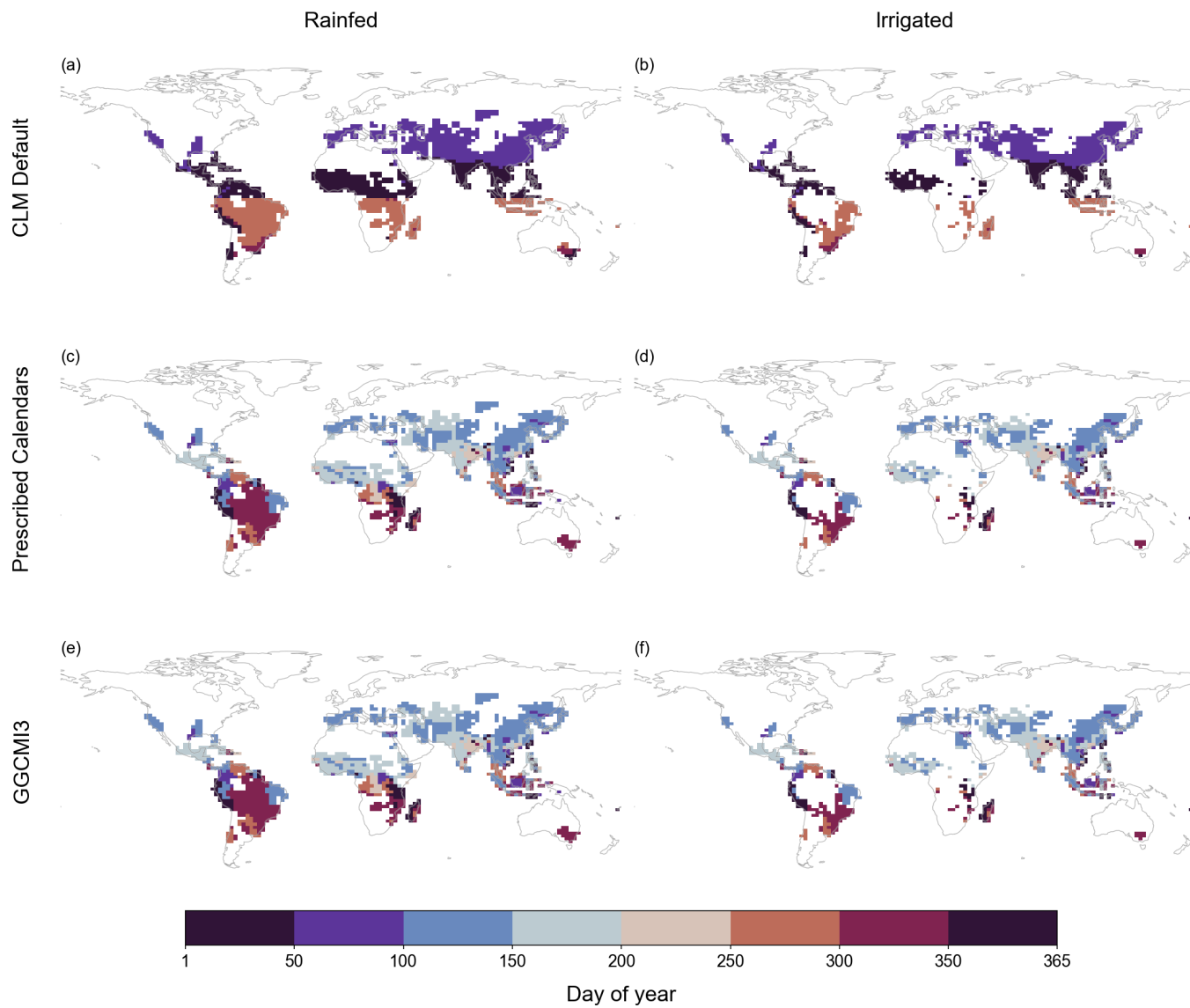


Figure S25. For rice: (a–d) Mean sowing date across the 1980–2009 growing seasons in CLM Default (a–b) and Prescribed Calendars (c–d); (e–f) sowing date from the GGCM13 dataset.

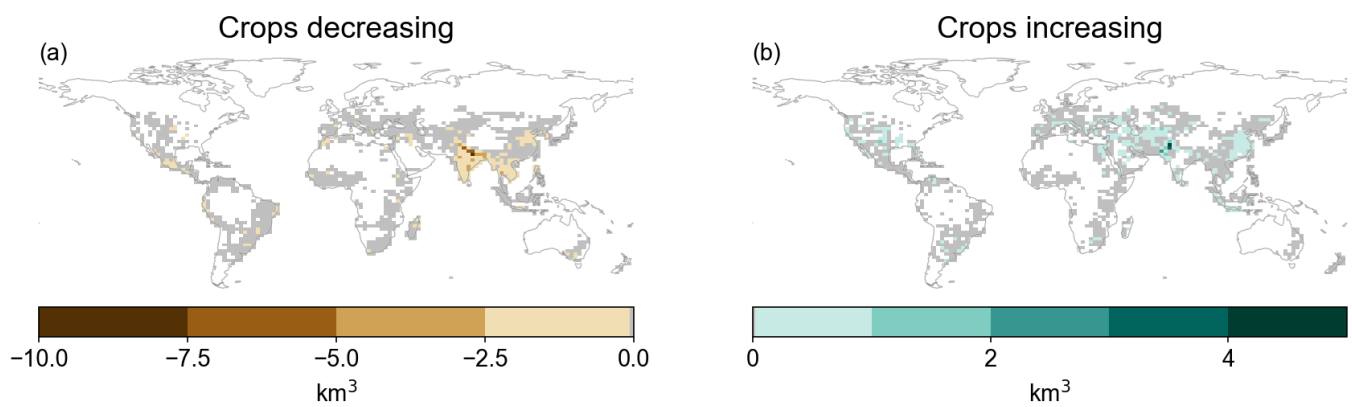


Figure S26. Global distribution of difference in mean annual irrigation demand among the six crops analyzed here, broken into positive and negative components. In each gridcell, the maps show the sum of all crops with (a) decreased and (b) increased irrigation demand under Prescribed Calendars. (See Fig. S27 for maps of individual crops.) Gray cells are those outside the top 95% of cumulative absolute values in each map. White cells in each map had no crop whose irrigation amount changed in the respective direction (i.e., no crop had decreasing [a] or increasing [b] irrigation).

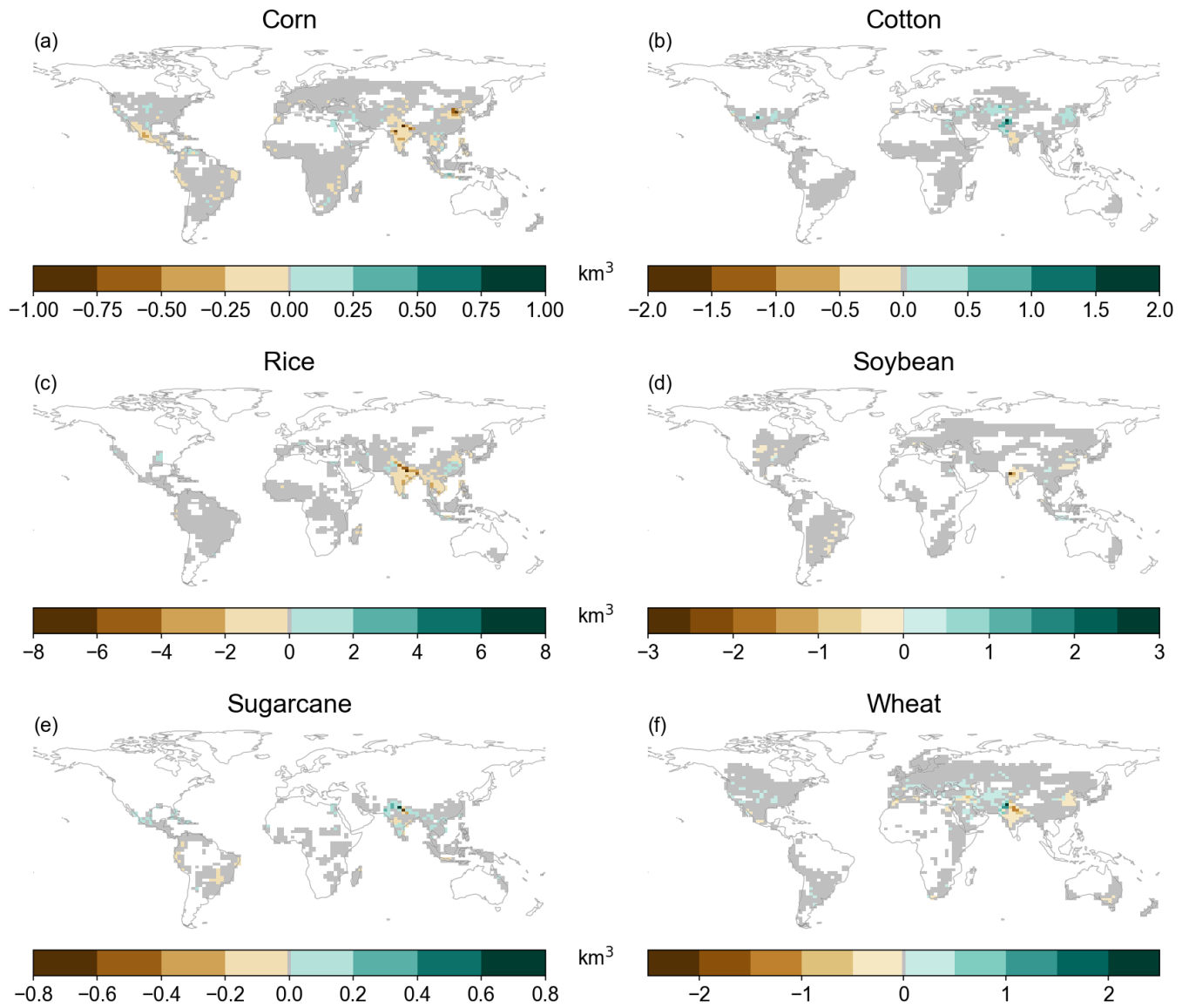


Figure S27. Global distribution of changes in mean annual irrigation demand (Prescribed Calendars minus CLM Default) among the six crops analyzed here. This is the crop-wise breakdown of Fig. 11 in the main text. Gray cells are those outside the top 95% of cumulative absolute values in each map.