

Assimilation of the AMSU-A radiances using the CESM (v2.1.0) and the DART (v9.11.13)/RTTOV (v12.3)

Young-Chan Noh¹, Yonghan Choi¹, Hyo-Jong Song², Kevin Raeder³, Joo-Hong Kim¹, and Youngchae Kwon²

¹ Korea Polar Research Institute, Incheon, 21990, South Korea

² Department of Environmental Engineering and Energy, Myongji University, Seoul, 17058, South Korea

³ National Center for Atmospheric Research, CISL/DAReS, Boulder, CO, 80305, USA

Correspondence to: Yonghan Choi (yhdchoi@kopri.re.kr)

Abstract. To improve the initial condition (“analysis”) for numerical weather prediction, we attempt to assimilate observations from the Advanced Microwave Sounding Unit-A (AMSU-A) on board the low-earth-orbiting satellites. The data assimilation system, used in this study, consists of the Data Assimilation Research Testbed (DART) and the Community Earth System Model as the global forecast model. Based on the ensemble Kalman filter scheme, DART supports the radiative transfer model that is used to simulate the satellite radiances from the model state. To make the AMSU-A data available to be assimilated in DART, preprocessing modules are developed, which consist of quality control, spatial thinning, and bias correction processes. In the quality control, two sub-processes are included: outlier test and channel selection depending on the cloud condition and surface type. The bias correction process is divided into scan-bias correction and air-mass-bias correction. As input data used in DART, the observation errors are also estimated for the AMSU-A channels. In the trial experiments, a positive analysis impact is obtained by assimilating the AMSU-A observations on top of the DART data assimilation system that already makes use of the conventional measurements. In particular, the analysis errors are significantly reduced in the whole troposphere and lower stratosphere over the Northern Hemisphere. Overall, this study demonstrates a positive impact on the analysis when the AMSU-A observations are assimilated in the DART assimilation system.

1 Introduction

Data assimilation is a numerical procedure for making the initial condition (“analysis”) that is used as the starting point for a numerical weather prediction (NWP). In the data assimilation process, various observation data are combined with the short-term forecast (“background”) derived from the NWP model, based on the error characteristics of the observations and model forecast (Kalnay, 2003). With the huge amount of satellite observations and advances in model configurations (e.g., horizontal/vertical resolution and dynamic core) and data assimilation, the quality of the initial condition significantly increases, which enhances the forecast skill. In particular, the initial condition has dramatically improved since the satellite observations started to be assimilated (Migliorini et al., 2008; Eyre et al., 2020; Eyre et al., 2022). It is because the satellites cover the regions where the conventional observations are sparse or absent. Among many types of satellite observations being assimilated, a significant forecast benefit mainly comes from the observations of the hyperspectral infrared and microwave sounders that provide unique information on the vertical structure of key atmospheric parameters (e.g., temperature and moisture) (Joo et al., 2013; Eresmaa et al., 2017; Menzel et al., 2018). For this reason, satellite observations are actively being assimilated into the data assimilation system in many operational NWP centers.

To advance the research related to data assimilation, a well-organized data assimilation system is essential, which consists of the forecast model, a data assimilation scheme, and flexible interfaces to use various types of observations. Operational NWP centers have well-constructed assimilation systems to use diverse types of available observations with up-to-date data assimilation schemes. However, as most operational global NWP systems require huge computation resources, it is practically impossible for researchers to recreate those systems outside of the NWP centers. Thus, a user-friendly global data

40 assimilation system is needed for small numerical modeling communities to attempt challenging studies related to advancing
41 the data assimilation quality.

42 The National Center for Atmospheric Research (NCAR) has developed an open-source data assimilation tool that is
43 named the Data Assimilation Research Testbed (DART) for data assimilation research, development, and education (Anderson
44 et al., 2009). DART has interfaces to diverse Earth system components (e.g., atmosphere, ocean, and cryosphere) developed
45 by many modeling centers. For instance, the Community Atmospheric Model (CAM), the atmospheric component of the
46 Community Earth System Model (CESM) developed by NCAR, can be used to provide the short-range forecast that is the
47 background field in DART. DART is based on the ensemble data assimilation method instead of the variational method, which
48 requires complicated software specific to a particular numerical prediction model (Anderson et al., 2009; Raeder et al., 2012).
49 In addition, well-defined modules are included to make various types of observations available in the DART data assimilation
50 process. Thus, DART can assimilate many observation types (e.g., conventional and satellite-based wind). Liu et al. (2012)
51 investigated the impact of the Global Positioning System (GPS) Radio Occultation (RO) observations on the forecast of
52 Hurricane Ernesto (2006) using the DART assimilation system. Coniglio et al. (2019) showed that additional forecast benefit
53 is made by assimilating the measurements of ground-based wind profilers. In addition, a decade-long reanalysis was created
54 with 80 ensemble members derived from DART, using ground-based data, satellite-based winds, GPS-RO observations, and
55 temperature soundings retrieved from the Atmospheric Infrared Sounder (AIRS) observation (Raeder et al., 2021).

56 However, there are few studies of assimilating satellite-measured radiances in the DART data assimilation system,
57 because the previous version of DART did not have the essential components, e.g., the radiative transfer model (RTM), needed
58 to simulate the satellite radiances from the model state. Fortunately, in the recent version of DART (version 9.11.13), the RTM
59 is included. The Radiative Transfer for TIROS Operational Vertical Sounder (RTTOV) version 12.3 is supported to map the
60 model space into observation space in the data assimilation scheme (Saunders et al., 2018). In Zhou et al. (2022), the visible
61 imagery of the Chinese geosynchronous-orbiting (GEO) satellite was assimilated in DART, but using the Observing System
62 Simulation Experiment (OSSE) framework in which the visible imagery was simulated and then assimilated. Considering that,
63 it is interesting to assimilate the satellite-observed radiances using the DART data assimilation system to know how the analysis
64 derived from DART is affected by real satellite observations.

65 Considering the fact that the analysis/forecast impact derived from the satellite radiances mainly comes from
66 observations of hyperspectral infrared and microwave sounders (English et al., 2013; Joo et al., 2013; Kim and Kim, 2019), it
67 is reasonable to assimilate the observations of both sounders first. Unfortunately, the use of hyperspectral infrared sounder
68 observations was not supported in the recent version of DART. For this reason, we attempt to assimilate the radiances of the
69 Advanced Microwave Sounding Unit-A (AMSU-A) temperature sounder within the DART data assimilation system coupled
70 with the NCAR CESM. AMSU-A instruments are currently operating on board many low-earth-orbiting (LEO) satellite
71 platforms, and thus a large amount of AMSU-A observation data is available for assimilation. In addition, as the microwave
72 sounder observations are less sensitive to clouds than the infrared sounder observations, the data availability of AMSU-A is
73 better than that of the infrared sounder. AMSU-A observations are actively used to improve global/regional forecasts as well
74 as severe weather forecasts such as tropical cyclones (Zhang et al., 2013; Zhu et al., 2016; Migliorini and Candy, 2019; Duncan
75 et al., 2022). As the preprocessing modules (e.g., quality control, cloud detection, and spatial thinning) for AMSU-A
76 observations are not provided in the DART package, they are developed in this study. In addition, the diagonal observation
77 error covariance matrix is estimated using the method suggested by Desroziers et al. (2005), and a bias correction scheme is
78 also developed based on the methods suggested by Harris and Kelly (2001). In this study, we attempt to assimilate the AMSU-
79 A radiances in clear-sky conditions. In many operational NWP centers, the AMSU-A radiances have been assimilated in all-
80 sky conditions (i.e., clear-sky and cloudy-sky) (Zhu et al., 2016; Migliorini and Candy, 2019; Duncan et al., 2022). However,
81 as the current version of DART is not ready to assimilate the AMSU-A radiances in cloudy-sky conditions, only the clear-sky
82 assimilation of AMSU-A radiances is considered. To assess the impact of assimilating AMSU-A observations on the analysis

83 derived from DART, the assimilation experiments are conducted using the DART assimilation system coupled with the CESM
84 as the forecast model system.

85 This paper is organized as follows. Section 2 provides the background information on the DART data assimilation
86 system and CESM. Observation data assimilated in DART are described in section 3. The developed preprocessing steps and
87 the estimated observation errors are presented in sections 4 and 5, respectively. The setup of the assimilation experiments is
88 explained in section 6. The results of the first-guess/analysis departure analysis and the analysis impact are explored in section
89 7, followed by a summary in section 8.

90 **2 DART-CESM data assimilation system**

91 **2.1 Data Assimilation Research Testbed (DART)**

92 DART is an open-source assimilation package that has been developed by NCAR since 2002 for data assimilation
93 development, research, and education. DART can be coupled with full-complexity Earth system components due to the flexible
94 interfaces provided. In addition, the DART package provides the modules to convert observation data from a variety of native
95 formats, e.g., the Binary Universal Form for the Representation of meteorological data (BUFR) format and the Hierarchical
96 Data Format (HDF), into the input format specified for the DART system (Anderson et al., 2009; Raeder et al., 2012). The
97 recent version of DART (version 9.11.13) is capable of using the RTTOV, a fast RTM, for assimilating visible, infrared, and
98 microwave satellite observations. Provided in RTTOV, many satellite instruments on board the GEO and LEO satellites are
99 also supported in the DART assimilation package, but the hyperspectral infrared sounders, e.g., the Cross-track Infrared
100 Sounder (CrIS) and the Infrared Atmospheric Sounding Interferometer (IASI), are excluded (Hoar et al., 2020). The main data
101 assimilation technique provided by DART is the ensemble Kalman filter (EnKF) in which the forecast error covariance is
102 estimated using short-range ensemble forecasts. The derived forecast error covariance is fully multivariate and depends on the
103 synoptic situation.

104 **2.2 Community Earth System Model (CESM)**

105 CESM version 2 (CESM v2.1.0) is used as the model component of the ensemble data assimilation system. CESM2
106 is the latest generation of coupled climate/earth modeling system developed by NCAR, consisting of the atmosphere, land
107 surface, ocean, sea-ice, land-ice, river, and wave models. These component models can be coupled to exchange states and
108 fluxes (Hurrell et al., 2013; Kay et al., 2015). In this study, atmosphere and land component models are actively coupled, but
109 the ocean component (sea surface temperature) and sea ice coverage are specified by data read from files. As the atmosphere
110 model of CESM2, CAM version 6 (CAM6) is an atmospheric general circulation model (AGCM) with the Finite Volume (FV)
111 dynamical core (Danabasoglu et al., 2020). CAM6 provides the short-term forecast (6-h forecast) of the atmospheric state,
112 which is used as the background state in the DART assimilation scheme. The land model is the Community Land Model
113 version 5 (CLM5). The atmospheric variables are directly updated by the information derived from the observations ingested
114 in the DART assimilation process, while the land state is affected interactively by the updated atmosphere state because the
115 two component models are coupled. The two active models (CAM6 and CLM5) are run with a nominal 1° (1.25° in longitude
116 and 0.95° in latitude) horizontal resolution. CAM6 has 32 vertical levels from the surface level to the top at 3.6 hPa (about 40
117 km).

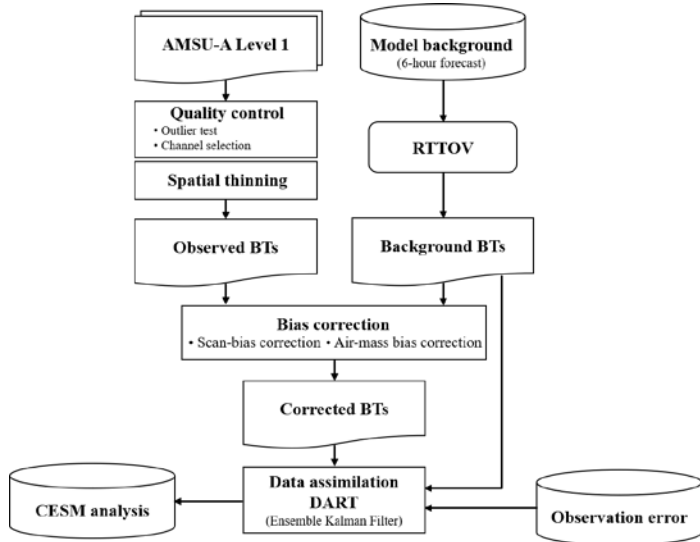
118 **3 Observations**

119 **3.1 NCEP PrepBUFR data**

120 The baseline observation data are obtained from the National Centers for Environmental Prediction (NCEP)
 121 Automated Data Processing (ADP) global upper air and surface weather observations that are available from the NCAR
 122 Research Data Archive (NCAR RDA) (<https://rda.ucar.edu/datasets/ds337.0/>). These data are produced in the PrepBUFR
 123 format for assimilation in the diverse NCEP NWP systems, and mainly consist of ground-based observations and satellite-
 124 based wind retrievals. The ground-based observations include land and marine surface reports, aircraft reports, radiosonde,
 125 and pilot balloon (pibal) measurements, which are transmitted via the Global Telecommunications System (GTS) coordinated
 126 by the World Meteorological Organization (WMO). The satellite-based retrievals are provided from the National
 127 Environmental Satellite Data and Information Service (NESDIS). They include oceanic wind derived from the Special Sensor
 128 Microwave Imager (SSM/I) and upper wind from the LEO and GEO satellites. As the NCEP ADP dataset is provided in the
 129 BUFR format, it must be converted to the data format available in the DART assimilation system, using the modules provided
 130 in the DART data assimilation package.

131 **3.2 AMSU-A data**

132 AMSU-A is the microwave temperature sounder that is currently on board diverse sun-synchronous satellite
 133 platforms e.g., MetOp satellites (MetOp-A, -B, and -C), three satellites of the National Oceanic and Atmospheric
 134 Administration (NOAA), and the National Aeronautics and Space Administration (NASA) research satellite *Aqua*. These three
 135 LEO satellite constellations provide near-global coverage, even in data assimilation that has a sub-daily assimilation window;
 136 NOAA satellites circle in an early-morning orbit (around 0600 local time), MetOp satellites have a mid-morning orbit (around
 137 0900 local time), and *Aqua* has an afternoon orbit (around 1300 local time). As a cross-track scanning sounder, the AMSU-A
 138 instrument has a total of 15 channels that consist of 12 channels (AMSU-A channels 3–14) over the 50–58 GHz oxygen (O₂)
 139 absorption band and three window channels (AMSU-A channels 1, 2, and 15) at 23.8, 31.4, and 89 GHz. The instrument
 140 measures 30 pixels in each swath with a spatial footprint size of 48 km in nadir. The channels over the O₂ absorption band
 141 mainly provide information about the vertical structure of tropospheric and stratospheric temperature (Mo, 1999; Goldberg et
 142 al., 2001). In this study, observations of AMSU-A instruments on board four LEO satellites (i.e., NOAA-19, *Aqua*, MetOp-A,
 143 and MetOp-B) are assimilated within the DART data assimilation system.
 144



145 **Figure 1.** Flowchart of the preprocessing system for AMSU-A brightness temperatures (BTs).
 146

4 Preprocessing AMSU-A observations

Prior to assimilating the AMSU-A observations into DART, the AMSU-A observations should be passed through a preprocessing stage. Figure 1 shows the flowchart of the preprocessing stage for the AMSU-A observations as well as the DART assimilation step. In the preprocessing, three main steps are included: quality control, spatial thinning, and bias correction. Quality control consists of two sub-processes: outlier test and channel selection depending on the cloud condition and surface type. If the difference between the observed AMSU-A brightness temperature and the forward-modeled brightness temperature derived from the model background (6-h forecast) is larger than three times the square root of the sum of the observation error variance and the prior background error variance, the AMSU-A observation is not assimilated (called outlier test). As the prior background error variance is based on the ensemble spread, the larger the ensemble spread of the 6-h forecast, the more the AMSU-A observations are assimilated. More detailed information on the channel selection, spatial thinning, and bias correction process is described in sections 4.1, 4.2, and 4.3, respectively.

4.1 Channel selection for the cloud condition and surface type

As each AMSU-A channel has distinct spectral characteristics, it is necessary to carefully choose the channels to be assimilated in the DART data assimilation system. First, the three AMSU-A channels at 23.8, 31.4, and 89 GHz (i.e., channels 1, 2, and 15), distributed over the window region of the microwave spectrum, are not assimilated. These three window channels are mostly affected by the emitted radiances from the surface under clear-sky conditions, so there is almost no information about the atmosphere. However, AMSU-A channels 1 (23.8 GHz) and 2 (31.4 GHz) are highly sensitive to clouds, so they are used for the quality control in which clouds are detected. In addition, even though the AMSU-A channels 3 (50.3 GHz) and 4 (52.8 GHz) are located over the O₂ absorption band used for the temperature sounding, they have a strong sensitivity to the surface, so they are not used in DART. Considering that the upper parts of the weighting function of AMSU-A channels 12 (57.29±0.322±0.022 GHz), 13 (57.29±0.322±0.010 GHz), and 14 (57.29±0.322±0.0045 GHz) are above the top of the atmosphere (i.e., 3.6 hPa) in the CAM6, these three channels are also removed to prevent vertical interpolation errors that may occur in the forward modeling using the RTM. This leaves channels 5-11 (53.596±0.115, 54.4, 54.94, 55.5, 57.29, 57.29±0.217, and 57.29±0.322±0.048 GHz) as the ones which may be assimilated.

As this study aims to assimilate the AMSU-A observations under the clear-sky condition, the cloud-affected channels are filtered out in the quality control step. In other words, the tropospheric channels (channels 5-7) whose peak of the weighting function is below 200 hPa are rejected if the AMSU-A pixel is determined to be a cloud-affected pixel. To determine this, we calculate the cloud liquid water (CLW) derived from observations of AMSU-A channels 1 and 2 over the ocean, using the retrieval methodology suggested by Grody et al. (2001). The CLW is defined as follows:

$$CLW = \cos\theta [D_0 + 0.754 \ln(285.0 - BT_{23}) - 2.265 \ln(285.0 - BT_{31})] \quad (1)$$

$$D_0 = 8.240 - (2.622 - 1.846 \cos\theta) \cos\theta \quad (2)$$

where θ is the satellite viewing zenith angle. BT_{23} and BT_{31} are the brightness temperature of AMSU-A channels 1 and 2, respectively. If the retrieved CLW is larger than 0.2 mm, the AMSU-A pixel is judged to be cloud-contaminated, then the three tropospheric channels (channels 5-7) are rejected.

In this study, seven candidate AMSU-A channels (i.e., channels 5-11) are assimilated differently, depending on the surface type. Channels 5, 6, and 7 are the main tropospheric channels. Their weighting functions peak below 200 hPa, but also have a bit of sensitivity to the surface because of the broad vertical shape of the weighting functions. Thus, the quality of the analysis can be degraded by assimilating the three tropospheric channels over the land and sea-ice types whose surface

188 information (e.g., surface temperature and surface spectral emissivity) is uncertain. For this reason, AMSU-A channels 5–7 are
 189 not assimilated over the land and sea ice. To identify sea-ice area, the sea-ice index (SII) is retrieved from observations of
 190 AMSU-A channels 1 and 3 over the high latitude region (poleward of 50 degrees), using the retrieval algorithm suggested by
 191 Grody et al. (1999). The SII is derived as follows:

$$192 \quad \text{SII} = 2.85 + 0.20 \text{BT}_{23} - 0.028 \text{BT}_{50} \quad (3)$$

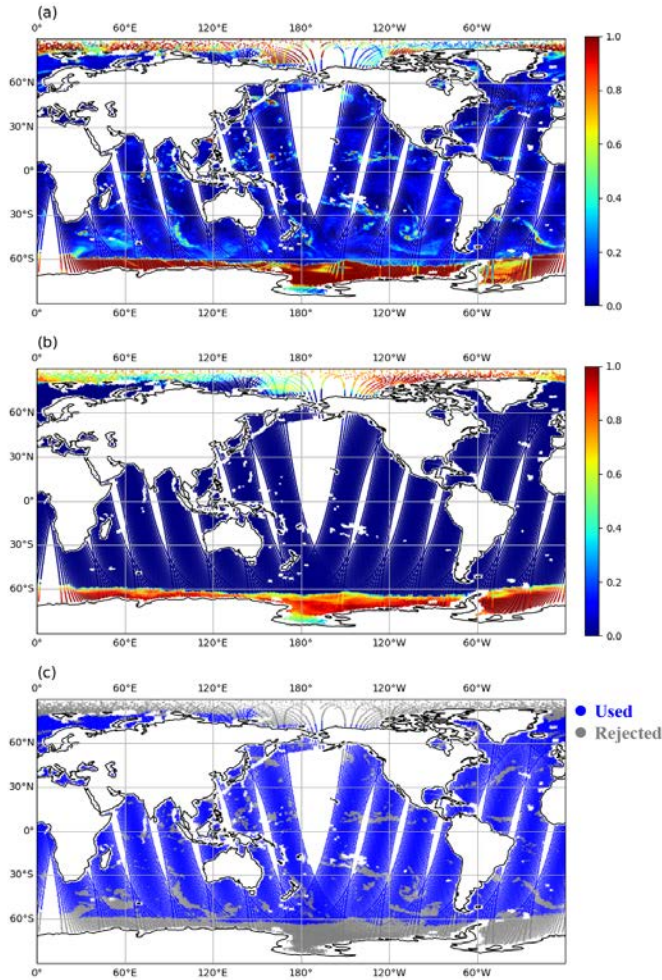
194
 195 where BT_{50} is the brightness temperature of AMSU-A channel 3. Three tropospheric channels are turned off if the SII is larger
 196 than 0.1 in the latitudes beyond 50 degrees. However, as the surface information over the ocean is relatively reliable, seven
 197 candidate AMSU-A channels are assimilated under the clear-sky condition. The AMSU-A channel list for DART is summarized
 198 in Table 1.

199
 200 **Table 1.** AMSU-A channel list for the DART data assimilation.

Satellite platform	Type	CH5	CH6	CH7	CH8	CH9	CH10	CH11
Aqua	Land/Sea-ice		X		O	O	O	O
	Ocean	N/A*	O	N/A	O	O	O	O
	Cloud		X		O	O	O	O
NOAA-19	Land/Sea-ice	X	X	X		O	O	O
	Ocean	O	O	O	N/A	O	O	O
	Cloud	X	X	X		O	O	O
MetOp-A	Land/Sea-ice	X	X			O	O	O
	Ocean	O	O	N/A	N/A	O	O	O
	Cloud	X	X			O	O	O
MetOp-B	Land/Sea-ice	X	X	X	O	O	O	O
	Ocean	O	O	O	O	O	O	O
	Cloud	X	X	X	O	O	O	O

201 *N/A: not available due to the malfunction in August and September 2014. O: assimilated. X: excluded.

202
 203 As an example, Figure 2a and b presents the spatial distribution of the CLW and the SII retrieved from AMSU-A on
 204 board NOAA-19 on 12 August 2014. It is found that many regions over the ocean are covered by cloud-related systems (CLW
 205 > 0.2 mm) and also sea-ice (SII > 0.1) exists near the north and south pole regions. Observations of AMSU-A channel 5 over
 206 the cloud region and sea-ice areas are rejected (Fig. 2c). The channel selection process is also applied to the other two AMSU-
 207 A channels (channels 6 and 7) which are likely affected by clouds and sea ice. In the pre-trial runs, it was found that the analysis
 208 quality is degraded if the AMSU-A observations are assimilated over Antarctica during the Southern Hemisphere winter season.
 209 It seems to be due to the complex topography of the Antarctic continent, extreme cold weather conditions, and large errors in
 210 the numerical model. Thus, AMSU-A observations are not used over the high latitude region (> 60°S) during the Southern
 211 Hemisphere winter season, in order to prevent the degradation of the analysis quality.



212
213 **Figure 2.** Spatial distribution of (a) cloud liquid water (CLW, mm), (b) sea-ice index (SII) retrieved from AMSU-A observations, and (c)
214 quality flag of AMSU-A channel 5 (53.6 GHz) from NOAA-19 on 12 August 2014.

215 **4.2 Spatial thinning**

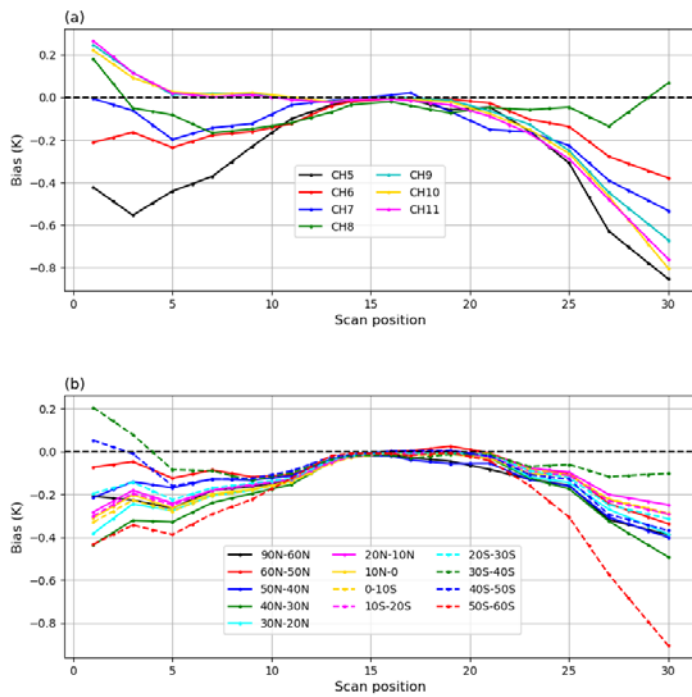
216 In addition to the inter-channel error correlation (refer to section 5), spatial error correlation between the observations
217 at a close distance also exists due to different representativeness of the observed radiances and the model state, and the
218 uncertain quality control process such as cloud detection (Ochotta et al., 2005; Bormann and Bauer, 2010). Thus, the analysis
219 is likely to be sub-optimized if highly dense observations are assimilated without considering the spatial error correlations. A
220 common treatment to counteract the spatial error correlation is spatial thinning which is widely used in data assimilation
221 systems operated by the NWP centers. To choose the optimal spatial thinning distance, we performed four extra assimilation
222 runs in which different spatial thinning distance (i.e., 96 km, 192 km, 288 km and 384 km) was applied. Except for the spatial
223 thinning distance, these pre-trial runs were set up with the same assimilation factors, i.e., the estimated bias correction
224 coefficients (refer to section 4.3), the estimated observation errors (refer to section 5), and the localization half-width of 0.075
225 (refer to section 6). These distances are multiples of the AMSU-A field of view (FOV) footprint size (~48 km in nadir). The

226 thinning interval of 288 km resulted in the largest analysis impact, so that distance was used to thin the observations in this
 227 study.

228 4.3 Bias correction

229 The biases mainly come from systematic errors: instrument calibration errors, inaccuracies of the RTM, and
 230 uncertain preprocessing (e.g. cloud detection errors). The biases tend to depend on time-of-day and on the season as well as
 231 the instrument scan angle and air mass. While random errors are considered by defining the observation errors used in the
 232 assimilation process, the biases should be removed before assimilating the satellite observations. In these experiments, the
 233 biases are estimated using the time averaged departures between the observed radiances and the simulated radiances from the
 234 spatiotemporally collocated model field (background), because of the absence of reference data suitable to compare the satellite
 235 observations (Scheck et al., 2018). The use of the simulated radiances from the model background (i.e., 6-h forecast) may be
 236 questionable because the model background could be biased. However, it is effectively impossible to find sufficient reference
 237 observations for comparing with these satellite observations, so the biases are made using the departures between the observed
 238 radiances and the model simulated radiances. To estimate the systematic biases coming from diverse error sources, in this study,
 239 two bias correction processes are performed separately: scan-bias correction and air-mass-bias correction, using the statistical
 240 bias correction methods suggested by Harris and Kelly (2002).

241



242
 243 **Figure 3.** (a) Globally averaged, residual scan bias of AMSU-A channels 5–11 and (b) the regionally averaged, residual scan bias depending
 244 on 13 latitude bands for AMSU-A channel 6 on board MetOp-B during the period from 11 August to 25 August 2014.
 245

246 As a cross-track microwave sounder, the AMSU-A scans 30 FOVs per scan line, which are distributed symmetrically
 247 about the nadir. The scan angles of 30 FOVs range between $\pm 48.33^\circ$. Thus, the observed radiance varies depending on the scan
 248 angle even though the observation point is the same. The variation of AMSU-A radiance is due to the change in the optical

249 path length between the earth and the satellite instrument, called the limb effect. The variation of radiance along with the scan
 250 angle can be simulated in the RTTOV embedded in DART. However, the mean first-guess departures between the AMSU-A
 251 observed radiances and forward-modeled radiances still increase with an increasing scan angle on the center of two near-nadir
 252 FOVs (15 and 16) (Fig. 3a), meaning that the residual scan-angle-dependent biases exist for each AMSU-A channel. Thus, the
 253 scan-bias correction is required to correct the residual scan bias for each AMSU-A channel. In this study, the scan-bias
 254 correction is performed using the pre-computed residual scan bias for each AMSU-A channel. There are two steps to estimate
 255 the residual scan bias for AMSU-A channels assimilated. First, the mean bias of the departure between the AMSU-A observed
 256 radiances and forward-modeled radiances for each FOV is made with the data assimilation results derived from the pre-trial
 257 run. The pre-trial run was set up with the spatial thinning of 96 km (refer to section 4.2) and the default localization half-width
 258 (0.15, refer to section 6). The instrument noise errors were used as the observation errors within DART. Second, as the scan
 259 bias derived from the departures between the observed radiances and forward-modeled radiances likely includes the air-mass
 260 bias, the averaged residual scan bias is obtained by removing the mean bias of two near-nadir FOVs (15 and 16) from the bias
 261 for each FOV (1–30). In addition, as shown in Fig. 3b, it is also found that the residual scan biases have different patterns
 262 depending on the latitude band for AMSU-A channel 6 (not shown for other channels), suggesting that the use of globally
 263 averaged scan bias is likely to deteriorate the quality of AMSU-A data assimilation. Thus, the residual scan (b^{scan}) bias for
 264 each AMSU-A channel is subdivided into 14 latitude bands as follows:

$$265 \quad b_i^{scan}(\theta, \phi) = [y - H(x_b)]_i(\theta, \phi) - [y - H(x_b)]_i(\theta = 0, \phi) \quad (4)$$

266 where the subscript i denotes the AMSU-A channel number ($i=1, 2, \dots, 15$), θ is the satellite scan angle, ϕ is the latitude band
 267 at an interval of 10 degrees in the latitudes below 60 degrees and 30 degrees in the latitudes beyond 60 degrees, y is the AMSU-
 268 A radiance, x_b is the background model state, and H is the observation operator. Prior to the air-mass-bias correction, the
 269 observed brightness temperatures of each AMSU-A channel are corrected using the estimated scan bias coefficients.

270 The air-mass bias ($b^{airmass}$) is predicted using the multivariate regression method. The biases are mainly due to
 271 uncertainties in the RTM, which tend to vary with the air mass and surface characteristics. The predictors, used in the regression
 272 method, come from the model variables (i.e., 1000–300 hPa thickness, 200–50 hPa thickness, and surface temperature) that
 273 include information on air mass and surface characteristics. The predictors regress to the first-guess departure between the
 274 satellite radiances and forward-modeled radiances as follows:

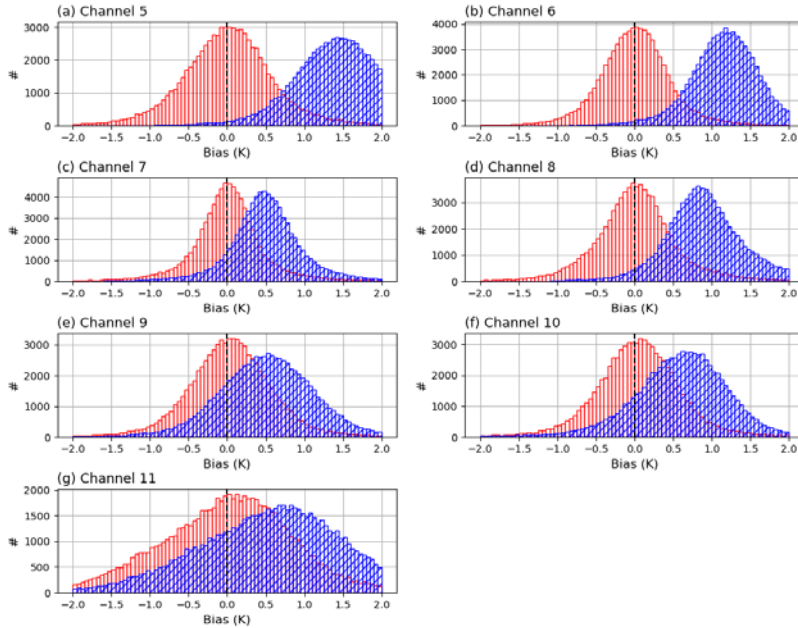
$$275 \quad b_i^{airmass} = \beta_{i,0} + \sum_{j=1}^N \beta_{i,j} p_{i,j} \quad (5)$$

276 where $\beta_{i,0}$ indicates the constant component of bias b_i , and $\beta_{i,j}$ are the bias correction coefficients of the predictor $p_{i,j}$. The
 277 subscripts i and j denote the AMSU-A channel number and the predictor number (i.e., $j = 1, 2, \dots, N$), respectively.

278 For the tropospheric AMSU-A channels (channels 5–7), the air mass bias is estimated with two model variables (i.e.,
 279 1000–300 hPa thickness and surface temperature), because the peak of the channel weighting function is positioned below the
 280 200 hPa pressure level, and these channels have a bit of sensitivity to the surface. However, 200–50 hPa thickness is only
 281 employed for other upper-tropospheric and stratospheric AMSU-A channels (channels 8–11) whose peak of the weighting
 282 function is above 200 hPa. As the biases fluctuate with time, it is reasonable to update the regression coefficients and an
 283 intercept point periodically, rather than using the climatological-based coefficients that are estimated using the long-term model
 284 outputs. In this study, at each data assimilation cycle, the regression coefficients and an intercept point for each AMSU-A
 285 channel are computed using DART outputs for the last four cycles and then used to predict the air-mass biases. As shown in
 286 Fig. 4, the histograms of the first-guess departures of the MetOp-B channels 5–11 show a positive bias and a Gaussian

291 distribution if the AMSU-A observations are not bias-corrected. In particular, channels 5 and 6 have a large positive bias of
 292 1.0–1.5K. However, the positive biases are almost removed through the bias correction process, meaning that the bias
 293 correction scheme works well (Table 2).

294



295 **Figure 4.** Histogram of the first-guess departures between the observations of the MetOp-B AMSU-A channels 5–11 and the corresponding
 296 model background (6-h forecast). Colors indicate the results before the bias correction (hatched blue) and after the bias correction (red),
 297 respectively.
 298
 299

300 **Table 2.** Mean biases and standard deviations of the first-guess departures (O-B) for MetOp-B AMSU-A channels before and after the bias
 301 correction.

O-B	Bias correction	CH5	CH6	CH7	CH8	CH9	CH10	CH11
Bias	X	1.518	1.181	0.514	0.937	0.514	0.590	0.612
	O	0.0005	0.002	0.003	0.014	0.033	0.028	0.010
STDDEV	X	0.677	0.489	0.521	0.572	0.639	0.688	1.052
	O	0.627	0.482	0.494	0.554	0.580	0.642	0.966

302 **5 AMSU-A observation errors**

303 As well as the model background error, the observation errors play an important role in determining the weight of
 304 the observations in the data assimilation system. Thus, it is an important step to define the observation errors so that the
 305 observations are suitably blended with the model background, which is a 6-hour forecast derived from the CAM6, in order to
 306 provide the optimal initial condition to the numerical model. In this study, a diagonal observation error covariance matrix is
 307 used for the AMSU-A channels, meaning that the inter-channel error correlation is not considered. In fact, the use of the
 308 diagonal observation error covariance matrix may be problematic because the inter-channel error correlation definitely exists
 309 for the infrared and microwave sounders (Bormann and Bauer, 2010; Stewart et al., 2014; Weston et al., 2014; Campbell et al.,

2017). Unfortunately, the recent version of DART (version 9.11.13) does not support the use of a full observation error covariance matrix in which the diagonal and off-diagonal components are fully defined. For this reason, the diagonal observation errors are empirically inflated to counteract the effect of error correlation between different AMSU-A channels. In other words, the inflated diagonal observation errors take account of the inter-channel error correlation as well.

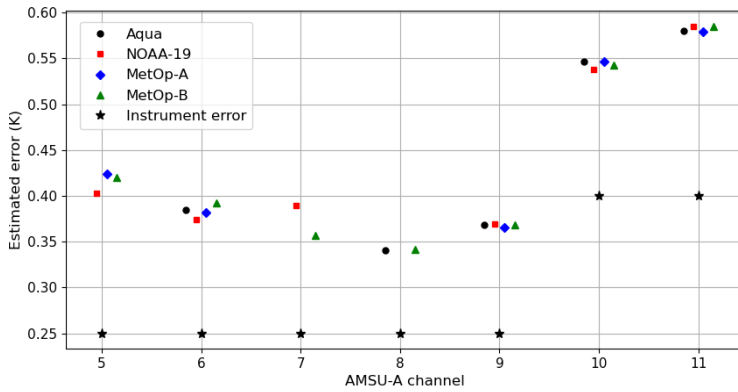


Figure 5. Estimated observation errors (K) for AMSU-A channels on board Aqua (black: circle), NOAA-19 (red: square), MetOp-A (blue: diamond), and MetOp-B (green: triangle) satellite platforms. Black asterisks indicate the instrument noise errors for AMSU-A channels.

To estimate the diagonal components (called variances) of the observation error covariance matrix (R) for AMSU-A channels, we use a diagnostic procedure suggested by Desroziers et al. (2005) in which the error variances are made with two departures, i.e., the background innovation (O-B) between the observation (y) and the model background (x_b) and the analysis innovation (O-A) between the observation and the model analysis (x_a), using the expression in Eq. (6).

$$R = E[\{y - H(x_b)\} \{y - H(x_a)\}^T] \quad (6)$$

where E is the statistical expectation operator and the superscript “T” indicates the matrix transpose. To compute the observation error variances of AMSU-A channels on board four satellite platforms (i.e., Aqua, NOAA-19, MetOp-A, and MetOp-B), the background and analysis innovations were derived from the pre-trial run that was conducted from 25 August to 30 September 2014. In the pre-trial run, instrument noise errors were simply used as the observation errors. The pre-trial run was set up with the default localization half-width (0.15, refer to section 6), the spatial thinning of 96 km (refer to section 4.2), and the bias correction scheme (refer to section 4.3). Then, the observation error variances were estimated using the Eq. (6).

As the surface-sensitive channels and upper-stratospheric channels are not assimilated in this study (see section 4.1), Figure 5 shows the observation errors of seven AMSU-A channels (channels 5–11) as well as the instrument noise errors employed in the pre-trial run. As some channels (i.e., channels 5 and 7 for Aqua, channel 8 for NOAA-19, and channels 7 and 8 for MetOp-A) malfunctioned during the trial period (11 August – 30 September 2014), the errors for these channels were not needed or estimated. The estimated errors are larger than the instrument noise errors because various error sources (e.g., the radiative transfer modeling errors, representative errors, and systematic errors) are considered as well as the instrument noise errors. The estimated errors for the tropospheric and upper-tropospheric channels (channels 5–9) are smaller than the errors for the stratospheric channels (channels 10–11). This error pattern is also presented for the instrument noise errors. As aforementioned, the estimated observation errors were inflated by a factor of two that was empirically estimated by the multiple

pre-trial runs, in order to counteract the inter-channel error correlation. Then, the inflated observation errors, two times the estimated observation errors, were employed for the trial experiments aiming at assessing the analysis impact of assimilating the AMSU-A observations.

6 Trial experiment design

To diagnose the analysis impact of assimilating the AMSU-A observations into the DART global data assimilation system, two assimilation experiments were conducted: (a) a control run (CNTL) where the conventional observations (i.e., ground-based observations and satellite-derived winds) were assimilated, and (b) “AMSU-A run”, where the AMSU-A observations from four LEO satellite platforms (i.e., Aqua, NOAA-19, MetOp-A, and MetOp-B) were assimilated as well as the conventional data that were assimilated in the CNTL run. For the AMSU-A run, the developed preprocessing steps (e.g., channel selection, thinning, and bias correction) were applied to the AMSU-A observed radiances and then the pre-computed AMSU-A observation errors were employed in the DART data assimilation process.

For two trial runs, available observation data were assimilated within a 6-h assimilation window from -3 to +3 h centered at the nominal analysis time (0000, 0600, 1200, and 1800 UTC). All trial runs were carried out four times a day for the trial period from 0000UTC 11 August to 1800UTC 30 September 2014. The CAM6 forecast model was run with a nominal 1° horizontal resolution (1.25° in longitude and 0.95° in latitude) and 32 vertical levels. The initial ensembles that are available at the NCAR RDA (<https://rda.ucar.edu/datasets/ds345.0/>) were obtained from the DART reanalysis. To adjust the effect of initial ensembles, a two-week spin-up period (0000UTC 11 August to 1800UTC 24 August 2014) was included in the trial period. In this study, the ensemble adjustment Kalman filter (EAKF) is applied, which is a variation of the EnKF (Anderson, 2001). Twenty ensemble members were integrated to compute the flow-dependent background error covariance and the correlation between the DART state variables and observations.

All EnKF-based assimilation techniques have the sampling error that is induced by the limited size of the ensemble. In particular, the sampling error is likely to be large when the absolute value of correlation between the DART state variables and the observations is small. To remove the spurious correlation induced by limited ensemble size in DART, the correlation is multiplied by a localization factor that decreases from 1 to 0 with the physical distance between the model state variables and the observations. In DART, the localization half-width can be user-defined, which is half of the distance to where the localization factor is zero. To determine the localization half-width, three extra assimilation experiments were run with different half-widths (i.e., 0.15, 0.075, and 0.0375). Except for the localization half-width, the assimilation experiments were set up with the spatial thinning of 96 km (refer to section 4.2), the bias correction scheme (refer to section 4.3), and the estimated observation errors (refer to section 5). As the largest analysis impact was made with the half-width of 0.075, the horizontal/vertical localization half-width of 0.075 radians was employed to prevent the use of erroneous correlation. However, as the model top height is quite lower than the Earth’s horizontal scale, the localization half-width in the vertical is normalized by the user-defined scale height, which is equivalent to one radian. In DART, the difference in scale height between the model top (360 Pa) and the standard surface pressure (101325 Pa) is 5.73. In this study, the normalization scale height of 1.5, a default value in DART, was used, which is assumed to be equal to one radian. Thus, the localization half-width of 0.075 radians is converted into the scale height of 0.11, meaning that the localization cutoff can be an ellipsoid that is flat horizontally. In addition to the reduction of localization half-width (compared to the default value of 0.15), the sampling error correction algorithm was applied, which uses pre-defined information about the correlation between the model state variables and the observations as a function of ensemble size. Detailed information on the sampling error correction algorithm is described in Anderson (2012).

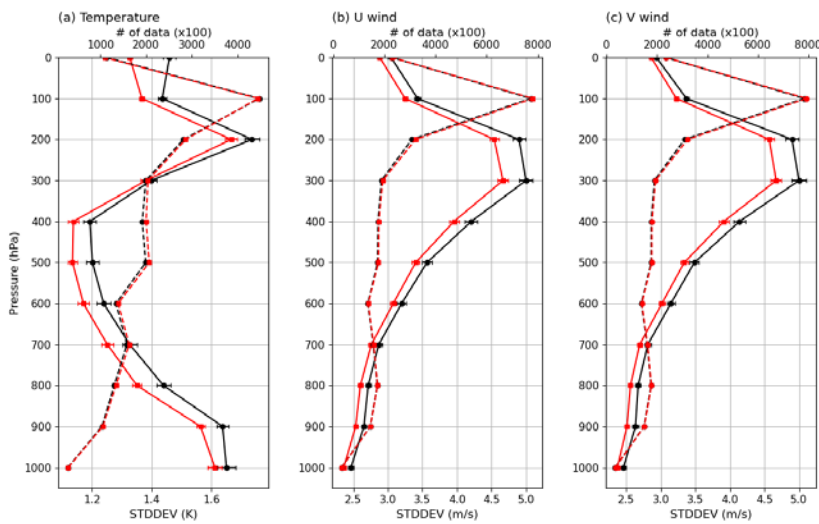
The EnKF technique has a risk of underestimation of the ensemble spread, meaning that the ensemble estimates are too confident. If the ensemble spread becomes too small, the observation data are ignored in the data assimilation process,

383 resulting in an ensemble collapse (Anderson et al., 2009; El Gharamti et al., 2019). To mitigate the underestimation issue of
384 the ensemble spread, the uncertainty in the ensemble estimate is inflated by linearly moving each ensemble member away
385 from the ensemble mean. It means that the standard deviation of the ensemble spread increases by applying the inflation value
386 in a way that the ensemble mean is unchanged. In DART, the ensemble spread varies spatiotemporally, as a function of the
387 evolving observation network and the chosen inflation algorithm. These experiments use a spatiotemporally varying inflation
388 algorithm with a Gaussian distribution. More detailed information on the inflation algorithm adopted in DART is presented in
389 El Gharamti et al. (2019).

390 7 Results

391 7.1 Assessment of first-guess departure and analysis departure

392 As the same conventional radiosonde measurements were assimilated in the two trial runs (i.e., CNTL and AMSU-
393 A), the first-guess departure statistics between the radiosonde measurements and the spatiotemporally-located background
394 states (6-h forecast) can be used to assess the impact of the AMSU-A observations to the short-range forecast. Figure 6 shows
395 the vertical structure of the standard deviation (STDDEV) of the first-guess departure from the radiosonde temperature, zonal
396 wind, and meridional wind as well as the number of the radiosonde measurements used.
397



398

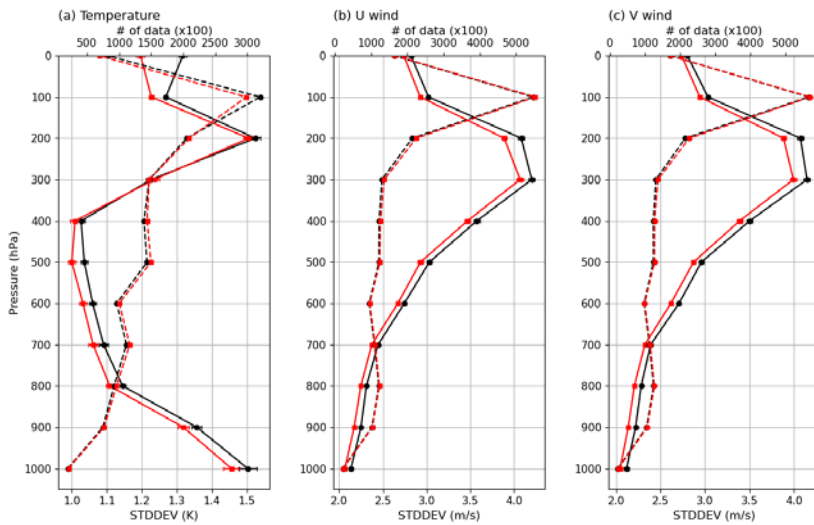


Figure 6. The standard deviation (STDDEV) of the first-guess departures for the radiosonde (a) temperature, (b) zonal wind, and (c) meridional wind for the control (CNTL run: circle symbol and black line) and experiment (AMSU-A run: square symbol and red line) runs. Solid and dashed lines indicate the STDDEV and the number (top axis) of radiosonde measurements assimilated, respectively. The 99% confidence intervals are indicated by the horizontal black lines.

For the temperature, the first-guess departure errors are significantly reduced below 300 hPa for the AMSU-A runs as compared with the errors for the CNTL run (Fig. 6a). Because the AMSU-A channels provide vertical information about the air temperature, the temperature error reduction is the direct impact derived by assimilating the AMSU-A observations in the AMSU-A run. In addition to the radiosonde temperature, the first-guess departure errors decrease for the two wind components (i.e., zonal and meridional winds) (Fig. 6b and c). In particular, the STDDEVs of the two winds at the 2300 hPa level are reduced by up to about 3.94-7m/s in the AMSU-A run, compared to the error of about 45.1m/s for the CNTL run. As the model background error covariance includes the multivariate correlation between different model parameters (e.g., temperature and winds), a change in one model parameter can change another model parameter in the assimilation process. In addition, model parameters are linked in the governing equations and the physical parameterizations, which are embedded in the CAM6. That is, the change in one parameter results in the adjustment of another parameter in the model time integration. Thus, the error reduction of the wind components is the indirect impact of the improved temperature field by assimilating the AMSU-A observations.

In addition to the first-guess departure analysis of radiosonde, the assimilation impact of the AMSU-A observations can be diagnosed by comparing the first-guess departures of the AMSU-A with the analysis departures between the AMSU-A observations and the model analysis state. In general, if the observations are successfully assimilated, the STDDEV of the analysis departure is smaller than that of the first-guess departure, because the background fields are improved by assimilating the observations. As shown in Fig. 7, the STDDEVs of the analysis departure are significantly smaller than that of the first-guess departure for AMSU-A assimilated channels (channels 5–11) regardless of the satellite platforms, meaning that the AMSU-A observations have a positive analysis impact. In particular, the gap between the STDDEVs of two departures is large for the stratospheric AMSU-A channels (channels 9–11).

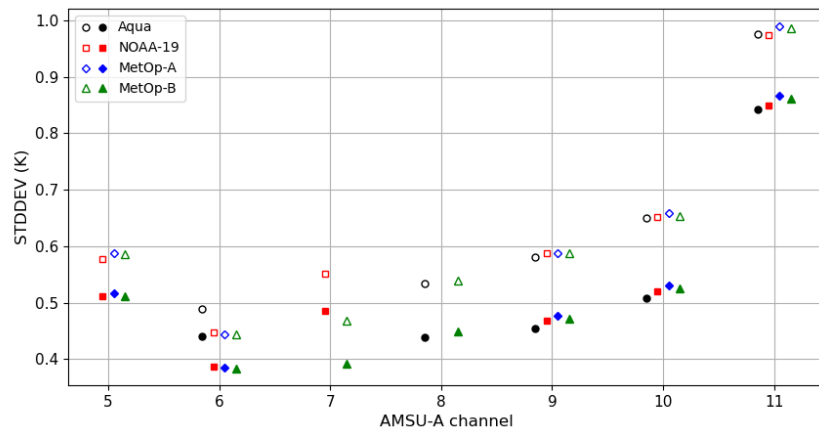
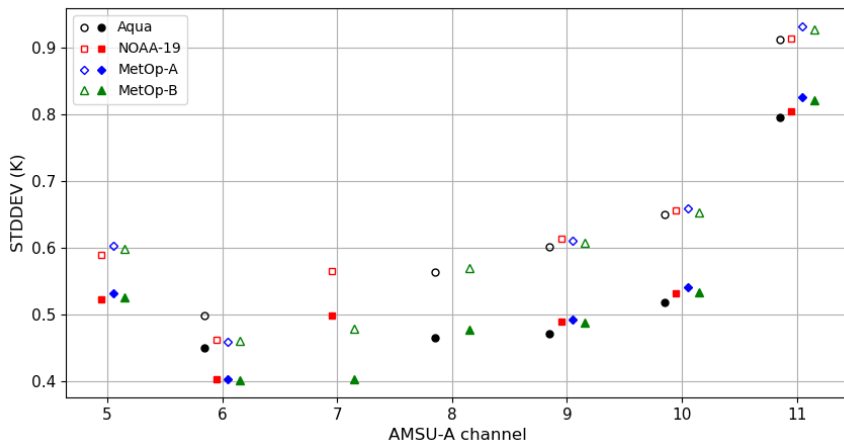


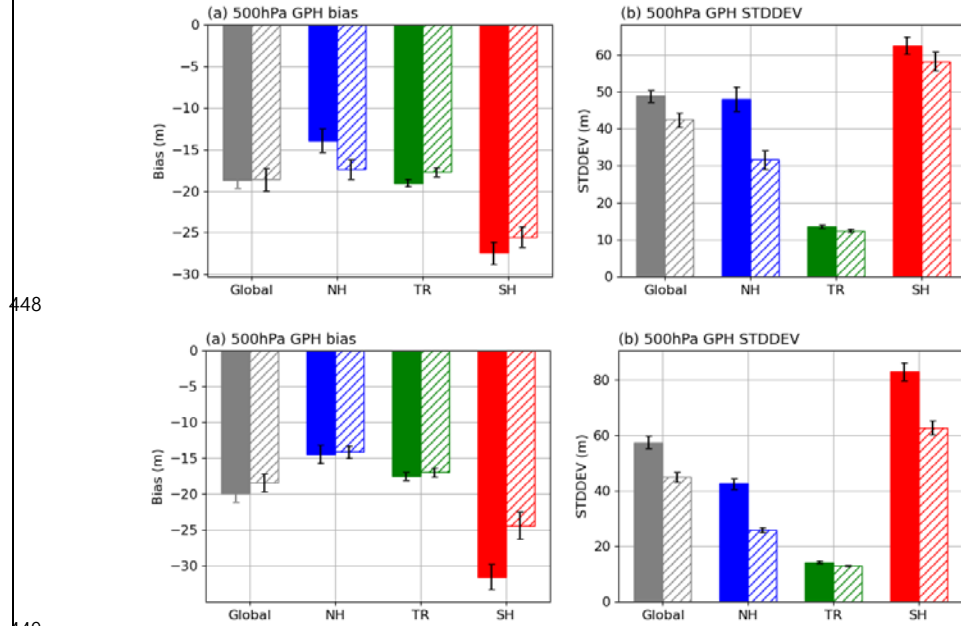
Figure 7. The standard deviations (STDDEVs) of the first-guess departure (unfilled symbols) and analysis departure (filled symbols) for AMSU-A channels on board Aqua (black: circle), NOAA-19 (red: square), MetOp-A (blue: diamond), and MetOp-B (green: triangle) satellites.

7.2 Analysis impact of AMSU-A observations

To assess the impact of the AMSU-A observations on the analysis derived from the DART data assimilation system, the analysis errors are computed between the DART analysis and the European Centre for Medium-Range Weather Forecasts (ECMWF) reanalysis version 5 (ERA5) as the reference data. As the ERA5 is made through the assimilation of all available observation data in the ECMWF data assimilation system and provides consistent maps without spatial gaps, the ERA5 is employed to assess the model-derived output. For four primary atmospheric parameters (i.e., 500 hPa geopotential height, temperature, zonal wind, and meridional wind), the departures between the DART ensemble-mean analysis and the ERA5 are computed. Then bias and standard deviation are derived from the long-term departures. In particular, the error of 500 hPa geopotential height is widely used to assess the overall performance of the model-derived output, because large-scale atmospheric motion in the middle troposphere (500 hPa) is closely linked with lower-level atmospheric motion.

Figure 8 describes the mean bias and STDDEV of 500 hPa geopotential height for the CNTL and AMSU-A run,

442 depending on the latitudinal regions. Detailed error values are described in Table 3. For two trial runs, overall negative mean
 443 bias occurs, reaching up to about -18m. However, the bias difference varies depending on the latitudinal regions. Over the
 444 tropics and the Northern Hemisphere (30°N–90°N), the AMSU-A two trial runs have a larger similar negative bias than the
 445 bias for the CNTL run. However, over the tropics (30°S–30°N) and Southern Hemisphere (30°S–90°S), the CNTL run has a
 446 larger negative bias than the bias for the AMSU-A run. Thus, similar global mean bias (about -18m) for two trial runs is caused
 447 by the offsetting between regionally different bias patterns.



449 **Figure 8.** (a) Mean bias and (b) standard deviation (STDDEV) of the analysis of 500 hPa geopotential height over the global (grey), Northern
 450 Hemisphere (NH: blue), tropics (TR: green), and Southern Hemisphere (SH: red), derived against the ERA5 reanalysis. Filled and hatched
 451 bars indicate the results for the control (CNTL) and experiment (AMSU-A) run, respectively. The 99% confidence intervals are indicated by
 452 the vertical black lines.
 453
 454

455 Considering that the geopotential height is a primary function of the average air temperature between the surface
 456 and the pressure level, we assumed that the model temperature has a cold bias at least below the 500 hPa pressure level. As
 457 expected, it is found that a negative bias is presented in the temperature field for both two trial runs (not shown). In addition,
 458 as shown in Fig. 9, the first-guess departure of the radiosonde temperature for the two trial runs has large positive values,
 459 implying that a cold bias exists in the model temperature fields (6-h forecast). In Raeder et al. (2021), it was noted that the
 460 CAM6/DART-derived reanalysis has a cold bias in the troposphere. However, it is still unclear the reason why the CAM6-
 461 based temperature fields have a cold bias. The bias issue in CAM6 will be an interesting study in future work.
 462

463 **Table 3.** Error statistics of 500 hPa geopotential height (m) for the control (CNTL run) and experiment (AMSU-A run) run. Better values
 464 are bolded. In parentheses, error statistics are shown over the mid-latitude region (30°S–60°S and 30°N–60°N) in the Northern and Southern
 465 Hemisphere.

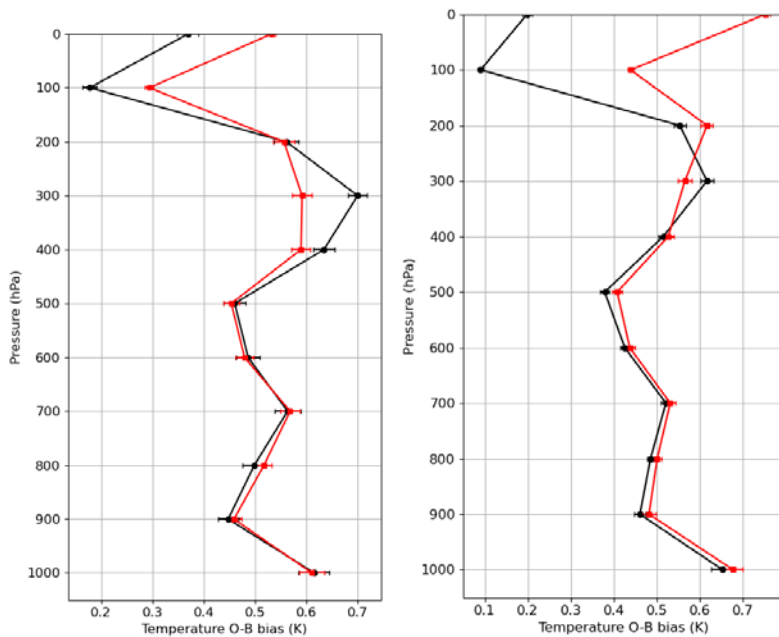
Trial Name	Bias				STDDEV			
	Global	NH	TR	SH	Global	NH	TR	SH
	-18	-15	-18	-25	48	48	13	62
	-18	-15	-18	-25	45	28	13	60

CNTL	-	-	-	-	-	-	-	-
	198.8470	143.4390 (- 158.8143)	179.4405	3127.514 5 (- 2349.028)	5748.498 2	428.5102 (256.857 +)	143.2455	83.0262.5 4 (6838.30 55)
AMSU-A	-	-	-	-	-	-	-	-
	168.9559	147.3119 (- 126.8395)	167.9473	2425.365 1 (- 2219.615)	4542.044 2	2531.915 5 (20.1324)	122.9744	6258.682 9 (4633.31 49)

서식 있음: 글꼴: 굵게

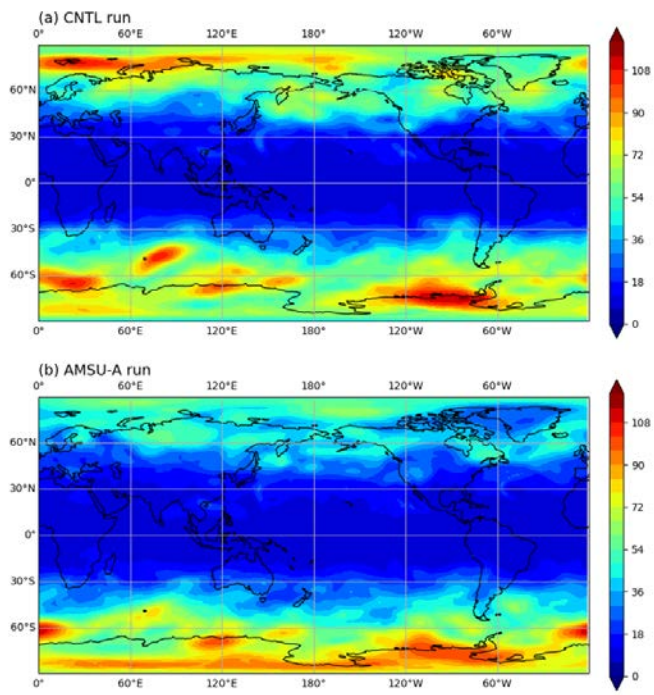
Even though the AMSU-A observations, including temperature information, are additionally assimilated in the AMSU-A run, the AMSU-A run has a negative temperature bias that occurs in the CNTL run. It is related to the bias correction applied to the AMSU-A observations in DART. As mentioned in section 4.3, the AMSU-A radiances are corrected by eliminating the biases based on the departure between the observed radiances and the forward-simulated radiances from the model background field. In addition, in this study, the bias correction coefficients were even updated at each cycle, using the DART outputs from the last four cycles. Thus, the information on the model bias is included in the biases derived from the correction scheme, which gradually fits the observations to the model background over the sequent assimilation cycles. As a result, the model bias still exists in the AMSU-A run as well as the CNTL run.

However, the global-mean STDDEV of 500 hPa geopotential height for the AMSU-A run is reduced to about 42-45 m as compared with the STDDEV (about 49-57 m) for the CNTL run, meaning that the 500 hPa geopotential height predictions are improved by assimilating the AMSU-A observations (Table 3). In particular, the error is largely reduced over the Northern Southern Hemisphere. That is, the analysis impact is more significant in the Northern-Southern Hemisphere. It is inconsistent with the consensus that the assimilation impact of satellite observations is larger in the Southern Hemisphere, where the conventional data are sparse (Terasaki and Miyoshi, 2017; Yamazaki et al., 2023). As shown in Fig. 10a and b, a positive impact mainly occurs in the high latitude region (> 60°N). In contrast, over the tropics and Southern Hemisphere, the error reduction is relatively smaller than over the Northern Hemisphere. In the tropics, the analysis error (about 14 m) is quite small for the CNTL run, as compared with the large errors of about 48-42 m and 63-83 m in the Northern Hemisphere and Southern Hemisphere, respectively. Following Judt (2020), it was demonstrated that the tropical atmosphere has longer predictability than the extratropical atmosphere. Thus, the AMSU-A observations are conservatively assimilated in the tropics due to the small forecast errors, leading to less analysis impact.

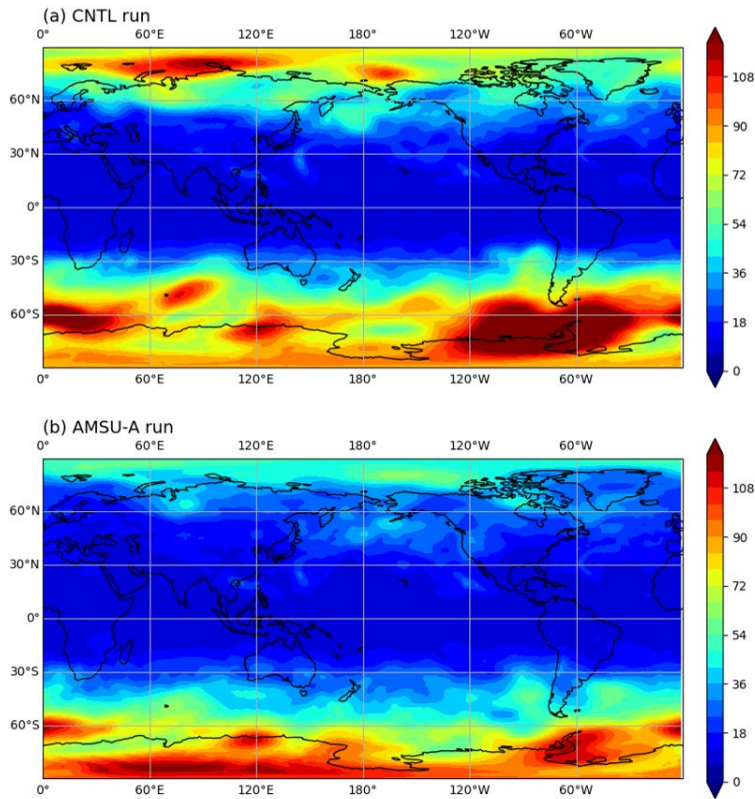


487
488 **Figure 9.** Mean bias of the first-guess departure for the radiosonde temperature measurements for the control (CNTL run: circle symbol and
489 black line) and experiment (AMSU-A run: square symbol and red line) runs. Horizontal lines indicate 99% confidence intervals.
490

491 It is noted that the AMSU-A assimilation impact is neutral in the high-latitude region ($> 60^{\circ}\text{S}$) over the Southern
492 Hemisphere. In contrast, in the high-latitude region ($> 60^{\circ}\text{N}$) over the Northern Hemisphere, the assimilation impact is
493 significant. It is because the AMSU-A observations were not assimilated in the high latitude region ($> 60^{\circ}\text{S}$) over the Southern
494 Hemisphere during the Southern Hemisphere winter season when the trial runs were conducted (mentioned in section 4.1),
495 resulting in the neutral analysis impact. **Thus, if the high-latitude regions (i.e., 60°S - 90°S and 60°N - 90°N) are extracted in the**
496 **error computation over both hemispheres, the analysis impact is still significant, but the difference in the analysis impact**
497 **between both hemispheres considerably decreases (Table 3).** It is still a challenging issue to assimilate the satellite radiances
498 over the Antarctic continent, because of the complex topography, extreme weather condition, and large errors in the numerical
499 model. In particular, as the conventional observations are quite sparse in the high latitude region, the forecast errors are
500 relatively larger than the other latitudinal regions (i.e., the tropics and mid-latitude region, shown in Fig. 10a). In addition, the
501 trial period (11 August – 30 September 2014) is the Southern Hemisphere winter season when the Antarctic continent was
502 under extremely cold weather conditions. In fact, in the pre-trial run, we found that the analysis field was degraded near the
503 Antarctic continent by assimilating the AMSU-A observations. Thus, to prevent the analysis degradation, the AMSU-A
504 observations were rejected over the high latitude region ($> 60^{\circ}\text{S}$) in the Southern Hemisphere. The assimilation of the AMSU-
505 A observation in the Antarctic region will be handled in future work.
506



507



508
509 **Figure 10.** Spatial distribution of the standard deviation (STDDEV) of the analysis of 500 hPa geopotential height for the (a) control run
510 (CNTL) and (b) experiment (AMSU-A) runs, derived against the ERA5 reanalysis.
511

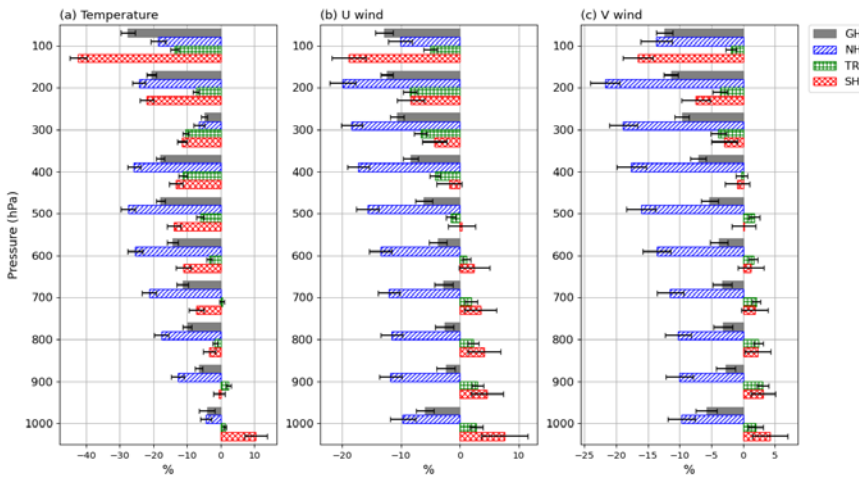
512 Figure 11 shows the normalized difference of STDDEV of temperature, zonal wind, and meridional wind between
513 the AMSU-A run and CNTL run, depending on the latitudinal regions (i.e., global, Northern/Southern Hemispheres, and
514 tropics). The STDDEV difference is normalized by the STDDEV for the CNTL run. A negative value means that assimilating
515 the AMSU-A observations provide analysis benefit. In contrast, a positive value indicates that the analysis error increases for
516 the AMSU-A run compared with the error for the CNTL run, implying a negative analysis impact of the AMSU-A observations.

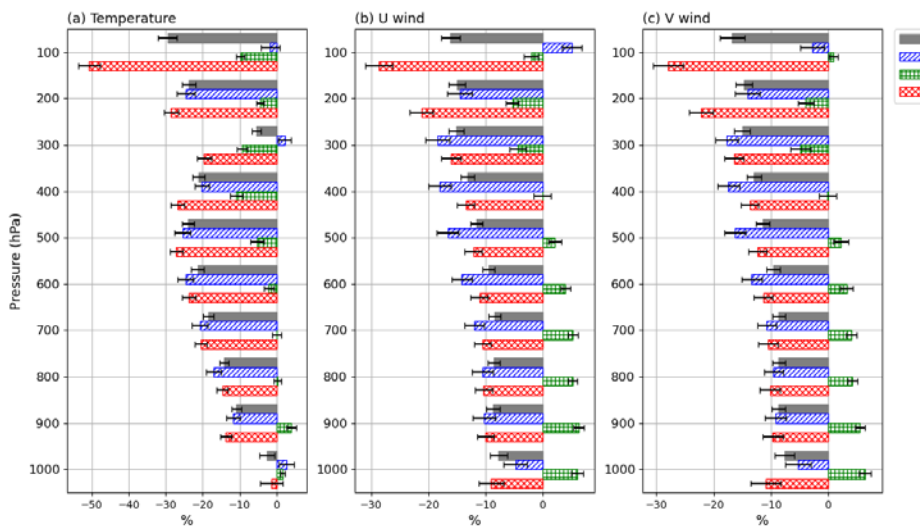
517 For the temperature, the global-mean analysis errors are significantly reduced in the whole troposphere and lower
518 stratosphere for the AMSU-A run, as compared with the CNTL run. Large error reduction occurs in the lower stratosphere (-
519 298% and -214% in 100 hPa and 200 hPa, respectively), which is consistent with the large gap between the STDDEVs of the
520 first-guess departure and the analysis departure for the stratospheric AMSU-A channels (channels 9–11) whose peak of the
521 weighting function is above 200 hPa (shown in Fig. 7). Similar to the results of the 500 hPa geopotential height, a strong error
522 reduction mainly occurs in the Northern and Southern Hemispheres where the errors reduces up to about 25% and 28% in the
523 500 hPa pressure level (Fig. 11a). The error decrease trends are consistent with the trends of the first-guess departure errors of
524 the radiosonde temperature measurements in which a significant error decrease occurs in the 500 hPa layer (Fig. 6a). However,
525 in the lower stratosphere (100 hPa pressure level), the analysis error decreases up to about 5145% in the Southern Hemisphere.

526 For two wind components (i.e., zonal and meridional winds), similar to the results of the temperature, the global-

527 mean analysis errors for the AMSU-A run overall decrease in the whole troposphere and lower stratosphere (Fig. 11b and c).
 528 It is noted that the magnitude of the error decrease tends to increase with height, reaching about -1.73% in the 100 hPa for the
 529 zonal and meridional wind. Moreover, most analysis impact is made in the Northern and Southern Hemispheres, except in the
 530 100 hPa where the maximum error decrease occurs in the Southern Hemisphere. However, over the Southern
 531 Hemispheretropics, the analysis errors for the AMSU-A runs are larger than the errors for the CNTL run in the middle and
 532 lower troposphere. For the spatial pattern of the STDDEV of two wind components (not shown), it is found that the error
 533 increment mainly occurs in the high latitude region ($> 60^{\circ}\text{S}$) where the AMSU-A data were not assimilated for the AMSU-A
 534 run. Considering that the temperature fields above the latitude of 60°S were only updated by the AMSU-A assimilation, the
 535 analysis degradation is possibly due to the discontinuity of the latitudinal temperature gradient near the latitude of 60°S .

536 In the model humidity field, a positive analysis impact only occurs in the Northern Southern Hemisphere (not shown),
 537 but is not as significant as the abovementioned parameters (i.e., 500 hPa geopotential height, temperature, and winds). As a
 538 further study, we plan to assimilate the Microwave Humidity Sounder (MHS) providing information on the vertical structure
 539 of humidity so that the initial condition of model humidity is improved.





542 **Figure 11.** Normalized difference of the standard deviation (STDDEV) of the analysis of (a) temperature, (b) zonal wind, and (c) meridional
 543 wind between the experiment (AMSU-A) run and the control (CNTL) run, derived against the ERA5 reanalysis. Hatched colors indicate the
 544 latitude regions (global: grey, Northern Hemisphere: blue, tropics: green, and Southern Hemisphere: red). Horizontal lines indicate 99%
 545 confidence intervals.
 546

547 8 Summary

548 In this study, we attempted to assimilate the AMSU-A observations using the global data assimilation system
 549 consisting of DART and CESM. To make the AMSU-A data available to be assimilated, preprocessing steps were developed,
 550 which include quality control (i.e., outlier test and channel selection), spatial thinning, and bias correction (i.e., scan-bias
 551 correction and air-mass-bias correction). In addition, the observation error covariance matrix was estimated, but only its
 552 diagonal components were employed in DART because the inter-channel error correlation is not considered in the current
 553 version of DART. To counteract the inter-channel error correlation, the diagonal components were inflated.

554 To assess the impact of the AMSU-A observations on the DART-derived analysis, trial experiments were conducted
 555 from 11 August to 30 September 2014. The derived analysis fields were verified using the ERA5 as the reference. For the
 556 primary atmospheric parameters (i.e., 500 hPa geopotential height, temperature, zonal wind, and meridional wind), an
 557 additional analysis benefit is provided by assimilating the AMSU-A observations on top of the DART data assimilation system
 558 which already makes use of the conventional ground-based observations. In particular, a large analysis impact is shown in the
 559 Northern and Southern Hemispheres where the analysis errors of the temperature and two wind components are significantly
 560 reduced in the whole troposphere. However, in the tropics, the analysis impact is relatively small due to the small forecast
 561 errors. Compared with the Northern Hemisphere, less analysis impact in the high latitude region over the Southern
 562 Hemisphere seems to be due to the reduction in the number of assimilated AMSU-A observations. The AMSU-A observations
 563 are rejected in the high latitude regions ($> 60^{\circ}\text{S}$) during the Southern Hemisphere winter season, because assimilating these
 564 observations worsens the analysis quality.
 565

566 Code and data availability.

567 DART version 9.11.13 was obtained from <https://github.com/NCAR/DART>. CESM version 2.1.0 is released at
 568 <https://github.com/ESCOMP/CESM/tree/release-cesm2.1.0>. Atmospheric initial conditions and the baseline observations at

569 the BUFR format were obtained from the NCAR RDA (<https://rda.ucar.edu/datasets/ds337.0> or <https://doi.org/10.5065/Z83F->
570 N512). AMSU-A Level-1B version 5 data from the Aqua satellite, including the calibrated brightness temperatures, were
571 downloaded from the NASA Goddard Earth Sciences Data and Information Services Center
572 (<https://www.earthdata.nasa.gov/eosdis/daacs/gesdisc>). In addition, AMSU-A Level-1B from NOAA-19, MetOp-A, and
573 MetOp-B satellites were downloaded from the atmosphere product section in the EUMETSAT product navigator
574 (<https://navigator.eumetsat.int>). The ECMWF ERA5 hourly data on pressure levels were acquired from the Copernicus Climate
575 Change Service (C3S) Climate Data Store (<https://cds.climate.copernicus.eu/cdsapp#!/dataset/reanalysis-era5-pressure-levels>).
576 As well as the software codes, the model outputs are available at <https://doi.org/10.5281/zenodo.7714755> and
577 <https://doi.org/10.5281/zenodo.7983459>.

578

579 **Author contributions.** YN and YC conceptualized the research idea. YN and YC developed the methods with assistance from
580 HS and YK. YN led the writing of the manuscript with support from YC, HS, and KR. YC, HS, KR, and JK involved in writing
581 the final version of the manuscript, whereas YK provided feedback on it.

582

583 **Competing interests.** The authors declare no conflicts of interest.

584

585 **Acknowledgements.** This project is sponsored by Korea Polar Research Institute (KOPRI) grant funded by the Ministry of
586 Oceans and Fisheries (KOPRI PE23010). NCAR is supported by the U.S. National Science Foundation (NSF). Any opinions
587 expressed here are not necessarily those of NCAR or the NSF. Hyo-Jong Song and Youngchae Kwon are supported by Korea
588 Environment Industry & Technology Institute (KEITI) through “Climate Change R&D Project for New Climate Regime”,
589 funded by Korea Ministry of Environment (MOE) (2022003560006).

590

591 **References**

- 592 Anderson, J. L.: An ensemble adjustment Kalman filter for data assimilation, *Mon. Weather Rev.*, 129, 2884-2903,
593 doi:10.1175/1520-0493(2001)129<2884:AEAKFF>2.0.CO;2, 2001.
- 594 Anderson, J. L.: Localization and sampling error correction in ensemble Kalman filter data assimilation, *Mon. Weather Rev.*,
595 140, 2359-2371, doi:10.1175/MWR-D-11-00013.1, 2012.
- 596 Anderson, J., Hoar, T., Raeder, K., Liu, H., Collins, N., Torn, R., and Avellano, A.: The data assimilation research testbed: A
597 community facility, *B. Am. Meteorol. Soc.*, 90, 1283-1296, doi:10.1175/2009BAMS2618.1, 2009.
- 598 Bormann, N., and Bauer, P.: Estimates of spatial and interchannel observation-error characteristics for current sounder
599 radiances for numerical weather prediction. I: Methods and application to ATOVS data, *Q. J. Roy. Meteor. Soc.*, 136, 1036-
600 1050, doi:10.1002/qj.616, 2010.
- 601 Campbell, W. F., Satterfield, E. A., Ruston, B., and Baker, N. L.: Accounting for correlated observation error in a dual-
602 formulation 4D variational data assimilation system, *Mon. Weather Rev.*, 145, 1019-1032, doi:10.1175/MWR-D-16-0240.1,
603 2017.
- 604 Coniglio, M. C., Romine, G. S., Turner, D. D., and Torn, R. D.: Impacts of targeted AERI and Doppler lidar wind retrievals on
605 short-term forecasts of the initiation and early evolution of thunderstorms, *Mon. Weather Rev.*, 147, 1149-1170., doi:
606 10.1175/MWR-D-18-0351.1, 2019.
- 607 Danabasoglu, G., Lamarque, J. F., Bacmeister, J., Bailey, D. A., DuVivier, A. K., Edwards, J., et al.: The community earth
608 system model version 2 (CESM2), *J. Adv. Model. Earth Sy.*, 12, 1-35, doi:10.1029/2019MS001916, 2020.
- 609 Desroziers, G., Berre, L., Chapnik, B., and Poli, P.: Diagnosis of observation, background and analysis-error statistics in
610 observation space, *Q. J. Roy. Meteor. Soc.*, 131, 3385-3396, doi:10.1256/qj.05.108, 2005.
- 611 Duncan, D. I., Bormann, N., Geer, A. J., and Weston, P.: Assimilation of AMSU-A in All-Sky Conditions, *Mon. Weather Rev.*,
612 150, 1023-1041, doi:10.1175/MWR-D-21-0273.1, 2022.
- 613 English, S., McNally, T., Bormann, N., Salonen, K., Matricardi, M., Horanyi, A., Rennie, M., Janisková, M., Michele, S. D.,
614 Geer, A., Tomaso E. D., Cardinali, C., Rosnay, P., Sabater, J. M., Bonavita, M., Albergel, C., Engelen, R., Thépaut, J.: Impact
615 of Satellite Data, ECMWF Technical Memorandum, 711, ECMWF Reading, UK, 2013.
- 616 Eresmaa, R., Letertre-Danczak, J., Lupu, C., Bormann, N., and McNally, A. P.: The assimilation of Cross-track Infrared
617 Sounder radiances at ECMWF, *Q. J. Roy. Meteor. Soc.*, 143, 3177-3188, doi:10.1002/qj.3171, 2017.
- 618 Eyre, J. R., Bell, W., Cotton, J., English, S. J., Forsythe, M., Healy, S. B., and Pavelin, E. G.: Assimilation of satellite data in
619 numerical weather prediction. Part II: Recent years, *Q. J. Roy. Meteor. Soc.*, 148, 521-556, doi:10.1002/qj.4228, 2022.
- 620 Eyre, J. R., English, S. J., and Forsythe, M.: Assimilation of satellite data in numerical weather prediction. Part I: The early
621 years, *Q. J. Roy. Meteor. Soc.*, 146, 49-68, doi:10.1002/qj.3654, 2020.
- 622 El Gharamti, M., Raeder, K., Anderson, J., and Wang, X.: Comparing adaptive prior and posterior inflation for ensemble filters
623 using an atmospheric general circulation model, *Mon. Weather Rev.*, 147, 2535-2553, doi:10.1175/MWR-D-18-0389.1, 2019.
- 624 Goldberg, M. D., Crosby, D. S., and Zhou, L.: The limb adjustment of AMSU-A observations: Methodology and validation, *J.*
625 *Appl. Meteorol. Clim.*, 40, 70-83, doi:10.1175/1520-0450(2001)040<0070:TLOAA>2.0.CO;2, 2001.
- 626 Grody, N., Weng, F., and Ferraro, R.: Application of AMSU for obtaining water vapor, cloud liquid water, precipitation, snow
627 cover, and sea ice concentration, 10th International TOVS Study Conference, International TOVS Working Group (ITWG),
628 1999.
- 629 Grody, N., Zhao, J., Ferraro, R., Weng, F., and Boers, R.: Determination of precipitable water and cloud liquid water over
630 oceans from the NOAA 15 advanced microwave sounding unit, *J. Geophys. Res.*, 106, 2943-2953, doi:
631 10.1029/2000JD900616, 2001.
- 632 Harris, B. A. and Kelly, G.: A satellite radiance-bias correction scheme for data assimilation, *Q. J. Roy. Meteor. Soc.*, 127,

633 1453-1468, doi:10.1002/qj.49712757418, 2001.

634 Hoar, T. J., Raeder, K., Anderson, J. L., Steward, J., El Gharamti, M., Johnson, B. K., Romine, G., Ha, S., and Mizzi, A. P.:
635 DART: Empowering Geoscience with Improved Ensemble Data Assimilation, 2020 AGU Fall Meeting, American Geophysical
636 Union, 2020.

637 Hurrell, J. W., Holland, M. M., Gent, P. R., Ghan, S., Kay, J. E., Kushner, P.J., et al.: The community earth system model: a
638 framework for collaborative research, *B. Am. Meteorol. Soc.*, 94, 1339-1360, doi:10.1175/BAMS-D-12-00121.1, 2013.

639 Joo, S., Eyre, J., and Marriott, R.: The impact of MetOp and other satellite data within the Met Office global NWP system
640 using an adjoint-based sensitivity method, *Mon. Weather Rev.*, 141, 3331-3342, doi:10.1175/MWR-D-12-00232.1, 2013.

641 Judt, F.: Atmospheric predictability of the tropics, middle latitudes, and polar regions explored through global storm-resolving
642 simulations, *J. Atmos. Sci.*, 77, 257-276, doi:10.1175/JAS-D-19-0116.1, 2020.

643 Kalnay, E.: *Atmospheric Modeling, Data Assimilation and Predictability*. Cambridge University Press, 2003.

644 Kay, J. E., Deser, C., Phillips, A., Mai, A., Hannay, C., Strand, G., et al.: The Community Earth System Model (CESM) large
645 ensemble project: A community resource for studying climate change in the presence of internal climate variability, *B. Am.*
646 *Meteorol. Soc.*, 96, 1333-1349, doi:10.1175/BAMS-D-13-00255.1, 2015.

647 Kim, S. M. and Kim, H. M.: Forecast sensitivity observation impact in the 4DVAR and hybrid-4DVAR data assimilation
648 systems, *J. Atmos. Ocean. Tech.*, 36, 1563-1575, doi:10.1175/JTECH-D-18-0240.1, 2019.

649 Liu, H., Anderson, J., and Kuo, Y. H.: Improved analyses and forecasts of Hurricane Ernesto's genesis using radio occultation
650 data in an ensemble filter assimilation system, *Mon. Weather Rev.*, 140, 151-166, doi:10.1175/MWR-D-11-00024.1, 2012.

651 Menzel, W. P., Schmit, T. J., Zhang, P., and Li, J.: Satellite-based atmospheric infrared sounder development and applications,
652 *B. Am. Meteorol. Soc.*, 99, 583-603, doi:10.1175/BAMS-D-16-0293.1, 2018.

653 Migliorini, S. and Candy, B.: All-sky satellite data assimilation of microwave temperature sounding channels at the Met Office,
654 *Q. J. Roy. Meteor. Soc.*, 145, 867-883, doi:10.1002/qj.3470, 2019.

655 Migliorini, S., Piccolo, C., and Rodgers, C. D.: Use of the information content in satellite measurements for an efficient
656 interface to data assimilation, *Mon. Weather Rev.*, 136, 2633-2650, doi:10.1175/2007MWR2236.1, 2008.

657 Mo, T.: AMSU-A antenna pattern corrections, *IEEE Trans. Geosci. Remote Sens.*, 37, 103-112, doi: 10.1109/36.739131, 1999.

658 Ochotta, T., Gebhardt, C., Saupe, D., and Wergen, W.: Adaptive thinning of atmospheric observations in data assimilation with
659 vector quantization and filtering methods, *Q. J. Roy. Meteor. Soc.*, 131, 3427-3437, doi:10.1256/qj.05.94, 2005.

660 Raeder, K., Anderson, J. L., Collins, N., Hoar, T. J., Kay, J. E., Lauritzen, P. H., and Pincus, R.: DART/CAM: An ensemble
661 data assimilation system for CESM atmospheric models, *J. Clim.*, 25, 6304-6317, doi:10.1175/JCLI-D-11-00395.1, 2012.

662 Raeder, K., Hoar, T. J., El Gharamti, M., Johnson, B. K., Collins, N., Anderson, J. L., Steward, J., and Coady, M.: A new
663 CAM6+ DART reanalysis with surface forcing from CAM6 to other CESM models, *Sci. Rep.*, 11, 1-24, doi: 10.1038/s41598-
664 021-92927-0, 2021.

665 Scheck, L., Weissmann, M., and Bernhard, M.: Efficient Methods to Account for Cloud-Top Inclination and Cloud Overlap in
666 Synthetic Visible Satellite Images, *J. Atmos. Ocean. Tech.*, 35, 665-685, doi:10.1175/JTECH-D-17-0057.1, 2018.

667 Saunders, R., Hocking, J., Turner, E., Rayer, P., Rundle, D., Brunel, P., Vidot, J., Roquet, P., Matricardi, M., Gear, A., Bormann,
668 N., and Lupu, C.: An update on the RTTOV fast radiative transfer model (currently at version 12), *Geosci. Model Dev.*, 11,
669 2717-2737, doi:10.5194/gmd-11-2717-2018, 2018.

670 Stewart, L. M., Dance, S. L., Nichols, N. K., Eyre, J. R., and Cameron, J.: Estimating interchannel observation-error
671 correlations for IASI radiance data in the Met Office system, *Q. J. Roy. Meteor. Soc.*, 140, 1236-1244, doi:10.1002/qj.2211,
672 2014.

673 Terasaki, K. and Miyoshi, T.: Assimilating AMSU-A Radiances with the NICAM-LETKF, *J. Meteorol. Soc. Jpn.*, 95, 433-446,
674 doi:10.2151/jmsj.2017-028, 2017.

675 Weston, P. P., Bell, W., and Eyre, J. R.: Accounting for correlated error in the assimilation of high-resolution sounder data, *Q.*

676 J. Roy. Meteor. Soc., 140, 2420–2429, doi:10.1002/qj.2306, 2014.
677 Yamazaki, A., Terasaki, K., Miyoshi, T., and Noguchi, S.: Estimation of AMSU-A radiance observation impacts in an LETKF-
678 based atmospheric global data assimilation system: Comparison with EFSO and observing system experiments, *Weather*
679 *Forecast.*, 38, 953–970, doi:10.1175/WAF-D-22-0159.1, 2023.
680 Zhang, M., Zupanski, M., Kim, M.-J., and Knaff, J. A.: Assimilating AMSU-A Radiances in the TC Core Area with NOAA
681 Operational HWRf (2011) and a Hybrid Data Assimilation System: Danielle (2010), *Mon. Weather Rev.*, 141, 3889–2907,
682 doi:10.1175/MWR-D-12-00340.1, 2013.
683 Zhou, Y., Liu, Y., Huo, Z., and Li, Y.: A preliminary evaluation of FY-4A visible radiance data assimilation by the WRF (ARW
684 v4. 1.1)/DART (Manhattan release v9. 8.0)-RTTOV (v12. 3) system for a tropical storm case, *Geosci. Model Dev.*, 15, 7397-
685 7420, doi:10.5194/gmd-15-7397-2022, 2022.
686 Zhu, Y., Liu, E., Mahajan, R., Thomas, C., Groff, D., Delst, P. V., Collard, A., Kleist, D., Treadon, R., and Derber, J. C.: All-
687 Sky Microwave Radiance Assimilation in NCEP's GSI Analysis System, *Mon. Weather Rev.*, 144, 4709–4735,
688 doi:10.1175/mwr-d-15-0445.1, 2016.
689