

The wave-age dependent stress parameterization (WASP) for momentum and heat turbulent fluxes at sea in SURFEX v8.1.

Marie-Noëlle Bouin^{1,2}, Cindy Lebeaupin Brossier¹, Sylvie Malardel³, Aurore Voldoire¹, and César Sauvage^{1,a}

¹CNRM, University of Toulouse, Météo-France, CNRS, Toulouse, France

²University of Brest, CNRS, Ifremer, IRD, Laboratoire d'Océanographie Physique et Spatiale (LOPS), IUEM, Plouzané, France

³Laboratoire de l'Atmosphère et des Cyclones, University of La Réunion, CNRS, Météo-France, Saint-Denis, France

^anow at: Physical Oceanography Department, Woods Hole Oceanographic Institution, Woods Hole, MA, USA

Correspondence: Marie-Noëlle Bouin (marie-noelle.bouin@meteo.fr)

Abstract. A widely applicable parameterization of turbulent heat and momentum fluxes at sea has been developed for the SURFEX v8.1 surface model. This wave-age dependent stress parameterization (WASP) combines a close fit to available in situ observations at sea up to wind speed of 60 m s^{-1} with the possibility of activating the impact of wave growth on the wind stress. It aims in particular at representing the effect of surface processes that depend on the surface wind according to the state of the art. It can be used with the different atmospheric models coupled with the surface model SURFEX, including the CNRM-CM climate model, the operational (numerical weather prediction) systems in use at Météo-France and the research model Meso-NH. Designed to be used in coupled or forced mode with a wave model, it can also be used in atmosphere-only configuration. It has been validated and tested in several case studies covering different surface conditions known to be sensitive to the representation of surface turbulent fluxes: i) the impact of a Sea Surface Temperature (SST) front on low-level flow by weak wind; ii) the simulation of a Mediterranean heavy precipitating event where waves are known to influence the low-level wind and displace precipitation; iii) several tropical cyclones; and iv) a climate run over 35 years. It shows skills comparable to or better than the different parameterizations in use in the SURFEX v8.1 so far.

1 Introduction

1.1 Background

Turbulent air–sea interactions are known to play a central role in modulating heat and moisture exchanges at interannual to climate scale. They also control the major part of the heat, moisture and momentum exchanges in tropical cyclones (TCs) and, as a consequence, have a strong impact on cyclone intensity (e.g. Emanuel, 2004; Bryan, 2012). Their accurate representation in climate or numerical weather prediction (NWP) models is thus a key step towards better modelling the climate evolution and extreme weather events.

Because the turbulent fluctuations of surface parameters cannot be represented explicitly in atmospheric models, turbulent fluxes are computed using "bulk" parameterizations as functions of mean atmospheric variables at the surface within the

framework of the similarity theory proposed by Monin and Obukhov (1954, MOST). For the wind stress τ , it reads:

$$\tau = \rho u_*^2 = C_d \Delta U^2 \quad (1)$$

with ρ the air density, u_* the friction velocity, ΔU the difference between the wind speed at a reference level and the surface current U_c and C_d the drag coefficient. **Note that bulk algorithms generally include the effect of gustiness in the turbulent fluxes by including a term U_g in the ΔU difference, such as ΔU reads: $\Delta U = ((U_x - U_{cx})^2 + (U_y - U_{cy})^2 + U_g^2)^{1/2}$ with U_x, U_y the components of the surface wind and U_{cx}, U_{cy} the components of the surface current. This gustiness term is not explicitly mentioned in the present work, but is taken into account in the SURFEX v8.1 version of all bulk algorithms used here.**

Similarly, the heat fluxes are expressed as:

$$H = \rho c_p C_h \Delta U \Delta \theta$$

$$LE = \rho L_v C_e \Delta U \Delta q \quad (2)$$

with c_p the air heat capacity and L_v the latent heat of vaporization. $\Delta \theta$ and Δq represent the vertical air–sea gradients of potential temperature and specific humidity, respectively. In neutral conditions and in the surface layer where u_* is supposed to be constant with height, $U(z)$ may be represented as a logarithmic profile:

$$U(z) = \frac{u_*}{\kappa} \log(z/z_0) \quad (3)$$

where κ is the von Karman’s constant (≈ 0.4) and z_0 the roughness length. Equivalently, one can write

$$u_* = \sqrt{C_d(z)} U(z) = \frac{\kappa U(z)}{\log(z/z_0)} \quad (4)$$

in neutral conditions and in the absence of surface current.

The roughness length z_0 is expressed as the sum of two terms representing the behavior of the surface in (respectively) rough and viscous regimes (Charnock, 1955; Beljaars, 1994):

$$z_0 = \frac{\alpha u_*^2}{g} + \frac{0.11\nu}{u_*}, \quad (5)$$

with ν the kinematic viscosity of dry air, g the gravitational acceleration, and α the Charnock coefficient. The Charnock coefficient was originally assumed constant but its dependence on wave parameters allows the drag coefficient to vary more explicitly with the sea state. Defining the transfer coefficients C_d , C_h and C_e with reasonable accuracy in various conditions of surface wind, stability and sea state has been the subject of a considerable amount of work by many expert teams for at least the last 50 years, and the motivation for many dedicated field campaigns.

1.2 Constraints from observations

Direct observations of the turbulent fluxes at sea on buoys, ships and platforms provide constraints on the mean value of the neutral drag coefficient and its growth with wind speed in the range of 10 m wind speed between 5 and 20 m s⁻¹ (e.g. Edson

50 et al., 2013). In this wind range, the momentum transferred from the wind to the sea surface is mainly used for the waves to grow up to a well-developed sea, in equilibrium with the wind (e.g. Janssen, 1989, 2004). The part of the wind stress absorbed by the waves has been formulated to be dependent on the stage of development of the wind sea or wave age (defined as the ratio of the wave peak period ratio of the wave phase speed for the peak of the wave spectrum to the near-surface wind) by Snyder et al. (1981) and Komen et al. (1984). The wave development, in turn, impacts the Charnock parameter and roughness length through Eq. (5) and the friction velocity through Eq. (4). Observations carried out with extreme care and in mainstream conditions (i.e. in the absence of swell or strong surface currents) show indeed a large variability of the friction velocity and of the drag coefficient at a given wind speed (Fig. 1). Several studies based on theoretical considerations (Kitaigorodskii, 1965; Janssen, 1989) or field observations (Smith et al., 1992; Donelan et al., 1993) attribute part of this variability to the effect of the wave growth on z_0 . Wave steepness (wave height divided by wave length) is also a good proxy of the sea-state impact on the surface roughness (Taylor and Yelland, 2001). Several parameterizations of the wind stress with dependence on the wave age have been developed to be used in wind-waves coupled models (e.g. Oost et al., 2002; Drennan et al., 2003; Janssen, 2004). As a pioneer in the wind-wave coupling domain, the European Centre for Medium-Range Weather Forecasts (ECMWF) used coupled models for operational forecasts since 1998 and obtained improvement for surface pressure in medium range NWP and for the 500 hPa geopotential at seasonal scales (Janssen et al., 2001).

For wind speed above 30 m s^{-1} , the coupling regime controlling the stress transfer from the atmosphere to the waves is thought

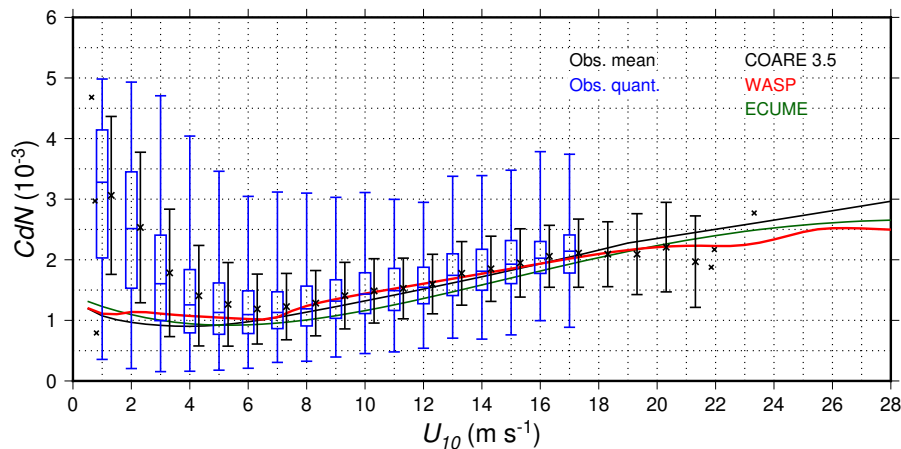


Figure 1. Neutral drag coefficient with respect to 10 m wind speed for different parameterizations (COARE3.5, Edson et al. (2013); COARE3.0, Fairall et al. (2003); ECUME Roehrig et al. (2020) and WASP) and in situ eddy covariance observations (see text and Appendix B for details)). The black symbols and error bars indicate the mean values and standard deviation for observations in each 1 m s^{-1} bin (with 5 values or more) and the blue boxes and whiskers indicate the median, 10%, 25%, 75% and 90% quantiles (with 10 values or more). The quantiles (blue error bars) correspond to the 10%–90% range.

65

to be less dependent on the wave growth, as most waves are breaking. Direct measurements of wind stress are sparse, but show no clear dependence on the wave age but a saturation or decrease for wind speeds above 30 to 35 m s^{-1} (Powell et al., 2003).

This saturation itself is confirmed by other (more or less direct) observations (e.g. Black et al., 2007; French et al., 2007; Jarosz et al., 2007; Vickery et al., 2009; Bell et al., 2012), but the exact corresponding 10 m wind speed where it occurs, the maximum value of the drag coefficient, and its behaviour at higher wind speeds are still very uncertain. Indeed, all available estimates beyond 30 m s^{-1} are highly scattered (see Fig. 2 and Fig. B2). ~~This indicates nevertheless that the dependence of the drag coefficient on the wave growth is not relevant for wind speeds higher than 30 m s^{-1} .~~ Based on observations, there is no evidence that the scattering of the drag coefficient in wind speeds higher than 30 m s^{-1} may be due to wave age. According to previous work, the physical mechanisms likely to explain the observed saturation or decrease of the drag coefficient above 30 m s^{-1} are air-flow separation due to wave breaking Kudryavtsev et al. (2014), changes in the wind profile close to the surface due to high concentration of sea-spray Andreas (2004), or inclusion of non-linear effects in the critical layer theory for wave-growth Miles (1957) with explicit calculation of the momentum transferred to capillary-gravity waves Janssen and Bidlot (2023). The saturation or decrease observed for cyclonic wind speeds must be reproduced in a parameterization (using an analytical function or capping) to match the observations and enable more realistic simulation of the tropical cyclone intensity Majumdar et al. (2023).

Observations of the heat transfer coefficients show no clear dependence on the wind speed, nor on the sea state. Estimations of

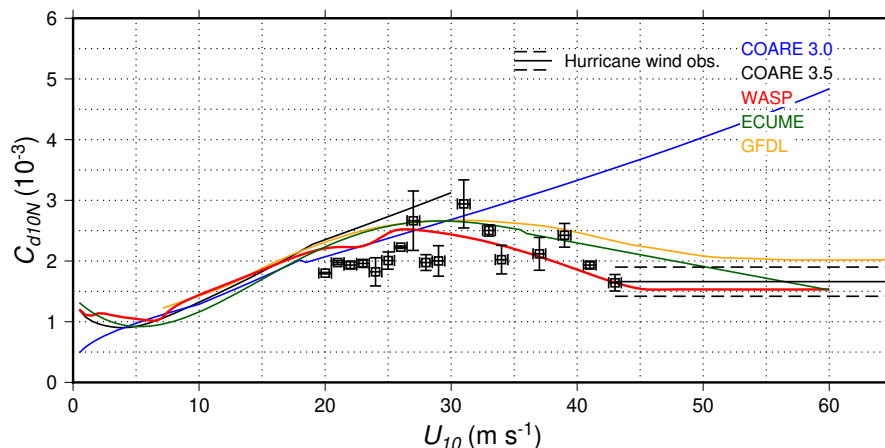


Figure 2. Neutral drag coefficient with respect to 10 m wind speed for different parameterizations (COARE3.0, Fairall et al. (2003); COARE3.5, Edson et al. (2013); WASP; ECUME Roehrig et al. (2020) and GFDL Chen et al. (2020)) and summary of observations up to 60 m s^{-1} .

sensible heat flux at sea from sonic anemometers are extremely noisy, resulting in large dispersion between datasets (Fig. 3). Measurements of the latent heat flux is done by gas analyzers, which are very sensitive to rain, high humidity rates at sea, sea spray and pollutants. All of this results in highly scattered values, even in the $5\text{--}20 \text{ m s}^{-1}$ wind speed range (Fig. 3). However, surface heat transfer play a central role in TC intensification (e.g. Emanuel, 2018) and correctly representing it for strong winds in NWP models is a key step towards a better forecast of TC intensity. Besides, heat transfer plays a central role on modulating

the climate-scale dynamics (in particular in the intertropical band) and can also control local processes even at low winds (e.g. Redelsperger et al., 2019).

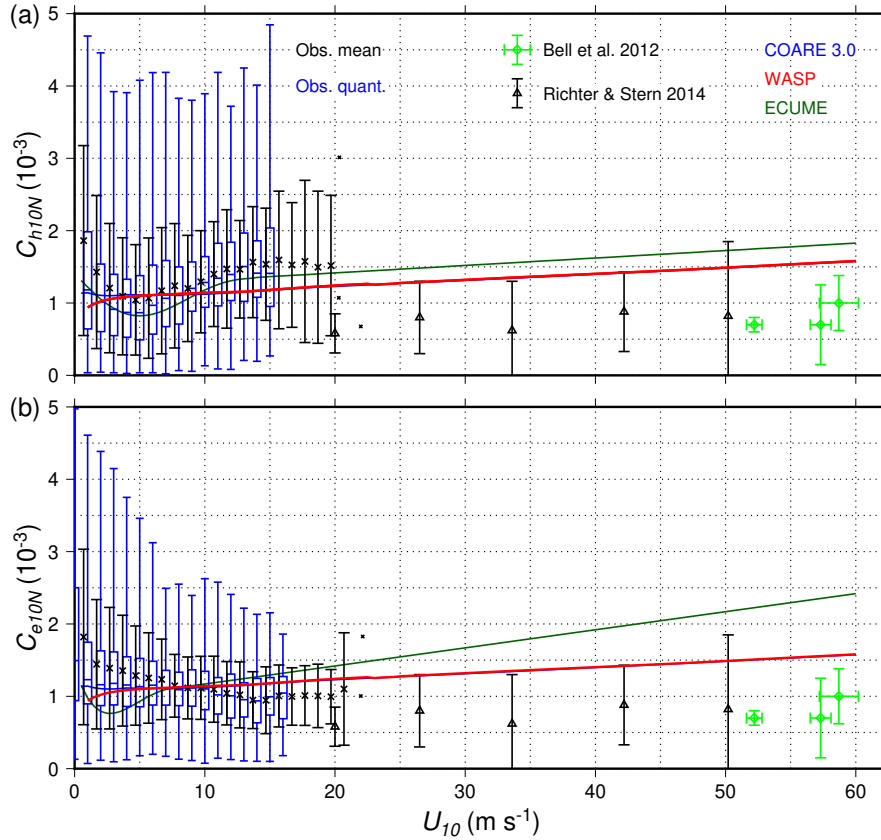


Figure 3. Neutral coefficient for sensible (a) and latent (b) heat fluxes at 10 m with respect to 10 m wind speed for different parameterizations (COARE3.0, Fairall et al. (2003), blue line; WASP, red line; and ECUME, Roehrig et al. (2020), dark green line) and in situ eddy covariance observations and estimates up to 60 m s⁻¹ (see text). Black and blue symbols as in Fig. 1.

1.3 Rationale for this work

90 Several parameterizations of sea surface turbulent fluxes are available in the current SURFEX v8.1 surface model (Masson et al., 2013), the surface scheme embedded in the atmospheric models used at Météo-France. None of them, however, provides a match to observations for all wind speeds, including the cyclonic conditions, and the possibility to account for the wave growth effect on the roughness length and drag coefficient.

The ECUME parameterization [Roehrig et al. (2020), updated from its initial version, Belamari (2005)] is the default scheme
 95 used for operational NWP in the non-hydrostatic, limited-area model AROME (Seity et al., 2011) and in the global model ARPEGE (Courtier et al., 1991). ECUME is also used in ARPEGE within the CNRM-CM configurations for climate simu-

lations (D  qu   et al., 1994). It is also commonly used for case studies with the research-oriented, non-hydrostatic, Meso-NH model (Lac et al., 2018). ECUME has been built by fitting scale parameters for wind, temperature and humidity on observations and enables a close match of the transfer coefficients to observations (Fig. 1 and B2). These transfer coefficients are expressed as polynomial functions of the 10 m wind speed only (the roughness length is a diagnostic parameter, Eq. (4) and (5) are not part of the bulk algorithm).

The COARE 3.0 parameterization (Fairall et al., 2003) can also be used in SURFEX v8.1. It enables representing the impact of sea state on the roughness length through the use of the parameterizations of Oost et al. (2002) or Taylor and Yelland (2001), (Fig. 4b and c). It can also be used in coupled mode with a wave model, the Charnock coefficient (Eq. 5) being computed within the wave model. Using SURFEX with the wave model WAVEWATCH IIITM[WW3, Tolman et al. (2009)] has been made possible by the implementation of a surface coupling interface with the OASIS coupler in SURFEX by Voldoire et al. (2017). COARE 3.0 has been fitted to observations of wind stress and heat fluxes in the tropics, for wind speeds up to 18 m s⁻¹. It provides a good match with observations of wind stress up to 20 m s⁻¹ (Fig. 1) but does not reproduce the decrease of the drag coefficient for winds higher than 30 m s⁻¹ (Fig. 4a and 2). As a consequence, it is not suitable for representing the development of TCs or strong storms.

The new parameterization presented here combines the two aspects of wind-wave coupling and reproducing the decrease of the drag by cyclonic winds. It is based on a very large set of field observations (see Sect. 2.1 for their selection) and ensures that their mean behaviour, in terms of drag and heat transfer coefficients, is well reproduced for wind speeds up to 60 m s⁻¹. It is also based on the Charnock relationship with a dependency of the Charnock parameter on the wave age for wind speeds between 7 and 22 m s⁻¹, corresponding to the growth of wind sea, (Janssen, 2004),

$$\alpha = A\chi^B \tag{6}$$

where $\chi = c_p/U_{10}$ is the wave age and A and B are polynomial functions of U_{10} (see Appendix A1 for more details). **Note that, according to Janssen (2004) the wave age should be computed as c_p/U_{10} rather than c_p/U_{10} but we use Eq. 6 for computing-cost reasons and we checked that the differences are negligible.** For wind speeds less than 22 m s⁻¹, the WASP transfer coefficients closely follow those derived by Edson et al. (2013), using a very large and carefully screened dataset. We do not pretend here to improve much the state of the art of turbulent fluxes at sea that can be used for wind-wave coupling, but rather to design a tool that can be used with every atmospheric model coupled with SURFEX v8.1, producing realistic wind stress and heat fluxes at every wind speed. In addition, the drag coefficient varies as a function of the wave age for a given wind speed in the moderate- to strong-wind range where wave growth is the major process absorbing the wind energy.

The next section presents the principle used for building the new parameterization, the observations used to check the mean values of the transfer coefficients for a given wind speed, and the dependency of the drag coefficient on wave age. These options are discussed with respect to the literature and information from various datasets. Section 3 presents the four case studies that were used to validate **and test** this parameterization. Some conclusions are given in Sect. 4.

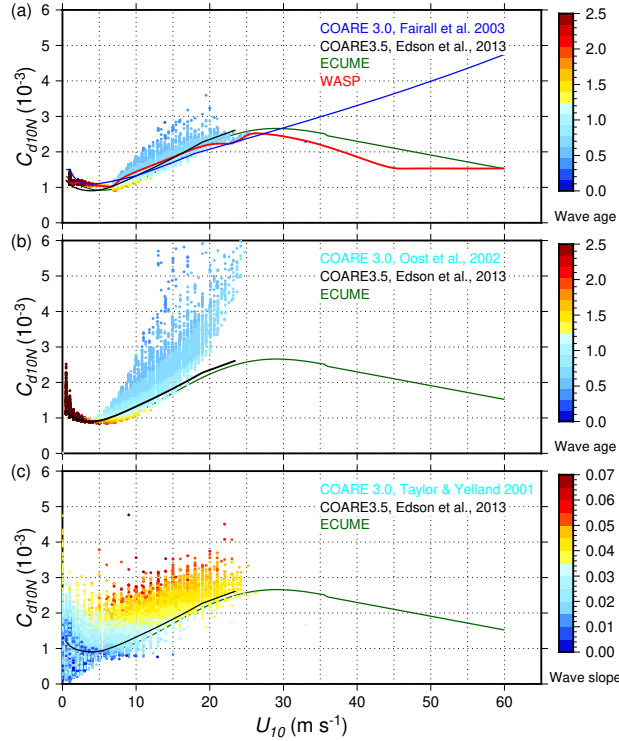


Figure 4. Neutral drag coefficient with respect to 10 m wind speed for the parameterizations implemented in SURFEX v8.1 (a) (COARE 3.0, Fairall et al. (2003); COARE3.5, Edson et al. (2013), ECUME Roehrig et al. (2020), and WASP (present study)), COARE 3.0 with dependence on the wage age (b - color scale, Oost et al. (2002)) and COARE 3.0 with dependence on the wave steepness (c - color scale, Taylor and Yelland (2001)). The surface data used to compute the drag coefficient with wave impact in (a, b, c) are the hourly observations of the LION moored Météo-France buoy (centre of the Gulf of Lion) between 2001 and 2014.

2 The WASP parameterization

130 We present here, first the observations that we retained to fit the mean values of the transfer coefficients, then the transfer coefficients we obtained as functions of the 10 m wind speed. Except specified otherwise, the transfer coefficients developed in this work corresponds to neutral transfer coefficients at the height of 10 m. They can be expressed as:

$$C_{xN10} = \frac{\kappa^2}{\log\left(\frac{10}{z_0}\right) \log\left(\frac{10}{z_{0x}}\right)} \quad (7)$$

135 with $x=d$ for wind stress, h for sensible heat and e for latent heat, and where z_{0x} is a roughness length characterizing the surface properties for the given variable. The non-neutral transfer coefficients used in Eq. (1) and (2) are expressed for a given

height z as:

$$C_x^{1/2}(\zeta) = \frac{C_{xN}^{1/2}}{\left(1 - \frac{C_{xN}^{1/2}}{\kappa} \psi_x(\zeta)\right)} \quad (8)$$

with $\zeta = z/L$ represents the stability parameter and L the Obukhov length. Neutral conditions correspond to $\psi = 0$, and the Obukhov length is a function of the scaling parameters and values of the wind, temperature and humidity. The stability functions
140 ψ are defined as in Beljaars and Holtslag (1991) with the modifications of Fairall et al. (2003) concerning the free convection conditions (see appendix A2 for their full definition).

WASP is intended to be used either in a coupled mode through the SURFEX v8.1 – OASIS3-MCT coupling interface (Voldoire et al., 2017) or in a forced mode using outputs of a wave model. **The wave age in Eq. 6 is computed using the wave phase speed for the peak of the wind sea, and not of the total wave field, and the parameters sent by WW3 to OASIS (starting with**
145 **WW3 v5.14) have been changed to include this phase speed.** But using WASP without wave information is also possible. For the latter use, transfer coefficients are functions of the wind speed corresponding to the mean value taken in coupled mode with a well-developed wind sea ("mean values" hereafter), to ensure that the coupled-mode variability corresponds actually to the wave effect. Section 2.1 presents the datasets used to derive these mean values (as explained in Sect. 2.2.1) and the variation of the surface roughness with sea state is presented in Sect. 2.2.2.

150 2.1 Selection of observations

The parameterization presented here is meant to be used for atmospheric numerical modelling, either operationally with the models of Météo-France or for a large variety of case studies with Meso-NH, with typically the first level at 5 to 20 m above sea level (asl). Whereas it may be tempting to use much finer sampling close to the surface to better represent its influence on the surface-layer or boundary-layer processes, we believe that doing so within the MOST framework leads to inconsistency
155 (see Pelletier et al., 2021, for a discussion).

The mean values of the transfer coefficients should be representative of a large number of neutral conditions, and the only variability introduced is the impact of the wave age for wind speeds between 7 and 23 m s⁻¹ (see Sect. 2.2.2). Turbulent fluxes and transfer coefficients are usually derived from in situ measurements recorded using high-frequency sensors (sonic anemometers and gas analyzers) with either the eddy-covariance (EC) or the inertial-dissipative (ID) methods. While obtaining
160 reliable estimates using the ID method is easier and more straightforward, it implies strong assumptions on the surface-layer structure, which restrict its use. In this study and for wind conditions up to 25 m s⁻¹, we use only carefully checked datasets from measurements at 5 m asl or above computed using the EC method. Thanks to the effort of the observing community, a large number of such datasets exist and many of them were already used by Edson et al. (2013) for deriving the wind stress parameterization COARE 3.5 (see Table B1 for a list). This results in more than 27 000 individual data (representing 10 to 30
165 min of measurements each) for C_d , 21 000 for C_h and 24 000 for C_e . This covers the wind speed up to 22 m s⁻¹ for C_d , and 20 m s⁻¹ for C_h and C_e . These observations were binned in intervals of 1 m s⁻¹ of wind speed, screened and quality checked. The screening consists in evaluating the symmetry of the binned distributions and whether they correspond rather to normal or

log-normal laws. Depending on the results, outliers more than 4 standard deviations from the mean values were removed.

170 Other historical datasets available in the literature (see Table B2) have been used for the range of wind speed up to 30 m
s⁻¹. Direct EC measurements in strong winds are scarce and usually made airborne at height between 30 and 500 m asl (Black
et al., 2007; Vickery et al., 2009; Cook and Renfrew, 2015). For extreme winds between 30 and 60 m s⁻¹, only very few
observations are available, especially for the heat transfer coefficients. Some of them are derived from profiles of dropsondes
(Powell and Ginis, 2006), mostly computed indirectly from the effect of the wind stress on the oceanic surface layer, which is
175 more easily sampled than the atmospheric boundary layer in extreme conditions (Jarosz et al., 2007; Hsu et al., 2017; Richter
and Stern, 2014). The observations used in this study that correspond to extreme conditions are listed in Table B3. **Among
them, some are derived from the oceanic response to tropical cyclones using inversion techniques and come with uncertainties
higher than more direct estimates (dropsondes).**

All these data were used as constraints to derive the transfer coefficients, with different principles for the drag or the heat
180 transfer coefficients, as detailed below.

2.2 Drag coefficient

The neutral drag coefficient is first constructed as a mean value, depending on the wind speed only, and fitted to available
observations in the wind range from 5 to 60 m s⁻¹. Then, a variability depending on the wave age in the wind range of 7 to 25
m s⁻¹ is added to the mean value.

185 2.2.1 Mean fit to observations

In the wind range covered by the in situ, EC observations used to derive the COARE 3.5 parameterization (Edson et al.,
2013), namely 0 to 21 m s⁻¹, the mean value of the neutral drag coefficient is aligned on the COARE 3.5 parameterization,
which we consider as the state of the art for drag coefficient. For wind range above 21 m s⁻¹, we use data published in the
literature (Tables B3 and B2) from less direct measurements, like airborne observations transformed into 10 m wind speed,
190 and measurements on platforms, which may be flawed by the flow distortion. These observations are shown in binned form of
1 m s⁻¹ wind speed in Fig. 1 and 2 (see also Fig. B2 for the detail of observations above 30 m s⁻¹). Between 25 and 45 m
s⁻¹, a polynomial function of the wind speed is used to represent the drag coefficient. This function is fitted on the data with
weighting based on the uncertainties published with the data (average values and standard deviation are computed with weights
equal to the inverse of the variance of the individual datasets). The root mean square of the residuals on C_d is $3.35 \pm 0.32 \times$
195 10^{-4} . For the wind speed range above 45 m s⁻¹, we consider a constant drag coefficient in the continuity of the previous wind
speed range, with a value 1.56×10^{-3} . The weighted average of the published datasets for the drag coefficient in this wind
range is $1.66 \pm 0.24 \times 10^{-3}$, compatible with the value chosen for this constant part of the drag coefficient.

2.2.2 Variability with wave growth

We aim here at introducing some variability in the drag coefficient with respect to the wave growth. In his seminal work, Janssen (1989, 1991, 2004) integrated the input term S_{in} in the wave model to derive the part of the wind stress absorbed by the wave growth and to scale the Charnock coefficient. This approach, used for two-way coupling in the operational Integrated Forecasting System (IFS) at ECMWF (Janssen, 2004), is well adapted to operational use with fixed resolutions, and careful tuning and upgrades of the wave and atmospheric model physical parameterizations. Conversely, it is not appropriate for being included in SURFEX v8.1, which is intended to be used with several atmospheric models at various resolution, for NWP, climate or research applications with variable configurations. Indeed, the Charnock parameter computed this way is mainly sensitive to the high-frequency tail of the spectrum (see Eq. 5.22 and 5.24 in Janssen (2004)), which is always parameterized in wave models, because high frequencies cannot be represented explicitly. Some sensitivity tests showed that there is few variability in the Charnock parameter due to the wave field variability for a given wind speed. **An alternative representation of the capillary-gravity waves and of the part of momentum they absorb is nevertheless provided by Janssen and Bidlot (2023) and should be tested.** In present configurations ~~Thus~~, the benefit of coupling with a wave model are reduced. The WASP approach used here has two advantages, compared to the Charnock parameter approach: i) **it is based on the phase speed or peak period of the waves, which is one of the most accurate parameters produced by wave models, and easy to compare to observations, unlike the Charnock parameter enables to check the validity of the wave parameters used for the coupling (produced by the wave model)** against observations; ii) the Charnock parameter is defined **here** differently depending on the range of wind speed considered, enabling to **add variability due to wave age for wind speeds going from moderate to strong only represent in a more physically sound way its behaviour and possible dependency on the waves.**

In the wind speed range between 7 and 25 m s⁻¹ where the roughness dependency on the wind sea is maximum, the Charnock parameter is expressed as in Eq. (6). Below 7 m s⁻¹, the Charnock coefficient is a power function of U_{10} , and a polynomial of U_{10} above 25 m s⁻¹. The WASP drag coefficient, with a dependence on the wave age, is shown in Fig. ~~4 and~~ 4a.

2.3 Heat fluxes

The principle retained here for building the heat flux transfer coefficient is very similar to the one of the COARE 3.0 (Fairall et al., 2003) parameterization. It is clear from Eq. (7) that the neutral transfer coefficients both for sensible and latent heat fluxes depend only on the roughness lengths z_{0x} and z_0 . The values of the neutral transfer coefficients for turbulent heat C_{hN} and C_{eN} corresponds to those of the COARE 3.0 parameterization. Then, Eq. 7 is inverted to obtain the value of z_{0x} , z_0 being obtained in WASP as explained in Sect. 2.2. In the following, we use datasets of available observations to evaluate these parameters for wind speed in the range 0 to 60 m s⁻¹. These observations are grouped in direct, EC measurements between 0 and 21 m s⁻¹ for C_{hN} , 0 and 19 m s⁻¹ for C_{eN} , and less direct measurements for higher wind speed, available as mean values with estimates of uncertainties for a given wind range or in binned form (see Fig 3).

2.3.1 Sensible heat flux

230 The direct EC observations have a mean value of $1.388 \pm 0.044 \times 10^{-3}$ for C_{hN} and the high wind or less direct observations (in the range 11–60 m s^{-1}) a weighted mean of $1.081 \pm 0.020 \times 10^{-3}$. The mean values are computed as weighted means using the standard deviations of different groups of observations as weights. All together, the whole dataset gives a weighted mean of $1.143 \pm 0.021 \times 10^{-3}$, very close to the constant value of C_{hN} in WASP. The mean difference and standard deviation between WASP and the binned values of this dataset are $2.1 \times 10^{-4} \pm 3.5 \times 10^{-5}$.

235 2.3.2 Latent heat flux

The direct EC observations have a weighted mean of $1.159 \pm 0.034 \times 10^{-3}$ for C_{eN} and the high wind or less direct observations (in the range 11–60 m s^{-1}) a weighted mean of $1.155 \pm 0.012 \times 10^{-3}$. All together, the whole dataset gives a weighted mean of $1.156 \pm 0.011 \times 10^{-3}$, even closer to the constant value of C_{eN} in WASP than for C_{hN} . The mean difference and standard deviation between WASP and the binned values of this dataset are $1.3 \times 10^{-4} \pm 3.4 \times 10^{-5}$.

240 2.4 Direct comparison

An offline test was performed to assess the differences between the current version of ECUME used in the Météo-France NWP and climate runs, and WASP. The SURFEX v8.1 model was used to compute the friction velocity and turbulent heat fluxes with either the ECUME or WASP scheme on the same dataset corresponding of observed atmospheric parameters, SST and wave parameters H_s and T_p . This dataset consists in more than 53 000 hourly in situ measurements at the Lion buoy, located
245 in the Gulf of Lion, between December 2001 and February 2014. They represent a large range of atmospheric conditions (Fig. 5) with wind up to 25 m s^{-1} , air temperature between 5 and 28 °C, relative humidity down to 40 % and wave age (C_p/U_{10}) as low as 0.4 due to strong wind and short fetch in mistral conditions. Strong winds in the Gulf of Lion correspond overall to the offshore blowing mistral and tramontane winds, resulting in strongly unstable conditions with dry air, young waves, and significant wave height up to 6 m. Figure 6 shows the difference obtained using WASP rather than ECUME on the fluxes of
250 momentum, sensible and latent heat, as a function of the different surface conditions at the buoy. Warm colours and triangles pointing upward indicate positive differences (the fluxes obtained using WASP are higher than those obtained using ECUME) and blue shades and triangles pointing downward negative indicate negative differences. The comparison of friction velocities obtained using WASP and ECUME (Fig. 6a) shows that the difference does not depend at first order on the wind speed but on the wave age. As expected, young waves give higher friction velocities than older waves. The larger scattering of the difference
255 which is obtained for the lowest and highest wave ages is an artefact due to the smaller size of the sample. For more common conditions, i.e. between 7 and 20 m s^{-1} and wave ages below 1, WASP gives consistently higher friction velocities than ECUME (8 %). In weaker wind conditions, the difference is not significant.

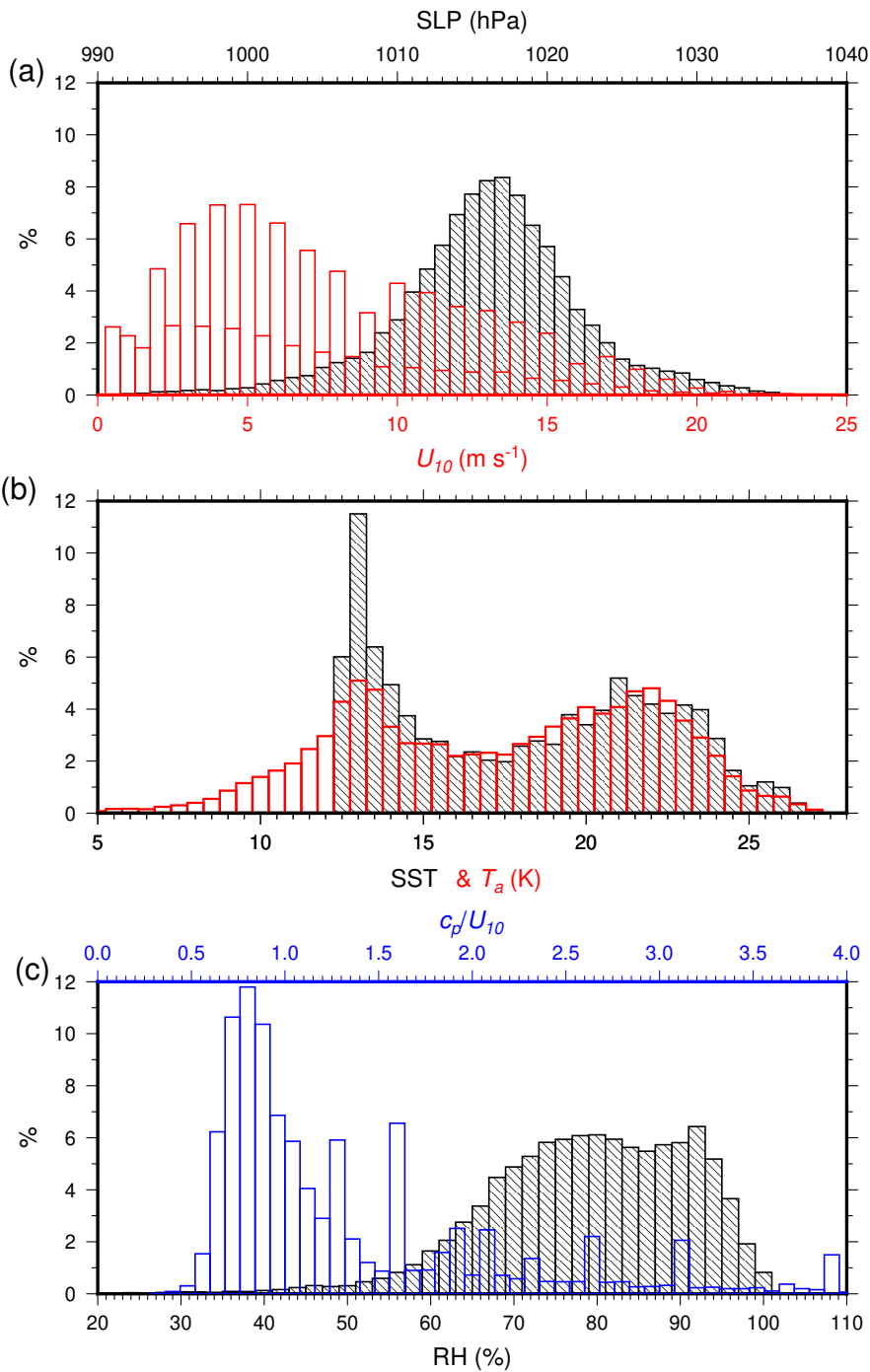


Figure 5. Probability distributions of the data recorded at the Lion buoy: U_{10} (red) and sea level pressure (black,a), SST (black) and air temperature (red,b) and relative humidity (black) and wave age (c_p/U_{10} , blue, c). These data are used to force the ECUME and WASP schemes for a direct intercomparison.

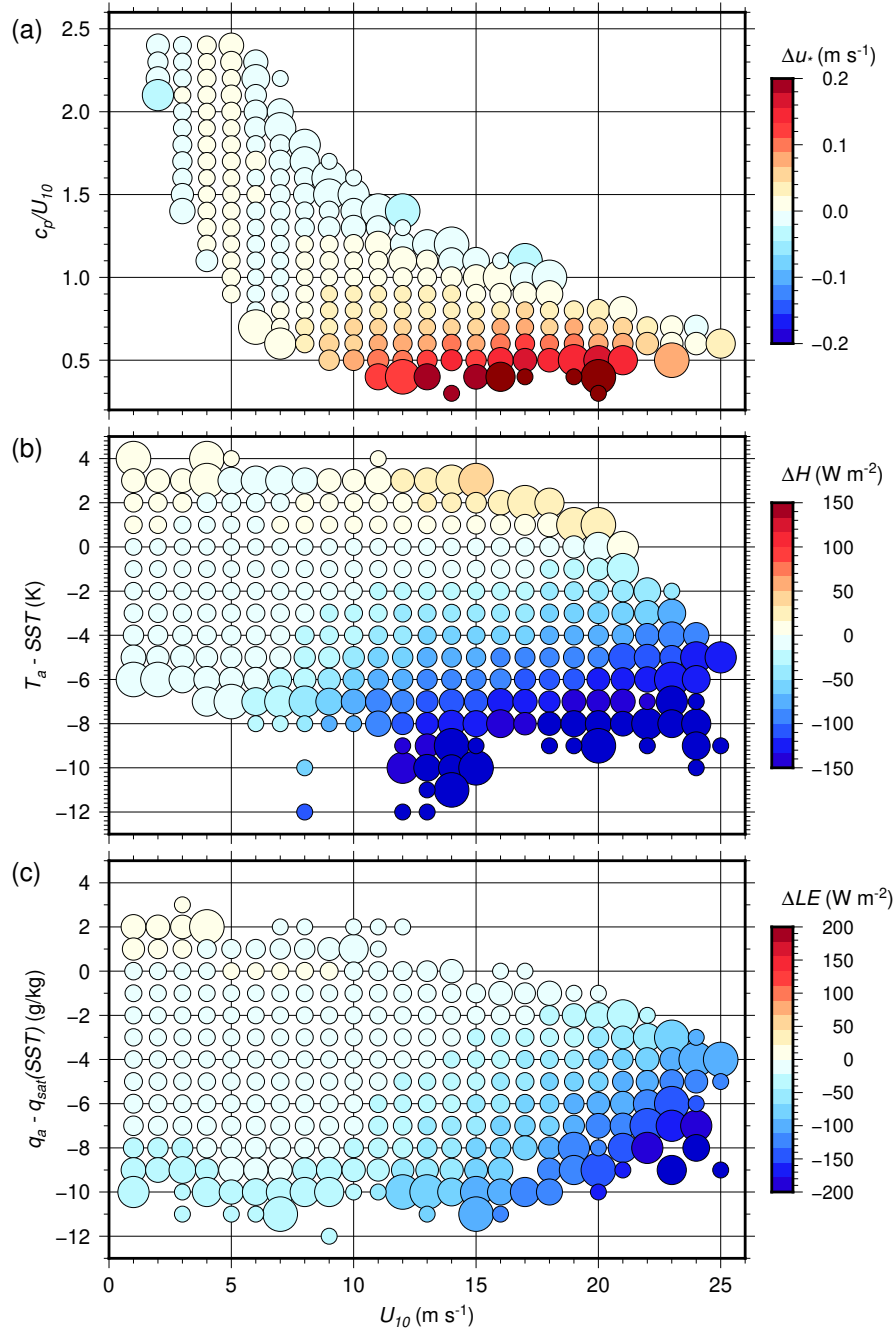


Figure 6. Differences between WASP and ECUME (coloured dots) for the friction velocity (a), the sensible (b) and the latent (c) heat fluxes. The differences are mapped as a function of the 10 m wind speed on the x axis and of the wave age (a), the air–sea temperature difference (b), and specific humidity difference (c) on the y axis. **The size of the symbols indicates the standard deviation of the difference.**

Both sensible and latent heat fluxes are generally lower with WASP than with ECUME (Fig. 6b,c). The difference of sensible heat flux is very dependent on the air–sea temperature gradient, especially for winds above 10 m s^{-1} . In very unstable conditions, which are rather common in the Gulf of Lion, the difference reaches -150 W m^{-2} , for only 30 to 40 W m^{-2} in stable conditions. The latent heat flux is lower whatever the conditions, except for weak wind, warm and moist conditions that are rarely met in the Gulf of Lion. It can be expected therefore that heat fluxes will be lower with WASP than with ECUME when simulating tropical cyclones, at least in the intensification phase with wind speed up to 25 m s^{-1} .

265 3 Validation with case studies and comparison with previous work

A key step of building a parameterization consists in checking its behaviour in representative conditions. To do this, we selected (i) a case study of weak wind and weak heat fluxes, but where the low-level flow is influenced by the effects of a change of stratification on the non-neutral drag coefficient; (ii) a strong-wind case where coupling wind and waves is known to influence the low-level flow and the location of heavy precipitation; (iii) several representative cases of tropical cyclones where both wind stress and heat fluxes control maximum wind speed and minimum sea level pressure; and (iv) a coarse, atmosphere-only climatic run where the energetic balance over several decades depends on both the wind stress and heat fluxes in weak to moderate wind conditions. Cases (ii) to (iv) were performed using the operational models of Météo-France in configurations close to the operational ones. Case (i) was performed using the research model Meso-NH in the same configuration as in Redelsperger et al. (2019). Case (iii) was of special importance for building WASP as its results led to the tuning of the parameterization for wind above 20 m s^{-1} , where observations do not provide enough constraints. Among these cases, only case (ii) explicitly takes into account the wave effect using sea state modelled by WW3, other cases use WASP with the wave age computed as a function of the 10 m wind speed effect depending on the wind only.

3.1 Weak wind conditions: an Iroise Sea case

The case study of a weak low-level flow across a sharp SST front in the Iroise Sea (Redelsperger et al., 2019, R2019 hereafter) is used to assess WASP in calm atmospheric conditions, with strong change of atmospheric stratification over a few kilometres. The configuration used here is the same as in R19, and the reader can refer to this paper for a full description of the case study and modelling configuration.

3.1.1 Atmospheric conditions and modelling configuration

The Ushant SST front is a sharp surface front (3 to $5 \text{ }^\circ\text{C}$ over $\sim 20 \text{ km}$), of barotropic (tidal) origin, which is usually present from March/April to October in the Iroise Sea and moves of about 5 km throughout the day due to the tidal currents. On the day of the study (2 September 2011), the low-level wind was 3 m s^{-1} from southwest, crossing the front from the warm to the cold side with a $\sim 45^\circ$ angle. The 2 m temperature was close to $15 \text{ }^\circ\text{C}$, in contrast with the $17 \text{ }^\circ\text{C}$ or higher SST on the warm side of the front and $15 \text{ }^\circ\text{C}$ or lower SST on its cold side, resulting in unstable to neutral atmospheric stratification. The Meso-NH model was used for a 12 hour simulation with three two-way nested domains with horizontal resolution as fine as

290 100 m on the central domain covering 45×50 km across the front. The surface conditions (SST) were provided hourly by a simulation using the Model for Applications at Regional Scales (MARS-3D), zoomed at 500 m (Lazure and Dumas, 2008). The atmospheric initial and boundary conditions of the largest domain were taken from the AROME-France operational analyses at 2.5 km (Seity et al., 2011). In the reference simulation, the surface turbulent fluxes were parameterized using COARE 3.0, which is suitable for the weak wind conditions.

295 In R2019, it is shown that the impact of the SST front on the Marine Atmospheric Boundary Layer (MABL), although in agreement with published results about its effects and intensity (e.g. Small et al., 2008), differs by the mechanism involved. The sharpness of the front combined with the weak flow results in strong advection, and the process involved here is turbulent mixing rather than pressure gradient. This turbulent mixing is enhanced by a strong contrast of stratification across the front, which increases the non-neutral drag coefficient correspondingly (Fig. 12 in R2019). We check here that the same effects are
300 obtained by running the simulation using the WASP parameterization instead of COARE 3.0.

3.1.2 Results

Figure 7 compares the SST, the difference between the SST and the air temperature, the drag coefficient and the momentum flux along a 35 km profile across the front (see Fig. 8c), from the warm side to the cold side. The decrease of the SST from 17.5 °C to 15 °C (Fig. 7a) produces a strong change in the surface stratification ($SST - T_a$ in Fig. 7b), which results in a
305 strong decrease of the non-neutral drag coefficient C_d (Fig. 7c) from 1.2×10^{-3} to 0.5×10^{-3} . This induces the corresponding decrease in the momentum flux τ (Fig. 7d). The striking correspondence of the change of non-neutral C_d with the SST front can be appreciated in Fig. 8a for the COARE3.0 parameterization. The role of this stratification change due to advection across the front in controlling C_d has been established in R2019 and is shown here by the difference between the non-neutral and neutral drag coefficients across the front (Fig. 7c - see also Fig. 8c for a map of the neutral drag coefficient, which is
310 almost homogeneous on the domain). The simulation using WASP rather than COARE 3.0 gives the same results with a small intensification of the contrast between both neutral and non-neutral drag coefficients across the front (Fig. 7c and d, 8a and b), in ~~link line~~ with slightly higher values of the neutral C_d by weak winds, Fig. 1.

In this weak wind situation with strong gradient of surface stratification, WASP behaves similarly to COARE3.0 in reproducing the decrease of turbulent stress from the warm side to the cold side of the SST front.

315 3.2 Moderate to strong wind conditions with waves: a Mediterranean Sea case

The western Mediterranean region is regularly affected by heavy precipitation events (HPEs) that are characterized by a large amount of rainfall over a small area in a very short time (typically more than 100 mm in less than one day, Ducrocq et al., 2014; Khodayar et al., 2021). These events regularly lead to flash flooding that is a major threat in the area, as it often causes severe damages and in some cases casualties (e.g. Llasat et al., 2013). At low level, strong wind with high SST as generally
320 encountered in autumn govern heat transfer, which moistens and warms the air parcel, thus increases the instability and finally intensifies the convection (e.g. Stocchi and Davolio, 2017; Rainaud et al., 2017; Senatore et al., 2020). The SST fine scale structures and fronts in the Mediterranean are also known to play a role on low-level wind convergence (Meroni et al., 2018,

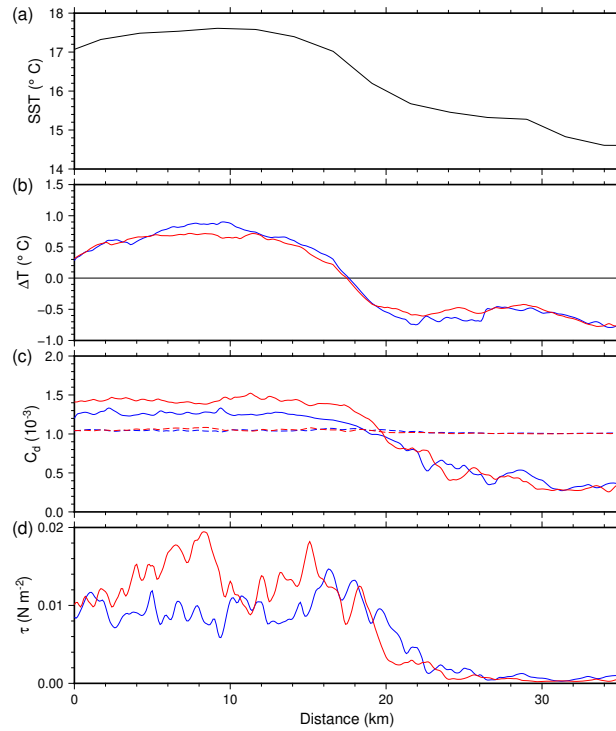


Figure 7. Mean values of the SST (a), $\Delta T = \text{SST} - T_a$ (b), non-neutral drag coefficient (solid) and neutral drag coefficient (dashed) (c), and turbulent stress (d) at 12 UT on 2 September 2011 on the Iroise Sea across the SST front, with COARE3.0 (blue) and WASP (red) parameterizations.

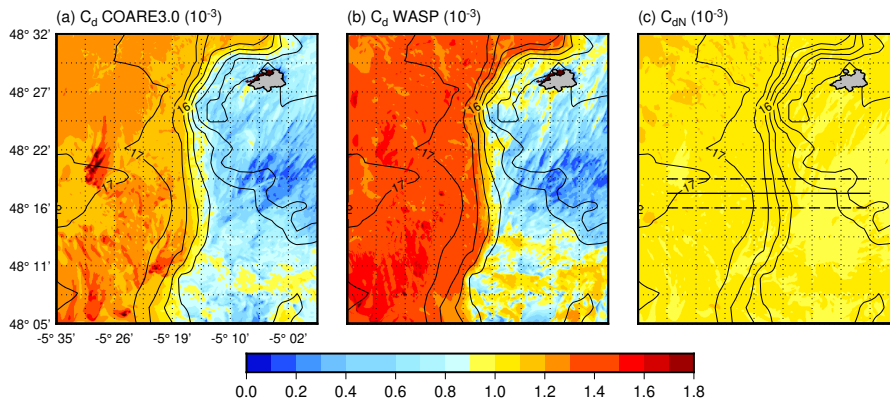


Figure 8. Maps of the COARE3.0 (a), WASP (b) and WASP neutral (c) drag coefficient at 12 UT on 2 September 2011 on the Iroise innermost domain (colour scale). The isolines indicate the SST. The black horizontal lines indicates the transect used for extracting the values of Fig. 7.

2020) that is a key triggering mechanism for deep convection and HPEs at sea. Several case studies using kilometer-scale atmospheric models also showed that taking into account the modulation of the surface roughness by the waves can slow down the low-level flow, shifting the convergence lines and/or modifying the spreading of the cold pool formed below the convective system by precipitation evaporation (e.g. Thévenot et al., 2016; Bouin et al., 2017).

The WASP parameterization has already been tested with and without wave effect by Sauvage et al. (2020, hereafter S2020) on a HPE occurring in mid-October 2016 in South-Eastern France. The wave parameters used as input of the parameterization came from the wave model WW3 v5.16 in forced or coupled mode. In this case, the wave impact on the surface roughness reduces the low-level wind speed of more than 1 m s^{-1} over a large area, and a displacement of the HPE of 40 km towards sea. Since the sensitivity of the wave impact within WASP was already investigated in S2020, we use here the same case study and configuration to test the effect of using WASP in the AROME model with respect to the parameterization ECUME currently used for operational forecasts. We first give a short summary of the configuration used and present then the results of the comparison.

~~The WASP parameterization has already been tested with and without wave effect by Sauvage et al. (2020, hereafter S2020) on a HPE occurring in mid-October 2016 in South-Eastern France. The wave parameters used as input of the parameterization came from the wave model WW3 in forced or coupled mode. In this case, the wave impact on the surface roughness reduces the low-level wind speed of more than 1 m s^{-1} over a large area, and displaces the HPE of 40 km towards sea. Since the sensitivity of the wave impact within WASP was already investigated in S2020, we use here the same case study and configuration to test the effect of using WASP in the AROME model with respect to the parameterization ECUME currently used for operational forecasts. We first give a short summary of the configuration used and present then the results of the comparison.~~

3.2.1 Case study and modelling configuration.

The complete description of the case study and the AROME model in the configuration used here is given in S2020.

The AROME domain configuration is the one used operationally at Météo-France, and known as AROME-France (Brousseau et al., 2016) with a grid resolution of 1.3 km and 90 η -levels with the first level at 5 m asl. To assess the sensitivity of the simulated event to a change of turbulent flux parameterization, we performed two identical sets of simulations using either ECUME or WASP with wave forcing from an offline WW3 simulation. Each set was composed of forecast simulations starting at 00:00 UTC on the 12, 13 and 14 October from AROME operational analyses and lasting 42 h. Hourly boundary conditions were sourced from the ARPEGE operational forecasts (Courtier et al., 1991) except for the SST, which came from the global daily analysis of the Mercator Ocean International ($1/12^\circ$ resolution, PSY4/GLO12 system, Lellouche et al., 2013).

The situation at low level is characterized by a cyclonic circulation that induced a south-easterly flow across the Western Mediterranean Sea and by a strong easterly flow originated from Southern Alps that triggered large sea-surface heat exchanges over the Ligurian Sea and along the French Riviera due to strong wind (up to 20 m s^{-1} observed at the Azur buoy [7.8° E , 43.4° N]) and to large air-sea gradients. The convergence zone between the warm and moist southerly flow and the dry and cold easterly flow was found to trigger convection over the sea. A second convective system, over Hérault in the South of France, was initiated by an orographic uplift and was fed by the easterly flow. Both systems produced large amounts of precipitation.

The Gulf of Lion was initially affected by the rapid easterly flow, producing a young sea with significant wave height (H_s) up to 6 m and strong air–sea fluxes. As the system moved eastwards with the highest wind intensity, the sea state evolved in time from a well-developed sea to swell in this region. Throughout the event, the French Riviera was affected by strong easterly wind generating wind sea.

3.2.2 Results.

The expected impact of parameterization change from ECUME to WASP on this case study is twofold: first, as in S2020, increasing the mean value of the drag coefficient in the range of wind speed [$7\text{--}20\text{ m s}^{-1}$ and adding variability for a given wind speed should decrease the low-level wind; and second, the turbulent heat fluxes should be lowered with respect to the ECUME parameterization possibly lowering the convection at sea.

Figure 9 shows that at 14:00 UTC on 13 October (i.e. at the peak of precipitation intensity), the 10 m wind speed actually decreases by 1 to 2 m s^{-1} over a large area in the Ligurian Sea with WASP. The decrease (and local increase) observed in the Gulf of Lion are due to the westward displacement and enhancement of the convergence zone at sea, as observed in S2020. On the Ligurian Sea which is also the place of strong evaporation, the surface enthalpy flux is significantly decreased by $200\text{--}250\text{ W m}^{-2}$ in the WASP simulation (Fig. 10). These two effects have competing impacts on the convective system all along its lifecycle. In ECUME, the stronger easterly wind tends to displace the convergence zone westwards. But, progressively, the larger heat fluxes lead to a more intense convective system at sea. It induces the development of a well marked cold pool below the system that reinforces the convergence line and pushes it eastwards. As a result of these competing effects, there is no shift of the precipitation area at sea between WASP and ECUME simulations, conversely to what was obtained when comparing simulations done using WASP with and without wave effect in S2020. The convergence and convective system are more stationary, the intense rainfall patch is thinner but the maximum amount of rainfall is quite similar as shown by the accumulated rain amounts between 06 and 12 UTC and between 12 and 18 UTC on 13 October (Fig. 11). For precipitation that hit the Hérault region, we found a small decrease in the rainfall intensity with WASP, in particular during the mature phase of the system (Fig. 11b,d), induced by the lower warming and moistening of the easterly low-level jet that feeds the convective system.

The WASP parameterization used here forced by realistic sea states produced by a WW3 simulation gives results very comparable to the operational simulation. The predictability of the event was good in general, especially concerning the precipitation over the Hérault region, and WASP enables to obtain similar results with a more realistic sea-surface roughness representation.

3.3 Extreme wind conditions: tropical cyclone

WASP is designed to ensure the representation of the variability due to the wave growth and the saturation of the drag coefficient in case of cyclonic winds. The values of the transfer coefficient for heat are reasonably constrained by the observations for winds up to 20 m s^{-1} but between 20 and 60 m s^{-1} observations are too sparse for a robust fit. Case studies of tropical cyclones can help to validate indirectly the values chosen for the drag and heat transfer coefficients in the wind speed range with no observations or observations with large uncertainties.

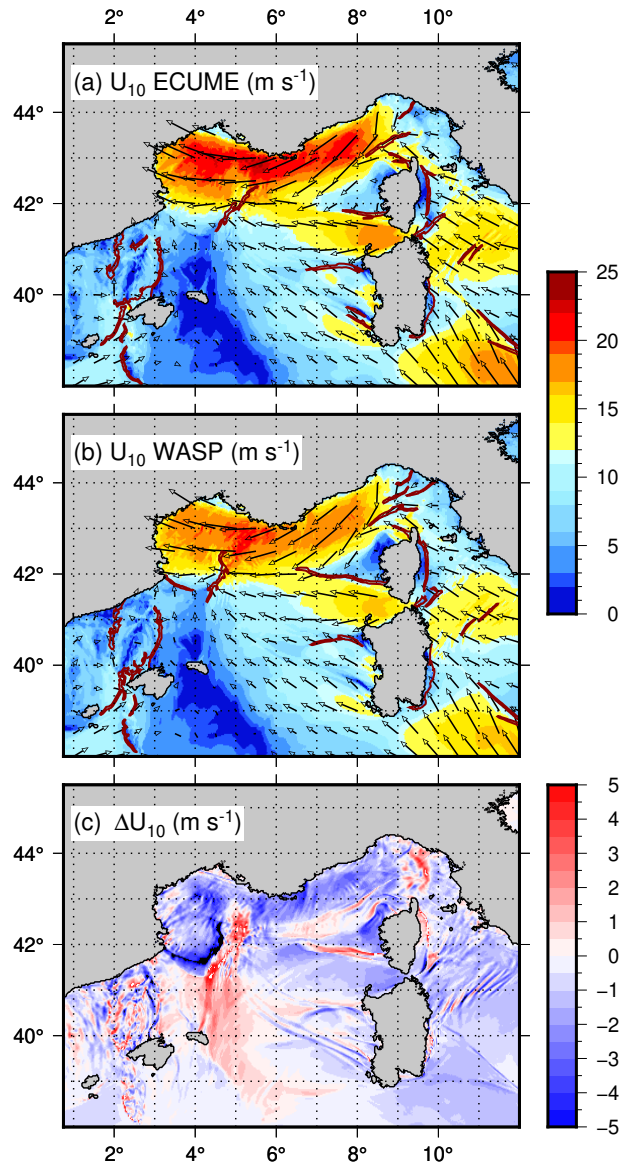


Figure 9. Maps of the 10 m wind in the ECUME (a) and WASP forced simulation (b), and difference WASP - ECUME (c) at 14:00 UTC on 13 October 2016. The main convergence areas are shown with dark red lines (threshold 10^{-3} s^{-1}).

390 3.3.1 Case study and modelling configuration.

To test the sensitivity to the turbulent fluxes, we used the current operational configuration of AROME for the forecast of the tropical cyclones in the Indian Ocean (AROME IO hereafter, Bousquet et al., 2020). AROME is used over a large domain centered at 50° E covering Madagascar and the Mozambique Channel. The horizontal resolution is 1.3 km with 90 vertical

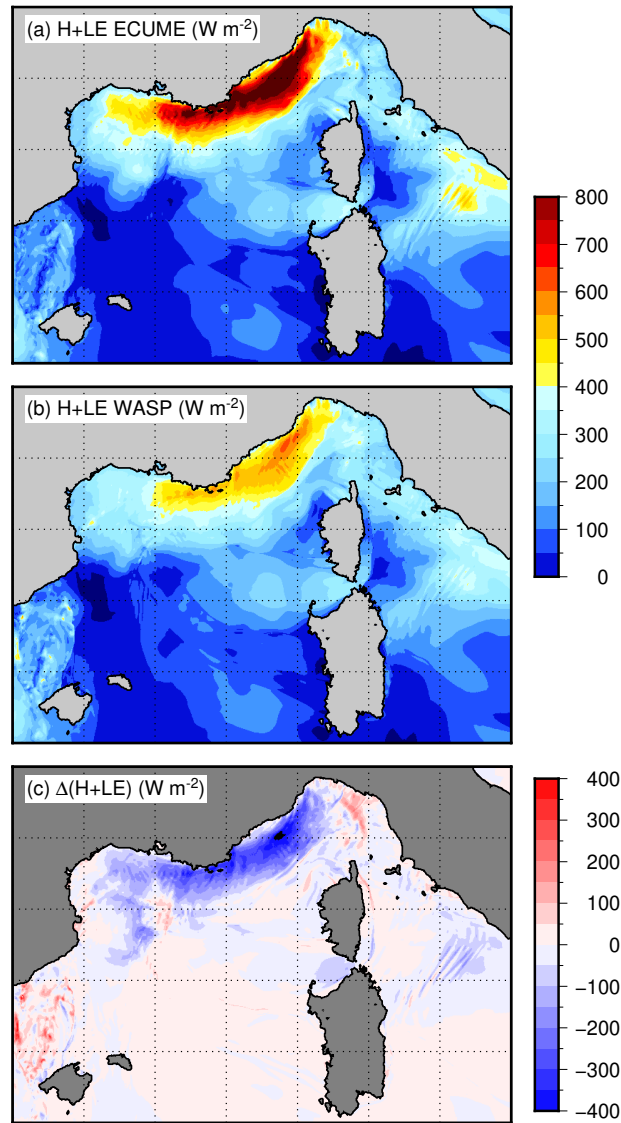


Figure 10. Maps of the enthalpy flux in the ECUME (a) and WASP forced simulation (b), and difference WASP – ECUME (c) at 14:00 UTC on 13 October 2016.

levels. It is coupled every 300 s with an oceanic 1D model based on the development of Gaspar et al. (1990), with a prognostic
 395 equation of the turbulent kinetic energy with a 1.5 order closure. This 1D ocean model is initialized by the Mercator Océan
 International global operational forecasts (one hour average) available 6 hourly with a resolution of $1/12^\circ$ (Lellouche et al.,
 2018). The surface turbulent fluxes are parameterized by ECUME in the control run (operational configuration), with WASP
 without waves in the sensitivity experiment. The case studies chosen for this validation are those of the cyclonic season 2021-
 2022, with a focus on Batsirai. Batsirai developed at the end of January 2022, reached category 4 on the 02 February 2022 right

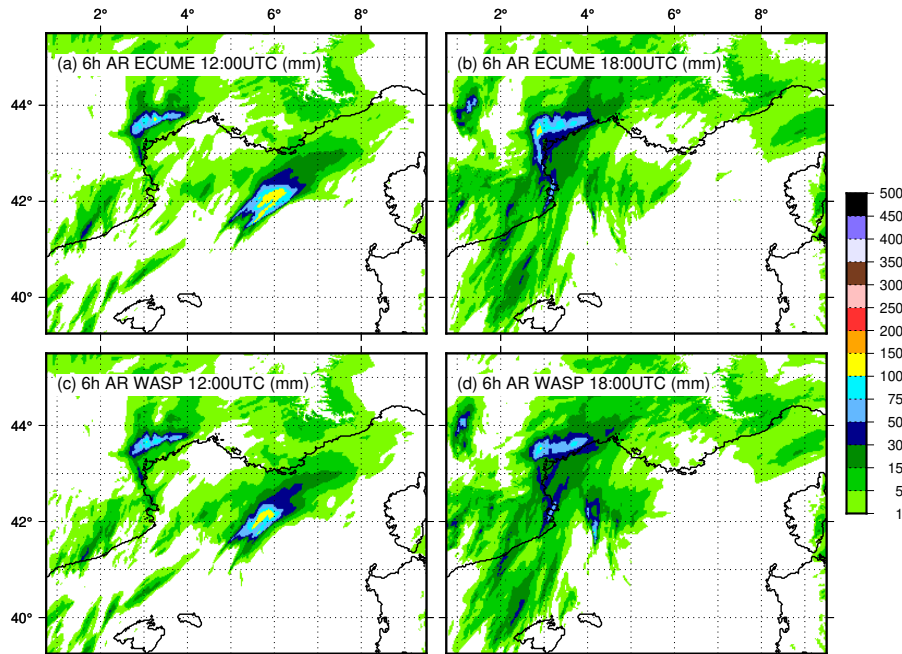


Figure 11. Maps of the 6 h accumulated rain in the ECUME (a,b) and WASP forced simulations (c,d) at 12:00 (a,c) and 18:00 UTC (b,d) on 13 October 2016.

400 before hitting La Réunion Island and slightly weakened to category 3 before landing on the eastern coast of Madagascar where it caused a lot of damages. Simulations of Batsirai started at 00:00 and 12:00 UTC on 03 February 2022, and 00:00 UTC on 04 February 2022 and lasted 72 hours. The profiles shown in Figure 12 are composites built from these three runs and ranges of 39 h for the first initial time, 27 h for the second and 15 h for the last one. The output time is 15:00 UTC on the 04 February matching the time of the Sentinel-1A SAR data at 15:03 UTC on the same day. These SAR high-resolution wind products
 405 are obtained from the IFREMER/Cyclob database and produced with SAR wind processor co-developed by IFREMER and CLS (Mouche et al., 2017).

3.3.2 Results

The scores based on the comparison of the minimum of sea-level pressure (SLP_{min}) and surface maximum wind (V_{max}) produced by the simulations with those of the Best Tracks have been produced for three major cyclones of the 2021-2022
 410 cyclonic season in the Southern Indian Ocean (Fig. 13). The Best Track (BT) is the result of the objective analysis of the Regional Specialised Meteorological Centre for Tropical Cyclones of La Réunion, and is considered as the reference in this study. The scores used here aggregate the outputs of about 25 runs with different initial times for every cyclone, either from IFS, AROME IO using ECUME or AROME IO using WASP. AROME IO with ECUME compares well with the BT at forecast ranges up to 12 h but overestimates the cyclone intensity (lower SLP_{min} and higher V_{max}) at longer ranges, even more so

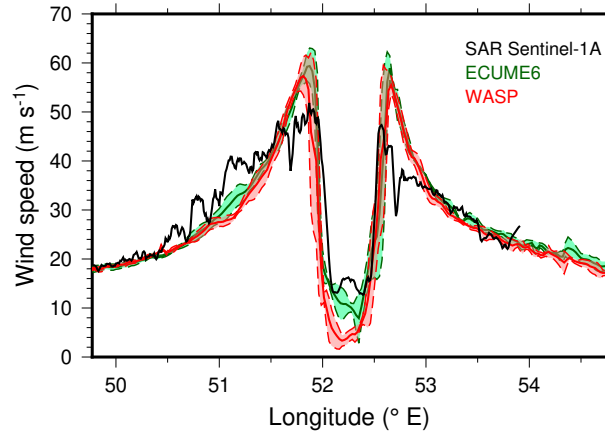


Figure 12. West-east composite profiles of U_{10} (m s^{-1}) across the AROME IO simulations of Batsirai at the time of SAR Sentinel-1A measurements (15 UTC on 04 February) from operational runs at 3 different initial times. The plain line represents the mean value, the dotted lines the standard deviation.

415 at increasing forecast ranges, while IFS overall underestimates the cyclone intensity. AROME IO with WASP underestimates
 V_{max} in the first 12 h (probably due to the effect of the initial conditions) but gives the closest values of SLPmin and V_{max}
to the BT for the forecast ranges longer than 12 h. For the case of Batsirai where SAR observations are available close to its
peak of intensity, direct comparisons of composite 10 m wind speed with SAR surface wind show that the wind speed along a
profile across the cyclone are slightly better represented using WASP than ECUME (Fig. 12 and 14).

420 Simplified, axisymmetric representations of tropical cyclones make the maximum potential intensity directly depend on the
ratio of the enthalpy transfer coefficient (C_k , analog to C_e here) by the drag coefficient. The minimum value of this ratio,
 C_k/C_d , able to produce maximum surface winds of 45 m s^{-1} or more as currently observed in cyclones of Category 5
was thought to be 0.75 (Emanuel, 1995). These considerations, however, have been contradicted by in situ and wave tank
observations: increasing surface wind up to 40 m s^{-1} are consistent with a slow but continuous decrease of the C_k/C_d ratio
425 down to 0.5 (Powell et al., 2003; Haus et al., 2010). Recently, simulations based on realistic, high resolution numerical models
showed that the C_d, C_k values leading to cyclone intensities close to observations and compatible with observations of turbulent
fluxes in strong wind actually result in C_k/C_d ratio close to 0.5 (Green and Zhang, 2013, 2014; Nystrom et al., 2020). In such a
respect, the ratio of enthalpy and drag coefficient obtained in WASP stays between 0.4 and 1.0 for wind speeds between 10 and
60 m s^{-1} (Fig. 15). It constitutes a good trade off between the continuous decreasing values given by COARE 3.0 and COARE
430 3.5, and the values of ECUME increasing probably unrealistically up to 1.5 for surface winds of 60 m s^{-1} and encourages to
test in a more comprehensive way the use of WASP for tropical cyclone prediction.

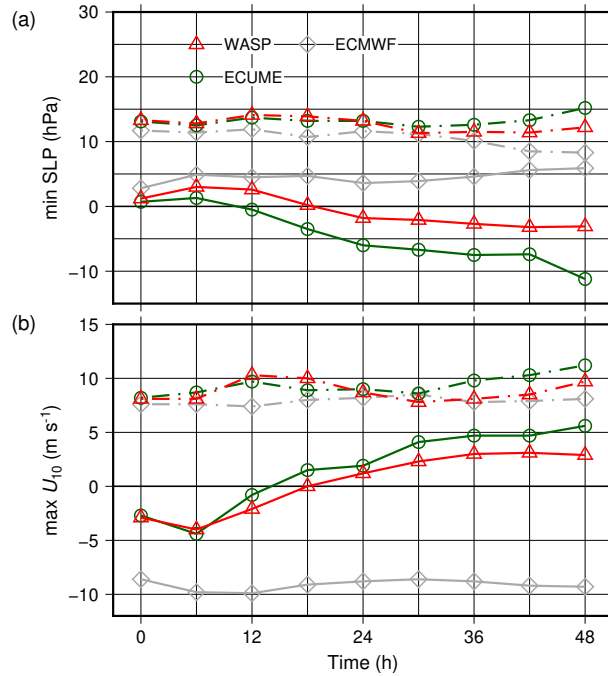


Figure 13. Mean bias (solid line) and RMSE (dot-dashed line) for the Batsirai, Emnati and Dumako simulations using AROME IO with ECUME (dark green, circles) or WASP (triangles, red) and IFS (diamonds, gray) for SLPmin (a) and Vmax (b).

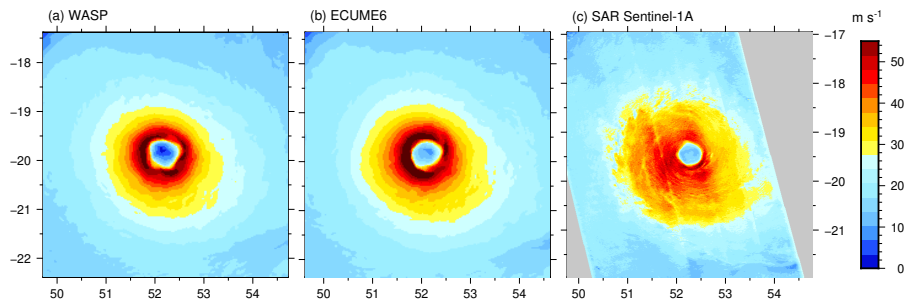


Figure 14. Maps of the 10 m wind speed close to the time of maximum intensity on the TC Batsirai, as simulated with AROME IO using ECUME (a), WASP (b) and in the Sentinel-1A SAR product (c). Simulation products shown here are composites from outputs at 15:00 UTC of 3 simulations starting at 00 UTC on 03 February, at 12 UTC on 03 February, and at 00 UTC on 04 February 2022. The time of the SAR observations is 15:03 UTC on 04 February 2022.

3.4 Climate-scale simulation

The sensitivity of climate-scale runs to the turbulent fluxes parameterization was tested in climate mode using the CNRM-CM model (Roehrig et al., 2020).

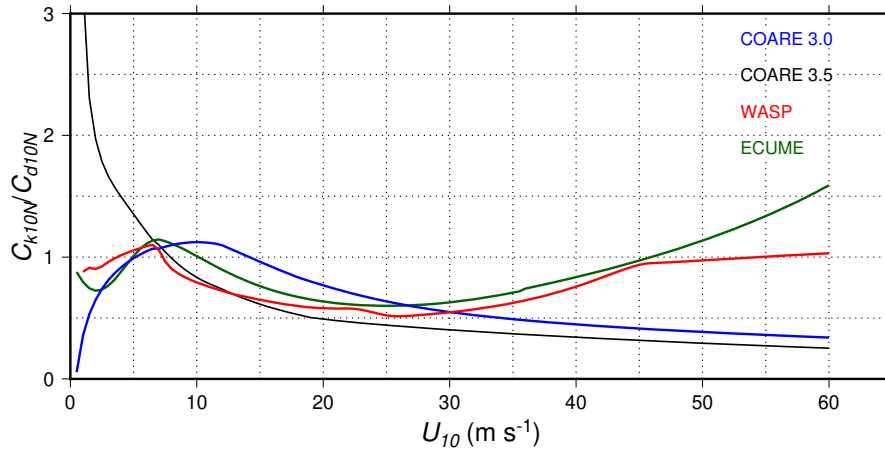


Figure 15. Ratios of the neutral enthalpy transfer coefficient and drag coefficient with respect to 10 m wind speed for different parameterizations (COARE3.0, Fairall et al. (2003); COARE3.5, Edson et al. (2013); WASP; and ECUME Roehrig et al. (2020)).

435 3.4.1 Configuration

The test has been made in an atmospheric simulation where SST are prescribed on a monthly basis over the 1979–2014 period following the AMIP protocol. The reference simulation for which the air–sea fluxes are calculated using the ECUME parameterisation has been published in the CMIP6 data base and is extensively described and assessed in Roehrig et al. (2020). Here we only provide minimal information on this configuration: the horizontal resolution is close to 1.4° and there are 91
 440 vertical levels in the atmosphere with the first level at 10 m. To test the WASP parameterisation, a sensitivity experiment has been performed where WASP is activated instead of ECUME over the same 35 years (1979–2014).

3.4.2 Results

Mapping the differences of surface parameters and fluxes obtained with the WASP and ECUME parameterizations shows an overall impact of the change of transfer coefficients. In the regions of high annual mean values of heat fluxes, namely the
 445 intertropical basins, the impact of such parameterization changes was explored by Torres et al. (2019). In the present study, C_{eN} in WASP is higher than in ECUME for 10 m wind speed below 8 m s^{-1} and lower for 10 m wind speed above 8 m s^{-1} . This results in higher evaporation in the intertropical basins (Fig. 16a,b) with annual mean values in the region between 20° S and 20° N of 121.7 W m^{-2} with ECUME and 123.2 W m^{-2} with WASP. With respect to the interannual variability over 36 years, this change is not significant (at 95 % uncertainty with a Student test). It nevertheless results in overall higher humidity
 450 on the ocean ($+0.21 \text{ g kg}^{-1}$ – not significant, Fig. 16c). Also, stronger precipitation (below the significance level) are obtained along the intertropical convergence zone (ITCZ, Fig. 16d, $+0.65 \text{ mm d}^{-1}$). Outside the intertropical region, using WASP rather than ECUME results in lower specific humidity near the surface (Fig. 16c) and less precipitation (Fig. 16d). These results are qualitatively similar to those of Torres et al. (2019), see for instance their Fig. 4-2 for the difference between AREF and ACTN.

The lowest level atmospheric temperature annual mean increases slightly in the intertropical regions and decreases at midlat-

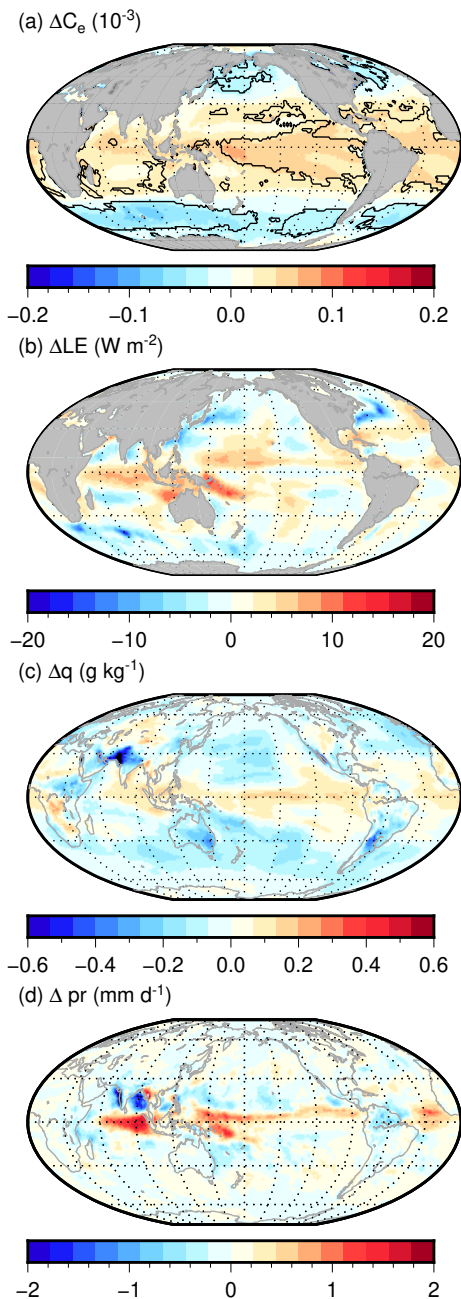


Figure 16. Maps of the annual mean differences for C_e (a), LE (b), q at the lowest atmospheric level (c) and daily precipitation pr (d) between WASP and ECUME in AMIP simulations over the period 1979–2014. The black lines indicates the zones where the difference is significant with respect to the interannual variability (Student test at 95 % uncertainty).

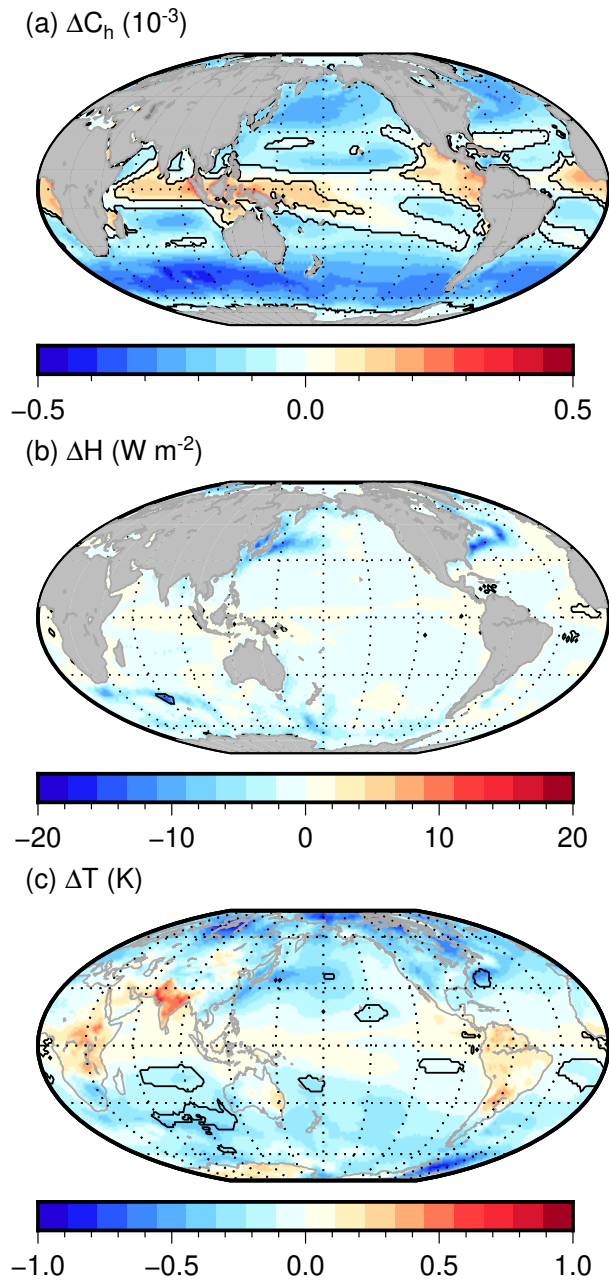
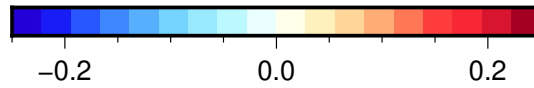
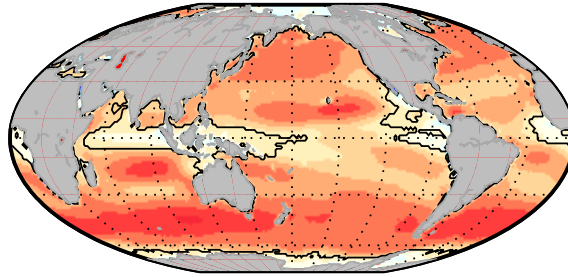


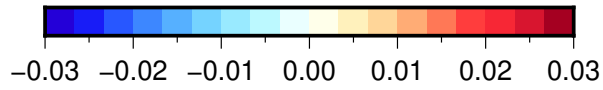
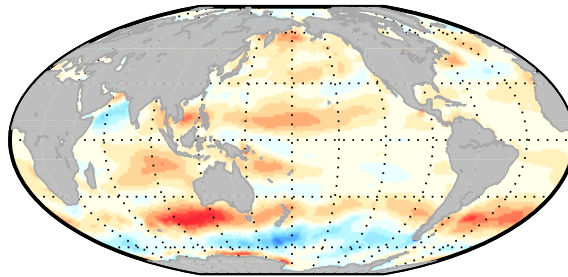
Figure 17. Maps of the annual mean differences for C_h (a), H (b), and T at the lowest atmospheric level (c) between WASP and ECUME in AMIP simulations over the period 1979–2014.

455 itudes (mostly not significant, Fig. 17c). This is due to the strong changes of the sensible and latent heat transfer coefficient in WASP (overall significant, Fig. 17a, 16a) which impact the sensible and latent heat fluxes, through a decrease at midlatitudes

(a) ΔC_d (10^{-3})



(b) $\Delta \tau$ (N m^{-2})



(c) ΔU (m s^{-1})

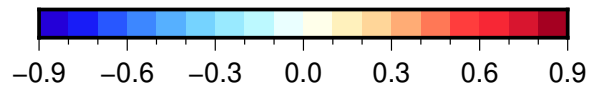
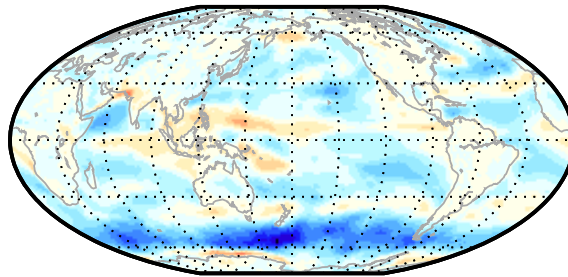


Figure 18. Maps of the annual mean differences for C_d (a), τ (b), and U at the lowest atmospheric level (c) between WASP and ECUME in AMIP simulations over the period 1979–2014.

and an increase in the intertropical band (not significantly, Fig. 17b, 16b). Note that stronger decrease on the western boundary energetics areas is partly due to a larger decrease of the heat transfer coefficients by stronger wind.

Finally, the neutral drag coefficient is higher in WASP than in ECUME, whatever the wind speed below 19 m s^{-1} (Fig. 18a).
460 The wind stress is higher everywhere at the sea surface except locally in the Arabic Sea and in the Southern Ocean (Fig. 18a,b,
 $+2.3 \cdot 10^{-3} \text{ N m}^{-2}$). This results in an overall decrease of the wind speed, with stronger effect in the Southern Ocean where the
increase of the drag coefficient is the strongest (Fig. 18c, -0.09 m s^{-1}).

Overall, testing WASP in a climate-scale configuration does not alter significantly the mean climate simulated. No significant
change is obtained except a slight increase of the precipitation in the ITCZ, and a slight cooling and drying effect outside the
465 ITCZ. Further tests should be done in ocean coupled mode to assess the coupling feedback that could arise when switching to
WASP air–sea flux parameterization.

4 Conclusions and perspective

The WASP bulk parameterization for surface turbulent fluxes has been built based on existing, reliable parameterizations like
COARE 3.0 (Fairall et al., 2003), COARE 3.5 for the momentum flux (Edson et al., 2013), and ECUME (Belamari, 2005;
470 Roehrig et al., 2020). **It does not necessarily represent an improvement towards a more accurate representation of turbulent
fluxes, but rather** combines the possibility of representing the effect of the wave growth on the wind stress with transfer co-
efficients close to field observations at every range of wind speed. It has been developed in the SURFEX v8.1 surface model
(Masson et al., 2013) and will be distributed as part of the next official SURFEX release (v9).

In the present study, we assess its behaviour in several case studies performed with the different atmospheric models in use
475 at Météo-France that can be coupled with SURFEX. It proves to perform reliably with respect to existing parameterizations
in various conditions of wind and heat transfer, and to enable an accurate representation of several surface processes. In the
case of the Ushant SST front (Redelsperger et al., 2019), the sharp change of stratification along the low-level flow from the
warm side to the cold side of the front is well reproduced and leads to a strong decrease of the momentum flux. As a result, the
turbulence on the cold side of the front is decoupled between the upper MABL and the surface and the surface wind is reduced.
480 In the HPE that occurred in West Mediterranean in October 2016, the change of parameterization affects the strong, moist
low-level flow leading to change in heavy precipitation through dynamical effects mainly. Representing the surface fluxes by
WASP rather than ECUME increases the surface roughness and decreases the turbulent heat fluxes. It results in a slightly less
intense but more stationary convective system at sea without significant impact on the precipitation forecast. Validating the
parameterization in cyclonic conditions is an important step towards its use for operational forecast. In the present case, it also
485 helped to adjust the heat transfer coefficients above 20 m s^{-1} , where observations provide no constrain anymore. Several case
studies in the South West Indian Ocean basin showed that the intensity of cyclones is slightly reduced with respect to ECUME,
mainly due to the decrease of the enthalpy transfer coefficient in case of strong and cyclonic winds. Finally, testing the impact
of the change on a climatic atmosphere-only simulation gives results consistent with existing studies. The combined effects of
the changes of the wind stress and heat fluxes enhance moisture extraction and precipitation in the intertropical zone whereas
490 lower atmosphere is drier and cooler at midlatitudes. This work is a first step towards further development of parameterization
of both momentum and turbulent heat fluxes. Ongoing work aims at refining the representation of the variability of the fluxes

possibly due to sea-state variations, including the effects of wave breaking, and the effect of sea spray on the momentum and heat fluxes. Indeed, the effect of sea spray, though likely significant for both the momentum and heat transfer in breaking conditions, is not considered in WASP. Recent and ongoing studies aim at building droplets source functions more consistent with the (few) existing observations for large droplets, meant to affect the turbulent fluxes (Bruch et al., 2021), and the corresponding parameterization of their impact on the fluxes following Bao et al. (2011).

Appendix A: WASP definition

A1 Transfer coefficients

In WASP, the Charnock parameter α is defined differently depending on the wind speed range, as follows:

- 10 m wind speed U_{10} below 7 m s^{-1} is a power of U_{10} : $\alpha = aU_{10}^b$, where $a = 0.7$ and $b = -2.52$;
- when U_{10} is above 7 m s^{-1} , the dependency on wave age $\chi = c_p/U_{10}$ is introduced and is defined as $\alpha = A\chi^B$, where A and B are polynomial functions of U_{10} .

$$\begin{cases} A &= A_0 + A_1U_{10} + A_2U_{10}^2 + A_3U_{10}^3 \\ B &= B_0 + B_1U_{10} + B_2U_{10}^2 + B_3U_{10}^3, \end{cases} \quad (\text{A1})$$

as detailed in Table A1.

Thus, the dependency of the Charnock parameter and the decrease in the drag coefficient under very strong wind conditions are represented, and the WASP parameterization, unlike those based on wave-age Charnock parameters, is suitable for very high wind speeds.

Table A1. Coefficients of the polynomial functions defining the WASP Charnock parameter depending on the wind speed.

	A_0	A_1	A_2	A_3
	B_0	B_1	B_2	B_3
$7 \leq U_{10} < 23$	-9.202	2.265	-1.34×10^{-1}	2.35×10^{-3}
	-4.12×10^{-1}	-2.225×10^{-1}	1.178×10^{-2}	1.616×10^{-4}
$23 \leq U_{10} < 25$	2.27	6.67×10^{-2}	0	0
	-2.41	4.30×10^{-2}	0	0
$U_{10} > 25$	9.81×10^{-2}	-4.13×10^{-3}	4.34×10^{-5}	1.16×10^{-8}
	0	0	0	0

510 A2 Stability functions

The stability functions for momentum and heat fluxes are taken as in Beljaars and Holtslag (1991), modified to be implemented in the COARE 3.0 algorithm (Fairall et al., 2003). In unstable conditions, the stability function for momentum is:

$$\Psi_M = 2 \log \left(\frac{1+x}{2} \right) + \log \left(\frac{1+x^2}{2} \right) - 2 \tan^{-1}(x) + \frac{\pi}{2} \quad (\text{A2})$$

with $x = (1 - 15z/L)^{1/4}$, and in conditions of free convection:

$$515 \quad \Psi_M = 1.5 \log \left(\frac{y^2 + y + 1}{3} \right) + \sqrt{3} \tan^{-1} \left(\frac{2y + 1}{\sqrt{3}} \right) + \frac{2\pi}{\sqrt{3}} \quad (\text{A3})$$

with $y = (1 - 10.15z/L)^{1/3}$ and in stable conditions:

$$\Psi_M = -1 \left[1 + z/L + \frac{2}{3} \frac{(z/L - 14.28)}{e^c} + 8.5 \right] \quad (\text{A4})$$

with $c = 0.35z/L$.

The stability function for heat or humidity is defined as:

$$520 \quad \Psi_H = 2 \log \left(\frac{1+x^2}{2} \right) \quad (\text{A5})$$

with $x = (1 - 15z/L)^{1/2}$, in conditions of free convection:

$$\Psi_H = 1.5 \log \left(\frac{y^2 + y + 1}{\sqrt{3}} \right) + \frac{2\pi}{\sqrt{3}} \quad (\text{A6})$$

with $y = (1 - 34.15z/L)^{1/3}$ and in stable conditions:

$$\Psi_H = -1 \left[\left(1 + \frac{2z}{3L} \right)^{1.5} + \frac{2}{3} \frac{(z/L - 14.28)}{e^c} + 8.525 \right] \quad (\text{A7})$$

525 with $c = 0.35z/L$.

Appendix B: Detail of datasets used for **fitting validation**

Table B1. Eddy covariance datasets used for fitting the neutral transfer coefficients in wind speed range 0–20 m s⁻¹. All these measurements except CBLAST low (RP *FLIP*) were made onboard ships ~~and most of them were used for the COARE 3.5 parameterization for wind stress (Edson et al. 2013).~~

Campaign	Year	Height m	Wind range m s ⁻¹	Sampling min	Reference
ASTEX	1992	21	3–10	30	Albrecht et al. (1995)
CAPRICORN	2016	21	1–16	10	Bharti et al. (2019)
CBLAST low	2001–2003	12	0–17	20	Edson et al. (2007)
DYNAMO	2011–2012	15.6–17.75	0–14	10	Moum et al. (2014), De Szoeke et al. (2015)
FASTEX	1996–1997	15.5–17.7	1–18	10	Hare et al. (1999), Joly et al. (1999)
HIWINGS	2013	14–15.9	1–19	10	Blomquist et al. (2017)
JASMINE	1999	14.8–17.7	0–13	10	Fairall et al. (2000)
KWAJEX	1999	15.5–17.7	0–9	10	Fairall et al. (2003)
MOORINGS	1999	15.5–17.7	0–13	10	Fairall et al. (2003)
NAURU	1999	15.5–17.7	0–10	10	Fairall et al. (2003)

Table B2. Additional EC datasets used for fitting the neutral transfer coefficients in wind speed range 0–30 m s⁻¹. ** indicates that measurements of enthalpy fluxes are available.

Campaign	Year	Height m	Wind range m s ⁻¹	Platform	Reference
Halifax	1976	12	8–22	platform	Smith (1980)
Halifax	1976	12	4–24	platform	Large and Pond (1981)
HEXOS**	1986	10–18	6–23	platform	DeCosmo et al. (1996)
HEXOS	1986	6	7–20	platform	Janssen (1997)
BaltEx**	1998	10,18	6–18	platform	Rutgersson et al. (2001)
RASEX	1994	3	4–15	platform	Fairall et al. (2003)
South China Sea**	2010	20	0–22	platform	Zou et al. (2017)
SWADE	1990	12	4–14	ship	Donelan et al. (1997)
ITOP	2010	5.4	3–28	buoy	Potter et al. (2015)
CBLAST high**	2003	70–370	17–29	air	Black et al. (2007), French et al. (2007), Zhang et al. (2008)
GOTEX	2004	30–50	11–20	air	Romero and Melville (2010)
GFDex**	2007	36–43	15–19	air	Petersen and Renfrew (2009)
British Iles**	2007–2013	35–80	4–25	air	Cook and Renfrew (2015)

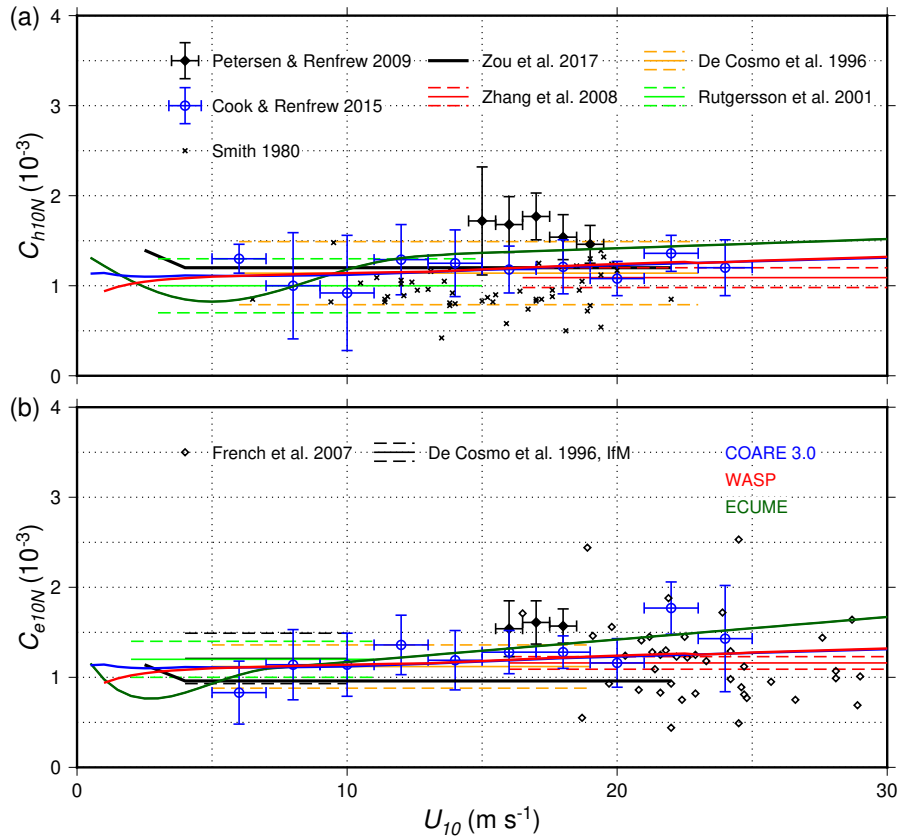


Figure B1. Neutral drag coefficient with respect to 10 m wind speed for different parameterizations (COARE3.5, Edson et al. (2013); COARE3.0, Fairall et al. (2003); ECUME Roehrig et al. (2020) and WASP) in comparison with additional observations (see Table B2) up to 28 m s^{-1} .

Table B3. Additional, indirect datasets used for fitting the neutral transfer coefficients in wind speed range above 30 m s^{-1} . ** indicates that measurements of enthalpy fluxes are available

Reference	Method	Wind range m s^{-1}
Powell and Ginis (2006)	Dropsondes	27–62
Richter and Stern (2014) **	Dropsondes	20–50
Vickery et al. (2009)	Dropsonde & modelling	18–54
Bell et al. (2012) **	SAMURAI	54–72
Jarosz et al. (2007)	Inversion of surface currents	20–47
Sanford et al. (2011)	Inversion of oceanic resp.	22–47
Hsu et al. (2017)	Inversion of oceanic resp.	27–57

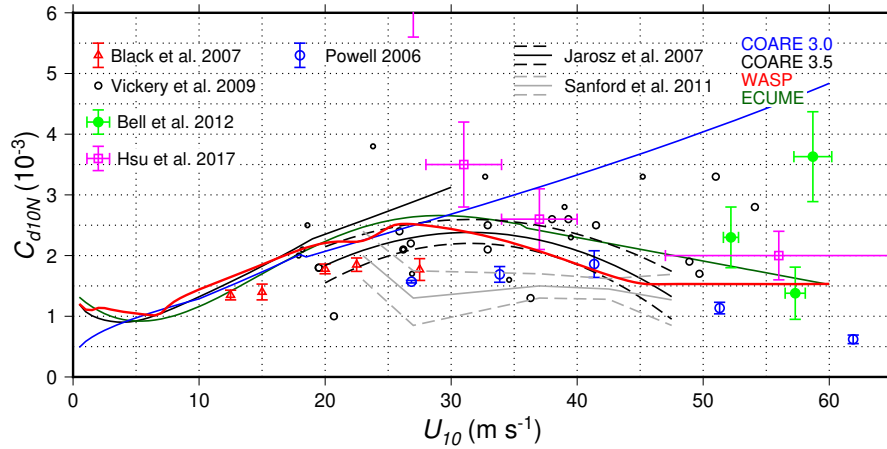


Figure B2. Neutral drag coefficient with respect to 10 m wind speed for different parameterizations (COARE3.5, Edson et al. (2013); COARE3.0, Fairall et al. (2003); ECUME Roehrig et al. (2020) and WASP) and detail of observations up to 60 m s^{-1} (see Tables B2 and B3).

Appendix C: Examples of SURFEX v8.1 namelists using WASP

C1 WASP without wave impact

Table C1. SURFEX namelist (EXSEG1.nam) parameters used for using WASP without wave impact.

<hr/>	
\$NAM_SEAFLUXN	
<hr/>	
CSEA_FLUX	'WASPV3'
LWAVEWIND	.TRUE.
<hr/>	

Table C2. SURFEX namelist (EXSEG1.nam) parameters used for using WASP with wave coupling, with a coupling frequency of 600 s.

\$NAM_SEAFLUXN	
CSEA_FLUX	'WASPV3'
LWAVEWIND	.FALSE.
\$NAM_OASIS	
LOASIS	.TRUE.
LOASIS_GRID	.TRUE.
CMODEL_NAME	'mesonh'
\$NAM_SFX_WAVE_CPL	
CWAVE_U10	'MNH__U10'
CWAVE_V10	'MNH__V10'
CWAVE_CHA	' , '
XTSTEP_CPL_WAVE	600.0
CWAVE_UCU	' , '
CWAVE_VCU	' , '
CWAVE_HS	'MNH__HS'
CWAVE_TP	'MNH__TP'

Code and data availability. The new developed code will be included in the next official version of SURFEX v9.0. The complete code of SURFEX v8.1 including WASP and the WASP subroutines is available at <https://doi.org/10.5281/zenodo.4557378> (Bouin, 2021); the data used to tune the transfer coefficients are available by contacting C.W. Fairall (NOAA Physical Science Division) or J.B. Edson (U. Conn. Marine Sciences). The official release of SURFEX v8.1 offline is available at <https://www.umr-cnrm.fr/surfex/spip.php?rubrique141>.
535 The ARPEGE-Climat model is only available to registered users for research purposes. The access to the AROME code is ruled by the first Memorandum of Understanding of the ACCORD consortium (<http://www.accord-nwp.org>). For non-commercial research purposes, AROME can be distributed upon signature of a licence agreement (see <http://www.accord-nwp.org/?ACCORD-MoU-2021-2025> for conditions). The modifications of the ARPEGE and AROME codes including WASP and used for the case studies of this paper are stored at <https://doi.org/10.7910/DVN/WXZ1FO>. The output parameters of the simulations used to validate WASP (Figures 7 to 18) and the data of
540 the Lion buoy used to compare the wave effects in Figure 4 are available at <https://doi.org/10.5281/zenodo.6783319>. The SAR product was obtained from Ifremer/Cyclobes and produced with SAR wind processor co-developed by IFREMER and CLS and can be accessed here: <https://cyclobes.ifremer.fr/app/archive/2022/SI/sh082022> (last access on 30/06/2022). The Best Track data have been extracted from the Best Track data base of the Direction Régionale de l’Océan Indien (DIROI) of Météo-France. These data are shared with the IBTracs data base (<https://www.ncdc.noaa.gov/ibtracs/>) after a subjective reanalysis by the DIROI forecasters at the end of each TC season.

545 *Author contributions.* MNB designed and implemented the WASP parameterization, and performed the Iroise case study. CLB and CS designed and ran the Mediterranean case study. SM designed and performed the tropical cyclones case studies. AV designed and performed the climate-scale simulation. All authors contributed to the writing and revising of the manuscript.

Competing interests. The authors declare that they have no conflict of interests

Acknowledgements. The authors acknowledge the Pôle de Calcul et de Données Marines for the DATARMOR facilities (storage, data access,
550 computational resources). We are also grateful to C. Fairall for providing field measurements. We thank A. Mouche and O. Archer (LOPS) and CLS for providing the SAR products in the framework of the Ifremer/Cyclobes project.

References

- Albrecht, B. A., Bretherton, C. S., Johnson, D., Scubert, W. H., and Frisch, A. S.: The Atlantic stratocumulus transition experiment—ASTEX, *Bulletin of the American Meteorological Society*, 76, 889–904, 1995.
- 555 Andreas, E. L.: Spray stress revisited, *Journal of physical oceanography*, 34, 1429–1440, 2004.
- Bao, J.-W., Fairall, C. W., Michelson, S., and Bianco, L.: Parameterizations of sea-spray impact on the air–sea momentum and heat fluxes, *Monthly Weather Review*, 139, 3781–3797, 2011.
- Belamari, S.: Report on uncertainty estimates of an optimal bulk formulation for surface turbulent fluxes, *Marine Environment and Security for the European Area–Integrated Project (MERSEA IP)*, Deliverable D, 4, 2005.
- 560 Beljaars, A. and Holtlag, A.: Flux parameterization over land surfaces for atmospheric models, *Journal of Applied Meteorology and Climatology*, 30, 327–341, 1991.
- Beljaars, A. C. M.: The parametrization of surface fluxes in large-scale models under free convection, *Quarterly Journal of the Royal Meteorological Society*, 121, 255–270, <https://doi.org/10.1002/qj.49712152203>, 1994.
- Bell, M. M., Montgomery, M. T., and Emanuel, K. A.: Air–sea enthalpy and momentum exchange at major hurricane wind speeds observed
565 during CBLAST, *Journal of the Atmospheric Sciences*, 69, 3197–3222, 2012.
- Bharti, V., Fairall, C. W., Blomquist, B. W., Huang, Y., Protat, A., Sullivan, P. P., Siems, S. T., and Manton, M. J.: Air-sea heat and momentum fluxes in the Southern Ocean, *Journal of Geophysical Research: Atmospheres*, 124, 12 426–12 443, 2019.
- Black, P. G., D’Asaro, E. A., Drennan, W. M., French, J. R., Niiler, P. P., Sanford, T. B., Terrill, E. J., Walsh, E. J., and Zhang, J. A.: Air–sea exchange in hurricanes: Synthesis of observations from the coupled boundary layer air–sea transfer experiment, *Bulletin of the American*
570 *Meteorological Society*, 88, 357–374, 2007.
- Blomquist, B., Brumer, S., Fairall, C., Huebert, B., Zappa, C., Brooks, I., Yang, M., Bariteau, L., Prytherch, J., Hare, J., et al.: Wind speed and sea state dependencies of air-sea gas transfer: Results from the High Wind speed Gas exchange Study (HiWinGS), *Journal of Geophysical Research: Oceans*, 122, 8034–8062, 2017.
- Bouin, M.-N.: WASP turbulent fluxes parameterization for SURFEX 8.0, <https://doi.org/10.5281/zenodo.4557378>, <https://doi.org/10.5281/zenodo.4557378>, 2021.
575
- Bouin, M.-N., Redelsperger, J.-L., and Lebeaupin Brossier, C.: Processes leading to deep convection and sensitivity to sea-state representation during HyMeX IOP8 heavy precipitation event, *Quarterly Journal of the Royal Meteorological Society*, 143, 2600–2615, 2017.
- Bousquet, O., Barbary, D., Bielli, S., Kebir, S., Raynaud, L., Malardel, S., and Faure, G.: An evaluation of tropical cyclone forecast in the Southwest Indian Ocean basin with AROME-Indian Ocean convection-permitting numerical weather predicting system, *Atmospheric*
580 *Science Letters*, 21, e950, 2020.
- Brousseau, P., Seity, Y., Ricard, D., and Léger, J.: Improvement of the forecast of convective activity from the AROME-France system, *Quarterly Journal of Royal Meteorological Society*, 142, 2231–2243, <https://doi.org/10.1002/qj.2822>, 2016.
- Bruch, W., Piazzola, J., Branger, H., van Eijk, A. M., Luneau, C., Bourras, D., and Tedeschi, G.: Sea-Spray-Generation Dependence on Wind and Wave Combinations: A Laboratory Study, *Boundary-Layer Meteorology*, 180, 477–505, 2021.
- 585 Bryan, G. H.: Effects of surface exchange coefficients and turbulence length scales on the intensity and structure of numerically simulated hurricanes, *Monthly Weather Review*, 140, 1125–1143, 2012.
- Charnock, H.: Wind stress on a water surface, *Quart. J. Roy. Meteor. Soc.*, 81, 639–640, <https://doi.org/10.1002/qj.49708135027>, 1955.

- Chen, X., Hara, T., and Ginis, I.: Impact of shoaling ocean surface waves on wind stress and drag coefficient in coastal waters: 1. Uniform wind, *Journal of Geophysical Research: Oceans*, 125, e2020JC016222, 2020.
- 590 Cook, P. A. and Renfrew, I. A.: Aircraft-based observations of air–sea turbulent fluxes around the British Isles, *Quarterly Journal of the Royal Meteorological Society*, 141, 139–152, 2015.
- Courtier, P., Freydier, C., Geleyn, J., Rabier, F., and Rochas, M.: The ARPEGE project at Meteo-France, ECMWF, workshop on numerical methods in atmospheric models, Reading, UK, pp. 9–13, 1991.
- De Szoeko, S. P., Edson, J. B., Marion, J. R., Fairall, C. W., and Bariteau, L.: The MJO and air–sea interaction in TOGA COARE and
595 DYNAMO, *Journal of Climate*, 28, 597–622, 2015.
- DeCosmo, J., Katsaros, K., Smith, S., Anderson, R., Oost, W., Bumke, K., and Chadwick, H.: Air-sea exchange of water vapor and sensible heat: The Humidity Exchange Over the Sea (HEXOS) results, *Journal of Geophysical Research: Oceans*, 101, 12 001–12 016, 1996.
- Déqué, M., Drevet, C., Braun, A., and Cariolle, D.: The ARPEGE/IFS atmosphere model: a contribution to the French community climate modelling, *Climate Dynamics*, 10, 249–266, 1994.
- 600 Donelan, M. A., Dobson, F. W., Smith, S. D., and Anderson, R. J.: On the dependence of sea surface roughness on wave development, *Journal of physical Oceanography*, 23, 2143–2149, 1993.
- Donelan, M. A., Drennan, W. M., and Katsaros, K. B.: The air–sea momentum flux in conditions of wind sea and swell, *Journal of physical oceanography*, 27, 2087–2099, 1997.
- Drennan, W. M., Graber, H. C., Hauser, D., and Quentin, C.: On the wave age dependence of wind stress over pure wind seas, *Journal of
605 Geophysical Research: Oceans*, 108, 2003.
- Ducrocq, V., Braud, I., Davolio, S., Ferretti, R., Flamant, C., Jansa, A., Kalthoff, N., Richard, E., Taupier-Letage, I., Ayrat, P., Belamari, S., Berne, A., Borga, M., Boudevillain, B., Bock, O., Boichard, J.-L., Bouin, M.-N., Bousquet, O., Bouvier, C., Chiggiato, J., Cimini, D., Corsmeier, U., Coppola, L., Cocquerez, P., Defer, E., Delanoë, J., Di Girolamo, P., Doerenbecher, A., Drobinski, P., Dufournet, Y., Fourrié, N., Gourley, J. J., Labatut, L., Lambert, D., Le Coz, J., Marzano, F. S., Molinié, G., Montani, A., Nord, G., Nuret, M., Ramage, K.,
610 Rison, B., Roussot, O., Saïd, F., Schwarzenboeck, A., Testor, P., Van Baelen, J., Vincendon, B., Aran, M., and Tamayo, J.: HyMeX-SOP1, the field campaign dedicated to heavy precipitation and flash flooding in the Northwestern Mediterranean, *Bull. Amer. Meteor. Soc.*, 95, 1083–1100, <https://doi.org/10.1175/BAMS-D-12-00244.1>, 2014.
- Edson, J., Crawford, T., Crescenti, J., Farrar, T., Frew, N., Gerbi, G., Helmis, C., Hristov, T., Khelif, D., Jessup, A., et al.: The coupled boundary layers and air–sea transfer experiment in low winds, *Bulletin of the American Meteorological Society*, 88, 341–356, 2007.
- 615 Edson, J. B., Jampana, V., Weller, R. A., Bigorre, S. P., Plueddemann, A. J., Fairall, C. W., Miller, S. D., Mahrt, L., Vickers, D., and Hersbach, H.: On the exchange of momentum over the open ocean, *Journal of Physical Oceanography*, 43, 1589–1610, 2013.
- Emanuel, K. A.: Sensitivity of tropical cyclones to surface exchange coefficients and a revised steady-state model incorporating eye dynamics, *Journal of the Atmospheric Sciences*, 52, 3969–3976, 1995.
- Emanuel, K. A.: Tropical cyclone energetics and structure, *Atmospheric turbulence and mesoscale meteorology*, 8, 165–191, 2004.
- 620 Emanuel, K. A.: 100 years of progress in tropical cyclone research, *Meteorological Monographs*, 59, 15–1, 2018.
- Fairall, C. W., Hare, J. E., Edson, J. B., and McGillis, W.: Parameterization and micrometeorological measurement of air–sea gas transfer, *Boundary-Layer Meteorology*, 96, 63–106, 2000.
- Fairall, C. W., Bradley, E. F., Hare, J. E., Grachev, A. A., and Edson, J. B.: Bulk parameterization of air-sea fluxes : Updates and verification for the COARE algorithm, *J. Climate*, 16, 571–591, 2003.

- 625 French, J. R., Drennan, W. M., Zhang, J. A., and Black, P. G.: Turbulent fluxes in the hurricane boundary layer. Part I: Momentum flux, *Journal of the atmospheric sciences*, 64, 1089–1102, 2007.
- Gaspar, P., Grégoris, Y., and Lefevre, J.-M.: A simple eddy kinetic energy model for simulations of the oceanic vertical mixing: Tests at station Papa and Long-Term Upper Ocean Study site, *Journal of Geophysical Research: Oceans*, 95, 16 179–16 193, 1990.
- Green, B. W. and Zhang, F.: Impacts of air–sea flux parameterizations on the intensity and structure of tropical cyclones, *Monthly Weather*
630 *Review*, 141, 2308–2324, 2013.
- Green, B. W. and Zhang, F.: Sensitivity of tropical cyclone simulations to parametric uncertainties in air–sea fluxes and implications for parameter estimation, *Monthly Weather Review*, 142, 2290–2308, 2014.
- Hare, J., Persson, P., Fairall, C., and Edson, J.: Behavior of Charnock’s relationship for high wind conditions, in: Preprints, 13th Symp. on Boundary Layers and Turbulence, Dallas, TX, Amer. Meteor. Soc, pp. 252–255, 1999.
- 635 Haus, B. K., Jeong, D., Donelan, M. A., Zhang, J. A., and Savelyev, I.: Relative rates of sea-air heat transfer and frictional drag in very high winds, *Geophysical research letters*, 37, 2010.
- Hsu, J.-Y., Lien, R.-C., D’Asaro, E. A., and Sanford, T. B.: Estimates of surface wind stress and drag coefficients in Typhoon Megi, *Journal of Physical Oceanography*, 47, 545–565, 2017.
- Janssen, P. A.: *The interaction of ocean waves and wind*, Cambridge University Press, 2004.
- 640 Janssen, P. A. and Bidlot, J.-R.: Wind–Wave Interaction for Strong Winds, *Journal of Physical Oceanography*, 53, 779–804, 2023.
- Janssen, P. A. E. M.: Wave-induced stress and the drag of air flow over sea waves, *Journal of Physical Oceanography*, 19, 745–754, 1989.
- Janssen, P. A. E. M.: Quasi-linear theory of wind-wave generation applied to wave forecasting, *J. Phys. Oceanograph.*, 21, 1631–1642, 1991.
- Janssen, P. A. E. M.: Does wind stress depend on sea-state or not?—A statistical error analysis of Hexmax data, *Boundary-layer meteorology*, 83, 479–503, 1997.
- 645 Janssen, P. A. E. M., Doyle, J. D., Bidlot, J., Hansen, B., Isaksen, L., and Viterbo, P.: Impact and feedback of ocean waves on the atmosphere, Tech. Rep. 341, ECMWF Technical Memoranda Series, 2001.
- Jarosz, E., Mitchell, D. A., Wang, D. W., and Teague, W. J.: Bottom-up determination of air-sea momentum exchange under a major tropical cyclone, *Science*, 315, 1707–1709, 2007.
- Joly, A., Browning, K. A., Bessemoulin, P., Cammas, J.-P., Caniaux, G., Chalon, J.-P., Clough, S. A., Dirks, R., Emanuel, K. A., Eymard, L.,
650 et al.: Overview of the field phase of the Fronts and Atlantic Storm-Track EXperiment (FASTEX) project, *Quarterly Journal of the Royal Meteorological Society*, 125, 3131–3163, 1999.
- Khodayar, S., Davolio, S., Di Girolamo, P., Lebeaupin Brossier, C., Flaounas, E., Fourrie, N., Lee, K.-O., Ricard, D., Vie, B., Bouter, F., Caldas-Alvarez, A., and Ducrocq, V.: Overview towards improved understanding of the mechanisms leading to heavy precipitation in the western Mediterranean: lessons learned from HyMeX, *Atmospheric Chemistry and Physics*, 21, 17 051–17 078,
655 <https://doi.org/10.5194/acp-21-17051-2021>, <https://acp.copernicus.org/articles/21/17051/2021/>, 2021.
- Kitaigorodskii, S.: On the roughness parameter of the sea surface and the calculation of momentum flux in the near surface layer of the atmosphere, *Izv., Atmos. Oceanic Phys.*, 1, 973–988, 1965.
- Komen, G., Hasselmann, S., and Hasselmann, K.: On the existence of a fully developed wind-sea spectrum, *Journal of physical oceanography*, 14, 1271–1285, 1984.
- 660 Kudryavtsev, V., Chapron, B., and Makin, V.: Impact of wind waves on the air-sea fluxes: A coupled model, *Journal of Geophysical Research: Oceans*, 119, 1217–1236, 2014.

- Lac, C., Chaboureaud, J.-P., Masson, V., Pinty, J.-P., Tulet, P., Escobar, J., Leriche, M., Barthe, C., Aouizerats, B., Augros, C., et al.: Overview of the Meso-NH model version 5.4 and its applications, *Geoscientific Model Development*, 11, 1929–1969, 2018.
- Large, W. and Pond, S.: Open ocean momentum flux measurements in moderate to strong winds, *Journal of physical oceanography*, 11, 324–336, 1981.
- Lazure, P. and Dumas, F.: An external–internal mode coupling for a 3D hydrodynamical model for applications at regional scale (MARS), *Advances in water resources*, 31, 233–250, 2008.
- Lellouche, J.-M., Le Galloudec, O., Drévilion, M., Régnier, C., Greiner, E., Garric, G., Ferry, N., Desportes, C., Testut, C.-E., Bricaud, C., et al.: Evaluation of global monitoring and forecasting systems at Mercator Océan, *Ocean Science*, 9, 57, 2013.
- Lellouche, J.-M., Greiner, E., Le Galloudec, O., Garric, G., Regnier, C., Drevillon, M., Benkiran, M., Testut, C.-E., Bourdalle-Badie, R., Gasparin, F., Hernandez, O., Levier, B., Drillet, Y., Remy, E., and Le Traon, P.-Y.: Recent updates to the Copernicus Marine Service global ocean monitoring and forecasting real-time $1/12^\circ$ high-resolution system, *Ocean Science*, 14, 1093–1126, <https://doi.org/10.5194/os-14-1093-2018>, 2018.
- Llasat, M., Llasat-Botija, M., Petrucci, O., Pasqua, A., Rosselló, J., Vinet, F., and Boissier, L.: Towards a database on societal impact of Mediterranean floods within the framework of the HYMEX project, *Natural Hazards and Earth System Sciences*, 13, 1337, 2013.
- Majumdar, S. J., Magnusson, L., Bechtold, P., Bidlot, J. R., and Doyle, J. D.: Advanced tropical cyclone prediction using the experimental global ECMWF and operational regional COAMPS-TC systems, *Monthly weather review*, 151, 2029–2048, 2023.
- Masson, V., Le Moigne, P., Martin, E., Faroux, S., Alias, A., Alkama, R., Belamari, S., Barbu, A., Boone, A., Bouysse, F., et al.: The SURFEXv7. 2 land and ocean surface platform for coupled or offline simulation of earth surface variables and fluxes, *Geoscientific Model Development*, 2013.
- Meroni, A. N., Parodi, A., and Pasquero, C.: Role of SST patterns on surface wind modulation of a heavy midlatitude precipitation event, *Journal of Geophysical Research: Atmospheres*, 123, 9081–9096, <https://doi.org/10.1029/2018JD028276>, 2018.
- Meroni, A. N., Giurato, M., Ragone, F., and Pasquero, C.: Observational evidence of the preferential occurrence of wind convergence over sea surface temperature fronts in the Mediterranean, *Quarterly Journal of the Royal Meteorological Society*, 146, 1443–1458, <https://doi.org/https://doi.org/10.1002/qj.3745>, 2020.
- Miles, J. W.: On the generation of surface waves by shear flows, *Journal of Fluid Mechanics*, 3, 185–204, 1957.
- Monin, A. S. and Obukhov, A. M.: Basic laws of turbulent mixing in the surface layer of the atmosphere, *Contrib. Geophys. Inst. Acad. Sci. USSR*, 151, e187, 1954.
- Mouche, A. A., Chapron, B., Zhang, B., and Husson, R.: Combined co-and cross-polarized SAR measurements under extreme wind conditions, *IEEE Transactions on Geoscience and Remote Sensing*, 55, 6746–6755, 2017.
- Moum, J. N., de Szoeke, S. P., Smyth, W. D., Edson, J. B., DeWitt, H. L., Moulin, A. J., Thompson, E. J., Zappa, C. J., Rutledge, S. A., Johnson, R. H., et al.: Air–sea interactions from westerly wind bursts during the November 2011 MJO in the Indian Ocean, *Bulletin of the American Meteorological Society*, 95, 1185–1199, 2014.
- Nystrom, R. G., Rotunno, R., Davis, C. A., and Zhang, F.: Consistent impacts of surface enthalpy and drag coefficient uncertainty between an analytical model and simulated tropical cyclone maximum intensity and storm structure, *Journal of Atmospheric Sciences*, 77, 3059–3080, 2020.
- Oost, W., Komen, G., Jacobs, C., and Van Oort, C.: New evidence for a relation between wind stress and wave age from measurements during ASGAMAGE, *Bound.-Layer. Meteorol.*, 103, 409 – 438, <https://doi.org/10.1023/A:1014913624535>, 2002.

- Pelletier, C., Lemarié, F., Blayo, E., Bouin, M.-N., and Redelsperger, J.-L.: Two-sided turbulent surface-layer parameterizations for computing air–sea fluxes, *Quarterly Journal of the Royal Meteorological Society*, 147, 1726–1751, 2021.
- Petersen, G. and Renfrew, I.: Aircraft-based observations of air–sea fluxes over Denmark Strait and the Irminger Sea during high wind speed conditions, *Quarterly Journal of the Royal Meteorological Society: A journal of the atmospheric sciences, applied meteorology and physical oceanography*, 135, 2030–2045, 2009.
- Potter, H., Graber, H. C., Williams, N. J., Collins III, C. O., Ramos, R. J., and Drennan, W. M.: In situ measurements of momentum fluxes in typhoons, *Journal of the Atmospheric Sciences*, 72, 104–118, 2015.
- Powell, M. D. and Ginis, I.: Drag coefficient distribution and wind speed dependence in tropical cyclones, Final Report to the National Oceanic and Atmospheric Administration (NOAA) Joint Hurricane Testbed (JHT) Program, 2006.
- Powell, M. D., Vickery, P. J., and Reinhold, T. A.: Reduced drag coefficient for high wind speeds in tropical cyclones, *Nature*, 422, 279–283, 2003.
- Rainaud, R., Lebeaupin Brossier, C., Ducrocq, V., and Giordani, H.: High-resolution air-sea coupling impact on two heavy precipitation events in the Western Mediterranean, *Quart. J. Roy. Meteor. Soc.*, 143, 2448–2462, <https://doi.org/10.1002/qj.3098>, 2017.
- Redelsperger, J.-L., Bouin, M.-N., Pianezze, J., Garnier, V., and Marié, L.: Impact of a sharp, small-scale SST front on the marine atmospheric boundary layer on the Iroise Sea: Analysis from a hectometric simulation, *Quarterly Journal of the Royal Meteorological Society*, 145, 3692–3714, <https://doi.org/10.1002/qj.3650>, 2019.
- Richter, D. H. and Stern, D. P.: Evidence of spray-mediated air-sea enthalpy flux within tropical cyclones, *Geophysical Research Letters*, 41, 2997–3003, 2014.
- Roehrig, R., Beau, I., Saint-Martin, D., Alias, A., Decharme, B., Guérémy, J.-F., Voldoire, A., Abdel-Lathif, A. Y., Bazile, E., Belamari, S., et al.: The CNRM global atmosphere model ARPEGE-Climat 6.3: Description and evaluation, *Journal of Advances in Modeling Earth Systems*, 12, e2020MS002 075, 2020.
- Romero, L. and Melville, W. K.: Airborne observations of fetch-limited waves in the Gulf of Tehuantepec, *Journal of Physical Oceanography*, 40, 441–465, 2010.
- Rutgersson, A., Smedman, A.-S., and Omstedt, A.: Measured and simulated latent and sensible heat fluxes at two marine sites in the Baltic Sea, *Boundary-Layer Meteorology*, 99, 53–84, 2001.
- Sanford, T. B., Price, J. F., and Girton, J. B.: Upper-ocean response to Hurricane Frances (2004) observed by profiling EM-APEX floats, *Journal of Physical Oceanography*, 41, 1041–1056, 2011.
- Sauvage, C., Lebeaupin Brossier, C., Bouin, M.-N., and Ducrocq, V.: Characterization of the air–sea exchange mechanisms during a Mediterranean heavy precipitation event using realistic sea state modelling, *Atmos. Chem. Phys.*, 20, 1675–1699, <https://doi.org/10.5194/acp-20-1675-2020>, 2020.
- Seity, Y., Brousseau, P., Malardel, S., Hello, G., Bénard, P., Bouttier, F., Lac, C., and Masson, V.: The AROME-France convective-scale operational model, *Monthly Weather Review*, 139, 976–991, 2011.
- Senatore, A., Furnari, L., and Mendicino, G.: Impact of high-resolution sea surface temperature representation on the forecast of small Mediterranean catchments’ hydrological responses to heavy precipitation, *Hydrology and Earth System Sciences*, 24, 269–291, <https://doi.org/10.5194/hess-24-269-2020>, <https://hess.copernicus.org/articles/24/269/2020/>, 2020.
- Small, R. J., deZoeke, S. P., Xie, S. P., O’Neill, L., Seo, H., Song, Q., Cornillon, P., Spall, M., and Minobe, S.: Air–sea interaction over ocean fronts and eddies, *Dynamics of Atmospheres and Oceans*, 45, 274–319, 2008.
- Smith, S. D.: Wind stress and heat flux over the ocean in gale force winds, *Journal of Physical Oceanography*, 10, 709–726, 1980.

- Smith, S. D., Anderson, R. J., Oost, W. A., Kraan, C., Maat, N., De Cosmo, J., Katsaros, K. B., Davidson, K. L., Bumke, K., Hasse, L., et al.: Sea surface wind stress and drag coefficients: The HEXOS results, *Boundary-Layer Meteorology*, 60, 109–142, 1992.
- 740 Snyder, R., Dobson, F., Elliott, J., and Long, R.: Array measurements of atmospheric pressure fluctuations above surface gravity waves, *Journal of Fluid mechanics*, 102, 1–59, 1981.
- Stocchi, P. and Davolio, S.: Intense air-sea exchanges and heavy orographic precipitation over Italy: The role of Adriatic sea surface temperature uncertainty, *Atmos. Res.*, 196, 62 – 82, <https://doi.org/10.1016/j.atmosres.2017.06.004>, 2017.
- Taylor, P. K. and Yelland, M. J.: The Dependence of Sea Surface Roughness on the Height and Steepness of the Waves, *Journal of Physical Oceanography*, 31, 572–590, [https://doi.org/10.1175/1520-0485\(2001\)031<0572:TDOSSR>2.0.CO;2](https://doi.org/10.1175/1520-0485(2001)031<0572:TDOSSR>2.0.CO;2), [https://doi.org/10.1175/1520-0485\(2001\)031<0572:TDOSSR>2.0.CO;2](https://doi.org/10.1175/1520-0485(2001)031<0572:TDOSSR>2.0.CO;2), 2001.
- 745 Th evenot, O., Bouin, M.-N., Ducrocq, V., Lebeaupin Brossier, C., Nuissier, O., Pianezze, J., and Duffourg, F.: Influence of the sea state on Mediterranean heavy precipitation: a case-study from HyMeX SOP1, *Quarterly Journal of the Royal Meteorological Society*, 142, 377–389, 2016.
- Tolman, H. L. et al.: User manual and system documentation of WAVEWATCH III TM version 3.14, Technical note, MMAB Contribution, 750 276, 2009.
- Torres, O., Braconnot, P., Marti, O., and Gential, L.: Impact of air-sea drag coefficient for latent heat flux on large scale climate in coupled and atmosphere stand-alone simulations, *Climate Dynamics*, 52, 2125–2144, 2019.
- Vickery, P. J., Wadhwa, D., Powell, M. D., and Chen, Y.: A hurricane boundary layer and wind field model for use in engineering applications, *Journal of Applied Meteorology and Climatology*, 48, 381–405, 2009.
- 755 Voldoire, A., Decharme, B., Pianezze, J., Lebeaupin Brossier, C., Sevault, F., Seyfried, L., Garnier, V., Bielli, S., Valcke, S., Alias, A., et al.: SURFEX v8. 0 interface with OASIS3-MCT to couple atmosphere with hydrology, ocean, waves and sea-ice models, from coastal to global scales, *Geoscientific Model Development*, 10, 4207–4227, 2017.
- Zhang, J. A., Black, P. G., French, J. R., and Drennan, W. M.: First direct measurements of enthalpy flux in the hurricane boundary layer: The CBLAST results, *Geophysical research letters*, 35, 2008.
- 760 Zou, Z., Zhao, D., Liu, B., Zhang, J. A., and Huang, J.: Observation-based parameterization of air-sea fluxes in terms of wind speed and atmospheric stability under low-to-moderate wind conditions, *Journal of Geophysical Research: Oceans*, 122, 4123–4142, 2017.