

Development of a total variation diminishing (TVD) sea ice transport scheme and its application in an ocean (SCHISM v5.11) and sea ice (Icepak v1.3.4) coupled model on unstructured grids

5 Qian Wang^{1,2}, Yang Zhang², Fei Chai^{1,2,3}, Y. Joseph Zhang⁴, Lorenzo Zampieri⁵

1. School of Oceanography, Shanghai Jiao Tong University, Shanghai, China

2. State Key Laboratory of Satellite Ocean Environment Dynamics, Second Institute of Oceanography, Ministry of Natural Resources, Hangzhou, China

3. State Key Laboratory of Marine Environmental Science, Xiamen University, Xiamen, China

10 4. Virginia Institute of Marine Science, Gloucester Point, VA, USA

5. Climate Simulations and Predictions Division, Centro Euro-Mediterraneo sui Cambiamenti Climatici (CMCC), Bologna, Italy

Correspondence to: Fei Chai (fchai@sio.org.cn) Yang Zhang (y Zhang@sio.org.cn)

Abstract. As the demand for increased resolution and complexity in unstructured sea ice models is growing, ~~higher demands are also placed on a more advanced sea ice transport scheme is needed.~~ In this study, we couple the Semi-implicit Cross-scale Hydro-science Integrated System Model (SCHISM, v5.11) with Icepack (v1.3.4), the column physics package of the sea ice model CICE; a key step is to implement a total variation diminishing (TVD) transport scheme for the multi-class sea ice module in the coupled model. ~~Compared with the second-order upwind scheme and the Finite Element Flux Corrected Transport (FEM-FCT) scheme, the TVD transport scheme is overall superior when evaluated based on conservation, accuracy, efficiency (even with very high resolution), and strict monotonicity. Although it is slightly weaker than FEM-FCT in terms of accuracy alone, the TVD scheme still outperforms the other two schemes in comprehensive performance.~~ ~~Compared with the second-order upwind scheme and the Finite Element Flux Corrected Transport scheme (FEM FCT), the TVD transport scheme is found to have better performance for both idealized and realistic cases, and meets the requirements for conservation, accuracy, efficiency (even with very high resolution), and strict monotonicity.~~ The new coupled model outperforms the existing single-class ice model of SCHISM in the case of ~~the~~ Lake Superior. For the Arctic Ocean case, it successfully reproduces the long-term changes in the sea ice extent, the sea ice boundary, concentration observation from satellites and thickness from in situ measurement.

30 1 Introduction

The dramatic decrease in the Arctic sea ice in recent decades attributable to global warming has a major impact on local and global climate (IPCC, 2019). In order to understand the changes in the physical and biogeochemical processes occurring in the Arctic Ocean, numerical models have become an important tool and they have been significantly improved in the past few decades. The sea ice, as a

35 highly complex material (Hunke et al., 2020), received special attention. Consequently, sea ice models
 have evolved, offering better representation of the sophisticated physical processes. At present, an
 advanced sea ice model, the Los Alamos sea ice model (CICE, Hunke et al., 2015), including a stand-
 alone column physics package Icepack (Hunke et al., 2020), has incorporated multi-class
 thermodynamics, such as the Bitz and Lipscomb (1999; BL99) thermodynamics formulation for
 40 constant salinity profiles, the mushy layer thermodynamics formulation for evolving salinity (Turner et
 al. 2013), and the sea ice ridging processes (Lipscomb et al., 2007). Many structured-grid models have
 been coupled with Icepack or CICE directly or via couplers, e.g., the Community Earth System Model
 (CESM, Hurrell et al., 2013) and the HYbrid Coordinate Ocean Model (HYCOM); others have partially
 incorporated and adapted CICE subroutines in their own ice module, e.g., the Sea Ice modelling
 45 Integrated Initiative (SI³) of the Nucleus for European Modelling of the Ocean (NEMO, and NEMO
 can also couple with CICE or The Louvain-La-Neuve sea ice model, LIM3, Madec et al., 2022), and
 The Thermodynamic Sea Ice Package (THSICE) of the Massachusetts Institute of Technology General
 Circulation Model (MITgcm, Adcroft et al., 2023). For the unstructured-grid (UG) models, Gao et al.
 (2011) have incorporated the Unstructured-Grid CICE (UG-CICE) into the unstructured-grid Finite
 50 Volume Community Ocean Model (FVCOM, Chen et al., 2012). Some other unstructured-grid models
 have incorporated Icepack directly, e.g., the Finite-volume Sea ice-Ocean Model version 2 (FESOM2,
 Zampieri et al., 2021) and the Model for Prediction Across Scales (MPAS-Seaice, Turner et al., 2022).
 UG-CICE and FESOM2 utilize triangular mesh grids, whereas MPAS-Seaice employs a Voronoi dual
 graph. UG-CICE is based on a finite-volume formulation, the sea ice component allows for five ice
 55 categories, four layers of ice and one layer of snow. The remaining models permit user specification of
 the number of ice categories. UG-CICE can produce good results on the seasonal variability of the sea
 ice in the Arctic Ocean (Gao et al., 2011). FESOM2, having implemented Icepack comprehensively,
 demonstrates that additional complexity in model formulations can enhance simulation accuracy
 (Zampieri et al., 2021). MPAS-Seaice can be viewed as the unstructured version of CICE, and thus
 60 shares sophisticated thermodynamics and biogeochemistry with CICE, including BL99 and mushy
 layer, and is the current sea-ice component of the Energy Exascale Earth System Model (E3SM, Turner
 et al., 2022). A summary of these sea-ice models is given in Table 1.

| Model | Ice model | Grid | Thermodynamic | Transport solver | Coupling method |
|-------|-----------|------|---------------|------------------|-----------------|
|-------|-----------|------|---------------|------------------|-----------------|

| | | | | | |
|---------|-----------------------------|--------------|--|---|--------------------------------|
| CESM | CICE | Structured | BL99 Mushy Layer | Incremental remapping scheme/ Upwind scheme | Coupler |
| NEMO | CICE, LIM3, SI ² | Structured | Mushy Layer | Prather scheme/ ULTIMATE-MACHO scheme (SI ²) | Direct (with SI ²) |
| HYCOM | CICE | Structured | BL99 Mushy Layer | Incremental remapping scheme/ Upwind scheme | Coupler |
| MITgem | THSICE | Structured | Two layers of ice and one layer of snow | 2nd-order flux limited scheme | Direct |
| E3SM | MPAS-Seaice | Unstructured | BL99 Mushy Layer | Incremental remapping scheme/ Upwind scheme | Coupler |
| UG-CICE | CICE | Unstructured | Four layers of ice and one layer of snow | Second order upwind scheme | Direct |
| FESOM2 | ICEPACK | Unstructured | BL99 Mushy Layer | FEM-FCT | Direct |

Table 1. Comparison of several sea ice models

SCHISM is a derivative product built from the original Semi-implicit Eulerian–Lagrangian Finite Element (SELFE, v3.1dc; Zhang and Baptista 2008) with multiple enhancements, including the seamless cross-scale capability from creek to ocean, a mass conservative, monotone, higher-order transport solver TVD² (implicit TVD in the vertical and explicit TVD in the horizontal, Zhang et al., 2016). SCHISM has been applied to study the Great Lakes ice formation process and obtained reasonable results in very high resolution (Zhang et al., 2023), using a single-class ice/snow module borrowed from FESOM (Danilov et al., 2015). The employed thermodynamic approach utilizes a zero-layer thermodynamic module (Parkinson & Washington, 1979), with constant dry and melting albedos of ice and snow. In the simulation of the Great Lakes ice formation process, both SCHISM and single-class ice model allow multi-scale physics on variable resolution, but the rate of melting within the model is more rapid than what has been observed (Zhang et al., 2023). In order to improve the simulation capability of ice, the implementation of the multi-class sea ice module, Icepack, is required.

When Icepack is coupled with another model, the latter must implement its own transport solver for ice. Hunke et al. (2010) suggested that the solver should be accurate, stable, conservative, strictly monotonic, and efficient. In the sea ice model, monotonicity ensures that the values of new tracers, such as ice thickness and enthalpy (but not ice concentration), do not exceed the local extrema, specifically the maximum or minimum values in their vicinity under pure advection (Lipscomb and Hunke, 2004), even when. ~~For~~ ice concentration, ~~it can~~ exceeds 1 and results in ridge which has been described in Icepack. The methodology for sea ice transport has undergone extensive study over the years, resulting in the proposition of various schemes. Lipscomb and Hunke (2004) implemented the upwind and incremental remapping schemes in CICE, both of which are still available in the latest version. Although the upwind scheme stands as the simplest method for transport, its first-order accuracy results in excessive diffusion. The incremental remapping scheme is a second-order accurate scheme, and has great performance in

structured grid models and MPAS-Seaice, but requires excessively smaller time step to avoid cross trajectories when the velocity field is divergent (Lipscomb and Hunke, 2004) or for highly distorted UGs (Turner et al., 2022). ~~For example, MPAS-Seaice uses the incremental remapping scheme (Turner et al., 2022); however, as it is a global model, it typically operates with coarser resolution.~~ The MITgcm provides a variety of tracer advection solvers, with a recommendation for flux-limited schemes in order to prevent unphysical outcomes (Adcroft et al. 2023). NEMO uses either the Prather scheme or the ULTIMATE-MACHO scheme with SI³ ice model (Madec et al., 2022), both of which require some functions to limit the tracer concentrations from exceeding the largest values of all adjacent nodes.

In the case of triangular UGs, the transport scheme utilized in UG-CICE is the second-order upstream scheme, which considers the gradient of sea ice tracers (Gao et al., 2011). This scheme is consistent with the tracer transport in FVCOM (Chen et al., 2012). The transport scheme of FESOM2 is the FEM-FCT (Löhner et al., 1987), which is based on the finite element description (Danilov et al. 2015). It is also a conservative and second-order scheme (Budgell, et al. 2007), but its cost is linearly increasing with the number of variables, and more importantly, strict monotonicity comes with a higher cost (Löhner et al., 1987). It is imperative to underscore that the requirement for strict monotonicity is designed to prevent unphysical values that can crash the model. Therefore, Zhang et al. (2023) used the modified FEM-FCT scheme by zeroing out certain higher-order contribution in their study for single-class ice module with very high resolution.

This paper presents SCHISM-Icepack, an unstructured ice-ocean coupled model that updates SCHISM for Icepack. The coupled model utilizes the TVD transport scheme, which has been implemented in SCHISM for ocean tracers (Zhang et al., 2016), to achieve an efficient, strictly monotone, second-order accuracy scheme for ice tracers on generic unstructured grids (even with locally very high resolution). Section 2 introduces components of SCHISM-Icepack and describes how the TVD transport scheme is implemented for the ice model. In Section 3, we compare some ideal test results from the new TVD scheme with two other second-order accurate methods (the second-order upwind scheme and FEM-FCT). The efficiency of the TVD scheme is also compared with the upwind scheme when applied to a high-resolution mesh. Additionally, the results of the new coupled model are compared with those of the existing single-class ice model of SCHISM. The new coupled model is validated with a simulation of the Arctic Ocean sea ice using realistic atmosphere forcing. Section 4 summarizes the major findings of this work.

2 Method

2.1 Icepack implemented in SCHISM

SCHISM-Icepack is coupled by Icepack v1.3.4 (Hunke et al., 2023) and SCHISM v5.11. Besides the
120 zero-layer thermodynamics, two more sophisticated thermodynamic formulations, BL99 and the mushy
layer are also implemented. At the sub-grid scale, thin and thick ice coexist, and therefore an ice thickness
distribution (ITD, Lipscomb, 2001; Bitz et al., 2001; ~~Bitz and Lipscomb, 1999~~) has been implemented
in order to describe the unresolved spatial heterogeneity of the thickness field. The ITD offers a
prognostic statistical description of the sea ice thickness, which it divides into multiple categories, along
125 with the ice area fraction corresponding to each category – a more detailed approach than the singular
fraction used in the previous implementation. More tracers and more ice processes are added in this
coupled model by Icepack, including multiple melt pond parameterizations (Hunke et al., 2013) and a
mechanical redistribution parameterization (Lipscomb et al. 2007) that responds to sea ice convergence
by piling up thin sea ice and therefore mimicking ridging and rafting events. The interaction between the
130 shortwave radiation and the sea ice in Icepack is addressed using two formulations: the Community
Climate System Model (CCSM3) formulation, which relates the surface albedo to the surface sea ice
temperature, and the Delta-Eddington formulation (Briegleb et al., 2007), which relates the albedo to
inherent optical properties of sea ice and snow. The dynamic solver is not included in Icepack and is
based on two approaches: 1. the classic Elastic-Viscous-Plastic method (EVP, Hunke & Dukowicz, 1997),
135 and 2. the modified Elastic-Viscous-Plastic method (mEVP, Kimmritz et al., 2015). Both methods are
inherited from the previous single-class ice/snow formulation (Zhang et al. 2023). It is important to note
the difference in grid definition between the ice module and the hydrodynamic module. The ice module
uses the Arakawa-A grid, and all tracers and velocities are defined at nodes. ~~But, while~~ the hydrodynamic
module uses the Arakawa-CD grid, that the velocities are defined at the side centers while tracers at prism
140 center. The decision to employ an analogue of the Arakawa-A grid in the rheology part, adapted from
FESIM, was primarily based on its computational efficiency and success in sea ice simulation (Danilov
et al., 2015). All ice-related subroutines are called at each time step in the ocean model by SCHISM's
hydrodynamic core. The ice module exports to SCHISM variables needed for coupling such as the
shortwave radiation, the ice-ocean heat flux, the freshwater flux, and finally the sea ice pressure and ice-
145 ocean stress for all ice-covered nodes, in proportion to the sea ice area fraction. Over open ocean these

variables are calculated directly by SCHISM. All variables required by Icepack can be obtained from either SCHISM or separate input file. And the coupling between the ice module and the hydrodynamic module remains unaffected by the differences in the variable definition, as all forcing variables are located at nodes in the hydrodynamic module.

150

2.2 Schemes for sea ice transport

The basic transport equation of sea ice area or fraction a_n for each sea ice category is (Thorndike et al. 1975),

155

$$\frac{\partial a_n}{\partial t} + \frac{\partial u a_n}{\partial x} + \frac{\partial v a_n}{\partial y} + \frac{\partial}{\partial h} (a_n f) = \psi, \quad (1)$$

where u and v are the ice velocities of x and y components, respectively, and h is the ice thickness.

The last term on the left side is thermodynamic change, where f is the rate of ice melting or growing,

and the right-side term ψ is mechanical redistribution like the ridging process. We solve this equation

160

using a fractional step method: first solve a pure advection equation (i.e. by setting the thermodynamic term and mechanical redistribution term to 0), followed by a correction step that includes the remaining terms. The main challenge occurs in the first step, where we must solve a pure advection equation for one category of sea ice fraction a_n :

$$\frac{\partial a_n}{\partial t} + \frac{\partial u a_n}{\partial x} + \frac{\partial v a_n}{\partial y} = 0. \quad (2)$$

165

Note that the ice velocity field is divergent or convergent, which can produce new local maxima/minima for a_n . However, a strictly monotone scheme is still desirable in order to separate the numerical dispersion from the physical convergence, especially for tracers like ice enthalpy and salinity.

We apply a finite volume algorithm to discretize equation (2). The sea ice module inside SCHISM

employs an Arakawa-A grid, with both the sea ice velocity, ice concentration and other tracers located

170

at the node (blue circles in Fig.1). The ~~tracer~~-control volume is defined as the polygon enclosed by the lines composed of centroids and edge centers (red circles in Fig.1). So, in the subsequent time step, after Δt , the new ice fraction is:

$$a_n^{t+1} = a_n^t + \frac{\Delta t \sum_{i \in S} Q_i \phi_i}{\Omega_S}, \quad (3)$$

175 Ω_S is the total area of the control volume; S is its boundary, and Q_i is the flux across the edge i of the control volume. Most of these variables can be obtained easily in the model, so we only focus on finding a method to approximate the edge ~~tracer~~-value, ϕ_i (this symbol always represents ice concentration hereafter).

The simplest method is the first order upwind scheme (assuming, without loss of generality, the velocity direction is as depicted in Fig. 1):

$$180 \quad \phi_i = \phi_C. \quad (4)$$

The TVD corrects the upwind values as:

$$\phi_i = \phi_C + \frac{\psi_i}{2}(\phi_D - \phi_C), \quad (5)$$

where ϕ_C and ϕ_D are the values at the upwind and the downwind nodes, respectively, for one edge of the control volume (Fig.1a). And the last term on right side is the anti-diffusion correction. In this part, ψ_i is a function of the upwind ratio, r_i , for which we select the van-Leer limiter (van Leer, 1979),

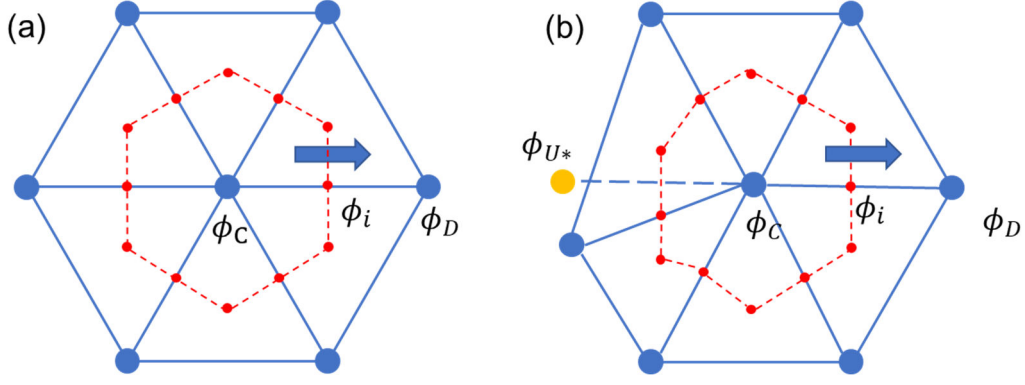
$$\psi_i = \frac{r_i + |r_i|}{1 + |r_i|}, \quad (6)$$

$$r_i = \frac{\phi_C - \phi_{U*}}{\phi_D - \phi_C}. \quad (7)$$

If $r_i < 0$, it means ϕ_C is a local extreme, ϕ_i in Eq.6 will revert to upwind. If $r_i > 0$, there is no local extreme, and $\psi_i \in [0,2]$, so ϕ_i is a weighted average of ϕ_C and ϕ_D in Eq.5. And here, ϕ_{U*} is defined as the upwind node of the upwind node (i.e., ‘up-upwind’), and can be accessed easily in a structured grid or a uniform unstructured grid (Fig.1a). But for generic unstructured grids, how to approximate ϕ_{U*} is a key issue for the TVD scheme. There are several possible choices for ϕ_{U*} , and after some comparisons we choose the method proposed by Darwish et al. (2003). This method includes the gradient of the central node $\nabla\phi_C$.

$$190 \quad \phi_{U*} = \phi_D + \mathbf{R}_{DU} \cdot (\nabla\phi_C) = \phi_D - 2\mathbf{R}_{CD} \cdot (\nabla\phi_C), \quad (8)$$

where \mathbf{R}_{DU} is the vector from the downwind node to the up-upwind node, and \mathbf{R}_{CD} is the vector from the upwind to downwind nodes.



200 **Figure 1.** Schematics of control volume for the ice transport; **(a)** is for a uniform unstructured mesh, **(b)** is for a generic unstructured mesh.

As the sea ice concentration cannot exceed 1 or be negative in this pure advection step (but after the transport step, it can exceed 1 and lead to the ridging process, and in the latter case, Icepack will perform clipping), Darwish's method (9) can produce errors and needs to be limited:

205
$$\phi_{U^*} = \min(1, \max(0, \phi_D - 2\mathbf{R}_{CD} \cdot (\nabla\phi_C))). \quad (9)$$

Using the approximation of edge ~~tracer~~ values ϕ_i , we can calculate the sea ice area fluxes across every edge of the control volume, and thus the new concentration from Eq. (3). Other tracer fluxes like volume per unit area of ice and enthalpy depend on the area fluxes, as in CICE. For instance, the volume per unit area of ice v_n equals the product of the sea ice area a_n and the sea ice thickness h_n ,

210 here h_i is the sea ice thickness of the upwind node.

$$v_n = a_n h_n, \quad (10)$$

$$v_n^{t+1} = v_n^t + \frac{\Delta t \sum_{i \in S} Q_i \phi_i h_i}{\Omega_S}. \quad (11)$$

Sea ice enthalpy e_n is the product of the sea ice area a_n , the sea ice thickness h_n and the energy per unit volume q_n , here q_i is the energy per unit volume of upwind node.

215
$$e_n = a_n h_n q_n, \quad (12)$$

$$e_n^{t+1} = e_n^t + \frac{\Delta t \sum_{i \in S} Q_i \phi_i h_i q_i}{\Omega_S}. \quad (13)$$

Other tracers at the new step can be calculated this way.

The finite-volume method ensures both global and local conservation of tracers. Since all ice area fluxes are recorded, the method requires only a single flux calculation per ice category, enhancing
220 computational efficiency. Numerous tests have demonstrated that the TVD scheme provides second-order accuracy in smooth regions (Zhang et al., 2015), and guarantees strict monotonicity and a good accuracy. The limiter for this study is the widely used van-Leer limiter. Even though the accuracy of this

limiter may be locally reduced to first order, it always maintains monotonicity as long as the time step used satisfies the stability condition, as demonstrated by Sweby (1984). Sea ice concentration can exhibit new extremes after the transport step as a result of physical processes such as convergence and divergence. Furthermore, the monotonicity of tracers is guaranteed because the method in Eq. (11) and Eq. (13) is essentially a weighted average method with non-negative weights. And in general, the exchange caused by advection are relatively small in amount, i.e. $a_n^t \gg \frac{\Delta t \sum_{i \in S} Q_i \phi_i}{\Omega_S}$, so the non-negativity of a_n^{t+1} is guaranteed. When we consider a divergent flow, the h_i of Eq. (11) is just equal to h_n (the centre node value), and here is

$$v_n^{t+1} = a_n^t h_n + \frac{\Delta t \sum_{i \in S} Q_i \phi_i}{\Omega_S} h_n, \quad (14)$$

which is always non-negative.

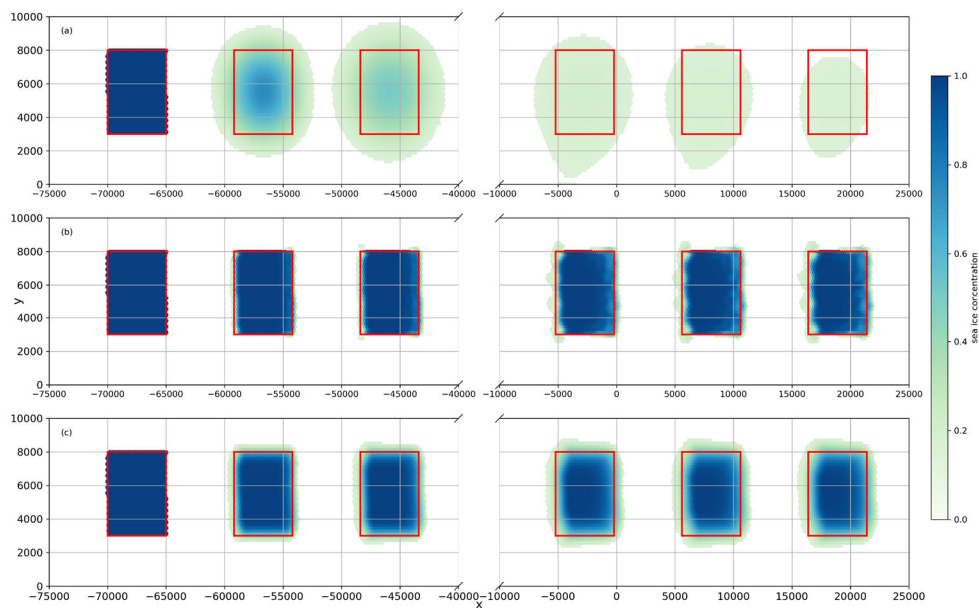
3 Results

3.1 Idealized test case

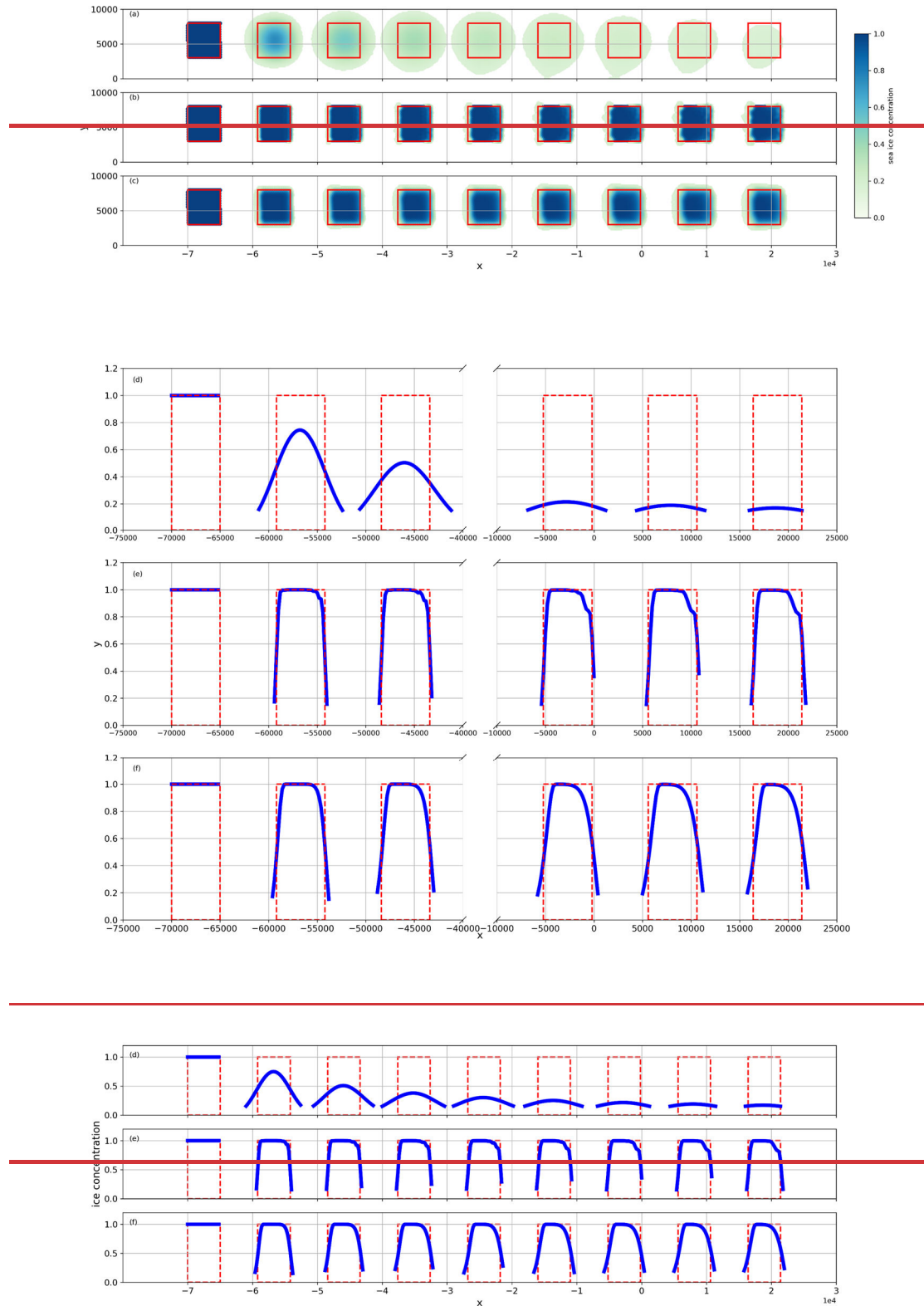
Since the thermodynamic ~~part~~ and dynamic parts of this model are relatively mature and have been widely utilized in other models, in this study we focus on validating the new transport scheme. The comparison of several transport schemes is carried out through an idealized ice transport experiment in a uniform unstructured mesh. The mesh grid consists entirely of equilateral triangles, with a side length of 200m for each triangle. As the initial condition, we placed a rectangular sheet of sea ice with dimensions of 5000m x 5000m on the left side of the mesh. The initial ice thickness is 1.5m, and it moves to the right along the x-axis at a speed of 1m/s. The time step is 1 second, which satisfies the Courant-Friedrichs-Lewy (CFL) condition ~~of~~ for TVD and meets the stricter CFL condition for SCHISM (Zhang et al., 2016). We run the idealized experiment for 24 hours, equivalent to 86400 steps. We select two other second order transport schemes for comparison: the second-order upwind scheme referred to UG-CICE (Gao et al., 2011) and the FEM-FCT scheme. It should be noted that in UG-CICE, although tracers are positioned at vertices (nodes) as in our model, the velocity is calculated at the centroids, differing from our scheme. The skill metrics employed include the accuracy and the monotonicity of the results.

3.1.1 Accuracy

250 Fig. 2 shows the snapshots and corresponding central profiles along the x-axis of the sea ice concentration taken every 3 hours, with the theoretical solution represented by the red rectangles. For clarity, only areas with a concentration greater than 15% are shown, and to show more details, only the first three and last three snapshots are shown. Compared to other schemes, the second-order upwind scheme exhibits significantly higher diffusivity, yet relatively uniform. The shape of the ice distribution varies over time, transitioning from a square to a circle. By the conclusion of the model run, the peak ice concentration reduces to roughly 20% of its initial value—this is the lowest retention observed amongst the three schemes. Moreover, most nodes fall below the 15% concentration visibility threshold in the snapshot. The FEM-FCT scheme retains most sea ice in the red rectangle, while it produces a banded distribution at the trailing and leading edges (Fig. 2b). The profiles portrayed in Fig. 2e indicate that the peak of sea ice concentration consistently approaches 100% and is the sharpest result of the three schemes. Figs. 2c and 2f demonstrate that the TVD scheme matches the FEM-FCT’s accuracy, and better than that of the second-order upwind scheme. Moreover, the horizontal distribution of the ice is also close to the analytical solution and exhibits a peak ice concentration around 100% at all times, despite some diffusion at the frontal edges, akin to the FEM-FCT scheme.



265

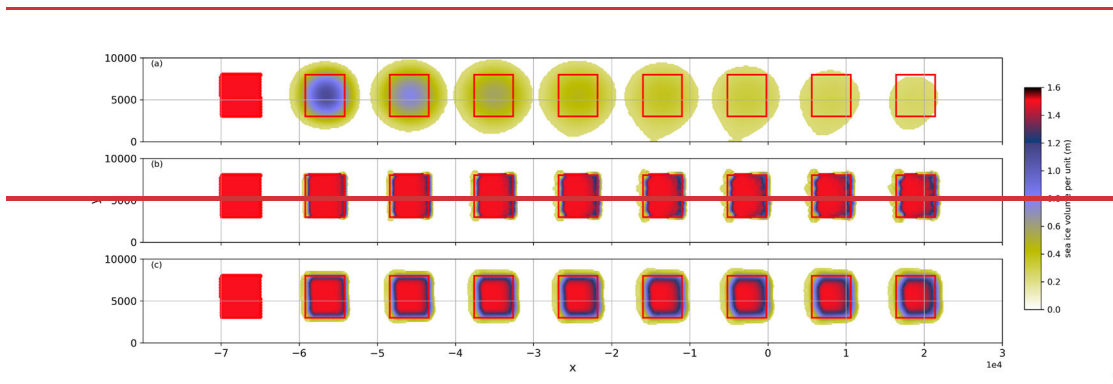
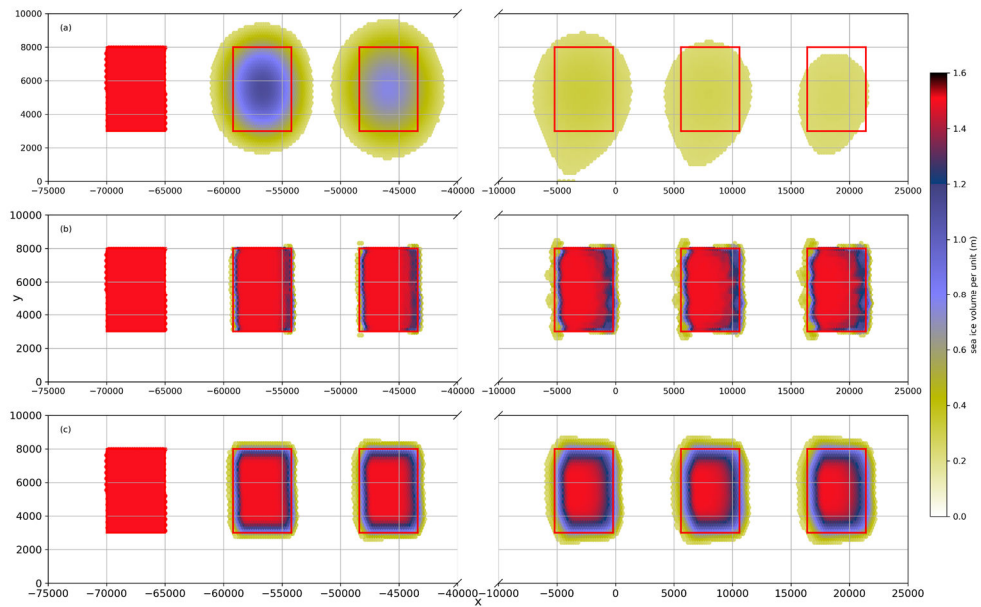


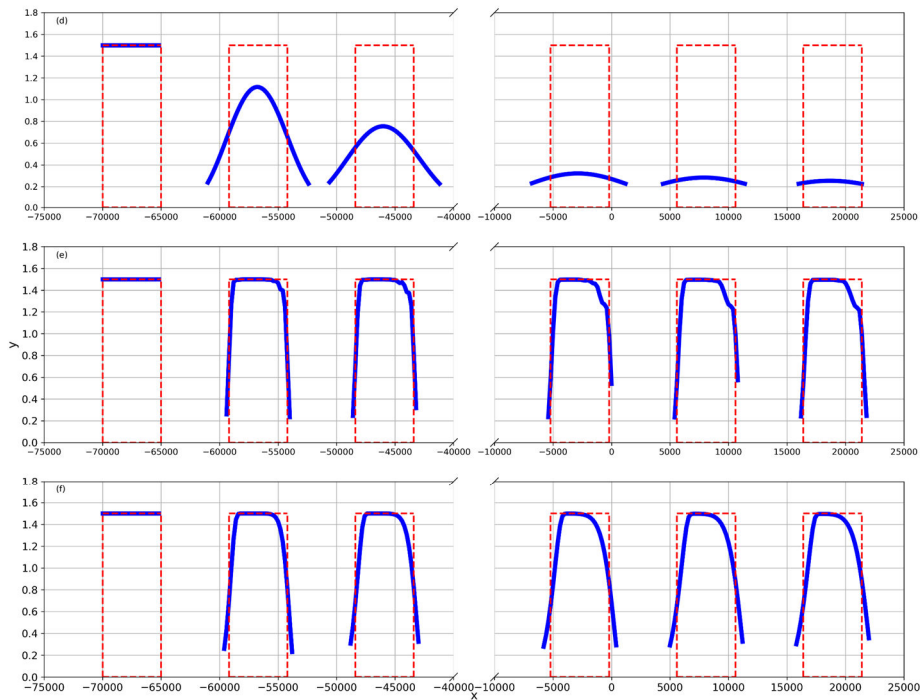
270

Figure 2. Sea ice concentration snapshots (a-c) and profiles (d-f). The sea ice moves from left to right, snapshots are taken every 3 hours, and the red rectangular is the exact solution. (a, d) second-order upwind, (b, e) FEM-FCT, (c, f) TVD. To show more details, only the first three and last three snapshots are shown.

The results of the ice volume per unit are analogous to the patterns observed in ice concentration (Fig.

275 3). Among the tested schemes, the second-order upwind scheme is the most diffusive one, while-with
the peak of ice volume per unit area is-of only 0.3 meters at the end. The FEM-FCT and TVD schemes
both demonstrate comparable accuracy, maintaining the shape and its peak value. From
commencement to conclusion, the geometries of the ice volume per unit area closely resemble the
theoretical model, with the peak values for TVD (1.496m) and FEM-FCT (1.495m) finishing
marginally below the precise solution. The ice volume per unit profiles of the three schemes (Fig. 3d-f)
280 exhibit shapes analogous to those seen in the ice concentration (Fig. 2d-f), suggesting all schemes
largely preserve monotonicity. However, the FEM-FCT scheme exhibits non-monotonic behavior at
the ice edges, and this will be further discussed below.





285

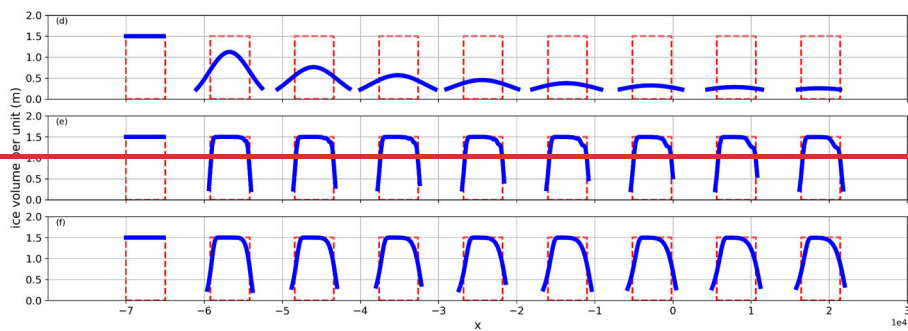


Figure 3. Volume per unit area of ice, with snapshots (a-c) and profiles (d-f). The sea ice moves from left to right, snapshots are taken every 3 hours, and the red rectangular is the exact solution. (a, d) second-order upwind, (b, e) FEM-FCT, (c, f) TVD. To show more details, only the first three and last three snapshots are shown.

290

3.1.2 Monotonicity

Here we select the ice thickness as the representative of tracers to verify monotonicity, with the ideal transport scheme expected to maintain the initial ice thickness (1.5m). Fig.2d and Fig.3d have shown the second-order upwind is overly diffusive, so we exclude it in the current comparison. Considering that non-monotonicity typically occurs in areas of low ice concentration, we choose 0.1% as the threshold rather than the previous 15%. In most areas, the FEM-FCT scheme maintains monotonicity,

295

and the ice thickness remains consistent with the initial value (Fig. 4a). But at the leading edge of the ice, the thickness overshoots the initial value and oscillates at the trailing edge. For the TVD scheme, some overshoots would occur at the leading edge of ice (Fig.4b) if we did not limit the up-upwind value (cf. Eq. 8). On the other hand, the modified TVD scheme we developed that limits the up-upwind value (cf. Eq. (9)) is completely monotonic (Fig. 4c).

300

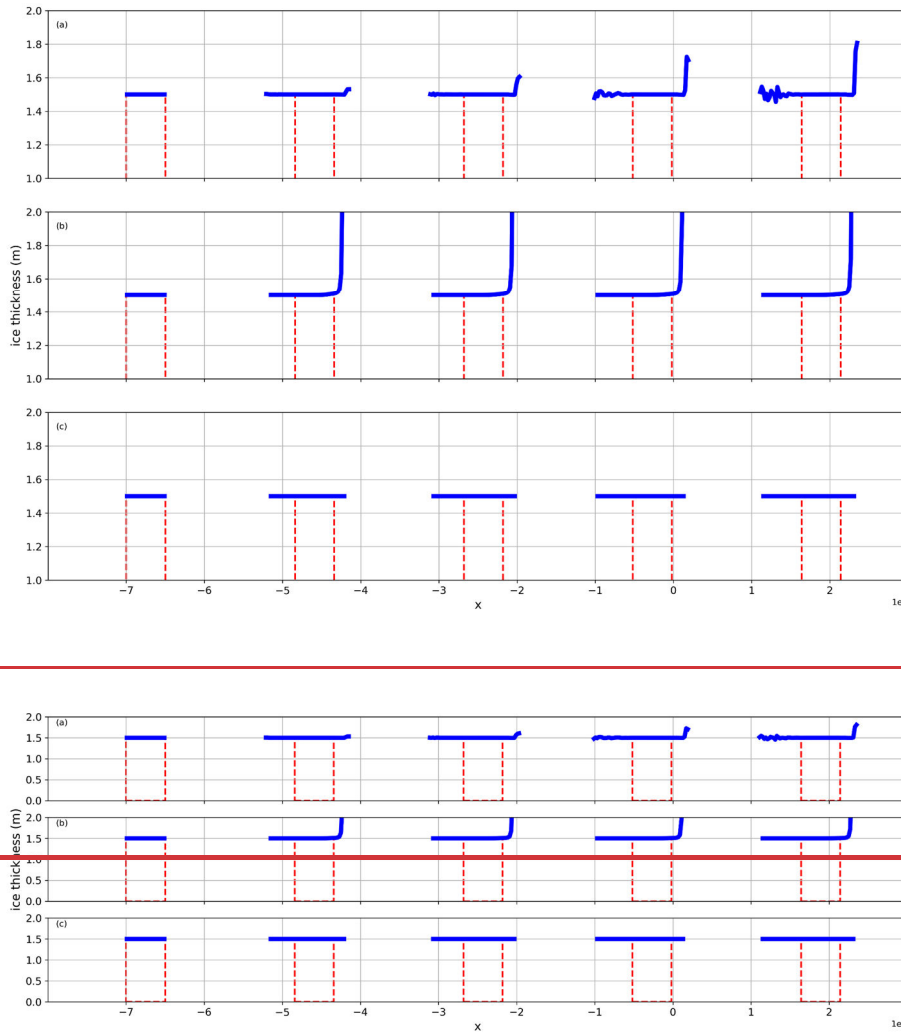


Figure 4. Sea ice thickness calculated from (a) FEM-FCT, (b) original TVD (Eq. (8)), (c) modified TVD (Eq. (9))

305

for ice. The time interval of snapshots is every 6 hours.

In summary, we have demonstrated that the TVD scheme provides second-order accuracy and outperforms that of the second-order upwind method. Although the FEM-FCT method could be more accurate than the TVD scheme, its propensity for non-monotonicity can cause numerical overshoots, consequently leading to unphysical values for salinity or temperature of ice, which might result in model instabilities or even 'blowup'. Approaches to enforcing the monotonicity in

310

the FEM-FCT method may entail higher cost (Löhner et al., 1987) or lower accuracy (Zhang et al., 2023). On the other hand, the TVD scheme not only preserves the tracer monotonicity but also meets other requirements such as accuracy, and we will further test its efficiency in a realistic case.

315 **3.2 Realistic model run**

SCHISM-Icepack, in conjunction with the TVD scheme for its ice transport module, is employed to reproduce the ice processes in ~~the~~ Lake Superior and the Arctic Ocean (Fig.5). The successful tests on unstructured grids demonstrate the cross-scale capability of SCHISM-Icepack.

3.2.1 The Lake Superior case

320 To gauge the numerical efficiency of the new TVD scheme, we test it on a very fine resolution Lake Superior mesh (Fig.5a) that was previously used in Zhang et al. (2023). The nearshore resolution in this mesh reaches ~50m with the finest resolution of 41.5m, found on the southwestern shore. As Zhang et al. (2023) indicated, the FCT scheme was having stability issues, so an essentially upwind method was applied in the high-resolution areas. The performance is compared with the upwind scheme. We
325 simulate the case for 180 days from December 1st, 2017, using 60 processors. The total simulation times for the two schemes are comparable, 678 minutes for the TVD scheme and 675 minutes for the upwind scheme. In total, the upwind scheme consumes 52.39 core hours while TVD spends 54.56 core hours. Compared to the total time of the ice module, TVD accounts for 21.71% and upwind accounts for 21.01%, while the dynamic part is the most computationally intensive, accounting for more than
330 70%. Overall, we found that the computational cost of the TVD scheme is comparable to that of the upwind scheme in this realistic benchmark application.

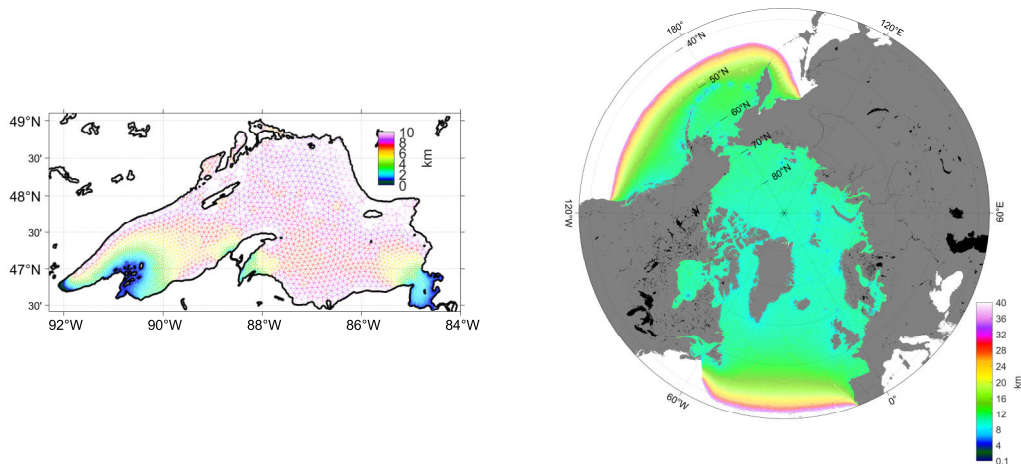
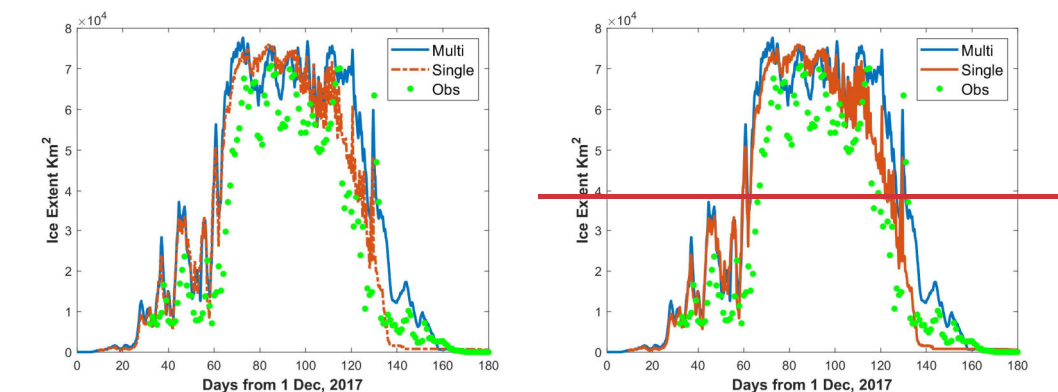


Figure 5. (a, left) The Lake Superior mesh. **(b, right)** The Arctic Ocean mesh. The colors show the mesh resolution.

335 As we have mentioned before, Zhang et al. (2023) have used a single-class ice model to reproduce the seasonal and interannual variability of ice extent (the ice concentration greater than 15%) in this case. The simulation results have been compared to the Great Lakes Surface Environmental Analysis (GLSEA) data, including some rapid melting-refreezing events. But they also found in their model that ice melts excessively fast near the end of each melting season. Here we compare the ice extent and ice concentration between two models. With the multi-class ice model and the TVD scheme, we are able to reproduce the similar pattern of ice extent and also some rapid melting-refreezing events, yielding a correlation coefficient of 0.93 and a Wilmot score of 0.92 (both values closer to 1 are better, Fig. 6). Furthermore, the melting phase simulation is improved beyond day 120. Approximately 10,000 km² of ice persists until around day 150 and the ice dissipates by day 160, aligning more closely with

340

345 observational data. After the observed ice extent falls below 10,000 km², the correlation coefficient between simulated extent and observed extent with using the multi-class ice model is 0.82, which is an improvement over the single-class ice model's coefficient of 0.43.

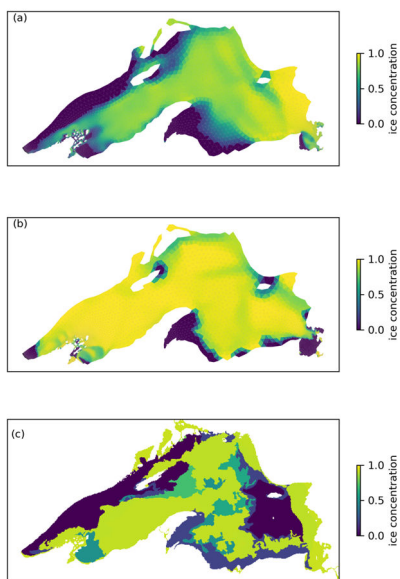


350 **Figure 6.** Comparison of ice extent in Lake Superior in 2017, the blue line is the result of multi-class ice model, the orange line is the result of single-class ice model, and green dot is the observation from GLSEA.

The spatial distribution of the ice concentration from the two models is compared with the observation from the U.S. National Ice Center (USNIC) on day 90 (Fig.7), when the ice cover was largest. Both models exhibit lower ice concentration in the southern part of the lake; however, while in most other areas, particularly in the western region, the multi-class ice model displays lower ice concentrations. Compared to the USNIC data, both models overestimate ice concentration on the lake's eastern side. However, the multi-class ice model reproduces the ice-free pattern on the west coast more accurately. The spatially average ice concentration is 0.617 for the multi-class ice model, which is closer to the observed value of 0.509 and represents a significant improvement over the single-class ice model's 0.847.

355

360 In the very high-resolution areas (the lake's southwestern and southeastern corners)-, the new coupled model and the TVD scheme yield a reasonable and stable result, which demonstrates its cross-scale capability.



365 **Figure 7.** The ice concentration on day 90, and (a) is the result of the multi-lass ice model (b) is that of single-class ice model, (c) is from USNIC.

3.2.2 The Arctic Ocean case

The Arctic mesh consists of 422,000 elements and 217,000 nodes (Fig. 5b) with the resolution ranging from 6 km near the coast to 40 km at the open boundary. The model starts on January 1st, 1994, and covers 2000 days, about 1.6 million steps using a time step of 100 sec. Initial conditions are derived from the HYCOM dataset, including ocean tracers, sea ice concentration and thickness. Moreover, the boundary conditions incorporate data from HYCOM and Finite Element Solution (FES2014, Lyard et al., 2021), including 15 tidal components. The domain boundary is chosen to be at ~40°N to ensure no sea ice crosses the boundary. In the vertical dimension, a highly flexible vertical gridding system (LSC², Zhang et al., 2015) is implemented with up to 60 layers in order to more accurately represent the complex topography of the Arctic Basin ~~better~~, and we set the bottom drag coefficient with a constant Manning coefficient of 0.0025. For the atmosphere forcing, we choose the European Centre for Medium-Range Weather Forecasts Reanalysis Fifth Generation global reanalysis (ERA5, Hersbach et al., 2020) due to its high temporal resolution, and utilize the bulk aerodynamic model (Zeng et al., 1998) to get the surface fluxes, like latent and sensible fluxes. The turbulence closure scheme in the ocean model is the generic length-scale equation as k-kl (Umlauf and Burchard, 2003) and the horizontal transport in the ocean model is TVD² (Ye et al. 2016). The parameters used in the sea ice model basically follow the standard CICE configuration, including a constant air-ice drag coefficient (about 0.0016), and a constant ice-ocean drag coefficient (about 0.006). Modules in the standard CICE are also included in this model, such as the mushy layer thermodynamics, the Rothrock (1975) ice strength method, and the level-ice melt ponds module among others. We evaluate our Arctic sea ice case by comparing its outputs to observational data sets from NSIDC, including the sea ice extent, ice boundary, and ice concentration. The observation of sea ice concentrations is from Nimbus-7 SMMR and DMSP SSM/I-SSMIS Passive Microwave Data (Fetterer et al., 2017), while the sea ice boundary corresponds to the 15% sea-ice concentration contour.

Fig.8a compares the sea ice extent of SCHISM-Icepack with the observation. The model is stable for the long-term test and has good performance to reproduce the inter-annual variability and the seasonal cycle, with both the minimum and maximum sea ice extents being reproduced satisfactorily. The first peak is noticeably higher than the observed value, which may be influenced by the initial conditions as we did not get all tracers, such as sea ice salinity and enthalpy, from HYCOM. The extent difference

between the model and observation is evaluated as absolute extent error (AEE, Eq. 14). However, AEE may underestimate the model error due to the cancellation between the overestimation(O) and underestimation(U). The Integrated Ice Edge Error (IIEE, Eq. 15) may be a preferable choice to evaluate the simulation result (Goessling et al., 2016, Zampieri et al., 2018).

$$AEE = |\Sigma(|O| - |U|)|, \quad (14)$$

$$IIEE = \Sigma|O| + \Sigma|U|, \quad (15)$$

We present the monthly AEE and IIEE in Fig. 8b, provide monthly statistics for them and compare our results with those from FESOM2 in Fig. 8c. FESOM2 team has run multiple cases to investigate the sensitivity of results to various forcing and model complexities, and selecting cases for our comparison that were also driven by ERA5 and based on a multi-class ice thermodynamics BL99 (Zampieri et al., 2021). IIEE and AEE (Fig. 8b) fluctuate in a similar fashion to the monthly extent in Fig.8a. In Fig.8a, the simulated sea ice extent often increases more rapidly during autumn compared to observed data, and it appears to more closely match observations in the remaining seasons. AEE shows a similar pattern, being relatively small in spring and summer, and reaching its maximum in autumn. The magnitude of AEE is also similar to that of FESOM2, peaking in autumn while lower in other seasons. The seasonal pattern of IIEE is similar to that of FESOM2, with maximum values during summer and lower values during autumn. Correspondingly, the largest variability of IIEE occurs in summer, while the lowest variability is observed in spring. The differences between SCHISM-Icepack and FESOM2 can be attributed to two primary factors: the first is that the selected FESOM2 results employed a different thermodynamic module and the second is that the integration period of FESOM2 spanned from 2002 to 2015, while integration period of this study is from 1994 to 1999. Nonetheless, the performance of the two models is generally comparable.

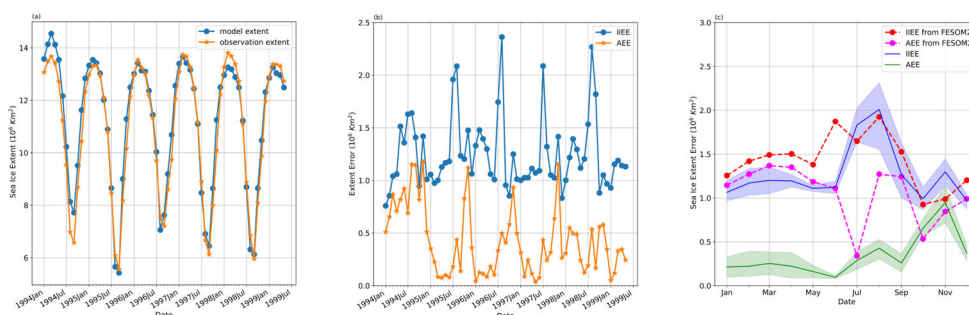
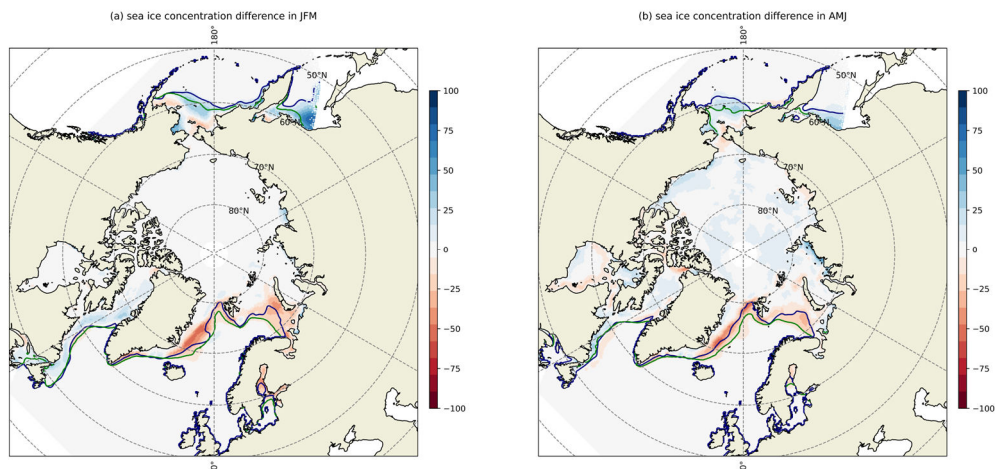
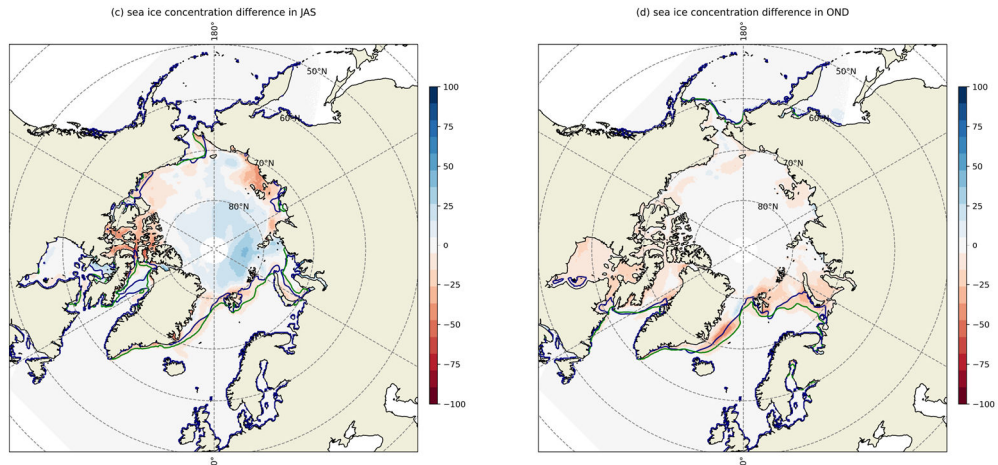


Figure 8. (a) Monthly sea ice extent of model and observation in the Arctic Ocean. **(b)** Monthly Integrated Ice Edge Error (IIEE) and Absolute Extent Error (AEE). **(c)** Monthly IIEE and AEE of SCHISM-Icepack and

FESOM2 (averaged across all years), with the shading representing the 95% confidence intervals.

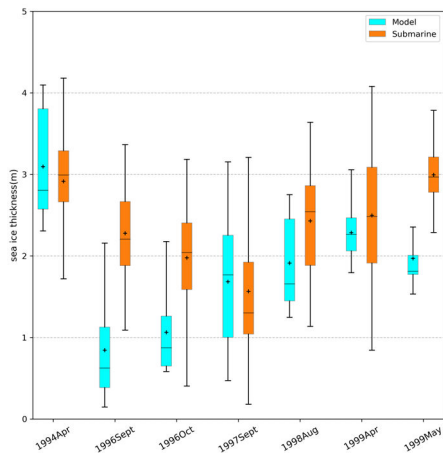
The comparison of the spatial sea ice concentration is shown in Fig.9. The simulated sea ice boundary and ice concentration show good agreement with satellite observations, and the model shows a robust ability to capture the seasonal evolution of sea ice in the Arctic Ocean. During winter and spring (Fig. 9a and 9b), the deviation occurs in the marginal ice zone, such as the Bering Sea and the Greenland Sea. In summer (Fig.9c), the model overestimates the sea ice concentration near the coast, such as the Canadian archipelago coast, but underestimates in the central Arctic Basin. The overestimation is likely due to the model's simplified representation of complex thermodynamic and dynamic processes in the coastal margin (e.g., the occurrence of landfast sea ice). Furthermore, the lack of precise runoff and temperature data of Arctic rivers has a significant impact on the coastal area simulation. In the central Arctic Basin, melt ponds have a significant effect on the mass of sea ice during the melting season, and they are typically formed as a certain amount of precipitation remains on the ice (Feng et al., 2022). The precipitation field we utilized shows slight overestimation compared to the observation-based precipitation products (Marcovecchio et al., 2021), so it is plausible that the underestimation of sea ice concentration in the central Arctic Basin is caused by the excessive melt ponds that were reproduced in SCHISM-Icepack. In autumn (Fig.9d), the model overestimates sea ice concentration in the marginal seas of the Arctic, such as Hudson and Baffin Bay, which causes the largest AEE. The heat exchange at the air-ice-sea interface is generally more intense in the freezing season compared to the melting season, so the coupled model may generate more sea ice due to its inability to deliver sufficient heat to the surface in time or due to the underrepresented strength of convection in the upper ocean.





445 **Figure 9.** Seasonally averaged sea ice concentration difference (Observation-Model). The blue line is the satellite sea ice boundary, and the green line is from the model. **(a)** Winter (Jan. Feb. and Mar.), **(b)** Spring (Apr. May. and Jun.), **(c)** Summer (Jul. Aug. and Sept.), **(d)** Autumn (Oct. Nov. and Dec.)

The sea ice thickness is also validated. The observed ice thickness data, derived from upward-looking sonar sea ice draft measurements, were collected by submarines of the SCience ICe EXercise (SCICEX, National Snow and Ice Data Center, 1998). The in-situ data are compared with the corresponding model values using a box plot in Fig. 10. The model results closely match the observations in Apr. 1994, Sept. 1997, Aug. 1998, and Apr. 1999, while the bias of the mean thickness is less than 0.6m. Underestimation of the ice thicknesses happens in other months, with the bias of the mean thickness ranging from approximately 1.0m to 1.5m. Specifically in the springs of 1994 and 1999 (April both years and May in 455 1999), the median thickness exhibits a bias of about 0.6m, which is smaller than over half of the individual CMIP5 models during the same season, where median thickness biases exceed 1.0m (Stroeve et al., 2014). Overall, SCHISM-Icepack demonstrates a robust capability to replicate both the observed seasonal and interannual variability of sea ice thickness.



460 **Figure 10.** The box plot of sea ice thickness comparison. Cyan is the model result and orange is the data from submarine.

4 Conclusion

We have incorporated a multi-class sea ice module, the advanced sea ice column physics package Icepack, into the SCHISM modelling system. Significantly, we have implemented a new TVD based scheme for ice tracer transport and validated it through an idealized case and realistic cases. The simulation results reveal that the TVD scheme is conservative, accurate, strictly monotonic, and efficient in reproducing the horizontal transport of ice, and has better performance-accuracy than the second-order upwind scheme at similar computational cost. Particularly, it provides strict monotonicity, which is crucial for stability, thus addresses the difficulties encountered in the single-class ice model utilizing the FEM-FCT. The coupled SCHISM-Icepack model improves the results of the previous single-class ice model in the case of the Lake Superior, and was able to reproduce the Arctic Sea ice concentration, boundary, extent, and thickness as seen from the observation.

An advantage of the coupled model SCHISM-Icepack is its ability to effectively simulate the sophisticated ocean-ice evolution in both open ocean and coastal regions. SCHISM includes various biogeochemistry modules like CoSiNE, while Icepack provides more detailed insights into the evolution of sea ice and biogeochemical processes. By integrating these biogeochemistry and physical modules in future work, we can deepen our investigation into the changes within under-ice ecosystems resulting from global warming.

480 **Code and data availability.**

Code of this model have two components, Icepack ~~1.3.4~~1.3.4, and SCHISM v5.11. Icepack 1.3.4 is obtained from <https://github.com/CICE-Consortium/Icepack>. SCHISM v5.11 and the coupled model can be found at <https://github.com/schism-dev/schism>, including all the code used in this paper. All source code is also available on Zenodo (<https://doi.org/10.5281/zenodo.10391035>, Wang et al., 2023) with all configuration files of the idealized case and the realistic test on the Arctic Ocean. In the realistic test on the Arctic Ocean, the forcing data is from ERA5, initial and boundary data is from HYCOM and FES2014, they can be generated by the preprocessing script in SCHISM. The input data of the realistic case on ~~the~~Lake Superior is available from Y. Joseph Zhang on reasonable request. All the results in the paper are also available from Qian Wang on reasonable request.

490

Author contributions

Qian Wang: Data curation, Formal analysis, Investigation, Methodology, Software, Visualization, Writing – original draft preparation. **Yang Zhang:** Validation, Resources, Software, Writing – review & editing. **Fei Chai:** Conceptualization, Supervision, Funding acquisition, Project administration. **Y. Joseph Zhang:** Validation, Methodology, Software, Writing – review & editing. **Lorenzo Zampieri:** Writing – review & editing.

495

Competing interests

The authors declare that they have no conflict of interest.

Acknowledgements

500 The authors acknowledge the financial support of the National Natural Science Foundation of China (Grant Number 41941013). The study in this paper was supported by the high-performance computing clusters at: (1) State Key Laboratory of Satellite Ocean Environment Dynamics, SIO, MNR; (2) William & Mary Research Computing (URL: <https://www.wm.edu/it/rc>). The authors also thank HYCOM data server for their sea ice product. Lorenzo Zampieri acknowledges the financial support of the Italian National Recovery and Resilience Plan (PNRR) through the "SPOKE 4 - EARTH & CLIMATE" program. Finally, we greatly appreciate the help of Christopher Horvat and two anonymous reviewers.

505

Financial support

This work is supported by the National Natural Science Foundation of China (Grant Number 41941013)

510 References

- Alistair Adcroft, Jean-Michel Campin, Ed Doddridge, Stephanie Dutkiewicz, Constantinos Evangelinos, David Ferreira, Mick Follows, Gael Forget, Baylor Fox-Kemper, Patrick Heimbach, Chris Hill, Ed Hill, Helen Hill, Oliver Jahn, Jody Klymak, Martin Losch, John Marshall, Guillaume Maze, Matt Mazloff, Dimitris Menemenlis, Andrea Molod, and Jeff Scott. MITgcm user manual. Massachusetts Institute of
515 Technology, <https://readthedocs.org/projects/mitgcm/downloads/pdf/latest/>, 2023.
- Bitz, C. M., Holland, M. M., Weaver, A. J., & Eby, M. Simulating the ice-thickness distribution in a coupled climate model. *Journal of Geophysical Research: Oceans*, 106(C2), 2441-2463, <https://doi.org/10.1029/1999JC000113>, 2001.
- Bitz, C. M. and Lipscomb, W. H.: An energy-conserving thermodynamic model of sea ice, *J. Geophys. Res.-Oceans*, 104, 15669–15677, <https://doi.org/10.1029/1999JC900100>, 1999.
520
- Briegleb, B. P. and Light, B.: A Delta-Eddington multiple scattering parameterization for solar radiation in the sea ice component of the Community Climate System Model, Tech. Rep. NCAR/TN 472+STR, National Center for Atmospheric Research, Boulder, Colorado USA, <https://doi.org/10.5065/D6B27S71>, 2007.
- Budgell, W. P., Oliveira, A., and Skogen, M. D.: Scalar advection schemes for ocean modelling on unstructured triangular grids, *Ocean Dynamics*, 57, 339-361, <https://doi.org/10.1007/s10236-007-0111-8>, 2007.
525
- Chen, C., Beardsley, R. C., Cowles, G., Qi, J., Lai, Z., Gao, G., ... & Lin, H. An unstructured-grid, finite-volume community ocean model: FVCOM user manual. Cambridge, MA, USA: Sea Grant College
530 Program, Massachusetts Institute of Technology. 2012.
- Danilov, S., Wang, Q., Timmermann, R., Iakovlev, N., Sidorenko, D., Kimmritz, M., Jung, T., and Schröter, J.: Finite-Element Sea Ice Model (FESIM), version 2, *Geoscientific Model Development*, 8, 1747-1761, <https://doi.org/10.5194/gmd-8-1747-2015>, 2015.
- Elizabeth Hunke, Richard Allard, David A. Bailey, Philippe Blain, Anthony Craig, Frederic Dupont,
535 Alice DuVivier, Robert Grumbine, David Hebert, Marika Holland, Nicole Jeffery, Jean-Francois Lemieux, Robert Osinski, Till Rasmussen, Mads Ribergaard, Lettie Roach, Andrew Roberts, Matthew

- Turner, & Michael Winton. CICE-Consortium/Icepack: Icepack 1.3.4 (1.3.4). Zenodo. <https://doi.org/10.5281/zenodo.8336034>, 2023.
- 540 Feng, J., Zhang, Y., Cheng, Q., and Tsou, J. Y.: Pan-Arctic melt pond fraction trend, variability, and contribution to sea ice changes, *Global and Planetary Change*, 217, <https://doi.org/10.1016/j.gloplacha.2022.103932>, 2022.
- Fetterer, F., K. Knowles, W. N. Meier, M. Savoie, and A. K. Windnagel.. Sea Ice Index, Version 3 [Data Set]. Boulder, Colorado USA. National Snow and Ice Data Center. <https://doi.org/10.7265/N5K072F8>. Date Accessed 08-05-2023. 2017.
- 545 Gao, G., Chen, C., Qi, J., and Beardsley, R. C.: An unstructured-grid, finite-volume sea ice model: Development, validation, and application, *Journal of Geophysical Research*, 116, <https://doi.org/10.1029/2010JC006688>, 2011.
- Goessling, H. F., Tietsche, S., Day, J. J., Hawkins, E., and Jung, T.: Predictability of the Arctic sea ice edge, *Geophysical Research Letters*, 43, 1642-1650, <https://doi.org/10.1002/2015GL067232>, 2016.
- 550 Great Lakes Surface Environmental Analysis (GLSEA): <https://coastwatch.glerl.noaa.gov/satellite-data-products/great-lakes-surface-environmental-analysis-glsea/>, , last access: 2 April 2024.
- Hersbach, H., Bell, B., Berrisford, P., Hirahara, S., Horányi, A., Muñoz-Sabater, J., ... & Thépaut, J. N. The ERA5 global reanalysis. *Quarterly Journal of the Royal Meteorological Society*, 146(730), 1999-2049. <https://doi.org/10.1002/qj.3803>, 2020.
- 555 Hunke, E. C. Thickness sensitivities in the CICE sea ice model. *Ocean Modelling*, 34(3-4), 137-149. <https://doi.org/10.1016/j.ocemod.2010.05.004>, 2010.
- Hunke, E., Allard, R., Blain, P., Blockley, E., Feltham, D., Fichefet, T., Garric, G., Grumbine, R., Lemieux, J. F., Rasmussen, T., Ribergaard, M., Roberts, A., Schweiger, A., Tietsche, S., Tremblay, B., Vancoppenolle, M., and Zhang, J.: Should Sea-Ice Modeling Tools Designed for Climate Research Be
560 Used for Short-Term Forecasting?, *Curr Clim Change Rep*, 6, 121-136, <https://doi.org/10.1007/s40641-020-00162-y>, 2020.
- Hunke, E. C. and Dukowicz, J. K.: An elasticviscous-plastic model for sea ice dynamics, *J. Phys. Oceanogr.*, 27, 1849–1867, [https://doi.org/10.1175/1520-0485\(1997\)027<1849:AEVPMF>2.0.CO;2](https://doi.org/10.1175/1520-0485(1997)027<1849:AEVPMF>2.0.CO;2), 1997.
- 565 Hunke, E. C., Hebert, D. A., & Lecomte, O. Level-ice melt ponds in the Los Alamos sea ice model, CICE. *Ocean Modelling*, 71, 26-42. <https://doi.org/10.1016/j.ocemod.2012.11.008>, 2013

- Hunke, E. C., Lipscomb, W. H., Turner, A. K., Jeffery, N., and Elliott, S.: CICE: the Los Alamos sea ice model documentation and software user's manual version 5.1, Tech. Rep., Los Alamos National Laboratory, LA-CC-06-012, <https://github.com/CICE-Consortium/CICE-svn-trunk/blob/main/cicedoc/cicedoc.pdf> (last access: 4 April 2022), 2015.
- Hunke, E. C., Lipscomb, W. H., & Turner, A. K. Sea-ice models for climate study: retrospective and new directions. *Journal of Glaciology*, 56(200), 1162-1172. <https://doi.org/10.3189/002214311796406095>, 2010.
- Hurrell, J. W., Holland, M. M., Gent, P. R., Ghan, S., Kay, J. E., Kushner, P. J., ... & Marshall, S. The community earth system model: a framework for collaborative research. *Bulletin of the American Meteorological Society*, 94(9), 1339-1360. <https://doi.org/10.1175/BAMS-D-12-00121.1>, 2013.
- Kimritz, M., Danilov, S., and Losch, M.: On the convergence of the modified elastic-viscous-plastic method for solving the sea ice momentum equation, *J. Comput. Phys.*, 296, 90–100, <https://doi.org/10.1016/j.jcp.2015.04.051>, 2015.
- Lipscomb, W. H. Remapping the thickness distribution in sea ice models, *J. Geophys. Res.*, 106(C7), 13989–14000, doi:[10.1029/2000JC000518](https://doi.org/10.1029/2000JC000518), 2001.
- Lipscomb, W. H. and Hunke, E. C.: Modeling sea ice transport using incremental remapping, *Mon. Weather Rev.*, 132, 1341–1354, [https://doi.org/10.1175/1520-0493\(2004\)132<1341:MSITUI>2.0.CO;2](https://doi.org/10.1175/1520-0493(2004)132<1341:MSITUI>2.0.CO;2), 2004.
- Lipscomb, W. H., Hunke, E. C., Maslowski, W., and Jakacki, J.: Ridging, strength, and stability in high-resolution sea ice models, *Journal of Geophysical Research: Oceans*, 112, <https://doi.org/10.1029/2005JC003355>, 2007.
- Löhner, R., Morgan, K., Peraire, J., & Vahdati, M. Finite element flux-corrected transport (FEM-FCT) for the euler and Navier–Stokes equations. *International Journal for Numerical Methods in Fluids*, 7(10), 1093-1109. <https://doi.org/10.1002/flid.1650071007>, 1987.
- Lyard, F. H., Allain, D. J., Cancet, M., Carrère, L., & Picot, N.. FES2014 global ocean tide atlas: design and performance. *Ocean Science*, 17(3), 615-649. <https://doi.org/10.5194/os-17-615-2021>, 2021.
- Madec Gurvan, Romain Bourdallé-Badie, Jérôme Chanut, Emanuela Clementi, Andrew Coward, Christian Ethé, Doroteaciro Iovino, Dan Lea, Claire Lévy, Tomas Lovato, Nicolas Martin, Sébastien Masson, Silvia Mocavero, Clément Rousset, Dave Storkey, Simon Müller, George Nurser, Mike Bell,

Guillaume Samson, Pierre Mathiot, Francesca Meleand Aimie Moulin: NEMO ocean engine, <https://doi.org/10.5281/zenodo.6334656>, 2022.

Marcovecchio, A., Behrangi, A., Dong, X., Xi, B., and Huang, Y.: Precipitation influence on and response to early and late Arctic sea ice melt onset during melt season, *International Journal of Climatology*, 42, 81-96, <https://doi.org/10.1002/joc.7233>, 2021.

600 M.S. Darwish, F. Moukalled. TVD schemes for unstructured grids. *International Journal of Heat and Mass Transfer*, 46(4), 599-611. [https://doi.org/10.1016/S0017-9310\(02\)00330-7](https://doi.org/10.1016/S0017-9310(02)00330-7), 2003.

National Snow and Ice Data Center (comp.). Submarine Upward Looking Sonar Ice Draft Profile Data and Statistics, Version 1 [Data Set]. Boulder, Colorado USA. National Snow and Ice Data Center. <https://doi.org/10.7265/N54Q7RWK>. Date Accessed 03-23-2024. 1998.

605 Parkinson, C. L. and Washington, W. M.: A large-scale numerical model of sea ice, *J. Geophys. Res.*, 84, 311–337, <https://doi.org/10.1029/JC084iC01p00311>, 1979.

Rothrock, D. A.: The energetics of the plastic deformation of pack ice by ridging, *Journal of Geophysical Research*, 80, 4514-4519, <https://doi.org/10.1029/JC080i033p04514>, 1975.

610 Stroeve, J., Barrett, A., Serreze, M., and Schweiger, A.: Using records from submarine, aircraft and satellites to evaluate climate model simulations of Arctic sea ice thickness, *The Cryosphere*, 8, 1839–1854, <https://doi.org/10.5194/tc-8-1839-2014>, 2014.

Sweby, P. K. High resolution schemes using flux limiters for hyperbolic conservation laws. *SIAM journal on numerical analysis*, 21(5), 995-1011. <https://doi.org/10.1137/0721062>, 1984.

615 Thorndike, A. S., Rothrock, D. A., Maykut, G. A., and Colony, R., The thickness distribution of sea ice, *J. Geophys. Res.*, 80(33), 4501–4513, <https://doi.org/10.1029/JC080i033p04501>, 1975.

The U.S. National Ice Center (USNIC) : <https://usicecenter.gov/> last access: 2 April 2024.

Turner, A. K., Hunke, E. C., and Bitz, C. M.: Two modes of sea-ice gravity drainage: A parameterization for largescale modeling, *J. Geophys. Res.-Oceans*, 118, 2279–2294, <https://doi.org/10.1002/jgrc.20171>,

620 2013.

Turner, A. K., Lipscomb, W. H., Hunke, E. C., Jacobsen, D. W., Jeffery, N., Engwirda, D., Ringler, T. D., and Wolfe, J. D.: MPAS-Seaice (v1.0.0): sea-ice dynamics on unstructured Voronoi meshes, *Geoscientific Model Development*, 15, 3721-3751, <https://doi.org/10.5194/gmd-15-3721-2022>, 2022.

Umlauf, L., & Burchard, H. A generic length-scale equation for geophysical turbulence models. *Journal of Marine Research*, 61(2), 235-265. <http://dx.doi.org/10.1357/002224003322005087> 2003.

625

- Van Leer, B. Towards the ultimate conservative difference scheme. V. A second-order sequel to Godunov's method. *Journal of computational Physics*, 32(1), 101-136. [https://doi.org/10.1016/0021-9991\(79\)90145-1](https://doi.org/10.1016/0021-9991(79)90145-1), 1979.
- 630 Wang, Q., Chai, F., Zhang, Y., Zhang, J. Y., & Zampieri, L. Dataset of 'Development of a total variation diminishing (TVD) Sea ice transport scheme and its application in in an ocean (SCHISM v5.11) and sea ice (Icepack v1.3.4) coupled model on unstructured grids' [Data set]. Zenodo. <https://doi.org/10.5281/zenodo.10391035>, 2023.
- 635 Ye F, Zhang Y, Friedrichs M, Wang HV, Irby I, Shen J, Wang Z., A 3D, cross-scale, baroclinic model with implicit vertical transport for the Upper Chesapeake Bay and its tributaries. *Ocean Model* 107:82–96. <https://doi.org/10.1016/j.ocemod.2016.10.004>, 2016.
- Zampieri, L., Goessling, H. F., & Jung, T. Bright Prospects for Arctic Sea Ice Prediction on Subseasonal Time Scales. In *Geophysical Research Letters* (Vol. 45, Issue 18, pp. 9731–9738). <https://doi.org/10.1029/2018gl079394>, 2018
- 640 Zampieri, L., Kauker, F., Fröhle, J., Sumata, H., Hunke, E. C., and Goessling, H. F.: Impact of Sea-Ice Model Complexity on the Performance of an Unstructured-Mesh Sea-Ice/Ocean Model under Different Atmospheric Forcings, *Journal of Advances in Modeling Earth Systems*, 13, <https://doi.org/10.1029/2020MS002438>, 2021.
- 645 Zeng, X., Zhao, M., & Dickinson, R. E. Intercomparison of bulk aerodynamic algorithms for the computation of sea surface fluxes using TOGA COARE and TAO data. *Journal of Climate*, 11(10), 2628-2644. [https://doi.org/10.1175/1520-0442\(1998\)011%3C2628:IOBAAF%3E2.0.CO;2](https://doi.org/10.1175/1520-0442(1998)011%3C2628:IOBAAF%3E2.0.CO;2), 1998.
- Zhang, D., Jiang, C., Liang, D., and Cheng, L.: A review on TVD schemes and a refined flux-limiter for steady-state calculations, *Journal of Computational Physics*, 302, 114-154, <https://doi.org/10.1016/j.jcp.2015.08.042>, 2015.
- 650 Zhang, Y. and Baptista, A.M. SELFE: A semi-implicit Eulerian-Lagrangian finite-element model for cross-scale ocean circulation", *Ocean Modelling*, 21(3-4), 71-96. <https://doi.org/10.1016/j.ocemod.2007.11.005>, 2008.
- Zhang, Y. J., Ateljevich, E., Yu, H. C., Wu, C. H., & Jason, C. S. A new vertical coordinate system for a 3D unstructured-grid model. *Ocean Modelling*, 85, 16-31. <https://doi.org/10.1016/j.ocemod.2014.10.003>, 2015.
- 655 Zhang, Y. J., Ye, F., Stanev, E. V., and Grashorn, S.: Seamless cross-scale modeling with SCHISM, *Ocean Modelling*, 102, 64-81, <https://doi.org/10.1016/j.ocemod.2016.05.002>, 2016.

Zhang, Y. J., Wu, C., Anderson, J., Danilov, S., Wang, Q., Liu, Y., and Wang, Q.: Lake ice simulation using a 3D unstructured grid model, *Ocean Dynamics*, 73, 219-230, <https://doi.org/10.1007/s10236-023-01549-9>, 2023.

660 Zhang, Z., Song, Z.-y., Kong, J., and Hu, D.: A new r-ratio formulation for TVD schemes for vertex-centered FVM on an unstructured mesh, *International Journal for Numerical Methods in Fluids*, 81, 741-764, <https://doi.org/10.1002/flid.4206>, 2016.