

# **Methane dynamics in the Baltic Sea: investigating concentration, flux and isotopic composition patterns using the coupled physical-biogeochemical model BALTSEM-CH<sub>4</sub> v1.0**

Erik Gustafsson<sup>1,2</sup>, Bo G. Gustafsson<sup>1,2</sup>, Martijn Hermans<sup>2,3</sup>, Christoph Humborg<sup>2</sup>, Christian Stranne<sup>2,4,5</sup>

5 <sup>1</sup>Baltic Nest Institute, Stockholm University, 106 91 Stockholm, Sweden

<sup>2</sup>Baltic Sea Centre, Stockholm University, 106 91 Stockholm, Sweden

<sup>3</sup>Environmental Geochemistry Group, Faculty of Science, University of Helsinki, Helsinki 00560, Finland

<sup>4</sup>Department of Geological Sciences, Stockholm University, 106 91 Stockholm, Sweden

<sup>5</sup>Bolin Centre for Climate Research, Stockholm University, 106 91 Stockholm, Sweden

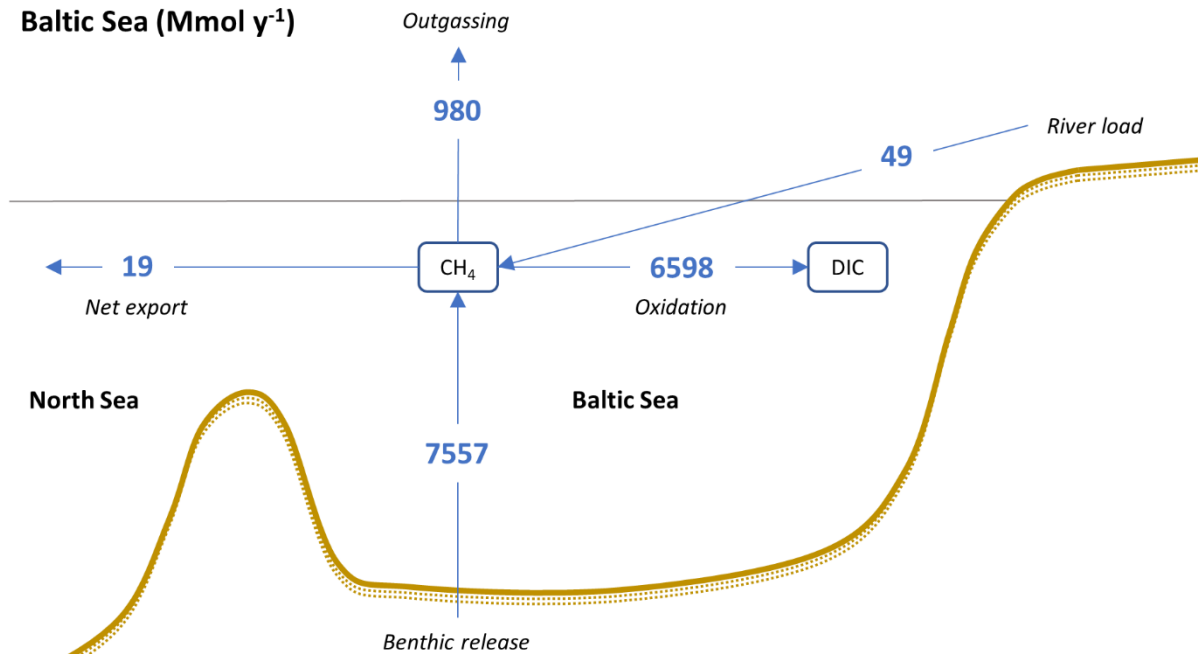
10 *Correspondence to:* Erik Gustafsson (erik.gustafsson@su.se)

**Abstract.** Methane ( $\text{CH}_4$ ) cycling in the Baltic Sea is studied through model simulations that incorporate the stable isotopes of  $\text{CH}_4$  ( $^{12}\text{C}-\text{CH}_4$  and  $^{13}\text{C}-\text{CH}_4$ ) in a physical-biogeochemical model. A preliminary  $\text{CH}_4$  budget identifies benthic release as the dominant  $\text{CH}_4$  source, which is largely balanced by oxidation in the water column and to a smaller degree by outgassing.

15 The contributions from river loads and net export to the North Sea are of marginal importance. Simulated total  $\text{CH}_4$  emissions from the Baltic Sea correspond to an average  $0.04 \text{ g CH}_4 \text{ m}^{-2} \text{ y}^{-1}$ , which can be compared to the calibrated sediment source of  $0.3 \text{ g CH}_4 \text{ m}^{-2} \text{ y}^{-1}$ . A major uncertainty is that spatial and temporal variations of the sediment source are not well known. Further, the coarse spatial resolution prevents the model to resolve shallow-water near-shore areas for which measurements indicate occurrences of considerably higher  $\text{CH}_4$  concentrations and emissions compared to the open Baltic Sea. Modeling of

20 stable  $\text{CH}_4$  isotopes can help to constrain process rates. A large-scale approach is used in this study, but the parametrizations and parameters presented here could also be implemented in models of near-shore areas where  $\text{CH}_4$  concentrations and fluxes are typically substantially larger and more variable. Currently, it is not known how important local shallow-water  $\text{CH}_4$  hotspots are compared to the open water outgassing in the Baltic Sea.

### Methane budget for the Baltic Sea ( $\text{Mmol y}^{-1}$ )



25

## 1 Introduction

Methane is the second-most important greenhouse gas after carbon dioxide (CO<sub>2</sub>), contributing about 20% of the total radiative forcing (Etminan et al., 2016). Using top-down approaches (atmospheric observations and inverse modeling), the present-day global CH<sub>4</sub> emissions have been estimated to be 576 Tg CH<sub>4</sub> y<sup>-1</sup>, whereas bottom-up approaches (process-based modeling of land surface emissions and data on anthropogenic emissions) yield a total of 737 Tg CH<sub>4</sub> y<sup>-1</sup> (Saunio et al., 2020). The causes of the discrepancy between the two methods are not well known, but is believed to mainly reflect uncertainties in estimates of natural emissions – in particular from wetlands, lakes, and running waters (Saunio et al., 2020). The global mean atmospheric CH<sub>4</sub> level has increased by about 1000 ppb over the last two centuries (Ferretti et al., 2005). Projections of future development ranges from a gradual decrease to a massive increase depending on the development of anthropogenic emissions (Saunio et al., 2020).

The isotopic composition of atmospheric CH<sub>4</sub> ( $\delta^{13}C_{CH_4a}$ ) varies seasonally and over longer time-scales (Ferretti et al., 2005; Lan et al., 2021). Long-term trends of  $\delta^{13}C_{CH_4a}$  depend on the relative contributions from three main sources: biogenic (-110‰ to -50‰; e.g., wetlands -60‰), fossil (-40‰), and pyrogenic/biomass burning (-25‰ or -12‰; depending on pathways of carbon fixation in plants). Over the 20<sup>th</sup> century, a long-term increase of  $\delta^{13}C_{CH_4a}$  from -49‰ to -47‰ has occurred (Ferretti et al., 2005). However, a recent increase of the atmospheric CH<sub>4</sub> level has been accompanied by a decrease in  $\delta^{13}C_{CH_4a}$ , for reasons that are not fully understood (Lan et al., 2021). The observed  $\delta^{13}C_{CH_4a}$  development can help to constrain different CH<sub>4</sub> sources and thus reduce their uncertainties.

It has been estimated that approximately half of the total CH<sub>4</sub> emissions come from aquatic ecosystem sources, dominated by inland water ecosystems (Rosentreter et al., 2021). The total oceanic CH<sub>4</sub> emissions, including diffusive and bubble-driven ebullitive fluxes, constitute a relatively small fraction amounting to ~6–12 Tg CH<sub>4</sub> y<sup>-1</sup> (Weber et al., 2019). Methane formation in sediments can be substantial, but aerobic and anaerobic oxidation processes can efficiently remove CH<sub>4</sub> both in the pore water and water column. For that reason, near-shore areas (0–50 m water depth), shallow enough to allow CH<sub>4</sub> to escape to the atmosphere before being oxidized, dominate the oceanic emissions despite representing a comparatively minor area (Weber et al., 2019). In shallow, organic-rich sediments, seafloor ebullition will increase in response to ocean warming due to increased biogenic CH<sub>4</sub> production and decreased CH<sub>4</sub> solubility (Borges et al., 2016). This notion was qualitatively supported by acoustic observations of outgassing from the sediments during a recent field study, where exceptionally high CH<sub>4</sub> emissions were reported from the coastal Baltic Sea at the end of a summer heat wave (~250 μmol m<sup>-2</sup> day<sup>-1</sup>, Humborg et al., 2019).

The coastal ocean is currently a net CO<sub>2</sub> sink, which depending on method (observations or model calculations) has been estimated to approximately 0.44-0.72 Pg C y<sup>-1</sup> (Resplandy et al., 2024). Emissions of the powerful greenhouse gases nitrous oxide (N<sub>2</sub>O) and CH<sub>4</sub> can, however, offset the CO<sub>2</sub> uptake in the net radiative balance of the coastal ocean: while highly uncertain, preliminary estimates indicate an offset in a range 30-60% (Resplandy et al., 2024). These numbers highlight the crucial importance of more accurate estimates of both N<sub>2</sub>O and CH<sub>4</sub> fluxes from coastal areas when determining the influence of the coastal ocean on climate.

60 In the Baltic Sea, there are strong gradients in CH<sub>4</sub> concentrations both from near-shore areas to open Baltic Sea surface waters (e.g., Güllow et al., 2013; Humborg et al., 2019) and from surface to deep water (e.g., Schmale et al., 2010; Jakobs et al., 2013). Substantial parts of Baltic Sea deep waters are stagnant over extended periods in time, which in combination with high loads of organic material cause episodic anoxia (e.g., Carstensen et al., 2014). During stagnant anoxic periods, CH<sub>4</sub> accumulates and reaches concentrations ranging from 1000 to 3000 nM (Jakobs et al., 2013; 2014; Ketzer et al., 2024). This  
65 CH<sub>4</sub> is, however, largely consumed by aerobic oxidation processes (MOX) when mixed into the redoxcline at intermediate depths (Jakobs et al., 2013). Peak oxidation rates have consequently been observed in the redoxcline where deep water enriched in CH<sub>4</sub> is mixed with oxic water (Jakobs et al., 2013). Due to the special characteristics of deep water areas isolated from the atmosphere, and with transitions between oxic and anoxic conditions, the Baltic Sea is a unique and suitable system for studying key processes in CH<sub>4</sub> cycling, in particular for investigating different oxidation pathways.

70 Surface water CH<sub>4</sub> concentrations in the open Baltic Sea are typically about 3.5–5 nM – only slightly oversaturated compared to the atmosphere (Güllow et al., 2013). In contrast, in shallow near-shore areas, observations indicate a very different situation, with CH<sub>4</sub> concentrations ranging from 10 to 500 nM (Humborg et al., 2019; Myllykangas et al., 2020; Lundevall-Zara et al., 2021; Roth et al., 2022) with large temporal and spatial variations on small scales (e.g., Roth et al., 2022). Methane emissions to the atmosphere depend on the degree of oversaturation in the surface water, but also on wind speed and  
75 temperature (e.g., Wanninkhof, 2014). Estimated CH<sub>4</sub> emissions from different near-shore sites in the Baltic Sea display a large range due to substantial variations in the parameters that control gas transfer across the air-sea interface (Humborg et al., 2019; Lundevall-Zara et al., 2021; Asplund et al., 2022; Roth et al., 2022; 2023). Short-term and small-scale variations cause considerable challenges for empirical estimates of fluxes over larger scales and longer periods in time.

Different processes in the CH<sub>4</sub> cycling do, however, produce certain “fingerprints” on the isotopic composition, similar to how  
80 the relative contributions of different atmospheric CH<sub>4</sub> sources determine long-term trends of  $\delta^{13}C_{CH_4a}$  (Lan et al., 2021). This can be helpful when assessing process rates. Observations in the Baltic Sea show a pronounced <sup>13</sup>C-CH<sub>4</sub> enrichment in the redoxcline (Schmale et al., 2012; 2016; Jakobs et al., 2013; 2014; Güllow et al., 2014), which is the result of a preferential oxidation of the lighter isotope. Similarly, CH<sub>4</sub> emissions to the atmosphere can produce a <sup>13</sup>C-CH<sub>4</sub> enrichment in the surface water because of a preferential outgassing of the lighter isotope (Knox et al., 1992). The isotopic composition of CH<sub>4</sub> produced  
85 in sediments depends on the processes involved, i.e., CO<sub>2</sub> reduction or acetate fermentation (Reeburgh, 2007; see also Sect. 2.3.5), but can then be modified by oxidation processes in the pore water (Chuang et al., 2019).

Models can be useful for identifying limiting processes and constraining budgets even though not all rates are well known, through sensitivity experiments on process rates and parameterizations, as well as on the influence of changes in forcing of the system. Methane cycling has previously been investigated in both lake (e.g., Lopes et al., 2011; Greene et al., 2014; Tan et al.,  
90 2015; Stepanenko et al., 2016; Bayer et al., 2019) and ocean (e.g., Nihous and Masutani, 2006; Wählström and Meier, 2014; Malakhova and Golubeva, 2022) modeling studies. In the present study, CH<sub>4</sub> cycling and dynamics in the Baltic Sea are introduced into the coupled physical-biogeochemical Baltic Sea long-term and large-scale eutrophication model (BALTSEM), by expanding with state variables for both <sup>12</sup>C-CH<sub>4</sub> and <sup>13</sup>C-CH<sub>4</sub> concentrations (see Sect. 2.2). BALTSEM has previously

been used in a similar approach where stable isotopes of dissolved inorganic carbon as well as dissolved and particulate organic carbon were included in the model in order to investigate constraints on process rates (Gustafsson et al., 2015). Benthic CH<sub>4</sub> release and the isotopic composition of CH<sub>4</sub> produced in the sediments are not well known except for a few specific sites where *in-situ* measurements have been acquired. This means that the model is, at this point, somewhat poorly constrained. The main objective of this study is to use the model in concert with observed water column CH<sub>4</sub> concentrations and isotopic compositions to 1. identify and roughly quantify key CH<sub>4</sub> fluxes, 2. set up a preliminary CH<sub>4</sub> budget on a Baltic Sea scale, and 3. perform sensitivity experiments on CH<sub>4</sub> concentration and isotopic composition depending on transport and transformation processes.

The motivation for implementing the CH<sub>4</sub> modeling on a Baltic Sea scale – with considerable spatial differences in terms of e.g., water and sediment properties as well as production, respiration, and sedimentation patterns – was utilizing the application of an already well-established model. BALTSEM has been described and validated in many publications, and it has been demonstrated that both physical (e.g., salinity, temperature, vertical mixing, lateral exchange, air-sea exchange) and biogeochemical (e.g., carbon and nutrient cycling and oxygen production/consumption) processes are largely described satisfactory (Gustafsson et al., 2012; 2017; Savchuk et al., 2012).

## 2 Material and methods

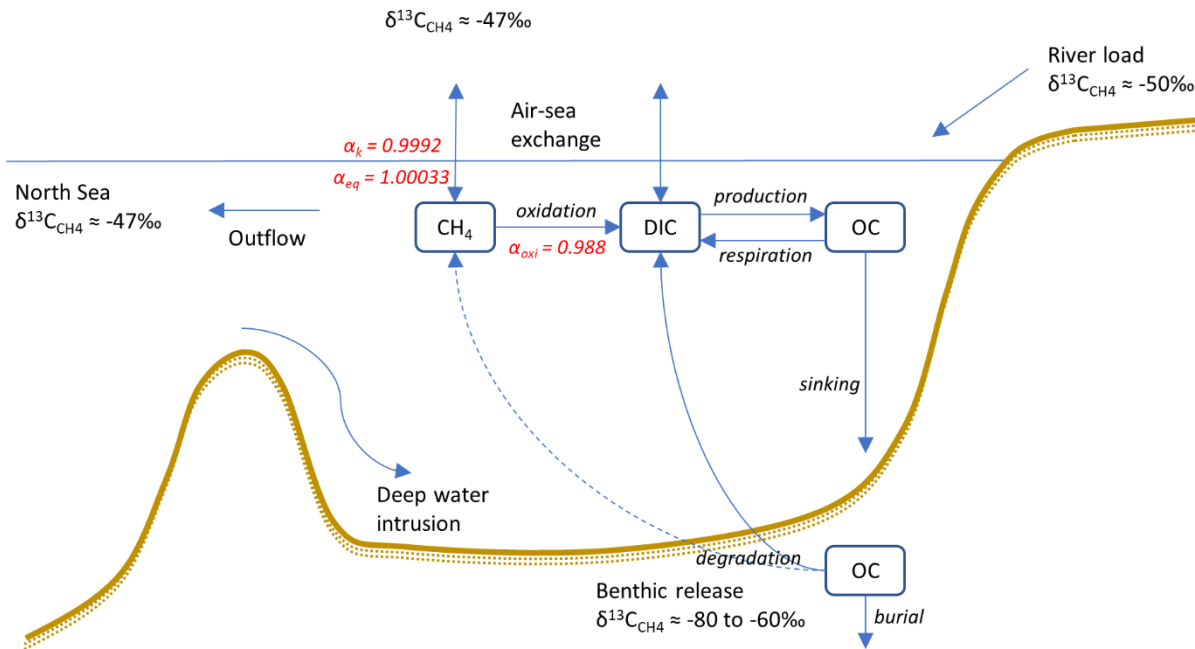
### 2.1 Area description

The Baltic Sea is a semi-enclosed brackish sea, connected to the North Sea via the shallow and narrow Danish straits. The system is characterized by a pronounced horizontal salinity gradient – going from the almost oceanic entrance area to the low-saline northernmost sub-basin – as well as a permanent salt dominated stratification, restricted water exchange with the North Sea, and long residence times (e.g., Stigebrandt and Gustafsson, 2003). As a result of strong stratification and long residence times, the central Baltic Sea is naturally susceptible to deep water de-oxygenation. Massively increased nitrogen (N) and phosphorus (P) loads from the early 1950s to the mid-1980s has caused a large expansion of de-oxygenated deep water areas (e.g., Gustafsson et al., 2012). The loads have declined substantially from the peak values in the 1980's (e.g., Kuliński et al., 2022), although oxygen conditions have not yet improved in the central Baltic Sea (Hansson and Viktorsson, 2023).

### 2.2 The model

BALTSEM is a horizontally averaged, but vertically resolved process-oriented model that couples hydrodynamic and biogeochemical modules in time-dependent, numerical simulations. In the model, the Baltic Sea is divided into thirteen coupled sub-basins (Figure S1), with geometric characteristics as summarized in Table S1. The hydrodynamic module has been described in detail by Gustafsson (2000; 2003), whereas the biogeochemical module has been described in detail by Savchuk (2002). Below, the two modules are qualitatively recapped (Sect. 2.2.1-2.2.2).

In this study, a new expanded version of the model, BALTSEM-CH4 v1.0, with state variables representing both  $^{12}\text{C-CH}_4$  and  $^{13}\text{C-CH}_4$  is presented for the first time. Figure 1 illustrates processes involved in  $\text{CH}_4$  cycling that are included in the model. This study focuses on the modeling of stable  $\text{CH}_4$  isotopes: The  $\text{CH}_4$  sources (i.e., river load and sediment release), boundary conditions (i.e., atmospheric  $\text{CH}_4$  and  $\text{CH}_4$  at the open ocean boundary), transport and transformation processes (i.e.,  $\text{CH}_4$  oxidation and air-sea exchange), as well as the isotopic fingerprints associated with these processes are described in Sect. 2.3. The model parameterizations for both hydrodynamic and biogeochemical processes (prior to the inclusion of  $\text{CH}_4$ ) have been described in detail in earlier publications (e.g., Gustafsson 2000; 2003; Gustafsson et al., 2012; 2014; 2017; Savchuk, 2002; Savchuk et al., 2012); this will not be repeated here. A list of all state variables in the model is included in Appendix A (Table A1).



135 **Figure 1: Conceptual sketch illustrating the processes involved in  $\text{CH}_4$  cycling, including  $\delta^{13}\text{C}_{\text{CH}_4}$  values of end-members as well as  $\alpha$  values of transformation processes (see Sect. 2.3). The benthic release (dashed arrow) is not explicitly modeled, instead a preset calibrated value is used (see Sect. 2.3.5).**

## 2.2.1 Hydrodynamic module

140 The vertical stratification in each sub-basin is resolved by a variable number of horizontally homogenous layers. The numbers of layers in the respective sub-basins increase over time because of both inflows from adjacent basins and instances of

pycnocline retreat, as described below, but are kept below maximum values by mixing of the two layers that require the least amount of energy to be merged (Gustafsson, 2000).

145 Flow dynamics through the straits that connect different sub-basins depends on the width of the strait compared to the internal Rossby radius, determining whether or not earth rotation influence the water exchange. In general, lateral exchange between sub-basins is forced by barotropic pressure gradients across the straits that depend on sea level difference and wind set-up, as well as baroclinic pressure gradients caused by differences in stratification. In narrow straits, the water flow is influenced by frictional resistance and dynamical contraction due to the Bernoulli effect, while the transport through wider straits is further controlled by earth rotation effects (Gustafsson, 2000; 2003).

150 Dynamics of the mixed surface layer in each sub-basin is forced by wind stress and buoyancy fluxes, but also depends on earth rotation, following Stigebrandt (1985). The pycnocline is eroded whenever the buoyancy flux is negative (e.g., if surface water density increases because of net evaporation, or by cooling when the water temperature is above the temperature for maximum density), or when the buoyancy flux is positive but the power generated by wind stress is sufficient to do work against the buoyancy forces. Pycnocline erosion means that the mixed surface layer becomes thicker and denser as a result of deep-water entrainment into the surface layer. If the power is not sufficient, the turbulent mixing becomes limited either by earth rotation or by buoyancy fluxes, leading to a pycnocline retreat and the formation of a new and shallower mixed surface layer. The thickness of the new surface layer will be determined either by the Ekman or Monin-Obukov length-scale – whichever is shorter (Stigebrandt, 1985).

155 Entrainment flows are further modified by the presence of sea-ice (Gustafsson, 2003). Ice dynamics is based on a sea-ice model by Björk (1997), but adapted to the Baltic Sea following Nohr et al. (2009). Calculations for heating/cooling and evaporation at the sea, ice or snow surface follow Björk (1997). About half of the incoming short-wave radiation is absorbed at the surface while the remaining fraction attenuates exponentially using constant attenuation factors for water, ice and snow, respectively. Turbulent vertical diffusion in deeper layers below the mixed surface layer is parameterized as a function of stratification and mixing wind (Stigebrandt, 1987; Axell, 1998), representing the energy inputs from inertial currents and breaking internal waves. The model further includes dense gravity currents (i.e., deep-water inflows along the seafloor), where entrainment of surrounding deep water into the gravity currents depends on bottom slope and friction as well as density difference between the gravity current and the surrounding water (Stigebrandt, 1987). Entrainment of surrounding water into gravity currents has the effect that the volume flow increases while at the same time density decreases, influencing at what depth the gravity current will be interleaved, i.e., the depth of neutral buoyancy. Deep-water inflows cause an uplift of the entire water column above the intrusion depth.

170

### **2.2.2 Biogeochemical module**

Biogeochemical processes are calculated using a nutrient-phytoplankton-zooplankton-detritus model setup that closely follows Savchuk (2002), but that has been expanded with state variables representing e.g., dissolved organic compounds and the inorganic carbon system (Gustafsson et al., 2014).

175 The biogeochemical module includes pelagic state variables for oxygen (O<sub>2</sub>), hydrogen sulfide (H<sub>2</sub>S), total alkalinity, dissolved inorganic carbon, nitrate + nitrite, ammonium, phosphate, dissolved silica, labile and refractory fractions of dissolved organic carbon (C), nitrogen (N), and phosphorus (P), particulate organic C, N, P, and silicon (Si), three functional groups of phytoplankton (representing diatoms, 'summer species', and diazotrophic cyanobacteria), and one bulk state variable for heterotrophs that represents zooplankton and other organisms that consume and mineralize phytoplankton and detrital matter.

180 All pelagic state variables are subject to transport processes (vertical mixing and horizontal advection) as well as various biological and chemical transformation processes; source and sink terms for each state variable are computed in all water layers in each sub-basin. BALTSEM further includes sediment pools of C, N, P, and Si that are subject to mineralization and burial. The pelagic and benthic realms are coupled by sedimentation of organic matter and sediment-water exchange of dissolved inorganic compounds. Oxygen, CO<sub>2</sub>, and CH<sub>4</sub> are exchanged at the air-sea boundary depending on solubilities, wind

185 speed, and gradients between sea surface and air of the respective gases.

Phytoplankton growth depends on water temperature and is further limited by light and nutrient availability (Savchuk, 2002). Light penetration in water in the biogeochemical module is calculated as a function of the biogeochemical state. The phytoplankton groups assimilate dissolved inorganic C, N, and P according to fixed Redfield ratios while at the same time producing oxygen, but also take up an excess of dissolved inorganic carbon which is transformed into dissolved organic carbon,

190 representing extracellular production (Gustafsson et al., 2014). The cyanobacteria group is able to fix atmospheric N when ammonium and nitrate become limiting. The diatom group is the only phytoplankton group that requires dissolved silica. Loss terms for phytoplankton include natural mortality, grazing by zooplankton, and sinking. Dead phytoplankton are converted into detrital C, N, P, and Si according to their elemental stoichiometry.

Heterotroph/zooplankton growth depends on grazing rate which is regulated by water temperature and food concentration

195 (phytoplankton and detritus) as well as the respective availability of different food sources (Savchuk, 2002). Grazing is in addition strongly inhibited at low oxygen concentrations. Fractions of each food source that are not digested are instead assigned to detritus pools in accordance with stoichiometry of the food sources. Zooplankton have elemental stoichiometry that differ from their food sources; growth thus becomes limited by the element in relative shortage, while carbon and nutrients in excess compared to zooplankton stoichiometry are excreted. Zooplankton biomass decreases by natural mortality and

200 excretion; dead zooplankton are converted into detrital C, N, and P according to elemental stoichiometry.

Phytoplankton and detritus sink through the water column; phytoplankton that are not lost by grazing or natural mortality in the water column settle on the seafloor where their constituents are assigned to sediment pools of C, N, P, and Si according to elemental composition. Temperature dependent leaching converts a fraction of the detritus into dissolved organic C, N, and P, as well as dissolved silica in the water column, while the remainder is either consumed by zooplankton in the water column or

205 settles on the seafloor where it is assigned to the respective sediment pools. Organic carbon and nutrients in the water column are mineralized either by means of zooplankton respiration (dissolved inorganic carbon) and excretion (ammonium and phosphate) or by temperature dependent oxidation of dissolved organic compounds; these processes also consume oxygen. Nitrification converts ammonium into nitrate while consuming oxygen. Heterotrophic and chemolithoautotrophic



denitrification processes represent loss terms for nitrate. In the absence of both oxygen and nitrate, organic matter is instead  
210 oxidized by sulfate, which also leads to hydrogen sulfide production. Sulfide can be oxidized by either oxygen or nitrate (i.e.,  
chemolithoautotrophic denitrification); sulfide oxidation thus represents loss terms for either oxygen or nitrate.

The sediment compartment in each sub-basin can be described as a series of horizontal terraces with a resolution of one terrace  
per one meter water depth; the area of each terrace is a function of the hypsographic curve for the respective sub-basins.  
Sediment state variables are not vertically resolved on the individual terraces, but instead formulated as pools of bioavailable  
215 C, N, P, and Si that have been deposited on the different terraces – representing the “active” (i.e., not permanently sequestered)  
top layer of sediments (Savchuk et al., 2012). The carbon and nutrients in phytoplankton and detritus that settles on the terraces  
are added to the respective sediment pools. A fraction of the sediment pools is permanently sequestered and thus removed  
from the biogeochemical cycling, while the remaining fraction undergoes temperature dependent mineralization into inorganic  
carbon and nutrients that can again be released to the water column.

220 Nutrient cycling and release from the sediments is strongly coupled to oxygen concentration in the overlying water. During  
oxic conditions, mineralized N is released in the form of nitrate, but an oxygen dependent fraction of the nitrate is lost by  
denitrification. A fraction of the mineralized P is retained in the sediments during oxic conditions, representing phosphate  
bound to e.g., iron oxides. P retention capacity is further regulated by salinity, representing a proxy for both sulfate  
concentration and iron availability (Savchuk et al., 2012). During anoxic conditions in the overlying water, mineralized N is  
225 released in the form of ammonium. At the same time, mineralized P cannot be retained in the sediments during anoxic  
conditions; instead, previously sequestered phosphate is released to the water column, representing reduction of metal oxides  
that are thus unable to bind phosphate. During oxic conditions, sediment mineralization consumes oxygen in the overlying  
water; during anoxic conditions, the sediments release hydrogen sulfide to the overlying water, representing sulfate reduction.

### **2.2.3 Model forcing, boundary conditions and initial conditions**

230 The meteorological forcing includes three-hourly wind data, air temperature, cloudiness, air pressure, and precipitation. Model  
forcing for the hydrodynamic module also includes observed daily mean sea level in the Kattegat as well as monthly mean  
river runoff to each sub-basin. Further, the model forcing includes monthly mean loads of inorganic and organic carbon and  
nutrients, and alkalinity from land (point sources and river loads) and atmosphere. Daily profiles of salinity and temperature  
(i.e., stratification), as well as concentrations of all biogeochemical state variables (Table A1) define the conditions at the open  
235 boundary between the Northern Kattegat (sub-basin 1; Figure S1) and the Skagerrak (open ocean). Monthly mean atmospheric  
partial pressures of CO<sub>2</sub> and CH<sub>4</sub> comprise the atmospheric boundary conditions for the respective gases. The model forcing  
is further detailed in Appendix B.

An initial model run over the period 1970-2000 started with initial profiles for the different state variables based on  
observations when possible or else calibrated values. The initial model run was then used as a spin-up for a series of model  
240 runs covering the period 2001-2020 that are performed to examine the sensitivity of e.g., CH<sub>4</sub> concentration and isotopic  
composition depending on process parameterizations (Sect. 4.1).

## 2.3 Methane modeling

### 2.3.1 Isotopic fractionation

245 Isotope values of CH<sub>4</sub> are expressed in  $\delta^{13}C$  units (‰) relative to the Vienna Peedee Belemnite (VPDB) standard (Hoffman and Rasmussen, 2022):

$$\delta^{13}C = \left( \frac{R_{sample}}{R_{std}} - 1 \right) * 1000, \quad (1)$$

250 Here,  $R_{sample}$  and  $R_{std}$  represent the <sup>13</sup>C/<sup>12</sup>C ratios of a sample and the PDB standard, respectively.

Isotopic fractionation  $\alpha$  during different processes (e.g., oxidation, air-sea exchange) in the CH<sub>4</sub> cycling can be expressed as:

$$\alpha = \frac{R_A}{R_B}, \quad (2)$$

255 Here,  $R_A$  and  $R_B$  represent <sup>13</sup>C/<sup>12</sup>C ratios of compounds  $A$  and  $B$ .

Fractionation can also be expressed in  $\delta^{13}C$  units using Eq. 1 and 2:

$$\alpha = \left( \frac{\delta_A}{1000} + 1 \right) / \left( \frac{\delta_B}{1000} + 1 \right), \quad (3)$$

260 Alternatively, fractionation is often expressed as  $\epsilon$  values (Zeebe and Wolf-Gladrow, 2001):

$$\epsilon = \delta_A - \delta_B \approx (\alpha - 1) * 1000, \quad (4)$$

In the model description below, both  $\alpha$  and  $\epsilon$  values are used to describe fractionation during different processes.

### 265 2.3.2 Air-sea exchange

The CH<sub>4</sub> flux ( $F_{CH_4}$ ) between water and air is calculated according to:

$$F_{CH_4} = k(CH_{4eq} - CH_{4w}), \quad (5a)$$

$$CH_{4eq} = K_0 pCH_{4a}, \quad (5b)$$

270

where  $k$  ( $\text{m s}^{-1}$ ) is the transfer velocity,  $CH_{4eq}$  the equilibrium concentration with the atmosphere,  $K_0$  ( $\text{nM atm}^{-1}$ ) the  $\text{CH}_4$  solubility,  $pCH_{4a}$  (atm) the partial pressure of  $\text{CH}_4$  in air, and  $CH_{4w}$  ( $\text{nM}$ ) the  $\text{CH}_4$  concentration in surface water.

The solubility is calculated as a dimensionless Bunsen coefficient ( $\beta$ ) according to Wiesenburg and Guinasso (1979):

$$275 \quad \ln\beta = A_1 + A_2(100/TK) + A_3\ln(TK/100) + S(B_1 + B_2(TK/100) + B_3(TK/100)^2), \quad (6)$$

Here,  $A_1, A_2, A_3, B_1, B_2,$  and  $B_3$  are constants and  $TK$  is temperature (K).

$\beta$  is then converted to  $K_0$  ( $\text{nM atm}^{-1}$ ) according to:

$$280 \quad K_0 = \frac{P_S\beta}{RT_S} * 10^6, \quad (7)$$

where  $P_S = 101325 \text{ Pa atm}^{-1}$  represents a unit conversion from Pa to atm,  $R = 8.314 \text{ m}^3 \text{ Pa K}^{-1} \text{ mol}^{-1}$  is the molar gas constant, and  $T_S = 273.15 \text{ K}$  is the standard temperature.

The transfer velocity  $k$  is calculated according to Wanninkhof (2014) and converted from  $\text{cm hour}^{-1}$  to  $\text{m s}^{-1}$ :

$$285 \quad k = 0.251U_{10}^2 \sqrt{\frac{660}{Sc} * \frac{0.01}{3600}}, \quad (8)$$

Here,  $U_{10}$  ( $\text{m s}^{-1}$ ) is the wind speed at 10 m height and  $Sc$  is the Schmidt number for  $\text{CH}_4$  (Wanninkhof, 2014):

$$290 \quad Sc = A + BT + CT^2 + DT^3 + ET^4, \quad (9)$$

Here,  $A, B, C, D,$  and  $E$  are constants and  $T$  is temperature ( $^{\circ}\text{C}$ ).

The atmospheric  $\text{CH}_4$  level has increased from around 800 ppb to almost 1900 ppb over the last two centuries (see Fig. S2). In the different model runs, the atmospheric  $\text{CH}_4$  levels according to the RCP 4.5 scenario were used (Fig. S2). The mixing ratio  
295 is expressed as mole fraction of dry air (ppb) and thus identical to the  $\text{CH}_4$  partial pressure,  $pCH_{4a}$  (natm).

#### *Fractionation during gas transfer and dissolution*

The fractionation of a gas during transfer between air and water depends on two fractionation processes – gas dissolution and molecular gas transfer. The fractionation  $\alpha_{eq}$  during dissolution of  $\text{CH}_4$  in water is defined as (Knox et al., 1992):

$$300 \quad \alpha_{eq} = \frac{R_{CH_{4eq}(d)}}{R_{CH_{4eq}(g)}}, \quad (10)$$

Here,  $R_{CH_4eq(d)}$  and  $R_{CH_4eq(g)}$  represent the ratios of the heavy and light  $CH_4$  isotopes between the equilibrium concentrations of  $CH_4$  in dissolved (d) and gas phase (g), respectively. Experiments by Fuex (1980) indicate that the heavy  $CH_4$  isotope is more  
305 soluble than the lighter isotope (although the lighter isotope initially dissolves faster), with a fractionation during dissolution amounting to approximately  $\alpha_{eq} = 1.00033$ .

A difference in the molecular transfer rates of heavy and light  $CH_4$  isotopes, result in further fractionation defined as (Knox et al., 1992):

$$310 \quad \alpha_k = \frac{k_{13CH_4}}{k_{12CH_4}}, \quad (11)$$

Here,  $k_{13CH_4}$  and  $k_{12CH_4}$  represent the transfer rates of the heavy and light isotope, respectively. Experiments by Knox et al. (1992) indicate a preferential exchange of the light isotope, with a fractionation during gas transfer of approximately  $\alpha_k = 0.9992$ . Measurements from stagnant wooded swamps point to a reduced gas exchange but also a considerably more  
315 pronounced kinetic fractionation in waters with insoluble organic surface films (Happell et al., 1995). Surface films are, however, not taken into account in BALTSEM- $CH_4$  v1.0.

The  $^{13}C$ - $CH_4$  flux between water and air,  $F_{13CH_4}$ , is calculated based on Holmes et al. (2000):

$$320 \quad F_{13CH_4} = k\alpha_k(K_0pCH_{4a}R_{atm}\alpha_{eq} - [^{13}CH_{4w}]), \quad (12)$$

Here,  $R_{atm}$  is the  $^{13}C/^{12}C$  ratio of atmospheric  $CH_4$ , and  $[^{13}CH_{4w}]$  is the surface water concentration of  $^{13}C$ - $CH_4$ .

In the model runs, the atmospheric  $\delta^{13}C_{CH_4}$  is set to a constant  $-47\text{‰}$ .

### 2.3.3 River loads

Measurements in Swedish low-order streams (Strahler stream order 1-4) indicate a median  $CH_4$  concentration of approximately  
325  $6.7 \mu\text{g C L}^{-1}$  – corresponding to  $560 \text{ nM}$  – but with substantial variations between individual streams (Wallin et al., 2018). As opposed to  $CO_2$  concentrations that generally declined with increasing stream order, there was no such clear relation between stream order and median  $CH_4$  concentration, although the lowest median concentration ( $3.6 \mu\text{g C L}^{-1}$ , corresponding to  $300 \text{ nM}$ ) was reported for the largest streams (Wallin et al., 2018).

$CH_4$  produced in freshwater sediments and wetlands is presumably mainly resulting from acetate fermentation (see Sect. 2.3.5),  
330 with isotope values in a typical range  $-65\text{‰}$  to  $-50\text{‰}$  (Whiticar et al., 1986; Quay et al., 1988). However, both  $CH_4$  oxidation and outgassing cause a  $^{13}C$  enrichment in the residual  $CH_4$  pool. This means that an increasing isotope value is expected as outgassing and oxidation processes gradually modulate both  $CH_4$  concentrations and isotopic composition in streams and rivers along their routes towards the sea. Measurements in a subtropical river network in Australia indicate surface water  $\delta^{13}C_{CH_4}$  values in a range  $-57\text{‰}$  to  $-47\text{‰}$  (Atkins et al., 2017), i.e., values close to, or lower than the atmospheric  $\delta^{13}C_{CH_4}$  (see Sect.

335 2.3.2). Similarly, measurements in an urbanized river system in Scotland indicate  $\delta^{13}C_{CH_4}$  values in a range -60‰ to -47‰ (Gu et al., 2021).

As a first approximation, it will be assumed that the riverine  $CH_4$  concentration ( $CH_{4riv}$ ) is 100 nM and that  $\delta^{13}C_{CH_4} = -50‰$  in rivers entering the Baltic Sea.

### 2.3.4 Inflows from the North Sea

340 Methane concentrations in open North Sea surface waters are highly heterogeneous, but generally above the solubility equilibrium with the atmosphere. Observations indicate a range 3 - 30 nM (Bange et al., 1994; Rehder et al., 1998; Osudar et al., 2015). This heterogeneity has been suggested to partly be a result of the westward transport of surface waters originating from the Kattegat and Skagerrak (Rehder et al., 1998). Closer to the coasts where both rivers and coastal sediments can be significant regional sources of  $CH_4$ , concentrations are usually considerably higher (Scranton and McShane, 1991; Rehder et al., 1998; Upstill-Goddard et al., 2000; Grunwald et al., 2009; Osudar et al., 2015), but large fractions appear to be removed within estuaries before reaching the open sea (Upstill-Goddard et al., 2000; Grunwald et al., 2009). Measurements from the southern central North Sea indicate concentrations close to (but higher than) the equilibrium (Scranton and McShane, 1991; Bange et al., 1994; Rehder et al., 1998).

345 As a first approximation, it will be assumed that the  $CH_4$  concentration is 5 nM and that  $\delta^{13}C_{CH_4} = -47‰$  in North Sea water entering the Baltic Sea.

### 2.3.5 Benthic release

#### *Methanogenesis*

There are two primary methanogenic pathways for biologically mediated  $CH_4$  production –  $CO_2$  reduction and acetate fermentation (Reeburgh, 2007):

355



360  $CO_2$  reduction is dominant in the sulfate depleted zone of marine sediments, whereas acetate fermentation is dominant in freshwater sediments. Both pathways may nevertheless occur in both marine and limnic environments (Whiticar et al., 1986). Methanogenesis in marine environments is assumed to predominantly occur in anoxic sediments, whereas the presence of oxygen and/or sulfate generally prevents large-scale methanogenesis in the water column. In anoxic sediments, sulfate can be used as an oxidant during mineralization of organic matter or consumed by sulfate mediated oxidation of  $CH_4$ . The sediment depth of sulfate depletion and the main zone of methanogenesis depend strongly on location and sedimentation rate.

365 Measurements in the Baltic Sea area indicate sulfate depletion depths in a range of centimeters to meters (Jørgensen et al., 1990; Slomp et al., 2013; Myllykangas et al., 2020).

The default sediment source is set to  $50 \mu\text{mol m}^{-2} \text{d}^{-1}$ , which is a calibrated value that produces deep water  $\text{CH}_4$  observations reasonably well. The impact from the sediment source is further explored in different sensitivity experiments (Sect. 4.1).

### 370 *Fractionation during methanogenesis*

Isotope values of  $\text{CH}_4$  from biogenic sources are typically in a range  $-110\%$  to  $-60\%$  (Whiticar et al., 1986), depending on methanogenic substrate and mechanisms (i.e.,  $\text{CO}_2$  reduction vs. acetate fermentation). The fractionation during  $\text{CO}_2$  reduction is typically  $\epsilon > 95\%$ , while the fractionation during acetate fermentation is in a range  $\epsilon \sim 40\text{-}60\%$  (Whiticar, 1999).

375 Measurements from anoxic deep water in the central Baltic Sea show isotope values of  $-84\%$  and  $-71\%$  in the Gotland and Landsort Deeps, respectively (Jakobs et al., 2013). Deep water in the Bornholm basin shows isotope values of approximately  $-70\%$ , and deep water in the Arkona basin show isotope values in a range  $-69\%$  to  $-63\%$  (Gülzow et al., 2014). Measurements by Roth et al. (2022) indicate a value of approximately  $-67\%$  for the sediment source in shallow areas with oxic conditions in the water column. Furthermore, measurements by Egger et al. (2017) indicate surface sediment pore water  $\delta^{13}\text{C}\text{-CH}_4$  values of approximately  $-80\%$  in the Landsort Deep (451 mbss),  $-70\%$  in the Bornholm Deep (87 mbss), and  $-60\%$  in the Little Belt  
380 (37 mbss).

As a first approximation, the sediment  $\text{CH}_4$  source in the model is assumed to have a  $\delta^{13}\text{C}\text{-CH}_4$  value of  $-80\%$  or  $-60\%$  in sediments underlying anoxic or oxic water, respectively. This value will then be adjusted in different sensitivity experiments (Sect. 4.1).

### 2.3.6 Methane oxidation in the water column

#### 385 *Methane oxidation by oxygen (MOX)*

Aerobic  $\text{CH}_4$  consumption by methanotrophic processes consume  $\text{CH}_4$  and oxygen while producing  $\text{CO}_2$  and water:



390 The oxidation rate,  $W_{\text{CH}_4\text{-O}_2}$  ( $\text{nM day}^{-1}$ ) is parameterized as Monod functions of both  $\text{CH}_4$  ( $\text{nM}$ ) and  $\text{O}_2$  ( $\mu\text{M}$ ) concentrations (Van Bodegom et al., 2001; Greene et al., 2014):

$$W_{\text{CH}_4\text{-O}_2} = v_{W\text{CH}_4\text{-O}_2} \left( \frac{[\text{CH}_4]}{h_{\text{CH}_4} + [\text{CH}_4]} \right) \left( \frac{[\text{O}_2]}{h_{\text{O}_2} + [\text{O}_2]} \right), \quad (16)$$

395 Here,  $v_{W\text{CH}_4\text{-O}_2}$  ( $\text{nM d}^{-1}$ ) is the potential maximum aerobic oxidation rate,  $[\text{CH}_4]$  ( $\text{nM}$ ) and  $[\text{O}_2]$  ( $\mu\text{M}$ ) are  $\text{CH}_4$  and  $\text{O}_2$  concentrations, whereas  $h_{\text{CH}_4}$  ( $\text{nM}$ ) and  $h_{\text{O}_2}$  ( $\mu\text{M}$ ) are “half saturation” concentrations for  $\text{CH}_4$  and  $\text{O}_2$ , respectively.

Aerobic oxidation of CH<sub>4</sub> is also included as an O<sub>2</sub> sink term in the model, consuming 2 mol O<sub>2</sub> for each mol of consumed CH<sub>4</sub> (Eq. 15). Furthermore, both aerobic and anaerobic CH<sub>4</sub> oxidation are included as sources of dissolved inorganic carbon in the model, producing 1 mol of dissolved inorganic carbon for each mol of consumed CH<sub>4</sub> (Eq. 15 and 17, respectively).

400 Observations from the Gotland and Landsort deeps in the Baltic Proper indicate oxidation rates in a range 0.1-4 nM d<sup>-1</sup> depending on location and season (Schmale et al., 2012; 2016; Jakobs et al., 2014). The parameters in Eq. 16 are set to default values of  $v_{WCH_4_{O_2}} = 8 \text{ nM d}^{-1}$ ,  $h_{CH_4} = 60 \text{ nM}$ , and  $h_{O_2} = 100 \text{ }\mu\text{M}$ . These are calibrated values that produce CH<sub>4</sub> concentrations and oxidation rates that fairly well reproduce observations (see Sect. 3.1). In Sect. 4.1, the influence of modified values of  $v_{WCH_4_{O_2}}$ ,  $h_{CH_4}$ , and  $h_{O_2}$  will be addressed in different sensitivity experiments.

405

#### *Anaerobic oxidation of CH<sub>4</sub> by sulfate (AOM)*

AOM is typically assumed to be mediated by sulfate, although other oxidants such as nitrate/nitrite and also iron and manganese oxides could be used as well (Myllykangas et al., 2020). The stoichiometry for sulfate mediated AOM can be written (Hoehler et al., 1994):

410



The ratios of sulfate and chlorine concentrations in the Baltic Sea are close to the oceanic ratio (Kremling, 1972), which means that the sulfate concentration  $[SO_4^{2-}]$  in the Baltic Sea can be approximated as

415

$$[SO_4^{2-}] \approx [SO_4^{2-}]_{oc} \frac{S}{35}, \quad (18)$$

Here,  $S$  is the salinity and  $[SO_4^{2-}]_{oc} = 0.0282 \text{ mol kg}^{-1}$  is the sulfate concentration in sea water ( $S = 35$ ) (Dickson et al., 2007).

Thus, sulfate concentrations in the Baltic Sea are orders of magnitude higher than CH<sub>4</sub> concentrations. For that reason, CH<sub>4</sub> oxidation by sulfate,  $W_{CH_4_{SO_4}}$  (nM day<sup>-1</sup>) is parameterized as a function of CH<sub>4</sub>, whereas the sulfate concentration is assumed not to be limiting in the water column:

420

$$W_{CH_4_{SO_4}} = v_{WCH_4_{SO_4}} \left( \frac{[CH_4]}{h_{CH_4} + [CH_4]} \right), \quad (19)$$

425 Since sulfate is assumed not to be limiting, other potential oxidants during AOM are not accounted for in the model.

Observations from the anoxic deep waters of the Gotland and Landsort deeps in the Baltic Proper indicate oxidation rates < 0.1 nM d<sup>-1</sup> (Jakobs et al., 2014). The maximum anaerobic oxidation rate is set to a default value of  $v_{WCH_4_{SO_4}} = 0.1 \text{ (nM d}^{-1}\text{)}$ .

#### *Fractionation during CH<sub>4</sub> oxidation*

430 There is a preferential oxidation of  $^{12}\text{C-CH}_4$  compared to the heavier  $^{13}\text{C-CH}_4$ , causing a fractionation during the process. The oxidation of  $^{13}\text{C-CH}_4$  is thus computed according to:

$$W_{^{13}\text{CH}_4\text{-O}_2} = \alpha_{\text{oxi}} R_{\text{CH}_4} W_{\text{CH}_4\text{-O}_2}, \quad (20)$$

435 Here,  $\alpha_{\text{oxi}}$  is the fractionation during  $\text{CH}_4$  oxidation,  $R_{\text{CH}_4}$  is the  $^{13}\text{C}/^{12}\text{C}$  ratio of  $\text{CH}_4$ , and  $W_{\text{CH}_4\text{-O}_2}$  is the  $\text{CH}_4$  oxidation rate (Eq. 16). By use of Eq. 16, Eq. 20 can be rewritten as:

$$W_{\text{CH}_4\text{-O}_2} \approx \alpha_{\text{oxi}} v_{W_{\text{CH}_4\text{-O}_2}} \left( \frac{[^{13}\text{CH}_4]}{h_{\text{CH}_4} + [\text{CH}_4]} \right) \left( \frac{[\text{O}_2]}{h_{\text{O}_2} + [\text{O}_2]} \right), \quad (21)$$

440 Observations indicate a wide range of fractionation during  $\text{CH}_4$  oxidation (e.g.,  $\varepsilon \sim 4\text{-}30\%$ , Whiticar (1999);  $\varepsilon \sim 16\text{-}54\%$ , Chan et al. (2019b)). Based on observations from the central Baltic Sea by Jakobs et al. (2013), the default fractionation is set to  $12\%$ , which corresponds to  $\alpha_{\text{oxi}} = 0.988$  in Eq. 20. The influence of fractionation during  $\text{CH}_4$  oxidation is addressed by sensitivity experiments in Sect. 4.1.

### 3 Results

445 In this section, simulated  $\text{CH}_4$  concentrations, isotopic compositions, and aerobic and anaerobic oxidation rates are presented for a ‘standard’ model run (Sect. 3.1). Simulated large-scale fluxes and a preliminary  $\text{CH}_4$  budget are presented in Sect. 3.2.

#### 3.1 Standard model run

The standard model run was performed over the period 2001-2020 after spin-up (see Sect. 2.2) with parameters as indicated in Table 1. These parameters are mostly calibrated values, where the intention was to reasonably well reproduce existing  
 450 observations from the Gotland Sea. This simulation will then be used as a basis for the sensitivity experiments presented in Sect. 4.1. Simulated contour plots and time series for the period 2001-2020 are presented in Fig. 2-3. Furthermore, monthly mean profiles for years 2014 and 2015 are presented in Fig. 4-5 in order to illustrate seasonal dynamics in surface waters as well as the impact of a major deep water inflow.

455 Table 1. Standard model settings. The values are own estimates/calibrated values (see Sect. 2.3) except where noted.

Parameter	Notation	Value	Unit
Potential maximum oxidation rate (MOX)	$v_{W_{\text{CH}_4\text{-O}_2}}$	8	$\text{nM d}^{-1}$
Potential maximum oxidation rate (AOM)	$v_{W_{\text{CH}_4\text{-SO}_4}}$	0.1	$\text{nM d}^{-1}$
Half saturation value, $\text{CH}_4$ oxidation	$h_{\text{CH}_4}$	60	$\text{nM}$

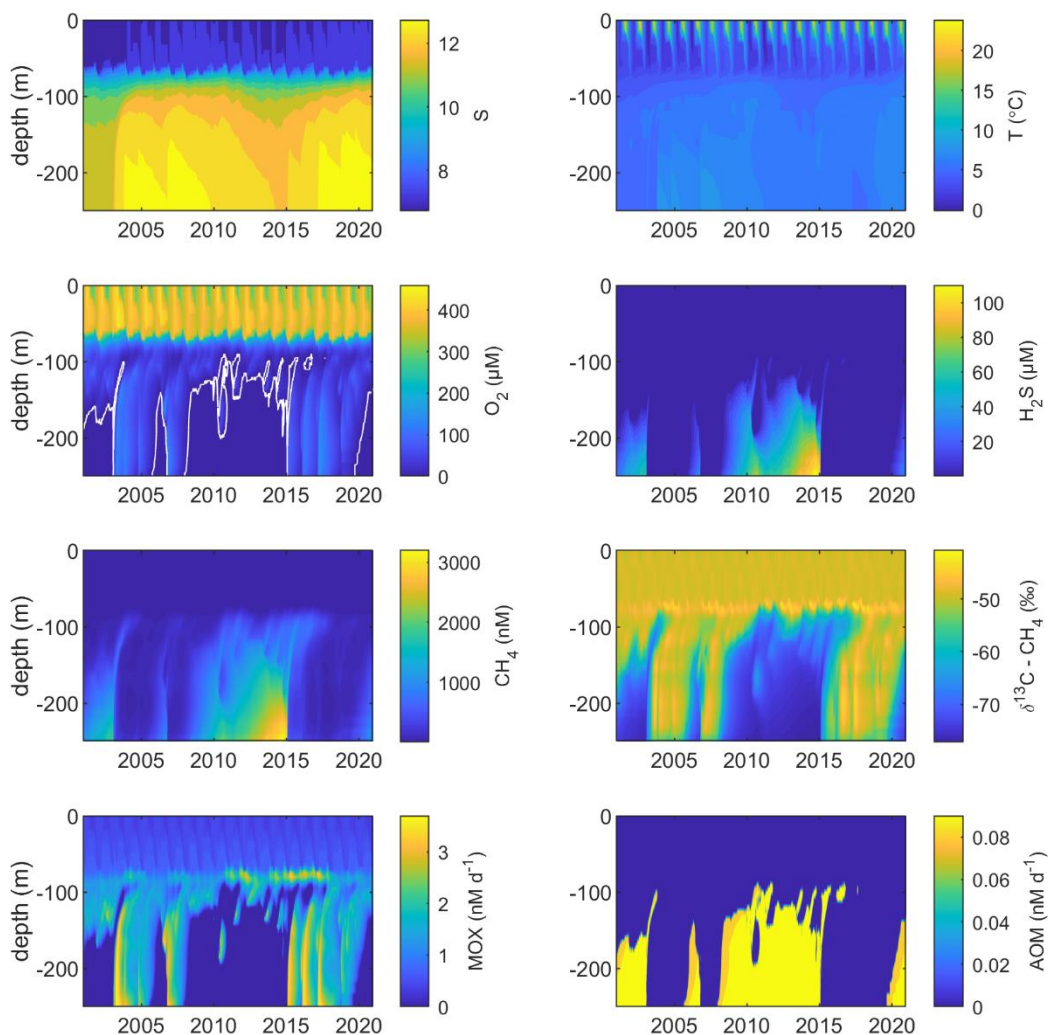


Half saturation value, CH <sub>4</sub> oxidation	$h_{O_2}$	100	μM
Fractionation, CH <sub>4</sub> oxidation	$\alpha_{oxi}$	0.988 <sup>1</sup>	-
Sediment source, CH <sub>4</sub> flux	$r_{SED}$	50	μmol m <sup>-2</sup> d <sup>-1</sup>
Sediment source, δ <sup>13</sup> C-CH <sub>4</sub> , anoxic water	$\delta^{13}C-CH_{4sed}$	-80	‰
Sediment source, δ <sup>13</sup> C-CH <sub>4</sub> , oxic water	$\delta^{13}C-CH_{4sed}$	-60	‰
Riverine CH <sub>4</sub>	$CH_{4riv}$	100	nM
Riverine δ <sup>13</sup> C-CH <sub>4</sub>	$\delta^{13}C-CH_{4riv}$	-50	‰
North Sea CH <sub>4</sub>	$CH_{4NS}$	5	nM
North Sea δ <sup>13</sup> C-CH <sub>4</sub>	$\delta^{13}C-CH_{4NS}$	-47	‰

---

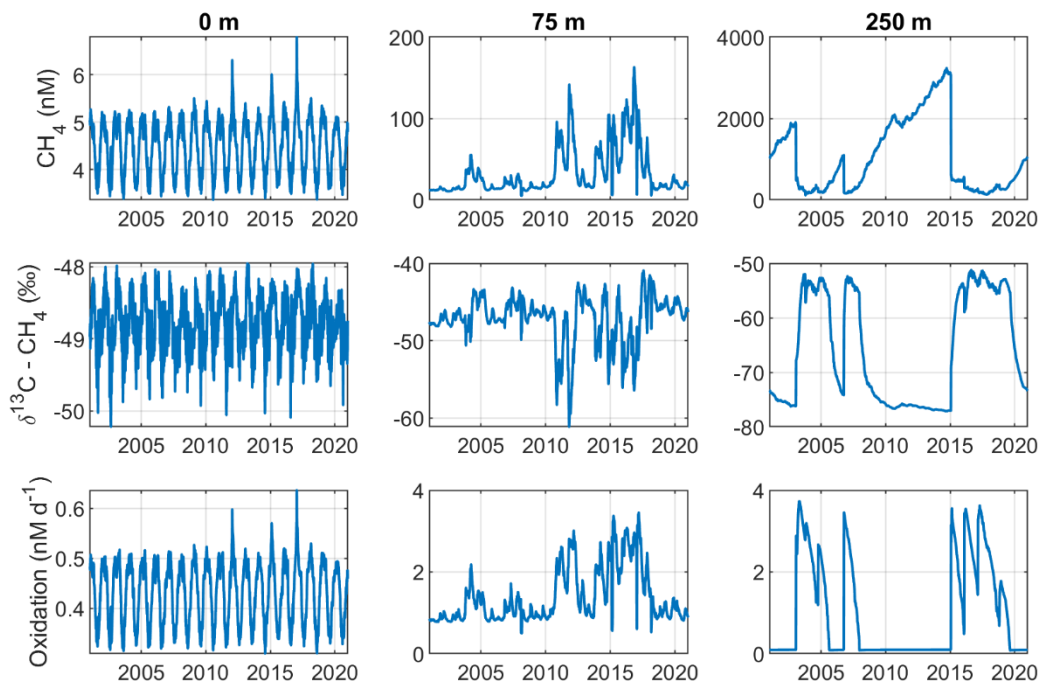
1. Jakobs et al. (2013)

Figure 2 illustrates the characteristic dynamics of the permanently salinity stratified Gotland Sea. The top of the halocline, which is typically located at around 60 m depth, isolates deeper waters from the atmosphere which means that O<sub>2</sub> can only be supplied via deep water inflows of oxic and comparatively high-saline water and through vertical turbulent diffusion. Stagnation periods with little or no advective O<sub>2</sub> supply to the deep may last for years, and since O<sub>2</sub> consumption by degradation processes exceeds the turbulent diffusive flux eventually conditions anoxic prevails. Stagnation periods are also characterized by CH<sub>4</sub> accumulation because of a low anaerobic oxidation rate, and the δ<sup>13</sup>C-CH<sub>4</sub> in anoxic water is also close to the sediment source because of the marginal influence of anaerobic oxidation processes in the water column. Inflows of new deep water lead to an uplift of the water column above the intrusion depth, which is clearly seen in the simulated O<sub>2</sub> and CH<sub>4</sub> profiles in February to June of 2015 (Fig. 5, upper panel). Inflows furthermore cause a sharp decline in deep water CH<sub>4</sub> concentration (Fig. 2-3), primarily due to water exchange, but additionally because of high aerobic oxidation rates during periods when O<sub>2</sub> and CH<sub>4</sub> co-occur in the deep water until O<sub>2</sub> is again depleted (Fig. 5).



470

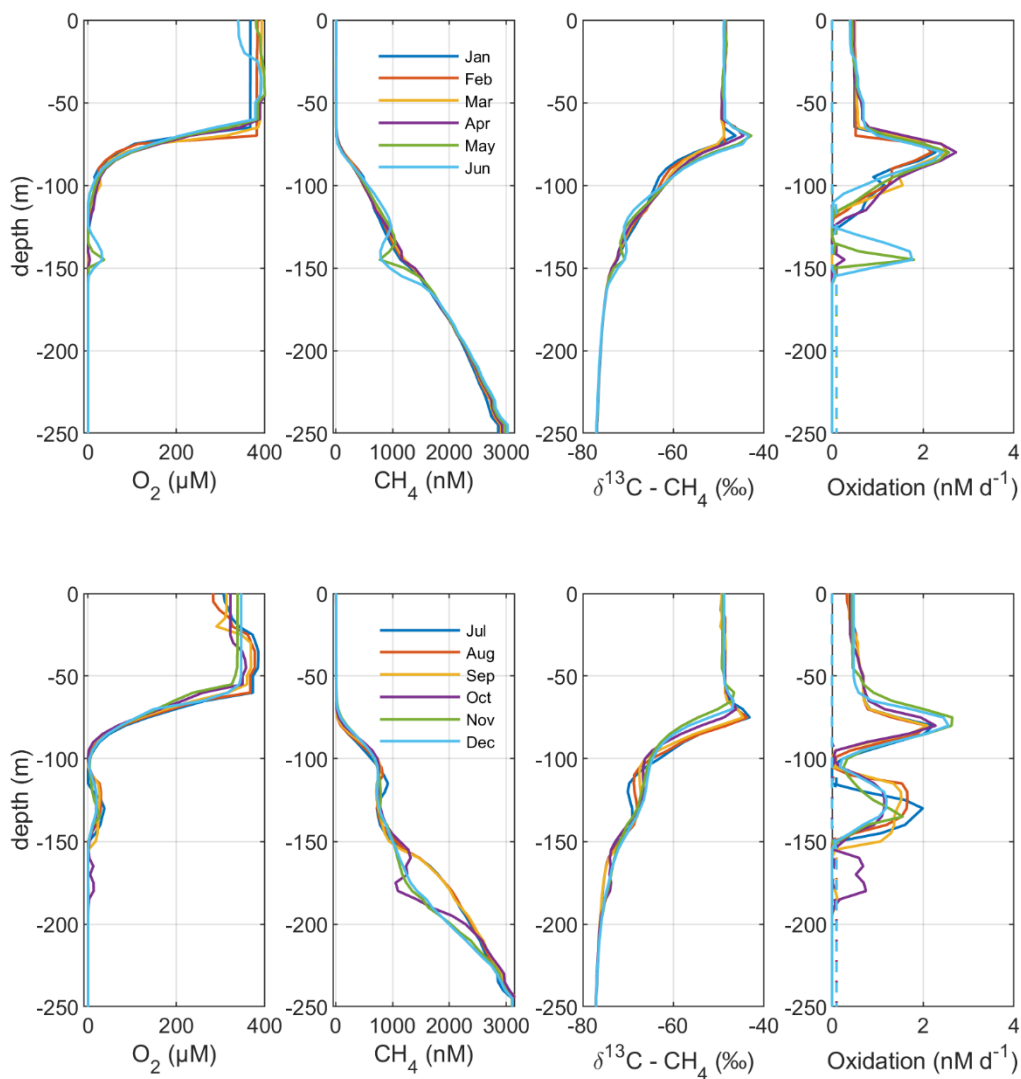
**Figure 2: Model output from the standard model run, showing simulated S, T (°C), O<sub>2</sub> (μM), H<sub>2</sub>S (μM), CH<sub>4</sub> (nM), δ<sup>13</sup>C-CH<sub>4</sub> (‰), MOX (nM d<sup>-1</sup>), and AOM (nM d<sup>-1</sup>) in the Gotland Sea sub-basin (cf. Fig. S1) over the period 2001-2020. The white line in the O<sub>2</sub> plot indicates the upper limit for anoxic deep water.**



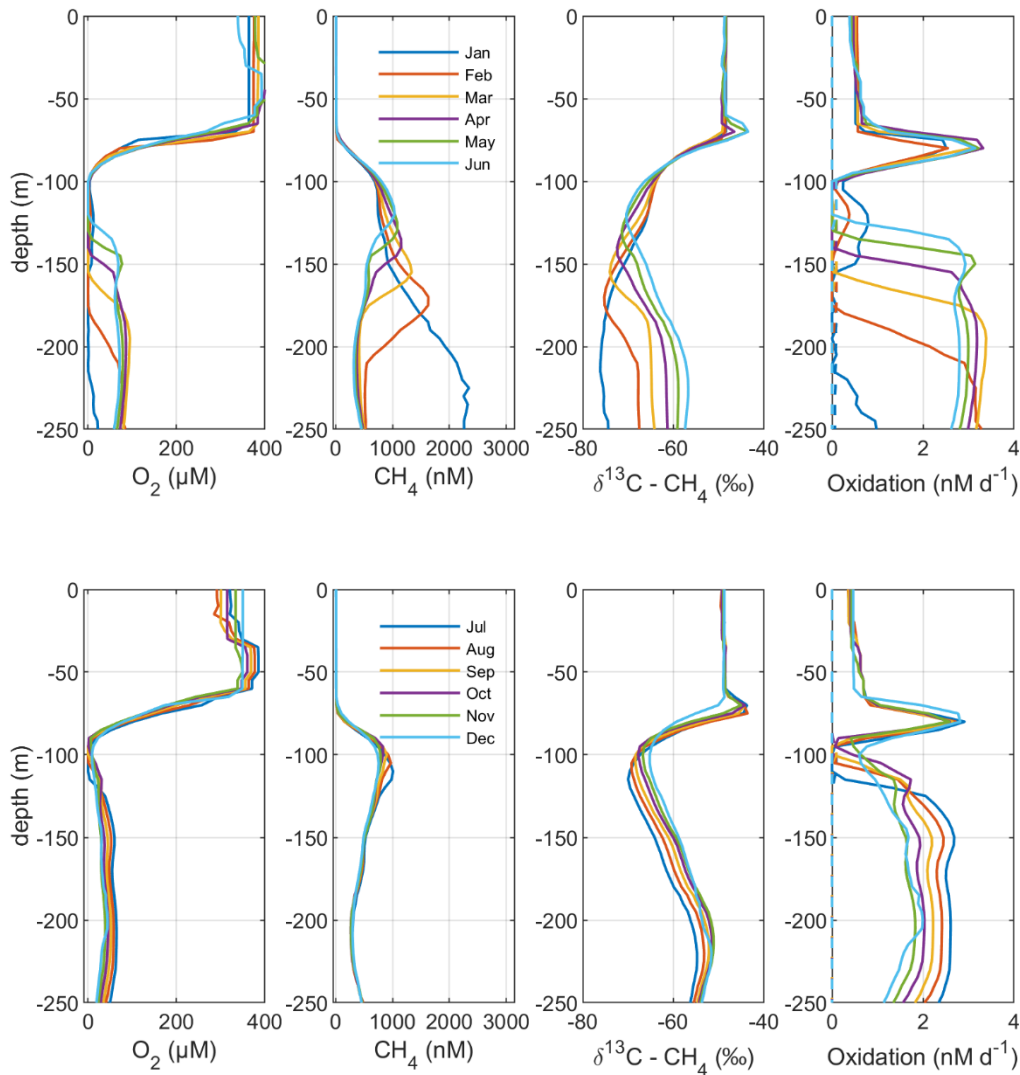
475

**Figure 3: Model output from the standard model run, showing simulated surface (0 m; left-hand panels), intermediate (75 m; middle panels), and deep water (250 m; right-hand panels) development of CH<sub>4</sub> (nM), CH<sub>4</sub> oxidation (MOX + AOM; nM d<sup>-1</sup>), and δ<sup>13</sup>C-CH<sub>4</sub> (‰) in the Gotland Sea sub-basin (cf. Fig. S1) over the period 2001-2020.**

480 In surface waters above the top of the halocline, seasonal changes in temperature and thermal stratification largely influence other parameters (Fig. 4-5; see also Fig. S3-S4, supporting information). The increasing surface water temperature in spring and summer leads to decreasing O<sub>2</sub> and CH<sub>4</sub> solubility which in addition affects aerobic oxidation rates that depend on O<sub>2</sub> and CH<sub>4</sub> concentrations (Fig. S3-S4, supporting information; see also Eq. 16). This temperature dependence on oxidation rates also has an impact on the isotopic composition of CH<sub>4</sub> – the δ<sup>13</sup>C-CH<sub>4</sub> in water above the top of the halocline is strongly influenced  
 485 by the seasonality of temperature stratification (Fig. S3-S4, supporting information). However, the variations of isotopic composition in surface waters are significantly smaller than the variations at depth where δ<sup>13</sup>C-CH<sub>4</sub> mainly depends on transitions between oxic and anoxic conditions (Fig. 4-5).



490 **Figure 4:** Model output from the standard model run, showing simulated monthly mean profiles of  $CH_4$  (nM),  $\delta^{13}C-CH_4$  (‰), and oxidation rates ( $nM d^{-1}$ ; MOX – full lines, AOM – dashed lines) in the Gotland Sea sub-basin (cf. Fig. S1) year 2014. The upper panels illustrate monthly mean profiles from January to June; the lower panels illustrate monthly mean profiles from July to December.



495

**Figure 5: Model output from the standard model run, showing simulated monthly mean profiles of  $\text{CH}_4$  (nM),  $\delta^{13}\text{C}-\text{CH}_4$  (‰), and oxidation rates ( $\text{nM d}^{-1}$ ; MOX – full lines, AOM – dashed lines) in the Gotland Sea sub-basin (cf. Fig. S1) year 2015. The upper panels illustrate monthly mean profiles from January to June; the lower panels illustrate monthly mean profiles from July to December.**

500

Observations from 2012 indicate  $\text{CH}_4$  concentrations in a range from  $\sim 1000$  to  $3000$  nM in stagnant deep waters of the Baltic Proper (Jakobs et al., 2013; Ketzer et al., 2024), and values below  $\sim 150$  nM in oxic deep waters in the same area after a major deep-water intrusion in winter 2014–2015 (Schmale et al., 2016; Myllykangas et al., 2017). These values are well reproduced

by the model (Fig. 3) using the settings listed in Table 1, which implies that the simulated sediment CH<sub>4</sub> source is likely close  
505 to the real source, at least in the deep water where AOM rates are apparently very low (<0.1 nM d<sup>-1</sup>; Jakobs et al., 2014). The  
simulated benthic CH<sub>4</sub> release from the seafloor amounts to 50 μmol CH<sub>4</sub> m<sup>-2</sup> d<sup>-1</sup> in the standard model run (Table 1),  
corresponding to ~0.3 g CH<sub>4</sub> m<sup>-2</sup> y<sup>-1</sup>. This is in the lower range of yearly observations at shallow coastal sites among varying  
habitats in the Baltic Sea (0.34-0.55 g CH<sub>4</sub> m<sup>-2</sup> y<sup>-1</sup>; Roth et al., 2023).

Measurements from the central Gotland Sea indicate typical surface water CH<sub>4</sub> concentrations in a range 3.5-5 nM, depending  
510 on the season (Gülzow et al., 2013), with the highest concentrations observed in winter because of increased gas solubility in  
cold water. This seasonal cycle is reproduced by the model (Fig. 3). Furthermore, simulated surface water CH<sub>4</sub> saturation  
levels vary between approximately 110% in winter and 150% in summer (Fig. S5), which reproduces observed saturation  
levels (Gülzow et al., 2013).

Measurements from the central Baltic Sea indicate MOX rates ranging from 0.1 to 4 nM d<sup>-1</sup> in the redoxcline (Schmale et al.,  
515 2012; 2016; Jakobs et al., 2014). In the standard model run, the highest oxidation rates (> 3 nM d<sup>-1</sup>; Fig. 5) occur in the deep  
water after deep water intrusions leading to oxygenation of stagnant water with high CH<sub>4</sub> concentrations. In the redoxcline,  
the simulated MOX rates are typically in a range 0.5-3 nM d<sup>-1</sup> (Fig. 4-5), which thus matches observed oxidation rates.  
Simulated surface water MOX rates are in a range 0.3-0.5 nM d<sup>-1</sup> (e.g., Fig. 3), whereas observations, on the other hand,  
indicate rates close to zero (Jakobs et al., 2014).

520 Observations indicate a pronounced <sup>13</sup>C-CH<sub>4</sub> enrichment in the redoxcline. Based on two profiles from 2012, δ<sup>13</sup>C-CH<sub>4</sub>  
increased from values below -70‰ at the bottom of the redoxcline (~140 m) to -40‰ at the top of the redoxcline (~80 m) in  
the central Gotland Sea (Jakobs et al., 2014). The δ<sup>13</sup>C-CH<sub>4</sub> peak values at intermediate depths coincide with peak oxidation  
rates (Jakobs et al., 2014) and result from the preferential oxidation of the lighter isotope. In water above the top of the  
redoxcline, observations indicate lower oxidation rates and δ<sup>13</sup>C-CH<sub>4</sub> values in a range -60‰ to -40‰ depending on season  
525 (Jakobs et al., 2014). In the standard model run, the δ<sup>13</sup>C-CH<sub>4</sub> value typically increases from approximately -70‰ at the upper  
limit for anoxic water (~130 m) to its peak values between -45‰ and -40‰ at approximately 75 m (Fig. 4). The simulated  
δ<sup>13</sup>C-CH<sub>4</sub> in the redoxcline thus tends to be less pronounced than what is apparent from the few available observations.  
Furthermore, a local minimum around 30 m observed by Jakobs et al. (2014) is not reproduced in the model run (see further  
discussion in Sect. 4).

### 530 3.2 Preliminary CH<sub>4</sub> budget

Here, we present preliminary budget calculations based on the standard model run. It is however important to stress that these  
estimates are heavily dependent on the prescribed benthic CH<sub>4</sub> source. As discussed below (Sect. 4), different combinations  
of benthic CH<sub>4</sub> release and MOX rates could produce similar CH<sub>4</sub> concentrations in the water column.

Total CH<sub>4</sub> sources (river load and sediment release) and sinks (outgassing, net export, and pelagic oxidation) were aggregated  
535 over the entire Baltic Sea to allow a preliminary assessment of the relative importance of different processes. The CH<sub>4</sub> sources  
were largely dominated by benthic release which amounted to an average 7557 Mmol y<sup>-1</sup> over the 2001-2020 period (Table

2). This source was mainly balanced by oxidation in the water column (6598 Mmol y<sup>-1</sup>, 87% of the sinks) and to a smaller degree by emission to the atmosphere (980 Mmol y<sup>-1</sup>, 13% of the sinks). The river load (49 Mmol y<sup>-1</sup>) and net export to the North Sea (19 Mmol y<sup>-1</sup>) were comparatively small.

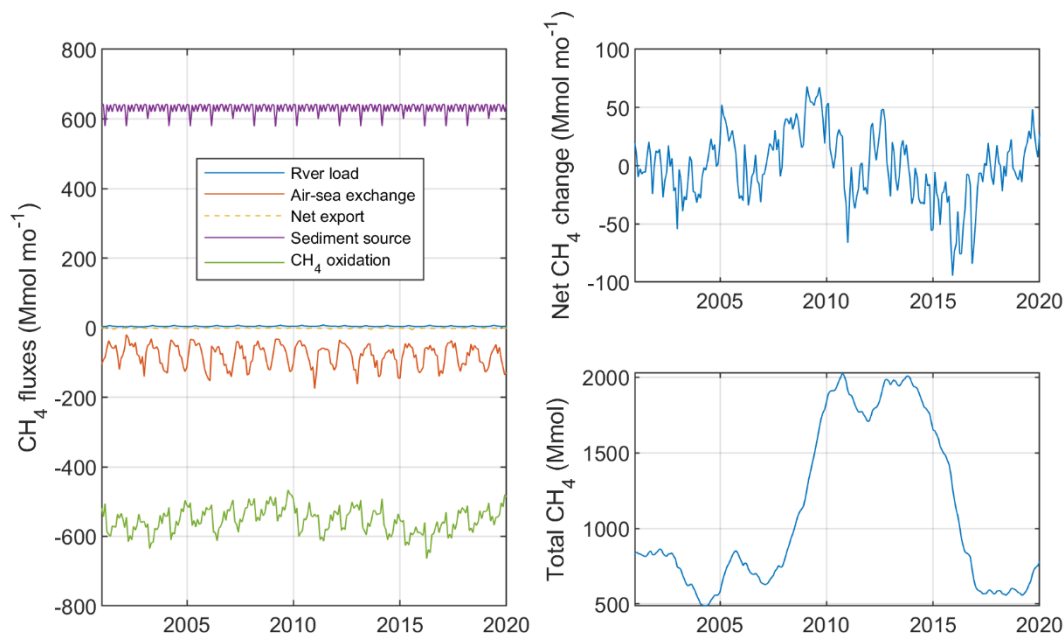
540

Table 2. Total CH<sub>4</sub> sources, sinks, and net change (= sources - sinks) (Mmol y<sup>-1</sup>) aggregated over the entire Baltic Sea and averaged over the period 2001-2020.

CH <sub>4</sub> sources, sinks, and net change	CH <sub>4</sub> flux (Mmol y <sup>-1</sup> )
River load	49
Air-sea exchange	-980
Net export	-19
Pelagic oxidation	-6598
Sediment release	7557
Net change	9

545 Figure 6 illustrates simulated monthly fluxes, net accumulation as well as the total amount of CH<sub>4</sub> in the entire Baltic Sea. The total CH<sub>4</sub> stock amounted to approximately 1800 Mmol y<sup>-1</sup> over the ~2010-2014 period, which exceeded the stock before and after that period by a factor 2-3 (Fig. 6). This comparatively large CH<sub>4</sub> stock was the result of a large anoxic deep-water volume and thus low oxidation rates (Fig. 2). There was an average net accumulation of 9 Mmol y<sup>-1</sup> over the 2001-2020 period (Table 2), but net changes of the total CH<sub>4</sub> stock between individual years varied by approximately ± 50 Mmol mo<sup>-1</sup>, which largely reflected oxygen dependent changes in CH<sub>4</sub> oxidation rates (Fig. 6).

550



**Figure 6: Simulated monthly mean CH<sub>4</sub> sources and sinks (Mmol mo<sup>-1</sup>; left), net change (= sources - sinks) (Mmol mo<sup>-1</sup>; upper right), and total CH<sub>4</sub> stock (Mmol; lower right) aggregated over the entire Baltic Sea.**

#### 555 4 Discussion

This study presents a first quantification of key CH<sub>4</sub> fluxes on a Baltic Sea scale. However, there are uncertainties in our estimates, in particular regarding the benthic CH<sub>4</sub> source. In the standard model run, benthic release is the dominant CH<sub>4</sub> source (Table 2). The sediment source is set as constant over time, at all depths, and in all sub-basins. In the real Baltic Sea, however, large spatial and temporal variations are expected (e.g., Roth et al., 2022). Furthermore, the isotopic composition of the sediment source is set either to -80‰ or -60‰ depending on oxygen conditions in the overlying water. This assumption is a simplified representation. The main uncertainty in our present large-scale estimates is that spatial and temporal variations of the sediment source are not well known.

The simulated CH<sub>4</sub> concentrations in anoxic deep waters agree with available observations. The calibrated rate of CH<sub>4</sub> release from sediments is for that reason deemed as feasible in anoxic deep waters, since CH<sub>4</sub> concentrations are only marginally influenced by oxidation during anoxic conditions (low AOM rates). It is, however, likely that the calibrated CH<sub>4</sub> release is mainly representative for present-day conditions (e.g., organic carbon deposition rates, oxygen concentrations, temperatures, etc.). Both climate change and nutrient load change are going to affect e.g., oxygen concentrations in the future which means that the benthic CH<sub>4</sub> source is likely to change as well. In order to address this, it is necessary to improve the knowledge of



CH<sub>4</sub> release rates depending on local conditions. One major uncertainty here is what is the contribution from more recent  
570 organic carbon deposition, and what is the contribution from “old” carbon deeper down in the sediments, i.e., if nutrient loads  
and organic carbon deposition decreases, and oxygen conditions improve, would this have a major impact on the CH<sub>4</sub> release  
from sediments, or is the release more heavily dependent on older carbon deposits? This is one of the major remaining open  
questions regarding CH<sub>4</sub> cycling in the Baltic Sea, but cannot be addressed by the model at this point.

While the calibrated flux gives a good idea of the present-day CH<sub>4</sub> source in deeper areas, it is more challenging to constrain  
575 the sediment source in shallower oxic waters, where the source can be largely compensated by MOX in the water column.  
Coastal systems are also more dynamic and show a larger variety compared to deep anoxic areas. A large CH<sub>4</sub> source  
compensated by high MOX rates could for example yield similar CH<sub>4</sub> concentrations as a smaller source combined with lower  
MOX rates. These two different cases (i.e., large source, high oxidation vs. small source, low oxidation) would produce quite  
different isotopic patterns that could be used to calibrate the model. However, a complication here is that we generally do not  
580 know the isotopic composition of CH<sub>4</sub> released from the sediments, with the exception of observational data from a few  
locations. Justification of the calibrated rates used in the model would require more observational data to fill the knowledge  
gaps.

Studies from wetlands (Segers, 1998), lakes (Martinez-Cruz et al., 2015; Tan et al., 2015), and oceanic sites (Kessler et al.,  
2011; Crespo-Medina et al., 2014; Pack et al., 2015; Rogener et al., 2018; Chan et al., 2019a) show that MOX rates can vary  
585 by several orders of magnitude. For example, observed deep water MOX in the Gulf of Mexico increased from a background  
rate of around 60 pM d<sup>-1</sup> to a peak rate of 5900 nM d<sup>-1</sup> after the Deepwater Horizon oil spill (Rogener et al., 2018). The  
observed MOX rates from the central Baltic Sea (approximately 0.1-4 nM d<sup>-1</sup>; Schmale et al., 2012; 2016; Jakobs et al., 2014)  
are in the same range as MOX rate observations from the eastern tropical North Pacific Ocean (Pack et al., 2015), but typically  
lower than MOX rates observed in lakes (Martinez-Cruz et al., 2015; Tan et al., 2015).

590 In this study, the parameter values used in the computation of MOX rates (Eq. 16) were calibrated so that the resulting profiles  
of oxidation rates and isotopic composition – as well as CH<sub>4</sub> concentrations – reasonably well reproduce observed profiles  
from the central Baltic Sea. Results for CH<sub>4</sub> concentrations, MOX rates, and isotopic composition are sensitive to O<sub>2</sub> profiles,  
which also means that the calibrated values depend on how well the model reproduces O<sub>2</sub> concentrations.

The rate constant for MOX depends on the activity and abundance of methanotrophs, in theory allowing for reduced MOX in  
595 spite of favorable conditions in terms of CH<sub>4</sub> and O<sub>2</sub> concentrations when methanotrophs are not active. The model does not  
include methanotrophic activity explicitly, and the rate constant for MOX is constant. Perhaps, lower abundance and activity  
of methanotrophs could be an explanation for the lower rate constant in the present results compared to the results from lakes  
cited above.

The present study does not include the potential contributions from aerobic CH<sub>4</sub> production. There are, however, several  
600 potential pathways for CH<sub>4</sub> production in shallow oxic waters, including e.g., direct CH<sub>4</sub> production by phytoplankton (Lenhart  
et al., 2016) and cyanobacteria (Bižić et al., 2020), CH<sub>4</sub> production as a biproduct of microbial degradation processes (Karl et  
al., 2008; Damm et al., 2010), and CH<sub>4</sub> formation in anoxic microniches within degrading detritus (Karl and Tilbrook, 1994;

605 Holmes et al., 2000). In the Baltic Sea, local CH<sub>4</sub> maxima coinciding with δ<sup>13</sup>C-CH<sub>4</sub> minima have been observed in oxic waters just below the summer thermocline (Jakobs et al., 2014; Schmale et al., 2018). These signals can be coupled to zooplankton grazing activities, both directly through CH<sub>4</sub> production during digestion, and indirectly via release of methanogenic substrates that can subsequently be degraded to methane by microbes (Schmale et al., 2018; Stawiarski et al., 2019). However, the main pathways as well as magnitude of aerobic CH<sub>4</sub> production in the Baltic Sea remain to be resolved in detail. Parameterizations of these processes can then potentially be included in models such as BALTSEM that explicitly include both phytoplankton and zooplankton groups as model state variables.

#### 610 4.1 Sensitivity experiments

A series of sensitivity experiments was performed on different parameters used in the modeling of CH<sub>4</sub> and its stable isotopes (Table 1). The adjusted parameter values are listed in Table 3. Modeled profiles are then drawn for both winter conditions (February) and summer conditions (August) of 2015 (Fig. S6-S11), which gives an indication of season dependent contrasting conditions in surface waters above the halocline. Methane cycling in the model is largely dominated by benthic release, 615 oxidation in the water column, and outgassing (Table 2; Fig. 6). For that reason, sensitivity experiments on riverine and North Sea CH<sub>4</sub> concentrations were not included.

Table 3. Adjusted parameter values and change (%) compared to the standard model run in the various sensitivity experiments.

Model run	Adjusted parameter	Notation	Value	Unit
test 1	Potential maximum oxidation rate (MOX)	$v_{WCH_4_{O_2}}$	4 (-50%)	nM d <sup>-1</sup>
test 2	Potential maximum oxidation rate (MOX)	$v_{WCH_4_{O_2}}$	12 (+50%)	nM d <sup>-1</sup>
test 3	Half saturation value, CH <sub>4</sub> oxidation	$h_{CH_4}$	30 (-50%)	nM
test 4	Half saturation value, CH <sub>4</sub> oxidation	$h_{CH_4}$	90 (+50%)	nM
test 5	Half saturation value, CH <sub>4</sub> oxidation	$h_{O_2}$	50 (-50%)	μM
test 6	Half saturation value, CH <sub>4</sub> oxidation	$h_{O_2}$	150 (+50%)	μM
test 7	Fractionation, CH <sub>4</sub> oxidation	$\alpha_{oxi}$	0.984 (-4‰)	-
test 8	Fractionation, CH <sub>4</sub> oxidation	$\alpha_{oxi}$	0.992 (+4‰)	-
test 9	Sediment source, δ <sup>13</sup> C-CH <sub>4</sub> , oxic water	$\delta^{13}C-CH_{4sed}$	-70 (-10‰)	‰
test 10	Sediment source, δ <sup>13</sup> C-CH <sub>4</sub> , oxic water	$\delta^{13}C-CH_{4sed}$	-50 (+10‰)	‰
test 11	Sediment source, CH <sub>4</sub> flux, oxic water	$r_{SED}$	25 (-50%)	μmol m <sup>-2</sup> d <sup>-1</sup>
test 12	Sediment source, CH <sub>4</sub> flux, oxic water	$r_{SED}$	75 (+50%)	μmol m <sup>-2</sup> d <sup>-1</sup>

#### 620 4.1.1 MOX and AOM: rates, half-saturation constants, and fractionation

Adjusting the potential maximum rate of MOX ( $v_{WCH_4_{O_2}}$ ) by  $\pm 50\%$  (tests 1-2) has a large influence on  $CH_4$  concentrations (Fig. S6), where decreased  $v_{WCH_4_{O_2}}$  (test 1) leads to substantially higher  $CH_4$  concentrations, and increased  $v_{WCH_4_{O_2}}$  (test 2) to lower  $CH_4$  compared to the standard model run. Since the MOX rate in addition to  $v_{WCH_4_{O_2}}$  depends on  $CH_4$  concentration, the changed  $CH_4$  concentration in itself will further modify the shape of the MOX profile ( $CH_4$  oxidation also consumes  $O_2$ ,  
625 but the influence on  $O_2$  concentration is small compared to the influence on  $CH_4$  concentration, since  $O_2$  and  $CH_4$  typically differ by orders of magnitude). The modified shapes of the MOX profiles also influence the  $\delta^{13}C$ - $CH_4$  profiles, with changed depths of the intermediate deep-water peak as well as changed peak values. Adjusting the potential maximum rate of AOM ( $v_{WCH_4_{SO_4}}$ ) has a comparatively minor influence on both  $CH_4$  concentration and isotopic composition because of the low anaerobic oxidation rates (not shown).

630 Adjusting the half saturation values for  $CH_4$  oxidation ( $h_{CH_4}$  and  $h_{O_2}$ ) by  $\pm 50\%$  (tests 3-6) influences the MOX rates and thus both the  $CH_4$  concentration and the isotopic composition (Fig. S7-S8). These parameters alter the dynamics within a relatively small range close to their respective values. Thus, the MOX rate is most sensitive to changes of  $h_{CH_4}$  where the  $CH_4$  concentration is close to 60 nM, and similarly, most sensitive to changes of  $h_{O_2}$  where the  $O_2$  concentration is close to 100  $\mu M$  (Table 1). At high concentrations compared to the values of  $h_{CH_4}$  and  $h_{O_2}$ , we do not expect a large impact by adjusting these  
635 constants. On the other hand: at low concentrations compared to the constants, the sensitivity to changed values of  $h_{CH_4}$  and  $h_{O_2}$  is expected to be similar to changing the potential maximum rate constant ( $v_{WCH_4_{O_2}}$ ).

In these particular experiments,  $CH_4$  dynamics are more sensitive to changes in  $h_{O_2}$  than  $h_{CH_4}$ , and the reason for this is the relatively large water volume where the  $O_2$  concentration is close to  $h_{O_2}$ , while the  $CH_4$  concentration on the other hand is only close to  $h_{CH_4}$  in a comparatively narrow band at intermediate depths. The modified  $CH_4$  dynamics are, however, transferred to  
640 other depths by turbulent diffusion and vertical internal circulation ('old' water mixing into the intruding new deep water), which means that altered  $CH_4$  concentrations,  $\delta$  values, and MOX rates are (more or less) apparent throughout the entire water column.

Adjusting the fractionation during  $CH_4$  oxidation by  $\pm 4\%$  (tests 7-8) has no influence on  $CH_4$  oxidation rates and concentrations, but a relatively strong (and predictable) impact on  $\delta^{13}C$ - $CH_4$  values throughout the entire water column (Fig.  
645 S9).

#### 4.1.2 Sediment source: $CH_4$ release and isotopic composition

As indicated in Sect. 4, it is expected that the isotopic composition of the sediment source differs between different locations depending on the degree of oxidation in the pore water. The rate of  $CH_4$  release is also expected to depend on the balance between benthic  $CH_4$  production and oxidation, respectively. Adjusting the  $\delta^{13}C$ - $CH_4$  value of the sediment source by  $\pm 10\%$   
650 during oxic conditions (tests 9-10) has no influence on  $CH_4$  oxidation rates and concentrations, but a strong (and predictable) impact on  $\delta^{13}C$ - $CH_4$  profiles (Fig. S10).

In experiments where the rate of CH<sub>4</sub> release from the sediments source was adjusted by ± 50‰ during oxic conditions (tests 11-12), strong impacts are apparent for both the CH<sub>4</sub> concentration and isotopic composition throughout the water column. Deep water MOX rates are however less sensitive since the rates in these cases depend more on O<sub>2</sub> concentration – which is  
655 very similar between the two experiments (not shown) – than CH<sub>4</sub> concentrations (Fig. S11).

#### 4.2 Caveats and outlook

As previously discussed, the main uncertainty in the model simulations lies in our limited understanding of CH<sub>4</sub> release from different sediment areas, as well as the isotopic composition of CH<sub>4</sub> released into the water column. Both the flux and the isotopic composition depend on the balance between production and oxidation rates in the sediment. A high production could  
660 be compensated by high oxidation and thus result in a relatively small CH<sub>4</sub> release to the water column in spite of a large production. This would then be evident by a <sup>13</sup>C-CH<sub>4</sub> enrichment, i.e., comparatively heavy CH<sub>4</sub>. Alternatively, a relatively small CH<sub>4</sub> production could still result in a substantial release to the water column in a case where the oxidation rate is low, which would then also be evident by CH<sub>4</sub> depleted in <sup>13</sup>C-CH<sub>4</sub>, i.e., comparatively light CH<sub>4</sub>.

Improved knowledge of properties of CH<sub>4</sub> released from sediment to water column in different areas of the Baltic Sea (e.g.,  
665 the Kattegat and the major gulfs – the Gulf of Bothnia, Gulf of Riga, and Gulf of Finland) would help to improve model parameterizations and thus reduce the main uncertainties of model simulations. This was, however, beyond the scope of the present study because of the missing knowledge concerning both temporal and spatial patterns of the CH<sub>4</sub> source. A logical progression at this stage would involve detailed observations combined with modeling studies focused on processes in the sediments, i.e., production and oxidation rates, depending on carbon accumulation rate, oxygen conditions, and the presence  
670 of methanotrophs.

A crucial missing link in this study is the formation, transport, and fate of CH<sub>4</sub> bubbles. Estimates by Weber et al. (2019) indicate that ebullitive fluxes contribute a major fraction of CH<sub>4</sub> released to the atmosphere from shallow coastal areas. Ebullition events have been observed in the Baltic Sea, both at coastal sites (e.g., Humborg et al., 2019; Lohrberg et al., 2020; Lehoux et al., 2021; Hermans et al., submitted) and deep water accumulation bottoms (C. Stranne, unpublished data). Ebullition  
675 has been included in lake models (e.g., Greene et al., 2014; Stepanenko et al., 2016; Bayer et al., 2019); however, we do not have experimental data to calibrate and validate the large-scale influence of ebullition in the Baltic Sea. The calibrated benthic CH<sub>4</sub> source represents a “bulk” CH<sub>4</sub> release, including in theory both the influences of diffusive flux and bubble dissolution on CH<sub>4</sub> concentrations in the water column. However, CH<sub>4</sub> ebullition might bypass methanotrophy and consequently contribute to higher CH<sub>4</sub> emissions, in particular in shallow-water areas (e.g., Broman et al., 2020). This indicates that the simulated CH<sub>4</sub>  
680 outgassing is likely underestimating the real outgassing from the Baltic Sea. Observations of ebullitive fluxes in combination with development of model parameterizations represent important steps to better describe and quantify CH<sub>4</sub> emissions from the Baltic Sea.

Roth et al. (2023) observed significant CH<sub>4</sub> production and release from vegetated oxic shallow-water areas. BALTSEM-CH<sub>4</sub> v1.0 does not differentiate between vegetated and unvegetated areas, which means that this CH<sub>4</sub> source – and its contribution

685 to outgassing – could not be addressed here, which consequently represents another gap in our current understanding. Both species distribution models and process-based models for vegetation exist (e.g., Lappalainen et al., 2019; Graiff et al., 2020), but to our knowledge do not include CH<sub>4</sub> dynamics. Hence, the inclusion of CH<sub>4</sub> in vegetation models could potentially serve as an objective for future scientific projects.

The process parameterizations used in this study to describe large-scale CH<sub>4</sub> cycling in the Baltic Sea can also be applied in various other domains. As part of our future plans, we aim to investigate CH<sub>4</sub> dynamics in a smaller area where more observations are available and where the CH<sub>4</sub> concentration and isotopic composition, as well as properties of end-members (river load, benthic release, and lateral boundary conditions), are better understood. This would further help to constrain process rates in the model.

The calculated average total CH<sub>4</sub> emission of 980 Mmol y<sup>-1</sup> corresponds to approximately 0.04 g CH<sub>4</sub> m<sup>-2</sup> y<sup>-1</sup>, and constitutes only about 13% of the calibrated sediment source (~0.3 g CH<sub>4</sub> m<sup>-2</sup> y<sup>-1</sup>). The model includes both shallow- and deep water sediment areas, but the calibrated sediment source is in the lower range of rates reported for a shallow-water coastal area (0.34-0.55 g CH<sub>4</sub> m<sup>-2</sup> y<sup>-1</sup>; Roth et al., 2023), indicating that the model might not well represent coastal CH<sub>4</sub> hotspots. One major knowledge gap at this point is the relative importance of shallow coastal areas compared to the open Baltic Sea in terms of CH<sub>4</sub> outgassing. This is an important scientific question that needs to be addressed in future studies.

## 700 **Code and data availability**

All model output data for the standard model run, as well as the version of the model source code used in this study are archived on Zenodo at <https://doi.org/10.5281/zenodo.10037197> (last access: 24 October 2023). In addition to model output and source code, the archive includes initial profiles, boundary conditions, meteorological forcing, runoff, as well as river loads, point sources, and atmospheric depositions of dissolved and particulate constituents.

## 705 **Author contributions**

E.G. wrote the first draft of the manuscript with contributions from all co-authors. E.G. developed the CH<sub>4</sub> model components, and designed and performed the model experiments and analyses. B.G. is the main developer of the BALTSEM model.

## **Competing interests**

710 The contact author has declared that none of the authors has any competing interests.

## Acknowledgements

This research is part of the University of Helsinki and Stockholm University collaborative research initiative (CoastClim, [www.coastclim.org](http://www.coastclim.org); The Baltic Bridge initiative). Financial support was provided by the Swedish Research Council (VR) grant 2021-04641. The Baltic Nest Institute is supported by The Swedish Agency for Marine and Water Management through their grant 1:11 – Measures for marine and water environment.

## Appendix A: State variables and biogeochemical transformation processes

Table A1. Pelagic and sediment state variables in BALTSEM-CH<sub>4</sub> v1.0.

State variable	Description	Unit
<i>Pelagic</i>		
SAL	Salinity	-
T	Temperature	°C
OXY	Dissolved oxygen	g O <sub>2</sub> m <sup>-3</sup>
NH	Ammonium	mg N m <sup>-3</sup>
NO	Nitrate + nitrite	mg N m <sup>-3</sup>
PO	Phosphate	mg P m <sup>-3</sup>
SiO	Dissolved silica	mg Si m <sup>-3</sup>
DETN	Detrital N	mg N m <sup>-3</sup>
DETP	Detrital P	mg P m <sup>-3</sup>
DETSi	Detrital Si	mg Si m <sup>-3</sup>
DETCm	Detrital C (autochthonous)	mg C m <sup>-3</sup>
DETCt	Detrital C (allochthonous)	mg C m <sup>-3</sup>
PHY1	Phytoplankton group 1, N <sub>2</sub> fixers	mg N m <sup>-3</sup>
PHY2	Phytoplankton group 2, diatoms	mg N m <sup>-3</sup>
PHY3	Phytoplankton group 3, other phytoplankton	mg N m <sup>-3</sup>
ZOO	Heterotrophs/zooplankton	mg N m <sup>-3</sup>
DONL	Labile dissolved organic N	mg N m <sup>-3</sup>
DONR	Refractory dissolved organic N	mg N m <sup>-3</sup>
DOPL	Labile dissolved organic P	mg P m <sup>-3</sup>
DOPR	Refractory dissolved organic P	mg P m <sup>-3</sup>
DOCLt	Labile dissolved organic C (allochthonous)	mg C m <sup>-3</sup>
DOCRt	Refractory dissolved organic C (allochthonous)	mg C m <sup>-3</sup>

DOCLm	Labile dissolved organic C (autochthonous)	mg C m <sup>-3</sup>
DOCRm	Refractory dissolved organic C (autochthonous)	mg C m <sup>-3</sup>
DIC	Dissolved inorganic carbon	mmol m <sup>-3</sup>
ALK	Total alkalinity	mmol m <sup>-3</sup>
HS	Hydrogen sulfide	mg S m <sup>-3</sup>
12CH4	<sup>12</sup> C methane	μmol m <sup>-3</sup>
13CH4	<sup>13</sup> C methane	μmol m <sup>-3</sup>
<i>Sediment</i>		
SEDN	Sedimentary organic N	mg N m <sup>-2</sup>
SEDP	Sedimentary organic P	mg P m <sup>-2</sup>
SEDSi	Sedimentary organic Si	mg Si m <sup>-2</sup>
SEDCm	Sedimentary organic C (autochthonous)	mg C m <sup>-2</sup>
SEDCt	Sedimentary organic C (allochthonous)	mg C m <sup>-2</sup>

---

## Appendix B: Model forcing

720 Model forcing consists of actual weather data and observed nutrient loads as well as calibrated carbon and total alkalinity loads (Gustafsson and Gustafsson, 2020) covering the period 1970-2020. River runoff, land loads, and atmospheric depositions were based on Pollution Load Compilation data (PLC; HELCOM, 2021) as well as other sources (Gustafsson et al., 2012). Atmospheric forcing was constructed from data provided by the Swedish Meteorological and Hydrological Institute (SMHI): RCA-ERA40 (1970-2006), Hirnam-Mesan (2007-2015), and Arome-Mesan (2016-2020). The Kattegat water level and also boundary conditions in the Skagerrak were based on data provided by the SMHI (Gustafsson et al., 2012).

## 725 References

- Asplund, M. E., Bonaglia, S., Boström, C., Dahl, M., Deyanova, D., Gagnon, K., Gullström, M., Holmer, M., and Björk, M.: Methane Emissions From Nordic Seagrass Meadow Sediments, *Front. Mar. Sci.*, 8, <https://doi.org/10.3389/fmars.2021.811533>, 2022.
- 730 Atkins, M. L., Santos, I. R., and Maher, D. T.: Seasonal exports and drivers of dissolved inorganic and organic carbon, carbon dioxide, methane and δ<sup>13</sup>C signatures in a subtropical river network, *Science of The Total Environment*, 575, 545–563, <https://doi.org/10.1016/j.scitotenv.2016.09.020>, 2017.
- Axell, L. B.: On the variability of Baltic Sea deepwater mixing, *Journal of Geophysical Research: Oceans*, 103, 21667–21682, <https://doi.org/10.1029/98JC01714>, 1998.

- Bange, H. W., Bartell, U. H., Rapsomanikis, S., and Andreae, M. O.: Methane in the Baltic and North Seas and a reassessment of the marine emissions of methane, *Global Biogeochem. Cycles*, 8, 465–480, <https://doi.org/10.1029/94GB02181>, 1994.
- 735 Bayer, T. K., Gustafsson, E., Brakebusch, M., and Beer, C.: Future Carbon Emission From Boreal and Permafrost Lakes Are Sensitive to Catchment Organic Carbon Loads, *Journal of Geophysical Research: Biogeosciences*, 124, 1827–1848, <https://doi.org/10.1029/2018JG004978>, 2019.
- Bižić, M., Klintzsch, T., Ionescu, D., Hindiyeh, M. Y., Günthel, M., Muro-Pastor, A. M., Eckert, W., Urich, T., Keppler, F., and Grossart, H.-P.: Aquatic and terrestrial cyanobacteria produce methane, *Sci. Adv.*, 6, eaax5343, <https://doi.org/10.1126/sciadv.aax5343>, 2020.
- 740 Björk, G.: The relation between ice deformation, oceanic heat flux, and the ice thickness distribution in the Arctic Ocean, *Journal of Geophysical Research: Oceans*, 102, 18681–18698, <https://doi.org/10.1029/97JC00789>, 1997.
- Borges, A. V., Champenois, W., Gypens, N., Delille, B., and Harlay, J.: Massive marine methane emissions from near-shore shallow coastal areas, *Sci Rep*, 6, 27908, <https://doi.org/10.1038/srep27908>, 2016.
- 745 Broman, E., Sun, X., Stranne, C., Salgado, M. G., Bonaglia, S., Geibel, M., Jakobsson, M., Norkko, A., Humborg, C., and Nascimento, F. J. A.: Low Abundance of Methanotrophs in Sediments of Shallow Boreal Coastal Zones With High Water Methane Concentrations, *Frontiers in Microbiology*, 11, <https://doi.org/10.3389/fmicb.2020.01536>, 2020.
- Carstensen, J., Andersen, J. H., Gustafsson, B. G., and Conley, D. J.: Deoxygenation of the Baltic Sea during the last century, *PNAS*, 111, 5628–5633, <https://doi.org/10.1073/pnas.1323156111>, 2014.
- 750 Chan, E. W., Shiller, A. M., Joung, D. J., Arrington, E. C., Valentine, D. L., Redmond, M. C., Breier, J. A., Socolofsky, S. A., and Kessler, J. D.: Investigations of Aerobic Methane Oxidation in Two Marine Seep Environments: Part 1—Chemical Kinetics, *Journal of Geophysical Research: Oceans*, 124, 8852–8868, <https://doi.org/10.1029/2019JC015594>, 2019a.
- Chan, E. W., Shiller, A. M., Joung, D. J., Arrington, E. C., Valentine, D. L., Redmond, M. C., Breier, J. A., Socolofsky, S. A., and Kessler, J. D.: Investigations of Aerobic Methane Oxidation in Two Marine Seep Environments: Part 2—Isotopic Kinetics, *Journal of Geophysical Research: Oceans*, 124, 8392–8399, <https://doi.org/10.1029/2019JC015603>, 2019b.
- 755 Chuang, P.-C., Yang, T. F., Wallmann, K., Matsumoto, R., Hu, C.-Y., Chen, H.-W., Lin, S., Sun, C.-H., Li, H.-C., Wang, Y., and Dale, A. W.: Carbon isotope exchange during anaerobic oxidation of methane (AOM) in sediments of the northeastern South China Sea, *Geochimica et Cosmochimica Acta*, 246, 138–155, <https://doi.org/10.1016/j.gca.2018.11.003>, 2019.
- 760 Crespo-Medina, M., Meile, C. D., Hunter, K. S., Diercks, A.-R., Asper, V. L., Orphan, V. J., Tavormina, P. L., Nigro, L. M., Battles, J. J., Chanton, J. P., Shiller, A. M., Joung, D.-J., Amon, R. M. W., Bracco, A., Montoya, J. P., Villareal, T. A., Wood, A. M., and Joye, S. B.: The rise and fall of methanotrophy following a deepwater oil-well blowout, *Nature Geosci*, 7, 423–427, <https://doi.org/10.1038/ngeo2156>, 2014.
- 765 Damm, E., Helmke, E., Thoms, S., Schauer, U., Nöthig, E., Bakker, K., and Kiene, R. P.: Methane production in aerobic oligotrophic surface water in the central Arctic Ocean, *Biogeosciences*, 7, 1099–1108, <https://doi.org/10.5194/bg-7-1099-2010>, 2010.



- Dickson, A. G., Sabine, C. L., and Christian, J. R. (Eds.): Guide to best practices for ocean CO<sub>2</sub> measurements. PICES Special Publication 3, North Pacific Marine Science Organization, Sidney, BC, 191 pp., 2007.
- 770 Egger, M., Hagens, M., Sapart, C. J., Dijkstra, N., van Helmond, N. A. G. M., Mogollón, J. M., Risgaard-Petersen, N., van der Veen, C., Kasten, S., Riedinger, N., Böttcher, M. E., Röckmann, T., Jørgensen, B. B., and Slomp, C. P.: Iron oxide reduction in methane-rich deep Baltic Sea sediments, *Geochimica et Cosmochimica Acta*, 207, 256–276, <https://doi.org/10.1016/j.gca.2017.03.019>, 2017.
- 775 Etminan, M., Myhre, G., Highwood, E. J., and Shine, K. P.: Radiative forcing of carbon dioxide, methane, and nitrous oxide: A significant revision of the methane radiative forcing, *Geophysical Research Letters*, 43, 12,614–12,623, <https://doi.org/10.1002/2016GL071930>, 2016.
- Ferretti, D. F., Miller, J. B., White, J. W. C., Etheridge, D. M., Lassey, K. R., Lowe, D. C., Meure, C. M. M., Dreier, M. F., Trudinger, C. M., van Ommen, T. D., and Langenfelds, R. L.: Unexpected Changes to the Global Methane Budget over the Past 2000 Years, *Science*, 309, 1714–1717, <https://doi.org/10.1126/science.1115193>, 2005.
- 780 Fuex, A. N.: Experimental evidence against an appreciable isotopic fractionation of methane during migration, *Physics and Chemistry of the Earth*, 12, 725–732, [https://doi.org/10.1016/0079-1946\(79\)90153-8](https://doi.org/10.1016/0079-1946(79)90153-8), 1980.
- Graiff, A., Karsten, U., Radtke, H., Wahl, M., and Eggert, A.: Model simulation of seasonal growth of *Fucus vesiculosus* in its benthic community, *Limnology and Oceanography: Methods*, 18, 89–115, <https://doi.org/10.1002/lom3.10351>, 2020.
- 785 Greene, S., Walter Anthony, K. M., Archer, D., Sepulveda-Jauregui, A., and Martinez-Cruz, K.: Modeling the impediment of methane ebullition bubbles by seasonal lake ice, *Biogeosciences*, 11, 6791–6811, <https://doi.org/10.5194/bg-11-6791-2014>, 2014.
- Grunwald, M., Dellwig, O., Beck, M., Dippner, J. W., Freund, J. A., Kohlmeier, C., Schnetger, B., and Brumsack, H.-J.: Methane in the southern North Sea: Sources, spatial distribution and budgets, *Estuarine, Coastal and Shelf Science*, 81, 445–456, <https://doi.org/10.1016/j.ecss.2008.11.021>, 2009.
- 790 Gu, C., Waldron, S., and Bass, A. M.: Carbon dioxide, methane, and dissolved carbon dynamics in an urbanized river system, *Hydrological Processes*, 35, e14360, <https://doi.org/10.1002/hyp.14360>, 2021.
- Gustafsson, B. G.: Time-dependent modeling of the Baltic entrance area. 1. Quantification of circulation and residence times in the Kattegat and the Straits of the Baltic sill, *Estuaries*, 23, 231–252, <https://doi.org/10.2307/1352830>, 2000.
- Gustafsson, B.: A time-dependent coupled-basin model for the Baltic Sea, C47, Göteborg: Earth Sciences Centre, Göteborg University, 2003.
- 795 Gustafsson, E., Mörth, C.-M., Humborg, C., and Gustafsson, B. G.: Modelling the <sup>13</sup>C and <sup>12</sup>C isotopes of inorganic and organic carbon in the Baltic Sea, *Journal of Marine Systems*, 148, 122–130, <https://doi.org/10.1016/j.jmarsys.2015.02.008>, 2015.
- Gustafsson, B. G., Schenk, F., Blenckner, T., Eilola, K., Meier, H. E. M., Müller-Karulis, B., Neumann, T., Ruoho-Airola, T., Savchuk, O. P., and Zorita, E.: Reconstructing the Development of Baltic Sea Eutrophication 1850–2006, *AMBIO*, 41, 534–548, <https://doi.org/10.1007/s13280-012-0318-x>, 2012.

- 800 Gustafsson, E., Deutsch, B., Gustafsson, B. G., Humborg, C., and Mörrh, C.-M.: Carbon cycling in the Baltic Sea — The fate of allochthonous organic carbon and its impact on air–sea CO<sub>2</sub> exchange, *Journal of Marine Systems*, 129, 289–302, <https://doi.org/10.1016/j.jmarsys.2013.07.005>, 2014.
- Gustafsson, E. and Gustafsson, B. G.: Future acidification of the Baltic Sea – A sensitivity study, *Journal of Marine Systems*, 211, 103397, <https://doi.org/10.1016/j.jmarsys.2020.103397>, 2020.
- 805 Gustafsson, E., Mörrh, C.-M., Humborg, C., and Gustafsson, B. G.: Modelling the <sup>13</sup>C and <sup>12</sup>C isotopes of inorganic and organic carbon in the Baltic Sea, *Journal of Marine Systems*, 148, 122–130, <https://doi.org/10.1016/j.jmarsys.2015.02.008>, 2015.
- Gustafsson, E., Savchuk, O. P., Gustafsson, B. G., and Müller-Karulis, B.: Key processes in the coupled carbon, nitrogen, and phosphorus cycling of the Baltic Sea, *Biogeochemistry*, 134, 301–317, <https://doi.org/10.1007/s10533-017-0361-6>, 2017.
- Gülzow, W., Gräwe, U., Kedzior, S., Schmale, O., and Rehder, G.: Seasonal variation of methane in the water column of  
810 Arkona and Bornholm Basin, western Baltic Sea, *Journal of Marine Systems*, 139, 332–347, <https://doi.org/10.1016/j.jmarsys.2014.07.013>, 2014.
- Gülzow, W., Rehder, G., Schneider v. Deimling, J., Seifert, T., and Tóth, Z.: One year of continuous measurements constraining methane emissions from the Baltic Sea to the atmosphere using a ship of opportunity, *Biogeosciences*, 10, 81–99, <https://doi.org/10.5194/bg-10-81-2013>, 2013.
- 815 Hansson, M. and Viktorsson, L.: Oxygen Survey in the Baltic Sea 2022 - Extent of Anoxia and Hypoxia, 1960-2022, SMHI, Göteborg, 2023.
- Happell, J. D., Chanton, J. P., and Showers, W. J.: Methane transfer across the water-air interface in stagnant wooded swamps of Florida: Evaluation of mass-transfer coefficients and isotropic fractionation, *Limnology and Oceanography*, 40, 290–298, <https://doi.org/10.4319/lo.1995.40.2.0290>, 1995.
- 820 HELCOM: HELCOM Baltic Sea Action Plan – 2021 update. Available at <http://helcom.fi>, 2021.
- Hermans, M., Stranne, C., Broman, E., Sokolov, A., Roth, F., Nascimento, F. J. A., Mörrh, C.-M., ten Hietbrink, S., Sun, X., Gustafsson, E., Gustafsson, B. G., Norkko, A., Jilbert, T., and Humborg, C.: Ebullition dominates methane emissions in stratified coastal waters, submitted to *Science of The Total Environment*.
- Hoehler, T. M., Alperin, M. J., Albert, D. B., and Martens, C. S.: Field and laboratory studies of methane oxidation in an  
825 anoxic marine sediment: Evidence for a methanogen-sulfate reducer consortium, *Global Biogeochemical Cycles*, 8, 451–463, <https://doi.org/10.1029/94GB01800>, 1994.
- Hoffman, D. W. and Rasmussen, C.: Absolute Carbon Stable Isotope Ratio in the Vienna Peedee Belemnite Isotope Reference Determined by <sup>1</sup>H NMR Spectroscopy, *Anal. Chem.*, 94, 5240–5247, <https://doi.org/10.1021/acs.analchem.1c04565>, 2022.
- Holmes, M. E., Sansone, F. J., Rust, T. M., and Popp, B. N.: Methane production, consumption, and air-sea exchange in the  
830 open ocean: An Evaluation based on carbon isotopic ratios, *Global Biogeochemical Cycles*, 14, 1–10, <https://doi.org/10.1029/1999GB001209>, 2000.

- Humborg, C., Geibel, Marc. C., Sun, X., McCrackin, M., Mörth, C.-M., Stranne, C., Jakobsson, M., Gustafsson, B., Sokolov, A., Norkko, A., and Norkko, J.: High Emissions of Carbon Dioxide and Methane From the Coastal Baltic Sea at the End of a Summer Heat Wave, *Frontiers in Marine Science*, 6, <https://doi.org/10.3389/fmars.2019.00493>, 2019.
- 835 Jakobs, G., Holtermann, P., Berndmeyer, C., Rehder, G., Blumenberg, M., Jost, G., Nausch, G., and Schmale, O.: Seasonal and spatial methane dynamics in the water column of the central Baltic Sea (Gotland Sea), *Continental Shelf Research*, 91, 12–25, <https://doi.org/10.1016/j.csr.2014.07.005>, 2014.
- Jakobs, G., Rehder, G., Jost, G., Kiebllich, K., Labrenz, M., and Schmale, O.: Comparative studies of pelagic microbial methane oxidation within the redox zones of the Gotland Deep and Landsort Deep (central Baltic Sea), *Biogeosciences*, 10, 7863–7875, <https://doi.org/10.5194/bg-10-7863-2013>, 2013.
- 840 Jørgensen, B. B., Bang, M., and Blackburn, T.: Anaerobic mineralization in marine sediments from the Baltic Sea-North Sea transition, *Marine Ecology Progress Series*, 59, 39–54, 1990.
- Karl, D. M., Beversdorf, L., Björkman, K. M., Church, M. J., Martinez, A., and Delong, E. F.: Aerobic production of methane in the sea, *Nature Geosci*, 1, 473–478, <https://doi.org/10.1038/ngeo234>, 2008.
- 845 Karl, D. M. and Tilbrook, B. D.: Production and transport of methane in oceanic particulate organic matter, *Nature*, 368, 732–734, <https://doi.org/10.1038/368732a0>, 1994.
- Kessler, J. D., Valentine, D. L., Redmond, M. C., Du, M., Chan, E. W., Mendes, S. D., Quiroz, E. W., Villanueva, C. J., Shusta, S. S., Werra, L. M., Yvon-Lewis, S. A., and Weber, T. C.: A Persistent Oxygen Anomaly Reveals the Fate of Spilled Methane in the Deep Gulf of Mexico, *Science*, 331, 312–315, <https://doi.org/10.1126/science.1199697>, 2011.
- 850 Ketzer, M., Stranne, C., Rahmati-Abkenar, M., Shahabi-Ghahfarokhi, S., Jaeger, L., Pivel, M. A. G., Josefsson, S., and Zillén, L.: Near seafloor methane flux in the world’s largest human-induced dead zone is regulated by sediment accumulation rate, *Marine Geology*, 468, 107220, <https://doi.org/10.1016/j.margeo.2024.107220>, 2024.
- Knox, M., Quay, P. D., and Wilbur, D.: Kinetic isotopic fractionation during air-water gas transfer of O<sub>2</sub>, N<sub>2</sub>, CH<sub>4</sub>, and H<sub>2</sub>, *Journal of Geophysical Research: Oceans*, 97, 20335–20343, <https://doi.org/10.1029/92JC00949>, 1992.
- 855 Kremling, K.: Untersuchungen Über die chemische Zusammensetzung des Meerwassers aus der Ostsee, III. Frühjahr 1969-Herbst 1970, *Kiel. Meeresforsch.*, 28, 99-118. <https://oceanrep.geomar.de/id/eprint/54305/>, 1972.
- Kuliński, K., Rehder, G., Asmala, E., Bartosova, A., Carstensen, J., Gustafsson, B., Hall, P. O. J., Humborg, C., Jilbert, T., Jürgens, K., Meier, H. E. M., Müller-Karulis, B., Naumann, M., Olesen, J. E., Savchuk, O., Schramm, A., Slomp, C. P., Sofiev, M., Sobek, A., Szymczycha, B., and Undeman, E.: Biogeochemical functioning of the Baltic Sea, *Earth System Dynamics*, 13, 633–685, <https://doi.org/10.5194/esd-13-633-2022>, 2022.
- 860 Lan, X., Basu, S., Schwietzke, S., Bruhwiler, L. M. P., Dlugokencky, E. J., Michel, S. E., Sherwood, O. A., Tans, P. P., Thoning, K., Etiope, G., Zhuang, Q., Liu, L., Oh, Y., Miller, J. B., Pétron, G., Vaughn, B. H., and Crippa, M.: Improved Constraints on Global Methane Emissions and Sinks Using  $\delta^{13}\text{C-CH}_4$ , *Global Biogeochemical Cycles*, 35, e2021GB007000, <https://doi.org/10.1029/2021GB007000>, 2021.

- 865 Lappalainen, J., Virtanen, E. A., Kallio, K., Junttila, S., and Viitasalo, M.: Substrate limitation of a habitat-forming genus *Fucus* under different water clarity scenarios in the northern Baltic Sea, *Estuarine, Coastal and Shelf Science*, 218, 31–38, <https://doi.org/10.1016/j.ecss.2018.11.010>, 2019.
- Lehoux, A. P., Isidorova, A., Collin, F., Koestel, J., Snowball, I., and Dahlberg, A.-K.: Extreme gas production in anthropogenic fibrous sediments: An overlooked biogenic source of greenhouse gas emissions, *Science of The Total Environment*, 781, 146772, <https://doi.org/10.1016/j.scitotenv.2021.146772>, 2021.
- 870 Lenhart, K., Klintzsch, T., Langer, G., Nehrke, G., Bunge, M., Schnell, S., and Keppler, F.: Evidence for methane production by the marine algae *Emiliania huxleyi*, *Biogeosciences*, 13, 3163–3174, <https://doi.org/10.5194/bg-13-3163-2016>, 2016.
- Lohrberg, A., Schmale, O., Ostrovsky, I., Niemann, H., Held, P., and Schneider von Deimling, J.: Discovery and quantification of a widespread methane ebullition event in a coastal inlet (Baltic Sea) using a novel sonar strategy, *Sci Rep*, 10, 4393, <https://doi.org/10.1038/s41598-020-60283-0>, 2020.
- 875 Lopes, F., Viollier, E., Thiam, A., Michard, G., Abril, G., Groleau, A., Prévot, F., Carrias, J.-F., Albéric, P., and Jézéquel, D.: Biogeochemical modelling of anaerobic vs. aerobic methane oxidation in a meromictic crater lake (Lake Pavin, France), *Applied Geochemistry*, 26, 1919–1932, <https://doi.org/10.1016/j.apgeochem.2011.06.021>, 2011.
- Lundevall-Zara, M., Lundevall-Zara, E., and Brüchert, V.: Sea-Air Exchange of Methane in Shallow Inshore Areas of the 880 Baltic Sea, *Frontiers in Marine Science*, 8, <https://doi.org/10.3389/fmars.2021.657459>, 2021.
- Malakhova, V. and Golubeva, E.: Model Study of the Effects of Climate Change on the Methane Emissions on the Arctic Shelves, *Atmosphere*, 13, 274, <https://doi.org/10.3390/atmos13020274>, 2022.
- Martinez-Cruz, K., Sepulveda-Jauregui, A., Walter Anthony, K., and Thalasso, F.: Geographic and seasonal variation of dissolved methane and aerobic methane oxidation in Alaskan lakes, *Biogeosciences*, 12, 4595–4606, <https://doi.org/10.5194/bg-12-4595-2015>, 2015.
- 885 Myllykangas, J.-P., Jilbert, T., Jakobs, G., Rehder, G., Werner, J., and Hietanen, S.: Effects of the 2014 major Baltic inflow on methane and nitrous oxide dynamics in the water column of the central Baltic Sea, *Earth System Dynamics*, 8, 817–826, <https://doi.org/10.5194/esd-8-817-2017>, 2017.
- Myllykangas, J.-P., Rissanen, A. J., Hietanen, S., and Jilbert, T.: Influence of electron acceptor availability and microbial 890 community structure on sedimentary methane oxidation in a boreal estuary, *Biogeochemistry*, 148, 291–309, <https://doi.org/10.1007/s10533-020-00660-z>, 2020.
- Nihous, G. C. and Masutani, S. M.: A model of methane concentration profiles in the open ocean, *J Mar Res*, 64, 629–650, <https://doi.org/10.1357/002224006778715748>, 2006.
- Nohr, C., Björk, G., and Gustafsson, B. G.: A dynamic sea ice model based on the formation direction of leads, *Cold Regions Science and Technology*, 58, 36–46, <https://doi.org/10.1016/j.coldregions.2009.04.005>, 2009.
- 895 Osudar, R., Matoušů, A., Alawi, M., Wagner, D., and Bussmann, I.: Environmental factors affecting methane distribution and bacterial methane oxidation in the German Bight (North Sea), *Estuarine, Coastal and Shelf Science*, 160, 10–21, <https://doi.org/10.1016/j.ecss.2015.03.028>, 2015.

- Pack, M. A., Heintz, M. B., Reeburgh, W. S., Trumbore, S. E., Valentine, D. L., Xu, X., and Druffel, E. R. M.: Methane oxidation in the eastern tropical North Pacific Ocean water column, *Journal of Geophysical Research: Biogeosciences*, 120, 1078–1092, <https://doi.org/10.1002/2014JG002900>, 2015.
- Quay, P. D., King, S. L., Lansdown, J. M., and Wilbur, D. O.: Isotopic composition of methane released from wetlands: Implications for the increase in atmospheric methane, *Global Biogeochemical Cycles*, 2, 385–397, <https://doi.org/10.1029/GB002i004p00385>, 1988.
- Reeburgh, W. S.: Oceanic Methane Biogeochemistry, *Chem. Rev.*, 107, 486–513, <https://doi.org/10.1021/cr050362v>, 2007.
- Rehder, G., Keir, R. S., Suess, E., and Pohlmann, T.: The Multiple Sources and Patterns of Methane in North Sea Waters, *Aquatic Geochemistry*, 4, 403–427, <https://doi.org/10.1023/A:1009644600833>, 1998.
- Resplandy, L., Hogikyan, A., Müller, J. D., Najjar, R. G., Bange, H. W., Bianchi, D., Weber, T., Cai, W.-J., Doney, S. C., Fennel, K., Gehlen, M., Hauck, J., Lacroix, F., Landschützer, P., Le Quéré, C., Roobaert, A., Schwinger, J., Berthet, S., Bopp, L., Chau, T. T. T., Dai, M., Gruber, N., Ilyina, T., Kock, A., Manizza, M., Lachkar, Z., Laruelle, G. G., Liao, E., Lima, I. D., Nissen, C., Rödenbeck, C., Séférian, R., Toyama, K., Tsujino, H., and Regnier, P.: A Synthesis of Global Coastal Ocean Greenhouse Gas Fluxes, *Global Biogeochemical Cycles*, 38, e2023GB007803, <https://doi.org/10.1029/2023GB007803>, 2024.
- Rogener, M. K., Bracco, A., Hunter, K. S., Saxton, M. A., and Joye, S. B.: Long-term impact of the Deepwater Horizon oil well blowout on methane oxidation dynamics in the northern Gulf of Mexico, *Elementa: Science of the Anthropocene*, 6, 73, <https://doi.org/10.1525/elementa.332>, 2018.
- Rosentreter, J. A., Borges, A. V., Deemer, B. R., Holgerson, M. A., Liu, S., Song, C., Melack, J., Raymond, P. A., Duarte, C. M., Allen, G. H., Olefeldt, D., Poulter, B., Battin, T. I., and Eyre, B. D.: Half of global methane emissions come from highly variable aquatic ecosystem sources, *Nat. Geosci.*, 14, 225–230, <https://doi.org/10.1038/s41561-021-00715-2>, 2021.
- Roth, F., Broman, E., Sun, X., Bonaglia, S., Nascimento, F., Prytherch, J., Brüchert, V., Lundevall Zara, M., Brunberg, M., Geibel, M. C., Humborg, C., and Norkko, A.: Methane emissions offset atmospheric carbon dioxide uptake in coastal macroalgae, mixed vegetation and sediment ecosystems, *Nat Commun*, 14, 42, <https://doi.org/10.1038/s41467-022-35673-9>, 2023.
- Roth, F., Sun, X., Geibel, M. C., Prytherch, J., Brüchert, V., Bonaglia, S., Broman, E., Nascimento, F., Norkko, A., and Humborg, C.: High spatiotemporal variability of methane concentrations challenges estimates of emissions across vegetated coastal ecosystems, *Global Change Biology*, 28, 4308–4322, <https://doi.org/10.1111/gcb.16177>, 2022.
- Saunois, M., Stavert, A. R., Poulter, B., Bousquet, P., Canadell, J. G., Jackson, R. B., Raymond, P. A., Dlugokencky, E. J., Houweling, S., Patra, P. K., Ciais, P., Arora, V. K., Bastviken, D., Bergamaschi, P., Blake, D. R., Brailsford, G., Bruhwiler, L., Carlson, K. M., Carrol, M., Castaldi, S., Chandra, N., Crevoisier, C., Crill, P. M., Covey, K., Curry, C. L., Etiope, G., Frankenberg, C., Gedney, N., Hegglin, M. I., Höglund-Isaksson, L., Hugelius, G., Ishizawa, M., Ito, A., Janssens-Maenhout, G., Jensen, K. M., Joos, F., Kleinen, T., Krummel, P. B., Langenfelds, R. L., Laruelle, G. G., Liu, L., Machida, T., Maksyutov, S., McDonald, K. C., McNorton, J., Miller, P. A., Melton, J. R., Morino, I., Müller, J., Murguía-Flores, F., Naik, V., Niwa, Y., Noce, S., O'Doherty, S., Parker, R. J., Peng, C., Peng, S., Peters, G. P., Prigent, C., Prinn, R., Ramonet, M., Regnier, P., Riley,

- W. J., Rosentreter, J. A., Segers, A., Simpson, I. J., Shi, H., Smith, S. J., Steele, L. P., Thornton, B. F., Tian, H., Tohjima, Y., Tubiello, F. N., Tsuruta, A., Viovy, N., Voulgarakis, A., Weber, T. S., van Weele, M., van der Werf, G. R., Weiss, R. F.,  
935 Worthy, D., Wunch, D., Yin, Y., Yoshida, Y., Zhang, W., Zhang, Z., Zhao, Y., Zheng, B., Zhu, Q., Zhu, Q., and Zhuang, Q.:  
The Global Methane Budget 2000–2017, *Earth System Science Data*, 12, 1561–1623, <https://doi.org/10.5194/essd-12-1561-2020>, 2020.
- Savchuk, O. P.: Nutrient biogeochemical cycles in the Gulf of Riga: scaling up field studies with a mathematical model, *Journal of Marine Systems*, 32, 253–280, [https://doi.org/10.1016/S0924-7963\(02\)00039-8](https://doi.org/10.1016/S0924-7963(02)00039-8), 2002.
- 940 Savchuk, O.P., Gustafsson, B.G., Müller-Karulis, B.: BALTSEM - a marine model for the decision support within the Baltic Sea Region (Technical Report No. 7), BNI Technical Report Series, 2012.
- Schmale, O., Blumenberg, M., Kießlich, K., Jakobs, G., Berndmeyer, C., Labrenz, M., Thiel, V., and Rehder, G.: Aerobic methanotrophy within the pelagic redox-zone of the Gotland Deep (central Baltic Sea), *Biogeosciences*, 9, 4969–4977, <https://doi.org/10.5194/bg-9-4969-2012>, 2012.
- 945 Schmale, O., Krause, S., Holtermann, P., Power Guerra, N. C., and Umlauf, L.: Dense bottom gravity currents and their impact on pelagic methanotrophy at oxic/anoxic transition zones, *Geophysical Research Letters*, 43, 5225–5232, <https://doi.org/10.1002/2016GL069032>, 2016.
- Schmale, O., Schneider von Deimling, J., Gülzow, W., Nausch, G., Waniek, J. J., and Rehder, G.: Distribution of methane in the water column of the Baltic Sea, *Geophysical Research Letters*, 37, <https://doi.org/10.1029/2010GL043115>, 2010.
- 950 Schmale, O., Wäge, J., Mohrholz, V., Wasmund, N., Gräwe, U., Rehder, G., Labrenz, M., and Loick-Wilde, N.: The contribution of zooplankton to methane supersaturation in the oxygenated upper waters of the central Baltic Sea, *Limnology and Oceanography*, 63, 412–430, <https://doi.org/10.1002/lno.10640>, 2018.
- Scranton, M. I. and McShane, K.: Methane fluxes in the southern North Sea: the role of European rivers, *Continental Shelf Research*, 11, 37–52, [https://doi.org/10.1016/0278-4343\(91\)90033-3](https://doi.org/10.1016/0278-4343(91)90033-3), 1991.
- 955 Segers, R.: Methane production and methane consumption: a review of processes underlying wetland methane fluxes, *Biogeochemistry*, 41, 23–51, <https://doi.org/10.1023/A:1005929032764>, 1998.
- Slomp, C. P., Mort, H. P., Jilbert, T., Reed, D. C., Gustafsson, B. G., and Wolthers, M.: Coupled Dynamics of Iron and Phosphorus in Sediments of an Oligotrophic Coastal Basin and the Impact of Anaerobic Oxidation of Methane, *PLOS ONE*, 8, e62386, <https://doi.org/10.1371/journal.pone.0062386>, 2013.
- 960 Stawiarski, B., Otto, S., Thiel, V., Gräwe, U., Loick-Wilde, N., Wittenborn, A. K., Schloemer, S., Wäge, J., Rehder, G., Labrenz, M., Wasmund, N., and Schmale, O.: Controls on zooplankton methane production in the central Baltic Sea, *Biogeosciences*, 16, 1–16, <https://doi.org/10.5194/bg-16-1-2019>, 2019.
- Stepanenko, V., Mammarella, I., Ojala, A., Miettinen, H., Lykosov, V., and Vesala, T.: LAKE 2.0: a model for temperature, methane, carbon dioxide and oxygen dynamics in lakes, *Geoscientific Model Development*, 9, 1977–2006, <https://doi.org/10.5194/gmd-9-1977-2016>, 2016.
- 965

- Stigebrandt, A.: A Model for the Seasonal Pycnocline in Rotating Systems with Application to the Baltic Proper, *J. Phys. Oceanogr.*, 15, 1392–1404, [https://doi.org/10.1175/1520-0485\(1985\)015<1392:AMFTSP>2.0.CO;2](https://doi.org/10.1175/1520-0485(1985)015<1392:AMFTSP>2.0.CO;2), 1985.
- Stigebrandt, A.: A Model for the Vertical Circulation of the Baltic Deep Water, *J. Phys. Oceanogr.*, 17, 1772–1785, [https://doi.org/10.1175/1520-0485\(1987\)017<1772:AMFTVC>2.0.CO;2](https://doi.org/10.1175/1520-0485(1987)017<1772:AMFTVC>2.0.CO;2), 1987.
- 970 Stigebrandt, A. and Gustafsson, B. G.: Response of the Baltic Sea to climate change—theory and observations, *Journal of Sea Research*, 49, 243–256, [https://doi.org/10.1016/S1385-1101\(03\)00021-2](https://doi.org/10.1016/S1385-1101(03)00021-2), 2003.
- Tan, Z., Zhuang, Q., and Walter Anthony, K.: Modeling methane emissions from arctic lakes: Model development and site-level study, *Journal of Advances in Modeling Earth Systems*, 7, 459–483, <https://doi.org/10.1002/2014MS000344>, 2015.
- Upstill-Goddard, R. C., Barnes, J., Frost, T., Punshon, S., and Owens, N. J. P.: Methane in the southern North Sea: Low-salinity inputs, estuarine removal, and atmospheric flux, *Global Biogeochemical Cycles*, 14, 1205–1217, 975 <https://doi.org/10.1029/1999GB001236>, 2000.
- Van Bodegom, P., Goudriaan, J., and Leffelaar, P.: A mechanistic model on methane oxidation in a rice rhizosphere, *Biogeochemistry*, 55, 145–177, <https://doi.org/10.1023/A:1010640515283>, 2001.
- Wallin, M. B., Campeau, A., Audet, J., Bastviken, D., Bishop, K., Kokic, J., Laudon, H., Lundin, E., Löfgren, S., Natchimuthu, 980 S., Sobek, S., Teutschbein, C., Weyhenmeyer, G. A., and Grabs, T.: Carbon dioxide and methane emissions of Swedish low-order streams—a national estimate and lessons learnt from more than a decade of observations, *Limnology and Oceanography Letters*, 3, 156–167, <https://doi.org/10.1002/lol2.10061>, 2018.
- Wanninkhof, R.: Relationship between wind speed and gas exchange over the ocean revisited, *Limnology and Oceanography: Methods*, 12, 351–362, <https://doi.org/10.4319/lom.2014.12.351>, 2014.
- 985 Weber, T., Wiseman, N. A., and Kock, A.: Global ocean methane emissions dominated by shallow coastal waters, *Nat Commun*, 10, 4584, <https://doi.org/10.1038/s41467-019-12541-7>, 2019.
- Whiticar, M. J., Faber, E., and Schoell, M.: Biogenic methane formation in marine and freshwater environments: CO<sub>2</sub> reduction vs. acetate fermentation—Isotope evidence, *Geochimica et Cosmochimica Acta*, 50, 693–709, [https://doi.org/10.1016/0016-7037\(86\)90346-7](https://doi.org/10.1016/0016-7037(86)90346-7), 1986.
- 990 Whiticar, M. J.: Carbon and hydrogen isotope systematics of bacterial formation and oxidation of methane, *Chemical Geology*, 161, 291–314, [https://doi.org/10.1016/S0009-2541\(99\)00092-3](https://doi.org/10.1016/S0009-2541(99)00092-3), 1999.
- Wiesenburg, D. A. and Guinasso, N. L.: Equilibrium solubilities of methane, carbon monoxide, and hydrogen in water and sea water, *J. Chem. Eng. Data*, 24, 356–360, <https://doi.org/10.1021/jc60083a006>, 1979.
- Wählström, I. and Meier, H. E. M.: A model sensitivity study for the sea–air exchange of methane in the Laptev Sea, Arctic 995 Ocean, *Tellus B*, 66, <https://doi.org/10.3402/tellusb.v66.24174>, 2014.
- Zeebe, R.E., Wolf-Gladrow, D.: CO<sub>2</sub> in seawater: equilibrium, kinetics, isotopes. Elsevier Oceanography Series. Amsterdam, Elsevier Science, B.V. 346 pp, 2001.