

Energy conserving physics for nonhydrostatic dynamics in mass coordinate models

Oksana Guba¹, Mark A. Taylor¹, Peter A. Bosler¹, Christopher Eldred¹, and Peter H. Lauritzen²

¹Sandia National Laboratories, Albuquerque, NM, USA

²National Center for Atmospheric Research, Boulder, CO, USA

Correspondence: Oksana Guba (onguba@sandia.gov)

Abstract. Motivated by reducing errors in the energy budget related to enthalpy fluxes within Energy Exascale Earth System Model (E3SM), we study several physics-dynamics coupling approaches. Using idealized physics, a moist rising bubble test case, and E3SM's nonhydrostatic dynamical core, we consider unapproximated and approximated thermodynamics applied at constant pressure or constant volume. With the standard dynamics/physics time-split implementation, we describe how the constant pressure and constant volume approaches use different mechanisms to transform physics tendencies into dynamical motion, and show that only the constant volume approach is consistent with the underlying equations. Using timestep convergence studies, we show that the two approaches both converge, but to slightly different solutions. We reproduce the large inconsistencies between the energy flux internal to the model and the energy flux of precipitation when using approximate thermodynamics, which can only be removed by considering variable latent heats both when computing the latent heating from phase change as well as when applying this heating to update the temperature. Finally, we show that in the nonhydrostatic case, for physics applied at constant pressure, the general relation that enthalpy is locally conserved no longer holds. In this case, the conserved quantity is enthalpy plus an additional term proportional to the difference between the hydrostatic and full pressure.

1 Introduction

The primary motivation of this study is to improve energy treatment in the atmospheric component of the Energy Exascale Earth System Model (E3SM) (Golaz et al., 2019, 2022). The component, called E3SM Atmosphere Model (EAM) (Rasch et al., 2019), is a close cousin of the Community Atmosphere Model (CAM) (Neale et al., 2012, accessed July 02, 2021) of CESM, and the design choices regarding thermodynamics in EAM are inherited from CAM (Williamson et al., 2015).

A recently published comprehensive overview by Lauritzen et al. (2022) of thermodynamics in global atmospheric models describes a few deficiencies in EAM/CAM, including the inconsistent treatment of enthalpy (or energy) fluxes of water forms, both within the atmosphere and across its surface boundaries. In particular, there is a large disagreement between the enthalpy fluxes internal to the model as compared to the enthalpy fluxes implied by the associated mass fluxes (Harrop et al., 2022; Lauritzen et al., 2022). This inconsistency is the result of a few design decisions: (1) absence of water forms, except for the water vapor, in the total mass of moist air, (2) use of specific heat capacities of dry air in place of specific heat capacities of

25 water forms, (3) constant moist pressure assumption, which requires a moist pressure adjustment process, (4) each atmospheric process, including the moist pressure adjustment, is required to conserve energy, which has led to the use of fixers, and (5) the atmosphere and surface components explicitly exchange only mass fluxes of water, not energy fluxes.

Some of the above-mentioned issues (1)-(5) are present in other climate models, for example, nearly all of them, except for Centre National de Recherches Météorologiques Earth system model (CNRM-ESM1) (Séférián et al., 2016; Termonia et al., 30 2018), use specific heat capacities of dry air for water forms. In E3SM version 1 (E3SMv1) (Golaz et al., 2019) inconsistency (5) is corrected by a so-called internal energy flux (IEFLX), a global energy flux based on the heat capacity of liquid water. However, by design, IEFLX is another global energy fixer, which balances the energy budget of coupled simulations (i.e., simulations with active atmosphere and ocean components), but does not address all deficiencies in the atmospheric models described above.

35 To eliminate the need for energy fixers and to properly transfer energy of water forms within the atmosphere and at its interface, we first introduce into the model close to theoretical (or unapproximated) specific heat capacities of water forms and include contributions of all water forms into the moist mass. Second, we reconsider how moist physics packages use the first law of thermodynamics to compute temperature tendencies from phase changes. Interpretations of the first law of thermodynamics in physics-dynamics coupling is the primary focus of this study.

40 For this, we introduce a few assumptions and considerations and derive coupling mechanisms between the moist physics and the adiabatic dynamical core for constant pressure and constant volume approaches. Our constant pressure approach is an extension of the coupling method that is currently used in EAM/CAM and is applicable to the nonhydrostatic dynamics. For comparison, we also investigate two coupling mechanisms that resemble the coupling in EAM/CAM. One uses the specific heat capacity of the dry air for all species in the moist air, and the other one uses approximated specific heat capacities (in 45 contrast to unapproximated ones mentioned above) of water forms.

Using HOMME, the standalone setup of the dynamical core of EAM, and a simplified moist physics package from Reed and Jablonowski (2012), we provide comparisons of simulations with coupling mechanisms for a test case with a moist rising bubble. The test is commonly used in the literature (Bryan and Fritsch, 2002; Bendall et al., 2020; Liu et al., 2022). Unlike typical large-scale tests for climate modeling, the moist rising bubble test is characterized by an unstable initial state with 50 strong vertical velocities, which quickly trigger phase changes crucial for our studies.

In the setup presented here, we show the constant volume and constant pressure approaches can be significantly different with large timesteps. We also show that using approximations where the specific heat function is held constant when computing the latent heat release (such as done in EAM's physics parameterizations) always results in large inconsistencies between the change in the atmosphere's energy and the energy flux of sedimentation. Fixing this inconsistency in EAM requires the use 55 of variable latent heats both when computing the latent heat of phase change and when using this heating term to update the temperature.

2 Time-split physics

Many global atmospheric models use a time split or fractional step method to separate the dynamics from the physical parameterizations (henceforth referred to as *physics*), including EAM. In this section, we apply time-splitting to a system of equations which includes phase change and external heating, but no external mass fluxes. Splitting the dynamics from the physics, we derive the standard constant volume and, in the case of hydrostatic dynamics, constant pressure fractional physics steps with near-exact thermodynamics. In the nonhydrostatic case, the constant pressure update is inconsistent with the time-split equations, and we derive the nonhydrostatic fractional step based on conservation of energy and a local heating assumption.

We start by considering a system of equations written as

$$\frac{\partial}{\partial t}X(t) + H(X(t), t) = F(X(t), t) \quad (1)$$

where $X(t)$ represents a state vector of all our prognostic variables at time t , H represents the dynamical terms, and F represents the forcing terms usually computed by the physics. We use a standard time-split approach and advance the model by one time step Δt via two fractional steps:

$$X_1 = X(t) + \Delta t F(X(t), t) \quad (2)$$

$$X(t + \Delta t) = X_1 - \Delta t H(X_1, t) \quad (3)$$

with X_1 denoting the intermediate state after applying the physics fractional step. System (2)-(3) represents a 1st order in time approximation to (1). In this example, both fractional steps are being advanced in time with a forward-Euler discretization. In practice, for the dynamics timestep, more advanced methods are used, such as HEVI-IMEX (Satoh, 2002; Weller, H. et al., 2013; Lock, S.-J. et al., 2014).

HOMME uses a vertically Lagrangian approach (Lin, 2004). Because of this, each dynamics fractional step (3) can advance from a state X_1 given on arbitrary level positions given by geopotential ϕ and mass coordinate values π , based on hydrostatic pressure. This in turn allows us to consider physics fractional steps that arbitrarily change the state variables including mass, pressure, and volume within each model layer. Below we will consider physics applied either at constant pressure or at constant volume.

80 To apply time-splitting to our full set of equations, we start with a generic form of the vertically Lagrangian equations with a terrain following coordinate s and the material derivative D/Dt

$$\frac{D\mathbf{u}}{Dt} + D_{\mathbf{u}} = f_{\mathbf{u}} \quad (4)$$

$$\frac{D}{Dt} (c_v^* T) + p \frac{D\alpha}{Dt} = - \sum_i L_i f_{q_i} + f_T \quad (5)$$

$$\frac{D}{Dt} (c_p^* T) - \alpha \frac{Dp}{Dt} = - \sum_i L_i f_{q_i} + f_T \quad (6)$$

85
$$\frac{D\phi}{Dt} - g\mathbf{u}_3 = 0 \quad (7)$$

$$\frac{D}{Dt} \left(\frac{\partial\pi}{\partial s} \right) + \frac{\partial\pi}{\partial s} \nabla \cdot \mathbf{u} = \frac{\partial\pi}{\partial s} \sum_i f_{q_i} = 0 \quad (8)$$

$$\frac{Dq_i}{Dt} = f_{q_i} \cdot \quad (9)$$

For completeness, we give the equation of state (EOS) and related mass coordinate identities,

$$p\alpha = R^*T, \quad \alpha = \frac{1}{\rho} = - \frac{\partial\phi}{\partial s} \Big/ \frac{\partial\pi}{\partial s} = - \frac{\partial\phi}{\partial\pi}. \quad (10)$$

90 In the above equations, \mathbf{u} is the 3D velocity, \mathbf{u}_3 the vertical or radial velocity component, T is temperature, p is the full nonhydrostatic pressure, ρ is density with $\alpha = 1/\rho$, ϕ is the geopotential height, π is the mass coordinate/hydrostatic pressure, $\frac{\partial\pi}{\partial s}$ is the mass coordinate *pseudo-density*, and q_i is a generic total mass mixing ratio that can represent dry air (q_d), vapor (q_v), liquid water (q_l) or ice (q_f). For simplicity, we have represented the dynamics terms in the velocity equation by $D_{\mathbf{u}}$. For the HOMME dynamical core used here, the dynamics terms are given in Taylor et al. (2020). We assume the surface elevation, ϕ_s
 95 is held fixed in time, and impose a pressure boundary condition at the model top, taking $p_{\text{top}} = \pi_{\text{top}}$, set to a global constant based on the desired vertical domain size. We give two different formulations of the thermodynamic equation, (5) and (6). The choice of which one to use depends on whether physics is predominantly applied at constant pressure ($\delta p = 0$) or at constant volume ($\delta\phi = 0$).

We use the *unapproximated* thermodynamics (or *variable latent heats* as explained further in Section 4.3) from Eldred et al.
 100 (2022), which is equivalent to the *near-exact* thermodynamics from Staniforth (2022). The specific heats c_p^* and c_v^* given in terms of specific heats of dry air, vapor, liquid and ice and their mixing ratios, and R^* is a function given in terms of the gas constants for dry air and vapor and their mixing ratios,

$$c_p^* = c_p^d q_d + c_p^v q_v + c_l q_l + c_f q_f, \quad c_v^* = c_v^d q_d + c_v^v q_v + c_l q_l + c_f q_f, \quad R^* = c_p^* - c_v^*, \quad (11)$$

and L_l and L_v are latent heat constants. The f_* terms in the above represent the forcing tendency terms, where $f_{\mathbf{u}}$ corresponds
 105 to the momentum fluxes, and f_{q_i} denotes sources and sinks of water mass from phase changes. The right-hand-side of the thermodynamic equation includes the energy flux from phase change ($\sum_i L_i f_{q_i}$) as well as any external heating denoted by f_T . The above equations allow for mass flux between species q_i via phase changes, but have assumed no net mass flux ($\sum_i f_{q_i} = 0$).

In this work we focus on the physics fractional step (2) derived from time-splitting Eqs. (4)–(9). We first expand the material
 110 derivative into partial derivatives and dynamics terms and then apply time-splitting, with all the f_* physics forcing terms put in
 the physics fractional step (3) and all remaining terms put in the dynamics fractional step (2). We then assume a forward Euler
 discretization for the physics fractional step partial derivatives, which we represent by δ (as in $\delta \mathbf{u} = (\mathbf{u}(t + \Delta t) - \mathbf{u}(t))/\Delta t$).
 This results in the following physics equations

$$\delta \mathbf{u} = f_{\mathbf{u}} \quad (12)$$

$$115 \quad \delta(c_v^* T) + p \delta \alpha = - \sum_i L_i f_{q_i} + f_T \quad (13)$$

$$\delta(c_p^* T) - \alpha \delta p = - \sum_i L_i f_{q_i} + f_T \quad (14)$$

$$\delta \phi = 0 \quad (15)$$

$$\delta \left(\frac{\partial \pi}{\partial s} \right) = \frac{\partial \pi}{\partial s} \sum_i f_{q_i} = 0 \quad (16)$$

$$\delta q_i = f_{q_i} \quad (17)$$

120 where we have again given two formulations of the thermodynamic equation.

2.1 Energy density and column energy

With the unapproximated thermodynamics, the energy density in mass coordinates π can be written

$$e = \frac{1}{2} \mathbf{u}^2 + e_i + \phi \quad (18)$$

$$= \frac{1}{2} \mathbf{u}^2 + h - p \alpha + \phi \quad (19)$$

$$125 \quad = \frac{1}{2} \mathbf{u}^2 + h + (\pi/p - 1) R^* T + \frac{\partial}{\partial \pi} (\pi \phi) \quad (20)$$

where we have introduced internal energy, $e_i = c_v^* T + L_v q_v + L_l q_l$, and enthalpy, $h = c_p^* T + L_v q_v + L_l q_l$. The third expression
 for e given above will be useful for certain calculations below and comes from using the identity $(\pi \phi)_\pi = \phi + \pi(\phi)_\pi = \phi - \pi \alpha$
 and the equation of state. The total column energy is given by

$$E = \frac{1}{g} \left(\int e d\pi + \pi_{\text{top}} \phi_{\text{top}} \right) \quad (21)$$

130 where the additional term represents the potential energy of the atmosphere above the model top (ϕ_{top}). We scale all energy
 integrals by $1/g$ and use a normalized horizontal integral so that the global quantities are in units of J/m^2 . Conserving the
 total column energy will take into account the work required to change ϕ_{top} .

Our fractional physics step (12)–(17) conserves the total column energy E in the sense that the change in E will be given by
 the net external heating, $\delta E = \frac{1}{g} \int f_T d\pi$.

135 2.2 Constant volume and constant pressure updates

From our time-split physics equations (12)–(17), we see that the only way to obey geopotential equation (15) is to apply physics at constant volume. In Section 2.3 we give the constant volume procedure to update the prognostic variables following (12)–(17), which we refer to as the constant volume *update*.

We also consider two additional physics updates that are designed for constant pressure, $\delta p = 0$. In Section 2.4 we show that with the hydrostatic equations, which omit (7) and (15), timesplitting naturally leads to a $\delta p = 0$ update. In the nonhydrostatic equations, it is not possible to impose both $\delta p = 0$ and $\delta \phi = 0$, and a constant pressure update cannot be consistent with our physics equations. In Section 2.5 we propose an alternative energy conserving $\delta p = 0$ update. Despite it being inconsistent with our physics equations, numerical results in Section 5 demonstrate that it can be practical. Note that modifying the constant volume update to obey $\delta p = 0$ as well is impossible, because it leads to an overdetermined system which in general will not have energy conserving solutions.

For the derivations of these updates, we simplify the algebra by neglecting momentum tendencies by taking $f_{\mathbf{u}} = 0$. We also note that for all updates we have $\delta \pi = 0$, which comes from our assumption of no mass fluxes (8).

2.3 The constant volume update

The constant volume update is given by the direct application of the time-split system (12)–(13) and (15)–(17), with constant volume a direct result of (15). Combined with our assumption of no mass fluxes, we also have constant density ($\delta \alpha = 0$). The time-split system reduces to (neglecting the prognostic variables which do not change)

$$\delta(c_v^* T) = - \sum_i L_i f_{q_i} + f_T \quad (22)$$

$$\delta q_i = f_{q_i} \quad (23)$$

For this update, the model updates q_i , c_v^* and T to obey the above, and then p is updated from the equation of state, holding ϕ constant. This approach represents a first order approximation to the original system, (1), and thus it is expected to converge to the correct solution as the timestep is decreased. This is the standard physics update used by constant height coordinate models, and can be straightforwardly used by vertically Lagrangian mass coordinate models. This update conserves energy locally in the sense that the change in energy is given by the external heating ($\delta e = f_T$), which can be seen directly from (18).

2.4 The constant pressure update – hydrostatic

Physics parameterizations are often applied at constant pressure ($\delta p = 0$). An update which holds pressure constant while allowing the volume to change is impossible to derive via time-splitting for the nonhydrostatic equations, since the prognostic equation for layer positions does not have any traditional physics tendency terms, and thus any dynamics/physics time-split approach will lead to $\delta \phi = 0$ for the update. However, for the hydrostatic equations, which replace (15) with a diagnostic equation for ϕ (e.g. for CAM/EAM, see Eq. 12.5 in (Taylor, 2011),), time-splitting the remaining prognostic equations, (12),

165 (14), (16) and (17), results in $\delta p = 0$, and we do have a constant pressure update, given by

$$\delta(c_p^*T) = -\sum_i L_i f_{q_i} + f_T \quad (24)$$

$$\delta q_i = f_{q_i} \quad (25)$$

The hydrostatic energy is given by

$$E_H = \frac{1}{g} \left(\int e_H d\pi + \pi_{\text{top}} \phi_{\text{top}} \right), \quad e_H = \frac{1}{2} \mathbf{u}^2 + h + \frac{\partial}{\partial \pi} (\pi \phi) \quad (26)$$

170 where e_H comes from (20) and making use of $p = \pi$ (total pressure equals to the hydrostatic pressure). The hydrostatic time-split step conserves the hydrostatic column energy, in the sense that change in column energy equals the net external heating,

$$\delta E_H = \frac{1}{g} \int f_T d\pi$$

The conservation can be seen by integrating δe_H and making use of the fact that the surface elevation ϕ_{surf} remains fixed so that $\delta \phi_{\text{surf}} = 0$.

175 Changing the volume of a cell does some work on the cells above it, increasing or decreasing their potential energy. Thus any constant pressure update that conserves column energy will not in general satisfy $\delta e = f_T$ within each cell. For this hydrostatic update, the local change in energy, internal energy and enthalpy are given by

$$\delta e_H = \frac{\partial}{\partial \pi} (\pi \delta \phi) + f_T \quad \delta e_i = -\pi \delta \alpha + f_T \quad \delta h = f_T$$

2.5 The constant pressure update – nonhydrostatic

180 In the nonhydrostatic case, one cannot derive a $\delta p = 0$ update consistent with the time-split equations since the combination $\delta p = 0$ and $\delta \phi = 0$ prohibits changes to any state variables. Instead, we look for a $\delta p = 0$ update that has the same local energy relation as in the hydrostatic equations,

$$\delta e = \frac{\partial}{\partial \pi} (\pi \delta \phi) + f_T \quad (27)$$

We start from this form since it will automatically conserve the correct column energy as can be seen by expanding δe using 185 (20) and integrating (27), as in the hydrostatic case.

Expanding δe using (20) allows us to write (27) as $\delta h + (\pi - p) \delta \alpha = f_T$, which can then be written in terms of our prognostic variables as

$$\delta(c_p^*T) + (\pi/p - 1) \delta(R^*T) = -\sum_i L_i f_{q_i} + f_T \quad (28)$$

$$\delta q_i = f_{q_i} \quad (29)$$

190 where the model updates q_i , c_p^* and T to obey the above, and then ϕ is updated from the equation of state, holding p constant. For this nonhydrostatic update, the local change in energy, internal energy and enthalpy are given by

$$\delta e = \frac{\partial}{\partial \pi} (\pi \delta \phi) + f_T, \quad \delta e_i = -\pi \delta \alpha + f_T, \quad \delta h + (\pi/p - 1) \delta(R^*T) = f_T. \quad (30)$$

There are other energy conserving $\delta p = 0$ updates, but (28)–(29) is unique in that it is the only one where phase change or heating localized to a particular layer will induce temperature changes only in that layer and no other layers (shown in Appendix A). We refer to this condition as *local heating*. We give an example of a non-local heating update in Appendix B.

Note that for this fractional step, the update of ϕ from the equation of state could be cast as a forcing term for the geopotential equation.

2.6 Dynamical differences between constant pressure and constant volume

A key difference between the constant pressure and constant volume approaches is in how latent heat release is translated into physical motion. In the constant volume approach, during the physics fractional step, each cell’s volume and Cartesian position remains fixed and heating will result in increased pressure. Localized heating will thus result in a pressure gradient, which will induce motion in the dynamics fractional step, and in general will result in both vertical and horizontal mass transport. In the constant pressure approach, in the physics fractional step each cell’s pressure will remain constant, and the heating will result in vertical expansion of the cell, representing vertical motion. Localized heating will lead to a gradient in the geopotential, which will induce horizontal motion in the dynamics fractional step.

2.7 Enthalpy formulations of the first law of thermodynamics

The first law of thermodynamics states that the energy of the system is conserved up to fluxes. In the hydrostatic case, the first law under constant pressure assumption is given by thermodynamic equation $\delta h = f_T$. This form of the first law holds across such a wide range of systems that the first law is often interpreted as local conservation of enthalpy. But here, in the nonhydrostatic case for physics processes that are applied $\delta p = 0$, we must change the above thermodynamic equation in order to conserve energy and to obey the first law. In this case, we derive a new thermodynamic equation. When expressed in terms of enthalpy, this energy conserving thermodynamic equation for nonhydrostatic $\delta p = 0$ processes can be written as $\delta h + (\pi/p - 1)\delta(R^*T) = f_T$, not $\delta h = f_T$.

3 Sedimentation

Lauritzen et al. (2022) presents an overview of challenges and possible solutions regarding modeling sedimentation. The challenges include interactions of the hydrometeors with the surrounding atmosphere and raise questions about representation of different velocities for different species, falling and not falling, and subsequent frictional heating. In the simple moist physics used here, rain falls out of the atmosphere instantaneously with no additional interactions. As with phase change physics, we consider sedimentation updates appropriate for constant pressure and constant volume approaches. In both cases we hold the temperature constant. In the constant volume case, we hold volume constant, update π based on the mass flux and then update the pressure to be consistent with the EOS. We note that the constant volume sedimentation procedure can be derived from the time-split equations, if one generalizes (13) or (14) to include additional terms induced by the mass fluxes.

For sedimentation used with constant pressure physics, we cannot hold the pressure constant due to the mass flux, so we update π based on the mass flux and hold the nonhydrostatic component of the pressure, $p - \pi$, constant. We then update the volume to be consistent with the EOS. The constant $p - \pi$ sedimentation procedure has the advantage that if the state is in hydrostatic balance, it will remain in hydrostatic balance.

4 Numerical simulations for the moist rising bubble

This section covers the setup for our numerical simulations with the physics updates introduced in Section 2, applied to unapproximated and approximated thermodynamics in a rising bubble test case with a simplified physics package. It also explains that we evaluate energy fluxes due to sedimentation in each simulation by introducing a baseline, a flux of the internal energy of precipitation.

4.1 Description of simple Reed-Jablonowski moist physics

The simple moist physics package from Reed and Jablonowski (2012) consists of a 2-stage procedure: First, an amount of condensed water is computed, and a temperature tendency is derived from condensation. For this stage, we will compare several different physics updates from Sec. 2. Second, all condensed liquid water is instantaneously removed from the moist air, which can be interpreted as rain falling with the infinite speed. For this stage, we use the sedimentation updates given in Sec. 3. In Reed and Jablonowski (2012) for condensation, the temperature tendency given by the conservation of enthalpy is computed using a first-order Taylor series with respect to temperature for the saturation specific humidity, $q_{\text{sat}} = q_{\text{sat}}(T, p)$. Here we instead use vapor tendency $\Delta q = q - q_{\text{sat}}(T, p)$ explicitly, for the current values of T and p .

4.2 Setup of simulations

All runs are performed with the HOMME nonhydrostatic dynamical core with a planar 2-dimensional domain (Bogenschutz et al., 2023). The initialization procedure for the moist rising bubble is described in Liu et al. (2022). We use the reference state with $\theta_0 = 300\text{K}$, zero background relative humidity and domain size of $[-10000, 10000] \times [0, 20000]$ m. In notations used by Liu et al. (2022) the initial conditions for the moist warm bubble are given by potential temperature perturbation maximum $\Delta\theta = 4.0$ K, relative humidity perturbation maximum $\Delta h = 1.0$ (not to confuse with enthalpy h from above), and a cosine-bell perturbation in form of an ellipse centered at $(0, 2000)$ m with 5000 m and 1000 m axes lengths for horizontal and vertical directions. All simulations use 128 vertical levels and 128 4th-order spectral elements for the horizontal domain (Taylor, 2011), which corresponds to approximate horizontal resolution $\Delta x \simeq 52$ m.

In simulations, we vary only time step, $\Delta t \in \{4.0, 2.0, 1.0, 0.4, 0.2, 0.1, 0.04, 0.02, 0.002\}$ sec, and the physics updates, which are described below in more detail. We consider physics updates with unapproximated thermodynamics as well as several approximations. In all cases, for energy diagnostics, we use the definition of energy given by (21).

4.3 Physics updates

Following considerations presented in Section 2 that connect conservation of column energy E in (21) with local temperature updates in parameterizations, we investigate five updates given by Table 1. The first three updates use unapproximated thermodynamics (or *variable latent heats*), including a constant volume approach which makes no approximations other than time-splitting. The remaining two updates introduce specific heat related approximations.

Since latent heats of phase changes are defined as a difference of enthalpies of the two phases (Emanuel, 1994), unapproximated thermodynamics that uses specific heat capacities of water species close to theoretical represents variable (with respect to temperature) latent heats of phase changes. That is, whether we impose variable or constant latent heats depends on the choice of specific heat capacities of water forms.

The first update, named CP-VL-NH, is based on the constant pressure approach and is formulated as

$$\delta \left(c_p^* T + \left(\frac{\pi}{p} - 1 \right) R^* T + L_v q_v + L_l q_l \right) = 0, \quad \delta \pi = 0, \quad \delta p = 0. \quad (31)$$

As explained in Section 2, this update conserves (21). Its alias is translated to *constant pressure* (CP), *variable latent heats* (VL), where *variable latent heats* mean that the correct specific heats for each water species are used in enthalpy expressions. In other words, VL in the name of the update indicates that we use the full unapproximated thermodynamics, including the use of c_p^* , not c_p^d (specific heat capacity of the dry air), in (31). NH in the name of the update stands for nonhydrostatic and denotes that the update conserves nonhydrostatic energy (21). Later we will use HY in the names of updates that conserve only the hydrostatic version of energy (26) and its modifications for updates that use specific heat approximations.

The second update, CV-VL-NH, is the only one presented here that is based on the constant volume (CV) approach. It is given by

$$\delta (c_v^* T + L_v q_v + L_l q_l) = 0, \quad \delta \pi = 0, \quad \delta \phi = 0 \quad (32)$$

where similarly to CP-VL-NH we use variable latent heats. As explained in Section 2, this update conserves (21).

The third update, CP-VL-HY, is a slight modification of CP-VL-NH,

$$\delta (c_p^* T + L_v q_v + L_l q_l) = 0, \quad \delta \pi = 0, \quad \delta p = 0. \quad (33)$$

It is of interest because we suspect that the nonhydrostatic term in (31) is negligible. The results from both CP-VL-NH and CP-VL-HY prove to be indistinguishable for our rising bubble test case.

The other two updates, CP-CL-HY and CP-AL-HY, are inspired by EAM design. CP-CL-HY is given by

$$\delta (c_p^d T + L_v q_v + L_l q_l) = 0, \quad \delta \pi = 0 \quad \delta p = 0. \quad (34)$$

and mimics the current EAM. Its name is based on *constant latent heats* (CL) since the update uses c_p^d , not c_p^* .

Since it would require a significant effort to rewrite moist parameterizations in EAM for update (31), one could consider a design where temperature tendencies from a parameterization are computed using c_p^* instead of c_p^d , but c_p^* is held constant

during the phase change physics and only updated after sedimentation. Thus CP-AL-HY update is given by

$$\delta(c_p^*T + L_v q_v + L_l q_l) = 0, \quad \delta\pi = 0, \quad \delta p = 0, \quad \delta(c_p^*) = 0. \quad (35)$$

The shorthand AL in its name indicates that only *approximate variable latent heats* are used.

285 As for the other updates above, for updates CP-CL-HY and CP-AL-HY we use definition of the total column energy (21) when computing energy diagnostics.

name of update, formulation	energy flux discrepancy	plots	similarities
CP-VL-NH, eqn. (31)	~ 0	Fig. 1, Fig. 2(a), Fig. 3(a,b), Fig. 4(a-d)	
CV-VL-NH, eqn. (32)	~ 0	Fig. 1, Fig. 2(b), Fig. 3(a,b), Fig. 4(e-h)	
CP-VL-HY, eqn. (33)	~ 0	Fig. 1, Fig. 3(a,b)	very similar to CP-VL-NH
CP-CL-HY, eqn. (34)	$\sim (c_p^v - c_l)T_{\text{ref}}P$	Fig. 1, Fig. 2(c), Fig. 3(a,b)	
CP-AL-HY, eqn. (35)	$\sim (c_p^v - c_l)T_{\text{ref}}P$	Fig. 1, Fig. 2(d), Fig. 3(a,b), Fig. 4(i-l)	very similar to CP-CL-HY

Table 1. List of physics updates considered. CP and CV stand for constant pressure and constant volume, VL denotes variable latent heats, CL denotes constant latent heats, and AL is for approximate latent heats. HY stands for hydrostatic and NH stands for nonhydrostatic. For more details on updates see Section 4.3. The choice of T_{ref} is explained in Section 4.4. P denotes precipitation mass flux. The energy flux discrepancy is the difference between the change in the total atmosphere energy (\tilde{E}_t) and the energy carried out of the model from precipitation (F_P), as explained in Sections 4.4 and 5.

4.4 Energy of precipitation and its relation to change of energy in the model

As mentioned in the introduction, in EAM there is a large disagreement between the change in atmospheric energy as compared to the net flux of energy carried into and out of the model by evaporation and precipitation. This error is significant and in order to balance the energy budget for simulations with an active ocean component a global fixer must be used (Golaz et al., 2019).
290

To examine this error in our idealized setup, we look at the total atmospheric energy changes for each of the updates in Table 1 and compare them to the approximate flux F_P coming from the internal energy of the precipitation P ,

$$F_P = c_l P T_{\text{ref}}, \quad T_{\text{ref}} = 290 \text{ K}. \quad (36)$$

Per discussions in Lauritzen et al. (2022), we define (36) not with variable, but with constant temperature, T_{ref} . Obviously, the true energy flux from precipitation would not be described by (36). However, (36) is a very good approximation for the energy of precipitation, as shown in Golaz et al. (2019) and later by our simulations. Using it gives us the same baseline to compare energy of precipitation for simulations with different updates.
295

Note that definition (36) does not include terms with L_v or L_l from (18). The energy of precipitation corresponding to these terms in all updates from Table 1 (as well as in EAM) is treated accurately, unlike the terms that correspond to internal

300 or potential energy. Therefore, in our analysis we focus only on the discrepancy between the globally integrated energy flux without L terms \tilde{E}_t , where $\tilde{E} = E - \frac{1}{g} \int (L_v q_v + L_l q_l) d\pi$, and F_P defined by (36).

Based on the results from our simulations presented below, we conclude that only updates with full variable latent heats, which correctly treat internal energy of liquid water, accurately represent energy of precipitation.

5 Numerical results

305 5.1 Timestep convergence

We first examine the error introduced by the physics-dynamics time splitting. To do this, we consider a fixed spatial discretization so that our system of equations can be represented as a system of ordinary differential equations (ODEs); and we consider the discretization of these ODEs in time. We study the convergence of this ODE system as the timestep goes to zero. This approach follows Wan et al. (2015), where CAM physics is shown to converge with respect to timestep with fixed horizontal
 310 resolution. The time discretization includes the time-splitting error as well as the truncation error in the forward Euler method used for the physics step and the Runge-Kutta method used for the dynamics step. These errors are all formally first order or better in Δt , and thus if the ODE has a solution we expect our discretization to converge to this solution with first-order accuracy.

For each update from Table 1, we perform simulations with time step Δt varying from 4.0 sec to 0.002 sec, as given in
 315 Section 4.2. Simulations with 0.002 sec will be used as reference solutions for convergence studies. Per discussion in Sec. 2, we do not expect the two unapproximated updates (CP-VL-NH and CV-VL-NH) to converge to the same unique solution since only CV-VL-NH is consistent with the time-split approach. Nor do we expect the different approximated updates (CP-VL-HY, CP-CL-HY, CP-AL-HY) to agree with any of the other updates. Instead, we study self-convergence for each update, defining the error with respect to each update's own reference solutions via

$$320 \text{ Error} := \frac{\sqrt{\sum_i a_i (\theta_i - \theta_{\text{ref},i})^2}}{\sqrt{\sum_i a_i \theta_{\text{ref},i}^2}} \quad (37)$$

where a set of θ_i represents a potential temperature field from a simulation with $\Delta t > 0.002$ sec, $\theta_{\text{ref},i}$ is the potential temperature field given by a reference solution with $\Delta t = 0.002$ sec, and a_i are horizontal area weights associated with each nodal value. Sets θ_i and $\theta_{\text{ref},i}$ are remapped to a uniform in height vertical grid for the domain $[0, 15000]$ m and a few horizontal levels at the top and at the bottom of the domain are discarded. The error is computed at $t = 800$ sec after the bubble has evolved
 325 quite substantially. Plots of θ at $t = 800$ sec are shown below in Fig. 4.

In Figure 1 we present self-convergence results for all 5 updates. There CP-VL-NH and CP-VL-HY are given by red and black curves, which are practically identical. CV-VL-NH is represented by the green curve. All of the VL updates show the expected first order convergence and have similar errors for small timesteps, although CV-VL-NH has noticeably larger errors for large timesteps which does result in visible differences in θ that will be shown below in Fig. 4. The convergence of the

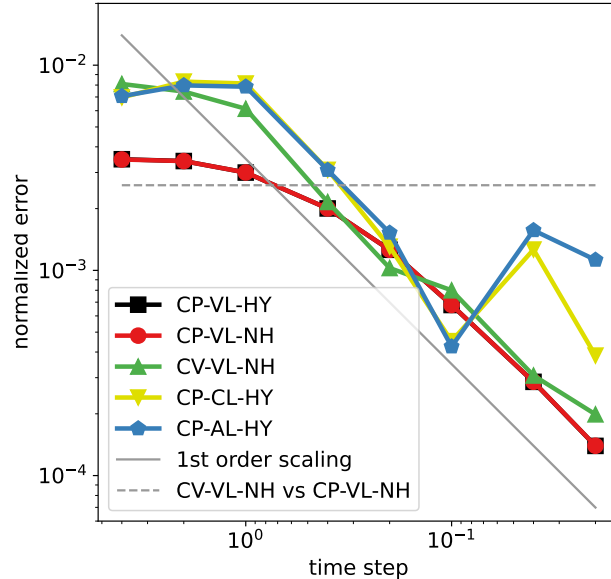


Figure 1. Self-convergence with respect to time step for all 5 updates using definition (37). Here (P) stands for CP-VL-NH and (V) stands for CV-VL-NH. Uncertainty, presented by the dashed horizontal line is the normalized difference between the reference solutions for simulations with CP-VL-NH (red curve) and CV-VL-NH (green curve). Other curves are CP-VL-HY (black), CP-AL-HY (blue), and CP-CL-HY (yellow).

330 non-VL updates CP-AL-HY and CP-CL-HY are given by blue and yellow curves. These updates have similar errors and show the expected first order convergence down to about 4 digits, but then fail to continue to converge.

We consider the reference solution for the CV-VL-NH update as the most accurate. For our fixed spatial discretization, the only remaining discretization errors in the CV-VL-NH update come from time discretization and are driven to zero by timestep convergence as shown in Fig. 1. The CP-VL-NH update has an additional source of error in that it applies a constant pressure assumption, which is not consistent with the time-split equations. To approximate this error, we measure the difference between the CP-VL-NH and CV-VL-NH reference solutions using (37). At $t = 800$ sec, this difference is 0.0026 (shown as the dashed line in Fig. 1). For these two VL updates, the potential temperature fields agree to better than three digits and are visually very close, as will be shown below in Fig. 4. We consider this difference a crude estimate of the uncertainty introduced by imposing the constant pressure constraint in the physics update.

340 Figure 2 shows the time evolution of the globally integrated over the domain precipitation rates P for CP-VL-NH (panel (a)), CV-VL-NH (panel (b)), CP-CL-HY (panel (c)), and CP-AL-HY (panel (d)) plotted against simulated time for each time step. A plot for CP-VL-HY is nearly identical to the plot for CP-VL-NH, and the two reference solutions for these two updates differ by only 3.8×10^{-5} using (37), so CP-VL-HY is not included in the figure. Precipitation plots can be used to evaluate the

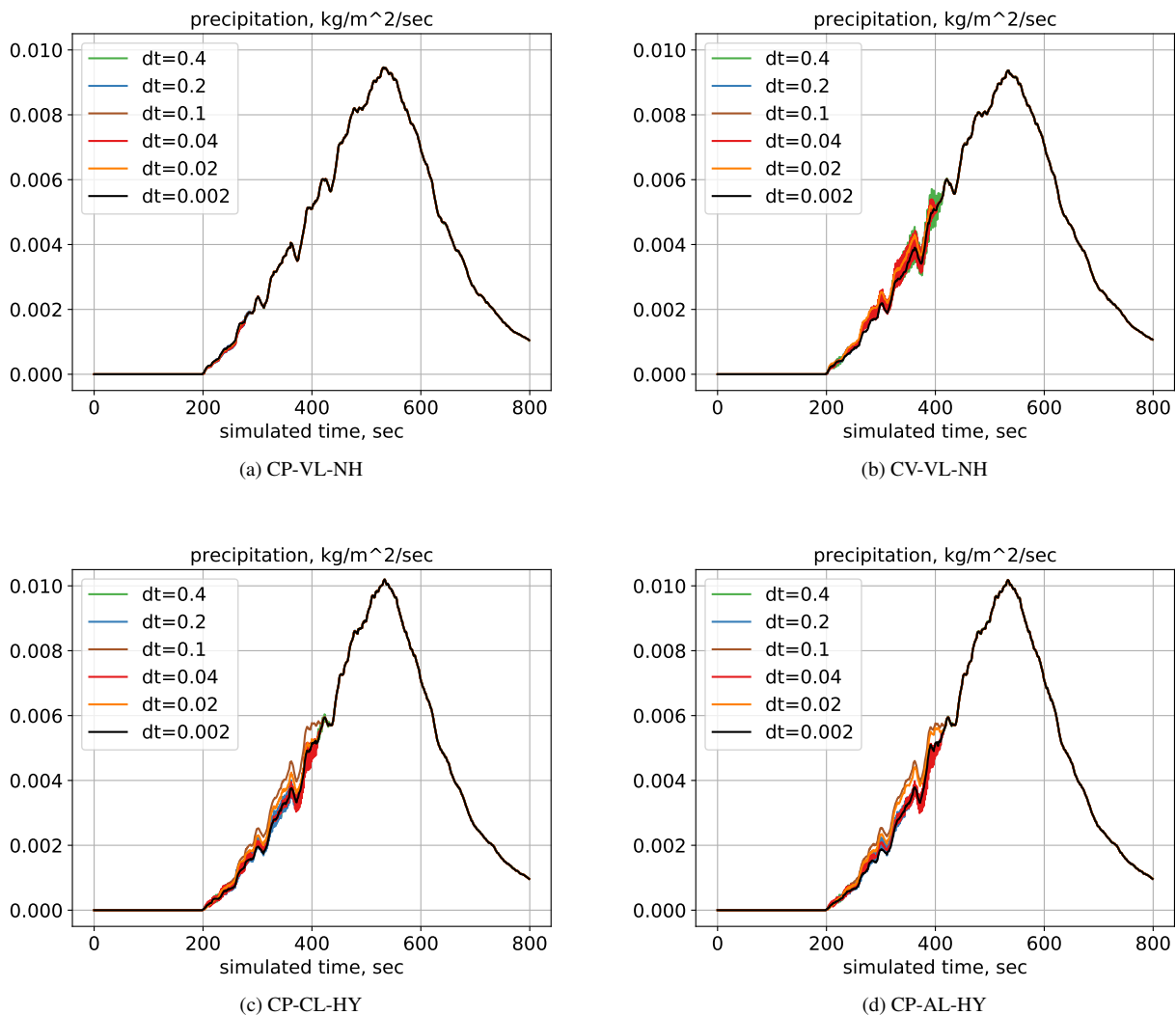


Figure 2. Globally integrated over the domain precipitation rate for different updates for different Δt (given in the labels in seconds) with respect to simulated time (horizontal axes); a plot for CP-VL-HY is not shown, but it is identical to plot (a) for CP-VL-NH.

sensitivity of each update with respect to different time steps. Qualitatively, all updates have very similar global precipitation rates. We note that the two constant pressure VL updates (panel (a)) have very little sensitivity, significantly lower than the remaining updates (panels (b-d)), which we consider to be an advantage of CP-VL-NH or CP-VL-HY.

5.2 Energy flux discrepancy

Next we compare energy flux \tilde{E}_t and the approximate precipitation energy flux F_P as given by (36), both globally integrated over the domain, for the reference solutions for each of 5 updates. Since F_P depends on the mass of precipitation, we first confirm that overall globally integrated over the domain mass fluxes from precipitation for all simulations are reasonably close to each other, as shown on Fig. 3 (a). There, CP-VL-NH (red), CP-VL-HY (black), and CV-VL-NH (green) curves are clustered together, while the non-VL methods, CP-AL-HY (blue) and CP-CL-HY (yellow), are positioned separately from the other three, but next to each other. In Figure 3(b), we first plot in purple color F_P computed for precipitation rates of each simulation. Then we plot $\tilde{E}_t \simeq \Delta\tilde{E}/\Delta t$, where $\Delta\tilde{E}$ is the difference of the total energy of the model (given by (21) and summed for all columns) for before and after physics fractional step, adjusted for L terms as discussed in Sec. 4.4. As expected, energy fluxes from the unapproximated VL updates, CP-VL-NH (red), CP-VL-HY (black), and CV-VL-NH (green) are very close to F_P . A small difference between F_P and \tilde{E}_t for these three updates is due to the temperature variations; the temperature of precipitation in the simulations is slightly smaller than T_{ref} . Another term that possibly could affect the difference between F_P and \tilde{E}_t is the potential temperature of precipitation, but it is negligible compared to its internal energy.

For the non-VL updates CP-AL-HY (blue) and CP-CL-HY (yellow), which have nearly identical values of \tilde{E}_t , the difference between \tilde{E}_t and F_P is significant,

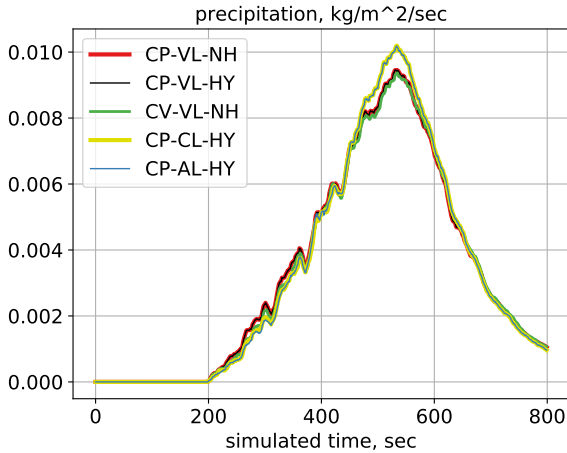
$$\tilde{E}_t - F_P \simeq (c_p^v - c_l)PT_{\text{ref}}. \quad (38)$$

Since $c_p^v = 1870.0 \text{ J/kg/K}$ and $c_l = 4188.0 \text{ J/kg/K}$, we see that error $\tilde{E}_t - F_P$ is 50% of the desired flux c_lPT_{ref} . This is due to the fact that the originally precipitating water in the model is represented by water vapor, with its enthalpy approximately given by $c_p^vPT_{\text{ref}}$. For both the AL and CL updates, the phase change physics followed by sedimentation appears to remove vapor from the atmosphere instead of liquid water, which results in $\tilde{E}_t \simeq c_p^vPT_{\text{ref}}$, which in turn leads to (38). In other words, the discrepancy between energies of precipitable water and \tilde{E}_t in CP-AL-HY and CP-CL-HY is due to the fact that the energy of the liquid water is not properly accounted for throughout the physics update.

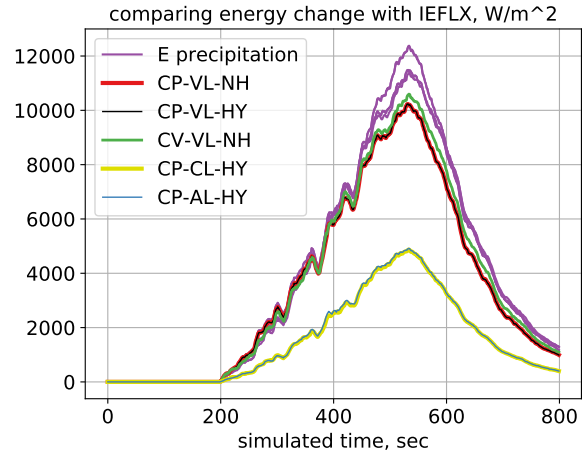
5.3 Qualitative comparisons

Figure 4 plots potential temperature of the bubble at the end of simulated time, 800 sec, for three updates, CP-VL-NH (top row), CV-VL-NH (middle row), and CP-AL-HY (bottom row). The results in each column correspond to a different time step size, $\Delta t = 4.0, 0.4, 0.04$, and 0.002 sec, from left to right. Note that simulations with 0.002 sec timestep (the rightmost column) are the reference solutions from the convergence plot in Figure 1. Bubbles from CP-VL-HY and CP-CL-HY are not shown: CP-VL-HY plots are identical to the bubbles from CP-VL-NH, and CP-CL-HY bubbles are very similar to the bubbles from CP-AL-HY.

One of the most interesting observations is that while bubbles for CP-VL-NH and CV-VL-NH at smaller time steps are very similar, their trajectories towards the reference solutions differ. The shapes in the constant pressure approach become indistinguishable starting at time step of 0.4 sec, while for the constant volume approach, only the solution for 0.04 sec time



(a) Precipitation for $\Delta t = 0.002$ sec for all 5 updates



(b) Comparing the outflux of energy of precipitation (36) and E_t for simulations with $\Delta t = 0.002$ sec for all 5 updates

Figure 3. Plot (a) contains globally integrated mass fluxes for all simulations, and these fluxes are very similar for all simulations. Plot (b) compares the outflux of energy of precipitation, F_P , in purple, given by (36), and E_t , both globally integrated, for simulations with $\Delta t = 0.002$ sec for all 5 updates.

step is comparable to the reference solution by eye. In other words, if we consider either reference solution, in panel (d) or panel (h), acceptable, then for this particular test case CP-VL-NH appears more accurate than CV-VL-NH when using large timesteps.

Separately, for the coarse, 4.0 sec, time steps, the bubble in the constant volume simulation is more distorted and more turbulent than the bubble from CP-VL-NH. It is explained in Section 2 that in CV-VL-NH, the energy from condensation is not transferred into moving vertical layers until the dynamics fractional step, while in the case of the constant pressure approach, a part of energy transfers into vertical motion during the physics fractional step.

Compared to the first two rows, the bubbles from CP-AL-HY in panels (i-l) (and CP-CL-HY, not shown) appear to be warmer and, as a result, moving upward faster, consistent with their approximated temperature update.

The primary focus of this paper is to study different updates from Table 1 at the condensation stage in physics. One could argue that in this case, all simulations should use the same sedimentation routine. To investigate this further, we performed simulations with CV-VL-NH for condensation and the constant-pressure sedimentation. The quantitative results of such simulations and plots are almost identical to the presented. For example, there are no detectable differences in the green convergence curve in Figure 1. There are only very minor differences for the precipitation and energy fluxes plots in Figures 2 and 3. For the bubble plots in Figure 4, middle row, switching to the constant pressure sedimentation does not affect the overall structures of the bubbles. It also does not change our conclusions about computational feasibility of the simulations with CV-VL-NH.

395 Therefore, for simulations with condensation based on CV-VL-NH we chose to apply sedimentation routine based on the constant volume approach, too, since both obey a time-split integration concept.

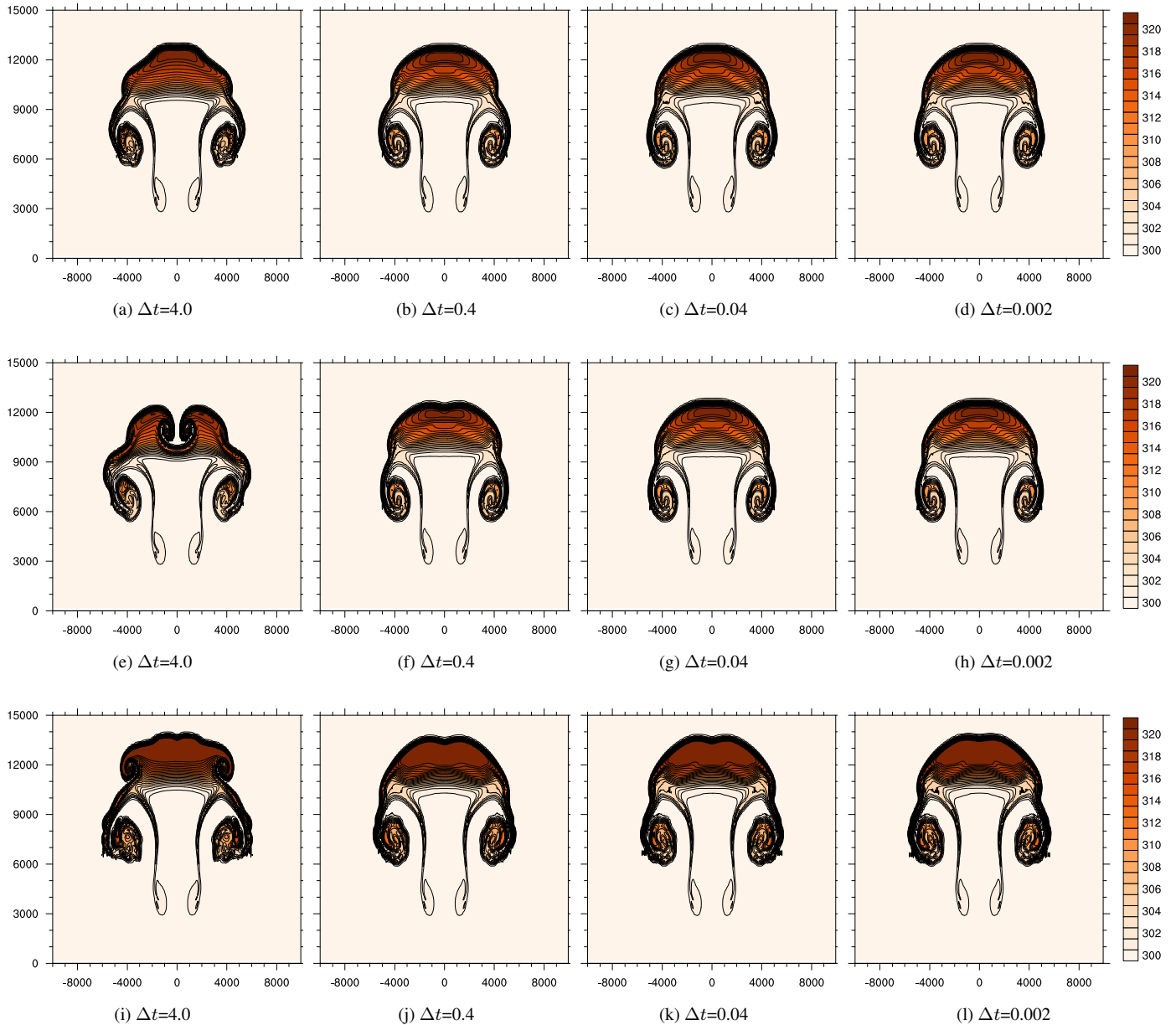


Figure 4. Potential temperature field in Kelvin for CP-VL-NH (plots (a) to (d)), CV-VL-NH (plots (e) to (h)), and CP-AL-HY (plots (i) to (l)). The units for time steps Δt in the captions are seconds.

6 Conclusions

Moist physics packages are designed to conserve energy from phase changes of water forms. A particular form of conservation rule defines how state variables like temperature, pressure, and geopotential, are updated during physics-dynamics coupling.

400 We focus on the two most common approaches, constant pressure and constant volume. Considering that the current EAM design is based on a time-split integration of physics and dynamics, our analysis shows that for the nonhydrostatic model, the constant volume approach is consistent with the underlying system of equations, while the constant pressure approach is not. The constant pressure approach is attractive for global models since if the initial state is in hydrostatic balance, this balance will be preserved by the physics update, including in the presence of mass fluxes such as sedimentation.

405 Thermodynamic processes which occur at constant pressure are often shown to locally conserve enthalpy, meaning that changes in enthalpy match the external forcing and the thermodynamic equation can be written as $\delta h = f_T$. This relation holds very generally, including in the hydrostatic equations, but it will not conserve energy in the nonhydrostatic equations. For the nonhydrostatic equations we derive the constant pressure energy conserving update $\delta h + (\pi/p - 1)\delta(R^*T) = f_T$ and show that this is the unique update which has the additional property that external heating and phase change will only result in local
410 temperature changes. In the rising bubble test case used here, the effect of this correction was negligible.

In order to have the model's energy budget properly account for the energy of the precipitation flux, we study effects of variable, constant, and approximate latent heats during phase transitions in physics. We show that only by using variable latent heats throughout the physics computations can one expect correct accounting of energy fluxes from precipitation. To extend our conclusions for more practical applications like EAM, proper modeling of water energy fluxes would require updating both the
415 moist physics packages as well as the code which applies the physics tendencies to incorporate unapproximated thermodynamics of water forms.

Appendix A: Uniqueness of the NH update

In this section we give the derivation of the unique nonhydrostatic $\delta p = 0$ update, (28)–(29), which will conserve column energy and ensure a concept of local heating. We consider the model presented in Sec. 2 with both phase changes and external heating f_T , but no net mass flux or momentum flux. The phase changes are given by $\delta q_i = f_{q_i}$ with associated heating $\sum_i L_i f_{q_i}$. We then seek updates for T and ϕ that obey the following constraints:

1. Constant pressure ($\delta p = 0$).
2. Conservation of column energy ($\delta E = \int f_T d\pi$).
3. *Local heating*: Latent heat and other sources of external heating will be applied locally. In particular, in regions with $\sum_i L_i f_{q_i} = 0$ and $f_T(\pi) = 0$ then $\delta T(\pi) = 0$.

In Section 2.5, we showed that under the $\delta p = 0$ constraint, the update given by $\delta h + (\pi/p - 1)\delta(R^*T) = f_T$ conserves column energy. By inspection one can also see that it obeys the local heating constraint. To show that such update is unique, we now show the converse: if one assumes $\delta p = 0$, conservation of the column energy, and local heating, then it must be that $\delta h + (\pi/p - 1)\delta(R^*T) = f_T$.

Given the first two requirements, and using (20), we start with conservation of column energy,

$$\delta E = \delta \int_{\pi_{\text{top}}}^{\pi_{\text{surf}}} e d\pi + \delta(\pi_{\text{top}}\phi_{\text{top}}) = \delta \int_{\pi_{\text{top}}}^{\pi_{\text{surf}}} \left(\frac{1}{2} \mathbf{u}^2 + h + (\pi/p - 1)R^*T + \frac{\partial}{\partial \pi}(\pi\phi) \right) d\pi + \delta(\pi_{\text{top}}\phi_{\text{top}}) =$$

$$\delta \int_{\pi_{\text{top}}}^{\pi_{\text{surf}}} \left(\frac{1}{2} \mathbf{u}^2 + h + (\pi/p - 1)R^*T \right) d\pi + \delta(\pi_{\text{surf}}\phi_{\text{surf}}) = \int f_T d\pi \quad (\text{A1})$$

Since we are not considering momentum flux or external mass flux, we have $\delta \mathbf{u} = 0, \delta \pi = 0$. Combined with $\delta p = 0$, we derive

$$\int_{\pi_{\text{top}}}^{\pi_{\text{surf}}} \delta(c_p^*T) + (\pi/p - 1)\delta(R^*T) d\pi = \int_{\pi_{\text{top}}}^{\pi_{\text{surf}}} Q d\pi \quad Q = - \sum_i L_i f_{q_i} + f_T \quad (\text{A2})$$

where we have introduced Q to denote the sum of the latent and external forcing terms. This integral relation must hold for all possible Q . Combined with our third requirement ($\delta T = 0$ where $f_{q_i} = 0$ and $f_T = 0$) we can show that this integral relation can only hold for all Q if the integrands in (A2) are equal. To see this in the discrete case, consider heating only in a single arbitrary model layer $[\pi_1, \pi_2]$. Outside that model layer we have no phase change ($\delta c_p^* = \delta R^* = 0$) and also $f_T = 0$ and thus $\delta T = 0$ by our local heating assumption. Thus outside this region, both integrands are zero, and the integral relation for energy conservation reduces to an integral over the single model layer $[\pi_1, \pi_2]$,

$$\int_{\pi_1}^{\pi_2} \delta(c_p^*T) + (\pi/p - 1)\delta(R^*T) d\pi = \int_{\pi_1}^{\pi_2} Q d\pi$$

The discrete version of this integral is computed as $d\pi$ times the layer midpoint values of the integrand, and thus these layer midpoint values must be equal and we have that $\delta(c_p^*T) + (\pi/p - 1)\delta(R^*T) = Q$ must hold at every model layer. This equation
 445 is equivalent to (28)–(29), as well as the different forms given in (30). In the continuum, a similar argument can be made by choosing a sequence of Q 's which converge to a Dirac delta function at an arbitrary layer π , and examining the convergence of (A2) with respect to this sequence.

Appendix B: Pressure work in NH constant pressure updates

Here we investigate other ways to derive constant pressure updates for the nonhydrostatic model and how the form of the
 450 update is connected to the form of the first law of thermodynamics.

In Section 2.5 we derive update CP-VL-NH by considering energy equation

$$\delta e = \frac{\partial}{\partial \pi}(\pi \delta \phi) + f_T, \quad (\text{B1})$$

which leads to the internal energy equation $\delta e_i = -\pi \delta e + f_T$. In the literature, the first law of thermodynamics is often presented as $\delta e_i = -p \delta \alpha + f_T$ with quantity $p \delta \alpha$ defined as the *pressure work*, but this version of the thermodynamic equation does not
 455 conserve column energy (21) for constant pressure processes. It follows that in update CP-VL-NH the pressure work is given by quantity $\pi \delta \alpha = p \delta \alpha + (\pi - p) \delta \alpha$, not $p \delta \alpha$.

One can be motivated to explore a constant pressure update with right hand side given by $\frac{\partial}{\partial \pi}(p \delta \phi) + f_T$ in (B1). Following Section 2, the formulations of this update in terms of e , e_i , and h are given by:

$$\delta e = \frac{\partial}{\partial \pi}(p \delta \phi) + f_T, \quad \delta e_i = -p \delta \alpha + \left(\frac{\partial p}{\partial \pi} - 1 \right) \delta \phi + f_T, \quad \delta h + \left(1 - \frac{\partial p}{\partial \pi} \right) \delta \phi = f_T. \quad (\text{B2})$$

Therefore, this update has yet another definition of the pressure work, $p \delta \alpha + \left(1 - \frac{\partial p}{\partial \pi} \right) \delta \phi$. We attribute inconsistencies in the
 460 definition of the pressure work in NH constant pressure updates as compared to quantity $p \delta \alpha$ to the fact that these updates do not obey a time-split approach and thus violate our thermodynamic equation (13).

As noted in Section 2, update (B2) cannot be local: Consider that in the whole vertical column of the model, there is only one vertical level where a phase change triggers heat release. Then the level expands and the geopotential for the levels above
 465 it changes, too. To conserve the total column energy, h equation from (B2) needs to be satisfied in those levels, which leads to a temperature tendency in levels without a phase change. However, if locality of the update is not essential for the computational performance, it is to be defined whether update CP-VL-NH is preferable to the update (B2) or any other non-local update.

Code availability. The code was developed as a part of the dynamical core (HOMME) code base, which itself is a part of the E3SM repository and is available under a BSD 3-clause license. The code, running scripts and plotting scripts are archived at <https://doi.org/10.5281/zenodo.8336379>. For instructions navigate to file components/homme/docs-to-save-for-paper-province-july22/HOW-TO-MAKE-PAPER-PLOTS. Plotting and running scripts use NCL and Python.

Author contributions. All authors contributed to conceptualization and manuscript writing. OG and MAT derived the algorithms. OG implemented the algorithms in HOMME and ran the numerical studies.

Competing interests. The authors declare that they have no conflict of interest.

475 *Acknowledgements.* We thank the manuscript reviewers for their helpful and constructive comments.

Sandia National Laboratories is a multi-mission laboratory managed and operated by National Technology & Engineering Solutions of Sandia, LLC (NTESS), a wholly owned subsidiary of Honeywell International Inc., for the U.S. Department of Energy's National Nuclear Security Administration (DOE/NNSA) under contract DE-NA0003525. This written work is authored by an employee of NTESS. The employee, not NTESS, owns the right, title and interest in and to the written work and is responsible for its contents. Any subjective views or opinions that might be expressed in the written work do not necessarily represent the views of the U.S. Government. The publisher acknowledges that the U.S. Government retains a non-exclusive, paid-up, irrevocable, world-wide license to publish or reproduce the published form of this written work or allow others to do so, for U.S. Government purposes. The DOE will provide public access to results of federally sponsored research in accordance with the DOE Public Access Plan.

485 This research used a high-performance computing cluster provided by the BER Earth System Modeling program and operated by the Laboratory Computing Resource Center at Argonne National Laboratory.

This research was supported as part of the Energy Exascale Earth System Model (E3SM) project, funded by the U.S. Department of Energy (DOE), Office of Science, Office of Biological and Environmental Research (BER) and by the DOE Office of Science, Advanced Scientific Computing Research (ASCR) Program under the Scientific Discovery through Advanced Computing (SciDAC 4) ASCR/BER Partnership Program.

490 SAND2023-087720

References

- Bendall, T. M., Gibson, T. H., Shipton, J., Cotter, C. J., and Shipway, B.: A compatible finite-element discretisation for the moist compressible Euler equations, *Quarterly Journal of the Royal Meteorological Society*, 146, 3187–3205, <https://doi.org/https://doi.org/10.1002/qj.3841>, 2020.
- 495 Bogenschutz, P. A., Eldred, C., and Caldwell, P. M.: Horizontal Resolution Sensitivity of the Simple Convection-Permitting E3SM Atmosphere Model in a Doubly-Periodic Configuration, *Journal of Advances in Modeling Earth Systems*, 15, e2022MS003466, <https://doi.org/https://doi.org/10.1029/2022MS003466>, 2023.
- Bryan, G. H. and Fritsch, J. M.: A Benchmark Simulation for Moist Nonhydrostatic Numerical Models, *Monthly Weather Review*, 130, 2917 – 2928, [https://doi.org/https://doi.org/10.1175/1520-0493\(2002\)130<2917:ABSFMN>2.0.CO;2](https://doi.org/https://doi.org/10.1175/1520-0493(2002)130<2917:ABSFMN>2.0.CO;2), 2002.
- 500 Eldred, C., Taylor, M., and Guba, O.: Thermodynamically consistent versions of approximations used in modelling moist air, *Quarterly Journal of the Royal Meteorological Society*, 148, 3184–3210, <https://doi.org/https://doi.org/10.1002/qj.4353>, 2022.
- Emanuel, K.: *Atmospheric Convection*, Oxford University Press, <https://doi.org/https://doi.org/10.1002/qj.49712152516>, 1994.
- Golaz, J.-C., Caldwell, P. M., Roekel, L. P. V., Petersen, M. R., Tang, Q., Wolfe, J. D., Abeshu, G., Anantharaj, V., Asay-Davis, X. S., Bader, D. C., Baldwin, S. A., Bisht, G., Bogenschutz, P. A., Branstetter, M., Brunke, M. A., Brus, S. R., Burrows, S. M., Cameron-Smith, P. J., 505 Donahue, A. S., Deakin, M., Easter, R. C., Evans, K. J., Feng, Y., Flanner, M., Foucar, J. G., Fyke, J. G., Griffin, B. M., Hannay, C., Harrop, B. E., Hunke, E. C., Jacob, R. L., Jacobsen, D. W., Jeffery, N., Jones, P. W., Keen, N. D., Klein, S. A., Larson, V. E., Leung, L. R., Li, H.-Y., Lin, W., Lipscomb, W. H., Ma, P.-L., Mahajan, S., Maltrud, M. E., Mamatjanov, A., McClean, J. L., McCoy, R. B., Neale, R. B., Price, S. F., Qian, Y., Rasch, P. J., Eyre, J. J. R., Riley, W. J., Ringler, T. D., Roberts, A. F., Roesler, E. L., Salinger, A. G., Shaheen, Z., Shi, X., Singh, B., Tang, J., Taylor, M. A., Thornton, P. E., Turner, A. K., Veneziani, M., Wan, H., Wang, H., Wang, S., Williams, D. N., 510 Wolfram, P. J., Worley, P. H., Xie, S., Yang, Y., Yoon, J.-H., Zelinka, M. D., Zender, C. S., Zeng, X., Zhang, C., Zhang, K., Zhang, Y., Zheng, X., Zhou, T., and Zhu, Q.: The DOE E3SM coupled model version 1: Overview and evaluation at standard resolution, *Journal of Advances in Modeling Earth Systems*, <https://doi.org/10.1029/2018ms001603>, 2019.
- Golaz, J.-C., Van Roekel, L. P., Zheng, X., Roberts, A. F., Wolfe, J. D., Lin, W., Bradley, A. M., Tang, Q., Maltrud, M. E., Forsyth, R. M., Zhang, C., Zhou, T., Zhang, K., Zender, C. S., Wu, M., Wang, H., Turner, A. K., Singh, B., Richter, J. H., Qin, Y., Petersen, M. R., 515 Mamatjanov, A., Ma, P.-L., Larson, V. E., Krishna, J., Keen, N. D., Jeffery, N., Hunke, E. C., Hannah, W. M., Guba, O., Griffin, B. M., Feng, Y., Engwirda, D., Di Vittorio, A. V., Dang, C., Conlon, L. M., Chen, C.-C.-J., Brunke, M. A., Bisht, G., Benedict, J. J., Asay-Davis, X. S., Zhang, Y., Zhang, M., Zeng, X., Xie, S., Wolfram, P. J., Vo, T., Veneziani, M., Tesfa, T. K., Sreepathi, S., Salinger, A. G., Reeves Eyre, J. E. J., Prather, M. J., Mahajan, S., Li, Q., Jones, P. W., Jacob, R. L., Huebler, G. W., Huang, X., Hillman, B. R., Harrop, B. E., Foucar, J. G., Fang, Y., Comeau, D. S., Caldwell, P. M., Bartoletti, T., Balaguru, K., Taylor, M. A., McCoy, R. B., Leung, L. R., and 520 Bader, D. C.: The DOE E3SM Model Version 2: Overview of the Physical Model and Initial Model Evaluation, *Journal of Advances in Modeling Earth Systems*, 14, e2022MS003156, <https://doi.org/https://doi.org/10.1029/2022MS003156>, 2022.
- Harrop, B. E., Pritchard, M. S., Parishani, H., Gettelman, A., Hagos, S., Lauritzen, P. H., Leung, L. R., Lu, J., Pressel, K. G., and Sakaguchi, K.: "Conservation of Dry Air, Water, and Energy in CAM and Its Potential Impact on Tropical Rainfall", *Journal of Climate*, 35, 2895 – 2917, <https://doi.org/10.1175/JCLI-D-21-0512.1>, 2022.
- 525 Lauritzen, P. H., Kevlahan, N. K.-R., Toniazzo, T., Eldred, C., Dubos, T., Gassmann, A., Larson, V. E., Jablonowski, C., Guba, O., Shipway, B., Harrop, B. E., Lemarié, F., Tailleux, R., Herrington, A. R., Large, W., Rasch, P. J., Donahue, A. S., Wan, H., Conley, A., and Bacmeister,

- J. T.: Reconciling and Improving Formulations for Thermodynamics and Conservation Principles in Earth System Models (ESMs), *Journal of Advances in Modeling Earth Systems*, 14, e2022MS003117, <https://doi.org/https://doi.org/10.1029/2022MS003117>, 2022.
- Lin, S.-J.: A Vertically Lagrangian Finite-Volume Dynamical Core for Global Models, *Mon. Wea. Rev.*, 132, 2293–2397, 2004.
- 530 Liu, W., Ullrich, P. A., Guba, O., Caldwell, P. M., and Keen, N. D.: An Assessment of Nonhydrostatic and Hydrostatic Dynamical Cores at Seasonal Time Scales in the Energy Exascale Earth System Model (E3SM), *Journal of Advances in Modeling Earth Systems*, 14, e2021MS002805, <https://doi.org/https://doi.org/10.1029/2021MS002805>, e2021MS002805 2021MS002805, 2022.
- Lock, S.-J., Wood, N., and Weller, H.: Numerical analyses of Runge-Kutta implicit-explicit schemes for horizontally explicit, vertically implicit solutions of atmospheric models, *Q. J. Roy. Meteor. Soc.*, 140, 1654–1669, <https://doi.org/10.1002/qj.2246>, 2014.
- 535 Neale, R. B., Chen, C.-C., Gettelman, A., Lauritzen, P. H., Park, S., Williamson, D. L., Conley, A. J., Garcia, R., Kinnison, D., Lamarque, J.-F., Marsh, D., Mills, M., Smith, A. K., Tilmes, S., Vitt, F., Morrison, H., Cameron-Smith, P., Collins, W. D., Iacono, M. J., Easter, R. C., Ghan, S. J., Liu, X., Rasch, P. J., and Taylor, M. A.: Description of the NCAR Community Atmosphere Model (CAM 5.0), https://www.cesm.ucar.edu/models/cesm1.0/cam/docs/description/cam5_desc.pdf, 2012, accessed July 02, 2021.
- Rasch, P. J., Xie, S., Ma, P.-L., Lin, W., Wang, H., Tang, Q., Burrows, S. M., Caldwell, P., Zhang, K., Easter, R. C., Cameron-Smith, P., Singh, B., Wan, H., Golaz, J.-C., Harrop, B. E., Roesler, E., Bacmeister, J., Larson, V. E., Evans, K. J., Qian, Y., Taylor, M., Leung, L. R., Zhang, Y., Brent, L., Branstetter, M., Hannay, C., Mahajan, S., Mamatjanov, A., Neale, R., Richter, J. H., Yoon, J.-H., Zender, C. S., Bader, D., Flanner, M., Foucar, J. G., Jacob, R., Keen, N., Klein, S. A., Liu, X., Salinger, A., Shrivastava, M., and Yang, Y.: An Overview of the Atmospheric Component of the Energy Exascale Earth System Model, *Journal of Advances in Modeling Earth Systems*, 11, 2377–2411, <https://doi.org/https://doi.org/10.1029/2019MS001629>, 2019.
- 540
- 545 Reed, K. A. and Jablonowski, C.: Idealized tropical cyclone simulations of intermediate complexity: A test case for AGCMs, *Journal of Advances in Modeling Earth Systems*, 4, <https://doi.org/10.1029/2011MS000099>, 2012.
- Satoh, M.: Conservative scheme for the compressible nonhydrostatic models with the horizontally explicit and vertically implicit time integration scheme, *Mon. Wea. Rev.*, 130, 1227–1245, 2002.
- Séférian, R., Delire, C., Decharme, B., Voldoire, A., Salas y Melia, D., Chevallier, M., Saint-Martin, D., Aumont, O., Calvet, J.-C., Carrer, D., Douville, H., Franchistéguy, L., Joetzjer, E., and Sénési, S.: Development and evaluation of CNRM Earth system model – CNRM-ESM1, *Geoscientific Model Development*, 9, 1423–1453, <https://doi.org/10.5194/gmd-9-1423-2016>, 2016.
- 550
- Staniforth, A. N.: *Global Atmospheric and Oceanic Modelling: Fundamental Equations*, Cambridge University Press, Cambridge, U.K., 2022.
- Taylor, M. A.: Conservation of mass and energy for the moist atmospheric primitive equations on unstructured grids, in: *Numerical Techniques for Global Atmospheric Models*, Springer Lecture Notes in Computational Science and Engineering, edited by Lauritzen, P. H., Jablonowski, C., Taylor, M. A., and Nair, R. D., vol. 80 of *Lecture Notes in Computational Science and Engineering*, Springer, Berlin, Heidelberg, New York, 2011.
- 555
- Taylor, M. A., Guba, O., Steyer, A., Ullrich, P. A., Hall, D. M., and Eldrid, C.: An Energy Consistent Discretization of the Nonhydrostatic Equations in Primitive Variables, *Journal of Advances in Modeling Earth Systems*, 12, e2019MS001783, <https://doi.org/10.1029/2019MS001783>, 2020.
- 560
- Termonia, P., Fischer, C., Bazile, E., Bouyssel, F., Brožková, R., Bénard, P., Bochenek, B., Degrauwe, D., Derková, M., El Khatib, R., Hamdi, R., Mašek, J., Pottier, P., Pristov, N., Seity, Y., Smolíková, P., Španiel, O., Tudor, M., Wang, Y., Wittmann, C., and Joly, A.: The ALADIN System and its canonical model configurations AROME CY41T1 and ALARO CY40T1, *Geoscientific Model Development*, 11, 257–281, <https://doi.org/10.5194/gmd-11-257-2018>, 2018.

- 565 Wan, H., Rasch, P. J., Taylor, M. A., and Jablonowski, C.: Short-term time step convergence in a climate model, *Journal of Advances in Modeling Earth Systems*, 7, 215–225, <https://doi.org/https://doi.org/10.1002/2014MS000368>, 2015.
- Weller, H., Lock, S.-J., and Wood, N.: Runge-Kutta IMEX schemes for the Horizontally Explicit/Vertically Implicit (HEVI) solution of wave equations, *J. Comput. Phys.*, 252, 365–381, <https://doi.org/10.1016/j.jcp.2013.06.02>, 2013.
- Williamson, D. L., Olson, J. G., Hannay, C., Toniazzo, T., Taylor, M., and Yudin, V.: Energy considerations in the Community Atmosphere
570 Model (CAM), *Journal of Advances in Modeling Earth Systems*, 7, 1178–1188, 2015.