



## Reservoir Assessment Tool Version 3.0: A Scalable and User-Friendly Software Platform to Mobilize the Global Water Management Community

Sanchit Minocha<sup>1</sup>, Faisal Hossain<sup>1</sup>, Pritam Das<sup>1</sup>, Sarath Suresh<sup>1</sup>, Shahzaib Khan<sup>1</sup>, George Darkwah<sup>1</sup>, Hyongki Lee<sup>2</sup>, Stefano Galelli<sup>3</sup>, Konstantinos Andreadis<sup>4</sup>, Perry Oddo<sup>5</sup>

<sup>1</sup>Department of Civil and Environmental Engineering, University of Washington, Seattle, WA 98105, United States

<sup>2</sup>Department of Civil and Environmental Engineering, University of Houston, Houston, TX 77204, United States

<sup>3</sup>Pillar of Engineering Systems and Design, Singapore University of Technology and Design, Singapore 487372

<sup>4</sup>Department of Civil and Environmental Engineering, University of Massachusetts, Amherst, MA 01003, United States

<sup>5</sup>NASA Goddard Space Flight Center, Science Systems and Application Inc, Greenbelt, MD 2077

*Corresponding Author:* Faisal Hossain (fhossain@uw.edu)

**Abstract.** In the modern world, dams and the artificial reservoirs behind them serve the increasing demand for water across diverse needs such as agriculture, energy production, and drinking water. As dams continue to proliferate, monitoring water availability influenced by reservoir operations is now of paramount importance. The Reservoir Assessment Tool (RAT) is a data-driven software that integrates satellite remote sensing with hydrological models, enabling the estimation of key reservoir parameters such as inflow, outflow, surface area, evaporation and storage changes. The earliest rendition of RAT (version 1.0) was set up for 1598 reservoirs around the world with limitations in functional robustness, updating frequency and scalability. Some of these limitations on updating frequency and functional robustness were addressed in version 2.0 that was later made operational for the inter-governmental agency of the Mekong River Commission. Recognizing the need for scalability to mobilize the global water management community to benefit from satellite remote sensing, we hereby introduce RAT version 3.0. This version is optimized for accelerating open collaboration among users for continuous improvement and customization of RAT to enable reservoir management breakthroughs. RAT 3.0 represents a wholesale overhaul from the previous versions to empower the global community of users and developers in the spirit of the open-source movement. RAT 3.0 allows reservoir monitoring advancements and new functional developments that can be freely exchanged and seamlessly integrated for continuous evolution of the software. A centralized web application has also been established to facilitate the storage and dissemination of global reservoir monitoring information along with comprehensive training resources. RAT 3.0 aspires to usher the traditional water management community into the era of satellite remote sensing. The global impact of the software can be expected to increase as uptake spreads, enabling a more sustainable and equitable utilization of our planet's water resources.

**Key words:** Reservoirs, satellites, scalability, open-source, cloud computing, distributed modelling



## 35 1 Introduction

Over the past seven decades, the number of large dams constructed globally to manage water for various purposes, has increased 10-fold, with the current count exceeding 58,700 (ICOLD, 2020). Figure 1 provides a geographic representation of the major dams, revealing the extensive presence of dams around the world (Lehner et al., 2011). This increase in the number of dams is a direct result of the growing demand for water resources (Gleick, 2012), which  
40 is driven by population growth, urbanization, industrialization, and increasing irrigation (Kannan and Anandhi, 2020). Dams create artificial lakes called reservoirs for reliable water storage and distribution, serving as a source for irrigation and domestic and industrial use (Baxter, 1977). From here on, the term ‘reservoirs’ will be used interchangeably with ‘dams’ and also to refer to these artificial lakes. Dams also play a major role in mitigating floods by reducing river flow (Sordo-Ward et al., 2012) and in generating hydroelectricity, thus providing a cleaner energy  
45 alternative (Baxter, 1977; Biswas, 2012).

While dams have played a crucial role in providing water and energy to communities around the world, they also have a significant number of drawbacks that cannot be ignored. Dams alter downstream water conditions and sediment flow, change water temperatures, and obstruct the movement of organisms and nutrients (Poff and Hart, 2002). As  
50 dams disrupt the natural flow of rivers, they can exacerbate drought and flood conditions and negatively impact the aquatic habitat and ecosystem services. This can further affect the livelihoods of people, such as fishermen and farmers.

Given dams' potential downsides, monitoring their performance to ensure safe operation and mitigating negative effects is extremely important. Moreover, monitoring can also help optimize dam operations and maximize its benefits for all stakeholders. Traditional methods of monitoring, such as installing gauges, can be costly and time-consuming as it requires regular maintenance and data collection. In the past few years, satellite remote sensing has emerged as a powerful alternative for monitoring dams because of the wide range of advantages it serves (Bonnema and Hossain, 2017; Bonnema et al., 2021). It allows monitoring at a global scale and provides valuable data on the aerial extent and  
60 elevation of surface water in the reservoirs. These time-varying observations of the reservoir's water condition allow the derivation of storage change. Satellite remote sensing provides near real-time data, making it possible to respond to changes in reservoir conditions in a timely and efficient manner, allowing for more effective management. Remote sensing can also address the issue of limited availability of data on reservoirs and water usage in transboundary river basins, which is often exacerbated by political or logistical barriers (Hossain et al., 2007).

65 Most studies that analyse the reservoir's dynamic state of storage change and inflow/outflow fluxes using satellite remote sensing are usually limited to a specific locations or periods (Vu et al., 2021; Bonnema and Hossain, 2017; Zhang et al., 2014). There are also satellite-based reservoir monitoring tools that provide information about reservoir state like water level, but are often restricted in terms of spatial coverage, spatial and temporal resolution, or the  
70 exclusive community of expert users. For example, the Global Reservoirs and Lakes Monitor (G-REALM) database, developed by the U.S. Department of Agriculture's Foreign Agricultural Service (USDA-FAS), routinely monitors



lake and reservoir height variations every 10 days based on Jason series nadir altimeter data. The Hydroweb database, developed at the LEGOS laboratory (Laboratoire d'Etudes en Géophysique et Océanographie Spatiales) in Toulouse, France, contains time series of water levels over large rivers, lakes and wetlands at the global scale  
75 (<http://hydroweb.theia-land.fr/>). Most reservoir monitoring studies or systems that are available today assume simplified operating rules based on reservoir storage capacity rather than the time-varying nature of the reservoir's actual operations driven by changing hydrology (supply) and user needs (demand). In 2021, Biswas et al. (2021) addressed these gaps by introducing an assumption-free and satellite data-driven reservoir monitoring tool called Reservoir Assessment Tool (RAT) version 1.0 (RAT 1.0). This version was later upgraded with a few enhancements  
80 by Das et al. (2022) as RAT version 2.0 (RAT 2.0).

RAT helps water managers to track a reservoir's dynamic state comprising inflow, outflow, evaporation, storage change, storage level and extent, ~~and evaporation~~. RAT 1.0 was operational for 1598 reservoirs worldwide, at a monthly update frequency that was used to generate monthly estimates of reservoirs' dynamic states (Biswas et al.,  
85 2021). Readers can still access the outputs of this original version at [http://depts.washington.edu/saswe/rat\\_beta](http://depts.washington.edu/saswe/rat_beta). In RAT 2.0, the updating frequency was improved to sub-weekly by leveraging data from multiple satellites. RAT 2.0 further enhanced the accuracy of storage change and outflow as Das et al. (2022) devised a more advanced multi-sensor surface water classification technique called 'TMS-OS.' RAT 2.0 operations have so far been primarily limited to the Mekong River basin and inter-governmental agency stakeholders, with scalability and reproducibility for the  
90 broader water management community remaining unexplored (Das et al., 2022). For an interested user with limited literacy on satellite remote sensing data, operationalizing RAT 1.0 or 2.0 for tracking reservoirs in a river basin of their choice requires significant training.

This paper describes an improved version of RAT (version 3.0), hereafter termed as RAT 3.0, driven by the need to  
95 lower the barrier of entry for first-time users and to improve scalability, robustness and reproducibility. RAT 3.0 is designed to be easy-to-install and easy-to-operate within an open-source software architecture. Software that is built on these design features can potentially mobilize the global water community to explore, use and improve RAT in the spirit of open-source development similar to Linux development. RAT 3.0 can benefit not only governments, hydrologists, researchers, and stakeholders but also the individual user who relies on water resources for their livelihood,  
100 such as farmers, city residents, and fishermen. Access to near real-time information on the reservoir's dynamic state can empower the individual user or a community by first quantifying any potential negative impact of floods and droughts, preparing for them, and optimally utilizing available water resources. The user-friendly installation and operation feature of RAT 3.0 can help farmers make informed decisions on irrigation and crop planning, assist city residents in water conservation efforts and future usage planning, and aid fishermen in identifying the best fishing  
105 locations while avoiding areas with low water levels. Additionally, a scalable software like RAT 3.0 can be used to plan and optimize hydroelectricity generation (Chowdhury et al., 2022). These are just some of the many examples of what may be possible when a reservoir monitoring tool is made scalable and easy to install and operate. Our motivation



for developing the RAT 3.0 software is to accelerate breakthroughs in the broader field of managed water resources driven by the grassroots needs of global users.

110



The architecture of RAT 3.0 has been designed in such a way that it requires minimal user input with additional flexibility added for the more advanced users. It is more robust and less susceptible to data gaps or instability that satellite remote sensing systems can sometimes experience. Operational efficiency has also been improved as RAT 3.0 can remember the equilibrium state of the basin at each time step, making the need for model spin up unnecessary in a cron job. The directory structure for major and intermediate outputs of RAT 3.0 has been reorganized for better database management. With this release of RAT 3.0, the conventional water management community can be more empowered with the vantage of space by providing an easy-to-use, scalable software architecture to monitor reservoirs. We believe such a software has the potential to build a self-sustaining community of users who can actively contribute to the continuous improvement and upkeep of the reservoir monitoring software.

115

120

## **2 Foundation of Reservoir Assessment Tool (RAT) 3.0**

### **2.1 History and Purpose**

RAT is a framework that employs satellite-based remote-sensing data and hydrological modeling to estimate the outflow of a reservoir via a mass balance equation. To estimate the inflow, RAT uses meteorological data and hydrological modeling. In RAT 1.0 (Biswas et al., 2021), the hydrological model used was the Variable Infiltration Capacity (VIC) version 4.2.d, which was later replaced with VIC-5 (Hamman et al., 2018) in RAT 2.0 by Das et al. (2022). To compute storage change in a reservoir, two inputs are required: the area elevation curve (AEC) and the change in the surface area or elevation of the reservoir. The AEC is also known as Area-elevation volume (AEV) or hypsometric curves. The AEC curve summarizes quantitatively the bathymetry of the reservoir and helps compute the inundated area of the reservoir for a given storage level or vice versa. Consequently, with two successive satellite observations of water elevation or surface area, the storage change can be derived. In RAT 2.0, the user had to provide the AEC for all reservoirs, which could be retrieved from either in situ pre-dam topographic maps or an available digital elevation model (DEM). The change in the surface area of the reservoir is estimated by observing the alteration in the number of water-classified pixels of the satellite imagery within the reservoir's region of interest. Alternatively, if the reservoir's water surface elevation information is available, such as from nadir-looking radar altimeters, surface area can be estimated from the AEC. The Penman Equation (Penman, 1948) is used in RAT 2.0 to calculate evaporation from a reservoir, leading to the estimation of reservoir outflow using the mass balance equation (Figure 2). Readers are encouraged to refer to Biswas et al. (2021) and Das et al. (2022) for a process-based understanding of RAT. This paper will hereafter focus mostly on the software model development aspect of RAT 3.0.

130

135

140

RAT was developed as a first-of-its-kind reservoir monitoring tool that could remotely monitor the changing dynamics of reservoirs, providing the global community with a comprehensive understanding of how they impact natural river flow. One of its original purposes was to serve as a decision-making tool for forming and evaluating water-sharing



agreements between countries in a river basin. Despite the success of RAT 1.0, the monthly frequency of updating for reservoir state, limited its use. Monthly estimates of reservoir outflow and storage fail to capture the operating patterns of a reservoir at finer scales, such as hydropeaking, often required for many decision-making needs of the water manager. RAT 2.0 was therefore developed based on feedback from stakeholders, particularly from member countries of the Mekong River Commission (MRC), to improve the updating frequency (to weekly) and improve the accuracy of outflow data. This resulted in better decision-making for stakeholder agencies. As a result, RAT 2.0 was the first major operational uptake by a large inter-governmental river agency such as the MRC (Das et al, 2022).

## 150 **2.2 Why RAT 3.0?**

RAT 3.0 has been developed to expand on the improvements made in the RAT 2.0 framework and apply them on a global scale to achieve RAT's original design goals. The provision of sub-weekly estimates of reservoir outflow can enable the user to gain insight into the operational patterns of dams and their effects on the aquatic environment. RAT 3.0 has been designed to appeal to a broader range of users beyond just government water agencies and large stakeholder communities, using a user-friendly setup that can be installed locally on any Linux machine for any reservoir worldwide. Input requirements have been significantly reduced in RAT 3.0, making it easier for non-hydrology communities such as farmers and fishing communities to install the tool. Wherever possible, familiarity with data and parameters related to hydrologic modelling or remote sensing is not required for the RAT 3.0 user. The open-access, scalable and user-friendly features of RAT 3.0 is designed to nurture a self-sustaining community of users who can actively contribute to the open-source development of the software, leading to further advancements, modifications, and breakthroughs in new frontiers for managing Earth's precious water resources. Figure 3 summarizes the technological evolution of RAT from version 1.0 to version 3.0.

## 160 **2.3 The Framework of RAT 3.0**

The RAT 3.0 framework comprises 14 key steps that need to be executed successfully to complete a RAT installation run (Figure 4). While these steps are independent in their execution, some of them may depend on others for input. For example, outflow calculation requires the prior execution of inflow estimation through VIC and its streamflow routing. Hence, users must ensure that any omitted step has already run or that its output does not serve as input for another step. This independent execution of steps is advantageous as it eliminates the need to rerun previously executed steps during debugging or software enhancement exercises. Additionally, users have the flexibility to choose specific steps to execute, allowing them to run just individual steps, such as the surface area time series calculation instead of a complete RAT run. The list of steps is shown in Table 1. The workflow diagram in Figure 4 summarizes the comprehensive process employed by RAT 3.0, executing the 14 key steps to generate essential reservoir data, including inflow, outflow, storage change, and evaporation.

175 In Step 1 of RAT 3.0, global meteorological data is downloaded, which includes precipitation, minimum and maximum temperature, and wind speed, for the user-provided duration. The [IMERG Late product](#) (Huffman et al., 2014) is used to retrieve daily precipitation, while temperature and wind speed data are sourced from NOAA



NCEP/Climate Prediction Center (Kalnay et al., 1996). The data is then scaled, aligned, and clipped to the region of interest. In Step 2, all the meteorological data is combined into a single NetCDF file in the format required by MetSim  
180 (Bennett et al., 2020) for input. The spatial resolution of the data remains fixed at  $0.0625^\circ$  for the entirety of the RAT run. Additionally, Step 3 generates region-specific parameter files for MetSim if not supplied by the user.

After the parameter and input files are prepared for MetSim, Step 4 initiates the MetSim run to produce forcings that are reformatted for input into VIC. If the user has provided parameter files that extend beyond the basin's spatial extent, Step 5 creates VIC's parameter files. Next, in Step 6, VIC generates gridded runoff from the meteorological  
185 forcings, which is converted to the format required by the routing model. RAT 3.0 employs the same routing model as RAT 2.0. To prepare for Step 8, parameter files for the routing model are created in Step 7, including the basin's flow direction file and station file, if necessary. Step 8 involves executing the routing model to generate daily, monthly, and yearly streamflow files for each reservoir.

190 Step 9 of RAT 3.0 involves the creation of a shapefile for the basin's reservoir polygons using a global reservoir shapefile, if available. In Step 10, the TMS-OS algorithm (Das et al., 2022), and Google Earth Engine (GEE) Python API (Gorelick et al., 2017) are used to produce a surface area time series for each reservoir by efficiently using cloud computing. Step 11 extracts the water level time series for any reservoir that lies on the Jason-3 altimeter track. In Step 12, the area-elevation curve for each reservoir is generated using a digital elevation model, unless provided by  
195 the user. Step 13 first calculates the daily inflow for each reservoir using the streamflow files created in Step 8 by the routing model. The storage change time series for each reservoir is then estimated using its surface area/water level time series and area-elevation curve, implementing the trapezoidal rule. The Penman equation of Penman (1948) is then used to estimate the water loss from a reservoir in terms of evaporation. Lastly, Step 13 implements the mass-balance approach to estimate outflow from the reservoirs. Finally, all outputs of the RAT 3.0 are prepared as separate  
200 time series CSV files for each reservoir in Step 14.

### 3 Advancements in RAT 3.0

RAT 3.0 introduces several improvements in terms of scalability, robustness, efficiency, ease of use while retaining the power for the user to customize, and improve specific processes in the spirit of open-source software development (Figure 5). These advancements are in line with the software design vision to increase the applicability of RAT to  
205 diverse fields allied to managed water such as food, energy, fisheries, bio-diversity, drought, recreation etc. One of the most notable improvements in RAT 3.0 is its ability to offer users a global database that can serve as a default configuration. This global database contains input files for VIC global parameters, river basin shapefiles, flow direction and dam geolocation (from GranD) which consequently makes it easier for the first-time user to install RAT 3.0 at a basin of their choice without requiring much customization.

210

Also, with the introduction of RAT 3.0, we adopt the semantic versioning system (Preston-Werner, 2023) to define the names of future releases. In this system, version numbers adhere to the format "MAJOR.MINOR.PATCH". A MAJOR version is incremented when changes are made that are not backward compatible, a MINOR version is



215 incremented when new features and functionality are added in a backward-compatible manner, and a PATCH version  
is incremented for backward-compatible bug fixes. This approach ensures clarity and consistency in communicating  
the nature of each release.

### 3.1 Scalability

220 RAT 3.0 operates at the river basin level and can be set up for any river basin worldwide. Users have the flexibility to  
either select a basin from the global database, allowing RAT 3.0 to automatically set up for the reservoirs within that  
basin. Alternately, users can provide specific basin geometry and reservoir information for RAT to work with.  
Moreover, for large-scale analysis, users can select multiple basins simultaneously by utilizing a single configuration  
file in RAT 3.0. The software also simplifies the creation of region-specific parameter files through automation. The  
streamlined and automated pipeline of RAT 3.0 allows for global-scale usage, eliminating the need for user  
dependencies during the process. Notably, RAT 3.0 utilizes a service account to access GEE Python API and converts  
225 reservoir geometries into earth-engine objects in real-time. This advancement eliminates the requirement of pre-  
loading reservoir shapefiles as assets into the user's earth-engine account. This characteristic, in conjunction with RAT  
3.0's software architecture featuring modular components and independent stepwise execution, enhances scalability  
and user-friendliness.

### 3.2 Robustness

230 RAT 3.0 conducts thorough validation of user input, which is provided via a configuration file, ensuring crucial checks  
such as the chronological correctness of start and end dates. The software adopts significant improvements in error  
handling, implementing a two-level log file system. The first log file (level 1) corresponds to the user's RAT execution,  
providing concise information on the successful execution of each step for each basin, along with any associated  
errors. The second log file (level 2) corresponds to a basin for which RAT 3.0 has been executed and offers a  
235 comprehensive description of the computations and processes undertaken by RAT for that basin. The level-1 log file  
also provides the authentication status of the earth-engine service account provided by the user.

In managing missing meteorological data within the designated execution period, the resilience of RAT 3.0 should be  
noted. The version 3.0 software proactively handles potential issues of file corruption resulting from internet  
240 connectivity problems during satellite data file downloads. It triggers an automatic re-download process to ensure data  
integrity. Users also have the flexibility to provide a climatological dataset specific to the basin, empowering RAT  
3.0 to identify unphysical precipitation values that are sometimes produced by satellite data algorithms and substitute  
them with more realistic alternatives.

245 To guarantee execution stability, RAT 3.0 integrates robust exception-handling mechanisms that prevent the failure  
of one step from obstructing the progress of subsequent steps. While the level-1 log file records any encountered  
errors, it may not provide in-depth insights into the underlying cause. Therefore, users are advised to seek support  
through the RAT discussion forum at <https://github.com/UW-SASWE/RAT/discussions>, where the engaged user and



250 developer community can assist in diagnosing and resolving specific errors. Additionally, RAT 3.0 verifies the  
availability of at least one satellite imagery for each reservoir within the desired execution period before initiating  
computations in GEE, effectively avoiding potential errors thrown by its Python API.

### 3.3 Efficiency

255 RAT 3.0 improves computational performance and memory usage. To optimize resource utilization, RAT 3.0  
leverages the dask Python library (Rocklin, 2015), enabling parallelization of meteorological data downloads and  
routing model execution for multiple reservoirs. Additionally, it incorporates a smart mechanism to avoid redundant  
operations by skipping the downloading and processing of files as well as the creation of parameter files that already  
exist from previous RAT runs. The configuration file of RAT 3.0 has been expanded to include new sections that  
correspond to the various steps outlined in the 'Framework of RAT 3.0' subsection. This enhancement allows users to  
selectively choose a subset of these 14 steps, enabling them to reduce the execution time of RAT based on their specific  
260 output requirements or to resume the process from a previous checkpoint.

RAT 3.0 offers automatic handling of the spin-up time required by the MetSim and VIC model, while still allowing  
users to utilize VIC's 'hot start' feature. In the hot start feature, VIC hydrologic model bypasses the spin-up period and  
initializes the soil parameters using an existing parameter file, which, in the case of RAT 3.0, represents the soil state  
265 conditions at the end of the duration of the last RAT execution. This time-saving capability allows users to seamlessly  
resume the RAT execution from the point where it last ended, unlike RAT 2.0, which required starting from the  
beginning to ensure an adequate spin-up period for VIC. This hot start feature brings down the computational burden  
of any operational cron job involving RAT 3.0. It is worth noting that employing VIC's 'hot start' feature necessitates  
a spin-up time for the routing model, which varies based on the basin size and the duration required for water to travel  
270 from upstream to downstream locations within the basin. RAT 3.0 effectively accounts for this spin-up time to ensure  
precise and accurate results.

Efficiency in memory usage has been achieved through the elimination of the need to save parameter files for each  
RAT execution. Moreover, users are offered the convenience of automatically deleting intermediate data while  
275 retaining only the final outputs. By default, RAT 3.0 merges newly generated output data with the previously stored  
results based on the date. However, users have the flexibility to execute RAT 3.0 by replacing the previous outputs,  
enabling a fresh start when desired.

### 3.4 Ease of Use

280 RAT 3.0 improves user-friendliness, particularly in the realm of data management. A major improvement is the  
separation of the data directory from the source code directory. Users are no longer required to keep the data directory  
in the same location as the source code. This separation proves advantageous when users need to store the data  
directory on a different disk to overcome memory limitations. Furthermore, RAT 3.0 recognizes the extensive





285 generation of intermediate outputs and parameter files before obtaining the final outputs. To streamline file  
organization and ease navigation, the data directory has undergone restructuring and re-organization. This allows users  
to effortlessly locate files associated with specific intermediate processes within RAT 3.0, such as MetSim, VIC, and  
GEE.

290 This version of RAT also introduces a convenient built-in feature for operationalizing RAT 3.0, allowing users to  
specify the desired latency. While the typical latency of meteorological data ranges from 1-2 days, it is advised to set  
a latency of 3 days when operationalizing RAT 3.0. This ensures that RAT 3.0 obtains all the necessary input data  
from various satellite data servers and executes smoothly, without encountering any errors. By setting a latency of 3  
days, RAT 3.0 will initiate execution from the end of the previous RAT 3.0 run and cover the duration up to three  
295 days prior to the current day. This approach guarantees that RAT 3.0 has access to the most up-to-date and reliable  
input data, providing users with comprehensive results.

The introduction of the global database simplifies the input requirements for utilizing and operationalizing RAT 3.0  
for first-time users. The expanded functionality of executing RAT 3.0 for multiple basins or selectively choosing  
specific tasks (steps) enhances the versatility of RAT. In RAT 3.0, users only need to provide a single configuration  
300 file and a secrets file to customize their preferences and provide the necessary credentials. To enhance user visibility  
and troubleshooting capabilities, RAT 3.0 incorporates two-level logging, enabling users to track the progress of each  
RAT execution and promptly identify and address any encountered errors or warnings. These combined features  
significantly reduce the barrier of installation for first-time users, making RAT more accessible to the broader water  
community.

305

For additional support and for downloading the RAT 3.0 software, a comprehensive user guide is available on the  
RAT Global web app, described in the following section. A dedicated discussion forum (see section 3.2) has been  
established to foster collaboration among RAT users, facilitating the open exchange of experiences, challenges, and  
specific use cases.

### 310 **3.5 Global Database**

While the inclusion of the global database may not be considered a technical advancement specific to RAT 3.0, its  
presence has brought about a transformative shift in the development of RAT 3.0. Without the global database, the  
significance of other enhancements in RAT 3.0 would have been diminished. Leveraging various global datasets  
outlined in Table 2, RAT 3.0 now possesses default inputs that enable the execution of RAT 3.0 for any river basin  
315 worldwide for the first-time user. This approach allows the user to focus more on improving the skill of RAT  
iteratively once the initial version is quickly set up and made functional.

The GRDC river basin shapefile [row 1 of Table 2] is utilized to generate a grid of the river basin for calculating  
inflow using VIC and routing models. In addition, the boundary polygon from this shapefile is also employed to select



320 only those reservoirs and dams from the GRanD dam database of Lehner et al. (2011) [rows 2 and 3 of Table 2] that lie within the river basin. RAT is then executed for only these dams and calculates inflow, surface area change, evaporation, and outflow. The routing model relies on the flow direction file [row 4 of Table 2] to calculate inflow based on gridded runoff data obtained from VIC.

325 The DEM elevation raster from the Shuttle Radar Topography Mission (SRTM) [row 5 of Table 2] is used by RAT to create a domain parameter file required for the execution of MetSim. VIC Soil and Domain Parameter raster files [rows 6 and 7 of Table 2] offer global-scale and high-resolution information, respectively, enabling the creation of input parameter files required by VIC.

330 Lastly, the EGM2008 geoid model [row 8 of Table 2] is used to extract reservoir levels from altimetry data. It is important to note that while these datasets are provided as default inputs for RAT execution, users have the flexibility to override these options according to their preferences and select dam locations that are not in the GranD database. Additionally, if no AEC (area elevation curve) file is provided for a reservoir, the SRTM 30 m digital elevation model available in GEE is used to automatically estimate the AEC for the reservoirs in question (Farr et al., 2007).

#### 335 **4 RAT – Global Web App: The Confluence of Visualization, Training and Access to RAT 3.0 Software**

An interactive web application for RAT 3.0 has been developed and can now be accessed at [www.satellitedams.net](http://www.satellitedams.net). This platform serves as an informational hub for RAT and provides users with an interactive map to visualize and analyse data from numerous dams worldwide (Figure 6). In addition, this global web app offers a comprehensive 'HELP' section where users can access three types of educational and training resources. These are: 1) accessing the source codes from the RAT 3.0 github page; 2) detailed software documentation hosted on ratdocs.io and 3) comprehensive tutorial detailing how to execute each of the 14 key steps for RAT 3.0 installation. Those interested in deepening their understanding of the tool can explore the 'PUBLICATIONS' section to access relevant literature and enhance their knowledge.

345 The web application has been carefully developed to cater to a wide range of users, including stakeholders, government officials, and the general public. The key idea was to make it easy for users to access and visualize the dynamic outputs on reservoir state that are routinely generated by University of Washington developers to develop a first-cut understanding. Currently, the tool offers data for reservoirs located in the Texas-Gulf, Mesopotamia, and Southeast Asian river basins, with plans to include information on 1600 major dams worldwide that were originally monitored in RAT 1.0 in the near future. Once the tool becomes operational for most of the world's major reservoirs, users will have access to data (with a 3-day latency) on the dynamic state reservoirs (hindcast and nowcast). We firmly believe that every individual user or entity should have equal access to such information of our managed water resources. By making this data publicly available on the global web app, the developers have contributed their part to mitigating the lack of access to water information in transboundary and ungauged river basins.

355



We have implemented an advanced visualizer feature (Figure 7) to expand the capabilities of the web application and meet the diverse requirements of different entities and stakeholders. With this feature, users can extract meaningful information without the hassle of downloading the data, allowing for a more streamlined and efficient analysis process.

360 The advanced visualizer component allows users to conduct in-depth analyses using the reservoir data by plotting multiple axes on a single interactive graph, such as discharge, surface area, and storage change (Figure 8). This functionality extends to any two reservoirs globally, providing the flexibility to perform comparative analyses (see Figures 9-10). For instance, users can compare the outflow of an upstream dam with the inflow of a downstream dam, shedding light on the dynamics between the two. Another scenario may involve plotting the surface area of a reservoir  
365 alongside its inflow, allowing users to gain a comprehensive understanding of the relationship between these reservoir state variables (Figures 6-10).

## 5 Discussion and Conclusion

In a world where dams continue to be constructed or maintained at a rate faster than they are dismantled, it is important  
370 to acknowledge that dams are here to stay in the foreseeable future with their inherent advantages and disadvantages. Our focus here is on mitigating the negative impacts associated with these structures by levelling the playing field of access to information on the dynamic state of the world's reservoirs. Timely understanding of how dams and reservoirs affect natural river flow and other important water parameters is crucial in achieving this goal. Real-time monitoring of reservoirs is also essential for effectively addressing immediate threats such as floods and droughts. RAT 3.0 makes  
375 such monitoring possible with satellite remote sensing missions that have emerged as an indispensable vantage for studying reservoir operations and their impact on surrounding areas.

In this paper, we have described ~~systematically~~ the redesigned software architecture of RAT 3.0. The modular design with 14 self-contained steps makes it possible for a user to execute RAT only for a desired set of tasks. This enhances  
380 the user-friendliness of RAT 3.0 and lowers the barrier of entry for the first-time user. Several improvements, like multiple log files, reduction of input requirements, and provision of customization using a config file, have been done to maximize user-friendliness. Error handling has been improved and RAT 3.0 is now more robust when input data is unstable or missing. RAT 3.0 is computationally more efficient by adopting parallelization during downloading and processing meteorological data and the automatic deletion of intermediate files. Finally, RAT 3.0 has been developed  
385 with global scalability in mind so that it can be set up for any reservoir system worldwide. Scalability is the most important consideration for developing and nurturing a self-sustaining community of users who can continuously improve such a software in the spirit of open-source development and open science.

RAT 3.0 has already undergone extensive global testing across various basins by multiple users, as illustrated in Figure  
390 11, covering a wide range of use cases. Notably, RAT 3.0 has been instrumental in studying flood tracking in mountainous regions characterized by high precipitation and steep terrain, with a specific focus on the 2018 floods in



395 Kerala, India (Suresh et al., 2023). It has been utilized to assess the impact of the Belo Monte Dam on the Xingu River  
in the Amazon (Hossain et al., 2023) and to compute and compare regulated inflow with natural inflow in the absence  
of upstream dams in the Tennessee River basin (Das et al., 2023). RAT 3.0 has also provided valuable insights into  
the effects of dams in the transboundary river basin of Mesopotamia (Hossain et al., 2023). Recently, RAT was  
400 upgraded by the Asian Disaster Preparedness Center (ADPC) from version 2.0 to 3.0 for the Mekong River basin with  
assistance from co-author Pritam Das (see <https://ratmekong-servir.adpc.net/>). This version currently serves as an  
operational system for the MRC stakeholders. Currently, RAT 3.0 is being employed to analyse the hydro-thermal  
history of the Columbia River in the Pacific Northwest and upgraded from version 1.0 for the Nile and Indus River  
basins (Figure 11).

RAT 3.0 does not represent the final word on satellite-based reservoir monitoring software development. There will  
undoubtedly be numerous unforeseen software hurdles or bugs that will emerge as the use of RAT 3.0 expands. New  
satellite missions will emerge and many current ones may become less relevant, requiring updating of certain  
405 components of the software architecture. One such satellite mission is the recently launched Surface Water and Ocean  
Topography (SWOT) mission that will produce more accurate reservoir storage level, area and change data. Based on  
simulation studies reported by Bonnema and Hossain (2019), we believe SWOT will “turbocharge” the accuracy and  
operational efficiency of RAT 3.0 (see also Hossain et al., 2023; 2022). RAT is also purported to be hydrologic model  
agnostic. In its current architecture RAT 3.0 is not yet streamlined to allow easy swapping of the hydrologic model,  
410 select specific satellites and input data streams by the user. These issues will no doubt be addressed in a future and  
minor upgrade of RAT 3.0. What is important to note is that with the wholesale overhaul of the RAT software  
architecture in version 3.0, we now have the necessary design spirit of user-friendliness, scalability, open-access and  
open-sharing embraced to nurture a self-sustaining community of users who can continuously improve satellite-based  
reservoir monitoring based on grassroots needs of users.

415 The current applications of RAT 3.0 mark the advent of a new era, where the combined power of high-performance  
computing, information technology and satellite earth observations enables us to deepen our understanding of dams  
and their ecological impacts. RAT 3.0 represents the vanguard of this progress, offered to the global community as  
the first stride towards advancing water resource management practices and bringing them up to speed in the 21<sup>st</sup>  
420 century space age. As water demand continues to escalate, RAT 3.0 equips water resource managers and stakeholders  
with invaluable insights to make informed decisions and optimize the utilization of scarce water resources. With RAT  
3.0, it is our hope that the deep-seated disparities among nations pertaining to transboundary rivers can be drastically  
reduced, ~~ushering in a more harmonious world~~. We believe the day is not far when the transformative power of the  
open source and collaborative software development spirit of RAT 3.0 will touch the lives of all, ensuring equal access  
425 to information on reservoir’s the dynamic state.



**Code Availability:** The RAT 3.0 software code is available for download from the HELP menu of the RAT 3.0 global web app at <http://www.satellitedams.net>. Alternately, the code can also be downloaded from <https://zenodo.org/record/8268138>.

430 **Data Availability on RAT 3.0 Global Database:** <https://zenodo.org/record/8267708>

**RAT 3.0 Training Resources Availability:** Software documentation on RAT 3.0 can be accessed from <http://ratdocs.io>. User manual is available at: [https://depts.washington.edu/saswe/rat/user\\_manual/RAT-3.0\\_User\\_Manual.pdf](https://depts.washington.edu/saswe/rat/user_manual/RAT-3.0_User_Manual.pdf)

435 **Author Contribution:** Sanchit Minocha: research design, analysis, testing and writing; Faisal Hossain: research design, writing and editing; Pritam Das: research design, analysis, editing. All other co-authors: writing and editing

**Competing Interest:** The authors declare that they have no conflict of interest

440 **Acknowledgements:** The work on the development of the RAT 3.0 software architecture was generously supported by the NASA Applied Science Program through grants 80NSSC22K0918 (Water Resources) and 80NSSC23K0184 (Capacity Building) awarded to the second and corresponding author. The first author was supported from NASA Applied Science Program grant 80NSSC22K0918, National Science Foundation Graduate Traineeship program on Future Rivers and the Ivanhoe Foundation Fellowship.

## References

- Baxter, R. M. (1977). Environmental Effects of Dams and Impoundments. *Annual Review of Ecology and Systematics*, 8(1). <https://doi.org/10.1146/annurev.es.08.110177.001351>
- 445 Becker, J. J., Sandwell, D. T., Smith, W. H. F., Braud, J., Binder, B., Depner, J. L., Fabre, D., Factor, J., Ingalls, S., and Kim, S. H. (2009). Global bathymetry and elevation data at 30 arc seconds resolution: SRTM30\_PLUS. *Marine Geodesy*, 32(4), 355–371.
- Bennett, A., Hamman, J., and Nijssen, B. (2020). MetSim: A Python package for estimation and disaggregation of meteorological data. *Journal of Open Source Software*, 5(47). <https://doi.org/10.21105/joss.02042>
- 450 Biswas, A. K. (2012). Impacts of Large Dams: Issues, Opportunities and Constraints. In *Water Resources Development and Management*. [https://doi.org/10.1007/978-3-642-23571-9\\_1](https://doi.org/10.1007/978-3-642-23571-9_1)
- Biswas, N. K., Hossain, F., Bonnema, M., Lee, H., and Chishtie, F. (2021). Towards a global Reservoir Assessment Tool for predicting hydrologic impacts and operating patterns of existing and planned reservoirs. *Environmental Modelling and Software*, 140. <https://doi.org/10.1016/j.envsoft.2021.105043>
- 455 Bonnema, M., Hossain, F., Nijssen, B. and Holt, G. (2020) Hydropower's Hidden Transformation of Rivers in the Mekong, *Environmental Research Letters*, 15(4), <https://doi.org/10.1088/1748-9326/ab763d>.
- Bonnema, M. and Hossain, F. (2019) Assessing the Potential of the Surface Water and Ocean Topography Mission for Reservoir Monitoring in the Mekong River Basin, *Water Resources Research*, 55(1), 444-461 (<http://dx.doi.org/10.1029/2018WR023743>).
- 460 Bonnema, M. and Hossain, F. (2017). Inferring reservoir operating patterns across the Mekong Basin using only space observations, *Water Resources Research*, 53, 3791–3810, (<http://dx.doi.org/10.1002/2016WR019978>).



- Chowdhury A.F.M. K, Deshmukh, R., Wu, G., Armstrong, L., Galelli, S., Ndhlukula, K. (2022) Enabling a low-carbon electricity system for Southern Africa, *Joule*, 6(8), 1826-1824. DOI:<https://doi.org/10.1016/j.joule.2022.06.030>
- 465 Das, P., Hossain, F., Minocha, S. et al. (2023) A scalable framework for incorporation of regulatory impact of reservoirs in satellite-based monitoring of reservoir dynamic state in Reservoir Assessment Tool, *Hydrology and Earth System Science (Special Issue)* (In submission).
- Das, P., Hossain, F., Khan, S., Biswas, N. K., Lee, H., Piman, T., Meechaiya, C., Ghimire, U. and Hosen, K. (2022). Reservoir Assessment Tool 2.0: Stakeholder driven improvements to satellite remote sensing based reservoir monitoring. *Environmental Modelling & Software*, 157, 105533. <https://doi.org/10.1016/j.envsoft.2022.105533>
- 470 Farr, T. G., Rosen, P. A., Caro, E., Crippen, R., Duren, R., Hensley, S., Kobrick, M., Paller, M., Rodriguez, E., and Roth, L. (2007). The shuttle radar topography mission. *Reviews of Geophysics*, 45(2).
- Gleick, P. H. (2012). Chapter 6: China Dam. In *The World's Water* (Vol. 7, pp. 127–142). London: Island Press.
- Gorelick, N., Hancher, M., Dixon, M., Ilyushchenko, S., Thau, D., & Moore, R. (2017). Google Earth Engine: Planetary-scale geospatial analysis for everyone. *Remote Sensing of Environment*, 202. DOI:<https://doi.org/10.1016/j.rse.2017.06.031>
- 475 GRDC. (2020). *Major river basins of the World/Global Runoff Data Centre (GRDC)*. Federal Institute of Hydrology (BfG) Koblenz, Germany.
- Hamman, J. J., Nijssen, B., Bohn, T. J., Gergel, D. R., and Mao, Y. (2018). The variable infiltration capacity model version 5 (VIC-5): Infrastructure improvements for new applications and reproducibility. *Geoscientific Model Development*, 11(8). <https://doi.org/10.5194/gmd-11-3481-2018>
- 480 Hossain, F., Alwash, A., Minocha, S., and Eldardiry, H. (2023). Restoring the Mesopotamian Rivers for Future Generations: A Practical Approach. *Water Resources Research*, 59(5). <https://doi.org/10.1029/2023WR034514>
- Hossain, F., P. Das, Srinivasan, M., Tsontos, V., Oaida, C. M., Nickles, C., et al. (2022). Building user-readiness for satellite Earth observing missions: The case of the Surface Water and Ocean Topography (SWOT) mission, *AGU Advances*, 3 <https://doi.org/10.1029/2022AV000680>.
- 485 Hossain F., Das P., Brencher G., Conroy H., Darkwah G., Mccall A., Minocha S., Schlepp G., Yao S., and Khan S. (2023). A Satellite Remote Sensing Perspective on Water Resources. *International Water Power and Dam Construction*, 30–31.
- 490 Hossain, F., Katiyar, N., Wolf, A., and Hong, Y. (2007). The Emerging role of Satellite Rainfall Data in Improving the Hydro-political Situation of Flood Monitoring in the Under-developed Regions of the World, *Natural Hazards (Special Issue)*. 43, 199-210 (doi 10.1007/s11069-006-9094-x)
- Huffman G., Bolvin D., Braithwaite D., Hsu K., Joyce R., & Xie P. (2014). Integrated Multi-satellite Retrievals for GPM (IMERG), version 4.4. In *NASA's Precipitation Processing Center*.
- 495 ICOLD. (2020, April). *ICOLD World register of dams*. . [https://www.icold-cigb.org/GB/World\\_register/General\\_synthesis.Asp](https://www.icold-cigb.org/GB/World_register/General_synthesis.Asp).



- Kalnay, E., Kanamitsu, M., Kistler, R., Collins, W., Deaven, D., Gandin, L., Iredell, M., Saha, S., White, G., and Woollen, J. (1996). The NCEP/NCAR 40-year reanalysis project. *Bulletin of the American Meteorological Society*, 77(3), 437–472.
- 500 Kannan, N., and Anandhi, A. (2020). Water management for sustainable food production. *Water (Switzerland)*, 12(3). <https://doi.org/10.3390/w12030778>
- Lehner, B., Liermann, C. R., Revenga, C., Vörösmarty, C., Fekete, B., Crouzet, P., Döll, P., Endejan, M., Frenken, K., and Magome, J. (2011). High-resolution mapping of the world's reservoirs and dams for sustainable river-flow management. *Frontiers in Ecology and the Environment*, 9(9), 494–502.
- 505 Pavlis, N. K., Holmes, S. A., Kenyon, S. C., and Factor, J. K. (2012). The development and evaluation of the Earth Gravitational Model 2008 (EGM2008). *Journal of Geophysical Research: Solid Earth*, 117(B4).
- Penman, H. L. (1948). Natural evaporation from open water, bare soil and grass. *Proceedings of the Royal Society of London. Series A. Mathematical and Physical Sciences*, 193(1032), 120–145. <https://doi.org/10.1098/rspa.1948.0037>
- 510 Poff, N. L., and Hart, D. D. (2002). How dams vary and why it matters for the emerging science of dam removal: an ecological classification of dams is needed to characterize how the tremendous variation in the size, operational mode, age, and number of dams in a river basin influences the potential for restoring regulated rivers via dam removal. *BioScience*, 52(8), 659–668.
- Rocklin, M. (2015). Dask: Parallel Computation with Blocked algorithms and Task Scheduling. *SciPy*. <https://doi.org/10.25080/MAJORA-7B98E3ED-013>
- 515 Preston-Werner, T. (2023) Semantic versioning 2.0.0, Semantic Versioning. Available at: <https://semver.org/> (Accessed: 19 June 2023).
- Schaperow, J. R., Li, D., Margulis, S. A., and Lettenmaier, D. P. (2021). A near-global, high-resolution land surface parameter dataset for the variable infiltration capacity model. *Scientific Data*, 8(1). <https://doi.org/10.1038/s41597-021-00999-4>
- 520 Suresh, S., Hossain, F., Minocha, S., Das P. et al. (2023) Investigating Satellite-based Tracking of Reservoir Operations for Flood Management during the 2018 Extreme Weather Event in Kerala, India, *Hydrology and Earth System Sciences, Special Issue* (In submission).
- Vu, D. Thanh Duc Dang, T., Galelli, S. and Hossain, F. (2022). Satellite observations reveal thirteen years of reservoir filling strategies, operating rules, and hydrological alterations in the Upper Mekong River Basin, *Hydrology and Earth System Science*, 26(9), 2345–2364, <https://doi.org/10.5194/hess-26-2345-2022>.
- 525 Wu, H., Kimball, J. S., Li, H., Huang, M., Leung, L. R., and Adler, R. F. (2012). A new global river network database for macroscale hydrologic modeling. *Water Resources Research*, 48(9).
- Wu, H., Kimball, J. S., Mantua, N., and Stanford, J. (2011). Automated upscaling of river networks for macroscale hydrological modeling. *Water Resources Research*, 47(3).
- 530 Zhang, S, Gao, H. and Naz, B. (2014) Monitoring reservoir storage in South Asia from satellite remote sensing, *Water Resource Research*, 50, <http://doi.org/10.1002/2014WR015829>.



Step Number	Step Name
1	Downloading and Pre-processing of meteorological data
2	Pre-processing of data and preparation of MetSim Input
3	Preparation of MetSim Parameter Files
4	Running MetSim & preparation of VIC input
5	Preparation of VIC Parameter Files
6	Running of VIC and preparation of Routing input
7	Preparation of Routing Parameter Files
8	Running Routing
9	Preparation of parameter files for Surface Area Calculation
10	TMS-OS Surface Area Calculation from GEE
11	Elevation extraction from Altimeter
12	Generating Area Elevation Curves for reservoirs
13	Calculation of Outflow, Evaporation, Storage change and Inflow
14	Conversion of output data to final format as time series

**Table 1: List of step numbers and their functions executed by RAT 3.0**

S. No.	Dataset Name	Brief Description	Reference
1	GRDC Major River Basins	Shapefile of all the major river basins' polygons in the world.	GRDC, 2020
2	GRanD Dams	Shapefile of all the major dams' locations in the world.	Lehner et al., 2011
3	GRanD Reservoirs	Shapefile of all the reservoirs' polygons associated with dams in [2].	Lehner et al., 2011
4	DRT Flow Direction	Global raster file providing the flow directions.	Wu et al., 2011, 2012
5	SRTM_30 Elevation	Global elevation raster file providing elevation in meters.	Becker et al., 2009
6	VIC Soil Parameters	Global VIC soil parameter dataset containing separate raster files for each continent in VIC compatible format.	Schaperow et al., 2021
7	VIC Domain Parameters	Global VIC domain parameter dataset containing separate raster files for each continent in VIC compatible format.	Schaperow et al., 2021
8	EGM2008	Geoid model that provides mean sea level in meters everywhere on Earth.	Pavlis et al., 2012

**Table 2: Different datasets in the global database used as default inputs by RAT 3.0**

535



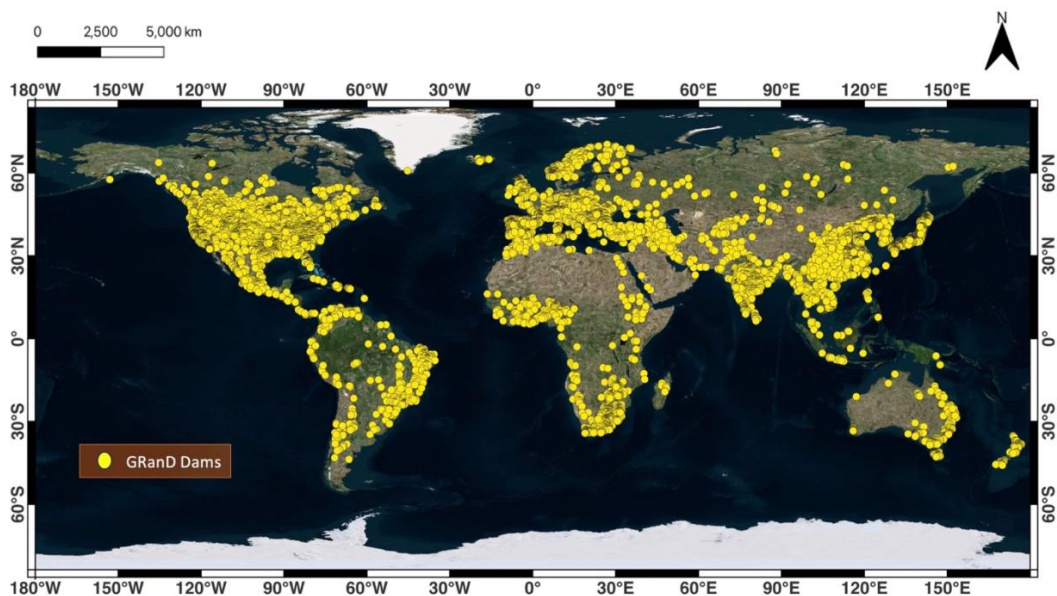
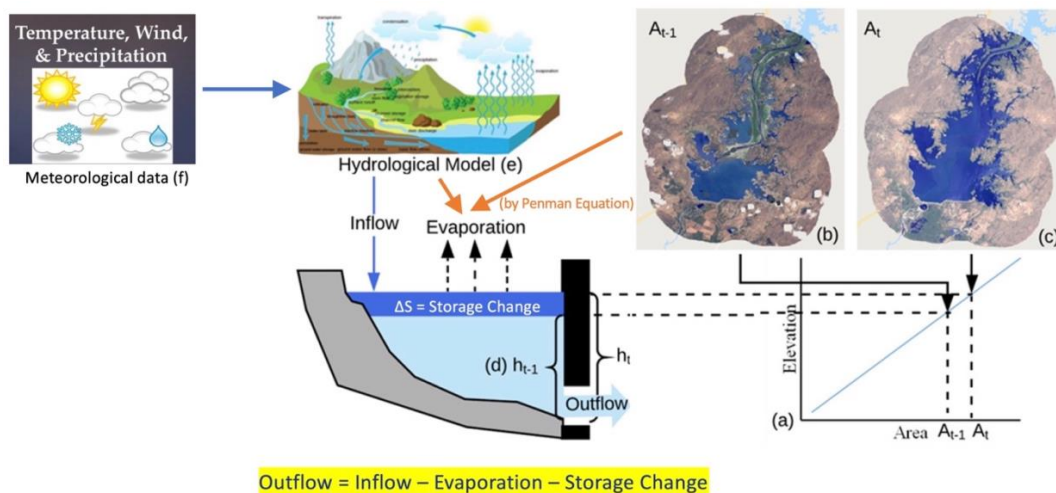


Figure 1: Geographic representation of major dams around the world derived from a global dam database known as Grand (Lehner et al., 2011)



540 Figure 2: Conceptual model of RAT and the mass balance equation.

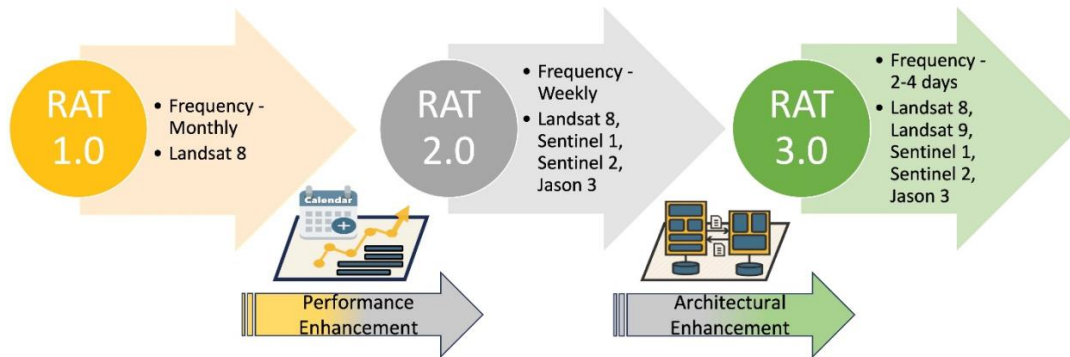
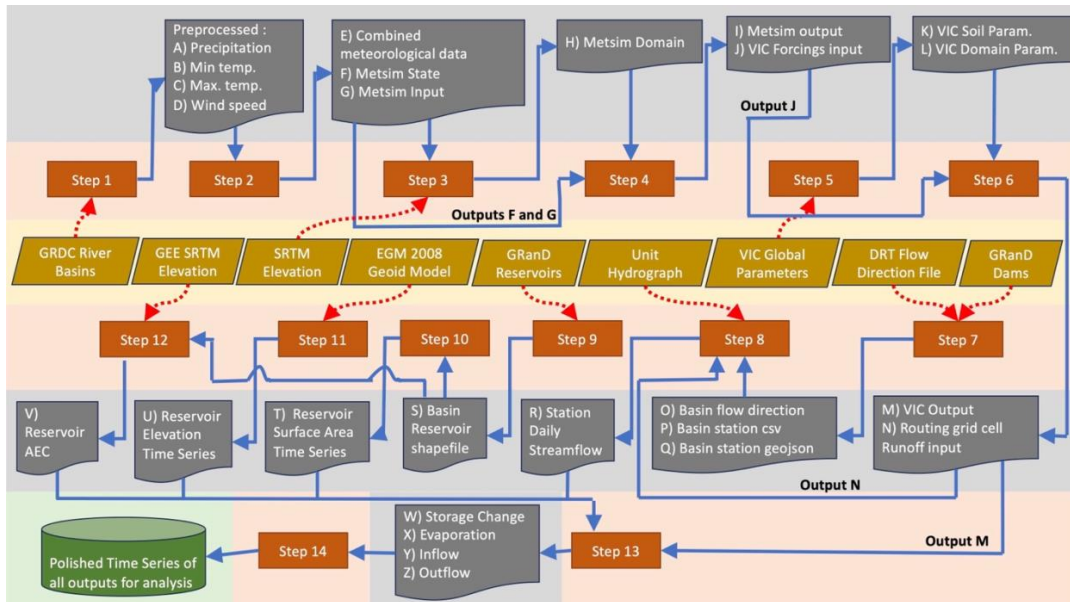
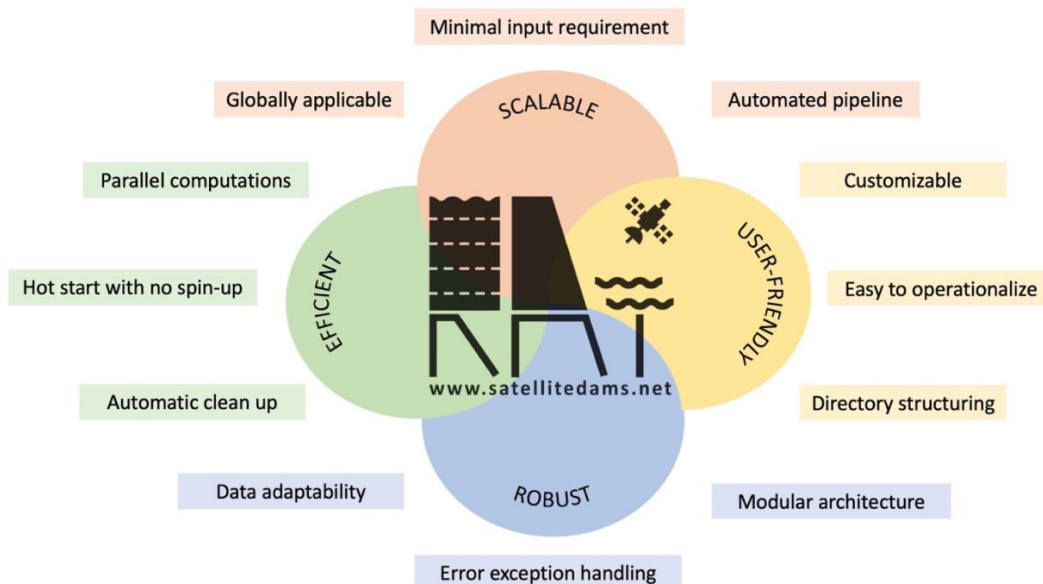


Figure 3. Technological evolution of the RAT software from version 1.0 to version 3.0. Names of key satellite missions are mentioned in the second bullet of each version.



545

Figure 4: Workflow of RAT 3.0 with all the different steps listed in Table 1. The yellow layer shows the user inputs, the orange layer shows the flow of different steps or processes, and the grey and green layers show the intermediate and final outputs produced by RAT 3.0, respectively.



550 Figure 5: Major software design advancements in RAT 3.0.

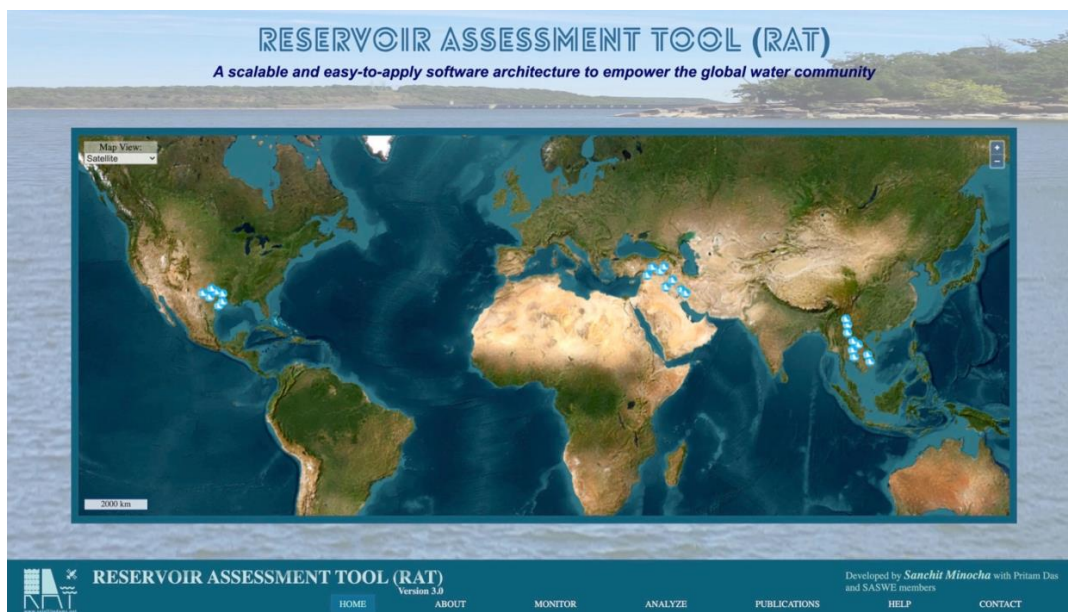
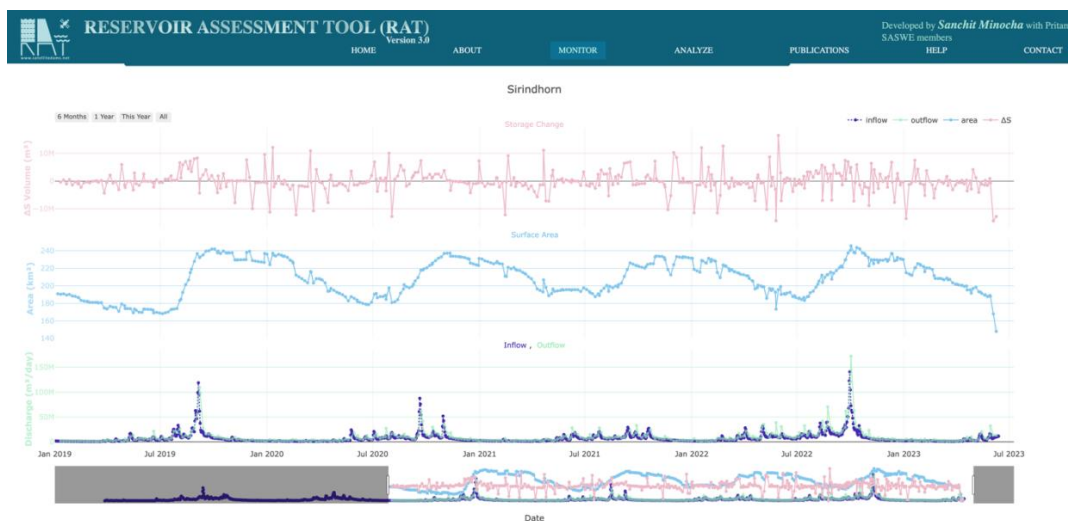


Figure 6: Homepage of the front end of the global RAT 3.0's online set up at [www.satellitedams.net](http://www.satellitedams.net). On the HELP menu, the RAT 3.0 software can be downloaded as well as other resources such as training and education can be found.

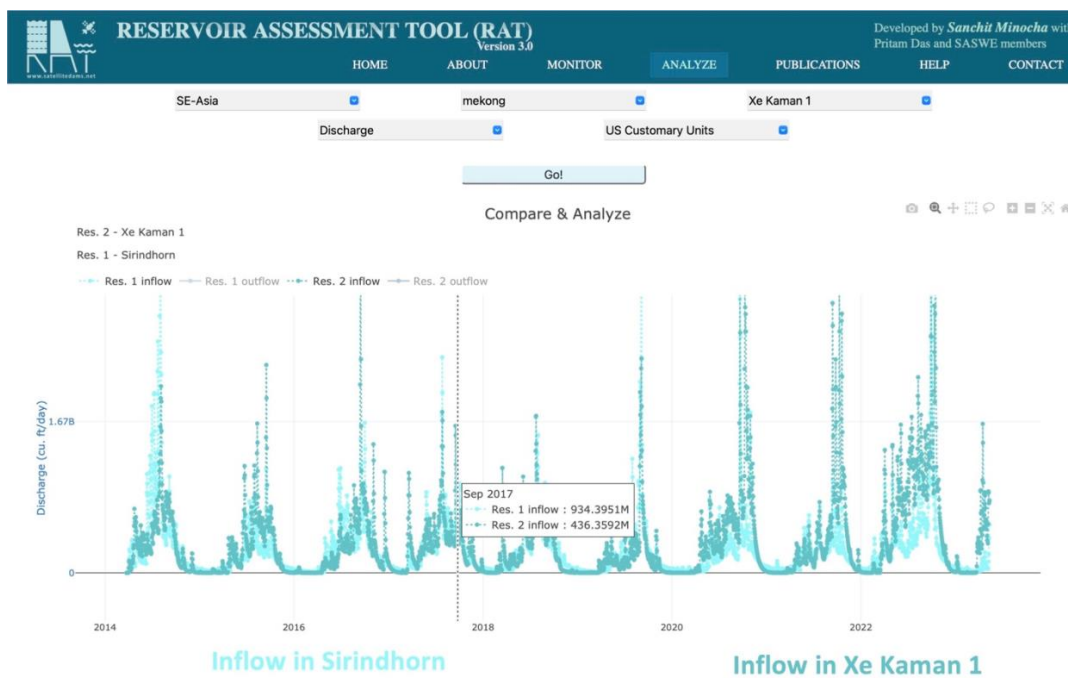
555



Figure 7: Advanced visualizer feature to meet the diverse requirements of different entities and stakeholders.



560 Figure 8: Reservoir data for one of the reservoirs ‘Sirindhorn’ (shown in Figure 6 (e)) in the Mekong River basin produced by RAT 3.0.



565 **Figure 9:** Inflow for ‘Sirindhorn’ in the Mekong River basin is compared to another nearby reservoir ‘Xe Kaman 1’ (shown in Figure 6 (e)) using the advanced visualizer feature.

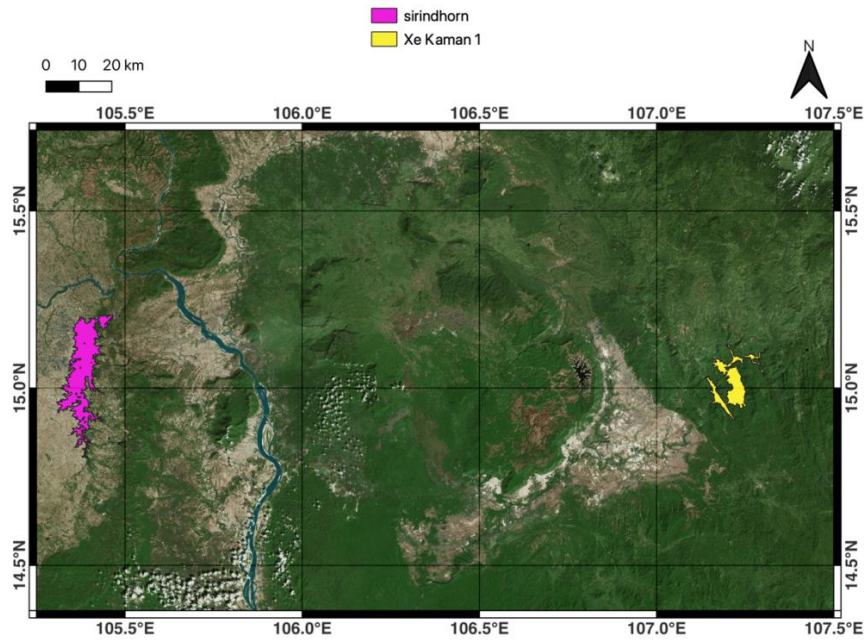


Figure 10: Reservoirs Sirindhorn and Xe Kaman 1 shown on the map for comparative analyses of RAT outputs on the global web app of RAT at [www.satellitedams.net](http://www.satellitedams.net).

570

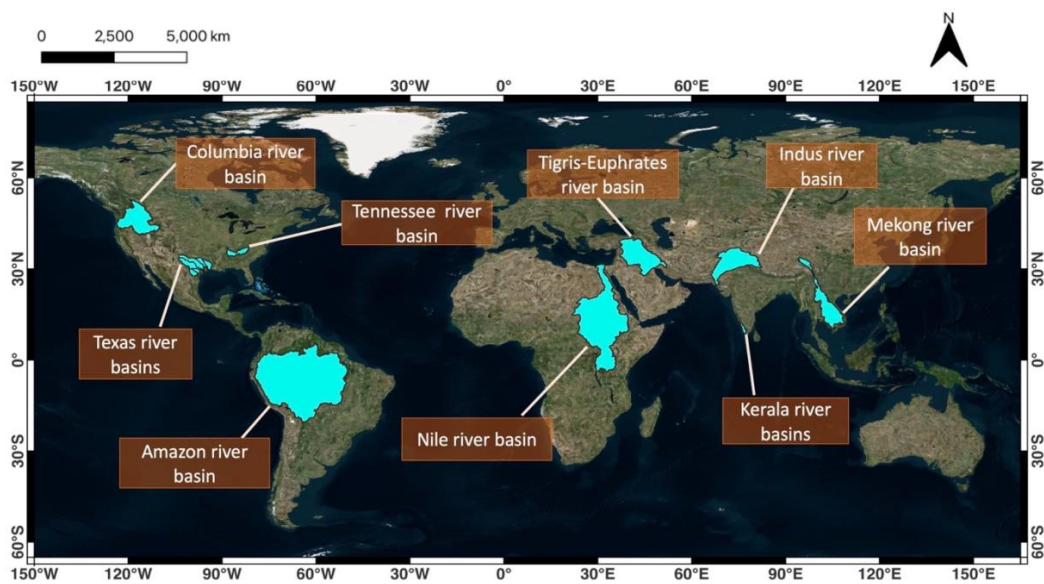


Figure 11: River basins where RAT 3.0 has been (or is being) independently installed and tested by users.