

WRF (v4.0)-SUEWS (v2018c) Coupled System: Development, Evaluation and Application

Ting Sun^{1,2,*}, Hamidreza Omidvar^{2,*}, Zhenkun Li^{3,*}, Ning Zhang⁴, Wenjuan Huang³, Simone Kotthaus⁵, Helen C. Ward⁶, Zhiwen Luo⁷, and Sue Grimmond¹

¹Department of Meteorology, University of Reading, Reading, UK

²Institute for Risk and Disaster Reduction, University College London, London, UK

³Shanghai Climate Centre, Shanghai, China

⁴School of Atmospheric Sciences, Nanjing University, Nanjing, China

⁵Institut Pierre Simon Laplace, École Polytechnique, Palaiseau, France

⁶Department of Atmospheric and Cryospheric Sciences, University of Innsbruck, Innsbruck, Austria

⁷Welsh School of Architecture, Cardiff University, Cardiff, UK

*These authors contributed equally to this work.

Correspondence: Ting Sun (ting.sun@ucl.ac.uk); Sue Grimmond (c.s.grimmond@reading.ac.uk)

Abstract. The process of coupling the Surface Urban Energy and Water Scheme (SUEWS) into the Weather research and forecasting (WRF) model is presented, including pre-processing of model parameters to represent spatial variability of surface characteristics. Fluxes and mixed layer height observations in the southern UK are used to evaluate a two-week period in each season. Mean absolute errors, based on all periods, are smaller in residential Swindon than central London for turbulent
5 sensible and latent heat fluxes (Q_H , Q_E) with greater skill on clear days at both sites (for incoming and outgoing short- and longwave radiation, Q_H and Q_E). Clear seasonality is seen in the model performance: with better absolute skill for Q_H and Q_E in autumn and winter, when there is a higher frequency of clear days, than in spring and summer. As the WRF-modelled incoming shortwave radiation has large errors, we apply a bulk transmissivity derived from local observations to reduce the incoming short-wave radiation input to the land surface scheme - this could correspond to increased presence of aerosols in
10 cities. We use the coupled WRF-SUEWS system to investigate impacts of the anthropogenic heat flux emissions on boundary layer dynamics by comparing areas with contrasting human activities (central-commercial and residential areas) in Greater London - larger anthropogenic heat emissions not only elevate the mixed layer heights but also lead to a warmer and drier near-surface atmosphere.

1 Introduction

15 Accurate prediction of urban-atmospheric interactions is one essential task of modern numerical weather prediction (NWP) models. There is increasing need to understand city-weather feedbacks and their impact on citizens and infrastructure to facilitate the delivery of Integrated Urban Services (IUS). IUS span weather, climate, hydrometeorological and environmental processes and are related to many urban functions (e.g. urban planning, building design, transport/logistics operation, health, energy infrastructure and operations; Baklanov et al., 2018; Grimmond et al., 2020; Masson et al., 2020).

20 To improve such predictions, numerous efforts have been made to develop and enhance many urban land surface models (ULSMs, Grimmond et al. 2010a, b; Best and Grimmond 2015), including the SingleLayer Urban Canopy Model (SLUCM, Kusaka et al., 2001), the Building Effect Parameterisation (BEP, Martilli et al., 2002), the Town Energy Balance model (TEB, Masson, 2000), and the Surface Urban Energy and Water Scheme (SUEWS, Järvi et al., 2011). Beyond resolving transfer of energy, water and scalars at land-atmosphere interface, the core tasks of ULSMs are to:

- 25 – Characterise the urban surface: the heterogeneous mix of materials and morphology varies from being dominated by built surfaces (i.e. buildings and paved areas) in city centres to having sparse built fractions and more vegetation at more residential outskirts. Morphological variability is driven by the changing heights and spacings of buildings and trees across cities.
- Account for anthropogenic dynamics: As people’s behaviour varies, it modifies emissions (e.g. energy, aerosols, wa-
30 ter) on both regular (e.g. work week and weekends) and irregular (e.g. major sports events such as Olympics, concerts, COVID19) patterns which modifies urban-atmosphere interactions. Thus, the city morphology, or form, remains relatively constant but the functioning of the city varies with changing behaviour patterns.
- Capture the impact of urban-atmosphere interactions on the boundary layer: the urban boundary layer (UBL) is the lowest part of the atmosphere that is directly influenced by the presence of the city. The UBL is characterised by higher wind
35 speeds, and higher turbulent fluxes than the overlying free atmosphere. Additionally, it features elevated concentrations of pollutants and aerosols, as well as a warmer and more humid near-surface atmosphere.

SUEWS, a widely used and tested ULSM (Table 1), uses a mix of seven land cover types to characterise the surface materials. Anthropogenic heat, water and carbon emissions, with other features (e.g. snow clearing, irrigation) are used to capture behavioural dynamics impacts on urban-atmosphere interactions. Since its development, SUEWS has been regularly enhanced
40 (e.g. Grimmond et al., 1986; Grimmond and Oke, 1991; Grimmond et al., 1991; Järvi et al., 2011, 2014, 2019; Offerle et al., 2003; Ward et al., 2016; Omidvar et al., 2022) and tested in a wide range of climates and cities worldwide (Table 1). Although operationally simple and scientifically robust, the full SUEWS model has primarily been used offline, preventing many urban-atmosphere feedbacks to be explored with the model. Coupling ULSMs (such as SUEWS) into larger-scale atmospheric models would better represent the land surfaces with more detailed physical processes and is thus expected to enhance the
45 understanding of urban-atmosphere interactions (Vilà-Guerau de Arellano et al., 2023).

Table 1. Recent studies involving SUEWS have undertaken (1) development (**D**) of modules (**M**) and supporting tools (**T**) improvements to coefficients (**C**), (2) applications (**A**) where the model has been evaluated (**E**) or used to assess scenario (**S**) outcome.

Topic	D	A	City	Reference
Application of SUEWS in vegetated areas	T, C	E	Multiple vegetation types	Omidvar et al. (2022)
Generation of urban typical meteorological year (uTMY) dataset	M	E, S	London, UK	Tang et al. (2021)
Evaluation of storage heat modules	M	E	Basel, Switzerland Heraklion, Greece London, UK	Lindberg et al. (2020)
Influence of aerosols on urban water balance	–	S, E	Beijing, China	Kokkonen et al. (2019a)
Haze effects on urban water balance	–	–	Beijing, China	Kokkonen et al. (2019b)
SuPy (SUEWS in Python)	T	–	(N/A)	Sun and Grimmond (2019)
Impacts of anthropogenic heat and irrigation on surface energy balance	–	S, E	Shanghai, China	Ao et al. (2018)
CO ₂ modelling scheme	M	E	Helsinki, Finland	Järvi et al. (2019)
Land cover and water use change	–	S	Vancouver, Canada	Kokkonen et al. (2018b)
Precipitation effects and reanalysis data	–	S	Vancouver, Canada	Kokkonen et al. (2018a)
SUEWS as a core processor of UMEP	T	–	(N/A)	Lindberg et al. (2018)
Precipitation intensity impacts on urban climate	–	–	London, UK	Ward et al. (2017)
Comparison with other ULSM	–	–	Singapore	Demuzere et al. (2017)
Implications of warming to cold climate cities	–	S, E	High latitudes cities	Järvi et al. (2017)
Cold climate urban hydrology	–	–	Helsinki, Finland Montreal, Canada Minneapolis, USA	Järvi et al. (2017)
Offline evaluation of SUEWS driven by WRF output	–	E	Basel, Switzerland Porto, Portugal	Rafael et al. (2017)
Impacts of changes in surface cover, human behaviour & climate on energy partitioning	–	S	London, UK	Ward and Grimmond (2017)
Four cities with different climates	–	E	Dublin, Ireland Hamburg, Germany Melbourne, Australia Phoenix, USA	Alexander et al. (2016)
Radiation flux	–	E	Shanghai, China	Ao et al. (2016)
Comparison with other ULSM	–	E	Helsinki, Finland	Karsisto et al. (2015)
Evaluation at two UK cities	M, C	E	London, Swindon	Ward et al. (2016)
Using Local Climate Zone information as surface characteristics	T	S	Dublin, Ireland	Alexander et al. (2015)

Boundary layer modelling and coupling with SUEWS, impacts to heat stress	T	S	Sacramento, USA	Onomura et al. (2015)
Snow melt	M	E	Helsinki, Finland	Järvi et al. (2014)
SUEWS development	T	E	Montreal, Canada Vancouver, Canada	Järvi et al. (2011)
Impacts of urban design on hydrologic cycle	–	S	Los Angeles, USA Canberra, Australia	Mitchell et al. (2008)

Here, we couple SUEWS (v2018c; Sun et al., 2019) to the Weather Research and Forecasting (WRF) model (V4.0; Skamarock et al., 2019), an open-source frequently used NWP model. WRF provides the atmospheric forcing to SUEWS, and in turn WRF receives surface-atmosphere feedbacks for the city and the region. In this paper, we describe the structure and key physics of the coupled WRF-SUEWS system (Sect. 2); evaluate WRF-SUEWS at two UK sites (Sect. 3) and explore its application in modelling dynamics and impacts of anthropogenic heat emissions at the city scale (Sect. 4).

2 Development of WRF-SUEWS coupled system

2.1 Physical Interactions between WRF and SUEWS

The coupling between WRF and SUEWS occurs via the biophysical interactions between the **land surface** – with SUEWS introduced as a new land surface module option – and other physics modules in WRF (Fig. 1):

1. The **radiation** module provides radiative forcing variables, incoming short- K_{\downarrow} and longwave radiation (L_{\downarrow}), to the land surface module. The land surface module returns outgoing short- and long-wave radiation (K_{\uparrow} and L_{\uparrow}).
2. Atmospheric variables needed for SUEWS, including air temperature T_a , relative humidity RH , barometric pressure p_a and wind speed U are supplied by the **boundary layer (BL)** module. These are influenced by turbulent transport (i.e., momentum τ , sensible heat Q_H and latent heat Q_E fluxes) from the land surface.
3. Precipitation P , is generated by the **microphysics** and **cumulus** modules that parameterise precipitation-related processes at different scales.

2.2 Key physics of SUEWS

SUEWS simulates both the energy (Oke, 2002):

$$Q^* + Q_F = Q_H + Q_E + \Delta Q_S \quad (1)$$

and water balances (Grimmond et al., 1986):

$$P + I_e = E + R + \Delta S \quad (2)$$

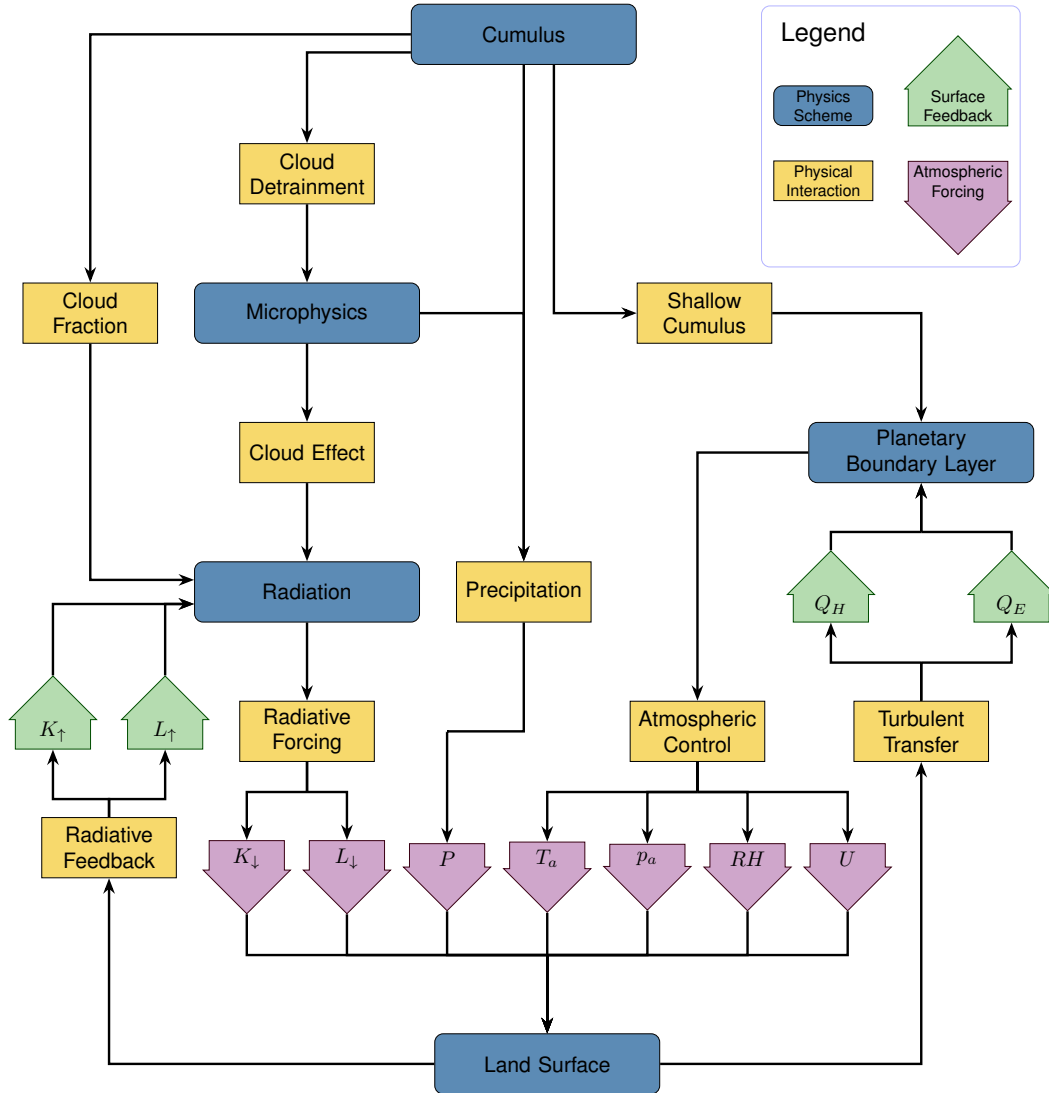


Figure 1. Interactions of the five WRF physics (blue) schemes through processes (yellow) and the land surface module variables (purple). Notation defined in Sect. 2.2.

70 The two are linked through the latent heat (Q_E) or evaporative E fluxes (by the latent heat of vaporisation). The water balance is driven by precipitation (P) and external water use (I_e). Whereas the surface energy balance is driven by the net all-wave radiation ($Q^* = K_{\downarrow} - K_{\uparrow} + L_{\downarrow} - L_{\uparrow}$; K and L denote the short- and long-wave components, respectively; arrows \downarrow and \uparrow in subscript the incoming and outgoing directions, respectively) in all environments but additionally in cities the human activities result in anthropogenic heat flux emissions (Q_F). The turbulent sensible (Q_H), latent (Q_E), net storage heat flux (ΔQ_S), runoff (R), and change in water storage (ΔS) each have distinct responses that differ with land use and land cover.

Traditionally, SUEWS has been mostly used for urban areas (Grimmond et al., 1986; Grimmond and Oke, 1991; Järvi et al., 2011; Ward et al., 2016) but for WRF-SUEWS it has been extended to non-urban contexts (Omidvar et al., 2022). Each model grid cell has up to seven land cover types (paved, buildings, deciduous trees, evergreen trees, grass/crops, bare soil and water) whose fractions and properties (e.g. height, albedo, leaf area index) can each vary between grid cells.

In WRF-SUEWS, Q_F is calculated using heating and cooling degree days (HDD and CDD) following the Sailor and Vasireddy (2006) approach:

$$Q_F = \rho_{pop,t} [a_{F0} + a_{F1}CDD + a_{F2}HDD] \quad (3)$$

where a_{F0} , a_{F1} and a_{F2} are grid-specific coefficients. The grid population densities $\rho_{pop,t}$ could be a daily mean (i.e. day and night) value (e.g. Ward et al., 2016) or capture the diurnal variations (e.g. Ward and Grimmond, 2017; Ao et al., 2018). Typically, for cities with strong commuting flows (e.g. London), Q_F and $\rho_{pop,t}$ are larger in the central business districts (CBD) during the day due to the commuting, but are higher in residential areas at night. As using daily mean population density may bias Q_F and lose intradaily variability (e.g., large city centre difference between work intensive and non-work periods), following other models (e.g. Allen et al., 2010) we divide the day into four periods (morning transition, day, afternoon transition and night). Day and night population densities are used in their respective periods, and their averages in both transition periods. The other parameter values can be derived from more detailed models that are not rapid enough for NWP (e.g. GQF: Iamarino et al., 2011; Gabey et al., 2018; DASH: Capel-Timms et al., 2020). ΔQ_S for each grid cell is calculated using the Objective Hysteresis Model (OHM) (Grimmond et al., 1991):

$$\Delta Q_S = \sum_i f_i \left[a_{1,i} Q^* + a_{2,i} \frac{\partial Q^*}{\partial t} + a_{3,i} \right] \quad (4)$$

where t is the time, f_i is the fraction of area of each land cover type (i), and $a_{1-3,i}$ are material-related coefficients for each land cover type that can vary with grid cell (cf. Sect. 3.1). This approach allows much more rapid calculation of this flux than other methods. Q_E is introduced to the Penman-Monteith equation (Grimmond and Oke, 1991):

$$Q_E = \frac{s(Q^* + Q_F - \Delta Q_S) + \rho c_p V / r_a}{s + \gamma(1 + r_s / r_a)} \quad (5)$$

where s is the slope of saturation vapour pressure curve, ρ , density of air, c_p specific heat capacity of air at constant pressure, V vapour pressure deficit, γ psychrometric 'constant', r_a aerodynamic resistance for heat or water vapour, and r_s surface or canopy resistance. Following Monteith (1965), assuming energy balance closure Q_H is calculated as:

$$Q_H = Q^* + Q_F - \Delta Q_S - Q_E \quad (6)$$

With the latent heat of vaporisation (L_v) and Eqn. 5 we obtain $E = \frac{Q_E}{L_v}$ to link surface energy (Eqn. 1) and water (Eqn. 2) balance. R includes the runoff from individual surfaces, in channels and to groundwater. External water use (I_e) is estimated based on the automatic and/or manual irrigation or external application (e.g. street cleaning) as follows (Järvi et al., 2011):

$$I_e = A_{irr} [f_{aut} (b_{0,a} + b_{1,a} T_d + b_{2,a} t_r) + (1 - f_{aut} (b_{0,m} + b_{1,m} T_d + b_{2,m} t_r))] \quad (7)$$

where A_{irr} is the area irrigated, f_{aut} is the fraction of A_{irr} that is automatically irrigated, $b_{0-2,a,m}$ are site specific coefficients, T_d is the daily mean temperature, and t_r is days since the rain. The net change in the water storage ΔS (e.g. in soil, water bodies, on the surface) is determined at each time step as the change of each surface water state compared to the previous time step.

The aerodynamic resistance (r_a) is calculated at first atmospheric level in WRF-SUEWS where the wind speed (U) is determined (Fig. 1):

$$r_a = \frac{\left[\ln \left(\frac{Z_m - z_d}{z_{0m}} - \psi_m \right) \right] \left[\ln \left(\frac{Z_m - z_d}{z_{0v}} - \psi_v \right) \right]}{\kappa^2 u}, \quad (8)$$

where z_d is the zero plane displacement height (m), z_{0m} (and z_{0v}) are roughness lengths for the momentum (and heat/water vapour); u is wind speed at height Z_m ; κ is the von-Kármán constant (0.4); and ψ_m (and ψ_v) are the atmospheric stability functions for momentum (and water vapour). Stability is determined iteratively using the Obukhov length and initiated with a LUMPS (Grimmond and Oke, 2002) calculated sensible heat flux taking the grid land cover fractions into account.

To compute the grid integrated surface resistance (r_s), its inverse the surface conductance (g_s), is used (Ward et al., 2016):

$$r_s^{-1} = g_s = \sum_i \left(G_{PFT} \left(g_{\max,i} f_i \frac{LAI_i}{LAI_{\max,i}} \right) g(K_{\downarrow}) g(\Delta q) g(T_a) g(\Delta\theta_{\text{soil}}) \right), \quad (9)$$

The mix of vegetation within the grid is taken into account by considering each vegetation type i with land cover fraction f_i , the maximum conductance $g_{\max,i}$, leaf area index (LAI_i), maximum LAI ($LAI_{\max,i}$) and the surface conductance parameter (G_{PFT}) determined by plant functional type. Functions $g(K_{\downarrow})$, $g(\Delta q)$, $g(T_a)$, $g(\Delta\theta)$ are related to how the environmental variables – downwelling shortwave (K_{\downarrow}), specific humidity deficit (Δq), air temperature (T_a), and soil moisture deficit ($\Delta\theta_{\text{soil}}$) – control the surface resistance. These functions have the following forms (Ward et al., 2016):

$$g(K_{\downarrow}) = \frac{\frac{K_{\downarrow}}{G_K + K_{\downarrow}}}{\frac{K_{\downarrow, \max}}{G_K + K_{\downarrow, \max}}}, \quad (10)$$

$$g(\Delta q) = G_{q, \text{base}} + (1 - G_{q, \text{base}}) G_{q, \text{shape}}^{\Delta q}, \quad (11)$$

$$g(T_a) = \frac{(T_a - T_L)(T_H - T_a)^{T_c}}{(G_T - T_L)(T_H - G_T)^{T_c}}, \quad (12)$$

$$g(\Delta\theta_{\text{soil}}) = \frac{1 - \exp(G_{\theta}(\Delta\theta_{\text{soil}} - \Delta\theta_{WP}))}{1 - \exp(-G_{\theta}\Delta\theta_{WP})}. \quad (13)$$

where the G parameters are related to environmental controls indicated by subscripts: K for solar radiation, q for specific humidity deficit ('base' and 'shape' for base value and curve shape, respectively), T_a for air temperature and θ for soil moisture deficit. Table 2 gives the values used in the evaluation of the coupled WRF-SUEWS system (detailed in Sect. 3.2). $K_{\downarrow, \max}$ is the maximum incoming shortwave radiation (1200 W m^{-2} used in this work), $T_c = \frac{T_H - G_T}{G_T - T_L}$ with T_L and T_H being the lower and upper limits for switching off evaporation respectively ($T_L = -10^\circ\text{C}$ and $T_H = 55^\circ\text{C}$); and $\Delta\theta_{WP}$ is the wilting point (= 120 mm).

LAI varies with growing degree days (GDD) and senescence degree days (SDD), via (Järvi et al., 2011, 2014):

$$LAI_{d,i} = \begin{cases} \min(LAI_{\max,i}, (LAI_{d-1,i})^{0.03} GDD \times 5 \times 10^{-4} + LAI_{d-1,i}), & T_{\text{BaseSDD}} < T_a < T_{\text{BaseGDD}} \\ \max(LAI_{\min,i}, (LAI_{d-1,i})^{0.03} SDD \times 5 \times 10^{-4} + LAI_{d-1,i}), & T_{\text{BaseGDD}} < T_a < T_{\text{BaseSDD}} \end{cases} \quad (14)$$

where the previous day (subscript $d - 1$) LAI is used with the base temperature corresponding to the initiation of leaf-off (T_{BaseSDD}) and leaf-on periods (T_{BaseGDD}). The model also requires $LAI_{\max,i}$ and $LAI_{\min,i}$ for each vegetation type i .

135 SUEWS accounts for the running water balance of the multiple surface types. The water amount on the canopy of each surface (C_i) (Grimmond et al., 1991) determines the surface resistance between dry and wet ($r_s = 0 \text{ s m}^{-1}$) by replacing r_s in Eqn. 5 with r_{ss} (Shuttleworth, 1978):

$$r_{ss} = \left[\frac{W}{r_b(s/\gamma + 1)} + \frac{(1 - W)}{r_s + r_b(s/\gamma + 1)} \right]^{-1} - r_b(s/\gamma + 1) \quad (15)$$

where W is a function of the relative amount of water present on each surface to its water storage capacity S_i :

$$140 \quad W = \begin{cases} 1 & C_i \geq S_i \\ \frac{K_r - 1}{K_r - S_i/C_i} & C_i < S_i \end{cases} \quad (16)$$

K_r depends on the aerodynamic and surface resistances:

$$K_r = \frac{(r_s/r_a)/(r_a - r_b)}{r_s + r_b(s/\gamma + 1)} \quad (17)$$

where r_b , the boundary layer resistance, is a function of friction velocity u_* (Shuttleworth, 1983):

$$r_b = 1.1u_*^{-1} + 5.6u_*^{\frac{1}{3}} \quad (18)$$

145 Eqns. 15 to 18 ensure that the surface resistance r_{ss} has a smooth transition from 0 s m^{-1} (a completely wet surface) to r_s (a dry surface).

2.3 Major updates since SUEWS v2018c

This work presents a coupling framework and its evaluation using SUEWS v2018, ensuring consistency in internal physics with the offline version for the comparison later in Sect. 3.4. However we note that the coupling structure designed for WRF-

150 SUEWS enables seamless upgrades to more recent SUEWS versions.

Current offline versions of SUEWS have options not in the coupled WRF-SUEWS system, including:

- *CO₂ fluxes*: local scale anthropogenic and biogenic urban-atmosphere exchanges (Järvi et al., 2019).
- *Roughness sub-layer profiles*: diagnosis of air temperature, humidity, and wind speed within the roughness sub-layer (Theeuwes et al., 2019; Tang et al., 2021).
- 155 – *2-D radiation profiles*: solar and thermal-infrared radiation for multi-layer urban canopies (Hogan, 2019).
- *ESTM*: heat storage estimation using surface temperature and thermal properties (Lindberg et al., 2020).

2.4 Technical implementation of the WRF-SUEWS coupling

The following are considered in the design of coupled WRF-SUEWS system:

- *Performance*: Given coupling with file-based IO (input-output) exchanges has unacceptable computational performance, we use the `SuMin` module under the WRF framework (Figs. 2 and 3).
- *Extendibility*: As SUEWS is regularly enhanced (Table 1), it is desirable or even essential, for the coupled system to use the full capacity of the standalone SUEWS.
- *Sustainability*: Given the vast community effort to build and improve sophisticated software systems coupling should not be limited to one version. Instead a highly standardised coupling procedure is required to be sustainable (Meyer et al., 2020).

To address these, the coupled WRF-SUEWS system uses an adaptive intermediate layer `SuMin` (SUEWS in a **Minimum** mode) to link both models (Fig. 5). From SUEWS, `SuMin` calls the main SUEWS calculator to conduct all core SUEWS physics calculations. Whereas from WRF, `SuMin` is linked to the `module_sf_suews` via `suews_ld` as a complete land surface model that can be used by WRF dynamics solver (i.e., ARW solver) via the surface driver (Fig. 5). By coupling SUEWS and WRF this way, fast prototyping of new functionalities is possible on the SUEWS side while maintaining a stable coupling to the more complex WRF. When new SUEWS features are available to be fully coupled, appropriate switches can be activated to incorporate them within the whole WRF system. This intermediate-layer-based approach allows efficient communication between SUEWS and other models (e.g., SuPy, Sun and Grimmond, 2019) through an explicit, unified interface. Thus, SUEWS can be potentially coupled to other weather/climate modelling systems (e.g., openIFS, ECMWF, 2021).

A Python-based WRF-SUEWS pre-processor system (WSPS, Fig. 5) formats the data to allow the additional parameters not in standard WRF input files (e.g. input variables in `wrfinput.nc`, `namelist` based configurations; cf. IO workflow in Fig. 3) to be incorporated, rather than modifying the WRF Preprocessing System (WPS). The WSPS can be used for offline model spin-up runs to obtain the appropriate required initial conditions for WRF-SUEWS. The files prepared are:

- i `wrfinput.nc`: a modified version of WRF inputs with initial model states and other static properties; and
- ii `namelist.suews`: the global configuration for SUEWS model.

To generate these, four types of inputs are needed (Fig. 3):

- i1 Standard WRF input files for WPS: The geographic and meteorological data are processed by WPS to produce `wrfinput.nc` files for the model domains and provide the template for the WSPS.
- i2 Additional input files: The static SUEWS-specific properties (e.g. land cover, population density, building morphology) and optional files (e.g. suitable default parameters to be used when known values are unavailable), which will precede the same information, if available, in the standard WRF input files within the coupled WRF-SUEWS system. Note in the London context this is not required (see later in Sect. 3).

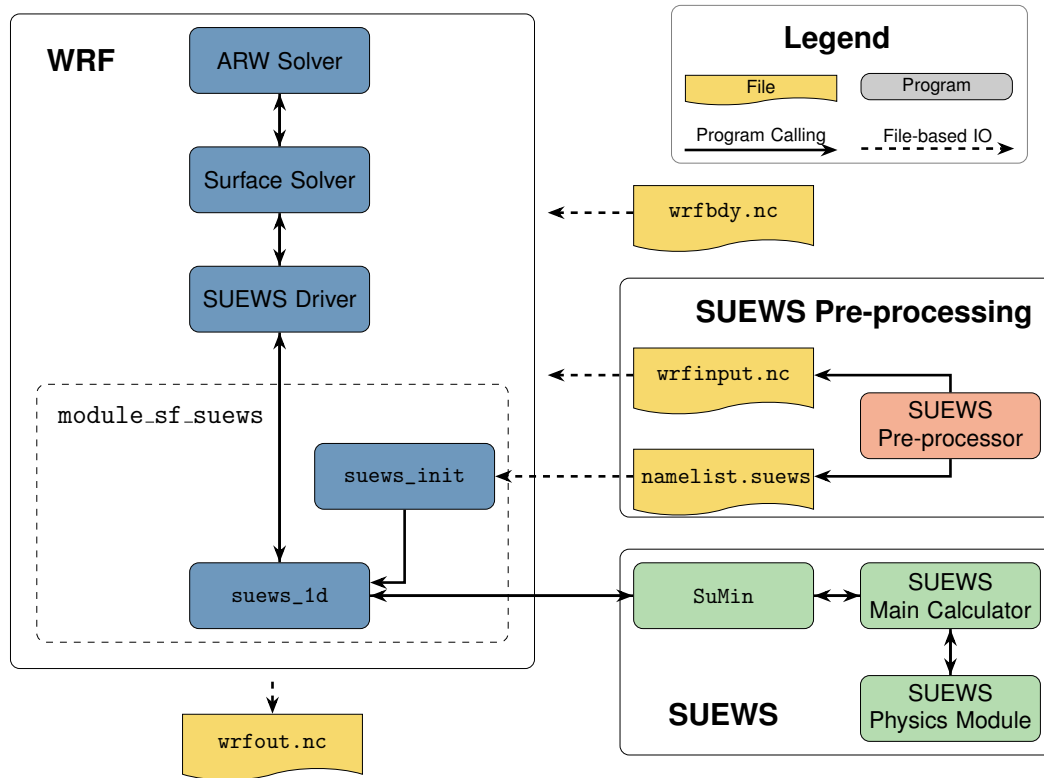


Figure 2. WRF-SUEWS system consists of the new `|module_sf_suews|` added into WRF (blue) to interact with SUEWS via `|SuMin|` (green) using input files pre-processed by SUEWS pre-processor (yellow). File-based input/output flow (dashed) and runtime calling logic (solid lines) are shown.

- 190 i3 Standard SUEWS input files: Files used by SuPy (Sun and Grimmond, 2019) for offline spin-up simulations to obtain appropriate model initial conditions (an example shown in Sect. 3.2). The SUEWS settings (e.g. physics options, population density profiles) are used to create the `namelist.suews` global settings.
- i4 Land cover reclassification settings: In `namelist.suews` the relations between land covers for WRF and SUEWS (Sect. 2.4) are prescribed.

The WSPS input files (Fig. 3) can have different spatial resolutions between files. The implemented netCDF processor obtains the static properties (i2) and initial condition (i3); and resamples them to the geospatial configuration (projection method, resolution and averaging strategy) of the base `wrfinput.nc` (i1), to produce the `wrfinput.nc` files for WRF-SUEWS. Subsequently, the `namelist.suews` can be easily modified by hand without going through the WSPS if useful (e.g., to test different configurations for spin-up, or change land cover mapping relations).

195

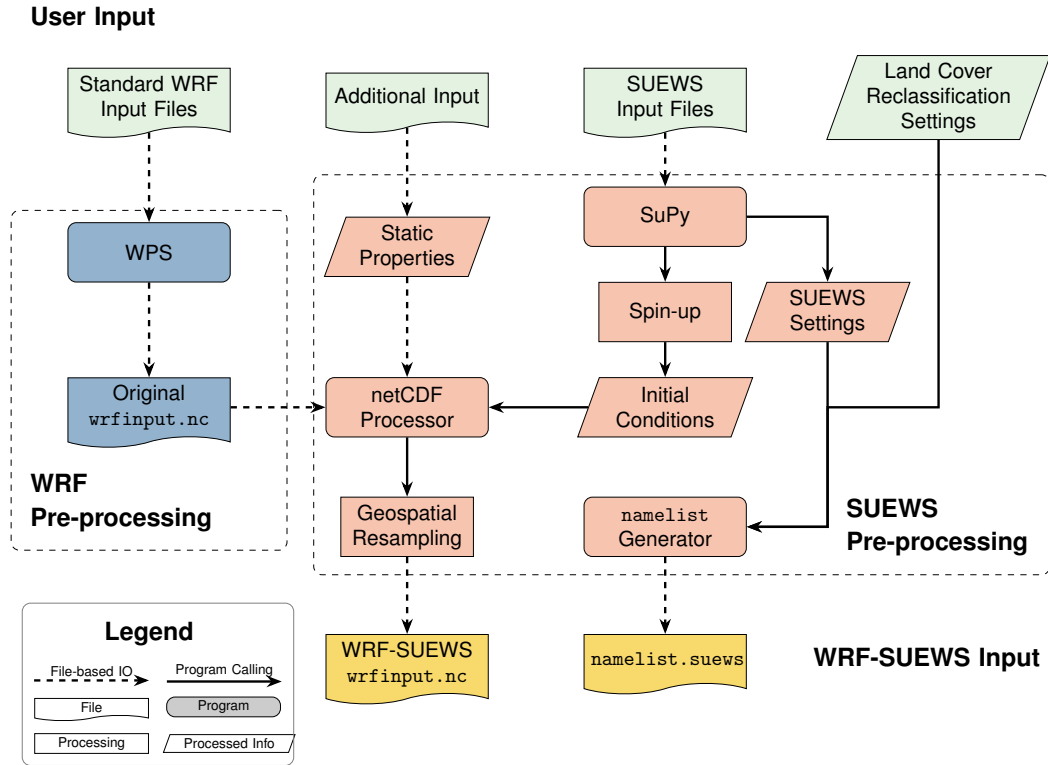


Figure 3. Workflow for WRF-SUEWS pre-processing system (WSPS)

The seven land cover (LC) types can be assigned different parameter values (Table 2) per grid cell and/or can change with time. For example, the ‘grass’ vegetation type can have varying parameters with season (e.g. rice-wheat rotation). The WSPS uses the `namelist.suews` global configuration file to translate the WRF land use (LU) data (e.g. IGBP (International Geosphere-Biosphere Programme)-Modified MODIS (MODerate resolution Imaging Spectro-radiometer) with 20 LU classes, or the USGS with 24 LU classes (NCEP, 2000), to the seven LC classes (Fig. 4). Each SUEWS LC may combine fractions from multiple IGBP LU. Through this reclassification, WRF-SUEWS can use existing LU data for SUEWS simulations while allowing the other parameters to vary between grids. Note a flexible number of WRF LUs (up to 100 in this release) can be specified to compose a SUEWS LC so an extremely heterogeneous LU composition can be accounted for.

2.5 Bulk transmissivity based solar radiation correction

Incoming shortwave radiation (K_{\downarrow}) is known to be overestimated by WRF because of unresolved clouds and/or aerosols (Jimenez et al., 2016; Lapo et al., 2017). However, if the forcing radiation is too large the other surface fluxes and variables will be impacted. Thus, they should not compare well to observations or alternatively if they do compare well, the variables are correct for the wrong reason. In urban areas, even on clear days, there is often a large presence of aerosols that impact

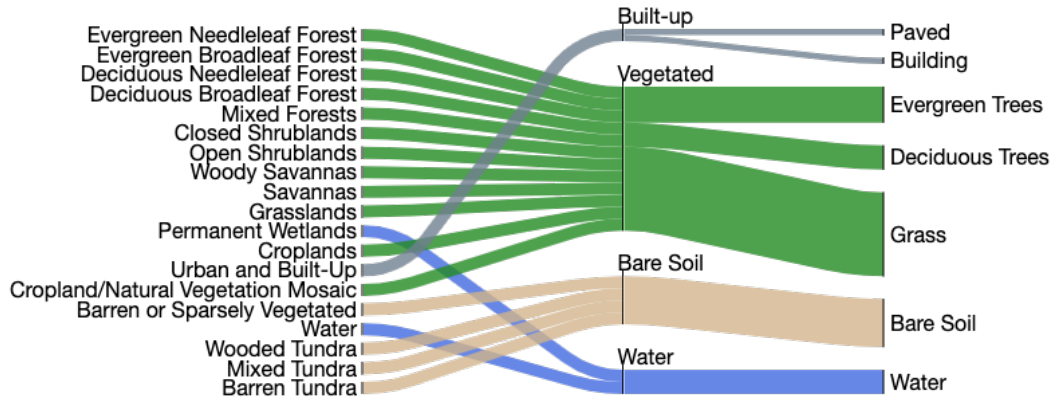


Figure 4. The WSPS can be used to reclassify the WRF/IGBP default MODIS 20-category land uses to SUEWS specific land covers: specifically, the 20 MODIS land use categories (left) with four general categories (middle) are reclassified into 7 SUEWS land covers (right).

bulk transmissivities (e.g. Shanghai: Xu et al., 2011; Ao et al., 2018; Beijing: Dou et al., 2019; Sun et al., 2022; London: Ryder and Toumi, 2011; Kotthaus and Grimmond, 2018a; Warren et al., 2018). A bulk atmospheric transmissivity (τ) can be specified in the `namelist.suews` to partially correct the overestimation of K_{\downarrow} by WRF, which can be determined using K_{\downarrow} at both the top of atmosphere ($K_{\downarrow,TOA}$) and the surface ($K_{\downarrow,S}$) are used (Oke, 2002):

$$215 \quad \tau = \frac{K_{\downarrow,s}}{K_{\downarrow,TOA}} \quad (19)$$

As τ can vary seasonally (e.g. the cases in London and Swindon as shown in Table 4) we determine the median clear sky difference ($\Delta\tau_c$) between τ_{WRF} and τ_{obs} from analysis of clear sky days observations around the peak K_{\downarrow} (which occurs between 40% and 60% of the daylight hours). The K_{\downarrow} forcing (Fig. 1) for SUEWS in WRF ($K_{\downarrow,W-S}$) is then corrected using the original one produced by WRF ($K_{\downarrow,WRF}$) as:

$$220 \quad K_{\downarrow,W-S} = K_{\downarrow,WRF} - (1 - \Delta\tau_c) K_{\downarrow,TOA} \quad (20)$$

Given the empirical nature of the parameter values, this correction can only be applied where observations are available. Here, we apply the correction to all time periods but separate the evaluation (Sect. 3.4.1) by sky conditions to assess effectiveness. Obviously, this simple correction is not a complete solution but rather an attempt to obtain more accurate K_{\downarrow} forcing for the coupled SUEWS, and hence, better surface feedbacks for the WRF atmospheric modules (Fig. 1).

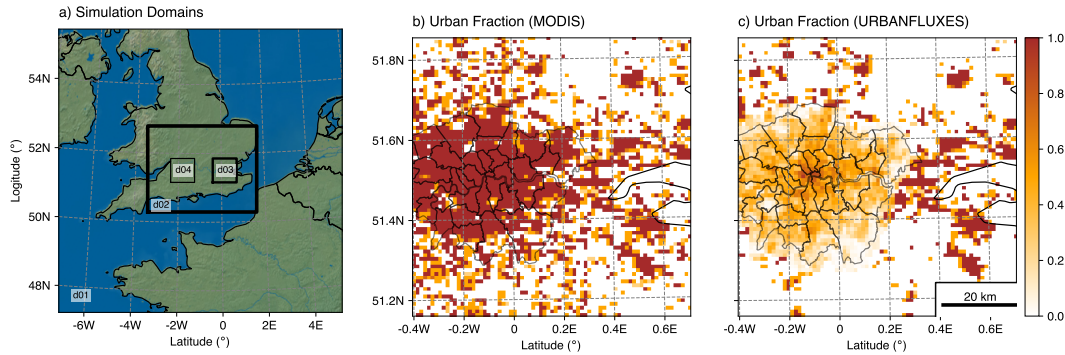


Figure 5. Model domain configurations: (a) four simulation domains (d01-d04) and urban land cover (paved and buildings) fraction in d03 (1 km resolution) based on (b) the WRF default MODIS dataset and (c) updated information for Greater London from URBANFLUXES project (Lindberg et al. 2020). The land cover information is accessible in Sun et al. (2023a).

225 3 Evaluation of WRF-SUEWS at two UK urban sites

3.1 Surface characteristics of evaluation sites

WRF-SUEWS is evaluated at the same two UK sites as in a previous SUEWS evaluation study (Ward et al., 2016; W16 hereafter) for consistency - these sites exhibit distinct urban characteristics:

- **KCL:** King’s College London Strand Street campus (51°30′ N 0°07′ W): a dense central business district area in London (d03 of Fig. 5), and
- **SWD:** Swindon (51°35′ N 1°48′ W): a residential area in the town of Swindon (d04 of Fig. 5).

WRF-SUEWS is set up with four nested model domains (Fig. 5) with grid spacing (domain and number of grids) being 9 km(d01, 100 × 100), 3 km(d02, 115 × 91) and 1 km (d03 and d04, 76 × 76)

As the default MODIS-based built (building and paved) fraction does not capture the surface heterogeneity within Greater London (Fig. 5b), we replace it with a high resolution (i.e. 2.5 m) land cover map (Fig. 5c) derived from an earth observation (EO) VHR SPOT imagery (Mitraka et al., 2016; Marconcini et al., 2017) with more realistic surface information. This high resolution dataset is processed using UMEP (Lindberg et al., 2018) to derive both land cover fractions for the seven SUEWS classes and other morphological parameters of roughness elements (e.g. building and vegetation heights, frontal area index; Table 2). The resulting dataset is upscaled to obtain 1 km resolution data for d03. As the equivalent detailed land cover information are unavailable for d04, the land cover (plus building and vegetation height) for the single grid where Swindon site is located is modified based on values in Ward et al. (2016) (Table 2).

Table 2. Key parameters assigned in the four model domains (Fig. 5) vary with land cover that is impervious (paved: PAV, buildings: BDG) and pervious (deciduous trees and shrubs: DCT and evergreen: EVT, grass or crops: GRA or CRP, bare soil: BSO and water: WAT). Anthropogenic heat flux coefficients vary between weekday (WD) and weekend (WE). Data sources are: Chrysoulakis et al. (2018):C18, Lindberg et al. (2020): L19, Omidvar et al. (2022): O22, and Ward et al. (2016): W16.

Parameter	Units	PAV	BDG	DCT	EVT	GRA	BSO	WAT	Densely built-up ^a	Suburban ^b	Natural ^c
<i>Interception capacity</i> (Source: W16; Eqn. 16)											
S_i	mm	0.48	0.25	1.3	0.8	1.9	1.9	-	-	-	-
<i>Phenology</i> (Source: O22; Eqn. 14)											
LAI_{\min}	$m^2 m^{-2}$	-	-	0.66	0.56	0.35	-	-	-	-	-
LAI_{\max}	$m^2 m^{-2}$	-	-	2.9	2.46	2.15	-	-	-	-	-
$T_{\text{Base,SDD}}$	$^{\circ}\text{C}$	-	-	7.3	4	4	-	-	-	-	-
$T_{\text{Base,GDD}}$	$^{\circ}\text{C}$	-	-	20.6	14	16.5	-	-	-	-	-
<i>Albedo</i> (Sources: W16, O22)											
$\alpha_{LAI,\min}$	-	0.11	0.11	0.10	0.09	0.16	0.21	0.12	-	-	-
$\alpha_{LAI,\max}$	-	-	-	0.13	0.11	0.19	-	-	-	-	-
<i>OHM</i> (Source: W16; Eqn. 4)											
a_1	-			0.215	0.215	0.215	0.335	0.5	-	-	-
a_2	h	0.3	0.337	0.325	0.325	0.325	0.335	0.21	-	-	-
a_3	W m^{-2}	-42.4	-33.9	-19.9	-19.9	-19.9	-35.28	-39.1	-	-	-
<i>Surface conductance</i> (Sources: W16, O22; Eqns. 9 to 13)											
G_{\max}	m s^{-1}	-	-	21.2	20.5	38.6	-	-	-	-	-
G_{LAI}	-	-	-	1	1	1	-	-	-	3.5	-
G_K	W m^{-2}	-	-	100	62	87	108.93	-	-	-	200
$G_{q,\text{base}}$	-	-	-	0.44	0.39	0.47	0.93	-	-	-	0.13
$G_{q,\text{shape}}$	-	-	-	0.9	0.9	0.9	0.96	-	-	-	0.7
G_T	$^{\circ}\text{C}$	-	-	30	30	30	42.26	-	-	-	30
G_{θ}	mm^{-1}	-	-	0.028	0.022	0.022	0.041	-	-	-	0.05
<i>Anthropogenic heat (WD/WE)</i> (Source: W16,Eqn. 3)											
a_{F0}	$\text{W m}^{-2} (\text{inh ha}^{-1})^{-1}$	-	-	-	-	-	-	-	0.37/0.34	0.14/0.13	-
a_{F1}	$\text{W m}^{-2} (\text{inh ha}^{-1})^{-1}$	-	-	-	-	-	-	-	0/0	0/0	-

$a_{F2} \times 100$	$\text{W m}^{-2} (\text{inh ha}^{-1})^{-1}$	-	-	-	-	-	-	-	0.73/0.67	0.37/0.38	-
---------------------	---	---	---	---	---	---	---	---	-----------	-----------	---

^a $0.6 \leq f_{\text{PAV}} + f_{\text{BDG}} \leq 1$

^b $0.16 \leq f_{\text{PAV}} + f_{\text{BDG}} < 0.6$

^c $f_{\text{PAV}} + f_{\text{BDG}} < 0.16$

To help assign SUEWS parameters related to the surface characteristics, the land cover characteristics of the 1362 d03 grid cells within the Greater London area are analysed by plan area fractions of paved (f_{PAV}) and building (f_{BDG}) land covers (Fig. 6). The most common ($N = 171$), LC grid combination (i.e., $f_{PAV} - f_{BDG}$ 0.05 fraction bins) is predominately pervious (notably grass) with minimal impervious area (< 0.05 for both paved f_{PAV} and buildings f_{BDG}). The second most frequent (245 $N = 112$, $f_{PAV} = 0.15$ and $f_{BDG} = 0.1$) is also largely pervious. It is also noting that KCL and SWD (blue dots in Fig. 6) reside in densely built-up and moderately pervious domains, respectively, indicating the different nature in land cover composition. Because high resolution property information is not readily available across the evaluation domains, the surface related SUEWS parameters (e.g. albedo, emissivity, OHM coefficients, etc.) are simplified into three classes based on paved and buildings fraction ($f_{PAV+BDG}$) from the gridded land cover (Table 2): (a) densely built areas ($f_{PAV+BDG} > 0.6$) are assigned parameter values of KCL (W16), (b) suburban areas ($0.16 < f_{PAV+BDG} \leq 0.6$) are assigned parameter values of SWD (W16); (c) natural surfaces ($0 < f_{PAV+BDG} \leq 0.16$) are assigned based on parameter values of dominant vegetation (Omidvar et al., 2022). In doing so, we can utilise the available property data to accurately represent surface heterogeneity. Note, the WRF-SUEWS system allows grid cell-level surface characteristic parameters assignment (e.g. SUEWS simulation of the Greater London by 255 Lindberg et al., 2020).

Given the importance of population density to anthropogenic heat emissions (Eqn. 3), output area day and night-time population data (UK ONS, 2013) are resampled to 1 km resolution for d03. For the grid point of SWD in d04, the Ward et al. (2016) values are used; otherwise, zero anthropogenic heat emission is set with population density being zero.

3.2 Model setup and spin-up

260 WRF-SUEWS is run with two-way nesting mode of 33 vertical levels (top at 5 kPa 11 layers in the boundary layer below 2000 m with lowest levels in d03 and d04 being ~ 40 m agl) for all four domains (Fig. 5). We note more vertical levels may be needed in detailed investigations of atmospheric features (e.g. temperature, precipitable water, etc.); here a moderate number of vertical levels are used as a balance between the computational cost and necessary representation of atmospheric profiles considering the focus of this work on the model development and evaluation of essential urban-atmospheric interactions. The atmospheric boundary conditions used are the $1^\circ \times 1^\circ$ (latitude \times longitude) National Centre for Environmental Prediction FNL data (NCEP, 2000). The well-tested WRF 'CONUS' physics suite (configuration since v3.9) is used with the land surface scheme changed to SUEWS (Table 3). The SUEWS physics schemes (Table 3, details provided in Sun et al., 2019) are selected for simplicity including using the building and tree heights with rule of thumb method (Grimmond and Oke, 1999) for momentum roughness length and displacement height; additionally, snow and irrigation modules are turned off (following W16's 265 KCL and SWD configuration). We use the WRF adaptive time step option to reduce the total run time while being numerically stable considering both the horizontal and vertical extent (Hutchinson, 2007). For us, the adopted time steps for domain 1 to 4 are around 72, 9, 3 and 3 seconds.

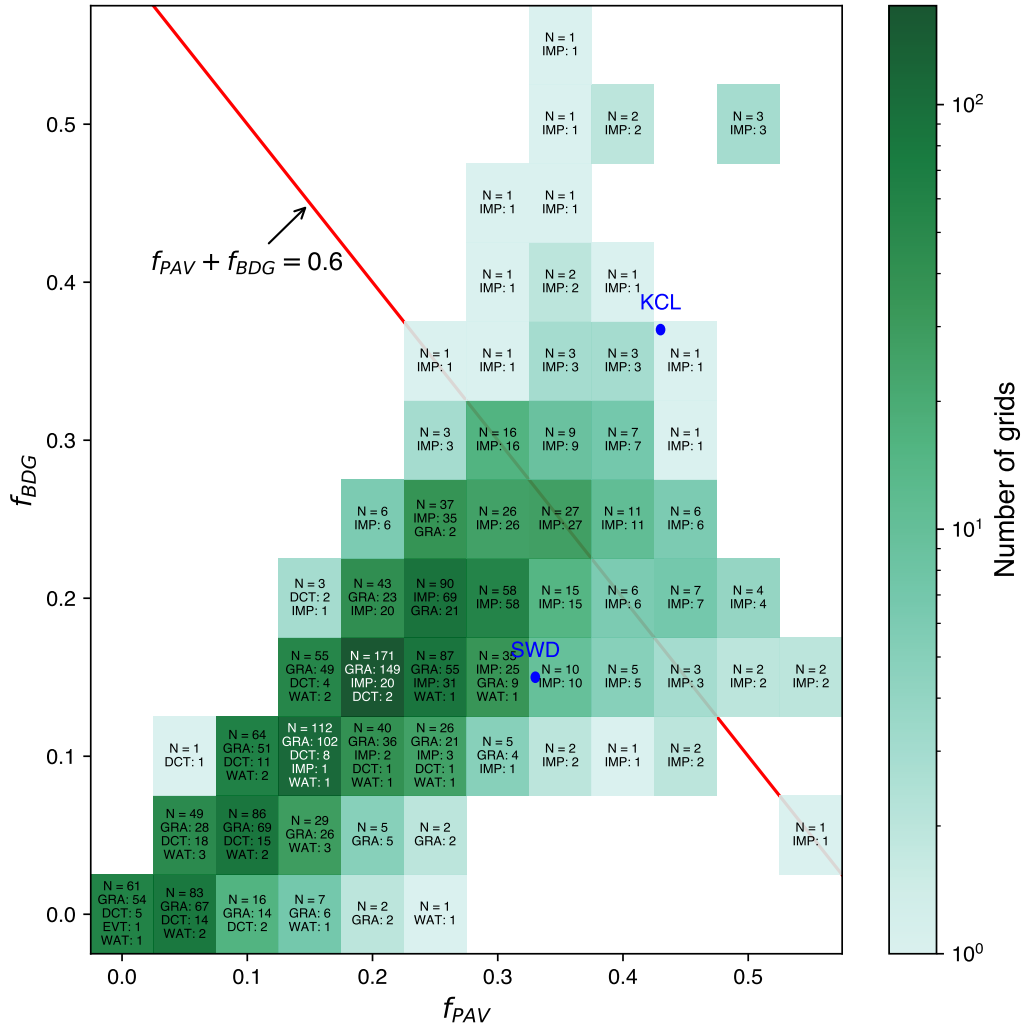


Figure 6. Frequency (colour, N) of land cover characteristics in d03 (Fig. 5) for the Greater London (GL) area (1362 grids of 1 km²). The individual grid cells are categorised first by the greatest land cover fraction with impervious (IMP) split between paved surfaces (PAV) and buildings (BDG). Other fractions are: deciduous trees (DCT), evergreen trees (EVT), grass (GRA), bare soil (BSV), and water (WAT). The blue dots indicate the cover around the KCL and SWD evaluation sites.

Table 3. Physics scheme in WRF and SUEWS option tested for use in coupled simulations. The local (internal) option number is given in column #.

Name in setup	Description	#	Scheme	References
<i>WRF</i>				
mp_physics	Micro-physics	18	Thompson	Thompson et al. (2008)

cu_physics	Cumulus parametrisation	6	Tiedtke	Tiedtke (1989); Zhang et al. (2011)
ra_lw_physics	Longwave	4	RRTMG	Iacono et al. (2008)
ra_sw_physics	Shortwave	4	RRTMG	Iacono et al. (2008)
bl_pbl_physics	Planetary boundary layer	2	Mellor-Yamada-Janjic	Janjić (1994)
sf_sfclay_physics	Surface layer	2	Eta similarity	Janjić (1994)
sf_surface_physics	Land Surface Model	9	SUEWS	Grimmond et al. (1986); Grimmond and Oke (1991); Järvi et al. (2011); Ward et al. (2016)

SUEWS

RoughLenHeatMethod	Roughness length for heat	2	-	Kawai et al. (2009)
RoughLenMomMethod	Roughness length for momentum	2	-	Grimmond and Oke (1999)
StabilityMethod	Stability function	3		Dyer (1974); Van Ulden and Holtslag (1985); Högström (1988)
EmissionsMethod	Anthropogenic heat	2	-	Järvi et al. (2011)
NetRadiationMethod	Radiation components	1	-	Loridan et al. (2011)
StorageHeatMethod	Storage heat flux	1	-	Grimmond and Oke (1991)
SnowUse	Snow calculation	0	-	Järvi et al. (2014)

We evaluate WRF-SUEWS during the four seasons using two-week periods in 2012 (Table 4). To generate appropriate initial conditions (i.e., model spin-up), we conduct offline SUEWS runs driven by observations collected at KCL and SWD (refer to the purple boxes in Fig. 1 and related notations in Sect. 2.2 for details about the atmospheric forcing variables as well as Table 2 for surface property settings) for 2012 until the soil moisture converges ($< 0.1\%$ difference in last time step between consecutive years): 15 years are needed for KCL while 5 years for SWD. For fully vegetated grids (i.e. $f_{DCT/EVT/GRA} = 1$), the observations at SWD are used as forcing conditions to spin-up SUEWS for 4 years before convergence. The required initial states (i.e. soil moisture, leaf area index) are used for each WRF-SUEWS period (Table 4). For grid cells with $f_{PAV+BDG} > 0.6$, the KCL-based initial states are prescribed to represent areas dominated by impervious surfaces; while SWD is used for the rest that are not completely vegetated. The appropriate complete pervious cover type values are assigned to the pervious cells based their dominant land cover type.

Table 4. Time periods in 2012 used to evaluate the WRF-SUEWS (Sect. 3.2) in London (KCL) and Swindon (SWD) with the observed air temperature (KCL: 49.6 m agl, SWD: 10.6 m agl) and rainfall. Measurement details given in Ward et al. (2013); Kotthaus and Grimmond (2014a, b). Note day light savings impacts all except for the January period, i.e. people’s activities (e.g. work times) are one hour earlier than UTC. $\Delta\tau_c$ is median clear sky transmissivity difference between τ_{WRF} and τ_{obs} . The clear-sky days are determined with mean $\tau_{\text{obs}} > 0.8$.

Period	Daily mean temperature ($^{\circ}\text{C}$)		Total rainfall (mm)		Number of clear days		$\Delta\tau_c$	
	KCL	SWD	KCL	SWD	KCL	SWD	KCL	SWD
Jan 16-30	6.1	5.2	14.8	55.8	5	5	0.14	0.11
Apr 11-25	8.3	6.6	42.4	67.8	2	2	0.22	0.20
Jul 16-30	18.4	17.0	9.6	11.0	3	2	0.07	0.00
Oct 1-14	11.5	9.9	42.6	19.0	5	3	0.16	0.05

3.3 Evaluation data and metrics

The W16 evaluation of SUEWS (v2016a) uses 60-min radiation and turbulent fluxes observed at KCL and SWD (Ward et al., 2013; Kotthaus and Grimmond, 2014a, b). Both flux towers are located close to the centre (within a 200 – 300 m radius circle) of a 1 km² model grid cell. The source areas of the observed turbulent fluxes have the probable 50% contribution from within ~ 400 m of the flux tower at KCL (Kotthaus and Grimmond, 2014b) and the probable 80% contribution from within ~ 700 m at SWD (Ward et al. 2013). Here, we average the 30-min sample output from land surface scheme (i.e., SUEWS) to 60 min to compare with the observations.

The mixed layer height (MLH), derived from continuous high resolution (15 s and 10 m) attenuated backscatter observed with a Vaisala CL31 ceilometer at Marylebone Road (MR) in London (Kotthaus et al., 2016; Kotthaus and Grimmond, 2018a, b), is used to evaluate the model’s ability to predict atmospheric boundary layer (ABL) dynamics. The MLH values have been compared to AMDAR, or Aircraft Meteorological Data Relay (the median difference between inversion heights and MLH is 346 m based on all time periods; more evaluation results refer to Kotthaus and Grimmond (2018a)). Various observations can be used to obtain the height of the boundary layer but the results depend on the variable used (Kotthaus et al., 2023). For example, differences occur between using temperature inversion and MLH (e.g., at night, Kotthaus and Grimmond, 2018a), or between MLH and the turbulence-derived mixing height (MH, Kotthaus et al., 2018) - the height where the vertical velocity variations falls below a threshold (Barlow et al., 2011; Halios and Barlow, 2017). On the other hand, when using the Mellor-Yamada-Janjic scheme, the WRF output PBLH (planetary boundary layer height) is derived from the height where turbulent kinetic energy falls below 0.2 m² s⁻² (Banks et al., 2016; Janjić, 1994).

Although the comparison of the aerosol-derived MLH from observations and the turbulence-based mixing height diagnosed from the model output (WRF PBL, hereafter referred to as WRF MH) may be affected to systematic differences (e.g. those associated with vertical resolution as suggested by Kotthaus et al. (2023)), the comparable nature between MLH and MH enables the former to be a proxy to examine the latter modelled by WRF.

The evaluation metrics used with the number of data points (N) available from the model output (Y_{mod}) and observations (Y_{obs}) time series are:

1. hit rate (HR):

$$\text{HR} = \frac{\sum_{j=1}^N H(\delta_{Y,j} - |Y_{\text{mod},j} - Y_{\text{obs},j}|)}{N} \quad (21)$$

with Heaviside step function H defined by

$$H(x) = \begin{cases} 0, & x < 0 \\ 1, & x \geq 0 \end{cases} \quad (22)$$

and the threshold $\delta_{Y,j}$ being a value dependent on evaluation variable Y . We use the HR to evaluate the surface energy fluxes with $\delta_{Y,j} = 50 \text{ W m}^{-2}$ for radiative ($K_{\downarrow}, K_{\uparrow}, L_{\downarrow}, L_{\uparrow}, Q^*$) and $\delta_{Y,j} = 0.1Q^* + 50 \text{ W m}^{-2}$ for turbulent (Q_E and Q_H) fluxes (Hollinger and Richardson, 2005), respectively. If $\text{HR} = 0$, it suggests none of model predictions are within the acceptable threshold set; while $\text{HR} = 1$ indicates all fall into the acceptance range.

2. mean absolute error (MAE):

$$\text{MAE} = \frac{\sum_{j=1}^N |Y_{\text{mod}} - Y_{\text{obs}}|}{N} \quad (23)$$

3. mean bias error (MBE):

$$\text{MBE} = \frac{\sum_{j=1}^N (Y_{\text{mod}} - Y_{\text{obs}})}{N} \quad (24)$$

Both MAE and MBE have units of the variable analysed (i.e. W^{-2} for fluxes, m for MLH or MH) with an ideal value of 0 indicating perfect agreement with the observations. The MAE, unlike the root mean square error, treats all error equally (Willmott et al., 2017).

3.4 Evaluation results

3.4.1 Effect of bulk transmissivity correction on solar radiation

First, we evaluate WRF-SUEWS' skill at predicting incoming shortwave radiation (K_{\downarrow}) as it is crucial to driving surface-atmosphere processes (Fig. 1). Given that fixing WRF's RRTMG radiation scheme (Iacono et al., 2008) tendency to overestimate K_{\downarrow} is beyond the scope of this study, we modify K_{\downarrow} for each grid to ensure that the land surface receives the appropriate energy to drive the land surface scheme (e.g. SUEWS) by accounting for the differences in bulk transmissivity on clear sky days (Fig. 7; correction methodology in Sect. 2.5).

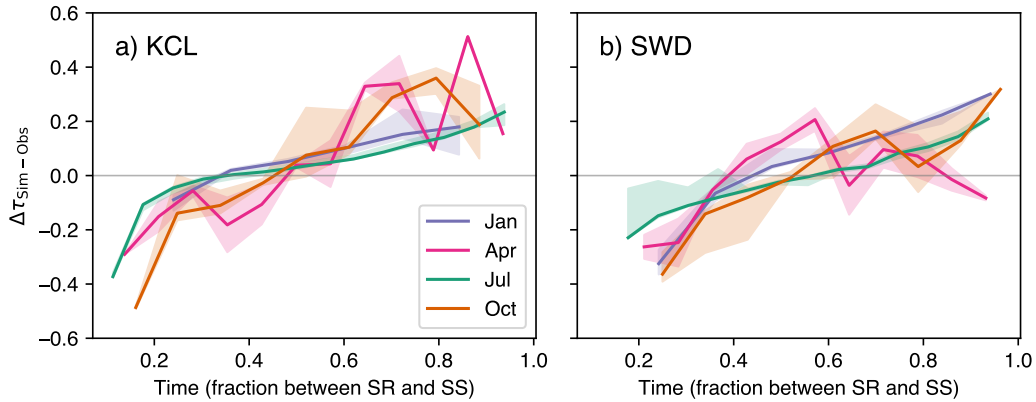


Figure 7. Bulk transmissivity difference (model-observation) of 60 min values median (line) and interquartile range (shading) during the daylight hours (normalised between sunrise (SR: 0) and sunset (SS: 1)) during four periods of the year (Table 4) at: (a) KCL and (b) SWD. See Sect. 2.5 for correction details of $\Delta\tau$.

Generally, after the correction is applied the modified K_{\downarrow} agrees better with observations on clear sky days (Fig. 8) with reduced overestimation. The improvement in HR is minimal, but MAE and MBE become smaller. This type of correction may cause underestimation of the peak K_{\downarrow} values in summer (Fig. 8c cf. Fig. 8g), as the WRF overestimated transmissivity is larger in the afternoon (Fig. 7). Thus using a single bulk correction will have a diurnal bias in K_{\downarrow} from under(over)-correction in the morning (afternoon). This is evident in the ascending trend of $\Delta\tau_{\text{Sim-Obs}}$ (cf. Fig. 7).

On cloudy days, the correction also improves the K_{\downarrow} performance. The MAE and MBE, as well as the HR are enhanced, despite the correction parameter not being derived for cloudy conditions (Fig. 9). The MBE is reduced by more than 50% for all simulation periods at both sites (except October 2012 at SWD) after correction. In general, we deem such correction necessary and effective for land surface modules in the WRF system (v4.0); hence we use K_{\downarrow} -corrected simulation results throughout the following analyses.

3.4.2 Online and offline simulated surface energy balance fluxes

Although our focus is on the online WRF-SUEWS system it is useful to compare its performance to the offline (i.e. standalone SUEWS) version. As we force the latter directly with observations (refer to the "Atmospheric forcing" variables in Fig. 1), removing potential forcing errors from the online system, we expect better performance and hence use this as a benchmark. The same simulation periods were used for the online and offline evaluation (Table 4). Given the SUEWS v2018c kernel is almost the same as the v2016 kernel, the offline performance is very similar to the values reported by W16. The largest difference may be associated with an update to the OHM calculations, as v2016 uses the two preceding hours mean net all-wave radiation values, while v2018c uses the step-size weighted average of two successive timesteps.

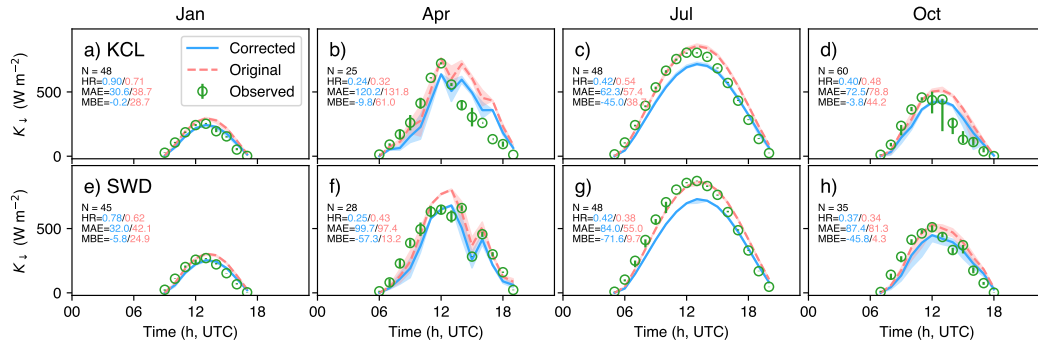


Figure 8. Daytime 60 min shortwave incoming radiation (K_{\downarrow}) fluxes during clear sky days. Observed data is marked with median values (circles) and interquartile range (IQR, vertical lines), while simulations by WRF-SUEWS are illustrated with median (lines) and interquartile range (shading). Both the original (solid) and corrected bulk transmissivity (dashed) are utilised across four two-week periods (refer to Table 4) at the (a-d) KCL and (e-h) SWD sites. Scarce clear sky periods occurred in April. For additional details on metrics and units, refer to Sect. 3.3.

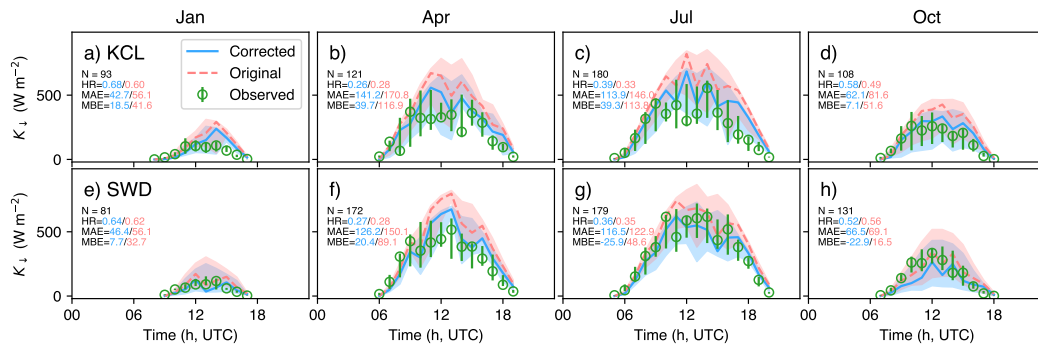


Figure 9. Same as Fig. 8, but for cloudy days.

Overall, the offline (upper row, Fig. 12) performance is better than online (lower row) at both sites for all fluxes. Although offline K_{\downarrow} should have no error, slight deterioration in performance occurs (Ward et al., 2016), because the high-resolution (e.g., 1 min, 5 min) forcing is not used but rather 60-min means are interpolated to 5 min and subsequently re-averaged to 60 min for evaluation. The offline K_{\downarrow} HR is greater than 0.93 for all four seasons at both sites, whereas the online K_{\downarrow} HR are 0.25 to 0.75 (Fig. B1-B2) with $HR < 0.5$ and $MAE > 60 \text{ W m}^{-2}$ in April and July (Fig. 12). The model performance in K_{\uparrow} is comparable at both sites (Fig. 12); the offline mode proves to be superior to the online mode - this is not surprising as it corresponds to the model's performance in K_{\downarrow} .

The outgoing longwave radiation L_{\uparrow} is modelled well ($MAE < 12.6 \text{ W m}^{-2}$) both offline and online. But like K_{\downarrow} , L_{\downarrow} is poorer for both cases (MAE online: 28.6; offline: 28.2 W m^{-2}) and its diurnal patterns is quite captured by the model correctly

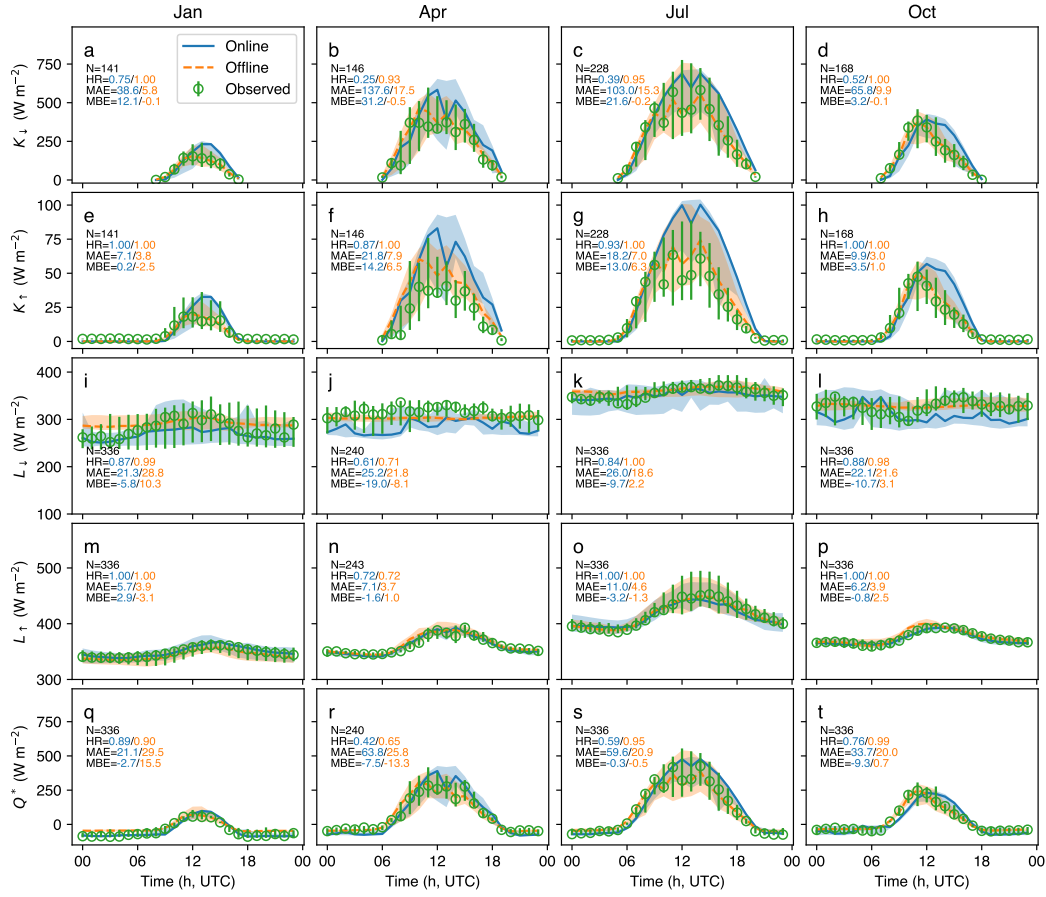


Figure 10. Diurnal pattern of simulated (median: online - line, offline - dashed; IQR: shading) and observed (median: circle, IQR: vertical line) incoming (a-d) shortwave (K_{\downarrow}) and (e-h) longwave (L_{\downarrow}), outgoing (i-l) short (K_{\uparrow}) and (m-p) longwave (L_{\uparrow}), and (q-t) net all-wave (Q^*) for four two-week periods in different seasons (Table 4) at KCL. "N" indicates number of hourly data points used in the analysis; other metrics are defined in Sect. 3.3.

- the offline mode lacks sufficient diurnal variability while the online mode shows general underestimation (cf. Figs. 10 and 11). Net all-wave radiation (Q^*) is impacted mostly by K_{\downarrow} during the day making the WRF K_{\downarrow} correction important. The intra-annual range of MAE for the online Q^* simulations is smaller for KCL ($21 - 64 \text{ W m}^{-2}$) than at SWD ($37 - 72 \text{ W m}^{-2}$), so the turbulent fluxes at SWD start with a potentially greater error.

360 Clear seasonality in MBE for the turbulent heat fluxes (Q_E and Q_H) occurs at both sites (Fig. 12). At KCL there is a positive bias of varying magnitude (6 to 47 W m^{-2}) for both fluxes, whereas at SWD Q_E is generally underestimated (-6 to -4 W m^{-2}) and Q_H is overestimated (underestimated) by 25 W m^{-2} (-31 W m^{-2}) in January (July).

Overall, WRF-SUEWS better predicts Q_E than Q_H at both sites (MAE $_{Q_E}$ vs. MAE $_{Q_H}$: 26 W m^{-2} vs. 45 W m^{-2} at KCL; 18 W m^{-2} vs. 62 W m^{-2} at SWD). The diurnal performance for the turbulent heat fluxes and Bowen ratio ($\beta = Q_H/Q_E$) is

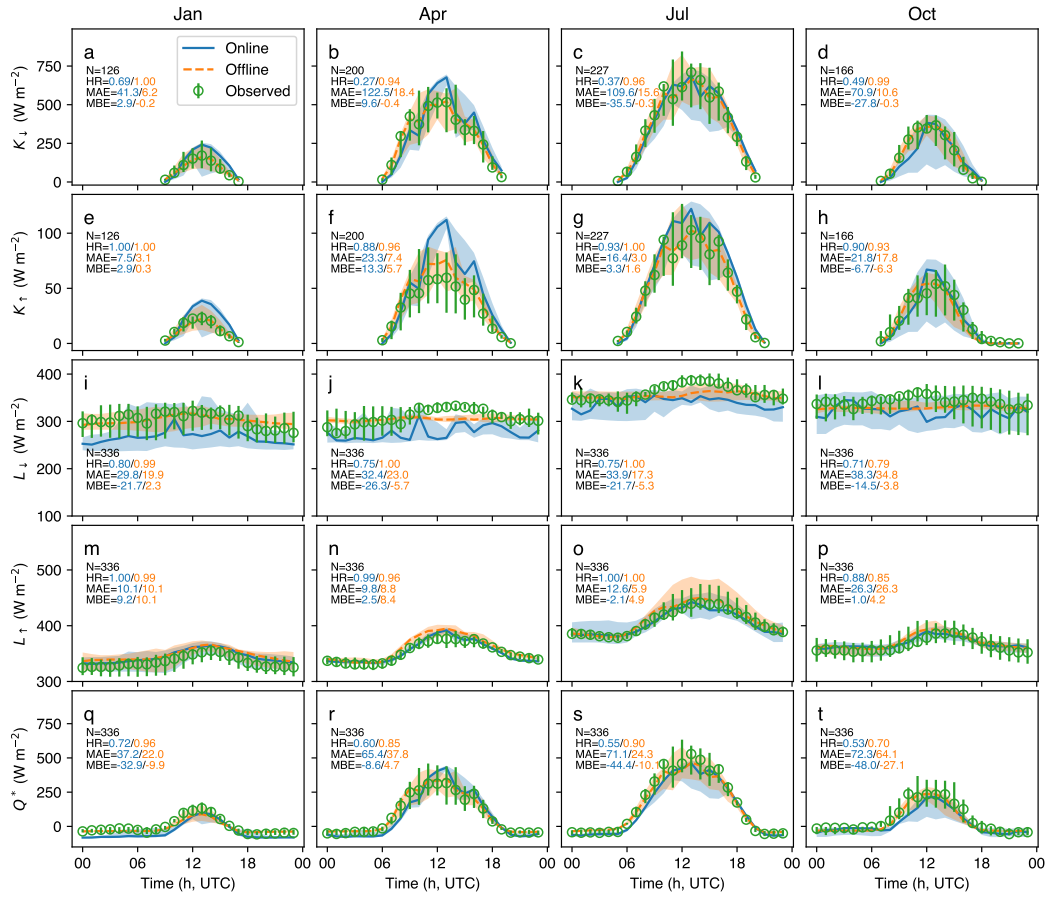


Figure 11. As 10, but for the SWD site.

365 similar for both offline and online runs for both KCL and SWD (Figs. 13 and 14). The β indicates the turbulent heat fluxes are correctly partitioned, suggesting the model's robustness in turbulent heat flux partitioning even when there are variations in radiation accuracy (i.e., making the skill in simulating the absolute radiation fluxes less critical). The WRF-SUEWS daytime β agrees well with the observations at both KCL and SWD. However, when both fluxes are small ($< 10 W m^{-2}$) there are both larger observational errors (e.g. uncertainties due to nocturnal weak turbulence; Järvi et al., 2018; Mahrt et al., 2012) and ratios change rapidly. Under these conditions, nocturnal β is overestimated (January at KCL; all seasons at SWD).

To set these results in context, it is useful to compare them to the results of other urban land surface models that have been evaluated in this region (e.g. SLUCM: Loridan et al., 2013; Tsiringakis et al., 2019; Best-1T and MORUSES with JULES: Hertwig et al., 2020). Loridan et al. (2013, hereinafter L13) focussed on the 3 June 2010 using KCL observations to evaluate the SLUCM (Kusaka et al., 2001) in WRF (Chen et al., 2011). Hertwig et al. (2020, H20) evaluated two urban schemes with
 375 JULES (Best et al., 2011), the Best-1T (Best et al., 2006) and MORUSES (Porson et al., 2010), over the 2011-2013 period

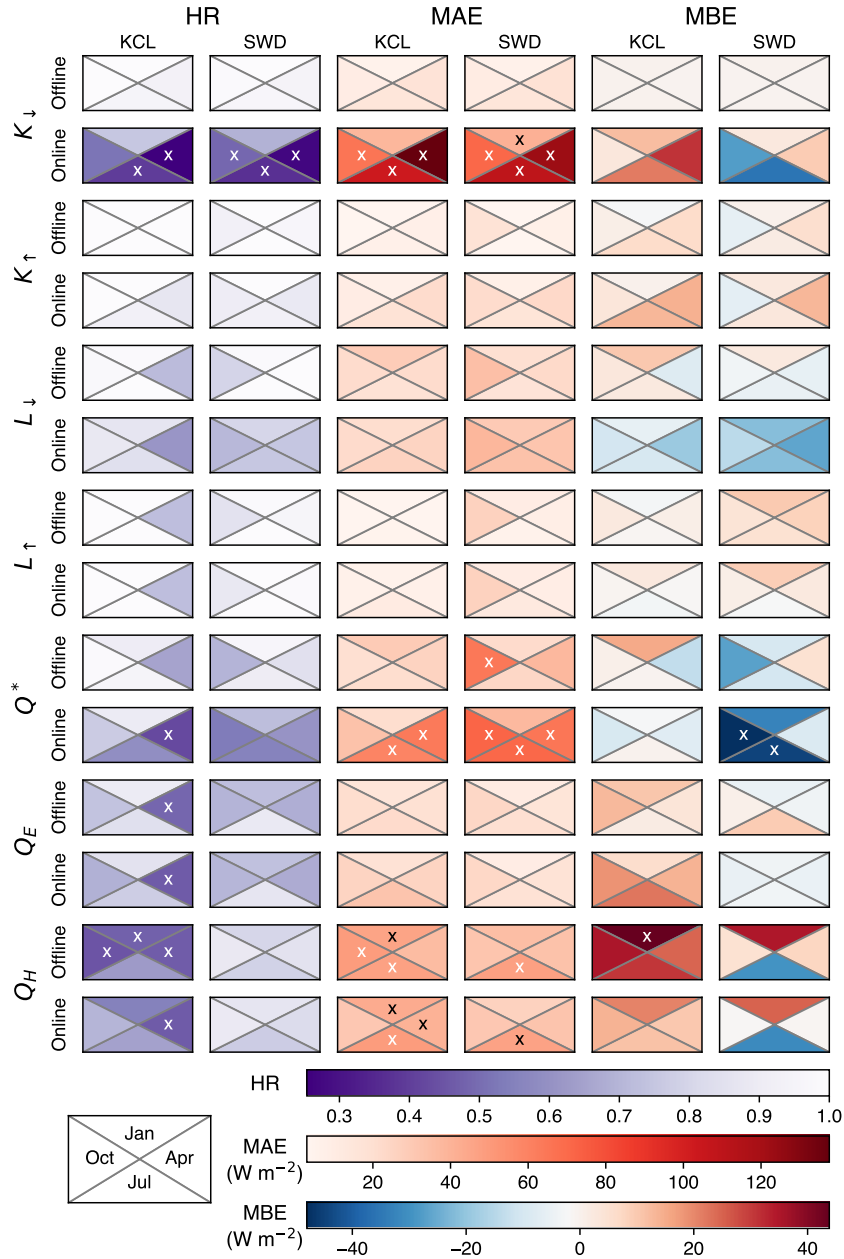


Figure 12. Model performance for (rows) radiative (K_{\downarrow} , K_{\uparrow} , L_{\downarrow} , L_{\uparrow} and Q^*) and turbulent heat (Q_E and Q_H) fluxes for (rows) simulated in online and offline modes at (columns) KCL and SWD assessed using (columns) three metrics (HR, MAE, MBE: colour - darker poorer performance) for four periods (triangles). Triangles marked (x) indicate the model performance can be categorised unsatisfactory based on the one of following criteria: $HR < 0.5$, $MAE > 40 W m^{-2}$, and $|MBE| > 40 W m^{-2}$. Metrics are defined in Sect. 3.3.

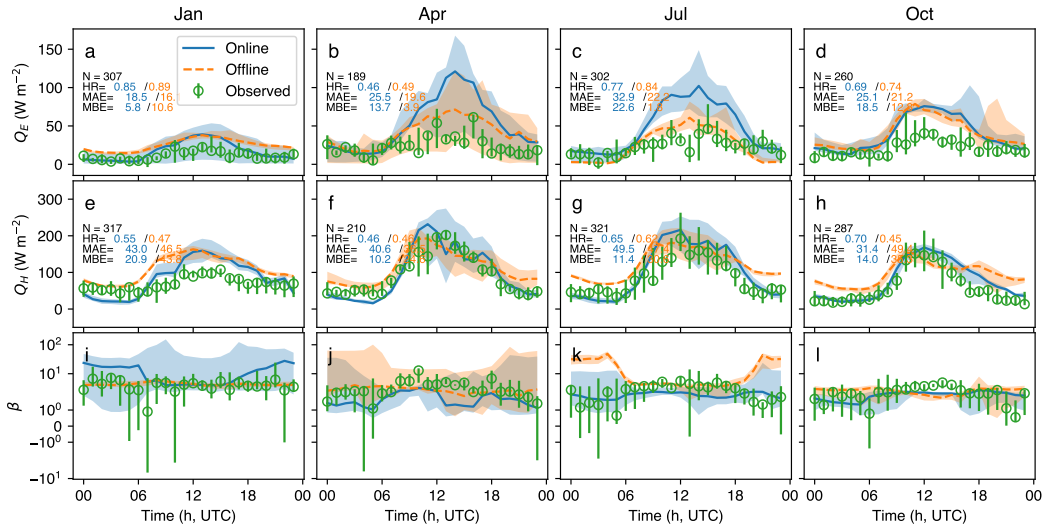


Figure 13. Diurnal pattern of simulated (median: online - line, offline - dashed; IQR: shading) and observed (median: circle, IQR: vertical line) fluxes: (a-d) sensible (Q_H) and (e-h) latent (Q_E) heat fluxes, and (i-l) Bowen ratio ($\beta = Q_H/Q_E$) (hourly median) for (columns) four two-week periods in different seasons (Table 4) at KCL. Metrics defined in Sect. 3.3

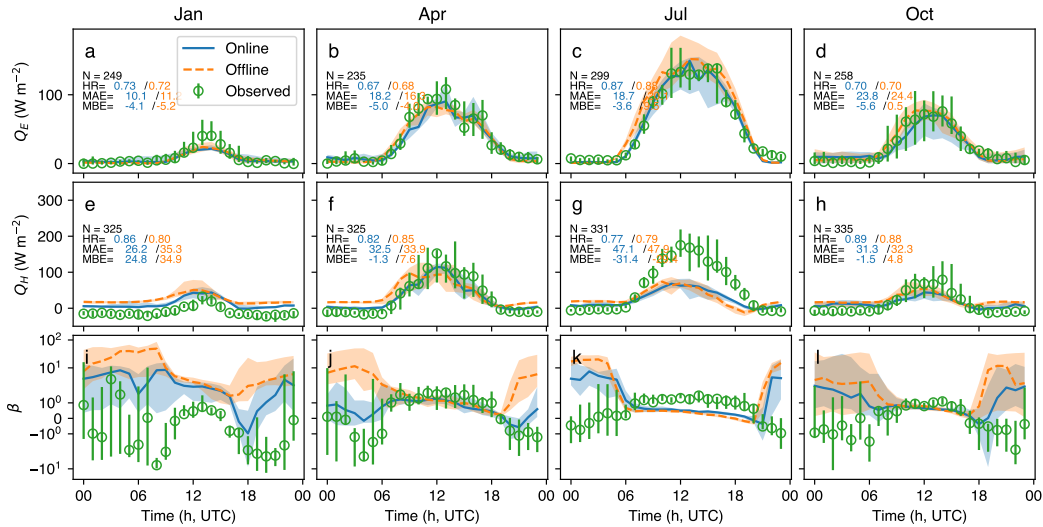


Figure 14. Same as Fig. 13, but for SWD.

at both the KCL and SWD sites. The evaluation strategies differ: L13 considers both online and offline performance but with different surface information; H20 is offline only, but considers a range of configurations. For comparison we consider their more "advanced" configurations (L13: online, UZE - Urban Zones for Energy partitioning - for plan area index-based surface

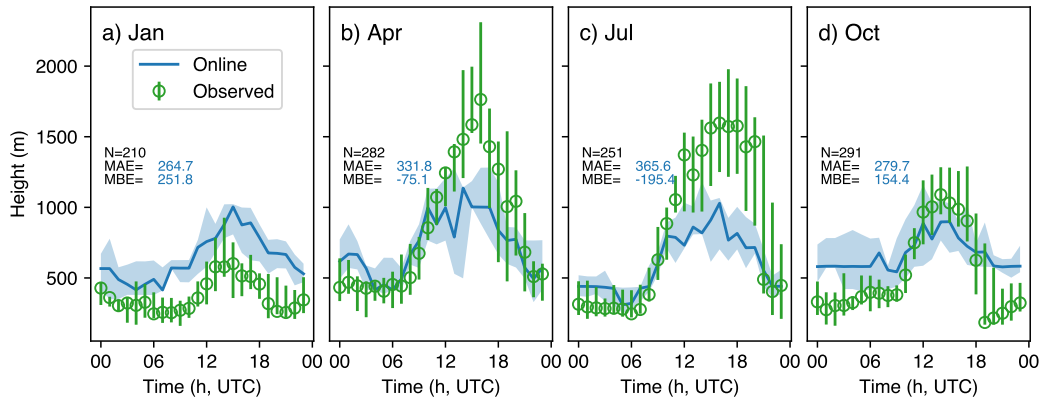


Figure 15. As Fig. 13, but for MLH (observed) and MH (online, Sect. 3.3) at MR in London.

categorisation; H20: offline, a baseline configuration CTRL-B and a more sophisticated one CTRL-M with the more realistic
 380 anthropogenic forcing and detailed land cover information) using appropriate periods.

WRF-SLUCM performance at KCL for Q_E is better (WRF-SUEWS MAE = 33 W m^{-2}); noted that the L13 study covers
 only 1 day (cf. our summer 14 days). Similar to SUEWS, SLUCM’s online mode performs slightly worse than its offline
 mode with respect to RMSE (online vs. offline): 82.8 W m^{-2} vs. 82.6 W m^{-2} for Q_H ; while for Q_E , 16.4 W m^{-2} vs.
 14.2 W m^{-2} . At KCL, the annual offline MAE_{SUEWS} for Q_E is similar to CTRL-B ($\sim 20 \text{ W m}^{-2}$) but larger than CTRL-M
 385 ($\sim 15 \text{ W m}^{-2}$), whereas all three model configurations have similar performance at SWD ($\sim 15 \text{ W m}^{-2}$). For Q_H , all three
 models are similar at KCL (MAE = $\sim 40 \text{ W m}^{-2}$) but at SWD, MAE_{SUEWS} is larger ($\sim 30 \text{ W m}^{-2}$) than for the two H20
 models ($\sim 20 \text{ W m}^{-2}$).

Although not directly comparable, the SUEWS performance appears to be consistent with both offline and online perfor-
 mance of other urban land surface models in this area. Attribution of bias differences (e.g. different parameterisations, config-
 390 urations, land cover information) is out of the scope of this study but is the focus of model comparison studies (e.g. Grimmond
 et al., 2010a, b).

3.4.3 Boundary layer depth

To assess the boundary layer depth the modelled MH (Sect. 3.3) is compared to the observed MLH at MR in London (Fig. 15).
 Generally, WRF-SUEWS underestimates daytime MH in all seasons except for winter (Fig. 15a) with MAE > 300 m in the
 395 warmer periods (Fig. 15b,c). WRF-SUEWS slightly overestimates MH at night. The MBE varies between -195 and 252 m
 for the four periods. These values are smaller than WRF-SLUCM (with multiple PBL schemes, -288 to 539 m) simulations
 over Greater Paris evaluated using radiosonde observations (Kim et al., 2013). Similarly, evaluating WRF using eight different
 PBL schemes in Barcelona, Banks et al. (2015) found daytime MH to be underestimated (cf. elastic backscatter lidar), with the
 largest relative bias of -48%. This is comparable to our summertime results (Fig. 15c).

4.1 Modelled variability of anthropogenic heat emissions

The WRF-SUEWS model demonstrates satisfactory performance across various seasons and for two distinct urban areas (Sect. 3.1). Therefore, we employ it to examine the influence of Q_F on the atmospheric boundary layer - a unique characteristic of the coupled WRF-SUEWS system compared to the standalone SUEWS - in d03 (Fig. 5) during April 2012, before
 405 the Olympics disrupted typical patterns in July. As daylight saving has begun by this time of the year, people's activities are shifted an hour earlier (e.g. typical workday is 08:00-16:00 UTC, or 09:00-17:00 BST local time). Peak Q_F emissions occur in central London (Fig. 16) during the daytime ($> 300 \text{ W m}^{-2}$, Fig. 16c). By the late afternoon and through the night (20:00-05:00 UTC) the values in these areas (Fig. 16b) are smaller ($< 130 \text{ W m}^{-2}$, Fig. 16d). The areas where large values occur differ between night and day.

410 At night the peaks occur across a larger area beyond central London, with some larger values towards the outskirts (Fig. 16b cf. Fig. 16a). The nocturnal Q_F mean in d03 is smaller (17.1 W m^{-2}) than the daytime (19.8 W m^{-2}) but more spatially consistent (Fig. 16d cf. Fig. 16c).

These spatiotemporal patterns (Fig. 16a, b) are largely consistent with previous studies in London. Daily peak values differ between studies because of model grid cell size (Lindberg et al., 2013), and efforts over time to reduce carbon emissions and
 415 therefore energy use (Lindberg et al., 2013; Ward and Grimmond, 2017). Peak values (grid size) vary between 120 W m^{-2} (3.2 km^2 , Capel-Timms et al., 2020), $\sim 150 \text{ W m}^{-2}$ (1 km^2 , Hamilton et al., 2009; 1 km^2 , Bohnenstengel et al., 2013) and 210 W m^{-2} (3.2 km^2 , Iamarino et al., 2011). Besides, the WRF-SUEWS predicted average Q_F values for London (i.e. $\sim 18 \text{ W m}^{-2}$) are comparable with those estimated in other mega-cities (e.g. peak values of $\sim 50 \text{ W m}^{-2}$ in Osaka City, Japan by Narumi et al. (2009); annual average of $\sim 20 \text{ W m}^{-2}$ in Beijing–Tianjin–Hebei Agglomeration by Feng et al. (2012);
 420 annual average of $\sim 30 \text{ W m}^{-2}$ in Beijing by Yang et al. (2022)).

4.2 Feedbacks from anthropogenic heat emissions

To assess the feedback, we focus on two example grids with contrasting population density profiles:

- a central business district (CBD) area, within the City of Westminster (grid C, Fig. 16), with tall buildings (roughness length $z_0 = 2.0 \text{ m}$, zero plane displacement $z_d = 13.9 \text{ m}$; calculated using the rule-of-thumb approach as in Grimmond
 425 and Oke, 1999), low fraction of vegetation ($f_{\text{VEG}} = 13.1\%$), and large daytime population density (763 inh ha^{-1}) but small nocturnal density (111 inh ha^{-1}).
- an inner-city residential area, within the Borough of Islington (grid R, Fig. 16), with $z_0 = 0.8 \text{ m}$, $z_d = 5.6 \text{ m}$, $f_{\text{VEG}} = 43.3\%$, and nocturnal population density (170 inh ha^{-1}) slightly greater than the daytime density (150 inh ha^{-1}).

Workday time series reveal differences in Q_F timing and magnitude between the two grids (Fig. 17a). In grid C, Q_F is
 430 significantly higher in general, staying at a rather consistent level between the morning and evening peaks, whereas the flux is lower in grid R and shows a reduction in emission between the two peaks. However, the second peak in R is much later

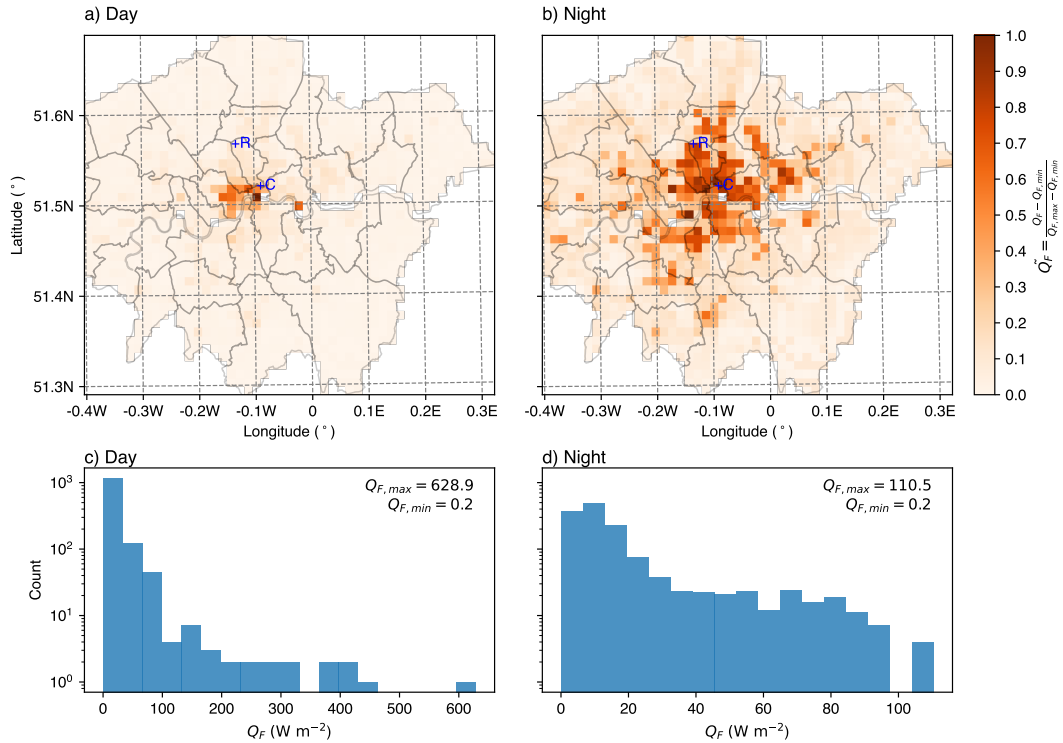


Figure 16. April (Table 4) weekday normalised anthropogenic heat flux in London (grey lines are boroughs) during (a) main working hours in the day (08:00 - 16:00 UTC), (b) night (20:00 - 05:00 UTC), and (c, d) the respective distributions of their actual values (in W m^{-2}). Grids analysed in more detail are indicated (blue): C - commercial/business, R - residential.

(R: $\sim 21:00$ UTC, C: $\sim 17:00$ UTC, Fig. 17a, red). Both grids have similar Q_E (Fig. 17a) despite the 30% difference in vegetation fraction, attributable to the low LAI in April (Kotthaus and Grimmond, 2014a, b; Ward et al., 2013). The net radiation (Q^* , Fig. 17a) values are also similar. The larger Q_F in grid C enhances Q_H by $\sim 220 \text{ W m}^{-2}$ over grid R during the middle of the day on average, which contributes to an increase in midday MH of 100–200 m compared to grid R (700–900 m above ground level; Fig. 17b, c).

The contrasting Q_F -induced heating alters several atmospheric variables within the urban boundary layer: daytime near surface air ($< 100 \text{ m agl}$) in grid C is warmer (positive difference, $\sim 0.3 \text{ K}$, Fig. 17b) and drier (negative difference, $\sim 0.2 \text{ g kg}^{-1}$, Fig. 17c) than in grid R. At night, the air temperature in grid C stays warmer at lower altitudes but with cooler and wetter air aloft with PBL (Fig. 17). These results are consistent with other WRF-SLUCM-based studies stating that urban heating leads to warmer and drier near-surface atmosphere (e.g. Zhang and Chen, 2014; Zhang et al., 2015). The Q_F impacts are of similar magnitude to those linked to urban greening (but with an inverse effect): for instance, with all roofs vegetated in Beijing, the near-surface atmosphere is cooled by $\sim 1 \text{ K}$ but moistened by $\sim 0.8 \text{ g kg}^{-1}$ during a heat wave period even

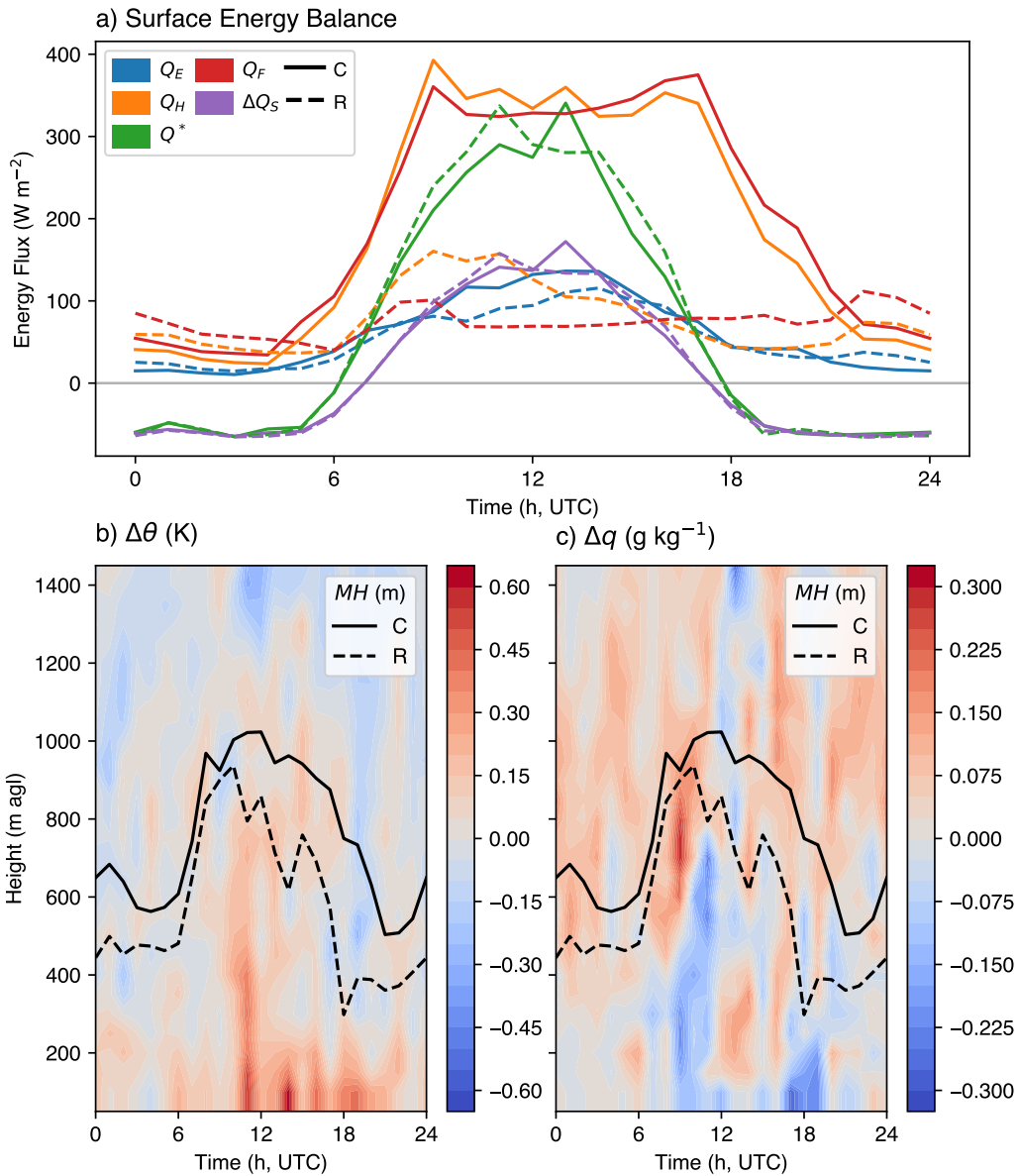


Figure 17. April (Table 4) weekday diurnal pattern in two grids (C and R, Fig. 16) of (a) mean surface energy fluxes, and (b, c) median MH and median difference (colour, C minus R) with height of (b) potential temperature θ and (c) specific humidity q .

when anthropogenic heat is accounted for (Sun et al., 2016); this suggests that urban greening may help mitigate some effects
 445 of anthropogenic heat emissions.

5 Concluding Remarks

Through coupling the SUEWS urban land surface model to WRF, urban-atmosphere interactions can be explored more fully than when using the standalone SUEWS. The new Fortran subroutine `SuMin` interfaces SUEWS with the land surface driver of WRF. The WSPS pre-processor incorporates SUEWS specific parameters into the `wrfinput` and `namelist.suews` files for WRF-SUEWS simulations. The coupling is designed to permit sustainable development of SUEWS so that regular enhancements of SUEWS can be seamlessly incorporated into the coupled system.

Evaluation of the coupled WRF-SUEWS system is performed at two UK sites: dense central London (KCL) and suburban/residential site in Swindon (SWD) across four seasons. It generally shows a good capacity of the coupled system to simulate the surface energy balance fluxes and mixing height in all periods. The performance compares well to other WRF studies in urban settings (Banks et al., 2015; Kim et al., 2013; Loridan et al., 2013). Better performance is found (i) at the suburban site SWD than the densely built-up KCL for the turbulent heat fluxes; (ii) during clear sky conditions for radiative than turbulent heat fluxes; (iii) using a bulk atmospheric transmissivity for incoming shortwave radiation (than without).

WRF-SUEWS' capability allows analyses of spatial and temporal variations over heterogeneous urban areas compared to existing WRF urban schemes (e.g. SLUCM, BEP, etc.) that can only resolve a limited number of urban classes. Critically, the SUEWS capability allows for dynamic feedbacks from human activities (e.g. heat, water, phenology, snow related). The influence of anthropogenic heat Q_F on the boundary layer in April prior to leaf growth in Greater London influences the sensible (more than the latent) heat fluxes. The larger Q_F and Q_H in central London are associated with warmer and drier air and deeper mixing heights during the day but not at night. The WRF-SUEWS evaluation should be expanded to other urban settings, timeframes and synoptic conditions, and further applications explored (e.g. Q_F impacts on urban-atmospheric interactions). Results suggest that the system has a great potential to help advance our understanding of the role of urban surface heterogeneity. As SUEWS is already integrated with many other models (e.g. building energy parameterisations and thermal comfort simulations, Table 1), WRF-SUEWS can help decision makers involved in a wide range of integrated urban services to identify the spatiotemporal distribution of near-surface meteorology (e.g. heat-induced climate risks, Zong et al., 2022; urban ventilation issues, Zheng et al., 2022) across a city.

Code and data availability. The snapshots of input data and source code for WRF-SUEWS used in this paper have been archived on Zenodo at <https://doi.org/10.5281/zenodo.7957903> (Sun et al., 2023a) and <https://zenodo.org/record/8137708> (Sun et al., 2023b), respectively. The up-to-date version of WRF-SUEWS is available at <https://github.com/Urban-Meteorology-Reading/WRF-SUEWS> (last access: 16 May 2023).

Author contributions. TS led the development of WRF-SUEWS with significant contributions from HO and ZL. TS and HO performed the evaluation. TS, HO and SG drafted the manuscript and all authors contributed to review and editing of the manuscript.

Competing interests. The authors declare that they have no conflict of interest.

Acknowledgements. This work has been supported by the Newton Fund/Met Office CSSP-China: HighResCity AJYG-DX4P1V), the Natural Environment Research Council (Independent Research Fellowship, grant no. NE/P018637/1 and NE/P018637/2; COSMA, grant no. NE/S005889/1; ClearfLo, NE/H003231/1; Studentship: NE/H52479X/1), the European Research Council (Synergy: urbisphere 855005, 480 FP7: BRIDGE 211345) and the National Natural Science Foundation of China (grant no. 41975006). HCW is supported by the Austrian Science Fund (grant no. M2244-N32 and V888-N).

References

- Alexander, P., Bechtel, B., Chow, W., Fealy, R., and Mills, G.: Linking urban climate classification with an urban energy and water budget model: Multi-site and multi-seasonal evaluation, *Urban Clim.*, 17, 196–215, <https://doi.org/10.1016/j.uclim.2016.08.003>, 2016.
- 485 Alexander, P. J., Mills, G., and Fealy, R.: Using LCZ data to run an urban energy balance model, *Urban Clim.*, 13, 14–37, <https://doi.org/10.1016/j.uclim.2015.05.001>, 2015.
- Allen, L., Lindberg, F., and Grimmond, C. S. B.: Global to city scale urban anthropogenic heat flux: Model and variability, *Int. J. Climatol.*, 31, 1990–2005, <https://doi.org/10.1002/joc.2210>, 2010.
- Ao, X., Grimmond, C. S. B., Liu, D., Han, Z., Hu, P., Wang, Y., Zhen, X., and Tan, J.: Radiation Fluxes in a Business District of Shanghai, China, *J. Appl. Meteorol. Clim.*, 55, 2451–2468, <https://doi.org/10.1175/jamc-d-16-0082.1>, 2016.
- 490 Ao, X., Grimmond, C. S. B., Ward, H. C., Gabey, A. M., Tan, J., Yang, X.-Q., Liu, D., Zhi, X., Liu, H., and Zhang, N.: Evaluation of the Surface Urban Energy and Water Balance Scheme (SUEWS) at a Dense Urban Site in Shanghai: Sensitivity to Anthropogenic Heat and Irrigation, *J. Hydrometeorol.*, 19, 1983–2005, <https://doi.org/10.1175/jhm-d-18-0057.1>, 2018.
- Baklanov, A., Grimmond, C., Carlson, D., Terblanche, D., Tang, X., Bouchet, V., Lee, B., Langendijk, G., Kolli, R., and Hovsepian, A.: From urban meteorology, climate and environment research to integrated city services, *Urban Clim.*, 23, 330–341, <https://doi.org/10.1016/j.uclim.2017.05.004>, 2018.
- 495 Banks, R. F., Tiana-Alsina, J., Rocadenbosch, F., and Baldasano, J. M.: Performance Evaluation of the Boundary-Layer Height from Lidar and the Weather Research and Forecasting Model at an Urban Coastal Site in the North-East Iberian Peninsula, *Bound.-Layer Meteorol.*, 157, 265–292, <https://doi.org/10.1007/s10546-015-0056-2>, 2015.
- 500 Banks, R. F., Tiana-Alsina, J., Baldasano, J. M., Rocadenbosch, F., Papayannis, A., Solomos, S., and Tzanis, C. G.: Sensitivity of boundary-layer variables to PBL schemes in the WRF model based on surface meteorological observations, lidar, and radiosondes during the HyrA-CD campaign, *Atmos. Res.*, 176–177, 185–201, <https://doi.org/10.1016/j.atmosres.2016.02.024>, 2016.
- Barlow, J. F., Dunbar, T. M., Nemitz, E. G., Wood, C. R., Gallagher, M. W., Davies, F., O'Connor, E., and Harrison, R. M.: Boundary layer dynamics over London, UK, as observed using Doppler lidar during REPARTEE-II, *Atmos. Chem. Phys.*, 11, 2111–2125, <https://doi.org/10.5194/acp-11-2111-2011>, 2011.
- 505 Best, M. J. and Grimmond, C. S. B.: Key Conclusions of the First International Urban Land Surface Model Comparison Project, *Bull. Amer. Meteorol. Soc.*, 96, 805–819, <https://doi.org/10.1175/bams-d-14-00122.1>, 2015.
- Best, M. J., Grimmond, C. S. B., and Villani, M. G.: Evaluation of the Urban Tile in MOSES using Surface Energy Balance Observations, *Bound.-Layer Meteorol.*, 118, 503–525, <https://doi.org/10.1007/s10546-005-9025-5>, 2006.
- 510 Best, M. J., Pryor, M., Clark, D. B., Rooney, G. G., Essery, R. L. H., Ménard, C. B., Edwards, J. M., Hendry, M. A., Porson, A., Gedney, N., Mercado, L. M., Sitch, S., Blyth, E., Boucher, O., Cox, P. M., Grimmond, C. S. B., and Harding, R. J.: The Joint UK Land Environment Simulator (JULES), model description – Part 1: Energy and water fluxes, *Geosci. Model Dev.*, 4, 677–699, <https://doi.org/10.5194/gmd-4-677-2011>, j.: The Joint UK Land Environment Simulator (JULES), model description – Part 1: Energy and water fluxes, *Geosci Model Dev.*, 2011.
- 515 Bohnenstengel, S. I., Hamilton, I., Davies, M., and Belcher, S. E.: Impact of anthropogenic heat emissions on London's temperatures, *Quart. J. Roy. Meteorol. Soc.*, 140, 687–698, <https://doi.org/10.1002/qj.2144>, 2013.
- Capel-Timms, I., Smith, S. T., Sun, T., and Grimmond, S.: Dynamic Anthropogenic activities impacting Heat emissions (DASH v1.0): Development and evaluation, *Geosci. Model Dev.*, 13, 4891–4924, <https://doi.org/10.5194/gmd-13-4891-2020>, 2020.

- Chen, F., Kusaka, H., Bornstein, R., Ching, J., Grimmond, C. S. B., Grossman-Clarke, S., Loridan, T., Manning, K. W., Martilli, A.,
520 Miao, S., Sailor, D., Salamanca, F. P., Taha, H., Tewari, M., Wang, X., Wyszogrodzki, A. A., and Zhang, C.: The integrated WR-
F/urban modelling system: Development, evaluation, and applications to urban environmental problems, *Int. J. Climatol.*, 31, 273–288,
<https://doi.org/10.1002/joc.2158>, 2011.
- Chrysoulakis, N., Grimmond, S., Feigenwinter, C., Lindberg, F., Gastellu-Etchegorry, J.-P., Marconcini, M., Mitraka, Z., Stagakis, S., Craw-
ford, B., Olofson, F., Landier, L., Morrison, W., and Parlow, E.: Urban energy exchanges monitoring from space, *Scientific Reports*, 8,
525 11 498, <https://doi.org/10.1038/s41598-018-29873-x>, 2018.
- Demuzere, M., Harshan, S., Järvi, L., Roth, M., Grimmond, C. S. B., Masson, V., Oleson, K. W., Velasco, E., and Wouters, H.: Impact of
urban canopy models and external parameters on the modelled urban energy balance in a tropical city, *Quart. J. Roy. Meteorol. Soc.*, 143,
1581–1596, <https://doi.org/10.1002/qj.3028>, 2017.
- Dou, J., Grimmond, S., Cheng, Z., Miao, S., Feng, D., and Liao, M.: Summertime surface energy balance fluxes at two Beijing sites, *Int. J.*
530 *Climatol.*, 39, 2793–2810, <https://doi.org/10.1002/joc.5989>, 2019.
- Dyer, A. J.: A review of flux-profile relationships, *Bound.-Layer Meteorol.*, 7, 363–372, <https://doi.org/10.1007/bf00240838>, 1974.
- ECMWF: IFS Documentation CY47R3 - Part IV Physical processes, <https://doi.org/10.21957/eyrpir4vj>, 2021.
- Feng, J.-M., Wang, Y.-L., Ma, Z.-G., and Liu, Y.-H.: Simulating the Regional Impacts of Urbanization and Anthropogenic Heat Release on
Climate across China, *J. Climate*, 25, 7187–7203, <https://doi.org/10.1175/jcli-d-11-00333.1>, 2012.
- 535 Gabey, A. M., Grimmond, C. S. B., and Capel-Timms, I.: Anthropogenic heat flux: Advisable spatial resolutions when input data are scarce,
Theor. Appl. Climatol., 135, 791–807, <https://doi.org/10.1007/s00704-018-2367-y>, 2018.
- Grimmond, C., Cleugh, H., and Oke, T.: An objective urban heat storage model and its comparison with other schemes, *Atmospheric
Environment. Part B. Urban Atmosphere*, 25, 311–326, [https://doi.org/10.1016/0957-1272\(91\)90003-w](https://doi.org/10.1016/0957-1272(91)90003-w), 1991.
- Grimmond, C. S. B. and Oke, T. R.: An evapotranspiration-interception model for urban areas, *Water Resour. Res.*, 27, 1739–1755,
540 <https://doi.org/10.1029/91wr00557>, 1991.
- Grimmond, C. S. B. and Oke, T. R.: Aerodynamic Properties of Urban Areas Derived from Analysis of Surface Form, *J. Appl. Meteorol.*,
38, 1262–1292, [https://doi.org/10.1175/1520-0450\(1999\)038<1262:apouad>2.0.co;2](https://doi.org/10.1175/1520-0450(1999)038<1262:apouad>2.0.co;2), 1999.
- Grimmond, C. S. B. and Oke, T. R.: Turbulent Heat Fluxes in Urban Areas: Observations and a Local-Scale Urban Meteorological Pa-
rameterization Scheme (LUMPS), *J. Appl. Meteorol.*, 41, 792–810, [https://doi.org/10.1175/1520-0450\(2002\)041<0792:thfiua>2.0.co;2](https://doi.org/10.1175/1520-0450(2002)041<0792:thfiua>2.0.co;2),
545 2002.
- Grimmond, C. S. B., Oke, T. R., and Steyn, D. G.: Urban Water Balance: 1. A Model for Daily Totals, *Water Resour. Res.*, 22, 1397–1403,
<https://doi.org/10.1029/wr022i010p01397>, 1986.
- Grimmond, C. S. B., Blackett, M., Best, M. J., Baik, J.-J., Belcher, S. E., Beringer, J., Bohnenstengel, S. I., Calmet, I., Chen, F., Coutts,
A., Dandou, A., Fortuniak, K., Gouvea, M. L., Hamdi, R., Hendry, M., Kanda, M., Kawai, T., Kawamoto, Y., Kondo, H., Krayenhoff,
550 E. S., Lee, S.-H., Loridan, T., Martilli, A., Masson, V., Miao, S., Oleson, K., Ooka, R., Pigeon, G., Porson, A., Ryu, Y.-H., Salamanca,
F., Steeneveld, G., Tombrou, M., Voogt, J. A., Young, D. T., and Zhang, N.: Initial results from Phase 2 of the international urban energy
balance model comparison, *Int. J. Climatol.*, 31, 244–272, <https://doi.org/10.1002/joc.2227>, 2010a.
- Grimmond, C. S. B., Blackett, M., Best, M. J., Barlow, J., Baik, J.-J., Belcher, S. E., Bohnenstengel, S. I., Calmet, I., Chen, F., Dandou,
A., Fortuniak, K., Gouvea, M. L., Hamdi, R., Hendry, M., Kawai, T., Kawamoto, Y., Kondo, H., Krayenhoff, E. S., Lee, S.-H., Loridan,
555 T., Martilli, A., Masson, V., Miao, S., Oleson, K., Pigeon, G., Porson, A., Ryu, Y.-H., Salamanca, F., Shashua-Bar, L., Steeneveld, G.-J.,

- Tombrou, M., Voogt, J., Young, D., and Zhang, N.: The International Urban Energy Balance Models Comparison Project: First Results from Phase 1, *J. Appl. Meteorol. Clim.*, 49, 1268–1292, <https://doi.org/10.1175/2010jamc2354.1>, 2010b.
- 560 Grimmond, S., Bouchet, V., Molina, L. T., Baklanov, A., Tan, J., Schlünzen, K. H., Mills, G., Golding, B., Masson, V., Ren, C., Voogt, J., Miao, S., Lean, H., Heusinkveld, B., Hovespian, A., Teruggi, G., Parrish, P., and Joe, P.: Integrated urban hydrometeorological, climate and environmental services: Concept, methodology and key messages, *Urban Clim.*, 33, 100623, <https://doi.org/10.1016/j.uclim.2020.100623>, 2020.
- Halios, C. H. and Barlow, J. F.: Observations of the Morning Development of the Urban Boundary Layer Over London, UK, Taken During the ACTUAL Project, *Bound.-Layer Meteorol.*, 166, 395–422, <https://doi.org/10.1007/s10546-017-0300-z>, 2017.
- 565 Hamilton, I. G., Davies, M., Steadman, P., Stone, A., Ridley, I., and Evans, S.: The significance of the anthropogenic heat emissions of London’s buildings: A comparison against captured shortwave solar radiation, *Build. Environ.*, 44, 807–817, <https://doi.org/10.1016/j.buildenv.2008.05.024>, 2009.
- Hertwig, D., Grimmond, S., Hendry, M. A., Saunders, B., Wang, Z., Jeoffrion, M., Vidale, P. L., McGuire, P. C., Bohnenstengel, S. I., Ward, H. C., and Kotthaus, S.: Urban signals in high-resolution weather and climate simulations: Role of urban land-surface characterisation, *Theor. Appl. Climatol.*, 142, 701–728, <https://doi.org/10.1007/s00704-020-03294-1>, 2020.
- 570 Hogan, R. J.: Flexible Treatment of Radiative Transfer in Complex Urban Canopies for Use in Weather and Climate Models, *Bound.-Layer Meteorol.*, 173, 53–78, <https://doi.org/10.1007/s10546-019-00457-0>, 2019.
- Högström, U.: Non-dimensional wind and temperature profiles in the atmospheric surface layer: A re-evaluation, *Bound.-Layer Meteorol.*, 42, 55–78, <https://doi.org/10.1007/bf00119875>, 1988.
- 575 Hollinger, D. Y. and Richardson, A. D.: Uncertainty in eddy covariance measurements and its application to physiological models, *Tree Physiol.*, 25, 873–885, <https://doi.org/10.1093/treephys/25.7.873>, 2005.
- Hutchinson, T. A.: An adaptive time-step for increased model efficiency, in: *Extended Abstracts, Eighth WRF Users’ Workshop*, p. 4, 2007.
- Iacono, M. J., Delamere, J. S., Mlawer, E. J., Shephard, M. W., Clough, S. A., and Collins, W. D.: Radiative forcing by long-lived greenhouse gases: Calculations with the AER radiative transfer models, *J. Geophys. Res.*, 113, 13 103., <https://doi.org/10.1029/2008jd009944>, 2008.
- 580 Iamarino, M., Beevers, S., and Grimmond, C. S. B.: High-resolution (space, time) anthropogenic heat emissions: London 1970-2025, *Int. J. Climatol.*, 32, 1754–1767, <https://doi.org/10.1002/joc.2390>, 2011.
- Janjić, Z. I.: The Step-Mountain Eta Coordinate Model: Further Developments of the Convection, Viscous Sublayer, and Turbulence Closure Schemes, *Mon. Weather Rev.*, 122, 927–945, [https://doi.org/10.1175/1520-0493\(1994\)122<0927:tsmecm>2.0.co;2](https://doi.org/10.1175/1520-0493(1994)122<0927:tsmecm>2.0.co;2), 1994.
- Järvi, L., Grimmond, C., and Christen, A.: The Surface Urban Energy and Water Balance Scheme (SUEWS): Evaluation in Los Angeles and Vancouver, *J. Hydrol.*, 411, 219–237, <https://doi.org/10.1016/j.jhydrol.2011.10.001>, 2011.
- 585 Järvi, L., Grimmond, C. S. B., Taka, M., Nordbo, A., Setälä, H., and Strachan, I. B.: Development of the Surface Urban Energy and Water Balance Scheme (SUEWS) for cold climate cities, *Geosci. Model Dev.*, 7, 1691–1711, <https://doi.org/10.5194/gmd-7-1691-2014>, 2014.
- Järvi, L., Grimmond, C. S. B., McFadden, J. P., Christen, A., Strachan, I. B., Taka, M., Warsta, L., and Heimann, M.: Warming effects on the urban hydrology in cold climate regions, *Scientific Reports*, 7, 1–8., <https://doi.org/10.1038/s41598-017-05733-y>, 2017.
- 590 Järvi, L., Rannik, U., Kokkonen, T. V., Kurppa, M., Karppinen, A., Kouznetsov, R. D., Rantala, P., Vesala, T., and Wood, C. R.: Uncertainty of eddy covariance flux measurements over an urban area based on two towers, *Atmospheric Measurement Techniques*, 11, 5421–5438, <https://doi.org/10.5194/amt-11-5421-2018>, 2018.

- Järvi, L., Havu, M., Ward, H. C., Bellucco, V., McFadden, J. P., Toivonen, T., Heikinheimo, V., Kolari, P., Riikonen, A., and Grimmond, C. S. B.: Spatial Modeling of Local-Scale Biogenic and Anthropogenic Carbon Dioxide Emissions in Helsinki, *Journal of Geophysical Research: Atmospheres*, 124, 8363–8384, <https://doi.org/10.1029/2018jd029576>, 2019.
- 595 Jimenez, P. A., Hacker, J. P., Dudhia, J., Haupt, S. E., Ruiz-Arias, J. A., Gueymard, C. A., Thompson, G., Eidhammer, T., and Deng, A.: WRF-Solar: Description and Clear-Sky Assessment of an Augmented NWP Model for Solar Power Prediction, *Bull. Amer. Meteorol. Soc.*, 97, 1249–1264, <https://doi.org/10.1175/bams-d-14-00279.1>, 2016.
- Karsisto, P., Fortelius, C., Demuzere, M., Grimmond, C. S. B., Oleson, K. W., Kouznetsov, R., Masson, V., and Järvi, L.: Seasonal surface urban energy balance and wintertime stability simulated using three land-surface models in the high-latitude city Helsinki, *Quart. J. Roy. Meteorol. Soc.*, 142, 401–417, <https://doi.org/10.1002/qj.2659>, 2015.
- 600 Kawai, T., Ridwan, M. K., and Kanda, M.: Evaluation of the Simple Urban Energy Balance Model Using Selected Data from 1-yr Flux Observations at Two Cities, *J. Appl. Meteorol. Clim.*, 48, 693–715, <https://doi.org/10.1175/2008jamc1891.1>, 2009.
- Kim, Y., Sartelet, K., Raut, J.-C., and Chazette, P.: Evaluation of the Weather Research and Forecast/Urban Model Over Greater Paris, *Bound.-Layer Meteorol.*, 149, 105–132, <https://doi.org/10.1007/s10546-013-9838-6>, 2013.
- 605 Kokkonen, T., Grimmond, C., Rätty, O., Ward, H., Christen, A., Oke, T., Kotthaus, S., and Järvi, L.: Sensitivity of Surface Urban Energy and Water Balance Scheme (SUEWS) to downscaling of reanalysis forcing data, *Urban Clim.*, 23, 36–52, <https://doi.org/10.1016/j.uclim.2017.05.001>, 2018a.
- Kokkonen, T. V., Grimmond, C. S. B., Christen, A., Oke, T. R., and Järvi, L.: Changes to the Water Balance Over a Century of Urban Development in Two Neighborhoods: Vancouver, Canada, *Water Resour. Res.*, 54, 6625–6642, <https://doi.org/10.1029/2017wr022445>, 2018b.
- 610 Kokkonen, T. V., Grimmond, S., Murto, S., Liu, H., Sundström, A.-M., and Järvi, L.: Simulation of the radiative effect of haze on the urban hydrological cycle using reanalysis data in Beijing, *Atmos. Chem. Phys.*, 19, 7001–7017, <https://doi.org/10.5194/acp-19-7001-2019>, 2019a.
- Kokkonen, T. V., Grimmond, S., Murto, S., Liu, H., Sundström, A.-M., and Järvi, L.: Simulation of the radiative effect of haze on the urban hydrological cycle using reanalysis data in Beijing, *Atmos. Chem. Phys.*, 19, 7001–7017, <https://doi.org/10.5194/acp-19-7001-2019>, 2019b.
- 615 Kotthaus, S. and Grimmond, C.: Energy exchange in a dense urban environment – Part I: Temporal variability of long-term observations in central London, *Urban Clim.*, 10, 261–280, <https://doi.org/10.1016/j.uclim.2013.10.002>, 2014a.
- Kotthaus, S. and Grimmond, C.: Energy exchange in a dense urban environment – Part II: Impact of spatial heterogeneity of the surface, *Urban Clim.*, 10, 281–307, <https://doi.org/10.1016/j.uclim.2013.10.001>, 2014b.
- 620 Kotthaus, S. and Grimmond, C. S. B.: Atmospheric boundary-layer characteristics from ceilometer measurements. Part 1: A new method to track mixed layer height and classify clouds, *Quart. J. Roy. Meteorol. Soc.*, 144, 1525–1538, <https://doi.org/10.1002/qj.3299>, 2018a.
- Kotthaus, S. and Grimmond, C. S. B.: Atmospheric boundary-layer characteristics from ceilometer measurements. Part 2: Application to London’s urban boundary layer, *Quart. J. Roy. Meteorol. Soc.*, 144, 1511–1524, <https://doi.org/10.1002/qj.3298>, 2018b.
- 625 Kotthaus, S., O’Connor, E., Münkler, C., Charlton-Perez, C., Haefelin, M., Gabey, A. M., and Grimmond, C. S. B.: Recommendations for processing atmospheric attenuated backscatter profiles from Vaisala CL31 ceilometers, *Atmos. Meas. Tech.*, 9, 3769–3791, <https://doi.org/10.5194/amt-9-3769-2016>, 2016.

- Kotthaus, S., Halios, C. H., Barlow, J. F., and Grimmond, C.: Volume for pollution dispersion: London's atmospheric boundary layer during ClearfLo observed with two ground-based lidar types, *Atmos. Environ.*, 190, 401–414, <https://doi.org/10.1016/j.atmosenv.2018.06.042>, 2018.
- Kotthaus, S., Bravo-Aranda, J. A., Collaud Coen, M., Guerrero-Rascado, J. L., Costa, M. J. a., Cimini, D., O'Connor, E. J., Hervo, M., Alados-Arboledas, L., Jiménez-Portaz, M., Mona, L., Ruffieux, D., Illingworth, A., and Haeffelin, M.: Atmospheric boundary layer height from ground-based remote sensing: A review of capabilities and limitations, *Atmos. Meas. Tech.*, 16, 433–479, <https://doi.org/10.5194/amt-16-433-2023>, 2023.
- Kusaka, H., Kondo, H., Kikegawa, Y., and Kimura, F.: A Simple Single-Layer Urban Canopy Model For Atmospheric Models: Comparison With Multi-Layer And Slab Models, *Bound.-Layer Meteorol.*, 101, 329–358, <https://doi.org/10.1023/a:1019207923078>, 2001.
- Lapo, K. E., Hinkelman, L. M., Sumargo, E., Hughes, M., and Lundquist, J. D.: A critical evaluation of modeled solar irradiance over California for hydrologic and land surface modeling, *Journal of Geophysical Research: Atmospheres*, 122, 299–317, <https://doi.org/10.1002/2016jd025527>, 2017.
- Lindberg, F., Grimmond, C., Yogeswaran, N., Kotthaus, S., and Allen, L.: Impact of city changes and weather on anthropogenic heat flux in Europe 1995–2015, *Urban Clim.*, 4, 1–15, <https://doi.org/10.1016/j.uclim.2013.03.002>, 2013.
- Lindberg, F., Grimmond, C., Gabey, A., Huang, B., Kent, C. W., Sun, T., Theeuwes, N. E., Järvi, L., Ward, H. C., Capel-Timms, I., Chang, Y., Jonsson, P., Krave, N., Liu, D., Meyer, D., Olofson, K. F. G., Tan, J., Wästberg, D., Xue, L., and Zhang, Z.: Urban Multi-scale Environmental Predictor (UMEP): An integrated tool for city-based climate services, *Environmental Modelling & Software*, 99, 70–87, <https://doi.org/10.1016/j.envsoft.2017.09.020>, 2018.
- Lindberg, F., Olofson, K. F. G., Sun, T., Grimmond, C. S. B., and Feigenwinter, C.: Urban storage heat flux variability explored using satellite, meteorological and geodata, *Theor. Appl. Climatol.*, 141, 271–284, <https://doi.org/10.1007/s00704-020-03189-1>, 2020.
- Loridan, T., Grimmond, C. S. B., Offerle, B. D., Young, D. T., Smith, T. E. L., Järvi, L., and Lindberg, F.: Local-Scale Urban Meteorological Parameterization Scheme (LUMPS): Longwave Radiation Parameterization and Seasonality-Related Developments, *J. Appl. Meteorol. Clim.*, 50, 185–202, <https://doi.org/10.1175/2010jamc2474.1>, 2011.
- Loridan, T., Lindberg, F., Jorba, O., Kotthaus, S., Grossman-Clarke, S., and Grimmond, C. S. B.: High Resolution Simulation of the Variability of Surface Energy Balance Fluxes Across Central London with Urban Zones for Energy Partitioning, *Bound.-Layer Meteorol.*, 147, 493–523, <https://doi.org/10.1007/s10546-013-9797-y>, 2013.
- Mahrt, L., Thomas, C., Richardson, S., Seaman, N., Stauffer, D., and Zeeman, M.: Non-stationary Generation of Weak Turbulence for Very Stable and Weak-Wind Conditions, *Bound.-Layer Meteorol.*, 147, 179–199, <https://doi.org/10.1007/s10546-012-9782-x>, 2012.
- Marconcini, M., Heldens, W., Del Frate, F., Latini, D., Mitrika, Z., and Lindberg, F.: EO-based products in support of urban heat fluxes estimation, in: 2017 Joint Urban Remote Sensing Event (JURSE), pp. 1–4, IEEE, IEEE, <https://doi.org/10.1109/jurse.2017.7924592>, 2017.
- Martilli, A., Clappier, A., and Rotach, M. W.: An Urban Surface Exchange Parameterisation for Mesoscale Models, *Bound.-Layer Meteorol.*, 104, 261–304, <https://doi.org/10.1023/a:1016099921195>, 2002.
- Masson, V.: A Physically-Based Scheme For The Urban Energy Budget In Atmospheric Models, *Bound.-Layer Meteorol.*, 94, 357–397, <https://doi.org/10.1023/a:1002463829265>, 2000.
- Masson, V., Lemonsu, A., Hidalgo, J., and Voogt, J.: Urban Climates and Climate Change, *Annu. Rev. Env. Resour.*, 45, 411–444, <https://doi.org/10.1146/annurev-environ-012320-083623>, 2020.

- 665 Meyer, D., Schoetter, R., Riechert, M., Verrelle, A., Tewari, M., Dudhia, J., Masson, V., van Reeuwijk, M., and Grimmond, S.: WRF-TEB: Implementation and Evaluation of the Coupled Weather Research and Forecasting (WRF) and Town Energy Balance (TEB) Model, *J. Adv. Model. Earth Syst.*, 12, <https://doi.org/10.1029/2019ms001961>, 2020.
- Mitchell, V. G., Cleugh, H. A., Grimmond, C. S. B., and Xu, J.: Linking urban water balance and energy balance models to analyse urban design options, *Hydrol. Process.*, 22, 2891–2900, <https://doi.org/10.1002/hyp.6868>, 2008.
- 670 Mitraka, Z., Del Frate, F., and Carbone, F.: Nonlinear Spectral Unmixing of Landsat Imagery for Urban Surface Cover Mapping, *#IEEE_J_STARS#*, 9, 3340–3350, <https://doi.org/10.1109/jstars.2016.2522181>, 2016.
- Monteith, J. L.: Evaporation and environment, in: *Symposia of the society for experimental biology*, vol. 19, pp. 205–234, Cambridge University Press (CUP) Cambridge, 1965.
- Narumi, D., Kondo, A., and Shimoda, Y.: Effects of anthropogenic heat release upon the urban climate in a Japanese megacity, *Environ. Res.*, 675 109, 421–431, <https://doi.org/10.1016/j.envres.2009.02.013>, 2009.
- NCEP: NCEP FNL operational model global tropospheric analyses, continuing from July 1999, Research Data Archive at the National Center for Atmospheric Research, Computational and Information Systems Laboratory, 2000.
- Offerle, B., Grimmond, C. S. B., and Oke, T. R.: Parameterization of Net All-Wave Radiation for Urban Areas, *J. Appl. Meteorol.*, 42, 1157–1173, [https://doi.org/10.1175/1520-0450\(2003\)042<1157:ponarf>2.0.co;2](https://doi.org/10.1175/1520-0450(2003)042<1157:ponarf>2.0.co;2), 2003.
- 680 Oke, T. R.: *Boundary Layer Climates*, Routledge, <https://doi.org/10.4324/9780203407219>, 2002.
- Omidvar, H., Sun, T., Grimmond, S., Bilesbach, D., Black, A., Chen, J., Duan, Z., Gao, Z., Iwata, H., and McFadden, J. P.: Surface Urban Energy and Water Balance Scheme (v2020a) in vegetated areas: Parameter derivation and performance evaluation using FLUXNET2015 dataset, *Geosci. Model Dev.*, 15, 3041–3078, <https://doi.org/10.5194/gmd-15-3041-2022>, 2022.
- Onomura, S., Grimmond, C., Lindberg, F., Holmer, B., and Thorsson, S.: Meteorological forcing data for urban outdoor thermal comfort models from a coupled convective boundary layer and surface energy balance scheme, *Urban Clim.*, 11, 1–23, 685 <https://doi.org/10.1016/j.uclim.2014.11.001>, 2015.
- Porson, A., Clark, P. A., Harman, I. N., Best, M. J., and Belcher, S. E.: Implementation of a new urban energy budget scheme into MetUM. Part II: Validation against observations and model intercomparison, *Quart. J. Roy. Meteorol. Soc.*, 136, 1530–1542, <https://doi.org/10.1002/qj.572>, 2010.
- 690 Rafael, S., Martins, H., Marta-Almeida, M., Sá, E., Coelho, S., Rocha, A., Borrego, C., and Lopes, M.: Quantification and mapping of urban fluxes under climate change: Application of WRF-SUEWS model to Greater Porto area (Portugal), *Environ. Res.*, 155, 321–334, <https://doi.org/10.1016/j.envres.2017.02.033>, 2017.
- Ryder, C. and Toumi, R.: An urban solar flux island: Measurements from London, *Atmos. Environ.*, 45, 3414–3423, <https://doi.org/10.1016/j.atmosenv.2011.03.045>, 2011.
- 695 Sailor, D. J. and Vasireddy, C.: Correcting aggregate energy consumption data to account for variability in local weather, *Environmental Modelling & Software*, 21, 733–738, <https://doi.org/10.1016/j.envsoft.2005.08.001>, 2006.
- Shuttleworth, W. J.: A simplified one-dimensional theoretical description of the vegetation-atmosphere interaction, *Bound.-Layer Meteorol.*, 14, 3–27, <https://doi.org/10.1007/bf00123986>, 1978.
- Shuttleworth, W. J.: Evaporation Models in the Global Water Budget, in: *Variations in the Global Water Budget*, pp. 147–171, Springer 700 Netherlands, https://doi.org/10.1007/978-94-009-6954-4_11, 1983.

- Skamarock, W. C., Klemp, J. B., Dudhia, J., Gill, D. O., Liu, Z., Berner, J., Wang, W., Powers, J. G., Duda, M. G., Barker, D. M., et al.: A description of the advanced research WRF model version 4, National Center for Atmospheric Research: Boulder, CO, USA, 145, 550, 2019.
- 705 Sun, J., Wang, Z., Zhou, W., Xie, C., Wu, C., Chen, C., Han, T., Wang, Q., Li, Z., Li, J., Fu, P., Wang, Z., and Sun, Y.: Measurement report: Long-term changes in black carbon and aerosol optical properties from 2012 to 2020 in Beijing, China, *Atmos. Chem. Phys.*, 22, 561–575, <https://doi.org/10.5194/acp-22-561-2022>, 2022.
- Sun, T. and Grimmond, S.: A Python-enhanced urban land surface model SuPy (SUEWS in Python, v2019.2): Development, deployment and demonstration, *Geosci. Model Dev.*, 12, 2781–2795, <https://doi.org/10.5194/gmd-12-2781-2019>, 2019.
- 710 Sun, T., Grimmond, C. S. B., and Ni, G.-H.: How do green roofs mitigate urban thermal stress under heat waves?, *Journal of Geophysical Research: Atmospheres*, 121, 5320–5335, <https://doi.org/10.1002/2016jd024873>, 2016.
- Sun, T., Jarvi, L., Grimmond, S., Lindberg, F., Li, Z., Tang, Y., and Ward, H.: C.: Urban-meteorology-reading/suews: 2018c Release, <https://doi.org/10.5281/ZENODO.3267306>, 2019.
- Sun, T., Omidvar, H., and Grimmond, S.: WRF(v4.0)-SUEWS(2018c): Input data for the evaluation at two UK sites, <https://doi.org/10.5281/zenodo.7957903>, 2023a.
- 715 Sun, T., Omidvar, H., Li, Z., and Grimmond, S.: WRF-SUEWS source code for GMD submission, <https://doi.org/10.5281/zenodo.8137708>, 2023b.
- Tang, Y., Sun, T., Luo, Z., Omidvar, H., Theeuwes, N., Xie, X., Xiong, J., Yao, R., and Grimmond, S.: Urban meteorological forcing data for building energy simulations, *Build. Environ.*, 204, 108 088, <https://doi.org/10.1016/j.buildenv.2021.108088>, 2021.
- 720 Theeuwes, N. E., Ronda, R. J., Harman, I. N., Christen, A., and Grimmond, C. S. B.: Parametrizing Horizontally-Averaged Wind and Temperature Profiles in the Urban Roughness Sublayer, *Bound.-Layer Meteorol.*, 173, 321–348, <https://doi.org/10.1007/s10546-019-00472-1>, 2019.
- Thompson, G., Field, P. R., Rasmussen, R. M., and Hall, W. D.: Explicit Forecasts of Winter Precipitation Using an Improved Bulk Microphysics Scheme. Part II: Implementation of a New Snow Parameterization, *Mon. Weather Rev.*, 136, 5095–5115, <https://doi.org/10.1175/2008mwr2387.1>, 2008.
- 725 Tiedtke, M.: A Comprehensive Mass Flux Scheme for Cumulus Parameterization in Large-Scale Models, *Mon. Weather Rev.*, 117, 1779–1800, [https://doi.org/10.1175/1520-0493\(1989\)117<1779:acmfsf>2.0.co;2](https://doi.org/10.1175/1520-0493(1989)117<1779:acmfsf>2.0.co;2), 1989.
- Tsiringakis, A., Steeneveld, G.-J., Holtslag, A. A. M., Kotthaus, S., and Grimmond, S.: On- and off-line evaluation of the single-layer urban canopy model in London summertime conditions, *Quart. J. Roy. Meteorol. Soc.*, 145, 1474–1489, <https://doi.org/10.1002/qj.3505>, 2019.
- 730 UK ONS: Population, latest available census and estimates (2010 - 2011), in: *Statistical Papers - United Nations (Ser. A), Population and Vital Statistics Report*, pp. 5–14, UN, <https://doi.org/10.18356/a7dbb328-en>, available from:., 2013.
- Van Ulden, A. P. and Holtslag, A. A. M.: Estimation of Atmospheric Boundary Layer Parameters for Diffusion Applications, *J. Clim. Appl. Meteorol.*, 24, 1196–1207, [https://doi.org/10.1175/1520-0450\(1985\)024<1196:eoablp>2.0.co;2](https://doi.org/10.1175/1520-0450(1985)024<1196:eoablp>2.0.co;2), 1985.
- 735 Vilà-Guerau de Arellano, J., Hartogensis, O., Benedict, I., de Boer, H., Bosman, P. J. M., Botía, S., Cecchini, M. A., Faassen, K. A. P., González-Armas, R., van Diepen, K., Heusinkveld, B. G., Janssens, M., Lobos-Roco, F., Luijkx, I. T., Machado, L. A. T., Mangan, M. R., Moene, A. F., Mol, W. B., van der Molen, M., Moonen, R., Ouwersloot, H. G., Park, S.-W., Pedruzo-Bagazgoitia, X., Röckmann, T., Adnew, G. A., Ronda, R., Sikma, M., Schulte, R., van Stratum, B. J. H., Veerman, M. A., van Zanten, M. C., and van Heerwaarden, C. C.: Advancing understanding of land–atmosphere interactions by breaking discipline and scale barriers, *Ann. N.Y. Acad. Sci.*, 1522, 74–97, <https://doi.org/10.1111/nyas.14956>, 2023.

- Ward, H. and Grimmond, C.: Assessing the impact of changes in surface cover, human behaviour and climate on energy partitioning across Greater London, *Landscape Urban Plan.*, 165, 142–161, <https://doi.org/10.1016/j.landurbplan.2017.04.001>, 2017.
- Ward, H., Kotthaus, S., Järvi, L., and Grimmond, C.: Surface Urban Energy and Water Balance Scheme (SUEWS): Development and evaluation at two UK sites, *Urban Clim.*, 18, 1–32, <https://doi.org/10.1016/j.uclim.2016.05.001>, 2016.
- Ward, H. C., Evans, J. G., and Grimmond, C. S. B.: Multi-season eddy covariance observations of energy, water and carbon fluxes over a suburban area in Swindon, UK, *Atmos. Chem. Phys.*, 13, 4645–4666, <https://doi.org/10.5194/acp-13-4645-2013>, 2013.
- 745 Ward, H. C., Tan, Y. S., Gabey, A. M., Kotthaus, S., and Grimmond, C. S. B.: Impact of temporal resolution of precipitation forcing data on modelled urban-atmosphere exchanges and surface conditions, *Int. J. Climatol.*, 38, 649–662, <https://doi.org/10.1002/joc.5200>, 2017.
- Warren, E., Charlton-Perez, C., Kotthaus, S., Lean, H., Ballard, S., Hopkin, E., and Grimmond, S.: Evaluation of forward-modelled attenuated backscatter using an urban ceilometer network in London under clear-sky conditions, *Atmos. Environ.*, 191, 532–547, <https://doi.org/10.1016/j.atmosenv.2018.04.045>, 2018.
- 750 Willmott, C., Robeson, S., and Matsuura, K.: Climate and Other Models May Be More Accurate Than Reported, *Eos (Washington DC)*, DC, <https://doi.org/10.1029/2017eo074939>, 2017.
- Xu, J., Li, C., Shi, H., He, Q., and Pan, L.: Analysis on the impact of aerosol optical depth on surface solar radiation in the Shanghai megacity, China, *Atmos. Chem. Phys.*, 11, 3281–3289, <https://doi.org/10.5194/acp-11-3281-2011>, 2011.
- Yang, Y., Guo, M., Ren, G., Liu, S., Zong, L., Zhang, Y., Zheng, Z., Miao, Y., and Zhang, Y.: Modulation of Wintertime Canopy Urban Heat Island (CUHI) Intensity in Beijing by Synoptic Weather Pattern in Planetary Boundary Layer, *Journal of Geophysical Research: Atmospheres*, 127, <https://doi.org/10.1029/2021jd035988>, 2022.
- 755 Zhang, C., Wang, Y., and Hamilton, K.: Improved Representation of Boundary Layer Clouds over the Southeast Pacific in ARW-WRF Using a Modified Tiedtke Cumulus Parameterization Scheme*, *Mon. Weather Rev.*, 139, 3489–3513, <https://doi.org/10.1175/mwr-d-10-05091.1>, 2011.
- 760 Zhang, N. and Chen, Y.: A Case Study of the Upwind Urbanization Influence on the Urban Heat Island Effects along the Suzhou–Wuxi Corridor, *J. Appl. Meteorol. Clim.*, 53, 333–345, <https://doi.org/10.1175/jamc-d-12-0219.1>, 2014.
- Zhang, N., Wang, X., Chen, Y., Dai, W., and Wang, X.: Numerical simulations on influence of urban land cover expansion and anthropogenic heat release on urban meteorological environment in Pearl River Delta, *Theor. Appl. Climatol.*, 126, 469–479, <https://doi.org/10.1007/s00704-015-1601-0>, 2015.
- 765 Zheng, Z., Ren, G., Gao, H., and Yang, Y.: Urban ventilation planning and its associated benefits based on numerical experiments: A case study in Beijing, China, *Build. Environ.*, 222, 109–138, <https://doi.org/10.1016/j.buildenv.2022.109383>, 2022.
- Zong, L., Yang, Y., Xia, H., Gao, M., Sun, Z., Zheng, Z., Li, X., Ning, G., Li, Y., and Lolli, S.: Joint occurrence of heatwaves and ozone pollution and increased health risks in Beijing, China: Role of synoptic weather pattern and urbanization, *Atmos. Chem. Phys.*, 22, 6523–6538, <https://doi.org/10.5194/acp-22-6523-2022>, 2022.