

The AirGAM 2022r1 air quality trend and prediction model

Sam-Erik Walker¹, Sverre Solberg¹, Philipp Schneider¹, Cristina Guerreiro¹

¹Norwegian Institute for Air Research (NILU), Kjeller, Norway

Correspondence to: Sam-Erik Walker (sew@nilu.no)

5 **Abstract.** This paper presents the AirGAM 2022r1 model – an air quality trend and prediction model developed at the Norwegian Institute for Air Research (NILU) in cooperation with the European Environment Agency (EEA) over 2017-2021. AirGAM is based on nonlinear regression GAM – Generalized Additive Models – capable of estimating trends in daily measured pollutant concentrations at air quality monitoring stations, discounting for the effects of trends and time variations in corresponding meteorological data. The model has been developed primarily for the compounds NO₂, O₃, PM₁₀ and PM_{2.5}.
10 Meteorological input data consist of temperature, wind speed and direction, planetary boundary layer height, relative and absolute humidity, cloud cover and precipitation over the period considered. The exact set of meteorological variables used in the model depends on the compound selected for analysis. In addition to meteorological variables introduced in the model as covariates, i.e. explanatory variables for the concentration levels, the model also incorporates time variables such as day of the week, day of the year, and overall time, related to the model's trend term. The trend analysis is performed at each station
15 separately. Thus, the model only considers the temporal features of concentrations and meteorology at a station, not any spatial correlations or dependencies between stations. AirGAM is implemented using the R language for statistical computing and, in particular, the GAM package `mgcv`. In the model, meteorological and time covariates are represented and estimated as smooth nonlinear functions of the corresponding variables. Thus, the trend term is defined and estimated as a smooth nonlinear function of time over the period selected for analysis. Once fitted to training data, the model may be used as a prediction tool capable
20 of predicting air pollutant concentrations for new sets of meteorological and time data which are not in the training set – e.g. for cross-validation or forecasting purposes. The model does not explicitly use emissions or background concentrations – these are sought to be implicitly represented through the estimated nonlinear relations between meteorology, time and concentrations. In addition to meteorology-adjusted trends, the program also produces unadjusted trends – i.e., trends based on the same regression set-up but only including the time covariates. Both types of trends can be output in the same run,
25 making it possible to compare them. Ideally, the meteorology-adjusted trend will show the trend in concentration mainly due to changes in emissions or physio-chemical processes not induced by changes in meteorology. AirGAM has been developed and tested primarily in trend studies based on measurement data hosted by EEA, including the Airbase data (before 2013) and the Air Quality e-Reporting (AQER) data from 2013 and onwards. Still, the model is general and could be applied in other regions with other input data. The EEA data provide daily or hourly surface measurements at individual monitoring stations
30 in Europe. For input meteorological data, we extract time-series from the gridded meteorological re-analysis (ERA5) provided

by the European Centre for Medium-Range Weather Forecast (ECMWF) for each monitoring station. The paper presents results with the model for all Airbase/AQER stations in Europe from the latest EEA trend study for 2005-2019.

1 Introduction

35 The atmospheric level of pollutants at a given site and time is determined by the emissions, meteorology, and various physio-chemical conditions (vegetational uptake, solar radiation, etc.). The evaluation of emission abatement protocols relies on long-term trends in measured air pollutant concentrations. These analyses are complicated by the influence of year-to-year variations in meteorology. Although the measurements are based on daily or hourly data throughout the year, seasonal anomalies in the weather conditions could significantly alter the annual statistics used in the trend calculations, such as e.g. the 2003 and 2018 heatwaves affecting the surface ozone levels in Europe (Logan et al., 2012; Sicard et al., 2013, Simpson et al., 2014, Diaz et al., 2020; Johansson et al., 2020). State-of-the-art CTMs (Chemical Transport Models) simulating the physio-chemical processes in the atmosphere is the common tool to meet this challenge. However, applying CTMs for long periods in a multi-scenario approach could be costly and time-consuming.

Furthermore, the analyses of trends become non-trivial when there are significant discrepancies between the CTM calculations and the measured level of pollutants. One background for our development of the AirGAM model – which is based on statistical regression generalized additive modelling or GAM (Hastie and Tibshirani, 1990; Wood, 2017) – was a statement in the 2013 Air Quality Report (EEA, 2013): "... there is a discrepancy between the past reductions in emissions of O₃ precursor gases in Europe and the change in observed average O₃ concentrations in Europe". This raised the question of whether the discrepancy was due to errors in the emission data, lack of performance by the CTMs or simply a result of the uncertainty of the data.

50 A large number of scientific papers have shown that statistical-based models focussed on the normalisation or removal of the impact of meteorological anomalies are valuable tools that could complement the CTMs when designed carefully (e.g. Thompson et al., 2001; Ordóñez et al., 2005; Camalier et al., 2007; Zheng et al., 2007; Chan and Vet, 2010; Davis et al., 2011; Grange et al., 2018; Fix et al., 2018; Otero et al., 2018; Grange and Carslaw, 2019; Pernak et al., 2019). A variety of names and types of these statistical models have been used for the assessment of long-term atmospheric data, like random forest (RF) models (e.g. Grange et al., 2018; Grange and Carslaw, 2019, Pernak et al., 2019), boosted regression trees (Carslaw, 2021), gradient boosting techniques (Barré et al., 2021; Keller et al., 2021, Petetin et al., 2020), as well as generalized additive models (Ordóñez et al., 2020) as used in this work. Note that standard trend estimation techniques, such as, e.g. curve fitting, smoothing methods (moving average), or robust methods, such as e.g. Theil-Sen estimation etc., can be used to estimate trends in time-series of concentrations but cannot account for trends in or impact of the corresponding meteorology. For this, regression-based methods are needed. An excellent recent overview of scientific issues and statistical methods for trend analysis in atmospheric time series is given by Chang et al. (2021).

The initial development of the AirGAM model (Solberg et al., 2018a) was based on a statistical method that was used by the US-EPA (Environmental Protection Agency) routinely to assess surface ozone trends, adjusting for the inter-annual influence of changing meteorology (Camalier et al., 2007). Subsequently, the model has been gradually refined and extended for NO₂, PM₁₀ and PM_{2.5} (Solberg et al., 2018b; Solberg et al., 2019; Solberg et al., 2021a).

1.1 The AirGAM model

AirGAM is a model for estimating trends in daily measured pollutant concentrations at one or more monitoring stations over a given period by adjusting for trends and time variations in corresponding meteorological data. It is based on nonlinear regression GAM modelling and has been developed primarily for the compounds NO₂, O₃, PM₁₀ and PM_{2.5}. Meteorological data consist of temperature, wind speed and direction, planetary boundary layer height, relative and absolute humidity, cloud cover and precipitation. The exact set of meteorological variables used in the model depends on the compound selected for analysis. In addition to meteorological variables introduced as covariates, i.e. explanatory variables for the concentrations, the model also uses time variables as covariates such as day of the week, day of the year (seasonality), and total time (days) over the period; the latter of which is associated with the model's trend term. The trend analysis is performed at each station separately. Thus, the model only considers the temporal features of concentrations and meteorology at a station, not spatial correlations or dependencies between stations.

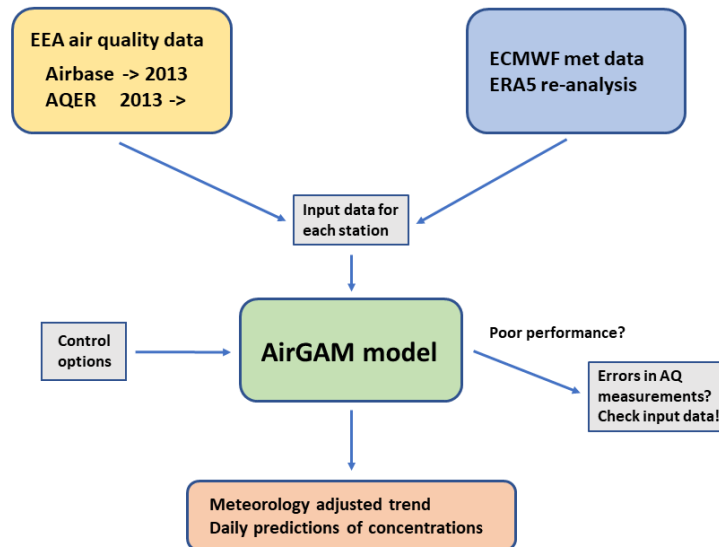
The model is implemented using the R language for statistical computing (R Core Team, 2022) and, in particular, the GAM (Generalized Additive Modelling) statistical modelling package `mgcv` (Wood, 2017). The program also uses the air pollution data analysis package `openair` (Carslaw and Ropkins, 2012; Carslaw, 2019) for analysis and plotting purposes and the `sandwich` package (Zeileis, 2004) for some statistical calculations. Using the GAM regression approach, the relationships between concentrations and meteorological and time covariates are represented and estimated as smooth nonlinear functions of the variables. Thus, the trend term is defined and estimated as a smooth nonlinear function of time (days) over the period selected for analysis.

In GAM modelling, the eventual nonlinear relations between the response (concentration) and covariates need not be known in advance. Still, they will, in a sense, be uncovered as part of the estimation procedure. Further, regularisation by penalising variability (wiggleness) of each nonlinear relation helps identify a more generalizable model and avoid overfitting. This represents one of the essential advantages of using a GAM model. Other standard regression model approaches, such as multiple linear regression (MLRs) with linear or polynomial terms or generalized linear models (GLMs) incorporating only linear relationships between the meteorology and time covariates and the concentrations, cannot model these dependencies with sufficient flexibility and accuracy since they usually are of a more complex and unspecified nonlinear form.

95

Once fitted to training data, the model may be used as a prediction tool capable of predicting air pollutant concentrations for new sets of meteorological and time data which are not in the training set – e.g. for cross-validation or forecasting purposes. The model's predictive capability is evaluated with associated plots using several deterministic and probabilistic model evaluation metrics. A leave-one-year-out cross-validation procedure is incorporated in AirGAM and is usually performed automatically as part of the model run.

The model has been mainly developed for trend studies based on the air quality (AQ) measurement data hosted by the European Environmental Agency (EEA), including the Airbase data (before 2013) and the AQER data (Air Quality e-Reporting) from 2013 and onwards. The EEA data provide daily or hourly surface concentrations at individual monitoring stations. For the input meteorological data, we extract time-series from the gridded meteorological re-analysis data (ERA5) provided by ECMWF for each monitoring station (Hersbach et al., 2018; Hersbach et al., 2020). Figure 1 shows a schematic of the data flow of AirGAM.



110 **Figure 1.** AirGAM data flow scheme.

In addition to concentrations and meteorology, the program reads several control options for the model run. Another feature of AirGAM is that it may sometimes check for errors in the air quality data. We have often found the poor performance of the model, e.g. low correlations between observed and model-predicted concentrations from cross-validation, associated with dubious measurement data.

115

AirGAM does not explicitly use emissions or background concentrations – these are sought to be implicitly represented through the estimated nonlinear relations between the concentrations and the meteorology and time variables. In addition to meteorology-adjusted trends, the program may also produce unadjusted trends – i.e., trends based on the same regression set-up but only including the time covariates. Both types of trends can be output in the same run, making it possible to compare them.

The model estimates trends over a user-defined period, from a minimum of two years upwards. For each year, the user may select the whole year; or a sub-part of the year, e.g. only winter months (say October-March), summer months (say April-September), or any user-defined interval of months for the trend analysis. Usually, only a single set of smooth relations between concentrations and the covariates is estimated from the data in the model. However, it is possible to operate with different groups of estimated smooth relations for different parts of the year (or sub-year) if needed, e.g. one set for the winter, say October-March, and another for the summer, say April-September. This latter capability of the model is typically necessary for modelling O₃ and PM_{2.5} using data for the whole year since the relationships usually are different in the wintertime than in the summer.

1.2 Predictions in the Covid-year 2020

The conceptual idea behind a statistical model such as AirGAM is that the model is "trained" to find patterns between various input data (local temperature, wind speed, mixing height etc.) and the daily level of pollutants (NO₂, O₃ etc.) for a given training period. Based on these patterns, the model can predict pollutant levels outside the training period. The main advantage compared to CTMs is that no assumptions on emissions are needed. Thus, the exceptional conditions experienced during the Covid-19 lockdown in 2020 offered a perfect task for such statistical models. We applied the AirGAM model for EEA's AQER (Air Quality e-Reporting) data of NO₂ (EEA, 2020; Solberg et al., 2021b) during the first lockdown in Europe (March-July 2020) and trained the model on data for the previous five years (2015-2019). The difference between the AirGAM predictions ("business-as-usual") and the observed NO₂ levels could then be related to the impact of the lockdown on mobility (road transport, aviation etc.). Compared to gridded models such as CTMs, statistical models could be applied directly to urban stations. We found that the AirGAM model performed fine for most sites while performing more poorly for a minor number of stations, partly explained by inconsistent measurement data. After aggregating all traffic sites (urban and suburban) for individual countries, the results showed good compliance between predicted and observed daily NO₂ levels.

The predictive capabilities of the AirGAM model come in addition to the application for long-term trend assessments. The experience from applying AirGAM specifically for a Covid-19 analysis (Solberg et al., 2021b) was that the model performed very well for NO₂ at the urban and suburban background and traffic sites. In contrast, as expected, the performance was lower at rural locations since the NO₂ levels outside the urban areas are less determined by local meteorological conditions. The performance was lower for O₃ and PM, which is also expected since secondary formation and long-range transport are more

important processes for these compounds. Such processes are only indirectly captured by AirGAM. These results do not imply
150 that the AirGAM model and other statistical tools are unfit for O₃ and PM assessments, just that the model performance is
somewhat lower than for a primary pollutant such as NO₂.

1.3 Outline of the paper

First, in Sect. 2, we overview the statistical GAM methodology implemented in the AirGAM model and how to interpret its
trends. Section 3 gives results from a recent EEA trend study for 2005-2019, using all available Airbase/AQER stations in
155 Europe. Section 4 compares GAM with the RF method in the R package `rmweather`. In Sect. 5, we shortly discuss how
AirGAM can also be used as a tool for data quality investigations. Finally, Sect. 6 contains a summary and conclusions.
Appendix A lists some questions and answers (Q & A) regarding the model. The accompanying supplement to the paper
includes a User's Guide to the model describing details of its numerical implementation, all inputs to the model and how to
run it on Windows and Linux, and all results files. It also contains instructions on installing the model and some run examples.

160 2 Model formulation

2.1 GAM models

In statistics, a GAM model (Hastie and Tibshirani, 1990; Wood, 2017) is a nonlinear regression model linking expected values
 μ_i of a given response variable Y_i to one or more explanatory variables x_{ij} through the following relations:

$$165 \quad g(\mu_i) = \beta_0 + \sum_{j=1}^p \beta_j(x_{ij}); \quad \mu_i = E(Y_i), \quad (1)$$

where β_0 is a constant (the intercept), and where $\beta_j(\cdot)$, for $j = 1, \dots, p$, represents smooth functions of the covariates x_{ij} ,
with p the number of covariates. In our implementation of this model for air quality analysis, the response variable Y_i in Eq.
(1) represents a daily average (NO₂ or PM) or maximum 8-hour running mean (O₃) concentration at day number i at a given
170 site, while x_{ij} represent the values of the explanatory variables, for $j = 1, \dots, p$, at the same location and day. These consist of
various meteorological variables such as temperature, wind, etc., and time variables such as day of the week, day of the year,
etc. The meteorological covariates depend on the air pollutant being modelled, as shown in Table 1.

In Eq. (1), $g(\cdot)$ is a function (the link function) that links the statistically expected value of the response variable Y_i , i.e. μ_i ,
175 to the covariates x_{ij} . Also, Y_i is assumed to have a definite probability distribution, the response distribution, with mean μ_i

and variance V_i . Further, in Eq. (1), each β_j is a smooth function of x_{ij} , and not simply a constant to be multiplied with x_{ij} as in multiple linear regression (MLR) or generalized linear regression models (GLMs). Thus, GAM models represent an extension of these models for regression. GAMs are also more flexible than MLR models (but not GLMs) since the mean value μ_i is related to the covariates through a link function $g(\mu_i)$, which need not be the identity function $g(\mu) = \mu$.

180

Since the relation between air pollution and meteorology is generally nonlinear, MLR models or GLMs cannot naturally model this relationship. Only a nonlinear model, such as a GAM, capable of fitting nonlinear relations between an air pollutant and a set of meteorological covariates will have a chance of succeeding in this regard. It is then vital to choose the "right" set of meteorological covariates for each type of air pollutant to be modelled. Besides, various time covariates will also be needed.

185

Note that emissions, background concentrations, physio-chemical processes and depositions have deliberately been left out from the design of such a regression model, even though we know that air pollutants are closely linked to and primarily determined by these factors and processes in addition to meteorology. The idea is to see how far we can use meteorology and time data to model air pollutants. Limitations depend on the compound and type of data. Over the last four years, the current
190 model has been developed for NO₂, O₃, PM₁₀ and PM_{2.5}. This development has resulted in a set of meteorological and time covariates found to model and predict concentrations of these compounds well (Table 1).

For NO₂, PM₁₀ and PM_{2.5}, we apply a log link $g(\mu) = \log \mu$ and Gamma distributions as response distributions. This is because these compounds generally have a somewhat more extensive range of concentration variations than O₃, with the
195 variance of Y_i , i.e. V_i , typically proportional to μ_i^2 . For such variables, it is usual practice in GAM modelling to select a logarithmic link function and a distribution potentially skewed to the right, such as a Gamma, as a response distribution for Y_i (Wood, 2017). This was also applied in the previous trend studies (Solberg et al., 2018a; 2018b; 2019).

For O₃, we apply an identity link $g(\mu) = \mu$ and Normal distribution as a response distribution. This choice is because O₃ has
200 a relatively small range of concentration variations where the variance of Y_i , i.e. V_i , does not change very much with the mean μ_i . Thus the response distribution is well represented with a symmetric distribution such as a Normal.

The input variables have been selected by combining a priori knowledge of the main physio-chemical processes and experience during the model development. Extensive research in previous work with the model (Solberg et al., 2018a; 2018b; 2019)
205 resulted in meteorological and time variables used, as presented in Table 1. Absolute humidity is introduced as a variable for O₃ since the gas-phase reaction $O^D + H_2O \rightarrow 2OH$ is the main production path for OH in the atmosphere and since OH, in

turn, is decisive for the O₃-formation. For PM and NO₂, we used relative humidity to reflect the importance of wet deposition and cloudiness.

210 **Table 1.** List of meteorological and time variables used in the AirGAM model (Eq. (1)) for various compounds. The short names refer to those used in the text and graphics files in Sect. S5 in the supplement.

	Meteorological variable	Short name	Unit	Used by compound
x1	Daily mean temperature at 2 m	temp	°C	All except O ₃
	Daily temperature at 2 m at 18 UT	temp	°C	O ₃
x2	Daily mean wind speed at 10 m	ws	m s ⁻¹	All
x3	Daily mean wind direction at 10 m	wd	°	All
x4	Daily mean planetary boundary layer height	pblh	m	All
x5	Daily mean relative humidity	rh	%	All except O ₃
	Daily absolute humidity at 18 UT	h2o	g kg ⁻¹	O ₃
x6	Medium-height cloud cover	mcc	%	All
x7	Daily total precipitation	prec	mm day ⁻¹	PM ₁₀ and PM _{2,5}
x8	Weekday number	dayofweek	day	All
x9	Day number in the year or sub-part of the year	dayofyear	day	All
x10	Continuous-time in fraction of years (0.0 at the start of the period). This is the trend term.	years	year	All

In the model, the trend term is represented as a smooth function of time ($\mathbf{x}_{10}=t$) rather than a straight line, as in some previous studies (Solberg et al., 2018a, 2018b). The main reason for this choice is for the model to be better prepared for trend studies
215 over extended periods. In such cases, it is less relevant to represent the whole trend over the entire period as a straight line.

Since meteorological variables are included in this GAM model to explain the expected (μ_i) and observed (Y_i) concentrations of air pollutants at each time point t_i , the estimated trend $\beta_{10}(t)$ in Eq. (1) will represent a so-called meteorology-adjusted trend, i.e. a trend discounting for the effects of trends or time variations in these meteorological variables over the period
220 selected for the analysis. This represents the main output from AirGAM.

Note that none of the covariates is transformed in the model, only the concentrations of NO₂ and PM. Wind direction is the only variable which is cyclic. Day of week and day of year are not defined as cyclic variables since Sunday and Monday, and 31 December and 1 January may differ considerably.

225

Also, wind direction and relative humidity are not provided directly in the ECMWF ERA5 data used in this study. Instead, they have been calculated from the u- and v-components of wind, and absolute humidity, surface temperature, and pressure found in these data. Details of this pre-processing of the ERA5 data are found in Appendix C in the supplement.

230 In addition to meteorology-adjusted trends produced by the model described above, AirGAM may also estimate so-called unadjusted trends. These are trends produced by the same GAM regression model set-up as above, but only including the time covariates \mathbf{x}_8 - \mathbf{x}_{10} , i.e., removing all the meteorological covariates \mathbf{x}_1 - \mathbf{x}_7 . Both trends can be produced individually and output from the same run, making it possible to compare them. These two models will be called the meteorology-adjusted and unadjusted models in the following.

235

Note that in AirGAM, we only use GAM models with covariates in a purely additive form, as shown by Eq. (1). Thus, no interactions between the variables are used, such as, e.g. multiplications between variables, defining 2-dimensional smooth functions, etc. This makes the models easy to interpret since the estimated nonlinear functions encode each independent variable's contribution to the predicted concentration. Sect. 4 compares our GAM models to RF models that incorporate interactions between the variables. We show that our GAM approach produces models with predictive performance on par with this method. Thus, we argue that a purely additive model seems sufficient to build models with good predictive performance, at least for the data analysed in this paper.

240

2.2 Calculation of physically interpretable trend curves

AirGAM outputs trend curves as plots and data values to various result files described in Sects. S5.1.1-S5.1.2 and S5.1.9-
 245 S5.1.10 in the supplement. To interpret a change in the trend level between two arbitrary time-points in these plots and data files as a change in the expected concentration levels between the same two time points under certain well-defined conditions, it is essential to adjust the raw trend given by the estimated trend function $\beta_{10}(t)$ from Eq. (1) into a physically interpretable trend curve $y_{\text{trend}}(t)$.

250 This section describes how this is done for the various compounds and the meteorology-adjusted and unadjusted models.

First, we focus on the meteorology-adjusted model. For compounds such as O₃, where we apply an identity link $g(\mu) = \mu$ in Eq. (1), the expected concentration at the time t is given by

255

$$\mu(t) = \beta_0 + \sum_{j=1}^{p-1} \beta_j(x_j(t)) + \beta_p(t) = A(t) + B(t), \quad (2)$$

with $A(t) = \beta_0 + \sum_{j=1}^{p-1} \beta_j(x_j(t))$ and $B(t) = \beta_p(t) = \beta_{trend}(t)$. Here $A(t)$ is the contribution to the expected concentration at the time t from meteorology and the time variables day of week and day of the year, while $B(t)$ is the contribution to the expected concentration at the time t from the trend term. In this case, the physically interpretable trend curve is sought defined as the function

$$y_{trend}(t) = A + B(t), \quad (3)$$

with A determined so that a difference in trend values between two arbitrary time points, say t_1 and t_2 , can be interpreted as the difference in the expected concentrations between these two time points, i.e., we need to have

$$\begin{aligned} y_{trend}(t_2) - y_{trend}(t_1) &= A + B(t_2) - (A + B(t_1)) = B(t_2) - B(t_1) = \\ \mu(t_2) - \mu(t_1) &= A(t_2) + B(t_2) - A(t_1) - B(t_1), \end{aligned} \quad (4)$$

which holds for all values of A as long as $A(t_1) = A(t_2)$, i.e. as long as the impact of meteorology and the two time variables is the same for the two time points. Under this assumption, Eq. (3) can be used as a physically interpretable trend curve for any value of A . However, it is natural to set A so that the trend curve values have the same time average over the period as the actual observations, i.e. $\bar{y}_{trend} = \bar{Y}$. Then, since the smooth β_{trend} -function from GAM always averages to zero over the time points of the trend estimation, which is a property of GAM modelling, it follows from Eq. (3) that this corresponds to setting $A = \bar{Y}$. Changes in the trend curve values can then be interpreted as changes in the expected concentrations if we assume the same impact of meteorology and day of week and day of the year for the two time points, i.e. $A(t_1) = A(t_2)$. Note that the actual values $A(t_1)$ and $A(t_2)$ will usually differ.

The same development as above also holds in the case of the unadjusted GAM model. There are only two time variables, day of week and day of the year, in the $A(t)$ function in this case. Thus, Eq. (3) with $A = \bar{Y}$ can be used as a physically interpretable trend curve, where changes in the trend curve values can be interpreted as changes in the expected concentrations if we assume that $A(t_1) = A(t_2)$, i.e. as long as the impact of, in this case, only the day of week and day of the year, is the same for the two time points.

Next, we apply the log-link function $g(\mu) = \log \mu$ to the more complicated GAM models for NO₂ and PM. Again, we focus first on the meteorology-adjusted model. The expected concentration level at time t is now given by

$$\mu(t) = \exp \left\{ \beta_0 + \sum_{j=1}^{p-1} \beta_j(x_j(t)) + \beta_p(t) \right\} = A(t)B(t), \quad (5)$$

with $A(t) = \exp \left\{ \beta_0 + \sum_{j=1}^{p-1} \beta_j(x_j(t)) \right\}$ and $B(t) = \exp \left\{ \beta_p(t) \right\} = \exp \left\{ \beta_{trend}(t) \right\}$. Here again, $A(t)$ is the contribution to the
 290 expected concentration at the time t from meteorology and the time variables day of week and day of the year, while $B(t)$ is
 the contribution to the expected concentration at the time t from the trend term, both as factors in this case. Now a physically
 interpretable trend curve is sought defined as a function that, in this case, reads

$$y_{trend}(t) = A \cdot B(t), \quad (6)$$

295

with A determined so that again a difference in trend values between two arbitrary time points, say t_1 and t_2 , can be
 interpreted as the difference in expected concentrations between these two time points, i.e., we need to have

$$\begin{aligned} y_{trend}(t_2) - y_{trend}(t_1) &= A \cdot B(t_2) - A \cdot B(t_1) = A \cdot (B(t_2) - B(t_1)) = \\ \mu(t_2) - \mu(t_1) &= A(t_2) \cdot B(t_2) - A(t_1) \cdot B(t_1), \end{aligned} \quad (7)$$

300

which holds as long as $A = A(t_1) = A(t_2)$, i.e., as long as the impact of meteorology and the two time variables is the same
 for these two time points and A is equal to this value.

Again, it is natural to set A so that the trend curve values have the same time average over the period as the actual observations,
 305 i.e. $\bar{y}_{trend} = \bar{Y}$. Thus, $A = \bar{Y}/\bar{B}$ where \bar{B} is the average of the $B(t)$ values over the period of trend estimation (note that this
 latter average is a positive number due to the exponentiation in Eq. (5)). Changes in the trend curve values can then be
 interpreted as changes in the expected concentrations if we assume this average impact of meteorology and day of week and
 day of the year for the two time points, i.e. $A(t_1) = A(t_2) = A$. Note again that the actual values $A(t_1)$ and $A(t_2)$ will usually
 differ and also differ from A .

310

To better understand the impact factor A in the previous paragraph, we give a formula for the expected value of this quantity.
 Since the conditioned observed concentrations $Y_i | \mu_i$ have expected values $\mu_i = \mu(t_i)$, from Eq. (1), we have

$$EA = \frac{E\bar{Y}}{\bar{B}} = \frac{\bar{\mu}}{\bar{B}} = \frac{\frac{1}{N} \sum_{i=1}^N A(t_i) B(t_i)}{\frac{1}{N} \sum_{i=1}^N B(t_i)} = \sum_{i=1}^N w_i A(t_i), \quad (8)$$

315

with $w_i = B(t_i) / \sum_{i=1}^N B(t_i)$. Thus, EA represents a weighted average of the $A(t_i)$ factors with weights w_i for $i = 1, \dots, N$, where N is the number of days for the trend estimation. If $\text{var}(Y_i | \mu_i)$ is uniformly bounded above, i.e., $\text{var}(Y_i | \mu_i) \leq V$ for some $V > 0$ for all i , and $\text{cor}(Y_{i+k} | \mu_{i+k}, Y_i | \mu_i)$ exponentially approaching zero as $k \rightarrow \infty$, which holds almost invariably for air quality observations, we have from Serfling's strong law of large numbers applied to $Y_i - \mu_i$ (McFadden, 2000, Ch. 4, p. 92) that $A - EA \rightarrow 0$ almost surely as $N \rightarrow \infty$. Thus, for large N , $A \approx EA$, and the average factor A in the physically interpretable trend curve will be close to a weighted average of the factors from the meteorological and time variables over the period for trend estimation given by Eq. (8), with weights based on the meteorology-adjusted $B(t)$ values.

The same development as above also holds in the case of the unadjusted GAM model. There are only two time variables, day of week and day of the year, in the $A(t)$ factor function in this case. Again, for large N , A will be close to a weighted average of these factor values as in Eq. (8), but with weights based on the unadjusted $B(t)$ values.

2.3 AirGAM User's Guide

A User's Guide to the model can be found in the supplement to this paper. This contains a description of all input files, how to run the model on Windows and Linux, and a description and presentation of all result files. It also contains a few run examples. Further, it gives details of the model's numerical implementation, including the choice of solution methods, automatic model selection, the choice of number and type of basis functions, and how uncertainties are interpreted and calculated in the trend and in the model predictions. Appendices in the supplement contain information on downloading and installing the model for Windows and Linux and an overview of the model's warning and error messages.

Currently, the AirGAM model is developed as a single R script rather than an R-library of user-callable routines. Even though having the model as a single script is less flexible than having it as a set of callable routines, we also believe our single script provides some advantages for an end user, such as automating the sequence of steps needed to perform trend analysis for a whole or seasonal part of years for a large number of stations with automatic data checking and files automatically produced with easy identification of outcomes. The script also enables the automatic creation of model evaluation results with cross-validation analysis and model predictions for a selectable number of years. In addition, batch scripts are provided, allowing the user to perform the model runs in parallel on Windows and Linux in the case of a large number of stations. A user only

needs to provide input data, define optional parameters, and run the batch scripts. This requires minimal knowledge of R and GAM modelling – since the model and the run scripts automate all the necessary steps.

345 The model script may also be used as an advanced starting point to develop further or from which to extract code. However, having an R-library with user-callable routines based on the current script code will further the model's scope and flexible use. Thus, we might pursue developing the model also as an R-library in the future.

3 Results for a European trend study 2005-2019

Here we give some results with the AirGAM model based on data from the latest EEA trend study 2005-2019 (Solberg et al., 2021a). Our experience from previous similar studies (Solberg et al., 2018a, 2018b, 2019) is that the model overall seems to perform best for NO₂, followed by O₃ and PM₁₀, and worst for PM_{2.5}. Sections 3.1-3.4 below present results for the compounds NO₂, O₃, PM₁₀ and PM_{2.5}, respectively.

Seasonal conditioning was not used for model runs, i.e. `use_season_cond=0`. Thus, only a single set of smooth relations between the concentrations and the meteorological and time covariates were estimated and used by the model. The trend type was set to nonlinear (`trend_type=nonlinear`), and the number of basis functions to be used by the trend term was set to missing (`k_years=NA`), which implies that five basis functions (15 years/3) were used to represent the trend term in the model. Introducing a basis function for the trend every three years was considered an appropriate setting in this long-term trend study since we did not want to focus on, or model, too much of the short-term variations in the trend at individual stations but rather focus on the more main features and more long-term variations in the trend.

The `bam` routine in the `mgcv` package was always tried before the `gam` routine (`incl_bam=1`) (incidentally, no `gam`-calls were executed), and automatic model selection was turned on (`incl_select=1`). The AR(1) model was not invoked for these runs (`incl_ar1=0`) to reduce the computational time, which means autocorrelation in the time series was not considered. Thus, the focus is not accurately estimating individual trend curves' uncertainties. In the cross-validation, the “limit-covariates” approach was used to obtain robust predictions (`rob_pred=limcov`), i.e. covariate values outside the training interval were set to the nearest value in this interval before being used in the predictions. For all compounds except for O₃, all months in each year were used to estimate the trend (`subyear=jan-dec`). For O₃, only the summer period (April-September) was used for a summer-trend study (`subyear=apr-sep`).

370 3.1 NO₂

For NO₂, there are 1485 stations in the Airbase/AQER database for 2005-2019, fulfilling the data coverage criteria for this compound (75 % coverage for individual years and 75 % coverage of years in the period), excluding the industrial stations.

375 This forms the basis for the trend study for this compound. Due to the large number of stations for NO₂, we refrain from showing any individual station results here. Input data and results for all stations for this compound can be found in the model's data repository (Walker and Solberg, 2022b-c).

380 However, the results for station EE0018Ah (Õismäe) are shown in Sect. S5 in the supplement, which describes the output results from the AirGAM model. This is a background station in an urban part of Tallinn, Estonia, with coordinates 52.41417°N and 24.64946°E, at 6 m a.s.l. This station was chosen to illustrate the results since it is the exact median station of all stations based on the cross-validation correlation results for NO₂. Thus, it is neither the best nor the worst station but may be viewed as “typical” for the results for this compound. In the supplement, Figure S2 shows the primary trend results in a meteorology-adjusted trend for 2005-2019. Figure S3 shows plots of all smooth functions of meteorology and time-explanatory variables based on all training data for the same period. A plot of model predictions from the cross-validation for 2019 based on data for the left-out years 2005-2018 is presented in Fig. S4. Figs. S5-S8 shows plots of observed and predicted annual and monthly average concentrations with trend curves and yearly and monthly median concentrations. Further, for this station, you may also find plots of all evaluation results in the supplement in the individual sub-sections of Sects. S5.2-S5.3. All results are commented upon in the respective sub-sections of Sects. S5.1-S5.3 there.

3.1.1 Results for all stations

390 Figure 2 shows a panel of three maps of stations over Europe. The maps are made for three categories of stations: (1) Background stations in rural areas (left); (2) Background stations in urban/suburban areas (middle); and (3) Traffic stations in any area (right). In each map, we present the percentage change in expected concentrations of NO₂ from 2005 to 2019 relative to the initial levels in 2005 based on the estimated meteorology-adjusted trend for NO₂ for each station. The stations plotted in each map are the stations for which the 2005-2019 cross-validation gave a correlation between observed and model-predicted values above 0.65. This resulted in 205, 742 and 409 stations, respectively, for the three types of stations, 1356 in total.

395

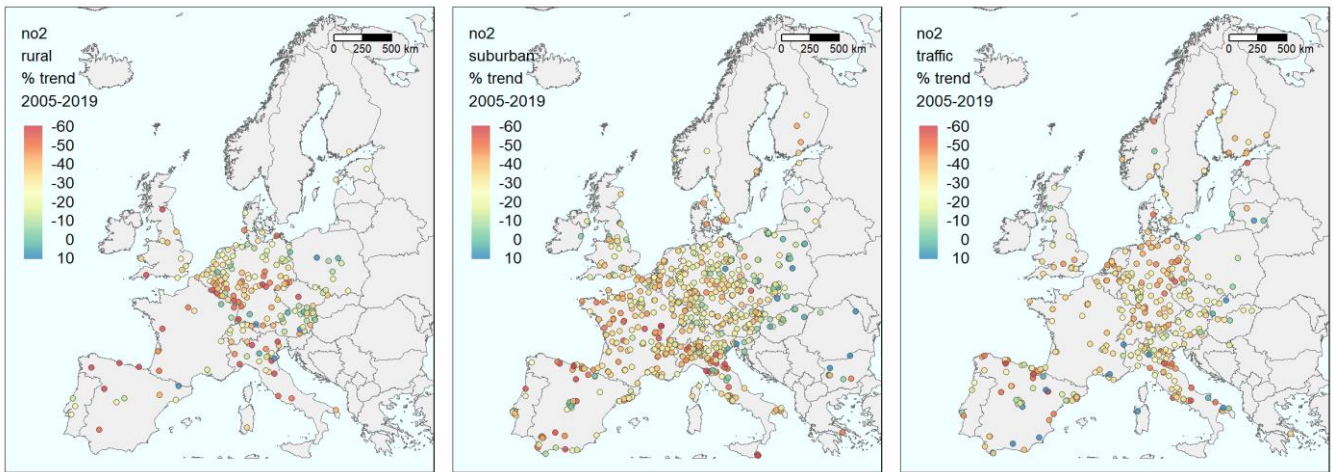


Figure 2. Maps of stations in Europe with the percentage change in expected concentrations from 2005 to 2019 relative to the initial level in 2005 based on the meteorology-adjusted trend for NO₂. Left: Background stations in rural areas; Middle: Background stations in urban/suburban areas; and Right: Traffic stations.

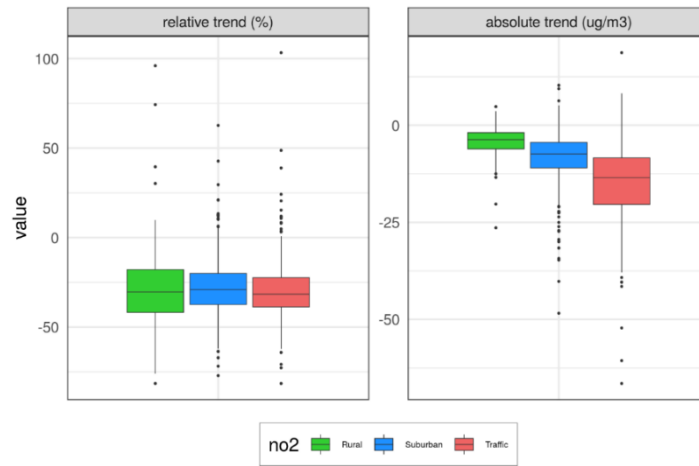
400 For each station, the change in the expected concentration level is calculated based on the physically interpretable trend curves $y_{\text{trend}}(t)$ as output from the model at the two time points t_1 and t_2 corresponding to the start and end of the trend estimation period 2005-2019, respectively, i.e. 1 January 2005 and 31 December 2019. Thus, the absolute change in expected concentration is calculated as $y_{\text{trend}}(t_2) - y_{\text{trend}}(t_1)$, while the relative per cent change is calculated as $100 \times (y_{\text{trend}}(t_2) - y_{\text{trend}}(t_1)) / y_{\text{trend}}(t_1)$. Section 2.2 describes how the trend curves are interpreted and calculated based on the

405 output from the GAM model.

The maps indicate a weak west-to-east gradient with more substantial declines in the west and smaller in the east. This is particularly marked for the urban/suburban background stations (middle panel), with the densest geographical coverage. The result is mixed with countries showing both substantial reductions and sites with no trend or even increasing levels for traffic

410 sites. This reflects that the roadside stations are more heterogeneous and subject to changes in the local urban environment (roads, buildings, etc.). Additionally, the NO₂/NO_x ratio in tailpipe emissions will strongly influence these sites, depending on the fleet of vehicles (fraction of diesel cars) and the ambient ozone level. These issues will be reduced and smoothed out for background stations due to atmospheric mixing and the NO₂/NO_x concentration ratio approaching the photo-stationary steady state determined by solar radiation, temperature, and ozone level.

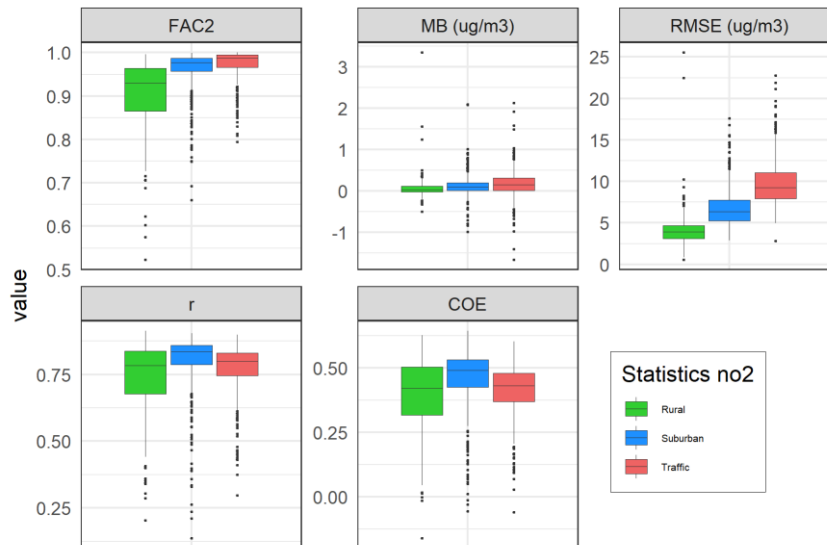
415 Figure 3 shows box plots of the same changes in expected concentrations for the same three categories of stations. The three left plots show the relative change in per cent as in Fig. 2, while the three right plots show the absolute changes in concentration levels.



420 **Figure 3.** Box plots of changes in expected concentrations over the same three types of stations as in the map plots in Fig. 2. The left panel
 shows relative per cent changes, while the right panel shows absolute changes from 2005 to 2019. Units: % and μgm^{-3} .

The results in Fig. 3 show that the NO_2 concentration has decreased approximately at the same rate at all station categories during 2005-2019. Median reductions of 29 % are found for the rural and urban/suburban stations and 31 % for the traffic
 425 stations, with corresponding decreases in concentrations of 4-13 μgm^{-3} .

Figure 4 shows box plots of some selected statistical evaluation parameters based on the cross-validation for 2005-2019. Again, the box plots are made for the same three categories of stations as in Figs. 2-3.



430 **Figure 4.** Box plots of some selected evaluation parameters from the cross-validation for 2005-2019, again for the same three categories of
 stations.

The statistical evaluation parameters are calculated in AirGAM using the routine `modStats` from the `openair` package in R. The manual pages for the `modStats` routine contain a detailed description of what these parameters represent and how they are calculated. See also Sect. S5.2.4 in the supplement.

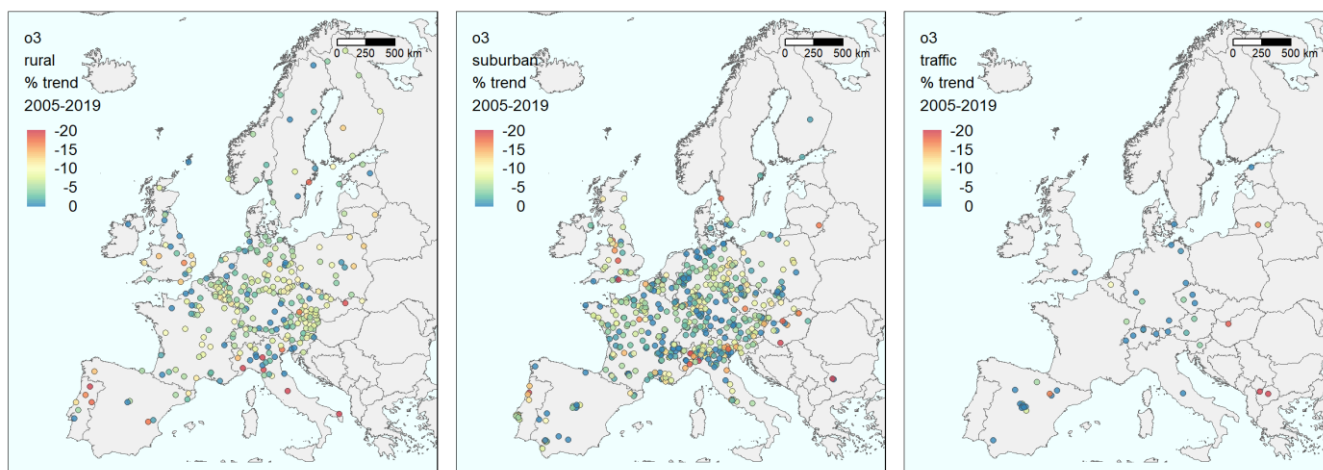
435

As seen from Fig. 4, the predictive performance of the AirGAM model for NO_2 concerning correlation (r) and coefficient of efficiency (COE) is somewhat better for the urban/suburban background stations than for the traffic and rural ones. However, the median values of r and COE are pretty decent for all three types. Regarding FAC2 (fraction of days with predictions within a factor two of observations) and RMSE (root mean squared error), traffic and rural sites are best, respectively, whence we
440 have a somewhat mixed picture. Nevertheless, FAC2, r and COE are slightly poorer, i.e. lower, for rural stations, which is expected since the NO_2 levels at these sites depend less on the local meteorological conditions than suburban and urban sites. Also, note that the mean bias (MB) is close to zero for all three types of stations, which is good.

3.2 O_3

For O_3 , there are 1175 non-industrial stations in the Airbase/AQER database for 2005-2019, fulfilling the data coverage criteria
445 for this compound (75 % coverage for individual years and 75 % coverage of years in the period). For this compound, the air quality data consist of maximum daily running 8-h average (MDA8) concentrations for each day. Again, no individual station results are shown here, but all data and results for this compound for all stations can be found in the model's data repository (Walker and Solberg, 2022b; Walker and Solberg, 2022d). Figures 5-7 show the same type of results as for NO_2 .

450 The stations plotted in each map in Fig. 5 and as data values in Fig. 6 are the stations for which the 2005-2019 cross-validation for O_3 gave a correlation above 0.65. This resulted in 303, 594 and 44 stations, respectively, for the three types of stations, 941 in total. However, for the evaluation in Fig. 7, all 1175 stations are used, 368, 729 and 78 in each category.



455 **Figure 5.** Maps of stations in Europe with the percentage change in expected concentrations from 2005 to 2019 relative to the initial level in 2005 based on the meteorology-adjusted trend for O₃. Left: Background stations in rural areas; Middle: Background stations in urban/suburban areas; and Right: Traffic stations.

460 The geographical distribution of the ozone-summer-time changes of mean MDA8 shows no clear patterns (Fig. 5). The rural stations offer reductions (yellow-green colours) over most areas, with more substantial decreases at some stations, mainly in Portugal and Italy. The changes at urban/suburban sites are closer to zero at many locations, but several stations also show marked reductions.

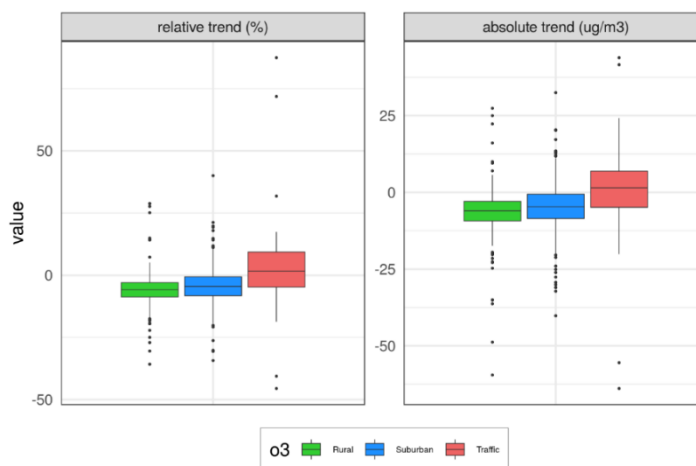
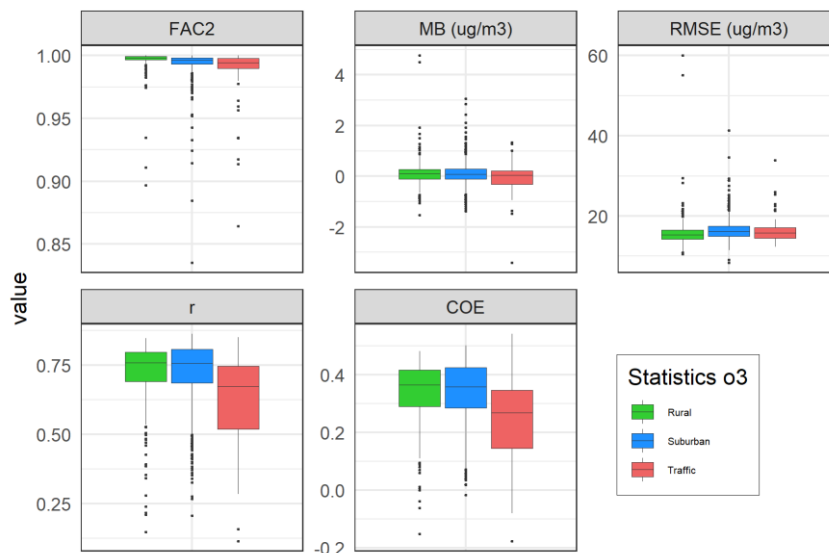


Figure 6. Box plots of changes in expected concentrations over the same three types of stations as in the map plots in Fig. 5. The left panel shows relative per cent changes, while the right panel shows absolute changes from 2005 to 2019. Units: % and μgm^{-3} .

465

As shown in Fig. 6, the calculated changes in the mean summer half-year of MDA8 during 2005-2019 are substantially smaller than the changes found for NO₂ over the same period. For the rural and urban/suburban stations, a median reduction of 6 % and 5 % is found, respectively, while a slight increase of 2 % is seen for the traffic sites. The corresponding changes in concentrations are from -6 to 2 μgm^{-3} from 2005 to 2019.



470

Figure 7. Box plots of evaluation parameters from the cross-validation for 2005-2019, again for the same three types of stations.

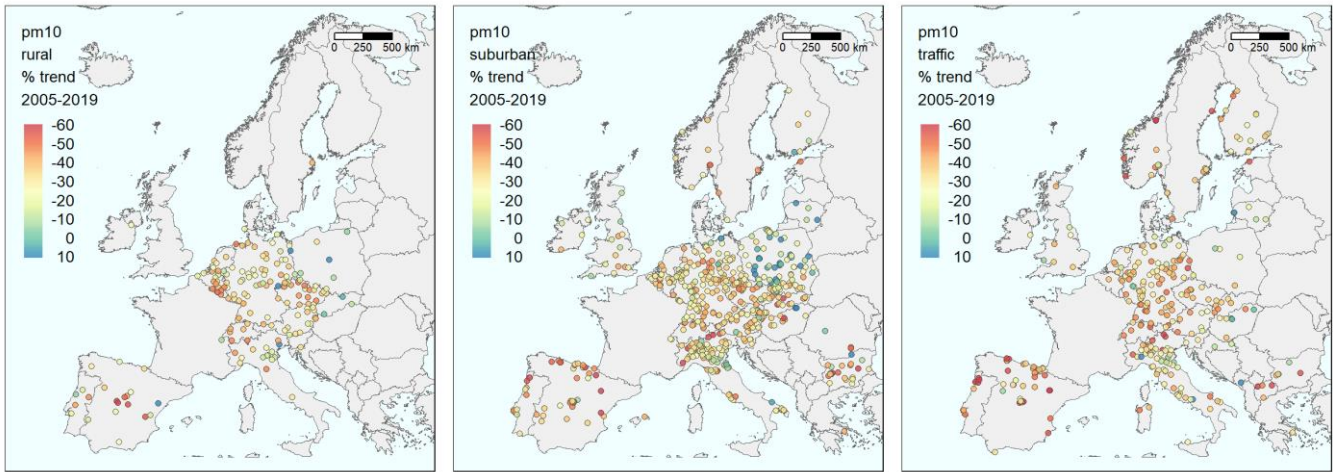
Otherwise, the results for ozone (Fig. 7) show the opposite compared to NO₂ regarding model performance; the best performance (high FAC2, r and COE) is seen at rural stations and the poorest at traffic sites. However, the model performance for the urban/suburban category is very close to the rural one.

475 3.3 PM₁₀

For PM₁₀, there are 1243 non-industrial stations in the Airbase/AQER database for 2005-2019, fulfilling the data coverage criteria for this compound (75 % coverage for individual years and 65 % coverage of years in the period). No individual stations are shown, but all data and results can be found in the model's data repository (Walker and Solberg, 2022b; Walker and Solberg, 2022e).

480

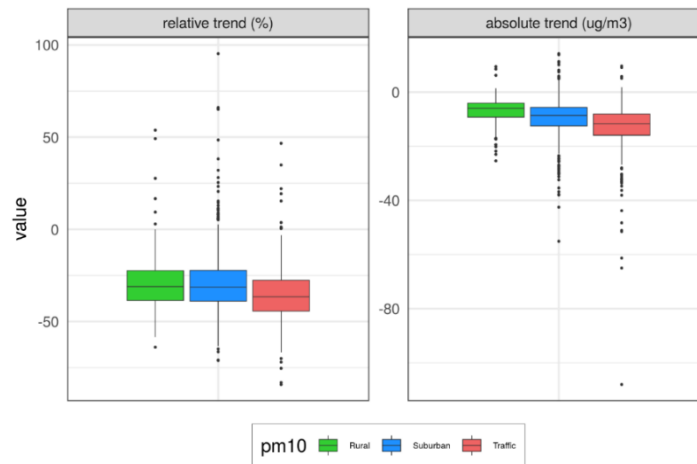
Figures 8-10 show the same type of results as for the previous compounds. The stations plotted in each map in Fig. 8 and as data values in Fig. 9 are the stations for which the 2005-2019 cross-validation for PM₁₀ gave a correlation above 0.55. This resulted in 176, 627 and 351 stations, respectively, for the three types of stations, 1154 in total. For the evaluation in Fig. 10, all 1243 stations are used, 204, 658 and 381 in each category.



485

Figure 8. Maps of stations in Europe with the percentage change in expected concentrations from 2005 to 2019 relative to the initial level in 2005 based on the meteorology-adjusted trend for PM₁₀. Left: Background stations in rural areas; Middle: Background stations in urban/suburban areas; and Right: Traffic stations.

490 For PM₁₀, AirGAM estimates marked reductions during 2005-2019 with indications of a west-to-east gradient (Fig. 8), as was found for NO₂. Median decreases of 31 % are found for the rural and urban/suburban stations and 37 % for the traffic stations (Fig. 9), with corresponding reductions in concentrations of 7-13 $\mu\text{g}\cdot\text{m}^{-3}$. Many Polish and Baltic sites have no change or even increased levels. Due to the shift from daily-based sampling to hourly in France, no trends could be calculated for sites there.



495 **Figure 9.** Box plots of changes in expected concentrations over the same three types of stations as in the map plots in Fig. 8. The left panel shows relative per cent changes, while the right panel shows absolute changes from 2005 to 2019. Units: % and $\mu\text{g}\cdot\text{m}^{-3}$.

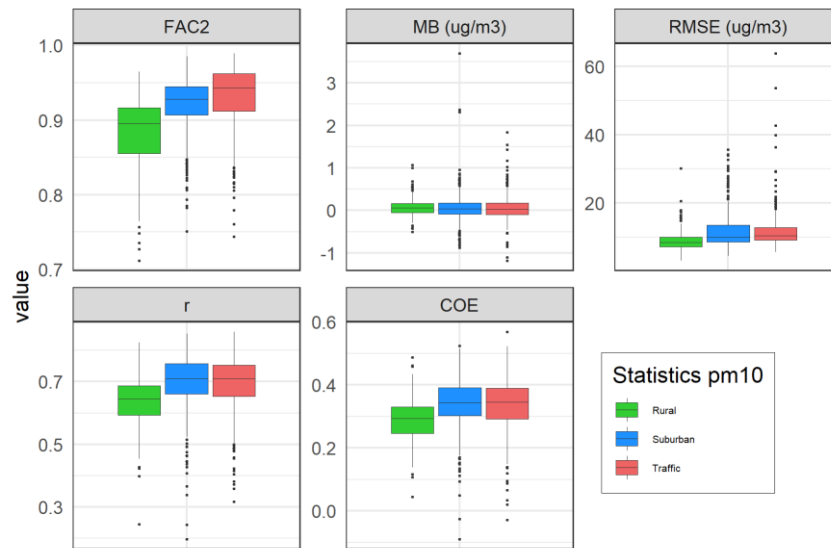


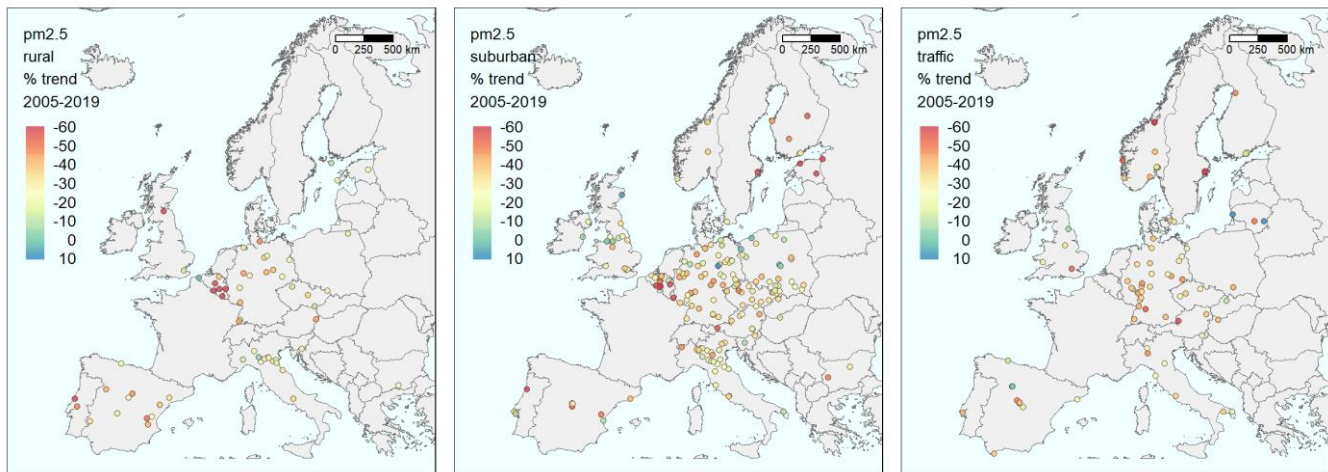
Figure 10. Box plots of evaluation parameters from the cross-validation for 2005-2019, again for the same three types of stations.

500 The AirGAM performance is best at the traffic and urban/suburban sites, with slightly poorer results for the rural ones (Fig. 10). This is as expected for PM_{10} (as for NO_2), mainly due to these stations being exposed to more direct local emissions. In contrast, the PM_{10} at rural sites is more influenced by long-range air mass transport and external processes not captured so well by the AirGAM model, such as windblown dust, forest fires, agricultural fires, etc.

3.4 $PM_{2.5}$

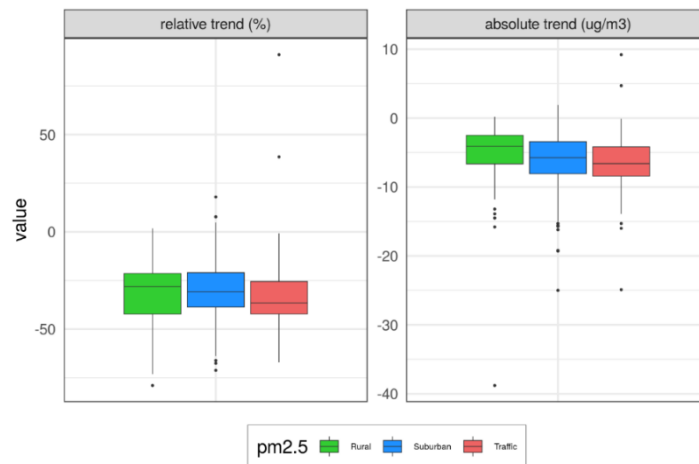
505 For $PM_{2.5}$, there are 354 non-industrial stations in the Airbase/AQER database for 2005-2019, fulfilling the data coverage criteria for this compound (75 % coverage for individual years and 65 % coverage of years in the period). No individual stations are shown, but all data and results can be found in the model's data repository (Walker and Solberg, 2022b; Walker and Solberg, 2022f).

510 Figures 11-13 show the same type of results as for the previous compounds. The stations plotted in each map in Fig. 11 and as data values in Fig. 12 are the stations for which the 2005-2019 cross-validation for $PM_{2.5}$ gave a correlation above 0.55. This resulted in 59, 186 and 80 stations, respectively, for the three types of stations, 325 in total. For the evaluation in Fig. 13, all 354 stations are used, 67, 201, and 86 in each category.



515 **Figure 11.** Maps of stations in Europe with the percentage change in expected concentrations from 2005 to 2019 relative to the initial level in 2005 based on the meteorology-adjusted trend for PM_{2.5}. Left: Background stations in rural areas; Middle: Background stations in urban/suburban areas; and Right: Traffic stations.

The number of stations for PM_{2.5} is substantially lower than for the other compounds, and thus the interpretation of the results becomes more uncertain. However, the sites with sufficient monitoring length showed a marked reduction in the expected concentration level (with a few exceptions) during 2005-2019 (Fig. 11). The geographical coverage is too sparse to conclude the spatial pattern in the trends. As a median over the sites, we find relative reductions of 28 %, 31 % and 37 % at rural, urban/suburban and traffic sites, respectively (Fig. 12), with corresponding reductions in the concentration of 4-7 $\mu\text{g m}^{-3}$.



525 **Figure 12.** Box plots of changes in expected concentrations over the same three types of stations as in the map plots in Fig. 11. The left panel shows relative per cent changes, while the right panel shows absolute changes from 2005 to 2019. Units: % and $\mu\text{g m}^{-3}$.

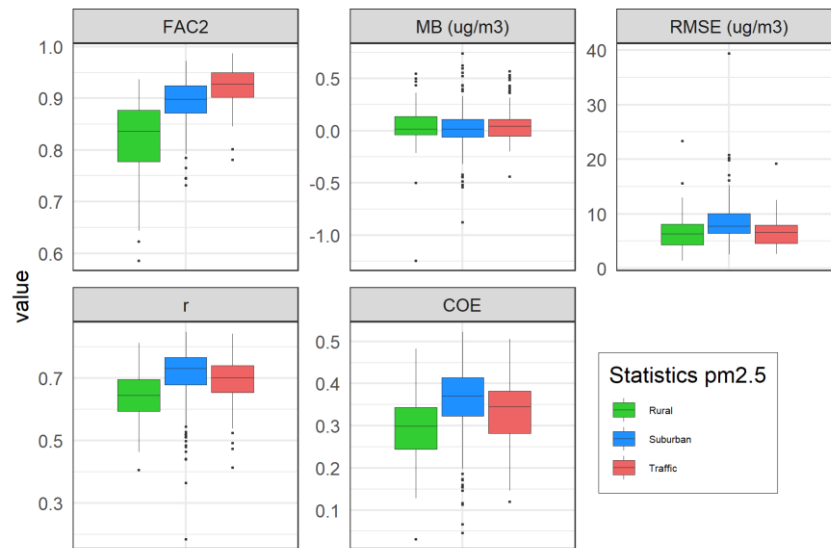


Figure 13. Box plots of evaluation parameters from the cross-validation for 2005-2019, again for the same three types of stations.

530 The AirGAM performance is best at the traffic stations concerning FAC2 but nearly the same for MB and RMSE (Fig. 13).
 For correlation r and COE, the urban/suburban and traffic stations are slightly better than the rural ones.

4 Comparison with the random forest method in `rmweather`

Another approach for discounting the effect of meteorology when estimating trends in air quality data is the random forest (RF) method (Ho, 1995; Breiman, 2001) as implemented, e.g. in the R package `rmweather` (Grange et al., 2018; Grange and
 535 Carslaw, 2019). We will briefly describe the main similarities and differences between GAM and RF and then compare them using the data from the present trend study.

Both methods attempt to solve a nonlinear regression with concentrations as a response and a given set of meteorological and time variables as covariates. However, the nature of their solution methods is quite different. In GAM, we estimate a set of
 540 nonlinear relations between the response and the covariates by regularisation, i.e. by maximising a penalised likelihood. This produces smooth and non-wiggly estimated relations between the response and each covariate resulting in a model that avoids overfitting and generalises well to new data not in the training set.

The RF approach uses decision trees as its main building block for relating the response to the covariates. Several datasets are
 545 then created randomly by bootstrapping, i.e. random sampling of new data with replacement from the available data, including randomly selecting various subsets of the available covariates. Then decision trees are fitted individually to these data. Finally, an ensemble of such fitted trees defines the nonlinear relations and predictions. The latter are produced as mean values over

the predictions from individual trees in the forest. This results in a model that avoids overfitting and generalises well to new data. Although they cannot be classified as robust methods per se, GAM and RF are not very sensitive to outliers. They can also handle missing data well.

Both methods result in interpretable models. We can quickly inspect the estimated nonlinear relations between the response and each covariate to see if an association makes physical sense. In GAM, for this purpose, we use the set of estimated smooth functions, including the smooth function for the trend, while in RF, we use a similar set of so-called estimated partial dependencies. In the latter method, a trend is estimated by calculating meteorologically normalised concentrations over time, i.e. mean concentrations predicted from the RF model using “average meteorology”. In GAM, uncertainties in the smooth functions are output directly as a bi-product of the estimation. For RF, however, bootstrapping, using randomly sampled data and repeated estimations, must generally be used to estimate uncertainties in the partial dependencies and the meteorologically normalised concentrations.

A nice feature of the RF approach is that concavity or collinearity between the covariates is handled efficiently and is thus not an essential issue for these models, while this can be detrimental for GAM models and needs to be checked. However, our present study's experience shows this to be a pretty minor issue, with only a few cases of potential problems, despite many stations. RF also has model selection built-in since the method will ignore a variable not contributing to predicting a response. GAM also has model selection built-in when we turn on the `select=TRUE` option in the calls to the `bam` and `gam` routines.

Also, more assumptions are built into a GAM model relative to an RF model. E.g. in GAM, we need to assume a specific probability distribution for the response given the covariates, and we need to consider transformations of the former. In contrast, no distributions or transformations must be specified in an RF. Further, GAM assumes a smooth and continuous underlying relation between the response and each covariate. In our case, smooth and continuous relations are often found between air pollution and related meteorological and time variables. However, such smooth and continuous relations are not considered in an RF approach, and they can be non-smooth and discontinuous. Even if perhaps not directly discontinuous, more abrupt changes in the trend, e.g. may happen if policy changes or mitigation measures lead to changes in emissions and subsequent concentration levels at a station over a relatively short period. Such sharp transitions will typically be more smoothed out in a GAM model unless we use a higher number of basis functions around the time of the events.

A trend analysis based on hourly values of NO_2 for the traffic station GB0682Ah – London Marylebone Road – for 1997-2016 was conducted in Grange and Carslaw (2019) using the RF method in `rmweather`. Their paper focuses on the impact on the trend due to various interventions imposed on road traffic in London during this period. These interventions aim to reduce primary NO_2 emissions from vehicles, leading to lower NO_2 concentrations. To compare AirGAM with RF, we have applied a similar trend analysis here for this station for 2005-2019, using daily mean values of NO_2 as input rather than hourly data. In

our study, we use the same meteorological and time variables in RF as in AirGAM, i.e., we use meteorology from ECMWF ERA5 for this station rather than data from Heathrow Airport, which was used in their paper. The meteorological covariates are the same in both studies, except for planetary boundary layer height and cloud cover, which is used here for both models, and atmospheric pressure, which is not used. Otherwise, we run with the same hyperparameters in RF as in their paper, using 300 trees in the forest, a minimal node size of five, and the default number of variables split at each node, three in our case. The seed number in the calls to the routines in `rmweather` was set to 1234. A default of 300 predictions was used to produce the meteorologically normalised concentrations.

As for AirGAM, we run with the same set-up as for the other runs in this paper, but we introduce a somewhat more agile GAM model by increasing the number of basis functions for the trend from the default five to ten. This is the smallest number of basis functions considered sufficient according to the `gam.check`-routine ($k-1 - \text{edf} > 0.5$) – so introducing just the right amount of model complexity for the trend in GAM for this more detailed trend analysis. We also consider auto-correlation in the time-series by including an AR(1) model for the model residuals using the option `incl_ar1=1` in AirGAM.

Figure 14 shows the meteorologically normalised trend from the RF model (blue curve) as monthly averages and the meteorology-adjusted smooth trend from AirGAM (dark green curve) for NO₂ at London Marylebone Road for 2005-2019. In the figure, the dark green dashed curves form a 95% confidence region for the trend from AirGAM.

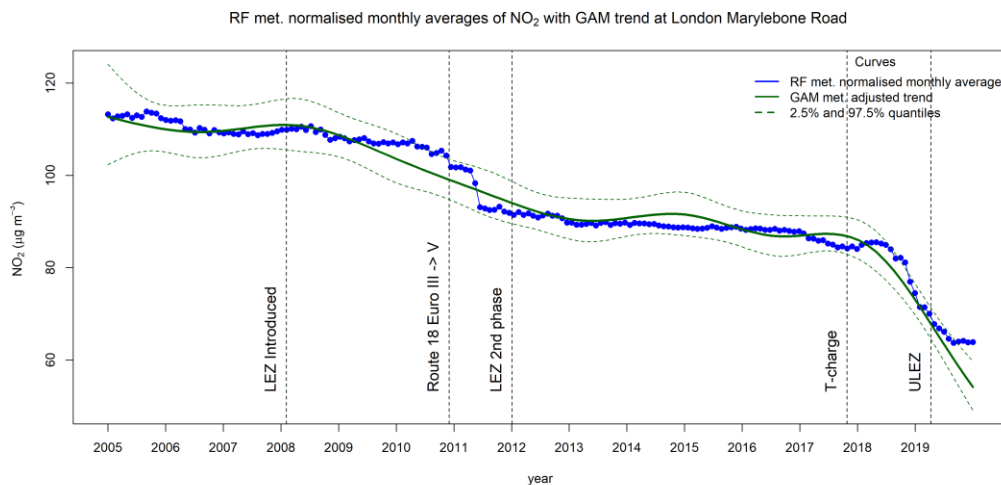


Figure 14. Meteorologically normalised trend (monthly averages) from the RF model (blue curve) together with a meteorology-adjusted smooth trend (dark green curve) from AirGAM with a 95% confidence region (dashed curves) for NO₂ at London Marylebone Road for 2005-2019. Unit: µg m⁻³.

The vertical dashed lines in the figure show air quality interventions in London during this period, the first two highlighted in Grange and Carslaw (2019) as identified breakpoints from a time-series breakpoint detection analysis conducted there. These are associated with the introduction of the Low Emission Zone (LEZ) in London on 4 April 2008 and the change from Euro

III to Euro V vehicles on Route 18 at the end of 2010. The following two interventions (2nd phase of LEZ on 3 January 2012 and the introduction of the toxicity surcharge (T-charge) on 23 October 2017) were also considered in their paper but not identified as actual breakpoints for the trends in their analysis. The last intervention shown in the figure introduces the Ultra-Low Emission Zone (ULEZ) in London on 4 April 2019. For a more thorough description of these interventions, see Grange and Carslaw (2019). A detailed description of the history and development of various congestion charges introduced in London to curb the levels of air pollution from the mid-90s to the present is given in Wikipedia (2022).

As shown in Fig. 14, the shape of the trend curve from the GAM model resembles the trend point values from the RF model with some noticeable differences. The GAM curve is smooth and not too wiggly by construction, falling gently in several phases with more flat in-between parts before decreasing sharply at the end around the introduction of the T-charge in 2017 and towards 2020. The concentration level is reduced from $113 \mu\text{gm}^{-3}$ in 2005 to $54 \mu\text{gm}^{-3}$ in 2020, a total reduction of $59 \mu\text{gm}^{-3}$. The trend values from RF are more variable, presumably due to the more adept nature of this method. Here the level is reduced from $113 \mu\text{gm}^{-3}$ in 2005 to $64 \mu\text{gm}^{-3}$ in 2020, a total of $49 \mu\text{gm}^{-3}$, ten μgm^{-3} less than for GAM, mainly due to the differences in the trends at the very end of the period. Also noticeable is the sharp decrease in the RF trend around the time of the Route 18 bus fuel changes from late 2010 to the middle of 2011, which the GAM model does not reproduce. Instead, GAM estimates a smooth and gentle reduction in the concentrations over a much more extended period from just after the introduction of the LEZ in 2008 to the middle of 2013.

Note that despite differences in the shapes of these trend curves, the RF trend is well contained within the 95% confidence region for the GAM trend, except for five months in 2010-2011 and six months at the end of the period, a total of 11 months. If the RF point values were the true trend, we would expect around nine monthly values (5 % of 180 months) outside this interval. However, they are also estimated and not identical to the true trend. It is challenging to state the most realistic trend – the smooth and non-wiggly trend from GAM or the more variable and detailed trend from RF. The sharp declines in the RF trend around the introduction of the Route 18 bus fuel changes may well indicate that the RF trend in this period is the most realistic. On the other hand, the gentle reduction in the GAM trend from the LEZ introduction in 2008 towards 2011, a period where the RF trend is more constant, is also interesting and may point to cuts in NO_2 emissions from traffic affecting the station in this period. Thus, it may be beneficial to use both methods in more detailed trend analyses to obtain a more diverse picture of and insight into the possible nature of the actual trend.

Comparing the trends produced from AirGAM and the RF method in `rmweather` for other stations and compounds (not shown here) gives, in most cases, the same picture as above. The GAM approach in AirGAM produces trend curves that are smooth and non-wiggly, while the RF approach tends to create more variable trends with more details. All in all, however, we found the trends to be similar in most cases. It would be interesting to study how well the two methods estimate trends using

controlled experiments with simulated but realistic data to know the underlying trend. We hope to pursue such a study in a
 640 forthcoming paper.

Table 2 shows for the various compounds the prediction accuracy of the GAM models in AirGAM versus the RF method in
 rmweather from the cross-validation for 2005-2019. Here, the evaluation parameters, i.e. prediction performance metrics,
 are the same as those used in Sect. 3. Each metric in the table is calculated as a mean over the n individual stations for each
 645 compound. The corresponding number in parentheses is an estimated standard deviation of this mean value obtained from
 bootstrapping using 5000 replications of the individual values in each case.

Table 2. Prediction accuracy from the cross-validation for 2005-2019 of AirGAM vs RF from rmweather. The prediction performance metrics are the same as those used in Sect. 3. Numbers in bold mark the best-performing model for each compound and metric.

Compound	Model	n	FAC2 (sd)	MB (sd) μgm^{-3}	RMSE (sd) μgm^{-3}	r (sd)	COE (sd)
NO ₂	GAM	1485	0.957 (0.001)	0.121 (0.007)	7.223 (0.080)	0.787 (0.003)	0.439 (0.003)
	RF	1485	0.954 (0.001)	0.279 (0.007)	7.031 (0.075)	0.797 (0.002)	0.444 (0.003)
O ₃	GAM	1175	0.995 ($3 \cdot 10^{-4}$)	0.094 (0.014)	16.301 (0.091)	0.719 (0.003)	0.335 (0.003)
	RF	1175	0.995 ($3 \cdot 10^{-4}$)	0.023 (0.012)	16.113 (0.086)	0.726 (0.003)	0.347 (0.003)
PM ₁₀	GAM	1243	0.918 (0.001)	0.059 (0.009)	11.195 (0.136)	0.687 (0.002)	0.330 (0.002)
	RF	1243	0.909 (0.001)	0.576 (0.016)	11.274 (0.138)	0.683 (0.002)	0.314 (0.002)
PM _{2.5}	GAM	354	0.884 (0.003)	0.035 (0.011)	7.751 (0.187)	0.691 (0.005)	0.341 (0.005)
	RF	354	0.874 (0.003)	0.404 (0.017)	7.759 (0.193)	0.690 (0.005)	0.328 (0.005)

650

As shown in Table 2, the two methods are similar in predictive performance concerning the various evaluation parameters shown. For some compounds and performance metrics, GAM is best; for others, RF is best, but the difference between the two is slight, except perhaps for the mean bias (MB), where GAM is clearly better than RF for all compounds except for O₃, where RF is slightly better. Bootstrapping the differences in the metrics between the models results in the bold numbers in the table,
 655 where one model is statistically significantly better than the other at the 1 % level. In terms of the concentration level independent metrics correlation (r) and coefficient of efficiency (COE), both models seem to perform best for NO₂, followed by O₃ and then PM, although GAM is fairly good regarding COE for PM_{2.5}. Overall, both methods perform pretty well for all metrics shown, but GAM seems to have an edge in PM, while the opposite is true for NO₂ and O₃.

660 Interaction between covariates means that a covariate's influence on the response depends on the level of one or more of the
other covariates. RF models, such as those produced by `rmweather`, can potentially include complex interactions between
the covariates. Strictly additive GAM models used by AirGAM do not have any interactions between covariates. Since they
are very similar in predictive performance for all compounds in this comprehensive trend study, there seem to be few or no
interactions between the covariates that need to be modelled to get good predictive performance, at least for these data. Thus,
665 a purely additive model with no interactions appears to be sufficient.

5 AirGAM as a tool for data quality investigations

A spin-off from the AirGAM model is the ability to detect measurement data of dubious quality. This is easily explained as
AirGAM is based on finding long-term systematic relationships between reported levels of air pollutants and meteorological
and temporal data. When this approach fails, it is either due to the station being dominated by long-range transport of air
pollutants (whereas AirGAM relies on local meteorological data) or a result of artefacts in the monitoring data, such as
670 significant shifts in the concentration level or the seasonal cycle or other kinds of spurious effects. As described in previous
reports (Solberg et al., 2018a; Solberg et al., 2018b), screening the AirGAM results on the lowest correlation coefficients (and
high values for NMGE, the normalised mean gross error) has proven a valuable tool for detecting errors in the measurement
data. Solberg et al. (2018a) and Solberg et al. (2018b) give various examples of time series of dubious quality identified by
675 screening the AirGAM results. The examples include time series with a substantial offset in specific years and ozone data
given in a faulty unit (ppb vs μgm^{-3}) during parts of the period. Although such errors could have been identified with basic
statistical tools, other types of artefacts would have been harder to detect. This includes time series of PM_{10} at certain stations
and years that turned out to be displaced by one day. AirGAM predicted the daily concentrations fairly accurately for these
time series, whereas a systematic shift of one day was seen compared to the observational time series. Further investigations
680 confirmed that the timestamp of the measurements was indeed wrong. This type of error in the monitoring data would have
been tough to detect by more basic statistical methods.

6 Summary and conclusions

This paper presents the AirGAM model – an air quality trend and prediction model developed at NILU in cooperation with
EEA over the years 2017-2021. The model is based on solving a nonlinear regression using generalized additive modelling
685 (GAM) of daily observed concentrations at individual air quality monitoring stations with corresponding meteorological and
time-related explanatory variables. It has been developed primarily for NO_2 , O_3 , PM_{10} and $\text{PM}_{2.5}$. Since the concentrations are
conditioned on local meteorology in the regression, the trend estimated by the model may be viewed as a meteorology-adjusted
trend – i.e. a trend in concentrations discounting for the effects of time variations and trends in the meteorological data.

690 The model can also produce unadjusted trends, i.e. trends using the same regression set-up but only including the time variables. These can then be compared with the meteorology-adjusted trends to see the effect of the meteorological adjustment. Unadjusted trends show changes in actual concentrations with time. In contrast, meteorology-adjusted trends show changes in concentrations mainly due to changes in emissions or physio-chemical processes not induced by meteorology.

695 The meteorological and time covariates used in AirGAM have been carefully selected on physical grounds for each pollutant as part of the model development. Generally, they were statistically significant both in our earlier studies and in our present study involving EEA Airbase/AQER stations in Europe for 2005-2019. Thus, we believe they are reasonable explanatory variables for the concentration variations. However, performing model selection is vital as good practice in statistical regression with many covariates. Due to the large number of stations to be handled, more traditional model selection techniques
700 of including or excluding individual covariates in a step-wise fashion were found to be intractable to implement in the model. Instead, a form of automatic model selection is introduced via extra penalisations in the GAM solver routines, forcing any non-essential or superfluous covariate to be pushed towards a zero-flat function and thus “removed” from the regression. Based on this in our present study, most covariates were significant at the 5 % level, with only a few non-significant at some stations – mostly cloud cover for NO₂ and precipitation for PM.

705

A concurvity analysis performed in the present study show all covariates to be relatively independent of each other for all compounds, with concurvity values of type *estimate* for the most part below 0.4. Higher values occurred only in 0.55 %, 0.09 %, 0.31 % and 0.53 % of the cases (stations and covariates) for NO₂, O₃, PM₁₀ and PM_{2.5}, respectively. For NO₂ and PM, all values were below 0.5, while for O₃, only three were in the interval [0.5, 0.6]. This generally indicates good statistical
710 identifiability of the model variables, implying a reasonable estimation of the smooth nonlinear relations, including the trend. In AirGAM, as a default, a basis function is introduced in the trend term every three years with data, which typically estimates the trend's main features and long-term properties quite well in most cases. However, the user may choose a higher number of basis functions for the trend if it is essential to capture more details and short-term variations.

715 Our present trend analysis in Europe for 2005-2019 shows that the NO₂ concentration has decreased approximately at the same rate at all station categories during this period. Median reductions of 29 % are found for rural and urban/suburban stations and 31 % for traffic stations, with corresponding decreases in concentration levels of 4-13 µgm⁻³. For O₃ at the rural and urban/suburban stations, median reductions of 6 % and 5 % are found, respectively, while a slight increase of 2 % is seen for the traffic sites. Corresponding changes in concentrations are from -6 to 2 µgm⁻³. For PM₁₀, median reductions of 31 % are
720 found for the rural and urban/suburban stations and 37 % for the traffic stations, with corresponding decreases in concentrations of 7-13 µgm⁻³. And finally, for PM_{2.5}, we find median reductions of 28 %, 31 % and 37 % at rural, urban/suburban and traffic sites, respectively, with corresponding decreases in concentrations of 4-7 µgm⁻³. Thus, these are our estimated changes in concentration levels due to changes in emissions or physio-chemical processes, not due to meteorology during this period.

725 Cross-validation at the stations in Europe for 2005-2019 shows that the model works well and can predict concentrations with
reasonably good accuracy in this period for most stations, with correlations ranging from 0.69 for PM to 0.79 for NO₂ and
RMSE ranging from 7.2 μgm⁻³ for NO₂ to 16.3 μgm⁻³ for O₃. Comparison with other approaches for estimating meteorology-
adjusted trends based on nonlinear regression, such as the random forest (RF) method from the `rmweather` package, show
our GAM to be on par with RF regarding prediction accuracy, e.g. in terms of RMSE and correlation while having somewhat
730 better results regarding mean bias. Thus, despite their very different nature of construction, both methods produce models that
avoid overfitting and generalise quite well towards new data not in the training set.

Interaction means that a covariate's influence on the response depends on the level of one or more of the other covariates. RF
models, such as those produced by `rmweather`, can potentially include complex interactions between the covariates. Strictly
735 additive GAM models implemented in AirGAM do not have any interactions between covariates. Since these two models have
very similar predictive performance for all compounds in this comprehensive trend study, there seem to be few or no
interactions between the covariates that need to be modelled to get good predictive performance, at least for these data. Thus,
purely additive GAM models with no interactions appear to be sufficient.

740 In AirGAM, we assume a smooth and continuous underlying relation between the response concentration and each of the
meteorological and time variables of the model – including that for the trend term. In air pollution modelling, such smooth
relations are natural to assume since they are, for the most part, also smooth in reality. However, more abrupt changes or steep
trends in concentrations at a station may happen if, e.g. policy changes or mitigation measures are introduced, leading to
emission changes influencing the station over a relatively short period. In such cases, RF methods and similar tree-based
745 techniques could be more appropriate since they generally allow the relationship between the concentrations and the total time
variable to be non-smooth and even discontinuous. Such sharp changes in concentration levels will typically be more smoothed
out in a GAM model unless we introduce more basis functions or adaptive basis functions around the time of such events.
However, it is less of a problem if our focus is on the trend's main features and long-term properties.

7 Code and data availability

750 The current version of the AirGAM model is available on Zenodo (Walker, 2022a) under the GPL-2 licence. The exact version
of the model (2022r1) used to produce the results used in this paper is archived on Zenodo (Walker, 2022b), as are input data
and scripts to run the model and produce the plots for the results presented in this paper (Walker and Solberg, 2022a-b). The
results for all individual stations and compounds can also be found on Zenodo (Walker and Solberg, 2022c-f).

Appendix A: AirGAM model Q & A

755 Q: Can I run for compounds other than NO₂, O₃, PM₁₀, and PM_{2.5}?

A: It should be possible to run for NO_x = NO₂ + NO and O_x = O₃ + NO₂ in the same way as for NO₂ and O₃, respectively, since these behave somewhat similarly to these compounds. Recently we applied the model for VOC (n-butane) at two rural background stations in Europe with encouraging results – showing good agreement between observed and predicted concentrations (Solberg et al., 2021a, Sect. 3.2.1). Including other compounds should be possible but may need additional
760 work to investigate which meteorological variables to use.

Q: Why are not hours being used in the system?

A: We think it is most sensible to stick to daily values since one of the program's aims is to estimate trends over a more extended period, several years. Diurnal air quality variations and meteorology are not essential to consider or model in this
765 respect.

Q: How can I run only for a subset of stations, e.g. just for the Danish sites?

A: You may edit the static station files (Sect. S3.4 in the supplement) to include only the stations you wish to run for, e.g., stations with DK in the station name. Note that you need to edit these files for each year. This may be a little tedious when
770 there are many years and files, so we plan to develop a more automatic procedure based on filtering in later versions of the model.

Q: Do the columns need to be in a specific order in the station input files?

A: No, the files are read into R as data frames with headers, so the column order is irrelevant. However, the header names must
775 be as specified in Sect. S3.4 in the supplement.

Q: Can there be missing air quality or meteorology data in the station input files?

A: Yes, you can have any number of missing data as long as you have enough complete cases, i.e., days with a complete set of data, to comply with the data coverage criteria. You do not need meteorology to run the model for unadjusted trends.
780

Q: Do I need to have data for all years in the period selected for trend estimation?

A: No, the model tolerates missing years in the input. However, you must have enough years to comply with the data coverage percentages in the AirGAM options file. E.g. if you use 75 % as the data coverage for years (`perc2`), you need to have at least eight years with data if running for ten years.
785

Q: Can I use a different missing data value on input, e.g. -9900 or another unique number?

A: No, not currently, but this may be introduced later. For now, you can only use the two- and three-letter combinations NA (missing value in R) and NaN (“not a number” in R).

790 Q: What happens if my data contains zero or negative concentrations?

A: For O₃, nothing happens; the data are used as-is. For the other compounds, due to the logarithmic transformation, zero or negative concentrations are replaced by 0.1. A warning is written to the `AirGAM_log.txt` file with the station name, year, month, day and the initial negative concentration for each such case.

Author contributions. Conceptualisation: S.E.W., S.S.; Data curation: S.S., S.E.W.; Formal analysis: S.E.W., S.S., P.S.; Investigation: S.S., S.E.W.; Methodology: S.E.W., S.S.; Resources: S.S.; S.E.W.; Software: S.E.W., S.S., P.S.; Validation: S.E.W., S.S., P.S.; Visualisation: S.E.W., S.S., P.S.; Writing—original draft preparation: S.E.W., S.S.; Writing—review and editing: S.E.W., S.S., P.S., C.G. All authors have read and agreed to the published version of the manuscript.

Competing interests. The authors declare that they have no conflict of interest.

Acknowledgements. EEA is acknowledged for providing all atmospheric measurement data. The EEA measurement data are based on non-aggregated time-series data downloaded from the web page <https://aqportal.discomap.eea.europa.eu/index.php/users-corner/> in April 2021. Data for 2005-2012 were extracted from Airbase and 2013-2019 as validated (E1a) from the Air Quality e-reporting database. ECMWF is acknowledged for providing ERA5 data. The meteorological data were generated using Copernicus Atmosphere Monitoring Service information 2021. Parts of the data contain modified Copernicus Atmosphere Monitoring Service information 2021. Neither the European Commission nor ECMWF is responsible for any use that may be made of the Copernicus information or data it contains. Sabine Eckhardt at NILU is acknowledged for extracting the meteorological data from ECMWF.

Financial support. The authors are grateful for the European Environment Agency's financial support to the European Topic Centre on Air Pollution, Transport, Noise, and Industrial Pollution (ETC/ATNI) for this work and the national contribution provided by the Norwegian Ministry of Climate and Environment.

810 *Review Statements.*

References

- Barré, J., Petetin, H., Colette, A., Guevara, M., Peuch, V.-H., Rouil, L., Engelen, R., Inness, A., Flemming, J., Pérez García-Pando, C., Bowdalo, D., Meleux, F., Geels, C., Christensen, J. H., Gauss, M., Benedictow, A., Tsyro, S., Friese, E., Struzewska, J., Kaminski, J. W., Douros, J., Timmermans, R., Robertson, L., Adani, M., Jorba, O., Joly, M., and Kouznetsov, R.: Estimating lockdown induced European NO₂ changes using satellite and surface observations and air quality models, *Atmos. Chem. Phys.*, 21, 7373–7394, <https://doi.org/10.5194/acp-21-7373-2021>, 2021.
- Breiman, L. (2001). Random Forests, *Machine Learning* 45 (1), 5–32, <https://doi.org/10.1023/A:1010933404324>, 2001.

- Camalier, L., Cox, W. and Dolwick, P.: The effects of meteorology on ozone in urban areas and their use in assessing ozone trends, *Atmos. Environ.*, 41, 7127–7137, <https://doi.org/10.1016/j.atmosenv.2007.04.061>, 2007.
- 820 Carslaw, D. C.: The openair manual - open-source tools for analysing air pollution data, Manual for version 2.6-6, University of York, <https://github.com/davidcarslaw/openair>, Accessed 21 Jan 2022, 2019.
- Carslaw, D. C.: deweather: Remove the influence of weather on air quality data, R package version 0.7, <https://github.com/davidcarslaw/deweather>, 2021, Accessed 21 Jan 2022.
- Carslaw, D. C. and Ropkins K.: openair - an R package for air quality data analysis, *Environ. Model. Softw.*, 27-28, 52–61, 825 <https://doi.org/10.1016/j.envsoft.2011.09.008>, 2012.
- Chan, E. and Vet, R. J.: Baseline levels and trends of ground level ozone in Canada and the United States, *Atmos. Chem. Phys.*, 10, 8629–8647, <https://doi.org/10.5194/acp-10-8629-2010>, 2010.
- Chang, K. L., Schultz, M. G., Lan, X., McClure-Begley, A., Petropavlovskikh, I., Xu, X., Ziemke, J. R.: Trend detection of atmospheric time series: Incorporating appropriate uncertainty estimates and handling extreme events, *Elem. Sci. Anth.* 9 (1), 830 <https://doi.org/10.1525/elementa.2021.00035>, 2021.
- Davis, J., Cox, W., Reff, A., and Dolwick, P.: A comparison of CMAQ-based and observation-based statistical models relating ozone to meteorological parameters, *Atmos. Environ.*, 45, 3481–3487, <https://doi.org/10.1016/j.atmosenv.2010.12.060>, 2011.
- Diaz, F. M. R., Khan, M. A. H., Shallcross, B. M. A., Shallcross, E. D. G., Vogt, U., and Shallcross, D. E.: Ozone Trends in the United Kingdom over the Last 30 Years, *Atmosphere*, 11 (5), 534, <https://doi.org/10.3390/atmos11050534>, 2020.
- 835 EEA - European Environment Agency, Leeuw, F., Guerreiro, C., Foltescu, V.: Air quality in Europe: 2013 report, Publications Office, 2013, <https://data.europa.eu/doi/10.2800/92843>, 2013.
- EEA - European Environment Agency, González Ortiz, A., Guerreiro, C., Soares, J.: Air quality in Europe: 2020 report, Publications Office, 2020, <https://data.europa.eu/doi/10.2800/602793>, 2020.
- Fix, M. J., Cooley, D., Hodzic, A., Gilleland, E., Russell, B. T., Porter, W. C., and Pfister, G. G.: Observed and predicted 840 sensitivities of extreme surface ozone to meteorological drivers in three US cities, *Atmos. Environ.*, 176, 292–300, <https://doi.org/10.1016/j.atmosenv.2017.12.036>, 2018.
- Grange, S. K. and Carslaw, D. C.: Using meteorological normalisation to detect interventions in air quality time series, *Sci. Total Environ.*, 653, 578–588, <https://doi.org/10.1016/j.scitotenv.2018.10.344>, 2019. Intervention exploration example: <https://www.sciencedirect.com/science/article/pii/S004896971834244X>.
- 845 Grange, S. K., Carslaw, D. C., Lewis, A. C., Boleti, E., and Hueglin, C.: Random forest meteorological normalisation models for Swiss PM₁₀ trend analysis, *Atm. Chem. Phys.* 18 (9), 6223–6239, <https://doi.org/10.5194/acp-18-6223-2018>, 2018. Trend analysis example: <https://www.atmos-chem-phys.net/18/6223/2018/>.
- Hastie, T. J. and Tibshirani, R. J.: *Generalized Additive Models*, CRC Press, Boca Raton, FL, <https://doi.org/10.1201/9780203753781>, 1990.
- 850 Hersbach, H., Bell, B., Berrisford, P., Biavati, G., Horányi, A., Muñoz Sabater, J., Nicolas, J., Peubey, C., Radu, R., Rozum, I., Schepers, D., Simmons, A., Soci, C., Dee, D., Thépaut, J.-N.: ERA5 hourly data on single levels from 1979 to present.

- Copernicus Climate Change Service (C3S) Climate Data Store (CDS), <https://doi.org/10.24381/cds.adbb2d47>, Accessed 24 Mar 2021, 2018.
- Hersbach, H., Bell, B., Berrisford, P., Hirahara, S., Horányi, A., Muñoz-Sabater, J., Nicolas, J., Peubey, C., Radu, R., Schepers, D., Simmons, A., Soci, C., Abdalla, S., Abellan, X., Balsamo, G., Bechtold, P., Biavati, G., Bidlot, J., Bonavita, M., De Chiara, G., Dahlgren, P., Dee, D., Diamantakis, M., Dragani, R., Flemming, J., Forbes, R., Fuentes, M., Geer, A., Haimberger, L., Healy, S., Hogan, R. J., Hólm, E., Janisková, M., Keeley, S., Laloyaux, P., Lopez, P., Lupu, C., Radnoti, G., de Rosnay, P., Rozum, I., Vamborg, F., Villaume, S., and Thépaut, J.-N.: The ERA5 global reanalysis, 146, Q. J. R. Meteorol., 146 (730), 1999–2049, <https://doi.org/10.1002/qj.3803>, 2020.
- 855 Ho, T. K.: Random Decision Forests. Proceedings of the 3rd International Conference on Document Analysis and Recognition, Montreal, QC, 14–16 August 1995, pp. 278–282, Archived from the original (PDF) on 17 Apr 2016, Retrieved 5 Jun 2016, <https://web.archive.org/web/20160417030218/http://ect.bell-labs.com/who/tkh/publications/papers/odt.pdf>, Accessed 21 Jan 2022, 1995.
- Johansson, J. M., Watne, A. K., Karlsson, P. E., Karlsson, G. P., Danielsson, H., Andersson, C., and Pleijel, H.: The European heat wave of 2018 and its promotion of the ozone climate penalty in southwest Sweden, Boreal Environ. Res., 25, 39–50, http://www.borenv.net/BER/archive/vol_25.html, Accessed 21 Jan 2022, 2020.
- 865 Keller, C. A., Evans, M. J., Knowland, K. E., Hasenkopf, C. A., Modekurty, S., Lucchesi, R. A., Oda, T., Franca, B. B., Mandarino, F. C., Díaz Suárez, M. V., Ryan, R. G., Fakes, L. H., and Pawson, S.: Global Impact of COVID-19 Restrictions on the Surface Concentrations of Nitrogen Dioxide and Ozone, Atmos. Chem. Phys., 21, 3555–3592, <http://doi.org/10.5194/acp-21-3555-2021>, 2021.
- 870 Logan, J. A., Staehelin, J., Megretskaia, I. A., Cammas, J.-P., Thouret, V., Claude, H., De Backer, H., Steinbacher, M., Scheel, H.-E., Stübi, R., Fröhlich, M., and Derwent, R.: Changes in ozone over Europe: Analysis of ozone measurements from sondes, regular aircraft (MOZAIC) and alpine surface sites, J. Geophys. Res.: Atmospheres, 117 (D9), <https://doi.org/10.1029/2011JD016952>, 2012.
- 875 McFadden, D.: Statistical Tools, https://eml.berkeley.edu/~mcfadden/e240a_sp01/ch4.pdf, Accessed 21 Jan 2022, 2000.
- Nychka, D.: Bayesian Confidence Intervals for Smoothing Splines, J. Am. Stat. Assoc., 83 (404), 1134–1143, <https://www.tandfonline.com/doi/abs/10.1080/01621459.1988.10478711>, 1988.
- Ordóñez, C., Mathis, H., Furger, M., Henne, S., Hüglin, C., Staehelin, J., and Prévôt, A. S. H.: Changes of daily surface ozone maxima in Switzerland in all seasons from 1992 to 2002 and discussion of summer 2003, Atmos. Chem. Phys., 5, 1187–1203, <https://doi.org/10.5194/acp-5-1187-2005>, 2005.
- 880 Ordóñez, C., Garrido-Perez, J. M., and Garcia-Herrera, R.: Early spring near-surface ozone in Europe during the COVID-19 shutdown: Meteorological effects outweigh emission changes, Sci. Total Environ., 747, 141322, <https://doi.org/10.1016/j.scitotenv.2020.141322>, 2020.
- Otero, N., Sillmann, J., Mar, K. A., Rust, H. W., Solberg, S., Andersson, C., Engardt, M., Bergström, R., Bessagnet, B., Colette, 885 A., Couvidat, F., Couvelier, C., Tsyro, S., Fagerli, H., Schaap, M., Manders, A., Mircea, M., Briganti, G., Cappelletti, A., Adani,

- M., D'Isidoro, M., Pay, M.-T., Theobald, M., Vivanco, M. G., Wind, P., Ojha, N., Raffort, V., and Butler, T.: A multi-model comparison of meteorological drivers of surface ozone over Europe, *Atmos. Chem. Phys.*, 18, 12269–12288, <https://doi.org/10.5194/acp-18-12269-2018>, 2018.
- 890 Pernak, R., Alvarado, M., Lonsdale, C., Mountain, M., Hegarty, J., and Nehrkorn, T.: Forecasting Surface O₃ in Texas Urban Areas Using Random Forest and Generalized Additive Models, *Aerosol Air Qual. Res.*, 9, 2815–2826, <https://doi.org/10.4209/aaqr.2018.12.0464>, 2019.
- Petetin, H., Bowdalo, D., Soret, A., Guevara, M., Jorba, O., Serradell, K., and Perez Garcia-Pando, C.: Meteorology-normalized impact of the COVID-19 lockdown upon NO₂ pollution in Spain, *Atmos. Chem. Phys.*, 20, 11119–11141, <https://doi.org/10.5194/acp-20-11119-2020>, 2020.
- 895 R Core Team: R: A language and environment for statistical computing, R Foundation for Statistical Computing, Vienna, Austria, URL <https://www.R-project.org/>, 2022.
- Sicard, P., De Marco, A., Troussier, F., Renou, C., Vas, N., and Paoletti, E.: Decrease in surface ozone concentrations at Mediterranean remote sites and increase in the cities, *Atmos. Environ.*, 79, 705–715, <https://doi.org/10.1016/j.atmosenv.2013.07.042>, 2013.
- 900 Simpson, D., Arneth, A., Mills, G., Solberg, S., and Uddling, J.: Ozone — the persistent menace: interactions with the N cycle and climate change, *Curr. Opin. Environ. Sustain.*, 9–10, 9–19, <https://doi.org/10.1016/j.cosust.2014.07.008>, 2014.
- Solberg, S., Walker, S.-E., Schneider, P., Guerreiro, C. and Colette, A.: Discounting the effect of meteorology on trends in surface ozone: Development of statistical tools, ETC/ACM Technical paper 15/2017, European Topic Centre on Air Pollution and Climate Change Mitigation, https://www.eionet.europa.eu/etcs/etc-atni/products/etc-atni-reports/etcacm_tp_2017_15_discount_meteo_on_o3_trends, 2018a.
- 905 Solberg, S., Walker, S.-E. and Schneider, P.: Trend in measured NO₂ and PM: Discounting the effect of meteorology, ETC/ACM Eionet Report 9/2018, European Topic Centre on Air Pollution and Climate Change Mitigation, https://www.eionet.europa.eu/etcs/etc-atni/products/etc-atni-reports/eionet_rep_etcacm_2018_9_no2_pm_trends, 2018b.
- 910 Solberg, S., Walker, S.-E., Guerreiro, C. and Colette, A.: Statistical modelling for long-term trends of pollutants - Use of a GAM model for the assessment of measurements of O₃, NO₂ and PM, ETC/ATNI Report 14/2019, European Topic Centre on Air Pollution and Climate Change Mitigation, <https://www.eionet.europa.eu/etcs/etc-atni/products/etc-atni-reports/etc-atni-report-14-2019-statistical-modelling-for-long-term-trends-of-pollutants-use-of-a-gam-model-for-the-assessment-of-measurements-of-o3-no2-and-pm-1>, 2019.
- 915 Solberg, S., Colette, A., Raux, B., Walker, S.-E., Guerreiro, C.: Long-term trends of air pollutants at national level 2005-2019, ETC/ATNI Eionet Report 9/2021, European Topic Centre on Air Pollution and Climate Change Mitigation, <https://www.eionet.europa.eu/etcs/etc-atni/products/etc-atni-reports/etc-atni-report-9-2021-long-term-trends-of-air-pollutants-at-national-level-2005-2019>, 2021a.
- Solberg, S., Walker, S.-E., Schneider, P., Guerreiro, C.: Quantifying the impact of the Covid-19 lockdown measures on

- 920 nitrogen dioxide levels throughout Europe, *Atmosphere*, 12, 131, <https://doi.org/10.3390/atmos12020131>, 2021b.
- Thompson, M., Reynolds, J., Cox, L., Guttorp, P., and Sampson, P.: A review of statistical methods for the meteorological adjustment of tropospheric ozone, *Atmos. Environ.*, 35 (3), 617–630, [https://doi.org/10.1016/S1352-2310\(00\)00261-2](https://doi.org/10.1016/S1352-2310(00)00261-2), 2001.
- Walker, S.-E.: AirGAM 2022r1 model (exact for results), Zenodo [code], <https://doi.org/10.5281/zenodo.6334104>, 2022a.
- Walker, S.-E.: AirGAM 2022r1 model (latest). Zenodo [code], <https://doi.org/10.5281/zenodo.6334104>, 2022b.
- 925 Walker, S.-E., Solberg, S.: AirGAM 2022r1 basic data 2005-2019 and scripts, Zenodo [data set], <https://doi.org/10.5281/zenodo.6334131>, 2022a.
- Walker, S.-E., Solberg, S.: AirGAM 2022r1 input data for all stations 2005-2019, Zenodo [data set], <https://doi.org/10.5281/zenodo.6334171>, 2022b.
- Walker, S.-E., Solberg, S.: AirGAM 2022r1 NO₂ results for all stations 2005-2019, Zenodo [data set],
- 930 <https://doi.org/10.5281/zenodo.6334195>, 2022c.
- Walker, S.-E., Solberg, S.: AirGAM 2022r1 O₃ results for all stations 2005-2019, Zenodo [data set], <https://doi.org/10.5281/zenodo.6334317>, 2022d.
- Walker, S.-E., Solberg, S.: AirGAM 2022r1 PM₁₀ results for all stations 2005-2019, Zenodo [data set], <https://doi.org/10.5281/zenodo.6334327>, 2022e.
- 935 Walker, S.-E., Solberg, S.: AirGAM 2022r1 PM_{2.5} results for all stations 2005-2019, Zenodo [data set], <https://doi.org/10.5281/zenodo.6334334>, 2022f.
- Wikipedia: London Congestion Charge, https://en.wikipedia.org/wiki/London_congestion_charge, 2022, Accessed 21 Jan 2022.
- Wood, S. N.: Generalized Additive Models. An introduction with R, Chapman and Hall/CRC Press, Boca Raton, Florida,
- 940 <https://doi.org/10.1201/9781315370279>, 2017.
- Zeileis A.: Econometric computing with HC and HAC covariance matrix estimators, *J. of Stat. Software*, 11(10), 1–17, <https://doi.org/10.18637/jss.v011.i10>, 2004.
- Zheng, J., Swall, J. L., Cox, W. M., and Davis, J. M.: Interannual variation in meteorologically adjusted ozone levels in the eastern United States: A comparison of two approaches, *Atmos. Environ.*, 41, 705–716,
- 945 <https://doi.org/10.1016/j.atmosenv.2006.09.010>, 2007.