

Supplemental Material for:

The Seasonal-to-Multiyear Large Ensemble (SMYLE) Prediction System using the Community Earth System Model Version 2

Stephen G. Yeager¹, Nan Rosenbloom¹, Anne Glanville¹, Xian Wu¹, Isla Simpson¹, Hui Li¹, Maria J. Molina¹, Kristen Krumhardt¹, Samuel Mogen², Keith Lindsay¹, Danica Lombardozzi¹, Will Wieder¹, Who M. Kim¹, Jadwiga H. Richter¹, Matthew Long¹, Gokhan Danabasoglu¹, David Bailey¹, Marika Holland¹, Nicole Lovenduski², Warren G. Strand¹

¹National Center for Atmospheric Research, Boulder, Colorado, USA

²Department of Atmospheric and Oceanic Sciences, University of Colorado, Boulder, Colorado, USA

Correspondence to: Stephen G. Yeager (yeager@ucar.edu)

Contents:

Table S1

Figs. S1-S5

Lead	NA	EP	NWP
1-month	0.61	0.3	0.25
4-month	0.44	0.002	0.08
7-month	0.14	0.06	0.28
10-month	0.14	-0.17	0.07
13-month	0.22	-0.16	0.07
16-month	0.19	0.03	0.05
19-month	0.2	-0.02	0.09

Table S1: Similar to Table 1 of Main Text, but showing correlation coefficients of normalized seasonal-mean (JJASON) TC number between the observations and the SMYLE forecasts. Bold numbers indicate the correlations are significant at 90% confidence level. The correlations in the North Indian Ocean, the South Indian Ocean and the South Pacific Ocean are not significant at any leadtime and are therefore not shown.

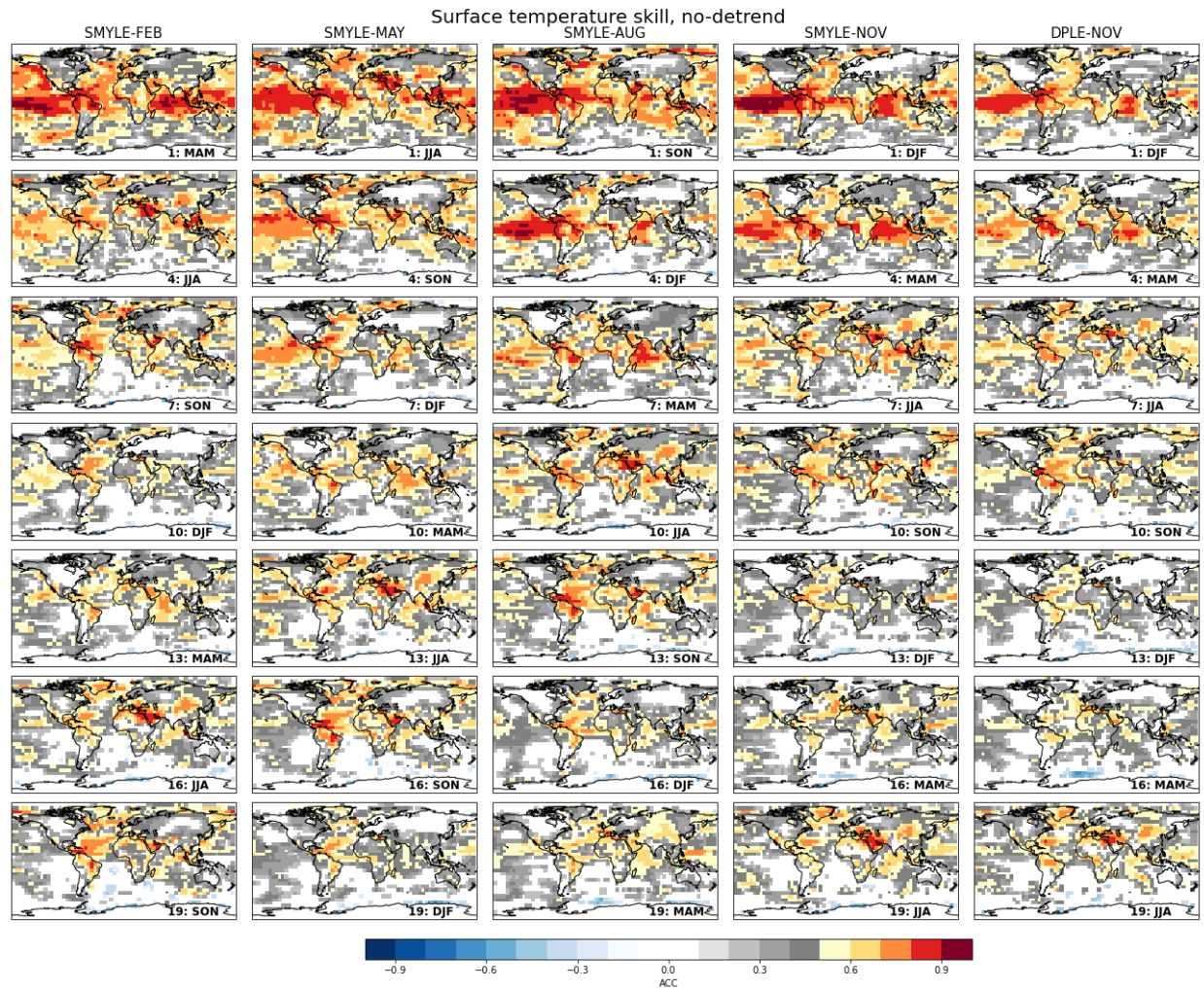


Fig. S1: Equivalent to Figure 1 but without removing a linear trend.

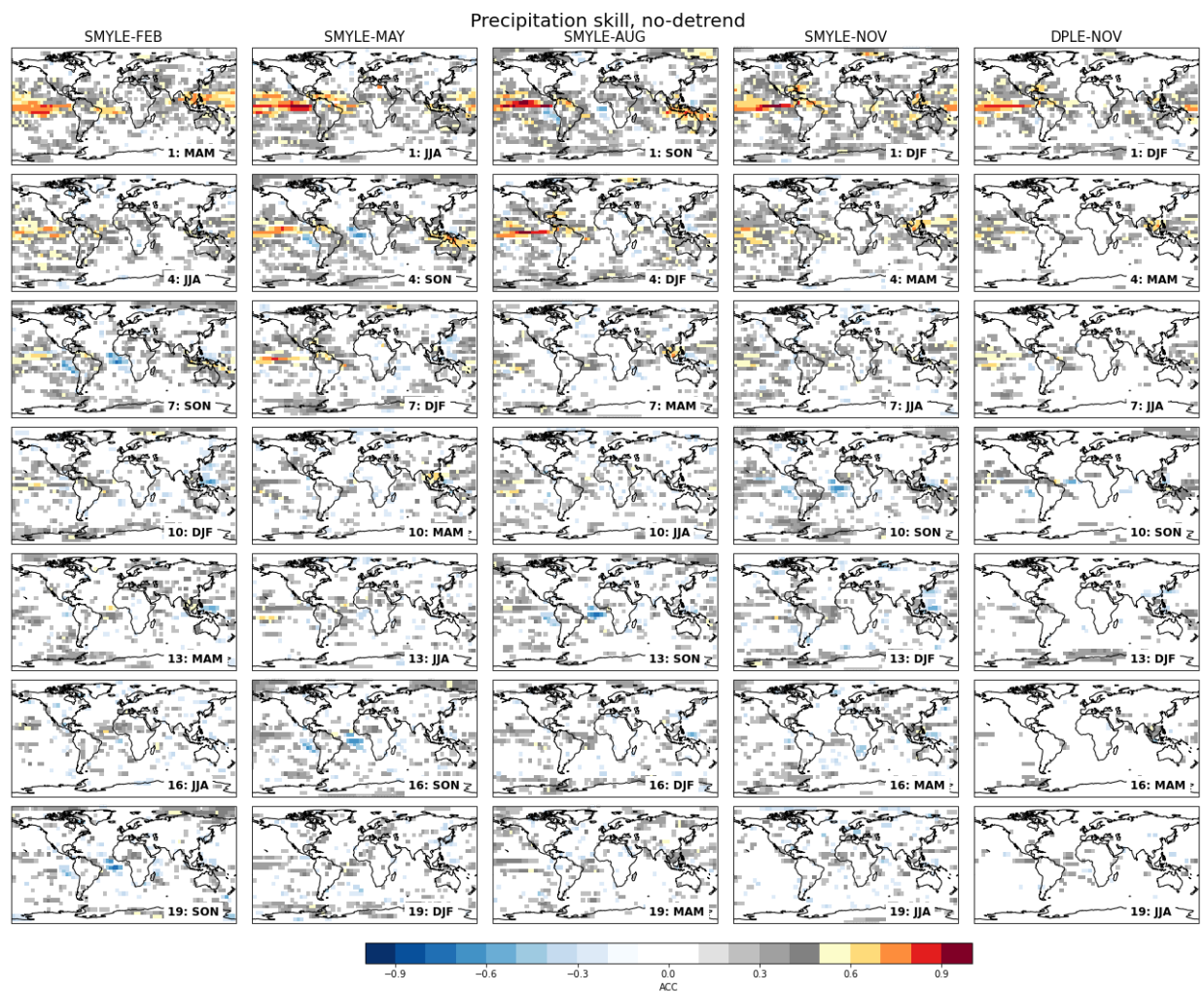


Fig. S2: Equivalent to Figure 2 but without removing a linear trend.

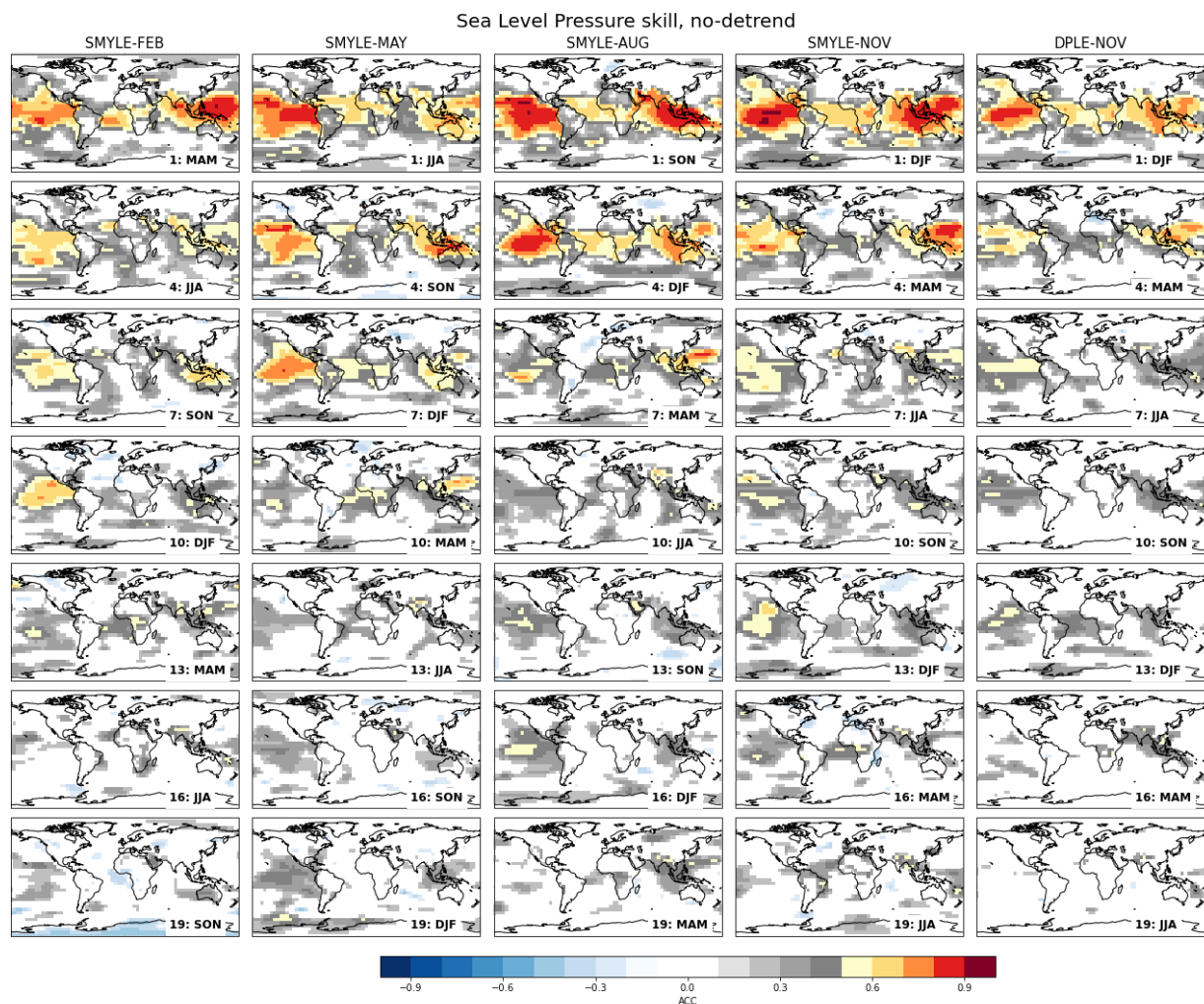


Fig. S3: Equivalent to Figure 6 but without removing a linear trend.

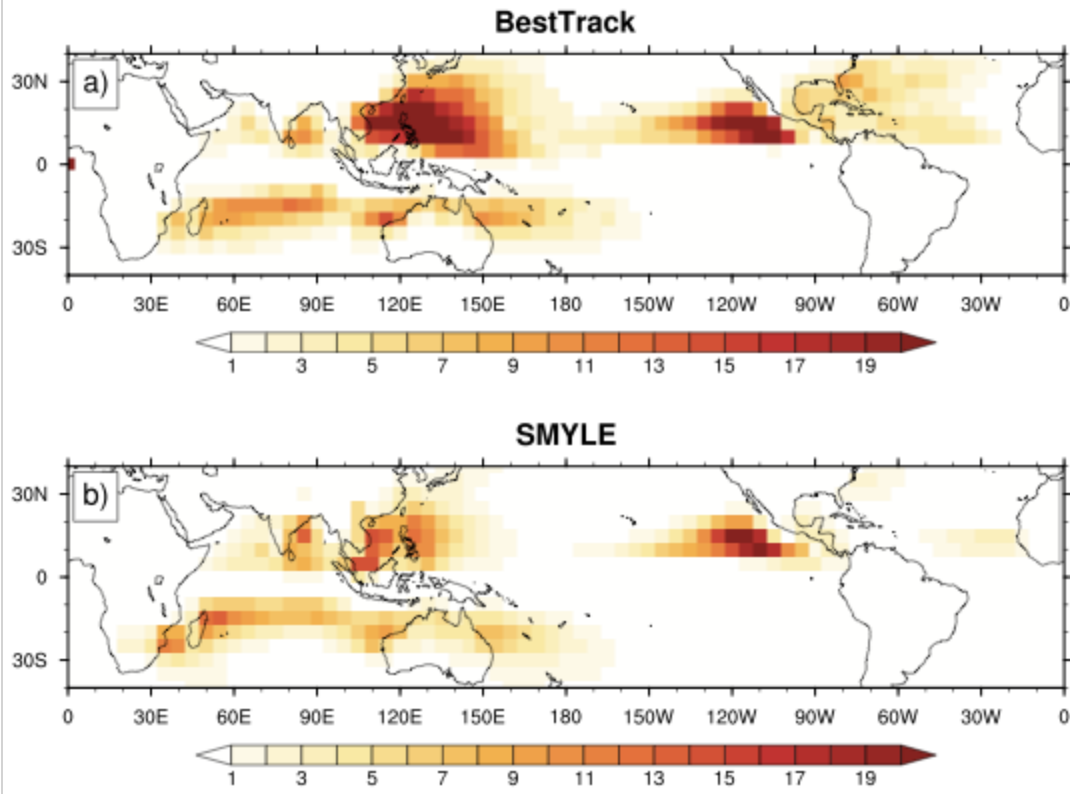


Fig. S4: Annual mean global TC track density (over 5°x5° box) during 1970-2018 in (a) observations and (b) SMYLE lead month 1 forecasts (averaged over 4 initialization times).

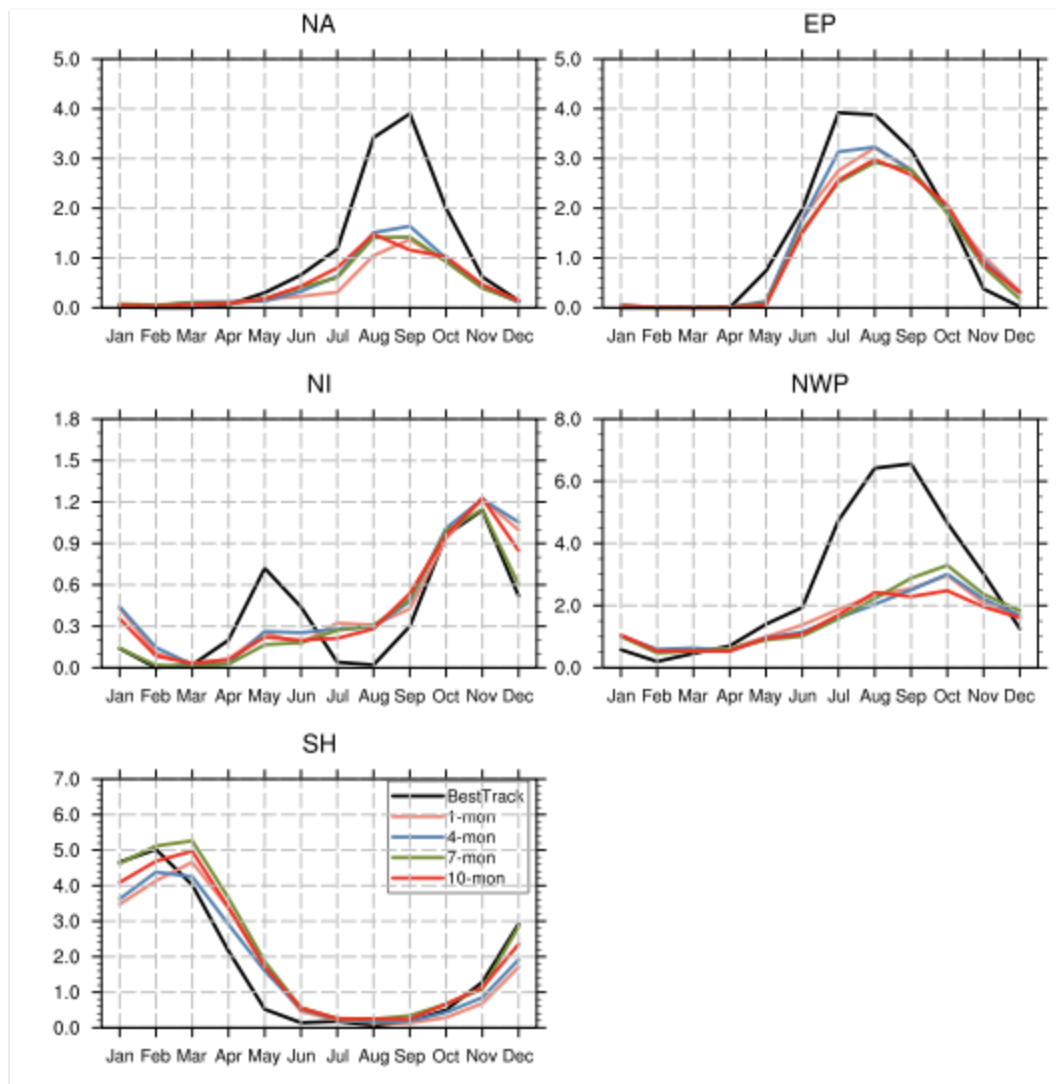


Fig. S5: Climatological mean TC number seasonality in observations (black curves) and SMYLE forecast at 1-month (orange), 4-month (blue), 7-month (green) and 10-month (red) lead time in different TC basins -- North Atlantic (NA), eastern Pacific (EP), North Indian Ocean (NI), Northwestern Pacific (NWP) and Southern Hemisphere (SH).