

Introducing a VIIRS-based Fire Emission Inventory version 0 (VFEIv0)

Gonzalo A. Ferrada¹, Meng Zhou², Jun Wang^{1,2}, Alexei Lyapustin³, Yujie Wang⁴, Saulo R. Freitas⁵, Gregory R. Carmichael¹

¹Center for Global and Regional Environmental Research, The University of Iowa, Iowa City, IA, USA

²Interdisciplinary Graduate Program in Informatics, The University of Iowa, Iowa City, IA, USA

³Laboratory for Atmospheres, NASA Goddard Space Flight Center, Greenbelt, MD, USA

⁴Joint Center for Earth Systems Technology, University of Maryland Baltimore County, Baltimore, MD, USA

⁵Center for Weather Forecast and Climatic Studies, National Institute for Space Research, São José dos Campos, SP, Brazil

Correspondence to: Gonzalo A. Ferrada (gonzalo-ferrada@uiowa.edu)

Abstract. A new open biomass burning inventory is presented that relies on the fire radiative power data from the Visible Infrared Imaging Radiometer Suite (VIIRS) onboard the Suomi NPP satellite. This VIIRS-based Fire Emission Inventory (VFEI) provides emission data from early 2012 to 2019 for more than 40 species of gases and aerosols at spatial resolutions of around 500 m. We found that VFEI produces similar results when compared to other major inventories in many regions of the world. Additionally, we conducted regional simulations using VFEI with the Weather Research and Forecasting (WRF) model with chemistry (WRF-Chem) for Southern Africa (September 2016) and North America (July-August 2019). We compared aerosol optical depth (AOD) from the model against two observational datasets: the MODIS Multi-Angle Implementation of Atmospheric Correction (MAIAC) product and AErosol RObotic NETwork (AERONET) stations. Results showed good agreement between both simulations and the datasets, with mean AOD biases of around +0.03 for Southern Africa and -0.01 for North America. Both simulations were not only able to reproduce accurately the AOD magnitudes, but also the inter-diurnal variations of smoke concentration. In addition, we made use of the airborne data from the ObseRvations of Aerosols above CLouds and their intEractionS (ORACLES; Southern Africa) and the Fire Influence on Regional to Global Environments Experiment and Air Quality (FIREX-AQ; North America) campaigns to evaluate the simulations. In Southern Africa, results showed correlations higher than 0.77 when comparing carbon monoxide and black carbon. In North America, correlations were lower and biases higher. However, this is because the model was not able to reproduce the timing, shape, and location of individual plumes over complex terrain (Rocky Mountains) during the FIREX-AQ campaign period.

1 Introduction

Biomass burning (BB) occurs in all vegetated regions of the world. Fires can be ignited naturally through lightning or via anthropogenic sources. For example, in tropical regions, fires are used for crop clearing or deforestation. Based on different datasets, Andreae (2019) estimated that between 4.3 and 12.9 Pg a⁻¹ of dry matter is burned globally, which leads to the emission of several types of aerosol species and many trace gases. Many of these emissions, such as carbon dioxide (CO₂),

Deleted: global warming

water vapor, methane (CH₄), and black carbon (BC), among others, play an important role in climate change. Bond et al. (2013) estimated that the radiative forcing of BC is +1.1 W m⁻² and that BB is the source of between 33 and 41 % of the global BC emissions. Fires also emit several ozone precursors (hydrocarbons and nitrogen oxides) that combined with the emitted particulate matter create poor air-quality episodes and health emergencies when sensitive populations are exposed (e.g., Dennekamp et al., 2015; Knorr et al., 2017). Moreover, aerosol particles can act as cloud condensation nuclei, altering the physics of clouds and precipitation patterns. Thus, aerosols have not only a direct effect on radiation, but indirect and semi-direct effects as well (Ge et al., 2014).

Several BB inventories have been created to quantify emissions of diverse species in different biomes. They are useful for atmospheric composition, weather, and climate studies, often using atmospheric models. These inventories rely on remote sensing observations of thermal anomalies or “hotspots”. Some of them, e.g., the Global Fire Emissions Database (GFED; van der Werf et al., 2017, 2010), the Fire INventory from NCAR (FINN; Wiedinmyer et al., 2011) and the Fire Locating and Modeling of Burning Emissions (FLAMBE; Reid et al., 2009) use the *bottom-up* approach which consists of using the burned area or fire size derivation to calculate emissions for species s (E_s) as follows:

$$E_s = M_{dry} \beta A_{burnt} EF_s, \quad (1)$$

where M_{dry} represents the biomass above ground available to burn, β is the combustion factor, i.e., the fraction of the biomass that burns, A_{burnt} is the burnt area and EF_s is the emission factor for a given species. The burnt area is estimated from satellite data, while the other coefficients come from literature and often are categorized on the biome where the fire occurs. However, some authors (e.g., Hoelzemann et al., 2004; Ito and Penner, 2004; Ichoku and Kaufman, 2005) have noted that the burnt area estimations can have large uncertainties because it is a variable difficult to measure.

Other inventories make use of the fire radiative power (FRP) which can be defined as the part of chemical energy emitted as radiation during the BB process and it is indicative of the fire intensity. In this case, emissions for each species are calculated as follows:

$$E_s = \kappa EF_s \frac{FRP}{A}, \quad (2)$$

where A is the satellite pixel area and κ is an empirical constant that relates the FRP to the amount of dry biomass burnt. The ratio between FRP and A is often called FRP density. This technique is called *top-down* approach and examples of emission inventories in this category are the Quick Fire Emission Dataset (QFED; Darmenov and da Silva, 2013), the Global Fire Assimilation System (GFAS; Kaiser et al., 2012) and the Fire Energetics and Emissions Research (FEER; Ichoku and Ellison, 2014). While almost all inventories rely on observations from the Moderate Resolution Imaging Spectroradiometer (MODIS) onboard of the Terra and Aqua satellites, they have large uncertainties, sometimes up to a factor of 10 at the regional scale (Zhang et al., 2014; Wang et al., 2018; Pan et al., 2019).

With the increase of computational resources available, atmospheric models now include sophisticated chemistry and aerosol mechanisms, considering hundreds of species and reactions, and are capable of using high-resolution model grids for local studies (e.g., Grell et al., 2005; Emmons et al., 2010; Pfister et al., 2020; Bindle et al., 2021; Bey et al., 2001; Freitas et al.,

2017). However, BB emission inventories often provide data for a limited number of species [in their publicly available datasets](#), and at spatial resolutions no higher than 0.1° (~ 10 km). [The first](#) can be a problem in model simulations since missing species can be highly volatile (e.g., hydrocarbons) and, thus, producing unrealistic results in smoke plume composition [by, for example, misrepresenting the formation of secondary species \(e.g., ozone, secondary aerosols\)](#). In addition, coarse resolution

inventories can produce a misplacement of fires in high-resolution model grids (< 10 km) since the model matches the closest coordinates from the inventory into the grid (see section 5). This can make the smoke plumes and its transport to be subject to different circulation patterns which is particularly important in regions of complex topography.

Aiming to solve these potential issues, in this paper we introduce an open biomass burning emission inventory using the *top-down* approach. We use FRP estimations from the Visible Infrared Imaging Radiometer Suite (VIIRS) instrument I-band (Schroeder et al., 2014) onboard of the Suomi National Polar-orbiting Partnership (Suomi NPP) and NOAA-20 satellites. We named this inventory as VIIRS-based Fire Emission Inventory version 0 (VFEIv0; hereafter simply as VFEI). VFEI provides daily emission fluxes for 46 species of gases and aerosols using emission factors from Andreae (2019) at a resolution of 0.005° (~ 500 m). The paper is organized as follows: section 2 describes the methodology of VFEI, including assumptions and filters applied. In section 3 we present VFEI product results and comparison to other major BB inventories. Section 4 describes the atmospheric simulations made with the Weather Research and Forecasting (WRF) model with chemistry (WRF-Chem; Grell et al., 2005) for two regions: Southern Africa in September 2016 and North America in July-August 2019. Model results are compared against aerosol optical depth (AOD) observations from the Moderate Resolution Imaging Spectroradiometer (MODIS) Multi-Angle Implementation of Atmospheric Correction (MAIAC; Lyapustin et al., 2018) product and Aerosol RObotic NETwork (AERONET). In addition, a comparison is made against airborne data of aerosol and gaseous species from the ObseRvations of Aerosols above CLouds and their intERactionS (ORACLES; Redemann et al., 2020) and the Fire Influence on Regional to Global Environments Experiment and Air Quality (FIREX-AQ; <https://www.esrl.noaa.gov/csd/projects/firex-aq/>, last access: 21 April 2022) field experiments carried out in the South Atlantic Ocean and the Continental US, respectively.

2 Description of VFEI

VFEI produces emissions by applying the *top-down* approach as shown in Eq. (2), where EF_s has units of $\text{g} [\text{species}] \text{kg}^{-1} [\text{dry-matter}]$, FRP has units of MW (or MJ s^{-1}), A is in m^2 and κ in $\text{kg} [\text{dry-matter}] \text{MJ}^{-1}$. The FRP information is taken from the VIIRS active fire detection data product (Schroeder et al., 2014; Csizsar et al., 2014) described in section 2.1. Table 1 shows the 46 species of gases and aerosols that VFEI considers and their emission factors (EF_s). These emission factors were compiled by Andreae (2019) using data available from many studies related to open biomass burning emissions, including field campaigns, and considers six different biomes. These emission factors are an update of an older version presented by Andreae and Merlet (2001). The emission factor of nitrous oxide (N_2O) over peatland was filled using its value from savanna and grassland, since it was not reported in the source. In addition, the conversion factors (κ) used in VFEI vary according to the biome (see table 2 of Kaiser et al., 2012). These conversion factors were developed by Heil et al. (2010). They made a

Deleted: These

linear regression analysis between the dry matter combustion from GFEDv3.1 and MODIS FRP to produce these coefficients, which are also applied in the GFAS inventory. Both emission and conversion factors are assumed to be climatologically representative for each biome type.

2.1 VIIRS active fire product

VFEI uses the daily hotspot information taken from the VIIRS active fire detection data product (Schroeder et al., 2014; Csiszar et al., 2014; doi:10.5067/VIIRS/VNP14IMG.001). The algorithm uses a similar approach as in the MODIS Fire and Thermal anomalies product (Giglio et al., 2003) but relies on the middle and thermal infrared imagery data from VIIRS I-band which has a resolution of 375 m at nadir. This high-resolution allows for a better detection of small fires when compared against VIIRS M-band (750 m nominal resolution; Schroeder et al., 2014) and MODIS (1 km resolution at nadir; Kaufman et al., 1998). Another advantage of VIIRS over MODIS is the wider swath of observation. The swath width of MODIS is around 2340 km while VIIRS has a swath width of ~3040 km. This means that VIIRS offers daily observations with no data gaps over the tropics. In addition, Li et al. (2018) made a comparison between the active fire products from MODIS and VIIRS and found that the FRP values are comparable between them with small variations in some regions. They further noted that MODIS is strongly dependent on the view zenith angle (i.e., pixel growth with scan angle), while VIIRS, due to its different design, show much less dependence (Wang et al., 2018). Furthermore, VIIRS mid-infrared I-band has a lower saturation temperature than MODIS and VIIRS M-band (Polivka et al., 2015), and thus, the FRP estimations for the VIIRS I-band product is derived from VIIRS M-bands and equally split into the observed I-band pixels.

Currently, VIIRS is onboard two polar orbiting satellites: (1) Suomi-NPP, a joint mission between the National Aeronautics and Space Administration (NASA) and the National Oceanic and Atmospheric Administration (NOAA), was launched in October 2011 and began providing data since early 2012; and (2) NOAA-20 which was launched in November 2017; however, data began to be available since early 2020. Here, we focus on the data from VIIRS onboard Suomi-NPP because we make analysis and comparison to other inventories during a period of 8 years (from 2012 to 2019) and the VIIRS active fire detection data product was developed based on the instrument onboard Suomi-NPP. In addition, the fire detection data product from NOAA-20 was not available as of mid-2021. Suomi-NPP overpasses the equator at around 1:30 PM and AM local time.

2.2 Gridding of hotspots

From the VIIRS active fire product, VFEI uses the information on coordinates (latitude and longitude), FRP, pixel area (A), the day/night flag and the confidence (low, nominal, or high) of each hotspot. The confidence is an indication of the quality of individual hotspots or fire pixels, and it is determined within the active fire algorithm. Low confidence pixels are associated with areas contaminated by sun glint and low relative temperature anomaly (<15 K) in the middle infrared channel (I4). Nominal and high confidence observations are free of sun glint contamination during daytime and, in contrast, have a high temperature anomaly in the mid-infrared channel. Furthermore, high confidence pixels are characterized by day- or nighttime

130 saturated pixels. To assure the quality of the emissions and remove potential false detections, VFEI does not consider low confidence observations.

135 The day/night flag is used to separate the hotspots into daytime and nighttime observations. Then, each hotspot is gridded into a global fine grid of 0.005° spatial resolution in both latitude and longitude directions. This is done by using the nearest neighbor remapping approach and the purpose is to reduce the potential multiple observations of the same fire that can occur around the edges of the swath and/or overlapping areas of different swaths (i.e., bowtie effect; Polivka et al., 2016). If a single grid point of VFEI contains more than one observation, then the average values of FRP and pixel area are taken. After gridding the hotspots separately for day- and nighttime observations, we take the average between both. This is done to constrain the average daily emission fluxes that are reported by VFEI. The assumption behind this is that fires tend to have a peak on FRP around early afternoon and a minimum during the night, following a gaussian distribution (Darmenov and da Silva, 2013; Kaiser et al., 2012; Pereira et al., 2009; Roberts et al., 2009; Li et al., 2019). The result is a single fine grid with average daily FRP density (FRP/pixel area) that include a representation of the typical diurnal cycle of fires.

2.3 Biome map

145 The emission factors from Andreae (2019; table 1) are classified into 6 biomes: tropical forest, temperate forest, boreal forest, savanna and grassland, cropland and peatland. A common way to categorize each fire into these biomes is to use MODIS Terra and Aqua combined land cover product (Friedl et al., 2015; doi:10.5067/MODIS/MCD12C1.006), which contains 17 land categorizations defined by the International Geosphere-Biosphere Programme (IGBP). This technique has been used in FINN, QFED and GFAS, among others. However, there is not a consensus on how to differentiate between tropical, temperate, and boreal biomes. For example, QFED defines forests between 30° S and 30° N as tropical forests, and FINN defines as boreal to all forests at latitudes higher than 50° N. On the other hand, Andreae (2019) suggests that boreal forests exist at latitudes higher than 60° N. These rough estimations on the transitions of the biomes could introduce uncertainties on the final emissions reported. To address this, we not only use the land cover categorizations from MODIS, but also complement it with the Köppen climate classifications (Beck et al., 2018) to differentiate between tropical, temperate and boreal biomes.

150 Table 2 shows the mapping of the 17 land cover categories from MODIS and the Köppen climate classifications used to define each biome considered in VFEI. We selected 6 warm climates to define a tropical layer and 8 cold climates to define a boreal layer (Fig. S1). The boreal mask was limited to the northern hemisphere only. Then, the biomes in VFEI were defined when both conditions (IGBP land cover and climate) were met. The global result is shown in figure 1 and this biome map provides more realistic transitions among tropical, temperate, and boreal regions.

2.4 Static corrections

160 Some filters are applied to the data from the VIIRS active fire product to reduce uncertainties and false detections. Besides the bowtie correction to avoid potential overrepresentation of fires, we also remove data from gas flares using the dataset presented

by Elvidge et al. (2016), which contains coordinates of every gas flare in the world (Fig. S1). Thus, hotspots within a radius of ~2 km of these gas flares are removed from the processing before gridding.

In addition, after gridding, all hotspots over water are inspected individually. We examine the 8 adjacent grid points of each fire over water to determine if there is land around it. If at least one of these adjacent grid points is land, then the pixel in question is kept. The assumption here is that the fire occurred near a body of water and this situation can happen because VFEI uses the dominant IGBP land categories from MODIS which can hide potential fractions of land in such grid point. On the other hand, if none of the adjacent pixels is land, then the fire in question is removed from the dataset.

Another important correction is related to the VIIRS FRP data. As mentioned in section 2.1, VFEI only uses data from VIIRS onboard of Suomi-NPP, which overpasses the equator at around 1:30 AM/PM. In contrast, MODIS is available onboard of Terra and Aqua satellites that overpass the equator at around 10:30 and 1:30 AM/PM, respectively. Then, MODIS provides more data to constrain the diurnal cycle of the fires and, thus, the total daily emissions. One of the impacts of this is noticeable when using the MODIS active fire product (Giglio et al., 2003, 2016) and apply the same methodology as for VFEI (data filtering, aggregation, etc.). Results (not shown) indicated that globally, FRPs are 20% higher than when using the VIIRS active fire product. Because of this, we scale up the FRP from VIIRS by a factor of 1.2 globally. This factor is in agreement with the findings of Li et al. (2018). However, this generalization may not be representative of all the regions of the world and further studies are needed.

Deleted: This factor was determined by using the same methodology described here but using data from the MODIS active fire product (Giglio et al., 2003, 2016). The results (not shown) indicated that global emissions with MODIS were 20 % higher than the ones with VIIRS.

Deleted: also

2.5 Product

The VFEI product is offered in NetCDF format (version 4) that includes daily global emission fluxes (in $\text{kg m}^{-2} \text{s}^{-1}$) for the species defined in table 1 at the nominal resolution of 0.005° (~500 m). Each hotspot contains information on grid geolocation (latitude and longitude), plus average FRP (MW). Other supplemental information, such as area of the VFEI grid cell and molecular weight of gaseous species are included in case a unit conversion is needed by the user. The file size of each daily NetCDF is around 5 to 15 Megabytes, depending on the number of hotspots included in a particular day. The data ranges from 20 January 2012 to present, except where the VIIRS active fire product was not available, i.e., 25 March 2012 and 25 August 2014. The most recent data is classified as near-real-time (NRT), while the data older than 3 months is classified as archived, which contains all the quality assurance provided in the VIIRS active fire product. The data can be downloaded from a dedicated server from the University of Iowa (<http://bio.cgrer.uiowa.edu/VFEI/DOWNLOAD>; last access: 21 April 2022).

3 Results

3.1 Global emissions

According to VFEI, open BB emits 2098.5 Tg of carbon globally every year. We expressed carbon emissions by taking the carbon part of five dominant species: carbon monoxide (CO), CO₂, CH₄, black carbon and organic carbon (OC):

$$E_C = \frac{12}{28}E_{CO} + \frac{12}{44}E_{CO_2} + \frac{12}{16}E_{CH_4} + E_{BC} + E_{OC}, \quad (3)$$

where the ratios represent the weights of carbon on each species (molar mass of carbon over molar mass of compound). However, emissions vary greatly from region to region (Fig. 2a). Table 3 shows the 10 regions defined for analysis that are also drawn in figure 2a. Thus, tropical regions (CAm, SAM, NAF, SAF and SEA) account for more than 78 % of carbon emissions, where Southern Africa alone accounts for 35.9 % (754 Tg a⁻¹) of the global total. Furthermore, each of these regions show a well-defined annual cycle (Fig. 2b), where tropical regions tend to have a peak of BB during their respective dry seasons, while in extratropical regions the peak is during spring and summer. Figure 2b also shows the interannual variability of the fire activity in every region. Both African regions (NAF and SAF) and Central America (CAm) have a low year-to-year variability, because most of the fires in these regions are man-made agricultural fires. On the other hand, extratropical regions, such as Siberia (Sib), North America (NAm) and boreal America (BAm), show a high interannual variability. This can be attributed to the nature of the fires in these regions, in which natural ignition of fires via lightning is more common. Thus, being subject to interannual climate variabilities.

3.2 Comparison to other inventories

We compared VFEI budgets against ~~four other~~ major inventories detailed in table 4. The versions that we used for comparison are GFED4.1s, FINNv1.5, QFEDv2.5r and GFASv1.2. These inventories rely ~~on one or more~~ compilations of emission factors for their species and biomes considered. All these inventories use hotspots detections from MODIS and key differences among their methodologies are that GFED and FINN use the *bottom-up* approach, while QFED and GFAS use the *top-down* approach (i.e., FRP). These inventories were chosen because they are widely used, especially in the models of their respective institutions developed them, and they are easily accessible on the internet. For simplicity, hereafter, we refer to them as their core name only, omitting their versions, except for FINN because we additionally include a recently developed version from this inventory (FINNv2.4). FINNv2.4 also uses the bottom-up approach but combines both MODIS and VIIRS hotspots detections to generate emissions. Furthermore, this newest version includes improvements in the fuel loadings and emission factors; however, a new version to be released in the future will include more developments and adjustments to specific regions (Christine Wiedinmyer, personal communication).

Figure 3 shows the average annual emissions (2012-2019) of selected species from VFEI, and each inventory mentioned above for each region displayed in figure 2. To make inventories comparable among each other, we applied the definition of total carbon from Eq. (3) to all inventories. Globally, all of them, including VFEI, seem to agree that the total carbon emissions are around 2000 Tg a⁻¹, except for FINNv2.4 which doubles that amount (Fig. 3a). The same pattern is observed in the other selected species (CO, SO₂, BC, OC and PM_{2.5}), however, QFED enhances emissions of the last four species by a factor of up to 5 depending on the biome (Darmenov and da Silva, 2013). Because of this, QFED emissions of these four species are always higher than the other inventories in all regions.

Deleted: other four

Deleted: i

Deleted: burnt area to estimate emissions (

Deleted:)

Deleted: FRP (

When BB emissions are analyzed by region, inventories tend to disagree more among them. This happens especially in regions with more uncertain emission factors, such as boreal forests (Sib and BAm) and peat fires that occur usually in regions of Southeast Asia (SEA). Because of this, inventories often apply adjustment factors to cope with aerosol loadings observed in these regions, producing differences among them that can vary up to factor of 7 in total carbon and up to 10 in BC at the regional level. In general, VFEI emissions are lower than the average of the other inventories in such regions of high uncertainty, and this could be because VFEI does not include a treatment for fires obscured by clouds, which is particularly important at high latitudes. Thus, it is not a surprise that VFEI has lower emissions than the other inventories in Sib and BAm. In addition, VFEI does not apply any adjustment factor depending on biome, since more global modeling studies are needed. As implied in section 3.1, the major global sources of BB carbon emissions are SAf (35.9 %), NAf (18.7 %) and SAm (10.9 %). In these regions, inventories tend to agree among each other (except FINNv2.4 and QFED because of the reasons explained above). Nonetheless, VFEI estimates higher emissions in SAf than the other inventories with 754 Tg C a^{-1} , which is around 16 % higher than the carbon emissions estimated by GFED (649 Tg C a^{-1}) and nearly 50 % more than the estimations by QFED and GFAS (550 and 498 Tg C a^{-1} , respectively). The higher emissions in VFEI may be because most of the fires in SAf tend to be small fires and VIIRS has a higher capability than MODIS on detecting them due to its higher resolution. In section 4, we conducted atmospheric model simulations for Southern Africa to examine the accuracy of VFEI. It is important to note that all these inventories, including VFEI, are estimations and none of them are observations of actual BB emissions. Each of the inventories have their own uncertainties and assumptions that explain most of the differences among them and most of the emission factors used are generalizations from lab experiments and in-situ measurements. However, as explained by several authors (e.g., Andreae and Merlet, 2001; Akagi et al., 2011; Andreae, 2019) these observations used to compile the emission factors are scarce in space and time.

4 Atmospheric model simulations

4.1 Model setup

To assess VFEI emissions, we conducted atmospheric simulations using WRF-Chem (Grell et al., 2005) version 4.2 for two domains (Fig. 4): (1) Southern Africa during September 2016 at 28 km spatial resolution and (2) North America between 20 July and 11 August 2019 at 20 km resolution. The North American simulation also considered a nested domain over the Pacific Northwest at 6.7 km resolution. All simulations considered 52 vertical layers, with higher resolution near surface. For all domains, outputs were produced every three hours containing information on meteorology, chemistry and aerosols and every one hour for optical properties, such as AOD. Hereafter, we refer to these simulations as WRF-VFEI. It is important to note that these simulations allow for an assessment on the quantities of VFEI emissions in typical model mid-resolution applications. However, they do not exercise the advantages of the high-resolution of VFEI. Section 5 provides an insight of this capability.

The domains and periods of these simulations were chosen to overlap with two recent field experiments: ORACLES (Redemann et al., 2020) and FIREX-AQ (<https://www.esrl.noaa.gov/csd/projects/firex-aq/>, last access: 21 April 2022). Both experiments were focused on measuring smoke composition using aircraft equipped with diverse instruments. ORACLES used the P-3 plane from the National Aeronautics and Space Administration (NASA); however, all their flights were conducted over the South Atlantic Ocean (Fig. 4a) because its main focus was to study the interaction of smoke with the semi-permanent stratocumulus layer over the ocean. During 2016, ORACLES was based in the airport of Walvis Bay, Namibia. Similarly, the NASA DC-8 aircraft was used during FIREX-AQ to sample fresh and semi-fresh smoke plumes from wildfires and agricultural fires in the Continental US. During its first phase (22 July to 17 August 2019), FIREX-AQ was based in Boise, Idaho, USA, with most of the flights conducted over the Pacific Northwest region (Fig. 4b). In its second phase, FIREX-AQ was deployed in Salina, Kansas, until early September 2019; in this study we focused only in its first phase.

Both simulations were made using meteorological data from ERA5 (Hersbach et al., 2020) and chemistry and aerosol data from the Copernicus Atmosphere Monitoring Service (CAMS) reanalysis (Inness et al., 2019) as initial and boundary conditions. Both datasets are produced by the European Centre for Medium-Range Weather Forecasts (ECMWF). We allowed a 14-day period for *spin-up* of the model from its initial condition. As mentioned above, simulations for North America were made using a nested domain with continuous feedback and online with its parent domain.

The chemistry mechanism used in both simulations was the Model for Ozone and Related chemical Tracers T1 (MOZART-T1; (Emmons et al., 2020) complemented with the Model for Simulating Aerosol Interactions and Chemistry (MOSAIC; Fast et al., 2006; Zaveri et al., 2008; Gao et al., 2016). MOSAIC uses a sectional representation of aerosol size distribution, and considers interactions with radiation and clouds (Chapman et al., 2009). MOSAIC provides aerosol data in eight size bins. The chemical constituents of aerosols are assumed internally mixed within each bin; however, they are considered externally mixed between bins. Other selected model configurations are shown in table S1.

4.2 Emissions

We used biogenic emissions by using Model of Emissions of Gases and Aerosols from Nature (MEGAN; Guenther et al., 2006) in both domains. These are complemented by the Emissions Database for Global Atmospheric Research Hemispheric Transport of Air Pollution (EDGAR-HTAP; Janssens-Maenhout et al., 2012) anthropogenic emissions for the Southern African domain, while using the 2017 emission inventory prepared by the US Environmental Protection Agency (EPA; <https://www.epa.gov/air-emissions-inventories/2017-national-emissions-inventory-nei-data>; last access: 21 April 2022) for North America. Naturally, VFEI was used in both simulations to account for BB emissions.

Panels a and b from figure 5 show the total carbon emissions calculated by VFEI in each domain during their corresponding simulation periods. It is evident that fire activity is more widespread in the African simulation and with higher magnitudes. In areas between 5° S and 20° S the carbon emissions easily exceed 0.2 Tg, with local areas in Mozambique and Zambia surpassing 10 Tg. On the other hand, in North America fires are not widespread due to their different nature mentioned above. Thus, total carbon amounts from BB are much smaller than the ones in the African domain. Here, the areas with higher

emissions are concentrated in the Pacific Norwest region, precisely the focus area of FIREX-AQ during this period. In fact, a large fire event occurred in early August 2019, and this is detected by VFEI and by the other four inventories as well (Fig. 5d). It is important to mention that VFEI carbon emissions seem to be lower than the other inventories in both simulations, especially in North America. This can happen since, in contrast to the other inventories, VFEI does not include a treatment for fires potentially obscured by clouds. This phenomenon can be particularly important in fires occurring in mid and high latitudes because the periodic passage of frontal systems and other precipitation events. Nonetheless, a future version of VFEI will include a correction for this following the same approach as in QFED (see section 6).

In Southern Africa, BB emissions were distributed daily by using a gaussian distribution with a peak at 2 PM local solar time as suggested in Roberts et al. (2009). In North America, FRP data from the active fire product of the Geostationary Operational Environmental Satellites (GOES-16 and GOES-17; Li et al., 2020) was used to constrain the BB diurnal cycle of large fires, since they often follow an erratic diurnal cycle (e.g., Li et al., 2019; Wiggins et al., 2020; Zhang and Kondragunta, 2008). However, most observations from these datasets are from large fires only. For other fires the BB diurnal cycle was constrained depending on biome type following Li et al. (2019). It is important to note that the FRP from the GOES satellites was used only to constrain the diurnal cycle and not the emissions.

BB emissions were also distributed vertically using the plume rise model described by Freitas et al. (2007, 2010), which uses the meteorological conditions from WRF-Chem to compute the injection layer of smoke. We used this process only for the North American simulation. Ferrada et al. (2021) showed that the use of plume rise in Southern Africa could lead to overestimations of smoke in the mid-troposphere and found better results when emissions were distributed within the boundary layer.

4.3 AOD evaluation

In this section we evaluate modeled AOD against observations from MODIS MAIAC (Lyapustin et al., 2018). MODIS MAIAC provides high quality AOD retrievals at 1 km resolution globally. In this study, we used preliminary results based on the MODIS MAIAC collection 6.1 (C6.1). This new version provides several improvements from the collection 6 (C6). The main one is the use of updated regional aerosol models correcting for the known biomass burning AOD underestimation at high AOD values (AOD>0.6). The updated models, derived from analysis of the v3 AERONET dataset, have a dynamically increasing absorption and reduced effective particle size with AOD at AOD>0.6, typical of the emitted BB smoke in comparison to the background aerosol (Lyapustin et al., *manuscript in preparation*). MAIAC 6.1 also introduced a 300 km buffer zone covering the transition between different MAIAC regions with different aerosol model absorption. The linear change of the aerosol model properties from one region to another avoids AOD discontinuity on the regions' boundary. We gridded MAIAC C6.1 1 km resolution data into each model grid by taking the average of all observations falling within a grid box. In addition, we used the AERONET sun photometer data (version 3, level 2.0, cloud-cleared and quality assured; Giles et al., 2019) from available stations in each domain. The data from the model simulations were extracted by using the closer grid cell to each AERONET site.

Deleted: (

From the model side, the optical properties of each aerosol bin included in MOSAIC are calculated using the Mie code (Toon and Ackerman, 1981). Then, the bulk optical properties of the aerosols are calculated by simply summing across all bins (Fast et al., 2006; Barnard et al., 2010). The Mie code provides aerosol optical properties in 4 wavelengths (300, 400, 600 and 1000 nm). Here, we compare AOD against MODIS MAIAC and AERONET sites at wavelengths of 550 and 500 nm, respectively.

We use the model data from wavelengths 400 and 600 nm to calculate the Angstrom exponent (α) to then estimate the AOD at the desired wavelength (λ), as follows:

$$\alpha = -\frac{\log\left(\frac{AOD_{400}}{AOD_{600}}\right)}{\log\left(\frac{400}{600}\right)}, \quad (4)$$

$$AOD_{\lambda} = AOD_{400} \left(\frac{\lambda}{400}\right)^{-\alpha} \quad (5)$$

4.3.1 Southern Africa

Figure 6 shows a composite of averaged AOD at 550 nm during September 2016 over Southern Africa from MODIS MAIAC C6.1, the WRF-VFEI simulation and two reanalysis products: CAMS and the Modern-Era Retrospective analysis for Research and Applications (MERRA-2; Gelaro et al., 2017). The data from the model and reanalysis products were sampled at the locations and observation times of MODIS MAIAC, whenever there was observation. Thus, this is a direct comparison of each dataset against observations. The number of observations (Fig. 6e) gives an insight of how robust these averages in each grid point are. Evidently, land areas with little or absent cloud coverage throughout the period are the ones with higher number of observations and, thus, samples from the models. Observed AOD suggests that the smoke plume was located mostly over Angola, western Zambia, and the southern regions of the Democratic Republic of the Congo (DRC) with magnitudes between 0.4 and 0.8 (Fig. 6a). Although, the location of the core of the smoke plume is well reproduced by WRF-VFEI and the reanalysis products (Fig. 6b-d), they differ on their magnitudes. WRF-VFEI shows overestimations in AOD of around 0.14 in the western side of Southern Africa, while slightly underestimates the AOD in the east side. The higher biases appear in northwest Angola and the westernmost tip of the DRC, however, a relatively few number of observations is weighted in the average in these areas. In general, the reanalysis products underrepresent the AODs by around 0.1 in the case of CAMS and 0.22 in the case of MERRA-2.

Figure S2 includes the same comparison as in figure 6 but using MAIAC C6 instead. In general, the AOD in the source region is higher in C6.1 than in C6, due to the improved representation of the aerosol properties in high AOD regions. Additionally, the boundary between two different aerosol models is noticed at around 18° S (Fig. S2). As a result, AOD south of this parallel is lower compared to the northern side, leading to noticeable biases from WRF-VFEI and reanalyses. In contrast, this does not occur when using MAIAC C6.1 (Fig. 6).

To make a more extensive analysis, we compare WRF-VFEI against AERONET data (Fig. 7). We selected six sites that were closer to the core of the smoke plume to have a better insight on the inter-diurnal variability of AOD (Fig. 7a-f). In general, WRF-VFEI is able to reproduce the trends with accuracy, with correlations of ~0.7 and mean AOD biases of around 0.1. We

highlight the stations of Windpoort and Bonanza (Fig. 7e,f), both located in Namibia within the region with different aerosol model in MAIAC as discussed above. WRF-VFEI not only reproduces the AOD variability very well in both stations (correlations higher than 0.86), but the AOD biases are also small (lower than 0.1).

During September 2016, 24 AERONET sites had data for comparison. When considering all this information available (more than 36000 data points) we find that WRF-VFEI has an overall mean AOD bias of +0.029 and correlation of 0.85 (Fig. 7h). These metrics confirm a good agreement between VFEI emissions and observations.

4.3.2 North America

We applied the same approach to evaluate the simulation over North America. Figure 8 shows the comparison of MODIS MAIAC AOD against WRF-VFEI and the two reanalysis products included as reference: CAMS and MERRA-2. Overall, AODs in this domain are much smaller than in Southern Africa since North America does not experience widespread fire activity. In contrast, BB tends to be mostly controlled fires, with occasional wildfires that often ignite in the west side of the continent. Moreover, sources of aerosols in North America are more diverse, with anthropogenic aerosols playing an important role in the AOD. In addition, sporadic long-range transport of smoke can contribute to high aerosol loadings. With this in consideration, WRF-VFEI and the reanalysis products capture the main features of the AOD pattern in North America (Fig. 8b), with the higher AODs (> 0.2) in the densely populated areas of the Eastern and Southern US, which is also observed by MODIS MAIAC and the reanalysis products. Furthermore, WRF-VFEI reproduces AODs higher than 0.3 in Central Canada that were produced by a relatively intense fire activity in that region during this period. Overall, WRF-VFEI seems to slightly underestimate AODs in the domain (biases of -0.04).

It is important to note that these AODs consider all sources of aerosols (BB, anthropogenic and biogenic). Since large fires in North America tend to be more sporadic, we focused on the largest fire event observed during this period which occurred in early August 2019 in the state of Washington in the US (47.97° N, 118.45° W). This fire was called as Williams Flats fire (WFF). Figure 9 shows a similar composite as figure 8, but considering the nested domain used in this simulation and averaged only between 6-9 August 2019 to isolate this fire event. Here, the smoke from the fire is clearly visible in MODIS MAIAC with AODs ranging from 0.3 to 0.7 during this period. The averaged map also captures the long-range transport of the smoke over Northern Idaho and Montana. WRF-VFEI reproduces the smoke from this fire well, although with smaller AODs over Montana (Fig. 9f). This can be due to several reasons: the resolution of the inner domain (6.7 km) is not high enough to reproduce abrupt changes in topography that are common in this mountainous region; the plume rise process may be injecting smoke at altitudes not high enough for it to be subject to stronger winds, which has been documented in Ye et al. (2021); and/or chosen parameterizations have their own uncertainties that contribute to errors in the meteorology and subsequent transport of the smoke. The reanalysis products show similar patterns as observed by MODIS MAIAC with local biases, especially in the fire source. However, the details of the plume are difficult to evaluate in these reanalysis products since they provide data at coarse resolutions (CAMS at ~ 80 km and MERRA-2 at ~ 25 km). For visualization purposes, these datasets were gridded into the model grid.

395 Figure 10 shows an AOD comparison between AERONET and WRF-VFEI. Six stations were chosen to be analyzed as time
series. Five of these stations were the closest to the WFF (Fig. 10a-e) while the UWisconsin_SSEC site (Fig. 10f) was chosen
because it was affected by long-range transport of smoke from Canada in late July 2019. Hence, the data from these stations
can be considered to contain a strong signal from BB rather than aerosols from other emission sources. In general, WRF-VFEI
reproduces the trends and day-to-day variability in these stations with correlations above 0.9 in UWisconsin_SSEC and 0.79
400 in Missoula. In contrast, correlations were low (< 0.4) in Cliff_Creek_6, probably due to its location in highly complex terrain
(mountainous region). Another feature observed is that WRF-VFEI did not always reproduce the timing of the smoke plume
over each station. For example, on 9 August the Rimrock AERONET site (Fig. 10d) experienced high AODs that decreased
quickly (from ~ 0.33 to 0.17 in a matter of few hours). WRF-VFEI also reproduced the same trend but around 4 hours in
advance. These situations obviously have an impact on the metrics used to evaluate the performance of the model and
405 highlights the need for multiple observations of fires throughout the day to be able to parametrize better the diurnal cycle of
BB emissions. Overall, when considering all 109 AERONET stations available within the domain, results show that the model
is capable of reproducing AOD values with high accuracy (mean bias of -0.013 and correlation of 0.73; Fig. 10h). However,
as mentioned above, the AODs in this domain are not always related to BB, but in many cases due to anthropogenic emissions
(urban areas, transport, industries, etc.).

410 **4.4 Comparison against airborne data**

4.4.1 ORACLES

The ORACLES field campaign provided airborne observations of smoke from Southern Africa over the South Atlantic Ocean
during the three years the mission was deployed: September 2016, August 2017, and October 2018. Here, we use in-situ
observations of CO from the CO Measurement & Analysis (COMA) trace gas detector and black carbon concentrations from
415 the Single Particle Soot Photometer (SP2) onboard the P-3 aircraft (12 flights during September 2016). As described in
Redemann et al. (2020), these flights were conducted at different altitudes with different maneuvers and mostly at altitudes of
around 5-6 km.a.s.l (Fig. S6). We averaged the airborne data every 60 seconds to make a fair comparison against the model.
Even though no flights were conducted over land or near the source of fires, we assume that these species suffer little alteration
throughout their westward transport over the ocean.

420 Overall, WRF-VFEI reproduces these species accurately (Fig. 11), with correlations higher than 0.77 and normalized mean
biases of around -2% for BC. WRF-VFEI tends to underestimate CO more considerably (~ 30 ppb) but consistently
throughout all flights and altitudes (Fig. S7). This may suggest that the background CO in the model is underestimated, rather
than VFEI emissions themselves. However, this is difficult to prove due to lack of observational data outside the smoke plume.
Also, it is important to consider that most observations were made at altitudes higher than 3 km where the model layers are
425 thicker (~ 800 m) and we used the closest altitude approach to extract the data from the model, which can also introduce errors.

Deleted: To make a fair comparison, we

Deleted: remove its noise

Furthermore, the SP2 instrument has a nominal uncertainty of 25 % of the BC reported and, when considering this, most of the BC from the model falls under the uncertainty range of the instrument.

4.4.2 FIREX-AQ

Analogously, the FIREX-AQ campaign measured diverse trace gases with different instruments. Here, we focused on CO, formaldehyde, methanol, SO₂ and BC (Fig. 12). Using the same approach applied to the ORACLES airborne data, we averaged the data every 60 seconds to remove abrupt changes in the concentration of these species that could contribute to biases when comparing against the model simulations. Figure S8 shows the flight trajectories of each of the 9 flights from the campaign that covered the period of the model simulation. On average, WRF-VFEI tends to slightly underestimate CO concentrations of less than 150 ppb (-25 ppb), but biases are greater at higher concentrations (Fig. 12a). The same trend is observed for the other species, with overall underestimations. This can be happening for one or a combination of the following reasons: (i) VFEI present biases on the BB emissions over the North American Pacific Northwest during this period. Figure 5d hints that VFEI has overall lower carbon emissions than other inventories such as QFED and GFAS during the simulation for FIREX-AQ. However, VFEI emissions are comparable to these inventories during the 2012-2019 period (Fig. 3c); (ii) generally, fires in North America tend to be localized and thus, the exact timing, location, evolution, and transport of the smoke is more challenging for the model to reproduce, especially at the resolutions used in this study (20 km and 6.7 km for the outer and inner domains, respectively, with 52 vertical layers). Since the comparison against the flights was done using the nearest grid point to the trajectories of the flights, even a slight misrepresentation of the smoke can introduce large biases in the results. For example, the model can be simulating the plume transport faster or slower than observed; or the core of the plume can be displaced more to the north or south. (iii) in contrast to ORACLES, the flights conducted during FIREX-AQ flew directly into the smoke plumes with zigzag transects going rapidly in and out of the plume covering relatively small areas (Fig. S8). Because of this, it is not surprising that the model could not reproduce these drastic changes in CO (Fig. S10) and other species, since the data was extracted from few grid boxes. It is important to remember that the model reports the average concentrations in each grid box, hence, hiding extreme values and smoothing sharp gradients. This is especially the case of the flights of 6, 7 and 8 August 2019 which sampled the smoke from the Williams Flats fire (Fig. S10g-i), where the model is not able to reproduce the drastic changes in CO due to one or more of the factors mentioned.

To reduce the impact of the factors mentioned above in the results of the model, we evaluated VFEI emissions for selected fires using the total carbon emissions derived by Fuel2Fire (Table S1). Fuel2Fire is a FIREX-AQ specific high-resolution inventory, which combines in situ airborne measurements, remote sensing observations and a derived diurnal cycle following geostationary satellite observations, among others (Stockwell et al., 2022). Hence, Fuel2Fire is considered to be most accurate representation of emissions during the FIREX-AQ campaign [CITATIONS]. Table S1 and figure 13 show a comparison between total carbon emissions as derived by Fuel2Fire and VFEI. Overall, VFEI tends to show higher emissions than Fuel2Fire, but differences are remarkably low for the case of the WFF, the largest fire sampled by the campaign. In total, from these 14 fires, Fuel2Fire reports 520111 tC emitted, while VFEI estimates 584373 tC (or 12 % more). It is important to mention

Deleted: possible noise and

Deleted: Here

Deleted: produces accurate results when comparing

Deleted:

Deleted: slightly underestimates

Deleted: 6

Deleted: 4

470 that Fuel2Fire reports around 40% uncertainty for most fires. Differences between these two datasets can be explained because VFEI relies only on FRP observations from VIIRS onboard the Suomi-NPP satellite and lacks the ability to represent the diurnal cycle of fires. In the other hand, Fuel2Fire uses highly specific emission factors, biome maps and a combination of different observations to constrain the evolution of the fires and their emissions. This hints on the need for a combination of polar orbit and geostationary satellite observations to account for irregular fire behaviors throughout the day. It is imperative to highlight that this evaluation against Fuel2Fire represent results for a very specific region and time frame and may not be representative of other regions and times.

475 **5 Resolution advantage of VFEI**

In section 4, we evaluated the quantities of VFEI emissions in two mid-resolution model simulations. Nonetheless, another capability of VFEI is its high-resolution (~500 m) that can improve the placement of fires in fine resolution model grids. This is on the same direction as other BB inventories, such as FEER, FINN and FLAMBE, which provide data at MODIS pixel resolution (1 km nadir) instead of gridding the data at coarse resolutions. Figure 14 shows an example of this advantage by illustrating the evolution of the WFF during early August 2019 and how emissions are mapped into a high-resolution (3 km) model grid. If VFEI had a typical spatial resolution of 0.1° (~10 km; Fig. 14a), this single large fire is then usually mapped as 1-5 different isolated fires into the 3 km model grid (Fig. 14b). This happens because a common practice in modeling is to assign each data point from the inventory into the closer coordinates of the model grid. The potential misplacement of fires can be particularly important for fires occurring over complex topography since irregular terrain can promote different local circulation patterns. Thus, altering model processes like plume rise that uses the local meteorological profile (temperature, humidity, winds, etc.) of the grid box where the fire is located to distribute the emissions vertically (Freitas et al., 2007, 2010) and, therefore, altering the transport of the smoke plume. In contrast, the high resolution of VFEI (~500 m) is capable to reproduce the day-to-day evolution of the fire and its area more accurately (Fig. 14c). Thus, when mapping this information into the 3 km model grid (Fig. 14d), the model is capable to constraint the fire and its area more precisely, and thus, minimizing the possible smoke transport complications mentioned before.

490 The potential misrepresentation of vertical distribution of smoke and its latter transport not only applies to large fire events. In addition, small fires, such as agricultural prescribed fires, are also prone to this, because small fires can be notoriously misplaced during the mapping process. Expanding the example above, that would mean that a small fire of an area of 1 ha would have a location uncertainty radius of up to around 0.1° (~10 km) if using the 0.1° resolution inventory, while if using VFEI at its native resolution, that uncertainty is reduced to ~500 m or less.

495 In this study, the high-resolution advantage of VFEI was not evaluated because of the high computational cost that high-resolution model simulations involve. Consequently, just the quantities of the emissions were evaluated in section 4. However, as computational resources keep increasing, it is expected that very fine resolution model simulations will become more common and will be able to take advantage of this capability of VFEI.

Deleted: and

Deleted: 3

Deleted: would have

Deleted: 3

Deleted: 3

Deleted: models

Deleted: is

Deleted: in

Deleted: 3

Deleted: 3

510 6 Summary and conclusions

We developed an open BB emission inventory called VIIRS-based Fire Emission Inventory (VFEI). VFEI produces daily emissions for 46 species of aerosols and gases by using the FRP data from the VIIRS instrument onboard the Suomi-NPP satellite (*top-down* approach). The formula is the same as the one used in other inventories, such as QFED and GFAS. Emissions for each species depend on the FRP density, an empirical factor to relate FRP to the amount of biomass above the
515 ground and the emission factor of the specie. VFEI uses the emission factors presented by Andreae (2019) distinguishing among 6 different biomes. The main advantages of using VIIRS instead of MODIS is its ability to detect small fires, absence of data gaps over the tropics and its higher resolution (375 m on its I-Band). Thus, VFEI provides emissions at ~500 m resolutions which is ideal for high-resolution model simulations. In addition, the data product comes in two different formats for an easy implementation in models (as text or NetCDF files). Globally, VFEI produces carbon emissions comparable to
520 other major inventories, such as GFED, QFED and GFAS, but with some differences depending on the region of the globe. We note that this initial version of VFEI (VFEIv0) does not include a treatment for fires that can be missed due to cloud coverage, which can explain the overall slightly lower emissions in high latitudes when compared against the other inventories. We anticipate that the next version of VFEI (VFEIv1) will include the same approach used in QFED and described by Darmenov and da Silva (2013) to solve this potential problem. Future versions will also include observations from the VIIRS
525 instrument onboard the NOAA-20 satellite when its fire product becomes publicly available.

Two simulations using the WRF-Chem model and VFEI were conducted to assess the BB emissions: the first over Southern Africa during September 2016, and the second over North America during July-August 2019. These regions and periods were chosen to make use of two datasets from different field experiments (ORACLES and FIREX-AQ, respectively). Results showed that VFEI produces strong correlations (0.85) of AOD when compared against MODIS MAIAC C6.1 and AERONET
530 stations over Southern Africa. In North America correlations were also high (0.73), but in this region is more difficult to make a clear assesment because of the different sources of aerosols. For example, anthropogenic emissions play an important role. By isolating the case for the largest fire occurred during the simulation (Williams Flats fire), AOD results showed overall good agreement with the MODIS MAIAC C6.1 observations, but with slight discrepancies on the exact location and AOD magnitudes of the smoke plume. When comparing against the flight data from each field campaign, the model performed well
535 over Southern Africa, with CO correlations of 0.78 and slight BC underestimations of around 2 %. However, the model reproduces the smoke plumes sampled by FIREX-AQ with low correlations and underestimating high concentrations of CO. This is because the trajectories of the flights conducted during FIREX-AQ were performed in transects coming in and out of the plumes rapidly and the model could not reproduce the exact location and timing of the smoke plumes, thus producing large biases (other possible factors were exposed in section 4.4.2). On the other hand, the good results over Southern Africa can be
540 explained because the widespread and persistent fire activity of the region that produces an almost homogeneous smoke plume that the model is able to reproduce more accurately. It should be noted that we only conducted two regional model simulations

for a month each, and thus, results are particular to these regions and periods. Ideally, global model simulations for at least a characteristic year would be necessary to widely assess VFEI and, perhaps, the discussion for possible callibrations.

It is necessary to mention that VFEI, as the other inventories, provides an estimation of BB emissions. The formulation used to derive emissions use different factors that have been generalized. For instance, emission factors are a compilation of several in-situ and laboratory studies, but not all species have been extensively sampled, nor there is enough data for different biomes. In addition, the FRP data from VIIRS also introduces uncertainties that are inherent to the active fire product and the instrument itself. Furthermore, BB inventories still do not provide differentiation between flaming or smoldering phases, which can impact the calculated emission fluxes. New developments on remote sensing techniques can provide an insight on this by deriving the visible fire energy which is strongly correlated to the modified combustion efficiency (Wang et al., 2020), which could significantly improve the emissions and information reported by VFEI. Another aspect that can be improved by remote sensing studies is the diurnal cycle used in models to release the BB. Commonly, a gaussian distribution with a peak at around 2 PM local time is used, but some fires (especially large fire events) do not follow this cycle, leading to errors in the model results. It is important to reflect that atmospheric models have been developed in recent decades to consider complex chemical reactions and aerosol formation and feedbacks. Nonetheless, they are often optimized for some regions of the globe. Furthermore, an important source of uncertainty is the vertical distribution of smoke, which is often done by using a plume rise model. The dynamical approach used in WRF-Chem uses tabulated data of heat fluxes from Amazon fires, which can introduce errors when used in other regions. Improved versions of plume rise could provide a more individual treatment to better distribute emissions within the vertical layers of the model and, thus, improving the smoke transport. Another aspect is the calculation of AOD and aerosol properties, which can vary from model to model. Recent studies (e.g., Majdzadeh et al., 2022), have discussed and proposed new approaches to calculate aerosol properties which could improve the accuracy of the reported AODs from the model.

Code and data availability: The VFEIv0 product containing daily emission fluxes from early 2012 to 2021 can be accessed at <https://doi.org/10.5281/zenodo.6474058> (doi:10.5281/zenodo.6474058). The data can also be accessed through <http://bio.cgrer.uiowa.edu/VFEI/DOWNLOAD> (last access: 21 April 2022), which also contains near-real-time emissions. The VIIRS I-band active fire product is provided through the Level-1 and Atmosphere Archive & Distribution System (LAADS) Distributed Active Archive Center (DAAC) website (<https://ladsweb.modaps.eosdis.nasa.gov/archive/>; last access: 21 April 2022). The MODIS IGBP data was downloaded from the Land Processes Distributed Active Archive Center (LP DAAC) of the United States Geological Survey (USGS) website (<https://lpdaac.usgs.gov/products/mcd12c1v006/>; last access: 21 April 2022). The GFED emission datasets were downloaded from their main website (<https://globalfiredata.org/pages/data/>; last access: 21 April 2022). Similarly, FINN emissions were downloaded from the NCAR's Atmospheric Chemistry Observations and Modeling (ACOM) repository (<https://www.acom.ucar.edu/Data/fire/>; last access: 21 April 2022). QFED daily emissions were obtained from NASA's Center for Climate Simulation (NCCS) public repository (<https://portal.nccs.nasa.gov/datashare/iesa/aerosol/emissions/QFED/v2.5r1/0.1/QFED/>; last access: 21 April 2022). GFAS

Deleted: ↵

emissions were retrieved from ECMWF's public online repository (<https://apps.ecmwf.int/datasets/data/cams-gfas/>; last access: 21 April 2022). The WRF-Chem model v4.2 was downloaded from their public GitHub repository (<https://github.com/wrf-model/WRF/releases/tag/v4.2>; last access: 21 April 2022). The MODIS MAIAC product was retrieved from USGS' LP DAAC website (<https://lpdaac.usgs.gov/products/mcd19a2v006/>; last access: 21 April 2022). The preliminary MAIAC C6.1 dataset was provided by the MAIAC team via the NASA Computer for Climate Simulations (NCCS). The AERONET data can be accessed through their dedicated website (https://aeronet.gsfc.nasa.gov/cgi-bin/webtool_aod_v3; last access: 21 April 2022). The airborne data from the ORACLES campaign was retrieved through NASA's Earth Science Project Office (ESPO) website (<https://espo.nasa.gov/oracles/archive/browse/oracles>; last access: 21 April 2022), while the data from the FIREX-AQ field experiment, [including the airborne observations and the Fuel2Fire dataset](#), can be accessed through NASA's Langley Research Center data archive (<https://www-air.larc.nasa.gov/cgi-bin/ArcView/firexaq>; last access: 21 April 2022).

Author contributions: GAF was responsible for the design, methodology, development, and coding of VFEI, model simulations, analysis of results and writing of the most part of the manuscript. GRC and SRF provided comments on the research design, modeling details and interpretation of results. MZ and JW processed, filtered, and gridded the MODIS MAIAC C6 and C6.1 data that was used to evaluate model results. Additionally, MZ provided comments on the methods of VFEI. AL and YW provided the newer MODIS MAIAC C6.1 version details and data used to evaluate the model simulations for this study. All authors provided comments and edited the manuscript.

Competing interests: The authors declare that they have no conflict of interest.

Acknowledgements: The authors acknowledge the Level-1 and Atmosphere Archive & Distribution System (LAADS) Distributed Active Archive Center (DAAC), located in the Goddard Space Flight Center in Greenbelt, Maryland (<https://ladsweb.nascom.nasa.gov/>; last access 01 February 2022) from where the VIIRS active fire data was retrieved. We would also like to acknowledge high-performance computing support from Cheyenne (doi:10.5065/D6RX99HX) provided by NCAR's Computational and Information Systems Laboratory, sponsored by the National Science Foundation, where the model simulations from this study were performed. The authors thank the PI in charge of the instruments deployed in the ORACLES and FIREX-AQ field experiments that measured the species used to evaluate the model simulations in this study: James Podolske (CO; ORACLES); Steven Howell and Steffen Freitag (BC; ORACLES); Jeff Peischl and Tom Ryerson (CO; FIREX-AQ); Reem A. Hannun and Thomas F. Hanisco (formaldehyde; FIREX-AQ); Carsten Warneke, Matthew Coggon, Georgios Gkatzelis and Kanako Sekimoto (methanol; FIREX-AQ); Andrew W. Rollins (SO₂; FIREX-AQ) and Joshua P. Schwarz (BC; FIREX-AQ). [We acknowledge the production of the Fuel2Fire inventory from the FIREX-AQ campaign, specifically to Amber Soja, Elizabeth Wiggings and Emily Gargulinski.](#) Special thanks to Dr. Ravan Ahmadov (CIRES/NOAA) who

Deleted: '

provided advise during the making of this study. We further acknowledge the use of imagery from the Worldview Snapshots application (<https://wvs.earthdata.nasa.gov>), part of the Earth Observing System Data and Information System (EOSDIS).

Formatted: Font: Not Bold

Financial support: This research has been supported by the National Aeronautics and Space Administration (NASA; grant no. NNX15AF95G) and the National Oceanic and Atmospheric Administration (grant no. NA16OAR4310114). M. Zhou and J. Wang also acknowledge the support from NASA (grant no. 80NNSC21L1976 and 80NSC21K1494). The work of A. Lyapustin and Y. Wang was supported by the NASA MODIS Terra/Aqua and VIIRS SNPP Program.

References

- 620 Akagi, S. K., Yokelson, R. J., Wiedinmyer, C., Alvarado, M. J., Reid, J. S., Karl, T., Crounse, J. D., and Wennberg, P. O.: Emission factors for open and domestic biomass burning for use in atmospheric models, *Atmospheric Chemistry and Physics*, 11, 4039–4072, <https://doi.org/10.5194/acp-11-4039-2011>, 2011.
- Andreae, M. O.: Emission of trace gases and aerosols from biomass burning - An updated assessment, *Atmospheric Chemistry and Physics*, 19, 8523–8546, <https://doi.org/10.5194/acp-19-8523-2019>, 2019.
- 625 Andreae, M. O. and Merlet, P.: Emission of trace gases and aerosols from biomass burning, *Global biogeochemical cycles*, 15, 955–966, 2001.
- Barnard, J. C., Fast, J. D., Paredes-Miranda, G., Arnott, W. P., and Laskin, A.: Technical Note: Evaluation of the WRF-Chem “Aerosol Chemical to Aerosol Optical Properties” Module using data from the MILAGRO campaign, *Atmospheric Chemistry and Physics*, 10, 7325–7340, <https://doi.org/10.5194/acp-10-7325-2010>, 2010.
- 630 Beck, H. E., Zimmermann, N. E., McVicar, T. R., Vergopolan, N., Berg, A., and Wood, E. F.: Present and future Köppen-Geiger climate classification maps at 1-km resolution, *Scientific Data*, 5, 180214, <https://doi.org/10.1038/sdata.2018.214>, 2018.
- Bey, I., Jacob, D. J., Yantosca, R. M., Logan, J. A., Field, B. D., Fiore, A. M., Li, Q., Liu, H. Y., Mickley, L. J., and Schultz, M. G.: Global modeling of tropospheric chemistry with assimilated meteorology: Model description and evaluation, *Journal of Geophysical Research: Atmospheres*, 106, 23073–23095, <https://doi.org/10.1029/2001JD000807>, 2001.
- 635 Bindle, L., Martin, R. V., Cooper, M. J., Lundgren, E. W., Eastham, S. D., Auer, B. M., Clune, T. L., Weng, H., Lin, J., Murray, L. T., Meng, J., Keller, C. A., Putman, W. M., Pawson, S., and Jacob, D. J.: Grid-stretching capability for the GEOS-Chem 13.0.0 atmospheric chemistry model, *Geoscientific Model Development*, 14, 5977–5997, <https://doi.org/10.5194/gmd-14-5977-2021>, 2021.
- 640 Bond, T. C., Doherty, S. J., Fahey, D. W., Forster, P. M., Berntsen, T., DeAngelo, B. J., Flanner, M. G., Ghan, S., Kärcher, B., Koch, D., Kinne, S., Kondo, Y., Quinn, P. K., Sarofim, M. C., Schultz, M. G., Schulz, M., Venkataraman, C., Zhang, H., Zhang, S., Bellouin, N., Guttikunda, S. K., Hopke, P. K., Jacobson, M. Z., Kaiser, J. W., Klimont, Z., Lohmann, U., Schwarz, J. P., Shindell, D., Storelvmo, T., Warren, S. G., and Zender, C. S.: Bounding the role of black carbon in the climate system: A scientific assessment, *Journal of Geophysical Research: Atmospheres*, 118, 5380–5552, <https://doi.org/10.1002/jgrd.50171>,
- 645 2013.
- Chapman, E. G., Gustafson Jr., W. I., Easter, R. C., Barnard, J. C., Ghan, S. J., Pekour, M. S., and Fast, J. D.: Coupling aerosol-cloud-radiative processes in the WRF-Chem model: Investigating the radiative impact of elevated point sources, *Atmospheric Chemistry and Physics*, 9, 945–964, <https://doi.org/10.5194/acp-9-945-2009>, 2009.
- Csiszar, I., Schroeder, W., Giglio, L., Ellicott, E., Vadrevu, K. P., Justice, C. O., and Wind, B.: Active fires from the Suomi NPP Visible Infrared Imaging Radiometer Suite: Product status and first evaluation results, *Journal of Geophysical Research: Atmospheres*, 119, 803–816, <https://doi.org/10.1002/2013JD020453>, 2014.
- Darmenov, A. and da Silva, A.: The quick fire emissions dataset (QFED)—documentation of versions 2.1, 2.2 and 2.4, NASA Technical Report Series on Global Modeling and Data Assimilation, NASA TM-2013-104606, 32, 183–183, 2013.
- 655 Dennekamp, M., Straney, L. D., Erbas, B., Abramson, M. J., Keywood, M., Smith, K., Sim, M. R., Glass, D. C., Del Monaco, A., Haikerwal, A., and Tonkin, A. M.: Forest fire smoke exposures and out-of-hospital cardiac arrests in Melbourne, Australia: A case-crossover study, *Environmental Health Perspectives*, <https://doi.org/10.1289/ehp.1408436>, 2015.

- Elvidge, C. D., Zhizhin, M., Baugh, K., Hsu, F.-C., and Ghosh, T.: Methods for Global Survey of Natural Gas Flaring from Visible Infrared Imaging Radiometer Suite Data, *Energies*, 9, 14, <https://doi.org/10.3390/en9010014>, 2016.
- Emmons, L. K., Walters, S., Hess, P. G., Lamarque, J.-F., Pfister, G. G., Fillmore, D., Granier, C., Guenther, A., Kinnison, D., Laepple, T., Orlando, J., Tie, X., Tyndall, G., Wiedinmyer, C., Baughcum, S. L., and Kloster, S.: Description and evaluation of the Model for Ozone and Related chemical Tracers, version 4 (MOZART-4), *Geoscientific Model Development*, 3, 43–67, <https://doi.org/10.5194/gmd-3-43-2010>, 2010.
- Emmons, L. K., Schwantes, R. H., Orlando, J. J., Tyndall, G., Kinnison, D., Lamarque, J.-F., Marsh, D., Mills, M. J., Tilmes, S., Bardeen, C., Buchholz, R. R., Conley, A., Gettelman, A., Garcia, R., Simpson, I., Blake, D. R., Meinardi, S., and Pétron, G.: The Chemistry Mechanism in the Community Earth System Model Version 2 (CESM2), *Journal of Advances in Modeling Earth Systems*, 12, e2019MS001882, <https://doi.org/10.1029/2019MS001882>, 2020.
- Fast, J. D., Gustafson Jr., W. I., Easter, R. C., Zaveri, R. A., Barnard, J. C., Chapman, E. G., Grell, G. A., and Peckham, S. E.: Evolution of ozone, particulates, and aerosol direct radiative forcing in the vicinity of Houston using a fully coupled meteorology-chemistry-aerosol model, *Journal of Geophysical Research: Atmospheres*, 111, <https://doi.org/10.1029/2005JD006721>, 2006.
- Ferrada, G., Carmichael, G. R., Freitas, S., Pereira, G., Ahmadov, R., and Shinozuka, Y.: Using Fire Radiative Power to Simulate the Southern African Smoke Plume during Oracles 2016, in: 101st American Meteorological Society Annual Meeting, 2021.
- Freitas, S. R., Longo, K. M., Chatfield, R., Latham, D., Silva Dias, M. A. F., Andreae, M. O., Prins, E., Santos, J. C., Gielow, R., and Carvalho Jr, J. A.: Including the sub-grid scale plume rise of vegetation fires in low resolution atmospheric transport models, *Atmospheric Chemistry and Physics*, 7, 3385–3398, 2007.
- Freitas, S. R., Longo, K. M., Trentmann, J., and Latham, D.: Sensitivity of 1-D smoke plume rise models to the inclusion of environmental wind drag, *Atmospheric Chemistry and Physics*, 10, 585–594, 2010.
- Freitas, S. R., Panetta, J., Longo, K. M., Rodrigues, L. F., Moreira, D. S., Rosário, N. E., Silva Dias, P. L., Silva Dias, M. A. F., Souza, E. P., Freitas, E. D., Longo, M., Frassoni, A., Fazenda, A. L., Santos E Silva, C. M., Pavani, C. A. B., Eiras, D., França, D. A., Massaru, D., Silva, F. B., Santos, F. C., Pereira, G., Camponogara, G., Ferrada, G. A., Campos Velho, H. F., Menezes, I., Freire, J. L., Alonso, M. F., Gácita, M. S., Zarzur, M., Fonseca, R. M., Lima, R. S., Siqueira, R. A., Braz, R., Tomita, S., Oliveira, V., and Martins, L. D.: The Brazilian developments on the Regional Atmospheric Modeling System (BRAMS 5.2): An integrated environmental model tuned for tropical areas, *Geoscientific Model Development*, <https://doi.org/10.5194/gmd-10-189-2017>, 2017.
- Friedl, Mark and Sulla-Menashe, Damien: MCD12C1 MODIS/Terra+Aqua Land Cover Type Yearly L3 Global 0.05Deg CMG V006, <https://doi.org/10.5067/MODIS/MCD12C1.006>, 2015.
- Gao, W., Fan, J., Easter, R. C., Yang, Q., Zhao, C., and Ghan, S. J.: Coupling spectral-bin cloud microphysics with the MOSAIC aerosol model in WRF-Chem: Methodology and results for marine stratocumulus clouds, *Journal of Advances in Modeling Earth Systems*, 8, 1289–1309, <https://doi.org/10.1002/2016MS000676>, 2016.
- Ge, C., Wang, J., and Reid, J. S.: Mesoscale modeling of smoke transport over the Southeast Asian Maritime Continent: coupling of smoke direct radiative effect below and above the low-level clouds, *Atmospheric Chemistry and Physics*, 14, 159–174, <https://doi.org/10.5194/acp-14-159-2014>, 2014.
- Gelaro, R., McCarty, W., Suárez, M. J., Todling, R., Molod, A., Takacs, L., Randles, C. A., Darmenov, A., Bosilovich, M. G., Reichle, R., Wargan, K., Coy, L., Cullather, R., Draper, C., Akella, S., Buchard, V., Conaty, A., da Silva, A. M., Gu, W., Kim,

- G.-K., Koster, R., Lucchesi, R., Merkova, D., Nielsen, J. E., Partyka, G., Pawson, S., Putman, W., Rienecker, M., Schubert, S. D., Sienkiewicz, M., and Zhao, B.: The Modern-Era Retrospective Analysis for Research and Applications, Version 2 (MERRA-2), *Journal of Climate*, 30, 5419–5454, <https://doi.org/10.1175/JCLI-D-16-0758.1>, 2017.
- Giglio, L., Descloitres, J., Justice, C. O., and Kaufman, Y. J.: An enhanced contextual fire detection algorithm for MODIS, *Remote sensing of environment*, 87, 273–282, 2003.
- Giglio, L., Schroeder, W., and Justice, C. O.: The collection 6 MODIS active fire detection algorithm and fire products, *Remote Sensing of Environment*, 178, 31–41, <https://doi.org/10.1016/j.rse.2016.02.054>, 2016.
- Giles, D. M., Sinyuk, A., Sorokin, M. G., Schafer, J. S., Smirnov, A., Slutsker, I., Eck, T. F., Holben, B. N., Lewis, J. R., Campbell, J. R., Welton, E. J., Korkin, S. V., and Lyapustin, A. I.: Advancements in the Aerosol Robotic Network (AERONET) Version 3 database – automated near-real-time quality control algorithm with improved cloud screening for Sun photometer aerosol optical depth (AOD) measurements, *Atmospheric Measurement Techniques*, 12, 169–209, <https://doi.org/10.5194/amt-12-169-2019>, 2019.
- Grell, G. A., Peckham, S. E., Schmitz, R., McKeen, S. A., Frost, G., Skamarock, W. C., and Eder, B.: Fully coupled “online” chemistry within the WRF model, *Atmospheric Environment*, 39, 6957–6975, 2005.
- Guenther, A., Karl, T., Harley, P., Wiedinmyer, C., Palmer, P. I., and Geron, C.: Estimates of global terrestrial isoprene emissions using MEGAN (Model of Emissions of Gases and Aerosols from Nature), *Atmospheric Chemistry and Physics*, 6, 3181–3210, <https://doi.org/10.5194/acp-6-3181-2006>, 2006.
- Heil, A., Kaiser, J., van der Werf, G.R., Wooster, M.J., Schultz, M.G., and van der Gon, H.D.: Assessment of the real-time fire emissions (GFASv0) by MACC, ECMWF Technical Memoranda, <https://doi.org/10.21957/2m000mza9>, 2010.
- Hersbach, H., Bell, B., Berrisford, P., Hirahara, S., Horányi, A., Muñoz-Sabater, J., Nicolas, J., Peubey, C., Radu, R., Schepers, D., Simmons, A., Soci, C., Abdalla, S., Abellan, X., Balsamo, G., Bechtold, P., Biavati, G., Bidlot, J., Bonavita, M., De Chiara, G., Dahlgren, P., Dee, D., Diamantakis, M., Dragani, R., Flemming, J., Forbes, R., Fuentes, M., Geer, A., Haimberger, L., Healy, S., Hogan, R. J., Hólm, E., Janisková, M., Keeley, S., Laloyaux, P., Lopez, P., Lupu, C., Radnoti, G., de Rosnay, P., Rozum, I., Vamborg, F., Villaume, S., and Thépaut, J.-N.: The ERA5 global reanalysis, *Quarterly Journal of the Royal Meteorological Society*, 146, 1999–2049, <https://doi.org/10.1002/qj.3803>, 2020.
- Hoelzemann, J. J., Schultz, M. G., Brasseur, G. P., Granier, C., and Simon, M.: Global Wildland Fire Emission Model (GWEM): Evaluating the use of global area burnt satellite data, *Journal of Geophysical Research: Atmospheres*, 109, <https://doi.org/10.1029/2003JD003666>, 2004.
- Ichoku, C. and Ellison, L.: Global top-down smoke-aerosol emissions estimation using satellite fire radiative power measurements, *Atmospheric Chemistry and Physics*, 14, 6643–6667, <https://doi.org/10.5194/acp-14-6643-2014>, 2014.
- Ichoku, C. and Kaufman, Y. J.: A method to derive smoke emission rates from MODIS fire radiative energy measurements, *IEEE Transactions on Geoscience and Remote Sensing*, 43, 2636–2649, <https://doi.org/10.1109/TGRS.2005.857328>, 2005.
- Inness, A., Ades, M., Agustí-Panareda, A., Barré, J., Benedictow, A., Blechschmidt, A.-M., Dominguez, J. J., Engelen, R., Eskes, H., Flemming, J., Huijnen, V., Jones, L., Kipling, Z., Massart, S., Parrington, M., Peuch, V.-H., Razinger, M., Remy, S., Schulz, M., and Suttie, M.: The CAMS reanalysis of atmospheric composition, *Atmospheric Chemistry and Physics*, 19, 3515–3556, <https://doi.org/10.5194/acp-19-3515-2019>, 2019.
- Ito, A. and Penner, J. E.: Global estimates of biomass burning emissions based on satellite imagery for the year 2000, *Journal of Geophysical Research: Atmospheres*, 109, <https://doi.org/10.1029/2003JD004423>, 2004.

- 735 Janssens-Maenhout, G., Dentener, F., Van Aardenne, J., Monni, S., Pagliari, V., Orlandini, L., Klimont, Z., Kurokawa, J., Akimoto, H., Ohara, T., and others: EDGAR-HTAP: a harmonized gridded air pollution emission dataset based on national inventories, European Commission Publications Office, Ispra (Italy). JRC68434, EUR report No EUR, 25, 299–2012, 2012.
- Kaiser, J. W., Heil, A., Andreae, M. O., Benedetti, A., Chubarova, N., Jones, L., Morcrette, J.-J., Razinger, M., Schultz, M. G., Suttie, M., and van der Werf, G. R.: Biomass burning emissions estimated with a global fire assimilation system based on observed fire radiative power, *Biogeosciences*, 9, 527–554, <https://doi.org/10.5194/bg-9-527-2012>, 2012.
- 740 Kaufman, Y. J., Justice, C. O., Flynn, L. P., Kendall, J. D., Prins, E. M., Giglio, L., Ward, D. E., Menzel, W. P., and Setzer, A. W.: Potential global fire monitoring from EOS-MODIS, *Journal of Geophysical Research: Atmospheres*, 103, 32215–32238, 1998.
- Knorr, W., Dentener, F., Lamarque, J. F., Jiang, L., and Arneth, A.: Wildfire air pollution hazard during the 21st century, *Atmospheric Chemistry and Physics*, <https://doi.org/10.5194/acp-17-9223-2017>, 2017.
- 745 Li, F., Zhang, X., Kondragunta, S., and Csiszar, I.: Comparison of Fire Radiative Power Estimates From VIIRS and MODIS Observations, *Journal of Geophysical Research: Atmospheres*, 123, 4545–4563, <https://doi.org/10.1029/2017JD027823>, 2018.
- Li, F., Zhang, X., Roy, D. P., and Kondragunta, S.: Estimation of biomass-burning emissions by fusing the fire radiative power retrievals from polar-orbiting and geostationary satellites across the conterminous United States, *Atmospheric Environment*, 211, 274–287, <https://doi.org/10.1016/j.atmosenv.2019.05.017>, 2019.
- 750 Li, F., Zhang, X., Kondragunta, S., Schmidt, C. C., and Holmes, C. D.: A preliminary evaluation of GOES-16 active fire product using Landsat-8 and VIIRS active fire data, and ground-based prescribed fire records, *Remote Sensing of Environment*, 237, 111600, <https://doi.org/10.1016/j.rse.2019.111600>, 2020.
- Lyapustin, A., Wang, Y., Korkin, S., and Huang, D.: MODIS Collection 6 MAIAC algorithm, *Atmospheric Measurement Techniques*, 11, 5741–5765, <https://doi.org/10.5194/amt-11-5741-2018>, 2018.
- 755 Majdzadeh, M., Stroud, C. A., Sioris, C., Makar, P. A., Akingunola, A., McLinden, C., Zhao, X., Moran, M. D., Abboud, I., and Chen, J.: Development of aerosol optical properties for improving the MESSy photolysis module in the GEM-MACH v2.4 air quality model and application for calculating photolysis rates in a biomass burning plume, *Geoscientific Model Development*, 15, 219–249, <https://doi.org/10.5194/gmd-15-219-2022>, 2022.
- 760 Pan, X., Ichoku, C., Chin, M., Bian, H., Darmenov, A., Colarco, P., Ellison, L., Kucsera, T., da Silva, A., Wang, J., Oda, T., and Cui, G.: Six Global Biomass Burning Emission Datasets: Inter-comparison and Application in one Global Aerosol Model, *Atmospheric Chemistry and Physics Discussions*, 2019, 1–39, <https://doi.org/10.5194/acp-2019-475>, 2019.
- Pereira, G., Freitas, S. R., Moraes, E. C., Ferreira, N. J., Shimabukuro, Y. E., Rao, V. B., and Longo, K. M.: Estimating trace gas and aerosol emissions over South America: Relationship between fire radiative energy released and aerosol optical depth observations, *Atmospheric Environment*, 43, 6388–6397, 2009.
- 765 Pfister, G. G., Eastham, S. D., Arellano, A. F., Aumont, B., Barsanti, K. C., Barth, M. C., Conley, A., Davis, N. A., Emmons, L. K., Fast, J. D., Fiore, A. M., Gaubert, B., Goldhaber, S., Granier, C., Grell, G. A., Guevara, M., Henze, D. K., Hodzic, A., Liu, X., Marsh, D. R., Orlando, J. J., Plane, J. M. C., Polvani, L. M., Rosenlof, K. H., Steiner, A. L., Jacob, D. J., and Brasseur, G. P.: The Multi-Scale Infrastructure for Chemistry and Aerosols (MUSICA), *Bulletin of the American Meteorological Society*, 101, E1743–E1760, <https://doi.org/10.1175/BAMS-D-19-0331.1>, 2020.
- 770 Redemann, J., Wood, R., Zuidema, P., Doherty, S. J., Luna, B., LeBlanc, S. E., Diamond, M. S., Shinozuka, Y., Chang, I. Y., Ueyama, R., Pfister, L., Ryoo, J., Dobracki, A. N., da Silva, A. M., Longo, K. M., Kacenelenbogen, M. S., Flynn, C. J., Pistone,

- K., Knox, N. M., Piketh, S. J., Haywood, J. M., Formenti, P., Mallet, M., Stier, P., Ackerman, A. S., Bauer, S. E., Fridlind, A. M., Carmichael, G. R., Saide, P. E., Ferrada, G. A., Howell, S. G., Freitag, S., Cairns, B., Holben, B. N., Knobelspiesse, K. D., Tanelli, S., L'Ecuier, T. S., Dzambo, A. M., Sy, O. O., McFarquhar, G. M., Poellot, M. R., Gupta, S., O'Brien, J. R., Nenes, A., Kacarab, M. E., Wong, J. P. S., Small-Griswold, J. D., Thornhill, K. L., Noone, D., Podolske, J. R., Schmidt, K. S., Pilewskie, P., Chen, H., Cochrane, S. P., Sedlacek, A. J., Lang, T. J., Stith, E., Segal-Rozenhaimer, M., Ferrare, R. A., Burton, S. P., Hostetler, C. A., Diner, D. J., Platnick, S. E., Myers, J. S., Meyer, K. G., Spangenberg, D. A., Maring, H., and Gao, L.: An overview of the ORACLES (ObseRvations of Aerosols above CLouds and their intERactionS) project: aerosol-cloud-radiation interactions in the Southeast Atlantic basin, *Atmospheric Chemistry and Physics Discussions*, 2020, 1–82, <https://doi.org/10.5194/acp-2020-449>, 2020.
- Reid, J. S., Hyer, E. J., Prins, E. M., Westphal, D. L., Zhang, J., Wang, J., Christopher, S. A., Curtis, C. A., Schmidt, C. C., Eleuterio, D. P., Richardson, K. A., and Hoffman, J. P.: Global Monitoring and Forecasting of Biomass-Burning Smoke: Description of and Lessons From the Fire Locating and Modeling of Burning Emissions (FLAMBE) Program, *IEEE Journal of Selected Topics in Applied Earth Observations and Remote Sensing*, 2, 144–162, <https://doi.org/10.1109/JSTARS.2009.2027443>, 2009.
- Roberts, G., Wooster, M. J., and Lagoudakis, E.: Annual and diurnal african biomass burning temporal dynamics, *Biogeosciences*, 6, 849–866, <https://doi.org/10.5194/bg-6-849-2009>, 2009.
- Schroeder, W., Oliva, P., Giglio, L., and Csiszar, I. A.: The New VIIRS 375m active fire detection data product: Algorithm description and initial assessment, *Remote Sensing of Environment*, 143, 85–96, <https://doi.org/10.1016/j.rse.2013.12.008>, 2014.
- Stockwell, C. E., Bela, M. M., Coggon, M. M., Gkatzelis, G. I., Wiggins, E., Gargulinski, E. M., Shingler, T., Fenn, M., Griffin, D., Holmes, C. D., Ye, X., Saide, P. E., Bourgeois, I., Peischl, J., Womack, C. C., Washenfelder, R. A., Veres, P. R., Neuman, J. A., Gilman, J. B., Lamplugh, A., Schwantes, R. H., McKeen, S. A., Wisthaler, A., Piel, F., Guo, H., Campuzano-Jost, P., Jimenez, J. L., Fried, A., Hanisco, T. F., Huey, L. G., Perring, A., Katich, J. M., Diskin, G. S., Nowak, J. B., Bui, T. P., Halliday, H. S., DiGangi, J. P., Pereira, G., James, E. P., Ahmadov, R., McLinden, C. A., Soja, A. J., Moore, R. H., Hair, J. W., and Warneke, C.: Airborne Emission Rate Measurements Validate Remote Sensing Observations and Emission Inventories of Western U.S. Wildfires, *Environ. Sci. Technol.*, 56, 7564–7577, <https://doi.org/10.1021/acs.est.1c07121>, 2022.
- T. N. Polivka, E. J. Hyer, J. Wang, and D. A. Peterson: First Global Analysis of Saturation Artifacts in the VIIRS Infrared Channels and the Effects of Sample Aggregation, *IEEE Geoscience and Remote Sensing Letters*, 12, 1262–1266, <https://doi.org/10.1109/LGRS.2015.2392098>, 2015.
- T. N. Polivka, J. Wang, L. T. Ellison, E. J. Hyer, and C. M. Ichoku: Improving Nocturnal Fire Detection With the VIIRS Day–Night Band, *IEEE Transactions on Geoscience and Remote Sensing*, 54, 5503–5519, <https://doi.org/10.1109/TGRS.2016.2566665>, 2016.
- Toon, O. B. and Ackerman, T. P.: Algorithms for the calculation of scattering by stratified spheres, *Appl. Opt.*, 20, 3657–3660, <https://doi.org/10.1364/AO.20.003657>, 1981.
- Wang, J., Yue, Y., Wang, Y., Ichoku, C., Ellison, L., and Zeng, J.: Mitigating Satellite-Based Fire Sampling Limitations in Deriving Biomass Burning Emission Rates: Application to WRF-Chem Model Over the Northern sub-Saharan African Region, *Journal of Geophysical Research: Atmospheres*, 123, 507–528, <https://doi.org/10.1002/2017JD026840>, 2018.
- Wang, J., Roudini, S., Hyer, E. J., Xu, X., Zhou, M., Garcia, L. C., Reid, J. S., Peterson, D. A., and da Silva, A. M.: Detecting nighttime fire combustion phase by hybrid application of visible and infrared radiation from Suomi NPP VIIRS, *Remote Sensing of Environment*, 237, 111466, <https://doi.org/10.1016/j.rse.2019.111466>, 2020.

- van der Werf, G. R., Randerson, J. T., Giglio, L., Collatz, G. J., Mu, M., Kasibhatla, P. S., Morton, D. C., DeFries, R. S., Jin, Y., and van Leeuwen, T. T.: Global fire emissions and the contribution of deforestation, savanna, forest, agricultural, and peat fires (1997–2009), *Atmospheric Chemistry and Physics*, 10, 11707–11735, <https://doi.org/10.5194/acp-10-11707-2010>, 2010.
- 815 van der Werf, G. R., Randerson, J. T., Giglio, L., van Leeuwen, T. T., Chen, Y., Rogers, B. M., Mu, M., van Marle, M. J. E., Morton, D. C., Collatz, G. J., Yokelson, R. J., and Kasibhatla, P. S.: Global fire emissions estimates during 1997–2016, *Earth System Science Data*, 9, 697–720, <https://doi.org/10.5194/essd-9-697-2017>, 2017.
- Wiedinmyer, C., Akagi, S. K., Yokelson, R. J., Emmons, L. K., Al-Saadi, J. A., Orlando, J. J., and Soja, A. J.: The Fire INventory from NCAR (FINN): a high resolution global model to estimate the emissions from open burning, *Geoscientific Model Development*, 4, 625–641, <https://doi.org/10.5194/gmd-4-625-2011>, 2011.
- 820 Wiggins, E. B., Soja, A. J., Gargulinski, E., Halliday, H. S., Pierce, R. B., Schmidt, C. C., Nowak, J. B., DiGangi, J. P., Diskin, G. S., Katich, J. M., Perring, A. E., Schwarz, J. P., Anderson, B. E., Chen, G., Crosbie, E. C., Jordan, C., Robinson, C. E., Sanchez, K. J., Shingler, T. J., Shook, M., Thornhill, K. L., Winstead, E. L., Ziemba, L. D., and Moore, R. H.: High Temporal Resolution Satellite Observations of Fire Radiative Power Reveal Link Between Fire Behavior and Aerosol and Gas Emissions, *Geophysical Research Letters*, 47, e2020GL090707, <https://doi.org/10.1029/2020GL090707>, 2020.
- 825 Ye, X., Arab, P., Ahmadov, R., James, E., Grell, G. A., Pierce, B., Kumar, A., Makar, P., Chen, J., Davignon, D., Carmichael, G., Ferrada, G., McQueen, J., Huang, J., Kumar, R., Emmons, L., Herron-Thorpe, F. L., Parrington, M., Engelen, R., Peuch, V.-H., da Silva, A., Soja, A., Gargulinski, E., Wiggins, E., Hair, J. W., Fenn, M., Shingler, T., Kondragunta, S., Lyapustin, A., Wang, Y., Holben, B., Giles, D., and Saide, P. E.: Evaluation and intercomparison of wildfire smoke forecasts from multiple modeling systems for the 2019 Williams Flats fire, *Atmospheric Chemistry and Physics Discussions*, 2021, 1–69, <https://doi.org/10.5194/acp-2021-223>, 2021.
- Zaveri, R. A., Easter, R. C., Fast, J. D., and Peters, L. K.: Model for Simulating Aerosol Interactions and Chemistry (MOSAIC), *Journal of Geophysical Research: Atmospheres*, 113, <https://doi.org/10.1029/2007JD008782>, 2008.
- 835 Zhang, F., Wang, J., Ichoku, C., Hyer, E. J., Yang, Z., Ge, C., Su, S., Zhang, X., Kondragunta, S., Kaiser, J. W., Wiedinmyer, C., and da Silva, A.: Sensitivity of mesoscale modeling of smoke direct radiative effect to the emission inventory: a case study in northern sub-Saharan African region, *Environmental Research Letters*, 9, 075002, <https://doi.org/10.1088/1748-9326/9/7/075002>, 2014.
- Zhang, X. and Kondragunta, S.: Temporal and spatial variability in biomass burned areas across the USA derived from the GOES fire product, *Remote Sensing of Environment*, 112, 2886–2897, <https://doi.org/10.1016/j.rse.2008.02.006>, 2008.

Table 1. Species considered by VFEI and their emission factors (g kg⁻¹) compiled by Andreae (2019).

Species	VFEI name	Tropical forest	Temperate forest	Boreal forest	Savanna & grassland	Cropland	Peat fires
CO	CO	104	113	121	69	76	260
CO ₂	CO2	1620	1570	1530	1660	1430	1590
CH ₄	CH4	6.5	5.2	5.5	2.7	5.7	9.1
C ₂ H ₂	C2H2	0.35	0.31	0.28	0.31	0.27	0.11
Ethylene	C2H4	1.11	1.11	1.54	0.83	1	1.47
Ethane	C2H6	0.88	0.69	0.97	0.42	0.79	1.85
C ₃ H ₄	C3H4	0.013	0.05	0.062	0.071	0.18	0.006
Propylene	C3H6	0.86	0.6	0.67	0.46	0.47	1.14
Propane	C3H8	0.53	0.28	0.29	0.13	0.17	0.99
Butenes	BUTENES	0.246	0.281	0.265	0.16	0.225	0.91
Butanes	BUTANES	0.056	0.111	0.163	0.028	0.059	0.41
Isoprene	ISOP	0.22	0.1	0.074	0.101	0.17	0.52
Pentenes	PENTENES	0.084	0.091	0.057	0.036	0.038	0.172
Pentanes	PENTANES	0.022	0.051	0.082	0.015	0.061	0.363
Hexenes	HEXENES	0.151	0.182	0.195	0.11	0.042	0.34
Hexanes	HEXANES	0.08	0.058	0.067	0.037	0.099	0.194
Heptanes	HEPTANES	0.024	0.029	0.021	0.016	0.031	0.112
Octenes	OCTENES	0.012	0.036	0.021	0.021	0.002	0.065
Terpenes	TERPENES	0.15	1.17	1.53	0.104	0.027	0.08
Benzene	BENZENE	0.38	0.42	0.57	0.33	0.27	0.87
Toluene	TOLUENE	0.23	0.27	0.35	0.19	0.17	0.45
Xylenes	XYLENES	0.086	0.16	0.11	0.086	0.1	0.23
Methanol	METHANOL	2.8	2.2	2.33	1.35	3.3	2.5
Ethanol	ETHANOL	0.067	0.076	0.058	0.036	0.05	0.17
Formaldehyde	HCHO	2.4	2.04	1.75	1.23	1.8	1.07
Acetaldehyde	CH3CHO	2.26	1.21	0.81	0.84	1.8	1.16
Glyoxal	GLYOXAL	0.5	0.54	0.59	0.33	0.24	1.3
Methylglyoxal	CH3COCHO	0.49	0.27	0.57	0.4	0.55	0.23
Methacrolein	MACR	0.15	0.14	0.11	0.1	0.28	0.39
Acetone	ACETONE	0.63	0.76	1.59	0.47	0.71	0.91
Methyl vinyl ketone	MVK	0.39	0.165	0.099	0.23	0.48	0.057
Acetol	HYAC	1.81	1.13	2.1	0.56	3.12	0.64
Formic acid	HCOOH	0.49	0.91	1.04	0.21	0.56	0.29
Acetic acid	CH3COOH	3.3	2.74	3.8	2.31	6.1	4.9
H ₂	H2	3.1	2.1	1.6	0.97	2.6	1.2
NO	NO	2.8	3	1.18	2.5	2.4	1.2
HONO	HONO	0.85	0.33	0.41	0.47	0.37	0.35
N ₂ O	N2O	0.2	0.25	0.24	0.17	0.09	0.17
NH ₃	NH3	1.33	0.98	2.5	0.89	0.99	4.2
SO ₂	SO2	0.77	0.7	0.75	0.47	0.8	4.3
Dimethyl sulfide	DMS	0.0022	0.014	0.0023	0.008	0.05	0.045
HCl	HCL	0.13	0.039	0.13	0.13	0.18	0.008
PM _{2.5}	PM25	8.3	18.5	18.7	6.7	8.2	18.9
Total PM	TPM	10.9	18.4	15.3	8.7	12.9	27.5
Organic carbon	OC	4.4	10.9	5.9	3	4.9	14.2
Black carbon	BC	0.51	0.55	0.43	0.53	0.42	0.1

845 **Table 2.** Biomes considered in VFEI with their corresponding mapping using IGBP land classes and Köppen climate classifications. See footnote for the key of each climates.

VFEI biome	IGBP land classification	Köppen climate classifications
Tropical forest	Evergreen Broadleaf Forest	Af, Am, Aw, BSh, Cwa, Cwb
Tropical savanna	Closed Shrublands	Af, Am, Aw, BSh, Cwa, Cwb
	Open Shrublands	
	Woody Savannas	
	Savannas	
Temperate forest	Evergreen Needleleaf Forest	Climates that do not belong to tropical nor boreal biomes
	Evergreen Broadleaf Forest	
	Deciduous Needleleaf Forest	
	Deciduous Broadleaf Forest	
	Mixed Forest	
Temperate savanna	Closed Shrublands	Climates that do not belong to tropical nor boreal biomes
	Open Shrublands	
	Woody Savannas	
	Savannas	
Boreal forest	Evergreen Needleleaf Forest	Dsc, Dsd, Dwc, Dwd, Dfc, Dfd, ET, EF
	Deciduous Needleleaf Forest	
	Mixed Forest	
Boreal savanna	Closed Shrublands	Dsc, Dsd, Dwc, Dwd, Dfc, Dfd, ET, EF
	Open Shrublands	
	Woody Savannas	
	Savannas	
Grassland	Grasslands	Climate independent
	Urban and Built-Up	
Cropland	Croplands	Climate independent
	Cropland/Natural Vegetation Mosaic	
Peatland	Permanent Wetlands	Climate independent
Desertic areas	Snow and Ice	Climate independent
	Barren or Sparsely Vegetated	
(Af) Tropical rainforest		(Dsd) Cold, dry summer, very cold winter
(Am) Tropical monsoon		(Dwc) Cold, dry winter, cold summer
(Aw) Tropical savanna		(Dwd) Cold, dry winter, very cold winter
(BSh) Arid, hot steppe		(Dfc) Cold, no dry season, cold summer
(Cwa) Temperate, dry winter, hot summer		(Dfd) Cold, no dry season, very cold winter
(Cwb) Temperate, dry winter, warm summer		(ET) Polar, tundra
(Dsc) Cold, dry summer, cold summer		(EF) Polar, frost

Table 3. Regions defined for analysis.

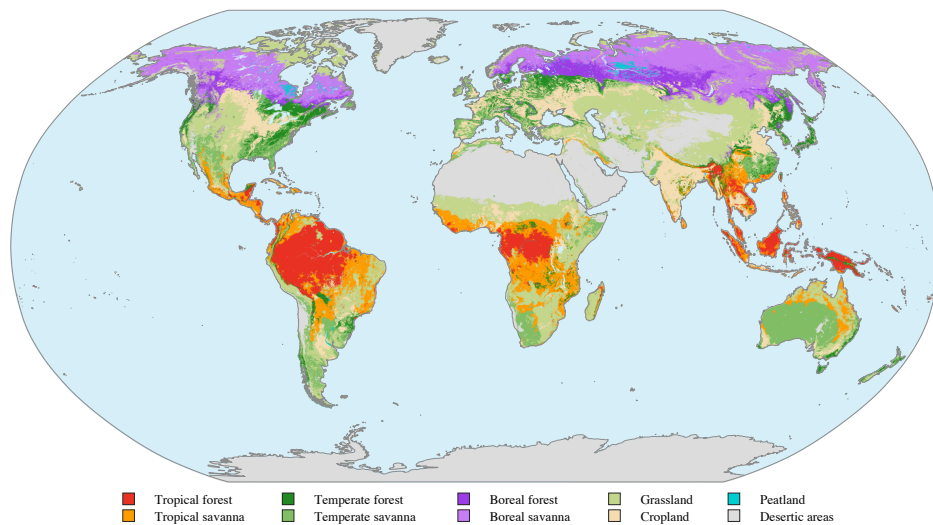
Region	Abbreviation	Bounding box			
		West	East	South	North
Boreal America	BAm	168° W	55° W	49° N	72° N
North America	NAm	126° W	60° W	25° N	49° N
Central America	CAm	110° W	50° W	0°	25° N
South America	SAm	82° W	30° W	30° S	0°
Europe	Eur	12° W	50° E	35° N	73° N
Northern Africa	NAf	20° W	45° E	0°	25° N
Southern Africa	SAf	8° E	51° E	35° S	0°
Siberia	Sib	85° E	150° E	42° N	75° N
Southeast Asia	SEA	70° E	130° E	0°	28° N
Australasia	AUS	95° E	160° E	45° S	0°

Table 4. Details of inventories used to compare VFEl against.

Parameter	Inventory			
	GFED	FINN	QFED	GFAS
Approach	bottom-up	bottom-up	top-down	top-down
Hotspots	MODIS burnt area	MODIS thermal anomalies	MODIS active fire FRP	MODIS and SEVIRI FRP
Land cover	MODIS	MODIS IGBP	MODIS INPE-IGBP	MODIS
Emission factors	Andreae & Merlet (2001)	Akagi et al. (2011) Andreae & Merlet (2001) McMeeking (2008)	Andreae & Merlet (2001)	Akagi et al. (2011)
Product resolution	0.25 degrees	~1 km	0.1 degrees	0.1 degrees
Reference(s)	van der Werf et al. (2010, 2017)	Wiedinmyer et al. (2011)	Darmenov & da Silva (2015)	Kaiser et al. (2012)

INPE: Instituto Nacional de Pesquisas Espaciais (Portuguese); *National Institute for Space Research (English)*.

Deleted: burnt area



855 **Figure 1.** Biome map used in VFEI. Biomes were constrained using MODIS IGBP land categories and Köppen climate classifications following the criteria shown in table 2.

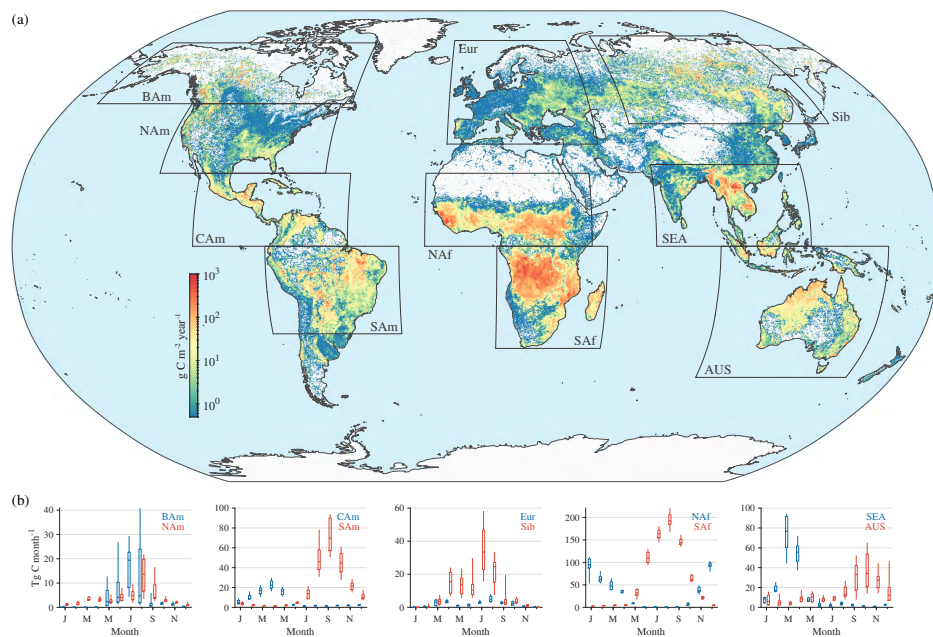


Figure 2. (a) Average annual carbon emissions ($\text{g m}^{-2} \text{a}^{-1}$) from VFEI between 2012 and 2019. Polygons show the regions defined to compare VFEI to other inventories. (b) Annual cycle of carbon emissions in each region (Tg month^{-1}) defined in table 3 and shown in (a). The lower (upper) boundary of the boxplots represents the 25th (75th) percentile, the mid-line in the box represents the median and the bottom and top of the vertical lines represent the 10th and 90th percentile, respectively.

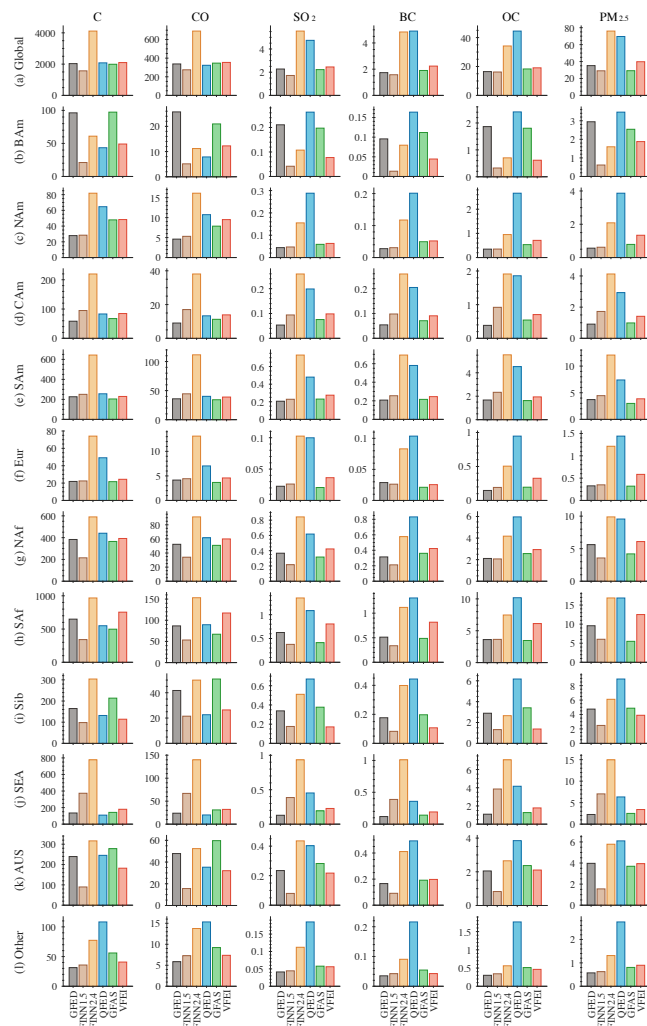


Figure 3. Comparison of average (2012-2019) annual emissions (Tg a^{-1}) of VFEI and other inventories for different species in different regions shown in figure 2. The species compared are, from left to right, total carbon (C), carbon monoxide (CO), sulfur dioxide (SO_2), black carbon (BC), organic carbon (OC), and particulate matter $< 2.5 \mu\text{m}$ ($\text{PM}_{2.5}$).

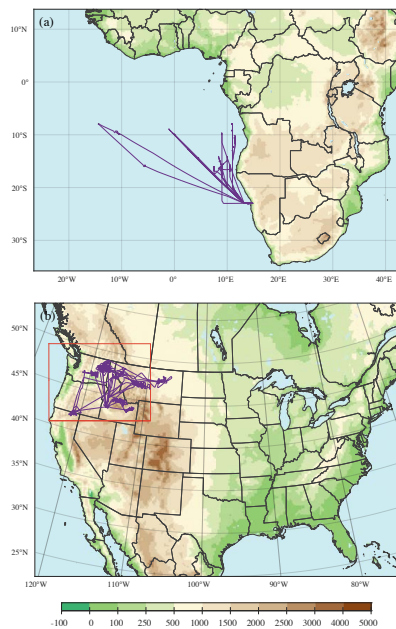


Figure 4. Domains of the simulations conducted in this study using WRF-Chem and VFEI (WRF-VFEI) showing topography (m.a.s.l.). Purple lines represent the flight tracks from ORACLES-2016 (Southern Africa) and FIREX-AQ (North America) used to evaluate the model results. The red polygon in (b) shows the inner domain used in this simulation.

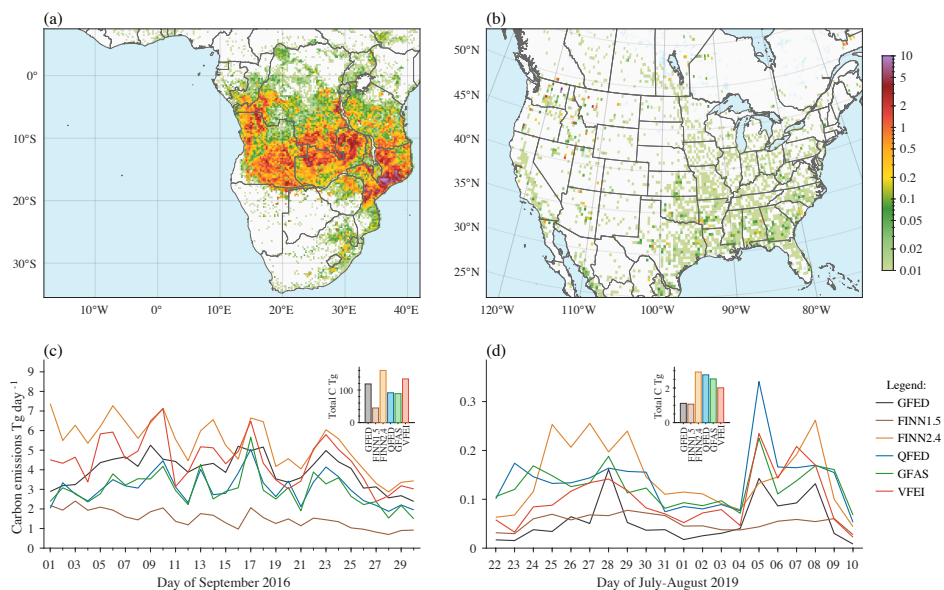


Figure 5. (Top) Total carbon emissions (Tg) for the period of (a) September 2016 and (b) between 20 July and 11 August 2019 from VFEI in each model simulation. (Bottom) Time series of daily carbon emissions (Tg day⁻¹) comparing VFEI to other inventories over the domains shown at the top. Small plots represent the total carbon emitted in each region during their period.

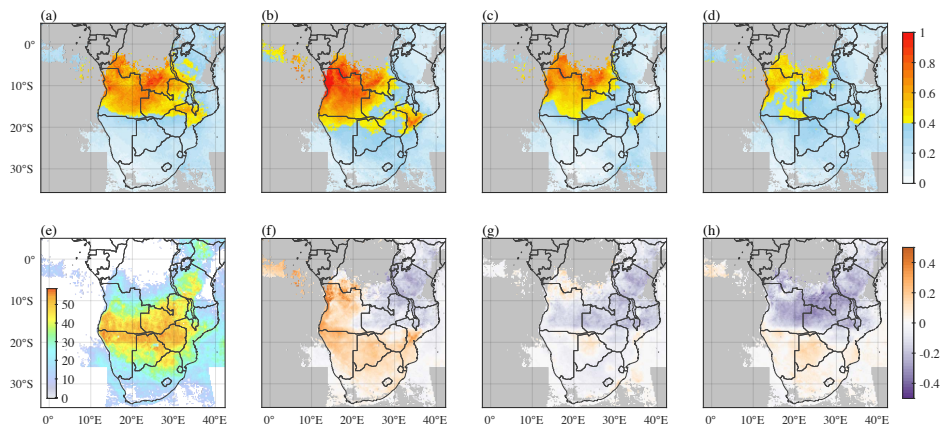


Figure 6. Monthly averaged aerosol optical depth at 550 nm from (a) MODIS MAIAC, (b) WRF-VFEI, (c) CAMS reanalysis and (d) MERRA-2 reanalysis during September 2016. (e) number of observations per grid point weighted in the final average for each dataset. Panels (f-h) show the mean monthly bias from each dataset with respect to MODIS MAIAC. Gray areas represent grid points with no observations during the period.

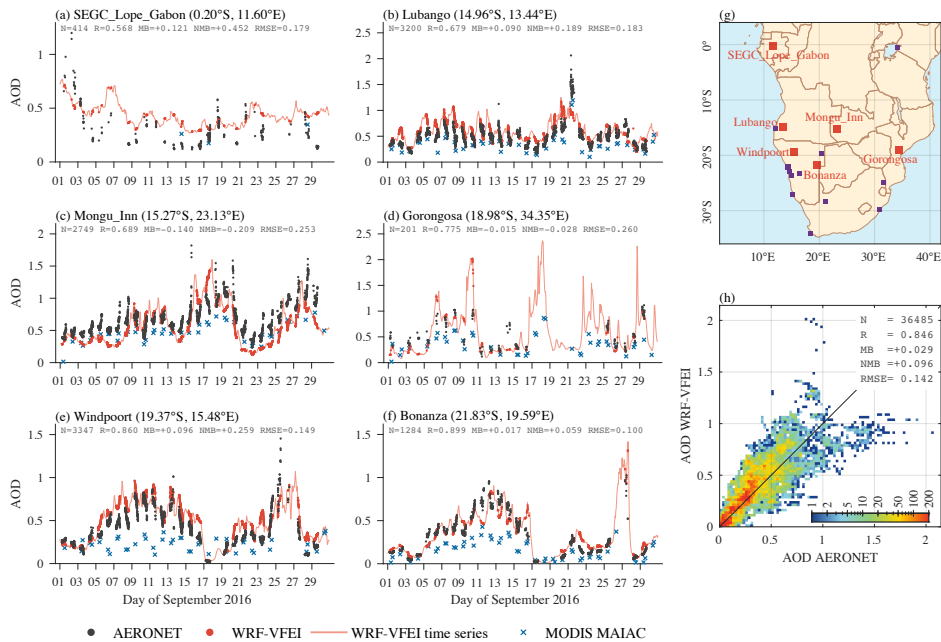


Figure 7. Comparison of aerosol optical depth (AOD) at 500 nm between AERONET sites and WRF-VFEI for September 2016. Panels (a-f) show the data as time series from six selected sites. AOD data at 550 nm from MODIS MAIAC C6.1 at the location of the sites is included as reference. Panel (g) shows the location of the AERONET sites used to evaluate the model simulations. The stations shown in panels (a-f) are highlighted in red. (h) Scatter plot displayed as heat map made using data from all the AERONET sites shown in (g). Statistics are reported in each panel, such as number of points (N), correlation (R), mean bias (MB), normalized mean bias (NMB) and root mean squared error (RMSE).

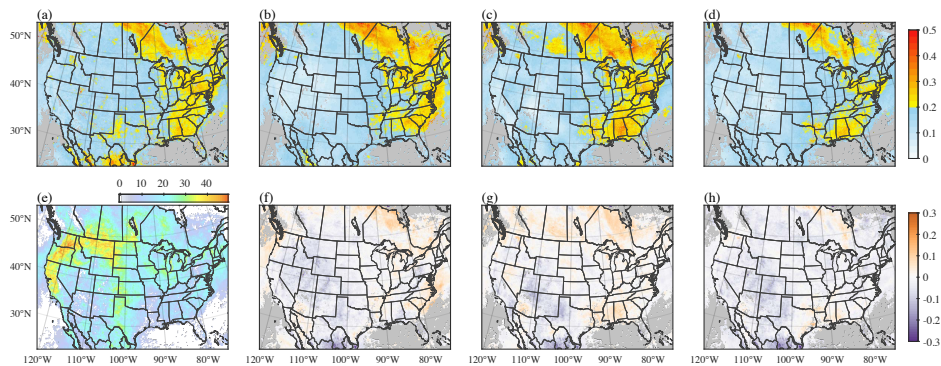


Figure 8. Aerosol optical depth at 550 nm from (a) MODIS MAIAC C6.1, (b) WRF-VFEI, (c) CAMS reanalysis and (d) MERRA-2 reanalysis averaged between 22 July and 10 August 2019. (e) number of observations per grid point weighted in the final average for each dataset. Panels (f-h) show the mean monthly bias from each dataset with respect to MODIS MAIAC C6.1. Gray areas represent grid points with no observations during the period.

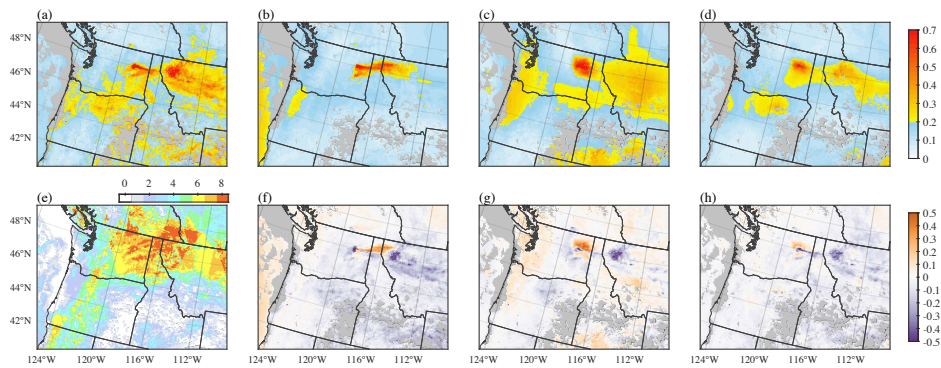


Figure 9. Same as in figure 8 but focusing on the inner domain of the simulation. The period averaged here is 6-9 August 2019, aiming on the Williams Flats fire event.

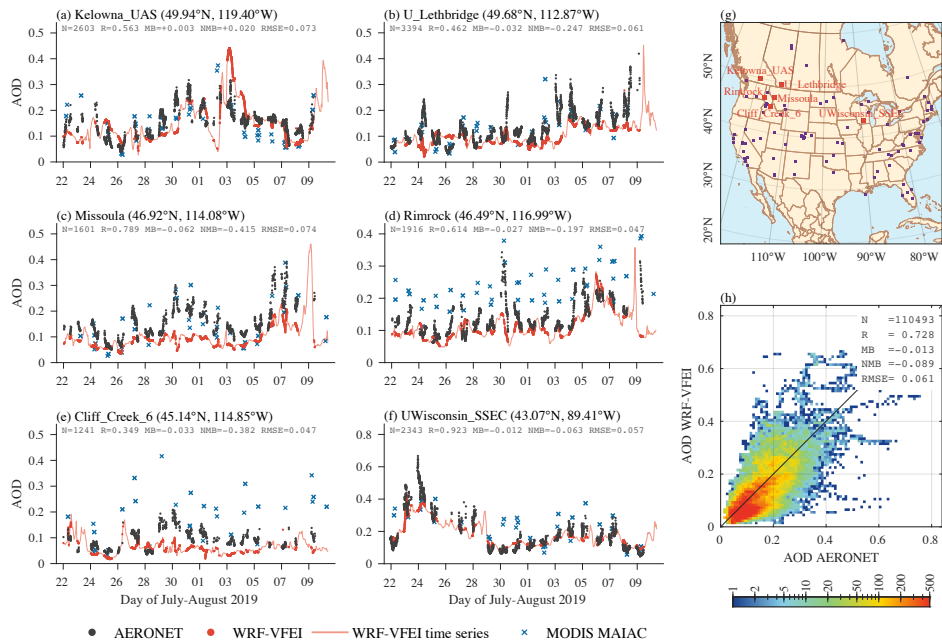


Figure 10. Same as figure 7 but comparing AERONET stations from North America between 22 July and 10 August 2019.

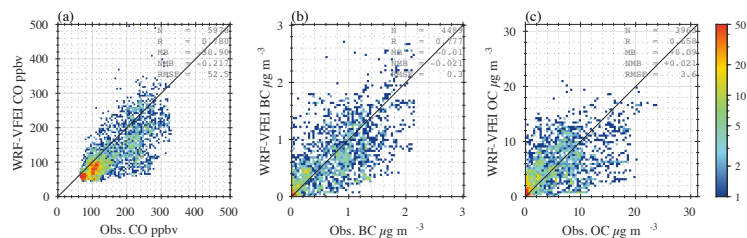


Figure 11. Scatter plots displayed as heat maps comparing the airborne data from the ORACLES-2016 campaign in Southern Africa and the WRF-VFEL simulations. (a) carbon monoxide in ppb, (b) black carbon in $\mu\text{g m}^{-3}$ and (c) organic carbon in $\mu\text{g m}^{-3}$. Statistics are reported in each panel, such as number of points (N), correlation (R), mean bias (MB), normalized mean bias (NMB) and root mean squared error (RMSE).

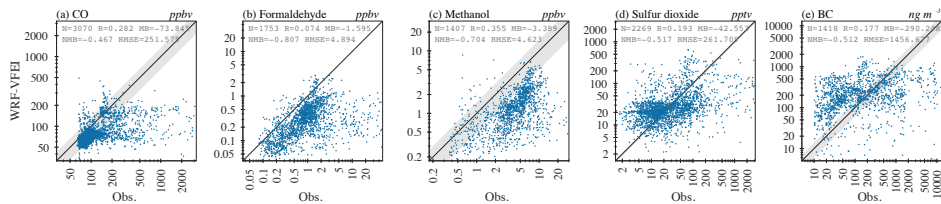


Figure 12. Scatter plots comparing the airborne data from the FIREX-AQ campaign in North America and the WRF-VFEI simulations between 24 July and 8 August 2019. (a) carbon monoxide in ppbv, (b) formaldehyde in ppbv, (c) methanol in ppbv, (d) sulfur dioxide in ppt and (e) black carbon in ng m^{-3} . Statistics are reported in each panel, such as number of points (N), correlation (R), mean bias (MB), normalized mean bias (NMB) and root mean squared error (RMSE).

920

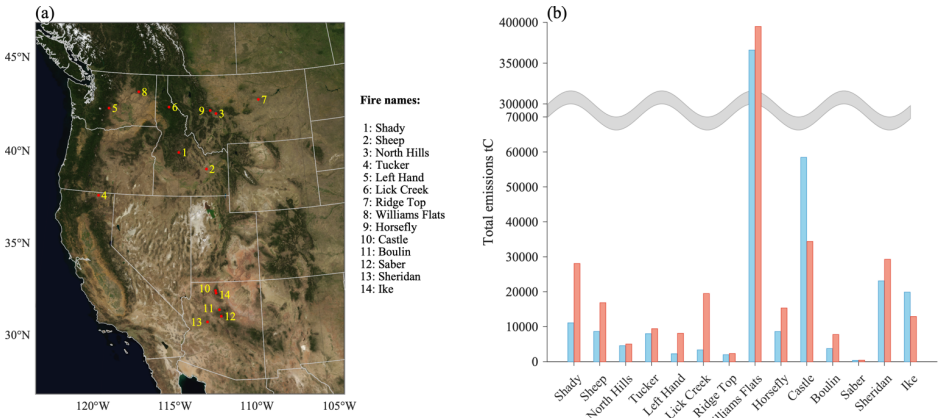


Figure 13. (a) Location of the 14 fires selected from the Fuel2Fire dataset specifically designed for the FIREX-AQ campaign, overlaid by a Blue Marble image from NASA. (b) Total carbon emissions (tC) from Fuel2Fire (blue bars) and VFEI (red bars). Note the broken y-axis. Table S1 shows the date(s) of occurrence of each of these fires.

Formatted: Font: Bold

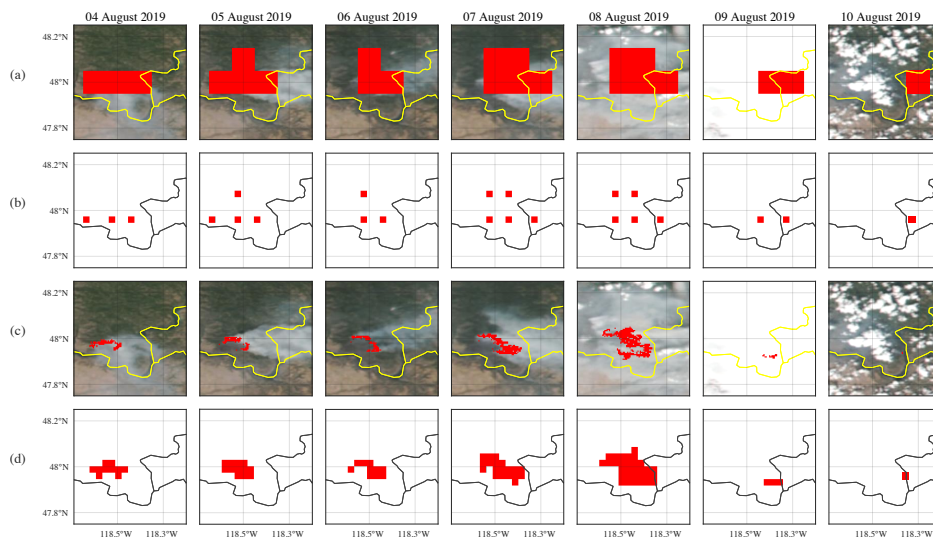


Figure 14. Example of mapping of a large fire event into a high-resolution (3 km) model grid. (a) VFEI emissions at 0.1° resolution. (b) VFEI emissions at 0.1° resolution mapped into high-resolution model grid. (c) VFEI at native ~500 m resolution. (d) VFEI at native ~500 m resolution mapped into the same high-resolution model grid. Each column represents a different day of early August 2019 shown at the top. Panels (a) and (c) include an overlay of VIIRS visible imagery from each day as reference. The VIIRS visible imagery were obtained from NASA Worldview Snapshots (<https://wvs.earthdata.nasa.gov/>; last access: 21 April 2022).

Deleted: 3