

Decision Support System version 1.0 (DSS v1.0) for air quality management in Delhi, India.

Gaurav Govardhan^{1,2,*}, Sachin D. Ghude^{1*}, Rajesh Kumar³, Sumit Sharma⁴, Preeti Gunwani⁵, Chinmay Jena⁵, Prafull Yadav¹, Shubhangi Ingle¹, Sreyashi Debnath^{1,6}, Pooja Pawar¹, Prodip Acharja^{1,6}, Rajmal Jat¹,
5 Gayatry Kalita¹, Rupal Ambulkar¹, Santosh Kulkarni⁷, Akshara Kaginalkar⁷, Vijay K Soni⁵, Ravi S.
Nanjundiah^{8,9}, and Madhavan- Rajeevan¹⁰

10 1: Indian Institute of Tropical Meteorology, Ministry of Earth Sciences, Pune, Maharashtra, India

2: National Centre for Medium-Range Weather Forecasting, Ministry of Earth Sciences, Noida, Uttar Pradesh, India

3: National Center for Atmospheric Research, Boulder, CO, United States of America

4: The Energy and Resources Institute, Delhi, India

15 5: India Meteorology Department, Ministry of Earth Sciences, Delhi, India

6: Savitribai Phule Pune University, Pune, Maharashtra, India

7: Centre for Development of Advanced Computing, Pune, Maharashtra, India

8: Centre for Atmospheric and Oceanic Sciences, Indian Institute of Science, Bengaluru, India.

9: Divecha Centre for Climate Change, Indian Institute of Science, Bengaluru, India.

20 10: National Centre for Earth Science Studies, Thiruvananthapuram, Kerala, India.

* : corresponding authors:

Gaurav Govardhan: gaurav.govardhan@tropmet.res.in ,

Sachin D. Ghude: sachinghude@tropmet.res.in

25

Abstract

This paper discusses the newly developed Decision Support System version 1.0 (DSS v1.0) for air quality management activities in Delhi, India. In addition to standard air quality forecasts, DSS provides the
30 contribution of Delhi, its surrounding districts, and stubble-burning fires in the neighboring states of Punjab and Haryana to the PM_{2.5} load in Delhi. DSS also quantifies the effects of local and neighborhood emission-source-level interventions on the pollution load in Delhi. The DSS-simulated Air Quality Index for the post-monsoon and winter seasons of 2021-22 shows high accuracy (up to 80%) and a very low false alarm ratio (~20%) from Day 1 to Day 5 of the forecasts, especially when the ambient AQI is > 300.

35 During the post-monsoon season (winter season), emissions from Delhi, the rest of the National Capital Region's districts, biomass-burning activities, and all other remaining regions on average contribute 34.4% (33.4%), 31% (40.2%), 7.3% (0.1%), and 27.3% (26.4%), respectively, to PM_{2.5} load in Delhi. During peak pollution events (stubble-burning periods), however, the contribution from sources within Delhi (farm fires in Punjab-Haryana) could reach 65% (69%). According to DSS, a 20% (40%) reduction
40 in anthropogenic emissions across all NCR districts would result in a 12% (24%) reduction in PM_{2.5} in Delhi on a seasonal mean basis. DSS is a critical tool for policymakers because it provides such information daily through a single simulation with a plethora of emission reduction scenarios.

45 1. Introduction

The national capital of India, Delhi, is one of the most populated capitals in the world with an estimated count of more than 18.7 million (UIDAI, 2021). Immense population density, urbanization, and

50 industrialization within the city have resulted in many urban issues, including air pollution (Molina and
Molina, 2004; Chopra, 2016; Zhang et al., 2022). The primary sources of pollutants are vehicles,
industries, power plants, waste-burning practices, construction and demolition activities, road dust, etc.
On top of this, the post-monsoonal (October-November) harvesting of the paddy crops and the associated
burning of the paddy residue in the neighboring states of Haryana and Punjab also contribute to the
degradation of air quality in Delhi and the surrounding region (Bikkina et al., 2019; Bray et al., 2019;
Choudhury et al., 2019; Kulkarni et al., 2020; Nair et al., 2020). Besides, the geographical location and
55 the local meteorological conditions, especially during the winter months, aggravate the pollution levels in
the city (Guttikunda and Gurjar, 2012; Tiwari et al., 2014; Kumar et al., 2020). The pollution in the city is
at its peak during the post-monsoon and the winter seasons, though the summer (April-June) months also
bring severe dust storms and the associated degradation of Delhi's air quality (Banerjee et al., 2021;
Chakravarty et al., 2021; Parde et al., 2022). The air quality in Delhi is so poor that it occasionally
60 (especially during the post-monsoon and winter seasons) crosses the national air quality standards by
more than ten times (Kanawade et al., 2020; Jena et al., 2021; Roozitalab et al., 2021). Owing to the ever-
increasing pollution, Delhi has been topping the list of the most polluted national capital cities in the
world (Meteosim, 2019). It has been estimated that the air pollution in Delhi is causing more than 7,000
premature mortalities every year (Guttikunda and Goel, 2013; Ghude et al., 2016; Saini and Sharma,
65 2020). The loss of average life expectancy in the city is also estimated to be around two years in Delhi
(Ghude et al., 2016; Guo et al., 2018).

The primary solution to this problem lies in the reduction of anthropogenic emissions happening
in and around the city. However, permanent mitigation of emissions is a long-term objective due to the
involvement of multiple socio-economic factors (Riahi et al., 2017). A short-term and effective solution to
70 this problem could be related to creating awareness in the common public about air pollution, releasing
early warnings about the air pollution episodes that are likely to happen, and imposing temporary
emission controls so that the exposure of the common people to acute levels of air pollution could be
avoided. With this motivation, the Government of India, in the year 2018, directed the Ministry of Earth
Sciences (MoES) to develop an early warning system for air pollution events happening in Delhi. With
75 this mandate, the Indian Institute of Tropical Meteorology (IITM), Pune, and the India Meteorology
Department (IMD) developed the 'Air Quality Early Warning System' (AQEWS) in collaboration with
the National Center for Atmospheric Research (NCAR), USA, in 2018. AQEWS is a dynamical modeling
system that simulates air quality over the entire India with a special focus on Delhi (Ghude et al., 2020;
Kumar et al., 2020; Jena et al., 2021; Sengupta et al., 2022). The forecasting for Delhi is carried out with
80 a spatial grid spacing of 400 m x 400 m. The system is capable of delivering forecasts for three days and
at a slightly coarser resolution (10 km) for the next ten days. The skill of these forecasts has been found to
be excellent, especially when the air quality is beyond the 'very-poor' category (Jena et al., 2021;
Sengupta et al., 2022). The forecast has been found to be very useful to policymakers and has helped
them manage the air quality in the city, especially when severe air pollution episodes are predicted
85 (Ghude et al., 2022).

However, the governing authorities require more specific information about the emission sources
contributing to forthcoming air pollution events occurring in the near future besides the actual forecasts.
They also want to know the solution on how to reduce the impact of an air pollution event forecasted to
affect the city. These requirements were put forth by the Commission for Air Quality Management
90 (CAQM) in the National Capital Region and Adjoining Areas, constituted by the honorable Supreme
Court of India in 2021. While there exist some recent source-apportionment-related studies on air
pollution in Delhi (e.g., Gadi et al., 2019; Guo et al., 2019; Shivani et al., 2019; Rai et al., 2020; Tobler
et al., 2020; Yadav et al., 2020; Hama et al., 2021; Lalchandani et al., 2021), there does not exist a system
that can provide source apportionment information about the city's pollution either in near-real-time or 72
95 h in advance. Even globally, a very few such systems exist (Denby et al., 2020; Colette et al., 2022)
which give real-time and forecast of region-wise source apportionment of air pollution. Such a capability

is highly essential to suggest possible short-term immediate-relief-based solutions to the pollution menace happening in Delhi, especially during the post-monsoon and winter seasons. Responding to this requirement from the CAQM, we have come up with a dynamical modeling system named ‘Decision Support System’ (DSS) for air quality management in Delhi. The DSS is a new armor in our AQEWS that has already been providing neighborhood scale forecasts in Delhi (Jena et al., 2021) and provides quantitative information about the

- a) the contribution of emissions from 20 districts of the National Capital Region (NCR) (including Delhi) to the air pollution (PM_{2.5} and CO) in Delhi,
- b) the contribution of eight different emission sectors within Delhi to the air pollution in the city,
- c) the contribution of emissions from the biomass-burning activities happening in the neighboring states of Punjab and Haryana to the degradation of air quality in Delhi, and
- d) the efficacy of the possible emission source-level interventions on the forecasted air pollution event occurring in Delhi.

The DSS was operationalized during the post-monsoon and the winter seasons of the year 2021. It has been found to be very helpful for the governing authorities and the policy-makers. It has been estimated that the governing authorities avoided a severe air pollution event in Delhi by improving the air quality index (AQI) in the city by 20-22%, taking guidelines from the AQEWS and DSS (Ghude et al., 2022). Keeping in mind the usefulness of DSS, the CAQM has recommended that DSS must be an integral part of the decision-making process for reducing air pollution in the NCR (CAQM, 2022).

In this paper, we describe DSS by explaining its underlying modeling system, the various input datasets needed for the simulations, and the chemical data assimilation occurring in the system, in section 2. In the results section (section 3), we first evaluate the performance of DSS in capturing air pollution load in Delhi during the post-monsoon and the winter seasons of the year 2021-22. This is followed by the source-apportionment-related results from DSS for both the seasons of interest. We further discuss the findings from the ‘scenarios of emission reductions’ from DSS. In section 4, we summarize the main results from the paper.

2. Details of the Modeling System

2.1 Domain and Meteorological Formulation

The DSS holds the fully coupled regional chemistry transport model ‘Weather Research and Forecasting coupled with Chemistry’ (WRF-Chem) (Grell et al., 2005) in its core. The model’s version 3.9.1 has been used. The model domain is centered in Delhi with a horizontal grid spacing of 10 km x 10 km with 50 vertical levels with eight levels in the first 1 km from the surface, and the model top is set at 50 hPa. The simulation uses a time step of 1 minute for temporal integration with radiation calculations done every 12 minutes. The model domain mainly covers the north Indian region spanning from 62°E - 93°E and 21°N-36°N (see supplementary figure 1). We use the Rapid Radiative Transfer Model for Global Circulation Models (RRTMG) scheme (Mlawer et al., 1997; Iacono et al., 2000, 2008; Clough et al., 2005) to parameterize the short-wave and long-wave radiative interactions. The choice of the scheme for the parameterization for boundary layer turbulence is vital for the simulations of atmospheric particulate pollutants (Govardhan et al., 2015, 2016, 2019; Sengupta et al., 2022; and the reference therein). The boundary layer processes in the DSS modeling framework are parameterized using the Mellor-Yamada-Nakanishi-Niino 2.5 (MYNN2.5) scheme (Nakanishi and Niino, 2005), which is a turbulent kinetic energy-based scheme that puts a local closure of level 1.5 on the turbulent fluxes. For the parameterization of the microphysical processes, we use the WRF single-moment six-class microphysics scheme (Hong and Lim, 2006). The scheme includes six prognostic water substances, including cloud water, rain, snow, graupel, water vapor, and cloud ice. We parameterize the sub-grid scale convective processes using the Grell-Freitas scheme (Grell and Freitas, 2014). A recent study (Debnath et al., 2022)

highlights the ability of the Grell-Freitas scheme in capturing rainfall characteristics over the Indian region. The DSS uses Noah Land Surface Model (Ek et al., 2003; Niu et al., 2011) to parameterize land-surface processes with the Monin-Obukhov scheme to take into account the surface layer physics (Jiménez et al., 2012). The DSS utilizes the IITM Global Forecasting System model (GFS) to generate the meteorological initial and the boundary conditions for the study domain every 3 hours. This is a global atmospheric model of IITM, Pune, based on the Global Forecasting System of the National Centers for Environmental Prediction (NCEP), USA. The IITM GFS runs in an operational forecasting framework at a horizontal grid spacing of 12 km employing ensemble Kalman filtering for assimilating observational data (Mukhopadhyay et al., 2019). The IITM GFS provides the required conditions of the atmospheric state variables like pressure, temperature, winds, specific humidity, etc., to the model domain. The stationary geographic fields like topographical height, surface albedo, land-use, leaf area index, etc., are interpolated from the Moderate Resolution Imaging Spectroradiometer (MODIS) dataset to the model's grid.

160 2.2 Anthropogenic Emissions

We use version 2.2 of the Emission Database for Global Atmospheric Research Hemispheric Transport of Air Pollutants (EDGAR-HTAP) (Janssens-Maenhout et al., 2015) for the prescription of anthropogenic emissions of aerosols and trace gases in the DSS. This global emissions inventory has been constructed by combining multiple regional emission inventories like the Environmental Protection Agency (EPA) for the USA, the European Monitoring and Evaluation Programme (EMEP), and the Netherlands Organisation for Applied Scientific Research (TNO) for Europe, EPA and Environment Canada for Canada, and the Model Intercomparison Study for Asia (MICS-Asia III) for China, India, and other Asian countries. The inventory also provides sector-wise emissions for the five main sectors, including transport, industries, power, residential, and agricultural. The emissions are provided at a spatial resolution of 0.1° in latitude and longitude space. The emissions are available for the aerosols and their precursor gases, including sulfur-di-oxide (SO_2), nitrogen oxides (NO_x), carbon monoxide (CO), non-methane volatile organic compounds (NMVOC), ammonia (NH_3), BC, OC, $\text{PM}_{2.5}$, and PM_{10} .

For Delhi and the surrounding 19 districts of the National Capital Region (NCR), including Jhajjar, Rohtak, Sonapat, Panipat, Bagpat, Muzaffarnagar, Meerut, Gautam Buddha Nagar, Faridabad, Ghaziabad, Alwar, Bharatpur, Bulandshahar, Gurgaon, Rewari, Mahendragarh, Rewari, Jind, and Karnal we use the anthropogenic emissions inventory prepared by The Energy and Resources Institute (TERI) for the year 2016. This fine-gridded (4km x 4km) emissions inventory (TERI and ARAI, 2018) provides anthropogenic emissions of SO_2 , NO_x , NMVOC, CO , PM_{10} , and $\text{PM}_{2.5}$. The $\text{PM}_{2.5}$ has been further speciated in OC, BC, Sulphates, Ammonium, Chlorides, and Nitrates. The inventory also provides emissions on a sectoral basis. The sectors could be broadly classified into eight major sectors, including transport, residential, industries, waste burning, construction, road dust, energy, and others (which include the emissions from the sectors like Crematoria, Airports, Restaurants, Non-energy solvent use, and Diesel Generator sets). Moreover, the inventory also includes a monthly variation in emissions from all the aforementioned sectors. For this study, we have re-gridded this emission inventory to a horizontal grid spacing of $0.1^\circ \times 0.1^\circ$ and have subsequently replaced the EDGAR emission fields with this inventory over the NCR region. In general, for Delhi-NCR, there is an increasing trend in the anthropogenic emissions in the recent years. Sahu et al., 2023 reports changes in sectoral emissions over Delhi in 2020 in comparison with 2010. The study suggests that for $\text{PM}_{2.5}$, the emissions from transport sector and industries have increased by 37% and 25% respectively. On the other hand, the residential sector emissions show a slight decrease (1-2%). However, due to lack of any such data for the period 2016 to 2022, we have stick to the original inventory of the year 2016 for this study.

For the emissions from agricultural burning activities, we use a combination of the Fire Inventory from NCAR (FINN) database (Wiedinmyer et al., 2011) and the active fire count data from the Visible Infrared Imaging Radiometer Suite (VIIRS) instrument (Schroeder et al., 2014) on-board the Suomi

195 | National Polar-Orbiting Partnership (Suomi NPP) satellite. –We have prepared a daily climatology for
year-long fire emissions using the FINN data-set for the years 2002 to 2018. On each day of the forecast,
we superimpose the near-real time daily active fire count data from the Visible Infrared Imaging
Radiometer Suite (VIIRS) instrument on-board the Suomi National Polar-Orbiting Partnership (Suomi
200 | NPP) satellite on the climatological fire emissions file for that day. For day 1 of the forecast, the fire
emissions only over those grids are activated where we get non-zero active fire counts on that day with a
confidence level greater than 70%. The other points in the domain are supplied with no fire emissions.
For day 2 – day 5 of the forecast, the climatological fire emissions over only those grids are activated
where we get non-zero values in the climatological VIIRS fire count data for that day. This dataset is
205 | prepared using the VIIRS data the years 2011–2018. Thus, while the Day 1 fire emission forecasts are
generated by amalgamation of near-real time fire count and climatological fire emissions, the Day 2-- Day
5 fire emission forecasts are generated using the climatological information about the fire emissions and
the active fire counts. In Supplementary Figure 2, we compare the prescribed emissions of OC from fires
in the DSS framework with the corresponding emissions from the long-term climatological data from
210 | FINN, and from the Copernicus Atmosphere Monitoring Service (CAMS) Global Fire Assimilation
System (GFAS) (Kaiser et al., 2012) for the period of October 2021–November 2021. It may be noted
that the fire emissions employed in the DSS framework do show day-to-day variability. They are not
overly driven by long-term FINN climatology. However, the peak in the absolute magnitudes of the
emissions in DSS looks to reach a week earlier compared to that in GFAS. The fire emissions in DSS and
215 | GFAS show a good agreement with the availability of VIIRS fire count information. It is particularly
evident around 19th October and 28th October when VIIRS fire counts are zero and the corresponding
prescribed fire emissions in the DSS and GFAS are also zero.

2.3 Chemical boundary conditions and the mechanism employed

220 | The boundary conditions for the chemistry variables in DSS are set using the climatological data
from the global chemistry transport model ‘Model for Ozone and Related Tracers version 4’ (MOZART-
4; Emmons et al., 2010). The climatologies are specifically used as the real-time forecast from MOZART-
4 is not available. In the future, we plan to replace these climatological boundary conditions using global
225 | atmospheric composition forecasts such as the Copernicus Atmosphere Monitoring Service (CAMS) and
the Whole Atmosphere Community Climate Model (WACCM). Dynamic chemical lateral boundary
conditions are essential for capturing air pollution events related to dust storms originating outside our
domain. The gas-phase chemistry in DSS is simulated using the MOZART-4 chemical mechanism. This
mechanism takes into account 85 gas-phase species with 39 photolysis and 157 gas-phase reactions
(Emmons et al., 2010). The aerosol processes are simulated by employing the Goddard Chemistry
230 | Aerosol Radiation and Transport (GOCART) model that includes five major tropospheric aerosol species,
viz., sulfate, organic carbon (OC), black carbon (BC), dust, and sea salt (Chin et al., 2000, 2002; Ginoux
et al., 2001). While sulfate, BC, and OC are simulated as bulk aerosol species, dust and sea salts are
resolved into five and four size bins, respectively. The carbonaceous aerosols (BC and OC) are assumed
to be present in both the hydrophobic and hydrophilic modes. The conversion of hydrophobic to
235 | hydrophilic is assumed to take place with an e-folding lifetime of 2.5 days. The aerosols are assumed to
be deposited down by dry deposition (for all aerosols) and wet deposition (for hydrophilic aerosols)
pathways. While it is noted that the GOCART mechanism does not take into account the secondary
organic aerosols and the nitrate aerosols, we stick to it as it is computationally less expensive and thus
useful in an operational air quality forecasting set-up.

240 |

2.3 Chemical Data Assimilation

The DSS improves the initialization of aerosol species and thus $PM_{2.5}$ field via assimilation of
satellite observations of aerosol optical depth (AOD) using the three-dimensional variational (3DVAR)

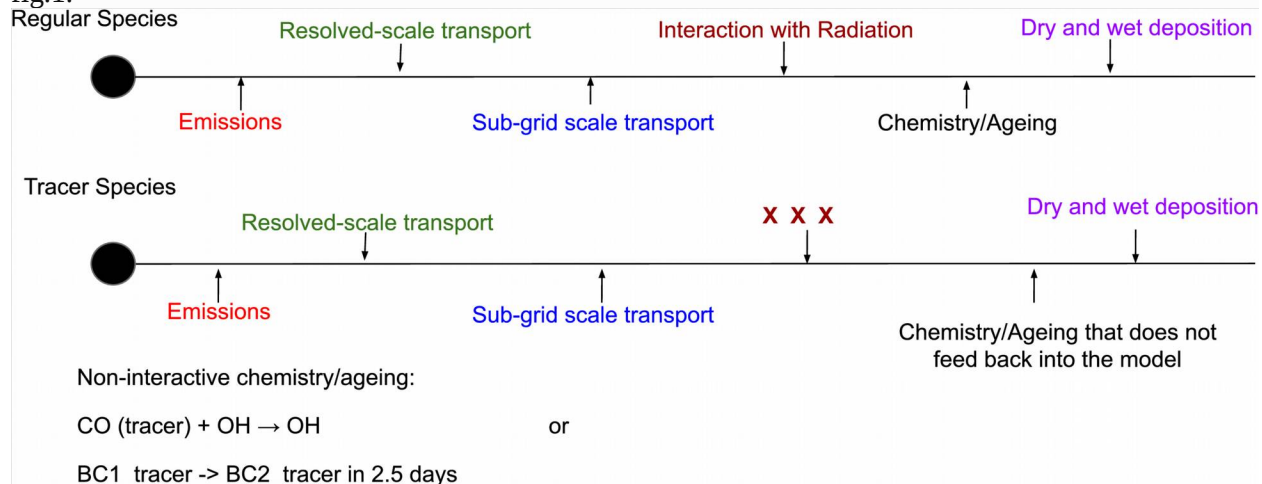
245 scheme of the community Gridpoint Statistical Interpolation system (version 3.5). The system assimilates the observations into the model by minimizing the cost function $J(x)$ (equation 1), which is the sum of the deviation of the final state of the model from its background state and the observations. The cost function takes the following form,

$$J(x) = \frac{1}{2}(x - x_b)^T B^{-1} (x - x_b) + \frac{1}{2}(H(x) - y)^T R^{-1} (H(x) - y) \dots (1)$$

250 Where x is the state vector which is composed of aerosol chemical composition and meteorological parameters needed for AOD calculation, x_b is the information about x available prior to the assimilation (also known as background information), B is the background error covariance (BEC) matrix, H is the forward operator that calculates AOD from the WRF-Chem aerosol chemical composition following Liu et al. (2011), y is the AOD retrieved by MODIS, and R is the observational error covariance matrix. More details about each of the terms in equation 1 can be found in Kumar et al. (2020). The assimilation of MODIS AOD (from both TERRA and AQUA satellites) in the model is done at 9 UTC every day in the DSS. In addition to assimilation of satellite data, we also assimilate surface measurements of PM_{2.5} into the model at 9 UTC. The data comes from 43 stations of the Central Pollution Control Board (CPCB) and the Delhi Pollution Control Committee (DPCC), 260 spanned across Delhi. The exact names and the locations of the stations can be found in supplementary figure 1 of Sengupta et al. (2022).

2.4 Tagged-tracers in DSS

265 We have added a variety of passive tagged-tracers in WRF-Chem, which assist us in understanding the region- and source-specific contribution to PM_{2.5} mass concentration over Delhi. The passive tracer of a regular species is that species introduced in the model which undergoes all physio-chemical processes identical to a regular chemical species (e.g., emissions, transport, chemical transformation, deposition, etc.) without providing feedback to the model (Bhardwaj et al., 2021; Kumar et al., 2015). In other words, the tracer species does not take part in radiation or droplet formation processes, as its effect in such feedback processes is already taken into account by the parent regular species. The difference between a regular chemical species and a tracer chemical species is illustrated in fig.1.



275 Figure 1: The life-cycle of a regular chemical species and a tracer chemical species is illustrated. The

main difference lies in the feedback and the chemistry sections. The tracer species does not have feedback on the radiation processes in the model, and it does not affect the chemistry of regular species in the model. Two such examples of non-interactive chemistry are given. The CO tracer species gets oxidized by OH[•] radical, but it does not change the mass budget of the OH[•] radical in the model. Similarly, the tracer hydrophobic BC (BC1_tracer) species gets aged into the tracer hydrophilic BC species (BC2_tracer) while keeping the mass of the regular hydrophilic BC in the model intact.

Since PM_{2.5} is not a prognostic species in the model, we employ tracers for hydrophobic black carbon (BC1), hydrophilic black carbon (BC2), hydrophobic organic carbon (OC1), hydrophilic organic carbon (OC2), non-speciated primary PM_{2.5} (P25), and carbon monoxide (CO). The GOCART scheme employed in the WRF-Chem model used in this study calculates PM_{2.5} as follows,

$$PM_{2.5} = BC1 + BC2 + (OC1 + OC2) \times 1.8 + P25 + DUST1 + SEAS1 + (0.286 \times DUST2) + (0.942 \times SEAS2) + 1.375 \times Sulfate \quad \dots (2)$$

Where,

DUST1 = Mineral dust aerosol species falling in the first bin with the effective radii equal to 0.73 μm

DUST2 = Mineral dust aerosol species falling in the second bin with the effective radii equal to 1.4 μm

SEAS1 = Sea-salt aerosol species falling in the first bin with the effective radii equal to 0.3 μm

SEAS2 = Sea-salt aerosol species falling in the second bin with the effective radii equal to 1.0 μm

Sulfate = Sulfate aerosol species,

In this study, we employ tracers for five of the ten species involved in the calculation of PM_{2.5} in the GOCART scheme (equation 2). In figure 2, we examine the contribution of those ten species to the simulated PM_{2.5} in the model.

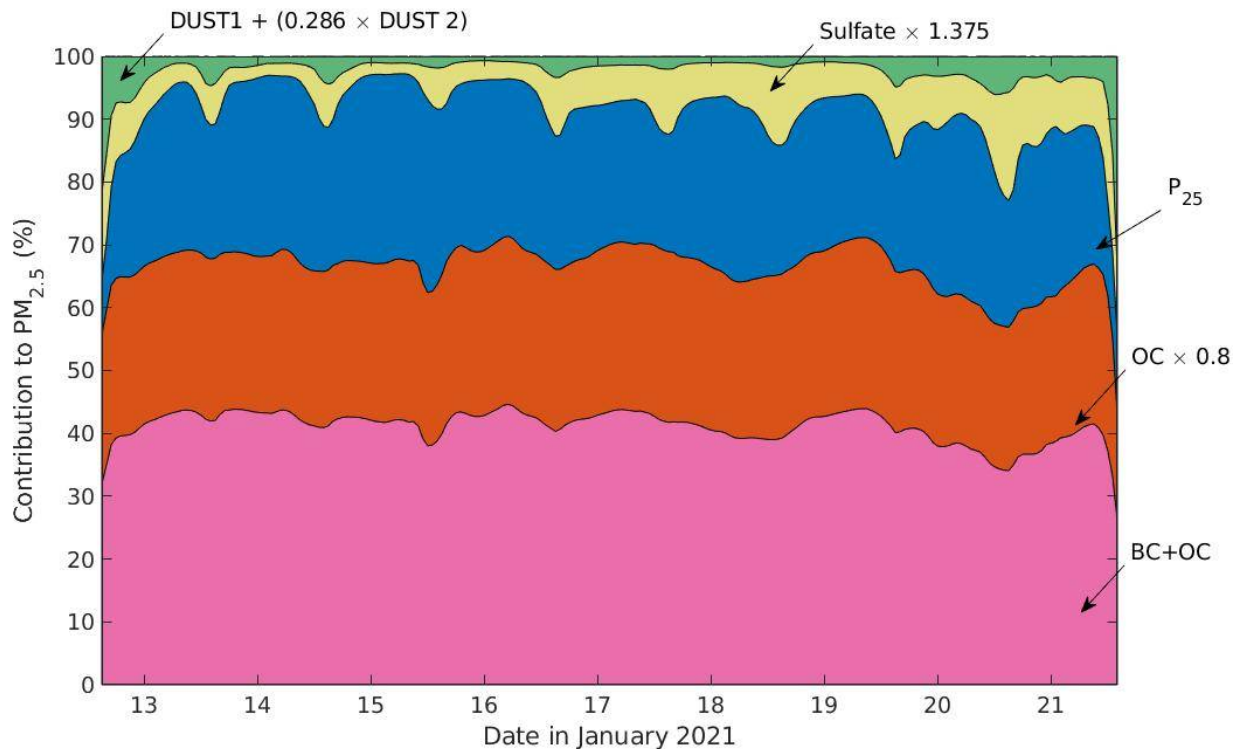


Figure 2: Speciation of the WRF-Chem simulated near-surface PM_{2.5} mass concentration over Delhi

during January 2021. Contribution from SEAS1 and SEAS2 to $PM_{2.5}$ in Delhi is negligible during the study period and thus it is not shown in the figure.

305 It may be noted that the chosen five species (BC1, BC2, OC1, OC2, and P25) together contribute around
85-90% of the total $PM_{2.5}$ in the model. Thus, our five tracers would together represent, on an average, 85-
90% of the corresponding $PM_{2.5}$ mass concentrations. Therefore, practically we can interpret those five
tracers together as a $PM_{2.5}$ tracer. Adding tracers for SO_4^- , DUST1, DUST2, SEAS1, and SEAS2 would
not drastically affect the overall results as their contribution to $PM_{2.5}$ over Delhi, specifically during the
winter season, is negligible, especially in the model simulations (however, the fractional contribution of
310 different species during April-September could be different due to dust storms and monsoon circulation
affecting this region). Moreover, since the forecasting system is operational on a daily basis, one needs to
limit the computational load and thus the total number of species in the model configuration to keep avoid
daily run-time as short as possible. Keeping all these constraints in mind, we chose to put tracers only for
the five selected species.

315

2.4.1 Tracers for Anthropogenic $PM_{2.5}$ in the model

We introduce regional tracers for the total emitted anthropogenic $PM_{2.5}$ from Delhi and the 19
districts surrounding it. These districts, along with Delhi, form the NCR. The following are the districts
included: Delhi, Jhajjar, Sonapat, Bagpat, Ghaziabad, Gautam Buddha Nagar, Faridabad, Gurgaon,
320 Rohtak, Jind, Panipat, Karnal, Muzaffarnagar, Meerut, Bulandshahr, Bharatpur, Alwar, Mahendragarh,
Rewari, and Bhiwani. In figure 3, we show the locations of these 20 districts.



325 Figure 3: The locations of the 20 districts of NCR whose anthropogenic $PM_{2.5}$ emissions are tagged in
 DSS.

In addition to those 20 districts, we also trace $PM_{2.5}$ from eight broad source-based categories
 exclusively in Delhi. These individual broad categories are a group of several sub-categories put together.
 330 The broad categories and the included sub-categories are listed in table 1. As mentioned in section 2.2, the
 emissions inventory provides extensive sub-categorical information for the entire NCR domain. However,
 version 1.0 DSS does not trace the $PM_{2.5}$ emissions from the individual broad categories from the NCR
 districts other than Delhi. Even for Delhi, the emissions from the individual sub-categories are not traced.
 335 All these ensure the computational speed and cost for the operational DSS system. Moreover, the tagged
 sources fulfill the current requirements of the policymakers with regards to the air quality management
 in the city.

| Broad categories | Included sub-categories |
|------------------|--|
| Transport | Diesel vehicles, Gasoline vehicles, and CNG vehicles |
| Industries | Industries, stone crushers, Brick industry, and Refineries |
| Construction | Construction activities |
| Road dust | Dust emissions from paved roads |
| Waste burning | Refuse burning, Landfill fires, and Incinerators |
| Energy | Power Plants in NCR, Badarpur power plant in Delhi, and Flyash ponds |
| Residential | Domestic-biomass, and other fuels |
| Others | Crematoria, Airport, Restaurant, Non-energy solvent use, and Diesel Generator sets |

340 Table 1: The source-based $PM_{2.5}$ tracers employed only for Delhi in this version of DSS. It is to be further noted that we employ tracers for the eight broad source categories (column 1) in Delhi. We do not employ tracers for the individual sub-categories in this version of DSS.

2.4.2 Tracers for biomass-burning activities

345 Along with the anthropogenic emissions of $PM_{2.5}$, we also trace the biomass-burning generated emissions of $PM_{2.5}$. Similar to the anthropogenic $PM_{2.5}$, we introduce tracers for biomass-burning generated BC1, BC2, OC1, OC2, and P25. These tracers hold significant importance in DSS, as the post-monsoonal harvesting of paddy generates a large amount of stubble which gets burnt and generates a thick layer of smoke in the upwind regions of Delhi, which eventually travels to Delhi. So, the tracers representing those burning activities help us identify the contribution of biomass-burning to the $PM_{2.5}$ 350 load in Delhi and thus are critical for air quality management in Delhi.

2.4.3 Scenario tracers for Anthropogenic $PM_{2.5}$

355 Apart from tracing the anthropogenic and the biomass-burning generated $PM_{2.5}$, DSS offers a very unique feature, which we term ‘scenario tracers’. The scenario tracers are very similar to the other anthropogenic $PM_{2.5}$ tracers, with the main difference laying in the emission magnitudes of these tracers. In DSS, a scenario tracer of a regular species has its emission 20 or 40% lesser than the regular species. Therefore, the scenario tracer represents a scenario in which the emissions of the corresponding regular species are reduced by 20 or 40%. We have introduced these scenario tracers for all the 20 districts and all the eight broad source categories in Delhi. These scenario tracers play a vital role in guiding the 360 authorities about the possible effects of the source-level interventions. The advantage of scenario tracers is that it gives an opportunity to generate numerous emission reduction scenarios, which would guide the policy-makers in finalizing the intervention targets. The use of these tracers for air quality management purposes will be shown in the results section.

365 2.4.4 Chemical data-assimilation for tracers

Another important feature of DSS is chemical data-assimilation applied for the tracer species. In DSS, for every grid point in the model domain, we identify the ratio by which the regular species like BC1, BC2, OC1, OC2, and P25 are modified due to the assimilation of satellite as well as ground-based data. We multiply all the corresponding tracers species by the same ratios to get them closer to reality.

2.5 Post-processing of the output

375 With the aforementioned tracers of different categories, we introduce a total of 470 new tracers in WRF-Chem for the purpose of DSS. Upon running DSS in an operational forecasting setup, we generate an enormous amount of data that needs to be processed to get meaningful information. In the post-processing and analysis of the output, we extract the surface level data for all the tracers and the main regular species. Since our focus of analysis is Delhi, we mask out all other regions from the variable fields. By doing this, we estimate the contribution of $PM_{2.5}$ emitted from all the regions of interest to $PM_{2.5}$ in Delhi. Morevoer, we also get to know the contribution from the sources in Delhi to $PM_{2.5}$ in Delhi. The change in $PM_{2.5}$ due to the emission reduction scenarios is subsequently found. All the analysis is made publicly available daily at <https://ews.tropmet.res.in/dss/>.

2.6 Overall flow of DSS

385 Figure 4 depicts the operational functioning of DSS. The input data needed for the chemistry part (white boxes, fig.4), i.e., the anthropogenic and biomass-burning emissions and chemical boundary conditions, are generated using the utilities like anthro, FINN, and mozbc as explained in sections 2.2 and 2.3. Note that biomass-burning emissions are generated using FINN and the VIIRS active fire count data. The meteorological input component (white boxes with a circle in their left corner, fig.4) consists of the meteorological boundary forcing data (IITM GFS model output) and the stationary geographical data, both of which are processed by the WRF Preprocessing System (WPS) to create the model compatible input and boundary forcing. Both the chemistry and meteorological input data are then processed by the core part of the DSS (gray boxes, fig.4) to create the initial and the boundary condition files. Subsequently, DSS carries out the chemical data assimilation using the CPCB and the satellite data (gray blocks with a circle in their right corner, fig.4). After this step, the actual WRF-Chem run with 400 tracers is carried out for the next five days. Upon the completion of the simulation, the outputs are suitably post-processed to generate two main results (gray boxes with a rectangle in their right corner, fig.4) a) source apportionment of $PM_{2.5}$ in Delhi to understand the contribution of the surrounding 19 districts and the eight sectors in Delhi, and b) the effects of the various emission reduction scenarios on $PM_{2.5}$ in Delhi. 395 The results are then sent to the governing and decision-making authorities, which could take certain policy-level decisions in order to manage the air quality in Delhi. If the decision-making authorities decide to carry out certain source-level interventions (e.g., Ghude et al., 2022), then those interventions are then incorporated into the DSS through the feedback section (gray block with a triangle in its right corner, fig.4). 400

Decision Support System for Air Quality Management in Delhi

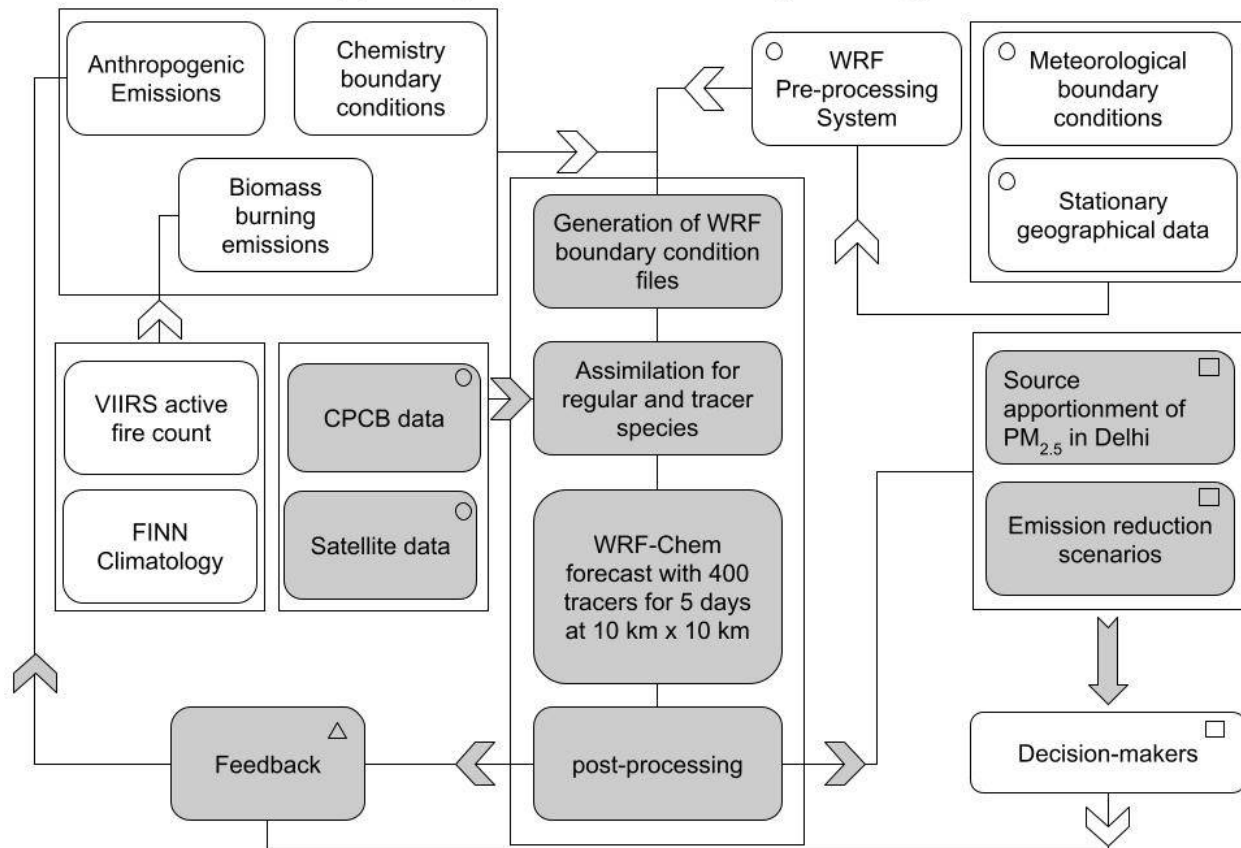


Figure 4: Block diagram for DSS: The white boxes denote input data needed for the chemistry part, the white boxes with a circle in their left corner stand for the input data related to the meteorological component. The gray blocks represent the core part of DSS, which is mainly related to the running of the WRF-Chem model. The gray blocks with a circle in their right corner denote the input data needed for chemical data-assimilation purposes. The gray boxes with a rectangle in their right corner stand for the standard outputs from the DSS, which are communicated to the decision-makers (white block with a rectangle in its right corner). The feedback (gray block with a triangle in its right corner) from the decision-makers and the model's post-processed output are analyzed, and accordingly, the emissions of the anthropogenic activities are modified. A more detailed explanation of the working principle of each block can be found in sections 2 and section 2.6.

3. Results and discussion:

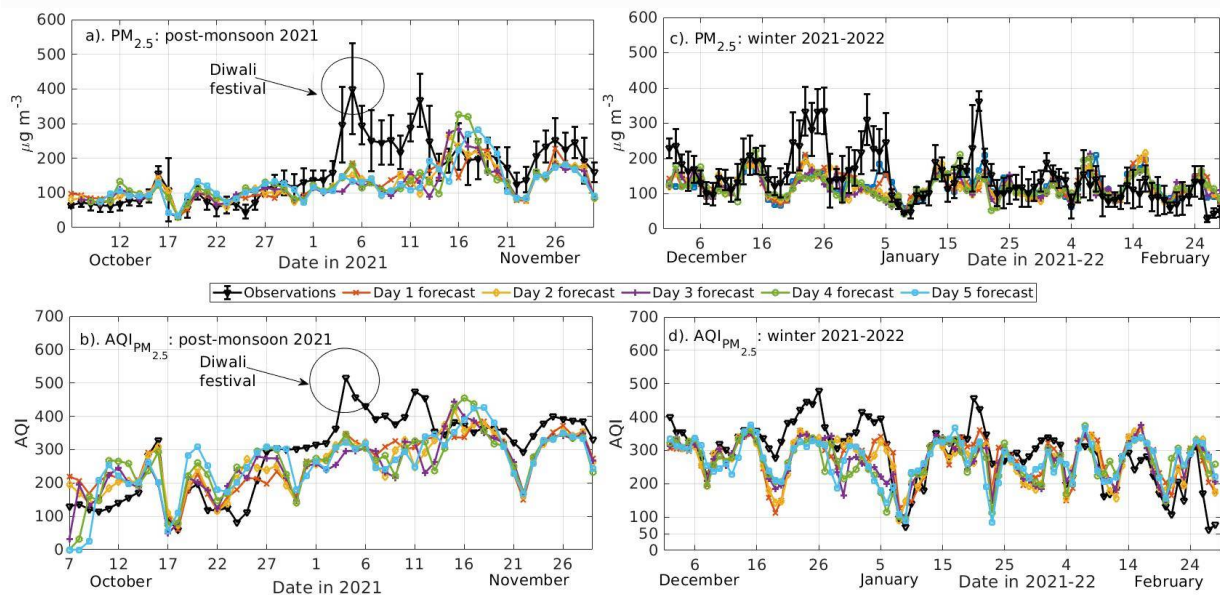
3.1 Performance evaluation for DSS:

We examine the DSS-simulated near-surface PM_{2.5} mass concentration against the corresponding observations carried out at the CPCB and DPCC stations in Delhi. We divide the entire period of 5 months into the post-monsoon (October–November) and winter (December–February) seasons as the stubble-burning activities are prevalent mainly during the post-monsoonal season, while the winter season pollution is primarily governed by the local as well as distant anthropogenic emissions and the pollution-conducive meteorology. Thus, such a division is essential to help us understand the performance of DSS

in capturing the season-specific emission sources and the associated pollutants' concentrations. We evaluate the performance of DSS for Day 1 to Day 5 of every day's forecasts. During the post-monsoonal period (fig. 5a), the simulated daily-mean $PM_{2.5}$ closely matches the measurements for the month of October 2021. The sharp reduction in the $PM_{2.5}$ during mid-October (17–20 October) is well captured by the model for all the lead times (i.e., Day 1 to Day 5). In the first week of November (black circles, fig.5a and fig.5c), the model shows a large underestimation with respect to the observations. This period was mainly associated with the peak of stubble-burning activities (Govardhan et al., 2022) and the Diwali festival in 2021. Both these events result in emissions of a significant amount of particulate pollutants and their precursor gases (Singh et al., 2010; Parkhi et al., 2016; Cusworth et al., 2018; Chowdhury et al., 2019; Kulkarni et al., 2020; Saxena et al., 2020). The large uncertainty associated with both these emission sources (Vadrevu et al., 2015; Liu et al., 2018; Mukharjee et al., 2020; Kumar et al., 2020) results in the under-estimated $PM_{2.5}$ mass concentrations by DSS. The improvements in emission inventories such as the use of Fire Radiative Power (FRP) for estimating and temporally allocating fire emissions, incorporation of emissions from fire crackers would help improve the estimates. On the contrary, the model simulations over-estimate $PM_{2.5}$ during the following week. Owing to the persistent severe air pollution days and a forecast of a similar scenario from 15th–19th November 2021, the Government of Delhi and the CAQM had issued certain restrictions on the traffic in the city, banned construction activities, ordered remote schooling and working guidelines, and had banned the entry of the heavy vehicles into the city (CAQM 2021). As a result, the $PM_{2.5}$ concentration in the city showed a reduction in the following week. The simulations did not implement such restrictions in the modeling framework and thus overestimated the $PM_{2.5}$ concentration during this week. We further note that the fire activity in the neighboring states of Punjab and Haryana during that period was also on a declining trend (Fig.1, Govardhan et al., 2023), so the associated fire emissions may not be completely responsible for this behavior of the model. For the entire duration, the mean overestimation is found to be 21.94%. This overestimation is consistent with the previous estimation put forth by Ghude et al., 2022. Towards the end of November, the model captures the day-to-day variations in the observed $PM_{2.5}$ but underestimates the actual magnitudes. Such a behavior could be associated with the coarse grid-spacing of the model (10 km), which limits its ability to simulate higher PM concentrations. For the $AQI_{PM_{2.5}}$ (fig.5b), the model has more tendency to generate AQI up to 300 (barring the episode of 15th–19th November 2021). The disagreements with observations in $PM_{2.5}$ get reflected in the AQI as well. It may well be noted that the model's performance does not drastically degrade from Day 1 to Day 5. A detailed analysis of the model's ability to capture $PM_{2.5}$ and the associated AQI has been shown in tables 2–5, which will be discussed further.

For the winter period (fig.5c), DSS shows a better agreement with the observation up to the mid of December, beyond which the model starts to under-perform in comparison with the observations. The model simulations are capable of simulating the $PM_{2.5}$ concentrations as high as $200 \mu\text{g m}^{-3}$ however, they are not able to simulate the values greater than that. Improvements in the emission inventory would be vital to achieve that. This issue is likely to be related to the coarser grid spacing in the simulations, unrealistic simulations of meteorological parameters (like the planetary boundary layer height, near-surface winds, etc.) (Govardhan et al., 2015, 2016), and limitations associated with the chemistry scheme in the model which may not adequately represent the ambient air pollution chemistry in Delhi (Jena et al., 2020; Pawar et al., 2022), and under-representation of the emission sources in the region due to the unavailability of the real-time dynamic emissions inventory (Sengupta et al., 2022). The current emissions inventory used in the model though does have some information about the sources like open waste burning and brick kilns, in and around Delhi, this information is likely to be underestimating the reality in 2021. The emissions inventory employed in this study was compiled using surveys done in 2016. There are significant changes that have occurred in the emissions magnitudes from 2016 to 2021. We note that these uncertainties will affect the model simulations. Moreover, during the January month the temperatures of the region fall down. The residents of Delhi burn biomass or solid wood for space

475 heating purposes. Such sources are missing in the employed emissions inventory. Additionally, such
 480 burning activities occur at a very fine spatial scales which can not be identified by remote sensing
 techniques. Thus, a part of the underestimation during the month of January would be related to these
 factors. In addition to this, the lower temperatures bring foggy conditions into the picture. Such weather
 conditions promote a large number of atmospheric chemical reactions resulting in gas-to-particle
 conversion of volatile gas phase species into secondary aerosols. Such processes are currently missing the
 models' chemical mechanism. This further enhances the underestimations in the model. All these factors
 put together result in the underestimated $PM_{2.5}$ in the model vis-a-vis the measurements. Nonetheless,
 DSS does a better job in the month of February when the ambient $PM_{2.5}$ concentration is mostly below
 200 $\mu g m^{-3}$. The $AQI_{PM_{2.5}}$ is also better captured in the winter season (fig. 5d) compared to the post-
 485 monsoon period (fig.5b). The model does capture some events of very poor AQI conditions ($300 < AQI \leq$
 400). However, the severe AQI values ($AQI > 400$) are missed by the model. Overall, the model captures
 the air quality conditions up to the very-poor AQI category, but it can not quantitatively capture the severe
 air pollution events. However, it is also to be noted that during an observed severe air pollution event
 ($AQI > 400$), the simulated AQI lies only one category below (i.e., in the very poor AQI category). Thus,
 490 the model does show signatures of severe air pollution but fails to capture the actual magnitudes. It may
 also be noted that whenever the modeled AQI is in or above the very-poor category, the observed AQI
 almost always lies in or above the very-poor category, i.e., our system is able to capture extreme events
 very well. This point is illustrated further in tables 4 and 5. The supplementary figure 32 clearly depicts
 that the simulated AQI captures the overall trend of the observed AQI, however the magnitudes of AQI
 495 are not captured by the model.



500 Figure 5: Performance of the DSS in simulating near-surface $PM_{2.5}$ mass concentration ($\mu g m^{-3}$) over
 Delhi in comparison with the observations averaged over the 39 observational locations across the city. a).
 Model Vs Observation comparison for the simulated daily mean $PM_{2.5}$ mass concentration during the
 post-monsoonal season of 2021. The error bars on the black line indicate the one standard deviation range
 for the observations. b). Model Vs Observation comparison for the daily mean AQI associated with $PM_{2.5}$
 during the post-monsoonal period c). similar comparison as a, for the winter season. d). similar to b,
 505 for the winter period. The black circles mark the days of Diwali festival during the post-monsoon period of
 2021.

510 We further compute the relevant statistical parameters, namely mean bias (MB), mean error (ME), root
mean square error (RMSE), normalized mean bias (NMB), normalized mean error (NME), fractional bias
(FB), and fractional error (FE) for the model-observation comparison of the near-surface $PM_{2.5}$ mass
concentration for post-monsoon 2021 (table 2) and winter 2021-22 (table 3). We report the statistics
individually for moderate ($100 < AQI \leq 200$), poor ($200 < AQI \leq 300$), and ‘very poor and above’ ($AQI >$
515 | 300) AQI categories for Day 1 to Day 5 forecasts. The formulae used for calculating the statistical
parameters are listed in section 43 of the supplementary material. For the post-monsoon season (table 2),
DSS shows the least MB under poor AQI conditions. Expectedly, ME and RMSE are higher for very poor
and above AQI categories. Moreover, they gradually increase from Day 1 to Day 5 forecasts for all the
scenarios. Nevertheless, the change in ME or RMSE from Day 1 to Day 5 is within 30% of the ME or
520 RMSE of Day 1 forecasts, especially for the very poor and above AQI conditions. This signifies the
accuracy of the forecasts over a longer time horizon. The NMB and NME values are limited to ± 0.30 and
 ± 0.50 , suggesting that DSS depicts an acceptable accuracy for the simulated $PM_{2.5}$ mass concentrations
(Emery et al., 2017) for all the AQI categories through Day 1 to Day 5 forecasts. Specifically, NMB
(NME) values do not cross 0.1 (0.37) for the poor AQI category, highlighting the accuracy of DSS and
its ability to match the best model in the community (Emery et al., 2017). Like MB and NMB, FB is the
525 least for the poor AQI conditions. The DSS tends to over-predict (under-predict) the $PM_{2.5}$ with positive
(negative) MB, NMB, and FB values during moderate (poor and above conditions) AQI conditions.
Nevertheless, the system can simulate the observed $PM_{2.5}$ during the post-monsoonal months with an
acceptable deviation (Emery et al., 2017), especially when the observed AQI is in the poor or above
categories.

530

535

540

545

| AQI category | Day | MB ($\mu\text{g m}^{-3}$) | ME ($\mu\text{g m}^{-3}$) | RMSE ($\mu\text{g m}^{-3}$) | NMB | NME | FB | FE |
|---------------------|-------|--------------------------------|--------------------------------|----------------------------------|-------|------|-------|------|
| Moderate | Day 1 | 16.34 | 18.48 | 25.18 | 0.23 | 0.26 | 0.20 | 0.23 |
| | Day 2 | 13.37 | 17.24 | 23.87 | 0.19 | 0.24 | 0.17 | 0.22 |
| | Day 3 | 17.61 | 20.93 | 27.70 | 0.23 | 0.28 | 0.22 | 0.26 |
| | Day 4 | 24.52 | 27.51 | 36.60 | 0.30 | 0.33 | 0.29 | 0.33 |
| | Day 5 | 24.02 | 26.84 | 33.73 | 0.27 | 0.30 | 0.28 | 0.32 |
| Poor | Day 1 | -19.97 | 31.99 | 38.61 | -0.17 | 0.28 | -0.19 | 0.31 |
| | Day 2 | -17.27 | 27.85 | 37.18 | -0.15 | 0.24 | -0.16 | 0.26 |
| | Day 3 | -20.49 | 27.18 | 36.51 | -0.18 | 0.24 | -0.20 | 0.26 |
| | Day 4 | -10.53 | 27.25 | 37.00 | -0.09 | 0.24 | -0.10 | 0.25 |
| | Day 5 | -1.20 | 29.20 | 40.08 | -0.01 | 0.26 | -0.01 | 0.26 |
| Very poor and above | Day 1 | -65.59 | 76.10 | 101.26 | -0.31 | 0.36 | -0.37 | 0.42 |
| | Day 2 | -67.11 | 79.76 | 110.05 | -0.32 | 0.38 | -0.38 | 0.45 |
| | Day 3 | -72.82 | 86.71 | 115.57 | -0.34 | 0.41 | -0.42 | 0.49 |
| | Day 4 | -67.02 | 85.77 | 107.39 | -0.32 | 0.40 | -0.38 | 0.48 |
| | Day 5 | -68.11 | 85.06 | 112.84 | -0.32 | 0.40 | -0.38 | 0.48 |

550 Table 2: The statistical parameters associated with the model evaluation for the simulated near-surface
PM_{2.5} mass concentration for the post-monsoonal season of 2021. The meaning of the acronyms can be
found in section 3.1. The ideal value for all the statistical parameters is zero. The units of MB, ME, and
RMSE are $\mu\text{g m}^{-3}$, while the other parameters are unitless.

555 For the winter season of 2021-22, the MB values for the moderate category (table 3) are twice
that of the post-monsoonal period, indicating a higher overestimation of the moderate AQI conditions in
the model in the winter period. On the other hand, the MBs for poor and ‘very poor and above’ AQI
scenarios are comparable to that in the post-monsoonal months. The ME, RMSE, and NME remain
roughly the same for Day 1 through Day 5 forecasts, which increases the trustworthiness of the forecasts
560 on short to medium-range time scales. Similar to the post-monsoon season, the NMB and NME values for
the winter season are lesser than ± 0.3 and 0.5, respectively, underscoring the ability of the system to
capture the observed PM_{2.5} mass concentrations very adequately (Emery et al., 2017). Similarly, for the
‘poor’ AQI category, the NMB and NME values are less than ± 0.1 and 0.35, respectively, suggesting an
outstanding performance by DSS in this category (Emery et al., 2017). It is to be noted that the NMB
565 values for the ‘very poor and above’ scenarios are higher compared to the poor scenario. This is likely
because the ‘very poor and above’ category holds a broader range of AQI values (AQI > 300) compared
to the ‘poor’ AQI bracket ($200 < \text{AQI} \leq 300$), which results in the higher NMB in the former compared to
the latter. Similar to the post-monsoonal period, the system has a tendency to overestimate
(underestimate) the PM_{2.5} under moderate (very poor and above) AQI conditions, which is reflected in the
570 positive (negative) MB, NMB, and FB values. Overall, the performance of the DSS is improved in the
winter season compared to the post-monsoonal season (indicated by the lower values of the relevant
statistical parameters in table 2 and table 3).

| AQI category | Day | MB ($\mu\text{g m}^{-3}$) | ME ($\mu\text{g m}^{-3}$) | RMSE ($\mu\text{g m}^{-3}$) | NMB | NME | FB | FE |
|---------------------|-------|--------------------------------|--------------------------------|----------------------------------|-------|------|-------|------|
| Moderate | Day 1 | 22.25 | 32.66 | 44.25 | 0.29 | 0.43 | 0.26 | 0.37 |
| | Day 2 | 20.43 | 32.56 | 42.38 | 0.27 | 0.43 | 0.24 | 0.38 |
| | Day 3 | 25.78 | 36.70 | 49.92 | 0.34 | 0.48 | 0.29 | 0.41 |
| | Day 4 | 24.29 | 35.50 | 47.93 | 0.32 | 0.47 | 0.28 | 0.40 |
| | Day 5 | 22.31 | 34.92 | 44.73 | 0.29 | 0.46 | 0.26 | 0.40 |
| Poor | Day 1 | 4.50 | 27.20 | 34.50 | 0.04 | 0.26 | 0.04 | 0.26 |
| | Day 2 | 6.75 | 29.95 | 40.25 | 0.06 | 0.29 | 0.06 | 0.28 |
| | Day 3 | 7.40 | 33.96 | 44.84 | 0.07 | 0.33 | 0.07 | 0.32 |
| | Day 4 | 3.75 | 33.58 | 42.16 | 0.04 | 0.32 | 0.04 | 0.32 |
| | Day 5 | 4.84 | 34.70 | 44.99 | 0.05 | 0.33 | 0.05 | 0.33 |
| Very poor and above | Day 1 | -58.66 | 75.54 | 97.63 | -0.28 | 0.36 | -0.33 | 0.42 |
| | Day 2 | -60.70 | 76.96 | 101.21 | -0.29 | 0.37 | -0.34 | 0.43 |
| | Day 3 | -65.98 | 83.00 | 107.70 | -0.32 | 0.40 | -0.38 | 0.47 |
| | Day 4 | -67.49 | 80.42 | 106.76 | -0.32 | 0.39 | -0.39 | 0.46 |
| | Day 5 | -65.21 | 80.20 | 106.45 | -0.31 | 0.39 | -0.37 | 0.46 |

575 Table 3: Similar to table 2 but for the winter period of 2021-22.

580 We have also examined the ability of DSS to capture the AQI associated with $\text{PM}_{2.5}$ mass concentration values in comparison with the corresponding observations. To assess the model's performance, we have computed the statistical parameters, namely Accuracy, False Alarm Ratio (FAR), Probability of Detection (POD), Critical Success Index (CSI), Success Ratio (SR), and Bias. These parameters are calculated for the individual AQI categories using the contingency table and the formulae presented in section 54 of the supplementary material. From table 4, it can be seen that, during the post-monsoon season, the Accuracy is generally high for all the AQI scenarios. For the poor and moderate categories, this could be an artifact of the correct forecasts of the non-events, while for the 'very poor and above' AQI category, this behavior could be attributed to the correct forecasts for both the events and the non-events (fig.5b). Please note that here the 'event' (non-event) refers to the occurrence (non-occurrence) of the observed AQI in the desired AQI range. The Probability of Detection (POD) comprehends the ability of the model in giving correct forecast for occurrence of an event. On the other hand, 'Accuracy', describes the ability of the model in giving correct forecast of an event or a non-event too. Thus, Accuracy encompasses the event and non-event space, while POD cover only the event space. For the 'Poor' AQI category, it may be noted that during the post-monsoonal season (fig.5b) after 27th October 2021, the observed AQI is always greater than 200 i.e. above the 'poor' category. Thus, as far as the 'Poor' AQI category is concerned, all those instances are recognized as 'non-events'. The model simulated AQI on most of those instances (if not all) is seen to be greater than 200, thus correctly giving forecasts of non-event. This correct forecasts of non-events mainly results in respectable value of

600 Accuracy for the model forecasts as far as ‘Poor’ AQI category is concerned. On the other hand, from 27th October 2021 to 30th November 2021, the POD for ‘Poor’ AQI does not exist as the observed AQI does not exist in ‘Poor’ category. Prior to 27th October, the Observed AQI does exist in the ‘Poor’ category, the model forecasts for Day-4 and Day-5 fail to capture that on certain occasions. This failure results in lesser POD for Day-4 and Day-5 forecast in capturing AQI in ‘Poor’ Category.

605 The FAR is higher for moderate and poor categories suggesting false forecasts of the non-events; this could be partly related to the fact that the model-simulated AQI does not reach the very poor and above categories as frequently as the observations but remains in the poor category on more instances as compared to the observations. This results in a higher FAR for the poor category. On the other hand, the FAR for the ‘very poor and above’ AQI category is drastically low, which enhances the confidence in the simulated AQI in the very poor and above category. The POD is low for the poor and moderate, while it is relatively higher for the ‘very poor and above’ category. The CSI values, which indicate the overall success of the forecasting system, are relatively high for the ‘very poor and above’ category and lower for the poor category. Thus, during the post-monsoon season, DSS shows trustworthy performance for the
610 AQI ranging beyond very-poor conditions.

| AQI category | Day | Accuracy (%) | FAR (%) | POD (%) | CSI (%) |
|---------------------|-------|--------------|---------|---------|---------|
| Moderate | Day 1 | 75.62 | 50.99 | 39.87 | 28.18 |
| | Day 2 | 82.41 | 35.64 | 59.81 | 44.93 |
| | Day 3 | 79.86 | 41.20 | 53.70 | 39.02 |
| | Day 4 | 77.55 | 45.76 | 41.16 | 30.55 |
| | Day 5 | 74.61 | 55.56 | 23.15 | 17.96 |
| Poor | Day 1 | 67.67 | 86.76 | 59.79 | 12.16 |
| | Day 2 | 69.75 | 83.91 | 72.16 | 15.15 |
| | Day 3 | 63.35 | 87.80 | 62.89 | 11.38 |
| | Day 4 | 65.12 | 92.57 | 31.96 | 6.42 |
| | Day 5 | 60.88 | 95.35 | 21.65 | 3.98 |
| Very Poor and above | Day 1 | 80.86 | 0.36 | 69.48 | 69.31 |
| | Day 2 | 78.86 | 0.00 | 66.01 | 66.01 |
| | Day 3 | 72.07 | 0.00 | 55.09 | 55.09 |
| | Day 4 | 72.92 | 9.30 | 62.90 | 59.09 |
| | Day 5 | 70.06 | 13.46 | 61.41 | 56.06 |

615 Table 4: The statistical parameters associated with the evaluation of the simulated AQI associated with PM_{2.5} mass concentration for the post-monsoonal season of 2021. The meaning of the acronyms can be found in section 3.1, and details about the formulae are mentioned in section 45 of the supplementary material. The ideal values for Accuracy, FAR, POD and CSI are 100.0, 0.0, 100.0, and 100.0, respectively.

620 For the winter season (table 5), the model's behavior roughly remains the same as the post-monsoon, with the only difference occurring in the poor AQI category. The FAR for the ‘poor’ category drops with a consequent increase in CSI. Nevertheless, the model still behaves the best when AQI goes to ‘very poor’ and above, with FAR limiting only to as high as 21% and the POD and CSI crossing 60%. Thus, the analysis assures that the model-simulated AQI is trustworthy for values beyond 300.

The Graded Response Action Plan (GRAP) includes a variety of predefined temporary emission

control measures for all the PM_{2.5} and PM₁₀ AQI categories. Expectedly, the GRAP regulations become more stringent when the AQI goes beyond very poor and above (CAQM, 2022). Starting from October 2022, the GRAP in Delhi will be made operational based on the AQI forecast released by the air quality forecasting models (CAQM, 2022). The low FAR for DSS in the ‘very poor and above’ categories certainly increases the confidence about the simulated AQI in this range and thus permits us to use the model data to implement GRAP in the city. Additionally, the FAR values for the ‘very poor and above’ categories remain within 20% for day one to day five forecasts for both seasons. This further assures the use of short to medium-range DSS forecasts for implementation of GRAP when AQI goes beyond very-poor conditions.

635

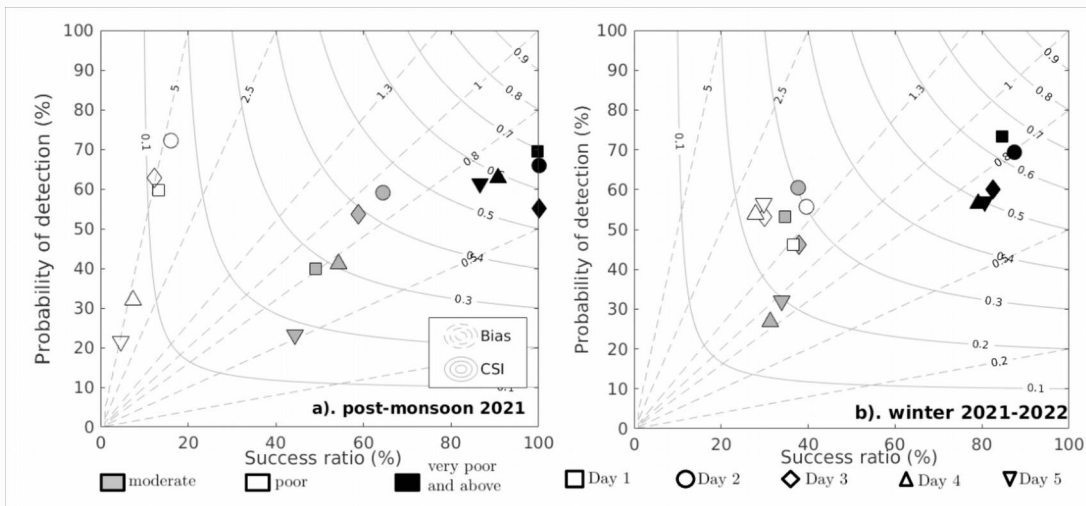
| AQI category | Day | Accuracy (%) | FAR (%) | POD (%) | CSI (%) |
|---------------------|-------|--------------|---------|---------|---------|
| Moderate | Day 1 | 82.35 | 65.39 | 53.13 | 26.51 |
| | Day 2 | 83.29 | 62.29 | 60.55 | 30.27 |
| | Day 3 | 84.46 | 62.18 | 46.09 | 26.22 |
| | Day 4 | 84.13 | 68.78 | 26.95 | 16.91 |
| | Day 5 | 84.41 | 65.98 | 32.03 | 19.76 |
| Poor | Day 1 | 69.34 | 63.43 | 46.22 | 25.65 |
| | Day 2 | 70.41 | 60.41 | 55.62 | 30.09 |
| | Day 3 | 60.86 | 70.01 | 53.17 | 23.72 |
| | Day 4 | 57.49 | 72.17 | 53.78 | 22.46 |
| | Day 5 | 59.55 | 70.23 | 56.44 | 24.21 |
| Very Poor and above | Day 1 | 76.03 | 15.47 | 73.44 | 64.74 |
| | Day 2 | 75.66 | 12.52 | 69.30 | 63.04 |
| | Day 3 | 68.49 | 17.40 | 60.08 | 53.33 |
| | Day 4 | 64.98 | 20.96 | 56.56 | 49.18 |
| | Day 5 | 66.01 | 19.36 | 56.95 | 50.10 |

Table 5: Similar to table 4 but for the winter period of 2021-22.

To shed more light on the model’s performance in the simulation of AQI, we have drawn the performance diagrams (figure 6) for the model simulated AQI in different categories for both seasons, using the SR, Bias, CSI, and POD. The performance diagram (Roebber, 2009; Sengupta et al., 2022) provides a quick visualization of the model’s performance for multiple statistical parameters. The category-wise statistical parameters have been plotted for Day 1 through Day 5 forecasts for post-monsoon (fig.6a) and winter (fig. 6b) seasons. In the performance diagram, an ideal model simulation would fall in the upper right corner. It is to be noted that the ideal value of Bias is 1, which indicates that the POD and SR match each other (Roebber, 2009; Sengupta et al., 2022). This signifies that the probability of getting a false forecast for a non-event from the model is equal to that of a false forecast for

650 an event from the same model. For the post-monsoonal period, the forecasts for very poor and above AQI fall relatively closer to the upper right corner, with POD values going up to 70% and SR reaching 100%. The model is highly (moderately) skillful in capturing the ‘very poor and above’ (moderate) air quality conditions. It depicts lower SR values (and thus higher FAR and Bias) for the poor AQI conditions; this is likely to be related to the underestimation of the very-poor AQI by the model resulting in higher occurrences of the simulated AQI in the poor category (in comparison with the observations), thus
 655 resulting in lower SR values for poor conditions, as noted in table 4.

For the winter season (fig. 6b), the model’s performance shows large improvements, especially for poor AQI conditions (as noted in table 5). The POD and SR for ‘very poor and above’ conditions cross the 80% mark, indicating an excellent performance for Day 1 through Day 5 forecasts. Even for the poor category, the model shows large improvements with greater SR (~40%) and POD (~60%) values compared to the post-monsoon. Interestingly, as noted in tables 4 and 5, for both seasons, the model shows the highest performance ratings for the very poor and above AQI conditions. The implications of this have already been discussed in the analysis of tables 4 and 5. It is to be noted that, throughout section 3.1, we do not evaluate the model’s performance for good (AQI ≤ 50) and satisfactory (50 ≤ AQI < 100) categories as the observed AQI hardly ever falls in these categories. Nonetheless, the ability of the model
 660 to capture AQI in very poor and above conditions is encouraging as the air quality forecasting capabilities are mainly needed for such air quality conditions and not when the air quality is in a good or satisfactory category.



670 Figure 6. Performance diagram for model simulations of Air Quality Index for a) post-monsoon season 2021 and b) winter season 2021-22. The details about the calculation of the statistical parameters like Bias, and CSI can be found in section 54 of the supplementary material.

3.2 Region and sector-wise source apportionment of PM_{2.5} in Delhi:

675 One of the main features of DSS is its ability to quantify the contribution of the different NCR districts and emissions sources to the PM_{2.5} pollution load in Delhi. The tagged tracers employed in the system help achieve this objective. To facilitate ease in visualization and understanding of these contributions we divide them in six broad categories as follows a) Delhi transport sector, b) All other emission sectors within Delhi, c) Bordering districts (which include Jhajjar, Faridabad, Gurgaon, Gautam Buddha Nagar, Rohtak, Sonipat, Bagpat and Ghaziabad districts of NCR), d) Other districts of NCR (which include the remaining districts of NCR, the details of which can be found from figure 3) e) stubble
 680

burning , and f). all other remaining regions. In figure 7, we show the daily mean and seasonal mean contribution of those six broad source-categories to the simulated $PM_{2.5}$ in Delhi for the post-monsoon and winter seasons of the year 2021. For the post-monsoonal period (fig. 7a-b), 34% contribution to $PM_{2.5}$ in Delhi comes from Delhi's own sources, including the transport, peripheral industries, residential, construction, waste burning, road dust, and energy sectors. The next major contribution comes from the bordering districts and the stubble-burning activities, with their seasonal mean contributions going up to 25% and 8% respectively. The stubble/biomass-burning activities impact the pollution load in Delhi roughly for a month i.e., from mid-October to mid-November. The daily mean biomass-burning contribution goes as high as 37% in the first week of November when the biomass-burning activities in Punjab and Haryana are recorded to be at their peak (Govardhan et al., 2022). It is important to note that around 26% of Delhi's $PM_{2.5}$ comes from the other regions (excluding the biomass burning activities), which are not included in the 20 districts considered in this analysis. Within Delhi, the major contribution comes from the transport sector with a seasonal mean of 17%.

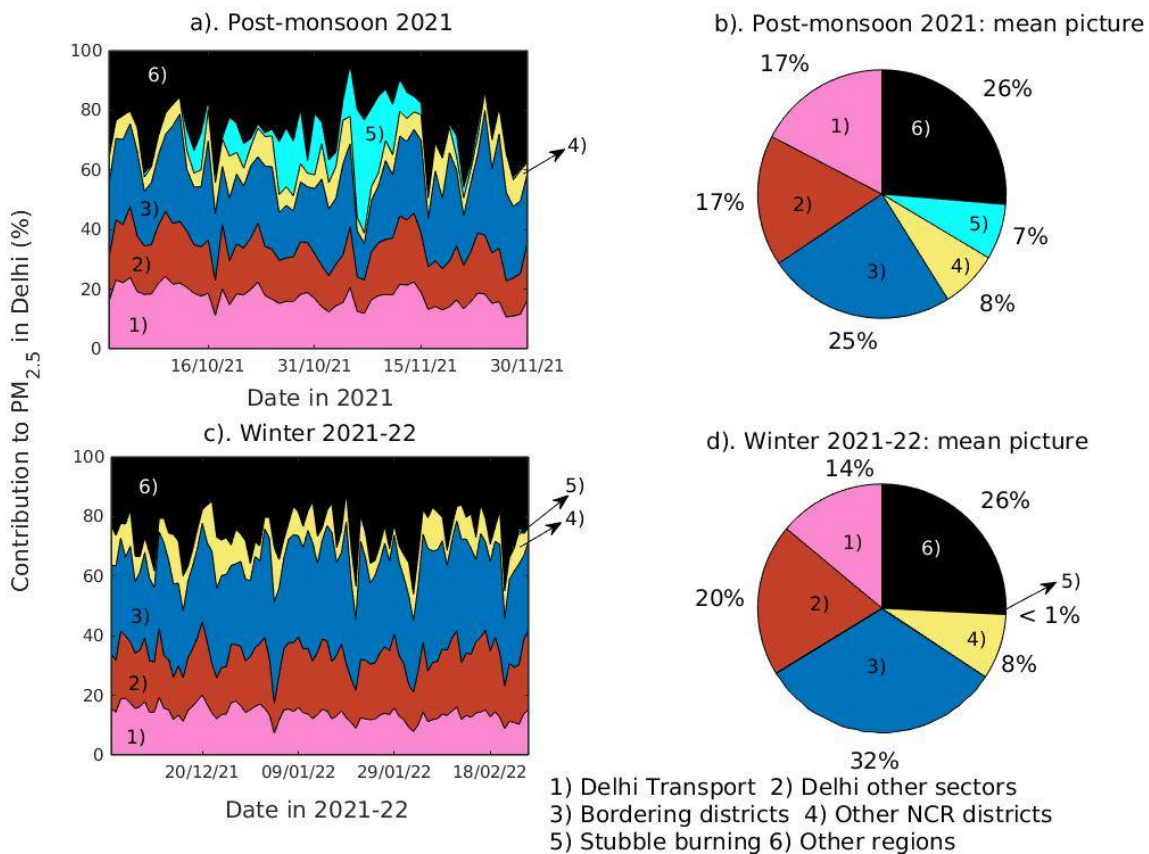


Figure 7: Source apportionment of $PM_{2.5}$ mass concentration in Delhi for a) post-monsoon 2021 on a daily mean basis b) post-monsoon 2021 on a seasonal mean basis, and d) winter 2022 on a seasonal mean basis. The numbers written on the pie charts indicate the percentage contribution of the particular source to $PM_{2.5}$ in Delhi. Day 1 forecasts have been used to generate this figure.

During the winter season (fig. 7c-d), Delhi's own contribution roughly remains the same (34%).

705 This estimate is comparable to a previous study carried out by TERI and ARAI, which reports the
contribution to be around 36% (TERI and ARAI, 2018). The contribution from the neighboring districts
increases to 20% from 17% in the post-monsoon season. Within Delhi, the transport sector contributes the
highest (14%). The industries in and around Delhi also contribute around 9.5%. The increased
710 contribution of the industries could be associated with the emissions coming from the brick kilns located
on the periphery of the city. The kilns are not operational during the post-monsoon season, but they
become operational during the winter season (TERI, 2018). The contribution from the 'other' regions
remains roughly the same (26%) as in the post-monsoon season. Overall, on the seasonal mean basis, for
the post-monsoonal season (winter season), contributions from the different regions could be listed as
715 follows: Delhi: 34.4% (33.4%), NCR districts: 33% (40.2%), Biomass burning 7.3% (~0.1%) and the
other regions: 27.3% (26.4%). Those bordering districts of Delhi contribute to around 25% in the post-
monsoon season and 32% in the winter season. Thus a majority of the PM_{2.5} in Delhi comes from its
immediate neighbors. Thus, Delhi's air pollution load does not look like a local issue, but it seems to be a
regional issue, and cooperation among various stakeholders is required to address this problem
effectively.

720

3.3 Impacts of emission reductions:

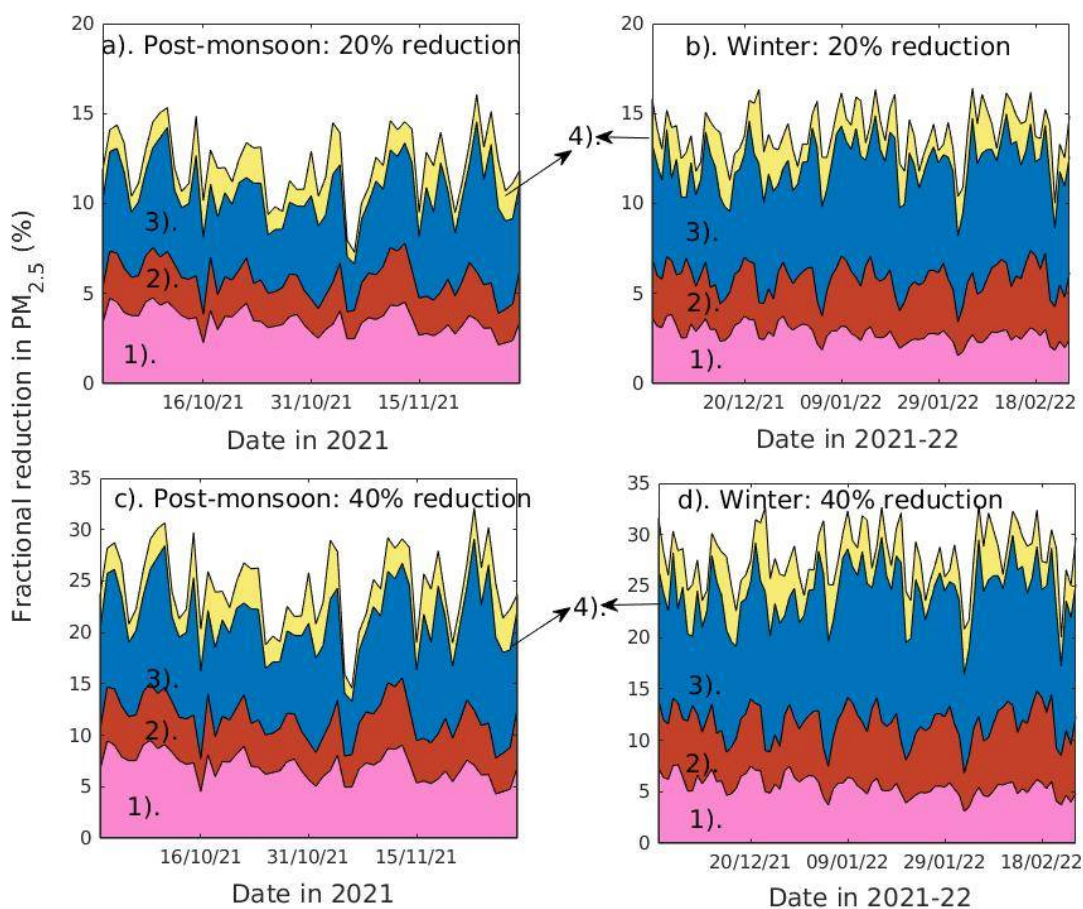
The most unique feature of DSS is the availability of 'scenario' tracers. This feature estimates the
impacts of reduction in the individual source/district-wise emissions on the PM_{2.5} load in Delhi. We
include 50 such PM_{2.5} tracers, which carry the reduced emissions from 25 different sources, including 19
725 surrounding districts and the six individual emission sectors (namely transport, peripheral industries,
waste burning, construction, road dust, and energy) in Delhi. We form two sets of scenario tracers with a)
emissions reduced by 20% and b) emissions reduced by 40%. Using the scenario tracers one can compute
the changes in the PM_{2.5} mass concentration in Delhi upon a 20 or 40% reduction in one or a combination
of the 25 emissions sources (19 surrounding districts and six sectors in Delhi). The reduction in PM_{2.5}
730 mass concentration in Delhi upon a 20% and 40% reduction in all those emissions during the post-
monsoon and the winter seasons of 2021 have been plotted in figure 8. Similar to figure 7, we have
divided the sources in four different categories i.e. the categories a to d from section 3.2.

During the post-monsoon season, a 20% reduction in all the sources (fig.8a) results in a seasonal
mean reduction of ~12.1% in PM_{2.5} Delhi. While around 5.7% of it would result from a 20% reduction in
735 the sources within Delhi, the remaining 6.4% would come from the reduction in the neighboring districts
of NCR. Similarly, a 40% reduction in all the concerned emissions sources (fig.8c) would result in an
overall 24.3% reduction in the seasonal mean PM_{2.5} load in Delhi, of which 11.5% comes from the
reduction in the sources within Delhi, while the remaining 12.8% would result from 40% reduction in the
emissions from other districts of NCR. It is to be noted that the change in PM_{2.5} in Delhi roughly scales
740 linearly from a 20% reduction to a 40% reduction. During the period when biomass burning activities are
the highest (on 6th and 7th November 2021), the 20% (40%) reduction in other sources of PM_{2.5} reduces
the PM_{2.5} in Delhi only by 7-8% (14-16%). Thus, it is to be noted that when such activities are at their
peak, any control measure on the anthropogenic emissions of PM_{2.5} will not have a drastic effect on the air
quality in Delhi.

745 For the winter season, the 20% reduction scenarios result in a mean reduction of 13.8% in PM_{2.5}
in Delhi, of which 5.8% comes from Delhi's sources while the remaining 8% comes from the neighboring
districts of NCR. Similarly, the 40% reduction scenarios result in a mean reduction of 27.75% in PM_{2.5} in
Delhi. Out of this, 11.5% comes from Delhi's own sources, while the remaining 16.25% comes from the
other districts of NCR. In the winter season, the improvements in Delhi's PM_{2.5} by controlling the
750 emissions in the neighboring district of Jhajjar (see supplementary figure 34) are comparable to the
improvements achieved by controlling the transport sector emissions within Delhi. However, in the post-
monsoon season, the emission reductions in Jhajjar have a relatively lesser impact. This signifies the need
for change in the emission reduction strategy from season to season for air quality management in Delhi.

The same policy for both seasons may not give the same amount of reductions.

755 On a daily mean basis, the reduction scenarios can reduce the PM_{2.5} in Delhi by as high as 16%
 (for 20% reduction scenarios) and 32% (for 40% reduction scenarios) in either of the seasons. These
 control measures, when operated during severe air pollution events like the ones noticed during the last
 week of December 2021, the first week of January 2022, and the third week of January 2022, would result
 760 in a substantial reduction in Delhi's PM_{2.5}. The measurements of daily mean PM_{2.5} suggest that the
 maximum values of PM_{2.5} during those events were 334 µg m⁻³, 310 µg m⁻³, and 362 µg m⁻³, respectively.
 The 40% reduction scenario for all the sources would result in ~25-30% reduction in PM_{2.5} in Delhi
 during those days, which would roughly result in a reduction of 80-110 µg m⁻³ in PM_{2.5} in Delhi on those
 days. This would result in the modulation of air quality from the 'severe' category to the 'very poor'
 category. This is a satisfactory gain considering the already elevated air pollution level in the city. Thus,
 765 such information about the possible emission-reduction scenario would be critical from the air quality
 management perspective. Moreover, since the performance of the DSS in capturing the broad category of
 air quality scenario does not drastically drop from Day 1 to Day 5 (figure 5, table 2-5), such information
 would certainly help the decision-makers in managing the air quality in the city in a timely manner.



1). Delhi Transport 2). Delhi other sectors 3). Bordering districts 4). Other NCR districts

770 Figure 8: Fractional reduction in the PM_{2.5} load in Delhi due to a). a 20% reduction in all the
 considered emission sources for the post-monsoon season of 2021, b) same as a) but for the winter

season, c). same as a) but with a 40% reduction scenario, and d) same as c) but for the winter season. Day 1 forecasts have been used to generate this figure.

775 A practical example of the use of DSS for air quality management purposes in Delhi was
witnessed in the month of November 2021. Based on the air quality forecast, source attribution of $PM_{2.5}$ in
Delhi, and the associated scenario analysis, the CAQM and the Government of Delhi issued certain
restrictions on trans-boundary and internal vehicular traffic and construction activities in Delhi. This
resulted in an 18-20% reduction in $PM_{2.5}$ and a 20-22% reduction in the AQI of Delhi (Ghude et al.,
2022). This clearly signifies the role DSS played (and would play in the future) in the short-term air
780 quality management in Delhi. This is one of the rare air quality forecasting systems in the world that offer
a utility like the ‘scenarios’ tool that would inform the decision-makers about the efficacy of their source-
level interventions on the air pollution occurring in a city. With the help of the ‘scenario’ tool, users can
create their own strategy for emission reduction to get an idea of how to possibly avoid the forecasted
severe air pollution event for the city. We certainly note that DSS currently provides all such information
785 only for the city of Delhi; however, there is an equal demand for such information from the neighboring
towns of NCR like Ghaziabad, Faridabad, Noida, Gurgaon, etc, as outlined in the recently formed air
pollution control policy for the NCR (CAQM, 2022). In the next version of DSS, we plan to cater to this
requirement and explore machine learning-based approaches to maximize computational efficiency. In the
current configuration, the DSS runs with a relatively coarser resolution (10 km x 10 km). This is mainly
790 due to the computational cost it carries associated with a large number of three-dimensional tagged tracers
and the upper bound on the daily run time due to the daily forecasting requirements. Nevertheless, in the
next version, we are planning to increase the spatial resolution of the simulations. Another artifact of the
coarse spatial resolution is the limited accuracy of the forecasts with respect to the observed $PM_{2.5}$ values.
However, in the case of DSS, one is more interested in the relative contributions of the sources to the
795 $PM_{2.5}$ load and the relative reduction in the $PM_{2.5}$ upon employing the various emission reduction
scenarios. This focus on the relative contribution comes from the basic assumption that the contributions
would roughly remain similar even when the DSS-simulated $PM_{2.5}$ matches the observations with a
greater agreement. However, we acknowledge that if the models underestimate the absolute
concentration of $PM_{2.5}$, it is likely to erroneous source apportionment. Especially, during a severe air
800 quality episode in the winter season, the contribution from the local sources would be much higher owing
to the stable atmospheric conditions. In such a situation, if the model fails to capture the peak, it will
certainly underestimate the contribution from the local sources and overestimate the contribution coming
from the relatively distant sources. We agree that the source apportionment in that situation would not be
correct. However, we would also like to mention that, in situations where the model has missed the
805 observational peaks, the modeled attribution for the local sources would represent a lower bound than the
reality. Thus, any intervention, if applied to the local sources, will certainly result in an enhanced
reduction in $PM_{2.5}$ in the city in reality than that suggested by the model. Thus, in other words, in such
situations, the modeled source attributions and the scenario analysis would represent a lower bound.

810 Another reason for the underestimated $PM_{2.5}$ in DSS is the static nature of the emissions
inventory. However, the anthropogenic emission sources vary in a dynamic manner. Any forecasting
model which does not take those dynamic changes into account is expected to miss the sudden rise in
 $PM_{2.5}$ associated with the dynamic changes in the emissions. Even though the chemical data assimilation
operational in DSS bridges this gap at the start of the model run, it fails to capture the sudden rise in
emissions happening during the other hours. The incursion of the dynamic emissions inventory, though,
815 remains a challenge; there are a few recent efforts done on that front (Liu et al., 2018; Zhang et al.,2019;
Meng et al., 2020; Li et al., 2021). Using the daily Visible Infrared Imaging Radiometer Suite (VIIRS)
thermal anomaly product, Zhang et al. (2019) and Li et al. (2021) have shown the capabilities of
generating dynamic emissions for industrial sources. Meng et al. (2020) have utilized web-based traffic
maps and real-time traffic data to generate a dynamic inventory of vehicular traffic emissions in China.

820 Such techniques could be used in future versions of DSS to get better estimates of real-time traffic. The emissions inventory used in this version of DSS does not take into account emissions associated with space heating. These emissions would be non-negligible, especially in the winter months. Thus, in the next version, we would explore the possibility of including such sources of emissions.

825 Additionally, we do acknowledge that the model's chemistry currently lacks the representation of the secondary aerosols in the ambient. There are several studies which have focused on understanding the chemical composition of PM_{2.5} in Delhi (Sharma et al., 2016; Sharma and Mondal, 2017; Jain et al., 2020; Yadav et al., 2022). A study by Sharma and Mondal, 2017 reports that, the particulate organic matter, soil/crustal matter, ammonium sulphate, ammonium nitrate, sea-salt and light absorbing carbon contribute 27.5%, 16.1%, 16.1%, 13.1%, 17.1% and 10.2% respectively to the city's PM_{2.5}. The study was carried out for a period of 2 years (January 2013 to December 2014). Jain et al., 2020 reported the chemical composition of PM_{2.5} for the period of 4 years (January 2013 to December 2016). The average PM_{2.5} mass concentration for post-monsoon (winter) season was 186 (183) $\mu\text{g}/\text{m}^3$, out of which sulphates were reported to be 18.1 (18.6) $\mu\text{g}/\text{m}^3$, nitrates were 18.4 (20.2) $\mu\text{g}/\text{m}^3$, chlorides and ammonium were 11.4 (11) and 14.9 (16.6) $\mu\text{g}/\text{m}^3$ respectively. The elemental carbon and organic carbon were measured to 835 11.4 (10.6) and 25.2 (23.6) $\mu\text{g}/\text{m}^3$ respectively. Thus, it may be seen that the missing aerosol species (mainly the nitrates, ammonium and chlorides) in the GOCART mechanism of WRF-Chem contribute to around 24-30% of PM_{2.5} in Delhi. Thus a part of the underestimation in the model could be associated with these missing species. An artefact of the missing secondary aerosols in the model is that the tracers are mainly put on the primary species BC and OC. However, the secondary species are not tagged 840 effectively. This results in underestimated impacts of the source levels interventions on the ambient PM_{2.5}. For example, in reality, the traffic emission reductions might lead to a significant reduction in nitrate aerosols, but this is not captured by the model. Thus, the model currently underestimates the impacts of source-level interventions. In the next version, we are aiming to include the missing secondary aerosols by using a simple parameterization (Hodzic and Jimenez, 2011). This would include nitrate and secondary 845 organic aerosols in the model set-up without hampering the model runtime drastically.

The biomass-burning emissions, on the other hand, have even more uncertainties. The limitations associated with satellite detection of stubble-burning fires due to the cloud cover (Liu et al., 2020; Cusworth et al., 2018), the limited number of passes in a day (Liu et al., 2020; Kumar et al., 2021), smarter burning practices (Kumar et al., 2021), unrealistic estimation of emissions from the fires (Kumar et al., 2021), etc., lead to multiple orders of uncertainty in the emission estimates from fires. We have seen that biomass-burning fires contribute as high as 37% to the daily mean PM_{2.5} load in Delhi during the peak burning periods; however, this number certainly represents a lower bound due to the aforementioned uncertainties. Therefore, more work is needed to constrain the estimates of the emissions from biomass-burning activities in the region. Additionally, stronger policies are needed to reduce the amount of stubble 855 that is being burnt, especially in the post-monsoonal season in this region. In DSS, we carry out the chemical data assimilation only once in the forecasting cycle in this setup; in the future, we can carry out assimilation at least twice to correct the model concentrations even at night times. This will help the model capture higher PM concentrations which usually occur during the night hours due to shallower mixed layers. In the next version of DSS, we are planning to incorporate a few new scenario tracers, like the 'odd-even' scenario for vehicular traffic, which allows only those vehicles to ply on the road with an odd (even) number as the last digit of their registration number on odd (even) dates. This policy has been used by the Government of Delhi in the past to control vehicular movement and the associated emissions (Sud and Iyengar, 2016; Kumar et al., 2017; Choudhary et al., 2018; Tiwari et al., 2018). Thus, while the first version of DSS has proven to be beneficial for the policy-makers, we have identified its limitations 860 as well, and we will attempt to overcome those limitations in the next version.

Additionally, we understand the the day-4 and day-5 forecasts would be more useful for the policy makers. We acknowledge that the implementation of source-level intervention may not start from day-1, so in reality, one also needs to account for a time delay in implementing those. This is currently

870 missing in the framework. However, we would also like to mention that including such time-delays, even
for the interventions only on the major sources, if not all, would substantially increase the number of
tracers in the modeling framework. Currently, we have more than 400 three-dimensional tracers in an
operational forecasting set-up. Keeping in mind our operational commitments, we will certainly include
some sense of the time delay for the scenario tracers in the next version of DSS.

875

4. Conclusions:

In order to assist the governing authorities in managing the air quality in the capital of India,
Delhi, we have designed an operational air quality forecasting framework with certain unique features
that help the decision-makers to form policies for managing the air quality in the city. This newly
developed Decision Support System (DSS) for air quality management in Delhi, besides forecasting the
air quality in the north Indian region for the next five days, quantifies the contributions of the 19
surrounding districts, individual emission sectors in Delhi, and the biomass burning activities (occurring
primarily in the northwestern states of India in the post-monsoon season) to the $PM_{2.5}$ mass concentration
in Delhi. The system also quantifies the effects of emission source-level interventions on the forecasted
air pollution in the city. Thus, with the help of DSS, the policy-makers not only get a warning about future
severe air pollution events but also understand the possible causes for the event and get a quantitative idea
about the efficacy of the source-level interventions on the forecasted event. In this paper, we evaluated the
performance of DSS in simulating near-surface $PM_{2.5}$ mass concentration and the associated air quality
index in Delhi for the post-monsoon and winter seasons of 2021-22. We also carry out the source
apportionment of $PM_{2.5}$ in Delhi during the two seasons. The key results are listed as follows:

885 1. The performance of the model in simulating the air pollution in Delhi noticeably improves from post-
monsoon to the winter season, owing primarily to the uncertainty in the emission estimates from the
biomass burning activities and the anthropogenic activities during the Diwali festival, which occur in the
post-monsoon season.

895 2. For both seasons (post-monsoon and winter), the DSS satisfactorily captures the observed air quality
index (AQI) in Delhi, especially when the AQI crosses a very poor or above that mark. Under such a
situation, DSS depicts a very low false alarm ratio (~20%), which increases the trustworthiness of the
simulated AQI. For all the AQI categories (moderate, poor, and very poor and above), DSS shows a very
high accuracy (~80%). However, the critical success index for the simulated AQI is seen to be the highest
for the 'very-poor and above' category, i.e., extreme pollution events are captured very well.

900 3. The performance of the model does not deviate largely from Day 1 to Day 5 forecasts, which highlights
the applicability of the DSS forecasts in short to medium-range air quality management activities.

905 4. The region-wise source apportionment of $PM_{2.5}$ mass concentration in Delhi carried out with the help of
DSS suggests that during the post-monsoon season (winter season), on average, Delhi itself contributes
34.4% (33.4%) to its $PM_{2.5}$ load. The NCR districts contribute 31% (40.2%). The emissions from the
biomass burning activities on the seasonal mean basis contribute 7.3% (~0.1%) of the $PM_{2.5}$ mass in
Delhi, while the other regions contribute around 27.3% (26.4%). The districts of NCR which share their
border with Delhi (namely Jhajjar, Gurgaon, Faridabad, Ghaziabad, Gautam Buddha Nagar, Bagpat, and
Sonipat) contribute about 22% in the post-monsoon season and 30% in the winter season.

910 5. The 'scenario' tracers employed for $PM_{2.5}$ in DSS suggest that a 20% reduction in all the tagged sources
in Delhi and the NCR districts results in a seasonal mean reduction of ~12 - 14 % in $PM_{2.5}$ mass in Delhi.
While around 5.8% of that comes from controlling Delhi's own emission sources, the remaining comes
from control measures applied in the NCR districts. As expected, during the peak biomass burning events,
such control measures on the anthropogenic emissions yield a relatively lesser gain.

915 6. The reduction in Delhi's $PM_{2.5}$ load scales roughly linearly with the magnitude of emission reductions,
i.e., the reduction in Delhi's $PM_{2.5}$ for a 40% control on the anthropogenic emission sources within Delhi

and the NCR districts is roughly twice that of the reductions associated with a 20% cut on emissions.
In short, DSS is a highly effective tool for decision-makers and the masses.

920 **Author contribution:**

Design and Model development: GG, SG, RK, PG and CJ

Input dataset: SS

Analysis and interpretation of the result: GG, SG and RK

Figures: GG and SI

925 Writing original draft: GG

Modifying the draft: All authors

Project supervision: SG, RK, RN and MR

Acknowledgments:

930 The authors would like to thank the Central Pollution Control Board (CPCB) and the Delhi Pollution Control Committee (DPCC) for providing measurement data for PM_{2.5} which was utilised in this study for chemical data assimilation and model evaluation purpose. The authors also thank the MODIS team for providing satellite retrieved AOD and VIIRS team active fire count information. The study was partially supported by Commission for Air Quality Management in the National Capital Region and its adjoining
935 areas, and, National Supercomputing Mission. The authors would like to thank Director, IITM for his constant support and motivation. The simulations were carried out on ‘Aditya’ supercomputer at IITM. The National Center for Atmospheric Research is sponsored by the National Science Foundation.

Code/data availability Statement:

940 The observational data for PM_{2.5} from Central Pollution Control Board, India, is available on <https://app.cpcbcr.com/ccr/#/caaqm-dashboard-all/caaqm-landing>. The model output is available on IITM HPC and could be downloaded through a request to the corresponding authors. The model code employed in DSS is available on <https://figshare.com/s/2f5cebda8f6b73e1e316>. The user manual for installing and running the code is available at
945 https://figshare.com/articles/software/User_manual_for_DSS/22231543.

Conflict of Interests:

The authors declare that they have no conflict of interests.

950 **References:**

Banerjee, P., Satheesh, S.K., and Moorthy, K.K.: The unusual severe dust storm of May 2018 over northern India: Genesis, propagation, and associated conditions, *J. Geophys. Res-Atmos.*, 126, 1-25, <https://doi.org/10.1029/2020JD032369>, 2021.

955 Bhardwaj, P., Kumar, R., and Seddon, J.: Interstate transport of carbon monoxide and black carbon over India, *Atmos. Environ.*, 251, 118268, <https://doi.org/10.1016/j.atmosenv.2021.118268>, 2021.

Bikkina, S., Andersson, A., Kirillova, E.N., Holmstrand, H., Tiwari, S., Srivastava, A.K., Bisht, D.S. and Gustafsson, Ö.: Air quality in megacity Delhi affected by countryside biomass burning, *Nat. Sustain.*, 2, 200–205, <https://doi.org/10.1038/s41893-019-0219-0>, 2019.

960 CAQM.: Policy to Curb Air Pollution in the National Capital Region, <https://caqm.nic.in/WriteReadData/LINKS/0031dcb806e-8af7-4b38-a9bc-65b91f2704cd.pdf>, 2022, last accessed on 26th December 2022.

- Chakravarty, K., Vincent, V., Vellore, R., Srivastava, A.K., Rastogi, A. and Soni, V.K.: Revisiting Andhi in northern India: A case study of severe dust-storm over the urban megacity of New Delhi, *Urban Climate*, 37, 100825, <https://doi.org/10.1016/j.uclim.2021.100825>, 2021.
- 965 Chin, M., Ginoux, P., Kinne, S., Torres, O., Holben, B. N., Duncan, B. N., Martin, R. V., Logan, J. A., Higurashi, A., and Nakajima, T.: Tropospheric aerosol optical thickness from the GOCART model and comparisons with satellite and Sun photometer measurements, *J. Atmos. Sci.*, 59, 461– 483. [https://doi.org/10.1175/1520-0469\(2002\)059<0461:TAOTFT>2.0.CO;2](https://doi.org/10.1175/1520-0469(2002)059<0461:TAOTFT>2.0.CO;2), 2002.
- 970 Chin, M., Rood, R. B., Lin, S.-J., Müller, J.-F., and Thompson, A. M.: Atmospheric sulfur cycle simulated in the global model GOCART: Model description and global properties, *J. Geophys. Res.*, 105, 24671-24687, <https://doi.org/10.1029/2000JD900384>, 2000.
- Chopra, R.: Environmental degradation in India: causes and consequences, *International journal of applied environmental sciences*, 11, 1593-1601, https://www.ripublication.com/ijaes16/ijaesv11n6_21.pdf, 2016.
- 975 Chowdhury, S., Dey, S., Di Girolamo, L., Smith, K.R., Pillarisetti, A. and Lyapustin, A.: Tracking ambient PM_{2.5} build-up in Delhi national capital region during the dry season over 15 years using a high-resolution (1km) satellite aerosol dataset., *Atmos. Environ.*, 204, 142–150, <https://doi.org/10.1016/j.atmosenv.2019.02.029>, 2019.
- 980 Chowdhury, S., Dey, S., Tripathi, S.N., Beig, G., Mishra, A.K. and Sharma, S.: “Traffic intervention” policy fails to mitigate air pollution in megacity Delhi, *Environ. Sci. Policy*, 74, 8-13, <https://doi.org/10.1016/j.envsci.2017.04.018>, 2017.
- Colette, A., Rouil, L., Meleux, F., Lemaire, V. and Raux, B.: Air Control Toolbox (ACT_v1. 0): a flexible surrogate model to explore mitigation scenarios in air quality forecasts, *Geosci. Model Dev.*, 15, 1441-1465, <https://doi.org/10.5194/gmd-15-1441-2022>, 2022.
- 985 Cusworth, D.H. and Milly, G.: Seasonal impact of regional outdoor biomass burning on air pollution in three Indian cities: Delhi, Bengaluru, and Pune, *Atmos. Environ.*, 172, 83–92, <https://doi.org/10.1016/j.atmosenv.2017.10.024>, 2018.
- 990 Debnath, S., Jena, C., Ghude, S.D., Kumar, R., Govardhan, G., Gunwani, P., Saha, S.K., Hazra, A. and Pokhrel, S.: Simulation of Indian Summer Monsoon Rainfall (ISMR) with fully coupled regional chemistry transport model: A case study for 2017, *Atmos. Environ.*, 268, 118785, <https://doi.org/10.1016/j.atmosenv.2021.118785>, 2022.
- Denby, B.R., Gauss, M., Wind, P., Mu, Q., Grøtting Wærsted, E., Fagerli, H., Valdebenito, A. and Klein, H.: Description of the uEMEP_v5 downscaling approach for the EMEP MSC-W chemistry transport model, *Geosci. Model Dev.*, 13, 6303-6323, <https://doi.org/10.5194/gmd-13-6303-2020>, 2020.
- 995 Ek, M.B., Mitchell, K.E., Lin, Y., Rogers, E., Grunmann, P., Koren, V., Gayno, G. and Tarpley, J.D.: Implementation of Noah land surface model advances in the National Centers for Environmental Prediction operational mesoscale Eta model, *J. Geophys. Res-Atmos*, <https://doi.org/10.1029/2002JD003296>, 2003.
- Emery, C., Liu, Z., Russell, A. G., Odman, M. T., Yarwood, G., and Kumar, N.: Recommendations on statistics and benchmarks to assess photochemical model performance, *Japca. J. Air Waste Ma.*, 67, 582-

- 1000 598, <https://doi.org/10.1080/10962247.2016.1265027>, 2017.
- Emmons, L.K., Walters, S., Hess, P.G., Lamarque, J.F., Pfister, G.G., Fillmore, D., Granier, C., Guenther, A., Kinnison, D., Laepple, T.J.G.M.D. and Orlando, J.: Description and evaluation of the model for ozone and related chemical tracers, version 4 (MOZART-4), *Geosci. Model Dev*, 3, 43–67, <https://doi.org/10.5194/gmd-3-43-2010>, 2010.
- 1005
- Gaikwad, S., Kumar, B., Yadav, P. P., Ambulkar, R., Govardhan, G., Kulkarni, S. H., ... & Ghude, S. D. (2023). Harnessing deep learning for forecasting fire-burning locations and unveiling PM 2.5 emissions. *Modeling Earth Systems and Environment*, 1-15.
- Ghude, S.D., Chate, D.M., Jena, C., Beig, G., Kumar, R., Barth, M.C., Pfister, G.G., Fadnavis, S. and Pithani, P.: Premature mortality in India due to PM_{2.5} and ozone exposure, *Geophys. Res. Lett.*, 43, 4650-4658, <https://doi.org/10.1002/2016GL068949>, 2016.
- 1010
- Ghude, S.D., Kumar, R., Jena, C., Debnath, S., Kulkarni, R.G., Alessandrini, S., Biswas, M., Kulkarni, S., Pithani, P., Kelkar, S. and Sajjan, V.: Evaluation of PM_{2.5} forecast using chemical data assimilation in the WRF-Chem model: A novel initiative under the Ministry of Earth Sciences Air Quality Early Warning System for Delhi India, *Curr. Sci.*, 118, 1803-1815, <http://dx.doi.org/10.18520/cs/v118/i11/1803-1815>, 2020.
- 1015
- [Ghude, S.D., Kumar, R., Govardhan, G., Jena, C., Nanjundiah, R.S., Rajeevan, M., New Delhi: air-quality warning system cuts peak pollution, Nature. 602 \(2022\) 211–211. https://doi.org/10.1038/d41586-022-00332-y.](https://doi.org/10.1038/d41586-022-00332-y)
- 1020
- Ginoux, P., Chin, M., Tegen, I., Prospero, J. M., Holben, B., Dubovik, O., and Lin, S.-J.: Sources and distributions of dust aerosols simulated with the GOCART model. *J. Geophys. Res.*, 106, 20255– 20273, <https://doi.org/10.1029/2000JD000053>, 2001.
- 1025
- Govardhan, G., Ambulkar, R., Kulkarni, S., Vishnoi, A., Yadav, P., Choudhury, B.A., Khare, M. and Ghude, S.D., 2023. Stubble-burning activities in north-western India in 2021: Contribution to air pollution in Delhi. *Heliyon*.
- Govardhan, G. R., Nanjundiah, R. S., Satheesh, S. K., Moorthy, K. K., and Takemura, T.: Inter-comparison and performance evaluation of chemistry transport models over Indian region, *Atmos. Environ.*, 125, 486-504, <https://doi.org/10.1016/j.atmosenv.2015.10.065>, 2016.
- 1030
- Govardhan, G., Nanjundiah, R. S., Satheesh, S. K., Krishnamoorthy, K., and Kotamarthi, V. R.: Performance of WRF-Chem over Indian region: Comparison with measurements, *Journal of Earth System Science*, 124, 875-896, <https://www.ias.ac.in/article/fulltext/jess/124/04/0875-0896>, 2015.
- 1035
- Govardhan, G., Satheesh, S. K., Moorthy, K. K., and Nanjundiah, R.: Simulations of black carbon over the Indian region: improvements and implications of diurnality in emissions, *Atmos. Chem. Phys.*, 19, 8229-8241, <http://dx.doi.org/10.5194/acp-2019-152>, 2019.
- Grell, G. A., and Freitas, S. R.: A scale and aerosol aware stochastic convective parameterization for

weather and air quality modeling, *Atmos. Chem. Phys.*, 14, 5233-5250, <https://doi.org/10.5194/acp-14-5233-2014>, 2014.

- 1040 Grell, G. A., Peckham, S. E., Schmitz, R., McKeen, S. A., Frost, G., Skamarock, W. C., & Eder, B. (2005). Fully coupled “online” chemistry within the WRF model. *Atmospheric environment*, 39(37), 6957-6975.
- 1045 Guo, H., Kota, S.H., Chen, K., Sahu, S.K., Hu, J., Ying, Q., Wang, Y. and Zhang, H.: Source contributions and potential reductions to health effects of particulate matter in India, *Atmos. Chem. Phys.*, 18, 15219-15229, <https://doi.org/10.5194/acp-18-15219-2018>, 2018.
- Guttikunda, S.K. and Goel, R.: Health impacts of particulate pollution in a megacity-Delhi, India, *Environ. Dev.*, 6, 8-20, <https://doi.org/10.1016/j.envdev.2012.12.002>, 2013.
- 1050 Guttikunda, S.K. and Gurjar, B.R.: Role of meteorology in seasonality of air pollution in megacity Delhi, India, *Environ. Monit. Assess.*, 184, 3199-3211, <https://doi.org/10.1007/s10661-011-2182-8>, 2012.
- Hodzic, A., & Jimenez, J. L. (2011). Modeling anthropogenically controlled secondary organic aerosols in a megacity: A simplified framework for global and climate models. *Geoscientific Model Development*, 4(4), 901-917.
- 1055 Hong, S. Y., and Lim, J. O. J.: The WRF single-moment 6-class microphysics scheme (WSM6), *Asia-Pac. J. Atmos. Sci.*, 42, 129-151, 2006.
- Jain, S., Sharma, S.K., Vijayan, N., Mandal, T.K., 2020. Seasonal characteristics of aerosols (PM_{2.5} and PM₁₀) and their source apportionment using PMF: a four year study over Delhi, India. *Environ. Pollut.* 262, 114337. <https://doi.org/10.1016/j.envpol.2020.114337>.
- 1060 Janssens-Maenhout, G., Crippa, M., Guizzardi, D., Dentener, F., Muntean, M., Pouliot, G., Keating, T., Zhang, Q., Kurokawa, J., Wankmüller, R. and Denier van der Gon, H.: HTAP_v2. 2: a mosaic of regional and global emission grid maps for 2008 and 2010 to study hemispheric transport of air pollution, *Atmos. Chem. Phys.*, 15, 11411-11432, <https://doi.org/10.5194/acp-15-11411-2015>, 2015.
- 1065 Jena, C., Ghude, S.D., Kulkarni, R., Debnath, S., Kumar, R., Soni, V.K., Acharja, P., Kulkarni, S.H., Khare, M., Kaginalkar, A.J. and Chate, D.M.: Evaluating the sensitivity of fine particulate matter (PM_{2.5}) simulations to chemical mechanism in Delhi, *Atmos. Chem. Phys. Discussions*, 1-28, <https://doi.org/10.5194/acp-2020-673>, 2020.
- 1070 Jena, C., Ghude, S.D., Kumar, R., Debnath, S., Govardhan, G., Soni, V.K., Kulkarni, S.H., Beig, G., Nanjundiah, R.S. and Rajeevan, M.: Performance of high resolution (400 m) PM_{2.5} forecast over Delhi, *Sci Rep-Uk*, 11, 4104, <https://www.nature.com/articles/s41598-021-83467-8>, 2021.

[Jethva, H., Torres, O., Field, R. D., Lyapustin, A., Gautam, R., & Kayetha, V. \(2019\). Connecting crop productivity, residue fires, and air quality over northern India. *Scientific Reports*, 9\(1\), 16594.](#)

Jiménez, P.A., Dudhia, J., González-Rouco, J.F., Navarro, J., Montávez, J.P. and García-Bustamante, E.: A

revised scheme for the WRF surface layer formulation, *Mon Weather Rev*, 140, 898-918,
1075 <https://doi.org/10.1175/MWR-D-11-00056.1>, 2012.

[Kaiser, J. W., Heil, A., Andreae, M. O., Benedetti, A., Chubarova, N., Jones, L., Morcrette, J.-J., Razinger, M., Schultz, M. G., Suttie, M., and van der Werf, G. R. \(2012\). Biomass burning emissions estimated with a global fire assimilation system based on observed fire radiative power. *BG*, 9:527-554.](#)

1080 [Kant, Y., Chauhan, P., Natwariya, A., Kannaujiya, S., & Mitra, D. \(2022\). Long term influence of groundwater preservation policy on stubble burning and air pollution over North-West India. *Scientific Reports*, 12\(1\), 2090.](#)

1085 Kumar, A., Hakkim, H., Sinha, B. and Sinha, V.: Gridded 1 km \times 1 km emission inventory for paddy stubble burning emissions over north-west India constrained by measured emission factors of 77 VOCs and district-wise crop yield data, *Sci. Total Environ.*, 789, 148064, <https://doi.org/10.1016/j.scitotenv.2021.148064>, 2021.

Kumar, P., Gulia, S., Harrison, R.M. and Khare, M.: The influence of odd–even car trial on fine and coarse particles in Delhi, *Environ. Pollut.*, 225, 20-30, <https://doi.org/10.1016/j.envpol.2017.03.017>, 2017.

1090 Kumar, R.R., Soni, V.K. and Jain, M.K.: Evaluation of spatial and temporal heterogeneity of black carbon aerosol mass concentration over India using three year measurements from IMD BC observation network, *Sci. Total Environ.*, 723, 138060, <https://doi.org/10.1016/j.scitotenv.2020.138060>, 2020.

1095 Kumar, R., Ghude, S.D., Biswas, M., Jena, C., Alessandrini, S., Debnath, S., Kulkarni, S., Sperati, S., Soni, V.K., Nanjundiah, R.S. and Rajeevan, M.: Enhancing accuracy of air quality and temperature forecasts during paddy crop residue burning season in Delhi via chemical data assimilation, *J. Geophys. Res.-Atmos.*, 125, 1-16, <https://doi.org/10.1029/2020JD033019>, 2020.

Li, R., Tao, M., Zhang, M., Chen, L., Wang, L., Wang, Y., He, X., Wei, L., Mei, X., and Wang, J.: Application potential of satellite thermal anomaly products in updating industrial emission inventory, *Geophys. Res. Lett.*, 48, 1-7, <https://doi.org/10.1029/2021GL092997>, 2021.

1100 Liu, T., Marlier, M.E., DeFries, R.S., Westervelt, D.M., Xia, K.R., Fiore, A.M., Mickley, L.J., Cusworth, D.H. and Milly, G.: Seasonal impact of regional outdoor biomass burning on air pollution in three Indian cities: Delhi, Bengaluru, and Pune,, *Atmos. Environ.*, 172, 83-92, <https://doi.org/10.1016/j.atmosenv.2017.10.024>, 2018.

1105 Liu, Y., Hu, C., Zhan, W., Sun, C., Murch, B., and Ma, L.: Identifying industrial heat sources using time-series of the VIIRS Night fire product with an object-oriented approach, *Remote Sens. Environ.* 204, 347–365, <http://dx.doi.org/10.1016/j.rse.2017.10.019>, 2018.

Liu, Z., Liu, Q., Lin, H.-C., Schwartz, C. S., Lee, Y.-H., and Wang, T.: Three-dimensional variational assimilation of MODIS aerosol optical depth: Implementation and application to a dust storm over East Asia, *J. Geophys. Res.*, 116, 1-19, <https://doi.org/10.1029/2011JD016159>, 2011.

1110 M.J. Iacono, E.J. Mlawer, S. A. Clough, and J.-J. Morcrette.: Impact of an improved longwave radiation model, rrtm, on the energy budget and thermodynamic properties of the near community climate model ccm3, *J. Geophys. Res.*, 105, 14873–14890, <https://doi.org/10.1029/2000JD900091>, 2000.

- M.J. Iacono, J.S. Delamere, E.J. Mlawer, M. W. Shephard, S. A. Clough, and W.D. Collins.: Radiative forcing by long-lived greenhouse gases: Calculations with the aer radiative transfer models, *J. Geophys. Res.*, 113, 1-8, <https://doi.org/10.1029/2008JD009944>, 2008.
- 1115 Mlawer, E.J., Taubman, S.J., Brown, P.D., Iacono, M.J. and Clough, S.A.: Radiative transfer for inhomogeneous atmospheres: RRTM, a validated correlated-k model for the longwave, *J. Geophys. Res.-Atmos.*, 102, 16663-16682, <https://doi.org/10.1029/97JD00237>, 1997.
- Meng, X., Zhang, K., Pang, K., and Xiang, X.: Characterization of spatio-temporal distribution of vehicle emissions using web-based real-time traffic data, *Sci. Total Environ.*, 709, 136227, <http://dx.doi.org/10.1016/j.scitotenv.2019.136227>, 2020.
- 1120 *Meteosim, World Most Polluted Cities - Meteosim [WWW Document]*, 10.1080/10473289.2004.10470936, <https://www.meteosim.com/en/world-most-polluted-cities/>, 2019, last accessed on 19 July 2022.
- Molina, M.J. and Molina, L.T.: Megacities and atmospheric pollution, *J. Air Waste. Manage.*, 54, 644-680, <https://doi.org/10.1080/10473289.2004.10470936>, 2004.
- 1125 Mukherjee, T., Vinoj, V., Midya, S.K., Puppala, S.P. and Adhikary, B.: Numerical simulations of different sectoral contributions to post-monsoon pollution over Delhi, *Heliyon*, 6, e03548, <https://doi.org/10.1016/j.heliyon.2020.e03548>, 2020.
- Mukhopadhyay, P., Prasad, V.S., Krishna, R., Deshpande, M., Ganai, M., Tirkey, S., Sarkar, S., Goswami, T., Johny, C.J., Roy, K., Mahakur, M., Durai V.R. and Rajeevan, M.: Performance of a very high-resolution global forecast system model (GFS T1534) at 12.5 km over the Indian region during the 2016–2017 monsoon seasons, *J. Earth Syst. Sci.*, 128, 1-18, <http://dx.doi.org/10.1007/s12040-019-1186-6>, 2019.
- 1130 Nakanishi, M. and Niino, H.: An Improved Mellor–Yamada Level-3 Model: Its Numerical Stability and Application to a Regional Prediction of Advection Fog, *Bound. Layer Meteorol.*, 119, 397–407, <https://link.springer.com/article/10.1007/s10546-005-9030-8>, 2006.
- 1135 Niu, G.Y., Yang, Z.L., Mitchell, K.E., Chen, F., Ek, M.B., Barlage, M., Kumar, A., Manning, K., Niyogi, D., Rosero, E. and Tewari, M.: The community Noah land surface model with multi parameterization options (Noah-MP): 1. Model description and evaluation with local-scale measurements, *J. Geophys. Res.-Atmos.*, 116, 1-19, <https://doi.org/10.1029/2010JD015140>, 2011.
- 1140 Parde, A.N., Dhangar, N.G., Nivdange, S., Ghude, S.D., Pithani, P., Jena, C., Lal, D.M. and Gopalakrishnan, V.: The analysis of pre-monsoon dust storm over Delhi using ground-based observations, *Nat. Hazards*, 112, 829-844, <https://link.springer.com/article/10.1007/s11069-022-05207>, 2022.
- Parkhi, N., Chate, D., Ghude, S.D., Peshin, S., Mahajan, A., Srinivas, R., Surendran, D., Ali, K., Singh, S., Trimbake, H. and Beig, G.: Large inter annual variation in air quality during the annual festival ‘Diwali’ in an Indian megacity, *J. Environ. Sci.*, 43, 265-272, <https://doi.org/10.1016/j.jes.2015.08.015>, 2016.
- 1145 ~~Pawar, P.V., Ghude, S.D., Govardhan, G., Acharja, P., Kulkarni, R., Kumar, R., Sinha, B., Sinha, V., Jena, C., Gunwani, P., Adhya, T.K., Nemitz, E., and Sutton, M.: Hydrochloric acid emission dominates inorganic aerosol formation from ammonia in the Indo-Gangetic Plain during winter, *Atmos. Chem. Phys.*~~

- 1150 | [Discussions, 1-34, https://doi.org/10.5194/acp-2022-237, 2022.](https://doi.org/10.5194/acp-2022-237)
- Pawar, P. V., Ghude, S. D., Govardhan, G., Acharja, P., Kulkarni, R., Kumar, R., ... & Sutton, M. A. (2023). Chloride (HCl/Cl⁻) dominates inorganic aerosol formation from ammonia in the Indo-Gangetic Plain during winter: modeling and comparison with observations. *Atmospheric Chemistry and Physics*, 23(1), 41-59.
- 1155 Riahi, K., Van Vuuren, D.P., Kriegler, E., Edmonds, J., O’neill, B.C., Fujimori, S., Bauer, N., Calvin, K., Dellink, R., Fricko, O. and Lutz, W.: The shared socioeconomic pathways and their energy, land use, and greenhouse gas emissions implications: an overview, *Global environmental change*, 42, 153-168, <https://doi.org/10.1016/j.gloenvcha.2016.05.009>, 2017.
- 1160 Roebber, P.J.: Visualizing multiple measures of forecast quality, *Weather Forecast*, 24, 601-608, <https://doi.org/10.1175/2008WAF2222159.1>, 2009.
- Roozitalab, B., Carmichael, G.R. and Guttikunda, S.K.: Improving regional air quality predictions in the Indo-Gangetic Plain—case study of an intensive pollution episode in November 2017, *Atmos. Chem. Phys.*, 21, 2837-2860, <https://doi.org/10.5194/acp-21-2837-2021>, 2021.
- 1165 Clough, S.A., Shephard, M.W., Mlawer, E.J., Delamere, J.S., Iacono, M.J., Cady-Pereira, K., Boukabara, S. and Brown, P.D.: Atmospheric radiative transfer modeling: A summary of the AER codes, *J. Quant. Spectrosc., Radiat. Transfer*, 91, 233–244, <http://dx.doi.org/10.1016/j.jqsrt.2004.05.058>, 2005.
- Sahu, S. K., Mangaraj, P., & Beig, G. (2023). Decadal growth in emission load of major air pollutants in Delhi. *Earth System Science Data Discussions*, 2023, 1-39.
- 1170 Saini, P. and Sharma, M.: Cause and Age-specific premature mortality attributable to PM_{2.5} Exposure: An analysis for Million-Plus Indian cities, *Sci. Total Environ.*, 710, 135230, <https://doi.org/10.1016/j.scitotenv.2019.135230>, 2020.
- 1175 Saxena, P., Srivastava, A., Verma, S., Singh, L. and Sonwani, S.: Analysis of atmospheric pollutants during fireworks festival ‘Diwali’ at a residential site Delhi in India, In *Measurement, analysis and remediation of environmental pollutants*, 91-105, Springer, http://dx.doi.org/10.1007/978-981-15-0540-9_4, 2020.
- Schroeder, W., Oliva, P., Giglio, L., & Csiszar, I. A. (2014). The New VIIRS 375m active fire detection data product: algorithm description and initial assessment. *Remote Sensing of Environment*, 143: 85-96. **doi:10.1016/j.rse.2013.12.008**
- 1180 Sengupta, A., Govardhan, G., Debnath, S., Yadav, P., Kulkarni, S.H., Parde, A.N., Lonkar, P., Dhangar, N., Gunwani, P., Wagh, S., Nivdange, S., Jena, C., Kumar, R., and Ghude, S.D.: Probing into the wintertime meteorology and particulate matter (PM_{2.5} and PM₁₀) forecast over Delhi. *Atmos. Pollut. Res.*, 13, 101426, <https://doi.org/10.1016/j.apr.2022.101426>, 2022.
- 1185 [Sembhi, H., Wooster, M., Zhang, T., Sharma, S., Singh, N., Agarwal, S. Boesch, H., Gupta, S., Misra, A., Tripathi, S.N., Mor, S., Khaiwal, R \(2020\). Post-monsoon air quality degradation across Northern India: assessing the impact of policy-related shifts in timing and amount of crop residue burnt. *Environmental*](#)

- 1190 Sharma, S.K., Mandal, T.K., 2017. Chemical composition of fine mode particulate matter (PM 2.5) in an urban area of Delhi, India and its source apportionment. *Urban Clim.* 21, 106–122. <https://doi.org/10.1016/j.uclim.2017.05.009>.
- Sharma, S.K., Sharma, A., Saxena, M., Choudhary, N., Masiwal, R., Mandal, T.K., Sharma, C., 2016. Chemical characterization and source apportionment of aerosol at an urban area of Central Delhi, India. *Atmos. Pollut. Res.* 7, 110–121. <https://doi.org/10.1016/j.apr.2015.08.002>.
- 1195 Singh, D.P., Gadi, R., Mandal, T.K., Dixit, C.K., Singh, K., Saud, T., Singh, N., and Gupta, P.K.: Study of temporal variation in ambient air quality during Diwali festival in India, *Environ. Monit. Assess.* 169, 1-13, <https://doi.org/10.1007/s10661-009-1145-9>, 2010.
- Sud, S. and Iyengar, S.: A Conceptual Review of the Odd-Even Policy on Delhi's Urban Environment, *Artha Journal of Social Sciences*, 15, 87-116, <https://doi.org/10.12724/ajss.39.6>, 2016.
- 1200 TERI & ARAI: Source apportionment of PM_{2.5} and PM₁₀ concentrations of Delhi NCR for identification of major sources, TERI and ARAI, https://www.teriin.org/sites/default/files/2018-08/Report_SA_AQM-Delhi-NCR_0.pdf, 2018, last accessed on 26th December 2022.
- Tiwari, S., Bisht, D.S., Srivastava, A.K., Pipal, A.S., Taneja, A., Srivastava, M.K. and Attri, S.D.: Variability in atmospheric particulates and meteorological effects on their mass concentrations over Delhi, India, *Atmos. Res.*, 145, 45-56, <http://dx.doi.org/10.1016/j.atmosres.2014.03.027>, 2014.
- 1205 Tiwari, S., Thomas, A., Rao, P., Chate, D.M., Soni, V.K., Singh, S., Ghude, S.D., Singh, D. and Hopke, P.K.: Pollution concentrations in Delhi India during winter 2015–16: A case study of an odd-even vehicle strategy, *Atmos. Pollut. Res.*, 9,1137-1145, <http://dx.doi.org/10.1016/j.apr.2018.04.008>, 2018.
- 1210 Vadrevu, K.P., Lasko, K., Giglio, L. and Justice, C.: Vegetation fires, absorbing aerosols and smoke plume characteristics in diverse biomass burning regions of Asia, *Environ. Res. Lett.* , 10, 105003, <http://dx.doi.org/10.1088/1748-9326/10/10/105003>, 2015.
- Wiedinmyer, C., Akagi, S.K., Yokelson, R.J., Emmons, L.K., Al-Saadi, J.A., Orlando, J.J. and Soja, A.J.: The Fire Inventory from NCAR (FINN): A High Resolution Global Model to Estimate the Emissions from Open Burning, *Geosci. Model Dev.*, 4, 625-41, <http://www.geosci-model-dev.net/4/625/2011/gmd-4-625-2011.html>, 2011.
- 1215 Yadav, S., Tripathi, S. N., & Rupakheti, M. (2022). Current status of source apportionment of ambient aerosols in India. *Atmospheric Environment*, 274, 118987.
- 1220 Zhang, P., Yuan, C., Sun, Q., Liu, A., You, S., Li, X., Zhang, Y., Jiao, X., Sun, D., Sun, M., Liu, M., and Lun, F.: Satellite-based detection and characterization of industrial heat sources in China. *Environ. Sci. Technol.*, 53, 11031–11042, <https://doi.org/10.1021/acs.est.9b02643>, 2019.
- 1225 Zhang, X., Han, L., Wei, H., Tan, X., Zhou, W., Li, W. and Qian, Y.: Linking urbanization and air quality together: A review and a perspective on the future sustainable urban development, *J. Clean. Prod.*, 346, 130988, <http://dx.doi.org/10.1016/j.jclepro.2022.130988>, 2022.