

# 4DVarNet-SSH: end-to-end learning of variational interpolation schemes for nadir and wide-swath satellite altimetry

Maxime Beauchamp<sup>1</sup>, Quentin Febvre<sup>1</sup>, Hugo Georgentum<sup>1</sup>, and Ronan Fablet<sup>1</sup>

<sup>1</sup>IMT Atlantique Bretagne Pays de la Loire, 655 Av. du Technopôle, 29280 Plouzané, France

**Correspondence:** Maxime Beauchamp (maxime.beauchamp@imt-atlantique.fr)

**Abstract.** The reconstruction of sea surface currents from satellite altimeter data is a key challenge in spatial oceanography, especially with the upcoming wide-swath SWOT (Surface Water and Ocean and Topography) altimeter mission. Operational systems however generally fail to retrieve mesoscale dynamics for horizontal scales below 100km and time-scale below 10 days. Here, we address this challenge through the 4DVarNet framework, an end-to-end neural scheme backed on a variational data assimilation formulation. We introduce a parametrization of the 4DVarNet scheme dedicated to the space-time interpolation of satellite altimeter data. Within an observing system simulation experiment (NATL60), we demonstrate the relevance of the proposed approach both for nadir and nadir+swot altimeter configurations for two contrasted case-study regions in terms of upper ocean dynamics. We report relative improvement with respect to the operational optimal interpolation between 30% and 60% in terms of reconstruction error. Interestingly, for the nadir+swot altimeter configuration, we reach resolved space-time scales below 70km and 7days. The code is open-source to enable reproductibility and future collaborative developments. Beyond its applicability to large-scale domains, we also address uncertainty quantification issues and generalization properties of the proposed learning setting. We discuss further future research avenues and extensions to other ocean data assimilation and space oceanography challenges.

## 1 Introduction

Satellite altimetry is the main data source for the observation and reconstruction of sea surface dynamics on a global scale (Chelton et al., 2001). Current satellite altimeters only deliver along-track nadir observations. This results in a very scarce sampling of the ocean surface. Interpolation schemes are then key components of the operational processing of satellite altimetry data. Current operational products (Taburet et al., 2019; Lellouche et al., 2018) show however a limited ability to retrieve the full-range of mesoscale dynamics. Upcoming wide-swath altimetry SWOT mission, see e.g. (Gaultier et al., 2015), will provide for the first time two-dimensional observation of the Sea Surface Seight (SSH). The space-time sampling of satellite altimeters will however still remain scarce for a long time, which has motivated a recent research literature towards the improvement of the interpolation of satellite-derived SSH fields, see e.g. (Lopez-Radcenco et al., 2019; Lguensat et al., 2017; Beauchamp et al., 2021; Ballarotta et al., 2019).

25 Besides operational schemes based on optimal interpolation techniques (Taburet et al., 2019) and data assimilation schemes for ocean circulation models (Benkiran et al., 2021), we may sort the proposed SSH interpolation schemes into three main categories: extension of optimal interpolation approaches towards multi-scale schemes (Arduin et al., 2020), data assimilation schemes using sea surface dynamical priors such as quasi-geostrophic (QG) dynamics (Le Guillou et al., 2020), and data-driven interpolation methods. The latter comprises both EOF-based (Empirical Orthogonal Function) techniques (Beckers and Rixen, 30 2003b; Alvera-Azcárate et al., 2009), analog approaches (Lguensat et al., 2017; Tandeo et al., 2020) and more recently deep learning schemes (Fablet et al., 2020; Fablet and Chapron, 2022; Manucharyan et al., 2021; Beauchamp et al., 2020).

Here, we explore further this avenue and more specifically the 4DVarNet framework recently introduced in Fablet et al. (2021). As it relies on a variational data assimilation formulation, it appears particularly suited to the space-time interpolation of sea 35 surface variables from irregularly-sampled observations. We propose a parametrization of the 4DVarNet scheme dedicated to SSH interpolation from satellite altimeter data and report OSSE (Observing System Simulation Experiment) results to support the relevance of the proposed scheme. Our main contributions are as follows:

- The proposed 4DVarNet-SSH scheme delivers an end-to-end neural architecture using as inputs raw satellite altimeter data and optimally-interpolated fields. We also address uncertainty quantification issues using an ensemble method.
- 40 ▪ For OSSE on two case-study regions, respectively along the GULFSTREAM and for an open ocean area dominated by mesoscale eddy dynamics, the 4DVarNet-SSH scheme outperforms previous work and significantly improves performance metrics with respect to the operational processing. We also support the relevance of wide-swath SWOT altimeter data to significantly improve the reconstruction of sea surface dynamics compared to nadir-only satellite altimeters.
- We deliver an open source code for the proposed 4DVarNet-SSH scheme. It relies on a Pytorch and associated state-of- 45 the-art packages. As such, it supports multi-GPU configuration and can scale up to large-scale domains.

We believe these contributions able to help for the development of deep learning approaches for satellite altimetry, and more broadly for operational oceanography.

This paper is organized as follows. Sect. 2 briefly reviews key methodological aspects and related work. We describe the 50 proposed 4DVarNet-SSH approach in Sect. 3 and Sect. 4 presents the considered OSSE setting. We report our results in Sect. 5 and discuss further our main contributions in Sect. 6.

## 2 Background and related work

From a methodological point of view, interpolation problems in geoscience are classically regarded as data assimilation issues (Asch et al., 2016). They aim at estimating the state  $\mathbf{x}_t$  of a multi-dimensional dynamical system:

$$55 \quad \begin{cases} \frac{d\mathbf{x}_t}{dt} &= \mathcal{M}(\mathbf{x}_t) + \eta_t \\ \mathbf{y}_t &= \mathcal{H}_t(\mathbf{x}_t) + \varepsilon_t \end{cases}. \quad (1)$$

The first equation relates to the forecast step which describes the evolution of the system from time  $t$  to  $t + dt$  according to the potentially non-linear model  $\mathbf{x}_{k+1} = \mathcal{M}(\mathbf{x}_k)$ . The second equation introduces the observations  $\mathbf{y}_t$  at time  $t$  where  $\mathcal{H}_t$  is the corresponding observation operator, usually known, but also potentially learnable.  $\eta(t)$  is the model error and  $\varepsilon(t)$  the observation error. Both errors are generally assumed to be Gaussian, unbiased and uncorrelated over time. When discretized on a spatio-temporal grid where index  $k = 1, \dots, T$  refers to time  $t_k$ , their associated covariance matrices write  $\mathbf{Q}_k \in \mathbb{R}^{m \times m}$  and  $\mathbf{R}_k \in \mathbb{R}^{p_k \times p_k}$ .

Broadly speaking, a vast family of data assimilation methods stems from the minimization of some energy or functional which involves two terms, a dynamical prior and an observation term. We may distinguish two main categories of data assimilation approaches (Evensen, 2009): variational and statistical data assimilation. Specifically, within a variational data assimilation framework, the state analysis  $\mathbf{x}^a$  results in a gradient-based minimization of the defined variational cost  $\mathcal{J}(\mathbf{x}) = \mathcal{J}_\Phi(\mathbf{x}, \mathbf{y}, \Omega)$  (Asch et al., 2016). The latter generally combines the sum of an observation term and a regularization term involving an operator  $\Phi$ :

$$70 \quad \mathcal{J}_\Phi(\mathbf{x}, \mathbf{y}, \Omega) = \frac{1}{2} \sum_{i=k-L}^{k+L} \|\mathbf{y}_i - \mathcal{H}_i(\mathbf{x}_i)\|_{\mathbf{R}_i}^2 + \frac{1}{2} \sum_{i=k-L}^{k+L} \|\mathbf{x}_i - \Phi_i(\mathbf{x}_i)\|_{\mathbf{Q}_i}^2 \quad (2)$$

The prior operator  $\Phi_k$  is a time-stepping operator at time  $t_k$ . In model-based data assimilation, it generally relates to a dynamical model  $\mathcal{M}$  to provide a background estimation, i.e. the physical prior, corresponding to the deterministic forecast.  $\mathbf{x} = \{x_{k-L}, \dots, x_{k+L}\}$  respectively denotes the temporal vectors of sizes  $(2L + 1) \times m$  and  $\prod_{i=k-L}^{k+L} p_i$  associated to the state of the system and the observations within the data assimilation window (DAW) of length  $2L + 1$  centered around  $t_k$ .  $\mathcal{H}_k$  is the observation operator and  $\Omega = \{\Omega_k\}$  is the set of subdomains of  $\mathcal{D}$  with observations at time  $t_k$ ,  $k = 1, \dots, T$ . Last,  $\mathbf{Q}_k$  and  $\mathbf{R}_k$  are the background and the observation error covariance matrices. This formulation of functional  $\mathcal{J}_\Phi(\mathbf{x}, \mathbf{y}, \Omega)$  directly relates to weak constraint 4D-Var, see e.g. Carrassi et al. (2018), which aims at estimating the optimal trajectory of a system in a predefined DAW, given the additional constraint of model uncertainty in the objective function  $\mathcal{J}$ .

80 Regarding statistical data assimilation, many state-of-the-art methods rely on optimal interpolation (OI), which is the basic block of all statistical methods, especially regarding SSH-related datasets. OI has been used for decades (Taburet et al., 2019)

for the interpolation of along-track nadir altimeter datasets and is still used today for the operational Marine (CMEMS) and Climate (C3S) production of the E.U. Copernicus program. It involves a significant smoothing, solving spatial scales up to 150km. Extensions of OI schemes to multi-scale to better account for mesoscale sea surface dynamics have recently been  
85 proposed (Arduin et al., 2020; Ubelmann et al., 2016).

Variational DA schemes have also been widely explored for the assimilation of satellite altimeter data in ocean general circulation models, see e.g. Ngodock et al. (2015), Benkiran et al. (2021) or Li et al. (2021). Previous works have also considered quasigeostrophic (QG) dynamics as an approximate and reduced-order dynamical prior for sea surface dynamics, leading to state-of-the-art performance (Ubelmann et al., 2016; Le Guillou et al., 2020).

90 Whereas model-driven and optimal interpolation approaches are the state-of-the-art solutions for operational products, data-driven strategies have recently emerged as promising alternatives to improve the space-time resolution of interpolated products. We may cite among others DINEOF (Beckers and Rixen, 2003a; Alvera-Azcárate et al., 2005; Alvera-Azcárate et al., 2009) and the Analog Data Assimilation, AnDA (Lguensat et al., 2017; Tandeo et al., 2020) and the recent developments of deep  
95 learning schemes (Barth et al., 2019) . Beauchamp et al. (2020) have reported a benchmarking experiment, which supported the relevance of data-driven schemes compared with the operational OI product.

Here, we further explore deep learning approaches, and more particularly the 4DVarNet scheme (Fablet and Chapron, 2022), which bridges variational data assimilation and deep learning. Because the analyzed state obtained from OI matches the mini-  
100 mization of the 3DVar cost function, this establishes the formal link between the statistical DA framework and the optimal control theory used in the variational formulation. When adding time as an extra dimension, 4DVar generalizes the stationary case of the 3DVar formulation, see e.g. Carrassi et al. (2018). It makes the 4DVarNet framework relevant to compare with traditional DA methods: BOOST-SWOT 2020 data challenge ([https://github.com/ocean-data-challenges/2020a\\_SSH\\_mapping\\_NATL60](https://github.com/ocean-data-challenges/2020a_SSH_mapping_NATL60)) provides a representative benchmarking framework to assess the performance of SSH mapping schemes for nadir-only and  
105 nadir+SWOT altimetry datasets.

As detailed hereafter, we introduce a parameterization of the 4DVarNet scheme dedicated to SSH interpolation issues and demonstrate its relevance in the context of the benchmarking settings introduced in the BOOST-SWOT 2020 data challenge.

### 3 Method

110 This section details the proposed learning-based framework for the interpolation of satellite altimeter data. We first briefly review 4DVarNet framework recently introduced in Fablet et al. (2021) in Sect. 3.1 and present the proposed parameterization for SSH mapping from nadir and SWOT altimeter data in Sect. 3.2. We describe the resulting Pytorch package and associated implementation details in Sect. 3.4 and the proposed learning setting in Sect. 3.3.

### 3.1 4DVarNet framework

115 4DVarNet framework introduced in Fablet et al. (2021) provides a generic approach for the learning of 4DVar models and solvers. They have been shown to outperform classic 4DVar solver for toy case-studies such as Lorenz-63 and Lorenz-96 dynamics, when considering partially-observed systems. 4DVarNet framework can be regarded as an extension using trainable gradient-based solvers of the deep learning scheme, which led to the best SSH interpolation performance in our previous work (Beauchamp et al., 2020).

120

From a methodological point of view, 4DVarNet framework derives an end-to-end neural architecture from an underlying variational DA formulation, see again Section 2:

$$\mathcal{J}_\Phi(\mathbf{x}, \mathbf{y}, \Omega) = \lambda_1 \|\mathbf{y} - \mathcal{H}(\mathbf{x})\|_\Omega^2 + \lambda_2 \|\mathbf{x} - \Phi(\mathbf{x})\|^2, \quad (3)$$

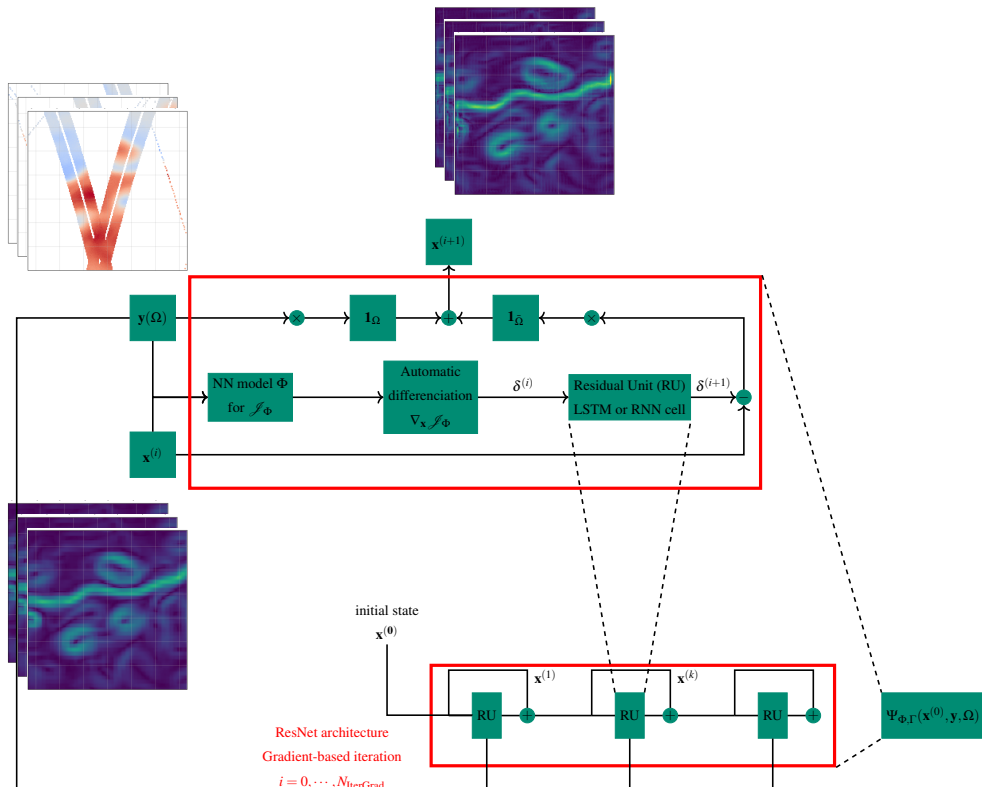
125 where  $\lambda_{1,2}$  are predefined or tunable scalar weights and we replaced the Mahalanobis norms  $\|\cdot\|_R^{-1}$  and  $\|\cdot\|_Q^{-1}$  by a standard mean-square norm for sake of simplicity. In the regularization term, we substitute to the traditional dynamical prior  $\mathcal{M}$  a neural operator  $\Phi$  based on a convolutional architecture. Then, we can exploit the automatic differentiation tools embedded in deep learning libraries to consider the following iterative gradient-based solver, denoted as  $\Gamma$ , for the minimization of variational cost  $\mathcal{J}_\Phi$  w.r.t. state  $\mathbf{x}$ :

$$\begin{cases} g^{(i+1)} &= LSTM \left[ \alpha \cdot \nabla_{\mathbf{x}} \mathcal{J}_\Phi(\mathbf{x}^{(i)}, \mathbf{y}, \Omega), h(i), c(i) \right] \\ x^{(i+1)} &= x^{(i)} - \mathcal{T} \left( g^{(i+1)} \right) \end{cases}, \quad (4)$$

130 where *LSTM* denotes here a convolutional Long-Short-Term-Memory (LSTM) model, see e.g. (Shi et al., 2015),  $\alpha$  a normalization scalar,  $h(i)$  and  $c(i)$  denotes the internal states of the LSTM, and  $\mathcal{T}$  a linear mapping. The key idea relies in the capability of the LSTM to learn an adaptative gradient update  $g^{(i+1)}$  from the gradient of the variational cost  $\nabla_{\mathbf{x}} \mathcal{J}_\Phi(\mathbf{x}^{(i)})$  in order to considerably speed up the optimization and reach the corresponding optimal state. This iterative rule based on a trainable LSTM operator is similar to meta-learning schemes (Andrychowicz et al., 2016). Due to the ability of LSTM models 135 to capture long-term dependencies, it results in a trainable gradient descent with momentum.

Overall, a 4DVarNet scheme defines a neural architecture which runs a predefined number of iterative gradient-based update (see Eq. 4). Let denote by  $\Psi_{\Phi, \Gamma}(\mathbf{x}^{(0)}, \mathbf{y}, \Omega)$  the output of the 4DVarNet architecture for given priors  $\Phi$  and solver  $\Gamma$ , the initialization  $\mathbf{x}^{(0)}$  of state  $\mathbf{x}$  and the observations  $\mathbf{y}$  on domain  $\Omega$ . The resulting neural architecture is referred as an end-to-end 140 architecture since it uses as inputs raw observation data and an initial guess and directly provides as outputs the reconstructed state.

Then, the joint learning of operators  $\{\Phi, \Gamma\}$  is stated as the minimization of a reconstruction cost  $\mathcal{L}(\mathbf{x}, \mathbf{x}^*)$ , typically the root mean squared error (RMSE) between true state  $\mathbf{x}$  and its reconstruction  $\mathbf{x}^*$ , and additional regularization terms fully described



**Figure 1.** Sketch of the gradient-based algorithm: the upper-left stack of images corresponds to an example of SSH observations temporal sequence with missing data used as inputs. The upper-right stack of images is an example of intermediate reconstruction of the SSH gradient at iteration  $i$  while the bottom-left stack of images identifies the updated reconstruction fields used as new inputs after each iteration of the algorithm.

145 in Sect. 3.3:

$$\arg \min_{\Phi, \Gamma} \mathcal{L}(\mathbf{x}, \mathbf{x}^*) \text{ s.t. } \mathbf{x}^* = \Psi_{\Phi, \Gamma}(\mathbf{x}^{(0)}, \mathbf{y}, \Omega). \quad (5)$$

Let stress that the outer loss function  $\mathcal{L}$  differs from the inner variational cost  $\mathcal{J}_{\Phi}$  to take advantage of a supervised configuration (true states are known during training). Such a formulation turns out to be particularly efficient when applied to Gaussian Processes, for which the optimal solution is known, see e.g. Beauchamp et al. (2022), with promising transfer to  
 150 non-Gaussian/non-linear dynamics.

In Appendix A, a parameter-free fixed point version of the solver is also given, based on the previous results of (Beauchamp et al., 2020). In addition, Beauchamp et al. (2021) have already shown how the iterative gradient-based update is more efficient than the simpler fixed-point formulation.

---

**Algorithm 1:** 4DVarNet algorithm, Fablet et al. (2020)
 

---

**Data:**

- $\mathbf{x} \in \mathbb{R}^{T \times m} = \{\mathbf{x}_k\}$ ,  $k = 1, \dots, T$
- $\mathbf{y}_\Omega = \{\mathbf{y}_{k, \Omega_k}\}$ ,  $k = 1, \dots, T$ : observations on domains  $\Omega_k \subset \mathcal{D}$
- $N_I$ : number of iterations
- $\eta$ : gradient step

**List of procedures:**

- Train  $\Psi_{\Phi, \Gamma}$ : end-to-end learning procedure with:
  - \*  $\Phi$ : NN-based representation of the dynamical system
  - \* *GradLSTM*: residual NN-based representation of  $\nabla_{\mathbf{x}} \mathcal{J}(\mathbf{x})$
  - \*  $\Gamma$ : iterative gradient-based update operator

$$\mathbf{x} = \Phi(\mathbf{y})$$

**while**  $i < N_I$  **do**

$$\left| \begin{array}{l} \mathbf{x}^{(i+1)} \leftarrow \mathbf{x}^{(i)} - \eta \times \text{GradLSTM}(\mathbf{x}^{(i)}) \\ N_I \nearrow; \eta \searrow; i \leftarrow i + 1 \end{array} \right.$$

**end**

Train  $\Psi_{\Phi, \Gamma}$

**Result:**  $\mathbf{x}^* \leftarrow \Psi_{\Phi, \Gamma}(\mathbf{x}^{(0)}, \mathbf{y}, \Omega)$

---

### 155 3.2 4DVarNet-SSH parameterization

The proposed 4DVarNet-SSH framework aims at exploiting and improving the mapping performance of current operational OI products. This Section draws from the generic 4DVarNet formulation presented above and adapt its target components given that OI products retrieve consistent large-scale dynamics. Then, we rely on the following multiscale decomposition:

$$\mathbf{x} = \bar{\mathbf{x}} + d\mathbf{x} + \varepsilon \tag{6}$$

160 where the anomaly  $d\mathbf{x}$  is seen as the difference between the true state  $\mathbf{x}$  and the large-scale components  $\bar{\mathbf{x}}$ . Regarding the observations data, let us denote by  $\mathbf{y}(\Omega) = \{\mathbf{y}_k(\Omega_k)\}$  the partial and potentially noisy altimetry observations associated with masks  $\Omega = \{\Omega_k\} \subset \mathcal{D}$ , where  $\bar{\Omega}_k$  corresponds to the gappy part of the field and index  $k$  refers to time  $t_k$ . We use the operational OI product as a gap-free observation data, denoted as  $\bar{\mathbf{y}}$ , for state component  $\bar{\mathbf{x}}$ , whereas the observation data for anomaly  $d\mathbf{x}$  is  $\mathbf{y} - \bar{\mathbf{y}}$  over domain  $\Omega$ .

165 Numerical experiments showed that an augmented state formulation led to better interpolation performance regarding potential stripping artifacts due to the nadir along-track sampling. This results in the application of 4DVarNet model (see Eq. 5) to augmented states  $\tilde{\mathbf{x}}$  and observations  $\tilde{\mathbf{y}}$  defined as follows:

$$\tilde{\mathbf{x}} = \begin{pmatrix} \bar{\mathbf{x}} \\ d\mathbf{x}_1 \\ d\mathbf{x}_2 \end{pmatrix}, \tilde{\mathbf{y}} = \begin{pmatrix} \bar{\mathbf{y}} \\ dy_1 \\ dy_2 \end{pmatrix}, \tilde{\Omega} = \begin{pmatrix} \mathbb{1} \\ \Omega \\ \mathbf{0} \end{pmatrix} \tag{7}$$

$$\tag{8}$$

170 This augmented state parameterization introduces two anomaly components  $d\mathbf{x}_1$  and  $d\mathbf{x}_2$ , with corresponding observations. While only the first one is actually observed, the reconstructed SSH state is however given by the addition of the coarse component  $\bar{\mathbf{x}}$  and the latent anomaly  $d\mathbf{x}_2$ :  $\mathbf{x}^* = \bar{\mathbf{x}} + d\mathbf{x}_2$ .

Following Fablet et al. (2021), the operator  $\Phi$  follows a purely data-driven parameterization with a two-scale residual archi-  
 175 tectures involving bilinear units (Fablet et al., 2020). The number of residual blocks is set to 2 and the bilinear units are made  
 of two hidden convolutional layers, respectively with linear and ReLU activations, followed by a linear scheme combining  
 the outputs of the second layer. A final convolutional layer with linear activation is involved to bring the outputs back to the  
 initial state dimension. In its current implementation,  $\Phi$  contains about 500.000 parameters. In any case, the number of gradient  
 iterations for the solver  $\Gamma$  is fixed at 5. Complementary tests showed that a higher number of iterations leads to a large increase  
 180 of the training time (because of the implicit number of parameters which grows linearly with this number of iterations) without  
 a significant gain in terms of 4DVarnet reconstruction skills.

Regarding the initial state for iterative gradient-based rule (4), we consider the OI field  $\bar{\mathbf{y}}$  for state component  $\bar{\mathbf{x}}$ ,  $\mathbf{y} - \bar{\mathbf{y}}$  for  
 anomaly component  $\mathbf{dx}_1$  and a zero state for anomaly component  $\mathbf{dx}_2$ . For anomaly component  $\mathbf{dx}_1$ , gaps are initialized to 0.

### 185 3.3 Learning setting

We implement a classic supervised learning strategy using gap-free targets. The considered training loss  $\mathcal{L}$  combines recon-  
 struction losses and additional regularization terms:

$$\begin{aligned} \mathcal{L}(\mathbf{x}, \mathbf{x}^*) &= \lambda_1 \sum_{i=1}^N \mathbf{w}_i \|\mathbf{x} - \mathbf{x}^*\|^2 + \lambda_2 \left| \sum_{i=1}^N \mathbf{w}_i \|\nabla_{\mathbf{x}} - \nabla_{\mathbf{x}^*}\|^2 \right. \\ &\quad \left. + \lambda_3 \sum_{i=1}^N \mathbf{w}_i \|\mathbf{x} - \Phi(\mathbf{x}^*)\|^2 + \lambda_4 \sum_{i=1}^N \mathbf{w}_i \|\mathbf{x} - \Phi(\mathbf{x})\|^2 \right. \end{aligned} \quad (9)$$

190 i.e., the L2-norm of the difference between state  $\mathbf{x}$  and reconstruction  $\mathbf{x}^*$  as well as for their gradients, and regularisation losses  
 according to prior  $\Phi$  to enforce that both the true states and the reconstructed ones are correctly encoded by prior  $\Phi$ .  $\mathbf{w} = \{\mathbf{w}_i\}$ ,  
 $i = 1, \dots, N$  denotes a weighting vector along the data assimilation window of size  $N$  (=7 here). To give more importance to  
 the center of the DAW, we use:

$$\mathbf{w} = [0 \quad 0.25 \quad 0.75 \quad 1 \quad 0.75 \quad 0.25 \quad 0]^T \quad (10)$$

195 This training loss is used in Sect. 4 for the OSSE-based BOOST-SWOT data challenge framework.

Regarding the training configuration, when the domain is small (see GULFSTREAM and OSMOSIS regions definition in Sect.  
 4), we use a single GPU and Adam optimizer with batch size of 2 over 200 epochs. The same set of parameters holds for larger  
 domain (NATL and cNATL, see again Table 1) but we use the 4DVarNet-distributed version of the code over 4 GPUs. The  
 200 computational time of the training procedure lies between 4 and 5 hours for the small-domain setup and between 7 and 8 hours  
 for the large-domain setup.



### 3.4 Implementation aspects

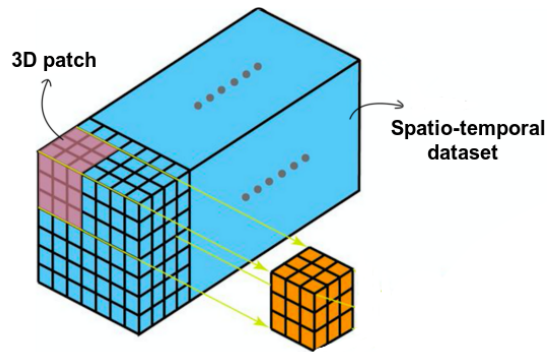
We provide an open source PyTorch implementation of the 4dVarNet-SSH scheme<sup>1</sup>. Pytorch is a state-of-the-art deep learning framework. We benefit from associated packages such as lightning and hydra to provide a high-level environment and make  
205 easier the reproduction of the experiments as well as the development of other applications. Through lightning package, our implementation supports multi-GPU distributed learning configurations. This may be highly relevant to speed up the training process.

Regarding computational issues, the OSSE-based applications, see Sect. 4, involves the processing of  $7 \times 240 \times 240$  tensors (i.e.,  
210 7-day time series over a  $12^\circ \times 12^\circ$  domain with a  $1/20^\circ$  resolution). GPU with a significant RAM (typically above 30Go), such as NVidia V100, A40, A100, can process such tensors through the proposed 4DVarNet architecture. The direct training 4DVarNet models over larger spatial domains is however limited by the GPU memory. To address this issue, we develop a specific data management module, through the so-called *dataloaders*. Our *dataloader* module automatically extracts patches of a predefined size (typically,  $7 \times 240 \times 240$  in the reported experiments) from the considered training dataset according to stride parameters as sketched in Fig.2. One can exploit the same approach to apply a learnt model to a large domain during the eval-  
215 uation or production stage. In both cases, we benefit from the fully-convolutional feature of the considered neural architecture. This guarantees that, up to border effects, the 4DVarNet processing is translation-invariant.

Let precise that the size of the tensors relates to the maximal space-time distance with significant autocorrelation of the SSH. Then, we use a data assimilation window of length  $N = 2L + 1$ , meaning that we use temporal sequences of state space  
220  $\mathbf{x}_{k \pm L} = \mathbf{x}_{k-L:k+L}$ . The idea is to optimize the results for the time  $t_k$  at the center of the window  $[t_{k-L}; t_{k+L}]$  and the value of  $N$  has to be chosen according to the dynamics of the geophysical field considered, the SSH here. In the following experiments, we use a value of  $N = 7$  which seems to be enough to describe the spatio-temporal correlations of the anomaly between the Ground Truth and the DUACS OI scheme. To apply 4DVarNet directly on the SSH dataset, without providing the DUACS OI baseline as a coarse version of the reconstruction, the value of  $N$  shall increase up to 20 days, see e.g. Beauchamp et al. (2022).  
225 In the same vein, the spatial size of the patches is  $240 \times 240$  pixels with corresponding  $0.05^\circ$  resolution:  $12^\circ$  is large enough to consider spatial autocorrelation as negligible outside of the patch.

---

<sup>1</sup>The code is available at <https://doi.org/10.5281/zenodo.7186322>



**Figure 2.** Patch-based strategy: the whole spatio-temporal dataset is split into small patches. The temporal size of the patches corresponds to the length of the data assimilation window.

## 4 Observation System Simulation Experiments

This Section details the experimental setup considered in this study for the quantitative evaluation of the proposed framework. We first introduce the simulation dataset used in our experiments as well as the case-study regions. Sect. 4.2 reviews the simulation satellite altimetry datasets and Sect. 4.3 describes our evaluation framework.

### 4.1 NATL60 dataset and case-study regions

In our study, the Nature Run (NR) corresponds to the NATL60 configuration (Molines, 2018) of the NEMO (Nucleus for European Modeling of the Ocean) model. It is one of the most advanced state-of-the-art basin-scale high-resolution ( $1/60^\circ$ ) simulation available today, whose surface field effective resolution is about 7km.

In this work, we will use five different subdomains of the North Atlantic basin (see Fig. 3):

- two  $10^\circ \times 10^\circ$  GULFSTREAM and GULFSTREAM2 domains,
- two  $8^\circ \times 10^\circ$  OSMOSIS and OSMOSIS2 "open ocean" domains,
- a large  $20^\circ \times 40^\circ$  cNATL domain, at the center North Atlantic basin, used to assess 4DVarNet training on large domains, without any pieces of land inside to avoid any issues in the learning process.

The GULFSTREAM and OSMOSIS domains (blue and red solid lines in Fig. 3) are the domains used by the BOOST-SWOT project in the framework of the NATL60 OSSE throughout the different related studies, see their 2020 ocean data challenges and Le Guillou et al. (2020). Because we aim at exploring the capabilities of 4DVarNet to deploy at the basin scale, we also propose the two alternate GULFSTREAM2 and OSMOSIS2 domains (blue and red dashed lines in Fig. 3), with similar



**Figure 3.** Extents of the GULFSTREAM, GULFSTREAM2, OSMOSIS, OSMOSIS2 and cNATL domains used in this work, all part of the North Atlantic (NATL) basin used in the BOOST-SWOT data challenge

245 dynamical properties than the two initial domains, as well as a larger domain centered in the North Atlantic basin (cNATL, purple dashed lines). The full extent of the subdomains are summarized in Table 1:

**Table 1.** Description of the NATL subdomains used for assessing 4DVarNet capabilities generalization

Domain	longitude	latitude	extent
GULFSTREAM	$[-65^{\circ}, -55^{\circ}]$	$[33^{\circ}, 43^{\circ}]$	$10^{\circ} \times 10^{\circ}$
GULFSTREAM2	$[-45^{\circ}, -35^{\circ}]$	$[42^{\circ}, 52^{\circ}]$	$10^{\circ} \times 10^{\circ}$
OSMOSIS	$[-19.5^{\circ}, -11.5^{\circ}]$	$[45^{\circ}, 55^{\circ}]$	$8^{\circ} \times 10^{\circ}$
OSMOSIS2	$[-28.5^{\circ}, -20.5^{\circ}]$	$[50^{\circ}, 60^{\circ}]$	$8^{\circ} \times 10^{\circ}$
cNATL	$[-50^{\circ}, -10^{\circ}]$	$[33^{\circ}, 53^{\circ}]$	$20^{\circ} \times 40^{\circ}$
NATL	$[-79^{\circ}, 7^{\circ}]$	$[27^{\circ}, 65^{\circ}]$	$38^{\circ} \times 88^{\circ}$

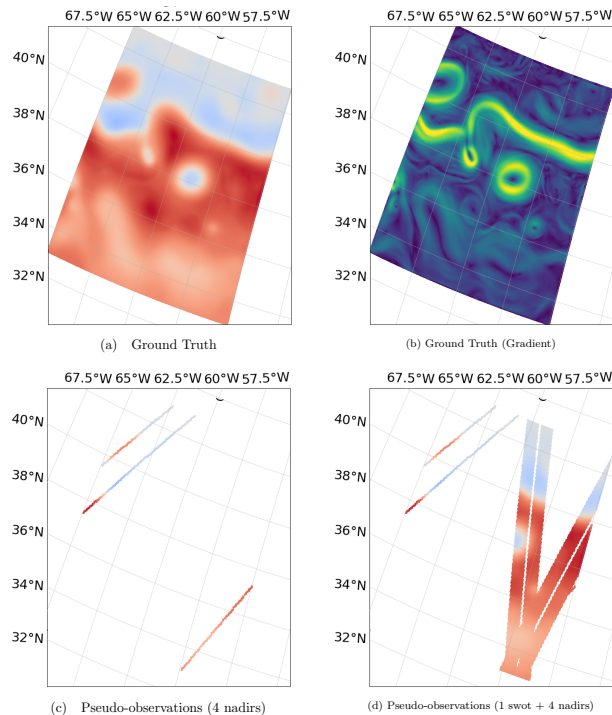
The GULFSTREAM regions display physical processes 100 times more energetic at scales larger than 100km with a greater temporal variability than the OSMOSIS regions. As a consequence, the SSH spatial gradient at scales above 100km is lower for OSMOSIS regions which explains why we can see more small scales related structures on such domains. In addition of their intrinsic differences in terms of dynamical regimes, the latitudes of GF-based and OSMOSIS-based regions implies different SWOT temporal samplings. For OSMOSIS regions, one SWOT observation is available every day, while over the low-latitude GULFSTREAM domains, the SWOT sampling is irregular leading to sequences of several days with only pseudo-nadir observations.

255 Over these regions, the Sea Surface Height (SSH) resolution of the nature run is downgraded to  $1/20^{\circ}$ , which is enough to capture both mesoscale dynamical regimes and the OSMOSIS-related smaller scales, while avoiding unnecessary heavy computation time.

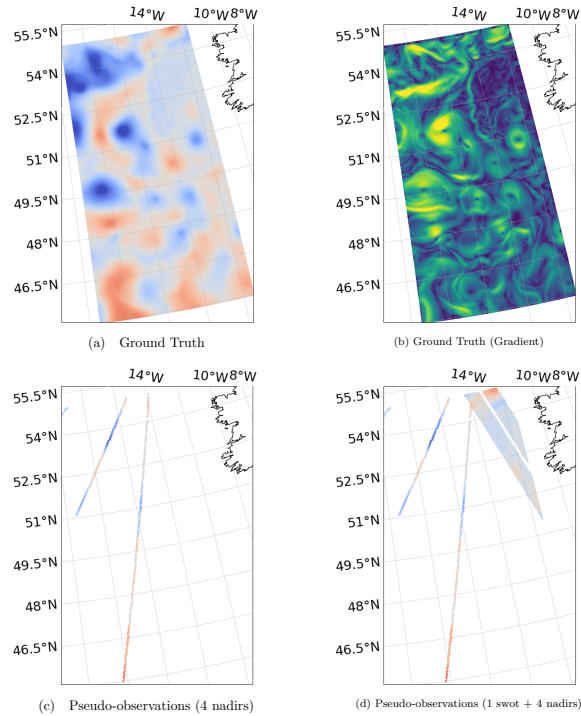
The NATL60 nature run will then be used as the reference Ground Truth (GT) in an observing system simulation experiments (OSSE). The pseudo-altimetric nadir and SWOT observational datasets will be generated by a realistic sub-sampling of satellite constellations.

## 4.2 Simulated altimetry datasets

In this Section, we provide the technical description of the two observational datasets used to train 4DVarNet: the 4 nadir 1 SWOT+4 nadir configurations. Regarding the pseudo-nadir altimetry dataset, representative of the current pre-SWOT observational altimetric dataset, we use the groundtracks of 4 altimetric missions (TOPEX/Poseidon, Geosat, Jason-1 and Envisat) picked up from the 2003 constellation to interpolate the NATL60 simulation from October 1st, 2012 to September 29th, 2013. A Gaussian white noise with variance  $\sigma^2 = (4 \dots 9) \text{cm}^2$  is added to the interpolated NATL60 simulation by the SWOTsimulator tool to mimic a noise with a spectrum of error consistent with global estimates from the Jason-2 altimeter (Dufau et al., 2016). We aggregate the nadir pseudo-observations on a daily basis to produce the gappy daily fields used as inputs by 4DVarNet-SSH. Fig. 4(c) vs Fig. 4(d) and Fig. 5(c) vs Fig. 5(d) illustrate the resulting nadir altimetry data on 2012, October 25.



**Figure 4.** NATL60 Ground Truth (a) and its gradient (b) ; one day accumulated along-track 4 nadirs (c) and wide-swath SSH pseudo-observations + 4 nadirs (d) on 2012, October 25 (domain: GULFSTREAM)



**Figure 5.** NATL60 Ground Truth (a) and its gradient (b) ; one day accumulated along-track 4 nadirs (c) and wide-swath SSH pseudo-observations + 4 nadirs (d) on 2012, October 25 (domain: OSMOSIS)

We proceed similarly to simulate SWOT pseudo observations using the swotsimulator tool (Gaultier et al., 2015) in its swath mode with an along-track and across-track 2km spatial resolution (the same theoretical resolution that the upcoming SWOT mission derived products is expected to provide). Let us note that we consider error-free SWOT pseudo-observations.

### 4.3 Evaluation framework

Our evaluation framework exploits and extends the one introduced in Le Guillou et al. (2020) as follows:

**Training and evaluation setting:** Because the NATL60 dataset is made of 365 daily simulations and the reference data used for training have to never be used during the optimization, we train all learning-based models using the time period going from 2013, February 4 to September 30. During the training procedure, we select the best model according to metrics computed over the validation period going from 2013, January 1 to February 2. Overall, we evaluate the performance metrics over the test period going from 2012, October 22 to December 2, which is 42 days, corresponding to two SWOT cycles in the SWOT science phase orbit. Doing so, the test period can be considered uncorrelated to the training and validation period.

**Evaluation metrics:** We use BOOST-SWOT DC metrics to benchmark 4DVarNet-SSH scheme with respect to the state-of-the-art SSH interpolation schemes. They comprise:

- $\overline{RMSE_s(t)}$ : mean RMSE score (normalized RMSE);
- $\sigma[RMSE_s(t)]$ :  $RMSE(t)$  standard deviation of the RMSE(t) which gives some information regarding the temporal stability of the reconstruction;
- 290 ▪  $\lambda_x$ : the minimum spatial scale resolved (wavelength in degree);
- $\lambda_t$ : the minimum temporal scale resolved (wavelength in days)

where  $RMSE_s(t) = 1 - \frac{RMSE(t)}{RMS(\mathbf{x})}$ ,  $RMS$  denotes the root mean square function,  $N$  is the number of pixels included in the study domain, and  $RMSE(t) = \sqrt{\frac{1}{N} \sum_{i=1}^N (\mathbf{x}^*(t, i) - \mathbf{x}(t, i))^2}$ . Last, the spectral analysis ( $\lambda_x$  and  $\lambda_t$ ) is based on the wavenumber-frequency power spectral density score  $PSD_S^{wf}$  defined as:  $PSD_S^{wf} = 1 - \frac{PSD^{wf}(\mathbf{x}^* - \mathbf{x})}{PSD^{wf}(\mathbf{x})}$ . We refer the reader to Le Guillou et al. 295 (2020) for additional description regarding these metrics. Besides this quantitative metrics, we also analyse the space-time distribution of the interpolation error and explore the impact of the interpolation onto the characterization of mesoscale eddy dynamics. Based on the work of Mason et al. (2014), we detect anticyclonic and cyclonic eddies in the Ground Truth NATL60 outputs and interpolated SSH fields using py-eddy-tracker toolbox (<https://py-eddy-tracker.readthedocs.io>) and analyze how key features of matching eddies, such as speed radius (km), outer radius (km), amplitude (cm) and speed max (cm/s), are 300 retrieved.

## 5 Results

This section presents the considered OSSE for the evaluation of the 4DVarNet-SSH scheme. We first report the benchmarking experiments with respect to the state-of-the-art (Sect. 5.1). Sect. 5.2 studies the impact of wide-swath SWOT data to improve the reconstruction of finer-scale SSH pattern. Last, we analyze generalization issues and uncertainty quantification in Sect. 5.3 305 and 5.4.

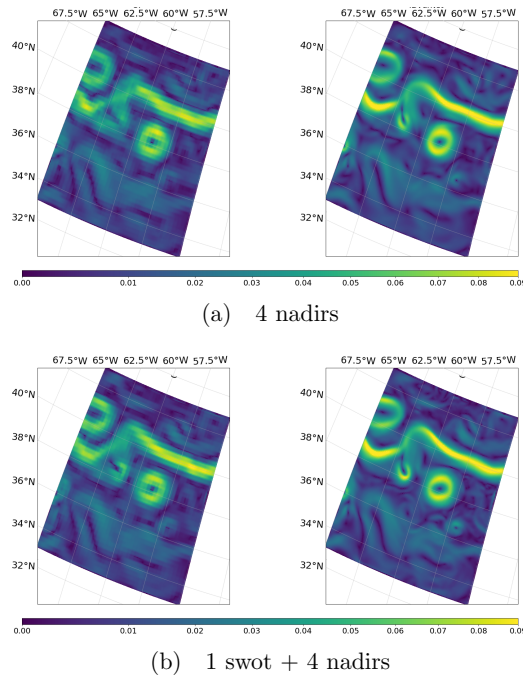
### 5.1 Benchmarking experiments

Regarding the BOOST-SWOT OSSE data challenge on the GULFSTREAM domain, we provide both performance with 4 nadirs and 1 swot + 4 nadirs in Table 2. For both settings, the improvement is quite significant with respect to all benchmarked schemes, *i.e.* not only compared to DUACS OI (Taburet et al., 2019), but also with respect to the recently proposed SSH interpolation schemes Le Guillou et al. (2020), DYMOST (Dynamic OI accounting for the SSH non-linear temporal propagation), see e.g. Ballarotta et al. (2020) and MIOST (Multi-scale OI) of Arduin et al. (2020). While DUACS OI has minimal spatial and temporal resolution of  $1.42^\circ(4 \text{ nadirs})/1.22^\circ(1 \text{ swot} + 4 \text{ nadirs})$  and 12 days (4 nadirs)/11.15 days (1 swot + 4 nadirs), 4DVarNet-SSH reaches  $0.83^\circ(4 \text{ nadirs})/0.62^\circ(1 \text{ swot} + 4 \text{ nadirs})$  and 8.01 days (4 nadirs)/5.29 days (1 swot + 4 nadirs). It amounts to a gain up to **33%** in the **4 nadirs** setup and **50%** in the **1 swot + 4 nadirs** configuration. 310

**Table 2.** 4DVarNet-SSH performance on the GULFSTREAM domain compared to DUACS OI (traditional covariance-based Optimal Interpolation), BFN (Back and Forth Nudging of A QG model), MIOST (Multi-scale OI), DYMOST (Dynamic OI accounting for non-linear temporal propagation of the SSH fields), and Fixed-point versions with 10 and a single iteration of the 4DVarNet solver, over the period from 2012-10-22 to 2012-12-02 (42 days)

Method	Description	$\mu$ (RMSE)	$\sigma$ (RMSE)	$\lambda_x$ (degree)	$\lambda_t$ (days)
DUACS 4 nadirs	OI	0.92	0.01	1.42	12.0
BFN 4 nadirs	QG-based DA (nudging)	0.92	0.02	1.23	10.6
DYMOST 4 nadirs	Dynamic OI	0.91	0.01	1.36	11.79
MIOST 4 nadirs	Multi-scale OI	0.93	0.01	1.35	10.19
4DVarNet 4 nadirs	Fixed-Point solver, $N_i=10$	0.92	0.01	1.22	11.51
4DVarNet 4 nadirs	NN-based 4DVar (ours)	<b>0.94</b>	<b>0.01</b>	<b>0.83</b>	<b>8.01</b>
DUACS 1 swot + 4 nadirs	OI	0.92	0.01	1.22	11.15
BFN 1 swot + 4 nadirs	QG-based DA (nudging)	0.93	0.02	0.8	10.09
DYMOST 1 swot + 4 nadirs	Dynamic OI	0.93	0.02	1.2	10.07
MIOST 1 swot + 4 nadirs	Multi-scale OI	0.94	0.01	1.18	10.14
4DVarNet 1 swot + 4 nadirs	Fixed-Point solver, $N_i=10$	0.94	0.01	1.18	9.65
4DVarNet 1 swot + 4 nadirs	NN-based 4DVar (ours)	<b>0.95</b>	<b>0.01</b>	<b>0.62</b>	<b>5.29</b>

315 Fig. 6 displays the SSH gradient field of DUACS OI and 4DVarNet-SSH interpolations on October, 25. The comparison to the associated Groundtruth displayed in Fig. 4(b) clearly reveals the improvement brought by 4DVarNet-SSH, in particular along the main meandrum of the GULFSTREAM.

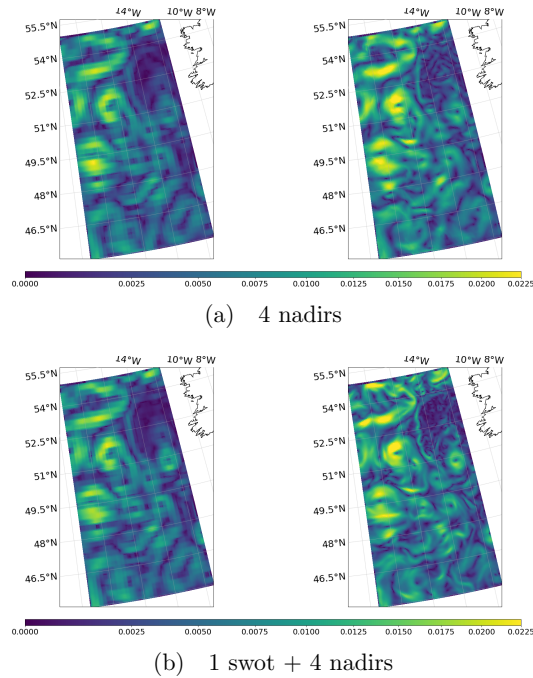


**Figure 6.** SSH Gradient (DUACS OI & 4DVarNet reconstruction) on the 2012-10-25 for the GULFSTREAM domain

**Table 3.** 4DVarNet-SSH performance on the OSMOSIS domain compared to DUACS OI over the period from 2012-10-22 to 2012-12-02 (42 days)

Method	$\mu$ (RMSE)	$\sigma$ (RMSE)	$\lambda_x$ (degree)	$\lambda_t$ (days)
duacs 4 nadirs	0.78	0.02	<b>1.10</b>	18.80
4DVarNet 4 nadirs (ours)	0.80	0.01	1.18	<b>14.51</b>
duacs 1 swot + 4 nadirs	0.81	0.02	1.03	17.50
4DVarNet 1 swot + 4 nadirs (ours)	0.87	0.02	<b>0.35</b>	<b>6.84</b>

We can draw similar conclusions from the experiments reported in Table 3 and Fig. 7 for the OSMOSIS domain. We may emphasize that 4DVarNet-SSH interpolation for the 1 swot + 4 nadirs configuration, see e.g. Fig.7, retrieves most of the fine-scale features of the SSH fields, which are smoothed out by the optimal interpolation.



**Figure 7.** SSH Gradient (DUACS OI & 4DVarNet-SSH reconstruction) on the 2012-10-25 for the OSMOSIS domain

## 5.2 Impact of SWOT data on the interpolation performance

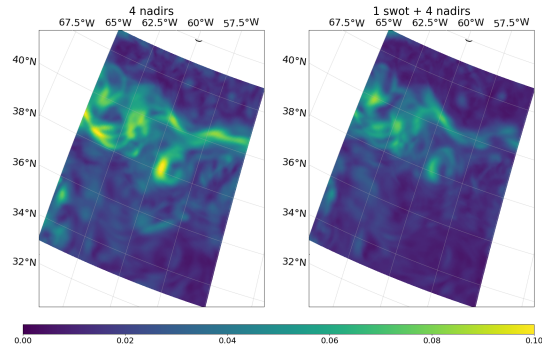
Thanks to its ability to reconstruct finer-scale patterns, 4DVarNet-SSH complements the assessment of the potential impact of SWOT data onto the reconstruction of mesoscale sea surface dynamics. Though the interpolation performance (Tab. 2 and 3) improves with the use of SWOT data for all the interpolation methods, the relative improvement strongly depends on the interpolation method. Interestingly, contrary to OI DUACS scheme, we report a significant improvement when using SWOT data with 4DVarNet-SSH for both GULFSTREAM and OSMOSIS regions. These results emphasize the ability of our scheme



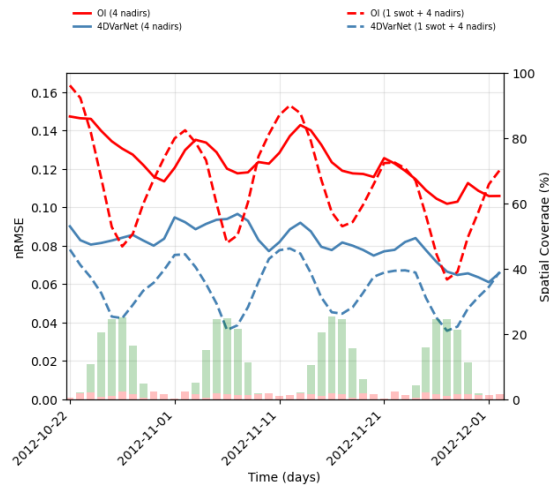
to exploit irregularly-sampled high-resolution data. For instance, for the OSMOSIS region, we truly benefit from SWOT data to reconstruct mesoscale dynamics up to  $0.4^\circ$  and 7 days, whereas OI DUACS smooths out the altimetry signals in the mesoscale range below  $1^\circ$  and 14 days.

330 While we report relative gains of 20 – 25% for the GULFSTREAM region for the different evaluation metrics, it reaches 40 – 60% for the OSMOSIS domain. We interpret these results as a direct consequence of differences in the space-time sampling of SWOT data for these two regions. As revealed by Fig. 8(b) and 9(b) no SWOT data may be available over 4 (resp. 1) consecutive days for the GULFSTREAM (resp. OSMOSIS) domain, This time variability of the sampling pattern translates for the GULFSTREAM region into a periodic variability of the MSE time series. By contrast, the OSMOSIS region leads to  
335 a much lower time variability of the interpolation performance. The PSD-based analysis reported in Fig.8(c) and 9(c) further supports these conclusions.

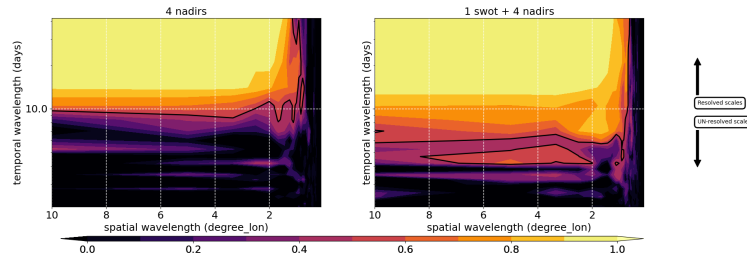
To complement with the analysis of contribution of SWOT altimetry on the interpolation performance, Fig. 10 displays eddy identification results on 2022, October 25 after application of a 200km high pass filter when using 1 swot + 4 nadirs configuration. Additional Figures are given in Appendix B for illustrations for both the GULFSTREAM and OSMOSIS domains in the  
340 two observational configurations (4 nadirs and 1 swot + 4 nadirs). Clearly, 4DVarNet-SSH improves the matching between true and interpolated eddies (39 vs 35), and the features of the matching eddies are also more similar to those of the true eddies, in terms of speed radius (km), outer radius (km), amplitude (cm) and speed max (cm/s), with respect to their true values. Again, the interpolation of eddy-related dynamics significantly improves with the exploitation of SWOT data.



(a) spatial

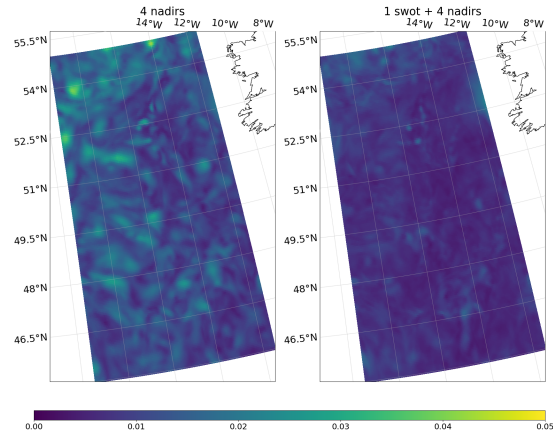


(b) temporal

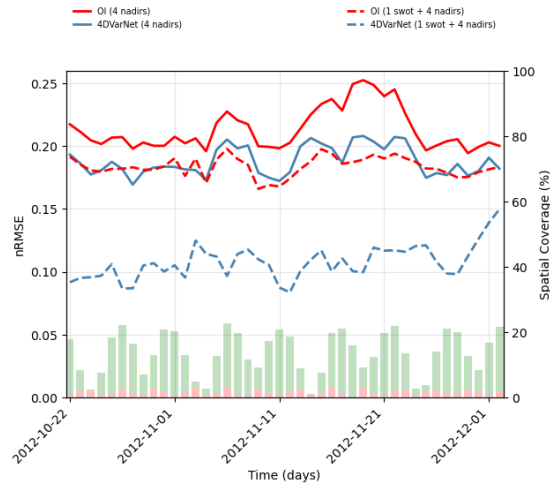


(c) spectral

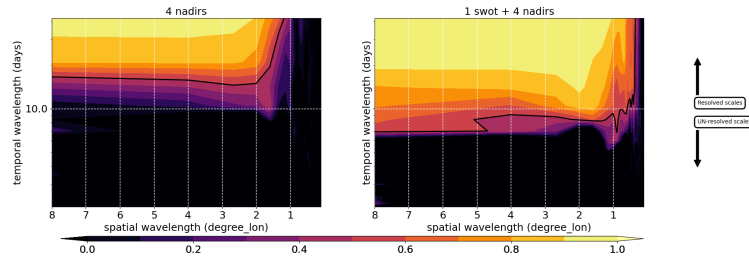
**Figure 8.** (a) Spatial performance: RMSE time series are computed for each spatial position of the GF domain (left: 4 nadirs ; right: 1 swot + 4 nadirs) ; (b) Temporal performance: RMSE daily GF maps are computed along the BOOST-SWOT DC evaluation period (left: 4 nadirs ; right: 1 swot + 4 nadirs), the daily spatial coverage of the two configurations are given as complementary red and green barplots scaled on the right-hand side ; (c) Spectral performance: the PSD-based score evaluates the spatio-temporal scales resolved in GF mapping (yellow area) (top: 4 nadirs ; bottom: 1 swot + 4 nadirs)



(a) spatial

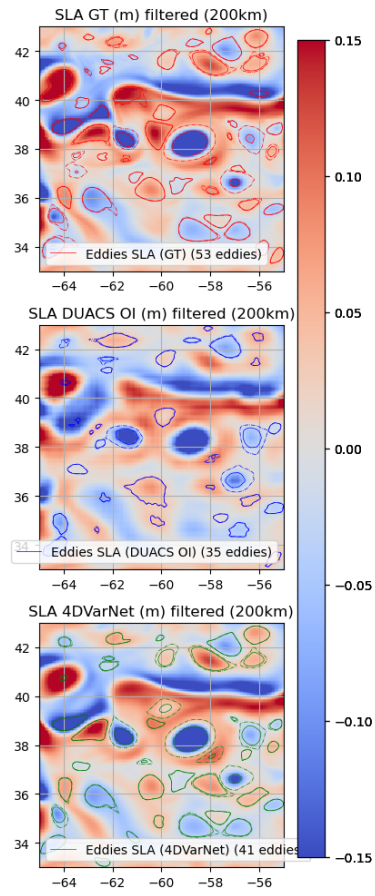


(b) temporal

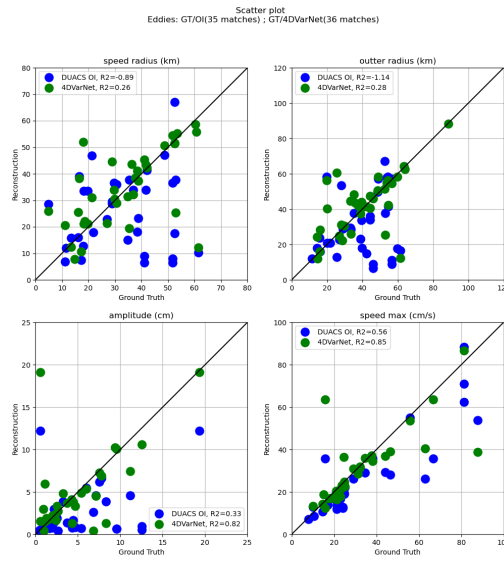


(c) spectral

**Figure 9.** (a) Spatial performance: RMSE time series are computed for each spatial position of the GF domain (left: 4 nadirs ; right: 1 swot + 4 nadirs) ; (b) Temporal performance: RMSE daily GF maps are computed along the BOOST-SWOT DC evaluation period (left: 4 nadirs ; right: 1 swot + 4 nadirs), the daily spatial coverage of the two configurations are given as complementary red and green barplots scaled on the right-hand side ; (c) Spectral performance: the PSD-based score evaluates the spatio-temporal scales resolved in GF mapping (yellow area) (top: 4 nadirs ; bottom: 1 swot + 4 nadirs)



**Figure 10.** Eddies detected on the GULFSTREAM domain (2012-10-25) over SSH (1 swot + 4 nadirs)



**Figure 11.** Speed radius (km), outer radius (km), amplitude (cm), speed max (cm/s) scatterplots of 4DVarNet/DUACS OI (1 swot + 4 nadirs) vs Ground truth on the GULFSTREAM domain (2012-10-25) for matching eddies

### 345 5.3 Generalization performance

Whereas the results reported in the previous sections involve 4DVarNet-SSH models evaluated on the same domain as the training one, we assess how 4DVarNet-SSH schemes trained for a specific domain may also apply to another one. Besides the GULFSTREAM and OSMOSIS regions, we consider three additional domains:

- cNATL domain: a larger  $20^\circ \times 40^\circ$  North Atlantic domain, which involves a variety of dynamical regimes;
- 350 ▪ GF2 domain: a domain similar to the reference GULFSTREAM domain in terms of upper ocean dynamics, but with a disjoint spatial extent;
- OSMOSIS2 domain: a domain similar to the reference OSMOSIS domain in terms of upper ocean dynamics, but with a disjoint spatial extent;

For the 1 swot + 4 nadirs configuration, we train 4DVarNet-SSH schemes on these three domains. We then evaluate how these  
355 models compare with the models reported in Sect. 5.1 for the GULFSTREAM and OSMOSIS domains. We also evaluate how the different models apply to the cNATL domain. Table 4 summarizes the resulting performance metrics.

As expected for each evaluation domain, we retrieve the best performance for the model trained on this domain. For the GULFSTREAM regions, the difference in terms of minimal temporal scales is negligible while the minimal spatial scales may exhibit an increase of 30% using the model trained on the GULFSTREAM2 domain. This does not hold in the other way when  
360 applying on the GULFSTREAM2 domain a model learnt on GULFSTREAM, with similar spatial scales resolved in the end.

**Table 4.** 4DVarNet performance on the GULFSTREAM and OSMOSIS domain compared to DUACS OI over the period from 2012-10-22 to 2012-12-02 (42 days)

Domain	Method	$\mu$ (RMSE)	$\sigma$ (RMSE)	$\lambda_x$ (degree)	$\lambda_t$ (days)	Train/Test
GF	DUACS OI 1 swot + 4 nadirs	0.92	0.01	1.22	11.31	-
	4DVarNet 1 swot + 4 nadirs	0.96	0.01	0.62	5.29	GF/GF
	4DVarNet 1 swot + 4 nadirs	0.95	0.01	0.86	5.67	GF2/GF
	4DVarNet 1 swot + 4 nadirs	0.92	0.02	1.25	10.93	cNATL/GF
OSMOSIS	DUACS OI 1 swot + 4 nadirs	0.81	0.02	1.04	17.80	-
	4DVarNet 1 swot + 4 nadirs	0.89	0.02	0.35	6.84	OSMOSIS/OSMOSIS
	4DVarNet 1 swot + 4 nadirs	0.88	0.02	0.41	8.05	OSMOSIS2/OSMOSIS
	4DVarNet 1 swot + 4 nadirs	0.84	0.02	0.93	9.59	cNATL/OSMOSIS
cNATL	DUACS OI 1 swot + 4 nadirs	-	-	-	-	-
	4DVarNet 1 swot + 4 nadirs	-	-	-	-	cNATL/cNATL
	4DVarNet 1 swot + 4 nadirs	-	-	-	-	cNATL/GF
	4DVarNet 1 swot + 4 nadirs	-	-	-	-	cNATL/OSMOSIS

The same conclusions hold for the OSMOSIS regions, except that the minimal resolved temporal scales also display a slight increase (lower than 20%) over OSMOSIS. These results are consistent with the dynamical properties given in Sect. 4 and support the generalization capabilities of 4DVarNet-SSH schemes. The comparison with the performance metrics reported for the model trained on the cNATL domain suggests that the considered 4DVarNet-SSH parameterization applies to a regional scale. This training configuration only leads to a relatively marginal gain w.r.t. OI DUACS when applied to the GULFSTREAM region. We report a slightly better performance for the OSMOSIS domain. We expect future work to explore new 4DVarNet-SSH parameterizations, which could better account for basin-scale variabilities.

#### 5.4 Uncertainty Quantification for 4DVarNet-SSH interpolations

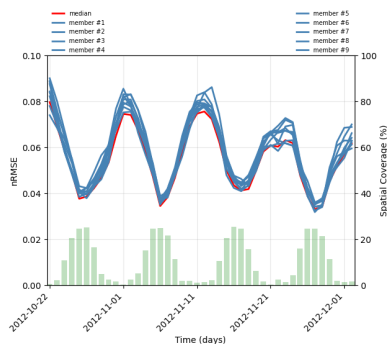
**Table 5.** 4DVarNet performance on the GULFSTREAM domain based on nine different trainings with random initialization of both  $\Phi$  and  $\Gamma$  weights but similar training parameters (number of epochs, learning rates, optimizers, gradient steps, etc.) over the period from 2012-10-22 to 2012-12-02 (42 days)

Members	$\mu$ (RMSE)	$\sigma$ (RMSE)	$\lambda_x$ (degree)	$\lambda_t$ (days)
4DVarNet (#1)	0.96	0.01	0.68	5.16
4DVarNet (#2)	0.96	0.01	0.66	4.52
4DVarNet (#3)	0.96	0.01	0.62	4.66
4DVarNet (#4)	0.96	0.01	0.63	4.12
4DVarNet (#5)	0.96	0.01	0.87	4.92
4DVarNet (#6)	0.96	0.01	0.86	5.07
4DVarNet (#7)	0.96	0.01	0.68	5.18
4DVarNet (#8)	0.96	0.01	0.85	4.99
4DVarNet (#9)	0.96	0.01	0.62	5.29
4DVarNet (median)	0.96	0.01	0.67	4.62

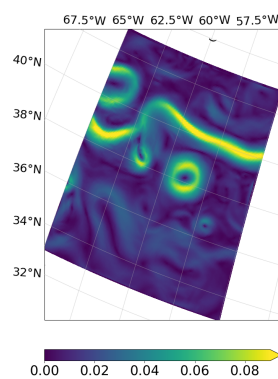
Besides gap-free fields, operational interpolation products generally require to provide some evaluation of the reconstruction uncertainty. While this is a built-in feature of OI and statistical DA methods, uncertainty quantification may involve specific methodological or computational methods for other data assimilation schemes, among which ensemble methods represent a widely-considered family of approaches, see e.g. Asch et al. (2016). Their common feature is to generate an ensemble of solutions, generally through some randomization process.

Here, we benefit from the stochastic nature of the training procedure of 4DVarNet-SSH schemes (Goodfellow et al., 2016). Similarly to most deep learning schemes, we exploit a stochastic gradient descent during the learning stage and a random

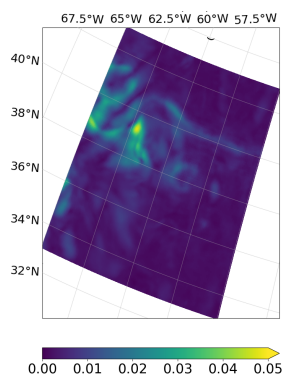
initialization of model parameters. As such, for a given training configuration, we can learn an ensemble of 4DVarNet-SSH schemes by running multiple training procedures.



(a) 4DVarNet temporal variability



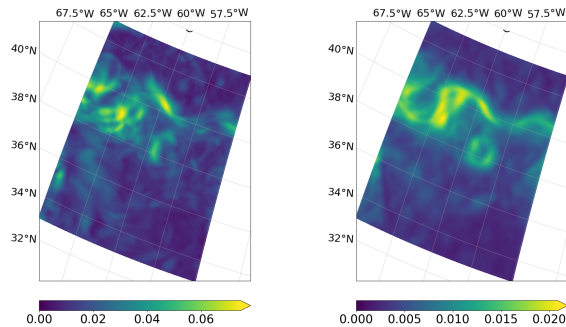
(b) 4DVarNet median reconstruction



(c) 4DVarNet standard deviation

**Figure 12.** Interpolation performance of an ensemble of nine 4DVarNet-SSH models trained using similar training parameters (number of epochs, learning rates, optimizers, gradient steps, etc.) but different random initialization of both  $\Phi$  and  $\Gamma$  weights. (a) : spatial RMSE time series on the BOOST-SWOT DC evaluation period ; (b) 4DVarNet median run (2012-10-25, GF domain) and (c) its spatial standard deviation

We apply this approach to build an ensemble of nine 4DVarNet-SSH schemes for a given training configuration, which comprises a training dataset, the considered 4DVarNet-SSH parameterization and given training hyperparameters (*i.e.*, number of epochs, learning rates, optimizers). For a given observation time window, we then retrieve nine interpolations, from which we can compute a median field and the associated standard deviation. We report in Tab. 5 the performance metrics for the GULF-STREAM domain of the nine trained models as well as the median model. It reveals the internal variability of the training process. Though it does not reach the best performance, the median model combines a resolved spatial scale below  $0.7^\circ$  and a resolved time scale below 5 days, which is only the case of 6 over 9 of the trained models. Fig. 12(a) further illustrates this aspect. Interestingly, the standard deviation of the ensemble of 4DVarNet-SSH schemes correlates to the interpolation error, with an R2 coefficient of determination equals to 0.86. Even if the scales between the interpolation error and the training related 4DVarNet internal variability differ, see Fig. 13, the latter can be regarded as an indicator of the interpolation error, usually with an appropriate localization of large errors. In future works, we plan to draw from traditional ensemble DA methods or ensemble gaussian-based simulations to address all the components of the interpolation error related to the data assimilation scheme.



**Figure 13.** Standard deviation of the 4DVarNet-SSH median ensemble interpolation error (left) and average of the daily standard deviation interpolation errors on the test period (right)

## 6 Conclusion and Discussion

This paper introduced 4DVarNet-SSH scheme, an end-to-end neural architecture for the space-time interpolation of SSH fields from nadir and wide-swath satellite altimetry data. 4DVarNet-SSH scheme draws from recent methodological development to bridge data assimilation and deep learning with a view to learning 4DVar DA models and solvers from data. Numerical experiments within an OSSE setting support the relevance of 4DVarNet-SSH scheme with respect to the state-of-the-art.

We discuss further our main contributions according to three aspects: the added value of deep learning scheme for satellite altimetry and operational oceanography, the exploitation of upcoming SWOT data and the ability to scale up learning approaches from regional case-studies to the global scale.



**Deep learning for satellite altimetry and operational oceanography:** This study contributes to a growing research effort regarding the potential benefit of deep learning schemes for space and operational oceanography challenges, see e.g. Ballarotta et al. (2020). Given the sampling of available satellite and in situ data sources, interpolation problems naturally arise as critical challenges. This study brings an additional evidence of the potential of deep learning schemes to outperform the state-of-the-art operational techniques, generally based on optimal interpolation and data assimilation. Importantly, we do not rely on the off-the-shelf application of some reference deep learning architectures. The considered class of neural architectures relates to a variational DA formulation, such that it can be regarded as the implementation of a neural and trainable version of a DA model and solver. Our results for satellite altimetry are in line with other recent studies for other ocean parameters, such as sea surface temperature (Barth et al., 2019), suspended sediments (Vient et al., 2022) and 3D temperature and salinity fields (Pauthenet et al., 2022). All these studies support the potential of neural approaches to retrieve finer-scale variabilities from available satellite and/or in situ observations. Regarding satellite altimetry, future challenge includes the application to real altimetry datasets, see e.g. the 2021 Observation System Experiment (OSE) BOOST-SWOT data challenge [https://github.com/ocean-data-challenges/2021a\\_SSH\\_mapping\\_OSE](https://github.com/ocean-data-challenges/2021a_SSH_mapping_OSE), as well as the exploitation of multimodal synergies (Fablet and Chapron, 2022).

**Making the most of SWOT data:** Our study brings new evidence that the wide-swath space-time sampling of upcoming SWOT mission could lead to a very significant improvement of the reconstruction of mesoscale sea surface dynamics. For the considered case-study regions, with contrasted dynamical regimes in play and revisit times of SWOT orbits, we report relative gains from 20% to 60% compared to nadir altimetry data only in terms of RMSE and resolved space-time scales. These results assume an error-free SWOT product. Therefore, exploring further how these results could generalize to error-prone (Esteban-Fernandez, 2014; Gaultier and Ubelmann, 2010) and uncalibrated SWOT data (Febvre et al., 2022) is a critical challenge. Preliminary preprocessing of the pseudo-SWOT observations (Metref et al., 2020) to filter out its correlated components and avoid major issues in the assimilation and/or learning process of the interpolation methods may also be considered. The extension of the considered OSSE to multi-swot configurations could also provide new means to optimize the deployment of multi-satellite configurations in coming years.

**Scaling up to a global scale with learning-based scheme:** Our numerical experiments focused mainly on a regional- scale, typically  $10^\circ \times 10^\circ$  domains as illustrated by the GULFSTREAM and OSMOSIS regions. The reported results support the relevance of the proposed 4DVarNet-SSH parameterization to account for such regional space-time variabilities. Scaling up to a basin scale or even the global scale naturally arises as a key challenge for future work. Through the built-in features of Pytorch framework and associated packages, our open-source code can leverage multi-GPU distribution learning schemes and on-the-fly mini-batch generation tools to deal with larger-scale dataset from a computational point of view. To account for a greater diversity of dynamical regimes in play on the global scale, or even on a basin scale, it also seems necessary to explore more complex 4DVarNet-SSH parameterizations, especially regarding dynamical prior  $\Phi$ . This could benefit from the variety

435 of neural architectures recently introduced in computational imaging (Barbastathis et al., 2019), especially using attention mechanisms (Vaswani et al., 2017) to achieve some decomposition of the underlying space-time variabilities.

*Code and data availability.* The open-source 4DVarNet version of the code is available at (<https://doi.org/10.5281/zenodo.7186322>). The datasets is shared through the BOOST-SWOT data challenge also available on Github ([https://github.com/ocean-data-challenges/2020a\\_SSH\\_mapping\\_NATL60](https://github.com/ocean-data-challenges/2020a_SSH_mapping_NATL60))

440 *Video supplement.* The animations corresponding to the 4DVarNet comparison to DUACS OI on the BOOST-SWOT DC test period are given for both GULFSTREAM and OSMOSIS domains in the 4 nadirs and 1 swot + 4 nadirs configuration. They can be found on the AI CHair OceaniX Youtube channel:

- GF (4 nadirs): [https://youtube.com/shorts/QKXukB\\_Rd5E](https://youtube.com/shorts/QKXukB_Rd5E)
- GF (1 swot + 4 nadirs): <https://youtube.com/shorts/i91Z1pMm4gY>
- 445 ▪ OSMOSIS (4 nadirs): <https://youtube.com/shorts/Pxcd0Afco0>
- OSMOSIS (1 swot + 4 nadirs): <https://youtube.com/shorts/HbVSJFtdG6Q>

*Author contributions.* Maxime Beauchamp designed the experiments, ran the analysis of the results and wrote the paper. Ronan Fablet is the principal investigator of the 4DVarNet methodology. Quentin Febvre led the developments of the 4DVarNet implementation on large domains. Hugo Georgenthum ran the experiments used in this paper. All the authors actively participate to the open-source 4DVarNet version  
450 of the code available at (<https://doi.org/10.5281/zenodo.7186322>).

*Competing interests.* No competing interests are present.

*Acknowledgements.* This work was supported by LEFE program (LEFE MANU project IA-OAC), CNES (grant OSTST DUACS-HR) and ANR Projects Melody and OceaniX. It benefited from HPC and GPU resources from Azure (Microsoft Azure grant) and from GENCI-IDRIS (Grant 2020-101030).

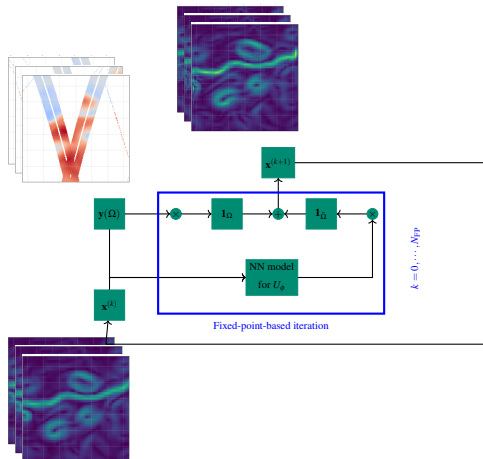
- Alvera-Azcárate, A., Barth, A., Sirjacobs, D., and Beckers, J.-M.: Enhancing temporal correlations in EOF expansions for the reconstruction of missing data using DINEOF, *Ocean Science*, 5, 475–485, <https://doi.org/10.5194/os-5-475-2009>, 2009.
- Alvera-Azcárate, A., Barth, A., Rixen, M., and Beckers, J. M.: Reconstruction of incomplete oceanographic data sets using empirical orthogonal functions: application to the Adriatic Sea surface temperature, *Ocean Modelling*, 9, 325–346, <https://doi.org/10.1016/j.ocemod.2004.08.001>, 2005.
- Andrychowicz, M., Denil, M., Gomez, S., Hoffman, M. W., Pfau, D., Schaul, T., Shillingford, B., and De Freitas, N.: Learning to learn by gradient descent by gradient descent, in: *Advances in neural information processing systems*, pp. 3981–3989, 2016.
- Ardhuin, F., Ubelmann, C., Dibarboure, G., Gaultier, L., Ponte, A., Ballarotta, M., and Faugère, Y.: Reconstructing Ocean Surface Current Combining Altimetry and Future Spaceborne Doppler Data, *Earth and Space Science Open Archive*, p. 22, <https://doi.org/10.1002/essoar.10505014.1>, 2020.
- Asch, M., Bocquet, M., and Nodet, M.: *Data Assimilation, Fundamentals of Algorithms*, Society for Industrial and Applied Mathematics, <https://doi.org/10.1137/1.9781611974546>, 2016.
- Ballarotta, M., Ubelmann, C., Pujol, M.-I., Taburet, G., Fournier, F., Legeais, J.-F., Faugère, Y., Delepouille, A., Chelton, D., Dibarboure, G., and Picot, N.: On the resolutions of ocean altimetry maps, *Ocean Science*, 15, 1091–1109, <https://doi.org/10.5194/os-15-1091-2019>, 2019.
- Ballarotta, M., Ubelmann, C., Rogé, M., Fournier, F., Faugère, Y., Dibarboure, G., Morrow, R., and Picot, N.: Dynamic Mapping of Along-Track Ocean Altimetry: Performance from Real Observations, *Journal of Atmospheric and Oceanic Technology*, 37, 1593 – 1601, <https://doi.org/10.1175/JTECH-D-20-0030.1>, 2020.
- Barbastathis, G., Ozcan, A., and Situ, G.: On the use of deep learning for computational imaging, *Optica*, 6, 921–943, <https://doi.org/10.1364/OPTICA.6.000921>, 2019.
- Barth, A., Alvera-Azcárate, A., Licer, M., and Beckers, J.-M.: DINCAE 1.0: a convolutional neural network with error estimates to reconstruct sea surface temperature satellite observations, *Geoscientific Model Development Discussions*, 2019, 1–21, <https://doi.org/10.5194/gmd-2019-128>, 2019.
- Beauchamp, M., Fablet, R., Ubelmann, C., Ballarotta, M., and Chapron, B.: Intercomparison of Data-Driven and Learning-Based Interpolations of Along-Track Nadir and Wide-Swath SWOT Altimetry Observations, *Remote Sensing*, 12, <https://doi.org/10.3390/rs12223806>, 2020.
- Beauchamp, M., Amar, M. M., Febvre, Q., and Fablet, R.: End-to-End Learning of Variational Interpolation Schemes for Satellite-Derived SSH Data, in: *2021 IEEE International Geoscience and Remote Sensing Symposium IGARSS*, pp. 7418–7421, <https://doi.org/10.1109/IGARSS47720.2021.9554800>, 2021.
- Beauchamp, M., Thompson, J., Georgenthum, H., Febvre, Q., and Fablet, R.: Learning Neural Optimal Interpolation Models and Solvers, <https://doi.org/10.48550/ARXIV.2211.07209>, 2022.
- Beckers, J. M. and Rixen, M.: EOF Calculations and Data Filling from Incomplete Oceanographic Datasets, *Journal of Atmospheric and Oceanic Technology*, 20, 1839–1856, [https://doi.org/10.1175/1520-0426\(2003\)020<1839:ECADFF>2.0.CO;2](https://doi.org/10.1175/1520-0426(2003)020<1839:ECADFF>2.0.CO;2), 2003a.
- Beckers, J. M. and Rixen, M.: EOF Calculations and Data Filling from Incomplete Oceanographic Datasets, *Journal of Atmospheric and Oceanic Technology*, 20, 1839–1856, 2003b.

- Benkiran, M., Ruggiero, G., Greiner, E., Le Traon, P.-Y., Rémy, E., Lellouche, J. M., Bourdallé-Badie, R., Drillet, Y., and Tchonang, B.: Assessing the Impact of the Assimilation of SWOT Observations in a Global High-Resolution Analysis and Forecasting System Part 1: Methods, *Frontiers in Marine Science*, 8, <https://doi.org/10.3389/fmars.2021.691955>, 2021.
- 495 Carrassi, A., Bocquet, M., Bertino, L., and Evensen, G.: Data assimilation in the geosciences: An overview of methods, issues, and perspectives, *WIREs Climate Change*, 9, e535, <https://doi.org/https://doi.org/10.1002/wcc.535>, 2018.
- Chelton, D. B., Ries, J., Haines, B. J., Fu, L.-L., and Callahan, P. S.: Satellite Altimetry, in: *International Geophysics*, edited by Cazenave, A. and Fu, L.-L., vol. 69 of *Satellite Altimetry and Earth Sciences A Handbook of Techniques and Applications*, pp. 1–ii, Academic Press, <http://www.sciencedirect.com/science/article/pii/S0074614201801467>, 2001.
- Dufau, C., Orszynowicz, M., Dibarboure, G., Morrow, R., and Le Traon, P.-Y.: Mesoscale resolution capability of altimetry: Present and 500 future, *Journal of Geophysical Research: Oceans*, 121, 4910–4927, <https://doi.org/10.1002/2015JC010904>, 2016.
- Esteban-Fernandez, D.: SWOT project mission performance and error budget document, Tech. rep., JPL, NASA, 2014.
- Evensen, G.: *Data Assimilation*, Springer Berlin Heidelberg, Berlin, Heidelberg, <http://link.springer.com/10.1007/978-3-642-03711-5>, 2009.
- Fablet, R. and Chapron, B.: Multimodal learning-based inversion models for the space-time reconstruction of satellite-derived geophysical fields, <https://doi.org/10.48550/ARXIV.2203.10640>, 2022.
- 505 Fablet, R., Drumetz, L., and Rousseau, F.: End-to-end learning of optimal interpolators for geophysical dynamics, 2019.
- Fablet, R., Drumetz, L., and Rousseau, F.: Joint learning of variational representations and solvers for inverse problems with partially-observed data, 2020.
- Fablet, R., Beauchamp, M., Drumetz, L., and Rousseau, F.: Joint Interpolation and Representation Learning for Irregularly Sampled Satellite-Derived Geophysical Fields, *Frontiers in Applied Mathematics and Statistics*, 7, 25, <https://doi.org/10.3389/fams.2021.655224>, 2021.
- 510 Febvre, Q., Fablet, R., Sommer, J. L., and Ubelmann, C.: Joint Calibration and Mapping of Satellite Altimetry Data Using Trainable Variational Models, in: *ICASSP 2022 - 2022 IEEE International Conference on Acoustics, Speech and Signal Processing (ICASSP)*, pp. 1536–1540, <https://doi.org/10.1109/ICASSP43922.2022.9746889>, 2022.
- Gaultier, L. and Ubelmann, C.: SWOT Simulator Documentation, Tech. rep., JPL, NASA, 2010.
- Gaultier, L., Ubelmann, C., and Fu, L.-L.: The Challenge of Using Future SWOT Data for Oceanic Field Reconstruction, *Journal of Atmospheric and Oceanic Technology*, 33, 119–126, <https://doi.org/10.1175/JTECH-D-15-0160.1>, 2015.
- 515 Goodfellow, I., Bengio, Y., and Courville, A.: *Deep Learning*, MIT Press, <http://www.deeplearningbook.org>, 2016.
- Le Guillou, F., Metref, S., Cosme, E., Ubelmann, C., Ballarotta, M., Verron, J., and Le Sommer, J.: Mapping altimetry in the forthcoming SWOT era by back-and-forth nudging a one-layer quasi-geostrophic model, *Earth and Space Science Open Archive*, p. 15, <https://doi.org/10.1002/essoar.10504575.1>, 2020.
- 520 Lellouche, J.-M., Greiner, E., Le Galloudec, O., Garric, G., Regnier, C., Drevillon, M., Benkiran, M., Testut, C.-E., Bourdalle-Badie, R., Gasparin, F., Hernandez, O., Levier, B., Drillet, Y., Remy, E., and Le Traon, P.-Y.: Recent updates to the Copernicus Marine Service global ocean monitoring and forecasting real-time  $1/12^\circ$  high-resolution system, *Ocean Science*, 14, 1093–1126, <https://doi.org/10.5194/os-14-1093-2018>, 2018.
- Lguensat, R., Tandeo, P., Aillot, P., and Fablet, R.: The Analog Data Assimilation, *Monthly Weather Review*, 2017.
- 525 Li, Z., Archer, M., Wang, J., and Fu, L.-L.: Formulation and demonstration of an extended-3DVAR multi-scale data assimilation system for the SWOT altimetry era, *Ocean Science Discussions*, pp. 1–26, 2021.

- Lopez-Radcenco, M., Pascual, A., Gomez-Navarro, L., Aissa-El-Bey, A., Chapron, B., and Fablet, R.: Analog Data Assimilation of Along-Track Nadir and Wide-Swath SWOT Altimetry Observations in the Western Mediterranean Sea, *IEEE Journal of Selected Topics in Applied Earth Observations and Remote Sensing*, pp. 1–11, <https://doi.org/10.1109/JSTARS.2019.2903941>, 2019.
- 530 Manucharyan, G. E., Siegelman, L., and Klein, P.: A Deep Learning Approach to Spatiotemporal Sea Surface Height Interpolation and Estimation of Deep Currents in Geostrophic Ocean Turbulence, *Journal of Advances in Modeling Earth Systems*, 13, e2019MS001965, <https://doi.org/https://doi.org/10.1029/2019MS001965>, e2019MS001965 2019MS001965, 2021.
- Mason, E., Pascual, A., and J.C., M.: A New Sea Surface Height–Based Code for Oceanic Mesoscale Eddy Tracking, *Journal of Atmospheric and Oceanic Technology*, 31, 1181 – 1188, <https://doi.org/10.1175/JTECH-D-14-00019.1>, 2014.
- 535 Metref, S., Cosme, E., Le Guillou, F., Le Sommer, J., Brankart, J.-M., and Verron, J.: Wide-Swath Altimetric Satellite Data Assimilation With Correlated-Error Reduction, *Frontiers in Marine Science*, 6, 822, <https://doi.org/10.3389/fmars.2019.00822>, 2020.
- Molines, J.-M.: meom-configurations/NATL60-CJM165: NATL60 code used for CJM165 experiment, <https://doi.org/10.5281/zenodo.1210116>, 2018.
- Ngodock, H., Carrier, M., Souopgui, I., Smith, S., Martin, P., Muscarella, P., and Jacobs, G.: On the direct assimilation of along-track sea-surface height observations into a free-surface ocean model using a weak constraints four-dimensional variational (4D-Var) method, *Quarterly Journal of the Royal Meteorological Society*, 142, n/a–n/a, <https://doi.org/10.1002/qj.2721>, 2015.
- 540 Pauthenet, E., Bachelot, L., Balem, K., Maze, G., Tréguier, A.-M., Roquet, F., Fablet, R., and Tandeo, P.: Four-dimensional temperature, salinity and mixed-layer depth in the Gulf Stream, reconstructed from remote-sensing and in situ observations with neural networks, *Ocean Science*, 18, 1221–1244, <https://doi.org/10.5194/os-18-1221-2022>, 2022.
- 545 Shi, X., Chen, Z., Wang, H., Yeung, D.-Y., Wong, W.-k., and WOO, W.-c.: Convolutional LSTM Network: A Machine Learning Approach for Precipitation Nowcasting, in: *Advances in Neural Information Processing Systems*, edited by Cortes, C., Lawrence, N., Lee, D., Sugiyama, M., and Garnett, R., vol. 28, Curran Associates, Inc., <https://proceedings.neurips.cc/paper/2015/file/07563a3fe3bbe7e3ba84431ad9d055af-Paper.pdf>, 2015.
- Taburet, G., Sanchez-Roman, A., Ballarotta, M., Pujol, M.-I., Legeais, J.-F., Fournier, F., Faugere, Y., and Dibarboue, G.: DUACS DT2018: 25 years of reprocessed sea level altimetry products, 15, 1207–1224, <https://doi.org/https://doi.org/10.5194/os-15-1207-2019>, publisher: Copernicus GmbH, 2019.
- 550 Tandeo, P., Ailliot, P., Bocquet, M., Carrassi, A., Miyoshi, T., Pulido, M., and Zhen, Y.: A Review of Innovation-Based Methods to Jointly Estimate Model and Observation Error Covariance Matrices in Ensemble Data Assimilation, *Monthly Weather Review*, 148, 3973–3994, <https://doi.org/10.1175/mwr-d-19-0240.1>, 2020.
- 555 Ubelmann, C., Cornuelle, B., and Fu, L.-L.: Dynamic Mapping of Along-Track Ocean Altimetry: Method and Performance from Observing System Simulation Experiments, *Journal of Atmospheric and Oceanic Technology*, 33, 1691 – 1699, <https://doi.org/10.1175/JTECH-D-15-0163.1>, 2016.
- Vaswani, A., Shazeer, N., Parmar, N., Uszkoreit, J., Jones, L., Gomez, A. N., Kaiser, L., and Polosukhin, I.: Attention is All you Need, in: *Advances in Neural Information Processing Systems*, edited by Guyon, I., Luxburg, U. V., Bengio, S., Wallach, H., Fergus, R., Vishwanathan, S., and Garnett, R., vol. 30, Curran Associates, Inc., <https://proceedings.neurips.cc/paper/2017/file/3f5ee243547dee91fbd053c1c4a845aa-Paper.pdf>, 2017.
- 560 Vient, J.-M., Fablet, R., Jourdin, F., and Delacourt, C.: End-to-End Neural Interpolation of Satellite-Derived Sea Surface Suspended Sediment Concentrations, *Remote Sensing*, 14, 4024, <https://doi.org/10.3390/rs14164024>, 2022.

## Appendix A: Fixed-point formulation of the solver

565 Let note that when replacing both CNN/LSTM cell by the identity operator and the minimization function  $\mathcal{J}_\Phi(\mathbf{x}, \mathbf{y}, \Omega)$  by its single regularization term  $\mathcal{J}_\Phi^b(\mathbf{x})$ , the gradient-based solver simply leads to a parameter-free fixed-point version of the algorithm, the same used in Beauchamp et al. (2020); Fablet et al. (2019), which is similar to the DINEOF approach, see Fig. A1.



**Figure A1.** Sketch of the iterative fixed-point algorithm: the upper-left stack of images corresponds to an example of SSH observations temporal sequence with missing data used as inputs. The upper-right stack of images is an example of intermediate reconstruction of the SSH gradient at iteration  $i$  while the bottom-left stack of images identifies the updated reconstruction fields used as new inputs after each iteration of the algorithm.

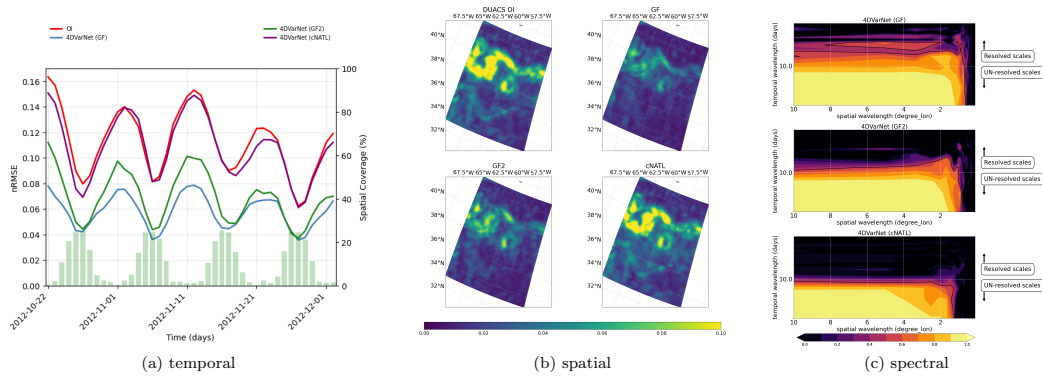
$$\begin{cases} \mathbf{x}^{(k+1)} & = \psi(\mathbf{x}^{(k)}) \\ \mathbf{x}^{(k+1)}(\Omega) & = \mathbf{y}(\Omega) \\ \mathbf{x}^{(k+1)}(\overline{\Omega}) & = \mathbf{x}^{(k+1)}(\overline{\Omega}) \end{cases} \quad (\text{A1})$$

570 This fixed-point solver is parameter-free and easily implemented as a neural network in a joint solution with the NN-parametrization of  $\mathcal{J}_\Phi$  for the interpolation problem.

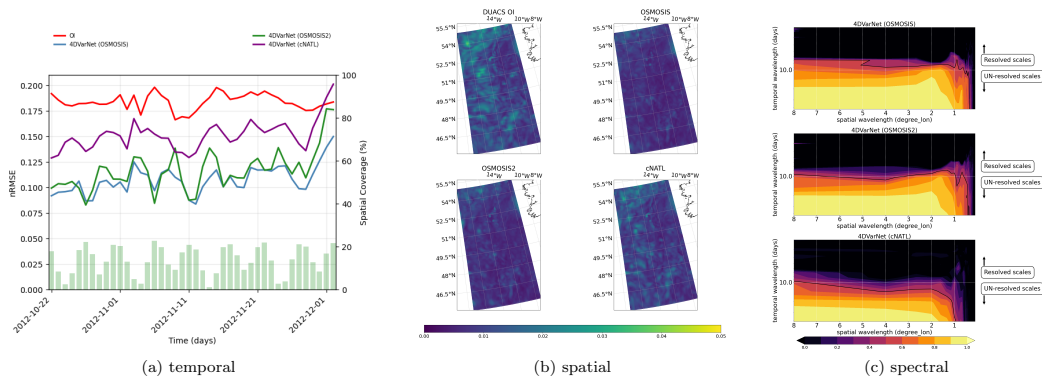
## Appendix B: Additional results on the 4DVarNet generalization capabilities

**Table B1.** 4DVarNet performance on the GULFSTREAM2 and OSMOSIS2 domain compared to DUACS OI over the period from 2012-10-22 to 2012-12-02 (42 days)

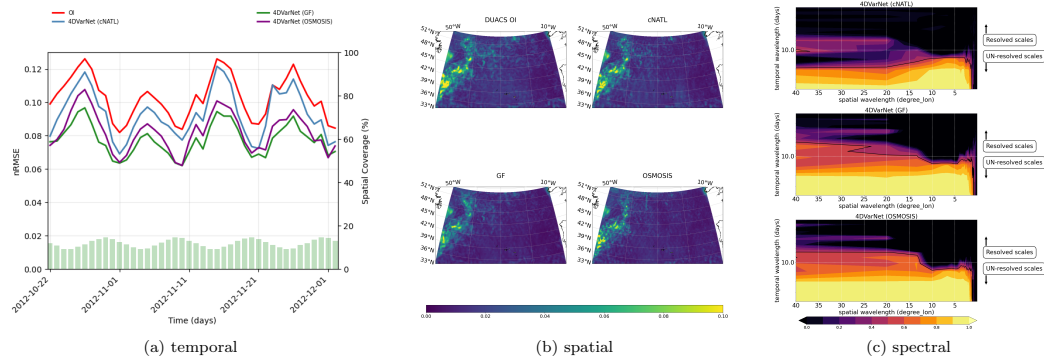
Domain	Method	$\mu$ (RMSE)	$\sigma$ (RMSE)	$\lambda_x$ (degree)	$\lambda_t$ (days)	Train/Test
GF2	DUACS OI 1 swot + 4 nadirs	0.87	0.02	1.26	11.95	-
	4DVarNet 1 swot + 4 nadirs	0.93	0.02	0.63	6.30	GF2/GF2
	4DVarNet 1 swot + 4 nadirs	0.92	0.01	0.66	6.53	GF/GF2
	4DVarNet 1 swot + 4 nadirs	0.88	0.02	1.26	11.22	cNATL/GF2
OSMOSIS2	DUACS OI 1 swot + 4 nadirs	0.91	0.02	1.35	17.69	-
	4DVarNet 1 swot + 4 nadirs	0.96	0.01	0.70	33.61	OSMOSIS2/OSMOSIS2
	4DVarNet 1 swot + 4 nadirs	0.95	0.01	0.69	36.84	OSMOSIS/OSMOSIS2
	4DVarNet 1 swot + 4 nadirs	0.93	0.02	1.10	9.64	cNATL/OSMOSIS2



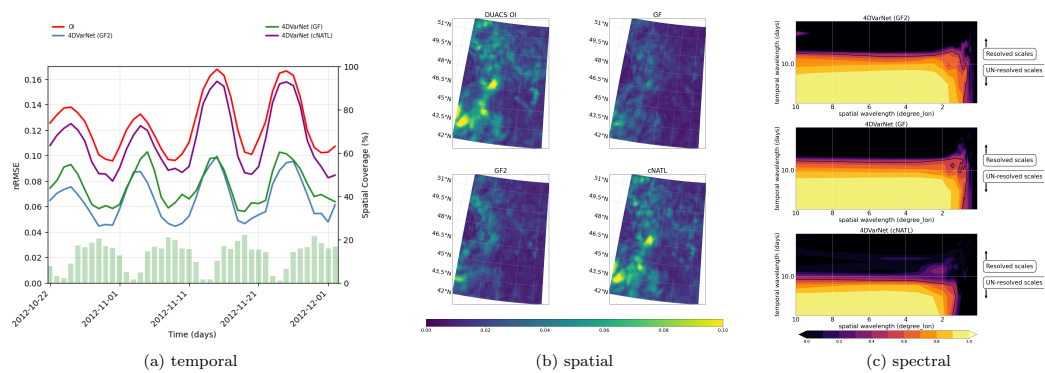
**Figure B1.** 4DVarNet generalization capabilities (GULFSTREAM): spatial, temporal and spectral performance on the BOOST-SWOT DC evaluation period based on three different training domains: GULFSTREAM, GULFSTREAM2 and cNATL



**Figure B2.** 4DVarNet generalization capabilities (OSMOSIS): spatial, temporal and spectral performance on the BOOST-SWOT DC evaluation period based on three different training domains: OSMOSIS, OSMOSIS2 and cNATL

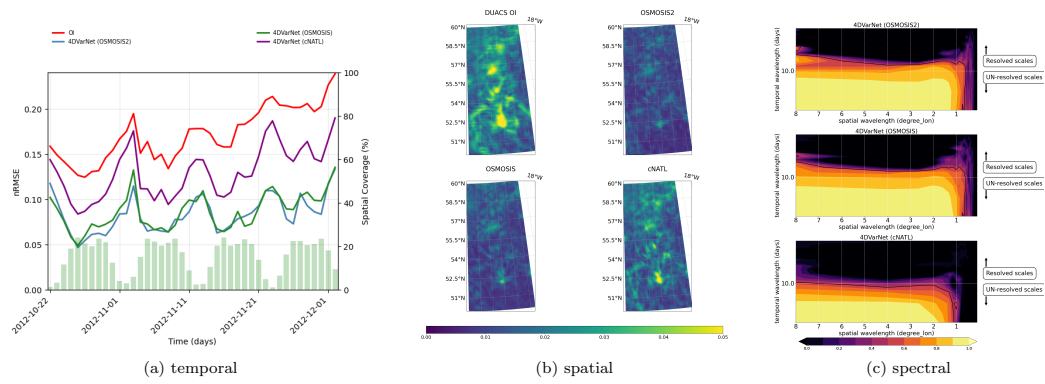


**Figure B3.** 4DVarNet generalization capabilities (cNATL): spatial, temporal and spectral performance on the BOOST-SWOT DC evaluation period based on three different training domains: cNATL, GF and OSMOSIS



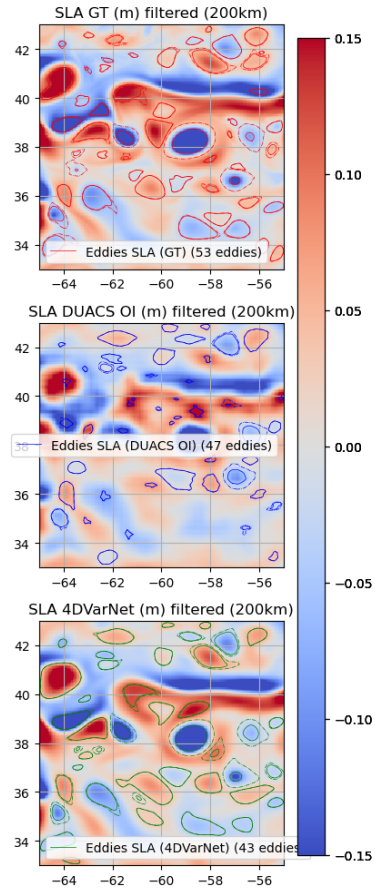
**Figure B4.** 4DVarNet generalization capabilities (GULFSTREAM2): spatial, temporal and spectral performance on the BOOST-SWOT DC evaluation period based on three different training domains: GULFSTREAM2, GULFSTREAM and cNATL



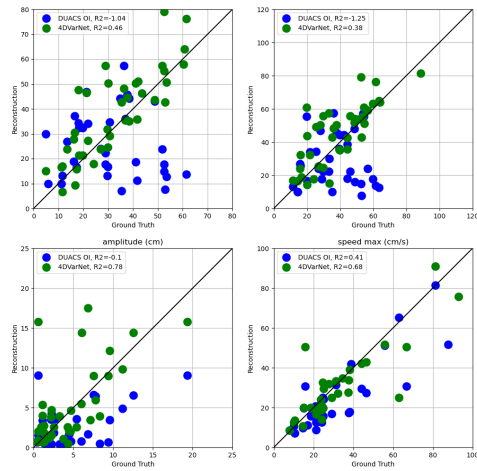


**Figure B5.** 4DVarNet generalization capabilities (OSMOSIS2): spatial, temporal and spectral performance on the BOOST-SWOT DC evaluation period based on three different training domains: OSMOSIS2, OSMOSIS and cNATL

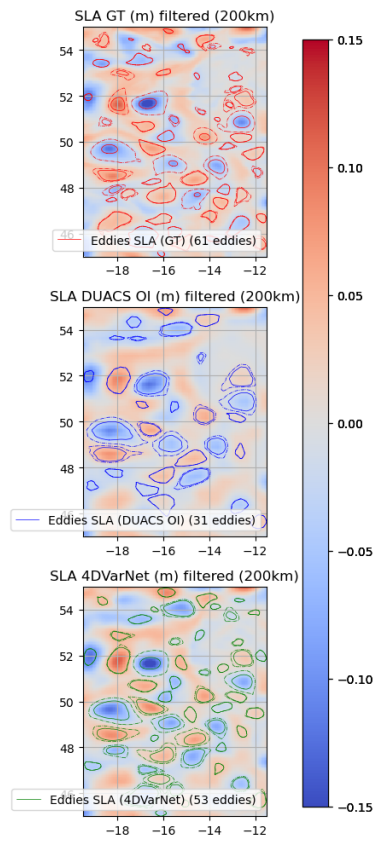
## Appendix C: Eddy identifications



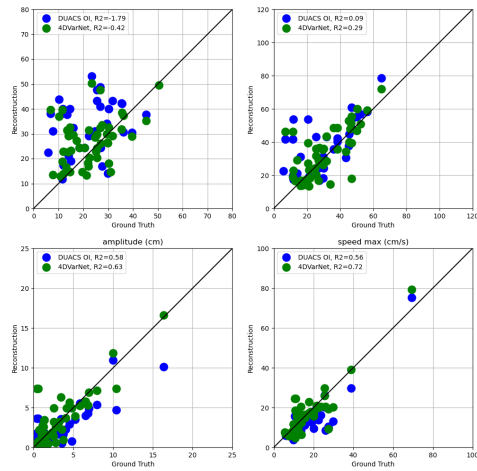
**Figure C1.** Eddies detected on the GULFSTREAM domain (2012-10-25) over SSH (4 nadirs)



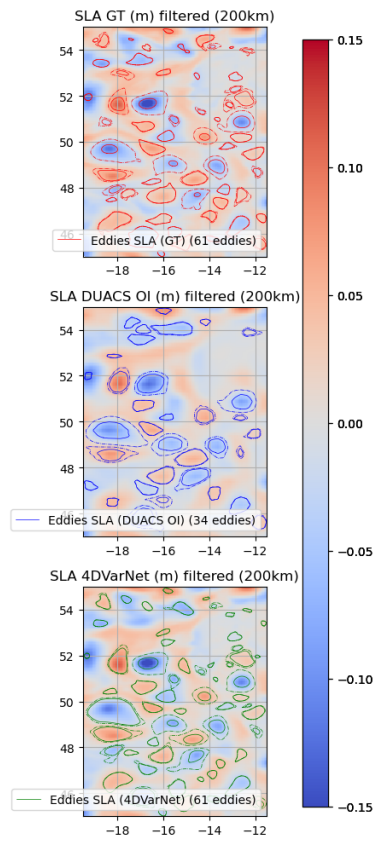
**Figure C2.** Speed radius (km), outer radius (km), amplitude (cm), speed max (cm/s) scatterplots of 4DVarNet/DUACS OI (4 nadirs) vs Ground truth on the GULFSTREAM domain (2012-10-25) for matching eddies



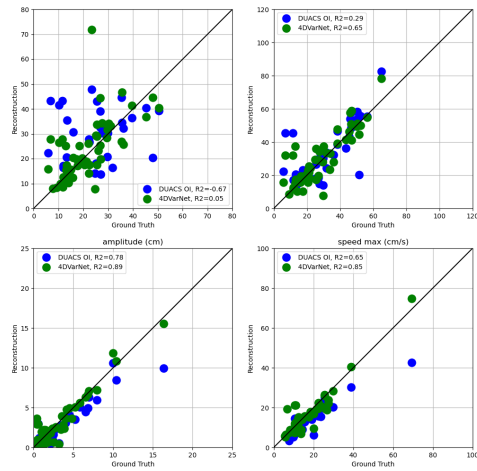
**Figure C3.** Eddies detected on the OSMOSIS domain (2012-10-25) over SSH (4 nadirs)



**Figure C4.** Speed radius (km), outer radius (km), amplitude (cm), speed max (cm/s) scatterplots of 4DVarNet/DUACS OI (4 nadirs) vs Ground truth on the OSMOSIS domain (2012-10-25) for matching eddies



**Figure C5.** Eddies detected on the OSMOSIS domain (2012-10-25) over SSH (1 swot + 4 nadirs)



**Figure C6.** Speed radius (km), outer radius (km), amplitude (cm), speed max (cm/s) scatterplots of 4DVarNet/DUACS OI (1 swot + 4 nadirs) vs Ground truth on the OSMOSIS domain (2012-10-25) for matching eddies