

# Wflow\_sbm v0.6.1.7.3, a spatially distributed **hydrologic** **hydrological** model: from global data to local applications

Willem J. van Verseveld<sup>1</sup>, Albrecht H. Weerts<sup>1,2</sup>, Martijn Visser<sup>1</sup>, Joost Buitink<sup>1</sup>, Ruben O. Imhoff<sup>1</sup>, H el ene Boisgontier<sup>1</sup>, Laur ene Bouaziz<sup>1</sup>, Dirk Eilander<sup>1,3</sup>, Mark Hegnauer<sup>1</sup>, Corine ten Velden<sup>1</sup>, and Bobby Russell<sup>1</sup>

<sup>1</sup>Department of Inland Water Systems, Deltares, P.O. Box 177, 2600MH Delft, The Netherlands

<sup>2</sup>Hydrology and Environmental Hydraulics Group, Department of Environmental Sciences, Wageningen University & Research, P.O. BOX 47, 6700 AA Wageningen, The Netherlands

<sup>3</sup>Institute for Environmental Studies (IVM), Vrije Universiteit Amsterdam, Amsterdam, the Netherlands

**Correspondence:** Willem van Verseveld (willem.vanverseveld@deltares.nl)

**Abstract.** The wflow\_sbm **hydrologic-hydrological** model, recently released by Deltares, as part of the Wflow.jl (v0.6.1.7.3) modelling framework is being used to better understand and potentially address multiple operational and water resources planning challenges from catchment scale, national scale to continental and global scale. Wflow.jl is a free and open-source distributed **hydrologic-hydrological** modelling framework written in the Julia programming language. The development of wflow\_sbm, the model structure, equations and functionalities are described in detail, including example applications of wflow\_sbm. The wflow\_sbm model aims to strike a balance between low-resolution, low-complexity and high-resolution, high-complexity **hydrologic-hydrological** models. Most wflow\_sbm parameters are based on physical characteristics or processes and at the same time wflow\_sbm has a runtime performance well suited for large-scale high-resolution model applications. Wflow\_sbm models can be set **a-priori-a-priori** for any catchment with the Python tool HydroMT-Wflow based on globally available datasets and through the use of point-scale (pedo)transfer functions and suitable upscaling rules and generally results in a satisfactory ( $0.4 \geq$  Kling-Gupta Efficiency (KGE)  $< 0.7$ ) to good (KGE  $\geq 0.7$ ) performance **for discharge** a-priori (without further tuning). Wflow\_sbm includes relevant **hydrologic-hydrological** processes as glacier and snow processes, evapotranspiration processes, unsaturated zone dynamics, (shallow) groundwater and surface flow routing including lakes and reservoirs. Further planned developments include improvements on the computational efficiency and flexibility of the routing scheme, implementation of a water demand and allocation module for water resources modelling, the addition of a deep groundwater concept and **distributed computing with a focus on multi-node parallelism** **computational efficiency improvements through for example distributed computing and graphics processing unit (GPU) acceleration**.

## 1 Introduction

**Hydrologic-Hydrological** models have proven to be useful tools in better understanding multiple operational and water resources planning challenges including drought (e.g., Trambauer et al., 2015) and flood forecasting (e.g., Alfieri et al., 2013), the assessment of water availability (e.g., van Beek et al., 2011) and to analyse the impact of food production on river systems

(e.g., Jägermeyr et al., 2017). An advantage of spatially distributed (gridded) [hydrologie-hydrological](#) models, in contrast to spatially lumped models, is the ability to directly use the spatially varying information contained in spatial datasets for model setup, forcing and validation. High resolution spatial datasets become increasingly available, often at a global scale, and can be used to represent land cover, vegetation (e.g. [Leaf-Area-Index](#))[leaf area index \(LAI\)](#) and soil properties in spatially distributed [hydrologie-hydrological](#) models. For example, SoilGrids provides gridded soil information at 250 m resolution globally (Hengl et al., 2017). With regard to forcing, the release of the fifth generation ECMWF atmospheric reanalysis of the global climate (ERA5) (Hersbach et al., 2020) dataset (1959-present) is worth mentioning, with a spatial resolution of  $\sim 31 \text{ km} \times 31 \text{ km}$  and a temporal resolution of 1 hour, and ERA5 Land with a spatial resolution of  $\sim 9 \text{ km} \times 9 \text{ km}$ . Recently, it has been argued that the development of a hyperresolution global hydrological model at  $1 \text{ km}^2$  or finer is a “grand challenge for hydrology” and is needed to address the water problems facing society (Wood et al., 2011; Bierkens et al., 2014).

Notwithstanding the advantages of and need for (hyperresolution) spatially distributed [hydrologie-hydrological](#) models, parameterization of these models is not straightforward, because of overparameterization and as a result overfitting (Jakeman and Hornberger, 1993; Beven, 1993, 2006). Furthermore, transferability of [hydrologie-hydrological](#) parameters across spatial and temporal scales is important for reducing calibration time and the application of [hydrologie-hydrological](#) models in ungauged or poorly gauged basins. However the impact of transferring model parameters across spatial and temporal resolutions on model performance is unequivocal and high parameter transferability across spatial resolution may also be the result of inadequate representation of spatial variability in (large-scale) [hydrologie-hydrological](#) models (Melsen et al., 2016). Finally, there is the scientific debate on the “best” approach to process-based [hydrologie-hydrological](#) modelling leading to appropriate physical realism, especially related to model structure and model solutions (Kirchner, 2006; Clark et al., 2016, 2017).

Concerning [hydrologie-hydrological](#) model structure and solutions, Hrachowitz and Clark (2017) classified [hydrologie-hydrological](#) models along two dimensions, process complexity and spatial resolution. [Hydrologie-Hydrological](#) models with high process complexity and spatial resolution are for example PARFLOW (Kollet and Maxwell, 2006), HydroGeoSphere (Brunner and Simmons, 2012) and HYDRUS-3D (Šimůnek et al., 2008), while for example HBV (Bergström, 1992), SUPER-FLEX (Fenicia et al., 2011) and FLEX-Topo (Gao et al., 2014) are characterized by low spatial resolution and low process complexity. For the high-resolution, high-complexity [hydrologie-hydrological](#) models the majority of the parameters are based on physical characteristics, and may be directly or by upscaling be estimated from field or remotely sensed observations, depending on the model resolution. For low-resolution, low-complexity [hydrologie-hydrological](#) models, the majority of parameters are effective parameters at the catchment-scale and calibration is required to identify parameter values. Generally, high-resolution, high-complexity [hydrologie-hydrological](#) models are computationally demanding, which limits their application to smaller domains, or requires a reduction in model resolution or high performance computing resources for large-scale applications. Free and open-source spatially distributed [hydrologie-hydrological](#) models that require a low calibration effort (parameters based on physical characteristics) and have fast run times applicable for large-scale high-resolution modelling (medium complexity), are not or very limited available to our knowledge.

Wflow\_sbm represents a family of spatially distributed [hydrologie-hydrological](#) models that have the vertical [hydrologie-hydrological](#) simple bucket model (SBM, Vertessy and Elsenbeer, 1999) concept in common, but can have different lateral

concepts that control how water is routed for example over the land or river domain. This paper presents the wflow\_sbm model configuration that makes use of the [kinematic-wave kinematic wave](#) approach for river, overland and lateral subsurface flow. It is part of the open-source distributed [hydrologie hydrological](#) model platform Wflow.jl (~~van Verseveld et al., 2022a~~)  
60 ([van Verseveld et al., 2024](#)) developed at Deltares. Wflow\_sbm strikes a balance between low-resolution, low-complexity and high-resolution, high-complexity [hydrologie hydrological](#) models, giving an answer to most of the aforementioned challenges. In this model, the soil part is largely based on Topog\_SBM (Vertessy and Elsenbeer, 1999), with gravity-based infiltration and vertical flow through the soil column as well as capillary rise representing a simplified version of the Richards' equation. Furthermore it uses a 1-D kinematic wave approach for channel, overland and lateral subsurface flows similar to TOPKAPI  
65 (Benning, 1994; Todini and Ciarapica, 2002), G2G (Bell et al., 2007), 1K-DHM (Tanaka and Tachikawa, 2015) and Topog\_SBM (Vertessy and Elsenbeer, 1999), as an approximation for dynamic waves and variably saturated subsurface flow (Richards' equation). The advantage is that most wflow\_sbm parameters are based on physical characteristics and at the same time wflow\_sbm has a run time performance well suited for large-scale high-resolution modelling.

Furthermore, in line with the need to improve the transparency, reproducibility and ease of setting up [hydrologie hydrological](#)  
70 models (Clark et al., 2017; Knoben et al., 2021), we use the wflow plugin (HydroMT-Wflow, Eilander et al., 2022) of the HydroMT Python package (Eilander and Boisgontier, 2022) to set up wflow\_sbm models for any catchment based on globally available datasets, e.g. SoilGrids (Hengl et al., 2017), GlobCover-2009 (Arino et al., 2010) and MERIT Hydro (Yamazaki et al., 2019). Point scale (pedo)transfer-functions (PTFs) from literature are used to derive model parameters at the highest available resolution of the data and scaled with suitable upscaling operators (Imhoff et al., 2020) to the desired model resolution. The  
75 advantage is that transfer functions are only constrained by field and laboratory measurements, although we acknowledge that the scale at which these PTFs can be applied remains uncertain (van Looy et al., 2017; Samaniego et al., 2017). Nevertheless, the application of this method to the Rhine basin resulted for most [discharge](#) gauging stations in the central and northern part of the basin in Kling-Gupta Efficiency (KGE, Gupta et al., 2009) values between 0.6 and 0.9 (Imhoff et al., 2020). In the meantime, wflow\_sbm and the forementioned approach was used and tested to model the basins in the upper region of the  
80 greater Chao Phraya River in Thailand (Wannasin et al., 2021a, b) and the Citarum river in Indonesia (Rusli et al., 2021). Meijer et al. (2021) used wflow\_sbm to rapidly develop a water resources model for the Upper Niger Basin using global online data. Sperna Weiland et al. (2021) used wflow\_sbm to assess climate change impacts in nine river basins across Europe. While ~~Aerts et al. (2021)~~ [Aerts et al. \(2022\)](#) used wflow\_sbm to assess impact of various model resolutions (200m, 1km, 3km) on wflow\_sbm performance for the CAMELS-US dataset.

85 The objective of this paper is to describe the wflow\_sbm model in detail (model structure and equations) and to present some applications and envisaged future developments. Section 2 describes the development of the wflow\_sbm model within the Wflow.jl framework, its model structure, model equations, and functionalities. In section 3 we describe the computational performance of wflow\_sbm. Several applications of wflow\_sbm are demonstrated in section 4, followed by conclusions and foreseen future work in section 5.

## 90 2 Model description

### 2.1 Overview

Wflow.jl (v0.6.1) ([van Verseveld et al., 2022a](#))-[7.3](#) ([van Verseveld et al., 2024](#)) is an open-source modelling framework for distributed [hydrologie-hydrological](#) modelling, containing multiple distributed [hydrologie-hydrological](#) model concepts, implemented in the programming language Julia (Bezanson et al., 2017). It is a continuation of the wflow framework (Schellekens et al., 2020) which is based on Python PCRaster (Karszenberg et al., 2010). The switch to the programming language Julia was made because Julia offers high performance (speed of C), required for large-scale high-resolution [hydrologie-hydrological](#) model applications, and is an “easy-to-use” language. Julia also opens up opportunities to parallelize the code for further improved computational performance. Wflow.jl provides several different vertical and lateral concepts that can be used for [hydrologie-hydrological](#) modelling and is Basic Model Interface (BMI) compliant. Three vertical [hydrologie-hydrological](#) concepts are available within Wflow.jl: HBV-96 (wflow\_hbv), FLEXTopo (wflow\_flextopo) and SBM (wflow\_sbm).

Wflow\_sbm is the main [hydrologie-hydrological](#) model concept of the Wflow.jl framework and represents a family of [hydrologie-hydrological](#) models that have the vertical SBM concept in common. Wflow\_sbm can have different lateral concepts that control how water (river, overland and subsurface flow) is routed, easily enabled by the modular structure of Wflow.jl. The wflow\_sbm model presented here (Fig. 1) consists of the vertical SBM concept and for the lateral components the [kinematic-wave-kinematic wave](#) approach is used for river, overland and lateral subsurface flow, similar to TOPKAPI (Benning, 1994; Todini and Ciarapica, 2002), G2G (Bell et al., 2007), 1K-DHM (Tanaka and Tachikawa, 2015) and Topog\_SBM (Vertessy and Elsenbeer, 1999). The vertical SBM concept is largely based on Topog\_SBM (Vertessy and Elsenbeer, 1999) that considers the soil as a “bucket” with a saturated and unsaturated store. While Topog\_SBM is specifically designed to simulate fast-runoff processes during discrete storm events in small catchments (< 10 km<sup>2</sup>) as evapotranspiration losses are ignored, wflow\_sbm can be applied to a wider variety of catchments. The main differences of wflow\_sbm with Topog\_SBM are:

- The addition of evapotranspiration and interception losses.
- The addition of a root water uptake reduction function (Feddes et al., 1978).
- The addition of capillary rise.
- The addition of glacier, snow build-up and melting processes and an avalanche option for downhill snow transport.
- 115 – Water is routed downstream over an eight direction (D8) network, instead of the element network based on contour lines and trajectories, used by Topog\_SBM.
- The option to divide the soil column into different layers, to allow for transfer of water within the unsaturated zone.

Wflow\_sbm has been applied in various catchments around the world showing satisfactory ( $0.4 \geq KGE < 0.7$ ) to good ( $KGE \geq 0.7$ ) performance (e.g., López López et al., 2016; Hassaballah et al., 2017; Giardino et al., 2019; Gebremicael et al., 2019; Imhoff et al., 2020; Laverde-Barajas et al., 2020; Wannasin et al., 2021a, b; Rusli et al., 2021; Meijer et al., 2021).

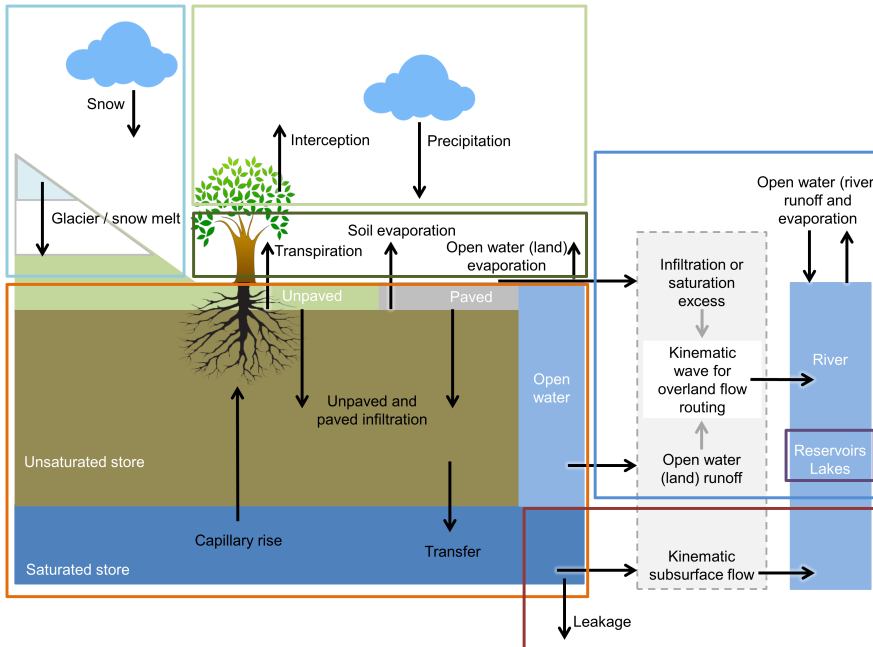
Figure 1 presents the different processes and fluxes in the wflow\_sbm model. Precipitation enters each grid cell through the interception routine (total precipitation is first intercepted), based on the Gash model (Gash, 1979) or a modified Rutter model (Rutter et al., 1971, 1975), depending on the time stamp the model is using. Throughfall and stemflow from the interception routine are transferred to the optional snow (based on the HBV-96 [hydrologie-hydrological](#) model concept (Bergström, 1992)) and glacier routines (based on the HBV-light degree-day based model (Seibert et al., 2018)). The soil in every grid cell is considered as a single bucket, divided into a saturated and unsaturated store, with the option to divide the soil column into different layers. Available infiltration (stemflow and throughfall not converted to snow, including meltwater) infiltrates into the soil or becomes direct runoff based on the river fraction or open water (excluding rivers) fraction. Soil infiltration is determined separately for the paved and nonpaved areas, as these have different infiltration capacities. Naturally, only the water that can be stored in the soil can infiltrate. If not all water can infiltrate, this is added as saturation excess water to the runoff routing scheme for overland flow. Infiltration excess occurs when the infiltration capacity is smaller ~~then~~ than the available infiltration rate, and this amount of water is also added to the runoff routing scheme for overland flow. An exponential decay of the saturated hydraulic conductivity with soil depth is assumed. Transfer of water in the unsaturated store, and to the saturated store is based on Brooks and Corey (1964) when the soil column is divided into different layers, and in case of one soil layer also the original Topog\_SBM vertical transfer formulation can be used. Part of the water evaporates through soil evaporation, transpiration which is first derived from the saturated store if roots intersect with the saturated store and then from the unsaturated store, and open water (excluding rivers) and river evaporation. Besides transpiration, capillary rise and leakage result in a flux from the saturated store, to the unsaturated store and outside of the model domain, respectively. The ~~kinematic-wave~~ kinematic wave approach is used to route subsurface flow laterally. Saturation excess water occurs when the water table of lateral subsurface flow reaches the surface, and exfiltration of water ~~in~~ from the unsaturated store to the surface because of a changing water table, is added as saturation excess water to the runoff routing scheme for overland flow. Also for overland and river ~~the kinematic-wave~~ routing the kinematic wave approach is used. Reservoir and lake models (optional) can be included within the kinematic wave river routing.

The wflow\_sbm model is described in more detail, including equations, in sections 2.2 - 2.7. These sections link to the main routines of wflow\_sbm (Fig. 1):

1. Interception (section 2.2)
2. Snow and glaciers (section 2.3)
3. Soil module and evapotranspiration (section 2.4)
4. Lateral subsurface flow (section 2.5)
5. Surface routing (section 2.6)
6. Reservoirs and lakes (section 2.7)

Table A1 lists wflow\_sbm state and flux variables (non-exhaustive). Additionally, wflow\_sbm model inputs and parameters are listed in Table A2, including default values. Table A1 and A2 both list the symbols that are used in sections 2.2 - 2.7 as well

as the corresponding Wflow.jl names. It is possible to provide cyclic model parameters to wflow\_sbm, for example monthly LAI maps (part of HydroMT-Wflow default model setup) to estimate time dependent interception parameters (see also section 2.2.3), or to provide model parameters as part of forcing (besides precipitation, potential evapotranspiration and temperature fields). For symbols that represent model parameters in sections 2.2 - 2.7 (except in section 2.2.3) a time dependent notation is not used, because providing time dependent model parameters is optional.



**Figure 1.** An overview of the different processes and fluxes in the wflow\_sbm model (adopted from van Verseveld et al., 2022a) (adopted from van Verseveld et al., 2024). The model includes the following routines: Interception (green, section 2.2), Snow and glaciers (light blue, section 2.3), Soil module and evapotranspiration (orange, section 2.4), Lateral subsurface flow (brown, section 2.5), Surface routing (dark blue, section 2.6) and Reservoirs and lakes (black, section 2.7).

The equations of most hydrological processes of the wflow\_sbm model are solved using the explicit Euler method for each model time step  $t$  of length  $\Delta t$  [s] (model time step size) specified in the configuration file. For the unsaturated flow through multiple soil layers, a variable internal time stepping is used, as a maximum change in soil water per unsaturated soil layer is allowed to prevent the overestimation of vertical unsaturated flows (section 2.4.2). The kinematic wave equations (sections 2.5 and 2.6) are solved using Newton's method. For the river and overland flow kinematic wave, a variable internal time stepping based on the Courant number or a fixed time step size [s] specified in the configuration file is used when iterations of the kinematic wave for surface flow are enabled in the configuration file, otherwise these equations are solved at model time step  $t$  of length  $\Delta t$  [s]. Reservoir and lake equations (section 2.7) are solved using the explicit Euler method, except for the lake model with a parabolic weir, the Modified Puls approach is used. The reservoirs and lakes are part of the kinematic wave river

170 routing, and these equations are solved at the internal time step of the kinematic wave river routing. The lateral subsurface flow is solved for each model time step using Newton's method, and depending on the model time step size, resolution and model parameters related to lateral subsurface flow, this may result in loss of accuracy. With a daily model time step, we estimate to use a minimum grid resolution of 200 m for generally accurate lateral subsurface flow results. The use of the explicit Euler method for most equations means that results may differ between simulations that use a different model time step (for example daily vs. hourly). Most flux variables in `wflow_sbm` are defined per model time step  $t$  and external flux parameters (expressed per day (the model base time step size)) are converted to the user defined model time step size, during model initialization. For model equations in this section handling these flux variables, the model time step  $t$  is implicitly embedded (e.g. for subtracting a flux variable from a storage variable, the flux variable is not multiplied by  $t$  in the equation), identical to the code implementation of these equations.

To run a `wflow_sbm` model several files are required: 1) a configuration file in the Tom's Obvious, Minimal Language (TOML) format, 2) a NetCDF file containing static and (optional) cyclic data, for example model parameters, flow direction, river network and gauges, and 3) a NetCDF file containing forcing data (precipitation, potential evapotranspiration and temperature fields). Storage and rating curves for lakes should be provided in CSV format. The static and forcing maps should have the same spatial domain and resolution, e.g. regridding of forcing data is not supported. The focus of `Wflow.jl` is on the computations (computational engine), and the modular structure of the code simplifies ~~extendig~~ extending the base code for pre- and post-processing purposes.

185 In the TOML file the following aspects are defined: simulation period and model time step size, model specific settings like the model type (e.g. "sbm" for `wflow_sbm`) or whether to include snow modelling, locations and names of input and output files, mapping of internal model variables and parameters to external NetCDF variables, optional modification of input model parameters and forcing, and output options. Glacier and snow modelling, and lake and reservoir modelling are optional (specific model settings). `Wflow_sbm` runs typically at a daily time step (recommended maximum model time step size) and a spatial resolution of  $\sim 1$  km (we recommend a maximum grid resolution of  $\sim 5$  km). Sub-daily model time steps are supported, for example for flow forecasting purposes or small (fast responding) catchments. Output options consist of gridded data (NetCDF) and scalar data (NetCDF or CSV). Scalar data can be generated for individual grid cells or areas (e.g. sub-catchment).

195 For users that mainly want to run simulations without installing Julia, `Wflow.jl` is available as a compiled executable (cross platform). Users that want to explore and modify the code, and want to extend `Wflow.jl` (e.g. writing your own Julia scripts around the `Wflow.jl` package), we recommend to install `Wflow.jl` as a Julia package. The `Wflow.jl` documentation provides more details about the `Wflow.jl` installation and usage in the "User guide" section (~~van Verseveld et al., 2022a~~) (van Verseveld et al., 2024).

## 2.2 Interception

For interception the Gash model (Gash, 1979) for daily (or larger) time steps and a modified Rutter model (Rutter et al., 200 1971, 1975) for sub-daily time steps is available within the `Wflow.jl` framework. The Gash model is a ~~daily~~ storm-based

interception model, by assuming one precipitation event per day, and model time step, and is applied when wflow\_sbm runs at a daily (or larger) time step. For sub-daily time steps a modified Rutter model is used.

### 2.2.1 Gash model

The original Gash model considers precipitation input as a series of discrete storm events, where each storm event is divided into three sequential phases: 1) wetting phase during which precipitation saturates the canopy, 2) saturation phase during which the canopy is saturated and the precipitation intensity is higher than the average evaporation rate of the saturated canopy and 3) drying phase during the period after precipitation has ceased. The amount of water needed-precipitation rate to completely saturate the canopy ( $P_{\text{sat,max}}^t$  [mm  $t^{-1}$ ]) at time step  $t$  is defined as:

$$P_{\text{sat,max}}^t = \frac{-P_{\text{sat}}^t S_{\text{canopy,max}}}{E_{\text{sat}}^t} \ln \left[ 1 - \frac{E_{\text{sat}}^t}{P_{\text{sat}}^t} (\max((1 - f_{\text{canopygap}} - f_{\text{stemflow}}), 0))^{-1} \right], \quad (1)$$

where  $P_{\text{sat}}^t$  [mm  $t^{-1}$ ] is the average precipitation intensity and  $E_{\text{sat}}^t$  [mm  $t^{-1}$ ] is the average evaporation rate during saturation of the canopy,  $S_{\text{canopy,max}}$  [mm] is the canopy storage capacity,  $f_{\text{canopygap}}$  [-] is the canopy gap fraction and  $f_{\text{stemflow}}$  [-] is the stemflow fraction. When leaf area index (LAI) is not provided to wflow\_sbm the ratio  $\frac{E_{\text{sat}}^t}{P_{\text{sat}}^t}$  [-] is used as model parameter (Table A2), otherwise  $E_{\text{sat}}^t = (1 - f_{\text{canopygap}}) E_{\text{pot,total}}^t$  where  $E_{\text{pot,total}}^t$  [mm  $t^{-1}$ ] is potential evapotranspiration (for the computation of  $f_{\text{canopygap}}$  as a function of LAI see section 2.2.3),  $P_{\text{sat}}^t$  is then equal to the total precipitation input rate [mm  $t^{-1}$ ] and  $f_{\text{canopygap}}$  is time dependent when LAI is provided as a cyclic (e.g. monthly) parameter or as part of forcing. The stemflow fraction  $f_{\text{stemflow}}$  in wflow\_sbm is defined as a fixed fraction (0.1) of the canopy gap fraction- $f_{\text{canopygap}}$  limited by the canopy fraction  $(1 - f_{\text{canopygap}})$ , and stemflow  $P_{\text{stemflow}}^t$  [mm  $t^{-1}$ ] at time step  $t$  is calculated as the stemflow fraction of the precipitation amount  $P^t$  mm at time step  $t$ :

follows:

$$f_{\text{stemflow}} = \min(0.1 f_{\text{canopygap}}, 1 - f_{\text{canopygap}}), \quad (2)$$

$$P_{\text{stemflow}}^t = f_{\text{stemflow}} P^t. \quad (3)$$

Interception during the wetting phase  $I_{\text{wet}}^t$  [mm  $t^{-1}$ ], saturation phase  $I_{\text{sat}}^t$  [mm  $t^{-1}$ ] and dry phase  $I_{\text{dry}}^t$  [mm  $t^{-1}$ ] at time step  $t$  are given by Eq. (4) - (6):

$$I_{\text{wet}}^t = \begin{cases} (1 - f_{\text{canopygap}} - f_{\text{stemflow}}) P_{\text{sat,max}}^t - S_{\text{canopy,max}} & \text{if } P^t > P_{\text{sat,max}}^t \\ (1 - f_{\text{canopygap}} - f_{\text{stemflow}}) P^t & \text{otherwise,} \end{cases} \quad (4)$$

$$I_{\text{sat}}^t = \begin{cases} \frac{E_{\text{sat}}^t}{P_{\text{sat}}^t} (P^t - P_{\text{sat,max}}^t) & \text{if } P^t > P_{\text{sat,max}}^t \\ 0 & \text{otherwise,} \end{cases} \quad (5)$$



$$I_{\text{dry}}^t = \begin{cases} S_{\text{canopy,max}} & \text{if } P^t > P_{\text{sat,max}}^t \\ 0 & \text{otherwise.} \end{cases} \quad (6)$$

The total interception  $I_{\text{total}}^t$  [mm  $t^{-1}$ ] at time step  $t$ , assuming that trunk interception can be neglected, is the sum of the interception in all three phases, bounded by ~~potential evapotranspiration~~  $E_{\text{pot,total}}^t$ :

$$I_{\text{total}}^t = \min(I_{\text{wet}}^t + I_{\text{dry}}^t + I_{\text{sat}}^t, E_{\text{pot,total}}^t). \quad (7)$$

230 Throughfall  $P_{\text{throughfall}}^t$  [mm  $t^{-1}$ ] at time step  $t$  is the remainder after subtracting the total interception and stemflow from the precipitation:

$$P_{\text{throughfall}}^t = P^t - I_{\text{total}}^t - P_{\text{stemflow}}^t. \quad (8)$$

The remaining potential evaporation  $E_{\text{pot,remainder}}^t$  [mm  $t^{-1}$ ] at time step  $t$  is given by:

$$E_{\text{pot,remainder}}^t = E_{\text{pot,total}}^t - I_{\text{total}}^t. \quad (9)$$

### 235 2.2.2 Modified Rutter model

For sub-daily time steps a modified Rutter interception model is used, which compared to the Gash model keeps track of the canopy storage  $S_{\text{canopy}}^t$  [mm] and is updated in two steps. Stemflow is calculated in the same way as the Gash model, see Eq. (3). The ~~amount of precipitation~~ precipitation rate on the canopy  $P_{\text{canopy}}^t$  [mm  $t^{-1}$ ] at time step  $t$  ~~that falls on the canopy is~~ is a function of the total precipitation amount input rate and the canopy gap and stemflow fractions:

$$240 P_{\text{canopy}}^t = \max((1 - f_{\text{canopygap}} - f_{\text{stemflow}}), 0) P^t. \quad (10)$$

The initial drainage rate  $D_{\text{canopy,s1}}^t$  [mm  $t^{-1}$ ] from the canopy storage at time step  $t$  is the surplus of canopy storage at the previous time step compared to the canopy storage capacity  $S_{\text{canopy,max}}$  [mm]:

$$D_{\text{canopy,s1}}^t = \begin{cases} S_{\text{canopy}}^{t-1} - S_{\text{canopy,max}} & \text{if } S_{\text{canopy}}^{t-1} > S_{\text{canopy,max}} \\ 0 & \text{otherwise.} \end{cases} \quad (11)$$

This check is required because  $S_{\text{canopy,max}}$  (and  $f_{\text{canopygap}}$ ) can change over time (see section 2.2.3). The canopy storage is then updated based on the initial canopy drainage rate and precipitation that falls on the canopy ~~and the evaporation~~ (Eq. 12), then the evaporation rate from the canopy storage  $(\min(S_{\text{canopy}}^t, E_{\text{pot,total}}^t)) E_{\text{canopy}}^t$  [mm  $t^{-1}$ ]:

is determined (Eq. 13), and subtracted from  $S_{\text{canopy}}^t$  (Eq. 14):

$$S_{\text{canopy}}^t = S_{\text{canopy}}^{t-1} + P_{\text{canopy}}^t - D_{\text{canopy},s1}^t, \quad (12)$$

$$SE_{\text{canopy}}^t = S_{\text{canopy}}^t - \min(S_{\text{canopy}}^t, E_{\text{pot},\text{total}}^t), \quad (13)$$

250  $S_{\text{canopy}}^t = S_{\text{canopy}}^t - E_{\text{canopy}}^t.$  (14)

The remaining potential evaporation  $E_{\text{pot},\text{remainder}}^t$  [mm  $t^{-1}$ ] at time step  $t$  is given by:

$$E_{\text{pot},\text{remainder}}^t = E_{\text{pot},\text{total}}^t - \min(S_{\text{canopy}}^t, E_{\text{pot},\text{total}}^t)_{\text{canopy}}. \quad (15)$$

The canopy storage  $S_{\text{canopy}}^t$  is drained again if required with drainage rate  $D_{\text{canopy},s2}^t$  at time step  $t$ :

$$D_{\text{canopy},s2}^t = \begin{cases} S_{\text{canopy}}^t - S_{\text{canopy},\text{max}} & \text{if } S_{\text{canopy}}^t > S_{\text{canopy},\text{max}} \\ 0 & \text{otherwise,} \end{cases} \quad (16)$$

255 and ~~subtracted from~~  $S_{\text{canopy}}^t$  ~~is updated~~ to get the final canopy storage  $S_{\text{canopy}}^t$  [mm]:

$$S_{\text{canopy}}^t = S_{\text{canopy}}^t - D_{\text{canopy},s2}^t. \quad (17)$$

Throughfall  $P_{\text{throughfall}}^t$  [mm  $t^{-1}$ ] at time step  $t$  is ~~calculated as given by adding~~ the total drainage rate from the canopy and the ~~amount of precipitation that falls~~ precipitation rate directly on the ground:

$$P_{\text{throughfall}}^t = D_{\text{canopy},s1}^t + D_{\text{canopy},s2}^t + f_{\text{canopygap}} P^t. \quad (18)$$

260 The total interception  $I_{\text{total}}^t$  [mm  $t^{-1}$ ] at time step  $t$  is given by:

$$I_{\text{total}}^t = P^t + D_{\text{canopy},s1}^t - P_{\text{stemflow}}^t - P_{\text{throughfall}}^t. \quad (19)$$

### 2.2.3 Interception model parameters from Leaf Area Index (LAI)

Within wflow\_sbm it is possible to estimate interception model parameters based on ~~monthly LAI maps (climatology)~~ LAI [m<sup>2</sup> m<sup>-2</sup>] as static input (generally not used) or as time dependent input such as cyclic timeseries (climatology) or as part of forcing. It is assumed that the canopy capacity for leaves  $S_{\text{leaf},\text{max}}^t$  is linearly related to ~~LAI~~ LAI<sup>t</sup> at time step  $t$  through the specific leaf storage  $S_{\text{leaf}}$  [mm] (van Dijk and Bruijnzeel, 2001):

$$S_{\text{leaf,max}}^t = S_{\text{leaf}} \text{LAI}^t. \quad (20)$$

The specific leaf storage is related to land cover type. Also the storage for the woody part of the vegetation  $S_{\text{wood,max}}$  [mm] is required to estimate total canopy capacity  $S_{\text{canopy,max}}^t$  [mm] at time step  $t$ . The relations between land cover and  $S_{\text{leaf}}$  and  $S_{\text{wood,max}}$  are based on Pitman (1989) and Liu (1998). The canopy gap fraction  $f_{\text{canopygap}}^t$  [-] at time step  $t$  is determined by using the extinction coefficient  $k$  based on van Dijk and Bruijnzeel (2001) and the value of  $k$  is related to land cover type:

$$f_{\text{canopygap}}^t = e^{(-k\text{LAI}^t)}. \quad (21)$$

## 2.3 Snow and glaciers

### 2.3.1 Snow

Snow processes are adopted from the HBV-96 hydrologic-hydrological model concept (Bergström, 1992). Effective precipitation  $P_{\text{effective}}^t$  [mm  $t^{-1}$ ] (throughfall and stemflow) occurs as snowfall  $P_{\text{snow}}^t$  [mm  $t^{-1}$ ] at time step  $t$ , if the air temperature  $T_{\text{air}}^t$  [ $^{\circ}\text{C}$ ] at time step  $t$  is below a user-defined temperature threshold  $s_{\text{fall,Tthreshold}}$  [ $^{\circ}\text{C}$ ]. An interval parameter  $s_{\text{fall,Tinterval}}$  [ $^{\circ}\text{C}$ ] defines the range over which precipitation is partly falling as snow, and partly as rain, with 100% snow at the lower end and decreasing linearly to 0% at the upper end. The fraction of precipitation that occurs as rainfall  $f_{\text{rain}}^t$  [-] at time step  $t$  is calculated as:

$$f_{\text{rain}}^t = \begin{cases} 0 & \text{if } s_{\text{fall,Tinterval}} = 0 \text{ \& } T_{\text{air}}^t \leq s_{\text{fall,Tthreshold}} \\ 1 & \text{if } s_{\text{fall,Tinterval}} = 0 \text{ \& } T_{\text{air}}^t > s_{\text{fall,Tthreshold}} \\ \max\left(\min\left(\frac{T_{\text{air}}^t - (s_{\text{fall,Tthreshold}} - 0.5 s_{\text{fall,Tinterval}})}{s_{\text{fall,Tinterval}}}, 1\right), 0\right) & \text{if } s_{\text{fall,Tinterval}} \neq 0. \end{cases} \quad (22)$$

This fraction is used to calculate the snowfall amount  $P_{\text{snow}}^t$  and rainfall amount  $P_{\text{rain}}^t$  [mm  $t^{-1}$ ] at time step  $t$  as follows:

$$P_{\text{snow}}^t = (1 - f_{\text{rain}}^t) P_{\text{effective}}^t, \quad (23)$$

$$P_{\text{rain}}^t = f_{\text{rain}}^t P_{\text{effective}}^t. \quad (24)$$

For snowmelt HBV-96 uses a degree-day approach, an empirical relationship between melt and air temperature. If  $T_{\text{air}}^t$  is above a melting temperature threshold  $s_{\text{melt,Tthreshold}}$  [ $^{\circ}\text{C}$ ], snowmelt occurs. The potential snowmelt rate  $M_{\text{snow,pot}}^t$  [mm  $t^{-1}$ ] at time step  $t$ , using the degree-day factor  $s_{\text{ddf}}$  [mm  $t^{-1} t^{-1} ^{\circ}\text{C}^{-1}$ ], is calculated as follows:

$$290 \quad M_{\text{snow,pot}}^t = \begin{cases} s_{\text{ddf}}(T_{\text{air}}^t - s_{\text{melt,Tthreshold}}) & \text{if } T_{\text{air}}^t > s_{\text{melt,Tthreshold}} \\ 0 & \text{otherwise.} \end{cases} \quad (25)$$

The actual snowmelt rate  $M_{\text{snow,act}}^t$  [mm  $t^{-1}$ ] at time step  $t$  is limited by the snow storage  $S_{\text{snow}}^{t-1}$  [mm] at the **end-of-the** previous time step, and is calculated by taking the minimum of  $M_{\text{snow,pot}}^t$  and  $S_{\text{snow}}^{t-1}$ . The **snow pack snowpack** retains water that can refreeze if  $T_{\text{air}}^t$  is below  $s_{\text{melt,Tthreshold}}$ . The potential **amount of water that can refreeze refreezing rate**  $M_{\text{refreeze,pot}}^t$  [mm  $t^{-1}$ ] at time step  $t$ , is controlled by  $s_{\text{ddf}}$ , a coefficient of refreezing  $s_{\text{refreeze}}$  [-] (fixed: 0.05),  $T_{\text{air}}^t$  and  $s_{\text{melt,Tthreshold}}$  as follows:

$$M_{\text{refreeze,pot}}^t = \begin{cases} s_{\text{ddf}}s_{\text{refreeze}}(s_{\text{melt,Tthreshold}} - T_{\text{air}}^t) & \text{if } T_{\text{air}}^t < s_{\text{melt,Tthreshold}} \\ 0 & \text{otherwise.} \end{cases} \quad (26)$$

The actual **amount that can refreeze, refreezing rate**  $M_{\text{refreeze,act}}^t$  [mm  $t^{-1}$ ] is based on the **amount of snow water liquid water content of snow**  $S_{\text{snow,liquid}}^{t-1}$  [mm] at the previous time step and the potential **amount of water that can refreeze refreezing rate**  $M_{\text{refreeze,pot}}^t$ , by taking the minimum of  $M_{\text{refreeze,pot}}^t$  and  $S_{\text{snow,liquid}}^{t-1}$ . Snow **pack** storage  $S_{\text{snow}}^t$  [mm] at time step  $t$  is then a function of snow **pack storage storage**  $S_{\text{snow}}^{t-1}$  at the previous time step ( $S_{\text{snow}}^{t-1}$ ), **snowfall amount**, **snowfall**, actual refreezing **amount rate** and actual snowmelt at time step  $t$ :

$$S_{\text{snow}}^t = S_{\text{snow}}^{t-1} + P_{\text{snow}}^t + M_{\text{refreeze,act}}^t - M_{\text{snow,act}}^t. \quad (27)$$

The liquid water content of snow  $S_{\text{snow,liquid}}^t$  **mm** at time step  $t$  is a function of the liquid water content of snow  $S_{\text{snow,liquid}}^{t-1}$  at the previous time step ( $S_{\text{snow,liquid}}^{t-1}$  **mm**), actual refreezing **amount rate**, actual snowmelt and rainfall **amount rate** at time step  $t$ , and the maximum amount of water that the snowpack can hold. This maximum amount is controlled by the water holding capacity  $s_{\text{whc}}$  [-] of snow and **the snow pack snow** storage at time step  $t$ :

$$S_{\text{snow,liquid}}^t = S_{\text{snow,liquid}}^{t-1} - M_{\text{refreeze,act}}^t + M_{\text{snow,act}}^t + P_{\text{rain}}^t;$$

$$S_{\text{snow,liquid}}^t = S_{\text{snow,liquid}}^{t-1} + M_{\text{snow,act}}^t + P_{\text{rain}}^t - M_{\text{refreeze,act}}^t; \quad (28)$$

$$310 \quad S_{\text{snow,liquid}}^t = S_{\text{snow,liquid}}^t - \max(S_{\text{snow,liquid}}^t - S_{\text{snow}}^t s_{\text{whc}}, 0). \quad (29)$$

$$S_{\text{snow,liquid}}^t = S_{\text{snow,liquid}}^t - \max(S_{\text{snow,liquid}}^t - S_{\text{snow}}^t s_{\text{whc}}, 0).$$

The amount that does exceed the fraction-of-the-current-snow-pack-water holding capacity of snow ( $\max(S_{\text{snow,liquid}}^t - S_{\text{snow}}^t s_{\text{whc}}, 0)$ ) is available as rainfall at time step  $t$ .

To control unlimited build-up of the snow-pack-snowpack at high altitude where temperature rarely reaches above melting  
 315 temperature, the optional avalanche routine can be used to transport snow downhill based on the local drain network, where it becomes available for snow melt. The fraction of snow that can be transported downhill is calculated as:

$$f_{\text{snow transport}}^t = \min\left(0.5, \frac{c_{\text{land slope}}}{\tan(80^\circ)}\right) \min\left(1, \frac{S_{\text{snow}}^t}{s_{\text{max}}}\right), \quad (30)$$

with  $f_{\text{snow transport}}^t$  [-] the fraction of snow at time step  $t$  that is available for transport downhill,  $c_{\text{land slope}}$  [ $\text{m m}^{-1}$ ] the slope of the land surface and  $s_{\text{max}}$  [mm] the maximum snow-pack-snowpack with a fixed value of 10,000 mm. The fraction of snow  
 320 that can be transported downhill is multiplied with the snow-pack-snowpack storage, and gives-represents the transport capacity of snow  $M_{\text{snow,downhill}}^t$  [ $\text{mm t}^{-1}$ ] at time step  $t$ :

$$M_{\text{snow,downhill}}^t = S_{\text{snow}}^t f_{\text{snow transport}}^t. \quad (31)$$

Snow is then transported downhill, based on the local drain network and the transport capacity of snow that limits the snow transport, updating the-amount-of-snow-snow storage  $S_{\text{snow}}^t$  [mm] and liquid water content of snow  $S_{\text{snow,liquid}}^t$  [mm] in each  
 325 grid cell at time step  $t$ .

### 2.3.2 Glaciers

Glacier modelling considers two main processes: glacier build-up from snow turning into firn/ice (adopted from the HBV-light model; Seibert et al., 2018) and glacier melt (using a temperature degree-day model). First, a fixed fraction  $g_{\text{snow to ice}}$  [ $\text{t}^{-1}$ ],  
 330 that typically ranges between 0.001 and 0.006 ,of-the-snowpack-for-a-daily-time-step,of-snow-storage  $S_{\text{snow}}^t$  [mm] on top of the glacier is converted into ice for each time step  $\div$ :

t of length  $\Delta t$  [s]:

$$S_{\text{snow to ice}}^t = \min\left(g_{\text{snow to ice}} S_{\text{snow}}^t, 8 \frac{t}{t_b} \frac{\Delta t}{\Delta t_b}\right), \quad (32)$$

where  $S_{\text{snow to ice}}^t$  [ $\text{mm t}^{-1}$ ] is the amount-of-snow-converted-into-ice-snow into ice conversion rate at time step  $t$ , with a maximum conversion rate of 8 mm day $^{-1}$ . This maximum conversion rate is scaled by the-the-model-time-step-t-s- $\Delta t$ , and the  
 335 model base time step  $t_b$ -size  $\Delta t_b$  of 86,400 [s]. The snow pack-storage from the snow module (section 2.3.1)  $S_{\text{snow}}^t$  [mm] at time step  $t$  is then updated as follows:

$$S_{\text{snow}}^t = S_{\text{snow}}^t - \left(S_{\text{snow to ice}}^t f_{\text{glacier}}\right), \quad (33)$$

with  $f_{\text{glacier}}$  [-] the fraction of a grid cell covered by a glacier. When the snowpack on top of the glacier is almost all melted ( $S_{\text{snow}}^t < 10$  mm), glacier melt is enabled and estimated with a degree-day model. If the air temperature  $T_{\text{air}}^t$  is above a melting temperature threshold  $g_{\text{melt},T_{\text{threshold}}}$  [ $^{\circ}\text{C}$ ], glacier melt occurs. The potential glacier melt  $M_{\text{glacier,pot}}^t$  [ $\text{mm } t^{-1}$ ], using the degree-day factor  $g_{\text{ddf}}$  [ $\text{mm } t^{-1} \text{ } ^{\circ}\text{C}^{-1}$ ], is calculated as:

$$M_{\text{glacier,pot}}^t = \begin{cases} g_{\text{ddf}}(T_{\text{air}}^t - g_{\text{melt},T_{\text{threshold}}}) & \text{if } T_{\text{air}}^t > g_{\text{melt},T_{\text{threshold}}} \\ 0 & \text{otherwise.} \end{cases} \quad (34)$$

The actual glacier melt  $M_{\text{glacier,act}}^t$  [ $\text{mm } t^{-1}$ ] at time step  $t$  is limited by the ~~sum of the~~ glacier storage at the ~~end of the~~ previous time step  $S_{\text{glacier}}^{t-1}$  [mm] (expressed in mm water equivalent) and  $S_{\text{snow to ice}}^t$  ~~÷~~ as follows:

$$M_{\text{glacier,act}}^t = \min(M_{\text{glacier,pot}}^t, S_{\text{glacier}}^{t-1} + S_{\text{snow to ice}}^t). \quad (35)$$

The glacier storage  $S_{\text{glacier}}^t$  [mm] at time step  $t$  is then updated as follows:

$$S_{\text{glacier}}^t = S_{\text{glacier}}^{t-1} + S_{\text{snow to ice}}^t - M_{\text{glacier,act}}^t. \quad (36)$$

A map with  $S_{\text{glacier}}$  values can be provided as an initial state (default: 5500 mm) when wflow\_sbm is initialized with default values in the code (“cold” start), see also Table A2.

## 2.4 The soil module and evapotranspiration

### 2.4.1 Infiltration

~~Water available for infiltration~~ The infiltration rate  $F_{\text{available}}^t$  [ $\text{mm } t^{-1}$ ] of available water at time step  $t$  into the soil (throughfall, stemflow, snow and glacier melt) is first added to the saturated parts of the grid cell: the river flow and overland flow components of wflow\_sbm. This is based on the river fraction  $f_{\text{river}}$  [-] (river flow component) and open water fraction (excluding rivers)  $f_{\text{open water}}$  [-] (overland flow component) within a grid cell, as follows:

$$R_{\text{river}}^t = f_{\text{river}} F_{\text{available}}^t, \quad (37)$$

$$R_{\text{open water}}^t = f_{\text{open water}} F_{\text{available}}^t, \quad (38)$$

where  $R_{\text{river}}^t$  [ $\text{mm } t^{-1}$ ] is runoff from the river fraction in a cell at time step  $t$ , and  $R_{\text{open water}}^t$  [ $\text{mm } t^{-1}$ ] is runoff from the open water fraction in a cell at time step  $t$ .  $R_{\text{river}}^t$  and  $R_{\text{open water}}^t$  are later added to the wflow\_sbm river and overland flow components respectively. The ~~remaining water available for infiltration~~ infiltration rate of remaining available water  $F_{\text{available}}^t$  [ $\text{mm } t^{-1}$ ] at time step  $t$  into the soil is determined as:

$$F_{\text{available}}^t = F_{\text{available}}^t - R_{\text{river}}^t - R_{\text{open water}}^t. \quad (39)$$

The soil in wflow\_sbm is considered as a bucket with a depth  $z_{\text{soil}}$  [mm], and is divided into a saturated store  $S_{\text{sat}}$  [mm] and an unsaturated store  $S_{\text{unsat}}$  [mm]. The top of the saturated store forms a pseudo-water table at depth  $z_{\text{watertable}}$  [mm] such that the value of  $S_{\text{sat}}$  is given by:

$$S_{\text{sat}} = (z_{\text{soil}} - z_{\text{watertable}})(\theta_s - \theta_r), \quad (40)$$

where  $\theta_s$  and  $\theta_r$  are the saturated and residual soil water contents, respectively, both expressed as  $\text{mm mm}^{-1}$ . The amount of water that can infiltrate is a function of the infiltration capacity  $c_{\text{infiltration,paved}}$  [ $\text{mm day}^{-1}t^{-1}$ ] of the compacted soil (or paved area) fraction ( $f_{\text{paved}}$  [-]) of each grid cell, the infiltration capacity  $c_{\text{infiltration,unpaved}}$  [ $\text{mm day}^{-1}t^{-1}$ ] of the non-compacted soil fraction (or unpaved area) ( $(1 - f_{\text{paved}})$ ) of each gridcell, the grid cell, the initial storage capacity of the unsaturated zone  $S_{\text{unsat}}^{t-1} S_{\text{unsat,max}}^t$  [mm] at the previous time step (Eq. 43) at time step  $t$ , and an optional reduction factor  $f_{\text{frozen}}$  applied to the infiltration capacity when snow is modelled. The parameter  $f_{\text{frozen}}$  depends on the near-surface soil temperature which is modelled based on the approach of Wigmosta et al. (2009):

$$T_{\text{soil}}^t = T_{\text{soil}}^{t-1} + w_{\text{soil}}(T_{\text{air}}^t - T_{\text{soil}}^{t-1}), \quad (41)$$

where  $T_{\text{soil}}^t$  [ $^{\circ}\text{C}$ ] is the near-surface soil temperature at time step  $t$ ,  $T_{\text{air}}^t$  [ $^{\circ}\text{C}$ ] is the air temperature at time step  $t$ ,  $T_{\text{soil}}^{t-1}$  [ $^{\circ}\text{C}$ ] is the near-surface soil temperature at the previous time step, and  $w_{\text{soil}}$  is a weighting coefficient [ $t^{-1}$ ]. The optional infiltration capacity reduction factor  $f_{\text{frozen}}^t$  at time step  $t$  is based on the model parameter  $f_{\text{red,frozen}}$  [-] and the near-surface soil temperature as follows:

$$f_{\text{frozen}}^t = \begin{cases} \frac{1}{b + e^{(-c(T_{\text{soil}}^t - a))}} + f_{\text{red,frozen}} & \text{if snow \& soilinfreduction} \\ 1 & \text{otherwise,} \end{cases} \quad (42)$$

where  $b = \frac{1.0}{(1.0 - f_{\text{red,frozen}})}$ ,  $a = 0.0$  and  $c = 8.0$   $b = \frac{1}{(1 - f_{\text{red,frozen}})}$ ,  $a = 0$  and  $c = 8$ . The initial storage capacity of the unsaturated zone  $S_{\text{unsat,max}}^t$  [mm] at time step  $t$  is based on the saturated storage  $S_{\text{sat}}^{t-1}$  [mm] at the previous time step, the sum of unsaturated storage for in each soil layer  $n$  for  $m$  unsaturated soil layers ( $\sum S_{\text{unsat},n}^{t-1} \sum_{n=1}^m S_{\text{unsat},n}^{t-1}$  [mm] at the previous time step), and the total soil water capacity of the wflow\_sbm soil bucket.  $S_{\text{unsat,max}}^t$  is calculated as follows:

$$S_{\text{unsat,max}}^t = z_{\text{soil}}(\theta_s - \theta_r) - S_{\text{sat}}^{t-1} - \sum_{n=1}^m S_{\text{unsat},n}^{t-1}. \quad (43)$$

The ~~total available water for infiltration~~ infiltration rate of remaining available water is split into two parts, the part that falls on compacted areas  $F_{\text{available}}^t f_{\text{paved}}$  [mm  $t^{-1}$ ] and the part that falls on non-compacted areas  $F_{\text{available}}^t (1 - f_{\text{paved}})$  [mm  $t^{-1}$ ] at time step  $t$ . The maximum ~~amount of water that can infiltrate~~ infiltration rate in these areas is calculated by taking the minimum of the infiltration capacity and the ~~available water for infiltration in~~ infiltration rate for these areas:

$$390 \quad \underline{F_{\text{unpaved}}^t = \min(c_{\text{infiltration,unpaved}} f_{\text{frozen}}^t, F_{\text{available}}^t (1 - f_{\text{paved}}))},$$

$$\underline{F_{\text{unpaved}}^t = \min(c_{\text{infiltration,unpaved}} f_{\text{frozen}}^t, F_{\text{available}}^t (1 - f_{\text{paved}}))}, \quad (44)$$

$$\underline{F_{\text{paved}}^t = \min(c_{\text{infiltration,paved}} f_{\text{frozen}}^t, F_{\text{available}}^t f_{\text{paved}})}. \quad (45)$$

$$395 \quad \underline{F_{\text{paved}}^t = \min(c_{\text{infiltration,paved}} f_{\text{frozen}}^t, F_{\text{available}}^t f_{\text{paved}})}.$$

~~The water that can actually infiltrate~~ The actual total infiltration rate  $F_{\text{total}}^t$  [mm  $t^{-1}$ ] is ~~calculated by taking the minimum a~~ function of the total ~~water that can infiltrate~~ infiltration rate (compacted and non-compacted areas) and the initial unsaturated storage capacity:

$$F_{\text{total}}^t = \min(F_{\text{unpaved}}^t + F_{\text{paved}}^t, S_{\text{unsat,max}}^t). \quad (46)$$

400 Finally, the ~~amount of~~ infiltration excess water rate  $F_{\text{excess}}^t$  [mm  $t^{-1}$ ] at time step  $t$  is determined as:

$$F_{\text{excess}}^t = (F_{\text{available}}^t (1 - f_{\text{paved}}) - F_{\text{unpaved}}^t) + (F_{\text{available}}^t f_{\text{paved}} - F_{\text{paved}}^t). \quad (47)$$

## 2.4.2 Soil water accounting scheme

The soil bucket in wflow\_sbm with a depth  $z_{\text{soil}}$  [mm] can be split-up in different layers. Assuming a unit head gradient, the potential transfer of water  $\underline{Q_{\text{transfer},n}^t}$   $\underline{Q_{\text{transfer,pot},n}^t}$  [mm  $t^{-1}$ ] from an unsaturated ~~store-layer~~ layer  $n$  at time step  $t$  is controlled by the vertical saturated hydraulic conductivity  ~~$K_{\text{vz}}$  at depth  $z$  of the bottom layer (transfer between unsaturated~~ store layers) or the pseudo-water table at depth  $z_{\text{watertable}}$  (transfer to the saturated store)  $\underline{K_{\text{vz},n}^t}$  [mm  $t^{-1}$ ] at time step  $t$  (Eq. 50), the effective saturation degree of ~~the layer~~ layer  $n$  at time step  $t$ , and a Brooks-Corey power coefficient  $(e_n) \underline{c_n}$  [-] based on the pore size distribution index  $\lambda$  (Brooks and Corey, 1964) ÷:

$$\underline{Q_{\text{transfer},n} = K_{\text{vz}} \left( \frac{\theta - \theta_r}{\theta_s - \theta_r} \right)^{c_n}},$$



410  $\lambda_n$  [-] (Brooks and Corey, 1964) of layer  $n$ :

$$Q_{\text{transfer,pot},n}^t = K_{vz,n}^t \left( \frac{\theta_n^t - \theta_r}{\theta_s - \theta_r} \right)^{c_n}, \quad (48)$$

$$c_n = \frac{2 + 3\lambda_n}{\lambda_n}, \quad (49)$$

$$c_n = \frac{2 + 3\lambda}{\lambda}.$$

415 **Vertical** where  $\theta_n^t$  [mm mm<sup>-1</sup>] is the soil water content of unsaturated soil layer  $n$  at time step  $t$ , and  $\theta_s$  and  $\theta_r$  as previously defined. The vertical saturated hydraulic conductivity  $K_{vz}^t$  of unsaturated soil layer  $n$  for  $m$  unsaturated soil layers (based on the pseudo-water table depth at the previous time step  $z_{\text{watertable}}^{t-1}$  [mm<sup>t-1</sup>] declines with soil depth  $z$  in wflow\_sbm according to :-

,  $n = 1$  refers to the upper soil layer) at time step  $t$  is given by:

$$K_{vz,n}^t = K_{v0} e^{-f_{Kv} z} \begin{cases} f_{Kv,n} K_{v0} e^{-f_{Kv} z_{\text{bottom},n}} & \text{if } n < m \\ f_{Kv,n} K_{v0} e^{-f_{Kv} z_{\text{watertable}}^{t-1}} & \text{if } n = m, \end{cases} \quad (50)$$

420 where the model parameter  $K_{v0}$  [mm t<sup>-1</sup>] is the vertical saturated hydraulic conductivity at the soil surface and (that declines exponentially with depth),  $f_{Kv,n}$  is an optional (default: 1.0) multiplication factor [-] for each soil layer  $n$  to correct the vertical saturated hydraulic conductivity,  $f_{Kv}$  is a scaling parameter [mm<sup>-1</sup>] .For and  $z_{\text{bottom},n}$  [mm] is the soil depth at the bottom of soil layer  $n$ . The thickness  $z_{n,\text{thickness}}^t$  [mm] of unsaturated soil layer  $n$  for  $m$  unsaturated soil layers ( $\Rightarrow z_{\text{watertable}}^{t-1}$ ) at time step  $t$  is given by:

$$425 \quad z_{n,\text{thickness}}^t = \begin{cases} z_{n,\text{thickness}} & \text{if } n < m \\ z_{\text{watertable}}^{t-1} - z_{\text{bottom},n-1} & \text{if } n = m \ \& \ n > 1 \\ z_{\text{watertable}}^{t-1} & \text{if } n = 1 \ \& \ m = 1, \end{cases} \quad (51)$$

where  $z_{n,\text{thickness}}$  is the actual thickness of soil layer  $n$  and  $z_{\text{bottom},n-1}$  [mm] is the soil depth at the bottom of the soil layer above soil layer  $n$ . For each unsaturated soil layer  $n$ , the transfer of water at time step  $t$  for  $m$  unsaturated soil layers is calculated as follows:

$$S_{\text{unsat},n}^t = S_{\text{unsat},n}^{t-1} + Q_{\text{in},n}^t, \quad (52)$$

$$430 \quad Q_{\text{transfer},n}^t = f_{K_{v,n}} \underline{K_{v0}} e^{(-f_{K_{v,n}} z_n)^t} \min \left( \left( \frac{S_{\text{unsat},n}^t}{z_{n,\text{thickness}} (\theta_s - \theta_r)} \frac{S_{\text{unsat},n}^t}{z_{n,\text{thickness}} (\theta_s - \theta_r)} \right)^{c_n}, 1 \right), \quad (53)$$

$$Q_{\text{transfer},n}^t = S_{\text{unsat},n}^t - \min(Q_{\text{transfer},n}^t, S_{\text{unsat},n}^t), \quad (54)$$

$$S_{\text{unsat},n}^t = S_{\text{unsat},n}^t - Q_{\text{transfer},n}^t, \quad (55)$$

where  $Q_{\text{in},n}^t$  for unsaturated soil layer  $n = 1$  (upper soil layer) is the actual total infiltration rate  $F_{\text{total}}^t$  (Eq. 46), and for unsaturated soil layer  $n > 1$ ,  $Q_{\text{in},n}^t$  is  $\min(Q_{\text{transfer},n-1}^t, S_{\text{unsat},n-1}^t)$ ,  $S_{\text{unsat},n}^{t-1}$  is the actual transfer of water from the soil layer above layer  $n$  ( $Q_{\text{transfer},n-1}^t$  [mm  $t^{-1}$ ]),  $S_{\text{unsat},n}^{t-1}$  [mm] is the unsaturated storage of layer  $n$  at the previous time step,  $S_{\text{unsat},n}^t$  and  $S_{\text{unsat},n}^t$  [mm] the subsequent updated unsaturated storage of layer  $n$  at time step  $t$ ,  $f_{K_{v,n}}$  is a multiplication factor for each soil layer  $n$ , and  $z_{n,\text{thickness}}$  mm the soil layer thickness of soil layer  $n$ . During each model time step  $t$ , an internal time stepping (iterations) is applied to Eqs. (53), (54) and (55), during unsaturated conditions based on a maximum allowed change in  $S_{\text{unsat},n}$  of 0.2 mm for each internal time step to prevent an overestimation of  $Q_{\text{transfer},n}^t$ .

440 When the soil bucket in wflow\_sbm is not split-up into different layers, it is possible to use the original Topog\_SBM vertical transfer formulation. The transfer of water from the unsaturated store to the saturated store is in that case controlled by the vertical saturated hydraulic conductivity  $K_{vz}$  at depth  $z_{\text{watertable}}^{t-1}$  and the, an optional multiplication factor  $f_{K_{v,1}}$  [-] to correct the vertical saturated hydraulic conductivity, the ratio between the unsaturated store storage  $S_{\text{unsat},1}^t$  [mm] (resulting from Eq. 52) and the saturation deficit  $S_{\text{deficit}}^t$  [mm], and the available unsaturated storage  $S_{\text{unsat},1}^t$  at time step  $t$ :

$$445 \quad S_{\text{deficit}}^t = (\theta_s - \theta_r) z_{\text{soil}} - S_{\text{sat}}^{t-1}, \quad (56)$$

$$Q_{\text{transfer},n}^t = f_{K_{v,1}} \underline{K_{v0}} e^{(-f_{K_{v,1}} z_{\text{watertable}}^{t-1})} \frac{S_{\text{unsat},1}^t}{S_{\text{deficit}}^t}, \quad (57)$$

$$Q_{\text{transfer},n}^t = \min(Q_{\text{transfer},n}^t, S_{\text{unsat},1}^t). \quad (58)$$

### 2.4.3 Evapotranspiration

Open water evaporation from water bodies (excluding rivers)  $E_{\text{open water}}^t$  [mm  $t^{-1}$ ] and rivers  $E_{\text{river}}^t$  [mm  $t^{-1}$ ] at time step  $t$  is based on: the fraction of open water  $f_{\text{open water}}$  [-], the fraction of rivers  $f_{\text{river}}$  [-], the water level in the kinematic reservoir of the river flow component  $S_{\text{wl,river}}^{t-1}$  [mm] and the overland flow component  $S_{\text{wl,land}}^{t-1}$  [mm] at the previous time step, and the remaining potential evaporation after interception  $E_{\text{pot,remainder}}^t$  [mm  $t^{-1}$ ], as follows:

$$E_{\text{river}}^t = \min(S_{\text{wl,river}}^{t-1} f_{\text{river}}, f_{\text{river}} E_{\text{pot,remainder}}^t),$$

$$455 \quad \underline{E_{\text{river}}^t = \min(f_{\text{river}} S_{\text{wl,river}}^{t-1}, f_{\text{river}} E_{\text{pot,remainder}}^t)}, \quad (59)$$

$$\underline{E_{\text{open water}}^t = \min(f_{\text{open water}} S_{\text{wl,land}}^{t-1}, f_{\text{open water}} E_{\text{pot,remainder}}^t)}. \quad (60)$$

$$\underline{E_{\text{open water}}^t = \min(S_{\text{wl,land}}^{t-1} f_{\text{open water}}, f_{\text{open water}} E_{\text{pot,remainder}}^t)}.$$

The potential evaporation rate remaining after interception (Eq. (9) or (15)) and open water evaporation (rivers and water bodies (excluding rivers))  $E_{\text{pot,remainder}}^t$  [mm  $t^{-1}$ ] at time step  $t$  is then:

$$460 \quad E_{\text{pot,remainder}}^t = E_{\text{pot,remainder}}^t - E_{\text{river}}^t - E_{\text{open water}}^t. \quad (61)$$

Potential soil evaporation  $E_{\text{pot,soil}}^t$  [mm  $t^{-1}$ ] at time step  $t$  is based on  $E_{\text{pot,remainder}}^t$  and the canopy gap fraction  $\underline{f_{\text{canopygap}}^t}$   $f_{\text{canopygap}}$  [-] (assumed to be identical to the amount of bare soil and can vary in time (section 2.2.3)). When the soil bucket in wflow\_sbm is not split-up into different layers, soil evaporation  $E_{\text{act,soil}}^t$  [mm  $t^{-1}$ ] is calculated as follows:

$$E_{\text{pot,soil}}^t = E_{\text{pot,remainder}}^t f_{\text{canopygap}}^t, \quad (62)$$

$$465 \quad E_{\text{act,soil}}^t = \min\left(E_{\text{pot,soil}}^t \frac{S_{\text{deficit}}^t}{z_{\text{soil}}(\theta_s - \theta_r)}, S_{\text{unsat},1}^t\right), \quad (63)$$

with  $S_{\text{deficit}}^t$ ,  $z_{\text{soil}}$ ,  $\theta_s$ ,  $\theta_r$  and  $S_{\text{unsat},1}^t$  (Eq. 55) as previously defined. As such, soil evaporation will be potential if the soil is fully wetted and it decreases linearly with increasing soil moisture deficit, limited by  $S_{\text{unsat},1}^t$ . When the soil bucket in wflow\_sbm is split-up into different layers, soil evaporation  $E_{\text{act,soil}}^t$  [mm  $t^{-1}$ ] is restricted to the upper layer. As for the case of one single soil layer, potential soil evaporation is scaled according to the wetness of the soil layer, based on the unsaturated

470 layer storage from Eq. (55), as follows:

$$E_{\text{act,soil}}^t = \begin{cases} \min\left(E_{\text{pot,soil}}^t \frac{S_{\text{unsat},1}^t}{z_{\text{watertable}}^{t-1}(\theta_s - \theta_r)}, S_{\text{unsat},1}^t\right) & \text{if } z_{\text{watertable}}^{t-1} \leq z_{1,\text{thickness}} \\ \min\left(E_{\text{pot,soil}}^t \frac{S_{\text{unsat},1}^t}{z_{1,\text{thickness}}(\theta_s - \theta_r)}, S_{\text{unsat},1}^t\right) & \text{if } z_{\text{watertable}}^{t-1} > z_{1,\text{thickness}}, \end{cases} \quad (64)$$

where  $z_{1,\text{thickness}}$  [mm] is the actual thickness of the upper layer, and  $\theta_s$ ,  $\theta_r$  and  $z_{\text{watertable}}^{t-1}$  as previously defined. Soil evaporation  $E_{\text{act,soil}}^t$  is subtracted from the unsaturated storage in the upper soil layer  $S_{\text{unsat},1}^t$  (Eq. 55), and the remaining potential soil evaporation  $E_{\text{remainder,soil}}^t$  is determined as follows:

$$475 \quad S_{\text{unsat},1}^t = S_{\text{unsat},1}^t - E_{\text{act,soil}}^t, \quad (65)$$

$$E_{\text{remainder,soil}}^t = E_{\text{pot,soil}}^t - E_{\text{act,soil}}^t. \quad (66)$$

When the soil bucket in `wflow_sbm` is split-up into different layers, soil evaporation  $E_{act,soil,sat}^t$  [mm  $t^{-1}$ ] from the saturated store is possible, when the water table  $z_{watertable}^{t-1}$  is present in the upper soil layer with actual thickness  $z_{1,thickness}$  [mm], and calculated as follows:

$$480 \quad E_{act,soil,sat}^t = \min\left(E_{remainder,soil}^t \frac{z_{1,thickness} - z_{watertable}^{t-1}}{z_{1,thickness}}, (z_{1,thickness} - z_{watertable}^{t-1})(\theta_s - \theta_r)\right), \quad (67)$$

and with  $\theta_s$  and  $\theta_r$  as previously defined. In case of a single soil layer, or when  $z_{watertable}^{t-1}$  is not present in the upper soil layer,  $E_{act,soil,sat}^t$  is set at zero.  $E_{act,soil,sat}^t$  is subtracted from the saturated store (at the previous time step):

$$S_{sat}^t = S_{sat}^{t-1} - E_{act,soil,sat}^t. \quad (68)$$

Potential evaporation  $E_{pot,remainder}^t$  [mm  $t^{-1}$ ] that is available for transpiration, is based on the remaining potential evaporation after interception and open water evaporation (Eq. 61) and the canopy gap fraction, as follows:

$$E_{pot,remainder}^t = E_{pot,remainder}^t (1.0 - f_{canopygap}^t). \quad (69)$$

In `wflow_sbm`, transpiration is first taken from the saturated store if the roots reach the water table  $z_{watertable}^{t-1}$  at the previous time step. The fraction of wet roots  $f_{wet\ roots}$  [-] (ranging between 0 and 1) is determined using a sigmoid function, that defines the sharpness of the transition between fully wet and fully dry roots. Transpiration  $E_{trans,sat}^t$  [mm  $t^{-1}$ ] from the saturated store at time step  $t$  is calculated as follows:

$$f_{wet\ roots} = \frac{1.0}{1.0 + e^{(-c_{rd}(z_{watertable}^{t-1} - z_{rooting}))}},$$

$$f_{wet\ roots} = \frac{1}{1 + e^{(-c_{rd}(z_{watertable}^{t-1} - z_{rooting}))}}, \quad (70)$$

$$E_{trans,sat}^t = \min(E_{pot,remainder}^t f_{wet\ roots}, S_{sat}^t), \quad (71)$$

$$495 \quad E_{trans,sat}^t = \begin{cases} \min(E_{pot,remainder}^t f_{wet\ roots}, S_{sat}^t), & \text{multiple soil layers} \\ \min(E_{pot,remainder}^t f_{wet\ roots}, S_{sat}^{t-1}), & \text{otherwise,} \end{cases}$$

where  $c_{rd}$  [mm $^{-1}$ ] is a model parameter that controls the sharpness of the sigmoid function and  $z_{rooting}$  [mm] is the rooting depth. The saturated store is then updated as follows (in case of multiple soil layers  $S_{sat}^t$  is given by Eq. (68)):-

⋮

$$S_{\text{sat}}^t = S_{\text{sat}}^t - E_{\text{trans,sat}}^t \quad (72)$$

500 The remaining potential evaporation  $E_{\text{pot,remainder}}^t$  [mm  $t^{-1}$ ] available for transpiration from the unsaturated store is updated by  $E_{\text{trans,sat}}^t$  as follows:

$$E_{\text{pot,remainder}}^t = E_{\text{pot,remainder}}^t - E_{\text{trans,sat}}^t \quad (73)$$

The maximum allowed water extraction by roots  $E_{\text{root,max,n}}^t$  rate by roots  $E_{\text{root,max,n}}^t$  [mm  $t^{-1}$ ] from unsaturated soil layer  $n$  at time step  $t$  is a function of the fraction of roots  $f_{\text{roots,n}}^t$   $f_{\text{roots,n}}^t$  [-] per of unsaturated layer  $n$ , and the available unsaturated store layer depth storage [mm] of layer  $n$ :

$$E_{\text{root,max,n}}^t = f_{\text{roots,n}}^t S_{\text{unsat,n}}^t \quad (74)$$

Next, a root water uptake reduction model based on Feddes et al. (1978) is used to calculate a reduction coefficient as a function of soil matric suction. Soil matric suction is calculated following Brooks and Corey (1964):

$$\frac{(\theta - \theta_r)}{(\theta_s - \theta_r)} \frac{(\theta_n - \theta_r)}{(\theta_s - \theta_r)} = \frac{h_b^\lambda}{h} \lambda, h > h_b, h \leq h_b, \begin{cases} \left(\frac{h_b}{h_n}\right)^{\lambda_n} & \text{if } h_n > h_b \\ 1 & \text{if } h_n \leq h_b, \end{cases} \quad (75)$$

510 where  $h_n$  is the soil matric suction [cm] of unsaturated soil layer  $n$ ,  $h_b$  is the air entry value [cm], and  $\theta_n$ ,  $\theta_r$ ,  $\theta_s$  and  $\lambda_n$  as previously defined. In wflow\_sbm soil matric suction  $h_n^t$  for each unsaturated soil layer  $n$  with thickness  $z_{n,\text{thickness}}^t$  [mm] at time step  $t$  is calculated as follows:

$$h_n^t = \frac{h_b}{\left(\frac{S_{\text{unsat,n}}^t / z_{n,\text{thickness}}^t}{(\theta_s - \theta_r)}\right)^{\lambda_n^{-1}}} \frac{h_b}{\left(\frac{S_{\text{unsat,n}}^t / z_{n,\text{thickness}}^t}{(\theta_s - \theta_r)}\right)^{\lambda_n^{-1}}}, \quad (76)$$

where  $S_{\text{unsat,1}}^t$  is given by Eq. (65), and for unsaturated layers  $n > 1$   $S_{\text{unsat,n}}^t$  is given by Eq. (55). The root water uptake reduction coefficient  $f_{\text{root uptake,n}}^t$  at time step  $t$  with  $h_n^t$  below or equal  $h_3$  (400 cm) is set to 1, with  $h_n^t$  above or equal to  $h_4$  (15849 cm)  $f_{\text{root uptake,n}}^t$  is 0, and with  $h_n^t$  between  $h_3$  and  $h_4$   $f_{\text{root uptake,n}}^t$  declines linearly from 1 to 0. The values for  $h_2$  (100 cm),  $h_3$  and  $h_4$  are fixed, and  $h_1$  is set by  $h_b$  (default: 10 cm) and  $h_2$  can be defined as input to the model. In the original transpiration reduction-curve of Feddes et al. (1978) root water uptake above  $h_1$  is set to zero (oxygen deficit) and between  $h_1$  and  $h_2$  root water uptake is limited. The assumption

520 that very wet conditions do not affect root water uptake too much is probably generally applicable to natural vegetation,

however for crops this assumption is not valid. This could be improved in the Wflow.jl code by applying the reduction to crops only. While the  $h_3$  value is fixed, in the original transpiration reduction-curve of Feddes et al. (1978)  $h_3$  varies with the potential transpiration rate, and this could also be improved in the code. For unsaturated soil layer  $n$ , transpiration  $E_{trans,unsat,n}^t$  [mm  $t^{-1}$ ] is controlled by  $E_{root,max,n}^t$ , the remaining evaporation  $E_{pot,remainder}^t$  [mm  $t^{-1}$ ] (Eq. 73) for soil layer  $n = 1$  see Eq. (73) and for layers  $n > 1$  see Eq. (79)), the unsaturated storage  $S_{unsat,n}^t$  [mm] (for soil layer  $n = 1$  see Eq. (65) and for layers  $n > 1$  see Eq. (55)), and  $f_{root\ uptake,n}^t$ , at time step  $t$ :

$$E_{trans,unsat,n}^t = \min(E_{root,max,n}^t, E_{pot,remainder}^t, S_{unsat,n}^t f_{root\ uptake,n}^t) \quad (77)$$

At the same time  $S_{unsat,n}^t$  and the remaining potential evaporation  $E_{pot,remainder}^t$  [mm  $t^{-1}$ ] are updated by subtracting  $E_{trans,unsat,n}^t$ :

$$S_{unsat,n}^t = S_{unsat,n}^t - E_{trans,unsat,n}^t \quad (78)$$

$$E_{trans,unsat,n}^t$$

$$S_{unsat,n}^t = S_{unsat,n}^t - E_{trans,unsat,n}^t \quad (78)$$

$$E_{pot,remainder}^t = E_{pot,remainder}^t - E_{trans,unsat,n}^t \quad (79)$$

$$E_{pot,remainder}^t = E_{pot,remainder}^t - E_{trans,unsat,n}^t$$

535 After the soil water transfer, evaporation and transpiration computations, a soil water balance check is performed. Unsaturated storage that exceeds the maximum storage per layer, is transferred to the layer above (or surface), from the bottom to the top unsaturated soil layer, resulting in excess water at the surface  $R_{excess,unsat}^t$  [mm  $t^{-1}$ ]. The water that actually infiltrates actual infiltration rate  $F_{act}^t$  [mm  $t^{-1}$ ] is then calculated as follows:

$$F_{act}^t = F_{total}^t - R_{excess,unsat}^t, \quad (80)$$

540 and the amount with  $F_{total}^t$  as previously defined. And the rate of water that cannot infiltrate due to saturated soil conditions  $F_{excess,sat}^t$  [mm  $t^{-1}$ ] is determined as:

$$F_{excess,sat}^t = F_{available}^t - F_{total}^t - F_{excess}^t + R_{excess,unsat}^t, \quad (81)$$

with  $F_{available}^t$ ,  $F_{total}^t$  and  $F_{excess}^t$  as previously defined.

Capillary rise in wflow\_sbm is determined ~~using the following approach, first  $K_{vz_{\text{watertable}}}^t$~~  when an unsaturated zone occurs  
 545 ~~in the soil column~~ at time step  $t$  is determined based on the water table  ~~$z_{\text{watertable}}^{t-1}$~~  depth at the previous time step :-

$$\underline{K_{vz_{\text{watertable}}}^t} = f_{Kv,n}(K_{v0})e^{(-f_{Kv}z_{\text{watertable}}^{t-1})},$$

where  ~~$f_{Kv,n}$~~  is the multiplication factor for soil layer  $n$  where  ~~$z_{\text{watertable}}^{t-1}$~~  is present. Then ( ~~$z_{\text{watertable}}^{t-1} > 0$~~ ), using the following  
 approach. First a maximum capillary rise  ~~$C_{\text{max}}^t$  [mm  $t^{-1}$ ]~~ at time step  $t$  is determined from the minimum of  ~~$K_{vz_{\text{watertable}}}^t K_{vz,n}^t$~~   
 (Eq. 50), the actual transpiration ~~taken rate~~ from the unsaturated store  ~~$\sum E_{\text{trans,unsat},n}^t \sum_{n=1}^m E_{\text{trans,unsat},n}^t$~~  for  $m$  unsaturated  
 550 ~~soil layers~~,  $S_{\text{sat}}^t$  (Eq. 72), and the unsaturated store capacity  $S_{\text{unsat,max}}^t$  which is based on  $S_{\text{sat}}^t$  (Eq. 72) and  ~~$\sum S_{\text{unsat},n}^t$~~  the  
~~sum of unsaturated storage  $\sum_{n=1}^m S_{\text{unsat},n}^t$  for  $m$  unsaturated soil layers~~ (soil water balance check after Eq. (78)):-  
 78):

$$S_{\text{unsat,max}}^t = z_{\text{soil}}(\theta_s - \theta_r) - S_{\text{sat}}^t - \sum_{n=1}^m S_{\text{unsat},n}^t, \quad (82)$$

$$C_{\text{max}}^t = \max(0.0, \min(K_{vz_{\text{watertable}}}^t, \sum_{n=1}^m E_{\text{trans,unsat},n}^t, S_{\text{unsat,max}}^t, S_{\text{sat}}^t)), \quad (83)$$

555 Finally with  ~~$z_{\text{soil}}$ ,  $\theta_s$  and  $\theta_r$~~  as previously defined. Then, the maximum capillary ~~rise rate~~ is scaled using the following empirical  
 equation (e.g., Zammouri, 2001; Yang et al., 2011; Wang et al., 2016):

$$C_{\text{act}}^t = \begin{cases} C_{\text{max}}^t \left(1 - \frac{z_{\text{watertable}}^{t-1}}{z_{\text{cap,maxdepth}}}\right)^{n_{\text{cap}}} & \text{if } (z_{\text{watertable}}^{t-1} > z_{\text{rooting}}) \ \& \ (z_{\text{watertable}}^{t-1} < z_{\text{cap,maxdepth}}) \\ 0 & \text{otherwise,} \end{cases} \quad (84)$$

where  $C_{\text{act}}^t$  [mm  $t^{-1}$ ] is the capillary ~~rise rate~~ at time step  $t$ ,  $z_{\text{cap,maxdepth}}$  [mm] is the critical water depth beyond which  
 capillary rise ceases and  ~~$m$ ,  $n_{\text{cap}}$~~  [-] is an empirical coefficient related to soil properties and climate, generally set between  
 560 1-3,  ~~$z_{\text{watertable}}^{t-1}$~~  and  ~~$z_{\text{rooting}}$~~  as previously defined. When the ~~soil~~ bucket in wflow\_sbm is split-up into different layers,  $C_{\text{act}}^t$   
 is divided over the different unsaturated soil layers, from the bottom to the top unsaturated soil layer, without exceeding ~~the~~  
~~saturated water content  $\theta_s$~~ .

#### 2.4.4 Leakage

In wflow\_sbm it is possible to have leakage  $L^t$  [mm  $t^{-1}$ ] at time step  $t$  from the saturated store  $S_{\text{sat}}^t$  (Eq. 72) to deeper  
 565 groundwater, by setting the maximum leakage model parameter  $L_{\text{max}}$  [mm  $t^{-1}$ ]  $> 0$ . This water is lost from the saturated store  
 and runs out of the model domain.  $L^t$  is calculated as follows:

$$L^t = \min(\underline{f_{Kv,n_b}} K_{v0} e^{(-f_{Kv}z_{\text{soil}})}, S_{\text{sat}}^t, L_{\text{max}}), \quad (85)$$

where  ~~$f_{Kv,n_b}$~~  is the optional multiplication factor (to correct the vertical saturated hydraulic conductivity) for the bottom soil  
 layer  $n_b$ , and  $K_{v0}$ ,  $f_{Kv}$  and  $z_{\text{soil}}$  as previously defined.

## 570 2.5 Lateral subsurface flow

In wflow\_sbm the kinematic wave approach is used to route subsurface flow laterally. The saturated store can be drained laterally by saturated downslope subsurface flow for a slope with width  $w$  [m] according to:

$$Q_{\text{subsurface}} = \frac{K_{h0} c_{\text{land slope}}}{f_{Kv}} \frac{K_{h0} c_{\text{land slope}}}{f_{\text{ssf}, Kv}} \left( e^{\frac{(-f_{Kv} z_{\text{ssf}, \text{watertable}})}{(-f_{\text{ssf}, Kv} z_{\text{ssf}, \text{watertable}})}} - e^{\frac{(-f_{Kv} z_{\text{ssf}, \text{soil}})}{(-f_{\text{ssf}, Kv} z_{\text{ssf}, \text{soil}})}} \right) w, \quad (86)$$

where  $c_{\text{land slope}}$  is the land slope [ $\text{m m}^{-1}$ ],  $Q_{\text{subsurface}}$  is subsurface flow [ $\text{m}^3 \text{t}^{-1} \text{d}^{-1}$ ],  $K_{h0} = 0.001 K_{v0} f_{Kh0} \frac{t_b}{t}$ ,  $K_{h0} = 0.001 K_{v0} f_{Kh0} \frac{t_b}{t}$  is the horizontal saturated hydraulic conductivity at the soil surface [ $\text{m day d}^{-1}$ ], based on the vertical saturated hydraulic conductivity at the soil surface  $K_{v0}$  [ $\text{mm t}^{-1}$ ] and an optional multiplication factor  $f_{Kh0}$  [-] (default: 100) applied to  $K_{v0}$ ,  $z_{\text{ssf}, \text{watertable}}$  [m] is the water table depth (set by  $z_{\text{watertable}}$  [mm] after unit conversion at the start of the lateral subsurface flow computation) and  $z_{\text{ssf}, \text{soil}}$  [m] is the soil depth (set by  $z_{\text{soil}}$  [mm] after unit conversion),  $f_{\text{ssf}, Kv}$  is a scaling parameter [ $\text{m}^{-1}$ ] (set by  $f_{Kv}$  [ $\text{mm}^{-1}$ ] after unit conversion) and  $\Delta t_b$  and  $\Delta t$  as previously defined. Combining with the following continuity equation:

$$(\theta_s - \theta_r) w \frac{\partial h}{\partial t} \frac{\delta h}{\delta t} = - \frac{\partial Q_{\text{subsurface}}}{\partial x} \frac{\delta Q_{\text{subsurface}}}{\delta x} + w R_{\text{input}} \quad (87)$$

where  $h$  is the water table height [m],  $x$  is the distance downslope [m],  $w$  is the flow width [m], and  $R_{\text{input}} = 0.001 \frac{\Delta t_b}{\Delta t} R_{\text{input}}$  is the netto input rate [ $\text{m d}^{-1}$ ] computed from the netto input rate variable  $R_{\text{input}}$  [ $\text{mm t}^{-1}$ ] to the saturated store, substituting for  $h(\frac{\partial q}{\partial h})$  which is part of the vertical SBM concept, and  $\theta_s$  and  $\theta_r$  as previously defined. Substituting for  $h(\frac{\delta Q_{\text{subsurface}}}{\delta h})$ , gives:

$$\frac{\partial Q_{\text{subsurface}}}{\partial t} \frac{\delta Q_{\text{subsurface}}}{\delta t} = -c \frac{\partial Q_{\text{subsurface}}}{\partial x} \frac{\delta Q_{\text{subsurface}}}{\delta x} + c w R_{\text{input}}, \text{ with celerity } c = \frac{K_{h0} c_{\text{land slope}}}{(\theta_s - \theta_r)} e^{\frac{(-f_{Kv} z_{\text{ssf}, \text{watertable}})}{(-f_{\text{ssf}, Kv} z_{\text{ssf}, \text{watertable}})}} \frac{K_{h0} e^{\frac{(-f_{\text{ssf}, Kv} z_{\text{ssf}, \text{soil}})}{(-f_{\text{ssf}, Kv} z_{\text{ssf}, \text{soil}})}}}{(f_{\text{ssf}, Kv} z_{\text{ssf}, \text{soil}})} \quad (88)$$

The kinematic wave equation for lateral subsurface flow is solved iteratively using Newton's method. In wflow\_sbm, the flow width  $w$  is calculated for each grid cell by dividing the cell area with the distance downslope  $x$ , based on the flow direction and the length in the x and y direction of each grid cell. The land slope  $c_{\text{land slope}}$  needs to be provided for each grid cell in wflow\_sbm. The netto input rate  $R_{\text{input}}$  in wflow\_sbm consists of the input of transfer of soil water from the  $Q_{\text{transfer}, \text{act}, m}^t$  from unsaturated soil layer  $m$  above the water table  $z_{\text{watertable}}^{t-1}$  [mm] at the previous time step, and the losses through capillary rise  $C_{\text{act}}^t$ , transpiration  $E_{\text{act}, \text{soil}, \text{sat}}^t E_{\text{trans}, \text{sat}}^t$  from the saturated store, leakage  $L^t$  and soil evaporation  $E_{\text{act}, \text{soil}}^t E_{\text{act}, \text{soil}, \text{sat}}^t$  from the saturated store, converted to  $\text{m with unit mm t}^{-1}$  for these terms. After the lateral subsurface flow calculation, that is bounded by the maximum lateral subsurface flow rate based on  $z_{\text{ssf}, \text{soil}}$ , a check is made to determine if saturation of the



entire soil column occurs, and as a consequence saturation excess overland flow is triggered. Water exfiltrating during saturated  
 595 conditions  $R_{\text{exfilt,sat}}^t$  [m  $t^{-1}$ ] at time step  $t$  is calculated as follows:

$$R_{\text{exfilt,sat}}^t = \max\left(0, \frac{(Q_{\text{subsurface,in}}^t + R_{\text{input}}wx - Q_{\text{subsurface,out}}^t)}{wx} - z_{\text{ssf,watertable}}^t(\theta_s - \theta_r)\right),$$

$$\Delta S_{\text{subsurface}}^t = \frac{Q_{\text{subsurface,in}}^t \Delta t_{\text{ssf}} + 0.001 R_{\text{input}}wx - Q_{\text{subsurface,out}}^t \Delta t_{\text{ssf}}}{wx}, \quad (89)$$

$$R_{\text{exfilt,sat}}^t = \max\left(0, \Delta S_{\text{subsurface}}^t - z_{\text{ssf,watertable}}^{t-1}(\theta_s - \theta_r)\right), \quad (90)$$

600 where  $\Delta S_{\text{subsurface}}^t$  [m] is the change in subsurface storage at time step  $t$ ,  $Q_{\text{subsurface,in}}^t$  [m<sup>3</sup> dayd<sup>-1</sup>] is the subsurface flow  
 in to a cell at time step  $t$ ,  $Q_{\text{subsurface,out}}^t$  [m<sup>3</sup> dayd<sup>-1</sup>] is the subsurface flow out of a cell,  $z_{\text{ssf,watertable}}^t$  at time step  $t$ ,  
 $z_{\text{ssf,watertable}}^{t-1}$  [m] is the water table depth, at time step  $t$ , at the previous time step,  $\Delta t_{\text{ssf}}$  [d] is the time increment (same  
 length as  $\Delta t$  [s], expressed in different unit [d]) of the lateral subsurface flow component, and  $R_{\text{input}}$ ,  $w$ ,  $x$ ,  $\theta_s$  and  $\theta_r$  as  
 previously defined. Additionally, after the lateral subsurface flow calculation  $w_{\text{flow\_sbm}}$  checks if exfiltration  $R_{\text{exfilt,unsat}}^t$   
 605 [mm  $t^{-1}$ ] of the unsaturated store onto the land surface occurs because of a change in water table depth  $z_{\text{watertable}}$  [mm] (set  
 by  $z_{\text{ssf,watertable}}^t$  after unit conversion). This check is performed from the bottom unsaturated layer (at the previous time step)  
 until the top unsaturated layer, where the excess of unsaturated storage for each layer is transferred from the bottom to the top  
 unsaturated layer, and can result in exfiltration of water onto the land surface.

## 2.6 Surface flow routing

610 The kinematic wave approach is used for river and overland flow routing. The kinematic wave equations are (Chow et al.,  
 1988):

$$\frac{dQ}{dx} + \frac{dA}{dt} = Q_{\text{inflow}},$$

$$\frac{\delta Q}{\delta x} + \frac{\delta A}{\delta t} = Q_{\text{inflow}}, \quad (91)$$

615  $A = \alpha Q^\beta, \quad (92)$

$$A = \alpha Q^\beta,$$

and can be combined as follows:

$$\frac{\delta Q}{\delta x} + \alpha\beta Q^{\beta-1} \frac{\delta Q}{\delta t} = Q_{\text{inflow}}, \quad (93)$$

where  $Q$  is the surface runoff-flow in the kinematic wave [ $\text{m}^3 \text{s}^{-1}$ ],  $x$  is the length of the runoff-flow pathway [m],  $A$  is the cross-section area of the runoff-flow pathway [ $\text{m}^2$ ],  $Q_{\text{inflow}}$  is the lateral inflow per unit length into the kinematic wave [ $\text{m}^2 \text{s}^{-1}$ ],  $t$  is the integration time step and  $\alpha$  and  $\beta$  are coefficients. These coefficients can be determined by using Manning's equation (Chow et al., 1988), resulting in:

$$\alpha = \left( \frac{n P_{\text{w}}^{\frac{2}{3}}}{\sqrt{c_{\text{slope}}}} \frac{n P_{\text{w}}^{\frac{2}{3}}}{\sqrt{c_{\text{slope}}}} \right)^{\beta} \quad \text{and} \quad \beta = 0.6, \quad (94)$$

where  $P_{\text{w}}$  [m] is the wetted perimeter,  $c_{\text{slope}}$  ( $c_{\text{land slope}}$  for overland flow and  $c_{\text{river slope}}$  for river flow) is the slope [ $\text{m m}^{-1}$ ], and  $n$  ( $n_{\text{land}}$  for overland flow and  $n_{\text{river}}$  for river flow) is Manning's coefficient [ $\text{s m}^{-\frac{1}{3}}$ ]. The wetted perimeter  $P_{\text{w}}$  for river flow is calculated by adding the river width ( $w_{\text{river}}$ ) and two times half of the river bankfull depth ( $h_{\text{bankfull}}$ ). For overland flow,  $P_{\text{w}}$  is set equal to the effective flow width, determined by dividing the grid cell area by the flow length, and subtracting  $w_{\text{river}}$ . In wflow\_sbm for river flow the parameters  $w_{\text{river}}$ , length ( $x_{\text{river}}$ ) and  $c_{\text{river slope}}$ , and for overland flow  $c_{\text{land slope}}$ , need to be provided. The lateral inflow  $Q_{\text{inflow}}$  per unit flow length for overland flow routing consists of infiltration excess water  $F_{\text{excess}}^t$ , saturation excess water during infiltration  $F_{\text{excess,sat}}^t$ , exfiltration water from the unsaturated store  $R_{\text{exfilt,unsat}}^t$ , water exfiltrating during saturated conditions  $R_{\text{exfilt,sat}}^t$ , runoff from open water  $R_{\text{open water}}^t$ , and open water evaporation loss  $E_{\text{open water}}^t$ , converted to  $\text{m}^2 \text{s}^{-1}$ . The lateral inflow  $Q_{\text{inflow}}$  per unit length of  $x_{\text{river}}$  for river flow routing consists of overland flow [ $\text{m}^3 \text{s}^{-1}$ ], lateral subsurface flow [ $\text{m}^3 \text{d}^{-1}$ ], runoff from the river  $R_{\text{river}}^t$  [ $\text{mm t}^{-1}$ ], and river evaporation loss  $E_{\text{river}}^t$  [ $\text{mm t}^{-1}$ ], converted to  $\text{m}^2 \text{s}^{-1}$ . Like the lateral subsurface routing, these equations are solved in wflow\_sbm using Newton's method. The number of iterations for surface runoff-flow in the kinematic wave within a time step  $t$  of length  $\Delta t$  [s], defaults to the Courant number  $C$ :

$$C = \frac{c_k dt}{dx} \frac{c_k \Delta t}{\Delta x}, \quad (95)$$

where  $c_k$  [ $\text{m s}^{-1}$ ] is the kinematic wave celerity:  $c_k = \frac{1}{\alpha\beta Q^{\beta-1}}$ , and  $x$  and  $t$  as previously defined.  $\Delta x$  [m] is the space increment. The number of iterations within a time step  $t$  is calculated by multiplying the 95th percentile of  $C$  (to remove potential very high values (outliers)) for the wflow\_sbm model domain with 1.25. The number of iterations can also be fixed to a specific sub time step [s] for both river and overland flow, this is a model setting in the wflow\_sbm configuration file. For river cells in wflow\_sbm, where overland and river flow can be both present, lateral subsurface and overland flow into the river cell is partitioned based on the land slope of the river cell  $c_{\text{land slope,river}}$  [ $\text{m m}^{-1}$ ] and the land slope  $c_{\text{land slope,upstream}}$  [ $\text{m m}^{-1}$ ] of the upstream cell:

$$645 \quad f_{\text{to river}} = \frac{c_{\text{land slope,upstream}}}{c_{\text{land slope,upstream}} + c_{\text{land slope,river}}}, \quad (96)$$

$$f_{\text{to land}} = 1 - f_{\text{to river}}, \quad (97)$$

where  $f_{\text{to river}}$  [-] is the fraction of lateral subsurface or overland flow from an upstream cell that flows into the river, and  $f_{\text{to land}}$  [-] is the fraction of lateral subsurface or overland flow from an upstream cell that flows into the downstream kinematic reservoir of lateral subsurface and overland flow respectively. In case a river cell has the same flow direction as the upstream cell,  $f_{\text{to river}} = 0$ , and thus overland and lateral subsurface flow from the upstream cell do not contribute to flow into the river.

## 2.7 Reservoirs and lakes

### 2.7.1 Reservoirs

In wflow\_sbm, reservoirs can be included in the kinematic wave routing for river flow. The first step in the reservoir module is to calculate the storage  $S_{\text{res}}^t - S_{\text{res}}^{t_i}$  [m<sup>3</sup>] at kinematic wave time step  $t_i$  with length  $\Delta t_i$  [s], based on the storage  $S_{\text{res}}^{t-1} - S_{\text{res}}^{t_i-1}$  at the previous time step, inflow  $Q_{\text{in,res}}^t$  of the kinematic wave, inflow  $Q_{\text{in,res}}^{t_i}$  [m<sup>3</sup> s<sup>-1</sup>] at time step  $t_i$ , average precipitation  $P_{\text{res}}^{t_i}$  [mm t<sup>-1</sup>] (converted from  $P_{\text{res}}^t$  [mm t<sup>-1</sup>]) and potential evapotranspiration  $E_{\text{pot,res}}^{t_i}$  [mm t<sup>-1</sup>] (converted from  $E_{\text{pot,res}}^t$  [mm t<sup>-1</sup>]) on the reservoir area  $A_{\text{res}}$  [m<sup>2</sup>], at time step  $t_i$ :

$$S_{\text{res}}^{t_i} = S_{\text{res}}^{t-1} + Q_{\text{in,res}}^{t_i} \Delta t_i + 0.001 P_{\text{res}}^{t_i} A_{\text{res}} - 0.001 E_{\text{pot,res}}^{t_i} A_{\text{res}}. \quad (98)$$

660 Then the storage fraction  $f_{\text{res,storage}}^t$  [-] is calculated based on the maximum storage of the reservoir  $S_{\text{res,max}}$  [m<sup>3</sup>] (above this storage amount water is spilled):

$$f_{\text{res,storage}}^t = \frac{S_{\text{res}}^t}{S_{\text{res,max}}}. \quad (99)$$

The minimum release  $R_{\text{min}}^t$  [m<sup>3</sup> t<sup>-1</sup>] at time step  $t$  is based on a sigmoid function, the minimum flow requirement downstream of the reservoir  $Q_{\text{min req.}}$  [m<sup>3</sup> s<sup>-1</sup>], the target minimum storage fraction (of  $S_{\text{res,max}}$ )  $f_{\text{res,min}}$  [-] and  $f_{\text{res,storage}}^t$  at time step  $t$ :

$$R_{\text{min}}^t = \min\left(\frac{Q_{\text{min req.}} \Delta t_i}{1 + e^{-30(f_{\text{res,storage}}^t - f_{\text{res,min}})}}, \frac{Q_{\text{min req.}} \Delta t_i}{1 + e^{-30(f_{\text{res,storage}}^t - f_{\text{res,min}})}}, S_{\text{res}}^t\right), \quad (100)$$

and  $R_{\text{min}}^t$  is subtracted from the reservoir storage  $S_{\text{res}}^t$ :

$S_{\text{res}}^{t_i}$ :

$$670 \quad S_{\text{res}}^{t_i} = S_{\text{res}}^{t_i} - R_{\text{min}}^{t_i}. \quad (101)$$

An additional release  $R_{\text{pot}}^{t_i}$  [m<sup>3</sup> t<sup>-1</sup>] is calculated when the reservoir storage is above the target maximum storage fraction  $f_{\text{res,max}}$  [-], controlled by the maximum release capacity below the spillway  $Q_{\text{max,res}}$  [m<sup>3</sup> s<sup>-1</sup>]:

$$R^t = \min(\max(0, S_{\text{res}}^t - (S_{\text{res,max}} f_{\text{res,max}})), \max(0, S_{\text{res}}^t - S_{\text{res,max}}) + Q_{\text{max,res}} t - R_{\text{min}}^t),$$

$$675 \quad R_{\text{pot}}^{t_i} = \max(0, S_{\text{res}}^{t_i} - (S_{\text{res,max}} f_{\text{res,max}})), \quad (102)$$

$$S_{\text{res,above max}}^{t_i} = \max(0, S_{\text{res}}^{t_i} - S_{\text{res,max}}), \quad (103)$$

$$R^{t_i} = \min(R_{\text{pot}}^{t_i}, S_{\text{res,above max}}^{t_i} + Q_{\text{max,res}} \Delta t_i - R_{\text{min}}^{t_i}), \quad (104)$$

and  $R^t$  where  $R_{\text{pot}}^{t_i}$  [m<sup>3</sup> t<sup>-1</sup>] is the potential reservoir release and  $S_{\text{res,above max}}^{t_i}$  [m<sup>3</sup>] is the reservoir storage above the maximum reservoir storage.  $R^{t_i}$  is subtracted from the reservoir storage  $S_{\text{res}}^{t_i}$ .

$S_{\text{res}}^{t_i}$ :

$$680 \quad S_{\text{res}}^{t_i} = S_{\text{res}}^{t_i} - R_{\text{min}}^{t_i}. \quad (105)$$

The total reservoir inflow  $Q_{\text{in,res}}^t$  [m<sup>3</sup> t<sup>-1</sup>] and outflow  $Q_{\text{out,res}}^t$  [m<sup>3</sup> t<sup>-1</sup>] for model time step  $t$  of length  $\Delta t$  [s] are calculated as follows:

$$Q_{\text{in,res}}^t = \sum_{i=1}^{n_i} Q_{\text{in,res}}^{t_i} \Delta t_i, \quad (106)$$

$$685 \quad Q_{\text{out,res}}^t = \sum_{i=1}^{n_i} (R_{\text{min}}^{t_i} + R^{t_i}), \quad (107)$$

where  $n_i$  refers to the number of iterations within model time step  $t$ , and  $Q_{\text{in,res}}^{t_i}$ ,  $R_{\text{min}}^{t_i}$ ,  $R^{t_i}$  and  $\Delta t_i$  as previously defined.

## 2.7.2 Natural lakes

As for Lakes can be included in the kinematic wave routing for river flow, and as for the reservoirs in wflow\_sbm, a mass balance approach is used for modelling natural lakes:-

690 lakes:

$$\frac{S_{\text{lake}}(t + \Delta t)}{\Delta t} - \frac{S_{\text{lake}}^{t_i + \Delta t_i}}{\Delta t_i} = \frac{S_{\text{lake}}(t)}{\Delta t} - \frac{S_{\text{lake}}^{t_i}}{\Delta t_i} + Q_{\text{in,lake}}^{t_i + \Delta t_i} + \frac{0.001(P_{\text{lake}} - E_{\text{lake}})A_{\text{lake}}}{\Delta t} - \frac{0.001(P_{\text{lake}}^{t_i + \Delta t_i} - E_{\text{lake}}^{t_i + \Delta t_i})A_{\text{lake}}}{\Delta t_i} - Q_{\text{out,lake}}^{t_i + \Delta t_i}.$$

where  $S_{\text{lake}}$  is lake storage [ $\text{m}^3$ ],  $\Delta t$  is the model timestep,  $t_i$  is the kinematic wave time step of length  $\Delta t_i$  [s],  $Q_{\text{in,lake}}$  is the sum of inflows [ $\text{m}^3 \text{ s}^{-1}$ ],  $Q_{\text{out,lake}}$  is the lake outflow at the outlet [ $\text{m}^3 \text{ s}^{-1}$ ],  $P_{\text{lake}}$  is precipitation [ $\text{mm}$ ],  $P_{\text{lake}}^{t_i+\Delta t_i}$  is the precipitation amount during  $\Delta t_i$  (converted from  $P_{\text{lake}}^t$  [ $\text{mm t}^{-1}$ ]),  $E_{\text{lake}}^{t_i+\Delta t_i}$  is lake evaporation [ $\text{mm}$ ] during  $\Delta t_i$  (converted from  $E_{\text{lake}}^t$  [ $\text{mm t}^{-1}$ ]) and  $A_{\text{lake}}$  is the lake surface [ $\text{m}^2$ ]. Most of the terms in Eq. (108) are known at the current or previous time step, except  $S_{\text{lake}}(t+\Delta t)$  and  $Q_{\text{out,lake}}^{t_i+\Delta t_i}$  and  $Q_{\text{out,lake}}^{t_i+\Delta t_i}$ . For lakes characterized by a storage curve of the form  $S_{\text{lake}} = A_{\text{lake}} H_{\text{lake}}$  and the following rating curve:

$$Q_{\text{out,lake}} = \alpha_{\text{lake}} (H_{\text{lake}} - H_{0,\text{lake}})^{\beta_{\text{lake}}}, \quad (109)$$

where  $H_{0,\text{lake}}$  is the minimum water level under which the outflow is zero, and the  $\beta_{\text{lake}}$  [ $\text{m s}^{-1}$ ] is a parameter that depends on lake outlet characteristics and the  $\beta_{\text{lake}}$  exponent has a value of 2 (parabolic weir) the Modified Puls Approach is used. Then,  $S_{\text{lake}}$  can be expressed as follows:

$$S_{\text{lake}} = A_{\text{lake}} H_{\text{lake}} = A_{\text{lake}} (h + H_{0,\text{lake}}) = \frac{A_{\text{lake}}}{\sqrt{\alpha}} \frac{A_{\text{lake}}}{\sqrt{\alpha_{\text{lake}}}} \sqrt{Q_{\text{out,lake}}} + A_{\text{lake}} H_{0,\text{lake}}, \quad (110)$$

where  $h = H_{\text{lake}} - H_{0,\text{lake}}$ . Inserting this equation in the mass balance equation gives:

$$\frac{\sqrt{Q_{\text{out,lake}}}}{\Delta t_i \sqrt{\alpha_{\text{lake}}}} \frac{A_{\text{lake}}}{\sqrt{\alpha}} \sqrt{Q_{\text{out,lake}}^{t_i+\Delta t_i}} + Q_{\text{out,lake}}^{t_i+\Delta t_i} = \frac{S_{\text{lake}}(t)}{\Delta t} \frac{S_{\text{lake}}^{t_i}}{\Delta t_i} + Q_{\text{in,lake}}^{t_i+\Delta t_i} + \frac{0.001(P_{\text{lake}} - E_{\text{lake}})A_{\text{lake}}}{\Delta t} \frac{0.001(P_{\text{lake}}^{t_i+\Delta t_i} - E_{\text{lake}}^{t_i+\Delta t_i})}{\Delta t_i} \quad (111)$$

The solution for  $Q_{\text{out,lake}}^{t_i+\Delta t_i}$  is then:

$$Q_{\text{out,lake}}^{t_i+\Delta t_i} = \begin{cases} \left( \frac{-f_{\text{lake}} + \sqrt{f_{\text{lake}}^2 + 4 \left( S_{\text{lake}} - \frac{A_{\text{lake}} H_{0,\text{lake}}}{\Delta t_i} \right)}}{2} \right)^2 & \text{if } S_{\text{lake}} > \frac{A_{\text{lake}} H_{0,\text{lake}}}{\Delta t_i} \\ 0 & \text{if } S_{\text{lake}} \leq \frac{A_{\text{lake}} H_{0,\text{lake}}}{\Delta t_i}, \end{cases} \quad (112)$$

where  $f_{\text{lake}} = \frac{A_{\text{lake}}}{\Delta t \sqrt{\alpha}}$ , and  $S_{\text{lake}} = \frac{S_{\text{lake}}(t)}{\Delta t} + Q_{\text{in,lake}} + \frac{0.001(P_{\text{lake}} - E_{\text{lake}})A_{\text{lake}}}{\Delta t}$ ,  $f_{\text{lake}} = \frac{A_{\text{lake}}}{\Delta t_i \sqrt{\alpha_{\text{lake}}}}$ , and  $S_{\text{lake}} = \frac{S_{\text{lake}}^{t_i}}{\Delta t_i} + Q_{\text{in,lake}}^{t_i+\Delta t_i} + \frac{0.001(P_{\text{lake}}^{t_i+\Delta t_i} - E_{\text{lake}}^{t_i+\Delta t_i})}{\Delta t_i}$ .

The Modified Puls Approach is not applicable for lakes characterized by a rating curve (Eq. 109) with  $\beta \neq 2$  ( $\beta_{\text{lake}} \neq 2$ ) (non-parabolic weir, for a rectangular weir usually a value of 3/2 is used) or a rating curve from measurements (linear interpolation of  $Q_{\text{out,lake}}$  and  $H_{\text{lake}}$  values in a lookup table), in combination with a storage curve from measurements (linear interpolation of  $S_{\text{lake}}$  and  $H_{\text{lake}}$  values in a lookup table) or computed from the relationship  $S_{\text{lake}} = A_{\text{lake}} H_{\text{lake}}$ . For these lakes  $Q_{\text{out,lake}}$  is first computed for each time step, based on  $H_{\text{lake}}$  at the previous time step. Then,  $S_{\text{lake}}$  is updated with Eq. (108), and  $H_{\text{lake}}$  is

updated with the storage curve based on the updated  $S_{\text{lake}}$ . For closeby lakes which are connected it is possible to link the lakes and return flow can be allowed from the downstream to the upstream lake. An average lake water level ( $H_{\text{lake,avg}}$  [m]) should

715 be provided as an initial state when wflow\_sbm is initialized with default values in the code (“cold” start), see also Table A2. The total lake inflow  $Q_{\text{in,lake}}^t$  [ $\text{m}^3 \text{t}^{-1}$ ] and outflow  $Q_{\text{out,lake}}^t$  [ $\text{m}^3 \text{t}^{-1}$ ] for model time step  $t$  are calculated as follows:

$$Q_{\text{in,lake}}^t = \sum_{i=1}^{n_i} Q_{\text{in,lake}}^{t_i} \Delta t_i, \quad (113)$$

$$Q_{\text{out,lake}}^t = \sum_{i=1}^{n_i} Q_{\text{out,lake}}^{t_i} \Delta t_i, \quad (114)$$

where  $n_i$  refers to the number of iterations within model time step  $t$ , and  $Q_{\text{in,lake}}^{t_i}$ ,  $Q_{\text{out,lake}}^{t_i}$  and  $\Delta t_i$  as previously defined.

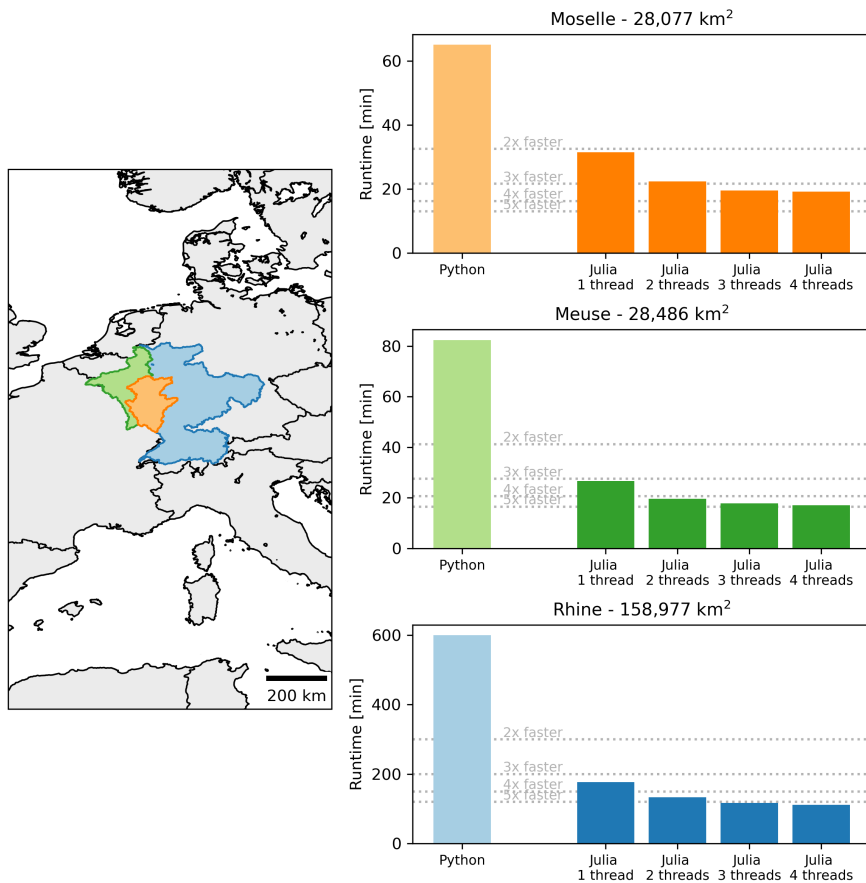
### 720 3 Computational performance

One of the reasons to switch to the Julia programming language is that it offers high performance, required for large-scale high-resolution hydrologie-hydrological model applications. Here we compare the simulation times of wflow\_sbm between the Julia (van Verseveld et al., 2022a) (van Verseveld et al., 2024) and Python (Schellekens et al., 2020) version, for three large catchments: Moselle, Meuse and Rhine (Fig. 2). We used HydroMT-Wflow (Eilander et al., 2022) to setup the models for the

725 three catchments at a resolution of  $30''$  ( $\sim 1\text{km} \times 1\text{km}$ ). The models were run at a daily time step for 5 years (2000-2005) with ERA5 forcing data. We did exclude the input/output (I/O) operations to allow for a clean comparison between the Julia and Python version, and ran the simulation on a machine with the following specifications: a desktop with an Intel Xeon Gold 6144 CPU (with 4 cores, 4 threads exposed to the user) and 16GB RAM.

The switch to Julia results in substantial smaller simulation times, independent of the size of the catchment (Fig. 2). By

730 enabling threads (Julia version) the simulation times decrease further, leading to a model that runs 4-5 times faster compared to the Python version. For the Rhine catchment the simulation time for 1 year is 120 min for the wflow\_sbm Python version, for the Julia version this is 37 min and 25-36 min and 23 min with 1 and 4 threads, respectively. These simulation times take up most of the total computational time (>e.g.  $\sim 98\%$  for the Rhine model with Julia running on one and multiple threads). These results show that the wflow\_sbm Julia version is suitable for large-scale high-resolution model applications.



**Figure 2.** Simulation times of the wflow\_sbm model in three large catchments with the wflow Python version 2020.1.2 (Schellekens et al., 2020) and Wflow.jl v0.6.1 (van Verseveld et al., 2022a), 7.3 (van Verseveld et al., 2024), including multithreading in the Julia version.

## 735 4 Applications

The wflow\_sbm model has been applied to a number of specific cases. Below we describe these specific applications and its a-priori parameter estimation, including forcing, with HydroMT-Wflow for a variety of hydroclimates and hydrological processes.

### 4.1 Parameter estimation with HydroMT-Wflow

740 The estimation of wflow\_sbm model parameters is based on earlier work by Imhoff et al. (2020) that focused on the Rhine basin, and the development of the Iterative Hydrography Upscaling (IHU) method by Eilander et al. (2021) to derive flow direction and representative river length, slope and width parameters. Eilander et al. (2021) showed an improved accuracy with IHU upscaled flow direction maps, applied to MERIT Hydro, compared to other often-used upscaling methods. Furthermore,

for a case study of the Rhine basin, Eilander et al. (2021) showed that with IHU applied to MERIT Hydro, errors in the timing and magnitude of simulated peak discharge compared to simulations at the native data resolution are minimized. Imhoff et al. (2020) used available point-scale (pedo)transfer-functions (PTFs) from literature to generate seamless parameter maps for the Rhine basin. Following the Multiscale Parameter Regionalization (MPR) technique (Samaniego et al., 2010), parameters were estimated on the ~~original~~original data resolution ('level-0'), and upscaled to the model resolution ('level-1') with upscaling operators. Although universal scaling rules for hydrological model parameters are not available, the correct upscaling operator is found when model parameters are characterized by a constant mean and standard deviation across different spatial resolutions. Additionally, model fluxes and states should be consistent across different spatial resolutions. For the Rhine basin, Imhoff et al. (2020) found that modelled actual evapotranspiration fluxes were consistent across different spatial resolutions (1.2, 2.4, 3.6, and 4.8 km). Routed discharge in headwater basins was not consistent across scales (KGE decreased from the finest to the coarsest resolution), while for the main Rhine river routed discharge was consistent. For recharge fluxes, relatively large differences were found for regions with high drainage densities.

The transfer function and upscaling operators to derive wflow\_sbm model parameters for any region in the world are part of the HydroMT-Wflow software (Eilander et al., 2022) and are listed in Table 1. For two sensitive wflow\_sbm model parameters, the temperature threshold ( $s_{\text{fall},T_{\text{threshold}}}$ ) and the multiplication factor  $f_{K_{h0}}$ , a PTF is not available (Imhoff et al., 2020). For  $s_{\text{fall},T_{\text{threshold}}}$  and  $f_{K_{h0}}$  a uniform default value of 0.0 °C and 100.0 is applied (Table 2), respectively. The a-priori parameter estimation for wflow\_sbm provides a model setup without the need for much further calibration, in most cases only the model parameter  $f_{K_{h0}}$  is tuned (e.g., Wannasin et al., 2021a; Sperna Weiland et al., 2021).

Table 1 also includes references to examples of global datasets that can be used to set up a wflow\_sbm model with HydroMT-Wflow. For soil properties the SoilGrids (Hengl et al., 2017) at 250 m resolution is available. For land cover the datasets GlobCover-2009 (Arino et al., 2010) at 300 m resolution, VITO v2.0.2 (Buchhorn et al., 2019) at 100 m resolution and Corine Land Cover (CLC) 2018 (European Environment Agency, 2018) are currently available. Leaf area index climatology is based on the MCD15A3H Version 6 Leaf Area Index product, at 500 m resolution (Myneni et al., 2015). For elevation and derived data, the MERIT DEM-based Hydrography map (MERIT Hydro, Yamazaki et al., 2019) at 90 m resolution is used. It contains a global flow direction map derived from the Multi-Error-Removed Improved-Terrain Digital Elevation Model dataset (MERIT DEM, Yamazaki et al., 2017) and a synthetic water layer map that consists of a combination of the Global 1-s Water Body Map (G1WBM, Yamazaki et al., 2015), Global Surface Water Occurrence (GSWO, Pekel et al., 2016) and water-related features from OpenStreetMap. The fine-resolution MERIT Hydro flow direction map is upscaled to the wflow\_sbm model resolution with the Iterative Hydrography Upscaling (IHU) method (Eilander et al., 2021). River width ( $w_{\text{river}}$ ) and bankfull depth ( $h_{\text{bankfull}}$ ) are based on MERIT Hydro (river mask based on a minimum upstream area) and the global reach-level bankfull river width dataset from Lin et al. (2019). River bankfull depth  $h_{\text{bankfull}}$  is estimated from bankfull discharge ( $Q_{\text{bankfull}}$ ) data in Lin et al. (2019) with the following power law relationship:

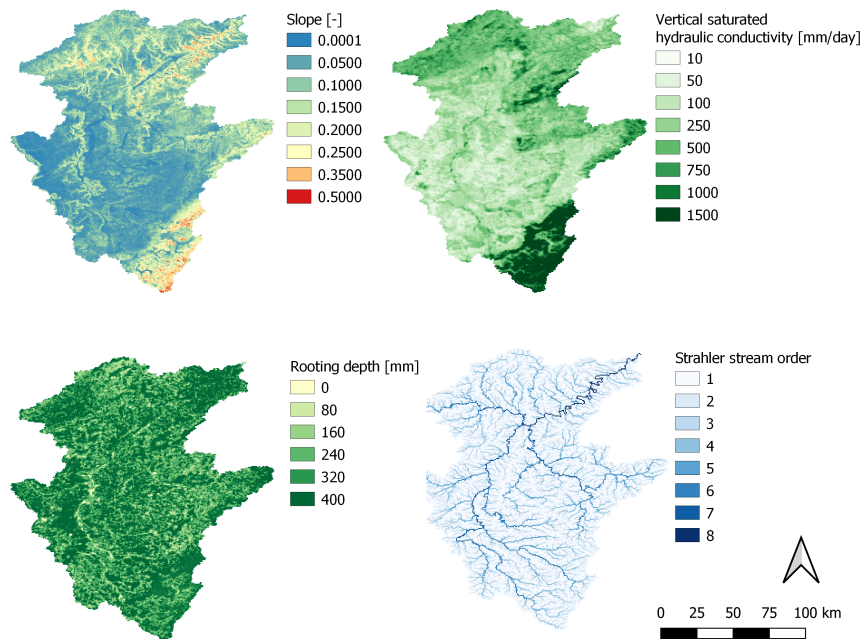
$$h_{\text{bankfull}} = cQ_{\text{bankfull}}^p, \quad (115)$$



with  $c = 0.27$  (default) and  $p = 0.30$  (default).

For glacier-related model parameters, the Randolph Glacier Inventory 6.0 (Pfeffer et al., 2014) is available. Lake-related parameters are derived from the HydroLAKES Version 1.0 (Messenger et al., 2016) dataset, and reservoir parameters are based on a combination of The Global Reservoir and Dam Database (GRanD), Version 1, Revision 01 (v1.01) (Lehner et al., 2011), HydroLAKES Version 1.0 (Messenger et al., 2016), and GSWO datasets. For more details on the setup of a wflow\_sbm model, from global (or regional/local) datasets with HydroMT-Wflow, we refer to the documentation and code of HydroMT-Wflow (Eilander et al., 2022).

Figure 3 shows examples of model parameter maps setup with HydroMT-Wflow for the Moselle catchment (see also section 4.2.4). The parameters are related to elevation (slope), elevation and flow direction (Strahler stream order), land cover (rooting depth) and soil properties (vertical saturated hydraulic conductivity).



**Figure 3.** Wflow\_sbm static model parameter maps slope, vertical saturated hydraulic conductivity, rooting depth and Strahler stream order for catchment Moselle.

## 4.2 Wflow\_sbm model cases

The wflow\_sbm model cases have been setup with HydroMT-Wflow at a resolution of  $30''$  based on the (pedo)transfer functions listed in Table 1 and HydroMT-Wflow constant default model parameters listed in Table 2. We present two model cases illustrating the model sensitivity to the model parameter horizontal hydraulic conductivity  $f_{Kh0}$  (Whanganui catchment, see section 4.2.1) and the parameter  $f_{Kv}$  (Crystal River catchment, see section 4.2.2) that controls the exponential decline of vertical

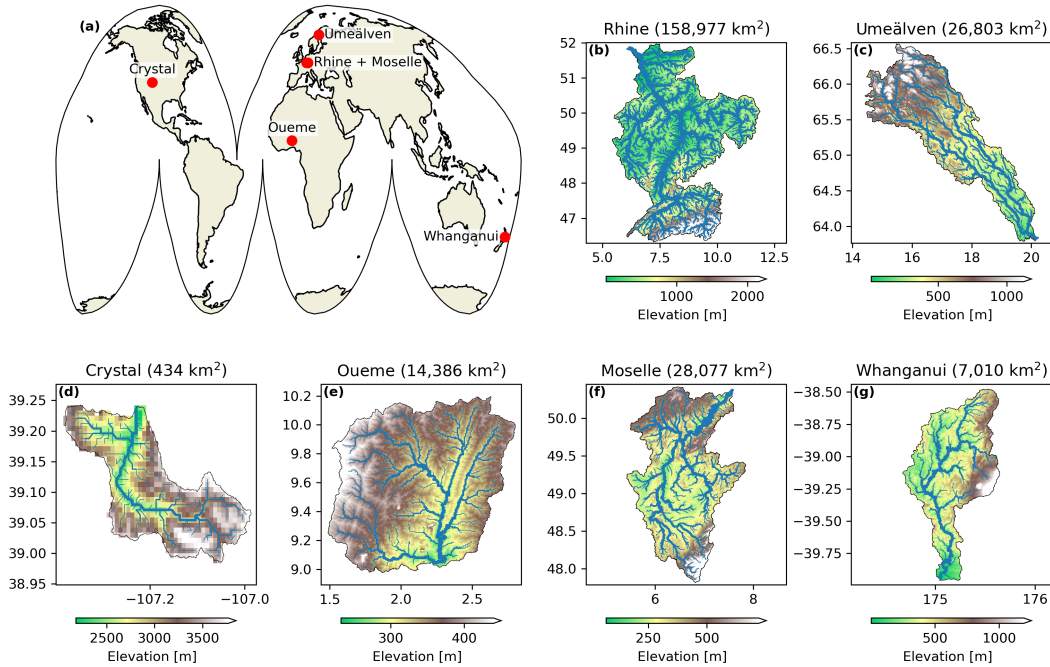
**Table 1.** List of wflow\_sbm parameters estimated with a (pedo)transfer function (PTF). Upscaling operators are abbreviated as follows:  $A$  - arithmetic mean,  $\log A$  - arithmetic mean of the natural logarithm.

Parameter	Equation or Section	(pedo)transfer function	Upscaling operator	Additional notes
$c_n$	Eq. (48) and (49)	Rawls and Brakensiek (1989) applied to SoilGrids	$\log A$	$\lambda_n$ upscaled with $\log A$ , $c_n$ determined from $\lambda_n$ at model resolution
$k$	Eq. (21)	van Dijk and Bruijnzeel (2001)	$A$	Lookup table from land cover
$K_{v0}$	Eq. (50)	Brakensiek et al. (1984) applied to SoilGrids	$\log A$	For the soil depths $z$ : 0, 50, 150, 300, 600, 1000 and 2000 mm
LAI	Eq. (20) and (21)	Myneni et al. (2015)	$A$	LAI climatology from the period 2003-2017
$f_{Kv}$	Eq. (50)			Fitting exponential function between $K_{vz}$ and $z$
$n_{\text{land}}$	Eq. (94)	Engman (1986); Kilgore (1997)	$A$	Lookup table (land cover)
$n_{\text{river}}$	Eq. (94)	Liu et al. (2005)	$A$	Derived at model resolution, lookup table (Strahler order)
$z_{\text{rooting}}$	Eq. (70)	Schenk and Jackson (2002); Fan et al. (2016)	$A$	$d_{75}$ rooting depth, lookup table
$S_{\text{leaf}}$	Eq. (20)	Pitman (1989); Liu (1998)	$A$	Lookup table (land cover)
$c_{\text{land slope}}$	Eq. (86) and (94)	Horn (1981)	$A$	Derived from MERIT DEM
$c_{\text{river slope}}$	Eq. (94)			Derived from MERIT Hydro
$x_{\text{river}}$	Sect. (2.6)			Derived from MERIT Hydro
$w_{\text{river}}$	Sect. (2.6)	Lin et al. (2019)		River mask from MERIT Hydro
$h_{\text{bankfull}}$	Sect. (2.6)	Lin et al. (2019)		River mask from MERIT Hydro
$z_{\text{soil}}$	Eq. (40)	Hengl et al. (2017); ESDAC (2004)	$A$	
$S_{\text{wood,max}}$	Sect. (2.2.3)	Pitman (1989); Liu (1998)	$A$	Lookup table (land cover)
$\theta_s$	Eq. (40)	Tóth et al. (2015)	$A$	
$\theta_r$	Eq. (40)	Tóth et al. (2015)	$A$	
$f_{\text{open water}}$	Eq. (60)		$A$	Lookup table (land cover)
$f_{\text{paved}}$	Sect. (2.4.1)		$A$	Lookup table (land cover)
$S_{\text{glacier}}, f_{\text{glacier}}$	Eq. (36)	Pfeffer et al. (2014)		
$H_{\text{lake,avg}}, \alpha_{\text{lake}}, A_{\text{lake}}$	Sect. (2.7.2)	Messenger et al. (2016)		Lake parameters, fixed $\beta_{\text{lake}} = 2$
$A_{\text{res}}, S_{\text{res}}, f_{\text{res,min}}, f_{\text{res,max}}, Q_{\text{min req.}}, Q_{\text{max,res}}$	Sect. (2.7.1)	Lehner et al. (2011); Messenger et al. (2016); Pekel et al. (2016)		Reservoir parameters

**Table 2.** Constant wflow\_sbm model parameter values defined in HydroMT-Wflow (Eilander et al., 2022).

Parameter	Equation	Value
$\frac{E_{sat}}{P_{sat}}$	Eq. (1)	0.11
$C_{infiltration,paved}$	Eq. (45)	5.0 mm $\text{dayd}^{-1}$
$C_{infiltration,unpaved}$	Eq. (44)	600.0 mm $\text{dayd}^{-1}$
$f_{red,frozen}$	Eq. (42)	0.038
$s_{fall,Tthreshold}$	Eq. (22)	0.0 °C
$s_{fall,Tinterval}$	Eq. (22)	2.0 °C
$s_{ddf}$	Eq. (25) and (26)	3.75653 mm $\text{d}^{-1} \text{ } ^\circ\text{C}^{-1}$ $\text{day}^{-1}$
$s_{melt,Tthreshold}$	Eq. (25) and (26)	0.0 °C
$s_{whc}$	Eq. (29)	0.1
$g_{ddf}$	Eq. (34)	5.3 mm $\text{d}^{-1} \text{ } ^\circ\text{C}^{-1}$ $\text{day}^{-1}$
$g_{snow \text{ to ice}}$	Eq. (32)	0.002 $\text{d}^{-1}$
$g_{melt,Tthreshold}$	Eq. (34)	1.3 °C
$c_{rd}$	Eq. (70)	-500.0 $\text{mm}^{-1}$
$f_{Kh0}$	Eq. (86)	100.0
$L_{max}$	Eq. (85)	0.0 mm $\text{dayd}^{-1}$

saturated hydraulic conductivity. We also illustrate how wflow\_sbm performs based on the a-priori parameter estimation with only changing the model parameter  $f_{Kh0}$  for the catchment Umeälven (section 4.2.3), where reservoir operations and snow processes play an important role, ~~and~~ for the Moselle catchment (section 4.2.4) including discharge and catchment-average soil moisture as output, ~~and for the Rhine catchment (section 4.2.5) to demonstrate the ability of wflow\_sbm to represent the spatial distribution of actual evapotranspiration  $E_a$  and snow storage  $S_{snow}$ .~~ Finally, we present a model case for the Oueme catchment (section 4.2.6), where groundwater loss plays an important role. The location of the wflow\_sbm model cases on a global map are shown in Fig. 4a. For each model case a map of the catchment with elevation and rivers is presented in Fig. 4b-f. For each model case four soil layers are defined as follows (default): ~~0-10, 10-40, 40-120 and 120 cm~~ 0-100, 100-400, 400-1200 and 1200 mm up till the maximum soil depth  $z_{soil}$  (Table 1), to capture changes in soil hydraulic properties and roots, and thus soil moisture fluxes, with depth. Wflow\_sbm determines the actual soil layer thickness for each layer per grid cell based on  $z_{soil}$ . For river and overland flow the time step is set to a fixed value of 900 and 3600 s, respectively. When snow is enabled, a reduction factor to infiltration in soils because of frozen conditions, is not applied. Other, more specific model settings are described per model case in sections 4.2.1 - 4.2.6.



**Figure 4.** Locations and maps of wflow\_sbm model cases: (a) model case locations on a global map, (b) Europe - [Rhine \(section 4.2.5\)](#) (c) [Europe - Umeälven \(section 4.2.3\)](#), (d) Europe - [Moselle \(section 4.2.4\)](#), (e) USA - [Crystal River \(section 4.2.2\)](#), (f) Africa - [Oueme River \(section 4.2.6\)](#), (g) New Zealand - [Whanganui River \(section 4.2.1\)](#).

805 The model performance of the wflow\_sbm applications is here assessed with the modified Kling-Gupta Efficiency (KGE, Kling et al., 2012) [for discharge and catchment-average soil moisture](#):

$$KGE = 1 - \sqrt{(r - 1)^2 + (\beta - 1)^2 + (\gamma - 1)^2} \quad (116)$$

where  $r$  is the correlation coefficient between observed and simulated values,  $\beta$  is a bias term and  $\gamma$  is the variability ratio:

$$KGE = 1 - \sqrt{(r - 1)^2 + \left(\frac{\mu_{sim}}{\mu_{obs}} - 1\right)^2 + \left(\frac{\sigma_{sim}/\mu_{sim}}{\sigma_{obs}/\mu_{obs}} - 1\right)^2} \sqrt{(r - 1)^2 + \left(\frac{\mu_{sim}}{\mu_{obs}} - 1\right)^2 + \left(\frac{\sigma_{sim}/\mu_{sim}}{\sigma_{obs}/\mu_{obs}} - 1\right)^2} \quad (117)$$

810 [where  \$\mu\_{sim}\$  where  \$\mu\_{sim}\$  is the mean of simulated values,  \$\mu\_{obs}\$  is the mean of observed values,  \$\sigma\_{sim}\$  is the standard deviation of simulated values and  \$\sigma\_{obs}\$  is the standard deviation of observed values. KGE = 1 means a perfect match between simulated and observed values, and KGE  \$\approx\$  -0.41 indicates the model simulation is as accurate as the observed mean \(Knoben et al., 2019\). For \[each the assessment of the reproduction of spatial patterns for the model case of the Rhine catchment the spatial efficiency metric \\( \\$E\\_{SP}\\$ , Dembélé et al., 2020\\) is used:\]\(#\)](#)

$$815 \quad E_{SP} = 1 - \sqrt{(r_s - 1)^2 + (\alpha - 1)^2 + (\gamma - 1)^2}, \text{ with} \quad (118)$$

$$r_s = 1 - \frac{6 \sum_1^n d_i^2}{n(n^2 - 1)}, \quad (119)$$

$$\alpha = 1 - E_{RMS}(Z_{X_{sim}}, Z_{X_{obs}}) \text{ and} \quad (120)$$

$$\gamma = \frac{\sigma_{sim}/\mu_{sim}}{\sigma_{obs}/\mu_{obs}}, \quad (121)$$

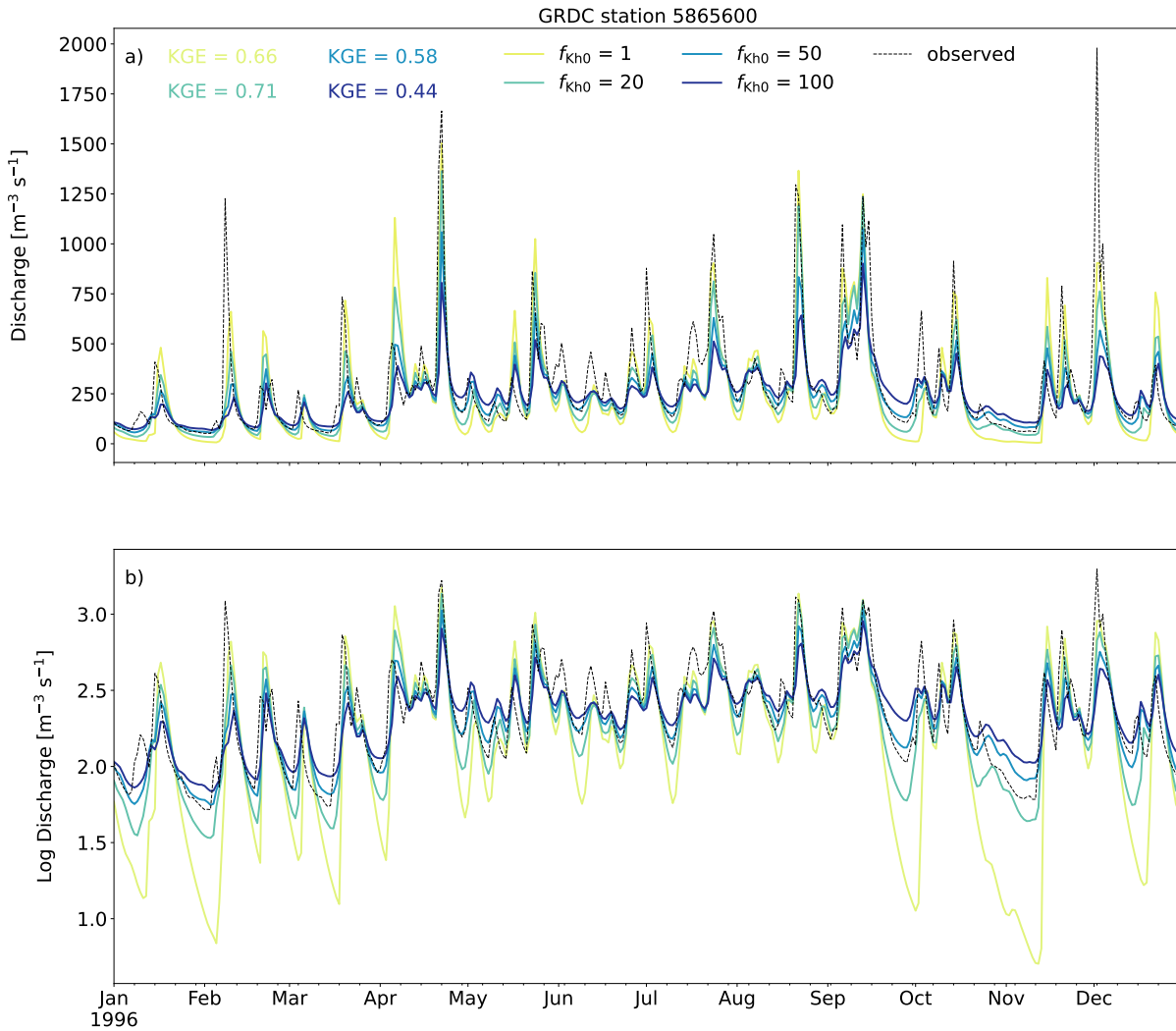
820 where  $r_s$  is the Spearman rank-order correlation coefficient,  $d_i$  is the difference between the two ranks (observed variable  $X_{obs}$  and simulated variable  $X_{sim}$ ) of each cell  $i$  in  $n$  grid cells,  $\alpha$  is a term that determines the spatial location matching, calculated as the root mean squared error ( $E_{RMS}$ ) of the standardized values (z-scores,  $Z_X$ ) of  $X_{sim}$  and  $X_{obs}$ , and  $\gamma$  is the variability ratio (equal to the  $\gamma$  term of KGE). As for KGE,  $E_{SP}$  ranges from  $-\infty$  to 1 (a perfect match between  $X_{sim}$  and  $X_{obs}$ ).

825 For each model case we use the first year as warm-up period. For the simulations of all except ~~two~~ three model cases we use ERA5 forcing, temperature and potential evapotranspiration (using de Bruin method (de Bruin et al., 2016)) are derived based on downscaled ERA5 fields using a fixed lapse rate of  $-0.0065 \text{ }^\circ\text{C m}^{-1}$ . For the model case of the Crystal River catchment (section 4.2.2) forcing is based on the dataset by Maurer et al. (2002), for the model case of the Rhine catchment (section 4.2.5) we use the Multi-Source Weighted-Ensemble Precipitation version 2.8 (MSWEP V2.8) (Beck et al., 2019) global precipitation product instead of ERA5 rainfall, and for the case of catchment Oueme (section 4.2.6) we use Climate Hazards group Infrared Precipitation with Stations (CHIRPS) rainfall (Funk et al., 2015) estimates instead of ERA5 rainfall.

### 830 4.2.1 New Zealand - Whanganui River - Effect of model parameter $f_{Kh0}$

The wflow\_sbm model parameter  $f_{Kh0}$  is a multiplication factor applied to the vertical saturated hydraulic conductivity at the soil surface  $K_{v0}$  to calculate the horizontal saturated hydraulic conductivity used for computing lateral subsurface flow. This parameter compensates for anisotropy, small scale saturated hydraulic conductivity (soil core) measurements that do not represent larger scale hydraulic conductivity, and smaller flow length scales (hillslope) in reality, not represented by the model resolution. Land cover derived model parameters are based on VITO v2.0.2 (Buchhorn et al., 2019). For this model case, the snow (including the snow ~~avalanee~~ avalanche routine) and glacier model are enabled. To illustrate the effect of different  $f_{Kh0}$  values (1, 20, 50, 100), Fig. 5 shows the discharge simulation (daily time step) and KGE values for GRDC station 5865600 of the Whanganui River catchment in New Zealand, for the year 1996. Figure 5 clearly shows that higher  $f_{Kh0}$  values results generally in higher baseflow values and flattened peaks. The  $f_{Kh0}$  value of 20 results in the highest KGE of 0.71 for the year

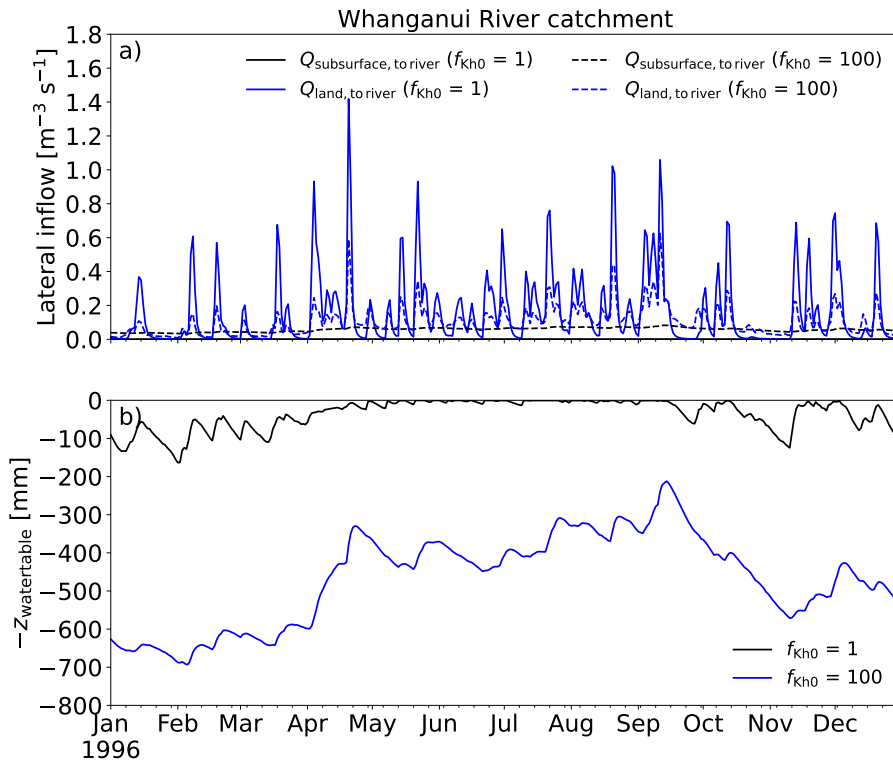
840 1996. For the complete period of simulation 1979-2009, the KGE values were 0.63, 0.79, 0.68 and 0.55 for  $f_{Kh0}$  values 1, 20, 50 and 100, respectively.



**Figure 5.** Effect of  $f_{Kh0}$  on simulated discharge for GRDC station 5865600 of the Whanganui River catchment, in 1996. (a) discharge, (b)  $\log_{10}$  of the discharge.

By changing the parameter  $f_{Kh0}$  it is expected that the contribution of overland flow and lateral subsurface flow to river discharge will change. We show in Fig. 6a the effect of different  $f_{Kh0}$  values (1 and 100) on the average lateral inflow components subsurface flow  $Q_{\text{subsurface,to river}}$  and overland flow  $Q_{\text{land,to river}}$  to the river. With a  $f_{Kh0}$  value of 1, the contribution of  $Q_{\text{subsurface,to river}}$  is minimal (maximum contribution is  $0.0011 \text{ m}^3 \text{ s}^{-1}$ ), and river inflow consists mainly of  $Q_{\text{land,to river}}$ , with high values during discharge peaks and quickly dropping to low values during baseflow conditions (Fig. 6a). The average water

table depth  $z_{\text{watertable}}$  is low without much variation with a  $f_{K_{h0}}$  value of 1 (Fig. 6b). With a  $f_{K_{h0}}$  value of 100, the contribution of  $Q_{\text{subsurface,to river}}$  is higher, and  $Q_{\text{land,to river}}$  is lower during peaks and higher during baseflow conditions, compared to a  $f_{K_{h0}}$  value of 1. On average  $z_{\text{watertable}}$  is lower and shows more variation with a  $f_{K_{h0}}$  value of 100 compared to a  $f_{K_{h0}}$  value of 1 (Fig. 6b). Thus,  $f_{K_{h0}}$  controls the distribution of  $Q_{\text{subsurface,to river}}$  and  $Q_{\text{land,to river}}$ , related to the overall wetness of the catchment and the magnitude of lateral subsurface flows ( $Q_{\text{subsurface}}$ ), which has an effect on the peak discharges and baseflow values of the hydrograph.



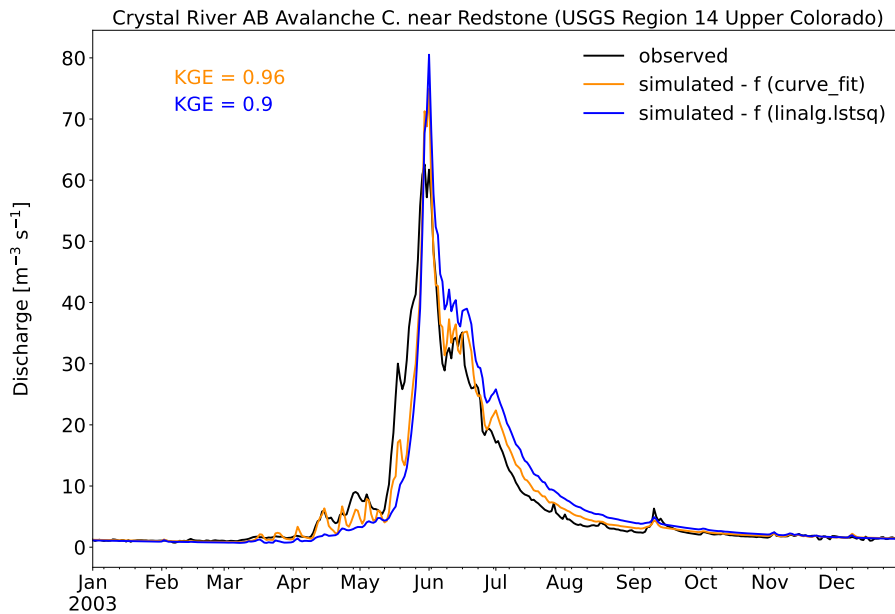
**Figure 6.** Simulated (a) average lateral inflow (subsurface flow  $Q_{\text{subsurface,to river}}$  and overland flow  $Q_{\text{land,to river}}$ ), (b) average water table depth  $z_{\text{watertable}}$ , of the Whanganui River catchment, in 1996, with  $f_{K_{h0}} = 1$  and  $f_{K_{h0}} = 100$ .

#### 4.2.2 USA - Crystal River - Effect of exponential decline of $K_{v0}$

The wflow\_sbm parameter  $f_{K_v}$  controls the exponential decline of the vertical saturated hydraulic conductivity  $K_{v0}$  at the soil surface with depth, and thus vertical flow and lateral subsurface flow. A-priori,  $f_{K_v}$  is estimated with HydroMT-Wflow through the use of two different fitting methods using non-linear least squares (curve\_fit) and a least-squares solution (linalg.lstsq) applied to the estimated vertical saturated hydraulic conductivity  $K_{vz}$  at different depths from SoilGrids (see also Table 1). Figure 7 shows simulated (daily time step) discharge for the Crystal River near Redstone (Colorado, USA) in 2003, with land cover derived model parameters based on VITO v2.0.2 (Buchhorn et al., 2019). For this model case, the snow (including the

860 snow ~~avalanee~~ avalanche routine) model is enabled. For both fitting methods the performance is good (KGE 0.9 or higher), the fitting method using non-linear least squares (curve\_fit) ~~result~~ results in a higher KGE value. This fitting method is capturing the rising limb (partially caused by snow melt) during the period 15 March - 15 May, and generally the falling limb (less overestimation) of the hydrograph better. The average  $f_{K_v}$  value for the catchment was 0.0027 and 0.0011 for fitting using non-linear least squares and least-squares solution, respectively. A higher  $f_{K_v}$  value results in a more exponential decline of

865  $K_{v0}$  with depth.

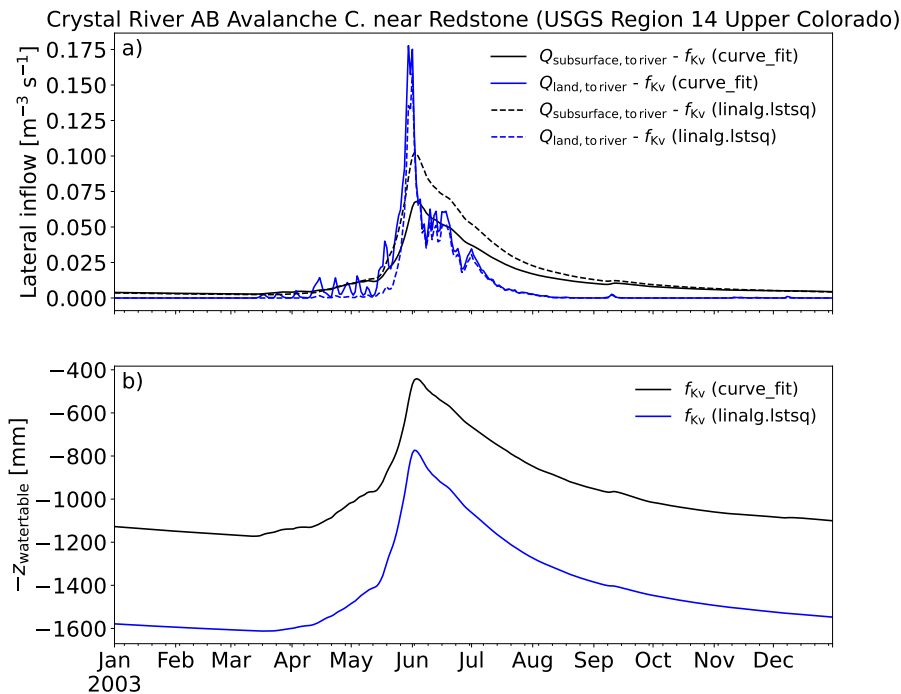


**Figure 7.** Simulated discharge for the Crystal River near Redstone (Colorado, USA) in 2003, with different fitting methods for  $f_{K_v}$ .

As for the parameter  $f_{K_{h0}}$ , it is expected that by changing the  $f_{K_v}$  parameter the contribution of overland flow and lateral subsurface flow to river discharge will change. We show the effect of the different  $f_{K_v}$  values as a result of different fitting methods on the average lateral inflow components  $Q_{\text{subsurface,to river}}$  and  $Q_{\text{land,to river}}$  to the river in Fig. 8a, and on  $z_{\text{watertable}}$  in Fig. 8b. The curve\_fit fitting method is capturing the rising limb of the hydrograph better during the period 15 March - 15

870 May because the contribution of  $Q_{\text{land,to river}}$  is higher compared to the linalg.lstsq fitting method, while the  $Q_{\text{subsurface,to river}}$  contribution is similar (Fig. 8a). With the curve\_fit fitting method the catchment is wetter;  $z_{\text{watertable}}$  has a shallower pattern compared to the linalg.lstsq fitting method (Fig. 8b), causing higher  $Q_{\text{land,to river}}$  values. During the falling limb of the hydrograph, the curve\_fit fitting method results in less overestimation caused by a lower  $Q_{\text{subsurface,to river}}$  contribution, while the  $Q_{\text{land,to river}}$  contribution is similar (Fig. 8a).





**Figure 8.** Simulated (a) average lateral inflow (subsurface flow  $Q_{\text{subsurface, to river}}$  and overland flow  $Q_{\text{land, to river}}$ ), (b) average water table depth  $z_{\text{watertable}}$ , for the Crystal River near Redstone (Colorado, USA) in 2003, with different fitting methods for  $f_{Kv}$ .

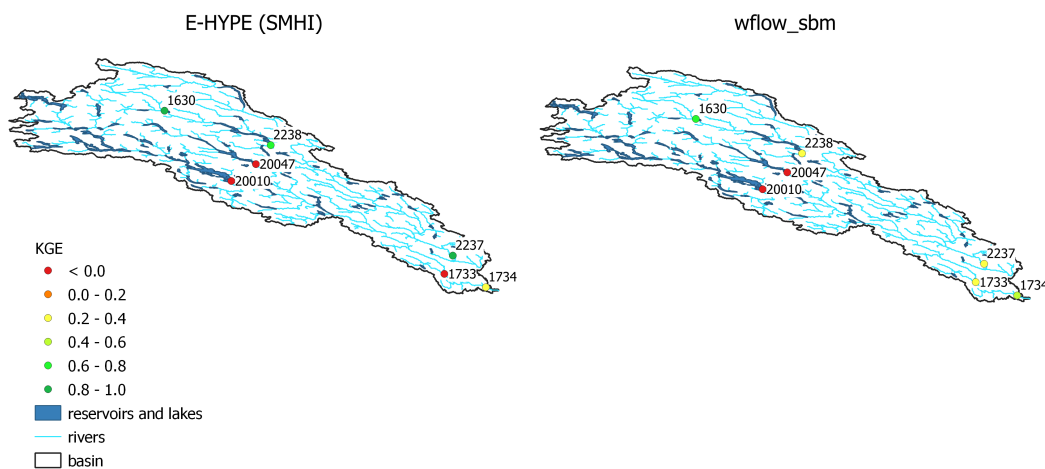
### 875 4.2.3 Europe - Umeälven - Snow and Reservoirs

The Ume river in Sweden is one of the largest rivers in Sweden and has been extensively cultivated for hydroelectric power. From a [hydrometeorological-hydrometeorological](#) aspect, snowfall and melt play here an important role. Furthermore, accounting for these hydropower stations in the hydrological model is done on the basis of the information in the GRand, HydroLAKES and GWSO datasets. This information is rather uncertain as hydropower operators have their own release curves or optimization schemes. Here, we simulated discharge for the period 1979 [until-2020-to 2019](#) at a daily time step, with land cover derived model parameters based on CLC 2018 (European Environment Agency, 2018). The values derived for the vertical [saturated](#) hydraulic conductivity are quite large in the order of a few meters per day and hence no anisotropy factor for [lateral-horizontal saturated](#) hydraulic conductivity was applied ( $f_{Kh0} = 1$ ). For this model case, the snow (including the snow [avalanche-avalanche](#) routine) and glacier model are enabled, and lakes and reservoirs are included.

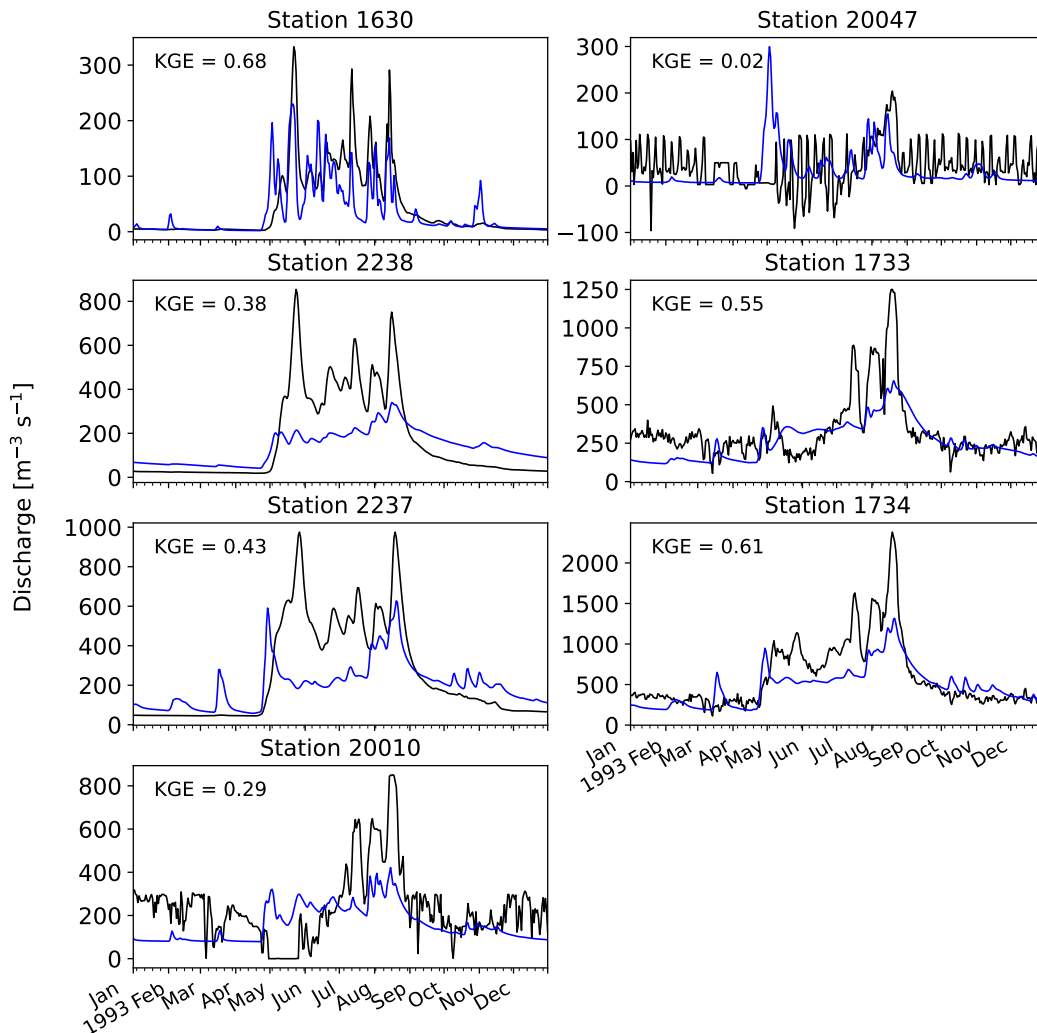
885 Figure 9 presents KGE scores for Swedish Meteorological and Hydrological Institute (SMHI) stations simulated with E-HYPE (Swedish Meteorological and Hydrological Institute, 2022) and wflow\_sbm. Observed discharges for the stations were obtained from Swedish Meteorological and Hydrological Institute (2021). Because of differences in forcing, simulation periods and the use of different KGE methods, a quantitative comparison of model performance scores is not possible. However, it is obvious that for locations (20010 and 20047) largely influenced by reservoirs and lakes, and thus reservoir operations, both

890 models show poor performance. For a more upstream location like [station 1630](#), E-HYPE performance is good ( $KGE > 0.8$ ) and wflow\_sbm performance is satisfactory ( $KGE = 0.66$ ). Wflow\_sbm shows lower KGE values for locations 2237 and 2238, while for locations 1733 and 1734 wflow\_sbm shows a better performance. Wflow\_sbm performance for the unregulated Vindel river (locations 1630, 2237 and 2238), a tributary to the Ume river, could probably be improved on the basis of E-HYPE performance. This could be done for example through a further analysis of the impact of different snow model parameters like  $s_{fall,Threshold}$  and  $s_{ddf}$  on model performance, lake model settings of lake Storovan, and possibly other forcing datasets than ERA5.

Figure 10 shows simulated and observed discharge for the SMHI stations within catchment Umeälven for the year 1993. The performance for the most downstream stations 1733 and 1734 is satisfactory. The underestimation of discharge peaks for station 1733 during July and August is mostly caused by underestimating discharge peaks at station 20010 (downstream of lake Storuman) during the same period. The actual release scheme of lake Storuman is very likely not captured well enough by wflow\_sbm. Wflow\_sbm is overestimating baseflow and underestimating peak flows for station 2238 (Fig. 10), downstream of lake Storovan. This may be caused for example by the lake model settings of lake Storovan, upstream model parameters related to lateral subsurface flow (see also sections 4.2.2 and 4.2.1) or snow dynamics, and has an effect on underestimating peak flows at the downstream station 1734 by wflow\_sbm. Overall, we show that with the a-priori parameter estimation, the performance for catchment Umeälven is (qualitatively) similar to the E-HYPE performance for this catchment.



**Figure 9.** KGE scores for stations within the Umeälven catchment with E-HYPE and wflow\_sbm. E-HYPE and wflow\_sbm performance is assessed with KGE from Gupta et al. (2009) and the modified KGE from Kling et al. (2012), respectively.

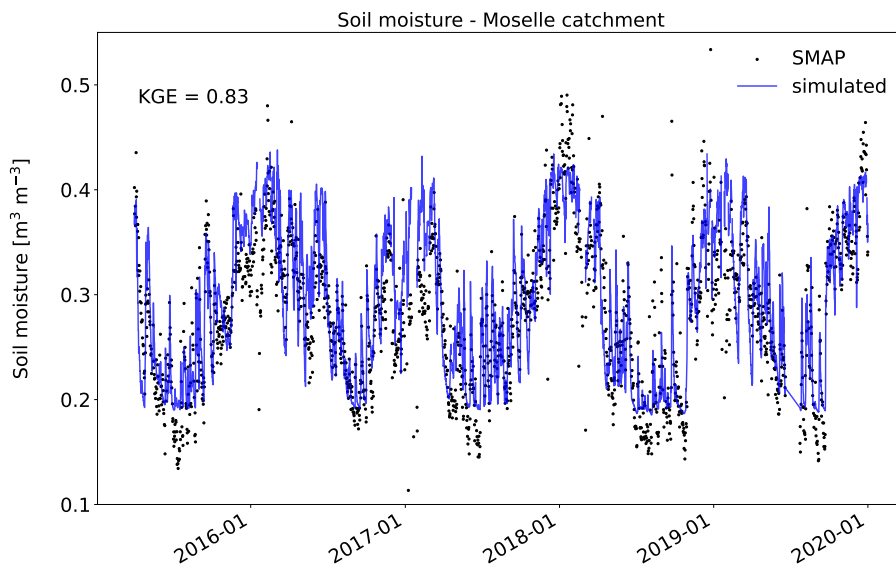


**Figure 10.** Simulated (blue) and observed discharge (black) for the SMHI stations within catchment Umeälven for the year 1993.

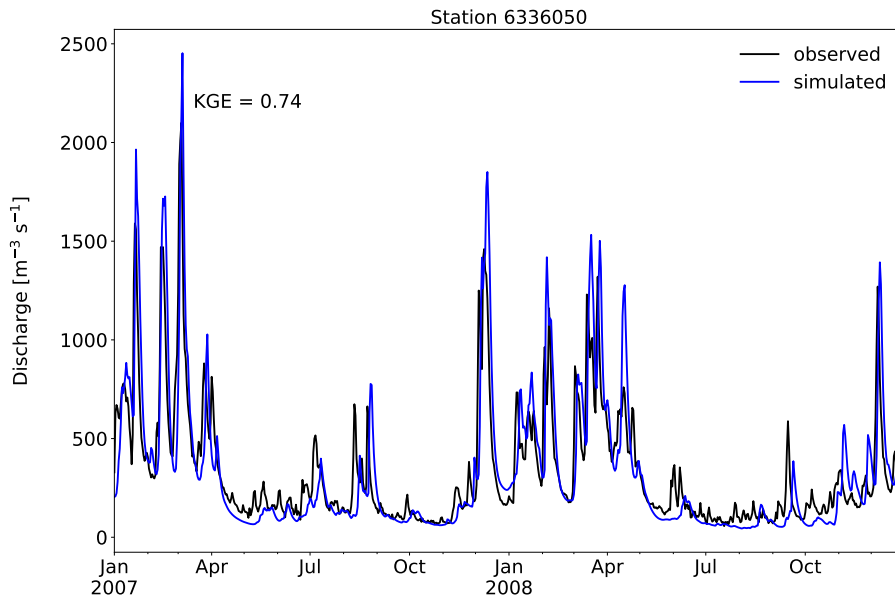
#### 4.2.4 Europe - Moselle - Soil moisture

Besides comparing simulated discharge with observed discharge, it can be useful to compare model state variables like soil moisture or snow water equivalent to actual observations or satellite based datasets for calibration and validation purposes of the [hydrologic-hydrological](#) model. Here we simulate for the period 1979 ~~until 2020~~ to 2019 at a 6-hourly time step, with land cover derived model parameters that are based on CLC 2018 (European Environment Agency, 2018). We use a  $f_{Kh0}$  value of 250 based on previous [hydrologic-hydrological](#) modelling work of the Rhine basin in Imhoff et al. (2020). For this model case, the snow (including the snow [avalanche-avalanche](#) routine) model is enabled, and lakes and reservoirs are included. The simulated soil moisture dynamics of the first soil layer (0-10 cm) are compared to the SMAP Enhanced L3 Radiometer dataset

(O'Neill et al. , 2021), averaged over the catchment, for the period 2015 ~~until 2020.~~ to 2019. Figure 11 shows that wflow\_sbm captures the average soil moisture dynamics quite well, with a KGE score of ~~0.86~~ 0.83. Some of the lower and higher soil moisture values of the SMAP Enhanced L3 Radiometer dataset are not captured by wflow\_sbm. This could be caused by using the default first soil layer thickness of 10 cm here, while the SMAP Enhanced L3 Radiometer dataset represents the top 5 cm of the soil column. Additionally, differences in used saturated and residual water contents between wflow\_sbm and SMAP Enhanced L3 Radiometer can also play a role, for example the average saturated and residual water content for the wflow\_sbm model is 0.44 and 0.17 respectively, while the SMAP soil moisture product shows values outside of this range (Fig. 11). Figure 12 shows simulated and observed daily discharge for GRDC station 6336050 (Cochem, near the outlet of the Moselle river in to the Rhine river), for the period 2007-2008, with a KGE score of 0.74. The KGE score for GRDC station 6336050 for the complete simulation period is 0.71, and thus the overall performance of simulated soil moisture dynamics and discharge at the catchment scale is good.



**Figure 11.** ~~Average Catchment-average~~ simulated and SMAP soil moisture for the Moselle catchment.

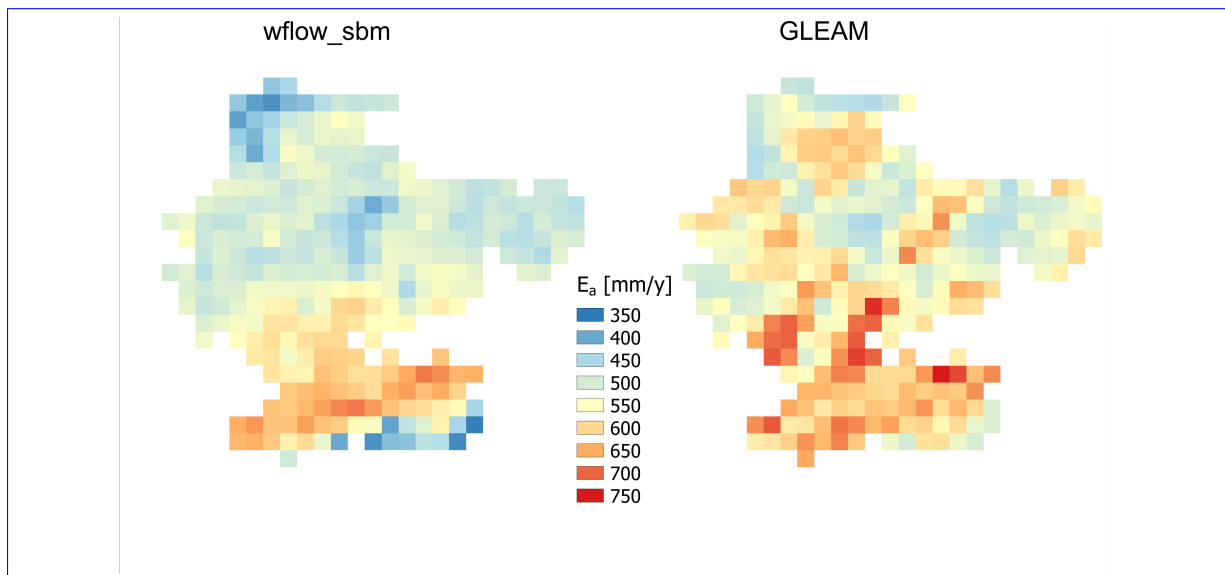


**Figure 12.** Simulated and observed discharge for GRDC station 6336050 (Cochem).

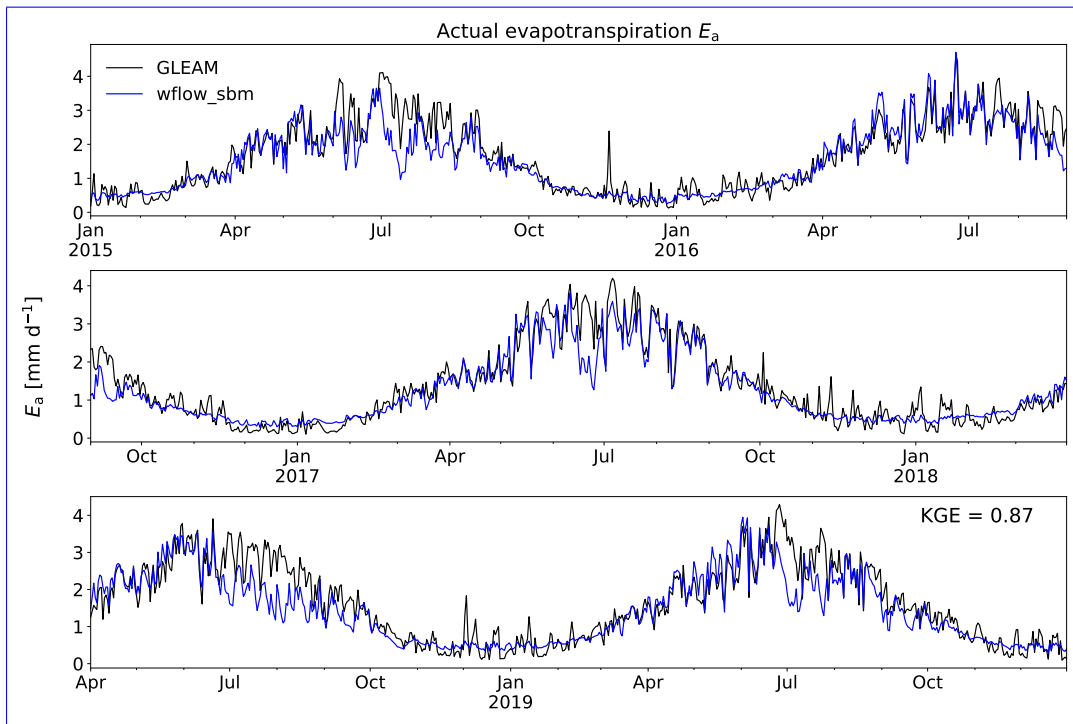
925 **4.2.5 Europe - Rhine - Actual evapotranspiration and snow storage**

As a spatially distributed hydrological model, wflow\_sbm can easily make directly use of spatial datasets for model calibration, evaluation and data-assimilation. Because of the increasing availability of satellite-based earth observations, also at finer temporal and spatial resolutions, hydrological modelling studies increasingly make use of these datasets for calibration, evaluation and data-assimilation purposes (e.g., López López et al., 2016; Demirel et al., 2018; Dembélé et al., 2020). Here, we demonstrate the ability of wflow\_sbm to represent the spatial distribution of actual evapotranspiration  $E_a$  and snow storage  $S_{snow}$ , with the a-priori estimation of the model parameters and only changing the  $f_{Kh0}$  parameter, for the Rhine catchment. We simulate for the period 2014 to 2019 at a daily time step, with land cover derived model parameters that are based on CLC 2018 (European Environment Agency, 2018). We use a regionally optimized  $f_{Kh0}$  map, initially based on hydrological modelling work of the Rhine basin in Imhoff et al. (2020) with further improvements as part of hydrological modelling work for Rijkswaterstaat (part of the Dutch Ministry of Infrastructure and Water Management). For this model case, the snow (including the snow avalanche routine) and glacier models are enabled, and lakes and reservoirs are included. The KGE score for GRDC station 6435060 (Lobith) at the Dutch-German border for the complete simulation period is 0.85. For the actual evapotranspiration comparison, we use The Global Land Evaporation Amsterdam Model (GLEAM) v3.7b daily actual evapotranspiration data with a spatial resolution of  $\sim 28$  km (Martens et al., 2017; Miralles et al., 2011) for the period 2015 to 2019. For the forcing variable precipitation, GLEAM and wflow\_sbm both use the global precipitation product MSWEP V2.8. Wflow\_sbm  $E_a$  is upscaled to the GLEAM resolution using average resampling. Figure 13 shows the average annual  $E_a$  for the period 2015-2019 for wflow\_sbm and GLEAM. The spatial variability is quite similar ( $\gamma = 1.07$ ), the spatial correlation

is moderate ( $r_s = 0.70$ ), but the matching of the spatial location of grid cells ( $\alpha = 0.19$ ) is not satisfactory, leading to an  $E_{SP}$  of 0.13. GLEAM and wflow\_sbm both show a higher region of  $E_a$  in northern Switzerland characterized by lower elevations and flatter terrain than the southern part of Switzerland. For other parts in the Rhine catchment GLEAM shows spatial clusters with higher  $E_a$  values that are not matched by wflow\_sbm. While an  $E_{SP}$  value of 0.13 may seem low,  $E_{SP}$  can be considered a tough criterion. Koch et al. (2018) identified the SPATial Efficiency metric (SPAEF) as such, a spatial efficiency metric equivalent to  $E_{SP}$ . Additionally, according to Koch et al. (2018) more detailed investigation in the relationship between spatial variability and spatial efficiency metrics as SPAEF and  $E_{SP}$  is required to be able to put these metrics into context, for example for the comparison of different models or catchments. The temporal KGE scores for each grid cell (not shown) show a satisfactory to good performance, the median KGE is 0.79, with a range between 0.54 and 0.91, indicating wflow\_sbm can represent  $E_a$  from GLEAM. Comparing catchment-average daily  $E_a$  from GLEAM and wflow\_sbm (Fig. 14) shows a good agreement (KGE = 0.87), with generally an underestimation of  $E_a$  by wflow\_sbm during the months July and August, and GLEAM showing more variability during Fall and Winter. Overall, these results indicate that wflow\_sbm can represent daily  $E_a$  variability from GLEAM, although the matching of the spatial location of grid cells is not well represented. This might for example be caused by the difference in resolution between GLEAM and wflow\_sbm (especially in regions with complex terrain), the potential evaporation method used by each model (GLEAM uses the Priestley-Taylor equation), irrigation not (yet) included in wflow\_sbm while in GLEAM this is partly corrected for by the assimilation of satellite soil moisture (Miralles et al., 2011) and differences in snow evaporation approaches between wflow\_sbm (only evaporation of intercepted snow) and GLEAM (snow evaporation based on a modified Priestley-Taylor equation).



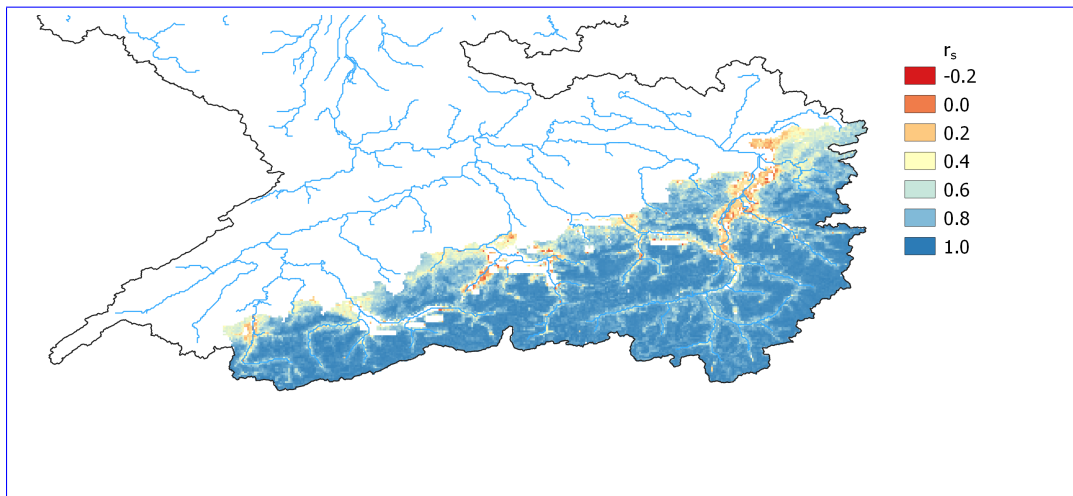
**Figure 13.** Wflow\_sbm simulated and GLEAM long-term (2015-2019) average annual evapotranspiration ( $E_a$ ) for the Rhine catchment.



**Figure 14.** wflow\_sbm simulated and GLEAM catchment-average daily evapotranspiration ( $E_a$ ) for the Rhine catchment for the period 2015-2019.

965 The C-SNOW project provides Sentinel-1 (S1) snow depth observations over the Northern Hemisphere mountains at a spatial resolution of  $\sim 1$  km (Lievens et al., 2019, 2022). For the European Alps the S1 snow depth dataset of Lievens et al. (2019) was improved (Lievens et al., 2022) over the period 2017-2019, and we use this dataset at  $\sim 1$  km resolution for the comparison with wflow\_sbm  $S_{\text{snow}}$ . Because C-SNOW provides snow depth observations and  $S_{\text{snow}}$  represents snow water equivalent, a direct comparison of spatial patterns is not feasible with the spatial efficiency metric  $E_{\text{SP}}$ . Therefore, we determine the temporal correlation for each grid cell (Fig. 15), and the spatio-temporal correlation between S1 snow depth retrievals and  $S_{\text{snow}}$ , estimated with the Spearman rank-order correlation coefficient  $r_s$ . The S1 snow depth retrievals are matched to the wflow\_sbm grid using nearest neighbor resampling, excluding wet snow conditions detected by S1. The spatio-temporal correlation between S1 snow depth retrievals and  $S_{\text{snow}}$  is 0.88. Figure 15 shows generally a strong to a very strong positive correlation (median of  $r_s = 0.87$ ), except in the valleys. Lievens et al. (2022) indicated that main uncertainties in S1 snow depth retrievals are mainly caused by wet, shallow, and occasional snow cover and forest cover. Regional model simulations of snow depth to assess the S1 snow depth retrievals showed a strong positive temporal correlation if the maximum snow depth reaches above  $\sim 1$  m at an elevation above  $\sim 1000$  m or with a forest cover fraction below  $\sim 80$  % (Lievens et al., 2022). A similar pattern is revealed by the temporal correlation between the S1 snow depth retrievals and wflow\_sbm  $S_{\text{snow}}$  in Fig. 15.

970



**Figure 15.** Temporal correlation (Spearman rank-order coefficient  $r_s$ ) for each grid cell between wflow\_sbm  $S_{snow}$  and S1 snow depth retrievals from C-SNOW for the Alps in the Rhine catchment, for the period 2017-2019.

#### 975 4.2.6 Africa - Oueme River - groundwater loss

The Oueme mesoscale site (Benin), Africa, is part of the AMMA-CATCH observation network covering a 14,000 km<sup>2</sup> basin in Sudanian climate on a crystalline basement. It is an interesting test case for wflow\_sbm and the automated model setup including a-priori estimation of the model parameters. Various studies using a variety of hydrological model concepts, including similar model concepts as wflow\_sbm have been conducted (see Cornelissen et al. (2013) and references therein) for this area.

980 Séguis et al. (2011) reported that around 15% of water is being lost to the groundwater which is disconnected from the river system. Here, we run the wflow\_sbm model for the period 1981 ~~until 2020~~ to 2019 at a daily time step both without and with groundwater loss ( $L_{max} = 0$  mm/d vs  $L_{max} = 0.6$  mm/d; ~~15% of  $\sim 4$  mm/day of yearly average rainfall~~) d of annual average daily rainfall and analyse the model results for a variety of locations.  $L_{max}$  represents a maximum groundwater loss value and the actual groundwater loss (computed by wflow\_sbm) is controlled by the vertical hydraulic conductivity at the soil bottom and the saturated store (see Eq. 85) and may vary spatially and in time.

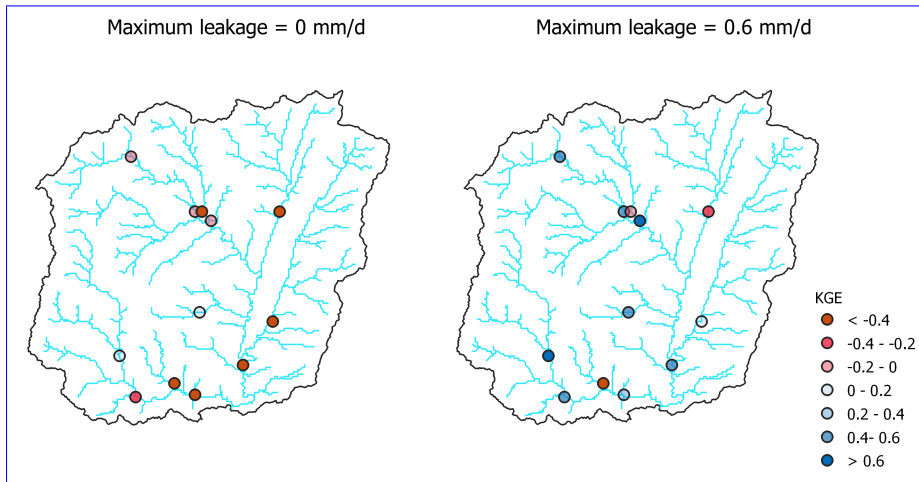
985 Land cover derived model parameters are based on VITO v2.0.2 (Buchhorn et al., 2019). For this model case the snow model is ~~disables~~ disabled, and lakes and reservoirs are not included. Figure 16 shows the KGE scores of discharge for the stations within the Oueme mesoscale site without and with groundwater loss. Generally the performance of wflow\_sbm increases with groundwater loss with a median increase of 0.86 for all stations. Figure 17 shows simulated discharge for station TEBOU for 2010 with and without groundwater loss.

990 The simulation with groundwater loss clearly shows less overestimation of discharge during the rising limb and peaks of the hydrograph, also reflected in the higher KGE score for the simulation with groundwater loss.

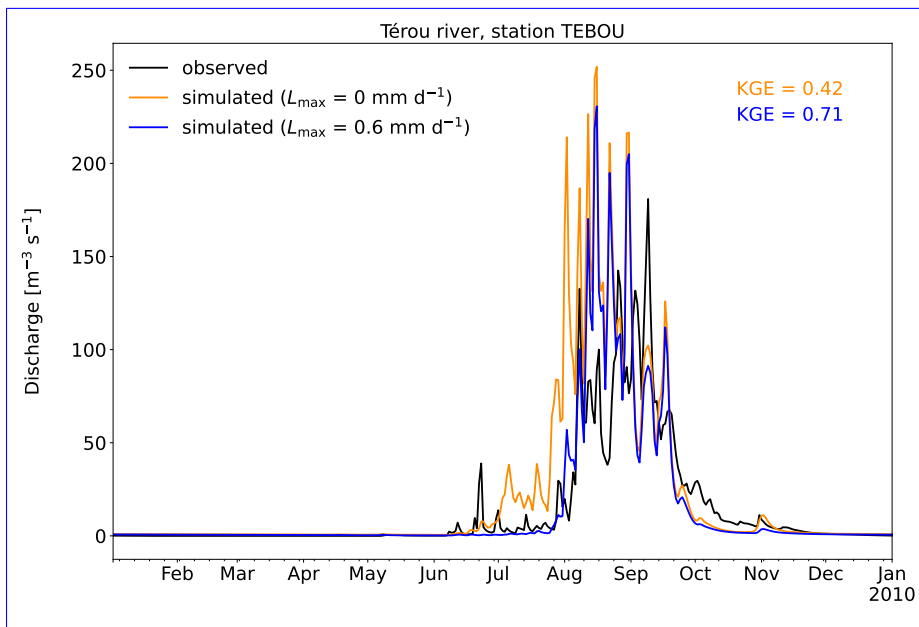
While the simulation with groundwater loss shows generally a better performance, we expect further improvement is possible by checking the effect of different groundwater loss values. For example, during the start of the rising limb of the hydrograph, the simulation underestimates the discharge for 2010 (Fig. 16) and other years (not shown). Applying a lower uniform



995 groundwater loss value (we use the upper range of 15% reported by Séguis et al. (2011)), or applying spatially distributed groundwater loss values based on discharge measurements and a water balance approach for the upstream area (sub-catchment) of each station, could further improve simulation results.



**Figure 16.** KGE scores of discharge for stations within the Oueme mesoscale site without and with groundwater loss.



**Figure 17.** Simulated (with and without groundwater loss) and observed discharge for station TEBOU for 2010.

## 5 Conclusions and future work

We presented the wflow\_sbm hydrological model as part of the Wflow.jl (v0.6.1.7.3) open-source modelling framework for distributed hydrologic-hydrological modelling in Julia, a continuation of the wflow development in the PCRaster-Python framework. Wflow\_sbm has been applied in various catchments around the world with satisfactory to good performance. With wflow\_sbm we aim to strike a balance between low-resolution, low-complexity and high-resolution, high-complexity hydrologic-hydrological models. Most wflow\_sbm parameters are based on physical characteristics and at the same time wflow\_sbm has a run time performance well suited for large-scale high-resolution modelling. We demonstrated some examples of wflow\_sbm applications with Wflow.jl (v0.6.1.7.3), using HydroMT-Wflow to setup the wflow\_sbm model, including forcing, in an automated way. The wflow\_sbm applications illustrate that the a-priori model parameter estimates in combination with a manual adjustment of the  $f_{K_{h0}}$  model parameter result in generally satisfactory to good performance [for discharge and catchment-average soil moisture \(Moselle catchment\)](#), with for catchment Umeälven similar performance [for discharge](#) (qualitatively) to E-HYPE. [For the Rhine catchment we demonstrated the ability of wflow\\_sbm to represent the spatial distribution of actual evapotranspiration  \$E\_a\$  from GLEAM, and snow storage  \$S\_{snow}\$  for the Alps by comparing to C-SNOW S1 snow depth observations. Wflow\\_sbm can represent daily  \$E\_a\$  variability from GLEAM, although the spatial location matching is not satisfactory, which could be due to, amongst others, the difference in resolution between GLEAM and wflow\\_sbm and different or missing process representations as snow evaporation and irrigation. For the comparison of  \$S\_{snow}\$  and S1 snow depth retrievals a good performance indicated by the spearman rank-order correlation coefficient \(temporal \(median of  \$r\_s = 0.87\$ \) and spatio-temporal \( \$r\_s = 0.88\$ \)\) is obtained.](#) The Oueme River case illustrates the use of the model parameter  $L_{max}$  (maximum leakage) based on data from literature, resulting in an overall significant increase in model performance. Including the process of leakage to deeper groundwater results in loss of water outside of the model domain, and we recommend to include this process only if scientific literature or geological data indicate that leakage to deeper groundwater is of importance. With the a-priori parameter estimation, a working wflow\_sbm model is setup quickly and incorrect process representations become apparent. The results, e.g. for the Oueme River, indicate that local information and literature studies can help in improving process representation and if not, it opens the way for a better focus on the missing process representation. This is something that lacks when a hydrologic-hydrological model would directly be calibrated for a given catchment.

While (pedo)transfer [function-functions](#) are available for most of the sensitive wflow\_sbm model parameters, this is not the case for the  $f_{K_{h0}}$  model parameter. An interesting approach, as part of future work focusing on model data, could be to develop a transfer function for this model parameter by estimating the transfer function with function space optimization (FSO), a method presented by Feigl et al. (2020). Relevant hydrologic-hydrological processes as glacier and snow processes, evapotranspiration processes, unsaturated zone dynamics, (shallow) groundwater, surface flow routing including lakes and reservoirs are part of wflow\_sbm. Floodplain dynamics (backwater effects and floodplain storage) are not part of the kinematic wave routing in Wflow.jl and and this may be problematic to accurately simulate discharge and water depths when backwater effects and floodplain storage cannot be ignored (e.g. Zhao et al., 2017). Additionally, the kinematic wave approach is mostly applicable when slopes are steep and less reliable for low gradient rivers. A recent wflow\_sbm development, which is part of v0.6.1.7.3, is

the improvement of the routing scheme for river-floodplain dynamics and to improve discharge and water depth estimates for low gradient rivers. The improved routing scheme ~~consists of~~ includes the following options: 1) a 1-D local inertial solution for river channel flow and a 2-D local inertial solution for floodplain and overland flow, similar to Neal et al. (2012), and 2) a  
1035 1-D local inertial solution for river channel flow with an optional 1-D floodplain schematization. Future possible developments related to the improved local inertial routing scheme are 1) to improve the multi-threaded performance for the 2-D local inertial solution, 2) vector based routing (e.g. Mizukami et al., 2021) would allow for more flexible channel routing configurations that are less computationally intensive and 3) to combine different routing solutions (e.g. kinematic wave and local inertial) at the submodel-domain scale (e.g. local inertial for the ~~flood plain~~ floodplain). For water resources modelling studies, wflow\_sbm is  
1040 often linked to a network-based water allocation model (e.g., Meijer et al., 2021). The development of a water demand module (irrigation, livestock, industrial and domestic) and water allocation module is foreseen, to fully exploit the gridded capabilities of wflow\_sbm. The standard soil column of wflow\_sbm extends to 2 m below surface level based on SoilGrids data, and although the soil column depth can be increased, the process modelled by wflow\_sbm consists of shallow lateral subsurface flow, with an exponential decline of  $K_{v0}$  with depth, that may not be appropriate for simulating deep groundwater. While for  
1045 many applications deep groundwater processes can be ignored, for the coupling with a groundwater model like MODFLOW, or for the extraction of groundwater as part of the foreseen water demand and allocation developments, implementation of a deep groundwater concept is important. Finally, speedup of the wflow code is ongoing work, recently multi-threading (single node) was added to the wflow code, and further ~~development of distributed computing with a focus on multi-node parallelism using developments may include distributed computing (using for example Julia's implementation Distributed.jl or the Julia~~  
1050 interface to Message Passing Interface (MPI) is planned. MPI.jl) and GPU acceleration. In view of these future developments and the current status of the Wflow.jl framework, we have developed the wflow\_sbm model which is applicable worldwide, and serves as an important tool to provide relevant information for operational and water resources planning challenges.

*Code and data availability.* Wflow.jl is open-source and distributed under the terms of the MIT license. The code and documentation is provided through the following GitHub repository <https://github.com/Deltares/Wflow.jl>. Wflow v0.7.3 is available through  
1055 <https://github.com/Deltares/Wflow.jl/releases/tag/v0.7.3>, Zenodo with the associated DOI: <https://doi.org/10.5281/zenodo.10495638> (van Verseveld et al., 2024), and is available as a Julia package. The wflow\_sbm model cases presented in this paper are available at Zenodo with the associated DOI: <https://doi.org/10.5281/zenodo.10370017> (van Verseveld et al., 2023). Development and maintenance of Wflow.jl is conducted by Deltares and we welcome contributions from external parties.

**Table A1.** Wflow\_sbm state and flux variables (non-exhaustive).

<u>Symbol</u>	<u>Description</u>	<u>Unit</u>	<u>Wflow.jl name</u>
$S_{\text{canopy}}$	Canopy storage	mm	canopystorage
$S_{\text{snow}}$	Snow storage	mm	snow
$S_{\text{snow,liquid}}$	Amount of liquid water in the snowpack	mm	snowwater
$S_{\text{glacier}}$	Glacier storage	mm	glacierstore
$S_{\text{unsat},n}$	Amount of water in the unsaturated zone, for layer $n$	mm	ustorelayerdepth
$S_{\text{sat}}$	Amount of water in saturated store	mm	satwaterdepth
$S_{\text{res}}$	Storage of reservoir	m <sup>3</sup>	volume
$S_{\text{lake}}$	Lake storage	m <sup>3</sup>	storage
$H_{\text{lake}}$	Water level lake	m	waterlevel
$P$	Precipitation	mm t <sup>-1</sup>	precipitation
$I_{\text{total}}$	Total interception	mm t <sup>-1</sup>	interception
$P_{\text{throughfall}}$	Throughfall	mm t <sup>-1</sup>	throughfall
$F_{\text{available}}$	Infiltration rate of available water	mm t <sup>-1</sup>	avail_forinfiltr
$F_{\text{excess}}$	Infiltration excess water rate	mm t <sup>-1</sup>	infiltrationexcess
$F_{\text{excess,sat}}$	Rate of water that cannot infiltrate due to saturated soil	mm t <sup>-1</sup>	waterexcess
$F_{\text{act}}$	Actual infiltration rate	mm t <sup>-1</sup>	actinfiltr
$R_{\text{exfiltr,sat}}$	Water exfiltrating during saturation excess conditions	m t <sup>-1</sup>	exfiltrationwater
$R_{\text{exfiltr,unsat}}$	Water exfiltrating from unsaturated store because of change in water table	mm t <sup>-1</sup>	exfiltrationstore
$R_{\text{river}}$	Runoff from river fraction	mm t <sup>-1</sup>	runoff_river
$R_{\text{open water}}$	Runoff from open water fraction (excluding rivers)	mm t <sup>-1</sup>	runoff_land
$E_{\text{open water}}$	Evaporation from open water bodies (excluding rivers)	mm t <sup>-1</sup>	ae_openw_l
$E_{\text{river}}$	Evaporation from rivers	mm t <sup>-1</sup>	ae_openw_r
$E_{\text{act,sat}}$	Soil evaporation from the saturated store	mm t <sup>-1</sup>	soilevapsat
$E_{\text{act,soil}}$	Soil evaporation from the unsaturated store	mm t <sup>-1</sup>	-
$E_{\text{trans,sat}}$	Transpiration from the saturated store	mm t <sup>-1</sup>	actevapsat
$\sum_{m=1}^m E_{\text{trans,unsat},n}$	Transpiration from the unsaturated store for $m$ unsaturated soil layers	mm t <sup>-1</sup>	ae_ustore
$C_{\text{act}}$	Actual capillary rise	mm t <sup>-1</sup>	actcapflux
$L$	Leakage	mm t <sup>-1</sup>	actleakage
$R_{\text{input}}$	Net recharge to the saturated store	mm t <sup>-1</sup>	recharge
$Q_{\text{subsurface}}$	Subsurface flow	m <sup>3</sup> d <sup>-1</sup>	ssf
$Q_{\text{transfer,act},m}$	Transfer of water from unsaturated soil layer $m$ to saturated store	mm t <sup>-1</sup>	transfer
$Q$	Surface flow in the kinematic wave	m <sup>3</sup> s <sup>-1</sup>	q_av <sup>a</sup>
$Q_{\text{in,lake}}$	Lake inflow	m <sup>3</sup> t <sup>-1</sup>	inflow
$Q_{\text{out,lake}}$	Lake outflow	m <sup>3</sup> t <sup>-1</sup>	totaloutflow
$P_{\text{lake}}$	Lake average precipitation	mm t <sup>-1</sup>	precipitation
$E_{\text{lake}}$	Lake average evaporation	mm t <sup>-1</sup>	evaporation
$Q_{\text{in,res}}$	Reservoir inflow	m <sup>3</sup> t <sup>-1</sup>	inflow
$Q_{\text{out,res}}$	Reservoir outflow	m <sup>3</sup> t <sup>-1</sup>	totaloutflow
$P_{\text{res}}$	Reservoir average precipitation	mm t <sup>-1</sup>	precipitation
$E_{\text{pot,res}}$	Reservoir average evaporation	mm t <sup>-1</sup>	evaporation

Note. Variables are defined for model time step  $t$ . Some variables use the same Wflow.jl names to improve code-readability, as they are handled in separate structs.

<sup>a</sup>q\_av represents the average surface flow during model time step  $t$ .

**Table A2.** Wflow\_sbm model parameters and forcing.

Symbol	Description	Unit	Wflow.jl name	Default value
$P$	Precipitation	mm $t^{-1}$	precipitation	-
$E_{pot,total}$	Potential evapotranspiration	mm $t^{-1}$	potential_evaporation	-
$T_{air}$	Mean air temperature	$^{\circ}C$	temperature	-
$z_{soil}$	Soil depth	mm	soilthickness	2000.0
$\theta_s$	Saturated soil water content	mm $mm^{-1}$	$\theta_s$	0.6
$\theta_r$	Residual soil water content	mm $mm^{-1}$	$\theta_r$	0.01
$f_{paved}$	Fraction of compacted soil (or paved)	-	pathfrac	0.01
$f_{openwater}$	Open water fraction (excluding rivers)	-	waterfrac	0.0
$f_{river}$	River fraction	-	riverfrac	-
$C_{infiltration,unpaved}$	Infiltration capacity of non-compacted soil	mm $t^{-1}$	infiltpcapsoil	100.0 mm $d^{-1}$
$C_{infiltration,paved}$	Infiltration capacity of compacted soil	mm $t^{-1}$	infiltpcappath	10.0 mm $d^{-1}$
$z_{rooting}$	Rooting depth	mm	rootingdepth	750.0
$\frac{E_{sat}}{P_{sat}}$	Gash interception model parameter	-	e_r	0.1
LAI	Leaf area index	$m^2 m^{-2}$	leaf_area_index	-
$S_{leaf}$	Specific leaf storage	mm	sl	-
$S_{canopy,max}$	Canopy storage capacity	mm	cmax	1.0
$f_{canopygap}$	Canopy gap fraction	-	canopygapfraction	0.1
$S_{wood,max}$	Storage capacity woody parts of vegetation	mm	swood	-
$k$	Extinction coefficient	-	kext	-
$C_{rd}$	Model parameter controlling the sigmoid function, for the fraction of wet roots	mm $^{-1}$	rootdistpar	-500.0
$z_{cap,maxdepth}$	Critical water depth beyond which capillary rise ceases	mm	cap_hmax	2000.0
$n_{cap}$	Empirical coefficient controlling capillary rise	-	cap_n	2.0
$K_{v0}$	Vertical saturated hydraulic conductivity at the soil surface	mm $t^{-1}$	kv0	3000.0 mm $d^{-1}$
$f_{Kv}$	Scaling parameter for saturated hydraulic conductivity	mm $^{-1}$	f	0.001
$c_n$	Brooks-Corey power coefficient	-	c	10.0
$h_b$	Air entry value	cm	hb	10.0
$L_{max}$	Maximum allowed leakage	mm $t^{-1}$	maxleakage	0.0 mm $d^{-1}$
$f_{Kh0}$	Multiplication factor applied to $K_{v0}$ (for lateral subsurface flow)	-	-	1.0
$f_{Kv,n}$	Multiplication factor (correcting vertical saturated hydraulic conductivity)	-	kvfrac	1.0
$s_{ddf}$	Degree-day-melt factor snow	mm $t^{-1} ^{\circ}C^{-1}$	cfmax	3.75653 mm $d^{-1} ^{\circ}C^{-1}$
$s_{fall,Tthreshold}$	Temperature threshold for snowfall	$^{\circ}C$	tt	0.0
$s_{fall,Tinterval}$	Temperature threshold interval for snowfall	$^{\circ}C$	ttoi	1.0
$s_{melt,Tthreshold}$	Temperature threshold for snowmelt	$^{\circ}C$	ttm	0.0
$s_{whc}$	Water holding capacity of snow	-	whc	0.1
$g_{melt,Tthreshold}$	Temperature threshold for glacier melt	$^{\circ}C$	g_tt	0.0
$g_{ddf}$	Degree-day-melt factor glacier	mm $t^{-1} ^{\circ}C^{-1}$	g_cfmax	3.0 mm $d^{-1} ^{\circ}C^{-1}$
$f_{glacier}$	Fraction covered by a glacier	-	glacierfrac	0.0
$S_{glacier}$	Glacier storage	mm	glacierstore	5500.0
$g_{snow to ice}$	Fraction of snow that is converted into ice	$t^{-1}$	g_sifrac	0.001 $d^{-1}$
$w_{soil}$	Weighting coefficient for near-surface soil temperature	$t^{-1}$	w_soil	0.1125 $d^{-1}$
$f_{red,frozen}$	Controlling infiltration reduction factor	-	cf_soil	0.038
$C_{land slope}$	Slope of the land surface	m $m^{-1}$	$\beta_1$	-
$C_{river slope}$	Slope of river	m $m^{-1}$	sl	-
$A_{res}$	Reservoir area	$m^2$	area	-
$Q_{min req.}$	Minimum flow requirement downstream of the reservoir	$m^3 s^{-1}$	demandrelease	-
$Q_{max,res}$	Maximum release capacity spillway	$m^3 s^{-1}$	maxrelease	-
$S_{res,max}$	Maximum storage of the reservoir	$m^3$	maxvolume	-
$f_{res,min}$	Target minimum storage fraction	-	targetminfrac	-
$f_{res,max}$	Target maximum storage fraction	-	targetmaxfrac	-
$A_{lake}$	Lake area	$m^2$	area	-
$H_{0,lake}$	Water level lake threshold, below this threshold no outflow occurs	m	threshold	-
$H_{lake}$	Water level lake	m	waterlevel	-
$\alpha_{lake}$	Lake rating curve coefficient	$m s^{-1(a)}, m^{\frac{3}{2}} s^{-1(b)}$	b	-
$\beta_{lake}$	Lake rating curve exponent	-	e	-
$n_{land}$	Manning's roughness (overland flow)	$s m^{-\frac{1}{3}}$	n	0.072
$n_{river}$	Manning's roughness (river flow)	$s m^{-\frac{1}{3}}$	n	0.036
$x_{river}$	River length	m	dl	-
$w_{river}$	River width	m	width	-
$h_{bankfull}$	River bankfull depth	m	bankfull_depth	1.0

Note.  $t$  represents the model time step. Some parameters use the same Wflow.jl names to improve code-readability, as they are handled in separate structs.

(<sup>a</sup>) unit for parabolic weir (<sup>b</sup>) unit for rectangular weir.

## Appendix A

1060 **A1**

**A2**

*Author contributions.* WV and MV wrote the majority of the source code and JB, HB, DE, LB and MH contributed to the software development and documentation. WV wrote the original draft of the paper. AW, RI and WV did setup and analyse the model simulations and wrote section 4.2. JB wrote section 3 and produced Fig. 2. LB produced Fig. 1 (adapted from van Verseveld et al. (2024)). All co-authors  
1065 contributed to review and editing of the original draft paper.

*Competing interests.* The authors declare that there is no conflict of interest.

*Acknowledgements.* This work has received funding from the EU Horizon 2020 Program for Research & Innovation, under grant agreement no 776613 (EUCP: European Climate Prediction system; <https://www.eucp-project.eu>) and from the European High-Performance Computing Joint Undertaking (JU) under grant agreement No 955648 (ACROSS, <https://www.acrossproject.eu/>). The research was co-funded by the  
1070 Deltares Strategic Research Programs Natural Hazards and Real-Time Information.

## References

- Aerts, J. P. M., Hut, R. W., van de Giesen, N. C., Drost, N., van Verseveld, W. J., Weerts, A. H., and Hazenberg, P.: Large-sample assessment of ~~spatial-sealing-effects-of-the-distributed~~ varying spatial resolution on the streamflow estimates of the wflow\_sbm hydrological model ~~shows that finer spatial resolution does not necessarily lead to better streamflow estimates~~, Hydrol. Earth Syst. Sci. ~~Discuss. preprint~~, 26, 4407–4430, <https://doi.org/10.5194/hess-2021-605>, ~~in review, 2021~~. ~~hess-26-4407-2022~~, 2022.
- Alfieri, L., Burek, P., Dutra, E., Krzeminski, B., Muraro, D., Thielen, J., and Pappenberger, F.: GloFAS – global ensemble streamflow forecasting and flood early warning, Hydrol. Earth Syst. Sci., 17, 1161–1175, <https://doi.org/10.5194/hess-17-1161-2013>, 2013.
- Arino O., Ramos, J., Kalogirou, V., Defourny, P., and Achard., F.: GlobCover 2009, ESA Living Planet Symposium, 27 June, 2 July 2010, 1080 Bergen, Norway.
- Beck, H. E., Wood, E. F., Pan, M., Fisher, C. K., Miralles, D. M., van Dijk, A. I. J. M., McVicar, T. R., and Adler, R. F.: MSWEP V2 global 3-hourly 0.1° precipitation: Methodology and quantitative assessment, Bulletin of the American Meteorological Society, 100(3), 473–500, 2019.
- Bell, V. A., Kay, A. L., Jones, R. G., and Moore, R. J.: Development of a high resolution grid-based river flow model for use with regional 1085 climate model output, Hydrol. Earth Syst. Sci., 11, 532–549, doi: 10.5194/hess-11-532-2007951, 2007.
- Benning, R. G.: Towards a new lumped parameterization at catchment scale (Doctoral dissertation, Wageningen University, Wageningen, The Netherlands). Retrieved from <http://edepot.wur.nl/216531ID954>, 1994.
- Bergström, S.: The HBV model – its structure and applications, SMHI Norrköping, Schweden, SMHI, SMHI Reports Hydrology, 4, 32 pp., 1992.
- 1090 Bezanson, J., Edelman, A., Karpinski, S., and Shah, V. B.: Julia: A Fresh Approach to Numerical Computing, SIAM Rev.59, 1, 2017, <https://doi.org/10.1137/141000671>
- Beven, K.: Prophecy, reality, and uncertainty in distributed hydrological modeling, Adv. Water Resour., 16, 41-51, 1993.
- Beven, K.: A manifesto for the equifinality thesis, J. Hydrol., 320, 18-36, 2006.
- Bierkens, M. F. P., et al.: Hyper-resolution global hydrological modelling: What is next? “Everywhere and locally relevant”, Hydrol. Processes, 29, 310–320, 2014.
- 1095 Brakensiek, D. L., Rawls, W. J., and Stephenson, G. R.: Modifying scs hydrologic soil groups and curve numbers for rangeland soils, ASAE Paper no. PNR-84-203, St. Joseph, Michigan, USA, 1984.
- Brooks, R. H., and Corey, A. T.: Hydraulic properties of porous media, Hydrology Papers 3, Colorado State University, Fort Collins, 27 p., 1964.
- 1100 Brunner, P., and Simmons, C. T.: HydroGeoSphere: A Fully Integrated, Physically Based Hydrological Model, Groundwater, 50, 170-176, 2012.
- Buchhorn, M., Smets, B., Bertels, L., Lesiv, M., Tsendbazar, N.-E., Herold, M., and Fritz, S.: Copernicus Global Land Service: Land Cover 100m, epoch 2015, Globe (Version V2.0.2), <http://doi.org/10.5281/zenodo.3243509>, 2019.
- Chow, V. T., Maidment, D. R., and Mays, L. W.: Applied Hydrology, McGraw-Hill International Editions, Civil Engineering Series, 1988.
- 1105 Clark, M. P., et al.: Improving the theoretical underpinnings of processbased hydrologic models, Water Resour. Res., 52, 2350–2365, doi:10.1002/2015WR017910, 2016.

- Clark, M. P., et al.: The evolution of process-based hydrologic models: historical challenges and the collective quest for physical realism, *Hydrol. Earth Syst. Sci.*, 21, 3427–3440, 2017.
- 1110 Cornelissen, T., Diekkrüger, B., Giertz, S.: A comparison of hydrological models for assessing the impact of land use and climate change on discharge in a tropical catchment, *Journal of Hydrology*, Volume 498, 2013, Pages 221-236, ISSN 0022-1694, <https://doi.org/10.1016/j.jhydrol.2013.06.016>.
- de Bruin, H. A. R. d., Trigo, I. F., Bosveld, F. C., and Meirink, J. F.: A Thermodynamically Based Model for Actual Evapotranspiration of an Extensive Grass Field Close to FAO Reference, Suitable for Remote Sensing Application, *Journal of Hydrometeorology*, 17, 1373-1382, <https://doi.org/10.1175/JHM-D-15-0006.1>, publisher: American Meteorological Society Section: *Journal of Hydrometeorology*, 2016.
- 1115 [Dembélé, M., Hrachowitz, M., Savenije, H. H. G., Mariéthoz, G., and Schaeffli, B.: Improving the predictive skill of a distributed hydrological model by calibration on spatial patterns with multiple satellite data sets, \*Water Resources Research\*, 56, e2019WR026085, <https://doi.org/10.1029/2019WR026085>, 2020.](https://doi.org/10.1029/2019WR026085)
- [Demirel, M. C., Mai, J., Mendiguren, G., Koch, J., Samaniego, L., and Stisen, S.: Combining satellite data and appropriate objective functions for improved spatial pattern performance of a distributed hydrologic model, \*Hydrol. Earth Syst. Sci.\*, 22, 1299–1315, <https://doi.org/10.5194/hess-22-1299-2018>, 2018.](https://doi.org/10.5194/hess-22-1299-2018)
- 1120 Eilander, D., and Boisgontier, H.: hydroMT (v0.4.5), Zenodo, <https://doi.org/10.5281/zenodo.610766>, 2022.
- Eilander, D., Boisgontier, H., van Verseveld, W., Bouaziz, L., and Hegnauer, M.: hydroMT-wflow (v0.1.4), Zenodo, <https://doi.org/10.5281/zenodo.6221375>, 2022.
- Eilander, D., van Verseveld, W., Yamazaki, D., Weerts, A., Winsemius, H. C., and Ward, P. J.: A hydrography upscaling method for scale-invariant parametrization of distributed hydrological models, *Hydrol. Earth Syst. Sci.*, 25, 5287–5313, <https://doi.org/10.5194/hess-25-5287-2021>, 2021.
- 1125 Engman, E.: Roughness coefficients for routing surface runoff, *J. Irrig. Drain. Eng.*, 112, 39–53, doi: 10.1061/(ASCE)0733-9437(1986)112:1(39), 1986.
- ESDAC: The European Soil Database distribution version 2.0, European Commission and the European Soil Bureau Network, 2004. Retrieved from [esdac.jrc.ec.europa.eu](https://esdac.jrc.ec.europa.eu)
- 1130 European Environment Agency: Corine Land Cover (CLC) 2018, Version 2020\_20u1, Retrieved from <https://land.copernicus.eu/pan-european/corine-land-cover/clc2018>, 2018.
- Fan, J., McConkey, B., Wang, H., and Janzen, H.: Root distribution by depth for temperate agricultural crops, *Field Crops Res.*, 189, 68-74, <https://doi.org/10.1016/j.fcr.2016.02.013>, 2016.
- 1135 Feddes, R.A., Kowalik, P.J. and Zaradny, H.: Simulation of field water use and crop yield, Pudoc, Wageningen, Simulation Monographs, 1978.
- Feigl, M., Herrnegger, M., Klotz, D., and Schulz, K.: Function space optimization: A symbolic regression method for estimating parameter transfer functions for hydrological models, *Water Resources Research*, 56, e2020WR027385. <https://doi.org/10.1029/2020WR027385>, 2020.
- 1140 Fenicia, F., Kavetski, D., and Savenije, H. H.: Elements of a flexible approach for conceptual hydrological modeling: 1. Motivation and theoretical development, *Water Resour. Res.*, 47, W11510, <https://doi.org/10.1029/2010WR010174>, 2011.
- Funk, C., Peterson, P., Landsfeld, M. et al.: The climate hazards infrared precipitation with stations—a new environmental record for monitoring extremes, *Sci Data* 2, 150066, <https://doi.org/10.1038/sdata.2015.66>, 2015.



- Gao, H., Hrachowitz, M., Fenicia, F., Gharari, S., and Savenije, H. H. G.: Testing the realism of a topography-driven model (FLEX-Topo) in the nested catchments of the Upper Heihe, China, *Hydrol. Earth Syst. Sci.*, 18, 1895–1915, <https://doi.org/10.5194/hess-18-1895-2014>, 2014.
- Gash, J. H. C.: An analytical model of rainfall interception by forests, *Q. J. Roy. Meteor. Soc.*, 105, 43–55, doi:10.1002/qj.497105443041027, 1979.
- Gebremicael, T., Mohamed, Y., and der Zaag, P.V.: Attributing the hydrological impact of different land use types and their long-term dynamics through combining parsimonious hydrological modelling, alteration analysis and PLSR analysis, *Sci. Total Environ.*, 660, pp. 1155-1167, [10.1016/j.scitotenv.2019.01.085](https://doi.org/10.1016/j.scitotenv.2019.01.085), 2019.
- Giardino, A., Schrijvershof, R., Nederhoff, C., De Vroeg, H., Brière, C., Tonnon, P.K., Caires, S., Walstra, D., Sosa, J., Van Verseveld, W., Schellekens, J., and Sloff, C. J.: A quantitative assessment of human interventions and climate change on the West African sediment budget, *Ocean Coast. Manag.*, 156, 249–265, <https://doi.org/10.1016/j.ocecoaman.2017.11.008>, 2018.
- Gupta, H., Kling, H., Yilmaz, K., and Martinez, G.: Decomposition of the mean squared error and nse performance criteria: Implications for improving hydrological modelling, *J. Hydr.*, 377, 80–91. doi:10.1016/j.jhydrol.2009.08.0031037, 2009.
- Hassaballah, K., Mohamed, Y., Uhlenbrook, S., and Biro, K.: Analysis of streamflow response to land use and land cover changes using satellite data and hydrological modelling: case study of Dinder and Rahad tributaries of the Blue Nile (Ethiopia-Sudan). *Hydrol. Earth Syst. Sci.* 21, 5217, <https://doi.org/10.5194/hess-21-5217-2017>, 2017.
- Hengl, T., Mendes de Jesus, J., Heuvelink, G. B. M., Ruiperez Gonzalez, M., Kilibarda, M., Blagotić, A., et al.: SoilGrids250m: Global gridded soil information based on machine learning, *PLoS ONE*, 12, <https://doi.org/10.1371/journal.pone.0169748>, 2017.
- Hersbach, H., Bell, B., Berrisford, P., Hirahara, S., Horányi, A., Muñoz-Sabater, J., Nicolas, J., Peubey, C., Radu, R., Schepers, D., Simmons, A., Soci, C., Abdalla, S., Abellan, X., Balsamo, G., Bechtold, P., Biavati, G., Bidlot, J., Bonavita, M., De Chiara, G., Dahlgren, P., Dee, D., Diamantakis, M., Dragani, R., Flemming, J., Forbes, R., Fuentes, M., Geer, A., Haimberger, L., Healy, S., Hogan, R. J., Hólm, E., Janisková, M., Keeley, S., Laloyaux, P., Lopez, P., Lupu, C., Radnoti, G., de Rosnay, P., Rozum, I., Vamborg, F., Villaume, S., and Thépaut, J.-N.: The ERA5 global reanalysis, *Q. J. Roy. Meteor. Soc.*, 146, 1999–2049, <https://doi.org/10.1002/qj.3803>, 2020.
- Horn, B. K. P.: Hill Shading and the Reflectance Map, *Proceedings of IEEE*, Vol. 69, No. 1, 1981, pp. 14-47, 1981, <http://dx.doi.org/10.1109/PROC.1981.11918>
- Hrachowitz, M., and Clark M. P.: HESS Opinions: The complementary merits of competing modelling philosophies in hydrology, *Hydrol. Earth Syst. Sci.*, 21, 3953–3973, <https://doi.org/10.5194/hess-21-3953-2017>, 2017.
- Imhoff, R. O., van Verseveld, W. J., Osnabrugge, B., and Weerts, A. H.: Scaling Point-Scale (Pedo)transfer Functions to Seamless Large-Domain Parameter Estimates for High-Resolution Distributed Hydrologic Modeling: An Example for the Rhine River, *Water Resour. Res.*, 56, <https://doi.org/10.1029/2019WR026807>, 2020.
- Jägermeyr, J., Pastor, A., Biemans, H., and Gerten, D.: Reconciling irrigated food production with environmental flows for Sustainable Development Goals implementation, *Nat. Commun.* 8, 15900 doi: 10.1038/ncomms15900, 2017.
- Jakeman, A. J., and Hornberger, G. M.: How Much Complexity Is Warranted in a Rainfall-Runoff Model?, *Water Resour. Res.*, 29, 2637-2649, 1993.
- Karssenber, D., Schmitz, O., Salamon, P., de Jong, K., and Bierkens, M. F. P.: A software framework for construction of process-based stochastic spatio-temporal models and data assimilation, *Environ. Modell. Softw.*, 25, 489–502. doi: 10.1016/j.envsoft.2009.10.0041062, 2010.

- Kilgore, J. L.: Development and evaluation of a gis-based spatially distributed unit hydrograph model, MSc. thesis, Retrieved from <http://hdl.handle.net/10919/35777>, 1997.
- Kirchner, J. W.: Getting the right answers for the right reasons: Linking measurements, analyses, and models to advance the science of hydrology, *Water Resour. Res.*, 42, W03S04, doi:10.1029/2005WR004362, 2006.
- 1185 Kling, H., Fuchs, M. and Paulin, M.: Runoff conditions in the upper Danube basin under an ensemble of climate change scenarios, *J. Hydrol.*, 424–425, 264–277, doi:10.1016/j.jhydrol.2012.01.011, 2012.
- Knoben, W. J. M., Clark, M. P., Bales, J., Bennett, A., Gharari, S., Marsh, C. B., Nijssen, B., Pietroniro, A., Spiteri, R. J., Tarboton, D. G., and Wood, A. W.: Community Workflows to Advance Reproducibility in Hydrologic Modeling: Separating model-agnostic and model-specific configuration steps in applications of large-domain hydrologic models, *Earth and Space Science Open Archive*, 1190 <https://doi.org/10.1002/essoar.10509195.1>, 2021.
- Knoben, W. J. M., Freer, J. E., and Woods, R. A.: Technical note: Inherent benchmark or not? Comparing Nash–Sutcliffe and Kling–Gupta efficiency scores, *Hydrol. Earth Syst. Sci.*, 23, 4323–4331, <https://doi.org/10.5194/hess-23-4323-2019>, 2019.
- [Koch, J., Demirel, M. C., and Stisen, S.: The SPAtial Efficiency metric \(SPAEF\): multiple-component evaluation of spatial patterns for optimization of hydrological models, \*Geosci. Model Dev.\*, 11, 1873–1886, <https://doi.org/10.5194/gmd-11-1873-2018>, 2018.](https://doi.org/10.5194/gmd-11-1873-2018)
- 1195 Kollet, S. J., and R. M. Maxwell; Integrated surface groundwater flow modeling: A free surface overland flow boundary condition in a parallel groundwater flow model, *Adv. Water Resour.*, 29, 945–958, doi:10.1016/j.advwatres.2005.08.006, 2006.
- Laverde-Barajas, M., Corzo Perez, G. A., Chishtie, F., Poortinga, A., Uijlenhoet, R., and Solomatine, D. P.: Decomposing satellite-based rainfall errors in flood estimation: Hydrological responses using a spatiotemporal object-based verification method, *Journal of Hydrology*, Volume 591, 125554, ISSN 0022-1694, <https://doi.org/10.1016/j.jhydrol.2020.125554>, 2020.
- 1200 [Lievens, H., Brangers, I., Marshall, H.-P., Jonas, T., Olefs, M., and De Lannoy, G. J. M.: Sentinel-1 snow depth retrieval at sub-kilometer resolution over the European Alps, \*The Cryosphere\*, 16, 159-177, 2022.](https://doi.org/10.1016/j.cryosphere.2022.100015)
- [Lievens, H., Demuzere, M., Marshall, H.-P., Reichle, R.H., Brucker, L., Brangers, I., de Rosnay, P., Dumont, M., Giroto, M., Immerzeel, W.W., Jonas, T., Kim, E.J., Koch, I., Marty, C., Saloranta, T., Schöber J., and De Lannoy, G.J.M.: Snow depth variability in the Northern Hemisphere mountains observed from space, \*Nature Communications\*, 10, 4629, 2019.](https://doi.org/10.1038/s41467-019-1241-4)
- 1205 Lehner, B., Reidy Liermann, C., Revenga, C., Vörösmarty, C., Fekete, B., Crouzet, P., Döll, P., Endejan, M., Frenken, K., Magome, J., Nilsson C., Robertson, J. C., Rodel, R., Sindorf, N., and Wissler, D.: High-Resolution Mapping of the World’s Reservoirs and Dams for Sustainable River- Flow Management, *Front. Ecol. Environ.*, 9, 494-502, <http://dx.doi.org/10.1890/100125>, 2011.
- Lin, P., Pan, M., Allen, G., Frasson, R., Zeng, Z., Yamazaki, D., and Wood, E.: Global estimates of reach-level bankfull river width leveraging big-data geospatial analysis [Data set], Zenodo, <https://doi.org/10.5281/zenodo.3552776>, 2019.
- 1210 Liu, S.: Estimation of rainfall storage capacity in the canopies of cypress wetlands and slash pine uplands in North-Central Florida, *J. Hydr.*, 207, 32–41, doi: 10.1016/S0022-1694(98)00115-2, 1998.
- Liu, Z., Martina, M. L. V., and Todini, E.: Flood forecasting using a fully distributed model: application of the TOPKAPI model to the Upper Xixian Catchment, *Hydrol. Earth Syst. Sci.*, 9, 347–364, doi: 10.5194/hess-9-347-2005, 2005.
- 1215 López López, P., Wanders, N., Schellekens, J., Renzullo, L. J., Sutanudjaja, E. H., and Bierkens, M. F. P.: Improved large-scale hydrological modelling through the assimilation of streamflow and downscaled satellite soil moisture observations, *Hydrol. Earth Syst. Sci.*, 20, 3059–3076, <https://doi.org/10.5194/hess-20-3059-2016>, 2016.

- [Martens, B., Miralles, D.G., Lievens, H., van der Schalie, R., de Jeu, R.A.M., Fernández-Prieto, D., Beck, H.E., Dorigo, W.A., and Verhoest, N.E.C.: GLEAM v3: satellite-based land evaporation and root-zone soil moisture, \*Geoscientific Model Development\*, 10, 1903–1925, doi: 10.5194/gmd-10-1903-2017, 2017.](#)
- 1220 Maurer, E., Wood, A., Adam, J., Lettenmaier, D., and Nijssen, B.: A long-term hydrologically based dataset of land surface fluxes and states for the conterminous United States, *J. Climate*, 15, 3237–3251, [https://doi.org/10.1175/1520-0442\(2002\)015<3237:ALTHBD>2.0.CO;2](https://doi.org/10.1175/1520-0442(2002)015<3237:ALTHBD>2.0.CO;2), 2002.
- Meijer, K., Verschelling, E., van Verseveld, W., Donchyts, G., Schmeier, S., and Kwadijk, J.: Fit for purpose? Rapid development of water allocation models using global data: Application for the Upper Niger Basin, *Environmental Modelling & Software*, Volume 145, 105168, ISSN 1364-8152, <https://doi.org/10.1016/j.envsoft.2021.105168>, 2021.
- 1225 Melsen, L. A., Teuling, A. J., Torfs, P. J. J. F., and Clark, M. P.: HESS Opinions: The need for process-based evaluation of large-domain hyper-resolution models, *Hydrol. Earth Syst. Sci.*, 20, 1069–1079, doi: 10.5194/hess-20-1069-2016, 2016.
- Messenger, M.L., Lehner, B., Grill, G., Nedeva, I., and Schmitt, O.: Estimating the volume and age of water stored in global lakes using a geo-statistical approach, *Nat. Commun.*, 7, <https://doi.org/10.1038/ncomms13603>, 2016.
- 1230 [Miralles, D.G., Holmes, T.R.H., de Jeu, R.A.M., Gash, J.H., Meesters, A.G.C.A., Dolman, A.J.: Global land-surface evaporation estimated from satellite-based observations, \*Hydrology and Earth System Sciences\*, 15, 453–469, doi: 10.5194/hess-15-453-2011, 2011.](#)
- Mizukami, N., Clark, M. P., Gharari, S., Kluzek, E., Pan, M., Lin, P., et al.: A vector-based river routing model for Earth System Models: Parallelization and global applications, *Journal of Advances in Modeling Earth Systems*, 13, e2020MS002434, <https://doi.org/10.1029/2020MS002434>, 2021.
- 1235 Myneni, R. B., Knyazikhin, Y., and Park, T.: MCD15A3H MODIS/Terra+Aqua Leaf Area Index/FPAR 4-day L4 Global 500m SIN Grid V006 (Tech. Rep.): NASA EOSDIS and Processes DAAC, 2015.
- Neal, J., Schumann, G., and Bates P.: A subgrid channel model for simulating river hydraulics and floodplain inundation over large and data sparse areas, *Water Resour. Res.*, 48, W11506, doi:10.1029/2012WR012514, 2012.
- O'Neill, P. E., S. Chan, E. G. Njoku, T. Jackson, R. Bindlish, J. Chaubell, and Colliander, A.: SMAP Enhanced L3 Radiometer Global and Polar Grid Daily 9 km EASE-Grid Soil Moisture, Version 5. [53°N, 12°W; 45°N, 3°W]. Boulder, Colorado USA. NASA National Snow and Ice Data Center Distributed Active Archive Center. doi: <https://doi.org/10.5067/4DQ54OUIJ9DL>. [01-11-2022].
- 1240 Pekel, J. F., Cottam, A., Gorelick, N., and Belward, A. S.: High resolution mapping of global surface water and its long term changes, *Nature*, 540, 418–422, <https://doi.org/10.1038/nature20584>, 2016.
- Pfeffer, W. T., Arendt, A. A., Bliss, A., Bolch, T., Cogley, J. G., Gardner, A. S., Hagen, J.-O., Hock, R., Kaser, G., Kienholz, C., Miles, 510 E. S., Moholdt, G., Mölg, N., Paul, F., Radic, V., Rastner, P., Raup, B. H., Rich, J., Sharp, M. J., and Consortium, T. R.: The Randolph Glacier Inventory: a globally complete inventory of glaciers, *Journal of Glaciology*, 60, 537–552, <https://doi.org/10.3189/2014JoG13J176>, publisher: Cambridge University Press, 2014.
- 1245 Pitman, J.: Rainfall interception by bracken in open habitats—relations between leaf area, canopy storage and drainage rate, *J. Hydr.*, 105, 317–334, doi: 10.1016/0022-1694(89)90111-X, 1989.
- 1250 Rawls, W. J., and Brakensiek, D. L.: Estimation of Soil Water Retention and Hydraulic Properties, In H. J. Morel-Seytoux (Ed.), *Unsaturated flow in hydrologic modelling - Theory and practice*, NATO ASI Series 9, 275–300, Dordrecht, The Netherlands: Kluwer Academic Publishing, 1989.

- Rusli, S.R., Weerts, A.H., Taufiq, A., and Bense, V.F.: Estimating water balance components and their uncertainty bounds in highly groundwater-dependent and data-scarce area: An example for the Upper Citarum basin, *Journal of Hydrology: Regional Studies*, Volume 37, 2021, 100911, ISSN 2214-5818, <https://doi.org/10.1016/j.ejrh.2021.100911>.
- 1255 Rutter, A., Kershaw, K., Robins, P., and Morton, A.: A predictive model of rainfall interception in forests. I. Derivation of the model from observations in a plantation of Corsican pine *Agric. Meteorol.*, 9, pp. 367-384, 10.1016/0002-1571(71)90034-3, 1971.
- Rutter, A., Morton, A., and Robins, P.: A predictive model of rainfall interception in forests. II. Generalization of the model and comparison with observations in some coniferous and hardwood stands *J. Appl. Ecol.*, pp. 367-380, 10.2307/2401739, 1975
- 1260 Samaniego, L., Kumar, R., and Attinger, S.: Multiscale parameter regionalization of a grid-based hydrologic model at the mesoscale, *Water Resour. Res.*, 46, doi: 10.1029/2008WR0073271178, 2010.
- Samaniego, L., Kumar, R., Thober, S., Rakovec, O., Zink, M., Wanders, N., Eisner, S., Müller Schmied, H., Sutanudjaja, E. H., Warrach-Sagi, K., and Attinger, S.: Toward seamless hydrologic predictions across spatial scales, *Hydrol. Earth Syst. Sci.*, 21, 4323-4346, <https://doi.org/10.5194/hess-21-4323-2017>, 2017.
- 1265 Schellekens, J., van Verseveld, W., Visser, M., Winsemius, H., Bouaziz, L., Euser, T., De Vries, S., Thiange, C., Boisgontier, H., Eilander, D., Tollenaar, D., Weerts, A., Baart, F., Hazenberg, P., Pronk, M., Lutz, A., Ten Velden, C., Benedict, I., and Jansen, M.: *openstreams/wflow: Bug fixes and updates for release 2020.1.2*, <https://zenodo.org/record/4291730>.
- Schenk, H. J., and Jackson, R. B.: The global biogeography of roots. *Ecological monographs*, 72, 311-328, [https://doi.org/10.1890/0012-9615\(2002\)072\[0311:TGBOR\]2.0.CO;2](https://doi.org/10.1890/0012-9615(2002)072[0311:TGBOR]2.0.CO;2), 2002.
- 1270 Seibert, J., Vis, M. J. P., Kohn, I., Weiler, M., and Stahl, K.: Technical note: Representing glacier geometry changes in a semi-distributed hydrological model, *Hydrol. Earth Syst. Sci.*, 22, 2211-2224, <https://doi.org/10.5194/hess-22-2211-2018>, 2018.
- Séguis, L., Kamagaté, B., Favreau, G., Descloitres, M., Seidel, J.-L., Galle, S., Peugeot, C., Gosset, M., Le Barbé, L., Malinur, F., Van Exter, S., Arjounin, M., Boubkraoui, S., Wubda, M.: Origins of streamflow in a crystalline basement catchment in a sub-humid Sudanian zone: The Donga basin (Benin, West Africa): Inter-annual variability of water budget, *Journal of Hydrology*, Volume 402, Issues 1-2, 2011, Pages 1-13, ISSN 0022-1694, <https://doi.org/10.1016/j.jhydrol.2011.01.054>.
- 1275 Šimůnek, J., van Genuchten, M. T., and Šejna, M.: Development and applications of the HYDRUS and STANMOD software packages and related codes, *Vadose Zone J.*, 7, 587-600, 2008.
- <https://vattenwebb.smhi.se/station/>, last access: 25 January 2021.
- Swedish Meteorological and Hydrological Institute: Model Performance Europe, [online] Available from: <https://hypeweb.smhi.se/explore-water/model-performances/model-performance-europe/> (Accessed 2 June 2022), 2022.
- 1280 Sperna Weiland, F.C., Visser, R.D., Greve, P., Bisselink, B., Brunner, L., and Weerts, A.H.: Estimating Regionalized Hydrological Impacts of Climate Change Over Europe by Performance-Based Weighting of CORDEX Projections, *Frontiers of Water*, 10.3389/frwa.2021.713537, 2021.
- Tanaka, T., and Tachikawa, Y.: Testing the applicability of a kinematic wave-based distributed hydrologic model in two climatically contrasting catchments, *Hydrolog. Sci. J.*, 60, 1361-1373, <https://doi.org/10.1080/02626667.2014.967693>, 2015.
- 1285 Todini, E., and Ciarapica, L.: Mathematical models of large watershed hydrology. In V. P. Singh and D. K. Frevert (Eds.), (pp. 471-506). Water Resources Publications, Littleton, Colorado, 2002.
- Tóth, B., Weynants, M., Nemes, A., Makó, A., Bilas, G., and Tóth, G.: New generation of hydraulic pedotransfer functions for Europe, *Eur. J. Soil Sci.*, 66, 226-238. doi: 10.1111/ejss.121921211, 2015.

- 1290 Trambauer, P., Werner, M., Winsemius, H. C., Maskey, S., Dutra, E., and Uhlenbrook, S.: Hydrological drought forecasting and skill assessment for the Limpopo River basin, southern Africa, *Hydrol. Earth Syst. Sci.*, 19, 1695–1711, <https://doi.org/10.5194/hess-19-1695-2015>, 2015.
- van Beek, L. P. H., Wada, Y., and Bierkens, M. F. P.: Global monthly water stress: 1. Water balance and water availability, *Water Resour. Res.*, 47, W07517, doi:10.1029/2010WR009791, 2011.
- 1295 ~~Van~~  
[van](#) Dijk, A. I. J. M., and Bruijnzeel, L. A.: Modelling rainfall interception by vegetation of variable density using an adapted analytical model, Part 2, Model validation for a tropical upland mixed cropping system, *J. Hydr.*, 247, 239–262. 2001.
- ~~Van~~  
[van](#) Looy, K., Bouma, J., Herbst, M., Koestel, J., Minasny, B., Mishra, U., Vereecken, H.: Pedotransfer functions in Earth system science: Challenges and perspectives, *Rev. Geophys.*, 55, 1199–1256, <https://doi.org/10.1002/2017RG000581>, 2017.
- 1300 van Verseveld, W., Visser, M., [Buitink, J.](#), [Bouaziz, L.](#), Boisgontier, H., Bootsma, H., ~~Bouaziz, L.~~, ~~Buitink, J.~~ [Pronk, M.](#), [Hartgring, S.](#), Eilander, D., [Weerts, A.](#), [Dalmijn, B.](#), [Hofer, J.](#), and Hegnauer, M.: Wflow\_jl (v0-~~6.1~~-[7.3](#)), Zenodo, <https://doi.zenodo.org/10.5281/records/zenodo.6490936-2022a-10495638-2024>.
- 1305 van Verseveld, W., Weerts, A., and Imhoff, R.: Wflow\_sbm v0-~~6.1~~-[7.3](#) model cases (0.1), [Data set], Zenodo, <https://doi.org/10.5281/zenodo.6821468-2022b-10370017-2023>.
- Vertessy, R., and Elsenbeer, H.: Distributed modeling of storm flow generation in an amazonian rain forest catchment: effects of model parameterization, *Water Resour. Res.*, 35, 2173–2187. doi: 10.1029/1999WR9000511257, 1999.
- 1310 Yamazaki, D., Ikeshima, D., Sosa, J., Bates, P. D., Allen, G. H., and Pavelsky, T. M.: MERIT Hydro: a high resolution global hydrography map based on latest topography dataset, *Water Resour. Res.*, 55, 5053–5073, <https://doi.org/10.1029/2019WR024873>, 2019.
- Yamazaki, D., Ikeshima, D., Tawatari, R., Yamaguchi, T., O’Loughlin, F., Neal, J. C., Sampson, C. C., Kanae, S., and Bates, P. D.: A high accuracy map of global terrain elevations, *Geophys. Res. Lett.*, 44, 5844–5853. <https://doi.org/10.1002/2017GL072874>, 2017.
- Yamazaki, D., Trigg, M. A., and Ikeshima, D.: Development of a global 90 m water body map using multitemporal Landsat images, *Remote Sens. Environ.*, 171, 337–351. <https://doi.org/10.1016/j.rse.2015.10.014>, 2015.
- 1315 Yang, F., Zhang, G., Yin, X., Liu, Z., and Huang, Z.: Study on capillary rise from shallow groundwater and critical water table depth of a saline-sodic soil in western Songnen plain of China, *Environ. Earth Sci.* 64, 2119–2126, <https://doi.org/10.1007/s12665-011-1038-4>, 2011.
- Wang, X., Huo, Z., Feng, S., Guo, P., and Guan, H.: Estimating groundwater evapotranspiration from irrigated cropland incorporating root zone soil texture and moisture dynamics, *Journal of Hydrology*, 543, 501-509, <https://doi.org/10.1016/j.jhydrol.2016.10.027>, 2016.f
- 1320 Wannasin, C., Brauer, C., Uijlenhoet, R., van Verseveld, W., and Weerts, A.: Daily flow simulation in thailand part I: testing a distributed hydrological model with seamless parameter maps based on global data, *J. Hydrol.: Reg. Stud.*, 34, p. 100794, 10.1016/j.ejrh.2021.100794, 2021a.
- Wannasin, C., Brauer, C., Uijlenhoet, R., van Verseveld, W., and Weerts, A.: Daily flow simulation in thailand part II: unraveling effects of reservoir operation, *J. Hydrol.: Reg. Stud.*, 34, p. 100792, 10.1016/j.ejrh.2021.100792, 2021b.
- 1325 Wigmosta, M. S., Lane, L. J., Tagestad, J. D., and Coleman A. M.: Hydrologic and erosion models to assess land use and management practices affecting soil erosion, *J. Hydrol. Eng.*, 14, 27-41, 2009.

- Wood, E. F., et al.: Hyperresolution global land surface modeling: Meeting a grand challenge for monitoring Earth's terrestrial water, *Water Resour. Res.*, 47, W05301, doi:10.1029/2010WR010090, 2011.
- 1330 Zammouri, M.: Case study of water table evaporation at Ichkeul Marshes (Tunisia). *J. Irrig. Drain. Eng.* 127, 265–271, 2001.
- Zhao, F., Veldkamp, T. I. E., Frieler, K., Schewe, J., Ostberg, S., Willner, S., Schauburger, B., Gosling, S. N., Schmied, H. M., Portmann, F. T., Leng, G., Huang, M., Liu, X., Tang, Q., Hanasaki, N., Biemans, H., Gerten, D., Satoh, Y., Pokhrel, Y., Yamazaki, D.: The critical role of the routing scheme in simulating peak river discharge in global hydrological models, *Environmental Research Letters*, 12(7), 075003. <https://doi.org/10.1088/1748-9326/aa7250>, 2017.