

# Modeling the role of livestock grazing in C and N cycling in grasslands with LPJmL5.0-grazing

Jens Heinke<sup>1</sup>, Susanne Rolinski<sup>1</sup>, and Christoph Müller<sup>1</sup>

<sup>1</sup>Potsdam Institute for Climate Impact Research (PIK), member of the Leibniz Association, P.O. Box 60 12 03, 14412 Potsdam, Germany

**Correspondence:** Jens Heinke (heinke@pik-potsdam.de)

**Abstract.** ~~Grazing livestock alter the fluxes of~~ To represent the impact of grazing livestock on carbon (C) and nitrogen (N) ~~in grasslands. We~~ dynamics in grasslands, we implement a livestock module ~~representing grazing dairy cows~~ into LPJmL5.0-tillage, a global vegetation and crop model with explicit representation of managed grasslands and pastures, forming LPJmL5.0-grazing. The livestock module uses lactating dairy cows as a generic representation of grazing livestock. The new module explicitly accounts for feed-forage quality on dry matter intake and feed-digestibility using relationships derived from compositional analyses for different forages. Partitioning of N into milk, feces, and urine are simulated by the new livestock module shows very good agreement with observation-based relationships reported in the literature. Modeled C and N dynamics depend on feed-forage quality (C:N ratios in grazed biomass), feed-forage quantity, livestock densities, manure or fertilizer inputs, soil, atmospheric CO<sub>2</sub> concentrations, and climate conditions. Due to the many interacting relationships, C sequestration ~~or emission~~ rates as well as, GHG emissions, N losses and N-use efficiency (NUE) livestock productivity show substantial variation in space and across livestock densities. The improved LPJmL5.0-grazing model can now assess the effects of ~~management and climate change on grazing dairy productivity, C dynamics and N losses. Optimal stocking densities can be derived per location for different optimization targets, such as maximization of milk production, lowest emission intensity, best NUE, or highest C sequestration~~ livestock grazing on C and N stocks and fluxes in grasslands. It can also provide insights about the spatio-temporal variability of grassland productivity and into trade-offs between livestock production and environmental impacts.

## 1 Introduction

Grazing lands occupy about 25 % of the global land area (excluding Antarctica) (Klein Goldewijk et al., 2017) and provide nearly half of the total biomass used in global livestock production (Herrero et al., 2013). They also play an important role in Earth's carbon cycle by storing large amounts of soil organic carbon (Conant et al., 2017) and contributing to the terrestrial carbon sink (Chang et al., 2021). Grazing alters carbon and nitrogen cycling in grassland (McSherry and Ritchie, 2013; Conant et al., 2017; He et al., 2020; Zhou et al., 2017) with potential effects on carbon stocks, carbon uptake, N<sub>2</sub>O emissions, NO<sub>3</sub><sup>-</sup> leaching, and NH<sub>3</sub> volatilization. In addition, grazing ruminants produce large amounts of CH<sub>4</sub>, a potent greenhouse gas (GHG).

Dynamic global vegetation models (DGVMs) are powerful tools to quantify global biogeochemical cycles, including im-  
 25 portant aspects such as carbon uptake and loss from the terrestrial biosphere and their response to changing climate and  
 management (Fernández-Martínez et al., 2019; Kondo et al., 2020). Yet, most state-of-the-art DGVMs do not account for graz-  
 ing or only in a simplified form by removing a fixed fraction of the above-ground living biomass and, in some cases, returning  
 part of it to grassland litter pools (Friedlingstein et al., 2022). A notable exception is ORCHIDEE-GM (Chang et al., 2013),  
 which employs the animal module of the process-based grassland model PaSIM (Riedo et al., 1998; Vuichard et al., 2007) to  
 30 estimate livestock feed intake from stocking density, animal weight and biomass availability, and to determine the partitioning  
 of C and N into maintenance respiration, products, feces, and urine. However, the effect of feed composition on feed intake  
 and digestibility of C, N, and energy in feed are not accounted for.

In this paper, we describe the implementation of grazing ~~livestock—represented-livestock – represented~~ by lactating dairy  
~~eows—into-cows – into~~ the dynamic global vegetation and agricultural model LPJmL5-tillage (Lutz et al., 2019), forming  
 35 LPJmL5.0-grazing. LPJmL5-tillage incorporates an explicit representation of the N cycle (von Bloh et al., 2018) and includes  
 all improvements of grassland vegetation and carbon dynamics described in Rolinski et al. (2018). The representation of  
 lactating dairy cows is primarily based on established relationships also used in livestock management applications (National  
 Research Council, 2001) supplemented by relationships from the scientific literature. To account for the effect of ~~feed-forage~~  
 quality on the digestibility of C and N, as well as digestible energy content, we use compositional data for a wide range of  
 40 forage plants from Feedipedia (2020) to link these properties to ~~feed-forage~~ N content.

## 2 Model description

The principal concept of the new livestock module is to determine the mass balances of C and N for grazing dairy ~~cattle~~cows.  
 Both arranged in a way that one term can be estimated as the remainder of the balance. In the N balance that remainder is  
 urinary N excretion ( $m_{N,urine}$ ):

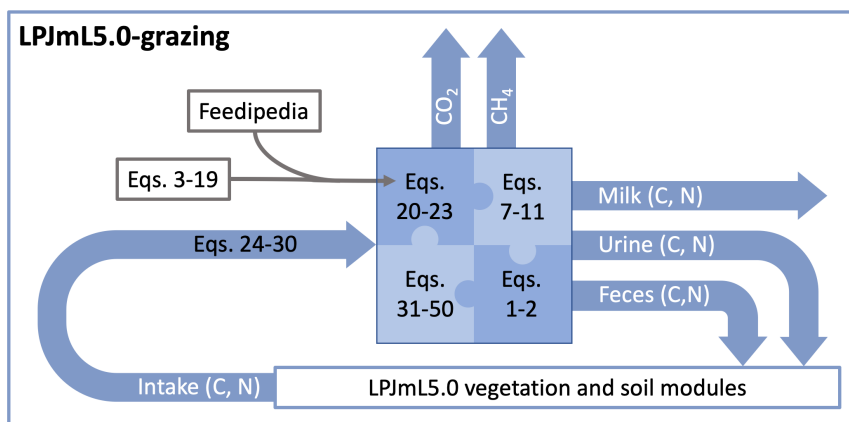
$$45 \quad m_{N,urine} = m_{N,intake} - m_{N,feces} - m_{N,milk} \quad (1)$$

where  $m_{N,intake}$  (Eq. 29) is N intake with ~~feed~~forage,  $m_{N,feces}$  is N excreted with feces (Eq. 48), and  $m_{N,milk}$  is N in milk  
 produced (Eq. 42). In the C balance, the respective remainder is C converted to  $CO_2$  through respiration ( $m_{C,respiration}$ ):

$$m_{C,respiration} = m_{C,intake} - m_{C,feces} - m_{C,urine} - m_{C,methane} - m_{C,milk} \quad (2)$$

where  $m_{C,intake}$  is C intake with ~~feed~~forage (Eq. 30),  $m_{C,feces}$  is C excreted with feces (Eq. 49),  $m_{C,urine}$  is C excreted with  
 50 urine (Eq. 50),  $m_{C,methane}$  is C in methane from enteric fermentation (Eq. 47), and  $m_{C,milk}$  is C in milk produced (Eq. 43).

All terms on the right-hand side of Eqs. 1 and 2 depend directly or indirectly on ~~feed~~forage composition, i.e, the mass  
 fractions of crude protein, fatty acids, non-fiber carbohydrates (starch and sugars), fiber carbohydrates (cellulose and hemi-  
 cellulose), and lignin. However, the only constituents of biomass in LPJmL5.0-grazing are C and N, so that all relevant ~~feed~~



**Figure 1.** [Schematic representation of LPJmL5.0-grazing.](#) The new livestock module calculates intake of C and N from grazing and determines their partitioning into CO<sub>2</sub>, methane (CH<sub>4</sub>), and C and N in milk, urine, and feces. The equations described in the method section can be broadly divided into the following groups: Eqs. 3–19 are used to process compositional data from Feedipedia (2020) to derive Eqs. 20–23, which link important variables required in the main model equations (Eqs. 31–50) to N in forage ( $w_{N,CN}$ ). Eqs. 26–30 are used to calculate C and N intake, Eqs. 1–2 are the mass balance equations of N and C, respectively, and Eqs. 7–10 are weight fractions of C and N in protein, fat, and carbohydrates used to calculate the C and N content of milk.

55 [forage](#) properties that depend on [feed-forage](#) composition need to be linked to a metric based on C and N content. We use compositional data for a wide range of forage plants from Feedipedia (2020) to calculate the weight fraction of C in [feed-forage](#) dry matter and the weight fraction of N in the total mass of C and N ( $w_{C,DM}$  and  $w_{N,CN}$ , [respectively](#); section 2.1), digestible fractions of C and N in [feed-forage](#) ( $f_C$  and  $f_N$ ; section 2.2), and the net energy content of [feed-forage](#) dry matter ( $ne$ , section [??2.3](#)). We then determine statistical relationships for  $f_C$ ,  $f_N$ ,  $ne$ , and  $w_{C,DM}$  in relation to  $w_{N,CN}$  (section [??2.4](#)) to calculate these parameters in LPJmL5.0-grazing.

60 The remaining part of the method section is structured as follows: Section 2.5 describes the calculation of dry matter intake, section 2.6 the calculation of energy and protein requirements of livestock, section 2.7 the calculation of milk production, section 2.9 the calculation of C and N in feces and urine, and section 2.8 the calculation of methane emissions from enteric fermentation. [Fig. 1 provides a schematic representation of the LPJmL5.0-grazing with the new livestock module and its linkages to LPJmL5.0 through fluxes of C and N.](#) In addition, we provide an R script with a fully functional implementation of [the livestock model as supplementary material.](#)

65

## 2.1 Conversion of feed-forage dry matter to C and N

### 2.1.1 Composition of feed-forage dry matter

Compositional analyses from Feedipedia (2020) provide mass fractions of forage dry matter for crude protein ( $w_{CP}$ ), neutral detergent fibre ( $w_{NDF}$ ), lignin ( $w_L$ ), ether extract ( $w_{EE}$ ), and ash ( $w_A$ ).  $w_{NDF}$  contains a small amount of neutral detergent insoluble crude protein (NDICP), which is also included in  $w_{CP}$  and needs to be subtracted to obtain the mass fraction of nitrogen-adjusted NDF in feed-forage dry matter (National Research Council, 2001):

$$w_{nNDF} = w_{NDF} - w_{NDICP} \quad (3)$$

where  $w_{NDICP}$  is the weight fraction of NDICP in feed-forage dry matter. From data for a wide range of grasses and legumes, Weiss et al. (1992) determined the following relationship for the estimation of the weight fraction of NDICP in feed-forage dry matter:

$$w_{NDICP} = -0.0877 + 0.33 \cdot w_{CP} + 0.143 \cdot w_{NDF} \quad (4)$$

From the mass fractions of crude protein, nominal-nitrogen-adjusted neutral detergent fibre, ether extract, and ash, the mass fraction of non-fiber carbohydrates is determined as a residuum (National Research Council, 2001):

$$w_{NFC} = 1 - w_{CP} - w_{nNDF} - w_{EE} - w_A \quad (5)$$

The ether extract obtained from nutritional analysis consists of all lipids in the sample. Some of these lipids, such as pigments and waxes, have almost no nutritional value (Weiss et al., 1992). To obtain the weight fraction of highly digestible fatty acids,  $w_{EE}$  needs to be adjusted to account for about 1 % non-fatty acids components in feed-forage dry matter (National Research Council, 2001):

$$w_{FA} = \begin{cases} w_{EE} - 0.01 & \text{if } w_{EE} > 0.01 \\ 0 & \text{otherwise} \end{cases} \quad (6)$$

### 2.1.2 C and N content of crude protein

Proteins are large macromolecules, which consist of amino acids linked by peptide bonds. There are 20 different-commonly-occurring-proteinogenic amino acids with molar weights between 75.1 and 204.2 g mol<sup>-1</sup>, mass fractions of C between 0.30 and 0.65, and mass fractions of N between 0.08 and 0.32. When amino acids are linked through peptide bonds, one molecule of water is released for each bond. Therefore, anhydrous amino acids in peptide chains have a molar weight that is about 18 g mol<sup>-1</sup> lower and a higher mass fraction of C and N of 0.35 to 0.73 and 0.09 to 0.36, respectively.

The C and N content of proteins varies depending on their amino acid composition. Tomé et al. (2019) give a range of 13 to 19 % for the N content of proteins, but data on C content are rare. Kozłowski (2017) analyzed nearly 14 billion amino acids



95 in nearly 30 million proteins to determine the composition of proteins in 1612 eucaryote species. Using the average amino acid frequencies across all eucaryote species, we estimate a C fraction of 0.53 and a N fraction of 0.17 for average eucaryote protein. Using the amino acid frequencies for the two grass species in the database (*Setaria viridis* and *Eragrostis curvula*), we estimate a C fraction of 0.53 and a N fraction of 0.18 for protein in both grass species. Given the close agreement of estimated C fractions, we assume for the weight fraction of C in crude protein:

100  $w_{C,CP} = 0.53$  (7)

The estimates of N content, however, are different and both larger than the N fraction of 0.16 assumed in compositional analyses (Santos and Huber, 2002; Feedipedia, 2020). Because all estimates of crude protein have been calculated from measured N content using that lower value, we also use it to convert crude protein back to N. Thus, the weight fraction of N in crude protein is defined as:

105  $w_{N,CP} = 0.16$  (8)

### 2.1.3 C content of carbohydrates

The basic building blocks of carbohydrates are hexoses ( $C_6H_{12}O_6$ ) and pentoses ( $C_5H_{10}O_5$ ) with a C fraction of 0.40 each. In polymers, their monomers (hexosans and pentosans) are linked by glycosidic bonds, which are formed by releasing one water molecule for each bond. Therefore, polysaccharides from hexoses and pentoses have a higher C fraction of 0.44 and 0.45, respectively. Disaccharides and oligosaccharides lie in-between.

Carbohydrates in plant fiber comprise mainly cellulose and hemicellulose. Cellulose is a polymer of glucose (a hexose), hemicellulose consists of a mix of hexosans and pentosans (Abu Ghalia and Dahman, 2017). Information on the composition of non-fiber carbohydrates is scarce but it can be assumed to be a mix of starch (a polymer of glucose) and various disaccharides and oligosaccharides, which allows for a relatively broad range of possible C [fractions](#). However, the mass fraction of non-fiber carbohydrates in total carbohydrates in the data from Feedipedia (2020) is small (in average 17 %), which limits its relevance for the estimation of C content in [feed forage](#) dry matter. Therefore, we assume the C fraction of starch and celluloses as representative value for the weight fraction of all carbohydrates:

115  $w_{C,CHO} = 0.44$  (9)

120

### 2.1.4 C content of lignin

~~Lignin is a group of large macromolecules derived mainly from three precursors: p-coumaryl alcohol, coniferyl alcohol, and sinapyl alcohol (Amthor, 2003). During polymerization, the monomer units hydroxyphenyl (H), guaiacyl (G), and syringyl (S) are formed from these alcohols, which crosslink through a variety of bonds to form complex three-dimensional macromolecules. The H, G, and S units in lignin have molecular weights of 149.2, 179.2, and 209.2 g mol<sup>-1</sup> and C fractions of 0.73, 0.67, and 0.63 (Amthor, 2003).~~

130 ~~The abundance of H, G, and S units in lignin varies depending on species and tissue type. We obtain the monomer composition for lignin from eight different herbaceous plants from Baucher et al. (1998) and determine their C fraction in lignin using molecular weight and C fractions of the three monomers. Despite considerable differences in composition, we find all C fractions to be between 0.65 and 0.67 with an overall average of 0.66. Based on that we define the weight fraction of C in lignin as:-~~

$$w_{C,L} = 0.66$$

#### 2.1.4 C content of fatty acids

135 The mass fraction of C of fatty acids primarily depends on their chain length. Caprylic acid, a saturated fatty acid with eight C atoms ( $C_8H_{16}O_2$ ), has a C fraction of 0.67, while stearic acid, saturated fatty acid with 18 C atoms ( $C_{18}H_{36}O_2$ ), has a C fraction of 0.76. The degree of saturation also has an effect on C content. For example, linolenic acid, a triunsaturated fatty acid with 18 C atoms ( $C_{18}H_{30}O_2$ ), has a C fraction of 0.78. Triglycerides (esters from glycerol and three fatty acids) have a higher C content than single fatty acids of the same type, but the effect becomes negligible with increasing chain length. The triglyceride of linolenic acids has the same C content of 0.78 as linolenic acid.

140 The composition of ether extract is not reported in the data from Feedipedia (2020). According to a meta-analysis by Glasser et al. (2013), linolenic acid is the by far most abundant fatty acid in grasses, making up more than half of total lipids. Other important fatty acids are linoleic acid and palmitic acid, each contributing about 10 to 20 % to total lipids. The C content of these two fatty acids is slightly lower with 0.77 and 0.75, respectively. Because of the dominance of linolenic acid and the similar C content of other fatty acids we assume the C fraction of linolenic acid for the weight fraction of all fats and fatty acids:

$$w_{C,FA} = 0.78 \tag{10}$$

#### 2.1.5 C content of lignin

150 Lignin is a group of large macromolecules derived mainly from three precursors: p-coumaryl alcohol, coniferyl alcohol, and sinapyl alcohol (Amthor, 2003). During polymerization, the monomer units hydroxyphenyl (H), guaiacyl (G), and syringyl (S) are formed from these alcohols, which crosslink through a variety of bonds to form complex three-dimensional macromolecules. The H, G, and S units in lignin have molecular weights of 149.2, 179.2, and 209.2 g mol<sup>-1</sup> and C fractions of 0.73, 0.67, and 0.63 (Amthor, 2003).

155 The abundance of H, G, and S units in lignin varies depending on species and tissue type. We obtain the monomer composition for lignin from eight different herbaceous plants from Baucher et al. (1998) and determine their C fraction in lignin using molecular weight and C fractions of the three monomers. Despite considerable differences in composition, we find all C fractions to be between 0.65 and 0.67 with an overall average of 0.66. Based on that we define the weight fraction of C in

lignin as:

$$w_{C,L} = 0.66 \quad (11)$$

160

### 2.1.6 C and N content of dry matter

The C content of feed forage dry matter is calculated from the different feed forage components multiplied by their respective C fraction:

$$w_{C,DM} = w_{C,CP} \cdot w_{CP,DM} + w_{C,CHO} \cdot \left( w_{NFC,DM} + w_{nNDF,DM} - w_{LL,DM} \right) + w_{C,L} \cdot w_{LL,DM} + w_{C,FA} \cdot w_{FA,DM} \quad (12)$$

165 Note that for the calculation of total C content the weight fraction of total lipids (ether extract) is used, which also comprises pigments and waxes.

The N content in feed forage dry matter is calculated from crude protein only:

$$w_{N,DM} = w_{N,CP} \cdot w_{CP,DM} \quad (13)$$

We also calculate the fraction of N in the sum of C and N:

170 
$$w_{N,CN} = \frac{w_{N,DM}}{w_{C,DM} + w_{N,DM}} \quad (14)$$

This variable can also be calculated in LPJmL5.0-grazing, where biomass is represented in terms of C and N only.

### 2.2 Digestible nutrients

The nutritious value of feed forage components does not only depend on their energy content but also how well they can be digested. Weight fractions of digestible nutrients ( $d$ ) in total dry matter from NFC, CP, FA, and nNDF are calculated using

175 relationships from National Research Council (2001):

$$d_{NFC} = 0.98 \cdot w_{NFC,DM} \quad (15a)$$

$$d_{CP} = \exp\left(-1.2 \cdot \frac{w_{ADICP}}{w_{CP}}\right) \exp\left(-1.2 \cdot \frac{w_{ADICP,DM}}{w_{CP,DM}}\right) \cdot w_{CP,DM} \quad (15b)$$

$$d_{FA} = w_{FA,DM} \quad (15c)$$

$$d_{nNDF} = 0.75 \cdot \left[ 1 - \left( \frac{w_L}{w_{nNDF}} \frac{w_{L,DM}}{w_{nNDF,DM}} \right)^{0.667} \right] \cdot \left( w_{nNDF,DM} - w_{LL,DM} \right) \quad (15d)$$

180 Ash and lignin do not contribute digestible nutrients.  $w_{ADICP}$  in Eq. 15b is the mass fraction of acid detergent insoluble crude protein (ADICP) in feed forage dry matter, which is estimated from  $w_{NDICP}$  using a relationship

from Clipes et al. (2006):

$$d_{\text{ADICP}} = 0.008145 + 0.1131 \cdot w_{\text{NDICP}} \cdot w_{\text{NDICP,DM}} \quad (16)$$

For the calculations within LPJmL5.0-grazing, the fraction of digestible C from the total C in dry matter is required, which is calculated as:

$$f_{\text{C}} = \frac{w_{\text{C,CP}} \cdot d_{\text{CP}} + w_{\text{C,CHO}} \cdot (d_{\text{NFC}} + d_{\text{nNDF}}) + w_{\text{C,FA}} \cdot w_{\text{FA}}}{w_{\text{C,DM}}} \cdot \frac{w_{\text{C,CP}} \cdot d_{\text{CP}} + w_{\text{C,CHO}} \cdot (d_{\text{NFC}} + d_{\text{nNDF}}) + w_{\text{C,FA}} \cdot w_{\text{FA,DM}}}{w_{\text{C,DM}}} \quad (17)$$

Similarly, the fraction of digestible N from the total N in dry matter is calculated as:

$$f_{\text{N}} = \frac{w_{\text{N,CP}} \cdot d_{\text{CP}}}{w_{\text{N,DM}}} \quad (18)$$

### 190 2.3 Energy value of feeds forages

The digestible energy  $de$  in  $\text{Mcal kg}^{-1}$  of feed-forage dry matter is estimated by multiplying the mass fractions of digestible feed-forage components with their energy content (National Research Council, 2001):

$$de = 4.2 \cdot d_{\text{NFC}} + 5.6 \cdot d_{\text{CP}} + 9.4 \cdot d_{\text{FA}} + 4.2 \cdot d_{\text{nNDF}} - 0.3 \quad (19)$$

Heat of combustion is  $4.2 \text{ Mcal kg}^{-1}$  for carbohydrates,  $5.6 \text{ Mcal kg}^{-1}$  for protein, and  $9.4 \text{ Mcal kg}^{-1}$  for long chain fatty acids (National Research Council, 2001). Because Eqs. 15a, 15b, 15c, and 15d give true digestibilities, a correction for metabolic fecal energy is needed, which is assumed as  $0.3 \text{ Mcal kg}^{-1}$  of feed-forage dry matter (National Research Council, 2001). In a strict sense, this calculation of  $de$  according to Eq. 19 is valid for energy intake at maintenance only. At higher levels of feed-forage intake, the digestibility of diets containing high shares of digestible nutrients (above 60%) is reduced (National Research Council, 2001). While this is relevant in highly productive dairy systems, where intake can exceed the maintenance level by a factor of four, the intake above maintenance in grazing systems is only moderate (see Fig. 3). In addition, the share of digestible nutrients in forages from Feedipedia (2020) is 54% on average and rarely exceeds 60%. We therefore assume that this effect is negligible for grazing cattle and do not apply a correction for intake above maintenance.

### 200 2.4 Feed-Forage properties in relation to $w_{\text{N,CN}}$

For the application within LPJmL5.0-grazing, we calculate  $f_{\text{C}}$ ,  $f_{\text{N}}$ ,  $ne$ , and  $w_{\text{C,DM}}$  for a wider range of forage plants from Feedipedia (2020) and determine their relationship with  $w_{\text{N,CN}}$  (Fig. 2). We test three different types of functional relationships: (i) no relationship with  $w_{\text{N,CN}}$  (i.e., the mean of the dependent variable), (ii) a linear relationship, and (iii) a non-linear exponential relationship with three parameters. All three relationships are determined for each feed-forage property and the relationship with the lowest value for the Akaike's information criterion (AIC) is selected.

For the digestibility of C ( $f_C$ ), we find the lowest AIC for a linear relationship with  $w_{N,CN}$ :

$$210 \quad f_C = 0.561 + 2.190 \cdot w_{N,CN} \quad (20)$$

The estimated parameters are statistically significant with  $p$ -values  $< 0.001$ . Residual standard error (RSE) of the fitted model about 0.036, which translates into a 95 % prediction interval of  $\pm 10.8$  % at  $w_{N,CN} = 0.05$ .

For the digestibility of N ( $f_N$ ), we find the lowest AIC for a concave exponential relationship with  $w_{N,CN}$ :

$$f_N = 0.914 - 0.494 \cdot \exp(-59.559 \cdot w_{N,CN}) \quad (21)$$

215 All estimated parameters are statistically significant with  $p$ -values  $< 0.001$ . RSE is small (0.0078), which translates into a narrow 95 % prediction interval of  $\pm 1.8$  % at  $w_{N,CN} = 0.05$ .

Similar to digestibility of C, digestible energy in feed-forage ( $de$ ) increases linearly with  $w_{N,CN}$ :

$$de = 1.952 + 11.438 \cdot w_{N,CN} \quad (22)$$

Also here, the estimated parameters are statistically significant with  $p$ -values  $< 0.001$ . Similar to the model of C digestibility, 220 the RSA-RSE is relatively large (0.15), which results in a similar 95 % prediction interval of  $\pm 12.0$  % at  $w_{N,CN} = 0.05$ .

C content of feed-forage dry matter ( $w_{C,DM}$ ) is found to be independent of  $w_{N,CN}$ :

$$w_{C,DM} = 0.424 \quad (23)$$

However, sample standard deviation of  $w_{C,DM}$  is only 0.01, which translates into a 95 % prediction interval of  $\pm 4.7$  %.

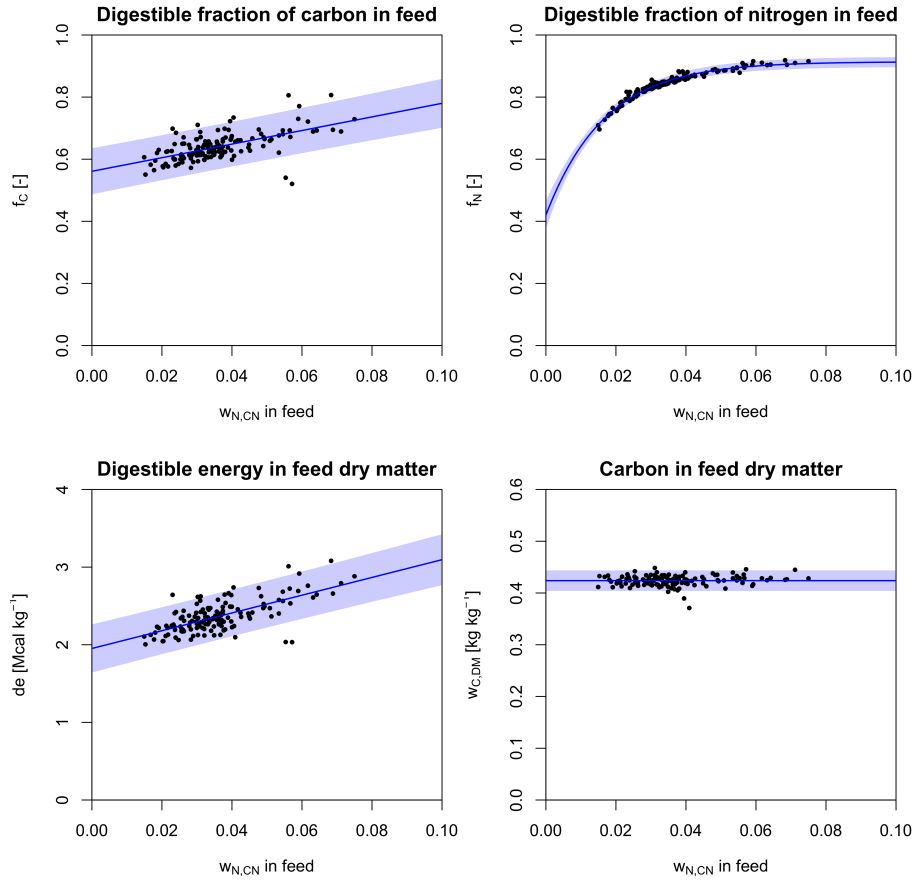
~~With known  $w_{C,DM}$ , the N content of feed dry matter ( $w_{N,DM}$ ) can be calculated directly from  $w_{N,CN}$  by rearranging Eq-14:~~

225

$$w_{N,DM} = \frac{w_{C,DM} \cdot w_{N,CN}}{1 - w_{N,CN}}$$

## 2.5 Dry matter intake

Relationships for predicting dry matter intake of lactating dairy cows usually include milk production as an independent variable because their purpose is to determine the amount and composition of feed required to achieve a desired milk yield 230 (National Research Council, 2001). To meet the nutritional requirements of high yielding dairy cows, their diets must contain high proportions of concentrates (e.g., maize and barley) to achieve a high concentration of readily available nutrients. Such relationships are obviously inappropriate for the estimation of voluntary feed-forage intake of grazing cows, which is limited by the capacity of the rumen to digest fibrous materials rather than the metabolic capacity of the animal to utilize the available energy (Tedeschi et al., 2019). Several relationships for predicting ad libitum forage intake of grazing cattle have been proposed 235 but none of them has most of them have not been explicitly developed for lactating cows. Feed-Forage intake of lactating cows is higher than for dry cows of equal size because lactation causes an increase in size of the gastrointestinal tract (Coleman et al., 2014). Tulloh (1966) has measured the size of the gastrointestinal tract of twin pairs of lactating and dry cows and found that



**Figure 2.** Relationships between [feed-forage](#) properties and  $w_{N,CN}$  derived from data from Feedipedia (2020). Shaded areas denote 95 % prediction intervals.

the weight of the whole tract per body weight was in average 33.1 % higher in lactating cows. The weight and the water-filled volume of the reticulo-rumen per body weight were in average about 21.3 % and 44.6 % higher in lactating cows. We choose  
 240 a relationship from Coleman et al. (2014) obtained from data of Moore et al. (1999) that predicts voluntary [feed-forage](#) intake per kg of body weight as a function of crude protein content in forages. Because the relationship was derived from data of dry dairy cows, we multiply body weight by 1.33 for the calculation of total daily dry matter intake ( $DMI_{max}$ ) to account for the larger gastrointestinal tract of lactating cows:

$$DMI_{max} = 1.33 \cdot BW \cdot \left[ 0.0235 - 0.0385 \cdot \exp(-32 \cdot w_{CP}) \exp(-32 \cdot w_{CP,DM}) \right] \quad (24)$$

245 where  $DMI_{max}$  is in  $\text{kg d}^{-1}$ ,  $BW$  is the body weight in kg, and  $w_{CP} w_{CP,DM}$  is mass fraction of crude protein in [feed-forage](#) dry matter. The equation predicts a maximum daily forage intake of 2.82 % of body weight or 14.1  $\text{kg d}^{-1}$  dry matter for a lactating cow weighing 500 kg. At low levels of crude protein in the feed ( $w_{CP} < 0.10$   $w_{CP,DM} < 0.10$ ), the ability of ruminal

microbes to break down fibrous material is affected by low N availability, which leads to lower passage rates and lower feed intake (Coleman, 2005).

250 The protein content in feed-forage dry matter ( $w_{CP,DM}$ ) required in Eq. 24 for the estimation of  $DMI_{max}$  is calculated by dividing N content of forage dry matter ( $w_{N,DM}$ ) by the N content of CP (see section 2.1.2):

$$w_{CP,DM} = \frac{w_{N,DM}}{w_{N,CP}} \quad (25)$$

$w_{N,DM}$  can be calculated from  $w_{N,CN}$  by rearranging Eq. 14:

$$w_{N,DM} = \frac{w_{C,DM} \cdot w_{N,CN}}{1 - w_{N,CN}} \quad (26)$$

255 We note that an alternative model for estimating voluntary feed intake of dairy cows has been proposed by Faverdin et al. (2011). Unlike our approach, which is based on the NRC energy and protein system (National Research Council, 2001), their model is based on the INRA fill unit system (Institut national de la recherche agronomique, 2007) and requires iteration between multiple equations of that system. Therefore, it is not applicable here.

The dry matter intake calculated in Eq. 24 only considers limitations by the animal and does not account for the effect of biomass availability. When biomass viability-availability declines, the grazing efficiency of the animals is reduced, because less biomass is acquired with each bite (Hodgson, 1985). To account for this effect, we adopt the sigmoid grazing function used in the Hurley model (Johnson and Parsons, 1985), which describes the decline in the proportion of  $DMI_{max}$  as a function of leaf area index (LAI):

$$DMI = DMI_{max} \cdot \frac{(LAI/K)^q}{1 + (LAI/K)^q} \quad (27)$$

265 where  $q$  is a parameter that determines the slope of the curve, and  $K$  a position parameter that can be interpreted as the LAI value at which half of  $DMI_{max}$  is achieved. For  $q$ , a value of 3 is suggested to give realistic results (Johnson and Parsons, 1985; Herrero et al., 2000). For the calculation of  $K$ , we adapt a relationship from Herrero et al. (2000), which accounts for the effect of animal size (body weight):

$$K = 0.229 \cdot BW^{0.36} \quad (28)$$

270 For a cow of 500 kg, a value of 2.15 for  $K$  is obtained.

The daily intake of N per head ( $m_{N,intake}$ ) is calculated by multiplying  $DMI$  with the N content of feed-forage dry matter:

$$m_{N,intake} = DMI \cdot w_{N,DM} \quad (29)$$

The daily intake of C per head ( $m_{C,intake}$ ) is calculated by multiplying  $DMI$  with the C content of feed-forage dry matter:

$$m_{C,intake} = DMI \cdot w_{C,DM} \quad (30)$$

275

## 2.6 Energy and protein requirements

Calculations of energy requirements in National Research Council (2001) are based on net energy units, which represent energy available to the animal after all losses have been subtracted. Part of the digestible energy are lost as urine ~~of~~ and methane, which reduces the amount of energy that is actually metabolized by the body (Weiss, 2011). Metabolizable energy  $me$  in  $\text{Mcal kg}^{-1}$  of feed-forage dry matter is calculated from  $de$  (National Research Council, 2001):

$$me = 1.01 \cdot de - 0.45 \quad (31)$$

Part of the metabolizable energy is lost as heat. Net energy  $ne$  in  $\text{Mcal kg}^{-1}$  of feed-forage dry matter that is available for maintenance, activity, and lactation is calculated as (National Research Council, 2001):

$$ne = 0.703 \cdot me - 0.19 \quad (32)$$

Over a range for  $w_{N,CN}$  from 0.02 to 0.1, the ratio of  $ne$  to  $de$  increases from 50 % to 57 %.

Net-Daily net energy requirements for maintenance are proportional to metabolic body weight  $BW^{0.75}$  (National Research Council, 2001):

$$NE_M = 0.08 \cdot BW^{0.75} \quad (33)$$

The value of  $0.08 \text{ Mcal day}^{-1} \text{ kg}^{-0.75}$  metabolic body weight accounts for the increased maintenance requirements of lactating cows and includes a 10 % activity allowance (National Research Council, 2001). Although additional energy requirements for grazing and walking are not included in this allowance (National Research Council, 2001), they are ignored here and will be addressed in a subsequent version of our model.

Requirements of metabolizable protein ( $MP$ ) consist of urinary protein requirements ( $MP_{UP}$ ) and metabolic fecal protein ( $MP_{MFP}$ ).  $MP_{UP}$  is proportional to  $BW^{0.5}$  (National Research Council, 2001):

$$MP_{UP} = 0.0041 \cdot BW^{0.5} \quad (34)$$

whereas  $MP_{MFP}$  is proportional to  $DMI$  (National Research Council, 2001):

$$MP_{MFP} = 0.03 \cdot DMI \quad (35)$$

## 2.7 Milk production

Net energy requirements for milk production (lactation) equal the energy content of milk (National Research Council, 2001):

$$NE_{\text{milk}} = 0.36 + 9.69 \cdot w_{\text{Fat,Milkfat,milk}} \quad (36)$$

where  $w_{\text{Fat,Milkfat,milk}}$  is the weight fraction of fat in milk. We assume a constant fat content of 4 % in milk ( $w_{\text{Fat,Milkfat,milk}} = 0.04$ ) which corresponds to net energy requirements for milk production of  $0.748 \text{ Mcal kg}^{-1}$ .



The amount of milk that can be produced from the available net energy above maintenance requirements is calculated as:

$$305 \quad m_{\text{Milk,NE}} = \frac{DMI \cdot ne - NE_M}{NE_L} \frac{DMI \cdot ne - NE_M}{NE_{\text{milk}}} \quad (37)$$

Requirements of metabolizable protein for lactation are calculated from milk protein content assuming a conversion efficiency of metabolizable protein to milk protein of 0.67 (National Research Council, 2001):

$$MP_{L,\text{milk}} = \frac{w_{\text{Protein,Milk}}}{0.67} \frac{w_{\text{protein,milk}}}{0.67} \quad (38)$$

where  $w_{\text{Protein,Milk}} = 0.032$  and  $w_{\text{protein,milk}} = 0.032$  is the weight fraction of protein in milk. Assuming a constant protein content of 3.2 % in milk (310) gives metabolizable protein requirements for milk production of  $0.048 \text{ kg kg}^{-1}$ .

The amount of milk that can be produced from the available  $MP$  above maintenance is calculated as:

$$m_{\text{Milk,MP}} = \frac{MP_{\text{avl}} - MP_{\text{UP}} - MP_{\text{MFP}}}{MP_L} \frac{MP_{\text{avl}} - MP_{\text{UP}} - MP_{\text{MFP}}}{MP_{\text{milk}}} \quad (39)$$

where  $MP_{\text{avl}}$  is total available metabolizable protein calculated from digested N:

$$MP_{\text{avl}} = \frac{DMI \cdot w_{N,DM} \cdot f_N}{w_{N,CP}} \quad (40)$$

315 The actual amount of milk that can be produced is the minimum of  $m_{\text{Milk,NE}}$  and  $m_{\text{Milk,MP}}$ :  $m_{\text{Milk,NE}}$  and  $m_{\text{Milk,MP}}$ :

$$m_{\text{Milk}} = \min(m_{\text{Milk,NE}}, m_{\text{Milk,MP}}) \quad (41)$$

The amount of N contained in milk ( $m_{N,\text{milk}}$ ) are calculated by multiplying with the mass fraction of N in milk ( $w_{N,\text{milk}}$ ):

$$m_{N,\text{milk}} = w_{N,\text{milk}} \cdot m_{\text{Milk}} \quad (42)$$

In the same way, the amount of C is determined:

$$320 \quad m_{C,\text{milk}} = w_{C,\text{milk}} \cdot m_{\text{Milk}} \quad (43)$$

Weight fractions of N ( $w_{N,\text{milk}}$ ) and C ( $w_{C,\text{milk}}$ ) in milk can be determined from milk composition:

$$w_{N,\text{milk}} = w_{N,CP} \cdot w_{\text{protein,milk}} \quad (44)$$

and

$$w_{C,\text{milk}} = w_{C,CP} \cdot w_{\text{protein,milk}} + w_{C,CHO} \cdot w_{\text{CHO,milk}} + w_{C,FA} \cdot w_{\text{fat,milk}} \quad (45)$$

325 Assuming a constant composition of 4 % fat, 3.2 % protein, 4.85 % sugar in milk, we obtain estimates for  $w_{N,\text{milk}}$  and  $w_{C,\text{milk}}$  of 0.00512 and 0.0695, respectively.

## 2.8 Methane from enteric fermentation

Enteric fermentation in the rumen produces methane as a by-product. According to IPCC guidelines for greenhouse gas inventories,  $6.5\% \pm 1.0\%$  of gross energy intake is converted to methane (IPCC, 2006). The lower and upper bound of this range are described to be appropriate for "good" and "poorer" feed, respectively, but a quantitative relationship is not given by IPCC (2006). Hence, we calculate methane production ( $m_{\text{Methane}}$  in  $\text{kg day}^{-1}$ ) assuming a constant methane conversion factor of 6.5 % of gross energy intake:

$$m_{\text{Methane}} = \frac{DMI \cdot 18.4 \cdot 0.065}{55.6} \quad (46)$$

where 18.4 and 55.6 are the gross energy content of feed and methane, respectively, in  $\text{MJ kg}^{-1}$ . Note that in light of the large uncertainty entailed with assuming a constant emission factor, we do not account for possible variations in gross energy content for forage here.

Since C makes up 75 % of the molar weight of methane ( $12 \text{ g mol}^{-1}$  out of  $16 \text{ g mol}^{-1}$ ), the amount of C converted to methane is calculated as:

$$m_{\text{C, methane}} = 0.75 \cdot m_{\text{Methane}} \quad (47)$$

## 2.9 Feces and urine

N excreted with feces comprises indigestible N in feed and the N contained in metabolic fecal protein:

$$m_{\text{N, feces}} = m_{\text{N, intake}} \cdot (1 - f_{\text{N}}) + w_{\text{N, CP}} \cdot MP_{\text{MFP}} \quad (48)$$

Analogously, C excreted with feces is calculated as:

$$m_{\text{C, feces}} = m_{\text{C, in C, intake}} \cdot (1 - f_{\text{C}}) + w_{\text{C, CP}} \cdot MP_{\text{MFP}} \quad (49)$$

N excreted with urine is calculated as the residual of the animal's N balance (Eq. 1). The amount of C excreted with nitrogenous components in urine is calculated by multiplying  $m_{\text{C, feces}}$  with an appropriate C:N ratio. According to Dijkstra et al. (2013), the majority of N in urine (50 %–90 %) is present as urea (Dijkstra et al., 2013), which has a C:N ratio of 0.5. Around 5 % of N is present as hippuric acid with a C:N ratio of 9. The remainder are purine derivatives, creatine and creatinine, which all have C:N ratios between 1 and 1.33. This implies a plausible range of average C:N ratio in urine of about 0.95 to 1.3. For simplicity and because the amount of C excreted with urine generally makes up a small part of the C balance, we assume a C:N ratio of 1 in urine:

$$m_{\text{C, urine}} = 1 \cdot m_{\text{N, urine}} \quad (50)$$

C and N excreted with feces are added to the respective aboveground litter pools in LPJmL. Nitrogenous compounds in urine are assumed to be quickly degraded to ammonium. Thus,  $m_{\text{N, urine}}$  is added to the ammonium pool of the top soil layer in LPJmL, while  $m_{\text{C, urine}}$  is added to the aboveground litter pool.

## 2.10 Integration in LPJmL5.0-grazing

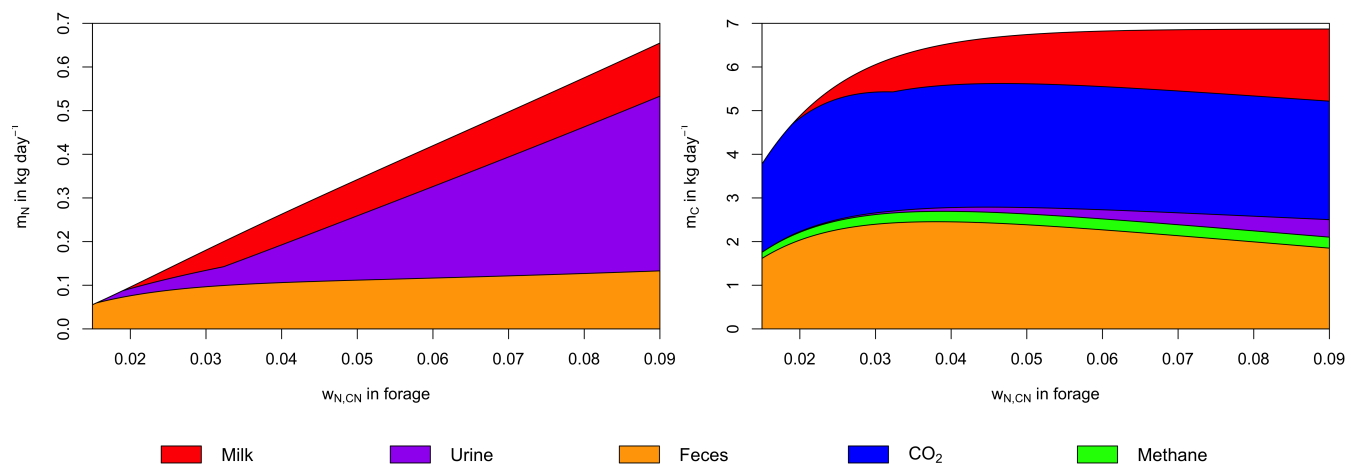
The new module to calculate grazing, digestion and returning C and N to the soil in form of feces and urine is implemented as a new harvest function `harvest_grass_grazing_ext_livestock` in the source code file `harvest_stand.c`. The function is called daily in the `daily_grassland` function when the grassland management option `GS_GRAZING_EXT` is set in the configuration file `lpjml.js`. The dairy cow representation is only compatible with the grassland implementation as described by Rolinski et al. (2018). The new functions of LPJmL5.0-grazing have been implemented in the LPJmL model version LPJmL5.0-tillage as described by Lutz et al. (2019).

In situations where grass biomass availability exhibits a strong seasonality, it can happen that feed-forage intake is insufficient to fulfill daily maintenance requirements of net energy and protein at all times of the year. In order to prevent overly optimistic milk yield estimates under such circumstances, the unfulfilled daily requirements are tracked by adding the deficit to a 'buffer' (one for net energy and one for protein). When energy and protein intake are above maintenance requirements, the buffers are balanced first; milk production can only occur when both deficit buffers are zero and energy and protein intake is above maintenance requirements. To prevent that a large deficit accumulated during long deficit periods (e.g. during spin-up), impede milk production during succeeding, more productive periods, we constrain the size of the deficit buffers of energy and protein to  $365 \cdot NE_M$  and  $365 \cdot MP_{UP}$ , respectively.

## 2.11 Modelling protocol

For the evaluation of the feed-intake and production model alone (without interaction with LPJmL) we calculate C and N uptake and their division into C and N contained in milk, urine, feces, methane, and  $CO_2$  for 1000 values of  $w_{N,CN}$  between  $\theta$  and  $0.10$ , 0.015 and 0.09 (the allowed range for grass biomass in LPJmL). We assume a body weight of 500 kg per LSU livestock unit (LSU), unlimited grass availability, and no unfulfilled requirements of  $NE$  and  $MP$  from previous days.

For the simulations of the livestock model within LPJmL5.0-grazing, we also assume a body weight of 500 kg per LSU. Simulations are performed on 0.5 arc-degree resolution (about 55 km at the equator) for all global land cells except Antarctica. The model is driven by climate forcing from the GSWP3-W5E5 dataset (Kim, 2017; Cucchi et al., 2020; Lange et al., 2022), historical atmospheric deposition of  $NO_3^-$  and  $NH_4^+$  (Yang and Tian, 2020), and historic atmospheric  $CO_2$  concentrations (Büchner and Reyer, 2022). We perform simulations with 45 different LSU densities from 0 to  $4 \text{ LSU ha}^{-1}$  of grazing area; the increment between scenarios increases with increasing LSU densities from  $0.01 \text{ LSU ha}^{-1}$  to  $0.2 \text{ LSU ha}^{-1}$ . For each LSU density setting, the model is run for 7000 years using a random permutation of years from the 1901–1931 period to bring C and N pools into equilibrium. After that, the model is run from 1901–2016 with transient climate, atmospheric deposition, and atmospheric  $CO_2$  concentration.



**Figure 3.** Mass balances of nitrogen and carbon as a function of  $w_{N,CN}$  for a single livestock unit of 500 kg. Feed-Dry matter intake is assumed to be not limited by feed-forage availability, and unfulfilled requirements of  $NE$  and  $MP$  from previous days are ignored.

### 385 3 Evaluation

Intake of C and N of a single livestock unit of 500 kg (Fig. 3) changes as a function of  $w_{N,CN}$ , and is divided per cow as well as their division into C and N contained in milk, urine, feces, methane, and CO<sub>2</sub>. Intake of C and N are zero for  $w_{N,CN} < 0.0057$ . As changes as a function of  $w_{N,CN}$  increases (Fig. 3). For a LSU of 500 kg, intake of C increases steeply is  $3.7 \text{ kg day}^{-1}$  for  $w_{N,CN} = 0.015$  and increases steeply with increasing  $w_{N,CN}$  until it reaches  $6 \text{ kg day}^{-1}$  at  $w_{N,CN} = 0.033$ , which is about 90 % of the maximum daily C intake. Further increases in  $w_{N,CN}$  have a comparatively small impact on C intake. In contrast, N intake increases almost linearly with  $w_{N,CN}$ , dominated by the increasing N content of grazed biomass. Because the digestibility of C and N increases with  $w_{N,CN}$  (Fig. 2), the proportion of intake excreted with feces decreases, which causes in the case of C results a decline in the absolute amount of C in feces for  $w_{N,CN} > 0.038$ . Below  $w_{N,CN} = 0.019$ , Net energy intake is sufficient to meet energy requirements for maintenance over the considered range of  $w_{N,CN}$ , but metabolizable protein corresponding to digested N is insufficient to meet urinary and metabolic fecal protein requirements, and below  $w_{N,CN} = 0.014$ , net energy from feed intake is insufficient to meet energy requirements for maintenance below  $w_{N,CN} = 0.019$ . Thus, milk production only occurs for  $w_{N,CN} > 0.019$ , where it is limited by available N up to  $w_{N,CN} = 0.32$  and by available energy for higher  $w_{N,CN}$ .

390

395

To evaluate the validity of our model, we compare the simulated partitioning of dietary N as a function of  $w_{N,CN}$  to corresponding relationships from Huhtanen et al. (2008) (Fig. 4). Huhtanen et al. (2008) analyze relationships between feed properties and nitrogen utilization and partitioning in dairy cows obtained from 998 data points from 207 lactation trials. For nitrogen use efficiency (i.e., the amount of N in milk divided by total N intake), Huhtanen et al. (2008) provide nine different

400

relationships, of which we selected the one with lowest residual mean square error (RMSE) and lowest AIC:

$$\frac{m_{N,milk}}{m_{N,intake}} = 0.627 - 33.9 \cdot \frac{w_{CP}}{me} \frac{w_{CP,DM}}{me} + 650 \cdot \left( \frac{w_{CP}}{me} \frac{w_{CP,DM}}{me} \right)^2 \quad (51)$$

405 For N in feces, urine, manure (feces + urine), and the fraction of urinary N in manure N, up to five different relationships are provided in Huhtanen et al. (2008), of which some contained independent variables for which we had no corresponding estimate. From the remaining relationships, we chose the ones with lowest RMSE and AIC. N in feces is related to  $DMI$  and  $m_{N,intake}$ :

$$m_{N,feces} = -0.021 + 0.00673 \cdot DMI + 0.101 \cdot m_{N,intake} \quad (52)$$

N in urine is related to  $m_{N,intake}$ ,  $DMI$ , and  $m_{Milk}$ :

$$410 \quad m_{N,urine} = 0.04 + 0.879 \cdot m_{N,intake} - 0.009 \cdot DMI - 0.0039 \cdot m_{Milk} \quad (53)$$

N in manure ( $m_{N,manure} = m_{N,feces} + m_{N,urine}$ ) is related to  $m_{N,intake}$ ,  $DMI$ , and  $me$ :

$$m_{N,manure} = 0.081 + 0.947 \cdot m_{N,intake} - 0.0059 \cdot DMI - 0.0059 \cdot me \quad (54)$$

The fraction of urinary N in manure N is quadratically related to  $w_{CP}$  and  $w_{CP,DM}$ :

$$\frac{m_{N,urine}}{m_{N,manure}} = -0.241 + 7.11 \cdot w_{CP} w_{CP,DM} - 13 \cdot w_{CP}^2 w_{CP,DM}^2 \quad (55)$$

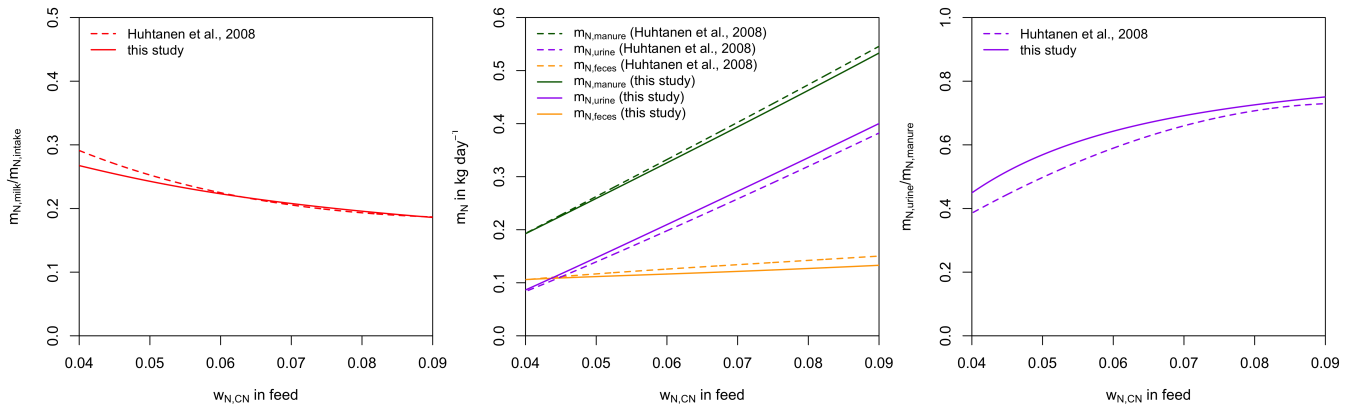
415 To obtain the relationships with  $w_{N,CN}$  shown in Fig. 4,  $w_{CP}$ ,  $w_{CP,DM}$ ,  $me$ ,  $DMI$ ,  $m_{N,intake}$ , and  $m_{Milk}$  are calculated from  $w_{N,CN}$  using the relationships described in section 2.

The There is close agreement between relationships simulated by our model and those determined by Huhtanen et al. (2008) is remarkable. The partition of N intake into N in milk, N in feces, and N in urine as a function of  $w_{N,CN}$  in our model is strongly supported by the relationships derived from trials by Huhtanen et al. (2008). Unfortunately, we were not able to obtain similar  
420 reference data for the evaluation of C partitioning. However, C:N ratios for all elements of the N balance are well determined or closely related to  $w_{N,CN}$  in feedforage. Therefore, the comparison in Fig. 4 also provides an indirect validation of the C balance.

## 4 Results

With the implementation of grazing dairy systems in LPJmL, including the effect of feedforage quality and quantity on  
425 the uptake and partitioning of C and N, the model can now explicitly represent the effects of grazing management on land productivity and the C and N budgets.

In LPJmL5, gross primary productivity (GPP) is computed on a daily basis depending on climate, atmospheric CO<sub>2</sub> concentration, leaf area index (LAI), and plant-available water and mineral N in the soil. One direct effect of grazing in LPJmL is a reduction



**Figure 4.** Comparison of simulated partition of dietary nitrogen as a function of  $w_{N,CN}$  to corresponding relationships from Huhtanen et al. (2008) obtained from experimental data. Simulation are performed assuming feed-forage intake not limited by feed-forage availability, and ignoring unfulfilled requirements of *NE* and *MP* from previous days.

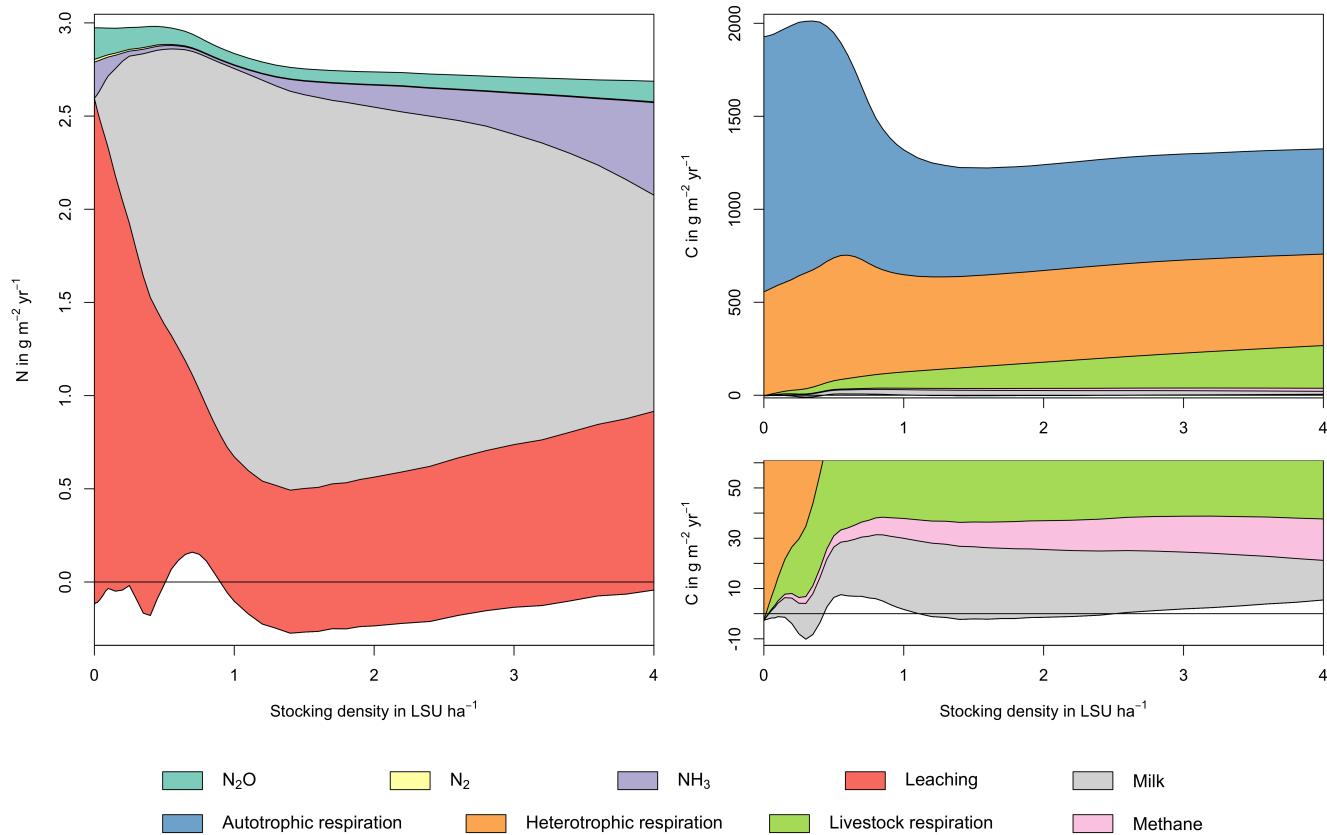
430 leaf area, which tends to reduce GPP but also autotrophic respiration. Depending on the relative strength of both effects, this can lead to an increase or a decrease in net primary productivity (i.e., the amount of carbon available for allocation to leaf and roots). Another important direct effect of grazing is the partial withdrawal of grazed N from the ecosystem (as milk) along with a transfer of the remaining N in other compartments (organic litter N and soil ammonium pools). This can result in an increase or a decrease of plant-available mineral N in soils, depending on the relative strength of the two effects. Other processes in LPJmL respond in various ways to these primary impacts of grazing and lead to changes in all stocks and flows of carbon,  
 435 nitrogen, and water in the model. It should be noted, however, that the current implementation neither considers mechanical impacts of grazing (e.g., trampling or soil compaction) nor preferential grazing of certain grass types or compartments.

As examples for site- and management specific dynamics, we show C and N balances of grassland (Fig. 5), C and N partitioning by the dairy herd (Fig. 6), and ~~total-GHG emissions (Fig. 7) for Potsdam, Germany in the main text and for 3 additional sites in the Sahel in Burkina Faso (14.25°N 0.25°E), in Cordoba, Argentina (31.75°S 62.75°W), and in Riau, Indonesia (1.25°N 101.75°E) in the Appendix .~~  
 440 ~~Management decisions, such as the livestock density, determine C and N balances and the efficiency of the grazing dairy system. Different management strategies can be chosen to fulfill different objectives so that scenario analyses can now assess trade-offs between productivity and environmental impacts , such as GHG emissions. We show how grid-cell specific conditions determine the optimal stocking density for two exemplary objectives (maximized milk production vs. lowest GHG emissions per kg of milk protein) and corresponding milk productivity and emissions per kg of milk protein (Fig. 8).~~

~~Marginal sites, such as in the Sahel (Fig. A1) can only sustain milk production at low stocking densities whereas competition for feed at higher densities leads to a situation in which not enough energy is available from grazed biomass to fulfill maintenance requirements of the herd. More productive sites such as in Indonesia (Fig. A3) show much higher productivity~~

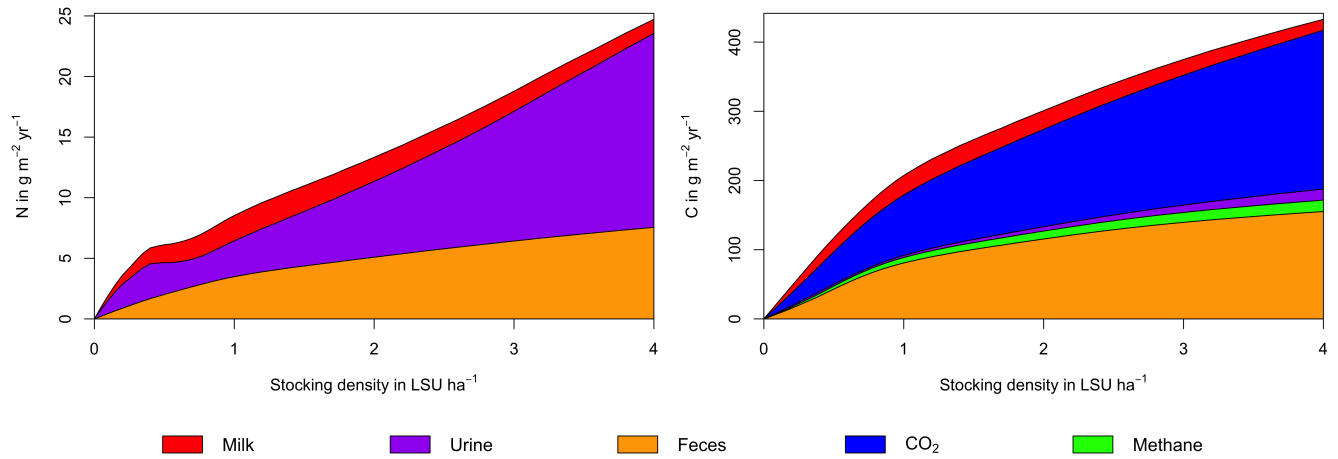
and monotonically increasing milk yield with stocking density, while (Figs. A1–A9). The different sites exhibit a wide range of responses to changes in stocking density, which are caused by the interplay between direct grazing impacts and their subsequent effect on other processes in LPJmL5.0-grazing. A robust response across sites is a reduction of autotrophic respiration with increasing stocking density, which is the result of the reduction of standing biomass (Figs. 5, A1–A3). The reduction in biomass (leaf area), however, does not always lead to a reduction in GPP, which can be attributed to an increase in plant-available mineral N in the soils by grazing. An increase in N and C intake with stocking density (Figs. 6, A4–A6) is to be expected but the shape of the relationship varies among sites and is not always monotonically increasing, reflecting variations in grass availability and quality (N content). Methane emissions increase proportionally with C intake. Milk production first increases with stocking density but then decreases again, when increase in intake become smaller than increases in maintenance requirements. At the site in Argentina shows more complex dynamics Indonesia (Fig. A2). Also, the partitioning of C and N within the grazing dairy herd show very different levels of productivity and shares of C and N in milk (A6), this point apparently lies beyond 4 LSU ha<sup>-1</sup>, which is the largest stocking density used in these simulations. The N withdrawal from the ecosystem with milk production is clearly reflected in a reduction in N losses. In fact, NO<sub>3</sub> leaching and N<sub>2</sub>O emissions are usually smallest at or near the stocking density, for which highest milk yield is achieved (Figs. A4–5, A1–A6A3). This diversity can also be observed across sites for GHG emissions (CH<sub>4</sub>, is very much in contrast to carbon sequestration in soils in response to increasing atmospheric CO<sub>2</sub>, N concentrations, which is typically largest for much lower stocking densities.

At medium to high stocking densities (above 1 – 2 LSU ha<sup>-1</sup>), total GHG emissions (expressed in CO<sub>2</sub> O). Typically, net GHG emissions are positive and increase with stocking density (e.g. in Potsdam, Fig. 7, A7–A9). However, grazing can also lead to carbon sequestration and reduced nitrous oxide emissions in comparison to a grassland without any grazing, so that at low stocking densities, methane emissions can be overcompensated (e.g. in Argentina at low stocking densities, enhanced carbon sequestration in soils and reduced N<sub>2</sub>O emissions through grazing can offset methane emissions and in some cases even lead to a decrease in total GHG emissions (e.g., Fig. A8). GHG Thus, there is usually a trade-off between maximizing productivity and minimizing GHG intensity (net emissions per kg protein in milk can substantially increase with stocking density, especially at sites with low productivity of protein) at lower productivity levels. To highlight this tradeoff and to demonstrate that LPJmL5.0-grazing can be used to assess such trade-offs on a global scale, we use the set of simulations described in section 2.11 to determine for each grid cell the stocking densities corresponding to highest milk production and lowest GHG intensity (Fig. A7), but can also remain largely constant if productivity is high (e.g. in Indonesia, Fig. A9). 8). The results show that GHG intensity of livestock production can indeed be negative in many locations at low or very low stocking densities but at the cost of much lower livestock productivity than possible. It is important to note that these results should be interpreted with care because dairy grazing may not be the most appropriate production system in all locations. However, the change in GHG emissions in response to grazing can be expected to be similar for other livestock grazing systems, and the level of milk production provides an indication for the level of grassland productivity, in general.

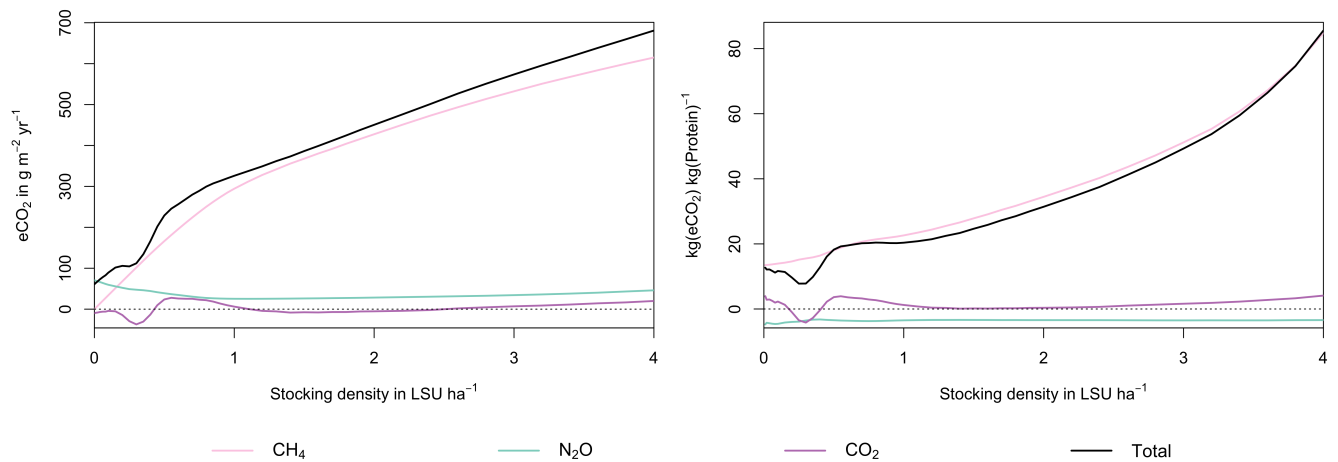


**Figure 5.** N (left) and C (right) budgets for the whole grassland system as a function of livestock density in a grid cell near Potsdam (52.25°N 13.25°E). The lower boundary represent changes in C and N soil storage. The upper boundaries represent C and N fluxes into the system: gross primary productivity for C and atmospheric deposition and biological N fixation for N. [Atmospheric deposition of N at this site is 2.15 g m<sup>-2</sup> yr<sup>-1</sup>](#). All values represent averages for 1971–2016. The lower end of the C budget (upper right) is shown in greater detail in a separate graph (lower right).

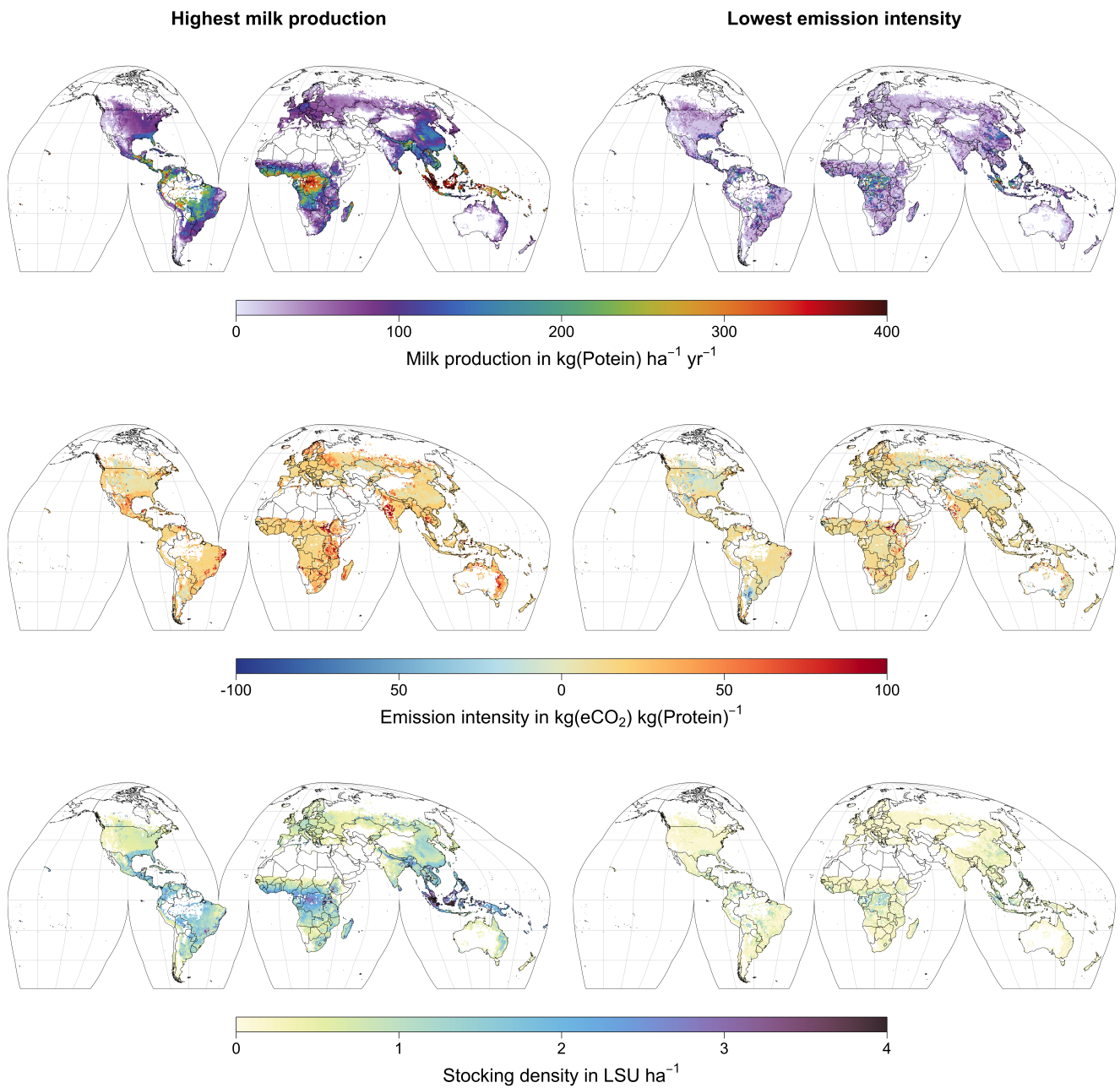




**Figure 6.** N (left) and C (right) budgets for the dairy herd as a function of livestock density in a grid cell near Potsdam ( $52.25^\circ\text{N}$   $13.25^\circ\text{E}$ ). All values represent averages for 1971–2016.



**Figure 7.** Total-GHG emissions (left) and emission intensity per kg of milk protein (right) as a function of livestock density in a grid cell near Potsdam ( $52.25^\circ\text{N}$   $13.25^\circ\text{E}$ ). Emission intensity is defined as net emissions of livestock grazing (i.e., actual emissions minus emissions for  $0 \text{ LSU ha}^{-1}$ ) per kg of protein produced. All values represent averages for 1971–2016.



**Figure 8.** Global maps of milk production (top), and emission intensity per kg of milk protein (middle), stocking density (bottom) for the stocking densities yielding the highest milk production (left) and the lowest emission intensity per kg of milk protein (left). Only grid cells with pasture or rangeland in the year 2000 according to the HYDE3.2 dataset (Klein Goldewijk et al., 2017) are shown. All values represent averages for 1971–2016.

## 5 Discussion and conclusions

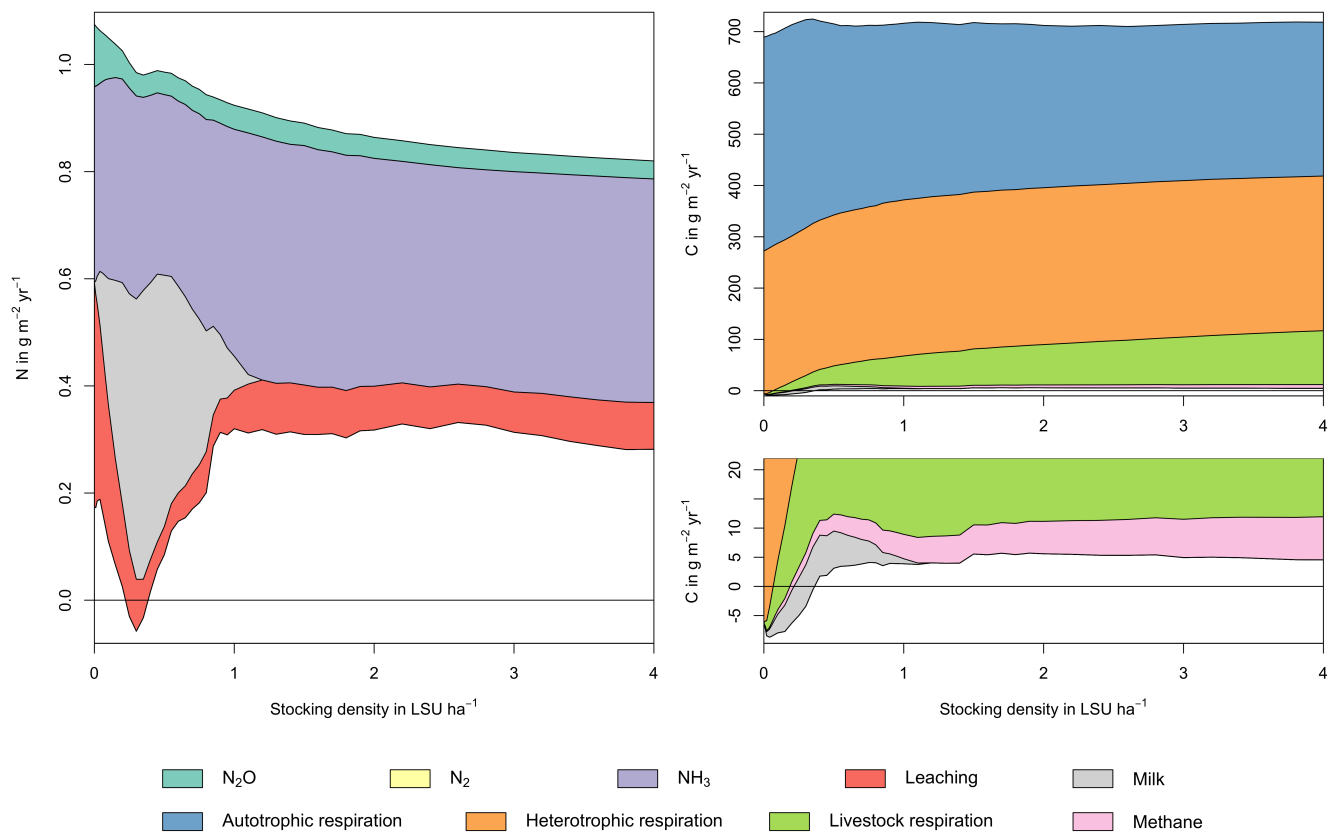
The new implementation of grazing dairy ~~systems cows~~ in LPJmL5.0-grazing ~~allows for more detailed analyses of grassland dynamics and productivity under different management regimes and climate change than before, where only biomass extraction and manure return rates were considered (Rohinski et al., 2018)~~ greatly improves the representation of C and N cycling in grasslands under livestock grazing. The importance of ~~feed-forage~~ quality, in addition to ~~feed-quantity, has been described widely (e.g., Heinke et al., 2020)~~ forage quantity, for the uptake and partitioning of C and N by ruminants are well known (e.g., National Research Council, 2001; Institut national de la recherche agronomique, 2007) but this has, to our knowledge, never been represented in a dynamic global vegetation model, such as LPJmL. ~~There is a plenitude of livestock production systems , for which variation in productivity and environmental impacts have been analyzed (e.g., Herrero et al., 2013), and~~ Limitations of the model arise from the generic representation of grazing systems by grazing dairy systems, which are not the most important systems globally (Herrero et al., 2013; Heinke et al., 2020). However, ~~given the complexity of feed availability, quality, and intake on the productivity and efficiency of an individual animal,~~ this system with continuous productivity (in comparison to beef cattle) is much easier to describe ~~, as it is an acceptable simplification to focus on the lactating cows only rather than on~~ and parametrize than grazing beef cattle, which require modeling the weight gain of individual animals as well as herd dynamics. ~~Still, the implementation as presented here can also serve as the basis for implementing more complex herd systems , in which the response of animal growth and reproduction on feed quality and intake are also considered~~ Also, the effect of supplementation with feed crops is currently not included in the model.

Despite these limitations, LPJmL5.0-grazing can be applied to assess the impacts of grazing on C and N cycles – including carbon sequestration – for given levels of grazing intensity. For such analyses, the representation of grazing systems by grazing dairy systems is a reasonable simplification. Other possible applications include the determination of stocking densities to fulfill predefined targets (e.g., maximum productivity or lowest GHG intensity; see Fig. 8). But the results of these kinds of assessments need to be carefully interpreted in light of the generic representation by grazing dairy systems. However, such analyses can provide valuable insights on spatial variations of grassland productivity and GHG intensity, as well as the synergies and trade-offs entailed with pasture management, which can be generalized to other forms of livestock production.

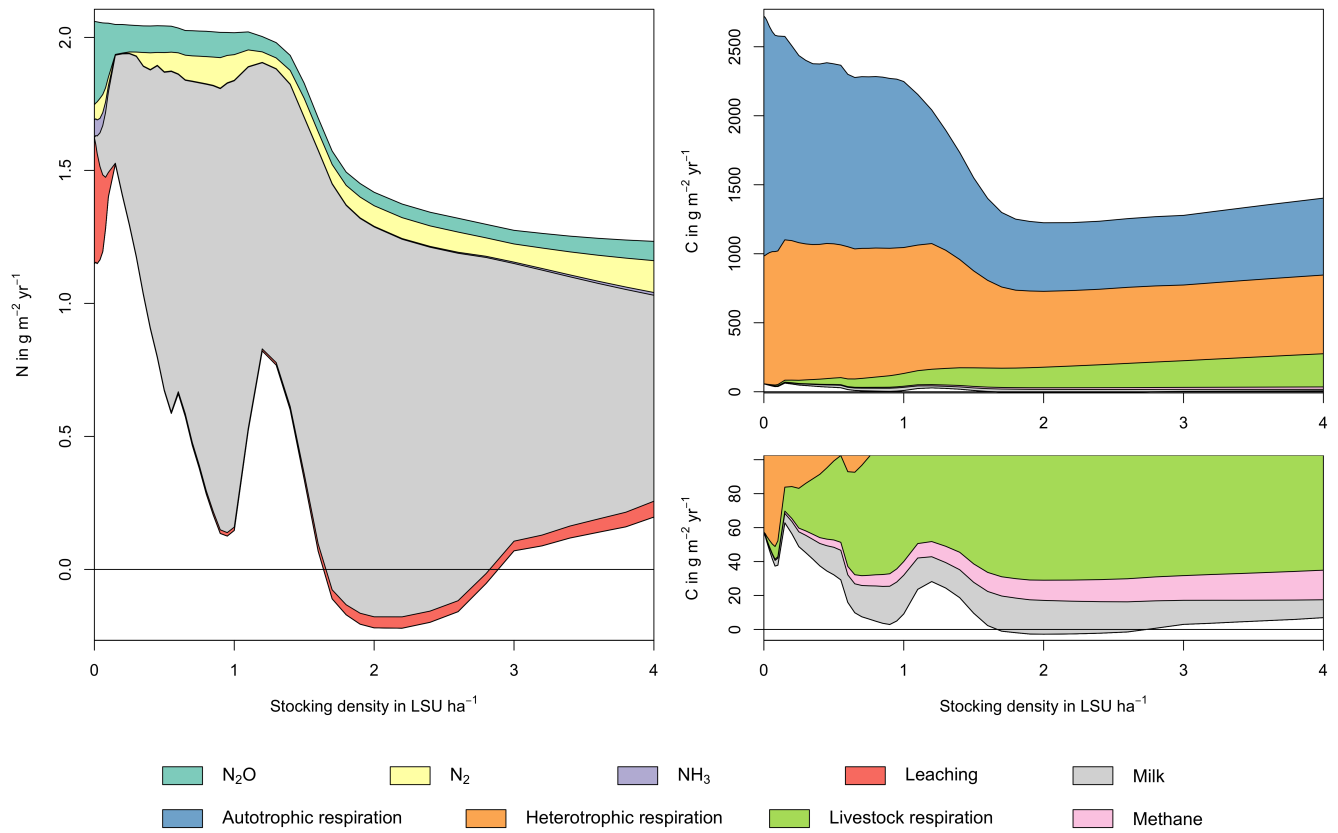
*Code and data availability.* The source code of LPJmL5.0-grazing is archived at Zenodo under <https://doi.org/10.5281/zenodo.6806652> (Heinke et al., 2022).

## **Appendix A: Additional site dynamics**

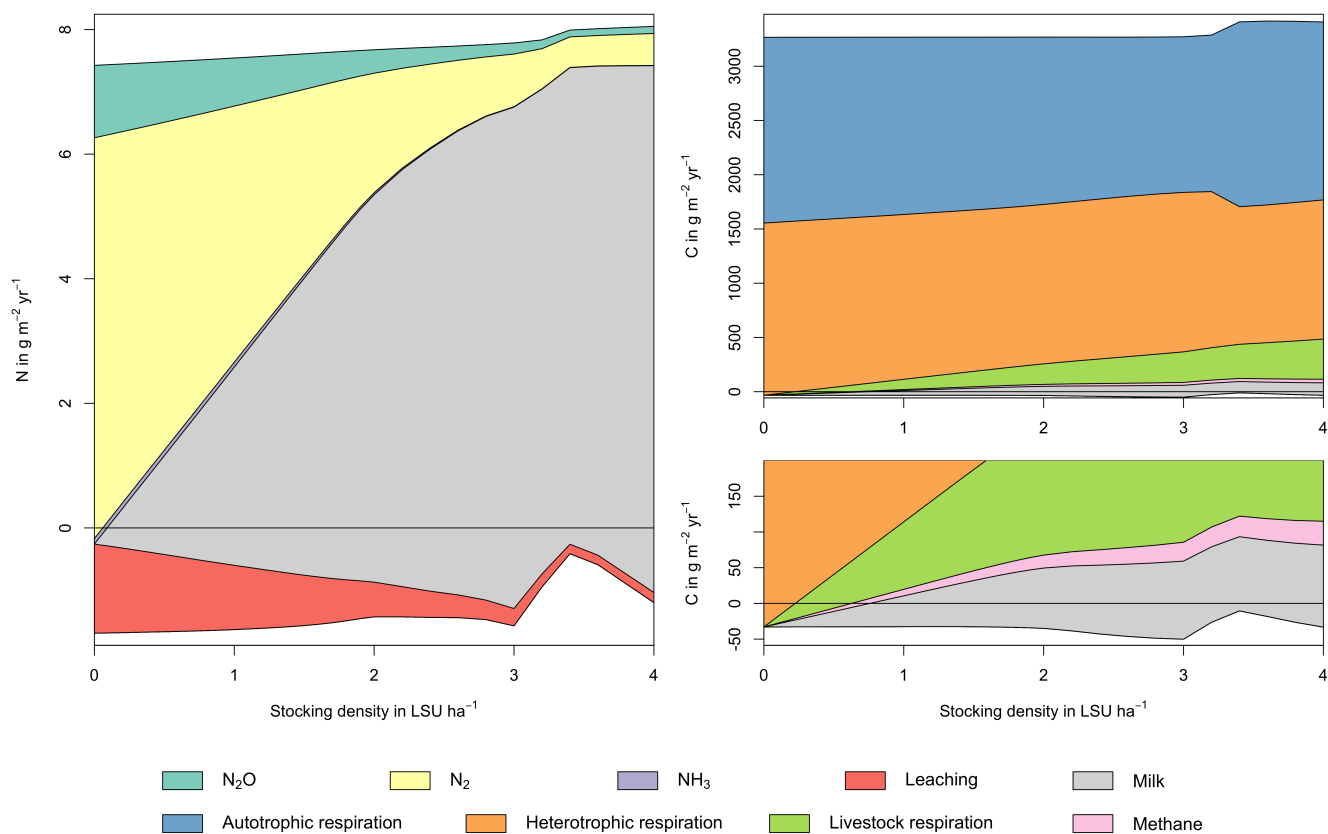
Plots of C and N dynamics at additional sites for a marginal site in the Sahel in Burkina Faso ( $14.25^{\circ}\text{N}$   $0.25^{\circ}\text{E}$ ), a site in  
510 Cordoba, Argentina ( $31.75^{\circ}\text{S}$   $62.75^{\circ}\text{W}$ ), and a productive site in Riau, Indonesia ( $1.25^{\circ}\text{N}$   $101.75^{\circ}\text{E}$ ) in comparison to the plots  
for Potsdam, Germany ( $52.25^{\circ}\text{N}$   $13.25^{\circ}\text{E}$ ) in the main text.



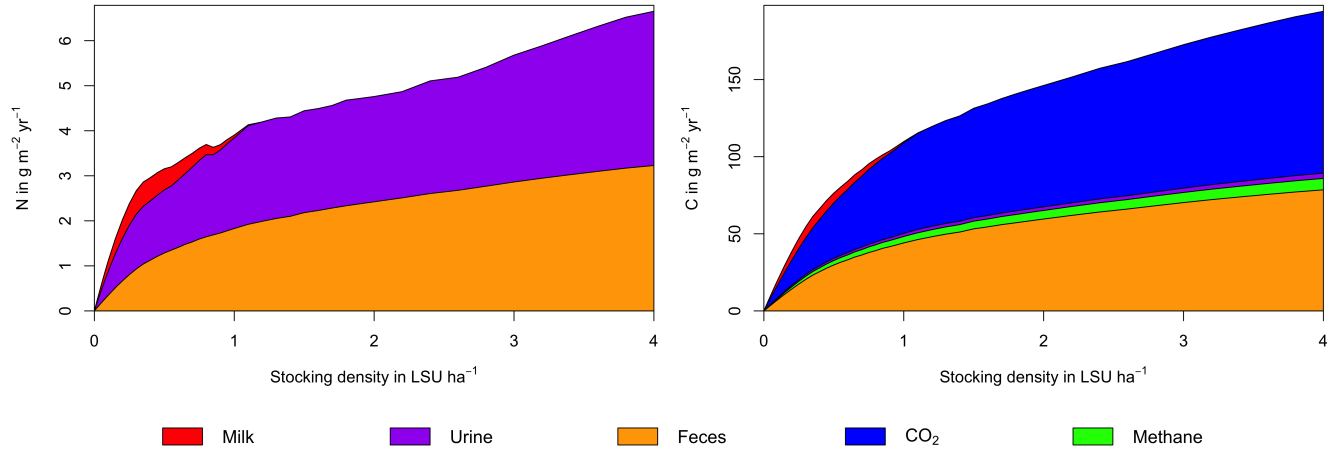
**Figure A1.** Same as Fig. 5 in the main text, but for a site in the Sahel (14.25°N 0.25°E). Atmospheric deposition of N at this site is  $0.37 g m^{-2} yr^{-1}$ .



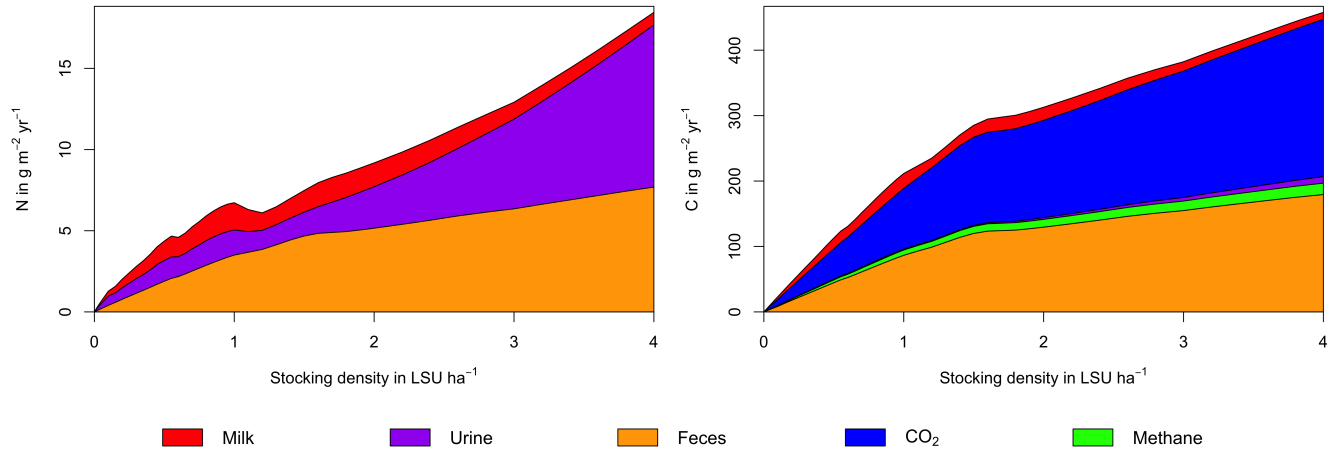
**Figure A2.** Same as Fig. 5 in the main text, but for a site in Argentina (31.75°S 62.75°W). Atmospheric deposition of N at this site is 0.40 g m<sup>-2</sup> yr<sup>-1</sup>.



**Figure A3.** Same as Fig. 5 in the main text, but for a site in Indonesia (1.25°N 101.75°E). Atmospheric deposition of N at this site is 4.99 g m<sup>-2</sup> yr<sup>-1</sup>.

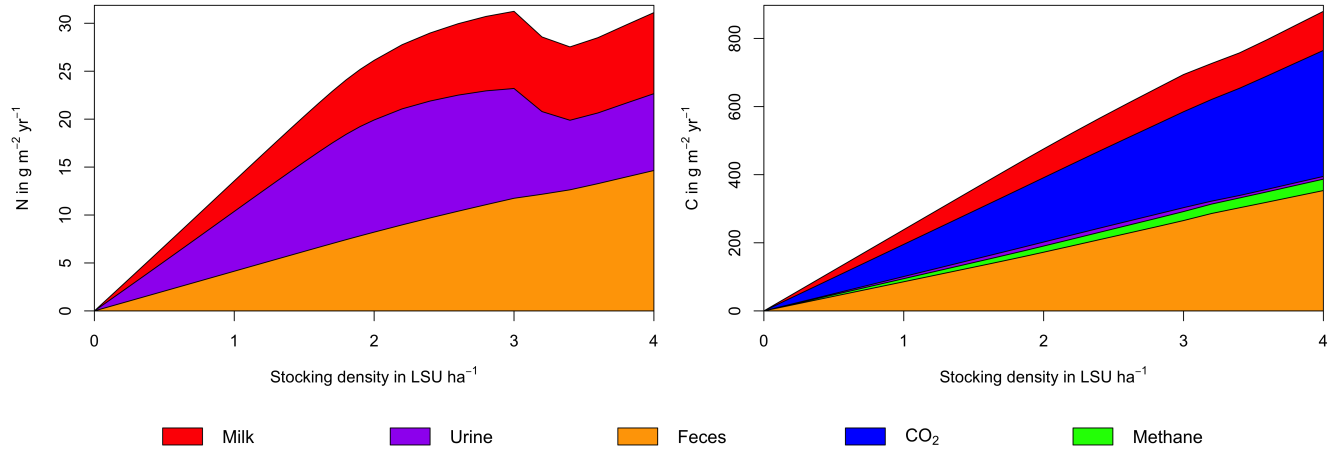


**Figure A4.** Same as Fig. 6 in the main text, but for a site in the Sahel (14.25°N 0.25°E)

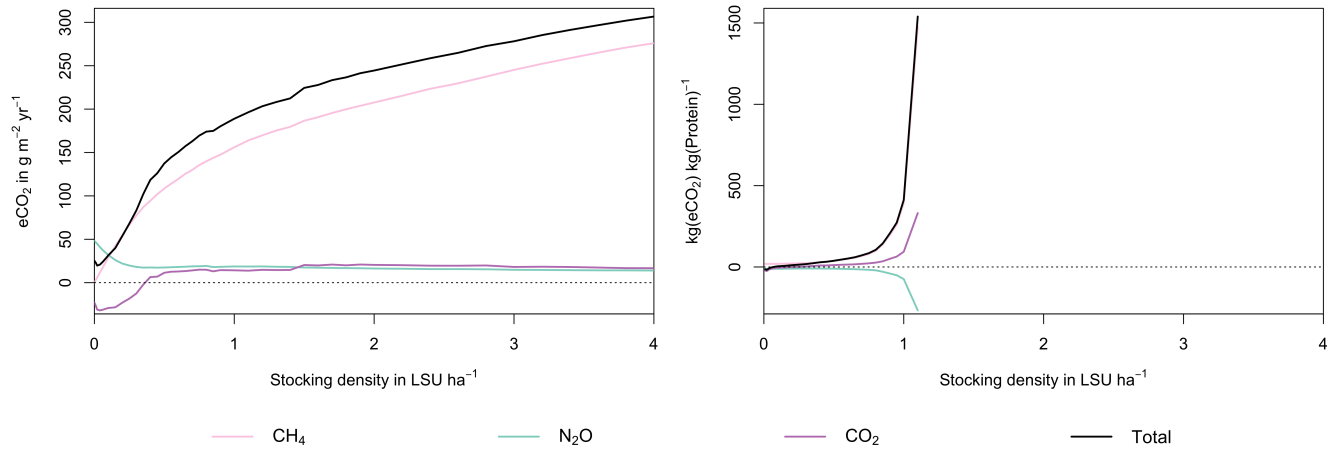


**Figure A5.** Same as Fig. 6 in the main text, but for a site in Argentina (31.75°S 62.75°W)

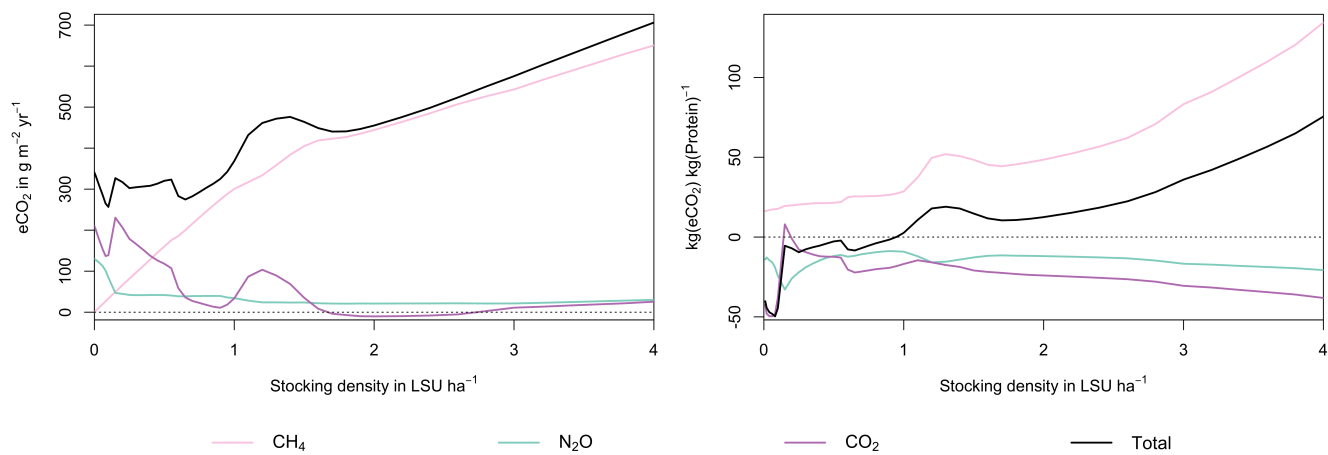




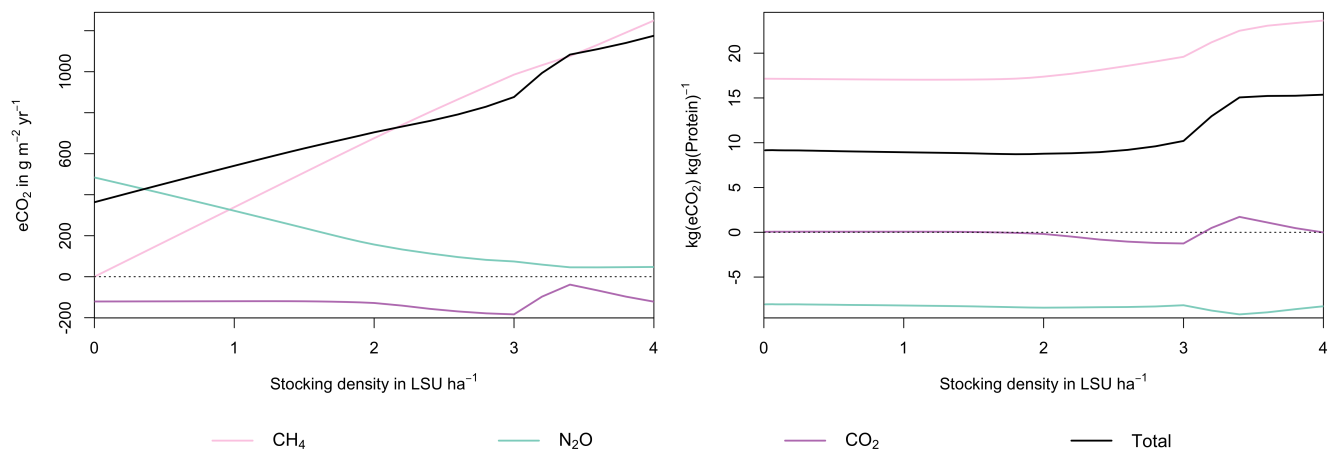
**Figure A6.** Same as Fig. 6 in the main text, but for a site in Indonesia (1.25°N 101.75°E)



**Figure A7.** Same as Fig. 7 in the main text, but for a site in the Sahel (14.25°N 0.25°E)



**Figure A8.** Same as Fig. 7 in the main text, but for a site in Argentina (31.75°S 62.75°W)



**Figure A9.** Same as Fig. 7 in the main text, but for a site in Indonesia (1.25°N 101.75°E)

**Appendix B: [List of symbols](#)**

**Table A1.** List of symbols

Symbol	Unit	Description
$m_{N,urine}$	$kg\ day^{-1}$	Mass of nitrogen in urine
$m_{N,intake}$	$kg\ day^{-1}$	Mass of nitrogen in forage intake
$m_{N,feces}$	$kg\ day^{-1}$	Mass of nitrogen in feces
$m_{N,milk}$	$kg\ day^{-1}$	Mass of nitrogen in milk
$m_{C,respiration}$	$kg\ day^{-1}$	Mass of carbon used for maintenance respiration
$m_{C,intake}$	$kg\ day^{-1}$	Mass of carbon in forage intake
$m_{C,feces}$	$kg\ day^{-1}$	Mass of carbon in feces
$m_{C,urine}$	$kg\ day^{-1}$	Mass of carbon in urine
$m_{C,methane}$	$kg\ day^{-1}$	Mass of carbon in methane
$m_{C,milk}$	$kg\ day^{-1}$	Mass of carbon in milk
$w_{nNDF,DM}$	$kg\ kg^{-1}$	Weight fraction of nitrogen-adjusted neutral detergent fibre in forage dry matter
$w_{NDF,DM}$	$kg\ kg^{-1}$	Weight fraction of neutral detergent fibre in forage dry matter
$w_{NDICP,DM}$	$kg\ kg^{-1}$	Weight fraction of neutral detergent insoluble crude protein in forage dry matter
$w_{CP,DM}$	$kg\ kg^{-1}$	Weight fraction of crude protein in forage dry matter
$w_{NFC,DM}$	$kg\ kg^{-1}$	Weight fraction of non-fiber carbohydrates in forage dry matter
$w_{EE,DM}$	$kg\ kg^{-1}$	Weight fraction of ether extract in forage dry matter
$w_A,DM$	$kg\ kg^{-1}$	Weight fraction of ash in forage dry matter
$w_{FA,DM}$	$kg\ kg^{-1}$	Weight fraction of fatty acids in forage dry matter
$w_L,DM$	$kg\ kg^{-1}$	Weight fraction of lignin in forage dry matter
$w_{ADICP,DM}$	$kg\ kg^{-1}$	Weight fraction of acid detergent insoluble crude protein in forage dry matter
$w_{C,CP}$	$kg\ kg^{-1}$	Weight fraction of carbon in crude protein
$w_{N,CP}$	$kg\ kg^{-1}$	Weight fraction of nitrogen in crude protein
$w_{C,CHO}$	$kg\ kg^{-1}$	Weight fraction of carbon in carbohydrates
$w_{C,L}$	$kg\ kg^{-1}$	Weight fraction of carbon in lignin
$w_{C,FA}$	$kg\ kg^{-1}$	Weight fraction of carbon in fatty acids
$w_{C,DM}$	$kg\ kg^{-1}$	Weight fraction of carbon in forage dry matter

Symbol	Unit	Description
$d_{\text{NDF}}$	$\text{kg kg}^{-1}$	Weight fractions of digestible nitrogen-adjusted neutral detergent fibre in total dry matter
$d_{\text{ADICP}}$	$\text{kg kg}^{-1}$	Weight fractions of digestible acid detergent insoluble crude protein in total dry matter
$f_{\text{C}}$	$\text{kg kg}^{-1}$	Digestible fraction of carbon in total dry matter
$f_{\text{N}}$	$\text{kg kg}^{-1}$	Digestible fraction of nitrogen in total dry matter
$BW$	kg	Body weight
$DMI_{\text{max}}$	$\text{kg day}^{-1}$	Dry matter intake capacity
$DMI$	$\text{kg day}^{-1}$	Dry matter intake
$q$	~	Slope parameter in Eq. 27
$K$	~	Position parameter in Eq. 27
$de$	$\text{Mcal kg}^{-1}$	Digestible energy in forage dry matter
$me$	$\text{Mcal kg}^{-1}$	Metabolizable energy in forage dry matter
$ne$	$\text{Mcal kg}^{-1}$	Net energy in forage dry matter
$NE_{\text{M}}$	$\text{Mcal day}^{-1}$	Net energy requirements for maintenance
$NE_{\text{milk}}$	$\text{Mcal kg}^{-1}$	Net energy requirements for milk production
$MP_{\text{avl}}$	$\text{kg day}^{-1}$	Available metabolizable protein
$MP_{\text{UP}}$	$\text{kg day}^{-1}$	Metabolizable protein requirements for urinary protein
$MP_{\text{MFP}}$	$\text{kg day}^{-1}$	Metabolizable protein requirements for metabolic fecal protein
$MP_{\text{milk}}$	$\text{kg kg}^{-1}$	Metabolizable protein requirements for milk production
$m_{\text{milk,NE}}$	$\text{kg day}^{-1}$	Potential milk production from net energy
$m_{\text{milk,MP}}$	$\text{kg day}^{-1}$	Potential milk production from metabolizable protein
$m_{\text{milk}}$	$\text{kg day}^{-1}$	Milk production
$w_{\text{fat,milk}}$	$\text{kg kg}^{-1}$	Weight fractions of fat in milk
$w_{\text{protein,milk}}$	$\text{kg kg}^{-1}$	Weight fractions of protein in milk
$w_{\text{CHO,milk}}$	$\text{kg kg}^{-1}$	Weight fractions of carbohydrates in milk
$w_{\text{C,milk}}$	$\text{kg kg}^{-1}$	Weight fractions of carbon in milk
$w_{\text{N,milk}}$	$\text{kg kg}^{-1}$	Weight fractions of nitrogen in milk

515 *Author contributions.* JH developed the model, performed simulations, and analysed results. JH, SR, and CM wrote the paper.

*Competing interests.* The authors declare that there are no competing interests.

*Acknowledgements.* JH acknowledges funding from the EXIMO project (01LP1903D) funded through the German Ministry for Education and Research (BMBF). SR acknowledges funding from the projects AGrEc (01DG21039) and CLIMASTEPPPE (01DJ18012), both funded through the BMBF.

## 520 References

- ~~State of the science in reconciling top-down and bottom-up approaches for terrestrial CO<sub>2</sub> budget, *Global Change Biology*, 26, 1068–1084, 2020.~~
- Abu Ghalia, M. and Dahman, Y.: Synthesis and utilization of natural fiber-reinforced poly (lactic acid) bionanocomposites, in: *Lignocellulosic Fibre and Biomass-Based Composite Materials*, pp. 313–345, Elsevier, <https://doi.org/10.1016/B978-0-08-100959-8.00015-9>, 2017.
- 525 Amthor, J. S.: Efficiency of Lignin Biosynthesis: a Quantitative Analysis, *Annals of Botany*, 91, 673–695, <https://doi.org/10.1093/aob/mcg073>, 2003.
- Baucher, M., Monties, B., Montagu, M. V., and Boerjan, W.: Biosynthesis and Genetic Engineering of Lignin, *Critical Reviews in Plant Sciences*, 17, 125–197, <https://doi.org/10.1080/07352689891304203>, 1998.
- Büchner, M. and Reyer, C.: ISIMIP3a atmospheric composition input data (v1.2), <https://doi.org/10.48364/ISIMIP.664235.2>, 2022.
- 530 Chang, J., Ciais, P., Gasser, T., Smith, P., Herrero, M., Havlík, P., Obersteiner, M., Guenet, B., Goll, D. S., Li, W., Naipal, V., Peng, S., Qiu, C., Tian, H., Viovy, N., Yue, C., and Zhu, D.: Climate warming from managed grasslands cancels the cooling effect of carbon sinks in sparsely grazed and natural grasslands, *Nature Communications*, 12, 118, <https://doi.org/10.1038/s41467-020-20406-7>, 2021.
- Chang, J. F., Viovy, N., Vuichard, N., Ciais, P., Wang, T., Cozic, A., Lardy, R., Graux, A.-I., Klumpp, K., Martin, R., and Soussana, J.-F.: Incorporating grassland management in ORCHIDEE: model description and evaluation at 11 eddy-covariance sites in Europe, *Geoscientific*
- 535 *Model Development*, 6, 2165–2181, <https://doi.org/10.5194/gmd-6-2165-2013>, 2013.
- Clipes, R., Detmann, E., Silva, J., Vieira, R., Nunes, L., Lista, F., and Ponciano, N.: Evaluation of acid detergent insoluble protein as an estimator of rumen non-degradable protein in tropical grass forages, *Arquivo Brasileiro de Medicina Veterinária e Zootecnia*, 58, 694–697, <https://doi.org/10.1590/S0102-09352006000400041>, 2006.
- Coleman, S. W.: Predicting Forage Intake by Grazing Ruminants, *Proceedings of 2005 Florida Ruminant Nutrition Symposium*, pp. 72–90,
- 540 2005.
- Coleman, S. W., Gunter, S. A., Sprinkle, J. E., and Neel, J. P.: Difficulties associated with predicting forage intake by grazing beef cows, *Journal of Animal Science*, 92, 2775–2784, <https://doi.org/10.2527/jas2013-7090>, 2014.
- Conant, R. T., Cerri, C. E. P., Osborne, B. B., and Paustian, K.: Grassland management impacts on soil carbon stocks: a new synthesis, *Ecological Applications*, 27, 662–668, <https://doi.org/10.1002/eap.1473>, 2017.
- 545 Cucchi, M., Weedon, G. P., Amici, A., Bellouin, N., Lange, S., Müller Schmied, H., Hersbach, H., and Buontempo, C.: WFDE5: bias-adjusted ERA5 reanalysis data for impact studies, *Earth System Science Data*, 12, 2097–2120, <https://doi.org/10.5194/essd-12-2097-2020>, 2020.
- Dijkstra, J., Oenema, O., van Groenigen, J., Spek, J., van Vuuren, A., and Bannink, A.: Diet effects on urine composition of cattle and N<sub>2</sub>O emissions, *Animal*, 7, 292–302, <https://doi.org/10.1017/S1751731113000578>, 2013.
- [Faverdin, P., Baratte, C., Delagarde, R., and Peyraud, J. L.: \*GrazeIn: a model of herbage intake and milk production for grazing dairy\*](https://doi.org/10.1111/j.1365-2494.2010.00776.x)
- 550 [cows. 1. Prediction of intake capacity, voluntary intake and milk production during lactation, \*Grass and Forage Science\*, 66, 29–44, <https://doi.org/10.1111/j.1365-2494.2010.00776.x>, 2011.](https://doi.org/10.1111/j.1365-2494.2010.00776.x)
- Feedipedia: Animal Feed Resources Information System, <https://www.feedipedia.org>, 2020.
- Fernández-Martínez, M., Sardans, J., Chevallier, F., Ciais, P., Obersteiner, M., Vicca, S., Canadell, J. G., Bastos, A., Friedlingstein, P., Sitch, S., Piao, S. L., Janssens, I. A., and Peñuelas, J.: Global trends in carbon sinks and their relationships with CO<sub>2</sub> and temperature, *Nature*
- 555 *Climate Change*, 9, 73–79, <https://doi.org/10.1038/s41558-018-0367-7>, 2019.



- Friedlingstein, P., Jones, M. W., O'Sullivan, M., Andrew, R. M., Bakker, D. C. E., Hauck, J., Le Quéré, C., Peters, G. P., Peters, W., Pongratz, J., Sitch, S., Canadell, J. G., Ciais, P., Jackson, R. B., Alin, S. R., Anthoni, P., Bates, N. R., Becker, M., Bellouin, N., Bopp, L., Chau, T. T., Chevallier, F., Chini, L. P., Cronin, M., Currie, K. I., Decharme, B., Djeutchouang, L. M., Dou, X., Evans, W., Feely, R. A., Feng, L., Gasser, T., Gilfillan, D., Gkritzalis, T., Grassi, G., Gregor, L., Gruber, N., Gürses, Ö., Harris, I., Houghton, R. A., Hurtt, G. C., Iida, Y., Ilyina, T., Luijckx, I. T., Jain, A., Jones, S. D., Kato, E., Kennedy, D., Klein Goldewijk, K., Knauer, J., Korsbakken, J. I., Körtzinger, A., Landschützer, P., Lauvset, S. K., Lefèvre, N., Lienert, S., Liu, J., Marland, G., McGuire, P. C., Melton, J. R., Munro, D. R., Nabel, J. E. M. S., Nakaoka, S.-I., Niwa, Y., Ono, T., Pierrot, D., Poulter, B., Rehder, G., Resplandy, L., Robertson, E., Rödenbeck, C., Rosan, T. M., Schwinger, J., Schwingshackl, C., Séférian, R., Sutton, A. J., Sweeney, C., Tanhua, T., Tans, P. P., Tian, H., Tilbrook, B., Tubiello, F., van der Werf, G. R., Vuichard, N., Wada, C., Wanninkhof, R., Watson, A. J., Willis, D., Wiltshire, A. J., Yuan, W., Yue, C., Yue, X., Zaehle, S., and Zeng, J.: Global Carbon Budget 2021, *Earth System Science Data*, 14, 1917–2005, <https://doi.org/10.5194/essd-14-1917-2022>, 2022.
- 560
- Glasser, F., Doreau, M., Maxin, G., and Baumont, R.: Fat and fatty acid content and composition of forages: A meta-analysis, *Animal Feed Science and Technology*, 185, 19–34, <https://doi.org/10.1016/j.anifeedsci.2013.06.010>, 2013.
- He, M., Zhou, G., Yuan, T., Groenigen, K. J., Shao, J., and Zhou, X.: Grazing intensity significantly changes the C : N : P stoichiometry in grassland ecosystems, *Global Ecology and Biogeography*, 29, 355–369, <https://doi.org/10.1111/geb.13028>, 2020.
- 570
- Heinke, J., Lannerstad, M., Gerten, D., Havlík, P., Herrero, M., Notenbaert, A. M. O., Hoff, H., and Müller, C.: Water Use in Global Livestock Production—Opportunities and Constraints for Increasing Water Productivity, *Water Resources Research*, 56, <https://doi.org/10.1029/2019WR026995>, 2020.
- Heinke, J., Rolinski, S., and Müller, C.: LPJmL5.0-grazing Model Code, <https://doi.org/10.5281/zenodo.6806652>, 2022.
- 575
- Herrero, M., Fawcett, R., Silveira, V., Busqué, J., Bernués, A., and Dent, J.: Modelling the growth and utilisation of kikuyu grass (*Pennisetum clandestinum*) under grazing. 1. Model definition and parameterisation, *Agricultural Systems*, 65, 73–97, [https://doi.org/10.1016/S0308-521X\(00\)00028-7](https://doi.org/10.1016/S0308-521X(00)00028-7), 2000.
- Herrero, M., Havlik, P., Valin, H., Notenbaert, A., Rufino, M. C., Thornton, P. K., Blummel, M., Weiss, F., Grace, D., and Obersteiner, M.: Biomass use, production, feed efficiencies, and greenhouse gas emissions from global livestock systems, *Proceedings of the National Academy of Sciences*, 110, 20 888–20 893, <https://doi.org/10.1073/pnas.1308149110>, 2013.
- 580
- Hodgson, J.: The control of herbage intake in the grazing ruminant, *Proceedings of the Nutrition Society*, 44, 339–346, <https://doi.org/10.1079/PNS19850054>, 1985.
- Huhtanen, P., Nousiainen, J., Rinne, M., Kytölä, K., and Khalili, H.: Utilization and Partition of Dietary Nitrogen in Dairy Cows Fed Grass Silage-Based Diets, *Journal of Dairy Science*, 91, 3589–3599, <https://doi.org/10.3168/jds.2008-1181>, 2008.
- 585
- [Institut national de la recherche agronomique: Alimentation des bovins, ovins et caprins, Éditions Quae, Paris, 2007.](https://doi.org/10.17858/JAAS.2007.10.01)
- IPCC: Emissions from livestock and manure management, in: 2006 IPCC Guidelines for National Greenhouse Gas inventories, pp. 10.1–10.87, Prepared by the National Greenhouse Gas Inventories Programme, Hayama, Japan, [https://www.ipcc-nggip.iges.or.jp/public/2006gl/pdf/4\\_Volume4/V4\\_10\\_Ch10\\_Livestock.pdf](https://www.ipcc-nggip.iges.or.jp/public/2006gl/pdf/4_Volume4/V4_10_Ch10_Livestock.pdf), 2006.
- Johnson, I. and Parsons, A.: A theoretical analysis of grass growth under grazing, *Journal of Theoretical Biology*, 112, 345–367, [https://doi.org/10.1016/S0022-5193\(85\)80292-7](https://doi.org/10.1016/S0022-5193(85)80292-7), 1985.
- 590
- Kim, H.: Global Soil Wetness Project Phase 3 Atmospheric Boundary Conditions (Experiment 1) [Data set], <https://doi.org/10.20783/DIAS.501>, 2017.

- Klein Goldewijk, K., Beusen, A., Doelman, J., and Stehfest, E.: Anthropogenic land use estimates for the Holocene – HYDE 3.2, *Earth System Science Data*, 9, 927–953, <https://doi.org/10.5194/essd-9-927-2017>, 2017.
- 595 [Kondo, M., Patra, P. K., Sitch, S., Friedlingstein, P., Poulter, B., Chevallier, F., Ciais, P., Canadell, J. G., Bastos, A., Lauerwald, R., Calle, L., Ichii, K., Anthoni, P., Armeth, A., Haverd, V., Jain, A. K., Kato, E., Kautz, M., Law, R. M., Lienert, S., Lombardozzi, D., Maki, T., Nakamura, T., Peylin, P., Rödenbeck, C., Zhuravlev, R., Saeki, T., Tian, H., Zhu, D., and Ziehn, T.: State of the science in reconciling top-down and bottom-up approaches for terrestrial CO<sub>2</sub> budget, \*Global Change Biology\*, 26, 1068–1084, <https://doi.org/10.1111/gcb.14917>, 2020.](#)
- 600 Kozłowski, L. P.: Proteome-pI: Proteome isoelectric point database, *Nucleic Acids Research*, 45, D1112–D1116, <https://doi.org/10.1093/nar/gkw978>, 2017.
- Lange, S., Mengel, M., Treu, S., and Büchner, M.: ISIMIP3a atmospheric climate input data (v1.0), <https://doi.org/10.48364/ISIMIP.982724>, 2022.
- Lutz, F., Herzfeld, T., Heinke, J., Rolinski, S., Schaphoff, S., von Bloh, W., Stoorvogel, J. J., and Müller, C.: Simulating the effect of tillage practices with the global ecosystem model LPJmL (version 5.0-tillage), *Geoscientific Model Development*, 12, 2419–2440, <https://doi.org/10.5194/gmd-12-2419-2019>, 2019.
- 605
- McSherry, M. E. and Ritchie, M. E.: Effects of grazing on grassland soil carbon: a global review, *Global Change Biology*, 19, 1347–1357, <https://doi.org/10.1111/gcb.12144>, 2013.
- Moore, J. E., Brant, M. H., Kunkle, W. E., and Hopkins, D. I.: Effects of supplementation on voluntary forage intake, diet digestibility, and animal performance, *Journal of Animal Science*, 77, 122, [https://doi.org/10.2527/1999.77suppl\\_2122x](https://doi.org/10.2527/1999.77suppl_2122x), 1999.
- 610 National Research Council: Nutrient Requirements of Dairy Cattle: Seventh Revised Edition, 2001, National Academies Press, Washington, D.C., <https://doi.org/10.17226/9825>, 2001.
- Riedo, M., Grub, A., Rosset, M., and Fuhrer, J.: A pasture simulation model for dry matter production, and fluxes of carbon, nitrogen, water and energy, *Ecological Modelling*, 105, 141–183, [https://doi.org/10.1016/S0304-3800\(97\)00110-5](https://doi.org/10.1016/S0304-3800(97)00110-5), 1998.
- 615 Rolinski, S., Müller, C., Heinke, J., Weindl, I., Biewald, A., Bodirsky, B. L., Bondeau, A., Boons-Prins, E. R., Bouwman, A. F., Leffelaar, P. A., te Roller, J. A., Schaphoff, S., and Thonicke, K.: Modeling vegetation and carbon dynamics of managed grasslands at the global scale with LPJmL 3.6, *Geoscientific Model Development*, 11, 429–451, <https://doi.org/10.5194/gmd-11-429-2018>, 2018.
- Santos, J. and Huber, J.: Feeds, Prediction of Energy and Proteins | Feed Proteins, in: *Encyclopedia of Dairy Sciences (Second Edition)*, edited by Fuquay, J. W., pp. 409–417, Academic Press, San Diego, <https://doi.org/10.1016/B978-0-12-374407-4.00174-6>, 2002.
- 620 Tedeschi, L. O., Molle, G., Menendez, H. M., Cannas, A., and Fonseca, M. A.: The assessment of supplementation requirements of grazing ruminants using nutrition models, *Translational Animal Science*, 3, 811–828, <https://doi.org/10.1093/tas/txy140>, 2019.
- Tomé, D., Cordella, C., Dib, O., and Péron, C.: Nitrogen and protein content measurement and nitrogen to protein conversion factors for dairy and soy protein-based foods: a systematic review and modelling analysis, *World Health Organization and Food and Agriculture Organization of the United Nations*, Geneva, <https://apps.who.int/iris/handle/10665/331206>, 2019.
- 625 Tulloh, N. M.: Physical studies of the alimentary tract of grazing cattle, *New Zealand Journal of Agricultural Research*, 9, 999–1008, <https://doi.org/10.1080/00288233.1966.10429360>, 1966.
- von Bloh, W., Schaphoff, S., Müller, C., Rolinski, S., Waha, K., and Zaehle, S.: Implementing the nitrogen cycle into the dynamic global vegetation, hydrology, and crop growth model LPJmL (version 5.0), *Geoscientific Model Development*, 11, 2789–2812, <https://doi.org/10.5194/gmd-11-2789-2018>, 2018.

- 630 Vuichard, N., Soussana, J.-F., Ciais, P., Viovy, N., Ammann, C., Calanca, P., Clifton-Brown, J., Fuhrer, J., Jones, M., and Martin, C.: Estimating the greenhouse gas fluxes of European grasslands with a process-based model: 1. Model evaluation from in situ measurements, *Global Biogeochemical Cycles*, 21, 1–14, <https://doi.org/10.1029/2005GB002611>, 2007.
- Weiss, W.: Feeds, Prediction of Energy and Proteins | Feed Energy, in: *Encyclopedia of Dairy Sciences (Second Edition)*, edited by Fuquay, J. W., pp. 403–408, Academic Press, San Diego, <https://doi.org/10.1016/B978-0-12-374407-4.00173-4>, 2011.
- 635 Weiss, W., Conrad, H., and St. Pierre, N.: A theoretically-based model for predicting total digestible nutrient values of forages and concentrates, *Animal Feed Science and Technology*, 39, 95–110, [https://doi.org/10.1016/0377-8401\(92\)90034-4](https://doi.org/10.1016/0377-8401(92)90034-4), 1992.
- Yang, J. and Tian, H.: ISIMIP3b N-deposition input data (v1.0), <https://doi.org/10.48364/ISIMIP.600567>, 2020.
- Zhou, G., Zhou, X., He, Y., Shao, J., Hu, Z., Liu, R., Zhou, H., and Hosseinibai, S.: Grazing intensity significantly affects belowground carbon and nitrogen cycling in grassland ecosystems: a meta-analysis, *Global Change Biology*, 23, 1167–1179, <https://doi.org/10.1111/gcb.13431>,  
640 2017.