

Sensitivity of NEMO4.0-SI³ model parameters on sea ice budgets in the Southern Ocean

Yafei Nie^{1,2,6}, Chengkun Li³, Martin Vancoppenolle⁴, Bin Cheng⁵, Fabio Boeira Dias², Xianqing Lv^{1,6}, Petteri Uotila²

¹Frontier Science Center for Deep Ocean Multispheres and Earth System (FDOMES) and Physical Oceanography Laboratory, Ocean University of China, Qingdao, China

²Institute for Atmospheric and Earth System Research (INAR), Faculty of Science, University of Helsinki, Helsinki, Finland

³Department of Computer Science, University of Helsinki, Helsinki, Finland

⁴Laboratoire d'Océanographie et du Climat, CNRS/IRD/MNH, Sorbonne Université, 75252, Paris, France

⁵Finnish Meteorological Institute, Helsinki, Finland

⁶Qingdao National Laboratory for Marine Science and Technology, Qingdao, China

Correspondence to: Petteri Uotila (petteri.uotila@helsinki.fi) and Xianqing Lv (xqinglv@ouc.edu.cn)

Abstract. The seasonally-dependent Antarctic sea ice concentration (SIC) budget is well-observed and synthesizes many important air-sea-ice interaction processes. However, it is rarely well simulated in Earth System Models and means to tune the former are not well understood. In this study, we investigate the sensitivity of 18 key NEMO4.0-SI³ (Nucleus for European Modelling of the Ocean coupled with the Sea Ice modelling Integrated Initiative) model parameters on modelled SIC and sea ice volume (SIV) budgets in the Southern Ocean based on a total of 449 model runs and two global sensitivity analysis methods. We found the simulated SIC/SIV budgets are sensitive to ice strength, the thermal conductivity of snow, the number of ice categories, two parameters related to lateral melting, ice-ocean drag coefficient and air-ice drag coefficient. An optimised ice-ocean drag coefficient and air-ice drag coefficient can reduce the root-mean-square error between simulated and observed SIC budget by about 10%. We recommend ten combinations of NEMO4.0-SI³ model parameters that could yield better sea ice extent and SIC budgets than using the standard values.

1 Introduction

The Southern Ocean sea ice, a crucial component of the climate system, has experienced a slight but statistically significant expansion from 1979 to 2015 and remarkable fluctuations in the last few years (Comiso et al., 2017; Parkinson, 2019; Raphael and Handcock, 2022; Wang et al., 2022). Several state-of-the-art climate models have successfully simulated the near-realistic annual cycle of sea ice area (SIA) (Holmes et al., 2019), but they typically still fail to capture the observed sea ice variability and trends (Zunz et al., 2013; Turner et al., 2013; Shu et al., 2015; Shu et al., 2020). This implies that standard metrics commonly used for model evaluation, such as sea ice extent (SIE), SIA and total volume (SIV), are rather rudimentary and of limited use in improving the model skill (Notz, 2014; Notz, 2015), and better metrics are needed to optimise models.

Deleted: Lv⁶

Deleted: sensitivity

Deleted: A better quality of

Deleted: , SIV seasonal cycles

Deleted: Internal variability (Zunz et al., 2013; Mahlstein et al., 2013; Singh et al., 2019) and association with tropical oceans (Meehl et al., 2016; Li et al., 2021) have been used to understand the changes in sea ice, and there is consensus that atmospheric circulation, particularly wind, are primary drivers (Holland and Kwok, 2012; Matear et al., 2015; Hobbs et al., 2016). However, in contrast to observations, Several

Deleted: simulate a decline in Antarctic

Deleted: during this period

Deleted:), the causes of which

Deleted: subject to further diagnosis and identification

Holland and Kwok (2012) proposed an analysis of sea ice concentration (SIC) budgets, i.e., decomposing the dynamic and the other processes leading to changes in SIC to compare with the same processes in observations, as an extension of the commonly used diagnostics for individual variables (e.g., SIC, ice thickness and ice drift). Diagnostics using SIC budgets for fully coupled climate models as well as ocean-sea ice models driven by atmospheric reanalysis showed that the relatively realistic sea ice extent in the models was the result of excessive sea ice velocity bias (Uotila et al., 2014; Lecomte et al., 2016). ~~Correcting the sea ice velocity field in the model with satellite observations was able to simulate the trend of expanding sea ice extent in the Southern Ocean during 1992–2015 (Sun et al., 2021).~~ Furthermore, correctly modelling the sea ice budget is so important as the ocean can only be driven correctly if the sea ice budget is realistic (Holmes et al., 2019), which is related to the importance of sea ice in transporting fresh water (Abernathey et al., 2016; Haumann et al., 2016) and the role of sea ice as a mediator of polar air-ocean matter and energy exchange (Thomas and Dieckmann, 2010).

Sensitivity experiments with three different atmospheric reanalyses indicated that, at least in winter (April to October), SIC budgets are sensitive to atmospheric forcing, as sea ice models driven by these atmospheric reanalysis products show large errors compared to observations (Barthélemy et al., 2018). This was further validated by the fact that even when using the same atmospheric reanalysis, the SIC budget in the ice-ocean reanalysis products can vary considerably (Nie et al., 2022). On the other hand, some studies have shown that simulations of the Southern Ocean sea ice area are not sensitive to model parameters (e.g., Massonnet et al., 2011; Uotila et al., 2012; Rae et al., 2014), but this is likely due to the dynamic and thermodynamic biases in SIC budget cancelling out (Uotila et al., 2014), i.e. wrong processes lead to a right-looking result. Therefore, a hypothesis was proposed that model physics could be more important than previously recognised for improving sea ice modelling skills in the Southern Ocean (Barthélemy et al., 2018). Indeed, the conclusions of Uotila et al. (2014) showed that the SIC budget is sensitive to model configuration and they surmised that it may be possible to adjust the model parameters to make the SIC budget components more realistic. An example is that by changing the ice-ocean stress turning angle from 0° to 16°, the advection contribution to sea ice area change would be halved, although the divergence contribution would become unrealistic (Uotila et al., 2014). However, the sensitivity of the sea ice budgets to the model parameters has not been systematically assessed to date.

The most common approach for sensitivity experiments is to adjust a single variable of interest at a time, while keeping all other parameters fixed (e.g., Fichefet and Morales Maqueda, 1997; Rae et al., 2014), but due to the complexity and strong non-linearity of the model, there are often interactions between variables that cannot be identified with this approach. Another approach is to adjust several variables simultaneously. Kim et al. (2006) tested the sensitivity of 22 parameters of the Los Alamos sea-ice model (CICE) based on the automatic differentiation method and adjusted the parameters to make the simulation as close as possible to the observations. Uotila et al. (2012) conducted experiments on 100 combinations of 10 parameters in a coupled ocean-ice model and recommended several optimal sets of parameters that would produce a realistic global sea ice distribution. To address the problem that the above sensitivity experiments cannot fully explore the entire high-dimensional parameter space, a more attractive way is to do a global sensitivity analysis (GSA; Saltelli et al., 2008). However, a completely performed GSA requires a very large number of runs of the model, for example, $O(10^4)$ runs for

Deleted: Whereas correcting

O(10) parameters (Saltelli et al., 2010). One option is to build an emulator to quickly and with modest computational requirements predict the possible model outputs for a given input and as a substitute for the full dynamic model (Sacks et al., 1989; Kennedy and O'Hagan, 2000; Oakley and O'Hagan, 2004). In brief, an emulator is a machine learning method that statistically constructs relationships between inputs and outputs from existing model results.

There has been some success in quantifying the parameter uncertainty using emulators in ocean/sea ice models. For example, Urrego-Blanco et al. (2016) applied a Gaussian process (GP) emulator to perform the GSA on 39 parameters in CICE. Williamson et al. (2017) built an emulator for the NEMO ocean model and quantified the effect of uncertainty on the model for 24 parameters. In this paper, our research objective is to quantify the sensitivity of the Southern Ocean SIC and SIV budgets to key parameters in a coupled ocean-sea ice model by constructing a GP emulator, and furthermore, to verify whether the model parameters can be adjusted to obtain near-realistic SIC budget components. It is worth noting that NEMO4.0-SI³ parameters' default values are generally optimised based on Arctic observations (e.g., Warren, 1999; Perovich et al., 2002; Lüpkes et al., 2012) and here we are investigating their optimal values in the Southern Ocean SIC budget perspective, which has not been done so far.

2 Materials and data

2.1 Model configuration and parameter space elicitation

Sea ice simulations in this study were performed using the version 4.0.7 revision 15731 of the Nucleus for European Modelling of the Ocean (NEMO; NEMO System Team, 2022) coupled with the Sea Ice modelling Integrated Initiative (SI³; NEMO Sea Ice Working Group, 2019), hereafter called NEMO4.0-SI³. The model represents global ocean via a commonly used nominal 2° tri-polar grid (ORCA2), which is about 85 km resolution between 55°S and 75°S. The ORCA2 was chosen because it is already capable of identifying features of the Southern Ocean SIC budget at this resolution (Nie et al., 2022) and, considering that hundreds of experiments will be performed, using ORCA2 is computationally comparably cheap. The ORCA2 grid configuration has 31 unevenly spaced vertical layers from 10 m (near surface) to 500 m (at 5500 m depth). The vertical physics of the ocean is solved by the combination of the Turbulent Kinetic Energy (TKE) turbulent closure scheme (Marsaleix et al., 2008), an enhanced vertical diffusion scheme applied on tracer (Madec et al., 1998) and a double diffusive mixing (Merryfield et al., 1999).

The sea ice momentum equation is calculated by using the adaptive elastic-viscous-plastic method (Kimmritz et al., 2016, 2017), which is formulated on a C-grid and improved the numerical efficiency of the modified EVP scheme. The default number of sea ice thickness categories is 5, with each category having two vertical layers of ice and one layer of snow on top of ice. The thermodynamic component of NEMO4.0-SI³ includes the 1D energy-conserving model (Bitz and Lipscomb, 1999) and a time-dependent vertical salinity profile (Vancoppenolle et al., 2009). The sea ice model uses the same 1.5-hour time step as the ocean model.

Deleted: sea ice volume (

Deleted:)

Deleted: modeling

Deleted: setting for the

Deleted: category

Deleted: 2 and 1

Deleted: respectively

120 In this study, the NEMO4.0-SI³ model is forced with the DRAKKAR Forcing Set version 5.2 (DFS5.2, Dussin et al.,
 2016), based primarily on the ERA-Interim with some corrections (Dee et al., 2011) and covering the time period 1979–2017.
 The DFS5.2 provides the atmospheric field required for the NCAR bulk formula (Large and Yeager, 2004) in NEMO4.0-SI³,
 which includes 2 m air temperature, 2 m specific humidity, 10 m zonal and meridional wind speeds, mean sea level pressure,
 downward long-wave and short-wave radiation, and the total and solid precipitation rates. In these atmospheric fields, the
 125 frequency of radiation and precipitation is 1 day and 3 hours for all other surface boundary conditions. The spatial resolution
 of DFS5.2 is approximately 80 km, close to that of ORCA2 in the Southern Ocean. The continental discharge rates followed
 the climatological dataset of Dai and Trenberth (2002) and do not include ice mass loss in Antarctica. The simulations are
 initialized at rest via the temperature and salinity fields from the World Ocean Atlas 2018 monthly climatology (WOA18;
 Garcia et al., 2019), run from January 1979 to December 2017, with only the last decade of model output (2008-2017) being
 130 used for analysis.

To investigate the sensitivity of sea ice budgets, we selected 18 parameters and determined their uncertainties (Table 1),
 which cover a number of important processes in sea ice modelling, such as ice/snow physical properties, ocean mixing and
 eddies, and ice-ocean/air-ice interactions. The lower and upper bounds of the parameters were selected according to the
 listed references and the uncertainty intervals were suitably extended to avoid under-sampling at the edge of the interval. The
 135 standard values of the parameters used for the control experiment (CTRL) are the default values for NEMO4.0-SI³.

Table 1. The 18 parameters investigated, including their realistic ranges taken from the listed references.

| Category | Symbol | Description and unit | Low | Standard | High | Reference |
|----------|------------|---|----------|----------|----------|--|
| Ice/snow | m_pstar | Ice strength parameter [N/m ²] | 5.00E+03 | 2.00E+04 | 3.50E+04 | Massonnet et al. (2014) |
| | rhos | Snow density [kg/m ³] | 130 | 330 | 530 | Massom et al. (2001) and Warren et al. (1999) |
| | rhoi | Ice density [kg/m ³] | 880 | 917 | 940 | Timco and Frederking (1996) |
| | m_cnd_s | Thermal conductivity of the snow [W/mK] | 0.1 | 0.31 | 0.5 | Maykut and Untersteiner (1971) and Lecomte et al. (2013) |
| | m_beta | Coefficient beta for lateral melting parameter | 0.2 | 1 | 1.8 | Lupkes et al. (2012) |
| | m_dmin | Minimum floe diameter for lateral melting parameter [m] | 2 | 8 | 14 | Lupkes et al. (2012) |
| | m_alb_sdry | Dry snow albedo | 0.85 | 0.85 | 0.87 | Perovich et al. (2002) and Brandt et al. (2005) |
| | m_alb_smlt | Melting snow albedo | 0.72 | 0.75 | 0.82 | Perovich et al. (2002) and Brandt et al. (2005) |
| | m_alb_idry | Dry ice albedo | 0.54 | 0.6 | 0.65 | Perovich et al. (2002) and Brandt et al. (2005) |
| | m_alb_imit | Melting ice albedo | 0.49 | 0.5 | 0.58 | Perovich et al. (2002) and Brandt et al. (2005) |
| Ocean | m_sal_gd | Restoring ice salinity, gravity drainage [g/kg] | 4 | 5 | 7.5 | Nakawo and Sinha (1981) |
| | jpl | Number of ice thickness categories | 1 | 5 | 30 | Massonnet et al. (2019) |
| | m_avm0 | Eddy viscosity [m ² /s] | 1.00E-05 | 1.20E-04 | 1.50E-04 | Williamson et al. (2017) |
| | m_avt0 | Eddy diffusivity [m ² /s] | 1.00E-06 | 1.20E-05 | 1.50E-05 | Williamson et al. (2017) |
| Coupling | m_deds | Magnitude of the damping on salinity [mm/day] | -20 | -166.67 | -180 | NEMO System Team (2022) |
| | m_ce | Magnitude of the mixed layer eddy | 0.04 | 0.06 | 0.1 | NEMO System Team (2022) |
| Coupling | m_cio | Ice-ocean drag coefficient | 2.00E-03 | 5.00E-03 | 8.00E-03 | Massonnet et al. (2014) |
| | Cd_ice | Air-ice drag coefficient | 8.00E-04 | 1.40E-03 | 2.00E-03 | Massonnet et al. (2014) |

Deleted: the

Deleted: frequencies are 3 hours

Deleted: .)

Deleted: Our selection principles for parameters and their values were first to target the three compartments at a stake (air, ocean and ice) and their interactions, and second, to act on uncertain and important processes. Ultimately, we selected 18 parameters (Table 1) toTo

Deleted: the

Deleted: budget to

Deleted: .

Deleted: elicited

Deleted: in

Deleted: marginal regions

| Category | Symbol | Description and unit |
|----------|------------|--|
| | m_pstar | Ice strength parameter [N/m ²] |
| | rhos | Snow density [kg/m ³] |
| | rhoi | Ice density [kg/m ³] |
| Ice/snow | m_cnd_s | Thermal conductivity of the snow [W/mK] |
| | m_beta | Coefficient beta for lateral melting pa |
| | m_dmin | Minimum floe diameter for lateral me |
| | m_alb_sdry | Dry snow albedo |
| | m_alb_smlt | Melting snow albedo |
| | m_alb_idry | Dry ice albedo |
| | m_alb_imit | Melting ice albedo |
| | m_sal_gd | Restoring ice salinity, gravity drainag |
| | jpl | Number of ice categories |
| | Ocean | m_avm0 |
| m_avt0 | | Eddy diffusivity [m ² /s] |
| m_deds | | Magnitude of the damping on salinity |
| m_ce | | Magnitude of the mixed layer eddy |
| Coupling | m_cio | Ice-ocean drag coefficient |
| | Cd_ice | Air-ice drag coefficient |

Deleted: .

155 2.2 Experimental design

The flow chart describing the procedure for obtaining the optimised model parameter values based on evaluation metrics is shown in Fig. 1. We start with the definition of the 18-dimensional parameter space (as already done in Table 1); the next steps are to sample from this parameter space and run the NEMO4.0-SI³ model with a limited number of sampled sets of parameter values (the sampling method is described in the next section). Three sets of metrics are then calculated from the NEMO4.0-SI³ model output: 1) the area integrals of SIC budget components, 2) the area integrals of SIV budget components, and 3) the root-mean-square errors (RMSEs) between the simulated and observed SIC budgets (RMSE_{SICB}).

After the calculation of the three sets of metrics, GP emulators are trained (to be described in Section 2.4) to link the parameter sets with the evaluation metrics based on the NEMO4.0-SI³ simulations. Two GSA methods are used: the PAWN method (Pianosi and Wagener, 2015) and Sobol method (Sobol, 2001; both described in Appendix A), large amount of input data to comprehensively explore the full parameter space covered by NEMO4.0-SI³ simulations and complemented by the GP emulators. Finally, once the key parameters have been identified by the GSA methods, parameter sets that provide results closest to the observations can be identified.

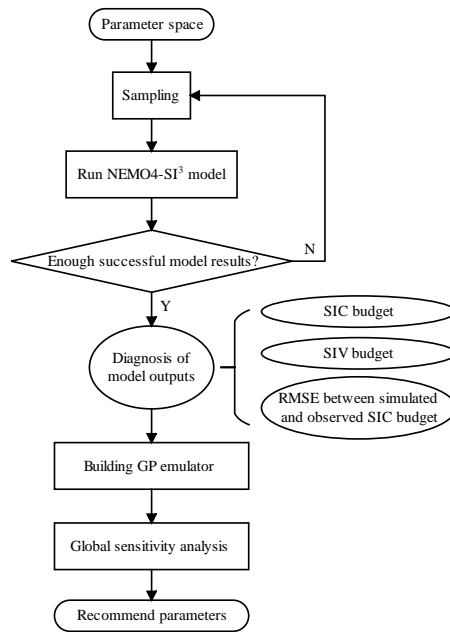


Figure 1. Flow chart describing how to obtain optimised parameter values for the NEMO4.0-SI³ model.

Deleted: experimental

Deleted: achieving the sensitivity analysis

Deleted: see

Deleted: separately

Deleted: the

Deleted: set

Deleted: parameters

Deleted: paragraph). The

Deleted: based on adequate sampling is then diagnosed by focusing mainly on three sets of metrics, including:

Deleted: integral

Deleted: simulated

Deleted: /

Deleted: error (RMSE

Deleted: It is necessary to train a

Deleted: emulator

Deleted: 3) for each metric to be evaluated

Formatted: Indent: First line: 1 ch

Deleted: , as both

Deleted: , i.e.,

Deleted: would require a

Deleted: number

Deleted: model runs

Deleted: with a huge computational demand.

Deleted: , we will recommend some of

Deleted: close

Deleted:

Deleted: Experimental flow

Deleted: sensitivity analysis

Formatted: Line spacing: single

2.3 Latin Hypercube Sampling

We use the Latin Hypercube Sampling (LHS) method with a maxi-min property to generate low-discrepancy sequences from the 18-dimensional parameter space (step 2 in Figure 1) to identify parameter set values for the NEMO4.0-SI³ simulations. The LHS is a stratified sampling method that divide each dimension evenly to ensure that samples are available in all intervals, and therefore allows for a more evenly drawn sample than the usual random sampling methods (Morris and Mitchell, 1995; McKay et al., 2000). Additionally, the maxi-min property is a space-filling criteria that aims to maximize the minimum Euclidean distance between two sampling points and thus improves the effectiveness of the GP emulation (Joseph and Hung, 2008) to be carried out after the NEMO4.0-SI³ simulations. The recommendation for the number of samples to build a GP emulator is $N=10p$ (Loeppky et al., 2009), where p is the dimension of parameter space and equals to 18 in this study. In practice, however, we decided to use about 20p samples in order to build the GP emulator as accurate as possible (Williamson et al., 2017). Based on this principle, and taking into account possible model run failures, we first perform a sampling of 800 points in parameter space to run the NEMO4.0-SI³, and if the number of successful experiments ends up being too little (less than 360), we will continue the sampling.

2.4 Gaussian process emulator and model selection

The amount of computation using NEMO4.0-SI³ required for comprehensively to cover the 18-parameter space for the model evaluation remains practically too large, and the use of a much faster GP emulator is required to emulate the behaviour of NEMO4.0-SI³ given the 18 parameter values. The emulator functionality is described next.

Let $X_t = (\vec{x}_1, \vec{x}_2, \dots, \vec{x}_N)^T$ and $Y_t = (y_1, y_2, \dots, y_N)^T$ denote the total number of N simulations, each \vec{x}_i is a column vector of 18 values, sampled from the 18-dimensional parameter space by the LHS, and each y_i is a real number representing the corresponding one model output metric, which is assumed to be noiseless here. A GP emulator $f(\cdot)$ for a model output metric $Y_t = f(X_t)$ can generally be represented as

$$f(\cdot) \sim GP(\mu(\cdot), K(\cdot, \cdot)), \quad (1)$$

where $\mu(\cdot)$ and $K(\cdot, \cdot)$ are prior mean function and covariance function respectively. Then the posterior distribution for parameter values X^* can be obtained as

$$f(X^*)|f(X_t) \sim N(\mu^*, K^*) \quad (2)$$

where

$$\mu^* = \mu + K(X^*, X_t)K(X_t, X_t)^{-1}(f(X_t) - \mu), \quad (3)$$

$$K^* = K(X^*, X^*) - K(X^*, X_t)K(X_t, X_t)^{-1}K(X_t, X^*). \quad (4)$$

We used the GP software (GPpy, 2012), with the prior of the mean function set to zero by default, and the user only had to choose the covariance function K to build the GP emulator for each evaluation metric. To achieve this, we used a 10-fold cross-validation method for model selection (Geisser, 1975). The idea is to divide the dataset $\{X_t, Y\}$ evenly into 10 parts, each time using 9 parts as the "training data" to train the emulator and 1 part as the "true data" for model validation, and so

Deleted:

Deleted: .

Deleted: to improve

Deleted: .

Deleted: the

Deleted: 3

Deleted: In general, the PAWN method converges to a sufficiently accurate value with relatively fewer parameter adjustments than the Sobol method (Pianosi and Wagener, 2015), however, the T

Deleted: comprehensive

Deleted: which requires

Deleted: make predictions about

Deleted: output of the NEMO4.0-SI³ after adjusting the parameters

Deleted: p-dimensional

Deleted: representing a sample

Deleted: parameters

Deleted: of

Deleted: variable

Deleted: test

Deleted: sets

Deleted: implemented in Python

Deleted:) to build the GP emulator for each metric of interest. Once the user has selected the mean and covariance functions, the toolkit will automatically maximize the marginal likelihood by the L-BFGS method to find the optimal values of all hyperparameters in the mean and covariance functions. In general,

Deleted: is assumed

Deleted: be

Deleted: . Thus,

Deleted: key matter remaining is how

Formatted: Indent: First line: 0 ch

Deleted: .

on for 10 cycles and taking the average as a proxy for model performance. Using this approach, we traversed the linear, squared exponential, exponential, Matern 3/2, Matern 5/2 covariance functions and their sums and products (Rasmussen and Williams, 2006), for a total of 177 different combinations, and then selected the covariance function with both the minimum RMSE and the highest correlation coefficient between the simulated and emulated values.

2.5 Sea ice concentration and volume budgets

Following the ice conservation law, the change of a sea ice state field Θ , such as SIC and SIV, can be contributed to dynamic and other processes (Leppäranta 2011, Chapter 3.4):

$$\frac{\partial \Theta}{\partial t} = -\mathbf{u} \cdot \nabla \Theta - \Theta \nabla \cdot \mathbf{u} + (f - r) \quad (5)$$

where \mathbf{u} is the sea ice velocity, f represents the change from freezing/melting, r stands for any other progresses (e.g., ridging and rafting). Integrating the Eq.(5) in time, then the net changes in Θ over a period of time ($t_2 - t_1$) can be obtained as:

$$\int_{t_1}^{t_2} \frac{\partial \Theta}{\partial t} dt = - \int_{t_1}^{t_2} \mathbf{u} \cdot \nabla \Theta dt - \int_{t_1}^{t_2} \Theta \nabla \cdot \mathbf{u} dt + \int_{t_1}^{t_2} (f - r) dt, \quad (6)$$

where the left-hand-side term is the change or *dadt* (also referred to specifically as *dC/dt* and *dV/dt* for changes in SIC and SIV respectively), the first term on the right-hand-side represents the contribution of advection (*adv*), the second term divergence (*div*) and the last term residual (*res*). A positive value for each term is defined as an increase of Θ and a negative value for a decrease.

The budgets for SIC and SIV were calculated in our study, including seasonal climatologies for each SIC or SIV budget term, following the same approach as Holland and Kimura (2016). First, the daily *dadt* was obtained by central differencing of the ice fields on the day before and after; the advection and divergence were first calculated on each day, and then averaged over the corresponding 3-day periods to be consistent with the daily *dadt*. Second, *adv* and *div* were subtracted from the *dadt* to obtain the daily *res*; and finally, all daily terms were summed over each season and averaged over the years 2008-2017.

2.6 Observation data

Daily sea ice velocity observations from Kimura et al. (2013) and SIC from the NOAA/NSIDC Climate Data Record of Passive Microwave Sea Ice Concentration, Version 4 (Meier et al., 2021) (hereafter referred to as CDR) were used to calculate the observed SIC budget. The ice velocity dataset KIMURA was generated from the brightness temperature of the 36-GHz channel of the Advanced Microwave Scanning Radiometer-Earth Observing System (AMSR-E) using the maximum cross correlation technique (Kimura et al., 2013), and ultimately deriving a 60 km resolution product. Therefore, the KIMURA data shares the same period as AMSR-E and its successor AMSR2, covering from 2002 to the present. Following Holland and Kwok (2012), a 3×3 grid filter was used in the calculations to smooth out the grid-scale noise present in the satellite-derived ice drift. Regarding the SIC satellite observations, the CDR SIC is a rule-based combination of the NASA

Deleted: 4

Deleted: 5

Team (Cavalieri et al., 1984) and NASA Bootstrap (Comiso, 1986) ice concentration datasets in the same $25\text{ km} \times 25\text{ km}$ grid, covering the years from 1978 to 2021, with daily, grid-based uncertainty estimates. The other three SIC observation products are only used as references in the calculation of SIE (integral of grid cells areas where SIC > 15%) and SIA (integral of grid cells areas multiplied by the SIC in each grid cell), they are AMSR-E/AMSR2 provided by NSIDC (Cavalieri et al., 2014; Meier et al., 2018), Ocean-Sea Ice Satellite Application Facilities (OSISAF) from European Meteorological Satellite agency (EUMETSAT; Eastwood et al., 2014) and CERSAT developed by the French National Institute for Ocean Science (IFREMER, Ezraty et al., 2007).

The observed SIC budget (Fig. B1) shows that the Southern Ocean sea ice is generally transported to the ice edge at lower latitudes by advection and melts there, with divergence yields open water and thus promotes freezing of ice (Holland and Kwok, 2012; Uotila et al., 2014). It is important to note that the calculated SIC budget observations were considered as "true values" in our study, despite the uncertainties and biases in the ice drift observations, such as the overall overestimation of 5% compared to the buoy measured velocities (Kimura et al., 2013). The simulated SIC budgets and the root-mean-square errors from the observed one were only calculated at grid points with SIC larger than 15% and at dates where ice drift observations existed, to minimize the uncertainty of results caused by missing observations and observational errors.

3 Results

3.1 Sea ice concentration and thickness in the model ensemble

Out of 800 experiments, 44% were terminated due to model instability caused by parameter combinations, resulting in an ensemble of models of size 449, which included the CTRL experiment. The seasonal cycles of SIE and SIA for the model ensemble are shown in Fig. 2. The SIE and SIA intervals for the ensemble cover the observed values fairly well, except for September when SIA is systematically slightly overestimated. Inter-model disagreement due to parameter uncertainty is greatest in summer (ranging from 0.42 to $8.26 \times 10^6\text{ km}^2$), when SIE and SIA are at a minimum (observed at $4.26 \times 10^6\text{ km}^2$), while there is little disagreement between models during the autumn months. Among the members of the model ensemble, the CTRL run essentially overlaps with the ensemble mean and matches well with the observation.

In February, comparing the ensemble mean SIC (Fig. B2a-b) with the CDR observation shows that there are still challenges in the modelling of the local patterns, especially as the NEMO4.0-SI³ significantly underestimates the SIC near the East Antarctic coast. In addition, the ensemble standard deviation for February stands at a high level (around 20%) in most regions. Whereas in September (Fig. B2d-f) the ensemble mean SIC is more consistent with the observations than in February, although differences between the ensemble members remain relatively high (around 10%) in marginal ice areas where the SIC is low. Overall, the discrepancies between ensemble members due to parameter uncertainty are smaller at high SIC areas (SIC > 90%) than in low SIC areas.

Deleted: sea ice extent (
Deleted: ; integral of grid cells areas where SIC > 15%)
Deleted: area (
Deleted: ; integral of grid cells areas multiplied by the SIC in each grid cell)

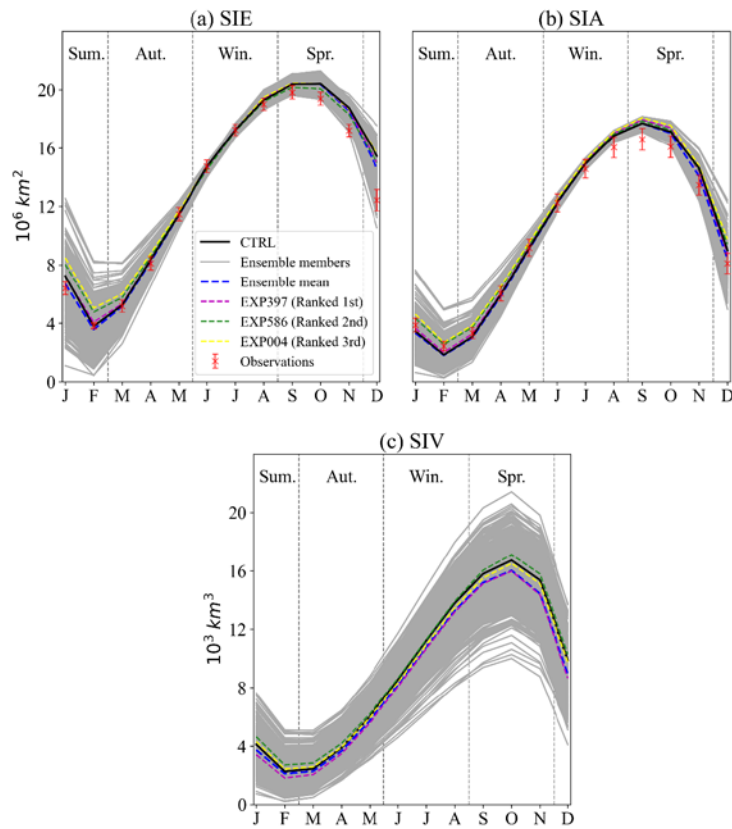
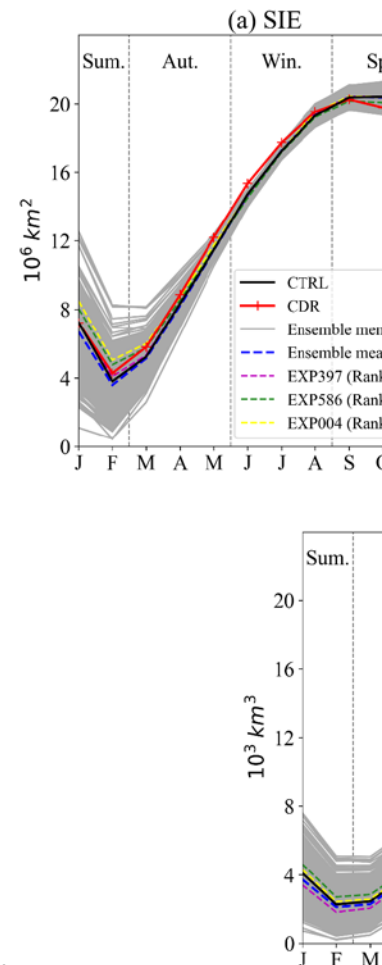


Figure 2. Simulated monthly climatologies of (a) sea ice extent (SIE), (b) area (SIA) and (c) volume (SIV) from 2008 to 2017, ensemble model means and results from four sets of experiments of interest are also highlighted. The SIE and SIA calculated from the [CDR](#), [AMSR-E/AMSR2](#), [CERSAT](#) and [OSISAF](#) are used as references in the form of mean \pm one deviation.

Similar to the seasonal cycles of SIE and SIA, the CTRL run's SIV remains close to the ensemble mean. However, the differences between SIVs simulated based on different parameter sets are much greater than for SIEs (Fig. 2c), for instance in winter, the maximum values of SIVs in the ensemble members are more than twice as large as the minimum values. Additionally, there are some model runs whose SIV cycles are detached from other members, which is most evident in



Deleted:

Deleted: NOAA/NSIDC Climate Data Record of Passive Microwave Sea Ice Concentration, Version 4 (CDR)

Deleted:)

Deleted: .

335

340

winter. For the ensemble mean sea ice thickness, thicker sea ice of up to two meters is maintained year-round in the western Weddell Sea (Fig. B3a,c), which appears to be higher than the previous observation-based dataset of 1.2 to 1.5 meters (Haumann et al., 2016, in their Extended Data Figure 2). However, the lack of observations from the same period as this study precludes a direct comparison. The spatial pattern of ice thickness standard deviation between model ensembles (Fig. B3) is similar to that of sea ice thickness, which means thicker sea ice is usually accompanied by a larger standard deviation.

3.2 Sea ice concentration and volume budgets in the model ensemble

The diagnostics of the SIC and sea ice thickness of the model ensemble in the last section show that the NEMO4.0-SI³ model driven by DFS5.2 provides reasonable results. The mean states of the model ensemble being close to the CTRL experiment, for SIC in particular, match the observations very well, which provides a good basis for the budget analysis. In this section we first calculated the SIC budget and SIV budget for the ensemble of 449 model runs by applying the same approach as for the calculation of the observed SIC budget (cf. Fig. B1), and then computed the $RMSE_{SICB}$ (step 5 in Figure 1).

3.2.1 Model ensemble mean and standard deviation

As can be seen in Fig. 3, the spatial pattern characteristics of the ensemble mean of dC/dt and adv for each season are generally consistent with observations. The magnitudes of the model ensembles of dC/dt and adv are significantly larger due to the fact that the observed ice drift has some missing values and the dC/dt term is only integrated over the grids with ice drift observations. However, the simulated divergence appears to be systematically biased when compared to the observation, the simulated div in the inner ice pack is smaller than the observed even considering there are missing data in the observation, and some sporadic convergence (positive value of divergence) scattered in the marginal ice zone is not captured by the model. The lack of divergence in the inner ice pack also leads to a lack of open water and thus insufficient freezing of sea ice, which can be seen from the winter and spring *res* in Fig. 3, and in summer in the south Weddell Sea. In summer, the overall contribution of model simulated advection and divergence to sea ice change is minimal, with thermodynamic sea ice melt dominating, which is consistent with the observation.

The standard deviation of each budget terms for the model ensemble was also calculated (Fig. 4), the deviations between simulated sea ice changes are mainly concentrated in autumn and summer, and are mainly located in the Weddell and Ross Seas, with insignificant deviations in winter and autumn. For the advection term, the inter-model deviation is large at the ice edge, where sea ice is transported by the advection, and the coastal area, where winds and currents are strong. The deviations of the divergence term in the model ensemble are mostly concentrated in the coastal region, while the model ensemble is more consistent in the inner ice pack, although the greatest differences between simulations and observations are found there. Since the *res* term was calculated by subtracting adv and div from dC/dt , the deviations in these three terms are generally

Deleted: Diagnostics

Formatted: Indent: First line: 0.5 ch

Deleted: following analysis of the budgets.

Deleted: Budgets on ice concentration

Deleted: volume

Deleted: By applying the same approach as for the calculation of the observed SIC budget (cf. Fig. B1), in this section we calculate the SIC budget and SIV budget for the ensemble of 449 model runs. As

Deleted: $dadt$

Deleted: $dadt$

Deleted: $dadt$

Deleted: B4

Deleted: $dadt$

combined in the *res* term, with the possible exception of some cancelling out of deviations in these terms, for example, in the Weddell Sea in autumn *res* deviates less than dC/dt .

Deleted: *dadt*

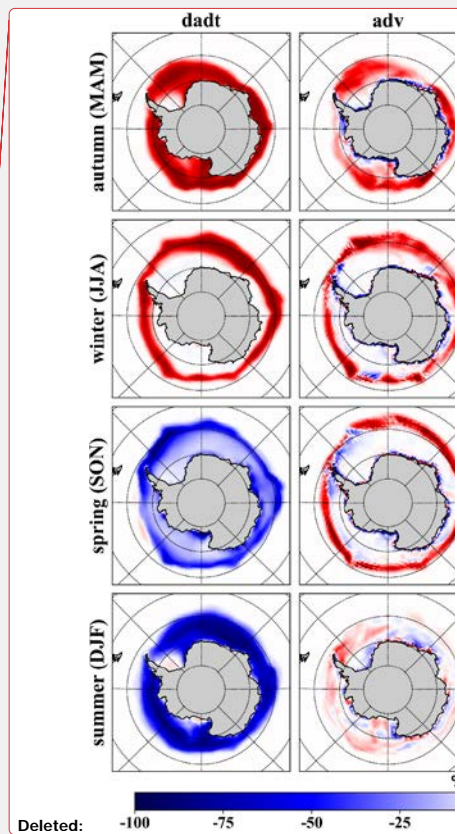
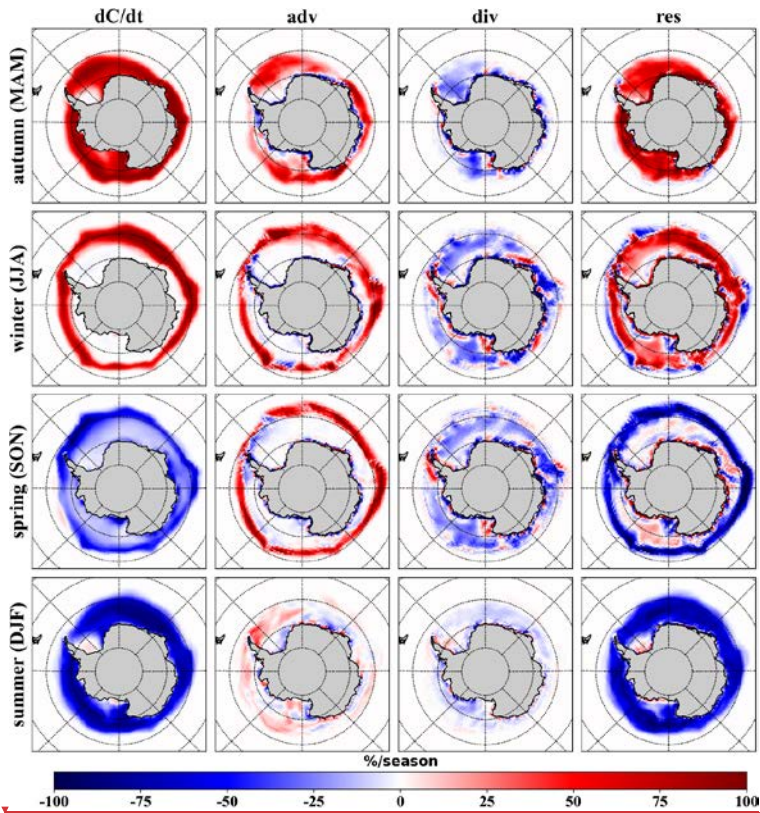


Figure 3. Mean seasonal SIC budget components for the ensemble of 449 model runs from 2008 to 2017. The specific meaning of each term has been described in section 2.5. A positive/negative percentage value indicates an increase/decrease in SIC during the season. The first column is the sum of other columns. The SIC budget for each member was first calculated separately and then averaged together.

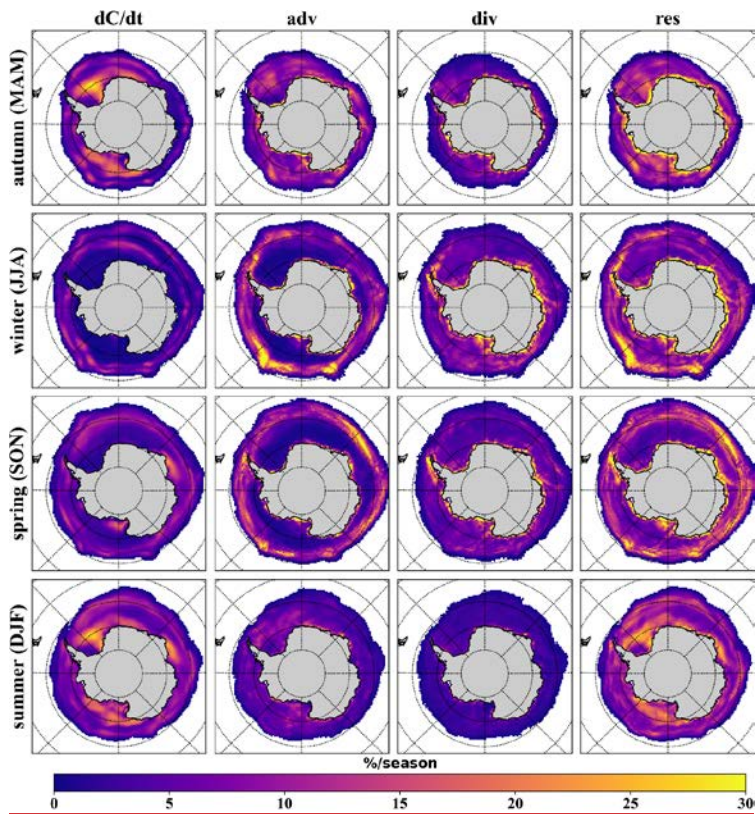


Figure 4. Standard deviation of seasonal SIC budget components for the ensemble of 449 model runs. The maximum value of colormap is limited to 30% per season for the best presentation. A higher percentage value means that the model ensemble is more divergent here.

The SIV increases extensively in the Southern Ocean in autumn and winter and decreases in summer (dV/dt column in Fig. 5), and is generally decreasing in spring, except for a slight increase in the Amundsen-Bellinghousen Seas as well as along the South Weddell Sea. Differing from the SIC budget (Fig. 3) in which advection contributes little to sea ice changes in the inner ice pack, the ensemble model mean shows that advection will lead to a reduction in SIV (adv column in Fig. 5), although SIC maintains high in this region. The spatial pattern of the divergence of SIV is very little different from that of

Formatted: English (United States)

Deleted: $dadt$

Deleted: 4

Deleted: 4

410 SIC, and since the contribution of simulated SIC divergence to sea ice change is underestimated compared to the observation as mentioned earlier, it is safe to assume here that divergence should similarly underestimate the change in SIV, given the strong interdependence of SIC and SIV. The inner ice pack maintains an increase in SIV from autumn to spring as the sea ice freezes, and from spring onwards the sea ice starts to melt from the marginal ice zone and reaches a full melting of the entire Southern Ocean sea ice in summer (*res* column in Fig. 5).

415

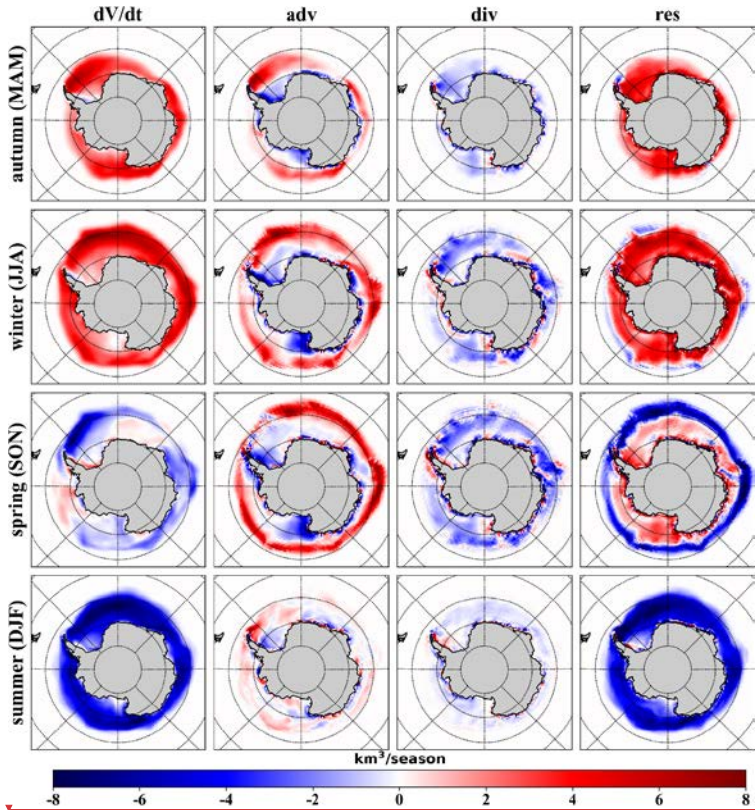
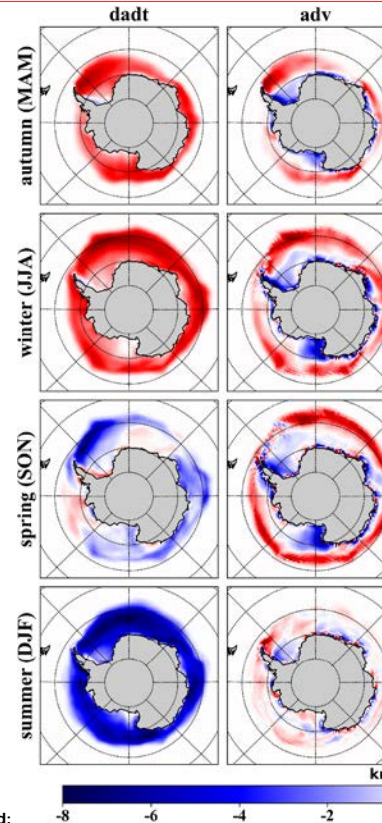


Figure 5. As Fig. 3, but for SIV budget. A positive/negative value indicates an increase/decrease in SIV, respectively.

Deleted: 4



Deleted:

Deleted: 4

For simulations of overall changes in SIV, the standard deviation between ensemble members is only slightly greater in summer than in other seasons (Fig. 6). The disagreement between members originates mainly from the contribution of advection to SIV change, which is most pronounced along the West Weddell Sea and Antarctic Peninsula coasts, in marginal ice zone and the East Antarctic coast. In addition, the contribution of advection and divergence to SIV that simulated based on different parameter sets, varies considerably in the Antarctica coastal region, similar to the SIC budget. The residual term, which equals the thermodynamic contribution as SIV is conserved, still has the largest standard deviation as it retains the deviations of the other terms.

Deleted: B5

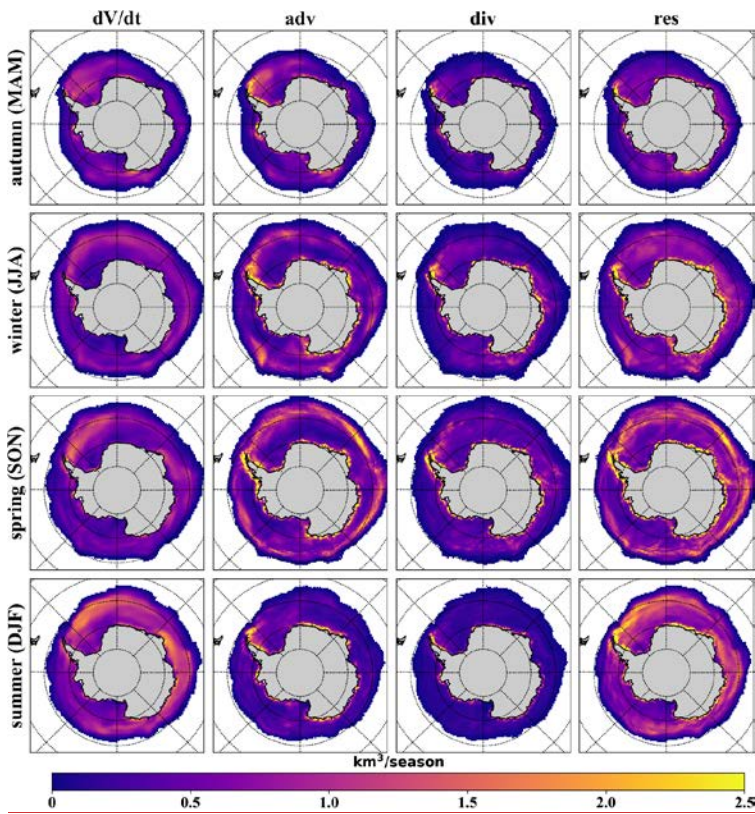


Figure 6. As Fig. 4, but for SIV budget. The maximum value of colormap is limited to 2.5 km³ per season for the best

presentation.

The area and time integrals of each budget term for the simulated SIC and SIV are presented in Table 2. Although this quantification of the contribution of each term to sea ice change does not consider local differences and cancels out positive and negative sea ice change to some extent, it is a simple and easy to implement a method for quantifying the sensitivity of sea ice budget to parameters. As can be seen from the ensemble mean of SIC and SIV budget terms, the area integrals of the advection and divergence contributions to sea ice change largely cancel each other out. For SIV this is, because these two processes do not change the total amount of sea ice, and for SIC this also holds approximately, considering that in the Southern Ocean sea ice is close to free drifting and the non-conservative nature of SIC due to ridging can be neglected (Uotila et al., 2014; Holland and Kimura, 2016). Therefore, when studying the effects of model parameter uncertainty on sea ice budgets in the following sections, it is only necessary to only use the area integrals of *res* (or *dadt*) and *adv* (or *div*).

Table 2. Area integrals of sea ice concentration (SIC) and sea ice volume (SIV) budget components for the ensemble of 449 model runs. Data are listed in the form of mean \pm one standard deviation. The units are 10^6 km^2 and 10^3 km^3 for SIC and SIV budget respectively.

| Season | Name | dadt | adv | div | res |
|--------------|------|-------------------|-----------------|------------------|-------------------|
| Autumn (MAM) | SIC | 8.57 ± 0.47 | 2.30 ± 0.22 | -2.35 ± 0.22 | 8.62 ± 0.47 |
| | SIV | 9.51 ± 1.06 | 2.23 ± 0.42 | -2.17 ± 0.41 | 9.45 ± 1.05 |
| Winter (JJA) | SIC | 6.74 ± 0.17 | 3.17 ± 0.37 | -3.28 ± 0.38 | 6.85 ± 0.18 |
| | SIV | 18.73 ± 2.13 | 4.94 ± 0.87 | -4.75 ± 0.86 | 18.55 ± 2.11 |
| Spring (SON) | SIC | -5.84 ± 0.73 | 2.91 ± 0.35 | -3.02 ± 0.35 | -5.73 ± 0.72 |
| | SIV | -5.86 ± 2.01 | 6.27 ± 1.05 | -6.02 ± 1.04 | -6.10 ± 2.04 |
| Summer (DJF) | SIC | -9.57 ± 0.40 | 0.55 ± 0.11 | -0.55 ± 0.11 | -9.57 ± 0.40 |
| | SIV | -22.65 ± 3.01 | 1.02 ± 0.29 | -1.00 ± 0.29 | -22.67 ± 3.01 |

3.2.2 RMSEs between the simulated and observed SIC budgets

The $\text{RMSE}_{\text{SICB}}$ is calculated as a complement to the area integrals of each SIC budget term. In matching the simulated results to the observation, we first linearly interpolated the modelled data onto the grid cells containing observed data, and then calculated daily budgets for only those dates for which observations were available and for grids with SIC greater than 15%, and finally calculated the seasonal SIC budget climatology. Fig. 7 counts the $\text{RMSE}_{\text{SICB}}$ for all model ensemble members. The model ensemble has the smallest $\text{RMSE}_{\text{SICB}}$ with observations in term of net sea ice change (~15%), followed by advection (~25%), and a larger $\text{RMSE}_{\text{SICB}}$ for the divergence term, which is consistent with the results showed in Fig. 3 and Fig. B1. In the model ensemble, the $\text{RMSE}_{\text{SICB}}$ of the CTRL experiment is essentially at or below the median level, and

Deleted: , which

Deleted: potentially

Deleted: . This

Deleted: means

Deleted: effect

Deleted: budget

Deleted:

Deleted: 5

the distributions of the $RMSE_{SICB}$ in the model ensemble are not symmetric, i.e., there are more flier points outside of third quartile plus 1.5 times the inter-quartile range.

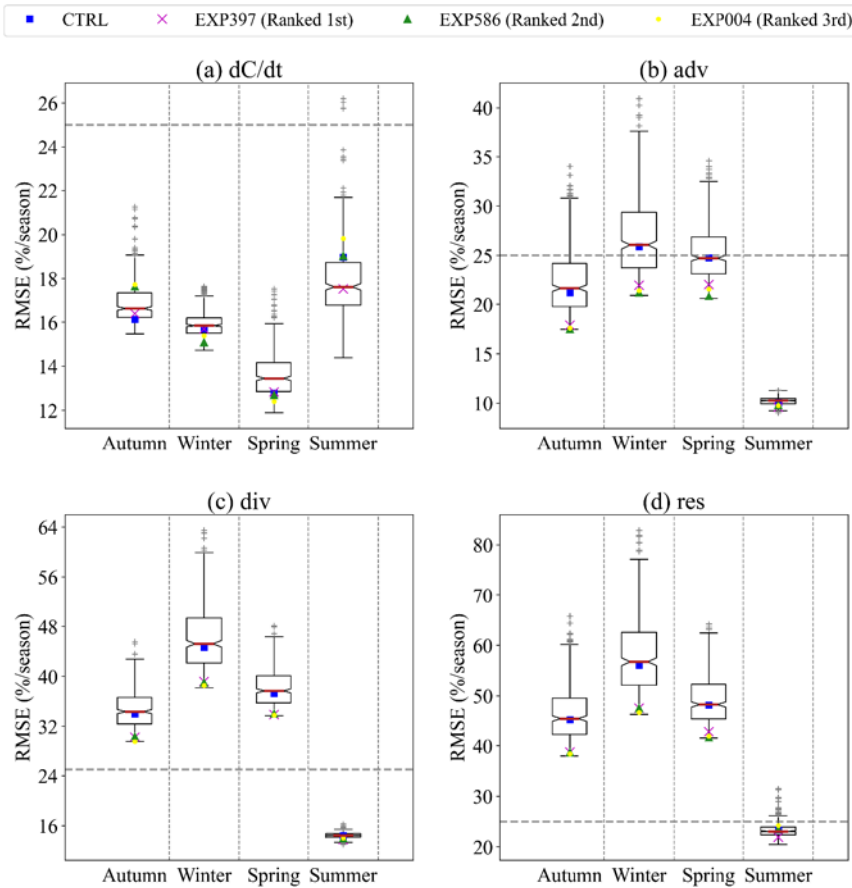
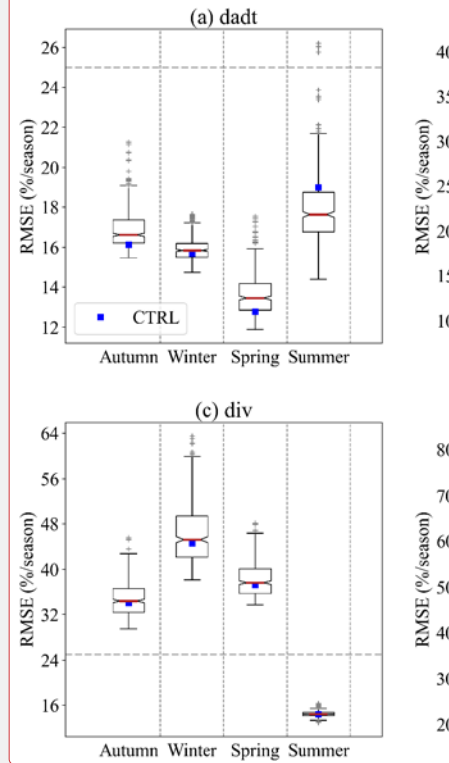


Figure 7. Boxplots of RMSE for each component of the simulated and observed SIC budget. Boxes extend from the first quartile (top border) to the third quartile (bottom border), the red line represents the median of all 449 model results, the CTRL experiment and three best performed experiments are also flagged. The whiskers extend outwards from the box to 1.5

Deleted: Based on the results of this section, the area integrals of *adv* and *res* in the SIC (and SIV) budget and the $RMSE_{SICB}$ are used as the metrics to assess the sensitivity of the model's sea ice budget to 18 parameters in the next sections.



Deleted: 5

Deleted: and the blue squares represent

times the inter-quartile range, with a few flier points beyond the whiskers. The 25% horizontal dashed lines are marked as references.

480 3.3 Sensitivity of ice concentration and volume budgets to parameters

Based on the results of the last section, the area integrals of *adv* and *res* in the SIC (and SIV) budget and the $RMSE_{SICB}$ are used as the metrics to assess the sensitivity of the model's sea ice budget to 18 parameters in this section. Before conducting the GSA, Fig. B4 shows the cross-validation results for the best GP emulator for each of the *adv* and *res* term area integral metrics of the SIC and SIV budgets (step 6 in Figure 1). Overall, the emulated and simulated values have a very high correlation coefficients (typically greater than 0.98), thus the built emulator is considered successful and will be used as a proxy for NEMO4.0-SI³ in the subsequent sensitivity analysis.

The sensitivity of each metric to the 18 parameters, quantified by the Sobol and PAWN methods, is illustrated in Fig. 8. It should be noted that the sensitivity scores for the two methods are independent and not comparable in absolute terms. Following Urrego-Blanco et al. (2016), the Sobol sensitivity index below 0.02 is considered insignificant, and for the Kolmogorov-Smirnov (KS) mean index in PAWN, the critical value at confidence level of 0.05 is about 6.65×10^{-2} . Both

490 GSA methods show that the advection is very sensitive to ice strength (*m_pstar*) outside of summer in the SIC budget. Ice-ocean drag coefficient (*m_cio*) and air-ice drag coefficient (*Cd_ice*) have an influence on the modelled advection contribution to sea ice change from summer to autumn and spring, respectively. In summer, the snow thermal conductivity (*rn_cnd_s*) and two lateral melting parameters (*rn_beta* and *rn_dmin*) also has some effect on the advection of SIC budget.

495 The total and first-order Sobol indices are not very different, which is usually the case for both indices of the PAWN method, however, with the exception of the number of ice thickness categories (*jpl*), where KS max is shown to be much larger than KS mean (e.g., in autumn and summer). For other metrics, this also happens for sensitivity assessment of some other parameters, which will be discussed further in the next section. The residual term of the SIC budget shows considerable sensitivity to ice-ocean drag coefficient (*m_cio*), which persists from autumn to spring. Meanwhile the effect of air-ice drag

500 coefficient (*Cd_ice*) on *res* increases continuously from autumn to summer. Ice strength still has a weak effect, much less than its effect on *adv*. In addition, snow thermal conductivity (*rn_cnd_s*) and number of ice thickness categories (*jpl*) have a non-negligible effect on the modelling of *res* in winter and summer, respectively.

Among the sensitivity indices of the SIV budget, the most noticeable parameter is snow thermal conductivity (*rn_cnd_s*), to which both *adv* and *res* are very sensitive at all times of the year, except in the spring when it has less impact on *res* (Fig. 8). Another physical parameter related to the snow on sea ice (*rhos*, i.e., snow density) is important for *res* simulations in the SIV budget, especially from autumn to winter, the period when sea ice freezes fast (Fig. 2c). Similar to the SIC budget, the air-ice and ice-ocean drag coefficients remain crucial for the SIV budget in spring and summer, while the ice strength is only important for advection in winter and spring.

Deleted: Before conducting the GSA, Fig. B6

Deleted: .

Deleted: 6

Deleted: PWAN

Deleted: *jpl* (ice category)

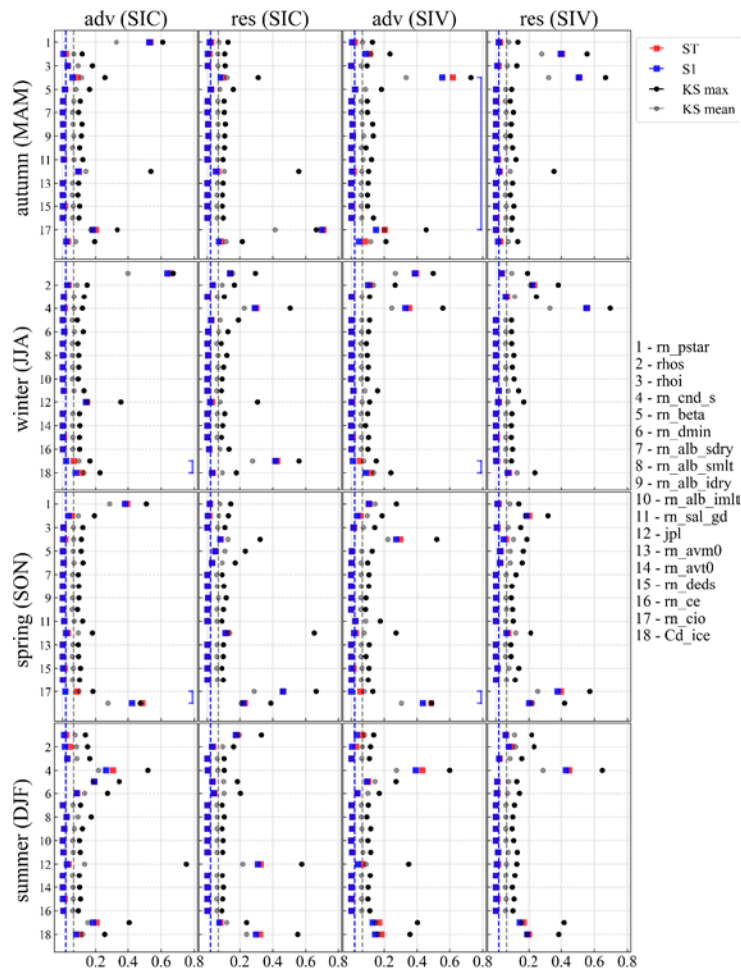
Deleted: .

Deleted: .

Deleted: 6

Deleted: *m_cio*

Deleted: *Cd_ice*



520

Figure 8. The total (ST) and first-order (S1) Sobol sensitivity indices, and the maximum (KS max) and mean (KS mean) PAWN sensitivity indices for each sea ice budget component to 18 parameters. The blue and grey dashed lines are the thresholds for S1 and KS mean indices, respectively. Larger Sobol/PAWN index value indicates that the metric is more sensitive to this parameter. The blue connecting line indicates that the Sobol second-order index for the combination of these two parameters is greater than 0.02.

525

Deleted: 6

3.4 Sensitivity of SIC budget errors to parameters

The results for four $RMSE_{SICB}$ metrics based on the best performing GP emulators are shown in Fig. B5. The GP emulator performs well for the $RMSE_{SICB}$ of *adv*, *div* and *res*, with a correlation coefficient greater than 0.998, except in summer. As can be seen in Fig. 7 in the summer months, the difference in $RMSE_{SICB}$ for these three terms is very small compared to other seasons, and this small difference is likely to be random and therefore difficult to capture well by the GP emulator. The GP emulator also does not perform well in terms of dC/dt $RMSE_{SICB}$ (Fig. B5, first column) and there is also likely to be a large randomness in the difference in dC/dt between the model ensemble and the observation. Given the poor performance of the GP emulator in terms of dC/dt $RMSE_{SICB}$ as well as $RMSE_{SICB}$ over the summer, the GSA results obtained by using it instead of the NEMO4.0-SI³ dynamical ocean model are subject to uncertainty and should be kept in mind in the following analysis.

Fig. 9 demonstrates quite clearly that for *adv*, *div* and *res* $RMSE_{SICB}$ in autumn, winter and spring (which are also the terms and seasons with the largest $RMSE_{SICB}$ values, Fig. 7), only air-ice and ice-ocean drag coefficients are the most critical parameters, while ice strength also has, but only weakly, an effect. Besides these two important drag coefficients, Fig. 9 also shows that the dC/dt $RMSE_{SICB}$ between model and observation might be sensitive to the snow thermal conductivity and ice category number to some extent. The analysis is more complicated in summer, as is the sensitivity of SIC budget and SIV budget to the parameters. In addition to all the previously mentioned parameters that have an impact, Fig. 9 shows that in summer the $RMSE_{SICB}$ may also be sensitive to the minimum floe diameter for lateral melting parameter (*m_dmin*) and the magnitude of the damping on salinity (*m_deds*), which is a parameter belonging to the ocean module. Further comparing Fig. 8 and Fig. 9, it can be found that overall, both the simulation of the SIC budget by the NEMO4.0-SI³ model and its $RMSE_{SICB}$ are most sensitive to the air-ice and ice-ocean drag coefficients, both of which belong to the coupling category in Table 1. Next important are ice strength as well as the thermal conductivity of snow, identified by the six metrics related to SIC budget. In summer, some thermodynamic melting related parameters, such as *m_beta* and *m_dmin*, are important. In contrast, the SIC budget simulated by the model is sensitive to the number of ice thickness categories (*jpI*), unlike the $RMSE_{SICB}$ metrics.

As it has been identified that the $RMSE_{SICB}$ metrics are sensitive to the two most critical parameters (air-ice and ice-ocean drag coefficients) and one relatively important parameter (ice strength), Fig. 10 illustrates the $RMSE_{SICB}$ for all SIC budget terms and all seasons, averaged over 449 model runs, in relation to the values of these three parameters with the top 10 combinations listed in Table 3. It can be seen in Fig. 10b that the $RMSE_{SICB}$ broadly decreases with increasing ice-ocean drag coefficient (*m_cio*) and decreasing air-ice drag coefficient (*Cd_ice*), such that the 10 sets of model runs with the smallest $RMSE_{SICB}$ are concentrated in the top left corner of the figure, where air-ice drag coefficient is approximately from 8×10^{-4} to 1×10^{-3} , and ice-ocean drag coefficient is approximately from 5.5×10^{-3} to 7.5×10^{-3} (Table 3). In contrast, the best 10 ice strength values are more dispersed, and greater than 15×10^3 (Fig. 10a,c), and the $RMSE_{SICB}$ does not depend linearly on it as with air-ice and ice-ocean drag coefficients (i.e., *Cd_ice* and *m_cio*).

Deleted: B7

Deleted: perfectly

Deleted: 5

Deleted: dadt

Deleted: B7

Deleted: dadt

Deleted: dadt

Deleted: 7

Deleted: 5

Deleted: 7

Deleted: dadt

Deleted: 7

Deleted: 6

Deleted: 7

Deleted: .

Deleted: m_cio

Deleted: Cd_ice

Deleted: m_pstar

Deleted: 8

Deleted: 8b

Deleted: .

Deleted: Cd_

Deleted: m_cio

Deleted: 8a

Deleted: .

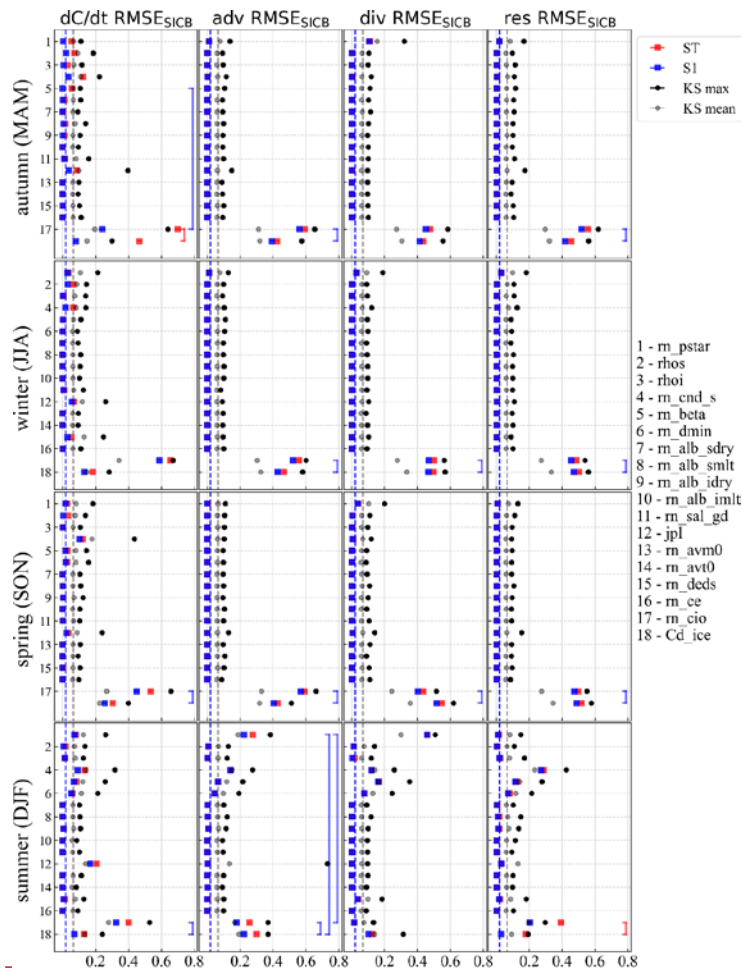
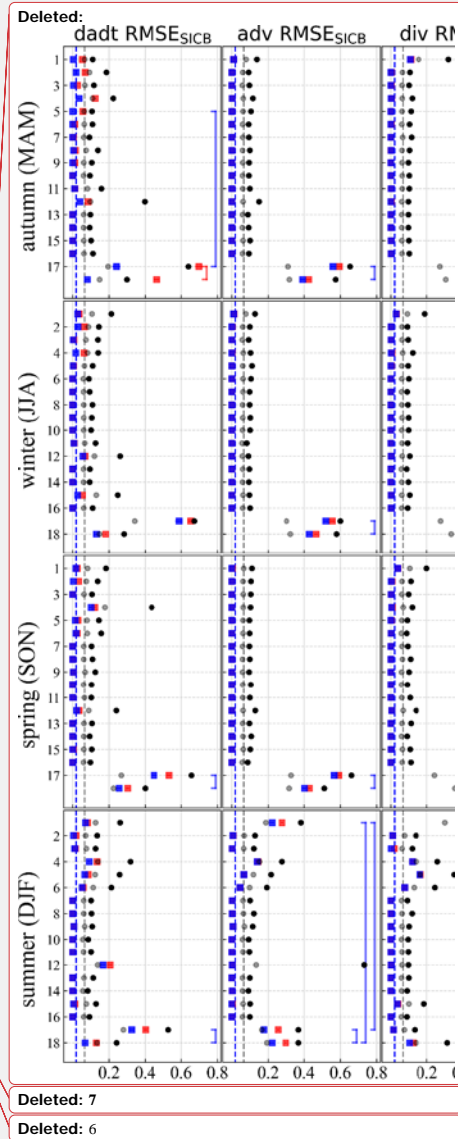


Figure 9. As Fig. 8, but for the sensitivity of the RMSE between SIC budgets of the model and the observation to 18 parameters. The red connecting lines are the same as the blue ones but for the Sobol second-order index larger than 0.1.



585

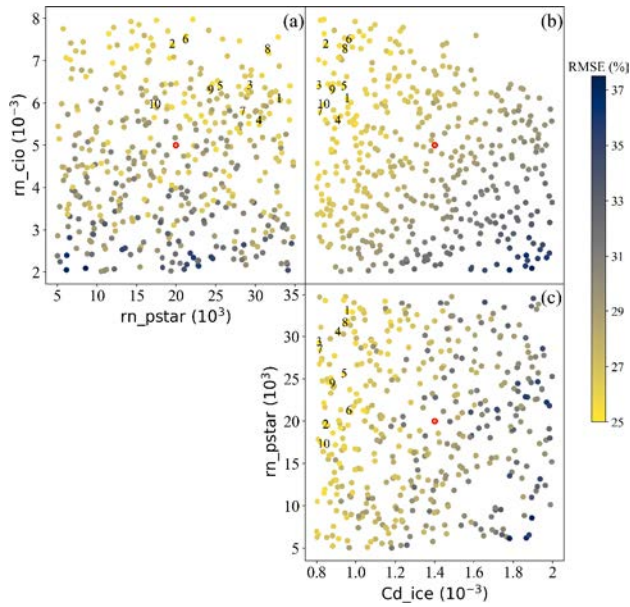


Figure 10. Average $RMSE_{SICB}$ for all four SIC budget components for different combinations of key parameters. The numbers 1 to 10 indicate the results of the 10 best parameter sets in ascending order of the average $RMSE_{SICB}$, and the points with red edges indicate the standard values used for the CTRL experiment.

Deleted: 8

Table 3. The 10 best performed experiments in terms of mean $RMSE_{SICB}$ (i.e., RMSE between simulated and observed SIC budget) and the values of the 3 key parameters they used. Note that these values are highly correspond to the DRAKKAR Forcing Set version 5.2 (Dussin et al., 2016) atmospheric forcing used in this study.

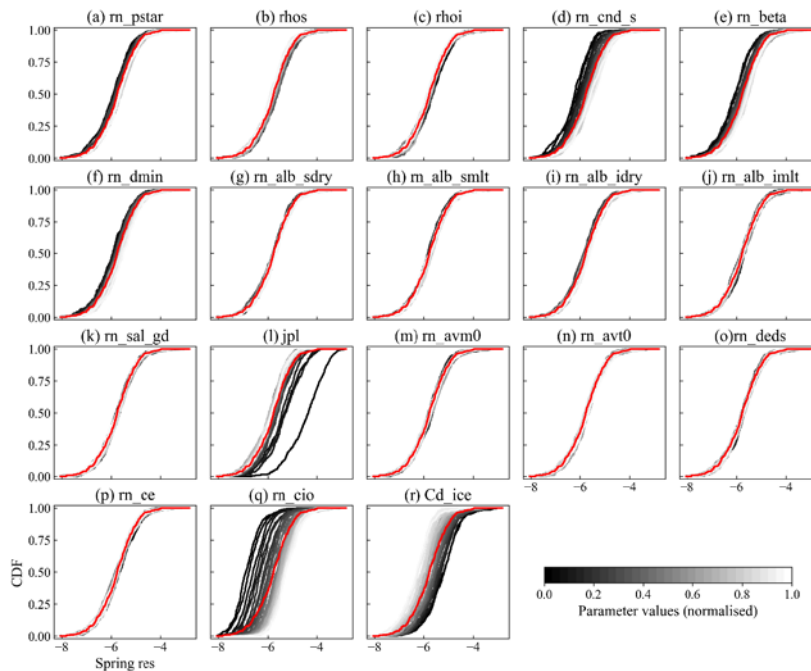
| Rank | RMSE (%) | $Cd_{ice} (10^{-4})$ | $m_{cio} (10^{-3})$ | $m_{pstar} (10^4)$ |
|------|----------|----------------------|---------------------|--------------------|
| 1 | 25.127 | 9.563 | 6.094 | 3.298 |
| 2 | 25.163 | 8.478 | 7.379 | 1.954 |
| 3 | 25.182 | 8.125 | 6.402 | 2.929 |
| 4 | 25.270 | 9.100 | 5.572 | 3.047 |
| 5 | 25.299 | 9.407 | 6.384 | 2.555 |
| 6 | 25.356 | 9.643 | 7.491 | 2.119 |
| 7 | 25.364 | 8.172 | 5.783 | 2.839 |
| 8 | 25.378 | 9.455 | 7.262 | 3.154 |
| 9 | 25.389 | 8.807 | 6.293 | 2.437 |
| 10 | 25.391 | 8.373 | 5.957 | 1.723 |

4 Discussion

4.1 Key parameters and their physical effects

605 Several parameters have been identified in Sections 3.3 and 3.4 as having a significant impact on the simulated SIC and SIV budgets in the Southern Ocean. In this section we present how these parameters specifically act on the SIC and SIV budget by looking at the impact of parameter changes on the cumulative distribution function (CDF) in the PAWN method.

610 Considering the performance of the GP emulator (Fig. B4) as well as the number of sensitive parameters (Fig. 3), the area integral of *res* component in the SIC budget in spring and the area integral of *adv* component in the SIV budget in winter have been selected here as examples to be discussed. Figs. 11 and 12 show how the CDF of the model output changes as one parameter is fixed to vary across a range of values, and other parameters varied freely.



615 **Figure 11.** Cumulative distribution function (CDF) of the area integral of the *res* component in the spring SIC budget (cf. Fig. 3). Red lines are the unconditional CDF for the ensemble of 449 model runs, and the grey lines stand for conditional CDF at different fixed values of parameters calculated by the GP emulator. The units of the x-axis are 10^6 km^2 .

Deleted: B6

Deleted: 6

Deleted: 9

Deleted: 10

Deleted: 9

Since the low thermal conductivity of the snow reduces the heat transfer from the bottom of the ice to the atmosphere, it reduces the ice growth rate (Fichefet et al., 2000; Lecomte et al., 2013), and therefore leads to less freezing inside the ice pack, and res moves more towards negative values (Fig. 11d). The reduction in freezing due to the reduction in snow thermal conductivity is more pronounced in winter (Fig. 8) and the SIV budget simulation is more sensitive to this parameter than the SIC budget, as it is primarily affecting the vertical ice growth.

The rn_beta and rn_dmin are the two parameters that determine the minimum floe diameter of sea ice, and their decrease implies a decrease in sea ice floe sizes, which promotes the lateral melting (Lüpkes et al., 2012). Consequently, in contrast to the reduction of snow thermal conductivity (rn_cnd_s) which inhibits ice freezing, rn_beta and rn_dmin lead to more negative values of res (Fig. 11e-f) by promoting sea ice melting at low-latitude regions (Fig. 3). Furthermore, this effect is greater in summer than in spring and plays a weak role in winter (Fig. 8), which fits well with the magnitude of the SIC reduction in the res column in Fig. 3, although it is not the only process affecting SIC.

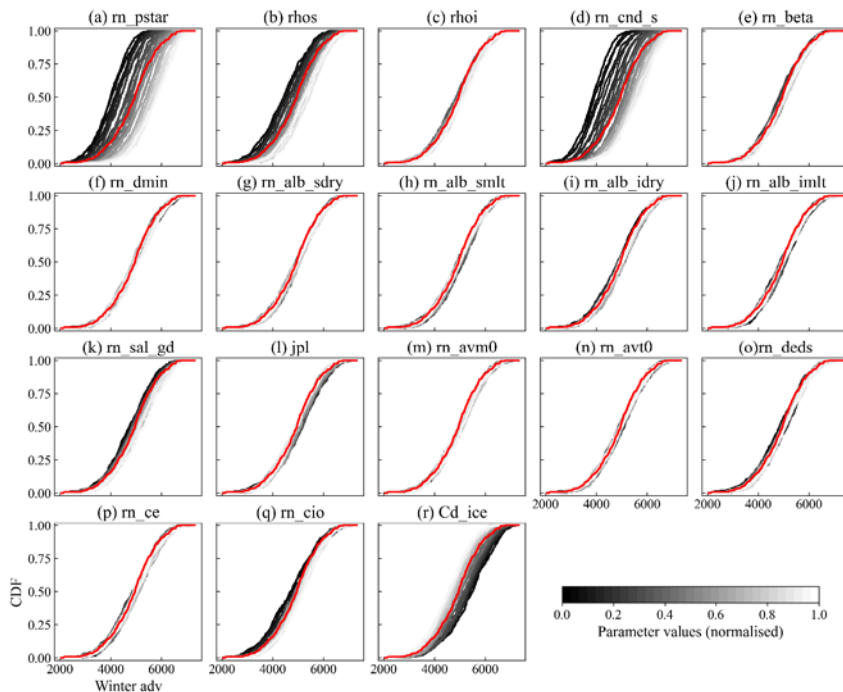


Figure 12. As Fig. 11, but for the area integral of adv component of winter SIV budget. The units of the x-axis are $10^3 km^3$.

Compared to rather continuous looking variations in CDFs of other parameters, the variation in CDFs due to changes in **number of ice thickness categories (jpl)** is more dispersed (Fig. [J11](#)), with several lines being clearly outliers, which were checked to match $jpl=1$. This is because the multi-category sea ice thickness takes into account the subgrid-scale variations in sea ice properties (Thorndike et al., 1975; Massonnet et al., 2019; Moreno-Chamarro et al., 2020) and is therefore significantly different from the single thickness category ($jpl=1$). For instance, the presence of thin sea-ice categories in multi-category sea-ice schemes allows for greater melt rates compared to a single-category scheme (Uotila et al., 2017).

The ice-ocean drag coefficient and the air-ice drag coefficient should be discussed jointly, as the sea-ice drift velocity is related to the Nansen number $Na = \sqrt{\rho_a C_a / \rho_w C_w}$, where ρ_a / ρ_w and C_a / C_w are air/water density and air-ice/ice-ocean drag coefficient. The Fig. [J1q](#) and 9r illustrate that a decrease in C_a / C_w leads to a larger *res*, which has two possibilities, either sea ice melt is inhibited or freezing is intensified, by assuming that sea ice deformation is comparably small (Holland and Kwok, 2012). Since the solution of free sea ice drift (Leppäranta, 2011, Chapter 6.1.1) indicates that the decrease in C_a / C_w leads to a decrease in sea ice velocity, we argue that this causes a more limited transport of sea ice to low-latitude region, leading to the inhibited melting (see spring *adv* and *res* in Fig. 3).

With the exception of **snow thermal conductivity (rn_cnd_s)**, **ice-ocean drag coefficient (rn_cio)** and **air-ice drag coefficient (Cd_ice)**, whose physical effects have been elucidated, the *adv* term in the winter SIV budget is also sensitive to **ice strength (rn_pstar)** (Fig. [J2a](#)). This can be explained by the fact that the weaker ice is more easily to deform and increase ice thickness, leading to a smaller drift speed and therefore results in a smaller absolute value of the area integral of *adv* or *div*. This is also true in spring (Fig. [8](#)), as ice drift speeds are greater in winter and spring compared to other seasons during the period of this study (not shown but similar to, e.g., Holland et al., 2016) and making the ridging of weak ice more pronounced.

For the NEMO4.0-SI³, the snow thickness on sea ice is determined by the snow density as the solid precipitation equivalent which is determined by atmospheric reanalyses, and other factors affecting the snow depth (e.g., wind packing, windblown snow lost to leads, etc.; Petty et al., 2018) that are not included (NEMO Sea Ice Working Group, 2019). When the snow density decreases in the model, the snow thickness increases, thereby reducing the heat exchange between the ice and the atmosphere, which in turn limits the vertical increase in sea ice thickness. Thus, for the SI³ model, the effect of reducing snow thickness and reducing snow thermal conductivity on the simulation of sea ice thickness is equivalent. This is the reason why the *res* term in the SIV budget always shows a similar high sensitivity to **snow thermal conductivity (rn_cnd_s)** and **ice density (rhos)** (Fig. [8](#)). These two parameters have the greatest influence on the total SIV and thus also on the area integral of the *adv* during autumn and winter, the seasons when sea ice vertical growth is most pronounced. When sea ice thickening is limited, the value of SIV itself becomes smaller, resulting in a smaller area integral for *adv* (Fig. [J2b](#)).

However, of the seven parameters discussed above that have an impact on the SIC budget, only two drag coefficients play a critical role to the RMSE of simulated and observed SIC budget, followed by the weak effect of sea ice strength (Fig. [9](#)).

Deleted: 9l

Deleted: 9q

Deleted: .

Deleted: .

Deleted: 10a

Deleted: 6

Deleted: 6

Deleted: 10b

Deleted: 7

685 This means that while adjusting [snow thermal conductivity](#) has an impact on the simulation of SIE (Urrego-Blanco et al., 2016) and may improve the SIE seasonal cycle to be closer to observation (Lecomte et al., 2013), it does not make the model's simulation of the SIC budget any more realistic. In addition, although the remaining parameters display sensitivity during the summer months (bottom row in the Fig. [9](#)), the robustness of this result is not guaranteed given the already low level of RMSE in the summer and the mediocre performance of the GP emulator (bottom row in the Fig. [B5](#)).

Deleted: rn_cnd_s

Deleted: 7

Deleted: B7

690 4.2 Interactions between the parameters

[In addition to the sensitivity of the model to individual parameters discussed in the previous section, using](#) the second order sensitivity indices provided by the Sobol method, the interaction between the parameters can be further explored. We have added some vertical connector lines in Figs. [8](#) and [9](#) to indicate that a simultaneous change in two parameters question has a significant impact. Not surprisingly, the interconnection of the ice-ocean and the air-ice drag coefficients causes their simultaneous changes to have the greatest impact on the advection metric in both SIC and SIV budgets, especially in winter and spring, the two seasons with the largest sea ice speeds. Furthermore, for the SIV budget, the contribution of its advection term to SIV change is also sensitive to the simultaneous changes in [snow thermal conductivity \(rn_cnd_s\)](#) and [ice-ocean drag coefficient \(rn_cio\)](#) in autumn. This makes sense, considering that sea ice starts to grow vertically in autumn and that the advection is significantly affected by the ice-ocean drag coefficient (Fig. [8](#)). However, [snow thermal conductivity \(rn_cnd_s\)](#) does not interact with any drag coefficient in winter, when ice vertical grow is also rapid (Fig. 2c), thus the interaction in autumn remains somewhat uncertain due to the GP emulator does not perform very well for *adv* in the autumn SIV budget ($r=0.961$).

Deleted: Using

Deleted: 6

Deleted: 7

The ratio between the ice-ocean and the air-ice drag coefficients continues to dominate the sensitivity of the four RMSE metrics as the sea ice velocity is controlled by C_a/C_w (Fig. [9](#)). Although the GSA results also show some sensitivity to ice strength, there is little interaction between this parameter and the two drag coefficients in the SIV budget, except for the *adv* term in summer. Despite this, considering that the *adv* RMSE_{SICB} itself fluctuates very little in summer and the GP emulator is not a perfect performer, there is uncertainty in this result. Fig. [9](#) also shows that the dC/dt RMSE_{SICB} is sensitive to simultaneous changes in rn_beta and [ice-ocean drag coefficient \(rn_cio\)](#) in the autumn, which we argue may be an error introduced by the poorer performing GP emulator ($r=0.915$) as the lateral ice growth process is independent with the ice floe size in NEMO4.0-SI³ (NEMO Sea Ice Working Group, 2019).

Deleted: 6

Deleted: 7

Deleted: 7

Deleted: dadt

715 4.3 Recommended set of parameters

[The previous sections have shown the sensitivity of the simulated sea ice budget to parameters and there are a number of parameter sets that are recommended \(Table 3\), in this section we provide further insight into how these parameter sets perform in terms of other metrics.](#) Fig. 2 highlights the SIE, SIA and SIV seasonal cycles of the three experiments that performed best in the mean RMSE_{SICB} (as listed in Table 3). An interesting thing is that although these three experiments used rn_cio/Cd_ice values that were clearly above/below the standard values, they all exhibit SIE and SIA seasonal cycles

that are very close to the model ensemble mean and the CTRL. The EXP397, which is the best performing one, has a SIV seasonal cycle that almost overlaps with the ensemble mean, while the second and third best are both close to the CTRL. This evidence again suggests that even if the realistic SIE is modelled, there is no guarantee of a reasonable SIC budget (Uotila et al., 2014; Nie et al., 2022).

Regionally, the recommended parameter sets match the observed SIC budgets much better in all sectors of the Southern Ocean (Fig. B6). On the other hand, even the optimal set of parameters recommended in this study (EXP397) would only reduce the dC/dt , adv , div and res RMSE_{SICB} by about 2%, 5%, 8% and 10% respectively (Fig. 7 and Fig. B6), which is a rather modest impact. This indicates that the accurate modelling of the SIC budget does not appear to be possible by simply changing the atmospheric forcing product or tuning ocean model's parameters, as the atmospheric forcing itself is systematically biased (Barthélemy et al., 2018). As shown in Fig. B7, all model ensembles have similarly shaped ice-speed seasonal cycles that all differ significantly from observations, meaning that adjusting the parameter values alone will not correct errors caused by biases in the atmospheric forcing. Nevertheless, the parameter sets in Table 3 can be confidently recommended to NEMO4.0-SI³ modelers to optimize the Southern hemispheric sea ice in the ORCA2 grid, provided that DFS5.2 is used as the atmospheric forcing.

In addition, Fig. B8 shows that the recommended parameter sets also provide some improvements in the Arctic SIE and SIA simulations compared to the default parameters, as reflected by more sea ice in summer months, which is closer to observations than in the CTRL experiment. However, given that SIE and SIA are limited metrics (Notz, 2014; Notz, 2015) and that the key parameters affecting sea ice simulations may not be the same between the northern and southern hemispheres due to the vast geographical differences (e.g. ocean and land locations, atmospheric and oceanic circulations), whether these parameter sets, which perform well in the Southern Ocean SIC budget, can be safely applied to the Arctic merits further investigation.

5 Conclusions

To investigate the impacts of model parameter uncertainty on sea ice budgets in the Southern Ocean, we drove the NEMO4.0-SI³ ice-ocean coupled model with DFS5.2 atmospheric forcing and simultaneously adjusted 18 potentially critical model parameters and generated the model ensemble with a size of 449. Preliminary diagnostics of the model output for the SIE and SIA seasonal cycles revealed that the model results are generally reasonable, as the ensemble model mean being very close to observations. The ensemble model mean SIC budget shows the basic characteristics of the observed SIC budget, although differing a lot in details, and the adjustment of the parameters indeed leads to a certain degree of perturbation of the SIC and SIV budgets, which sets the stage for the sensitivity experiments that followed.

Benefiting from the overall excellent performance of the GP emulator, GSA was carried out with adequate computational resources. The results show that the contribution of the modelled advection to the changes in SIC is very sensitive to ice strength, ice-ocean and air-ice drag coefficients from autumn to spring, and to snow thermal conductivity in summer,

Deleted:), e.g., the mean RMSE between the CTRL and observed SIC budgets is similar compared to the other experiments, whereas the SIE seasonal cycle of the CTRL is very realistic.

Deleted: $dadt$

Deleted: ,

Deleted: B8

765 followed by two other parameters related to lateral melting as well as the ice-ocean drag coefficient. Additionally, the *res*
term in summer is very sensitive to the number of ice categories, which is attributed to the significant difference in sea ice
melt rates between single and multi-category sea ice categories. In addition to several parameters that have an impact on the
simulation of the SIC budget, the SIV budget also shows a high sensitivity to snow density. However, considering the simple
770 approach to snow in the current NEMO4.0-SI³ model (e.g., one layer and the effect of windblown is not taken into account,
etc.), the effects of snow density and snow thermal conductivity on sea ice thickness are largely equivalent.

The sensitivity of the $RMSE_{SICB}$ to 18 parameters was assessed. Overall, the ice-ocean and air-ice drag coefficients are the
most important ones, followed by ice strength. Moreover, there are other parameters that significantly affect $RMSE_{SICB}$
during the summer months, but since $RMSE_{SICB}$ values are inherently small during the summer months, we consider the
effects of these parameters on the $RMSE_{SICB}$ to be negligible. Based on these results, we recommend 10 combinations of ice-
775 ocean drag coefficient, air-ice drag coefficient and ice strength that can be safely used for the DFS5.2 driven NEMO4.0-SI³
model with the ORCA2 grid. The recommended combinations of these parameters allow the simulations of near-observed
SIE and SIA seasonal cycles, as well as similar SIV seasonal cycles with the CTRL experiment and, more importantly,
resulting in a more realistic SIC budget compared to the standard parameters.

Apart from the success of the GP emulator, another reason why the GSA results are considered reliable is that the two
780 GSA methods used in this paper show a high degree of consistency in the identification of key parameters. Nevertheless, we
recommend that it is necessary to use two or more GSA methods together to target same problem, as variance-based Sobol
method and density-based PAWN method each have their own characteristics and can be cross-referenced and complement
each other, which has also been revealed in other studies (e.g., Pianosi and Wagener, 2015; Zadeh et al., 2017; Mora et al.,
2019).

785 There are at least two limitations in this study, the first is that we selected the area integral of *adv* and *res* as metrics, and
although they can be used as proxies for the total contribution of dynamical and other processes to sea ice change
respectively, the local biases may counteract and affect the integrals. We therefore complemented this with another set of
metrics using the $RMSE_{SICB}$. The second limitation stems from the fact that uncertainties in observations cannot be
accurately assessed and the observed budgets were simply referred to as the "true", which could be re-evaluated after more
790 accurate observations become available, or when the uncertainties in observed ice motion can be more accurately estimated.

In summary, the key to reproducing a realistic SIC budget for an ice-ocean coupled model driven by atmospheric
reanalysis is to simulate realistic sea ice velocities, which undoubtedly remains a challenge. It would be very useful to
correct the biases in the atmospheric reanalysis, and the model could then be further optimised by adjusting several key
parameters identified in this study. [The recommended parameter sets are determined from current conditions and one could](#)
795 [expect their optimal values to change in a warming world.](#)

Code and data availability. The model code for NEMO4.0-SI³ is available from the NEMO website (<https://www.nemo-ocean.eu/>, last access: 1 March 2022). The parameter sets, configuration files and scripts for running NEMO4.0-SI³ are archived on <https://doi.org/10.5281/zenodo.6780342> (Nie, 2022). The atmospheric forcing was provided by the DRAKKAR consortium through the following link: https://ige-meom-opensap.univ-grenoble-alpes.fr/thredds/catalog/meomopensap/extract/FORCING_ATMOSPHERIQUE/DFS5.2/ALL/catalog.html (last access: 22 February 2022). The [CDR, AMSR-E and AMSR2 sea ice concentration](#) data can be downloaded from National Snow & Data Center (<https://nsidc.org/>) by registering for an EarthData account. [The OSISAF sea ice concentration data are available from https://resources.marine.copernicus.eu/product-detail/SEAICE_GLO_SEAICE_L4_REP_OBSERVATIONS_011_009.](#) [The CERSAT data are available from ftp://ftp.ifremer.fr/ifremer/cersat/products/gridded/psi-concentration/.](#) The KIMURA ice drift data are available from the authors on request. The GPy code is available here: <https://github.com/SheffieldML/GPy> (last access: 1 March 2022). The SAFE Toolbox used for implement the PAWN method is available here: <http://bristol.ac.uk/cabot/resources/safe-toolbox/> (last access: 11 April 2022).

Deleted: NOAA/NSIDC Climate Data Record of Passive Microwave Sea Ice Concentration, Version 4 (Meier et al.,

Author contributions. PU, YFN and XQL designed the study. YFN and PU run the NEMO4.0-SI³ model. CKL and YFN built the GP emulator. Data analysis was performed by YFN, PU, BC and FBD. The first draft of the manuscript was written by YFN, PU, MV and all authors commented on previous versions of the manuscript. All authors read and approved the final manuscript.

Competing interests. The authors declare that they have no known competing financial interests or personal relationships that could have appeared to influence the work reported in this paper.

Acknowledgements. The authors acknowledge CSC – IT Center for Science, Finland, for HPC computational resources.

Financial support. PU was supported by the Academy of Finland (Project 322432), and the European Union’s Horizon 2020 research and innovation framework programme under Grant agreement no. 101003590 (PolarRES project). XQL was supported by the National Natural Science Foundation of China (Grant No. 42076011 and Grant No. U1806214) and YFN was supported by Scholarship from China Scholarship Council (CSC. 202006330054).

Appendix A: Global sensitivity analysis

Two different kinds of GSA methods were performed here, as only one may not adequately bring out all the characteristics (Baki et al., 2022; Pianosi et al., 2015). The first one is the variance-based sensitivity analysis, which is also referred to as

Sobol indices (Sobol, 2001). Suppose the relationship between model output Y and parameter sets X is $Y = f(X)$, where

825 $X_i \in [0,1]$, $i = 1, 2, \dots, p$, and it can be decomposed as (Sobol, 1990):

$$Y = f_0 + \sum_{i=1}^p f_i(X_i) + \sum_{i<j}^p f_{ij}(X_i, X_j) + \dots + f_{1,2,\dots,p}(X_1, X_2, \dots, X_p), \quad (\text{A1})$$

where f_0 is a constant, f_i and f_{ij} are functions of X_i and X_{ij} respectively, and so on. Then the i^{th} parameter's first-order indices (S_i) and total-effect index (S_{Ti}) are estimated as (Sobol, 2001; Saltelli et al., 2010):

$$S_i \approx \frac{\frac{1}{N} \sum_{j=1}^N f(\mathbf{B})_j (f(\mathbf{X}_B^i)_j - f(\mathbf{X})_j)}{\sum_{i=1}^p V_i + \sum_{i<j}^p V_{ij} + \dots + V_{1,2,\dots,p}}, \quad (\text{A2})$$

$$830 \quad S_{Ti} \approx \frac{\frac{1}{2N} \sum_{j=1}^N (f(\mathbf{X}_B^i)_j - f(\mathbf{X})_j)^2}{\sum_{i=1}^p V_i + \sum_{i<j}^p V_{ij} + \dots + V_{1,2,\dots,p}}, \quad (\text{A3})$$

where $V_i = \text{Var}_{X_i}(E_{X_{-i}}(Y|X_i))$, $V_{ij} = \text{Var}_{X_{ij}}(E_{X_{-ij}}(Y|X_i, X_j)) - V_i - V_j$, and so on, the X_{-i} indicates the set of all parameters except X_i . The matrix \mathbf{B} is a $N \times p$ matrix generated by sampling the parameter space with the LHS method and used as a "perturbation matrix". N denotes the number of model simulations. The matrices \mathbf{X}_B^i , $i = 1, 2, \dots, p$ are obtained by replacing the i^{th} column of \mathbf{X} with the same column of \mathbf{B} .

835 The other GSA method named PAWN (Pianosi and Wagener, 2015) is a density-based method, in which sensitivity is assessed by quantifying the effect of parameter changes on the cumulative distribution function (CDF) of the model output Y . In brief, the distance between the CDF of Y obtained from the control simulation (i.e., unconditional CDF) and the CDF of the output perturbed by changing the parameters (i.e., conditional CDF) is calculated by the Kolmogorov-Smirnov statistic (KS):

$$840 \quad KS(X_i) = \max_Y |F_Y(Y) - F_{Y|X_i}(Y)|, \quad (\text{A4})$$

where $F_Y(Y)$ is the unconditional CDF and $F_{Y|X_i}(Y)$ is the conditional CDF with the fixed X_i . Since the KS statistic may vary due to X_i taking different values, the PAWN index T_i , which indicates the sensitivity of Y to X_i , is then obtained by considering a statistic (e.g., maximum or median) over all possible X_i :

$$T_i = \text{stat}_{X_i}[KS(X_i)]. \quad (\text{A5})$$

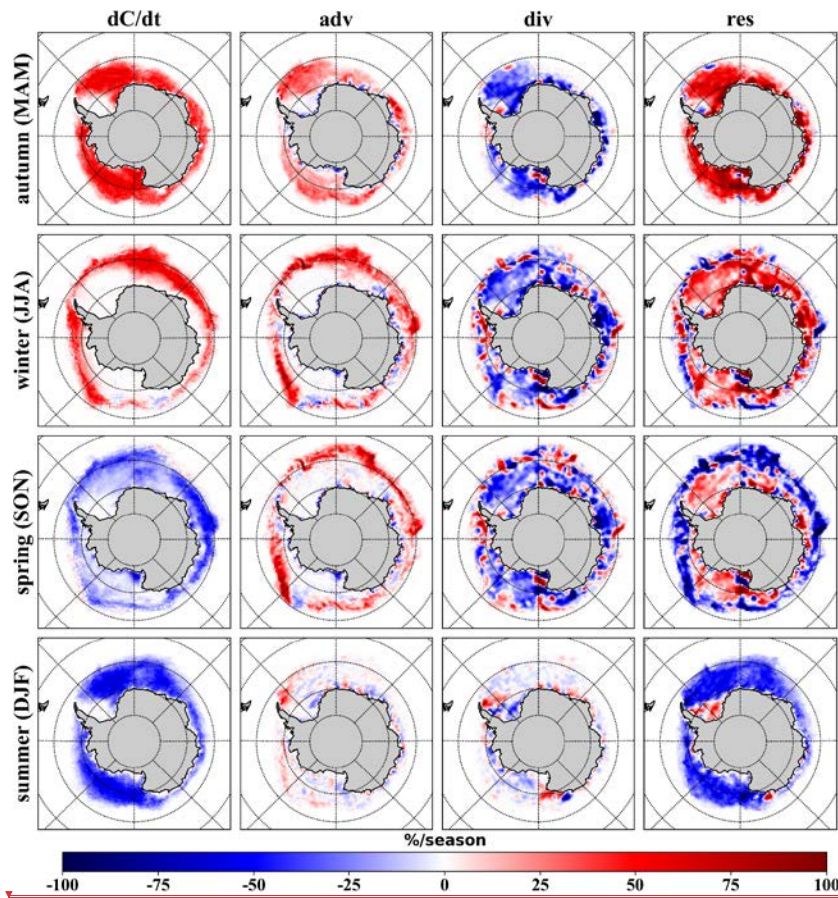
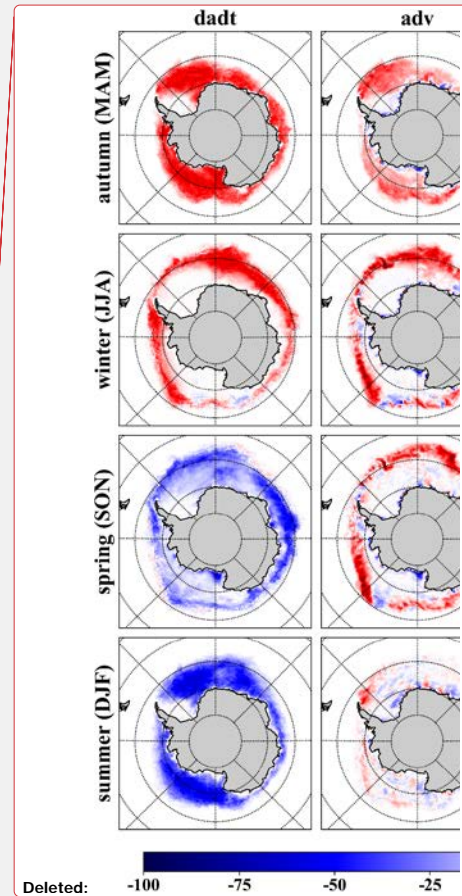
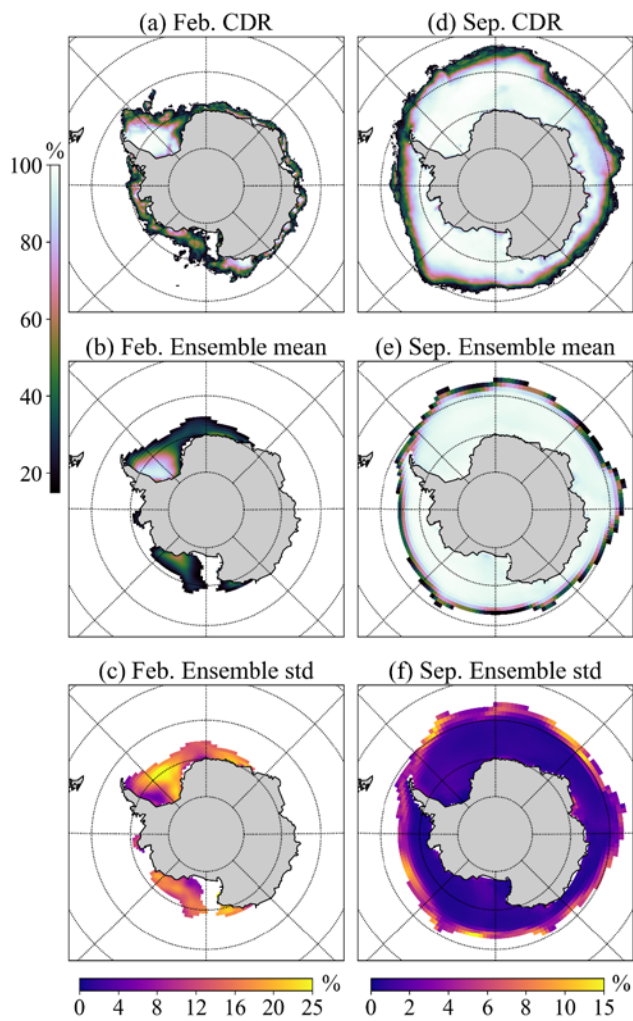


Fig. B1. Seasonal mean of sea ice concentration (SIC) budget components for 2008-2017, calculated based on satellite-derived sea ice velocity (Kimura et al., 2013) and SIC (Meier et al., 2021) observations. The positive value stands for the SIC increase and the negative value for the decrease.





850 **Fig. B2.** (a-b) Observed (NOAA/NSIDC Climate Data Record of Passive Microwave Sea Ice Concentration, Version 4; CDR) and model ensemble mean February SIC climatologies (only SIC > 15% are shown), (c) standard deviation of all model runs. (d-f) The same as (a-c) but for September.

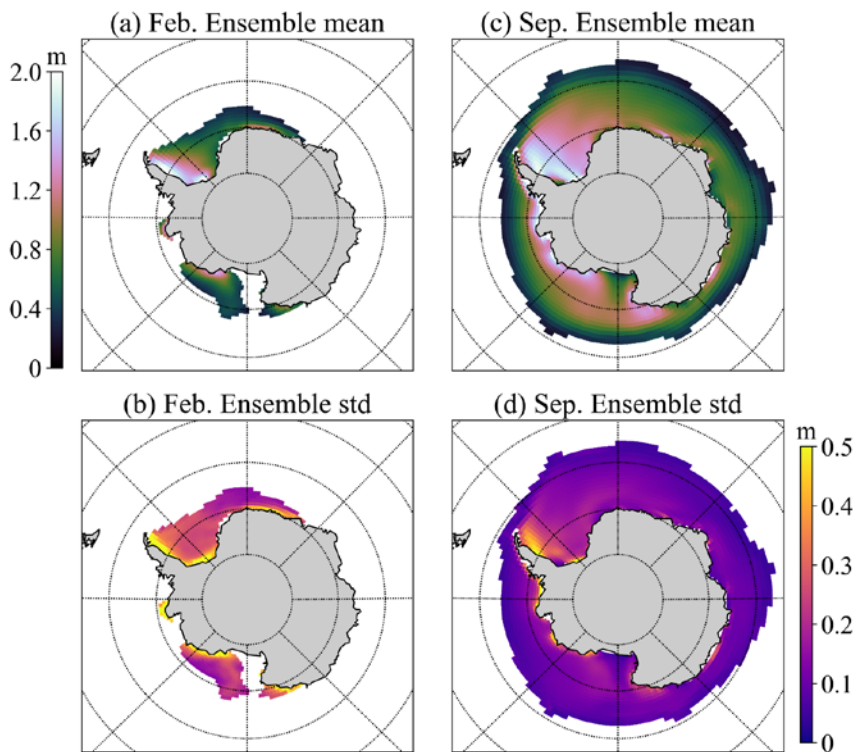
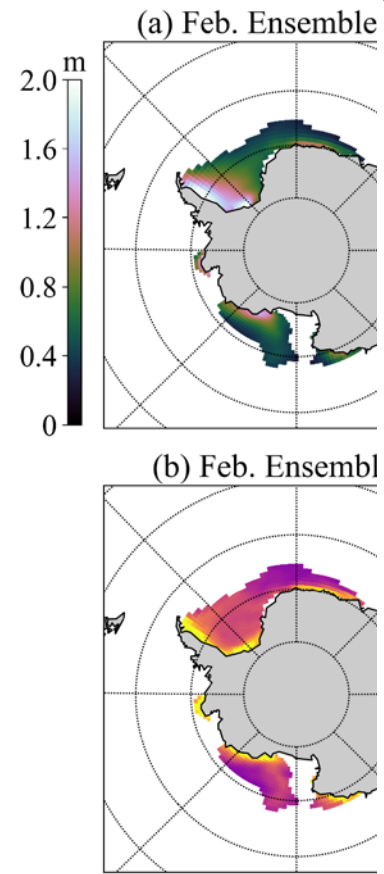
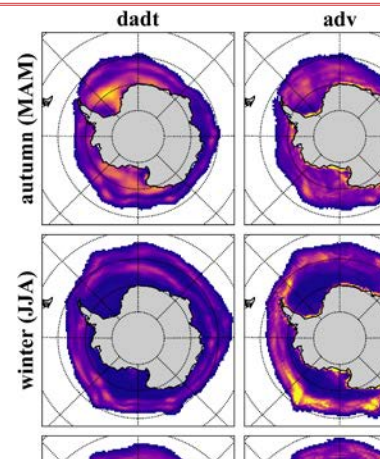


Fig. B3. (a) Ensemble model mean February sea ice thickness climatologies (only SIC > 15% are shown) and (b) the standard deviation. (c-d) The same as (a-b) but for September.

855



Deleted:



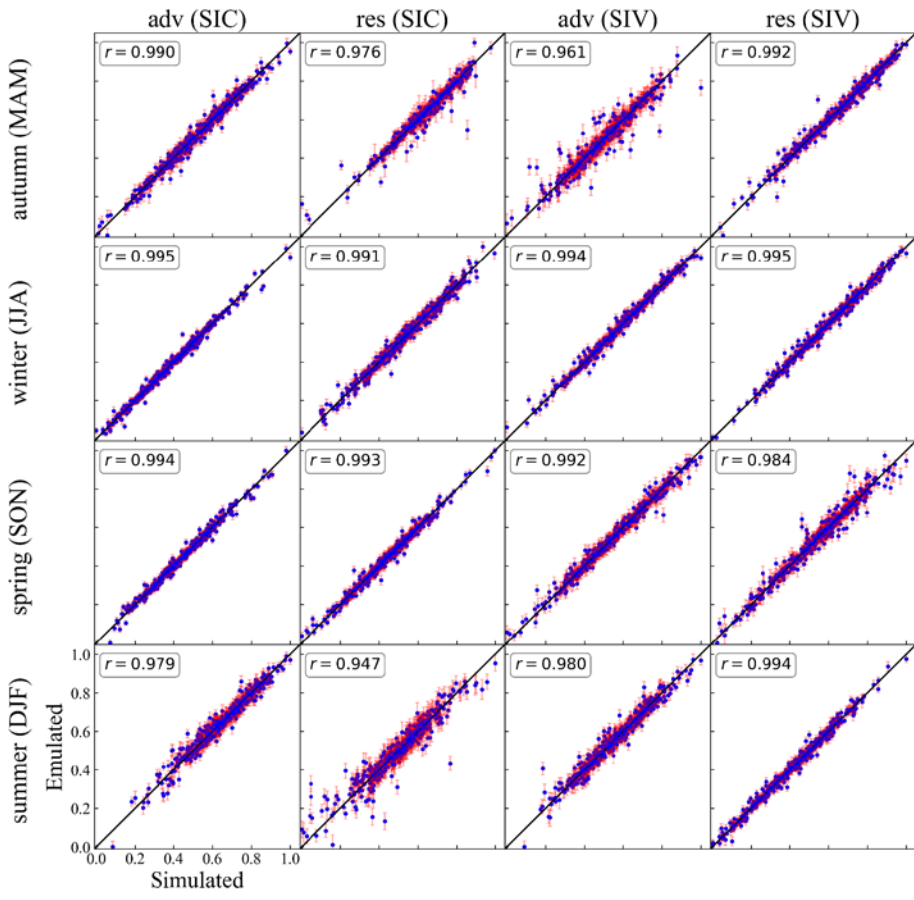


Fig. B4. Validation results of the best Gaussian process (GP) emulators for each of the four metrics (area integrals of *adv* and *res* components in SIC and SIV budgets) selected by the 10-fold cross-validation. Each subplot consists of 449 error bars and a 1:1 line, and Pearson correlation coefficients are also listed. Each metric has been normalized (scaled to [0, 1]) using the difference between the maximum and minimum values of the simulation) for better presentation.

Deleted: B6

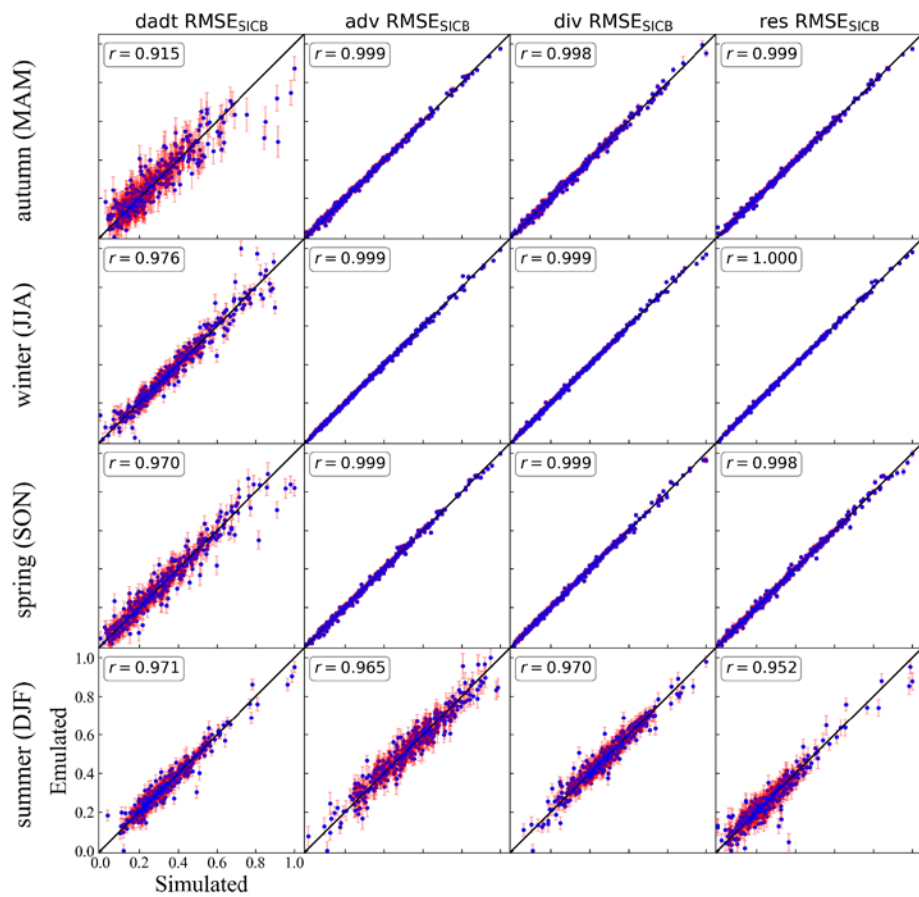
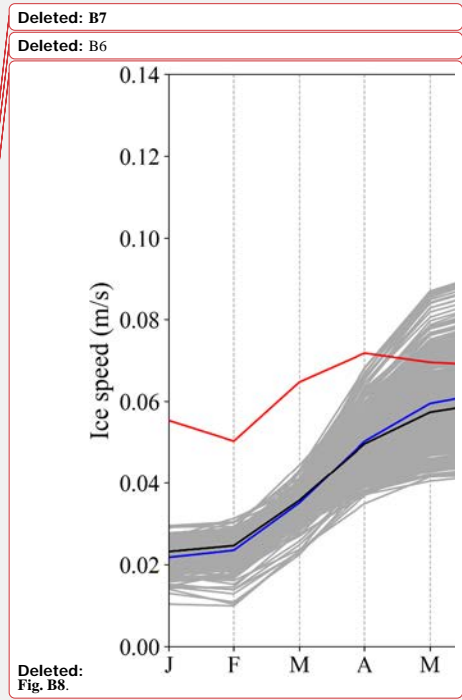


Fig. B5. As Fig. B4, but for the root-mean-square error between SIC budget components of the simulation and the observation (RMSE_{SICB}).



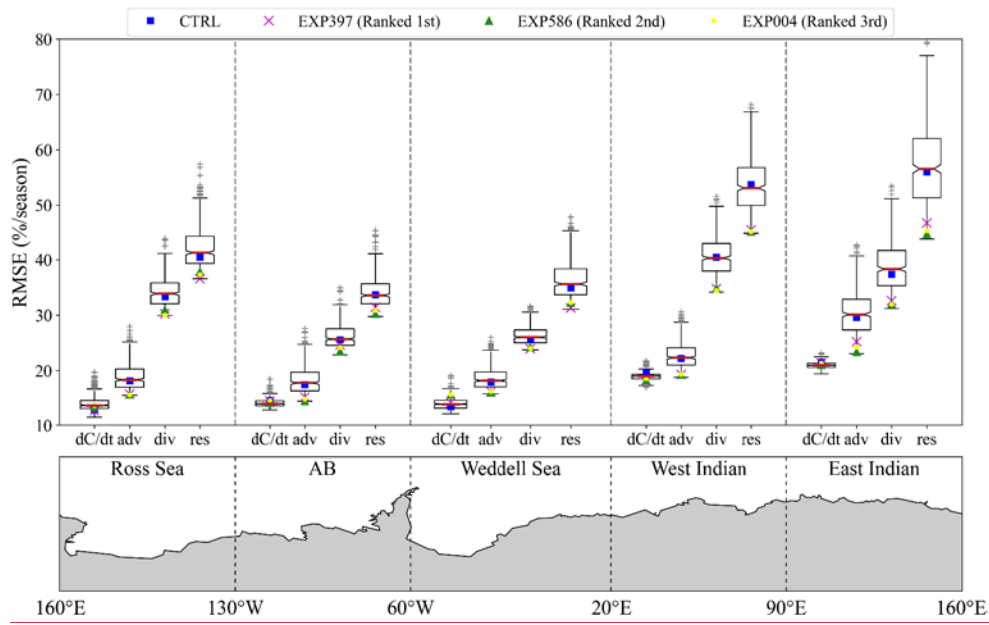


Fig. B6. As Fig. 7, but the RMSE of each SIC budget term is averaged over four seasons and counted separately in each Southern Ocean sector. The vertical dotted line marks the demarcation of each sector. AB=Amundsen-Bellinghousen Seas.

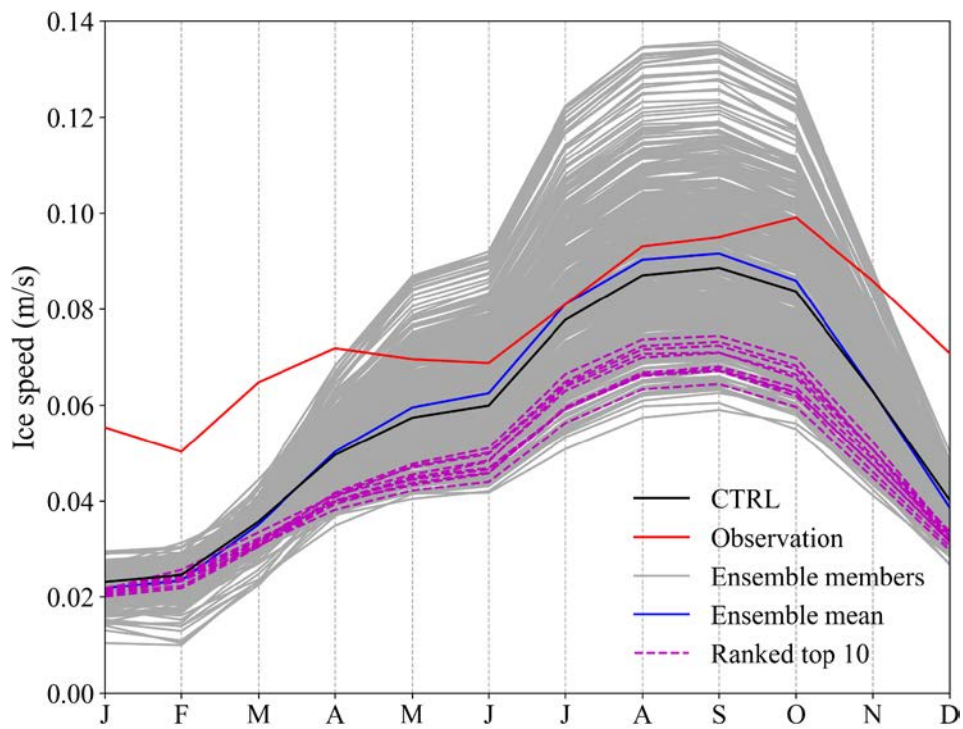


Fig. B7. Sea ice speed seasonal cycles for the observation (Kimura et al., 2013) and simulations, over 2008-2017. The simulated sea ice velocities are first interpolated onto the KIMURA data grid, then the spatial average of the ice speed is calculated in the areas where observations are available. The ice speeds of the 10 experiments with the closest SIC budget to the observation are marked with magenta dashed lines.

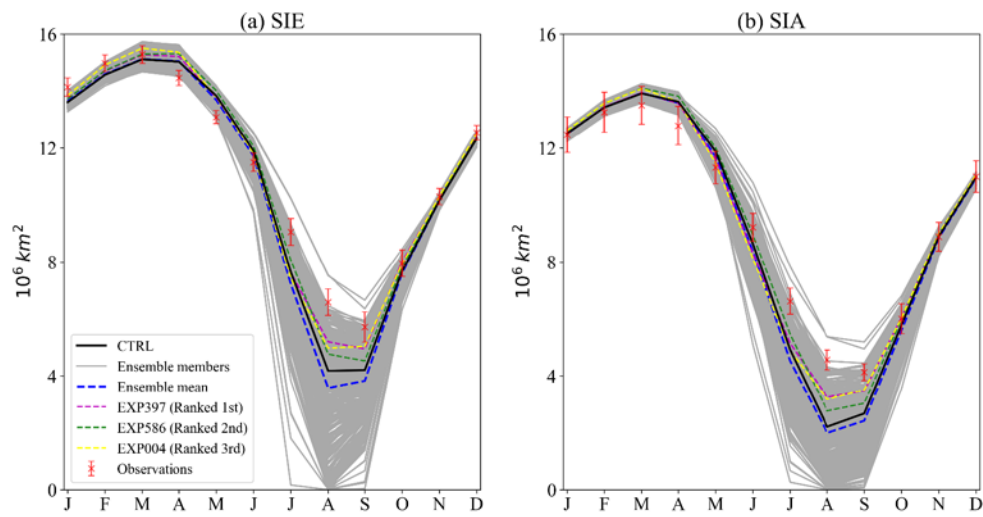


Fig. B8. As Fig. 2 (a) and (b) but for the Arctic.

References

- 860 Abernathy, R. P., Cerovecki, I., Holland, P. R., Newsom, E., Mazloff, M. and Talley, L. D.: Water-mass transformation by sea ice in the upper branch of the Southern Ocean overturning, *Nat. Geosci.*, 9(8), 596–601, doi:10.1038/ngeo2749, 2016.
- Baki, H., Chinta, S. and Srinivasan, B.: Determining the sensitive parameters of the Weather Research and Forecasting (WRF) model for the simulation of tropical cyclones in the Bay of Bengal using global sensitivity analysis and machine learning, *Geosci. Model Dev.*, 15(5), 2133–2155, doi:10.5194/gmd-15-2133-2022, 2022.
- 865 Barthélemy, A., Fichefet, T. and Goosse, H.: Spatial heterogeneity of ocean surface boundary conditions under sea ice, *Ocean Model.*, 102, 82–98, doi:10.1016/j.ocemod.2016.05.003, 2016.
- Bitz, C. M. and Lipscomb, W. H.: An energy-conserving thermodynamic model of sea ice, *J. Geophys. Res. Ocean.*, 104(C7), 15669–15677, doi:10.1029/1999jc900100, 1999.
- Brandt, R. E., Warren, S. G., Worby, A. P. and Grenfell, T. C.: Surface albedo of the Antarctic sea ice zone, *J. Clim.*, 18(17), 3606–3622, doi:10.1175/JCLI3489.1, 2005.
- 870 Cavalieri, D. J., Gloersen, P. and Campbell, W. J.: Determination of sea ice parameters with the NIMBUS 7 SMMR, *J. Geophys. Res. Atmos.*, 89(D4), 5355–5369, doi:10.1029/JD089iD04p05355, 1984.
- [Cavalieri, D. J., Markus, A., and Comiso, J. C.: AMSR-E/Aqua Daily L3 12.5 km Brightness Temperature, Sea Ice Concentration, & Snow Depth Polar Grids, Version 3. Boulder, Colorado USA., NASA Natl. Snow Ice Data Cent. Distrib. Act. Arch. Cent., 2014.](#)
- 875 Comiso, J. C.: Characteristics of Arctic winter sea ice from satellite multispectral microwave observations., *J. Geophys. Res.*, 91(C1), 975–994, doi:10.1029/JC091iC01p00975, 1986.
- Comiso, J. C., Gersten, R. A., Stock, L. V., Turner, J., Perez, G. J. and Cho, K.: Positive trend in the Antarctic sea ice cover and associated changes in surface temperature, *J. Clim.*, 30(6), 2251–2267, doi:10.1175/JCLI-D-16-0408.1, 2017.
- 880 Dai, A. and Trenberth, K. E.: Estimates of freshwater discharge from continents: Latitudinal and seasonal variations, *J. Hydrometeorol.*, 3(6), 660–687, doi:10.1175/1525-7541(2002)003<0660:EOFDfC>2.0.CO;2, 2002.
- Dee, D. P., Uppala, S. M., Simmons, A. J., Berrisford, P., Poli, P., Kobayashi, S., Andrae, U., Balmaseda, M. A., Balsamo, G., Bauer, P., Bechtold, P., Beljaars, A. C. M., van de Berg, L., Bidlot, J., Bormann, N., Delsol, C., Dragani, R., Fuentes, M., Geer, A. J., Haimberger, L., Healy, S. B., Hersbach, H., Hólm, E. V., Isaksen, I., Kållberg, P., Köhler, M., Matricardi, M., McNally, A. P., Monge-Sanz, B. M., Morcrette, J. J., Park, B. K., Peubey, C., de Rosnay, P., Tavolato, C., Thépaut, J. N. and Vitart, F.: The ERA-Interim reanalysis: Configuration and performance of the data assimilation system, *Q. J. R. Meteorol. Soc.*, 137(656), 553–597, doi:10.1002/qj.828, 2011.
- 885 Dussin, R., Barnier, B., Brodeau, L. and Molines, J. M.: The making of the DRAKKAR forcing set DFS5, *Lab. Glaciol. Géophysique l'Environnement Tech. Rep.*, (April), 34 [online] Available from: https://www.drakkar-ocean.eu/publications/reports/report_DFS5v3_April2016.pdf, 2016.
- 890

Moved (insertion) [1]

[Eastwood, S., Lavergne, T., and Tonboe, R.: Algorithm Theoretical Basis Document for the OSI SAF Global Reprocessed Sea Ice Concentration Product, EUMETSAT Netw. Satell. Appl. Facil., 1–28, 2014.](#)

[Ezraty, R., Girard-Ardhuin, F., Piolle, J. F., and Heygster, L. K. G.: Arctic and Antarctic sea-ice concentration and Arctic sea ice drift estimated from Special Sensor Microwave Imager data. Version 2.1, 1–22, 2007.](#)

895 Fichetef, T. and Maqueda, M. A. M.: Sensitivity of a global sea ice model to the treatment of ice thermodynamics and dynamics, *J. Geophys. Res. Ocean.*, 102(C6), 12609–12646, doi:10.1029/97JC00480, 1997.

Fichetef, T., Tartinville, B. and Goosse, H.: Sensitivity of the Antarctic sea ice to the thermal conductivity of snow, *Geophys. Res. Lett.*, 27(3), 401–404, doi:10.1029/1999GL002397, 2000.

Garcia, H.: NOAA Atlas NESDIS 62 WORLD OCEAN ATLAS 2005 Volume 2 : Salinity, Apparent Oxyg. Util. Dissolved
900 Oxyg. Satur., 3(September), 38 [online] Available from: <https://archimer.ifremer.fr/doc/00651/76337/>, 2019.

Geisser, S.: The predictive sample reuse method with applications, *J. Am. Stat. Assoc.*, 70(350), 320–328, doi:10.1080/01621459.1975.10479865, 1975.

GPy: GPy: A Gaussian process framework in python, available at: <http://github.com/SheffieldML/GPy> (last access: 1 March 2022), 2012.

905 Haumann, F. A., Gruber, N., Münnich, M., Frenger, I. and Kern, S.: Sea-ice transport driving Southern Ocean salinity and its recent trends, *Nature*, 537(7618), 89–92, doi:10.1038/nature19101, 2016.

[Holland, P. R. and Kimura, N.: Observed concentration budgets of Arctic and Antarctic sea ice, *J. Clim.*, 29\(14\), 5241–5249, doi:10.1175/JCLI-D-16-0121.1, 2016.](#)

Holland, P. R. and Kwok, R.: Wind-driven trends in Antarctic sea-ice drift, *Nat. Geosci.*, 5(12), 872–875,
910 doi:10.1038/ngeo1627, 2012.

Holmes, C. R., Holland, P. R. and Bracegirdle, T. J.: Compensating Biases and a Noteworthy Success in the CMIP5 Representation of Antarctic Sea Ice Processes, *Geophys. Res. Lett.*, 46(8), 4299–4307, doi:10.1029/2018GL081796, 2019.

Joseph, V. R. and Hung, Y.: Orthogonal-maximin Latin hypercube designs, *Statistica. Sinica.*, 18(1), 171–186, <http://www.jstor.org/stable/24308251>, 2008.

915 Kennedy, M. C. and O’Hagan, A.: Predicting the output from a complex computer code when fast approximations are available, *Biometrika*, 87(1), 1–13, doi:10.1093/biomet/87.1.1, 2000.

Kim, J. G., Hunke, E. C. and Lipscomb, W. H.: Sensitivity analysis and parameter tuning scheme for global sea-ice modeling, *Ocean Model.*, 14(1–2), 61–80, doi:10.1016/j.ocemod.2006.03.003, 2006.

920 Kimmritz, M., Danilov, S. and Losch, M.: The adaptive EVP method for solving the sea ice momentum equation, *Ocean Model.*, 101, 59–67, doi:10.1016/j.ocemod.2016.03.004, 2016.

Kimmritz, M., Losch, M. and Danilov, S.: A comparison of viscous-plastic sea ice solvers with and without replacement pressure, *Ocean Model.*, 115, 59–69, doi:10.1016/j.ocemod.2017.05.006, 2017.

Kimura, N., Nishimura, A., Tanaka, Y. and Yamaguchi, H.: Influence of winter sea-ice motion on summer ice cover in the Arctic, *Polar Res.*, 32(SUPPL.), 20193, doi:10.3402/polar.v32i0.20193, 2013.

Deleted: Hobbs, W. R., Massom, R., Stammerjohn, S., Reid, P., Williams, G. and Meier, W.: A review of recent changes in Southern Ocean sea ice, their drivers and forcings, *Glob. Planet. Change*, 143, 228–250, doi:10.1016/j.gloplacha.2016.06.008, 2016.

- 930 Large, W. G., and Yeager, S. G. Diurnal to decadal global forcing for ocean and sea-ice models: the data sets and flux climatologies, NCAR Technical Note, National Center for Atmospheric Research, 11, 324–336, 2004.
- Lecomte, O., Fichefet, T., Vancoppenolle, M., Domine, F., Massonnet, F., Mathiot, P., Morin, S. and Barriat, P. Y.: On the formulation of snow thermal conductivity in large-scale sea ice models, *J. Adv. Model. Earth Syst.*, 5(3), 542–557, doi:10.1002/jame.20039, 2013.
- 935 Lecomte, O., Goosse, H., Fichefet, T., Holland, P. R., Uotila, P., Zunz, V. and Kimura, N.: Impact of surface wind biases on the Antarctic sea ice concentration budget in climate models, *Ocean Model.*, 105, 60–70, doi:10.1016/j.ocemod.2016.08.001, 2016.
- Leppäranta, M.: *The drift of sea ice*, Springer, Berlin, 2011
- Loeppky, J. L., Sacks, J. and Welch, W. J.: Choosing the sample size of a computer experiment: A practical guide, *Technometrics*, 51(4), 366–376, doi:10.1198/TECH.2009.08040, 2009.
- 940 Lüpkes, C., Gryanik, V. M., Hartmann, J. and Andreas, E. L.: A parametrization, based on sea ice morphology, of the neutral atmospheric drag coefficients for weather prediction and climate models, *J. Geophys. Res. Atmos.*, 117(13), 1–18, doi:10.1029/2012JD017630, 2012.
- Madec, G.: NEMO ocean engine, Note du Pôle modélisation, Inst. Pierre-Simon Laplace, (27), 357pp., doi:10.5281/zenodo.1464816, 2012.
- 945 Madec, G., Delecluse, P., Imbard, M. and Levy, C.: OPA 8.1 Ocean General Circulation Model Reference Manual, Notes du Pôle Modélisation, Inst. Pierre Simon Laplace, doi:10.2478/adms, 1998.
- Marsaleix, P., Auclair, F., Floor, J. W., Herrmann, M. J., Estournel, C., Pairaud, I. and Ulses, C.: Energy conservation issues in sigma-coordinate free-surface ocean models, *Ocean Model.*, 20(1), 61–89, doi:10.1016/j.ocemod.2007.07.005, 2008.
- Massom, A., Eicken, H., Jeffries, O., Drinkwater, M. R., Worby, P., Lytle, I., Morris, K., Reid, A. and Warren, G.: Snow on Antarctic sea ice, *Rev. Geophys.*, 39(3), 413–445, 2001.
- Massonnet, F., Fichefet, T., Goosse, H., Vancoppenolle, M., Mathiot, P. and König Beatty, C.: On the influence of model physics on simulations of Arctic and Antarctic sea ice, *Cryosphere*, 5(3), 687–699, doi:10.5194/tc-5-687-2011, 2011.
- Massonnet, F., Goosse, H., Fichefet, T. and Counillon, F.: Calibration of sea ice dynamic parameters in an ocean-sea ice model using an ensemble Kalman filter, *J. Geophys. Res. Ocean.*, 119(7), 4168–4184, doi:10.1002/2013JC009705, 2014.
- 955 Massonnet, F., Barthélemy, A., Worou, K., Fichefet, T., Vancoppenolle, M., Rousset, C. and Moreno-Chamarro, E.: On the discretization of the ice thickness distribution in the NEMO3.6-LIM3 global ocean–sea ice model, *Geosci. Model Dev.*, 12(8), 3745–3758, doi:10.5194/gmd-12-3745-2019, 2019.
- Maykut, G. A. and Untersteiner, N.: Some results from a time- dependent thermodynamic model of sea ice, *J. Geophys. Res.*, 76(6), 1550–1575, doi:10.1029/jc076i006p01550, 1971.
- 960 McKay, M. D., Beckman, R. J. and Conover, W. J.: A Comparison of Three Methods for Selecting Values of Input Variables in the Analysis of Output From a Computer Code, *Technometrics*, 42(1), 55–61, doi:10.1080/00401706.2000.10485979, 2000.

Moved up [1]: J.,

Deleted: Li, X., Cai, W., Meehl, G. A., Chen, D., Yuan, X., Raphael, M., Holland, D. M., Ding, Q., Fogt, R. L., Markle, B. R., Wang, G., Bromwich, D. H., Turner,...

Deleted: Xie, S., Steig, E. J., Gille, S. T., Xiao, C., Wu, B., Lazzara, M. A., Chen, X., Stammerjohn, S., Holland, P. R., Holland, M. M., Cheng, X., Price, S. F., Wang, Z., Bitz, C. M., Shi, J., Gerber, E. P., Liang, X., Goosse, H., Yoo, C., Ding, M., Geng, L., Xin, M., Li, C., Dou, T., Liu, C., Sun, W., Wang X. and C. Song: Tropical teleconnection impacts on Antarctic climate changes, *Nat. Rev. Earth Environ.*, 680–698, doi:10.1038/s43017-021-00204-5, 2021.

Deleted: Mahlstein, I., Gent, P. R. and Solomon, S.: Historical Antarctic mean sea ice area, sea ice trends, and winds in CMIP5 simulations, *J. Geophys. Res. Atmos.*, 118(11), 5105–5110, doi:10.1002/jgrd.50443, 2013.

Deleted: Matear, R. J., O’Kane, T. J., Risbey, J. S. and Chamberlain, M.: Sources of heterogeneous variability and trends in Antarctic sea-ice, *Nat. Commun.*, 6, doi:10.1038/ncomms9656, 2015.

Merryfield, W. J., Holloway, G. and Gargett, A. E.: A global ocean model with double-diffusive mixing, *J. Phys. Oceanogr.*, 29(6), 1124–1142, doi:10.1175/1520-0485(1999)029<1124:AGOMWD>2.0.CO;2, 1999.

Meier, W. N., Fetterer, F., Windnagel, A. K., and Stewart, J. S.: NOAA/NSIDC Climate Data Record of Passive Microwave Sea Ice Concentration, Version 4. Boulder, Colorado USA. NSIDC: National Snow and Ice Data Center. doi: https://doi.org/10.7265/efmz-2t65, 2021.

Meier, W. N., Markus, T., and Comiso, J. C.: AMSR-E/AMSR2 Unified L3 Daily 12.5 km Brightness Temperatures, Sea Ice Concentration, Motion & Snow Depth Polar Grids, Version 1, November 2018, Arct. grid, <https://doi.org/10.5067/RA1MIJOYPK3P>, 2018.

Mora, E. B., Spelling, J. and van der Weijde, A. H.: Benchmarking the PAWN distribution-based method against the variance-based method in global sensitivity analysis: Empirical results, *Environ. Model. Softw.*, 122(September), doi:10.1016/j.envsoft.2019.104556, 2019.

Moreno-Chamarro, E., Ortega, P. and Massonnet, F.: Impact of the ice thickness distribution discretization on the sea ice concentration variability in the NEMO3.6 LIM3 global ocean sea ice model, *Geosci. Model Dev.*, 13(10), 4773–4787, doi:10.5194/gmd-13-4773-2020, 2020.

Morris, M. D. and Mitchell, T. J.: Exploratory designs for computational experiments, *J. Stat. Plan. Inference*, 43(3), 381–402, doi:10.1016/0378-3758(94)00035-T, 1995.

Nakawo, M. and Sinha, N. K.: Growth Rate and Salinity Profile of First-Year, *J. Glaciol.*, 27(1), 315–330, 1981.

NEMO ocean engine, NEMO System Team, Scientific Notes of Climate Modelling Center, 27, ISSN 1288-1619 Institut Pierre-Simon Laplace (IPSL), <https://doi.org/10.5281/zenodo.1464816>, 2022.

Nie, Y., Uotila, P., Cheng, B., Massonnet, F., Kimura, N., Cipollone, A., and Lv, X.: Southern Ocean sea ice concentration budgets of five ocean-sea ice reanalyses, *Clim. Dyn.*, <https://doi.org/10.1007/s00382-022-06260-x>, 2022.

Nie, Y.: Y.Nie/Paper-SICB-SEN. Zenodo. <https://doi.org/10.5281/zenodo.6780342>, 2022.

Oakley, J. E. and O'Hagan, A.: Probabilistic sensitivity analysis of complex models: A Bayesian approach, *J. R. Stat. Soc. Ser. B Stat. Methodol.*, 66(3), 751–769, doi:10.1111/j.1467-9868.2004.05304.x, 2004.

Parkinson, C. L.: A 40-y record reveals gradual Antarctic sea ice increases followed by decreases at rates far exceeding the rates seen in the Arctic, *Proc. Natl. Acad. Sci. U. S. A.*, 116(29), 14414–14423, doi:10.1073/pnas.1906556116, 2019.

Perovich, D. K.: Seasonal evolution of the albedo of multiyear Arctic sea ice, *J. Geophys. Res.*, 107(C10), 1–13, doi:10.1029/2000jc000438, 2002.

Petty, A. A., Webster, M., Boisvert, L. and Markus, T.: The NASA Eulerian Snow on Sea Ice Model (NESOSIM) v1.0: Initial model development and analysis, *Geosci. Model Dev.*, 11(11), 4577–4602, doi:10.5194/gmd-11-4577-2018, 2018.

Pianosi, F., Sarrazin, F. and Wagener, T.: A Matlab toolbox for Global Sensitivity Analysis, *Environ. Model. Softw.*, 70, 80–85, doi:10.1016/j.envsoft.2015.04.009, 2015.

Pianosi, F. and Wagener, T.: A simple and efficient method for global sensitivity analysis based on cumulative distribution functions, *Environ. Model. Softw.*, 67, 1–11, doi:10.1016/j.envsoft.2015.01.004, 2015.

Deleted: Meehl, G. A., Arblaster, J. M., Bitz, C. M., Chung, C. T. Y. and Teng, H.: Antarctic sea-ice expansion between 2000 and 2014 driven by tropical Pacific decadal climate variability, *Nat. Geosci.*, 9(8), 590–595, doi:10.1038/ngeo2751, 2016.

Deleted: .

Deleted: (0123456789).

Deleted: :

- Rae, J. G. L., Hewitt, H. T., Keen, A. B., Ridley, J. K., Edwards, J. M. and Harris, C. M.: A sensitivity study of the sea ice simulation in the global coupled climate model, HadGEM3, *Ocean Model.*, 74, 60–76, doi:10.1016/j.ocemod.2013.12.003, 2014.
- 1025 Raphael, M.N. and Handcock, M.S: A new record minimum for Antarctic sea ice. *Nat. Rev. Earth Environ.*, 3, 215–216, doi:10.1038/s43017-022-00281-0, 2022
- Rasmussen, C. E. and Williams, C. K. I.: *Gaussian processes for machine learning.*, The MIT Press, 2006.
- Sacks, J., Welch, W. J., Mitchell, T. J. and Wynn, H. P.: Design and analysis of computer experiments, *Stat. Sci.*, 4(4), 409–423, doi:10.1214/ss/1177012413, 1989.
- 1030 Saltelli, A.: *Global Sensitivity Analysis. The Primer*, John Wiley Sons, doi:10.1021/jf60213a001, 2008.
- Saltelli, A., Annoni, P., Azzini, I., Campolongo, F., Ratto, M. and Tarantola, S.: Variance based sensitivity analysis of model output. Design and estimator for the total sensitivity index, *Comput. Phys. Commun.*, 181(2), 259–270, doi:10.1016/j.cpc.2009.09.018, 2010.
- Sea Ice modelling Integrated Initiative (SI3) – The NEMO sea ice engine, NEMO Sea Ice Working Group, *Scientific Notes of Climate Modelling Center*, 31, ISSN 1288-1619 Institut Pierre-Simon Laplace (IPSL), doi:10.5281/zenodo.1471689, 2019.
- 1035 Shu, Q., Song, Z. and Qiao, F.: Assessment of sea ice simulations in the CMIP5 models, *Cryosphere*, 9(1), 399–409, doi:10.5194/tc-9-399-2015, 2015.
- Shu, Q., Wang, Q., Song, Z., Qiao, F., Zhao, J., Chu, M. and Li, X.: Assessment of Sea Ice Extent in CMIP6 With Comparison to Observations and CMIP5, *Geophys. Res. Lett.*, 47(9), 1–9, doi:10.1029/2020GL087965, 2020.
- 1040 Sobol, I. M.: Global sensitivity indices for nonlinear mathematical models and their Monte Carlo estimates, *Math. Comput. Simul.*, 55(1–3), 271–280, doi:10.1016/S0378-4754(00)00270-6, 2001.
- Sobol, I. M.: On sensitivity estimation for nonlinear mathematical models, *Mat. Model.*, 2(1), 112–118, doi:10.18287/0134-2452-2015-39-4-459-461., 1990.
- 1045 Sun, S. and Eisenman, I.: Observed Antarctic sea ice expansion reproduced in a climate model after correcting biases in sea ice drift velocity, *Nat. Commun.*, 12(1), 1060, doi:10.1038/s41467-021-21412-z, 2021.
- Thomas, D. N. and Gerhard S.Dieckmann: *Sea ice (Second Edition).*, Wiley, Oxford, 2010.
- Thorndike, A. S., Rothrock, D. A., Maykut, G. A. and Colony, R.: The thickness distribution of sea ice, *J. Geophys. Res.*, 80(33), 4501–4513, doi:10.1029/jc080i033p04501, 1975.
- 1050 Timco, G. W. and Frederking, R. M. W.: A review of sea ice density, *Cold Reg. Sci. Technol.*, 24(1), 1–6, doi:10.1016/0165-232X(95)00007-X, 1996.
- Turner, J., Bracegirdle, T. J., Phillips, T., Marshall, G. J. and Scott Hosking, J.: An initial assessment of antarctic sea ice extent in the CMIP5 models, *J. Clim.*, 26(5), 1473–1484, doi:10.1175/JCLI-D-12-00068.1, 2013.
- Uotila, P., Holland, P. R., Vihma, T., Marsland, S. J. and Kimura, N.: Is realistic Antarctic sea-ice extent in climate models the result of excessive ice drift?, *Ocean Model.*, 79, 33–42, doi:10.1016/j.ocemod.2014.04.004, 2014.
- 1055

Deleted: Singh, H. A., Polvani, L. M. and Rasch, P. J.: Antarctic Sea Ice Expansion, Driven by Internal Variability, in the Presence of Increasing Atmospheric CO₂, *Geophys. Res. Lett.*, 46(24), 14762–14771, doi:10.1029/2019GL083758, 2019.

- 1060 Uotila, P., O'Farrell, S., Marsland, S. J. and Bi, D.: A sea-ice sensitivity study with a global ocean-ice model, *Ocean Model.*, 51, 1–18, doi:10.1016/j.ocemod.2012.04.002, 2012.
- Uotila, P., Iovino, D., Vancoppenolle, M., Lensu, M. and Rousset, C.: Comparing sea ice, hydrography and circulation between NEMO3.6 LIM3 and LIM2, *Geosci. Model Dev.*, 10(2), 1009–1031, doi:10.5194/gmd-10-1009-2017, 2017.
- Urrego-Blanco, J. R., Urban, N. M., Hunke, E. C., Turner, A. K. and Jeffery, N.: Uncertainty quantification and global
1065 sensitivity analysis of the Los Alamos sea ice model, *J. Geophys. Res. Ocean.*, 121(4), 2709–2732, doi:10.1002/2015JC011558, 2016.
- Vancoppenolle, M., Fichefet, T., Goosse, H., Bouillon, S., Madec, G. and Maqueda, M. A. M.: Simulating the mass balance and salinity of Arctic and Antarctic sea ice. 1. Model description and validation, *Ocean Model.*, 27(1–2), 33–53, doi:10.1016/j.ocemod.2008.10.005, 2009.
- 1070 Wang, J., Luo, H., Yang, Q., Liu, J., Yu, L., Shi, Q. and Han, B.: An Unprecedented Record Low Antarctic Sea-ice Extent during Austral Summer 2022, 2022.
- Warren, S. G., Rigor, I. G., Untersteiner, N., Radionov, V. F., Bryazgin, N. N., Aleksandrov, Y. I. and Colony, R.: Snow depth on Arctic sea ice, *J. Clim.*, 12(6), 1814–1829, doi:10.1175/1520-0442(1999)012<1814:SDOASI>2.0.CO;2, 1999.
- Williamson, D. B., Blaker, A. T. and Sinha, B.: Tuning without over-tuning: Parametric uncertainty quantification for the
1075 NEMO ocean model, *Geosci. Model Dev.*, 10(4), 1789–1816, doi:10.5194/gmd-10-1789-2017, 2017.
- Zadeh, K. F., Nossent, J., Sarrazin, F., Pianosi, F., van Griensven, A., Wagener, T. and Bauwens, W.: Comparison of variance-based and moment-independent global sensitivity analysis approaches by application to the SWAT model, *Environ. Model. Softw.*, 91, 210–222, doi:10.1016/j.envsoft.2017.02.001, 2017.
- Zunz, V., Goosse, H. and Massonnet, F.: How does internal variability influence the ability of CMIP5 models to reproduce
1080 the recent trend in Southern Ocean sea ice extent?, *Cryosphere*, 7(2), 451–468, doi:10.5194/tc-7-451-2013, 2013.