

# Deep learning for stochastic precipitation generation – Deep SPG v1.0

Leroy J. Bird<sup>1</sup>, Matthew G. W. Walker<sup>1</sup>, Greg E. Bodeker<sup>1</sup>, Isaac H. Campbell<sup>1</sup>, Guangzhong Liu<sup>1</sup>, Swapna Josmi Sam<sup>1</sup>, Jared Lewis<sup>2</sup>, and Suzanne M. Rosier<sup>3</sup>

<sup>1</sup>Bodeker Scientific, Alexandra, New Zealand

<sup>2</sup>Climate & Energy College, The University of Melbourne, Parkville, Victoria, Australia

<sup>3</sup>National Institute of Water and Atmospheric Research, Wellington, New Zealand

**Correspondence:** L. J. Bird (leroy@bodekerscientific.com)

## Abstract.

We present a deep ~~neural network~~neural-network based single site stochastic precipitation generator (SPG), capable of producing realistic time series of daily and hourly precipitation. The neural network outputs a wet day probability and precipitation distributions in the form of a mixture model. The SPG was tested in four different locations in New Zealand, and

5 we found it accurately reproduced the precipitation depth, the autocorrelations seen in the original data, the observed dry-spell lengths and the seasonality in precipitation. We present two versions of the hourly and daily SPGs: (i) a stationary version of the SPG that assumes that the statistics of the precipitation are time independent, and (ii) a non-stationary version that captures the secular drift in precipitation statistics resulting from climate change. The latter was developed to be applicable to climate change impact studies, especially, studies reliant on SPG projections of future precipitation. We highlight many of the pitfalls

10 associated with the training of a non-stationary SPG on observations alone, and offer an alternative method that replicates the secular drift in precipitation seen in a large-ensemble regional climate model. The SPG runs several orders of magnitude faster than a typical regional climate model ~~;~~ and permits the generation of very large ensembles of realistic precipitation time series under many climate change scenarios, ~~these~~. These ensembles will also contain many extreme events not seen in the historical record.

The effects of climate change are often most acutely felt in the form of changes in the severity, or in frequency, of extreme precipitation events (EPEs) (van der Wiel and Bintanja, 2021; Li et al., 2021; Lewis et al., 2019).

Modelling expected changes in EPEs is challenging. They often occur on spatial scales of several kilometres, an order of magnitude smaller than the spatial scales simulated by regional climate models (RCMs) and perhaps two orders of magnitude smaller than the scales typically simulated by global climate models (GCMs; Wedi et al. (2020)). Furthermore, EPEs are, by definition, rare. As a result, modelling expected changes in the frequency and severity of EPEs requires dynamical downscaling of GCMs, and the generation of very large ensembles of simulations. State-of-the-art GCMs are needed to correctly simulate expected changes in the dynamics underlying the synoptic conditions that lead to EPEs (Fahad et al., 2020b, a) while dynamical downscaling (Monjo et al., 2016; Castellano and DeGaetano, 2016), using an RCM, is required to capture scales typical of EPEs. Very large ensembles (hundreds of members) of simulations are required to allow sufficiently large populations of EPEs to derive robust statistics of expected changes in their frequency and their severity. Achieving these two requirements, at ~~sufficient~~sufficiently high resolution, is prohibitively computationally expensive using currently available GCMs and RCMs.

Stochastic precipitation generators (SPGs) (Ahn, 2020; Iizumi et al., 2012; Wilks, 2010), can be designed and trained to emulate the precipitation ~~of~~at one or more sites simulated by GCMs containing nested regional climate models (RCMs). SPGs provide less computationally demanding approaches to generating the large ensembles of simulations required to adequately represent the statistics of EPEs.

SPGs can be trained on historical observations of daily or hourly precipitation to learn the statistical characteristics of the precipitation at that site. However, if the intent is to develop a non-stationary SPG – one capable of capturing climate-induced secular changes in the statistical nature of the precipitation – extracting this climate signal from historical precipitation records is itself challenging. Inhomogeneities in those records (Venema et al., 2012; Toreti et al., 2012; Peterson et al., 1998) resulting from, for example, changes in instrumentation, can hide the underlying climate induced signal. Further, a rather weak climate signal in the past makes it difficult to learn the strong signal expected in the future. To avoid these challenges of measurement series inhomogeneity and the brevity of historical records, an alternative is to train the SPG on RCM simulations of past and future precipitation. However, GCMs<sub>2</sub> and their nested RCMs<sub>2</sub> have well identified short-comings in the simulation of precipitation (Li et al., 2014; Haerter et al., 2015; Piani et al., 2010). As such, without careful bias correction, the SPG would learn from biased RCM data, and therefore its simulations would be biased and it would not produce a realistic precipitation distribution.

As alluded to above, the statistics of precipitation, and in particular the statistics of EPEs, are expected to evolve under climate change. Developing an SPG architecture that is capable of capturing that non-stationarity, but avoids errant behaviour when applied outside the limits of the training data, is a particular challenge. These, and other methodological choices, have been explored in the construction of the SPGs described in this paper.

SPGs are a subset of the broader class of stochastic weather generators (SWGs) and, as with SWGs, they come in two broad types: parametric and non-parametric. Non-parametric SWGs simply resample the data, while parametric generators

fit ~~a~~-distributions to the data (Ailliot et al., 2015), and then use these distributions to create events outside the range of the  
50 training data. Therefore, while non-parametric SWGs cannot create an entirely new event outside of their training data, they  
can ~~however~~ generate a unique sequence of such events.

Typically, parametric SWGs and SPGs simulate precipitation in two stages. The first stage decides whether precipitation  
occurs, while the second stage models the precipitation amount (Richardson, 1981). The material presented here focuses  
entirely on precipitation and follows from the class of SWGs first introduced by (Katz, 1977), where a gamma distribution  
55 was used to describe the precipitation amount. Because a single distribution is often insufficient to fully capture precipitation  
extremes, a mixture of different distributions was adopted in Carreau and Vrac (2011) who introduced a conditional mixture  
model for precipitation downscaling. Imperatives for the work presented herein were to build an SPG that learns the nature  
of the statistics of precipitation from observations alone (and is therefore not subject to the biases of GCMs or RCMs in  
training), including the inference of non-stationarity in the signal, and which only resorts to auxiliary model simulations where  
60 the observation record is found to be inadequate to capture the non-stationarity. An additional imperative was to have the non-  
stationarity described by a single annual mean hemispheric covariate time series that can be quickly and robustly simulated by  
a simple climate model for a wide range of future greenhouse gas emission scenarios. This makes the SPGs reported on below  
easily applicable to a wide range of climate impact studies that benefit from very large ensembles of precipitation projections.

**Table 1.** Stations providing daily observations of precipitation. Where more than one station was used ~~per~~ to construct the historical record for the location, the stations appear in priority order.

City	Station name	<u>Climate Network Number</u>	Latitude	Longitude
Auckland	Henderson North	<u>A64863</u>	-36.85539	174.62383
	Albert Park	<u>A64871</u>	-36.853	174.767
Tauranga	Tauranga Aero Aws	<u>B76624</u>	-37.67068	176.19660
	Tauranga Aero	<u>B76621</u>	-37.67242	176.19635
Christchurch	Christchurch Gardens	<u>H32561</u>	-43.531	172.619
Dunedin	Dunedin, Btl Gardens	<u>I50852</u>	-45.860	170.522

## 2 Data

65 The following data sets were used for training, validating, or transforming the SPGs presented below. Both daily resolution and hourly resolution SPGs are presented here. Daily SPGs benefit from the availability of longer measurement series being available for their training as, prior to the development of automatic weather stations, precipitation data were typically recorded once each day. However, for many applications, especially for highly damaging extreme precipitation events, the distribution of precipitation over the course of a day can be important to resolve. As such, hourly resolution SPGs can have wider utility  
70 than daily SPGs. They suffer, however, from a paucity of data for their training. The benefits of the SPGs at both daily and hourly resolution are presented below.

### 2.1 Daily precipitation observations

Daily weather station precipitation data were obtained from ~~Cliflo~~CLIDB, NIWA’s National Climate Database<sup>1</sup> for four cities in New Zealand: Auckland, Tauranga, Christchurch, and Dunedin. Each data point was the cumulative amount of precipitation  
75 measured each day. These four locations were selected as they represented a range of climatic regimes around New Zealand and are large population centres. The selected locations also had ~~sufficiently long~~ time series of hourly and daily precipitation ~~available~~data sufficiently long to achieve robust training.

In some cases, data from two weather stations were combined in order to generate records of longer duration. When combining ~~sites, we prioritized one site over the other. The~~ data from two sites, the secondary site’s data were used only where data  
80 were not available from the primary ~~preferred site. Cliflo site. CLIDB~~ details for the six stations used for daily data are listed in Table 1. Table 2 ~~details~~ provides key statistics describing the data, after combination, for the four cities.

Additional data points were dropped if the data point’s features (see Sect. 3.1.1) could not be calculated, due to the features requiring precipitation measurements from days with missing data. This treatment of missing data was required to ensure that the neural network (see Sect. 3) saw only valid data. Specifically, this meant that for one day of missing data we would drop

<sup>1</sup><https://cliflo.niwa.co.nz/>

**Table 2.** Key attributes of the combined time series of daily precipitation observations.

City	Duration	Dates	Missing data	Effective missing data
Auckland	159 years	1863–2022	3.5%	3.5%
Tauranga	112 years	1910–2022	0.2%	0.7%
Christchurch	159 years	1863–2022	11.2%	11.5%
Dunedin	109 years	1913–2022	4.2%	8.7%

**Table 3.** Stations providing hourly observations of precipitation. Where more than one station was used to construct the historical record for the location, the stations appear in priority order.

City	Station Name	Latitude	Longitude
Auckland	Auckland Aero	−37.00813	174.78873
Tauranga	Tauranga Aero Aws	−37.67068	176.19660
Christchurch	Christchurch Aero	−43.493	172.537
Dunedin	Dunedin Aero	−45.929	170.196
	Dunedin Aero Aws	−45.92675	170.19684

85 the eight following days, and thus the effective ~~amount~~ percentage of missing data was greater than the ~~amount~~ percentage missing in the source observation time series.

## 2.2 Hourly precipitation observations

Hourly weather station precipitation data for the same four cities were obtained from ~~ChFlo~~ CLIDB (see Table 3). Each data point was the cumulative amount of precipitation seen in the hour before the timestamp.

90 Additional data points were dropped if the data point’s features (see Sect. 3.1.2) could not be calculated, due to the features requiring precipitation measurements from hours with missing data. Specifically, this meant that for one hour of missing data we would drop the 144 following hours, and thus the effective amount of missing data was greater than the amount missing in the source observation time series. Table 4 list the volume of effective missing hourly data for the four locations.

## 2.3 Global-scale temperature anomalies

95 To describe the non-stationarity in the precipitation time series at each location, we sought a climate change covariate that would ~~be absent of~~ not be subject to small-scale temporal and spatial variability, would be easy to calculate for a range of greenhouse gas emission scenarios, and broadly applicable. We settled on the annual mean Southern Hemisphere mean surface temperature over land anomaly, (hereafter  $T'_{SH-land}$ ). Time series of  $T'_{SH-land}$  for a range of different RCP and SSP

**Table 4.** Key attributes of the combined time series of hourly precipitation observations.

City	Duration	Dates	Number of values	Missing data	Effective missing data
Auckland	54 years	1965–2019	395,000	19.3%	28.2%
Tauranga	24 years	1995–2019	214,000	0.7 %	7.6%
Christchurch	59 years	1960–2019	519,000	0.2%	5.5%
Dunedin	57 years	1962–2019	441,000	12.8%	18.7%

greenhouse gas ~~emission-emissions~~ scenarios were obtained from the MAGICC simple climate model (Meinshausen et al., 2009, 2011, 2020). These annual time series extended from 1765 to 2150, and are anomalies with respect to 1765.

MAGICC is a probabilistic reduced complexity model, which was used to produce hemispherical land and ocean surface temperature time series for selected Shared Socio-economic Pathways (SSPs Riahi et al., 2017). MAGICC version 7.5.1 simulations were constrained using a set of historical assessed ranges representative of the IPCC AR5 assessment with some additional updates (Nicholls et al., 2020) as part of the Reduced Complexity Model Intercomparison Project, RCMIP. A similar generation of MAGICC7 was used in various other studies, including IPCC AR6 WG1 and WG3 to assess the warming for a given pathway of emissions or concentrations (Meinshausen et al., 2022). From a 600 member MAGICC ensemble, the ensemble member with the median equilibrium climate sensitivity was used in this study, ~~instead-of-rather than~~ calculating percentiles across the ensemble. This was done to ensure ~~that~~ the results were internally consistent – such that the hemispherical mean annual mean surface temperatures were consistent with global mean annual mean surface temperatures.

We use  $T'_{\text{Global}}$  and  $T'_{\text{SH-land}}$  in Sect. 5 and 2.4.

## 2.4 Regional climate model precipitation simulations

While RCM simulations cannot generate precipitation time series that are unbiased with respect to historical observations and are seldom available at an hourly resolution, they do provide a means of quantifying the non-stationarity in precipitation, especially if observational records are too short to reliably extract the secular climate signal. These RCM simulations can provide a useful validation standard for a non-stationary SPG. To this end we obtained RCM simulations for the New Zealand region from the weather@home project (Massey et al., 2015; Black et al., 2016; Rosier et al., 2015). The weather@home project ~~provided-provides~~ ensembles with many thousands of members, permitting the calculation of statistics with a high degree of confidence, even in the extremes. The resolution of these weather@home simulations was  $0.44^\circ$  and the closest land-based grid cell was selected for each of the stations ~~when data~~. Selecting a single weather@home grid cell may not be best practice when using the precipitation data directly as single grid cells may not be representative of the location ~~as-a-result of due to~~, e.g., inadequately resolved topography, or due to the inability of a climate model to represent weather at this scale. In this study, however, the raw precipitation data are not used, but rather the *sensitivities* of precipitation to a climate covariate (in this case  $T'_{\text{SH-land}}$ ); the field of such sensitivities is expected to be less spatially variable than the precipitation field itself. **As**

to whether Whether a single cell or several neighbouring cells should be used to best quantify the sensitivity of precipitation to  $T'_{SH-land}$  for a given location, is beyond the scope of this analysis but will be a focus of future work.

Three HAPPI (Half a degree Additional warming, Prognosis and Projected Impacts<sup>2</sup>) ensembles were used, representing climates states of 1.5 K, 2.0 K, and 3.0 K above pre-industrial. ~~Only members with simulations spanning the full 600 day period were used.~~ There were approximately 2,500 ~~complete~~ members for each ensemble, each 20 months long, of which we selected the last 12 months. In total, this provided approximately 7,500 years of daily precipitation data for each location.

The  $T'_{Global}$  values were converted to  $T'_{SH-land}$  using the MAGICC scenarios simulations (see Sect. 2.3). The mean of all  $T'_{Global}$  entries was found ~~—~~ across all scenarios (RCP2.6, RCP4.5, RCP6.0, RCP8.5, SSP119, SSP126, SSP245, SSP370, SSP434, SSP460, SSP585), for each year from 1765 to 2150. The mean of all  $T'_{SH-land}$  entries was also found across all scenarios and for each year. The 1.5 K, 2.0 K, and 3.0 K  $T'_{Global}$  values were interpolated to  $T'_{SH-land}$  values, ~~the results are shown below, in see~~ Table 2.4. We then use ~~the interpolated these~~  $T'_{SH-land}$  values ~~as opposed~~ in Sect. 5, when using weather@home.

$T'_{Global}$	$T'_{SH-land}$	<u>Complete # ensemble members</u>
1.5 K	1.728 K	2,543
2.0 K	2.277 K	2,496
3.0 K	3.384 K	2,549

### 3 Model description

Both the hourly and daily SPG use the same neural network and were assessed in a similar manner. The key difference between ~~the hourly and daily~~ SPGs were the number of inputs to the neural network. Using a neural network ~~based approach~~ allows for a simpler implementation, as seasonality and autocorrelation can be learnt without the need to explicitly account for them. In Sect. 3.6 we compare the neural network to a ~~more simple~~ linear model.

#### 3.1 Input features

For every hourly or daily observation in the data sets, ~~we calculated the following features~~ several features were calculated to serve as predictors for the neural network. These features were selected, in part, through a process of trial and error to identify a parsimonious set of features that would provide robust predictability of the precipitation in the next time interval. Results from simpler network architectures informed our choice of the final set of predictors selected. The time span selected for specific features was based, in part, on the level of autocorrelation calculated from the precipitation time series, e.g., it was found that there was little autocorrelation beyond 8 days (see Figs 5 and 6). It is very likely that the set of features finally selected is not the optimal set of features, suggesting scope for future work to explore a far wider range of possible features. The features selected were combined with the observed precipitation for the period, effectively giving  $(X, y)$  training pairs, where  $X$  was a vector of features, and  $y$  the observed precipitation amount for the period.

<sup>2</sup>See <https://www.happimip.org/>

### 3.1.1 Daily features

The following ten features were calculated for every day of ~~observed daily station data sets.~~  
daily observations in each station data set:

- 155
- Average precipitation in the prior 1, 2, 4, and 8 days.
  - Average proportion of days with precipitation above a threshold (1 mm per day), in the previous 1, 2, 4, and 8 days.
  - An annual cycle of variable phase, expressed as ~~a first-order Fourier series, that is one pair of~~ sine and cosine terms.

### 3.1.2 Hourly features

The following sixteen features were calculated for every hour of ~~observed hourly station data sets.~~  
160 hourly observations in each station data set:

- Average precipitation in the prior 1, 3, 8, 24, 48, and 144 hours  
~
  - Average proportion of hours with rain above a threshold (0.1 mm per hour), over 1, 3, 8, 24, 48, and 144 hours  
~
- 165
- An annual cycle and diurnal cycle, each expressed as a ~~first-order Fourier series as above.~~  
pair of sine and cosine terms.

### 3.1.3 Preprocessing features

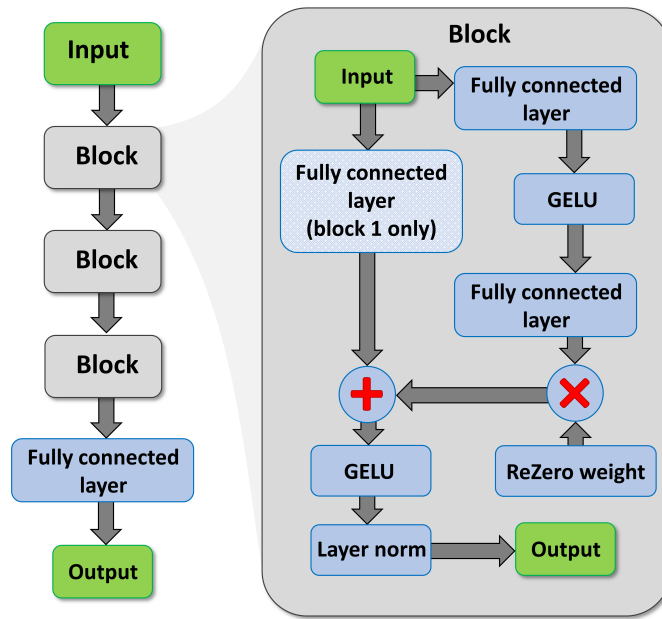
The features were normalized by subtracting their mean and scaling ~~them~~ by their standard deviation before they were fed as input to the neural network. If any of the prior days or hours were missing, ~~then~~ this data point was removed from the training  
170 data set.

While the precipitation data,  $y$ , were scaled by the standard deviation, the mean was not subtracted, as we wanted to ensure the precipitation remained positive. This scaling was ~~reversed after~~ reversed when producing a synthetic precipitation value ~~in~~  
(see Sect. 3.5).

## 3.2 Neural network structure

175 Artificial neural networks (Krose and Smagt, 2011) ~~;~~ typically comprise many thousands of neurons, each of which ~~calculate~~  
calculates a weighted sum of all their inputs ~~;~~ then are which is then transformed using an activation function. The neurons are arranged into layers: an input layer (with the number of neurons equal to the number of inputs), a number of intermediate – known as “hidden” – layers, and a final output layer (with the number of neurons equal to the number of desired outputs).





**Figure 1.** The neural network architecture used in the daily and hourly SPGs. The inset on the right shows the detail of each of the three primary blocks shown on the left. Note that only the first block includes the fully connected layer on the identity path (downward arrow to the left of the block).

The neural networks underlying the SPGs took the features (described in Sect. 3.1) as inputs. The outputs of the network were used to specify parameters of precipitation distribution functions (described in Sect. 3.3). ~~The Several architectures of increasing complexity were developed and tested until a somewhat arbitrarily defined performance target was achieved. A full exploration of all possible architectural choices and their associated parameter spaces was not performed; there may well be superior architectures to that presented here. The results presented here indicate one possible approach and we encourage the community to explore alternative and superior architectures.~~

~~The final architecture arrived is described in Fig. 1. This architecture is based on that used in the construction of transformers (Wolf et al., 2020) but excluding the self-attention components. The internal structure of the network was arranged in comprises three repeating blocks (see followed by a fully connected layer. The three hidden layers ('blocks' in Fig. 1) ,where the hidden layers within the network were all are each 256 neurons wide.~~

~~The neural network architecture used in the daily and hourly SPGs.~~

~~Each block consisted~~ The input received by each block immediately bifurcates along two different paths. The first, hereafter the identity path, passes the input directly to a ResNet (see below) while the second passes the data to a sandwich of a fully connected layer, activation, a GELU activation function (Hendrycks and Gimpel, 2016), and then another fully connected layer, this was followed by a ResNet (He et al., 2016) connection, then activation and finally applies layer normalization. The output of this sandwich is multiplied a by very small weight, close to zero, and similar to the ReZero technique introduced

195 ~~by Bachlechner et al. (2021). This multiplication ensures that after the initialisation, the intermediate layers of the neural network essentially just replicate their input, reducing the signal-to-noise ratio, and aiding convergence. The output from the multiplication is combined with the identity path via a ResNet (shown with the + sign in Fig. 1).~~ ResNets, known as residual neural networks, are typically arranged in blocks, where the input to a block is added back to the output of a block, giving an alternative path (the identity path) for gradients to flow and forcing the neural network block to learn a residual on top of the  
200 input. ~~ResNets are widely used within deep learning, as Because~~ they are easier to optimize and allow the training of deeper neural networks. ~~ResNets are widely used within deep learning. The output from the ResNet feeds another GELU activation and then finally layer normalization is performed.~~ Layer normalization is a technique ~~used~~ to normalize the activations of intermediate layers (Ba et al., 2016) ~~;~~ which helps stabilize the learning process and preforms some regulation. ~~We used the GELU function, introduced by Hendryeks and Gimpel (2016), as the activation function for the intermediate layers. Within the~~  
205 ~~ResNet layer, the output before the addition with the identity path was multiplied by a very small weight close to zero, similar to the ReZero a technique introduced by Bachlechner et al. (2021), this ensures that after the initialisation the intermediate layers of the neural network essentially just replicate their input, reducing the signal-to-noise ratio, and aiding convergence.~~

As the dimensionality of the input was not 256 (it was between 10 and 17; see Sect. 3.1 and 5), an extra fully connected layer was ~~added across the top of the~~ ~~inserted on the~~ identity path of the network to increase the dimensionality to 256. ~~The extra~~  
210 ~~fully connected layer is shown on the top left of~~ ~~This ensures dimensional compatibility at the concatenation stage (+ sign in Fig. 1) in the first block.~~ The neural network outputs a collection of real numbers; in Sect. 3.3 we discuss how these numbers are used to model precipitation. The neural networks underlying the SPGs were implemented using the machine learning libraries JAX (Bradbury et al., 2018) and Flax (Heek et al., 2020). Each neural network comprises approximately 200,000 parameters, although the actual number of parameters differs slightly across SPG simulations, depending on the number of input features  
215 and the number of output values.

### 3.3 Neural network outputs: precipitation distribution

For each period (either daily or hourly), the precipitation is simulated in two stages. The first stage selects whether precipitation occurs. Then, in the second stage, if precipitation did occur, the depth of precipitation is ~~selected~~ ~~determined~~. The outputs from the neural network are used as parameters for both stages.

220 The first two network outputs ( $p_d$  and  $p_w$ ) are used as parameters to model the probability of precipitation occurrence. Softmax, also known as the normalized exponential function, was applied to these first two parameters to ensure they represented probabilities (and always summed to one, thus  $p_w = 1 - p_d$ ). The first parameter,  $p_d$ , represents the probability that the period was dry, and the second parameter,  $p_w$ , represented the probability of a wet period.

If precipitation occurred, another distribution is used to model the depth of the precipitation. Katz (1977) previously employed a gamma distribution to model precipitation. We found that a mixture of two gamma distributions and two general-  
225 ized Pareto distributions provided a superior fit ~~;~~ ~~as this combination avoided over-fitting while still appropriately extreme precipitation which is not the case when using~~ a single gamma distribution ~~significantly underestimated which significantly underestimates~~ extreme precipitation. ~~Other mixtures of distributions, including Weibell distributions, were tested. Mixtures~~

incorporating Weibull distributions tended to generate excessively large extreme precipitation (unbounded) values and so were  
230 discarded; minimising the loss was not the only factor used to select the optimal mix of distributions.

Some parameters learned by the model ~~are required to be positive,~~ such as the scale and shape parameter of the gamma  
distributions, are required to be positive. To ensure such constraints, they were passed through  $\text{elu}(x) + 1$ , where  $\text{elu}(x)$  is the  
exponential linear unit function (Clevert et al., 2015). For the generalized Pareto distribution, the location parameter was set to  
zero, and both the shape and scale were forced to be positive. While the shape can conceivably be negative for a generalized  
235 Pareto distribution, allowing it to be negative led to training instabilities. This resulted in two parameters being used for each  
of the four distributions, with a further four parameters being used to weight the distributions within the mixture, for a total of  
12 parameters used to model the amount of precipitation. Again, we applied softmax to the weightings of the mixture model  
to ensure they summed to one.

Equation (1) shows the log probability density function used within the loss function (see Sect. 3.4). The probability of a  
240 dry period (either day or hour) is given by  $p_d$ , and  $p_w$  is the probability of a wet period, while  $r$  is the rain period threshold,  
~~which is i.e.,~~ the threshold under which the period is considered dry. The rain period threshold was set to 1.0 mm per day for  
the daily data set and 0.1 mm per hour for the hourly data set. A threshold of 0.1 mm per day for the daily data was found to  
lead to poor performance in the precipitation extremes. The variable  $y$  is the precipitation from the training data set ~~and,~~  $P_i$   
is the probability density function of distribution  $i$  in the mixture model and  $w_i$  is the weighting of the corresponding component  
245 in the mixture model. In this case,  $n$  is set to four, as there are four distributions in the mixture model. For each distribution  
in the mixture,  $y - r + \epsilon$  is passed to the corresponding probability density function. ~~This is because each~~ Each distribution is  
designed to model positive values ~~starting from zero.~~ We add  $r$  back to the precipitation depth when sampling (see Sect. 3.5),  
and we set  $\epsilon$  to  $10^{-8}$  for numerical stability.

$$\log\_pdf(y) = \begin{cases} \ln(p_d) & \text{if } y < r \\ \ln(p_w) + \ln\left(\sum_{i=1}^n (w_i P_i(y - r + \epsilon))\right) & \text{if } y \geq r \end{cases} \quad (1)$$

### 250 3.4 Training

A single station's observed precipitation data was used in every training run. In training the daily SPG, the last 1,000 entries  
(not quite three years) were kept aside for validation. In training the hourly SPG, the last 10,000 entries (slightly more than a  
year) were used for validation. A one-step-ahead prediction over the last 1,000 or 10,000 observations was used to calculate  
the validation loss. The remainder of the data were used for training. The batch size was set to 256, ~~this means therefore~~ 256  
255 samples from the training data set were evaluated every training step. The mean negative log-likelihood (the negative, mean  
of Eq. (1) across a batch) was used as the training loss function, ~~we~~ the model was trained for up to 40 epochs. Although  
minimising the negative log-likelihood is equivalent to maximising the likelihood, using the log-likelihood results ~~in better~~  
~~numerical stability~~ avoids numerical underflow when dealing with small probabilities as it requires a summation as opposed  
to a product. The training process can be thought of as the neural network trying to produce the parameters for Eq. (1) ~~;~~  
260 maximize the probability of observing the precipitation in the training data sets given the corresponding features (see Sect. 3.1).

The neural network was optimized using Lookahead (Zhang et al., 2019), with AdamW (Loshchilov and Hutter, 2017) as the inner optimizers, a weight decay of 0.01, b1 of 0.9 and b2 of 0.999. Lookahead was configured with a slow weight step of 0.5, and synchronization period of 5 steps. A cosine learning rate scheduler was used, with a maximum learning rate of  $10^{-3}$  and a minimum learning rate of  $10^{-7}$ , with a warm-up from  $10^{-6}$  to  $10^{-3}$  for the first 300 training steps. The maximum number of decay training steps, after which the learning rate would stay at the minimum, was set to 5,000 for training the daily SPG and 50,000 for training the hourly SPG. We used the implementation from the Optax library (Hessel et al., 2020) to configure our optimizer.

### 3.5 Generating precipitation time series

To validate the SPGs through comparisons with the observed station data, precipitation series were generated by the SPGs over the same time range as the historical data set, but without any gaps. To initiate the simulation, the first eight days of precipitation for the daily SPG or the first 144 hours for the hourly SPG, were extracted from the observations. These were used to calculate the inputs for the neural network (as per Sect. 3.1), which then iteratively generates the next day or hour of precipitation. This next data point is then appended to the precipitation series. The extended time series is then used to calculate the input features for the next hour or day, in a sliding window manner.

Recall that the neural network generates 14 parameters, which are then used to generate the precipitation distribution (see Eq.(2)). In order to Eq. 2). To generate a precipitation time series, we sample from this distribution using two random uniform numbers,  $u_1$  and  $u_2$ .  $u_1$  is used to sample from the dry-day part of the distribution. If  $u_1$  is smaller than  $p_d$ , (the probability of a dry day – the first parameter from the neural network), the precipitation is set to zero. If  $u_1 \geq p_d$ , the precipitation depth is sampled from the mixture using  $u_2$ , i.e., we sample from the mixture of size  $n$  (in this case four), by summing the quantile function (also known as the percentage point function),  $Q_i$ , at  $u_2$  of each mixture and multiplying it by its corresponding weight ( $w_i$ ). The mixture model distributions were constructed as described in Sect. 3.3. Finally, we added add  $r$  back to the precipitation as we had previously subtracted it, as described in Sect. 3.3. Therefore, the daily SPG does not produce non-zero precipitation below 1 mm per day, and the hourly SPG does not produce non-zero precipitation below 0.1 mm per hour.

$$y_{pred} = \begin{cases} 0 & \text{if } u_1 < p_d \\ r + \sum_{i=1}^n (w_i Q_i(u_2)) & \text{if } u_1 \geq p_d \end{cases} \quad (2)$$

Very rarely, the SPG produces invalid precipitation values or precipitation values much too high. We used expert judgment to give an upper bound judgement to prescribe upper bounds on the maximum daily and hourly precipitation accumulations for each location (see Table. 5). If the precipitation accumulation exceeded accumulated precipitation exceeded the bound for the given location, or if the precipitation was invalid, then the precipitation was sampled from the mixture model again.

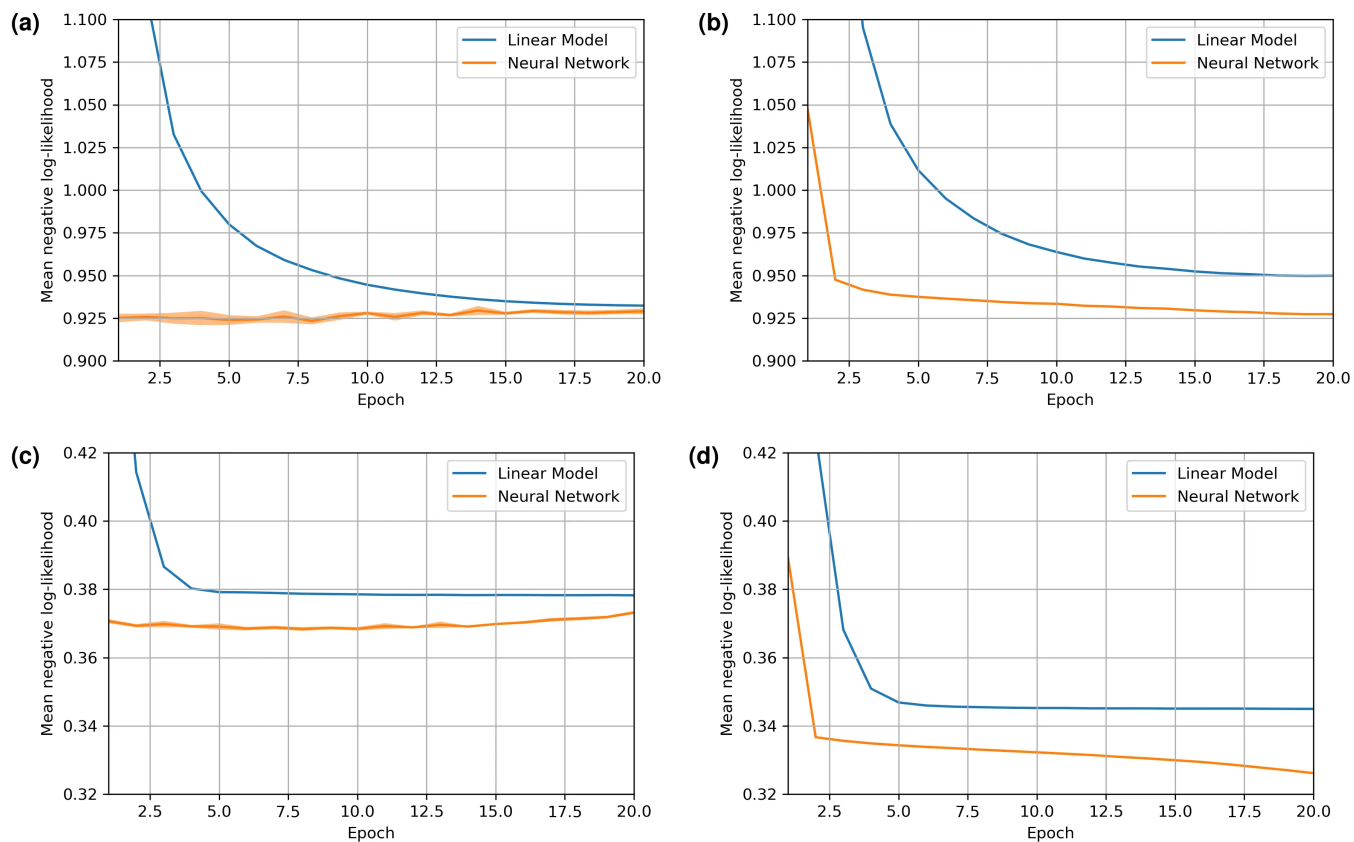
**Table 5.** ~~Maximum~~ Imposed maximum daily and hourly precipitation for the given locations, for the daily SPG and hourly SPG respectively.

City	Maximum daily precipitation	Maximum hourly precipitation
Auckland	250 mm	80 mm
Tauranga	300 mm	80 mm
Christchurch	180 mm	40 mm
Dunedin	220 mm	40 mm

### 3.6 Neural network versus linear model

290 A common question that arises when creating a neural network based ~~SWG~~SWG is whether using a neural network actually improves the performance of the model. To investigate this, the neural network within each of the SPGs was replaced with a single linear layer, including a bias, with everything else left the same. Despite replacing the neural network with a single linear layer akin to multiple linear regression, the problem is still formulated as a non-linear optimization problem due to the complex distributions used within the mixture model. Both the linear and neural network based SPG were trained on the hourly  
295 and daily Auckland data sets, with five different random seeds. The results were then averaged.

The mean validation loss, and training loss, for the daily and hourly SPGs using the linear model and the neural network based model are shown in Fig. 2. Given the relatively large volume of data available for training, the mean validation loss approached the minimum loss within the first epoch. For the daily SPG, the neural network ~~achieves~~achieved a minimum average validation loss of 0.926, while the linear model achieved a minimum average validation loss of 0.932 showing the  
300 superior performance of the neural network based SPG. For the hourly SPG, the neural network achieved a loss of 0.369 while the linear model achieved a loss of 0.378, again showing the superior performance of the ~~neural-network~~neural-network based SPG. The neural network also converges much faster than the linear model. ~~After about 10 epochs~~The mean negative log-likelihood minimises within the first few epochs (generally before or at epoch 6 for the daily SPG and epoch 10 for the hourly SPG - depending on which of the five ensemble members are considered). Thereafter, the neural network begins to  
305 ~~overfit as~~slightly overfit, indicated by the validation loss ~~starts increasing~~starting to increase while the training loss continues to decrease. It is therefore important to employ early stopping when training the neural network. Hereafter, we report only results generated by the neural ~~network-based~~network-based SPGs.



**Figure 2.** (a) Mean validation loss for the daily SPG, (b) Mean training loss for the daily SPG, (c) Mean validation loss for the hourly SPG, (d) Mean training loss for the hourly SPG. All SPGs were trained for Auckland. The mean ~~over~~ of five training runs are shown with 95% confidence intervals displayed as shading; the confidence intervals are not always visible as the uncertainties are very small.

## 4 Stationary SPG quality assessment

### 4.1 Quantile-quantile comparisons

310 Quantile-quantile (QQ) plots of SPG simulated precipitation against station observed precipitation provide ~~an initial useful a~~  
measure of any biases in the magnitude of the precipitation simulated by the SPG. Ideally, points on the QQ plot should lie on  
the  $y = x$  line but due to the stochastic nature of the SPGs, some ~~variance deviation~~ from this line is to be expected. QQ plots  
for the four sites are shown in Fig. 3 for the daily resolution SPG and in Fig. 4 for the hourly resolution SPG. For most days,  
there is no precipitation – for the cities studied, on average, it is dry (less than 1.0 mm per day) 68% of the time. For hourly  
315 precipitation, it is dry (less than 0.1 mm per hour) 96.9% of the time. As a result, the ~~25th percentile and 50th~~ 25<sup>th</sup> percentile  
and 50<sup>th</sup> percentile (equivalent to the median) are usually zero as shown by the orange dots in Fig. 3 and Fig. 4.

The QQ plots in Fig. 3 and Fig. 4 show that the SPGs approximate very well the original distributions of precipitation  
intensity. The daily SPG overestimates the extremely high precipitation (>50mm per day) values over Auckland, Tauranga  
and Christchurch by  $10 \pm 14\%$  but shows little, if any, bias for Dunedin. For the hourly SPG, at all four sites, there is no  
320 significant bias against the observations.

For both the daily and hourly SPG, it is clear that precipitation depths outside the range of the training data can be simulated.

### 4.2 Autocorrelation

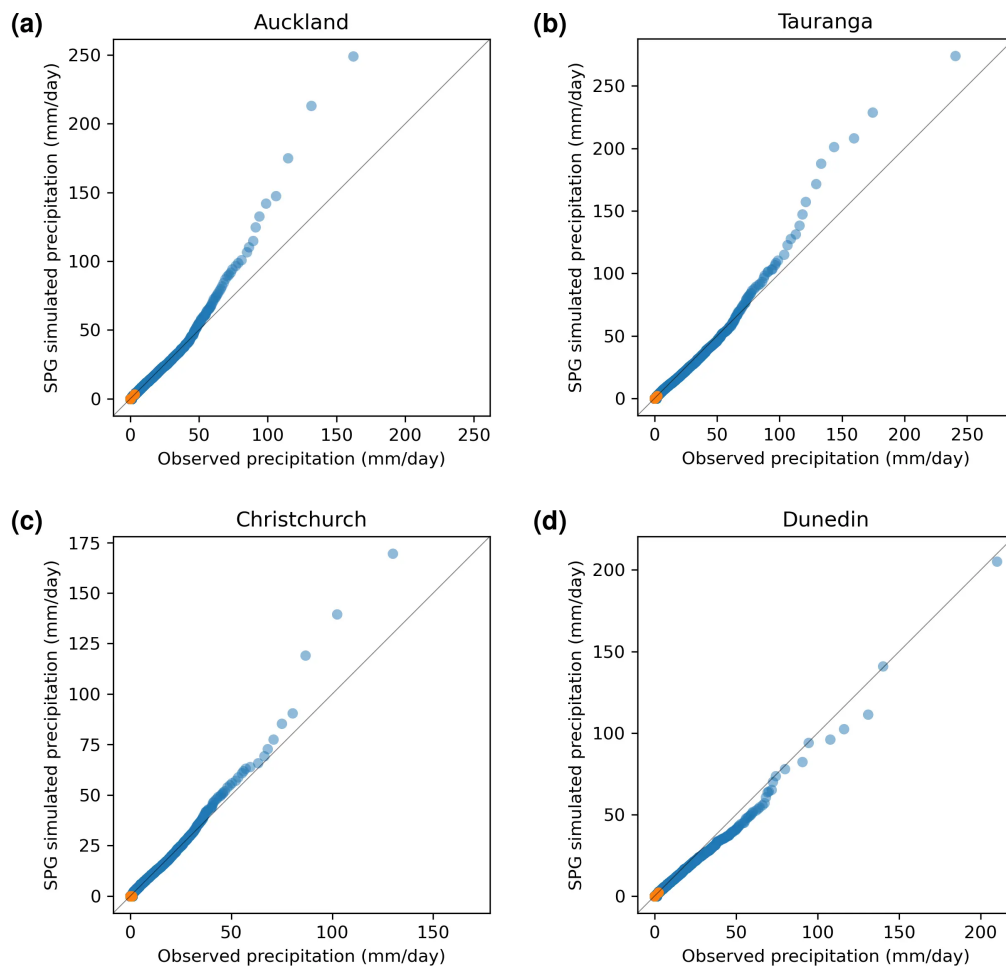
While the QQ plots are useful for assessing the extent to which the SPGs can simulate the correct distribution of precipitation  
intensity, they are agnostic to the sequence of the precipitation and provide no assessment as to whether the cadence of pre-  
325 cipitation is simulated correctly. To that end, we first consider the extent to which the SPGs can simulate the autocorrelation  
observed in the precipitation time series. Correlation coefficients for the daily SPG for all four sites for a range of lags (in  
days) are shown in Fig. 5. The equivalent for the hourly SPG are shown in Fig. 6).

In general, the daily SPG does an excellent job in replicating the observed autocorrelation, and slightly underestimates  
the autocorrelation in the hourly SPG. At Auckland, the daily precipitation observations show low but non-zero levels of  
330 autocorrelation all the way out to about 70–80 days lag (Fig. 5a). This is likely caused by the strong seasonality in precipitation  
seen in Auckland (see Sect. 5.4). The daily SPG appears to simulate well that structure in the autocorrelation.

### 4.3 Dry-spell duration and cadence

Another precipitation cadence attribute which is important for the SPGs to simulate correctly is the dry spell length, i.e. the  
number of consecutive days where precipitation is less than 1.0 mm per day. This is essential if the SPG is to be used to simulate  
335 drought conditions for any location. To that end, Fig. 7 shows QQ plots of dry spell length for all four locations. The daily SPG  
shows an excellent ability to simulate correctly the frequency of dry spell lengths at all four locations. The deviations from 1:1  
correspondence at the longer dry spell lengths (the rightmost few data points of the 10,000 data points describing the quantiles)





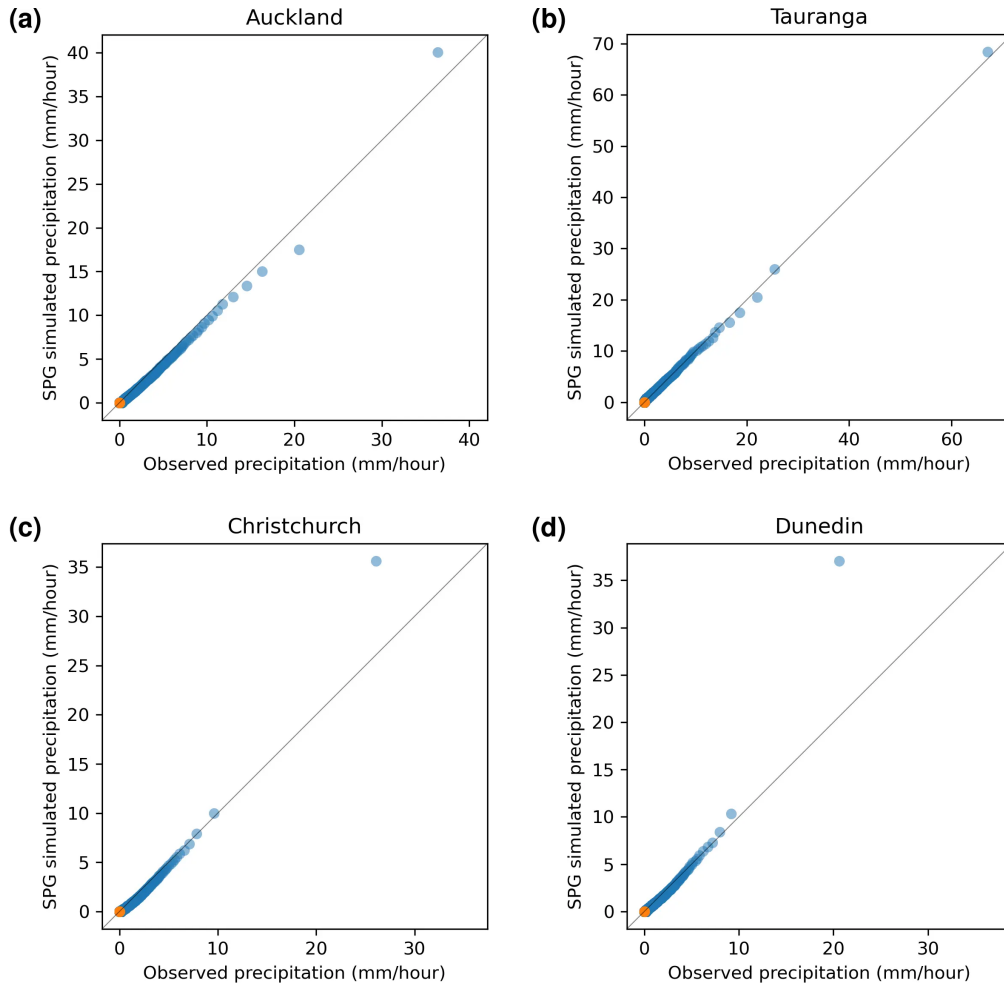
**Figure 3.** Quantile-quantile plots of simulated precipitation produced by the daily SPG against observed precipitation. Orange point-points indicate quartiles.

most likely result from the stochastic nature of the SPGs. This suggests that this SPG could form the basis for drought-based studies if more variables describing key drought parameters, such as temperature and solar radiation, were added.

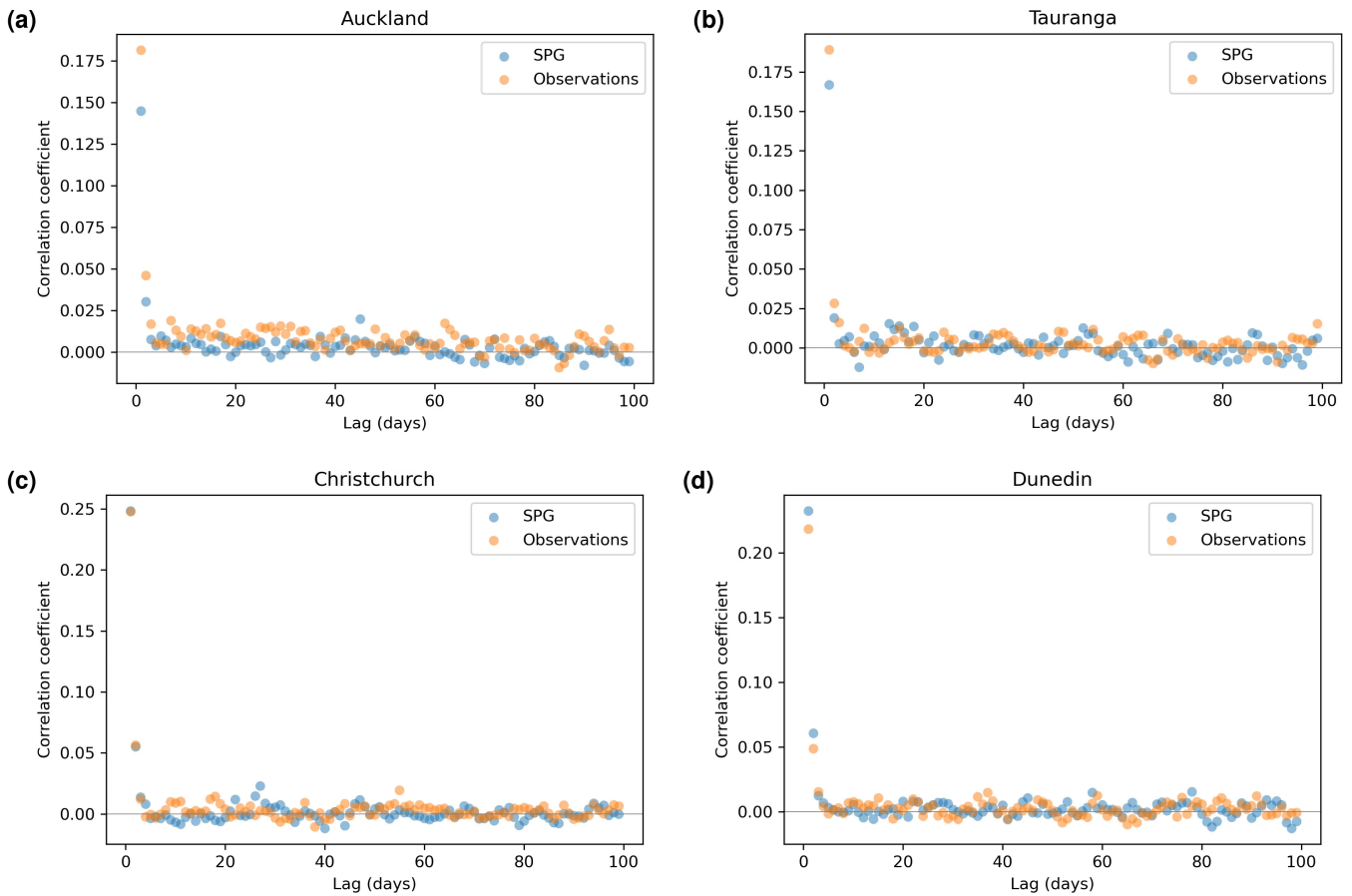
340 To produce the dry-spell QQ plots for the hourly SPG shown in Fig. 8, both the station data and the SPG simulated data were first resampled to daily frequency prior to calculating the dry spell lengths. The hourly SPG also shows strong skill in simulating dry spell lengths with perhaps a small underestimation for Tauranga and overestimations at the very longest dry spell lengths for Auckland, Christchurch and Dunedin.

#### 4.4 Seasonality

345 To assess whether the SPGs simulate the seasonality of the precipitation correctioncorrectly, dry-day seasonality was calculated as the proportion of days in a given week of the year that had less than 1.0 mm per day of precipitation. The dry-hour seasonality



**Figure 4.** Quantile-Quantile plots of simulated precipitation produced by the hourly SPG against observed precipitation. Orange [point points](#) indicate quartiles, these are generally too close to zero to distinguish.



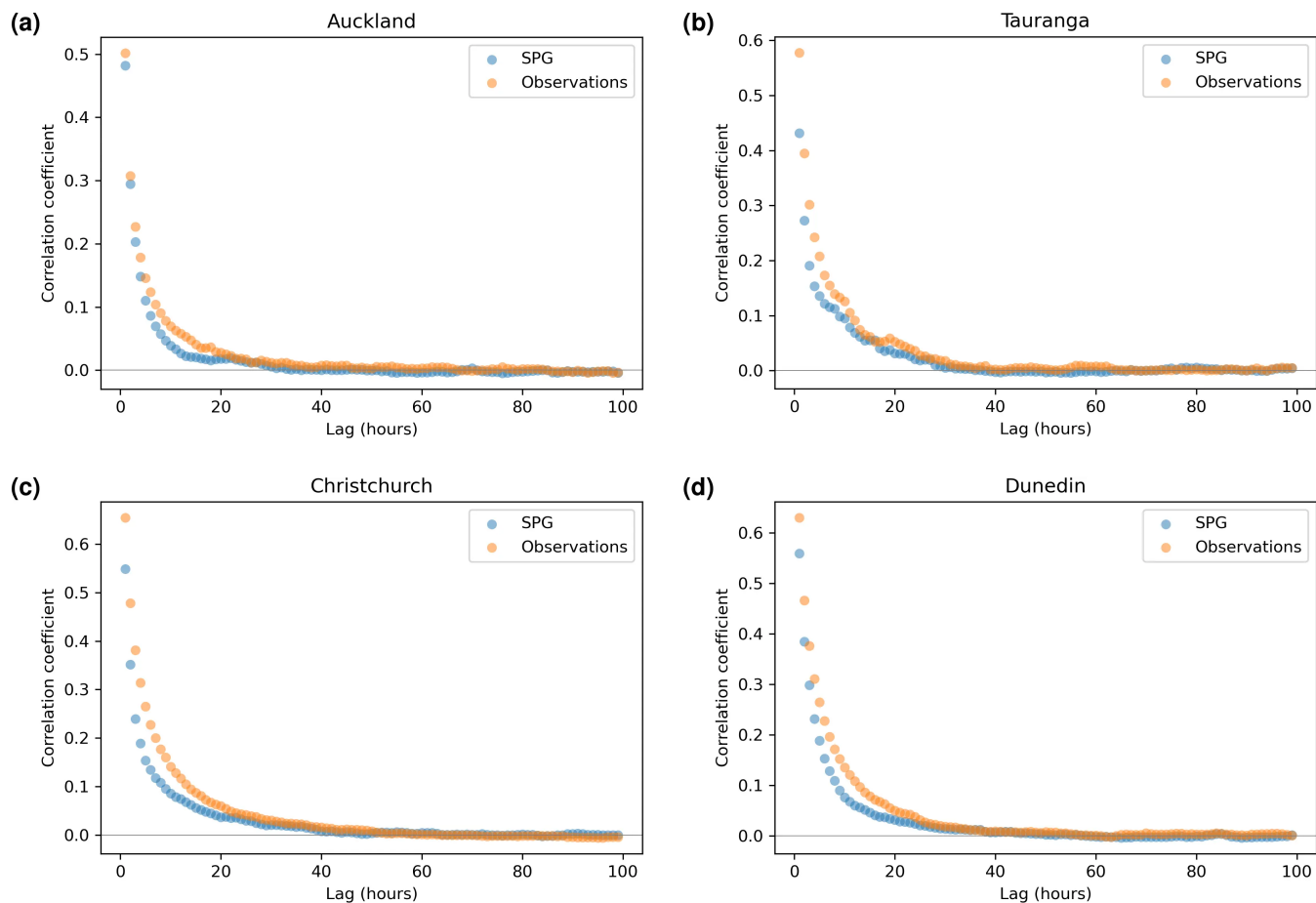
**Figure 5.** Autocorrelation plots for precipitation simulated by the daily SPG and for observed precipitation.

was calculated similarly, but with a threshold of 0.1 mm per hour. We focused on dry-day seasonality, as there was little seasonality in the wet day precipitation depths.

Auckland displays the strongest seasonality in dry-day-dry-day proportions, and the daily SPG simulates this seasonality extremely well (see Fig. 9a). The dry-hour-dry-hour proportions from the observations for Auckland (Fig. 10a) showed a weaker, more noisy signal compared to the daily observations; this. This was likely caused by the far shorter hourly observation period (around half the number of years). The hourly SPG somewhat underestimates the seasonality in the proportion of dry hours for Auckland (Fig. 10a).

Tauranga also shows a strong daily seasonal cycle in the proportion of dry-days-dry-days, which was also excellently simulated by the daily SPG (Fig. 9b). The hourly SPG captures, to some extent, the weak seasonal cycle in the proportion of dry hours in Tauranga.

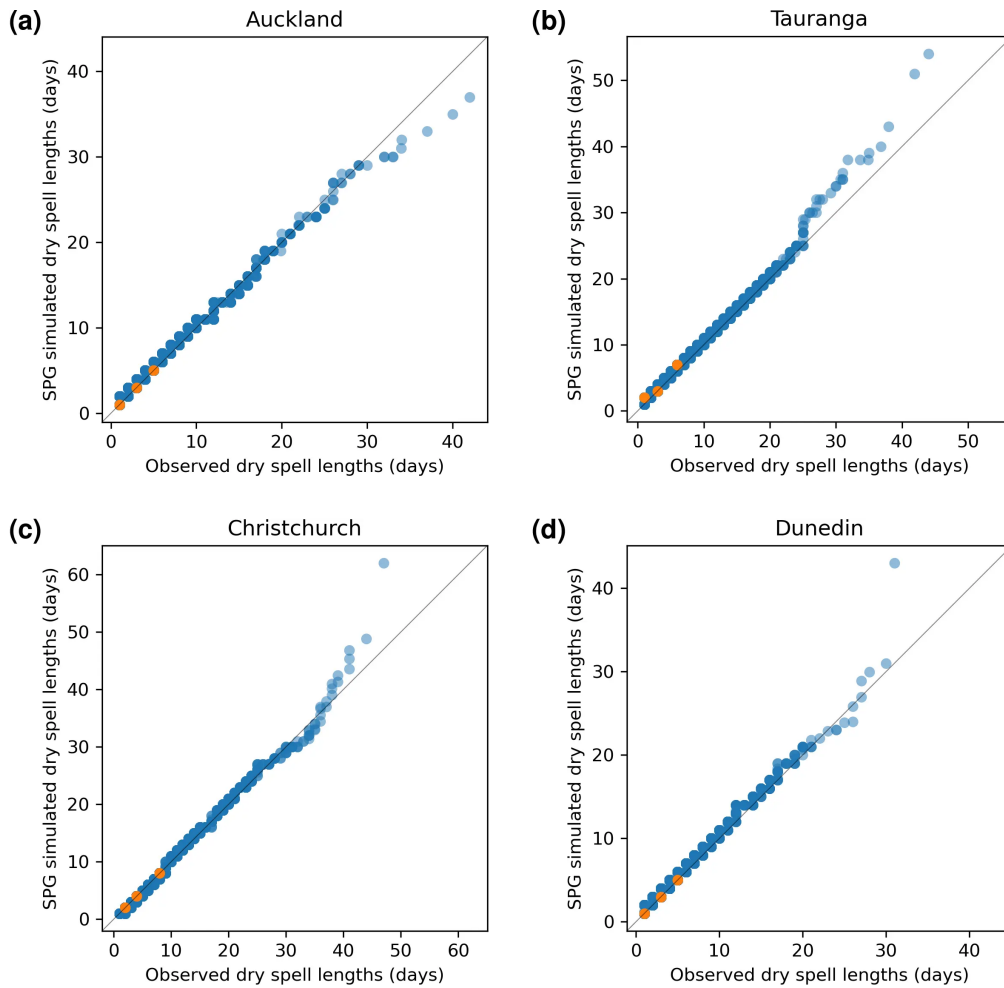
While neither Christchurch (Fig. 9c) nor Dunedin (Fig. 9d) show strong seasonality, the daily SPG simulates their weak seasonality well.



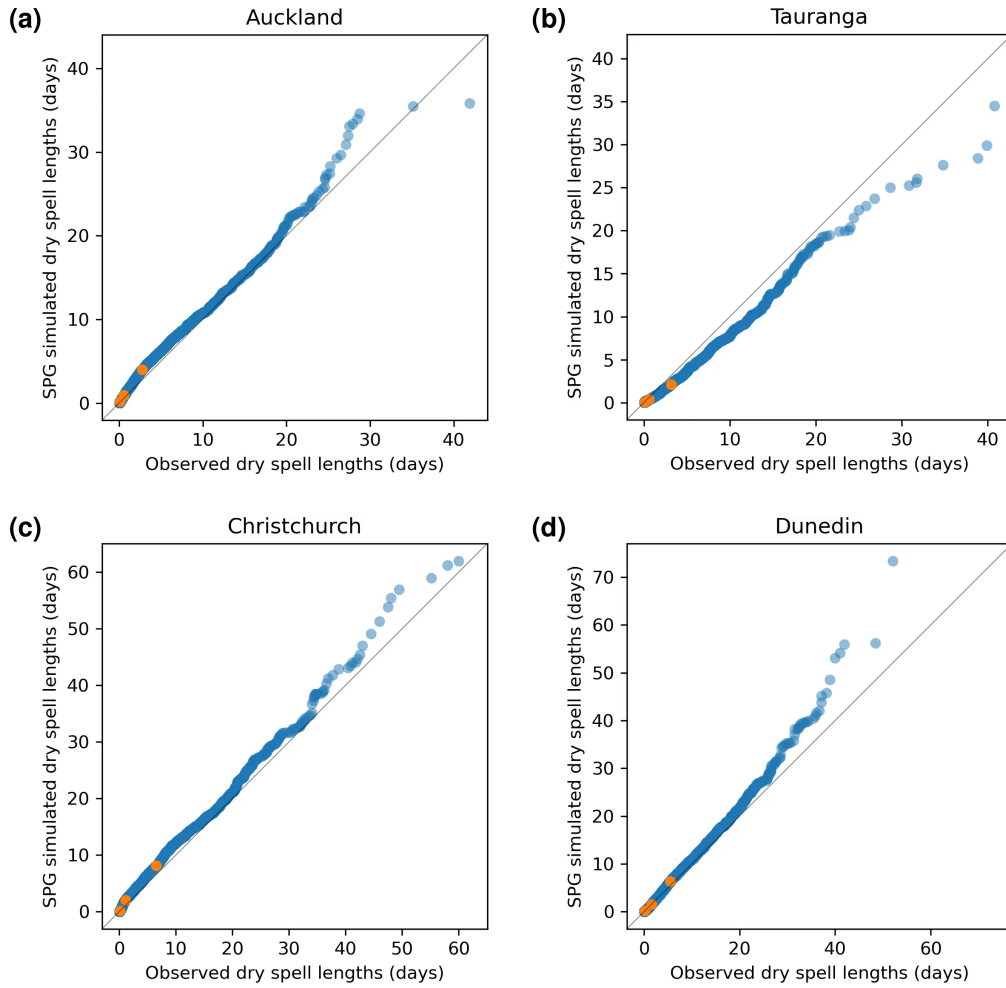
**Figure 6.** Autocorrelation plots for precipitation simulated by the hourly SPG and for the observed precipitation.

Christchurch appears to have a more clear seasonality in [the](#) proportion of dry hours (Fig. 10c) that was simulated well by the hourly SPG, albeit with a small offset. The hourly SPG, simulates well the lack of seasonality in Dunedin's proportion of dry hours, although also with a slight offset (Fig. 10d).

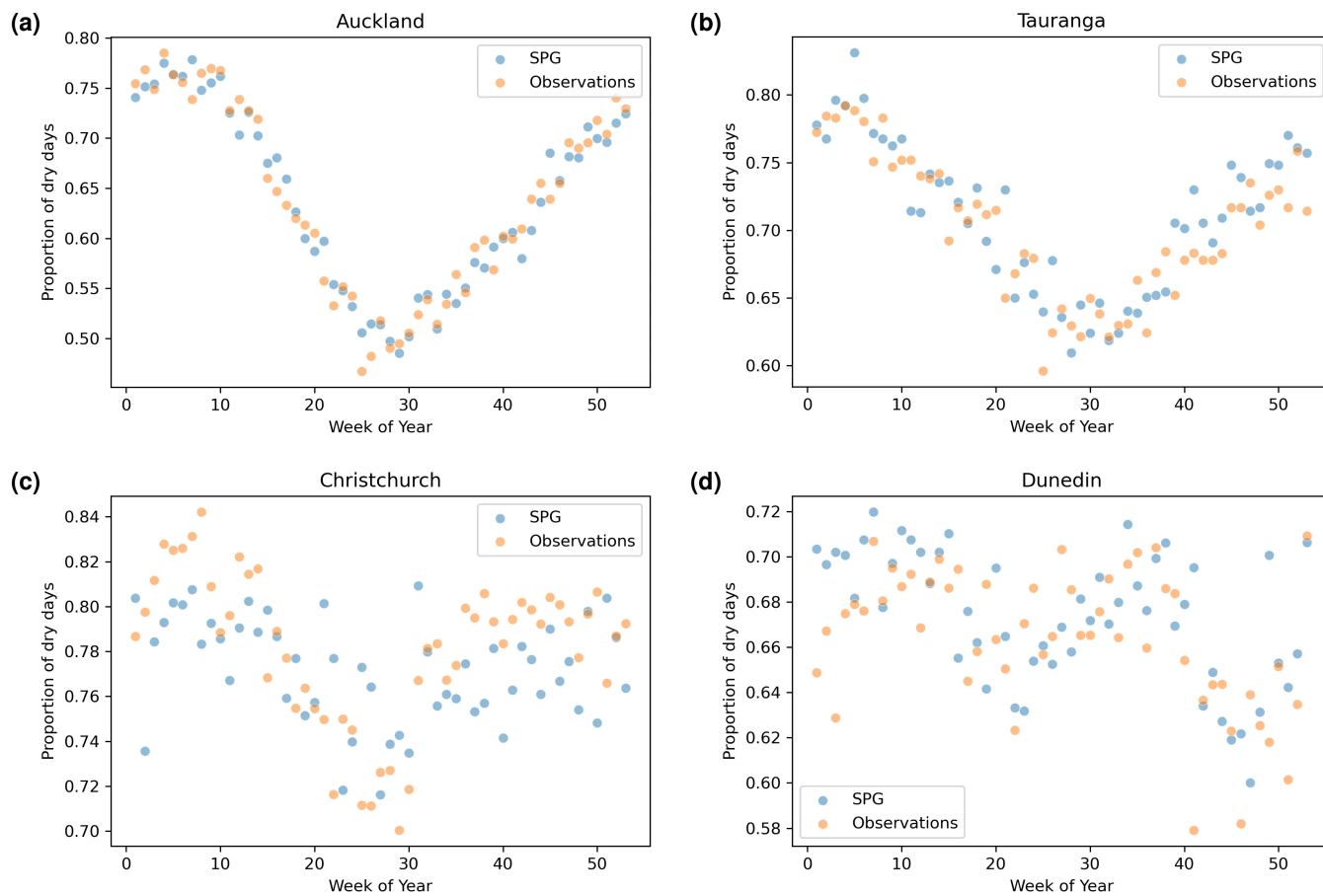
#### 4.5 [Discussion](#) [Statistical Summary](#)



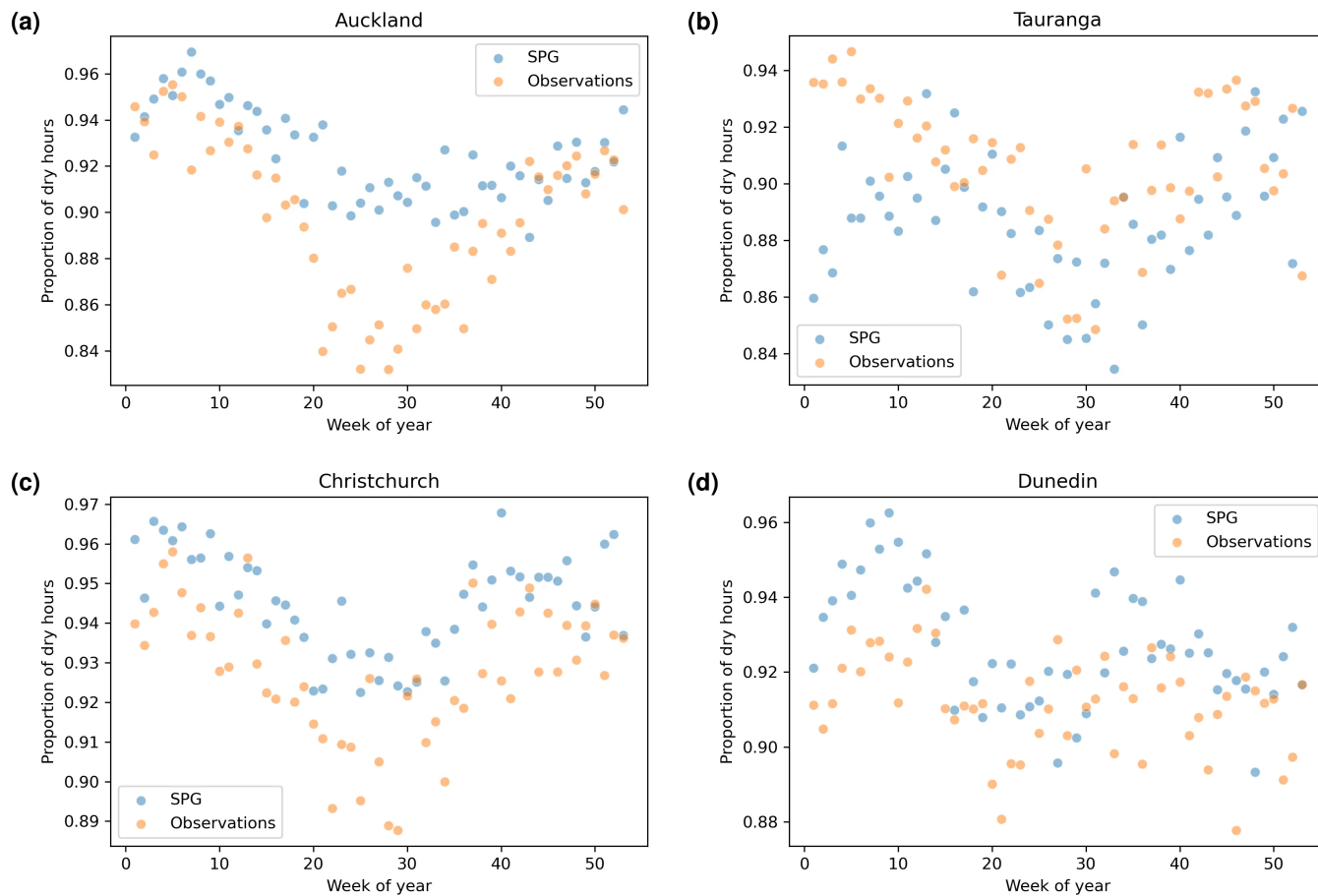
**Figure 7.** Quantile-quantile plots for simulated dry-spell lengths produced by the daily SPG against observed dry-spell lengths. Orange points indicate quartiles.



**Figure 8.** Quantile-quantile plots for simulated dry-spell lengths produced by the hourly SPG against observed dry-spell lengths. Orange points indicate quartiles.



**Figure 9.** Dry day proportion (proportion of days in a given calendar week of the year with precipitation less than 1 mm per day) against the week number of the year.



**Figure 10.** Dry hour proportion (proportion of hours in a given calendar week of the year with precipitation less than 0.1 mm per hour) against the week number of the year.



	<u>10-year return period [mm/day]</u>	<u>100-year return period [mm/day]</u>
<u>Dunedin SPG</u>	<u>114.89</u>	<u>193.62</u>
<u>Dunedin Obs</u>	<u>103.46[90.54 – 121.27]</u>	<u>204.78[149.64 – 319.96]</u>
<u>Tauranga SPG</u>	<u>203.49</u>	<u>283.84</u>
<u>Tauranga Obs</u>	<u>147.40[134.83 – 166.72]</u>	<u>227.25[187.08 – 307.10]</u>
<u>Christchurch SPG</u>	<u>103.31</u>	<u>163.86</u>
<u>Christchurch Obs</u>	<u>74.43[67.55 – 82.92]</u>	<u>134.80[106.91 – 177.50]</u>
<u>Auckland SPG</u>	<u>156.88</u>	<u>233.51</u>
<u>Auckland Obs</u>	<u>106.27[97.77 – 116.25]</u>	<u>179.90[151.17 – 224.64]</u>

**Table 6.** 1-day precipitation extremes for 10 and 100 year return periods, calculated from the daily observations and a large ensemble from the daily SPG. 90% confidence bounds for the observation are shown in square brackets.

~~The neural network approach produces good results for both~~

365 ~~We generated a large ensemble of daily and hourly data sets when measured by the reproduction of the original distribution (QQ-plots) SPG simulations, totalling over 13, the reproduction of the original distribution's autocorrelations, by reproduction of the original distribution's dry-spell lengths, 1000 years of precipitation data, for each location. To analyse the extremes for the SPG simulations, and given the large volume of data, we did not need to fit extreme value distributions but rather simply we took annual block maximum and then calculated precipitation depths (mm/day and mm/hour) for 10-year and by acceptable reproduction of the seasonality of the proportion of dry periods. 100-year return periods directly from quantiles of the block~~  
370 ~~maxima (see Table. 6 and Table. 7). For the observations, however, with a single time series, it was necessary to fit generalized extreme value (GEV) distributions to the 1-year block maxima (Coles et al., 2001). 90% confidence intervals were calculated using a parametric bootstrap. Overall, the daily SPG performs adequately in simulating the extremes. However, there is some overestimation of the extremes at Auckland and Tauranga. The hourly SPG accurately reproduces the extremes at all locations, except for Auckland, for which there is some overestimation. The middle and upper-bound estimates for the observations at~~  
375 ~~Tauranga are very likely too high as a result of the exceptionally short hourly precipitation record available at this location (only 24 years of data). All the other locations have a sufficient volume of data to produce reasonable estimates.~~

Tables 8 and 9 summarise various other statistics for the daily and hourly precipitation data, respectively. We used the same large SPG ensemble as above but apply the same methodology to both the observations and the SPG simulations when

	10-year return period [mm/hour]	100-year return period [mm/hour]
<u>Dunedin SPG</u>	<u>18.81</u>	<u>31.56</u>
<u>Dunedin Obs</u>	<u>13.95</u> [12.20 – 16.93]	<u>24.40</u> [17.20 – 43.55]
<u>Tauranga SPG</u>	<u>51.93</u>	<u>75.49</u>
<u>Tauranga Obs</u>	<u>48.25</u> [32.85 – 85.75]	<u>165.94</u> [54.10 – 1010.23]
<u>Christchurch SPG</u>	<u>17.21</u>	<u>29.69</u>
<u>Christchurch Obs</u>	<u>16.59</u> [14.18 – 19.56]	<u>31.03</u> [21.15 – 47.44]
<u>Auckland SPG</u>	<u>37.97</u>	<u>67.60</u>
<u>Auckland Obs</u>	<u>29.42</u> [27.14 – 31.97]	<u>37.36</u> [31.55 – 44.32]

**Table 7.** 1-hour precipitation extremes for 10 and 100 year return periods, calculated from the hourly observations and a hourly ensemble from the daily SPG. 90% confidence bounds for the observation are shown in square brackets.

calculating these statistics. The wet proportion represents the percentage of the year when it is raining on any given hour or day. We used a threshold of 1.0 mm/day for a daily precipitation and 0.1 mm/hour for the hourly precipitation. Both the wet proportion and the annual precipitation were first calculated on an annual basis, the means derived, and the 90% confidence intervals calculated. The daily SPG accurately captures the annual precipitation and wet-day proportion. The standard deviation of annual mean precipitation was also calculated to understand whether the SPG produced sufficient year-to-year variability, as the SPG has no intrinsic input features to capture this variability. Table 8 suggests that daily SPG largely captures this variability, with only small underestimation in Auckland and Tauranga. The hourly SPG, whose statistics are summarised in Table 9, underestimates the variability at all locations. This may be largely due to the SPG underestimating the annual mean precipitation at all locations, except Tauranga. The poor performance of the hourly SPG, compared to the daily SPG, on the annual precipitation, is likely due to a poor estimate of the wet day proportion. Improving how the hourly SPG estimates the wet-hour probability is a target for future development of our SPG.

	<u>Annual mean precipitation [mm/day]</u>	<u>Annual precipitation std [mm/day]</u>	<u>Wet proportion [%]</u>	<u>Skewness</u>	<u>Kurtosis</u>
<u>Dunedin SPG</u>	<u>854.31 ± 2.35</u>	<u>162.54</u>	<u>32.07 ± 0.05</u>	<u>8.37</u>	<u>133.22</u>
<u>Dunedin Obs</u>	<u>941.91 ± 27.08</u>	<u>145.38</u>	<u>35.30 ± 0.68</u>	<u>7.44</u>	<u>103.90</u>
<u>Tauranga SPG</u>	<u>1227.35 ± 3.45</u>	<u>239.27</u>	<u>29.14 ± 0.05</u>	<u>8.85</u>	<u>130.57</u>
<u>Tauranga Obs</u>	<u>1298.15 ± 42.06</u>	<u>264.51</u>	<u>31.55 ± 0.60</u>	<u>6.37</u>	<u>66.23</u>
<u>Christchurch SPG</u>	<u>685.46 ± 2.13</u>	<u>148.02</u>	<u>23.12 ± 0.04</u>	<u>7.94</u>	<u>110.71</u>
<u>Christchurch Obs</u>	<u>642.30 ± 21.47</u>	<u>145.31</u>	<u>23.29 ± 0.44</u>	<u>6.47</u>	<u>68.03</u>
<u>Auckland SPG</u>	<u>1224.97 ± 2.86</u>	<u>198.30</u>	<u>36.50 ± 0.05</u>	<u>7.80</u>	<u>110.68</u>
<u>Auckland Obs</u>	<u>1238.11 ± 31.29</u>	<u>232.96</u>	<u>38.13 ± 0.47</u>	<u>5.32</u>	<u>46.21</u>

**Table 8.** Precipitation statistics calculated from the daily observations and a large ensemble from the daily SPG. 90% confidence intervals are given for annual precipitation and wet proportion.

	<u>Annual mean precipitation [mm/hour]</u>	<u>Annual precipitation std [mm/hour]</u>	<u>Wet proportion [%]</u>	<u>Skewness</u>	<u>Kurtosis</u>
<u>Dunedin SPG</u>	<u>518.98 ± 1.33</u>	<u>92.88</u>	<u>7.22 ± 0.01</u>	<u>16.59</u>	<u>554.48</u>
<u>Dunedin Obs</u>	<u>659.51 ± 28.96</u>	<u>118.08</u>	<u>9.43 ± 0.34</u>	<u>11.21</u>	<u>217.06</u>
<u>Tauranga SPG</u>	<u>1403.89 ± 3.01</u>	<u>210.67</u>	<u>11.34 ± 0.02</u>	<u>17.12</u>	<u>631.89</u>
<u>Tauranga Obs</u>	<u>1281.93 ± 100.86</u>	<u>274.21</u>	<u>9.38 ± 0.40</u>	<u>18.03</u>	<u>638.00</u>
<u>Christchurch SPG</u>	<u>442.56 ± 1.26</u>	<u>88.22</u>	<u>5.61 ± 0.01</u>	<u>16.67</u>	<u>534.10</u>
<u>Christchurch Obs</u>	<u>620.18 ± 28.56</u>	<u>131.08</u>	<u>8.06 ± 0.29</u>	<u>13.01</u>	<u>343.84</u>
<u>Auckland SPG</u>	<u>844.54 ± 1.76</u>	<u>123.22</u>	<u>7.52 ± 0.01</u>	<u>20.19</u>	<u>869.11</u>
<u>Auckland Obs</u>	<u>1110.32 ± 41.80</u>	<u>168.56</u>	<u>11.03 ± 0.31</u>	<u>13.59</u>	<u>305.93</u>

**Table 9.** Precipitation statistics calculated from the hourly observations and a large ensemble from the hourly SPG. 90% confidence intervals are given for annual precipitation and wet proportion.

The SPG described in Sect. 3 and whose results are presented in Sect. 4 is a stationary SPG, i.e., the statistics of the precipitation that it generates are time invariant. As such, the SPG is insensitive to climate change and will represent the *mean* precipitation climate over the period of data on which it was trained. The purpose of this section is to describe extensions to the SPG that make it non-stationary and therefore amenable to simulating climate-induced changes to the statistics of the precipitation.

395 Daily (and hourly) values of  $T'_{\text{SH-land}}$  were obtained by repeating the annual value for that year, and were fed as an extra feature to both the daily and hourly SPGs to create daily and hourly non-stationary SPGs. This resulted in the daily, non-stationary SPG having 11 input features and the hourly, non-stationary SPG having 17 input features (see Sect. 3.1.1 and Sect. 3.1.2 for a discussion of the other features). Other than the addition of the new input features based on  $T'_{\text{SH-land}}$ , the model architecture and training were the same as for the stationary SPG.

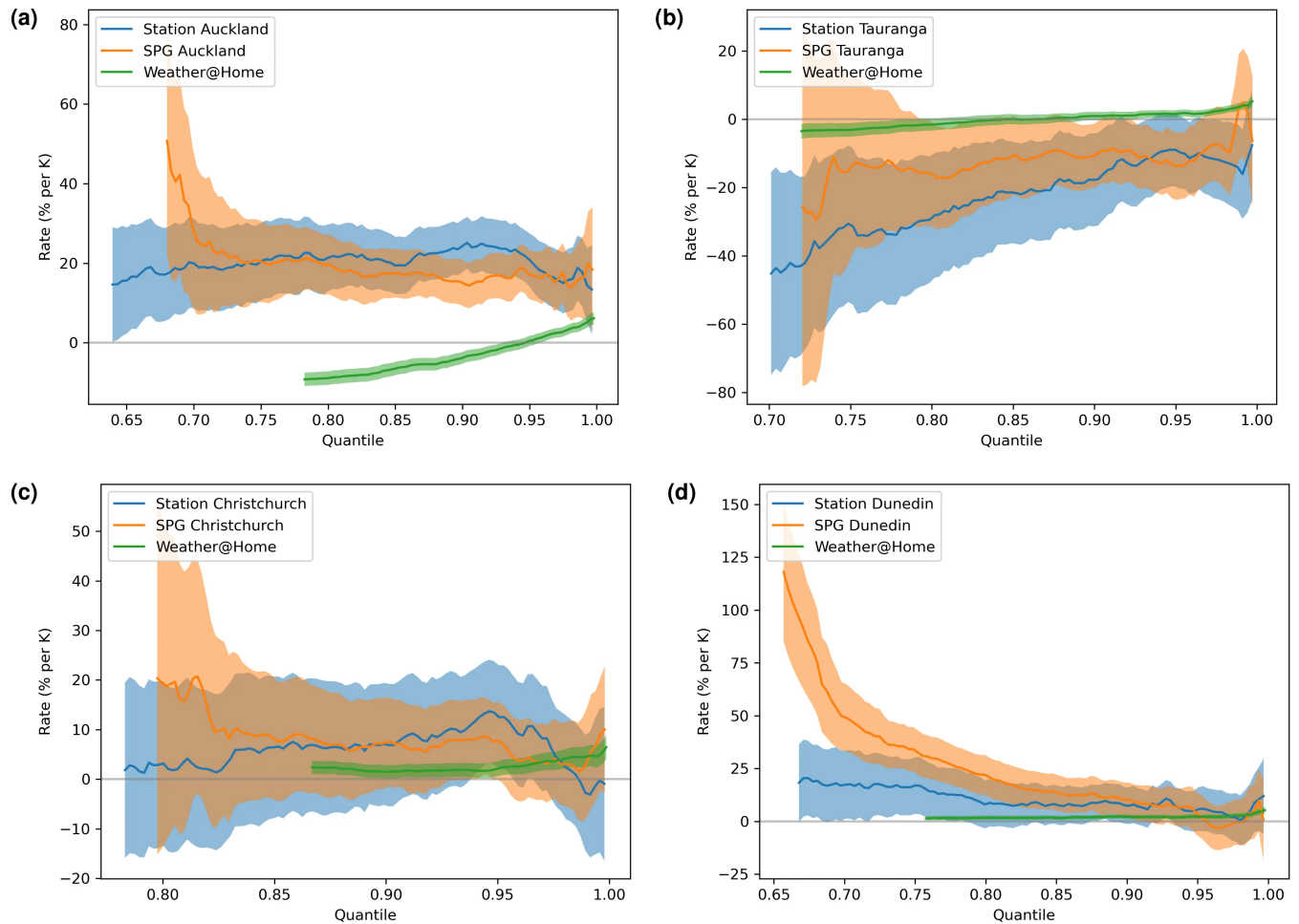
400 A similar set of validation plots, as for the daily and hourly stationary SPG, were created for the non-stationary SPGs. Since there were no substantive differences between the stationary and non-stationary validation plots, they are not included here.

### 5.1 Assessing the validity of the non-stationarity in precipitation

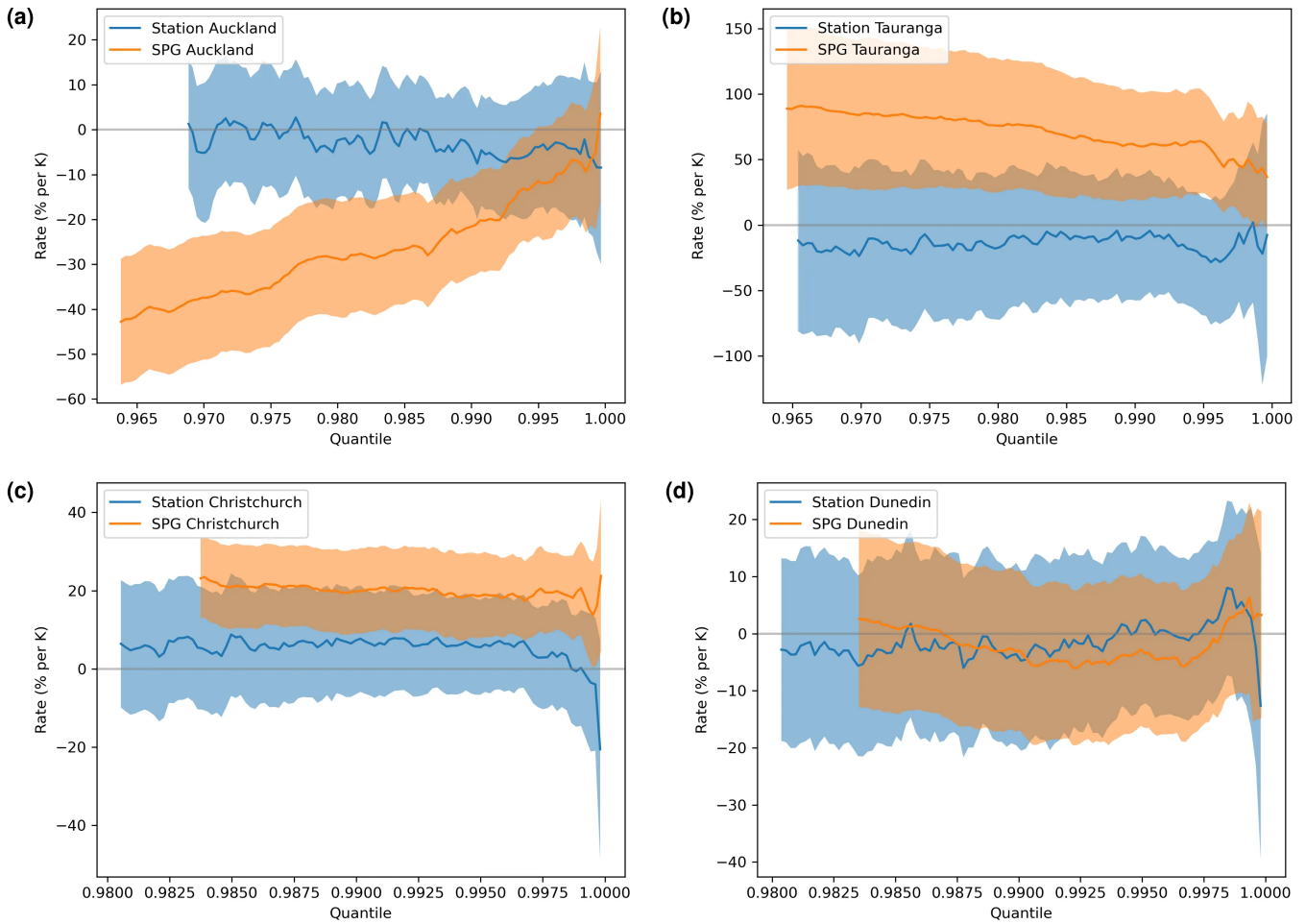
To quantify the non-stationarity in precipitation, ~~both in the observational record and in the~~ in (i) the SPG simulations, we considered, within each of (ii) the weather@home simulations, and (iii) the observations, we calculated within each year of  
 405 data 100 quantiles of precipitation (~~percentiles~~). These were then analysed independently for the percentage change in precipitation per Kelvin change in  $T'_{\text{SH-land}}$ . This arose from expectations of the application of the Clausius–Clapeyron equation of a 7% change in atmospheric water vapour loading for every 1 K change in temperature. We recognize that the same sensitivity cannot be expected for precipitation, but that a similar functional dependence (but with different rates) may be expected. A comparison of rates extracted from SPG simulations with rates extracted from observations and/or RCM simulations com-  
 410 prises our assessment of the validity of the non-stationarity in precipitation simulated by the SPG. ~~Within each percentile, the precipitation data were averaged over each calendar year to create 100 annual mean precipitation time series.~~ Where this method was applied to the weather@home RCM simulations containing many ensemble members, the annual mean ensemble mean was calculated for each calendar year. To each of these time series we fitted  $p(T) = p_0 e^{rT}$ , where  $p(T)$  is the precipitation at a  $T'_{\text{SH-land}}$  value of  $T$ ,  $p_0$  is the expected precipitation when  $T'_{\text{SH-land}}$  is zero, i.e., in 1765, and  $r$  is the rate of  
 415 change per K. An example of the fit of this function to the 75<sup>th</sup> percentile of precipitation extracted from the weather@home simulations for Auckland is shown in Sect.5.3, Fig. 14.

### 5.2 Quality assessment

The rates described in Sect. 5.1 were calculated across all 100 quantiles for both the daily SPG (see Fig. 11) and for the hourly SPG (Fig. 12). The uncertainties on the traces shown in these figures as well as Fig. 13 were calculated from uncertainties on  
 420 the fit of the  $p(T) = p_0 e^{rT}$  equation to the data within each of the 100 quantiles.



**Figure 11.** The percentage precipitation change per Kelvin change in  $T'_{SH-land}$  for the daily SPG across all four sites over the same period as the historical observations (orange) together with comparable rates derived from the historical observational record (blue) and from weather@home simulations provided at daily resolution (green). Shading indicates 95% confidence intervals (note the smaller uncertainties resulting from the large ensembles available from weather@home). All three data sets are truncated to precipitation above 1.2 mm per day. Because weather@home simulates many days with extremely low precipitation, i.e., below an observable detection limit, there are fewer percentiles exceeding 1.2 mm per day.



**Figure 12.** As for Fig. 11 but for the hourly SPG. Results for weather@home are not included as hourly precipitation data were not saved for the weather@home simulations.

For the daily SPG these are compared with equivalent rates derived from the observations and from the weather@home simulations. Because the weather@home simulations provide output only at daily resolution, for the hourly SPG the derived rates are compared only with observationally determined rates in Fig. 12.

425 The precipitation sensitivities to  $T'_{SH-land}$  simulated by the daily SPG are generally not statistically distinguishable from those derived from the observational record (although the uncertainties on both are large). They are, however, often statistically significantly different from those derived from the weather@home simulations. There are also significant inter-site differences: consider Auckland and Tauranga which are just 150km apart. Auckland shows large positive precipitation sensitivities to changes in  $T'_{SH-land}$  while Tauranga shows large negative sensitivities. At both sites the sensitivities are quite different from those derived from the weather@home simulations.

430 For the hourly SPG (Fig. 12), however, there are statistically significant differences in the precipitation sensitivities derived from the observational record and simulated by the SPG. Unlike the precipitation sensitivities derived from daily station data, the sensitivities derived from the hourly resolution observational record are never statistically different from zero at all four sites. This is perhaps not surprising given the shorter historical record of hourly station observations compared to daily observations and the likelier noisier hourly precipitation time series. The SPG, however, simulates statistically significant  
435 precipitation sensitivities at all sites except Dunedin.

Given the results presented in Figs. 11 and 12, and noting the likely inhomogeneities in the historical precipitation records, e.g., due to changes in instrumentation and standard observing practices (Venema et al., 2012; Toreti et al., 2012; Peterson et al., 1998), and the challenges of splicing together measurement series from multiple nearby location to represent a single site, we conclude that extracting the sensitivity of precipitation to a climate signal such as  $T'_{SH-land}$  is unlikely to be robust  
440 for these four stations. It is beyond the scope of this work to detect and correct for any inhomogeneities in the precipitation observational records before training the SPGs.

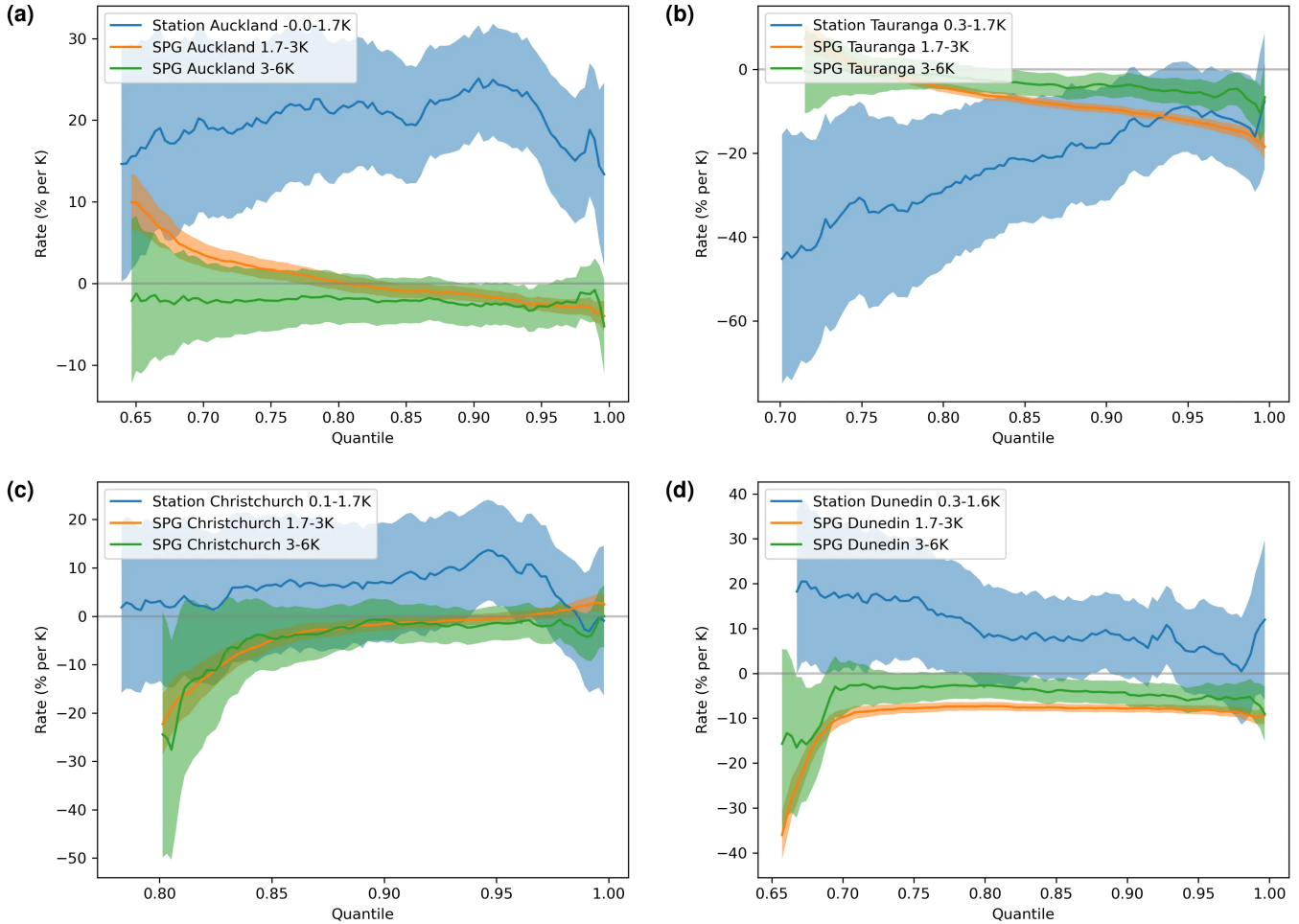
Notwithstanding this conclusion, and to further explore the utility of SPGs trained exclusively on historical records, we generated 10-member ensembles of simulations based on projections of  $T'_{SH-land}$  for several RCP and SSP greenhouse gas emissions scenarios (RCP2.6, RCP4.5, RCP6.0, RCP8.5, SSP119, SSP126, SSP245, SSP370, SSP434, SSP460, SSP585)  
445 for the period 1980 to 2100. Precipitation sensitivities derived from these ensembles of projections (Fig. 13), are not only inconsistent themselves over different ranges of  $T'_{SH-land}$ , including the historical range sensitivities seen in Fig.11 (which is unexpected), but also show significant differences from the sensitivities derived from observations.

The results shown in Fig. 13 are for the daily SPG but those for the hourly SPG (not shown) are not substantively different. This reinforces that projections using a non-stationary SPG trained only on historical observations are unlikely to be reliable.  
450 To this end, in Sect. 5.3, we discuss an alternative approach to incorporating non-stationarity into both the daily and hourly SPGs.

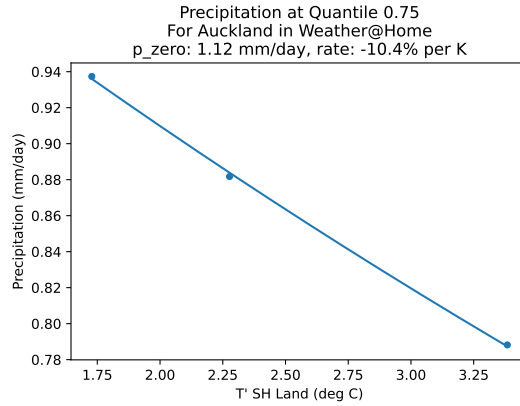
### 5.3 Post hoc addition of non-stationarity

Here we consider an approach where, given a time series of hourly precipitation generated by the stationary SPG, a post hoc correction is applied to encapsulate non-stationarity in such a way that the SPG can be used to simulate expected future  
455 changes in precipitation. First, the three weather@home ensembles described in Sect. 2.4 were used to establish a relationship between precipitation and  $T'_{SH-land}$ . The hourly precipitation time series simulated by the **hourly**-SPG were scaled to ensure that their correlation to  $T'_{SH-land}$  was the same as the correlation between the weather@home time series and  $T'_{SH-land}$  at each location. This scaling, [detailed further below](#), was done independently across percentiles to avoid any potential biases between the weather@home data and the observed precipitation on which the SPG was trained. Each of the weather@home ensembles  
460 is associated with a specific  $T'_{SH-land}$  value (Table 2.4) and the mean precipitation within each ensemble, at each location, was analysed to extract the sensitivity of the precipitation to  $T'_{SH-land}$ . Approximately 900,000 daily precipitation values were available for each site for each of the three values of  $T'_{SH-land}$ .





**Figure 13.** SPG-derived precipitation rates/sensitivities in % per Kelvin for each quantile with daily change (per K) versus quantiles, 95% confidence intervals shown as filled areas. Only precipitation quantiles with more than 1.2 mm per hour were plotted. We focus on the projected changes of difference range of  $T'_{SH-land}$ . The minimum and maximum historical  $T'_{SH-land}$  values are also shown for each station. These plots demonstrate that the Daily, Non-Stationary SPG does not perform as expected when predicting values into the future (1.7–6 K). Some temperature values for the station data were just below 0 K because there were years that were cooler than the reference year, due to temperature fluctuations.

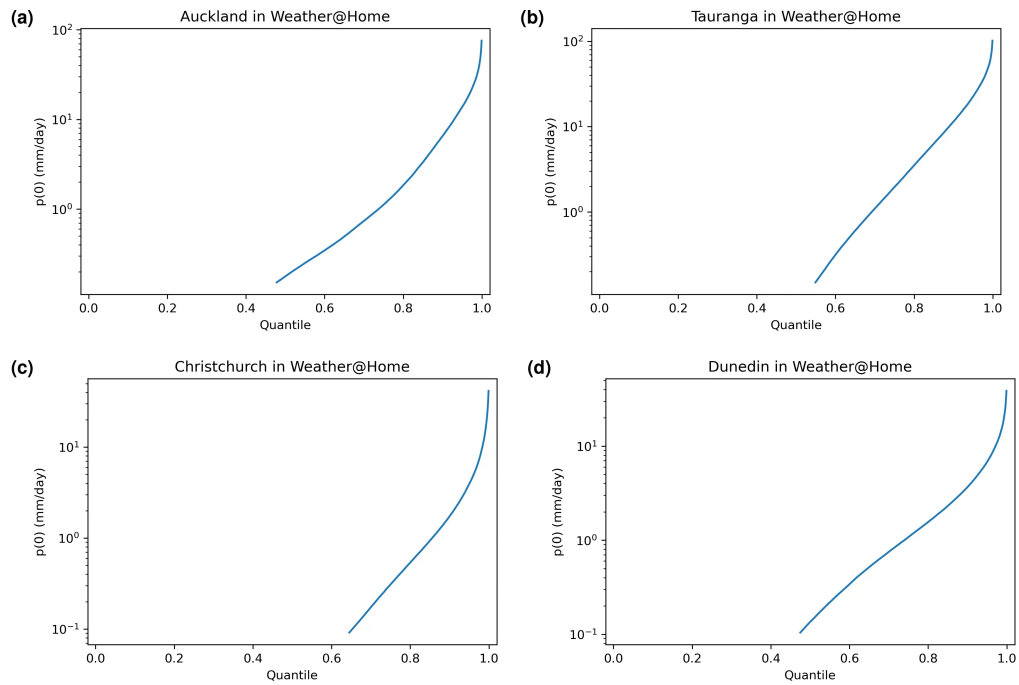


**Figure 14.** Ensemble mean, weather@home precipitation at the 75<sup>th</sup> percentile in Auckland and the fit used to extract the sensitivity of precipitation to  $T'_{SH-land}$ . In this case a sensitivity of -10.4%/K is derived suggesting that, at this percentile, a drying in Auckland is expected over the future.

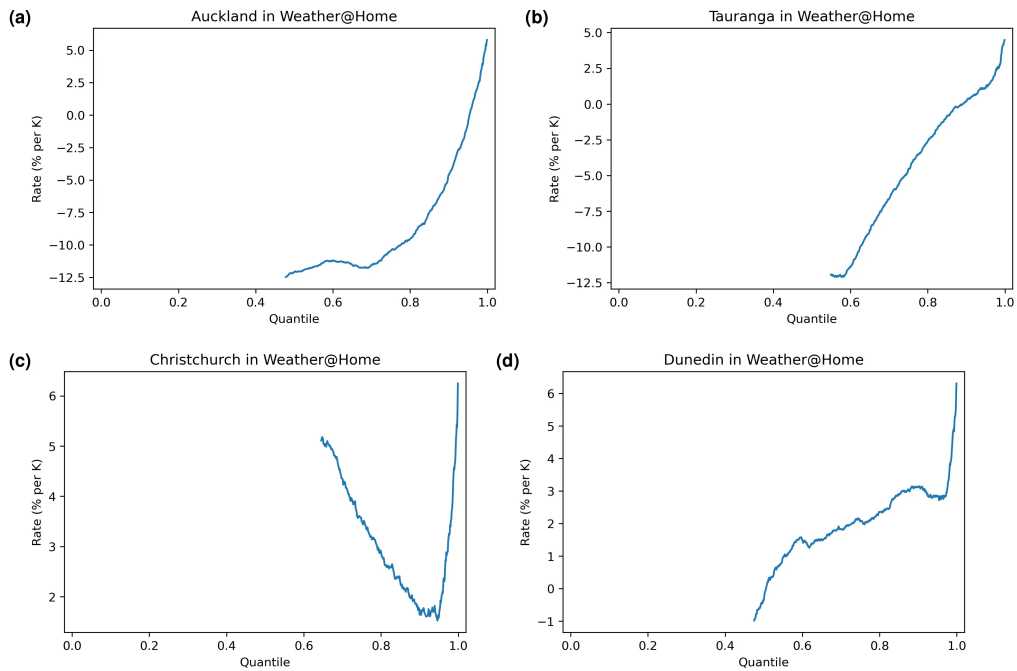
An example of the fit of the equation described in Sect. 5.1 to extract this sensitivity is shown in Fig. 14, noting however that rather than showing the individual quantile values derived for each year across all ensemble members (noting that each member contributes a year of data), the ensemble mean is shown for clarity. In practice such fits are made to many thousands of values at each  $T'_{SH-land}$  value on the X axis of Fig. 14 and the uncertainty of that fit is what is shown in Figs. 11 to 13.

Because weather@home precipitation values below 0.1mm/day were omitted from this analysis as these were considered to be dry days, this often resulted in these sensitivities not being available below the 50<sup>th</sup> percentile.

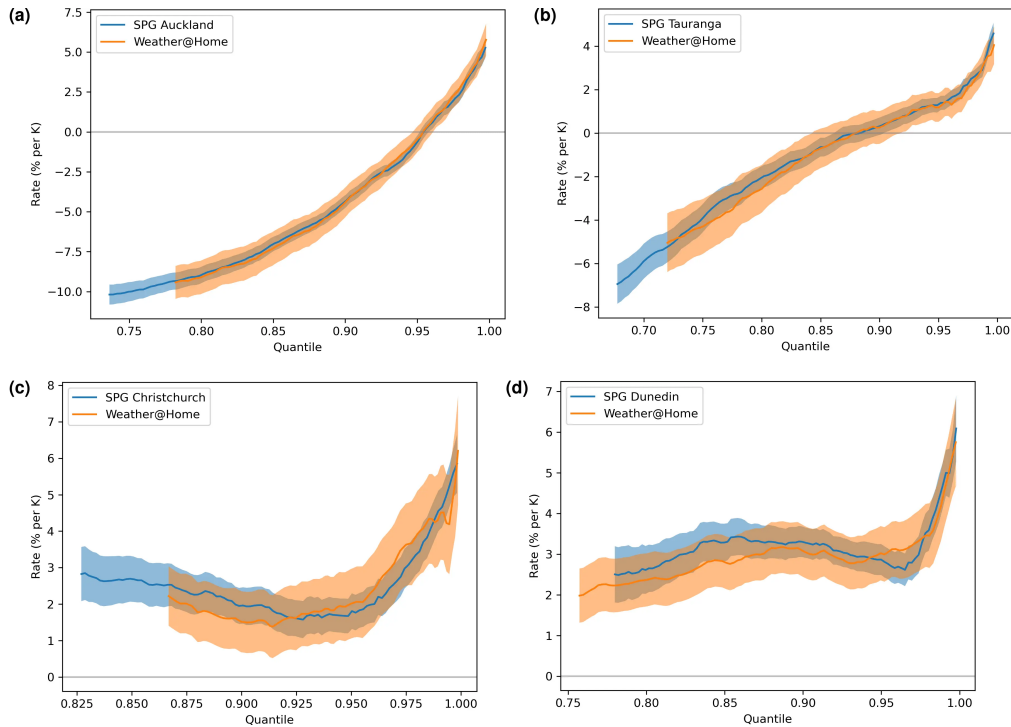
The  $p_0$  values derived from the equation fits within each percentile are shown in Fig 15. Plots for all cities were very similar in shape. They all showed believable values for the quantile range, from about 0.1 mm per day to about 200 mm per day. The rates/sensitivities of precipitation to  $T'_{SH-land}$ , in %/K are plotted for each quantile in Fig. 16. plots the fitted values for the rate against quantiles. While Auckland and Tauranga show drying tendencies for all but the highest percentiles of precipitation, for Christchurch and Dunedin the weather@home simulations suggest increases in precipitation across almost all percentiles with increases in  $T'_{SH-land}$ . To use the results presented in Fig. 16 to add non-stationarity to the hourly SPG, the time series generated by the SPG were first summed to daily time series to ensure temporal resolution alignment with the weather@home simulations. These daily resolution SPG time series were then indexed by  $T'_{SH-land}$ .  $T'_{SH-land}$  anomalies were then calculated with respect to the period over which the hourly SPG was trained, hereafter referred to as  $\Delta x$ ) based on the assumption the neural network's output was aligned with the average  $T'_{SH-land}$  value it saw during training. Each value in any daily SPG precipitation time series is then also indexed by its associated quantile. The associated rate for that quantile (Fig. 16 was then used to calculate a scaling for the precipitation as  $1 + \frac{p(x_2) - p(x_1)}{p(x_1)} = e^{r(x_2 - x_1)} = e^{r\Delta x}$ , where  $x_1$  is the  $T'_{SH-land}$  mean over the training period and  $x_2$  is the  $T'_{SH-land}$  value for the specified day in the non-stationary time series. The application of this scaling to the absolute hourly precipitation generated the non-stationary hourly precipitation. The utility of this post hoc approach is assessed in Sect. 5.4 below.



**Figure 15.** The  $p_0$  values, i.e. the precipitation when  $T'_{SH-land}$  is zero (1765), derived from the weather@home HAPPI ensembles as a function of percentile.



**Figure 16.** The sensitivities of precipitation (rates) to changes in  $T'_{SH-land}$ , in % per K and for each percentile, extracted from the weather@home simulations at each of the four cities.



**Figure 17.** Rate of change of precipitation (% per K) by quantile for the post hoc corrected SPG and the weather@home data set

#### 5.4 Post hoc addition results

485 An ensemble of hourly stationary SPG simulations, to which the post hoc non-stationarity correction described above was applied, were analysed for their sensitivity to  $T'_{SH-land}$ . In total 110 ensembles were generated over the time period from 1980 to 2100, using the stationary hourly SPG for each location, which is of course invariate  $T'_{SH-land}$  and therefore the year. For each of the RCP and SSP greenhouse gas emissions scenarios (RCP2.6, RCP4.5, RCP6.0, RCP8.5, SSP119, SSP126, SSP245, SSP370, SSP434, SSP460, SSP585), 10 of the ensembles were transformed using the post hoc non-stationary correction with the corresponding values of  $T'_{SH-land}$  from the scenario over the time period, 1980 to 2100. These sensitivities of the transformed simulations are compared to those derived from the weather@home simulations in Fig. 17. The agreement between the sensitivities is very good, though this is not too surprising given that the post hoc transformation applied to the SPG hourly precipitation values were themselves derived from the weather@home simulations as described in Sect. 5.3. The agreement is not perfect since the multipliers, derived from daily precipitation, are applied to hourly values. These post hoc corrected simulations show similar validation results to the stationary simulations presented in Sect. 4 (not shown).

495

## 6 Discussion and conclusions

We have demonstrated the utility of a deep neural network-based mixture model as the basis for a single site stochastic precipitation generator (SPG). Stationary versions of a daily and hourly resolution SPG were shown to generate precipitation time series that matched several key attributes derived from observed precipitation time series including the probability density of precipitation depth, the seasonal cycle in precipitation, the auto-correlation in precipitation, and dry-period frequency.

Furthermore, it was shown that a neural network is capable of learning the non-stationarity in the precipitation from data, provided the climate signal in the data is strong and that the data are free of any inhomogeneities. Unfortunately, observational records are unlikely to meet these prerequisites such that attempting to learn the non-stationarity from observational records and projecting that non-stationarity outside of the training domain is likely to lead to unreliable projections of expected future changes in precipitation. To ameliorate such deficiencies in our non-stationary SPGs a post hoc correction was developed using sensitivities of precipitation to  $T'_{SH-land}$  derived from weather@home simulations (a regional climate model) to create daily and hourly non-stationary SPGs suitable for projecting expected changes in precipitation into the future.

While the SPGs presented here are significantly computationally faster (by many orders of magnitude) than typical regional climate models (RCMs) they should not be seen as universal alternatives to climate models – the SPG simulations of expected changes in precipitation over the near future (next 2-3 decades) are likely to be robust as the climate of the next few decades is unlikely to be significantly different from that of the last century on which the SPGs were trained. Non-linearities in the climate system, absent in the historical record on which the SPGs were trained, may be adequately simulated by RCMs which encapsulate much of our understanding of the physics of the climate system, but are very unlikely to be well simulated by the SPGs since the SPGs had no opportunity to learn of these non-linearities. We also emphasise that the SPGs presented here are single site SPGs and simulated precipitation time series from two nearby sites will lack the temporal correlation observed in reality and simulated by RCMs, i.e., the spatial morphology of precipitation fields cannot be simulated by these SPGs. That said, these SPGs have several advantages over RCMs, the main being their ability to generate very large ensembles of simulations for a wide range of future greenhouse gas emissions scenarios, including simulating events that were not seen in the training data set. This would include many rare but extreme precipitation events sufficient to describe potential changes in their frequency or severity with a statistical robustness that would not be achievable with a small ensemble of RCM simulations. Our intention is to use these SPGs to simulate hourly precipitation time series with the SPGs, for the next few decades, with a view to quantifying the impacts of expected changes in the frequency and severity of extreme precipitation events at selected single sites.

*Code availability.* The latest version of the code is available on GitHub, under the following url, [github.com/bodekerscientific/SPG](https://github.com/bodekerscientific/SPG), the v1.0 release used within this paper can be found on zenodo, [doi.org/10.5281/zenodo.6801733](https://doi.org/10.5281/zenodo.6801733)

*Data availability.* The station data used to train the SPG are available from cliflo, <https://cliflo.niwa.co.nz/> due to licence restrictions we cannot directly provide this station data. The MAGIC global, and hemispheric, annual mean temperature anomalies are located with the code.

*Author contributions.* LJB and MGWW developed the SPG code and performed the simulations. MGWW, LJB, GEB, IHC and GL contributed to the validation of the SPG. JL provided the MAGICC simulations and description. SMR provided expertise on the weather@home simulations. LJB and MGWW prepared the manuscript draft; GEB, IHC, GL, SJS, JL, and SMR reviewed and edited the manuscript.

*Competing interests.* The authors declare that they have no conflict of interest.

*Acknowledgements.* The authors would like to thank Kyle Clem and Nokuthaba Sibanda from Victoria University, Wellington. The work presented here, especially regarding model validation, was considerably informed by our prior work with them on stochastic weather generators. Additionally, we would like to thank Stefanie Kremser and Annabel Yip from Bodeker Scientific, for their assistance proofreading the paper.

[The New Zealand daily rainfall data were kindly provided by Errol Lewthwaite, NIWA.](#)

This research was funded by the New Zealand Ministry of Business, Innovation and Employment under the Extreme Events and the Emergence of Climate Change (Whakahura) programme, administered through Victoria University of Wellington (contract number RTVU1906).

## 540 References

- Ahn, K.-H.: Coupled annual and daily multivariate and multisite stochastic weather generator to preserve low-and high-frequency variability to assess climate vulnerability, *Journal of Hydrology*, 581, 124–143, 2020.
- Ailliot, P., Allard, D., Monbet, V., and Naveau, P.: Stochastic weather generators: an overview of weather type models, *Journal de la Société Française de Statistique*, 156, 101–113, 2015.
- 545 Ba, J. L., Kiros, J. R., and Hinton, G. E.: Layer normalization, arXiv preprint arXiv:1607.06450, 2016.
- Bachlechner, T., Majumder, B. P., Mao, H., Cottrell, G., and McAuley, J.: Rezero is all you need: Fast convergence at large depth, in: *Uncertainty in Artificial Intelligence*, pp. 1352–1361, PMLR, 2021.
- Black, M. T., Karoly, D. J., Rosier, S. M., Dean, S. M., King, A. D., Massey, N. R., Sparrow, S. N., Bowery, A., Wallom, D., Jones, R. G., et al.: The weather@home regional climate modelling project for Australia and New Zealand, *Geoscientific Model Development*, 9, 550 3161–3176, 2016.
- Bradbury, J., Frostig, R., Hawkins, P., Johnson, M. J., Leary, C., Maclaurin, D., Necula, G., Paszke, A., VanderPlas, J., Wanderman-Milne, S., and Zhang, Q.: JAX: composable transformations of Python+NumPy programs, <http://github.com/google/jax>, 2018.
- Carreau, J. and Vrac, M.: Stochastic downscaling of precipitation with neural network conditional mixture models, *Water Resources Research*, 47, 2011.
- 555 Castellano, C. M. and DeGaetano, A. T.: A multi-step approach for downscaling daily precipitation extremes from historical analogues, *International Journal of Climatology*, 36, 1797–1807, 2016.
- Clevert, D.-A., Unterthiner, T., and Hochreiter, S.: Fast and accurate deep network learning by exponential linear units (elus), arXiv preprint arXiv:1511.07289, 2015.
- Coles, S., Bawa, J., Trenner, L., and Dorazio, P.: An introduction to statistical modeling of extreme values, vol. 208, Springer, 2001.
- 560 Fahad, A. a., Burls, N. J., and Strasberg, Z.: Correction to: How will southern hemisphere subtropical anticyclones respond to global warming? Mechanisms and seasonality in CMIP5 and CMIP6 model projections, *Climate Dynamics*, 55, 719–720, 2020a.
- Fahad, A. a., Burls, N. J., and Strasberg, Z.: How will southern hemisphere subtropical anticyclones respond to global warming? Mechanisms and seasonality in CMIP5 and CMIP6 model projections, *Climate dynamics*, 55, 703–718, 2020b.
- Haerter, J. O., Eggert, B., Moseley, C., Piani, C., and Berg, P.: Statistical precipitation bias correction of gridded model data using point 565 measurements, *Geophysical Research Letters*, 42, 1919–1929, 2015.
- He, K., Zhang, X., Ren, S., and Sun, J.: Deep residual learning for image recognition, in: *Proceedings of the IEEE conference on computer vision and pattern recognition*, pp. 770–778, 2016.
- Heek, J., Levskaya, A., Oliver, A., Ritter, M., Rondepierre, B., Steiner, A., and van Zee, M.: Flax: A neural network library and ecosystem for JAX, <http://github.com/google/flax>, 2020.
- 570 Hendrycks, D. and Gimpel, K.: Gaussian error linear units (gelus), arXiv preprint arXiv:1606.08415, 2016.
- Hessel, M., Budden, D., Viola, F., Rosca, M., Sezener, E., and Hennigan, T.: Optax: composable gradient transformation and optimisation, in *JAX!*, <http://github.com/deepmind/optax>, version 0.0.1, 2020.
- Iizumi, T., Takayabu, I., Dairaku, K., Kusaka, H., Nishimori, M., Sakurai, G., Ishizaki, N. N., Adachi, S. A., and Semenov, M. A.: Future change of daily precipitation indices in Japan: A stochastic weather generator-based bootstrap approach to provide probabilistic climate 575 information, *Journal of Geophysical Research: Atmospheres*, 117, 2012.
- Katz, R. W.: Precipitation as a chain-dependent process, *Journal of Applied Meteorology* (1962-1982), pp. 671–676, 1977.



- Krose, B. and Smagt, P. v. d.: An introduction to neural networks, 2011.
- Lewis, S. C., Perkins-Kirkpatrick, S. E., and King, A. D.: Approaches to attribution of extreme temperature and precipitation events using multi-model and single-member ensembles of general circulation models, *Advances in Statistical Climatology, Meteorology and Oceanography*, 5, 133–146, 2019.
- 580 Li, C., Sinha, E., Horton, D. E., Diffenbaugh, N. S., and Michalak, A. M.: Joint bias correction of temperature and precipitation in climate model simulations, *Journal of Geophysical Research: Atmospheres*, 119, 13–153, 2014.
- Li, C., Zwiers, F., Zhang, X., Li, G., Sun, Y., and Wehner, M.: Changes in annual extremes of daily temperature and precipitation in CMIP6 models, *Journal of Climate*, 34, 3441–3460, 2021.
- 585 Loshchilov, I. and Hutter, F.: Decoupled weight decay regularization, arXiv preprint arXiv:1711.05101, 2017.
- Massey, N., Jones, R., Otto, F., Aina, T., Wilson, S., Murphy, J., Hassell, D., Yamazaki, Y., and Allen, M.: weather@ home—development and validation of a very large ensemble modelling system for probabilistic event attribution, *Quarterly Journal of the Royal Meteorological Society*, 141, 1528–1545, 2015.
- Meinshausen, M., Meinshausen, N., Hare, W., Raper, S., Frieler, K., Knutti, R., Frame, D., and Allen, M.: Greenhouse-gas emission targets for limiting global warming to 2°C, *Nature*, 458, 1158–1162, 2009.
- 590 Meinshausen, M., Raper, S., and Wigley, T.: Emulating coupled atmosphere-ocean and carbon cycle models with a simpler model, *MAGICC6 – Part 1: Model description and calibration*, *Atmospheric Chemistry and Physics*, 11, 1417–1456, 2011.
- Meinshausen, M., Nicholls, Z. R. J., Lewis, J., Gidden, M. J., Vogel, E., Freund, M., Beyerle, U., Gessner, C., Nauels, A., Bauer, N., Canadell, J. G., Daniel, J. S., John, A., Krummel, P. B., Luderer, G., Meinshausen, N., Montzka, S. A., Rayner, P. J., Reimann, S., Smith, S. J., van den Berg, M., Velders, G. J. M., Vollmer, M. K., and Wang, R. H. J.: The shared socio-economic pathway (SSP) greenhouse gas concentrations and their extensions to 2500, *Geoscientific Model Development*, 13, 3571–3605, <https://doi.org/10.5194/gmd-13-3571-2020>, 2020.
- 595 Meinshausen, M., Lewis, J., McGlade, C., Gütschow, J., Nicholls, Z., Burdon, R., Cozzi, L., and Hackmann, B.: Realization of Paris Agreement pledges may limit warming just below 2°C, *Nature*, 604, 304–309, 2022.
- Monjo, R., Gaitán, E., Pórtoles, J., Ribalaygua, J., and Torres, L.: Changes in extreme precipitation over Spain using statistical downscaling of CMIP5 projections, *International Journal of Climatology*, 36, 757–769, 2016.
- 600 Nicholls, Z. R., Meinshausen, M. A., Lewis, J., Rojas Corradi, M., Dorheim, K., Gasser, T., Gieseke, R., Hope, A. P., Leach, N., McBride, L. A., and et al.: Reduced Complexity Model Intercomparison Project Phase 2: Synthesising Earth system knowledge for probabilistic climate projections, *Earth and Space Science Open Archive*, p. 29, <https://doi.org/10.1002/essoar.10504793.1>, 2020.
- Peterson, T. C., Easterling, D. R., Karl, T. R., Groisman, P., Nicholls, N., Plummer, N., Torok, S., Auer, I., Boehm, R., Gullett, D., et al.: Homogeneity adjustments of in situ atmospheric climate data: a review, *International Journal of Climatology: A Journal of the Royal Meteorological Society*, 18, 1493–1517, 1998.
- 605 Piani, C., Haerter, J., and Coppola, E.: Statistical bias correction for daily precipitation in regional climate models over Europe, *Theoretical and Applied Climatology*, 99, 187–192, 2010.
- Riahi, K., van Vuuren, D. P., Kriegler, E., Edmonds, J., O’Neill, B. C., Fujimori, S., Bauer, N., Calvin, K., Dellink, R., Fricko, O., Lutz, W., Popp, A., Cuaresma, J. C., KC, S., Leimbach, M., Jiang, L., Kram, T., Rao, S., Emmerling, J., Ebi, K., Hasegawa, T., Havlik, P., Humpenöder, F., Da Silva, L. A., Smith, S., Stehfest, E., Bosetti, V., Eom, J., Gernaat, D., Masui, T., Rogelj, J., Strefler, J., Drouet, L., Krey, V., Luderer, G., Harmsen, M., Takahashi, K., Baumstark, L., Doelman, J. C., Kainuma, M., Klimont, Z., Marangoni, G., Lotze-Campen, H., Obersteiner, M., Tabeau, A., and Tavoni, M.: The Shared Socioeconomic Pathways and

- their energy, land use, and greenhouse gas emissions implications: An overview, *Global Environmental Change*, 42, 153–168, <https://doi.org/https://doi.org/10.1016/j.gloenvcha.2016.05.009>, 2017.
- 615 Richardson, C. W.: Stochastic simulation of daily precipitation, temperature, and solar radiation, *Water resources research*, 17, 182–190, 1981.
- Rosier, S., Dean, S., Stuart, S., Carey-Smith, T., Black, M. T., and Massey, N.: 27. EXTREME RAINFALL IN EARLY JULY 2014 IN NORTHLAND, NEW ZEALAND—WAS THERE AN ANTHROPOGENIC INFLUENCE?, *Bulletin of the American Meteorological*
- 620 *Society*, 96, S136–S140, 2015.
- Toreti, A., Kuglitsch, F. G., Xoplaki, E., and Luterbacher, J.: A novel approach for the detection of inhomogeneities affecting climate time series, *Journal of applied meteorology and climatology*, 51, 317–326, 2012.
- van der Wiel, K. and Bintanja, R.: Contribution of climatic changes in mean and variability to monthly temperature and precipitation extremes, *Communications Earth & Environment*, 2, 1–11, 2021.
- 625 Venema, V. K., Mestre, O., Aguilar, E., Auer, I., Guijarro, J. A., Domonkos, P., Vertacnik, G., Szentimrey, T., Stepanek, P., Zahradnicek, P., et al.: Benchmarking homogenization algorithms for monthly data, *Climate of the Past*, 8, 89–115, 2012.
- Wedi, N. P., Polichtchouk, I., Dueben, P., Anantharaj, V. G., Bauer, P., Boussetta, S., Browne, P., Deconinck, W., Gaudin, W., Hadade, I., Hatfield, S., Iffrig, O., Lopez, P., Maciel, P., Mueller, A., Saarinen, S., Sandu, I., Quintino, T., and Vitart, F.: A baseline for global weather and climate simulations at 1 km resolution, *Journal of Advances in Modeling Earth Systems*, <https://doi.org/10.1029/2020ms002192>,
- 630 2020.
- Wilks, D. S.: Use of stochastic weathergenerators for precipitation downscaling, *Wiley Interdisciplinary Reviews: Climate Change*, 1, 898–907, 2010.
- Wolf, T., Debut, L., Sanh, V., Chaumond, J., Delangue, C., Moi, A., Cistac, P., Rault, T., Louf, R., Funtowicz, M., Davison, J., Shleifer, S., von Platen, P., Ma, C., Jernite, Y., Plu, J., Xu, C., Le Scao, T., Gugger, S., Drame, M., Lhoest, Q., and Rush, A.: Transformers: State-of-the-Art
- 635 *Natural Language Processing*, in: *Proceedings of the 2020 Conference on Empirical Methods in Natural Language Processing: System Demonstrations*, pp. 38–45, Association for Computational Linguistics, Online, <https://doi.org/10.18653/v1/2020.emnlp-demos.6>, 2020.
- Zhang, M., Lucas, J., Ba, J., and Hinton, G. E.: Lookahead optimizer: k steps forward, 1 step back, *Advances in Neural Information Processing Systems*, 32, 2019.