

Supplement of 'Gulf Stream and interior western boundary volume transport as key regions to constrain the future North Atlantic Carbon Uptake'

Nadine Goris¹, Klaus Johannsen², and Jerry Tjiputra¹

¹NORCE Norwegian Research Centre and Bjerknes Centre for Climate Research, Bergen, Norway

²NORCE Norwegian Research Centre, Bergen, Norway

Correspondence: Nadine Goris (nadine.goris@norce-research.no)

Multi-model mean, C_{ant^*} -fraction, 1997-2007

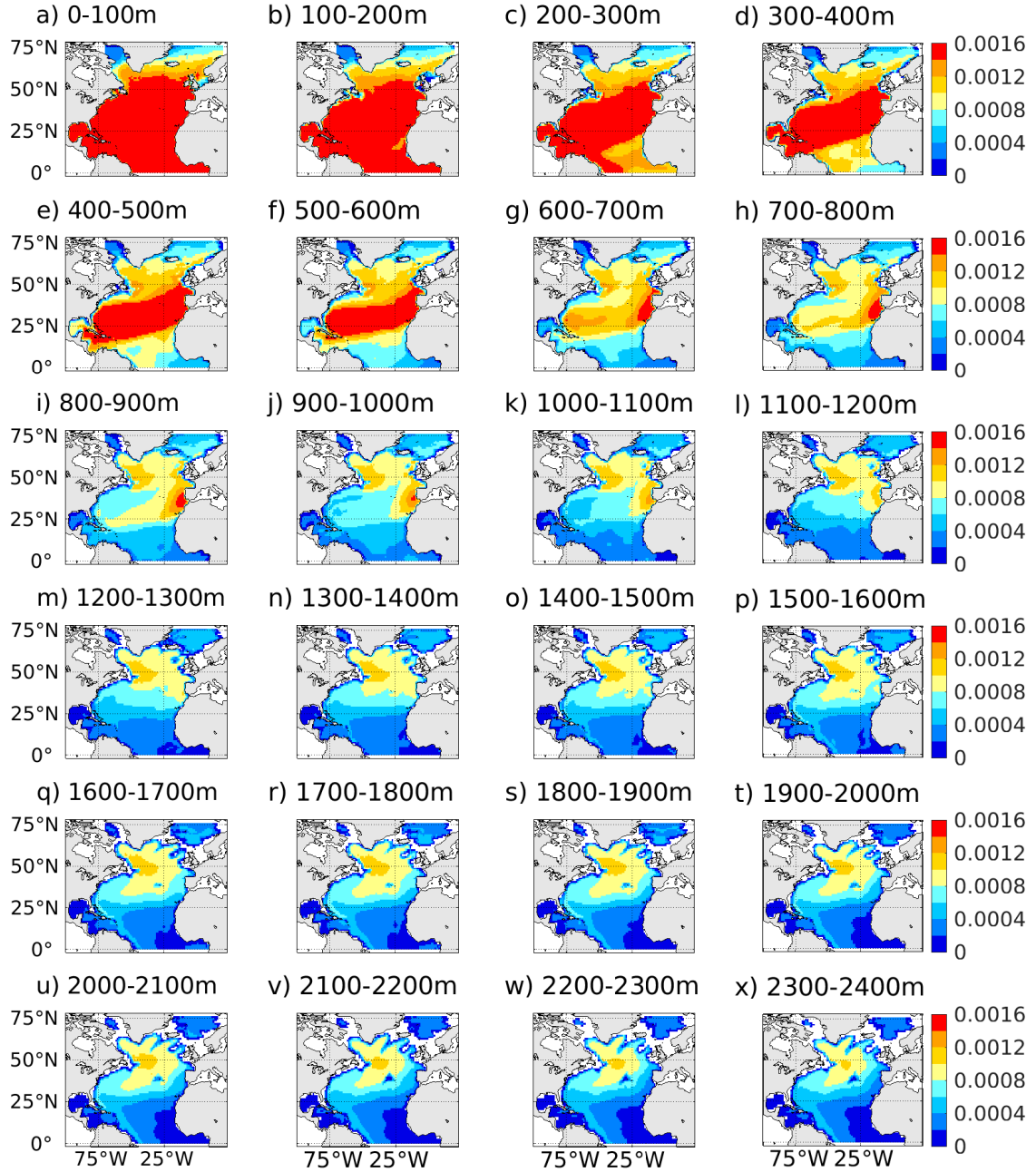


Figure 1. Contemporary fraction of the North Atlantic C_{ant^*} multi-model mean for our considered model-ensemble. Panels (a-x) displays results for different depth planes between surface and 2400m.

Multi-model mean, C_{ant^*} -fraction, 1997-2007

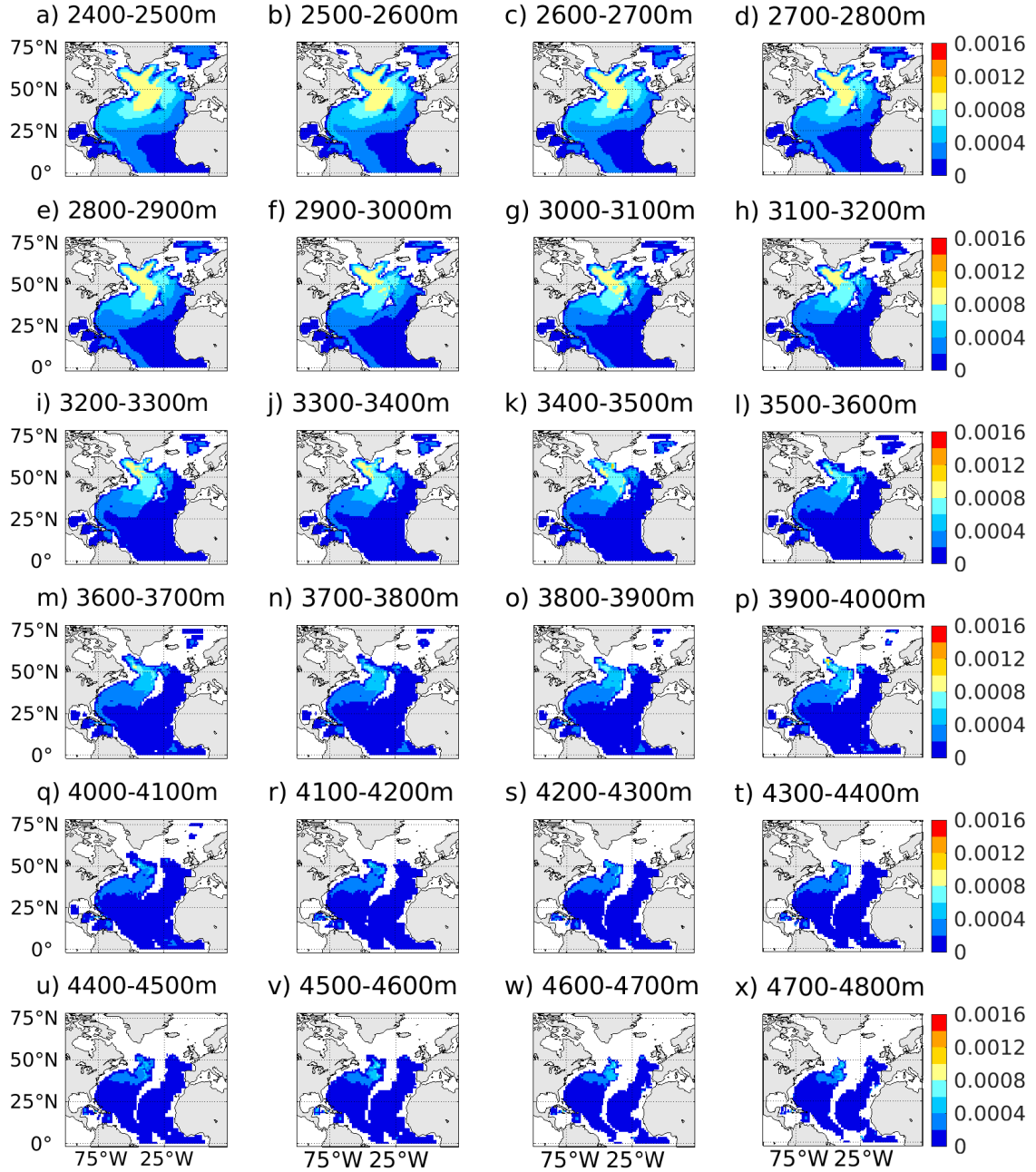


Figure 2. Contemporary fraction of the North Atlantic C_{ant^*} multi-model mean for our considered model-ensemble. Panels (a-x) displays results for different depth planes between 2400m and 4800m.

Multi-model standard deviation, C_{ant*} -fraction, 1997-2007

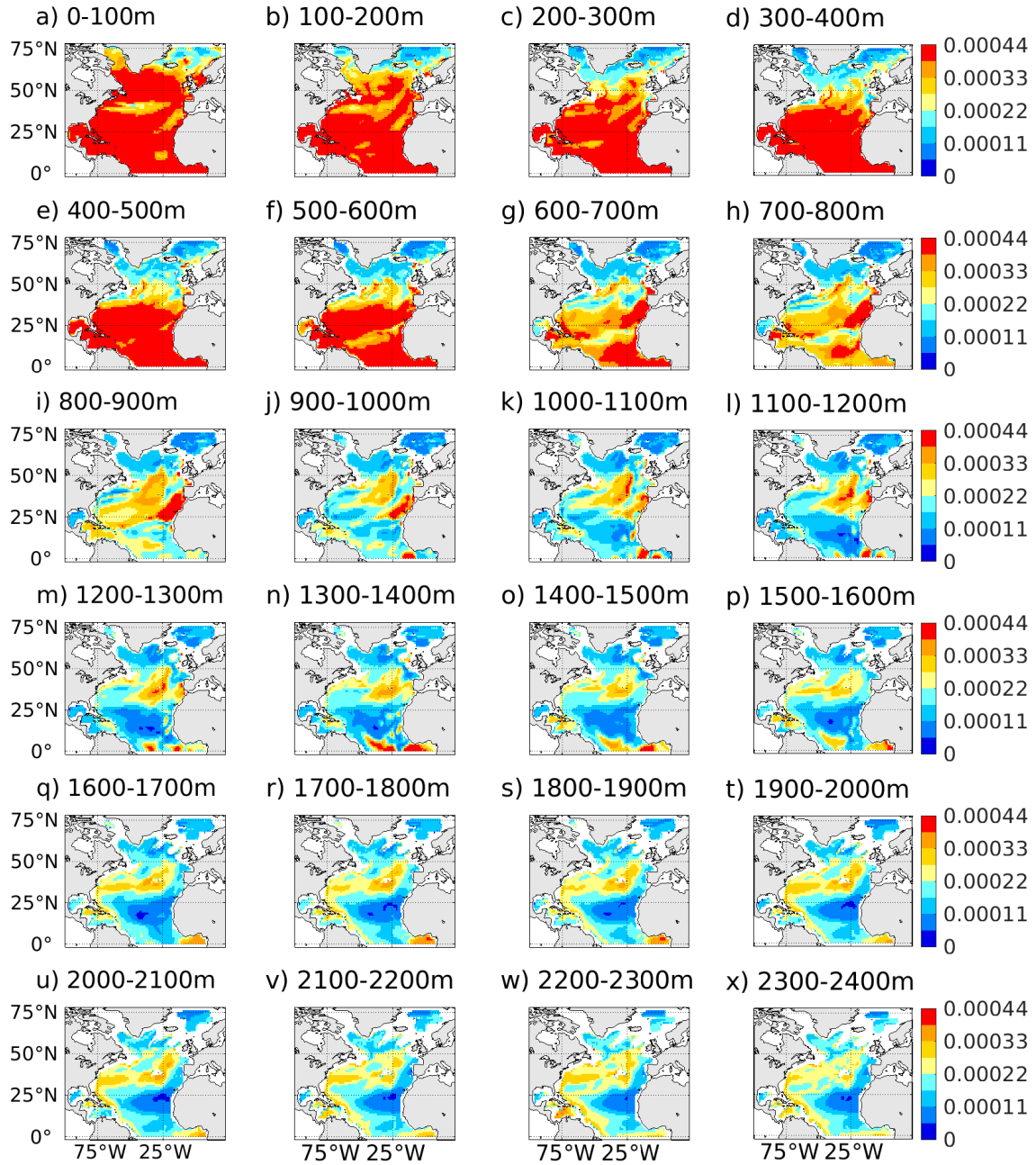


Figure 3. Contemporary fraction of the North Atlantic C_{ant*} multi-model standard deviation for our considered model-ensemble. Panels (a-x) displays results for different depth planes between surface and 2400m.

Multi-model standard deviation, C_{ant*} -fraction, 1997-2007

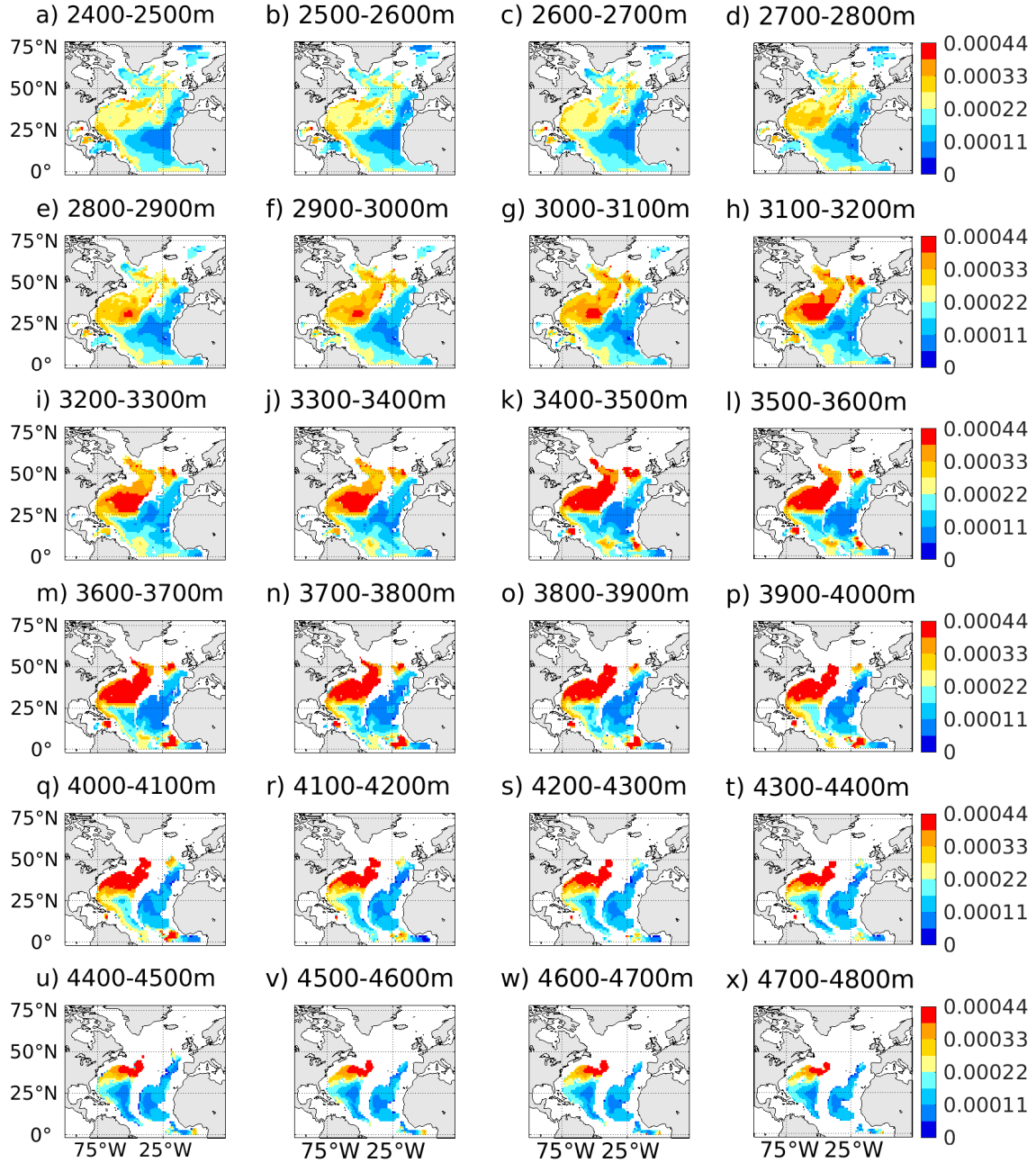


Figure 4. Contemporary fraction of the North Atlantic C_{ant*} multi-model standard deviation for our considered model-ensemble. Panels (a-x) displays results for different depth planes between 2400m and 4800m.