

The emergence of Gulf Stream and interior western boundary volume transport as key regions to constrain the future North Atlantic Carbon Uptake

Nadine Goris¹, Klaus Johannsen², and Jerry Tjiputra¹

¹NORCE Norwegian Research Centre and Bjerknes Centre for Climate Research, Bergen, Norway

²NORCE Norwegian Research Centre, Bergen, Norway

Correspondence: Nadine Goris (nadine.goris@norce-research.no)

Abstract. ~~As one of the major carbon sinks in the global ocean, the North Atlantic is a key player in mediating the ongoing global warming. However, projections of the North Atlantic carbon sink in a high-CO₂ future are highly uncertain due to greatly varying model results. A previous study analysed an ensemble of 11 CMIP5-models and identified two indicators of contemporary model behavior that are highly correlated with a model's projected future carbon-uptake in the North Atlantic:~~

5 In recent years, the growing number of available climate models and future scenarios has led to emergent constraints becoming a popular tool to constrain uncertain future projections. However, when emergent constraints are applied over large areas, it is unclear (i) the high-latitude winter pCO₂^{sea}-anomaly, which is tightly linked to winter mixing and nutrient supply and if the well-performing models simulate the correct dynamics within the considered area, (ii) the fraction of the anthropogenically altered carbon-inventory stored below 1000m depth, indicating the efficiency of dissolved inorganic carbon transport into and
10 within the deep ocean. Both relationships build so-called emergent constraints, where observed contemporary indicators can be used to improve future North Atlantic carbon sink estimates. which key dynamical features the emerging constraint is stemming from, and (iii) if the observational uncertainty is low enough to allow for considerable reduction in the projection uncertainties. We propose therefore to regionally optimize emergent relationships with the two-fold goal to (a) identify key model dynamics for the emergent constraint and model inconsistencies around them and (b) provide key areas where a narrow observational
15 uncertainty is crucial for constraining future projections.

~~In this study, we apply a genetic algorithm to optimize these emergent relationships by constraining the spatial extent of the indicators, i.e. to identify key regions that maximise the cross-correlations between the indicators and Here, we consider two previously established emergent constraints of the future carbon uptake. We pre-define the shape of the desired regions as (i) rectangles and ellipses of different sizes for the first surface-2D indicator and (ii) cuboids and ellipsoids of different~~
20 volumes for the second water column-3D indicator in the North Atlantic (Goris et al., 2018). For the regional optimisation, we use a genetic algorithm and a suite of pre-defined shapes and sizes for the desired regions. Independent on shape and size, the genetic algorithm persistently identifies the Gulf Stream region ~~as optimal for the first indicator~~ centered around 30°N as optimal as well as the ~~pathway of the region associated with~~ broad interior southward volume transport for the second indicator. This is further confirmed with high correlations between the North Atlantic future carbon uptake and volume transport values
25 ~~extracted for the central latitudes and depths of these optimal regions. Though the importance of volume transport for the~~

carbon uptake is well known, our results go beyond traditional knowledge and identify which depth ranges and latitudes of this centered around 26°N. Close to and within our optimal regions, observational data of volume transport are consistently of importance across the multi-model ensemble. Our study shows that regional optimisations of emergent constraint can isolate key drivers responsible for multi-model spread and furthermore provide information on where observations are most crucial to constrain future projections. Moreover, a comparison of the model performance in the identified key regions and the large-scale North Atlantic indicates that models whose mean values are in good agreement with observations within one key area available from the RAPID array with relative low observational uncertainty. Yet, our regionally optimised emergent constraints show that additional measures of specific biogeochemical variables along the array will fundamentally improve our estimates of the future carbon uptake in the North Atlantic. Moreover, our regionally optimised emergent constraints demonstrate that models that perform well for the upper ocean volume transport and related key biogeochemical properties do not necessarily perform well when looking at another key area, reproduce the interior ocean volume transport well, leading to inconsistent gradients of key biogeochemical properties. This hampers the applicability of emergent constraints and highlights the need to additionally evaluate spatial model features.

1 Introduction and Motivation

At the heart of current investigations of the impact of possible future emissions pathways is the Coupled Model Intercomparison Project (CMIP). CMIP gathers the output of state-of-the-art climate models to a set of given experiments, designed to understand the drivers of climate change in a multi-model context. The CMIP-archive is commonly referred to in reports of the Intergovernmental Panel on Climate Change (e.g., IPCC, 2013, 2018) and has hence become fundamental for the creation of climate policies.

The first phase of CMIP, CMIP1, began in 1996, including 21 global coupled climate models and a handful of experiments (Meehl et al., 1997, 2000). In contrast, the sixth and latest phase of CMIP (CMIP6, Eyring et al., 2016a) includes 312 experiments (Petrie et al., 2021) and anticipated output-data from at least 100 models hosted by 40 modelling centres (Balaji et al., 2018), though not every model participated in every experiment. Moreover, the model resolution has increased substantially over the years, additional Earth system processes and components have been introduced and an increased number of variables are required for each experiment (Petrie et al., 2021). Accordingly, the size of CMIP-data is increasing rapidly with a volume of 40TB related to CMIP3, 2PB for CMIP5 and an estimated 20PB for CMIP6 (Balaji et al., 2018).

Despite many progresses much progress in climate modelling, model bias and uncertainty (i.e. spread across models) have not necessarily decreased. For example decreased in many of the simulated variables. Most prominently, the model-generation of CMIP6 reveals the highest range-model uncertainty in equilibrium climate sensitivity when compared to other CMIP model-generations (Meehl et al., 2020). The Similarly, Tagliabue et al. (2021) found that the absolute uncertainty in projections of global ocean net primary productivity has increased from CMIP5 to CMIP6. Additionally, their study points out that this growth in uncertainty substantially differs at regional scale. Contrarily, Terhaar et al. (2021) identify that the model uncertainty in surface density in the Arctic has decreased in CMIP6-ESMs when compared to CMIP5, leading to a reduced inter-model

60 range of the anthropogenic carbon uptake in the Arctic. This result is echoed by Bourgeois et al. (2022), who find a smaller
CMIP6 than CMIP5 model uncertainty in both the contemporary ocean stratification and the anthropogenic carbon uptake in
the Southern Ocean between 30°S and 55°S. Yet, the combination of large data volume and partially high model uncertainty in
CMIP6 makes a comprehensive evaluation of associated models and simulations highly challenging. Moreover, while obser-
65 vational estimates inform about present and past dynamics, it is often unclear how past and contemporary model biases affect
their simulated climate change signal (Eyring et al., 2019). The emergent constraint approach (e.g., Hall et al., 2019) addresses
this problem by identifying a relationship between observable characteristics of the current climate (predictor) and a certain
70 aspect of future change (predictand) that emerge within a multi-model ensemble. Based on this relationship, it is possible to
constrain the model ensemble, assuming that alignment with the observational estimate of the predictor is key to correctly
simulate the predictand. Emergent constraints offer an attractive way of evaluating uncertain future projections. In the realm of
Earth system projections, more than 50 emergent constraints have been found so far (Williamson et al., 2021). However, there
are several concerns denoted when it comes to the usefulness of emergent constraints, including that a high cross-correlation
between predictor and predictand can potentially reflect (i) the simplicity of a commonly used model parametrization and
(ii) spurious relationships (Eyring et al., 2019). Hence, a physical explanation behind the emergent constraint is key for its
plausibility (Williamson et al., 2021; Hall et al., 2019).

~~Given a physically-plausible emergent constraint~~In ocean biogeochemistry, emergent constraints are often applied to variables
75 that are averaged over large areas, as large scale ocean dynamics are crucial for many biogeochemical processes like the ocean
carbon uptake (Kessler and Tjiputra, 2016; Goris et al., 2018; Bourgeois et al., 2022; Terhaar et al., 2021). Though these emergent
constraints are physically plausible, we note that they deem a model to be the fittest due to its ability to simulate spatially
averaged values of the predictor within observational uncertainty. There is no inspection if the models deemed to be 'fit' have
a dynamically consistent predictor gradient within the considered region and we are not aware that this problem has been
80 discussed yet. Yet, this is especially relevant in cases where the predictor is closely linked to dynamical processes such as
meridional advectons. Moreover, the yielded constrained predictand is highly dependent on the observational estimate and a
correct estimate of its uncertainty (Williamson et al., 2021). ~~A highly uncertain observational constraint of the predictor will~~
~~lead to a less tight estimate of the predictand.~~In the marine biogeochemical realm, in-situ observations are often too sparse
in space and time to fully capture spatial and temporal variability, including fine-scale mixing, seasonal, interannual, decadal
85 variability, long-term trends and short-term natural variability (Wang et al., 2019). Only few platforms reach the deep ocean,
though its continuous observations are necessary e.g., to confidently capture the oceanic heat and carbon storage (Weller et al.,
2019). The error occurring from the interpolation of sparse data is typically less well quantified than the observational error
itself (Landschützer et al., 2020). Though the advent of biogeochemical ARGO floats gives the option to a substantial contribu-
tion to the goal of a 3-dimensional image of ocean biogeochemistry (Claustre et al., 2010), this potential is still far from being
90 fully explored. While case-studies for selected regions ~~exists (e.g., D'Ortenzio et al., 2020), emergent constraints that focus on~~
~~ocean biogeochemistry are often applied on larger ocean areas (Kessler and Tjiputra, 2016; Goris et al., 2018). Estimates exist~~
(e.g., D'Ortenzio et al., 2020), estimates of observational uncertainty are ~~hence often~~ uncertain for emergent constraints in the

realm of ocean biogeochemistry due to the large area covered by the emergent constraint and might hamper ongoing efforts to achieve a proper constraint for climate sensitivities of ocean biogeochemical variables.

95 ~~It was pointed out before that emergent constraints~~ Due to these limitations of emergent constraints in the realm of biogeochemistry, our study is concerned with the regionally optimization of emergent relationships with the two-fold goal to (a) identify key model dynamics for the emergent constraint and model inconsistencies around them and (b) provide key areas where a narrow observational uncertainty is crucial for constraining future projections. These key areas can be used to guide observational strategies (Eyring et al., 2019). ~~Given that there is a clear need for this in the realm of ocean biogeochemistry,~~

100 In this study, we utilised two existing emergent constraints and applied a genetic algorithm to regionally optimise the area of the predictor, i. e., the observed variable. Our regional optimization explores different shapes and sizes of the sought-after area as an input and hence can be adapted for specific observational campaigns such as cruises. Moreover, the use of different shapes and sizes helps to identify key model dynamics for the emergent constraint and model inconsistencies around them. Both emergent constraints that we regionally optimise are related to the future carbon uptake of the North Atlantic and use

105 (i) the seasonality of the oceanic partial pressure $p\text{CO}_2$ and (ii) the deep ocean storage of anthropogenically altered carbon as predictors (Goris et al., 2018). Both predictors could ~~highly~~ gain from an improved observational strategy as data is sparse on both seasonal timescales and in the deep ocean. Additionally, both predictors are highly dependent on the large scale ocean circulation such that it is of importance to not only study their averaged values over large areas but also the model performance within key regions and its dynamical consistency. We therefore consider this as the optimal test case for our

110 regional optimisation. We note, however, that our study is primarily a showcase to illustrate the effectiveness of the genetic algorithm and to demonstrate the usefulness of ~~a~~-regionally optimised emergent ~~constraint~~ constraints. Our selection of the North Atlantic basin is motivated by its critical role for the long-term anthropogenic carbon sink and as the gateway to transport carbon from surface to the deep ocean (Tjiputra et al., 2010). Further, the North Atlantic carbon uptake and dynamical features are relatively well studied such that the plausibility of our results can readily be confirmed.

115 This paper is organised as follows: In Section 2, we introduce the concept of emergent constraints, the emergent constraints that we use as the base for our regional optimisation as well as the genetic algorithm used for the regional optimisation and its experimental set up. When describing our results and discussing them in Section 3, we first describe the efficiency and performance of the genetic algorithm. Subsequently, we present the optimal regions for both predictors ~~and discuss their plausibility~~ . Finally, we present all newly found Emergent Constrains and discuss spatial differences in model performance as well as the

120 associated regionally optimised emergent constraints; and analyse the plausibility of our results as well as their implications. We discuss our approach and the additional information that it provides in Section 4. Our summary and conclusions can be found in Section 5.

2 Background and experimental set-up

In this Section, we give a short overview over the concept of emergent constraint to constrain future projections (Section 2.1) and introduce the emergent constraint that we apply the regional optimisation on (Section 2.2). We furthermore introduce our set-up for the regional optimisation (Section 2.3) and the genetic algorithm as our optimisation tool (Section 2.4).

2.1 The Emergent Constraint approach

The emergent constraint approach identifies an emerging quasi-linear relationship between characteristics of the current climate (predictor) and a certain aspect of future change (predictand) that emerge within a multi-model ensemble and subsequently utilises observations of the predictor to constrain the predictand (e.g., Cox et al., 2013; Williamson et al., 2021). Our method of calculating the constrained estimate follows the approach of Cox et al. (2013). Here, the unconstrained estimate is given by the model mean and its uncertainty by the multi-model standard deviation. Assuming that all models are equally likely to simulate the true state of the predictand and are sampled from a Gaussian distribution, a probability density function (PDF) can be calculated for the unconstrained estimate using model mean and standard deviation. Similarly, PDFs of the observational estimate and of the linear regression between predictor and predictand are established. For the observationally constrained predictand, a conditional PDF is calculated by integrating over the product of the PDF of the observational estimate and the PDF of the linear regression. The observationally constrained estimate equals the mean value of the conditional PDF and the uncertainty of the estimate is given by its standard deviation. We note that emergent constraints come with a number of caveats, among them the fact that they are often applied over large areas and hence constrain a model's ability to simulate spatially averaged values within observational uncertainty (see Section 1).

2.2 Emergent constraints of the North Atlantic future carbon uptake

As basis for our regional optimization, we utilise two emergent constraints that both constrain the future North Atlantic carbon uptake for an ensemble of 11 CMIP5-models under a high CO₂ future. Here, we give a short summary of these emergent constraints, for details the reader is referred to Goris et al. (2018). We note that the study of Goris et al. (2018) is concerned with the “anthropogenically altered” component of the carbon cycle, defined as the outcome of the RCP8.5 experiment minus that of the piControl experiment. All variables calculated in this manner are henceforth marked by the subscript “ant*” and can be equated to the anthropogenic component of the carbon cycle plus climate change–induced differences of the carbon cycle.

Goris et al. (2018) found that the selected model-ensemble agrees fairly well on the North Atlantic C_{ant*} -uptake of the 1990s (defined as an average over the years 1990-1999), yet the simulated future North Atlantic C_{ant*} -uptake of the 2090s (defined as an average over the years 2090-2090s) is highly uncertain. Here, some models simulate a future C_{ant*} -uptake of the same magnitude as that of the 1990s and other models project a future C_{ant*} -uptake that is 2-3 times higher than that of the 1990s (Fig. 1a). Goris et al. (2018) identified that discrepancies in the modelled North Atlantic future C_{ant*} -uptake arise due to differences in the efficiency of the high latitude transport of C_{ant*} -storage from the surface to the deep ocean. This transport is fuelled by deep mixed layer depths, high biological production and subsequent particle export to the deep as well as deep convection and subsequent interior ocean southward transport of C_{ant*} -storage out of the high latitudes.

Two predictors associated with the contemporary efficiency of the surface-to-depth carbon transport were identified by Goris et al. (2018). The first predictor is the mid-to-high latitude ~~winter (November to April)~~summer (May to October) $\text{pCO}_2^{\text{sea}}$ -anomaly (Fig. 1b-e), which is tightly linked to winter mixing, nutrient supply and biological production, but also to deep convection (e.g., Olsen et al., 2008; Tjiputra et al., 2012). We note that Goris et al. (2018) partly utilised the negative mean summer $\text{pCO}_2^{\text{sea}}$ -anomaly in order to be able to depict positive correlations. We follow this approach but opt to use the term mean 'winter $\text{pCO}_2^{\text{sea}}$ -anomaly' (November to April) instead (Fig. 1b), defining it to be the deviation of the averaged winter $\text{pCO}_2^{\text{sea}}$ -values from the mean annual $\text{pCO}_2^{\text{sea}}$ -values and hence to equal the negative mean summer $\text{pCO}_2^{\text{sea}}$ -anomaly. Goris et al. (2018) found that models with a low future C_{ant^*} -uptake have a negative mid-to-high latitude winter $\text{pCO}_2^{\text{sea}}$ -anomaly. Their $\text{pCO}_2^{\text{sea}}$ seasonal cycle is driven by temperature meaning that their C_{ant^*} -uptake is strongest in winter when surface temperatures are cold. Contrarily, models with a high future C_{ant^*} -uptake have a positive mid-to-high latitude winter $\text{pCO}_2^{\text{sea}}$ -anomaly, indicating that their seasonal cycle of $\text{pCO}_2^{\text{sea}}$ is dominated by variations of dissolved inorganic carbon (DIC) via biology and mixed layer depth. As the here considered models have differing timings for their peak in biological production (ranging from May to July) and seasonal warming and biological production is not in phase (the modelled peak in seasonal warming occurs in August), the highest correlations with the future North Atlantic C_{ant^*} -uptake are yielded when the seasonal $\text{pCO}_2^{\text{sea}}$ -anomaly covers the months from May to October (or November to March) and hence captures the different seasonal drivers at play. While both a DIC- and a temperature-driven $\text{pCO}_2^{\text{sea}}$ annual cycle leads approximately to the same contemporary C_{ant^*} -uptake for the considered models, a temperature-driven $\text{pCO}_2^{\text{sea}}$ annual cycle leads to less C_{ant^*} -uptake in the future. The second predictor is the fraction of the North Atlantic C_{ant^*} stored below 1000m depth (Fig. 1d-ed), indicating how efficient C_{ant^*} -storage is transported into the deep ocean. Here, models that project a high future C_{ant^*} -uptake have the majority of C_{ant^*} -storage below 1000m depth, leading to a smaller fraction of C_{ant^*} -storage at the surface and hence allowing for further C_{ant^*} -uptake. For the second predictor, we focus on the time-frame of 1997-2007 (hereinafter referred to as the 1997s) as the observation-based data-product, which we utilise to compare to the simulated fractional C_{ant^*} -storage, is normalized to the year 2002 (see Appendix A).

By comparison to the observational database, these predictors allowed to better constrain the model ensemble, and demonstrated that the models with more efficient surface-to-deep transport are best aligned with current observations (Fig. 1e,eb,d). These models also show the largest future North Atlantic C_{ant^*} -uptake, which is hence the more plausible future evolution (Fig. 1c,e). We note that, within the selected model ensemble, the cross-correlation between the contemporary mid-to-high latitude winter $\text{pCO}_2^{\text{sea}}$ -anomaly and the future North Atlantic C_{ant^*} -uptake is $r = 0.79$, while the cross-correlation between the fraction of the North Atlantic C_{ant^*} stored below ~~1000m~~1000 m depth and the future North Atlantic C_{ant^*} -uptake is $r = 0.94$. ~~Though these~~These correlations are relatively high and studies concerned with emergent constraints use frequently relationships with correlations lower than $r = 0.79$ (e.g., Qu et al., 2018; Selten et al., 2020; Mystakidis et al., 2017; Tokarska et al., 2020). Yet, the study of Goris et al. (2018) includes no regional optimization. Instead, it focuses on the broad surface areas of Mikaloff Fletcher et al. (2003) including the North Atlantic tropics (0.0°N to 17.781°N), low latitudes (17.781°N to 35.563°N), midlatitudes (35.563°N to 48.901°N), and high latitudes (48.901°N to 75.595°N) and the depth-boundary of 1000m depth as

190 an indication for deep convection as well as for the horizon that separates between the upper and lower limbs of the Atlantic meridional overturning circulation (AMOC). ~~Here, we-~~

2.3 Experimental set-up for the regional optimisation

We apply a genetic algorithm (described in Section 2.4) to regionally optimise both predictors, i. e. to find a regionally condensed footprint of the already discovered relationship. This regional footprint might lead us even closer to the dynamical
195 origin of the constraints and expose potential dynamical inconsistencies within the model ensemble but also allows to focus on smaller and more concentrated regions, which ultimately can be utilised for observational strategies and to refine observational uncertainties.

In our application of the regional optimisation to both predictors, we consider the whole North Atlantic for regional optimization of the winter $p\text{CO}_2^{\text{sea}}$ -anomaly instead of focusing on the mid-to-high latitudes. Likewise, we consider all depth
200 ranges of the fractional North Atlantic C_{ant^*} -storage for the regional optimisation, instead of focusing on the depth horizon below ~~1000m~~ 1000 m depth. This way, the regional optimisation can confirm or reject the previously found latitudinal boundaries and depth-ranges. Before applying the regional optimisation, we re-gridded both the winter $p\text{CO}_2^{\text{sea}}$ -anomaly and the fractional C_{ant^*} -storage values from each model on a regular $1^\circ \times 1^\circ$ grid. We further interpolated the fractional C_{ant^*} -storage on depth-levels at 100 m intervals. That way, it is possible to construct new regions and apply them to the output of the whole
205 model ensemble.

For our experimental set-up, we pre-define the desired optimal regions in terms of geometrical shape. Specifically, we select two different shapes for both predictors, i.e. the winter $p\text{CO}_2^{\text{sea}}$ -anomaly (2D-case) and the fractional C_{ant^*} -storage (3D-case). For the 2D-case, these are rectangles aligned with the longitudinal and latitudinal axes, respectively and arbitrary ellipses. For the 3D-case, we chose rectangular cuboids aligned with the longitudinal, latitudinal and depth axes, respectively and general
210 ellipsoids. Our set-up of shapes is motivated by two criteria: (i) the possibility to capture regions of interest and (ii) to have a low dimensional search space allowing for a fast optimisation. The search space is of lower dimension for rectangles than for arbitrary ellipses and of lower dimension for cuboids than for general ellipsoids. Yet, arbitrary ellipses and general ellipsoids can be tilted within the surface water plane and the water volume, respectively, such that the associated optimal regions have the option to follow water masses more closely and are hence beneficial to consider. We note that other geometrical shapes
215 would have satisfied both criteria. Among them is the option to optimize a tube, so that, for example, the ship track of an upcoming cruise can be optimised.

We additionally prescribed the approximate volume or area size that the optimal region should have. Here, we focus on areas and volumes of i) 10-20% , ii) 20-30% and iii) 30-40% of the total size of the North Atlantic surface area (for the 2D-case) or basin volume (for the 3D-case), respectively. In combination with rectangles, ellipses, cuboids and ellipsoids this results in 12
220 applications of the genetic algorithm. We note that the desired area can also be given as total area instead of a percentage and could, for example, be the distance that the cruise can cover within a given duration. Our choice of considering different area sizes is motivated by two considerations: firstly, we want to avoid spurious relationships, i.e. that the high correlation between the predictor spatially averaged over the optimal area and the predictand occurs by chance. If areas of different geometrical

225 shapes and area sizes point towards the same key regions, it is less likely that these regions randomly provide high correlations, especially for diverse area sizes. Secondly, it is our goal to identify key model dynamics for the emergent constraint and model inconsistencies around them. A set of optimal areas of different shapes and geometrical forms allows us to inspect in more detail where key regions for the model performance are and if the simulated results for each of these regions are consistent with each other.

230 Apart from the size and shape limitation, we are also interested in solutions where the inter-model spread in the predictor is high as we want our regionally optimised emergent constraint to help us to constrain model spread. Therefore, we only consider grid-point within the optimal region where the multi-model standard deviation of the predictor is larger than the average multi-model standard deviation of the predictor for the whole North Atlantic.

2.4 Genetic algorithm and ~~experimental set-up~~ optimisation procedure

We utilize a genetic algorithm to conduct the regional optimization of the predictors described in Section 2.2. Genetic algo-
235 rithms are metaheuristics inspired by the process of natural selection that can be used to design flexible optimization algorithms. The algorithm goes back to Holland (1975), who created genetic algorithms drawing on the ideas from the field of biology. Since then, genetic algorithms have been developed by a growing community. The algorithms are increasingly popular due to their flexibility as they can be used in very general setting with non-differentiable or even discontinuous objective functions.

Genetic algorithms belong to the family of evolutionary algorithms and are inspired by Darwinian evolution (Sivanandam
240 and Deepa, 2007). They mimic natural evolution through mutation, reproduction and selection to find (close-to) optimal solutions for highly complex problems. Constitutive elements of genetic algorithms are a population formed by a number of individuals (characterized by genes and equipped with phenotypical expressions and fitness), selection of parents and reproduction (creation of offspring), mutation and selection of surviving individuals. The original population is then replaced by all or parts of the offspring. For a number of generations, the steps outlined above are repeated. In this way, the algorithm can ap-
245 proximate the (close-to) optimal solutions, determined by the fittest individuals. In our case, individuals correspond to domains and the fittest individual is the domain for which spatially-averaged values of the predictor reach the highest correlations with the predictand. In the following paragraphs, we describe the choices taken to perform the regional optimization of this study.

~~Before applying the genetic algorithm, we re-gridded both the winter $p\text{CO}_2^{sea}$ -anomaly and the fractional C_{ant*} -storage values from each model on a regular $1^\circ \times 1^\circ$ grid. We further interpolated the fractional C_{ant*} -storage on depth-levels with a
250 distance of 100m. That way, it is possible to construct new regions and apply them to the output of the whole model ensemble. Furthermore, we pre-select the geometrical shape of the desired region, so that it is possible to characterize regions using only a few continuous genes (i.e., parameters). For both (i) the winter $p\text{CO}_2^{sea}$ -anomaly (2D-case) and (ii) the fractional C_{ant*} -storage (3D-case), we selected two different shapes. For the 2D-case, these are rectangles aligned with the longitudinal and latitudinal axes, respectively and arbitrary ellipses. For the 3D-case, we chose rectangular cuboids aligned with the longitudinal, latitudinal
255 and depth axes, respectively and general ellipsoids. A rectangle is encoded by~~ As we regionally optimise the predictors of two emergent constraints and utilise two pre-defined area/volume shapes and three pre-defined area/volume sizes (see Section 2.3) for each predictor, our genetic algorithm is applied 12 times to a population of individuals. We utilise 4 different types of

individuals, that is rectangles, ellipses, cuboids and ellipsoids (see Section 2.3). Genetic algorithms express an individual as a specific combination of genes. Here, we express a rectangle as four continuous genes, where the first two describe the south-
260 western point and the second two describe the north-eastern point of the rectangle in longitude-latitude coordinates (Fig. 2b).
An ellipse is described by five genes (Fig. 2b), consisting of a shift vector (two genes) and a symmetric positive definite matrix
(encoded by three genes). The shift vector is the center of the ellipse and the eigenvectors of the symmetric positive definite
matrix are the principal axis of the ellipse. A cuboid is encoded by six genes. The first three genes describe the south-western
point at the shallowest ocean depth and the second three genes describe the north-eastern point at the deepest ocean depth
265 (Fig. 2b). Similar to the ellipse, an ellipsoid (Fig. 2b) is described by a shift vector (three genes) and a symmetric positive
definite matrix (six genes). The shift vector is the center of the ellipsoid and the eigenvectors of the symmetric positive definite
matrix are the principal axis of the ellipsoid. ~~Our set-up of shapes is motivated by two considerations: (i) the possibility to
capture regions of interest and (ii) to have a low dimensional search space allowing for a fast optimisation. However, other
options would have satisfied both criteria. Amongst them is the option to optimize a tube, so that, for example, the ship track
of an upcoming cruise can be optimised.~~

~~For each of our applications of the genetic algorithm, we use a population of 1000 individuals evolving over 100 generations.
As initialization, a population of (i) 1000 rectangles or ellipses of varying area sizes are placed randomly across the surface of
the North Atlantic ocean (2D-case) or of (ii) 1000 cuboids or ellipsoids of varying volume sizes are placed randomly across the
water columns of the North Atlantic (3D-case). Each individual gets a fitness assigned through the so-called fitness function,
275 which is to be maximised over the course of 100 generations. For In order to find the fittest individual or the optimal domain,
a fitness function is maximised. In our study, the first part of the fitness function is the cross-correlation ~~of two vectors. One
vector describes the future C_{ant*} -uptake of the North Atlantic (our predictand) and each entry of the vector corresponds to
one member out of our ensemble of climate models. The second vector describes our predictor, which is either the between
(i) the simulated predictor values per model (contemporary winter pCO_2^{sea} -anomaly or ~~the~~ contemporary fractional C_{ant*} -
storage ~~within~~) averaged over the region specified by the considered individual and (ii) the simulated predictand per model
(the future C_{ant*} -uptake of the North Atlantic). The cross-correlation ~~between first and second vector~~ describes how tight the
relationship between predictor and predictand is and higher values corresponds to a higher fitness for an individual. We As
we additionally prescribed the approximate volume or area size that the optimal region should have. ~~Our, our~~ fitness function
includes a penalization to ensure compliance with the area/volume-condition. If ~~a~~ an area/volume is not compliant with the
285 size condition, a negative value smaller than -1, which is decreasing with the area/volume-violation, is added. ~~Here, we focus
on areas and volumes of i) 10-20%, ii) 20-30% and iii) 30-40% of the total size of the North Atlantic surface area or basin
volume, respectively, leading in combination with rectangles, ellipses, cuboids and ellipsoids to 12-~~~~~~

For each of our applications of the genetic algorithm. ~~We note that the desired area can also be given as total area instead
of a percentage and could, for example, be the distance that the cruise can cover within a given duration. However, even when
choosing a total area instead of a percentage, a range of this total area has to be given as the model resolution does not allow
290 to reach an exact area easily. Apart from the size limitation, we are only interested in solutions where the inter-model spread
in the predictor is high as we want our emergent constraint to help us to constrain model spread. Therefore, we only consider~~

~~grid-point within the optimal region where the multi-model standard deviation of the predictor is larger than the average multi-model standard deviation of the predictor for the whole North Atlantic.~~

295 , we use a population of 1000 individuals evolving over 100 generations. As initialization, a population of (i) 1000 rectangles or ellipses of varying area-sizes are placed randomly across the surface of the North Atlantic ocean (2D-case) or of (ii) 1000 cuboids or ellipsoids of varying volume-sizes are placed randomly across the water columns of the North Atlantic (3D-case). Subsequently, each individual gets a fitness assigned based on our fitness-function. After our initialisation, we create a new generation by applying three steps (see Fig. 2a): (1) We select a new population of 1000 individuals through a repeated
300 tournament selection. In the tournament selection process, 10 individuals are selected at random and the fittest of these is selected (Eiben and Smith, 2003). We note that the resulting population in general contains a number of identical individuals. (2) We randomly chose 50% of the individuals of our new population (this equals a crossover probability of $p = 0.5$) as parents, create two offspring for each pair of parents and use the offspring to replace their parents. This leads to a population of 500 selected individuals and 500 offspring. To create an offspring, we use a one point crossover with random position (see Fig. 2c),
305 i. e. within the sequence of genes of both parents, a crossover site is selected at random. If, for example, an individual is defined by 4 genes and the crossover site is between the first and the second gene, then the first gene of one offspring will be defined by one parent, while the second to fourth gene is defined by the other parent (Sastry et al., 2005). (3) We mutate 20% of the revised population (this equals a mutation probability of $p = 0.2$) and replace the corresponding individuals with their mutations. We realise mutation using Gaussian mutation, where a vector of Gaussian noise is added to the vector of genes (Kramer, 2017). As
310 Gaussian noise we choose a mean of zero and a standard deviation of 0.05. After these three steps, we have a new generation consistent of selected copies, selected and mutated copies, offspring and mutated offspring. Subsequently, the fitness of each individual of our new generation is evaluated. The assigned fitness is then utilised for creation of another new generation as outlined in steps (1)-(3). This algorithmic sequence is illustrated in Fig. 2a. For the purpose of our study, we set the number of iterations to be fixed to 100 and stop the algorithm afterwards. The fittest individual of all generations is then defined to be our
315 (close-to) optimal solution.

3 Results and discussion

In this Section, we first describe the (close-to) optimal cross-correlations obtained through regional optimisation of our emergent constraints as well as the associated speed of convergence of the genetic algorithm (Section 3.1). For both predictors, we separately illustrate the optimal regions and their related emergent constraints (Sections 3.2/ 3.3), their plausibility (Sections 3.2.1/ 3.3.1) and their implications for both models dynamics and observational strategies (Sections 3.2.2/ 3.3.2).
320

3.1 Towards an optimal solution in 100 iterations

Cross-correlations between the simulated values of the future North Atlantic C_{ant^*} -uptake and values of both predictors within the optimal regions identified by the genetic algorithm are significantly improved as compared to the original emergent constraints (see Fig. 3). In the 2D-case, the original cross-correlation of $r = 0.79$ is improved to $r = 0.863$, $r = 0.855$ and $r = 0.848$

325 for the rectangle solutions with 10-20%, 20-30% and 30-40% of North Atlantic surface area, respectively and $r=0.863$,
 $r=0.856$ and $r=0.852$ for the ellipse solutions with corresponding area sizes. For the 3D-case, the already high original
cross-correlation of $r=0.94$ is still improved to $r=0.972$, $r=0.966$ and $r=0.966$ for the cuboid solutions with 10-20%, 20-
30% and 30-40% of North Atlantic volume size, respectively, and $r=0.987$, $r=0.975$ and ~~$r=0.968$~~ $r=0.970$ for the ellipsoid
330 solutions with corresponding volume sizes. We note that, in general, higher cross-correlations are achieved for smaller areas
or volumes due to more placement possibilities. While this is not surprising, this might lead to the desire to use shapes that
are even smaller than our predefined volumes and area-sizes. For our application, however, we ~~advise~~ advise against using
shapes of very limited volume. This is based on the fact that we are searching for areas that provide a fingerprint of the original
emergent constraints for the North Atlantic future C_{ant*} -uptake, which are based on features that are associated with the large
scale ocean circulation. While the algorithm would be able to find high cross-correlations for shapes of smaller size, it would
335 be difficult to assign the desired outcome to those large-scale circulation features and to assign a dynamical interpretation to
the so-obtained optimal regions.

For the rectangle solutions, the first iteration of the genetic algorithm reaches already cross-correlation of ~~$r=0.862$, $r=0.853$~~
 $r=0.863$, $r=0.854$ and $r=0.847$ for area-sizes of 10-20%, 20-30% and 30-40%, respectively and only offers improvements
in the fourth decimal point afterwards (Fig. 3a). After four iterations, there is subsequently no improvement in the first 10 dec-
340 imal points. For the ellipse solutions, the first iteration yields cross-correlations of ~~$r=0.855$~~ $r=0.857$, $r=0.849$ and ~~$r=0.850$~~
 $r=0.851$ for area-sizes of 10-20%, 20-30% and 30-40% and only improvements in the third ~~decimal point or subsequent~~
decimal points are subsequently achieved. In contrast to the rectangle solutions, the genetic algorithm converges slower for the
ellipse solutions (Fig. 3b) and, for the area-size of 30-40%, no subsequent improvement in the first ~~10-16~~ decimal points is
only reached after the ~~90th-66th~~ iteration. In general, for the 2D-case, the fast speed of convergence can be traced back to the
345 limited area that the genetic algorithm operates in and the associated limited options for placement.

The first iteration of the cuboid-application of the genetic algorithm reaches already cross-correlations of ~~$r=0.960$, $r=0.959$~~
~~and $r=0.962$~~ , $r=0.964$ ~~and $r=0.962$~~ for 10-20%, 20-30% and 30-40% of North Atlantic volume size (Fig. 3bc). Subse-
quently, only improvements in the third decimal place are achieved and after 10 iterations there is no improvement in the first
350 decimal points. Compared to the convergence of the rectangle solutions, the convergence of the cuboid-solutions is a bit slower
due to more placement options throughout the water column.

In contrast to the cuboid solutions and all applications of the 2D-case, ~~the smaller all~~ ellipsoid solutions show a slightly
different convergence-behaviour (Fig. 3d). Here, the cross-correlations are still significantly increasing at the end of our appli-
cation of the genetic algorithm. At the same time, the maximum cross-correlation of the smaller ellipsoids during our execution
of 100 iterations are 0.015 and 0.009 higher than those of the smaller cuboids. We assign both the slow speed of convergence as
355 well as the improved cross-correlations of the smaller ellipsoid to the higher degrees of freedom as well as to more placement
options as the smaller-volume ellipsoids have the option to be tilted within the water column.

3.2 Optimal regions for the winter pCO_2^{sea} -anomaly and ~~their physical explanation~~associated new emergent constraints

The optimal regions found by the genetic algorithm for the winter pCO_2^{sea} -anomaly (2D-case) all have their southern boundary at 28°N or 29°N, independent on predefined shape and size (Fig. 4). Their northern boundaries vary between 43°N and 53°N, with larger optimal areas reaching further north. Longitude-wise, all optimal areas are placed in the western part of the North Atlantic. Here, their western and eastern boundaries vary dependent on the predefined size and shape of the optimal area. Yet, the area between 73°W and 30°W and between 29°N and 42°N is enclosed by all optimal areas and is hence central for the considered emergent constraint. This central area is very similar to the optimal rectangle and ellipse covering 10-20% of the North Atlantic area size, which yield the highest cross-correlations when compared to the optimal rectangles and ellipses with larger surfaces, respectively (see Section 3.1). We note that, for the optimal areas and their given size-requirements, a placement further south was not possible as only grid-points where the multi-model standard deviation of the predictor is larger than that of the mean multi-model standard deviation of the predictor of the North Atlantic are eligible for our optimal regions (see Section 2.4). ~~Non-eligible points are illustrated with different shades of blue. It can be readily seen~~ in Fig. 4b-d. ~~It can be readily seen~~ that our requirements for eligible grid points excludes the lower latitudes of the North Atlantic from being chosen for placement of the optimal region. ~~However, our eligibility criterion indicates that, for the lower latitudes, the multi-model ensemble agrees relatively well on the seasonal forcing of~~

We utilise the optimal regions to spatially average the winter pCO_2^{sea} -anomaly, ~~so that it is not necessary to constrain the model ensemble hereover each of them individually and constrain our predictand~~ (Fig. 5). For details of the method that we ~~utilise to calculate the unconstrained and observationally constrained estimates of the future North Atlantic C_{ant*} -uptake, the reader is referred to Section 2.1. The unconstrained estimate of our model ensemble yields a mean value of 0.5 ± 0.23 PgC/yr for the future North Atlantic C_{ant*} uptake, while our non-regionally optimised predictor yields a mean value of 0.73 ± 0.27 PgC/yr. When applying our regionally optimised predictors, the observational constraints correct the unconstrained mean values towards mean values between 0.72 PgC/yr and 0.79 PgC/yr (Fig. 5, Table 1).~~

As ~~noted in the introduction, outlined in Section 1, our regional optimization of emergent relationships has the two-fold goal to (a) identify key model dynamics for the emergent constraint and model inconsistencies around them and (b) provide key areas where a narrow observational uncertainty is crucial for constraining future projections. However, before following up with our goal, we need to ensure that the high correlations between our regionally optimised predictors and the predictand do not come into place randomly but that there is~~ a physical explanation behind the ~~emergent constraint is of high importance for its plausibility~~ (Williamson et al., 2021; Hall et al., 2019). Our predictor, the winter pCO_2^{sea} -anomaly, is a measure of seasonal features of pCO_2^{sea} , which are tightly related to our predictand (the future C_{ant*} -uptake), as the seasonal cycle of pCO_2^{sea} indicates through which processes C_{ant*} -uptake occurs in a given model (see Section 2.2 and Goris et al., 2018). Our optimal areas found as this is key for the plausibility of emergent constraints (Williamson et al., 2021; Hall et al., 2019). Therefore, we utilise Section 3.2.1 to investigate the plausibility of the optimal areas found before examining our two-fold goal in

390 Section 3.2.2. We note however, that our investigation of the plausibility of the optimal regions is closely related to model dynamics and hence to part of our goal.

3.2.1 Plausibility of the optimal areas for the winter pCO_2^{sea} -anomaly

As all of our six optimal areas cover the same central area between $73^\circ W$ and $30^\circ W$ and between $29^\circ N$ and $42^\circ N$, we consider it less likely that the high correlations between the predictor spatially averaged over the optimal areas and the predictand occurs by chance. Therefore, we proceed to investigate the physical explanation of the identified optimal domains. Here, our identified optimal regions for the predictor have the aim to point out key regions, where the simulated differences in the winter pCO_2^{sea} -anomaly are especially well related to a model's future North Atlantic C_{ant*} -uptake. ~~Based on multi-model mean and standard deviation of the contemporary winter pCO_2^{sea} -anomaly (Fig. 4), it is apparent that the model spread is increasing when going further north and that the disagreement in the seasonal drivers of pCO_2^{sea} only appears in the mid-to-high latitude North Atlantic. We note that the difference in contemporary seasonal cooling/warming between models is not as prominent as their contemporary difference in mixed layer depth and biological activity (Goris et al., 2018).~~ We expect large scale circulation features to be an important driver of ~~these model differences~~ model differences in the winter pCO_2^{sea} -anomaly as these are directly related to nutrient supply, heat transport and deep mixing and hence determine the simulated pCO_2^{sea} . Based on this logic, the identified optimal regions seem reasonable as they all cover a major part of the Gulf Stream. The Gulf Stream is a key part of the warm and upper branch of the Atlantic Meridional Overturning Circulation (AMOC), which transports waters from the low-latitude North Atlantic via the Gulf Stream, the North Atlantic Current (NAC) and the Irminger Current to the high latitude North Atlantic, thereby releasing heat to the atmosphere (e.g. Rhein et al., 2011). Along this path, deep mixed layers are formed via wind-driven velocity shears but also via heat-loss to the atmosphere, which becomes more prominent in higher latitudes where it leads to deep convection (e.g. Rhein et al., 2011). The strength of the Gulf Stream and its extension is not only an important driver of the amount of heat that is transported from low to high latitudes and the strength of deep convection in high latitudes but also for transporting high-nutrient thermocline waters from low to high latitudes (the so-called nutrient-stream, see e.g. Williams et al., 2011) and hence for the strength of the winter pCO_2^{sea} -anomaly. In line with this, the model spread is increasing further north and the highest multi-model standard deviation of the contemporary winter pCO_2^{sea} -anomaly (Fig. 4b) follows the path of the NAC, which is the immediate Gulf Stream extension.

415 In first instance, it seems surprising that not all optimal regions cover the path of this high standard-deviation, but that the smallest optimal regions are placed directly at the southwestern boundary of it, which coincides with the beginning of the Gulf Stream. However, we note that high multi-model standard deviations might also indicate a slightly different placement of currents between models and that the paths of Gulf Stream and NAC in the open ocean are influenced by decadal variations, which might not be in phase within the model ensemble. The optimal regions cover those latitudes before and where the Gulf Stream starts to separate from the coast and where the spatial path of the current is therefore less variable within models. Additionally, we note that such a placement seems reasonable as biological production becomes more dominant further north. Here, different ecosystem model-parametrisations get a larger imprint on the simulated contemporary winter pCO_2^{sea} -anomaly,

such that the cross-correlations between predictor and predictand are not only based on surface temperature, available nutrients and mixed layer depth.

425 We use further calculations to support ~~the argument that these~~ our plausibility-argument that our optimal regions capture the influence of the upper branch of the AMOC, specifically the Gulf Stream, on the simulated contemporary winter $p\text{CO}_2^{\text{sea}}$ -anomaly and hence on our predictand, the future North Atlantic C_{ant^*} -uptake. For this, we calculate the cross-correlation between our predictand and the strength of the upper AMOC branch (see ~~appendix~~ Appendix B) at 30°N , as this is a central latitude in our identified optimal regions. As we consider ~~this the AMOC~~ volume transport only in terms of driving the
430 contemporary winter $p\text{CO}_2^{\text{sea}}$ -anomaly, we expect the transport within the mixed layer depth to be key. Indeed, when calculating cross-correlations between 10-year running averages of the accumulated northward volume transport between surface and different depths at 30°N and our predictand, we identify cross-correlations to be highest for the accumulated northward volume transport between surface and ~~500m~~ 500 m. The cross-correlations get worse for both shallower and deeper depths when varying the lower boundary of the northward volume transport in depth-intervals of ~~100m~~ 100 m (Fig. 6a). We note that cross-
435 correlations between 10-year running averages of our predictand and the northward volume transport between surface and ~~500m~~ 500 m at 30°N stay between $r = 0.845$ and $r = 0.921$ for all considered time-periods (Fig. 6a), with a cross-correlation of $r = 0.883$ for the 1990s. This value is slightly above the cross-correlations between the modelled contemporary winter $p\text{CO}_2^{\text{sea}}$ -anomaly in our optimal regions and the predictand.

In order to quantify that these high cross-correlations between our predictor and the accumulated northward volume transport
440 between surface and ~~500m~~ 500 m are a specific feature of our identified optimal regions, i.e. the Gulf Stream region, we further vary the latitude of the northward volume transport in our calculations in latitude-intervals of 5° (Fig. 6b). We find that cross-correlations are highest when utilising 10-year running averages of the northward volume transport between surface and ~~500m~~ 500 m at 25°N and 30°N with cross-correlations getting worse for latitudes further north and south. Specifically between 30°N and 35°N , the cross-correlations are decreasing rapidly. For most of the considered decades, cross-correlations
445 are slightly higher at 25°N than at 30°N . However, this latitudinal band contains no eligible grid-points in the Gulf Stream region, so that the genetic algorithm could not identify it to be part of an optimal region. We conclude that it is indeed in the Gulf Stream region where cross-correlations between our predictor and the predictand are exceptionally high. We ~~hence~~ deem the identified optimal regions ~~for the contemporary winter $p\text{CO}_2^{\text{sea}}$ -anomaly to be plausible and find these regions~~ to be characteristic of the northward volume transport of a model, governing its surface temperature distribution, available nutrients
450 and mixed layer depths not only at the specified latitudes of the optimal regions, but along the path of the Gulf Stream, NAC and Irminger currents from low-to-high latitudes. This confirms the plausibility of our optimal regions for the contemporary winter $p\text{CO}_2^{\text{sea}}$ -anomaly.

We would like to additionally denote that cross-correlations between our predictand and 10-year running averages of the maximum northward volume transport at our central latitude of 30°N stay between $r = 0.652$ and $r = 0.870$ for all considered
455 time-periods. A commonly used metric in modelling studies, i. e., the maximum northward volume transport at 40°N yields cross-correlations with the future North Atlantic C_{ant^*} -uptake between $r = 0.575$ and $r = 0.790$ for all considered time-periods. Hence, when inferring from maximum AMOC-strengths to the North Atlantic carbon sink, the relationship might not be as

strong as commonly assumed [in modelling studies](#). We hence propose to instead focus on the northward volume transport within the mixed layer at latitudes between 25°N and 30°N.

460 3.2.2 [Implications of the optimal areas of the winter \$p\text{CO}_2^{\text{sea}}\$ -anomaly](#)

After having verified the plausibility of the optimal areas of the winter $p\text{CO}_2^{\text{sea}}$ -anomaly, we follow up on the two-fold goal of our regional optimization of emergent relationships. Our optimal areas directly fulfill one part of our goal by indicating key areas where a narrow observational uncertainty is crucial for constraining future projections. With regards to our second goal of identifying key model dynamics for the emergent constraint, our plausibility-analysis identified the northward volume transport of a model to be the key driver of the emergent constraint between the winter $p\text{CO}_2^{\text{sea}}$ -anomaly and future North Atlantic C_{ant^*} -uptake, via governing its distributions of temperature, available nutrients and mixed layer depths from low-to-high latitudes. Based on this, we examine the emergent constraints of our regionally optimised winter $p\text{CO}_2^{\text{sea}}$ -anomaly (Fig. 5) for model inconsistencies around these key model dynamics.

We find that all newly obtained constrained values for the future North Atlantic C_{ant^*} uptake are consistent with each other, i.e. the differences in the mean values are small and the uncertainties around the mean values ensure that the solutions do not contradict each other (Fig. 5, Table 1). Nevertheless, the constrained mean values of the future North Atlantic C_{ant^*} uptake based on the smallest optimal ellipse or rectangle are consistently smaller than those based on the largest optimal ellipse or rectangle (Fig. 5), which reach further north (Fig. 4c,d). Similarly, areas positioned further south (Fig. 5a,c) generally have models with lower future North Atlantic C_{ant^*} uptake closer to their mean observational value of the $p\text{CO}_2^{\text{sea}}$ -anomaly than those positioned further north (Fig. 5b,d), equal to the observational constraint shifting further right within the model ensemble (from Fig. 5a,c to Fig. 5b,d). The observational mean value of the winter $p\text{CO}_2^{\text{sea}}$ -anomaly increases by 5.85 μatm (7.18 μatm) between the smaller and the largest rectangles (ellipses), while the average value of the winter $p\text{CO}_2^{\text{sea}}$ -anomaly of the four models that are within observational uncertainty for all optimal areas only increased by 1.89 μatm (3.99 μatm). The seven remaining models show an even smaller increase of 0.01 μatm (decrease of 0.73 μatm). This could indicate that the south-north gradient of the winter $p\text{CO}_2^{\text{sea}}$ -anomaly is not steep enough in the model ensemble, i.e. that the modelled northwards-propagation of related properties is too weak (this relationship is visualised for the winter $p\text{CO}_2^{\text{sea}}$ -anomaly gradient between the southernmost and northernmost latitudes of the smallest rectangle in supplementary Fig. S2). However, the uncertainties around the observational estimates of the winter $p\text{CO}_2^{\text{sea}}$ -anomaly are large and do not allow us to be certain about the observed south-north gradient and hence potential discrepancies in the modelled south-north gradient. We use observational estimates of the upper (0-500 m) North Atlantic northward volume transport to further investigate a potentially too weak northward propagation (confirmed to be a plausible predictor in Section 3.2.1), due to limited observational availability only considered at 26.5°N and for the time period 2005-2014 (see Appendix A). The transport values show that the northward propagation of the seven models with the lowest future C_{ant^*} uptake is notably too weak, but that the upper ocean northward transport of the four models with the highest future C_{ant^*} uptake is within observational uncertainties (see supplementary Fig. S1). Yet, the model ensemble shows diverse changes of this transport between 26°N and the latitudes of the optimal areas. Here, the transport of the four models with the highest future C_{ant^*} uptake shows an average increase of 1.86 Sv between

26°N and 30°N, and we find an average increase of 0.65 Sv for the remaining 7 models. Without an additional observational estimate at 30°N (or another latitude of the optimal areas), we cannot confirm or deny if the northward propagation of the four best models is within observational bounds for our optimal regions.

495 3.3 Optimal regions for the fractional C_{ant*} -storage and **their physical explanation**associated new emergent constraints

In the case of cuboids-solutions, all optimal areas identified by the genetic algorithm for the contemporary fractional North Atlantic C_{ant*} -storage (3D-case) are placed in the western part of the North Atlantic (Fig. 7c) with a common western boundary at 96°W and southern boundaries at 19°N (smallest cuboid) or 18°N (larger cuboids). Their northern and eastern boundaries vary between 34°N-50°N and N and 50°N as well as 61°W-31°W and 31°W, respectively, with larger cuboids reaching both further north and east. With the given size-requirements and the fact that only grid-points where the multi-model standard deviation of the predictor is larger than the mean standard deviation of the North Atlantic are eligible for our optimal regions (see Section 2.4.2.3), a placement of the optimal cuboids further south is unlikely. We note that the eligibility of grid-points is considered per depth-layer, such that the illustrated depth-integrated values of the multi-model standard deviation (Fig. 7b) only give a first indication of eligible points (non-eligible points are visualised per depth layer in supplementary Figs. S5 and S6). The genetic algorithm identified the optimal depth-ranges for the cuboids to be 700-4700m-700 - 4700 m for the smallest cuboid as well as 800-4900m-800 - 4900 m for the larger cuboids. Hence Apart from the depth range from 700 - 800 m, the optimal cuboids of larger volumes are enclosing the optimal cuboids of smaller volumes, such that the smallest cuboid is enclosed by all cuboids. As the cross-correlations between the simulated future North Atlantic C_{ant*} -uptake and the fractional C_{ant*} -storage within the optimal cuboids is also highest for the smallest cuboid (see Section 3.1), we consider its enclosed volume to be central for our emergent constraint.

For the ellipsoids, the optimal depth-ranges identified by the genetic algorithm are 0-4700m-0 - 4800 m for the smallest, 0-5000m-0 - 5000 m for the medium-sized and 500-5000m-for the largest ellipsoid. The surface positions of the vertical principal axis of the smallest and the medium-sized ellipsoids are in the eastern North Atlantic around 25°W/ 40°N and they tilt in south-west direction with depth until being positioned in the western North Atlantic at around 75°W/ 25°N for their deepest points (Fig. 7d-e). While Contrarily, the vertical principal axes of the largest ellipsoid also tilts in direction south-west with depth, north-east with depth and its position is already in the western North Atlantic for its shallowest point (Fig. 7f).

Our predictor, We utilise the optimal regions to spatially average the fractional C_{ant*} -storage over each of them individually and constrain our predictand (Fig. 8). Details of the method that we utilise to calculate the unconstrained and observationally constrained estimates of the future North Atlantic C_{ant*} uptake can be found in Section 2.1. The unconstrained estimate of our model ensemble yields 0.5 ± 0.23 PgC/yr for the future North Atlantic C_{ant*} uptake, while our non-regionally optimised predictor yields 0.64 ± 0.26 PgC/yr. When applying our regionally optimised predictors, the unconstrained estimate is corrected towards mean values between 0.55 PgC/yr and 0.79 PgC/yr (Fig. 8, Table 1).

Before we follow up on our two goal associated with the regional optimization of this emergent relationship, we want to ensure that there is a physical explanation behind the optimal areas found. Therefore, we follow the same approach as for the

2D-case and investigate the plausibility of the optimal areas found first (Section 3.3.1) and only subsequently report on our two-fold goal (Section 3.3.2). However, there is a close relation between our investigation of the plausibility of the optimal regions and our goal of identifying key model dynamics for the emergent constraint.

3.3.1 Plausibility of the optimal areas for the fractional C_{ant*} -storage

530 As all of our three optimal cuboids cover the same central area between 96°W and 61°W, 19°N and 34°N and 800 m and 4700 m, it appears to be less likely that the high correlation between the predictor spatially averaged over the optimal cuboids and the predictand occurs by chance. Similarly, all optimal ellipsoids appear to cover the relatively slow and broad interior pathway west of the North Atlantic for ocean depths below 1000 m, yet the similarity of the optimal ellipsoids is more difficult to establish. To confirm the plausibility of our optimal areas, we subsequently investigate the physical explanation for the
535 regionally optimised emergent constraint.

Our identified optimal regions for the predictor have the aim to point out key regions, where the simulated differences in the fractional North Atlantic C_{ant*} -storage are especially well related to a model's future North Atlantic C_{ant*} -uptake. We expect large scale circulation features to be an important driver of these model differences as the contemporary fractional North Atlantic C_{ant*} -storage is a measure for the efficiency of carbon sequestration (see Goris et al., 2018)(Goris et al., 2018),
540 which reflects not only the strength of high latitude deep convection and sinking organic particles, but also of southward volume transport of C_{ant*} in deeper ocean depths. This feature is tightly related to our predictand, the future North Atlantic C_{ant*} -uptake, as ~~these the~~ pathways of carbon sequestration ultimately determine how much C_{ant*} -storage is efficiently removed from the high latitude North Atlantic ocean surface and hence how much C_{ant*} can subsequently be taken up across the air-sea interface. Here, a more efficient carbon sequestration, i. e. less storage of C_{ant*} in shallower depths and more storage in the
545 deeper ocean leads to the potential for more C_{ant*} uptake in a high CO₂ future.

As the ellipsoids can be tilted within the water volume, the associated optimal regions have the option to follow water masses more closely. Their optimal solutions allow us to visually quantify if the reasoning of the predictor being a measure of pathways of carbon sequestration (see Goris et al., 2018)(Goris et al., 2018) holds. While the placements of the optimal ellipsoids in shallower ocean layers are still influenced by mixed layer dynamics and the pathways of carbon sequestration
550 are difficult to identify, the optimal ellipsoids are placed in central areas of the simulated fractional C_{ant*} -storage pathways for deeper layers. We note that the spatial gradients of the fractional C_{ant*} -storage multi-model mean (displayed for different depth in supplementary Figs. ~~S01 and S02~~S3 and S4) are consistent with the theory that the deeper and southward branch of the North Atlantic volume transport can be divided into (i) a fast and narrow boundary pathway and (ii) a relatively slow and broad interior pathway west of the North Atlantic ridge (Gary et al., 2011, and references therein). However, the multi-model
555 standard deviation of the fractional C_{ant*} -storage as displayed in Fig. 7b (and additionally displayed for different depths in supplementary Figs. ~~S03 and S04~~S5 and S6) indicates that the models do not agree on the strength of this southward transport, neither for its slow nor for its fast component. For ocean depths below ~~1000m~~1000 m, the optimal ellipsoids consistently point towards the areas of the relatively slow and broad interior pathway west of the North Atlantic ridge with both high fractional C_{ant*} -storage multi-model mean values and standard deviations. We hence ~~deem~~ consider the optimal ellipsoids to be in

560 accordance with the previous reasoning of Goris et al. (2018), though we note that it was difficult to relate the ellipsoid-shapes to physical meaning.

The cuboid-solutions are implemented in a way that prevents them from being tilted within the water volume and they hence can not follow the C_{ant*} sequestration pathway as closely as the ellipsoid solutions. ~~We note, however, that all~~ All optimal cuboids seem to point roughly towards the southernmost points that the relatively slow and broad interior southward transport of C_{ant*} reaches to, though the narrow and fast southward transport of C_{ant*} reaches further south (both are indicated through the horizontal gradient in the fractional C_{ant*} -storage multi-model mean as illustrated in Fig. 7b and supplementary Figs. ~~S01 and S02~~ S3 and S4). This placement seems to support our argument that the optimal cuboids-solutions capture the influence of the transport pathways of the carbon sequestration.

As previously done in the 2D-case, we use further calculations to support our argument with respect to the optimal cuboids. In detail, we calculate cross-correlations between our predictand and the streamfunction volume transport at 26°N (see ~~appendix~~ Appendix B), as this is the latitudinal mid-point of the smallest cuboid and hence a central latitude ~~in of~~ of our identified optimal cuboids. To validate the depth-boundaries identified by the smallest and central cuboid, we set one boundary of the volume transport to be one of the identified depth-boundaries of the cuboid, while we vary the other depth-boundary (Fig. ~~9a-ba,b~~ 9a-b). Cross-correlations between 10-year running averages of the accumulated volume transport in different depth-ranges at 26°N and our predictand show that cross-correlations are highest for the accumulated southward volume transport between ~~900-4700m~~ 900 - 4700 m when varying the upper depth boundary (Fig. 9a) and between ~~700-5300m~~ 700 - 5300 m (or even deeper) when varying the lower depth boundary (Fig. 9b). While this seems to indicate that the depth-boundaries of the cuboids are not optimal, we note that the cross-correlations obtained for upper depth boundaries of ~~900m and 700m~~ 900 m and 700 m are relatively similar and a strong decline in cross-correlations only appears for an upper depth boundary above ~~500m~~ 500 m. Moreover, the C_{ant*} southward transport is strongly influenced by the amount of C_{ant*} that is available for transport in a specific depth-layer and while the lower depth boundary of ~~5300m~~ 5300 m reaches higher cross-correlations between 10-year running averages of the southward volume transport and the predictand, the amount of C_{ant*} that can be transported in these deep depth layers is negligible. Additionally, there are no eligible grid-points in these very deep layers.

When considering the streamfunction volume transport within the depth-boundaries given by the smallest optimal cuboid and varying its latitudes (Fig. 9c), we find that the 10-year running averages of volume transport at the identified mid-latitude of the smallest cuboid offers significantly higher cross-correlations with our predictand than the volume transport further north. This points towards the optimal cuboids capturing an important latitude of the southward interior C_{ant*} -transport. However, the volume transport south of the cuboid's placements offers slightly higher cross-correlations with the predictand. Yet, in these latitudes south of our cuboids, the amount of deep C_{ant*} -storage available for southward transport is small and there are moreover very few eligible grid-points in these latitudes. Under the conditions given to the genetic algorithm, the identified depth ranges and latitudes hence seem plausible. Cross-correlations between our predictand and 10-year running averages of the southward volume transport at the identified depth-ranges and latitudinal mid-point of the smallest cuboid are between $r=0.690$ and $r=0.859$ for all time-periods and $r=0.771$ for the analysed time-period 1997-2007. ~~While the~~ The identified cross-correlations indicate a strong link between southward volume transport and our predictand, ~~we notethat our original~~

595 ~~predictor, and hence verify its plausibility. We note, however, that~~ the fractional C_{ant^*} -storage offers an better relationship with our predictand ~~than the southward volume transport~~. This comes as no surprise as the depth-distribution of the C_{ant^*} -storage plays a big role in its southward transport.

3.4 ~~Newly identified emerging relationships and their implications~~

600 ~~Based on the high cross-correlations between our indicators in the identified optimal areas and the future North Atlantic C_{ant^*} uptake and due to the dynamical plausibility of these relationships, we identify the values of our indicators in the optimal areas as new and additional predictors. Furthermore, we found the upper (0-500m) North Atlantic northward volume transport at 30°N (2D-case) and the deep (700-4700m) North Atlantic southward volume transport at 26°N (3D-case) to be powerful and plausible predictors. Now, we use observational estimates of our new predictors to constrain our predictand. This procedure is based on the assumption that a correct simulation of our new predictors is fundamental for being able to correctly simulate the~~
605 ~~future North Atlantic C_{ant^*} uptake and can be used as a necessary condition for its estimation. For details of the method that we utilise to calculate the unconstrained and observationally constrained estimates of the future North Atlantic C~~

3.3.2 Implications based on the optimal areas of the fractional C_{ant^*} -storage

After having examined and verified the plausibility of our optimal areas for the fractional C_{ant^*} uptake, the reader is referred to Bourgeois et al. (2022). We note that, for the volume transport, the spatially closest observations available are those from
610 the RAPID array (see Appendix A) at 26.5°N, starting from April 2004. In order to be able to use these observations as a constraint, we consider both volume transport related predictors at 26°N and for the time period 2005-2014. Both our dynamical explanation of the emergent relationship and storage, we now consider the associated implications for both the model dynamics and observational uncertainty in line with our two-fold goal. Again, the optimal areas point us directly towards the regions where a reduction of the observational uncertainty is most useful to increase our knowledge on the future C_{ant} -uptake. Yet, it
615 might be operationally more challenging to encompass the optimal ellipsoids during a cruise, while the optimal cuboids might be represented with observations more easily.

Based on the identified model dynamics relating to the associated high cross-correlations are not fundamentally changed by this (optimal regions, our optimised emergent constraints can inform us about model inconsistencies around those dynamical features. For the smallest and medium-sized ellipsoids, the observational uncertainty does not allow for constraining the
620 solution further (see Fig. 6).

The unconstrained estimate of our model ensemble yields a mean value of 0.5 ± 0.25 PgC/yr for the future North Atlantic C_{ant^*} uptake. When applying our regionally optimised predictors, the observational constraints correct the unconstrained mean values towards higher mean values between 0.57 PgC/yr and 0.79 PgC/yr (see Table 1). We note 8c for the smallest ellipsoid. For the largest ellipsoid and the optimal cuboids, we find that all newly obtained constrained values for the future North Atlantic
625 C_{ant^*} uptake are consistent which with each other, i.e. the solutions do not contradict each other due to small differences in their mean values and large enough uncertainties around the mean values (Fig. 8a,b,d, Table 1). Nevertheless, the constrained mean values are large enough for the solutions to not contradict each other. In line with this, there is one model that satisfies

the observational constraint of all our predictors, that is CESM1-BGC (Fig. ??). Nevertheless, it can readily be seen that our observational constraints for the upper ocean predictors are systematically identifying models with a higher future North Atlantic C of the future North Atlantic C_{ant*} uptake to be dynamically 'correct' than those for the deep ocean predictors. This is also reflected in our constrained mean values, which are 0.09-0.22PgC/yr higher for the upper ocean predictors ((see Table 1). Moreover, we note that uptake based on the optimal cuboids and the largest ellipsoid are consistently smaller than that of the original emergent constraint and offer a reduced uncertainty. Especially for the optimal cuboids, the regional optimisation leads to a narrowing down of our ensemble of well-performing models from five models (original emergent constraint) to three models (largest optimal cuboid) and finally down to two models (smallest optimal cuboid).

4 Discussion

With a multitude of model-projections available from several scenarios and model-generations, the desire to decrease the related uncertainty based on a process-based understanding has increased. In this context, the upper ocean predictors positioned further south have models with lower concept of emergent constraint appears to be highly valuable and has become increasingly popular in recent years. Yet, the method has also attracted a lot of criticisms relating to, among others, the non-valid Gaussian assumption for the model ensemble, relationships between predictors and predictands that occur without any physical meaning behind them (Caldwell et al., 2014), non-robust emergent constraints that are not valid across different scenarios and model-ensembles, the assumption of linearity between predictor and predictand (Williamson and Sansom, 2019, who include a solution for testing the linearity) and most prominently that the linear relationship of averaged values overly simplifies the complex interactions of many components and feedbacks (Schlund et al., 2020; Williamson and Sansom, 2019). Our study relates to the last point, but yet in a not-previously discussed manner: we advance the view that it is overly simplified to compare a regional average of the predictor (as often done in emergent constraints) to a regionally averaged observational value. We use regionally optimised emergent constraints to show that this course of action might deem a model to be 'fit' in the context of an emergent constraint but disregards that some aspects of the model's spatial distribution of the predictor within the considered region might be a misfit. Yet, the spatial distribution is of high importance for dynamical predictors that capture or rely on, for example, a transport from north to south. Here, the north-south distribution of the predictor is in fact an expression of its dynamical correctness. The spatial distribution is moreover especially important for predictands that are not evenly distributed within the considered region like the future North Atlantic C_{ant*} uptake closest to their mean observational value than those positioned further north. The observational mean value. This predictand has substantially higher C_{ant*} uptake in higher latitudes such that a misfit in the north-south gradient of the winter pCO_2^{sea} -anomaly increases by $5.85\mu atm$ ($7.18\mu atm$) between the smaller and the largest rectangles (ellipses). However, the average value of the winter pCO_2^{sea} -anomaly of the four models that are closest to the observational mean values only increased by $1.89\mu atm$ ($3.99\mu atm$). This indicates that the south-north gradient of will have consequences for the correctness of the constrained value. While it can be argued that a potentially easy approach to solve this problem is to additionally evaluate the spatial gradient of the predictor within the considered area (not done here), we note that not all parts of the considered region might be equally important for the considered emergent constraint. Our regionally

optimised emergent constraints point towards key areas for the emergent constraints (in terms of the predictor) and hence do reveal potential spatial mismatches only for highly important areas for the emergent constraint. Moreover, the identification of these key areas also allows us to uncover key dynamics behind the emergent constraint. We hence find our regionally optimised emergent constraints superior towards a simple gradient-analysis and recommend using it.

665 Regionally optimised emergent constraint can be applied to create new estimates of the predictand, which are potentially inconsistent with those of the original emergent constraint or with each other. In a review of emergent constraint, Williamson et al. (2021) noted that highly related predictors with different predictand-estimates indicate (i) persistent measurement biases and/or (ii) that the modelled-real world may not be sharing the same responses as the models and hence that a persistent error across the model ensemble exists. Our analysis does not consider the possibility of measurement biases as this is beyond the goal
670 of our study. Yet, we restrict measurement biases from playing a big role by assuming measurement errors generously. We hence use our regionally optimised emergent constraints to investigate potential inconsistencies within the model ensemble. In our case study, we note a potential model inconsistency for our first predictor, the winter pCO_2^{sea} -anomaly indicating that its south-north gradient is not steep enough, i.e. that the modelled northwards-propagation of related properties is too weak (see Section 3.2.2). However, the uncertainties around the observational estimates of the winter pCO_2^{sea} -anomaly are large and do
675 not allow us to be certain about this south-north gradient. We do not detect model inconsistencies for our second predictor, the fractional C_{ant*} -storage (see Section 3.3.2).

In our case study, both considered predictors are also highly related to each other, and can therefore further be used to inform about inconsistencies in the upper ocean model performance. We note that, in this study, the uncertainties around the observational estimates of and interior ocean in terms of C_{ant*} . This is due to the fact that (i) the strength of the northward AMOC volume transport in the upper 500m drives the upper ocean properties in the high latitude North Atlantic and hence the winter pCO_2^{sea} -anomaly have been estimated very roughly and generously. Assuming that we had utilised our identified optimal areas to gain new and narrower observational uncertainties, then our new observational constraints could be utilised to identify a comparatively weak northward propagation of the winter pCO_2^{sea} -anomaly within our model ensemble. Interestingly, some of the deep ocean predictors are also placed slightly further south than (see Section 3.2.1); and concurrently, (ii) the strength
680 of the southward AMOC volume transport in the interior ocean drives the effectiveness of surface-to-deep C_{ant*} -transport (see Section 3.3.1). Both parts are connected as the strength of the northward AMOC volume transport (i.e., the upper branch of the AMOC) is highly related to the strength of the southward AMOC volume transport (i.e., its lower branch). Specifically, the upper branch of the AMOC transports warm waters from the low latitude to the high latitude North Atlantic, thereby releasing heat to the atmosphere (e.g., Rhein et al., 2011). Upon losing its heat, the water becomes denser and sinks. This densification
685 links the warm, surface branch with the cold, deep return branch at regions of deep convection in the Nordic and Labrador Seas. For the Atlantic north of $26^\circ N$, volume conservation dictates that, for constant sea level, the net northward flow of upper waters balances the southward flow of deeper waters with a tolerance of 1Sv (McCarthy et al., 2015) such that there is a direct link between upper and lower branch of the AMOC, driving both our predictors and predictand.

A comparison between the constrained estimates of the predictand achieved using these highly related predictors can help to
695 further disentangle model inconsistencies. When dividing the constrained estimates of the regionally optimised area into those

associated with the upper ocean predictors, which can partly explain that they identify models with lower (0-500 m depth, i.e. all regionally optimised rectangles and ellipses) and those of the deep ocean (below 500 m depth, i.e. all regionally optimised cuboids), it can readily be seen that our observational constraints for the upper ocean predictors are systematically identifying models with a higher future North Atlantic C_{ant*} uptake to be correct (when compared to the upper ocean predictors). The difference between the upper ocean predictors and the deep ocean predictors reduces from 0.09-0.22PgC/yr to well-performing than those for the deep ocean predictors (Figs. 5, 8a,b and Table 1). This is also reflected in our constrained mean values, which are 0.09-0.16PgC PgC/yr when only considering the southern upper yr higher for the regionally optimised winter pCO_2^{sea} -anomaly than for the regionally optimised cuboids (see Table 1) and indicates a mismatch between the propagation from the upper ocean to the deep ocean predictors (smallest ellipse/rectangle and for some of the models. We note that this is also confirmed for the optimal ellipsoids, where both smallest and medium-sized ellipsoids have a higher volume in the upper ocean (25% and 19% of their volume is above 1000 m depth, respectively) and lead to higher constrained mean values of the future North Atlantic C_{ant*} uptake than the largest ellipsoid with only 6% of its volume above 1000 m. Based on the our plausibility analysis for the optimal areas for the upper ocean northwards and deep ocean (Section 3.2.1 and 3.3.1), we found that the upper (0-500 m) North Atlantic northward volume transport at 30°N (2D-case) and the deep (700-4700 m) North Atlantic southward volume transport at 26°N)-

Emergent constraints of larger regions like the North Atlantic might deem a model to be the fittest due to its ability to simulate values within the observational uncertainties. Yet, we show that this model's gradient of the observed quantity within the considered region might be a misfit. This is of high importance for dynamical predictors that capture, for example, a transport from north to south. Here, the north-south distribution of the predictor is in fact an expression of its dynamical correctness. It is moreover especially important for predictands that are not evenly distributed within the considered region. For example, the future (3D-case) are also plausible predictors for the future North Atlantic C_{ant*} uptake and can be utilised to confirm this potential mismatch. Due to the limited observational availability, we only consider these volume transports at 26.5°N and for the time period 2005-2014. The resulting emergent constraints (see supplementary Figs. S1 and S7) confirm the assumed mismatch identifying several models which are only well-performing for one of the volume-transport constraints. Only one model is able to perform well for all considered upper and deep ocean emergent constraints (CESM1-BGC, Figs. 5, 8, S1 and S7).

For both upper ocean and deep ocean constraints, the AMOC-observations come with lower observational uncertainty, yet the AMOC represent a purely physical constraint such that we consider the biogeochemical constraints as more closely related to the North Atlantic C_{ant*} uptake is not uniformly distributed over and hence more plausible. This is reflected in the fact that they also offer very similar or higher correlations with the North Atlantic but there is substantially higher C_{ant*} uptake in higher latitudes such that a misfit in the north-south gradient of the winter pCO_2^{sea} -anomaly will have consequences for the correctness of the constrained value. Whenever spatial distributions are important for the dynamic of the emergent constraint, we propose therefore to always additionally evaluate the spatial gradient of the bias of the predictor within the considered area. We note that the temporal robustness of an emergent constraint is also of importance, but this information is frequently analysed

730 ~~in studies concerned with emergent constraints (see Bourgeois et al., 2022).~~ when compared to the AMOC-constraints in the same ocean depth-range. A lower observational uncertainty in the biogeochemical constraints would hence be of high value.

5 Summary and conclusions

We applied a genetic algorithm to regionally ~~constrain the predictors of two emergent constraints in the realm of the ocean carbon cycle, with the objective to enhance our understanding of key processes driving the uncertainties in the projected future~~
735 ~~anthropogenically altered carbon (C_{ant*}) uptake~~ optimize emergent relationships with the two-fold goal to (a) identify key model dynamics for the emergent constraint and model inconsistencies around them and (b) provide key areas where a narrow observational uncertainty is crucial for constraining future projections. We base the need for regional optimisation on the fact that emergent constraints are often related to dynamical features inherently coupled to spatial distributions. Hence, model performance of this dynamic can not be captured by one single averaged value as usually done for emergent constraints. As
740 a case study to illustrate the usefulness of regional optimisation, we consider two previously established emergent constraints of the future carbon-uptake in the North Atlantic (Goris et al., 2018). The predictors of these emergent constraints are (i) the contemporary winter pCO_2^{sea} -anomaly, which is a surface quantity (2D-case) and (ii) the fraction of the North Atlantic C_{ant*} -storage, which is a surface-to-interior ocean quantity (3D-case). Both predictors relate to a model's ability to efficiently remove C_{ant*} from the ~~ocean's~~ surface into the deep ocean.

745 The genetic algorithm was primarily adopted to find optimal regions for both predictors, such that cross-correlations between the regionally-optimized predictor-values and predictand-values are maximised. As emergent constraints are utilised to constrain the model spread, we only allowed the genetic algorithm to consider grid-points where the multi-model standard deviation of the simulated predictors was larger than average. For the regional optimisation, we pre-defined a suite of different shapes and sizes, such that the genetic algorithm had to identify optimal ellipses and rectangles for the 2D-case and optimal ellipsoids
750 and cuboids for the 3D-case with different ~~size-sizes~~ and volumes, respectively. Our consideration of different geometrical shapes and area sizes allows us to inspect in more detail where key regions for the model performance are, to determine if the simulated results for each of these regions are consistent with each other and to avoid spurious relationships.

Our results indicate that the genetic algorithm converges quickly for rectangles, ellipses and cuboids and slower for ellipsoids. After 100 iterations, the optimal solutions of the genetic algorithm provided higher cross-correlations than the original emergent constraints. ~~With multi-model~~ The regional solutions of the 2D-case have cross-correlations between 0.848 and 0.863,
755 ~~the regional solutions of the 2D-case were at least that is~~ 0.058 - 0.093 higher than those of the original emergent constraint of 0.79. The regional solutions of the 3D-case ~~had~~ have cross-correlations between 0.966 and 0.987 and offered an improvement of 0.026-0.047 - 0.047 in comparison to those of the original emergent constraint of 0.94. The optimal predictor regions ~~pointed~~ point towards the Gulf Stream area at around 30°N to be central for our emergent constraint (2D-case) as well as the region of
760 the interior ocean pathway of the southward volume transport (3D-case). ~~Both identified areas are plausible~~ Before following up on our two-fold goal of the regional optimisation, we investigated the plausibility of the newly identified optimal areas. The Gulf Stream is fundamental in transporting heat and nutrients to the north and is therefore key in determining a model's

765 mixed layer depth as well as its productivity in high latitudes and hence its C_{ant^*} -uptake. The interior ocean southward volume transport is fundamental for transporting C_{ant^*} -saturated surface watermasses to the deep ocean and hence allowing for further high latitude C_{ant^*} -uptake. These dynamical justifications led to the detection of two additional qualified predictors of the future North Atlantic C_{ant^*} uptake: the upper ocean northward volume transport between surface and 500m-500 m depth at 30°N and the deep ocean southward volume transport between 700m and 4700m-700 m and 4700 m at 26°N. We note that the commonly used depth range of the northward maximum volume transport (surface to depth of maximum) did not allow for such high cross-correlations, neither at 26°N nor at 40°N. This indicates that the relation of maximum northward volume transport to the ocean carbon sink is not as robust as often assumed in modelling studies.

~~To our knowledge, this is the first time that a regional optimisation of emergent constraints has been carried out. The results are of high value as the use of emergent constraints in the realm of climate projections has gained a lot of momentum in the last decade (see Williamson et al., 2021, for a review of existing emergent constraints for climate sensitivities) due to the fast growing number of models taking part in coordinated model exercises associated with future projections (e.g. Balaji et al., 2018). Though invaluable progress has been made through automated observational platforms like Argo (Argo, 2000) and analysis tools like ESMvaltool (Eyring et al., 2016b), observational networks and analyses of these future projections are not growing in the same speed. Here, our regional optimisation of existing emergent constraints can be used to guide future monitoring strategies. We show this for the North Atlantic, where our results point towards the already employed RAPID array and prove that the algorithm is able to provide meaningful results. We note, however, that the RAPID array takes purely physical observations, though our localised emergent constraints show that additional measures of carbon storage would fundamentally improve our understanding of the C_{ant^*} -uptake in the North Atlantic. For other ocean basins, we foresee that a similar application of our regional optimisation on existing emergent constraints could be of fundamental value for the employment of further observational instruments. Our regional optimisation of two existing emergent constraints of the future North Atlantic C_{ant^*} uptake allowed moreover for a better understanding of After this confirmation of the plausibility of the optimal areas, we used the regionally optimised emergent constraints to better understand the modelled dynamics of the predictors and potential inconsistencies around them. Though a typical emergent constraint should already have a solid physical background, its predictor is usually averaged aver-over a large area such that the optimal areas found by the algorithm help to refine this knowledge. Our regional optimisation and the newly identified emergent constraints pointed-point us towards the fact that dynamical features are often inherently coupled to spatial distributions. Hence, model performance of this dynamic can not be captured by one single averaged value as usually done for emergent constraints. In our case, the regional optimisation confirmed that a correct simulation of the upper ocean and interior ocean volume transport is fundamental for a correct estimate of the future North Atlantic C_{ant^*} uptake. However, our results indicate that most models that perform well for the upper ocean volume transport might-do not perform well for the interior ocean volume transport and that most of the considered models do not capture the south-north gradient of the upper ocean northward volume transport well. It is questionable if a model that simulates the average upper ocean northward volume transport within observational constraints but not the related dynamical features like the south-north or vertical gradient of that transport can be considered a well-performing model. In future studies, we henceforth advise to combine the average values of the emergent constraint with a measure of spatial performance relating to~~

770
775
780
785
790
795

the dynamical feature in question.

800 Though invaluable progress has been made through automated observational platforms like Argo (Argo, 2000) and analysis tools like ESMValTool (Eyring et al., 2016b), observational networks and analyses of model projections are not growing in the same speed. Here, our regional optimisation of existing emergent constraints can be used to guide future monitoring strategies. We show this for the North Atlantic, where our results point towards the already employed RAPID array and prove that the genetic algorithm is able to provide meaningful results. We note, however, that the RAPID array takes purely physical observations, though our localised emergent constraints show that additional measures of carbon-storage would fundamentally
805 improve our understanding of the C_{ant*} -uptake in the North Atlantic.

To our knowledge, this is the first time that a regional optimisation of emergent constraints has been carried out. The results are of high value as the use of emergent constraints in the realm of climate projections has gained a lot of momentum in the last decade (see Williamson et al., 2021, for a review of existing emergent constraints for climate sensitivities) due to the fast growing number of models taking part in coordinated model exercises associated with future projections (e.g. Balaji et al., 2018)
810 . Here, a regional optimisation can be valuable to identify model inconsistencies in terms of spatial gradients and at the same time point towards areas where a reduction of observational uncertainties is most useful.

Code and data availability. The code of the genetic algorithm including the relevant input and output data for our 2D North Atlantic case study is available through Johannsen (2022a, <https://doi.org/10.5281/zenodo.7037947>). The genetic algorithm code and the relevant input and output data for our 3D North Atlantic case study is available through Johannsen (2022b, <https://doi.org/10.5281/zenodo.7037981>).

815 **Appendix A: Observational Estimates**

For observational estimates of the contemporary winter pCO_2^{sea} -anomaly (depicted in Fig. 1b-e_b and Fig. ??a-b5), we utilised a neural-network-based interpolated pCO_2^{sea} product provided by Landschützer et al. (2017) ([Landschützer et al., 2017, https://doi.org/10.7202/1056117ar](https://doi.org/10.7202/1056117ar)). Specifically, we calculated the contemporary winter pCO_2^{sea} -anomaly as a decadal average based on the 'spco2_smoothed'-variable for the years 1990-1999. We note that it would have been possible to focus on other time-frames. However, we decided
820 to consider the same time-frames as in Goris et al. (2018), so that an easy comparison of previous and new results is possible. As the utilised pCO_2^{sea} database does not include an error-estimate, we utilise the error-estimate of the supplementary information of Landschützer et al. (2018), where the neural-network product is analysed for seasonal mean biases for 4 broad latitudinal bands. Results for summer and winter biases of the data-product for the latitudinal bands of 10-40°N and 40-65°N show that the biases are randomly spread around 0, but do show substantial variability. We apply the largest detected seasonal
825 bias of these latitudinal bands of about $\pm 14 \mu\text{atm}$ as our uncertainty range of the observational estimate of the contemporary winter pCO_2^{sea} -anomaly.

For observational estimates of the contemporary fractional C_{ant*} -storage (depicted in Fig. 1d-e_d and Fig. ??d-e), the 8), a mapped climatology of anthropogenic carbon (C_{ant}) from GLODAPv2.2016b has been used ([Lauvset et al., 2016, https://doi.org/10.1029/2016gl070001](https://doi.org/10.1029/2016gl070001)).

. We note that there is a difference between this data-product and our modelled estimates as the data product describes C_{ant} and
830 the modelled estimates C_{ant*} , i. e. a combination of the anthropogenic component of the carbon cycle combined with climate
change-induced differences. Yet, for the time span of the historical simulation, the climate-change induced differences are
small and it is possible to use C_{ant} as an approximation of C_{ant*} (Frölicher et al., 2015). The observation-based data-product
of the C_{ant} -storage is normalized to the year 2002. We therefore compare it to the simulated fractional C_{ant*} -storage in the
835 time-frame 1997-2007, abbreviated as 1997s. For conversion of the data product from $\mu\text{mol/kg}$ to PgC , we utilised a mean
ocean standard density of ~~1036~~1036 kg/m^3 (Pawlowicz, 2013). Furthermore, we linearly interpolated the data-product onto
the considered depth-levels. Though the data-product includes estimates of a mapping error, a comprehensive error estimate
containing observational, methodological and mapping error is not available. In lack of such an estimate, we follow the ap-
proach of Goris et al. (2018) and use an error estimate of $\pm 10\%$ for the observational estimate of the fractional C_{ant} -storage
below ~~1000m~~1000 m accumulated over the whole North Atlantic (Fig. 1e). In order to get an error estimate for the fractional
840 C_{ant} -storage within our optimal cuboids and ellipsoids, we utilise the error-estimate of $\pm 29\%$ for the C_{ant} -storage of the North
Atlantic (Steinfeldt et al., 2009). The simple assumption of an error of 29% for every grid point leads to the same factor in
numerator and denominator and results in an error estimate of zero for the fractional C_{ant} -storage. Only a spatially heteroge-
neously distributed error of the C_{ant} -storage leads to a non-zero error estimate for the fractional C_{ant} -storage. As such an error
estimate is missing, we simply assume an error of $\pm 29\%$ within our optimal areas but assume no error for other grid points
845 of the North Atlantic, which are taken into account to build the fractional measure. When assuming an error of $\pm 29\%$ for the
 C_{ant} -values within our largest optimal cuboid, we obtain an error of +3.78% and -4.12% for the fractional C_{ant} -storage. In
order to obtain an evenly distributed error around the mean value, we always chose the error-value larger in absolute values,
yielding an error of e. g. $\pm 4.12\%$ for the largest cuboid. We follow the same procedure for the other optimal volumes.

For observational estimates of the contemporary strength of northward and southward volume transport (depicted in ~~Fig. ??e~~Figs. S1
850 and S7), data from the RAPID-Meridional Overturning Circulation and Heatflux Array-Western Boundary Time Series array
at 26°N have been employed (~~Frajka-Williams et al., 2021~~(Frajka-Williams et al., 2021, <https://doi.org/10/gwqg>)). RAPID-
observations are only available from April 2004 onward, though our application of the genetic algorithm considers the years
1990-1999 (2D-case) and 1997-2007 (3D-case) for our regional optimisation. Due to lacking observations in the time-frames
of interest, we build a decadal average of the observations of the AMOC streamfunction profile for the years 2005-2014. When
855 needing to access accumulations of the streamfunction over differing depth ranges with boundaries at surface, ~~500m, 700m and~~
~~4700m~~500 m, 700 m and 4700 m, we are utilising the observed depths that are closest to these boundaries, i.e. surface, ~~496m,~~
~~694m and 4696m~~496 m, 694 m and 4696 m. We consider these depth-values to be close enough to the desired boundaries such
that no interpolation is necessary. Annual error estimates between 0.9 and 1.3 Sv are given for maximum northward transport
estimates of the years 2004 to 2014 (https://rapid.ac.uk/rapidmoc/rapid_data/README_ERROR.pdf, accessed in November
860 2021). We employ the estimate of 1.3Sv as our observational error estimate. We note, however, that we are not utilising the
maximum northward volume transport estimate directly but are accumulating differing depths of the streamfunction profile.
This might lead to the error-estimate being imprecise.

Appendix B: Streamfunction values for our CMIP5 ensemble

Several of the here considered models did not provide the Atlantic Meridional Overturning Circulation to the CMIP5 database.
865 Therefore, we utilised AMOC streamfunction values calculated with monthly mean meridional currents as described in Mecking et al. (2017).

Author contributions. NG, KJ and JT designed the application of the genetic algorithm. KJ implemented the genetic algorithm. NG prepared the ocean biogeochemical input data, extended the analysis to include the transport, illustrated the results and established and analysed the new emergent constraints. NG wrote the manuscript with assistance of KJ and JT.

870 *Competing interests.* The authors declare that they have no conflict of interest.

Acknowledgements. We would like to thank Jennifer Mecking for providing us with calculated AMOC streamfunction values for our model ensemble. This work was supported by the Norwegian Research Council through the project COLUMBIA [and CE2COAST](#) (Grant 275268 [and 318477](#)). We acknowledge the World Climate Research Programme's Working Group on Coupled Modelling, which is responsible for CMIP, and we thank the climate modeling groups for producing and making available their model output. For CMIP, the U.S. Department
875 of Energy's Program for Climate Model Diagnosis and Intercomparison provides coordinating support and led development of software infrastructure in partnership with the Global Organization for Earth System Science Portals. Data from the RAPID AMOC monitoring project is funded by the Natural Environment Research Council and are freely available from www.rapid.ac.uk/rapidmoc.

Emergent constraints of the North Atlantic future C_{ant^*} -uptake

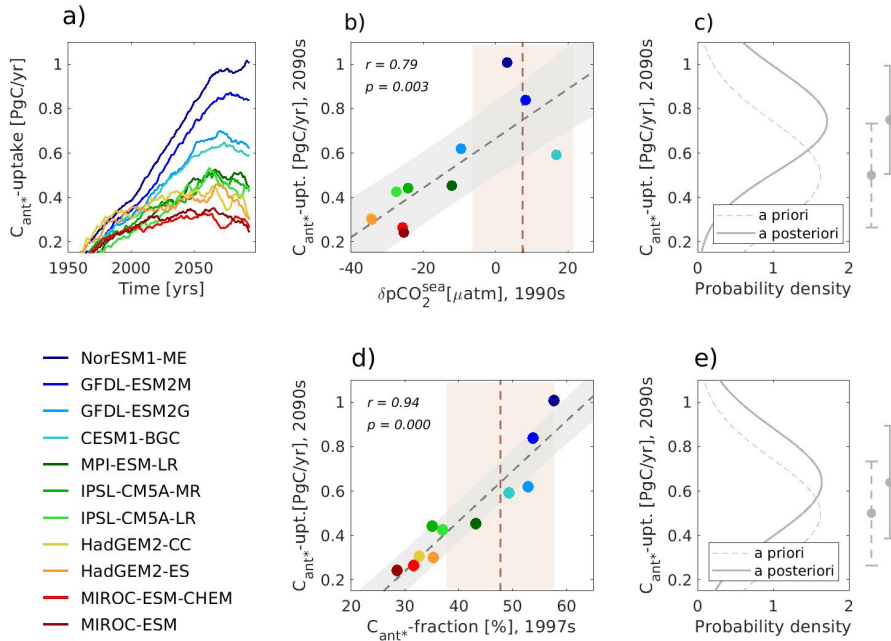


Figure 1. Illustration of two emergent constraints of the future North Atlantic C_{ant^*} -uptake, both considering an ensemble of 11 CMIP5-models under a high CO_2 future. The color-coding of the ensemble is indicated in the legend. Panels (a,b,d) illustrate the temporal evolution in (10-year running averages) for the (a) North Atlantic C_{ant^*} -uptake (predictand Y), (b) Projected North Atlantic C_{ant^*} -uptake for the years 2090-2099 against (b) the mid-to-high latitude ($35.5^{\circ}N$ - $75.5^{\circ}N$) winter pCO_2^{sea} -anomaly, 1990-1999 (predictor X_1) and its observational estimate (black error-bar in year 1995), (d) fraction of the North Atlantic C_{ant^*} stored below 1000m-1000 m depth, 1997-2007 (predictor X_2) and its observational estimate (black error-bar in year 2002). Panels (c,e) Scatter-plots of model results (color coding of models indicated in legend) show scatter-plots, best fit linear regression (grey dashed lines) including the predictors during interval of the 68% projection uncertainty (grey shading) as well as observational period constraints and their uncertainties (1990-1999 for X_1 brown dashed lines and 1997-2007 for X_2 light brown shading). (c,e) Prior- and future values after-constraint probability density functions and their associated new estimates of the predictand. Here, future North Atlantic C_{ant^*} -uptake for the mean observational constraint and its uncertainty are indicated by black (box-) lines parallel to the y-axis, while on the observationally constrained mean value right side of the predictand and its uncertainty range are indicated by black (box-) lines parallel to the x-axis. See Appendix A for a detailed description of the considered observational estimates.

880 Illustration of emergent constraints between different regionally optimised predictors and the future North Atlantic C_{ant^*} -uptake (predictand) for our model ensemble. All panels show scatter-plots, best fit linear regression, and cross-correlations between the predictors during the observational period and future values of the predictand. Here, the mean observational constraints and their uncertainties (see appendix A) are indicated by (box-) lines parallel to the y-axis, while the observationally constrained mean values of the predictand and their uncertainty ranges are indicated by (box-) lines parallel to the x-axis. Upper-ocean

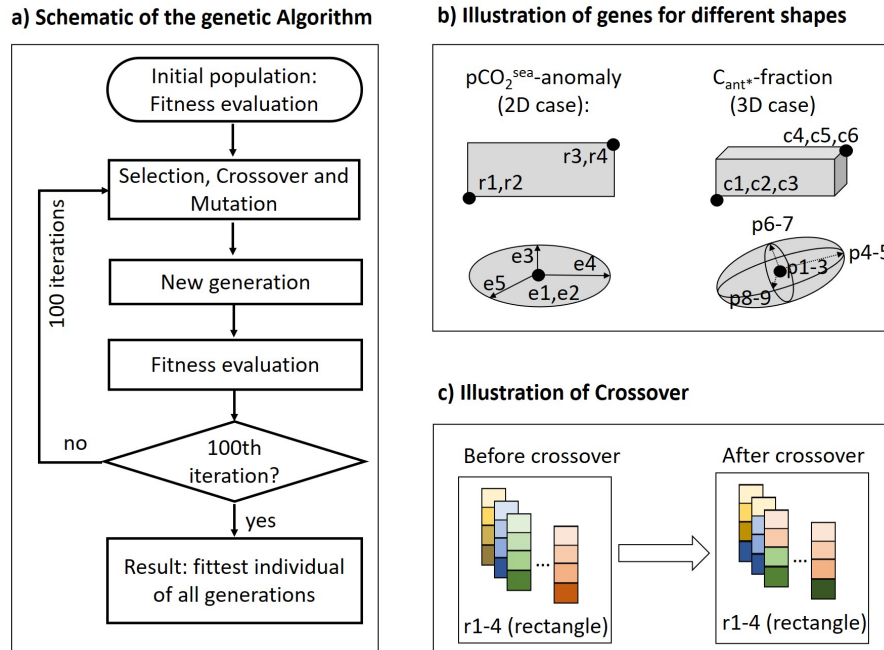


Figure 2. Schematic illustration for the experimental set-up of our application of the genetic algorithm. The panels illustrate a) one iteration of the algorithm, b) genes chosen to represent rectangles, ellipses, cuboids and ellipsoids as well as c) visualisation of a crossover for a population of rectangles.

885 predictors are visualised in the top panels including the winter $\text{pCO}_2^{\text{sea}}$ -anomaly for different optimal areas (panels a-b, years 1990-1999) and the upper ocean northward volume transport (panel c, years 2005-2014). Bottom panels show water-column and deep ocean predictors, that is the fractional C_{ant^*} -storage (panels d-e, years 1997-2007) and the deep ocean southward volume transport (panel f, years 2005-2014). In panels a-b and d-e, different sizes of the optimal areas are indicated with numbers (1: area-size of 10-20% and 3: area-size of 30-40% of the considered area) and associated coloring (coral lines for the smaller area and grey lines for the larger areas). Model results are visualised via dots, following the same color code as the associated observational constraints.

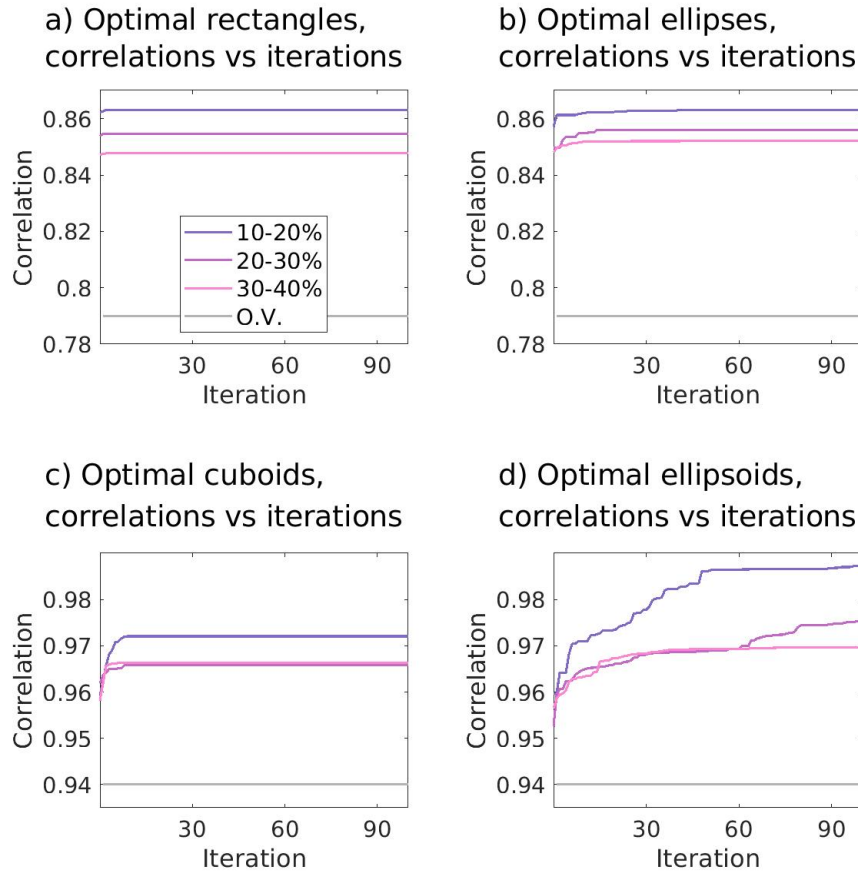


Figure 3. Iteration (population) versus cross-correlations for our application of the genetic algorithm. The correlation coefficients are calculated between contemporary values of the predictor within the regions identified by the genetic algorithm and future values of the predictand. Illustrated are the individuals with the highest cross-correlation of each population (i.e., per iteration). The color-coding of the lines point towards the shapes-area and volume sizes that characterise these regions. Continuous/dashes lines identify the individual with the highest/lowest cross-correlation of each population, dotted lines identify the mean cross-correlation of each population identified regions. The green-gray lines illustrates-illustrate the cross-correlation without regional optimisation of the predictor.

2D-case: Winter pCO₂-anomaly

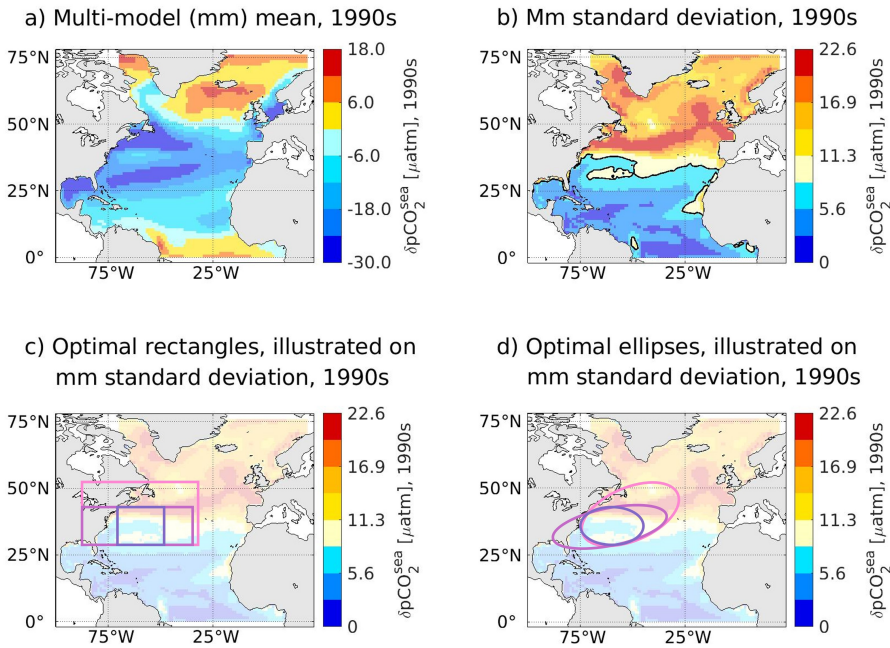


Figure 4. Contemporary winter pCO₂^{sea}-anomaly and associated optimal regions as identified by the genetic algorithm. For the contemporary winter pCO₂^{sea}-anomaly of our considered model-ensemble, panel (a) illustrates the multi-model mean, while panel (b) displays the multi-model standard deviation. Panels (c,d) display the optimal regions identified by the genetic algorithm on top of the multi-model standard deviation (here with an added transparency of 70%) with non-eligible points colored in different shades of blue (separated with a black contour line in panel (b)). Optimal regions are visualised according to shapes, with panel (c) visualising rectangles and panel (d) visualising ellipses. The color-coding of the lines indicate different area-conditions that were imposed on the optimal areas (black-dark lilac lines: area-size of 10-20%, blue-light lilac lines: area-size of 20-30% and green-pink lines: area-size of 30-40% of the surface of the North Atlantic).

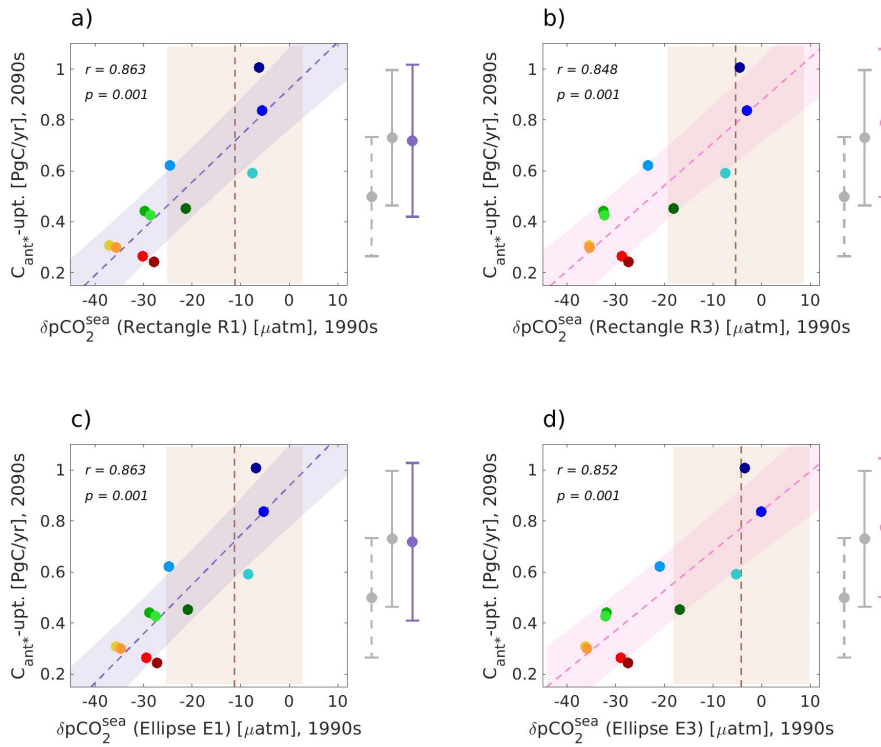


Figure 5. Illustration of emergent constraints between different realisations of the regionally optimised winter $p\text{CO}_2^{\text{sea}}$ -anomaly (predictor) for the years 1990-1999 and the future North Atlantic C_{ant^*} -uptake (predictand) for the years 2090-2099 for our model ensemble. Emergent constraints for optimal regions of different area-size conditions in shape of rectangles are visualised in the top panels (R1: 10-20%, R3: 30-40% of the considered area), while those in shape of ellipses are visualised in the bottom panels (E1: 10-20%, E3: 30-40% of the considered area). All panels show scatter-plots (color coding of models as in Figure 1), best fit linear regression (R1/E1: lilac line, R3/E3: pink line) including the interval of the 68% projection uncertainty (R1/E1: lilac shading, R3/E3: pink shading), cross-correlations between simulated predictor and predictand as well as mean observational constraints and their uncertainties (brown dashed lines and light brown shading). Associated estimate for the unconstrained model ensemble (grey dashed bars), the original emergent constraint (grey bars) and the regionally optimised emergent constraint (lilac/pink) are shown on the right side of the panels. See Appendix A for a detailed description of the considered observational estimates.

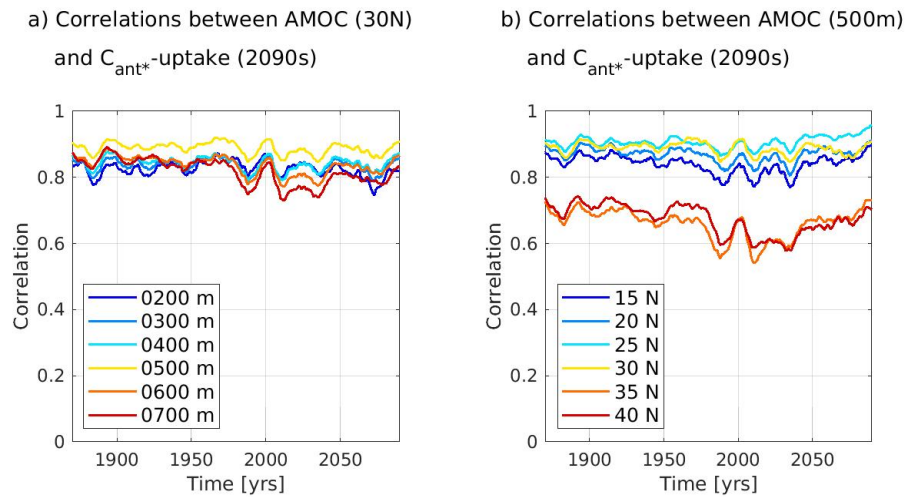


Figure 6. Time series of cross-correlations between 10-year running averages of the simulated upper branch of the Atlantic Meridional Overturning Circulation (AMOC) and the future North Atlantic C_{ant^*} -uptake (2090s) for our model ensemble. The upper branch of the AMOC is expressed as accumulated northward volume transport between surface and a lower depth boundary at a certain latitude. Panel (a) shows results for 30°N and a varying lower depth boundary, while panel (b) shows results for a lower depth boundary of ~~500m~~500 m and varying latitudes.

3D-case: C_{ant^*} -fraction

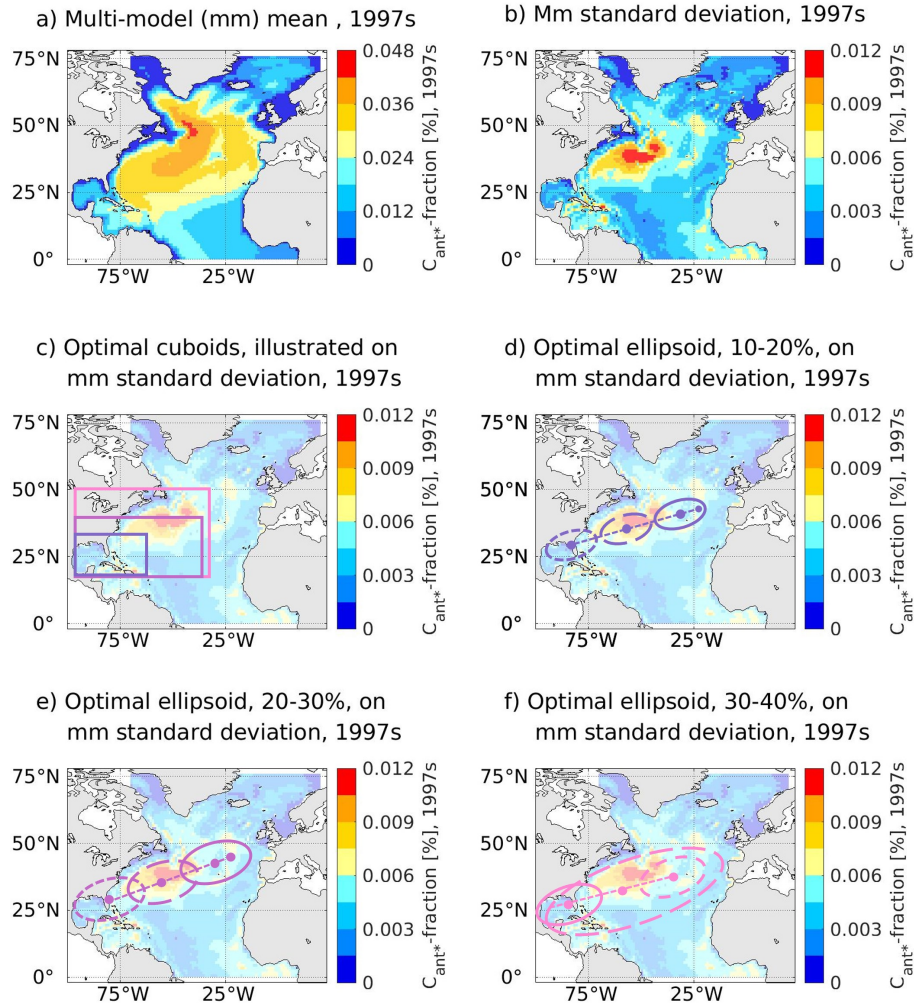


Figure 7. Contemporary fraction of the North Atlantic C_{ant^*} and associated optimal regions as identified by the genetic algorithm. For the depth-integrated contemporary fraction of the North Atlantic C_{ant^*} of our considered model-ensemble, panel (a) illustrates the multi-model mean, while panel (b) displays the multi-model standard deviation. Panels (c,d,e,f) display the optimal regions identified by the genetic algorithm on top of the multi-model standard deviation ([here with an added transparency of 70%](#)). Optimal regions are visualised according to shapes, with panel (c) visualising cuboids with volume-sizes of 10-20% ([black-dark lilac lines](#)), 20-30% ([blue-light lilac lines](#)) and 30-40% ([green-pink lines](#)) of the North Atlantic. Panels (d,e,f) visualise ellipsoids of different volumes via illustration of their mid-points ([black-dots](#)) and outlines for the depth-planes [500-660m-500-660 m](#) ([black-linesline](#)), [2500-2600m-2500-2600 m](#) ([long dashed dark-grey-linesline](#)) and [4500-4600m-4500-4600 m](#) ([dashed light-red-linesline](#)) and their depth-following principal axis ([black-line connecting the mid-points](#)). In panels (d,e), the midpoint of the surface plane is additionally illustrated.

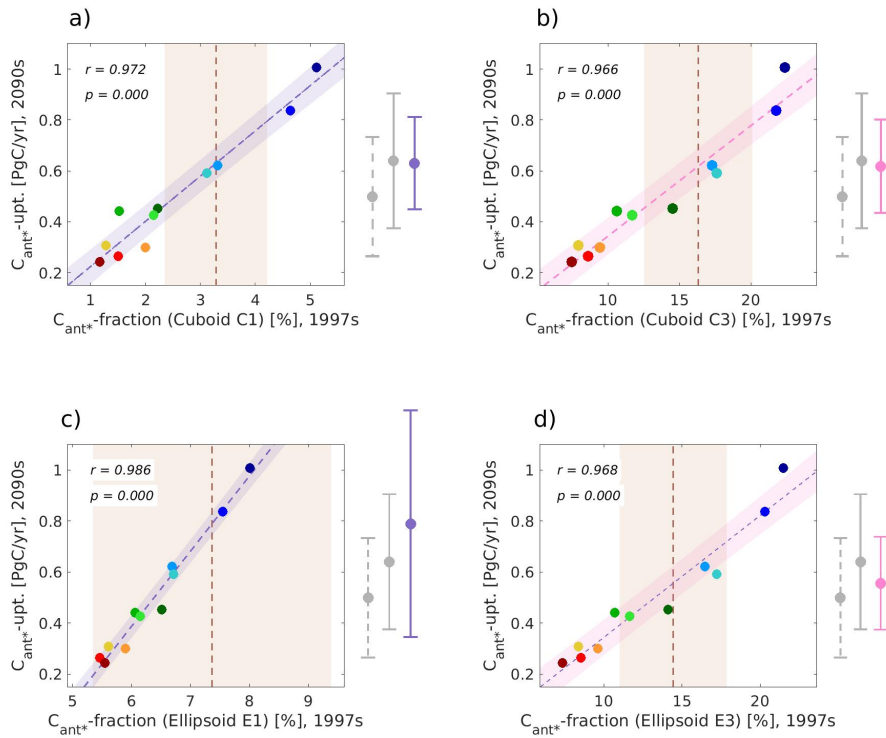


Figure 8. Illustration of emergent constraints between different realisations of the regionally optimised C_{ant^*} -fraction (predictor) for the years 1997-2007 and the future North Atlantic C_{ant^*} -uptake (predictand) for the years 2090-2099 for our model ensemble. Emergent constraints for optimal regions of different volume-size conditions in shape of cuboids are visualised in the top panels (C1: 10-20%, C3: 30-40% of the considered volume), while those in shape of ellipsoids are visualised in the bottom panels (E1: 10-20%, E3: 30-40% of the considered volume). All panels show scatter-plots (color coding of models as in Figure 1), best fit linear regression (R1/E1: lilac line, R3/E3: pink line) including the interval of the 68% projection uncertainty (R1/E1: lilac shading, R3/E3: pink shading), cross-correlations between simulated predictor and predictand as well as mean observational constraints and their uncertainties (brown dashed lines and light brown shading). Associated estimate for the unconstrained model ensemble (grey dashed bars), the original emergent constraint (grey bars) and the regionally optimised emergent constraint (lilac/pink) are shown on the right side of the panels. See Appendix A for a detailed description of the considered observational estimates.

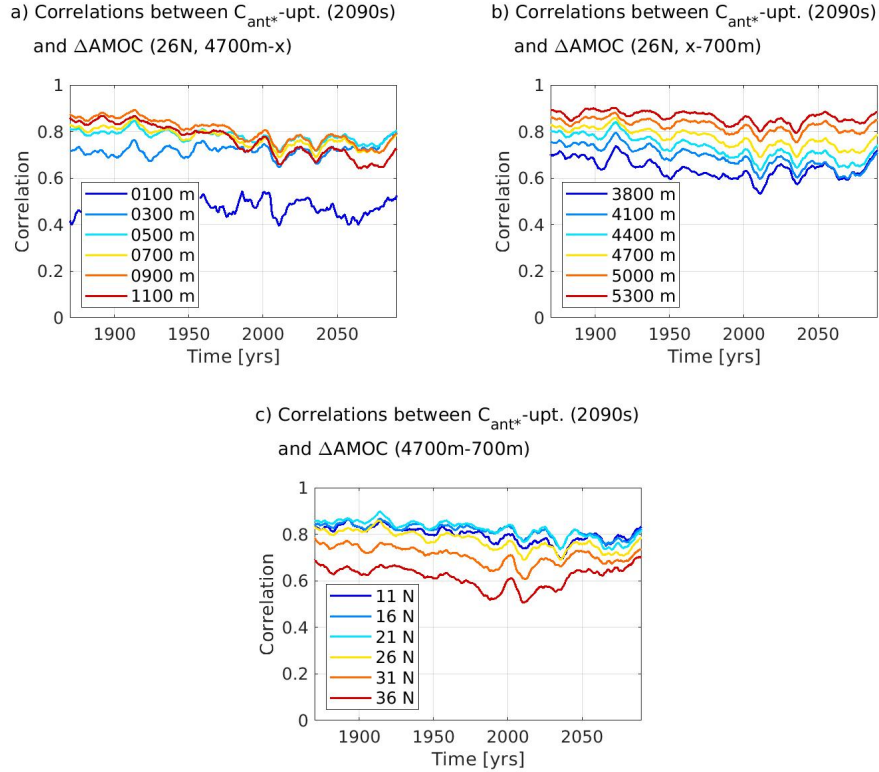


Figure 9. Time series of cross-correlations between 10-year running averages of the simulated lower branch of the Atlantic Meridional Overturning Circulation (AMOC) and the future North Atlantic C_{ant^*} -uptake (2090s) for our model ensemble. The lower branch of the AMOC is expressed as accumulated southward volume transport between a higher depth boundary and a lower depth boundary at a certain latitude. Panel (a) shows results for $26^\circ N$, a lower depth boundary at 4700m-4700 m and a varying higher depth boundary, while panel (b) shows results for $26^\circ N$, a higher depth boundary at 700m-700 m and a varying lower depth boundary and panel (c) for a higher depth boundary at 700m-700 m, a lower depth boundary at 4700m-4700 m and varying latitudes.

Table 1. Constrained estimates of the future North Atlantic C_{ant*} -uptake based on regionally optimised predictors. Listed are the predictors, their realms (upper ocean: above ~~500m~~500 m, deep ocean: below ~~500m~~500 m depth) and considered time-frames as well as the associated constrained estimates of the future North Atlantic C_{ant*} -uptake. Different sizes of the optimal areas are indicated with numbers (1: area-size of 10-20%, 2: area-size of 20-30% and 3: area-size of 30-40% of the considered area).

| predictor | realm | time-frame | constrained C_{ant*} -upt. |
|---|---|------------|--|
| δpCO_2^{sea} (Ellipse E1) | upper ocean | 1990-1999 | 0.72 ± 0.31 PgC/yr |
| δpCO_2^{sea} (Ellipse E2) | upper ocean | 1990-1999 | 0.72 ± 0.28 PgC/yr |
| δpCO_2^{sea} (Ellipse E3) | upper ocean | 1990-1999 | 0.77 ± 0.27 PgC/yr |
| δpCO_2^{sea} (Rectangle R1) | upper ocean | 1990-1999 | 0.72 ± 0.30 PgC/yr |
| δpCO_2^{sea} (Rectangle R2) | upper ocean | 1990-1999 | 0.73 ± 0.31 PgC/yr |
| δpCO_2^{sea} (Rectangle R3) | upper ocean | 1990-1999 | 0.79 ± 0.29 PgC/yr |
| $\Delta AMOC$, 26N <u>(0-500m</u> 26°N <u> (0-500 m)</u>) | upper ocean | 2005-2014 | 0.74 ± 0.18 PgC/yr |
| C_{ant*} -fraction (Ellipsoid E1) | water column | 1997-2007 | 0.78 <u>0.79</u> \pm 0.57 <u>0.44</u> PgC/yr |
| C_{ant*} -fraction (Ellipsoid E2) | water column | 1997-2007 | 0.74 <u>0.73</u> \pm 0.39 <u>0.36</u> PgC/yr |
| C_{ant*} -fraction (Ellipsoid E3) | deep ocean <u>water column</u> | 1997-2007 | 0.63 <u>0.55</u> \pm 0.17 <u>0.18</u> PgC/yr |
| C_{ant*} -fraction (Cuboid C1) | deep ocean | 1997-2007 | 0.63 ± 0.18 PgC/yr |
| C_{ant*} -fraction (Cuboid C2) | deep ocean | 1997-2007 | 0.62 ± 0.17 PgC/yr |
| C_{ant*} -fraction (Cuboid C3) | deep ocean | 1997-2007 | 0.62 ± 0.18 PgC/yr |
| $\Delta AMOC$, 26N <u>(700-4700m</u> 26°N <u> (700-4700 m)</u>) | deep ocean | 2005-2014 | 0.57 ± 0.20 PgC/yr |

890 **References**

- Argo: Argo float data and metadata from Global Data Assembly Centre (Argo GDAC), <https://doi.org/https://doi.org/10.17882/42182>, 2000.
- Balaji, V., Taylor, K. E., Jukes, M., Lawrence, B. N., Durack, P. J., Lautenschlager, M., Blanton, C., Cinquini, L., Denvil, S., Elkington, M., Guglielmo, F., Guilyardi, E., Hassell, D., Kharin, S., Kindermann, S., Nikonov, S., Radhakrishnan, A., Stockhause, M., Weigel, T., and Williams, D.: Requirements for a global data infrastructure in support of CMIP6, *Geoscientific Model Development*, 11, 3659–3680, <https://doi.org/10.5194/gmd-11-3659-2018>, 2018.
- 895 Bourgeois, T., Goris, N., Schwinger, J., and Tjiputra, J.: Stratification constrains future heat and carbon uptake in the Southern Ocean between 30°S and 55°S, *Nature Communications*, 13, <https://doi.org/10.1038/s41467-022-27979-5>, 2022.
- Caldwell, P. M., Bretherton, C. S., Zelinka, M. D., Klein, S. A., Santer, B. D., and Sanderson, B. M.: Statistical significance of climate sensitivity predictors obtained by data mining, *Geophysical Research Letters*, 41, 1803–1808, <https://doi.org/https://doi.org/10.1002/2014GL059205>, <https://agupubs.onlinelibrary.wiley.com/doi/abs/10.1002/2014GL059205>, 2014.
- 900 Claustre, H., Bishop, J., Boss, E., Stewart, B., Berthon, J., Coataoan, C., Johnson, K., Lotiker, A., Ulloa, O., Perry, M. J., D’Ortenzio, F., D’andon, O. H. F., and Uitz, J.: Bio-optical profiling floats as new observational tools for biogeochemical and ecosystem studies, in: *Proceedings of the OceanObs’09: Sustained Ocean Observations and Information for Society Conference, Venice, 2010*.
- Cox, P. M., Pearson, D., Booth, B. B., Friedlingstein, P., Huntingford, C., Jones, C. D., and Luke, C. M.: Sensitivity of tropical carbon to climate change constrained by carbon dioxide variability, *Nature*, 494, <https://doi.org/10.1038/nature11882>, 2013.
- 905 D’Ortenzio, F., Taillandier, V., Claustre, H., Prieur, L. M., Leymarie, E., Mignot, A., Poteau, A., Penkerch, C., and Schmechtig, C. M.: Biogeochemical Argo: The Test Case of the NAOS Mediterranean Array, *Frontiers in Marine Science*, 7, 120, <https://doi.org/10.3389/fmars.2020.00120>, 2020.
- Eiben, A. E. and Smith, J. E.: *Introduction to Evolutionary Computing*, Natural Computing Series, Springer, 2003.
- 910 Eyring, V., Bony, S., Meehl, G. A., Senior, C. A., Stevens, B., Stouffer, R. J., and Taylor, K. E.: Overview of the Coupled Model Intercomparison Project Phase 6 (CMIP6) experimental design and organization, *Geoscientific Model Development*, 9, 1937–1958, <https://doi.org/10.5194/gmd-9-1937-2016>, 2016a.
- Eyring, V., Righi, M., Lauer, A., Evaldsson, M., Wenzel, S., Jones, C., Anav, A., Andrews, O., Cionni, I., Davin, E. L., Deser, C., Ehbrecht, C., Friedlingstein, P., Gleckler, P., Gottschaldt, K.-D., Hagemann, S., Jukes, M., Kindermann, S., Krasting, J., Kunert, D., Levine, R., Loew, A., Mäkelä, J., Martin, G., Mason, E., Phillips, A. S., Read, S., Rio, C., Roehrig, R., Senftleben, D., Sterl, A., van Ulft, L. H., Walton, J., Wang, S., and Williams, K. D.: ESMValTool (v1.0) – a community diagnostic and performance metrics tool for routine evaluation of Earth system models in CMIP, *Geoscientific Model Development*, 9, 1747–1802, <https://doi.org/10.5194/gmd-9-1747-2016>, 2016b.
- 915 Eyring, V., Cox, P. M., Flato, G. M., Gleckler, P. M., Abramowitz, G., Caldwell, P., Collins, W. D., Gier, B. K., Hall, A., Hoffman, F., Hurtt, G. C., Jahn, A., Jones, C. D., Klein, S. A., Krasting, J. P., Kwiatkowski, L., Lorenz, R., Maloney, E., Meehl, G. A., Pendergrass, A. G., Pincus, R., Ruane, A. C., Russell, J. L., Sanderson, B. M., Santer, B. D., Sherwood, S. C., Simpson, I. R., Stouffer, R. J., and Williamson, M. S.: Taking climate model evaluation to the next level, *Nature Clim Change*, 9, 102–110, <https://doi.org/https://doi.org/10.1038/s41558-018-0355-y>, 2019.
- 920 Frajka-Williams, E., Moat, B., Smeed, D., Rayner, D., Johns, W., Baringer, M., Volkov, D., and Collins, J.: Atlantic meridional overturning circulation observed by the RAPID-MOCHA-WBTS (RAPID-Meridional Overturning Circulation and Heatflux Array-Western Boundary Time Series) array at 26N from 2004 to 2020 (v2020.1), <https://doi.org/10.5285/cc1e34b3-3385-662b-e053-6c86abc03444>, 2021.

- Frölicher, T. L., Sarmiento, J. L., Paynter, D. J., Dunne, J. P., Krasting, J. P., and Winton, M.: Dominance of the Southern Ocean in Anthropogenic Carbon and Heat Uptake in CMIP5 Models, *J. Climate*, 28, 862–886, <https://doi.org/http://dx.doi.org/10.1175/JCLI-D-14-00117.1>, 2015.
- 930 Gary, S. F., Lozier, M. S., Böning, C. W., and Biastoch, A.: Deciphering the pathways for the deep limb of the Meridional Overturning Circulation, *Deep Sea Research Part II: Topical Studies in Oceanography*, 58, 1781–1797, <https://doi.org/https://doi.org/10.1016/j.dsr2.2010.10.059>, 2011.
- Goris, N., Tjiputra, J., Olsen, A., Schwinger, J., Lauvset, S., and Jeansson, E.: Constraining Projection-Based Estimates of the Future North Atlantic Carbon Uptake, *Journal of Climate*, 31, 3959–3978, <https://doi.org/10.1175/JCLI-D-17-0564.1>, 2018.
- Hall, A., Cox, P., Huntingford, C., and Klein, S.: Progressing emergent constraints on future climate change, *Nat. Clim. Change*, 9, 269–278, 935 <https://doi.org/https://doi.org/10.1038/s41558-019-0436-6>, 2019.
- Holland, J. H.: *Adaptation in natural and artificial systems: An introductory analysis with applications to biology, control, and artificial intelligence*, University of Michigan Press, 1975.
- IPCC: *Climate Change 2013: The Physical Science Basis*, in: *Fifth Assessment Report of the Intergovernmental Panel on Climate Change*, edited by Stocker, T., Qin, D., Plattner, G.-K., Tignor, M., Allen, S. K., Boschung, J., Nauels, A., Xia, Y., Bex, V., and Midgley, P. M., p. 940 1535, Cambridge University Press, Cambridge, United Kingdom and New York, USA, doi:10.1017/CBO9781107415324, 2013.
- IPCC: *Summary for Policymakers*, in: *Global Warming of 1.5°C. An IPCC Special Report on the impacts of global warming of 1.5°C above pre-industrial levels and related global greenhouse gas emission pathways, in the context of strengthening the global response to the threat of climate change, sustainable development, and efforts to eradicate poverty*, edited by Masson-Delmotte, V., Zhai, P., Pörtner, H.-O., Roberts, D., Skea, J., Shukla, P., Pirani, A., Moufouma-Okia, W., Pean, C., Pidcock, R., Connors, S., Matthews, J., Chen, Y., Zhou, X., 945 Gomis, M., Lonnoy, E., Maycock, T., Tignor, M., and Waterfield, T., World Meteorological Organization, Geneva, Switzerland, 2018.
- Johannsen, K.: Genetic algorithm for regional optimisation of Emergent Constraints in the surface North Atlantic (v1.3), <https://doi.org/10.5281/zenodo.7037947>, 2022a.
- Johannsen, K.: Genetic algorithm for regional optimisation of Emergent Constraints in water column North Atlantic (v1.3), <https://doi.org/10.5281/zenodo.7037981>, 2022b.
- 950 Kessler, A. and Tjiputra, J.: The Southern Ocean as a constraint to reduce uncertainty in future ocean carbon sinks, *Earth Syst. Dynam.*, 7, 295–312, <https://doi.org/10.5194/esd-7-295-2016>, 2016.
- Kramer, O.: *Genetic Algorithm Essentials*, pp. 11–19, Springer International Publishing, https://doi.org/10.1007/978-3-319-52156-5_2, 2017.
- Landschützer, P., Gruber, N., and Bakker, D.: An updated observation-based global monthly gridded sea surface pCO₂ and air-sea CO₂ 955 flux product from 1982 through 2015 and its monthly climatology (NCEI Accession 0160558). Version 2.2., https://www.nodc.noaa.gov/oceans/SPCO2_1982_2015_ETH_SOM_FFN.html, 2017.
- Landschützer, P., Gruber, N., Bakker, D. C. E., Stemmler, I., and Six, K. D.: Strengthening seasonal marine CO₂ variations due to increasing atmospheric CO₂, *Nature Climate Change*, 8, 146–150, <https://doi.org/https://doi.org/10.1038/s41558-017-0057-x>, 2018.
- Landschützer, P., Laruelle, G. G., Roobaert, A., and Regnier, P.: A uniform pCO₂ climatology combining open and coastal oceans, *Earth 960 System Science Data*, 12, 2537–2553, <https://doi.org/10.5194/essd-12-2537-2020>, 2020.
- Lauvset, S. K., Key, R. M., Olsen, A., van Heuven, S., Velo, A., Lin, X., Schirnick, C., Kozyr, A., Tanhua, T., Hoppema, M., Jutterström, S., Steinfeldt, R., Jeansson, E., Ishii, M., Perez, F. F., Suzuki, T., and Watelet, S.: A new global interior ocean mapped climatology: the 1° × 1° GLODAP version 2, *Earth Syst. Sci. Data*, 8, 325–340, <https://doi.org/10.5194/essd-8-325-2016>, 2016.

- McCarthy, G., Smeed, D., Johns, W., Frajka-Williams, E., Moat, B., Rayner, D., Baringer, M., Meinen, C., Collins, J., and
965 Bryden, H.: Measuring the Atlantic Meridional Overturning Circulation at 26°N, *Progress in Oceanography*, 130, 91–111,
<https://doi.org/https://doi.org/10.1016/j.pocean.2014.10.006>, 2015.
- Mecking, J. V., Drijfhout, S. S., Jackson, L. C., and Andrews, M. B.: The effect of model bias on Atlantic freshwater transport and implications
for AMOC bi-stability, *Tellus A: Dynamic Meteorology and Oceanography*, 69, <https://doi.org/10.1080/16000870.2017.1299910>, 2017.
- Meehl, G. A., Boer, G. J., Covey, C., Latif, M., and Stouffer, R. J.: Intercomparison makes for a better climate model, *Eos*, 78, 445–451,
970 1997.
- Meehl, G. A., Boer, G. J., Covey, C., Latif, M., and Stouffer, R. J.: The Coupled Model Intercomparison Project (CMIP), *B. Am. Meteorol. Soc.*, 81, 313–318, 2000.
- Meehl, G. A., Senior, C. A., Eyring, V., Flato, G., Lamarque, J.-F., Stouffer, R. J., Taylor, K. E., and Schlund, M.: Context for interpreting equilibrium climate sensitivity and transient climate response from the CMIP6 Earth system models, *Science Advances*, 6,
975 <https://doi.org/10.1126/sciadv.aba1981>, 2020.
- Mikaloff Fletcher, S. E., Gruber, N. P., and Jacobson, A.: Ocean Inversion Project how-to document, Report, Inst. for Geophys. and Planet. Phys., Univ. of Calif., Los Angeles, version 1.0, 2003.
- Mystakidis, S., Seneviratne, S. I., Gruber, N., and Davin, E. L.: Hydrological and biogeochemical constraints on terrestrial carbon cycle feedbacks, *Environmental Research Letters*, 12, 014 009, <https://doi.org/10.1088/1748-9326/12/1/014009>, 2017.
- 980 Olsen, A., Brown, K. R., Chierici, M., Johannessen, T., and Neill, C.: Sea-surface CO₂ fugacity in the subpolar North Atlantic, *Biogeosciences*, 5, 535–547, <https://doi.org/10.5194/bg-5-535-2008>, 2008.
- Pawlowicz, R.: Key Physical Variables in the Ocean: Temperature, Salinity, and Density, *Nature Education Knowledge*, 4, 2013.
- Petrie, R., Denvil, S., Ames, S., Levavasseur, G., Fiore, S., Allen, C., Antonio, F., Berger, K., Bretonnière, P.-A., Cinquini, L., Dart, E.,
Dwarakanath, P., Druken, K., Evans, B., Franchistéguy, L., Gardoll, S., Gerbier, E., Greenslade, M., Hassell, D., Iwi, A., Juckes, M.,
985 Kindermann, S., Lacinski, L., Mirto, M., Nasser, A. B., Nassisi, P., Nienhouse, E., Nikonov, S., Nuzzo, A., Richards, C., Ridzwan, S.,
Rixen, M., Serradell, K., Snow, K., Stephens, A., Stockhause, M., Vahlenkamp, H., and Wagner, R.: Coordinating an operational data
distribution network for CMIP6 data, *Geoscientific Model Development*, 14, 629–644, <https://doi.org/10.5194/gmd-14-629-2021>, 2021.
- Qu, X., Hall, A., DeAngelis, A. M., Zelinka, M. D., Klein, S. A., Su, H., Tian, B., and Zhai, C.: On the Emergent Constraints of Climate Sensitivity, *Journal of Climate*, 31, 863 – 875, <https://doi.org/10.1175/JCLI-D-17-0482.1>, 2018.
- 990 Rhein, M., Kieke, D., Hüttl-Kabus, S., Roessler, A., Mertens, C., Meissner, R., Klein, B., Böning, C. W., and Yashayaev, I.: Deep water
formation, the subpolar gyre, and the meridional overturning circulation in the subpolar North Atlantic, *Deep Sea Research Part II: Topical Studies in Oceanography*, 58, 1819–1832, <https://doi.org/https://doi.org/10.1016/j.dsr2.2010.10.061>, 2011.
- Sastry, K., Goldberg, D., and Kendall, G.: Genetic Algorithms, in: *Search Methodologies*, edited by Burke, E. K. and Kendall, G., Springer, Boston, MA, https://doi.org/10.1007/0-387-28356-0_4, 2005.
- 995 Schlund, M., Lauer, A., Gentine, P., Sherwood, S. C., and Eyring, V.: Emergent constraints on equilibrium climate sensitivity in CMIP5: do they hold for CMIP6?, *Earth System Dynamics*, 11, 1233–1258, <https://doi.org/10.5194/esd-11-1233-2020>, 2020.
- Selten, F. M., Bintanja, R., Vautard, R., and van den Hurk, B. J. J. M.: Future continental summer warming constrained by the present-day seasonal cycle of surface hydrology, *Scientific Reports*, 10, <https://doi.org/10.1038/s41598-020-61721-9>, 2020.
- Sivanandam, S. N. and Deepa, S. N.: *Introduction to Genetic Algorithms*, Springer Publishing Company, Incorporated, 1st edn., 2007.
- 1000 Steinfeldt, R., Rhein, M., Bullister, J. L., and Tanhua, T.: Inventory changes in anthropogenic carbon from 1997–2003 in the Atlantic Ocean between 20°S and 65°N, *Global Biogeochemical Cycles*, 23, <https://doi.org/10.1029/2008GB003311>, 2009.

- Tagliabue, A., Kwiatkowski, L., Bopp, L., Butenschön, M., Cheung, W., Lengaigne, M., and Vialard, J.: Persistent Uncertainties in Ocean Net Primary Production Climate Change Projections at Regional Scales Raise Challenges for Assessing Impacts on Ecosystem Services, *Frontiers in Climate*, 3, <https://doi.org/10.3389/fclim.2021.738224>, 2021.
- 1005 Terhaar, J., Torres, O., Bourgeois, T., and Kwiatkowski, L.: Arctic Ocean acidification over the 21st century co-driven by anthropogenic carbon increases and freshening in the CMIP6 model ensemble, *Biogeosciences*, 18, 2221–2240, <https://doi.org/10.5194/bg-18-2221-2021>, 2021.
- Tjiputra, J. F., Assmann, K., and Heinze, C.: Anthropogenic carbon dynamics in the changing ocean, *Ocean Science*, 6, 605–614, <https://doi.org/10.5194/os-6-605-2010>, 2010.
- 1010 Tjiputra, J. F., Olsen, A., Assmann, K., Pfeil, B., and Heinze, C.: A model study of the seasonal and long-term North Atlantic surface pCO₂ variability, *Biogeosciences*, 9, 907–923, <https://doi.org/10.5194/bg-9-907-2012>, 2012.
- Tokarska, K. B., Stolpe, M. B., Sippel, S., Fischer, E. M., Smith, C. J., Lehner, F., and Knutti, R.: Past warming trend constrains future warming in CMIP6 models, *Science Advances*, 6, <https://doi.org/10.1126/sciadv.aaz9549>, 2020.
- Wang, Z. A., Moustahfid, H., Mueller, A. V., Michel, A. P. M., Mowlem, M., Glazer, B. T., Mooney, T. A., Michaels, W., McQuillan, J. S., Robidart, J. C., Churchill, J., Sourisseau, M., Daniel, A., Schaap, A., Monk, S., Friedman, K., and Brehmer, P.: Advancing Observation of Ocean Biogeochemistry, Biology, and Ecosystems With Cost-Effective in situ Sensing Technologies, *Frontiers in Marine Science*, 6, 519, <https://doi.org/10.3389/fmars.2019.00519>, 2019.
- Weller, R. A., Baker, D. J., Glackin, M. M., Roberts, S. J., Schmitt, R. W., Twigg, E. S., and Vimont, D. J.: The Challenge of Sustaining Ocean Observations, *Frontiers in Marine Science*, 6, 105, <https://doi.org/10.3389/fmars.2019.00105>, 2019.
- 1020 Williams, R. G., McDonagh, E., Roussenov, V. M., Torres-Valdes, S., King, B., Sanders, R., and Hansell, D. A.: Nutrient streams in the North Atlantic: Advective pathways of inorganic and dissolved organic nutrients, *Global Biogeochemical Cycles*, 25, <https://doi.org/https://doi.org/10.1029/2010GB003853>, 2011.
- Williamson, D. B. and Sansom, P. G.: How Are Emergent Constraints Quantifying Uncertainty and What Do They Leave Behind?, *Bulletin of the American Meteorological Society*, 100, 2571 – 2588, <https://doi.org/10.1175/BAMS-D-19-0131.1>, 2019.
- 1025 Williamson, M. S., Thackeray, C. W., Cox, P. M., Hall, A., Huntingford, C., and Nijssen, F. J. M. M.: Emergent constraints on climate sensitivities, *Reviews Of Modern Physics*, 93, <https://doi.org/10.1103/RevModPhys.93.025004>, 2021.

Supplement of 'The emergence of Gulf Stream and interior western boundary ~~volume transport~~ as key regions to constrain the future North Atlantic Carbon Uptake'

Nadine Goris¹, Klaus Johannsen², and Jerry Tjiputra¹

¹NORCE Norwegian Research Centre and Bjerknes Centre for Climate Research, Bergen, Norway

²NORCE Norwegian Research Centre, Bergen, Norway

Correspondence: Nadine Goris (nadine.goris@norce-research.no)

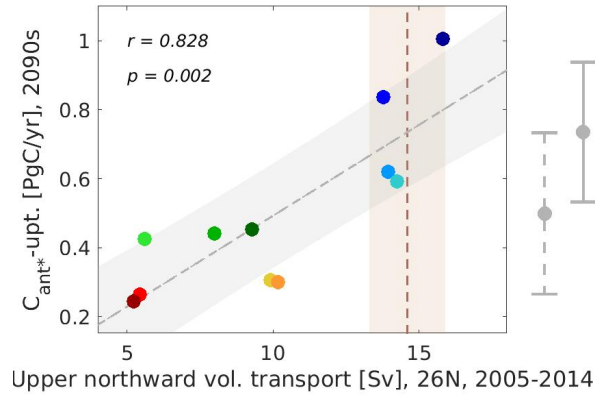


Figure S1. Emergent constraint between upper ocean northward volume transport accumulated between surface and 500 m depth for the years 2005-2014 (predictor) and the future North Atlantic C_{ant^*} -uptake (predictand) for the years 2090-2099 for our model ensemble. Shown are scatter-plots (color coding of models as in Figure 1 of the main article), best fit linear regression (grey line) including the interval of the 68% projection uncertainty (grey shading), cross-correlations between simulated predictor and predictand as well as mean observational constraints and their uncertainties (brown dashed lines and light brown shading). Associated estimate for the unconstrained model ensemble (grey dashed bars) and the emergent constraint (grey bars) are shown on the right side of the panels.

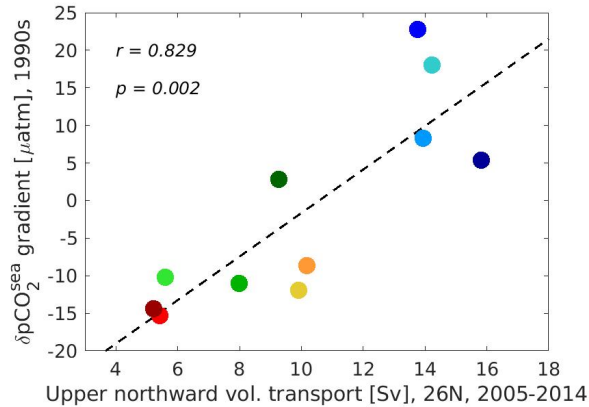


Figure S2. Relationship between (i) upper ocean northward volume transport accumulated between surface and 500 m depth for the years 2005-2014 and (ii) the northward propagation of the winter pCO_2^{sea} -anomaly for the years 1990-1999, here expressed as the difference between winter pCO_2^{sea} -anomalies for latitudes 26° - 28° N and latitudes 40° - 42° N. Shown are scatter-plots (color coding of models as in Figure 1 of the main article), best fit linear regression (black dashed lines) and cross-correlations between both quantities. See Appendix A of the main article for a detailed description of the considered observational estimates.

Multi-model mean, C_{ant^*} -fraction, 1997-2007

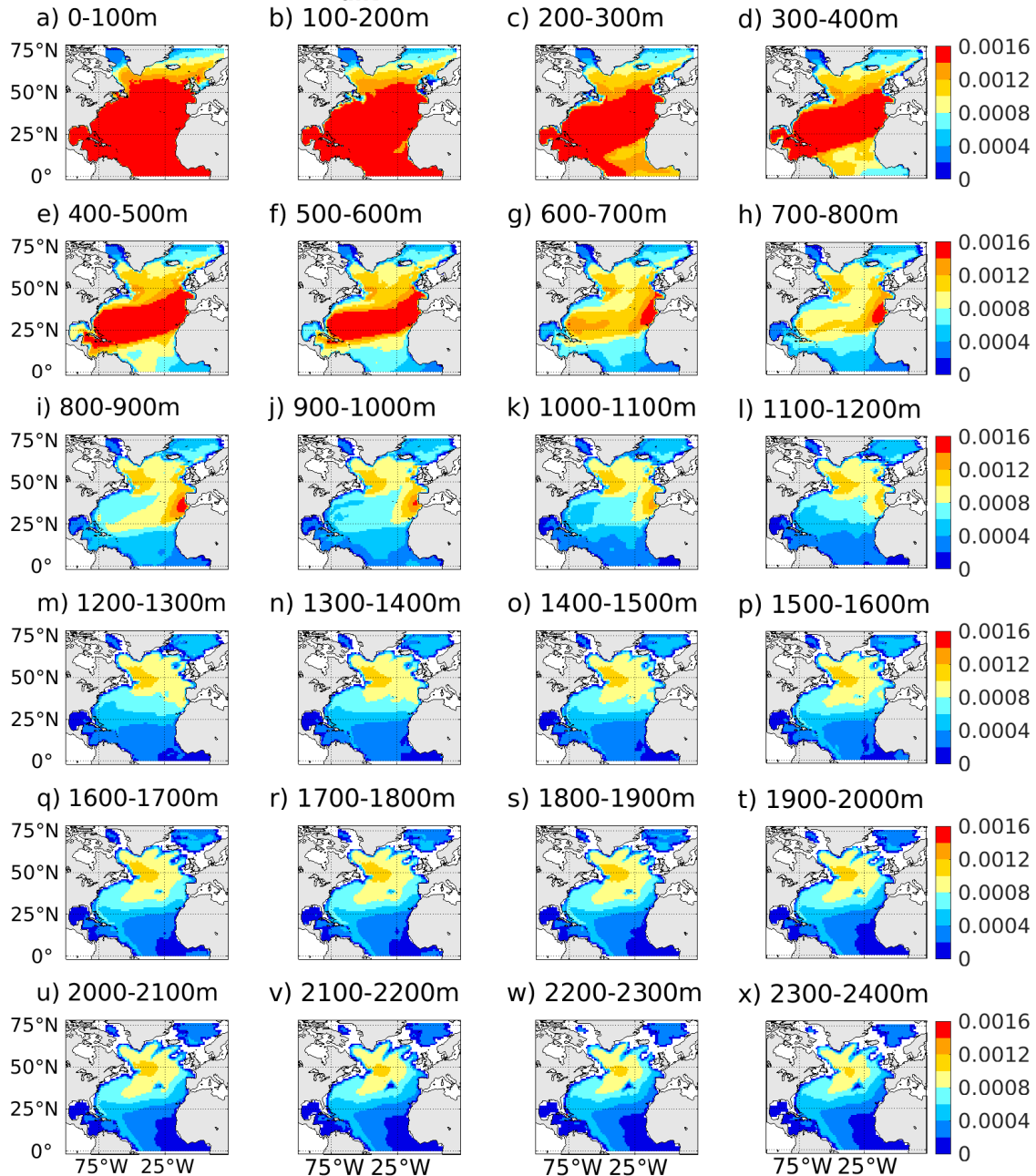


Figure S3. Contemporary fraction of the North Atlantic C_{ant^*} multi-model mean for our considered model-ensemble. Panels (a-x) displays results for different depth planes between surface and 2400m.

Multi-model mean, C_{ant^*} -fraction, 1997-2007

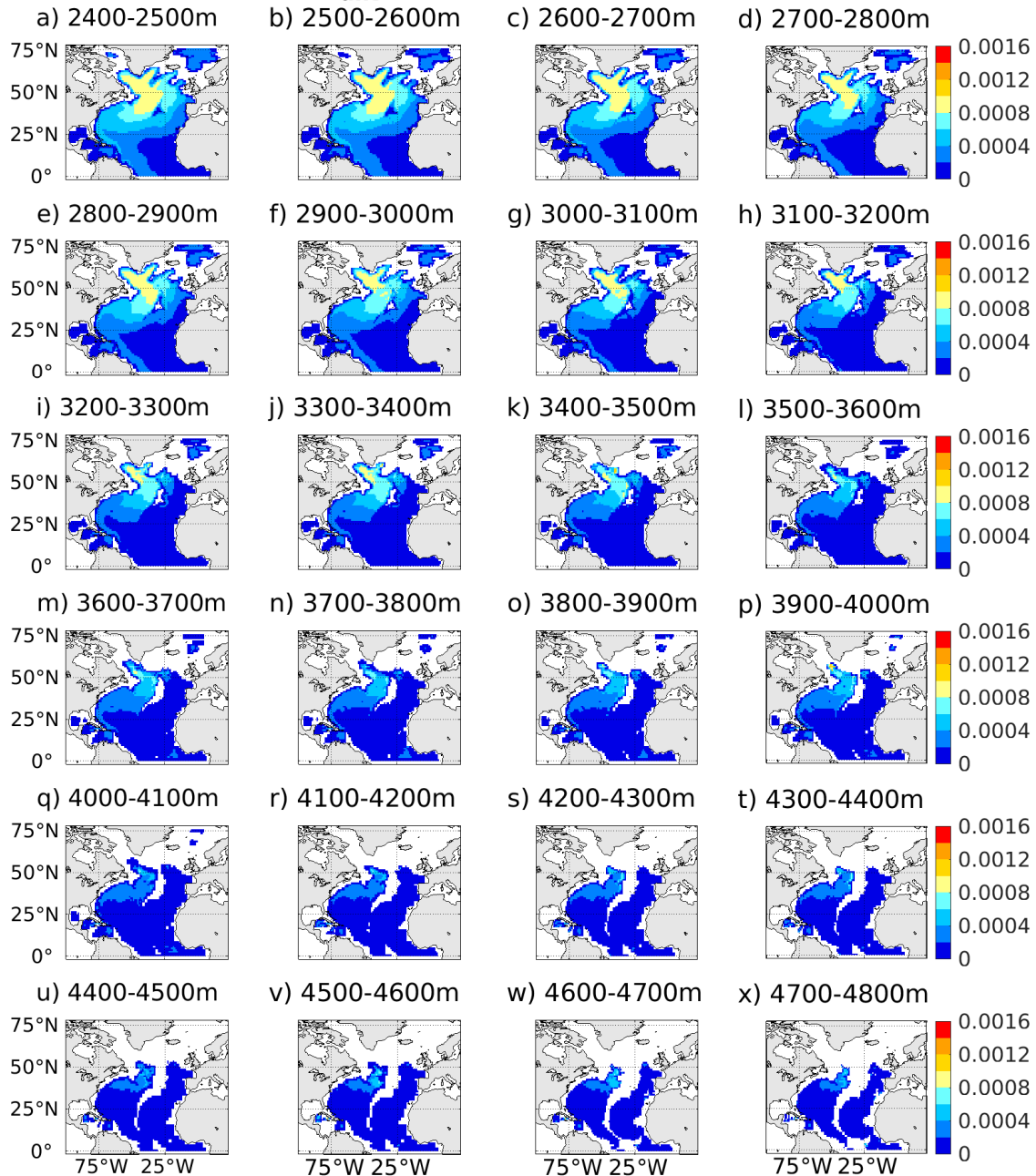


Figure S4. Contemporary fraction of the North Atlantic C_{ant^*} multi-model mean for our considered model-ensemble. Panels (a-x) displays results for different depth planes between 2400m and 4800m.

Multi-model standard deviation, C_{ant*} -fraction, 1997-2007

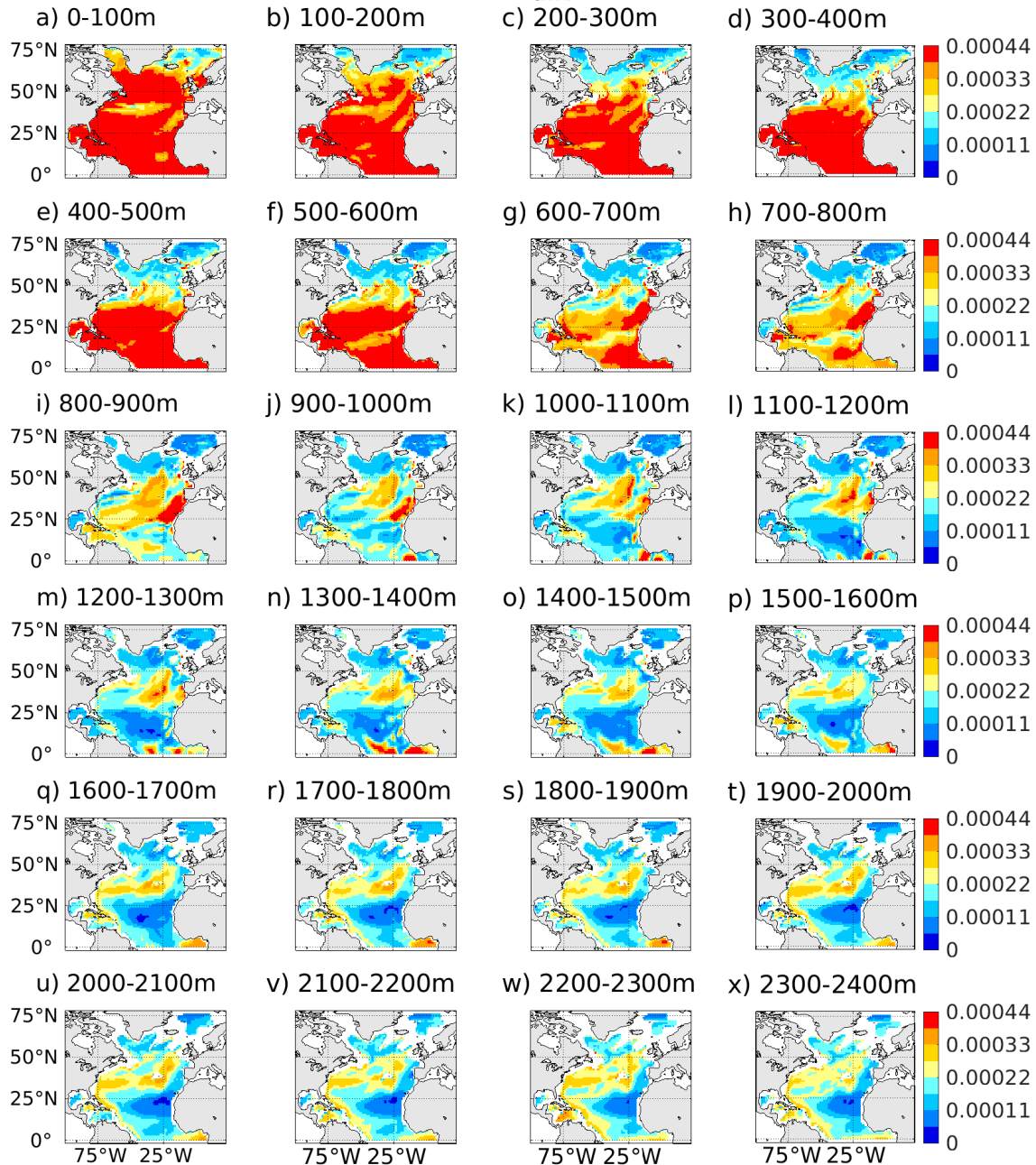


Figure S5. Contemporary fraction of the North Atlantic C_{ant*} multi-model standard deviation for our considered model-ensemble. Panels (a-x) displays results for different depth planes between surface and 2400m. Non-eligible points are colored in different shades of blue.

Multi-model standard deviation, C_{ant^*} -fraction, 1997-2007

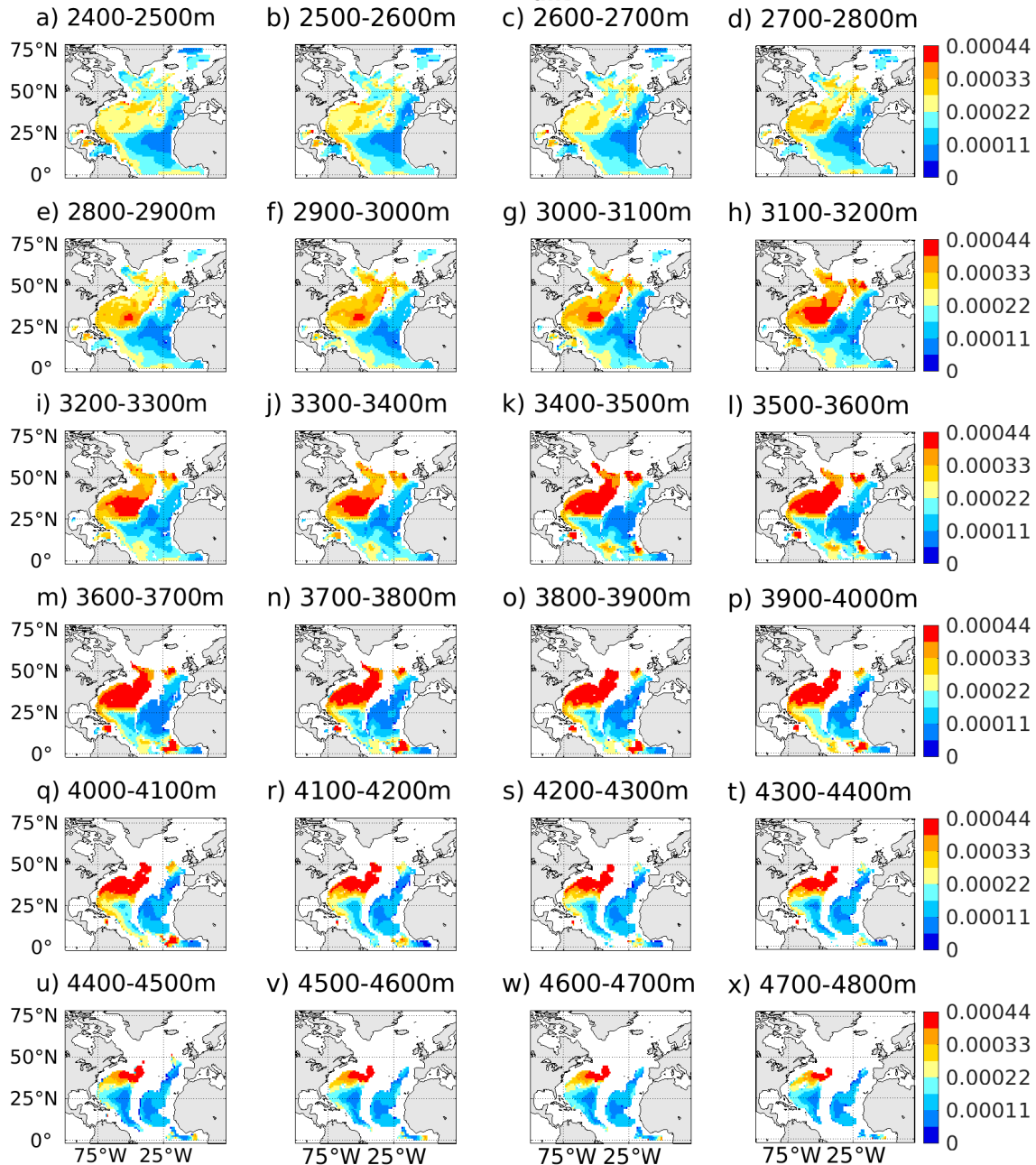


Figure S6. Contemporary fraction of the North Atlantic C_{ant^*} multi-model standard deviation for our considered model-ensemble. Panels (a-x) displays results for different depth planes between 2400m and 4800m. Non-eligible points are colored in different shades of blue.

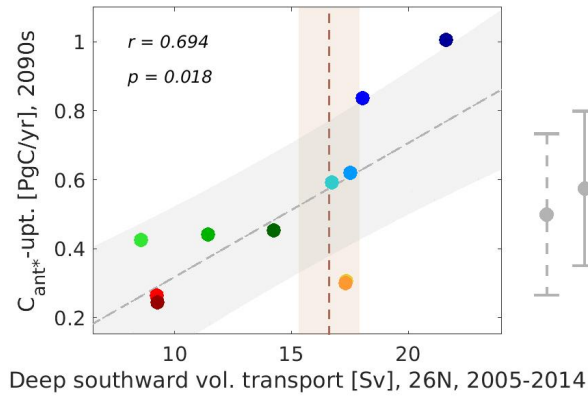


Figure S7. Emergent constraint between interior ocean southward volume transport accumulated between 700 m and 4700 m depth for the years 2005-2014 (predictor) and the future North Atlantic C_{ant^*} -uptake (predictand) for the years 2090-2099 for our model ensemble. Shown are scatter-plots (color coding of models as in Figure 1 of the main article), best fit linear regression (grey line) including the interval of the 68% projection uncertainty (grey shading), cross-correlations between simulated predictor and predictand as well as mean observational constraints and their uncertainties (brown dashed lines and light brown shading). Associated estimate for the unconstrained model ensemble (grey dashed bars) and the emergent constraint (grey bars) are shown on the right side of the panels. See Appendix A of the main article for a detailed description of the considered observational estimates.