

Evaluating the vegetation-atmosphere coupling strength of ORCHIDEE land surface model (v7266)

Yuan Zhang^{1,2}, Devaraju Narayanappa¹, Philippe Ciais¹, Wei Li³, Daniel Goll¹, Nicolas Vuichard¹, Martin G. De Kauwe⁴, Laurent Li², Fabienne Maignan¹

5 ¹Laboratoire des Sciences du Climat et de l'Environnement (LSCE), IPSL, CEA/CNRS/UVSQ, Gif sur Yvette, France

²Laboratoire de Météorologie Dynamique, IPSL, Sorbonne Université/CNRS, Paris, France

³Department of Earth System Science, Ministry of Education Key Laboratory for Earth System Modeling, Institute for Global Change Studies, Tsinghua University, Beijing, 100084, China

⁴School of Biological Sciences, University of Bristol, Bristol, BS8 1TQ, UK

Correspondence to: Yuan Zhang (yuan.zhang@lsce.ipsl.fr)

10 **Abstract.** Plant transpiration dominates terrestrial latent heat fluxes (LE) and plays a central role in regulating the water cycle and land surface energy budget. However, currently Earth system models (ESM) disagree strongly on the amount of transpiration, and thus LE, leading to large uncertainties in simulating future climate. Thus it is crucial to correctly represent the mechanisms controlling the transpiration in models. At the leaf-scale, transpiration is controlled by stomatal regulation, and at the canopy-scale, through turbulence, which is a function of canopy structure and wind. The coupling of vegetation to
15 the atmosphere can be characterized by a coefficient Ω . A value of $\Omega \rightarrow 0$ implies a strong coupling of vegetation and the atmosphere, leaving a dominant role to stomatal conductance in regulating water (H₂O) and carbon dioxide (CO₂) fluxes, while $\Omega \rightarrow 1$ implies a complete decoupling of leaves from the atmosphere, that is, the transfer of H₂O and CO₂ is limited by aerodynamic transport. In this study, we investigated how well the land surface model ORCHIDEE (v7266), simulates the coupling of vegetation to the atmosphere by using empirical daily estimates of Ω derived from flux measurements from 90
20 FLUXNET sites. Our results show that ORCHIDEE generally captures the Ω in forest vegetation types (0.27 ± 0.12) compared with observation (0.26 ± 0.09), but underestimates Ω in grasslands and croplands (0.25 ± 0.15 for model, 0.33 ± 0.17 for observation). The good model performance in forests is due to compensation of biases in surface conductance (G_s) and aerodynamic conductance (G_a). Calibration of key parameters controlling the dependence of the stomatal conductance to the water vapor deficit (VPD) improves the simulated G_s, and Ω estimates in grasslands and croplands (0.28 ± 0.20). To assess the
25 underlying controls of Ω , we applied random forest (RF) models to both simulated and observation-based Ω . We found that large observed Ω are associated with periods of low wind speed, high temperature, low VPD and related to sites with large leaf area index (LAI) and/or short vegetation. The RF models applied to ORCHIDEE output generally agree with this pattern. However, we found the ORCHIDEE underestimated the sensitivity of Ω to VPD when VPD is high, overestimated the impact of LAI on Ω , and did not correctly simulate the temperature dependence of Ω when temperature is high. Our results highlight
30 the importance of observational constraints on simulating the vegetation-atmosphere coupling strength, which can help improve predictive accuracy of water fluxes in Earth system models.

1 Introduction

Representing accurately the land-atmosphere interactions in Earth system models (ESMs) is crucial for analyzing climate variability and projecting climate change (Claussen, 1998; Goldberg and Bernhofer, 2001; Zhu et al., 2017). Among the key interactions, the exchange of latent heat (LE) between the land surface and the atmosphere is one of the most important processes (Trenberth et al., 2009; IPCC, 2014). LE is contributed by several sources, including evaporation from bare soil and canopy interception, vegetation transpiration, snow and ice sublimation (Chapin et al., 2011). In these sources, transpiration has the largest contribution (Jasechko et al., 2013; Wei et al., 2017; Li et al., 2019), but is massively uncertain across models (Stoy et al., 2019), leading to considerable uncertainty in LE simulation in current ESMs (Wild, 2020). The large uncertainties in current transpiration and LE simulations can further result in difficulties in constraining soil moisture and the carbon cycle (Humphreys et al., 2021). Therefore, there is a need to evaluate and improve the simulation of transpiration and LE in ESMs. The LE parameterization in ESMs is based on Fick's law, using the conductance, or 1/resistance of water vapor between vegetation and atmosphere (Bonan, 2019). This conductance is the result of several processes such as stomatal opening, boundary layer turbulence, soil-to-air evaporative resistance, and it is thus affected by multiple factors including plant physiology, vegetation structure, vapor pressure deficit (VPD), temperature, net radiation, soil moisture etc (Igarashi et al., 2016; Zhang et al., 2018; Veste et al., 2020). Currently, we can observe total LE at the site scale (i.e. FLUXNET), but we are unable to disentangle the relative contribution of different processes. The complexity of conductance and the lack of process-level observations lead to difficulties in detailed evaluation on the vegetation-atmosphere water exchanges in ESMs based on the underlying processes. As a result, accurately capturing the regulation of LE by biotic and abiotic factors remains a key challenge for the land surface modeling community (Mueller et al., 2013; De Kauwe et al., 2017; Stoy et al., 2019). An early attempt to quantify the contribution of different conductance processes was made by Jarvis and McNaughton (1986), who developed a metric commonly referred to as the decoupling coefficient, Ω , to describe whether vegetation transpiration is mainly controlled by stomatal or aerodynamic processes. The calculation of Ω is based on the ratio between aerodynamic and stomatal conductance (See Method). At the limit, $\Omega=0$ denotes perfect coupling between vegetation and atmosphere, i.e. the transpiration is entirely regulated by stomata, while $\Omega=1$ denotes complete decoupling, i.e. transpiration is driven entirely by boundary layer turbulence. The concept of Ω can be used at scales from leaf to regional level, and for different fluxes from transpiration only to the total evapotranspiration (e.g., Peng et al. 2019). Because evapotranspiration includes water fluxes from not only leaf but also other surfaces, the stomatal conductance needs to be replaced by a surface conductance which integrates all conductances at different surfaces in the evapotranspiration Ω calculation. During the last decades, the number of eddy covariance flux measurements has rapidly grown. Quantification of Ω at site level from eddy covariance flux measurements offers insights into how different vegetation types control turbulent fluxes as a function of their phenology and stomatal physiology during the growing and the non-growing season (De Kauwe et al., 2017; Goldberg and Bernhofer, 2001). These observation-based Ω provides valuable information to evaluate ESMs on how well they capture the controls of LE. Using this estimate, De Kauwe et al. (2013) found that one of the principal reasons for disagreement

65 among simulated transpiration responses to elevated CO₂ is the differences in the degree of coupling between vegetation and the atmosphere.

ORCHIDEE land surface model (LSM) is one of the widely used models in simulating carbon, energy and water budget of terrestrial ecosystems (e.g. Zhang et al., 2021; Schrapffer et al., 2020). ORCHIDEE and the ESM IPSLCM, which has ORCHIDEE as the land surface module have participated in various model intercomparison projects including TRENDY, 70 Coupled Model Intercomparison Project (CMIP), etc. In spite of its wide usage, the LE of ORCHIDEE LSM remains simply calibrated and evaluated against the total evapotranspiration observations (Bastrikov et al., 2018), without considering the detailed processes. A recent study showed that the ORCHIDEE version used in CMIP6 still has biases in LE, especially in tropical regions (Tafasca et al., 2020). However, it remains unclear how the biases happened and which processes need to be improved to better simulate the fluxes. To solve this problem, in this study we used Ω dataset derived from eddy-covariance 75 data from 106 sites (De Kauwe et al., 2017), to evaluate the vegetation-atmosphere coupling strength of the land surface model ORCHIDEE 2.2 (v7266). We tested whether the calibration of the stomatal response to atmospheric dryness, or using observed canopy height, can improve the simulation of coupling strength. Further we used random forest models to investigating the biotic and abiotic factors affecting the coupling strength. The methodology presented here is generic enough to be applied for the benchmarking of other LSMs. The objectives of this study are to: (1) Benchmark ORCHIDEE using Ω estimated from 80 FLUXNET observations; (2) Investigate how different factors affect Ω in the observations and whether ORCHIDEE correctly captured the driving factors.

2 Data and methods

2.1 ORCHIDEE model

We use the ORCHIDEE 2.2 (v7266) land surface model in this study. This model version is the latest version participating in 85 CMIP6 project under coupled configuration to atmospheric circulation model in the IPSL-CM6A-LR ESM (Boucher et al., 2020). The ORCHIDEE model consists of three interactive sub-modules (Krinner et al., 2005). The SECHIBA module parameterizes the land surface energy and water balance (Ducoudré et al., 1993). The STOMATE module deals with phenology (Botta et al., 2000) and carbon fluxes of terrestrial ecosystems (Viovy, 1996). The LPJ dynamic vegetation module simulates the dynamics of vegetation (Sitch et al., 2003). In this study, the dynamic vegetation module is turned off because the 90 vegetation types are prescribed at each site.

ORCHIDEE simulates LE by considering plant transpiration, bare soil evaporation, sublimation, floodplain evaporation, and evaporation from canopy water interception. Because this study focuses on the vegetation-atmosphere coupling strength for transpiration and also because the data to evaluate this model has been filtered to represent the transpiration (De Kauwe et al., 2017), here we only introduce the parameterization of conductance relating to transpiration in ORCHIDEE.

95 The stomatal conductance (g_s , mol m⁻² s⁻¹ bar⁻¹) is calculated in the photosynthesis module which couples the leaf-level photosynthesis and stomatal conductance based on (Yin and Struik, 2009):

$$g_s = g_0 + \frac{A+R_d}{C_i-C_i^*} f_{vpd} \quad (1)$$

Where g_0 is the stomatal conductance when the irradiance is zero ($\text{mol m}^{-2} \text{s}^{-1} \text{ bar}^{-1}$). A is the rate of CO_2 assimilation ($\mu\text{mol m}^{-2} \text{s}^{-1}$), R_d is the dark respiration ($\mu\text{mol m}^{-2} \text{s}^{-1}$), C_i is the intercellular CO_2 partial pressure (μbar), C_i^* is the C_i -based CO_2 compensation point (μbar) in the absence of R_d , and f_{vpd} is the function for the effect of vapor pressure deficit (VPD, kPa) on stomatal conductance, calculated as:

$$f_{vpd} = \frac{1}{\left[\frac{1}{a_1 - b_1 \text{VPD}} - 1 \right]} \quad (2)$$

Here a_1 and b_1 are empirical parameters depending on vegetation type (Fig S1). This equation shows that a higher VPD will induce stomatal closure and decrease g_s .

105 The canopy level stomatal conductance is calculated by integrating g_s across all leaves in the canopy.

The aerodynamic conductance ($G_a, \text{mol m}^{-2} \text{s}^{-1}$) formulation in ORCHIDEE is

$$G_a = \frac{\kappa^2 u_a}{\left[\ln \left(\frac{z_a - d}{z_{0m}} \right) \ln \left(\frac{z_a - d}{z_{0h}} \right) \right]} p_s / (RT) \quad (3)$$

where z_a is the height of the wind measurement, d is the displacement height (i.e. the height at which the wind speed would go to zero), calculated as 0.66 of average canopy height. u_a is wind speed (m s^{-1}), κ is the von Karman's constant. p_s , T are air pressure and temperature. R is the universal gas constant. z_{0m} and z_{0h} are respectively the roughness heights (m) for momentum and heat transfer estimated following Su et al. (2001) and Ershadi et al. (2015) using canopy height (z) and LAI:

$$z_{0m} = (z - d) e^{-\frac{\kappa}{\eta}} \quad (4)$$

Where

$$\eta = 0.32 - 0.264 e^{-3.02 \text{LAI}} \quad (5)$$

115 z_{0h} is estimated using z_{0m} :

$$z_{0h} = \frac{z_{0m}}{e^{\kappa B^{-1}}} \quad (6)$$

B is the Stanton number. κB^{-1} is estimated following Su et al. (2001; 2002):

$$\kappa B^{-1} = \frac{\kappa C_d}{4 C_t \eta (1 - e^{-\frac{nec}{2}})} f_c^2 + 2 f_c f_s \frac{\kappa \eta \frac{z_{0m}}{z}}{C_t^*} + \kappa B_s^{-1} f_s^2 \quad (7)$$

Where C_d , C_t are drag and heat transfer coefficient of leaves, nec is within canopy wind profile extinction coefficient, calculated as $nec = C_d \text{LAI} / (2\eta^2)$. f_c , f_s are the fraction of canopy and bare soil, C_t^* is the heat transfer coefficient of soil. B_s is the Stanton number for bare soil, with κB_s^{-1} estimated following Brutsaert (1999):

$$\kappa B_s^{-1} = 2.46 \text{Re}_*^{\frac{1}{4}} - \ln(7.4) \quad (8)$$

Where Re_* is the Reynolds number.

2.2 FLUXNET data and empirical calculation of Ω

125 The empirical Ω reference is derived from the FLUXNET 2015 dataset (Pastorello et al., 2020). This dataset collects eddy covariance measurements of heat and water fluxes, as well as the corresponding meteorological variables above vegetation canopy in sites over the world and across different plant functional types (PFT). The detailed information of the flux sites used can be found in Table S1.

The calculation of Ω was firstly introduced by Jarvis and McNaughton (1986), using the formulation:

$$130 \quad \Omega = \frac{1+\epsilon}{1+\epsilon+\frac{G_a}{G_s}} \quad (9)$$

where $\epsilon = \frac{s}{\gamma}$, s is the slope of the saturation vapor pressure curve with air temperature (Pa K^{-1}), γ is the psychrometric constant (Pa K^{-1}). It should be noted that the conductance (G_a , G_s) used for Ω calculation depends on the scale of interest, at the scale larger than a leaf, if other water vapor fluxes besides transpiration (e.g. soil evaporation) have significant contribution to LE, G_s must also include such contribution. In such cases, the synthesized G_s was sometimes referred to as surface conductance (Peng et al., 2019). To be accurate, we use the term surface conductance for G_s hereafter to match our scale.

135 There remains no direct observation of G_a and G_s at flux sites. De Kauwe et al. (2017) developed an empirical method to estimate the two terms. In this method, G_a was estimated as an empirical equation using wind speed and friction velocity (Thom, 1972), and G_s ($\text{mol m}^{-2} \text{s}^{-1}$) was estimated using inverted Penman–Monteith equation with measured evapotranspiration (ET , in $\text{mol m}^{-2} \text{s}^{-1}$) flux:

$$140 \quad G_s = \frac{G_a \gamma \lambda ET}{s(R_n - G) - (s + \gamma)\lambda ET + G_a M_a c VPD} \quad (10)$$

Where λ is the latent heat of vaporization (J mol^{-1}), VPD (Pa) is the vapor pressure deficit, R_n (W m^{-2}) is the net radiation flux, G (W m^{-2}) is the soil heat flux, M_a (kg mol^{-1}) is molar mass of air, and c is the heat capacity of air ($\text{J kg}^{-1} \text{K}^{-1}$).

In this study, G_a , G_s and Ω from De Kauwe et al.'s (2017) dataset are used as the reference to evaluate ORCHIDEE LSM.

2.3 Simulation setup and modeled Ω calculation

145 The site simulations with ORCHIDEE are forced with observed meteorology in the FLUXNET 2015 dataset (Pastorello et al., 2020). The variables include half-hourly time series of air temperature (K), surface pressure (Pa), specific humidity (kg kg^{-1}), North and East direction wind speed (m s^{-1}), short-wave downward radiation (W m^{-2}), long-wave downward radiation (W m^{-2}), rainfall ($\text{kg m}^{-2} \text{s}^{-1}$) and snowfall ($\text{kg m}^{-2} \text{s}^{-1}$). Gaps in the FLUXNET meteorology data are filled following Vuichard and Papale (2015). The plant functional type (PFT) classification of FLUXNET is different from the one used in ORCHIDEE. To
150 let ORCHIDEE simulate LE and the conductances without bias, we used a combination of ORCHIDEE PFT types to represent the vegetation type at each site (Table S1).

Three simulations are performed at each site (Fig. 1). The first simulation named *Ctrl* uses the default configuration and parameters as used in CMIP6 and TRENDY experiments. The second simulation named *Clb_gs* uses the same configuration as *Ctrl* but changes the empirical parameters in Eq. 2. New values for a_1 and b_1 are obtained by constraining the modeled

155 formulation of conductance against a global database of leaf-level observations of stomatal conductance from Lin et al. (2015)
for different plant functional types (See the Supplementary, Table S2, Fig S1). Finally, because the ORCHIDEE model
prescribes canopy height for each PFT (Table S3), which may cause biases in G_a , we performed a last simulation referred to
as *Clb_ht*. *Clb_ht* also uses the *Ctrl* configuration but the default canopy height parameters for each PFT are replaced by the
160 height consistent with the observations, to ensure unbiased estimates of aerodynamic conductance in the model. Because
canopy height and measurement height are required in the last simulation, we only used 90 sites where we found both height
information out of the flux sites in the FLUXNET2015 dataset in this study.

Although De Kauwe et al. (2017) excluded time steps with precipitation and the subsequent 48 half hours to have the LE
mainly contributed by transpiration and referred to G_s as ‘stomatal conductance’ in their paper, we still need to keep in mind
165 that the G_s calculated in this way may also contain contributions from several other processes. It includes the conductance
related to bare soil evaporation and the one related to water transport in the leaf boundary layer, in addition to the stomatal
conductance integrated over the entire canopy. So it is more a ‘surface conductance’ than a ‘stomatal conductance’. To be
consistent with the observation-based dataset, we did not use the integrated canopy level stomatal conductance from
ORCHIDEE output to calculate Ω . Instead, G_s is diagnosed using ORCHIDEE output evapotranspiration, R_n and G following
170 Eq 5.

2.4 Leaf area index data

Because leaf area is an important factor affecting both aerodynamic and surface conductance, it is necessary to take leaf area
into consideration when explaining the decoupling coefficient. However, instantaneous leaf area information is not available
at most of the flux sites. To match the space and time of observation-based Ω , we extracted the leaf area index (LAI) from the
175 500m 8-day MOD15A2H dataset derived from the space-borne MODIS observations (Myneni et al., 2015). This LAI dataset
shows good consistency with in situ observations (Xu et al., 2018). The LAI for a given date is interpolated by averaging the
nearest two high-quality LAI observations from the 8-day time series. For the simulated Ω , we used the LAI from the
simulations for analyses to keep consistency between Ω and LAI.

2.5 Analyses

180 To be comparable with the observation-based Ω dataset, we first used the same criteria to screen the model outputs as De
Kauwe et al. (2017), i.e. (1) only the three most productive months, to account for the different timing of summer in the
Northern (June, July, August) and Southern (December, January, February) hemispheres are included in the study. This is to
maximize the role of transpiration in Ω versus bare soil evaporation in the growing season. (2) only day-time data from 8:00
am to 4:00 pm (local solar time) are used. (3) time steps during precipitation or within 2 days after precipitation are excluded.
185 Because the 30-min Ω is very noisy, to reduce the noise in data, we used the day-time average of Ω and explanatory variables
in all later analyses.

The decoupling coefficient Ω is affected by multiple factors and the relationships between Ω and different factors are often nonlinear. To characterize these relationships, we constructed random forest models for each of the observation-/simulation-based daily Ω . The goal is here to diagnose the main explanatory variables from the random forests in the observations/simulations, and to gain insights about the model over-/under-representation of their relative importance. The explanatory variables used in the random forest models include wind speed, air temperature (T_{air}), VPD, net radiation (R_{net}), LAI, canopy height and PFT. For each model, 90% of the data are randomly sampled for training and the left 10% are used for testing whether there is overfitting in the random forest models (Fig S2).

To visualize the role of each factor in the complex random forest model, we calculated the SHapley Additive exPlanations (SHAP) values. SHAP value is an index based on the classic Shapley values from game theory (Lundberg and Lee, 2017). For each daily sample, SHAP calculates the expectation of contribution of each factor to deviate the sample value from the average of all samples. An example explaining the SHAP values can be found in Fig S3. Investigating the dependence of SHAP value to the factor value tells how this factor affects Ω . Also, by averaging the absolute values of the SHAP of one factor from all samples, we can get the importance of the factor in the random forest model.

The workflow of the simulations and analyses can be found in Fig 1.

3 Results

3.1 The performance of the ORCHIDEE model

The average growing season daytime Ω estimated from observations and from the ORCHIDEE outputs are shown in Fig 2. A remarkable difference in the decoupling coefficient is found among plant functional types. According to the observation-based estimation (De Kauwe et al. 2017), the short vegetation types including grasslands (GRA) and croplands (CRO) are generally more decoupled from the atmosphere than forests, with the median values of Ω over sites of 0.31 and 0.38. In forest vegetation types, the evergreen forests (median $\Omega=0.26-0.35$) are more decoupled with the atmosphere than deciduous forests (median $\Omega=0.16$). The wetlands in observation show a strong decoupling (median $\Omega=0.42$). Considering the large evaporation from open water in this vegetation type, the strong decoupling is not surprising. Besides the difference among vegetation types, we also find large variability in Ω within each type, especially for GRA and CRO (Table S4).

Compared with observations, ORCHIDEE *Ctrl* simulations show similar median Ω in forests and croplands (Fig 2, Table S4). However, in grasslands, the *Ctrl* median Ω (0.15) is much smaller compared to observation (0.31), implying a greater stomatal control in the model than the observations on grassland transpiration. This bias is not contributed by a few outlier sites but by a systematic underestimation of Ω at most of the grassland sites. For wetlands, ORCHIDEE also shows a significant underestimation of Ω (Fig 2). This could be due to the lack of wetland PFT and the corresponding open water in the ORCHIDEE model (Table S3). In spite of the biases in grassland and wetland, the observed differences in Ω among vegetation type are to a larger degree well reproduced (Fig 2). The strongest decoupling is found in CRO and deciduous broadleaf forest (DBF), and the evergreen needleleaf forests are more coupled than deciduous broadleaf forests.

By calibrating stomatal conductance (VPD dependence parameters leading to the *Clb_gs* simulation), we obtained Ω estimations closer to observations in short vegetation types (CRO and GRA) than *Ctrl* (Fig 2). But the median Ω estimation for most forest types is degraded after the gs ‘calibration’, with the Ω more overestimated in DBF, ENF and MF. In contrast to the large impact from the calibration of stomatal conductance, prescribing realistic canopy height to the model leads to minor changes in Ω (Fig 2).

In order to understand the reasons for differences in Ω between observation and the ORCHIDEE model, we also look into its components G_a and G_s (Fig 3). Compared to observations, both G_a and G_s are underestimated in *Ctrl*. For G_a , the underestimation from model is $\sim 1.0 \text{ mol m}^{-2} \text{ s}^{-1}$ in forest types and $\sim 0.4 \text{ mol m}^{-2} \text{ s}^{-1}$ in GRA and CRO. Calibrating stomatal conductance (*Clb_gs*) or prescribing the observed canopy height to the model (*Clb_ht*) both have a small impact on G_a . For G_s , using the new parameters for stomatal conductance (*Clb_gs*) can generally correct the G_s bias in DBF, ENF and MF, and improved G_s in GRA and CRO than *Ctrl*. Although *Clb_gs* has improved the G_s simulation compared with *Ctrl*, it does not result in an improvement of Ω and latent heat simulation, implying a compensation of biases in G_a and G_s in current ORCHIDEE model.

3.2 Factors controlling the decoupling coefficient

To better understand the underlying drivers of the variability in decoupling we separated the importance of hypothesized drivers of decoupling coefficient in random forest models using SHAP values (Fig. 4a). Among all the factors, the observation-based random forest results show that the variation of Ω is mainly contributed by the variation of VPD, followed by PFT, with each of them having a SHAP value of ~ 0.06 , i.e. the variation of the factor contributes on average 0.06 of the deviation of Ω (absolute value) from the average of all samples. The other factors show relatively small importance to Ω , with SHAP values smaller than 0.03. Compared to observations, the ORCHIDEE Ω variation is also strongly contributed by VPD. However, opposite from the strong PFT impact found in observation, the modeled Ω is strongly affected by LAI. In *Ctrl*, the SHAP value of LAI is 0.09, which is much higher than the observation. The calibration of gs increased this value to 0.14. In contrast to the strong impact of LAI, all the modeled Ω show a much smaller contribution from PFT than in observation. It is also notable that the impact of air temperature on Ω is also much smaller in ORCHIDEE simulations than in observations.

To further understand the differences between tall and short vegetation, we trained random forest models using only forests (EBF, DBF, ENF and MF) and only short vegetation (GRA and CRO) observation/simulation. In forests, the SHAP value of VPD is comparable in the observation and ORCHIDEE simulations, while the LAI SHAP value is strongly overestimated and the canopy height SHAP value is slightly underestimated by the model. For short vegetation, a strong overestimation of the SHAP of LAI is also confirmed in ORCHIDEE. But for the other factors (Tair, Rnet, VPD and height), the SHAP values are underestimated. It is notable that the SHAP values for VPD in ORCHIDEE is only 60% of the estimation in observation, probably indicating a strong underestimation of water stress on Ω in short vegetation.

Figure 5 summarizes how different factors affect Ω in each of the observation/simulation random forest models. The responses of Ω to most factors are generally consistent in observations and simulations. According to all of the random forest models,

the vegetation is more decoupled, or having a larger Ω , under conditions with low wind speed, low VPD and large LAI. Also, both observation and simulations agree that GRA and CRO are more decoupled from the atmosphere than the other PFTs. However, for Tair and Rnet, ORCHIDEE does not capture the observed dependence correctly. In observation, a remarkable
255 positive Tair dependence is found, with higher temperature tending to result in higher Ω . While in simulations, temperature shows a very small impact on Ω . The dependence of Ω on Rnet is similar to that of Tair in observation, but only the *Clb_gs* simulation captured this dependence correctly. Finally, to our surprise, we did not find Ω to strongly depend on canopy height in both observation and simulation. Although the highest canopy tends to have positive SHAP values, the range of SHAP values for smaller height levels is very large with both positive and negative.

260 A comparison of all controlling factors individually between the observations and the ORCHIDEE simulations is shown in Fig. 6. The dependence of Ω on wind speed generally has similar patterns in observation and in ORCHIDEE. Similar patterns are also found in Ga and Gs between simulation and observations at wind speed larger than 1 m s^{-1} . In observation, we found positive SHAP values of wind speed at wind speed smaller than 1 m s^{-1} , this might be due to coincidence because low wind speed will cause large uncertainty in the eddy covariance measurements and there are very few valid observation-based Ω
265 available at low wind speed.

The observed dependence of Ω on Tair is not captured by ORCHIDEE. Observations indicate an increase of Ω when Tair is lower than 30°C , and a slight decrease at higher temperature. While ORCHIDEE simulations show a much smaller impact from Tair. This model bias is caused by differences in the relationships of Gs on Tair at high temperature. A strong decline of the Gs SHAP values is found when the Tair is over 20°C in ORCHIDEE, while the observations show a slight increase of Gs
270 SHAP values at the same temperature. This difference probably indicates an underestimation of optimal temperature for photosynthesis in ORCHIDEE in PFTs that have been acclimated to hot weather.

In terms of the VPD, ORCHIDEE generally captures the negative dependence of Ω to VPD at VPD smaller than 2 kPa. However, when the VPD is larger, observations show continuous negative dependence of Ω , while ORCHIDEE simulations show no significant changes in Ω with VPD. The decomposition into components of Ω shows that this difference is mainly
275 contributed by different dependence of Gs on VPD (Fig 6).

Compared with the observations, ORCHIDEE simulations show a different dependence of Ω to Rnet when the net radiation is $<100 \text{ W m}^{-2}$. This difference is also mainly contributed by differences in Gs. In observation, the Gs SHAP values start to decrease rapidly when Rnet is lower than 200 W m^{-2} , while in ORCHIDEE simulations, the decrease of SHAP values is smaller and happens when Rnet is below 50 W m^{-2} .

280 Regarding the dependence of Ω to LAI, ORCHIDEE simulations show a significant increase of Ω with LAI across the entire range of LAI, due to a strong increase of Gs along with LAI, with the Gs SHAP values increasing by $0.2\text{-}0.4 \text{ mol m}^{-2} \text{ s}^{-1}$ from LAI=0 to LAI=5. However, the observations show that SHAP values increase only by less than $0.05 \text{ mol m}^{-2} \text{ s}^{-1}$ for the same change in LAI, resulting in a weak dependence of Ω on LAI.

Both observation and ORCHIDEE show weak dependence of Ω on canopy height. However, all of the data agree with a
285 positive impact of canopy height on Ga. A strong increase of Ga is found when the height is below 15 m.

3.3 Interactions among factors

To further understand how the model biases the controls of Ω , we explored the interactions between factors that have significant different impacts between ORCHIDEE and observations (Fig 7, 8).

290 The interactions between VPD and T_{air} are shown in Fig. 7. The observation data show that when Ω SHAP value is positive ($T_{air} > 25^\circ\text{C}$), data with larger VPD have smaller Ω values than those with smaller VPD.

In ORCHIDEE simulations, although Ω SHAP values varies differently along the temperature gradient compared with observations, similar interactions between VPD and T_{air} are also found, i.e., for a given temperature when Ω SHAP value is positive, large VPD values tend to result in smaller Ω . In another words, the dependence of Ω to T_{air} in hot weather is weakened by high VPD level. This weakening of Ω dependence on T_{air} is due to weakened dependence of G_s on T_{air} under high VPD
295 conditions (Fig S3).

A similar interaction between VPD and LAI is also found in both the observations and ORCHIDEE simulations (Fig 8). The data points with $\text{VPD} > 3\text{kPa}$ show SHAP values close to zero, indicating that higher VPD tends to also weaken the dependence of Ω on LAI. ORCHIDEE underestimated the weakening effect of high VPD to the Ω to LAI dependence as the SHAP values under high VPD conditions remain very positive/negative compared with the observation.

300 4 Discussion

4.1 How can models correctly simulate the coupling strength

Accurately resolving the land-atmospheric water/energy exchanges is critical in simulating the climate system. To ensure this, LSMs must be carefully calibrated and validated with observations before use. The ORCHIDEE model has been calibrated several times for carbon and water fluxes against flux observations including the use of dedicated data assimilation systems
305 (e.g., Bastrikov et al., 2018). As a result, the ORCHIDEE model with the most recent set of parameters does not show large biases in LE (Fig 3c).

Nevertheless, there remains no evaluation on the components and processes of LE, as well as their biotic and abiotic controls, leading to potential biases in LE simulation if climate changes. Disentangling and assessing processes and components of LE are difficult due to the lack of direct observation (Nelson et al., 2020). Although not perfect, evaluating the coupling strength
310 and its components gives a possible way to further constrain the models.

In this study, we showed that current ORCHIDEE model captures the coupling strength at most of the sites, however fails to correctly represent the processes. The tuning of current LSM models often adjusts a few uncertain parameters to produce a small number of target variables (C fluxes, LE, sensible heat flux) close to the observation. In a complex model, this kind of calibration may result in overfitting, and errors compensating for each processes. In the end, the model may get the correct
315 result for the wrong reasons. Therefore, calibration the model at the process level is helpful. For instance, the calibration of the a_1 and b_1 parameters in stomatal conductance calculation using independent observation-constrained values from Lin et al.

(2015) leaf scale data synthesis has significantly improved our estimation of f_{vpd} (Fig. S1), and consequently corrected some biases in G_s and resulted in better Ω in short vegetation. In Forest sites, Ω seems worse after this calibration, but this is because of the biases in modeled G_a , probably due to bad assumption in calculating the displacement height.

320 In spite of the improvement from g_s calibration, there remain large biases in G_s in short vegetation (grasslands and croplands). Our analyses on the controlling factors sheds light on where the problems are and give a direction to improve: we expect the model performance to improve if the dependence of G_s on temperature is corrected and the impact of VPD on stomatal conductance is further constrained. We did not do further calibration here because the responses of g_s to VPD are an emergent area of concern for LSMs and more process-level modeling and calibration efforts remain needed (Yang et al., 2019). Also, it
325 is out of the scope of this evaluation study. Nevertheless, the framework we used here would be helpful for models to identify their problematic processes and potentially fix their biases.

4.2 Factors controlling vegetation coupling strength

Due to the complexity of processes, as well as the lack of data, it is difficult to attribute the variation of coupling strength to different factors. Previous studies either focus on one or a few meteorological factors such as VPD, radiation or wind speed
330 (Kumagai et al., 2004; Nicol s et al., 2008; Zhang et al. 2018) or biotic factors like LAI or PFT (Tateishi et al., 2010; Zhang et al., 2016). Our new framework to disentangling the impacts of different factors provides a systematic view to understand the impact of these factors.

Among all the factors, VPD was the most intensively investigated factor due to its strongest impact on stomatal conductance. Previous study showed that vegetation tends to be more decoupled in wet season with low VPD compared with dry season
335 with high VPD (Kumagai et al. 2004). In this study, we found VPD the most important factor affecting Ω and to affect Ω similarly as the previous study (Fig 6). This effect is mainly due to the reduction of G_s under dry conditions as plants tend to close the stomata under high VPD conditions to reduce water loss. In addition, high VPD conditions often coincide with low soil moisture, which hampers soil water uptake by plants, also leading to low G_s . It should be noted that this VPD- Ω relationship is obtained using daily data. At a sub-daily time scale, this VPD- Ω relationship is not easily observed due to the
340 strong impacts of other factors, such as radiation (Wullschleger et al., 2000; Zhang et al., 2018).

The impact of T_{air} on Ω is through two possible pathways. First, T_{air} can directly affect VPD by changing saturate water vapor pressure, leading to changes in Ω . Second, T_{air} can affect the photosynthesis rate by changing enzyme activities. Because stomatal conductance is strongly coupled with carbon assimilation rate (Cowan and Farquhar, 1977), the changes in photosynthesis rate can thus affect g_s , and consequently Ω . In this study, we found that the responses of Ω and G_s to T_{air}
345 different from those to VPD, implying that the impacts of T_{air} through the second pathway is not negligible. The differential T_{air} impacts on G_s and Ω between observation and model simulations are probably due to wrong T_{air} adaptation of vegetation in ORCHIDEE model.

Besides VPD and T_{air} , some studies found significant impacts from net radiation (Nicol s et al., 2008) or photosynthetically active radiation on Ω (which is strongly correlated to net radiation used in our analyses) (Zhang et al., 2018). Similar to T_{air} ,

350 changing radiation can also alter leaf photosynthesis rate. Due to the coupling between stomatal conductance and carbon assimilation, the changes in radiation thus result in Ω changes. Nevertheless, the impact of radiation should be considered with caution because radiation is strongly correlated with other environmental or biotic factors that have diurnal and seasonal cycles (e.g. temperature, LAI). Besides the short-term effect, long term changes of radiation can affect soil moisture by altering LE, which may potentially change the coupling strength of the vegetation.

355 In terms of wind speed, we detected a negative dependence of Ω on wind as expected. This is because wind can accelerate the mixing of the boundary layer, increasing G_a . In this study, we did not find wind speed to be as important as VPD or vegetation types in explaining the variation of Ω . However, it needs to be kept in mind that the importance of factors depends on vegetation type. In ecosystems with a small vegetation cover (meaning small G_s), or in ecosystems where G_s has small variability, the importance of wind speed will increase.

360 Apart from the abiotic factors, the biotic factors, or vegetation properties also play important roles in controlling Ω . The PFT is found the second important factor affecting Ω after VPD in observation data (Fig 4). In ORCHIDEE simulations, the PFT impact on Ω is weaker but still important, especially for different forest types. The pattern of Ω among PFTs found in this study agree well with De Kauwe et al. (2017). The influences from PFT types on Ω may be due to various reasons. Besides leaf area and canopy height (investigated in this study), different PFTs often have different canopy structure and leaf traits,
365 leading to differences in G_a and G_s . Meanwhile, the climate and environmental conditions (e.g. soil types) which different PFTs adapted to are also different. More detailed data are needed to further explain the PFT impacts.

In the two biotic factors, canopy height is thought to be an important factor in affecting Ω because it directly affects the roughness length and the aerodynamic resistance (Ershadi et al., 2015). Higher canopies with larger roughness tend to enhance the turbulence for a given wind speed above the canopy. In this study, we found a positive but weak dependence of G_a on
370 canopy height when the height is under 15m. This result is consistent with Peng et al. (2019), who found that when controlling leaf area, Ω decreases (corresponding to G_a increase) with canopy height in vegetation with height < 20m. In higher canopies, G_a and Ω becomes less sensitive to canopy height.

Besides canopy height, LAI is also an important control. On the one hand, observations have shown that large LAI can increase the roughness (Alekseychik et al., 2017), which can lead to an increase of G_a . Along with LAI, leaf size might be also important
375 in affecting the roughness and G_a , but is not available at most sites, neither simulated by ORCHIDEE model. On the other hand, LAI affects G_s as a larger LAI means a larger area for transpiration. This effect might be further regulated by environmental factors such as VPD (Fig 8). Besides the influence from environmental factors, we also expect the impact of LAI on G_s to saturate for high LAI, because of increasing self-shading. The shaded leaves in lower canopy tend to have smaller transpiration due to the low interception of radiation (Roberts et al., 1993), resulting in a decrease of average transpiration per
380 leaf area. Also, the G_s at the ecosystem level is a synthesis of different processes including the vapor diffusion within the canopy. Large LAI may slow down the diffusion of water vapor within the canopy, potentially resulting in smaller G_s , and smaller Ω .

4.3 Limitations

Although the simulations and analyses we performed in this study clearly showed how and why ORCHIDEE LSM has biases
385 in its estimation of the coupling strength, there remain some questions which need to be answered before we can calibrate the
processes underlying these biases.

First, the coupling strength is the consequence of multiple processes. In this evaluation of Ω , strict criteria have been used to
screen the data to have only time steps with LE mainly contributed by transpiration. The effect of other processes (e.g. soil
evaporation) can potentially affect the coupling strength under some circumstances. For instance, the wetland Ω is also strongly
390 affected by evaporation from open water. An understanding of these processes is also important, and our evaluation cannot
draw conclusions on how well ORCHIDEE simulates these processes.

Second, due to the meteorological requirements of eddy covariance methods, the current selected observations have an
incomplete coverage of the real meteorological conditions. We could not obtain valid observations under conditions with very
low wind speeds. However, plants still transpire water to the atmosphere under such conditions. New observation methods are
395 needed to fill this gap so that future calibrations can ensure the models to correctly simulate vegetation under the whole range
of conditions.

The data used in this study are all day-time values. But for some vegetation types, transpiration also happens at nighttime
(Dawson et al., 2007). Although the nighttime transpiration is smaller than the day-time transpiration, it can still affect the
water and energy balance at longer time scale. These changes can potentially affect vegetation. However, the processes
400 controlling the nighttime transpiration, as well as how coupled the ecosystems are at night remains poorly understood. Current
LSMs also lack representations of such processes. We are not able to consider these processes in our evaluation/simulation.

Besides the missing processes, uncertainty may also come from the method to estimate Ω . In the observation-based estimates,
Ga was estimated using an empirical method from Thom (1972), which was derived from a bean crop. Ga estimates from this
method are found to be 81%-116% of the estimates of a more physically based method (Knauer et al., 2017) in 6 forest sites.
405 To test how biased Ga affects our evaluation, we increased/decreased Ga by 30% and re-estimated Gs and Ω (Fig S6). We
found that perturbing Ga does not result in large changes in Gs. However, when Ga is 30% smaller than current observation-
based estimates, we obtained smaller biases in Ga and Ω in ORCHIDEE Ctrl simulation in forest PFTs. Whereas in short PFTs,
decreasing the reference Ga results in even larger biases in Ω , indicating that the large biases in model vegetation coupling
strength in short vegetation is not due to uncertainties in the observation-based estimates.

410 For Gs, the inverted Penman-Monteith equation may also result in some uncertainties. On the one hand, the energy budget is
not always closed in flux observations. De Kauwe et al. (2017) used the value zero when soil heat flux observation is absent
in estimating Gs, which could lead to biases in Gs and consequently Ω if the actual soil heat flux is not negligible. When the
energy imbalance is corrected by adjusting the Bowen-ratio following De Kauwe et al. (2017), we obtained larger Gs estimates
(Fig S6), resulting in even larger modeled Gs bias than in this study. The increased biases in the corrected Gs compensate for
415 the existing biases in Ga, leading to a “good” performance of Ω simulation in forest PFTs. On the other hand, Penman-Monteith

equation remains not perfect in estimating LE. A recent study (McColl, 2020) showed that the linear approximation of Clausius-Clapeyron relation in the Penman-Monteith equation can contribute $\sim 5.7 \text{ W m}^2$ biases to daytime and $\sim 1.2 \text{ W m}^2$ to nighttime LE. This bias is remarkable when there is large difference between ambient air temperature and surface temperature (often with small G_a). A higher surface than ambient air temperature (daytime) tends to overestimate G_s in the inverted Penman-Monteith equation with observed LE, which can further overestimate Ω . However, since ORCHIDEE used the same method to estimate G_s as the observation, the uncertainties from the Penman-Monteith equation should not significantly affect our findings and conclusion.

5 Conclusion

In summary, in this study we evaluated the vegetation-atmosphere coupling strength, Ω , in ORCHIDEE LSM using an observation-based dataset at 90 flux sites. We found that short vegetation (grassland and cropland) in ORCHIDEE is too tightly coupled to the atmosphere compared to the observation-based estimates, while the coupling strength of forests is generally well estimated by ORCHIDEE. Nevertheless, there remains biases in both modeled G_a and G_s . Calibration of parameters controlling the dependence of the stomatal conductance to VPD reduces the biases of G_s in ORCHIDEE model to a small extent and improves the Ω estimates in short vegetation. Using a set of random forest models and analyses on SHAP values, we found that vegetation tends to be more decoupled to atmosphere at low wind speed, high temperature, low VPD and large LAI conditions and in short vegetation. ORCHIDEE generally agrees with this pattern but underestimated the VPD impacts when VPD is high, overestimated the contribution of LAI and did not correctly simulate the temperature dependence when temperature is high. Canopy height affects G_a but does not show a strong direct impact on Ω . Our results highlight the importance of observational constraints on simulating the vegetation-atmosphere coupling strength, which can help improve the predictive accuracy of water fluxes in Earth system models.

Code availability

The ORCHIDEE model code is available at https://forge.ipsl.jussieu.fr/orchidee/wiki/GroupActivities/CodeAvailabilityPublication/ORCHIDEE_2.2_gmd_2022.

Data availability

The Ω data used in this study is from De Kauwe et al. (2017). And the FLUXNET data is obtained at <https://fluxnet.org> (Pastorello et al., 2020)

Author contribution

YZ and DN performed the simulations and analyses, MDK estimated Ω at fluxnet sites. YZ prepared the manuscript with the contributions from all the co-authors.

445 **Acknowledgements**

The authors are grateful to the ORCHIDEE group for their kind help with the model. The authors are very grateful to the FLUXNET communities for their efforts with respect to making the sites and collecting data. The authors also thank Dr Xiaoni Wang for providing the ORCHIDEE PFT fraction at each flux site.

Financial support

- 450 This study is supported by the H2020-EU.3.5.1. 4C project (grant no. 821003). DG benefited from support from the Agence Nationale de la recherche (ANR) grant ANR- 16- CONV- 0003 (CLAND).

References

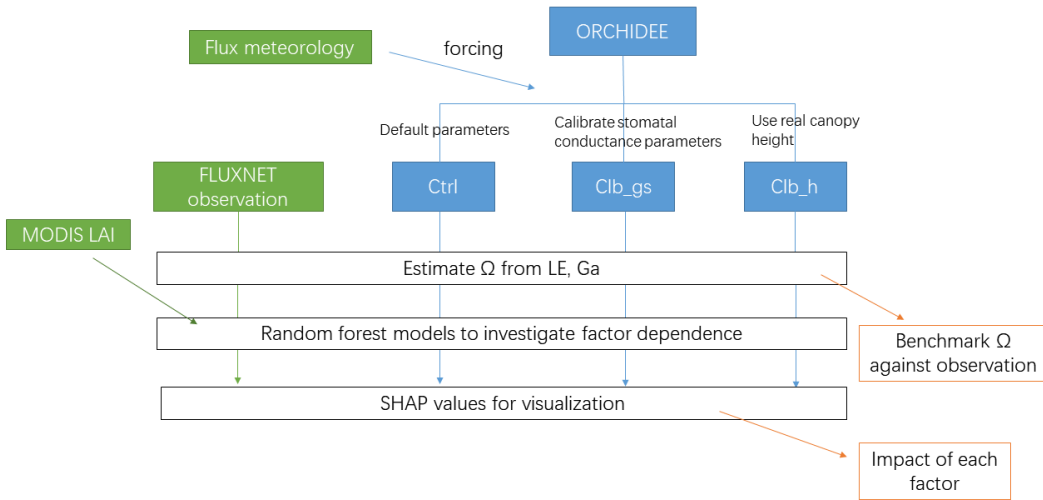
- Alekseychik, P., Korrensalo, A., Mammarella, I., Vesala, T., and Tuittila, E. S.: Relationship between aerodynamic roughness length and bulk sedge leaf area index in a mixed-species boreal mire complex, *Geophys. Res. Lett.*, 44, 5836-5843, 455 <https://doi.org/10.1002/2017GL073884>, 2017.
- Bastrikov, V., MacBean, N., Bacour, C., Santaren, D., Kuppel, S., and Peylin, P.: Land surface model parameter optimisation using in situ flux data: comparison of gradient-based versus random search algorithms (a case study using ORCHIDEE v1.9.5.2), *Geosci. Model Dev.*, 11, 4739–4754, <https://doi.org/10.5194/gmd-11-4739-2018>, 2018.
- Bonan, G. B.: *Climate Change and Terrestrial Ecosystem Modeling*, Cambridge University Press, 460 <https://doi.org/10.1017/9781107339217>, 2019.
- Botta, A., Viovy, N., Ciais, P., and Friedlingstein, P.: A global prognostic scheme of leaf onset using satellite data, *Glob. Change Biol.*, 6, 709–726, 2000.
- Boucher, O., Servonnat, J., Albright, A. L., Aumont, O., Balkanski, Y., Bastrikov, V., Bekki, S., Bonnet, R., Bony, S., Bopp, L., Braconnot, P., Brockmann, P., Cadule, P., Caubel, A., Cheruy, F., Codron, F., Cozic, A., Cugnet, D., D'Andrea, F., Davini, 465 P., Lavergne, C. de, Denvil, S., Deshayes, J., Devilliers, M., Ducharne, A., Dufresne, J.-L., Dupont, E., Été C., Fairhead, L., Falletti, L., Flavoni, S., Foujols, M.-A., Gardoll, S., Gastineau, G., Ghattas, J., Grandpeix, J.-Y., Guenet, B., Guez, L., Guilyardi, É., Guimberteau, M., Hauglustaine, D., Hourdin, F., Idelkadi, A., Joussaume, S., Kageyama, M., Khodri, M., Krinner, G., Lebas, N., Levavasseur, G., Lély, C., Li, L., Lott, F., Lurton, T., Luysaert, S., Madec, G., Madeleine, J.-B., Maignan, F., Marchand, M., Marti, O., Mellul, L., Meurdesoif, Y., Mignot, J., Musat, I., Ottlé C., Peylin, P., Planton, Y., Polcher, J., Rio, 470 C., Rochetin, N., Rousset, C., Sepulchre, P., Sima, A., Swingedouw, D., Thiéblemont, R., Traore, A. K., Vancoppenolle, M., Vial, J., Vialard, J., Viovy, N. and Vuichard, N.: Presentation and evaluation of the IPSL-CM6A-LR climate model, *J. Adv. Model. Earth Sy.*, 12, e2019MS002010, <https://doi.org/10.1029/2019MS002010>, 2020.
- Claussen, M.: On multiple solutions of the atmosphere-vegetation system in present-day climate, *Glob. Change Biol.*, 4, 549–559, 1998.
- 475 Cowan, I. R. and Farquhar, G. D.: Stomatal function in relation to leaf metabolism and environment, *Symp. Soc. Exp. Biol.*, 31, 471–505, 1977.

- Dawson, T. E., Burgess, S. S. O., Tu, K. P., Oliveira, R. S., Santiago, L. S., Fisher, J. B., Simonin, K. A., and Ambrose, A. R.: Nighttime transpiration in woody plants from contrasting ecosystems, *Tree Physiol.*, 27, 561–575, <https://doi.org/10.1093/treephys/27.4.561>, 2007.
- 480 De Kauwe, M. G., Medlyn, B. E., Zaehle, S., Walker, A. P., Dietze, M. C., Hickler, T., Jain, A. K., Luo, Y., Parton, W. J., Prentice, I. C., Smith, B., Thornton, P. E., Wang, S., Wang, Y., W  rlind, D., Weng, E., Crous, K. Y., Ellsworth, D. S., Hanson, P. J., Seok Kim, H., Warren, J. M., Oren, R., and Norby, R. J.: Forest water use and water use efficiency at elevated CO₂: A model-data intercomparison at two contrasting temperate forest FACE sites, *Glob. Change Biol.*, 19, 1759–1779, 2013.
- 485 De Kauwe, M. G., Medlyn, B. E., Knauer, J., and Williams, C. A.: Ideas and perspectives: how coupled is the vegetation to the boundary layer?, *Biogeosciences*, 14, 4435–4453, <https://doi.org/10.5194/bg-14-4435-2017>, 2017.
- Ducoudre-De Noblet, N., Laval, K., and Perrier, A.: Sechiba, a ´new set of parametrizations of the hydrologic exchanges at the land/atmosphere interface within the lmd atmospheric general circulation model, *J. Climate*, 2, 248–273, 1993.
- Ershadi, A., McCabe, M .F., Evans, J. P., and Wood, E. F.: Impact of model structure and parameterization on Penman–Monteith type evaporation models, *J. Hydrol.*, 525, 521–535, 2015.
- 490 Goldberg, V. and Bernhofer, Ch.: Quantifying the coupling degree between land surface and the atmospheric boundary layer with the coupled vegetation-atmosphere model HIRVAC, *Ann. Geophys.*, 19, 581–587, <https://doi.org/10.5194/angeo-19-581-2001>, 2001.
- Humphrey, V., Berg, A., Ciais, P., Gentine, P., Jung, M., Reichstein, M., Seneviratne, S. I., and Frankenberg, C.: Soil moisture–atmosphere feedback dominates land carbon uptake variability, *Nature*, 592, 65–69, [https://doi.org/10.1038/s41586-021-](https://doi.org/10.1038/s41586-021-03325-5)
- 495 03325-5, 2021.
- Igarashi, Y., Kumagai, T. O., Yoshifuji, N., Sato, T., Tanaka, N., Tanaka, K., ... & Tantasirin, C. (2015). Environmental control of canopy stomatal conductance in a tropical deciduous forest in northern Thailand. *Agricultural and Forest Meteorology*, 202, 1-10.
- IPCC: Climate Change 2013: The Physical Science Basis. Contribution of Working Group I to the Fifth Assessment Report of the Intergovernmental Panel on Climate Change, edited by: Stocker, T. F., Qin, D., Plattner, G.-K., Tignor, M., Allen, S. K., Boschung, J., Nauels, A., Xia, Y., Bex, V., and Midgley, P. M., Cambridge University Press, Cambridge, UK and New York, NY, USA, 2013.
- Jarvis, P. and McNaughton, K.: Stomatal control of transpiration: Scaling up from leaf to region, *Adv. Ecol. Res.*, 15, 1–49, 1986.
- 505 Jasechko, S., Sharp, Z. D., Gibson, J. J., Birks, S. J., Yi, Y., and Fawcett, P. J.: Terrestrial water fluxes dominated by transpiration, *Nature*, 496, 347–350, 2013.
- Knauer, J., Zaehle, S., Medlyn, B. E., Reichstein, M., Williams, C. A., Migliavacca, M., De Kauwe, M. G., Werner, C., Keitel, C., Kolari, P., Limousin, J.-M., and Linderson, M.-L.: Towards physiologically meaningful water-use efficiency estimates from eddy covariance data, *Glob. Change Biol.*, 24, 694–710, 2017.

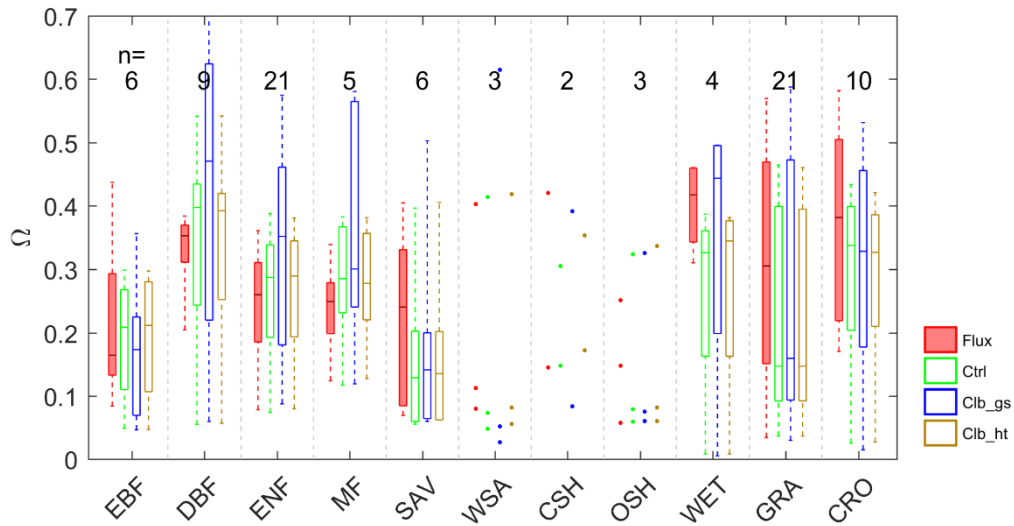
- 510 Krinner, G., Viovy, N., de Noblet-Ducoudré N., Ogée, J., Polcher, J., Friedlingstein, P., Ciais, P., Sitch, S., and Prentice, I. C.: A dynamic global vegetation model for studies of the coupled atmosphere-biosphere system, *Global Biogeochem. Cy.*, 19, GB1015, <https://doi.org/10.1029/2003GB002199>, 2005.
- Kumagai, T., Saitoh, T. M., Sato, Y., Morooka, T., Manfroi, O. J., Kuraji, K., and Suzuki, M.: Transpiration, canopy conductance and the decoupling coefficient of a lowland mixed dipterocarp forest in Sarawak, Borneo: dry spell effects, *J. Hydrol.*, 287, 237–251, 2004.
- 515 Li, X., Gentine, P., Lin, C., Zhou, S., Sun, Z., Zheng, Y., Liu, J., and Zheng, C.: A simple and objective method to partition evapotranspiration into transpiration and evaporation at eddy-covariance sites, *Agr. Forest Meteorol.*, 265, 171–182, 2019.
- Lin, Y.-S., Medlyn, B. E., Duursma, R. A., Prentice, I. C., Wang, H., Baig, S., Eamus, D., de Dios, V. R., Mitchell, P., Ellsworth, D. S., de Beeck, M. O., Wallin, G., Uddling, J., Tarvainen, L., Linderson, M.-L., Cernusak, L. A., Nippert, J. B., Ocheltree, T. W., Tissue, D. T., Martin-StPaul, N. K., Rogers, A., Warren, J. M., De Angelis, P., Hikosaka, K., Han, Q., Onoda, Y., Gimeno, T. E., Barton, C. V. M., Bennie, J., Bonal, D., Bosc, A., Low, M., Macinins-Ng, C., Rey, A., Rowland, L., Setterfield, S. A., Tausz-Posch, S., Zaragoza-Castells, J., Broadmeadow, M. S. J., Drake, J. E., Freeman, M., Ghannoum, O., Hutley, L. B., Kelly, J. W., Kikuzawa, K., Kolari, P., Koyama, K., Limousin, J.-M., Meir, P., Lola da Costa, A. C., Mikkelsen, T. N., Salinas, N., Sun, W., and Wingate, L.: Optimal stomatal behaviour around the world, *Nature Climate Change*, 5, 459–464, 2015.
- 525 Lundberg, S. and Lee, S.-I.: A Unified Approach to Interpreting Model Predictions, in: *Advances in Neural Information Processing Systems*, edited by Guyon, I., Fergus, R., Wallach, H., von Luxburg, U., Garnett, R., Vishwanathan, S., and Bengio, S., Neural information processing systems foundation, Vol. 2017, 4766–4775, 2017.
- McColl, K. A.: Practical and Theoretical Benefits of an Alternative to the Penman-Monteith Evapotranspiration Equation, *Water Resour. Res.*, 56, 205–215, 2020.
- 530 Mueller, B., Hirschi, M., Jimenez, C., Ciais, P., Dirmeyer, P. A., Dolman, A. J., Fisher, J. B., Jung, M., Ludwig, F., Maignan, F., Miralles, D. G., McCabe, M. F., Reichstein, M., Sheffield, J., Wang, K., Wood, E. F., Zhang, Y., and Seneviratne, S. I.: Benchmark products for land evapotranspiration: LandFlux-EVAL multi-data set synthesis, *Hydrol. Earth Syst. Sci.*, 17, 3707–3720, <https://doi.org/10.5194/hess-17-3707-2013>, 2013.
- Myneni, R., Knyazikhin, Y., and Park, T.: MCD15A2H MODIS/Terra+Aqua Leaf Area Index/FPAR 8-day L4 Global 500 m SIN Grid V006, Data set, <https://doi.org/10.5067/MODIS/MCD15A2H.006>, 2015.
- 535 Nelson, J. A., Pérez-Priego, O., Zhou, S., Poyatos, R., Zhang, Y., Blanken, P. D., Gimeno, T. E., Wohlfahrt, G., Desai, A. R., Gioli, B., Limousin, J.-M., Bonal, D., Paul-Limoges, E., Scott, R. L., Varlagin, A., Fuchs, K., Montagnani, L., Wolf, S., Delpierre, N., Berveiller, D., Gharun, M., Marchesini, L. B., Gianelle, D., Šigut, L., Mammarella, I., Siebicke, L., Black, T. A., Knohl, A., Hörtnagl, L., Magliulo, V., Besnard, S., Weber, U., Carvalhais, N., Migliavacca, M., Reichstein, M., and Jung, M.: Ecosystem transpiration and evaporation: Insights from three water flux partitioning methods across FLUXNET sites, *Global Change Biol.*, 26, 6916–6930, <https://doi.org/10.1111/gcb.15314>, 2020.
- 540

- Nicolás, E., Barradas, V., Ortúño, M., Navarro, A., Torrecillas, A., and Alarcón, J.: Environmental and stomatal control of transpiration, canopy conductance and decoupling coefficient in young lemon trees under shading net, *Environ. Exp. Bot.*, 63, 200–206, 2008.
- 545 Pastorello, G., Trotta, C., Canfora, E., Chu, H., Christianson, D., Frank, J., Massman, W., and Urbanski, S.: The FLUXNET2015 dataset and the ONEFlux processing pipeline for eddy covariance data, *Sci. Data*, 7, 225, <https://doi.org/10.1038/s41597-020-0534-3>, 2020.
- Peng, L., Zeng, Z., Wei, Z., Chen, A., Wood, E. F., and Sheffield, J.: Determinants of the ratio of actual to potential evapotranspiration, *Glob. Change Biol.*, 25, 1326–1343, <https://doi.org/10.1111/gcb.14577>, 2019.
- 550 Schrapfner, A., Sörensson, A., Polcher, J., and Fita, L.: Benefits of representing floodplains in a Land Surface Model: Pantanal simulated with ORCHIDEE CMIP6 version, *Clim. Dynam.*, 55, 1303–1323, <https://doi.org/10.1007/s00382-020-05324-0>, 2020.
- Sitch, S., Smith, B., Prentice, I. C., Arneth, A., Bondeau, A., Cramer, W., Kaplan, J. O., Levis, S., Lucht, W., Sykes, M. T., and Thonicke, K.: Evaluation of ecosystem dynamics, plant geography and terrestrial carbon cycling in the LPJ dynamic global
555 vegetation model, *Glob. Change Biol.*, 9, 161–185, 2003.
- Stoy, P. C., El-Madany, T. S., Fisher, J. B., Gentine, P., Gerken, T., Good, S. P., Klosterhalfen, A., Liu, S., Miralles, D. G., Perez-Priego, O., Rigden, A. J., Skaggs, T. H., Wohlfahrt, G., Anderson, R. G., Coenders-Gerrits, A. M. J., Jung, M., Maes, W. H., Mammarella, I., Mauder, M., Migliavacca, M., Nelson, J. A., Poyatos, R., Reichstein, M., Scott, R. L., and Wolf, S.:
560 Reviews and syntheses: Turning the challenges of partitioning ecosystem evaporation and transpiration into opportunities, *Biogeosciences*, 16, 3747–3775, <https://doi.org/10.5194/bg-16-3747-2019>, 2019.
- Su, Z., Schumge, T., Kustas, W. P., and Massman, W. J.: An evaluation of two models for estimation of the roughness height for heat transfer between the land surface and the atmosphere, *J. Appl. Meteorol.*, 40, 1933–1951, 2001
- Tafasca, S., Ducharne, A., and Valentin, C.: Weak sensitivity of the terrestrial water budget to global soil texture maps in the ORCHIDEE land surface model, *Hydrol. Earth Syst. Sci.*, 24, 3753–3774, <https://doi.org/10.5194/hess-24-3753-2020>, 2020.
- 565 Thom, A.: Momentum, mass and heat exchange of vegetation, *Q. J. Roy. Meteor. Soc.*, 98, 124–134, 1972.
- Trenberth, K. E., Fasullo, J. T., and Kiehl, J.: Earth's global energy budget, *B. Am. Meteorol. Soc.*, 90, 311–324, <https://doi.org/10.1175/2008BAMS2634.1>, 2009.
- Viovy, N.: Interannuality and CO₂ sensitivity of the SECHIBA-BGC coupled SVAT-BGC model, *Phys. Chem. Earth*, 21, 489–497, 1996.
- 570 Veste, M., Littmann, T., Kunneke, A., Du Toit, B., and Seifert, T.: Windbreaks as part of climate-smart landscapes reduce evapotranspiration in vineyards, Western Cape Province, South Africa, *Plant, Soil and Environment*, 66, 119–127, 2020.
- Vuichard, N. and Papale, D.: Filling the gaps in meteorological continuous data measured at FLUXNET sites with ERA-Interim reanalysis, *Earth Syst. Sci. Data*, 7, 157–171, <https://doi.org/10.5194/essd-7-157-2015>, 2015.
- Wei, Z., Yoshimura, K., Wang, L., Miralles, D. G., Jasechko, S., and Lee, X.: Revisiting the contribution of transpiration to
575 global terrestrial evapotranspiration, *Geophys. Res. Lett.*, 44, 2792–2801, 2017.

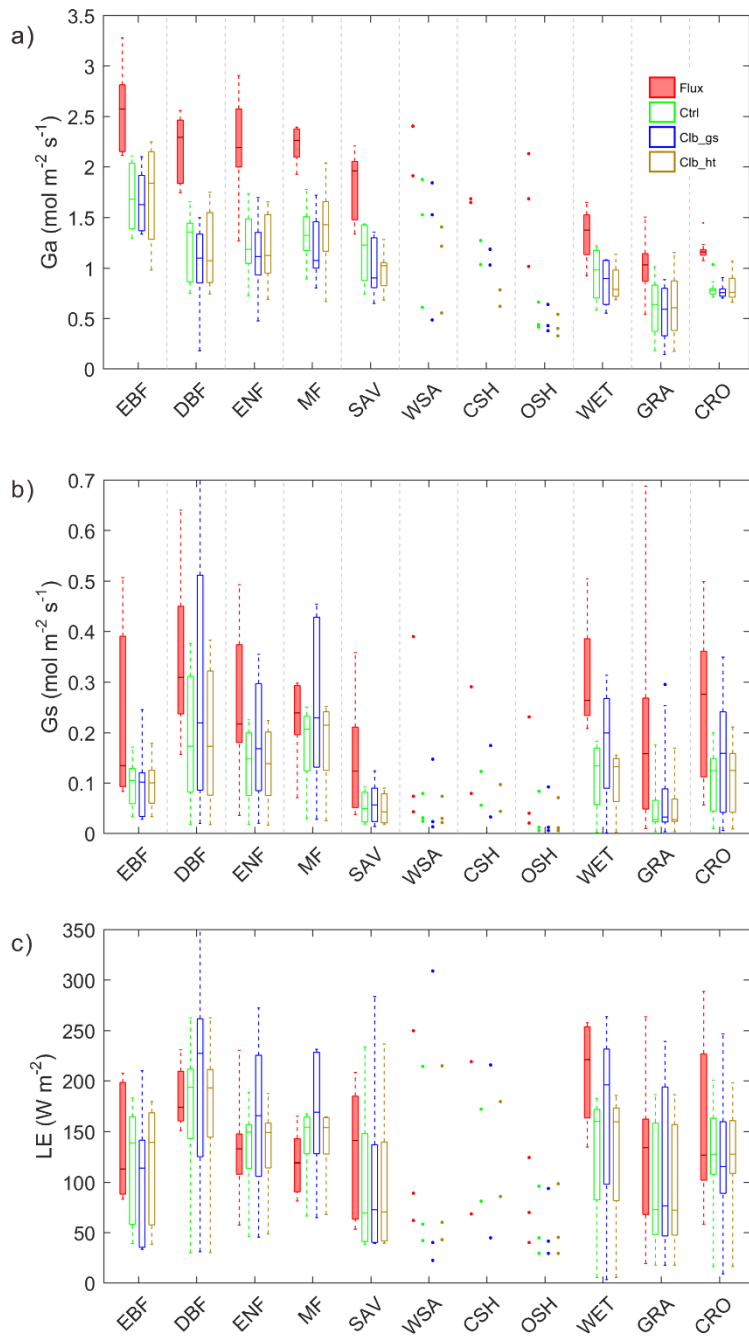
- Wild, M.: The global energy balance as represented in CMIP6 climate models, *Clim. Dynam.*, 55, 553–577, <https://doi.org/10.1007/s00382-020-05282-7>, 2020.
- Wullschlegel, S. D., Wilson, K. B., and Hanson, P. J.: Environmental control of whole-plant transpiration, canopy conductance and estimates of the decoupling coefficient for large red maple trees, *Agr. Forest Meteorol.*, 104, 157–168, 2000.
- 580 Xu, B., Li, J., Park, T., Liu, G., Zeng, Y., Yin, G., Zhao, J., Fan, W., Yang, L., Knyazikhin, Y., and Myneni, R. B.: An integrated method for validating long-term leaf area index products using global networks of site-based measurements, *Remote Sens. Environ.*, 209, 134–151, <https://doi.org/10.1016/j.rse.2018.02.049>, 2018
- Yang, J., Duursma, R. A., De Kauwe, M. G., Kumarathunge, D., Jiang, M., Mahmud, K., Gimeno, T. E., Crous, K. Y., Ellsworth, D. S., Peters, J., Choat, B., Eamus, D., and Medlyn, B. E.: Incorporating non-stomatal limitation improves the
585 performance of leaf and canopy models at high vapour pressure deficit, *Tree Physiol.*, 39, 1961–1974, <https://doi.org/10.1093/treephys/tpz103>, 2019.
- Yin, X. and Struik, P.: C₃ and C₄ photosynthesis models: an overview from the perspective of crop modelling, *NJAS-Wagen, J. Life Sc.*, 57, 27–38, 2009.
- Zhang, F., Li, H., Wang, W., Li, Y., Lin, L., Guo, X., Du, Y., Li, Q., Yang, Y., and Cao, G.: Net radiation rather than surface
590 moisture limits evapotranspiration over a humid alpine meadow on the northeastern Qinghai-Tibetan Plateau, *Ecohydrology*, 11, e1925, 2018.
- Zhang, Z. Z., Zhao, P., McCarthy, H. R., Zhao, X. H., Niu, J. F., Zhu, L. W., Ni, G. Y., Ouyang, L., and Huang, Y. Q.: Influence of the decoupling degree on the estimation of canopy stomatal conductance for two broadleaf tree species, *Agr. Forest Meteorol.*, 221, 230–241, 2016.
- 595 Zhang, Z. Z., Zhao, P., Zhao, X. H., Zhang, J. X., Zhu, L. W., Ouyang, L., and Zhang, X. Y.: Impact of environmental factors on the decoupling coefficient and the estimation of canopy stomatal conductance for ever-green broad-leaved tree species, *Chin. J. Plant Ecol.*, 42, 1179, 2018.
- Zhang, Y., Ciais, P., Boucher, O., Maignan, F., Bastos, A., Goll, D., Lurton, T., Viovy, N., Bellouin, N., and Li, L.: Disentangling the impacts of anthropogenic aerosols on terrestrial carbon cycle during 1850-2014, *Earth's Future*,
600 e2021EF002035, 2021.
- Zhu, P., Zhuang, Q., Ciais, P., Welp, L., Li, W., and Xin, Q.: Elevated atmospheric CO₂ negatively impacts photosynthesis through radiative forcing and physiology-mediated climate feedback, *Geophys. Res. Lett.*, 44, 1956–1963, 2017.



605 **Figure 1: Workflow of this study.**

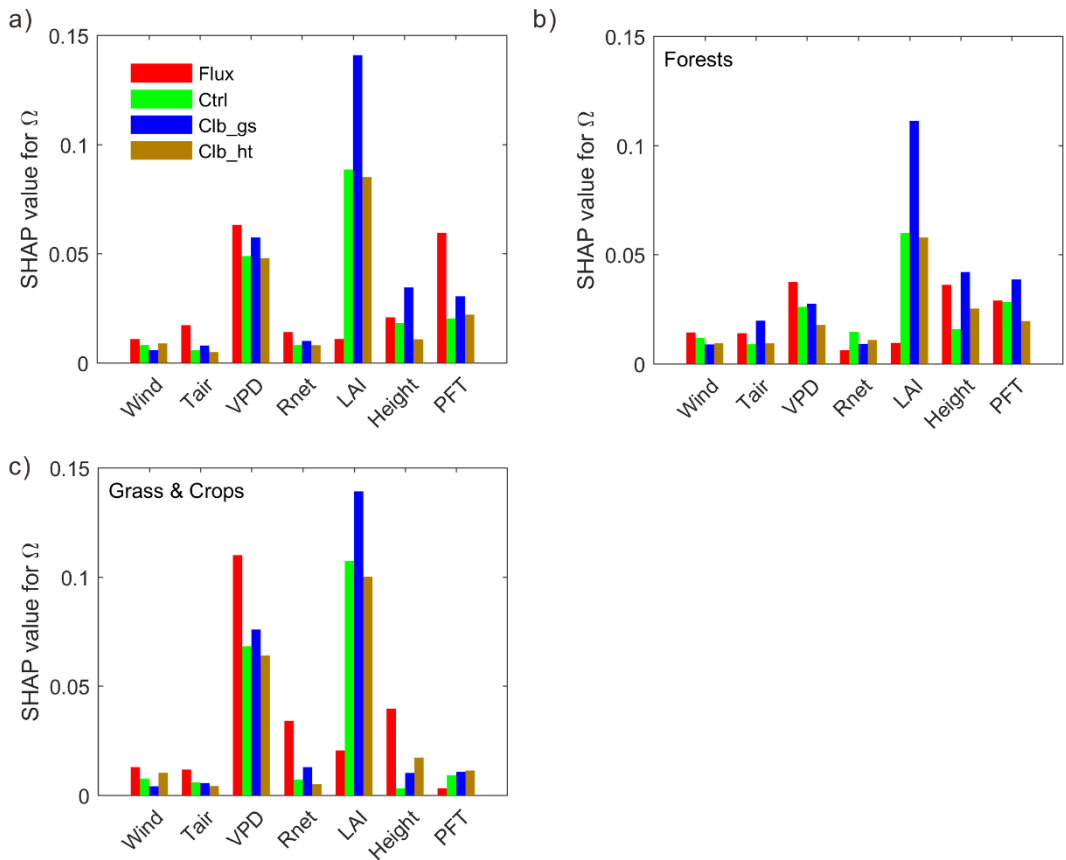


610 **Figure 2. Box plots of site mean Ω observation (Flux) and different simulations, n indicates the number of sites in each PFT group. EBF, Evergreen broadleaf forests; DBF, Deciduous broadleaf forests; ENF, Evergreen needleleaf forests; MF, Mixed forests; SAV, Savannas; WSA, Woody savannas; CSH, Closed shrublands; OSH, Open shrublands; WET, wetlands; GRA, grasslands; CRO, croplands**



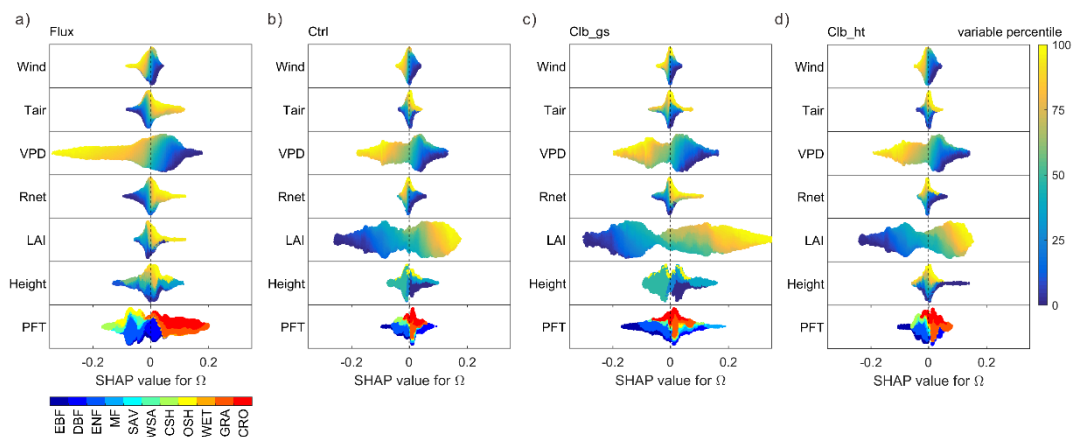
615

Figure 3: Same as Fig. 2 but for (a) aerodynamic conductance, (b) surface conductance and (c) latent heat.



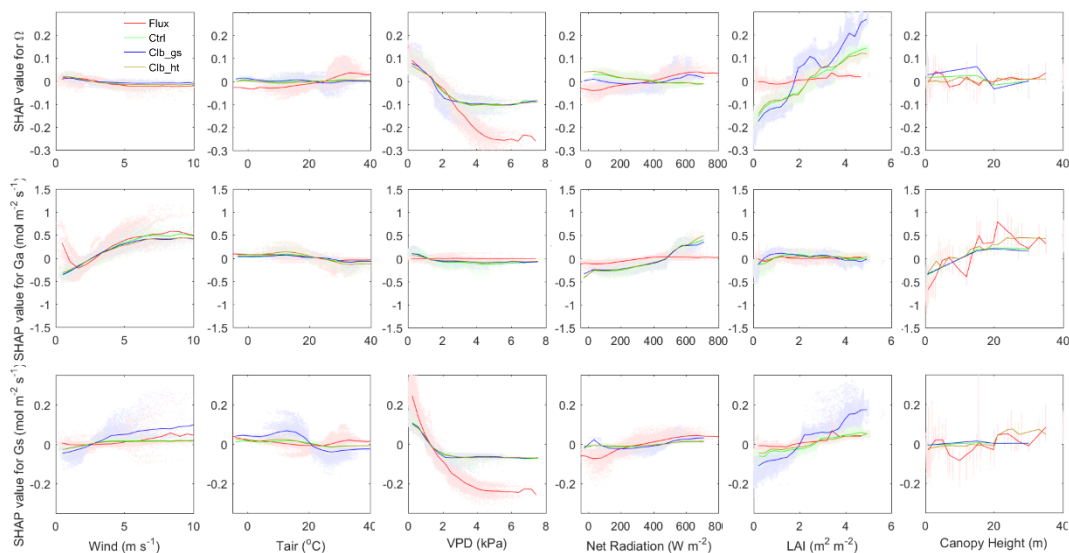
620 **Figure 4. Importance of different factors based on absolute SHAP values of Ω (the expectation of factor-induced deviation of Ω from the averages of all samples). (a) in random forest model built by data from all PFTs. (b) model using only forest data. (c) model using only grassland and cropland data.**

625



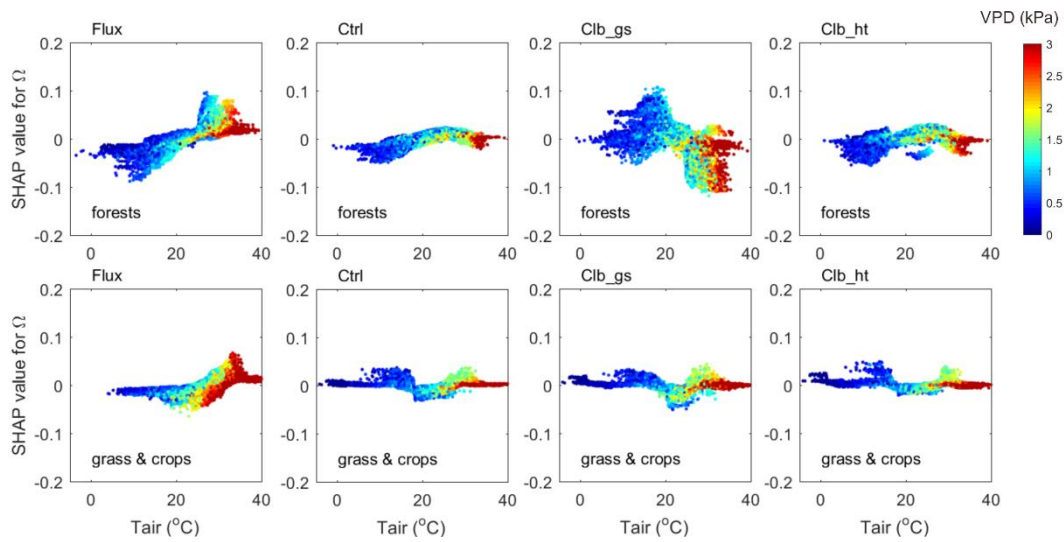
630 **Figure 5. Beeswarm plots showing the dependence of Ω SHAP values to different factors. For each data point, the percentile of the factor's value in all samples is shown in color. The SHAP value, or contribution of this factor value to deviate the day-time Ω from the average Ω of all samples, is shown in x axis. In each subplot, data points at a certain SHAP value level are sorted by the factor percentile (i.e. vertical gradient indicates the distribution of factor values in the data). (a) based on observation dataset, (b), (c) and (d) are for Ctrl, Clb_gs and Clb_ht simulations respectively.**

635



640 **Figure 6. Dependence of Ω (top), G_a (middle) and G_s (bottom) SHAP values on different factors (in order from left to right: wind speed, air temperature, VPD, net radiation, LAI and canopy height). The colors indicate observation or simulations. red: observation-based dataset, green: Ctrl, blue: Clb_gs, brown: Clb_ht. The shaded dots show the distribution of SHAP values in sample.**

645



650 **Figure 7. The interaction between VPD and air temperature in controlling Ω (contribution of temperature) in forests (top) and in grasslands and croplands (bottom). The y axis is the SHAP value of T_{air} for Ω , colors indicate the VPD of each data point.**

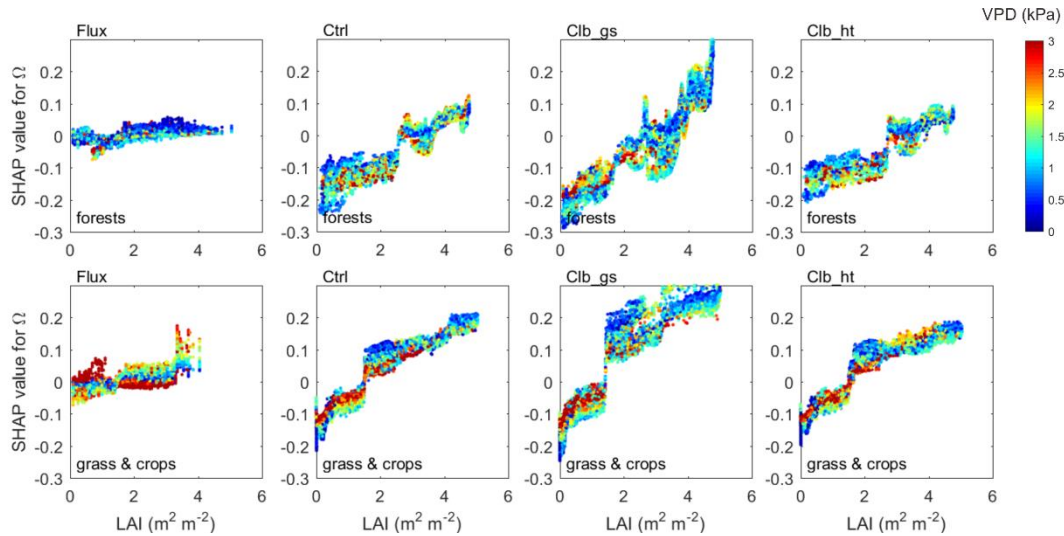


Figure 8. Same as Figure 7 but for interactions between VPD and LAI

655