

Data Assimilation for the Model for Prediction Across Scales - Atmosphere with the Joint Effort for Data assimilation Integration (JEDI-MPAS 1.0.0): EnVar implementation and evaluation

Zhiquan Liu¹, Chris Snyder¹, Jonathan J. Guerrette¹, Byoung-Joo Jung¹, Junmei Ban¹, Steven Vahl^{1,+}, Yali Wu^{1,#}, Yannick Trémolet², Thomas Auligné², Benjamin Ménétrier², Anna Shlyayeva², Stephen Herbener², Emily Liu^{2,@}, Daniel Holdaway^{2,*}, and Benjamin T. Johnson²

¹National Center for Atmospheric Research, Boulder, Colorado 80301, USA

²Joint Center for Satellite Data Assimilation, Boulder, Colorado 80301, USA

⁺Now at the Joint Center for Satellite Data Assimilation

[#]Now at the Shenzhen Institute of Meteorological Innovation, Guangdong, China

[@]Now at the NOAA National Centers for Environmental Prediction

^{*}Now at the NASA Goddard Space Flight Center

Correspondence: Zhiquan Liu (liuz@ucar.edu)

Abstract. On 24th September 2021, JEDI-MPAS 1.0.0, a new data assimilation (DA) system for the Model Prediction Across Scales - Atmosphere (MPAS-A) built on the software framework of the Joint Effort for Data assimilation Integration (JEDI), was publicly released for community use. [Operating directly on the native MPAS unstructured mesh](#), JEDI-MPAS capabilities include three-dimensional variational (3DVar) and ensemble-variational (EnVar) schemes ~~for deterministic analyses, as well as~~

5 the ensemble of DAs (EDA) technique ~~to produce ensembles of analyses, and dual-resolution, where the analysis increment and the input forecast ensemble are at a lower resolution than that of the background and analysis, thus decreasing computational requirements. Moreover, JEDI-MPAS operates directly on the native MPAS unstructured mesh and can be applied without code modifications to all MPAS meshes, whether uniform, variable resolution, global, or regional.~~ On the observation side, one advanced feature in JEDI-MPAS is the full all-sky approach for satellite radiance DA with the introduction of hydrometeor
10 analysis variables. This paper describes the formulation and implementation of EnVar for JEDI-MPAS. JEDI-MPAS 1.0.0 is evaluated with month-long cycling 3DEnVar experiments with a global 30km-60km dual-resolution configuration. The robustness and credible performance of JEDI-MPAS are demonstrated by establishing a benchmark non-radiance DA experiment, then incrementally adding microwave radiances from three sources: AMSU-A temperature sounding channels in clear-sky scenes, AMSU-A window channels in all-sky scenes, and MHS water vapor channels in clear-sky scenes. JEDI-MPAS 3DEn-
15 Var behaves well with substantial and significant positive impact obtained for almost all aspects of forecast verification when progressively adding more microwave radiance data. In particular, the day-5 forecast of the best-performing JEDI-MPAS experiment yields an anomaly correlation coefficient (ACC) of 0.8 for 500 hPa geopotential height, a gap of roughly a half day when compared to cold start forecasts initialized from operational analyses of the National Centers for Environmental Prediction, whose ACC does not drop to 0.8 until a lead time of 5.5 days. This indicates JEDI-MPAS's great potential for both

20 research and operations. Further development of JEDI-MPAS is ongoing, with emphasis on 3DVar, EDA, and cloud analysis from all-sky radiance observations.

1 Introduction

Based upon probability theory, data assimilation (DA) seeks to find the optimal estimate of a model state by combining observations and prior information of the state (typically from a short-term model forecast) as well as the associated error characterizations (Tarantola, 2005). DA systems are an integral part of Numerical Weather Prediction (NWP), as they provide initial conditions for numerical forecasts at operational forecast centers. Some DA systems are openly available and widely used by the community, e.g., the Data Assimilation Research Testbed (DART) (Anderson et al., 2009) and the Weather Research and Forecasting model's data assimilation (WRFDA) system (Barker et al., 2012) developed by the National Center for Atmospheric Research (NCAR), and the Gridpoint Statistical Interpolation (GSI) DA system (Shao et al., 2016) developed at the National Centers for Environmental Prediction (NCEP). While DART implements the ensemble Kalman filter (EnKF) and variants, WRFDA and GSI mainly emphasize variational algorithms. Those DA systems are mainly programmed in Fortran.

Since 2018, the Joint Effort for Data assimilation Integration (JEDI) project (Trémolet and Auligné, 2020) led by the Joint Center for Satellite Data Assimilation (JCSDA) has been developing a community DA framework centered on generic, model-agnostic components, which can be interfaced to a variety of models such as those for atmosphere, ocean, land, and atmospheric chemistry. JEDI adopts object-oriented and generic programming and uses a mix of C++ and Fortran (Trémolet, 2020).

There are four main generic components in the JEDI framework. The Object Oriented Prediction System (OOPS, <https://github.com/JCSDA/oops>) defines the abstract representations of elements of several DA algorithms, including three- and four-dimensional variational (3D/4DVar) (e.g., Lorenc, 1986; Rabier et al., 2007; Liu et al., 2020) and 3D/4D ensemble-variational (3D/4DEnVar) (e.g., Wang et al., 2013; Kleist and Ide, 2015) techniques with several minimization algorithms implemented. OOPS is mainly programmed in C++ using templates. The System-Agnostic Background Error Representation (SABER, <https://github.com/JCSDA/saber>) repository hosts background error covariance models. All experiments discussed here employ the Background error on an Unstructured Mesh Package (BUMP) (Ménétrier, 2020) from SABER, which estimates and applies background error covariance-related operators, defined on an unstructured mesh. Two observation-related components are the Unified Forward Operator (UFO, <https://github.com/JCSDA/ufo>) and the Interface for Observation Data Access (IODA, <https://github.com/JCSDA/ioda>) (Honeyager et al., 2020). UFO implements observation operators for various types of observations. In addition, UFO implements other observation-space functionality, including quality control, data thinning, and bias correction. IODA provides functionality for input, output, and in-memory data access of observations. In addition to those model-agnostic components of JEDI described above, there are model-specific implementations of interfaces to those generic components that allow the realization of model-specific DA systems within the JEDI framework (Holdaway et al., 2020).

Ha et al. (2017) developed a DA system for the Model for Prediction Across Scales - Atmosphere (MPAS-A) (Skamarock et al., 2012) based upon DART (i.e., MPAS-DART). MPAS-DART can only perform ensemble analysis with the ensemble

Kalman filter and variants and lacks variational DA capability for deterministic analysis, which must be addressed, especially given the pervasive use of variational DA systems at operational centers. We also think that it is beneficial to implement different DA schemes for both deterministic and ensemble analyses to meet a variety of needs for research and operational applications using MPAS DA. JEDI provides such a software framework with various DA algorithms and standardizes to some extent the model interfaces to different components of JEDI. Therefore, we decided to develop a new DA system for MPAS-A based upon the JEDI framework at a similar time in 2018. In the past more than three years, we have developed the JEDI-MPAS DA system, which consists of MPAS interfaces to JEDI (<https://github.com/JCSDA/mpas-jedi>) and the four model-agnostic JEDI components. The first release JEDI-MPAS 1.0.0 was made publicly available in September 2021. JEDI-MPAS capabilities include three-dimensional variational (3DVar) and ensemble-variational (EnVar) schemes for deterministic analyses, the ensemble of DAs (EDA) technique to produce ensembles of analyses, and dual resolution, where the analysis increment and the input forecast ensemble are at a lower resolution than that of the background and analysis, thus decreasing computational requirements. Moreover, JEDI-MPAS operates directly on the native MPAS unstructured mesh and can be applied without code modifications to all MPAS meshes, whether uniform, variable resolution, global, or regional. On the observation side, one advanced feature in JEDI-MPAS is the full all-sky approach for satellite radiance DA with the introduction of hydrometeor analysis variables.

This article describes MPAS-specific aspects of JEDI-MPAS, emphasizing its implementation of EnVar, and documents JEDI-MPAS performance in global cycling experiments. The implementation and evaluation of JEDI-MPAS’s EDA and 3DVar algorithms will be presented in separate articles. The next section provides a brief introduction to MPAS-A and modifications made for JEDI-MPAS. Section 3 describes the formulation and implementation of JEDI-MPAS’s EnVar, followed by the experimental design in section 4. The results of global cycling experiments are presented in section 5 and the paper is concluded with section 6.

2 MPAS-A model

MPAS-A is a nonhydrostatic model discretized horizontally on an unstructured centroidal Voronoi mesh with C-grid staggering of state variables (Skamarock et al., 2012). It is run-time configurable to use either quasi-uniform or variable-resolution meshes, and for either global or regional applications (Skamarock et al., 2018). MPAS-A adopts a height-based terrain-following vertical coordinate ζ following Klemp (2011), in which the coordinate surfaces are progressively smoothed to remove smaller-scale terrain structure.

MPAS-A’s prognostic equations employ flux variables that are coupled with density; that is, the prognostic variables in the discretized equations are

$$X = (U, W, \Theta_m, Q_j, \tilde{\rho}_d) = (\tilde{\rho}_d u, \tilde{\rho}_d w, \tilde{\rho}_d \theta_m, \tilde{\rho}_d q_j, \tilde{\rho}_d), \quad (1)$$

where ρ_d is the density of dry air, $\tilde{\rho}_d = \rho_d(\partial\zeta/\partial z)^{-1}$, u is the normal component of horizontal velocity at cell edges, w is the vertical velocity at cell centers, q_j represents the mixing ratio of the respective water species (water vapor, cloud liquid

85 water, cloud ice, rain, snow, graupel, hail) denoted by $(q_v, q_c, q_i, q_r, q_s, q_g, q_h)$, and $\theta_m = \theta_d[1 + (R_v/R_d)q_v]$ is a modified moist potential temperature with θ_d the dry potential temperature and R_d and R_v the gas constants for dry air and water vapor, respectively. The continuous prognostic equation set can symbolically be expressed as

$$\frac{\partial X}{\partial t} = F(p, \frac{\rho_d}{\rho_m}, X, \dots), \quad (2)$$

where pressure p is obtained diagnostically from the equation of state, and $\rho_m = \rho_d(1 + q_v + q_c + q_i + q_r + q_s + q_g + q_h)$ is the
90 density of moist air.

The fully compressible nonhydrostatic equations are solved using the time-split integration technique described by Klemp et al. (2007). To reduce the truncation error associated with the horizontal pressure gradient terms and the roundoff error associated with the right-hand-side terms in the vertical momentum equation, the governing equations are rewritten in terms of perturbation thermodynamic variables (ρ'_d, Θ'_m, p') relative to a hydrostatically-balanced reference state that is only a function
95 of the geometric height z .

JEDI-MPAS not only uses MPAS as the forecast model for cycling data assimilation, but also leverages and extends certain capabilities within MPAS. Crucially, JEDI-MPAS shares with MPAS the data structures for MPAS fields and accompanying utilities for manipulating those fields, such as construction of new instances, parallel decomposition across processors, and reading from or writing to files. JEDI-MPAS also depends on MPAS initialization steps that occur before a model integration,
100 in which input variables are converted to the MPAS prognostic variables given by [Eq. \(1\)](#) and additional thermodynamic variables, such as p or ρ_d , are diagnosed as needed. In addition, JEDI-MPAS modifies MPAS routines for reading files by splitting static and time-varying fields into separate files and reducing the number of time-varying fields retained (relative to a restart file). These enhancements ~~-, which greatly decrease storage requirements, build on earlier work that was never incorporated into released MPAS code (S.-Y. Ha and W. Skamarock, personal communication, 2019)~~[build on a two-stream input approach for MPAS data assimilation developed by Soyoung Ha with William Skamarock, which was expanded and implemented for JEDI-MPAS cycling experiments.](#) All changes necessary for JEDI-MPAS 1.0.0 are in a modified version of MPAS-A (<https://github.com/JCSDA/MPAS-Model>) that is based upon the latest MPAS-A version 7.1.

The methodology of JEDI-MPAS DA in updating the MPAS model variables using the EnVar technique is given in the next section.

110 3 Methodology of JEDI-MPAS EnVar

3.1 Incremental variational analysis

The non-quadratic form of the cost function for a variational analysis is expressed as

$$J(\mathbf{x}) = \frac{1}{2}(\mathbf{x} - \mathbf{x}_b)^T \mathbf{B}^{-1}(\mathbf{x} - \mathbf{x}_b) + \frac{1}{2} \underline{[H(\mathbf{x}) - \mathbf{y}] \frac{1}{2} [h(\mathbf{x}) - \mathbf{y}]^T \mathbf{R}^{-1} [H(\mathbf{x}) - \mathbf{y}]^{-1} [h(\mathbf{x}) - \mathbf{y}]}, \quad (3)$$

where the column vector \mathbf{x} represents the model analysis variables distributed in a model's horizontal grid and vertical co-
115 ordinate (and at different times if it is for a four-dimensional analysis), the subscript b indicates a background field which is

typically from a short-term model forecast, and the column vector \mathbf{y} is the various types of observations irregularly distributed in space and time. $\mathbf{H}\mathbf{h}$ is the observation operator that interpolates the model fields to observation locations and transforms the analysis variables \mathbf{x} to the observed quantities. \mathbf{B} and \mathbf{R} are the background and observation error covariance matrices, respectively. The superscripts “ -1 ” and “ \mathbf{T} ” denote the inverse of a matrix and the transpose of a column vector, respectively.

120 With the introduction of a first-guess variable \mathbf{x}_g and letting $\delta\mathbf{x} = \mathbf{x} - \mathbf{x}_g$ and $\delta\mathbf{x}_g = \mathbf{x}_b - \mathbf{x}_g$, Eq. (3) can be rewritten in the incremental form (Courtier et al., 1994) as

$$J(\delta\mathbf{x}) = \frac{1}{2}(\delta\mathbf{x} - \delta\mathbf{x}_g)^{\mathbf{T}}\mathbf{B}^{-1}(\delta\mathbf{x} - \delta\mathbf{x}_g) + \frac{1}{2}(\mathbf{H}\delta\mathbf{x} - \mathbf{d})^{\mathbf{T}}\mathbf{R}^{-1}(\mathbf{H}\delta\mathbf{x} - \mathbf{d}), \quad (4)$$

where $\mathbf{d} = \mathbf{y} - \mathbf{H}(\mathbf{x}_g)$, $\mathbf{d} = \mathbf{y} - \mathbf{h}(\mathbf{x}_g)$ is the first-guess departure to observations (also called "the innovation vector") and \mathbf{H} is the linearized version of $\mathbf{H}\mathbf{h}$ in the vicinity of \mathbf{x}_g . The gradient of the cost function with respect to $\delta\mathbf{x}$

$$125 \quad \nabla_{\delta\mathbf{x}} J(\delta\mathbf{x}) = \mathbf{B}^{-1}(\delta\mathbf{x} - \delta\mathbf{x}_g) + \mathbf{H}^{\mathbf{T}}\mathbf{R}^{-1}(\mathbf{H}\delta\mathbf{x} - \mathbf{d}) \quad (5)$$

shall vanish at the value $\delta\mathbf{x}_a$ that minimizes the cost function, which leads to

$$(\mathbf{B}^{-1} + \mathbf{H}^{\mathbf{T}}\mathbf{R}^{-1}\mathbf{H})\delta\mathbf{x}_a = \mathbf{B}^{-1}\delta\mathbf{x}_g + \mathbf{H}^{\mathbf{T}}\mathbf{R}^{-1}\mathbf{d}. \quad (6)$$

(6) is a linear algebra system $\mathbf{A}\delta\mathbf{x}_a = \mathbf{b}$ that can be solved iteratively with a minimization algorithm. The analysis of the full field can be found with $\mathbf{x}_a = \mathbf{x}_g + \delta\mathbf{x}_a$. It is common practice that the minimization iterations (also referred to as "inner loop") start from $\mathbf{x}_g = \mathbf{x}_b$ and $\delta\mathbf{x}_g = 0$. Multiple outer loops can be used with the first guess \mathbf{x}_g (and thus $\delta\mathbf{x}_g$) updated from the analysis of the previous outer loop. In each outer loop, \mathbf{d} is recalculated and \mathbf{H} is re-linearized using the updated \mathbf{x}_g .

Several minimization algorithms are available in OOPS and the most extensively tested one in JEDI-MPAS is the “Derber-Rosati” Inexact Preconditioned Conjugate Gradient (DRIPCG) algorithm (Golub and Ye, 1999; Derber and Rosati, 1989), which is documented in https://jointcenterforsatellitedataassimilation-jedi-docs.readthedocs-hosted.com/en/latest/inside/jedi-components/oops/algorithmic_details/solvers.html. It is important to note that the DRIPCG algorithm introduces an additional initial vector $\widehat{\delta\mathbf{x}}_g = \mathbf{B}^{-1}\delta\mathbf{x}_g$ at the beginning of the inner loop so that the application of \mathbf{B}^{-1} can be avoided if the initial guess is taken as $\delta\mathbf{x}_g = 0$ (the case of the first outer loop), or if both $\delta\mathbf{x}_g$ and $\widehat{\delta\mathbf{x}}_g$ are retained from a previous outer loop. In each iteration of minimization, DRIPCG only requires the application of the background error covariance matrix \mathbf{B} , which will be described in the next subsection.

140 3.2 Background error covariance model for EnVar

The modeling of the background error covariance matrix \mathbf{B} is a key component of variational DA systems. OOPS’s hybrid-EnVar follows the original form of Hamill and Snyder (2000), in which \mathbf{B} in Eq. (4) is the weighted sum of the static background error covariance \mathbf{B}_s and an ensemble-based covariance \mathbf{B}_e , i.e.,

$$\mathbf{B} = \beta_s\mathbf{B}_s + \beta_e\mathbf{L} \circ \mathbf{B}_e, \quad (7)$$

145 where β_s and β_e are the scalar weights with $\beta_s + \beta_e = 1$, and $\mathbf{L} \circ \mathbf{B}_e$ denotes the Schur product (element-by-element) of the localization matrix \mathbf{L} and the sample covariance matrix \mathbf{B}_e of the ensemble. Note that \mathbf{L} is a correlation matrix with diagonal

elements being 1 and off-diagonal elements smaller than 1 that reduce to zero for a certain distance between two model grid points. Localization ameliorates the detrimental effects of sampling noise in \mathbf{B}_e by reducing spurious correlations between state variables separated by large distances and by increasing the rank of the localized sample covariance relative to \mathbf{B}_e (Hamill et al., 2001; Houtekamer and Mitchell, 2001).

The modeling of the static covariance \mathbf{B}_s for JEDI-MPAS will be presented in a separate paper. This article only describes the pure EnVar algorithm, in which the weight of the static covariance is zero with $\beta_s = 0$ and $\beta_e = 1$. In each iteration of DRIPCG minimization, $\mathbf{B}\mathbf{r}_k$ is calculated, where $\mathbf{r}_k = \mathbf{b} - \mathbf{A}\delta\mathbf{x}_k$ is the residual vector at the k th iteration and \mathbf{A} and \mathbf{b} are defined by Eq. (6). In the case of pure EnVar with $\mathbf{B} = \mathbf{L} \circ \mathbf{B}_e$, $\mathbf{B}\mathbf{r}_k$ is actually evaluated in OOPS in the form

$$(\mathbf{L} \circ \mathbf{B}_e)\mathbf{r} = \sum_{m=1}^{N_e} \mathbf{x}'_m \circ [\mathbf{L}(\mathbf{x}'_m \circ \mathbf{r})], \quad (8)$$

where N_e is the ensemble size and \mathbf{x}'_m is $(N_e - 1)^{-1/2}$ times the deviation of the m th member from the ensemble mean. That is, $(\mathbf{L} \circ \mathbf{B}_e)\mathbf{r}$ is given by taking the Schur product of each \mathbf{x}'_m with \mathbf{r} , passing the result through \mathbf{L} , taking the Schur product of the result again with \mathbf{x}'_m , and finally summing over m .

To see that Eq. (8) is correct, write $(\mathbf{L} \circ \mathbf{B}_e)_{ij} = L_{ij} \sum_{m=1}^{N_e} x'_{im} x'_{jm}$ and so the i th element of the vector $(\mathbf{L} \circ \mathbf{B}_e)\mathbf{r}$

$$[(\mathbf{L} \circ \mathbf{B}_e)\mathbf{r}]_i = \sum_{j=1}^{N_x} \sum_{m=1}^{N_e} L_{ij} x'_{im} x'_{jm} r_j = \sum_{m=1}^{N_e} x'_{im} \sum_{j=1}^{N_x} L_{ij} x'_{jm} r_j = \sum_{m=1}^{N_e} x'_{im} [\mathbf{L}(\mathbf{x}'_m \circ \mathbf{r})]_i, \quad (9)$$

where N_x is the dimension of the state vector. This gives Eq. (8). It is worth mentioning that OOPS does not take the α control variable form of the hybrid-EnVar cost function used in other DA systems (e.g., Lorenc, 2003; Wang, 2010; Wang et al., 2013; Schwartz et al., 2015), which do not perform the explicit calculation of Eq. (8).

Since the dimension of the localization matrix \mathbf{L} is $N_x \times N_x$, in-memory storage of the full matrix \mathbf{L} is prohibitive and the multiplication of \mathbf{L} with a vector of size N_x can be computationally expensive for a high-resolution setting of the model. JEDI-MPAS 1.0.0 adopts the Normalized Interpolated Convolution from an Adaptive Subgrid (NICAS) method to model \mathbf{L} such that

$$\mathbf{L} = \mathbf{N} \mathbf{S} \mathbf{C} \mathbf{S}^T \mathbf{N}^T, \quad (10)$$

where the correlation matrix \mathbf{C} is defined on a coarse grid (i.e., subgrid), \mathbf{S} is an interpolation operator to transform \mathbf{C} on the coarse grid to \mathbf{L} on the full grid, and the diagonal normalization matrix \mathbf{N} ensures that resulting \mathbf{L} has diagonal entries equal to 1. The local resolution of the subgrid in NICAS adapts to the correlation length-scale to reduce computational cost while retaining a reasonable approximation of the underlying continuous correlation function. Therefore, the convolution of \mathbf{L} with a vector becomes a sequence of computationally less-expensive operations with reduced memory usage compared to the use of the full matrix \mathbf{L} . NICAS is available in the BUMP, part of the SABER code repository.

BUMP/NICAS is implemented based upon an unstructured mesh that is naturally suited for JEDI-MPAS (also built on an unstructured mesh). This is a key feature that enables JEDI-MPAS to work seamlessly for global or regional domains with

a quasi-uniform or variable-resolution MPAS mesh. More details about BUMP and NICAS are given by Ménétrier (2020) (https://github.com/benjaminmenetrier/nicas_doc/blob/master/nicas_doc.pdf).

To further reduce the computational cost, a dual-resolution capability is implemented in JEDI-MPAS’s EnVar, in which the background and analysis (thus first guess departure calculation) are at the same resolution as that for the model forecast, but the analysis increment and ensemble input (thus inner loop minimization) are at a lower resolution. While this study evaluated 3DEnVar, JEDI-MPAS can be run with the 4DEnVar mode, which assimilates observations at more appropriate times by having the background and analysis files as well as the ensemble input at multiple times within the assimilation time window.

3.3 Analysis variables and variable transforms

One important aspect in designing a DA system is the choice of analysis variables (i.e., \mathbf{x}). JEDI-MPAS uses as analysis variables the cell-center values of temperature (T), specific humidity (q), zonal and meridional components of horizontal velocity (\mathbf{v}), and surface pressure (p_s). Optionally, mixing ratios of five hydrometeors (cloud liquid water, cloud ice, rain, snow, and graupel) can also be included as analysis variables when assimilating cloud-/precipitation-affected observations. We chose these analysis variables because of our experience with modeling background-error covariances for similar variables in WRFDA and because use of T rather than θ will reduce nonlinearity in the observation operators for many conventional observations and for satellite radiances.

After obtaining the analysis increment for (T, q, \mathbf{v}, p_s) by iteratively solving Eq. (6), several additional steps are followed to arrive at a full-field analysis for variables closer to the MPAS prognostic variables:

1. Transform the cell-center \mathbf{v} increments to increments of u , the normal component of horizontal velocity at cell edges, by averaging the corresponding component of the \mathbf{v} increment from the cells adjacent a given edge. Obtain the full-field analysis of u by adding increments to the first guess.

2. Get the full field analyses of T , q , and p_s (and optionally hydrometeors) by adding analysis increments to the first guess. Calculate the water vapor mixing ratio analysis with $q_v = q/(1 - q)$.

3. Diagnose the full field analyses of 3D pressure p and dry air density ρ_d using T , q_v , and p_s by applying the hypsometric equation $p(z_2) = p(z_1) \exp(-\frac{g}{R_d} \int_{z_1}^{z_2} \frac{dz}{T_v})$ and the equation of state of moist air $\rho_d = p/[(1 + q_v + \dots)R_d T_v]$ with virtual temperature $T_v = (1 + 0.608q_v)T$. Note that the hypsometric equation, which implies hydrostatic balance, is applied upward layer-by-layer starting from the ground with the analysis field of p_s .

4. Update dry potential temperature $\theta_d = T \left(\frac{p_0}{p} \right)^{R_d/c_p}$, with c_p the specific heat of dry air at constant pressure and $p_0 = 1000$ hPa a reference pressure.

Sensitivity experiments showed that the hydrostatic balance constraint in Step 3 is important for JEDI-MPAS to cycle stably by allowing surface pressure observations to constrain upper air fields.

3.4 Observation handling and all-sky radiance DA

In JEDI-MPAS, observations I/O and in-memory storage are handled through IODA, which is one of model-agnostic components of JEDI and reads specific netCDF4 (based on hdf5) format observation input files, and outputs DA feedback files.

210 UFO, another model-agnostic component of JEDI, consists of non-linear observation operators and associated tangent linear and adjoint (TL/AD) (and/or Jacobian) operators. At the time of this study, quality control (QC) procedures and radiance bias correction algorithms within the UFO are still under development, and thus the GSI DA system (Shao et al., 2016) is used as a data preprocessor to perform QC of observations and radiance bias correction. GSI observation feedback files in the so-called gsi-ncdiag format are converted into the IODA-v2 format and then assimilated into JEDI-MPAS. Therefore, mainly two
215 QC filters are applied in JEDI-MPAS experiments (see section 4). One uses QC flags generated by GSI and another is the "background check" filter, which discards observations with first guess departures larger than three times the observation error standard deviation. For surface pressure (p_s) data, additional QC is applied to reject observations with differences between the model terrain height and station elevation larger than 200 meters. Terrain correction is also applied to p_s data following Ingleby (2014).

220 In recent years, leading operational NWP centers assimilate increasingly more satellite radiance data under cloudy situations, with most successes in using all-sky microwave radiances (e.g., Geer et al., 2017, 2018; Zhu et al., 2016, 2019; Migliorini and Candy, 2019). JEDI-MPAS allows the assimilation of all-sky radiance data with the introduction of hydrometeor analysis variables, cloudy radiance observation operator via the Community Radiative Transfer Model (CRTM) (Liu and Weng, 2006), and situation-dependent all-sky observation error models (Geer and Bauer, 2011). While all-sky radiance DA in JEDI-MPAS
225 can be applied to data from both microwave and infrared sensors, this study evaluates only microwave all-sky radiance DA from AMSU-A window channels 1-4 and 15 over water. The AMSU-A all-sky radiance error model follows Zhu et al. (2016), in which the observation error is a piecewise-linear ramp function (see section 4) of the model-observation-averaged cloud liquid water path $(c_{obs} + c_{fg})/2$ retrieved from the AMSU-A channel 1's and 2's brightness temperatures. Zhu et al. (2016) assimilated AMSU-A window channels only for non-precipitating clouds due to the lack of precipitation variables in the microphysics
230 scheme used in their study. In contrast, with the WSM6 microphysics scheme (Hong and Lim, 2006) used in this study and all five hydrometeor variables included in the analysis variables, JEDI-MPAS assimilates AMSU-A window channel radiances in both non-precipitating and precipitating cloudy situations with a full all-sky approach. Note that microwave radiances are assimilated in terms of brightness temperature in units of Kelvin. For the sake of simplicity, we will interchangeably use radiance and brightness temperature throughout the article.

235 4 Experimental design

We evaluate JEDI-MPAS 3DEnVar's performance with month-long (April 15 - May 14, 2018) cycling experiments. Although this is not an observational impact study, incrementally adding satellite radiance data and evaluating their impact is informative about the implementation correctness and the robustness and performance of the system. In this regard, four 6-hourly cycling dual-resolution 3DEnVar experiments are conducted with a global quasi-uniform ~~30-km~~ 30 km mesh for high-resolution anal-

Table 1. Observations assimilated in the four cycling 3DEnVar experiments.

Experiments	Assimilated Obs
conv	radiosondes, aircraft, GPS refractivity, atmospheric motion vectors, surface pressure
clrama	obs in conv + clear-sky AMSU-A radiances (ch 5-9) from NOAA-15/18/19, METOP-A/B, Aqua
cldama	obs in clrama + all-sky over-water AMSU-A radiances (ch 1-4, 15) from NOAA-15/18/19, METOP-A/B
clrmhs	obs in cldama + clear-sky MHS radiances (ch 3-5) from NOAA-18/19, METOP-A/B

240 ysis/background and a ~~60-km~~60 km mesh for low-resolution increment and ensemble input. The first analysis is at 0000 UTC 15 April 2018 with the background being a ~~6-h~~6 h forecast initialized from the NCEP’s Global Forecast System (GFS) analysis at 1800 UTC 14 April. From the second analysis through the final analysis at 1800 UTC 14 May, the background is a ~~6-h~~6 h forecast initialized from the previous cycle’s JEDI-MPAS analysis. The first guess departure is computed using the ~~30-km~~30 km background and the minimization is performed on the ~~60-km~~60 km mesh. Each DA analysis uses two outer loops, each
245 with 60 inner iterations. ~~20-member~~Twenty-member ensemble input on the ~~60-km~~60 km mesh is generated from ~~6-h~~6 h MPAS model forecasts initialized from the NCEP’s 20-member Global Ensemble Forecast System (GEFS) ensemble analysis (Zhou et al., 2017).

The four experiments differ from each other by assimilating different sets of observations, as listed in Table 1. The **conv** experiment assimilates: temperature, specific humidity, and zonal and meridional wind components from radiosondes and
250 aircraft; GPS refractivity; atmospheric motion vectors (AMVs) retrieved from geostationary and polar-orbiting satellite sensors; and surface pressure (p_s). In addition to the observations used in **conv**, the **clrama** experiment assimilates clear-sky AMSU-A radiances (channels 5-9) from six satellites (NOAA-15/18/19, METOP-A/B, Aqua; omitting platforms and channels that had failed before the experimental period). The **cldama** experiment further adds over-water AMSU-A window channels (channels 1-4 and 15) all-sky radiances from five satellites. Note that Aqua AMSU-A channels 1 and 2, which are needed
255 for the all-sky observation error model (see section 3.4), are not available, and thus Aqua AMSU-A window channels are excluded in **cldama**. We use the fourth experiment, **clrmhs**, to evaluate the additional benefit of assimilating three water vapor channels from MHS onboard four satellites (NOAA-18/19, METOP-A/B) under clear sky conditions. Data thinning is applied to AMSU-A and MHS radiance data with a 145 km thinning mesh. All four experiments use a \pm ~~3-h~~3 h time window.

All-sky observation error statistics were computed separately for five AMSU-A sensors using the observations minus the
260 CRTM-simulated brightness temperatures from the ~~6-h~~6 h forecast background fields (i.e., O minus B) of the **clrama** experiment over the month-long period. Figure 1 gives an example of the all-sky observation error model for NOAA-19 AMSU-A channel 15 at 89 GHz. The blue curve is the statistics of the standard deviation of O minus B as a function of the model-observation-averaged cloud liquid water path $\bar{c} = (c_{obs} + c_{fg})/2$. The red curve gives the number of observations (the right y-axis) used in each bin’s statistics ($0.01 \text{ kg}/m^2$ bin interval). The dashed black curve is the fitted piecewise-linear ramp

Table 2. Parameterisation schemes in the ‘mesoscale reference’ physics suite.

Parameterisation	Scheme
Convection	New Tiedtke (Tiedtke, 1989; Zhang and Wang, 2017)
Microphysics	WSM6 (Hong and Lim, 2006)
Land surface	Noah (Chen and Dudhia, 2001)
Boundary layer	YSU (Hong et al., 2006)
Surface layer	Monin-Obukhov (Jiménez et al., 2012)
Radiation, longwave/shortwave	RRTMG (Iacono et al., 2008)
Cloud fraction for radiation	Xu-Randall (Xu and Randall, 1996)
Gravity wave drag by orography	YSU (Choi and Hong, 2015)

265 function of the blue curve in the form (Geer and Bauer, 2011)

$$\sigma_o = \begin{cases} \sigma_{clr}, & \text{if } \bar{c} \leq \bar{c}_{clr} \\ \sigma_{clr} + (\sigma_{cld} - \sigma_{clr}) \frac{\bar{c} - \bar{c}_{clr}}{\bar{c}_{cld} - \bar{c}_{clr}}, & \text{if } \bar{c}_{clr} < \bar{c} \leq \bar{c}_{cld} \\ \sigma_{cld}, & \text{if } \bar{c} > \bar{c}_{cld} \end{cases}, \quad (11)$$

which serves as the observation error model for this particular channel with $\bar{c}_{clr} = 0.03$, $\bar{c}_{cld} = 0.24$, $\sigma_{clr} = 6.33$, and $\sigma_{cld} = 19.24$. The four numbers for each of channels 1-4 and 15 of five AMSU-A sensors are provided in the supplemental configuration file of JEDI-MPAS (*jedi_mpas.yaml*), which specifically describes the configuration for the **clrmhs** experiment.

270 BUMP has the ability to diagnose horizontal and vertical localization length scales with geographical variation. For a relatively small ensemble size, however, BUMP-diagnosed localization length scales may not be optimal. Therefore, we used the fixed localization scale values in this study, which is not uncommon for ensemble DA. After some sensitivity testing, we use 1200 km and 6 km for the horizontal and vertical full widths of Gaspari and Cohn (1999) localization function (Eq. 4.10), respectively. That function reduces the spatial correlation to zero when the distance between two locations is greater than the
275 full width.

The MPAS-A model is configured with a ~~30-km~~ 30 km quasi-uniform mesh and 55 vertical levels with a 30 km model top. The "mesoscale reference" physics suite is used with the parameterization schemes listed in Table 2. A time step of 180 seconds is applied for the model time integration. We used the same "mesoscale reference" physics suite to generate the ~~6-h~~ 6 h MPAS ensemble forecasts on the 60 km mesh that comprise the sample ensemble covariances.

5.1 Short-term forecasts

Here we assess the DA cycling performance of the four experiments by examining the first guess departure (i.e., observation minus background or OMB) statistics, similar to the diagnostic commonly monitored at operational NWP centers (e.g., <https://www.ecmwf.int/en/forecasts/charts/obstat/>). Additionally, we present error statistics of ~~6-h~~ 6 h forecast
 285 backgrounds with respect to the NCEP's GFS analysis to more clearly assess the geographic and vertical variations of the cycling performance.

5.1.1 Observation space verification

Figure 2 displays time series of mean and root mean square (RMS) values of OMB for AMV zonal and meridional wind components from the four experiments. Overall the mean and RMS give the ~~same indication regarding~~ consistent performance
 290 indication for the four experiments' ~~relative performances~~. For zonal wind, the **conv** experiment has the largest bias and RMSE; adding clear-sky AMSU-A radiances leads to substantial error reduction in terms of both bias and RMSE; further adding all-sky AMSU-A window-channels' radiances additionally reduces the RMSE. The red curves (**clrmhs**) are basically overlaid with the green curves (**cldama**), indicating a neutral impact on ~~6-h~~ 6 h wind forecasts by adding clear-sky MHS water vapor radiances to all-sky AMSU-A radiances. The statistics of OMB for AMV meridional wind component indicate similar
 295 relative experiment performances overall, except for a slightly positive impact for **clrmhs** versus **cldama**.

Figure 3 compares the ~~6-h~~ 6 h forecast fits to radiosonde observations from the three radiance DA experiments with that of the **conv** experiment. Shown in Fig. 3 are relative differences between RMS of OMB from the three radiance DA experiments and that from the **conv** experiment, given by

$$ratio = 100 \times (RMS_{EXP} - RMS_{conv}) / RMS_{conv}, \quad (12)$$

300 where *EXP* can be **clrama**, **cldama**, or **clrmhs**. Negative ratios indicate positive impacts from *EXP* relative to **conv**, and vice versa. Different magnitudes of ratio among the three radiance experiments give their relative performance. A 95% confidence interval is shown at each pressure level as an error bar, which is computed using bootstrap re-sampling (Hamill, 1999), with a re-sample size of 10,000. The RMS difference between *EXP* and **conv** at each cycle is treated as an independent sample in the bootstrap. Assimilating clear-sky temperature sounding channels from **clrama** has small impacts on humidity
 305 (blue curve in Fig. 3b), whereas large positive impacts on moisture are obtained by adding all-sky AMSU-A and clear-sky MHS radiances. The impact on virtual temperature (T_v) is mostly from AMSU-A clear-sky temperature sounding channels, and the additional benefit on T_v from all-sky AMSU-A and clear-sky MHS radiances is relatively small (Fig. 3a). ~~Note The reason we show here T_v instead of T is~~ that the majority of radiosonde temperature observations in GSI's ncdiag files ~~is~~ are expressed in terms of T_v . RMS decreases up to 5% for zonal wind (Fig. 3c) and 2% for meridional wind (Fig. 3d) from **clrama**,
 310 likely caused by the mass-wind balance implied in the ensemble background error covariance. The extra benefit on wind fields from AMSU-A all-sky window channel radiances is confined to 200 - 800 hPa. Additional positive impact on winds between

300 hPa and 650 hPa is achieved by adding MHS clear-sky water vapor channels' radiances. Each of the three radiance DA experiments exhibit, to a different extent, improvement with respect to the **conv** experiment for all four observed radiosonde variables at almost all pressure levels.

315 Among the four experiments, both **cldama** and **clrmhs** assimilate AMSU-A all-sky radiances from the window channels (ch 1-4 and 15). It is expected apriori that assimilating MHS water vapor channels' radiances in ~~clmhs~~ **clrmhs** will improve background fitting to those AMSU-A all-sky radiances. That is indeed the case in Fig. 4. **clrmhs** achieves statistically significant improvement up to 2.5% at tropical latitudes for AMSU-A channel 1 (Fig. 4a), while positive impacts from MHS radiances are smaller and less significant for other AMSU-A window channels (Figs. 4b-d). This is because AMSU-A channel
320 1 (23.8 GHz) is more sensitive to water vapor and clouds than other AMSU-A window channels.

5.1.2 Model space verification

Similar to Figs. 2-4, Figures 5-7 evaluate the ~~6-h-6-h~~ forecast backgrounds in model space relative to GFS analyses. Figure 5 shows the time series of global RMSE of the four experiments for four surface variables. Note that the background for the first analysis at 0000 UTC 15 April 2018 is a ~~6-h-6-h~~ forecast initialized from the GFS analysis. GFS utilizes a hybrid-4D_{En}Var DA
325 technique via the GSI system (Kleist and Ide, 2015), and includes assimilation of many more satellite observations than those used in our own cycling experiments. Smaller RMSEs for the first 2-3 days come from the memory of the superior performance of the operational analysis. Cycling performance quickly converges to a stable level for the three radiance DA experiments due to the good global coverage of observations. Gradually increasing errors are clearly seen in the **conv** experiment for 2-meter temperature (T_2), ~~10-m-10-meter~~ zonal wind (u_{10}), and p_s , which is caused by sparse coverage of non-radiance data over the
330 Southern Hemisphere. The impacts of AMSU-A clear-sky and all-sky radiances and MHS clear-sky radiances are consistent with those shown in upper air observation space of Fig. 3.

Similar to Fig. 3, Figure 6 presents the vertical distribution of the global percentage RMSE difference of **cldama** and **clrmhs** relative to **clrama**. Figure 6 yields similar conclusions as Fig. 3, but the magnitudes of improvement in model space (Fig. 6) are larger than those in observation space (Fig. 3), because the model space verification covers the entire globe. The
335 most drastic improvement is for water vapor mixing ratio with nearly 20% RMSE decrease at model level 15 (~2.2 km or ~700 hPa) by assimilating AMSU-A all-sky radiances and >20% improvement at model level 30 (~8.8 km or ~330 hPa) when adding both AMSU-A all-sky radiances and MHS clear-sky radiances (Fig. 6b). One noticeable issue is the negative impact for temperature near the model top (Fig. 6a), which is believed to be related to an increasing cold bias during the cycling (not shown). A biased model top makes radiance DA less effective. Note that the MPAS-A model currently lacks
340 processes for representing O₃ chemistry and that a climatological O₃ field is used, leading to inaccurate radiation calculations attributed to O₃. Work is underway to add a parameterized O₃ chemistry scheme (McCormack et al., 2006) and include O₃ as a prognostic variable in MPAS-A.

Figure 7 is similar to Fig. 6, but depicts the latitudinal variation of relative RMSE reduction for several variables. For p_s , the greatest impact is between 25° S-50° S (Fig. 7a), and large RMSE reductions are also seen in North and South Pole regions for
345 the **clrmhs** experiment (Fig. 7a). The large RMSE reduction from **clrmhs** in the Arctic is apparently associated with a reduc-

tion of a ~ 1 hPa low pressure bias in the **conv**, **clrama**, and **cldama** experiments (not shown). For the other three variables, the greatest impact is within tropical regions (Figs. 7b-d). In addition to the large benefit on moisture from the addition of MHS water vapor channels' radiances (Fig. 7b), the impact of MHS radiances on the meridional wind component (Fig. 7d) is also substantial and significant, possibly indicating an improved representation of equatorial convergence-divergence patterns associated with convective activity.

These observation-space and model-space evaluations of short-term forecasts demonstrate that the JEDI-MPAS 3DEnVar scheme behaves well for the assimilation of clear-sky and all-sky microwave radiance data. More accurate background fields are obtained by adding more and more radiance data.

5.2 1-to-10-day forecasts

This subsection examines the 1-to-10-day forecast performance relative to GFS analyses, independent radiance data from the Advanced Himawari Imager (AHI), and a global precipitation product. Twenty-seven 10-day forecasts initialized each day at 0000 UTC from 18 April to 14 May, 2018 are used to produce the error statistics. The first three days (15 - 17 April) are considered as the spin-up period for each experiment to converge from the GFS climatology to JEDI-MPAS's own cycling climatology and thus are not included in the forecast evaluation. The three radiance DA experiments significantly outperform the **conv** experiment. Therefore, we only evaluate the **cldama** and **cldmhs-clrmhs** experiments, from here considering the **clrama** experiment as the benchmark.

5.2.1 Model space verification

Figure 8 displays relative RMSE reductions (with respect to GFS analyses) as a function of forecast lead time for three surface and three upper air variables. Due to a temperature bias at the model top, as described in Sec. 5.1 in relation to Fig. 6a, the evaluation on temperature is limited to below model level 30. We also exclude the moisture assessment above model level 30, where the air is very dry. In general, adding AMSU-A all-sky radiances produces more accurate forecasts for all variables compared to the AMSU-A clear-sky radiance experiment, and extra MHS clear-sky radiances further reduce forecast errors. Percentage improvements and associated statistical significance decrease with forecast range, but can last up to 10 days, especially for the **clrmhs** experiment. Note that forecast errors increase with forecast lead time and thus absolute error reduction could be increased or flat at certain forecast lead times even with decreasing percentage improvement. The greatest improvement from **clrmhs** is for upper air moisture with up to 10% and $>1\%$ RMSE reduction for day-1 and day-10, respectively (Fig. 8e). The improvement for moisture remains statistically significant for the whole 10-day forecast range, while that is not the case for other variables. This result is consistent with AMSU-A window channels' and the three MHS channels' large sensitivity to water vapor (and clouds for AMSU-A all-sky radiances). Large impacts are also seen on Q2m (Fig. 8b), though to a lesser extent than is seen for upper air moisture. Conversely, the impact is the smallest on temperature (Fig. 8d) with only $\sim 1\%$ and 3% improvement for the day-1 forecast from **cldama** and **clrmhs**, respectively. The magnitudes of improvement on p_s and the zonal wind are comparable to each other, gradually decreasing from an initial $\sim 5\%$ RMS reduction for the day-1 forecast.

Figure 9 shows the impact on moisture and zonal wind over three different regions. The largest impact is over the tropical
 380 region for both variables, which is consistent with the short-term forecast impact as shown in Figs. 7b-c. The smallest impact is
 between 30° N and 90° N, where conventional observations have good coverage. One interesting thing is that the impact over
 the Tropics exhibits a clear decreasing trend with forecast range, but this decreasing trend is not always present poleward of
 30° . This might be related to the different levels of convective weather activity between low and middle/high latitudes.

Figure 10 more clearly depicts the relative impact of `clrmhs` with respect to `cldama` for four upper air variables. Again,
 385 the greatest and most significant improvement (up to 7 days) achieved by adding MHS water vapor channels' radiances is on
 moisture with 2.5% RMSE reduction for day-1 and still retaining $\sim 1\%$ for day-7 (Fig. 10b). The magnitude of MHS radiance
 impact on temperature (Fig. 10a) is comparable with that of moisture, but less statistically significant. The MHS impact on the
 wind field is smaller, but the percentage of improvement remains nearly unchanged with the forecast lead time for up to day-8
 for zonal wind (Fig. 10c) and day-6 for meridional wind (Fig. 10d). Similar to the impact on short-term forecasts shown in Fig.
 390 7, the MHS radiance impact on meridional wind ($\sim 1.5\%$) is 50% greater than that for the zonal wind ($\sim 1\%$) up to day-6.

5.2.2 Verification against AHI radiances

JEDI-MPAS also has the capability of simulating and assimilating clear-sky and cloudy infrared (IR) radiances such as those
 from the geostationary satellite sensor Advanced Himawari Imager (AHI). CRTM's cloudy IR radiance simulation capability
 with JEDI-MPAS is used to evaluate 1-to-10-day forecasts using independent (i.e., not assimilated) AHI full-disk radiance
 395 data centered at 140.7° E. Using the JEDI-MPAS HofX3D application, and in conjunction with UFO, CRTM takes the forecast
 temperature, moisture, and hydrometeor profiles at AHI locations to compute modeled AHI radiances. Then we compare
 the simulated and observed AHI brightness temperatures offline. Before being ingested into JEDI-MPAS, the raw AHI IR
 channels' data at 2 km resolution undergo cloud detection at each pixel following Wu et al. (2020) and are preprocessed into
 super-observations averaged over 15×15 pixels. The cloud detection and super-obbing are carried out offline using WRFDA.
 400 These super-observations better match the model's ~~30-km~~30 km mesh, reducing representativeness errors. A by-product of
 cloud detection on the raw AHI pixels and super-obbing is the cloud fraction for each super-observation, which allows statistical
 evaluation separately over clear, partly cloudy, and overcast observations.

Figure 11 shows the relative RMSE reduction as a function of forecast range in AHI radiance space for all super-obbed
 pixels of six channels. Among them, channels 8-10 are water vapor (WV) channels sensing the middle-to-upper tropospheric
 405 moisture and bands 13-15 are window channels sensitive to surface properties and clouds. The patterns of the RMSE reduction
 across different channels are very similar and overall consistent with those in the model space variables shown in Figs 8-9.
 The impact of `cldama` and `clrmhs` for the higher peaking channel 8 (350-400 hPa) is larger than that for the lower peaking
 channel 10 (600-700 hPa), which is consistent with the vertical distribution of humidity RMSE reduction shown in Fig. 6b.
 Improved fitting to the three window channels (relative to `clrama`) is most likely evidence of improved cloud forecasts, with
 410 significance at least up to day-4. Figure 12 further splits error statistics into clear, partly cloudy, and fully cloudy pixels for
 the lower peaking WV channel 10. Over the verification period, clear, partly cloudy, and fully cloudy pixels account for 28%,

33%, and 39% of observations, respectively. The relative impact from **cldama** and **clrmhs** decreases with more cloudiness. The absolute RMSE reduction, however, is comparable for the three categories due to increased RMSE with more cloudiness.

5.2.3 Precipitation forecast verification

415 ~~24-h~~ Twenty-four-hour accumulated precipitation forecasts from the four experiments are verified against the Climate Prediction Center's morphing technique (CMORPH) 0.25° precipitation product (Xie et al., 2017). Figure 13a gives the Gilbert Skill Scores (GSS) (also known as Equitable Threat Score, ETS) (Hogan et al., 2010) computed for the observed and predicted ~~24-h~~ 24 h accumulated rainfall ≥ 10 mm using the Model Evaluation Tool (MET) (Brown et al., 2021). The GSS ranges from -1/3 to 1 with ≤ 0 corresponding to no skill and 1 to perfect skill. An improvement of 5-8% ~~improvement~~ is gained up to
420 day-7 precipitation forecast from AMSU-A temperature-sounding radiance DA when compared to the non-radiance DA experiment. A further 5-12% improvement is achieved by adding AMSU-A all-sky radiances and MHS radiances for up to day-6 (Fig. 13b). From precipitation forecast verification here and other aspects of forecast verification shown earlier, JEDI-MPAS's AMSU-A all-sky DA exhibits a larger positive impact than those at operational centers (e.g., Zhu et al., 2016; Migliorini and Candy, 2019). This might be partly related to the use of the full all-sky approach in JEDI-MPAS whereas Zhu et al. (2016)
425 and Migliorini and Candy (2019) assimilated AMSU-A all-sky radiances only under non-precipitating conditions. Also, obtaining additional benefit above a well-tuned operational system with abundant satellite observations, as in Zhu et al. (2016) and Migliorini and Candy (2019), is much harder than for the benchmark experimental settings used in this study.

5.2.4 Anomaly correlation coefficient for 500 hPa geopotential height

Figure 14 provides global Anomaly Correlation Coefficients (ACC) of 500 hPa geopotential height as a function of forecast
430 range for the four JEDI-MPAS experiments together with the cold start forecast experiment using GFS analyses as initial conditions (light blue, marked as cold). The climatology derived from the 1980-2010 NCEP/NCAR reanalysis products (Kalnay et al., 1996) is used in the ACC calculation. The largest improvement on ACC is from AMSU-A temperature sounding channels, gaining a half day of skill (from 4.5 days to 5 days) with respect to the non-radiance experiment for 0.8 ACC level. Further ACC improvement by adding AMSU-A all-sky window channels and MHS clear-sky WV channels is visible, but
435 much smaller than that gained by AMSU-A clear-sky temperature-sensitive channels. This could be understandable with the tight link between temperature and geopotential height. The cold start forecasts from GFS analyses reach 5.5 days for 0.8 ACC level and outperforms JEDI-MPAS's three radiance DA experiments by half a day. Given that the operational GFS analysis is produced with a more advanced hybrid-4DVar algorithm (Kleist and Ide, 2015) at a higher resolution and with ensemble covariances formed by 80-member ensemble input, plus the assimilation of many more satellite observations, this half day gap
440 on ACC is not surprising with a ~~less-advanced~~ less-advanced pure 3DVar algorithm, a smaller ensemble size, and ~~less-fewer~~ observations assimilated in JEDI-MPAS experiments.

6 Conclusions and future perspectives

A new DA system for the MPAS-A model has been developed based upon the JEDI software framework and was publicly released as JEDI-MPAS 1.0.0 for community use. This article describes the EnVar's formulation and technical implementation of JEDI-MPAS and evaluates its robustness and performance through four global cycling 3DEnVar experiments. JEDI-MPAS is robust with stable cycling over a month-long period and behaves well, with positive impacts obtained when adding more and more microwave radiance data for most aspects of assessment in both observation- and model-space. One advanced feature developed with JEDI-MPAS is all-sky radiance DA capability along with the introduction of hydrometeor analysis variables, which is first applied to the assimilation of all-sky radiances from AMSU-A's five window channels. Large impacts are achieved from AMSU-A all-sky DA, especially for moisture, clouds, and precipitation forecasts. Credible forecast skill is seen from the assimilation of a subset of conventional and satellite observations used in operational NWP centers, with a half day skill gap relative to forecasts initialized from GFS analyses for the 0.8 ACC level of 500 hPa geopotential height. It is expected that the forecast performance can be further improved to be closer to operational skill by using a more advanced DA algorithm such as 4DEnVar, a larger ensemble size, more satellite data, a higher model resolution, and fine tuning of DA settings, as well as by improving the MPAS model. JEDI-MPAS can also perform deterministic analyses using 3DVar and ensemble analyses using the EDA technique. The implementation and evaluation of 3DVar and EDA will be described in separate articles. JEDI-MPAS in regional mode and with a variable resolution will also be evaluated with higher resolutions.

The general JEDI software framework and more specific JEDI-MPAS DA system are still undergoing active development since the JEDI-MPAS 1.0.0 release. One new development specific to JEDI-MPAS is to change the hydrostatic balance constraint in the full fields to the increment fields, which can still allow surface pressure observations to constrain the upper air variables but is better suited for the non-hydrostatic MPAS-A model. Initial tests of this new linear hydrostatic balance constraint show improvement, especially near the model top. Other ongoing work on the model side is to introduce a parameterized O3 chemistry scheme (McCormack et al., 2006) and include O3 as a prognostic variable in MPAS-A, which should reduce temperature bias in the stratosphere and also allow the assimilation of satellite-based O3 observations. Improving stratosphere processes will allow the use of a high model top, that will enable the assimilation of higher-peaking radiance data. All-sky radiance DA for both microwave and infrared sensors continues to be refined with JEDI-MPAS. One important feature missing in the released JEDI/UFO, but available in the "develop" branch of the UFO, is the variational bias correction (VarBC) for satellite radiance data (Auligné et al., 2007; Dee and Uppala, 2009; Zhu et al., 2013), which is undergoing active testing and evaluation with JEDI-MPAS at the time of this writing. The quality control procedures of several types of observations implemented in the UFO are also being tested with assimilation of raw NCEP-bufr converted observation input files with the goal of eliminating reliance on GSI for quality control. Moreover, the computational efficiency of JEDI is being improved. We intend to periodically release new and improved versions of JEDI-MPAS in upcoming years.

Code and data availability. JEDI-MPAS 1.0.0 is publicly released on github, accessible from <https://www.jcsda.org/jedi-mpas>. It is also available on Zenodo at <https://doi.org/10.5281/zenodo.6784274> (Joint Center for Satellite Data Assimilation and National Center for Atmospheric Research, 2021). Global Forecast System analysis data are downloaded from NCAR Research Data Archive <https://rda.ucar.edu/datasets/ds084.1/> (National Centers For Environmental Prediction/National Weather Service/NOAA/U.S. Department Of Commerce, 2015). Global Ensemble Forecast System ensemble analysis data are downloaded from <https://www.ncei.noaa.gov/products/weather-climate-models/global-ensemble-forecast>. Conventional and satellite observations assimilated are downloaded from <https://rda.ucar.edu/datasets/ds337.0/> (National Centers For Environmental Prediction/National Weather Service/NOAA/U.S. Department Of Commerce, 2008) and <https://rda.ucar.edu/datasets/ds735.0/> (National Centers For Environmental Prediction/National Weather Service/NOAA/U.S. Department Of Commerce, 2009). CMORPH precipitation product and AHI radiance data used in the forecast verification are downloaded from <https://www.ncei.noaa.gov/products/climate-data-records/precipitation-cmorph/> (Xie et al., 2019) and <https://registry.opendata.aws/noaa-himawari/>, respectively.

Author contributions. The first author designed and conducted all experiments and wrote the paper. All co-authors contributed to the development of JEDI-MPAS and the article.

Competing interests. The authors have no competing interests.

Acknowledgements. The National Center for Atmospheric Research is sponsored by the National Science Foundation of the United States. The co-authors from NCAR are partially financially supported by the US Air Force. We thank Craig Schwartz for reviewing an initial version of the manuscript and making valuable suggestions that improved the manuscript. [We also thank three anonymous reviewers for valuable comments and suggestions.](#)

- Anderson, J., Hoar, T., Raeder, K., Liu, H., Collins, N., Torn, R., and Avellano, A.: The Data Assimilation Research Testbed: A Community Facility, *Bulletin of the American Meteorological Society*, 90, 1283–1296, <https://doi.org/10.1175/2009bams2618.1>, 2009.
- Auligné, T., McNally, A. P., and Dee, D. P.: Adaptive bias correction for satellite data in a numerical weather prediction system, *Quarterly Journal of the Royal Meteorological Society*, 133, 631–642, <https://doi.org/10.1002/qj.56>, 2007.
- 495 Barker, D., Huang, X.-Y., Liu, Z., Auligné, T., Zhang, X., Rugg, S., Ajjaji, R., Bourgeois, A., Bray, J., Chen, Y., Demirtas, M., Guo, Y.-R., Henderson, T., Huang, W., Lin, H.-C., Michalakes, J., Rizvi, S., and Zhang, X.: The Weather Research and Forecasting Model's Community Variational/Ensemble Data Assimilation System: WRFDA, *Bulletin of the American Meteorological Society*, 93, 831–843, <https://doi.org/10.1175/bams-d-11-00167.1>, 2012.
- Brown, B., Jensen, T., Gotway, J. H., Bullock, R., Gilleland, E., Fowler, T., Newman, K., Adriaansen, D., Blank, L., Burek, T., Har-
 500 rold, M., Hertnecky, T., Kalb, C., Kucera, P., Nance, L., Opatz, J., Vigh, J., and Wolff, J.: The Model Evaluation Tools (MET): More than a Decade of Community-Supported Forecast Verification, *Bulletin of the American Meteorological Society*, 102, E782–E807, <https://doi.org/10.1175/bams-d-19-0093.1>, 2021.
- Chen, F. and Dudhia, J.: Coupling an Advanced Land Surface–Hydrology Model with the Penn State–NCAR MM5 Modeling System. Part II: Preliminary Model Validation, *Monthly Weather Review*, 129, 587–604, [https://doi.org/10.1175/1520-0493\(2001\)129<0587:caalsh>2.0.co;2](https://doi.org/10.1175/1520-0493(2001)129<0587:caalsh>2.0.co;2), 2001.
- 505 Choi, H.-J. and Hong, S.-Y.: An updated subgrid orographic parameterization for global atmospheric forecast models, *Journal of Geophysical Research: Atmospheres*, 120, 12 445–12 457, <https://doi.org/10.1002/2015jd024230>, 2015.
- Courtier, P., Thépaut, J.-N., and Hollingsworth, A.: A strategy for operational implementation of 4D-Var, using an incremental approach, *Quarterly Journal of the Royal Meteorological Society*, 120, 1367–1387, <https://doi.org/10.1002/qj.49712051912>, 1994.
- 510 Dee, D. P. and Uppala, S.: Variational bias correction of satellite radiance data in the ERA-Interim reanalysis, *Quarterly Journal of the Royal Meteorological Society*, 135, 1830–1841, <https://doi.org/10.1002/qj.493>, 2009.
- Derber, J. and Rosati, A.: A Global Oceanic Data Assimilation System, *Journal of Physical Oceanography*, 19, 1333–1347, [https://doi.org/10.1175/1520-0485\(1989\)019<1333:agodas>2.0.co;2](https://doi.org/10.1175/1520-0485(1989)019<1333:agodas>2.0.co;2), 1989.
- Gaspari, G. and Cohn, S. E.: Construction of correlation functions in two and three dimensions, *Quarterly Journal of the Royal Meteorological*
 515 *Society*, 125, 723–757, <https://doi.org/10.1002/qj.49712555417>, 1999.
- Geer, A. J. and Bauer, P.: Observation errors in all-sky data assimilation, *Quarterly Journal of the Royal Meteorological Society*, 137, 2024–2037, <https://doi.org/10.1002/qj.830>, 2011.
- Geer, A. J., Baordo, F., Bormann, N., Chambon, P., English, S. J., Kazumori, M., Lawrence, H., Lean, P., Lonitz, K., and Lupu, C.: The growing impact of satellite observations sensitive to humidity, cloud and precipitation, *Quarterly Journal of the Royal Meteorological*
 520 *Society*, 143, 3189–3206, <https://doi.org/10.1002/qj.3172>, 2017.
- Geer, A. J., Lonitz, K., Weston, P., Kazumori, M., Okamoto, K., Zhu, Y., Liu, E. H., Collard, A., Bell, W., Migliorini, S., Chambon, P., Fourrié, N., Kim, M.-J., Köpken-Watts, C., and Schraff, C.: All-sky satellite data assimilation at operational weather forecasting centres, *Quarterly Journal of the Royal Meteorological Society*, 144, 1191–1217, <https://doi.org/10.1002/qj.3202>, 2018.
- Golub, G. H. and Ye, Q.: Inexact Preconditioned Conjugate Gradient Method with Inner-Outer Iteration, *SIAM Journal on Scientific Computing*, 21, 1305–1320, <https://doi.org/10.1137/s1064827597323415>, 1999.
- 525

- Ha, S., Snyder, C., Skamarock, W. C., Anderson, J., and Collins, N.: Ensemble Kalman Filter Data Assimilation for the Model for Prediction Across Scales (MPAS), *Monthly Weather Review*, 145, 4673–4692, <https://doi.org/10.1175/mwr-d-17-0145.1>, 2017.
- Hamill, T. M.: Hypothesis Tests for Evaluating Numerical Precipitation Forecasts, *Weather and Forecasting*, 14, 155–167, [https://doi.org/10.1175/1520-0434\(1999\)014<0155:htfenp>2.0.co;2](https://doi.org/10.1175/1520-0434(1999)014<0155:htfenp>2.0.co;2), 1999.
- 530 Hamill, T. M. and Snyder, C.: A Hybrid Ensemble Kalman Filter–3D Variational Analysis Scheme, *Monthly Weather Review*, 128, 2905–2919, [https://doi.org/10.1175/1520-0493\(2000\)128<2905:ahkefv>2.0.co;2](https://doi.org/10.1175/1520-0493(2000)128<2905:ahkefv>2.0.co;2), 2000.
- Hamill, T. M., Whitaker, J. S., and Snyder, C.: Distance-Dependent Filtering of Background Error Covariance Estimates in an Ensemble Kalman Filter, *Monthly Weather Review*, 129, 2776–2790, [https://doi.org/10.1175/1520-0493\(2001\)129<2776:ddfobe>2.0.co;2](https://doi.org/10.1175/1520-0493(2001)129<2776:ddfobe>2.0.co;2), 2001.
- Hogan, R. J., Ferro, C. A. T., Jolliffe, I. T., and Stephenson, D. B.: Equitability Revisited: Why the “Equitable Threat Score” Is Not Equitable, *Weather and Forecasting*, 25, 710–726, <https://doi.org/10.1175/2009waf2222350.1>, 2010.
- 535 Holdaway, D., Vernieres, G., Wlasak, M., and King, S.: Status of Model Interfacing in the Joint Effort for Data Assimilation Integration (JEDI), *JCSDA Quarterly Newsletter*, 66, 15–24, <https://doi.org/10.25923/RB19-0Q26>, 2020.
- Honeyager, R., Herbener, S., Zhang, X., Shlyueva, A., and Trémolet, Y.: Observations in the Joint Effort for Data Assimilation Integration (JEDI) - Unified Forward Operator (UFO) and Interface for Observation Data Access (IODA), *JCSDA Quarterly Newsletter*, 66, 24–33, <https://doi.org/10.25923/RB19-0Q26>, 2020.
- 540 Hong, S.-Y. and Lim, J.-O. J.: The WRF Single-Moment 6-Class Microphysics Scheme (WSM6), *J. Korean Meteor. Soc.*, 42, 129–151, 2006.
- Hong, S.-Y., Noh, Y., and Dudhia, J.: A New Vertical Diffusion Package with an Explicit Treatment of Entrainment Processes, *Monthly Weather Review*, 134, 2318–2341, <https://doi.org/10.1175/mwr3199.1>, 2006.
- 545 Houtekamer, P. L. and Mitchell, H. L.: A Sequential Ensemble Kalman Filter for Atmospheric Data Assimilation, *Monthly Weather Review*, 129, 123–137, [https://doi.org/10.1175/1520-0493\(2001\)129<0123:asekff>2.0.co;2](https://doi.org/10.1175/1520-0493(2001)129<0123:asekff>2.0.co;2), 2001.
- Iacono, M. J., Delamere, J. S., Mlawer, E. J., Shephard, M. W., Clough, S. A., and Collins, W. D.: Radiative forcing by long-lived greenhouse gases: Calculations with the AER radiative transfer models, *Journal of Geophysical Research*, 113, <https://doi.org/10.1029/2008jd009944>, 2008.
- 550 Ingleby, B.: Global assimilation of air temperature, humidity, wind and pressure from surface stations, *Quarterly Journal of the Royal Meteorological Society*, 141, 504–517, <https://doi.org/10.1002/qj.2372>, 2014.
- Jiménez, P. A., Dudhia, J., González-Rouco, J. F., Navarro, J., Montávez, J. P., and García-Bustamante, E.: A Revised Scheme for the WRF Surface Layer Formulation, *Monthly Weather Review*, 140, 898–918, <https://doi.org/10.1175/mwr-d-11-00056.1>, 2012.
- Joint Center for Satellite Data Assimilation and National Center for Atmospheric Research: JEDI-MPAS Data Assimilation System v1.0.0, <https://doi.org/10.5281/ZENODO.6784274>, 2021.
- 555 Kalnay, E., Kanamitsu, M., Kistler, R., Collins, W., Deaven, D., Gandin, L., Iredell, M., Saha, S., White, G., Woollen, J., et al.: The NCEP/NCAR 40-year reanalysis project, *Bulletin of the American meteorological Society*, 77, 437–472, [https://doi.org/10.1175/1520-0477\(1996\)077<0437:TNYRP>2.0.CO;2](https://doi.org/10.1175/1520-0477(1996)077<0437:TNYRP>2.0.CO;2), 1996.
- Kleist, D. T. and Ide, K.: An OSSE-Based Evaluation of Hybrid Variational–Ensemble Data Assimilation for the NCEP GFS. Part II: 4DEnVar and Hybrid Variants, *Monthly Weather Review*, 143, 452–470, <https://doi.org/10.1175/mwr-d-13-00350.1>, 2015.
- 560 Klemp, J. B.: A Terrain-Following Coordinate with Smoothed Coordinate Surfaces, *Monthly Weather Review*, 139, 2163–2169, <https://doi.org/10.1175/mwr-d-10-05046.1>, 2011.

- Klemp, J. B., Skamarock, W. C., and Dudhia, J.: Conservative Split-Explicit Time Integration Methods for the Compressible Nonhydrostatic Equations, *Monthly Weather Review*, 135, 2897–2913, <https://doi.org/10.1175/mwr3440.1>, 2007.
- 565 Liu, Q. and Weng, F.: Advanced Doubling–Adding Method for Radiative Transfer in Planetary Atmospheres, *Journal of the Atmospheric Sciences*, 63, 3459–3465, <https://doi.org/10.1175/jas3808.1>, 2006.
- Liu, Z., Ban, J., Hong, J.-S., and Kuo, Y.-H.: Multi-resolution incremental 4D-Var for WRF: Implementation and application at convective scale, *Quarterly Journal of the Royal Meteorological Society*, 146, 3661–3674, <https://doi.org/10.1002/qj.3865>, 2020.
- Lorenc, A. C.: Analysis methods for numerical weather prediction, *Quarterly Journal of the Royal Meteorological Society*, 112, 1177–1194, 570 <https://doi.org/10.1002/qj.49711247414>, 1986.
- Lorenc, A. C.: The potential of the ensemble Kalman filter for NWP—a comparison with 4D-Var, *Quarterly Journal of the Royal Meteorological Society*, 129, 3183–3203, <https://doi.org/10.1256/qj.02.132>, 2003.
- McCormack, J. P., Eckermann, S. D., Siskind, D. E., and McGee, T. J.: CHEM2D-OPP: A new linearized gas-phase ozone photochemistry parameterization for high-altitude NWP and climate models, *Atmospheric Chemistry and Physics*, 6, 4943–4972, 575 <https://doi.org/10.5194/acp-6-4943-2006>, 2006.
- Ménétrier, B.: Normalized Interpolated Convolution from an Adaptive Subgrid documentation, https://github.com/benjaminmenetrier/nicas_doc/blob/master/nicas_doc.pdf, 2020.
- Migliorini, S. and Candy, B.: All-sky satellite data assimilation of microwave temperature sounding channels at the Met Office, *Quarterly Journal of the Royal Meteorological Society*, 145, 867–883, <https://doi.org/10.1002/qj.3470>, 2019.
- 580 National Centers For Environmental Prediction/National Weather Service/NOAA/U.S. Department Of Commerce: NCEP ADP Global Upper Air and Surface Weather Observations (PREPBUFR format), <https://doi.org/10.5065/Z83F-N512>, 2008.
- National Centers For Environmental Prediction/National Weather Service/NOAA/U.S. Department Of Commerce: NCEP GDAS Satellite Data 2004-continuing, <https://doi.org/10.5065/DWYZ-Q852>, 2009.
- National Centers For Environmental Prediction/National Weather Service/NOAA/U.S. Department Of Commerce: NCEP GFS 0.25 Degree 585 Global Forecast Grids Historical Archive, <https://doi.org/10.5065/D65D8PWK>, 2015.
- Rabier, F., Järvinen, H., Klinker, E., Mahfouf, J.-F., and Simmons, A.: The ECMWF operational implementation of four-dimensional variational assimilation. I: Experimental results with simplified physics, *Quarterly Journal of the Royal Meteorological Society*, 126, 1143–1170, <https://doi.org/10.1002/qj.49712656415>, 2007.
- Schwartz, C. S., Liu, Z., and Huang, X.-Y.: Sensitivity of Limited-Area Hybrid Variational-Ensemble Analyses and Forecasts to Ensemble 590 Perturbation Resolution, *Monthly Weather Review*, 143, 3454–3477, <https://doi.org/10.1175/mwr-d-14-00259.1>, 2015.
- Shao, H., Derber, J., Huang, X.-Y., Hu, M., Newman, K., Stark, D., Lueken, M., Zhou, C., Nance, L., Kuo, Y.-H., and Brown, B.: Bridging Research to Operations Transitions: Status and Plans of Community GSI, *Bulletin of the American Meteorological Society*, 97, 1427–1440, <https://doi.org/10.1175/bams-d-13-00245.1>, 2016.
- Skamarock, W. C., Klemp, J. B., Duda, M. G., Fowler, L. D., Park, S.-H., and Ringler, T. D.: A Multiscale Nonhydrostatic Atmospheric Model 595 Using Centroidal Voronoi Tessellations and C-Grid Staggering, *Monthly Weather Review*, 140, 3090–3105, <https://doi.org/10.1175/mwr-d-11-00215.1>, 2012.
- Skamarock, W. C., Duda, M. G., Ha, S., and Park, S.-H.: Limited-Area Atmospheric Modeling Using an Unstructured Mesh, *Monthly Weather Review*, 146, 3445–3460, <https://doi.org/10.1175/mwr-d-18-0155.1>, 2018.
- Tarantola, A.: Inverse Problem Theory and Methods for Model Parameter Estimation, *Society for Industrial and Applied Mathematics*, 600 <https://doi.org/10.1137/1.9780898717921>, 2005.

- Tiedtke, M.: A Comprehensive Mass Flux Scheme for Cumulus Parameterization in Large-Scale Models, *Monthly Weather Review*, 117, 1779–1800, [https://doi.org/10.1175/1520-0493\(1989\)117<1779:acmfsf>2.0.co;2](https://doi.org/10.1175/1520-0493(1989)117<1779:acmfsf>2.0.co;2), 1989.
- Trémolet, Y.: Joint Effort for Data Assimilation Integration (JEDI) Design and Structure, *JCSDA Quarterly Newsletter*, 66, 6–14, <https://doi.org/10.25923/RB19-0Q26>, 2020.
- 605 Trémolet, Y. and Auligné, T.: The Joint Effort for Data Assimilation Integration (JEDI), *JCSDA Quarterly Newsletter*, 66, 1–5, <https://doi.org/10.25923/RB19-0Q26>, 2020.
- Wang, X.: Incorporating Ensemble Covariance in the Gridpoint Statistical Interpolation Variational Minimization: A Mathematical Framework, *Monthly Weather Review*, 138, 2990–2995, <https://doi.org/10.1175/2010mwr3245.1>, 2010.
- Wang, X., Parrish, D., Kleist, D., and Whitaker, J.: GSI 3DVar-Based Ensemble–Variational Hybrid Data Assimilation for NCEP Global
610 Forecast System: Single-Resolution Experiments, *Monthly Weather Review*, 141, 4098–4117, <https://doi.org/10.1175/mwr-d-12-00141.1>, 2013.
- Wu, Y., Liu, Z., and Li, D.: Improving forecasts of a record-breaking rainstorm in Guangzhou by assimilating every 10-min AHI radiances with WRF 4DVAR, *Atmospheric Research*, 239, 104912, <https://doi.org/10.1016/j.atmosres.2020.104912>, 2020.
- Xie, P., Joyce, R., Wu, S., Yoo, S.-H., Yarosh, Y., Sun, F., and Lin, R.: Reprocessed, Bias-Corrected CMORPH Global High-Resolution
615 Precipitation Estimates from 1998, *Journal of Hydrometeorology*, 18, 1617–1641, <https://doi.org/10.1175/jhm-d-16-0168.1>, 2017.
- Xie, P., Joyce, R., Wu, S., Yoo, S.-H., Yarosh, Y., Sun, F., Lin, R., and NOAA CDR Program: NOAA Climate Data Record (CDR) of CPC Morphing Technique (CMORPH) High Resolution Global Precipitation Estimates, Version 1, <https://doi.org/10.25921/W9VA-Q159>, 2019.
- Xu, K.-M. and Randall, D. A.: A Semiempirical Cloudiness Parameterization for Use in Climate Models, *Journal of the Atmospheric
620 Sciences*, 53, 3084–3102, [https://doi.org/10.1175/1520-0469\(1996\)053<3084:ascpfu>2.0.co;2](https://doi.org/10.1175/1520-0469(1996)053<3084:ascpfu>2.0.co;2), 1996.
- Zhang, C. and Wang, Y.: Projected Future Changes of Tropical Cyclone Activity over the Western North and South Pacific in a 20-km-Mesh Regional Climate Model, *Journal of Climate*, 30, 5923–5941, <https://doi.org/10.1175/jcli-d-16-0597.1>, 2017.
- Zhou, X., Zhu, Y., Hou, D., Luo, Y., Peng, J., and Wobus, R.: Performance of the new NCEP Global Ensemble Forecast System in a parallel experiment, *Weather and Forecasting*, 32, 1989–2004, <https://doi.org/10.1175/WAF-D-17-0023.1>, 2017.
- 625 Zhu, Y., Derber, J., Collard, A., Dee, D., Treadon, R., Gayno, G., and Jung, J. A.: Enhanced radiance bias correction in the National Centers for Environmental Prediction's Gridpoint Statistical Interpolation data assimilation system, *Quarterly Journal of the Royal Meteorological Society*, 140, 1479–1492, <https://doi.org/10.1002/qj.2233>, 2013.
- Zhu, Y., Liu, E., Mahajan, R., Thomas, C., Groff, D., Delst, P. V., Collard, A., Kleist, D., Treadon, R., and Derber, J. C.: All-Sky Microwave Radiance Assimilation in NCEP's GSI Analysis System, *Monthly Weather Review*, 144, 4709–4735, <https://doi.org/10.1175/mwr-d-15-0445.1>, 2016.
630
- Zhu, Y., Gayno, G., Purser, R. J., Su, X., and Yang, R.: Expansion of the All-Sky Radiance Assimilation to ATMS at NCEP, *Monthly Weather Review*, 147, 2603–2620, <https://doi.org/10.1175/mwr-d-18-0228.1>, 2019.

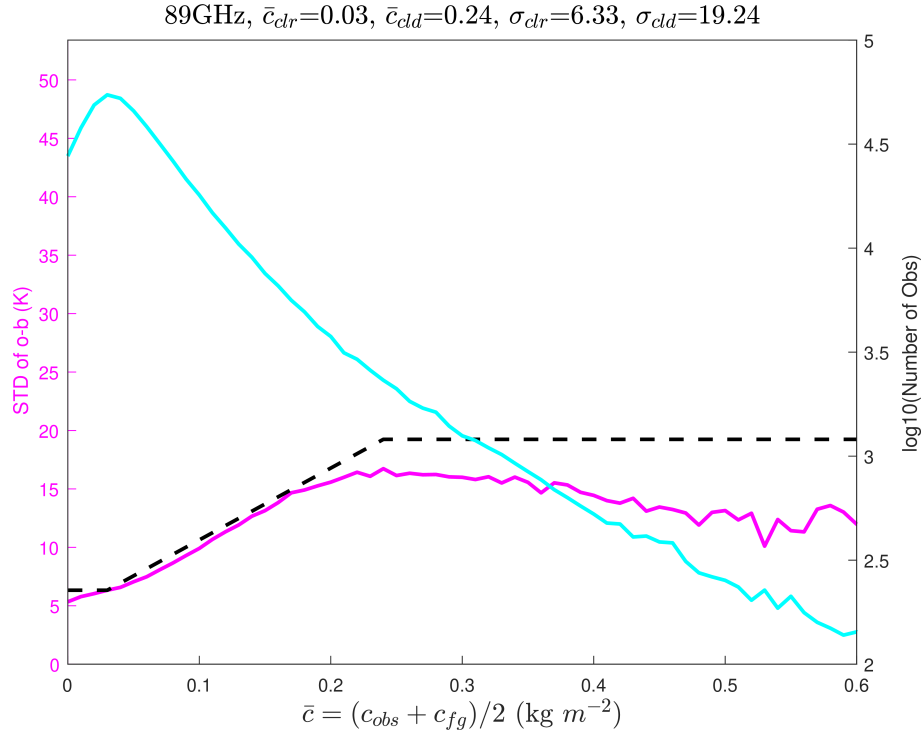


Figure 1. All-sky observation error model for NOAA-19 AMSU-A channel 15. ~~See text~~The magenta curve is the statistics of the standard deviation of O minus B (left y-axis) as a function of the model-observation averaged cloud liquid water path (x-axis). The cyan curve gives the number of observations (right y-axis) used in each bin's statistics (0.01 kg/m² bin interval). The dashed black curve is the fitted piecewise-linear ramp function of the magenta curve, serving as the all-sky observation error model. Variables in the title are those of Eq. (11) in section 4.

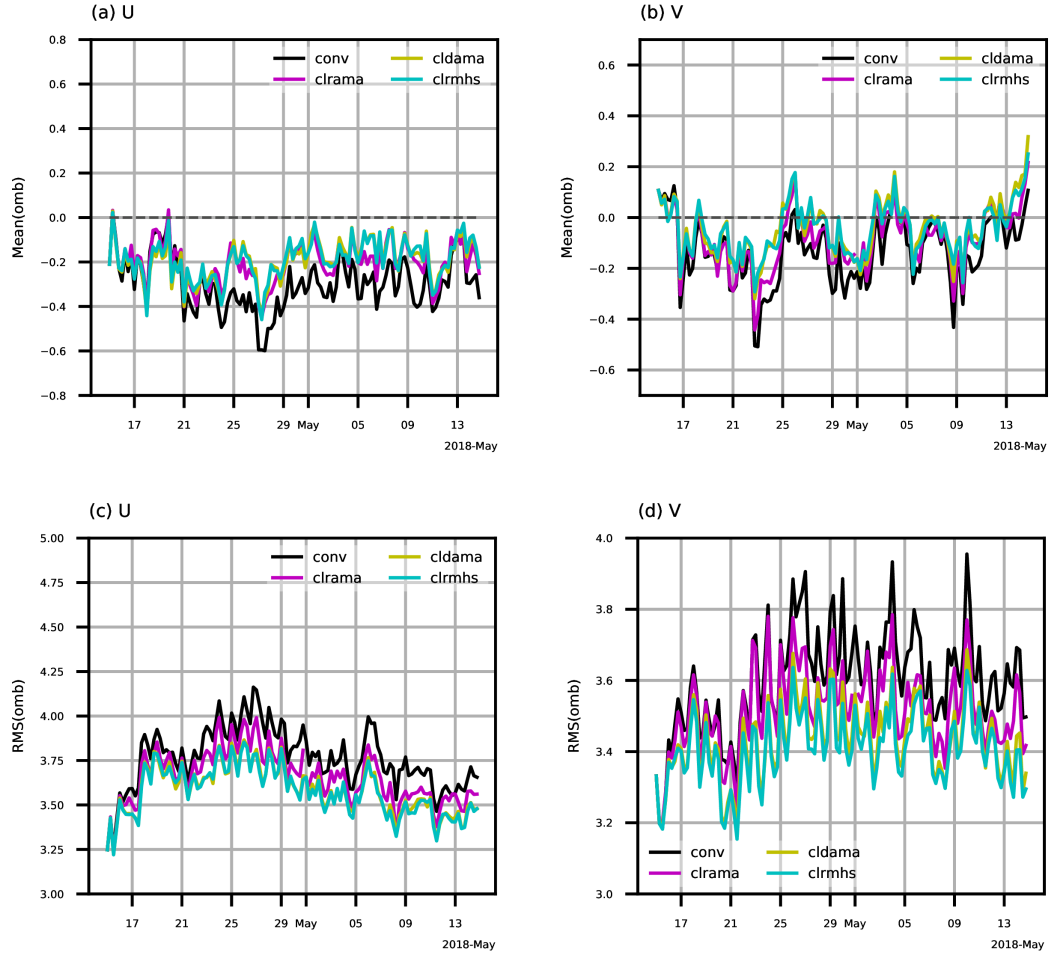


Figure 2. Time series (0000 UTC 15 April - 1800 UTC 14 May, 2018) of (a, b) mean and (c, d) RMS of OMB for AMV (a, c) zonal and (b, d) meridional wind components (units: ms^{-1}) from the four experiments. The background is a 6-h-6 h forecast. Statistics are computed over the globe and averaged for all vertical levels.

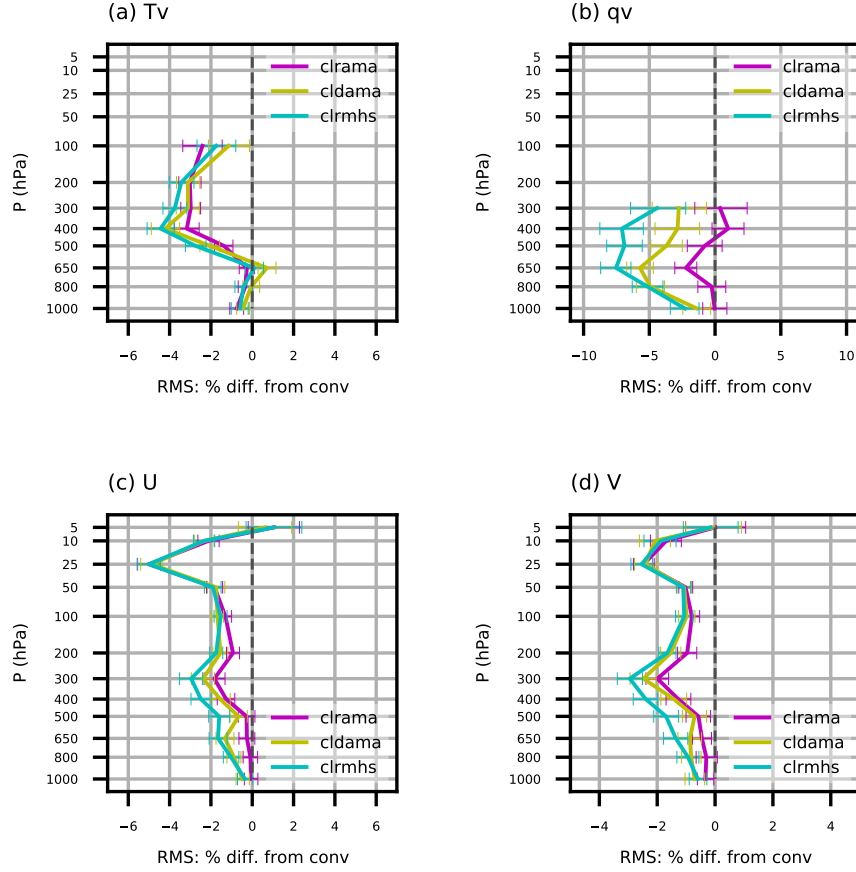


Figure 3. Vertical distributions of relative RMS reduction of OMB for radiosonde's (a) virtual temperature(T_v), (b) specific humidity(q_v), (c) zonal wind, and (d) meridional wind. Statistics are computed over the period from 0000 UTC 18 April to 1800 UTC 14 May 2018 for the three radiance DA experiments against the **conv** experiment. Negative percentage indicates the positive impact from radiance DA experiments relative to the non-radiance DA experiment.

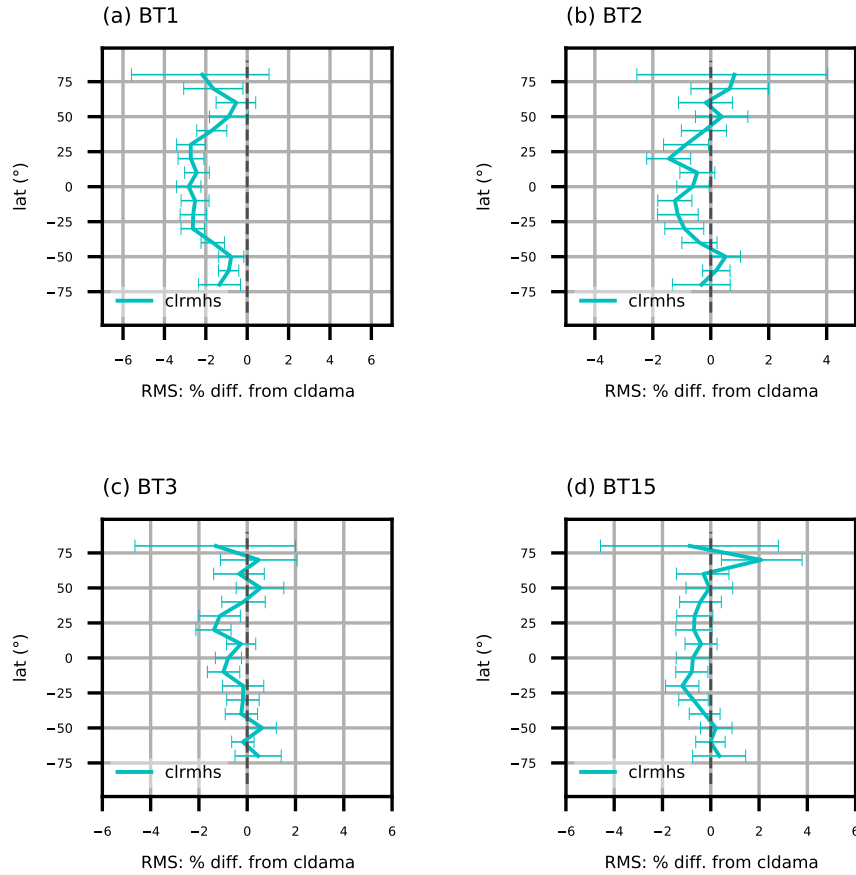


Figure 4. Similar to Fig. 3, but for latitudinal variation of relative RMS reduction of OMB for NOAA-19 AMSU-A ch 1-3 and 15 for **clrmhs** versus **cldama**.

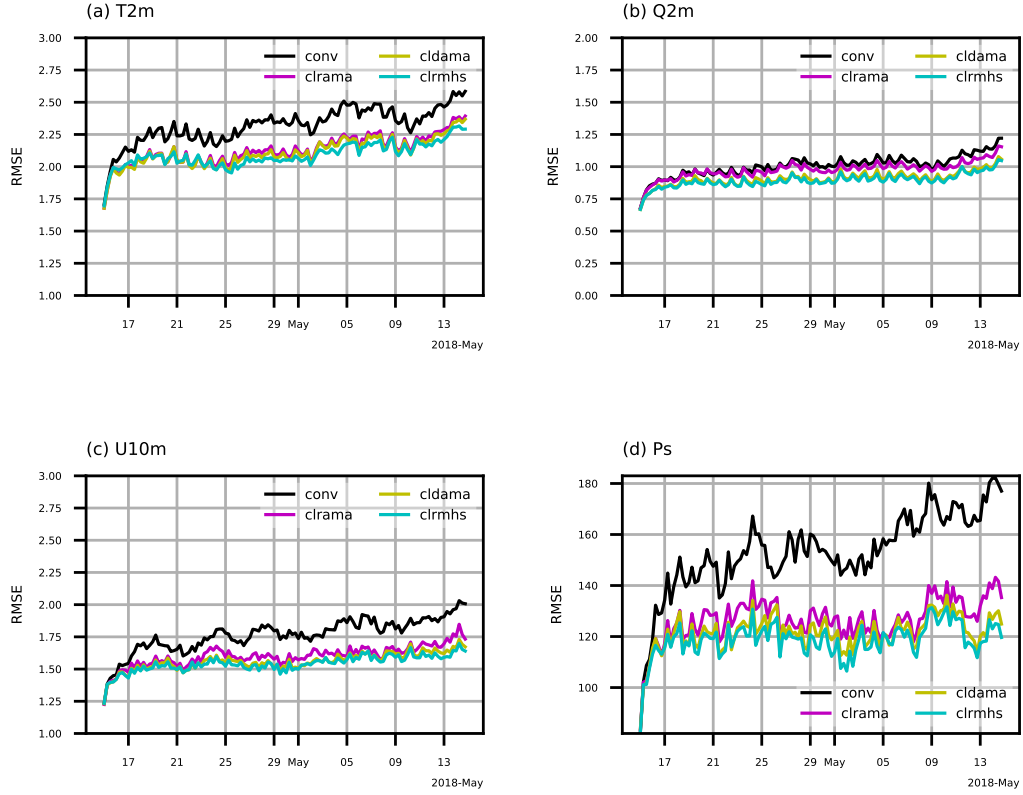


Figure 5. Time series (0000 UTC 15 April - 1800 UTC 14 May, 2018) of RMSE of cycling background with respect to GFS analyses for global (a) temperature (units: Kelvin) and (b) specific humidity (units: g kg^{-1}) at 2 meters, (c) zonal wind component (units: ms^{-1}) at 10 meters, and (d) surface pressure (units: Pa) from the four experiments.

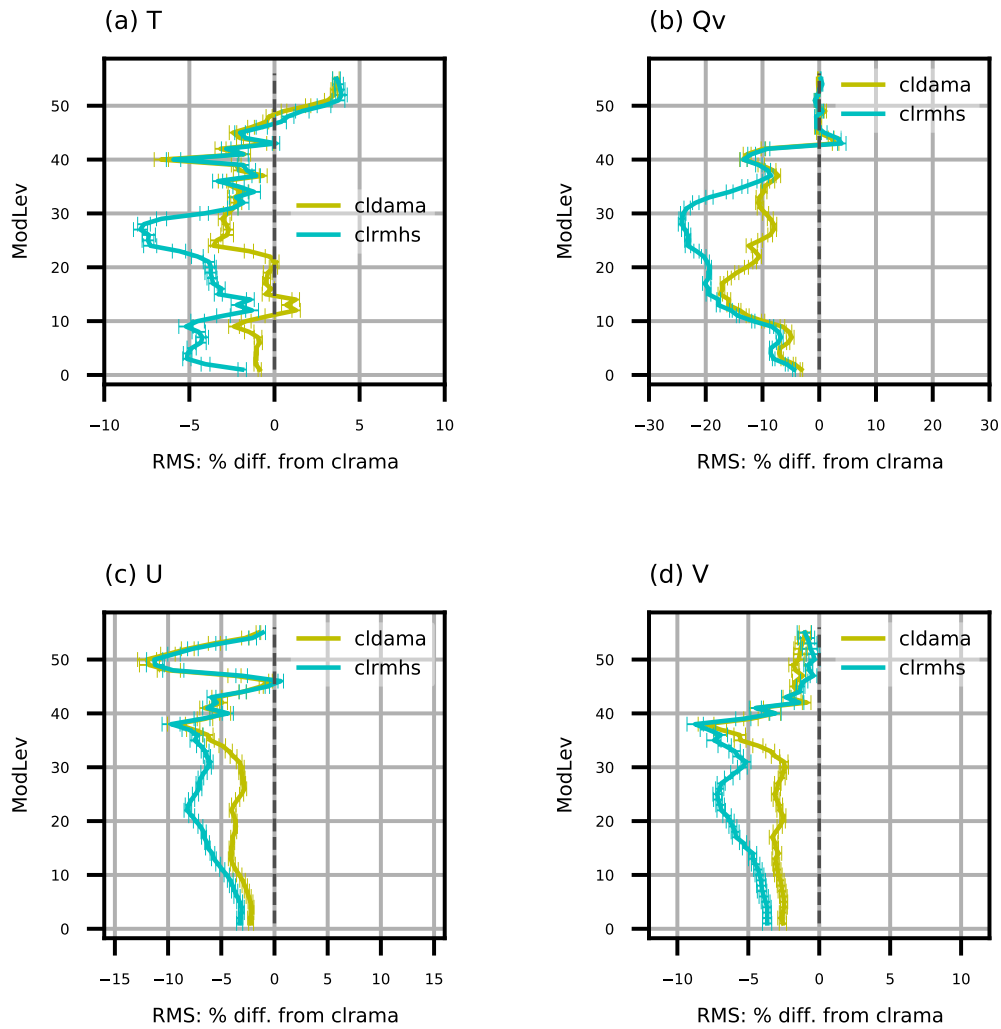


Figure 6. Vertical distributions of relative RMSE reduction (with respect to GFS analyses) reduction of cycling background for global (a) temperature, (b) water vapor mixing ratio, (c) zonal wind, and (d) meridional wind (**cldama** and **clrmhs** versus **clrama**). Statistics are for the period from 0000 UTC 18 April to 1800 UTC 14 May, 2018.

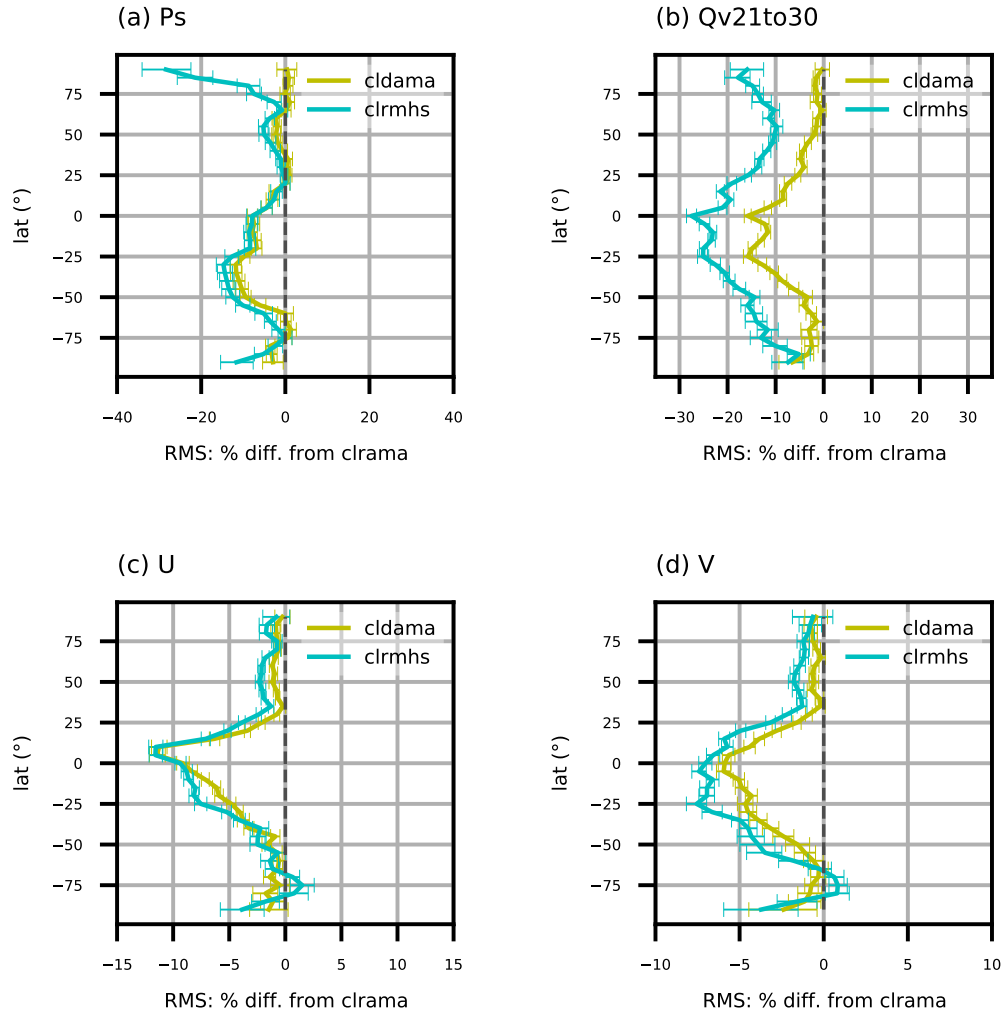


Figure 7. Similar to Fig. 6, but for latitudinal variations of RMSE reduction for (a) surface pressure, (b) water vapor mixing ratio of model level 21 to 30, and the whole column (c) zonal wind and (d) meridional wind.

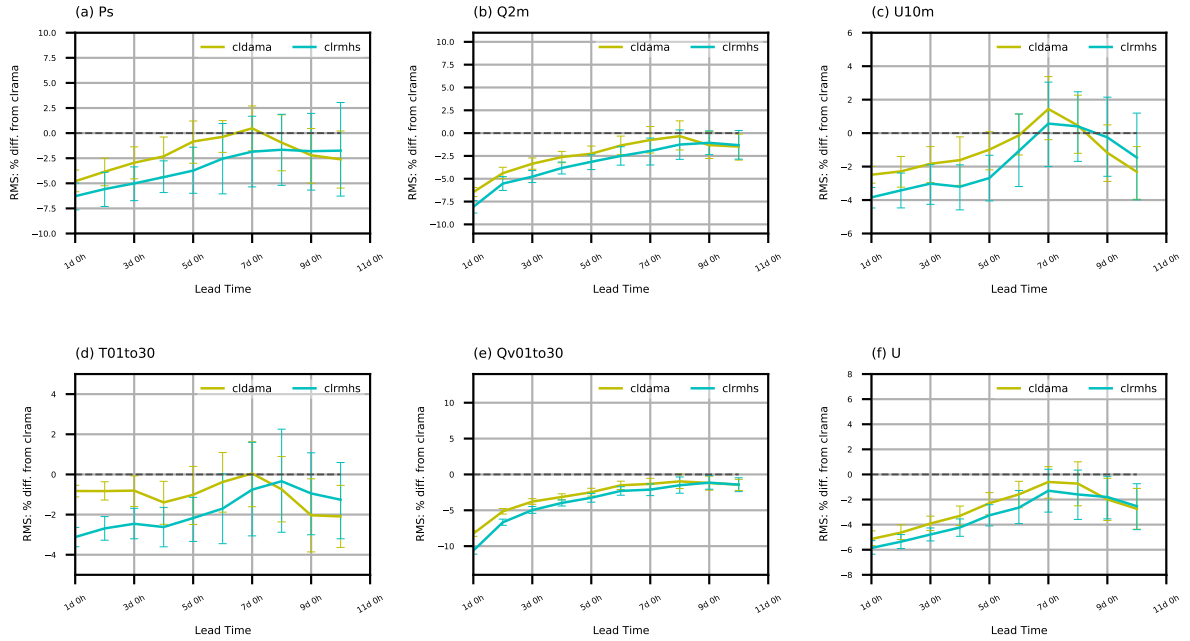


Figure 8. Relative RMSE reductions (with respect to GFS analyses) as a function of forecast lead time for global (a) surface pressure, (b) specific humidity at 2 meters, (c) zonal wind at 10 meters, (d) temperature and (e) water vapor mixing ratio below model level 30, and (f) the whole column zonal wind (cldama and clrmhs versus clrama). Statistics are aggregated over all 27 forecasts.

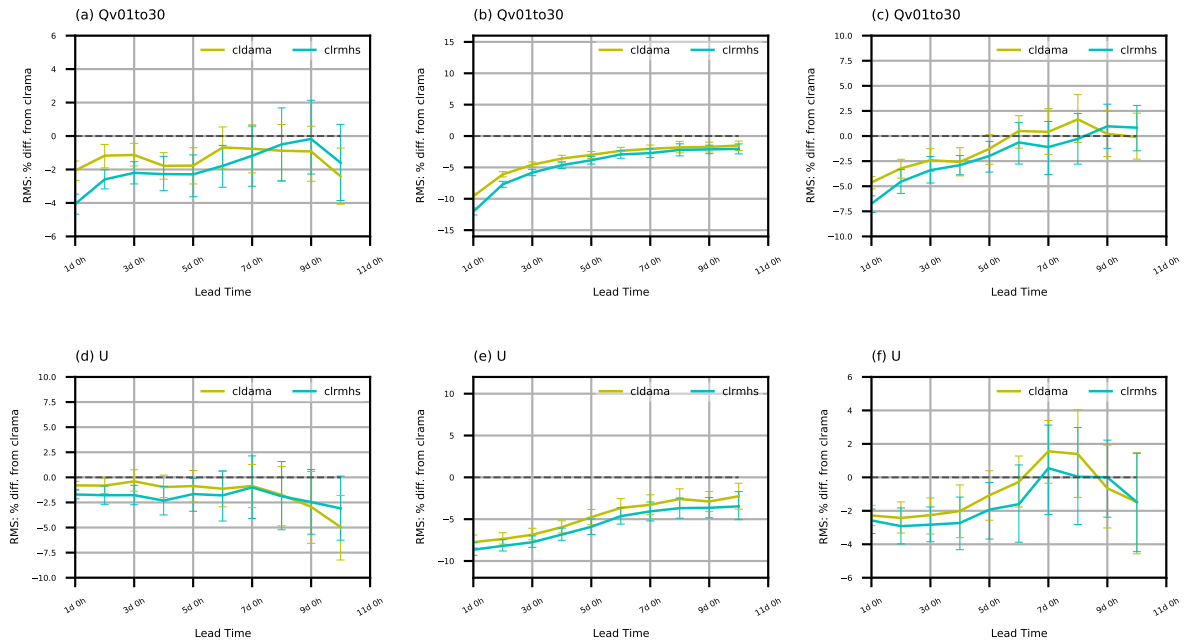


Figure 9. Similar to Fig. 8, but for water vapor mixing ratio below model level 30 and zonal wind over the three regions (NXTro: 30° N - 90° N; Tro: 30° S - 30° N; SXTro: 30° S - 90° S)

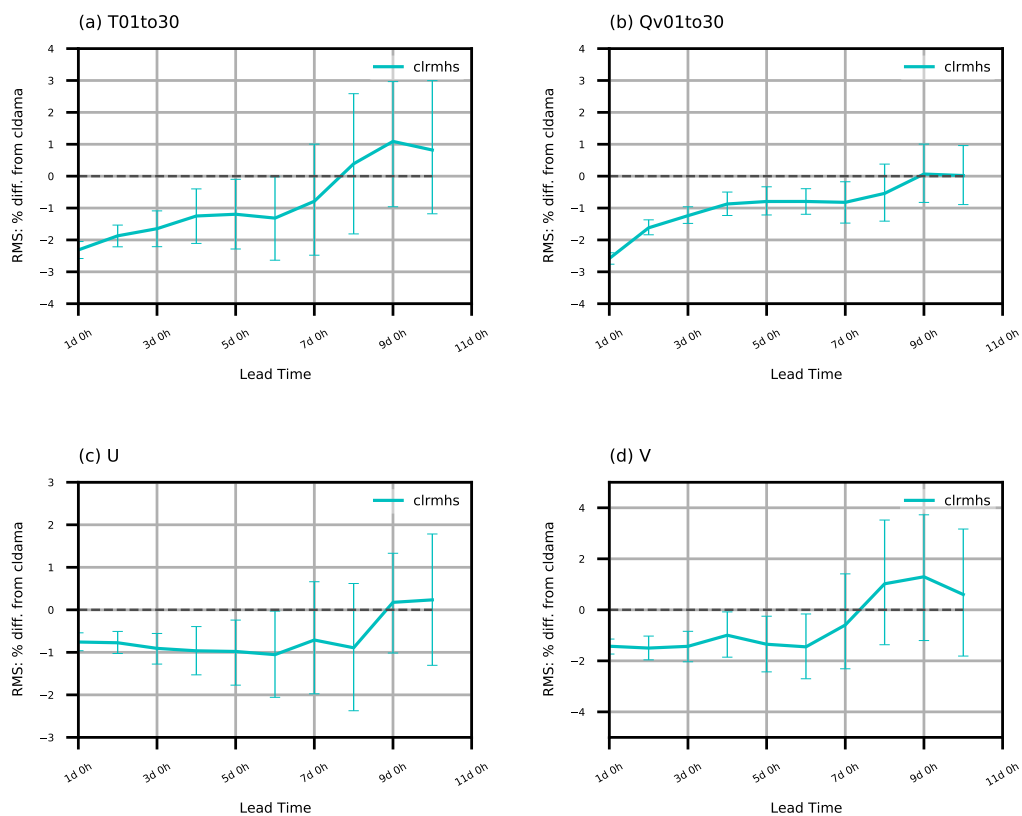


Figure 10. Similar to Fig. 8, but for cirmhs versus cldama of four upper air variables

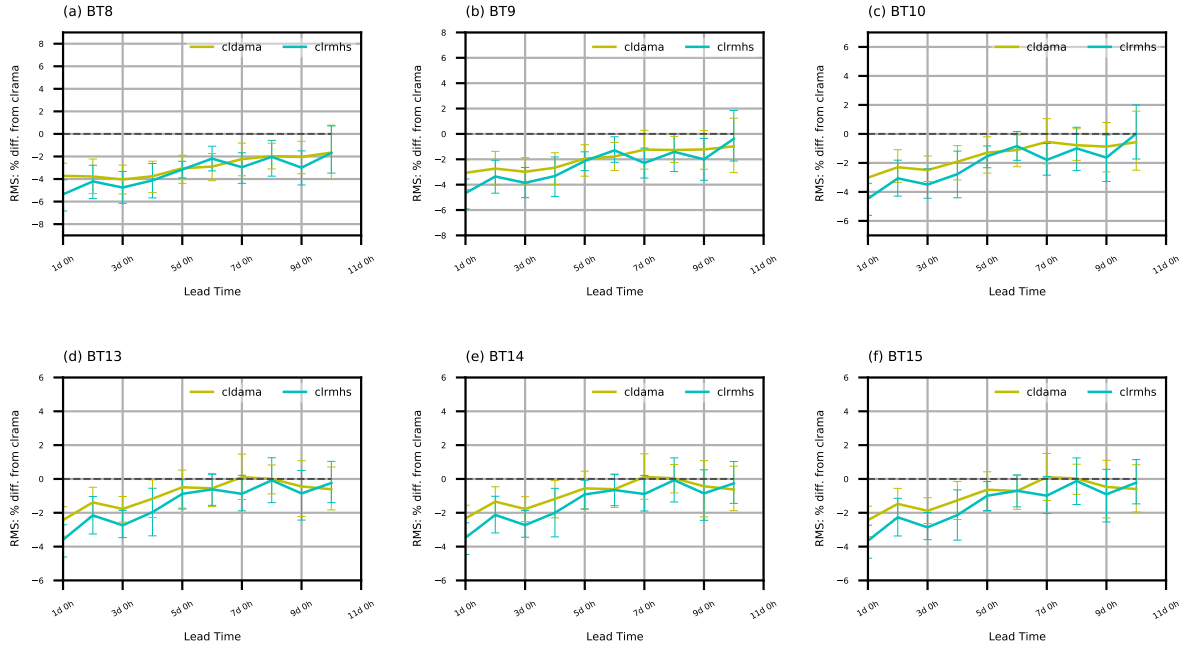


Figure 11. Similar to Fig. 8, but for RMSE in AHI six channels' brightness temperature space.

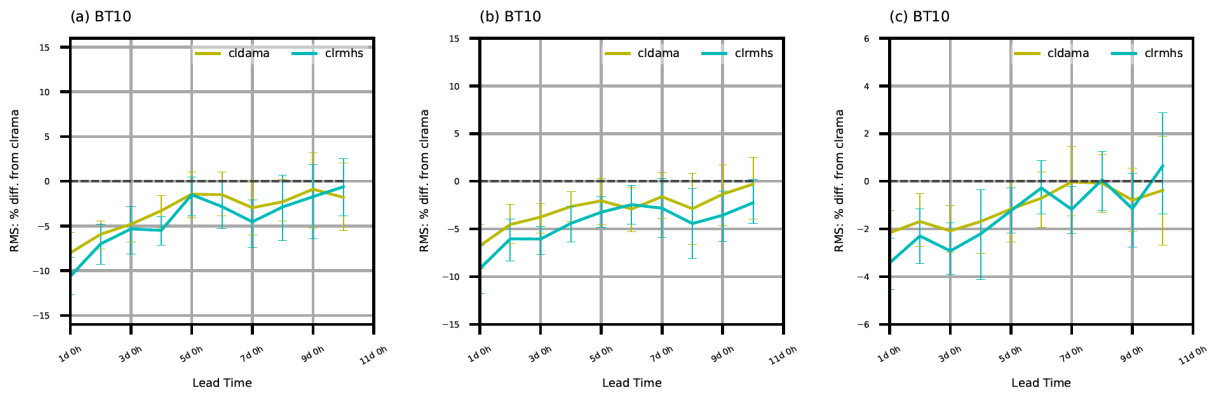


Figure 12. Similar to Fig. 11, but for AHI channel 10's error statistics over (a) clear, (b) partly cloudy, and (c) fully cloudy pixels, respectively.

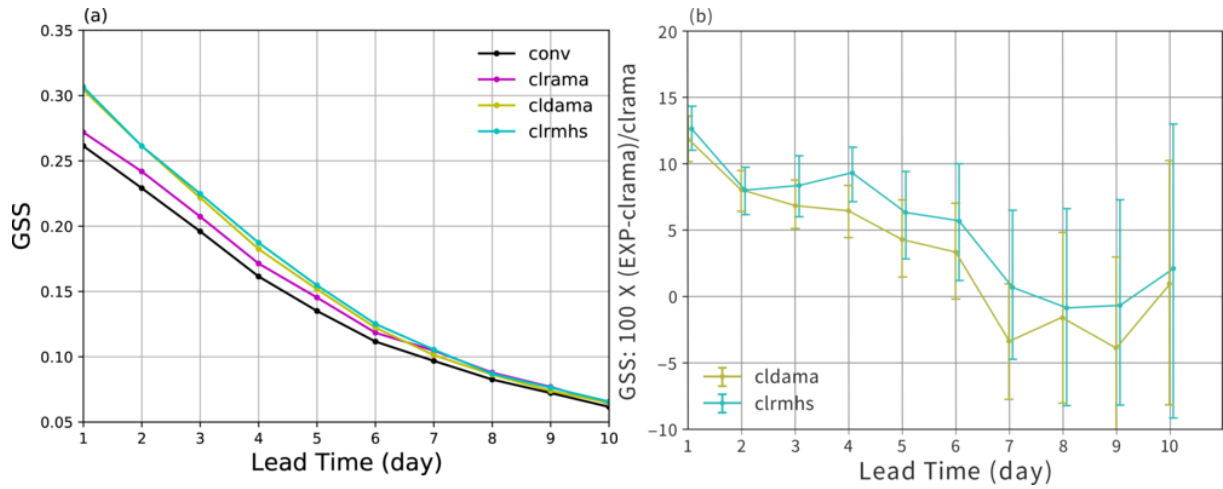


Figure 13. (a) Gilbert Skill Scores (GSS) of ~~24-h-24 h~~ accumulated precipitation forecast verified against CMORPH observations for a threshold of 10 mm; (b) Relative difference of GSS between ~~cldama/clrmhs~~ and ~~clrama~~, also for a threshold of 10 mm.

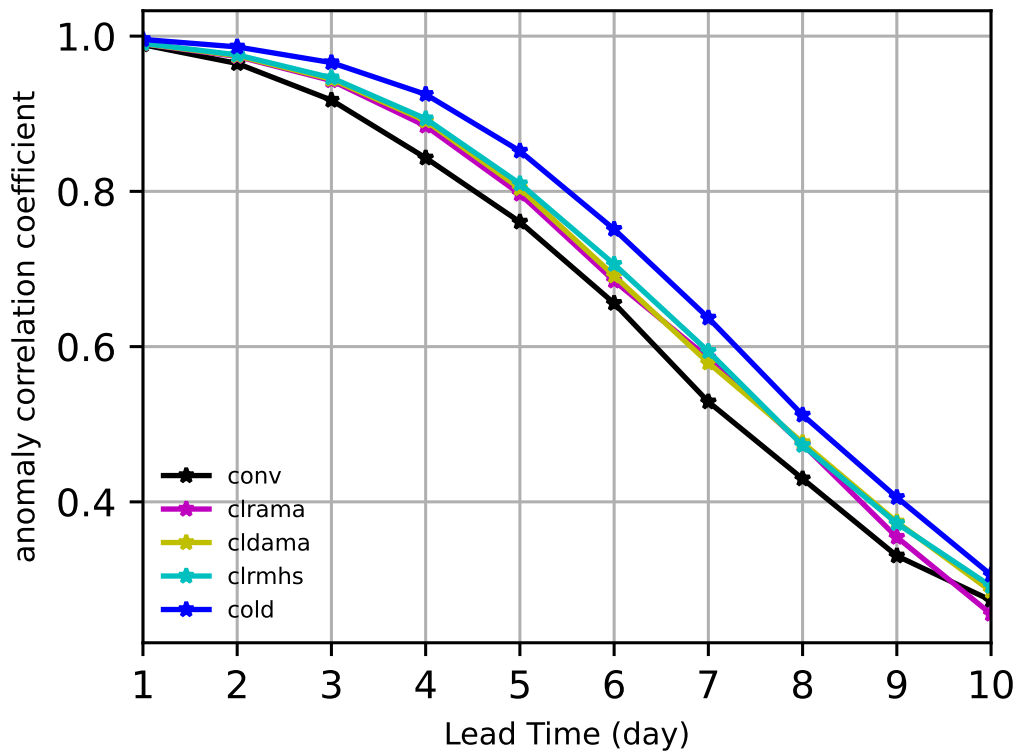


Figure 14. Global Anomaly Correlation Coefficients of 500 hPa geopotential height as a function of forecast lead time for the four cycling experiments together with the cold start ~~forecast-initialised~~ ~~forecasts initialized~~ from GFS analyses (~~light~~-blue).