

Response to Review by RC2

Relevant figures to accompany this response:

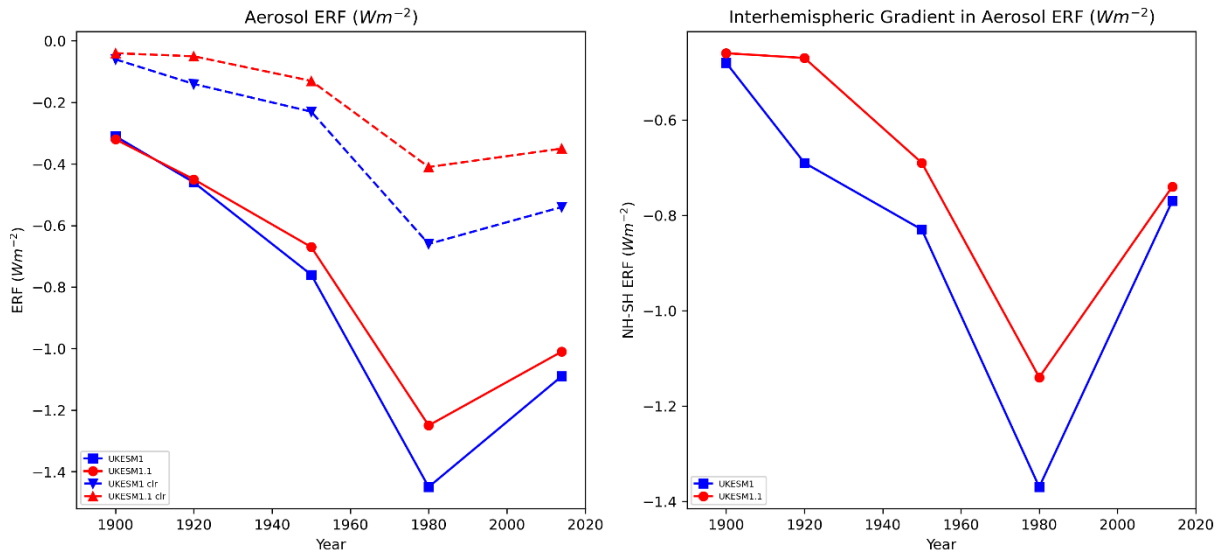


Figure: (left) Timeseries of the aerosol ERF from UKESM1 (blue) and UKESM1.1 (red) for all-sky (solid) and clear-sky (dashed) conditions. The aerosol ERFs are calculated for selected timeslices along the historical period; (right) the interhemispheric gradient in aerosol ERF for each timeslice.

Comparison of using tas versus blended tas/sst dataset for figure 3:

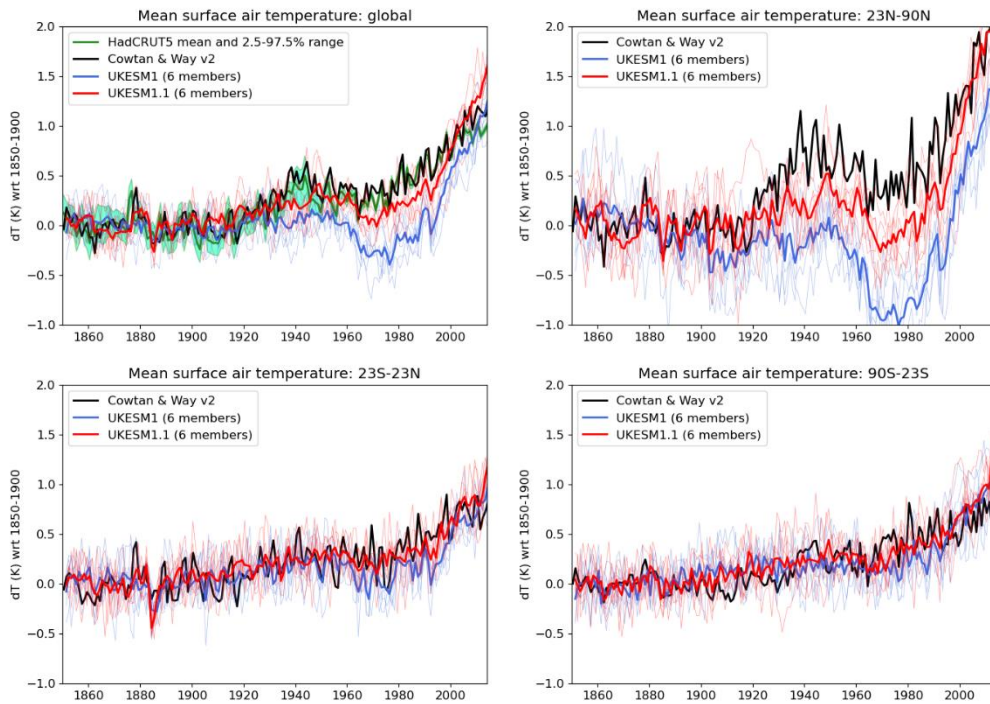


Figure (above): Surface air temperature anomalies using only 'tas'.

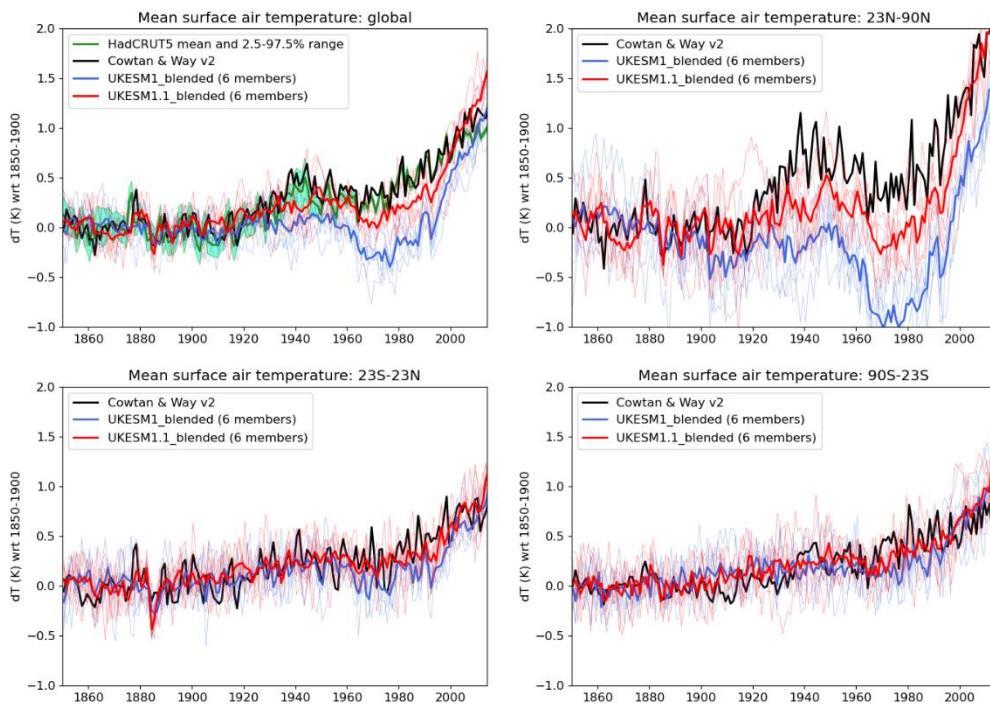


Figure (above): Surface air temperature anomalies using a blended 'tas' and SST dataset.