

# The CHIMERE v2020r1 online chemistry-transport model

Laurent MENUT<sup>1</sup>, Bertrand BESSAGNET<sup>1,6</sup>, Régis BRIANT<sup>1</sup>, Arineh CHOLAKIAN<sup>1</sup>, Florian COUVIDAT<sup>2</sup>, Sylvain MAILLER<sup>1,3</sup>, Romain PENNEL<sup>1</sup>, Guillaume SIOUR<sup>4</sup>, Paolo TUCCELLA<sup>5</sup>, Solène TURQUETY<sup>1</sup>, and Myrto VALARI<sup>1</sup>

<sup>1</sup>Laboratoire de Météorologie Dynamique (LMD), Ecole Polytechnique, IPSL Research University, Ecole Normale Supérieure, Université Paris-Saclay, Sorbonne Universités, UPMC Univ Paris 06, CNRS, Route de Saclay, 91128 Palaiseau, France

<sup>2</sup>INERIS, National Institute for Industrial Environment and Risks, Parc Technologique ALATA, F-60550 Verneuil-en-Halatte, France

<sup>3</sup>Ecole des Ponts, Université Paris-Est, 77455 Champs-sur-Marne, France

<sup>4</sup>Laboratoire Interuniversitaire des Systèmes Atmosphériques (LISA), UMR CNRS 7583, Université Paris Est Créteil et Université de Paris, Institut Pierre Simon Laplace, Créteil, France

<sup>5</sup>CETEMPS, Department of Physical and Chemical Sciences and Center of Excellence in Telesensing of Environment and Model Prediction of Severe Events, University of L'Aquila, Italy.

<sup>6</sup>Now at European Commission, Joint Research Centre (JRC), Ispra, Italy

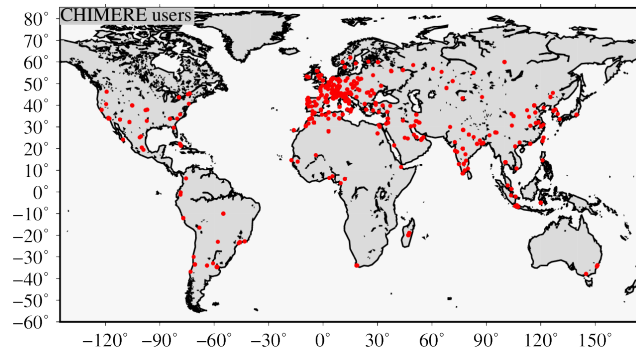
**Correspondence:** Laurent Menut, [menut@lmd.ipsl.fr](mailto:menut@lmd.ipsl.fr)

**Abstract.** The CHIMERE v2020r1 model replaces the v2017r5 version and provides numerous novelties. The most important of which is the online coupling with the WRF meteorological model, via the OASIS3-MCT external coupler. The model can still be used in offline mode; the online mode enables taking into account the direct and indirect effects of aerosols on meteorology. This coupling also enables using the meteorological parameters with sub-hourly time-steps. Some new parameterizations are implemented to increase the model performance and the user's choices: DMS emissions, additional schemes for SOA formation with VBS and H<sub>2</sub>O, improved schemes for mineral dust, biomass burning and sea-salt emissions. The NO<sub>x</sub> emissions from lightning ~~is~~ are added. The model also includes the possibility to use the splitting-operator integration technique. The subgrid scale variability calculation of concentrations due to emission activity sectors is now possible. Finally, a new vertical advection scheme has been implemented, able to simulate more correctly long-range transport of thin pollutants plumes.

## 10 1 Introduction

The CHIMERE chemistry-transport model has been developed and distributed since 1999. It is used for analysis, forecast, and scenarios in the framework of regional air pollution. Since its first version, it has evolved a lot and is now able to accurately model gas and aerosols pollutants, at spatial scales ranging from urban to hemispheric and within the whole troposphere. The number of users is difficult to estimate, but more than 300 different institutes are registered in the users mailing list. Originally, more prominent in France and Europe, the CHIMERE users are now spread all around the world, as displayed in **Figure 1**.

The previous version, called v2017r5 and distributed in 2017, was the last offline version. Its novelties were the code structure, the update or addition of parameterizations, and the possibility to use the model with a hemispheric domain, (Mailler et al., 2017). The new version presented in this article is called v2020r1 (for the year of distribution of this first release).



**Figure 1.** Map of ~~the~~ CHIMERE users ~~in 2021~~.

Numerous new developments are included in this new version, and most of what is described here has already been published in articles by the CHIMERE developers. As for all previous versions, the code is open source and freely available on a website. All databases used to run simulations were also selected for their open data status. In addition to the CHIMERE code itself, this new version is also distributed with the OASIS3-MCT and WRF models.

We can group and summarize these developments as:

1. The online coupling with WRF via OASIS3-MCT, to calculate the possible retroactions of aerosols on radiation (direct effect) and cloud formation (indirect effect), (Briant et al., 2017; Tuccella et al., 2019).
2. Natural emissions: the addition of dimethylsulfide, new schemes for sea-salt, improvements of the mineral dust and biomass burning due to forest fires, NO<sub>x</sub> by lightning, (Cholakian et al., 2018; Menut et al., 2018; Menut, 2018; Turquety et al., 2020).
3. Aerosols chemistry: the addition of the Volatility Basis Set (VBS) scheme (Cholakian et al., 2018), and the new Hydrophilic/Hydrophobic Organics (H<sup>2</sup>O) aerosol scheme, (Couvidat et al., 2012, 2018), coupled with the Secondary Organic Aerosol Processor (SOAP, (Couvidat and Sartelet, 2015)) thermodynamic model.
4. The subgrid scale variability of emissions: for cells with anthropogenic emissions from several activity sectors, it is possible to have pollutants concentrations for each. This option corresponds to Valari and Menut (2010).
5. Vertical transport: updated strategy for the vertical advection of pollutants and the implementation of the Després and Lagoutière (1999) antidiffusive advection scheme, evaluated in Lachatre et al. (2020).
6. The core of the model: with the possibility to use the splitting operators or the integrated production/loss terms approaches.

In this article, we summarize these new developments and show examples of their use. In order to illustrate the changes and quantify the quality of the model, we present an analysis of simulations for the whole year 2014 over the Euro-Mediterranean area. Simulations, with or without new processes, one by one, are compared to measurements and to a reference case.

Section 2 presents the main novelties of this model version. Section 3 presents the simulation of the year 2014 with the model version using all new processes and updated parameterizations. This simulation is called REF. In the next sections, many other simulations are carried out in which the new parameterizations are used or not. In section 5, the online developments are summarized and simulations with and without direct and indirect effects are performed. Results are compared to the REF simulation. The subgrid scale variability of concentrations due to different activity sectors of anthropogenic emissions is described in Section 6. In section 7, the aerosol chemistry changes are presented with the VBS and H<sup>2</sup>O schemes. The VBS scheme is described and its impact is discussed by comparing a simulation without the use of VBS to the REF simulation. The H<sup>2</sup>O scheme is summarized and its use is also compared to the REF simulation. In section 8, all changes regarding the natural emissions are described: the addition of dimethylsulfide (DMS) emissions and the improvements of sea-salt, mineral dust, and biomass burning emissions. The impacts of all the new processes are compared in section 9. In section 10, the code architecture changes are presented, including several optimizations, important for forecasting, and the possibility to use the splitting operator technique for the integration of processes. The management of nesting is described in section 11 and the scalability of the parallelized version is quantified in section 12. Finally, a general conclusion about this new version is presented in section 13.

## 2 What is new in v2020r1 version?

The easiest way to present the novelties of this model version is to list the new or modified users' parameters available in the simulation namelist *chimere.par*. The parameters and their function are summarized in [Table 1](#).

Parameter	Function
<i>Numerics</i>	
ntotprocs	Number of available processors
ratioproc	Ratio procs #chimere/#wrf (real)
accurmet	Manage amount of meteo data write in <i>out</i> file
imethod	Numerical method (twostep:0, splitting:1)
splitcfl	(if splitting) use CFL for trsp only (0/1)
timeverb	Print exec time on screen [0:5]
outloc	Write outfiles locally during run (0/1)
<i>Emissions definitions</i>	
imegan	MEGAN database choice (1/2)
iusedms	DMS marine emissions? (0/1/2/3/4)
iusesalt	Sea salts emissions? (0/1/2/3/4)

iuse_firemis	Fire emissions? (0/1)
ifirevprof	Fire vertical profile shape (1/2/3)
ilinox	NO <sub>x</sub> lightning (0/1)
<i>Emissions scenarios</i>	
factaemis	Factor on anthro surface emissions
factfemis	Factor on fire emissions
factbemis	Factor on biogenic emissions
factdms	Factor on DMS emissions
factdemis	Factor on dust emissions
factsemis	Factor on salt emissions
factlinox	Factor on NO <sub>x</sub> lightning
<i>On line coupling</i>	
online	online [1] or offline [0] modeling
cpl_case	coupling case (0/1/2/3/4)
geodata	Static input data for WPS
dgrb	Dir path for input meteo grib files
wrfrestart	WRF restart param (true/false/optional)
wrf_restart_dir	WRF restart dir path
wrf_tstep_grid	WRF default is 6 in 6*dx
<i>Diagnostics</i>	
nest_topconc	Use global top conc? (when same vert grid) (0/1)
ithermo	Choice of SOA thermodynamics (0/1/2/3)
is_diagwinw	Diagnose W from U/V (true/false)
idiagblh	Use BLH of meteo driver (0) or diagnose (1)
idiagustar	Use u* of meteo driver (0) or diagnose (1)
idiagshf	Use Surf.Heat Flux of meteo (0) or diag. (1)
istopdom	Make domains and exit (0/1)
cfl_max	Maximum authorized CFL number
sgmodel	Subgrid scale model for anthropogenic emissions (0/1)
runwrfonly	Run WRF only, without CHIMERE (0/1)

Table 1: *List of the new parameters available for the users in this model version, v2020r1.*

- *ntotprocs* and *ratioproc*: with the previous offline version, the user had the possibility to specify the number of subdomains in x and y directions, and only for CHIMERE. With the online coupling in this version, two models are running at the same

60 time, WRF and CHIMERE, and they have to share the whole amount of available processors. The user has only to specify the total number of available processors. If the user wants to favor one of the two models, it is possible to change the *ratioPROC* value. For example, if 60 processors are available on the cluster, *ntotprocs*=60 and for *ratioPROC*=2, 20 processors will be assigned to WRF and 40 to CHIMERE.

• *accrmet*: Enables to select what meteorological variables are written in the *out* file. Possible values are *low*, *medium* or *full*.  
65 • *imethod* and *splitcfl*: These flags are added to manage the pollutants' concentrations calculation. Historically, CHIMERE uses a method integrating all processes with a production and loss term. Many models are also using operator-splitting: this later possibility was added in CHIMERE. The flag *splitcfl* is here to separate the time-step calculation between meteorology and chemistry when the operator splitting technique is chosen. Details are presented in section 10.2.

• *timeverb*: A flag to have, verbose, on screen, the time spent in each routine or part of the model. It is mainly for developers,  
70 i.e. if you decide to add a new parameterization in the code and want to check the time used.

• *outloc*: A flag to write output results in the same directory as the executable file. Sometimes, depending on the computer architecture, to write output files on remote disks may cause instabilities and bus errors. To avoid this problem, output files are written locally, then moved to remote disks at the end of the simulation only.

• *imegan*: It enables to select the landuse database used by MEGAN to calculate the biogenic emission fluxes. Two datasets  
75 are available in the CHIMERE distribution:

- *imegan*=1 for the dataset with a resolution of 2.5 min, with monthly LAI.
- *imegan*=2 with a resolution of 30 seconds and with 8-days LAI, ([Sindelarova et al., 2014](#)).
- *iusedms*: This flag is whether to take into account DMS emissions or not. The option 0 is for 'no emissions' and the options 1, 2, 3, or 4 are to select a parameterization such as:

- 80
- *iusedms*=0 No DMS emissions
  - *iusedms*=1, ([Liss and Merlivat, 1986](#))
  - *iusedms*=2, ([Wanninkhof, 1992](#))
  - *iusedms*=3, ([Nightingale et al., 2000](#))
  - *iusedms*=4, ([Elliott, 2009](#))

85 • *iusesalt*: Like for the DMS emissions flag, this flag selects if emissions have to be taken into account (0 for 'no emission') and what parameterization to use:

- *iusesalt*=0 No sea-salt emissions
- *iusesalt*=1 ([Monahan, 1986](#))
- *iusesalt*=2 ([Monahan, 1986](#)) + ([Martensson et al., 2003](#)) for the size distribution
- 90 • *iusesalt*=3 ([Martensson et al., 2003](#))
- *iusesalt*=4 ([Grythe et al., 2014](#))

More details are presented in section 8.2.

- *iuse\_firemis* and *ifirevprof*: These flags are for the use of fire emissions. These emissions have to be pre-calculated, using external data and models. Details are provided in section 8.4.
- 95 • *ilinox*: To take into account  $\text{NO}_x$  emissions by lightning.
- *factaemis*, *factfemis*, *factbemis*, *factdms*, *factdemis*, *factsemis*, *factlinox*: for all types of emissions (anthropogenic, biomass burning, biogenic, DMS, mineral dust, sea-salt and  $\text{NO}_x$  from lightning), the user can select a factor to make scenarios. Values must be real and positive, and zero is possible.
- *online*: The management of the coupling. It selects if the user wants a simulation in offline or online mode.
- 100 • *cpl\_case*: Type of coupling in case of *online*=1. Four possibilities are implemented:
  1. *cpl\_case*=1: The exchanges only go from WRF to CHIMERE. This is the same as in offline mode, except that in this case the flow is through OASIS and not by reading previously prepared WRF NetCDF files. In addition, CHIMERE receives the meteorological state at the physical time-step (selected by the user and generally about 10min) and not only hourly.
  - 105 2. *cpl\_case*=2: The Aerosol Direct Effect. This case is equivalent to case 1 with, in addition to, the exchange of aerosol optical properties from CHIMERE to WRF.
  3. *cpl\_case*=3: The Aerosol Indirect Effect. This case is equivalent to case 1 with, in addition to, the exchange of the cloud fraction and the droplet number from CHIMERE to WRF.
  4. *cpl\_case*=4: The Aerosol Direct and Indirect Effects.
- 110 • *geodata*, *dgrb*, *wrfrestart*, *wrf\_restart\_dir*, *wrf\_tstep\_grid*: These flags are linked to the use of WRF in online mode. They are not used in offline mode. *geodata* and *dgrb* are data paths for input data. *wrfrestart* and *wrf\_restart\_dir* are for the management of the restart files in case of chained simulations. *wrf\_tstep\_grid* is a parameter to control the time-step estimated for WRF and is mandatory in its namelist. In general, it is recommended to have a maximum time step, in seconds, equal to  $6 \times dx$ , with  $dx$  as the grid cell size in km. Here, the user can modulate this value.
- 115 • *nest\_topconc*: The users can select the way to use model data at the top of the domain in the case of nesting.
- *ithermo*: This option is used by SOAP to compute the partitioning of semi-volatile compounds.
  1. *ithermo*=1: ideal partitioning.
  2. *ithermo*=2: non-ideal partitioning but without interactions with inorganic ions.
  3. *ithermo*=3: non-ideal partitioning with interactions with inorganics ions. This option is used only with the  $\text{H}_2\text{O}$  mechanism.
- 120

The implementation of SOAP in CHIMERE is presented in [Couvidat et al. \(2018\)](#).

- *is\_diagwinw*: Originally, the vertical wind speed was diagnosed in CHIMERE from the horizontal wind components calculated by the forcing meteorological model. This is a way to ensure mass-flux consistency and therefore the conservation of mass and mixing ratio. However, as discussed in [Lachatre et al. \(2020\)](#), this approach introduces large errors in upper tropospheric wind, and, it is possible to use directly the vertical wind speed  $w$  from the forcing meteorological model
- 125

and compensate the errors in mixing ratio introduced thereby, even though this introduces errors in mass conservations. *is\_diagwinw=1* corresponds to the original CHIMERE formulation, *is\_diagwinw=0* to the approach described in [Lachatre et al. \(2020\)](#).

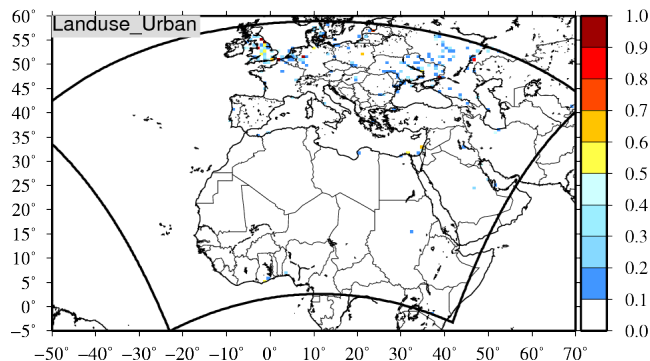
- 130 • *idiagblh*: A diagnostic report of the Boundary Layer Height (BLH) has been available in CHIMERE for many versions. With this new option, it is now possible to select the BLH to use: in case of coupling, the BLH calculated in WRF may be directly read and used. The way to estimate this BLH therefore depends on the user's choice with the WRF's namelist. The same is true for the diagnostic report or use of the friction velocity with *idiagustar* and the surface sensible heat flux with *idiagshf*.
- *istopdom*: This flag enables the creation of a horizontal domain using the WPS and WRF tools and then stop. It is useful if the user wants to check the domain before launching a simulation or use the created geography file for the calculation of
- 135 surface emissions (with the emiSURF or APIFLAME programs for example).
- *cfl\_max*: A limit to ensure that the Courant Friedrich Levy (CFL) number is respected. The maximum is 1. But for numerical stability during horizontal transport, *cfl\_max=0.8* is recommended.
- *sgmodel*: The subgrid scale model for anthropogenic emissions. Note that in this case, anthropogenic emissions must be provided with activity sectors for each chemical species.
- 140 • *runwrfonly*: This version is being distributed with a modified version of WRF (to host the OASIS3-MCT routines for the coupling), it can be useful to have a flag to run WRF only, enjoying all the scripts already written around it (compilation, processing metgrid, geogrid etc.)

### 3 The model set-up for its evaluation

#### 3.1 Model set-up

145 ~~For this new version evaluation, several~~ Several model configurations are defined ~~.The goal is~~ in order to answer the following questions:

- 150 1. Is this version more accurate than the previous one? To answer this, two simulations are performed, one with the previous version v2017r5 and one with this new version v2020r1. In order to have a correct comparison, the v2020r1 is used in offline mode and the two versions are forced by the ECMWF meteorological fields, to enjoy data assimilation of meteorological variables.
2. What is the impact of the coupling on the results? Even if the fact to use a coupling is, by principle, more realistic, it is interesting to quantify how this coupling changes the modelled concentrations. Four simulations are carried out: using the offline mode (*cpl\_case=1*) and the online mode with only direct effects (*cpl\_case=2*), only indirect effects, (*cpl\_case=3*) and all effects (*cpl\_case=4*).
- 155 3. What is the impact of the new schemes implemented in this model version? Is there one process largely changing the results? Several simulations are also performed with a single main configuration and the processes are changed one by one.



**Figure 2.** Map of the studied region with the modelled domain. The colors represent the percentage of urban and built-up surfaces in each model cell.

For all simulations, the domain was chosen large enough to take into account all possible kinds of sources, **Figure 2**. By including the northern half of Africa and Europe, the modelled region is able to take into account anthropogenic, biogenic, biomass burning, sea-salt and dust sources, with an horizontal resolution of  $60 \times 60$ km. The whole year of 2014 was modelled.

### 3.2 The observations used for validation

The model was validated by using a vast dataset of atmospheric and meteorological in-situ measurements. The European Environment Agency (EEA, <https://www.eea.europa.eu>) provides hourly data for a list of atmospheric species and a substantial number of stations covering Europe, categorized by station type (rural, traffic, etc). The data for particulate matter  $PM_{2.5}$  and  $PM_{10}$ , ozone ( $O_3$ ) and nitrogen dioxide ( $NO_2$ ) are used for regular model validations and are presented in this article. The number of stations differ for each pollutant; for the year of 2014, the data from 322 stations for  $NO_2$ , 431 stations for  $O_3$ , 178 stations for  $PM_{10}$  and 69 stations for  $PM_{2.5}$  are used in our comparisons. We have also included aerosol optical depth (AOD) data taken from the AErosol RObotic NETwork global remote sensing network (AERONET, <https://aeronet.gsfc.nasa.gov/>). Out of the 305 stations in the network having measurements for the year 2014, 75 are in the simulation domain and are used for the validation shown in this paper.

We have also included validation for vertical profiles of pressure, temperature and ozone using the data downloaded from the World Ozone and Ultraviolet Radiation Data Centre (WOUDC, <https://woudc.org/home.php>) resulting from **OzoneSonde ozonesonde** measurements. From around 25 stations that are in our domain only 9 have consistent data for the year 2014. All the 9 stations use ECC as the measurement instrument (<https://woudc.org/data/instruments/>). Out of the remaining 9 stations, 7 of them are well allocated over the seasons of the year, each representing at least 10 sondes per season. The 2 remaining stations, in Ireland and Italy, have 24 and 28 usable sondes respectively. These two stations present data only for the winter months. Our criteria for choosing the stations was their geographical position: we wanted to present different parts of Europe in the limits of availability of data for the stations, therefore the stations in Ireland, Switzerland and Poland were chosen in the



180 [presentation of the results. The number of total sondes over all the stations \(561 in total\) and their temporal distribution over different seasons is quite enough to be representative of both the geographical and temporal aspects of the simulations.](#)

Meteorological parameters have also been validated using two datasets. The ECA&D project provides the E-Obs database containing measurements for a large number of stations over the European region. This dataset provides values for daily temperature (average, minimum and maximum), daily average wind speed and direction, relative humidity and precipitation; the data can be downloaded both in a gridded format or per station files. The data provided by the British Atmospheric Data 185 Centre network (BADC, <http://data.ceda.ac.uk/badc>) is also integrated into the validation chain, providing hourly values for temperature, wind speed and precipitation. While these results are not presented in this article, they are checked in regular validation processes performed for all simulations.

All datasets are integrated into the Evaltools python package (<https://opensource.umr-cnrm.fr/projects/evaltools>, version 1.0.6r) which is designed as a free assessment tool for atmospheric models versus in-situ observations. Given the output for all 190 simulations and all the observations, this tool provides a statistical comparison between the aforementioned simulations and the provided measurements. The tables and images presented in this paper are all produced by this tool.

#### 4 Improvement of v2020r1 compared to v2017r5

In order to quantify the quality of this new version, two simulations are performed, one with v2017r5 and one with v2020r1. The ~~meteorological forcing is ECMWF~~. [meteorology used corresponds to the IFS/ECMWF fields, with a global  \$0.25^\circ \times 0.25^\circ\$  resolution and 3-hourly time-frequency. For each day, we use analysis day of this dataset.](#) The new version is used in offline 195 mode to be homogeneous with the v2017r5 version.

##### 4.1 Statistical scores

Simu	Model	Obs	RMSE	Bias	R
			( $\mu\text{g m}^{-3}$ )		(-1:1)
<i>O<sub>3</sub> daily mean, all stations</i>					
v2017r5	66.34	58.12	18.64	8.22	0.75
v2020-offline	62.28	58.12	17.23	4.16	0.75
<i>O<sub>3</sub> daily max, all stations</i>					
v2017r5	86.56	81.53	18.88	5.03	0.76
v2020-offline	80.74	81.53	18.38	-0.79	0.76
<i>NO<sub>2</sub> daily mean, all stations</i>					
v2017r5	8.45	10.14	6.43	-1.69	0.51
v2020-offline	6.58	10.14	6.67	-3.56	0.51
<i>NO<sub>2</sub> daily max, all stations</i>					

v2017r5	14.88	19.62	13.34	-4.74	0.38
v2020-offline	11.84	19.62	14.15	-7.78	0.34
<i>PM<sub>10</sub> daily mean, all stations</i>					
v2017r5	13.66	17.16	11.12	-3.50	0.41
v2020-offline	11.10	17.16	11.23	-6.06	0.63
<i>PM<sub>10</sub> daily max, all stations</i>					
v2017r5	18.07	32.28	25.95	-14.21	0.33
v2020-offline	17.20	32.28	25.45	-15.08	0.50
<i>PM<sub>2.5</sub> daily mean, all stations</i>					
v2017r5	11.75	11.01	7.87	0.75	0.50
v2020-offline	10.01	11.01	7.93	-1.00	0.66
<i>PM<sub>2.5</sub> daily max, all stations</i>					
v2017r5	15.69	20.28	15.80	-4.59	0.45
v2020-offline	15.71	20.28	16.31	-4.58	0.57
<i>AOD daily mean, all stations</i>					
v2017r5	0.09	0.12	0.06	-0.03	0.28
v2020-offline	0.05	0.12	0.07	-0.06	0.52
<i>AOD daily max, all stations</i>					
v2017r5	0.11	0.16	0.09	-0.04	0.23
v2020-offline	0.06	0.16	0.10	-0.08	0.53

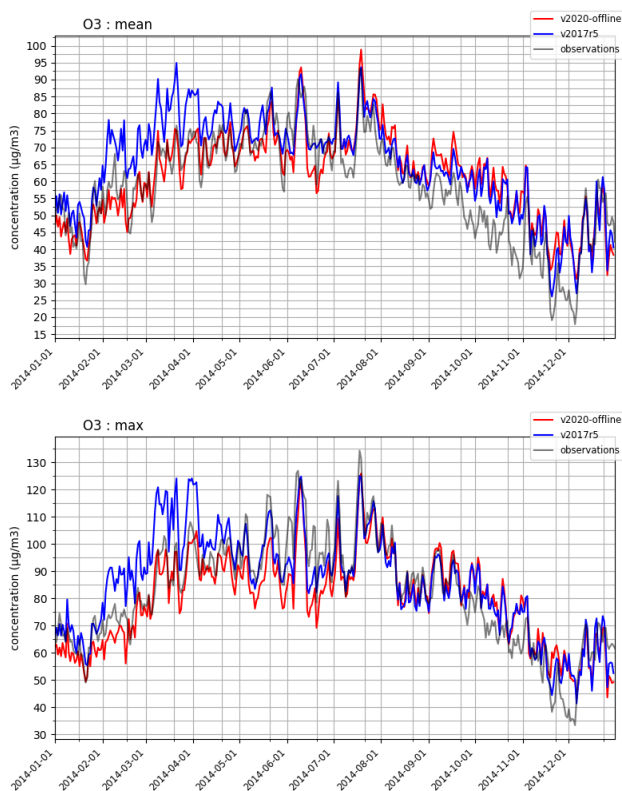
Table 2: Main results for the v2017r5 and v2020r1 versions of the CHIMERE model. Scores are calculated by comparison between surface observations for several stations in Europe and the corresponding model daily mean and maximum value. Statistical scores are presented for O<sub>3</sub>, NO<sub>2</sub>, PM<sub>10</sub>, PM<sub>2.5</sub> and Aerosol Optical Depth (AOD).

Results are presented in Table 2 for the daily mean and maximum values of O<sub>3</sub>, NO<sub>2</sub>, PM<sub>10</sub>, PM<sub>2.5</sub>, and Aerosol Optical Depth (AOD). Due to the horizontal resolution of the simulations ( $\Delta x=60\text{km}$ ), and to the representativity of the model outputs compared to the measurements, the scores are presented for 'rural' stations.

For surface ozone mean concentrations, the correlations are high in the two cases (0.75) but there is no improvement with the new version. There is an improvement for the bias, reduced from 8.22 to 4.16  $\mu\text{g m}^{-3}$  with the V2020r1 version. For the daily maxima, the correlation is the same (0.76) and the bias is also reduced (-0.79 in place of 5.03  $\mu\text{g m}^{-3}$ ). For NO<sub>2</sub> surface concentrations, the scores have not improved with the v2020r1 version. The bias increased, and the correlation for the mean values are 0.51 with the two versions. But knowing the horizontal resolution of the simulations, it is not unexpected to not have very good scores for NO<sub>2</sub>, a species mainly emitted in urban areas and with strong horizontal gradients.

On the other hand, results have really improved for Particulate Matter (PM) and Aerosol Optical Depth (AOD). For the PM<sub>10</sub> mean and maximum daily values, the correlation between the models' outputs and observations increased from 0.41 to 0.63 (mean) and 0.33 to 0.50 (max), respectively. The same kind of improvement is noted for PM<sub>2.5</sub>. For AOD, the correlations increased from 0.28 to 0.52 for the daily mean and from 0.23 to 0.53 for the daily maximum. If the bias is reduced with the new version for PM, it increases for AOD.

## 4.2 Time series of O<sub>3</sub>

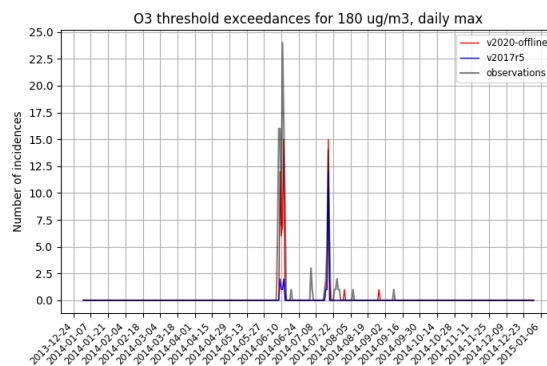


**Figure 3.** Time-series of daily mean (top) and maximum (bottom) ozone surface concentrations measured with the EMEP network and modelled with CHIMERE v2017r5 and v2020r1.

Time-series are presented in **Figure 3** for ozone daily mean and daily maximum surface concentrations (in  $\mu\text{g}\cdot\text{m}^{-3}$ ). Data are averaged in time, but also spatially, over all model cells where EMEP data are present. For mean or maximum values, the behaviour of the modelled concentrations compared to observations is close: the two model versions are able to catch the annual cycle, as well as the major observed peaks. For the spring of 2014, the v2020r1 version is more able to model the

observed concentrations, when the v2017r5 overestimates the values. During the summer, the two versions give good results in the both cases. For autumn and fall of 2014, the two versions are also close, but overestimate the concentrations.

### 4.3 Daily peaks

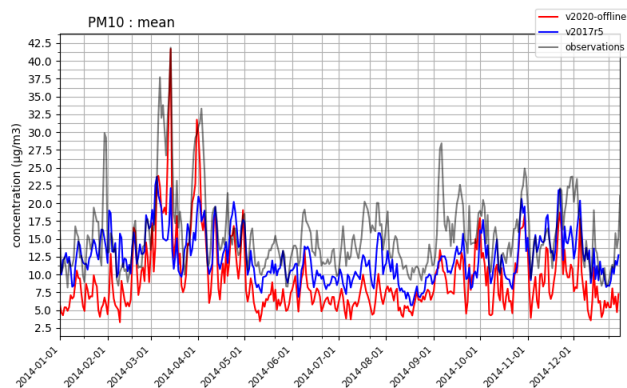


**Figure 4.** Time-series of surface ozone daily exceedances, measured with the EMEP network and modelled with CHIMERE v2017r5 and v2020r1.

220 As the CHIMERE model is being extensively used by organisations for daily forecasting, it is useful to add calculations with the capability to model daily peaks of the pollutants' surface concentrations (such as ozone, NO<sub>2</sub>, Particulate Matter). An example is presented in **Figure 4** with the count of exceedances of 180 µg.m<sup>-3</sup> for the daily maximum for surface ozone concentrations. With the observations, two major peaks are recorded: ~~around~~ the 10th June and 22th July 2014. Four to five other less numerous peaks were also recorded. For the peak on the 10th June, 23 stations recorded an exceedance in western  
 225 Europe. The model v2020r1 was able to reproduce 15 exceedances, whereas the v2017r5 was only able to reproduce 2. For the peaks on the 22th July, 15 exceedances are observed ~~and reproduced~~, 15 are modelled by v2020r1. ~~The v2017r5 was also more accurate in this case with~~, 12 exceedances. ~~For all situations by v2017r5.~~ For these two cases, the v2020r1 ~~is more able to represent the observed exceedances than the v2017r5 version~~ version improves the capability of the model to simulate ozone daily maximum surface concentrations.

### 230 4.4 Time series of PM<sub>10</sub>

The time-series of surface concentrations of PM<sub>10</sub> is presented in **Figure 5**. The two model configurations are able to simulate the annual variability of Particulate Matter, to the same order of magnitude. The new version gives lower values than v2017r5, but with a better day to day variability (correlation shown in **Table 2**).



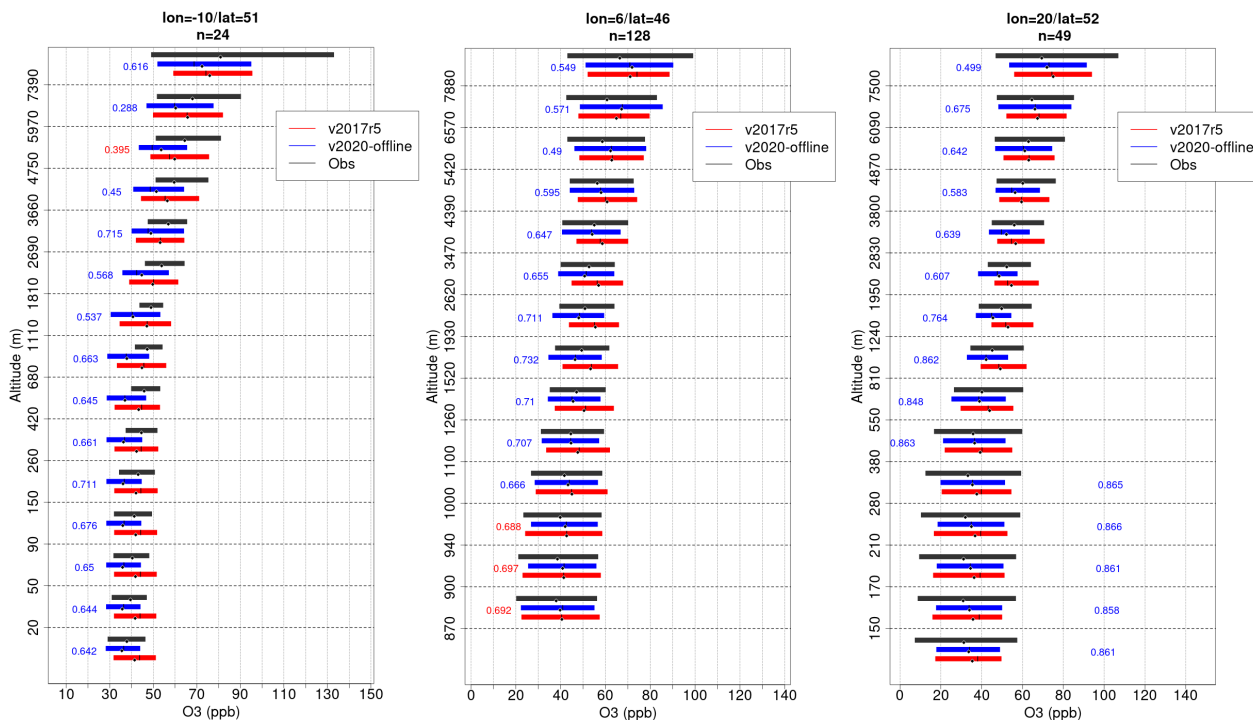
**Figure 5.** Time-series of  $PM_{10}$  daily mean surface concentrations measured with the EMEP network and modelled with CHIMERE v2017r5 and v2020r1.

Simu	Model	Obs	RMSE	Bias	R
	$(\mu\text{g m}^{-3})$				(-1:1)
<i>Station 1 (lon:10.25/lat:51.93 - 24 sondes)</i>					
v2017r5	49.86	51.17	23.07	-1.31	0.84
v2020-offline	44.21	51.17	30.28	-6.96	0.85
<i>Station 2 (lon:6.57/lat:46.49 - 128 sondes)</i>					
v2017r5	50.67	49.53	25.52	3.73	0.70
v2020-offline	53.26	49.53	19.11	1.15	0.70
<i>Station 3 (lon:20.96/lat:52.40 - 49 sondes)</i>					
v2017r5	49.61	46.30	28.67	3.31	0.89
v2020-offline	46.18	46.30	19.35	-0.12	0.89
<i>All stations (9 stations, 561 sondes in total)</i>					
v2017r5	48.75	47.40	26.85	1.35	0.74
v2020-offline	46.84	47.40	19.44	-0.56	0.79

**Table 3.**  $O_3$  vertical profile results for the v2017r5 and v2020r1 versions of the CHIMERE model. Scores are calculated by comparison between OzoneSondes observations and the corresponding model vertical distribution of ozone. Statistical scores are presented for  $O_3$ ; correlations for each model level are shown in [Figure 6](#). The coordinates and the number of sondes are given on top of each section.

#### 4.5 Vertical profiles of $O_3$

235 Apart from surface measurement validations, we have also included a vertical profile comparison between v2017r5 and v2020r1. Since the model is used for national air quality forecast simulations, it is important to have a good vertical repre-



**Figure 6.**  $O_3$  vertical profiles for three stations across Europe. Coordinates of the stations are given on top of each plot. Each bar represents the spread (10% to 90% quantiles) of the data for the two versions (blue and red) and observations (grey). The value on each level represents the correlation for the model with the higher correlation with the same color. The white small dot on each bar represents the average.

240 presentation for species commonly used as air quality indicators, such as  $O_3$ . The measurements used are explained in section 3.2. While 9 stations are available in our simulation domain (with 561 sondes in total during the year 2014), three of them were chosen to be shown in this article. The choice of these stations was done on the basis of their location in an effort to cover different regions of the European continent. The  $O_3$  vertical profiles of the chosen stations are shown in [Figure 6](#), while the locations and statistics for each one are shown in [Table 3](#). The Figures show the spread of all sondes for each station over the year 2014 for each level of the model.

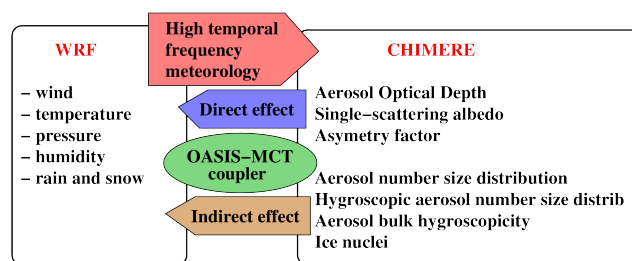
245 For these three stations, the two versions are quite close when it comes to simulating the shape of vertical variations, the order of magnitude of concentrations, and near surface concentrations of  $O_3$ . The statistics for these stations are also quite similar on average, although the bias presented by v2020r1 shows improvements. However, the higher in altitude the model level is, the more visible the differences between the two versions become: in most stations, the 2020r1 manages to simulate higher altitudes better regarding the correlation, spread of the concentrations, and bias. This is especially visible looking at the correlation of each level shown in [Figure 6](#), which in the majority of cases is higher for the v2020r1 compared to the 2017r5.

The average statistics for all stations are also included at the end of [Table 3](#), showing general improvement on correlation, bias, and RMSE in the v2020r1.

## 5 Impact of the online coupling

In this section, only the v2020r1 version is used. Sensitivity tests are performed using several options of the online coupling to quantify its impact on the results. The same set-up is used from the validation: the large domain with  $60 \times 60$  km resolution over Africa and Europe, and the complete simulation of the year 2014.

Online models are dedicated to take into account the retroactions between radiation, clouds and aerosols in the atmosphere, (Zhang, 2008), (Baklanov et al., 2014). The model developed here is in the category *online access model* and couples the Weather and Research Forecasting (WRF), (Powers et al., 2017), and CHIMERE, (Mailler et al., 2017), regional models with the OASIS3-MCT coupler, (Craig et al., 2017). Two kinds of retroactions are considered: the direct and the indirect effects, respectively detailed for WRF-CHIMERE in Briant et al. (2017) and Tuccella et al. (2019). The variables exchanged between the two models are described in [Figure 7](#). The exchange frequency ranges from 1 to 30 min, depending on the horizontal resolution and the user's choice.



**Figure 7.** Main principle of the coupling between WRF and CHIMERE, for the calculation of the direct and indirect effects of aerosols on meteorology.

The meteorology is calculated using the version 3.7.1 of WRF and with a configuration identical to the one used in Menut et al. (2018). The model uses spectral nudging to follow the large scale dynamics, (Von Storch et al., 2000). The National Centers for Environmental Prediction (NCEP) fields are nudged for pressure, temperature, humidity, and wind and for wavelengths greater than  $\approx 2000$  km and only for pressure above 850 hPa. The WRF model remains thus free to create its own dynamics in the boundary layer. This configuration allows the regional model to create its own dynamics within the boundary layer. The large scale follows the thermodynamics fields from the NCEP analyses.

For the model distribution, note that, for the first time, CHIMERE is distributed with OASIS3-MCT3.4 and WRF v3.7.1. OASIS is used as is but WRF was modified in order to be able to receive data via the OASIS coupler.

## 270 5.1 Direct effects

The direct effect impacts the thermodynamics below an aerosol layer after scattering and absorption of solar radiation, (Haywood and Boucher, 2000; Helmert et al., 2007; Zhang, 2008). To take into account this effect, the CHIMERE model calculates Aerosol Optical depth (AOD), Single Scattering Albedo (SSA), and an asymmetry factor and sends it to WRF (in place of the climatology used by the meteorological model when it is used alone). These new informations varies every physical time-step  
 275 (i.e a few minutes) and are used in WRF by the RRTMG scheme (Iacono et al., 2008).

## 5.2 Indirect effects

The implementation of the indirect effect in WRF and CHIMERE was performed and presented in Tuccella et al. (2019). The indirect effect takes into account the aerosol-induced increase in cloud condensation nuclei (CCN) and Ice Nuclei (IN), and the subsequent changes in clouds microphysical and optical properties. An increase of CCN induces for cloud with the same liquid  
 280 water path, an enhancement of cloud albedo due to a larger droplet number with smaller dimensions (first indirect effect or Twomey's effect). A variation in CCN burden induces also changes in cloud lifetime and precipitation pattern (second indirect effect or Albrecht effect), (Andreae and Rosenfeld, 2008).

The microphysics parameterization used in WRF is the aerosol-aware scheme of Thompson and Eidhammer (2014). This scheme calculates the cloud droplet nucleation rate using the aerosol size distribution calculated in CHIMERE. ~~In this model version, and using~~  
 285 ~~The activation scheme of Thompson and Eidhammer (2014) is replaced by the one of Abdul-Razzak and Ghan (2002), this latter being able to use a sectional approach for aerosol in CHIMERE, the activation scheme of is replaced by the one of aerosols as designed in CHIMERE. For each aerosol section, the scheme is able to calculate the fraction of activated aerosol.~~ For the cloud ice formation, it is calculated in the Thompson and Eidhammer (2014) scheme and the climatology of IN is replaced by the IN concentration diagnosed in CHIMERE. The scheme for the ice nucleation is the one of Tobo et al.  
 290 (2013), corresponding to an adaptation of DeMott et al. (2010).

Some aerosol properties are calculated in CHIMERE for the indirect effects and are sent to WRF, to be read in the Thompson and Eidhammer (2014) microphysics scheme. The number concentrations,  $N_i$  ( $\# \text{ m}^{-3}$ ), of all aerosols (except water) and for each size distribution bin  $i$ , is defined as:

$$N_i = \sum_{a=1,naero} \frac{c_{i,a} \times 10^{-9}}{vol_i \times \rho_a} \quad (1)$$

295 with  $c_{i,a}$  the mass concentration of each  $a$  aerosol and bin  $i$  ( $\mu\text{g m}^{-3}$ ),  $vol_i$  ( $\text{m}^3$ ), the volume of the aerosol in the bin  $i$  and  $\rho_a$  ( $\text{kg m}^{-3}$ ) the density of aerosol  $a$ . A subset of  $N_i$ , called  $N_{i,hygro}$ , is calculated in the same way but only for hygroscopic aerosols (Salt, SOA,  $\text{H}_2\text{SO}_4$ ,  $\text{NH}_3$  and  $\text{HNO}_3$ ). The aerosol bulk hygroscopicity,  $H$ , is estimated as:

$$H_i = \frac{\sum_{a=1,naero} \left( \frac{H_a \times c_{i,a}}{\rho_a} \right)}{\sum_{a=1,naero} \left( \frac{c_{i,a}}{\rho_a} \right)} \quad (2)$$



where the  $H_a$  hygroscopicity factors are expressed for each aerosol as in **Table 4**.  $IN$ , ( $\# \text{ m}^{-3}$ ), is estimated with mineral dust concentration only and for the size distribution part corresponding to a mean mass median diameter  $D > 0.5 \mu\text{m}$ , as:

$$IN = \sum_{i=1, D_p > 0.5 \mu \text{ m}} \frac{c_{i,dust} \times 10^{-9}}{vol_i \times \rho_{dust}} \quad (3)$$

Aerosol	Hygroscopicity	Aerosol	Hygroscopicity
PPM	0.10	BSOA	0.20
OCAR	0.10	DUST	0.03
BCAR	$10^{-6}$	H <sub>2</sub> SO <sub>4</sub>	0.50
SALT	1.16	NH <sub>3</sub>	0.50
ASOA	0.14	HNO <sub>3</sub>	0.50

**Table 4.** Hygroscopic properties of the aerosols modelled in CHIMERE

The developments in this model version may induce a slight underestimation of the cloud formation regarding the indirect effects. It is due to the fact that the [Thompson and Eidhammer \(2014\)](#) microphysics scheme only takes into account grid-resolved clouds. ~~Depending on the resolution, these clouds are more or less well estimated: more the resolution is coarse, less these clouds are diagnosed~~  
 305 The diagnostic of these grid-resolved clouds depends on the horizontal resolution. For a coarse resolution, they are less well calculated than for a fine resolution. In addition, some clouds may be generated by convection, as described in the [Grell and Freitas \(2014\)](#) scheme used in WRF. But, for this ~~version~~-coupled version, this effect is not yet implemented (as in many regional models) and this will be the subject of future developments.

The use of the direct and indirect effects is up to the user's discretion, with two flags called *online* and *cpl\_case*. When *online*  
 310 is equal to 1, the model considers the values of *cpl\_case* ~~-,~~ the several degrees of the coupling.

For *cpl\_case*=1, there is no aerosol feedback from CHIMERE to WRF but the meteorological parameters is sent from WRF with the coupling time step. This is still a step forward when compared to the previous CHIMERE versions that were only able to read hourly meteorological outputs. For *cpl\_case*=2, only the direct effects are taken into account. For *cpl\_case*=3, only the indirect effects. With *cpl\_case*=4, the direct and indirect effects are both taken into account.

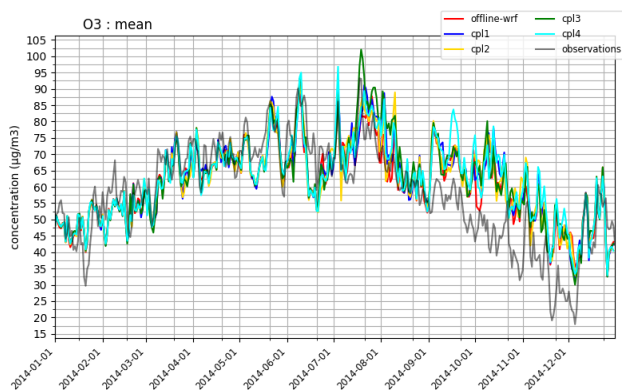
### 315 5.3 Results

To illustrate the coupling, five simulations were performed with and without direct and indirect effects. ~~WRF and CHIMERE used~~  
These simulations correspond to:

1. offline-wrf: the CHIMERE model is forced by hourly meteorological fields stored in the WRF model output files (as in the previous CHIMERE version). It corresponds to option *online*=0.

- 320 2. cpl1: The is no coupling but CHIMERE received WRF meteorological fields using the OASIS-MCT coupler. The coupling frequency is now the physical time-step (for example 15mn).
3. cpl2: Coupling with the aerosol direct effect
4. cpl3: Coupling with the aerosols indirect effect
5. cpl4: Coupling with the direct and indirect effects.

325 WRF and CHIMERE use the same horizontal domain and the same grid size of 60 km × 60 km resolution to avoid horizontal interpolation during the coupling. The output results are issued hourly. The modelled period ranges for the whole year of 2014, like in the previous sections.

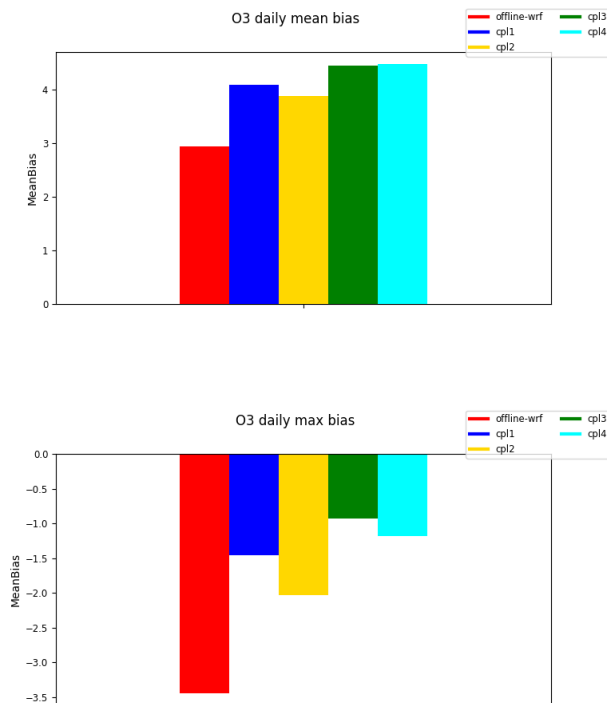


**Figure 8.** Time-series of ozone surface concentrations measured with the EMEP network and modelled with CHIMERE v2020r1 for  $cpl\_case=1, 2, 3$  and 4.

Results are presented in **Figure 8**. For the 'offline-wrf' simulations, CHIMERE is forced by previously calculated WRF meteorological fields, themselves forced by NCEP. For 'cpl1', CHIMERE is forced by WRF meteorological fields calculated independently of CHIMERE (with no retroactions from CHIMERE to WRF). The main differences between the two simulations are (i) the meteorological fields are read in through a file in the first case, but sent by OASIS3-MCT in the second case, (ii), more importantly, the meteorological fields forced CHIMERE hourly with 'offline-wrf', when with 'cpl1', it is at each physical time-step (in this case 20mn). As previously shown in Briant et al. (2017), having more frequent meteorological fields presents a very important effect on results: temperature is more precise for photolysis, surface wind fields are more accurate for natural emissions, etc. ~~By comparing all simulations to observations, it appears that the results are different between them, but with a lesser extent than the difference between the offline model and observations. For all model configurations, All configurations show an overestimation of the ozone daily mean concentration, with a bias between 3 and 4  $\mu\text{g}\cdot\text{m}^{-3}$ , compared to observations. The variability between the several model configurations is only 1  $\mu\text{g}\cdot\text{m}^{-3}$ , showing that the choice of the overestimation of wintertime ozone remains, as well as in the reference simulation coupling is not the main reason of the bias.~~

330

335



**Figure 9.** Bias ( $model-obs$ ) in  $\mu g.m^{-3}$  with CHIMERE v2020r1 for offline mode and online with  $cpl\_case=1, 2, 3$  and 4. Scores are calculated for the whole year and over the whole domain, for model cells where observations data are present and valid.

340 In order to quantify the differences between the simulations, the daily mean and max biases are presented in **Figure 9**. Results show the bias increases with the coupling for the mean ozone concentrations values. But for the daily maximum ozone values, the bias decreases. The use of the online coupling is more realistic but may be also an improvement for the forecast, when searching for exceedances based on threshold values.

Statistical scores for these simulations are also presented in **Table 5**. For  $NO_2$ , the bias remains the same and decreases 345 for  $PM_{10}$ , but increases for  $PM_{2.5}$ . For the correlation, the results show low changes among the different configurations. This means that the online coupling is an improvement for modelling realistic physico-chemical interactions, but is not a major change on average for surface pollutants concentrations.

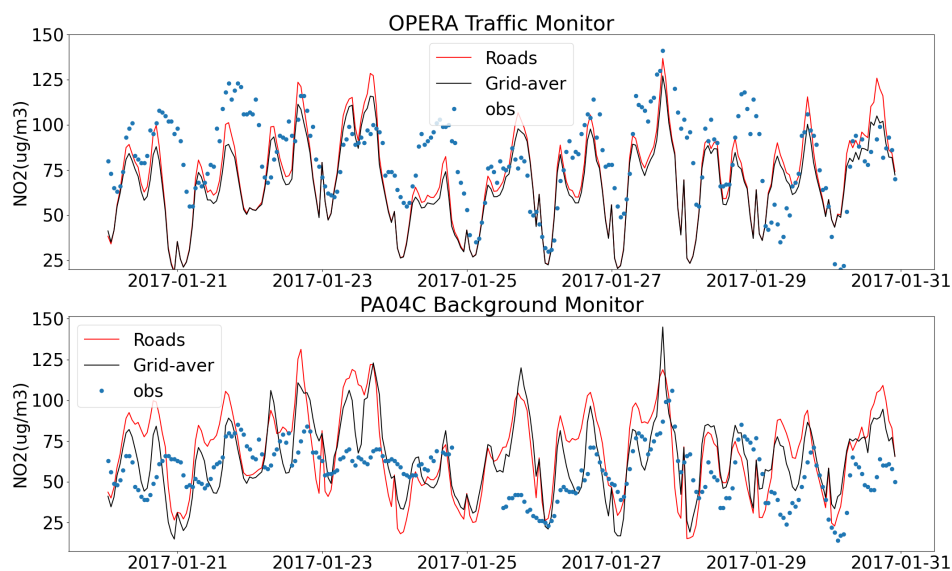
Simu	Model	Obs	RMSE	Bias	R
	$(\mu g m^{-3})$				$(-1:1)$
<i>O<sub>3</sub> daily mean</i>					
offline-wrf	61.06	58.12	19.40	2.94	0.59

cpl1	62.21	58.12	20.10	4.09	0.56
cpl2	61.99	58.12	20.13	3.87	0.56
cpl3	62.56	58.12	19.98	4.44	0.58
cpl4	62.59	58.12	20.49	4.47	0.54
<i>NO<sub>2</sub> daily mean</i>					
offline-wrf	5.99	10.14	7.06	-4.15	0.39
cpl1	6.14	10.14	7.00	-4.00	0.38
cpl2	6.10	10.14	6.98	-4.04	0.39
cpl3	6.16	10.14	7.00	-3.98	0.38
cpl4	6.05	10.14	7.03	-4.09	0.38
<i>PM<sub>10</sub> daily mean</i>					
offline-wrf	14.38	17.16	13.38	-2.78	0.43
cpl1	15.09	17.16	13.20	-2.08	0.45
cpl2	15.28	17.16	13.33	-1.89	0.46
cpl3	15.48	17.16	14.53	-1.69	0.43
cpl4	15.93	17.16	15.94	-1.24	0.43
<i>PM<sub>2.5</sub> daily mean</i>					
offline-wrf	11.39	11.01	9.23	0.39	0.49
cpl1	11.82	11.01	9.24	0.81	0.51
cpl2	11.71	11.01	9.04	0.70	0.52
cpl3	11.78	11.01	9.12	0.77	0.51
cpl4	11.56	11.01	8.97	0.55	0.50
<i>AOD daily mean</i>					
offline-wrf	0.10	0.12	0.06	-0.02	0.43
cpl1	0.11	0.12	0.06	-0.01	0.40
cpl2	0.12	0.12	0.08	-0.00	0.31
cpl3	0.12	0.12	0.08	-0.00	0.37
cpl4	0.14	0.12	0.09	0.01	0.33

Table 5: Main results for the different coupling options of the v2020r1 CHIMERE version. Scores are calculated by comparison between surface observations for several stations in Europe and the corresponding model daily mean value. Statistical scores are presented for  $O_3$ ,  $NO_2$ ,  $PM_{10}$ ,  $PM_{2.5}$  and Aerosol Optical Depth (AOD).

## 6 A subgrid scale model to account for heterogeneous surface emissions

Regional scale chemistry transport models such as CHIMERE do not resolve physical and chemical processes occurring at spatial scales below  $1\text{km}^2$ . If such effects are to be accounted for, they must be parametrized. Heterogeneous surface emissions at the unresolved subgrid scale (i.e. at spatial scales smaller than the model resolution) have been shown to have a large impact on grid-averaged pollutant concentrations, (Galmarini et al., 2008; Valari and Menut, 2010; Korsakissok and Mallet, 2010; Cassiani et al., 2010). Especially over urban areas with large population density, very contrasted emission sources, such as roads and buildings co-exist within small distance. To account for this subgrid scale effect the new version of CHIMERE includes the scheme described in Valari and Menut (2010) following which the CHIMERE model grid cell area is divided into several subgrid areas, each representing a different emission source. During the CHIMERE simulation, at each model time-step, the calculation of chemistry splits into the different subgrid volumes.



**Figure 10.** Ten-day hourly time series of modelled and measured  $\text{NO}_2$  ( $\mu\text{g}/\text{m}^3$ ) surface concentrations. The top panel compares simulations with observations over a traffic monitor site while the bottom panel over a background monitor site of the AIRPARIF air-quality network. Concentrations are simulated with the usual CHIMERE calculation where emissions are homogeneous over the grid-cell volumes (black lines) and with the 'on-road' component of the subgrid-scale model.

The subgrid-scale model produces surface concentrations for all model species at each model time-step. **Figure 10** compares simulated hourly concentrations over two surface stations in the city of Paris with i) the usual CHIMERE calculation and ii) the 'on-roads' component of the subgrid scale module against surface measurements of the local regional air-quality

network AIRPARIF. A traffic site (OPERA) and an urban background site (PA04C) are chosen for these comparisons as shown in **Figure 10**. It is shown that the 'on-road' component of the subgrid-scale simulation models significantly higher NO<sub>2</sub> levels compared to the grid-averaged value especially during rush hour. On the contrary, as expected, over the urban background monitor site the grid-averaged concentration is generally closer to observations.

## 365 7 Secondary organic aerosol (SOA)

The Secondary Organic Aerosols calculations changed a lot with this model version. Mainly, two different schemes were added: the H<sup>2</sup>O (Hydrophilic/Hydrophobic Organics) mechanism, (Couvidat et al., 2018), and the VBS scheme, (Zhang et al., 2013), with a version including the fragmentation process, (Cholakian et al., 2018).

### 7.1 The several mechanisms

370 There are two different choices available for the Secondary Organic Aerosols (SOA) modeling. The first one is the flag *carb* and is linked to the anthropogenic emitted species list. The second one is the flag *soatyp* for the parameterization of SOA formation. The two flags are linked.

The values of *carb* are:

- *carb*=0: no primary carbonaceous species
- 375 • *carb*=1: primary carbonaceous species (OCAR and BCAR) are used.
- *carb*=2: primary carbonaceous species (POA and BCAR) are used. With VBS, POA (POA+IVOC+SVOC) are separated into 9 volatility bins. Only the functionalization process is taken into account, (Zhang et al., 2013). With H<sup>2</sup>O, POA are splitted into three compounds POAIP, POAmP and POAhP with respectively low, medium and high volatilities.
- *carb*=3: primary carbonaceous species (POA and BCAR) are used. POA (POA+IVOC+SVOC) are separated in 9 volatility
- 380 bins. Functionalization, fragmentation, and non volatile bins are taken into account, (Cholakian et al., 2018). With H<sup>2</sup>O, POA from biomass burning are separated into three species BOAIP, BOAmP and BOAhP) using a specific split. Other POA are distributed into POAIP, POAmP and POAhP compounds.

The emitted species used, depending on *carb*, are listed in **Table 6**. For *carb*=0, there is no speciation between OCAR and BCAR. The model only uses PPM as emission, without chemistry. With *carb*=1, PPM is separated into OCAR, BCAR and

385 PPM. This is done with the anthropogenic emissions program *emisurf*, distributed with CHIMERE. For users having their own anthropogenic interface, it is required to build emissions with this speciation.

The values of *soatyp* are:

- *soatyp*=0: no SOA chemistry
- *soatyp*=1: single-step oxidation (simple)
- 390 • *soatyp*=2: single-step oxidation (medium)
- *soatyp*=3: single-step oxidation (complex)

No SOA carb=0	single-step carb=1	VBS carb=2 or 3	H <sup>2</sup> O carb=2 carb=3	
	OCAR_fin	POA1_fin	POAIP	OAIIP
		POA2_fin	POAmP	POAmP
		POA3_fin	POAhP	POAhP
		POA4_fin	POAIP_fin	POAIP_fin
		POA5_fin	POAmP_fin	POAmP_fin
		POA6_fin		BOAIP
		POA7		BOAmP
		POA8		BOAhP
		POA9		BOAIP_fin
				BOAmP_fin
	BCAR_fin	BCAR_fin	BCAR_fin	BCAR_fin
	PPM_fin	PPM_fin	PPM_fin	PPM_fin
	OCAR_coa	OCAR_coa	OCAR_coa	OCAR_coa
PPM_fin	BCAR_coa	BCAR_coa	BCAR_coa	BCAR_coa
PPM_coa	PPM_coa	PPM_coa	PPM_coa	PPM_coa

**Table 6.** List of anthropogenic emitted species depending on the way to split the emissions of Primary Particulate Matter (PPM) and the chemical scheme used for the SOA formation.

- *soatyp*=4: H<sup>2</sup>O (Hydrophilic/Hydrophobic Organics) mechanism, (Couvidat et al., 2018)
- *soatyp*=5: H<sup>2</sup>O reduced mechanism, (Couvidat et al., 2018)
- *soatyp*=6: VBS scheme, (Zhang et al., 2013)
- 395 • *soatyp*=7: VBS scheme with fragmentation process, (Cholakian et al., 2018)

Note that for single-step, VBS or H<sup>2</sup>O, the biogenic VOC precursors emitted by MEGAN are taken into account: APINEN ( $\alpha$ -pinene and sabinene), BPINEN ( $\beta$ -pinene and  $\delta^3$ -carene), LIMONE (limonene), OCI (myrcene and ocimene) and C5H8 (isoprene).

400 Important: when selecting the *carb* flag, it is important to be consistent with the choice made for this variable in the *emisurf* program/namelist if the user is using this tool.

Depending on the choice of *vbs*, the anthropogenic emissions of Primary Particulate Matter (PPM) are separated into several emitted species or not. The first level of separating is to distinguish between Organic Carbon (OCAR) and black carbon (BCAR) in the fine mode ("\_fin"). The possible sets of values for *carb* and *soatyp* are explained in Table 7. Note that it is possible to use *carb*=0 and *soatyp*=4 or 5. In this case, POA are not used to estimate the relative part of organics in SOAP (see Couvidat et al., 2018) for details).

405

carb	soatyp							
	0	1	2	3	4	5	6	7
0	✓				✓	✓		
1		✓	✓	✓				
2		✓	✓	✓	✓		✓	✓
3		✓	✓	✓		✓	✓	✓

**Table 7.** Correspondence between the different carb and soatyp flag values.

## 7.2 Single-step oxidation mechanism

For *soatyp* equal 1, 2, or 3, the formation of SOA is taken into account with single-step oxidation schemes. Anthropogenic precursors include:

- TOL (benzene, toluene and other mono-substituted aromatics),
- 410 • TMB (Trimethylbenzene and other poly-substituted aromatics),
- NC4H10 (higher alkanes).

The base SOA module was tested against the smog chamber data of [Odum et al. \(1997\)](#) for anthropogenic compounds and those of [Griffin et al. \(1999\)](#) for biogenic compounds, and was shown to satisfactorily reproduce SOA formation for these compounds. Higher alkanes and isoprene were added to the original chemical mechanism of [Pun et al. \(2006\)](#). The formation of SOA from higher alkanes follows the formulation of [Zhang et al. \(2007\)](#) for the stoichiometric SOA yield and it is assumed  
415 of SOA from higher alkanes follows the formulation of [Zhang et al. \(2007\)](#) for the stoichiometric SOA yield and it is assumed that the SOA species can be represented by a hydrophobic surrogate compound with moderate saturation vapor pressure. The formation of SOA from the oxidation of isoprene by hydroxyl radicals is represented with two surrogate products and follows the formulations of [Kroll et al. \(2006\)](#) and [Zhang et al. \(2007\)](#).

## 7.3 The H<sup>2</sup>O mechanism

420 The H<sup>2</sup>O mechanism is presented in detail in [Couvidat et al. \(2012\)](#) and its performance was evaluated over Europe in [Couvidat et al. \(2018\)](#). This mechanism is an evolution of the [Pun et al. \(2006\)](#) mechanism. It uses the molecular surrogate approach, into which semi-volatile organic compounds with similar thermodynamical properties are lumped together and are represented with a single molecular structure. By attaching a molecular structure to the surrogate structure, several processes can be represented that are often not taken into account. For example, absorption of organic compounds into the aqueous phase of aerosols,  
425 the acidic dissociation and non-ideality (interactions between organic compounds and with inorganics compounds) can be estimated. The model distinguishes two types of compounds: hydrophilic compounds (compounds with a high affinity for water that can condense into the aqueous phase of particles) and hydrophobic compounds (compounds with a low affinity for water that condense into an organic-rich phase).



The mechanism takes into account SOA formation from the oxidation of isoprene, monoterpene, sesquiterpenes and aromatic compounds. The properties of the surrogate compounds are described in the parameter file *species.cxx* and are summarized in the Table 2 of Couvidat et al. (2018). It should be noted that some compounds (like AnCIP or POA) do not have a predefined molecular structure. In that case, a hydrophobic default structure is used.

The complete mechanism (*soatyp*=4) has 15 species and has been reduced to 7 species (*soatyp*=5). Contrary to the other SOA mechanisms, equilibrium is computed with SOAP to account for non-ideality and aqueous-phase absorption. *ithermo* in *chimere.par* must be above 1.

POA can be considered as semi-volatile within H<sup>2</sup>O with the option *carb* equal to 2 or 3 in *chimere.par*. With *carb* equal to 2, POA are split into three compounds: POAIP (25% of emissions), POAmP (32% of emissions), and POAhP (43% of emissions), having respectively a low, medium, and high volatility, to follow the dilution curve of POA in Robinson et al. (2007). With *carb* equal to 3, the same split is done except for POA from biomass burning which are split into three other compounds BOAIP (26%), BOAmP (31%), and BOAhP (43%) to follow the dilution curve for biomass burning of May et al. (2013). The two dilution curves are similar. However, BOAIP is almost non-volatile, contrary to POAIP. The oxidation of POAIP, POAmP, POAhP, BOAIP, BOAmP, and BOAhP is assumed to lead to the compounds SOAIP, SOAmP, SOAhP, BSOAIP, BSOAmP, and BSOAhP, respectively. Based on Grieshop et al. (2009), these compounds are assumed to be less volatile by a factor of 100 and the oxidation rate is a constant equal to  $2 \times 10^{-11} \text{ molecules}^{-1} \cdot \text{cm}^3 \cdot \text{s}^{-1}$ . The properties of the primary semi-volatile compounds are shown in Table 8 and are: the name of the surrogate species, the molecular weight of this species, noted MW (g.mol<sup>-1</sup>), the partitioning constant  $K_p$  (m<sup>3</sup>.μg<sup>-1</sup>) and the enthalpy of vaporization  $\Delta H_{\text{vap}}$  ([kJ.mol<sup>-1</sup>]).

### 7.3.1 Computation of partitioning of SVOC with SOAP

### 7.4 Computation of partitioning of SVOC with SOAP

SOAP can compute the partitioning of SVOC with either an equilibrium (assuming instantaneous partitioning) or a dynamic approach (solving the differential equations involved in the formation of SOA). In the current state, only the equilibrium approach has been implemented into CHIMERE. The two methods are described extensively in Couvidat and Sartelet (2015).

SOAP computes the gas-particle partitioning into an organic phase based on Raoult's law by taking into account the non-ideality (interactions between organic compounds) of the organic phase. The partitioning is computed with the following algorithm.

$$\frac{A_{p,i}}{A_{g,i}} = K_{p,i} M_o \quad (4)$$

Surrogate	Molecular weight MW [g.mol <sup>-1</sup> ]	Partitioning constant K <sub>p</sub> [m <sup>3</sup> .μg <sup>-1</sup> ]	Enthalpy of vaporization ΔH <sub>vap</sub> [kJ.mol <sup>-1</sup> ]
POAIP	280	1.1	106
POAmP	280	0.0116	91
POAhP	280	0.00031	79
SOAIP	392	110	106
SOAmP	392	1.16	91
SOAhP	392	0.031	79
BOAIP	280	18.3	106
BOAmP	280	0.040	91
BOAhP	280	0.00023	79
BSOAIP	392	1830	106
BSOAmP	392	4.0	91
BSOAhP	392	0.023	79

**Table 8.** Properties of primary and aged SVOC used in the H<sup>2</sup>O mechanism, extended version of Table 3 in Cowidat et al. (2018).

with A<sub>p,i</sub> the concentration of i in the organic phase (in μg m<sup>-3</sup>), A<sub>g,i</sub> the concentration of i in the gas phase (in μg m<sup>-3</sup>), M<sub>o</sub> the concentration of the organic phase (in μg m<sup>-3</sup>) and K<sub>p,i</sub> the organic-phase partitioning coefficient (in m<sup>3</sup>/μg) which is computed with this equation:

$$K_{p,i} = \frac{760 \times 8.202 \times 10^{-5} \times T}{M_{ow} \gamma_{i,org} P_i^0 \times 10^6} \quad (5)$$

460 with T, the temperature (in K), M<sub>ow</sub>, the mean molar mass of the organic phase (in g mol<sup>-1</sup>), and the saturation vapour pressure, P<sub>i</sub><sup>0</sup>, in Torr. In SOAP, activity coefficients γ<sub>i,org</sub> are computed with the thermodynamic model UNIFAC (UNiversal Functional group Activity Coefficient, (Fredenslund et al., 1975)).

Similarly, the partitioning into the aqueous phase of particles (due to water being absorbed by inorganic compounds) is computed with a non-ideal Henry's law:

$$465 \quad K_{aq,i} = \frac{H_i RT}{\rho_{water} \zeta_i \times 1.013 \times 10^{11}} \times \frac{18}{M_{aq}} \quad (6)$$

with  $H_i$  (in  $\text{M}\cdot\text{atm}^{-1}$ ),  $\rho_{water}$ , the density of the aqueous phase (in  $\text{kg m}^{-3}$ ),  $M_{aq}$ , the molar mass of the aqueous phase (in  $\text{g/mol}$ ), which can be slightly different from the molar mass of water due to the presence of other compounds, and  $\zeta_i$ , the activity coefficient by reference to infinite dilution.  $\zeta_i$  is computed with:

$$\zeta_i = \frac{\gamma_{i,aq}}{\gamma_{i,aq}^\infty} \quad (7)$$

470 where  $\gamma_{i,aq}^\infty$  is the activity coefficient at infinite dilution in water, which is computed with UNIFAC. However, UNIFAC only computes the activity coefficients due to short-range interactions and does not take into account medium and long range interactions due to the presence of electrolytes in the aqueous phase. In the aqueous phase, activity coefficients are computed with:

$$\gamma_{i,aq} = \gamma_{LR}\gamma_{MR}\gamma_{SR} \quad (8)$$

475  $\gamma_{LR}$ ,  $\gamma_{MR}$ , and  $\gamma_{SR}$  are, respectively, the activity coefficients at long, medium, and short range interactions.  $\gamma_{SR}$  is computed with UNIFAC, whereas  $\gamma_{LR}$  and  $\gamma_{MR}$  are computed with the AIOMFAC method where parameters, (Zuend et al., 2008, 2011; Zuend and Seinfeld, 2012), therefore the influence of inorganic ions on the partitioning of organic compounds, are taken into account.

SOAP can be used with three *ithermo* flag values in *chimere.par*. For *ithermo*=1, ideality is assumed, with reference to  
 480 Raoult's law for hydrophobic partitioning ( $\gamma_{i,org}=1$ ) and Henry's law for hydrophobic partitioning ( $\zeta_i=1$ ). For *ithermo*=2, non-ideality is computed with UNIFAC, but long and medium range interactions are not taken into account (i.e. no interactions with electrolytes). Hygroscopicity of organic compounds is also taken into account. For *ithermo*=3, long and medium range interactions are taken into account. The effect of non-ideality on SOA formation has been studied by Couvidat et al. (2012) and Kim et al. (2019).

## 485 7.5 The VBS mechanisms

### 7.5.1 SOA from Semi and Intermediate volatile compounds

For *carb* equal to 2 or 3 in *chimere.par*, the POA are distributed in bins covering the range of  $10^{-2}\mu\text{g}\cdot\text{m}^{-3}$  to  $10^6\mu\text{g}\cdot\text{m}^{-3}$ , (Robinson et al., 2007). These volatility bins cover three groups:

- $C^* < 10^{-2}\mu\text{g}\cdot\text{m}^{-3}$ : non-volatile organic compounds
- 490 •  $10^{-2}\mu\text{g}\cdot\text{m}^{-3} < C^* < 10^3\mu\text{g}\cdot\text{m}^{-3}$ : Semi Volatile Organic Compounds (SVOC)
- $10^3\mu\text{g}\cdot\text{m}^{-3} < C^* < 10^6\mu\text{g}\cdot\text{m}^{-3}$ : Intermediate-volatility Organic Compounds (IVOCs).

The POA compounds are listed in the **Table 9**.

1. **VBS scheme with functionalization process:** For *carb*=2, the fraction of POA in the gaseous phase can be oxidized by OH radical to form an oxidized POA noted OPOA $_x$  ( $x$  represents the bin of volatility defined in **Table 9**).

Model species	C* ( $\mu\text{g}\cdot\text{m}^{-3}$ )	Molar Mass ( $\text{g}\cdot\text{mol}^{-1}$ )
POA1	$10^{-2}$	250
POA2	$10^{-1}$	250
POA3	$10^0$	250
POA4	$10^1$	250
POA5	$10^2$	250
POA6	$10^3$	250
POA7	$10^4$	250
POA8	$10^5$	250
POA9	$10^6$	250

**Table 9.** List and characteristics of the POA compounds

495 2. **VBS scheme with functionalization and fragmentation process:** For *carb*=3 corresponds to the scheme used in [Cholakian et al. \(2018\)](#). Two processes were added to the VBS scheme presented above. Fragmentation processes, corresponding to the breakup of oxidized OA compounds in the atmosphere into smaller and thus more volatile molecules, ([Shrivastava et al., 2011](#)) and the formation of nonvolatile SOA, where SOA can become nonvolatile after forming, ([Shrivastava et al., 2015](#)).

## 500 7.5.2 SOA from VOC oxidation

### 1. VBS scheme with functionalization process

For *soatyp*=6, the formation of SOA from VOC is taken into account with the VBS scheme with functionalization process. Anthropogenic precursors include:

- OLE1: Alkyls  $k_{OH} < 7 \times 10^4$
- 505 • OLE2: Alkyls  $k_{OH} > 7 \times 10^3$
- ALK4: Alkyls  $5 \times 10^3 < k_{OH} < 1 \times 10^4$
- ALK5: Alkyls  $1 \times 10^4 < k_{OH}$
- ARO1: Aromatics  $k_{OH} < 2 \times 10^4$
- ARO2: Aromatics  $k_{OH} > 2 \times 10^4$

510 SOA yields were kept the same as in the standard VBS scheme described in [Zhang et al. \(2013\)](#); however, instead of using the low- $\text{NO}_x$  or the high- $\text{NO}_x$  regimes, an interpolation between the yields of these two regimes was added to the model. For this purpose, a parameter is added to the scheme, which calculates the ratio of the reaction rate of  $\text{RO}_2$  radicals with NO (high- $\text{NO}_x$  regime) with respect to the sum of the reaction rates of the reactions with  $\text{HO}_2$  and  $\text{RO}_2$  (low- $\text{NO}_x$  regime). For this purpose, a parameter ( $\alpha$ ) was added to the scheme, which calculates the ratio of the reaction

515 rate of RO<sub>2</sub> radicals with NO ( $\nu_{NO}$ , and high-NO<sub>x</sub> regime) with respect to the sum of reaction rates of the reactions with  
HO<sub>2</sub> ( $\nu_{HO_2}$ ) and RO<sub>2</sub> ( $\nu_{RO_2}$ ; low-NO<sub>x</sub> regime). The parameter  $\alpha$  is expressed as follows:

$$\alpha = \frac{\nu_{NO}}{\nu_{NO} + \nu_{HO_2} + \nu_{RO_2}} \quad (9)$$

It represents the part of RO<sub>2</sub> radicals reacting with NO (which leads to applying "high NO<sub>x</sub> yields"). It is calculated for  
each grid cell by using the instantaneous NO, HO<sub>2</sub>, and RO<sub>2</sub> concentrations in the model. Then, the following equation  
520 is used to calculate an adjusted SOA yield using this  $\alpha$  value, (Carlton et al., 2009).

$$Y = \alpha \times Y_{highNO_x} + (1 - \alpha) \times Y_{lowNO_x} \quad (10)$$

## 2. VBS scheme with functionalization and fragmentation process

For *soatyp*=7, the formation of SOA from VOC is taken into account with the VBS scheme with the functionalization and  
fragmentation process. The fragmentation processes for the SVOC start after the third generation of oxidation because  
525 fragmentation is favored with respect to functionalization for more oxidized compounds. Therefore, three series of  
species in different volatility bins were added to present each generation, similar to the approach setup in Shrivastava et al.  
(2013). For biogenic VOC, fragmentation processes come into effect starting from the first generation, as in Shrivastava  
et al. (2013), because the intermediate species are considered to be more oxidized. A fragmentation rate of 75% (with  
25% left for functionalization) is used here for each oxidation step following Shrivastava et al. (2015). The formation  
530 of non-volatile SOA is performed by moving a part of each aerosol bin to nonvolatile bins with a reaction constant  
corresponding to a lifetime of 1h, similar to Shrivastava et al. (2015).

## 8 Natural emissions

Numerous changes were made in this model version for natural emissions: Dimethylsulfide emissions were added, sea-salt  
emissions have new parameterizations, mineral dust emissions were improved with mineralogical speciation, biomass burning  
535 can be calculated either with CAMS or APIFLAME models and with new vertical profiles; NO<sub>x</sub> emissions by lightning were  
added.

### 8.1 Dimethylsulfide emissions

The dimethylsulfide (DMS) emissions may now be calculated over the oceans. DMS is a major source of atmospheric sulfur.  
It contributes to cloud condensation nuclei (CCN) and has thus an impact on cloud formation. DMS atmospheric emission  
540 fluxes are parameterized and correspond to a fraction of aqueous DMS sea surface concentrations (nM). These concentrations  
are extracted from the global database of Lana et al. (2011). The global database contains monthly mean global fields of

oceanic DMS with a horizontal resolution of  $1^\circ \times 1^\circ$ . The aqueous DMS is produced by plankton under light exposure and concentrations are thus sensitive to the time of the year, the latitude, and the sea surface temperature.

In CHIMERE, these monthly mean global fields are projected on the current simulation domain, using landuse information  
545 to realistically downscale the values. Using these concentrations, the emitted flux (from ocean to air) is expressed as, (Zavarsky et al., 2018):

$$F = -k \cdot \left( \frac{c_{air}}{H} - c_{water} \right) \quad (11)$$

where  $k$  ( $\text{m s}^{-1}$ ) is the transfer velocity (also called "piston velocity" in some studies).  $c_{air}$  and  $c_{water}$  are the concentrations of dimethylsulfide in the air and the water (ocean), respectively, then in gas and liquid phase.  $H$  is the Henry's law constant and  
550 represents the gas solubility, depending on sea salinity and temperature. The most important assumption in the flux calculation is to consider that  $c_{water} \gg c_{air}$ . This is the case in all situations where studies showed that there is at least an order of magnitude between the two. The equation reduces to:

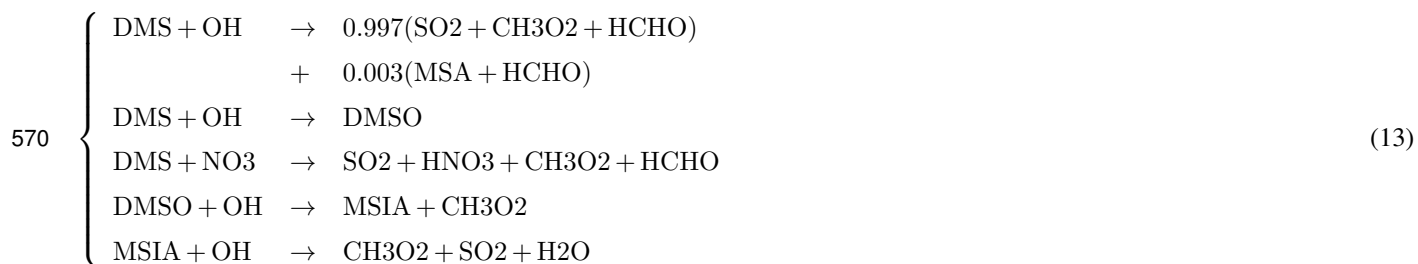
$$F = k \cdot c_{water} \quad (12)$$

The key point is to estimate  $k$ , the transfer velocity. Elliott (2009) studies the dependence of DMS flux on transfer velocity  
555 at the global scale. For that, they compare four different emission parameterizations, with several equations for the transfer velocity  $k_w$ . These four schemes are implemented in CHIMERE and may be selected using a dedicated user's option. The schemes are Liss and Merlivat (1986), Wanninkhof (1992), Nightingale et al. (2000), and Elliott (2009). The last one is a blend of the first three schemes.

The schemes correspond to best-fit functions built to parameterize the  $k$  value. This value depends on the wind speed in the  
560 atmosphere (the 10m wind speed is used here) and the sea surface temperature via the calculation of the DMS Schmidt number. Equations used are those explained in Kettle and Andreae (2000).

After the emission, the DMS reacts chemically in the atmosphere. Chemical reactions were added in the model, both in the MELCHIOR and SAPRC mechanisms. DMS is oxidized mainly by OH during the day and by  $\text{NO}_3$  radicals during the night. It produces  $\text{SO}_2$ , then sulfate  $\text{SO}_4^{2-}$  (Tesdal et al. (2016)). Another pathway of the OH oxidation forms dimethylsulfoxide  
565 (DMSO), intermediate methane sulfinic acid (MSIA), and methane sulfinic acid (MSA) (Chen et al. (2018)). The complete chemistry of DMS being extremely complicated, a reduced version is implemented in CHIMERE. The chemical scheme suggested by Mihalopoulos et al. (2007) is used. While aqueous reactions are also available in this scheme, they were not

implemented in CHIMERE, since their importance compared to the gas-phase DMS chemistry is small. The final set of added reactions is:



## 8.2 Sea-salt

In the previous CHIMERE versions, the only way to calculate the sea-salt emissions was the [Monahan \(1986\)](#) parameterization. There was also two flags for the sea-salt management in the *chimere.par* parameter file. In this model version, there is now only one flag, *iusesalt*, and four schemes for the sea-salt emissions calculations. Other improvements are: (i) the sea-salt calculations are now able to take into account the difference between inland water and lakes, (ii) the sea ice is removed from the sea surface estimation for the calculation. The modelled species are NA for the sodium fraction, HCL, the chloride fraction, H2SO4, the sulfate fraction, and WATER, the water fraction. The interest to split the sea salt chemical contribution is to have access to Na and Cl concentrations, later used in the model to more precisely calculate the pH.

The [Monahan \(1986\)](#) parameterization can be used setting *iusesalt=1* and calculates emission fluxes as:

$$\frac{dF}{dr} = \frac{1.373 \times U_{10}^{3.41}}{r^3} (1 + 0.057r^{1.05}) 10^{1.19e^{-B^2}} \quad (14)$$

$$\text{where } B = \frac{0.38 - \log(r)}{0.65} \quad (15)$$

$F$  is the flux of sea salt particle number in ( $\text{particles m}^{-2} \text{ s}^{-1} \mu\text{m}^{-1}$ ),  $r$  is the particle radius ( $\mu\text{m}$ ), and  $U_{10}$  is the 10m wind speed ( $\text{m s}^{-1}$ ). The sea salt flux is calculated with several limitations: only for 10m wind speed less than or equal to  $30 \text{ m s}^{-1}$  and with a fixed size distribution. This scheme is for the indirect mechanism (bubbles bursting) and not the direct mechanism (spume) as explained by [Grini et al. \(2002\)](#). For the direct mechanism, the parameterization proposed by [Monahan \(1986\)](#) was found to produce too much and is thus not implemented in our case. This scheme is designed to be used for particles bigger than  $0.8 \mu\text{m}$ , but is used for all sizes in many models, such as in CHIMERE's previous version. In order to have an alternative method for small size particles, two additional schemes are implemented: ([Martensson et al., 2003](#)) and ([Grythe et al., 2014](#)) schemes. In addition, a mix is possible between ([Monahan, 1986](#)) and ([Martensson et al., 2003](#)) for the size distribution. This mix can be selected by the user by using *iusesalt=2*. In this case, the flux is calculated using [Monahan \(1986\)](#), but the way to distribute this flux into the aerosol size distribution is calculated after [Martensson et al. \(2003\)](#).

The scheme of (Martensson et al., 2003) is available with *iusesalt=3*. This scheme is designed for an aerosol mean mass median diameter of until  $D_p=2.8 \mu\text{m}$ . Up to  $D_p=2.8 \mu\text{m}$ , the mass flux is estimated using (Monahan, 1986). The interest of this scheme is that the size distribution is temperature dependent. This scheme makes also the differences between the dry and wet radius of the particle for the calculation.

The same temperature influence is taken into account with the scheme of Grythe et al. (2014) using *iusesalt=4*. The flux is calculated as:

$$\begin{aligned} \frac{dF(D_p, U_{10}, T)}{dD_p} = & T_w \cdot \left[ 235 \cdot U_{10}^{3.5} \exp \left( -0.55 \left[ \ln \left( \frac{D_p}{0.1} \right) \right]^2 \right) \right. \\ & + 0.2 U_{10}^{3.5} \exp \left( -1.5 \left[ \ln \left( \frac{D_p}{2} \right) \right]^2 \right) \\ & \left. + 6.8 U_{10}^{3.0} \exp \left( -1.0 \left[ \ln \left( \frac{D_p}{30} \right) \right]^2 \right) \right] \end{aligned}$$

with  $T_w$  ( $K$ ) as the temperature dependence of production at temperature  $T$ , the sea surface temperature, and is estimated as:

$$T_w(T) = 0.3 + 0.1T - 0.0076T^2 + 0.00021T^3 \quad (16)$$

### 8.3 Mineral dust

The mineral dust emissions calculation remains highly uncertain in transport models, (Cuevas et al. (2015); Middleton (2017)). This uncertainty is linked to the fact that these emissions are estimated based on a threshold process computed with very uncertain forcings, (Alfaro and Gomes (2001); Darnenova et al. (2009)). The emission measurements are rare and, when they exist, representative mainly of a very local environment (a few tens of meters around the measurement site). Several, (Kok et al. (2012)). In CHIMERE v2020r1, several improvements were done on the mineral dust emissions flux calculation: (i) implementation of several subgrid scale approaches to take into account soil and surfaces variabilities, and (ii) the mineralogy to explicitly model several species instead of only one.

#### 8.3.1 Subgrid scale variability

The problem of using a threshold is that the transition between a zero and a non-zero value is very sensitive to the accuracy of the forcing parameter and on its spatial and temporal representativity. For the mineral dust emissions calculation, the key parameters are the 10m wind speed and the surface and soil type, including the aeolian roughness length, (Shao (2001); Engelstaedter et al. (2006)). Their spatial representativity is the one of the model cell, ~~in general from 5km to 1°; it can be very large and much higher and may be different~~ than the local phenomenon to model.

The best way to represent such processes is to calculate distributions: the input parameters are not used with a single value, which has high uncertainty, but with their distribution. This distribution represents at the same time the uncertainty and the spatio-temporal variability around the mean averaged value.



For the 10m wind speed, the subgrid scale variability was first represented using a Weibull distribution, (Menut, 2008). The Weibull  $k$  shape parameter was constant and equal to  $k=4$ . It was shown that the emissions were very sensitive to a change of the  $k$  value. In fact, there is no reason for the  $k$  parameter to be constant. Its value could depend on many parameters to express the surface and soil variability in the modelled cell. In Menut (2018), the  $k$  parameter is linked to the subgrid scale variability of the orography. The differences in emissions are quantified over Africa: the correlation is slightly improved but the RMSE, compared to AERONET AOD data, is well decreased. The use of the  $k$  parameter variability is a user's option.

For soil and surface properties, a subgrid scale variability was also implemented. In general, global, and regional models use the dominant landuse and soil properties in their domain cells. For each cell, there is one characteristic and the emissions flux is thus calculated once. Using high resolution (30s) USGS databases, we implemented a matrix, providing for each model cell the percentage of each soil type, and for each one, the percentage of each landuse type. The USGS database has 16 soil categories and 24 landuse categories, the dust flux is calculated for a maximum of 384 combinations. The values are then accumulated to have the mean flux in the cell.

### 8.3.2 Mineralogy

Among many others, one interest of the mineral dust modeling is to calculate accurate aerosol deposition fluxes, Sokolik and Toon (1999). For biogeochemical studies, the deposition of mineral dust over the ocean is of interest, in particular for phytoplankton growth, Zhang et al. (2015). In this new model version, the detailed mineralogy of dust was implemented, following the development of Balkanski et al. (2007). Instead of one mineral dust species called 'dust', twelve mineral species are emitted, transported, and deposited. They are: calcite, chlorite, feldspar, goethite, gypsum, hematite, illite, kaolinite, mica, quartz, smectite, and vermiculite, Claquin et al. (1999); Balkanski et al. (2007). Each one has a specific density, silt/clay ratio, and refractive index. As with the mean mineral dust, these species are described with a binned size distribution (in general 10 bins as recommended in the parameter file). The complete parameterization and results are presented in Menut et al. (2020b). The use of this mineralogy may be numerically expensive due to the larger number of emitted species (twelve), which are then transported and deposited. This doubles the number of aerosols in the CHIMERE model.

### 8.4 Biomass-Forests biomass burning emissions

Biomass-Forests biomass burning emission fluxes may be included in CHIMERE model simulations using two different sources:

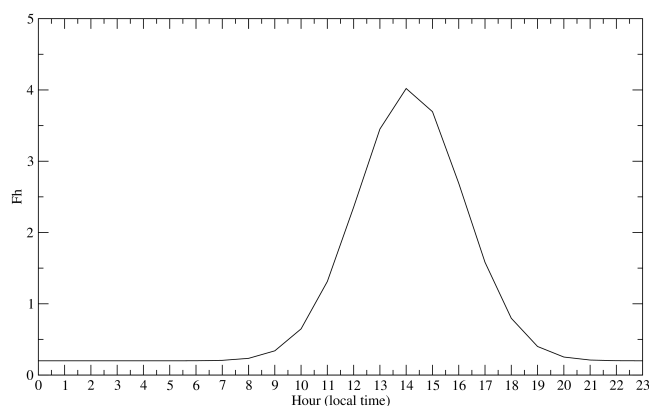
- The CAMS model fluxes with a horizontal resolution of  $0.1 \times 0.1$  degrees. These fluxes are reprojected on the CHIMERE grid and with the used chemical model species.
- The APIFLAME model fluxes, with an adaptable horizontal resolution, up to the maximum resolution of  $1\text{km} \times 1\text{km}$ . This model reads satellite data, global model fuel load, and calculates emission fluxes. This model is more dedicated to research and enables development of new biomass burning parameterizations, development scenarios, the ability to change the hypothesis on the emitted chemical species, etc.

### 8.4.1 The CAMS pre-processor

The pre-processor for ECMWF CAMS data formatting is a program distributed with the new CHIMERE version. The goal is to download the ECMWF model outputs of [Kaiser et al. \(2012\)](#) and adapt them to the CHIMERE format. For this formatting, several conversions are needed: projecting the data onto the CHIMERE simulation grid, converting the proposed chemical  
655 model species to the CHIMERE chemical mechanism species, and temporally refining the data by shifting the time resolution from daily to hourly fluxes. All available chemical species are downloaded and used to create the CHIMERE emitted species. Temporally, having no realistic information to move from daily to hourly emissions fluxes, an academic diurnal profile is applied to the daily data as:

$$F_h = d_w + (1 - d_w) \frac{24}{d_s \sqrt{2\pi}} \times \exp\left(-0.5 \left(\frac{h + 0.5 + \delta - t_0}{2d_s}\right)^2\right) \quad (17)$$

660 with the constant values:  $h$ , the current GMT hour,  $d_w=0.2$ ,  $d_s=2.0$ ,  $t_0=13.5$ , and  $\delta=\text{longitude}/360 \times 24$ . An example is displayed in [Figure 11](#).



**Figure 11.** Academic hourly profile applied to the constant daily wildfire fluxes.

### 8.4.2 APIFLAME v2

APIFLAME was designed to calculate the emissions from biomass burning at high spatial and temporal resolution with flexibility in terms of the input data used. While the CAMS approach is based on fire radiative power (FRP) detection (active fires),  
665 APIFLAME calculates emissions based on the burned area and resulting biomass consumed (in terms of carbon), as described in [Menut et al. \(2013\)](#); [Turquety et al. \(2014\)](#). Maps of the burned areas and FRP on the user-defined grid are derived (with the corresponding *geog* file) from MODIS satellite observations (MOD14 and MCD64A1, respectively, version v006), com-

670 bined the information on the vegetation type (satellite observations or landuse databases). Depending on the type of vegetation burned, the amount of carbon consumed is calculated by multiplying the burned area with the fuel consumption derived from the ORCHIDEE land surface model (Turquety et al., 2014). Emissions for inventory species are then calculated using a list of emission factors, and converted to emission fluxes for CHIMERE species using aggregation matrices accounting for the reactivity to OH (either the SAPRC or MELCHIOR chemical scheme).

The main improvement included in version 2 (Turquety et al., 2020) is related to temporal variability, with the possibility to: (i) redistribute the total monthly burned area (MCD64 data) according to the FRP value (MOD14 data) so that higher emissions will correspond to enhanced fire intensity; (ii) redistribute daily emissions using the diurnal variability of the FRP in the geostationary observations (SEVIRI above Europe and Africa). Small fires that may be observed with the active fire detection (FRP), but that are not present in the burned area product, may also be included.

680 The flexibility of the use of input datasets for fire activity or vegetation type burned allows for the calculation models in an ensemble that provide information on the uncertainties related to these choices. The analysis of a case study in Portugal during the summer of 2016 shows an average dispersion of  $\sim 75\%$  of daily carbon emissions. The list of species included may also be modified without modifying the core of the model (input datasets).

### 8.4.3 The height and shape of the vertical injection

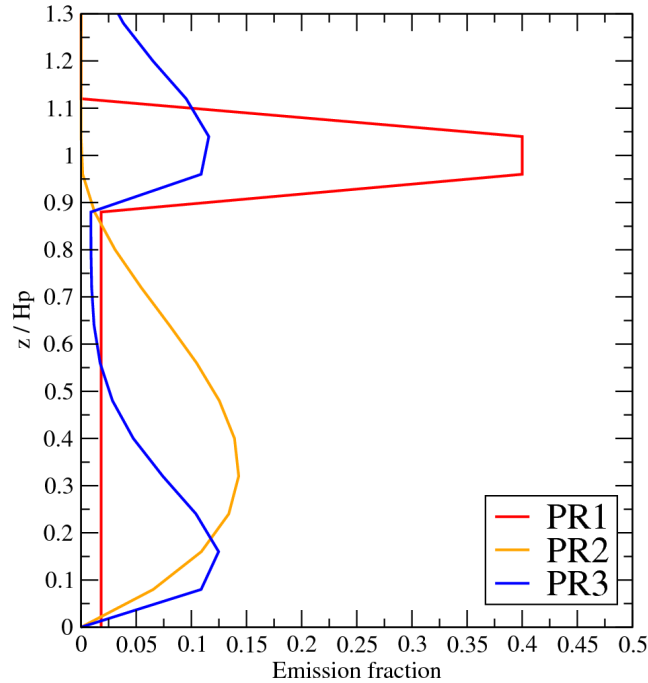
The CAMS or APIFLAME data provide a biomass burning surface flux. It is necessary to redistribute vertically the flux along a profile representing pyroconvection. The injection height,  $H_p$ , estimation is based on the Sofiev et al. (2012) scheme, as:

$$685 \quad H_p = \alpha H_{abl} + \beta \left( \frac{FRP}{P_{f0}} \right)^\gamma \exp(-\delta N_{FT}^2 / N_0^2) \quad (18)$$

with  $\alpha=0.24$ ,  $\beta=170\text{m}$ ,  $\gamma=0.35$ , and  $\delta=0.6$ ,  $P_{f0}=10^6\text{W}$ , and  $N_0^2=2.5 \times 10^{-4} \text{ s}^{-2}$ .  $N_{FT}$  is the Brünt-Väisälä frequency and is calculated between  $H_{abl}$  and the pressure level corresponding to 300hPa (to ensure it remains in the free troposphere). The FRP is expressed in [W] and is provided by the emission flux data. In the case of 'huge' fires, i.e. if the  $H_p$  value is greater than 1500m AGL, the calculation is redone following Veira et al. (2015), after replacing  $FRP$  with  $FRP^* = FRP \sqrt{H_p / H_{deep}}$ ,  
690 with  $H_{deep} = 1500\text{m}$ .

After the estimation of the height of the mass injection, it is possible to estimate the shape of the injection profile. Three user options have been implemented in the model, Figure 12 .

- PR1: The mass flux is separated into two parts: 20% is injected between the surface and  $0.9 \times H_p$  and 80% between  $0.9 \times H_p$  and  $1.1 \times H_p$ . Inside these two intervals, the flux is constant with altitude. This profile is close to the shape of  
695 the convective profile obtained using thermal parameterizations.



**Figure 12.** Vertical profiles of factors used for the vertical redistribution of the biomass burning emissions fluxes.

- PR2: The emissions are injected between the surface and  $H_p$ , following a profile close to the one used in [Veira et al. \(2015\)](#) with a  $K_z$ -like shape:

$$\begin{cases} \text{if } z_n \leq 1 & EF(z) = H_p z_n (1 - z_n)^2 \\ \text{if } z_n > 1 & EF(z) = 0 \end{cases} \quad (19)$$

with  $EF$  as the emission flux and  $z_n = z / H_p$ .

- 700 – PR3: This profile also uses a  $K_z$ -like shape, but with two maxima: one in the surface layer and one around  $H_p$ .

These profiles were tested in [Menut et al. \(2018\)](#), with the simulation of biomass burning episodes in the center of Africa. It was shown that, after long range transport, the atmospheric concentration of pollutants is not very sensitive to the shape of the vertical profile. It is mainly due to the fact that pyroconvection has higher temperature and more turbulence than the environment: the emitted species are quickly and homogeneously mixed in the whole column between the surface and  $H_p$ .

## 705 8.5 $\text{NO}_x$ by lightning

The emissions of  $\text{NO}_x$  from lightning were added in this version. These emissions occur in case of deep convection and convective precipitation. The detailed implementation and its impact on chemical concentration is explained in [Menut et al.](#)

(2020a). The scheme implemented is simple and follows the [Price and Rind \(1993\)](#) scheme, based on the presence and vertical structure of convective clouds. The use of this parameterization is more realistic, in particular at tropical latitudes, when lightning flashes are the most often observed. These emissions improve the Aerosol Optical Depth in Africa but have limited impact on the surface concentrations of pollutants in Europe.

## 9 Impact of several changes in the model

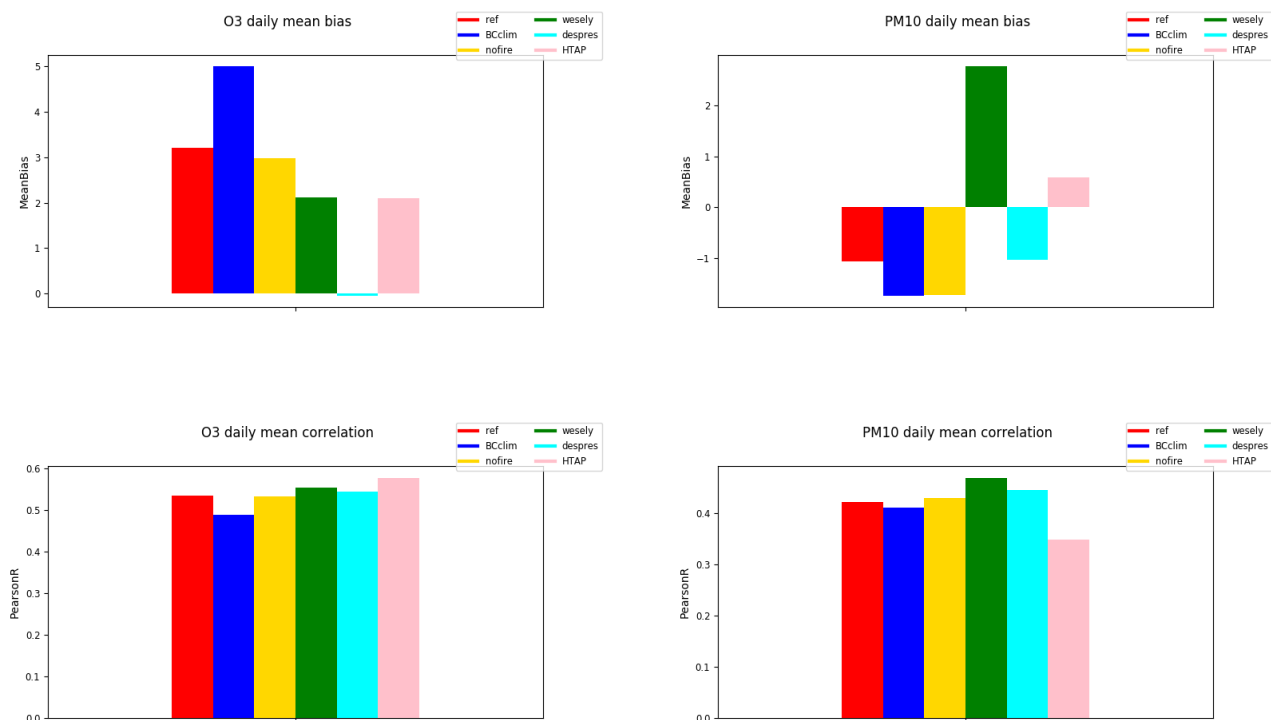
The previous sections presented all the changes made in this model version. For some of these changes, simulations were carried out in order to examine their impact. Note that compared to the section 3, the reference simulation was done here with WRF forced by NCEP global meteorological fields.

The following sensitivity tests were performed:

- 'ref' is the reference simulation. The following simulations are done by changing one (and only one) parameter of this simulation.
- 'BCclim<sup>uv</sup>': in place of the daily boundary conditions from CAMS, we use the climatological boundary conditions, distributed with the model and performed using the GOCART and LMDz-INCA global models.
- 'nofire': Biomass burning emissions were set to zero, in place of the CAMS emissions in 'ref'.
- 'wesely': this simulation used the [Wesely \(1989\)](#) scheme for dry deposition in place of the [Zhang et al. \(2001\)](#) scheme in 'ref'.
- 'despres': this simulation used the [Després and Lagoutière \(1999\)](#) transport scheme for vertical advection, in place of the [Van Leer \(1977\)](#) in 'ref'.
- 'HTAP': this simulation used HTAP anthropogenic emissions in place of the EMEP emissions.

Results are presented in [Figure 13](#), with the daily mean bias (in  $\mu\text{g m}^{-3}$ ) and correlation (between -1 and 1) for surface ozone and  $\text{PM}_{10}$  concentrations. For ozone, the reference case shows a mean daily bias of  $+3.29 \mu\text{g m}^{-3}$ . By changing the boundary conditions, this bias increased to  $+4.81 \mu\text{g m}^{-3}$ . The fact to not use biomass burning emissions reduced this bias to  $3.10 \mu\text{g m}^{-3}$ . It means that the addition of fires emissions does not have a large mean impact on the ozone surface concentrations. But this is normal as fires events, even if they may induce a large increase in ozone concentrations, are only present for a few days during a year. The change of the dry deposition scheme has a large impact for ozone, decreasing the bias a lot to  $2.35 \mu\text{g m}^{-3}$ . The largest impact on ozone bias was from the new vertical transport scheme of [Després and Lagoutière \(1999\)](#): the bias was reduced to  $-0.05 \mu\text{g m}^{-3}$ . Finally, the change of the anthropogenic emissions inventory, by using HTAP in place of CAMS, also has an impact, with a decreased bias of  $1.48 \mu\text{g m}^{-3}$ .

For  $\text{PM}_{10}$ , the bias also changed a lot, depending on the used parameterization. With the reference case, the bias was  $-1.42 \mu\text{g m}^{-3}$ . The bias became larger and was always negative for the change in boundary conditions and when not taking into account biomass burning, with biases of  $-2.12$  and  $-1.87 \mu\text{g m}^{-3}$ , respectively. The most important change was the bias becoming positive ( $+2.89 \mu\text{g m}^{-3}$ ) with the dry deposition scheme of [Wesely \(1989\)](#). For the use of the vertical transport scheme of [Després and Lagoutière \(1999\)](#), the bias remained negative but was reduced to  $-0.92 \mu\text{g m}^{-3}$ . Finally, in another



**Figure 13.** Bias ( $\mu\text{g m}^{-3}$ ) and correlation (-1:1) for  $\text{O}_3$  and  $\text{PM}_{10}$  surface concentrations, for several sensitivity tests.

positive case, was the change of the emissions inventory, with a bias of  $+0.43 \mu\text{g m}^{-3}$  with the use of HTAP. For the correlation, for ozone and  $\text{PM}_{10}$ , the changes were not as large as the biases. For ozone, the values were between  $0.51$  and  $0.60 \mu\text{g m}^{-3}$ , when the reference was  $0.56 \mu\text{g m}^{-3}$ , and, for  $\text{PM}_{10}$ , the values were between  $0.34$  and  $0.48 \mu\text{g m}^{-3}$ , when the reference was  $0.43 \mu\text{g m}^{-3}$ . For several cases, some compensation errors were possible, but, it was noticeable that the use of the new vertical transport scheme of Després and Lagoutière (1999) was the only case where scores were improved for all pollutants. Reduction on the positive ozone bias close to the ground could be linked to the antidiffusive properties of the Després and Lagoutière (1999) scheme, reducing erroneous downward transport of ozone from the higher troposphere which has been shown by, e.g., Emery et al. (2011), to be a major source of overestimation of ozone concentration in the midlatitudes. Implementation of the Després and Lagoutière (1999) scheme in CHIMERE is discussed in detail in Lachatre et al. (2020), which shows the strong reduction in vertical diffusion obtained with the use of this scheme relative to Van Leer (1977). Mailler et al. (2021) discusses in more detail the strength and weaknesses of this scheme relative to Van Leer (1977).

## 10 Model's time integration

The model's time integration benefits from two main changes for this new version: (i) the three time-steps were optimized and the adaptive time-step is more efficient and robust. (ii) the process integration may now be done with the original approach of 'prod-loss budget' or through using the newly implemented approach of 'operator splitting'.

### 10.1 Time management

The time management in the model was already defined in [Menut et al. \(2013\)](#). In this model version, some changes were done, mainly due to the need to manage variable time-steps with the online version. Three time-steps are defined: the *hour*, a physical time-step, called *dphys*, and a chemical time-step called *dtchem*.

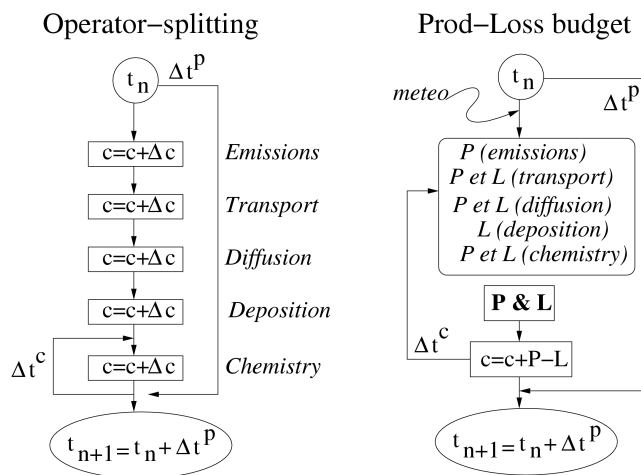
760 The *hour* is obviously a fixed time step of one hour. This interval is mandatory since many input model data are provided at an hourly frequency: meteorological fields, emissions, and boundary conditions, for example. It is also the frequency used to read the data in offline mode.

The physical time-step *dphys* is defined by the user in the chimere parameter file. In offline mode, it indicates the value that the user wants ~~to interpolate the hourly meteorology at~~ for the transport [calculation](#). The meteorological data ~~is-are~~ linearly  
765 interpolated between two consecutive hours, therefore the number of steps may change the simulated chemical concentrations in the case of a rapid change in meteorology from one hour to the next one. In online mode, this time-step has another meaning and represents the exchange frequency of variables between WRF and CHIMERE.

The chemical time-step *dtchem* is also defined in the chimere parameter file. But, in this case, it is just a recommendation. The CFL is calculated in each cell and at each time-step and if a lower *dphys* value is necessary, the calculated value is used.  
770 The *dphys* value is estimated as:

$$\Delta t = \frac{\text{CFL}_{max} \times \Delta x}{U} \quad (20)$$

where  $\text{CFL}_{max}$  is the maximum acceptable CFL value. Theoretically,  $\text{CFL}_{max}=1$ , but to avoid numerical instabilities during the transport,  $\text{CFL}_{max}=0.8$  is recommended. If the user experiences instabilities, it is possible to reduce this value in the parameter file.  $\Delta x$  is the grid cell width (m) and  $U$  is the wind speed ( $\text{m s}^{-1}$ ). The value of  $\Delta t$  is calculated for  $U$ , with  
775 the zonal wind component,  $u$ , the meridian wind component,  $v$ , the vertical wind component,  $w$ , and the deep convection components (updraft and downdraft). The minimum of all these values is retained as the necessary time-step. In general, it is the  $w$  value which limits the time-step. This calculation is performed for each subdomain of the parallelized domain and the minimum value is retained. Finally, an adjustment is done to ensure that *dphys* is an exact multiple of *dtchem*. As the CFL calculation is performed every *dphys*, it is possible to have a different *dtchem* value at each physical time-step. This adaptive  
780 time-step was shown to be very efficient to decrease the computational time of a simulation.



**Figure 14.** Principle of the time-integration in the model of all processes calculated to update the chemical concentration fields.

## 10.2 Operator splitting

The integration of all processes to update the concentrations in a chemistry-transport model is a well-known problem and several methods exist. Until the 2017 version, the update in time of the chemical concentrations was done using the Production/Loss approach, as presented in **Figure 14**. In this case, all production (P) and loss (L) terms are calculated independently.

785 The update of a chemical concentration is thus done by integrating the equation:

$$\frac{\partial c}{\partial t} = P - L.c \quad (21)$$

All production and loss terms are calculated at the same time and integrated all together. To solve this complex system, the numerical method used is the two-step algorithm developed by Verwer (1994). It consists of a Gauss-Seidel scheme to have a stable update of all concentrations, whatever their lifetime. Its strength is that there is no splitting error, linked to the order of the processes. Its weakness is that the time-step required is constrained to the smallest time-step, which is, general, the time-step required for the chemical modelling. This means that many of the concentrations are updated for the transport and the mixing much more often than necessary. The results are more accurate but slower to obtain than with the splitting method.

790 In this version, the splitting-operator approach was added. It is a well known approach, widely used in chemistry-transport models, (McRae et al., 1982). Contrary to the two-step approach, the chemical concentration is updated with each process one by one. A new concentration is thus calculated with the transport, then with the mixing, then with the chemical reactions, etc. Its strength is that the time-step used may be different between each process: knowing that the chemical reactions need a fast time-step, it is possible to update the chemistry with a small time-step, and to later update the concentrations with the transport, which uses a larger time-step. Globally, this speeds up the model integration. But its weakness is that the results depends on the order of the processes. The results are less accurate but obtained faster than with the prod/loss approach. Finally, knowing



800 the strengths and weaknesses, the user can select their own approach, with, for example, the prod/loss approach for analysis and the operator splitting approach for forecasting.

### 10.3 Flexibility on outputs

The output files may be very large, depending on the grid size and the simulation duration. More flexibility was added in this model version to have less variables in the output files if the user is interested in basic output variables only. This may be  
805 convenient for forecasting users, for example, where only tracked pollutants are used and not all defined variables in the model.

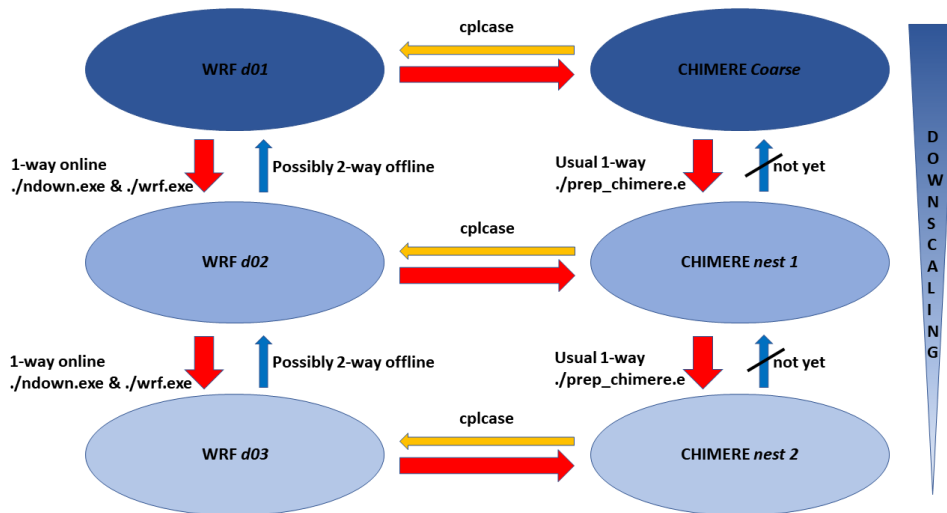
For the output concentration species, there is no change in this version. The difference between the *low* and *full* flags are whether to write the aerosols bin per bin or not. In all cases, the total mass of each aerosol species is written. For the deposition, the novelty is that by selecting *nsdepos=0*, the output file for dry and wet deposition is not created. This is a gain in runtime and disk space if the user is not interested in analyzing the deposition fluxes. For the meteorology, a new flag called *accurmet*  
810 is added in the parameter file, with three different possible values: *low*, *medium* and *full*. With *accurmet=low*, only the two-dimensional meteorological fields are written in the output: the 2m temperature and 2m relative humidity, the 10m wind speed, and the boundary layer height. With *accurmet=medium*, the previous fields are written, with, in addition, the three-dimensional fields of pressure, temperature, specific humidity, and wind components *u* and *v*. Finally, with *accurmet=full*, all meteorological fields treated by the model are written in output. This includes deep convection mass fluxes, ice, snow, and rain.

## 815 11 Nesting and nudging

For the nesting, the way how it is managed with this new version is presented in Figure 15. As with the previous version, CHIMERE authorizes nesting up to three levels. However, the namelist files can be easily changed to increase the depth of the nesting. ~~For this version~~

In offline mode, CHIMERE can be used as usual ~~in the offline mode~~ with meteorological forcing through WRF, ECMWF,  
820 or from other sources of data. In this case, WRF can be run in 1-way or 2-way nesting, then CHIMERE is run after, as usual, for each domain with a 1-way nesting. If the online flag is activated (*online=1*), the model is fully coupled with WRF, with different complexities of coupling (*cpl\_case* flag). For this case, the 2-way nesting is not permitted, each level of nesting is run, WRF and CHIMERE exchange information frequently but there is no online feedback to the level above to update both the species concentrations and meteorological fields. To achieve this 1-way nesting procedure the *ndown.exe* WRF executable is  
825 used, permitting the use of meteorological outputs coming from the above domain to drive the nested domain. Therefore, for a given level of nesting, WRF and CHIMERE are always run using the downscaled information from the level above and never benefiting from the interior level, if it exists. A nested domain can use different numbers of vertical levels, as long as the top height of the nested domain is less than the top height of the parent domain.

~~The~~ For the nudging, the CHIMERE-WRF coupled suite can use the WRF nudging option to avoid strong divergences inside  
830 the models. This used in coarse model simulations (typically above 25km resolution) that are driven by global scale simulations, commonly issued from GFS or ECMWF datasets that have been re-analysed with synoptic observations. At higher resolutions



**Figure 15.** Principle of the nesting in case of offline or online coupling.

with nested domains, model nudging should be not necessary to allow the model to accurately develop the local physics and dynamics. For the chemistry, model nudging is not used, but the assimilation of observation data (from satellite and ground stations) is an area of interest that is not yet fully operational in this version of CHIMERE.

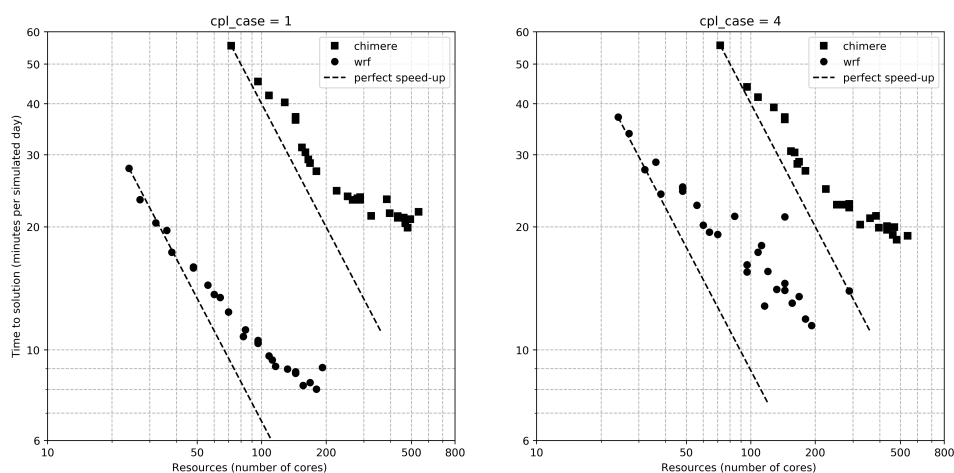
## 835 12 Computing performances

Computing performances and scalability are studied with a series of 1 day long run performed on the Irene Joliot-Curie machine of TGCC with varying number of cores dedicated to WRF and CHIMERE for the coupling case (*cpl\_case*) 1 and 4. To increase the number of points and therefore allow the use of more cores, the MED20 domain (same domain as MED60 but at 20 km horizontal resolution) is used. The effective computational times spent in both components of the coupled system (WRF and CHIMERE) are obtained with the LUCIA tool of the OASIS3-MCT coupler (Maisonnavé and Caubel, 2014) which enables separation of computational time and waiting time. The scalability is presented in Figure 16 using a time to solution (in minutes per simulated day) criteria omitting any waiting time due to load imbalance between the two components. In both coupling cases, the CHIMERE behaviour remains the same with a good scalability up to 200 hundred cores. WRF behaviour differs in the *cpl\_case* 4 when direct and indirect aerosol effects are at stake due to specific calculations in this case, however scalability remains correct up to 100 cores. In both cases WRF is faster than CHIMERE, therefore the speed of CHIMERE is key in the overall performance of the coupled model.

The time to solution of the coupled model as a whole is presented in Figure 17 as a function of the ratio of cores attributed to CHIMERE to the cores attributed to WRF for 3 different constant total number of cores. Essentially for the *cpl\_case* 1, the more cores that are given to CHIMERE, the better the performance is, especially if the total number of cores is relatively small.

850 For the *cpl\_case* 4, the core balancing between the two models is more important for performance. If the number of cores given to WRF becomes too small, the performance decreases. In this particular experiment, a ratio between 2 and 4 seems to be optimal.

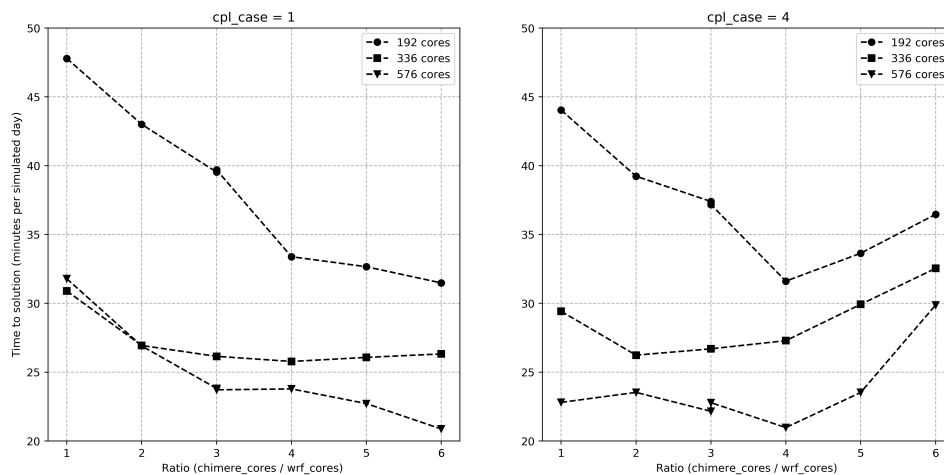
Those results show computational time for both components but in a coupled framework, they do not infer scalability when used in standalone mode. Moreover, scalability and performance are strongly dependent on the machine and the size of the domain.  
855 Custom sensitivity analysis on each setup is always better, but as a rule of thumb a ratio of 2 to 4 chimere cores to 1 wrf core is recommended for good performance.



**Figure 16.** Time to solution of WRF and CHIMERE in minutes per simulated day as a function of computational resources for *cpl\_case* = 1 (left) and *cpl\_case* = 4 (right)

### 13 Conclusions

This article presented the new CHIMERE chemistry-transport model version. All new commands and parameterizations were extensively described. This version is an important step forward, compared to evolutions of the previous versions. First, this is  
860 the first online coupled version, in this case with the WRF meteorological model. It enables to model the direct and indirect effects of aerosols on meteorology. [The validation of this version was performed using surface measurements of pollutants concentrations, aerosol optical depth and vertical ozone soundings. Statistical scores were calculated including bias, correlation, RMSE as well as scores on ozone daily maximum concentrations, being of importance for users doing forecast.](#) A long term simulation showed this new feature does not change drastically the results for pollutants at large scale. But for high resolution  
865 studies, this process has an increasing importance. Second, all natural emissions were revised and updated: mineral dust, sea salt, and biomass burning. The  $\text{NO}_x$  emissions by lightning was also added. Third, the aerosols chemistry was also improved with the addition of the VBS and  $\text{H}_2\text{O}$  schemes. Fourth, the subgrid scale variability of concentrations due to emissions by



**Figure 17.** Time to solution for the coupled model in minutes per simulated day as a function of the ratio of CHIMERE cores to WRF cores for 192, 336 and 576 total number of cores. and for  $cpl\_case = 1$  (left) and  $cpl\_case = 4$  (right).

activity sectors is also now included in this version. Finally, a new vertical advection scheme was added, which has been shown to strongly reduce excess vertical diffusion. Compared to the previous model version, this new one has the same performance  
 870 for the correlation of ozone, but the bias has been improved. For forecasting, the daily maxima are also better modelled. For aerosols and optical depth, the results are much better with v2020r1, for both the correlation and bias.

*Code availability.* The CHIMERE v2020 model is available on its dedicated web site <https://www.lmd.polytechnique.fr> and for download at <https://doi.org/10.14768/8afd9058-909c-4827-94b8-69f05f7bb46d>.

*Data availability.* All data used in this study, as well as the data required to run the simulations, are available on the CHIMERE web site  
 875 download page <https://doi.org/10.14768/8afd9058-909c-4827-94b8-69f05f7bb46d>.

*Author contributions.* All authors contributed to the model development. LM coordinated the manuscript and all authors wrote a part and reviewed it. AC ran the simulations for validation and made the validation figures.

*Competing interests.* The authors declare that they have no conflict of interest.

*Acknowledgements.* We would like to acknowledge Douglas Keller (LMD) for his complete review of this article, including an accurate  
880 correction of English. We also acknowledge Blandine Rault (INERIS) for the development and also support over the use of the evaltools  
python package (<https://opensource.umr-cnrm.fr/projects/evaltools>). This work was granted access to the HPC resources of TGCC under the  
allocation 10274 made by GENCI (Grand Equipement National de Calcul Intensif). We thank the OASIS modeling team for their support  
with the OASIS coupler, the WRF developers team for the free use of their model. We thank the National Aeronautics and Space Agency for  
the availability of the MODIS data, the investigators and staff who maintain and provide the AERONET data (<https://aeronet.gsfc.nasa.gov/>),  
885 the University of Wyoming for the availability of the atmospheric soundings, along with the European Environment Agency for provid-  
ing the AirBase data. We acknowledge the E-OBS dataset from the EU-FP6 project UERRA (<http://www.uerra.eu>) and the data providers  
in the ECA&D project (<https://www.ecad.eu>). European Environmental Agency (EEA) is acknowledged for their air quality station data  
that is provided and freely downloadable (<https://www.eea.europa.eu/data-and-maps/data/aqereporting-8>). We also thank the World Ozone  
and Ultraviolet Radiation Data Centre (WOUDC), the Environment and Climate Change Canada, Toronto and the World Meteorologi-  
890 cal Organization-Global Atmosphere Watch Program (WMO-GAW) for providing ozoneSonde data, downloaded from the WOUDC site  
(<https://woudc.org/home.php>).

## References

- Abdul-Razzak, H. and Ghan, S. J.: A parameterization of aerosol activation 3. Sectional representation, *Journal of Geophysical Research: Atmospheres*, 107, AAC 1–1–AAC 1–6, <https://doi.org/10.1029/2001JD000483>, 2002.
- 895 Alfaro, S. C. and Gomes, L.: Modeling mineral aerosol production by wind erosion: Emission intensities and aerosol size distribution in source areas, *J of Geophysical Research*, 106, 18,075–18,084, 2001.
- Andreae, M. and Rosenfeld, D.: Aerosol-cloud-precipitation interactions. Part 1. The nature and sources of cloud-active aerosols, *Earth-Science Reviews*, 89, 13–41, <https://doi.org/10.1016/j.earscirev.2008.03.001>, 2008.
- Baklanov, A., Schlünzen, K., Suppan, P., Baldasano, J., Brunner, D., Aksoyoglu, S., Carmichael, G., Douros, J., Flemming, J., Forkel, R.,  
900 Galmarini, S., Gauss, M., Grell, G., Hirtl, M., Joffre, S., Jorba, O., Kaas, E., Kaasik, M., Kallos, G., Kong, X., Korsholm, U., Kurganskiy, A., Kushta, J., Lohmann, U., Mahura, A., Manders-Groot, A., Maurizi, A., Moussiopoulos, N., Rao, S. T., Savage, N., Seigneur, C., Sokhi, R. S., Solazzo, E., Solomos, S., Sørensen, B., Tsegas, G., Vignati, E., Vogel, B., and Zhang, Y.: Online coupled regional meteorology chemistry models in Europe: current status and prospects, *Atmospheric Chemistry and Physics*, 14, 317–398, <https://doi.org/10.5194/acp-14-317-2014>, 2014.
- 905 Balkanski, Y., Schulz, M., Claquin, T., and Guibert, S.: Reevaluation of Mineral aerosol radiative forcings suggests a better agreement with satellite and AERONET data, *Atmospheric Chemistry and Physics*, 7, 81–95, <https://doi.org/10.5194/acp-7-81-2007>, 2007.
- Briant, R., Tuccella, P., Deroubaix, A., Khvorostyanov, D., Menut, L., Mailler, S., and Turquety, S.: Aerosol–radiation interaction modelling using online coupling between the WRF 3.7.1 meteorological model and the CHIMERE 2016 chemistry-transport model, through the OASIS3-MCT coupler, *Geoscientific Model Development*, 10, 927–944, <https://doi.org/10.5194/gmd-10-927-2017>, 2017.
- 910 Carlton, A. G., Wiedinmyer, C., and Kroll, J. H.: A review of Secondary Organic Aerosol (SOA) formation from isoprene, *Atmospheric Chemistry and Physics*, 9, 4987–5005, <https://doi.org/10.5194/acp-9-4987-2009>, <https://www.atmos-chem-phys.net/9/4987/2009/>, 2009.
- Cassiani, M., Vinuesa, J., Galmarini, S., and Denby, B.: Stochastic fields method for sub-grid scale emission heterogeneity in mesoscale atmospheric dispersion models, *Atmospheric Chemistry and Physics*, 10, 267–277, [www.atmos-chem-phys.net/10/267/2010/](http://www.atmos-chem-phys.net/10/267/2010/), 2010.
- Chen, Q., Sherwen, T., Evans, M., and Alexander, B.: DMS oxidation and sulfur aerosol formation in the marine troposphere: a focus  
915 on reactive halogen and multiphase chemistry, *Atmospheric Chemistry and Physics*, 18, 13 617–13 637, <https://doi.org/10.5194/acp-18-13617-2018>, 2018.
- Cholakian, A., Beekmann, M., Colette, A., Coll, I., Siour, G., Sciare, J. and Marchand, N., Couvidat, F., Pey, J., Gros, V., Sauvage, S., Michoud, V., Sellegri, K., Colomb, A., Sartelet, K. and Langley DeWitt, H., Elser, M., Prévot, A. S. H., Szidat, S., and Dulac, F.: Simulation of fine organic aerosols in the western Mediterranean area during the ChArMEx 2013 summer campaign, *Atmos. Chem. Phys.*, 18, 7287–  
920 7312, 2018.
- Claquin, T., Schulz, M., and Balkanski, Y. J.: Modeling the mineralogy of atmospheric dust sources, *Journal of Geophysical Research: Atmospheres*, 104, 22 243–22 256, <https://doi.org/10.1029/1999JD900416>, 1999.
- Couvidat, F. and Sartelet, K.: The Secondary Organic Aerosol Processor (SOAP v1.0) model: a unified model with different ranges of complexity based on the molecular surrogate approach, *Geosci. Model Dev.*, 8, 1111–1138, <https://doi.org/10.5194/gmd-8-1111-2015>,  
925 2015.
- Couvidat, F., Debry, E., Sartelet, K., and Seigneur, C.: A hydrophilic/hydrophobic organic (H<sub>2</sub>O) aerosol model: Development, evaluation and sensitivity analysis, *Journal of Geophysical Research Atmospheres*, 117, D10 304, <https://doi.org/10.1029/2011JD017214>, 2012.

- Couvidat, F., Bessagnet, B., Garcia-Vivanco, M., Real, E., Menut, L., and Colette, A.: Development of an inorganic and organic aerosol model (CHIMERE 2017 $\beta$  v1.0): seasonal and spatial evaluation over Europe, *Geoscientific Model Development*, 11, 165–194, <https://doi.org/10.5194/gmd-11-165-2018>, 2018.
- 930 Craig, A., Valcke, S., and Coquart, L.: Development and performance of a new version of the OASIS coupler, OASIS3-MCT\_3.0, *Geoscientific Model Development*, 10, 3297–3308, <https://doi.org/10.5194/gmd-10-3297-2017>, 2017.
- Cuevas, E., Camino, C., Benedetti, A., Basart, S., Terradellas, E., Baldasano, J. M., Morcrette, J. J., Marticorena, B., Goloub, P., Mortier, A., Berjón, A., Hernández, Y., Gil-Ojeda, M., and Schulz, M.: The MACC-II 2007–2008 reanalysis: atmospheric dust evaluation and characterization over northern Africa and the Middle East, *Atmospheric Chemistry and Physics*, 15, 3991–4024, <https://doi.org/10.5194/acp-15-3991-2015>, <http://www.atmos-chem-phys.net/15/3991/2015/>, 2015.
- 935 Darnenova, K., Sokolik, I. N., Shao, Y., Marticorena, B., and Bergametti, G.: Development of a physically based dust emission module within the Weather Research and Forecasting (WRF) model: Assessment of dust emission parameterizations and input parameters for source regions in Central and East Asia, *J of Geophysical Research*, 114, D14 201, <https://doi.org/10.1029/2008JD011236>, 2009.
- 940 DeMott, P. J., Prenni, A. J., Liu, X., Kreidenweis, S. M., Petters, M. D., Twohy, C. H., Richardson, M. S., Eidhammer, T., and Rogers, D. C.: Predicting global atmospheric ice nuclei distributions and their impacts on climate, *Proceedings of the National Academy of Sciences*, 107, 11 217–11 222, <https://doi.org/10.1073/pnas.0910818107>, 2010.
- Després, B. and Lagoutière, F.: Un schéma non linéaire anti-dissipatif pour l'équation d'advection linéaire, *Comptes Rendus de l'Académie des Sciences - Series I - Mathematics*, 328, 939–943, [https://doi.org/10.1016/S0764-4442\(99\)80301-2](https://doi.org/10.1016/S0764-4442(99)80301-2), 1999.
- 945 Elliott, S.: Dependence of DMS global sea-air flux distribution on transfer velocity and concentration field type, *Journal of Geophysical Research: Biogeosciences*, 114, <https://doi.org/10.1029/2008JG000710>, 2009.
- Emery, C., Tai, E., Yarwood, G., and Morris, R.: Investigation into approaches to reduce excessive vertical transport over complex terrain in a regional photochemical grid model, *Atmospheric Environment*, 45, 7341 – 7351, <https://doi.org/10.1016/j.atmosenv.2011.07.052>, 2011.
- Engelstaedter, S., Tegen, I., and Washington, R.: North African dust emissions and transport, *Earth-Science Reviews*, 79, 73 – 100, <https://doi.org/https://doi.org/10.1016/j.earscirev.2006.06.004>, 2006.
- 950 Fredenslund, A., Jones, R. L., and Prausnitz, J. M.: Group-contribution estimation of activity-coefficients in nonideal liquid-mixtures, *AIChE J.*, 21, 1086–1099, 1975.
- Galmarini, S., Vinuesa, J.-F., and Martilli, A.: Modeling the impact of sub-grid scale emission variability on upper-air concentration, *Atmospheric Chemistry and Physics*, 8, 141–158, <https://doi.org/https://doi.org/10.5194/acp-8-141-2008>, <https://acp.copernicus.org/articles/8/141/2008/>, publisher: Copernicus GmbH, 2008.
- 955 Grell, G. A. and Freitas, S. R.: A scale and aerosol aware stochastic convective parameterization for weather and air quality modeling, *Atmospheric Chemistry and Physics*, 14, 5233–5250, <https://doi.org/10.5194/acp-14-5233-2014>, 2014.
- Grieshop, A. P., Logue, J. M., Donahue, N. M., and Robinson, A. L.: Laboratory investigation of photochemical oxidation of organic aerosol from wood fires. 1: measurement and simulation of organic aerosol evolution, *Atmos. Chem. Phys.*, 9, 1263–1277, <https://doi.org/10.5194/acp-9-1263-2009>, 2009.
- 960 Griffin, R. J., Cocker, E. R., Flagan, R. C., and Seinfeld, J. H.: Organic aerosol formation from the oxidation of biogenic hydrocarbons, *J of Geophysical Research*, 104, 3555–3567, 1999.
- Grini, A., Zender, C. S., and Colarco, P. R.: Saltation Sandblasting behavior during mineral dust aerosol production, *Geophys. Res. Lett.*, 29, 1868, <https://doi.org/doi:10.1029/2002GL015248>, 2002.

- 965 Grythe, H., Ström, J., Krejci, R., Quinn, P., and Stohl, A.: A review of sea-spray aerosol source functions using a large global set of sea salt aerosol concentration measurements, *Atmospheric Chemistry and Physics*, 14, 1277–1297, <https://doi.org/10.5194/acp-14-1277-2014>, 2014.
- Haywood, J. and Boucher, O.: Estimates of the direct and indirect radiative forcing due to tropospheric aerosols: A review, *Reviews of Geophysics*, 38, 513–543, 2000.
- 970 Helmert, J., Hinold, B., Tegen, I., Hellmuth, O., and Wendish, M.: On the direct and semidirect effects of Saharan dust over Europe: A modeling study, *Journal of Geophysical Research*, 112, D13 208, 2007.
- Iacono, M. J., Delamere, J. S., Mlawer, E. J., Shephard, M. W., Clough, S. A., and Collins, W. D.: Radiative forcing by long-lived greenhouse gases: Calculations with the AER radiative transfer models, *Journal of Geophysical Research: Atmospheres*, 113, <https://doi.org/10.1029/2008JD009944>, 2008.
- 975 Kaiser, J. W., Heil, A., Andreae, M. O., Benedetti, A., Chubarova, N., Jones, L., Morcrette, J.-J., Razinger, M., Schultz, M. G., Suttie, M., and van der Werf, G. R.: Biomass burning emissions estimated with a global fire assimilation system based on observed fire radiative power, *Biogeosciences*, 9, 527–554, <https://doi.org/10.5194/bg-9-527-2012>, 2012.
- Kettle, A. J. and Andreae, M. O.: Flux of dimethylsulfide from the oceans: A comparison of updated data sets and flux models, *Journal of Geophysical Research: Atmospheres*, 105, 26 793–26 808, <https://doi.org/10.1029/2000JD900252>, 2000.
- 980 Kim, Y., Sartelet, K., and Couvidat, F.: Modeling the effect of non-ideality, dynamic mass transfer and viscosity on SOA formation in a 3-D air quality model, *Atmos. Chem. Phys.*, 19, 1241–1261, <https://doi.org/10.5194/acp-19-1241-2019>, 2019.
- Kok, J. F., Parteli, E. J. R., Michaels, T. I., and Karam, D. B.: The physics of wind-blown sand and dust, *Reports on Progress in Physics*, 75, 106 901, <http://stacks.iop.org/0034-4885/75/i=10/a=106901>, 2012.
- Korsakissok, I. and Mallet, V.: Development and application of a reactive plume-in-grid model: evaluation over Greater Paris, *Atmospheric Chemistry and Physics*, 10, <https://doi.org/https://doi.org/10.5194/acp-10-8917-2010>, <https://acp.copernicus.org/articles/10/8917/2010/>, 2010.
- 985 Kroll, J. H., Ng, N. L., Murphy, S. M., Flagan, R. C., and Seinfeld, J. H.: Secondary organic aerosol formation from isoprene photooxidation, *Environ. Sci. Technol.*, 40, 1869–1877, <https://doi.org/10.1021/es0524301>, 2006.
- Lachatre, M., Mailler, S., Menut, L., Turquety, S., Sellitto, P., Guerhazi, H., Salerno, G., Caltabiano, T., and Carboni, E.: New strategies for vertical transport in chemistry transport models: application to the case of the Mount Etna eruption on 18 March 2012 with CHIMERE v2017r4, *Geoscientific Model Development*, 13, 5707–5723, <https://doi.org/10.5194/gmd-13-5707-2020>, 2020.
- 990 Lana, A., Bell, T. G., Simo, R., Vallina, S. M., Ballabrera-Poy, J., Kettle, A. J., Dachs, J., Bopp, L., Saltzman, E. S., Stefels, J., Johnson, J. E., and Liss, P. S.: An updated climatology of surface dimethylsulfide concentrations and emission fluxes in the global ocean, *Global Biogeochemical Cycles*, 25, <https://doi.org/10.1029/2010GB003850>, 2011.
- 995 Liss, P. S. and Merlivat, L.: *Air-Sea Gas Exchange Rates: Introduction and Synthesis*, pp. 113–127, Springer Netherlands, Dordrecht, [https://doi.org/10.1007/978-94-009-4738-2\\_5](https://doi.org/10.1007/978-94-009-4738-2_5), 1986.
- Mailler, S., Menut, L., Khvorostyanov, D., Valari, M., Couvidat, F., Siour, G., Turquety, S., Briant, R., Tuccella, P., Bessagnet, B., Colette, A., Létinois, L., Markakis, K., and Meleux, F.: CHIMERE-2017: from urban to hemispheric chemistry-transport modeling, *Geoscientific Model Development*, 10, 2397–2423, <https://doi.org/10.5194/gmd-10-2397-2017>, 2017.
- 1000 Mailler, S., Pennel, R., Menut, L., and Lachâtre, M.: Using the Després and Lagoutière (1999) antidiffusive transport scheme: a promising and novel method against excessive vertical diffusion in chemistry-transport models, *Geoscientific Model Development Discussions*, accepted, <https://doi.org/10.5194/gmd-2020-304>, 2021.



- Maisonnavé, E. and Caubel, A.: LUCIA, load balancing tool for OASIS coupled systems, Tech. rep., CERFACS, 2014.
- Martensson, E. M., Nilsson, E. D., de Leeuw, G., Cohen, L. H., and Hansson, H.-C.: Laboratory simulations and parameterization of the primary marine aerosol production, *Journal of Geophysical Research: Atmospheres*, 108, <https://doi.org/10.1029/2002JD002263>, 2003.
- 1005
- May, A. A., Levin, E. J. T., Hennigan, C. J., Riipinen, I., Lee, T., Collett Jr., J. L., Jimenez, J. L., Kreidenweis, S. M., and Robinson, A. L.: Gas-particle partitioning of primary organic aerosol emissions: 3. Biomass burning, *J. Geophys. Res. (Atmospheres)*, 118, 11,327–11,338, <https://doi.org/10.1002/jgrd.50828>, 2013.
- McRae, G., Goodin, W., and Seinfeld, J.: Development of a second generation mathematical model for urban air pollution: I. model formulation, *Atmospheric Environment*, 16, 679–696, 1982.
- 1010
- Menut, L.: Sensitivity of hourly Saharan dust emissions to NCEP and ECMWF modelled wind speed, *J Geophys Res*, 113, D16 201, <https://doi.org/10.1029/2007JD009522>, 2008.
- Menut, L.: Modeling of Mineral Dust Emissions with a Weibull Wind Speed Distribution Including Subgrid-Scale Orography Variance, *Journal of Atmospheric and Oceanic Technology*, 35, 1221–1236, <https://doi.org/10.1175/JTECH-D-17-0173.1>, 2018.
- 1015
- Menut, L., Bessagnet, B., Khvorostyanov, D., Beekmann, M., Blond, N., Colette, A., Coll, I., Curci, G., Foret, F., Hodzic, A., Mailler, S., Meleux, F., Monge, J., Pison, I., Siour, G., Turquety, S., Valari, M., Vautard, R., and Vivanco, M.: CHIMERE 2013: a model for regional atmospheric composition modelling, *Geoscientific Model Development*, 6, 981–1028, <https://doi.org/10.5194/gmd-6-981-2013>, 2013.
- Menut, L., Flamant, C., Turquety, S., Deroubaix, A., Chazette, P., and Meynadier, R.: Impact of biomass burning on pollutant surface concentrations in megacities of the Gulf of Guinea, *Atmospheric Chemistry and Physics*, 18, 2687–2707, [https://doi.org/10.5194/acp-18-](https://doi.org/10.5194/acp-18-2687-2018)
- 1020 2687-2018, 2018.
- Menut, L., Bessagnet, B., Siour, G., Mailler, S., Pennel, R., and Cholakian, A.: Impact of lockdown measures to combat Covid-19 on air quality over western Europe, *Science of The Total Environment*, 741, 140 426, <https://doi.org/10.1016/j.scitotenv.2020.140426>, 2020a.
- Menut, L., Siour, G., Bessagnet, B., Couvidat, F., Journet, E., Balkanski, Y., and Desboeufs, K.: Modelling the mineralogical composition and solubility of mineral dust in the Mediterranean area with CHIMERE 2017r4, *Geoscientific Model Development*, 13, 2051–2071, <https://doi.org/10.5194/gmd-13-2051-2020>, 2020b.
- 1025
- Middleton, N.: Desert dust hazards: A global review, *Aeolian Research*, 24, 53 – 63, <https://doi.org/10.1016/j.aeolia.2016.12.001>, 2017.
- Mihalopoulos, N., Kerminen, V., Kanakidou, M., Berresheim, H., and Sciare, J.: Formation of particulate sulfur species (sulfate and methanesulfonate) during summer over the Eastern Mediterranean: A modelling approach, *Atmospheric Environment*, 41, 6860 – 6871, <https://doi.org/https://doi.org/10.1016/j.atmosenv.2007.04.039>, 2007.
- 1030
- Monahan, E. C.: In *The Role of Air-Sea Exchange in Geochemical Cycling*, chap. The ocean as a source of atmospheric particles, pp. 129–163, Kluwer Academic Publishers, Dordrecht, Holland, 1986.
- Nightingale, P. D., Malin, G., Law, C. S., Watson, A. J., Liss, P. S., Liddicoat, M. I., Boutin, J., and Upstill-Goddard, R. C.: In situ evaluation of air-sea gas exchange parameterizations using novel conservative and volatile tracers, *Global Biogeochemical Cycles*, 14, 373–387, <https://doi.org/10.1029/1999GB900091>, 2000.
- 1035
- Odum, J. R., Jungkamp, T. P. W., Griffin, R. J., Forster, H. J. L., Flagan, R. C., and Seinfeld, J. H.: Aromatics, reformulated gasoline and atmospheric organic aerosol formation, *Environ. Sci. Technol.*, 31, 1890–1897, 1997.
- Powers, J. G., Klemp, J. B., Skamarock, W. C., Davis, C. A., Dudhia, J., Gill, D. O., Coen, J. L., Gochis, D. J., Ahmadov, R., Peckham, S. E., Grell, G. A., Michalakes, J., Trahan, S., Benjamin, S. G., Alexander, C. R., Dimego, G. J., Wang, W., Schwartz, C. S., Romine, G. S., Liu, Z., Snyder, C., Chen, F., Barlage, M. J., Yu, W., and Duda, M. G.: The Weather Research and Forecasting Model: Overview, System Efforts,

- 1040 and Future Directions, *Bulletin of the American Meteorological Society*, 98, 1717–1737, <https://doi.org/10.1175/BAMS-D-15-00308.1>, 2017.
- Price, C. and Rind, D.: What determines the cloud-to-ground lightning fraction in thunderstorms?, *Geophys. Res. Lett.*, 20, 463–466, <https://doi.org/10.1029/93GL00226>, 1993.
- Pun, B. K., Seigneur, C., and Lohman, K.: Modeling secondary organic aerosol formation via multiphase partitioning with molecular data, *Environ. Sci. Technol.*, 40, 4722–4731, 2006.
- 1045 Robinson, A. L., Donahue, N. M., Shrivastava, M. K., Weitkamp, E., Sage, A. M., Grieshop, A. P., Lane, T. E., Pandis, S. N., and Pierce, J. R.: Rethinking organic aerosols: Semivolatile emissions and photochemical aging, *Science*, 315, 1259–1262, 2007.
- Shao, Y.: A model for mineral dust erosion, *J. Geophys. Res.*, 106, 20 239–20 254, 2001.
- Shrivastava, M., Fast, J., Easter, R., Gustafson, W. I., Zaveri, R. A., Jimenez, J. L., Saide, P., and Hodzic, A.: Modeling organic aerosols in  
1050 a megacity: Comparison of simple and complex representations of the volatility basis set approach, *Atmospheric Chemistry and Physics*, 11, 6639–6662, 2011.
- Shrivastava, M., Zelenyuk, A., Imre, D., Easter, R., Beranek, J., Zaveri, R. A., and Fast, J.: Implications of low volatility SOA and gas-phase fragmentation reactions on SOA loadings and their spatial and temporal evolution in the atmosphere, *Journal of Geophysical Research Atmospheres*, 118, 3328–3342, <https://doi.org/10.1002/jgrd.50160>, 2013.
- 1055 Shrivastava, M., Easter, R. C., Liu, X., Zelenyuk, A., Singh, B., Zhang, K., Ma, P.-I., Chand, D., Ghan, S., Jimenez, J. L., Zhang, Q., Fast, J., Rasch, P. J., and Tiitta, P.: Global transformation and fate of SOA: Implications of low-volatility SOA and gas-phase fragmentation reactions, *Journal of Geophysical Research : Atmospheres*, 120, 4169–4195, 2015.
- Sindelarova, K., Granier, C., Bouarar, I., Guenther, A., Tilmes, S., Stavrakou, T., Müller, J.-F., Kuhn, U., Stefani, P., and Knorr, W.: Global data set of biogenic VOC emissions calculated by the MEGAN model over the last 30 years, *Atmospheric Chemistry and Physics*, 14,  
1060 9317–9341, <https://doi.org/10.5194/acp-14-9317-2014>, 2014.
- Sofiev, M., Ermakova, T., and Vankevich, R.: Evaluation of the smoke-injection height from wild-land fires using remote-sensing data, *Atmospheric Chemistry and Physics*, 12, 1995–2006, <https://doi.org/10.5194/acp-12-1995-2012>, 2012.
- Sokolik, I. N. and Toon, O. B.: Incorporation of mineralogical composition into models of the radiative properties of mineral aerosol from UV to IR wavelengths, *Journal of Geophysical Research: Atmospheres*, 104, 9423–9444, <https://doi.org/10.1029/1998JD200048>, 1999.
- 1065 Tesdal, J.-E., Christian, J. R., Monahan, A. H., and von Salzen, K.: Sensitivity of modelled sulfate aerosol and its radiative effect on climate to ocean DMS concentration and air–sea flux, *Atmospheric Chemistry and Physics*, 16, 10 847–10 864, <https://doi.org/10.5194/acp-16-10847-2016>, 2016.
- Thompson, G. and Eidhammer, T.: A study of aerosols impacts on clouds and precipitation development in a large winter cyclone, *J Atmos Sci*, 71, 3636–3659, <https://doi.org/10.1175/JAS-D-13-0305.1>, 2014.
- 1070 Tobo, Y., Prenni, A. J., DeMott, P. J., Huffman, J. A., McCluskey, C. S., Tian, G., Pohlker, C., Poschl, U., and Kreidenweis, S. M.: Biological aerosol particles as a key determinant of ice nuclei populations in a forest ecosystem, *Journal of Geophysical Research: Atmospheres*, 118, 10,100–10,110, <https://doi.org/10.1002/jgrd.50801>, 2013.
- Tuccella, P., Menut, L., Briant, R., Deroubaix, A., Khvorostyanov, D., Mailler, S., Siour, G., and Turquety, S.: Implementation of Aerosol-Cloud Interaction within WRF-CHIMERE Online Coupled Model: Evaluation and Investigation of the Indirect Radiative Effect from  
1075 Anthropogenic Emission Reduction on the Benelux Union, *Atmosphere*, 10, <https://doi.org/10.3390/atmos10010020>, 2019.

- Turquety, S., Menut, L., Bessagnet, B., Anav, A., Viovy, N., Maignan, F., and Wooster, M.: APIFLAME v1.0: High resolution fire emission model and application to the Euro-Mediterranean region, *Geoscientific Model Development*, 7, 587–612, <https://doi.org/10.5194/gmd-7-587-2014>, 2014.
- 1080 Turquety, S., Menut, L., Siour, G., Mailler, S., Hadji-Lazaro, J., George, M., Clerbaux, C., Hurtmans, D., and Coheur, P.-F.: APIFLAME v2.0 biomass burning emissions model: impact of refined input parameters on atmospheric concentration in Portugal in summer 2016, *Geoscientific Model Development*, 13, 2981–3009, <https://doi.org/10.5194/gmd-13-2981-2020>, 2020.
- Valari, M. and Menut, L.: Transferring the heterogeneity of surface emissions to variability in pollutant concentrations over urban areas through a chemistry transport model, *Atmospheric Environment*, 44, 3229–3238, 2010.
- 1085 Van Leer, B.: Towards the ultimate conservative difference scheme. IV. A new approach to numerical convection, *Journal of Computational Physics*, 23, 276 – 299, 1977.
- Veira, A., Kloster, S., Wilkenskield, S., and Remy, S.: Fire emission heights in the climate system - Part 1: Global plume height patterns simulated by ECHAM6-HAM2, *Atmospheric Chemistry and Physics*, 15, 7155–7171, <https://doi.org/10.5194/acp-15-7155-2015>, 2015.
- Verwer, J.: Gauss-Seidel iteration for stiff ODEs from chemical kinetics., *Journal on Scientific Computing*, 15, 1243–1250, 1994.
- 1090 Von Storch, H., Langenberg, H., and Feser, F.: A spectral nudging technique for dynamical downscaling purposes, *Mon. Wea. Rev.*, 128, 3664–3673, 2000.
- Wanninkhof, R.: Relationship between wind speed and gas exchange over the ocean, *Journal of Geophysical Research: Oceans*, 97, 7373–7382, <https://doi.org/10.1029/92JC00188>, 1992.
- Wesely, M.: Parameterization of Surface Resistances to Gaseous Dry Deposition in Regional-Scale Numerical Models, *Atmospheric Environment*, 23, 1293–1304, 1989.
- 1095 Zavarsky, A., Goddijn-Murphy, L., Steinhoff, T., and Marandino, C. A.: Bubble-Mediated Gas Transfer and Gas Transfer Suppression of DMS and CO<sub>2</sub>, *Journal of Geophysical Research: Atmospheres*, 123, 6624–6647, <https://doi.org/10.1029/2017JD028071>, 2018.
- Zhang, L., Gong, S., Padro, J., and Barrie, L.: A size-segregated particle dry deposition scheme for an atmospheric aerosol module, *Atmospheric Environment*, 35(3), 549–560, 2001.
- 1100 Zhang, Q. J., Beekmann, M., Drewnick, F., Freutel, F., Schneider, J. and Crippa, M., Prevot, A. S. H., Baltensperger, U., Poulain, L., Wiedensohler, A., Sciare, J., Gros, V., Borbon, A., Colomb, A., Michoud, V., Doussin, J. F., van der Gon, H. A. C. D., Haefelin, M., Dupont, J. C., Siour, G., Petetin, H., Bessagnet, B., Pandis, S. N., Hodzic, A., Sanchez, O., Honore, C., and Perrussel, O.: Formation of organic aerosol in the Paris region during the MEGAPOLI summer campaign: evaluation of the volatility-basis-set approach within the CHIMERE model, *Atmospheric Chemistry and Physics*, 13, 5767–5790, 2013.
- Zhang, Y.: Online-coupled meteorology and chemistry models: history, current status and outlook, *Atmos Chem Phys*, 8, 2895–2932, 2008.
- 1105 Zhang, Y., Huang, J.-P., Henze, D. K., and Seinfeld, J. H.: Role of isoprene in secondary organic aerosol formation on a regional scale, *Journal of Geophysical Research Atmospheres*, 112, <https://doi.org/10.1029/2007JD008675>, 2007.
- Zhang, Y., Mahowald, N., Scanza, R. A., Journet, E., Desboeufs, K., Albani, S., Kok, J. F., Zhuang, G., Chen, Y., Cohen, D. D., Paytan, A., Patey, M. D., Achterberg, E. P., Engelbrecht, J. P., and Fomba, K. W.: Modeling the global emission, transport and deposition of trace elements associated with mineral dust, *Biogeosciences*, 12, 5771–5792, <https://doi.org/10.5194/bg-12-5771-2015>, 2015.
- 1110 Zuend, A. and Seinfeld, J. H.: Modeling the gas-particle partitioning of secondary organic aerosol: the importance of liquid-liquid phase separation, *Atmos. Chem. Phys.*, 12, 3857–3882, <https://doi.org/10.5194/acp-12-3857-2012>, 2012.
- Zuend, A., Marcolli, C., Luo, B. P., and Peter, T.: A thermodynamic model of mixed organic-inorganic aerosols to predict activity coefficients, *Atmos. Chem. Phys.*, 8, 4559–4593, <https://doi.org/10.5194/acp-8-4559-2008>, 2008.

1115 Zuend, A., Marcolli, C., Booth, A. M., Lienhard, D. M., Soonsin, V., Krieger, U. K., Topping, D. O., McFiggans, G., Peter, T., and Seinfeld, J. H.: New and extended parameterization of the thermodynamic model AIOMFAC: calculation of activity coefficients for organic-inorganic mixtures containing carboxyl, hydroxyl, carbonyl, ether, ester, alkenyl, alkyl, and aromatic functional groups, *Atmos. Chem. Phys.*, 11, 9155–9206, <https://doi.org/10.5194/acp-11-9155-2011>, 2011.