

Reply to RC1 – Supplement

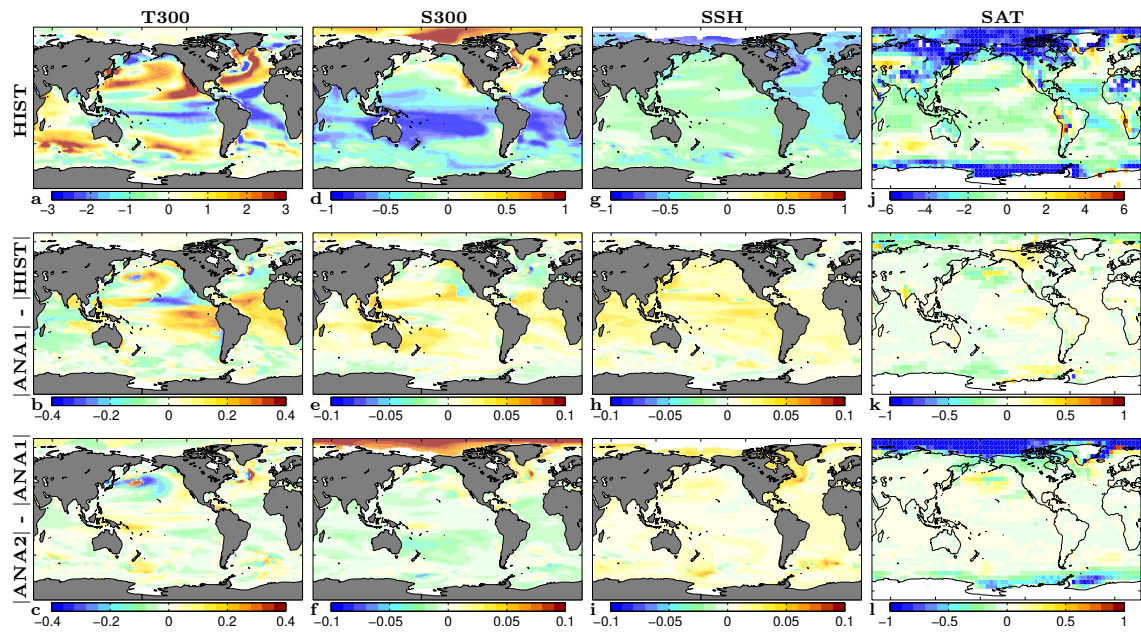


Figure 3 new: Quality of labels has been improved. Long experiment acronyms are replaced with shorter ones.

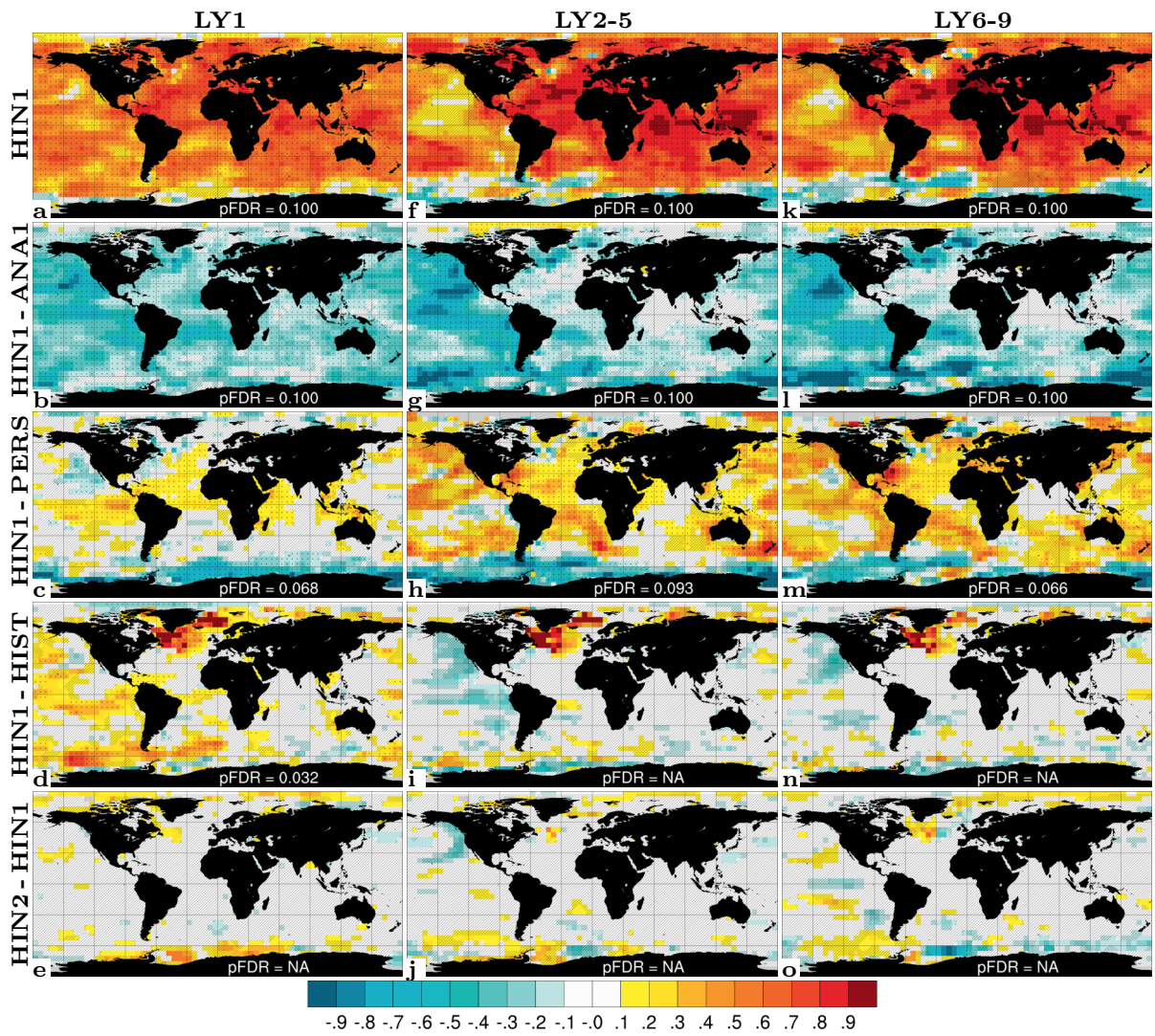


Figure 12 new: Labels are moved outside of panels.

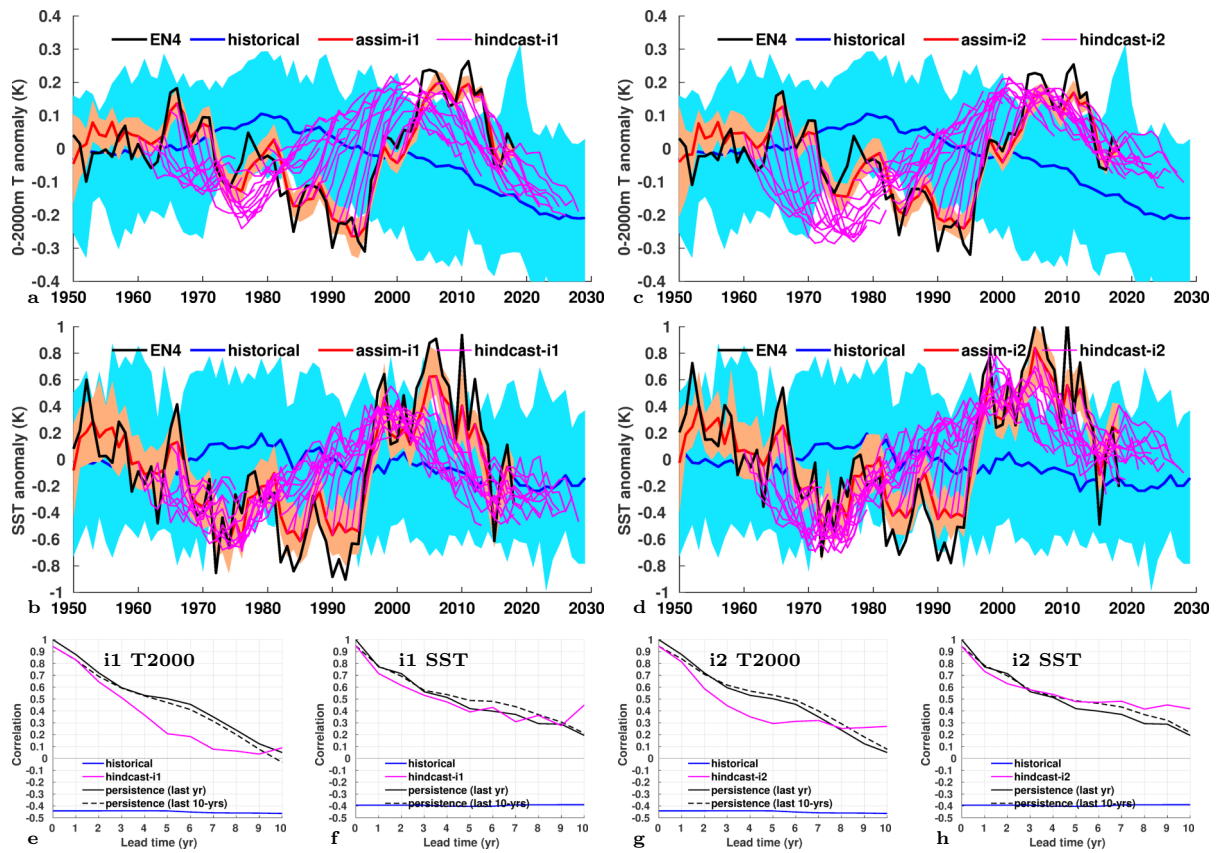


Figure 14 new: a,b,c... labels are moved to lower left corner of panels. Font size of SST/T2000 labels has been reduced in panels e-h.