

Minimal CMIP Emulator (MCE v1.2): A new simplified method for probabilistic climate projections

Junichi Tsutsui¹

¹Environmental Science Research Laboratory, Central Research Institute of Electric Power Industry, Abiko, 270-1194, Japan

5 *Correspondence to:* Junichi Tsutsui (tsutsui@criepi.denken.or.jp)

Abstract. Climate model emulators have a crucial role in assessing warming levels of many emission scenarios from probabilistic climate projections, based on new insights into Earth system response to CO₂ and other forcing factors. This article describes one such tool, MCE, from model formulation to application examples associated with a recent model intercomparison study. The MCE is based on impulse response functions and parameterized physics of effective radiative forcing and carbon uptake over ocean and land. Perturbed model parameters for probabilistic projections are generated from statistical models and constrained with a Metropolis-Hastings independence sampler. A part of the model parameters associated with CO₂-induced warming have a covariance structure, as diagnosed from complex climate models of the Coupled Model Intercomparison Project (CMIP). Although perturbed ensembles can cover the diversity of CMIP models effectively, they need to be constrained toward substantially lower climate sensitivity for the resulting historical warming to agree with the observed trends over recent decades. The model's simplicity and resulting successful calibration imply that a method with less complicated structures and fewer control parameters offers advantages when building reasonable perturbed ensembles in a transparent way. Experimental results for future scenarios show distinct differences between CMIP-consistent and observation-consistent ensembles, suggesting that perturbed ensembles for scenario assessment need to be properly constrained with new insights into forced response over historical periods.

20 **1 Introduction**

Climate model emulators, or simple climate models, are numerical tools for representing the complex Earth system in reduced dimensions using aggregated variables, such as global mean surface temperature (GMST) and global CO₂ uptake over ocean and land. They offer advantages of ease and transparency, with a wide range of applications in both scientific and decision-making contexts (Schwarber et al., 2019). Their computational efficiency allows users to conduct climate experiments for a number of emission scenarios with many different model parameters, to derive probabilistic climate projections. This article describes one such tool, Minimal CMIP Emulator (MCE), intended to emulate state-of-the-art atmosphere-ocean general circulation models (AOGCMs) in the Coupled Model Intercomparison Project (CMIP, Meehl et al., 2014) with sufficient simplicity and accuracy.

One key emulator application is climate assessment of emission scenarios presented in Intergovernmental Panel on Climate Change (IPCC) reports. In the case of the 2014 Working Group III Fifth Assessment Report (AR5), over 1000 scenarios were assessed with a well-established emulator, MAGICC version 6 (Meinshausen et al., 2011), from its 600-member parameter ensemble runs (Clarke et al., 2014). The method used was based on Meinshausen et al. (2009) and has a range of future temperature increases similar to that of multiple AOGCMs from the CMIP Phase 5 (CMIP5, Taylor et al., 2012). The results from ensemble runs were used to classify each scenario by climate indicators associated with warming levels and to probabilistically assess consistency with long-term temperature goals for climate change mitigation. The output of the CMIP5 models constitutes a dominant part of the scientific basis of Working Group I contribution to AR5, and the specific emulator plays a crucial role in synthesizing the most comprehensive information on climate projections available at the time. However, the climate assessment of AR5 is regarded as indicative as it is based on a single probability distribution (Clarke et al., 2014). This is similar to the scenario assessment of the 2018 IPCC Special Report on global warming of 1.5 °C (SR15) (Rogelj et al., 2018), where the same method as in AR5 was used for scenario classification but noticeable differences in radiative forcing and temperature response were identified between the results of MAGICC and of a different emulator, FaIR version 1.3 (Smith et al., 2018). FaIR incorporates recent updates of radiative forcing and shows greater non-CO₂ anthropogenic forcing in historical and future periods than MAGICC (Forster et al., 2018). In contrast, current and projected warming is generally greater in MAGICC than in FaIR, implying greater climate sensitivity in the former.

With regard to climate sensitivity, the new CMIP Phase 6 (CMIP6, Eyring et al., 2016) has been providing different outcomes from CMIP5. Equilibrium climate sensitivity (ECS), a hypothetical value of global warming at equilibrium in response to a doubling of the atmospheric CO₂ concentration, is generally greater in CMIP6 models than in CMIP5 models, mainly attributed to the models' cloud processes (Zelinka et al., 2020). Transient climate response (TCR), a value of global warming at the time of CO₂ doubling with an idealized 1%-per-year concentration increase, is also greater in CMIP6 than in CMIP5 models, but their relative difference is smaller than that of ECS (Meehl et al., 2020). This characteristic, reflecting the tendency of realized warming fractions, specifically TCR-to-ECS ratios, is consistent with a theoretical relationship between climate feedback strength and thermal response timescales (Tsutsui, 2020). However, modeled historical warming generally appears greater in the CMIP5 models than in the CMIP6 models, supported by extremely strong aerosol cooling as found in several CMIP6 models (Flynn and Mauritsen, 2020), as well as generally weaker greenhouse gas (GHG) forcing in CMIP6 models (Smith and Forster, 2021).

These confusing results require a more advanced and transparent methodology to synthesize new insights into forcing, response, and sensitivity, not only from climate modeling but also from other lines of evidence. The Reduced Complexity Model Intercomparison Project (RCMIP, Nicholls et al., 2020) is promising, providing the first comprehensive model intercomparison of emulators. During Phase 1 of this project, a new framework was established to systematically evaluate multiple emulators from scenario experiments that mirror those in CMIP5 and CMIP6, and 15 emulators were compared in terms of their ability to approximate each of the CMIP6 models, mainly in terms of global mean temperature changes

(Nicholls et al., 2020). Phase 2 then focused on probabilistic climate projections and nine models were compared under the same set of constraints for model parameter perturbations (Nicholls et al., 2021).

The MCE has been used in both phases, and the present article provides details of the version used in Phase 2. The MCE model consists of prediction equations for thermal response and carbon cycle. Although there are many emulators with different complexities, their core modules appear to be based on a few pioneering works and are often shared between different emulators. The thermal response of the MCE is implemented as a pure impulse response model (IRM), which is the most simplified form originated from the one presented in Hasselmann et al. (1993). The carbon cycle of the MCE is based on a part of the nonlinear impulse-response model of the coupled carbon-climate system (NICCS, Hooss et al., 2001), which may be categorized to be of intermediate complexity among RCMIP participants. One of them, ACC2 (Tanaka et al., 2007), also adopts the NICCS-based carbon cycle.

Although complex formulations generally are more capable of emulation, they are not necessarily advantageous for emulating individual CMIP models and representing their uncertainty ranges. For thermal response, this has been confirmed by the author's previous studies (Tsutsui, 2017; Tsutsui, 2020), which have demonstrated that a simple IRM can accurately emulate a variety of CMIP models in terms of temperature response to CO₂ forcing and provide a basis of parameter sampling that covers model diversity. These findings also imply that less complex emulators are suitable for knowledge transfer in a transparent way. From this perspective, key considerations for emulator design are in its subsidiary components, such as forcing parameterizations, treatment of non-linear processes involving some state-dependent response properties, and parameter constraining for probabilistic projections.

The remainder of this article is structured as follows. Section 2 describes model formulations and parameter sampling methods. Section 3 presents the experimental application of probabilistic climate projections. Section 4 discusses emulator performance and constraining model parameters. Finally, Section 5 presents the study's main conclusions.

2 Model description

2.1 Impulse response models

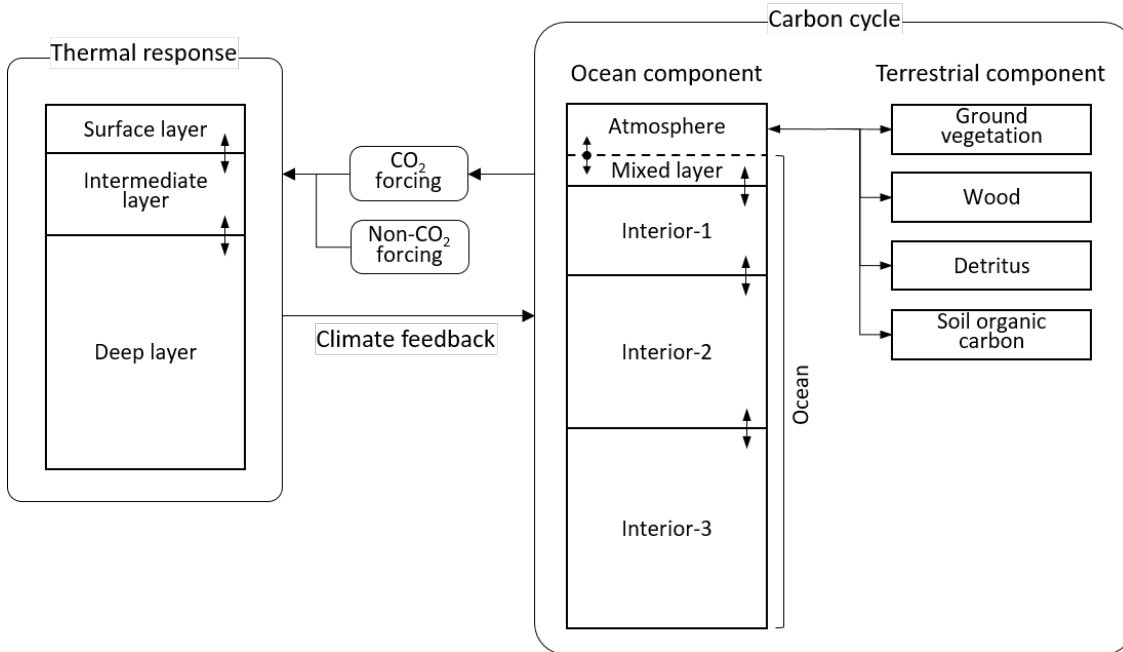
The MCE model is essentially built on impulse response functions for the fraction of the total CO₂ emitted that remains in the atmosphere (termed the airborne fraction), the decay of land carbon accumulated by the CO₂ fertilization effect, and temperature change to radiative forcing of CO₂ and other forcing agents. Under the linear response assumption with regard to input forcing F , an impulse response model (IRM) expresses the time change of a response variable x by a convolution integral:

$$x(t) = \int_0^t F(t') \sum_i A_i \exp\left(-\frac{t-t'}{\tau_i}\right) dt', \quad (1)$$

where t is time, and the sum of exponentials is an impulse response function with parameters A_i and τ_i denoting the i -th component of the response amplitude and time constant, respectively. The time derivative of this equation is given by:

$$\frac{dx(t)}{dt} = \sum_i \left[F(t)A_i - \frac{x_i(t)}{\tau_i} \right], \quad (2)$$

or an equivalent box model form that is converted into the original IRM through Laplace transform or eigenfunction expansion. The time derivative implemented in the MCE uses an IRM form for land carbon decay and temperature change, and a box model form for the airborne fraction, to address partitioning of excess carbon between the atmosphere and ocean mixed layer. Figure 1 illustrates the MCE's components in a box-model form representing heat or carbon reservoirs. Since each component is formulated on its own impulse response functions, the boxes are separately defined between the thermal response and carbon cycle modules.



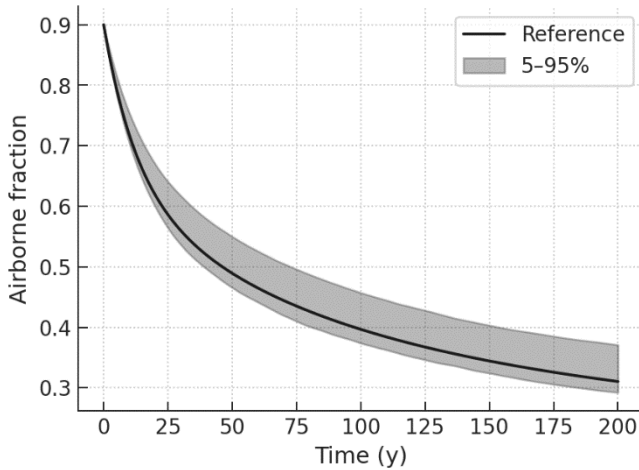
100

Figure 1: Schematic diagram of the box models equivalent to the MCE's impulse response models. Bidirectional arrows represent heat and carbon fluxes within each module of the thermal response and carbon cycle. The two modules are connected through CO₂ forcing and climate feedback mechanisms.

The IRM for the airborne fraction defines five components, one of which has infinity time constant, paired with an amplitude corresponding to an asymptotic long-term fraction. In the current configuration, the remaining four time constants are fixed at 236.5, 59.52, 12.17, and 1.271 years, adjusted to a specific three-dimensional ocean carbon cycle model in Hooss et al. (2001). The corresponding amplitudes assume perturbations at reference values of 0.24, 0.21, 0.25, and 0.1, respectively, with a reference long-term airborne fraction of 0.20. These reference values and perturbation ranges are set empirically so that resulting carbon budgets—cumulative land and ocean CO₂ uptake—agree with those of historical observations and CMIP experiments.

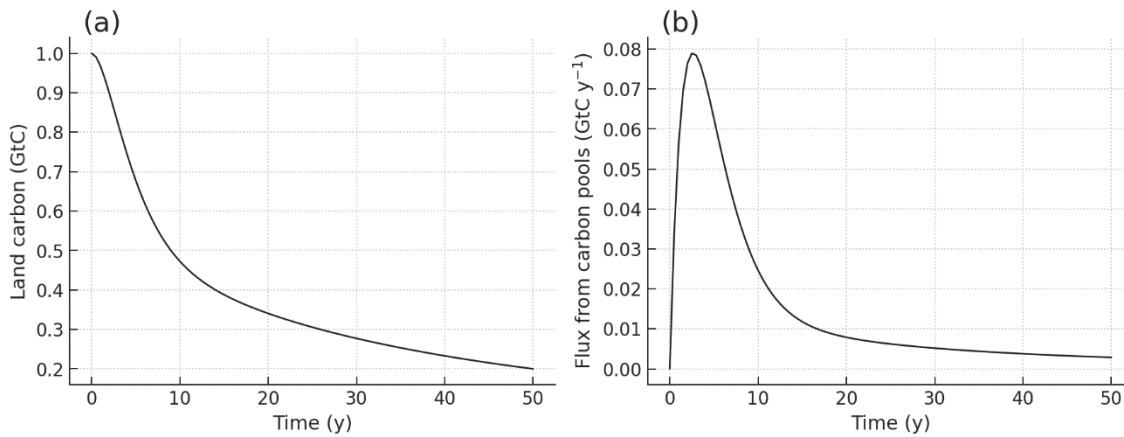
110

As described below, IRM parameters are converted into a set of parameters for an equivalent box model dealing with carbon exchange between four layers. In this conversion, the response of the shortest timescale component is interpreted as equilibration between the atmosphere and ocean mixed layer, which are combined into a composite layer in the box model, as shown in the ocean carbon cycle in Fig. 1. Figure 2 shows response to an idealized instantaneous input of 100 GtC without land carbon uptake and climate feedback. In this case, the airborne fraction decreases from 0.9 to a long-term equilibrium of about 0.2 at a gradually decreasing rate. The asymptotic long-term airborne fraction is slightly greater than an assumed value, depending on the size of pulse input, due to the buffering mechanism of sea water.



120 **Figure 2: Response of the airborne fraction to an initial input of 100 GtC without land CO₂ uptake and climate feedback. The line shows the case of reference amplitudes, and shading shows the range of the 5th–95th percentiles of the ‘Prior’ ensemble, described in 3.1.**

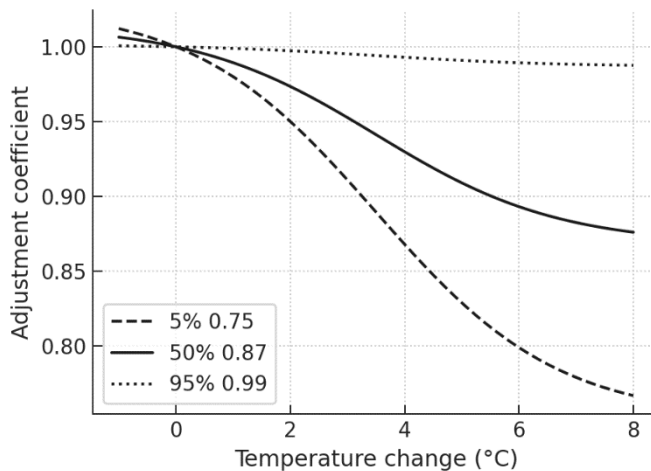
The IRM for land carbon defines four carbon pools, representing ground vegetation, wood, detritus, and soil organic carbon, with distinct overturning times (τ_i). The forcing term (F) is net primary production (NPP) enhanced by the effect of CO₂ fertilization, generally expressed by $\beta_L N_0$, where β_L is a fertilization factor that depends on the atmospheric CO₂ concentration, and N_0 is base annual NPP in GtC per year. The response amplitude (A_i) is rewritten as $\tilde{A}_{bi}\tau_i$, where \tilde{A}_{bi} denotes a decay flux after an initial carbon input. Based on Joos et al. (1996), the IRM parameters of the four carbon pools are set to 2.9, 20, 2.2, and 100 years for τ_i , and 0.70211, 0.013414, -0.71846, and 0.0029323 years⁻¹ for \tilde{A}_{bi} , respectively. Figure 3 illustrates response to unit forcing in this configuration.



130 **Figure 3: Response of land carbon to instantaneous unit input (a), and accompanying flux from carbon pools (b).**

In addition, the MCE deals with temperature dependency for the time constants of wood and soil organic carbon, indicating the tendency for warming to accelerate the decomposition of organic matter. This is one of the climate-carbon cycle feedback processes and is implemented with an adjustment coefficient varied along a logistic curve with respect to surface warming, as illustrated in Fig. 4. This scheme has a parameter to control the asymptotic minimum value of the coefficient.

135 The figure shows three curves with different control parameters, corresponding to the 5th, 50th, and 95th percentiles of the ‘Prior’ ensemble, described in 3.1, adjusted to be consistent with the variation of CMIP Earth system models (ESMs). In the IRM form, land accumulated carbon is proportional to $\sum_i \tilde{A}_{bi} \tau_i^2$, expressing the remaining carbon at an equilibrium state under unit continuous input, and the decrease in the time constants affects accumulated carbon quadratically.



140 **Figure 4: Adjustment coefficient as a function of surface temperature change to multiply the time constants for the decay of wood and soil organic matter. The three curves are functions corresponding to the 5th, 50th, and 95th percentiles of the ‘Prior’ ensemble, described in 3.1, with different asymptotic minimum values, as described in the legend. The temperature at which a curve has the maximum gradient is fixed at 3.5 °C.**

The IRM of the temperature change defines three components with typical time constants of approximately 1, 10, and > 100 years. Although the temperature response is usually well represented by two separated time constants of approximately 4 and > 100 years (e.g., Held et al., 2010, Geoffroy et al., 2013), dividing fast response is advantageous when considering instantaneous forcing changes, such as volcanic eruptions (Gupta and Marshall, 2018) and geoengineering mitigation, and using three time constants appears a practically optimal choice (Cummins et al., 2020). Separating the intermediate time constant is also beneficial for representing a pattern effect—warming response affected on a decadal or multi-decadal timescale by the changing pattern of surface warming (e.g., Andrews et al., 2015). The response amplitude is rewritten by $\tilde{A}_i/(\lambda\tau_i)$, where \tilde{A}_i is normalized so that the component sum is unity, and λ is the climate feedback parameter in $\text{Wm}^{-2}\text{C}^{-1}$, defined as the derivative of the outgoing thermal flux with respect to temperature change. These IRM parameters can be adjusted to emulate individual CMIP models with sufficient accuracy, as demonstrated in Tsutsui (2020), which serves a basis to build a perturbed parameter ensemble.

155 2.2 Carbon uptake over ocean

The box model converted from the IRM for the airborne fraction is as follows:

$$\frac{dc_0}{dt} = -\frac{\eta_1}{h_s}c_s + \frac{\eta_1}{h_1}c_1 + e - f, \quad (3)$$

$$\frac{dc_1}{dt} = \frac{\eta_1}{h_s}c_s - \frac{\eta_1 + \eta_2}{h_1}c_1 + \frac{\eta_2}{h_2}c_2, \quad (4)$$

$$\frac{dc_2}{dt} = \frac{\eta_2}{h_1}c_1 - \frac{\eta_2 + \eta_3}{h_2}c_2 + \frac{\eta_3}{h_3}c_3, \quad (5)$$

$$160 \quad \frac{dc_3}{dt} = \frac{\eta_3}{h_2}c_2 - \frac{\eta_3}{h_3}c_3, \quad (6)$$

where c_k is the amount of excess carbon in layer k , h_k is the layer depth, η_k is the exchange coefficient between layer $k - 1$ and layer k , e is anthropogenic emissions, and f is natural uptake over land. The parameters h_k and η_k are set through numerical optimization for the box model to be equivalent to the IRM form. The top layer, indexed with “0,” is the composite atmosphere-ocean mixed layer, and the three sub-surface layers are indexed with “1,” “2,” and “3” in the order of ocean depth. The amount of excess carbon in the top layer (c_0) is partitioned into atmospheric and ocean components, denoted by c_a and c_s , subject to chemical equilibrium at the ocean surface. The carbon exchange between the top layer and the first sub-surface is expressed in terms of c_s .

For a given time series of CO_2 emissions (emission-driven) or atmospheric CO_2 concentrations (concentration-driven), time integration is performed. In the latter case, c_0 and its partition within the composite layer are diagnostically determined, and the top-layer equation is dropped.

The partition of c_0 is solved through numerical computation with regard to hydrogen ion concentration associated with changes in dissolved inorganic carbon concentration (DIC) under the assumption of constant alkalinity (Alk). DIC, defined as the sum of $[\text{CO}_2]$, $[\text{HCO}_3^-]$ and $[\text{CO}_3^{2-}]$, where $[x]$ denotes the concentration of a substance x in mol L^{-1} , is expressed as:

$$\text{DIC} = \left(1 + \frac{K_1}{[\text{H}^+]} + \frac{K_1 K_2}{[\text{H}^+]^2}\right) [\text{CO}_2], \quad (7)$$

175 where K_1 and K_2 are equilibrium constants for bicarbonate and carbonate, defined as $K_1 = [\text{H}^+][\text{HCO}_3^-]/[\text{CO}_2]$ and $K_2 = [\text{H}^+][\text{CO}_3^{2-}]/[\text{HCO}_3^-]$. $[\text{CO}_2]$, defined as the sum of $[\text{CO}_2(\text{aq})]$ and $[\text{H}_2\text{CO}_3(\text{aq})]$ is related to the partial pressure of CO_2 ($p\text{CO}_2$) with equilibrium constant K_0 , as in $K_0 = [\text{CO}_2]/p\text{CO}_2$. Alkalinity, here considering borate ions as well as bicarbonate and carbonate ions, is represented as:

$$\text{Alk} = \frac{K_1[\text{H}^+] + 2K_1K_2}{[\text{H}^+]^2} [\text{CO}_2] + \frac{K_b B_T}{K_b + [\text{H}^+]} + \frac{K_w}{[\text{H}^+]} - [\text{H}^+], \quad (8)$$

180 where B_T is total borate concentration $[\text{B}(\text{OH})_3] + [\text{B}(\text{OH})_4^-]$, and K_b and K_w are equilibrium constants for borate and water, defined as $[\text{H}^+][\text{B}(\text{OH})_4^-]/[\text{B}(\text{OH})_3]$ and $[\text{H}^+][\text{OH}^-]$.

The values of Alk, B_T , and the equilibrium constants of K_0 , K_1 , K_2 , K_b , and K_w are set based on Dickson et al. (2007). The equilibrium constants depend on water temperature, and carbon uptake decreases with temperature, representing a climate-carbon cycle feedback process. This temperature dependency is implemented as a linear regression for empirical expressions,

185 as shown in Fig. 5.

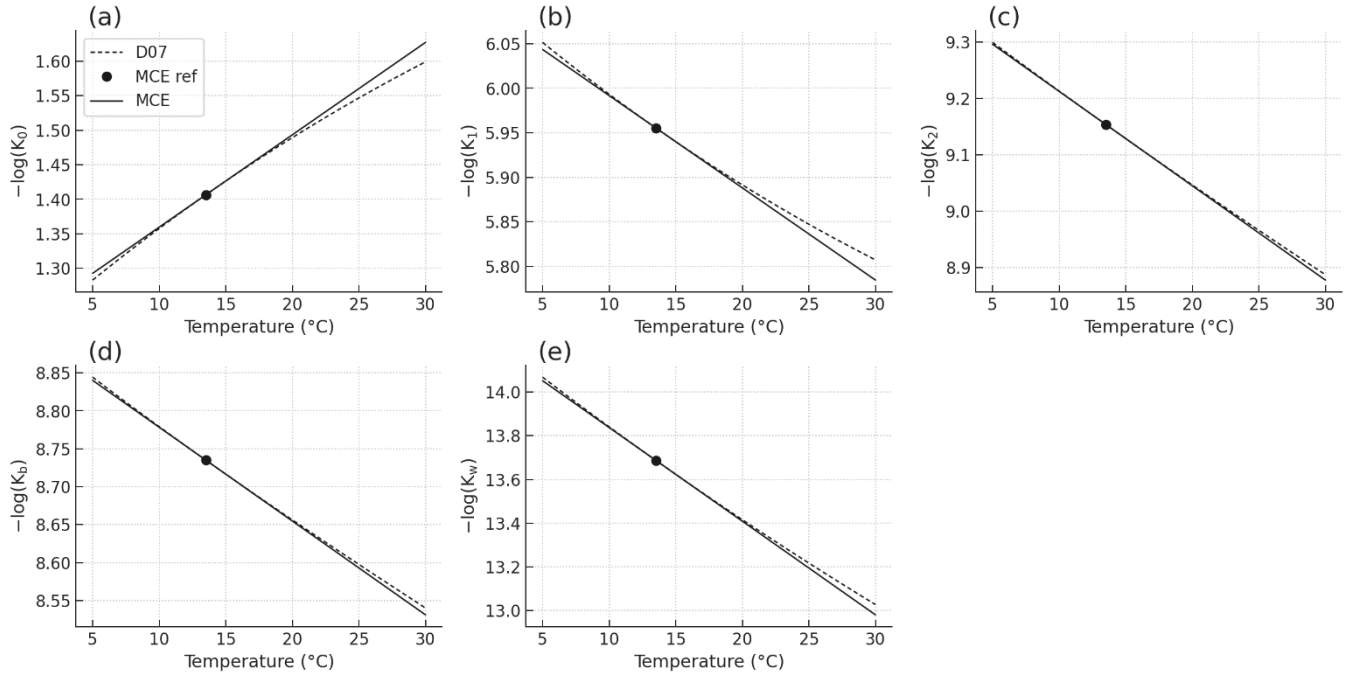
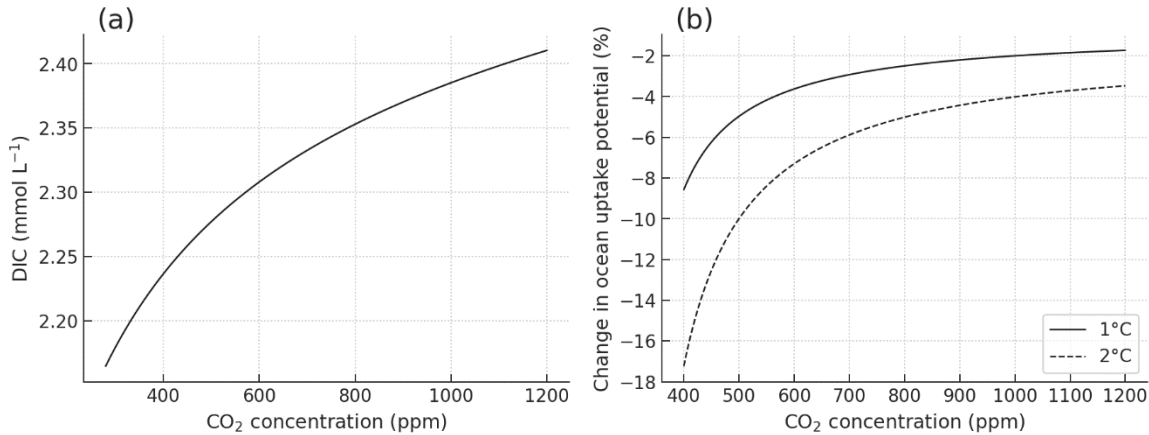


Figure 5: Temperature-dependent equilibrium constants of K_0 , K_1 , K_2 , K_b , and K_w (a–e) in the MCE model (solid lines), which approximate empirical expressions in Dickson et al. (2007) (D07, dotted lines). Values at a reference seawater temperature of 13.5 °C (dots) are assigned to those in the MCE’s preindustrial state.

190 The amount of excess carbon that can be accumulated in the ocean is proportional to a change in DIC from its preindustrial value. This carbon uptake potential and its temperature dependency are illustrated in Fig. 6. CO₂-induced global warming increases the airborne fraction in two ways—through the buffering mechanism of seawater and through temperature dependency of chemical equilibrium. The former is shown as a decreasing change rate of the DIC with regard to atmospheric CO₂ concentration (Fig. 6(a)), while the latter is shown as reduction in rates of carbon uptake potential with temperature, 195 which also depends on the concentration (Fig. 6(b)). The reduction rate is approximately proportional to the warming level, typically about 4 % per 1 °C at doubling CO₂.



200 **Figure 6: DIC in the ocean mixed layer as a function of atmospheric CO₂ concentration (a) and changes in ocean carbon uptake potential, measured by increase in DIC from preindustrial levels, due to 1 °C and 2 °C warming (b). The preindustrial CO₂ concentration is assumed to be 284.317 ppm and preindustrial DIC is about 2.17 mmol L⁻¹.**

2.3 CO₂ fertilization

The land carbon uptake term f in Eq. (3) is calculated from Eq. (2), rewritten as:

$$f(t) = \sum_i \left[\beta_L(t) N_0 \tilde{A}_{bi} \tau_i - \frac{c_{bi}}{\tau_i} \right], \quad (9)$$

205 where c_{bi} is the i -th component of accumulated carbon by CO₂ fertilization. The base NPP (N_0) is set to 60 GtC/y and the fertilization factor (β_L) is formulated with a sigmoid curve with regard to CO₂ concentration $C(t)$, as described in Meinshausen et al. (2011). This implementation is connected to a conventional logarithmic formula:

$$\beta_L = 1 + \hat{\beta}_L \ln \left[\frac{C(t)}{C(0)} \right], \quad (10)$$

210 such that the sigmoid and logarithmic curves are equal in terms of an increase ratio at 680 ppm relative to 340 ppm, and the latter factor $\hat{\beta}_L$ is used as a control parameter. Figure 7 illustrates three curves with different control parameters in the MCE model.

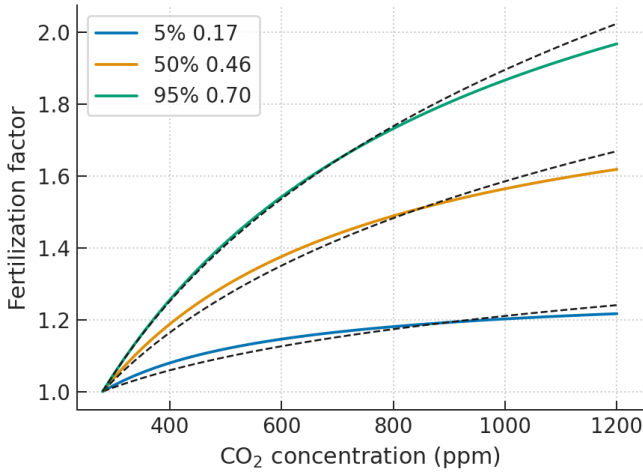


Figure 7: CO₂ fertilization factor as a function of atmospheric CO₂ concentration with different control parameters ($\hat{\beta}_L$) of 0.17, 0.45, and 0.69, corresponding to the 5th, 50th, and 95th percentiles of the ‘Prior’ ensemble described in 3.1. The colored lines show sigmoid curves used in the MCE model and the black dashed lines show reference logarithmic curves.

215 2.4 Effective radiative forcing

The forcing term in the IRM for temperature change is assumed to be effective radiative forcing (ERF), defined as top-of-atmosphere (TOA) radiative imbalance due to a change in a forcing agent through rapid adjustments in the stratosphere and troposphere prior to a response in surface temperature (Myhre et al., 2013, Sherwood et al., 2015). Forcing, defined as such, serves as a good predictor of surface temperature change.

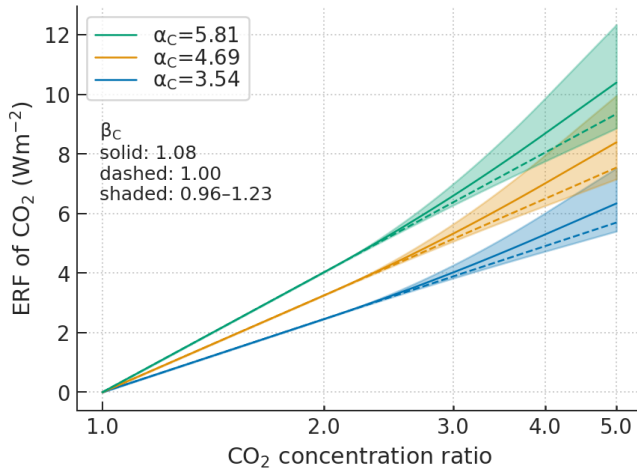
220 CO₂ forcing is evaluated with the following quadratic formula, in terms of the logarithm of CO₂ concentration:

$$F_C(x) = (\beta_C - 1) \left[\hat{F}_C(x) - 2F_C(2) \right] \left[\frac{2\hat{F}_C(x)}{F_C(2)} - 1 \right] + \beta_C \hat{F}_C(x) \quad (11)$$

$$\hat{F}_C(x) = \alpha_C \ln \left[\frac{\text{CO}_2(t)}{\text{CO}_2(0)} \right], \quad (12)$$

where x is the ratio of CO₂ concentrations to a preindustrial level, α_C is a scaling parameter in Wm^{-2} , and β_C is an amplification factor defined as $F_C(4) = \beta_C \times \hat{F}_C(4)$. This scheme was presented in Tsutsui (2017) to emulate the CMIP’s
 225 core CO₂ increase experiments for instantaneous quadrupling and 1%-per-year increase, referred to as abrupt-4xCO2 and 1pctCO2, respectively. Thus, the scheme is valid in the range of $1 \leq x \leq 4$. The two control parameters are diagnosed consistently with IRM parameters for individual CMIP models (Tsutsui 2020). The current diagnosing procedure solves numerical optimization to approximate the first 150-year and 140-year time series from abrupt-4xCO2 and 1pctCO2 experiments, respectively, in terms of TOA energy imbalance and the surface air temperature anomaly, respectively. The
 230 quadratic term is activated when the concentration exceeds a two-times level ($x > 2$), and β_C is set to unity in the range $x \leq 2$ so that F_C is equivalent to \hat{F}_C . The forcing amplification is expected to be valid in the range $x \leq 4$ and the quadratic term is

dropped beyond a four-time level. Figure 8 illustrates example outputs of the CO₂ forcing scheme in a range of 5th–95th percentiles of the ‘Prior’ ensemble for control parameters.



235 **Figure 8:** Effective radiative forcing (ERF) of CO₂ as a function of the ratio of CO₂ concentrations to a preindustrial level. The scaling parameter α_C is set to three different values, corresponding to the 5th, 50th, and 95th percentiles of the ‘Prior’ ensemble, described in 3.1. For each α_C value, the amplification factor β_C is varied between the 5th and 95th percentiles (shaded area), and is set to two specific values of the 50th percentile (solid line) and unity (dashed line, no amplification).

The forcing of CH₄ and N₂O is evaluated with the expressions given in Etminan et al. (2016). The forcing of halogenated
 240 gases is simply calculated as changes in concentration from preindustrial levels multiplied by radiative efficiencies assessed in the latest IPCC report (at the time of this manuscript preparation AR5, Myhre et al., 2013).

The current MCE model does not support non-CO₂ gas cycles and ERF schemes for other forcing agents, such as aerosols, tropospheric and stratospheric ozone, solar radiation, and volcanic eruptions. Experiments considering non-CO₂ forcing require prescribed concentrations for long-lived GHGs and prescribed ERF for others.

245 2.5 Parameter sampling

Probabilistic runs use an ensemble of perturbed model parameters designed to encompass the variation of multiple CMIP models with additional constraints with regard to assessed ranges of key climate indicators. In general, a series of candidate values of an uncertain parameter is generated from its statistical model and, if necessary, sampled from the series with an acceptance algorithm for given constraints. The latter process is Bayesian updating from a prior probability distribution to a
 250 posterior and here uses a Metropolis-Hastings (MH) independence sampler. As mentioned above, uncertain parameters include IRM amplitudes for the airborne fraction, control parameters for land carbon decay timescales and CO₂ fertilization, IRM parameters for temperature change, and control parameters for the CO₂ forcing scheme.

In a Bayesian framework, some difficulties arise from setting appropriate prior distributions and dealing with large-dimension likelihood functions. Although the latter can be avoided by using the Markov chain Monte Carlo (MCMC)
 255 approach, its implementation, typically based on the MH algorithm, is not necessarily straightforward in exploring a large-

dimension parameter space with the detailed balance that underlies MCMC. One of the relevant issues is sampling efficiency. Goodwin and Cael (2021), for example, generated a prior by varying a set of ~ 25 model parameters independently with a very large size of $\sim 10^9$ and constrained it by an acceptance algorithm with an observation-based likelihood function. Although the prior ensemble size can be reduced by improving the acceptance algorithm (Goodwin, 2021), it appears to need
260 $\sim 10^7$ to get a posterior for typical application, such as climate sensitivity estimation and probabilistic climate projections.

The current MCE's approach is one way to deal with the above difficulties. Setting a prior with statistical models representing a CMIP multi-model ensemble allows the use of an efficient MH independence sampler, where the size of a prior series for typical applications is expected to be $\sim 10^4$, or at most $\sim 10^5$. It is also convenient that this sampler is free from adjustment unlike random walk-based MCMC implementation that requires step-size adjustment. One thing to note is that
265 the independence sampler is suitable when the proposed prior series encompasses the target posterior series, and the acceptance rate of sampling is high to some extent. However, this requirement is not met for the case presented below. This problem is addressed in the implementation of the MH algorithm in Section 3 and further discussed in Section 4.

The carbon cycle parameters are individually generated from a uniform distribution with a given mean and perturbation range. The means and ranges are determined on a trial basis so that ranges of carbon budgets in historical and scenario
270 experiments are consistent with those from multiple CMIP ESMs. Since the sum of IRM amplitudes for the airborne fraction is unity, their perturbed values are normalized as such, subject to a modified distribution with more samples about the mean resulting from the operation.

The temperature response and CO₂ forcing parameters are synthetically generated from a multivariate normal distribution reflecting the variation of multiple CMIP AOGCMs. The IRM for temperature change has three pairs of time constant (τ_i)
275 and dimensional amplitude (A_i), and the CO₂ forcing scheme has two control parameters (α_C and β_C). A total of eight parameters have been diagnosed for each of the multiple CMIP models, revealing characteristic covariance structures, such as a noticeable negative correlation between feedback strength ($1/\lambda$) and a realized warming fraction (typically TCR-to-ECS ratio), and a weakly negative correlation between the forcing scale (α_C) and feedback strength (Tsutsui, 2020). The multivariate normal distribution is built on principal components (PCs) of these diagnosed parameters, as described in
280 Tsutsui (2017).

The eight parameters to be fed into PC analysis can include some derived parameters from the following expressions:

$$A_i = \frac{\tilde{A}_i}{\lambda \tau_i}, \quad \sum_i \tilde{A}_i = 1, \quad (13)$$

$$\text{ECS} = \frac{\alpha_C \ln(2)}{\lambda}, \quad (14)$$

$$\text{ECS}_G = \frac{\alpha_C \beta_C \ln(2)}{\lambda}, \quad (15)$$

$$285 \quad \text{TCR} = \text{ECS} \left\{ 1 - \sum_i \tilde{A}_i \frac{\tau_i}{t_{70}} \left[1 - \exp\left(-\frac{t_{70}}{\tau_i}\right) \right] \right\}, \quad (16)$$

where ECS is defined using a diagnosed forcing of CO₂ doubling, while ECS_G uses CO₂ quadrupling with a factor of 0.5 as in Gregory et al. (2004). Eq. (16) is derived from time integration of Eq. (1) to the 70th year (t_{70}) along a 1 %-per-year increasing path that defines TCR. One possible set consists of TCR, \tilde{A}_0/\tilde{A}_2 , \tilde{A}_1/\tilde{A}_2 , τ_0 , τ_1 , τ_2 , α_C , and β_C , applied with logarithmic transformation, except for α_C . This set was adopted in the experiments described below. The logarithmic transformation is intended to allow fair normality of PC scores, as a basis for fitting a multivariate normal distribution, and to make generated candidates positive.

Probabilistic runs can also use different scaling factors to adjust individual non-CO₂ ERF time series. This is a simple implementation to deal with non-CO₂ forcing uncertainties, typically assessed as a range at a reference time point. The scaling factor is perturbed with a suitable statistical model fitted to the range.

All uncertain parameters and ERF scaling parameters are not necessarily independent. The current sampling procedure incorporates covariance between the eight parameters relevant to temperature change in response to CO₂ forcing. However, the procedure assumes no other correlations, implying that uncertainties of the CO₂-induced temperature response are independent from those of the carbon cycle and non-CO₂ forcing.

3 Application examples

300 3.1 Scenario experiments

To demonstrate a typical application of the MCE model, a number of scenario experiments that mirror those of CMIP6 were conducted, including idealized abrupt-4xCO₂ and 1pctCO₂, and historical-future scenarios based on the Shared Socioeconomic Pathways (SSPs, Riahi et al., 2017). In the latter experiments, the model was initialized for the year 1850 and driven with GHG concentrations and other prescribed ERF, both provided from the RCMIP (Nicholls et al., 2020).

For each scenario, two sets of 600-member ensemble runs were conducted; one was perturbed to be consistent with a CMIP multi-model ensemble and the other was further constrained according to the RCMIP Phase 2 protocol (Nicholls et al., 2021), here labeled ‘Prior’ and ‘Constrained’, respectively. ‘Prior’ refers to 25 CMIP5 and 38 CMIP6 AOGCMs for the PC analysis input, and to 8 CMIP5 and 11 CMIP6 ESMs diagnosed in Arora et al. (2020) for simulated carbon budgets in the 1pctCO₂ experiment. Diagnosed forcing/response parameters of the multiple AOGCMs are presented in the MCE’s code repository.

The uncertain carbon cycle parameters for ‘Prior’ were generated from the above-mentioned statistical models, as shown in Figs. 1, 3, and 6, and were processed by the MH sampler to constrain accumulated land carbon at doubling CO₂ along the 1%-per-year pathway. In this case, 1pctCO₂ scenario runs with a set of proposed parameters were conducted to obtain data fed into the sampler. This single constraint was selected as it works inclusively for other relevant constraints through a trade-off relationship between ocean and land in terms of accumulated carbon.

RCMIP Phase 2 defines a number of constraints for climate indicators, including ERF levels, carbon budgets, recent warming trends, and climate sensitivity metrics of ECS, TCR, and transient climate response to cumulative CO₂ emissions (TCRE). Here, TCRE is defined as the ratio of the TCR to implied cumulative CO₂ emissions at the time of CO₂ doubling

along the same 1 %-per-year trajectory as that for TCR. These constraints use literature-based assessed ranges, referred to as a “proxy assessment” to distinguish these from the formal IPCC assessment. The ‘Constrained’ uncertain parameters were sampled from those of ‘Prior’ through a sequence of the MH sampler with a subset of RCMIP constraints, as follows: (1) CO₂ ERF in 2014 relative to 1750 evaluated in Smith et al. (2020), (2) TCR estimated in Tokarska et al. (2020, Table S3, both constrained), and (3) GMST in the period 1961–1990 relative to the period 2000–2019 from the HadCRUT.4.6.0.0 dataset (Morice et al., 2012) and ocean heat content (OHC) in 2018 relative to 1971 from the dataset of von Schuckmann et al. (2020). In this case, in addition to 1pctCO₂ runs, historical scenario runs with a set of proposed parameters were conducted to obtain data fed into the sampler.

The IRM for temperature change is transformed into a three-layer heat exchange model in physical space (Fig. 1). The top layer is representative of fast-responding Earth system components—the atmosphere and Earth’s surface including a part of the ocean mixed layer. However, when diagnosing the CO₂ forcing and response parameters, the top layer temperature was treated as global mean surface air temperature (GSAT) in practice. As in HadCRUT GMST was defined as a surface air ocean blended temperature change; here, a factor of 1.04 was used to convert observed GMST change into the MCE’s GSAT change. Likewise, as the MCE’s three layers cannot be allocated to specific climate system components, a factor of 1.08 was used to convert observed OHC change into the MCE’s total heat content change.

Besides CO₂ forcing, the RCMIP constraints include the ranges of non-CO₂ forcing over a historical period for CH₄, N₂O, halocarbons (aggregated into “Montreal gases” (CFCs/HCFCs/halons) and other “F-gases” (HFCs/PFCs/SF₆)), aerosols (aggregated), tropospheric ozone, stratospheric ozone, stratospheric water vapor from CH₄, and albedo change due to land use and black carbon aerosols on snow and ice. Ranges are based on AR5 (Myhre et al., 2013), except for those for CH₄ and aerosols, which consider recent updates (Etminan et al., 2016; Smith et al., 2020). To incorporate these uncertainty ranges in historical-future scenarios, the scaling factors to adjust individual non-CO₂ ERF time series were perturbed using normal or skewed normal distributions fitted to the prescribed ranges.

The RCMIP constraints are provided as *likely* ranges and optionally *very likely* ranges, corresponding to 17–83% and 5–95% according to the IPCC’s likelihood terms in italics. These ranges were applied to generate uncertain parameter proposals and to build the MH sampler requiring probability densities for a target distribution.

Although a number of indicators were prepared for the RCMIP constraints, a very limited number of those were used here partly because the prior was designed to match some of them like the forcing constraints, and partly because the proxy assessment ranges are not necessarily consistent with each other. The sequence of the MH sampler for the above three items, which relaxes the detailed balance required for MCMC, was established to deal with anyhow those constraints, and needs to be improved using fully consistent assessment ranges.

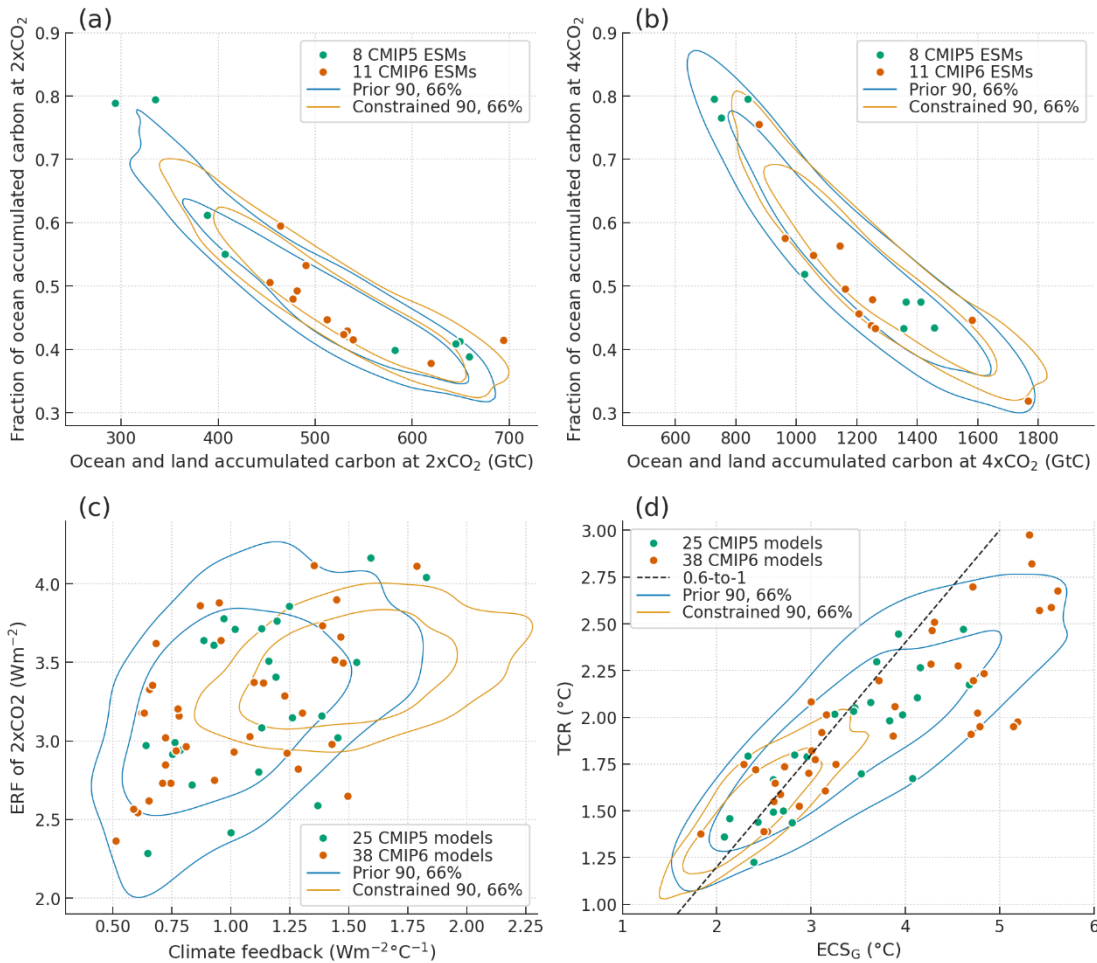
Other details of the constraining procedures and experimental specifications are provided in the MCE’s code repository (see *Code and data availability* at the end).

350 **3.2 Results: climate indicators**

Figure 9 illustrates relationships between key indicators associated with the carbon budget and climate sensitivity of the two ensembles in comparison with the CMIP models. The carbon budget is measured by the amount of accumulated carbon and its allocation to ocean and land reservoirs. Here, total accumulation and the ocean allocation ratio at doubling and quadrupling CO₂ levels are used as key indicators. The CMIP ESMs indicate a clear negative correlation between the two quantities (Fig. 9 (a) and (b)), reflecting much greater uncertainties relating to land carbon. This feature is well represented by the MCE parameter ensembles. Although there are some model differences between CMIP5 and CMIP6 eras, such as a reduced model spread in the latter associated with nitrogen cycle implementation (Arora et al., 2020), the MCE ensembles currently do not distinguish between the two. The carbon indicators of the ‘Constrained’ ensemble do not differ significantly from those of ‘Prior’ but are distributed toward higher total accumulations, attributed to warming differences that affect

355

360 carbon cycle-climate feedbacks.

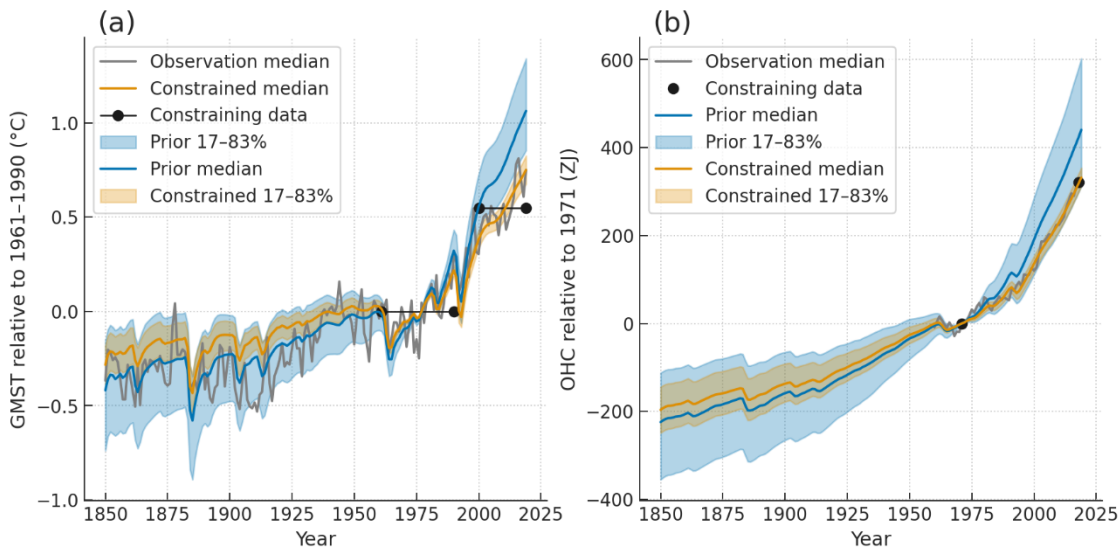


365 **Figure 9: Relationships between key indicators associated with carbon budget and climate sensitivity in comparison with CMIP models. Contours indicate kernel density levels at which the circles cover 90% and 66% of members. The legend indicates the number of the CMIP models. (a) The fraction of ocean accumulated carbon and ocean and land totals in the 70th year of 1pctCO₂. (b) Same as panel (a), but in the 140th year. (c) Effective radiative forcing (ERF) of CO₂ doubling and climate feedback parameter. (d) Transient climate response (TCR) and equilibrium climate sensitivity diagnosed from abrupt-4xCO₂ (ECS_G). The dashed line is located where the ratio of TCR to ECS_G is 0.6 as a reference.**

370 In contrast, climate sensitivity differences are most prominent and well characterized with key indicators' distributions on two-dimensional domains: the ERF of CO₂ doubling derived from α_C vs. the climate feedback parameter (λ) (Fig. 9 (c)), and TCR vs ECS_G (Fig. 9 (d)). While the 'Prior' distributions cover the CMIP AOGCMs effectively, the 'Constrained' are confined to lower sensitivity values—greater λ and smaller TCR and ECS_G, attributed to the observed GMST and OHC constraints. The 'Prior' distribution of the CO₂ forcing agrees well with the CMIP distribution, which shows a weakly positive correlation with the climate feedback parameter. In contrast, the 'Constrained' forcing levels are confined to an upper half of the CMIP AOGCMs, attributed to the historical CO₂ forcing constraint, and the forcing-feedback correlation becomes weak. Transient sensitivity is not necessarily proportional to equilibrium sensitivity, and greater CMIP6 sensitivity is more evident in ECS_G than in TCR. The inherent relationship between feedback strength and response timescales is responsible for the tendency, together with the forcing amplification effect represented by β_C . The PC analysis-based statistical model captures such covariance structure effectively.

380 Figure 10 illustrates historical GMST and OHC of the MCE's two ensembles in comparison with their observations, from which constraining data are considered for recent warming trends. In the figure, the time series are adjusted relative to the reference period 1961–1990 for GMST and the reference year 1971 for OHC. While the 'Prior' series are well above the observed warming during the target period 2000–2019 for GMST and during the target year 2018 for OHC, the 'Constrained' agree well with recent trends. The observation-based constraining results in lower climate sensitivity in the latter ensemble.

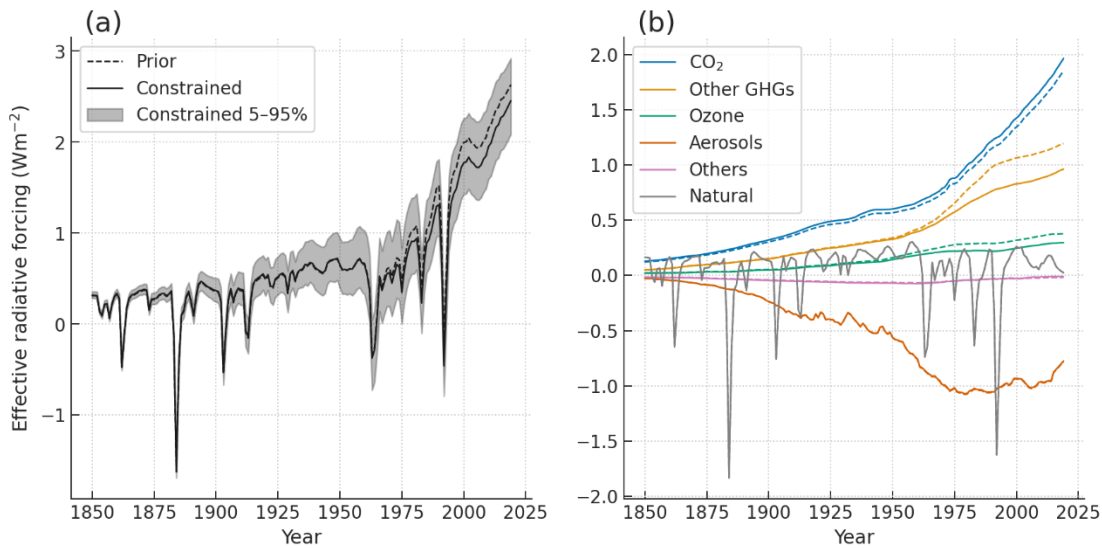
385 However, considerable uncertainties remain with regard to longer trends and unforced climate variability. In an earlier period, observed GMST was rather close to 'Prior', and the 'Constrained' trend appears underestimated. The OHC trend cannot be validated owing to its limited observation period. Assessment of forced response in the historical period, which is currently not available, would allow more reliable parameter sampling. Some variation in the historical forcing time series, in particular for aerosols (Smith et al., 2021), would also be worth to be explored.



390

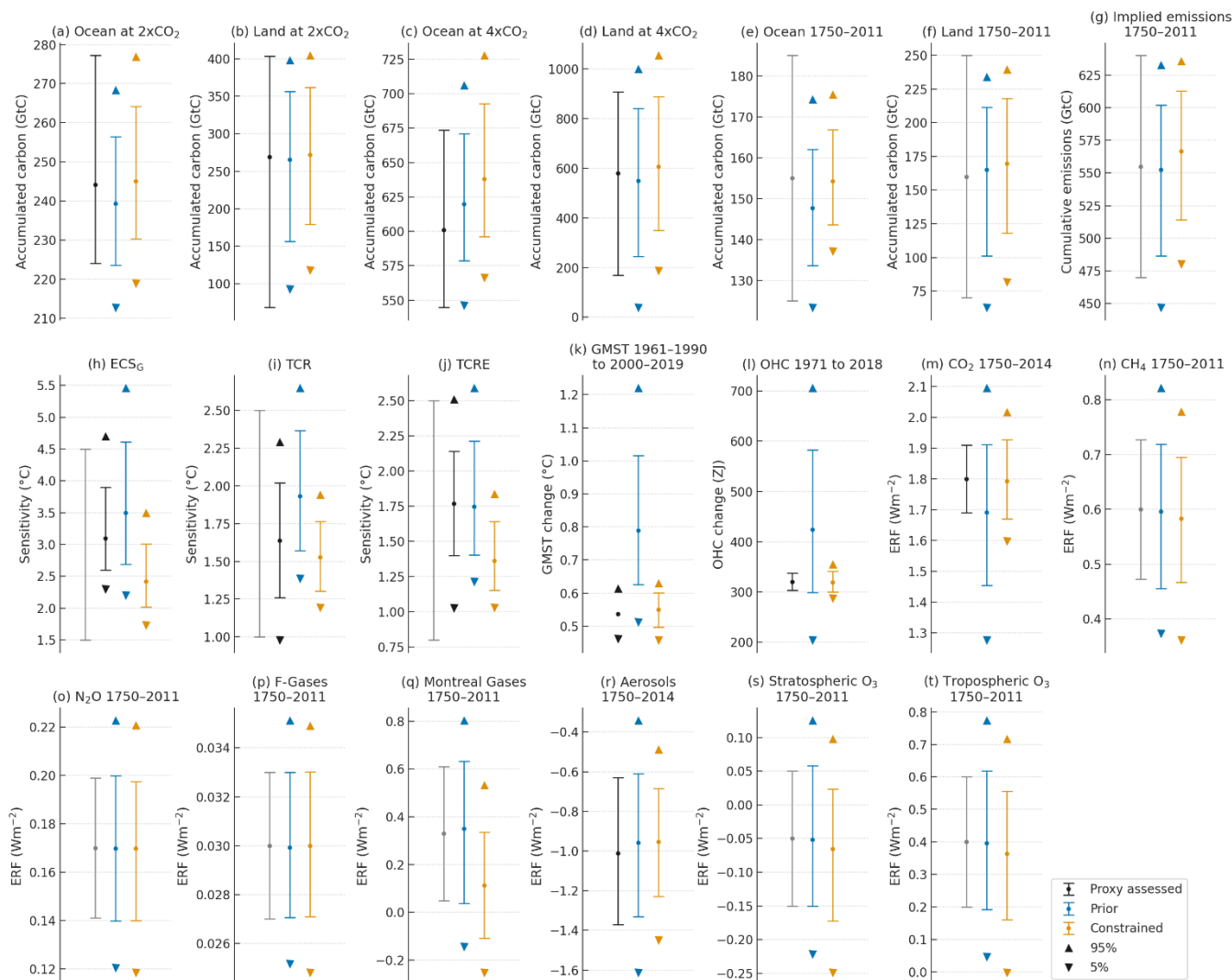
Figure 10: (a) Historical global mean surface temperature (GMST) relative to 1961–1990 and (b) historical ocean heat content (OHC) relative to 1971 in the period 1850–2019 compared with observation data from HadCRUT4.6.0.0 for GMST and von Schuckmann et al. (2020) for OHC. The black dots indicate the levels at two different periods or years used for the observation constraints.

395 The greater warming in ‘Prior’ is not only due to its greater climate sensitivity, but also partly due to non-CO₂ forcing differences, as shown in Fig. 11. The scaling factors of the non-CO₂ forcing agents are independently perturbed in the ‘Prior’ ensemble and probabilistically selected through the series of the MH sampler. Although the sampling process does not directly refer to forcing levels of non-CO₂ agents, it can modify their distributions to be consistent with other constraints. This modification is found for non-CO₂ GHGs and ozone time series (Fig. 11 (b)), and the most dominant contribution is of
 400 Montreal-gases (not shown). The ERF of Montreal-gases rapidly increases from the 1960s and levels off from the 1990s, and the sampling results imply that this tendency is not consistent with the recent warming trend. Total ERF fluctuates with changes in solar irradiance and volcanic eruptions, for which the RCMIP’s prescribed forcing was used without their efficacy uncertainties.



405 **Figure 11: Historical effective radiative forcing (ERF) in the period 1850–2019 for total ERF (a) and aggregated components (b). The ensembles' medians are shown by lines, and the 5–95% range of the 'Constrained' ensemble is shown for the total by shading.**

Figure 12 displays the ranges of climate indicators from the two ensembles associated with carbon cycle, climate sensitivity, warming trends, and historical ERF changes, in comparison with their proxy assessment ranges. The consistency between modeled and proxy ranges can be most distinctively shown for warming trends by GMST and OHC changes (Fig. 12 (k) and 410 (l)), with 'Prior' ranges substantially wider and higher than assessed ranges but comparable 'Constrained' ranges. The consistency of sensitivity indicators, including TCRE, (Fig. 12 (h)–(j)) is complex because the proxy assessment ranges (black error bars) themselves are not necessarily consistent with each other, as discussed in the next section, and narrowed from the AR5-assessed ranges (grey error bars). Overall, consistency is better for 'Prior' ranges, although 'Constrained' ranges, considerably narrowed and lowered, are still within the AR5-assessed ranges. The ranges of the carbon cycle 415 indicators (Fig. 12 (a)–(g)), including accumulated carbon and implied cumulative emissions in the historical period 1750–2011, are not significantly different between the two ensembles and broadly agree with assessed ranges. Ensemble runs for the extended historical period starting from 1750 were conducted for calibration. The ranges of the ERF indicators (Fig. 12 (m)–(t)) are consistent with assessed ranges, except for 'Prior' CO₂ and 'Constrained' Montreal gases, as mentioned above. Other minor changes from 'Prior' to 'Constrained' include a reduced range for aerosols and lowered ranges for stratospheric 420 and tropospheric ozone.

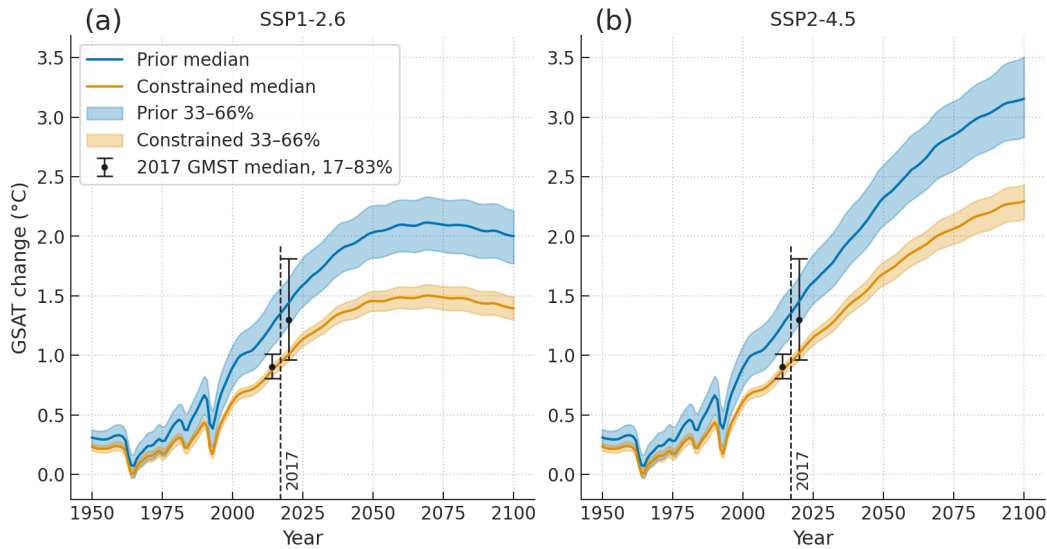


425 **Figure 12: Distributions of climate indicators:** (a) accumulated carbon over ocean at doubling CO₂ in 1pctCO₂; (b) same as (a) but over land; (c) same as (a) but at quadrupling CO₂; (d) same as (c) but over land; (e) accumulated carbon over ocean in 1750–2011; (f) same as (e) but over land; (g) implied cumulative emissions in 1750–2011; (h) equilibrium climate sensitivity diagnosed with CO₂ quadrupling forcing (ECS_G); (i) transient climate response (TCR); (j) transient climate response to 1000 GtC cumulative CO₂ emissions (TCRE); (k) global mean surface temperature (GMST, air-ocean blended) in 2000–2019 relative to 1961–1990; (l) ocean heat content (OHC) in 2018 relative to 1971; (m) effective radiative forcing (ERF) of CO₂ in 2014 relative to 1750; (n) ERF of CH₄ in 2011 relative to 1750; (o) same as (n) but of N₂O; (p) same as (n) but of ‘Montreal gases’ (CFCs/HFCs/halons); (q) same as (n) but of ‘F-gases’ (HFCs/PFCs/SF₆); (r) same as (m) but of aerosols; (s) same as (n) but of stratospheric O₃; (t) same as (n) but of tropospheric O₃. Error bars and pairs of triangle markers indicate *likely* ranges (17–83%) and *very likely* ranges (5–95%), respectively. The black and grey error bars indicate proxy assessment ranges and AR5-assessed ranges, respectively. The proxy ranges are based on 5–95% ranges of the CMIP Earth system models in (a)–(d), but otherwise taken from the RCMIP Phase 2 protocol that partly includes the AR5-assessed ranges.

430

3.3 Results: projected warming

435 Figure 13 illustrates temperature response in two SSP scenarios, SSP1-2.6 and SSP2-4.5, where warming is measured by an increase in global mean surface air temperature (GSAT) relative to 1850–1900, and the period up to 2100 is presented. In the scenario labeled ‘SSPn-x.x’, ‘n’ (1–5 numbers) identifies different socioeconomic development pathways, and ‘x.x’ expresses a nominal forcing level in Wm^{-2} at the end of the 21st century. The shaded areas indicate 33–66% ranges. The upper bound corresponds to the level to which warming is *likely* (66–100%) to be limited at the time, while the lower bound corresponds to the level which warming is *likely* to exceed. These thresholds are shown in Table 1 for peak and end-of-century (end-21C) warming for eight SSP scenarios, where the end-21C period is set to 2081–2100, in accordance with the AR5.



445 **Figure 13: Global mean surface air temperature (GSAT) changes relative to 1850–1900 in SSP1-2.6 (a) and SSP2-4.5 (b) scenarios from ‘Prior’ and ‘Constrained’ ensembles. Medians and 33–66% ranges at each time point are shown by lines and shading. The error bars indicate medians and *likely* (17–83%) ranges of global mean surface temperature (GMST, air-ocean blended) changes in 2017. For a visual purpose the two error bars are slightly shifted from the reference year of 2017 on the horizontal axis.**

450 **Table 1: Critical global mean surface air temperature (GSAT) change relative to 1850–1900 in different Shared Socioeconomic Pathway (SSP) scenarios. Warming levels at peak during the 21st century and averaged over the period 2081–2100 (end-21C) are shown for those *likely* to be limited (66 percentile) and *likely* to exceed (33 percentile) from ‘Prior’ and ‘Constrained’ ensembles.**

	SSP1-1.9	SSP1-2.6	SSP4-3.4	SSP5-3.4*	SSP2-4.5	SSP4-6.0	SSP3-7.0	SSP5-8.5
<i>Likely</i> limited to at peak	2.08	2.34	2.34	3.10	3.51	4.25	5.20	6.15
	1.39	1.60	2.09	2.16	2.43	2.96	3.70	4.44
<i>Likely</i> limited to at end-21C	1.82	2.27	3.05	2.78	3.38	4.01	4.72	5.54
	1.20	1.54	2.07	1.90	2.36	2.82	3.34	3.98

<i>Likely</i> exceed at peak	1.68	1.89	2.50	2.54	2.83	3.47	4.30	5.17
	<i>1.24</i>	<i>1.41</i>	<i>1.84</i>	<i>1.92</i>	<i>2.14</i>	<i>2.61</i>	<i>3.25</i>	<i>3.94</i>
<i>Likely</i> exceed at end-21C	1.44	1.82	2.47	2.23	2.76	3.29	3.86	4.64
	<i>1.04</i>	<i>1.34</i>	<i>1.83</i>	<i>1.65</i>	<i>2.08</i>	<i>2.48</i>	<i>2.94</i>	<i>3.55</i>

Units: °C; * Overshoot type pathway; Upper: 'Prior' ensemble; Lower in italic: 'Constrained' ensemble

Regarding consistency with target warming levels, such as two degrees above preindustrial levels, the 'Constrained' ensemble agrees relatively well with the AR5 assessment (Collins et al., 2013) for each of the comparable Representative Concentration Pathways (RCPs, van Vuuren et al., 2011) such as RCP2.6 with SSP1-2.6. For example, AR5 states that end-21C temperature change above 2 °C is *unlikely* (0–33%) under RCP2.6, which implies that temperature is *likely* limited to 2 °C. This assessment is consistent with the SSP1-2.6 result from 'Constrained' (*likely* limited to 1.51 °C) but not from 'Prior' (*likely* limited to 2.27 °C). Some threshold temperatures in 'Constrained' are not consistent with AR5, such that the temperature in SSP2-4.5 *likely* exceeds 2.06 °C, while in AR5 it is *more likely than not* (> 50–100%) to exceed 2 °C in RCP4.5. There is a similar difference in the possibility of limiting to 4 °C in SSP5-8.5 and RCP8.5. AR5 assessed these cases with *medium confidence* rather than *high confidence*, implying that the reduced *likely* ranges (as in 'Constrained') can update the AR5 assessment more authentically. However, at present, the 'Constrained' ensemble does not incorporate possible uncertainties, as discussed in the next section. It should also be noted that SSP forcing is not exactly the same as corresponding RCP forcing, leading to noticeable temperature differences between the comparable scenarios (Nicholls et al., 2020).

There are also some issues with handling of historical warming. The AR5 refers to a specific level of 0.61 °C from HadCRUT data for the period 1986–2005, which is added to the CMIP5 projected warming. However, HadCRUT warming is defined as an air-ocean blended temperature and is thereby somewhat underestimated for the GSAT definition (Schurer et al., 2018) with which modeled future warming is evaluated. In any case, the AR5 assessment is effectively constrained by observed warming, which may be responsible for its better agreement with the 'Constrained' ensemble. Figure 13 indicates medians and *likely* (17–83%) ranges of temperature changes in 2100 by the GMST (air-ocean blended) definition, 1.30 [0.96–1.81] °C in 'Prior' and 0.90 [0.80–1.01] °C in 'Constrained'. The latter warming levels are also closer to the SR15 assessment of 1.0 [0.8–1.2] °C for human-induced warming (Allen et al., 2018), despite some bias towards the lower end of the assessed range.

4 Discussion

4.1 Performance as an emulator

It has already been confirmed that the MCE reproduces many different CMIP models effectively in terms of thermal response to idealized CO₂ forcing changes, as demonstrated in Nicholls et al. (2020). The forcing and response parameters are adjusted to emulate two of the CMIP's basic experiments for step-shaped (abrupt-4xCO₂) and ramp-shaped (1pctCO₂) forcing increases. The forcing scheme uses different functions depending on concentration levels: a quadratic expression in terms of logarithmic concentrations in the range from two to four times the base level, smoothly connecting to linear expressions outside this range. This flexibility suits the CMIP models' tendency to deviate from logarithmic concentration proportions at higher concentrations, leading to better emulation not only for responses to quadrupling increases commonly used in basic experiments, but also for responses to considerably lower increases in many mitigation scenarios.

However, the scheme assumes constancy of the climate feedback parameter; emulation accuracy will therefore be decreased in scenarios where state dependency of feedbacks emerges. A typical example appears in a cooling scenario. The RCMIP Phase 1 results include a case in which the MCE fails to emulate a halving CO₂ experiment, while successfully emulating both doubling and quadrupling (See Figure 2 of Nicholls et al., 2020). It is also known that state dependency becomes significant when the time integration of the step response continues over multi-centennial to millennial timescales (Knutti and Rugenstein, 2015; Rohrschneider et al., 2019). As CMIP models tend to deviate from linearity between the TOA energy imbalance and the surface temperature anomaly so that additional warming occurs with time, the MCE would result in underestimated warming in such a case. In practice, this issue is not significant up to the time horizon of 2100, commonly used in mitigation scenarios, in particular for lower than doubling CO₂ levels.

For non-CO₂ forcing, additivity is assumed across different agents, except for overlapping effects for CH₄ and N₂O, as parameterized in Etminan et al. (2016). The forcing amplification for CO₂ is not extended to total forcing. These are reasonable assumptions for most mitigation scenarios where non-CO₂ components are presumably not extreme.

The carbon cycle module has a mixture of fixed and adjustable parameters, including those for several feedback mechanisms from temperature changes. The current configuration successfully works to represent the CMIP ESMs' ranges in terms of carbon budget in the idealized 1 %-per-year CO₂ increase experiment. However, it has not yet been verified that each of the ESMs can be accurately emulated.

Diagnosing the carbon cycle parameters to individual ESMs is a main issue to be addressed in future. Accumulated carbon in response to atmospheric CO₂ input has a trade-off relationship between ocean and land, and both components have their own mechanisms of climate-carbon cycle feedbacks, which are also subject to the magnitude of temperature response. This implies that calibrating the MCE parameters for each ESM requires a series of pulse-response experiments designed to allow each of the ocean and land contributions to be isolated, with and without temperature feedback. Besides the standard 1%-per-year increase experiment, the CMIP6 provides idealized ESM experiments, including 1%-per-year increase variants with different configurations and a variety of pathways to zero emissions (Jones et al., 2019; Keller et al., 2018). The extent to

510 which different ESMs are emulated for these scenarios needs to be verified with calibrated parameters, leading to further insights into carbon-cycle behavior in terms of amount of emissions, hysteresis effects after attaining zero emissions, and state dependency.

515 While the covariance of MCE parameters is incorporated for the CMIP models' variability of CO₂ induced warming, the carbon cycle parameters and the non-CO₂ scaling factors are independently sampled. There may exist other covariance between key indicators. As different types of aerosol schemes constitute a major source of model variations, incorporating covariance associated with aerosol forcing would improve parameter sampling, leading to more appropriate indicator ranges. The results shown in the previous section are outputs from concentration-driven experiments, where implied emissions are available for CO₂ only. Likewise, the emission-driven option is currently limited to CO₂. The two types of experiments are equivalent within numerical errors associated with a time integration scheme, for which Runge-Kutta 4th order is used. However, implied emissions tend to be noisy when pulse-like non-CO₂ forcing is given, owing to the temperature
520 dependency implemented in carbon cycle modules. This is the case in historical experiments including volcanic forcing.

4.2 Further improvement on constraints

The 'Constrained' ensemble was applied to that compared in the RCMIP Phase 2 exercise, where the MCE is recognized as one of two models that have commonly used the target constraints, implying successfully constrained, among nine participant models with different degrees of complexity (Nicholls et al., 2021). The MCE is a relatively simple emulator,
525 conceivably cited with a simple thermal response, an intermediate-complexity carbon cycle, simply parameterized non-CO₂ GHG forcing, and no other Earth system components. This simplicity and the successful results obtained imply that a method with less complicated structures and fewer control parameters offers advantages when building reasonable parameter ensembles, despite less capacity to emulate detailed Earth system components.

Several issues require clarification with regard to the differences between 'Prior' and 'Constrained' ensembles. First of all, it
530 should be emphasized that the constraints used in the RCMIP were preliminary, wherein the formal IPCC Sixth assessment was not yet available during the project. Since the results from the 'Constrained' ensemble heavily depend on recent warming trends from specific datasets without any additional uncertainties, which led to lower sensitivity indicators (Fig. 12 (h) and (i)), the 'Constrained' future warming projections and their uncertainty ranges would be underestimated compared to those based on formally assessed trends from multiple lines of evidence (IPCC, 2021).

535 The current proxy constraints such as the ones for the three climate sensitivity ranges of ECS_G, TCR, and TCRE adopted from individual studies are not necessarily consistent with each other. The range of ECS_G is based on multiple lines of evidence, including feedback process understanding, historical records, and paleoclimate records (Sherwood et al., 2020). Here, ECS_G, rather than ECS, is referred to, assuming that process understanding is largely based on the CMIP's quadrupling CO₂ experiments. The range of TCR is based on 30 and 22 AOGCMs from the CMIP5 and CMIP6, both constrained by
540 warming trends during recent decades (Tokarska et al., 2020). In contrast to these observations and modeling studies, the

range of TCRE is based on 11 CMIP6 ESMs (Arora et al., 2020). Improved ensembles based on comprehensively assessed constraints would increase reliability of probabilistic projections, leading to better insights into future warming.

In comparison with the AR5 assessment, the ‘Constrained’ ensemble has considerably low-biased climate sensitivity, but nevertheless indicates comparable future warming across different scenarios. As stated above, this inconsistency can be partly explained on the basis of the AR5 method for warming levels that adds up observed historical warming to CMIP5-modeled future projections. With regard to consistency throughout the whole period, the emulator approach would be more desirable. In any case, it is necessary to impose appropriate weighting on CMIP models to be emulated, in particular, when the model ensemble has a wide spread and some outliers in terms of reproducibility of past and current climates (Cox et al., 2018; Tokarska et al., 2020). The MH sampler with observed warming constraints corresponds to an indirect method for such weighting. As the present results decisively depend on surface temperature and OHC observations during recent decades, their validity as a constraint needs to be discussed from a broad perspective across forcing, response, and sensitivity. The current constraining assumes observed warming as entirely forced response. Recent findings from warming attribution studies may support this, suggesting that human-induced warming is similar to observed warming (Allen et al., 2018). However, the attribution depends on temporal and spatial patterns of forced response in multiple AOGCMs as well as their diagnosed forcing, leading to a complicated situation in which constraining data and AOGCMs to be constrained are mutually dependent. Besides, there remain substantial uncertainties of response patterns to changes in individual forcing factors owing to the diversity of AOGCMs (Jones et al., 2016). Moreover, the new CMIP6 models appear to have marked differences in the magnitude of internal variability underlying attribution studies (Parsons et al., 2020). The GMST constraint does not consider such uncertainties and may be replaced with broader ranges from new insights into forced response.

Furthermore, it is also necessary to constrain forced response on a centennial timescale. Besides the HadCRUT data available since 1850, the OHC data, limited to the late 20th century, may include delayed response components on a much longer timescale. In fact, major volcanic eruptions occurred frequently in the 18th and 19th centuries. The initial year of 1850 is commonly used as a proxy preindustrial time point to avoid difficulties that arise from limited observations and major eruptions (Allen et al., 2018). However, the pre-1850 volcanic impact on the deep ocean should be examined carefully. In fact, it has been recognized in historical runs with the MCE that the OHC increase during the late 20th century significantly depends on the initial year, while the surface warming does not. A series of volcanic eruptions in the period 1750–1850 appears to contribute to heating after the period and amplifies heat content increase since 1850. The results suggest that human-induced OHC increase should be distinguished from observed total increase for better constraints.

Aerosol cooling is one of the key factors influencing temperature changes in the latter half of the 20th century, resulting in different ranges of other climate indicators. The present method relies on the prescribed ERF time series prepared for the CMIP6, which is scaled to the proxy assessment range in 2014 (Fig. 12 (r)). Although this procedure assures that cooling magnitude is constrained to the given range at the specific time point, the base time series is fixed. The constraint, adopted from Smith et al. (2020), is the outcome of the Radiative Forcing Model Intercomparison Project (RFMIP, Pincus et al.,

575 2016), one of the CMIP6-endorsed model intercomparisons. A better insight into aerosol forcing may update its historical time series, thereby leading to improvement of forced response and other climate indicators, including climate sensitivity. Technical issues exist when sampling from the ‘Prior’ ensemble with observed warming constraints, associated with their distinct differences. The proxy ranges of the constraints are much more biased and localized compared to the ‘Prior’ distributions, leading to inefficient sampling. The acceptance rate in the present case reached only about 1 %, requiring $\sim 10^5$ 580 member calibration runs to obtain a 600-member ‘Constrained’ ensemble. Besides the efficiency issue, the sampling process should be visually monitored to verify whether the acceptance/rejection is reasonable. As the MH independence sampler compares a probability density ratio of the next state to the current between candidate and target densities, care is to be exercised at the distributions’ tail regions where relatively large approximation errors may exist. The present method introduced ad hoc criteria to avoid acceptance with an unexpectedly large density ratio. As mentioned in 3.1, and confirmed 585 from Figure 12, the current method does not technically meet the MCMC requirement, but still generates a reasonable ensemble that generally satisfies the RCMIP constraints. In anyway, methodological issues should be addressed using improved constraints.

5 Conclusions

A new climate model emulator, MCE, was developed, and its probabilistic climate projections for representative scenarios 590 were demonstrated and thoroughly discussed. The MCE is based on impulse response functions and several parameterized physics including key climate-carbon cycle feedbacks and may be categorized as a relatively low complexity model among recent model intercomparison participants. It has an advantage when building reasonable perturbed ensembles transparently, despite its lower capacity to emulate detailed Earth system components. Perturbed ensembles can cover complex climate models’ diversity effectively, reflecting their covariance structure of diagnosed forcing-response parameters associated with 595 CO₂-induced warming. Probabilistic projections constrained with several ranges of climate indicators, including CO₂ and other forcing factors and observed warming trends over recent decades, suggest that complex climate models generally overestimate climate sensitivity. The sampling procedure implemented for parameter constraining, based on a Metropolis-Hastings algorithm, effectively works as weighting given to complex models.

Results from climate assessments for future scenarios in terms of their compatibility with climate mitigation goals are 600 preliminary, and experiments should be conducted with newly assessed constraining data. There are considerable uncertainties about forced components of historical warming as well as different forcing factors, and consistency of assessed ranges among different climate sensitivity metrics. These are main issues to be clarified in the forthcoming new assessment. There is some room for improvement in emulator functionality. The carbon cycle module has not been configured to individual complex models, full emissions-driven experiments have not been supported, and perturbed parameter ensembles 605 have not reflected full covariance structures of complex models. These issues are to be addressed in future work.

Code and data availability. MCE source code and example usage scripts as used in this submission are available from the MCE GitHub repository at <https://github.com/tsutsui1872/mce> (last access: 18 October 2021) and archived by Zenodo (<https://doi.org/10.5281/zenodo.5574895>, Tsutsui, 2021).

610

Author contribution. JT developed the model code, performed experiments, and prepared the manuscript.

Competing interests. The author declares that the author has no conflict of interest.

615 *Acknowledgements.* I acknowledge the steering committee and the members of RCMIP, in particular Zebedee R. J. Nicholls, for giving me the opportunity to participate in the model intercomparison. The scenario experiments with perturbed parameter ensembles in my study depend on input scenario data and constraining data provided from RCMIP.

620 *Financial support.* This work was supported by the Integrated Research Program for Advancing Climate Models (TOUGOU) Grant Number JPMXD0717935457 from the Ministry of Education, Culture, Sports, Science and Technology (MEXT), Japan.

References

- Allen, M., P. Dube, O., Solecki, W., Aragon-Durand, F., Cramer, W., Humphreys, S., Kainuma, M., Kala, J., Mahowald, N., Mulugetta, Y., Perez, R., Wairiu, M. and Zickfeld, K.: Framing and Context, in Global warming of 1.5°C. An IPCC
625 Special Report on the impacts of global warming of 1.5°C above pre-industrial levels and related global greenhouse gas emission pathways, in the context of strengthening the global response to the threat of climate change, sustainable development, and efforts to eradicate poverty, edited by Masson-Delmotte, V., Zhai, P., Portner, H. O., Roberts, D., Skea, J., Shukla, P. R., Pirani, A., Moufouma-Okia, W., Pean, C., Pidcock, R., Connors, S., Matthews, J. B. R., Chen, Y., Zhou, X., Gomis, M. I., Lonnoy, E., Maycock, T., Tignor, M. and Waterfield, T., Available from <https://www.ipcc.ch/sr15>, 2018.
- 630 Andrews, T., Gregory, J. M., and Webb, M. J.: The dependence of radiative forcing and feedback on evolving patterns of surface temperature change in climate models, *J. Climate*, 28, 1630–1648, <https://doi.org/10.1175/JCLI-D-14-00545.1>, 2015.
- Arora, V. K., Katavouta, A., Williams, R. G., Jones, C. D., Brovkin, V., Friedlingstein, P., Schwinger, J., Bopp, L., Boucher, O., Cadule, P., Chamberlain, M. A., Christian, J. R., Delire, C., Fisher, R. A., Hajima, T., Ilyina, T., Joetzjer, E.,
635 Kawamiya, M., Koven, C. D., Krasting, J. P., Law, R. M., Lawrence, D. M., Lenton, A., Lindsay, K., Pongratz, J., Raddatz, T., Séférian, R., Tachiiri, K., Tjiputra, J. F., Wiltshire, A., Wu, T. and Ziehn, T.: Carbon-concentration and carbon-climate feedbacks in CMIP6 models and their comparison to CMIP5 models, *Biogeosciences*, 17, 4173–4222, <https://doi.org/10.5194/bg-17-4173-2020>, 2020.

- Clarke, L., Jiang, K., Akimoto, K., Babiker, M., Blanford, G., Fisher-Vanden, K., Hourcade, J.-C., Krey, V., Kriegler, E.,
640 Löschel, A., McCollum, D., Paltsev, S., Rose, S., Shukla, P. R., Tavoni, M., van der Zwaan, B. C. C. and van Vuuren, D.
P.: Assessing transformation pathways, in *Climate Change 2014: Mitigation of Climate Change, Contribution of Working
Group III to the Fifth Assessment Report of the Intergovernmental Panel on Climate Change*, edited by Edenhofer, O.,
Pichs-Madruga, R., Sokona, Y., Farahani, E., Kadner, S., Seyboth, K., Adler, A., Baum, I., Brunner, S., Eickemeier, P.,
Kriemann, B., Savolainen, J., Schlomer, S., von Stechow, C., Zwickel, T. and Minx, J. C., pp. 413–510, Cambridge
645 University Press, Cambridge, United Kingdom and New York, NY, USA, , 2014.
- Collins, M., Knutti, R., Arblaster, J., Dufresne, J.-L., Fichefet, T., Friedlingstein, P., Gao, X., Gutowski, W. J., Johns, T.,
Krinner, G., Shongwe, M., Tebaldi, C., Weaver, A. J. and Wehner, M.: Long-term climate change: projections,
commitments and irreversibility, in *Climate Change 2013: The Physical Science Basis*, edited by Stocker, T. F., Qin, D.,
Plattner, G.-K., Tignor, M., Allen, S. K., Boschung, J., Nauels, A., Xia, Y., Bex, V. and Midgley, P. M., pp. 1029–1136,
650 Cambridge University Press, Cambridge, United Kingdom and New York, NY, USA, , 2013.
- Cox, P. M., Huntingford, C. and Williamson, M. S.: Emergent constraint on equilibrium climate sensitivity from global
temperature variability, *Nature*, 553, 319–322, <https://doi.org/10.1038/nature25450>, 2018.
- Cummins, D. P., Stephenson, D. B., and Stott, P. A.: Optimal estimation of stochastic energy balance model parameters, *J.
Climate*, 33, 7909–7926, <https://doi.org/10.1175/JCLI-D-19-0589.1>, 2020.
- 655 Dickson, A. G., Sabine, C. L. and Christian, J. R., Eds.: *Guide to best practices for ocean CO₂ measurements.*, PICES
Special Publication 3, 2007.
- Etminan, M., Myhre, G., Highwood, E. J. and Shine, K. P.: Radiative forcing of carbon dioxide, methane, and nitrous oxide:
A significant revision of the methane radiative forcing, *Geophys. Res. Lett.*, 43, 12614–12623,
<https://doi.org/10.1002/2016GL071930>, 2016.
- 660 Eyring, V., Bony, S., Meehl, G. A., Senior, C. A., Stevens, B., Stouffer, R. J. and Taylor, K. E.: Overview of the Coupled
Model Intercomparison Project Phase 6 (CMIP6) experimental design and organization, *Geosci. Model Dev.*, 9, 1937–
1958, <https://doi.org/10.5194/gmd-9-1937-2016>, 2016.
- Forster, P., Huppmann, D., Kriegler, E., Mundaca, L., Smith, C., Rogelj, J. and Seferian, R.: Mitigation pathways compatible
with 1.5°C in the context of sustainable development, Supplementary material, in *Global warming of 1.5°C. An IPCC
665 Special Report on the impacts of global warming of 1.5°C above pre-industrial levels and related global greenhouse gas
emission pathways, in the context of strengthening the global response to the threat of climate change, sustainable
development, and efforts to eradicate poverty*, edited by Masson-Delmotte, V., Zhai, P., Portner, H. O., Roberts, D., Skea,
J., Shukla, P. R., Pirani, A., Moufouma-Okia, W., Pean, C., Pidcock, R., Connors, S., Matthews, J. B. R., Chen, Y., Zhou,
X., Gomis, M. I., Lonnoy, E., Maycock, T., Tignor, M. and Waterfield, T., Available from <https://www.ipcc.ch/sr15>, 2018.
- 670 Flynn, C. M. and Mauritsen, T.: On the climate sensitivity and historical warming evolution in recent coupled model
ensembles, *Atmos. Chem. Phys.*, 20, 7829–7842, <https://doi.org/10.5194/acp-20-7829-2020>, 2020.

- Geoffroy, O., Saint-Martin, D., Olivié, D. J. L., Voldoire, A., Bellon, G. and Tytéca, S.: Transient climate response in a two-layer energy-balance model. Part I: Analytical solution and parameter calibration using CMIP5 AOGCM experiments, *J. Climate*, 26, 1841–1857, <https://doi.org/10.1175/jcli-d-12-00195.1>, 2013.
- 675 Goodwin, P.: Probabilistic projections of future warming and climate sensitivity trajectories, *Oxford Open Climate Change*, 1, <https://doi.org/10.1093/oxfclm/kgab007>, 2021.
- Goodwin, P. and Cael, B. B.: Bayesian estimation of Earth’s climate sensitivity and transient climate response from observational warming and heat content datasets, *Earth Syst. Dynam.*, 12, 709–723, <https://doi.org/10.5194/esd-12-709-2021>, 2021.
- 680 Gregory, J. M., Ingram, W. J., Palmer, M. A., Jones, G. S., Stott, P. A., Thorpe, R. B., Lowe, J. A., Johns, T. C. and Williams, K. D.: A new method for diagnosing radiative forcing and climate sensitivity, *Geophys. Res. Lett.*, 31, L03205, <https://doi.org/10.1029/2003GL018747>, 2004.
- Gupta, M. and Marshall, J.: The climate response to multiple volcanic eruptions mediated by ocean heat uptake: Damping processes and accumulation potential, *J. Climate*, 31, 8669–8687, <https://doi.org/10.1175/JCLI-D-17-0703.1>, 2018.
- 685 Hasselmann, K., Sausen, R., Maier-Reimer, E. and Voss, R.: On the cold start problem in transient simulations with coupled atmosphere-ocean models, *Clim. Dynam.*, 9, 53–61, <https://doi.org/10.1007/BF00210008>, 1993.
- Held, I. M., Winton, M., Takahashi, K., Delworth, T., Zeng, F. and Vallis, G. K.: Probing the fast and slow components of global warming by returning abruptly to preindustrial forcing, *J. Climate*, 23, 2418–2427, <https://doi.org/10.1175/2009jcli3466.1>, 2010.
- 690 Hooss, G., Voss, R., Hasselmann, K., Maier-Reimer, E. and Joos, F.: A nonlinear impulse response model of the coupled carbon cycle-climate system (NICCS), *Clim. Dynam.*, 18, 189–202, <https://doi.org/10.1007/s003820100170>, 2001.
- IPCC: Summary for Policymakers, in: *Climate Change 2021: The Physical Science Basis. Contribution of Working Group I to the Sixth Assessment Report of the Intergovernmental Panel on Climate Change*, edited by: Masson-Delmotte, V., Zhai, P., Pirani, A., Connors, S. L., Pean, C., Berger, S., Caud, N., Chen, Y., Goldfarb, L., Gomis, M. I., Huang, M., Leitzell, K.,
- 695 Lonnoy, E., Matthews, J. B. R., Maycock, T. K., Waterfield, T., Yelekci, O., Yu, R., and Zhou, B., Cambridge University Press, 2021.
- Jones, C. D., Frölicher, T. L., Koven, C., MacDougall, A. H., Matthews, H. D., Zickfeld, K., Rogelj, J., Tokarska, K. B., Gillett, N. P., Ilyina, T., Meinshausen, M., Mengis, N., Séférian, R., Eby, M. and Burger, F. A.: The Zero Emissions Commitment Model Intercomparison Project (ZECMIP) contribution to C4MIP: quantifying committed climate changes
- 700 following zero carbon emissions, *Geosci. Model Dev.*, 12, 4375–4385, <https://doi.org/10.5194/gmd-12-4375-2019>, 2019.
- Keller, D. P., Lenton, A., Scott, V., Vaughan, N. E., Bauer, N., Ji, D., Jones, C. D., Kravitz, B., Muri, H. and Zickfeld, K.: The Carbon Dioxide Removal Model Intercomparison Project (CDRMIP): rationale and experimental protocol for CMIP6, *Geosci. Model Dev.*, 11, 1133–1160, <https://doi.org/10.5194/gmd-11-1133-2018>, 2018.

- Joos, F., Bruno, M., Fink, R., Siegenthaler, U., Stocker, T. F., Le Quéré, C. and Sarmiento, J. L.: An efficient and accurate
705 representation of complex oceanic and biospheric models of anthropogenic carbon uptake, *Tellus B*, 48, 394–417,
<https://doi.org/10.3402/tellusb.v48i3.15921>, 1996.
- Knutti, R. and Rugenstein, M. A. A.: Feedbacks, climate sensitivity and the limits of linear models, *Philos. T. Roy. Soc. A*,
373, 20150146, <https://doi.org/10.1098/rsta.2015.0146>, 2015.
- Meehl, G. A., Moss, R., Taylor, K. E., Eyring, V., Stouffer, R. J., Bony, S. and Stevens, B.: Climate model intercomparisons:
710 Preparing for the next phase, *Eos, Trans. AGU*, 95, 77–78, <https://doi.org/10.1002/2014EO090001>, 2014.
- Meehl, G. A., Senior, C. A., Eyring, V., Flato, G., Lamarque, J.-F., Stouffer, R. J., Taylor, K. E. and Schlund, M.: Context
for interpreting equilibrium climate sensitivity and transient climate response from the CMIP6 Earth system models, *Sci
Adv*, 6, eaba1981, <https://doi.org/10.1126/sciadv.aba1981>, 2020.
- Meinshausen, M., Meinshausen, N., Hare, W., Raper, S. C. B., Frieler, K., Knutti, R., Frame, D. J. and Allen, M. R.:
715 Greenhouse-gas emission targets for limiting global warming to 2°C, *Nature*, 458, 1158–1162,
<https://doi.org/10.1038/nature08017>, 2009.
- Meinshausen, M., Raper, S. C. B. and Wigley, T. M. L.: Emulating coupled atmosphere-ocean and carbon cycle models with
a simpler model, *MAGICC6 – Part 1: Model description and calibration*, *Atmos. Chem. Phys.*, 11, 1417–1456,
<https://doi.org/10.5194/acp-11-1417-2011>, 2011.
- 720 Morice, C. P., Kennedy, J. J., Rayner, N. A. and Jones, P. D.: Quantifying uncertainties in global and regional temperature
change using an ensemble of observational estimates: The HadCRUT4 data set, *J. Geophys. Res.-Atmos.*, 117, D08101,
<https://doi.org/10.1029/2011JD017187>, 2012.
- Myhre, G., Shindell, D., Bréon, F.-M., Collins, W., Fuglestedt, J., Huang, J., Koch, D., Lamarque, J.-F., Lee, D., Mendoza,
B., Nakajima, T., Robock, A., Stephens, G., Takemura, T. and Zhang, H.: Anthropogenic and natural radiative forcing, in
725 *Climate Change 2013: The Physical Science Basis, Contribution of Working Group I to the Fifth Assessment Report of
the Intergovernmental Panel on Climate Change*, edited by Stocker, T. F., Qin, D., Plattner, G.-K., Tignor, M., Allen, S.
K., Boschung, J., Nauels, A., Xia, Y., Bex, V. and Midgley, P. M., pp. 659–740, Cambridge University Press, Cambridge,
United Kingdom and New York, NY, USA, , 2013.
- Nicholls, Z. R. J., Meinshausen, M., Lewis, J., Gieseke, R., Dommenges, D., Dorheim, K., Fan, C.-S., Fuglestedt, J. S.,
730 Gasser, T., Goluke, U., Goodwin, P., Hartin, C., Hope, A. P., Kriegler, E., Leach, N. J., Marchegiani, D., McBride, L. A.,
Quilcaille, Y., Rogelj, J., Salawitch, R. J., Samset, B. H., Sandstad, M., Shiklomanov, A. N., Skeie, R. B., Smith, C. J.,
Smith, S., Tanaka, K., Tsutsui, J. and Xie, Z.: Reduced Complexity Model Intercomparison Project Phase 1: introduction
and evaluation of global-mean temperature response, *Geosci. Model Dev.*, 13, 5175–5190, [https://doi.org/10.5194/gmd-
13-5175-2020](https://doi.org/10.5194/gmd-13-5175-2020), 2020.
- 735 Nicholls, Z. R. J., Meinshausen, M. A., Lewis, J., Corradi, M. R., Dorheim, K., Gasser, T., Gieseke, R., Hope, A. P., Leach,
N., McBride, L. A., Quilcaille, Y., Rogelj, J., Salawitch, R. J., Samset, B. H., Sandstad, M., Shiklomanov, A. N., Skeie, R.
B., Smith, C. J., Smith, S., Su, X., Tsutsui, J., Vega-Westhoff, B. A. and Woodward, D.: Reduced Complexity Model

- Intercomparison Project Phase 2: Synthesizing Earth system knowledge for probabilistic climate projections, *Earth's Future*, 9, e2020EF001900, <https://doi.org/10.1029/2020EF001900>, 2021.
- 740 Parsons, L. A., Brennan, M. K., Wills, R. C. J. and Proistosescu, C.: Magnitudes and spatial patterns of interdecadal temperature variability in CMIP6, *Geophys. Res. Lett.*, 47, e2019GL086588, <https://doi.org/10.1029/2019GL086588>, 2020.
- Pincus, R., Forster, P. M. and Stevens, B.: The Radiative Forcing Model Intercomparison Project (RFMIP): experimental protocol for CMIP6, *Geoscientific Model Development*, 9, 3447–3460, <https://doi.org/10.5194/gmd-2016-88>, 2016.
- 745 Riahi, K., van Vuuren, D. P., Kriegler, E., Edmonds, J., O'Neill, B. C., Fujimori, S., Bauer, N., Calvin, K., Dellink, R., Fricko, O., Lutz, W., Popp, A., Cuaresma, J. C., Kc, S., Leimbach, M., Jiang, L., Kram, T., Rao, S., Emmerling, J., Ebi, K., Hasegawa, T., Havlik, P., Humpenöder, F., Da Silva, L. A., Smith, S., Stehfest, E., Bosetti, V., Eom, J., Gernaat, D., Masui, T., Rogelj, J., Strefler, J., Drouet, L., Krey, V., Luderer, G., Harmsen, M., Takahashi, K., Baumstark, L., Doelman, J. C., Kainuma, M., Klimont, Z., Marangoni, G., Lotze-Campen, H., Obersteiner, M., Tabeau, A. and Tavoni, M.: The
- 750 Shared Socioeconomic Pathways and their energy, land use, and greenhouse gas emissions implications: An overview, *Global Environmental Change*, 42, 153–168, <https://doi.org/10.1016/j.gloenvcha.2016.05.009>, 2017.
- Rogelj, J., Shindell, D., Jiang, K., Fifita, S., Forster, P., Ginzburg, V., Handa, C., Kheshgi, H., Kobayashi, S., Kriegler, E., Mundaca, L., Seferian, R. and Vilarino, M. V.: Mitigation pathways compatible with 1.5°C in the context of sustainable development, in *Global warming of 1.5°C. An IPCC Special Report on the impacts of global warming of 1.5°C above pre-*
- 755 *industrial levels and related global greenhouse gas emission pathways, in the context of strengthening the global response to the threat of climate change, sustainable development, and efforts to eradicate poverty*, edited by Masson-Delmotte, V., Zhai, P., Portner, H. O., Roberts, D., Skea, J., Shukla, P. R., Pirani, A., Moufouma-Okia, W., Pean, C., Pidcock, R., Connors, S., Matthews, J. B. R., Chen, Y., Zhou, X., Gomis, M. I., Lonnoy, E., Maycock, T., Tignor, M. and Waterfield, T., Available from <https://www.ipcc.ch/sr15>, 2018.
- 760 Rohrschneider, T., Stevens, B. and Mauritsen, T.: On simple representations of the climate response to external radiative forcing, *Clim. Dynam.*, 53, 3131–3145, <https://doi.org/10.1007/s00382-019-04686-4>, 2019.
- Schurer, A. P., Cowtan, K., Hawkins, E., Mann, M. E., Scott, V. and Tett, S. F. B.: Interpretations of the Paris climate target, *Nature Geoscience*, 11, 220–221, <https://doi.org/10.1038/s41561-018-0086-8>, 2018.
- Schwarber, A. K., Smith, S. J., Hartin, C. A., Vega-Westhoff, B. A. and Sriver, R.: Evaluating climate emulation: fundamental impulse testing of simple climate models, *Earth Syst. Dynam.*, 10, 729–739, <https://doi.org/10.5194/esd-10-729-2019>, 2019.
- 765 Sherwood, S. C., Bony, S., Boucher, O., Bretherton, C., Forster, P. M., Gregory, J. M. and Stevens, B.: Adjustments in the forcing-feedback framework for understanding climate change, *B. Am. Meteorol. Soc.*, 96, 217–228, <https://doi.org/10.1175/BAMS-D-13-00167.1>, 2015.
- 770 Smith, C. J. and Forster, P. M.: Suppressed late-20th Century warming in CMIP6 models explained by forcing and feedbacks, *Geophys. Res. Lett.*, e2021GL094948, <https://doi.org/10.1029/2021GL094948>, 2021.

- Smith, C. J., Forster, P. M., Allen, M., Leach, N., Millar, R. J., Passerello, G. A. and Regayre, L. A.: FAIR v1.3: a simple emissions-based impulse response and carbon cycle model, *Geosci. Model Dev.*, 11, 2273–2297, <https://doi.org/10.5194/gmd-11-2273-2018>, 2018.
- 775 Smith, C. J., Harris, G. R., Palmer, M. D., Bellouin, N., Collins, W., Myhre, G., Schulz, M., Golaz, J.-C., Ringer, M., Storelvmo, T., and Forster, P. M.: Energy budget constraints on the time history of aerosol forcing and climate sensitivity, *Journal of Geophysical Research: Atmospheres*, 126, e2020JD033622, <https://doi.org/10.1029/2020JD033622>, 2021.
- Smith, C. J., Kramer, R. J., Myhre, G., Alterskjær, K., Collins, W., Sima, A., Boucher, O., Dufresne, J.-L., Nabat, P., Michou, M., Yukimoto, S., Cole, J., Paynter, D., Shiogama, H., O'Connor, F. M., Robertson, E., Wiltshire, A., Andrews, T.,
780 Hannay, C., Miller, R., Nazarenko, L., Kirkevåg, A., Olivíé, D., Fiedler, S., Lewinschal, A., Mackallah, C., Dix, M., Pincus, R. and Forster, P. M.: Effective radiative forcing and adjustments in CMIP6 models, *Atmos. Chem. Phys.*, 20, 9591–9618, <https://doi.org/10.5194/acp-20-9591-2020>, 2020.
- Tanaka, K., Kriegler, E., Bruckner, T., Hooss, G., Knorr, W., Raddatz, T. and Tol, R.: Aggregated Carbon Cycle, Atmospheric Chemistry, and Climate Model (ACC2): Description of the forward and inverse modes, Max-Planck-Institut für Meteorologie. https://pure.mpg.de/rest/items/item_994422/component/file_994421/content, 2007.
- 785 Taylor, K. E., Stouffer, R. J. and Meehl, G. A.: An overview of CMIP5 and the experiment design, *B. Am. Meteorol. Soc.*, 93, 485–498, <https://doi.org/10.1175/bams-d-11-00094.1>, 2012.
- Tokarska, K. B., Stolpe, M. B., Sippel, S., Fischer, E. M., Smith, C. J., Lehner, F. and Knutti, R.: Past warming trend constrains future warming in CMIP6 models, *Sci Adv*, 6, eaaz9549, <https://doi.org/10.1126/sciadv.aaz9549>, 2020.
- 790 Tsutsui, J.: Quantification of temperature response to CO₂ forcing in atmosphere–ocean general circulation models, *Climatic Change*, 140, 287–305, <https://doi.org/10.1007/s10584-016-1832-9>, 2017.
- Tsutsui, J.: Diagnosing transient response to CO₂ forcing in coupled atmosphere–ocean model experiments using a climate model emulator, *Geophys. Res. Lett.*, 47, e2019GL085844, <https://doi.org/10.1029/2019GL085844>, 2020.
- van Vuuren, D. P., Edmonds, J., Kainuma, M., Riahi, K., Thomson, A., Hibbard, K., Hurtt, G. C., Kram, T., Krey, V.,
795 Lamarque, J.-F., Masui, T., Meinshausen, M., Nakicenovic, N., Smith, S. J. and Rose, S. K.: The representative concentration pathways: an overview, *Climatic Change*, 109, 5, <https://doi.org/10.1007/s10584-011-0148-z>, 2011.
- von Schuckmann, K., Cheng, L., Palmer, M. D., Tassone, C., Aich, V., Adusumilli, S., Beltrami, H., Boyer, T., Cuesta-Valero, F. J., Desbruyères, D., Domingues, C., García-García, A., Gentine, P., Gilson, J., Gorfer, M., Haimberger, L., Ishii, M., Johnson, G. C., Killick, R., King, B. A., Kirchengast, G., Kolodziejczyk, N., Lyman, J., Marzeion, B., Mayer, M.,
800 Monier, M., Monselesan, Didier Paolo, Purkey, S., Roemmich, D., Schweiger, A., Seneviratne, S. I., Shepherd, A., Slater, D. A., Steiner, A. K., Straneo, F., Timmermanns, M.-L. and Wjffels, S. E.: Heat stored in the Earth system: Where does the energy go?, https://doi.org/10.26050/WDCC/GCOS_EHI_EXP, 2020.
- Zelinka, M. D., Myers, T. A., McCoy, D. T., Po-Chedley, S., Caldwell, P. M., Ceppi, P., Klein, S. A. and Taylor, K. E.: Causes of higher climate sensitivity in CMIP6 models, *Geophys. Res. Lett.*, 47, e2019GL085782, <https://doi.org/10.1029/2019GL085782>, 2020.
- 805

