

Development of a coupled simulation framework representing the lake and river continuum of mass and energy ([T-CHOIRCHOIR](#) v1.0)

Daisuke Tokuda^{1,2}, Hyungjun Kim¹, Dai Yamazaki¹, and Taikan Oki^{2,3}

5 ¹Institute of Industrial Science, University of Tokyo, Tokyo, Japan

²Graduate School of Engineering, The University of Tokyo, Tokyo, Japan

³United Nations University, Tokyo, Japan

Correspondence to: Daisuke Tokuda (daisuke@rainbow.iis.u-tokyo.ac.jp)

Abstract. Terrestrial surface water temperature is a key variable affecting water quality and energy balance, and thermodynamics and fluid dynamics are tightly coupled in fluvial and lacustrine systems. Streamflow generally plays a role in the horizontal redistribution of heat, and thermal exchange in lakes predominantly occurs in a vertical direction. However, numerical models simulate the water temperature for uncoupled rivers and lakes, and the linkages between them on a global scale remain unclear. In this study, we proposed an integrated modeling framework: Tightly Coupled framework for Hydrology of Open water Interactions in River–lake network ([T-CHOIRCHOIR](#), read as “tee quire”). The objective is to simulate terrestrial fluvial and thermodynamics as a continuum of mass and energy in solid and liquid phases redistributed among rivers and lakes. [T-CHOIRCHOIR](#) uses high-resolution geographical information harmonized over fluvial and lacustrine networks. The results have been validated through comparison with in-situ observations and satellite-based data products, and the model sensitivity has been tested with multiple meteorological forcing datasets. It was observed that the “coupled” mode outperformed the “river-only” mode in terms of discharge and temperature in downstream of lakes; it was also observed that seasonal and interannual variation in lake water levels and temperature are also more reliable in the “coupled” mode. The inclusion of lakes in the coupled model resulted in an increase in river temperatures during winter in mid-latitudes and a decrease in temperatures during summer in high latitudes, which reflects the role of lakes as a form of large heat storage. The river–lake coupling framework presented herein provides a basis for further elucidating the role of terrestrial surface water in Earth’s energy cycle.

25

1 Introduction

The temperature of terrestrial surface water plays a vital role in biogeochemical cycles, as it affects the solubility and reactivity of materials and organismal activity (Abril et al., 2014; Ozaki et al., 2003; Webb, 1996). Water temperature can also affect water quality, resulting in adverse impacts on water availability to society. For example, the cooling efficiency of

30 surface water used in power plants and factories is determined by water temperature, and excessively warm return flow
sometimes causes thermal pollution downstream of discharge points (Liu et al., 2020; Raptis et al., 2016; van Vliet et al.,
2016). A recent study noted that changes in surface water volume and temperature could impact the global heat budget
(Vanderkelen et al., 2020). Understanding the thermodynamics of the terrestrial hydrological cycle has become increasingly
important for managing freshwater environments and ecosystems, as well as developing global water policies to protect and
35 preserve the Earth's freshwater system.

Some researchers have proposed statistical approaches to describe water temperatures, such as correlating water and air
temperature and the inertia of water temperature changes (e.g., Keller, 1967; Smith, 1968). Physical-based numerical models
have also been developed to assess the future impacts of climate change and human activities on water temperature. As
40 rivers and lakes are the major components of terrestrial hydrology, they are governed by extremely different dynamics, and
hence, different approaches have been adopted for each domain. Previous studies have focused on the role of rivers as
horizontal transport pathways for residues from the vertical water balance between the atmosphere and the land surface
(Manabe, 1969; Oki et al., 1995). A horizontal one-dimensional model for river water temperature has been developed (e.g.,
Sinokrot and Stefan, 1993) that assumes that sufficient mixing occurs ensuring that water temperature is uniform in a cross
45 section (Caissie, 2006). In recent years, such a horizontally-distributed model has been applied on global scales (e.g., Beek
et al., 2012; Tokuda et al., 2019; Wanders et al., 2019) based on the development of global-scale river routing models (e.g.,
Yamazaki et al., 2011).

Existing studies on the thermal dynamics of lakes have mainly focused on vertical profiles, such as temperature stratification
50 and attenuation of solar radiation (Dake and Harleman, 1969). A breakthrough in model development came through a
proposal by Henderson-Sellers (1985) for parameterization of vertical mixing to bypass explicit calculations of turbulent
exchanges by shear stress. This led to the development of several numerical models (e.g., Hostetler and Bartlein, 1990)
which solved a diffusion equation with the boundary conditions set at the water surface and lake bottom. These models also
assumed that diffusion is primarily driven by density gradients and turbulence, allowing global-scale models to be developed
55 (Stepanenko et al., 2013). In addition to describing the internal dynamics of lakes, lake models have been applied to
represent the lower boundary condition of atmospheric models (Dickinson et al., 1993). The impact of lakes on climate at
regional scales has been widely studied since the 1990s (e.g., Hostetler et al., 1993; Small et al., 1999). Related models have
also estimated that global lake evaporation will be accelerated by the changes in surface energy allocation as [the](#) climate gets
warmer (Wang et al., 2018).

60 Many modeling efforts do not treat rivers and lakes in an integrated manner. Lake models typically ignore riverine inflow
and outflow and describe thermodynamics under the assumption that the elevation of the water surface is constant. For
example, a previous study ~~pointed out reported a decrease and an increase in that~~ the heat capacities of rivers and lakes [have](#)

decreased—due to [a decrease in lower](#)—water volumes and [increased—because of higher—water](#) temperatures [warm-up,](#)
65 [respectively](#); however, these models did not properly consider the mass balance of the water budget in reality (Vanderkelen
et al., 2020). Another study developed a coupled hydrodynamic and thermodynamic model for rivers and lakes (Bonnet et al.,
2000; Yigzaw et al., 2019) and demonstrated that temperature stratification in lacustrine reservoirs affects river temperatures
downstream (Li et al., 2015). In particular, Yigzaw et al. (2019) used a continental-scale dataset of river networks that
70 were constructed by matching lakes with the grids on a river network dataset that previously ignored the presence of lakes
and by using the relevant data on the longitude, latitude, and upstream catchment area of each lake. However, although the
upstream areas are important for water balance in lakes and reservoirs, it has been reported that this matching method does
not work for some reservoirs (Shin et al., 2019). [In addition, the latest research developed a river–lake dynamics model for](#)
[multiple regions by careful integration of river network and lake mask datasets, but a rectangular grid system remains a](#)
75 [technical obstacle](#) (Guinaldo et al., 2020).

The research reported herein initially developed a method that enabled the location and shape of lakes to be represented
explicitly on a river channel network on a global scale. This technique is an extension of the upscaling method for high-
resolution topographic data, representing the shape of a hydrological unit catchment area instead of assuming a rectangular
80 grid system (Yamazaki et al., 2009). It is possible to upscale to any required spatial resolution using this procedure. River
and lake sub-models were then coupled to represent the hydrodynamics and thermodynamics of rivers and lakes on the
river–lake network dataset created in this study. The modeling framework, called the Tightly Coupled framework for
Hydrology of Open water Interactions in River–lake networks ([T-CHOIR](#)), conserves the mass and energy in rivers
and lakes for advection as well as the vertical heat budget. The remainder of this paper is structured as follows: Sect. 2
85 describes the algorithm used to develop the river–lake network dataset, Sect. 3 presents the development details of the
coupling framework and the one-dimensional lake model, Sect. 4 shows the validation results of the river–lake network
dataset, Sect. 5 provides the experimental configuration used to validate the framework and the corresponding results, Sect. 6
discusses the effects of thermodynamics of lakes on rivers, Sect. 7 shows the sensitivity test of the validation results of the
meteorological forcing datasets, Sect. 8 summarizes the further development of the framework, and Section 9 presents the
90 conclusion.

2 Development of the river–lake network dataset

2.1 Harmonization of geographical information

The river–lake network was developed by upscaling high-resolution and global-scale datasets of topographical information,
such as MERIT Hydro (Yamazaki et al., 2019), and lake distributions from the HydroLAKES database (Messenger et al.,
95 2016). MERIT Hydro derives streamflow direction on a global scale using water body datasets and one of the latest elevation

datasets, the MERIT DEM (Yamazaki et al., 2017). It also corrects elevation and streamlines for use in hydrological models and has a spatial resolution of 3" (~90 m at the equator). Moreover, HydroLAKES is used to identify each lake, which contains information regarding the spatial shape of lakes and reservoirs (and other attributes such as name and mean depth of each water body) of more than 1.4 million lakes and reservoirs (the term "lake" used in this manuscript includes both natural lakes and human-made reservoirs according to the dataset). The shapefile in the HydroLAKES dataset was rasterized to the same spatial resolution as that of MERIT Hydro.

A preliminary analysis showed that the shapes of the lakes registered in HydroLAKES were often larger than the water masks in MERIT Hydro, suggesting that MERIT Hydro underestimates the area of seasonal lakes (e.g., Lake Chad) because the dataset incorporates only permanent water. Our goal for the lake model employed in this study was to represent seasonal or interannual variability of the area of various water surfaces; therefore, lake distribution data was overridden by HydroLAKES instead of using the water distribution data derived from MERIT Hydro.

The merging methods are summarized in Table 1. When merging the datasetsFirst, we classified the lakes into two groups according to size: 1) a river–lake network that represents the connectivity of larger lakes with river channels both upstream and downstream (i.e., lakes of which area > 1 upscaled grid area), and 2) smaller lakes treated as sub-grid lakes in a numerical model (i.e., lakes of which area < 1 upscaled grid area). For example, in the case of upscaling from the original resolution (i.e., 3" to 15'), the minimum lake size in the river–lake network was 90,000 pixels. Consequently, 369 lakes worldwide were represented at the 15' resolution. We then filled in isolated parts of each lake formed by rasterization of the shapefile (e.g., the rasterized file does not resolve a narrow conduit in Embalse Tucupido reservoir registered as 880 in HydroLAKES). We then determined the outlet of each lake using flow direction information obtained from MERIT Hydro. When inconsistencies between MERIT Hydro and HydroLAKES created multiple possible outlets for a lake, we selected the outlet with the largest upstream area, following the algorithm of HydroLAKES (Messenger et al., 2016). In some cases, no outlet for a lake could be found, such as for Lake Balkhash and Large Aral Sea (registered as 12 and 13 in HydroLAKES, respectively). We found that this accurately reflected real-world geography, as both water bodies exist within closed basins. For other endorheic closed-lakes such as the Caspian Sea and Lake Chad, we manually removed incorrectly detected lake outlets which were incorrectly detected. We also adjusted the flow direction for all the grids in each lake to match the outlet location to allow all the lake grids flow into one river basin if the lake is open. This property changes the size of the river basin if a lake lies between multiple basins in the map, which was upscaled, ignoring the lakes (hereafter called "river-only" map). Among the 369 lakes resolved in 15' resolution, we found 20 lakes lying between multiple basins and of these, six are endorheic (e.g., the Caspian Sea and Lake Chad). Most (13) of the other lakes are allocated the basin with the most grids in each lake in the "river-only" map. Finally, there is only one exception, Laguna Salada (HydroLAKES ID is 834). It is connected to the Colorado River basin, but the river occupies only 0.6% of the lake on the "river-only" map, but fortunately the river–lake network dataset reproduces the connection. Therefore, we did not conduct any additional correction for the

130 [river-lake network dataset](#), and thereafter, we recalculated the area and number of pixels for the upstream drainage area over all grids to improve computational efficiency. [The only manual work required by these methods is the removal of lake outlets from endorheic lakes; the rest of the processes are automated.](#)

135 [Table 1 Summary of harmonization of geographical information, MERIT Hydro and HydroLAKES. All processes except number 4 are automated.](#)

No.	Process	Updated variable		Reference data
		MERIT Hydro	HydroLAKES	
1	Select lakes to resolve in the river-lake network	-	lake area	lake area
2	Fill in isolated parts of each lake	-	lake area	lake area
3	Select lake outlet	-	-	upstream area calculated in MERIT Hydro
4	Remove outlets from endorheic lakes	flow direction	-	actual geography
5	Change flow direction in each lake	flow direction	-	lake outlet location
6	Recalculate upstream area for all the grids	upstream area	-	flow direction

2.2 Upscaling method

The upscaling algorithm for the merged dataset is based on an existing method, FLOW (Yamazaki et al., 2009). FLOW divides the land area into hydrological unit-catchment distributions using a high-resolution topographic dataset (e.g., flow direction and elevation) and creates a river network with a coarser spatial resolution. The original version of FLOW did not consider lake distribution, so two additional treatments were applied to this method: we first defined lake locations within the upscaled network, with at least one upscaled grid provided for each of the larger lakes defined in the previous section to retain information such as area. When the cover fraction of the lake for each grid exceeded a threshold (80% in this study), the upscaled grid was identified as a lake; otherwise (i.e., < 80%) it was identified as a river grid. When a lake was not defined, such as one with a long and narrow shape, a single upscaled grid containing the most lake pixels was selected as the lake. The second modification to FLOW involved changing the adjustment process used for the outlets of the unit catchments. The original version of FLOW adjusted the location of the unit catchment outlet to equalize the area and length of the catchment. This process was modified so that the location of the lake outlet was the same as the outlet of the unit catchments. The river-lake inlet was moved closer to the boundary between the lake and the river. The former of the modifications is used to couple the lake model with the reservoir operational model, and the latter aims to lengthen the channel area for better calculation efficiency (i.e., increase the time step of the river model). [Figure 1](#) shows examples of the upscaled river-lake network dataset.

書式変更: 図表番号

書式変更: 中央揃え

書式付きの表

書式変更: 右揃え

書式変更: 中央揃え

書式変更: 右揃え

書式変更: 中央揃え

書式変更: 右揃え

書式変更: 中央揃え

書式変更: 右揃え

書式変更: 中央揃え

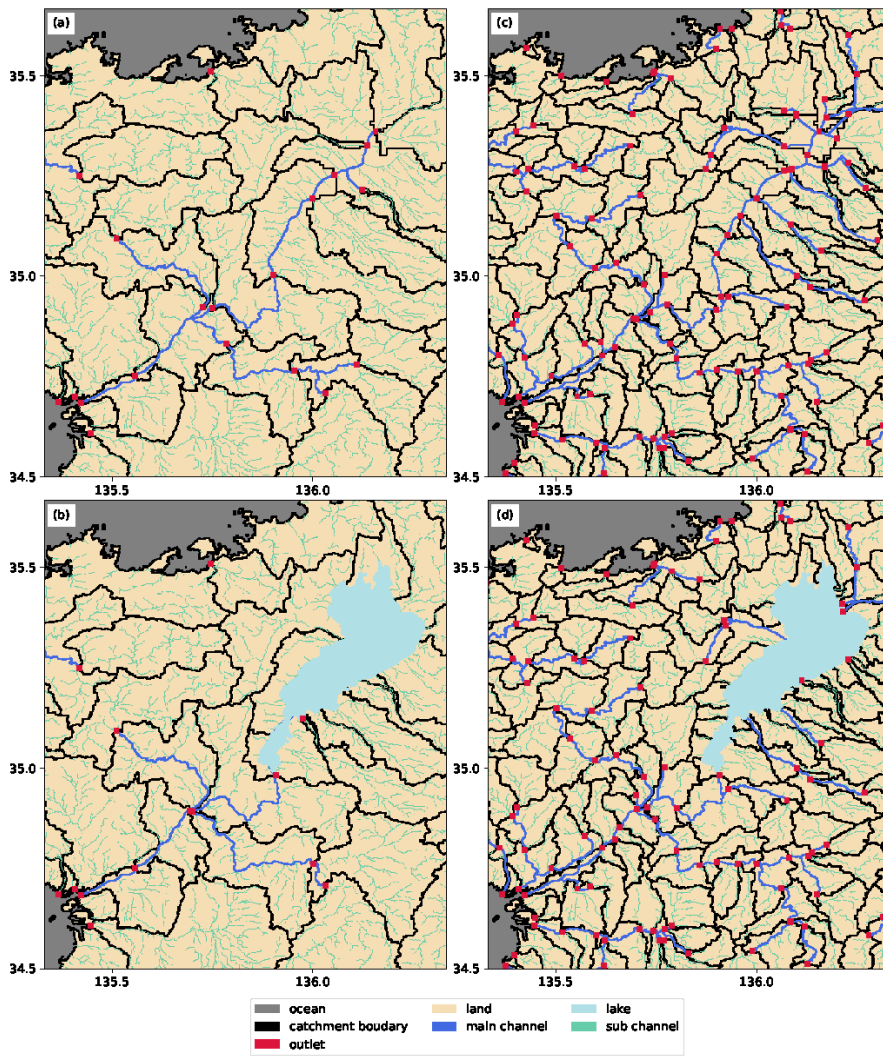
書式変更: 右揃え

書式変更: 中央揃え

書式変更: 右揃え

書式変更: 中央揃え

書式変更: 右揃え



155 **Figure 1: Example of upscaled river–lake network dataset. Figures shows results under four different configurations for Lake Biwa and Yodo River basin in Japan, (a) 15' without lakes, (b) 15' with lakes, (c) 6' without lakes, and (d) 6' with lakes.**

3 Model description

The river–lake network dataset provides fundamental information for use in a framework that couples river and lake models. The network explicitly relates the models to corresponding grids and represents the horizontal connectivity between them.

160 Because the physical schemes used in this study to represent hydro- and thermodynamics in rivers are identical to an existing model (Tokuda et al., 2019), this section focuses on the lake model and the coupling framework after briefly summarizing those riverine schemes.

3.1 River model

The river model used in this study is HEAT-LINK (Tokuda et al., 2019), which is fully coupled with a river routing model, 165 CaMa-Flood (Yamazaki et al., 2011, 2013). This model solves the conservation laws of mass, momentum, and energy for one-dimensional channels.

CaMa-Flood solves the conservation of momentum law by approximating it using a local inertial flow equation, and this enables efficient computation (Bates et al., 2010). The equation is discretized explicitly using a forward-time central-space 170 scheme to simulate the time evolution of the state variables. CaMa-Flood calculates discharges in river channels and floodplains as prognostic variables and diagnoses the cross-sectional shape (e.g., the water depth and area in river channels and adjacent floodplain). This river routing model accounts for fluvial dynamics in river channels and the floodplain with objective parameterization based on high-resolution topographic data. The introduction of floodplain inundation in addition to channel storage tends to reduce changes in water level and leads to improved reproducibility of seasonal discharge 175 variability in large continental rivers, such as the Amazon (Yamazaki et al., 2011).

HEAT-LINK solves water and ice mass and energy conservation laws by calculating heat fluxes, including short- and longwave radiation, sensible heat, latent heat, and frictional heat (Tokuda et al., 2019). The methods used to calculate fluxes are identical to those used in existing studies (Kondo, 1992; Hondzo and Stefan, 1994; Webb and Zhang, 1997). As HEAT- 180 LINK considers varying water surface area and decaying absorption of downward shortwave to water depth, it can represent the role of flood inundation in water temperature changes. By considering the effects of riverine hydrodynamics on thermodynamics, the model properly produces the variability for water temperature not only in ice-free and ice-covered channels, but also in regions with bi-modal seasonality of water temperature (Tokuda et al., 2019).

3.2 Lake model

185 A simple one-dimensional lake model was implemented to represent the water budget and thermodynamics in lakes. To reproduce the exchanges between rivers and lakes, the lake model conserves mass and energy while considering horizontal advection in addition to the vertical exchange. All input data, except the meteorological forcing data, were provided by HydroLAKES and the Global Reservoir and Dam Database (GRanD) (Lehner et al., 2011), as described in the following sections.

190 3.2.1 Hydrodynamics

The lake model used in this study represents seasonal variation in water depth and discharge above a lake bottom elevation derived from HydroLAKES, because the water surface elevation is a downstream boundary condition, and the outflow is an upstream boundary condition for the river model. The water balance in each lake is expressed by the following equation:

$$\frac{dS}{dt} = P - E + Q_{in} - Q_{out} = A(p - e) + Q_{in} - Q_{out} \quad (1)$$

195 where S (m^3) is the water storage in each lake; t (s) is the time, P and E ($m^3 s^{-1}$) are precipitation and evaporation, respectively; Q_{in} and Q_{out} ($m^3 s^{-1}$) are the inflow from and outflow out of the lake, respectively; A (m^2) is the lake surface area, and p and e ($m s^{-1}$) are the precipitation and evaporative loss per area, respectively. Q_{in} and Q_{out} also consider backflow at both the lake inlet and outlet. While the precipitation per area is given as input data and the river discharge at the inlet from rivers is calculated by the river model, the outflow and evaporation are calculated from a weir formula and the thermodynamics model in the following section.

This study set geomorphological boundary conditions by estimating the depth–area relationship according to the Global Reservoir Geometry Database (ReGeom) (Yigzaw et al., 2018). In that study, the water surface of each reservoir was extracted from satellite images, and the depth–area relationship was estimated to match the total storage of the reservoir registered in GRanD. However, the dataset assumed several shapes for horizontal and vertical cross-sections, and the estimation of the surface area and volume of water may have led to large inconsistencies with the reported values for some reservoirs. Therefore, in this study, the vertical shape assumed in the ReGeom was generalized to derive a new depth–area relationship that is consistent with the surface area and volume of water derived from other datasets. In this respect, the area attenuation rate $f(r)$ was calculated by Eq. (2) when $r = z/D_0$, where z is the vertical distance from the origin at the elevation wherein the water surface area is at its maximum, and D is the total depth from the origin to the bottom of the reservoir.

$$f(r) = \begin{cases} r(1-r^2)(1-r)^a & (V_0 < \frac{2}{3}A_0D_0) \\ 1-r^a & (\frac{2}{3}A_0D_0 \leq V_0 < A_0D_0) \\ 1 & (A_0D_0 \leq V_0) \end{cases} \quad (2)$$

where A_0 (m^2) and V_0 (m^3) are the surface area and volume of water, respectively, when the water depth is D_0 . a is the shape scaling parameter. D_0 , A_0 , and V_0 are input from GRanD, and a is derived as follows:

215

When $V_0 < 2/3 (A_0 D_0)$,

$$p = \frac{V_0}{A_0 D_0} = \frac{a + 4}{(a + 2)(a + 3)} \therefore a = \frac{-5p + 1 + \sqrt{p^2 + 6p + 1}}{2p} \quad (3)$$

When $2/3 (A_0 D_0) \leq V_0 < A_0 D_0$,

$$p = \frac{V_0}{A_0 D_0} = 1 - \frac{1}{a + 1} \therefore a = \frac{1}{1 - p} - 1 \quad (4)$$

220 otherwise (i.e., $A_0 D_0 \leq V_0$), D_0 was updated as V_0/A_0 , and a constant depth–area relationship was assumed. The area was also assumed to be constant with respect to water depth for lakes not registered in GRanD.

As the spatial shape of the lakes was obtained from HydroLAKES, the depth–area relationship was also estimated only for those lakes that exhibited consistent volumes in HydroLAKES (attribute name is Vol_total) and GRanD (attribute name is
225 Cap_mcm). For example, this condition excluded Lake Baikal (HydroLAKES ID is 11) where the volumes registered in the two databases were 23,615,000 and 46,000 mcm, respectively.

This study assumes that the outlet of each lake is a rectangular cross section, and applies the weir formula to estimate the
230 outflow Q_{out} as follows:

$$Q_{out} = \frac{2}{3} \sqrt{2g} C_d B h^3/2 \quad (5)$$

where g ($m s^{-2}$) is the gravitational acceleration, C_d is a correction coefficient, B (m) is the width of the outlet, and h (m) is the height from the top of the weir to the water surface. A similar formula is used in the existing global model, WaterGAP
Global Hydrology Model (WGHM) (Döll et al., 2003; Meigh et al., 1999), but it considers the relationship using a parameter known as “active storage.” Equation (2) assumes a situation in which subcritical flow requires a specific water depth at the
235 overflow section; it then transitions to supercritical flow and forms a free-falling water cascade. In this study, based on the above considerations, the amount of outflow from each lake was calculated in the following three ways:

$$Q_{out} = \begin{cases} k B h_0^{3/2} & (h_1 \leq 2/3 h_0) \\ k B (h_0 - h_1)^{3/2} & (2/3 h_0 < h_1 \leq h_0) \\ -k B (h_1 - h_0)^{3/2} & (h_0 < h_1) \end{cases} \quad (6)$$

where k is a correction coefficient (to be set 5.0 because $C_d \approx 1.7$), and h_0 and h_1 (m) are the height of the lake surface and downstream surface from the weir height, respectively. When a lake flows into a river channel, this study assumes that the
240 river water depth in each unit catchment is uniform and gives h_1 as the downstream water depth; otherwise, h_1 is calculated from the surface elevation of the downstream lake or the ocean. Additionally, environmental flow is represented using a

simplified method as follows: The minima among 1) 20% of inflow to lake and 2) discharge to maintain the water depth of the river grid located immediately downstream greater than 0.5 m is considered to be the environmental flow. [The model updates the sum of the inflow from all of the inlets for each lake at every \(CFL\) timestep, then calculates the former value with the total inflow at the previous step. Then, ~~and~~ the value](#) is taken as the outflow when discharge based on the extended weir formula is smaller.

Q_{out} is supposed to be zero in an inland lake with no outlet. However, preliminary results showed that several inland lakes (e.g., Small Aral Sea, HydroLAKES ID is 130) were identified where the water level did not reach equilibrium and continued to increase even after a spinning-up calculation due to two factors: 1) overestimation of riverine inflow caused by the lack of knowledge about some processes including groundwater infiltration and water withdrawals; 2) absence of negative feedback due to the unavailability of the water depth–area relationship in drier regions, where $P - E$ is negative. In a basin with such a lake, the water level of the surrounding river increases along with the lake due to backflow, resulting in unrealistic ranges (this backflow continues until the inflow to the lake is balanced by the vertical water balance of the lake).

In this study, to stabilize the water level of such inland lakes within a realistic range, we calculated the outflow using the method described below and discharged it out of the system. This treatment is identical to that of the river model that does not represent lake dynamics.

3.2.2 Thermodynamics

The lake thermodynamics model implemented in this study is a vertical one-dimensional model in which the water temperature is calculated for each vertical layer, and therefore the horizontal distribution within the lake is not resolved. This model is also able to represent the phase change between water and ice. The vertical structure (i.e., the maximum number of vertical layers and thickness of each layer) is configurable, and the number of active layers and thickness of the bottom layer vary along with lake depth which is defined in order from the water surface to the lake bottom. In the case of a lake that has an area with varying water level as described in Section 3.2.1, the volume of each layer is calculated with consideration given to this relationship.

The heat budget of water is expressed using Eq. (7) (Hostetler and Bartlein, 1990):

$$\frac{\partial T}{\partial t} = \frac{1}{A} \frac{\partial}{\partial z} \left(AK \frac{\partial T}{\partial z} \right) + \frac{1}{c_w \rho_w A} \frac{\partial (A\phi)}{\partial z} \quad (7)$$

where T ($^{\circ}\text{C}$) is the water temperature, z (m) is the depth, A (m^2) is the horizontal area of a lake, K ($\text{m}^2 \text{s}^{-1}$) is eddy diffusivity, c_w ($\text{J kg}^{-1} \text{ }^{\circ}\text{C}^{-1}$) is the specific heat capacity of water, ρ_w (kg m^{-3}) is the density of water, and ϕ (W m^{-2}) is the shortwave radiation. To calculate K , this study uses the method of Henderson-Sellers (1985), which considers wind-driven diffusion and buoyant convection, and the exponential attenuation of shortwave radiation is used to calculate ϕ (Dake and Harleman, 1969).

275 The boundary conditions are the heat flux exchanges at the water surface and lake bottom. The heat fluxes at the water
 surface include up- and downward, short- and longwave, sensible heat, and latent heat. The methods for calculating these
 fluxes are identical to those of the river model. Assuming a well-mixed condition, the surface temperature of the water is
 assumed to be the same as the first (uppermost) layer and not defined as skin temperature. This calculation is only performed
 when the surface is not covered by ice completely. For the ice-water mixed case, the boundary condition for the surface flux
 280 is the weighted mean of the ice-free and ice-covered areas; the boundary condition beneath the ice is the conductive flux
 between the water and ice. The heat flux from the lake bottom is assumed to be zero, in accordance with existing models
 (Goudsmit et al., 2002; Hostetler and Bartlein, 1990; Joehnk and Umlauf, 2001).

Many lakes in mid- and high latitude regions experience ice formation during the winter, and several lake ice models have
 285 been developed in past decades (Gu and Stefan, 1990; Hostetler, 1991; Hostetler et al., 1993; Croley and Assel, 1994;
 Patterson et al., 1998). The representation of the temporal evolution of ice volume in this study is consistent with such
 models based on the heat budget of the ice. Additionally, this study uses a simplified version of the ice shape
 parameterization from the Great Lakes Advanced Hydrologic Prediction System (AHPS), a watershed model developed for
 the Great Lakes region by the Great Lakes Environmental Research Laboratory (GLERL) (Croley and Assel, 1994),

290 The boundary conditions for the heat budget of the ice cover are that the ice temperature adjacent to the atmosphere T_{si} (°C)
 and to water T_{bi} (°C) are equal to the atmospheric temperature T_a (°C) and melting point of water T_m (= 0 °C), respectively,

$$\begin{cases} T_{si} = \min(T_a, T_m) \\ T_{bi} = T_m \end{cases} \quad (8)$$

The heat balance at the ice surface is expressed as follows:

$$295 \quad \phi_{dli} - \phi_{uli}(T_{si}) - \phi_{Hi}(T_{si}) - \phi_{ci} = 0 \quad (9)$$

where ϕ_{dli} , ϕ_{uli} , ϕ_{Hi} , and ϕ_{ci} (W m^{-2}) are the downward longwave, upward longwave, sensible, and conductive heat fluxes
 at the ice surface, respectively.

The temporal change in the ice volume is expressed as follows:

$$300 \quad -\rho_i \gamma \frac{dS_i}{dt} = A_i(\phi_{ci} - \phi_{iw} + \phi_{dsi}) \quad (10)$$

where ρ_i (kg m^{-3}) is the ice density, γ is the fusion heat ($= 333,500 \text{ J kg}^{-1}$), S_i (m^3) is the ice volume, A_i (m^2) is the ice area,
 and ϕ_{iw} and ϕ_{dsi} (W m^{-2}) are the conductive heat flux from ice to water and the absorption of shortwave radiation by the ice
 body, respectively. ϕ_{iw} is calculated using the same method as that of an existing river temperature model (Beek et al., 2012).

Our model also assumes that ice loss due to sublimation is negligible according to the GLERL AHPS model (Croley and
 305 Assel, 1994).

While a two-dimensional horizontal model computes the ice fraction in each grid in one lake (Goyette et al., 2000), a one-dimensional model such as the ~~T-CHOIR~~TCHOIR needs to consider the ice fraction at a the sub-lake scale. The GLERL AHPS computes the time evolution of ice thickness and area using heat exchange with the atmosphere, water, snowfall, and evaporation. Our study simplified this representation by adding two assumptions: the ice shape change is only caused by exchanging heat with the atmosphere; the thickness of the ice is only determined by area. Under these assumptions, ice thickness is proportional to the square root of the ice area.

The heat budget of water and ice is solved as follows. First, the heat flux from the ice surface to the ice body is calculated by solving the heat balance at the ice surface. With this and the other two fluxes, an increase or decrease in the mass of the ice is calculated. If the ice melts completely in a timestep, the heat flux from the ice to the water is recalculated. If there is no ice in a lake, these processes are skipped. The model then computes the heat flux from the water surface to the water body by solving the heat balance at the water surface. For an upper boundary condition of the energy budget of the water body, the model considers shortwave radiation into the body and heat fluxes from the water surface or ice cover, which are different between ice-free and ice-covered areas. Therefore, the model calculates their weighted mean considering the areas.~~The heat fluxes from the ice and the water surface are combined as an upper boundary condition for the water body. The amount of incoming shortwave radiation into the water body is also weighted by the area of ice and water.~~ The heat budget of each layer of the water body is solved using an implicit scheme with a staggered grid. In the layers below the melting point, the amount of ice formation is calculated and added to the surface ice. Water from the melted ice is added to the water surface layer.

Because the river model does not solve vertical distributions of mass and heat fluxes within the channel, both rainfall and the water inflowing to a lake are added to the surface layer. The snowfall and ice inflows are also added to the ice cover. The model assumes that the temperature of precipitation is equal to the air temperature, with the minimum temperature of rainfall and maximum temperature of snowfall set to the melting point of water. The model decreases the water volume from the surface to lower layers onward for outflow and evaporative loss. The model reanalyzes the ice shape, the layer structures, and the water temperature profile by mixing the temperature of the existing layers from top to bottom, thereby conserving the mass and energy of the water.

3.3 Implementation of coupling interface

3.3.1 Grid system

~~T-CHOIR~~TCHOIR reads the dataset of a two-dimensional river-lake network derived by the upscaling method described in Sect. 2.2, and then vectorizes it to a one-dimensional array for better computational efficiency. The river grids are arranged

in the following order: channel grids from rivers to rivers, lake inlet grids from rivers to lakes, and river mouth grids to the ocean. Following the flow direction, the lake outlet is connected to a river, another lake, or ocean. As the lake outlets and inlets are matched to the outlets of the unit catchments, the discharge at the lake outlets and inlets are calculated using the lake and river model, respectively. These discharges can be negative, which indicates backflow (e.g., a negative value at a lake outlet means that the net water flow is from downstream into the lake).

3.3.2 Data exchanges and communications between model components

As the river and lake models were developed separately, a wrapper interface was required to share interdependent boundary conditions between the sub-models. The [T-CHOIR](#) framework was built using a coupler that encapsulates the sub-models and ensures topological consistency in time and geography for their communications. [Figure 2](#) shows the sequence of the temporal integrations and data exchange in the coupler. In this study, corrections to the river and lake outflows ~~were limit them made to in~~ ensure that the outflow is smaller than the storage discharge, ~~which is conducted for river discharge in the original CaMa-Flood~~. Data exchange between the models occurred prior to correction, which is necessary for some conditions (e.g., backwater).

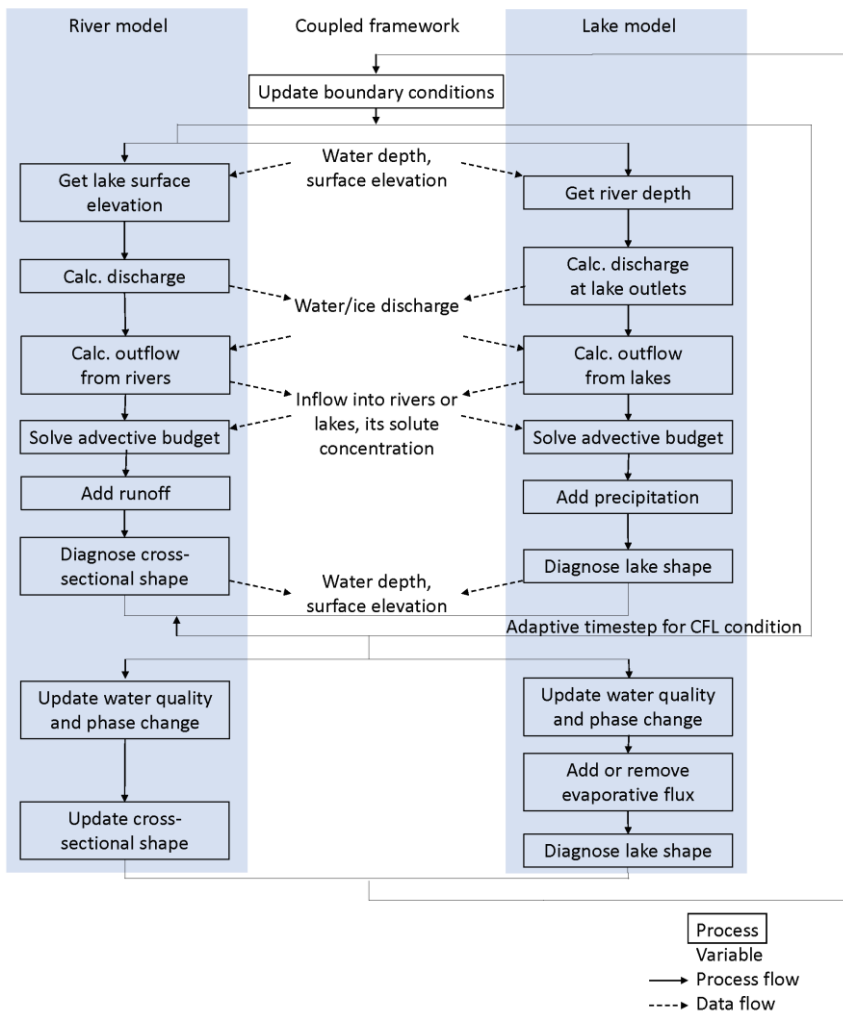


Figure 2: Flowchart of the calculation of T-ChoirTCHOIR. The solid (dashed) arrows indicate the order of the calculations (data exchange). The arrow branches indicate that each process can be computed in parallel, but the data exchange takes place at the same time.

The coupler also shares common information for both models, such as time steps and meteorological forcing data. The time step is determined such that the river model satisfies the Courant–Friedrichs–Lewy (CFL) condition, and it is used for the lake model as well.

360

Our framework structure has two significant advantages: 1) encapsulation of stand-alone sub-models, which allows them to be developed or easily replaced, and 2) provision of a convenient testbed to turn each sub-model on or off. In the following section, we compare the results of three experiments to distinguish the interactions between rivers and lakes: “coupled,” “river-only,” and “lake-only.”

365 **4 Validation of harmonized geographical information**

This section shows the validation results of the harmonized geographical information by comparing the upstream area with the survey-reported value in GRanD for some reservoirs, instead of the upstream area based on the hydrography information in HydroLAKES. Although the spatial resolution of the following validations of numerical simulations is 15', the validation in this section was conducted in 6' resolution to have a higher number of lakes available for validation (only 14 reservoirs are resolved at a 15' resolution). The upscaling method implemented in our study conserves the upstream area of the high-resolution input data for all grids; therefore, the upstream areas were identical for lakes resolved between the 6 and 15-arcmin networks.

370

[Figure 3](#) shows a comparison between the calculated values obtained in this study and the reported values in GRanD for the upstream area of each reservoir. The correlation coefficient was 0.852 for all 103 matched reservoirs. The calculated values of only eight reservoirs were greater than 200% or less than 50% of the reported values. Those eight reservoirs are further compared to hydrological data gathered by the United States Geological Survey (USGS) and Australian National Committee on Large Dams (ANCOLD) ([Table 2](#)). In the rest of this section, we discuss three reservoirs that did not agree with the upstream area, both in our data and in other data sources.

380

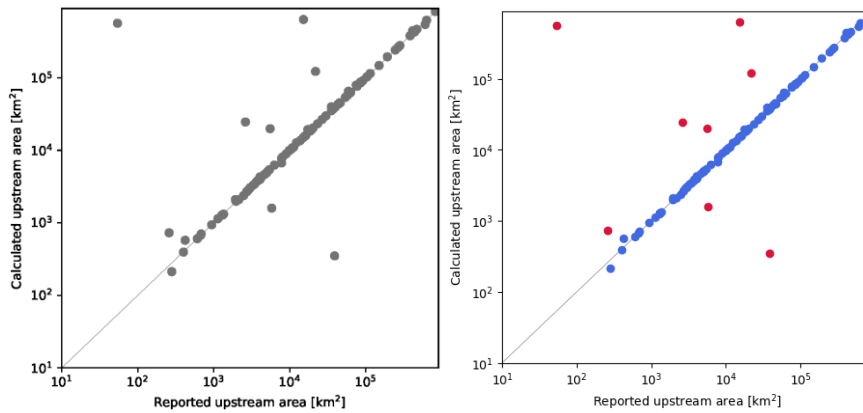


Figure 3: Comparison between calculated upstream area (km^2) in the river-lake network developed in this study (vertical) and reported values registered in GRanD (horizontal). Red dots indicate the reservoirs whose areas (km^2) differ by more than a factor of 2 or 0.5 as listed in Table 2

385

Table 224: List of reservoirs whose areas (km^2) differ by more than a factor of 2 or 0.5 between calculated and reported upstream values. The ID column provides the lake's identifier in HydroLAKES, and the columns showing the values in literature and the reference refer to upstream areas described in other literature from GRanD.

ID	Name	Calculated value (km^2)	Reported value in GRanD (km^2)	Value in literature (km^2)	Reference
764	Lake Sharpe	638023.6	15126.0	645684.0	USGS 06442700
815	Lake Eufaula	122613.4	21769.0	123081.4	USGS 07244800
830	Lake Moultrie	350.3	38850.0	38331.8	USGS 02172002
835	Cedar Creek Reservoir	24599.4	2608.0	2608.1	USGS 08063010
1062	Iovskoye Reservoir	19900.2	5510.0	5488.8	HydroLAKES
1293	Lake Iron gates	566946.1	54.0	560682.4	HydroLAKES
1701	Lake Pedder	730.1	258.0	733.0	ANCOLD
8978	Lake Cascade	1596.8	5776.0	1592.8	USGS 13244500

390 Lake Moultrie is located at the uppermost point of the Cooper River Basin located in the United States. The Cooper River has a length of 230 km, and the larger Santee River flows through the northern part of the basin. Lake Marion (HydroLAKES ID 828) is located at the confluence of the Wateree River and the Congaree River, which are tributaries of the Santee River. There are two outlets in Lake Marion: one to the Santee River and the other to Lake Moultrie. However, the network developed in this study assumes that each lake has only one outlet according to HydroLAKES, which means that

395 such diversions are not represented. In fact, the reported and calculated values of the upstream area of Lake Marion are almost identical (38,073.0 and 38,060.2 km², respectively), while the reported upstream area of Lake Moultrie is more similar to that of Lake Marion. This implies that the reported value of Lake Moultrie includes Lake Marion and its upstream area.

400 The Cedar Creek Reservoir is located within a sub-basin of the Trinity River, and the lake discharge flows into the main stem of the river. However, in the river–lake network dataset developed here, the reservoir is located on the mainstem. This problem is related to flow direction information in MERIT Hydro, and this issue has already been reported to the data developer.

405 The Iovskoye (Иовское) reservoir is in the Kovda (Ковда) River Basin. Given the basin map and the fact that the entire Kovda River has a basin area of 25,600 km² (O’Sullivan and Reynolds, 2008), it is considered that the estimate of the upstream area of 19,900.2 km² in this study is reasonable.

5 Validation of integrated simulation framework

5.1 Simulation configuration

410 The spatial resolution of the models was set to 15', and the river–lake network dataset was upscaled to the same resolution. ~~As a result,~~ 369 lakes from around the world were represented at the target resolution [as mentioned in Sect. 2.1](#). Their area and volume accounted for 51% and 92% of the total area and volume of all lakes in HydroLAKES, respectively. As described in Sect. 2 and 3, the geomorphic information (e.g., mean depth, mean surface area, and sill height) were obtained from the HydroLAKES and GRanD datasets. The depth–area relationships were defined for 79 out of 369 lakes, and the area
415 of the other lakes was set to be constant.

Three different meteorological forcing datasets were prepared to investigate the uncertainty caused by the datasets: GSWP3 (Kim, 2017), JRA55-ELSE (Kim, 2020), and Prcp-GPCCLW90 (Kim et al., 2009). The associated spatio-temporal resolutions are shown in ~~Table 3~~[Table 2](#). To produce the amount and temperature of runoff, a land surface model,
420 MATSIRO (Takata et al., 2003), was employed by using each meteorological forcing dataset. These outputs have the same spatial resolution as the input data (i.e., 0.5 degree, 1 degree, and 1 degree, respectively), and the temporal resolution is one day. The main results were based on the GSWP3 forced simulation, and we discuss the sensitivity of the results in Sect. [5.1A2](#).

425 **Table 332: Summary of meteorological forcing data used in this study.**

Product name	Spatial resolution (deg)	Temporal resolution (h)	Reference
GSWP3	0.5	6	Kim (2017b)
JRA55-ELSE	1.0	3	Kim (2017a)
Prcp-GPCCLW90	1.0	6	Kim et al. (2009)

This study assumed constant values for several physical parameters of rivers and lakes. The albedo and attenuation rate for the shortwave radiation of water (ice) were assumed as 0.1 (0.6) and 0.1 (10.0) m^{-1} , respectively, and the absorption rate of the shortwave radiation at the water surface was set to 0.4. Future research will examine the variations in the parameters by considering other processes including solar zenith angle and water turbidity. Previous studies have proposed empirical equations to calculate outflow for the Great Lakes (Croley and Assel, 1994), which we have adopted. The vertical structure is configured as 5 layers of 0.2 m, 6 layers of 0.5 m, 8 layers of 2 m, 4 layers of 5 m, 2 layers of 10 m, and 2 layers of 20 m.

430 The calculation period used in this study was 2000 to 2002, and the spin-up was carried out by repeating the simulation in 2000 twenty times. [We gave an initial guess of the initial value for lake water level and temperature with the surface elevation in HydroLAKES \(attribute name is Elevation\) and the air temperature \(or the water melting point if the air temperature is below it\) on the first day of the simulation, respectively, but](#) we manually set initial values for water depth and temperature profile for several lakes to remove the interannual variability in the lake water depth and the bottom temperature after the spin-up. [The initial layer thicknesses were calculated by the initial water level and the maximum layer thicknesses given in the configuration file, and the initial ice volume was set to be zero.](#)

440 -To observe interactions between rivers and lakes, we conducted two separate experiments, in addition to the “coupled” experiment. The first used a conventional river model that did not include lakes (the “river-only” experiment). The river network dataset used in this experiment was slightly different from that used with the “coupled” experiment due to modification of the outlets of unit catchments to the inlet and outlet of lakes. As this river network was created from the same dataset (MERIT Hydro) using the same algorithm, the comparison should be reasonable. In the second simulation, we turned off the river model and computed only lakes (the “lake-only” experiment). The simulation ignored the direct flow from one lake into another ~~in order to~~ exclude the effects of riverine dynamics on lakes.

5.2 Reference data

450 The framework was validated by comparison with in-situ and satellite observation data for the following five variables: 1) river discharge, 2) river temperature, 3) lake surface elevation, 4) lake surface temperature, and 5) vertical profiles of lake temperature. The Pearson correlation coefficient (CORR), bias (BIAS), and root-mean-square difference (RMSD) were used

in evaluations. Additionally, for river discharge, normalized BIAS and RMSD calculated by the mean observed value (hereafter pBIAS and pRMSD) were used because of the wide range of absolute values.

455

In-situ observation data of river discharge and temperature were collected by the Global Runoff Data Centre (GRDC) and the Global Environmental Monitoring System (GEMS). Validation was performed at a monthly time scale. Stations with data longer than a year were selected, which resulted in 148 and 75 of GRDC and GEMS reference sites, respectively, located downstream of lakes. Stations located upstream were excluded because the backwater effect was negligible (Fig. S1).

460

To validate the seasonal change in water surface elevation of the lake, the G-REALM dataset (Birkett et al., 2018) was used. This dataset provides the water surface elevation of lakes with areas greater than 100 km² based on satellite altimetry remote sensing. We used the EGM96 referenced data, which is identical to the MERIT DEM. To identify a lake between HydroLAKES and G-REALM datasets, latitude and longitude information were used. The consistency of the matched pairs was then manually checked. As a result, 318 out of the 340 lakes in the G-REALM dataset were matched, and 152 lakes were resolved in the river–lake dataset. This validation was performed for 132 lakes that have data longer than a year.

465

For lake surface temperature, the GloboLakes (Carrea and Merchant, 2019) dataset was used. It provides multiple satellite-based estimations at 0.05-degree global grids on a daily scale for 979 lakes. The observation lake grids were arithmetically averaged to compare with the lake model in this study, which does not represent the horizontal distributions; only quality flags of 4 (acceptable quality) and 5 (best quality) were taken. This dataset was matched to HydroLAKES using the same method as above, which resulted in 878 matching lakes, of which 200 were resolved in the river–lake network. The validation was performed on 124 lakes that have data longer than a year.

470

475

The vertical profile of lake water temperature for lakes in North America was validated against The Water Quality Portal (WQP). WQP covers lakes globally, but vertical temperature profiles were only available for the North American region. The comparison between the simulated data and observations is instantaneous because the vertical observations are made only a few times a year. Up to three observation locations were selected for each lake.

5.3 River discharge at downstream areas of lakes

480

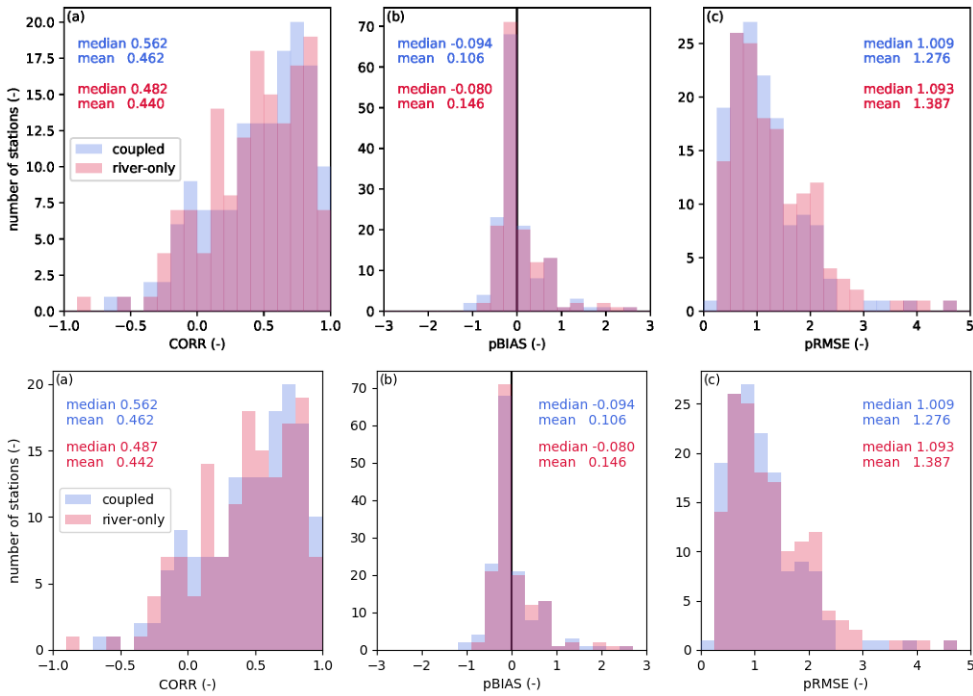
[Figure 4](#) summarizes the reproducibility of river discharge simulated by the [T-CHOIR](#) framework downstream of the lakes for the “coupled” and “river-only” simulations. Overall, it showed an improved performance when the lake was considered (i.e., “coupled”). However, some rivers showed the limited impact of the lakes (e.g., the Lena and Amazon rivers). The impacts were mainly found in two aspects: 1) reduction in the overestimation of discharge and 2) dampening of the amplitude of the seasonal variations in the “river-only” simulation. For example, at Cornwall station in the

485

St. Lawrence River ([Figure 5](#) (a)), located downstream of the Great Lakes, discharge from the “coupled” experiment

shows better performance than that of the “river-only” simulation due to higher evaporative loss at the lake surface, which affects the basin-wide water balance significantly. The reduced seasonality is evident at the Volgograd station of the Volga River, Manitou Rapids station of the Rainy River, and Above Kazan Falls station of the Kazan River (Figure 5Figure-5 (b), (c), and (d)). In these cases, the incorporation of lakes leads to the dampening of peak discharge, because the lake plays a

490 role as a buffer between flux and storage.



495 **Figure 4: Comparison between reproducibility indices of river discharge: bars are the histograms of each index, and the numbers indicate the associated median and mean values. Blue (red) bars and written values show the results of the “coupled” (“river-only”) simulation. (a) CORR, (b) pBIAS, and (c) pRMSE.**

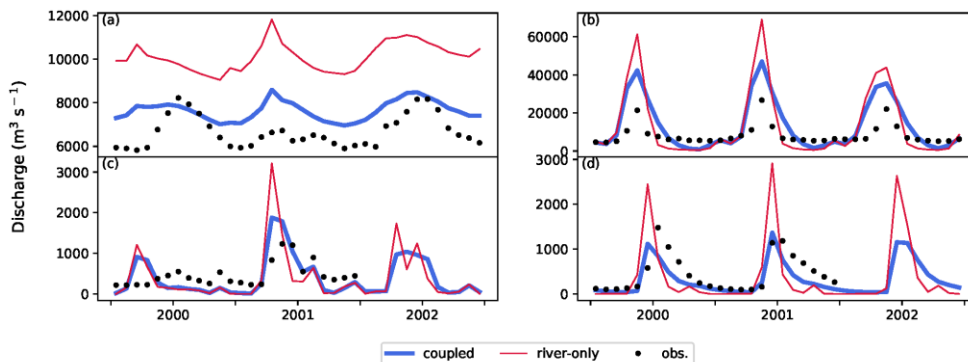
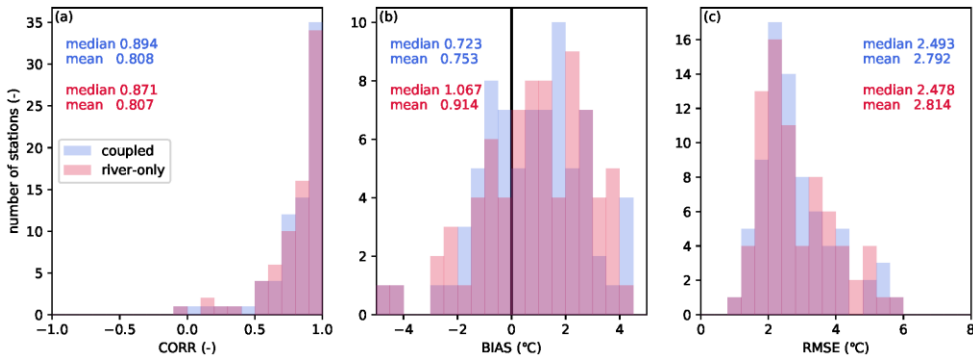


Figure 5: Timeseries of monthly mean values of river discharge ($\text{m}^3 \text{s}^{-1}$). Black dots show the observed values, and blue (red) line shows values simulated/calculated by the “coupled” (“river-only”) model/simulation. (a) Cornwall station in the St. Lawrence River, (b) Volgograd station in the Volga River, (c) Manitou rapids station in the Rainy River, and (d) Above Kazan falls station in the Kazan River. Station codes of GRDC are 4143550, 6977100, 4213211, and 4214090, respectively.

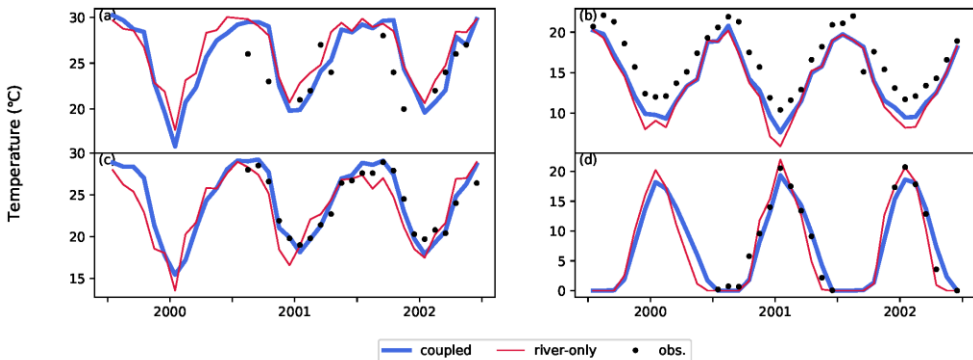
5.4 River temperature at downstream of lakes

The effect of lakes on river temperature is summarized in Figure 6. It is evident that all performance metrics improved when lakes were presented. Positive or negative river temperature biases were reduced significantly. In particular, for a number of stations in Brazil, coupling of river and lake models reduced the overestimation of water temperature. For example, improvement at 00MS13SM2000 station in Rio Santa Maria (Figure 7 (a)) was due to an increase in heat release resulting from an increase in residence time. At Hamilton traffic bridge station in the Waikato River and Puerto Libertad station in the Parana River, the simulations were improved (Figure 7 (b) and (c), respectively) due to the fact that warmer water near the surface flows out of lakes due to thermal stratification, among which improvement observed at Puerto Libertad station is significant during the cold season. On the other hand, the incorporation of the lake model led to a lower performance for some Russian stations, such as the Neva River and Cheboksarskoye Reservoir stations (station code RUS00014 and RUS00029, respectively). The former is located downstream of Lake Ladoga (HydroLAKES ID is 10), just before it flows into the Gulf of Finland (Figure 7 (d)). Lake Ladoga is a large lake that spans more than 1.5° north to south. Our framework was unable to capture the temperature peak, especially in summer. We speculate that inflow carrying warmer water from the southern upstream area and the missing representation of sub-lake-scale dynamics may be the cause of such shortcomings and suggest selecting a river scheme for lakes where horizontal flow predominates in addition to vertical mixing. In this respect, a previous study proposed a method for calculating water temperature in lakes using a river

520 model that considers a lake to be a wider river (Beek et al., 2012). A similar shortcoming was found in the Gorkovsky Reservoir (HydroLAKES ID 109).



525 Figure 6: Comparison between reproducibility indices of river temperature. Bars show the histogram of each index, and the numbers indicate associated median and mean values. Blue (red) bars and written values show the result of “coupled” (“river-only”) simulation. (a) CORR, (b) BIAS (°C), and (c) RMSD (°C).



530 Figure 7: Timeseries of monthly mean values of river temperature (°C). Black dots show the observed values, and blue (red) line shows values simulated-calculated by the “coupled” (“river-only”) modelsimulation. (a) 00MS13SM2000 station in Rio Santa Maria, (b) Hamilton traffic bridge station in the Waikato River, (c) Puerto Libertad station in the Parana River, and (d) Neva River station in the Neva River. Station codes in GEMS are BRA01900, NZL00013, ARG00001, and RUS00014, respectively.

5.5 Lake water surface elevation

The following sections compare the results from the “coupled” and “lake-only” experiments. A comparison of the performance metrics (i.e., CORR, BIAS, and RMSD) for the water surface elevation in the 132 lakes is shown in [Figure 8](#). We noted that the “lake-only” simulation did not reach the equilibrium state even after the 20-year spin-up, showing a steady increase or decrease ([Figure 9](#)). This is not surprising, given the imbalance between precipitation and evaporation. Therefore, the “lake-only” simulation is validated only for CORR in [Figure 8](#). The typical examples are shown in [Figure 9](#) (a) and (b), which show the time series data for Lake Superior and Champlain. The water surface elevations of those lakes keep increasing in the “lake-only” simulation because of the mass imbalance; precipitation is greater than evaporation, which is consistent with observations (Bennett, 1978; Smeltzer and Quinn, 1996). However, the incorporation of riverine dynamics allows for variation in lake water level within a reasonable range, as the river inflow and outflow play a role in dampening the water level change in lakes. According to [Figure 8](#) (a), although the seasonality of the lake surface elevations is dominated by the water budget within the lake (i.e., precipitation minus evaporation), the topographic information surrounding the lakes plays a crucial role in reproducing the absolute value of the water surface elevation in addition to the water budget in between rivers (i.e., in and outflow). Therefore, applying the coupling framework is potentially beneficial for a long-term Earth system simulation. The “coupled” simulation also reproduces the range of seasonal variability in Lake Superior. However, the water level in Lake Champlain tends to be overestimated during the wet season. A tuned empirical equation gives the outflow from Lake Superior. At the same time, the model possibly underestimates negative feedback between water level and outflow in Lake Champlain.

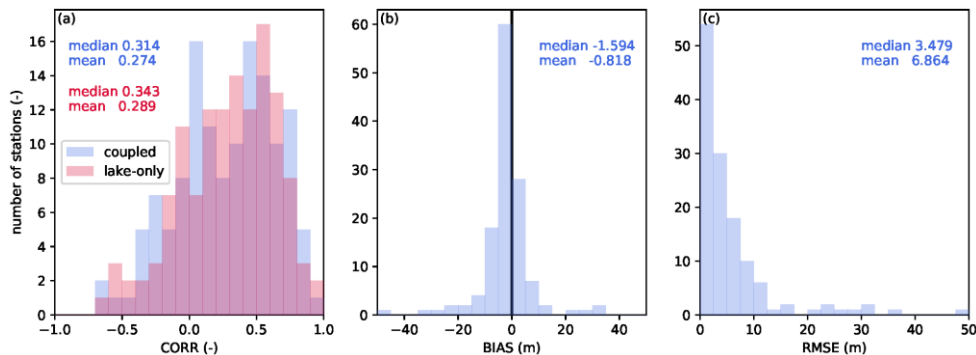


Figure 8: Comparison between reproducibility indices of lake surface elevation. Bars are the histogram of each index, and written values show the associated median and mean values. Blue (red) bars and writing show the results of the “coupled” (“lake-only”) simulation. (a) CORR, (b) BIAS (m), and (c) RMSE (m).

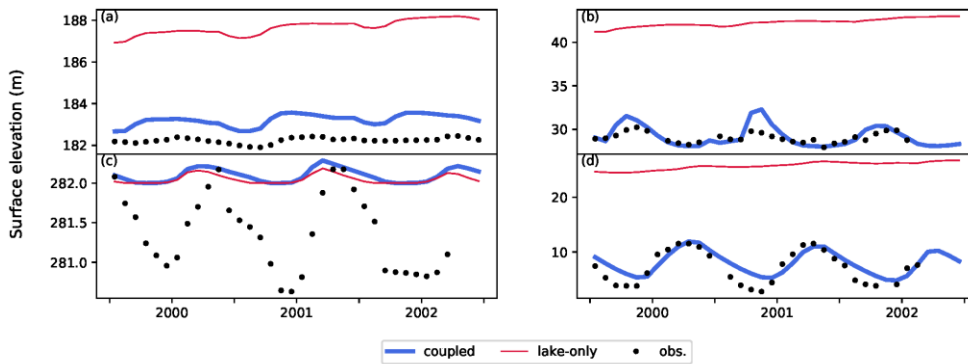


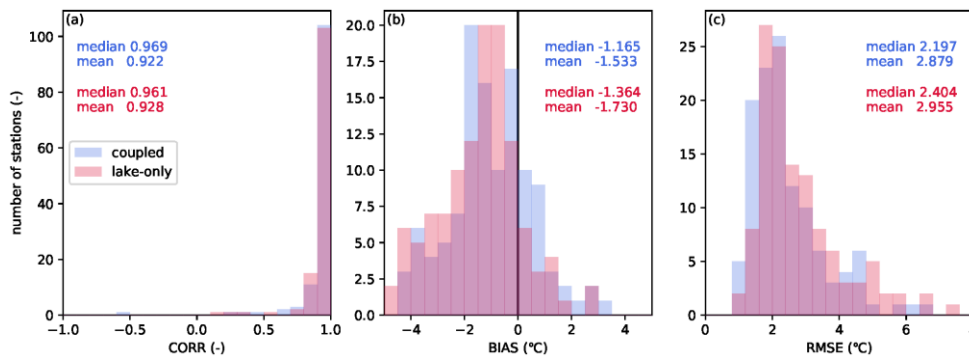
Figure 9: Timeseries of monthly mean values of lake surface elevation (m). Black dots show observed values, and blue (red) line shows value simulated-calculated by the “coupled” (“lake-only”) simulation. (a) Lake Superior, (b) Champlain, (c) Chad, and (d) Tonle Sap (HydroLAKES IDs are 5, 64, 15, and 153, respectively).

For Lake Chad (Figure 9(c)), both the “coupled” and “lake-only” experiments overestimated the water level. The water level was reproduced relatively well during the wet season, but there was a considerable discrepancy between observations. This is because the simulated water level cannot be lower than the given bottom elevation (282 m). To reproduce lake water levels accurately, it is important to treat this lake in two or three parts separately (Gao et al., 2011; Lemoalle et al., 2012). Such topography-induced impacts on lake surface extent and level are rather significant in dry regions. Therefore, a possible solution is to integrate sub-lakes defined based on precise topography information via the [T-CHOIR](#) framework.

However, the “coupled” simulation shows high applicability for use in Lake Tonle Sap (Figure 9(d)). This lake joins the Mekong River in the downstream area, which functions as a natural floodwater reservoir due to backflow from the river during the wet season. Although our framework cannot be compared directly with the water budget of a previous estimation (Kummu et al., 2014) because the river model in this study does not distinguish tributary flows and overland flow, the seasonal change in the simulated outflow from the lake indicates a similar pattern (in which the outflow is negative for several months, mainly from July to September). It is of note that we do not consider temporal changes in the lake area fixed at 2415.98 km², which is within the minimum range of this lake (Kummu et al., 2014).

5.6 Lake surface temperature

Between the “coupled” and “lake-only” experiments, the difference in the water temperature estimates was not significant, but the performance measured by the metrics showed slight improvements in the “coupled” simulation (Figure 10). The improvement in bias metric is relatively apparent. Although the lake water storage and heat capacity are significantly larger than the fluvial and thermal inflow (Figure 11 (a) and (b)), the riverine impacts on the lake temperature were found during the summer in some lakes (Figure 11 (c)). In particular, the river flow has a unique impact on lake surface temperature in Lake St. Clair (Figure 11 (d)); coupling warms up the temperature during summer and cools down during winter. The temperature difference increase between the lakes and associated inflows caused by the incorporation of a river model is explained from three perspectives. One is the difference in heat capacity between rivers and lakes, which leads to a bigger temperature difference during summer. The second one is a difference in water depth, which affects mainly due to the lower the shortwave absorption rate per unit volume in the lakes. Shortwave radiation reaches deeper lake water after attenuation, but shallower river water can effectively absorb radiation. The last mechanism is temperature stratification in upstream lakes, of which the impact is conveyed via rivers. On the other hand, the decrease in temperature Lake St. Clair during winter is caused by cooler riverine inflows from the Northern area. We found that the effect also improves the underestimation of a monthly maximum of ice cover fraction in the lake (Sect. A1). Most of the variation in water temperature near the surface is explained by heat exchange at the interface with the atmosphere. However, it is also influenced by lake depth, as shown in an intercomparison experiment using multiple vertical one-dimensional lake temperature models (Stepanenko et al., 2013). It implies that two factors may cause differences in water temperature between the “coupled” and “lake-only” simulations, such as: 1) the effect of improved lake depth estimation and 2) the effect of differences in water temperature between rivers and lakes. For the latter factor, further comparative experiments with a lake model that resolves the spatial distributions of water temperature within a lake would enable us to observe the riverine impact required with a lake model that resolves the spatial distributions of water temperature within a lake.



600

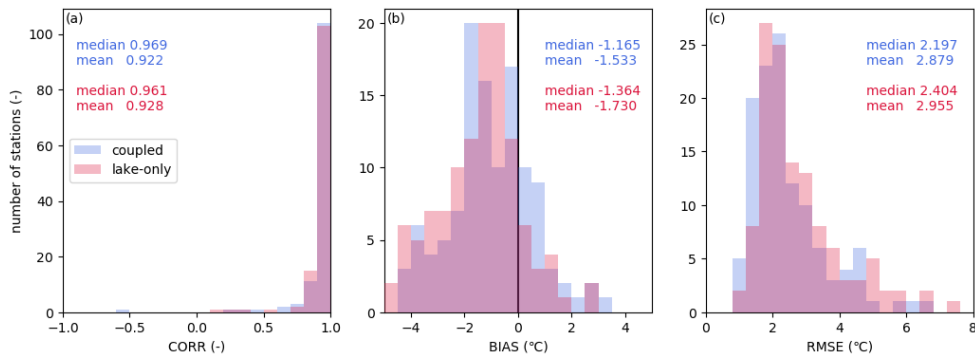


Figure 10: Comparison of reproducibility indices for lake surface temperature. Bars indicate the histogram of each index, and characters do the media and mean value of them. Blue (red) bars and characters indicate the result of “coupled” (“lake-only”) simulation. (a) CORR (-), (b) BIAS (°C), and (c) RMSD (°C).

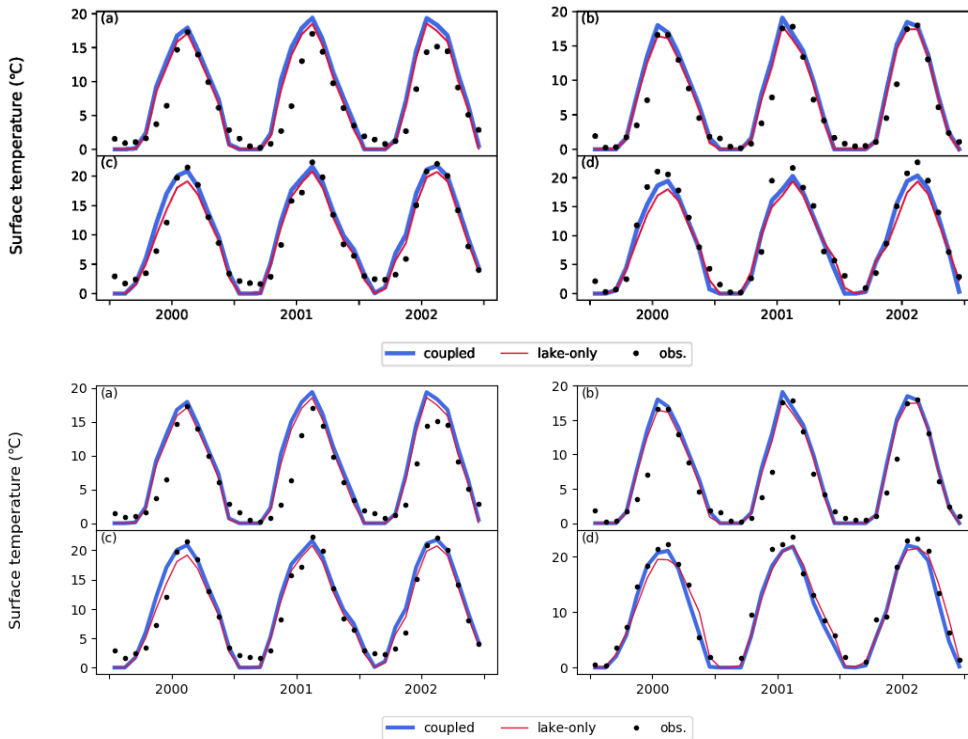


Figure 11: Timeseries of monthly mean values of river temperature ($^{\circ}\text{C}$). Black dots show the observed values, and blue (red) line shows the simulated-calculated values by “coupled” (“lake-only”) simulation. (a) Lake Superior, (b) Ladoga, (c) Ontario, and (d) Champlain-St. Clair (the HydroLAKES ID is 5, 10, 7, and 646, respectively).

610

5.7 Vertical profile of lake water temperature

Eleven lakes in North America were observed at multiple depths across the calculation period. In some cases, the simulated depth tended to be shallower than the maximum observed water depth because the lake bottom elevation parameter was derived from the mean lake depth of HydroLAKES. In general, the water surface elevation bias is considerably smaller than this difference (according to the validation in Sect. 5.5). This bias exists due to the fact that the bathymetry of lakes is not spatially uniform. This underestimation of water depth can cause bias in water temperature (Stepanenko et al., 2013). Such a

615

calibration was not conducted here; however, the model configuration fixed the bottom elevation derived from the datasets.

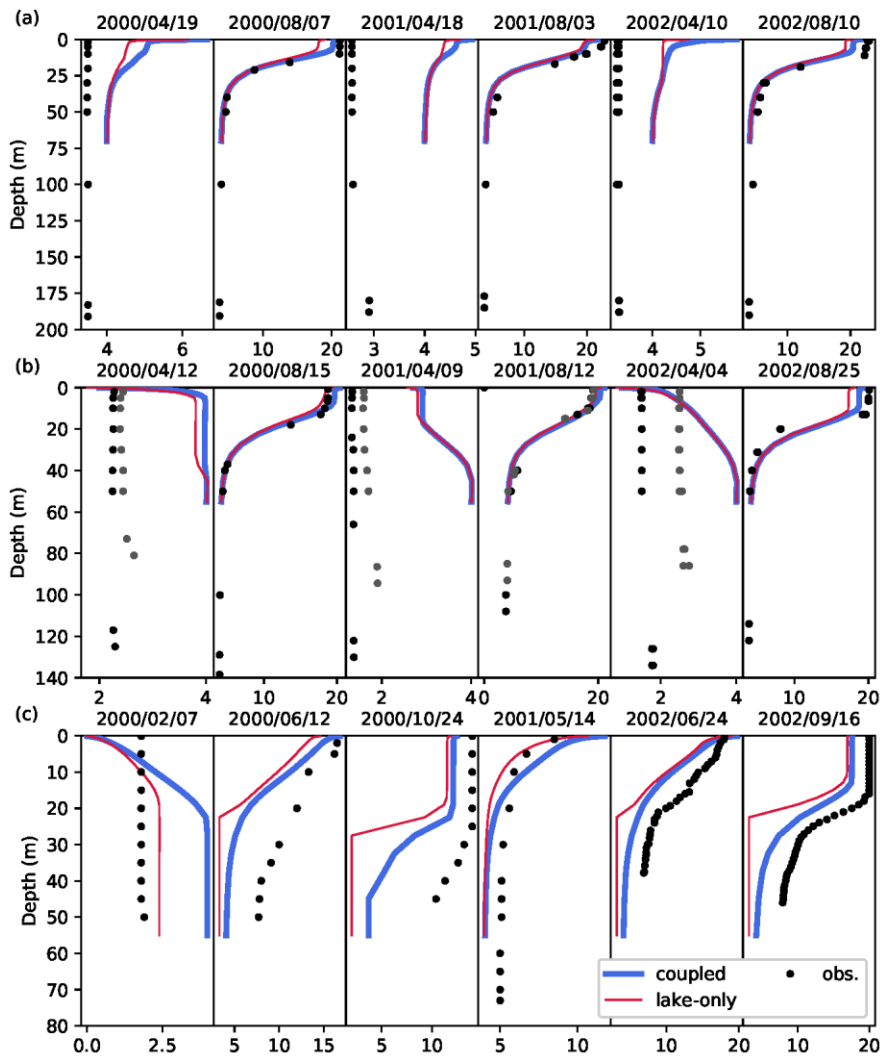
[Figure 12](#) shows three representative examples of vertical water temperature profile comparisons over six days.

620

As shown in the results for Lake Ontario and Huron in [Figure 12](#) (a) and (b), the observed water depths in all the Great Lakes (except Lake Erie) are approximately double those of the simulated water depths. However, the vertical pattern of water temperature in the upper layers (up to approximately 60 m from the surface) in summer was reproduced well in all lakes. The “lake-only” simulation also reproduced the profile, but it was found that consideration of riverine in- and outflow

625

reduced the underestimation of surface temperature, which is in accordance with Sect. 5.6. However, the model still showed temperature overestimation in early spring (all four lakes were observed in April). The water temperature near the bottom was close to 4 °C, which is consistent with the maximum water density assumption at 4 °C. Moreover, this observation indicates a slightly lower temperature (2–3 °C) that we speculate may be a result of the entrainment of upper cooler water due to local mixing.



630

Figure 12: Comparison between vertical water temperature profiles of simulations and observation: (a) Lake Ontario, (b) Lake Huron, and (c) Lake Oahe.

Even for lakes smaller than the Great Lakes, the models tended to underestimate the temperature near the surface. [Figure 12](#) (c) shows the results for Lake Oahe, where both experiments were shown to have underestimated the temperature near the surface (up to approximately 20 m) in summer, regardless of the difference between calculated and observed water depths. These trends were also observed in the satellite products described in Sect. 5.6.

6 Global distributions of lake impacts on riverine thermodynamics

The impact of reservoir operations and lakes affect downstream flow regimes (Hanasaki et al., 2006; Veldkamp et al., 2017). [Figure 13](#) shows the impacts of lakes on the global distribution of temperature changes in rivers. In most areas, the effect on average temperature is within 1 °C. The inclusion of lakes lowers the river temperatures at high latitudes and in the Nile River Basin and raises them in other regions (e.g., Parana River). It was found that the minimum river water temperature in mid-latitudes during the cold season increased with inclusion of lakes (i.e., “coupled”). This is because the formation of thermal stratification in the lakes warms the water near the surface. The opposite trend is observed in the Nile River, where increase in heat loss (such as evaporation due to increased residence time) is dominant.

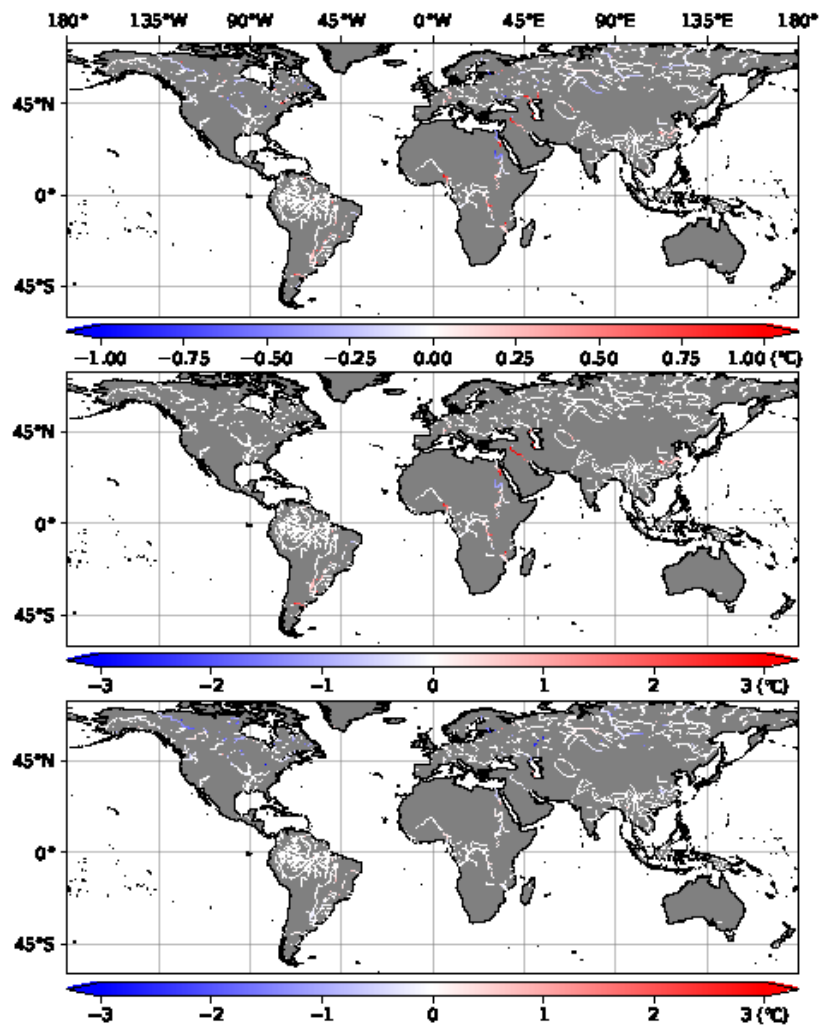


Figure 13: Global distribution of the effect of introducing lakes on river water temperature, calculated by subtracting the simulated value of the “river-only” experiment that does not consider lakes from the “coupled” experiment that does (°C). Red color indicates that lakes cause an increase in river water temperature. (a) Annual mean of climatological monthly temperature, (b) minimum, and (c) maximum.

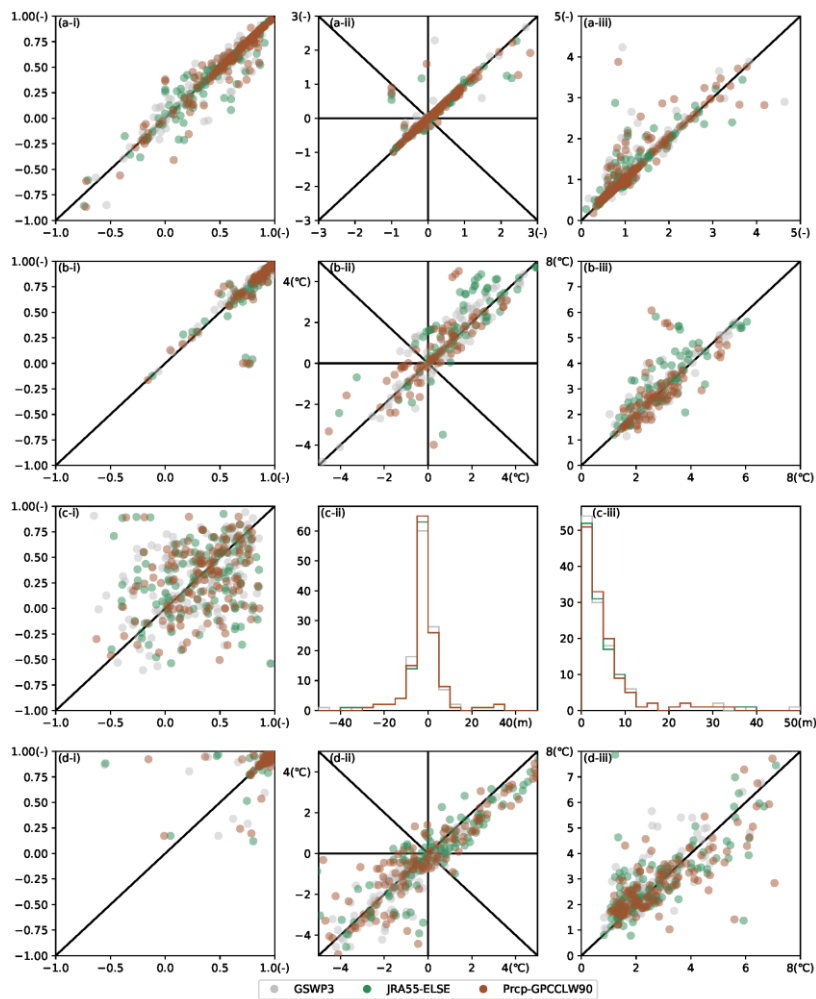
650

At high latitudes, the minimum water temperature is at the freezing point and maximum water temperature decreases (up to 3 °C) in many basins. As Arctic rivers flow across a strong meridional temperature gradient, they play a role in transporting warmer water from upstream areas to colder downstream areas. However, the vertical one-dimensional lake model does not
655 correctly represent such an effect as the sub-lake-scale dynamics within the lake is not resolved. This impact becomes substantial for larger lakes that span multiple model grids.

7 Sensitivity to meteorological forcing dataset

~~We examined the sensitivity of the results to the forcing dataset by comparison with simulations using JRA55-ELSE (Kim, 2020) and Prep GPCCLW90 (Kim et al., 2009) forcing datasets in addition to the experiment based on the GSWP3 data. Similar to Sect. 5, Figure 14 compares the performances of "coupled" and uncoupled ("river-only" and "lake-only" for riverine and lacustrine variables, respectively) forced by those three datasets. All simulations used the same river or river-lake network dataset. The stations subjected to validation are identical to those in Sect. 5.3–5.6.~~
660

変更されたフィールドコード



665 **Figure 14: Sensitivity of the performance metrics to the meteorological forcing datasets. Horizontal and vertical axes indicate the results of "coupled" and uncoupled ("river only" for (a) and (b), "lake only" for (c) and (d)) simulation, respectively. Gray, green, and brown color indicates the results of GSWP3, JRA55-ELSE, and Prcp-GPCCLW90, respectively. (a) River discharge, (b) river**
 670 **water temperature, (c) lake surface elevation, and (d) lake surface temperature. (i) CORR, (ii) BIAS, and (iii) RMSD. BIAS and RMSD are normalized for river discharge. BIAS and RMSD of the lake surface elevation in the "lake only" simulation are not shown due to the drift even after spin-up.**

In general, the results from the sensitivity experiments were similar to the GSWP3 results. The CORR and BIAS for river discharge were ameliorated by inclusion of lakes. The improved reproducibility in river water temperature was found in the “coupled” mode for all forcing datasets. Stable reproducibility of the lake surface elevation was found to be robust for the forcing datasets. Although incorporating the river model improved the underestimation of the lake surface temperature, a systematic bias is observed for lakes where the model overestimates the temperature. These under- and overestimation patterns can be attributed to the difference in heat capacity of river and lake waters. Shallow water depth in rivers leads to warmer temperatures due to more effective absorption of shortwave radiation. A better representation of vertical mixing may reduce such underestimation, which can lead to further realistic heat exchanges between the atmosphere.

680 **87. Discussion for further development**

The results discussed so far depend on the implementation of the models used within the integrated framework. While the river model employed in our study is a state-of-the-art model that can be applied on a global scale, it is evident that the lake model requires more improvement compared with previous studies (e.g., representation of the heat budget of bottom sediments and eddy mixing). This section summarizes potential improvements, mainly for the lake model.

685 The fundamental idea of the coupling framework is to represent only larger lakes in the river–lake network, [with the aim of explicitly representing to explicitly represent](#) mass and energy exchanges with rivers upstream and downstream. Our study applied a one-dimensional vertical model to the larger lakes, but did not implement a sub-lake-scale model for the other lakes. However, it would be preferable if such a one-dimensional model is applied to smaller lakes from the perspective of the spatial heterogeneity of the actual lakes. Although the river–lake network developed in this study identifies the locations of lake inlets and outlet, the in-lake horizontal hydrodynamics are driven not only by river inflow and outflow but also by the uneven distribution of wind directions caused by surrounding topography and temperature gradients related to spatial heterogeneity of the bottom elevation. Such horizontal mixing could be one reason why there are changes in the optimal parameters or calculation schemes for vertical mixing depending on lake size (Subin et al., 2012). Previous studies have adopted an approach that divides lakes into horizontal grids and applies a vertical one-dimensional model to each column. This does not represent water flow in the horizontal direction. The computational cost of a three-dimensional model (Hodges, 2000) is very expensive to be applied globally, and hence, devising a simplified physical scheme is suggested. Such a model would contribute to our knowledge of the impacts of rivers on the thermodynamics of lakes, particularly in Arctic regions where incorporating vertical one-dimensional models results [in](#) an underestimation of river water temperature. [Also, such a model would be well validated by in-situ observation data of vertical temperature profile and satellite-derived dataset of surface temperature distribution.](#)

690
695
700

705 This study also assumes that all outflows from lakes come from layers near the water surface. However, to minimize the
impact of new dam construction on the ecosystem, some dams are manipulated to release water from a depth with the same
temperature as the water entering the reservoir. Furthermore, as highlighted in Sect. 4, while validating the upstream areas of
reservoirs, the water balance is affected within and between basins as dam operations are conducted and conduits are built
between reservoirs. The latest lake dataset referred to in this study provides detailed information on the spatial distribution of
lakes; however, information on outlets from lakes and reservoirs (e.g., location and height) also needs to be extended.
710 Because the outlets of lakes coincide with the most downstream points of each unit-catchment grid in the river–lake network
developed in this study, it will be easy to couple with dam operation models.

[We conducted a minimal adjustment to fill the inconsistency between the flow direction of MERIT Hydro and lake
distribution of HydroLAKES which are developed independently. However, elevation within and near the lakes should be
corrected since that of MERIT Hydro was corrected according to flow direction and streamlines. In addition to the lake
outlet data, such a comprehensive development of the geographical dataset is also important for the river–lake coupling
simulation.](#)
715

89. Conclusions

Our study was conducted to develop a coupling framework between a river model representing the horizontal flow and a
lake model representing a layered structure based on locating lakes on a river network dataset to express the terrestrial
hydrological transport of water and energy within the river–lake system. Two high-resolution datasets, MERIT Hydro and
HydroLAKES, were merged and upscaled into a hydrological unit-catchment grid system. In our dataset, the upstream area
of the reservoir was shown to correlate with the reported values well.
720

725 In-situ observation data on river discharge and water temperature and satellite datasets on water surface elevation and surface
temperature of lakes were used to validate the framework (Table 4). The global results show that the “coupled” simulation
reproduced the absolute values and seasonal variations of those variables better than the individual river model or lake model.
The effects of lakes on rivers and vice versa were then discussed by comparing simulation results, which showed better
representation in river discharge seasonality when lakes were introduced in the experiment. At sites where lakes occupy a
large fraction in their associated basins, such as the Great Lakes region, an increase in evaporative loss from the lakes tended
to improve the overestimation of absolute river discharge. It suggests that simultaneous representations of fluvial- and
thermodynamics in rivers and lakes are necessary for reliable water availability estimates due to dam construction
(Shiklomanov, 2000). The impact of coupling river and lake models on river water temperature has two main aspects: 1)
730 alleviating underestimations in mid-latitudes due to the formation of thermal stratification in lakes, and 2) causing a negative

735 bias at high latitudes because of missing representation of sub-lake-scale dynamics within a lake suppressing poleward heat transportation by Arctic rivers.

Table 4 Summary of comparison of reproducibility indices between coupled and uncoupled (“river-only” for riverine and “lake-only” for lacustrine variables) simulations.

書式変更: 図表番号

Variable	Statistical Index	Uncoupled	
	(unit)	Coupled	(“river-only” or “lake-only”)
River discharge	CORR (-)	0.562 (0.462)	0.482 (0.440)
	pBIAS (-)	-0.094 (0.106)	-0.080 (0.146)
	pRMSE (-)	1.009 (1.276)	1.093 (1.387)
River water temperature	CORR (-)	0.894 (0.808)	0.871 (0.807)
	BIAS (°C)	0.723 (0.753)	1.067 (0.914)
	RMSE (°C)	2.493 (2.792)	2.478 (2.814)
Lake water surface elevation	CORR (-)	3.314 (0.274)	0.343 (0.289)
	BIAS (m)	-1.594 (-0.818)	- (-)
	RMSE (m)	3.479 (6.864)	- (-)
Lake surface temperature	CORR	0.969 (0.922)	0.961 (0.928)
	BIAS (°C)	-1.165 (-1.533)	-1.364 (-1.730)
	RMSE (°C)	2.197 (2.879)	2.404 (2.955)

740

Additionally, the contribution of river inflow and outflow to the water balance of lakes was significant. The seasonal variation of water surface elevation was well reproduced on a global scale. The coupling effects on water surface temperature were not apparent. However, notably, the simulation and validation in this study did not consider spatial variability within lakes, which should be significant in larger lakes. The local energy budget of rivers and lakes is affected by water depth (Stepanenko et al., 2013) and water surface areas (Tokuda et al., 2019). The energy exchanges among them are determined by the combined impacts of their fluvial and thermodynamics. The impact of the water volume changes of lakes and reservoirs has still not been elucidated, even in the latest global study (Vanderkelen et al., 2020), and the modeling framework newly developed in this study, T-CHOIR, is expected to estimate a further reliable terrestrial heat budget.

745

[A1 Validation of cover ice in Great Lakes and Lake St. Clair](#)

We validated the simulated ice cover period and monthly maximum ice fraction in Great Lakes and Lake St. Clair by comparing them with the dataset provided by GLERL (Assel, 2003; Wang et al., 2012). Except for Lake St. Clair, the “coupled” and “lake-only” simulations underestimated the ice cover period in all the Great Lakes (Fig A1 (a)), suggesting that the vertical 1D model of lacustrine thermodynamics does not analyze the spatial distribution of the cover ice in larger lakes where the temperature gradient is dominant. It also causes the overestimation of the monthly maximum of ice cover fraction (Fig A1 (b)-(f)). The bias would be improved if parameterization of the ice shape is tuned for those lakes, but implementing a horizontal 2D (3D give with the vertical 1D) model could be a more straightforward solution. On the other hand, the simulations reproduced the interannual variability of the fraction. In addition, coupling with a river model increased the fraction in Lake Erie and St. Clair, indicating that cooler riverine inflow from the Northern area impacts the ice formation in those lakes. Those validations also stress that the efficient 3D lake model is required for global-scale simulation.

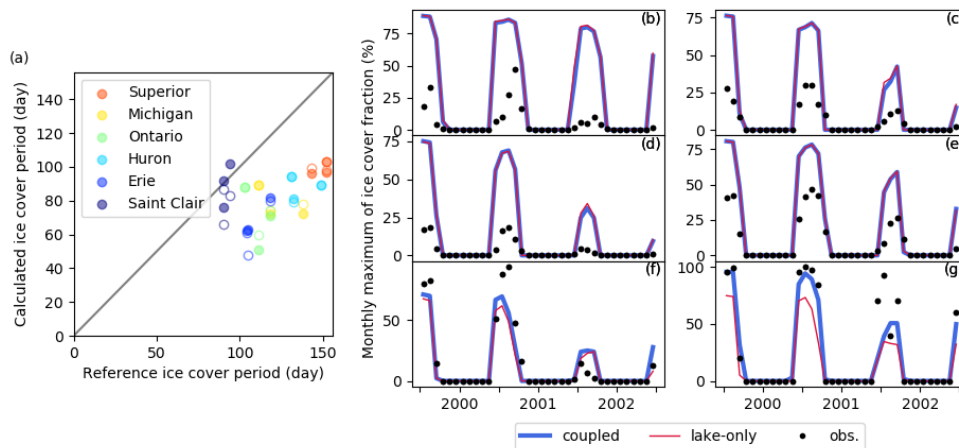


Figure A1: The comparison of (a) ice cover period in each year (day) and (b)-(g) monthly maximum of cover-ice fraction (%) in the Great Lakes region between the simulations and reference dataset. (a) The colored (white) face shows the results of the “coupled” (“lake-only”) simulation. (b)-(g) Black dots show observed values, and the blue (red) line shows value simulated by the “coupled” (“lake-only”) simulation. (b) Lake Superior, (c) Michigan, (d) Ontario, (e) Huron, (f) Erie, and (g) St. Clair (the HydroLAKES ID is 5, 6, 7, 8, 9, and 66, respectively).

770 **7A2 Sensitivity to meteorological forcing dataset**

We examined the sensitivity of the results to the forcing dataset by comparison with simulations using JRA55-ELSE (Kim, 2020) and Prcp-GPCCLW90 (Kim et al., 2009) forcing datasets in addition to the experiment based on the GSWP3 data. Similar to Sect. 5, FigureFigure 14A2 compares the performances of “coupled” and uncoupled (“river-only” and “lake-only” for riverine and lacustrine variables, respectively) simulations forced by those three datasets. All simulations used the same river or river–lake network dataset. The stations subjected to validation are identical to those in Sect. 5.3–5.6.

書式変更: 見出し2

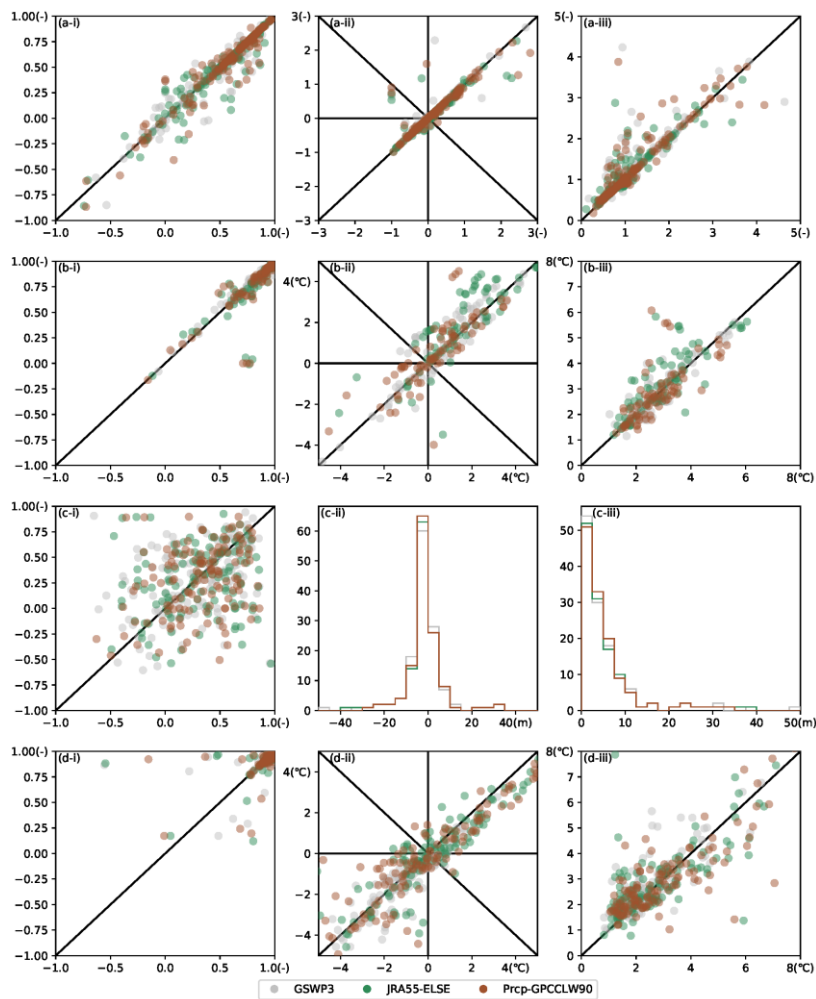


Figure 14A2: Sensitivity of the performance metrics to the meteorological forcing datasets. Horizontal and vertical axes indicate the results of “coupled” and uncoupled (“river-only” for (a) and (b), “lake-only” for (c) and (d)) simulation, respectively. Gray, green, and brown color indicates the results of GSWP3, JRA55-ELSE, and Prcp-GPCCLW90, respectively. (a) River discharge, (b) river water temperature, (c) lake surface elevation, and (d) lake surface temperature. (i) CORR, (ii) BIAS, and (iii) RMSD. BIAS and RMSD are normalized for river discharge. BIAS and RMSD of the lake surface elevation in the “lake-only” simulation are not shown due to the drift even after spin-up.

785 In general, the results from the sensitivity experiments were similar to the those of GSWP3 results. The CORR and BIAS for
river discharge were ameliorated by the inclusion of lakes. The improved reproducibility in river water temperature was
found in the “coupled” mode for all forcing datasets. Stable reproducibility of the lake surface elevation was found to be
robust for the forcing datasets. Although incorporating the river model improved the underestimation of the lake surface
temperature, a systematic bias is observed for lakes where the model overestimates the temperature. These under- and
790 overestimation patterns can be attributed to the difference in heat capacity of river and lake water heat capacities. Shallow
water depth in rivers leads to warmer temperatures due to more effective absorption of shortwave radiation. A better
representation of vertical mixing may reduce such underestimation, which can leading to further realistic heat exchanges
between the atmosphere.

Code and data availability

795 The source code of T-CHOI TCHOIR can be obtained from <https://zenodo.org/record/47687694584226> (Version 1 for the
source code and version 1.0m for the river-lake network dataset). ~~Due to the restrictions of the MERIT Hydro data, the~~
~~river-lake network data developed in this study is not available to public.~~

Author contribution

DT developed the river-lake network dataset and the coupling framework, analyzed the results. DT and HK developed the
800 manuscript. DY provided the topographic dataset and the original FLOW code. TO performed funding acquisition and
provided supervision. All authors contributed to discussions and improvement of the manuscript.

Competing interests

The authors declare that they have no conflict of interest.

Acknowledgements

805 This work was supported by the Japan Society for Promotion of Science (JSPS) via 16H06291 and Environmental
Restoration and Conservation Agency of Japan via the Environment Research and Technology Development Fund
(JPMEERF20202005). We gratefully acknowledge the United Nations Environment Programme Global Environment
Monitoring System (GEMS) for providing us with monthly observed data of river water temperature, and the Global Runoff
Data Centre (GRDC) for the daily observed discharge data.

810 **References**

- Abril, G., Martinez, J.-M., Artigas, L. F., Moreira-Turcq, P., Benedetti, M. F., Vidal, L., Meziane, T., Kim, J.-H., Bernardes, M. C. and Savoye, N.: Amazon River carbon dioxide outgassing fuelled by wetlands, *Nature*, 505(7483), 395 [online] Available from: <https://www.nature.com/articles/nature12797>, 2014.
- 815 Assel, R. A.: NOAA Atlas: An Electronic Atlas of Great Lakes Ice Cover, Winters 1973-2002, Great Lakes Environmental Research Laboratory., 2003.
- Bates, P. D., Horritt, M. S. and Fewtrell, T. J.: A simple inertial formulation of the shallow water equations for efficient two-dimensional flood inundation modelling, *J. Hydrol.*, 387(1), 33–45, 2010.
- Beek, L. P. H., Eikelboom, T., Vliet, M. T. H. and Bierkens, M. F. P.: A physically based model of global freshwater surface temperature, *Water Resour. Res.*, 48(9), 2012.
- 820 Bennett, E. B.: Water Budgets for Lake Superior and Whitefish Bay, *J. Great Lakes Res.*, 4(3–4), 331–342, doi:10.1016/S0380-1330(78)72202-1, 1978.
- Birkett, C. M., Reynolds, C. A., Deeb, E. J., Ricko, M., Beckley, B. D. and Yang, X.: G-REALM: A Lake/Reservoir Monitoring tool for Water Resources and Regional Security assessment, AGUFM, 2018, H51S-1570, 2018.
- 825 Bonnet, M.-P., Poulin, M. and Devaux, J.: Numerical modeling of thermal stratification in a lake reservoir. Methodology and case study, *Aquat. Sci.*, 62(2), 105–124, 2000.
- Caissie, D.: The thermal regime of rivers: a review, *Freshw. Biol.*, 51(8), 1389–1406, 2006.
- Carrea, L. and Merchant, C. J.: GloboLakes: lake surface water temperature (LSWT) v4. 0 (1995-2016), *Cent. Environ. Data Anal.*, 29, 2019.
- Croley, T. E. and Assel, R. A.: A one-dimensional ice thermodynamics model for the Laurentian Great Lakes, *Water Resour. Res.*, 30(3), 625–639, doi:10.1029/93WR03415, 1994.
- 830 Dake, J. M. K. and Harleman, D. R. F.: Thermal stratification in lakes: analytical and laboratory studies, *Water Resour. Res.*, 5(2), 484–495, 1969.
- Dickinson, E., Henderson-Sellers, A. and Kennedy, J.: Biosphere-atmosphere transfer scheme (BATS) version 1e as coupled to the NCAR community climate model, 1993.
- 835 Döll, P., Kaspar, F. and Lehner, B.: A global hydrological model for deriving water availability indicators: model tuning and validation, *J. Hydrol.*, 270(1–2), 105–134, 2003.
- Gao, H., Bohn, T. J., Podest, E., McDonald, K. C. and Lettenmaier, D. P.: On the causes of the shrinking of Lake Chad, *Environ. Res. Lett.*, 6(3), doi:10.1088/1748-9326/6/3/034021, 2011.
- 840 Goudsmit, G. H., Burchard, H., Peeters, F. and Wüest, A.: Application of k- ϵ turbulence models to enclosed basins: The role of internal seiches, *J. Geophys. Res. C Ocean.*, 107(12), 23–1, doi:10.1029/2001jc000954, 2002.
- Goyette, S., McFarlane, N. A. and Flato, G. M.: Application of the Canadian Regional Climate Model to the Laurentian Great Lakes region: Implementation of a lake model, *Atmosphere-Ocean*, 38(3), 481–503, 2000.
- Gu, R. and Stefan, H. G.: Year-round temperature simulation of cold climate lakes, *Cold Reg. Sci. Technol.*, 18(2), 147–160, 1990.
- 845 Guinaldo, T., Munier, S., Le Moigne, P., Boone, A., Decharme, B., Choulga, M. and Leroux, D.: Parametrization of lakes water dynamics in the ISBA-CTRIP land surface system (SURFEX v8.1), *Geosci. Model Dev. Discuss.*, 1–59, doi:10.5194/gmd-2020-296, 2020.
- Hanasaki, N., Kanae, S. and Oki, T.: A reservoir operation scheme for global river routing models, *J. Hydrol.*, 327(1), 22–41, 2006.
- 850 Henderson-Sellers, B.: New formulation of eddy diffusion thermocline models, *Appl. Math. Model.*, 9(6), 441–446, 1985.
- Hodges, B. R.: Numerical Techniques in CWR-ELCOM (code release v. 1), CWR Manuscr. WP, 1422, 2000.
- Hostetler, S. W.: Simulation of lake ice and its effect on the late-Pleistocene evaporation rate of Lake Lahontan, *Clim. Dyn.*, 6(1), 43–48, 1991.
- 855 Hostetler, S. W. and Bartlein, P. J.: Simulation of lake evaporation with application to modeling lake level variations of Harney-Malheur Lake, Oregon, *Water Resour. Res.*, 26(10), 2603–2612, 1990.
- Hostetler, S. W., Bates, G. T. and Giorgi, F.: Interactive coupling of a lake thermal model with a regional climate model, *J. Geophys. Res. Atmos.*, 98(D3), 5045–5057, 1993.

- Joehnk, K. D. and Umlauf, L.: Modelling the metalimnetic oxygen minimum in a medium sized alpine lake, *Ecol. Modell.*, 136(1), 67–80, doi:10.1016/S0304-3800(00)00381-1, 2001.
- 860 Keller, H. M.: Sources of streamflow in a small high country catchment in Canterbury, New Zealand, *J. Hydrol.(NZ)*, 6(1), 2, 1967.
- Kim, H.: Global Soil Wetness Project Phase 3 Atmospheric Boundary Conditions (Experiment 1) [Data set], *Data Integr. Anal. Syst. (DIAS)*., doi:https://doi.org/10.20783/DIAS.501, 2017.
- Kim, H.: [Global Climate] River discharge and runoff [in “State of the Climate in 2019”], *Bull. Am. Meteorol. Soc.*, 101(8), S53–S55, 2020.
- 865 Kim, H., Yeh, P. J., Oki, T. and Kanae, S.: Role of rivers in the seasonal variations of terrestrial water storage over global basins, *Geophys. Res. Lett.*, 36(17), 2009.
- Kondo, J.: Bulk transport coefficient on water surface, *J. Japan Soc. Hydrol. Water Resour.*, 5(3), 50–55, 1992.
- Kummu, M., Tes, S., Yin, S., Adamson, P., Józsa, J., Koponen, J., Richey, J. and Sarkkula, J.: Water balance analysis for the 870 Tonle Sap Lake-floodplain system, *Hydrol. Process.*, 28(4), 1722–1733, doi:10.1002/hyp.9718, 2014.
- Lehner, B., Liermann, C. R., Revenga, C., Vörösmarty, C., Fekete, B., Crouzet, P., Döll, P., Endejan, M., Frenken, K. and Magome, J.: High-resolution mapping of the world’s reservoirs and dams for sustainable river-flow management, *Front. Ecol. Environ.*, 9(9), 494–502, 2011.
- Lemoalle, J., Bader, J. C., Leblanc, M. and Sedick, A.: Recent changes in Lake Chad: Observations, simulations and 875 management options (1973–2011), *Glob. Planet. Change*, 80–81, 247–254, doi:10.1016/j.gloplacha.2011.07.004, 2012.
- Li, H., Ruby Leung, L., Tesfa, T., Voisin, N., Hejazi, M., Liu, L., Liu, Y., Rice, J., Wu, H. and Yang, X.: Modeling stream temperature in the Anthropocene: An earth system modeling approach, *J. Adv. Model. Earth Syst.*, 7(4), 1661–1679, 2015.
- Liu, S., Xie, Z., Liu, B., Wang, Y., Gao, J., Zeng, Y., Xie, J., Xie, Z., Jia, B., Qin, P., Li, R., Wang, L. and Chen, S.: Global river water warming due to climate change and anthropogenic heat emission, *Glob. Planet. Change*, 193(May 2019), 103289, 880 doi:10.1016/j.gloplacha.2020.103289, 2020.
- Manabe, S.: Climate and the Ocean Circulation, *Mon. Weather Rev.*, 97(11), 775–805, doi:10.1175/1520-0493(1969)097<0775:catoc>2.3.co;2, 1969.
- Meigh, J. R., McKenzie, A. A. and Sene, K. J.: A grid-based approach to water scarcity estimates for eastern and southern Africa, *Water Resour. Manag.*, 13(2), 85–115, 1999.
- 885 Messenger, M. L., Lehner, B., Grill, G., Nedeva, I. and Schmitt, O.: Estimating the volume and age of water stored in global lakes using a geo-statistical approach, *Nat. Commun.*, 7, 13603, 2016.
- O’Sullivan, P. and Reynolds, C. S.: *The lakes handbook: lake restoration and rehabilitation*, John Wiley & Sons., 2008.
- Oki, T., Musiaki, K., Matsuyama, H. and Masuda, K.: Global atmospheric water balance and runoff from large river basins, *Hydrol. Process.*, 9(January 1994), 655–678, doi:10.1002/hyp.3360090513, 1995.
- 890 Ozaki, N., Fukushima, T., Harasawa, H., Kojiri, T., Kawashima, K. and Ono, M.: Statistical analyses on the effects of air temperature fluctuations on river water qualities, *Hydrol. Process.*, 17(14), 2837–2853, 2003.
- Patterson, J. C., Hamblin, P. F. and May, N.: Thermal Simulation of a Lake with Winter Ice Cover, *Limnology*, 33(3), 323–338, 1998.
- Raptis, C. E., van Vliet, M. T. H. and Pfister, S.: Global thermal pollution of rivers from thermoelectric power plants, 895 *Environ. Res. Lett.*, 11(10), 104011, 2016.
- Shiklomanov, I. A.: Appraisal and Assessment of world water resources, *Water Int.*, 25(1), 11–32, doi:10.1080/02508060008686794, 2000.
- Shin, S., Pokhrel, Y. and Miguez-Macho, G.: High-Resolution Modeling of Reservoir Release and Storage Dynamics at the Continental Scale, *Water Resour. Res.*, 55(1), 787–810, doi:10.1029/2018WR023025, 2019.
- 900 Sinokrot, B. A. and Stefan, H. G.: Stream temperature dynamics: measurements and modeling, *Water Resour. Res.*, 29(7), 2299–2312, 1993.
- Small, E. E., Sloan, L. C., Hostetler, S. and Giorgi, F.: Simulating the water balance of the Aral Sea with a coupled regional climate-lake model, *J. Geophys. Res. Atmos.*, 104(D6), 6583–6602, doi:10.1029/98JD02348, 1999.
- Smeltzer, E. and Quinn, S.: A phosphorus budget, model, and load reduction strategy for lake champlain, *Lake Reserv. Manag.*, 12(3), 381–393, doi:10.1080/07438149609354279, 1996.
- 905 Smith, K.: Some thermal characteristics of two rivers in the Pennine area of northern England, *J. Hydrol.*, 6(4), 405–416, 1968.

- Stepanenko, V. M., Martynov, A., Jöhnk, K. D., Subin, Z. M., Perroud, M., Fang, X., Beyrich, F., Mironov, D. and Goyette, S.: A one-dimensional model intercomparison study of thermal regime of a shallow, turbid midlatitude lake, *Geosci. Model Dev.*, 6(4), 1337–1352, doi:10.5194/gmd-6-1337-2013, 2013.
- 910 Subin, Z. M., Riley, W. J. and Mironov, D.: An improved lake model for climate simulations: Model structure, evaluation, and sensitivity analyses in CESM1, *J. Adv. Model. Earth Syst.*, 4(2), 1–27, doi:10.1029/2011MS000072, 2012.
- Takata, K., Emori, S. and Watanabe, T.: Development of the minimal advanced treatments of surface interaction and runoff, *Glob. Planet. Change*, 38(1), 209–222, 2003.
- 915 Tokuda, D., Kim, H., Yamazaki, D. and Oki, T.: Development of a global river water temperature model considering fluvial dynamics and seasonal freeze-thaw cycle, *Water Resour. Res.*, 2019.
- Vanderkelen, I., Lipzig, N. P. M., Lawrence, D. M., Droppers, B., Golub, M., Gosling, S. N., Janssen, A. B. G., Marce, R., Schmied, H. M., Perroud, M., Pierson, D., Pokhrel, Y., Satoh, Y., Schewe, J., Seneviratne, S. I., Stepanenko, V. M., Tan, Z., Woolway, R. I. and Thiery, W.: Global heat uptake by inland waters, *Geophys. Res. Lett.*, doi:10.1029/2020gl087867, 2020.
- 920 Veldkamp, T. I. E., Wada, Y., Aerts, J. C. J. H., Döll, P., Gosling, S. N., Liu, J., Masaki, Y., Oki, T., Ostberg, S., Pokhrel, Y., Satoh, Y., Kim, H. and Ward, P. J.: Water scarcity hotspots travel downstream due to human interventions in the 20th and 21st century, *Nat. Commun.*, 8, doi:10.1038/ncomms15697, 2017.
- van Vliet, M. T. H., Wiberg, D., Leduc, S. and Riahi, K.: Power-generation system vulnerability and adaptation to changes in climate and water resources, *Nat. Clim. Chang.*, 2016.
- 925 Wanders, N., van Vliet, M. T. H., Wada, Y., Bierkens, M. F. P. and van Beek, L. P. H.: High-Resolution Global Water Temperature Modeling, *Water Resour. Res.*, 55(4), 2760–2778, 2019.
- Wang, J., Bai, X., Hu, H., Clites, A., Colton, M. and Lofgren, B.: Temporal and spatial variability of Great Lakes ice cover, 1973–2010, *J. Clim.*, 25(4), 1318–1329, doi:10.1175/2011JCLI4066.1, 2012.
- Wang, W., Lee, X., Xiao, W., Liu, S., Schultz, N., Wang, Y., Zhang, M. and Zhao, L.: Global lake evaporation accelerated by changes in surface energy allocation in a warmer climate, *Nat. Geosci.*, 11(6), 410–414, doi:10.1038/s41561-018-0114-8, 2018.
- 930 Webb, B. W.: Trends in stream and river temperature, *Hydrol. Process.*, 10(2), 205–226, 1996.
- Webb, B. W. and Zhang, Y.: Spatial and seasonal variability in the components of the river heat budget, *Hydrol. Process.*, 11(1), 79–101, 1997.
- 935 Yamazaki, D., Oki, T. and Kanae, S.: Deriving a global river network map and its sub-grid topographic characteristics from a fine-resolution flow direction map, *Hydrol. Earth Syst. Sci.*, 13(11), 2241, 2009.
- Yamazaki, D., Kanae, S., Kim, H. and Oki, T.: A physically based description of floodplain inundation dynamics in a global river routing model, *Water Resour. Res.*, 47(4), 2011.
- Yamazaki, D., Almeida, G. A. M. and Bates, P. D.: Improving computational efficiency in global river models by implementing the local inertial flow equation and a vector-based river network map, *Water Resour. Res.*, 49(11), 7221–7235, 2013.
- 940 Yamazaki, D., Ikeshima, D., Tawatari, R., Yamaguchi, T., O’Loughlin, F., Neal, J. C., Sampson, C. C., Kanae, S. and Bates, P. D.: A high-accuracy map of global terrain elevations, *Geophys. Res. Lett.*, 44(11), 5844–5853, doi:10.1002/2017GL072874, 2017.
- 945 Yamazaki, D., Ikeshima, D., Sosa, J., Bates, P. D., Allen, G. H. and Pavelsky, T. M.: MERIT Hydro: A High-Resolution Global Hydrography Map Based on Latest Topography Dataset, *Water Resour. Res.*, 5053–5073, doi:10.1029/2019WR024873, 2019.
- Yigzaw, W., Li, H. Y., Demissie, Y., Hejazi, M. I., Leung, L. R., Voisin, N. and Payn, R.: A New Global Storage-Area-Depth Data Set for Modeling Reservoirs in Land Surface and Earth System Models, *Water Resour. Res.*, 54(12), 10,372–10,386, doi:10.1029/2017WR022040, 2018.
- 950 Yigzaw, W., Li, H. Y., Fang, X., Leung, L. R., Voisin, N., Hejazi, M. I. and Demissie, Y.: A Multilayer Reservoir Thermal Stratification Module for Earth System Models, *J. Adv. Model. Earth Syst.*, 11(10), 3265–3283, doi:10.1029/2019MS001632, 2019.