

HydroPy (v1.0): A new global hydrology model written in Python

Tobias Stacke¹ and Stefan Hagemann¹

¹Helmholtz-Zentrum Hereon, Institute of Coastal Research, Max-Planck-Strasse 1, 21502 Geesthacht, Germany

Correspondence: Tobias Stacke (tobias.stacke@hereon.de)

Abstract. Global hydrological models (GHMs) are a useful tool in the assessment of the land surface water balance. They are used to further the understanding of interactions between water balance components as well as their past evolution and potential future development under various scenarios. While GHMs are a part of the Hydrologist’s toolbox since several decades, the models are continuously developed. In our study, we present the HydroPy model, a revised version of an established GHM, the Max-Planck Institute for Meteorology’s Hydrology Model (MPI-HM). Being rewritten in Python, the new model requires much less effort in maintenance and due to its flexible infrastructure, new processes can be easily implemented. Besides providing a thorough documentation of the processes currently implemented in HydroPy, we demonstrate the skill of the model in simulating the land surface water balance. We find that evapotranspiration is reproduced realistically for the majority of the land surface but is underestimated in the tropics. The simulated river discharge correlates well with observations. Biases are evident for the annual accumulated discharge, however they can – at least to some part – be attributed to discrepancies between the meteorological model forcing data and the observations. Finally, we show that HydroPy performs very similar to MPI-HM and, thus, conclude the successful transition from MPI-HM to HydroPy.

Copyright statement. TEXT

1 Introduction

Hydrological models are used in a large number of research and operational applications. These range from the catchment scale e.g. highly calibrated models simulating discharge for one specific river, towards large temporal and spatial scales e.g. the global analysis of hydrological extremes in long-term climate projections (e.g., Do et al., 2020). Models employed in the latter type of studies belong to the group of global hydrology models (GHM), which focus on simulating different components of the hydrological cycle for the whole land surface.

The Hydrological modeling looks back at several decades of model development (Bierkens, 2015). Starting from early land-surface schemes featuring a single bucket-style soil layer (Manabe, 1969), they grew in complexity over time implementing plant processes and multi-layer soil hydrology as well as considering human impacts (e.g. Alcamo et al., 1997). Depending on their area of operation, the models differ not only in terms of processes, but also in their technical infrastructure and programming language used. They can be designed for stand-alone applications using meteorological forcing data or be an

25 interactively coupled component in Earth System Models. Models with a long legacy are often written in Fortran (e.g. SWAT Arnold et al., 1
or C (e.g. VIC Liang et al., 1994), but also other programming languages like Python (e.g. PCR-GLOBWB Sutanudjaja et al., 2018)
are used. While models have come a long way since their initial concepts, there is still ample opportunity for improvement and
extension of their functions. Bierkens (2015) identified issues due to missing geospatial data, calibration and input data quality,
but also recognized the need to increase model resolution and eventually include sociological and economical interactions.

30 In order to face such challenges with our model, the Max-Planck Institute for Meteorology’s Hydrology Model (MPI-
HM; Hagemann and Dümenil, 1997; Stacke and Hagemann, 2012; Telteu et al., 2021), a thorough revision of its source
code is required. The MPI-HM is a well established GHM, which was applied in several inter-comparisons projects and case
studies over the last years (e.g., Haddeland et al., 2011; Wada et al., 2013; Schewe et al., 2013; Prudhomme et al., 2013;
Mbaye et al., 2015; Zhao et al., 2017; Rasche et al., 2018; Hagemann et al., 2020; Pokhrel et al., 2021). Nonetheless, after a
35 decade of demand-driven development, the MPI-HM became increasingly difficult to maintain ~~and was in need of a thorough~~
~~revision~~. Furthermore, its source code – originally written in ~~fortran~~ Fortran 77 style and later upgraded with ~~fortran~~ Fortran 90
statements – made debugging and the implementation of new processes unnecessarily cumbersome. Therefore, it was decided
to rewrite the model from scratch using ~~python~~ Python, thus taking advantage of the high level routines provided by NumPy
(Harris et al., 2020) and xarray (Hoyer and Hamman, 2017).

40 This revised version of MPI-HM ~~;~~ now renamed to HydroPy ~~;~~ uses the same hydrological process formulations and
boundary data, but is easier to set up, more flexible in terms of spatial resolution, and offers a much higher potential for future
enhancement. Consequently, a number of new processes were already implemented. The purpose of this article is to document
the setup and structure of HydroPy, including both, the revised as well as newly implemented processes. Furthermore, Hy-
droPy’s ability to represent observed hydrological quantities is evaluated. Lastly, an overview of ongoing model development
45 is presented and the challenges encountered during this project are discussed.

2 Model description

HydroPy (Stacke and Hagemann, 2021b) consists of a simplified land surface scheme and a lateral river routing module. It
computes only water fluxes and does not feature an explicit energy balance. Instead, near surface air temperature is used as
input for empirical formulations in energy related processes, e.g. snow melt or evaporation. If not mentioned otherwise, the
50 near surface air temperature (or 2m temperature) is referred to as surface temperature throughout this study. Spatial resolution,
time step, domain size, and simulation period are determined from the auxiliary data and meteorological forcing. The default
setup, for which simulation data is presented in Sect. 4, uses a spatial resolution of 0.5° and a time step of 1 day.

Data describing land surface conditions and meteorological forcing are expected in SI units, e.g. $[\text{kg m}^{-2}]$ for all water
storages and $[\text{kg m}^{-2} \text{ s}^{-1}]$ for water fluxes. Internally, all fluxes are multiplied with the model time step Δt .

55 Each simulation starts with the computation of several secondary boundary fields derived from the primary input data (details
in Sect. 3). As this is done only once per simulation, the numerical costs are low, but compared to the former MPI-HM the
number of variables in the land surface data file is reduced from 29 to 18. Thus, new HydroPy users need to spend less

effort for compiling the required input data prior to model application. Next, the model loops over the time axis provided by the meteorological forcing data. In the beginning of the loop, surface temperature (T_{surf}), precipitation (P) and potential evapotranspiration (PET) are read and the latter two are converted into mass flux per time step. Next, all land cover type (LCT) fractions are updated based on the actual date. This is followed by computing water fluxes for the various processes and updating the respective water storages. Figure 1 displays an overview about the water storages included in HydroPy and their connecting water flows. For most storages, outgoing water fluxes are computed based on the storage state at the start of the actual time step followed by updating the storage state using the actual fluxes. The order of storage updates is snow → skin & canopy → soil → surface water & groundwater → river flow and the related processes are presented in detail in the following paragraphs. paragraphs in section 2.2. At the end of every time step, all requested output variables are either written to a file (for time-step output) or added to an temporary field for time averaged output. Thus, no time series of variables need to be kept in memory, which strongly reduces the model's computational demands. All output variables are combined in one netCDF file per output time step resolution (daily, monthly, or yearly). Similar to the input, they are stored in SI units: [kg m^{-2}] for water storages, [$\text{kg m}^{-2} \text{s}^{-1}$] for water fluxes as well as [m^3] and [$\text{m}^3 \text{s}^{-1}$] for the special cases of river storage and river discharge, respectively.

2.1 Snow processes

At the end of the time loop, screen output is created which informs about the overall water balance and any residuum in the sum of water sources, sinks and storage changes. In case the water balance residuum exceeds a given threshold, an additional netCDF output file is generated which provides fields containing the water balance components. This acts as an early warning system during model development while implementing new processes. The water balance residuum is diagnosed for every grid cell as one-dimensional water column and as water volume accumulated over the whole fields. Through the latter also water balance errors caused by changes in LCT fractions can be spotted easily.

In case of errors, there is an option to output time series for single grid cells in which all variables are included as well as partial water balances for the individual water storages at model time step. This supports the identification of processes responsible for a water balance violation.

2.1 Model design and setup

The rational behind HydroPy is not so much to generate a highly efficient GHM, but rather a model which can be easily understood by scientists and extended with additional processes. Thus, we decided to separate functions based on their purpose (see Fig. 2). The file `parameter_class.py` contains default options and parameter settings together with variable definitions, the `dataio_class.py` file handles all input and output functions required by HydroPy, the file `analysis_class.py` includes functions related to spin-up, water balance checks and log data and the file `utility_routines.py` is a compilation of general routines like interpolation. All physical process representations are compiled in respective files describing their overall topic like hydrology, land cover and streamflow processes. This enables us to use the main routine to manage the

90 simulation time loop and call the specific model processes in a clearly arranged manner. Furthermore, this file separation serves as a template for the implementation of extensions.

All variables representing physical properties are organised in a variable class that contains variable attributes and functions. Attributes comprise name, units and grid information. Functions are used to initialize the state of variables, average over time periods and write output as well as restart data. At the start of the model one variable stream is created for all fluxes, states and land cover fractions, respectively. This allows to easily add new variables simply by adding some basic information to the respective definition function in the parameter file.

95 For the majority of hydrological processes, highly optimized NumPy arrays can be used because no information is exchanged between grid cells. However, this is different for river routing. Here, lateral water transport is considered (see Sect. 2.2.1), which requires iterations across the field indices. Such loops are rather slow in an interpreted programming language like Python. For this reason, the river routing routine was written not only in Python, but also in Fortran. Optionally, the Fortran code can be compiled into a shared library during model run-time using the NumPy tool `f2py` and called directly from HydroPy. During model development, we made sure that identical results are returned from the Python and Fortran functions. Thus, the Python version can be used during model development and debugging while the Fortran based river routing is recommended for production simulations due to its higher efficiency (see Fig. 3).

100 The model itself can be called via command line and includes a `-help` option to display calling parameters and further options. A file containing meteorological forcing data is required. Default configurations can be changed by either providing a json-style configuration file or by changing options directly via command line. A detailed technical documentation for model and simulation setup is part of the model repository (Stacke and Hagemann, 2021b).

105 Although the MPI-HM followed a similar idea in terms of separating processes in different files, the structure of HydroPy is much cleaner and easier to extend and modify due to the use of variable objects. Also, the included diagnostics like spin-up state evaluation and water balance computation as well as the interactive debugging options facilitate the implementation of new processes. And finally, the simulation setup using a simple command line interface and a optional configuration file is a considerable improvement compared to the rather extensive run-scripts required for MPI-HM simulations.

2.2 Hydrological processes

115 The following paragraphs describe all processes implemented in HydroPy in detail and all variables used are summarized in Tab 1. Generally, the processes are identical to the MPI-HM in terms of equations. A few exceptions from this rule exist, which are mentioned below. Furthermore, it should be noted that MPI-HM also includes a simple irrigation scheme which was used to explore the effect of human impacts on river discharge (e.g Haddeland et al., 2014). This scheme is not yet implemented in the current version of HydroPy, but will become part of a model version dedicated to land management in a future release.

120 2.2.1 Snow processes

In the snow module, the snow storage S_{sn} is updated based on snowfall P_{sn} , snowmelt R_{sn} and liquid snow storage content S_{snlq} as:

$$\Delta S_{sn} = P_{sn} - R_{sn} + \begin{cases} S_{snlq}, & \text{if } T_{srf} < 273.15 \text{ K} \\ 0 & \text{otherwise} \end{cases} \quad (1)$$

The involved water fluxes are computed as follows. Snowfall – if not provided directly in the forcing data – is diagnosed from precipitation as a function of surface temperature (Eq. 2) following Wigmosta et al. (1994). Snowmelt is calculated using the surface temperature T_{srf} and day-length fraction f_{lday} in a degree-day formular based on the HBV model (Bergström, 1992). Naturally, snowmelt is limited by the available snow storage.

$$P_{sn} = P \cdot \min \left\{ 1, \max \left\{ 0, \frac{T_{sn,max} - T_{srf}}{T_{sn,max} - T_{sn,min}} \right\} \right\}, \quad \text{with } T_{sn,min} = 272.05 \text{ K and } T_{sn,max} = 276.45 \text{ K} \quad (2)$$

$$R_{sn} = \min \{ (f_{lday} \cdot 8.3 + 0.7) \cdot (T_{srf} - T_{melt}), S_{sn} + P_{sn} \}, \quad \text{with } T_{melt} = 273.15 \text{ K} \quad (3)$$

130 While MPI-HM used a sine function to estimate the daylength fraction based on the day of the year, this is replaced in HydroPy by explicitly computing the day-length based on the Earth's declination (Forsythe et al., 1995). This has the advantage that a reasonable snowmelt is computed also for the southern hemisphere. However, the effects are only visible for very few grid cells due to the small extent of snow affected areas in the southern hemisphere.

Part of the snowmelt can be retained (F_{snlq}) as liquid snow storage content and is either subject to refreezing – if surface temperatures fall below the freezing point – or sustains snowmelt in the next time step. [The liquid snow storage content is limited to a maximum of 6% of the total snow storage, which is a common value also used in other models \(e.g. Wigmosta et al., 1994\)](#)

$$F_{snlq} = S_{sn} \cdot f_{snlq,max} - S_{snlq}, \quad \text{with } f_{snlq,max} = 0.06 \quad (4)$$

$$R_{sn} = R_{sn} - F_{snlq} \quad (5)$$

$$140 \quad S_{snlq} = S_{snlq} + F_{snlq} \quad (6)$$

2.3 ~~Skin and Canopy processes~~

2.2.1 Skin and Canopy processes

A new addition to HydroPy is the implementation of a skin S_{skin} and canopy storage S_{can} , which enhances the evaporation E for the grid cell fractions with the LCTs bare soil f_{bare} and vegetated f_{veg} , respectively. Both storages receive input from rainfall P_{ra} and snowmelt R_{sn} and provide overflowing water as throughfall towards the ground. Evaporation scales linearly with PET and available water, but is additionally limited by the maximum storage content $S_{x,max} S_{prc,max}$. Mechanistically,

both storages are treated equally and are described using the index prc to denote the different $skin$ and can processes:

$$\Delta S_{xprc} = \left(P_{ra} + R_{sn} - E_{xprc} \right) \cdot f_{ylct}, \text{ with } xprc = \{skin, can\} \text{ and } ylct = \{bare, veg\} \quad (7)$$

The related fluxes are defined for the respective fraction of the grid cell and scaled to the overall grid cell during the final
150 balancing. Thus, for all storage interactions its content needs to be normalized to the fraction f_y resulting in $S_{x,loc} = \frac{S_x}{f_y} f_{lct}$
resulting in $S_{prc,norm} = \frac{S_{prc}}{f_{lct}}$ so that:

$$f_{wet} = \min \left\{ 1, \frac{S_{x,loc} + P_{ra} + R_{sn}}{S_{x,max}} \frac{S_{prc,norm} + P_{ra} + R_{sn}}{S_{prc,max}} \right\} \quad (8)$$

$$E_{xprc} = PET \cdot f_{wet} \cdot \min \left\{ 1, \frac{S_{x,loc} + P_{ra} + R_{sn}}{f_{wet} \cdot PET} \frac{S_{prc,norm} + P_{ra} + R_{sn}}{f_{wet} \cdot PET} \right\} \quad (9)$$

$$R_{xprc} = \max \left\{ 0, S_{x,loc} \frac{prc,norm}{prc,max} + \left(P_{ra} + R_{sn} - E_{xprc} \right) - S_{x,max} \frac{prc,max}{prc,max} \right\} \quad (10)$$

155 While the processes for skin and canopy storage are parameterized similarly, they use specific maximum storage values:

$$\Delta S_{x,maxprc,max} = cap_0 \cdot \begin{cases} 1, & \text{if } prc = skin \\ LAI & \text{if } prc = can \end{cases}, \text{ with } cap_0 = 0.2 \quad (11)$$

Both runoff fluxes are scaled by the respective LCT fractions and combined to provide the throughfall R_{tr} that reaches the soil surface:

$$R_{tr} = R_{skin} \cdot f_{bare} + R_{can} \cdot f_{veg} \quad (12)$$

160 2.3 Soil processes

2.2.1 Soil processes

HydroPy employs a single-layer soil scheme in which the storage S_{so} provides water for transpiration E_T , bare soil evaporation E_{bs} , and drainage R_{gr} (used synonymously for groundwater recharge or subsurface runoff) towards a shallow groundwater storage. Furthermore, its content determines the surface runoff R_{srf} . The soil storage does not represent the physical soil over
165 a given depth but only the water column stored in the soil. Thus, its maximum value is limited by the maximum soil water capacity $S_{so,max}$. The soil moisture storage is defined as:

$$\Delta S_{so} = R_{tr} - R_{srf} - R_{gr} - E_T \cdot f_{veg} - E_{bs} \cdot f_{bare} \quad (13)$$

Both, drainage and surface runoff, are implemented identically to these fluxes in MPI-HM using the same parameter values. Drainage, following the formulation by Dümenil and Todini (1992), is defined such that it scales linearly with soil moisture

170 content up to a given threshold. Above, saturated flow is assumed resulting in accelerated downward percolation with exponential scaling:

$$R_{gr,low} = R_{gr,min} \cdot \Delta t \cdot \frac{S_{so}}{S_{so,max}} \quad (14)$$

$$R_{gr,high} = (R_{gr,max} - R_{gr,min}) \cdot \Delta t \cdot \left(\frac{S_{so} - S_{so,grmax}}{S_{so,max} - S_{so,grmax}} \right)^{R_{gr,exp}}, \quad \text{with } R_{gr,exp} = 1.5 \quad (15)$$

Both are combined as:

$$175 \quad R_{gr} = \begin{cases} 0, & \text{if } S_{so} \leq S_{so,grmin} \text{ or } T_{srf} < 273.15 \text{ K} \\ R_{gr,low} & \text{if } S_{so,grmin} < S_{so} \leq S_{so,grmax} \\ R_{gr,low} + R_{gr,high} & \text{if } S_{so,grmax} < S_{so} \end{cases} \quad (16)$$

The soil moisture thresholds $S_{so,grmin}$ and $S_{so,grmax}$ are products of $S_{so,max}$ using the factors 0.05 and 0.9, respectively. The minimum and maximum drainage, $R_{gr,min}$ and $R_{gr,max}$ are set to $2.7e-7$ and $2.7e-5$ [$\text{kg m}^{-2} \text{ s}^{-1}$]. As both parameters are given as flux per second, they need to be multiplied with the model time step Δt . All drainage related model parameters are taken from Roeckner et al. (1992).

180 The surface runoff R_{srf} representation follows the Improved Arno Scheme (Hagemann and Gates, 2003). It assumes that $S_{so,max}$ is not homogeneous for a whole grid cell, but varies on subgrid-sub-grid scale. Thus, ~~surface runoff is not only generated in case of soil storage overflow. Instead~~ parts of the grid cell, where the local storage capacity is low, can already generate surface runoff even though the cell average soil moisture state is still below its average maximum moisture holding capacity. Therefore, a fraction of R_{tr} is ~~already~~ converted into R_{srf} ~~when a~~ as soon as the minimum soil moisture content is
 185 exceeded. This is realized by ~~scaling mapping~~ S_{so} with the subgrid-parameters using onto the sub-grid soil moisture capacity distribution parameters denoted by the index sg :

$$S_{so,sg} = \begin{cases} S_{so,sg,max} - (S_{so,sg,max} - S_{so,sg,min}) \cdot \left(1 - \frac{S_{so} - S_{so,sg,min}}{S_{so,max} - S_{so,sg,min}} \right)^{\frac{1}{1+b}} & \text{if } S_{so} > S_{so,sg,min} \\ S_{so} & \text{otherwise} \end{cases} \quad (17)$$

where b is a shape parameter describing the distribution of sub-grid soil moisture capacities within a grid cell (see Sect. 3).

Overall R_{srf} is computed as:

$$190 \quad R_{srf} = \begin{cases} R_{tr} & \text{if } T_{srf} < 273.15 \text{ K} \\ 0 & \text{if } S_{so,sg} + R_{tr} \leq S_{so,sg,min} \text{ or } R_{tr} = 0 \\ R_{tr} + \max\{0, S_{so} - S_{so,max}\} & \text{if } S_{so,sg} + R_{tr} > S_{so,sg,max} \\ R_{tr} - \max\{0, S_{so,sg,min} - S_{so}\} - \frac{S_{so,sg,max} - S_{so,sg,min}}{1+b} \cdot (c_1 - c_2) & \text{otherwise} \end{cases} \quad (18)$$

where c_1 and c_2 are further scaling operations put into separate equations for convenience:

$$c_1 = \min \left\{ 1, \left(\frac{S_{so,sg,max} - S_{so,sg}}{S_{so,sg,max} - S_{so,sg,min}} \right)^{1+b} \right\} \quad (19)$$

$$c_2 = \max \left\{ 0, \left(\frac{S_{so,sg,max} - S_{so,sg} - R_{tr}}{S_{so,sg,max} - S_{so,sg,min}} \right)^{1+b} \right\} \quad (20)$$

The subgrid parameters $S_{so,sg,max}$ and $S_{so,sg,min}$ that determine the range of subgrid maximum water capacity variability are spatially distributed fields and their generation is discussed in Sect. 3.

As for runoff, transpiration E_T and bare soil evaporation E_{bs} are implemented based on the respective MPI-HM equations (which themselves are derived from Roeckner et al., 1996; Warrilow et al., 1986; Bauer et al., 1983) and use a linear scaling with soil moisture content. Even though they are attributed to specific LCT fractions, the vegetated f_{veg} and bare soil f_{bare} parts of the grid cell, they don't rely on fraction specific soil moisture storages but use the grid cell average for simplicity. Still, it has to be considered that part of the evaporative demand on these fractions is already satisfied due to canopy and skin evaporation:

$$E_T = (PET - E_{can}) \cdot \min \left\{ 1, \max \left\{ 0, \frac{S_{so} - S_{so,wilt}}{f_{so,crit} \cdot S_{so,max} - S_{so,wilt}} \right\} \right\}, \quad \text{with } f_{so,crit} = 0.75 \quad (21)$$

$$E_{bs} = (PET - E_{skin}) \cdot \min \left\{ 1, \max \left\{ 0, \frac{S_{so} - f_{so,bs,low} \cdot S_{so,max}}{(1 - f_{so,bs,low}) \cdot S_{so,max}} \right\} \right\}, \quad \text{with } f_{so,bs,low} = 0.05 \quad (22)$$

Again, the spatially distributed data fields $S_{so,max}$ and $S_{so,wilt}$ are part of the input dataset (Sect. 3).

Runoff and evaporation fluxes are visualized in Fig. 4 for a single grid cell. There, the threshold dependent change in the scaling of individual fluxes in respect to specific thresholds can be easily recognized.

2.3 Surface water and shallow groundwater processes

2.2.1 Surface water and shallow groundwater processes

The implementation of surface water has been simplified-modified compared to the formulation used in MPI-HM and being described in Stacke and Hagemann (2012). In MPI-HM ~~a dedicated storage was used which interacted with the the vertical land surface water balance module and the river routing module were strongly separated, each featuring storages which were restricted to be used within the respective module. The sole exception was the surface water storage resulting from ponding water on the land surface, and, hence, used to represent small creeks, lakes and wetlands. This storage was part of the vertical~~ land surface water balance ~~as well as but could also interact with~~ the lateral river routing scheme. In HydroPy, ~~this representation is simplified and utilizes~~ we simplify the representation of lakes and wetlands and utilize storages that are already part of the routing scheme as will be explained in the next paragraphs.

The river routing scheme used in both, MPI-HM and HydroPy, is the Hydrological Discharge Model (HD-Model; Hagemann and Dümenil, 1997; Hagemann et al., 2020). To represent river flow, it employs three storages: the overland flow storage receives the local grid cell's surface runoff, the baseflow storage receives the local drainage and the river flow storage receives

220 inflow from upstream grid cells. All three storages provide water to the next downstream grid cell. The purpose of the overland and baseflow storages is to delay the flow of both runoff components before they enter the river. As such, they represent a major function of surface water (e.g. small lakes, wetlands and creeks smaller than the grid cell size) and shallow groundwater - even though no effort was taken to explicitly represent any other hydrological functions.

In HydroPy, the former overland and baseflow storages are used as surface water S_{sw} and groundwater storages S_{gw} .
 225 However, we like to emphasize that both storage representations are very limited and are not expected to simulate all relevant lake and groundwater processes. Neither circulation within lakes nor confined aquifers, fossil groundwater or lateral water movement within large scale aquifers are considered at this point. The surface water balance is adapted to allow for interception of rainfall and snow melt as well as water loss due to evaporation over the surface fraction f_{sw} while the shallow groundwater balance only considers groundwater recharge R_{gr} and runoff R_{gw} :

$$230 \quad \Delta S_{lasw} = (P_{ra} + R_{sn} - PET) \cdot f_{sw} + R_{strf} - R_{lasw}, \text{ where } f_{sw} = \max\{f_{lake}, f_{wetland}\} \quad (23)$$

$$\Delta S_{gw} = R_{gr} - R_{gw} \quad (24)$$

Surface water evaporation is set to PET as long as there is enough water available over the surface water fraction. Surface water and groundwater runoff are both computed as:

$$R_{xprc} = S_{xprc} \cdot \frac{1}{LAG_x + 1} \frac{1}{LAG_{xprc} + 1}, \text{ with } xprc = \{sw, gw\} \quad (25)$$

235 The storage retention time LAG_{xprc} is computed based on the inner grid cell slope and grid cell size. More details can be found in Sect. 3.

2.3 River-routing

2.2.1 River routing

River routing is realized based on formulations from the HD-Model, which was also part of the MPI-HM. It applies a river
 240 flow cascade with up to five intermediate storages (c_{max}), parametrizations for river flow retention times and uses prescribed routing directions. It is the only part of HydroPy that uses a volumetric unit [m³] instead of water columns. Thus, runoff needs to be converted using the grid cell area A_{gc} . The river flow storages $S_{rf,n}$ for the individual cascade members n are defined as:

$$\Delta S_{rf,n} = Q_{n-1rf,n-1} - Q_{nrfn} \quad \text{with } n = \{1, \dots, c_{max}\} \text{ where} \quad (26)$$

$$Q_{nrfn} = \left(S_{rf,n} + Q_{n-1rf,n-1} \right) \cdot \frac{1}{LAG_{rf} + 1} \quad (27)$$

$$245 \quad Q_{0rf,0} = \sum Q_{rf,up} \quad (28)$$

$$Q_{rf} = Q_{5rf,cmax} + (R_{sw} + R_{gw}) \cdot 0.001 \cdot A_{gc} \quad (29)$$

where the index up denotes the river flow $Q_{r,f}$ from upstream grid cells. High river flow velocities combined with a daily model time step can lead to numerical instabilities at a given resolution in case water would travel more than one grid cell. For this reason, the river flow cascade as well as the routing are encapsulated in a sub-step time loop which is called several times per
250 model time step.

~~Up to now, all processes could be solved using the highly optimized numpy arrays, because no water was exchanged between grid cells. Of course, this is different with river routing where lateral water transport is considered, which requires iterations over the field indices. Such loops are rather slow in a interpreted programming language like python. For this reason, the river routing routine was written in Fortran instead. During model runtime, the fortran code is compiled into a shared library using
255 the numpy tool `f2py` and can be called directly from HydroPy.~~

~~The time loop finishes with transferring all requested output fields into xarray objects. These are averaged to the requested temporal resolution (daily, monthly, or yearly) at the end of the simulation and written to the predefined output directory as one netCDF file per output time step resolution. Similar to the input, they are provided in SI units: kg m^{-2} for water storages, $\text{kg m}^{-2} \text{s}^{-1}$ for water fluxes as well as m^3 and $\text{m}^3 \text{s}^{-1}$ for the special cases of river storage and river discharge, respectively.~~

~~Furthermore, an additional output file is generated which provides information about the overall water balance and any residuum in the sum of water sources, sinks and storage changes. This acts as an early warning system during model development while implementing new processes. The water balance residuum is diagnosed for every grid cell as one-dimensional water column and as water volume over the full fields. Through the latter also water balance errors caused by changes in LCT fractions can be spotted easily.~~

~~In case of errors, there is an option to output time series for single grid cells in which all variables are included as well as partial water balances for the individual water storages. This supports the identification of processes responsible for a water balance violation.~~

~~Finally, it should be noted that MPI-HM also includes a simple irrigation scheme which was used to explore the effect of human impacts on river discharge (e.g Haddeland et al., 2014). This scheme is not yet implemented in the current version of
270 HydroPy, but will become part of a model version dedicated to land management in a future release.~~

3 Land surface data

In HydroPy an effort was made to reduce the number of land surface datasets to a minimum. Thus, very specialized datasets like the river flow lag times are computed by HydroPy itself instead of requiring the model user to pre-process such data. Of course, this comes with the disadvantage of a slight increase in computational demand, but as these data fields are only
275 computed once per simulation, this is hardly noticeable. All land surface data fields are collected in one parameter file (Stacke and Hagemann, 2021a).

3.1 Primary data fields

All computations in HydroPy are restricted to land cells which are defined in the land sea mask as values > 0 . All other fields providing fractional information on LCTs are normalized with the land sea mask and therefore represent relative fractions. The LCTs considered comprise glaciers, permafrost, lakes, wetlands and vegetation. Glacier cells (Hagemann, 2002) are omitted from the simulation if the glaciers cover the full land surface fraction while permafrost (GEWEX ISLSCP Project, 2007) strongly reduces the soils capability to store water. The lake and wetland fractions are based on the Global Lake and Wetland Database (GLWD; Lehner and Döll, 2004). They are utilized to scale surface water evaporation, surface water runoff and modify lateral flow velocities. The lake fractions are used without any modifications, but wetlands were restricted to the classes floodplains and peatlands ~~as the inclusion of the other classes resulted in too strong river flow retention especially in North America. for this study. Thus, we can best resemble the general wetland distribution used for the predecessor of HydroPy and facilitate a clean comparison between both (see Sect. 4.4).~~ The vegetated fraction is taken from the Land Surface Parameters Dataset 2 (LSP2; Hagemann, 2002) and included into the HydroPy parameter file as monthly mean climatology. Another vegetation parameter dataset use by HydroPy is the monthly LAI climatology, which also originates from the LSP2 dataset. For both, the monthly mean values are linearly interpolated to match the respective model time step. The vegetation fraction affects canopy processes and transpiration while the LAI defines the size of the canopy storage.

Three topographical variables are included in the parameter file, which are all based on the ETOPO1 dataset (Amante and Eakins, 2009). These variables are the grid cell mean surface orography and its standard deviation as well as the average slope within a grid cell. The slope was initially computed at the native dataset resolution ($1' \approx 0.01^\circ$). Mean slope, mean orography and its standard deviation were determined during upscaling from the original to the target resolution of 0.5° . Both, mean orography and slope, are used to derive lateral water flow velocities in surface water, groundwater and rivers. The orographical standard deviation plays a role in determining the surface runoff.

The majority of the remaining parameters are related to soil properties. Maximum soil moisture capacity and plant available water are computed following the procedure described in Hagemann et al. (1999), but with a different dataset as source for plant available water. Values for plant available water are derived via a multi-linear regression from a dataset of optimized plant rooting depth (Kleidon, 2004) and high resolution land cover data (Loveland et al., 2000). The same data was also used in the MPI-ESM, the Earth system model of the Max-Planck Institute for Meteorology Hagemann and Stacke (2015). While the maximum soil moisture capacity $S_{so,max}$ affects all soil processes, the plant available water $S_{so,wava}$ is needed to calculate transpiration. Further properties are the sub-grid minimum and maximum soil moisture capacity as well as an exponent b_{sg} that describes the distribution of sub-grid soil moisture capacities within every model grid cell. All three of these values are discussed in Hagemann and Gates (2003) and are needed to compute surface runoff.

The final two parameters describe the river routing network using routing target indices. There is one field for each geographical dimension, i.e. latitude and longitude, and each grid cell is assigned with a flow target in the respective direction, which must be one of the eight neighboring grid cells. Note, that the target is provided as grid cell index, not as geographical coordinate. As the indices follow ~~python~~Python notation, they start at 0. For cells without any valid target flow target, its

own indices are used. The directions prescribed with the routing target indices for HydroPy are identical to the one used by MPI-HM. After their first publication in Hagemann and Dümenil (1997), they were continuously improved during the last years.

3.2 Derived data fields

315 Not all land surface variables are used directly in the simulated processes. Instead, they are (also) used to derive other variables. This is done during model initialization and will be discussed in the following.

The impact of permafrost on the simulation is represented purely from a hydrological view point. All soil moisture capacity variables are reduced to reflect that only a small part of the soil column is not frozen and may actively contribute to the water balance. The reduction factor $f_{pe,red}$ is computed based on the permafrost cover fraction f_{pe} as

$$320 \quad f_{pe,red} = \frac{S_{pe,max} \cdot f_{pe} + S_{so,max} \cdot (1 - f_{pe})}{S_{so,max}} \quad \text{with } S_{pe,max} = 50 \text{ kg m}^{-2} \quad (30)$$

and then used to scale all soil moisture capacity fields:

$$\underline{xS} = \underline{xS} \cdot f_{pe,red} \quad \text{with } \underline{xS} = \left\{ S_{so,max}, S_{\underline{so,wava,so,wilt}}, S_{so,sg,min}, S_{so,sg,max} \right\} \quad (31)$$

Next, the shape parameter b describing the sub-grid distribution of soil moisture capacities (see Eqs. 15, 19, and 20) is derived based on the distribution parameter b_{sg} and modified with the normalized orographical standard deviation b_{oro} :

$$325 \quad b_{oro} = \frac{\sigma_h - \sigma_0}{\sigma_h + \sigma_{max}}, \quad \text{where } \sigma_0 = 100 \text{ m and } \sigma_{max} = 1000 \text{ m} \quad (32)$$

$$b = \begin{cases} b_{sg} + b_{oro} & \text{if } b_{oro} > 0.01 \\ b_{sg} & \text{otherwise} \end{cases} \quad (33)$$

where σ_h is the standard deviation of subgrid orography while the parameter σ_0 and σ_{max} need to be modified according to the models spatial resolution.

330 Finally, the retention times LAG are determined, which are used in the simulation of surface water and shallow groundwater flow (Eq. 25) as well as river flow (Eq. 27). In all three cases, reference values obtained by sensitivity experiments (Table 3, Hagemann and Dümenil, 1997) for a representative grid cell are modified using the actual properties of grid cells for the remaining part of the land surface – specifically a reference lag time, the flow distance Δl and the flow velocity v . The flow velocity is computed based on the slope s as:

$$v = \max \{v_{min}, c \cdot s^\alpha\}, \quad \text{with } c = 2, \alpha = 0.1 \quad (34)$$

335 with the minimum flow velocity set to 0.1 [m s⁻¹]. The actual lag for surface water \underline{sw} and river flow \underline{rf} is obtained by modifying the reference lag time (see Table 3) ~~÷for these processes prc:~~

$$LAG_{\underline{prc}} = LAG_{\underline{ref,prc,ref}} \cdot \frac{\Delta l}{\Delta l_{ref}} \cdot \frac{\Delta l_{prc}}{\Delta l_{prc,ref}} \cdot \frac{v_{ref}}{v} \cdot \frac{v_{prc,ref}}{v}, \quad \text{with } \underline{prc} = \left\{ \underline{sw}, \underline{rf} \right\} \quad (35)$$

As surface water flow is limited to the respective grid cells, the flow distance $\Delta t \cdot \Delta l_{sw}$ is set to the cell's diameter and the slope to the average slope within the grid cell. In contrast, river flow transports water from one cell to the next. Thus, the flow distance Δl_{rf} is measured as the distance between the centers of a grid cell and its downstream grid cell. Similarly, the slope is computed based on the height difference Δh between actual and downstream grid cell as $s = \frac{\Delta h}{\Delta l} s = \frac{\Delta h}{\Delta l_{rf}}$. Compared to surface water and river flow, shallow groundwater flow is assumed to be more independent of surface slope and the reference lag is modified using the grid cell diameter as flow distance and the normalized variation in orography b_{oro} :

$$LAG_{gw} = LAG_{ref\,gw,\,ref} \cdot \frac{\Delta l}{\Delta l_{ref}} \frac{\Delta l_{gw}}{\Delta l_{gw,\,ref}} \cdot \frac{1}{1 - b_{oro} + 0.01} \quad (36)$$

Additionally, the maximum number of cascade storages c_{max} (see Eq. 26) is assigned to surface water and river properties. The reference values are listed in table 3. The lag times of surface water and river flow are further modified if the lake or wetland fractions are large enough to interact with lateral water flow as described in Hagemann and Dümenil (1998). Here, it is assumed that a small water fraction hardly impacts lateral flow velocities but slows down flow velocity significantly if a certain threshold $f_{y,\,crit} = 0.5 \cdot f_{lct,\,crit} = 0.5$ is crossed. This behaviour is reflected in the following equations, where the flow reduction $f_{y,\,red} \cdot f_{lct,\,red}$ is computed:

$$f_{y,\,red\,lct,\,red} = 0.5 \cdot \left(\tanh \left(4 \cdot \pi \cdot \left(f_{y\,lct} - f_{y,\,crit\,lct,\,crit} \right) \right) + 1 \right) \text{ where } y_{lct} = \{\text{lake, wetland}\} \quad (37)$$

The flow velocity of both processes prc is normalized with reference flow velocities v_y for $v_{lct,\,ref}$ for for the land cover types (lct) lakes and wetlands – set to 0.01 and 0.06 m s⁻¹, respectively – and scaled with the flow reduction:

$$v_{x\,prc} = \frac{\Delta l_x}{LAG_x \cdot c_{max,x} \cdot \Delta t} \frac{\Delta l_{prc}}{LAG_{prc} \cdot c_{max,\,prc} \cdot \Delta t}, \text{ with } prc = \left\{ \begin{array}{l} sw, rf \end{array} \right\} \quad (38)$$

$$v_{x,\,red\,prc,\,red} = v_{x\,prc} \cdot \left(1 - \left(1 - \frac{v_x}{v_y} \frac{v_{prc}}{v_{lct,\,ref}} \cdot f_{y,\,red\,lct,\,red} \right) \right) \quad (39)$$

The number of storages within the flow cascade and the lag time are then updated accordingly:

$$c_{max,x\,max,\,prc} = \left(c_{max,x\,max,\,prc} - 1 \right) \cdot \left(1 - f_{y,\,red\,lct,\,red} \right) + 1 \quad (40)$$

$$LAG_{x\,prc} = \frac{\Delta l_x}{v_{x,\,red} \cdot c_{max,x} \cdot \Delta t} \frac{\Delta l_{prc}}{v_{prc,\,red} \cdot c_{max,\,prc} \cdot \Delta t} \quad (41)$$

These computations are done for both water storage types $x = \{\text{surface water, river}\}$ and both LCTs $y = \{\text{lake, wetland}\}$ $prc = \{\text{surface water and both land cover types } lct = \{\text{lake, wetland}\}$. As a final step, all retention times are scaled such that the maximum cascade storage number c_{max} becomes an integer value and can easily be applied in an iteration.

4 Evaluation

The HydroPy evaluation is based on a global simulation, set up at 0.5° spatial resolution with a time step of 1 day. Precipitation and surface temperature time series were taken directly from the Global Soil Wetness Project Phase 3 forcing data (GSWP3,

365 Dirmeyer et al., 2006), while potential evaporation was computed from the same dataset in a pre-processing step using the Penman-Monteith reference evaporation approach (Allen et al., 1998). The simulation period was initialized with a spin-up run over 50 iterations of the year 1979 and then run until 2014. The last 30 years were used for the evaluation and comparison against different observational datasets.

4.1 Simulation spin-up

370 While it is possible to convert restart files from MPI-HM to initialize HydroPy, the much cleaner way is to start with empty storages and run the model until the trends in its storages become reasonable small. With the currently implemented processes, a time period of 50 years was considered to be sufficient for this task.

The ~~central-upper left~~ map in Fig. 5 shows the total water storage (TWS) trends during the first 10 years of the spin-up simulation with values up to $100 \text{ kg m}^{-2} \text{ a}^{-1}$. The largest trends are found within the tropical zone as well as in the south-
375 eastern monsoon region due to the large amount of precipitation together with relative deep soils that provide a large potential storage. The TWS trends for the last 10 years of spin-up (Fig. 5, upper right map) are below $1 \text{ kg m}^{-2} \text{ a}^{-1}$ for the vast majority of grid cells except some single cells dominated by glaciers (see below).

Analysing the individual water storages of the spin-up simulation (see Fig. 5, blue lines), their simulated contents averaged over the land surface reach equilibrium within 10 years or less, with the exception of snow water equivalent where single grid
380 cells continuously accumulate snow. These cells are located close to the coasts of Greenland and Antarctica. They are not masked as their glacier fraction is smaller than the land fraction, but they have surface temperatures below 0°C for most of the year. Currently, no glacier flow processes are implemented in HydroPy and therefore these cells cannot reach an equilibrium state. However, this issue affects less than 2% of the snow-covered grid cells and these cells can easily be masked during the analysis.

385 The remaining storages differ in the number of years needed to reach equilibrium. Small, highly dynamical storages like canopy and skin (not shown) are well initialized already during the first year, while storages with larger values and slower processes like soil moisture, groundwater and river storage show positive trends in their mean state until year 8. Thus, 50 years of spin-up seems somewhat excessive at a first glance. However, the mean storage state is not necessarily representative for the whole land surface as can be demonstrated by considering the storage content for the individual grid cells that show the largest
390 residual trend at the end of the 50 year spin-up period (Fig. 5, orange lines). In the most extreme case, soil moisture spin-up takes the major part of the 50 years period for a grid cell in the Ganges delta where the soil moisture capacity is much larger than for the majority of the other cells. Another effect is seen in the groundwater storage of a cell in the same region where equilibrium was almost achieved after 40 years but was followed by a second increase period. This behaviour results from the drainage calculation (Eq. 16) where an exponential component is added in case the soil moisture exceeds a given threshold.
395 Thus, groundwater spin-up in cells with a positive water balance and large soil moisture storage cannot be completed until the overlying soil reaches an equilibrium state. For river storage, the most extreme cell is not spinning up much slower than the average, but looking at the single cell data, the storage content is shown to exceed those of other cells by several orders of magnitude. This cell is located at the eastern border of Lake Ontario where the main path of the St. Lawrence River crosses

a grid cell with a lake fraction only slightly smaller than one. This results in a strongly reduced flow velocity in this cell and consequently a huge water storage is build up. In summary, a shorter period of 10 years would be sufficient for most of the land surface. However, regional features very well justify a spin-up period of 50 years. Of course, for later studies the length of spin-up simulations can be significantly reduced using restart data from another suitable HydroPy run.

4.2 Evaporation

As precipitation is provided as forcing, the major task of HydroPy is to realistically distribute precipitation into evaporation and runoff. Thus, a good representation of evaporation is crucial to successfully simulate river discharge. Unfortunately, there are no global datasets of directly observed evaporation time series available that could be used for model validation. However, data is available from the Global Land Evaporation Amsterdam Model (GLEAM; Martens et al., 2017; Miralles et al., 2011; ICDC, 2019), a sophisticated modelling system dedicated to estimate evaporative fluxes based on satellite observation and reanalysis data.

Comparing the long term zonal mean actual evaporation between HydroPy and GLEAM (Fig. 6, upper panel) both datasets agree very well for the high and mid latitudes in terms of zonal mean and standard deviation. However, for the tropical region between 10° and -15° N HydroPy underestimates evapotranspiration by almost $1 \text{ kg m}^{-2} \text{ d}^{-1}$. Considering seasonal differences (Fig. 6, lower panel), some more deviations become evident. During MAM the underestimation of tropical evapotranspiration is most pronounced affecting a band of more than 10° width south of the equator. During JJA this is compensated by a slight overestimation south of -10° N while the evaporation underestimation shifts northwards. Also a small ($\approx 0.5 \text{ kg m}^{-2} \text{ d}^{-1}$) negative bias is visible between 30° and 70° N.

While the implication of these biases for runoff are discussed in a following paragraph (see Sect. 4.3), we aim to identify possible reasons for their appearance. The most obvious source would be potential evaporation, which is provided to HydroPy as input based on atmospheric forcing data and used in every evaporation computation as maximum value – especially as the Penman-Monteith methodology is shown to underestimate PET in tropical regions (Weiland et al., 2015). However, PET is overestimated compared to GLEAM (see Fig. 7) and thus unlikely to cause too low values in ET. Instead, the ET biases are well reflected in transpiration with even stronger values. This could hint on either issues with the overall size of the soil moisture storage or indicate a missing interaction between the shallow groundwater and soil moisture storages which could provide plants with additional water for transpiration during dry periods. The importance of a deep soil moisture layer for transpiration was already demonstrated by Hagemann and Stacke (2015) and might be relevant for HydroPy as well.

4.3 River discharge

River discharge is the most important output variable of HydroPy. It is an easily observable quantity that integrates the lateral water fluxes over a given catchment region and it is highly sensitive to all other components of the hydrological cycle. As such, river discharge is a prime target to evaluate the skill of GHMs. This is done for the whole globe using observations provided by GRDC (2020).

We use a modified version of the Nash-Sutcliffe Efficiency (NSE, Nash and Sutcliffe, 1970) as primary evaluation metric for river discharge. The NSE is defined as:

$$NSE = 1 - \frac{\sum_{t=1}^T (Q_m^t - Q_o^t)^2}{\sum_{t=1}^T (Q_o^t - \bar{Q}_o)^2} \quad (42)$$

with Q being the river discharge for model m and observations o , respectively, and \bar{Q} denoting the long term mean over the time period T . Please note, that river discharge observations are often not available directly at the river mouth. For our analysis, we use those stations which are located at the most downstream part of the catchment and compare it with discharge from the closest grid cell with similar inflow area. Nonetheless, the resulting values are projected onto the whole catchment for visualization. The NSE comes with a small inconvenience, i.e. there is no lower bound but values can be infinitely low. Thus, we normalize the NSE following Nossent and Bauwens (2012) towards the range $\{0, 1\}$ as:

$$NNSE = \frac{1}{2 - NSE} \quad (43)$$

and use the NNSE in all following analyses.

Additionally, we analyse the temporal correlation r and the percentile bias pb given by the equations:

$$r = \frac{\sum (Q_m - \bar{Q}_m) (Q_o - \bar{Q}_o)}{\sqrt{\sum (Q_m - \bar{Q}_m)^2 \sum (Q_o - \bar{Q}_o)^2}} \quad (44)$$

$$pb = \frac{\sum_{t=1}^T (Q_m^t - Q_o^t) \cdot 100}{\sum_{t=1}^T Q_o^t} \quad (45)$$

Figure 8 (histogram and upper map) shows the NNSE for monthly long-term river discharge climatologies between HydroPy and observations for the 100 largest catchments of the world. Less than 20% of the catchment covered area shows a NNSE \leq 0.5, which indicates an insufficient performance as just using the observed long-term average is superior to the prediction. Thus, HydroPy shows a reasonable performance for the majority of catchments. About 20% of the catchment area exceed a NNSE of 0.74, which is already considered sufficient for calibrated, high-resolution watershed models (Moriassi et al., 2007). Of these, further 14% even surpass a NNSE of 0.8 which shows a very good fit. Taking into account that HydroPy is neither calibrated nor adapted to any specific catchment and generally has a much coarser spatial resolution than the catchment hydrology models examined by Moriassi et al. (2007), its performance is surprisingly good and on the same level as its predecessor MPI-HM (see Sect. 4.4).

Still, some river catchments could not be represented sufficiently well. Thus, additional metrics were calculated to identify reasons for this failure. Figure 8 (lower left panel) shows the temporal correlation between HydroPy and GRDC monthly mean river discharge, with a good performance for most catchments. More than two third of the grid cell show a correlation $>$ 0.75 and less than 15% are below 0.5. Thus, HydroPy's demonstrates a significant skill to represent seasonal river discharge variations in the majority of catchments. Exceptions can be seen for the Nile and Ganges rivers which also show very low NNSE. Stronger regional discrepancies are evident for the percentile bias between HydroPy and GRDC river discharge (Fig.

460 8, lower right panel). Only 20% of the grid cells fall in the range of $\pm 10\%$ bias. For high northern latitude catchments, a strong underestimation of river discharge is visible, especially for Eastern Siberia and north-western Canada. Strong discharge overestimation is found for many dry regions in the Sahel zone and Australia, but also in parts of South America. Combining these measures (Fig. 8, upper right panel) shows that low NNSE values result mostly from strong, negative biases in mean discharge amounts and, hence, in total runoff. Therefore, this needs to be a focus of future model development. However, 465 it might be possible that not all of this issues can be addressed by the model alone. Figure 9 shows the long-term water balance residuum based on GSWP3 precipitation, GLEAM evaporation and GRDC river discharge. While it is only a first order approximation using a mixture of observed and computed quantities, it also highlights large negative values for Eastern Siberia and north-western Canada. These areas coincide with the regions showing the strongest river discharge biases in HydroPy. This points to the possibility that already the forcing or validation data might suffer from uncertainties and, thus, contribute to the 470 diagnosed river discharge biases for the Arctic region.

For regional river discharge curves (see Fig. 10), it can be seen that for Arctic Rivers the peak flow month is represented very well, but the amount of peak flow is underestimated even though ET is too low during summer. In terms of model skill, this could be related to too little accumulated snow cover during the winter months. Also during August and September, the discharge stays below the observed level. Whether this is an effect of too small water storages in the soil, biases in the model 475 forcing or related to other processes needs to be examined in later studies. For tropical rivers, a too early flow peak combined with too much discharge is visible. This can be attributed mostly to the strong negative ET bias during MAM and might be also related to the missing representation of interactive floodplains which might enhance ET and mitigate the peak flow. However, it should be noted that the discharge curve is strongly dominated by Amazon and Congo, while other tropical rivers, like Orinoco, Mekong and Rio Magdalena, are much better simulated. Similarly, river discharges for mid-latitude regions like the European 480 Rivers are represented very well by HydroPy.

4.4 Comparison to MPI-HM

In this section, HydroPy is compared to the original MPI-HM to prove its suitability as a successor. For this purpose, a simulation was conducted with MPI-HM using the same meteorological forcing data and spin-up duration. Similar to HydroPy, MPI-HM includes a number of grid cells with steadily increasing snow storage. These cells were masked during the analysis 485 of both simulations.

Figure 11 shows the average water fluxes and storage contents for HydroPy and MPI-HM. As expected, both are rather similar. The average precipitation received by the models amount to a yearly sum of $\approx 760 \text{ kg m}^{-2} \text{ a}^{-1}$. Evapotranspiration in HydroPy exceeds the one in MPI-HM by $\approx 20 \text{ kg m}^{-2} \text{ a}^{-1}$ while total runoff is $\approx 11 \text{ kg m}^{-2} \text{ a}^{-1}$ lower. The soil moisture storage is around $\approx 12 \text{ kg m}^{-2}$ higher in MPI-HM compared to HydroPy. Although both models agree in the spatial distri- 490 bution of soil moisture trends, the drying trends are slightly stronger in the HydroPy simulation resulting in an overall lower soil moisture. The average snow water equivalent is similar in both models with a difference of $< 1 \text{ kg m}^{-2}$. Still, regional differences can be found featuring an increase in snow cover in the high northern latitudes (due to later snow melt) balanced by a decrease in mid-latitudes. These small differences can be explained by the new processes implemented in HydroPy. The

addition of skin and canopy evaporation increases overall evapotranspiration in HydroPy resulting in a slight decrease in soil
495 moisture and therefore an decrease in total runoff. The differences in SWE are caused by the replacement of the normalized
sinus function in the snow melt scheme with an explicit calculation of the day-length fraction.

Comparing the quality of simulated river discharge between both models (see Fig. 12), HydroPy shows slightly better
results in the normalized Nash-Sutcliffe efficiency (NNSE) for around 60% of the area of considered catchments. While the
increased NNSE values for HydroPy are mostly small but widespread, the decreases are dominated by strong signals for three
500 rivers, the Yenisey, Ganges-Brahmaputra and Yangtze. Climatologies for the three rivers are shown in the upper panels of
Fig. 13. For these basins, HydroPy ~~shows a mitigated flow curve~~ generates a delay in river flow compared to MPI-HM and
GRDC observations, which delays the results in a later peak flow by 1 to 2 months and smooths the overall curves an overall
smoother curve. This behaviour results from the representation of surface water in HydroPy and its effect on river flow velocity.
Indeed, the wetland masks used in both models differ. MPI-HM relied on a wetland distribution compiled by Matthews and
505 Fung (1987). However, this dataset is only available at the rather low resolution of 1°. In order to enable HydroPy to run on
resolutions higher than the default 0.5° in future applications, lakes and wetlands are now compiled using the GLWD (Lehner
and Döll, 2004, see Sect. 3), which is available at 5' resolution. While both maps agree on the general distribution of wetlands,
there are regional differences. Most prominently, the Matthews and Fung (1987) dataset contains less wetlands than the GLWD
in the Ganges Delta, the downstream area of the Yangtze River and the outlet of the Yenisey, which results in the overestimation
510 of wetland impacts in HydroPy. The same effect causes the increase in NNSE for the Yukon and Lena catchments (see Fig. 13,
middle panels) where HydroPy reproduces the peak flow much better than MPI-HM although it falls off too quickly during the
summer. Here, the wetland impact acts too strong in MPI-HM while the selection of GLWD wetland classes in HydroPy leads
to less wetlands in this area. A different example for wetland impacts is seen for the Nelson River (see Fig. 13, middle panels).
Here, wetlands are more concentrated near the river outlet in the GLWD than in the formerly used dataset. However, at this
515 location this is an advantage, as MPI-HM shows a too large variability throughout the year that is strongly reduced in HydroPy
and resembles observations much better.

The river discharge simulation for Ganges-Brahmaputra, Yangtze and Yenisey can be significantly improved in HydroPy
by adapting the reference flow velocity for wetlands (see Fig. 13, lower panel). However, the effect is diametrical to the skill
in other wetland influenced catchments. An increase in the reference velocity reduces the wetland impact, thereby improving
520 the simulation skill towards the level of MPI-HM. At the same time, it results in performance degradation in other catchments
like the Ob, where due to the faster river flow through wetlands the snow melt peak appears earlier in the year while too less
water is available during late summer.

Besides exploring the reasons behind differences between HydroPy and MPI-HM, this analysis demonstrates the strong sen-
sitivity of river discharge to wetland extent in both models. However, the opposing effects of modifying the wetland reference
525 flow velocities discourages any further attempts to optimize this value at this point. More likely, better results can be obtained at
higher resolution when flow paths and wetland distribution are represented in greater detail. Then, only those wetlands would
mitigate river discharge which are indeed close enough to the flow channel and not simply exist in the same 0.5° grid cell.

Finally, it should be noted that due to the active participation of MPI-HM in several inter-comparison projects (e.g. Haddeland et al., 2011), there are many analyses available that evaluate the performance of MPI-HM in comparison to other GHMs. As MPI-HM and HydroPy produce very similar results, these analyses are also a good indication for the performance of HydroPy at this stage of development.

5 Conclusions

This study introduces HydroPy, a global hydrological model written in ~~python~~Python. Similar to its predecessor, the MPI-HM, the model simulates the land surface water balance as well as the river routing towards the ocean. HydroPy uses a default resolution of 0.5° on global scale. It has rather humble data requirements, using surface temperature, precipitation and potential evaporation as meteorological input data together with land surface property data. Compared to MPI-HM, HydroPy can be setup more easily, has less requirements for land surface data, provides internal checks to aid the model development process and requires less effort for maintenance and implementation of new processes.

The majority of process formulations were taken over from MPI-HM without any alterations, but some improvements were done for the snow melt, the skin and canopy storages as well as the impact of lakes and wetlands on river discharge. The evaluation of evapotranspiration using the GLEAM data (Martens et al., 2017; Miralles et al., 2011; ICDC, 2019) shows a generally reasonable behaviour but also highlights underestimation of transpiration in parts of the Tropics and the high northern latitudes. This affects runoff generation and results in an overestimation of river discharge especially for the Amazon and Congo rivers compared to GRDC data (GRDC, 2020) and also a too early discharge peak for these two rivers. The seasonality of Arctic rivers is captured very well but the peak discharge is generally too low. Although constraint to specific regions, both biases are considered to be important deficiencies – either in the model or in the meteorological forcing data – and will be a focus of the next development steps. Still, the majority of catchments show a very good correlation with observations and overall discharge can be satisfactorily represented by HydroPy.

Besides the necessary improvements in these parametrizations, there are further plans to actively develop HydroPy in the future. The two most important focus areas are the

- transport of nutrients within the lateral flow scheme of HydroPy to provide ocean models not only with river discharge, but also transient information about nutrient concentration,
- implementation of human impacts, especially irrigation and crop management, but also the representation of dams and reservoirs.

Compared to MPI-HM, HydroPy shows very similar results on the global scale. However, there are regional differences due to changes in the snow melt scheme and the updated wetland distribution. While these changes cause a degraded performance of river discharge in a few river basins, the majority of rivers benefit from the improvements implemented in HydroPy. Nonetheless, regions with decreased simulation quality will be in the focus of further model development. In conclusion, the transition from MPI-HM to HydroPy is completed successfully and HydroPy will replace MPI-HM in future applications.

560 As final remarks we present some insights gained during this project. Naturally, HydroPy is not the first hydrology model
to be rewritten (e.g. SWAT+ Bieger et al. (2016) and others), however the difficulties and challenges of such a project are not
often discussed (Müller et al., 2018). A major obstacle is the perception of this work: rewriting a model prepares the way for
new studies but is often considered a technical rather than a scientific task. For this reason, it is difficult to secure funding,
565 computational resources, and finally publish this work in high-ranking journals. As scientists are often employed on limited
contracts, they need to carefully weight such time investments because model development, maintenance and documentation
usually pays off only on long time scales. For this reason, small working groups with technical support are at a disadvantage
when trying to rewrite their models. Still, in terms of the technical realization, we like to share some advice that was useful to
us:

- 570 – Programming language and style should be chosen according to the user base and application, e.g. Fortran or C for
highly-optimized models running on high-performance machines vs interpreted languages like Python or R with easily
understandable code, e.g. for educational purposes or working groups without a technical support staff.
- Infrastructural routines should be separated from the scientific code as much as possible. If I/O and variable definitions
happen "under the hood", the main routine can be much more easily understood and extended by other scientists. For
575 this very reason, we recommend to develop the model infrastructure as the very first step and only later add the scientific
processes.
- Implement automated checks right from the beginning. Standardized computations of water/mass balances and sensible
additional outputs, e.g. log outputs for selected grid cells, help to spot any conceptual or programming errors as early as
possible.
- Port one routine at a time and summarize related functions in one file for a better overview. A modular model can be
580 much more easily extended for different applications.
- Write documentation right from the start and not only when the first model version is finished.
- Use a versioning tool (git, svn) to manage the development progress, collaborations and releases.

585 Of course, all this advice comes from personal preferences and other programmers might set different priorities. Nonetheless,
we hope it might ease the start on such projects because ultimately, a well structured and maintained open-source model is a
valuable asset in hydrological research.

Code availability. The source code of HydroPy is available under the GNU General Public License v3.0 at Zenodo (<https://doi.org/10.5281/zenodo.4541380>)

Data availability. The land surface property data used for the presented HydroPy simulations is available under the Creative Commons Attribution-NonCommercial-NoDerivatives 4.0 International Public License (CC BY-NC-ND 4.0) at Zenodo (<https://doi.org/10.5281/zenodo.4541238>). The raw data produced with HydroPy and MPI-HM is currently under review for upload to the CERA database and will be published under the Creative Commons Attribution-ShareAlike 4.0 International Public License (CC BY-SA 4.0). A DOI is expected to be available prior to the final publication.

Author contributions. TS developed the HydroPy model and conducted the experiments for this study. SH prepared the original land surface data, developed the land surface and river routing models which later became the MPI-HM, and provided input during the development of HydroPy. Both authors participated in the design of the study, the analysis of the simulation as well as in the writing and editing of the manuscript.

Competing interests. The authors declare that they have no conflict of interest.

Acknowledgements. TS is supported by the DAAD (#57429828) from funds of the German Federal Ministry of Education and Research (BMBF). [The HydroPy logo \(Fig. 1, upper right\) was created by Raphael Dlugosch and Maria Lyssenko with contributions by Tobias Stacke and Richard Stacke. We like to thank two anonymous reviewers for the constructive comments that helped to improve our manuscript.](#)

References

- Alcamo, J., Döll, P., Kaspar, F., and Siebert, S.: Global change and global scenarios of water use and availability: an application of WaterGAP 1.0, Center for environmental systems research, University of Kassel, Kassel, Germany, 1997.
- Allen, R. G., Pereira, L. S., Raes, D., and Smith, M.: Crop evapotranspiration: guidelines for computing crop water requirements, FAO
605 Irrigation and Drainage Paper No 56, FAO, Rome, Italy, p. 300, 1998.
- Amante, C. and Eakins, B.: ETOPO1 1 Arc-Minute Global Relief Model: Procedures, Data Sources and Analysis, accessed July 2020, <https://doi.org/10.7289/V5C8276M>, technical Memorandum NESDIS NGDC-24. National Geophysical Data Center, NOAA, 2009.
- Arnold, J. G., Srinivasan, R., Muttiah, R. S., and Williams, J. R.: Large area hydrologic modeling and assessment Part I: Model development, *Journal of the American Water Resources Association*, 34, 73–89, <https://doi.org/10.1111/j.1752-1688.1998.tb05961.x>, 1998.
- 610 Bauer, H., Heise, E., Pfandtner, J., Renner, V., and Schmidt, P.: Entwicklung und Erprobung eines ökonomischen Erdbodenmodells zur Vorhersage von Oberflächenparametern im Rahmen eines Klimamodells, Tech. rep., DWD, Offenbach, Germany, final report for contract CLI-001-80-D (B), 1983.
- Bergström, S.: The HBV model-its structure and applications, Tech. Rep. 4, Swedish Meteorological and Hydrological Institute, Norrköping, Sweden, 1992.
- 615 Bieger, K., Arnold, J. G., Rathjens, H., White, M. J., Bosch, D. D., Allen, P. M., Volk, M., and Srinivasan, R.: Introduction to SWAT+, A Completely Restructured Version of the Soil and Water Assessment Tool, *JAWRA Journal of the American Water Resources Association*, 53, 115–130, <https://doi.org/10.1111/1752-1688.12482>, 2016.
- Bierkens, M. F. P.: Global hydrology 2015: State, trends, and directions, *Water Resources Research*, 51, 4923–4947, <https://doi.org/10.1002/2015wr017173>, 2015.
- 620 Dirmeyer, P. A., Gao, X., Zhao, M., Guo, Z., Oki, T., and Hanasaki, N.: GSWP-2: Multimodel Analysis and Implications for Our Perception of the Land Surface, *Bull. Amer. Meteor. Soc.*, 87, 1381–1398, <https://doi.org/10.1175/bams-87-10-1381>, 2006.
- Do, H. X., Zhao, F., Westra, S., Leonard, M., Gudmundsson, L., Boulange, J. E. S., Chang, J., Ciais, P., Gerten, D., Gosling, S. N., Schmied, H. M., Stacke, T., Telteu, C.-E., and Wada, Y.: Historical and future changes in global flood magnitude – evidence from a model–observation investigation, *Hydrol. Earth Syst. Sci.*, 24, 1543–1564, <https://doi.org/10.5194/hess-24-1543-2020>, 2020.
- 625 Dümenil, L. and Todini, E.: Chapter 9 - A rainfall-runoff scheme for use in the Hamburg climate model, in: *Advances in Theoretical Hydrology*, edited by O’Kane, J. P., European Geophysical Society Series on Hydrological Sciences, pp. 129–157, Elsevier, Amsterdam, <https://doi.org/10.1016/b978-0-444-89831-9.50016-8>, 1992.
- Forsythe, W. C., Rykiel, E. J., Stahl, R. S., i Wu, H., and Schoolfield, R. M.: A model comparison for daylength as a function of latitude and day of year, *Ecol. Modell.*, 80, 87–95, [https://doi.org/10.1016/0304-3800\(94\)00034-f](https://doi.org/10.1016/0304-3800(94)00034-f), 1995.
- 630 GEWEX ISLSCP Project: ISLSCP - I, Volume 1: Hydrology and Soil data., <https://catalogue.ceda.ac.uk/uuid/d80ea7f75faffd71a051a1517f3b2c05>, online provided by the NCAS British Atmospheric Data Centre, accessed Jan. 2021, 2007.
- GRDC: Long-Term Statistics and Annual Characteristics of GRDC Timeseries Data, online provided by the Global Runoff Data Centre of WMO. Koblenz: Federal Institute of Hydrology (BfG), accessed Mar. 2020, 2020.
- Gädeke, A., Krysanova, V., Aryal, A., Chang, J., Grillakis, M., Hanasaki, N., Koutroulis, A., Pokhrel, Y., Satoh, Y., Schaphoff, S., Schmied, H. M., Stacke, T., Tang, Q., Wada, Y., and Thonicke, K.: Performance evaluation of global hydrological models in six large Pan-Arctic
635 watersheds, *Climatic Change*, 163, 1329–1351, <https://doi.org/10.1007/s10584-020-02892-2>, 2020.

- Haddeland, I., Clark, D. B., Franssen, W., Ludwig, F., Voß, F., Arnell, N. W., Bertrand, N., Best, M., Folwell, S., Gerten, D., Gomes, S., Gosling, S. N., Hagemann, S., Hanasaki, N., Harding, R., Heinke, J., Kabat, P., Koirala, S., Oki, T., Polcher, J., Stacke, T., Viterbo, P., Weedon, G. P., and Yeh, P.: Multimodel Estimate of the Global Terrestrial Water Balance: Setup and First Results, *J. Hydrometeorol.*, 12, 640 869–884, <https://doi.org/10.1175/2011jhm1324.1>, 2011.
- Haddeland, I., Heinke, J., Biemans, H., Eisner, S., Flörke, M., Hanasaki, N., Konzmann, M., Ludwig, F., Masaki, Y., Schewe, J., Stacke, T., Tessler, Z. D., Wada, Y., and Wisser, D.: Global water resources affected by human interventions and climate change, *Proc Natl Acad Sci*, 111, 3251–3256, <https://doi.org/10.1073/pnas.1222475110>, 2014.
- Hagemann, S.: An improved land surface parameter dataset for global and regional climate models, Tech. Rep. 336, Max Planck Institute for Meteorology, Hamburg, Germany, <http://hdl.handle.net/11858/00-001M-0000-002B-539B-6>, 2002.
- Hagemann, S. and Dümenil, L.: A parametrization of the lateral waterflow for the global scale, *Climate Dyn.*, 14, 17–31, <https://doi.org/10.1007/s003820050205>, 1997.
- Hagemann, S. and Dümenil, L.: Documentation for the Hydrological Discharge Model, Tech. Rep. 17, Deutsches Klimarechenzentrum, Hamburg, Germany, 1998.
- 650 Hagemann, S. and Gates, L. D.: Improving a subgrid runoff parameterization scheme for climate models by the use of high resolution data derived from satellite observations, *Climate Dyn.*, 21, 349–359, <https://doi.org/10.1007/s00382-003-0349-x>, 2003.
- Hagemann, S. and Stacke, T.: Impact of the soil hydrology scheme on simulated soil moisture memory, *Climate Dyn.*, 44, 1731–1750, <https://doi.org/10.1007/s00382-014-2221-6>, 2015.
- Hagemann, S., Botzet, M., Dümenil, L., and Machenhauer, B.: Derivation of global GCM boundary conditions from 1 km land use satellite 655 data, Tech. Rep. 289, Max Planck Institute for Meteorology, Hamburg, Germany, 1999.
- Hagemann, S., Stacke, T., and Ho-Hagemann, H. T. M.: High Resolution Discharge Simulations Over Europe and the Baltic Sea Catchment, *Front. Earth Sci.*, 8, <https://doi.org/10.3389/feart.2020.00012>, 2020.
- Harris, C. R., Millman, K. J., van der Walt, S. J., Gommers, R., Virtanen, P., Cournapeau, D., Wieser, E., Taylor, J., Berg, S., Smith, N. J., Kern, R., Picus, M., Hoyer, S., van Kerkwijk, M. H., Brett, M., Haldane, A., del Río, J. F., Wiebe, M., Peterson, P., Gérard-Marchant, 660 P., Sheppard, K., Reddy, T., Weckesser, W., Abbasi, H., Gohlke, C., and Oliphant, T. E.: Array programming with NumPy, *Nature*, 585, 357–362, <https://doi.org/10.1038/s41586-020-2649-2>, 2020.
- Hoyer, S. and Hamman, J. J.: xarray: N-D labeled Arrays and Datasets in Python, *J. Open Res. Softw.*, 5, <https://doi.org/10.5334/jors.148>, 2017.
- ICDC: GLEAM v3.3a, accessed from www.GLEAM.eu May 8 2019, provided with transposed coordinates as daily files comprising all 665 parameters by the Integrated Climate Data Center (ICDC, icdc.cen.uni-hamburg.de), 2019.
- Kleidon, A.: Global Datasets of Rooting Zone Depth Inferred from Inverse Methods, *J. Climate*, 17, 2714–2722, [https://doi.org/10.1175/1520-0442\(2004\)017<2714:gdrzd>2.0.co;2](https://doi.org/10.1175/1520-0442(2004)017<2714:gdrzd>2.0.co;2), 2004.
- Kumar, A., Gosling, S. N., Johnson, M. F., Zaherpour, J., Leng, G., Schmied, H. M., Kupzig, J., Breuer, L., Hanasaki, N., Tang, Q., Kumar, R., Ostberg, S., Stacke, T., Pokhrel, Y., Wada, Y., and Masaki, Y.: Cross-scale evaluation of catchment- and global-scale hydrological 670 model simulations of drought characteristics across eight large river catchments, PREPRINT (version 1), <https://doi.org/10.21203/rs.3.rs-409757/v1>, 2021.
- Lehner, B. and Döll, P.: Development and validation of a global database of lakes, reservoirs and wetlands, *J. Hydrol.*, 296, 1–22, <https://doi.org/10.1016/j.jhydrol.2004.03.028>, 2004.

- Liang, X., Lettenmaier, D. P., Wood, E. F., and Burges, S. J.: A simple hydrologically based model of land surface water and energy fluxes for general circulation models, *Journal of Geophysical Research*, 99, 14415, <https://doi.org/10.1029/94jd00483>, 1994.
- Loveland, T. R., Reed, B. C., Brown, J. F., Ohlen, D. O., Zhu, Z., Yang, L., and Merchant, J. W.: Development of a global land cover characteristics database and IGBP DISCover from 1 km AVHRR data, *Int. J. Remote Sens.*, 21, 1303–1330, <https://doi.org/10.1080/014311600210191>, 2000.
- Manabe, S.: Climate and the ocean circulation: I. The atmospheric circulation and the hydrology of the earth's surface, *Monthly Weather Review*, 97, 739–774, [https://doi.org/10.1175/1520-0493\(1969\)097<0739:catoc>2.3.co;2](https://doi.org/10.1175/1520-0493(1969)097<0739:catoc>2.3.co;2), 1969.
- Martens, B., Miralles, D. G., Lievens, H., van der Schalie, R., de Jeu, R. A. M., Fernández-Prieto, D., Beck, H. E., Dorigo, W. A., and Verhoest, N. E. C.: GLEAM v3: satellite-based land evaporation and root-zone soil moisture, *Geosci. Model Dev.*, 10, 1903–1925, <https://doi.org/10.5194/gmd-10-1903-2017>, 2017.
- Matthews, E. and Fung, I.: Methane emission from natural wetlands: Global distribution, area, and environmental characteristics of sources, *Global Biogeochem Cycles*, 1, 61–86, <https://doi.org/10.1029/gb001i001p00061>, 1987.
- Mbaye, M. L., Hagemann, S., Haensler, A., Stacke, T., Gaye, A. T., and Afouda, A.: Assessment of Climate Change Impact on Water Resources in the Upper Senegal Basin (West Africa), *Am. J. Clim. Change*, 04, 77–93, <https://doi.org/10.4236/ajcc.2015.41008>, 2015.
- Miralles, D. G., Holmes, T. R. H., Jeu, R. A. M. D., Gash, J. H., Meesters, A. G. C. A., and Dolman, A. J.: Global land-surface evaporation estimated from satellite-based observations, *Hydrol. Earth Syst. Sci.*, 15, 453–469, <https://doi.org/10.5194/hess-15-453-2011>, 2011.
- Moriasi, D. N., Arnold, J. G., Liew, M. W. V., Bingner, R. L., Harmel, R. D., and Veith, T. L.: Model Evaluation Guidelines for Systematic Quantification of Accuracy in Watershed Simulations, *Trans ASABE*, 50, 885–900, <https://doi.org/10.13031/2013.23153>, 2007.
- Müller, C., Schaphoff, S., von Bloh, W., Thonicke, K., and Gerten, D.: Going open-source with a model dinosaur and establishing model evaluation standards, in: EGU General Assembly Conference Abstracts, p. 16172, 2018.
- Nash, J. and Sutcliffe, J.: River flow forecasting through conceptual models part I — A discussion of principles, *J. Hydrol.*, 10, 282–290, [https://doi.org/10.1016/0022-1694\(70\)90255-6](https://doi.org/10.1016/0022-1694(70)90255-6), 1970.
- Nossent, J. and Bauwens, W.: Optimising the convergence of a Sobol' sensitivity analysis for an environmental model: application of an appropriate estimate for the square of the expectation value and the total variance, in: 6th International Congress on Environmental Modelling and Software, Conference proceedings, Leipzig, Germany, 2012.
- Pokhrel, Y., Felfelani, F., Satoh, Y., Boulange, J., Burek, P., Gädeke, A., Gerten, D., Gosling, S. N., Grillakis, M., Gudmundsson, L., Hanasaki, N., Kim, H., Koutroulis, A., Liu, J., Papadimitriou, L., Schewe, J., Schmied, H. M., Stacke, T., Telteu, C.-E., Thiery, W., Veldkamp, T., Zhao, F., and Wada, Y.: Global terrestrial water storage and drought severity under climate change, *Nat Clim Change*, <https://doi.org/10.1038/s41558-020-00972-w>, 2021.
- Prudhomme, C., Giuntoli, I., Robinson, E. L., Clark, D. B., Arnell, N. W., Dankers, R., Fekete, B. M., Franssen, W., Gerten, D., Gosling, S. N., Hagemann, S., Hannah, D. M., Kim, H., Masaki, Y., Satoh, Y., Stacke, T., Wada, Y., and Wisser, D.: Hydrological droughts in the 21st century, hotspots and uncertainties from a global multimodel ensemble experiment, *Proc Natl Acad Sci*, 111, 3262–3267, <https://doi.org/10.1073/pnas.1222473110>, 2013.
- Rasche, L., Schneider, U. A., Lobato, M. B., Diego, R. S. D., and Stacke, T.: Benefits of Coordinated Water Resource System Planning in the Cauca-Magdalena River Basin, *Water Economics and Policy*, 04, <https://doi.org/10.1142/s2382624x1650034x>, 2018.
- Roeckner, E., Arpe, K., Bengtsson, L., Brinkop, S., Dümenil, L., Esch, M., Kirk, E., Lunkeit, F., Ponater, M., Rockel, B., Sausen, R., Schlese, U., Schubert, S., and Windelband, M.: Simulation of the present-day climate with the ECHAM model: impact of model physics and resolution, *Tech. Rep. 93*, Max-Planck-Institute for Meteorology, Hamburg, Germany, 1992.

- Roeckner, E., Arpe, K., Bengtsson, L., Christoph, M., Claussen, M., Dümenil, L., Esch, M., Giorgetta, M. A., Schlese, U., and Schulzweida, U.: The atmospheric general circulation model ECHAM-4: Model description and simulation of present-day climate, Tech. Rep. 218, Max-Planck-Institute for Meteorology, Hamburg, Germany, 1996.
- 715 Schewe, J., Heinke, J., Gerten, D., Haddeland, I., Arnell, N. W., Clark, D. B., Dankers, R., Eisner, S., Fekete, B. M., Colón-González, F. J., Gosling, S. N., Kim, H., Liu, X., Masaki, Y., Portmann, F. T., Satoh, Y., Stacke, T., Tang, Q., Wada, Y., Wisser, D., Albrecht, T., Frieler, K., Piontek, F., Warszawski, L., and Kabat, P.: Multimodel assessment of water scarcity under climate change, *Proc Natl Acad Sci*, 111, 3245–3250, <https://doi.org/10.1073/pnas.1222460110>, 2013.
- Stacke, T. and Hagemann, S.: Development and evaluation of a global dynamical wetlands extent scheme, *Hydrol. Earth Syst. Sci.*, 16, 2915–2933, <https://doi.org/10.5194/hess-16-2915-2012>, 2012.
- 720 Stacke, T. and Hagemann, S.: Land surface parameter fields at 0.5deg resolution for use with the HydroPy model, <https://doi.org/10.5281/zenodo.4541239>, 2021a.
- Stacke, T. and Hagemann, S.: Source code for the global hydrological model HydroPy, <https://doi.org/10.5281/zenodo.4541380>, 2021b.
- Sutanudjaja, E. H., van Beek, R., Wanders, N., Wada, Y., Bosmans, J. H. C., Drost, N., van der Ent, R. J., de Graaf, I. E. M., Hoch, J. M., de Jong, K., Karssenber, D., López, P. L., Peßenteiner, S., Schmitz, O., Straatsma, M. W., Vannamettee, E., Wisser, D., and Bierkens, M. F. P.: PCR-GLOBWB 2: a 5 arcmin global hydrological and water resources model, *Geoscientific Model Development*, 11, 2429–2453, <https://doi.org/10.5194/gmd-11-2429-2018>, 2018.
- 725 Telteu, C.-E., Schmied, H. M., Thiery, W., Leng, G., Burek, P., Liu, X., Boulange, J. E. S., Andersen, L. S., Grillakis, M., Gosling, S. N., Satoh, Y., Rakovec, O., Stacke, T., Chang, J., Wanders, N., Shah, H. L., Trautmann, T., Mao, G., Hanasaki, N., Koutroulis, A., Pokhrel, Y., Samaniego, L., Wada, Y., Mishra, V., Liu, J., Döll, P., Zhao, F., Gädeke, A., Rabin, S., and Herz, F.: Understanding each other's models: a standard representation of global water models to support improvement, intercomparison, and communication, *Geosci. Model Dev. Discuss.*, pp. 1–56, <https://doi.org/10.5194/gmd-2020-367>, 2021.
- 730 Wada, Y., Wisser, D., Eisner, S., Flörke, M., Gerten, D., Haddeland, I., Hanasaki, N., Masaki, Y., Portmann, F. T., Stacke, T., Tessler, Z., and Schewe, J.: Multimodel projections and uncertainties of irrigation water demand under climate change, *Geophys. Res. Lett.*, 40, 4626–4632, <https://doi.org/10.1002/grl.50686>, 2013.
- Warrilow, D. A., Sangster, A. B., and Slingo, A.: Modelling of landsurface processes and their influence on European climate, *Met O 20 Tech Note DCTN 38*, Meteorological Office, Bracknell, UK, 1986.
- Weiland, F. S., Lopez, P., Van Dijk, A., and Schellekens, J.: Global high-resolution reference potential evaporation, in: 21st International Congress on Modelling and Simulation, Conference Proceedings, Broadbeach, Queensland, Australia, 2015.
- 740 Wigmosta, M. S., Vail, L. W., and Lettenmaier, D. P.: A distributed hydrology-vegetation model for complex terrain, *Water Resour. Res.*, 30, 1665–1679, <https://doi.org/10.1029/94wr00436>, 1994.
- Zhang, L., Dobslaw, H., Stacke, T., Güntner, A., Dill, R., and Thomas, M.: Validation of terrestrial water storage variations as simulated by different global numerical models with GRACE satellite observations, *Hydrology and Earth System Sciences*, 21, 821–837, <https://doi.org/10.5194/hess-21-821-2017>, 2017.
- 745 Zhao, F., Veldkamp, T. I. E., Frieler, K., Schewe, J., Ostberg, S., Willner, S., Schauburger, B., Gosling, S. N., Schmied, H. M., Portmann, F. T., Leng, G., Huang, M., Liu, X., Tang, Q., Hanasaki, N., Biemans, H., Gerten, D., Satoh, Y., Pokhrel, Y., Stacke, T., Ciais, P., Chang, J., Ducharne, A., Guimberteau, M., Wada, Y., Kim, H., and Yamazaki, D.: The critical role of the routing scheme in simulating peak river discharge in global hydrological models, *Environ. Res. Lett.*, 12, <https://doi.org/10.1088/1748-9326/aa7250>, 2017.

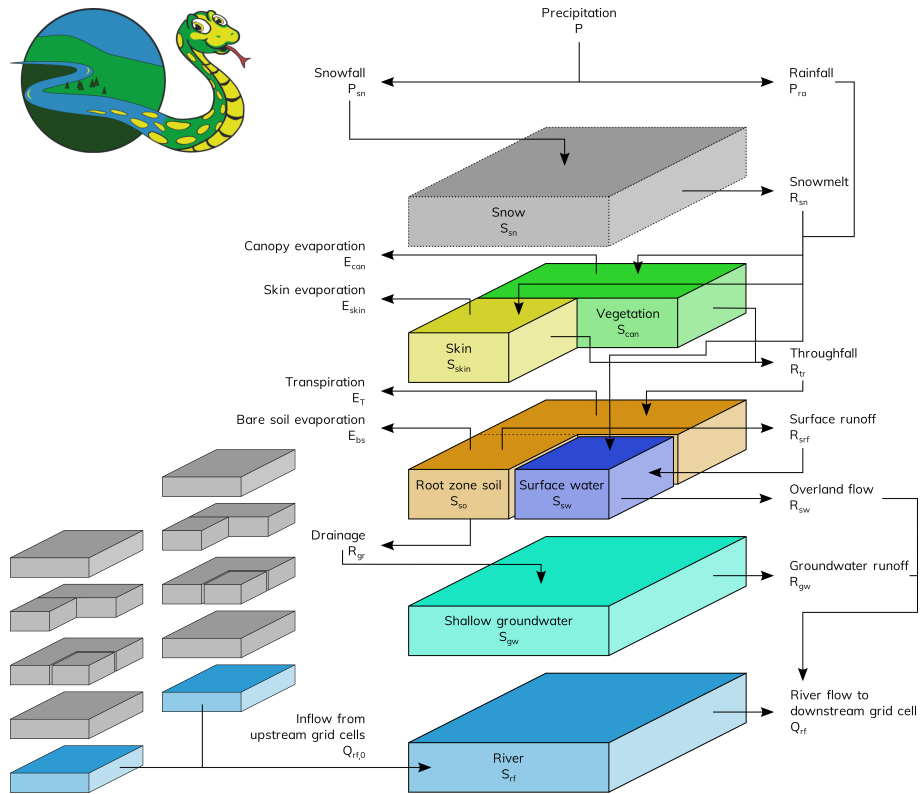


Figure 1. Schematic of the major water storages and fluxes in HydroPy -~~Connecting water fluxes are shown together with solid arrows~~ the symbols used in the process description (see Sec. ~~Input and output fluxes are denote~~ 2.2) Most processes only affect each grid cell individually (central column) but river routing also interacts with ~~dashed arrows~~ neighboring cells (represented by small storage columns) The upper left figure shows the official logo designed for the HydroPy model.

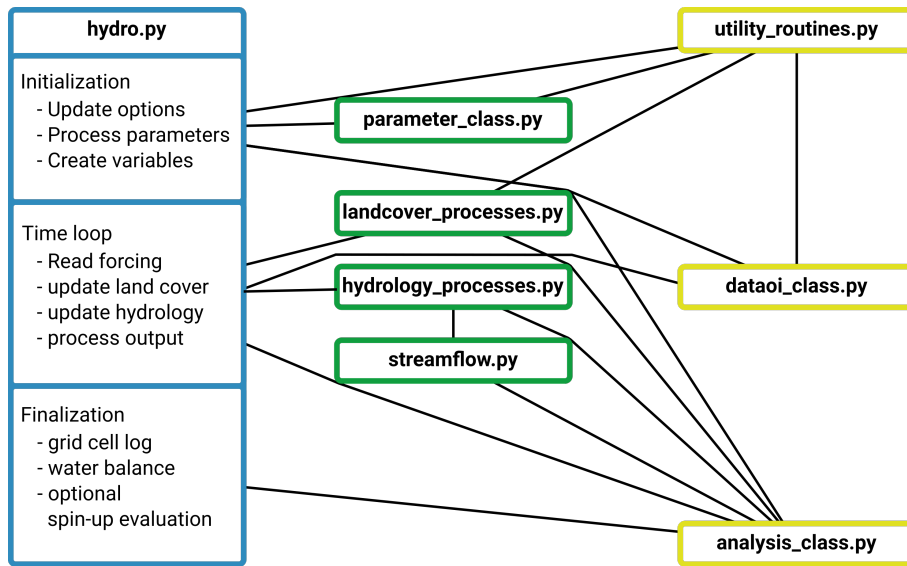


Figure 2. Simplified flowchart of HydroPy depicting the files belonging to the model and their primary interactions. The main routine is shown in blue, process routines are shown in green and files containing auxiliary functions (I/O, analysis, ...) are shown in yellow.

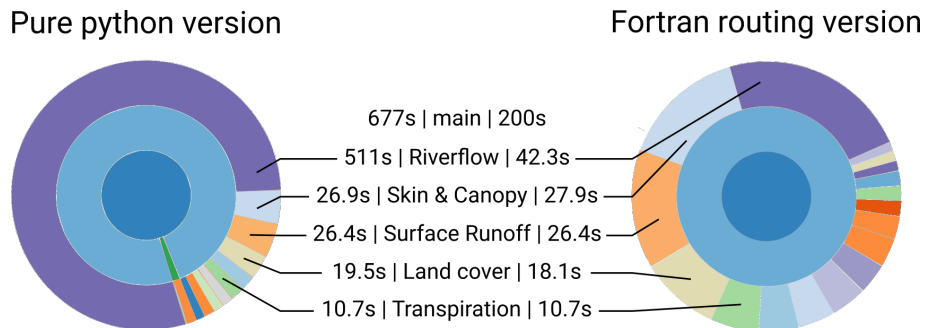


Figure 3. Sunburst graphs depicting the distribution of model run-time for a global simulation of one year at 0.5° resolution without writing any output. Both simulations were conducted on a single node of a high-performance Linux cluster (using a Intel(R) Xeon(R) Platinum 8160 CPU with 2.10GHz). Values are shown for the pure Python version (left) and the version using Fortran for river routing (right). The visualization was done using Snakeviz (<https://jiffyclub.github.io/snakeviz/>). Note, that as HydroPy does currently not utilize parallelization, the run-times on a standard office laptop are roughly the same.

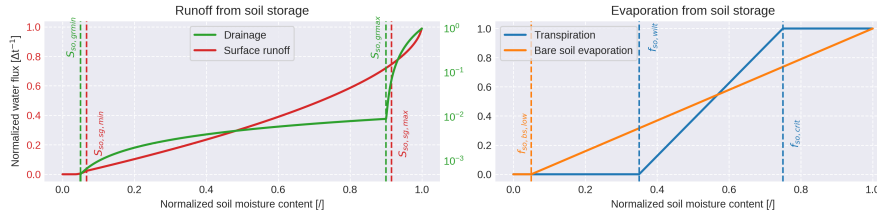


Figure 4. Behaviour of runoff (left panel, surface runoff in red, drainage in green) and evaporation (right panel, transpiration in blue, bare soil evaporation in orange) fluxes calculated as a function of soil moisture for a single grid cell. All variables are normalized using their maximum values for better comparison. Dashed lines indicate variable specific thresholds with are defined in section 2.2.1. Note, that drainage is visualized using a logarithmic axis.

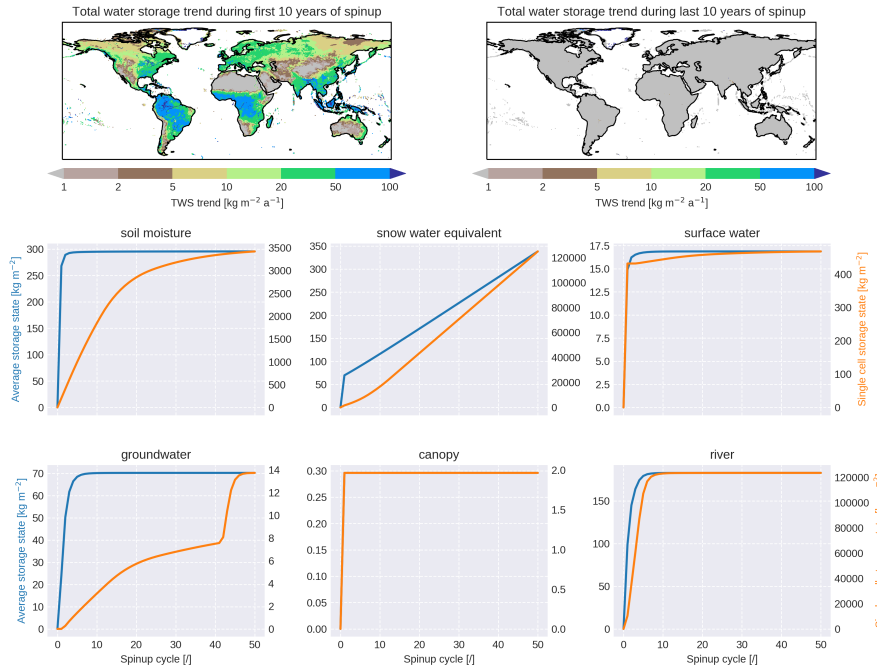


Figure 5. Evolution of various storage contents during HydroPy spin-up. The maps shows the trends in the total water storage (all storages accumulated) during the first (left map) and last (right map) 10 years of spin-up. Blue lines show values averaged over the whole land surface and orange lines represent the grid cell with the largest residual trend at the end of the spin-up period. The central map shows the trends in the total water storage (all storages accumulated) during the first 10 years of spin-up.

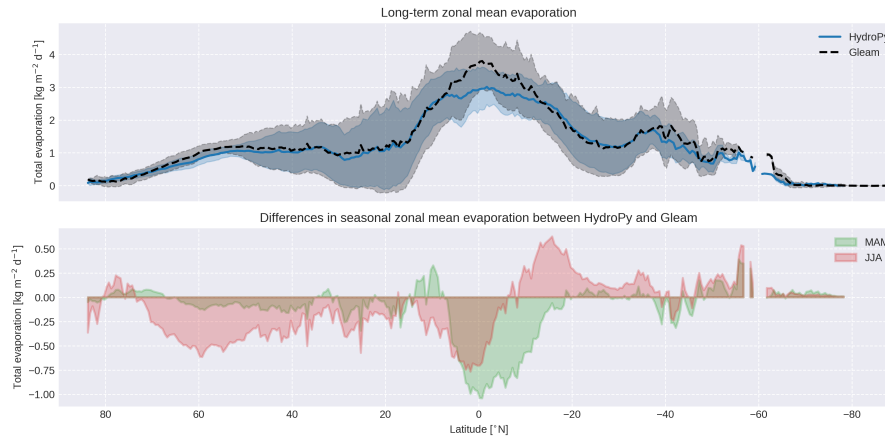


Figure 6. Zonal mean evaporation averaged over the period 1980-2014 for HydroPy and Gleam (upper panel) as well as their seasonal differences in the boreal spring (MAM) and summer (JJA) (lower panel).

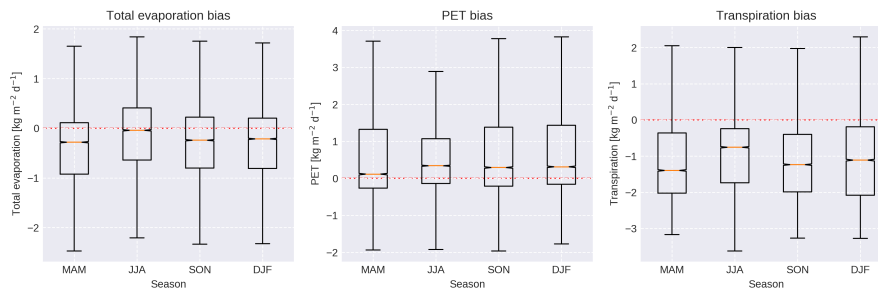


Figure 7. Percentile distribution of biases in the differences of seasonal mean fields between HydroPy and Gleam data between 20 and -20°N.

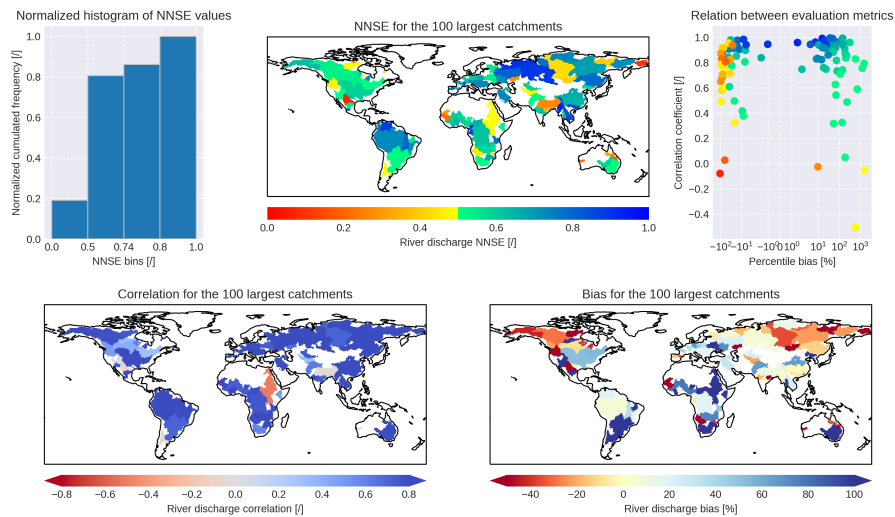


Figure 8. Normalized Nash-Sutcliffe efficiency of simulated river discharge for the world’s 100 largest catchments compared to GRDC observations (GRDC, 2020): the upper panel shows the cumulative histogram (left) of the spatial distribution (middle) of NNSE values as well as its relation (right) to the temporal correlation and percentile bias. The spatial distribution of the two latter metrics are shown in the lower panels.

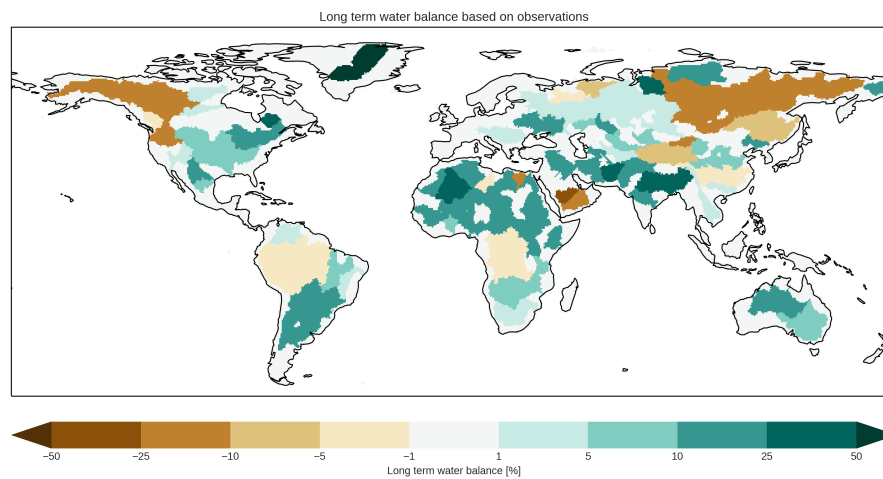


Figure 9. Long-term water balance based on GSWP3 precipitation, GLEAM evaporation and GRDC river discharge remapped to catchment scale. Note, that this water balance is only a first order estimate. No trends in storage content are included. Furthermore, the GRDC river discharge climatologies often represent different time periods than GSPW3 and GLEAM.

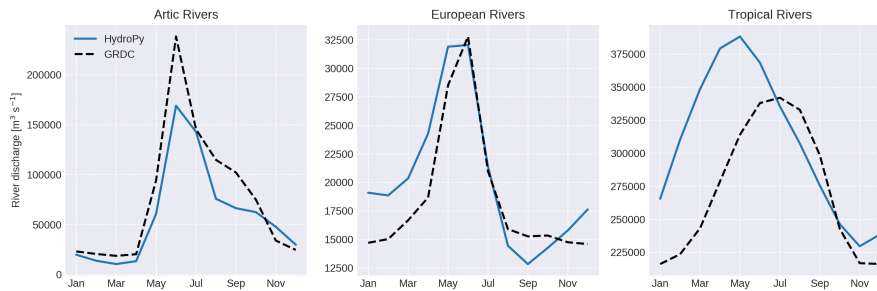


Figure 10. Climatological river discharge curves averaged for selected rivers in three regions: Arctic Rivers (Lena, Ob, Yenisey, Amur, Kolyma, Mackenzie River, and Yukon), European Rivers (Danube, Rhine, Rhone, Po, Vistula, Pechora, and Neva) and Tropical rivers (Amazon, Congo, Orinoco, Mekong, Rio Magdalena, Zambezi, and Niger). Simulated HydroPy discharge curves are indicated in blue and GRDC observations in dashed black.

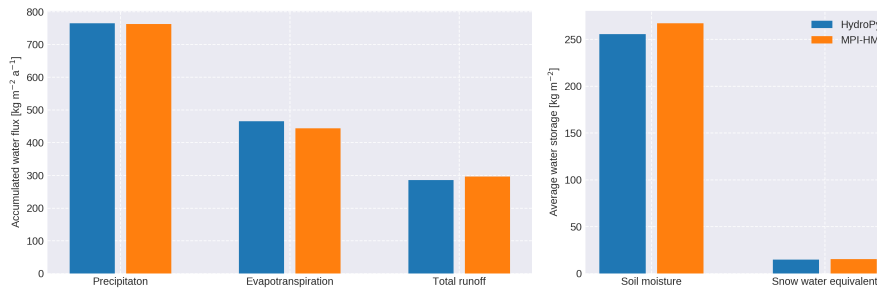


Figure 11. Land surface water fluxes (left) and storage states (right) averaged over the simulation period for HydroPy (blue) and MPI-HM (orange).

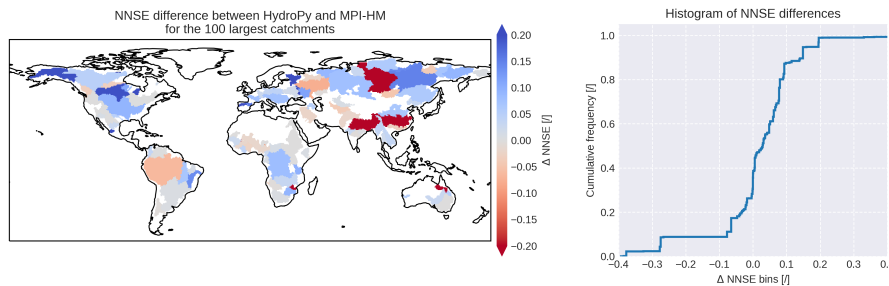


Figure 12. Spatial distribution (left) and cumulative histogram (right) of NNSE differences for river discharge between HydroPy and MPI-HM.

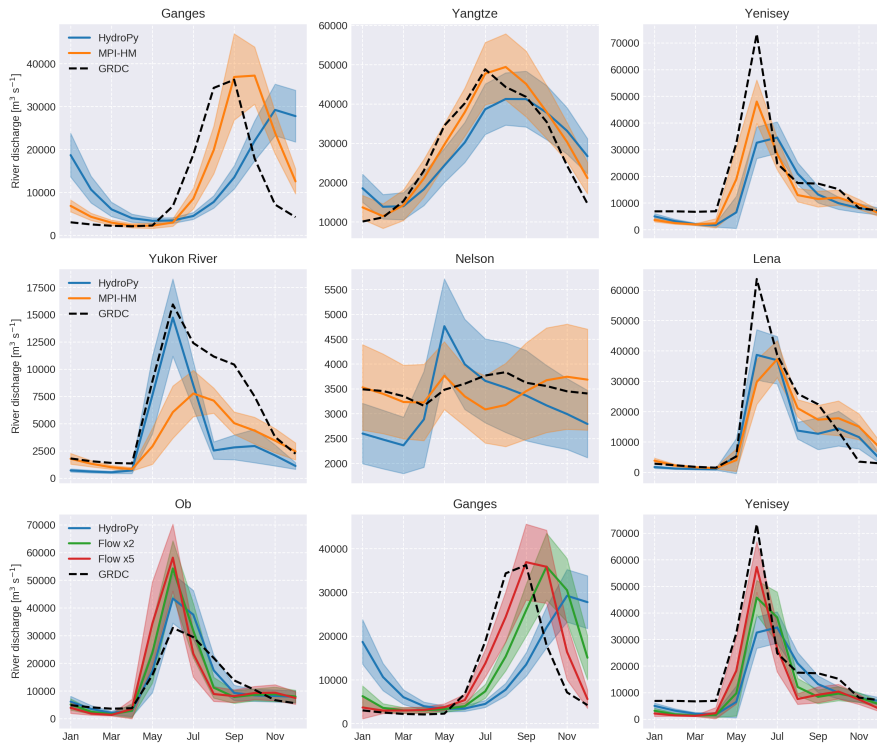


Figure 13. Monthly climatologies of river discharge for different river catchments with GRDC observations (dashed black). The upper two rows also show simulated discharge from HydroPy (blue) and MPI-HM (orange). The lower row show simulated river discharge produced with the default parameters in HydroPy (blue) as well as those with modified reference flow velocities for wetlands using factors of two (green) and five (red).

Table 1. Overview about variables used in HydroPy process description, referenced with their equations numbers. Variables directly available for output are denoted by providing their short name in the output column.

Symbol	Description	Output Name	Equation
A_{gc}	Grid cell surface area	-	29
b	Orographical shape parameter	-	17, 18, 19, 20, 33
b_{oro}	Normalized topographical standard deviation	-	32, 36
b_{sg}	Subgrid distribution parameter	-	32
c_{max}	Maximum number of river flow cascades	-	26, 38, 40, 41
E_T	Plant transpiration	transp	13, 21
E_{bs}	Bare soil evaporation	sevap	13, 22
E_{can}	Canopy evaporation	canoevap	7, 9, 10, 21
E_{skin}	Skin evaporation	skinevap	7, 9, 10, 22
f_{bare}	Bare soil fraction	fbare	7, 12, 13
f_{lake}	Lake fraction	-	23, 37
f_{day}	Fractional day length	-	3
$f_{pe,red}$	Fractional storage reduction due to permafrost	-	30, 31
f_{pe}	Permafrost fraction	-	30
$f_{seq,bs,low}$	S_{seq} fractional lower limit for E_{bs}	-	22
$f_{seq,crit}$	S_{seq} fraction for unconstraint transpiration	-	21
f_{sw}	Surface water fraction	flake	23
f_{veg}	Vegetation fraction	fveg	7, 12, 13
$f_{wetland}$	Wetland fraction	-	23, 37
f_{wet}	Wet surface fraction for skin and canopy	-	8, 9
$f_{rc,liquid}$	Maximum liquid snow water fraction	-	4
F_{snlg}	Refreezing snow melt	-	4, 5, 6
LAG_{gw}	Shallow groundwater retention time	-	25, 36
LAG_{rf}	River flow retention time	-	27, 35, 38, 41
LAG_{sw}	Surface water retention time	-	25, 35, 38, 41
LAI	Leaf area index	-	11
P	Total precipitation	precip	2
PET	Potential evapotranspiration	potevap	9, 21, 22, 23
P_{re}	Rainfall	rainf	7, 8, 9, 10, 23
P_{sn}	Snowfall	snowf	1, 2, 3
$Q_{r,lo}$	River inflow from upstream cells	rivdis	28

continued on next page

750

Symbol	Description	Output Name	Equation
Q_{rla}	River storage outflow from cascade n	-	26, 27, 29
Q_{rf}	River discharge	dis	28, 29
R_{can}	Runoff from canopy reservoir	-	10, 12
$R_{gr,high}$	Highflow drainage component	-	15, 16
$R_{gr,low}$	Lowflow drainage component	-	14, 16
$R_{gr,max}$	Maximum drainage	-	15
$R_{gr,min}$	Minimum drainage	-	14, 15
R_{gr}	Subsurface drainage / groundwater recharge	qsb	13, 16, 24, 25
R_{gw}	Grundwater runoff	qg	24, 29
R_{skin}	Runoff from skin reservoir	-	10, 12
R_{sn}	Snowmelt	smelt	1, 3, 5, 7, 8, 9, 10, 23
R_{srf}	Surface runoff	qs	13, 18, 23, 29
R_{sw}	Overland flow into river	qsl	23, 25
R_{tr}	Throughfall onto ground	throu	12, 13, 18, 20
σ_0	Minimum orographical sub-grid standard deviation	-	32
σ_h	Orographical sub-grid standard deviation	-	32
σ_{max}	Maximum orographical sub-grid standard deviation	-	32
$S_{can,max}$	Maximum actual canopy storage	-	8, 10, 11
S_{can}	Canopy reservoir	canopystor	7
S_{gw}	Groundwater storage	groundwstor	24, 25
$S_{pe,max}$	Maximum soil moisture in permafrost regions	-	30
S_{rf}	Riverflow storage	riverstor	26, 27
$S_{skin,max}$	Maximum actual skin storage	-	8, 10, 11
S_{skin}	Skin reservoir	skinstor	7
S_{snlq}	Snow liquid water content	wliq	1, 4, 6
S_{sn}	Snow water equivalent	swe	1, 3, 4
$S_{se,max}$	Maximum root zone soil moisture capacity	-	14, 15, 16, 17, 18, 21, 22, 30, 31
$S_{se,sa,max}$	Maximum sub-grid soil moisture capacity	-	17, 18, 19, 20, 31
$S_{se,sa,min}$	Minimum sub-grid soil moisture capacity	-	17, 18, 19, 20, 31
$S_{se,sa}$	Sub-grid soil moisture capacity	-	17, 18, 19, 20
$S_{se,wilt}$	Root zone moisture at the wilting point	-	21, 31
S_{se}	Root zone soil moisture	rootmoist	13, 14, 15, 16, 17, 18, 21, 22
S_{sw}	Surface water storage	lakestor	23, 25
T_{melt}	Snow melt temperature threshold	-	3

continued on next page

continued from previous page

Symbol	Description	Output Name	Equation
$T_{sn,min}$	Minimum temperature for rainfall	-	2
$T_{sn,max}$	Maximum temperature for snowfall	-	2
T_{surf}	Surface temperature	tsurf	1, 2, 3, 16, 18
v	Slope dependend water flow velocity	-	34
v_{gw}	Water flow velocity for groundwater	-	36
v_{rf}	Water flow velocity in rivers	-	35, 38, 39
v_{sw}	Water flow velocity for surface water	-	35, 38, 39

Table 2. Land surface data [fields-variables](#) and their use (directly or as input for derived variables) in the default setup of HydroPy. [A symbol is provided for all variables that are used in equations in the hydrological process \(Sect. 2.2\) or input data description \(Sect. 3\).](#)

Variable	Long Name	Symbol	Source	Utilization
lsm	Land sea mask	\sim	Hagemann (2002)	defines land cells
area	Grid cell surface area	A_{gc}	Computed	unit conversions
glacier	Glacier fraction	\sim	Hagemann (2002)	excluded from simulation
perm	Permafrost fraction	f_{pe}	GEWEX ISLSCP Project (2007)	Soil scheme
flake	Lake fraction	f_{lake}	Lehner and Döll (2004)	Lake scheme, River routing
fwetl	Wetland fraction	$f_{wetland}$	Lehner and Döll (2004)	River routing
fveg	Vegetated fraction	f_{veg}	Hagemann (2002)	Canopy scheme, Soil scheme
lai	Leaf area index	LAI	Hagemann (2002)	Canopy scheme
srftopo	Mean surface orography	h	Amante and Eakins (2009)	River routing
topo_std	STD of surface orography	σ_h	Amante and Eakins (2009)	Soil scheme, Groundwater scheme
slope_avg	Slope	s	Amante and Eakins (2009)	Lake scheme
wcap	Maximum soil water capacity	$S_{so,max}$	Hagemann and Stacke (2015)	Soil scheme
wava	Plant available water	$S_{so,witt}$	Hagemann and Stacke (2015)	Soil scheme
wmin	Minimum sub-grid soil moisture capacity	$S_{so,sa,min}$	Hagemann and Gates (2003)	Soil scheme
wmax	Maximum sub-grid soil moisture capacity	$S_{so,sa,max}$	Hagemann and Gates (2003)	Soil scheme
beta	Distribution of sub-grid soil moisture capacities	b_{sg}	Hagemann and Gates (2003)	Soil scheme
rout_lat	River flow target indices for latitudes	\sim	Hagemann and Dümenil (1997)	River routing
rout_lon	River flow target indices for longitudes	\sim	Hagemann and Dümenil (1997)	River routing

Table 3. Reference values for lateral water flow computation obtained from sensitivity simulations described in Hagemann and Dümenil (1997).

	LAG_{ref}	n_{ref}	v_{ref}	Δl
Surface water	50.5566	1.11070	1.0885	171000
River	0.41120	5.47872	1.0039	228000
Groundwater	300	1	-	50000