

Development of a moving point source model for shipping emission dispersion modelling in EPISODE-CityChem v1.3

Kang Pan¹, Mei Qi Lim¹, Markus Kraft^{1,2,3}, and Epaminondas Mastorakos^{1,4}

¹Cambridge Centre for Advanced Research and Education in Singapore LTD., 1 Create Way, #05-05 Create Tower, Singapore, 138602

²School of Chemical Engineering and Biotechnology, University of Cambridge, West Cambridge Site, Philippa Fawcett Drive, Cambridge, CB3 0AS, UK

³Department of Chemical and Biomedical Engineering, Nanyang Technological University, 62 Nanyang Drive, Singapore, 637459

⁴Department of Engineering, University of Cambridge, Trumpington Street, Cambridge, CB2 1PZ, UK

Correspondence: Kang Pan (kangpan@mie.utoronto.ca), Epaminondas Mastorakos (em257@eng.cam.ac.uk)

Abstract. This paper demonstrates the development of a moving point source (MPS) model for simulating the atmospheric dispersion of pollutants emitted from ships under movement. The new model is integrated into the chemistry transport model EPISODE-CityChem v1.3. In the new model, ship parameters, especially speed and direction, are included to simulate the instantaneous ship positions and then the emission dispersion at different simulation time. The model was first applied to shipping emission dispersion modelling under simplified conditions, and the instantaneous and hourly averaged emission concentrations predicted by the MPS model and the commonly-used line source (LS) and fixed point source (FPS) models were compared. The instantaneous calculations were quite different due to the different ways to treat the moving emission sources by different models. However, for the hourly averaged concentrations, the differences became smaller especially for a large number of ships. The new model was applied to a real configuration from the seas around Singapore that included hundreds of ships and their dispersion was simulated over a period of a few hours. The simulated results were compared to measured values at different locations, and it was found that reasonable emission concentrations were predicted by the moving point source model.

1 Introduction

Maritime transport plays an important role in the global transportation for passengers and goods. Compared to other transportation modes, such as road and air transport, maritime transport is considered as the most energy efficient and environment-friendly mode (International Maritime Organization (IMO), 2012). Maritime trade has grown rapidly in past years and is expected to keep an average annual growth rate of 3.5% in future five years (Asariotis et al., 2019), leading to an increase of maritime activities. As a result, pollutant emissions generated from ships keep increasing and hence their impact on human health and environment in coastal cities and harbours has received attention by researchers (Langella et al., 2016; Tzannatos, 2010; Goldsworthy and Goldsworthy, 2015).

To evaluate the contributions of ship emissions on air quality in coastal areas, atmospheric dispersion modelling of the pollutants, such as NO_x , SO_2 and Particulate Matter (PM), in a regional or city scale by considering the local meteorological conditions, topographical information, turbulent diffusion, and chemical transformations is a useful approach. Different dispersion softwares such as a Gaussian model and a Eulerian model have been developed and widely applied in numerical simulations (Milazzo et al., 2017; Gibson et al., 2013; De Nicola et al., 2013; Mallet et al., 2018; Kukkonen et al., 2016). The most common and simplest one is a Gaussian-based model that assumes the dispersion of air pollutant to follow a Gaussian distribution. Merico et al. (2019) applied a steady-state Gaussian-based model – ADMS-5 – to estimate the dispersion of emissions from ships which are mainly in the hoteling and maneuvering phase in the harbour area of an Italian port city Bari. The same model was also used by Cesari et al. (2016) for a case study of ship emissions in Brindisi, Italy. Another popular steady-state Gaussian plume model, AERMOD, recommended by United States Environmental Protection Agency (EPA) was also widely used by different groups (Gibson et al., 2013; Cohan et al., 2011). Abrutytė et al. (2014) employed AERMOD to simulate the dispersion of NO_x from ships in Klaipėda port. AERMOD was also used by Fileni et al. (2019) and Cohan et al. (2011) to evaluate the contribution of ships on PM emissions in harbour cities. The Gaussian plume model is able to save a lot of computational cost, however, it suffers from several limitations, such as assuming a steady-state solution, a spatially uniform meteorology and straight line trajectories (Bluett et al., 2004), that make it not suitable under many conditions for air quality modelling.

In addition to the simple Gaussian models, some advanced dispersion models are developed as well. An example is the unsteady Gaussian puff model named CALPUFF, which is able to simulate the effects of time and space-varying meteorological conditions on pollutant transport, transformation and removal (Bluett et al., 2004). CALPUFF has been widely used for simulating the dispersion of ship emissions. Jahangiri et al. (2018) applied CALPUFF to simulate the average values of the ship emissions on the port area of Brisbane, Australia for the whole of 2013. Poplawski et al. (2011) and Murena et al. (2018) also employed CALPUFF to evaluate the effects of cruise ships on air quality in the harbours of Victoria, Canada and Naples, Italy respectively. Furthermore, a Lagrangian or Eulerian chemistry transport model (CTM) that can solve the advection-diffusion equation and the atmospheric chemistry to predict the transport and chemical reactions of emission species also received an increasing attention (Pillai et al., 2012; Gariazzo et al., 2007; Gadhavi et al., 2015). Krysztofiak-Tong et al. (2017) evaluated the air pollution contributed from ships and oil platforms in West Africa by using the Lagrangian model FLEXPART. Shang et al. (2019) and Chen et al. (2018) applied the Eulerian based WRF-CHEM model to simulate the influence of ship emissions on harbour cities in China. Liu et al. (2017) studied the impact of ship emissions on Shanghai urban area by using WRF-CMAQ model. Huszar et al. (2010) evaluated the effects of ship emissions on NO_x and Ozone (O_3) in Eastern Atlantic and Western Europe by using an Eulerian model CAMx. Karl et al. (2020) investigated the particles concentrations in the ship plumes by coupling an aerosol dynamic model MAFOR with a 3D Eulerian chemistry transport model EPISODE-CityChem. In these studies, the chemistry transport models (mainly Eulerian models) have shown the ability of predicting the pollutant concentrations at the locations of interest, and hence are a good approach for investigating the environmental impact of ship emissions in coastal cities.

55 In pollutant dispersion modelling, it is necessary to include an appropriate assumption or model for treating the emission sources. For a typical setup of shipping emission dispersion simulation, the definition for an emission source usually depends on the ship status, namely that the ship is at berth (hoteling) or on cruise (maneuvering and cruising). Usually, the ship at hoteling phase is treated as a fixed point emission source (Merico et al., 2019; Poplawski et al., 2011; Deniz and Kilic, 2010; Luciali et al., 2011; Formentin, 2017), which is a reasonable assumption as the ship stops at the dock and generates emissions from
60 its chimney as a single point. For the ships under movement, different models have been applied to treat the emission sources in different studies. Iodice et al. (2017) assumed the emissions from the moving ships were generated at multiple fixed points along the predefined navigation route. Saxe and Larsen (2004) used fixed points to represent the average positions of the ships in both maneuvering and hoteling modes. Murena et al. (2018) also treated the ships in maneuvering and navigation modes as fixed point emission sources. In another group of studies, a line emission source model was widely applied to simulate the
65 moving ships in maneuvering or cruising mode (Poplawski et al., 2011; Kotrikla et al., 2013; Deniz and Kilic, 2010; Luciali et al., 2011). In the line source (LS) model setup, the ship emission is assumed to be constantly emitted along the entire ship route which is assumed as a straight line. In some other cases, ships in hoteling or maneuvering modes were treated as area sources (Kotrikla et al., 2013; Formentin, 2017; Abrutyte et al., 2014), however, this assumption is not commonly used to treat ship emissions.

70 From the above literature review, it is evident that either a (or multiple) fixed point(s) source model or a line source model is commonly used for ships under movement in the air pollution dispersion modelling. However, neither of these assumptions is realistic as the ship position is changing when it is moving. The ship movement is not explicitly included in current air pollution dispersion modelling and leads to a research gap. In this paper, a moving point source (MPS) model was hence developed, that can update the ship positions at different time based on the ship speed and direction and then simulate the emission release from
75 the moving ships in the dispersion modelling. The new developed MPS model was integrated into the 3D Eulerian chemistry transport model EPISODE-CityChem (Hamer et al., 2020; Karl et al., 2019) and applied to predict the dispersion of NO₂ species generated by the ships in cruising mode in a simplified simulation, and the simulated results were compared to those obtained by using LS and fixed point source (FPS) models. In addition, the new MPS model was applied to a real case study to predict the concentrations of NO₂ and PM_{2.5} species contributed by all ships around the Singapore city, and the simulated
80 results were compared to the measured values in different observation stations. The MPS model introduces a new approach for treating the ships and other objects under movement in the atmospheric dispersion modelling, and will increase the knowledge of the atmospheric environment modelers. The model setups and important simulation results are presented in this paper.

2 Methods

The MPS model developed in this paper was integrated into the chemistry transport model, EPISODE-CityChem (Hamer et al.,
85 2020; Karl et al., 2019), which is an open source Fortran based code. EPISODE-CityChem is a city-scale chemistry extension of the dispersion model EPISODE, which is originally developed by Slørdal et al. (2003, 2008). In this section, the dispersion model, the MPS model, simulation setups and configurations of the case studies are introduced.

2.1 Dispersion model

EPISODE-CityChem simulates the transport, chemical reactions and deposition of pollutant species in both a 3D Eulerian grid and a ground-level sub-grid (Hamer et al., 2020; Karl et al., 2019). A typical Eulerian grid has a horizontal resolution of 1 km by 1 km, while the vertical grid size varies from several meters (near ground) to several hundreds meters (higher layer) with a total height up to several kilometers. The sub-grid has a better resolution with a typical size of 100 m by 100 m horizontally. The governing advection-diffusion and mass conservation equations for the averaged concentrations in the main Eulerian grid model are indicated as:

$$95 \quad \frac{\partial C_i}{\partial t} + \frac{\partial(uC_i)}{\partial x} + \frac{\partial(vC_i)}{\partial y} + \frac{\partial(wC_i)}{\partial z} = \frac{\partial}{\partial x} \left(K^{(H)} \frac{\partial C_i}{\partial x} \right) + \frac{\partial}{\partial y} \left(K^{(H)} \frac{\partial C_i}{\partial y} \right) + \frac{\partial}{\partial z} \left(K^{(z)} \frac{\partial C_i}{\partial z} \right) + R_i - S_i \quad (1)$$

$$\frac{\partial u}{\partial x} + \frac{\partial v}{\partial y} + \frac{\partial w}{\partial z} = 0 \quad (2)$$

where C_i is the concentration of species i ($i=1:N$, where N is the total number of species), u , v and w are the three wind velocity components, $K^{(H)}$ and $K^{(z)}$ are the horizontal and vertical eddy diffusivities, and R_i and S_i represent the source and sink terms. The estimation of eddy diffusivities is based on the mixing length theory (K-theory) (Slørddal et al., 2003). In the simulation, the emission source term, wind field and other meteorological conditions are assumed hourly constant. The emission species will be simulated until it is fully diluted or outside of the simulation domain. The photochemistry simulated in the Eulerian grid has several options, such as EMEP45 (Walker et al., 2003), EmChem03mod and EmChem09mod (Simpson et al., 2012), that are modified or updated from the European Monitoring and Evaluation Programme (EMEP) (Simpson, 1995). In this study, the chemical scheme applied is EmChem09mod.

105 In the sub-grid receptor model, the pollutants generated by emission sources (either a point or a line source) are calculated by using simple Gaussian models. The LS model used in the EPISODE-CityChem package is a steady-state integrated Gaussian plume model (HIWAY-2) with a simplified street canyon model (SSCM), which will affect the concentrations on the receptor points close to the line source (usually within an influence distance of 500 m). The emitted mass from line sources will be integrated into the 3D Eulerian model in each simulation time step. For the point source, a Gaussian segmented plume model, SEGPLU (Walker and Grønskei, 1992), with the use of a Weak-wind Open Road Model (WORM) (Walker, 2011) meteorological pre-processor (WMPP) is implemented to treat the pollutants released from an individual point source as discrete emissions of finite length plume segments, that emitted in each time interval (Δt). In the calculations, the plume rise (due to buoyancy or momentum) is estimated based on Briggs's algorithms (Briggs, 1969, 1971, 1975), which consider the different atmospheric stability conditions (such as neutral-unstable and stable conditions). The effects of stack downwash (Briggs, 1973) and plume penetration (Weil and Brower, 1984) on plume height are considered as well. The transport, growth, chemical reaction and deposition of the plumes will be estimated based on the local meteorological conditions where the plumes stay, and the plume mass will be integrated into the Eulerian grids when the segmented plume grows to a predefined size (usually when $\sigma_y/dy=4$ or $\sigma_z/dz=4$, where σ_y , σ_z are Gaussian dispersion length scales in cross wind direction and vertical direction for a plume, and dy , dz are the horizontal and vertical sizes of an Eulerian grid cell). The existing plumes will contribute to the concentrations in the sub-grid receptors. The emission concentration at the receptor points will be finally

estimated as the sum of the Eulerian grid concentration and contributions from line and point sources, described as Eq. (3).

$$C_{rec}^t = C_m^{t-1} + \sum_{l=1}^L C_l^t + \sum_{p=1}^P C_p^t \quad (3)$$

where, C_{rec}^t is the receptor point concentration at time t , C_m^{t-1} is the Eulerian grid concentration at previous time step (estimated by Eq. 1), C_l^t and C_p^t are the concentrations contributed from line and point emission sources, L and P are the total numbers of line and point emission sources. In the sub-grid modelling, the stack downwash, dry and wet deposition, and plume rise and penetration are considered as well, and the photochemistry applied is EP-10 plume scheme (Karl et al., 2019). More details about the EPISODE-CityChem software can be found in the papers written by Hamer et al. (2020) and Karl et al. (2019).

2.2 The moving point source model

As found from the literature review, LS and FPS models are the common approaches to simulate the emissions generated by the moving ships, however, they are not realistic as they cannot update the instantaneous ship positions. The MPS model is hence developed to fill the gap in the pollutant dispersion modelling.

In the MPS model, five new parameters are defined to determine the ship movement route, as presented in Fig. 1. The most important parameters are ship speed and direction, which can be easily captured from the maritime online databases, such as MarineTraffic. Three additional parameters, namely turning angle, start and stop time, are defined to customize the ship movement, based on more accurate ship travel information. The new variables for each ship are only updated hourly and hence keep constant for each simulation hour. The detailed descriptions about the five model parameters are summarized in Table 1.

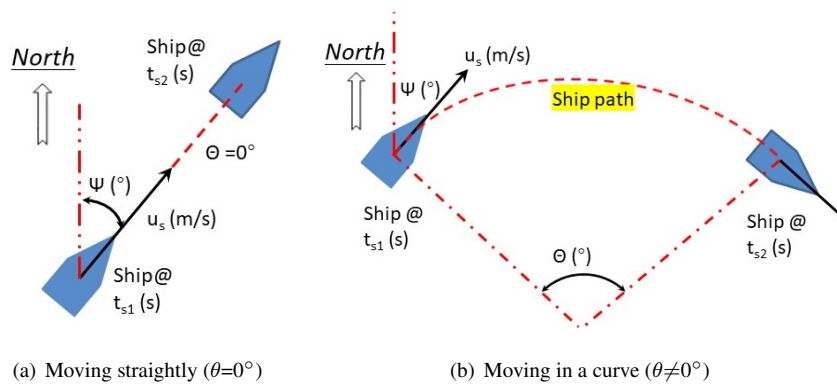


Figure 1. Illustration of the moving point source model. The ship variables in the figures are explained in Table 1.

Based on these five variables, the ship position is estimated and updated in each simulation time step (Δt). As shown in Fig. 2, ship emission is assumed to be emitted in a virtual point of the short ship line that represents an average ship position for each individual time step. The emitted plume is then treated by using the SEGPLU model in EPISODE. As mentioned above, the parameters (such as plume size and location) of each individual plume will be updated in each time step, and then their contributions to the 3D Eulerian cell and sub-grid receptors were calculated. In this model, the ship movement parameters,

Table 1. Setup of the moving point source model.

| Parameter | Description | Value | Note |
|----------------------------|---|---------------------------|--|
| speed (u_s) | speed at which point source is moving | $\geq 0 \text{ m s}^{-1}$ | (1) $u_s = 0 \text{ m s}^{-1}$: fixed point (e.g. ships at berth); (2) $u_s > 0 \text{ m s}^{-1}$: moving point (e.g. ships under cruise). |
| direction (Ψ) | direction at which point source is moving | $0 \sim 360^\circ$ | 0° : north; 90° : east; 180° : south; 270° : west. |
| turning angle (θ) | ship turning angle | $-360 \sim 360^\circ$ | (1) $\theta = 0^\circ$: moving straightly (Fig. 1(a)); (2) $\theta > 0^\circ$: turning clockwise (Fig. 1(b)); (3) $\theta < 0^\circ$: turning counter-clockwise (Fig. 1(b)). |
| start time (t_{s1}) | time that ship starts to move in each simulation hour | $0 \sim 3600 \text{ s}$ | (1) $0 \text{ s} \leq t_{s1} \leq 3600 \text{ s}$ if $\theta > 0^\circ$ (when ship is moving straightly, as shown in Fig. 1(a)); (2) in current version, $t_{s1} = 0 \text{ s}$ if $\theta \neq 0^\circ$ (when ship is moving in a curve, as shown in Fig. 1(b)). |
| stop time (t_{s2}) | time that ship stops to move in each simulation hour | $0 \sim 3600 \text{ s}$ | (1) $0 \text{ s} \leq t_{s2} \leq 3600 \text{ s}$ if $\theta > 0^\circ$; (2) in current version, $t_{s2} = 3600 \text{ s}$ if $\theta \neq 0^\circ$; (3) $t_{s1} < t_{s2}$. |

Note: In each simulation hour, all five variables are assumed constant and only need to be updated hourly.

mainly ship speed, direction and turning angle, are constant for each simulation hour, and hence, the virtual point is usually taken as the middle point of the short travel distance during each Δt . Apparently, the ship and plume positions will be more realistic when time step is smaller. For the time step that ship starts or stops to move, the estimation of the virtual point takes time factor into account, as presented in Eqs. (4) and (5).

$$\vec{x}_i = \vec{x}_{i-1} + 0.5d\vec{x}_i \frac{t_i - t_{s1}}{\Delta t}; \text{ (if } t_{i-1} \leq t_{s1} \leq t_i \text{)} \quad (4)$$

$$\vec{x}_i = \vec{x}_{i-1} + d\vec{x}_i - 0.5d\vec{x}_i \frac{t_{s2} - t_{i-1}}{\Delta t}; \text{ (if } t_{i-1} \leq t_{s2} \leq t_i \text{)} \quad (5)$$

where, \vec{x}_i is the virtual position (x, y) of a ship during i^{th} time step in each simulation hour, $d\vec{x}_i = \vec{u}_s(t_i - t_{s1})$ (or $\vec{u}_s(t_{s2} - t_{i-1})$) is the actual ship travel distance in i^{th} time step, $t_i = i\Delta t$ is the actual time difference from the start of each simulation hour for i^{th} time interval, \vec{u}_s is the ship velocity. As mentioned above, the five parameters in the simulation are only updated in each hour, assuming that ship is moving in a straight line or a curve with a constant speed during each hour. This is actually a limitation for the current version of MPS model compared to a real ship if its movement parameters change frequently, however, the model used in this study is to address the idea of a MPS model that has the potential of tracking the ship movement and then better simulates the dispersion details of ship emissions. The current version of MPS model provides an alternative option for simulating the dispersion of ship emissions in a harbour city. In addition, it should be highlighted that it is possible to define an arbitrary ship movement by using the MPS model, once the real ship movement data collected at different time is added to the MPS input files in the simulation.

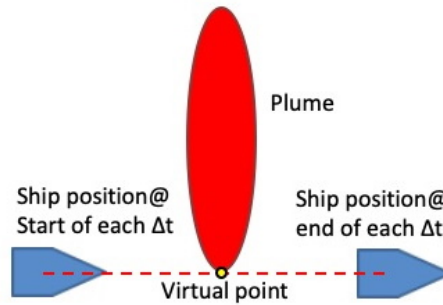


Figure 2. Virtual point for plume release in each time step (Δt).

2.3 Simulation setup

160 The purpose of this study is to evaluate the new developed MPS model, and two simulations are conducted in Singapore area in this paper. One is a simplified dispersion simulation that only includes moving ships with simplified input conditions, and the results by using the MPS model are compared with the LS and FPS models. Another is a real case study that simulates all the ships around Singapore city by the new model and compared with the concentrations of emission species measured in different stations.

165 2.3.1 Simplified study

As shown in Fig. 3, the simulation is first conducted to include only a group of moving ships. The simulation domain is set for a 70 km by 70 km area, with a horizontal resolution of 1 km by 1 km in the reference case as suggested by Hamer et al. (2020) and Karl et al. (2019), and the domain has 13 vertical layers, with a height of 10 m in the ground layer and 500 m in the top layer (total height is 3500 m). The sub-grid receptor points (100 m by 100 m horizontal resolution) are created with a
 170 receptor height of 1.5 m above ground. In addition, a data point is selected around the coastline, as shown in Fig. 3, to record the concentrations of emission species at every simulation time step.

To simplify the simulation, a constant meteorological condition taken from two weather stations (as shown in Fig. 3(b)), one in south of Singapore and another in north of Singapore, was applied to the entire simulation period. The details of the weather conditions are shown in Table 2, where the wind inputs in two weather stations were assumed as 2 m s^{-1} and 180° (blown
 175 from south to north). A build-in meteorological pre-processor, MCWIND, was used to first guess and estimate the local wind speed and direction in the simulation domain, based on the input values from the weather stations, and then they were adjusted to the given topography to obtain the 3D divergence-free and mass-consistent diagnostic wind field (Hamer et al., 2020). Other meteorological parameters (such as vertical temperature gradient) in the simulation area were also estimated by MCWIND. In this paper, the calculated wind field in the ground-level layer for the dispersion modelling is shown in Fig. 4.

180 In the simplified simulation, a total number of 44 ships with different types and sizes are included. The ships are separated to two groups, where one group (22 ships) is assumed to move towards China and another is heading to Europe. The ship data,

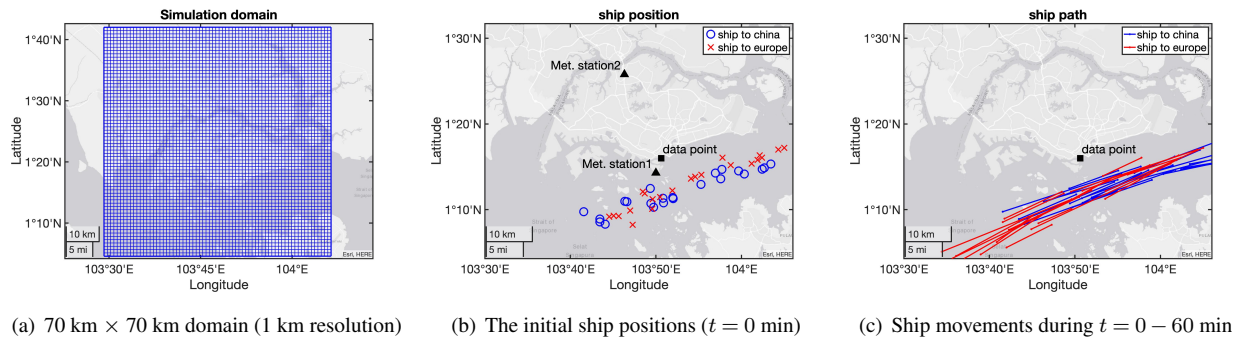


Figure 3. Configuration of the simulation domain in Singapore used in the simplified simulation. Symbols: ships to China (Blue circles) and ships to Europe (Red crosses); Lines: ship routes.

Table 2. Meteorological inputs applied in MCWIND pre-processing utility for the simplified simulation.

| U_{st1} (m s^{-1}) | WD_{st1} ($^{\circ}$) | T_{st1} ($^{\circ}\text{C}$) | RH_{st1} (%) | U_{st2} (m s^{-1}) | WD_{st2} ($^{\circ}$) |
|---------------------------------|---------------------------|----------------------------------|----------------|---------------------------------|---------------------------|
| 2.0 | 180 | 32 | 64.3 | 2.0 | 180 |

Note: U: wind speed; WD: wind direction; T: temperature; RH: relative humidity; st1 and st2: weather station 1 and 2.

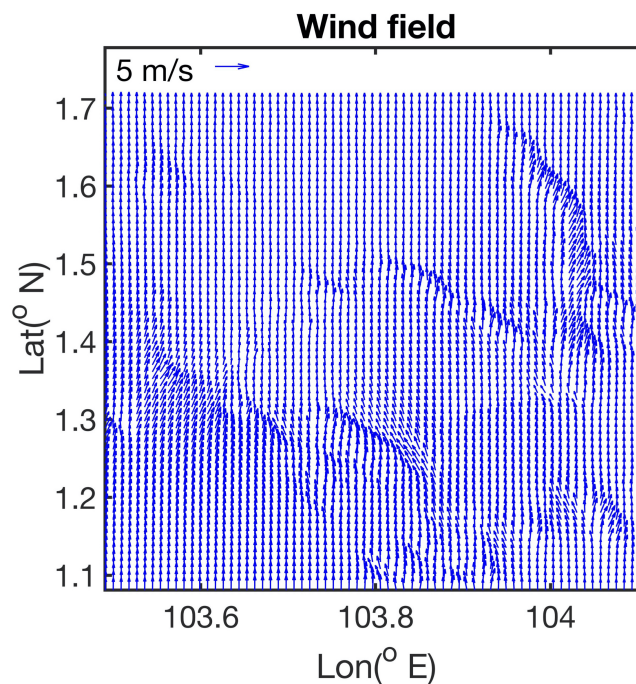


Figure 4. The 2D plot of ground-level diagnostic wind field calculated by MCWIND for the simplified dispersion modelling.

such as ship position, speed, direction and gross tonnage, is collected from the online ship resource (such as VesselFinder). In order to better illustrate the feature of the new MPS model and also compare its results with those simulated by the LS and FPS models, only ships on the China-Europe route (west-east direction) are kept as the initial conditions by removing all other ships (such as those are at berthed or moving in north-south direction), as shown in Fig. 3, and no new ships are included in the simulation. The dispersion modelling was conducted until all ships moved out of the simulation domain. During the entire simulation, all ships are assumed moving straightly ($\theta=0^\circ$) and the ship parameters (such as speed and direction) were assumed to be unchanged.

The ships are then divided into different categories (such as liquid bulk ships, dry bulk carriers, container, cargo, etc.) based on those defined in MEET (Methodologies for estimating air pollutant emissions from transport) methodology by Trozzi and Vaccaro (1999) and Trozzi (2010). The emission rates of main species (such as NO_x and PM) for each ship were then estimated by using the power-based emission factor equation (Eq. (6)) proposed in the MEET method, based on ship's specifications such as ship type, speed and gross tonnage, as shown in Fig. 5. During the simplified simulation, the emission rates for each ship were constant as the ship operating condition was unchanged, and no background concentrations were used. In addition, the chimney height is assumed to be 30 m for the large size ships (such as the liquid bulk ships) and 10 m for the small ones (such as the leisure ships), while exit gas is assumed to be at 20 m s^{-1} with 300°C for all ships. The ship building height for each ship is set as 5 m below than the chimney height, and the width is assumed as 20 m for the large size ships and 5 m for the small ones. These choices have a very minor effect on the results (Appendix C). In this study, the ship emission sources were treated by using three different models, namely moving point, fixed point and line sources, and the simulated emission profiles were compared. The simulation setups are summarized in Table 3. In addition, sensitivity studies were conducted by changing the mesh density, simulation time step and emission source setups (such as exit velocity, chimney height and ship building dimensions), and the simulated concentration profiles for different species (such as NO_2 , SO_2 and $\text{PM}_{2.5}$) were compared as well. The simulation results for the sensitivity studies are presented in Appendices A - D.

$$E_{trip,i,j,k} = \sum_m \left[t_m \sum_e (P_e \times LF_e \times EF_{e,i,j,k,m}) \right] \quad (6)$$

where, E_{trip} is emission over a trip (kg), EF is emission factor (kg kWh^{-1}), LF is engine load factor (%), P is engine power (kW), t is time (hours), e is engine category (main or auxiliary engine), i is pollutant species (such as NO_x , PM), j is engine type (slow, medium and high speed diesel engine, gas turbine and steam turbine), k is fuel type (bunker fuel oil, marine diesel/gas oil, gasoline), m is ship operation mode (cruising, hoteling, maneuvering).

2.3.2 Real case study

The MPS model was applied to a real case study in this paper as well. The hourly averaged emission values for several hours (11 am to 4 pm on April 23, 2020) in Singapore were simulated by using the MPS model, and the results at different observation stations were compared to the measured data. The model setups (such as the grid size) and numerical methods (such as MEET method for emission rate calculation) are same with those used in the simplified simulation, except those (such

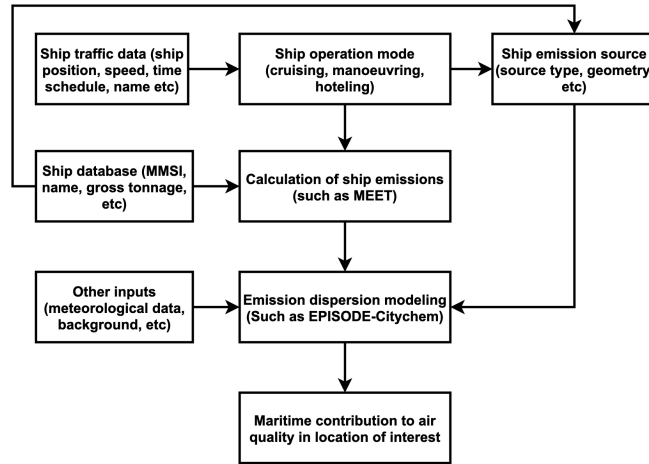


Figure 5. Shipping emission dispersion modelling with MEET method (Trozzi, 2010).

Table 3. Setups of shipping emission dispersion modelling.

| Case | Emission source | Time step | Horizontal resolution | Vertical resolution |
|------|-----------------|-------------------|-------------------------------|--|
| 1 | MPS model | $\Delta t=15.8$ s | $dx=dy=1$ km ($n_x=n_y=70$) | varying dz ($dz_{1-2}=10$ m ... $dz_{13}=500$ m) with total height of 3.5 km |
| 2 | LS model | $\Delta t=15.8$ s | $dx=dy=1$ km ($n_x=n_y=70$) | varying dz ($dz_{1-2}=10$ m ... $dz_{13}=500$ m) with total height of 3.5 km |
| 3 | FPS model | $\Delta t=15.8$ s | $dx=dy=1$ km ($n_x=n_y=70$) | varying dz ($dz_{1-2}=10$ m ... $dz_{13}=500$ m) with total height of 3.5 km |
| 4 | MPS model | $\Delta t=10$ s | $dx=dy=1$ km ($n_x=n_y=50$) | varying dz ($dz_{1-10}=10$ m and $dz_{11-30}=20$ m) with total height of 0.5 km |

as the meteorology and background concentrations) introduced in this section. The configuration and setups of the simulation is shown in Fig. 6.

The first difference in this real case study compared to the simplified simulation is that all the ships around Singapore city are included in the simulation, and the ships are only updated in each hour and their rates are estimated by using MEET method (Eq. 6) based on the ship information obtained from the online resource (VesselFinder). Then the meteorological conditions obtained from Meteorological Service Singapore in each hour are applied to the simulation, while the concentrations of emission species obtained from the National Environmental Agency in Singapore were selected as the background concentrations. In this study, all other model setups and configurations are list as case 4 in Table 3.

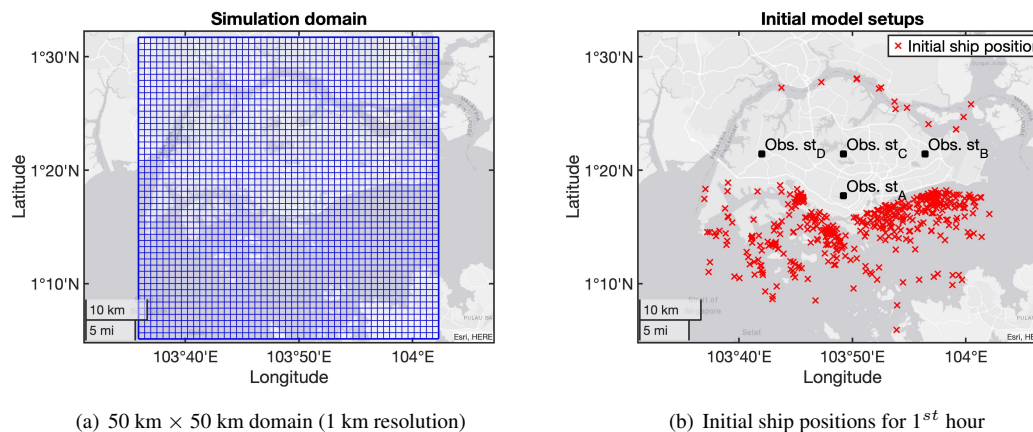


Figure 6. Configuration of the simulation domain used in the real case simulation.

3 Results and Discussion

In this section, the results for two studies are presented. The first one (section 3.1 and 3.2) is results by comparing the MPS model with LS and FPS models for a simplified simulation. The air pollution dispersion modelling was first conducted with only one ship in the simulation domain, and the plume structures simulated by different emission models are compared. The emission source models were then applied to the additional simulation cases (cases 1-3) that include more ships in China-Europe direction near Singapore. The instantaneous results and the hourly averaged NO_2 values simulated by different emission models are presented, as both of them are important for evaluating the impact of the pollutant emissions on the locations of interest. The second part (section 3.3) is a real case study (case 4) that compares the predicted hourly averaged NO_2 and $\text{PM}_{2.5}$ concentrations by the MPS model at the observation stations with the measured data.

3.1 Simplified simulation – preliminary comparisons of different emission source models

The new MPS model was first tested by simulating only one ship, which moves from east to west side. In this preliminary simulation, the ship movement parameters are constant, and all other conditions such as wind speed and direction are same as mentioned in Table 2.

Figure 7(a) presents the instantaneous NO_2 concentration near ground simulated by the MPS model. Based on the 2D plots, it clearly shows that the species concentration inside the plume is gradually reduced in the opposed direction to the ship movement, which is reasonable. As the ship moves to west-south direction and keeps emitting emissions at different positions along its route, the early generated emission will be transported by wind to further north and then diluted, and hence, the emission plume is formed with minimum concentration at the east side and peak value at the west side. The simulated results indicate that the MPS model gives a quite reasonable prediction for the distribution of emissions released by a moving ship.

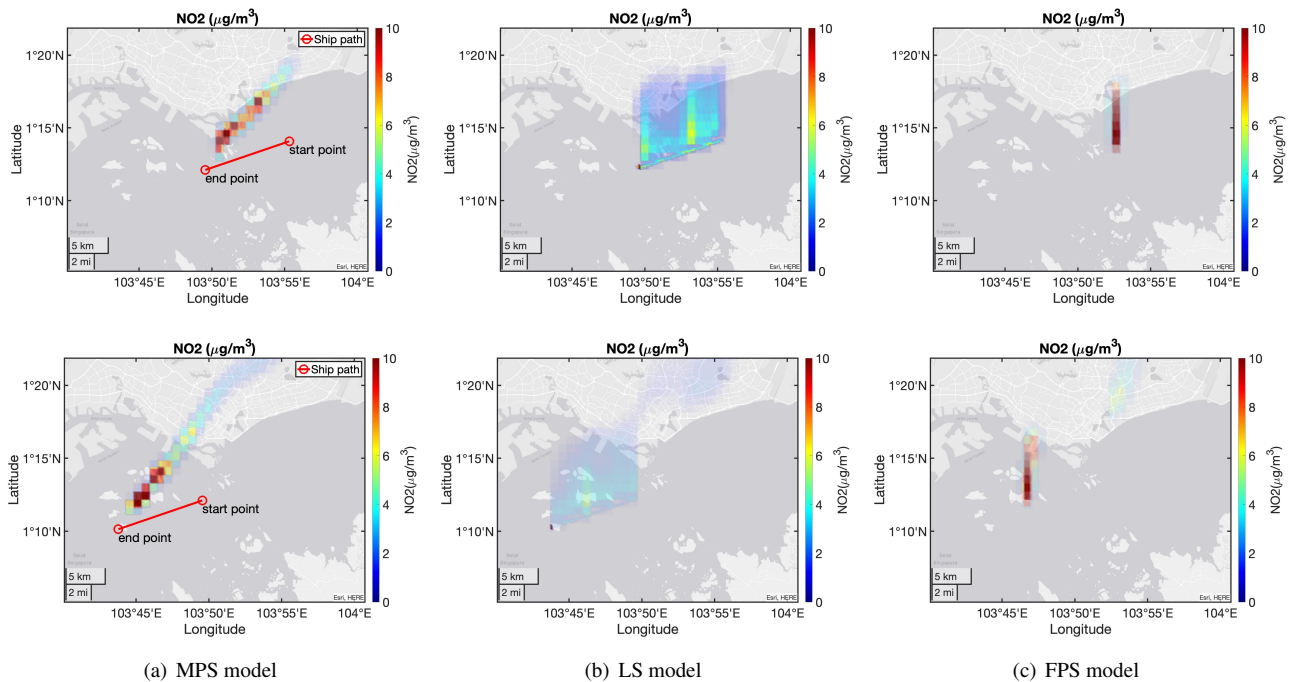


Figure 7. Instantaneous NO_2 concentrations near ground generated by one moving ship. 1st row: At $t = 60$ min; 2nd row: At $t = 120$ min.

In comparison, the LS model gives quite different results, as shown in Fig. 7(b), that the simulated NO_2 species is distributed in a much wider area with a relatively smaller peak concentration. In the dispersion modelling, a line source is a very common model for treating a moving ship, assuming that the ship continuously generates emissions along the entire line in the simulation. As a result, more emissions appear near the entire ship route and then gradually diluted in the downwind side. Compared to the real condition, it is unrealistic as the ship keeps moving and is not able to emit emissions from the entire ship route simultaneously. Furthermore, since the total emission rates (g s^{-1}) generated by the ship are same for the MPS and LS models, the NO_2 emission rate at each point along the ship route (or saying emission rate intensity ($\text{g s}^{-1} \text{m}^{-1}$)) in the LS model is much smaller than the MPS model. Hence, the maximum NO_2 concentration generated by the LS model has a relatively smaller value than the MPS model.

In addition, the simulated emission profiles by using a FPS model are illustrated in Fig. 7(c). The FPS model is another commonly used assumption for treating the moving ship in the literature. In this study, the moving ship is assumed to stay in the middle point of the ship routine in each hour. As shown in Fig. 7(c), the NO_2 emission is blown to north by wind from the ship point and then diluted. Since the ship position is assumed unchanged during each hour in the simulation, the emission is distributed in a much smaller area with a much larger concentration compared to the other two models. Clearly, the FPS model cannot reveal the effects of ship movement on emission dispersion.

3.2 Simplified simulation – results for case studies with more ships

After comparing the three emission source models for only one ship simulation, the three models were applied to a simplified study (cases 1-3) with 44 ships involved, in order to further evaluate the performance of different models for predicting the effects of moving ships on air quality in coastal cities. Both of the instantaneous and average results are presented in this section to fully compare the different emission models. The meteorological conditions and simulation setups are same as presented in Tables 2 and 3.

3.2.1 Simulated results by using the moving point source model

In the case study for more moving ships, the simulation was first conducted by using the MPS model (case 1), and the instantaneous ground-level NO_2 concentrations at different time around Singapore area are plotted in Fig. 8. Based on the 2D plots, it shows that the NO_2 emission moves to north from the ship positions and forms the higher concentration at $t = 60$ min compared to other simulation time, as most of ships are passing the same area during the first 60 minutes (Fig. 3(c)). The gas species then moves to west and east directions as the two groups of ships move towards their destinations, and the gas concentration is continuously diluted in the following simulations as the ships keep moving out of Singapore area.

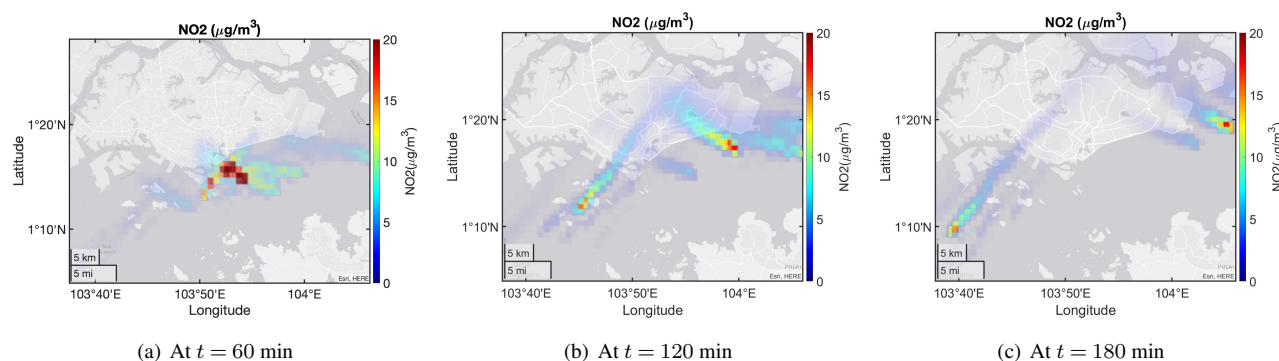


Figure 8. Instantaneous NO_2 concentrations near ground by using MPS model (case 1).

Figure 9 illustrates three vertical NO_2 concentration profiles (west-east vertical plane) at $t = 60$ min. From these figures, it shows that less NO_2 species arrives at the ground when the plumes are closer to ships (Fig. 9(a)), and then the gas species will be transported vertically to the ground as the plumes move to the downwind direction (Fig. 9(b)). This is mainly attributed to the plume rise effects that the gas species exits the ship chimney with a certain velocity (in the simplified simulation, the exit velocity is assumed as 20 m s^{-1} for all 44 ships), and then the gas species will be blown by the wind (south to north) and only reaches the ground at a certain distance in the downwind direction. As a result, the peak NO_2 concentrations at ground level appear on the locations that are far away from the ship routes but not near the ships, as shown in Fig. 8. As the emissions move further in the downwind direction, the plumes will be diluted vertically until fully disappeared, as shown in Fig. 9(c).

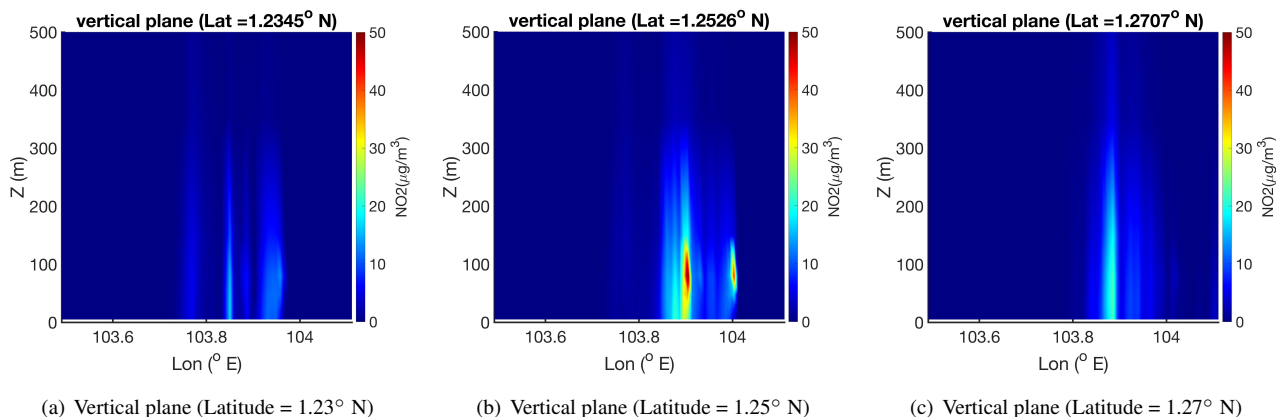


Figure 9. Vertical NO₂ profiles (west-east direction) at $t = 60$ min.

In addition, the time history of NO₂ concentration recorded at the data point (shown in Fig. 3(b)) is also plotted as shown in Fig. 10, where it indicates that there are two peaks for NO₂ concentration when using the MPS model. The time history is reasonable. Based on the NO₂ curves, it indicates that the emission species generated by the ships take around 30 minutes to reach the data point, and hence, the two peaks should be induced by the transport and accumulation of emissions generated during the first 60 minutes. As shown in Fig. 11, a large group of ships pass by or are close to the data point during the first 30 minutes and lead to a continuous emission accumulation to form the first peak concentration, and another group of ships pass by the data point later (from 40 to 60 minutes) to generate the second peak value. After 60 minutes, most of the ships have passed the data point (Fig. 12), and hence the NO₂ concentration is continuously decreased. The time series of 2D plots in Fig. 8 and the NO₂ concentration curve in Fig. 10 reveal that the effects of ship movements on emission distributions can be well captured by using the MPS model.

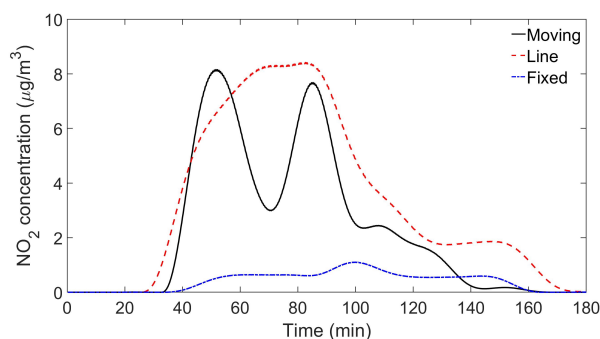


Figure 10. Time history of NO₂ concentration at data point simulated by using different emission source setups.

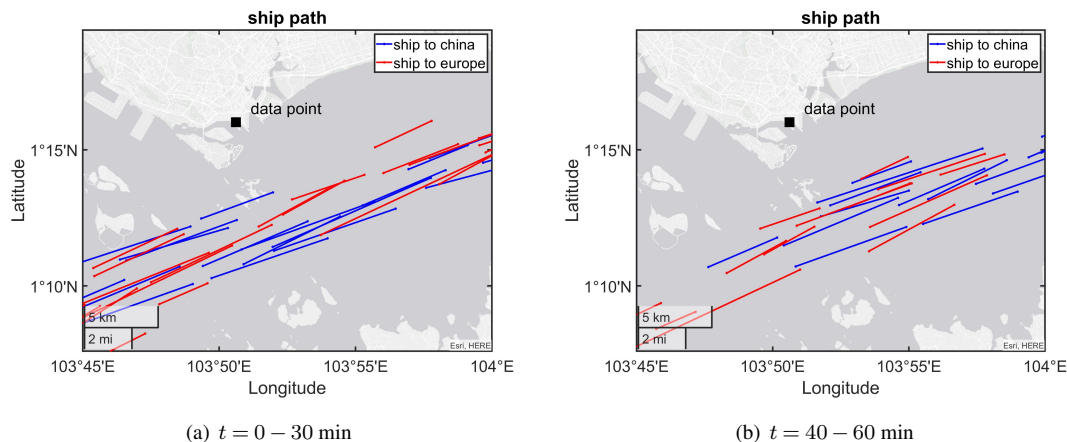


Figure 11. Ship movements during $t = 0 - 60$ min.

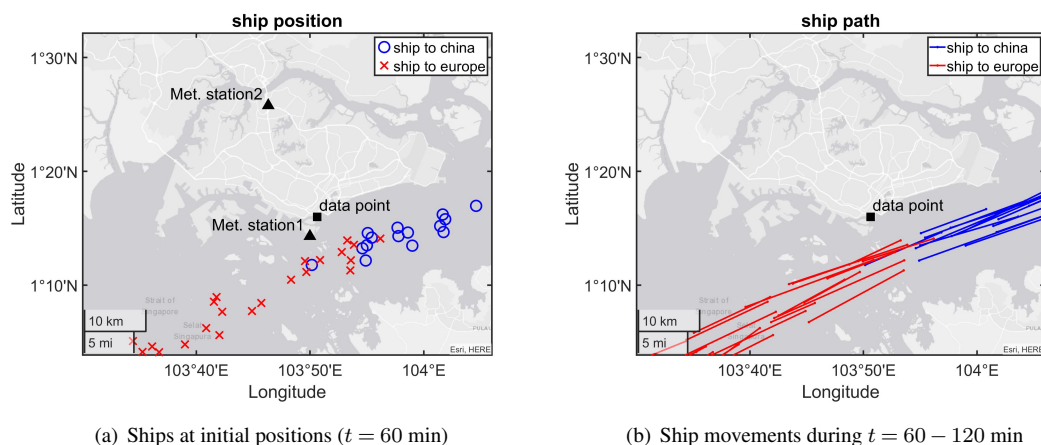


Figure 12. The ship initial positions and movements during $t = 60 - 120$ min.

3.2.2 Comparison of three emission source models — instantaneous value

In the simplified case study, the simulation was then conducted by treating each moving ship as a line source (case 2). The instantaneous NO_2 concentrations contributed from the two groups of ships are plotted in Fig. 13 for different simulation time. Compared to the MPS results (Fig. 8), it clearly shows a much wider NO_2 distribution in Singapore area when using the LS model to simulate the moving ships, due to the continuous emission generation along the entire ship routes. For the LS model, the generated emissions have the continuous impact on a specific area, while the emissions emitted by the MPS model only have transient impact on the same area. As a result, when ships are concentrated in a small region (as shown in Fig. 3), the integration of simulated NO_2 emission generated by line sources induces a higher peak concentration than the MPS model (Fig. 13(a)), although the emission rate intensity for each line source is smaller as mentioned in section 3.1. As expected, when

the ships are separated, the maximum NO_2 concentration for the line source becomes smaller than the MPS model, as shown in Figs. 13(b) and 13(c).

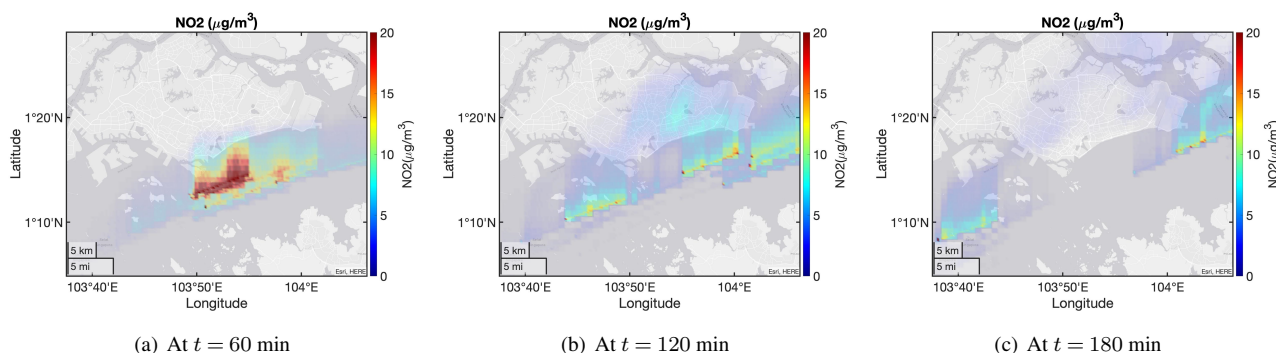


Figure 13. Instantaneous NO_2 concentrations near ground by using the LS model (case 2).

The NO_2 time history curve for the LS simulation is also obtained as shown in Fig. 10. Compared to the MPS model, this simulated NO_2 concentration reaches to its peak at around $t = 65$ min and then is kept for around 15 minutes before it drops. In EPISODE-CityChem, hourly based simulations are conducted, and all the conditions such as meteorological parameters and emission setups are constant for every 60 minutes' simulation. As shown in Figs. 3 and 12, more ships pass the data point during the first 60 minutes and less ships pass by during the 2nd simulation period ($t = 60 - 120$ min). When the LS model is used, a constant total NO_2 emission rate is generated during the 1st simulation period ($t = 0 - 60$ min) and continuously affects the data point, leading to a concentration rise in the NO_2 curve to the peak value at around $t = 65$ min (Fig. 10). Then the emission generation and dilution reach an equilibrium condition to maintain a constant peak concentration for a while, until the emissions generated by the ships in the 2nd simulation period arrive at the data point. A smaller total emission rate is generated by the smaller amount of ships (during $t = 60 - 120$ min) near the data point area, and hence, the local concentration at the data point is reduced, shown as the NO_2 curve in Fig. 10. Clearly, the NO_2 concentration history obtained by the LS model cannot reveal the effects of real ship movements on emission dispersion, and hence, it is not an appropriate assumption for simulating the instantaneous emission dispersion for ships in cruising mode compared to the MPS model.

In addition, the simulation was conducted by using the FPS model as well, assuming that the ships are staying at the middle points of the ship routes in each hour. The ground-level NO_2 distribution profiles are presented as Fig. 14. As expected, the emissions are distributed as separated plume segments, which are clearly not accurate. In Fig. 10, the NO_2 history curve for the fixed point assumption has the smallest peak value, as less NO_2 emission can be blown to the location of the data point. The individual plume segments and the smallest single-peak NO_2 time history indicate that the FPS model is an inaccurate approach for simulating the emission release and dispersion from the moving ships. Based on the comparisons of the simulation results by using three different emission models, it suggests that the new developed MPS model can simulate more realistic ship movement and then instantaneous emission concentrations generated by the moving ships.

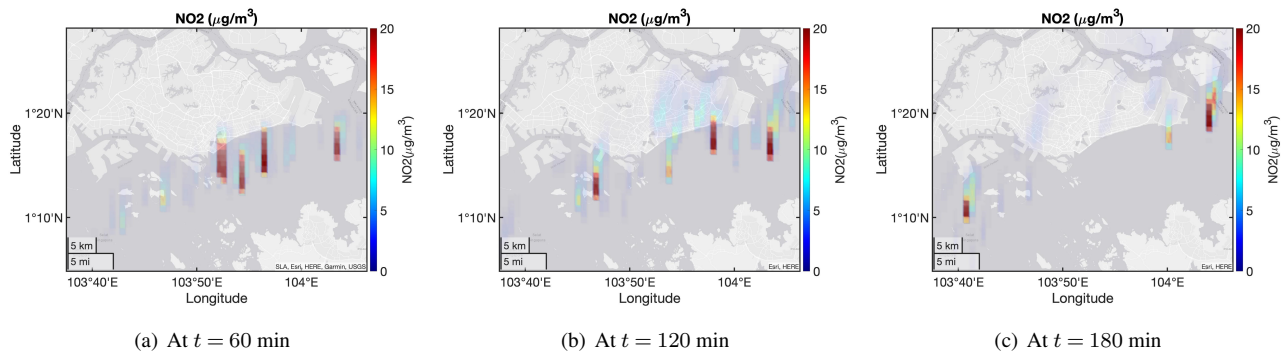


Figure 14. Instantaneous NO_2 concentrations near ground by using the FPS model (case 3).

3.2.3 Comparison of three emission source models – average value

320 The simulation results in previous sections are the instantaneous NO_2 concentrations. In emission dispersion modelling, the average results (usually hourly based) are also important as they can be used for policy decision and for evaluating the long-term environmental impact. In this section, the hourly averaged results by using three different emission source models are compared as well, and the average NO_2 concentrations near ground at different simulation time are presented in Fig. 15. Based on the 2D plots in Fig. 15, it shows that the average NO_2 profiles by using the FPS model are much different from the other
 325 two setups. As discussed above, the FPS setup is clearly inappropriate for modelling the moving ships.

The hourly averaged 2D plots in Fig. 15 also indicate that the simulated NO_2 emissions by using the MPS and LS models are distributed in similar area. This is because that the emissions for each ship are emitted along the same ship route for two models, although the location of NO_2 species generated by a MPS model changes along the ship route while the LS model emits emission along the entire route continuously. As a result, the accumulated NO_2 emissions will cover the similar area
 330 for the two model setups and then generate similar results in the hourly averaged evaluations. However, the details of the NO_2 distributions (such as the peak concentration locations and values) are different for the two emission models, due to their natures of treating the emission generation differently in the dispersion modelling. As shown in Fig. 15, the LS model may overestimate the average NO_2 concentrations in some locations, compared to the MPS model.

The hourly averaged NO_2 concentrations at the data point for three emission source models are presented in Fig. 16. The concentration curves again indicate that the MPS and LS models predict comparable average NO_2 concentrations, while the FPS
 335 model gives a much different result. The simulation results suggest that the MPS model should be able to provide an alternative option to predict the hourly averaged emission concentrations and distributions in the air pollution dispersion modelling.

3.3 Real case study – comparison with measurement

After comparing with the LS and FPS models in a simplified study, the new developed MPS model was applied to the real
 340 case by predicting the emission results generated by all ships (including those under cruise and at berth) around Singapore area

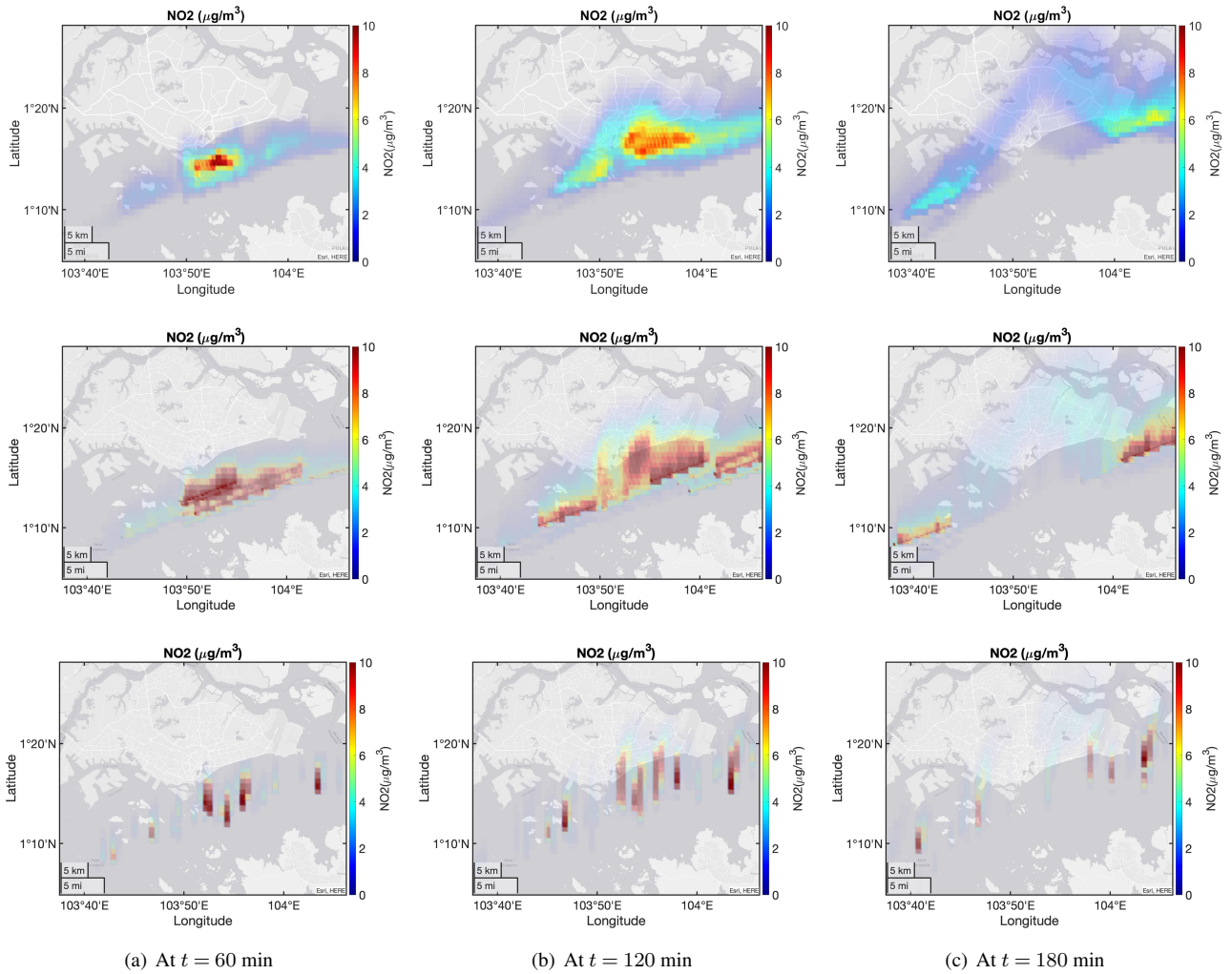


Figure 15. Hourly averaged NO_2 concentrations near ground by using different emission models. 1st row: MPS model (case 1); 2nd row: LS model (case 2); 3rd row: FPS model (case 3).

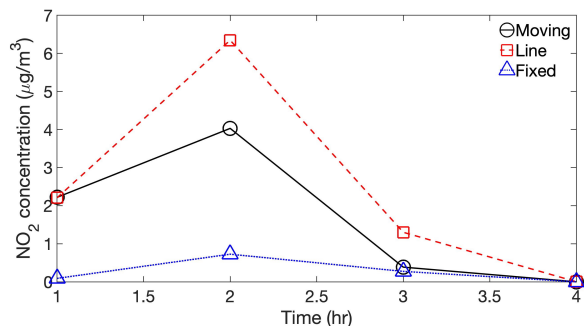


Figure 16. Hourly averaged NO₂ concentrations at a fixed point ("data point" in Fig. 3(b)) simulated by using different emission source setups.

during a couple of hours. The predicted hourly averaged NO₂ and PM_{2.5} concentrations are compared to the observed results obtained from the Singapore National Environment Agency online data resource.

Figure 17 compares the concentrations of NO₂ and PM_{2.5} predicted by using the MPS model with the values obtained from different observation stations, whose locations are shown in Fig. 6(b). Based on the figures, it shows that the new developed
 345 MPS model can reasonably predict the emission values at the four stations compared to the measured results, although there are still gaps between simulation and measurement. The differences may be attributed to the following aspects. First of all, only the emissions generated from ships around Singapore were included in the simulation, however, in the real world, the emissions measured in the observation stations should be the results contributed from ships and other sources, such as cars and powerplants. In addition, some assumptions were made in the simulation to simplify the model inputs that could induce
 350 different results from the real conditions. In the simulation, the meteorological conditions (such as wind speed and direction) are assumed to be hourly constant although a space-varying wind field is estimated based on the input values at multiple weather stations, while the real wind and temperature are time and space-varying that could highly affect the dispersion of the emissions generated from ships. A constant background concentration was applied for the simulation while the actual value changes in different locations at different time. For the MPS model, each ship is assumed to move at constant speed
 355 and direction in each simulation hour and no new ships are included until next hour, however, in the real world, ships' speed and direction vary frequently and ships can travel to the selected region at any time. The emission inventory or emission rate calculated by using the MEET method is based on the empirical equations fitted by the emission data obtained from a ship database, that includes ships with different types and sizes operating under different conditions (such as cruising and hoteling), and the estimated emission rates may be quite different from the actual values. Finally, the computational methods and model
 360 setups used in the simulation may not reveal the real process. The simulation is applied to a city-scale region with relatively coarse mesh setup, and the emission details at specific locations may not be well captured. The local emission distribution may vary highly due to the effects of different factors, such as building effect and different surface roughness. The chemical

reactions of emission species are very complicated and may not be well predicted by the chemical mechanism applied in the simulation, while the physical changes of the aerosol particles are not simulated by the model.

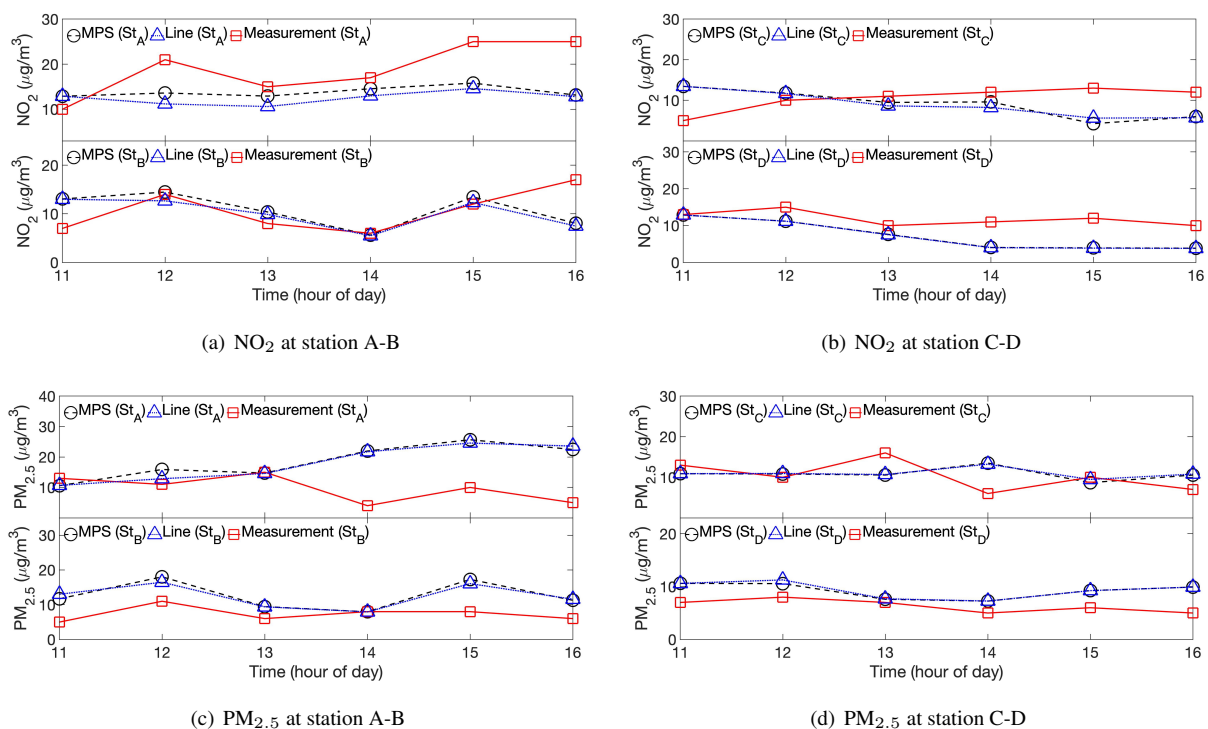


Figure 17. Comparison of hourly averaged emission concentrations between simulation and measurement at different locations.

365 The simulation results by using the LS model are also presented in Fig.17. Compared to the measured data, the NO₂ and PM_{2.5} concentrations predicted by the MPS and LS models are generally similar, while the MPS model shows slightly better NO₂ results at the observation station A, which is closer to the ships than other stations. Fig. 18 also presents the overall averaged emission concentrations during the entire simulation period predicted by the MPS and LS models, and it clearly shows that the emission concentrations predicted by the two models are quite different especially at the locations close to the ships. The different results for the two models are mainly attributed to the different treatments for the moving ships. However, as the emissions are transported to the locations far away from the ships (such as at the stations A-D), the differences of the emission concentrations predicted by the two models become smaller, due to the emission deposition and dilution. Although it may be expected that with a large number of ships and for large distances from the sources the LS model and the new MPS model will give similar results, the MPS model is a more realistic representation of the source and allows for greater granulation of the emissions, swift response of the pollution dispersion model to any changes in the ship movement, and is expected to be equally accurate across all scales. Based on the results in this section and the simplified study, it is found that differences between the LS and the MPS models are small when a large number of ships are moving in a constant manner in the location

370

375

of interest, however, the new MPS model could capture the impact of changes in the ship's course on the emission dispersion and hence provide more options to the modeller.

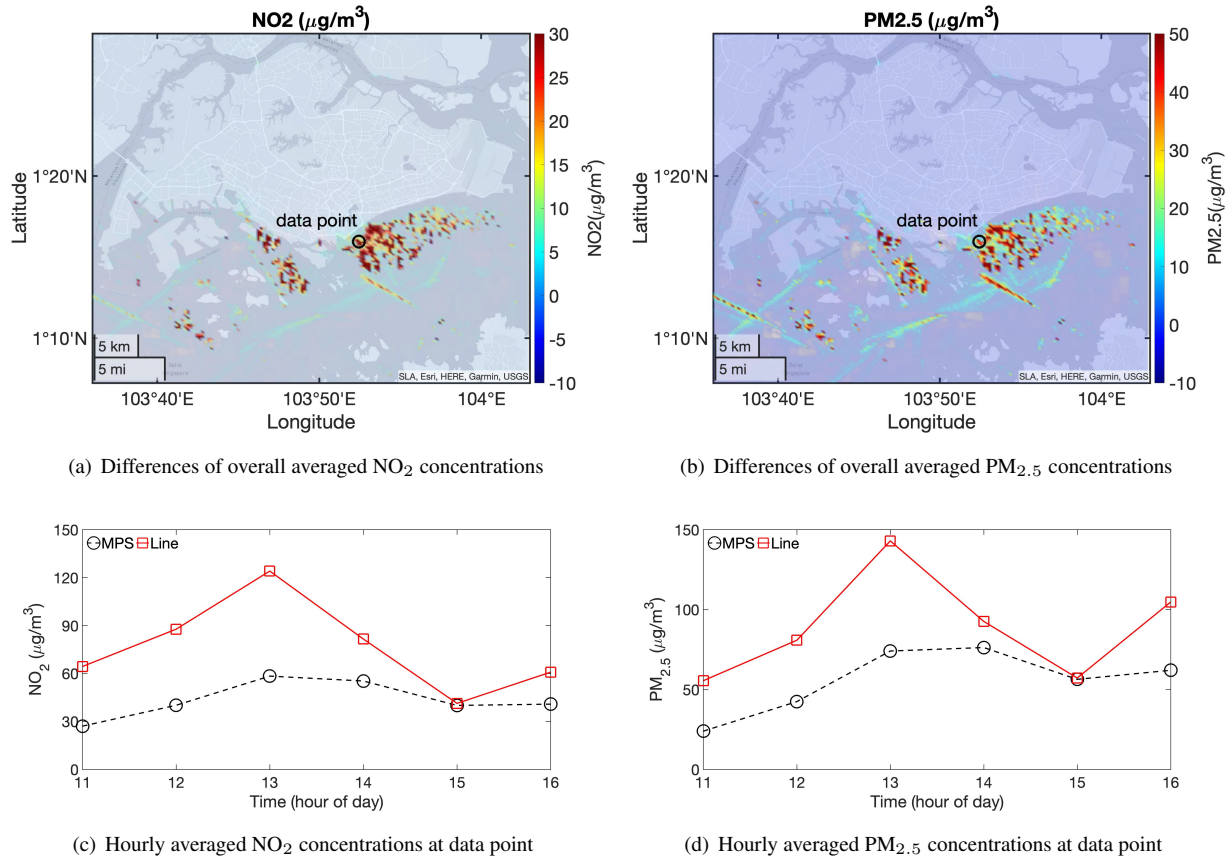


Figure 18. Emission concentrations during the entire simulation period predicted by the MPS and LS models. Note: in (a) and (b), the 2D plots show the differences of the overall averaged concentrations during the entire simulation period (6 hours) predicted by using the LS and MPS models (Differences = LS results – MPS results). In (c) and (d), the curves present the hourly averaged concentrations predicted by two models at the location of the data point shown in (a) and (b), where large differences exist.

380 4 Conclusions

In this paper, a MPS model was developed to simulate the emission generation and transport from the moving ships in pollutant dispersion simulations. For the dispersion modelling, the common assumption is to use a LS or a FPS model to treat the emissions generated by the moving ships. Both models cannot update the ship movements within a certain time period (usually an hour), and will result in unrealistic emission distribution. In the MPS model, the ship movement parameters, including speed and direction, are used to update the ship positions and then to estimate the emission dispersion at different simulation time.

385

The new developed model has been integrated into the city-scale chemistry transport model, EPISODE-CityChem, and then was evaluated by simulating the atmospheric dispersion of emission species emitted by the ships in Singapore area.

390 The computational results by using the MPS model were first compared to those obtained from a LS model and a FPS model in simplified simulations. Under the simplified conditions with a limited number of ships, the results indicated that the new developed MPS model can simulate the ship movement, and hence, predicts more realistic instantaneous concentration profiles for the emission species (such as NO₂) generated by the moving ships. In comparison, the LS model will assume a continuous and constant emission rate along the entire ship route, and then results in much different emission profiles and cannot reveal the instantaneous impact of ship movements on air quality in the coastal area. For the FPS model, separated plume segments were observed in the simulation. Clearly, it is unrealistic as the emission is continuously generated by the moving ships from
395 different positions at different time, and a continuous emission distribution should be formed. The hourly averaged values were compared as well for all three models. The comparison shows that the averaged concentration profiles are similar but with local differences for the MPS and LS models, mainly caused by the different treatments for emission release by the two models although the positions of emission release cover the same ship routes. The FPS model again was proven to be an inappropriate assumption for treating the moving emission source.

400 In addition, a real case study was conducted as well to further evaluate the MPS model by simulating all ships around Singapore area. Compared to the measured data, the MPS model was found that it can reasonably predict the emission concentrations at different observation stations located in Singapore, although gaps still exist due to the different setups and configurations between simulations and measurements. The LS model was compared in the study as well. The predicted emission concentrations by the MPS and LS models are quite different at the locations close to the ships, while these differences become smaller
405 at the locations far away from the ships as the emission is diluted and deposited. Compared to the measured data, the MPS and LS models perform similar while a slightly better NO₂ result was found for the MPS model at observation stations A, which is closer to the ships. The real case study together with the simplified study suggest that the MPS model is a more realistic representation of the emission source, and it allows for greater granulation of the emissions and swift response of the pollution dispersion model to any changes in the ship movement, compared to the LS and FPS models. The MPS also has a great
410 potential for a real-time simulation of the shipping emission dispersion, when using together with the automatic identification system (AIS) ship position data. Therefore, the MPS model should be a valuable alternative for the environmental society to evaluate the pollutant dispersion contributed from the moving ships.

Code availability. The source code of the MPS model is available at <http://doi.org/10.5281/zenodo.4650482> (Pan 2021). The code is written in Fortran 90 and is integrated with EPISODE-CityChem v1.3. The source codes of the EPISODE-CityChem v1.3 and the preprocessing
415 utilities are accessible in release under the RPL license at <https://doi.org/10.5281/zenodo.3549415> (Karl and Ramacher, 2019)

Data availability. The following datasets are available upon request from the authors. 1, input and output data of EPISODE-CityChem simulations for simplified cases with 1 ship in Singapore (~0.6 GB); 2, input and output data of EPISODE-CityChem simulations for simplified cases with 44 ships in Singapore (~1.1 GB); 3, input and output data of EPISODE-CityChem simulations for the real case study in Singapore (~0.5 GB).

420 Appendix A: Parameter study – time step

To further evaluate the MPS model, time step is investigated. In the reference case (case 1), the calculated time step is 15.8 s, and in this parameter study, time step is adjusted to two different values of 10 s (case S1) and 30 s (case S2) as shown in Table A1. All other conditions and model setups for all three cases are same.

Table A1. Setups of pollutant dispersion modelling for parameter study.

| Case | Emission source | Time step | Horizontal resolution | Vertical resolution |
|------|-----------------|-------------------|----------------------------------|---|
| S1 | MPS model | $\Delta t=10$ s | $dx=dy=1$ km ($n_x=n_y=70$) | varying dz ($dz_{1-2}=10$ m ... $dz_{13}=500$ m) with total height of 3.5 km |
| S2 | MPS model | $\Delta t=30$ s | $dx=dy=1$ km ($n_x=n_y=70$) | varying dz ($dz_{1-2}=10$ m ... $dz_{13}=500$ m) with total height of 3.5 km |
| S3 | MPS model | $\Delta t=15.8$ s | $dx=dy=0.7$ km ($n_x=n_y=100$) | varying dz ($dz_{1-2}=10$ m ... $dz_{13}=500$ m) with total height of 3.5 km |
| S4 | MPS model | $\Delta t=15.8$ s | $dx=dy=1.4$ km ($n_x=n_y=50$) | varying dz ($dz_{1-2}=10$ m ... $dz_{13}=500$ m) with total height of 3.5 km |
| S5 | MPS model | $\Delta t=15.8$ s | $dx=dy=1$ km ($n_x=n_y=70$) | smaller dz ($dz_{1-4}=10$ m ... $dz_{20}=500$ m) with total height of 3.5 km |

The instantaneous NO₂ profiles at ground level for two additional time step simulations are plotted in Fig. A1. Compared to the reference case (Fig. 8), it indicates that the NO₂ profiles at different simulation time are almost same for all three cases, although the local emission distributions and concentrations are slightly different.

In EPISODE-CityChem, parallel simulations of emission dispersion are conducted, that one Eulerian main grid (where $dx=dy=1$ km) is built up to model the time-dependent advection and diffusion of emission species in the 3D space. At the same time, the emissions emitted from each point source in the sub-grid modelling are treated as finite Gaussian plume segments generated in each time step. The plume size and movement (speed and direction) are estimated based on the local meteorological conditions (mainly temperature, wind speed and direction), in which Eulerian grid cell that the plume start point stays. In next time step, the plume position is updated and then its size and movement parameters are re-calculated based on the new meteorological conditions of the main grid cell, where the plume segment is transported. In addition, when the length scale of the segmented plume (σ_y or σ_z , which is highly affected by the meteorological conditions such as wind speed and temperature)

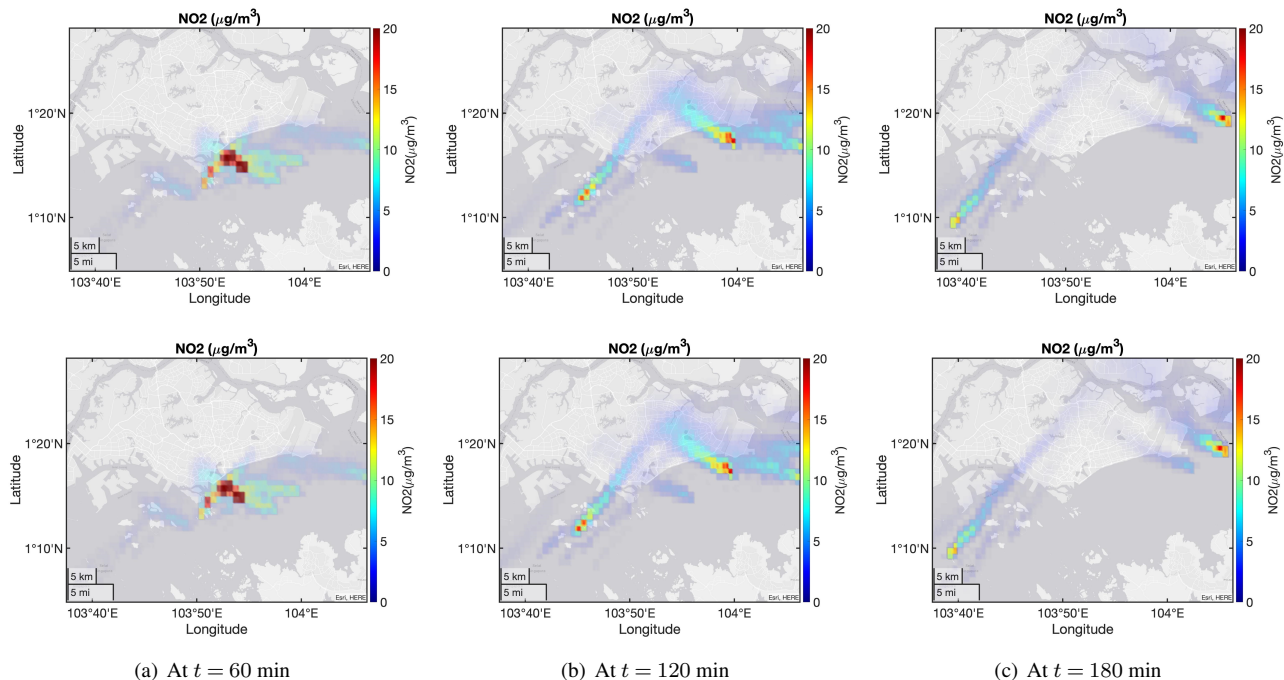


Figure A1. Instantaneous NO_2 concentrations near ground by using different time steps. 1st row: $\Delta t=10$ s (case S1); 2nd row: $\Delta t=30$ s (case S2).

435 reaches to a pre-defined value (usually 1/4 of the Eulerian grid size), the plume mass will be integrated into the main Eulerian grid cell that the segmented plume locates and then deleted from the sub-grid model.

As the wind field (speed and direction) estimated by EPISODE-CityChem is spatially different (as shown in Fig. 4), the mass and number of plume segments and the values of other parameters (position, size, speed and direction) for each plume segment estimated in the dispersion modelling are different when using different time steps, and hence, the plume prediction
 440 in the sub-grid modelling will be different to result in different emission concentrations. However, as the time step reduces to a relatively small value, the impacts of time step on simulation results are negligible as shown in this paper (Figs. 8 and A1).

Appendix B: Parameter study – grid resolution

Another parameter study was conducted by changing the horizontal (case S3 and S4) and vertical (case S5) grid size. In this section, the dispersion of ship emissions was first simulated by using two different main grid resolutions, where the horizontal
 445 grid sizes ($dx=dy$) are changed to 700 m (case S3) and 1400 m (case S4), compared to the reference case (case 1 where $dx=dy=1$ km). To keep the same simulation domain, the main grid has 100×100 cells in horizontal direction for case S3 and 50×50 cells for case S4. All of other model setups (including vertical grid size and number) and initial conditions are same for these cases.

The simulated NO₂ profiles for two additional grid resolutions are plotted in Fig. B1, which shows similar results as the reference case (Fig. 8) but with slightly different details. In one hand, the space-varying wind fields for the different grid-resolution simulations are slightly different from the value in the reference case (case 1). As mentioned in last section, the parameters of the plume segments, such as location, size and speed, will be affected for the cases with different horizontal grid resolutions. In another hand, the plume mass will be added into the main grid cell that the plume locates, and then it will induce a relatively higher local concentration for the finer grid and lower concentration for the coarse grid, compared to the reference case. Therefore, the integration of the sub-grid plume model with the main Eulerian model will be affected to result in different NO₂ concentrations for the different grid setups. However, compared to the coarse grid (case S4), when the grid size is reduced, the simulation results for cases 1 and S3 are much closer to show mesh independence, as presented in Figs. 8 and B1.

Similar study was conducted by changing the vertical grid size (dz) as well. In this study, a smaller dz (especially in lower height) was applied in the simulation (case S5: 20 vertical layers), compared to the reference case (case1: 13 vertical layers). All other setups and conditions are same for the two cases. Similar conclusions are obtained that the simulated NO₂ profiles are very similar with only slightly different details for the two different setups, as shown in Fig. 8 and B1. The parameter study suggests that the MPS model works well for the shipping emission dispersion modelling.

Appendix C: Parameter study – emission source setup

In this study, the ship exit gas velocity was assumed as 20 m s⁻¹ for all ships, and chimney height was set as 30 m for large size ships and 10 m for small size ships (case 1). To investigate the effects of different setups for the MPS model on the simulation results, two additional cases were conducted by changing the exit gas velocity to 30 m s⁻¹ (case S6) and by increasing the chimney height to 40 m for all ships (case S7), as shown in Table C1. The comparisons of the simulated results obtained by using different setups are presented in Figs. 8(a) and C1. Based on the simulated NO₂ profiles, it clearly indicates that the predicted results using different setups for the emission sources are almost identical, suggesting that the impact of different emission source parameters (such as chimney height and exit gas velocity) on the simulation results is quite small.

In addition, the ship building height was assumed to be 5 m below the chimney height, and the building width was set as 20 m and 5 m for the large size and the small size ships respectively (case 1), as shown in Table C1. Another sensitivity study was conducted to evaluate the influences of different ship building dimensions on the simulation results, by assuming 20 m as the building height and 15 m as the building width for all ships (case S8). As shown in Fig. C1, the predicted NO₂ concentrations by using different ship building setups are very similar, compared to the reference results (case 1) in Fig. 8(a). Therefore, it suggests that the impact of using these two different ship building setups on the simulations is negligible.

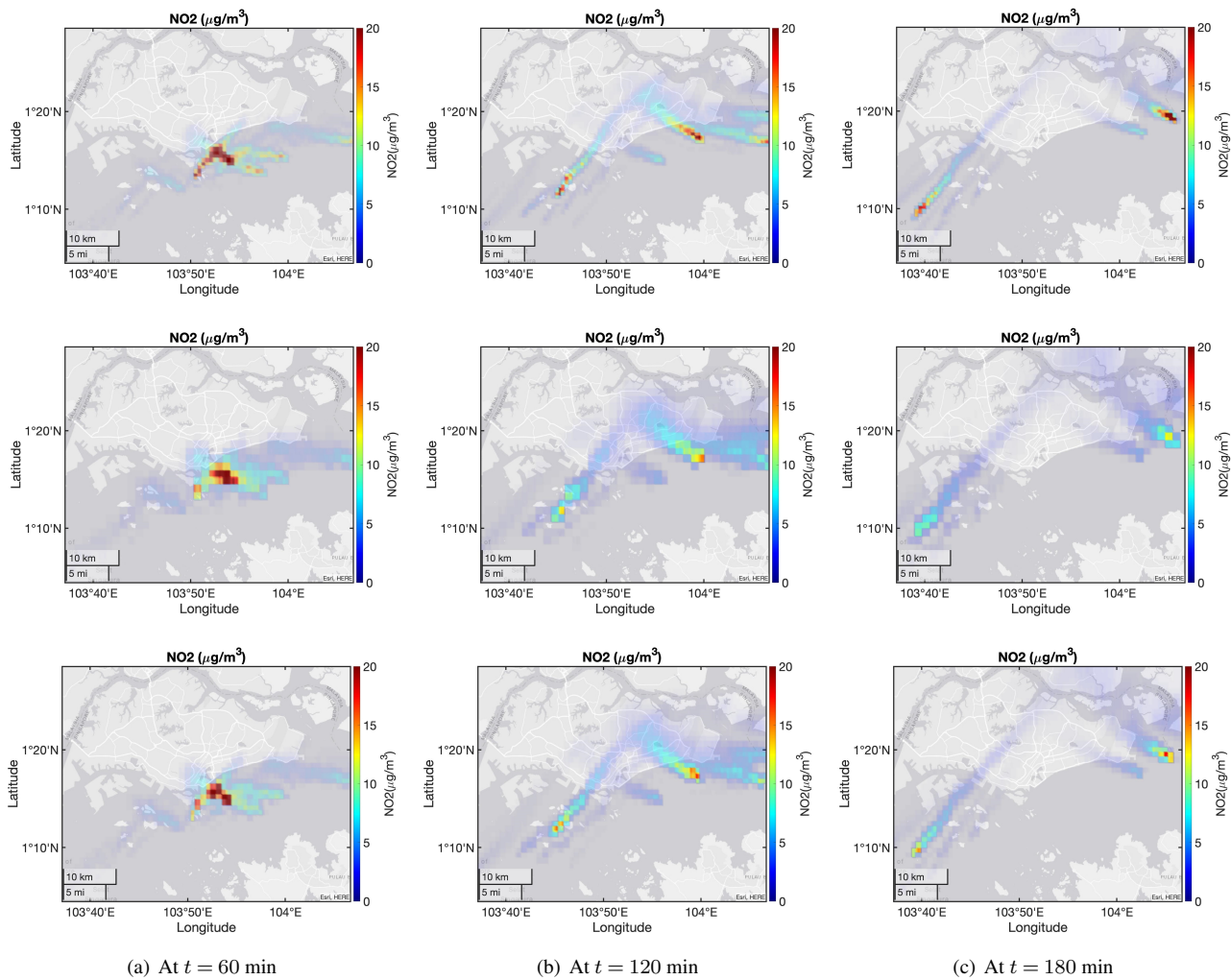
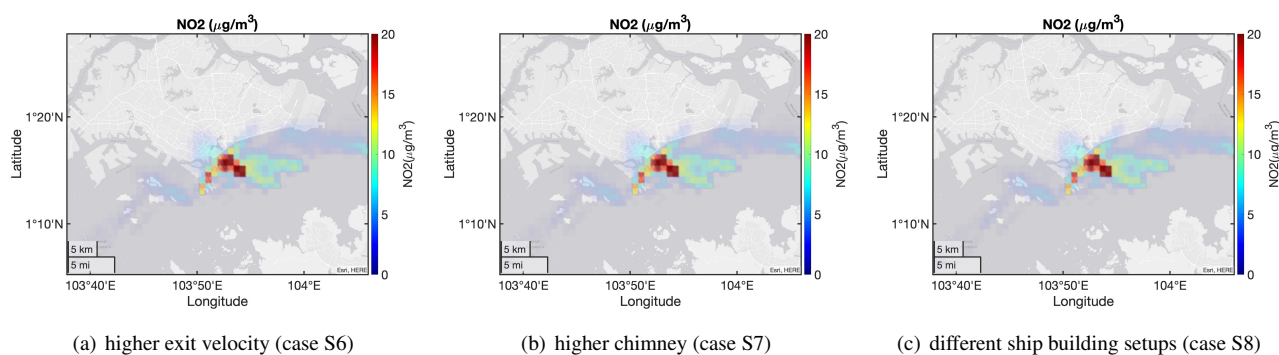


Figure B1. Instantaneous NO_2 concentrations near ground by using different grid resolutions. 1st row: $dx=dy=700\text{m}$ (case S3); 2nd row: $dx=dy=1400\text{m}$ (case S4); 3rd row: small dz (case S5).

Table C1. Setups of emission sources for the MPS model in parameter study.

| Case | Gas exit velocity | Chimney height | Ship building height | Ship building width |
|------|----------------------|---|--|--|
| 1 | 20 m s ⁻¹ | 30 m (for large ships) and 10 m (for small ships) | 25 m (for large ships) and 5 m (for small ships) | 20 m (for large ships) and 5 m (for small ships) |
| S6 | 30 m s ⁻¹ | 30 m (for large ships) and 10 m (for small ships) | 25 m (for large ships) and 5 m (for small ships) | 20 m (for large ships) and 5 m (for small ships) |
| S7 | 20 m s ⁻¹ | 40 m (for all ships) | 25 m (for large ships) and 5 m (for small ships) | 20 m (for large ships) and 5 m (for small ships) |
| S8 | 20 m s ⁻¹ | 30 m (for large ships) and 10 m (for small ships) | 20 m (for all ships) | 15 m (for all ships) |

**Figure C1.** Instantaneous NO₂ concentrations near ground by using different emission setups.**Appendix D: Results for different emission species**

In this study, different species such as NO₂, SO₂ and PM_{2.5} were simulated. However, the distributions of different species by using the same emission model (such as MPS model or LS model) are quite similar and only the concentration values are different, as presented in Fig. D1. As the purpose of this paper is to demonstrate the development of the new MPS model and to show the differences of the simulated results by using the MPS model and other two common models (LS and FPS models), the paper only presents the predicted NO₂ profiles in the simplified study. In the real case study, the predicted NO₂ and PM_{2.5} concentrations were presented to compare with the measured data in the observation stations, due to the data availability.

485 *Author contributions.* KP developed the model code, performed the simulations, processed and evaluated the results. EM discussed the model development and provided suggestions for the model evaluations. KP prepared the manuscript with the contributions from all co-authors.

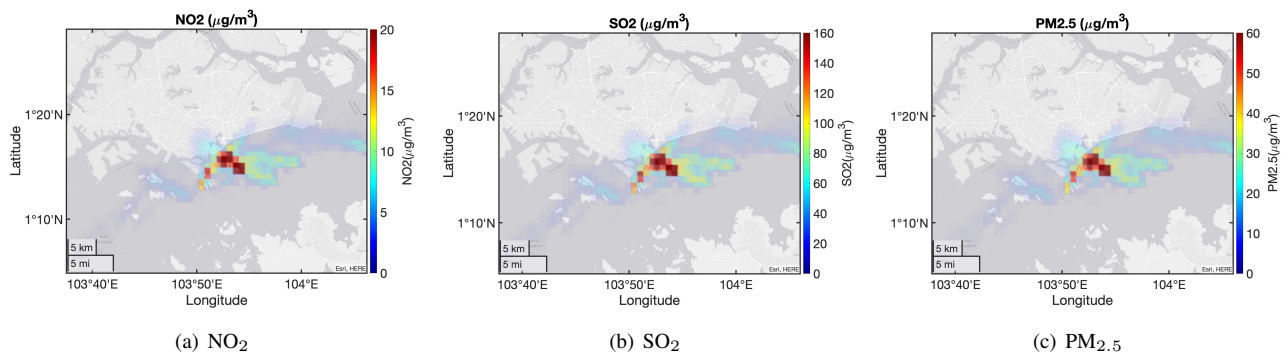


Figure D1. Predicted emission concentrations for different species when using the MPS model.

Competing interests. The authors declare that they have no conflict of interest.

Acknowledgements. This study is funded by the National Research Foundation, Prime Minister's Office, Singapore under its CREATE programme. The authors appreciate the support for EPISODE installation from Dr. Matthias Karl in Helmholtz-Zentrum Geesthacht, Department of Chemistry Transport Modelling, Geesthacht, Germany. KP also thanks Yichen Zong and Arkadiusz Chadzynski for their suggestions and help on obtaining input data for simulations.

References

- Abrutytė, E., Žukauskaitė, A., Mickevičienė, R., Zabukas, V., and Paulauskienė, T.: Evaluation of NO_x emission and dispersion from marine ships in Klaipėda sea port, *Journal of Environmental Engineering and Landscape Management*, 22, 264–273, 2014.
- 495 Asariotis, R., Assaf, M., Ayala, G., Benamara, H., Chantrel, D., Hoffmann, J., Premti, A., Rodriguez, L., and Youssef, F.: Review of Maritime Transport 2019, Tech. rep., 2019.
- Bluett, J., Gimson, N., Fisher, G., Heydenrych, C., Freeman, T., and Godfrey, J.: Good practice guide for atmospheric dispersion modelling, Ministry for the Environment, Wellington, New Zealand, 2004.
- Briggs, G. A.: Plume rise, U.S. Atomic Energy Commission (AEC critical review series), Oak Ridge Tennessee., 1969.
- 500 Briggs, G. A.: Some recent analyses of plume rise observations, in: Proceedings of the Second International Clean Air Congress. Ed. by H.M. Englund and W.T. Berry., pp. 1029–1032, Academic Press, New York, 1971.
- Briggs, G. A.: Diffusion estimation for small emissions, *Atmospheric turbulence and diffusion laboratory*, p. 83, 1973.
- Briggs, G. A.: Plume rise predictions, lectures on air pollution and environment impact analysis, Am. Meteorol. Soc., Boston, USA, 10, 1975.
- 505 Cesari, R., Buccolieri, R., Dinoi, A., Maurizi, A., Landi, T. C., and Di Sabatino, S.: Influence of Ship Emissions on Ozone Concentration in a Mediterranean Area: A Modelling Approach, in: International Technical Meeting on Air Pollution Modelling and its Application, pp. 317–321, Springer, 2016.
- Chen, D., Zhao, N., Lang, J., Zhou, Y., Wang, X., Li, Y., Zhao, Y., and Guo, X.: Contribution of ship emissions to the concentration of PM_{2.5}: A comprehensive study using AIS data and WRF/Chem model in Bohai Rim Region, China, *Science of the Total Environment*, 610, 1476–1486, 2018.
- 510 Cohan, A., Wu, J., and Dabdub, D.: High-resolution pollutant transport in the San Pedro Bay of California, *Atmospheric Pollution Research*, 2, 237–246, 2011.
- De Nicola, F., Murena, F., Costagliola, M. A., Alfani, A., Baldantoni, D., Prati, M. V., Sessa, L., Spagnuolo, V., and Giordano, S.: A multi-approach monitoring of particulate matter, metals and PAHs in an urban street canyon, *Environmental Science and Pollution Research*, 20, 4969–4979, 2013.
- 515 Deniz, C. and Kilic, A.: Estimation and assessment of shipping emissions in the region of Ambarli port, Turkey, *Environmental Progress & Sustainable Energy*, 29, 107–115, <https://doi.org/doi.org/10.1002/ep.10373>, 2010.
- Fileni, L., Mancinelli, E., Morichetti, M., Passerini, G., Rizza, U., and Virgili, S.: AIR POLLUTION IN ANCONA HARBOUR, ITALY, *WIT Transactions on The Built Environment*, 187, 199–208, 2019.
- 520 Formentin, G.: Estimating the dispersion of shipping emissions from Fremantle port, Western Australia, Ph.D. thesis, Murdoch University, 2017.
- Gadhavi, H., Kavutharapu, R., Ravi Kiran, V., Jayaraman, A., Stohl, A., Klimont, Z., and Beig, G.: Evaluation of black carbon emission inventories using a Lagrangian dispersion model-a case study over southern India, *Atmospheric Chemistry and Physics*, 15, 1447–1461, 2015.
- 525 Gariazzo, C., Papaleo, V., Pelliccioni, A., Calori, G., Radice, P., and Tinarelli, G.: Application of a Lagrangian particle model to assess the impact of harbour, industrial and urban activities on air quality in the Taranto area, Italy, *Atmospheric Environment*, 41, 6432–6444, 2007.
- Gibson, M. D., Kundu, S., and Satish, M.: Dispersion model evaluation of PM_{2.5}, NO_x and SO₂ from point and major line sources in Nova Scotia, Canada using AERMOD Gaussian plume air dispersion model, *Atmospheric Pollution Research*, 4, 157–167, 2013.

- Goldsworthy, L. and Goldsworthy, B.: Modelling of ship engine exhaust emissions in ports and extensive coastal waters based on terrestrial
530 AIS data—An Australian case study, *Environmental Modelling & Software*, 63, 45–60, 2015.
- Hamer, P. D., Walker, S.-E., Sousa-Santos, G., Vogt, M., Vo-Thanh, D., Lopez-Aparicio, S., Schneider, P., Ramacher, M. O., and Karl, M.:
The urban dispersion model EPISODE v10. 0—Part 1: An Eulerian and sub-grid-scale air quality model and its application in Nordic winter
conditions, *Geoscientific Model Development*, 13, 4323–4353, 2020.
- Huszar, P., Cariolle, D., Paoli, R., Haleuka, T., Belda, M., Schlager, H., Miksovsky, J., and Pisoft, P.: Modeling the regional impact of
535 ship emissions on NO_x and ozone levels over the Eastern Atlantic and Western Europe using ship plume parameterization, *Atmospheric
Chemistry and Physics*, 10, 6645–6660, <https://doi.org/10.5194/acp-10-6645-2010>, 2010.
- International Maritime Organization (IMO): Word Maritime Day: A concept of a Sustainable Maritime Transportation System,
[http://www.imo.org/en/About/Events/WorldMaritimeDay/WMD2013/Documents/CONCEPT%20OF%20%20SUSTAINABLE%
20MARITIME%20TRANSPORT%20SYSTEM.pdf](http://www.imo.org/en/About/Events/WorldMaritimeDay/WMD2013/Documents/CONCEPT%20OF%20%20SUSTAINABLE%20MARITIME%20TRANSPORT%20SYSTEM.pdf), 2012.
- 540 Iodice, P., Langella, G., and Amoresano, A.: A numerical approach to assess air pollution by ship engines in manoeuvring mode and fuel
switch conditions, *Energy & Environment*, 28, 827–845, 2017.
- Jahangiri, S., Nikolova, N., and Tenekedjiev, K.: Application of a developed dispersion model to port of Brisbane, *American Journal of
Environmental Sciences*, 14, 156–169, 2018.
- Karl, M., Walker, S.-E., Solberg, S., and Ramacher, M. O.: The Eulerian urban dispersion model EPISODE—Part 2: Extensions to the
545 source dispersion and photochemistry for EPISODE—CityChem v1. 2 and its application to the city of Hamburg, *Geoscientific Model
Development*, 12, 3357–3399, 2019.
- Karl, M., Pirjola, L., Karppinen, A., Jalkanen, J.-P., Ramacher, M. O. P., and Kukkonen, J.: Modeling of the Concentrations of Ultrafine
Particles in the Plumes of Ships in the Vicinity of Major Harbors, *International journal of environmental research and public health*, 17,
777, 2020.
- 550 Kotrikla, A., Dimou, K., Korras-Carraca, M., and Biskos, G.: AIR QUALITY MODELLING IN THE CITY OF MYTILENE, GREECE, in:
Proceedings of the 13th International Conference on Environmental Science and Technology, 2013.
- Krysztofiak-Tong, G., Brocchi, V., Catoire, V., Stratmann, G., Sauer, D., Deroubaix, A., Deetz, K., and Schlager, H.: Atmospheric Pollu-
tion from Shipping and Oil platforms of West Africa (APSOWA) observed during the airborne DACCIWA campaign, in: *EGU General
Assembly Conference Abstracts*, vol. 19, p. 7901, 2017.
- 555 Kukkonen, J., Karl, M., Keuken, M. P., van der Gon, H. A. D., Denby, B. R., Singh, V., Douros, J., Manders, A., Samaras, Z., Moussiopoulos,
N., et al.: Modelling the dispersion of particle numbers in five European cities, in: *Air Pollution Modeling and its Application XXIV*, pp.
415–418, Springer, 2016.
- Langella, G., Iodice, P., Amoresano, A., and Senatore, A.: Ship engines and air pollutants: emission during fuel change-over and dispersion
over coastal areas, *International Journal of Energy and Environmental Engineering*, 7, 307–320, 2016.
- 560 Liu, Z., Lu, X., Feng, J., Fan, Q., Zhang, Y., and Yang, X.: Influence of ship emissions on urban air quality: A comprehensive study using
highly time-resolved online measurements and numerical simulation in Shanghai, *Environmental science & technology*, 51, 202–211,
2017.
- Lucialli, P., Ugolini, P., and Pollini, E.: Harbour traffic in Ravenna: emission and diffusion of particulate matter, in: *14th Conference on
Harmonisation within Atmospheric Dispersion Modelling for Regulatory Purpose*, pp. 130–134, 2011.
- 565 Mallet, V., Tilloy, A., Poulet, D., Girard, S., and Brocheton, F.: Meta-modeling of ADMS-Urban by dimension reduction and emulation,
Atmospheric Environment, 184, 37–46, 2018.

- Merico, E., Dinoi, A., and Contini, D.: Development of an integrated modelling-measurement system for near-real-time estimates of harbour activity impact to atmospheric pollution in coastal cities, *Transportation Research Part D: Transport and Environment*, 73, 108–119, 2019.
- Milazzo, M. F., Ancione, G., and Lisi, R.: Emissions of volatile organic compounds during the ship-loading of petroleum products: Dispersion
570 modelling and environmental concerns, *Journal of environmental management*, 204, 637–650, 2017.
- Murena, F., Mocerino, L., Quaranta, F., and Toscano, D.: Impact on air quality of cruise ship emissions in Naples, Italy, *Atmospheric Environment*, 187, 70–83, 2018.
- Pillai, D., Gerbig, C., Kretschmer, R., Beck, V., Karstens, U., Neininger, B., and Heimann, M.: Comparing Lagrangian and Eulerian models for CO₂ transport—a step towards Bayesian inverse modeling using WRF/STILT-VPRM, *Atmospheric Chemistry and Physics*, 12, 8979–
575 8991, 2012.
- Poplawski, K., Setton, E., McEwen, B., Hrebenyk, D., Graham, M., and Keller, P.: Impact of cruise ship emissions in Victoria, BC, Canada, *Atmospheric Environment*, 45, 824–833, 2011.
- Saxe, H. and Larsen, T.: Air pollution from ships in three Danish ports, *Atmospheric Environment*, 38, 4057–4067, 2004.
- Shang, F., Chen, D., Guo, X., Lang, J., Zhou, Y., Li, Y., and Fu, X.: Impact of Sea Breeze Circulation on the Transport of Ship Emissions in
580 Tangshan Port, China, *Atmosphere*, 10, 723, 2019.
- Simpson, D.: Hydrocarbon reactivity and ozone formation in Europe, *Journal of Atmospheric Chemistry*, 20, 163–177, 1995.
- Simpson, D., Benedictow, A., Berge, H., Bergström, R., Emberson, L. D., Fagerli, H., Flechard, C. R., Hayman, G. D., Gauss, M., Jonson, J. E., et al.: The EMEP MSC-W chemical transport model—technical description, *Atmospheric Chemistry and Physics*, 12, 7825–7865, 2012.
- 585 Slørdal, L., Solberg, S., and Walker, S.: The Urban Air Dispersion Model EPISODE applied in AirQUIS2003, Technical description, Norwegian Institute for Air Research, Kjeller (NILU TR 12/03), 2003.
- Slørdal, L. H., McInnes, H., and Krognnes, T.: The air quality information system AirQUIS, *Environ. Sci. Eng.*, 1, 40–47, 2008.
- Trozzi, C.: Emission estimate methodology for maritime navigation, *Techne Consulting*, Rome, 2010.
- Trozzi, C. and Vaccaro, R.: Actual and future air pollutant emissions from ships, in: *Proceeding of INRETS Conference*, 1999.
- 590 Tzannatos, E.: Ship emissions and their externalities for the port of Piraeus—Greece, *Atmospheric Environment*, 44, 400–407, 2010.
- Walker, S.: WORM: A new open road line source model for low wind speed conditions, *International Journal of Environment and Pollution*, 47, 348–357, 2011.
- Walker, S. and Grønskei, K.: Spredningsberegninger for on-line overvåkning i Grenland. Programbeskrivelse og brukerveiledning, Norwegian Institute for Air Research, NILU OR, 55, 92, 1992.
- 595 Walker, S.-E., Solberg, S., and Denby, B.: Development and implementation of a simplified EMEP photochemistry scheme for urban areas in EPISODE, Norwegian Institute for Air Research, NILU TR, 13, 2003.
- Weil, J. and Brower, R.: An updated Gaussian plume model for tall stacks, *Journal of the Air Pollution Control Association*, 34, 818–827, 1984.