

서식 지정함: 영어 (영국)

# Rad-cGAN v1.0: Radar-based precipitation nowcasting model with conditional Generative Adversarial Networks for multiple dam domains

Suyeon Choi<sup>1</sup>, Yeonjoo Kim<sup>1</sup>

<sup>1</sup>Department of Civil and Environmental Engineering, Yonsei University, Seoul 03722, Korea

Correspondence to: [yeonjoo.kim@yonsei.ac.kr](mailto:yeonjoo.kim@yonsei.ac.kr)

**Abstract.** Numerical weather prediction models and probabilistic extrapolation methods using radar images have been widely used for precipitation nowcasting. Recently, machine-learning-based precipitation nowcasting models have also been actively developed for relatively short-term precipitation predictions. This study aimed to develop a radar-based precipitation nowcasting model using an advanced machine learning technique, conditional generative adversarial network (cGAN), which shows high performance in image generation tasks. The cGAN-based precipitation nowcasting model, named Rad-cGAN, developed in this study was trained with the radar reflectivity data of the Soyang-gang Dam Basin in South Korea with a spatial domain of 128×128 pixels, spatial resolution of 1 km, and temporal resolution of 10 min. The model performance was evaluated using previously developed machine-learning-based precipitation nowcasting models, namely, convolutional long short-term memory (ConvLSTM) and U-Net. In addition, Eulerian persistence model and pySTEPS, radar-based deterministic nowcasting system, used as baseline models.

We demonstrated that Rad-cGAN outperformed reference models at 10-min lead time prediction for the Soyang-gang Dam Basin based on verification metrics: Pearson correlation coefficient (R), root mean square error (RMSE), Nash–Sutcliffe efficiency (NSE), critical success index (CSI), and fraction skill scores (FSS) at intensity threshold of 0.1-, 1.0-, and 5.0-mm h<sup>-1</sup>. However, unlike low rainfall intensity, the CSI of high rainfall intensity in Rad-cGAN deteriorated rapidly beyond a lead time of 10 min; however, ConvLSTM and baseline models maintained the better performances. This observation was consistent with the FSS calculated at high rainfall intensity. These results were qualitatively evaluated using Typhoon Solik as an example, and ConvLSTM maintained relatively higher precipitation than the other models. However, for prediction of precipitation area, Rad-cGAN showed the best results, and the advantage of cGAN method to reduce the blurring effect was confirmed through power spectral density (PSD). We also demonstrated the successful implementation of the transfer learning technique to efficiently train model with the data from other dam basins in South Korea, such as the Andong and Chungju Dam basins. We used pre-trained model, which was completely trained in the Soyang-gang Dam Basin. Furthermore, we

삭제함: [yeonjoo.kim@yonsei.ac.kr](mailto:yeonjoo.kim@yonsei.ac.kr)

서식 지정함: 글꼴: Times New Roman

삭제함: a

삭제함: map

삭제함: region

삭제함: ×

삭제함: km

서식 지정함: 글꼴: Times New Roman

삭제함: probabilistic

삭제함:

서식 지정함: 글꼴: Times New Roman

삭제함: site

서식 지정함: 글꼴 색: 검정

서식 지정함: 글꼴: Times New Roman

서식 지정함: 글꼴 색: 검정

삭제함: and

서식 지정함: 글꼴 색: 검정

서식 지정함: 글꼴 색: 검정

서식 지정함: 글꼴: Times New Roman

서식 지정함: 글꼴 색: 검정

삭제함: beyond the lead time of 10 min

서식 지정함: 글꼴 색: 검정

삭제함: deteriorated rapidly in the case

삭제함: , unlike low rainfall intensity.

서식 지정함: 글꼴 색: 검정

서식 지정함: 글꼴 색: 검정

서식 지정함: 글꼴 색: 검정

삭제함: also

삭제함: for

삭제함: entire dam basin, and in

삭제함: and CSI

삭제함: , ConvLSTM maintained better performance. This result was interpreted through qualitative evaluation

서식 지정함: 글꼴 색: 검정

서식 지정함: 글꼴 색: 검정

서식 지정함: 글꼴 색: 검정

서식 지정함: 글꼴 색: 검정

삭제함: the

삭제함: maintains a

삭제함: high amount of

삭제함: compared to

서식 지정함: 글꼴: Times New Roman

서식 지정함: 글꼴: Times New Roman

삭제함: Power Spectrum Density

삭제함: regions

서식 지정함: 글꼴: Times New Roman

서식 지정함: 글꼴: Times New Roman

▲

analysed the amount of data to effectively develop the model for the new domain through the transfer learning strategies

55

applying the pre-trained model using data for additional dam basins. This study confirmed that Rad-cGAN can be successfully applied to precipitation nowcasting with longer lead times and using the transfer learning approach, showed good performance in dam basins other than the originally trained basin.

서식 지정함: 영어 (영국)

삭제함: confirms

삭제함: it shows

서식 지정함: 글꼴: Times New Roman

서식 지정함: 글꼴: Times New Roman

삭제함: regions

삭제함: region

서식 지정함: 글꼴: Times New Roman

서식 지정함: 글꼴: Times New Roman

2

서식 지정함: 영어 (영국)

## 1 Introduction

서식 지정함: 글꼴: Times New Roman, 글꼴 색: 검정

서식 지정함: 글꼴: Times New Roman, 글꼴 색: 검정

삭제함: of floods

서식 지정함: 글꼴: Times New Roman, 글꼴 색: 검정

삭제함: ,

서식 지정함: 글꼴: Times New Roman, 글꼴 색: 검정

서식 지정함: 글꼴: Times New Roman, 글꼴 색: 검정

삭제함: (real-time optical flow by variational methods for echoes of radar).

서식 지정함: 글꼴: Times New Roman, 글꼴 색: 검정

서식 지정함: 글꼴: Times New Roman, 글꼴 색: 검정

100

Scotland, using video GAN in the model improved the quality of precipitation forecasts significantly (Ravuri et al., 2021). These studies indicate that the performance of precipitation nowcasting models can be improved by advanced machine learning techniques. However, because machine learning is a data-driven technique, it will perform effectively for only trained data domains. Generally, it is vital to train from the beginning to develop a model for a new domain, and computation costs will be high even if new data are similar to old data. Thus, the models trained for one domain will be limited in their applications for multiple regions.

105

The aim of this study was to develop an advanced precipitation nowcasting model for multiple dam basins that can be applied as an early warning system. The decision-making process at upstream dams with regard to flood control, which is directly related to urban and rural water management, influences flood risk considerably. From such a dam management perspective, water level and inflow at dam sites are major factors to be considered, suggesting that increasing rainfall prediction accuracy over the entire dam basin is essential for effective flood management. To develop an advanced precipitation nowcasting model with good prediction performance for dam basins in general, we designed a model based on the cGAN approach (Rad-cGAN) for multiple dam domains of the Soyang-gang, Andong, and Chungju dam basins in South Korea. We trained the model using radar reflectivity data from the Soyang-gang Dam Basin for the summer season during 2014–2017 (provided by the Korea Meteorological Administration, KMA) and evaluated model performance using the 2018 data by comparing it with reference models of ConvLSTM, U-Net, and Eulerian persistence. We also used spectral prognosis (S-PROG) (Seed, 2003), which is a deterministic nowcast model in the pySTEPS library, for evaluation. We applied the transfer learning technique (Pan and Yang, 2009) that uses the previously trained model with cost-effective computation to train the model for the other two abovementioned domains. Five transfer learning strategies were compared to evaluate which was most effective for the Andong and Chungju Dam basins.

110

115

서식 지정함: 영어 (영국)

서식 지정함: 글꼴: Times New Roman, 글꼴 색: 검정

서식 지정함: 글꼴: Times New Roman, 글꼴 색: 검정

서식 지정함: 글꼴: Times New Roman, 글꼴 색: 검정

삭제함: the present

서식 지정함: 글꼴 색: 검정

삭제함: precipitation prediction

서식 지정함: 글꼴: Times New Roman, 글꼴 색: 검정

서식 지정함: 글꼴 색: 검정

삭제함: at

삭제함: site

서식 지정함: 글꼴 색: 검정

서식 지정함: 글꼴 색: 검정

서식 지정함: 글꼴 색: 검정

삭제함: sites and

서식 지정함: 글꼴 색: 검정

삭제함: of

삭제함: ),

삭제함: the

삭제함: using 2018 data

삭제함: Three

120

2 Materials and methods

2.1 Study area and Radar reflectivity data

We developed a precipitation nowcasting model for dam basins where an accurate rainfall forecasting system is essential for the estimation of urban water supply and flood prevention. The target domains were the Soyang-gang Dam Basin (D1), Chungju Dam Basin (D2), and Andong Dam Basin (D3) areas. These dams are multi-purpose and are located upstream of the major rivers of South Korea (Fig. 1).

125

The 1.5-km constant altitude plan position indicator (CAPPI) radar reflectivity data, provided by KMA, were used as input data for training and evaluation of our model. The map product represents the quality-controlled radar reflectivity composite (dBZ) of 11 weather radar stations across South Korea (Fig. 1a), with a size of 960 × 1200 pixels, spatial resolution of 1 km, and temporal resolution of 10 min.

삭제함: basin areas

서식 지정함: 글꼴: Times New Roman, 글꼴 색: 검정

삭제함: the

서식 지정함: 글꼴: Times New Roman, 글꼴 색: 검정

삭제함: ×

삭제함: 1 × 1 km

The radar composite data were cropped to 128×128 pixels, covering three target basins. Figure 1b shows the different topographical characteristics of each domain. Since topography (especially mountainous areas such as study domains) affects atmospheric conditions, such as temperature, humidity, air pressure distribution, and cloud formation, it directly or indirectly affects rainfall formation and distribution (Basist et al., 1994; Prudhomme and Reed, 1998). Consequently, data extracted from the three domains with different topographic characteristics would exhibit different rainfall patterns. We selected the available radar reflectivity data in summer (June–August, JJA) from 2014 to 2018 considering high intensity rainfall occurs in summer due to rainfall seasonality, a characteristic of our study domain. Data from 2014 to 2017 were used for training the model, and data from 2018 were used for evaluation (Table 1). For rapid and effective training, the raw radar reflectivity data (dBZ) were converted to grayscale (0–255), and the data range was scaled to 0–1 using the Min-Max scaler method (min-max values from training dataset). The predicted radar reflectivity data were converted into precipitation using the Z-R relationship (Eq. (1)) (Marshall and Palmer, 1948) to evaluate the rainfall prediction performance of the model.

$$Z = 200R^{1.6} \quad (1)$$

where Z is the radar reflectivity factor ( $\text{mm}^6 \text{m}^{-3}$ ) and R is the rainfall rate ( $\text{mm h}^{-1}$ ).

We used cropped radar reflectivity images ( $128 \times 128 \text{ km}^2$ ) of the Soyang-gang Dam Basin to train and evaluate the proposed model (Rad-cGAN) and reference models (U-net, ConvLSTM, Eulerian persistence, and pySTEPS (S-PROG)). Furthermore, to reduce the edge effect caused by the fast Fourier transform (FFT), which is used for scale decomposition of the pySTEPS (S-PROG) nowcast (Pulkkinen et al., 2019; Foresti and Seed, 2014), we derived the pySTEPS results using  $384 \times 384 \text{ km}^2$  input data extended by 128 pixels on each side of the original input data ( $128 \times 128$  pixels).

## 2.2 Model architecture

### 2.2.1 Conditional generative adversarial network (cGAN) for image translation

GAN is a recently developed framework for training generators (e.g., CNN encoder-decoder) via an adversarial process. It consists of a generator ( $G$ ) that produces the distribution of real data from random noise, and a discriminator ( $D$ ) that classifies whether the input sample is from the generator or the original data distribution (Goodfellow et al., 2014). Furthermore, the cGAN framework uses additional conditions (e.g., input data of the generator) for training and can generate targeted outputs that suit specific conditions (Mirza and Osindero, 2014). For image translation tasks, when  $G$  is trained to produce a targeted image ( $y$ ) from input ( $x$ ) with random noise ( $z$ ), the objective of  $D$  will try to maximize the loss function  $\mathcal{L}_{cGAN}(G, D)$  while  $G$  will try to minimize  $\mathcal{L}_{cGAN}(G, D)$ . This relation can be expressed as:

$$\min_G \max_D \mathcal{L}_{cGAN}(G, D) = \mathbb{E}_{x,y} [\log D(x, y)] + \mathbb{E}_{x,z} [\log(1 - D(x, G(x, z)))] \quad (2)$$

where losses were calculated as expected (E) values. After simultaneously training  $G$  and  $D$ ,  $G$  was trained to generate an output that cannot be distinguished from real data ( $y$ ) by  $D$ , which was trained in an adversarial manner to detect the fake

서식 지정함: 영어 (영국)

삭제함: ×

삭제함: .

서식 지정함: 글꼴: Times New Roman, 글꼴 색: 검정

삭제함: of rainfall in an area

서식 지정함: 글꼴: Times New Roman, 글꼴 색: 검정

서식 지정함: 글꼴: Times New Roman, 글꼴 색: 검정

서식 지정함: 글꼴: Times New Roman, 글꼴 색: 검정

서식 지정함: 글꼴: Times New Roman, 글꼴 색: 검정

서식 지정함: 글꼴: Times New Roman, 글꼴 색: 검정

삭제함: (dBZ)

삭제함: 2.2.1 Generative Adversarial Network (GAN)

서식 지정함: 글꼴: Times New Roman, 글꼴 색: 검정

서식 지정함: 글꼴: Times New Roman, 글꼴 색: 검정

180 image from  $G$ . Isola et al. (2017) showed that combining the traditional pixel-wise loss with cGAN loss can improve the quality of output images. To generate sharp and realistic images, the  $L1$  loss function  $\mathcal{L}_{L1}(G)$  was used as the traditional loss (Eq. (3)).

$$\mathcal{L}_{L1}(G) = \mathbb{E}_{x,y}[\|y - G(x, z)\|_1] \quad (3)$$

By adding the traditional loss with a weight  $\lambda$  to the cGAN loss, the final objective was obtained (Eq. (4)).

$$G^* = \arg \min_G \max_D \mathcal{L}_{cGAN}(G, D) + \lambda \mathcal{L}_{L1}(G) \quad (4)$$

185 In this study, we developed a radar-based precipitation nowcasting model using a cGAN framework. Recently, research on weather prediction using cGAN, an advanced machine learning approach, has been conducted extensively (e.g., Rüttgers et al., 2019; Ravuri et al., 2021). For example, Ravuri et al. (2021) proposed a generator consisting of two modules; conditioning stack (using CNN to extract representation of input); and sampler (using ConvGRU to generate prediction). The model, which used ConvGRU, could observe spatiotemporal changes of inputs such as ConvLSTM, and attempted to improve performance  
190 by extracting features from different spatial dimensions and deriving the results. Whereas the generator used to predict future radar map, the discriminator used a dual architecture that distinguishes the real and generated frames, to ensure both temporal and spatial consistency. Unlike the model proposed by Ravuri et al. (2021), our model adopts a U-net architecture that uses a CNN layer in image generation based on the underlying Pix2Pix model; the architecture exhibits outstanding performance in image-to-image translation tasks (Isola et al., 2017). Also, we considered only spatial consistency in the PatchGAN  
195 discriminator, which distinguishes images for each  $N \times N$  patch ( $N$  can be smaller than the full size of the image). U-net-based precipitation nowcasting model has previously demonstrated performance superior to that of a traditional radar-based precipitation nowcasting model that uses optical flow (Ayzel et al., 2020). Therefore, here, we apply the basic cGAN methodology to the U-net structure to improve performance and confirm the applicability of the transfer learning methodology to multiple dam domains.

### 2.2.2 Generator

Figure 2a shows the generator using U-Net architecture (a detailed description of U-Net is provided in Sect. 2.3.3). The model consists of nine convolutional layers, two max-pooling layers, two up-sampling layers, and an output convolutional layer. Each convolutional layer, except for the output layer, is composed of the following operations:  $3 \times 3$  2D convolution with zero-  
205 padding, batch normalization, and activation function of ReLU. In the contracting part of the generator, a  $2 \times 2$  2D max-pooling operation was used to down-sample the input images. To prevent overfitting, a dropout layer with a rate of 0.5 was applied after the pooling and convolutional layers of the expanding part of the model (Srivastava et al., 2014). A  $2 \times 2$  2D up-sampling operation was further applied in the expanding part after skip connection to increase the resolution of featured images that contain both high- and low-level information. Finally, the output convolutional layer had a  $1 \times 1$  2D convolution that used a  
210 linear function for activation to obtain future prediction of the radar reflectivity image.

서식 지정함: 영어 (영국)

서식 지정함: 글꼴: Times New Roman, 글꼴 색: 검정

서식 지정함: 글꼴 색: 검정

서식 지정함: 글꼴: Times New Roman, 글꼴 색: 검정

서식 지정함: 글꼴: Times New Roman, 글꼴 색: 검정

서식 지정함: 글꼴: Times New Roman, 글꼴 색: 검정

서식 지정함: 글꼴: Times New Roman, 글꼴 색: 검정

서식 지정함: 글꼴: Times New Roman, 글꼴 색: 검정

서식 지정함: 글꼴: Times New Roman, 글꼴 색: 검정

삭제함: ×

서식 지정함: 글꼴: Times New Roman, 글꼴 색: 검정

서식 지정함: 글꼴: Times New Roman, 글꼴 색: 검정

삭제함: 2

서식 지정함: 글꼴: Times New Roman, 글꼴 색: 검정

삭제함: ×

삭제함: ×

삭제함: ×

서식 지정함: 글꼴: Times New Roman, 글꼴 색: 검정

삭제함: ×

서식 지정함: 글꼴: Times New Roman, 글꼴 색: 검정

서식 지정함: 영어 (영국)

### 2.2.3 Discriminator

PatchGAN from the Pix2Pix model was used as the discriminator (Fig. 2b). As in cGAN, the input pair of the discriminator consists of historical radar reflectivity data (i.e., input of the generator) and future radar reflectivity data. The discriminator classifies real image pairs (input of generator and ground truth image) as 1 and fake image pairs (input and generated image from generator) as 0 (Mirza and Osindero, 2014). Particularly, PatchGAN only penalizes the structures over a certain scale of image patches; therefore, the discriminator classifies whether the  $N \times N$  patch in the input pair is real or fake. This patch represents the receptive field, which is the region in the input image that is used to measure the associated feature of the output layer. Consequently, the size of the patch (N) was determined based on the structure of the entire discriminator (e.g., number of layers, nodes, filter size, paddings, and strides), and it increased as the model deepened. We constructed a discriminator model with a  $34 \times 34$  patch size through hyperparameter tuning. The model consists of three convolutional layers and an output layer. The first two convolutional layers were composed of  $4 \times 4$  2D convolution with strides of two and zero-padding, batch normalization, and ReLU activation function, which was leaky and had a 0.2 slope. The third convolutional layer had the same configuration as the previous layers, except that its stride was 1. To distinguish the input pair in the image form, the output layer consisted of  $4 \times 4$  2D convolution with zero-padding and sigmoid activation functions. To train the discriminator as a classifier, we manually generated the training datasets consisting of the input image pairs and the target images, with spatial dimensions of  $32 \times 32$  filled with 1 (for real image pairs) or 0 (for generated image pairs). Therefore, each pixel of the output estimates the probability that the discriminator determines each patch of the input pair as the real one.

### 2.2.4 Optimization procedure

Before proceeding with training to optimize the model for the input data, hyperparameter tuning is required to determine the most optimal model structure and training settings. We selected the following hyperparameters: number of layers, number of hidden nodes, convolution filter size, patch size, batch size, and learning rate. To select the appropriate hyperparameter combination, the model for each combination was trained using radar data from 2014 to 2016 (June to August) and data from 2017 (June to July). Subsequently, using data from 2017 (August), the mean absolute error (MAE) and critical success index (CSI) (at an intensity threshold of 0.1 mm/h) were calculated to obtain the optimal combination of hyperparameters. Based on the tuning results, the MAE range was 0.45–47.66 and the CSI range was 0.0–0.83, and the results confirmed that hyperparameters influence model performance considerably. Based on the combinations that performed optimally, we determined the model structure and training settings.

서식 지정함: 글꼴: Times New Roman, 글꼴 색: 검정

삭제함: ×

서식 지정함: 글꼴: Times New Roman, 글꼴 색: 검정

서식 지정함: 글꼴: Times New Roman, 글꼴 색: 검정

삭제함: became deeper.

삭제함: ×

삭제함: ×

서식 지정함: 글꼴: Times New Roman, 글꼴 색: 검정

삭제함: ×

서식 지정함: 글꼴: Times New Roman, 글꼴 색: 검정

삭제함: a

삭제함: dataset

삭제함: an

삭제함: pair

삭제함: a

삭제함: image

삭제함: ×

서식 지정함: 글꼴: Times New Roman, 글꼴 색: 검정

서식 지정함: 글꼴: Times New Roman, 글꼴 색: 검정

서식 지정함: 글꼴: Times New Roman, 글꼴 색: 검정

		서식 지정함: 영어 (영국)
260	<p>To optimize Rad-cGAN, the training procedure suggested by Isola et al. (2017) was adopted. First, we compared the results using a total of four and six consecutive radar reflectivity images to determine the input historical data length. As a result of 10 min precipitation prediction at the Soyang-gang Dam site, in the case of CSI (at the rainfall intensity of 0.1 mm h<sup>-1</sup>), the case of using six historical data was slightly better than case of using four data, but in R, RMSE, and NSE, the results of using four data were better. Through this, samples that consisted of four consecutive radar reflectivity images (<math>t-30</math>, <math>t-20</math>, <math>t-10</math> min, and <math>t</math>) and the image at <math>t+10</math> min were selected. Subsequently, a training sample for the discriminator was created by adding labels to classify whether the samples were real (image at <math>t+10</math> min from observation) or fake (<math>t+10</math> image from the generator) pairs. Then, the parameters of the discriminator were updated using the minibatch stochastic gradient descent (SGD) method for one step. Binary cross-entropy was used as a loss function, and the ADAM optimizer (Kingma and Ba, 2015) with a learning rate of 0.0002 and momentum parameters <math>\beta_1 = 0.5</math> and <math>\beta_2 = 0.999</math> was applied. Afterwards, the generator was trained for one step to optimize Eq. (4). Binary cross-entropy was used as <math>\mathcal{L}_{cGAN}</math> for the discriminator to classify the generated image into a real image. Additionally, <math>\lambda</math> of the traditional pixel-wise <math>L1</math> loss was set to 100. The minibatch SGD and ADAM optimizer were applied to train the generator with the same setting as the discriminator. Both the procedures for updating the parameters of the discriminator and generator were run simultaneously during one epoch. Our model was trained using 600 epochs, with a batch size of 8. To achieve the optimal model, we applied an early stopping technique that stops the training model when the loss stops improving. The loss metric was defined as the generator loss based on 100 validation samples randomly sampled from the training dataset that was not used to train the model. To monitor the loss, we set patience to 30 epochs and saved the model when the loss improved. The model architecture was written in Python (<a href="https://www.python.org/">https://www.python.org/</a>) using the Keras deep learning application (<a href="https://keras.io/">https://keras.io/</a>). The entire procedure for training and all the experiments for evaluation were run on a computer with a single NVIDIA Tesla V100 GPU.</p>	<p>서식 지정함: 글꼴: Times New Roman, 글꼴 색: 검정</p> <p>삭제함: Subsequently</p> <p>서식 지정함: 글꼴: Times New Roman, 글꼴 색: 검정</p>
270		서식 지정함: 글꼴: Times New Roman, 글꼴 색: 검정
275		삭제함: was applied
	<h3>2.3 Reference models</h3> <p>The performance of the Rad-cGAN model was compared with and validated using reference models, that include two baseline and two machine-learning models. We used the Eulerian persistence model (hereafter referred to as persistence), a traditional radar-based rainfall prediction model, as the baseline model. This model assumes that rainfall prediction at any lead time is the same as the rainfall in the forecast time. This is a simple but powerful model for predicting short-term precipitation. Additionally, a deterministic S-PROG nowcast from the pySTEPS library was used as another baseline model (Sect. 2.3.1). We used ConvLSTM (Sect. 2.3.2) and U-Net (Sect. 2.3.3), which are the common basic structures for machine learning-based nowcasting models, as reference models for comparison.</p>	<p>삭제함: model</p> <p>삭제함: .</p> <p>삭제함: hereinafter</p> <p>삭제함: first reference</p> <p>삭제함: The persistence</p> <p>삭제함: will</p> <p>삭제함: It</p> <p>삭제함: For comparison, we</p> <p>삭제함: ,</p> <p>삭제함: -</p> <p>삭제함: in several studies</p>



서식 지정함: 영어 (영국)

### 2.3.1 PySTEPS

PySTEPS (Pulkkinen et al., 2019) is an open-source and community-driven Python framework for radar-based deterministic and probabilistic precipitation nowcasting, and is considered a strong baseline model (Imhoff et al., 2019; Ravuri et al., 2021).

In this study, deterministic S-PROG (Seed, 2003) nowcast from the pySTEPS library was used as the benchmark model.

305 To predict precipitation, we input the precipitation images (unit: dBR) transformed from four consecutive radar reflectivity images (from  $t-30$  to  $t$ , which were the same as the input of the Rad-cGAN model, based on the Z-R relationship (Eq. (1)). Additionally, the transformed precipitation was used to estimate the motion field, which was used together with precipitation as input data in the model. Future precipitation at a lead time of up to 90 min for the test period (JJA, 2018) was generated from the results of the S-PROG nowcasts. The source code of pySTEPS is available at GitHub repository (https://pysteps.github.io, last accessed: 23 May 2022).

삭제함: the

삭제함: python

삭제함: that

삭제함: the present

삭제함: STEPS (Short-Term Ensemble Prediction System) (Bowler et al., 2006)

삭제함: ensemble

삭제함: generate

삭제함: predictions

삭제함: first provided

삭제함: that were

삭제함: )

삭제함: a

삭제함: The

삭제함: also

서식 지정함: 글꼴: Times New Roman, 글꼴 색: 검정

삭제함: and the motion field and

삭제함: were used

삭제함: STEPS

삭제함: of

삭제함: based on the average across 20 ensemble members

삭제함: STEPS

삭제함: pySTEPS

삭제함: in

삭제함: 5 April

서식 지정함: 글꼴: Times New Roman, 글꼴 색: 검정

### 2.3.2 ConvLSTM

LSTM is a special case of recurrent neural networks (RNNs) and is widely used in temporal sequence predictions (Hochreiter and Schmidhuber, 1997). Sutskever et al. (2014) proposed an LSTM encoder-decoder framework for sequence-to-sequence problems, which consists of concatenated LSTMs for the input and output sequences. Based on this model, Shi et al. (2015) developed a ConvLSTM network that can be applied to spatiotemporal sequence prediction, such as radar-based rainfall prediction. To handle spatiotemporal sequences, a convolution operator was used in state-to-state and input-to-state transitions.

315 The ConvLSTM model was shown to outperform the traditional optical flow-based precipitation nowcasting model. Recent studies have shown that the ConvLSTM model can be successfully applied to predict future radar-based precipitation (Kim et al., 2017; Moishin et al., 2021).

325 We designed a ConvLSTM model that uses four radar reflectivity image frames ( $t-30$ ,  $t-20$ ,  $t-10$  min, and  $t$ ) as input to predict future frames at time  $t+10$  min, which is similar to input and output of Rad-cGAN. The model consists of three ConvLSTM layers and an output layer. Each ConvLSTM layer contains 64 hidden states and  $3 \times 3$  kernels. A 3D convolutional layer with a linear activation function was used as the output layer. The hyperparameters of the ConvLSTM model (i.e., number of layers, number of nodes, convolution filter size, batch size, and learning rate) were tuned using a procedure similar to that applied in Rad-cGAN (Sect. 2.2.4). To optimize the model, we used the mean squared error as the loss function and applied the ADAM optimizer (learning rate 0.002 and momentum parameters  $\beta_1 = 0.9$  and  $\beta_2 = 0.999$ ). We trained the model using 600 epochs (early stopping applied) with a batch size of 32.

서식 지정함: 글꼴: Times New Roman, 글꼴 색: 검정

서식 지정함: 글꼴: Times New Roman, 글꼴 색: 검정

삭제함: ×

서식 지정함: 글꼴: Times New Roman, 글꼴 색: 검정

서식 지정함: 글꼴 색: 검정

서식 지정함: 글꼴: Times New Roman, 글꼴 색: 검정

서식 지정함: 영어 (영국)

### 355 2.3.3 U-net

U-Net-based precipitation nowcasting models efficiently predict future precipitation using historical data, even though U-Net does not have a structure, such as RNN, that preserves temporal information (e.g., Ayzel et al., 2020; Trebing et al., 2021). U-Net was developed by modifying the fully convolutional network (Long et al., 2015), and performed well in image segmentation tasks (Ronneberger et al., 2015). This model architecture consists of two parts: a contracting network that captures the context of the input images and an expanding network that increases the resolution of features from the contracting network.

The contracting network follows the usual CNN, which consists of convolution and max-pooling layers. Each convolution layer is composed of convolution, batch normalization, and activation operations. Batch normalization is used to prevent gradient vanishing or exploding problems and can effectively increase the convergence speed (Ioffe and Szegedy, 2015). The max-pooling operation is applied for down-sampling after convolution of the input image. Through this process, the output of the contracting network can incorporate the features of the input image. The expanding network consists of the up-sampling and convolution layers. Before applying the up-sampling operation, the skip connection is applied between each layer of the contracting network and the layer of the expanding network to prevent gradient vanishing and share the low-level information of the input data (Simonyan et al., 2015). The convolution layers of the expanding and contracting networks follow the same operation.

As the reference model, hyperparameters for the U-net structure (number of layers, number of nodes, and convolution filter size) were set to be equivalent to those of Rad-cGAN (Sect. 2.2.2), and hyperparameters related to training settings (batch size and learning rate) were tuned using procedures similar to those of Rad-cGAN (Sect. 2.2.4). To optimize the model,  $L1$  loss and ADAM optimizers were used as in the case of ConvLSTM (Sect. 2.3.2). The model was trained using 600 epochs with early stopping and the batch size set to 8.

서식 지정함: 글꼴: Times New Roman, 글꼴 색: 검정

서식 지정함: 글꼴 색: 검정

서식 지정함: 글꼴 색: 검정

서식 지정함: 글꼴: Times New Roman, 글꼴 색: 검정

## 2.4 Experiments for evaluating model's prediction skills

### 2.4.1 Performance evaluation

The model was trained using data from the summers (June–August) of 2014–2017 and its precipitation nowcasting capacity was assessed using data from the summer of 2018. To predict radar reflectivity data 10 min ahead, four latest radar reflectivity data ( $t-30$ ,  $t-20$ ,  $t-10$  min, and  $t$  min;  $t$  being the forecast time) were used as input data. The model can generate multiple samples (No. of samples, 128, 128, 1) corresponding to the number of samples of the past four consecutive input data (No. of samples, 128, 128, 4). To predict beyond the 10 min lead time, we used the prediction data at  $t+10$  min as the latest input data. Using this recursive process, predictions were obtained at a lead time of  $>10$  min. Because the model predicts the radar

서식 지정함: 글꼴: Times New Roman, 글꼴 색: 검정

서식 지정함: 글꼴: Times New Roman, 글꼴 색: 검정

서식 지정함: 글꼴: Times New Roman, 글꼴 색: 검정

서식 지정함: 글꼴: Times New Roman, 글꼴 색: 검정

서식 지정함: 글꼴: Times New Roman, 글꼴 색: 검정

서식 지정함: 글꼴: Times New Roman, 글꼴 색: 검정

reflectivity after 10 min using past consecutive radar images, we first evaluated the model performance at a lead time of 10 min. This allowed us to confirm the prediction tendency of our model and other reference models while performing precipitation nowcasting. Furthermore, to assess the applicability of our model to an actual early warning system that needs to ensure at least one hour of lead time, the predictive skill was evaluated for >10 min of lead time using the recursive process.

We measured the verification metrics (see below) using rainfall prediction, converted from the radar reflectivity (Eq. (1)), at a lead time of up to 90 min to confirm the forecasting time in which the model ensured sufficient performance.

We evaluated the model performance of the entire dam basin since the effect on water level by rainfall over the dam basin is a major factor in the decision-making process for dam management (Fig. 1b). To evaluate the entire domain, the verification metrics were calculated with increasing lead time for all pixels of the predicted image. Additionally, to qualitatively evaluate the entire domain, we compared the resulting precipitation images obtained using data at a certain forecast time. We set the forecast time at 23 August 2018, 17:50 UTC, when Typhoon Soulik, which landed on the Korean Peninsula from 23 August 2018, 12:00 UTC to 24 August 2018, 03:00 UTC, started affecting the Soyang-gang Dam Basin.

Several metrics were used for model evaluation: Pearson correlation coefficient (R), root mean square error (RMSE), Nash–Sutcliffe efficiency (NSE), CSI, fractions skill scores (FSS). As the collinearity between actual rainfall and predicted rainfall increases, the explanatory power of the rainfall simulated by the model increases, so that the performance of the model can be illustrated by strong positive linear relationship between predictions and observations. Hence, we confirmed that the model exhibits better performance when R (Eq. (5)), calculated based on the model prediction and observation, is closer to 1. To verify the precision of the model, the RMSE (Eq. (6)) between prediction and observation was used. Since we propose a precipitation nowcasting model, NSE, which is widely used to assess hydrologic models, can be used as a goodness-of-fit index for it (McCuen et al., 2006) (Eq. (7)).

$$R = \frac{\sum_{i=1}^N (O_i - O)(P_i - P)}{\sqrt{\sum_{i=1}^N (O_i - O)^2 \sum_{i=1}^N (P_i - P)^2}} \quad (5)$$

$$RMSE = \sqrt{\frac{\sum_{i=1}^N (O_i - P_i)^2}{N}} \quad (6)$$

$$NSE = 1 - \frac{\sum_{i=1}^N (O_i - P_i)^2}{\sum_{i=1}^N (O_i - O)^2} \quad (7)$$

where  $O$  and  $P$  are the means of observation and prediction, respectively,  $O_i$  and  $P_i$  are the observed and predicted precipitation, respectively, in the  $i$ th time of the data period, and  $N$  is the total number of data for the entire period.

We used the CSI (Eq. (8)), which is a measure of categorical forecast performance, to verify the model accuracy for precipitation event detection.

$$CSI = \frac{hits}{hits + false\ alarms + misses} \quad (8)$$

서식 지정함: 영어 (영국)

서식 지정함: 글꼴 색: 검정

[1] 아래로 이동함: 1b)

삭제함: Furthermore, we

삭제함: at a specific dam site as well as for

삭제함: domain (Fig.

삭제함: We chose

삭제함: precipitation data at the dam site as it directly affects the dam...

삭제함: , which

서식 지정함: 글꼴 색: 검정

서식 지정함: 글꼴 색: 빨강

서식 지정함: 글꼴 색: 검정

서식 지정함: 글꼴 색: 검정

서식 지정함: 글꼴 색: 검정

[1] 이동함(삽입)

삭제함: of

삭제함: .

서식 지정함: 글꼴 색: 검정

서식 지정함: 글꼴 색: 검정

서식 지정함: 글꼴 색: 빨강

서식 지정함: 글꼴 색: 빨강

삭제함: , and the model performance was represented by the 50th percentile (median) of the metrics.

서식 지정함: 글꼴: Times New Roman, 글꼴 색: 검정

삭제함: radar reflectivity

서식 지정함: 글꼴: Times New Roman, 글꼴 색: 검정

삭제함: score

서식 지정함: 글꼴: Times New Roman, 글꼴 색: 검정

서식 지정함: 글꼴 색: 검정

서식 지정함: 글꼴: Times New Roman, 글꼴 색: 검정

서식 지정함: 글꼴 색: 검정

서식 지정함: 영어 (영국)

서식 지정함: 글꼴: Times New Roman, 글꼴 색: 검정

서식 지정함: 글꼴: Times New Roman, 글꼴 색: 검정

서식 지정함: 글꼴: Times New Roman, 글꼴 색: 검정

서식 지정함: 글꼴: Times New Roman, 글꼴 색: 검정

삭제함: ,

삭제함: ,

삭제함: ,

삭제함: ,

서식 지정함: 글꼴: Times New Roman, 글꼴 색: 검정

서식 지정함: 글꼴: Times New Roman, 글꼴 색: 검정

삭제함: To calculate each verification metric, in the case of the evaluating for dam sites, we calculated all metrics for one pixel (dam site location) in the dam basins and averaged them over the data period (No. of samples). Also, in the case of evaluating dam domain

삭제함: basin domains

서식 지정함: 글꼴: Times New Roman, 글꼴 색: 검정

We used transfer learning to train our model for different dam basins, i.e., Andong and Chungju, with a pre-trained model that was completely trained by data from the Soyang-gang Dam Basin. In addition, in existing papers that have successfully applied the transfer learning strategies, it was used to develop a model for a new domain using a pre-trained model based on vast data. Consequently, we used the pre-trained model with Daecheong Dam, Juam Dam, and Yongdam Dam basin data, in addition to Soyang-gang Dam data, to assess the amount of data required to develop a model for a new dam domain. The selected strategies were inspired by a previous approach of transferring GAN (Wang et al., 2018; Mo et al., 2020). We formulated two strategies for each pre-trained model. First, the weights of the pre-trained generator were frozen and used directly in new dam domain (Cases 2 and 4). Next, the weights of the pre-trained generator were fine-tuned (1/10<sup>th</sup> of the original learning rate) and the discriminator trained from the scratch (Cases 3 and 5). In addition, the entire model was trained for the new domain (Case 1) (Table 3a). The model was trained for the Chungju and Andong Dam domains, separately, using the five strategies (Table 3b). To determine the best strategy for training different dam domains, we estimated the performance at the 10-min lead time at each dam domain (Fig. 1b). Additionally, we compared the predictive skill of each strategy at the lead time of up to 90 min by using the recursive process.

### 3 Results and discussion

#### 3.1 Domain-averaged model performance for the Soyang-gang Dam Basin

To apply our model in an early warning system, the prediction performance upstream of the dam should be sufficient. Hence, the verification metrics were calculated for each grid cell in the entire domain. First, we evaluated the performance of our model for the predicted precipitation at a lead time of 10 min at the Soyang-gang Dam Basin during the summer of 2018 (Table 4). As the general criterion for evaluating hydrological models, when R and NSE are  $\geq 0.5$ , the model has acceptable performance (Moriasi et al., 2007). In addition, Germann and Zawadzki (2002) suggested that the threshold of predictability is  $1/e \approx 0.37$ , assuming that the verification metrics follow the exponential law. According to the standard, the mean values of each metrics of Table 4 shows that the machine learning-based models performed well as precipitation nowcasting models ( $R > 0.5$ ,  $NSE > 0.5$ ,  $CSI > 0.5$ ). Among them, Rad-cGAN outperforms the other reference models for almost all the verification metrics (Table 4). Particularly, Rad-cGAN shows improvements in the CSI values at different rainfall intensities (0.1-, 1.0-, and 5.0-mm h<sup>-1</sup>) by 0.55 %, 10.10 %, and 123.50 %, respectively, compared with the model results using U-Net, confirming that the cGAN approach can mitigate the tendency to underestimate precipitation. However, by comparing with ConvLSTM and baseline models (especially for pySTEPS), Rad-cGAN performs poorly for highest rainfall intensity (5.0 mm h<sup>-1</sup>). We predicted the precipitation at the lead times of up to 90 min by using the recursive process, and their performance in all the grid cells were presented through boxplots for each lead time in all the models (Fig. 3). By comparing the median values,

서식 지정함	...	[1]
서식 지정함	...	[2]
삭제함: Case	...	[3]
서식 지정함	...	[3]
삭제함: ....and 4). Next, to...the weights of the pre-trained	...	[4]
서식 지정함	...	[5]
삭제함: ....and 5). In addition, the entire model was trained	...	[6]
삭제함: Model...omain-averaged model performance at	...	[7]
[2] 이동함(삽입)	...	[7]
서식 지정함	...	[8]
삭제함: To evaluate	...	[8]
서식 지정함	...	[9]
삭제함: .	...	[9]
서식 지정함	...	[10]
삭제함: was predicted	...	[10]
삭제함: site	...	[10]
서식 지정함	...	[11]
서식 지정함	...	[12]
삭제함: CSI values	...	[12]
서식 지정함	...	[13]
삭제함: results	...	[13]
서식 지정함	...	[14]
삭제함: show	...	[14]
서식 지정함	...	[15]
삭제함: 8	...	[15]
서식 지정함	...	[16]
삭제함: significantly outperformed	...	[16]
서식 지정함	...	[17]
삭제함: , Fig. 3).The	...	[17]
삭제함: showed that the cGAN approach could be succes	...	[19]
서식 지정함	...	[18]
서식 지정함	...	[20]
삭제함: 37), even at high rainfall intensity. The scatter pl	...	[21]
서식 지정함	...	[22]
삭제함: .86) compared to the reference models (average R	...	[23]
서식 지정함	...	[24]
삭제함: NSE values	...	[24]
서식 지정함	...	[25]
삭제함: 2.63 %	...	[25]
서식 지정함	...	[26]
삭제함: 32.16	...	[26]
서식 지정함	...	[27]
삭제함: could	...	[27]
서식 지정함	...	[28]
삭제함: This improvement was also observed in the time	...	[29]
서식 지정함	...	[30]
삭제함: the prediction accuracy of the	...	[30]
서식 지정함	...	[31]
삭제함: model	...	[31]
서식 지정함	...	[32]
삭제함: maximum precipitation was higher than that of o	...	[33]
서식 지정함	...	[34]
삭제함: better than other reference models in precipitation	...	[35]
서식 지정함	...	[36]
삭제함: We predicted the precipitation at a lead time of u	...	[37]
[3] 아래로 이동함: learning studies (Wang et al., 2016).	...	[37]
[2] 위로 이동함: To apply our model in an early warning system,	...	[38]
서식 지정함	...	[38]
삭제함: Data imbalance of our results occurred since unli	...	[39]
삭제함: Hence, the verification metrics were calculated f	...	[41]
서식 지정함	...	[40]
서식 지정함	...	[42]
삭제함: 5	...	[42]
서식 지정함	...	[43]

Fig. 3 shows average increases of 9.02 % and 17.87% for the R of Rad-cGAN at overall lead times compared to those of U-Net and ConvLSTM, respectively, which indicate improved precipitation prediction capacity for the entire domain. However, in the cases of RMSE and NSE, Rad-cGAN performs slightly worse than ConvLSTM, with an average increases over median values of 1.90% in RMSE and a decrease of 7.67% in NSE over the entire lead time (Fig. 3).

Moreover, according to the CSI value at the intensity of  $0.1 \text{ mm h}^{-1}$ , our model preserves its predictability performance ( $>1/e$ ) for the entire lead time, indicating that it can be applied to predict precipitation at lead times of  $>90 \text{ min}$ . By comparing with previous studies, the lead time for the CSI at the intensity of  $0.1 \text{ mm h}^{-1} > 0.5$  was up to 90 min with ConvLSTM in this study, while CSI at the intensity of  $0.5 \text{ (not } 0.1) \text{ mm h}^{-1} > 0.5$  was up to 40 min with ConvLSTM-based nowcasting model for Hong Kong region (Shi et al., 2015). Also, Ayzel et al. (2020) showed that the U-net-based model preserved performance (CSI at an intensity of  $0.125 \text{ mm h}^{-1} > 0.5$ ) at a lead time of  $>60 \text{ min}$  in Germany, whereas the performance of our model with similar CSI ( $0.1 \text{ mm h}^{-1} > 0.5$ ) remained up to 90 min. Hence, we confirm that the reference model was sufficiently trained to be used for comparison with our model. The result indicates that Rad-cGAN has reliable performance in precipitation nowcasting for relatively light rain (rainfall intensity of  $0.1 \text{ mm h}^{-1}$ ). However, in the case of CSI at intensities of  $1.0\text{-}5.0 \text{ mm h}^{-1}$ , although Rad-cGAN maintains a good performance compared to that of U-net, the performance rapidly deteriorates as the lead time increased. Unlike Rad-cGAN and U-net, ConvLSTM and baseline models record low CSI under low-intensity rainfall; however, Fig. 3 shows that relatively high levels of performance are maintained under higher rainfall intensity. The results can also be confirmed through the FSS of each model (Fig. 4). When comparing Rad-cGAN and U-net, as lead time and rainfall intensity increase, both models decrease FSS; however, Rad-cGAN model exhibits superior performance. However, ConvLSTM and pySTEPS have the relatively high FSS values under high rainfall intensity compared to those of the other two models.

Thus, we observe a tendency to underestimate the prediction of high-intensity precipitation in all models, including Rad-cGAN (Figs. 3 and 4). A similar observation was made using ConvLSTM (Kumar et al., 2020), wherein significant errors occurred in precipitation prediction ( $>20 \text{ mm h}^{-1}$ ). This may be attributed to data imbalance, which is a common issue in machine-learning studies (Wang et al., 2016). Data imbalance occurred in this study because, unlike low-intensity precipitation ( $<5 \text{ mm h}^{-1}$ ), high-intensity precipitation rarely occurs during the training and testing periods.

### 3.2 Spatial model performance for the Soyang-gang Dam Basin

To better understand model performance with increasing lead time, we predicted precipitation for lead times of 10, 30, 60, and 90 min for a specific forecast time on 23 August 2018, 17:50 UTC, when Typhoon Soulik began affecting the Soyang-gang Dam Basin (Fig. 5). We observe that with an increase in lead time, the model performance deteriorates due to the blurring effect of the predicted image, which is an issue reported in previous machine-learning-based nowcasting models (Ayzel et al.,

서식 지정함: 영어 (영국)

삭제함: 5

삭제함: , and is consistent with the results obtained from the Soyang-gang Dam site (Fig. 4). In addition, the relatively small variation in R values with pixel location in Rad-cGAN shows that it performs generally well not only for dam site but also for the entire domain.

서식 지정함: 글꼴: Times New Roman, 글꼴 색: 검정

삭제함: 5

삭제함: CSI at the intensity of  $0.1 \text{ mm h}^{-1} > 0.5$

삭제함: The

삭제함: 40

서식 지정함: 글꼴: Times New Roman, 글꼴 색: 검정

삭제함: 80

서식 지정함: 글꼴: Times New Roman, 글꼴 색: 검정

서식 지정함: 글꼴: Times New Roman, 글꼴 색: 검정

서식 지정함: 글꼴: Times New Roman, 글꼴 색: 검정

삭제함: -

삭제함: maintained

삭제함: deteriorated

삭제함: recorded

서식 지정함: 글꼴 색: 검정

삭제함: 5

삭제함: performance was maintained at a

삭제함: level

삭제함: 6

서식 지정함: 글꼴: Times New Roman, 글꼴 색: 검정

삭제함: exhibited

서식 지정함: 글꼴: Times New Roman, 글꼴 색: 검정

삭제함: had a

삭제함: value

[3] 이동함(삼일)

서식 지정함: 글꼴 색: 검정

서식 지정함: 글꼴: Times New Roman, 글꼴 색: 검정

서식 지정함: 글꼴: Times New Roman, 글꼴 색: 검정

삭제함: 7

삭제함: observed

삭제함: deteriorated

서식 지정함: 글꼴: Times New Roman, 글꼴 색: 검정

		서식 지정함: 영어 (영국)
	2020; Shi et al., 2015). Despite the smoothing trend, Rad-cGAN produces qualitatively better results than those of the other	삭제함: produced
	reference models (Fig. 5). The bias of prediction (observation-prediction) of Rad-cGAN at 90-min lead time ranges from -1.97	삭제함: 7
	to 19.68 (mean = 0.83 mm h <sup>-1</sup> ), indicating that our model alleviates the underestimation of precipitation compared to U-Net,	삭제함: ranged
	whose bias ranges from -0.30 to 20.33 (mean = 1.04 mm h <sup>-1</sup> ). The results support the improvement in Rad-cGAN verification	서식 지정함: 글꼴: Times New Roman, 글꼴 색: 검정
	metrics compared to those of U-Net (Figs. 3 and 4). Furthermore, in the case of ConvLSTM, the mean bias of 0.86 mm h <sup>-1</sup>	삭제함: radar reflectivity
740	under a 90-min lead time prediction showed that ConvLSTM was less prone to underestimation when compared with U-Net.	삭제함: ranged
	However, the 90-min rainfall prediction by ConvLSTM is recorded to be approximately 0 mm h <sup>-1</sup> in areas with an observation	서식 지정함: 글꼴: Times New Roman, 글꼴 색: 검정
	of ~5–10 mm h <sup>-1</sup> , indicating that it predicts precipitation to be close to zero in most areas with increasing lead times. As Fig.	삭제함: Fig. 5
	5 illustrates, ConvLSTM does not define the boundary of the entire area well but maintains high intensity rainfall compared	삭제함: dBZ
745	to the other two models, which causes the CSI difference depending on the rainfall intensity of ConvLSTM (Figs. 3 and 4).	삭제함: was
	Figure 6 shows the PSD for each result in Fig. 5. Based on Fig. 5, all models exhibits a blurring effect compared to the ground	삭제함: predicted
	truth. However, when comparing U-net and Rad-cGAN, Rad-cGAN has slightly lower blurring effect (Fig. 6). This is because	삭제함: 7
	a sharper image can be generated when cGAN is applied to the U-net structure (Isola et al. (2017)), which shows that the	삭제함: did
	cGAN technique was successfully applied by our model. Therefore, based on the overall verification metrics, we conclude that	삭제함: maintained
750	Rad-cGAN has the optimal prediction performance in nowcasting and prediction of spatial patterns of movement of	삭제함: 5
	precipitation.	삭제함: 6
	PySTEPS shows poor performance (Fig. 5) compared to previous studies (e.g., Imhoff et al., 2020) in the verification metrics	삭제함: 8
	(Table. 4 and Figs. 3-4). The overall prediction performance degrades particularly because the precipitation area near the edge	삭제함: 7
	of the basin is not predicted. To better understand this side effect, we reran pySTEPS and Rad-cGAN with the extended data	삭제함: 7
755	of 384×384 pixels. Compared to the predictions in Fig. 5, the typhoon event (Fig. 7) shows that using the extended area reduces	삭제함: exhibited
	the edge effect of pySTEPS and properly maintains high rainfall intensity, thereby improving the performance. Moreover, the	서식 지정함: 글꼴: Times New Roman, 글꼴 색: 검정
	average R and CSI (at the highest rainfall intensity of 5.0 mm h <sup>-1</sup> ) for the 10-min precipitation prediction during the entire test	서식 지정함: 글꼴: Times New Roman, 글꼴 색: 검정
	period is calculated as 0.77 and 0.38, respectively, indicating that the performance improves quantitatively compared to the	삭제함:
760	previous results (R=0.70 and CSI=0.32). Additionally, the prediction performance of typhoon event improves using the	서식 지정함: 글꼴: Times New Roman, 글꼴 색: 검정
	extended area in Rad-cGAN (Fig. 7), and the average R and CSI (at the rainfall intensity of 5.0 mm h <sup>-1</sup> ) in the 10-minute	
	rainfall forecast for the entire test period improves from 0.79 to 0.80 and from 0.18 to 0.37, respectively. Both models show	
	improved performance using extended area, but considering the applicability of the model to real-world problems with limited	
	data availability, we conclude that, unlike pySTEPS, Rad-cGAN is more efficient in rainfall prediction without considering	
765	the edge effects of the spatial size of the input domains.	
		서식 지정함: 글꼴 색: 빨강



### 785 3.3 Performance with transfer learning at different dam domains

To develop a precipitation nowcasting model for multiple dam basins (Andong and Chungju Dam Basins) other than Soyang-gang Dam Basin, we proposed to not only retrain our model with data from new dam basins (Case 1) but also apply efficient transfer learning methodology (Cases 2-5; Sect. 2.4.2).

First, we evaluated whether the transfer learning method could be effectively applied to the new domain (Cases 2 and 3) using a pre-trained model only for one domain (i.e., Soyang-gang Dam Basin). Table 5a shows the performance of each case with model predicted precipitation at 10-min lead time at the Andong Dam Basin. The results show that most of the verification metrics in Case 3 and Case 2 perform better than those in Case 1. In Case 2, which uses all the parameters of the generator from the pre-trained model, an NSE of 0.56 is achieved, which is closest to the NSE of the pre-trained model (0.54) with data from the Soyang-gang Dam Basin. This is consistent with the verification metrics results at lead times of up to 90 min (Fig. 8).

Based on the median of R, Case 2 maintains the predictive performance ( $> 1/e$ ) up to about 80-min lead time (Fig. 8a). Especially for CSI at higher rainfall intensities, Case 2 shows better performance than Case 1 overall lead times (Fig. 8d-f).

Hyperparameter tuning would have had a significant impact on the results where Case 2 performs better than Case 1. Unlike the pre-trained model, which confirmed that model optimization and generalization were completed through the hyperparameter tuning process, in case 1, we did not proceed with hyperparameter tuning for the new domain. Although the new domain has properties similar to those of the pre-trained domain, minor changes in hyperparameters also result in differences in performance, so that optimization and generalization of the model (Case 1) were less comprehensive than in the pre-trained model, resulting in relatively poor performance. However, in Case 3, the performance is lower than that of the other strategies. This is because of performance degradation due to overfitting during fine-tuning the pre-trained parameters.

High similarity between the two datasets of the Andong and Soyang-gang dams may be the reason for a major performance degradation of the transfer learning using the fine-tuning method (Wang et al., 2018).

For the Chungju Dam Basin, we trained the model using the same methodology used for the Andong Dam Basin. Among the Cases 1, 2 and 3, transfer learning cases (Cases 2 and Case 3) perform better than Case 1 for the overall verification metrics, especially for CSI at higher rainfall intensities (Table 5b). Additionally, when the lead time is increased by up to 90 min, Cases 2 and 3 show better performance than Case 1 for the entire lead time (Fig. 9). From the median values of CSI at the 0.1 mm h<sup>-1</sup>, all three cases preserve sufficient performance (CSI  $> 1/e$ ) at a lead time of up to 90 min. However, as a result of comparing CSI with higher rainfall intensity (1.0 mm h<sup>-1</sup>), it is confirmed that the performance in Case 2 only maintains predictive performance up to 30 min (Fig. 9e). Through these results, the Case 2 is successfully applied to Andong Dam and Chungju Dam among the transfer learning methodologies using a pre-trained model for the Soyang-gang Dam Basin.

Considering the advantages of transfer learning that can be effectively applied when data for new domains is insufficient over pre-trained domains, we evaluated the results of using pre-training models that had been trained for additional dam basins: Daecheong Dam, Juam Dam, and Yongdam Dam basins in addition to Soyang-gang Dam (Cases 4 and 5). Through the R for

서식 지정함: 영어 (영국)

삭제함: sites

서식 지정함

삭제함: Case...ases 2,...and 3) using a pre-trained model only for one domain (i.e., Soyang-gang Dam Basin). Table 5a shows the performance of each case with model predicted precipitation at 10-min lead times...ime at the Andong Dam site...asin. The results showed...

삭제함: performed...erform better than those in Case 1. In Case 2, which uses all the parameters of the generator from the pre-trained model, an NSE of 0.65 was...6 is achieved, which is closest to the NSE of the pre-trained model (0.73...4) with data from the Soyang-gang Dam Basin. This was...s consistent with the verification metrics results at lead times of up to 90 min (Fig. 7a...). Based on the median of R results... Case 2 maintained...aintains the pr...

서식 지정함: 글꼴: Times New Roman, 글꼴 색: 검정

삭제함: (R > 0.5

삭제함: an 60...out 80-min lead time (Fig. 9a...a). Especially for CSI at higher rainfall intensities, Case 2 showed

서식 지정함: 글꼴 색: 검정

서식 지정함: 글꼴 색: 검정

삭제함: 9d...d-f). Hyperparameter tuning would have had a significant impact on the results where Case 2 performs better than Case 1. Unlike the pre-training...rained model, which confirmed that model optimization and generalization were completed through the hyperparameter tuning process, in case 1, we did not proceed with hyperparameter tuning for the new domain. Although the new domain has properties similar to those of the previous...re-trained domain, minor changes in hyperparameters also result in differences in performance, so that optimization and generalization of the model (Case 1) were less comprehensive than in the pre-training...rained model, resulting in relatively poor performance. However, in Case 3, the performance was...s lower than that of the other strategies. This was...

서식 지정함: 글꼴: Times New Roman, 글꼴 색: 검정

서식 지정함

삭제함: The three cases performed similarly for predicting...mong the precipitation at 10-min lead time at the Chungju Dam site (Table 5b). Although Case ...ases 1 showed the highest R of 0.86, by comparing other metrics (RMSE, NSE, CSI)... 2 and 3, transfer learning cases (Case...ases 2 and Case 3) performed...erform better than Case 1...for the overall verification metrics, especially for CSI at higher rainfall intensities (Table 5b). Additionally, when the lead time was...s increased by up to 90 min, Cases 2 and 3 showed...how better performance than Case 1 for the entire lead time (Fig. 10...). From the results...edian values of CSI at the 0.1 mm h<sup>-1</sup>, Case 3 preserved...l three cases preserve sufficient performance (CSI  $> 0.5.../e$ ) at a lead time of up to 80...0 min, which is the same in Case 2... However, as a result of comparing CSI with high...igher rainfall intensity...(1.0 mm h<sup>-1</sup>), it was...s confirmed that the performance in Case 2 was better maintained...nly maintains predictive performance up to 30 min (Fig. 9e). Through these results, it can be seen that ...he Case 2 was

삭제함: training

삭제함: basin

서식 지정함: 글꼴: Times New Roman, 글꼴 색: 검정

서식 지정함: 글꼴: Times New Roman, 글꼴 색: 검정

삭제함: Case...ases 4,

서식 지정함: 글꼴 색: 검정



서식 지정합: 영어(영국)

**삭제함:** sites

**삭제함:** data, showed

서식 지정함: 글꼴 색: 검정

**삭제함: Case**

**삭제함:** showed similar or slightly

**삭제합:** (Fig 9,10).

**삭제합: high**

**삭제합: Case**

**삭제함:**

**삭제함:** outperformed

**삭제합:**

**서식 지정함:** 글꼴 색: 검정

**삭제함:** data

**삭제합:** under-estimation

**삭제한:** it can be seen that

**삭제한** was

서식 지정함: 글꼴 색: 검정

**삭제함:**

**삼제한:** showed

**삭제한.**

## 4 Conclusions

**삭제함:** the present

**삭제합:** developed

**삭제함:**

서식 지정함: 글꼴: Times New Roman, 글꼴 색: 검정

**삭제함:** site

**삭제함:** low rainfall intensity (CSI >0.5)

**삭제합: 30**

**삭제합: 70**

**삭제함:** The R

**삭제합: CSI**

서식 지정함: 글꼴: Times New Roman, 글꼴 색: 검정

서식 지정함: 글꼴: Times New Roman, 글꼴 색: 검정

서식 지정함: 글꼴: Times New Roman, 글꼴 색: 검정

**삭제합:** calculating

**삭제함:** Therefore

**서식 지정함:** 글꼴: Times New Roman, 글꼴 색: 검정

**서식 지정함:** 글꼴: Times New Roman, 글꼴 색: 검정

**삭제함:** our

975

cGAN model is the most advanced precipitation nowcasting model that does not consider edge effects when compared to other reference models.

980

To develop the precipitation nowcasting model for different dam basins (Andong and Chungju Dam basins), we proposed different transfer learning strategies by using the previously trained model. Comparing the case of using transfer learning (Case 2-5) and the case of not using transfer learning (Case 1), the case of using transfer learning generally showed better performance in both Andong Dam and Chungju Dam. From the results of Cases 2 and 3, in which the performance is somewhat poor in the case of using fine-tuning, it is necessary to pay attention to the overfitting when applying the fine-tuning procedure. In addition, when a model trained with an additional dam basins was used as a pre-trained model (Cases 4 and 5), the prediction performance was outperformed, especially at high rainfall intensity, and it was found that data diversity had an effect on model generalization and underestimation.

985

We confirmed that the proposed precipitation nowcasting model demonstrated improved performance over conventional machine learning-based models (U-Net and ConvLSTM) and showed that transfer learning strategies could be effectively applied to develop models for other dam domains with summer precipitation in South Korea. However, there are remaining issues that must be considered to ensure auditability of our model for real problems, such as predicting heavy precipitation events and flash flood forecasting. First, the tendency of the model to underestimate precipitation is a major issue. The decisive cause of this issue is data imbalance, as mentioned in general machine-learning tasks (Wang et al., 2016). To address this issue, further studies need to be conducted to improve the predictive performance of extreme precipitation events by extending the duration of training data and assigning weights to the extreme or other events. Additionally, adding information about domain characteristics, such as the digital elevation model and land cover map is expected to improve the precipitation nowcasting model. Another issue is that we trained models for different domains using basic transfer learning strategies, and evaluated the performance only for the new domains, which are not sufficient to develop models for multiple dam domains that can be used in early warning systems. To overcome this issue, for example, Wang et al. (2020) presented a new transfer learning approach that simultaneously mined the knowledge of multiple pre-trained generators. Therefore, it is expected that further research using more advanced transfer learning strategies will help to develop a precipitation nowcasting model with good performance in all different domains to enhance practicality.

1000

서식 지정함: 영어 (영국)

삭제함: the

삭제함: dam

서식 지정함: 글꼴: Times New Roman, 글꼴 색: 검정

삭제함: can be seen that it

삭제함: adjustment.

삭제함: basin

삭제함: training

삭제함: Case

삭제함: ,

서식 지정함: 글꼴: Times New Roman, 글꼴 색: 검정

서식 지정함: 글꼴: Times New Roman, 글꼴 색: 검정

서식 지정함: 글꼴: Times New Roman, 글꼴 색: 검정

18

서식 지정함: 영어 (영국)

#### Code and data availability

1010 [Source](#) code of the model architecture, the pre-trained model for Soyang-gang Dam Basin, and example [test](#) data are available at [Zenodo](#) (<https://doi.org/10.5281/zenodo.6650722>; Choi and Kim, 2021). The model usage and implementation code of reference models (U-net; ConvLSTM; pySTEPS) are available at th GitHub repository (<https://github.com/SuyeonC/Rad-cGAN>; last access: 16 June 2022). The radar reflectivity composite data samples provided by the Korea Meteorological Administration (KMA) are available at the public service: <https://data.kma.go.kr/resources/html/en/aowdp.html> (last access: 16 June 2022). The dataset for the entire period can be obtained through a separate request to the KMA.

삭제함: The source

삭제함: is available at

삭제함: GitHub repository <https://github.com/SuyeonC/Rad-cGAN> (last access: 11 November 2021). The

서식 지정함: 글꼴: +본문 (Times New Roman)

서식 지정함: 글꼴: +본문 (Times New Roman)

서식 지정함: 글꼴: +본문 (Times New Roman)

서식 지정함: 글꼴: +본문 (Times New Roman)

서식 지정함: 글꼴: +본문 (Times New Roman)

삭제함: <https://doi.org/10.5281/zenodo.6460012>.

서식 지정함: 글꼴: +본문 (Times New Roman)

삭제함: <https://data.kma.go.kr/resources/html/en/ncdci.html> (last access: 11 November 2021).

#### Author contributions

SC and YK designed the study, and SC performed the model development, simulations, and result analysis under the supervision of YK. SC wrote the original manuscript, and YK reviewed and edited the manuscript.

#### 1020 Competing interests

The authors declare that they have no conflict of interest.

#### Acknowledgements

This study was supported by the Basic Science Research Program through the National Research Foundation of Korea, which was funded by the Ministry of Science, ICT & Future Planning (No. 2020R1A2C2007670), and the Technology

1025 Advancement Research Program through the Korea Agency for Infrastructure Technology Advancement (KAIA) grant funded by the Ministry of Land, Infrastructure and Transport (Grant 21CTAP-C163541-01).

서식 지정함: 글꼴: Times New Roman, 글꼴 색: 검정

## 1035 References

- Agrawal, S., Barrington, L., Bromberg, C., Burge, J., Gazen, C., and Hickey, J.: Machine learning for precipitation nowcasting from radar images, arXiv [preprint], arXiv:1912.12132, 2019.
- Ayzel, G., Heistermann, M., and Winterrath, T.: Optical flow models as an open benchmark for radar-based precipitation nowcasting (rainymotion v0.1), Geosci. Model Dev., 12, 1387-1402, 10.5194/gmd-12-1387-2019, 2019.
- 1040 Ayzel, G., Scheffer, T., and Heistermann, M.: RainNet v1.0: a convolutional neural network for radar-based precipitation nowcasting, Geosci. Model Dev., 13, 2631-2644, 10.5194/gmd-13-2631-2020, 2020.
- Bowler, N. E., Pierce, C. E., and Seed, A. W.: STEPS: A probabilistic precipitation forecasting scheme which merges an extrapolation nowcast with downscaled NWP, Q. J. Roy. Meteorol. Soc., 132, 2127-2155, 2006. a, b, c, d, e, f, g, h
- Choi, S. and Kim, Y.: Rad-cGAN v1.0: Radar-based precipitation nowcasting model with conditional Generative Adversarial  
1045 Networks for multiple dam domains. Zenodo. <https://doi.org/10.5281/zenodo.6650722>, 2021.
- Clark, A., Donahue, J., and Simonyan, K.: Adversarial video generation on complex datasets, arXiv [preprint], arXiv:1907.06571, 2019.
- Clive, P., Alan, S., Sue, B., David, S., and Zhihong, L.: Nowcasting, in: Doppler Radar Observations, edited by: Joan, B., and Jorge Luis, C., IntechOpen, Rijeka, 10.5772/39054, 2012.
- 1050 Fang, K., Kifer, D., Lawson, K., Feng, D., & Shen, C.: The data synergy effects of time-series deep learning models in hydrology. Water Resources Research, 58, e2021WR029583. <https://doi.org/10.1029/2021WR029583>, 2022.
- Foresti, L. and Seed, A.: The effect of flow and orography on the spatial distribution of the very short-term predictability of rainfall from composite radar images, Hydrol. Earth Syst. Sci., 18, 4671-4686, <https://doi.org/10.5194/hess-18-4671-2014>, 2014.
- 1055 Goodfellow, I., Pouget-Abadie, J., Mirza, M., Xu, B., Warde-Farley, D., Ozair, S., Courville, A., and Bengio, Y.: Generative adversarial networks, Commun. ACM, 63, 139-144, 10.1145/3422622, 2020.
- Graves, A.: Generating sequences with recurrent neural networks, arXiv [preprint], arXiv:1308.0850, 2013.
- He, K., Zhang, X., Ren, S., and Sun, J.: Deep Residual Learning for Image Recognition, in: 2016 IEEE Conference on Computer Vision and Pattern Recognition (CVPR), 27-30 June 2016, 770-778, 10.1109/CVPR.2016.90, 2016
- 1060 Hochreiter, S. and Schmidhuber, J.: Long Short-Term Memory, Neural Computation, 9, 1735-1780, 10.1162/neco.1997.9.8.1735, 1997.
- Hwang, S., Yoon, J., Kang, N., and Lee, D.-R.: Development of flood forecasting system on city-mountains-small river area in Korea and assessment of forecast accuracy, Journal of Korea Water Resources Association, 53, 225-236, 10.3741/JKWRA.2020.53.3.225, 2020.

삭제함: <https://doi.org/10.1029/2021WR029583>.

- Imhoff, R. O., Brauer, C. C., Overeem, A., Weerts, A. H., and Uijlenhoet, R.: Spatial and Temporal Evaluation of Radar  
Rainfall Nowcasting Techniques on 1,533 Events, *Water Resources Research*, 56, e2019WR026723,  
<https://doi.org/10.1029/2019WR026723>, 2020.
- Ioffe, S. and Szegedy, C.: Batch Normalization: Accelerating Deep Network Training by Reducing Internal Covariate Shift,  
1070 in: *Proceedings of the 32nd International Conference on Machine Learning, Proceedings of Machine Learning Research*,  
448-456, 2015.
- Isola, P., Zhu, J., Zhou, T., and Efros, A. A.: Image-to-Image Translation with Conditional Adversarial Networks, in: 2017  
IEEE Conference on Computer Vision and Pattern Recognition (CVPR), 21-26 July 2017, 5967-5976,  
10.1109/CVPR.2017.632, 2017.
- 1075 Jeong, C. H., Kim, W., Joo, W., Jang, D., and Yi, M. Y.: Enhancing the Encoding-Forecasting Model for Precipitation  
Nowcasting by Putting High Emphasis on the Latest Data of the Time Step, *Atmosphere*, 12, 261, 2021.
- Kim, S., Hong, S., Joh, M., and Song, S.-k.: Deeprain: ConvLstm network for precipitation prediction using multichannel radar  
data, in: 7th International Workshop on Climate Informatics, 20-22 September 2017, 89-92, 2017.
- Kingma, D. P. and Ba, J.: Adam: A method for stochastic optimization, in: *Proceedings of the 3rd International Conference*  
1080 *on Learning Representations (ICLR 2015)*, 2015.
- Krizhevsky, A., Sutskever, I., and Hinton, G. E.: ImageNet classification with deep convolutional neural networks, in:  
*Proceedings of the 25th International Conference on Neural Information Processing Systems - Volume 1, Lake Tahoe,*  
*Nevada, 2012.*
- Kumar, A., Islam, T., Sekimoto, Y., Mattmann, C., and Wilson, B.: Convcast: An embedded convolutional LSTM based  
1085 architecture for precipitation nowcasting using satellite data, *PLOS ONE*, 15, e0230114, 10.1371/journal.pone.0230114,  
2020.
- Long, J., Shelhamer, E., and Darrell, T.: Fully convolutional networks for semantic segmentation, in: *Proceedings of the IEEE*  
*Conference on Computer Vision and Pattern Recognition (CVPR)*, 3431-3440, 2015.
- Marshall, J. S. and Palmer, W. M. K.: THE DISTRIBUTION OF RAINDROPS WITH SIZE, *Journal of Atmospheric Sciences*,  
1090 5, 165-166, 10.1175/1520-0469(1948)005<0165:Tdorws>2.0.Co;2, 1948.
- Mathieu, M., Couprie, C., and LeCun, Y.: Deep multi-scale video prediction beyond mean square error, in: 4th International  
*Conference on Learning Representations (ICLR 2016)*, 2016.
- McCuen, R. H., Knight, Z., and Cutter, A. G.: Evaluation of the Nash-Sutcliffe Efficiency Index, *Journal of Hydrologic*  
*Engineering*, 11, 597-602, doi:10.1061/(ASCE)1084-0699(2006)11:6(597), 2006.
- 1095 Mirza, M. and Osindero, S.: Conditional generative adversarial nets, *arXiv [preprint]*, arXiv:1411.1784, 2014.
- Mo, S., Cho, M., and Shin, J.: Freeze the discriminator: a simple baseline for fine-tuning gans, in: *Proceedings of the IEEE*  
*Conference on Computer Vision and Pattern Recognition AI for Content Creation Workshop (CVPRW)*, 2020.

- Moishin, M., Deo, R. C., Prasad, R., Raj, N., and Abdulla, S.: Designing Deep-Based Learning Flood Forecast Model With ConvLSTM Hybrid Algorithm, *IEEE Access*, 9, 50982-50993, 10.1109/ACCESS.2021.3065939, 2021.
- 1100 Pan, S. J. and Yang, Q.: A Survey on Transfer Learning, *IEEE Transactions on Knowledge and Data Engineering*, 22, 1345-1359, 10.1109/TKDE.2009.191, 2010.
- Poletti, M. L., Silvestro, F., Davolio, S., Pignone, F., and Rebora, N.: Using nowcasting technique and data assimilation in a meteorological model to improve very short range hydrological forecasts, *Hydrol. Earth Syst. Sci.*, 23, 3823-3841, 10.5194/hess-23-3823-2019, 2019.
- 1105 Pulkkinen, S., Nerini, D., Pérez Hortal, A. A., Velasco-Forero, C., Seed, A., Germann, U., and Foresti, L.: Pysteps: an open-source Python library for probabilistic precipitation nowcasting (v1.0), *Geosci. Model Dev.*, 12, 4185-4219, <https://doi.org/10.5194/gmd-12-4185-2019>, 2019.
- Ranzato, M., Szlam, A., Bruna, J., Mathieu, M., Collobert, R., and Chopra, S.: Video (language) modeling: a baseline for generative models of natural videos, *arXiv [preprint]*, arXiv:1412.6604, 2014.
- 1110 Ravuri, S., Lenc, K., Willson, M., Kangin, D., Lam, R., Mirowski, P., Fitzsimons, M., Athanassiadou, M., Kashem, S., Madge, S., Prudden, R., Mandhane, A., Clark, A., Brock, A., Simonyan, K., Hadsell, R., Robinson, N., Clancy, E., Arribas, A., and Mohamed, S.: Skilful precipitation nowcasting using deep generative models of radar, *Nature*, 597, 672-677, 10.1038/s41586-021-03854-z, 2021.
- Rawat, W. and Wang, Z.: Deep Convolutional Neural Networks for Image Classification: A Comprehensive Review, *Neural Computation*, 29, 2352-2449, 10.1162/neco\_a\_00990, 2017.
- 1115 Reichstein, M., Camps-Valls, G., Stevens, B., Jung, M., Denzler, J., Carvalhais, N., and Prabhat: Deep learning and process understanding for data-driven Earth system science, *Nature*, 566, 195-204, 10.1038/s41586-019-0912-1, 2019.
- Renzullo, L., Velasco-Forero, C., and Seed, A.: Blending radar, NWP and satellite data for real-time ensemble rainfall analysis: a scale-dependent method, *CSIRO*, <https://doi.org/10.4225/08/594eb78c96025>, 2017.
- 1120 Ronneberger, O., Fischer, P., and Brox, T.: U-Net: Convolutional Networks for Biomedical Image Segmentation, in: *Medical Image Computing and Computer-Assisted Intervention – MICCAI 2015*, edited by: Navab, N., Hornegger, J., Wells, W. M., and Frangi, A. F., Springer International Publishing, Cham, pp. 234–241, [https://doi.org/10.1007/978-3-319-24574-4\\_28](https://doi.org/10.1007/978-3-319-24574-4_28), 2015.
- Rüttgers, M., Lee, S., Jeon, S., and You, D.: Prediction of a typhoon track using a generative adversarial network and satellite images, *Scientific Reports*, 9, 6057, 10.1038/s41598-019-42339-y, 2019.
- 1125 Seed, A. W.: A dynamic and spatial scaling approach to advection forecasting. *Journal of Applied Meteorology*, 42(3), 381–388. [https://doi.org/10.1175/1520-0450\(2003\)042<0381:ADASSA>2.0.CO;2](https://doi.org/10.1175/1520-0450(2003)042<0381:ADASSA>2.0.CO;2), 2003.

- Shi, X., Chen, Z., Wang, H., Yeung, D.-Y., Wong, W.-k., and Woo, W.-c.: Convolutional LSTM Network: a machine learning approach for precipitation nowcasting, in: Proceedings of the 28th International Conference on Neural Information Processing Systems-Volume 1, 802-810, 2015.
- 1130 Shi, X., Gao, Z., Lausen, L., Wang, H., Yeung, D.-Y., Wong, W.-k., and WOO, W.-c.: Deep Learning for Precipitation Nowcasting: A Benchmark and A New Model, in: Advances in Neural Information Processing Systems, 30, 5617-5627, 2017.
- Simonyan, K. and Zisserman, A.: Very deep convolutional networks for large-scale image recognition, , in: Proceedings of the 3rd International Conference on Learning Representations (ICLR 2015), 2015.
- 1135 Sønderby, C. K., Espenholt, L., Heck, J., Dehghani, M., Oliver, A., Salimans, T., Agrawal, S., Hickey, J., and Kalchbrenner, N.: Metnet: A neural weather model for precipitation forecasting, arXiv [preprint], arXiv:2003.12140, 2020.
- Srivastava, N., Hinton, G., Krizhevsky, A., Sutskever, I., and Salakhutdinov, R.: Dropout: a simple way to prevent neural networks from overfitting, The journal of machine learning research, 15, 1929-1958, 2014.
- 1140 Sutskever, I., Vinyals, O., and Le, Q. V.: Sequence to sequence learning with neural networks, in: Proceedings of the 27th International Conference on Neural Information Processing Systems - Volume 2, Montreal, Canada, 2014.
- Trebing, K., Stańczyk, T., and Mehrkanoon, S.: SmaAt-UNet: Precipitation nowcasting using a small attention-UNet architecture, Pattern Recognition Letters, 145, 178-186, <https://doi.org/10.1016/j.patrec.2021.01.036>, 2021.
- Wang, S., Liu, W., Wu, J., Cao, L., Meng, Q., and Kennedy, P. J.: Training deep neural networks on imbalanced data sets, in: 2016 International Joint Conference on Neural Networks (IJCNN), 24-29 July 2016, 4368-4374, 10.1109/IJCNN.2016.7727770, 2016.
- 1145 Wang, Y., Coning, E., Harou, A., Jacobs, W., Joe, P., Nikitina, L., Roberts, R., Wang, J., and Wilson, J.: Guidelines for nowcasting techniques, WMO publication, published online: [https://library.wmo.int/opac/doc\\_num.php](https://library.wmo.int/opac/doc_num.php), 2017.
- Wang, Y., Gonzalez-Garcia, A., Berga, D., Herranz, L., Khan, F. S., and Weijer, J. v. d.: MineGAN: Effective Knowledge Transfer From GANs to Target Domains With Few Images, in: 2020 IEEE/CVF Conference on Computer Vision and Pattern Recognition (CVPR), 13-19 June 2020, 9329-9338, 10.1109/CVPR42600.2020.00935, 2020.
- 1150 Wang, Y., Wu, C., Herranz, L., van de Weijer, J., Gonzalez-Garcia, A., and Raducanu, B.: Transferring gans: generating images from limited data, in: Proceedings of the European Conference on Computer Vision (ECCV), 218-234, 2018.
- Wang, Y., Yao, Q., Kwok, J., and Ni, L.: Generalizing from a Few Examples: A Survey on Few-shot Learning, ACM Computing Surveys, 53, 1-34, 10.1145/3386252, 2020.
- 1155 Yosinski, J., Clune, J., Bengio, Y., and Lipson, H.: How transferable are features in deep neural networks?, in: Advances in Neural Information Processing Systems, 27, 3320-3328, 2014.

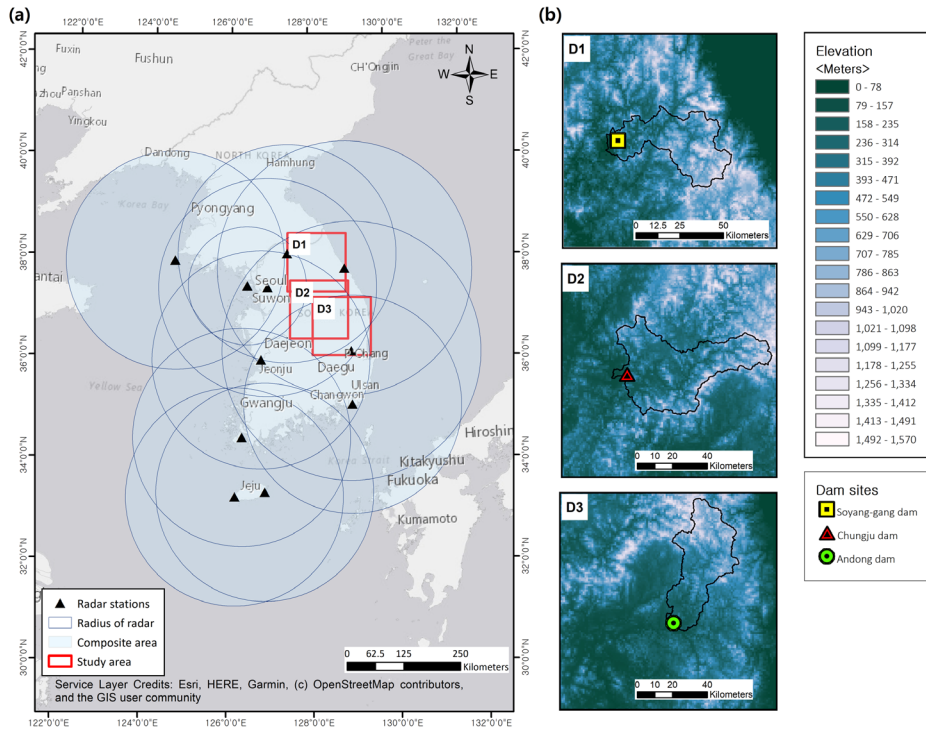


Figure 1: (a) Composite map of radar reflectivity and location of the dam basins; (b) selected areas over the dam basin. D1, D2, and D3 represent the areas of Soyang-gang, Chungju, and Andong Dam Basins, respectively. Maps were created using ArcGIS software by Esri; Base-map source: Esri, HERE, Garmin, © OpenStreetMap contributors, and the GIS user community.

서식 지정함: 영어 (영국)

삭제함: [↗](#)

페이지 나누기

[↗](#)  
<개척>

삭제함: 1:

삭제함: Radar

삭제함: composite map

삭제함: domain

삭제함: domains

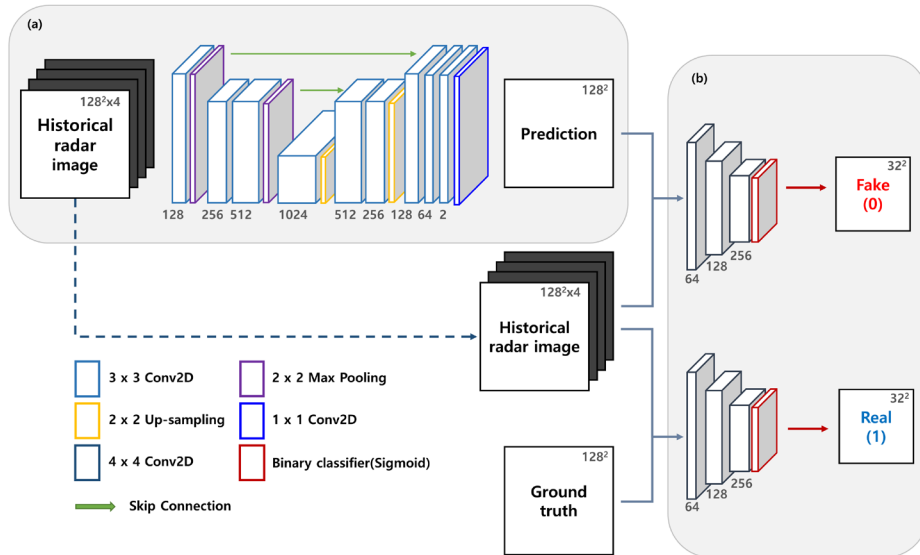
삭제함: The boxes of

삭제함: present

삭제함: domains

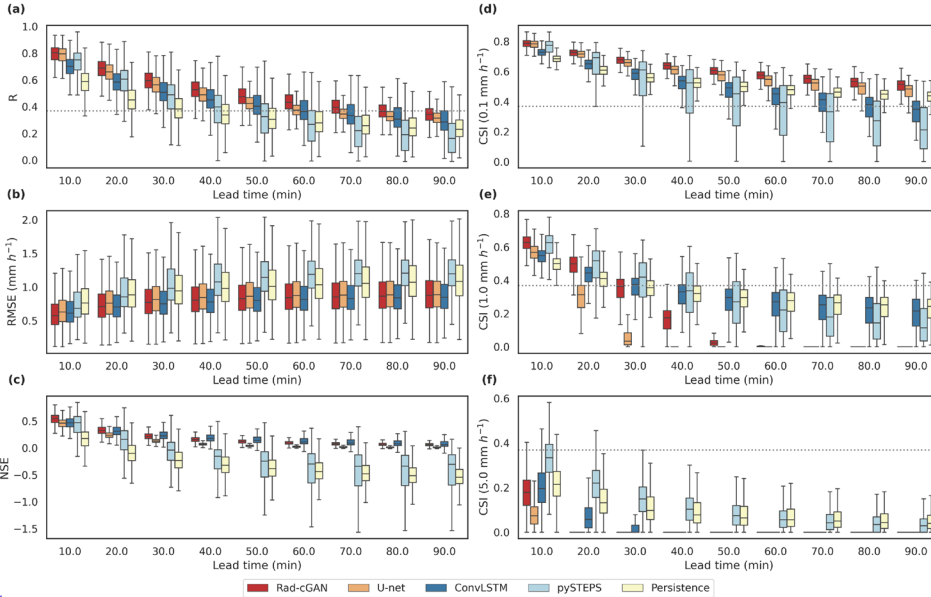
삭제함: dam basins



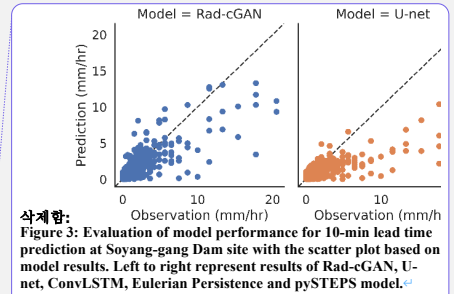


삭제함:

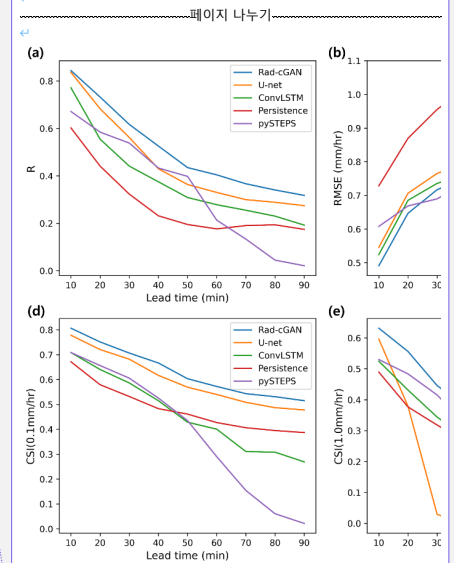
1180 Figure 2: Model architecture consists of a (a) generative and (b) discriminator.



서식 지정함: 영어 (영국)



**삭제함:**  
Figure 3: Evaluation of model performance for 10-min lead time prediction at Soyang-gang Dam site with the scatter plot based on model results. Left to right represent results of Rad-cGAN, U-net, ConvLSTM, Eulerian Persistence and pySTEPS model.



**삭제함:**  
Figure 4: Verification metrics of model predictions at the lead time up to 90 min at the Soyang-gang Dam site. (a) R, (b) RMSE, (c) NSE, (d) CSI (0.1 mm/hr), and (e) CSI (1.0 mm/hr).

서식 지정함: 글꼴 색: 검정

삭제함: Left panels from

삭제함:

삭제함: from top to bottom

서식 지정함: 글꼴 색: 검정

서식 지정함: 글꼴 색: 검정

서식 지정함: 글꼴 색: 검정

서식 지정함: 글꼴 색: 검정

서식 지정함: 글꼴 색: 검정

삭제함: threshold

서식 지정함: 글꼴 색: 검정

서식 지정함: 글꼴 색: 검정

서식 지정함: 글꼴 색: 검정, 위 첨자/아래 첨자없음

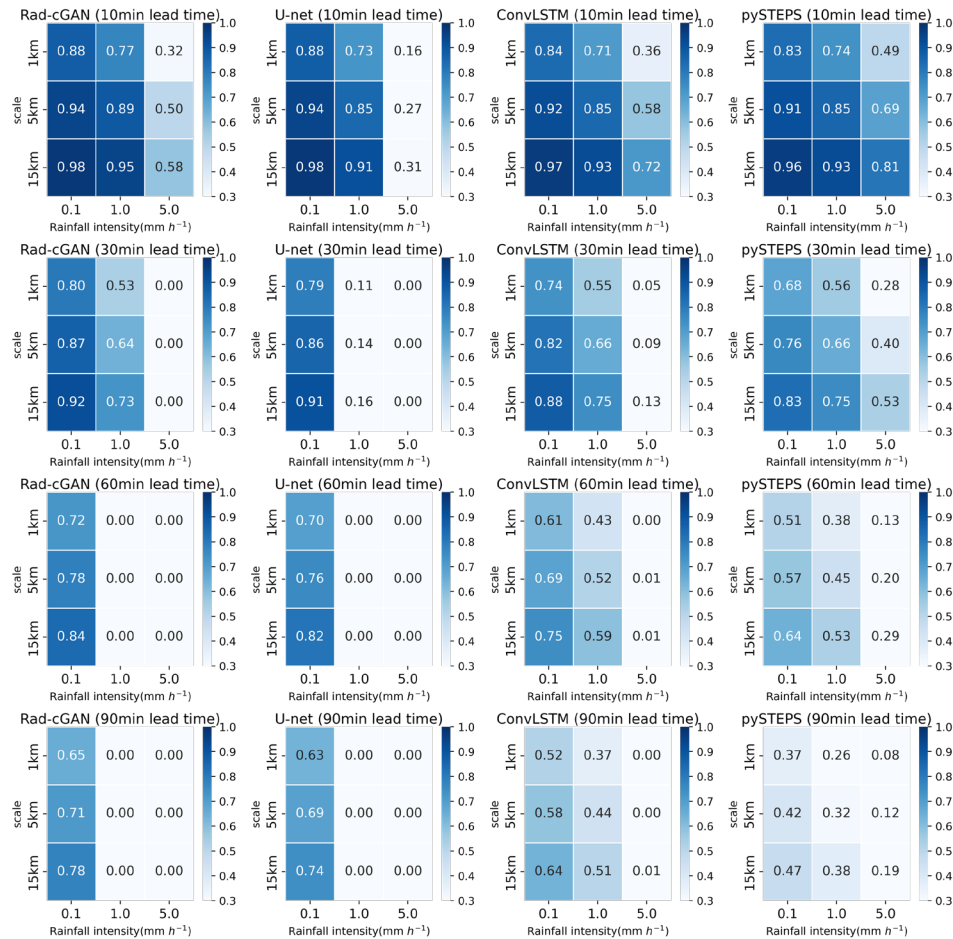
서식 지정함: 글꼴 색: 검정

서식 지정함: 글꼴 색: 검정

삭제함:

<개체>

서식 지정함: 영어 (영국)



삭제함: 6

서식 지정함: 글꼴 색: 검정

서식 지정함: 글꼴 색: 검정

삭제함: .

서식 지정함: 글꼴 색: 검정

Figure 4: Fraction Skill Scores (FSS) of model predictions at lead time of 10, 30, and 60 min at Soyang-gang Dam Basin. Panels from left to right express FSS of Rad-cGAN, U-net, ConvLSTM and pySTEPS (S-PROG).

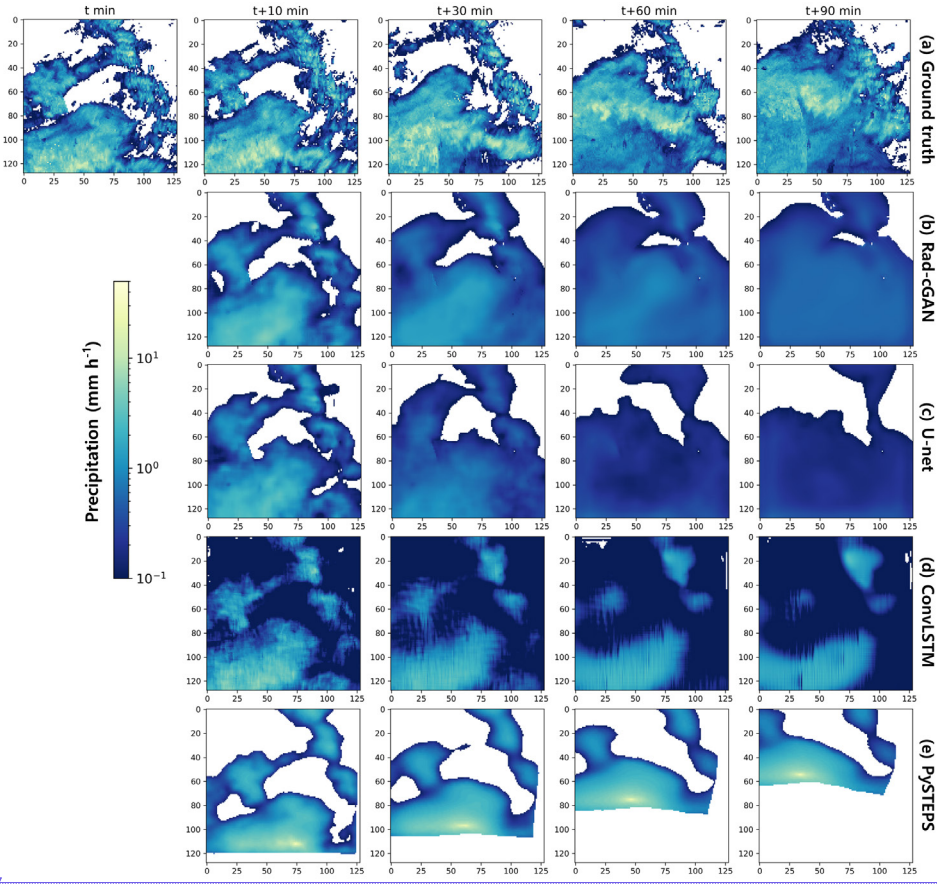
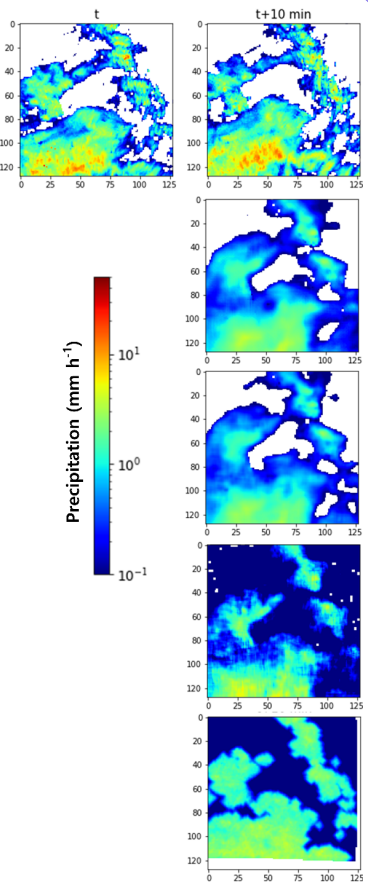


Figure 5: Example of precipitation at forecasting time  $t = 23$  August 2018, 17:50 UTC, for model predictions and (a) ground truth (OBS). Panels from top to bottom express ground truth: (b) prediction of Rad-cGAN model, (c) prediction of U-net based model, (d) prediction of ConvLSTM, and (e) prediction of pySTEPS.

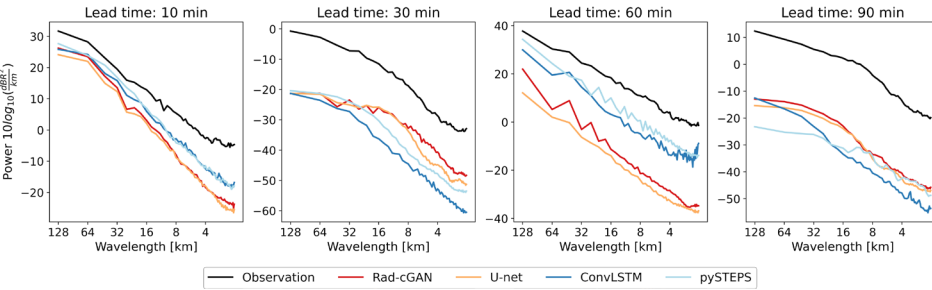
서식 지정함: 영어 (영국)



삭제함:

삭제함: 7: Precipitation observation example

삭제함: c



서식 지정함: 영어 (영국)

삭제함: 8

삭제함: <개제>

페이지 나누기

서식 지정함: 글꼴: 9 pt, 굵게

삭제함: 4

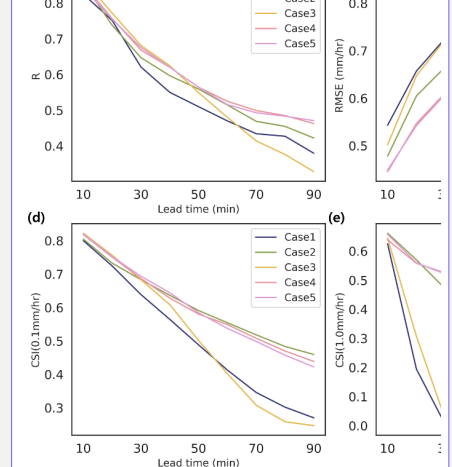


Figure 9: Verification

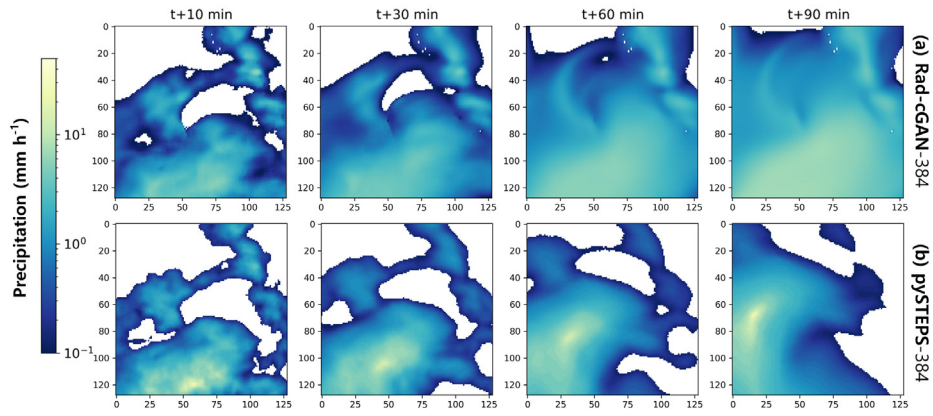
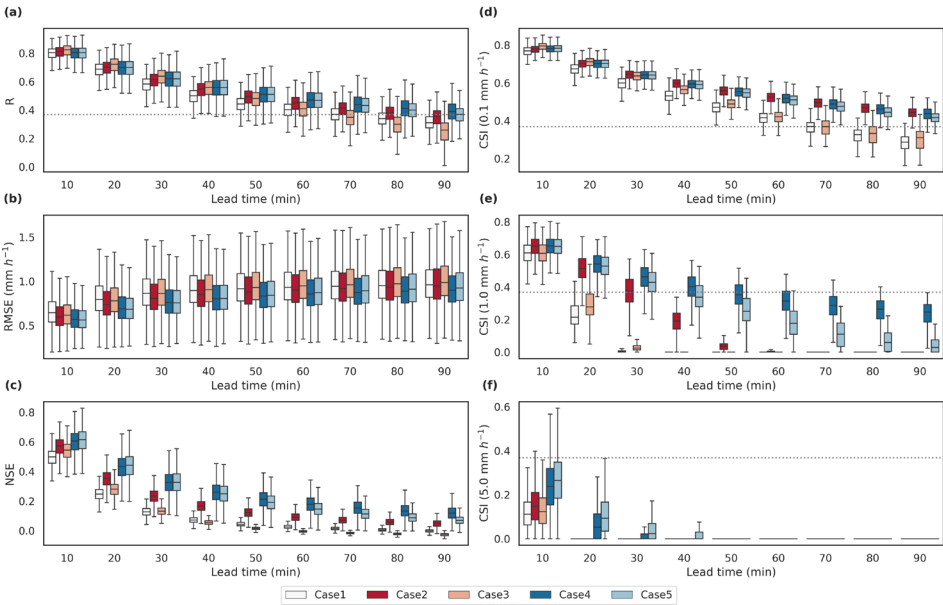


Figure 7: Example of precipitation at forecasting time  $t = 23$  August 2018, 17:50 UTC, for model prediction using increased input area ( $384 \times 384$ ). Panels from top to bottom express (a) prediction of Rad-cGAN model, and (c) prediction of pySTEPS.

서식 지정함: 영어 (영국)



**Figure 8: Box plot of the verification metrics of model predictions at lead time up to 90 min over all grid cells from the Andong Dam Basin.** (a) R, (b) NSE, (c) RMSE, and (d, e, f) CSI at intensity thresholds of 0.1, 1.0, and 5.0 mm h<sup>-1</sup>, respectively. Grey dotted line represents the predictability threshold ( $1/e \approx 0.37$ ).

삭제함: at

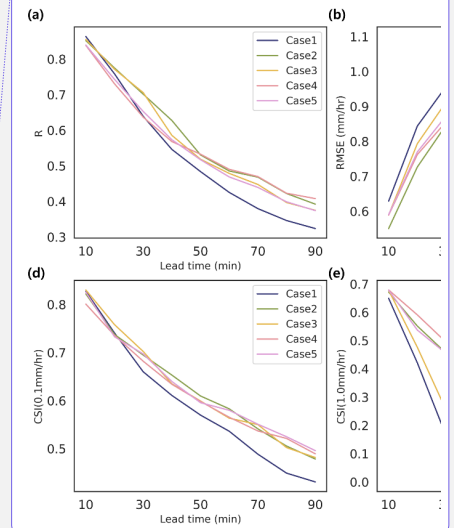
삭제함: site

삭제함: threshold

서식 지정함: 위 천자/아래 천자없음

서식 지정함: 영어 (영국)

삭제함: .....페이지 나누기



삭제함: 10: Verification

삭제함: at

삭제함: site

삭제함: threshold

서식 지정함: 위 첨자/아래 첨자없음

서식 지정함: 글꼴: 9 pt

서식 지정함: 글꼴: 굵게 없음

서식 있음: 양쪽

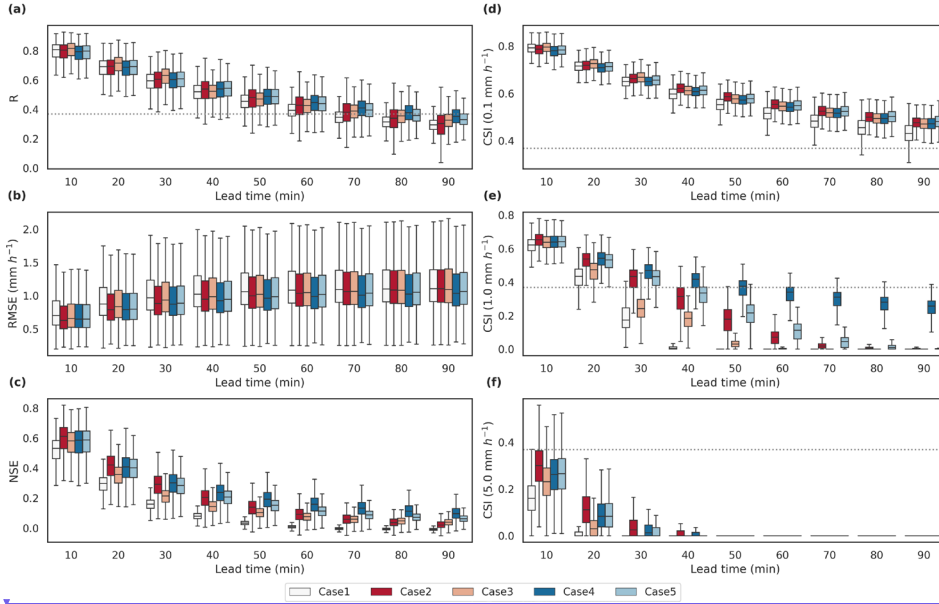


Figure 9: Box plot of the verification metrics of model predictions at the lead time up to 90 min over all grid cells from the Chungju Dam Basin. (a) R, (b) NSE, (c) RMSE, and (d, e, f) CSI at intensity thresholds of 0.1, 1.0, and 5.0 mm h<sup>-1</sup>, respectively. Grey dotted line represents the predictability threshold (1/e=0.37).



**Table 1: Distribution of precipitation amount and number of examples of (a) train dataset, and (b) test dataset of each dam domains and sites.**

(a) Train dataset						
Interval in mm h-1	Soyang-gang Dam Basin	Soyang-gang Dam site	Andong Dam Basin	Andong Dam site	Chungju Dam Basin	Chungju Dam site
0 ≤ R < 0.1	84.63	85.00	83.04	83.57	84.81	85.03
0.1 ≤ R < 1.0	10.23	10.19	11.56	11.02	10.75	10.61
1.0 ≤ R < 4.0	3.78	3.35	3.91	3.89	3.43	3.30
4.0 ≤ R < 8.0	0.92	1.03	0.94	0.98	0.68	0.69
8.0 ≤ R < 10.0	0.18	0.21	0.20	0.23	0.13	0.16
10.0 ≤ R	0.27	0.23	0.35	0.32	0.20	0.21
No. of examples	27,905 examples		29,136 examples		29,691 examples	
(b) Test dataset						
Interval in mm h-1	Soyang-gang Dam Basin	Soyang-gang Dam site	Andong Dam Basin	Andong Dam site	Chungju Dam Basin	Chungju Dam site
0 ≤ R < 0.1	90.77	91.92	87.41	87.73	86.54	87.61
0.1 ≤ R < 1.0	5.77	5.16	7.59	7.48	8.63	8.06
1.0 ≤ R < 4.0	2.65	2.26	3.77	3.92	3.80	3.58
4.0 ≤ R < 8.0	0.58	0.42	0.87	0.54	0.76	0.51
8.0 ≤ R < 10.0	0.10	0.06	0.15	0.09	0.12	0.13
10.0 ≤ R	0.14	0.17	0.21	0.24	0.14	0.11
No. of examples	9,753 examples		6,598 examples		6,137 examples	

Table 2: Contingency table for the categorical scores.

		Observation	
		Event detected	Event not detected
Prediction	Event detected	Hit	False alarm
	Event not detected	Miss	Correct non-event

1285 Table 3: Experimental design for transfer learning strategies to train model with different domain. (a) Detailed training procedure of each strategy, (b) data used to train the model according to each strategy.

(a) Training strategies			
No.	Generator		Discriminator
Case 1	Train from the scratch		Train from the scratch
Case 2	Use pre-trained parameters for one domain		-
Case 3	Fine tuning pre-trained parameters for one domain*		Train from the scratch
Case 4	Use pre-trained parameters for multiple domains		-
Case 5	Fine tuning pre-trained parameters for multiple domains*		Train from the scratch
(b) Training dataset			
	Pre-trained domain	Andong Dam domain	Chungju Dam domain
Case 1	-	2014–2017 (JJA) at Andong Dam domain	2014–2017 (JJA) at Chungju Dam domain
Case 2	2014-2017 (JJA) at Soyang-gang Dam domain	-	-
Case 3	2014-2017 (JJA) at Soyang-gang Dam domain	2014–2017 (JJA) at Andong Dam domain	2014–2017 (JJA) at Chungju Dam domain
Case 4	2014-2017 (JJA) at Soyang-gang/Daecheong/Juam/Yongdam Dam domain	-	-
Case 5	2014-2017 (JJA) at Soyang-gang/Daecheong/Juam/Yongdam Dam domain	2014–2017 (JJA) at Andong Dam domain	2014–2017 (JJA) at Chungju Dam domain
* Use 1/10 <sup>th</sup> of original learning rate			

290

Table 4: Comparison of the [average values of the verification metrics for a 10-min precipitation prediction of different models at the Soyang-gang Dam Basin during summer \(June–August\), 2018.](#)

	R	RMSE (mm h <sup>-1</sup> )	NSE	CSI (0.1 mm h <sup>-1</sup> )	CSI (1.0 mm h <sup>-1</sup> )	CSI (5.0 mm h <sup>-1</sup> )
Rad-cGAN	<a href="#">0.7891</a>	<a href="#">0.6138</a>	<a href="#">0.5367</a>	<a href="#">0.7827</a>	<a href="#">0.6262</a>	<a href="#">0.1772</a>
U-Net	<a href="#">0.7822</a>	<a href="#">0.6626</a>	<a href="#">0.4582</a>	<a href="#">0.7783</a>	<a href="#">0.5688</a>	<a href="#">0.0793</a>
ConvLSTM	<a href="#">0.6976</a>	<a href="#">0.6508</a>	<a href="#">0.4694</a>	<a href="#">0.7247</a>	<a href="#">0.5462</a>	<a href="#">0.2019</a>
<a href="#">pySTEPS</a> (baseline)	<a href="#">0.7076</a>	<a href="#">0.7826</a>	<a href="#">0.4100</a>	<a href="#">0.7181</a>	<a href="#">0.5803</a>	<a href="#">0.3214</a>
<a href="#">Persistence</a> (baseline)	<a href="#">0.5839</a>	<a href="#">0.8117</a>	<a href="#">0.1678</a>	<a href="#">0.6821</a>	<a href="#">0.4987</a>	<a href="#">0.2197</a>

1295

서식 지정함	...	53
삭제함: performance scores for...verage values of the	...	54
서식 지정함	...	55
삭제함: 8587		
서식 지정함	...	56
삭제함: 4248		
서식 지정함	...	57
삭제함: 7277		
서식 지정함	...	58
삭제함: 8065		
서식 지정함	...	59
삭제함: 6316		
서식 지정함	...	60
삭제함: 4118		
서식 지정함	...	61
삭제함: 8367		
삭제함: 5457		
삭제함: 5506		
삭제함: 7781		
삭제함: 5961		
삭제함: 1667		
서식 지정함	...	62
서식 지정함	...	63
서식 지정함	...	64
서식 지정함	...	65
서식 지정함	...	66
삭제함: 7716		
삭제함: 5241		
삭제함: 5855		
삭제함: 7086		
서식 지정함	...	67
서식 지정함	...	68
서식 지정함	...	69
서식 지정함	...	70
서식 지정함	...	71
삭제함: 5247		
서식 지정함	...	72
삭제함: 3000		
서식 지정함	...	74
삭제함: 6023		
서식 지정함	...	75
서식 지정함	...	76
삭제함: 7287		
서식 지정함	...	77
서식 지정함	...	78
삭제함: 1989		
삭제함: 6716		
서식 지정함	...	79
서식 지정함	...	80
서식 지정함	...	81
서식 지정함	...	82
삭제함: 4895		
삭제함: 1622		
서식 지정함	...	83
서식 지정함	...	84
서식 지정함	...	85
삭제함: Persistence		
서식 지정함	...	73
삭제함: 6072		
삭제함: 6080		
삭제함: 4440		
삭제함: 7086		
삭제함: 5303		
삭제함: 0833		
서식 지정함	...	86
서식 지정함	...	87
서식 지정함	...	88
서식 지정함	...	89
서식 지정함	...	90
서식 지정함	...	91
삭제함: pySTEPS		

Table 5: Comparison of the average values of the verification metrics for a 10-min precipitation prediction of the five different models using different transfer learning strategies for the (a) Andong and (b) Chungju Dam Basins in the summer (June–August) of 2018.

(a) Andong Dam domain						
	R	RMSE (mm h <sup>-1</sup> )	NSE	CSI (0.1 mm h <sup>-1</sup> )	CSI (1.0 mm h <sup>-1</sup> )	CSI (5.0 mm h <sup>-1</sup> )
Case 1	0.7945	0.8169	0.4926	0.7662	0.6073	0.1193
Case 2	0.8037	0.7673	0.5624	0.7756	0.6482	0.1523
Case 3	0.8146	0.7858	0.5351	0.7916	0.6067	0.1317
Case 4	0.7952	0.7407	0.5948	0.7782	0.6497	0.2399
Case 5	0.7952	0.7319	0.6051	0.7794	0.6472	0.2682
(b) Chungju Dam domain						
	R	RMSE (mm h <sup>-1</sup> )	NSE	CSI (0.1 mm h <sup>-1</sup> )	CSI (1.0 mm h <sup>-1</sup> )	CSI (5.0 mm h <sup>-1</sup> )
Case 1	0.7909	0.9221	0.5161	0.7893	0.6169	0.1639
Case 2	0.7863	0.8609	0.5876	0.7831	0.6492	0.2981
Case 3	0.7995	0.8849	0.5623	0.7920	0.6351	0.2324
Case 4	0.7776	0.8808	0.5661	0.7761	0.6380	0.2614
Case 5	0.7809	0.8783	0.5685	0.7803	0.6386	0.2657

서식 지정함	...	[92]
삭제함: performance scores for three...f the five differ	...	[93]
삭제함: site		
서식 있음	...	[94]
삭제함: 8249		
삭제함: 5430		
삭제함: 5437		
삭제함: 8000		
삭제함: 6250		
서식 지정함	...	[95]
서식 지정함	...	[96]
서식 지정함	...	[97]
서식 지정함	...	[98]
서식 지정함	...	[99]
서식 지정함	...	[100]
삭제함: 1852		
삭제함: 8553		
삭제함: 4779		
삭제함: 6466		
삭제함: 8046		
삭제함: 6613		
삭제함: 2593		
서식 지정함	...	[101]
서식 지정함	...	[102]
서식 지정함	...	[103]
서식 지정함	...	[104]
서식 지정함	...	[105]
서식 지정함	...	[106]
삭제함: 8667		
서식 지정함	...	[107]
서식 지정함	...	[108]
삭제함: 5018		
서식 지정함	...	[109]
삭제함: 6104		
서식 지정함	...	[110]
삭제함: 8222		
서식 지정함	...	[111]
삭제함: 6438		
서식 지정함	...	[112]
삭제함: 1852		
서식 지정함	...	[113]
삭제함: 8529		
서식 지정함	...	[114]
삭제함: 4451		
삭제함: 6934		
삭제함: 8182		
삭제함: 6386		
삭제함: 3000		
서식 지정함	...	[115]
서식 지정함	...	[116]
서식 지정함	...	[117]
서식 지정함	...	[118]
삭제함: 8421		
삭제함: 4487		
삭제함: 6884		
삭제함: 8195		
삭제함: 6570		
서식 지정함	...	[119]
서식 지정함	...	[120]
서식 지정함	...	[121]
서식 지정함	...	[122]
서식 지정함	...	[123]
서식 지정함	...	[124]
삭제함: 2727		
삭제함: site		
서식 있음	...	[125]
삭제함: 8632		
삭제함: 6288		
삭제함: 6191		
삭제함: 8273		
삭제함: 6492		
삭제함: 2400		