

Rad-cGAN v1.0: Radar-based precipitation nowcasting model with conditional Generative Adversarial Networks for multiple dam domains

Suyeon Choi¹, Yeonjoo Kim¹

¹Department of Civil and Environmental Engineering, Yonsei University, Seoul 03722, Korea

Correspondence to: yeonjoo.kim@yonsei.ac.kr

Abstract. Numerical weather prediction models and probabilistic extrapolation methods using radar images have been widely used for precipitation nowcasting. Recently, machine-learning-based precipitation nowcasting models have also been actively developed for relatively short-term precipitation predictions. This study aimed to develop a radar-based precipitation nowcasting model using an advanced machine learning technique, conditional generative adversarial network (cGAN), which shows high performance in image generation tasks. The cGAN-based precipitation nowcasting model, named Rad-cGAN, developed in this study was trained with a radar reflectivity map of the Soyang-gang Dam region in South Korea with a spatial domain of 128×128 km, spatial resolution of 1 km, and temporal resolution of 10 min. The model performance was evaluated using previously developed machine-learning-based precipitation nowcasting models, namely convolutional long short-term memory (ConvLSTM) and U-Net. In addition, Eulerian persistence model and pySTEPS, radar-based probabilistic nowcasting system, used as baseline models.

We demonstrated that Rad-cGAN outperformed reference models at 10 min lead time prediction for the Soyang-gang Dam site Basin based on verification metrics Pearson correlation coefficient (R), root mean square error (RMSE), Nash–Sutcliffe efficiency (NSE), and critical success index (CSI) at intensity threshold of 0.1-, 1.0-, and 5.0-mm h^{-1} . However, beyond the lead time of 10 min, the CSI deteriorated rapidly in the case of high rainfall intensity, unlike low rainfall intensity. This was also consistent for the entire dam basin, and in FSS and CSI calculated at high rainfall intensity, ConvLSTM maintained better performance. This result was interpreted through qualitative evaluation using Typhoon Solik as an example, and the ConvLSTM maintains a relatively high amount of precipitation compared to other models. However, for prediction of precipitation area, Rad-cGAN showed the best results, and the advantage of cGAN method to reduce the blurring effect was confirmed through Power Spectrum Density (PSD). We also demonstrated the successful implementation of the transfer learning technique to efficiently train model with the data from other dam regions in South Korea, such as the Andong and Chungju Dam basins. We used pre-trained model, which was completely trained in the Soyang-gang Dam Basin. Furthermore,

삭제함: , as well as the baseline

삭제함: .

삭제함: other

삭제함: not only

삭제함: chosen site but also for the entire domain across the

삭제함: region. Additionally, the proposed model maintained good performance even with lead times up to 80 min

삭제함: the

삭제함: the

삭제함:

삭제함: , while U-Net and ConvLSTM achieved

삭제함: times

삭제함: 70 and 40

삭제함: respectively.

삭제함: regions

삭제함: region.

45 we analysed the amount of data to effectively develop the model for the new domain through the transfer learning strategies
applying the pre-trained model using data for additional dam basins. This study confirms that Rad-cGAN can be successfully
applied to precipitation nowcasting with longer lead times, and using the transfer learning approach it shows good performance
in regions other than the originally trained region.

삭제함: .

50

1 Introduction

Nowcasting is defined as a description of the current weather and then forecasting within few hours and is generally applied to mesoscale and local scales. Due to the increasing number of disasters in small spatiotemporal scales, nowcasting plays an important role in risk management (WMO, 2017). Therefore, the need for accurate precipitation nowcasting for early warning systems of floods is increasing to reduce the damage caused by heavy rain, landslides, and flash floods.

Among the existing precipitation nowcasting models, numerical weather prediction (NWP), which performs rainfall prediction based on atmospheric physics equations, can generate high-resolution rainfall forecasts with long lead times. However, NWP has exhibited poor forecast performance with relatively short (0–2 h) lead times (Berenguer et al., 2012). Several studies have

demonstrated that radar-based models based on the extrapolation method perform better than NWP, especially in the case of precipitation nowcasting, with lead times of up to 6 h (Berenguer et al., 2012; Pierce et al., 2012; Renzullo et al., 2017; Imhoff et al., 2020). Additionally, the increased availability of high-resolution remote sensing observation data (e.g., radar) and computer resources has facilitated the development of advanced precipitation nowcasting models. For example, Ayzel et al.

(2019) developed an optical flow-based precipitation nowcasting model called rainymotion, and Pulkkinen et al. (2019) developed a deterministic and probabilistic nowcasting application called pySTEPS, which have potential applications in several countries (Finland, Switzerland, the United States, and Australia). Both models were written in an open-source Python library. Furthermore, the blending technique, which combines NWP and radar-based models, has improved the precipitation nowcasting performance for short-term flood forecasting (Poletti et al., 2019; Hwang et al., 2020).

Recent availability of large amount of data and increased computational resources led to the development of radar-based models using machine learning techniques. Shi et al. (2015) developed a radar-based model with a convolutional long short-term memory (ConvLSTM) architecture that outperformed the optical flow-based model (real-time optical flow by variational methods for echoes of radar). They showed that ConvLSTM can capture the spatiotemporal correlation between input rainfall image frames, which are recorded every 6 min across Hong Kong. Several studies have shown that the ConvLSTM architecture can be successfully applied to the precipitation nowcasting model (Kim et al., 2017; Moishin et al., 2021; Sønderby et al., 2020; Jeong et al., 2021). Although the convolution neural network (CNN) does not have a structure to conserve temporal information, Agrawal et al. (2019) showed that a fully connected CNN called U-Net can make better predictions than traditional NWP models. Further studies (e.g., Ayzel et al., 2020; Trebing et al., 2021) also confirmed that the U-Net architecture can accurately predict precipitation.

In the field of computer science, the generative adversarial network (GAN) architecture (Goodfellow et al., 2014) showed remarkable performance in image-to-image tasks. Isola et al. (2017) demonstrated that the U-Net model with a conditional GAN (cGAN) approach called Pix2Pix can generate higher-quality images than the original U-Net model. Rüttgers et al. (2019) showed that typhoon tracks and cloud patterns over the Korean Peninsula could be successfully predicted using cGAN architecture with satellite cloud images. Ravuri et al. (2021) developed a precipitation nowcasting model using a deep

삭제함: Such systems mostly use

삭제함: data provided by

삭제함: are insufficient for forecasting at

삭제함: shown

삭제함: using

삭제함: at

삭제함: led to

삭제함: data-driven

삭제함: prediction

삭제함: PySTEPS

삭제함: has

95 generative model inspired by the video GAN model (Clark et al., 2019). In the case study of convective cells over eastern
 Scotland, using video GAN in the model improved the quality of precipitation forecasts significantly (Ravuri et al., 2021).
 These studies indicate that the performance of precipitation nowcasting models can be improved by advanced machine learning
 techniques. However, because machine learning is a data-driven technique, it will perform effectively for only trained data
 domains. Generally, it is vital to train from the beginning to develop a model for a new domain, and computation costs will be
 100 high even if new data are similar to old data. Thus, the models trained for one domain will be limited in their applications for
 multiple regions.

삭제함: The video GAN model contains sequential components in the generator, while the discriminator uses a dual architecture that distinguishes the real and generated frames to ensure both temporal and spatial consistency. From

삭제함: connective

삭제함: it was observed that

삭제함: significantly

The aim of the present study was to develop an advanced precipitation nowcasting model for multiple dam basins that can be
 applied as an early warning system. The decision-making process at upstream dams with regard to flood control, which is
 directly related to urban and rural water management, influences flood risk considerably. From such a dam management
 105 perspective, water level and precipitation prediction at dam sites are major factors to be considered, suggesting that increasing
 rainfall prediction accuracy at the dam site is essential for effective flood management. To develop an advanced precipitation
 nowcasting model with good prediction performance for dam sites and basins in general, we designed a model based on the
 cGAN approach (Rad-cGAN) for multiple dam domains of the Soyang-gang, Andong, and Chungju dam basins in South Korea.
 We trained the model using radar reflectivity data of the Soyang-gang Dam Basin for summer season during 2014–2017
 110 (provided by the Korea Meteorological Administration, KMA), and evaluated the model performance by comparing it with
 reference models of ConvLSTM, U-Net, and Eulerian persistence using 2018 data. We applied the transfer learning technique
 (Pan and Yang, 2009) that uses the previously trained model with cost-effective computation to train the model for the other
 two abovementioned domains. Three transfer learning strategies were compared to evaluate which was most effective for the
 Andong and Chungju Dam basins.

삭제함: In this

삭제함: , we developed

삭제함: using a

삭제함: Dam

삭제함: proposed

115 2 Materials and methods

2.1 Study area and Radar reflectivity data

We developed a precipitation nowcasting model for dam basin areas where an accurate rainfall forecasting system is essential
 for the estimation of urban water supply and flood prevention. The target domains were the Soyang-gang Dam Basin (D1),
 Chungju Dam Basin (D2), and Andong Dam Basin (D3) areas. These dams are multi-purpose and are located upstream of the
 120 major rivers of South Korea (Fig. 1).

삭제함: basin

The 1.5-km the constant altitude plan position indicator (CAPPI) radar reflectivity data, provided by KMA, were used as input
 data for training and evaluation of our model. The map product represents the quality-controlled radar reflectivity composite
 (dBZ) of 11 weather radar stations across South Korea (Fig. 1a), with a size of 960×1200 pixels, spatial resolution of 1×1
 km, and temporal resolution of 10 min.

The radar composite data were cropped to 128×128 pixels, covering three target basins. Figure. 1b shows the different topographical characteristics of each domain. Since topography (especially mountainous areas such as study domains) affects atmospheric conditions, such as temperature, humidity, air pressure distribution, and cloud formation, it directly or indirectly affects rainfall formation and distribution of rainfall in an area (Basist et al., 1994; Prudhomme and Reed, 1998). Consequently, data extracted from the three domains with different topographic characteristics would exhibit different rainfall patterns. We selected the available radar reflectivity data in summer (June–August, JJA) from 2014 to 2018 considering high intensity rainfall occurs in summer due to rainfall seasonality, a characteristic of our study domain. Data from 2014 to 2017 were used for training the model, and data from 2018 were used for evaluation (Table 1). For rapid and effective training, the raw radar reflectivity data (dBZ) were converted to grayscale (0–255), and the data range was scaled to 0–1 using the Min-Max scaler method (min-max values from training dataset). The predicted radar reflectivity data were converted into precipitation using the Z-R relationship (Eq. (1)) (Marshall and Palmer, 1948) to evaluate the rainfall prediction performance of the model.

$$Z = 200R^{1.6} \quad (1)$$

where Z is the radar reflectivity (dBZ) and R is the rainfall rate (mm h^{-1}).

2.2 Model architecture

2.2.1 Generative Adversarial Network (GAN) for image translation

GAN is a recently developed framework for training generators (e.g., CNN encoder-decoder) via an adversarial process. It consists of a generator (G) that produces the distribution of real data from random noise, and a discriminator (D) that classifies whether the input sample is from the generator or the original data distribution (Goodfellow et al., 2014). Furthermore, the cGAN framework uses additional conditions (e.g., input data of the generator) for training and can generate targeted outputs that suit specific conditions (Mirza and Osindero, 2014). For image translation tasks, when G is trained to produce a targeted image (y) from input (x) with random noise (z), the objective of D will try to maximize the loss function $\mathcal{L}_{cGAN}(G, D)$ while G will try to minimize $\mathcal{L}_{cGAN}(G, D)$. This relation can be expressed as:

$$\min_G \max_D \mathcal{L}_{cGAN}(G, D) = \mathbb{E}_{x,y} [\log D(x, y)] + \mathbb{E}_{x,z} [\log(1 - D(x, G(x, z)))], \quad (2)$$

where losses were calculated as expected (E) values. After simultaneously training G and D , G was trained to generate an output that cannot be distinguished from real data (y) by D , which was trained in an adversarial manner to detect the fake image from G . Isola et al. (2017) showed that combining the traditional pixel-wise loss with cGAN loss can improve the quality of output images. To generate sharp and realistic images, the $L1$ loss function $\mathcal{L}_{L1}(G)$ was used as the traditional loss (Eq. (3)).

$$\mathcal{L}_{L1}(G) = \mathbb{E}_{x,y} [\|y - G(x, z)\|_1] \quad (3)$$

By adding the traditional loss with a weight λ to the cGAN loss, the final objective was obtained (Eq. (4)).

$$G^* = \arg \min_G \max_D \mathcal{L}_{cGAN}(G, D) + \lambda \mathcal{L}_{L1}(G) \quad (4)$$

삭제함: , suggesting their

삭제함: ⚡

삭제함: used

삭제함: .

삭제함: those

삭제함: .

삭제함: quick

삭제함: we converted

삭제함:)

삭제함: scaled

삭제함: via

삭제함: scaler.

삭제함: ⚡

삭제함: generative models

삭제함: generative model

삭제함: identifies

삭제함: discriminative model

삭제함: generative model

삭제함: generative model

삭제함: $\log(1 - D(x, G(x, z)))$.

In this study, we developed a radar-based precipitation nowcasting model using a cGAN framework. Recently, research on weather prediction using cGAN, an advanced machine learning approach, has been conducted extensively (e.g., Rüttgers et al., 2019; Ravuri et al., 2021). For example, Ravuri et al. (2021) proposed a generator consisting of two modules: conditioning stack (using CNN to extract representation of input); and sampler (using ConvGRU to generate prediction). The model, which used ConvGRU, could observe spatiotemporal changes of inputs such as ConvLSTM, and attempted to improve performance by extracting features from different spatial dimensions and deriving the results. Whereas the generator used to predict future radar map, the discriminator used a dual architecture that distinguishes the real and generated frames, to ensure both temporal and spatial consistency. Unlike the model proposed by Ravuri et al. (2021), our model adopts a U-net architecture that uses a CNN layer in image generation based on the underlying Pix2Pix model; the architecture exhibits outstanding performance in image-to-image translation tasks (Isola et al., 2017). Also, we considered only spatial consistency in the PatchGAN discriminator, which distinguishes images for each $N \times N$ patch (N can be smaller than the full size of the image). U-net-based precipitation nowcasting model has previously demonstrated performance superior to that of a traditional radar-based precipitation nowcasting model that uses optical flow (Ayzel et al., 2020). Therefore, here, we apply the basic cGAN methodology to the U-net structure to improve performance and confirm the applicability of the transfer learning methodology to multiple domains.

삭제함: structure of

삭제함: was inspired by the

삭제함: , which shows

삭제함: We used the U-Net architecture as the generative model, and

삭제함:), was used as the discriminative model for high-quality image generation.

삭제함: shown better

삭제함: than the

삭제함: propose an improved precipitation nowcasting model by applying...

삭제함: approach

삭제함: Net architecture.

2.2.2 Generator

Figure 2a shows the generator using U-Net architecture (a detailed description of U-Net is provided in Sect. 2.3.2). The model consists of nine convolutional layers, two max-pooling layers, two up-sampling layers, and an output convolutional layer. Each convolutional layer, except for the output layer, is composed of the following operations: 3×3 2D convolution with zero-padding, batch normalization, and activation function of ReLU. In the contracting part of the generator, a 2×2 2D max-pooling operation was used to down-sample the input images. To prevent overfitting, a dropout layer with a rate of 0.5 was applied after the pooling and convolutional layers of the expanding part of the model (Srivastava et al., 2014). A 2×2 2D up-sampling operation was further applied in the expanding part after skip connection to increase the resolution of featured images that contain both high- and low-level information. Finally, the output convolutional layer had a 1×1 2D convolution that used a linear function for activation to obtain future prediction of the radar reflectivity image.

삭제함: Generative model

삭제함: generative model

삭제함: generative model

삭제함: model generalization (

삭제함:),

2.2.3 Discriminator

PatchGAN from the Pix2Pix model was used as the discriminator (Fig. 2b). As in cGAN, the input pair of the discriminator consists of historical radar reflectivity data (i.e., input of the generator) and future radar reflectivity data. The discriminator

삭제함: Discriminative model

삭제함: discriminative model

삭제함: discriminative model

삭제함: generative model

삭제함: discriminative model

240 classifies real image pairs (input of generator and ground truth image) as 1, and fake image pairs (input and generated image from generator) as 0 (Mirza and Osindero, 2014). Particularly, PatchGAN only penalizes the structures over a certain scale of image patches; therefore, the discriminator classifies whether the $N \times N$ patch in the input pair is real or fake. This patch represents the receptive field, which is the region in the input image that is used to measure the associated feature of the output layer. Consequently, the size of the patch (N) was determined based on the structure of the entire discriminator (e.g., number
 245 of layers, nodes, filter size, paddings, and strides), and it increased as the model became deeper. We constructed a discriminator model with a 34×34 patch size through hyperparameter tuning. The model consists of three convolutional layers and an output layer. The first two convolutional layers were composed of 4×4 2D convolution with strides of two and zero-padding, batch normalization, and ReLU activation function, which was leaky and had a 0.2 slope. The third convolutional layer had the same configuration as the previous layers, except that its stride was 1. To distinguish the input pair in the image form, the output
 250 layer consisted of 4×4 2D convolution with zero-padding and sigmoid activation functions. To train the discriminator as a classifier, we manually generated a training dataset consisting of an input image pair and a target image, with spatial dimensions of 32×32 filled with 1 (for real image pairs) or 0 (for generated image pairs). Therefore, each pixel of the output estimates the probability that the discriminator determines each patch of the input pair as the real one.

삭제함: generative model

삭제함: .

삭제함: generative model

삭제함: at

삭제함: thus, this discriminative model

삭제함: The

삭제함: by

삭제함: discriminative model

삭제함: through optimization

삭제함: referred to

삭제함: discriminative model

255 2.2.4 Optimization procedure

Before proceeding with training to optimize the model for the input data, hyperparameter tuning is required to determine the most optimal model structure and training settings. We selected the following hyperparameters: number of layers, number of hidden nodes, convolution filter size, patch size, batch size, and learning rate. To select the appropriate hyperparameter combination, the model for each combination was trained using radar data from 2014 to 2016 (June to August) and data from
 260 2017 (June to July). Subsequently, using data from 2017 (August), the mean absolute error (MAE) and critical success index (CSI) (at an intensity threshold of 0.1 mm/h) were calculated to obtain the optimal combination of hyperparameters. Based on the tuning results, the MAE range was 0.45–47.66 and the CSI range was 0.0–0.83, and the results confirmed that hyperparameters influence model performance considerably. Based on the combinations that performed optimally, we determined the model structure and training settings.

265 To optimize Rad-cGAN, the training procedure suggested by Isola et al. (2017) was adopted. First, we compared the results using a total of four and six consecutive radar reflectivity images to determine the input historical data length. As a result of 10 min precipitation prediction at the Soyang-gang Dam site, in the case of CSI (at the rainfall intensity of 0.1 mm h⁻¹), the case of using six historical data was slightly better than case of using four data, but in R, RMSE, and NSE, the results of using four data were better. Through this, samples that consisted of four consecutive radar reflectivity images ($t-30$, $t-20$, $t-10$ min, and t) and the image at $t+10$ min were selected. Subsequently, a training sample for the discriminator was created by adding
 270

삭제함: we followed

삭제함: .

삭제함: randomly selected

삭제함: . Then, we created

삭제함: discriminative model

labels to classify whether the samples were real (image at $t+10$ min from observation) or fake ($t+10$ image from the generator) pairs. Subsequently, the parameters of the discriminator were updated using the minibatch stochastic gradient descent (SGD) method for one step. Binary cross-entropy was used as a loss function, and the ADAM optimizer (Kingma and Ba, 2015) with a learning rate of 0.0002 and momentum parameters $\beta_1 = 0.5$ and $\beta_2 = 0.999$ was applied. Afterwards, the generator was trained for one step to optimize Eq. (4). Binary cross-entropy was used as \mathcal{L}_{CGAN} for the discriminator to classify the generated image into a real image. Additionally, λ of the traditional pixel-wise $L1$ loss was set to 100. The minibatch SGD and ADAM optimizer were applied to train the generator with the same setting as the discriminator. Both the procedures for updating the parameters of the discriminator and generator were run simultaneously during one epoch. Our model was trained using 600 epochs, with a batch size of 8. To achieve the optimal model, an early stopping technique that stops the training model when the loss stops improving was applied. The loss metric was defined as the generator loss based on 100 validation samples randomly sampled from the training dataset that was not used to train the model. To monitor the loss, we set patience to 30 epochs and saved the model when the loss improved. The model architecture was written in Python (<https://www.python.org/>) using the Keras deep learning application (<https://keras.io/>). The entire procedure for training and all the experiments for evaluation were run on a computer with a single NVIDIA Tesla V100 GPU.

삭제함: generative model

삭제함: Next, we updated

삭제함: discriminative model

삭제함: we applied

삭제함: . Then, we

삭제함: the generative model

삭제함: We used binary

삭제함: generative model

삭제함: discriminative model

삭제함: We

삭제함: our model

삭제함: effectively

삭제함: we applied

2.3 Reference models

The model performance of the Rad-cGAN model was compared and validated using reference models. We used the Eulerian persistence model (hereinafter referred to as persistence), a traditional radar-based rainfall prediction model, as the first reference model. The persistence model assumes that rainfall prediction at any lead time will be the same as rainfall in the forecast time. It is a simple but powerful model for predicting short-term precipitation. For comparison, we used ConvLSTM and U-Net, which are the common basic structures for machine-learning-based nowcasting models in several studies, as reference models.

2.3.1 PySTEPS

PySTEPS (Pulkkinen et al., 2019) is the open-source and community-driven python framework for radar-based probabilistic precipitation nowcasting that is considered a strong baseline model (Imhoff et al., 2019; Ravuri et al., 2021). In the present study, STEPS (Short-Term Ensemble Prediction System) (Bowler et al., 2006) nowcast ensemble from the pySTEPS library was used as the benchmark model.

To generate precipitation predictions, we first provided input precipitation images (unit: dBR) that were transformed from four consecutive radar reflectivity images (from $t-30$ to t) based on a Z-R relationship (Eq. (1)). The transformed precipitation was

330 also used to estimate motion field, and the motion field and precipitation were used as input data in the STEPS model. Future
precipitation at a lead time of up to 90 min for the test period (JJA of 2018) was generated based on the average across 20
ensemble members from the results of STEPS nowcasts. The source code of pySTPES is available in GitHub
(<https://pysteps.github.io>, last accessed: 5 April 2022).

335 2.3.2 ConvLSTM

LSTM is a special case of recurrent neural networks (RNNs) and is widely used in temporal sequence predictions (Hochreiter
and Schmidhuber, 1997). Sutskever et al. (2014) proposed an LSTM encoder-decoder framework for sequence-to-sequence
problems, which consists of concatenated LSTMs for the input and output sequences. Based on this model, Shi et al. (2015)
developed a ConvLSTM network that can be applied to spatiotemporal sequence prediction, such as radar-based rainfall
340 prediction. To handle spatiotemporal sequences, a convolution operator was used in state-to-state and input-to-state transitions.
The ConvLSTM model was shown to outperform the traditional optical flow-based precipitation nowcasting model. Recent
studies have shown that the ConvLSTM model can be successfully applied to predict future radar-based precipitation (Kim et
al., 2017; Moishin et al., 2021).

We designed a ConvLSTM model that uses four radar reflectivity image frames ($t-30$, $t-20$, $t-10$ min, and t) as input to predict
345 future frames at time $t+10$ min, which is similar to input and output of Rad-cGAN. The model consists of three ConvLSTM
layers and an output layer. Each ConvLSTM layer contains 64 hidden states and 3×3 kernels. A 3D convolutional layer with
a linear activation function was used as the output layer. [The hyperparameters of the ConvLSTM model \(i.e., number of layers,
number of nodes, convolution filter size, batch size, and learning rate\) were tuned using a procedure similar to that applied in
Rad-cGAN \(Sect. 2.2.4\).](#) To optimize the model, we used the mean squared error as the loss function and applied the ADAM
350 optimizer (learning rate 0.002 and momentum parameters $\beta_1 = 0.9$ and $\beta_2 = 0.999$). We trained the model using 600 epochs
(early stopping applied) with a batch size of 32.

삭제함:

2.3.3 U-net

U-Net-based precipitation nowcasting models efficiently predict future precipitation using historical data, even though U-Net
355 does not have a structure, such as RNN, that preserves temporal information (e.g., Ayzel et al., 2020; Trebing et al., 2021). U-
Net was developed by modifying the fully convolutional network (Long et al., 2015), and performed well in image
segmentation tasks (Ronneberger et al., 2015). This model architecture consists of two parts: a contracting network that
captures the context of the input images and an expanding network that increases the resolution of features from the contracting
network.

삭제함: 2

The contracting network follows the usual CNN, which consists of convolution and max-pooling layers. Each convolution layer is composed of convolution, batch normalization, and activation operations. Batch normalization is used to prevent gradient vanishing or exploding problems and can effectively increase the convergence speed (Ioffe and Szegedy, 2015). The max-pooling operation is applied for down-sampling after convolution of the input image. Through this process, the output of the contracting network can incorporate the features of the input image. The expanding network consists of the up-sampling and convolution layers. Before applying the up-sampling operation, the skip connection is applied between each layer of the contracting network and the layer of the expanding network to prevent gradient vanishing and share the low-level information of the input data (Simonyan et al., 2015). The convolution layers of the expanding and contracting networks follow the same operation.

As the reference model, hyperparameters for the U-net structure (number of layers, number of nodes, and convolution filter size) were set to be equivalent to those of Rad-cGAN (Sect. 2.2.2), and hyperparameters related to training settings (batch size and learning rate) were tuned using procedures similar to those of Rad-cGAN (Sect. 2.2.4). To optimize the model, L1 loss and ADAM optimizers were used as in the case of ConvLSTM (Sect. 2.3.2). The model was trained using 600 epochs with early stopping and the batch size set to 8.

삭제함: U-Net was designed to have

삭제함: same

삭제함: as the proposed

삭제함: -based generative model in our study

삭제함:).

삭제함: similar to

삭제함: way in

삭제함: 1). We

삭제함: the model

삭제함: setting

2.4 Experiments for evaluating model's prediction skills

2.4.1 Performance evaluation

The model was trained using data from the summers (June–August) of 2014–2017 and its precipitation nowcasting capacity was assessed using data from the summer of 2018. To predict radar reflectivity data 10 min ahead, four latest radar reflectivity data ($t-30$, $t-20$, $t-10$ min, and t min; t being the forecast time) were used as input data. The model can generate multiple samples (No. of samples, 128, 128, 1) corresponding to the number of samples of the past four consecutive input data (No. of samples, 128, 128, 4). To predict beyond the 10 min lead time, we used the prediction data at $t+10$ min as the latest input data.

삭제함: We

삭제함: the model

삭제함: assessed

삭제함: skill

삭제함: the 10 min ahead

Using this recursive process, predictions were obtained at a lead time of >10 min. Because the model predicts the radar reflectivity after 10 min using past consecutive radar images, we first evaluated the model performance at a lead time of 10 min. This allowed us to confirm the prediction tendency of our model and other reference models while performing precipitation nowcasting. Furthermore, to assess the applicability of our model to an actual early warning system that needs to ensure at least one hour of lead time, the predictive skill was evaluated for >10 min of lead time using the recursive process. We measured the verification metrics (see below) using rainfall prediction, converted from the radar reflectivity (Eq. (1)), at a lead time of up to 90 min to confirm the forecasting time in which the model ensured sufficient performance.

Furthermore, we evaluated the model performance at a specific dam site as well as for the entire dam domain (Fig. 1b). We chose the precipitation data at the dam site as it directly affects the dam water level, which is a major factor in the decision-

making process of dam management. To evaluate the entire domain, the verification metrics were calculated with increasing lead time for all pixels of the predicted image, and the model performance was represented by the 50th percentile (median) of the metrics. Additionally, to qualitatively evaluate the entire domain, we compared the resulting radar reflectivity images obtained using data at a certain forecast time. We set the forecast time at 23 August 2018, 17:50 UTC, when Typhoon Soulik, which landed on the Korean Peninsula from 23 August 2018, 12:00 UTC to 24 August 2018, 03:00 UTC, started affecting the Soyang-gang Dam Basin.

Several metrics were used for model evaluation: Pearson correlation coefficient (R), root mean square error (RMSE), Nash–Sutcliffe efficiency (NSE), CSI, fractions skill score (FSS). As the collinearity between actual rainfall and predicted rainfall increases, the explanatory power of the rainfall simulated by the model increases, so that the performance of the model can be illustrated by strong positive linear relationship between predictions and observations. Hence, we confirmed that the model exhibits better performance when R (Eq. (5)), calculated based on the model prediction and observation, is closer to 1. To verify the precision of the model, the RMSE (Eq. (6)) between prediction and observation was used. Since we propose a precipitation nowcasting model, NSE, which is widely used to assess hydrologic models, can be used as a goodness-of-fit index for it (McCuen et al., 2006) (Eq. (7)).

$$R = \frac{\sum_{i=1}^N (O_i - \bar{O})(P_i - \bar{P})}{\sqrt{\sum_{i=1}^N (O_i - \bar{O})^2 \sum_{i=1}^N (P_i - \bar{P})^2}} \quad (5)$$

$$RMSE = \sqrt{\frac{\sum_{i=1}^N (O_i - P_i)^2}{N}} \quad (6)$$

$$NSE = 1 - \frac{\sum_{i=1}^N (O_i - \bar{P})^2}{\sum_{i=1}^N (O_i - \bar{O})^2} \quad (7)$$

where \bar{O} and \bar{P} are the means of observation and prediction, respectively, O_i and P_i are the observed and predicted precipitation, respectively, in the i th time of the data period, and N is the total data for the entire period.

We used the CSI (Eq. (8)), which is a measure of categorical forecast performance, to verify the model accuracy for precipitation event detection.

$$CSI = \frac{hits}{hits + false\ alarms + misses} \quad (8)$$

where *hits* (correct event forecasts), *false alarms* (incorrect event forecasts), and *misses* (missed events) are defined by a contingency table (Table 2). Also, FSS can spatially verify model performance by comparing fraction of grid points of prediction and ground truth, which exceed certain rainfall intensity thresholds within the neighborhood (Eq. (9)).

$$FSS = 1 - \frac{\sum_{i=1}^n (P_p - P_o)^2}{\sum_{i=1}^n P_p^2 + \sum_{i=1}^n (P_o)^2} \quad (9)$$

where P_p and P_o are the fractions of prediction and observation, respectively, calculated by specific thresholds in neighborhood size. For calculating CSI and FSS, we selected several intensity thresholds, including 0.1, 1.0, and 5.0 mm h⁻¹, and for FSS, we used neighborhood sizes of 1, 5, and 15 km. Additionally, we calculated the radially averaged power spectral density (PSD) of predictions and observations to assess blurring effect of predicted image by models.

삭제함: Four

삭제함: and critical success index (

삭제함:). Since

삭제함: precipitation prediction

삭제함: was more accurate, the prediction and observation showed a

삭제함: .

삭제함: is more accurate

삭제함: between

삭제함: was

삭제함: Additionally, we

삭제함: For this, we selected an intensity threshold of 0.1 mm h⁻¹, which is the criterion by which the KMA determines the number of days of precipitation.

삭제함: 1).

To calculate each verification metric, in the case of the evaluating for dam sites, we calculated all metrics for one pixel (dam site location) in the dam basins and averaged them over the data period (No. of samples). Also, in the case of evaluating dam domain, all metrics for each pixel in the dam basins were calculated and averaged over the data period (No. of samples).

455

2.4.2 Experiments for transfer learning among different domains

Since the machine learning model relies on input data as a data-driven model, training on the corresponding new data must be conducted from the beginning to develop a model for a new domain, which is also applicable for our precipitation nowcasting model for a new dam basin with different meteorological, environmental, and geographical characteristics (Fig. 1b). However, because this method is time-consuming and computationally expensive, we applied a transfer learning approach that can be efficiently used to train models with multiple basin domains.

Transfer learning is a machine learning technique that uses knowledge and skills from pre-trained models to train a model for new datasets (Pan and Yang, 2009). This method is often used when the size of the provided dataset is insufficient for training and is also used to train the models for the new dataset due to its lower computational cost than that of training from scratch.

465 The general training strategies of transfer learning are determined by the data size and similarity between the new and original data. For example, if the new dataset is similar to the dataset of the pre-trained model, the new model only fine-tunes for higher layers that learn specific features of the input data and freeze the lower layers that capture the general features. Fine-tuning uses a smaller learning rate (e.g., $\sim 1/10^{\text{th}}$ of the original learning rate) and is one of the most effective ways to transfer knowledge. Several studies have shown that the transfer learning approach performs successfully well in image classification tasks (Krizhevsky et al., 2012; Simonyan and Zisserman, 2015; He et al., 2016). In the GAN approach, the discriminator acts similar to the classifier of the image classification task. Wang et al. (2018) reported that fine-tuning both the generator and discriminator resulted in good performance, but the overfitting was a frequent issue that must be considered. Subsequently, Mo et al. (2020) proposed a strategy that works only on the discriminator called FreezeD, which freezes the lower layer of the discriminator and only fine-tunes the upper layers.

475 We used transfer learning to train our model for different dam basins, i.e., Andong and Chungju, with a pre-trained model that was completely trained by data from the Soyang-gang Dam Basin. In addition, in existing papers that have successfully applied the transfer learning strategies, it was used to develop a model for a new domain using a pre-trained model based on vast data. Consequently, we used the pre-trained model with Daecheong Dam, Juam Dam, and Yongdam Dam basin data, in addition to Soyang-gang Dam data, to assess the amount of data required to develop a model for a new dam domain. The selected strategies were inspired by a previous approach of transferring GAN (Wang et al., 2018; Mo et al., 2020). We formulated two strategies for each pre-trained model. First, the weights of the pre-trained generator were frozen and used directly in new dam domain (Case 2, 4). Next, to the weights of the pre-trained generator were fine-tuned ($1/10^{\text{th}}$ of the original learning rate) and the

삭제함: only

삭제함: discriminative model

삭제함: the

삭제함: We constructed three different strategies: Case 1 to train the entire model for the new domain, Case 2 to freeze the weights of the pre-trained generative model and train the discriminative model, and Case 3 to fine-tune

삭제함: generative model and train the discriminative model

495

discriminator trained (Case 3, 5). In addition, the entire model was trained for the new domain (Case 1) (Table 3a). The model was trained for the Chungju and Andong Dam domains, separately, using the five strategies (Table 3b). To determine the best strategy for training different dam domains, we estimated the performance at the 10-min lead time at each dam site (Fig. 1b). Additionally, we compared the predictive skill of each strategy at the lead time of up to 90 min by using the recursive process.

삭제함: 2a). We

삭제함: the model

삭제함: three

삭제함: 2b

3 Results and discussion

3.1 Model performance at the dam site

To evaluate the performance of our model, precipitation was predicted at a lead time of 10 min at the Soyang-gang Dam site during the summer of 2018 (Table 4). As the general criterion for evaluating hydrological models, when R and NSE are > 0.5 , the model has acceptable performance (Moriassi et al., 2007). In addition, Germann and Zawadzki (2002) suggested that the threshold of predictability is $1/e \approx 0.37$, assuming that the CSI values follow the exponential law. According to the standard, the results of Table 4 show that the machine learning-based models performed well as precipitation nowcasting models ($R > 0.8$, $NSE > 0.5$, $CSI > 0.5$). Among them, Rad-cGAN significantly outperformed the other reference models (Table 4, Fig. 3). The CSI values at different rainfall intensities showed that the cGAN approach could be successfully applied for short-term rainfall prediction after 10 minutes based on the predictive performance ($CSI > 0.37$), even at high rainfall intensity. The scatter plot of each model showed that the prediction of the proposed model strongly correlated with the observation ($R = 0.86$) compared to the reference models (average $R = \sim 0.70$). Particularly, Rad-cGAN showed improvements in R and NSE values by 2.63 % and 32.16 %, respectively, compared with the model results using U-Net, confirming that the cGAN approach could mitigate the tendency to underestimate precipitation. This improvement was also observed in the time series plot of the entire evaluation period, where our model performs better than U-Net in predicting peak precipitation. However, the prediction accuracy of the ConvLSTM model for maximum precipitation was higher than that of our model (Fig. 3). Despite this, ConvLSTM predicts most low-intensity rainfall ($< 5 \text{ mm h}^{-1}$) as zero. Therefore, we can confirm that Rad-cGAN performs better than other reference models in precipitation prediction.

삭제함: 3). All models except for persistence performed extremely

삭제함: Fig. 3).

삭제함: 74

삭제함: Figs. 3a and c

삭제함: reference

We predicted the precipitation at a lead time of up to 90 min by using the recursive process to evaluate the model performance. (Fig. 4). Based on R, Rad-cGAN was the best model with an average improvement of 51.70 % and 25.02 % over ConvLSTM and U-Net, respectively, at overall lead times. Additionally, our model maintained good performance ($R > 0.5$) at lead times of up to 50 min, while the U-Net and ConvLSTM models maintained it for up to 30 min and 20 min, respectively. Although the NSE values converged to 0 with increasing lead times in all the models except persistence, our model showed the lowest performance degradation rate. However, with increasing lead time, the RMSE of our model increased more than that of the other models since our model generated more outliers than others when predicting rainfall for a lead time of 40 min or more.

삭제함: Furthermore, our model maintained sufficient performance (CSI at the intensity of $0.1 \text{ mm h}^{-1} > 0.5$) up to 80-min lead time, while ConvLSTM and U-Net preserved their performance for up to 30- and 70-min lead times, respectively.

500

505

510

515

520

(Fig. 4). Furthermore, our model maintained sufficient performance (CSI at the intensity of $0.1 \text{ mm h}^{-1} > 0.5$) up to 80-min lead time, whereas ConvLSTM and U-Net preserved adequate performance for up to 30- and 70-min lead times, respectively. However, at higher rainfall intensity, CSI decreases rapidly as the lead time increases (Fig. 4 (d)-(f)). Figure 4 illustrates that, as the lead time passes 40 min, the prediction performance was lower than that of ConvLSTM or other baseline models. Based on the results, Rad-cGAN generally had good performance compared to U-net; however, Rad-cGAN tends to underestimate and whereas ConvLSTM has poor performance when estimating low rainfall intensity, but shows good performance when estimating high rainfall intensity.

Thus, we observed a tendency of underestimation of the prediction of high-intensity precipitation in all the models, including Rad-cGAN (Figs. 3 and 4). This phenomenon was also reported by Kumar et al. (2020), wherein ConvLSTM made significant errors in predicting the precipitation $> 20 \text{ mm h}^{-1}$. The main reason was data imbalance, which is a common issue in machine learning studies (Wang et al., 2016). Data imbalance of our results occurred since unlike low-intensity precipitation ($< 10 \text{ mm h}^{-1}$), high-intensity precipitation rarely occurs during the training and testing periods.

3.2 Model performance for the dam domain

To apply our model in an early warning system, the prediction performance upstream of the dam should be sufficient. Hence, the verification metrics were calculated for each grid cell in the entire domain used to train the model, and their performance in all the grid cells were presented through boxplots for each lead time in all the models (Fig. 5). By comparing the median values, Fig. 5 shows average increases of 9.02 % and 17.87% for the R of Rad-cGAN at overall lead times compared to those of U-Net and ConvLSTM, respectively, which indicate improved precipitation prediction capacity for the entire domain, and is consistent with the results obtained from the Soyang-gang Dam site (Fig. 4). In addition, the relatively small variation in R values with pixel location in Rad-cGAN shows that it performs generally well not only for dam site but also for the entire domain. However, in the cases of RMSE and NSE, Rad-cGAN performs slightly worse than ConvLSTM, with an average increases over median values of 1.90% in RMSE and a decrease of 7.67% in NSE over the entire lead time (Fig. 5).

Moreover, according to the CSI value, our model preserves its predictability performance (CSI at the intensity of $0.1 \text{ mm h}^{-1} > 0.5$) for the entire lead time, indicating that it can be applied to predict precipitation at lead times of $> 90 \text{ min}$. The lead time for the CSI at the intensity of $0.1 \text{ mm h}^{-1} > 0.5$ was up to 40 min with ConvLSTM in this study while CSI at the intensity of $0.5 \text{ (not } 0.1) \text{ mm h}^{-1} > 0.5$ was up to 40 min with ConvLSTM-based nowcasting model for Hong Kong region (Shi et al., 2015). Ayzel et al. (2020) showed that the U-net-based model preserved performance (CSI at an intensity of $0.125 \text{ mm h}^{-1} > 0.5$) at a lead time of $> 60 \text{ min}$ in Germany, whereas the performance of our model with similar CSI ($0.1 \text{ mm h}^{-1} > 0.5$) remained up to 80 min. Hence, we confirm that the reference model was sufficiently trained to be used for comparison with our model. The result indicates that Rad-cGAN has reliable performance in precipitation nowcasting for relatively light rain (rainfall intensity

삭제함: of
 삭제함: median values
 삭제함: Figure 5a
 삭제함: an
 삭제함: increase
 삭제함:
 삭제함: time
 삭제함: the
 삭제함: skill
 삭제함: was

삭제함: This
 삭제함: a
 삭제함: for
 삭제함: nowcasts.

of 0.1 mm h⁻¹). However, in the case of CSI at intensities of 1.0- and 5.0-mm h⁻¹, although Rad-cGAN maintained a good performance compared to that of U-net, the performance rapidly deteriorated as the lead time increased. Unlike Rad-cGAN and U-net, ConvLSTM recorded low CSI under low-intensity rainfall; however, Fig. 5 shows that performance was maintained at a relatively high level under higher rainfall intensity. The results can also be confirmed through the FSS of each model (Fig. 6). When comparing Rad-cGAN and U-net, as lead time and rainfall intensity increase, both models decrease FSS; however, Rad-cGAN model exhibited superior performance. However, ConvLSTM had a relatively high FSS value under high rainfall intensity compared to those of the other two models.

To better understand model performance with increasing lead time, we predicted precipitation for lead times of 10, 30, 60, and 90 min for a specific forecast time on 23 August 2018, 17:50 UTC, when Typhoon Soulik began affecting the Soyang-gang Dam Basin (Fig. 7). We observed that with an increase in lead time, the model performance deteriorated due to the blurring effect of the predicted image, which is an issue reported in previous machine-learning-based nowcasting models (Ayzel et al., 2020; Shi et al., 2015). Despite the smoothing trend, Rad-cGAN produced qualitatively better results than those of the other reference models (Fig. 7). The prediction (observation-prediction) of Rad-cGAN at 90-min lead time ranged from -1.97 to 19.68 (mean = 0.83 mm h⁻¹), indicating that our model alleviates the underestimation of radar reflectivity compared to U-Net, whose bias ranged from -0.30 to 20.33 (mean = 1.04 mm h⁻¹). The results support the improvement in Rad-cGAN verification metrics compared to those of U-Net (Fig. 5). Furthermore, in the case of ConvLSTM, the mean bias of 0.86 dBZ under a 90-min lead time prediction showed that ConvLSTM was less prone to underestimation when compared with U-Net. However, the 90-min rainfall prediction by ConvLSTM was recorded to be approximately 0 mm h⁻¹ in areas with an observation of ~5–10 mm h⁻¹, indicating that it predicted precipitation to be close to zero in most areas with increasing lead times. As Fig. 7 illustrates, ConvLSTM did not define the boundary of the entire area well but maintained high intensity rainfall compared to the other two models, which causes the CSI difference depending on the rainfall intensity of ConvLSTM (Figs. 5 and 6).

Figure 8 shows the PSD for each result in Fig. 7. Based on Fig. 7, all models exhibited a blurring effect compared to the ground truth. However, when comparing U-net and Rad-cGAN, Rad-cGAN has slightly lower blurring effect. This is because a sharper image can be generated when cGAN is applied to the U-net structure (Isola et al. (2017)), which shows that the cGAN technique was successfully applied by our model. Therefore, based on the overall verification metrics, we conclude that Rad-cGAN has the optimal prediction performance in nowcasting and prediction of spatial patterns of movement of precipitation.

3.3 Performance with transfer learning at different dam sites

To develop a precipitation nowcasting model for multiple dam basins (Andong and Chungju Dam Basins) other than Soyang-gang Dam Basin, we proposed to not only retrain our model with data from new dam basins (Case 1) but also apply efficient transfer learning methodology (Cases 2–5; Sect. 2.4.2).

삭제함: RMSE

삭제함: NSE,

삭제함: performs worse than ConvLSTM, with an average increase of 1.90 % in the RMSE and a decrease of 7.67 % in the NSE over the entire lead time (Figs. 5b, d). This

삭제함: degradation shows that our model generates more outliers than ConvLSTM with increasing prediction lead time. However, the CSI of ConvLSTM recorded a markedly low

삭제함: the persistence model, suggesting that the precipitation event detection

삭제함: rapidly with

삭제함: lead time (

삭제함: 5d).

삭제함: the

삭제함: the radar reflectivity results

삭제함: of

삭제함: .

삭제함: degraded

삭제함: by increasing the lead time,

삭제함: of

삭제함: this

삭제함: 6

삭제함: bias

삭제함: 35.00

삭제함: 18.43 (median = -4.98 dBZ

삭제함: 43.00

삭제함: 15.24 (median = -11.67 dBZ). This result supports

삭제함: 's

삭제함: the

삭제함: median

삭제함: -9.71

삭제함: at

삭제함: than

삭제함: bias of

삭제함: -20 to -40 dBZ

삭제함: 20–40 dBZ

삭제함: radar reflectivity

삭제함: This result confirms the cause of the remarkably low CSI of ConvLSTM (Fig. 5).

삭제함: through

삭제함: shows

삭제함: best

삭제함: skills for

삭제함: precipitation

삭제함: and 3

655 First, we evaluated whether the transfer learning method could be effectively applied to the new domain (Case 2,3) using a pre-trained model only for one domain (i.e., Soyang-gang Dam Basin). Table 5a shows the performance of each case with model predicted precipitation at 10-min lead times at the Andong Dam site. The results showed that most of the verification metrics in Case 3 and Case 2 performed better than those in Case 1. In Case 2, which uses all the parameters of the generator from the pre-trained model, an NSE of 0.65 was achieved, which is closest to the NSE of the pre-trained model (0.73) with data from the Soyang-gang Dam Basin. This was consistent with the verification metrics results at lead times of up to 90 min (Fig. 7a). Based on the R results, Case 2 maintained the prediction performance ($R_p > 0.5$) up to an 60-min lead time (Fig. 9a). Especially for CSI at higher rainfall intensities, Case 2 showed better performance than Case 1 overall lead times (Fig. 9d-f). Hyperparameter tuning would have had a significant impact on the results where Case 2 performs better than Case 1. Unlike the pre-training model, which confirmed that model optimization and generalization were completed through the hyperparameter tuning process, in case 1, we did not proceed with hyperparameter tuning for the new domain. Although the new domain has properties similar to those of the previous domain, minor changes in hyperparameters also result in differences in performance, so that optimization and generalization of the model (Case 1) were less comprehensive than in the pre-training model, resulting in relatively poor performance. However, in Case 3, the performance was lower than that of the other strategies. This was because of performance degradation due to overfitting during fine-tuning the pre-trained parameters. High similarity between the two datasets of the Andong and Soyang-gang dams may be the reason for a major performance degradation of the transfer learning using the fine-tuning method (Wang et al., 2018).

For the Chungju Dam Basin, we trained the model using the methodology used for the Andong Dam Basin. The three cases performed similarly for predicting the precipitation at 10-min lead time at the Chungju Dam site (Table 5b). Although Case 1 showed the highest R of 0.86, by comparing other metrics (RMSE, NSE, CSI), transfer learning cases (Case 2 and Case 3) performed better than Case 1. Additionally, when the lead time was increased by up to 90 min, Cases 2 and 3 showed better performance than Case 1 for the entire lead time (Fig. 10). From the results of CSI at the 0.1 mm h^{-1} , Case 3 preserved sufficient performance ($\text{CSI} > 0.5$) at a lead time of up to 80 min, which is the same in Case 2. However, as a result of comparing CSI with high rainfall intensity, it was confirmed that the performance in Case 2 was better maintained. Through these results, it can be seen that Case 2 was successfully applied to Andong Dam and Chungju Dam among the transfer learning methodologies using a pre-training model for the Soyang-gang Dam basin.

Considering the advantages of transfer learning that can be effectively applied when data for new domains is insufficient over pre-trained domains, we evaluated the results of using pre-training models that had been trained for additional dam basins: Daecheong Dam, Juam Dam, and Yongdam Dam basins in addition to Soyang-gang Dam (Case 4,5). Through the R for 10 min precipitation prediction at dam sites, Case 2 and 3, which used pre-trained model with Soyang-gang Dam data, showed better performance for both Andong Dam and Chungju Dam (Table 5), but as the lead time increased to 90 min, Case 4 and 5 showed similar or slightly better performance (Fig. 9,10). This trend is notable in RMSE and NSE. In addition, at CSI values

삭제함: measured
 삭제함: model
 삭제함: three cases
 삭제함: a
 삭제함: time
 삭제함: (Table 4a).
 삭제함: were similar
 삭제함: compared to Case 1,
 삭제함: generative model
 삭제함: 72
 삭제함: close
 삭제함: area
 삭제함: phenomenon
 삭제함: also
 삭제함: in
 삭제함: Through
 삭제함: and CSI (at the intensity of 0.1 mm h^{-1})
 삭제함: it was observed that
 삭제함: , CSI
 삭제함: for
 삭제함: 80-min lead time, even though
 삭제함: was
 삭제함: performed
 삭제함: match the model with the Andong Dam data

삭제함: 4b

삭제함: 7b).

삭제함: while
 삭제함: maintained it for up to 70 min.
 삭제함: Case 3 showed
 삭제함: less improved average CSI value of $\sim 1.44 \%$ compared to Case 2 for the overall lead time, indicating that the difference in
 삭제함: prediction
 삭제함: between the two
 삭제함: strategies was insignificant

삭제함: When comparing Cases 2 and 3, the Andong and Chungju dams showed different best cases. However, considering that the performance of both cases at Chungju Dam was almost similar, we decided that the Case 2 method, with the lowest computational cost, was the appropriate strategy for training the model with a new dam basin. Thus, we infer that by using transfer learning, a model can be successfully developed with different domains, although it does not optimize the hyperparameter to fit the model with the new domain. 41

of high rainfall intensity, Case 4,5 outperformed other strategies at longer lead time. Since various and numerous data data can solve the problem of data imbalance that causes under-estimation of the model, it can be seen that the CSI value was good even at high rainfall intensity (Wang et al., 2016). In addition, Fang et al., (2022) showed that models trained through diverse and numerous data on multiple regions can also learn about the characteristics that contribute to regional differences, and are more effective in predicting extreme events and future trends. These results showed that the diversity and amount of data have no significant effect on the short-term prediction of low rainfall intensity, but are very important in resolving model underestimation and improving prediction accuracy for heavy rainfall.

4 Conclusions

In the present study, our aim was to develop a model that could be applied at each flood control center by focusing on developing a model for a dam basin. We developed a rainfall prediction model that could perform sufficiently well with a relatively simple structure and low computational costs and evaluated the applicability of the transfer learning technique to facilitate its application in multiple dam basins. The developed model could be used for rainfall runoff modeling in dam basins in future work. To develop radar-based precipitation nowcasting model, we applied a cGAN approach based on the U-net architecture. The model architecture was inspired by the image-to-image translation model called Pix2Pix, which consists of U-Net as the generator and PatchGAN as the discriminator (Isola et al., 2017). In 10-min lead time precipitation prediction, at the Soyang-gang Dam site, our model outperformed the other reference models. Additionally, when we applied the recursive process to predict precipitation with lead times of up to 90 min, our model achieved adequate performance for low rainfall intensity (CSI >0.5) with lead times of up to 80 min, which was an improvement over ConvLSTM (up to 30 min) and U-Net (up to 70 min). The R and CSI (at the intensity of 0.1 mm h) results for the entire domain revealed that compared to the reference models, our model generated precipitation prediction more accurately at the overall lead times. However, in the case of higher rainfall intensity, CSI and FSS showed that Rad-cGAN had relatively poor performance compared to the reference models (excluding U-net). Although our model tends to underestimate strong precipitation, the qualitative evaluation of the Typhoon Soulik confirmed that our model can capture spatiotemporal change in the area of precipitation closest to the ground truth. In addition, based on the cGAN approach, our model can generate sharper and realistic images than U-net by calculating PSD. Therefore, we conclude that our Rad-cGAN model is the most advanced precipitation nowcasting model when compared to the other reference models.

To develop the precipitation nowcasting model for different dam basins (Andong and Chungju dam basins), we proposed different transfer learning strategies by using the previously trained model. Comparing the case of using transfer learning (Case 2-5) and the case of not using transfer learning (Case 1), the case of using transfer learning generally showed better performance in both Andong Dam and Chungju Dam. From the results of Cases 2 and 3 in which the performance is somewhat poor in the

삭제함: In this study, we proposed a radar-based precipitation nowcasting model using the cGAN approach.

삭제함: generative model,

삭제함: discriminative model

삭제함: For

삭제함: at

삭제함: sufficient

삭제함: For the median values of

삭제함: of

삭제함: .

삭제함: the

삭제함: extent

삭제함: radar reflectivity

삭제함: with data from the Soyang-gang Dam Basin. In the case of the Andong Dam Basin, the Case 2 strategy, which uses all pre-trained parameters of the generative model and re-trains the discriminative model, showed the highest performance. However, in the case of the Chungju Dam Basin, the Case 3 strategy, which fine-tuned the pre-trained parameters of the generative model and re-trained the discriminative model, showed almost the same but slightly better performance than Case 2. Therefore, we conclude that the transfer learning approach of using all pre-trained parameters of the generative model and re-training discriminative model is the most suitable strategy to develop the precipitation nowcasting model for new dam basins because of its computational efficiency.

785 case of using fine-tuning, it can be seen that it is necessary to pay attention to the overfitting when applying the fine adjustment.
In addition, when a model trained with an additional dam basin was used as a pre-training model (Case 4,5), the prediction
performance was outperformed, especially at high rainfall intensity, and it was found that data diversity had an effect on model
generalization and underestimation.

We confirmed that the proposed precipitation nowcasting model demonstrated improved performance over conventional
790 machine learning-based models (U-Net and ConvLSTM) and showed that transfer learning strategies could be effectively
applied to develop models for other domains with summer precipitation in South Korea. However, there are remaining issues
that must be considered to ensure auditability of our model for real problems, such as predicting heavy precipitation events
and flash flood forecasting. First, the tendency of the model to underestimate precipitation is a major issue. The decisive cause
of this issue is data imbalance, as mentioned in general machine-learning tasks (Wang et al., 2016). To address this issue,
795 further studies need to be conducted to improve the predictive performance of extreme precipitation events by extending the
duration of training data and assigning weights to the extreme or other events. Additionally, adding information about domain
characteristics, such as the digital elevation model and land cover map is expected to improve the precipitation nowcasting
model. Another issue is that we trained models for different domains using basic transfer learning strategies, and evaluated the
performance only for the new domains, which are not sufficient to develop models for multiple domains that can be used in
800 early warning systems. To overcome this issue, for example, Wang et al. (2020) presented a new transfer learning approach
that simultaneously mined the knowledge of multiple pre-trained generators. Therefore, it is expected that further research
using more advanced transfer learning strategies will help to develop a precipitation nowcasting model with good performance
in all different domains to enhance practicality.

805 **Code and data availability**

The source code of the model architecture is available at the GitHub repository <https://github.com/SuyeonC/Rad-cGAN> (last access: 11 November 2021). The radar reflectivity composite data samples provided by the Korea Meteorological Administration (KMA) are available at the public service: <https://data.kma.go.kr/resources/html/en/ncdci.html> (last access: 11 November 2021). The dataset for the entire period can be obtained through a separate request to the KMA.

810 **Author contributions**

SC and YK designed the study, and SC performed the model development, simulations, and result analysis under the supervision of YK. SC wrote the original manuscript, and YK reviewed and edited the manuscript.

Competing interests

The authors declare that they have no conflict of interest.

815 **Acknowledgements**

This study was supported by the Basic Science Research Program through the National Research Foundation of Korea, which was funded by the Ministry of Science, ICT & Future Planning (No. 2020R1A2C2007670), and the Technology Advancement Research Program through the Korea Agency for Infrastructure Technology Advancement (KAIA) grant funded by the Ministry of Land, Infrastructure and Transport (Grant 21CTAP-C163541-01).

820

References

- Agrawal, S., Barrington, L., Bromberg, C., Burge, J., Gazen, C., and Hickey, J.: Machine learning for precipitation nowcasting from radar images, arXiv [preprint], arXiv:1912.12132, 2019.
- Ayzel, G., Heistermann, M., and Winterrath, T.: Optical flow models as an open benchmark for radar-based precipitation nowcasting (rainymotion v0.1), Geosci. Model Dev., 12, 1387-1402, 10.5194/gmd-12-1387-2019, 2019.
- Ayzel, G., Scheffer, T., and Heistermann, M.: RainNet v1.0: a convolutional neural network for radar-based precipitation nowcasting, Geosci. Model Dev., 13, 2631-2644, 10.5194/gmd-13-2631-2020, 2020.
- [Bowler, N. E., Pierce, C. E., and Seed, A. W.: STEPS: A probabilistic precipitation forecasting scheme which merges an extrapolation nowcast with downscaled NWP, Q. J. Roy. Meteorol. Soc., 132, 2127–2155, 2006. a, b, c, d, e, f, g, h](#)
- Clark, A., Donahue, J., and Simonyan, K.: Adversarial video generation on complex datasets, arXiv [preprint], arXiv:1907.06571, 2019.
- Clive, P., Alan, S., Sue, B., David, S., and Zhihong, L.: Nowcasting, in: Doppler Radar Observations, edited by: Joan, B., and Jorge Luis, C., IntechOpen, Rijeka, 10.5772/39054, 2012.
- [Fang, K., Kifer, D., Lawson, K., Feng, D., & Shen, C.: The data synergy effects of time-series deep learning models in hydrology. Water Resources Research, 58, e2021WR029583. <https://doi.org/10.1029/2021WR029583>, 2022.](#)
- Goodfellow, I., Pouget-Abadie, J., Mirza, M., Xu, B., Warde-Farley, D., Ozair, S., Courville, A., and Bengio, Y.: Generative adversarial networks, Commun. ACM, 63, 139–144, 10.1145/3422622, 2020.
- Graves, A.: Generating sequences with recurrent neural networks, arXiv [preprint], arXiv:1308.0850, 2013.
- He, K., Zhang, X., Ren, S., and Sun, J.: Deep Residual Learning for Image Recognition, in: 2016 IEEE Conference on Computer Vision and Pattern Recognition (CVPR), 27-30 June 2016, 770-778, 10.1109/CVPR.2016.90, 2016.
- Hochreiter, S. and Schmidhuber, J.: Long Short-Term Memory, Neural Computation, 9, 1735-1780, 10.1162/neco.1997.9.8.1735, 1997.
- Hwang, S., Yoon, J., Kang, N., and Lee, D.-R.: Development of flood forecasting system on city mountains small river area in Korea and assessment of forecast accuracy, Journal of Korea Water Resources Association, 53, 225-236, 10.3741/JKWRA.2020.53.3.225, 2020.
- Imhoff, R. O., Brauer, C. C., Overeem, A., Weerts, A. H., and Uijlenhoet, R.: Spatial and Temporal Evaluation of Radar Rainfall Nowcasting Techniques on 1,533 Events, Water Resources Research, 56, e2019WR026723, <https://doi.org/10.1029/2019WR026723>, 2020.
- Ioffe, S. and Szegedy, C.: Batch Normalization: Accelerating Deep Network Training by Reducing Internal Covariate Shift, in: Proceedings of the 32nd International Conference on Machine Learning, Proceedings of Machine Learning Research, 448-456, 2015.

Isola, P., Zhu, J., Zhou, T., and Efros, A. A.: Image-to-Image Translation with Conditional Adversarial Networks, in: 2017 IEEE Conference on Computer Vision and Pattern Recognition (CVPR), 21-26 July 2017, 5967-5976, 10.1109/CVPR.2017.632, 2017.

855 Jeong, C. H., Kim, W., Joo, W., Jang, D., and Yi, M. Y.: Enhancing the Encoding-Forecasting Model for Precipitation Nowcasting by Putting High Emphasis on the Latest Data of the Time Step, *Atmosphere*, 12, 261, 2021.

Kim, S., Hong, S., Joh, M., and Song, S.-k.: Deeprain: ConvLstm network for precipitation prediction using multichannel radar data, in: 7th International Workshop on Climate Informatics, 20-22 September 2017, 89-92, 2017.

Kingma, D. P. and Ba, J.: Adam: A method for stochastic optimization, in: Proceedings of the 3rd International Conference
860 on Learning Representations (ICLR 2015), 2015.

Krizhevsky, A., Sutskever, I., and Hinton, G. E.: ImageNet classification with deep convolutional neural networks, in: Proceedings of the 25th International Conference on Neural Information Processing Systems - Volume 1, Lake Tahoe, Nevada, 2012.

Kumar, A., Islam, T., Sekimoto, Y., Mattmann, C., and Wilson, B.: Convcast: An embedded convolutional LSTM based
865 architecture for precipitation nowcasting using satellite data, *PLOS ONE*, 15, e0230114, 10.1371/journal.pone.0230114, 2020.

Long, J., Shelhamer, E., and Darrell, T.: Fully convolutional networks for semantic segmentation, in: Proceedings of the IEEE Conference on Computer Vision and Pattern Recognition (CVPR), 3431-3440, 2015.

Marshall, J. S. and Palmer, W. M. K.: THE DISTRIBUTION OF RAINDROPS WITH SIZE, *Journal of Atmospheric Sciences*,
870 5, 165-166, 10.1175/1520-0469(1948)005<0165:Tdorws>2.0.Co;2, 1948.

Mathieu, M., Couprie, C., and LeCun, Y.: Deep multi-scale video prediction beyond mean square error, in: 4th International Conference on Learning Representations (ICLR 2016), 2016.

McCuen, R. H., Knight, Z., and Cutter, A. G.: Evaluation of the Nash-Sutcliffe Efficiency Index, *Journal of Hydrologic Engineering*, 11, 597-602, doi:10.1061/(ASCE)1084-0699(2006)11:6(597), 2006.

875 Mirza, M. and Osindero, S.: Conditional generative adversarial nets, *arXiv [preprint]*, arXiv:1411.1784, 2014.

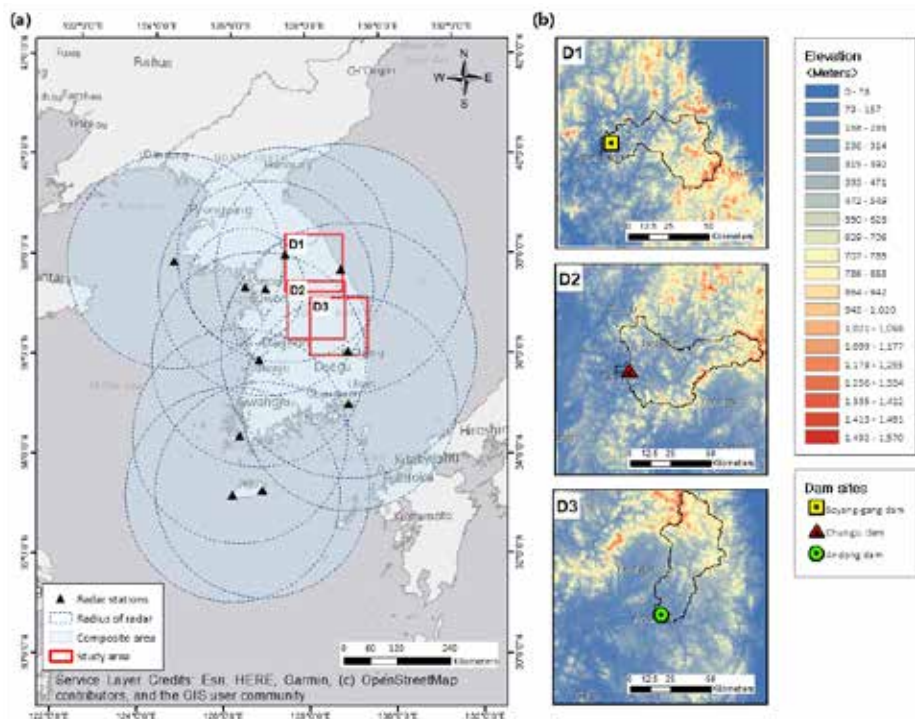
Mo, S., Cho, M., and Shin, J.: Freeze the discriminator: a simple baseline for fine-tuning gans, in: Proceedings of the IEEE Conference on Computer Vision and Pattern Recognition AI for Content Creation Workshop (CVPRW), 2020.

Moishin, M., Deo, R. C., Prasad, R., Raj, N., and Abdulla, S.: Designing Deep-Based Learning Flood Forecast Model With ConvLSTM Hybrid Algorithm, *IEEE Access*, 9, 50982-50993, 10.1109/ACCESS.2021.3065939, 2021.

880 Pan, S. J. and Yang, Q.: A Survey on Transfer Learning, *IEEE Transactions on Knowledge and Data Engineering*, 22, 1345-1359, 10.1109/TKDE.2009.191, 2010.

- Poletti, M. L., Silvestro, F., Davolio, S., Pignone, F., and Rebora, N.: Using nowcasting technique and data assimilation in a meteorological model to improve very short range hydrological forecasts, *Hydrol. Earth Syst. Sci.*, 23, 3823-3841, 10.5194/hess-23-3823-2019, 2019.
- 885 Pulkkinen, S., Nerini, D., Pérez Hortal, A. A., Velasco-Forero, C., Seed, A., Germann, U., and Foresti, L.: Pysteps: an open-source Python library for probabilistic precipitation nowcasting (v1.0), *Geosci. Model Dev.*, 12, 4185–4219, <https://doi.org/10.5194/gmd-12-4185-2019>, 2019.
- Ranzato, M., Szlam, A., Bruna, J., Mathieu, M., Collobert, R., and Chopra, S.: Video (language) modeling: a baseline for generative models of natural videos, *arXiv [preprint]*, arXiv:1412.6604, 2014.
- 890 Ravuri, S., Lenc, K., Willson, M., Kangin, D., Lam, R., Mirowski, P., Fitzsimons, M., Athanassiadou, M., Kashem, S., Madge, S., Prudden, R., Mandhane, A., Clark, A., Brock, A., Simonyan, K., Hadsell, R., Robinson, N., Clancy, E., Arribas, A., and Mohamed, S.: Skilful precipitation nowcasting using deep generative models of radar, *Nature*, 597, 672-677, 10.1038/s41586-021-03854-z, 2021.
- Rawat, W. and Wang, Z.: Deep Convolutional Neural Networks for Image Classification: A Comprehensive Review, *Neural*
895 *Computation*, 29, 2352-2449, 10.1162/neco_a_00990, 2017.
- Reichstein, M., Camps-Valls, G., Stevens, B., Jung, M., Denzler, J., Carvalhais, N., and Prabhat: Deep learning and process understanding for data-driven Earth system science, *Nature*, 566, 195-204, 10.1038/s41586-019-0912-1, 2019.
- Renzullo, L., Velasco-Forero, C., and Seed, A.: Blending radar, NWP and satellite data for real-time ensemble rainfall analysis: a scale-dependent method, *CSIRO*, <https://doi.org/10.4225/08/594eb78c96025>, 2017.
- 900 Ronneberger, O., Fischer, P., and Brox, T.: U-Net: Convolutional Networks for Biomedical Image Segmentation, in: *Medical Image Computing and Computer-Assisted Intervention – MICCAI 2015*, edited by: Navab, N., Hornegger, J., Wells, W. M., and Frangi, A. F., Springer International Publishing, Cham, pp. 234–241, https://doi.org/10.1007/978-3-319-24574-4_28, 2015.
- Rüttgers, M., Lee, S., Jeon, S., and You, D.: Prediction of a typhoon track using a generative adversarial network and satellite
905 images, *Scientific Reports*, 9, 6057, 10.1038/s41598-019-42339-y, 2019.
- Shi, X., Chen, Z., Wang, H., Yeung, D.-Y., Wong, W.-k., and Woo, W.-c.: Convolutional LSTM Network: a machine learning approach for precipitation nowcasting, in: *Proceedings of the 28th International Conference on Neural Information Processing Systems-Volume 1*, 802-810, 2015.
- Shi, X., Gao, Z., Lausen, L., Wang, H., Yeung, D.-Y., Wong, W.-k., and WOO, W.-c.: Deep Learning for Precipitation
910 Nowcasting: A Benchmark and A New Model, in: *Advances in Neural Information Processing Systems*, 30, 5617-5627, 2017.
- Simonyan, K. and Zisserman, A.: Very deep convolutional networks for large-scale image recognition, , in: *Proceedings of the 3rd International Conference on Learning Representations (ICLR 2015)*, 2015.

- Sønderby, C. K., Espeholt, L., Heek, J., Dehghani, M., Oliver, A., Salimans, T., Agrawal, S., Hickey, J., and Kalchbrenner, N.: Metnet: A neural weather model for precipitation forecasting, arXiv [preprint], arXiv:2003.12140, 2020.
- Srivastava, N., Hinton, G., Krizhevsky, A., Sutskever, I., and Salakhutdinov, R.: Dropout: a simple way to prevent neural networks from overfitting, *The journal of machine learning research*, 15, 1929-1958, 2014.
- Sutskever, I., Vinyals, O., and Le, Q. V.: Sequence to sequence learning with neural networks, in: *Proceedings of the 27th International Conference on Neural Information Processing Systems - Volume 2*, Montreal, Canada, 2014.
- 915 Trebing, K., Stańczyk, T., and Mehrkanoon, S.: SmaAt-UNet: Precipitation nowcasting using a small attention-UNet architecture, *Pattern Recognition Letters*, 145, 178-186, <https://doi.org/10.1016/j.patrec.2021.01.036>, 2021.
- Wang, S., Liu, W., Wu, J., Cao, L., Meng, Q., and Kennedy, P. J.: Training deep neural networks on imbalanced data sets, in: *2016 International Joint Conference on Neural Networks (IJCNN)*, 24-29 July 2016, 4368-4374, 10.1109/IJCNN.2016.7727770, 2016.
- 925 Wang, Y., Coning, E., Harou, A., Jacobs, W., Joe, P., Nikitina, L., Roberts, R., Wang, J., and Wilson, J.: Guidelines for nowcasting techniques, WMO publication, published online: https://library.wmo.int/opac/doc_num.php, 2017.
- Wang, Y., Gonzalez-Garcia, A., Berga, D., Herranz, L., Khan, F. S., and Weijer, J. v. d.: MineGAN: Effective Knowledge Transfer From GANs to Target Domains With Few Images, in: *2020 IEEE/CVF Conference on Computer Vision and Pattern Recognition (CVPR)*, 13-19 June 2020, 9329-9338, 10.1109/CVPR42600.2020.00935, 2020.
- 930 Wang, Y., Wu, C., Herranz, L., van de Weijer, J., Gonzalez-Garcia, A., and Raducanu, B.: Transferring gans: generating images from limited data, in: *Proceedings of the European Conference on Computer Vision (ECCV)*, 218-234, 2018.
- Wang, Y., Yao, Q., Kwok, J., and Ni, L.: Generalizing from a Few Examples: A Survey on Few-shot Learning, *ACM Computing Surveys*, 53, 1-34, 10.1145/3386252, 2020.
- Yosinski, J., Clune, J., Bengio, Y., and Lipson, H.: How transferable are features in deep neural networks?, in: *Advances in*
- 935 *Neural Information Processing Systems*, 27, 3320-3328, 2014.



940 Figure 1: (a) Radar reflectivity composite map and location of the domain; (b) selected domains over the dam basin. The boxes of D1, D2, and D3 present the domains of Soyang-gang, Chungju, and Andong dam basins, respectively. Maps were created using ArcGIS software by Esri; Base-map source: Esri, HERE, Garmin, © OpenStreetMap contributors, and the GIS user community.

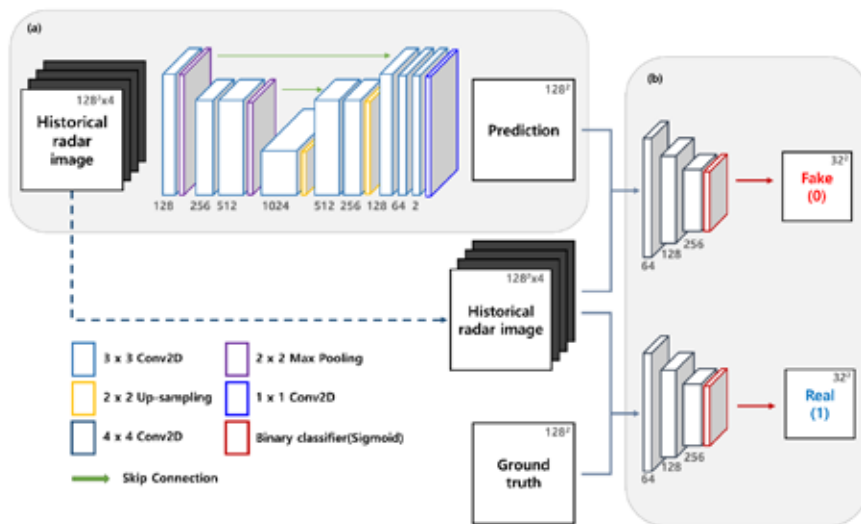
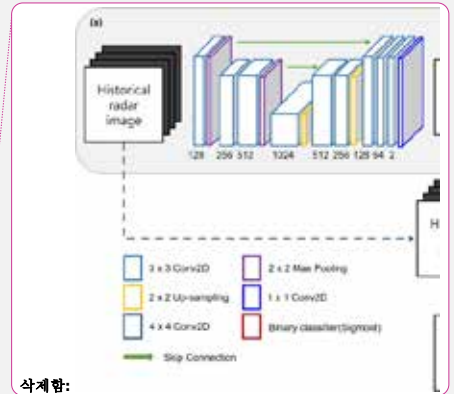


Figure 2: Model architecture consists of a (a) generative and (b) discriminator.



삭제함:

삭제함: discriminative model

950

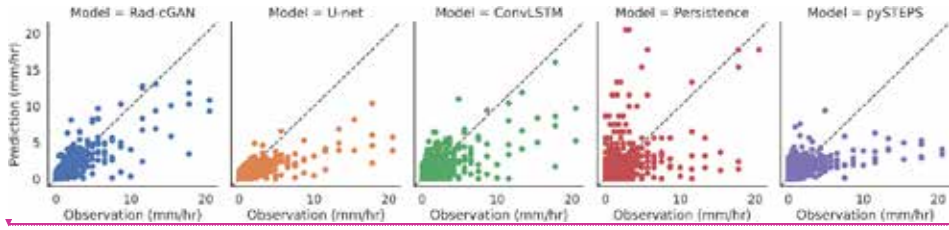


Figure 3: Evaluation of model performance for 10-min lead time prediction at Soyang-gang Dam site with the scatter plot based on model results. Left to right represent results of Rad-cGAN, U-net, ConvLSTM, Eulerian Persistence and pySTEPS model.

955

삭제함: <개제>

삭제함: (left column) and the time series (right column)

삭제함: (a)

삭제함: model, (b)

삭제함: based model, (c)

삭제함: model, and (d)

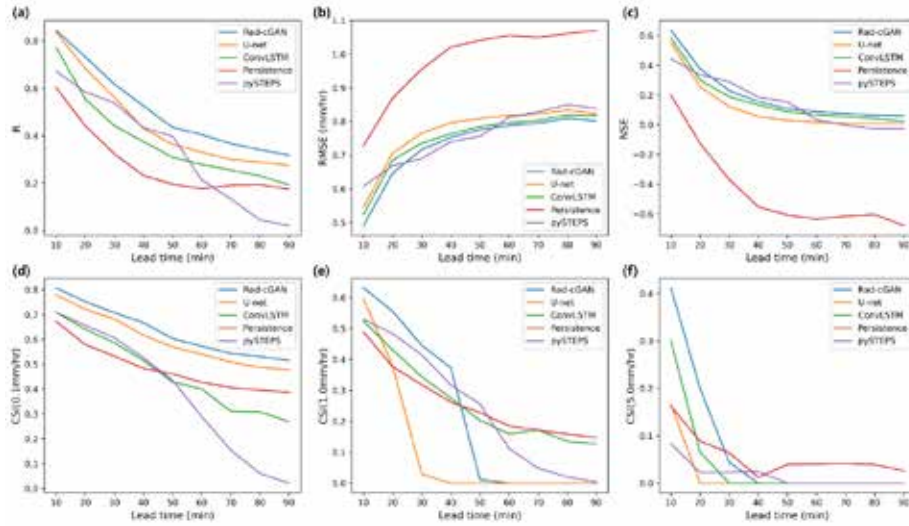
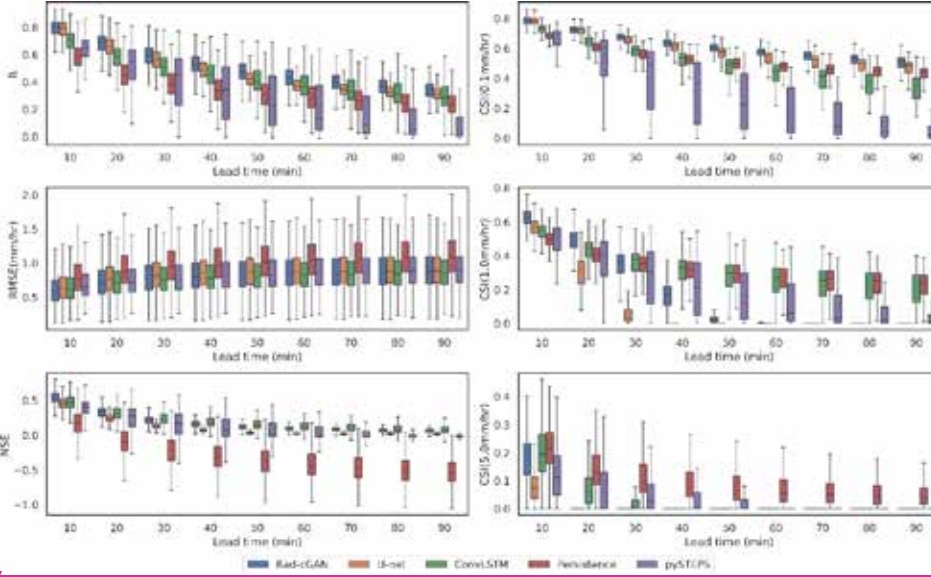


Figure 4: Verification metrics of model predictions at the lead time up to 90 min at the Soyang-gang Dam site. (a) R, (b) NSE, (c) RMSE, and (d,e,f) CSI at intensity threshold of 0.1, 1.0, and 5.0 mm h⁻¹, respectively.



삭제함: <개제>

삭제함: Median values

삭제함: Panels

삭제함:페이지 나누기.....
<개제>

Figure 5: **Box plot** of verification metrics of model predictions at the lead time up to 90 min over all grid cells from the Soyang-gang Dam region. **Left panels** from top to bottom represent R, RMSE, NSE, and **right panels from top to bottom represent CSI** at intensity threshold of 0.1, 1.0, 5.0 mm h⁻¹.

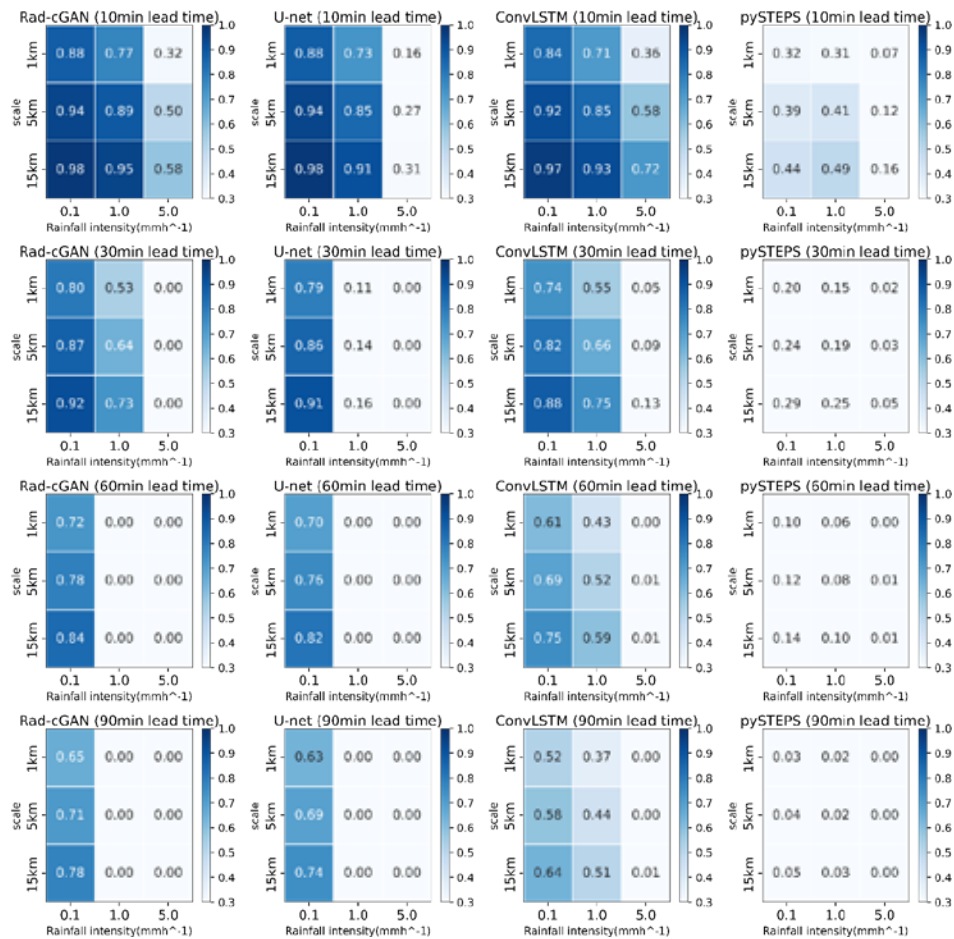


Figure 6: Fraction Skill Scores (FSS) of model predictions at lead time of 10, 30, and 60 min at Soyang-gang Dam Basin. Panels from left to right express FSS of Rad-cGAN, U-net, ConvLSTM.

작제함: Radar reflectivity (dBZ)

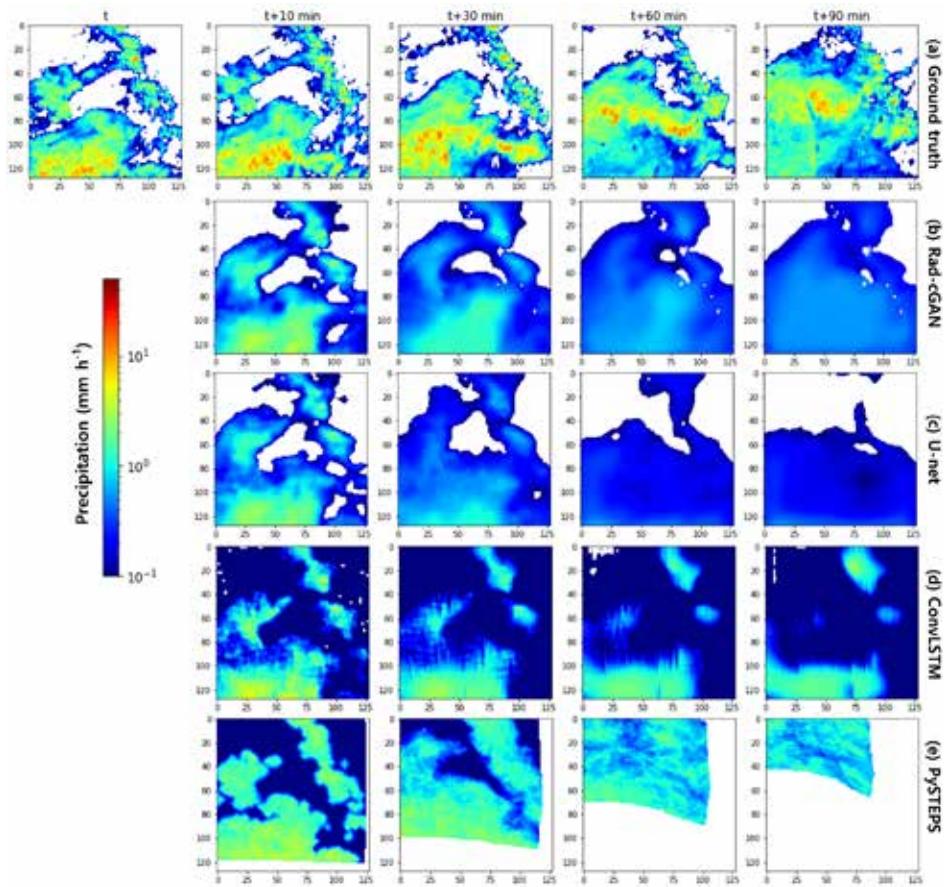


Figure 7: Precipitation observation example at forecasting time $t = 23$ August 2018, 17:50 UTC, for model predictions and (a) ground truth (OBS). Panels from top to bottom express ground truth: (b) prediction of Rad-cGAN model, (c) prediction of U-net based model, (d) prediction of ConvLSTM, and (e) prediction of PySTEPS.

삭제함: and the bias that represents difference between model prediction and ...

삭제함: a) difference of Rad-cGAN model, (

삭제함: difference

삭제함: (c) difference

삭제함: ConvLSTM.

삭제함: 페이지 나누기

<개췌>
Figure 7

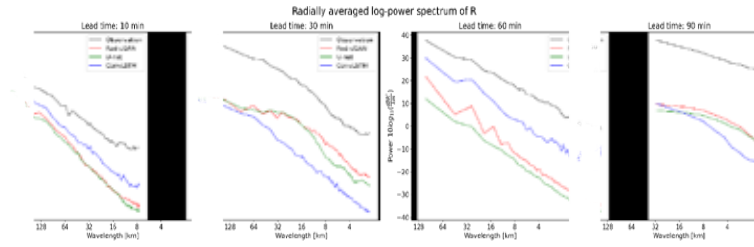


Figure 8: Radially averaged power spectral density (PSD) at forecasting time $t = 23$ August 2018, 17:50 UTC, for model predictions and observation.

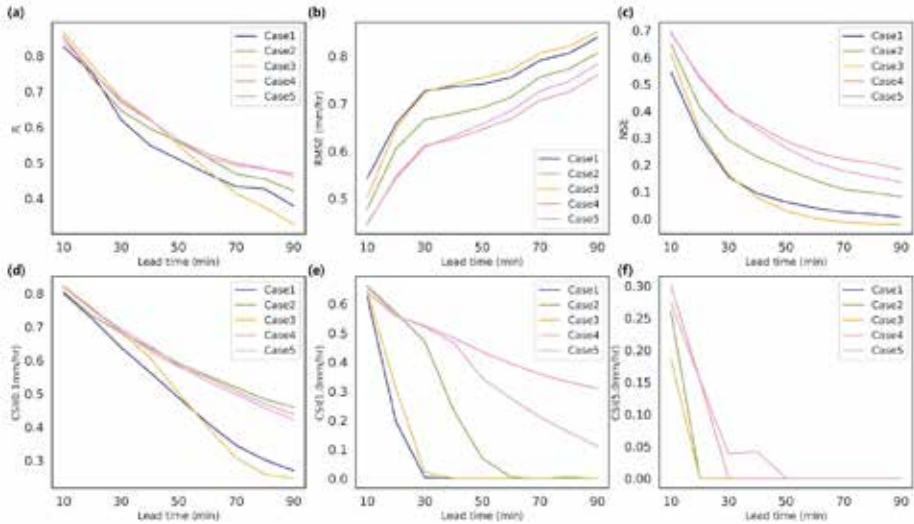


Figure 9: Verification metrics of model predictions at lead time up to 90 min at Andong Dam site, (a) R, (b) NSE, (c) RMSE, and (d,e,f) CSI at intensity threshold of 0.1, 1.0, and 5.0 mm h⁻¹, respectively.

삭제함: each domain at (a)
삭제함: and
삭제함: Chungju Dam site with R (left column)
삭제함: (right column).
삭제함:페이지 나누기.....
Table 1

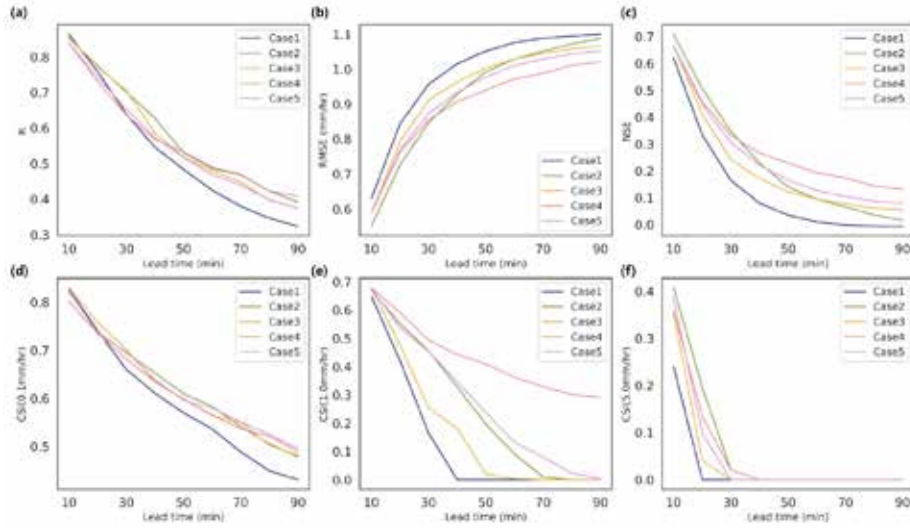


Figure 10: Verification metrics of model predictions at lead time up to 90 min at Chungju Dam site. (a) R, (b) NSE, (c) RMSE, and (d,e,f) CSI at intensity threshold of 0.1, 1.0, and 5.0 mm h⁻¹, respectively.

Table 1: Distribution of precipitation amount and number of examples of (a) train dataset, and (b) test dataset of each dam domains and sites.

(a) Train dataset						
Interval in mm h-1	Soyang-gang Dam Basin	Soyang-gang Dam site	Andong Dam Basin	Andong Dam site	Chungju Dam Basin	Chungju Dam site
$0 \leq R < 0.1$	84.63	85.00	83.04	83.57	84.81	85.03
$0.1 \leq R < 1.0$	10.23	10.19	11.56	11.02	10.75	10.61
$1.0 \leq R < 4.0$	3.78	3.35	3.91	3.89	3.43	3.30
$4.0 \leq R < 8.0$	0.92	1.03	0.94	0.98	0.68	0.69
$8.0 \leq R < 10.0$	0.18	0.21	0.20	0.23	0.13	0.16
$10.0 \leq R$	0.27	0.23	0.35	0.32	0.20	0.21
No. of examples	27,905 examples		29,136 examples		29,691 examples	
(b) Test dataset						
Interval in mm h-1	Soyang-gang Dam Basin	Soyang-gang Dam site	Andong Dam Basin	Andong Dam site	Chungju Dam Basin	Chungju Dam site
$0 \leq R < 0.1$	90.77	91.92	87.41	87.73	86.54	87.61
$0.1 \leq R < 1.0$	5.77	5.16	7.59	7.48	8.63	8.06
$1.0 \leq R < 4.0$	2.65	2.26	3.77	3.92	3.80	3.58
$4.0 \leq R < 8.0$	0.58	0.42	0.87	0.54	0.76	0.51
$8.0 \leq R < 10.0$	0.10	0.06	0.15	0.09	0.12	0.13
$10.0 \leq R$	0.14	0.17	0.21	0.24	0.14	0.11
No. of examples	9,753 examples		6,598 examples		6,137 examples	

1025

Table 2: Contingency table for the categorical scores.

		Observation	
		Event detected	Event not detected
Prediction	Event detected	Hit	False alarm
	Event not detected	Miss	Correct non-event

1030 Table 3: Experimental design for transfer learning strategies to train model with different domain. (a) Detailed training procedure of each strategy, (b) data used to train the model according to each strategy.

(a) Training strategies

No.	Generator	Discriminator
Case 1	Train from the scratch	Train from the scratch
Case 2	Use pre-trained parameters for one domain	=
Case 3	Fine tuning pre-trained parameters for one domain*	Train from the scratch
Case 4	Use pre-trained parameters for multiple domains	=
Case 5	Fine tuning pre-trained parameters for multiple domains*	Train from the scratch

(b) Training dataset

	Pre-trained domain	Andong Dam domain	Chungju Dam domain
Case 1	-	2014–2017 (JJA) at Andong Dam domain	2014–2017 (JJA) at Chungju Dam domain
Case 2	2014-2017 (JJA) at Soyang-gang Dam domain	=	=
Case 3	2014-2017 (JJA) at Soyang-gang Dam domain	2014–2017 (JJA) at Andong Dam domain	2014–2017 (JJA) at Chungju Dam domain
Case 4	2014-2017 (JJA) at Soyang-gang/Daecheong/Juam/Yongdam Dam domain	=	=
Case 5	2014-2017 (JJA) at Soyang-gang/Daecheong/Juam/Yongdam Dam domain	2014–2017 (JJA) at Andong Dam domain	2014–2017 (JJA) at Chungju Dam domain

* Use 1/10th of original learning rate

삭제함: 2

삭제함: 2

삭제함: Use

삭제함: 3

삭제함: 2

삭제함: 3

1040 Table 4: Comparison of the performance scores for 10-min precipitation prediction of different models at the Soyang-gang Dam site during summer season (June–August) of 2018.

삭제함: 3

삭제함:
삽입한 셀
삽입한 셀

	R	RMSE (mm h ⁻¹)	NSE	CSI (0.1 mm h ⁻¹)	CSI (1.0 mm h ⁻¹)	CSI (5.0 mm h ⁻¹)
Rad-cGAN	0.8587	0.4248	0.7277	0.8065	0.6316	0.4118
U-Net	0.8367	0.5457	0.5506	0.7781	0.5961	0.1667
ConvLSTM	0.7716	0.5241	0.5855	0.7086	0.5247	0.3000
Persistence (baseline)	0.6023	0.7287	0.1989	0.6716	0.4895	0.1622
pySTEPS (baseline)	0.6072	0.6080	0.4440	0.7086	0.5303	0.0833

Table 5: Comparison of the 10-min precipitation prediction performance scores for three different model using different transfer learning strategies for the (a) Andong and (b) Chungju Dam sites in the summer season (June–August) of 2018.

(a) Andong Dam site						
	R	RMSE (mm h ⁻¹)	NSE	CSI (0.1 mm h ⁻¹)	CSI (1.0 mm h ⁻¹)	CSI (5.0 mm h ⁻¹)
Case 1	0.8249	0.5430	0.5437	0.8000	0.6250	0.1852
Case 2	0.8553	0.4779	0.6466	0.8046	0.6613	0.2593
Case 3	0.8667	0.5018	0.6104	0.8222	0.6438	0.1852
Case 4	0.8529	0.4451	0.6934	0.8182	0.6386	0.3000
Case 5	0.8421	0.4487	0.6884	0.8195	0.6570	0.2727
(b) Chungju Dam site						
	R	RMSE (mm h ⁻¹)	NSE	CSI (0.1 mm h ⁻¹)	CSI (1.0 mm h ⁻¹)	CSI (5.0 mm h ⁻¹)
Case 1	0.8632	0.6288	0.6191	0.8273	0.6492	0.2400
Case 2	0.8518	0.5503	0.7083	0.8218	0.6715	0.4074
Case 3	0.8552	0.5892	0.6655	0.8301	0.6779	0.3529
Case 4	0.8384	0.5888	0.6660	0.8007	0.6790	0.3585
Case 5	0.8393	0.5902	0.6644	0.8255	0.6784	0.3846

삭제함: 4

삭제함:
삽입한 셀
삽입한 셀

삭제함: 8597
삭제함: 5338
삭제함: 5778
삭제함: 8541
삭제함: 8760
삭제함: 4919
삭제함: 7152
삭제함: 8683
삭제함: 8611
삭제함: 5999
삭제함: 5762
삭제함: 8522

삭제함:
삽입한 셀
삽입한 셀

삭제함: 8603
삭제함: 8562
삭제함: 6134
삭제함: 8271

삭제함: 2
삭제함: 8539
삭제함: 7328
삭제함: 7168
삽입한 셀
삽입한 셀

삭제함: 3
삭제함: 8526
삭제함: 7937
삭제함: 6677
삭제함: 8344

삭제함: 6
6
6