

# SUPPLEMENTARY MATERIAL

## **Soil related developments of the Biome-BGCMuSo v6.2 terrestrial ecosystem model**

Dóra Hidy<sup>1,2\*</sup>, Zoltán Barcza<sup>1,3,4</sup>, Roland Hollós<sup>3,5</sup>, Laura Dobor<sup>1,4</sup>, Tamás Ács<sup>6</sup>, Dóra Zacháry<sup>7</sup>, Tibor Filep<sup>7</sup>, László Pásztor<sup>8</sup>, Dóra Incze<sup>3</sup>, Márton Dencső<sup>8,9</sup>, Eszter Tóth<sup>8</sup>, Katarína Merganičová<sup>4,10</sup>, Peter Thornton<sup>11</sup>, Steven Running<sup>12</sup>, Nándor Fodor<sup>4,5</sup>

<sup>1</sup> Excellence Center, Faculty of Science, ELTE Eötvös Loránd University, H-2462 Martonvásár, Hungary

<sup>2</sup> MTA-MATE Agroecology Research Group, Department of Plant Physiology and Plant Ecology, Hungarian University for Agriculture and Life Sciences, H-2100 Gödöllő, Hungary

<sup>3</sup> Department of Meteorology, Institute of Geography and Earth Sciences, ELTE Eötvös Loránd University, H-1117 Budapest, Hungary

<sup>4</sup> Faculty of Forestry and Wood Sciences, Czech University of Life Sciences Prague, 165 21 Prague, Czech Republic"

<sup>5</sup> Centre for Agricultural Research, Agricultural Institute, H-2462 Martonvásár, Hungary

<sup>6</sup> Department of Sanitary and Environmental Engineering, Budapest University of Technology and Economics, H-1111 Budapest, Hungary

<sup>7</sup> Geographical Institute, Research Centre for Astronomy and Earth Sciences, H-1112 Budapest, Hungary

<sup>8</sup> Institute for Soil Sciences, Centre for Agricultural Research, H-1022 Budapest, Hungary

<sup>9</sup> Doctoral School of Environmental Sciences, ELTE Eötvös Loránd University, H-1117 Budapest, Hungary

<sup>10</sup> Department of Biodiversity of Ecosystems and Landscape, Institute of Landscape Ecology, Slovak Academy of Sciences, SK 949 01 Nitra, Slovakia

<sup>11</sup> Climate Change Science Institute/Environmental Sciences Division, Oak Ridge National Laboratory, Oak Ridge, TN 37831, USA

<sup>12</sup> Numerical Terradynamic Simulation Group, Department of Ecosystem and Conservation Sciences University of Montana, Missoula, MT 59812, USA

*Correspondence to:* Dora Hidy (dori.hidy@gmail.com)

## Abbreviations

SAT: saturation

FC: field capacity

WP: wilting point

HW: hygroscopic water

$i$ : index denoting soil layers (from 1 to 10)

$dz^i$ : thickness of the  $i^{\text{th}}$  soil layer in cm

$SWC^i$ : actual volumetric water content of the  $i^{\text{th}}$  soil layer in  $\text{m}^3 \text{m}^{-3}$

$SWC_{SAT}^i$ : volumetric water content at saturation of the  $i^{\text{th}}$  soil layer in  $\text{m}^3 \text{m}^{-3}$

$SWC_{FC}^i$ : volumetric water content at field capacity of the  $i^{\text{th}}$  soil layer in  $\text{m}^3 \text{m}^{-3}$

$SWC_{WP}^i$ : volumetric water content at wilting point in the  $i^{\text{th}}$  soil layer in  $\text{m}^3 \text{m}^{-3}$

$mid^i$ : depth of the midpoint of the  $i^{\text{th}}$  soil layer in m

$K_{SAT}^i$ : saturated hydraulic conductivity of the  $i^{\text{th}}$  soil layer in  $\text{cm day}^{-1}$

## 1. Runoff

Calculation of *RUNOFF* [ $\text{kg H}_2\text{O m}^{-2} \text{ day}^{-1}$ ] is based on a semi-empirical method that uses the precipitation amount (*PRCP*), the dimensionless runoff curve number (*RCN*), and the actual moisture content status of the topsoil (Williams, 1991). If *PRCP* is less than a critical value (product of a soil type and a moisture content dependent factor;  $k_{\text{type}}$  and  $k_{\text{moist}}$ ), runoff is equal to zero. Otherwise:

$$RUNOFF = \frac{(PRCP - k_{moist} \cdot k_{type})^2}{prcp + (1 - k_{moist}) \cdot k_{type}}, \text{ if } PRCP > k_{moist} \cdot k_{type}$$

$$k_{type} = 254 \cdot \frac{100}{RCN} - 1$$

$$k_{moist} = 0.15 \cdot \frac{SWC_{SAT}^1 - SWC^1}{SWC_{SAT}^1 - SWC_{HW}^1}$$

where:  $SWC_{SAT}^1$ ,  $SWC_{HW}^1$  and  $SWC^1$  are the saturated, the hygroscopic and the actual volumetric water content of the top soil layer.

The amount of runoff is affected also by the setting of pond water calculation: first the pond water accumulation is calculated (see details in Section 3.1), only the surplus above the maximum pond depth leaves as runoff.

## 2. Downward (gravitational) water flow

The percolation calculations (tipping bucket method) are carried out layer by layer starting from the 1<sup>st</sup> soil layer down to the 9<sup>th</sup> soil layer. The bottom (10<sup>th</sup>) soil layer is special: the percolating water (and dissolved materials) from the bottom layer is a net loss from the system. It is assumed that the soil can hold moisture against gravity up to its field capacity. One of the most important variables of percolation calculation is the drainage coefficient (*DC*) which determines the amount of water leaving a layer in a day. *DC* is a soil input parameter but in case it is not provided by the user, it is estimated from the hydraulic conductivity:

$$DC^i = 0.1122 \cdot K_{SAT}^i{}^{0.339}$$

Percolation calculation is different on rainy and rainless days, but in both cases uses daily time step. On rainy days, if the inflowing water amount ( $INFILT^i$ ; *cm*) is greater than the water holding capacity ( $HOLD^i$ , *cm*) of the given layer, the drainage water that leaves the layer ( $DRN^i$ , *cm*) is calculated as follows:

- $HOLD^i = (SWC_{SAT}^i - SWC^i) \cdot dz^i$
- drainage from the water content stored in the layer [*cm*]:

$$DRAIN^i = DC \cdot (SWC_{SAT}^i - SWC_{FC}^i) \cdot dz^i$$

- total drainage from and through a soil layer [cm]:

$$DRN^i = INFILT^i - HOLD^i + DRAIN^i$$

- total drainage is limited by saturated conductivity: if  $DRN^i \geq K_{SAT}^i$ :

$$(DRN^i)_{limited} = K_{SAT}^i$$

- water content is updated:  $SWC^i = SWC^i + \frac{INFILT^i - (DRN^i)_{limited}}{dz^i}$
- the excess water ( $EXCESS^i$ ; cm) is redistributed in layers above (from the actual layer up to the 1<sup>st</sup> one):  $EXCESS^i = DRN^i - K_{SAT}^i$
- first the capacity of the layer above is filled and in the case of remaining excess moving one layer above
- if at the end of the redistribution (in the top soil layer)  $EXCESS^i$  is greater than 0, its value is added to pond water and/or runoff depending on the actual pond depth and maximal pond depth, which is an input soil parameter
- infiltration into the next layer is the drainage from the layer above:

$$INFILT^{i+1} = DRN^i$$

If  $INFILT^i$  is less than or equal to  $HOLD^i$ :

- water content update:  $SWC^i = SWC^i + INFILT^i / dz^i$
- drainage is calculated only if soil moisture content is above field capacity, otherwise it is zero:

$$DRN_i = DC \cdot (SWC^i - SWC_{FC}^i) \cdot dz^i$$

- drainage is limited by the saturated conductivity:  $DRN^i \leq K_{SAT}^i$
- state update moisture content with drainage:  $SWC^i = SWC^i - DRN^i / dz^i$
- infiltration into the next layer is the drainage of the above one:  $INFILT^{i+1} = DRN^i$

On rainless days the calculation is simpler: there is no infiltration at the top of the soil profile

- Maximum of drainage ( $DRMX$ ; cm) is greater than zero only if soil moisture content is above field capacity

$$DRMX^i = DC \cdot (SWC^i - SWC_{FC}^i) \cdot dz^i$$

- $HOLD$  is greater than zero only if soil moisture content is below field capacity

$$HOLD^i = (SWC_{FC}^i - SWC^i) \cdot dz^i$$

- Drainage rate in the top layer:  $DRN^1 = DRMX^1$

- Drainage rate in layers below:  $DRN^i = DRN^{i-1} + DRM^i - HOLD^i$
- Drainage is limited by saturated conductivity:  $DRN^i \leq K_{SAT}^i$
- The  $SWC$  is updated from 9<sup>th</sup> layer to 2<sup>nd</sup> layer with saturation as the upper limit:

$$SWC^i = SWC^i + (DRN^{i-1} - DRN^i)/dz^i$$

$$\text{if } SWC^i > SWC_{SAT}^i$$

$$DRN^{i-1} = (SWC_{SAT}^i - SWC^i) \cdot dz^i + DRN^i$$

$$SWC^i = SWC_{SAT}^i$$

- Status update of  $SWC$  in the top (1<sup>st</sup>) layer:  $SWC^1 = SWC^1 - DRN^1/dz^1$

### 3. Capillary water flow

The diffusion calculations follow the formulae of the 4M model (Fodor et al., 2014). The downward diffused water from the bottom active (9<sup>th</sup>) layer is a net loss for the soil system, while the upward diffusion flux from the passive (10<sup>th</sup>) layer is a net gain.

- water flow between the actual layer and the one below is estimated with the product of the gradient ( $GRAD$ ) of the normalized water contents ( $THET$ ) between two adjacent layers and the diffusivity at the border of the two layers ( $DBAR$ ). Diffusivity is also assumed to be a function of the normalized water contents of the two adjacent layers.

$$ESW^i = SWC_{FC}^i - SWC_{WP}^i$$

$$ESW^{i+1} = SWC_{FC}^{i+1} - SWC_{WP}^{i+1}$$

$$THET^i = \min(SWC_{act}^i - SWC_{WP}^i; ESW^i)$$

$$THET^{i+1} = \min(SWC_{act}^{i+1} - SWC_{WP}^{i+1}; ESW^{i+1})$$

weighted average water content of the two layers:

$$inner_{THET} = \frac{THET^i \cdot dz^i + THET^{i+1} \cdot dz^{i+1}}{dz^i + dz^{i+1}}$$

$$DBAR = \min(p1_{diffus} * \exp(p2_{diffus} * inner_{THET}), p3_{diffus})$$

$$inner_{ESW} = \frac{ESW^i \cdot dz^i + ESW^{i+1} \cdot dz^{i+1}}{dz^i + dz^{i+1}}$$

where  $p1_{diffus}$ ,  $p2_{diffus}$ ,  $p3_{diffus}$  are the parameters of diffusion calculation, default values are 0.88, 35.4 and 100, respectively.

- gradient between the actual and the layer below:

$$GRAD = inner_{ESW} \cdot \left( \frac{THET^{i+1}}{ESW^{i+1}} - \frac{THET^i}{ESW^i} \right)$$

- water flow between the actual and the layer below:

$$FLOW = \frac{DBAR * GRAD}{dz^i + dz^{i+1}} \cdot 0.5$$

#### 4. Soil evaporation

The method calculates the cumulated soil evaporation (*soilEvap*) in two phases (Ritchie, 1972). In the first phase, if the cumulated evaporation is less than a critical value (*soilEvapLIM* [mm]: soil input parameter), and hence the evaporation is not limited. In the second phase, if the cumulated evaporation is greater than *soilEvapLIM*, soil evaporation is reduced. Variables *soilEvapCUM1* and *soilEvapCUM2* are the cumulated soil evaporation values in the first and the second evaporation phase, respectively. Potential infiltration (*infiltrPOT* [mm]) is the water from precipitation or melting snow, or pond water, which can decrease the cumulated soil evaporation values. Depending on the *infiltrPOT* amount, *soilEvapCUM2* is decreased first till it becomes zero, than *soilEvapCUM1* is reduced. Potential soil evaporation (*soilEvapPOT* [mm]) is calculated based on the Penman-Monteith method in daily time scale (see Section 3.3).

In the second evaporation phase the cumulative evaporation is a quadratic function of the time (number of days) since the last rainfall event (*dSr*).

First evaporation phase:  $soilEvapCUM1 < soilEvapLIM$

$$dSr = 0$$

$$soilEvapCUM1 = 0; \text{ if } infiltrPOT \geq soilEvapCUM1$$

$$soilEvapCUM1 = soilEvapCUM1 - infiltrPOT; \text{ if } infiltrPOT < soilEvapCUM1$$

$$soilEvapCUM1 = soilEvapCUM1 + soilEvapPOT$$

if  $soilEvapCUM1 > soilEvapLIM$ :

$$soilEvap = soilEvapPOT - 0.4 \cdot (soilEvapCUM1 - soilEvapLIM)$$

$$soilEvapCUM2 = 0.6 \cdot (soilEvapCUM1 - soilEvapLIM)$$

$$dSr = \left( \frac{soilEvapCUM2}{3.5} \right)^2$$

$soilEvapCUM1 = soilEvapLIM$  if  $soilEvapCUM1 \leq soilEvapLIM$ :

$$soilEvap = soilEvapPOT$$

Second evaporation phase:  $soilEvapCUM1 \geq soilEvapLIM$

If  $infiltrPOT \geq soilEvapCUM2$ :

$$dsr = 0$$

$$infiltrPOT = infiltrPOT - soilEvapCUM2$$

$$soilEvapCUM2 = 0$$

$$soilEvapCUM1 = 0 ; \text{if } infiltrPOT \geq soilEvapLIM$$

$$soilEvapCUM1 = soilEvapCUM1 - infiltrPOT; \text{if } infiltrPOT < soilEvapLIM$$

$$soilEvapCUM1 = soilEvapCUM1 + soilEvapPOT$$

if  $soilEvapCUM1 \leq soilEvapLIM$ :

$$soilEvap = soilEvapPOT - 0.4 \cdot (soilEvapCUM1 - soilEvapLIM)$$

$$soilEvapCUM2 = 0.6 \cdot (soilEvapCUM1 - soilEvapLIM)$$

$$dsr = \left( \frac{soilEvapCUM2}{3.5} \right)^2$$

if  $soilEvapCUM1 > soilEvapLIM$ :

$$soilEvap = soilEvapPOT$$

If  $infiltrPOT < soilEvapCUM2$ :

$$soilEvapCUM2 = soilEvapCUM2 - infiltrPOT$$

$$dsr = \left( \frac{soilEvapCUM2}{3.5} \right)^2$$

$$dsr = dsr + 1$$

$$soilEvap = 3.5 \cdot dsr^{0.5} - soilEvapCUM2$$

limitation: potential evaporation:  $soilEvap \leq soilEvapPOT$

Soil evaporation cannot be larger than the available soil water content ( $soilwAVAIL$ ) in the top layer which is the difference between the actual and the hygroscopic water content. The hygroscopic water content is a soil input parameter.

$$soilEvap = \min(soilEvap, soilwAVAIL)$$

$$soilEvapCUM2 = soilEvapCUM2 + soilEvap$$

$$dsr = \left( \frac{soilEvapCUM2}{3.5} \right)^2$$

## 5. Transpiration

Transpiration demand ( $TD$ ) is distributed across the soil layers according to the root distribution. From the plant specific root parameters and the actual root weight Biome-BGCMuSo calculates the actual rooting depth ( $RL$ ), the number of the layers where roots can be found together with the root mass distribution across the layers. If there is no enough water in the given soil layer to provide the transpiration demand, the transpiration flux from the actual layer ( $T^i$ ) is limited, and below WP  $T^i$  is equal to zero. The sum of  $T_i$  values across the root zone gives the actual transpiration flux ( $T$ ).

$$TD^i = TD \cdot rootprop^i$$

$$rootprop^i = RDP \cdot \frac{dz^i}{RL} \cdot e^{-RDP \cdot \frac{mid^i}{RL}}$$

$$T^i = TD^i \quad \text{if } SWC^i \geq SWC_{WP}^i \text{ and } TD^i \leq SWC^i - SWC_{WP}^i$$

$$T^i = SWC^i - SWC_{WP}^i \quad \text{if } SWC^i \geq SWC_{WP}^i \text{ and } TD^i > SWC^i - SWC_{WP}^i$$

$$T^i = 0 \quad \text{if } SWC^i < SWC_{WP}^i$$

where:  $rootprop^i$  is the proportion of the root length in the given soil layer,  $RDP$  is the rooting distribution plant input parameter (detailed description in User's Guide).

## 6. FC-rising effect of groundwater

The FC-rising effect of groundwater ( $GWeff$ ) for the layers above the water table (WT) is calculated based on the ratio of actual ( $GWdist$ ) and critical distance ( $CF_{act}$ ) from WT, but only after the layers below have already been charged up to their modified FC values.  $GWeff$  is equal to zero for layers above the capillary fringe.

$$GWeff = 1 - \frac{GWdist}{CF_{act}} \quad ; \text{if } CF_{act} > GWdist > 0$$

The modified FC due to the close groundwater table is calculated with a linear function:

$$SWC_{FCmod} = SWC_{FC} + GWeff \cdot (SWC_{SAT} - SWC_{FC})$$

The water flux coming from the groundwater on a given day and in a given layer ( $dischargeGW$ ;  $\text{kgH}_2\text{O m}^{-2} \text{day}^{-1}$ ) is a net gain for the soil profile above the water table and is the function of drainage coefficient ( $DC$ ) of the given layer.

$$dischargeGW = (SWC_{FCmod}^i - SWC^i) \cdot dz^i \cdot \rho_{water} \cdot DC \quad \text{if } SWC_{FCmod}^i > SWC^i$$

$$dischargeGW = 0 \quad \text{if } SWC_{FCmod}^i \leq SWC^i$$



## 7. Nitrogen mineralization function

The nitrogen mineralization fluxes of the litter pools are the function of the corresponding potential litter loss rate ( $potCloss$  in  $\text{kg C m}^{-2} \text{ day}^{-1}$ ), C:N ratio ( $\text{kg C kg N}^{-1}$ ) and respiration fraction. The nitrogen mineralization fluxes of the SOM pools are the function of carbon loss rate, which is the function of potential rate constant ( $k\_base$ : reciprocal of residence time in  $\text{day}^{-1}$ ), and environmental integrated response function ( $F_r$ ).

$$potM_{AB}^i = \frac{potCloss_A^i \cdot (1 - rf_A - CN_B^i / CN_A^i)}{CN_B^i}$$

$$potCloss_A^i = k_A^i \cdot CN_B^i$$

$$k_A^i = k\_base_A \cdot F_r$$

where:  $potCloss_A^i$  is the potential carbon loss of the source pool (A) in the actual layer,  $rf_A$  is the respiration factor of the source pool,  $CN_A^i$  and  $CN_B^i$  are the C:N ratios of the given source and target compartments in the actual layer, respectively;  $k_A^i$  is the actual rate constant scalar of the source pool in the  $i^{\text{th}}$  layer,  $k\_base_A$  is the potential rate constant scalar of the source compartment (soil input parameter, see detailed in User's Guide),  $F_r$  is the response function of the  $i^{\text{th}}$  layer. A index denotes the source pools (L1, L2, L4, S1, S2, S3), B index denotes the target pools (S1, S2, S3, S4), AB index denotes the transformations between different pools: L1-S1, L2-S2, L4-S3, S1-S2, S2-S3 and S3-S4 (see Figure 4 in Section 4.2).

The decomposition of the passive SOM pool (S4) is special: only mineralization is assumed, and the respiration factor is supposed to be equal to 1, namely all released carbon is respired, no target pool is defined.

$$potM_{S4}^i = \frac{potCloss_{S4A}^i}{CN_B^i}$$

The response function ( $F_r$ ) of the transformation processes is the product of depth, water and temperature dependent factors ( $Fr(d)_D^i$ ,  $Fr(SWC)_D^i$ , and  $Fr(T)_D^i$ , respectively) calculated layer by layer.

The  $Fr(d)_D^i$  factor of the  $i^{\text{th}}$  layer is the exponential function of ratio the layer's midpoint ( $mid_i$  in m) and  $e$ -folding depth of decomposition rate's depth scalar ( $ED$  in m; see detailed in the User's Guide):

$$Fr(d)_D^i = e^{-\frac{mid^i}{ED}}$$

The  $Fr(SWC)_D^i$  factor is zero below HW, is equal to 1 between FC and a critical SWC ( $SWC_{crit2}^i$ ) is defined by a soil input parameter (see User Guide).

$$F_r(SWC)_D^i = \frac{SWC_{act}^i - SWC_{HW}^i}{SWC_{FC}^i - SWC_{HW}^i}; \quad \text{if } SWC_{HW}^i < SWC_{act}^i < SWC_{FC}^i$$

$$F_r(SWC)_D^i = \frac{SWC_{SAT}^i - SWC_{act}^i}{SWC_{SAT}^i - SWC_{crit2}^i}; \quad \text{if } SWC_{crit2}^i < SWC_{act}^i < SWC_{SAT}^i$$

The  $F_r(T)_D^i$ , is the bell function of the soil temperature in the given layer ( $T_{soil}^i$ ):

$$F_r(T)_D^i = \frac{Tp1_{decomp}}{1 + \left( ABS \left( \frac{T_{soil}^i - Tp4_{decomp}}{Tp2_{decomp}} \right) \right)^{Tp3_{decomp}}}$$

## 8. Nitrification

The first step of nitrification calculation is to determine the net ammonia mineralization flux in the actual layer ( $MI_{netNH4}^i$ ). Net ammonia mineralization is the sum of mineralization fluxes  $MI^i$  (detailed in Section 4.2) and the ammonia mineralization of the passive humus pool ( $potM_{s4}^i$ ).

Nitrification flux is calculated layer by layer based on the following Equation:

$$NI^i = MI_{netNH4}^i \cdot NI_{netMI} \cdot F_r(Ts)_{NI}^i \cdot F_r(SWC)_{NI}^i \cdot F_r(pH)_{NI}^i$$

where:  $NI_{netMI}$  is the *net mineralization proportion of nitrification parameter* soil input parameter,  $F_r(Ts)_{NI}^i$ ,  $F_r(SWC)_{NI}^i$ ,  $F_r(pH)_{NI}^i$  are the response functions of soil temperature, soil water content and pH in the actual layer, respectively.  $F_r(Ts)_{NI}^i$ , is the same as  $F_r(Ts)_D^i$ ,  $F_r(SWC)_{NI}^i$  is also a trapezoidal function (such as  $F_r(SWC)_D^i$ ) depending on soil input parameter (detailed in the User Guide).  $F_r(pH)_{NI}^i$  is an empirical, exponential function of pH (Parton et al., 2001). If the value of the response function is zero (below a critical value of the given soil properties), the nitrification process is totally limited. If the value of the response function is 1 (above a critical value of the given soil properties), the process is not limited. In case the actual soil water content exceeds the optimal soil water content, the response function can decrease accounting for the saturation related stress (anoxic soil).

## 9. N<sub>2</sub>O-emission and N-emission

During both nitrification and denitrification N<sub>2</sub>O-emission occurs which (added to the N<sub>2</sub>O-flux originated from grazing processes) contributes to the total N<sub>2</sub>O-emission of the simulated ecosystem.

In Biome-BGCMuSo v6.2 a fixed part (set by the coefficient of N<sub>2</sub>O emission of nitrification soil input parameter; User Guide) of nitrification flux is lost as N<sub>2</sub>O and not converted to NO<sub>3</sub>.

During denitrification, nitrate transforms to N<sub>2</sub> and N<sub>2</sub>O gas depending on the environmental conditions: NO<sub>3</sub> availability, total soil respiration (proxy for microbial activity), soil water content and pH. The following equation is used to calculate the ratio of N<sub>2</sub> and N<sub>2</sub>O that is generated during denitrification:

$$R_{N_2:N_2O} = \min[F_r(NO_3)_{DN}^i \cdot F_r(CO_2)_{DN}^i] \cdot F_r(SWC)_{DN}^i \cdot F_r(pH)_{DN}^i$$

where  $R_{N_2:N_2O}$  is the ratio of N<sub>2</sub> and N<sub>2</sub>O gas (both expressed as N equivalent mass),  $F_r(NO_3)_{DN}^i$  represents the effect of NO<sub>3</sub> availability,  $F_r(CO_2)_{DN}^i$  is a total soil respiration related modifying factor (proxy for microbial activity),  $F_r(SWC)_{DN}^i$  represents the effect of soil water content, and  $F_r(pH)_{DN}^i$  is included to represent the effect of soil pH (this latter was not included in Parton et al., 1996) in the given layer. Importance of pH is highlighted in Wagena et al. (2017).

It is important to note that the equations presented in Wagena et al. (2017) are incorrect. The exact formulae of the equations are much better described in Parton et al. (1996) though their Fig. 5 also contains an error (equation describing the Fr(NO3) has a bracket problem). For clarity, here we provide explicit equations that are error-free according to our best knowledge.

The equation for  $F_r(NO_3)$  (Parton et al., 1996):

$$= \left\{ 1 - \left( 0.5 + \frac{\text{atan}(\pi \cdot 0.01 \cdot (NO_3^i - 190))}{\pi} \right) \right\} * 25$$

where  $NO_3$  is the nitrate content of the soil expressed in  $\mu\text{gN g}^{-1}$  (=ppm).

Effect of soil respiration on the  $R_{N_2:N_2O}$  ratio in the given layer:

$$F_r(CO_2)_{DN}^i = 13 + \left( \frac{30.78 \cdot \text{atan}(\pi \cdot 0.07 \cdot (R_{s,tot}^i - 13))}{\pi} \right)$$

where  $R_{s,tot}^i$  is total soil respiration (respiration of litter and soil pools) expressed in  $\text{kg C ha}^{-1} \text{ day}^{-1}$ .

Effect of soil water content status (Parton et al., 1996) in the given layer:

$$F_r(SWC)_{DN}^i = \frac{1.4}{13^{17/pDEN}}$$

$$pDEN = 13^{2.2 \cdot WFPS}$$

$$WFPS^i = \frac{SWC^i}{SWC_{SAT}^i}$$

Effect of soil pH (Wagena et al., 2017) in the given layer:

$$F_r(pH)_{DN}^i = \frac{1}{1470 \cdot e^{-1.1 \cdot pH}}$$

The  $R_{N_2:N_2O}$  ratio is used to calculate denitrification related  $N_2O$  flux of the given layer from the amount of denitrification (DN) using this formula:

$$F_{N_2O, DN}^i = \frac{DN}{1 + R_{N_2:N_2O} \cdot DNratioN_2O}$$

Denitrification related  $N_2/N_2O$  ratio multiplier ( $DNratioN_2O$ ) as a soil input parameter is used to take into account the effect of the soil type (Del Grosso et al., 2000).

## 10. Land use map of Hungary

Land use maps were created based on the CORINE-2018 database (EEA, 2022) using 25 ha minimum mapping units. Its 10 km spatial resolution version, that is in conform with the soil and weather databases used in the study, was created by selecting the dominant land use type for each cell after counting the number of mapping units within the cell in each land use category.

Fig. S1 shows the spatial distribution of croplands, grasslands and forests for Hungary in 100m resolution based on the CORINE-2018 database (EEA, 2022) using 25 ha minimum mapping units.

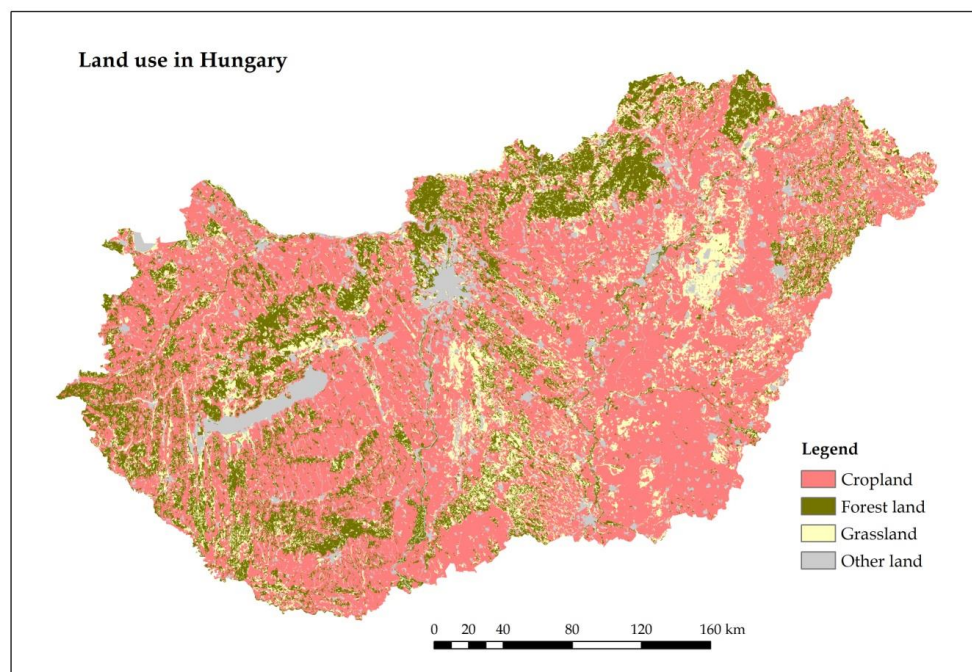


Figure S1: Fine resolution (25 hectare mapping units) land use map of Hungary based on the CORINE-2018 database.

Fig. S2 shows the 10 km resolution version of the land use map that is in conform with the soil and weather databases used in the study. The map was created by selecting the dominant land use type for each cell after counting the number of mapping units within the cell in each land use category.

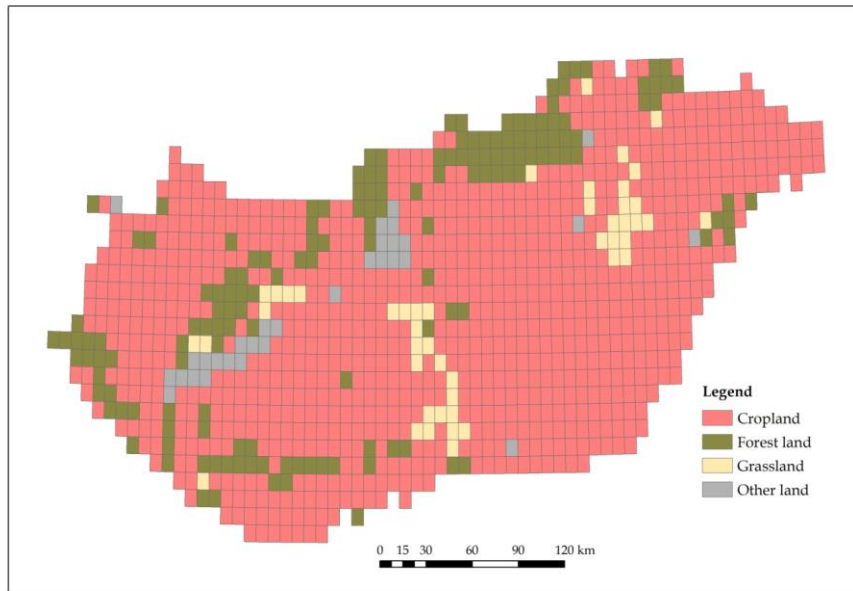


Figure S2: The spatial distribution of the dominant land use types using the grid resolution (approximately 10 km) that is defined for the country-wide simulations in the study (see main text).

## 11. Observation based soil organic carbon content of the topsoil in Hungary

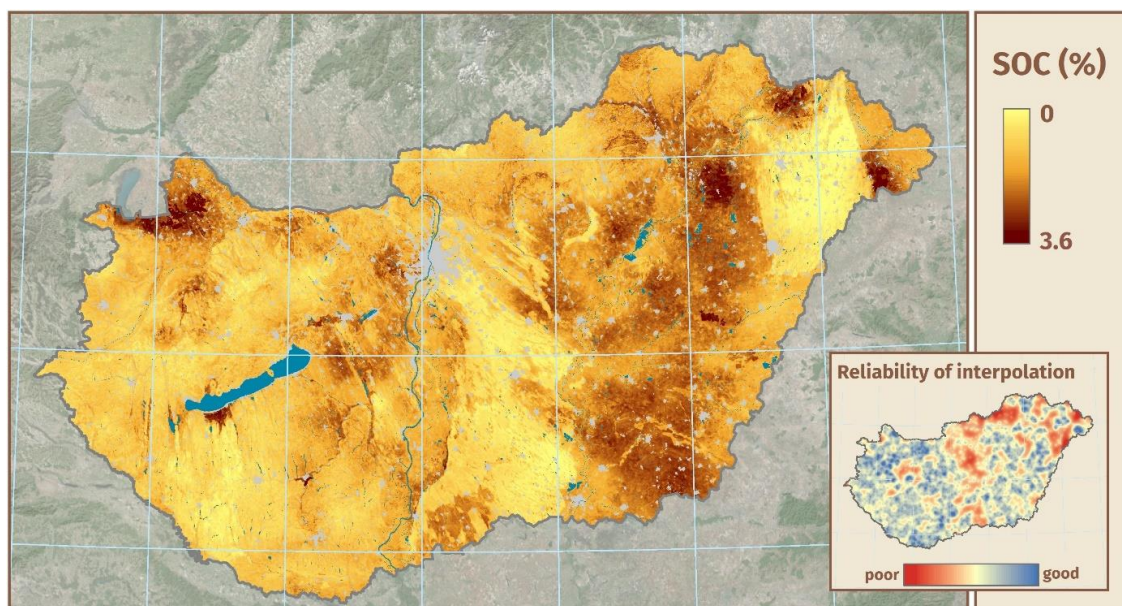


Figure S3: Fine resolution (100 m) map of topsoil (0-30 cm depth) soil organic carbon (SOC) content in Hungary based on the DOSoReMI database (Pásztor et al., 2020).

Fig. S3 shows the observation based SOC map of Hungary based on the DOSoReMI database (Pásztor et al., 2020). In order to harmonize the soil input data grid with weather data grid the 100 m resolution soil data were upscaled. For every approximately 10×10 km grid cells one representative cell out of the 10.000 constituting 100×100 m subcells of the DOSoReMI grid (Pásztor et al., 2020) has been selected using a dominant soil type method proposed by Fodor et al. (2021). The soil organic carbon contents of the topsoil of the representative cells are shown in Figure S4.

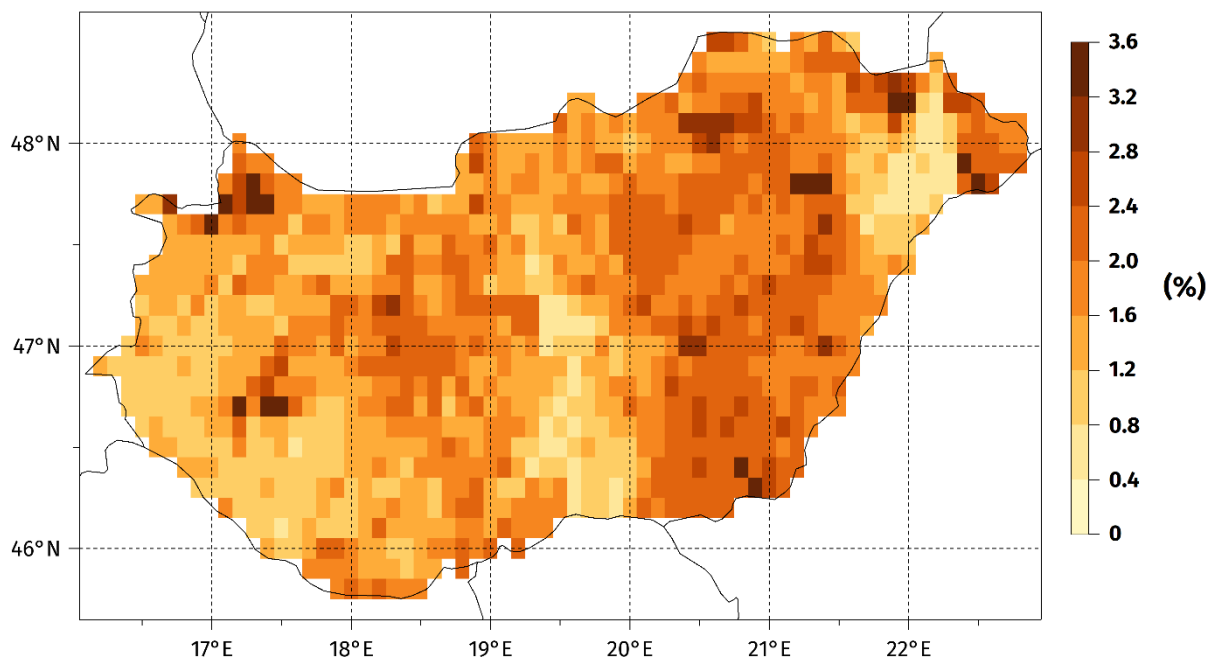


Figure S4: 10 km resolution map of topsoil (0-30 cm depth) soil organic carbon (SOC) content in Hungary.

## References

- Del Grosso, S.J, Parton, W., Mosier, A., Ojima, D., Kulmala, A., Phongpan, S.: General model for N<sub>2</sub>O and N<sub>2</sub> gas emissions from soils due to denitrification. *Global Biogeochemical Cycles* 14, 1045–1060, <https://doi.org/10.1029/1999GB001225>, 2000.
- EEA, 2022. "CoORDinated INformation on the Environment (CORINE) Land Cover, Version 2020\_20u1. European Commission - Directorate-General for Internal Market, Industry, Entrepreneurship and SMEs (DG-GROW, data owner)." European Environment Agency (EEA, data custodian). URL: <https://land.copernicus.eu/pan-european/corine-land-cover/clc2018>, 2018.
- Fodor, N., Pásztor, L., Németh, T.: Coupling the 4M crop model with national geo-databases for assessing the effects of climate change on agro-ecological characteristics of Hungary. *International Journal of Digital Earth* 7, 391–410. <https://doi.org/10.1080/17538947.2012.689998>, 2014.
- Fodor, N., Pásztor, L., Szabó, B., Laborczi, A., Pokovai, K., Hidy, D., Hollós, R., Kristóf, E., Kis, A., Dobor, L., Kern, A., Grünwald, T., Barcza, Z.: Input database related uncertainty of Biome-BGCMuSo agro-environmental model outputs, *International Journal of Digital Earth*, 14, 1582–1601, <https://doi.org/10.1080/17538947.2021.1953161>, 2021.
- Parton, W.J., Mosier, A.R., Ojima, D.S., Valentine, D., Schimel, D.S., Weier, K., Kulmala, A.E.: Generalized model for N<sub>2</sub> and N<sub>2</sub>O production from nitrification and denitrification, *Global Biogeochemical Cycles* 10, 401–412, 1996.
- Pásztor, L., Laborczi, A., Takács, K., Illés, G., Szabó, J., and Szatmár, G.: Progress in the elaboration of GSM conform DSM products and their functional utilization in Hungary, *Geoderma Regional* 21, <https://doi.org/10.1016/j.geodrs.2020.e00269>, 2020.
- Ritchie, J.T.: Model for predicting evaporation from a row crop with incomplete cover. *Water Resources Research* 8, 1204–1213, <https://doi.org/10.1029/WR008i005p01204>, 1972.
- Wagena, M.B., Bock, E.M., Sommerlot, A.R., Fuka, D.R., Easton, Z.M.: Development of a nitrous oxide routine for the SWAT model to assess greenhouse gas emissions from agroecosystems. *Environmental Modelling & Software* 89, 131–143. <https://doi.org/10.1016/j.envsoft.2016.11.013>, 2017.