

Implementation of HONO into the chemistry-climate model CHASER (V4.0): roles in tropospheric chemistry

Phuc T. M. Ha¹, Yugo Kanaya², Fumikazu Taketani², Maria Dolores Andrés Hernández³, Benjamin Schreiner⁴, Klaus Pfeilsticker⁴, Kengo Sudo^{1,2}

¹ Graduate School of Environmental Studies, Nagoya University, Nagoya 464-8601, Japan

² Research Institute for Global Change, JAMSTEC, Yokohama 236-0001, Japan

³ Institut für Umweltphysik, Universität Bremen, Otto-Hahn-Allee 1, Bremen 28359, Germany

⁴ Institut für Umweltphysik (IUP), Universität Heidelberg, INF 229, Heidelberg 69120, Germany

Correspondence to: Phuc T. M. Ha (hathiminh.phuc@gmail.com)

Abstract. Nitrous acid (HONO) is an important atmospheric gas given its contribution to the cycles of NO_x and HO_x, but its role in global atmospheric photochemistry is not fully understood. This study implemented three pathways of HONO formation in the chemistry-climate model CHASER (MIROC-ESM) to explore three physical phenomena: gas-phase kinetic reactions (GRs), direct emission (EM), and heterogeneous reactions on cloud/aerosol particles (HRs). We evaluated the simulations by the atmospheric aircraft-based measurements from EMeRGe-Asia-2018 (Effect of Megacities on the Transport and Transformation of Pollutants on the Regional to Global scales), ATom1 (atmospheric tomography), observations from the ship *R/V Mirai*, EANET (Acid Deposition Monitoring Network in eastern Asia) / EMEP (European Monitoring and Evaluation Programme) ground-based stationary observations, and the OMI (Ozone Monitoring Instrument). We showed that the inclusion of the HONO chemistry in the modeling process reduced the model bias against the measurements for PM_{2.5}, NO₃⁻/HNO₃, NO₂, OH, HO₂, O₃, and CO, especially in the lower troposphere and the North Pacific (NP) region.

We found that the retrieved global abundance of tropospheric HONO was 1.4 TgN. Of the three source pathways, HRs and EM contributed 63% and 26% to the net HONO production, respectively. We also observed that, reactions on the aerosol surfaces contributed larger amounts of HONO (51%) than those on the cloud surfaces (12%). The model exhibited significant negative biases for daytime HONO in the Asian off-coast region, compared with the airborne measurements by EMeRGe-Asia-2018, indicating the existence of unknown daytime HONO sources. Strengthening of aerosol uptake of NO₂ near surface and in the middle troposphere, cloud uptake, and direct HONO emission were all potential yet-unknown HONO sources. The most promising daytime source for HONO found in this study was the combination of enhanced aerosol uptake of NO₂ and surface-catalyzed HNO₃ photolysis (maxST+JANO3-B case), which could also remedy the model bias for NO₂ and O₃ during EMeRGe. We also found that the simulated HONO abundance and its impact on NO_x-O₃ chemistry were sensitive to the yield of the heterogeneous conversion of NO₂ to HONO (vs. HNO₃).

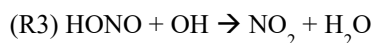
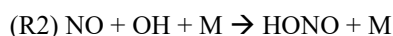
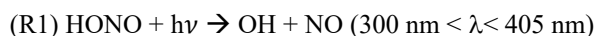
Inclusion of HONO reduced global tropospheric NO_x (NO + NO₂) levels by 20.4%, thereby weakening the tropospheric oxidizing capacity (OH, O₃) occurring for NO_x-deficit environments (remote regions and upper altitudes), which in turn,

increased CH₄ lifetime (13%) and tropospheric CO abundance (8%). The calculated reduction effect to global ozone level reduced the model overestimates for tropospheric column ozone against satellite OMI for a large portion of the North
35 hemisphere. HRs on the surfaces of cloud particles, which have been neglected in previous modeling studies, were the main drivers of these impacts. This effect was particularly salient for the substantial reductions of levels of OH (40–67%) and O₃ (30–45%) in the NP region during summer, given the significant reduction of NO_x level (50–95%). In contrast, HRs on aerosol surfaces in China (Beijing) enhanced OH and O₃ winter mean levels by 600–1700% and 10–33%, respectively, with regards to their minima in winter. Furthermore, sensitivity simulations revealed that the heterogeneous formation of HONO from NO₂
40 and heterogenous photolysis of HNO₃ coincided in the real atmosphere. Nevertheless, the global effects calculated in the combined case (enhancing aerosol uptakes of NO₂ and implementing heterogeneous photolysis of HNO₃), which most captured the measured daytime HONO level, still reduced the global tropospheric oxidizing capacity. Overall, our findings suggest that a global model that does not consider HONO heterogeneous mechanisms (especially photochemical heterogeneous formations) may erroneously predict the effect of HONO in remote areas and polluted regions.

45 1. Introduction

Nitrous acid (HONO) is an important atmospheric gas as it participates in the cycles of nitrogen oxides (NO_x = NO + NO₂) and radical chemistry (OH, HO₂, and RO₂) (Kanaya et al., 2007; Ren et al., 2013; Whalley et al., 2018). Researchers have suggested to include the HONO chemistry in atmospheric chemistry models for more accurate simulations of oxidative substances (Jacob, 2000; Li et al., 2011). Despite the empirical evidences have indicated that the HONO concentrations in
50 urban environments can reach 14 ppbv at night and can reach several hundred pptv throughout the day (Appel et al., 1990; Febo et al., 1996; Kanaya et al., 2007; Lee et al., 2016; Tan et al., 2017; Whalley et al., 2018), the HONO formation mechanism remains unclear. More specifically, the mechanisms of the HONO daytime sources have recently attracted considerable attention of researchers (Kleffmann et al., 2003; Li et al., 2014; VandenBoer et al., 2013; Xue et al., 2021a,b; Ye et al., 2018).

The only homogeneous reaction known to produce HONO in the troposphere is the direct combination of OH and NO
55 (R2). Note that the major loss of HONO occurs via photolysis (R1) in the atmosphere at 300–405 nm:



Moreover, the photolysis of HONO (R1) has attracted considerable attention in the literature as a critical source of OH
60 radicals in the polluted urban atmosphere (e.g., Calvert et al., 1994; Harris et al., 1982; Jenkin et al., 1988; Platt and Perner, 1980). The OH level at sunrise can be increased by a factor of 5 due to the photolysis of HONO, with the regional daily maximum O₃ level increasing by 8% (Jenkin et al., 1988). Besides the direct loss via photolysis, the reaction of HONO with OH (R3) may also contribute to the daytime loss of HONO (Burkholder et al., 1992).

Notably, some night-time measurements hinted on the heterogeneous sources of HONO from aerosol surfaces. For instance, Harrison and Kitto (1994) have provided evidence about the HONO source from high concentration episodes of > 10 ppbv NO₂ for grassland in eastern England (Harrison and Kitto, 1994). Two reactions have been widely suggested to produce HONO on aerosol surfaces: $2\text{NO}_2 + \text{H}_2\text{O} \rightarrow \text{HONO} + \text{HNO}_3$ and $\text{NO} + \text{NO}_2 + \text{H}_2\text{O} \rightarrow 2\text{HONO}$. The first process has been proven to be first-order with NO₂ and H₂O in reaction chamber studies (Sakamaki et al., 1983, Jenkin et al., 1988). The second process was evaluated by using laboratory surfaces (Sakamaki et al., 1983, Jenkin et al., 1988) and by using field observations in the presence of high O₃ and when NO₂ was the dominant form of NO_x (Kessler and Platt, 1984). As a result, the second process was proposed as a peculiarly important source of HONO in the urban atmosphere (Ammann et al., 1998; Gerecke et al., 1998). In the past two decades, researchers have investigated the heterogeneous NO₂ reactivity on vegetated, aqueous, sea salt, carbonaceous, and soot surfaces (Acker et al., 2001, 2006; Arens et al., 2001; Kleffmann and Wiesen, 2005; Kleffmann et al., 1998; Lammel and Cape, 1996; Lee et al., 2016; Notholt et al., 1992; Reisinger, 2000; Rubio et al., 2002; Stutz et al., 2002). In our model, these two processes are simplified as $\text{NO}_2 \rightarrow 0.5 \text{HONO} + 0.5 \text{HNO}_3$ (R4) and $\text{NO}_2 \rightarrow \text{HONO}$ (R5).

Also, some modeling studies have reported overestimations of HONO over remote areas, indicating the HONO release from or deposition in snow (Chu et al., 2000; Fenter and Rossi, 1996; Kerbrat et al., 2010), partitioning to cloud water (Bongartz et al. 1994; Cape et al., 1992; Harrison and Collins, 1998; Mertes and Wahner, 1995), and deliquescent aerosol surfaces (Harrison and Collins, 1998). The loss process occurs via the reaction $\text{HONO} + \text{H}_2\text{O} \rightarrow \text{NO}^- + \text{H}_3\text{O}^+$, simplified in our model as $\text{HONO} \rightarrow \text{NO}$ (R6) for surfaces of liquid and aqueous sulfate aerosols.

The natural sources of HONO include plant-foliar cuticles or soil biological crust (Hayashi and Noguchi, 2006; Oswald et al., 2013; Porada et al., 2019; Su et al., 2011), with estimated global total emission of 0.69 Tg yr⁻¹ HONO-N (Porada et al., 2019). Given the widespread occurrence of nitrite-fertilized soil in natural environment, highly acidic soils are arguably the strong sources of HONO and OH (Su et al., 2011). This potentially important source has been likely overseen by many previous modeling studies at both global and regional scales. Soil emissions could sustain the daytime HONO budget at relatively low aerosol concentrations (Lu et al., 2018). Anthropogenic activities can also directly emit HONO through incomplete combustion, as vehicles, for instance, can yield as high concentrations as 7 ppb (Kirchstetter et al., 1996; Kurtenbach et al., 2001). In regional air quality models, HONO sources from vehicles and vessels are often given at 0.8–2.3% of NO_x emissions level, given the differences between gasoline and diesel vehicle types (e.g., Aumont et al., 2003; Kurtenbach et al., 2001; Li et al., 2011; Zhang et al., 2016).

Many field observational studies reported unknown HONO sources during the day, and various mechanisms have been proposed as efficient daytime HONO formation mechanisms. The photolysis of particle-phase NO₃⁻ (aNO₃⁻) < 300 nm has been previously suggested as a supplemental NO_x source (Romer et al., 2018) and can be the efficient HONO production mechanism during the daytime in an aqueous environment with low pH and the presence of OH scavengers (Benedict et al., 2017a; Benedict et al., 2017b; Scharko et al., 2014; Ye et al., 2018). Another study addressed the altitudes below 300 m, where HONO deposited onto the ground surface at night and further proposed to be a significant reservoir for HONO during the day

(VandenBoer et al., 2013). Such a parameter for ground surfaces in a global model is somewhat uncertain. Moreover, the HONO source from ground surfaces may only affect the lower boundary layer while insignificantly contributing to the tropospheric HONO budget (Ye et al., 2018; Zhang et al., 2009). Furthermore, the particle-phase NO_3^- photolysis can occur on both ground and aerosol surfaces ($\text{HNO}_3 + h\nu \rightarrow \text{HONO}$) with a 2-orders-of-magnitude faster rate than its rate in the gas phase (Lee et al., 2016; Lu et al., 2018). Photolysis of ortho-nitrophenols, photoexcited NO_2 gas reaction ($\text{HO}_2 \times \text{H}_2\text{O} + \text{NO}_2 \rightarrow \text{HONO}$), photosensitized heterogeneous conversion of NO_2 on grounds are all potential daytime HONO sources (Jorba et al., 2012; Lee et al., 2016; Li et al., 2014), yet the mechanisms are complicated, and their efficiency are merely evaluated for ground-based observation.

Many scholars have scrupulously addressed the effects of HONO in polluted regions as well. For instance, HONO-induced enhancements in winter daytime HO_x (up to >200% for OH) and O_3 (6–12%) over urban sites in China have been reported (Li et al., 2011; Lu et al., 2018; Zhang et al., 2016). A box modelling study analysed the detailed budget of HONO in London and found that HONO chemistry increased OH by 20% during the day (Lee et al., 2016). A global modelling study found increments for OH and O_3 across the globe and throughout the troposphere, with a maximum of 30 ppb O_3 in Eastern Asia and slight NO_2 increment, although the results were evaluated with only ground-based data (Jorba et al., 2012). However, enhanced O_3 levels in response to additional OH production from the HONO photolysis only occur in high- NO_x regions, although they can be decreased in some areas under low NO_x conditions (Jorba et al., 2012). At the same time, another 3D modeling study used a constant occurrence ratio for HONO as 0.02 of NO_x and reported similar patterns for O_3 changes regarding HONO chemistry (Elshorbany et al., 2012). The NO_x reduction effects that follow the NO_2 conversion are suggested to be more critical over the oceans than over continental regions, with up to 20% NO_x reduction and 5%–20% HNO_3 enhancement over ocean regions of the lower troposphere (Martin et al., 2003).

As H_2O is required for the uptake of NO_2 on surfaces, wet surfaces have been broadly recommended as favoured surfaces for NO_2 uptake. Therefore, cloud droplets can be an important surface for heterogeneous reactions of NO_2 because they are ubiquitous in the troposphere. Heterogeneous reactions by clouds can have a similar impact as aerosol particles on tropospheric O_3 and OH levels (Christopher et al., 2019). However, this aspect has been overlooked many times in previous studies, leading to potential underestimating (or even dismissing) the potential effects over remote environments.

This study introduced HONO photochemical processes into the global atmospheric chemistry model CHASER-V4.0, which did not consider HONO chemistry before. The standard model configuration used basic mechanisms of HONO chemistry, while various sensitivity cases implementing other potential HONO sources were also conducted to force simulation into an agreement with the observed HONO values. The main idea for the HONO inclusion was to elaborate the model simulation for tropospheric oxidative substances while focusing on aerosol and cloud processes. The model included the detailed online calculation of O_3 - HO_x - NO_x - CH_4 -CO coupling and oxidation of non-methane hydrocarbons (NMHCs) (Sudo et al., 2002) and heterogeneous processes for N_2O_5 , HO_2 , and RO_2 radicals (Ha et al., 2021; Sekiya and Sudo, 2014; Sekiya et al., 2018; Sudo and Akimoto, 2007). In Section 2, we describe the approach, including the model description and configuration. In Section 3.1, simulated daytime HONO was verified with aircraft measurements for an Asian off-coast region. In addition,

our model was evaluated by the available observations for atmospheric species, including observations from aircraft, ship, ground stations, particularly addressing the roles of the HRs. Section 3.2 presents the model results for HONO distributions, verification for global effects to TCO with OMI satellite, global HONO impacts including different effects from each pathway and a discussion on the uncertainty of the calculated effects. Finally, Section 4 effectively represents the summary and concluding remarks.

2. Method and configurations

2.1. Global chemistry model

This study applied the global chemistry model CHASER (MIROC-ESM) (Sudo et al., 2002, 2007; Watanabe et al., 2011), which considered the detailed photochemistry in the troposphere and stratosphere. The chemistry component of the model, based on CHASER-V4.0, retrieved the concentrations of 94 total species and 258 chemical reactions (57 photolytic, 180 kinetic, and 21 heterogeneous reactions on tropospheric aerosol and cloud surfaces and polar stratospheric clouds) (Table 1), excluding the new HONO chemistry implemented in this study. We used the HTAP-II (Hemispheric Transport of Air Pollution) emission inventory for 2008 (https://edgar.jrc.ec.europa.eu/dataset_htap_v2, last access: 16th, Nov 2021) for O₃ and aerosol precursors (NO_x, CO, VOCs, SO₂), with biomass burning emissions derived from the MACC (Monitoring Atmospheric Composition and Climate) reanalysis system (<https://gmao.gsfc.nasa.gov/reanalysis/MERRA/ceop.php>). The details about CHASER could be found in the earlier studies (Ha et al., 2021; Morgenstern et al., 2017; Sekiya et al., 2018). In this study, the newly added HONO system included three pathways of HONO formation and interactions: (1) gas-phase formation via the NO + OH reaction (R2), the photolysis of HONO (R1), and the reaction of HONO with OH (R3), hereafter denoted as GRs; (2) HONO direct emissions estimated from anthropogenic- and soil-NO_x emissions (hereafter denoted as EM); and (3) the HONO conversion from NO₂ (R4, R5) and its loss on liquid/ice surfaces and aqueous aerosols (R6), which is hereafter denoted as HRs.

The investigation on heterogeneous photolysis of HNO₃ ($\text{HNO}_3 + h\nu \rightarrow \text{HONO}$), which was suggested as an efficient HONO source at daytime (Lee et al., 2016; Zhou et al., 2011), is presented in Chapter 3 as sensitivity cases in the effort of making simulation for daytime HONO compatible with measurement. This photolysis was simply accessed in the model via its rate using a multiply factor to the gas-phase HNO₃ photolysis ($\text{HNO}_3 + h\nu \rightarrow \text{OH} + \text{NO}_2$) (see Sect. 3.1.2). Another proposed daytime HONO source from the light-dependent gas-phase reaction of HO₂ and NO₂ ($\text{HO}_2 + \text{NO}_2 \rightarrow \text{HONO}$) (Li et al., 2014) was not investigated in this study. However, a simple gas-phase reaction of HO₂ and NO₂ ($\text{HO}_2 + \text{NO}_2 \rightarrow \text{HONO} + \text{O}_2$) (Burkholder et al., 2015), was introduced, but it did not successfully preserve the total reactive nitrogen chemistry (NO_y); hence, it was omitted in this study.

2.2. Experimental setup

The Global Emissions Initiative (GEIA) inventory (<http://www.geiacenter.org/>) was applied to quantify the soil NO_x emissions (6 TgN yr⁻¹) and anthropogenic NO_x emissions (45 Tg N yr⁻¹). Since this broadly applied inventory was not currently available for HONO, this study tentatively imposed the HONO direct emissions based on the above NO_x emission inventory through a constant factor of 0.1 (10% of NO_x emissions). This assumption (soils + combustion) led to a global HONO soil-emission estimate of about 0.6 TgN yr⁻¹, equivalent to the estimate from Porada et al. (2019), and it suggested that the anthropogenic emission for HONO is 4.5 TgN yr⁻¹. For HONO from exhaust sources, this factor (10%) was considerably higher than the previously reported estimate of 0.7%, derived for combustion (Xue et al., 2022b) or 0.8–2.3% for on-road vehicles (Aumont et al., 2003; Kurtenbach et al., 2001; Li et al., 2011) and 3%–6% for commercial aircraft (Lee et al., 2011). However, this factor of HONO emission (10% NO_x emission) intended to show the apparent potential impacts of direct HONO sources on the tropospheric chemistry.

Table 1: Computation packages in the chemistry-climate model "CHASER"

Base model	MIROC4.5 AGCM
Spatial resolution	Horizontal, T42 (2.8° × 2.8°); vertical, 36 layers (surfaces approx. 50 km)
Meteorology (u, v, T)	Nudged to the NCEP2 FNL reanalysis
Emission (anthropogenic, natural)	Industry traffic, Vegetation Ocean Biomass burning specified by MACC reanalysis
Aerosol	BC/OC, sea-salt, and dust BC ageing with SO _x /SOA production
Chemical process	94 chemical species, 263 chemical reactions (gas phase, liquid phase, non-uniform O _x -NO _x -HO _x -CH ₄ -CO chemistry with VOCs SO ₂ , DMS oxidation (sulfate aerosol simulation) SO ₄ -NO ₃ -NH ₄ system and nitrate formation Formation of SOA BC ageing (+) Heterogeneous reactions: 8 reactions of N ₂ O ₅ , HO ₂ , RO ₂ ; constant uptake coefficients (γ) on types of aerosols (Ice, Liquid, Sulfate, Sea salt, Dust, OC)

The photolysis reaction $\text{HONO} + h\nu \rightarrow \text{OH} + \text{NO}$ (300 nm < λ < 405 nm) (R1) was employed with the wavelength-dependent cross-sections following the recent study of Burkholder et al. (2015).

The kinetic of homogeneous reactions $\text{NO} + \text{OH} + \text{M} \rightarrow \text{HONO} + \text{M}$ (R2) and $\text{HONO} + \text{OH} \rightarrow \text{NO}_2 + \text{H}_2\text{O}$ (R3) was applied with the low and high-pressure-limit rate constants, which were temperature dependent, as suggested in the aforementioned study.

In CHASER, the heterogeneous chemistry of interest was simplified as a first-order chemical loss in the aerosol phase for a species transferred from the gas phase. The rate of this pseudo loss was combined, and the first-order-loss rate for heterogeneous processes was calculated by using the Schwartz theory (Jacob, 2000; Schwartz, 1986), being simply treated with the mass transfer limitations in addition to the reactive uptake coefficient (γ) (Ha et al., 2021). Note that only surface reactions were considered in CHASER, and there was no bulk particle reaction for the HR scheme.

The uptake coefficient parameter (γ) is defined as the net probability that a molecule X undergoing a gas-kinetic collision with a surface is taken up onto the surface. An average uptake coefficient for NO₂ (R4) of 10^{-4} (10^{-6} – 10^{-3}) for the conversion of aqueous aerosols and clouds has been previously suggested (Jacob, 2000; Kleffmann et al., 1998; Li et al., 2018; Lu et al., 2018). The NO₂ uptake by organic carbon aerosols has been reported to have similar coefficient values (Salgado-Muñoz and Rossi, 2002). The uptake coefficient for fresh black carbon is highly efficient and equals 3×10^{-3} (Ammann et al., 1998; Li et al., 2018). The parameters for the uptake coefficients of R4 applied in the CHASER model are shown in Table 2.

As previous studies have noted, the fast initial uptake of NO₂ is observed on soot with an uptake coefficient in the range of 10^{-1} – 10^{-4} (Ammann et al., 1996, 1998). However, it rapidly decreased to $\sim 10^{-7}$ over 5 min (Kleffmann et al., 1999) to $< 4 \times 10^{-8}$ for 5-day aged surfaces (Saathoff et al., 2001). In organic soot, γ is in the range of 10^{-4} – 10^{-6} (Al-Abadleh et al., 2000; Ammann et al., 1996; Arens et al., 2001; Salgado-Muñoz et al., 2002). In CHASER, the NO₂ conversion on organic carbon and soot (R5) was tentatively applied with uptake coefficients of 10^{-4} and 3×10^{-4} , respectively, which also falls within the previously suggested range (10^{-6} – 10^{-3}) considering the higher efficiency for soot (Table 2).

Also, previous laboratory experiments have introduced a wide range for the uptake coefficient of HONO by (R6), that is, 3.7×10^{-3} at 178 K to 1.3×10^{-5} at 200 K for the ice surface (Fenter and Rossi, 1996; Chu et al., 2000) and 4×10^{-3} – 4×10^{-2} at 278 K (Mertes and Wahner, 1995) or 0.03–0.15 at 297 K (Bongartz et al. 1994) for liquid water surfaces. In the aerosol flow reactor experiment on deliquescent sodium chloride and ammonium sulfate droplets at 279 K, the HONO reactive uptake coefficient of 0.0028 for 85% relative humidity has been previously obtained (Harrison and Collins, 1998). In CHASER, the aforementioned reference values for HONO uptake on ice, liquid clouds, and aqueous sulfate were simply averaged to be used as a heterogeneous loss of HONO (R6) in the atmosphere (Table 2: last row).

Table 2: Uptake coefficients for heterogeneous formation and loss of HONO

Reactions	γ_{ice}	$\gamma_{liq.}$	$\gamma_{sulf.}$	γ_{salt}	γ_{dust}	γ_{oc}	γ_{ec}
R4 NO ₂ → 0.5HONO + 0.5HNO ₃	0.0	0.0001	0.0001	0.0001	0.0001	0.0001	0.003
R5 NO ₂ → HONO	0.0	0.0	0.0	0.0	0.0	0.0001	0.0003
R6 HONO → NO	0.002	0.03	0.003	0.0	0.0	0.0	0.0

2.3. Simulations

205 In this study, two main simulations, OLD and STD, and three sensitivity simulations (Table 3, no. 2–4), were conducted to isolate the distinct impacts of each pathway of the HONO chemistry for different surface types considered in the model (Table 3). The OLD simulation was run with the base model configuration without any HONO species and HONO related processes. The heterogeneous scheme in the OLD simulation contained eight reactions on N_2O_5 ($N_2O_5 \rightarrow 2HNO_3$), HO_2 ($HO_2 \rightarrow 0.5 H_2O_2 + 0.5 O_2$), and RO_2 ($RO_2 \rightarrow$ inert products) (Ha et al., 2021). The control case (STD) considered all three types of
 210 HONO sources: direct emissions (EM), gas-phase reactions (GRs), and heterogeneous reactions (HRs). To quantify the effects of each mechanism using Eq. (1), two sensitivity cases (GR, GR+HR) intentionally implemented GRs (R1, R2, R3) into the OLD case and HRs (R1, R2, R3, R4, R5, R6) into the GR case, respectively. GR+HR (cld) was another sensitive case like GR+HR, with HRs on aerosols excluded to investigate the different effects of clouds and aerosols. Eq. (1) determines the effects of each mechanism on atmospheric species i ($i = OH, O_3, NO_x, CO$) by concentration differences of i in two relevant
 215 cases being compared to that in the OLD case.

$$E_i = \frac{(Case1_i - Case2_i)}{OLD_i} * 100 (\%), \quad (1)$$

where Case1_{*i*} and Case2_{*i*} are the concentrations of i in two separate cases: GR and OLD cases for the pure effects by the gaseous mechanism; GR+HR and GR cases for the effects of heterogeneous mechanisms; STD and GR+HR cases for the HONO emissions effects; and GR+HR(cld) and GR cases for the effects of heterogeneous reactions that exclusively occur on
 220 ice and cloud particles.

Table 3: Sensitivity simulations in this work.

No.	Simulation ID	HRs (HONO)		GRs (HONO)	EM (HONO)
		clouds	aerosols		
1	OLD				
2	GR			×	
3	GR+HR(cld)	×		×	
4	GR+HR	×	×	×	
5	STD	×	×	×	×

2.4. Observation data for model evaluation

We evaluated the OLD, STD, and sensitivity simulations with aircraft, ship-based, ground-based, and satellite measurements. The observational information and locations of the ship/aircraft tracks and surface sites for the observations used in this study
 225 are summarized in Table 4, Figure 1, Figure 6, and Figure S6.

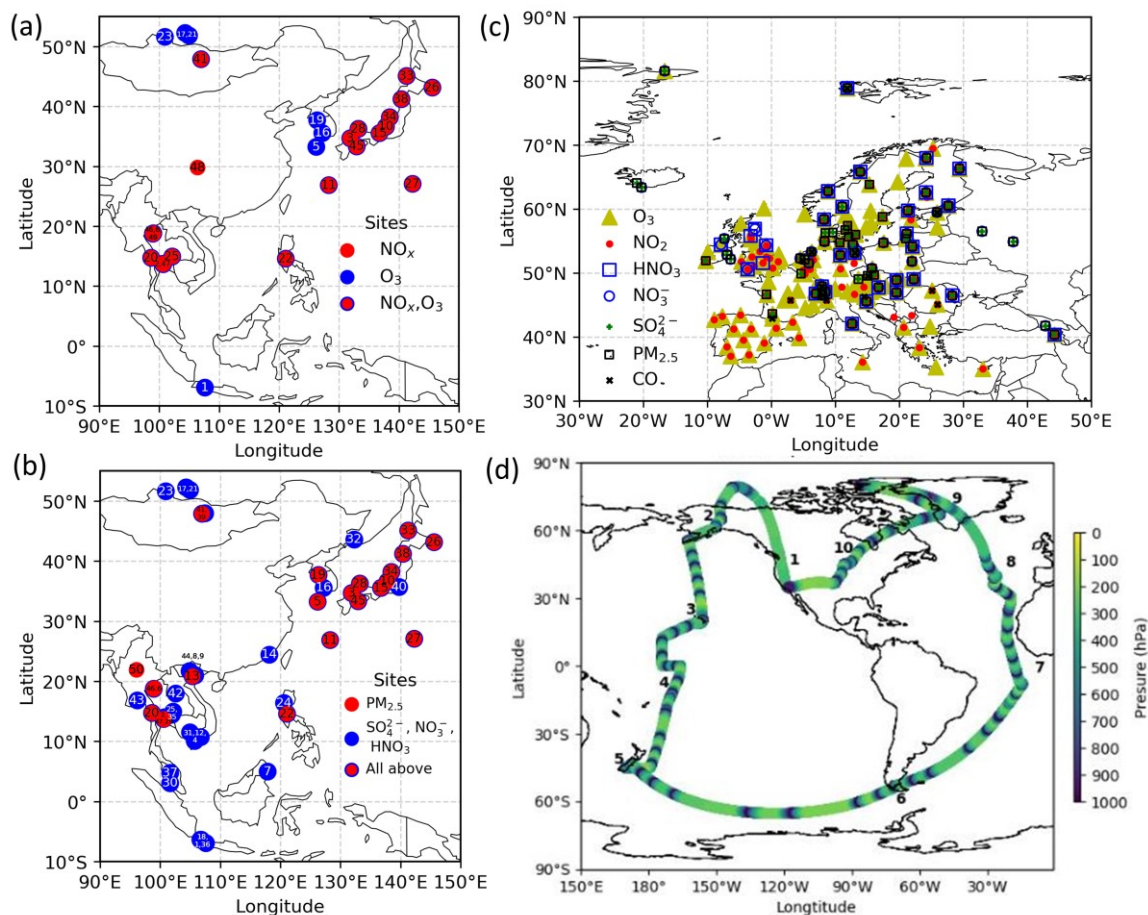
Daytime HONO concentrations were analyzed by using the DLR-HALO aircraft (Operator Deutsches Zentrum für Luft- und Raumfahrt - High-Altitude and Long-Range research aircraft) measurements made during the EMeRGe-Asia (Effect of Megacities on the Transport and Transformation of Pollutants on the Regional to Global scales) campaign in March and April

2018, over an off-coast region between Korea (including the Jeju Island as the part of the domain), Taiwan, and the Philippines
230 (<http://www.iup.uni-bremen.de/emerge/home/>). The measuring time falls in the range of 0:00 UTC to 9:00 UTC, around 8:00
to 17:00 in local time (UTC+8). The payload during EMeRGe-Asia mission could be retrieved from the similar mission
EMeRGe-Europe (Andrés Hernández et al., 2021). Verification with EMeRGe data helps explore the daytime HONO
chemistry mechanisms in the free troposphere.

To verify the vertical profiles of atmospheric species for the oceanic tropospheric environment, ATom1 aircraft
235 measurements (<https://espo.nasa.gov/atom/content/ATom>) for NO₂, OH, CO, and O₃ during August 2018 were employed. We
also utilized the ship-based observational data from the *R/V Mirai* cruise ([http://www.jamstec.go.jp/e/about/
equipment/ships/mirai.html](http://www.jamstec.go.jp/e/about/equipment/ships/mirai.html)) undertaken by Japan Agency for Marine-Earth Science and Technology (JAMSTEC) for surface
CO and O₃ in summers 2015-2017 along the Japan-Alaska routes. The monthly data from 45 stations during 2010–2016 were
used to verify aerosol surface concentrations (sulfate, nitrate) and trace gases (HNO₃, NO_x, O₃) in the Acid Deposition
240 Monitoring Network in eastern Asia (EANET: <https://www.eanet.asia/>). We also used the European Monitoring and
Evaluation Programme (EMEP: <https://www.emep.int/>) data, which compiles observations over 245 European stations. To
this end, simulated tropospheric column ozone was also evaluated by using tropospheric column O₃ (TCO) derived from the
OMI (Ozone Monitoring Instrument) spaceborne observations (<https://daac.gsfc.nasa.gov/>). For these evaluations and
verifications, the model data were compiled in the monthly or hourly timestep, interpolated corresponding to the observed data
245 time step and coordinates.

A model bias for each species was calculated as the difference between the simulated and observed concentrations, as
shown in Eq. (2), where N is the total number of data points used in the calculation.

$$bias = \frac{\sum_1^N Model-Observation}{N} \quad (2)$$



250 **Figure 1:** Location of measurements. (a) EANET stations for NO_x and O_3 and (b) for $\text{PM}_{2.5}$, SO_4^{2-} , NO_3^- , and HNO_3 , (c) EMEP stations, and (d) ATom1 cruising altitudes are plotted. In (a) and (b), each number described station name (see Table S1). In (d), numbers show flight tracks.

Table 4: Lists of the datasets used in this study for verification. Related simulations with their original model timestep are interpolated to the comparing timestep.

Verified species	Regions	Dataset name	Time	Measuring step	Model step	Interpolating step
$\text{PM}_{2.5}$, SO_4^{2-} , NO_3^- , NO_x , O_3 , HNO_3	East Asia	EANET (station)	2010–2016	Daily to 2-weekly	Daily	Monthly
$\text{PM}_{2.5}$, SO_4^{2-} , NO_3^- , NO_x , O_3 , CO	Europe	EMEP (station)	2010–2016	Hourly	Daily	Monthly
CO , O_3	Australia – Indonesia – Japan – Alaska	<i>Mirai</i> (vessel)	8,9/2015 1,8,9/2016 7,8,9/2017	30 min	1 h	30 min
NO_2 , OH , CO , O_3	Pacific, Atlantic ocean, Greenland, North America	ATom1 (aircraft)	8/2016	30 min	1 h	30 min

Tropospheric column ozone (TCO)	60°S - 60°N	OMI (Satellite)	2010–2016	Daily	Daily	Monthly
HONO	Jeju-Korea, Taiwan, and Philippine	EMeRGe (aircraft)	17/3/2018–4/4/2018	15–30 s	Hourly	14–30 s

255 3. Results and Discussion

3.1. Verification and validation of model simulations for cloud fraction, surface area density, atmospheric species, and effects on HONO mechanisms

3.1.1. Cloud fraction and surface area density for cloud and aerosols

In this study, besides NO₂ conversion onto clouds and aqueous particles (R4), the losses of HONO onto the ice and liquid clouds (R6) are also included. Therefore, for accurate simulations of HRs, we need to examine the cloud distribution. The CHASER model applied the common cloud maximum-random overlap assumptions (MRAN) in the radiation and cloud microphysics schemes as other general circulation models to estimate the distribution of the cloud fraction. The verification by using the satellite observation data ISCCP D2, CALIPSO-GOCCP, and reanalysis data JRA55 generally revealed good correlation, whereas notable (10–20%) underestimation for the entire troposphere was yet salient. During June – July – August (JJA), CHASER's cloud fraction was likely overestimated for the lower troposphere of the North Pacific (NP) region (10–20% compared to JRA55 reanalysis data). This finding indicated that thorough scrutiny of any impacts in this region is highly required (see the discussion in Section 3.2). Note that more detailed information for cloud verification for CHASER has been provided by Ha et al. (2021).

The heterogeneous processes by clouds and aerosol particles were parameterized by using surface area density (SAD) estimations alongside the cloud fraction and aerosol concentration. During DJF, the simulated total SAD was attributed to all types of aerosols. However, for JJA, liquid clouds and sulfate aerosols were the principal SAD sources. This was a peculiarly visible pattern for the northern polar and mid-latitude maritime regions. The performance for aerosol SAD in our model was in line with the earlier report by Thornton et al. (2008), except for sea salt density, which was very low in our model (up to 2 $\mu\text{m}^2 \text{cm}^{-3}$) compared to their work (up to 75 $\mu\text{m}^2 \text{cm}^{-3}$). This disagreement might be ascribed to the two models' different size distributions for sea salt. The calculated SAD for the liquid cloud was two orders of magnitude higher than SAD for ice cloud and total aerosols. Liquid cloud SAD maximized at ~ 800 hPa in the tropical convective systems and over the midlatitude storm tracks, reaching $\sim 50,000 \mu\text{m}^2 \text{cm}^{-3}$ at the surface of the North Pacific region in JJA. Sulfate aerosols dominated above 600 hPa for the Northern Hemisphere ($\sim 20 \mu\text{m}^2 \text{cm}^{-3}$) among the total aerosol surface area, followed by organic carbons and soil dust ($\sim 10 \mu\text{m}^2 \text{cm}^{-3}$ in JJA). At the surface layer, sulfate aerosols were prevalent in DJF for the Chinese region ($> 1,000 \mu\text{m}^2 \text{cm}^{-3}$), north-eastern U.S. ($\sim 500 \mu\text{m}^2 \text{cm}^{-3}$), and North Pacific region in JJA ($\sim 250 \mu\text{m}^2 \text{cm}^{-3}$). SAD for soil dust dominated in desert regions, with annual average values $> 100 \mu\text{m}^2 \text{cm}^{-3}$. Organic carbon (OC) was dominant in winter over

biomass burning regions such as China (up to $1,000 \mu\text{m}^2 \text{cm}^{-3}$) and South Africa (up to $800 \mu\text{m}^2 \text{cm}^{-3}$). For the Chinese region, SAD for black carbon (BC) could reach $600 \mu\text{m}^2 \text{cm}^{-3}$ in DJF and $75 \mu\text{m}^2 \text{cm}^{-3}$ in India. The total-aerosol SAD for the northern high-latitude and mid-latitude oceans was $\sim 75 \mu\text{m}^2 \text{cm}^{-3}$, consistent with the estimation by Thornton et al. (2008).

285 3.1.2. Daytime concentrations of HONO and other atmospheric species

This section evaluated CHASER-based HONO estimates using the HONO measurements collected during the EMeRGe campaign off-coast eastern Asia in spring 2018 (Andrés Hernández et al., 2021). This is the first global HONO modelling work using EMeRGe as the validation source. The HONO measurements in the free troposphere could provide essential information on the underlying gas-phase and heterogeneous HONO formation mechanisms as most current HONO
290 measurements were conducted in the surface air. The daytime HONO concentration was retrieved from the aircraft-borne limb measurements using the HALO mini-DOAS (differential optical absorption spectroscopy) instrument, in which the absorbed UV light (310–440 nm) by HONO was detected (Hüneke et al., 2017). The mini-DOAS's measurement method relies on near-UV/VIS/IR skylight spectroscopy in nadir and limb geometry. Data evaluation consists of three steps: (1) retrieval of slant column densities (SCDs) of trace gases by the DOAS method (Platt and Stutz, 2008), (2) forward radiative transfer modeling
295 for each measurement using McArtim (Deutschmann et al., 2011); and (3) retrieval of concentration through a new scaling method for UV/VIS data (Stutz et al., 2017; Hüneke et al., 2017; Werner et al., 2017; Kluge et al., 2020; Rotermund et al., 2021).

Additional sensitivity runs were conducted to explore potential HONO sources during the daytime (Table 5). The ratR4+CLD case is run in an attempt to produce more HONO from heterogeneous sources by altering the HONO: HNO₃ yield
300 ratio in (R4) to 0.9: 0.1, and γ_{HONO} increased a hundred-fold ($10^{-4} \rightarrow 10^{-2}$). The main idea here is to evaluate whether the missing HONO source was sensitive to cloud uptake in this region or not. The maxST case maximized the uptake coefficients (γ -values) of NO₂ on organic and black carbons to 0.1 (R4, R5), to estimate the separate role of soot uptake under daytime conditions (George et al., 2005; Monge et al., 2010; Ndour et al., 2008), which could achieve an unrealistically high γ -value of 10^{-1} (Ammann et al., 1998; Kalberer et al. 1999). In three other runs (JANO3-A, JANO3-B, JANO3-C), the photolysis of
305 aerosol nitrate / adsorbed HNO₃ on the ground and other surfaces (NO₃⁻/HNO₃) were examined, simply as HNO₃ + hv → HONO (R7)). These heterogeneous photolyses of HNO₃ were previously proposed as potential HONO sources at day (Lee et al., 2016; Scharko et al., 2014; Zhou et al., 2011). Because aerosol nitrate and aqueous surfaces are ubiquitous in the atmosphere, the photolysis (R7) was simply set for the gaseous HNO₃ species to occur in particular model spatial grids exposing ground surfaces and sufficient surface area density for aerosols and clouds. The photolysis (R7) was taken at a faster
310 rate by two orders of magnitude than the gas-phase photolysis rate of HNO₃ (HNO₃ + hv → OH + NO₂) (Zhou et al., 2011) and presumably yield 100% HONO to access the maximum effects by this photolysis (Lee et al., 2016). This setting allows (R7) not only to occur at the surfaces of particles but also in the gas and bulk phases. However, in this test, (R7) generally refers to surface-catalyzed photolysis or heterogeneous photolysis of HNO₃. The JANO3-A case investigated the photolysis

of adsorbed HNO₃ on ground surfaces by implementing (R7) for the first vertical layer (z=1). The JANO3-B explored
 315 photolysis of nitrate particles and adsorbed HNO₃ gas on both grounds and aerosol surfaces, applying (R7) for model grid cells
 with the SAD of 10⁻⁶ ~ 10⁻⁴ cm² cm⁻³ (100 to 10,000 μm² cm⁻³) to use 10⁻⁴ cm² cm⁻³ threshold to exclude cloud surfaces (Sect.
 3.1.1). The JANO3-C case examined (R7) for regions present of all particles with SAD ≥ 10⁻⁷ cm² cm⁻³ (10 μm²/cm³). The
 SAD of 10⁻⁶ and 10⁻⁷ cm² cm⁻³ was supposed to be the threshold for continental aerosols. The maxST and JANO3-B / JANO3-
 320 C cases were also combined in two additional cases (maxST+JANO3-B and maxST+JANO3-C, respectively), given the
 contrary effects on NO₂-O₃-CO chemistry of these cases might be neutralized, is discussed next. Other tests examined the
 possible HONO sources from aviation crafts (AIRC), amplified emissions (EMx8), amplified homogeneous HONO formation
 (R2) (GRx8), which descriptions were listed in the supplement Table S3.

The correlation coefficient (*R*) and model biases against EMerGe for HONO were shown in Table S4. As seen for the
 STD run, general underestimations of HONO simulations was identified, in which better correlations were found at 1000–
 325 2000 m (*R*=0.31–0.49). Vertical profiles for HONO and other species (NO₂, O₃, CO), retrieved from the EMerGe flights,
 were applied for the measurement-based model evaluation (Figure 2). The model discrepancies for the measurement for HONO
 (Δ_{HONO}) and NO₂ (Δ_{NO2}) in each flight trajectory, i.e., from Taiwan to South Korea, Japan, and the Philippines, were separated
 into bins of altitude ranges 0-1,000-3,000-5,000-6,000 m (Figure 3). The frequency distributions of Δ_{HONO}, Δ_{NO2}, Δ_{O3}, and Δ_{CO}
 were shown in Figures S7 and S8.

Figure 2(a) shows the vertical average score (cruising altitudes ± 500 m) for the measured (blacks) and simulated HONO
 concentrations in STD (reds) and those results of sensitivity cases. The measured daytime HONO concentration was close to
 the boundary layer (below 1,000 m) over Taiwan, averaged at 115 ppt, and was peaked at ~250 ppt. Also, the HONO
 concentration decreased up to 9,000 m (± 500 m), with mean values dropping from 70 ppt (2,000 m ± 500 m) to < 20 ppt
 (5,000 m ± 500 m) and < 10 ppt above. These measured HONO values for this Asian coastal region were surprisingly high,
 335 which range from 10-115 ppt for 2,000 m ± 500 m altitudes, compared to Wang’s report of < 100 ppt (maximum) and < 30
 ppt (4 daytime hours means) for 1,500-2,000 m altitudes measured by a MAX-DOAS at a station nearby the HONO source
 (Wang et al., 2019). This indicates that the source of HONO during EMerGe might relate to other mechanisms than emission
 sources. In this study, the simulated HONO concentration in the STD case significantly underestimated the observations. They
 reached only 30–70 ppt at 1,000 m and nearly zero from 2,000 m upward (Figure 2(a): red versus black triangles for the
 340 simulation and the observations, respectively). These discrepancies indicate a significant unknown HONO source during the
 daytime, although the proposed heterogeneous HONO formation mechanisms were incorporated in our model. This finding
 adds another instance of evidence about missing HONO sources in the polluted boundary layer and free troposphere (e.g.,
 Kleffmann et al., 2003; Li et al., 2014; VandenBoer et al., 2013; Xue et al., 2022a; Ye et al., 2018).

Table 5: Additional sensitivity simulations in this work.

No.	Simulation ID	Description	Note
1	maxST	γ_{oc} and $\gamma_{ec}(R4, R5) = 0.1$	See Table 2 for γ -values in STD
2	ratR4	NO ₂ → 0.9HONO + 0.1HNO ₃ (R4)	Product ratio is 0.5:0.5 in STD

3	ratR4+CLD	ratR4 and $\gamma_{liq}(R4) = 0.01$	= 0.0001 in STD
4	JANO3-A	Add $\text{HNO}_3 + \text{hv} \rightarrow \text{HONO}$ (R7) ($z=1$, rate = $100 \times$ rate of $\text{HNO}_3 + \text{hv} \rightarrow \text{OH} + \text{NO}_2$)	HONO from HNO_3 photolysis (adsorbed on ground surfaces) (Lee et al., 2016)
5	JANO3-B	Add (R7) ($100 < \text{SAD} < 10,000 \mu\text{m}^2\text{cm}^{-3}$)	HONO from HNO_3 photolysis (adsorbed on ground and aerosol surfaces for continental regions excluding cloud surface)
6	JANO3-C	Add (R7) ($\text{SAD} \geq 10 \mu\text{m}^2\text{cm}^{-3}$)	Similar to JANO3-B but using a larger SAD threshold
7	maxST+ JANO3-B	γ_{oc} and $\gamma_{ec}(R4, R5) = 0.1$ Add (R7) ($100 < \text{SAD} < 10,000 \mu\text{m}^2\text{cm}^{-3}$)	Combination of maxST and JANO3-B cases
8	maxST+ JANO3-C	γ_{oc} and $\gamma_{ec}(R4, R5) = 0.1$ Add (R7) ($\text{SAD} \geq 10 \mu\text{m}^2\text{cm}^{-3}$)	Combination of maxST and JANO3-C cases

345

In Figure 3, which shows model discrepancies, the measured NO_2 below 3,000 m (± 500 m) close to land was well captured in the model (Figure 3(a,e,i): magentas and greens), with 34% of the data being quite close for NO_2 (± 70 ppt) (Figure S7(d)). However, the modelling still underestimated the simulated HONO mixing ratio by up to 250 ppt (Figure 3(a): green). Over the off-coast of Taiwan bound to Japan, NO_2 was overestimated by up to 600 ppt in the model, corresponding to 20–70 ppt missing HONO (Figure 3(a,e): small oranges left of vertical line). The missing HONO can be driven by low HONO emission from land and low uptake of NO_2 on organic carbon and soot, as the amplified EMx8 and maxST cases could alleviate the model underestimates for HONO (Figure 3(a vs b): oranges, (a vs c and e vs f): greens and magentas). The model also underestimated O_3 and CO, usually by 25 ppb O_3 (freq. 79%) and 100 ppb CO (freq. 60%) (Figures S10, S11), which were larger than the model biases against ATom1 observations (Sect. 3.1.3; Figure 5) because of possible inland influence. More accurate and detailed emission inventory for substances such as HONO, NO_x and CO was thus sensible as this region is the outflow of the Pearl River Delta and Yangtze River Delta regions. Besides the uptake on organic and black carbon, identified in the maxST simulations, we identified the NO_2 uptake on sulfate nearly as important through a parallel test (not shown). Especially, the heterogeneous photolysis of HNO_3 couldn't provide a significant HONO amount near Taiwan, South-Korea, Japan (in JANO3-B and JANO3-C cases) and a small HONO amount for the Philippines-bounding route (in JANO3-C case) for the altitudes below 2,500 m (Figure 3(d,h): greens, oranges, blues).

For the middle troposphere (5,000–6,000 ± 500 m) over the Taiwan Island, too abundant NO_2 was predicted by the model during the cruises bounding to South Korea (up to 40 ppt) and the Philippines (up to 20 ppt) (Figure 3(m,p): small greens and blues left of the vertical line). These overabundances might hint on the deep stratospheric intrusion in springtime that caused imperfect downward mixing fluxes (Lin et al., 2012; Stohl et al., 2003; Trickl et al., 2014). This excessive NO_2 and the corresponding missing HONO were also sensitive to the AIRC and GRx8 cases (Figure 3(n,q)), indicating that aircraft-exhaust of HONO could adjust the HONO/ NO_2 ratio and more homogeneous HONO production might contribute more, given the high abundances of oxidizing substances at these altitudes. The possibility of emission of aviation-induced particles on which NO_x to HONO conversion could reach 45% (Meilinger et al., 2005) could support the need for NO_2 reduction and HONO formation for this height across EMERGE's near-land domains. Moreover, the surface-catalyzed photolysis of HNO_3 in the JANO3-C runs could serve as an efficient source and greatly reduced the model negative bias for HONO at 6,000 m. However, the NO_2

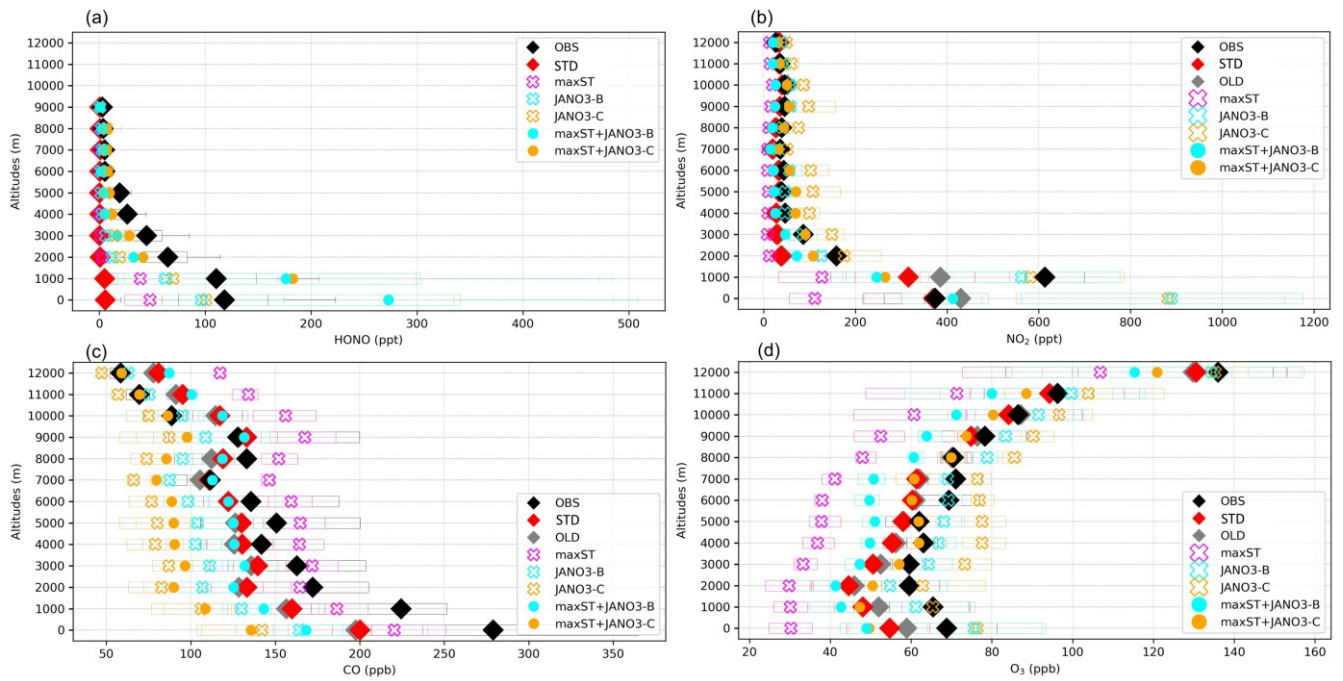
370

reproduction in this case was too strong (because less NO_x is removed via HNO_3 deposition), which turned the model bias for NO_2 become overestimates (Figure 3(s)).

The model underestimation for HONO was also associated with the concurrent underestimation of NO_2 , observed more often at the altitudes of > 1000 m. The likely erroneous NO_2 concentrations of ~ 1.8 ppb (1,000 m) and ~ 220 ppt (3,000 m) across Taiwan, linked with lacked HONO of as high as 290 ppt (1,000 m) and 140 ppt (3,000 m) (Figure 3(e,i)). These likely inadequate NO_2 abundances could be partially alleviated through the enhanced HONO/ NO_x emission ratio and more efficient NO_x recycling process in the ratR4+CLD cases, respectively (Figure 3(g,j)). Here, the missing HONO was largely supplemented only at $\sim 1,000$ m over the marine environment (Taiwan-Japan cruise), when we identified more products for HONO on cloud in the ratR4+CLD case. (Figure 3(e,g): red-orange diamonds). At $\sim 6,000$ m, small deficits of 60 ppt NO_2 corresponding to ~ 10 ppt HONO (Figure 3(p): oranges and magentas) might correspond to lightning NO_x emissions (Sudo et al., 2002) and stratospheric sources. Some homogeneous mechanisms at $\sim 6,000$ m as in the GRx8 could be effective (Figure 3(n,o)). Moreover, the heterogeneous photolysis of HNO_3 in the JANO3-C case could be an effective HONO supplement above 5,500 m (Figure 3(s)), while this photolysis acted as a NO_2 production mechanism at any altitudes.

In general, the upper limit for the aerosol uptake coefficients (maxST case) may be applicable for the lowest cruising altitudes, which induced the increase of modelled HONO levels during both daytime and nighttime (Figure S10). The photolysis of adsorbed HNO_3 on ground surfaces implemented in the JANO3-A case was impractical to be a source for HONO during EMerGe, as this case only provided a mild HONO amount at a thin surface layer (< 500 m; not shown). Fortunately, the surface-catalyzed photolysis of HNO_3 in JANO3-B and JANO3-C cases could remedy the model-measurement discrepancies, i.e. $R_{\text{HONO}} > 0.6$ and the model bias for HONO was reduced from -112 ppt (STD) to -22 ppt (JANO3-B) and -18 ppt (JANO3-C) for 0-500 m altitudes (Table S4). The HONO source from this photolysis of HNO_3 was sufficient for continental and near-land regions. In particular, the photolysis of HNO_3 adsorbed on particles with smaller SAD (JANO3-C case) was responsible for the 500 – 3,000 m atmosphere around Philipines and South Korea and at higher altitudes where robust solar radiance might enhance the HNO_3 photolysis. In the combined cases (maxST+JANO3-B and maxST+JANO3-C), HONO production was boosted, and the estimated NO_2/O_3 concentrations were best captured for 2,000 – 5,000 m (± 500 m) altitudes (Figure 2(a,b,d): black diamonds vs orange circles). Furthermore, the sensitivity cases including combined cases changed the global tropospheric effects differently, as discussed in Sect. 3.2.3.

The remaining drawbacks in reproducing HONO and other atmospheric species (NO_2 , O_3 , CO) by model urges further elucidation of efficient HONO formation mechanisms. To this end, one needs (1) to elaborate the combined HONO production mechanisms from enhanced NO_2 aerosol-uptakes and HNO_3 photolysis alongside testification other potential HONO formation mechanisms and NO_x recycling processes, (2) to simulate the lower and upper limits for the uptake coefficients of NO_2 on aerosols and clouds, (3) to provide better emission inventories for anthropogenic sources of pollutants from Southeast Asia and East Asia, lightning-produced NO_x and HO_x , and aviation-induced aerosols, and (4) to improve the vertical mixing and air mass transport from the stratosphere.



405 **Figure 2: Vertical profiles of (a) HONO, (b) NO₂, (c) CO, and (d) O₃ measured in EMeRGe campaign and calculated in the sensitivity**
410 runs. Diamonds (for OBS, STD, OLD), batches (for maxST, JANO3-B, JANO3-C cases), and filled circles (for maxST+JANO3-B,
maxST+JANO3-C cases) show mean vertical concentrations, and the corresponding boxes indicate 25th - 75th value ranges. In panel
(a), whiskers with two caps show min and max HONO levels; all sensitivity runs are shown except OLD (the case without HONO
chemistry). In all plots, black is for observation (OBS), colours are for simulations: STD (red), OLD (grey), maxST (magenta),
JANO3-B (cyan), JANO3-C (orange), maxST+JANO3-B (filled cyan), and maxST+JANO3-C (filled orange).

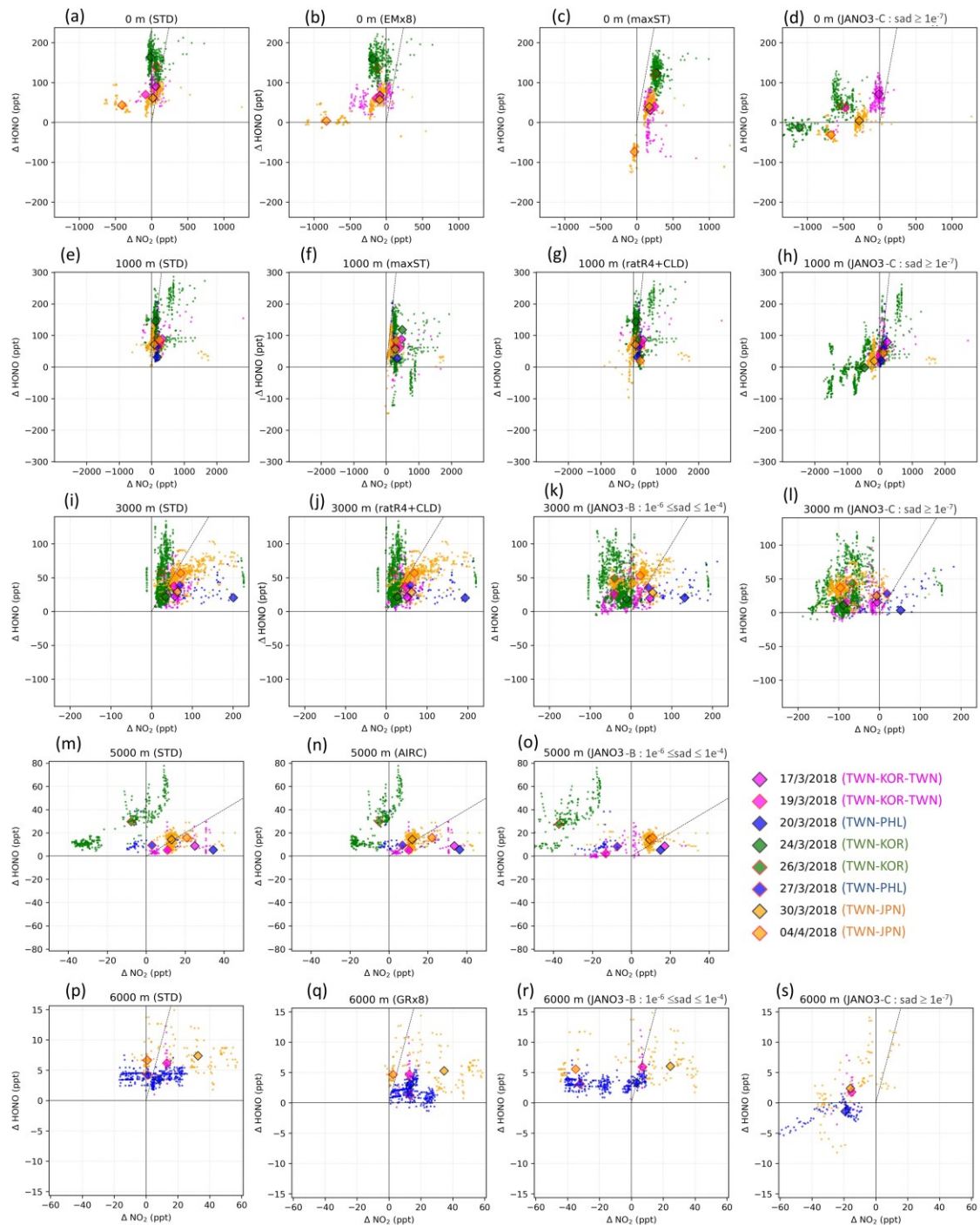


Figure 3: Model's discrepancies from measurements for HONO (ΔHONO) versus that for NO_2 (ΔNO_2). Only results from STD (first column) and helpful sensitivity cases (second, third, and fourth columns) are plotted. The scale is shared for each row. The altitude range (0, 1000, 3000, 5000, 6000 m \pm 500 m) and the sensitivity case names are shown at the top of each panel. Small points represent discrepancies distribution (observation – model). Diamonds mark the median point of each cruise distribution. Edge and fill colours indicate flight cruises (see legend). Vertical, horizontal, diagonal lines show $\Delta \text{NO}_2 = 0$, $\Delta \text{HONO} = 0$, $\Delta \text{NO}_2 = \Delta \text{HONO}$, respectively.

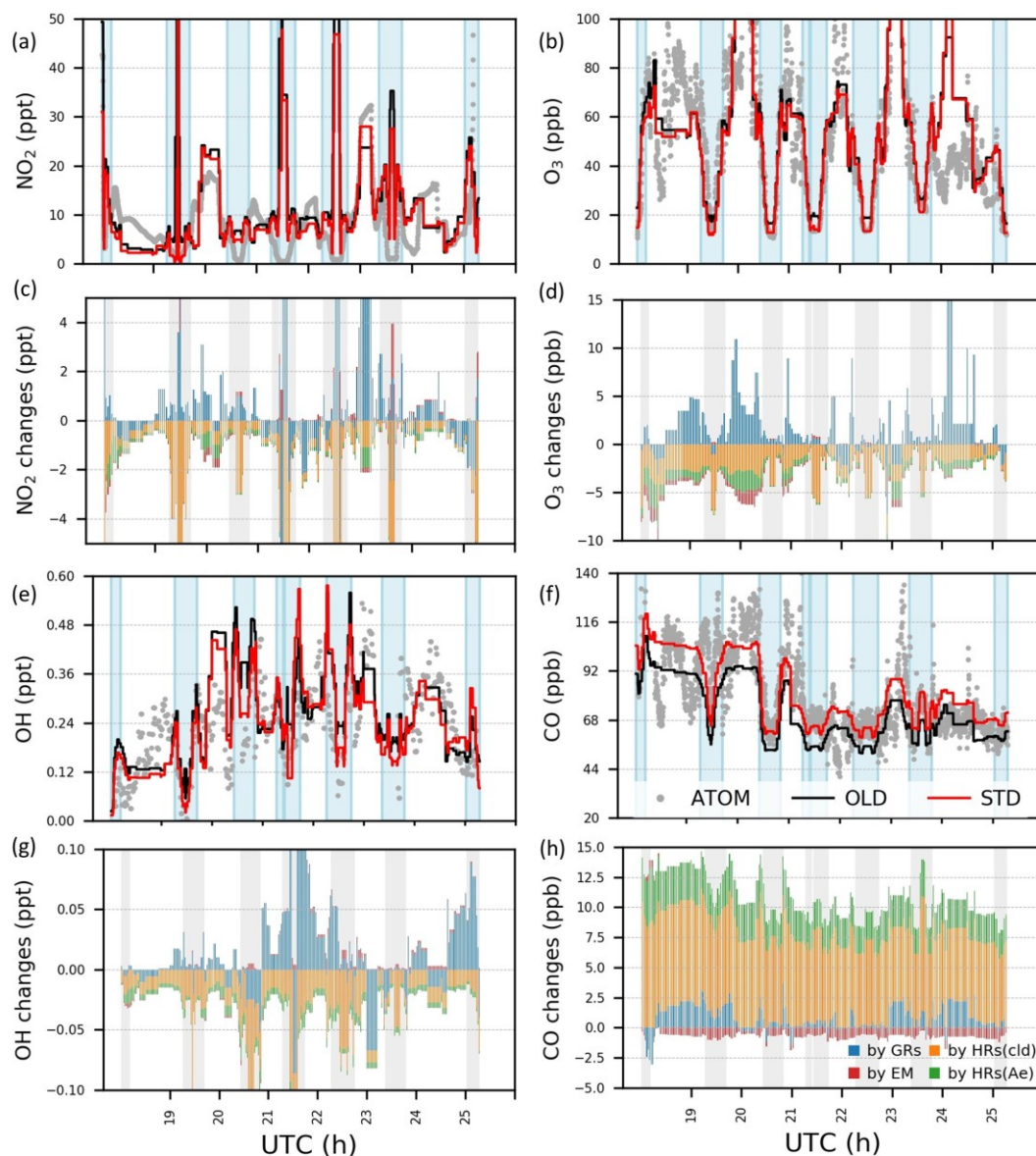
3.1.3. NO₂, OH, HO₂, O₃, and CO concentrations within the oceanic free troposphere

The model performance of the free troposphere was evaluated through the atmospheric tomography (ATom1) aviation in August 2016 for NO₂, OH, CO, HO₂, and O₃. The STD run reconstructed the chemical field observed in ATom1 with moderate or strong positive correlations for NO₂, OH, CO, and O₃ ($R_{\text{NO}_2}=0.730$, $R_{\text{O}_3}=0.751$, $R_{\text{OH}}=0.579$, $R_{\text{CO}}=0.659$; Table S2). For the NP region, the model correlations for these species were slightly lower ($R_{\text{NO}_2}=0.621$, $R_{\text{O}_3}=0.609$, $R_{\text{OH}}=0.407$, $R_{\text{CO}}=0.596$; Table S2). The R values for NO₂ and CO were consistently higher in the STD run than those in the OLD run, while for OH and O₃, the R values are only improved for the NP region (Table S2).

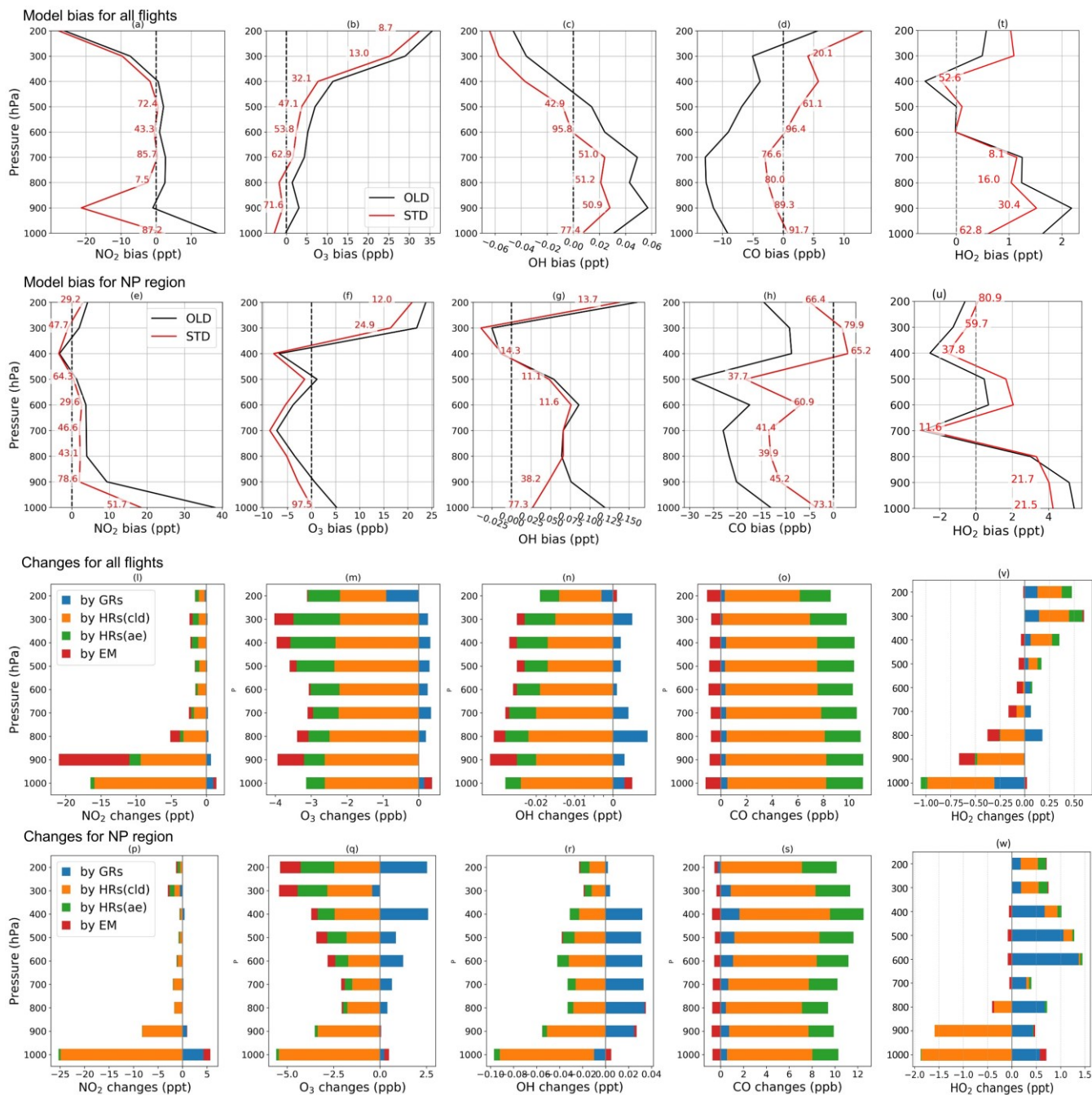
Figure 4 shows measured (grey) and simulated (red and black) NO₂, O₃, OH, CO concentrations and the effects of including HONO in the simulation for the NP region (flight #2 on August 3rd). Figure 5 displays vertical profiles of the model biases in STD vs OLD cases and photochemical effects by each HONO formation mechanism. Here, the data in all flights or in the NP region were classified based on the air pressure from 1000–200 hPa (± 50 hPa) and separated into nine bins. In the NP region, the OLD run (black lines) tended to overestimate NO₂, O₃, OH, and HO₂ but it underestimated CO at the lower troposphere, whereas the unsteady discrepancies at the upper layer were visible (Figure 4(a,b,e,f)). All five species tended to be underestimated near the tropopause (300–400 hPa) and to be overestimated in the lower stratosphere (Figure 5(e-h,u)). The HONO inclusion in STD run (red lines) reduced NO₂, OH, O₃ and increased CO levels, thereby, dwindling the model biases for NO₂, OH, and CO in the NP region except near the tropopause (Figure 5(e,g,h)). HO₂ was reduced near the surface layer and increased from the middle troposphere (Figure 5(v,w)), reducing model bias for most parts of HO₂'s vertical profile (Figure 5(t,u)). The reduction in HO₂ level near the surface might follow similar cloud-effect as that for OH, which turned to minor increases in HO₂ level at middle and high atmosphere, given lower HO₂ level at these altitudes.

In the NP region, the surface NO₂ level was reduced under the effects of HONO uptake on clouds (Figure 4(c): orange bars in vertical pink shades and Figure 5(p)). Hence, O₃ and OH were correspondingly reduced as their formations are assumably limited in the absence of sufficient NO_x, that is, lacking atomic oxygen from NO₂ photolysis and OH formation via HO₂ + NO \rightarrow OH + NO₂ (Figure 4(d,g): orange bars in pink columns and Figure 5(q,r)). Near the surface, aerosol HRs only slightly affected atmospheric species, whereas at high altitudes, the aerosol uptake was more relevant, especially for O₃ concentrations (Figure 4(c,d,g,h) and Figure 5(q-s): green bars), due to the contribution of aerosol direct effect to O₃ level (Xing et al., 2017). The dominant cloud effects near the surface appeared plausible for an ocean region with high cloud fractions at the lowest layer (Figure S2). GRs also affected OH, O₃, HO₂, and CO, whereas the effects manifest in the upper troposphere rather than in the lower troposphere. This was likely the most influential factor that increases OH, HO₂, and O₃ levels at these high altitudes (Figure 4(d,g) and Figure 5: blue bars). The additional HONO from direct emissions had minor effects on NO₂ and OH but contributed to the reductions of O₃ and CO at high altitudes (Figure 4(c,d,g) and Figure 5(q,s): red bars). At 900 hPa, the HONO emissions significantly reduced NO₂ near the continental areas (Figure 5(l): red bars) due to its uptake by particles. These effects of the HONO chemistry in the STD simulation somewhat reduce the model biases for NO₂, O₃, OH, HO₂, and CO (Figure 5(a-h,t,u): red numerical texts are the percentage reduction in model bias). Note that these biases were very

450 pronounced near-surface (~ 1000 hPa) in the NP region (51.7% for NO_2 and 77.3% for OH). To capture the patterns identified by observations in the upper troposphere, except the NP region, more robust increases for NO_2 , OH, and HO_2 levels were still required (Figure 5(a,c,t)). At these altitudes, NO_x and HO_x sources from lightning (Brune et al., 2021) or aviation could also be relevant, as discussed in Section 3.1.2.



455 **Figure 4:** Concentrations and variations by HONO chemistry for NO_2 , O_3 , OH and CO during ATom1 flight #2 (198–210° E, 20–62° N). In (a–b, e–f), concentrations by observation (grey dots), simulations in OLD case (black lines), and in STD case (red lines) are plotted. In (c–d, g–h), changes in concentrations by GRs (blue bars), EM (red), HRs on clouds (orange), and HRs on aerosols (green) are plotted. Vertical blue and grey columns reflect the data for the regions with air pressure $P > 500$ hPa.



460 **Figure 5:** Vertical profile of model bias against aerial ATom1 data (a-h, t-u) and changes by HONO chemistry (l-s, v-w) for NO₂, O₃, OH, CO, and HO₂ (from left to right columns). Biases in OLD (black lines) and STD (red lines) runs are calculated for all flights (a-d, t) and NP region (e-h, u). The red numerical texts are the relative reductions (%) of the bias in the STD run compared to that in the OLD run. Changes by GRs (blue), HRs on clouds (orange), HRs on aerosols (green), and EM (red) are calculated for all flights (i-o, v) and NP region (p-s, w).

The simulations was also compared with the *research vessel (R/V) Mirai*'s observation in the western Pacific Ocean for O₃ and CO. The interpolation of model results for six cruises across Japan–Alaska region (40° N– 75° N, 140° E–150° W) in 7-8-9/2015–2017 (summer), Indonesia–Australia region (5°–25° S, 105–115° E), and Indonesia–Japan region (10–35° N, 129°–140° E) were provided for the period of 12/2015 - 1/2016. All the measured and simulated data were provided, whereas the data for the NP region (40°–60° N) were analyzed separately, as discussed in Section 3.2. More detailed information about the *R/V Mirai* can be found in Kanaya et al. (2019). Furthermore, the model evaluation with *Mirai* for the OLD run can be found in Ha et al. (2021).

Table 6 shows correlation coefficients, which indicated that the STD simulation for CO and O₃ agreed well with *Mirai* ($R = \sim 0.6$). However, these correlation coefficients were slightly worsened compared with the OLD case. Although the HONO inclusion mostly reduced the model bias for CO, especially in the NP region (-16.158 to -4.948 ppb), the model bias for O₃ was increased. The model biases exhibited negative trend for both CO and O₃ in the OLD case. This simulation pattern for O₃ in the NP region was in line with the OMI comparison (Sect. 3.1.1). This finding seemingly indicated an insufficient downward mixing process of O₃ in the free-troposphere or inconsistent surface deposition (Ha et al., 2021; Kanaya et al., 2019). However, the CO underestimations in the NP region might mark the inadequate CO emission in the HTAP inventory in CHASER (Ha et al., 2021). In Figure 6(a,c), overestimations of CO and O₃ were visible along Japan-Indonesia-Australia (Track-2) during the low episodes in December/January. Here, the larger model biases might account for the model's insufficient halogen chemistry (Kanaya et al., 2019; Ha et al., 2021). Figure 6 shows the model's percentage discrepancies for O₃ from *Mirai*'s data, except those from HONO concentrations interpolated for these regions. The underestimated simulations of O₃ were enlarged, especially in the Japan – Alaska region, being driven by the reduction effects in the STD case. In another way, these effects weakened the O₃ overestimates across the land areas, namely, over the region near Japan and Indonesia-Australia. Moreover, the higher HONO levels were identified for these off-shore data with up to 1.4 ppb abundances (Figure 6(c): red numbers). This high HONO level might underestimate an accurate level as a stronger reduction for O₃ was still required for the STD run (Figure 6(a): red marks).

The effects of the HONO chemistry along *the R/V Mirai* tracks exhibited various trends for each mechanism. Figure 7(b,d) illustrates O₃ and CO changes triggered by the HONO gas reactions (GRs), uptakes (HRs), and emission (EM). The gaseous reactions (blue bars) had mostly increased CO levels due to the reduced OH and O₃ levels (Figure S14). The gaseous mechanisms caused some reductions at the peak CO level because higher OH level from HONO photolysis near land domain or extra OH flux from stratosphere near 60 °N latitude could dilute CO. Furthermore, O₃ level was slightly increased due to GRs north of 60° N, as GRs was a source for NO₂ thus enhanced O₃ formation at these high latitudes (Figure S14). O₃ level was often decreased in the NP region since minor NO₂ increased and stronger OH reduction were seen for this region (Figure S14). The change tendencies in O₃ near land areas were varied (T2, T3) because the vertical effects to NO_x and OH were stronger during DJF for this region (Figure S14). HRs, largely consuming NO₂, reduced O₃ (as large as 8 ppb), and increased

CO (~10 ppb) levels (Figure 7(b,d): orange+green). HRs, (particularly HRs on cloud surfaces, shown by orange bars), exerted the strongest contribution to the calculated changes in O₃ and CO among the three HONO pathways. This predominant cloud effect was also prominent in the previous comparisons, especially EMEP (Figure 10(ii,jj): blue), thereby, indicating substantial effects of clouds at the mid-latitudes where the cloud SAD is higher (Figure S1). HRs on aerosols (green bars) had minor contributions during all cruises, despite they caused a marked increase in the O₃ concentrations off-coast Japan (track #3). It should be noted that this is not enough to explain the simulation bias with regard to the measurements. The additional HONO from direct emission (red bars) mainly increased O₃ and reduced CO concentrations, especially near land (latitude < 50° N). This finding resonated with the comparison for continental stations (Figure 10(cc,ff,ii,jj): oranges). The overall effects of the HONO chemistry along *Mirai* cruises tended to reduce O₃ and increase CO levels. For the NP region, CO level increased and OH level reduction also can ameliorated the model performance. The improved model performance is evidenced from the comparison of the simulation with ATom1 aircraft data as well (Figure 5(g,h)). Thus, the strengthened underestimation of O₃ concentration in the NP region was unlikely driven by HR on cloud particles (Sect 3.1.1 and Ha et al., 2021). It was rather related to the inconsistencies in the surface deposition of ozone. These inconsistencies were supported by empirical evidence as the negative bias in this comparison turns neutral or positive for the aircraft measurements in the same region (Figure 5(f): at 1000 hPa).

Overall, the comparisons between the model and and ATom1 *Mirai* might indicate that the HRs on cloud surfaces were the main contributing factor to the marine boundary's photochemistry, whose effects emerged during the ATom1 flights in the marine atmosphere. GRs and aerosol HRs had a stronger impact on atmospheric chemistry at higher altitudes than the near-surface layer. Also, their effects should be enhanced through the additional NO_x and HONO sources to reconcile the model simulations with the observations.

Table 6: Model comparison with *Mirai* cruises: no outlier filter is applied. *N* is the available data for each calculation. Correlation coefficient (*R*, no unit) and biases (ppbv) in STD run are shown as bold if better than those in OLD run.

	CO <i>N</i> =4030	CO (40–60° N) <i>N</i> =1374	O₃ <i>N</i> =3893	O₃ (40–60° N) <i>N</i> =1418
<i>R</i> (STD)	0.690	0.586	0.568	0.618
<i>R</i> (OLD)	0.696	0.601	0.628	0.642
bias (STD)	4.087	-4.948	-8.823	-7.823
bias (OLD)	-8.136	-16.158	-3.625	-1.472

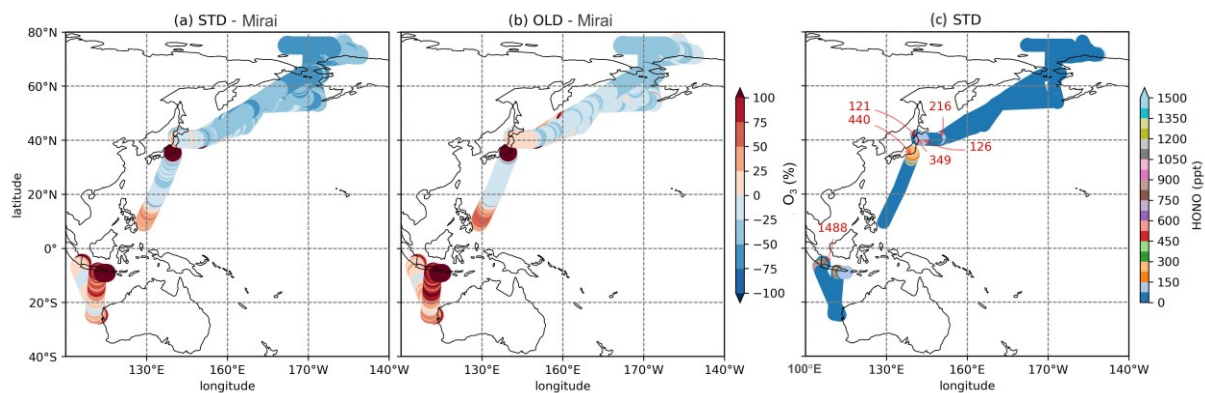


Figure 6: Percentage discrepancies of STD (a) and OLD (b) simulations from *Mirai* for O₃ and HONO concentration in STD (c). The red numbers in (c) indicate maximum HONO concentrations for each cruise.

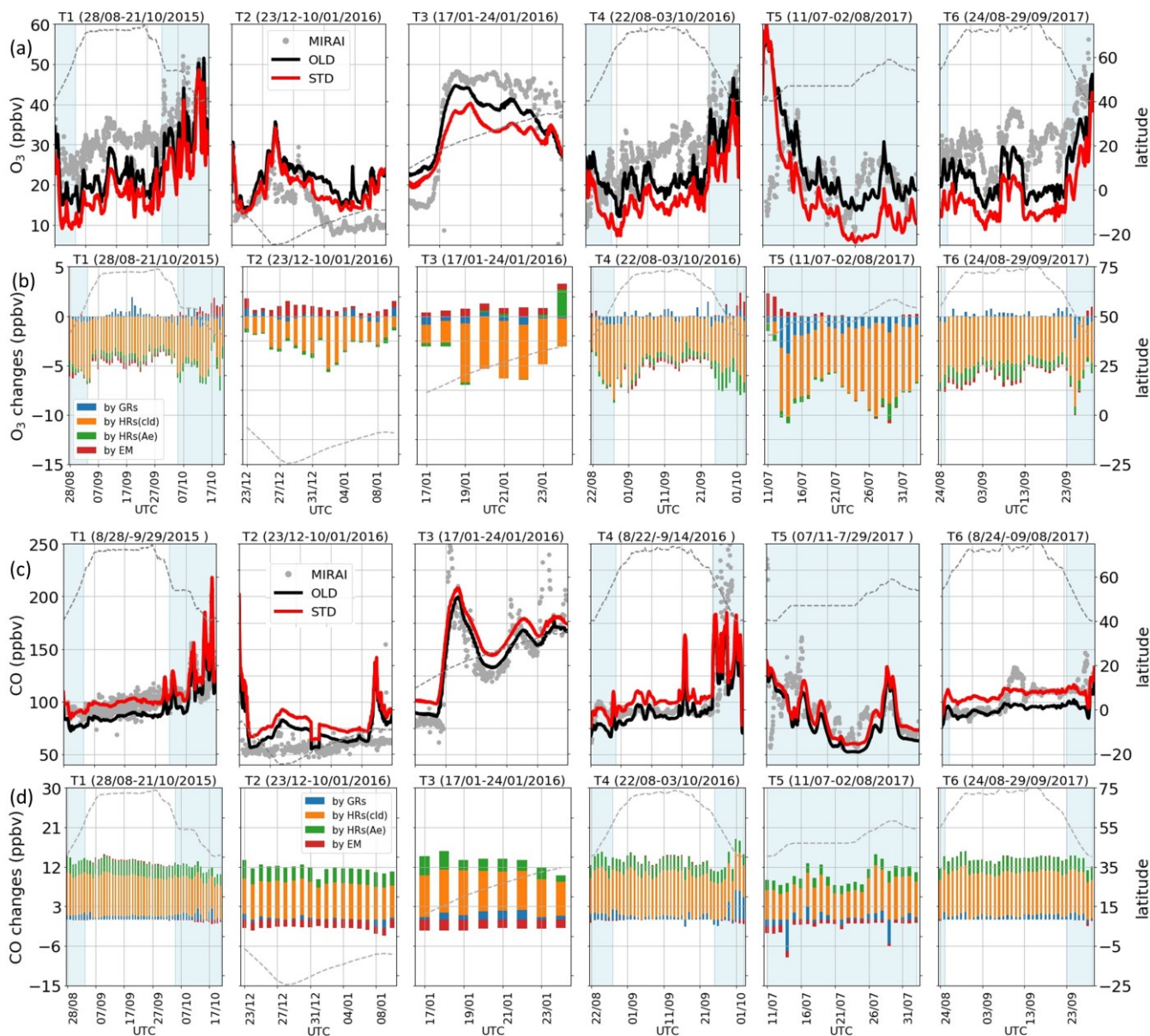


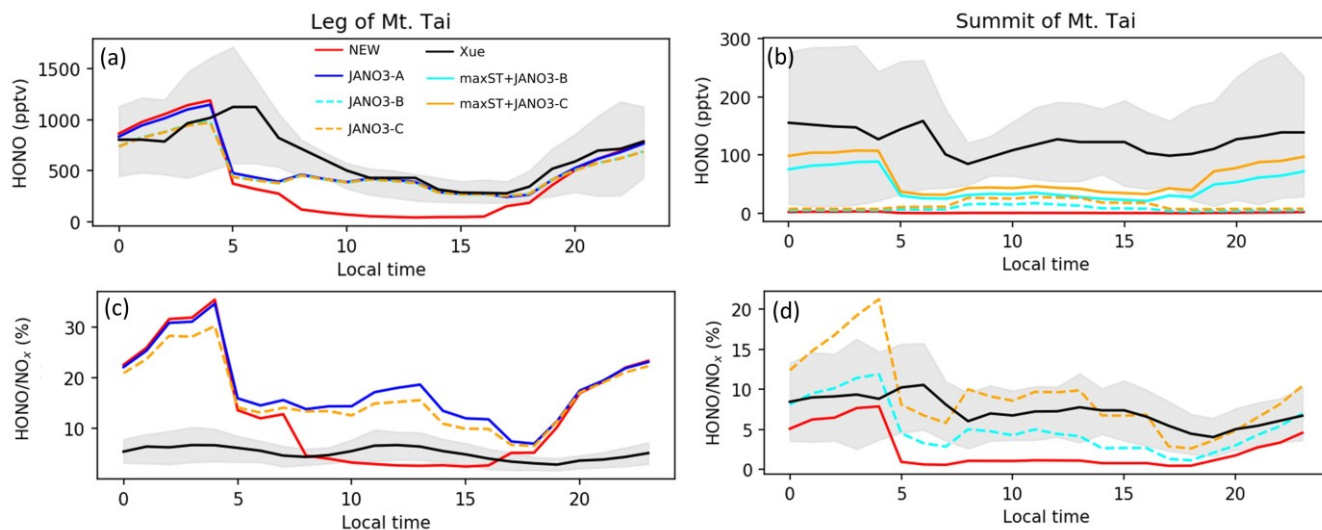
Figure 7: Validation with ship-based data. Observed and simulated concentrations (a, c) and daily mean effects by HONO chemistry (b, d) for O_3 and CO during *Mirai* cruises. In (a, c), grey dots: observation, black lines: OLD case, red lines: STD case. In (b, d), blue bars: changes by GRs; orange: by HRs on clouds; green: by HRs on aerosols; red: by EM. The left axis exhibits the concentrations and changes (ppbv). The right axis shows cruising latitudes plotted as dashed lines. The horizontal axis is travel times (UTC). Vertical light-blue shaded areas are for data in the NP region ($140\text{--}240^\circ\text{ E}$, $40\text{--}60^\circ\text{ N}$).

3.1.5. HONO, NO_x, O₃, and other atmospheric species at ground-based stations

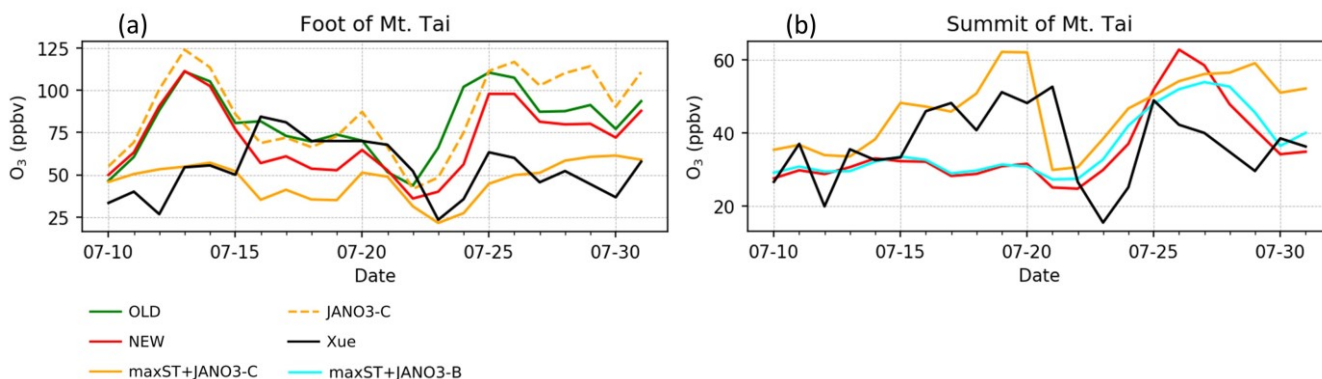
530 In this part, HONO concentration and HONO-related species measured for summer 2018 at the leg (150 m) and the summit
(1,534 m) of Mt. Tai (Shandong province, China) by Xue et al. were reproduced using a data extraction tool from images
(Figure 5 in Xue et al., 2022a). We compared our model's additional sensitivity simulations (Table 5) with Xue's measurements
(Figure 8). The HONO estimated in the STD case for the foot station was rapidly reduced after 4 am (from ~ 1,100 pptv),
535 while the observed HONO level peaks at ~ 6 am and remains about 0.5 ppbv at noon (Figure 8(a)). The HONO level produced
by the sole NO₃⁻ photolysis on ground, aerosols and cloud particles (JANO3-A/B/C cases – respectively in solid blue, dashed
cyan, and dashed orange lines in Figure 8(a)) can append moderately the simulated daytime HONO to reach the ground-based
observatory levels comparing to the STD case. This append indicated a partially important role of NO₃⁻ photolysis on all
surfaces to HONO sources since early morning. Also, NO₃⁻ photolysis adjusted the ratio of HONO/NO_x more analogue to the
observed daytime ratios at the ground (Figure 8(c,d)). The lack of NO₂ sources, especially during nighttime (Figure S15), even
540 in the OLD case (without HONO chemistry), was one of the reasons for the remaining unknown HONO sources existing
during ~ 5-11 am. The combined cases (maxST+JANO3-A/B/C cases) produced too much HONO at the leg compared to
observations (not shown in Figure 8), indicating the improper mechanism of enhanced NO₂ aerosol-uptakes for ground-based
stations. In contrast, the enhanced aerosol uptakes were more compatible with observation at the summit, where these
combined cases provided the best agreement to observation (Figure 8(a,b): solid cyan and orange lines). However, the best
545 simulation for HONO at the summit station only reached the lower line of the averaged-daytime HONO level (Figure 8(b)).
Xue suggested that the high HONO level at the summit of Mt. Tai was dominated by the rapid upward transport from the
ground and the in situ heterogeneous formation on the mountain surfaces (Xue et al., 2022a), which the mismatching between
the actual locations and the coarse model grid (2.8°) of our model, including vertical layer, might not provide. Similar to NO₂,
the simulated CO concentrations at Mt. Tai were very low (~200 ppb at the foot station in the STD case versus ~ 400-600 ppb
550 measured CO; not shown), even in the OLD case. In our model, the inadequate emission inventory of CO and NO₂ for the
Asian region using HTAP-II-2008 and the coarse model resolution (2.8°×2.8°) were the reasons for the low ground-based
emissions and vertical transport (Ha et al., 2021). Such emission inventory and vertical transportation improvement could
further close the HONO observation gap and reduce the unrealistic highness of HONO/NO_x ratios. Such a study could better
show the validity of the HONO production mechanisms from enhanced NO₂ aerosol-uptake and NO₃⁻ photolysis (combined
555 cases) for the summit station.

The above discussion confirmed that NO₃⁻ photolysis (R7) on the ground, aerosols, and clouds surfaces (JANO3-A/B/C
cases) enhanced daytime HONO but being ignorant of NO₂ level (Figure S15) due to an absent NO_x recovery process (Ha et
al., 2021). However, HONO sources via (R7) in JANO3-A/B/C cases still increased daytime O₃ levels at the foot of Mt. Tai
(Figure 9(a)) as a result of rapid NO_x cycling. Either the JANO3-A/B/C or the combined maxST+JANO3-B/C case was closest
560 to O₃ observation during cleaner (50-75 ppb O₃ on 16th – 22nd July) or uncleaner episodes (< 50 ppb O₃), suggesting an enhanced
role of aerosol-uptakes during the polluted episode (indicated by the corresponding increases for CO; Figure 7 in Xue et al.,

2022a). At the summit station, NO_3^- photolysis in JANO3-C and maxST+JANO3-C cases (all surfaces including clouds) boosted O_3 up to the observational level, indicating the contribution of cloud surface at the summit ($\sim 1,500$ m).



565 **Figure 8: HONO and HONO/NO_x ratio concentrations estimated in the model and reproduced from Xue et al. (2022a) for Mt. Tai's foot and summit stations during July. Shades show minimum / maximum ranges, while colours show simulations as in legend.**



570 **Figure 9: Daytime (05:00–18:00) average O₃ concentration during 9–31 July 2018 at the foot and summit of Mt. Tai simulated in the model (coloured) and reproduced from Figure 7 in Xue et al. (2022a) (black). In (b), JANO3-B/C cases are overlapped with maxST+JANO3-B/C cases, respectively.**

The effects of HONO chemistry in the continental near-surface layer of East Asia and Europe were also investigated. To this end, we conducted model comparisons versus EANET and EMEP stationary observations for mass and gaseous concentrations of PM_{2.5}, SO₄²⁻, NO₃⁻, HNO₃, NO_x, O₃, and CO (CO for EMEP only). Table 7 shows the correlation coefficients (*R*) and model biases for each species in the OLD and STD cases. The OLD simulation had its fair correlations and RMSEs with observation for SO₄²⁻ (*R*(EANET) = 0.56, *R*(EMEP) = 0.63), NO₃⁻ (*R*(EANET) = 0.36, *R*(EMEP) = 0.71), and HNO₃

($R(\text{EANET}) = 0.18$, $R(\text{EMEP}) = 0.12$), which were in line with other atmospheric chemistry models' R and RMSE values against EANET and EMEP (Brian et al., 2017), as also discussed in Ha et al. (2021).

Figure 10 compares the measured versus simulated HNO_3 , NO_x , HONO, O_3 , and CO concentrations for the EANET and EMEP stations. The stations were divided into three groups: (1) high- NO_x EANET stations, including Jinyushan (China), Kanghai, Imsil, Jeju (South Korea), Bangkok, Nai Muaeng, Samutprakarn, Si Phum (Thailand), Metro Manila (Philippines), and Ulaanbaatar (Mongolia); (2) other EANET stations (39 for HNO_3 , 22 for O_3 , and 15 for NO_x); and (3) all EMEP stations. The ground-based observations in the period 2010–2016 revealed the slightly decreasing NO_x for moderate NO_x concentrations, as well as $\text{PM}_{2.5}$, and aerosols (Figure 10(e,h) and Figure S4(e,g,h,i)). These decreasing trends were not captured by our simulations which used the high emission scenario for the EDGAR/HTAP-2008 inventory. Note that NO_x and $\text{PM}_{2.5}$ concentrations were generally underestimated in the model (OLD), especially in high- NO_x regions (Figure 10(b,e,h) and Figure S4(a,d,g)) with model's averaged biases of -0.8 ppb NO_x for EMEP and -4 ppb NO_x for EANET (Table 7). These underestimations were stronger during winter, particularly for the high- NO_x regions. It was possible that complex domestic sources could lead to diluted emissions for the simulations' moderate horizontal resolution ($\sim 2.8^\circ$). Higher model resolutions, such as 1.1° , 0.56° or even higher, could remedy such effects (Sekiya et al., 2018).

HONO chemistry in the STD case increased HNO_3 , NO_3^- , SO_4^{2-} , and $\text{PM}_{2.5}$ for EANET and EMEP stations compared to the OLD case (Figure 10 and Figure S4: red vs blue lines). HNO_3 and NO_3^- were increased as the products of NO_2 conversion (R4); thus, the model underprediction for NO_3^- in EANET stations was mitigated (bias OLD \rightarrow STD: $-0.439 \rightarrow -0.223 \mu\text{m m}^{-3}$). As a result of the increased OH level at the surface of these ground-based stations, SO_4^{2-} was also increased (Li et al., 2015; Lu et al., 2018) (Figure S4(j,k,l)), although this effect enlarged the model overestimation for SO_4^{2-} species at EANET and EMEP stations (Table 7). The consequent increase in $\text{PM}_{2.5}$, though minor, remedied the model underestimate for $\text{PM}_{2.5}$, e.g., model bias in OLD \rightarrow STD: $-3.044 \rightarrow -2.494 \mu\text{m m}^{-3}$ (EMEP). Unfortunately, the model overestimate for HNO_3 in the OLD case was enlarged with the inclusion of HONO.

In the STD case, including HONO photochemistry, the negative biases of NO_x in the model had adversely enhanced due to the NO_2 loss processes (bias OLD \rightarrow STD: $-3.997 \rightarrow -4.358$ ppb for EANET (Table 7)). These processes also suppressed the NO_x seasonality observed at most sites (Figure 10(b,h), red lines). The lack of seasonality was driven by the substantial loss of NO_2 on the surfaces of atmospheric particles during winter. For EANET's low NO_x and EMEP stations, this huge NO_2 loss was attributed to cloud surfaces (Figure 10(ee,hh): blue bars). However, NO_2 uptake by aerosols has a comparable contribution effect to the cloud effect in high- NO_x environments such as Jinyunshan (Figure 10(bb), grey bars). Namely, nearly half of the NO_2 was converted to HNO_3 in R4 (Figure 10(aa,dd,gg)) without an efficient recycling process, leading to an overall removal of NO_x . This lack of NO_x could be the main driver for the seasonal NO_x deterioration and the exacerbated overestimations of HNO_3 by simulations.

The STD O_3 simulation exhibited moderate and strong positive correlations with EANET and EMEP observations, 0.595 and 0.707, respectively (Table 7). The model improvements for SO_4^{2-} , NO_3^- , $\text{PM}_{2.5}$, and HNO_3 were minor. However, the model improvement for O_3 was considerable, with a bias reduction of $\sim 67\%$ for EMEP and $\sim 74\%$ for EANET (Table 4). In the STD

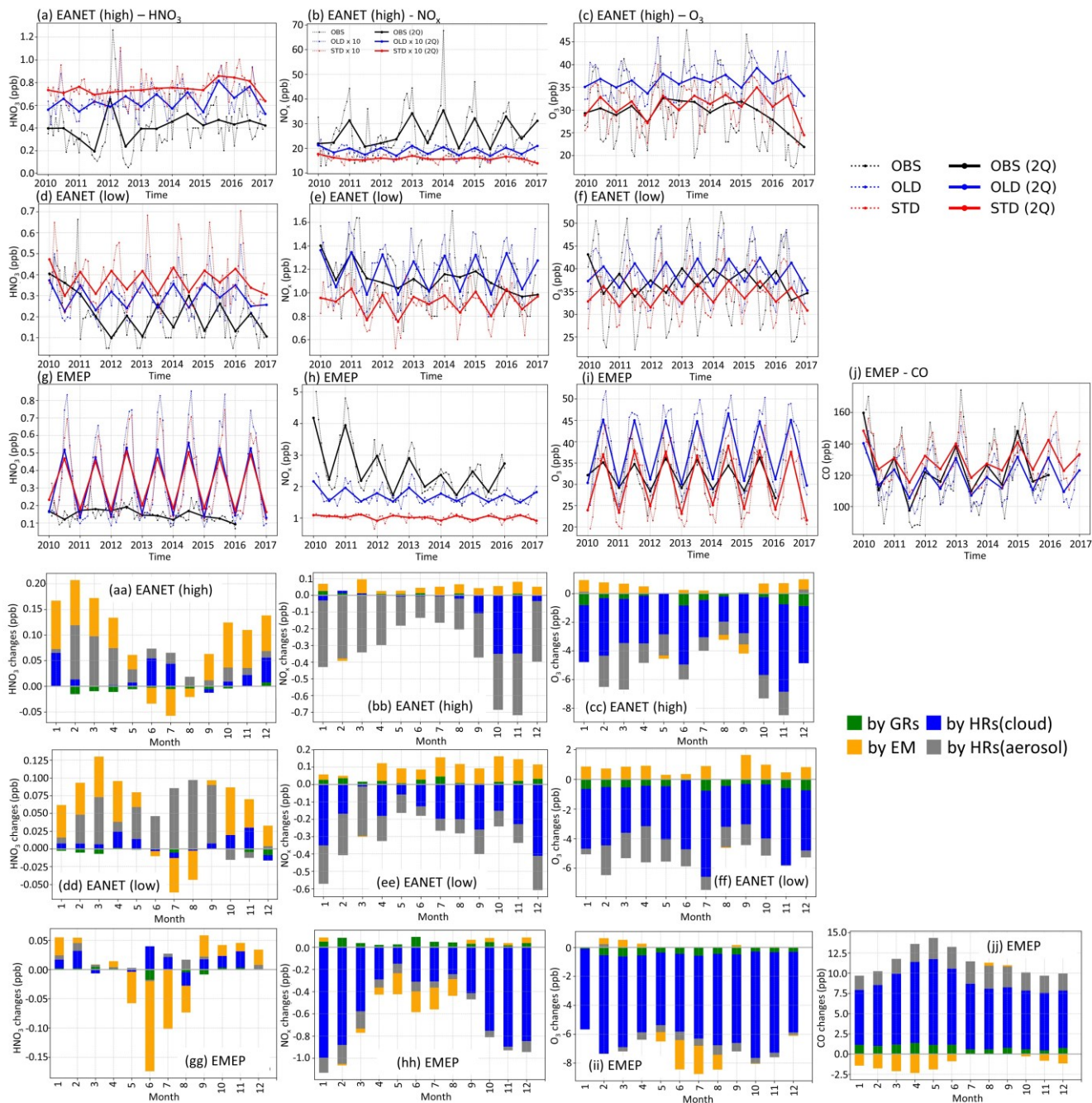
case, too little NO_x was left from its heterogeneous loss, causing a net O_3 chemical destruction (because lacking atomic oxygen from NO_2 photolysis), which in turn, reduced the model overestimates for O_3 in the OLD case (Table 7; Figure 10(c,f,i), red versus blue lines). However, further improvements in the chemical scheme were necessary to reproduce the O_3 measurements better; namely, a larger O_3 reduction for the summer and a reduced effect in simulated O_3 for the winter might alleviate the undesired effects. A delayed minimum from summer (as observed) to early winter (calculated in OLD and STD runs) causing opposite seasonality for O_3 was prominent for the low- NO_x EANET stations (Figure 10(f)). The effects of HONO chemistry on the mean OH levels were small, although it showed slight increases for OH's minima (Figure S4(j,k,l)). Thus, due to the apparent O_3 reduction for EMEP stations, CO was increased. Despite the reductions in NO_x and O_3 levels being exaggerated during winter, the increment in CO reconciled the model's underestimation of CO high peaks in spring (Figure 10(j)), thereby strongly dwindling the bias for CO by $\sim 59\%$ (Table 4). However, the CO concentrations during summer should be reduced in the STD case to capture the measurement. This finding might indicate inadequate HONO emissions for the EMEP stations (Figure 10(jj): oranges), which otherwise had reducing effects to NO_x , O_3 , and CO levels during summertime.

The break-down scrutinies for aerosols and clouds effects for the ground-based stations (EANET/EMEP) also revealed the vast role of cloud-uptakes in the HONO impacts on NO_3^- aerosols, NO_x , O_3 , and CO (Figure 10 and Figure S16: blue bars), while the HONO impacts on HNO_3 , $\text{PM}_{2.5}$, and SO_4^{2-} aerosols were governed by aerosol-uptakes and HONO emission (grey and yellow bars).

The existing ill-reproduction in NO_x 's seasonality and overestimations for HNO_3 might be amended by an explicit inventory for direct NO_x emissions and an efficient NO_x -recycle process. Such mechanism via HNO_3 uptakes on soot surfaces ($\text{HNO}_3 \rightarrow \text{NO}_2$) was also tested in this study using the uptake coefficients range from 3×10^{-5} - 4.6×10^{-3} (Lary et al., 1997; Akimoto et al., 2019). Unfortunately, this heterogeneous HNO_3 conversion could not solely serve as a productive NO_x recycling process in the EANET/EMEP stations (not shown). Among the additional cases described in Table 5, the alternated HONO : HNO_3 (0.9 : 0.1) product ratio of (R4) (ratR4 case) showed a good remedy for NO_x at EMEP stations (Figure S11(g): brown vs black). For the EANET sites, the photolysis of adsorbed HNO_3 on ground surfaces (JANO3-A case) avoiding NO_x removal via HNO_3 could remedy the NO_x seasonality issue for these ground-based stations (Figure S11(a,d): greens vs blacks). However, the photolysis of adsorbed HNO_3 on grounds and aerosol/cloud surfaces (JANO3-B and JANO3-C cases) was not an effective NO_x recycling for EANET/EMEP measurements, leaving only slight differences in surface NO_x levels compared to STD case (Figure S11(a,d,g): cyans and oranges vs reds). However, the heterogeneous photolysis of HNO_3 increased O_3 and OH at the high NO_x regions instead of O_3 reduction in the STD case (Figure S11(b,c): cyans and oranges vs blues), which brought reconciliation to the underestimates for O_3 peak in springs (Figure S11(e): dotted cyan vs dotted blacks), although the runs with HNO_3 photolysis still did not capture the O_3 minimum in summer. Only the ratR4 case could capture the O_3 minimum in summer among the sensitivity cases, which indicated the need for stronger NO_x recycle processes for these ground-based stations.

Table 7: Model comparison of different species with observations at the EMEP and EANET stations. Three-sigma-rule outlier detection is applied for each station before calculating correlation coefficients R . NO_x data are filtered once more using the two-sigma-rule. R and bias of the STD run are shown as bold if improved compared to the OLD run. Units for model biases for $\text{PM}_{2.5}$, SO_4^{2-} , NO_3^- : $\mu\text{m m}^{-3}$; HNO_3 , NO_x , O_3 , CO : ppb.

	EMEP							EANET					
	$\text{PM}_{2.5}$	SO_4^{2-}	NO_3^-	HNO_3	NO_x	O_3	CO	$\text{PM}_{2.5}$	SO_4^{2-}	NO_3^-	HNO_3	NO_x	O_3
$R(\text{STD})$	0.528	0.655	0.755	0.115	0.637	0.707	0.526	0.344	0.560	0.359	0.228	0.202	0.595
$R(\text{OLD})$	0.469	0.631	0.713	0.115	0.698	0.650	0.535	0.357	0.559	0.364	0.181	0.235	0.613
bias (STD)	-2.494	0.889	0.632	0.073	-1.680	-1.708	2.943	-7.231	1.161	-0.223	0.396	-4.358	1.410
bias (OLD)	-3.044	0.752	0.247	0.077	-0.818	5.154	-7.138	-7.583	0.981	-0.439	0.302	-3.997	5.494



650 **Figure 10: Concentrations and changes by HONO inclusion for EANET and EMEP stations. (a-j) Observed and simulated concentrations during 2010–2016. Black lines: observation; red: STD case; blue: OLD case. In (b), concentrations in STD and OLD are 10 times-folded for better visualization (red and blue lines). For each group of stations, dotted lines are all stations' median from each station's monthly-mean values. Thick solid lines represent two quarters averaged from dotted lines. (aa-jj) Calculated monthly-mean changes by HONO chemistry. Green bars: monthly changes by GRs; blue: by HRs on clouds; grey: by HRs on aerosols; orange: by EM. Stations are grouped as high- NO_x EANET (first and fourth rows), low- NO_x EANET (second and fifth rows), and all EMEP stations (third and sixth rows). First column: HNO_3 ; second column: NO_x , third column: O_3 , fourth column: CO .**

655

3.2. Distribution of HONO and global effects of HONO chemistry

3.2.1. Global HONO distribution and burden

This section sheds light on the global HONO distribution computed for the STD case. The surface HONO concentration was peaked over the geographical region that embraces China, with seasonal mean leveled up to 2.8 ppbv during summer and 7.8 ppbv during winter (Figure 11(a,b)). The winter peak agreed with observations for a large industrial region in the Yangtze River Delta of China (Zheng et al., 2020). The high concentrations of HONO were also identified in other industrial regional clusters: Northeast America (seasonal mean up to 0.5–1 ppbv), India (up to 1–3 ppbv), forest regions, especially the extra-tropic evergreen forest in Europe (up to 1–3 ppbv), and Africa (up to 0.5–1 ppbv). Over the ocean, HONO levels remained at 10–30 pptv in the coastal regions and below 10 pptv far off the coast. The simulated HONO distribution was in line with a previous study (Elshorbany et al., 2012) despite the peaks over polluted Chinese areas were markedly higher in our model (tenfold). The overestimation associated with the soot uptake in our model has been previously neglected. The highest HONO concentrations (10–30 pptv) in the free troposphere (at 2500 m) were simulated over Africa’s biomass burning region during wet months (JJA) (Figure 11(c,d)), which could arise due to the NO₂ uptake on aerosols, originated from this wildfire source.

In the model, HRs and EM were the main contributors to HONO at the surface layer (Figure 12) by providing efficient HONO formation and promoting gas reaction (R2). Of the various surfaces provided for HRs in our model, liquid/ice cloud particle surfaces were supposed to catalyze significant photochemical effects in remote regions. This phenomenon has not been previously addressed in other studies in detail. The uptake of liquid/ice cloud particles either increased HONO formation via (R4) for the tropical and southern oceans or reduce it via (R6) along 60 °S in DJF and Arctic in JJA (Figure 12(a,b)). Besides cloud particles, HRs on aqueous aerosols also produced HONO in a continental atmosphere rich in sulfate, dust, and soot particles (Figure 12(c,d)). EM included in the model has sharply increased the HONO level over deserts (Sahara, Arabian), grasslands (South Africa, South America), boreal, and agricultural land (West Europe, Australia). This finding agreed well with another study, based on spaceborne observations for HONO in wildfire plumes (Theys et al., 2020) and along ship tracks in the marine boundary layer (Figure 12(e,f)).

Table 8 summarizes the global sources and sinks of tropospheric HONO quantified by CHASER. The simulations indicated that GRs contribute only 11% of the HONO net production. HRs and EM produced more significant HONO (63% and 26% HONO net production, respectively). The pyrogenic HONO emission estimated in this study might be underestimated as HONO/NO_x emission ratio could be enhanced by up to 1 at extratropic evergreen forests (universally 0.1 in this study (STD)) (Theys et al., 2020). For large metropolitan areas such as those in China, HRs and EM had also been reported as the two most significant contributors to HONO formation, at ~59% and 26–29%, respectively (Li et al., 2011; Zhang et al., 2016). Of the various surfaces provided for HRs, aerosols represent a more effective HONO formation site (~51.2%) compared with ice and clouds, as they are contributing only 11.8% to HONO production. Moreover, the HONO loss through photolysis (R1)

and (R3) was equivalent to its uptake onto the particles (R6). In equilibrium, the tropospheric abundance of HONO averaged of the globe was estimated to be 1.4 TgN in our model.

HONO production calculated in sensitivity cases (Sect. 3.1.2) are recorded in Table S5 (last column), and the spatial distributions are plotted in Figure S12. The small supplement by the photolysis of adsorbed HNO₃ on ground surfaces (JANO3-A case) to surface HONO concentration and tropospheric HONO burden (1.40 → 1.45 TgN) was consistent with the discussion for EMERGe campaign. In the JANO3-B and JANO3-C cases, tropospheric HONO burden was increased to 2.02 TgN and 2.93 TgN, respectively, mainly remaining for the lower troposphere (~600 hPa) (Figure S12(g,h)). Compared to HNO₃ photolysis, the enhanced aerosol-uptake (maxST case) produced HONO more extensively over the source region and in the winter hemisphere where there was no photolysis (Figure S12(a-d)). Therefore, the maxST case did not produce enough HONO during EMERGe (worse than JANO3 cases). However, the global HONO burden in maxST case was added to 7.79 TgN, which might be because we set the enhanced aerosol uptake of NO₂ for all environments. The combined cases (maxST+JANO3-B or maxST+JANO3-C), although appropriately approaching daytime HONO production as well as NO₂ and O₃ levels during EMERGe, incredibly escalated the global HONO burden to 12.64 and 17.13 TgN, respectively (Table S5), more via the enhanced aerosol-uptake setting that could reach the upper troposphere (Figure S12(k,l)). However, it might be more realistic if HONO production stayed at the lower troposphere (Eshorbany et al., 2012). Further work for the combined cases to be standard cases, the amplified NO₂ conversion on aerosols should be confined in high SAD regions (Kalberer et al., 1999; Stadler et al., 2000), or at daytime only (Notholt et al., 1992; Stemmler, 2007).

Table 8: Global sources and sinks of tropospheric HONO calculated by CHASER (2011).

Sources (TgN/yr)	35.17	Sinks (TgN/yr)	33.77	Net productions (TgN/yr)	1.40
P _{GR}	13.24	L _{GR}	13.09	GRs	0.15(11%)
P _{HR}	15.31	L _{HR}	14.43	HRs	0.88 (63%)
P _{HR(cld)}	9.57	L _{HR(cld)}	9.40	HRs(cld)	0.17 (11.8%)
P _{HR(ac)}	5.74	L _{HR(ac)}	5.03	HRs(ac)	0.72 (51.2%)
S _{EM}	6.62	L _{EM}	6.25	EM	0.37 (26%)

P denotes chemical production, S denotes source (emission + chemical production), and L denotes loss. The numbers in parentheses represent the portion of each pathway to the total HONO net production. Bold lines show the most significant contributing mechanisms to the HONO burden.

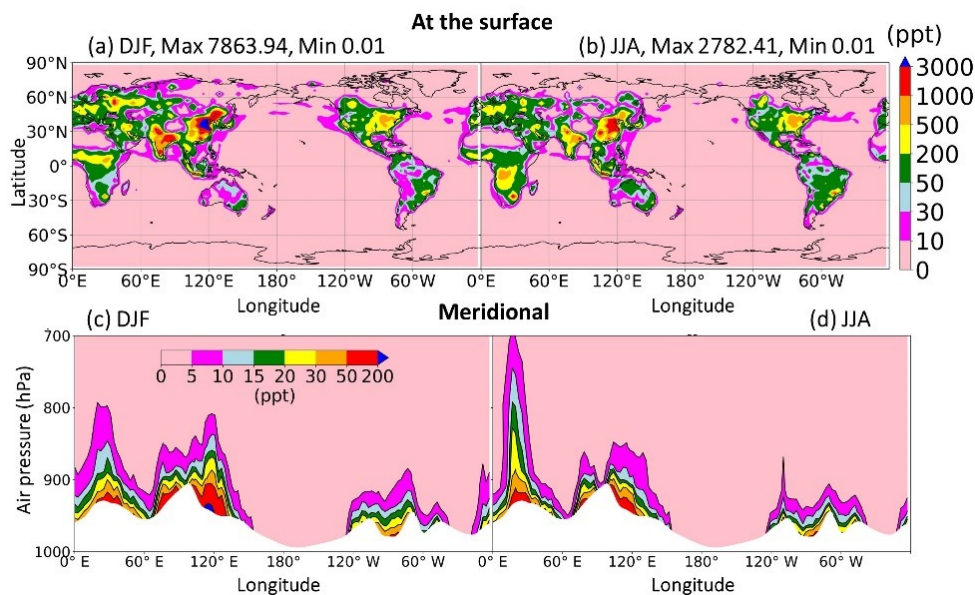


Figure 11: Distribution of HONO levels at the surface (a-b) and meridional mean (c-d).

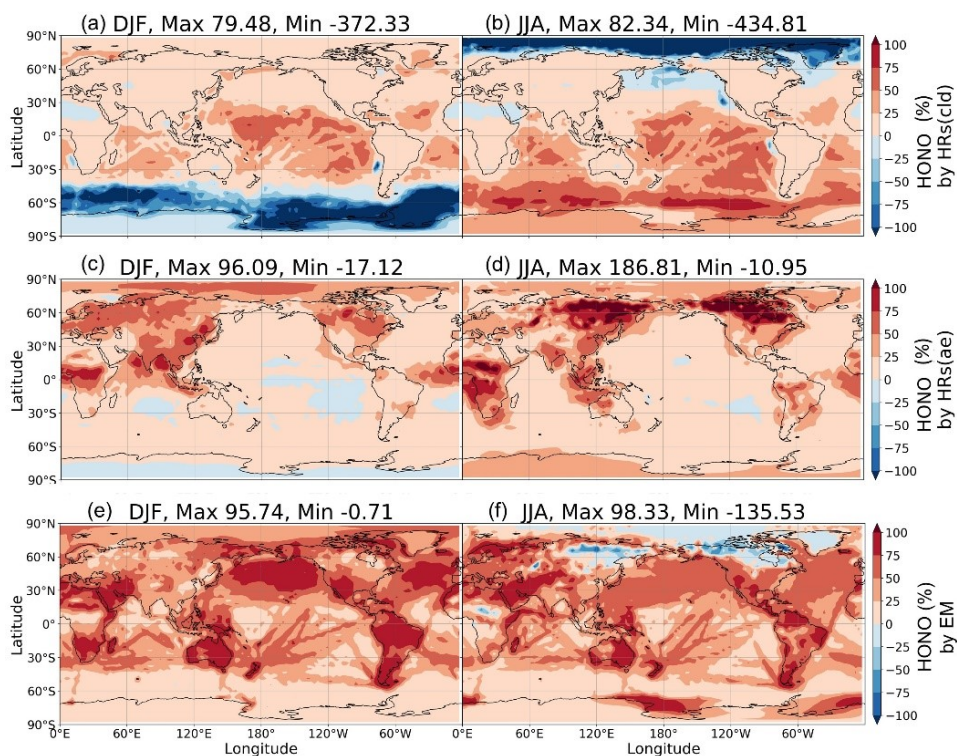


Figure 12: Contribution of HRs and EM to surface HONO concentrations. Contributions of HRs onto ice and clouds (a, b), HRs onto aerosols (c, d), EM (e, f) in DJF (left) and JJA (right) are plotted. Each contribution is determined by the difference of HONO in two simulations: (a, b): GR+HR(cld) and GR, (c, d): GR+HR and GR+HR(cld), (e, f): STD and GR+HR, divide by HONO in STD case. The maximum and minimum values are out-scaled hence displayed at the tops of each panel.

3.2.2. Global effects on tropospheric column ozone

Comparison between simulation and satellite OMI observation for tropospheric column ozone (TCO) can be examined as a global effect for ozone. In Figure 13, the STD run with HONO inclusion improved the overall tropospheric column ozone (TCO) distribution observed by the OMI, especially at the mid-latitudes. Figure S3 indicated a TCO reduction when HONO chemistry was included in the STD case (red lines vs green lines). Although HONO photolysis (R1) was a source of OH, supposedly increasing the tropospheric oxidizing capacity, the calculation in STD case showed the OH and O₃ increased only occur at the surface of polluted sites (Figure 14(a,e)). The NO₂ conversion to HONO and HNO₃ (R4) became a NO_x's removal pathway at remote regions, thus restricting the formation of O₃ and OH for the larger part of the troposphere (lacking atomic oxygen from NO₂ photolysis). Figure 13 shows that the O₃-reducing effects of HONO chemistry greatly reduced the model overestimates in the OLD simulation for the general Northern Hemisphere and polluted regions such as China. However, in the NP region, the inclusion of HONO only reduced the model overestimates during the insignificant episodes of TCO (autumn to early winter) while extending the underestimates for TCO for the rest of the year (Figure S3(b)). These O₃ underestimates in the NP region are also visible for the modelled surface air versus the measurements during the *Mirai* cruises (Figure 6(a,b)). Notably, these underestimates for O₃ could hold up to 400 hPa, as seen in comparison with the ATom1 flights (Figure 5(f): 400–900 hPa). This phenomenon could be related to the stratospheric downward transport and insufficient vertical mixing, as discussed in Sections 3.1.3 and 3.1.4, for comparisons in the NP region's surface air and free troposphere. Although the HONO level in STD remained < 10 ppt for this area (Figure 11), the O₃ reducing effects exacerbated the model discrepancy. The HONO photochemistry was unlikely to be the primary driver of this phenomenon as the ozone simulation was improved over the continents when the HONO photochemistry is included.

In the combined sensitivity case maxST+JANO3-B (Sect. 3.1.2), O₃ was further reduced than the STD case. The reduction in TCO might be due to the enhanced NO₂ uptake on aerosols leading to more substantial O₃ formation restriction. The maxST+JANO3-B case showed better harmony with OMI for the regions of TCO overestimations (Figure 13(g,h,k)), especially the annual mean (g panel). However, the underscores of TCO, including the NP region, were worsened. These results indicated that the reduction for O₃ by HONO chemistry was reasonable, and the combined cases such as maxST+JANO3-B could be plausible, although the estimated reduction degree should be reduced by elaborating the maxST's reactive conditions.

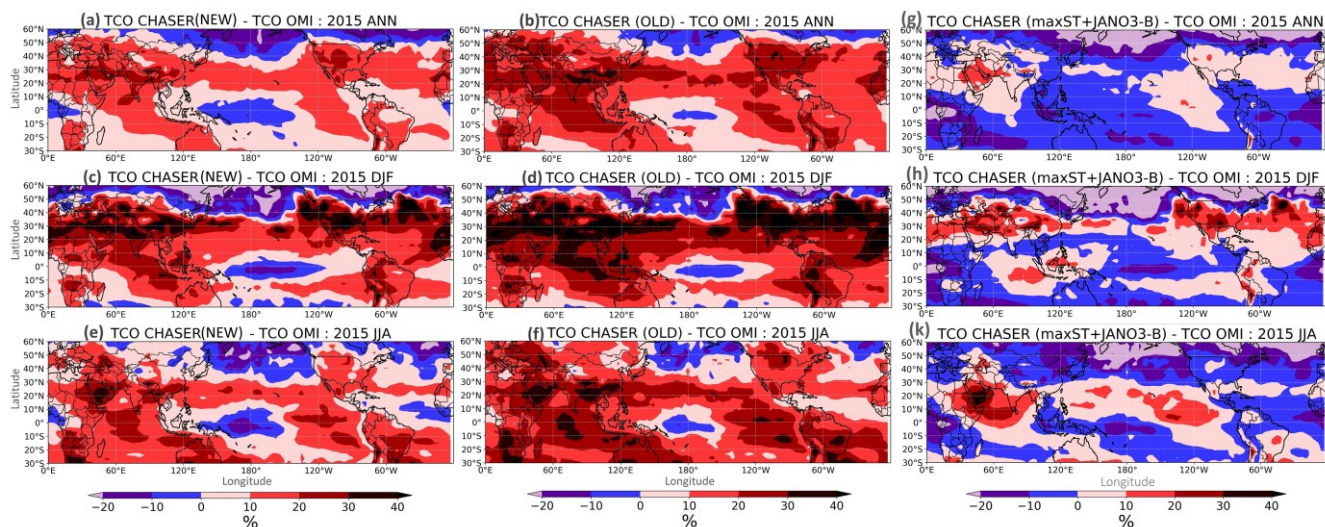


Figure 13: TCO percentage differences between model and OMI. Left panels show STD versus OMI; right panels show OLD versus OMI for annual (a,b), December – January – February (c,d), June – July – August (e,f). Black boxes indicate the NP region; dash boxes indicate the Chinese region.

745 3.2.3. Implication of HONO on the tropospheric photochemistry

In this section, the global impact of HONO photochemistry is elucidated. To this end, Table 8 summarizes the HONO budget and the contribution of each pathway to the HONO photochemical cycle. Table 9 describes its consequences for the lifetime of CH₄, and the budgets of NO_x, O₃, and CO. The gaseous reactions of HONO tended to increase the abundance of NO_x, O₃, and CO (+1.01%, +0.15%, +0.44%, respectively) and CH₄ lifetime (+0.36%) in the troposphere. Without heterogeneous and direct emissions, the relatively low HONO formation by gaseous reactions (11% of the total net HONO production; Table 8) did not cause any significant effects on NO_x, O₃, and CO in the troposphere.

Heterogeneous reactions that produce HONO were the most salient contributing factors to tropospheric chemistry, thereby, decreasing the tropospheric oxidizing capacity and increasing the CH₄ lifetime by 15% and CO abundance by 10%. HRs also reduced NO_x level by 23% and O₃ level by 6%, respectively (Table 9). The global HONO distribution from Figure 14 was mainly caused by the HR formation of HONO. Here, the reducing effects for NO_x levels, with consequences for OH and O₃ level reductions by heterogeneous reactions, were significant at mid-to-high latitudes during summer. More specifically, in DJF along 60°S and the Arctic and NP oceans during JJA, which amounted to about a -100% reduction in NO_x level at the surface (-60% in OH and -40% in O₃) (Figure 14(a-f): blue areas). These reductions in NO_x, OH, and O₃ levels extended up to 400 hPa at high N/S latitudes (Figure 14(k, l)). All these reduction effects for NO_x, OH, and O₃ levels were due to the removal of HONO on ice and cloud particles (R6) (Figure 12(a, b): blue fields). On the one hand, it accelerated the conversion of NO₂ to HONO and ultimately strengthen its deposition by particulate nitrate (R4) (Figure S13(a)). On the other hand, HRs occurring on aerosol surfaces led to increments in OH and O₃ near the surface of polluted regions during winter.

765 These were the main contributors to the regional photochemical effects over China, Western Europe, and East U.S. regions in winter (up to -74% in NO_x, +1500% OH, +48% in O₃, Figure 14(a,c,e)). However, these OH and O₃ levels increase were only accumulated in the surface layer (only small red areas at ~1000 hPa in Figure 14(i,m)). Compared to HRs on aerosol, HRs on clouds exhibited twofold effectiveness when reducing tropospheric NO_x level (-15% versus -8%) and caused threefold effects on the tropospheric oxidation capacity (+11.5% in CH₄ lifetime, -4.6% in O₃, +7% in CO), compared with HRs on aerosol (+3.5% CH₄ lifetime, -1.5% O₃, +2.6% CO) (Table 9).

770 Given the direct emissions of HONO (~10% of NO_x emission inventory), the surface NO_x, O₃, and OH concentrations were generally enhanced in the STD case compared to the GR+HR case. They induced the concentration modification for NO_x (+1.77%), O₃ (+0.97%), CO (-1.63%), and a significant reduction (-2.3%) in the CH₄ lifetime (Table 9). Remarkable enhancements for NO_x (up to +198%), OH (+243%), and O₃ (+24%) (Figure 14(b,d,f): red fields) were identified for the cropland and shrubland/forest regions in Australia, South America, and South Africa during JJA, and the boreal vegetation prevailing at mid-high latitudes in Europe, North America, and the polluted Chinese region in DJF (up to +748% OH) (Figure 775 14(a): red fields). NO_x and OH were elevated in these mid-latitude regions because of the enhanced HONO photolysis (R1) by the additional HONO source. However, OH, NO_x, and O₃ levels were reduced near the surface of the Northern Hemisphere's land during summer (up to -47% OH, -82% NO_x, and -15% O₃) (Figure 14(b,d,f)). The latter phenomenon was similar to the heterogeneous cloud effects for the high latitudes discussed above.

780 Overall, the inclusion of the three HONO processes (gas phase, aerosol and cloud uptakes, direct emission) caused -20% in NO_x, -5% in O₃, +8% in CO, and a significant increase of +13% CH₄ lifetime in the troposphere (Table 9). Figure 15 highlights the consequences of HO_x, NO_x, and O₃ for the Chinese and NP regions. NO_x level reduction accumulated in the Arctic and Antarctic during summer, especially over the NP ocean (reducing NO_x level by 60–90%, Figure 15(i)). These reductions in NO₂ and HONO concentrations were due to their uptake onto ice and clouds in these regions. However, these reducing effects caused further reductions in OH and O₃ levels for a larger part of the troposphere. As NO_x was essential in 785 regulating O₃ and OH in the troposphere, a reduction of NO_x level increased the HO₂/OH ratio (due to the HO₂ + NO → OH + NO₂ reaction), which restrained the formation of OH and ultimately of O₃. Moreover, a NO₂-deficit environment directly affected the O₃ level as NO₂ was a primary source of an oxygen atom that engages in the formation of O₃. Thus, in summer, both OH and O₃ levels were drastically reduced over the NP region (35–67% for OH, 30–43% for O₃, Figure 15(g,k)), and CO level was increased by 18% in this region (Figure 14(h)).

790 The significant impacts of HONO photochemistry were especially relevant over Eastern China in winter, which might reduce NO_x level by 48–78% (Figure 12(c)) due to the uptake of NO₂ onto aqueous aerosols. At the surface, OH level was enormously increased as a result of HONO photolysis (R1), heterogeneous NO₂ conversions (R4, R5), and additional direct emissions (Figure 15(a,b)). The corresponding increase in O₃ level was only identified at the surface of the Beijing region during winter, with +28.8% caused by HRs on aerosols (Figure 15(e)). For Beijing with high NO_x emissions, VOC-limited O₃ 795 chemistry was likely the driving mechanism (Liu et al., 2010). The vast increases in OH and O₃ levels over Beijing in winter were basically in line with the present knowledge of HONO photochemistry (e.g., Lu et al., 2018). Elshorbany et al. (2012)

also reported an increase in OH ($2\text{--}5\times 10^6$ molecules cm^{-3}) and O₃ (0.3–0.5 ppbv) concentrations over polluted regions in China during winter. Compared with Elshorbany's work, the increases in OH and O₃ concentrations in our model were higher due to the different HONO mechanisms applied in the two models, simply an averaged HONO/NO_x ratio (0.02) in their model. In particular, our newly added heterogeneous reactions on cloud particles (R4) caused significant reductions in OH, NO_x, and O₃ levels in the NP region during summer, which their model did not cover. The overall reductions in tropospheric oxidizing capacity due to HONO photochemistry were in line with the expected response to heterogeneous processes (Liao et al., 2003; Martin et al., 2003) and agreed with those previously reported for other HRs (HO₂, N₂O₅, and RO₂) previously reported (Ha et al., 2021) (Table 9). Our findings indicate that a global model without heterogeneous processes for HONO would neglect the significant changes in OH and O₃ concentrations in remote areas and, thus, will underestimate the potential effects in polluted regions.

As mentioned above, the relative importance of ice and cloud surfaces to the oxidant chemistry was negative for Arctic and NP regions. NO₂'s uptakes on ice and cloud surfaces (R4) were the main reason for the reductions in surface NO_x, OH, and O₃ concentrations in these regions during JJA (Figure S13(a)). These reductions also occurred for the free troposphere, which generally improved the model comparison with ATom (Figure 5) and partially improved in CO simulation by cloud effect (Figure 7). To HONO formation, enhancement of NO₂'s uptake coefficient on cloud surface ($\gamma_{\text{liq}}(\text{R4}) = 10^{-4} \rightarrow 10^{-2}$), along with changing HONO/HNO₃ yield ratio from 0.5:0.5 to 0.9/0.1 in (R4) in the ratR4+CLD case compared to STD case helped more NO_x preserved during EMERG's flights. Here, a supplement for HONO production is only seen in the ratR4+CLD case for the marine environment ~ 1,000 m near Japan (Figure 3(g): red-bordered orange diamonds). The ratR4+CLD case introducing an approach to recycle NO_x led to lowered global effects of HONO (only -8.57% NO_x globally, CH₄ lifetime = 9.6 years; Figure 16). For the ground-based station in comparison with Xue's data (Xue et al., 2022a), the NO₃⁻ photolysis in JANO3-C and maxST+JANO3-C cases (all surfaces including clouds) boosted O₃ level, which improved the agreement with observed O₃ at the Mt. Tai's summit station, indicating the contribution of cloud surface to O₃ formation at the altitudes ~ 1,500 m over a mountainous area (Figure 9(b)). The NO₃⁻ photolysis on cloud surface in the JANO3-C case could also be an effective HONO supplement for the tropospheric part above 2,000 m over the Asian coastal region compared with EMERG's data as compared to JANO3-B case, which excluded clouds (Figure 2(a)). The simulated concentrations of NO₂ and O₃ also agreed better with the measured data in this comparison.

Contrary to cloud surfaces, the aerosol effect was only crucial for regional photochemistry at the surface layer of polluted regions, such as China, Western Europe, East U.S. in winter time (Figure 14). As discussed above, aerosol uptakes reduce NO_x but increase regional OH and O₃ levels. For the sensitivity of HONO formation to aerosol effect, the cases JANO3-B and maxST+JANO3-B, which only included ground and aerosol surfaces for NO₃⁻ photolysis, also remedied the discrepancies for daytime HONO level across various altitudes during EMERG flights (Figure 2(a)). For the comparison with Mt. Tai station, enhanced uptakes of NO₂ onto aerosol surfaces in the combined cases (maxST+JANO3-B/C) provided more HONO production at the summit (Figure 8(b)), as well as adjusting O₃ levels at both foot and summit stations during the polluted episode (Figure 9).

The estimated global effects of HONO chemistry in the STD case was the abatement of global tropospheric oxidizing power, despite surface OH and O₃ levels being increased at polluted sites. The reduction tendency in global OH and O₃ contrasted with other modelling studies (e.g. Elshorbany et al., 2012; Jorba et al., 2012; Lee et al., 2016; Zhang et al., 2021). Some discussions on the tendency of HONO's global effects are addressed here. The positive or negative impacts on oxidizing species (OH and O₃) were constrained to HONO formation mechanisms rather than NO_x concentration. For high NO_x regions such as EANET stations with six-months-averaged NO_x higher than 20 ppb, O₃ and OH were reduced due to NO_x removal via NO₂ uptakes (Figure 8(b,c)), especially at night. When NO_x was highly underestimated in the model for these high NO_x regions, and an efficient NO_x recycle process was still absent, OH and O₃ might be reduced daily. The calculation for daytime-only in comparison with Xue's data showed that O₃ could be increased when a compliment HONO source was provided via NO₃⁻ photolysis (Figure 9(a)) and sole enhancement of aerosol-effect rather than both aerosols and clouds (JANO3-C versus JANO3-B, Figure 9(b)), even though NO₂ was still underestimated enormously in the model (Figure S15). At higher altitudes over remote regions in the ATom (NO₂ < 10 ppb) and EMerGe comparisons, OH and O₃ can be increased due to more potent gas-phase chemistry of HONO in STD case, including HONO photolysis (Figure 4) and particle NO₃⁻ photolysis (Figure 2).

The amplified aerosol uptake of NO₂ (maxST case) further reduced an unrealistic degree of global NO_x abundance (-55.4%) and tropospheric oxidizing capacity, leading to 14.5 years for a global CH₄ lifetime. The ratR4+CLD case introducing an approach to recycle NO_x led to lowered global effects of HONO (only 8.57% NO_x was reduced globally, CH₄ lifetime = 9.6 years). The photolysis of adsorbed HNO₃ on ground surfaces (JANO3-A case) still showed reductions in global OH and O₃ abundances (Table S5). The ground-surface HNO₃ photolysis in the JANO3-A case caused only minor changes for a thin surface layer which is in line with other studies (Ye et al., 2018; Zhang et al., 2009). In JANO3-B and JANO3-C cases, a recycling process for NO_x via HNO₃ photolysis was expected. However, only the JANO3-C case showed an increment in global NO_x and O₃ (+29% and +16.1%, respectively), leading to only 5.4 years for the global CH₄ lifetime, which was impractical. This was because that simplified approach and maximum thresholds for the phase HNO₃ photolysis were used. The combined cases maxST+JANO3-B led to more convincing effects (CH₄ lifetime was 10.2 years; Table S5), which held the same tendencies as those calculated in the STD case. However, validating this combined case was only conducted for the daytime environment during EMerGe (Sect. 3.1.2) and for TCO at northern mid-latitudes with OMI (Figure 13).

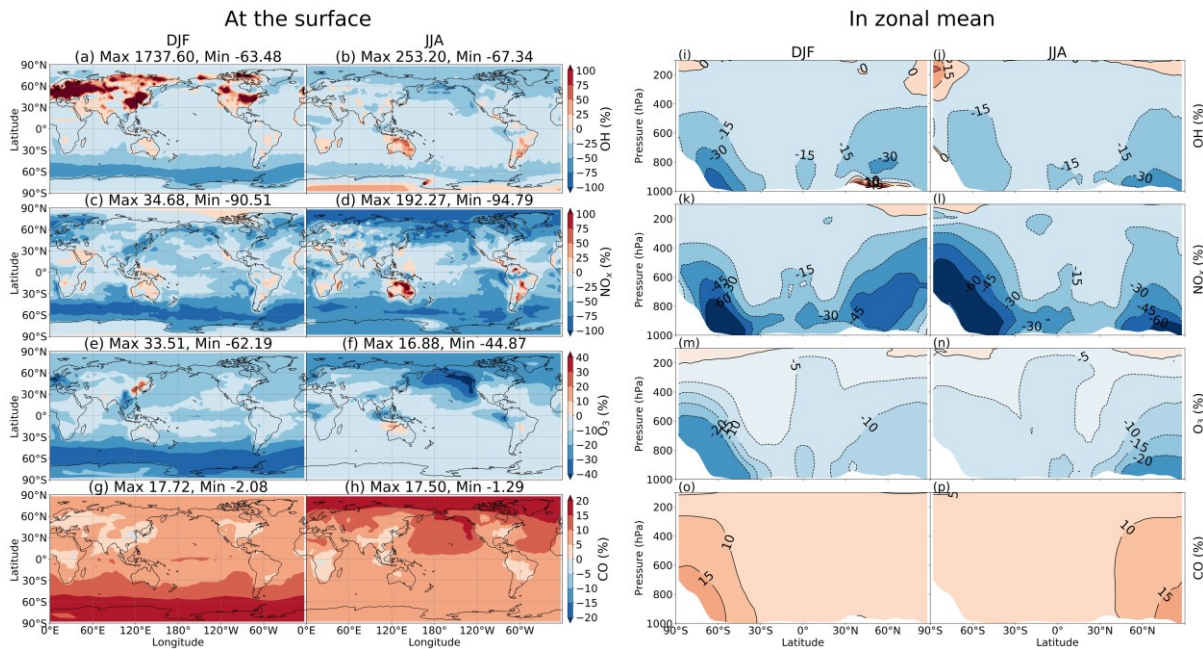
Figure 16 illustrates the calculated global-mean changes of tropospheric abundances in additional simulations from those in the OLD case (without HONO chemistry). The simulations of the largest negative to largest positive magnitudes of changes (%) in CH₄ lifetime (purple bars) were shown from left to right. Other bars show percentage changes in NO_x (red), O₃ (blue), and CO (green). In simulations including ratR4, ratR4+CLD, JANO3-A, maxST+JANO3-B, and maxST cases, the HONO's impacts on tropospheric CH₄ lifetime and abundances of NO_x, O₃, CO showed similar tendencies to those impacts in the STD simulation. These similarities indicated that the heterogeneous chemistry of HONO has a general tendency to reduce tropospheric oxidizing capacity (OH and O₃) as a result of NO_x removal globally via NO₂'s uptakes on aerosols and clouds. In these settings, more substantial reductions in oxidizing species and NO_x were seen in maxST and maxST+JANO3-B cases via enhanced aerosol uptakes of NO₂. The particle-phase NO₃⁻ photolysis can solely compensate NO_x removal processes and act

865 as an efficient NO_x recycling mechanism (on a global scale) which can be seen in the JANO3-B and JANO3-C cases. The enhanced aerosol uptake in the maxST setting of the combined maxST+JANO3-C case neutralized this compensation. However, the tropospheric oxidizing capacity (OH and O₃) was increased in the cases configured with NO₃⁻ photolysis (JANO3-B/C, maxST+JANO3-C cases), leading to a reduction in global CH₄ lifetime. The impacts quantitative was unrealistic in some cases, e.g., 30% CH₄ lifetime in maxST+JANO3-C case or -50% global NO_x in maxST+JANO3-B case, proven as
 870 the proper mechanism for a particular environment (along EmerGe-Asia-2018 flights) not globally. Thus, these changes merely provided the tendencies of impact sensitivity for different pathways of HONO formation, still with high uncertainty in their magnitudes.

In conclusion, we suggest the global effects tendency was towards tropospheric oxidizing capacity reduction, although further elaboration for enhanced aerosol-uptakes of NO₂ and surface-catalyzed photolysis of HNO₃ could change the effect
 875 magnitude. The implication of HONO chemistry in a bottom-up approached global model such as CHASER securely needs an intense examination of possible HONO sources and profound evaluations with observed HONO in the troposphere.

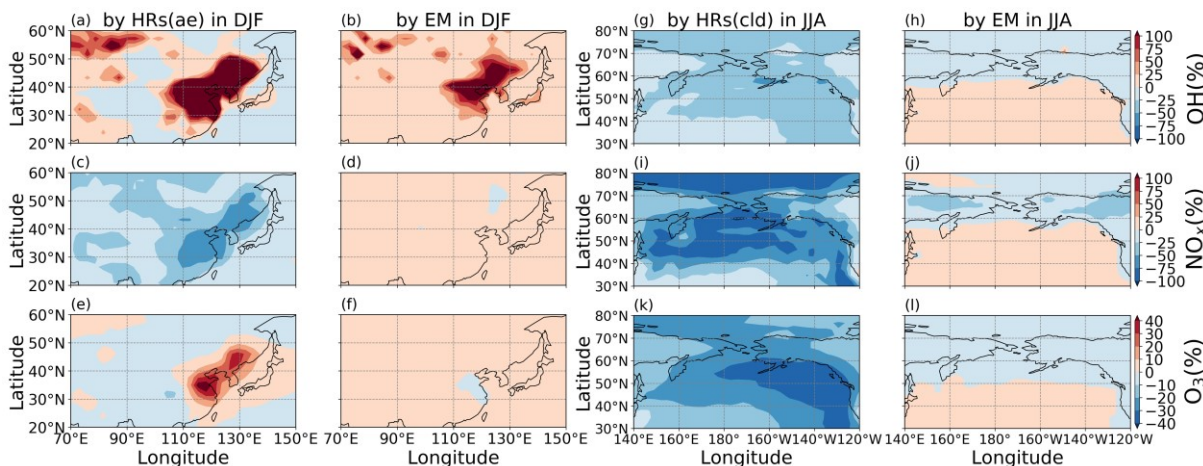
Table 9: CH₄ lifetime and tropospheric abundances for NO_x, O₃, CO and the changes by HONO chemistry

Simulation ID	CH ₄ lifetime (yr)	Abundances of tropospheric		
		NO _x (TgN)	O ₃ (TgO ₃)	CO (TgCO)
OLD	9.09	0.119	408.79	327.20
GR	9.12	0.120	409.38	328.65
GR+HR	10.49	0.092	384.25	359.90
GR+HR(cld)	10.17	0.102	390.46	351.53
STD	10.28	0.094	388.21	354.57
Effects	Changes (%)			
by GRs:	+0.36	+1.01	+0.15	+0.44
by HRs:	+14.99	-23.19	-6.15	+9.55
by HR(cld):	+11.52	-15.28	-4.63	+6.99
by HR(ae):	+3.47	-7.91	-1.52	+2.56
by EM:	-2.30	+1.77	+0.97	-1.63
Total:	+13.05	-20.40	-5.03	+8.36
by HRs(N ₂ O ₅ ,HO ₂ ,RO ₂) (Ha et al., 2021)	+5.7	-3.87	-2.91	+3.43



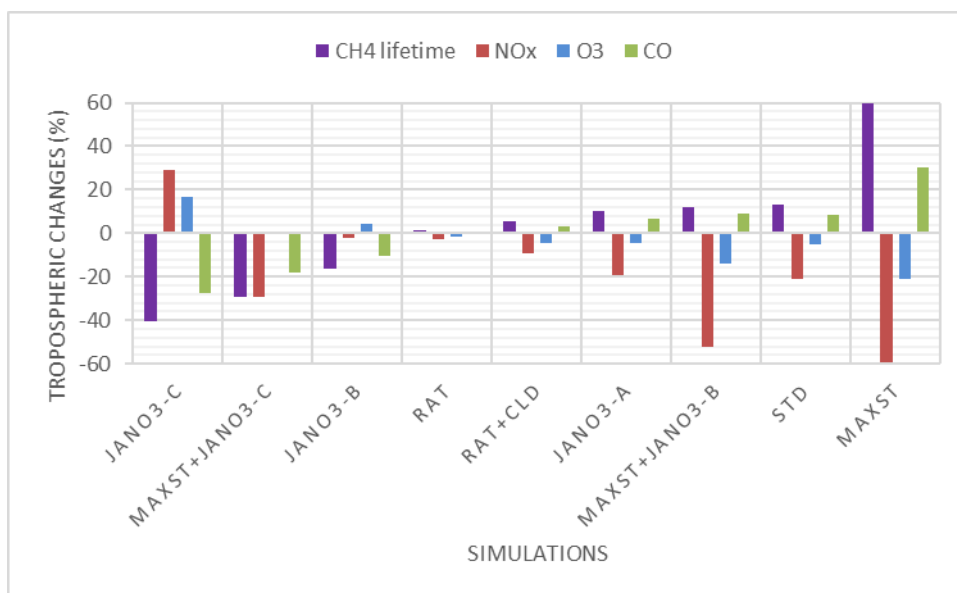
880

Figure 14: Effects of the HONO photochemistry on the tropospheric oxidants OH (first row of panels), NO_x (second row of panels), O₃ (third row of panels) and (CO last row of panels). Effects at the surface (a-h) and zonal means (i-p) are shown.



885

Figure 15: Effects of HONO photochemistry for the surface layer, for OH (upper panels), NO_x (middle panels), and O₃ (lower panels) over northeastern China region in DJF (a-f) and NP region in JJA (g-l) from dominant pathways of HONO by heterogeneous reactions of aerosols (1st column heterogeneous reactions ice and clouds (3rd column) and direct HONO emission (2nd and 4th columns).



890 **Figure 16: Calculated global-mean changes of tropospheric abundances in additional simulations compared to OLD case (without HONO chemistry). From left to right, the order of shown simulations follows the percentage change magnitudes in CH4 lifetime (largest negative change to largest positive change; purple bars). Other bars show percentage changes in NOx (red), O3 (blue), and CO (grey).**

4. Conclusion

905 The HONO photochemical processes, including (a) the gas-phase reaction involving HONO, (b) direct HONO emission from combustion and soil crust, as well as (c) heterogeneous processes involving HONO were added to the chemistry-climate model (CHASER), which did not consider HONO chemistry before. We compared the measurements during the EMERGe flights off the coastal region of East Asia and discerned good agreement between the measured and simulated NO₂, O₃, and CO profiles. However, the model does not reflect the influence of the Chinese river delta regions, as the large reductions in air masses affected by land emissions were identified. The model also stood out with NO₂, OH, HO₂, and CO improvements in the NP region, compared with the observations made during *Mirai* and ATom1, although the simulation underestimations of surface O₃ in this region was associated with the inconsistent surface deposition or vertical fluxes (c.f. from the stratosphere) becoming strong. We found that the model biases were reduced against the EANET/EMEP stationary observations for PM_{2.5}, NO₃ components, O₃, and CO concentrations when the HONO photochemistry was included.

905 In the model, the tropospheric abundance for HONO was 1.4 TgN and was made by 26% from the direct emission and 63% by HRs, in which HRs on clouds caused 11.8% and HRs on aerosols caused 51.2%. The HONO concentrations over the continents ranged from 30 ppt to 7 ppb and were maximized due to HRs over eastern China during winter. Only 5–10 ppt of HONO could be transported up to ~2000 m, indicating that its impacts remained mainly in the planetary boundary layer. We

argue that these simulated HONOs might underestimate the actual concentrations off-coast of eastern Asia in spring 2018. The unknown daytime HONO concentrations of up to 200 ppt measured in the boundary layer and free troposphere during the EMERGe campaign were not reproduced by the STD simulation. Fortunately, the measured HONO was moderately captured by the combined simulation, which enhanced aerosol-uptakes of NO₂ and heterogeneous photolysis of HNO₃ (maxST+JANO3-B case). However, the enhancement for NO₂ uptakes on aerosols should be confined to particular environments to eliminate the effect exaggeration. Moreover, a further improvement of the model performance for the HONO photochemistry requires (1) the revised model's emission inventory with the emission sources of NO_x and CO from South-Eastern and Eastern Asia, (2) the lighting-related NO_x module is upgraded, and (3) the vertical mixing and downward fluxes from the stratosphere to be elaborated.

One or more renoxification mechanisms converting HNO₃ into NO_x should be added to the model to overcome the observed and simulated NO_x seasonality mismatches. Shifting the product ratio towards more HONO and less HNO₃ in reaction R4 could also provide more HONO and mitigated the deteriorated representation of NO_x seasonality. The sensitivity tests also suggested that more robust aerosol processing in polluted areas and less HNO₃ product in R4 could further reduce O₃ level in summer, reducing the bias against measurements. The photolysis of adsorbed HNO₃ on ground surfaces (JANO3-A case) could also serve as a recycling process for NO_x at Asian ground-based sites (EANET).

As calculated in the STD case, HONO chemistry reduced the global tropospheric oxidizing capacity, including OH and O₃ levels in global scale. It should be underlined that this finding is rather unexpected and contrasts with the increasing oxidation capacity previously reported for polluted areas. However, the global reduction effect to O₃ reduced the overestimations of OMI-based TCO by simulations, which notably included the geographical region embracing China. Of the three HONO sources, HRs produced the most prominent effects on the tropospheric photochemistry: reducing OH, NO_x, O₃, and increasing CO levels in the troposphere, leading to a +13.05% longer CH₄ lifetime, and -20.4% less NO_x, -5.03% less O₃, and an increased CO (+8.36%) abundance. In winter near the surface, gas-phase reactions involving HONO and NO₂ conversions on soot induced significant photochemical effects over eastern Chinese with changes of -60% in NO_x, +1700% in OH, +33% in O₃. During summer, HRs on ice and cloud particles could cause significant changes of -67% in OH, -45% in O₃, -75% in NO_x, and +17% in CO in the NP region. Albeit the more significant contribution of aerosols' heterogeneous reactions to the net HONO production, the heterogeneous processes involving ice and cloud particles were more significant globally. Our results from sensitivity tests demonstrated that the tendencies and magnitudes of HONO's global effects debated along with the effort regarding daytime HONO formation mechanisms. In capturing HONO measurement during EMERGe campaign, the combined case enhancing NO₂ aerosol uptake and implementing heterogeneous photolysis of HNO₃ (maxST+JANO3-B) still resulted in the reduction for global tropospheric oxidizing capacity. In this case, the effect magnitude was smaller for CH₄ lifetime, but those for the NO_x-O₃-CO chemistry were stronger compared with the calculation in the STD case. Overall, our results proved that a global model without heterogeneous HONO formation, especially photochemical heterogeneous HONO formations, could bias the overall impacts of HONO on tropospheric photochemistry as it neglected the photochemical effects of HONO in remote areas and underestimated them in polluted regions. Our new finding on the

tropospheric oxidizing capacity reduction may affect climate change mechanisms and, as a result, may influence its mitigation policies.

Code availability

945 The CHASER V4.0' source code and input data to recreate this work's results can be acquired from the repository at <https://doi.org/10.5281/zenodo.4153452> (Ha et al., 2020).

Data availability

The primary data from *R/V Mirai* cruises for the period 2015–2017 are available from <http://www.godac.jamstec.go.jp/darwin/e> (last access: 30 September 2021). Due to a recent data security incident, the data owner (JAMSTEC) is
950 suspending public access to this dataset. For any inquiries, please send an email to yugo@jamstec.go.jp. The data collected by HALO aircraft during the EMERGe campaign are listed on https://www.iup.uni-bremen.de/emerge/home/halo_payload.html and can be acquired via email to Lola Andrés Hernández <lola@iup.physik.uni-bremen.de>.

Author contribution

HP composed all simulations and text. SK has the model code and supervised the findings of this study. KY and TF provided
955 *R/V Mirai* ship data. HM, BS, and KP provided EMERGe-Asia data. All authors have equally contributed to the discussion provided within the manuscript and post-writing formatting and revisions.

Competing interests

The authors declare that they have no conflicts of interest.

Acknowledgements

960 We are grateful to the NASA scientists and staff for providing ATom data (<https://espo.nasa.gov/atom/content/ATom>) and OMI data (<https://daac.gsfc.nasa.gov/>). The simulations were completed using a supercomputer (NEC SX-Ace and SX-Aurora TSUBASA) at NIES Japan. The surface observational data for model validation were obtained from the monitoring networks EANET (<https://www.eanet.asia/>) and EMEP (<https://www.emep.int/>).

965 **Financial support**

This research was supported by the Global Environment Research Fund (S-12 and S-20) of the Ministry of the Environment (MOE), Japan, and JSPS KAKENHI Grant Numbers: JP20H04320, JP19H05669, and JP19H04235. The study was also funded by the German Research Foundation (Deutsche Forschungsgemeinschaft; DFG) HALO-SPP 1294. The contributions from BS and KP were supported via the DFG grants PF 384/16, PF 384/17 und PF 384/19.

970

References

- Acker, K., Febo, A., Trick, S., Perrino, C., Bruno, P., Wiesen, P., Moller, D., Wieprecht, W., Auel, R., Giusto, M., Geyer, A., Platt, U., Allegrini, I.: Nitrous acid in the urban area of Rome. *Atmospheric Environment*. 40(17): 3123–3133, doi: 10.1016/j.atmosenv.2006.01.028, 2006.
- 975 Acker, K., Moller, D., Wierecht, W., Auel, R., KalaX, D., Tschervenka, W.: Nitrous and nitric acid measurements inside and outside of clouds at Mt. Brocken, *Water, Air and Soil Pollution*. 130: 331–336, 2001.
- Akimoto, H., Nagashima, T., Li, J., Fu, J. S., Ji, D., Tan, J., Wang, Z.: Comparison of surface ozone simulation among selected regional models in MICS-Asia III – effects of chemistry and vertical transport for the causes of difference, *Atmos. Chem. Phys.* 19: 603-615, doi: 10.5194/acp-19-603-2019, 2019.
- 980 Al-Abadleh, H. A., Grassian, V. H.: Heterogeneous reaction of NO₂ on hexane soot: A Knudsen cell and FT-IR study, *J. Phys. Chem. A*, 104, 11926-11933, 2000.
- Ammann, M., Kalberer, M., Jost, D. T., Tobler, L., Rossler, E., Piguet, D., Gaggeler, H. W., Baltensperger, U.: Heterogeneous production of nitrous acid on soot in polluted air masses, *Nature*, 395, 157-160, 1998.
- Ammann, M., Kalberer, M., Tabor, K., Tobler, K., Zellweger, C., Weingartner, E., Nyeki, S., Parrat, Y., Li, F., Piguet, D., 985 Rossler, E., Jost, D. T., Gaggeler, H. W., Baltensperger, U.: Proc. 7th Euro. Symp. on Physico-Chem. Behav. of Atmos. Poll., 1996.
- Andrés Hernández, M. D., Hilboll, A., Ziereis, H., Förster, E., Krüger, O. O., Kaiser, K., Schneider, J., Barnaba, F., Vrekoussis, M., Schmidt, J., Huntrieser, H., Blechschmidt, A.-M., George, M., Nenakhov, V., Klausner, T., Holanda, B. A., Wolf, J., Eirenschmalz, L., Krebsbach, M., Pöhlker, M. L., Hedegaard, A. B., Mei, L., Pfeilsticker, K., Liu, Y., Koppmann, R., 990 Schlager, H., Bohn, B., Schumann, U., Richter, A., Schreiner, B., Sauer, D., Baumann, R., Mertens, M., Jöckel, P., Kilian, M., Stratmann, G., Pöhlker, C., Campanelli, M., Pandolfi, M., Sicard, M., Gomez-Amo, J. L., Pujadas, M., Bigge, K., Kluge, F., Schwarz, A., Daskalakis, N., Walter, D., Zahn, A., Pöschl, U., Bönisch, H., Borrmann, S., Platt, U., and Burrows, J. P.: Overview: On the transport and transformation of pollutants in the outflow of major population centres – observational data from the EMERGe European intensive operational period in summer 2017, *Atmos. Chem. Phys. Discuss.* [preprint], doi: 10.5194/acp-2021-500, in review, 2021.
- 995 Appel, B. R., Winer, A. M., Tokiwa, Y., Biermann, H. W.: Comparison of atmospheric nitrous acid measurements by annular denuder and differential optical absorption systems, *Atmos. Environ.*, 24A (3), 611-616, 1990.
- Arens, F., Gutzwiller, L., Baltensperger, U., Gaggeler, H., Ammann, M.: Heterogeneous reaction of NO₂ on diesel soot particles. *Environ. Sci. Technol.*, 35, 2191-2199, 2001.
- 1000 Aumont, B., Chervier, F., Laval, S.: Contribution of HONO sources to the NO_x/HO_x/O₃ chemistry in the polluted boundary layer. *Atmos. Environ.* 37, 487–498, 2003.
- Benedict, K. B., McFall, A. S., and Anastasio, C.: Quantum Yield of Nitrite from the Photolysis of Aqueous Nitrate above 300 nm, *Environ. Sci. Technol.* 2017, 51, 4387–4395, doi: 10.1021/acs.est.6b06370, 2017.

- Benedict, K. B., and Anastasio, C., Quantum Yields of Nitrite (NO_2^-) from the Photolysis of Nitrate (NO_3^-) in Ice at 313 nm, *J. Phys. Chem. A* 2017, 121, 8474–8483, doi: 10.1021/acs.jpca.7b08839, 2017.
- Bongartz, A., Kames, J., Schurath, U., George, Ch., Mirabel, Ph., Ponche, J. L. J.: Experimental determination of HONO mass accommodation coefficients using two different techniques, *Atmos. Chem.*, 18, 149-169, 1994.
- Brune, W. H., McFarland, P. J., Bruning, E., Waugh, S., MacGorman, D., Miller, D. O., Jenkins, J. M., Ren, X., Mao, J., Peischl, J.: Extreme oxidant amounts produced by lightning in storm clouds, *Science* 372, 711–715, 2021.
- 1010 Burkholder, J. B., Mellouki, A., Talukdar, R.: Ravishankara, A. R.: Rate coefficients for the reaction of OH with HONO between 298 and 373 K, *Int. J. Chem. Kinet.*, 24, 711-725, 1992.
- Burkholder, J. B., Sander, S. P., Abbatt, J., Barker, J. R., Huie, R. E., Kolb, C. E., Kurylo, M. J., Orkin, V. L., Wilmouth, D. M., and Wine, P. H.: Chemical Kinetics and Photochemical Data for Use in Atmospheric Studies, Evaluation No. 18, JPL Publication 15-10, Jet Propulsion Laboratory, Pasadena, <http://jpldataeval.jpl.nasa.gov>, 2015.
- 1015 Calvert, J.G., Yarwood, G., Dunker, A.M.: An evaluation of the mechanism of nitrous acid formation in the urban atmosphere, *Research on Chemical Intermediates*, 20, 463-502, 1994.
- Cape, J. N., Hargreaves, K. J., Storeton-West, R., Fowler, D., Colvile, R. N., Choulaton, T. W., Gallagher, M. W.: The contribution of HONO to rural NO_y chemistry as inferred from measurements of nitrite in orographic cloud, *Atmos. Environ.*, 26A, 2301-2307, 1992.
- 1020 Chu, L., Diao, G., Chu, L. T.: Heterogeneous Interaction and Reaction of HONO on Ice Films between 173 and 230 K, *J. Phys. Chem. A*, 104, 3150-3158, 2000.
- Deutschmann, T., Beirle, S., Frieß, U., Grzegorski, M., Kern, C., Kritten, L., Platt, U., Prados-Roman, C., Puķīte, J., Wagner, T., Werner, B., and Pfeilsticker, K.: The Monte Carlo atmospheric radiative transfer model McArtim: Introduction and validation of Jacobians and 3D features, *J. Quant. Spectrosc. Ra.*: 112: 1119–1137, doi:10.1016/j.jqsrt.2010.12.009, 2011.
- 1025 Elshorbany, Y. F., Kleffmann, J., Kurtenbach, R., Lissi, E., Rubio, M., Villena, G., Gramsch, E., Rickard, A. R., Pilling, M. J., Wiesen, P.: Seasonal dependence of the oxidation capacity of the city of Santiago de Chile, *Atmos. Environ.*, 44, 5383–5394, 2010.
- Elshorbany, Y. F., Steil, B., Bruhl, C., Lelieveld, J.: Impact of HONO on global atmospheric chemistry calculated with an empirical parameterization in the EMAC model, *Atmos. Chem. Phys.*, 12, 9977–10000, 2012.
- 1030 Febo, A., Perrino, C., Allegrini, I.: Measurement of nitrous acid in Milan, Italy, by DOAS and diffusion denuders, *Atmos. Environ.*, 30 (21), 3599-3609, 1996.
- Fenter, F. F. and Rossi, M. J.: Heterogeneous Kinetics of HONO on H_2SO_4 Solutions and on Ice: Activation of HCl, *J. Phys. Chem.*, 100, 13765-13775, 1996.
- Finlayson-Pitts, B. J., Wingen, L. M., Sumner, A. L., Syomin, D., Ramazan, K. A.: The heterogeneous hydrolysis of NO_2 in laboratory systems and in outdoor and indoor atmospheres: An integrated mechanism, *Phys. Chem. Chem. Phys.*, 5, 223–242, 2003.

- George, C., Strekowski, R. S., Kleffmann, J., Stemmler, K., and Ammann, M.: Photoenhanced uptake of gaseous NO₂ on solid organic compounds: A photochemical source of HONO?, *Faraday Discuss.*, 130, 195–210, 2005.
- 1040 Gerecke, A., Thielmann, A., Gutzwiller, L., Rossi M. J.: The chemical kinetics of HONO formation resulting from heterogeneous interaction of NO₂ with flame soot, *Geophysical Research Letters*, 25(13), 1998.
- Ha, P., Matsuda, R., Kanaya, Y., Taketani, F., and Sudo, K.: Effects of heterogeneous reactions on tropospheric chemistry: a global simulation with the chemistry-climate model CHASER V4.0, *Geosci. Model Dev.*, 14, 1-29, doi: 10.5194/gmd-14-1-2021, 2021.
- 1045 Harris, G.W., Carter, W.P.L., Winer, A.M., Pitts, J.N., Platt, U., Perner, D.: Observations of nitrous acid in the Los Angeles atmosphere and implications for predictions of ozone-precursor relationships, *Environmental Science and Technology*, 16, 414-419, 1982.
- Harrison, R.M., Collins, G.M.: Measurements of reaction coefficients of NO₂ and HONO on aerosol particles, *Journal of Atmospheric Chemistry*, 30, 397-406, 1998.
- 1050 Harrison, R.M., Kitto, N.: Evidence for a surface source of atmospheric nitrous acid, *Atmospheric Environment*, 28, 1089–1094, 1994.
- Hayashi, K., Noguchi, I.: Indirect emission of nitrous acid from grasslands indicated by concentration gradients, *Journal of Japan Society for Atmospheric Environment*, 41(5), 279-287, 2006.
- Hüneke, T., Aderhold, O-A., Bounin, J., Dorf, M., Gentry, E., Grossmann, K., Groß, J-U., Hoor, P., Jöckel, P., Kenntner, M., Knapp, M., Knecht, M., Lörks, D., Ludmann, S., Matthes, S., Raecke, R., Reichert, M., Weimar, J., Werner, B., Zahn, A., 1055 Ziereis, H., Pfeilsticker, K.: The novel HALO mini-DOAS instrument: inferring trace gas concentrations from airborne UV/visible limb spectroscopy under all skies using the scaling method, *Atmos. Meas. Tech.*, 10, 4209–4234, doi: 10.5194/amt-10-4209-2017, 2017.
- Jacob, D. J.: Heterogeneous chemistry and tropospheric ozone, *Atmospheric Environment*, 34, Elsevier Science Ltd., 2000.
- Jenkin, M. E., Cox, R. A.: Kinetics of the gas-phase reaction of OH with nitrous acid, *Chem. Phys. Lett.*, 137, 548-552, 1987.
- 1060 Jenkin, M. E., Cox, R.A., Williams, D.J.: Laboratory studies of the kinetics of formation of nitrous acid from the thermal reaction of nitrogen dioxide and water vapour, *Atmospheric Environment*, 22, 487-498, 1988.
- Jorba, O., Dabdub, D., Blaszcak-Boxe, C., Pérez, C., Janjic, Z., Baldasano, J. M., Spada, M., Badia, A., Gonçalves, M.: Potential significance of photoexcited NO₂ on global air quality with the NMMB/BSC chemical transport model, *J. Geophys. Res.*, 117, D13301, 2012.
- 1065 Kalberer, M., Ammann, M., Arens, F., Gaggeler, H.W., Baltensperger, U.: Heterogeneous formation of nitrous acid (HNO₂) on soot aerosol particles. *Journal Geophysical Research*, 104 (D11), 13825–13832, 1999.
- Kanaya, Y., Cao, R., Akimoto, H., Fukuda, M., Komazaki, Y., Yokouchi, Y., Koike, M., Tanimoto, H., Takegawa, N., and Kondo, Y.: Urban photochemistry in central Tokyo: 1. Observed and modeled OH and HO₂ radical concentrations during the winter and summer of 2004. *J. Geophys. Res.*, 112, D21312, doi:10.1029/2007JD008670, 2007.

- 1070 Kanaya, Y., Miyazaki, K., Taketani, F., Miyakawa, T., Takashima, H., Komazaki, Y., Pan, X., Kato, S., Sudo, K., Sekiya, T., Inoue, J., Sato, K., and Oshima, K.: Ozone and carbon monoxide observations over open oceans on R/V *Mirai* from 67° S to 75° N during 2012 to 2017: testing global chemical reanalysis in terms of Arctic processes, low ozone levels at low latitudes, and pollution transport, *Atmos. Chem. Phys.*, 19, 7233–7254, doi: 10.5194/acp-19-7233-2019, 2019.
- Kerbrat, M., Huthwelker, T., Gaggeler, H. W., Ammann, M.: Interaction of Nitrous Acid with Polycrystalline Ice: Adsorption
1075 on the Surface and Diffusion into the Bulk, *J. Phys. Chem. C*, 114, 2208–2219, 2010.
- Kessler, C. and Platt, U.: Nitrous acid in polluted air masses: sources and formation pathways. In *Physicochemical Behaviour of Atmospheric Pollutant/s. Proc. 3rd Europ. Sump. Varese, Italy* (edited by Versino B. and Angdletti-G.j, pp. 412-422..Reidel, Dordrecht, 1984.
- Kirchstetter, T. W., Harley, R. A., Littlejohn, D.: Measurement of Nitrous Acid in Motor Vehicle Exhaust, *Environ. Sci.*
1080 *Technol.*, 30, 2843-2849, 1996.
- Kleffman, J., Becker, K. H., Lackhoff, M., Wiesen, P.: Heterogeneous conversion of NO₂ on carbonaceous surfaces. *Phys. Chem. Chem. Phys.*, 1, 5443-5450, 1999.
- Kleffmann, J., Kurtenbach, R., Lorzer, J., Wiesen, P., Kalthoff, N., Vogel, B., Vogel, H.: Measured and simulated vertical profiles of nitrous acid - Part I: Field measurements, *Atmospheric Environment*, 37, 2949–2955, 2003.
- 1085 Kleffmann, J., Becker, K. H., Wiesen, P.: Heterogeneous NO₂ conversion processes on acid surfaces: possible atmospheric implications. *Atmospheric Environment* 32, 2721–2729, 1998.
- Kleffmann, J. and Wiesen, P.: Heterogeneous conversion of NO₂ and NO on HNO₃ treated soot surfaces: atmospheric implications, *Atmos. Chem. Phys.*, 5, 77–83, 2005.
- Kluge, F., Hüneke, T., Knecht, M., Lichtenstern, M., Rotermund, M., Schlager, H., Schreiner, B., and Pfeilsticker, K.: Profiling
1090 of formaldehyde, glyoxal, methylglyoxal, and CO over the Amazon: normalized excess mixing ratios and related emission factors in biomass burning plumes, *Atmos. Chem. Phys.*, 20, 12363–12389, <https://doi.org/10.5194/acp-20-12363-2020>, 2020.
- Kurtenbach, R., Becker, K.H., Gomes, J.A.G., Kleffmann, J., Lorzer, J.C., Spittler, M., Wiesen, P., Ackermann, R., Geyer, A., Platt, U.: Investigations of emissions and heterogeneous formation of HONO in a road traffic tunnel, *Atmospheric*
1095 *Environment*, 35, 3385–3394, 2001.
- Lammel, G., Cape, J. N.: Nitrous Acid and Nitrite in the Atmosphere, *Chem. Soc. Rev.*, 361, 1996.
- Lary, D. J., Lee, A.M., Toumi, R., Newchurch, M. J., Pirre, M., Renard, J. B.: Carbon aerosols and atmospheric photochemistry, *Journal Of Geophysical Research*, 102, D3, 3671-3682, 1997.
- Lee, B. H., Santoni, G. W., Wood, E. C., Herndon, S. C., Miake-Lye, R. C., Zahniser, M. S., Wofsy, S. C., and Munger, J. W.:
1100 Measurements of Nitrous Acid in Commercial Aircraft Exhaust at the Alternative Aviation Fuel Experiment, *Environ. Sci. Technol.*, [dx.doi.org/10.1021/es200921t](https://doi.org/10.1021/es200921t), 45, 7648–7654, 2011.

- Lee, J. D., Whalley, L. K., Heard, D. E., Stone, D., Dunmore, R. E., Hamilton, J. F., Young, D. E., Allan, J. D., Laufs, S., Kleffmann, J.: Detailed budget analysis of HONO in central London reveals a missing daytime source. *Atmos. Chem. Phys.*, 16, 2747–2764. doi: 10.5194/acp-16-2747-2016, 2016.
- 1105 Li, Y., An, J., Kajino, M., Gultepe, I., Chen, Y., Song, T., and Xin, J.: Impacts of additional HONO sources on O₃ and PM_{2.5} chemical coupling and control strategies in the Beijing–Tianjin–Hebei region of China, *Tellus B: Chemical and Physical Meteorology*, 67:1, 23930, doi: 10.3402/tellusb.v67.23930, 2015.
- Li, Y., An, J., Min, M., Zhang, W., Wang, F., Xie, P.: Impacts of HONO sources on the air quality in Beijing, Tianjin and Hebei Province of China, *Atmos. Environ.*, 45, 4735–4744, 2011.
- 1110 Li, X., Brauers, T., Haseler, R., Bohn, B., Fuchs, H., Hofzumahaus, A., Holland, F., Lou, S., Lu, K. D., Rohrer, F. et al., Exploring the atmospheric chemistry of nitrous acid (HONO) at a rural site in Southern China, *Atmos. Chem. Phys.*, 12, 1497–1513, 2012.
- Li, X., Rohrer, F., Hofzumahaus, A., Brauers, T., Häseler, R., Bohn, B., Broch, S., Fuchs, H., Gomm, S., Holland, F., Jäger, J., Kaiser, J., Keutsch, F. N., Lohse, I., Lu, K., Tillmann, R., Wegener, R., Wolfe, G. M., Mentel, T. F., Kiendler-Scharr, A., Wahner, A., Missing Gas-Phase Source of HONO Inferred from Zeppelin Measurements in the Troposphere, *Science*, 344, 292 - 296, doi: 10.1126/science.1248999, 2014.
- 1115 Li, J., Chen, X., Wang, Z., Du, H., Yang, W., Sun, Y., Hu, B., Li, J., Wang, W., Wang, T., Fu, P., Huang, H.: Radiative and heterogeneous chemical effects of aerosols on ozone and inorganic aerosols over East Asia, *Science of the Total Environment*, 622–623, 1327–1342, doi: 10.1016/j.scitotenv.2017.12.041, 2018.
- 1120 Liao, H., Adams, P., Serena, H. C., Seinfeld, J. H., Mickley, L., Jacob, D. J.: Interactions between Tropospheric Chemistry and Aerosols in a Unified GCM Simulation, *Journal of Geophysical Research*, 108. 10.1029/2001JD001260, 2003.
- Lin, M., Fiore, A. M., Cooper, O. R., Horowitz, L. W., Langford, A. O., Levy II, H., Johnson, B. J., Naik, V., Oltmans, S. J., and Senff, C. J.: Springtime high surface ozone events over the western United States: Quantifying the role of stratospheric intrusions, *J. Geophys. Res.*, 117, D00V22, doi:10.1029/2012JD018151, 2012.
- 1125 Liu, X.-H., Zhang Y., Xing J., Zhang Q., Wang K., Streets D.G., Jang C., Wang W.-X., Hao J.-M.: Understanding of regional air pollution over China using CMAQ, part II. Process analysis and sensitivity of ozone and particulate matter to precursor emissions, *Atmospheric Environment*, 44, 3719–3727, 2010.
- Lu, X., Wang, Y., Li, J., Shen, L., Fung, C. H. J. : Evidence of heterogeneous HONO formation from aerosols and the regional photochemical impact of this HONO source, *Environ. Res. Lett.*, 13, 114002, 2018, doi: 10.1088/1748-9326/aae492.
- 1130 Martin, R. V., Jacob, D. J., Yantosca, R. M., Chin, M., and Ginoux, P.: Global and regional decreases in tropospheric oxidants from photochemical effects of aerosols, *J. Geophys. Res.*, 108(D3), 4097, 2003.
- Meilinger, S. K., Karcher, B., and Peter, Th.: Microphysics and heterogeneous chemistry in aircraft plumes – high sensitivity on local meteorology and atmospheric composition, *Atmos. Chem. Phys.*, 5, 533–545, 2005.
- Mertes, S. and Wahner, A.: Uptake of nitrogen dioxide and nitrous acid on aqueous surfaces, *Journal of Physical Chemistry*, 1135 99, 14000–14006, 1995.

- Monge, M. E., D'Anna, B., Mazri, L., Giroir-Fendler, A., Ammann, M., Donaldson, D. J., and George, C.: Light changes the atmospheric reactivity of soot, *Proc. Natl. Acad. Sci. U.S.A.*, 107(15), 6605–6609, 2010.
- Morgenstern, O., Hegglin, M. I., Rozanov, E., O'Connor, F. M., Abraham, N. L., Akiyoshi, H., Archibald, A. T., Bekki, S., Butchart, N., Chipperfield, M. P., Deushi, M., Dhomse, S. S., Garcia, R. R., Hardiman, S. C., Horowitz, L. W., Jöckel, P., Josse, B., Kinnison, D., Lin, M., Mancini, E., Manyin, M. E., Marchand, M., Marécal, V., Michou, M., Oman, L. D., Pitari, G., Plummer, D. A., Revell, L. E., Saint-Martin, D., Schofield, R., Stenke, A., Stone, K., Sudo, K., Tanaka, T. Y., Tilmes, S., Yamashita, Y., Yoshida, K., and Zeng, G.: Review of the global models used within phase 1 of the Chemistry–Climate Model Initiative (CCMI), *Geosci. Model Dev.*, 10, 639–671, doi:10.5194/gmd-10-639-2017, 2017.
- Ndour, M., D'Anna, B., George, C., Ka, O., Balkanski, Y., Kleffmann, J., Stemmler, K., and Ammann, M.: Photoenhanced uptake of NO₂ on mineral dust: Laboratory experiments and model simulations, *Geophys. Res. Lett.*, 35, L05812, 2008.
- Notholt, J., Hjorth, J., and Raes, F.: Formation of HNO₂ on aerosol surfaces during foggy periods in the presence of NO and NO₂, *Atmospheric Environment* 26A, 211–217, 1992.
- Oswald, R., Behrendt, T., Ermel, M., Wu, D., Su, H., Cheng, Y., Breuninger, C., Moravek, A., Mougins, E., Delon, C., Loubeta, B., Pommerening-Röserm, A., Sörgelu, M., Pöschl, U., Hoffmann, T., Andreaef, M. O., Meixner, F. X., Trebs, I.: HONO emissions from soil bacteria as a major source of atmospheric reactive nitrogen. *Science*, 341, 1233–1235, doi:10.1126/science.1242266, 2013.
- Perner, D. and Platt, U.: Detection of nitrous acid in the atmosphere by differential optical absorption, *Geophysical Research Letters* 6, 917–920, 1979.
- Platt, U. and Perner, D.: Direct Measurements of Atmospheric CH₂O, HNO₂, O₃, NO₂, and SO₂ by Differential Optical Absorption in the Near UV, *Journal of Geophysical Research*, 85, C12, 7453–7458, 1980.
- Platt, U., Stutz, J.: *Differential Optical Absorption Spectroscopy*, Springer, Berlin, Heidelberg, <https://doi.org/10.1007/978-3-540-75776-4>, 2008.
- Porada, P., Tamm, A., Raggio, J., Cheng, Y., Kleidon, A., Pöschl, U., Weber, B.: Global NO and HONO emissions of biological soil crusts estimated by a process-based non-vascular vegetation model, *Biogeosciences*, 16, 2003–2031, 2019.
- Reisinger, R.A.: Observations of HNO₂ in the polluted winter atmosphere: possible heterogeneous production on aerosols. *Atmospheric Environment* 34, 3865–3874, 2000.
- Ren, X., Duin, D. van, Cazorla, M., Chen, S., Mao, J., Zhang, L., Brune, W. H., Flynn, J. H., Grossberg, N., Lefer, B. L., Rappenglück, B., Wong, K. W., Tsai, C., Stutz, J., Dibb, J. E., Jobson, B. T., Luke, W. T., Kelley, P.: Atmospheric oxidation chemistry and ozone production: Results from SHARP 2009 in Houston, Texas. *J. Geophys. Res. Atmos.*: 118: 5770–5780, doi:10.1002/jgrd.50342, 2013.
- Romer, P. S., Wooldridge, P. J., Crounse, J. D., Kim, M. J., Wennberg, P. O., Dibb, J. E., Scheuer, E., Blake, D. R., Meinardi, S., Brosius, A. L., Thames, A. B., Miller, D. O., Brune, W. H., Hall, S. R., Ryerson, T. B., and Cohen, R. C.: Constraints on Aerosol Nitrate Photolysis as a Potential Source of HONO and NO_x, *Environ. Sci. Technol.* 2018, 52, 13738–13746, doi: 10.1021/acs.est.8b03861, 2018.

- 1170 Rotermund, M. K., Bense, V., Chipperfield, M. P., Engel, A., Grooß, J.-U., Hoor, P., Hüneke, T., Keber, T., Kluge, F., Schreiner, B., Schuck, T., Vogel, B., Zahn, A., and Pfeilsticker, K.: Organic and inorganic bromine measurements around the extratropical tropopause and lowermost stratosphere: insights into the transport pathways and total bromine, *Atmos. Chem. Phys.*, 21, 15375–15407, doi: 10.5194/acp-21-15375-2021, 2021.
- Rubio, M.A., Lissi, E., Villena, G.: Nitrite in rain and dew in Santiago city, Chile. Its possible impact on the early morning start of the photochemical smog. *Atmospheric Environment* 32, 293–297, 2002.
- 1175 Saathoff, H., Naumann, K.-H., Riemer, N., Kamm, S., Mohler, O., Schurath, U., Vogel, H. and Vogel, B.: The loss of NO₂, HNO₃, NO₃/N₂O₅, and HO₂/HOONO₂ on soot aerosol: A chamber and modeling study, *Geophysical Research Letters*, 28, 10, 1957-1960, 2001.
- Salgado-Muñoz, M. S. and Rossi, M. J.: Heterogeneous reactions of HNO₃ with flame soot generated under different combustion conditions. Reaction mechanism and kinetics. *Phys. Chem. Chem. Phys.*, 4, 5110-5118, 2002.
- 1180 Sakamaki, F., Hatakeyama, S., and Akimoto, H.: Formation of nitrous acid and nitric acid in the heterogeneous dark reaction of nitrogen dioxide and water vapour in smog chamber. *J. them. Kinet.* 15, 1013-1029, 1983.
- Scharko, N. K., Berke, A. E., and Raff, J. D.: Release of Nitrous Acid and Nitrogen Dioxide from Nitrate Photolysis in Acidic Aqueous Solutions, *Environ. Sci. Technol.* 2014, 48, 11991–12001, dx.doi.org/10.1021/es503088x, 2014.
- 1185 Schneider, J., Arnold, F., Btirger, V., Droste-Franke, B., Grimm, F., Kirchner, G., Klcm, M., Stilp, T., Wohlfrom, K.-H., Siegmundand, P., and vanVelthoven, P. F. J.: Nitric acid (HNO₃) in the upper troposphere and lower stratosphere at midlatitudes: New results from aircraft-based mass spectrometric measurements. *Journal Of Geophysical Research*, 103, D19, 25,337-25,343, 1998.
- Schwartz, S. E.: Mass-Transport Considerations Pertinent to Aqueous Phase Reactions of Gases in Liquid-Water Clouds: in *Chemistry of Multiphase Atmospheric Systems*, 415–471, Springer Berlin Heidelberg, 1986.
- 1190 Sekiya, T., Miyazaki, K., Ogochi, K., Sudo, K., Takigawa, M.: Global high-resolution simulations of tropospheric nitrogen dioxide using CHASER V4.0. *Geosci. Model Dev.*, 11, 959–988. doi: 10.5194/gmd-11-959-2018, 2018.
- Sekiya, T. and Sudo. K.: Roles of transport and chemistry processes in global ozone change on interannual and multidecadal time scales. *J. Geophys. Res.*: 119, 4903–4921. doi: 10.1002/2013JD020838, 2014.
- 1195 Stohl, A., Bonasoni, P., Cristofanelli, P., Collins, W., Feichter, J., Frank, A., Forster, C., Gerasopoulos, E., Gäggeler, H., James, P., Kentarchos, T., Kromp-Kolb, H., Kru"ger, B., Land, C., Meloen, J., Papayannis, A., Priller, A., Seibert, P., Sprenger, M., Roelofs, G. J., Scheel, H. E., Schnabel, C., Siegmund, P., Tobler, L., Trickl, T., Wernli, H., Wirth, V., Zanis, P., and Zerefos, C.: Stratosphere-troposphere exchange: A review, and what we have learned from STACCATO, *J. Geophys. Res.*, 108(D12), 8516, doi:10.1029/2002JD002490, 2003.
- 1200 Stutz, J., Alicke, B., Neftel, A.: Nitrous acid formation in the urban atmosphere: Gradient measurements of NO₂ and HONO over grass in Milan, Italy, *Journal Geophysical Research*, 107 (D22), 8192, 2002.
- Stutz, J., Werner, B., Spolaor, M., Scalone, L., Festa, J., Tsai, C., Cheung, R., Colosimo, S. F., Tricoli, U., Raecke, R., Hossaini, R., Chipperfield, M. P., Feng, W., Gao, R.-S., Hints, E. J., Elkins, J. W., Moore, F. L., Daube, B., Pittman, J., Wofsy, S.,

- Pfeilsticker, K.: A new Differential Optical Absorption Spectroscopy instrument to study atmospheric chemistry from a high-altitude unmanned aircraft, *Atmos. Meas. Tech.*, 10, 1017–1042, doi:10.5194/amt-10-1017-2017, 2017.
- 1205 Su, H., Cheng, Y., Oswald, R., Behrendt, T., Trebs, I., Meixner, F. X., Andreae, M. O., Cheng, P., Zhang, Y., and Pöschl, U., Soil Nitrite as a Source of Atmospheric HONO and OH Radicals, *Science* 333 (6049), 1616-1618, doi: 10.1126/science.1207687, 2011.
- Sudo, K. and Akimoto, H.: Global source attribution of tropospheric ozone: Long-range transport from various source regions, *J. Geophys. Res. Atmos.*: 112: D12302. doi: 10.1029/2006JD007992, 2007.
- 1210 Sudo, K., Takahashi, M., Kurokawa, J. I., and Akimoto, H.: CHASER: A global chemical model of the troposphere I. Model description. *J. Geophys. Res. Atmos.*: 107: 4339. doi: 10.1029/2001JD001113, 2002.
- Tan, Z., Fuchs, H., Lu, K., Hofzumahaus, A., Bohn, B., Broch, S., Dong, H., Gomm, S., Häsel, R., He, L., Holland, F., Li, X., Liu, Y., Lu, S., Rohrer, F., Shao, M., Wang, B., Wang, M., Wu, Y., Zeng, L., Zhang, Y., Wahner, A., Zhang, Y.: Radical chemistry at a rural site (Wangdu) in the North China Plain: observation and model calculations of OH, HO₂ and RO₂ radicals. *Atmos. Chem. Phys.*, 17, 663–690. doi:10.5194/acp-17-663-2017, 2017.
- 1215 Theys, N., Volkamer, R., Müller, J.-F., Zarzana, K. J., Kille, N., Clarisse, L., De Smedt, I., Lerot, C., Finkenzeller, H., Hendrick, F., Koenig, T. K., Lee, C. F., Knote, C., Yu, H. and Roozendael, M. V., Global nitrous acid emissions and levels of regional oxidants enhanced by wildfires, *Nature geoscience*, 13, 681–686, doi: 10.1038/s41561-020-0637-7, 2020.
- 1220 Thornton, J. A., Jaeglé, L., and McNeill, V. F.: Assessing known pathways for HO₂ loss in aqueous atmospheric aerosols: Regional and global impacts on tropospheric oxidants. *J. Geophys. Res. Atmos.*, 2008.
- Trickl, T., Vogelmann, H., Giehl, H., Scheel, H.-E., Sprenger, M., and Stohl, A.: How stratospheric are deep stratospheric intrusions?, *Atmos. Chem. Phys.*, 14, 9941–9961, doi:10.5194/acp-14-9941-2014, 2014.
- 1225 VandenBoer, T. C., Brown, S. S., Murphy, J. G., Keene, W. C., Young, C. J., Pszenny, A. A. P., Kim, S., Warneke, C., de Gouw, J. A., Maben, J. R., Wagner, N. L., Riedel, T. P., Thornton, J. A., Wolfe, D. E., Dubé, W. P., Öztürk, F., Brock, C. A., Grossberg, N., Lefer, B., Lerner, B., Middlebrook, A. M., and Roberts, J. M.: Understanding the role of the ground surface in HONO vertical structure: High resolution vertical profiles during NACHTT-11, *J. Geophys. Res. Atmos.*, 118, 10,155–10,171, doi:10.1002/jgrd.50721, 2013.
- 1230 Wang, Y., Dörner, S., Donner, S., Böhnke, S., De Smedt, I., Dickerson, R. R., Dong, Z., He, H., Li, Z., Li, Z., Li, D., Liu, D., Ren, X., Theys, N., Wang, Y., Wang, Y., Wang, Z., Xu, H., Xu, J., and Wagner, T.: Vertical profiles of NO₂, SO₂, HONO, HCHO, CHOCHO and aerosols derived from MAX-DOAS measurements at a rural site in the central western North China Plain and their relation to emission sources and effects of regional transport, *Atmos. Chem. Phys.*, 19, 5417–5449, 2019, doi: 10.5194/acp-19-5417-2019.
- 1235 Watanabe, S., Hajima, T., Sudo, K., Nagashima, T., Takemura, T., Okajima, H., Nozawa, T., Kawase, H., Abe, M., Yokohata, T., Ise, T., Sato, H., Kato, E., Takata, K., Emori, S., and Kawamiya, M.: MIROC-ESM 2010: model description and basic results of CMIP5-20c3m experiments, *Geosci. Model Dev.*, 4, 845–872, doi:10.5194/gmd-4-845-2011, 2011.

- Werner, B., Stutz, J., Spolaor, M., Scalone, L., Raecke, R., Festa, J., Colosimo, S. F., Cheung, R., Tsai, C., Hossaini, R., Chipperfield, M. P., Taverna, G. S., Feng, W., Elkins, J. W., Fahey, D. W., Gao, R.-S., Hints, E. J., Thornberry, T. D.,
1240 Moore, F. L., Navarro, M. A., Atlas, E., Daube, B. C., Pittman, J., Wofsy, S., and Pfeilsticker, K.: Probing the subtropical lowermost stratosphere and the tropical upper troposphere and tropopause layer for inorganic bromine, *Atmos. Chem. Phys.*, 17, 1161–1186, doi: 10.5194/acp-17-1161-2017, 2017.
- Winer, A. M. and Biermann, H. W.: Long pathlength differential optical absorption spectroscopy (DOAS) measurements of gaseous HONO, NO₂ and HCHO in the California South Coast air basin, *Res. Chem. Intermed.*, 20, 423–445, 1994.
- 1245 Xing, J., Wang, J., Mathur, R., Wang, S., Sarwar, G., Pleim, J., Hogrefe, C., Zhang, Y., Jiang, J., Wong, D. C., and Hao, J.: Impacts of aerosol direct effects on tropospheric ozone through changes in atmospheric dynamics and photolysis rates, *Atmos. Chem. Phys.*, 17, 9869–9883, doi: 10.5194/acp-17-9869-2017, 2017.
- Xue, C., Ye, C., Kleffmann, J., Zhang, C., Catoire, V., Bao, F., Mellouki, A., Xue, L., Chen, J., Lu, K., Zhao, Y., Liu, H., Guo, Z., and Mu, Y.: Atmospheric measurements at Mt. Tai – Part I: HONO formation and its role in the oxidizing capacity of
1250 the upper boundary layer, *Atmos. Chem. Phys.*, 22, 3149–3167, <https://doi.org/10.5194/acp-22-3149-2022>, 2022a.
- Xue, C., Ye, C., Kleffmann, J., Zhang, W., He, X., Liu, P., Zhang, C., Zhao, X., Liu, C., Ma, Z., Liu, J., Wang, J., Lu, K., Catoire, V., Mellouki, A., and Mu, Y.: Atmospheric measurements at Mt. Tai – Part II: HONO budget and radical (RO_x C NO₃) chemistry in the lower boundary layer, *Atmos. Chem. Phys.*, 22, 1035–1057, <https://doi.org/10.5194/acp-22-1035-2022>, 2022b.
- 1255 Xue, C., Zhang, C., Ye, C., Liu, P., Catoire, V., Krysztofiak, G., Chen, H., HONO Budget and Its Role in Nitrate Formation in the Rural North China Plain, *Environmental Science & Technology*, 54, Nr. 18, 11048–57, doi: 10.1021/acs.est.0c01832, 2020.
- Ye, C., Zhou, X., Pu, D., Stutz, J., Festa, J., Spolaor, M., Tsai, C., Cantrell, C., Mauldin III, R. L., Weinheimer, A., Hornbrook, R. S., Apel, E. C., Guenther, A., Kaser, L., Yuan, B., Karl, T., Haggerty, J., Hall, S., Ullmann, K., Smith, J., and Ortega,
1260 J., Tropospheric HONO distribution and chemistry in the southeastern US, *Atmos. Chem. Phys.*, 18(12), 9107–9120, doi:10.5194/acp-18-9107-2018, 2018.
- Zhang, L., Wang, T., Zhang, Q., Zheng, J., Xu, Z., and Lv, M.: Potential sources of nitrous acid (HONO) and their impacts on ozone: A WRF-Chem study in a polluted subtropical region, *J. Geophys. Res. Atmos.*, 121, 3645–3662, 2016.
- Zhang, N., Zhou, X., Shepson, P. B., Gao, H., Alaghmand, M., and Stirm, B.: Aircraft measurement of HONO vertical profiles
1265 over a forested region, *Geophys. Res. Lett.*, 36, L15820, doi:10.1029/2009GL038999, 2009.