

Forest fluxes and mortality response to drought: model description (ORCHIDEE-CAN-NHA, r7236) and evaluation at the Caxiuanã drought experiment

5 Yitong Yao^{1*}, Emilie Joetzjer^{2*}, Philippe Ciais¹, Nicolas Viovy¹, Fabio Cresto Aleina¹, Jerome Chave³, Lawren Sack⁴, Megan Bartlett⁵, Patrick Meir⁶, Rosie Fisher⁷, Sebastiaan Luyssaert⁸

¹ Laboratoire des Sciences du Climat et de l'Environnement, LSCE/IPSL, CEA-CNRS-UVSQ, Université Paris-Saclay, Gif-sur-Yvette, 91191, France

10 ² Centre National de Recherche Meteorologique, Unite mixte de recherche 3589 Meteo-France/CNRS, 42 Avenue Gaspard Coriolis, Toulouse, 31100, France

³ Laboratoire Evolution et Diversité Biologique UMR 5174 CNRS, IRD, Université Paul Sabatier, Toulouse, 31062, France

⁴ Department of Ecology and Evolutionary Biology, University of California Los Angeles, Los Angeles, California, 90095, USA

⁵ Department of Viticulture & Enology, University of California, Davis, California, 95616, USA

15 ⁶ Research School of Biology, Australian National University, Canberra, ACT 2601 Australia

⁷ CICERO Centre for International Climate and Environmental Research, Oslo, Norway

⁸ Faculty of Science, Vrije Universiteit Amsterdam, Netherlands

* These authors contributed equally to this work.

20

Correspondence to: Yitong Yao (yitong.yao@lsce.ipsl.fr)

Abstract. Extreme drought events in Amazon forests are expected to become more frequent and more intense with climate change, threatening ecosystem function and carbon balance. Yet large uncertainties exist on the resilience of this ecosystem to drought. A better quantification of tree hydraulics and mortality processes is needed to anticipate future drought effects on Amazon forests. Most state-of-the-art dynamic global vegetation models are relatively poor in their mechanistic description of these complex processes. Here, we implement a mechanistic plant hydraulic module within the ORCHIDEE-CAN-NHA r7236 land surface model to simulate the percentage loss of conductance (PLC) and changes in water storage among organs via a representation of the water potentials and vertical water flows along the continuum from soil to roots, stems and leaves. The model was evaluated against observed seasonal variability in stand-scale sap flow, soil moisture and productivity under both control and drought setups at the Caxiuanã throughfall exclusion field experiment in eastern Amazonia between 2001 and 2008. A relationship between PLC and tree mortality is built in the model from two empirical parameters, the cumulated drought exposure duration that triggers mortality, and the mortality fraction in each day exceeding the exposure. Our model captures the large biomass drop in the year 2005 observed four years after throughfall reduction, and produces comparable annual tree mortality rates with observation over the study period. Our hydraulic architecture module provides promising avenues for future research in assimilating experimental data to parameterize mortality due to drought-induced xylem

25
30
35

dysfunction. We also highlight that species-based (isohydric or anisohydric) hydraulic traits should be further tested to generalize the model performance in predicting the drought risks.

1 Introduction

Drought-induced forest mortality events are projected to become more frequent and intense under current climate trends (Allen *et al.*, 2015) and may threaten vegetation carbon sinks, as well as biophysical climate regulation by forests (Allen *et al.*, 2010; McDowell *et al.*, 2018). Amazonian rainforests hold the largest forest biomass carbon stock on Earth as one of the most important components of the global carbon balance. In the last 15-20 years Amazonia has been heavily affected by concurrent drought at intervals of 5-6 years (Lewis *et al.*, 2011; Phillips *et al.*, 2009; Yang *et al.*, 2018). A persistent increase of biomass mortality and levelling-off of stand-level growth rate from forest inventory plots suggest a decrease of net biomass accumulation rate over the past 30 years (Brienen *et al.*, 2015). The predicted intensification of droughts for future climate change scenarios may continue to cause increased tree mortality across large areas (Duffy *et al.*, 2015), and exacerbate the likelihood of exceeding a tipping point for regional carbon stocks (Nobre and Borma, 2009). Yet, great uncertainties prevent understanding and quantification of tree mortality, given the high diversity of tree species with different resistance and resilience to drought. Ecosystem models are especially challenged to simulate climate induced mortality at individual and stand level, given the lack of field studies providing long-term data for both biometric measurements and observations of soil and canopy physical climate variables leading to water stress and impairment of tree function. Local ecosystem models with a simulation of individual tree growth and death are computationally expensive, require a large number of parameters per species, and are generally less developed for simulating the soil water dynamics and surface energy budget. Upscaling of these models is also challenging (Maréchaux *et al.*, 2021) and to our knowledge, few land surface models have included climate induced mortality beyond that arising from crowding and tree longevity related mortality for large regions (Adams *et al.*, 2017; Delbart *et al.*, 2010; Powell *et al.*, 2013). On the other hand, land surface models, part of Earth System Models, have advanced capabilities to simulate water and energy fluxes between forests and the atmosphere, but usually have rather simple representations of biomass carbon dynamics, and many of them do not explicitly resolve climate-induced mortality processes. A mechanistic representation and prediction of the Amazon forest response to drought in global land surface models is thus an important priority for research.

Early vegetation models parameterized mortality through indicators of competition-induced self-thinning and /or threshold of growth vigor (Adams *et al.*, 2013; Zhu *et al.*, 2015; McDowell *et al.*, 2011), which ignored the mortality related to extreme events such as drought. Improving mortality representation requires more robust physiological processes embedded in models that couple water, carbon and energy fluxes (Gustafson and Sturtevant, 2013). Recent advances have been made for improved resolution of the mechanisms by which trees die from drought. Two non-exclusive physiological mechanisms have been proposed: hydraulic failure and carbon starvation (Choat *et al.*, 2018; McDowell *et al.*, 2018; Meir *et al.*, 2015). Hydraulic

failure occurs when the tension within the xylem vessels is so high that it causes air-seeded embolism, which impedes water transport. If embolism exceeds a tree dependent survival threshold (Cochard and Delzon, 2013), individual tree dieback may occur, possibly with some lag in case of insufficient repair capabilities to restore upward water transport. Carbon starvation during drought is expected to occur from prolonged stomatal closure causing reduced photosynthetic assimilation, resulting in a drawdown and possible exhaustion of nonstructural carbohydrate reserves (NSC) (Hartmann, 2015; Signori-Müller *et al.*, 2021). Also, embolized vessels may be detrimental to the carbon assimilation processes, so that hydraulic failure and carbon starvation are coupled together (McDowell *et al.*, 2018). Many studies have tried to discern the respective contributions of the two mechanisms in tree wilting during drought (Rowland *et al.*, 2015; Yoshimura *et al.*, 2016). After 15-years of experimental throughfall exclusion in a forest in the Amazon, Rowland *et al.* (2015) found that hydraulic failure was most closely associated with tree mortality under the drier condition, and that there was no distinct difference in NSC concentration between droughted and non-droughted trees, although seasonal differences were observed. Here, we will build on this early understanding of drought-induced impacts in the Amazon and present a model where hydraulic failure is considered to be the dominant risk factor for tree mortality, but we recognize the importance of carbon starvation and also investigate primary production and labile carbon changes in the simulations.

Efforts have been made toward accounting for physically-based water transport in land surface models, implemented through regulation of stomatal behavior, and the explicit simulation of water transport across the soil, root, stem, leaves and atmosphere continuum following a gradient of water potential and organ-specific conductivity parameters ([see summary in Table A1](#)). The Ecosystem Demography model optimized the marginal increase of net carbon assimilation per unit of water loss within the soil-plant-atmosphere continuum to simulate a realistic stomatal conductance (Xu *et al.*, 2016). Given the benefit-cost tradeoff between photosynthetic carbon gain and hydraulics uplift of water, Sperry *et al.* (2017) modeled stomatal behavior by maximizing the instantaneous difference between photosynthetic gain and the proximity to hydraulic failure. The target of such stomatal optimization schemes varies from carbon gains (Dewar *et al.*, 2018), water use efficiency (Bonan *et al.*, 2014) to profit maximization of the difference between carbon gain and hydraulic cost (Sabot *et al.*, 2020), or optimization was performed using a linear function of water potential (Eller *et al.*, 2018) or xylem conductance (Eller *et al.*, 2020). In addition to the optimization of stomatal control, key features of water potential along the soil-plant-atmosphere continuum are also introduced in some models to describe plant hydraulic responses. Papastefanou *et al.* (2020) modeled plant hydraulics starting from leaf water potential in consideration of iso-hydricity among different hydraulics strategies. De Kauwe *et al.* (2020) incorporated the plant hydraulic module ‘Desica’ into the CABLE land surface model, which simulated water flows and water potential through the soil-plant-atmosphere continuum following Xu *et al.* (2016). Kennedy *et al.* (2019) generated new configurations of prognostic vegetation water potential at the root, stem and leaf levels and based plant water stress on the metrics of leaf water potential in the community land model version 5a. Explicit representations of plant hydraulics in process-based models advance our knowledge of the plant responses to drought (Hendrik and Maxime, 2017). However, in terms of how tree mortality responds to future climate scenarios, research gaps still remain in the specific thresholds of hydraulics

failure beyond which drought stress induces tree mortality (Anderegg, 2015; Choat, 2013; Hammond *et al.*, 2019), which limits the development and testing of hydraulic failure mechanisms coupled to mortality in Amazonian rainforests.

105 Identifying a specific threshold for hydraulic failure associated with a given mortality likelihood remains challenging
(Choat *et al.*, 2018). Drought indices related to climate have already been tested in this context and were found to be species
and trait dependent. Anderegg *et al.* (2015) found that hydraulic conductivity of aspen dropped rapidly when accumulated
climatic water deficit from 2000-2013 exceeds almost 5300 mm from break-point regression analysis. Relative water content
derived from vegetation optical depth also contains the signal of such a threshold relationship with drought-driven mortality
110 rates (Rao *et al.*, 2019). The percentage of loss in conductivity (PLC) has also been found to be an appropriate metric for
assessment of hydraulic dysfunction (Adams *et al.*, 2017), and has been linked experimentally to plant mortality (Brodribb
and Cochard, 2009; Liu *et al.*, 2021a; Urli *et al.*, 2013). Liu *et al.* (2021a) fitted relationships between simulated PLC and
observed mortality rate across investigated sites via multiple regression, and used this formula for the prediction of mortality.
Brodribb and Cochard (2009) found that the maximum survivable water stress in conifer species was a 95% loss in leaf
115 conductance. For five angiosperm tree species in Europe, Urli *et al.* (2013) found that the embolism threshold was closer to
the water potential at 88% of conductance loss. Plant volumetric water content also shows a threshold-type response
empirically related to mortality risk, with an inflection point at 47% of volumetric content (Sapes *et al.*, 2019). Thus, the lethal
point can differ among tree species, and presumably strongly in tropical forests in which different species vary widely over
hydraulic traits (Bittencourt *et al.*, 2020; Rowland *et al.*, 2015). This variation needs to be considered in hydraulic modelling.

120
Currently, only a few studies have integrated plant hydraulic failure as a process in a global land surface model and
parameterized mortality as a consequence. In this study, we implement a mechanistic hydraulic architecture modeling of the
water transport in the continuum from soil to atmosphere in the ORCHIDEE-CAN model. We refer to this New Hydraulic
Architecture module as “NHA” that is, ORCHIDEE-CAN-NHA. We describe three developments and their evaluation against
125 field measurements for control and experimental throughfall conditions, in aspects of soil and plant water variables, and
biometric variables such as tree growth and mortality, at the Amazon tropical forest site of Caxiuanã (Fisher *et al.*, 2006; Meir
et al., 2018). Firstly, we describe the development of the new hydraulic architecture model. Then we carry out site-level
simulations and evaluate the model performance in aspects of seasonal variability in transpiration, soil moisture and
productivity against experimental control and drought observations. Thirdly with the simulation of dynamic water potential,
130 water transport, and conductance, the model is extended to define a mortality risk from continuous high loss of stem
conductance from cavitation. In this part, we bridge the gap between reaching a stem conductance threshold corresponding to
a high loss of conductance and mortality risk. Finally, we compare the modeled mortality in different circumference classes to
verify whether our improved model can capture the observed size-related mortality distribution, with trees being first rather
insensitive to drought during the first years, after which larger trees are affected by dieback.

2.1 Model description and simulation protocols**2.1.1 The starting point: ORCHIDEE-CAN r2290**

The model version taken as the starting point for development in this study is ORCHIDEE-CAN (r2290), a branch of the ORCHIDEE land surface model. ORCHIDEE is a physical process-based model, which can simulate the energy, water, and carbon fluxes between land surfaces and the atmosphere. The SECHIBA module corresponds to faster processes, such as exchange of water and energy as well as photosynthesis between land and the atmosphere in half hour time interval. The carbon module (STOMATE) simulates soil processes (soil decomposition, heterotrophic respiration, soil organic carbon dynamics) at the half-hourly time step and vegetation carbon cycle processes at daily intervals, including carbon allocation, vegetation mortality and recruitment, phenology, litter fall. The development of this branch of the ORCHIDEE model focuses on improving the capability of the ORCHIDEE model to simulate the biogeochemical and biophysical effects of forest management and includes allometric-based allocations of carbon to different pools, a simple plant hydraulic structure (see below) as well as an albedo scheme that in part depends on canopy structure (Naudts *et al.*, 2015). One of its new features is the way the vegetation is discretized; a dynamic canopy structure is simulated by considering a user-defined number of circumference classes (n=20 in this study) and an empirical rule reflecting intra-tree competition that downscales canopy level GPP into the different circumference classes, which feedback on light interception and mortality through self-thinning. Background mortality comes from the reciprocal of a constant residence time. Climate based mortality, e.g. from drought has not been modeled yet using this system.

2.1.2 Hydraulic architecture representation in ORCHIDEE-CAN

In ORCHIDEE-CAN r2290 (Naudts *et al.*, 2015), the representation of water stress is realized through a constraint based on the amount of water that plants can transport from soil to their leaves. This constrained transpiration supply equals the quotient between the water potential gradient from soil to leaves, and a total hydraulic resistance of leaf, stem and root. In this framework, the leaf water potential is fixed to a constant value for each plant functional type (PFT), with specific minimum value (-2.2 MPa for tropical evergreen forests, Hickler *et al.* (2006). The soil water potential in the root zone is calculated by adding a tuned scaling factor, accounting for soil-root resistance and other missing processes, to the sum of the soil water potential (calculated from soil moisture and van Genuchten parameters, Van Genuchten (1980) weighted by a proportion of root mass in each soil layer. Such hard modulator can sometimes lead to unrealistic soil water potential in the root zone (Joetzjer *et al.*, [under review2022](#)). The prescribed vegetation distribution is used to constrain this modulator to minimize model bias (Naudts *et al.*, 2015). During the simulation, transpiration is co-limited by the energy budget providing a transpiration demand, and the transpiration water supply limited by transport from soil to leaves. When the potential transpiration constrained by the energy budget is higher than the transpiration supply, real transpiration is limited to the physically plausible water supply. Then

the energy budget and photosynthesis-related processes are recalculated. It should be noted that the root and leaf resistance parameters in ORCHIDEE-CAN depend only on conductivity and biomass (root mass for root, LAI for leaf) and do not respond to hydrological conditions directly. Only the stem resistance related to xylem conductivity is dynamic and changes as a function of the soil water potential in the root zone. The schematic framework of the ORCHIDEE-CAN model is illustrated in Figure 1a. This architecture is not completely mechanistic, given the tuned factor on top of soil water potential, the fixed leaf water potential values and the conductivities affected solely by organ mass. Therefore, further developments of the hydraulic architecture scheme were performed and presented here.

2.1.3 Dynamic root scheme in ORCHIDEE-CAN-RS

To increase the reliability of soil water potential simulations in root zone ($\Psi_{soil-root}$), Joetzjer *et al* ([under review 2022](#)) improved this part of the model (flowchart in Figure 1b, ORCHIDEE-CAN-RS). $\Psi_{soil-root}$ integrated Ψ_{soil} in the root zone vertically, i.e. Ψ_{soil} in the root zone is now weighted by the maximum amount of water that can be absorbed by roots in each soil layer (E_{max}), which depends on a soil-to-root resistance and on a prescribed minimum root water potential (-3 MPa in this study) below which no more water in a given soil layer can be drawn into the plant. The soil-to-root resistance accounts for the water transport path from soil to root surface. With this scheme, the plant will dynamically use deep layer soil moisture when the surface soil desiccates, so that this process allows to sustain more transpiration from deeper layers during dry periods. Although Joetzjer *et al* ([under review 2022](#)) solved the problem of tuned modulator imposed on $\Psi_{soil-root}$ by adding a parameterization of the soil-to-root resistance, a more integral mechanistic structure of water transport from soil to leaf remains to be done to enable a dynamic connection between soil and leaf as well as corresponded simulations during drought events. $\Psi_{soil-root}$ is calculated separately for different cohorts, since we assume taller trees have deeper roots and can reach water stored in deeper layers. For example, we assume that the largest cohort can take water from all 12 soil layers while the smallest cohort can only take water in shallow layer.

2.1.4 Hydraulic scheme development and implementation in ORCHIDEE-CAN-NHA r7236

Figure 1c presents the schematic diagram of the new hydraulic architecture in ORCHIDEE-CAN-NHA. Besides the water transport driven by vertical water pressure difference, the water flow to / from organ-specific water storage at time t is explicitly modeled based on capacitances and water potential differences between time t and t-1. For each organ, the water supply should meet its water demand. For example, water demand at leaf level is parameterized as the transpiration supply. Water supply to leaf is composed by water transport from stem minus the water charge or plus the discharge from the leaf water storage pool. The water budget of the leaves is calculated first, in order to determine how much water has to be drawn up from the other connected upstream organs. It should be noted that the new hydraulic mechanism is imposed on 20 circumference classes, separately. The detailed description of new mechanistic hydraulic processes is given below.

2.1.4.1 Water storage calculation

200 The Supply-Demand framework is solved at leaf, stem and root, separately. We assume that during the first time step, all water potentials in different organs are the same (Eq. 1). Here, “the first time-step” points to the very first half-hour of the simulation. At first time-step, the initial value of Ψ_l , Ψ_s , and Ψ_r all equal to $\Psi_{soil-root}$, which is the weighted sum of soil water potential.

$$\Psi_{leaf,t} = \Psi_{stem,t} = \Psi_{root,t} = \Psi_{soil-root,t} \quad (1)$$

205 Water storage in the different organs is calculated with organ-specific capacitance values (water storage unit: mmol):

$$mM_{leaf,max} = \frac{bB_{leaf}}{LDMC} - bB_{leaf} \quad (2)$$

$$mM_{leaf,t} = mM_{leaf,max} + C_{leaf} \times \psi_{leaf,t} \times LA \quad (3)$$

Where C_{leaf} is relative leaf capacitance in unit of $mmol\ m^{-2}\ MPa^{-1}$, $LDMC$ the leaf dry matter content, $b_{leaf}B_{leaf}$ is the dry leaf biomass. LA is total leaf area. Maximum water storage in leaf ($mM_{leaf,max}$) is generated by leaf fresh mass minus dry mass.

210 $m_{leaf}M_{leaf,t}$ is leaf water storage at time t.

$$mM_{sap,max} = vV_{stem} \times \gamma WC \quad (4)$$

$$mM_{sap,t} = mM_{sap,max} + C_{stem} \times \psi_{stem,t} \times vV_{stem} \quad (5)$$

$$vV_{stem} = \pi \left(\frac{D_{dbh}}{2} \right)^2 h \quad (6)$$

215 Where C_{stem} is sapwood capacitance (unit: $kg\ m^{-3}\ MPa^{-1}$), h tree height in m, $v_{stem}V_{stem}$ is proportional to the volume of tree stem in m^3 . γWC is the amount of water (mmol) per unit volume of sapwood stem volume, which corresponds to the maximum mass of water per stem volume. $m_{sap}M_{sap,max}$ and $m_{sap}M_{sap,t}$ are maximum sapwood water storage and sapwood water storage at time t, respectively. $dbh-D$ is the diameter at breast height. In the model, we also did a unit transform from kg to mmol.

$$mM_{root,max} = bB_{root} \times \varepsilon_{root,wc} \quad (7)$$

$$bB_{root} = vV_{stem} \times \delta WD \times \theta_{ratio_{root:shoot}} \quad (8)$$

220 $vV_{root} = \frac{bB_{root}}{\rho_{root}} \quad (9)$

$$mM_{root,t} = mM_{root,max} + \varepsilon_{root} C_{root} \psi_{root,t} vV_{root} \quad (10)$$

Where $\varepsilon_{root,wc}$ indicates the amount of water (mmol) stored in per gram of root mass. δWD is aboveground wood density. $v_{root}V_{root}$ is root volume. $\theta_{ratio_{root:shoot}}$ is root to shoot ratio. bB_{root} is root mass. ρ_{root} is root density. $m_{root}M_{root,max}$ and $m_{root}M_{root,t}$ are maximum root water storage and root water storage at time t, respectively. $\varepsilon_{root}C_{root}$ is root capacitance (unit: $kg\ m^{-3}\ MPa^{-1}$).

225

2.1.4.2 Hydraulic conductance calculation

Hydraulic conductance per unit of leaf area in leaf, sapwood and root at time t ($k_{leaf,t}$, $k_{stem,t}$, $k_{root,t}$) are calculated with sigmoidal relationships (Pammenter and Van der Willigen, 1998), based on their real-time water potential and a maximum conductance. $\psi_{50,organ}$ denotes the water potential when 50% conductance lost. e^{organ} describes the sensitivity of

230 conductance to changes in water potential around $\psi_{50,organ}$. An example for how these two shape parameters affecting sapwood conductance is shown in Figure ~~2-S1 for the stem organ~~.

$$k_{leaf,t} = \frac{k_{leaf,max}}{1 + \exp(a_{leaf} \times (\varphi_{leaf,t} - \varphi_{50,leaf}))} \quad (11)$$

where $k_{leaf,t}$ and $k_{leaf,max}$ are leaf conductance at time t and maximum leaf conductance, respectively.

235
$$k_{stem,t} = \frac{k_{stem,max}}{1 + \exp(a_{stem} \times (\varphi_{stem,t} - \varphi_{50,stem}))} \quad (12)$$

where $k_{stem,t}$ and $k_{stem,max}$ are stem sapwood conductance at time t and maximum stem sapwood conductance, respectively.

$$k_{root,t} = \frac{k_{root,max}}{1 + \exp(a_{root} \times (\varphi_{root,t} - \varphi_{50,root}))} \quad (13)$$

where $k_{root,t}$ and $k_{root,max}$ are root conductance at time t and maximum root conductance, respectively.

240 The conductance of the upper part of the tree (leaf plus upper part of stem) and lower part of the tree (lower part of stem plus root) are calculated following Eq. 14-15. These two conductances will be used to calculate the water flow from stem to leaf, and root to stem later separately. The value 2 in front of $k_{stem,t}$ in each equation denotes that only half of stem is accounted for in upper part and trunk part separately. Half of root length is considered in trunk part as well. The water transport process is assumed to be similar to electric current, of which the resistance (the reciprocal of hydraulic conductance) should be added up along the water transport path.

245
$$k_{upper,t} = \frac{1}{\frac{1}{k_{leaf,t}} + \frac{1}{2k_{stem,t}}} \quad (14)$$

$$k_{trunk,t} = \frac{1}{\frac{1}{2k_{root,t}} + \frac{1}{2k_{stem,t}}} \quad (15)$$

2.1.4.3 Water transport pathway simulation

250 We assume that for leaves, transpiration supply is based on the water input transported from the stem minus the water charge/discharge from the leaf water storage pool (Eq. 16).

$$T_{supply} = J_{leaf,t+1} - W_{leaf,t+1} \quad (16)$$

255 Where $J_{leaf,t+1}$ is the flux of water transported vertically to leaf from stem sapwood (unit: mmol) and $W_{leaf,t+1}$ the change in leaf water storage. A positive value of $W_{leaf,t+1}$ means that the leaf was charged with water during hydraulic recovery, and negative means it was reduced by evapotranspiration. At leaf level, the target is to solve for the leaf water potentials that minimize the difference between potential transpiration water demand and supply (Eq. 17).

$$\Delta = (J_{leaf,t+1} - W_{leaf,t+1}) - PT_{demand} \quad (17)$$

Similarly, at stem level, the target is to minimize the difference between water demand at stem and water supply to the stem

(Eq. 18).

$$260 \quad \Delta = (J_{stem,t+1} - W_{stem,t+1}) - J_{leaf,t+1} \quad (18)$$

$J_{stem,t+1}$ is the water transported vertically from root to stem. $W_{stem,t+1}$ the change in stem water storage. After solving leaf-level target, $J_{leaf,t+1}$ is known, which is the water demand at stem.

At root level, the target is to minimize the difference between water demand at root and water supply to root (Eq. 19)

$$\Delta = (J_{root,t+1} - W_{root,t+1}) - J_{stem,t+1} \quad (19)$$

265 $J_{root,t+1}$ is the water transported from soil in root zone to root. $W_{root,t+1}$ is the change in root water storage. After solving stem-level target, $J_{stem,t+1}$ is known, which is the water demand at root. The detailed calculations of these water flow variables are explained below in the order of leaf, stem and root.

Thus, water potentials are solved to let the water supply equal to water demand at each organ. In the model, HYBRD1 function from Minpack package in Fortran is used, which seeks a zero of N nonlinear equations in N variables. The evaluated function is the difference between water supply and water demand at each organ level. This function iteratively minimizes the absolute value of the evaluated function. The initial estimate of the solution vector is quite important and comes from the water potential at last time step. For example, the initial estimate for leaf water potential at time step t that will be used in the formula is the stem water potential at time step t-1.

275 a. Leaf transport

The water movement into the leaf through the hydraulic pathway is calculated as

$$J_{leaf,t+1} = (\psi_{stem,t} - \psi_{leaf,t+1} - \psi_{h/2}) \times k_{upper,t+1} \times LA \quad (20)$$

$$W_{leaf,t+1} = \epsilon C_{leaf} \times (\psi_{leaf,t+1} - \psi_{leaf,t}) \times LA \quad (21)$$

A positive $W_{leaf,t+1}$ means an increase in leaf water storage and vice versa.

280 $\psi_{h/2}$ indicates how much water potential gradient is needed to pull water against gravity up to the height (h) of the tree from position of 1/2 tree height (middle of stem).

We calculate $J_{leaf,t+1}$ and $W_{leaf,t+1}$ using an optimization procedure i.e. we start by assuming $\psi_{leaf,t+1} = \psi_{stem,t}$ and progressively decrease $\psi_{leaf,t+1}$ until the difference between leaf water supply and demand is close to zero (Eq. 22). Leaf

285 water potential is solved using HYBRD1 function (see above). The tolerance is 0.00001MPa. When the relative error between two consecutive iterates is below the tolerance, the calculation routine is terminated.

$$\Delta = T_{supply} - PT_{demand} \quad (22)$$

PT_{demand} (potential transpiration demand) is related to stomatal conductance, VPD and total leaf area (Eq. 23), where stomatal conductance varies with Ψ_{leaf} (Eq. 24).

$$290 \quad PT_{demand} = g_s \times \frac{VPD}{\alpha + \beta P} \times LA \quad (23)$$

$$g_s = \frac{g_{max} \frac{L \times Rad}{L \times Rad + L_k}}{1 + e^{a_{gs}(\psi_{leaf,t} - \psi_{50,gs})}} + g_{min} \quad (24)$$

g_s , g_{max} and g_{min} are in unit of $\text{mmol m}^{-2} \text{s}^{-1}$. VPD is in unit of kPa. LA is total leaf area.

P is standard atmospheric pressure (101.3 kPa). The aim of this g_s model is to let g_s vary following dynamics of leaf water potential in sigmoidal function then g_s can be coupled into the plant water transport system via the transpiration supply.

295 Meanwhile, the g_s is assured to close to 0 in the night, mediated by the radiation-related variable ($\frac{L \times Rad}{L \times Rad + L_k}$). L and L_k are parameters specifying the strength of short-wave radiation limitation on stomatal conductance. $\frac{L \times Rad}{L \times Rad + L_k}$ is the function of short wave radiation (Rad), which is used to ensure g_s at night is close to zero. Minimum leaf water potential in this study is set to -3.0 MPa to avoid unrealistic value (Fisher *et al.*, 2006).

We verified that our simulated g_s with the parameters values from Table A1-A2 are of similar magnitude than in the SPA model of Fisher *et al* (2007) at Caxiuana, which was developed independently from ORCHIDEE (Figure S1-S2). g_s in SPA model is obtained by maximizing the marginal carbon gain of stomatal openness (intrinsic water use efficiency). Further, in order to show that our model parameters can be used to simulate g_s at other rainforest sites, we collected g_s observations (at leaf scale) from two rainforests in French Guiana and Peru from Lin *et al* (2015) and tested our model against these observations. Figure S2-S3 shows that our simulated g_s values fall in the range observed at these two sites.

305

b. Stem transport

Next, we know that the water demand at stem is the amount of water transported from stem to leaf, $J_{leaf,t+1}$. We can now use the same procedure to calculate the $\Psi_{stem,t+1}$ that produces the expected $J_{leaf,t+1}$, and how much of that transport is from storage and from the roots through the vertical hydraulic pathway.

310 $J_{stem,t+1} = (\psi_{root,t} - \psi_{stem,t+1} - \psi_{h/2}) \times k_{trunk,t+1} \times LA \quad (25)$

$$W_{stem,t+1} = \epsilon C_{stem} \times (\psi_{stem,t+1} - \psi_{stem,t}) \times \#V_{stem} \quad (26)$$

$$S_{stem,t+1} = J_{stem,t+1} - W_{stem,t+1} \quad (27)$$

$$\Delta = S_{stem,t+1} - J_{leaf,t+1} \quad (28)$$

$S_{stem,t+1}$ is the water supply to stem. $J_{leaf,t+1}$ is the water demand at stem. Then we ~~try to solved~~ the $\Psi_{stem,t+1}$ to minimize the difference between $J_{leaf,t+1}$ and $S_{stem,t+1}$ (Eqs. 27-28).

315

c. Root transport

The same procedure is also carried out for root. The total flow out of the root is equal to $J_{stem,t+1}$. We calculate root water transport according to the following equations:

320 $J_{root,t+1} = (\psi_{soil-root,t} - \psi_{root,t+1}) \times 2 \times k_{root,t+1} \times LA \quad (29)$

$$W_{root,t+1} = \epsilon C_{root} \times (\psi_{root,t+1} - \psi_{root,t}) \times \#V_{root} \quad (30)$$

$$S_{root,t+1} = J_{root,t+1} - W_{root,t+1} \quad (31)$$

$$\Delta = S_{root,t+1} - J_{stem,t+1} \quad (32)$$

325 $J_{stem,t+1}$ is the water demand at root. $S_{root,t+1}$ is the water supply to root. Then we ~~try to solved~~ the $\Psi_{root,t+1}$ to minimize the difference between $J_{stem,t+1}$ and $S_{root,t+1}$ (Eq. 31-32). The '2' in Eq. 29 means half of the root is accounted ($\frac{1}{2 \times k_{root}}$) here since the other half of the root is considered in $k_{trunk,t}$.

We assume that water does not travel in reverse, leaving the roots and going into the soil. We also impose a limit on vertical water flow to non-negative values.

330 2.1.4.4 Update water storage pools

After the simulation of water transport, we use the W_{t+1} values to update the water storage in each organ.

$$\mathbb{M}_{leaf,t+1} = \mathbb{M}_{leaf,t} + W_{leaf,t+1} \quad (33)$$

$$\mathbb{M}_{stem,t+1} = \mathbb{M}_{stem,t} + W_{stem,t+1} \quad (34)$$

$$\mathbb{M}_{root,t+1} = \mathbb{M}_{root,t} + W_{root,t+1} \quad (35)$$

335

All above calculation processes are carried out for 20 circumference classes, separately. The parameters used in the new hydraulic architecture are summarized in Table A1A2. We did some sensitivity tests by attempting different values combination of parameters within range of records in literatures, like degree of vulnerability, Ψ_{50} , and degree of sensitivity, a (shape parameter), as shown in Figure S4. Parameters set that can better capture the observed variation of drought-induced tree mortality (especially the higher tree mortality rate in larger cohorts) was chosen. We do not aim for a perfect match between model output and observation to avoid the overfit issue during the generalization of the model.

340

2.1.5 Parameterization of tree mortality related to drought

Since trees can endure drought conditions and do not die after one or two days of low stem water potential or water shortage (Brodribb *et al.*, 2020), we defined an exposure threshold desiccation time to trigger mortality. Continuous exposure to a high percentage loss of conductance forebodes tree mortality, therefore a decision rule was set with two empirical parameters, a drought mortality exposure threshold (in days) and a mortality fraction of trees each time (in % of all trees that die). When PLC > 50% condition lasts for more than 15 continuous days, we assume that a fraction of 0.6-3% of all the trees in each size cohort are killed. These two parameters are tuned according to the observed annual mortality rates. It should be noted that a cohort model represents all the trees in a grid cell as one average individual, thus an absolute mortality threshold would kill them all on the same day. Hence we impose a fractional mortality to capture the variability in mortality drivers and processes within each cohort. We also consider that a very short wetting break during a drought condition would not necessarily

350

act to reverse embolism and thus the tree's exposure to mortality. Here the minimum threshold for a continuous wetting break (PLC<50%) to reset the exposure to zero is set to 5 days. The annual mortality rate equals to the number of dead trees per year divided by the number of trees alive in the beginning of this year.

Finally, following ORCHIDEE-CAN-RS, the recruitment rate is determined by LAI (Joetzier *et al.*, under review 2022). LAI is determined by leaf mass, which is regulated by the leaf growth, leaf turnover and leaf loss due to drought-induced tree mortality. When LAI decreases during drought, the recruitment rate will increase correspondingly since recruitment is parameterized as function of LAI. The new outputs from ORCHIDEE-CAN-NHA are listed in Table A2A3.

360 **2.1.62 Biomass growth and loss calculation**

$$\Delta \text{biomass} = \text{growth} - \text{loss} \quad (36)$$

As ORCHIDEE does not account for BVOC emissions, root exudation and C-subsidies to mycorrhizae, biomass growth is simulated as the residual of GPP minus autotrophic respiration. Biomass loss comes from three processes in ORCHIDEE: turnover (loss of leaves and fine roots), self-thinning and climate-induced mortality, that is, drought for this study. It should be noted that, in ORCHIDEE-CAN, when the number of individuals falls below a parameterized threshold, self-thinning does not happen and individuals grow without competing with each other. This calculation process is the same among three different model versions.

2.2.3 Site description

370 The study site is a tropical lowland rainforest located in the Caxiuanã National forest, state of Para, north-east of Brazil (1°43'S, 51°27'W). Annual rainfall in this site is 2000-2500mm with dry season spanning from July to November (monthly rainfall < 100mm). There are two experiments, which were carried out since the beginning of 2001. A throughfall exclusion experiment (TFE) started in the end of dry season in 2001, where 50% of canopy throughfall is excluded by plastic roof at the height of 1-2m above the ground (Fisher *et al.*, 2007; Meir *et al.*, 2018). It is of 1-ha size. At the same time, a ~~Another~~ 1-ha
375 control plot is also set without any manipulation. Here the observation data we used extends to 2008 at most due to data access issue, but these experiments are still running.

From published literature (Carswell *et al.*, 2002; da Costa *et al.*, 2010; Fisher *et al.*, 2007; Rowland *et al.*, 2015), we collected observation data as validation for model simulation, including transpiration data, soil moisture data, annual mortality rate, annual biomass density, and GPP ~~and respiration components~~ (Table 1). We also used output from the SPA (soil-plant-atmosphere) model with parameters measured for the Caxiuanã experiment. SPA is a multilayer soil-vegetation-atmosphere transfer model, which has been parameterized upon such drought affected ecosystems (Fisher *et al.*, 2007). We included simulated GPP output from SPA for model evaluation comparison under TFE since eddy covariance flux measurements can only be used in model-data comparison under CTL.

Table 1 Collected observation data used for validation of process-based model simulation.

Variables	Period	Time step	References
Transpiration	2001-2003	Daily	Fisher <i>et al</i> (2007)
Soil moisture	2001-2004	Monthly	Fisher <i>et al</i> (2007)
Biomass density	2001-2008	Annual	Observation from Rowland <i>et al</i> (2015) and da Costa <i>et al</i> (2010)
GPP	2001-2003	Daily	SPA model : Fisher <i>et al</i> (2007), flux data: Carswell <i>et al.</i> (2002)
Mortality rate	2001-2008	Annual	da Costa <i>et al</i> (2010); Rowland <i>et al</i> (2015)

2.3.4 Simulation protocols

We performed three simulations at site-level for Caxiuanã to compare the hydraulic architecture from each model version. Specifically, we tested the model performance under two setups, the control (CTL) and the throughfall exclusion experiments (TFE). In the model, TFE is reproduced by keeping only 50% of the rainfall of CTL with all else being the same as CTL (Fisher *et al.*, 2007). It should be noted that such rainfall cut is a simplification since in reality, a plastic panel is used to exclude 50% of throughfall. We ~~run-ran~~ 250yr spin-up by cycling ~~over~~ climate forcing data over 2001 to 2008 with constant CO₂ concentration of 380 ppm to get the preliminary state of carbon pools and water flow at the beginning of 2001. The meteorological forcing is of half-hourly time step. The half-hourly meteorological data are measured using an automatic weather station located at the top (51.5 m) of a tower 1 km from the experimental plot. The simulation was ran offline without coupling with a climate model. Two former model versions, and our new developments are integrated as below. We compared ORCHIDEE-CAN-RS and ORCHIDEE-CAN-NHA to see the improvements brought by the new hydraulic architecture. It should be noted that all these three simulations are realized through several flags to switch on/off some functionality.

400

- (1) ORCHIDEE-CAN with the original simple hydraulic module setup.
- (2) ORCHIDEE-CAN-RS, which adds new dynamic soil-root scheme on top of (1)
- (3) ORCHIDEE-CAN-NHA, with the new mechanistic hydraulics on top of (2).

405 2.4.5 Statistical tools

We used the R programming environment and statistical packages (version 3.5.0; R Core Team 2019) for all data processing and analysis. Package ncd4 v1.17 (Pierce, 2019) is used to handle files in NetCDF format from model outputs. Package fields v10.3 (Nychka D, 2020) is used in water potential plotting.

410 3 Results

3.1 Model evaluation against observation

3.1.1 Evapotranspiration and soil moisture

Under the control (CTL) condition, the model developed here (ORCHIDEE-CAN-NHA) agreed well with the sap flow observations from well-watered periods but underestimated sap flow in the dry season. The dry season points in Figure 3.2 are those with a water deficit of up to -3 mm day^{-1} (monthly precipitation below evapotranspiration). Regressing modeled transpiration with sap flow observations, we found that the model better represents the month-to-month seasonal variability under CTL than TFE ($R=0.73-76$ in CTL v.s. $R=0.51-48$ in TFE). Under the TFE condition, the model overestimated transpiration in both the wet and dry seasons, with a positive bias increasing at water deficits typically below -2mm/d (Figure 3.2). Simulation by ORCHIDEE-CAN-RS also showed such a positive bias (Figure S3S5). This positive model bias was mainly contributed by the simulation in 2002 when the TFE experiment was installed by the end of 2001. The transpiration supply did not show water limitation on transpiration under TFE until the end of the dry season in 2002 (Figure S4S6). The simulated transpiration could be limited by water supply (water limitation) or water demand (energy limitation). Under CTL, there is almost no water limitation even in dry season. The underestimated sap flow can be due to that model tends to underestimate the sensitivity to VPD increase in dry season. Under TFE, there is water supply limitation. The possible reasons for such overestimation under TFE can be that the sensitivity of water supply to drop in soil moisture is underestimated or the too slow soil water drainage in our model setup relative to that in reality (Kennedy *et al.*, 2019).

In terms of comparison on transpiration (Table S1), under CTL, the correlation coefficient with the observation is similar among three model versions (0.71-0.76) although there is indeed a bit increase in other error metrics in ORCHIDEE-CAN-NHA like root mean square error (RMSE), and mean absolute percentage error (MAPE). ORCHIDEE-CAN-NHA performs better in water stress condition (under TFE) in aspects of these error metrics but shows a bit lower correlation with observation than other two versions.

The partitioning of evapotranspiration (ET) was compared between CTL and TFE. Under the CTL condition, the modeled partition of evapotranspiration (ET) into transpiration (T), intercepted canopy water or dew re-evaporation (CE), and bare soil evaporation (E) is shown in Figure S5S7, with the ratio (T/ET) being around $0.62-57$ in the wet season, and $0.75-74$ in the dry

season. Under TFE, the difference of T/ET between the dry and the wet season increased (wet: 0.~~63~~⁵⁸ vs. dry: 0.84~~82~~). Specifically, under CTL, the daily mean transpiration can reach more than 4 mm/d and soil evaporation accounted for ~~31~~²⁹% of total ET in the wet season. The magnitude of transpiration increased by ~~46~~⁵¹% in the dry season (range: ~~17~~²²%-~~67~~⁷¹%) compared to that in wet season under CTL, which is ~~consistent with~~similar to the observations (+44% in Fisher *et al.*, 2007), due to higher energy supply and non-water limiting conditions. This indicated that normal conditions at this site are not very strongly limited by soil moisture during the dry season, despite recurrent deficits, as shown by the red bars on the top of Figure ~~43~~. Nevertheless, under TFE, the transpiration was lower than in CTL and encountered emerging water supply induced limitation in the dry season, with T_{dry}/T_{wet} of 1.~~13~~¹² over 2002-2008 (minimum T_{dry}/T_{wet} can be 0.~~62~~⁶⁰ in 2005) (Figure ~~43~~). Soil evaporation also decreased a lot under TFE from wet to dry season, and the ratio (E/ET) was halved from the wet to the dry season, especially in the year 2005, 2006 and 2007, when annual rainfall was relatively lower.

We next examined the model performance (ORCHIDEE-CAN-NHA) for reproducing the soil moisture dynamics during the observation period between 2001 and 2004. Soil moisture content (SMC) featured a pronounced seasonal decrease between wet and dry periods under CTL and TFE (Figure ~~54~~). Under CTL, in the surface soil, the model produced a small underestimation of SMC in both wet and dry seasons compared to observation. With increasing depth in the soil, this negative difference between modeled and observed SMC became more pronounced in the dry season (Figure ~~54~~). Under TFE, a similar negative difference also appeared in the dry season only, while a positive difference appeared in the wet period. Besides, under TFE, the modeled SMC was however always lower than for CTL in the surface layer, and got even more depleted in the deeper layer with the dynamic soil-root scheme, even in wet season (Figure ~~65~~), because this scheme shifts root uptake from surface to deep layers when the surface dries out compared to simulation of ORCHIDEE-CAN (Figure ~~S6~~^{S8}). SMC at each layer is influenced by infiltration, evaporation, transpiration and drainage. The amount of water that can be absorbed from each layer (η) is determined by its water potential and also soil-root resistance. Soil water potential decreases with soil depth while soil-root resistance becomes much smaller with soil depth as well. Therefore, η does not change monotonically with soil depth. For example, in wet season in 2005 under TFE, η in deeper soil layer is higher than that in top layer. While in dry season, η in deeper soil layer can decrease to almost 0, when the water supply mainly comes from the shallower layer. In year 2004, even in dry season, lower soil layers can contribute a lot to water uptake (Figure S9).

3.1.2 Carbon fluxes

GPP simulation outputs had a similar seasonality under CTL among all model versions (Figure ~~S7~~^{S10}). All simulations showed higher GPP in the dry season compared to the wet season under CTL (also in eddy covariance Carswell *et al.*, 2002)- (Table ~~S2~~). When we compared GPP against the SPA model results from Fisher *et al* (2007) that were calibrated to best fit site-level observations, and against flux observation, we found that modeled GPP in ORCHIDEE-CAN-NHA showed a larger seasonal amplitude than that of SPA but with a similar phase (Figure ~~76~~). GPP from ORCHIDEE-CAN-NHA presents 1.1 gC m⁻² day⁻¹

470 ¹ difference between wet and dry season, which is similar with two previous versions. GPP seasonality from eddy covariance
data was also in agreement with the simulation from ORCHIDEE-CAN-NHA, with a peak in the middle of the dry season. In
contrast, the SPA modeled GPP decreased right from the start of the dry season. We found that the impact of TFE condition
on modeled GPP was relatively small during the wet season, with a difference less than 10% in comparison with CTL (see
Figure S7-S10 for the two other versions). On the other hand, the impact of TFE during the dry season led to a pronounced
475 decrease of GPP, like in the SPA model. In ORCHIDEE-CAN-NHA, GPP decreased only in the end of the dry season under
TFE while in SPA it decreased from the beginning (Figure 76). Only after two years of drought, ORCHIDEE-CAN-NHA
simulated an early decrease of GPP at the beginning of the dry season, and thus became consistent with SPA (Figure 76). Dry
season GPP increase is also found in other two model versions in spite of a bit difference in the magnitude. In SPA model,
GPP is simulated using FvCB model regulated by optimization of intrinsic water use efficiency, in which the optimization
480 target is $\frac{\partial A}{\partial g_s}$ (A is assimilation, g_s is stomatal conductance), not accounting for VPD. So the magnitude of GPP variation would
not be too high. In ORCHIDEE-CAN-NHA that we used here, larger seasonal amplitude of modeled GPP especially the low
GPP in dry season under TFE is due to higher water limitation imposed from our hydraulic architecture.

3.2 Simulated water potential gradients along the soil to leaf continuum

485 With the mechanistic hydraulic architecture of ORCHIDEE-CAN-NHA, the dynamic water potential at leaf, stem and
root levels were modeled and compared with observations (Figure S8S11). Diurnal cycle of Ψ_{leaf} was comparable between
model and observations although the modeled Ψ_{leaf} was less negative than the observation in the noon (Figure S8S11). The
lowest water potential was simulated in the leaf, followed by stem, as expected. There was clear seasonal variability between
wet and dry periods especially under TFE conditions (Figure 87). Under CTL, the water potential vertical negative gradient
490 between leaf and root was similar between the wet and the dry season (-0.82-79 MPa in wet season, -0.86-84 MPa in dry season
for tree cohort #10, that is in diameter of 1.15 m; for the cohorts description see Methods); the minimum monthly mean Ψ_{leaf} ,
 Ψ_{stem} and Ψ_{root} were -1.4-3 MPa, -1.0 MPa and -0.9-8 MPa in the dry season, respectively. Under TFE, Ψ_{leaf} , Ψ_{stem} and Ψ_{root} were
prominently more negative during the dry season (-2.5 MPa, -1.8-9 MPa, -1.6-7 MPa, respectively) and the range of water
potential gradients between stem and root in the dry season became a bit narrower than that in the wet season, which reflected
495 the fact that the water flow from vertical transport is limited. With regard to the change of water storage, leaf water storage
decreased continuously from wet to dry season but did not approach depletion of water storage (Figure S9S12). Ψ_{leaf} in the dry
season in year 2005 (dry season rainfall is minimum) reached its minimum during the whole simulation period under TFE. We
can see that at leaf and stem levels, Ψ_{leaf} and Ψ_{stem} decreased slightly with the size of cohorts and they were a bit more negative
in larger (taller) cohorts correspondingly (Figure 87, Figure S10S13). Taller trees have a longer water transport path, which
500 means greater gravitational potential energy is needed to pull water upward (Eq. 20). Thus more negative Ψ values were
expected in the circumference classes with higher trees. $\Psi_{\text{soil-root}}$ did not show too much variation among different cohorts

(Figure S14). Then the leaf water potential difference among cohorts is mainly contributed by the height effect, which is about -0.1MPa / 10m.

505 3.3 Simulated hydraulic failure

Here, we used the simulated Percentage Loss of Conductance (PLC) in stem sapwood as an indicator of tree hydraulic failure. Under CTL, the PLC remained lower than 50% even in dry seasons, due to weak water limitation (see soil moisture deficits in Figure ~~5~~4 and water potential gradients in Figure ~~8~~7). Under TFE, the PLC did not reach above 50% in wet seasons, but in dry seasons, it increased to more than 80% especially in the (abnormally dry) year 2005 (Figure ~~9~~8). Under TFE, the number of days with PLC above 50% were ~~8~~12 days, ~~52~~63 days in years 2002 and 2003 respectively, and reached up to ~~73~~84 days in year 2005 (cohort #10). Besides its seasonal variability, PLC also moderately increased with the size of cohorts, denoting more severe water stress in larger / taller cohorts (Figure ~~S14~~S15).

Next, we looked at the two variables defined to link PLC with mortality in the model: the PLC mortality exposure threshold and the mortality fraction per day of exposure (see Methods). The mortality exposure threshold represents a maximum tolerable drought duration for trees before a fraction of them die. In this study, this mortality threshold is set to consecutive 15 days when PLC stays above 50%. The mortality fraction is set to a death rate of 0.~~63~~% during each day of the exposure period (no preferential rule is imposed for small or large trees). In absence of any measurement, the values of these two mortality-triggering variables were calibrated to reproduce the observed mortality in the TFE experiment. We estimated the mortality fraction by totaling the dead trees in each year and dividing this number by the initial tree density in each year. With this scheme, estimated drought-induced tree mortality rates were shown in Figure ~~9~~8. The model simulated that more than 10% of trees in larger cohorts (#12 to #20) would be killed by the dry conditions in 2005 (Figure ~~9~~8), which was a bit ~~high~~larger than the 7% of mortality observed in the experiment. Figure S16 and S17 present that smaller cohort (#5 here) shows a bit larger variation in water potential dynamics and corresponding PLC, which indicates that an adequate cumulated drought exposure occurs less frequently than that of larger cohorts (#20 here). Thus the higher annual tree mortality rate is found in larger cohorts (Figure 8).

The model simulation (~~ORCHIDEE-CAN-NHA~~) produced a reasonable (but slightly too large) biomass mortality under TFE during 2002 to 2008 (Figure ~~4~~9, Figure ~~S12~~S18), with a modeled biomass loss (~ ~~56~~67 MgC/ha, ~~~16~~19% of biomass in 2001) being a bit larger than observation (~30 MgC/ha, ~12% of biomass in 2001). Other two previous model versions cannot reproduce the comparable drought-induced biomass loss (Table S3). Figure ~~11~~10 showed that under CTL, the biomass loss due to self-thinning and turnover is almost compensated by the biomass growth and recruitment. Under TFE, self-thinning only existed in the years before 2004 according to the model, because a drop of tree density was induced by preceding drought mortality in 2003, which suppressed the competition between trees in the model afterwards. The gain of biomass (labeled as

535 'growth' in green in Figure ~~H10~~) also decreased under TFE in comparison with CTL. Moreover, when we grouped the mortality rate simulated for 20 cohorts into three classes according to their DBH (<20cm, 20-40cm and >40cm) we can further evaluate the model performance (Figure ~~H11~~). Under CTL, the model produced higher mortality rate (~~2.01.7%~~) than the observation (2001:2008 mean: 1.1%-1.3%) in three classes. In other words, the modeled self-thinning rate was probably higher than that in reality since the mortality rate observed was only 0.4% in year 2001. Under TFE, the model performed differently
540 for each size class. For the small-sized class with DBH<20cm, the model underestimated the mortality rate compared to observations after 2006. For the medium-sized class (DBH: 20-40cm), the modeled mortality rate was comparable with observation ~~until 2004~~in year 2001, 2002 and 2006. For the large-sized class group, the model can estimate successfully the large mortality observed in-situ from 2004-2005. Overall, the averaged mortality rate was comparable between observation and model simulation. The model-observation gap in year 2005, ~~23.7%~~ in model simulation vs. 4.8% in observation, may be
545 due to modeled underestimation in ~~medium-sized group and large-sized group group of DBH<20cm and larger modeled individual density of this group than the reality~~ (Figure ~~H11~~).

Finally, we tested the performance of our hydraulic failure – mortality sub-model at another Throughfall Exclusion Experiment in the Amazon, from the Tapajos site (Nepstad *et al.*, 2007). At this site, TFE only happened in the wet season
550 between 2000 and 2003, with an exclusion of almost 50% rainfall. Figure ~~S13-S19~~ shows that our model can capture the observed phenomenon of a higher mortality rate found at Tapajos especially in trees with diameter > 30 cm although the modeled mortality rate is lower than that in the field measurement. Our model also simulates the net biomass increase at Tapajos under CTL and the great biomass loss under TFE. The two parameters of our hydraulic failure – mortality model (drought exposure threshold and mortality fraction each day upon exceeding the threshold), which are not directly observable,
555 were effectively calibrated at Caxiuna but the model is also successfully evaluated at Tapajos site. Given the complexity of drought-mortality relationships which lack a unified theory, this shows high performances for the new parameterization we proposed in the study.

560

4 Discussion

4.1 Model improvements by new parameterizations of hydraulic transport

The original ORCHIDEE-CAN model included a limit from transpiration supply based on water transport and resistances along a water potential gradient (Naudts *et al.*, 2015). Nonetheless, the constant value assumed for Ψ_{leaf} , the lack of a dynamic
565 simulation of Ψ_{stem} and Ψ_{root} and conductivities limit the mechanistic basis of the approach. To make a step forward, the new hydraulic module presented here tracks the water flow continuum from the soil to the atmosphere. The water potentials Ψ_{leaf} , Ψ_{stem} , Ψ_{root} are updated at each half-hour time step, based upon a Supply-Demand framework of minimization of difference

570 between water demand and water supply at organ-level. Besides improvements in modeling the processes of vertical water transport, our hydraulic module also considers the tissue water storage and the dynamics of water flow between different organs, both of which are bounded by the capacitance and water volume. The water storage capacity, can affect the water potential and determine the tolerable duration of desiccation before severe water potentials are reached (Gleason *et al.*, 2014). For example, in the model, stem sapwood water storage can be discharged under CTL during both wet and dry periods, and this contribution can be larger than that from vertical water flow. In contrast, under TFE, the stem sapwood water pool is not always refilled overnight in the dry season (Figure [S14S20](#)). Martinez-Vilalta *et al.* (2019) also found that a more explicit
575 consideration of water pools helps advance the monitoring and prediction of mortality risk, although more experimental evidence is required for verifying the relationship between relative water content and mortality probability.

Besides the capacity of each organ, stem hydraulic safety indicators like water potential at which 50% of stem conductance lost (Ψ_{50}) can be modeled directly, and used as an indicator of tree responses to drought events. This variable influences the
580 maximum drought exposure threshold proposed in our model, which varies among specific tree species, tree size and different growth conditions (Blackman *et al.*, 2016). In a previous study at this site, Rowland *et al.* (2015) found vulnerable and resistant genera have contrasting vulnerability to hydraulic deterioration. Vulnerable trees with larger DBH displayed higher conductivity loss under experimental drought and less negative Ψ_{50} . However, in a more recent study with much more field data in Bittencourt *et al.* (2020), the variability of hydraulic traits among species is also evident and the importance of particular
585 hyper-dominant species becomes notable too in affecting the overall species and size patterns. Naudts *et al.* (2015) related stem conductivity to $\Psi_{soil-root}$ with Ψ_{50} and another shape parameter as an adjustment. In our model, we built sigmoidal relationships between conductance and Ψ_{stems} , of which the slope parameter assesses the sensitivity of conductance loss to decline in water potential that can correspond to different plants water regulation strategies. Through involving trait-related parameters, our model could be used to reflect isohydric or anisohydric patterns although these two parameters are challenging to calibrate for
590 highly diverse tropical forests (e.g Mar échaux *et al.* (2015)).

Recently, there is expansion in the availability of the hydraulic parameters for tropics, but mainly for xylem and leaves. Although the sensitivity analysis of Supply-Demand theory in Sperry *et al.* (2016) suggested that the usage of single stem vulnerability curve would not bring more error to transpiration than the true segmented mode (that is, separate leaf, stem and
595 root curves) as long as the leaf/stem Ψ_{50} and root/stem Ψ_{50} closer to 1, our study included vulnerability segmentation of leaf, stem and root to facilitate the coherent representation of the soil-root-stem-leaf continuum. Besides, the possible context-dependent trait coordination also needs to be noticed in parameterizing models (Mar échaux *et al.*, 2020), e.g. the relationship between leaf turgor loss point and leaf area, which will benefit the diversity in vegetation models.

600 With water transport from vertical gradient of potentials and changes in water storage, ORCHIDEE-CAN-NHA produced dynamic and reasonable water potentials (Figure [S8S11](#)) and conductance at leaf, stem and root levels. Based on the improved

hydraulic architecture, we implemented an empirical algorithm that assumes a fixed fraction of trees will die after 15 days of continuous sustained drought exposure with PLC>50%. Combinations of these two parameters of drought exposure threshold and mortality fraction each time could also be adapted to diverse plants traits to match mortality rates across different sites, coping with adverse conditions, e.g. tree size, different isohydric and anisohydric behaviors of stomatal regulation upon varying water status (McDowell *et al.*, 2008). Therefore, these two parameters would need to be calibrated upon data suited to different conditions. For example, Esquivel-Muelbert *et al.* (2017) found that wet-affiliated genera tends to show higher drought-induced mortality than dry-affiliated ones. Assigning higher mortality fraction for wet-affiliated genera upon such condition can be a solution to test different levels of mortality fraction parameters.

The Supply-Demand framework in our model also draws on Sperry *et al.* (2016) that empirical expression of each continuum component, e.g. stomatal conductance, hydraulic conductivities from vulnerability curve is applied. There are also similarities between our hydraulic structure and Xu *et al.* (2016), in aspects that both vertical water flow and water storage capacity in leaf and stem are accounted for in modelling process of water supply and demand. The major differences from Xu *et al.* (2016) are that our model uses transpiration supply potential water demand (rather than the real transpiration) as the leaf-level demand instead and also refines the water transport from soil-root-stem thus water potential of each organ in continuum is solved.

In total, our new model mainly focus on the extension of plant hydraulics to the hydraulic failure induced tree mortality. Our model solves a complete water potential profile including nodes of soil, soil in root zone, root, stem and leaf as well as the hydraulic conductance dynamics. One of our strong strength is the modeling of drought-induced tree mortality using continuous higher loss of stem conductance as the indicator of occurrence of tree mortality event. Admittedly, weakness does exist in our model, for example, parameter retrieval can be further realized through data assimilation that use more benchmark (see below). More optimization paradigm can be integrated into our model, which would benefit the parameterization process.

4.2 Possible factors affecting tree mortality

Our model simulations showed that larger trees suffer more severe water stress with higher PLC (Figure 98) and that the mortality fraction is consequently the highest in groups with DBH>40cm. This uses the theory that longer vertical water transport pathway in taller trees can intensify the height-dependent hydraulic limitation (Grote *et al.*, 2016) and site-level experimental evidence (Rowland *et al.*, 2015). Such size-regulated mortality has also been corroborated by Bennett *et al.* (2015). Hendrik and Maxime (2017) summarized that drought can be more detrimental on growth and mortality rates of larger trees. Klos *et al.* (2009) also found that older and denser stands are more susceptible to drought damage, but that the mortality-height relationship can also be relaxed by species diversity, for example, the taxonomic identity also controls the traits-size relationship (Bittencourt *et al.*, 2020). Environmental gradients of climate conditions and concurrent competition can also affect the height-mortality risk relationship (Stovall *et al.*, 2019), and co-explain the forest mortality patterns (Young *et al.*,

635 2017). Conversely, the benefits of deeper root systems potentially may allow tall trees to avoid drought stress (Trugman *et al.*,
2021). Simulated water content in bottom soil layers did not counteract the embolism under dry season in our study, so we
captured the positive height-mortality relationship observed at this site. Nevertheless, in the Caxiuanã field measurements of
Rowland *et al* (2015), trees of similar size also showed different vulnerability (Ψ_{50}), which suggests the influence of other
640 kind of within PFT variation cannot yet be accounted for in model. Wood density with intra-individual variability is intimately
linked with tree mortality, and has been found to explain variation in tropical mortality rate across sites through a hierarchical
Bayesian approach (Kraft *et al.*, 2010). Plant functional traits like xylem, leaf specific conductivities and capacitances are
inversely related to the wood density (Meinzer *et al.*, 2008). On the one hand, taller trees with lower wood density (Rozendaal
et al., 2020), would be expected to present higher sapwood conductivity although the overall effect would depend on the forest
645 type, and growth conditions (Fajardo, 2018;Meinzer *et al.*, 2008). On the other hand, height-dependent water limitation
weakens the stem hydraulic conductivity. Such tradeoffs co-determine the resistance to hydraulic failure.

Under extreme drought, hydraulic traits are also highly important factors for mortality risk. Trees with high cavitation
resistance and wide hydraulic safety margin can endure longer desiccation (Blackman *et al.*, 2019). Although xylem anatomical
650 traits directly related to conductivity better reflect the whole-tree performance (Fan *et al.*, 2012), the relative importance of
climate conditions, plant functional and hydraulic traits in determining forest mortality risk encountering drought needs further
validation with large amount of experimental observations (Aleixo *et al.*, 2019).

4.3 Model limitations and directions for future development

655 Several potentially important ecological processes related to plant hydraulics and mortality warrant further consideration.
First, tree mortality risk, in the simulations, is mainly triggered by drought-induced water stress, but soil water limitation can
also be alleviated by enhanced tree survival through increasing nutrients uptake, to increase water use efficiency and reduce
negative effects of droughts (Wang *et al.*, 2012). Fast growth rate, however, is associated with higher mortality probability (see
Rozendaal *et al.* (2020) for spatial relationship between basal area growth, diameter and possibility of mortality in Amazonia
660 tropical forest). Discounting the demographic association between tree growth and mortality rate could lead to underestimation
of mortality in model simulations. Representations of these interactions should be further incorporated to increase model
credibility under various environments. Secondly, the plant functional type classification used in ORCHIDEE-CAN-NHA does
not capture hydraulic variation. Some researchers proposed hydraulic trait-based classifications (Anderegg, 2015) or hydraulic
functional types (Liu *et al.*, 2021b), which may better represent isohydric and anisohydric behaviors affecting water potential
665 and stomatal regulation. Accounting for the variability in hydraulic traits would be important to properly model in future
ecosystem-atmosphere feedback effects (Anderegg *et al.*, 2018;Powell *et al.*, 2018). More specifically, some traits are also but
not always found to vary with tree size, like Ψ_{50} , conductivity and the number of days of exposure to severe drought that a tree

can tolerate. Our assumption of fixed Ψ_{50} values for all 20 cohorts may lead to miscalculation of mortality rates in different classes, e.g. overestimation for PLC in smaller cohorts and underestimation for PLC in larger cohorts. Therefore, future research should focus on discerning the empirical connection between species-specific hydraulic strategies toward mortality by distinguishing vegetation functional groups. Thirdly, legacy or memory effects are not fully accounted here. The impacts of drought on increasing tree mortality can last for at least two years after an extreme climatic event (Aleixo *et al.*, 2019). Some cumulated or memory indicators may help tackle such problems. For example, we can consider the effects of past drought events on current tree growth by multiplying the drought intensity with the inverse of time passed (Franklin *et al.*, 1987). Finally, different threshold indicators like relative water content and turgor loss point can also be tested in mortality triggering process (Sapes *et al.*, 2019;Zhu *et al.*, 2018).

Besides future developments of the hydraulic module, more calibration and understanding of the lethal threshold required for hydraulic failure is clearly necessary. We call for that more observed hydraulic traits data for tropical trees, including detailed vulnerability, to support more reasonable and appropriate parameterization scheme in mortality risk modeling. For example, the point of no return from drought-induced xylem embolism in aspects of water potential (turgor loss point), conductivity and relative water content. Remote sensing products of vegetation optical depth (VOD), proportional to the vegetation water content, may help benchmark the capacitance dynamics. In addition, in this study we have only calibrated the new hydraulic architecture against observations from one experimentally droughted site. It should be noted that the hydrological parameters are quite sensitive in aspect of drought response and also uncertain. Expanding this method to other drought experiment sites to generalize the model performance is required. For example, this future work could address to what extent the 2005 and 2010 drought affected forest dynamics in western Amazonia. Large-scale mortality observations and more comprehensive mortality benchmarking datasets are also required to evaluate the hydraulic architecture in process-based model (Adams *et al.*, 2013;Allen *et al.*, 2010). Regarding the parameterization of model at the regional and global scales, generally, three means can be resorted to benefit such realizations. The first one can be embedding the plant trait database like TRY (Kattge *et al.*, 2020) into our process-based model although the records are still limited in aspect of hydraulic traits. The second solution can be the optimization of hydraulic parameters using e.g. Monte Carlo Markov Chain with measurements or remote sensing products as constraints like traits retrieval in Liu *et al.* (2021b) or other data-assimilation system like ORCHIDAS. Here the data quality of constraint is highly important as the error can be accumulated. The third method can be building simple regression formula between plant traits and the climatology where the plants reside in. In next step, these solutions will be attempted to test the generalization of process-based model performance at large scale.

5 Conclusion

Our study proposes a new mechanistic hydraulic architecture module, ORCHIDEE-CAN-NHA, which simulates dynamic xylem cavitation indicator of percentage loss of conductance (PLC) through modeling the water flow in soil-root-stem-leaf

continuum and water charge from storage. The model was calibrated against observations from the Caxiuanã throughfall exclusion field experiment in the eastern Amazon, during 2001 to 2008, with regard to the seasonal variability in transpiration, soil moisture and productivity. Besides the improvement of hydraulic architecture, we also built a relationship between PLC and tree mortality rate via two empirical parameters, drought exposure duration, which determines the mortality frequency and the mortality fraction in each day once exceeding the exposure. Our model produces comparable annual tree mortality rates with observations over the study period. Introduction of mechanistic hydraulic architecture in land surface models can help provide a window through which we can enable prediction for mortality under future possible drought events. We also call for more available hydraulic traits and vulnerability data for testing the generalization of model performance.

705

710 6 Appendix

Table A1 Plant hydraulics in major vegetation models. The column of validation indicates how the model performance be validated against observation.

<u>Model</u>	<u>Framework for modeling hydrodynamics</u>	<u>Validation</u>	<u>Reference</u>
<u>CLM v5</u>	<u>Stomata optimization and supply-demand theory</u>	<u>Caxiuanã site</u>	<u>Kennedy et al. (2019)</u>
<u>JULES-SOX</u>	<u>Optimization of stomatal conductance by maximizing the product of leaf photosynthesis and xylem hydraulic conductance</u>	<u>70 global eddy flux sites</u>	<u>Eller et al. (2020)</u>
<u>CliMA</u>	<u>Optimization-based stomatal model by maximizing the difference between leaf level carbon gain and risk</u>	<u>Two flux sites in US</u>	<u>Wang et al. (2021)</u>
<u>CABLE</u>	<u>Supply-demand theory</u>	<u>Garden dry-down experiment across south-east Australia</u>	<u>De Kauwe et al. (2020)</u>
<u>ORCHIDEE-CAN</u>	<u>Water supply via Darcy's law without dynamics in stem water potential</u>	<u>Europe</u>	<u>Naudts et al. (2015)</u>
<u>Ecosystem Demography Model 2</u>	<u>Stomata optimization and supply-demand theory</u>	<u>Costa Rican field</u>	<u>Xu et al. (2016)</u>
<u>TRIPLEX</u>	<u>Loss of stem conductivity is related to soil water potential</u>	<u>Canada boreal forests</u>	<u>Liu et al. (2021a)</u>

<u>SPAC</u>	<u>Stomata optimization and supply-demand theory</u>	<u>13 temperate and tropical forest biomes across the globe</u>	<u>Liu et al. (2017)</u>
<u>One hydraulic module</u>	<u>Two parameters: isohyricity factor and well-watered forcing pressure</u>	<u>Leaf- and soil water potentials of 66 species under drought and non-drought conditions</u>	<u>Papastefanou et al. (2020)</u>
<u>SurEau</u>	<u>Water mass conservation law</u>	<u>One forest site in east France</u>	<u>Cochard et al. (2021)</u>
<u>TFS v.1-Hydro</u>	<u>Continuous porous approach with pressure-volume formula</u>	<u>Caxiuana site</u>	<u>Christoffersen et al. (2016)</u>
<u>SPA</u>	<u>Stomata optimization and supply-demand theory</u>	<u>Caxiuana site</u>	<u>Fisher et al. (2007)</u>

715

Table A1-A2 Parameters used in new hydraulic architecture model. These parameters are selected from the range recorded by literature that we have analyzed.

Symbol	Description	Unit	Value	Source
ϵC_{leaf}	Leaf capacitance	mmol m ⁻² MPa ⁻¹	670	De Kauwe <i>et al.</i> (2020)
ϵC_{stem}	Stem capacitance	kg m ⁻³ MPa ⁻¹	130	Xu <i>et al.</i> (2016)
ϵC_{root}	Root capacitance	kg m ⁻³ MPa ⁻¹	150	Modified from C_{stem}
$SSLA$	Specific leaf area	m ² kg ⁻¹	16.6	Kattge <i>et al.</i> (2011)
$LEDMC$	Leaf dry matter content	g g ⁻¹	0.2	Kattge <i>et al.</i> (2011)
γWC	mass of water per unit of sapwood volume	mol m ⁻³	25000	Suzuki (1999)
δWD	Wood density	g cm ⁻³	0.645	Chave <i>et al.</i> (2006)

$\theta_{ratio_{root:shoot}}$	Root shoot ratio	g g^{-1}	0.25	Mokany <i>et al.</i> (2006)
$\theta_{root,we}$	root water content	mmol g^{-1}	35	Markesteijn and Poorter (2009)
ρ_{root}	Root density	g cm^{-3}	0.503	Schuldt <i>et al.</i> (2013)
$k_{leaf, max}$	Maximum leaf hydraulic conductance per unit leaf area	$\text{mmol m}^{-2} \text{s}^{-1} \text{MPa}^{-1}$	15	Sack (2006)
$k_{stem, max}$	Maximum sapwood hydraulic conductance per unit leaf area	$\text{mmol m}^{-2} \text{s}^{-1} \text{MPa}^{-1}$	15*	Hickler <i>et al.</i> (2006)
$k_{root, max}$	Maximum root hydraulic conductance per unit leaf area	$\text{mmol m}^{-2} \text{s}^{-1} \text{MPa}^{-1}$	10	Modified from $k_{stem, max}$
a_{leaf}	Shape parameter for k_{leaf} vs. Ψ_{leaf} curve	-	-2.5	[-3.8, -0.5] in Bartlett <i>et al</i> (2019)
a_{stem}	Shape parameter for k_{stem} vs. Ψ_{stem} curve	-	-2.3	[-3.8, -0.5] in Bartlett <i>et al</i> (2019)
a_{root}	Shape parameter for k_{root} vs. Ψ_{root} curve	-	-3.0	[-3.8, -0.5] in Bartlett <i>et al</i> (2019)
$\Psi_{50, leaf}$	Ψ_{leaf} at 50% loss of leaf conductance	MPa	-1.1	[-3, -0.75] in Bartlett <i>et al</i> (2019)
$\Psi_{50, stem}$	Ψ_{stem} at 50% loss of stem sapwood conductance	MPa	-1.32	[-3, -0.75] in Bartlett <i>et al</i> (2019)

$\Psi_{50, root}$	Ψ_{root} at 50% loss of root conductance	MPa	-1.1	[-3, -0.75] in Bartlett <i>et al</i> (2019)
g_{max}	Maximum stomatal conductance in Eq. 24	mmol m ⁻² s ⁻¹	700	Franks and Brodribb (2005)
g_{min}	Minimum stomatal conductance	mmol m ⁻² s ⁻¹	10	Franks and Brodribb (2005)
$\Psi_{50,gs}$	Ψ_{leaf} at 50% decline in stomatal conductance	MPa	-1.72	Bartlett <i>et al</i> (2016)
a_{gs}	Shape parameter for g_s vs. Ψ_{leaf} curve	-	-2.3	Bartlett <i>et al</i> (2016)
$\frac{L \times Rad}{L \times Rad + L_k}$	In this term, the function of short-wave radiation, is used to ensure the g_s at night to be close to 0	-	-	--

720 * In Hickler *et al* (2006), the maximum sapwood conductivity of $50 \times 10^{-4} \text{ m}^2 \text{ s}^{-1} \text{ MPa}^{-1}$ can be converted to $\sim 15 \text{ mmol m}^{-2} \text{ s}^{-1} \text{ MPa}^{-1}$ if we assume sapwood area/leaf area of 0.0016 (value falls in (Gotsch *et al.*, 2010), and tree height of 30m.

Table A2-A3 Outputs variables calculated by ORCHIDEE-CAN-NHA.

Category	Symbol	Description	Unit
Water potentials	$\psi_{soil-root}$	soil water potential in root zone	MPa
	ψ_{root}	Root water potential	MPa
	ψ_{stem}	Stem water potential	MPa
	ψ_{leaf}	Leaf water potential	MPa
Hydraulic conductances	k_{root}	Root hydraulic conductance	mmol m ⁻² s ⁻¹ MPa ⁻¹
	k_{stem}	Stem sapwood hydraulic conductance	mmol m ⁻² s ⁻¹ MPa ⁻¹

	k_{leaf}	Leaf hydraulic conductance	$\text{mmol m}^{-2} \text{s}^{-1} \text{MPa}^{-1}$
	m_{root}	Water volume in the root	mmol
Water storage	m_{stem}	Water volume in the stem	mmol
	m_{leaf}	Water volume in the leaf	mmol
Cavitation	PLC	Percentage loss of stem conductance	%
	$NK_{counter_PLC50}$	Number of continuous days with $PLC > 50\%$ (exposure)	days
Mortality	$circ_class_morCM$	Tree mortality for each circumference class due to exposure to $PLC > 50\%$	1 m^{-2}

725

Code/Data Availability Statement

The ORCHIDEE-CAN-NHA model (r7236) code used in this study is archived at <https://doi.org/10.14768/8C2D06FB-0020-4BC5-A831-C876F5FBBFE9>. The detailed code used to reproduce the analysis and figures is publicly available at doi:

730 10.5281/zenodo.5721245.

Author contributions

YY, EJ, PC, and NV designed the study. YY and EJ developed the code. YY conducted the analysis. YY wrote the manuscript. All authors provided comments and contributed to the final version of the paper.

735

Competing interests

The authors declare that they have no competing interests.

Acknowledgements

740 This work was financially supported by the CLAND Convergence Institute funded by ANR (16-CONV-0003). YY also acknowledges support from Make Our Planet Great Again (MOPGA) Scholarship.

References

- 745 Adams, H. D., Williams, A. P., Xu, C., Rauscher, S. A., Jiang, X., and McDowell, N. G.: Empirical and process-based approaches to climate-induced forest mortality models, *Frontiers in plant science*, 4, 438, 2013.
- Adams, H. D., Zeppel, M. J., Anderegg, W. R., Hartmann, H., Landhäusser, S. M., Tissue, D. T., Huxman, T. E., Hudson, P. J., Franz, T. E., and Allen, C. D.: A multi-species synthesis of physiological mechanisms in drought-induced tree mortality, *Nature ecology & evolution*, 1, 1285-1291, 2017.
- 750 Aleixo, I., Norris, D., Hemerik, L., Barbosa, A., Prata, E., Costa, F., and Poorter, L.: Amazonian rainforest tree mortality driven by climate and functional traits, *Nature Climate Change*, 9, 384-388, 2019.
- Allen, C. D., Macalady, A. K., Chenchouni, H., Bachelet, D., McDowell, N., Venetier, M., Kitzberger, T., Rigling, A., Breshears, D. D., and Hogg, E. T.: A global overview of drought and heat-induced tree mortality reveals emerging climate change risks for forests, *Forest ecology and management*, 259, 660-684, 2010.
- 755 Allen, C. D., Breshears, D. D., and McDowell, N. G.: On underestimation of global vulnerability to tree mortality and forest die-off from hotter drought in the Anthropocene, *Ecosphere*, 6, 1-55, 2015.
- Anderegg, W. R.: Spatial and temporal variation in plant hydraulic traits and their relevance for climate change impacts on vegetation, *New Phytologist*, 205, 1008-1014, 2015.
- Anderegg, W. R., Flint, A., Huang, C.-y., Flint, L., Berry, J. A., Davis, F. W., Sperry, J. S., and Field, C. B.: Tree mortality predicted from drought-induced vascular damage, *Nature Geoscience*, 8, 367-371, 2015.
- 760 Anderegg, W. R., Konings, A. G., Trugman, A. T., Yu, K., Bowling, D. R., Gabbitas, R., Karp, D. S., Pacala, S., Sperry, J. S., and Sulman, B. N.: Hydraulic diversity of forests regulates ecosystem resilience during drought, *Nature*, 561, 538-541, 2018.
- Bartlett, M. K., Klein, T., Jansen, S., Choat, B., and Sack, L.: The correlations and sequence of plant stomatal, hydraulic, and wilting responses to drought, *Proceedings of the National Academy of Sciences*, 113, 13098-13103, 2016.
- 765 Bartlett, M. K., Detto, M., and Pacala, S. W.: Predicting shifts in the functional composition of tropical forests under increased drought and CO₂ from trade-offs among plant hydraulic traits, *Ecology letters*, 22, 67-77, 2019.
- Bittencourt, P. R., Oliveira, R. S., da Costa, A. C., Giles, A. L., Coughlin, I., Costa, P. B., Bartholomew, D. C., Ferreira, L. V., Vasconcelos, S. S., and Barros, F. V.: Amazonia trees have limited capacity to acclimate plant hydraulic properties in response to long-term drought, *Global change biology*, 26, 3569-3584, 2020.
- 770 Blackman, C. J., Pfautsch, S., Choat, B., Delzon, S., Gleason, S. M., and Duursma, R. A.: Toward an index of desiccation time to tree mortality under drought, *Plant, cell & environment*, 39, 2342-2345, 2016.
- Blackman, C. J., Li, X., Choat, B., Rymer, P. D., De Kauwe, M. G., Duursma, R. A., Tissue, D. T., and Medlyn, B. E.: Desiccation time during drought is highly predictable across species of *Eucalyptus* from contrasting climates, *New Phytologist*, 224, 632-643, 2019.

- 775 Bonan, G., Williams, M., Fisher, R., and Oleson, K.: Modeling stomatal conductance in the earth system: linking leaf water-use efficiency and water transport along the soil–plant–atmosphere continuum, *Geoscientific Model Development*, 7, 2193-2222, 2014.
- Brienen, R. J., Phillips, O. L., Feldpausch, T. R., Gloor, E., Baker, T. R., Lloyd, J., Lopez-Gonzalez, G., Monteagudo-Mendoza, A., Malhi, Y., and Lewis, S. L.: Long-term decline of the Amazon carbon sink, *Nature*, 519, 344-348, 2015.
- 780 Brodrribb, T. J., and Cochard, H.: Hydraulic failure defines the recovery and point of death in water-stressed conifers, *Plant physiology*, 149, 575-584, 2009.
- Brodrribb, T. J., Powers, J., Cochard, H., and Choat, B.: Hanging by a thread? Forests and drought, *Science*, 368, 261-266, 2020.
- Carswell, F., Costa, A., Pálheta, M., Malhi, Y., Meir, P., de Pr Costa, J., Ruivo, M. d. L., do Sm Leal, L., Costa, J., and Clement, R.: Seasonality in CO₂ and H₂O flux at an eastern Amazonian rain forest, *Journal of Geophysical Research: Atmospheres*, 107, LBA 43-41-LBA 43-16, 2002.
- 785 Chave, J., Muller-Landau, H. C., Baker, T. R., Easdale, T. A., Steege, H. t., and Webb, C. O.: Regional and phylogenetic variation of wood density across 2456 neotropical tree species, *Ecological applications*, 16, 2356-2367, 2006.
- Choat, B.: Predicting thresholds of drought-induced mortality in woody plant species, *Tree physiology*, 33, 669-671, 2013.
- 790 Choat, B., Brodrribb, T. J., Brodersen, C. R., Duursma, R. A., López, R., and Medlyn, B. E.: Triggers of tree mortality under drought, *Nature*, 558, 531-539, 2018.
- [Christoffersen, B. O., Gloor, M., Fauset, S., Fyllas, N. M., Galbraith, D. R., Baker, T. R., Kruijt, B., Rowland, L., Fisher, R. A., and Binks, O. J.: Linking hydraulic traits to tropical forest function in a size-structured and trait-driven model \(TFS v. 1-Hydro\), *Geoscientific Model Development*, 9, 4227-4255, 2016.](#)
- 795 Cochard, H., and Delzon, S.: Hydraulic failure and repair are not routine in trees, *Annals of Forest Science*, 70, 659-661, 2013.
- da Costa, A. C. L., Galbraith, D., Almeida, S., Portela, B. T. T., da Costa, M., Junior, J. d. A. S., Braga, A. P., de Gonçalves, P. H., de Oliveira, A. A., and Fisher, R.: Effect of 7 yr of experimental drought on vegetation dynamics and biomass storage of an eastern Amazonian rainforest, *New Phytologist*, 187, 579-591, 2010.
- [Cochard, H., Pimont, F., Ruffault, J., and Martin-StPaul, N.: SurEau: a mechanistic model of plant water relations under extreme drought, *Annals of Forest Science*, 78, 1-23, 2021.](#)
- 800 De Kauwe, M. G., Medlyn, B. E., Ukkola, A. M., Mu, M., Sabot, M. E., Pitman, A. J., Meir, P., Cernusak, L., Rifai, S. W., and Choat, B.: Identifying areas at risk of drought-induced tree mortality across South-Eastern Australia, *Global Change Biology*, 2020.
- Delbart, N., Ciais, P., Chave, J., Viovy, N., Malhi, Y., and Le Toan, T.: Mortality as a key driver of the spatial distribution of aboveground biomass in Amazonian forest: results from a dynamic vegetation model, 2010.
- 805 Dewar, R., Murañan, A., Mäkelä, A., Hölttä, T., Medlyn, B., and Vesala, T.: New insights into the covariation of stomatal, mesophyll and hydraulic conductances from optimization models incorporating nonstomatal limitations to photosynthesis, *New Phytologist*, 217, 571-585, 2018.

- Duffy, P. B., Brando, P., Asner, G. P., and Field, C. B.: Projections of future meteorological drought and wet periods in the Amazon, *Proceedings of the National Academy of Sciences*, 112, 13172-13177, 2015.
- 810 Eller, C. B., Rowland, L., Oliveira, R. S., Bittencourt, P. R., Barros, F. V., da Costa, A. C., Meir, P., Friend, A. D., Mencuccini, M., and Sitch, S.: Modelling tropical forest responses to drought and El Niño with a stomatal optimization model based on xylem hydraulics, *Philosophical Transactions of the Royal Society B: Biological Sciences*, 373, 20170315, 2018.
- 815 Eller, C. B., Rowland, L., Mencuccini, M., Rosas, T., Williams, K., Harper, A., Medlyn, B. E., Wagner, Y., Klein, T., and Teodoro, G. S.: Stomatal optimization based on xylem hydraulics (SOX) improves land surface model simulation of vegetation responses to climate, *New Phytologist*, 226, 1622-1637, 2020.
- Esquivel-Muelbert, A., Galbraith, D., Dexter, K. G., Baker, T. R., Lewis, S. L., Meir, P., Rowland, L., da Costa, A. C. L., Nepstad, D., and Phillips, O. L.: Biogeographic distributions of neotropical trees reflect their directly measured drought tolerances, *Scientific reports*, 7, 1-11, 2017.
- 820 Fajardo, A.: Insights into intraspecific wood density variation and its relationship to growth, height and elevation in a treeline species, *Plant Biology*, 20, 456-464, 2018.
- Fan, Z. X., Zhang, S. B., Hao, G. Y., Ferry Slik, J., and Cao, K. F.: Hydraulic conductivity traits predict growth rates and adult stature of 40 Asian tropical tree species better than wood density, *Journal of Ecology*, 100, 732-741, 2012.
- Fisher, R., Williams, M., Da Costa, A. L., Malhi, Y., Da Costa, R., Almeida, S., and Meir, P.: The response of an Eastern Amazonian rain forest to drought stress: results and modelling analyses from a throughfall exclusion experiment, *Global Change Biology*, 13, 2361-2378, 2007.
- 825 Fisher, R. A., Williams, M., Do Vale, R. L., Da Costa, A. L., and Meir, P.: Evidence from Amazonian forests is consistent with isohydric control of leaf water potential, *Plant, Cell & Environment*, 29, 151-165, 2006.
- Franklin, J. F., Shugart, H. H., and Harmon, M. E.: Tree death as an ecological process, *BioScience*, 37, 550-556, 1987.
- 830 Franks, P., and Brodribb, T. J.: Stomatal control and water transport in the xylem, in: *Vascular transport in plants*, Elsevier, 69-89, 2005.
- Gleason, S. M., Blackman, C. J., Cook, A. M., Laws, C. A., and Westoby, M.: Whole-plant capacitance, embolism resistance and slow transpiration rates all contribute to longer desiccation times in woody angiosperms from arid and wet habitats, *Tree Physiology*, 34, 275-284, 2014.
- 835 Gotsch, S. G., Geiger, E. L., Franco, A. C., Goldstein, G., Meinzer, F. C., and Hoffmann, W. A.: Allocation to leaf area and sapwood area affects water relations of co-occurring savanna and forest trees, *Oecologia*, 163, 291-301, 2010.
- Grote, R., Gessler, A., Hommel, R., Poschenrieder, W., and Priesack, E.: Importance of tree height and social position for drought-related stress on tree growth and mortality, *Trees*, 30, 1467-1482, 2016.
- Gustafson, E. J., and Sturtevant, B. R.: Modeling forest mortality caused by drought stress: implications for climate change, *Ecosystems*, 16, 60-74, 2013.
- 840 Hammond, W. M., Yu, K., Wilson, L. A., Will, R. E., Anderegg, W. R., and Adams, H. D.: Dead or dying? Quantifying the point of no return from hydraulic failure in drought-induced tree mortality, *New Phytologist*, 223, 1834-1843, 2019.

- Hartmann, H.: Carbon starvation during drought-induced tree mortality—are we chasing a myth?, 2015.
- 845 Hendrik, D., and Maxime, C.: Assessing drought-driven mortality trees with physiological process-based models, *Agricultural and Forest Meteorology*, 232, 279-290, 2017.
- Hickler, T., Prentice, I. C., Smith, B., Sykes, M. T., and Zaehle, S.: Implementing plant hydraulic architecture within the LPJ Dynamic Global Vegetation Model, *Global Ecology and Biogeography*, 15, 567-577, 2006.
- 850 Joetzier, E., Maignan, F., Chave, J., Goll, D., Poulter, B., Barichivich, J., Maréchaux, I., Luyssaert, S., Guimberteau, M. and Naudts, K. The importance of tree demography and root water uptake for modelling the carbon and water cycles of Amazonia. under review, 2021.
- Kattge, J., Diaz, S., Lavorel, S., Prentice, I. C., Leadley, P., Bönisch, G., Garnier, E., Westoby, M., Reich, P. B., and Wright, I. J.: TRY—a global database of plant traits, *Global change biology*, 17, 2905-2935, 2011.
- Kennedy, D., Swenson, S., Oleson, K. W., Lawrence, D. M., Fisher, R., Lola da Costa, A. C., and Gentine, P.: Implementing plant hydraulics in the community land model, version 5, *Journal of Advances in Modeling Earth Systems*, 11, 485-513, 2019.
- 855 Klos, R. J., Wang, G. G., Bauerle, W. L., and Rieck, J. R.: Drought impact on forest growth and mortality in the southeast USA: an analysis using Forest Health and Monitoring data, *Ecological Applications*, 19, 699-708, 2009.
- Kraft, N. J., Metz, M. R., Condit, R. S., and Chave, J.: The relationship between wood density and mortality in a global tropical forest data set, *New Phytologist*, 188, 1124-1136, 2010.
- 860 Lewis, S. L., Brando, P. M., Phillips, O. L., van der Heijden, G. M., and Nepstad, D.: The 2010 amazon drought, *Science*, 331, 554-554, 2011.
- Lin, Y. S., Medlyn, B. E., Duursma, R. A., Prentice, I. C., Wang, H., Baig, S., Eamus, D., De Dios, V. R., Mitchell, P., and Ellsworth, D. S.: Optimal stomatal behaviour around the world, *Nature Climate Change*, 5, 459-464, 2015.
- Liu, Q., Peng, C., Schneider, R., Cyr, D., Liu, Z., Zhou, X., and Kneeshaw, D.: TRIPLEX-Mortality model for simulating drought-induced tree mortality in boreal forests: Model development and evaluation, *Ecological Modelling*, 455, 109652, 865 2021a.
- Liu, Y., Holtzman, N. M., and Konings, A. G.: Global ecosystem-scale plant hydraulic traits retrieved using model–data fusion, *Hydrology and Earth System Sciences*, 25, 2399-2417, 2021b.
- [Liu, Y., Parolari, A. J., Kumar, M., Huang, C.-W., Katul, G. G., and Porporato, A.: Increasing atmospheric humidity and CO2 concentration alleviate forest mortality risk, *Proceedings of the National Academy of Sciences*, 114, 9918-9923, 2017.](#)
- 870 Maréchaux, I., Bartlett, M. K., Sack, L., Baraloto, C., Engel, J., Joetzier, E., and Chave, J.: Drought tolerance as predicted by leaf water potential at turgor loss point varies strongly across species within an Amazonian forest, *Functional Ecology*, 29, 1268-1277, 2015.
- Maréchaux, I., Saint-André, L., Bartlett, M. K., Sack, L., and Chave, J.: Leaf drought tolerance cannot be inferred from classic leaf traits in a tropical rainforest, *Journal of Ecology*, 108, 1030-1045, 2020.
- 875 Maréchaux, I., Langerwisch, F., Huth, A., Bugmann, H., Morin, X., Reyer, C. P., Seidl, R., Collalti, A., Dantas de Paula, M., and Fischer, R.: Tackling unresolved questions in forest ecology: The past and future role of simulation models, *Ecology and*

- evolution, 11, 3746-3770, 2021.
- Markesteyn, L., and Poorter, L.: Seedling root morphology and biomass allocation of 62 tropical tree species in relation to drought-and shade-tolerance, *Journal of Ecology*, 97, 311-325, 2009.
- 880 Martinez-Vilalta, J., Anderegg, W. R., Sapes, G., and Sala, A.: Greater focus on water pools may improve our ability to understand and anticipate drought-induced mortality in plants, *New Phytologist*, 223, 22-32, 2019.
- McDowell, N., Pockman, W. T., Allen, C. D., Breshears, D. D., Cobb, N., Kolb, T., Plaut, J., Sperry, J., West, A., and Williams, D. G.: Mechanisms of plant survival and mortality during drought: why do some plants survive while others succumb to drought?, *New phytologist*, 178, 719-739, 2008.
- 885 McDowell, N., Allen, C. D., Anderson-Teixeira, K., Brando, P., Brienen, R., Chambers, J., Christoffersen, B., Davies, S., Doughty, C., and Duque, A.: Drivers and mechanisms of tree mortality in moist tropical forests, *New Phytologist*, 219, 851-869, 2018.
- McDowell, N. G., Beerling, D. J., Breshears, D. D., Fisher, R. A., Raffa, K. F., and Stitt, M.: The interdependence of mechanisms underlying climate-driven vegetation mortality, *Trends in ecology & evolution*, 26, 523-532, 2011.
- 890 Meinzer, F. C., Campanello, P. I., Domec, J.-C., Gatti, M. G., Goldstein, G., Villalobos-Vega, R., and Woodruff, D. R.: Constraints on physiological function associated with branch architecture and wood density in tropical forest trees, *Tree Physiology*, 28, 1609-1617, 2008.
- Meir, P., Mencuccini, M., and Dewar, R. C.: Drought-related tree mortality: addressing the gaps in understanding and prediction, *New Phytologist*, 207, 28-33, 2015.
- 895 Meir, P., Mencuccini, M., Binks, O., da Costa, A. L., Ferreira, L., and Rowland, L.: Short-term effects of drought on tropical forest do not fully predict impacts of repeated or long-term drought: gas exchange versus growth, *Philosophical Transactions of the Royal Society B: Biological Sciences*, 373, 20170311, 2018.
- Mokany, K., Raison, R. J., and Prokushkin, A. S.: Critical analysis of root: shoot ratios in terrestrial biomes, *Global Change Biology*, 12, 84-96, 2006.
- 900 Naudts, K., Ryder, J., McGrath, M., Otto, J., Chen, Y., Valade, A., Bellasen, V., Berhongaray, G., Bönisch, G., and Campioli, M.: A vertically discretised canopy description for ORCHIDEE (SVN r2290) and the modifications to the energy, water and carbon fluxes, *Geoscientific Model Development*, 8, 2035-2065, 2015.
- Nepstad, D. C., Tohver, I. M., Ray, D., Moutinho, P., and Cardinot, G.: Mortality of large trees and lianas following experimental drought in an Amazon forest, *Ecology*, 88, 2259-2269, 2007.
- 905 Nobre, C. A., and Borma, L. D. S.: 'Tipping points' for the Amazon forest, *Current Opinion in Environmental Sustainability*, 1, 28-36, 2009.
- Nychka D, F. R., Paige J, Sain S, Gerber F., Iverson M.: *Fields: Tools for Spatial Data*.
University Corporation for Atmospheric Research, Boulder, CO, USA 10.5065/D6W957CT
URL: <https://github.com/NCAR/Fields>. R package version 10.3, 2020.

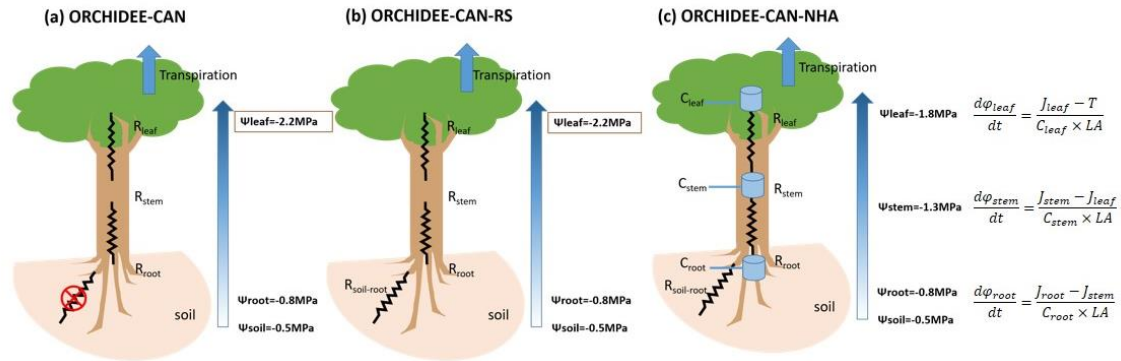
910 [Pammenter, N. v., and Van der Willigen, C.: A mathematical and statistical analysis of the curves illustrating vulnerability of](#)

[xylem to cavitation. *Tree physiology*, 18, 589-593, 1998.](#)

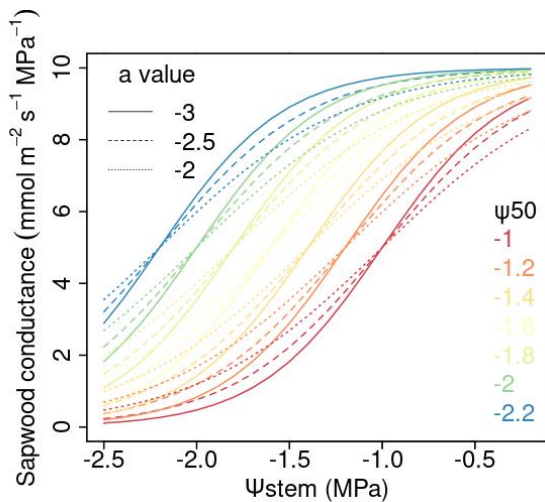
- Papastefanou, P., Zang, C. S., Pugh, T. A., Liu, D., Grams, T. E., Hickler, T., and Rammig, A.: A dynamic model for strategies and dynamics of plant water-potential regulation under drought conditions, *Frontiers in Plant Science*, 11, 373, 2020.
- Phillips, O. L., Aragão, L. E., Lewis, S. L., Fisher, J. B., Lloyd, J., López-González, G., Malhi, Y., Monteagudo, A., Peacock, J., and Quesada, C. A.: Drought sensitivity of the Amazon rainforest, *Science*, 323, 1344-1347, 2009.
- Powell, T. L., Galbraith, D. R., Christoffersen, B. O., Harper, A., Imbuzeiro, H. M., Rowland, L., Almeida, S., Brando, P. M., da Costa, A. C. L., and Costa, M. H.: Confronting model predictions of carbon fluxes with measurements of Amazon forests subjected to experimental drought, *New Phytologist*, 200, 350-365, 2013.
- Powell, T. L., Koven, C. D., Johnson, D. J., Faybishenko, B., Fisher, R. A., Knox, R. G., McDowell, N. G., Condit, R., Hubbell, S. P., and Wright, S. J.: Variation in hydroclimate sustains tropical forest biomass and promotes functional diversity, *New Phytologist*, 219, 932-946, 2018.
- R Development Core Team. R: A language and environment for statistical computing. Vienna, Austria: R Foundation for Statistical Computing, available at <http://www.R-project.org/> 2019.
- Rao, K., Anderegg, W. R., Sala, A., Martínez-Vilalta, J., and Konings, A. G.: Satellite-based vegetation optical depth as an indicator of drought-driven tree mortality, *Remote sensing of environment*, 227, 125-136, 2019.
- Rowland, L., da Costa, A. C. L., Galbraith, D. R., Oliveira, R., Binks, O. J., Oliveira, A., Pullen, A., Doughty, C., Metcalfe, D., and Vasconcelos, S.: Death from drought in tropical forests is triggered by hydraulics not carbon starvation, *Nature*, 528, 119-122, 2015.
- Rozendaal, D. M., Phillips, O. L., Lewis, S. L., Affum-Baffoe, K., Alvarez-Davila, E., Andrade, A., Aragão, L. E., Araujo-Murakami, A., Baker, T. R., and Bánki, O.: Competition influences tree growth, but not mortality, across environmental gradients in Amazonia and tropical Africa, *Ecology*, 101, e03052, 2020.
- Sabot, M. E., De Kauwe, M. G., Pitman, A. J., Medlyn, B. E., Verhoef, A., Ukkola, A. M., and Abramowitz, G.: Plant profit maximization improves predictions of European forest responses to drought, *New Phytologist*, 226, 1638-1655, 2020.
- Sack, L., and Holbrook, N. M.: Leaf hydraulics, *Annu. Rev. Plant Biol.*, 57, 361-381, 2006.
- Sapes, G., Roskilly, B., Dobrowski, S., Maneta, M., Anderegg, W. R., Martínez-Vilalta, J., and Sala, A.: Plant water content integrates hydraulics and carbon depletion to predict drought-induced seedling mortality, *Tree physiology*, 39, 1300-1312, 2019.
- Schuldt, B., Leuschner, C., Brock, N., and Horna, V.: Changes in wood density, wood anatomy and hydraulic properties of the xylem along the root-to-shoot flow path in tropical rainforest trees, *Tree physiology*, 33, 161-174, 2013.
- Signori-Müller, C., Oliveira, R. S., de Vasconcellos Barros, F., Tavares, J. V., Gilpin, M., Diniz, F. C., Zevallos, M. J. M., Yupayccana, C. A. S., Acosta, M., and Bacca, J.: Non-structural carbohydrates mediate seasonal water stress across Amazon forests, *Nature communications*, 12, 1-9, 2021.
- Sperry, J. S., Wang, Y., Wolfe, B. T., Mackay, D. S., Anderegg, W. R., McDowell, N. G., and Pockman, W. T.: Pragmatic hydraulic theory predicts stomatal responses to climatic water deficits, *New Phytologist*, 212, 577-589, 2016.

- 945 Sperry, J. S., Venturas, M. D., Anderegg, W. R., Mencuccini, M., Mackay, D. S., Wang, Y., and Love, D. M.: Predicting stomatal responses to the environment from the optimization of photosynthetic gain and hydraulic cost, *Plant, cell & environment*, 40, 816-830, 2017.
- Stovall, A. E., Shugart, H., and Yang, X.: Tree height explains mortality risk during an intense drought, *Nature communications*, 10, 1-6, 2019.
- 950 Suzuki, E.: Diversity in specific gravity and water content of wood among Bornean tropical rainforest trees, *Ecological Research*, 14, 211-224, 1999.
- Trugman, A. T., Anderegg, L. D., Anderegg, W. R., Das, A. J., and Stephenson, N. L.: Why is tree drought mortality so hard to predict?, *Trends in Ecology & Evolution*, 2021.
- Urli, M., Porté, A. J., Cochard, H., Guengant, Y., Burlett, R., and Delzon, S.: Xylem embolism threshold for catastrophic hydraulic failure in angiosperm trees, *Tree physiology*, 33, 672-683, 2013.
- 955 Van Genuchten, M. T.: A closed-form equation for predicting the hydraulic conductivity of unsaturated soils, *Soil science society of America journal*, 44, 892-898, 1980.
- Wang, W., Peng, C., Kneeshaw, D. D., Larocque, G. R., and Luo, Z.: Drought-induced tree mortality: ecological consequences, causes, and modeling, *Environmental Reviews*, 20, 109-121, 2012.
- 960 [Wang, Y., Köhler, P., He, L., Doughty, R., Braghieri, R. K., Wood, J. D., and Frankenberg, C.: Testing stomatal models at the stand level in deciduous angiosperm and evergreen gymnosperm forests using CliMA Land \(v0.1\), *Geosci. Model Dev.*, 14, 6741-6763, 10.5194/gmd-14-6741-2021, 2021.](#)
- Xu, X., Medvigy, D., Powers, J. S., Becknell, J. M., and Guan, K.: Diversity in plant hydraulic traits explains seasonal and inter-annual variations of vegetation dynamics in seasonally dry tropical forests, *New Phytologist*, 212, 80-95, 2016.
- 965 Yang, Y., Saatchi, S. S., Xu, L., Yu, Y., Choi, S., Phillips, N., Kennedy, R., Keller, M., Knyazikhin, Y., and Myneni, R. B.: Post-drought decline of the Amazon carbon sink, *Nature communications*, 9, 1-9, 2018.
- Yoshimura, K., Saiki, S.-T., Yazaki, K., Ogasa, M. Y., Shirai, M., Nakano, T., Yoshimura, J., and Ishida, A.: The dynamics of carbon stored in xylem sapwood to drought-induced hydraulic stress in mature trees, *Scientific reports*, 6, 24513, 2016.
- Young, D. J., Stevens, J. T., Earles, J. M., Moore, J., Ellis, A., Jirka, A. L., and Latimer, A. M.: Long-term climate and competition explain forest mortality patterns under extreme drought, *Ecology Letters*, 20, 78-86, 2017.
- 970 Zhu, D., Peng, S., Ciais, P., Viovy, N., Druel, A., Kageyama, M., Krinner, G., Peylin, P., Ottlé, C., and Piao, S.: Improving the dynamics of Northern Hemisphere high-latitude vegetation in the ORCHIDEE ecosystem model, 2015.
- Zhu, S.-D., Chen, Y.-J., Ye, Q., He, P.-C., Liu, H., Li, R.-H., Fu, P.-L., Jiang, G.-F., and Cao, K.-F.: Leaf turgor loss point is correlated with drought tolerance and leaf carbon economics traits, *Tree Physiology*, 38, 658-663, 2018.

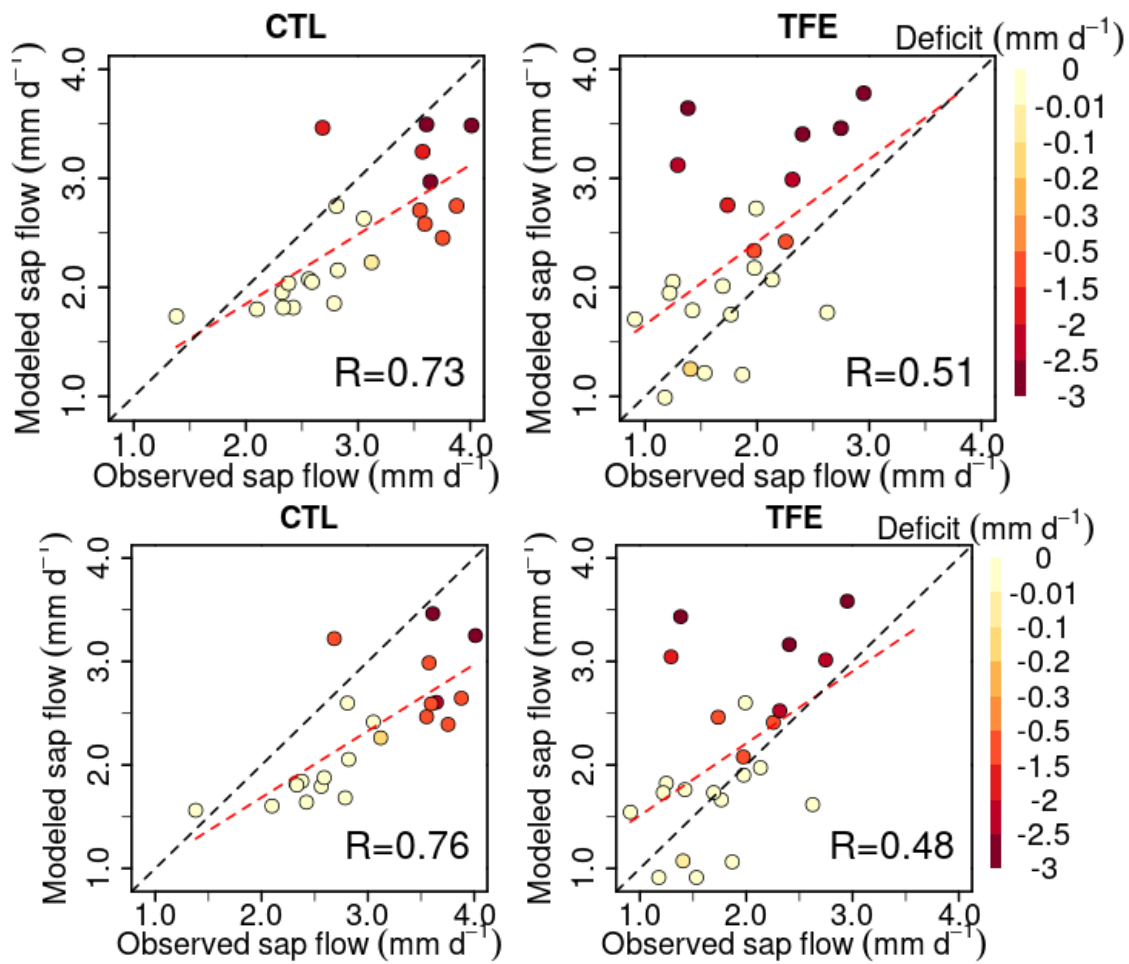
975



980 Figure 1 Schematic framework for hydraulic architecture in (a) ORCHIDEE-CAN, (b) ORCHIDEE-CAN-RS and (c)
 985 ORCHIDEE-CAN-NHA. The framed rectangles represent fixed values during the simulation. In ORCHIDEE-CAN and
 ORCHIDEE-CAN-RS, R_{leaf} is related to leaf conductivity and leaf area. R_{stem} is related to sapwood conductivity that can vary
 with cavitation and sapwood area. R_{root} is related to fine root conductivity and root biomass. In ORCHIDEE-CAN-NHA,
 transport conductance of each organ is a function of their organ-specific water potential, maximum conductance and water
 potential when loss of 50% conductance occurred. C_{leaf} , C_{stem} and C_{root} represent water storage capacitance. J_{leaf} , J_{stem} and J_{root}
 are vertical water transport to leaf, stem and root, respectively. LA is total leaf area.



990 Figure 2 Sigmoidal relationship between stem sapwood conductance (normalized by total leaf area) and stem water potential.
 Line colors correspond to different Ψ_{50} values. The line types (continuous, dashed and dotted line) denote different curvature
 parameters (a_{stem}).



995

1000

Figure 3-2 Modeled (ORCHIDEE-CAN-NHA) versus observed sap flow (monthly average values are displayed). The color of points indicates water deficit (negative difference between precipitation and evapotranspiration) with darker color meaning more severe water deficit. -The black dashed line is the 1:1 line. The red dashed line is the best fit between modeled and observed sap flow.

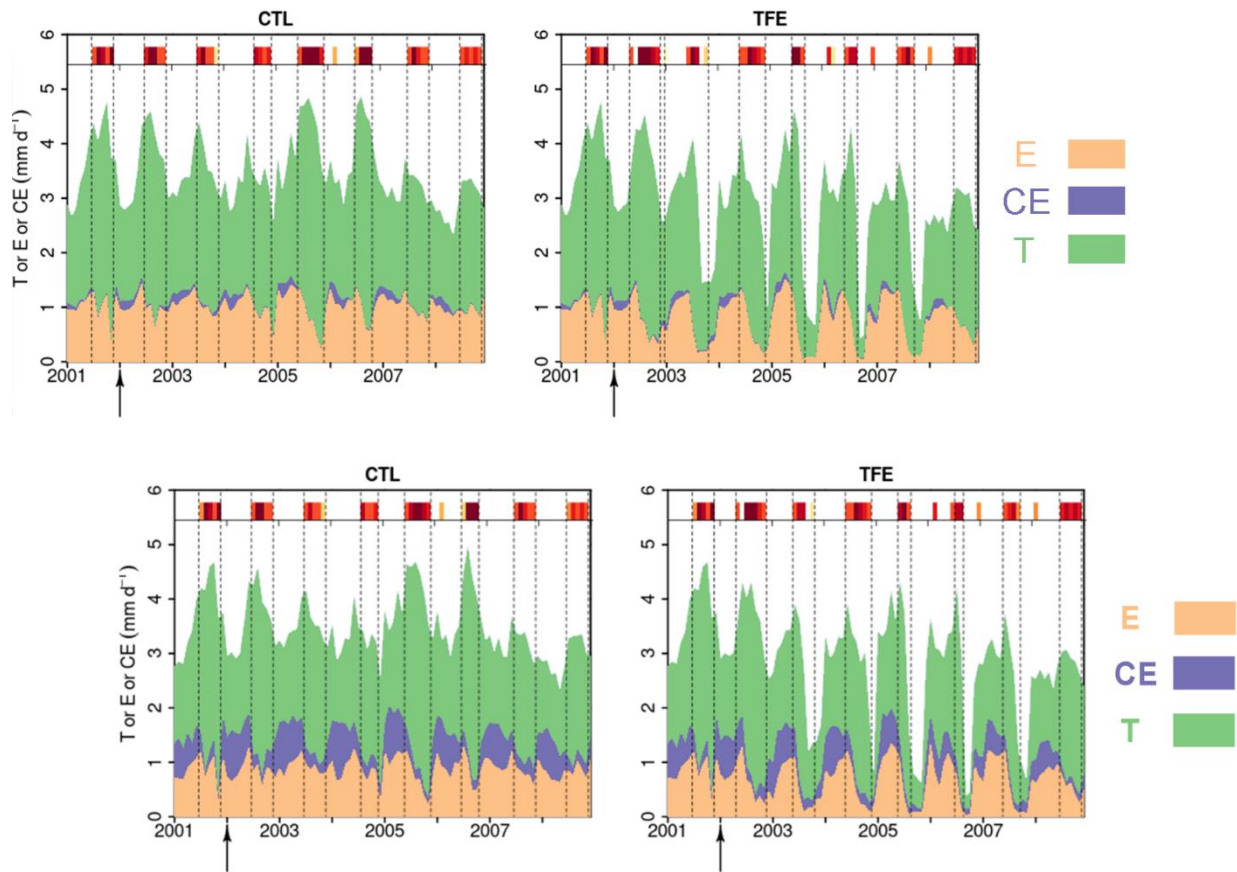


Figure 4.3 Modeled (ORCHIDEE-CAN-NHA) daily soil evaporation (E), canopy evaporation (CE) and transpiration (T) during 2001-2008. The arrows point to the start of TFE in the beginning of 2002. The inserted red shaded bars denote the periods with water deficits during the simulation period, following the same color scale as Fig. 3.2.

1005

1010

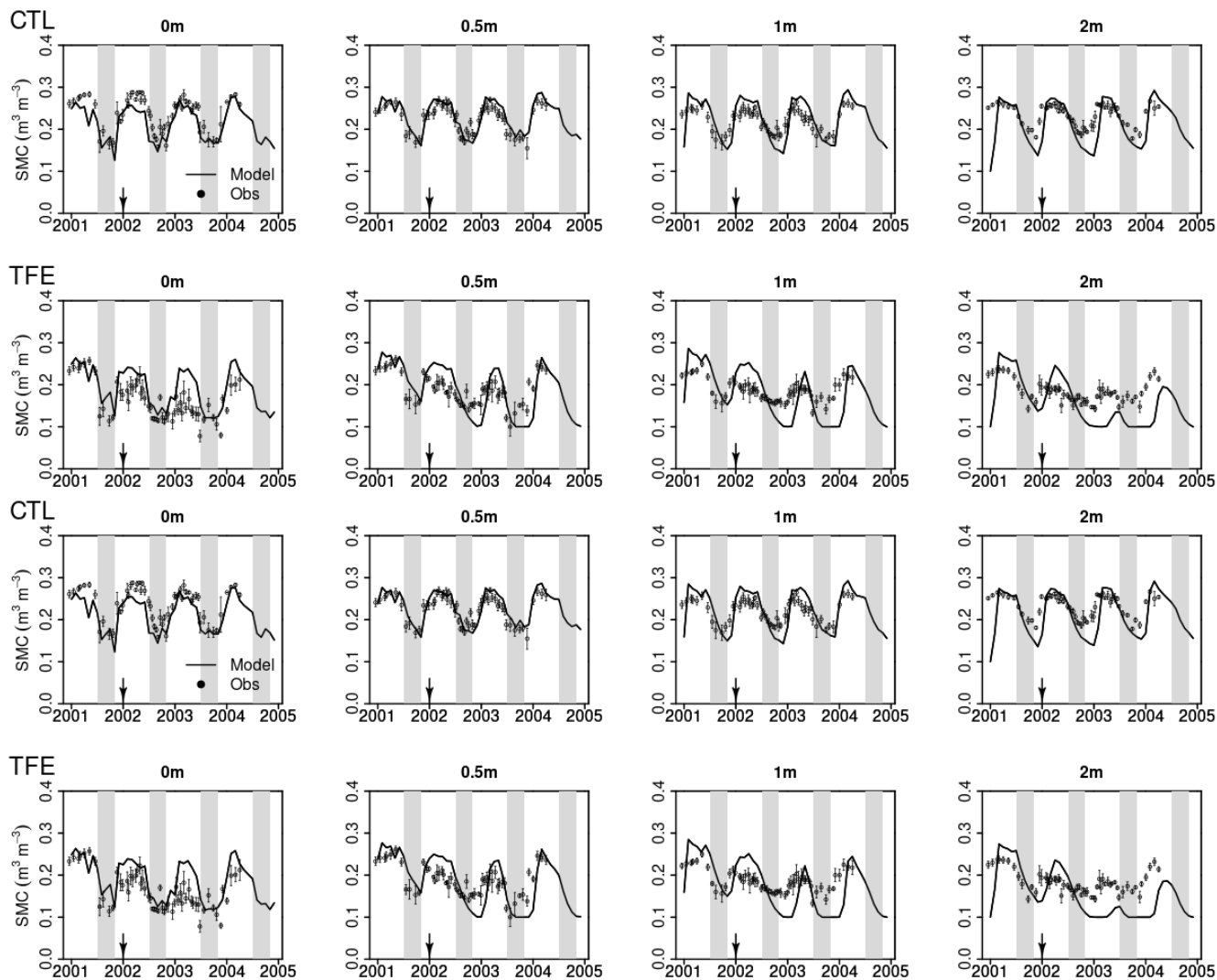


Figure 5-4 Modeled (ORCHIDEE-CAN-NHA, black line) versus observed (black dots) volumetric soil moisture content (SMC) at different depth. Due to the limited time duration of observation data, we only show the modeled SMC during 2001 to 2004. The grey shaded vertical area indicates the dry seasons from July to November.

1015

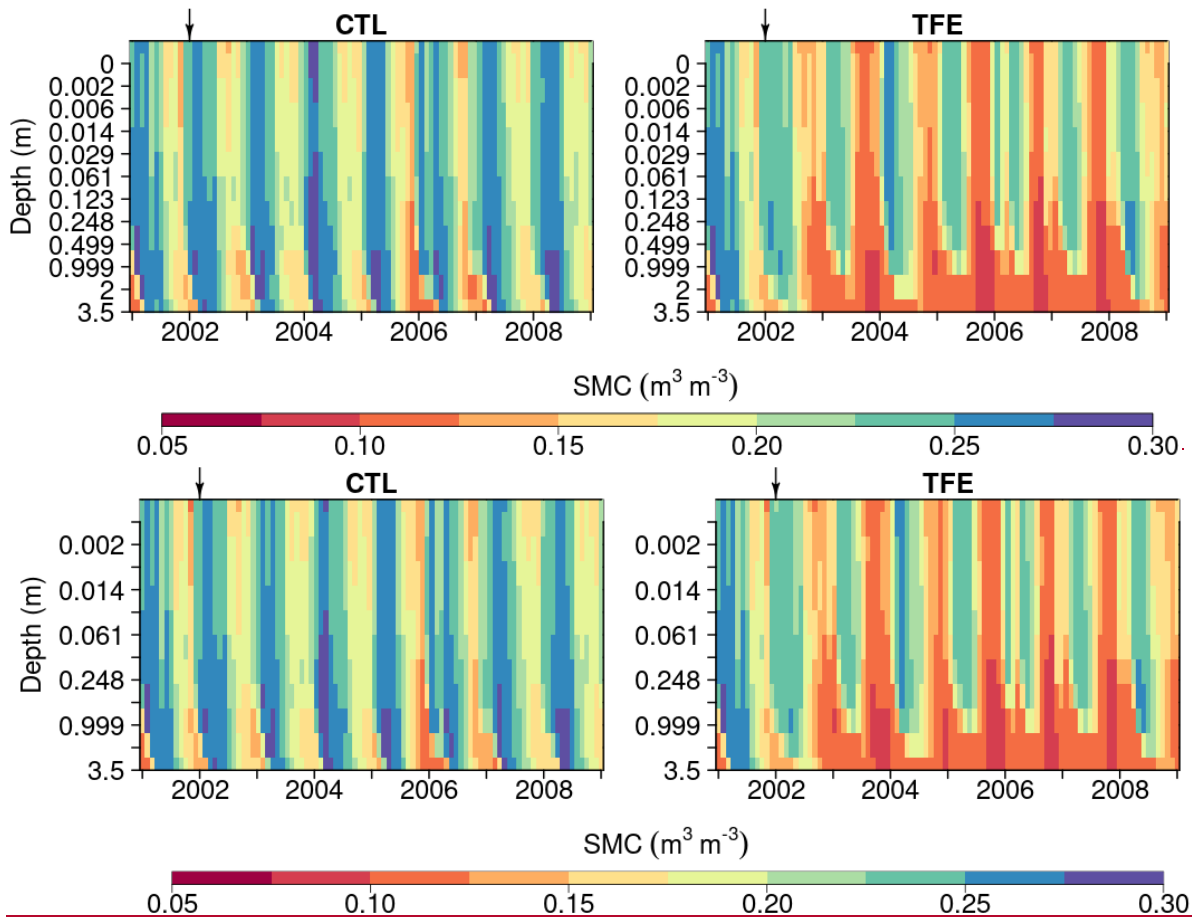
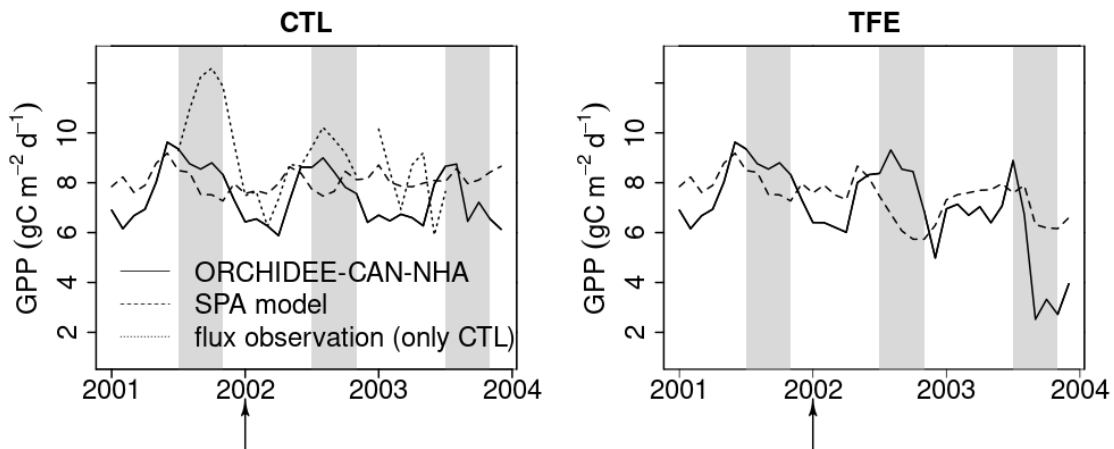


Figure 6-5 Soil moisture content simulated by ORCHIDEE-CAN-NHA during 2001 to 2008 under CTL and TFE. It should be noted the 12 soil layers have different thicknesses and here we show the SMC in same depth interval to present the change in SMC in top layers clearly.



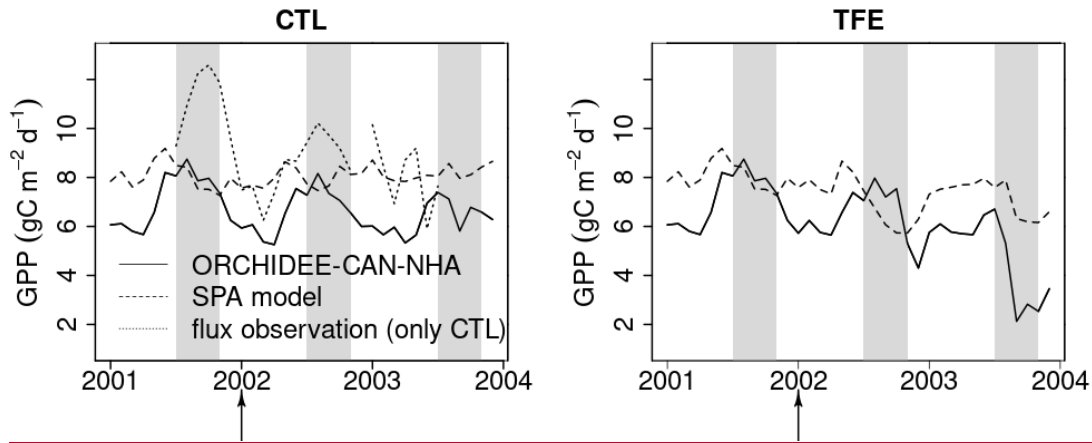
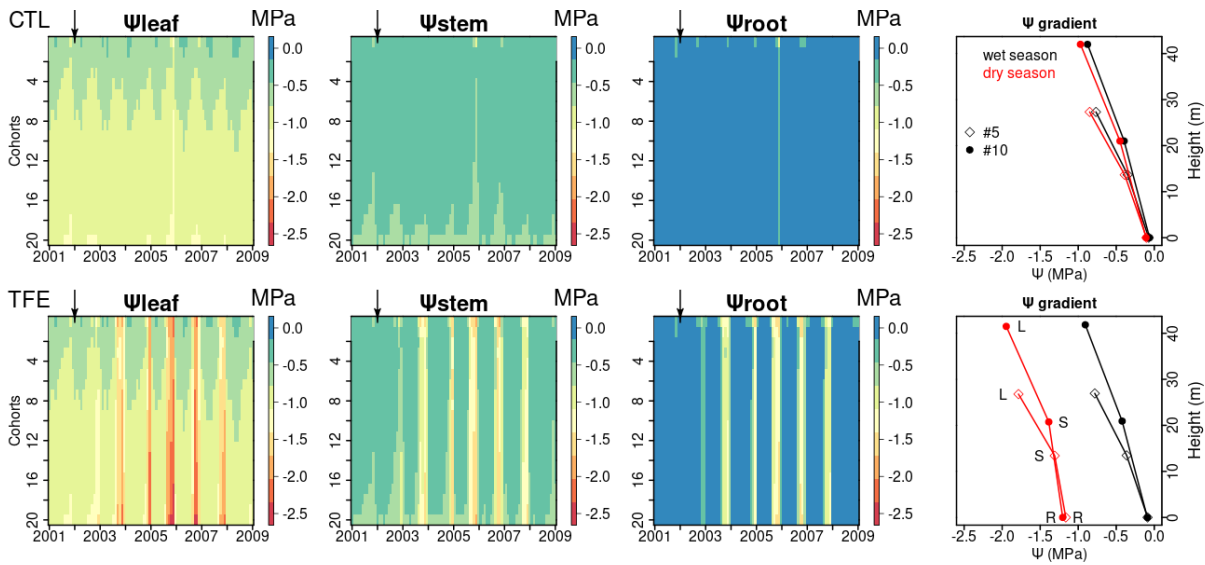


Figure 7.6 Modeled (ORCHIDEE-CAN-NHA) versus observed / modeled monthly mean GPP. The control model is compared to flux tower observations (Carswell *et al.*, 2002). In the case of TFE, as no observation is available, the locally calibrated model SPA is used. Due to GPP flux observation is unrealistically low in the start of 2001 ($<5 \text{ gC m}^{-2} \text{ d}^{-1}$), we only keep flux data after the mid of 2001. The grey shaded vertical area indicates the dry seasons from July to November.



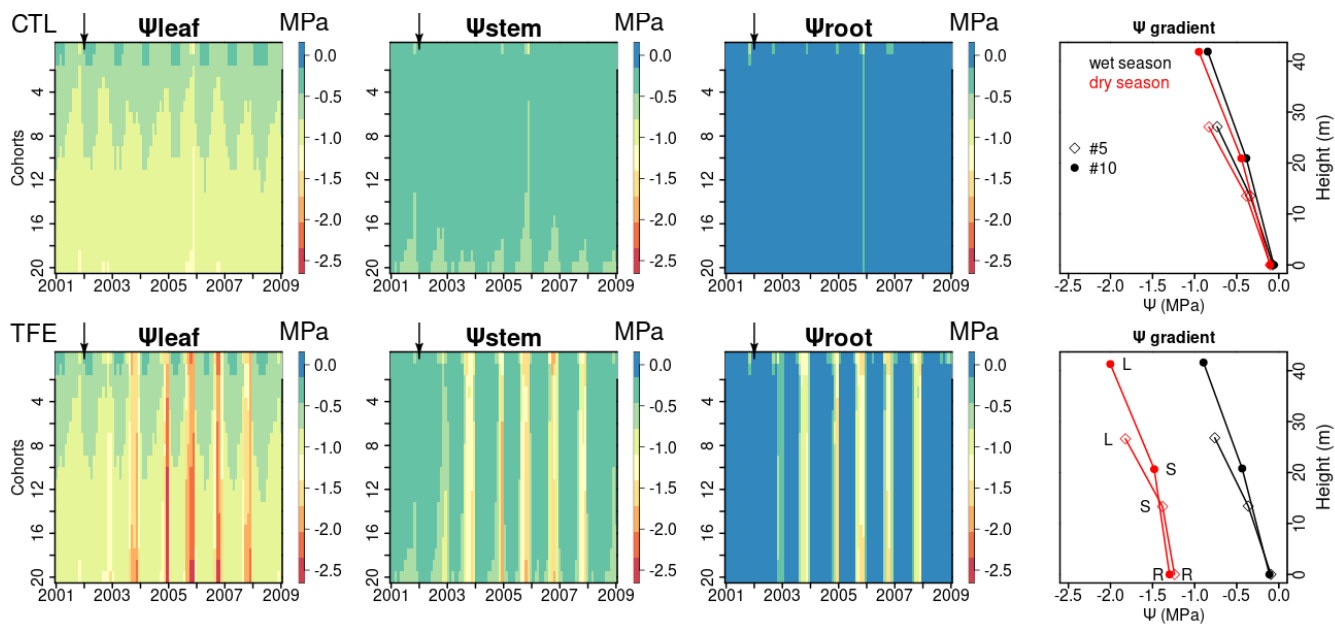
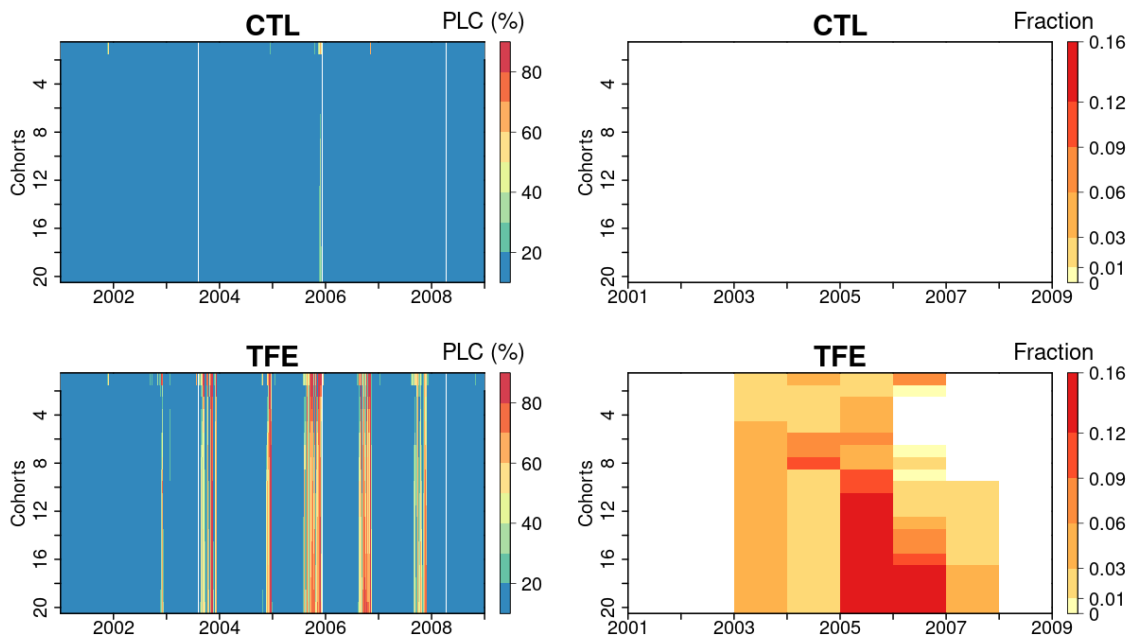


Figure 8-7 Ψ_{leaf} , Ψ_{stem} , and Ψ_{root} simulated by ORCHIDEE-CAN-NHA. Water potential gradients of two cohorts (#5, #10) are shown as an example (May 2005 as wet season, Nov 2005 as dry season). Here the cohort refers to circumference class (mean height of #5 and #10 are 19m, and 35m, respectively). The water potential gradient is composed by Ψ_{leaf} (labeled as L), Ψ_{stem} (labeled as S) and Ψ_{root} (labeled as R). The heights of Ψ_{leaf} and Ψ_{stem} correspond to tree height and half of tree height, respectively.



1040

1045

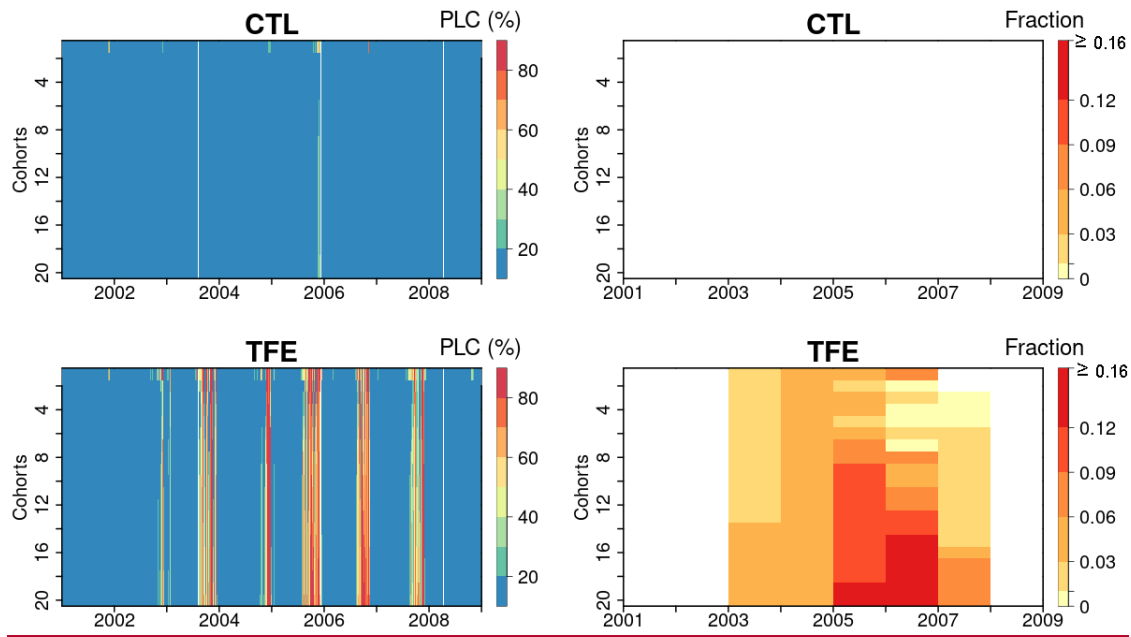
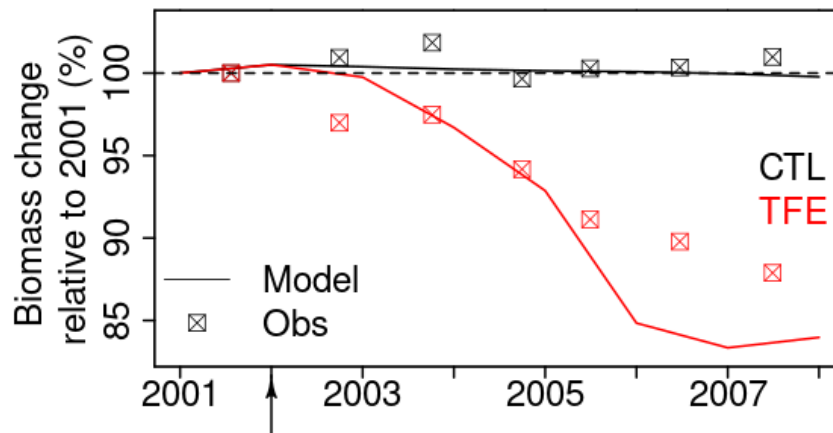


Figure 9-8 Percentage loss of daily stem conductance (PLC) (left) and tree mortality fraction simulated by ORCHIDEE-CAN-NHA (right). The vertical axis is for the index of 20 tree cohorts represented in the model, a larger index indicating taller trees (see Table S1-S4 for tree height and diameter in each cohort). Tree mortality fraction per year is calculated by totaling the number of dead trees in each year and dividing it by the tree density in the first day of each year.



1050

1055

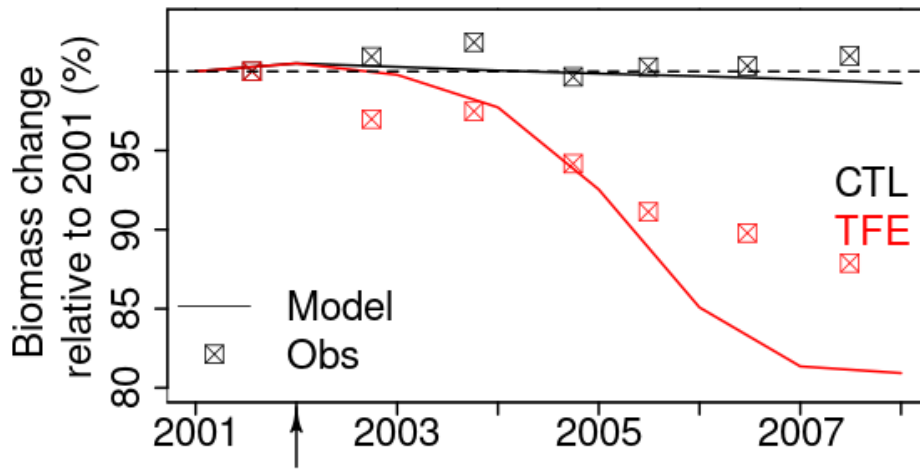
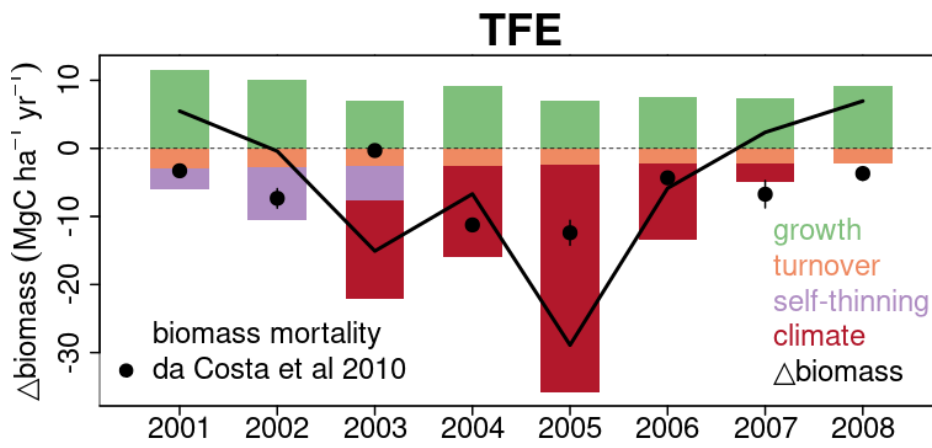
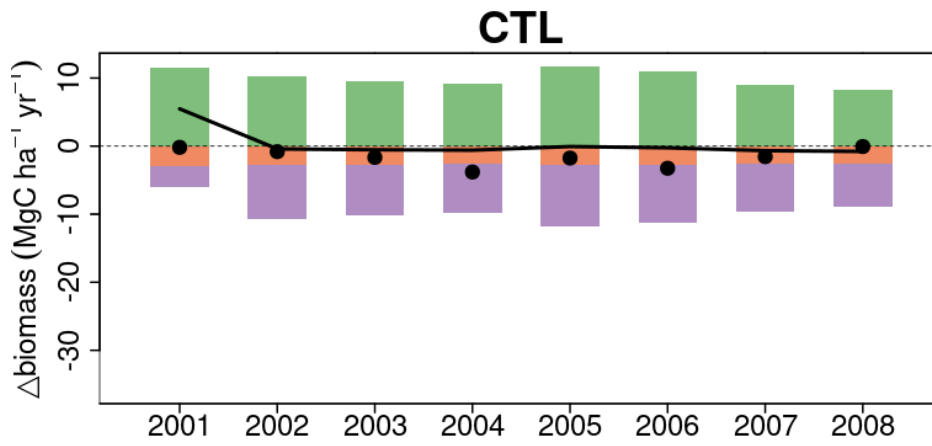


Figure 10-9 Tree biomass change simulated by model after mortality being triggered. The squares in the plot denote the observation. Biomass change relative to 2001 is calculated by dividing biomass during 2002-2008 by biomass in 2001.



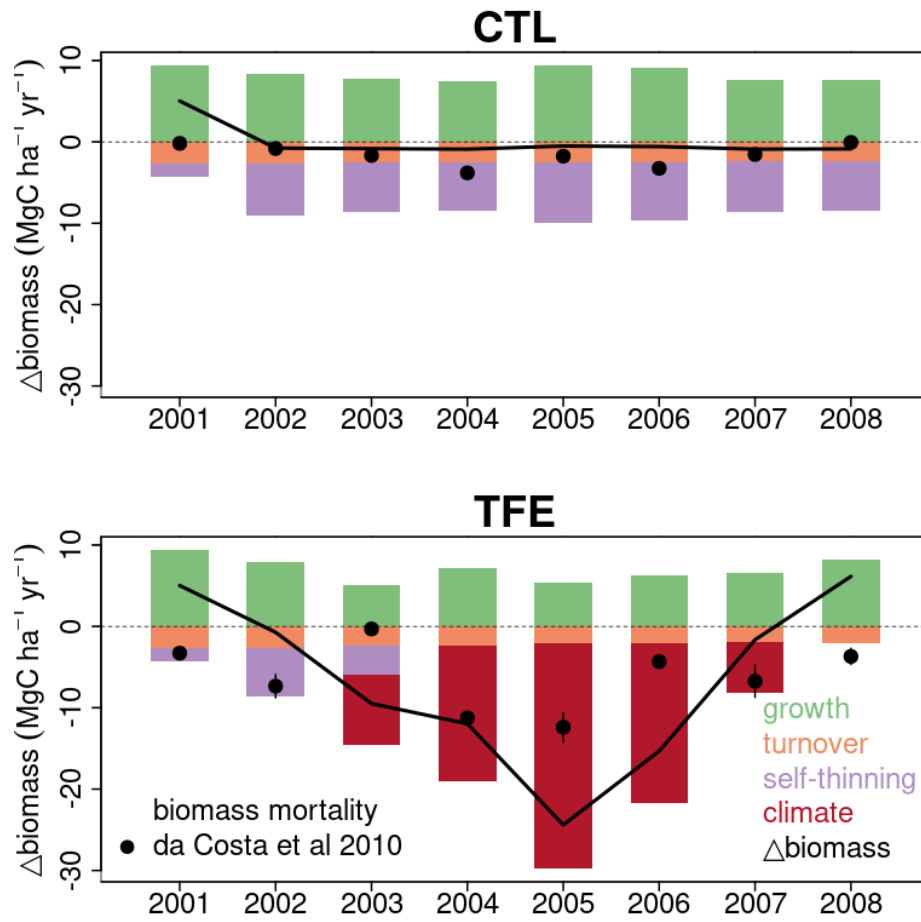


Figure 4-10 Simulated components of biomass change and observed net biomass change during 2001 to 2008. The observed net biomass change data in each year from da Costa et al (2010) is plotted as black dot. The black line shows the net change of simulated biomass by ORCHIDEE-CAN-NHA.

1065

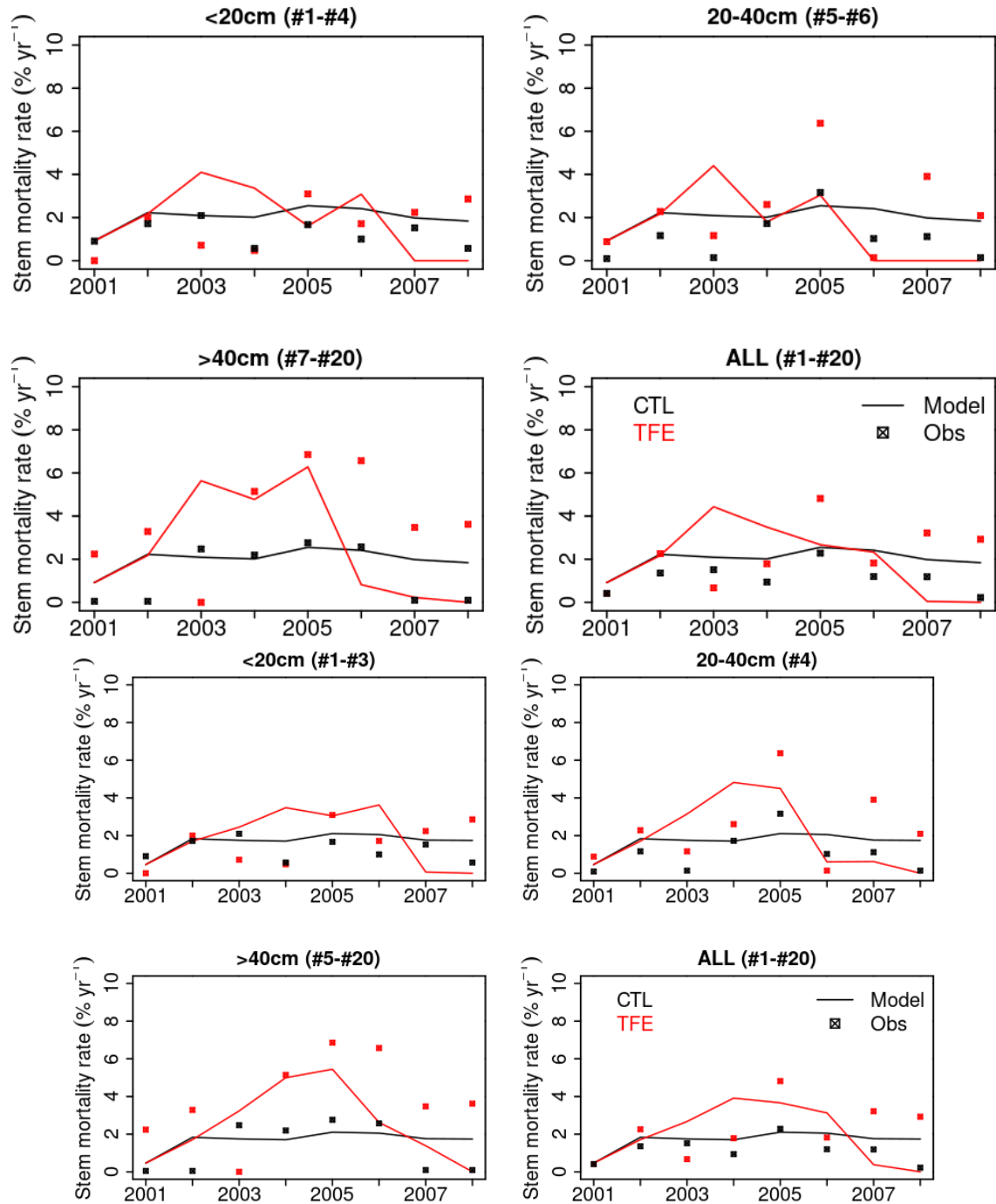


Figure 12-11 Annual stem mortality rates during the study period (2001 - 2008). All 20 cohorts have been aggregated to three classes according to DBH (<20cm, 20-40cm, >40cm). The value in bracket in title of each panel corresponds to the No. of cohorts falling in the class.