

Tracing and visualisation of contributing water sources in the LISFLOOD-FP model of flood inundation (within CAESAR-Lisflood version 1.9j-WS)

Matthew D. Wilson^{1,2} and Thomas J. Coulthard³

¹Geospatial Research Institute | Toi Hangarau, University of Canterbury, New Zealand

²School of Earth and Environment | Te Kura Aronukurangi, University of Canterbury, New Zealand

³Energy and Environment Institute, University of Hull, United Kingdom

Correspondence: Matthew Wilson (matthew.wilson@canterbury.ac.nz)

Abstract. We describe the formulation of a simple method of water source tracing for computational models of flood inundation and demonstrate its implementation within CAESAR-Lisflood. Water source tracing can provide additional insight into flood dynamics by accounting for flow pathways of each model boundary condition. The method developed is independent of the hydraulic formulation used, allowing it to be implemented in other model codes without affecting flow routing. In addition, we developed a method which allows up to three water sources to be visualised in RGB colour-space, while continuing to allow depth to be resolved. The number of water sources that may be traced is limited only by computational resources. We show the application of the methods developed for example applications of a major flood event, a shallow estuary, and Amazonian wetland inundation. A key advantage is that the method is independent of the hydraulic formulation, meaning that it is relatively straightforward to add to existing finite volume codes including those based on or developed around the LISFLOOD-FP method. This method enables water tracing with a minimal computational overhead, allowing users of the LISFLOOD-FP method to address environmental issues relating to water sources and mixing, such as water quality and contamination problems.

1 Introduction

Flood inundation models relate upstream river inflow and other dynamic boundary conditions (e.g. downstream stage) to inundation extent, depth and velocity, and have become invaluable tools for the assessment and understanding of flood dynamics and risk. Recently a series of fast and effective two dimensional hydrodynamic models have been developed (Hunter et al., 2007; Neal et al., 2018). These model codes have enabled assessment of flood inundation at high spatial resolutions (e.g. Yu and Coulthard, 2015) and large spatial scales including applications on the Amazon (Wilson et al., 2007) and Congo (O’Loughlin et al., 2020), at continental scales (Dottori et al., 2022; Wing et al., 2017) and global (Dottori et al., 2016; Sampson et al., 2015). The LISFLOOD-FP model (Bates and De Roo, 2000; Bates et al., 2010) uses a fixed raster grid structure and includes several flow formulations of different physical complexity (Shaw et al., 2021), which have been widely used for flood hazard assessment in fluvial (Horritt et al., 2010) and coastal (Vousdoukas et al., 2018) applications, as well as within models of

landscape evolution (Adams et al., 2017; Coulthard et al., 2013). However, the ability to trace the sources of water in the model domain is presently missing from reduced-complexity 2D flood models such as LISFLOOD-FP.

25 Understanding the contribution of different water sources to flooding and river flows is important when managing river basins, for example determining the relative contribution of tributaries or where water borne contamination is an issue. This is a function found in more complex two- and three-dimensional models based on the full shallow water equations, such as TELEMAC (Galland et al., 1991) and Ansys Fluent, and has been used for a variety of applications including water quality modeling in a lake (Kopmann and Markofsky, 2000) and solute and viral dispersal in estuaries (Robins et al., 2014, 2019).
30 For example in TELEMAC, non-buoyant tracers can be added and their course and concentration followed (Ch. 9, Ata et al., 2014). Similarly in PCSWMM, Qi et al. (2021) and Qi et al. (2022) developed a module to assess the relative contributions to downstream flood waters from upstream source catchments, with tracer sources generated by the PCSWMM water quality routing module. In their approach, each upstream source is assigned a constant tracer concentration, which is then routed downstream using PCSWMM methods for transportation of pollutants. Source proportion for a downstream catchment is then
35 determined from the relative mass of the total tracer amount which is in that catchment, multiplied by the total flood volume. However, approaches using such 2 and 3D codes have a considerable computational overhead compared to simpler schemes such as LISFLOOD-FP.

In this paper, we build on the work of Wilson and Coulthard (2019) to propose a simple and efficient method which can be added to finite volume codes to track the contribution of multiple water sources to predicted flood depths without the addition
40 of tracers, and demonstrate it within the CAESAR-Lisflood model (Coulthard et al., 2013) for several example flooding case studies which each represent the mixing of water from multiple sources. CAESAR-Lisflood¹ is a development of the CAESAR model (Coulthard et al., 2002; Van De Wiel et al., 2007) and the LISFLOOD-FP 2D hydrodynamic model (Bates et al., 2010) that simulates landscape evolution by coupling a hydrological model, a surface water flow model, fluvial erosion and deposition and slope processes.

45 In earlier work with CAESAR, Coulthard and Macklin (2003) demonstrated how sediment eroded from mining waste deposits could be traced downstream. The model worked by including different types of sediments which were used to represent contaminated and uncontaminated sediments as separate arrays for each sediment diameter included; during erosion and deposition of different sediment sizes, equal proportions of contaminated and uncontaminated sediment were transported. This enabled the prediction of patterns and levels of floodplain contamination, over a period of ~400 years. However, the approach
50 was limited to sediment tracing only and did not account for different sources of water, which may carry contaminants with it. As noted by Coulthard et al. (2013), the inclusion of an unsteady flow formula within CAESAR-Lisflood has enabled the possibility, for example, to simulate water balances and solute fluxes using the model code. Here, we present the formulation of a simple methodology to enable this functionality by accounting for the source of water within model cells throughout the simulation.

55 We use only the hydraulic and hydrological functionality of CAESAR-Lisflood to demonstrate the tracing method and visualisation of water sources, independently of sediment routing. We have used CAESAR-Lisflood for this purpose as the software

¹ Available from <https://sourceforge.net/projects/caesar-lisflood/>

is fully open source integrating a GUI as well as the hydraulic methods from LISFLOOD-FP. This enables our visualisation methods to be incorporated, but does not limit our tracing method to CAESAR-Lisflood. The equations and pseudo-code examples provided make it a straightforward task for users and researchers to add this functionality to LISFLOOD-FP (and other variants using similar methods).

2 Methods

2.1 Flow formulation

CAESAR-Lisflood implements the LISFLOOD-FP inertial formulation (Bates et al., 2010) to estimate depths across the domain. This is a reduced physical complexity mass-conservative hydraulic model structured on a Cartesian grid, in which the updated water depth h , at time t , for cell i, j is determined using (Bates and De Roo, 2000):

$$h_{i,j}^t = h_{i,j}^{t-\Delta t} + \Delta t \frac{Q_{x,i-1,j}^t - Q_{x,i,j}^t + Q_{y,i,j-1}^t - Q_{y,i,j}^t}{\Delta x^2} \quad (1)$$

where $h_{i,j}^{t-\Delta t}$ is the cell depth at the end of the previous timestep (Δt), Q represents the flows into or out of the cell in the x or y directions, and Δx is the cell size. Flows are decoupled in each direction; flow in the x direction is determined using (de Almeida et al., 2012; Bates et al., 2010):

$$Q_x^t = \frac{q_x^{t-\Delta t} - gh_{[\text{flow}]^t} \Delta t \frac{\Delta(h^t+z)}{\Delta x}}{(1 + gh_{[\text{flow}]^t} \Delta t n^2 |q_x^{t-\Delta t}| / (h_{[\text{flow}]^t}^{10/3}))} \Delta y \quad (2)$$

with flow in the y direction obtained analogously. In Eq. (2), $q_x^{t-\Delta t}$ represents the flux between the cells from the previous timestep ($Q_x^{t-\Delta t} / \Delta y$), g is acceleration from gravity, $h_{[\text{flow}]}$ is the maximum depth of flow between two cells, n is Manning's roughness and z is the cell bed elevation. The LISFLOOD-FP inertial formulation has been benchmarked against other formulations and industry standard codes and showed that, in appropriate flow conditions (i.e. gradually varied flow, Froude number $< \sim 1$), the model performed favourably and with high efficiency (de Almeida and Bates, 2013; Neal et al., 2012).

2.2 Water source tracing

Given that the sum of depths in a cell from each source, w , make up its total flood depth, h :

$$\sum_{w=1}^W h_w = h, \quad (3)$$

the volume fraction of each source, ϕ_w , may be obtained from:

$$\phi_w = \frac{h_w}{h}, \quad (4)$$

ensuring:

$$\sum_{w=1}^W \phi_w = 1. \quad (5)$$

Thus, the fraction of each water source in each cell is defined as the depth of water from that source in the cell, divided by the total cell depth.

85 Following this, once flows between cells are calculated and depths updated, our water tracing method proceeds as follows: (1) for each cell, the remaining depth following removal of water from any outflows is found; (2) the amount of the depth belonging to each water source is obtained by scaling the depths according to water source fractions from the previous timestep; (3) contributing inflow depths from each source for all neighbours is added to each source depth; and (4) updated water source fractions are calculated as per Eq. 4 by dividing the fractions from each source by the updated total cell depth. More formally,
90 for each cell, for each water source, w , at time, t , the volume fraction ϕ is:

$$\phi_w^t = \frac{h_{Q_{[out]}}^t \phi_w^{t-\Delta t} + \sum_D (Q_{[in]}^{t,D} \phi_w^{t-\Delta t,D}) \frac{\Delta t}{\Delta x^2}}{h^t} \quad (6)$$

where $h_{Q_{[out]}}^t$ represents the depth remaining in the cell after the removal of outflows at the current time, $Q_{[out]}^t$ (and before the addition of any inflows), which is scaled according to the fraction from this source from the previous timestep, $\phi_w^{t-\Delta t}$. To this depth is added the total amount of water from this source which is contributed from neighbouring cells, given by
95 $\sum_D (Q_{[in]}^{t,D} \phi_w^{t-\Delta t,D})$, where $Q_{[in]}^{t,D}$ is the inflow from a particular direction, D , and $\phi_w^{t-\Delta t,D}$ is the fraction of flow for source w from that direction. The updated source volume fraction is obtained by dividing by the updated cell depth, h^t . Finally, $h_{Q_{[out]}}^t$ is given by:

$$h_{Q_{[out]}}^t = h^{t-\Delta t} - \sum_D Q_{[out]}^{t,D} \frac{\Delta t}{\Delta x^2} \quad (7)$$

100 where $Q_{[out]}^{t,D}$ are the outflows in each direction. To improve computational efficiency, the method only requires knowledge of the source volume fractions for the previous timestep in each neighbouring, upstream cell; the actual depths or volumes from each source in each cell are not saved. The calculation cell depth after removal of outflows, $h_{Q_{[out]}}^t$, enables each source fraction to be updated based on the flows in ($Q_{[in]}^{t,D}$), the fraction from each source in direction, D ($\phi_w^{t-\Delta t,D}$), and the updated depth, h^t . Using this approach, calculation of water source fractions flowing out of the cell is not necessary. For completeness, using the notation of Eq. (1) and expanding D into cell indices, i, j , the updated depth from each source can be obtained using:

$$105 \phi_{w,i,j}^t h_{i,j}^t = \phi_{w,i,j}^{t-\Delta t} h_{i,j}^{t-\Delta t} + \Delta t \frac{\phi_{w,i-1,j}^{t-\Delta t} Q_{x,i-1,j}^t - \phi_{w,i+1,j}^{t-\Delta t} Q_{x,i,j}^t + \phi_{w,i,j-1}^{t-\Delta t} Q_{y,i,j-1}^t - \phi_{w,i,j+1}^{t-\Delta t} Q_{y,i,j}^t}{\Delta x^2}. \quad (8)$$

Boundary condition inputs are added prior to the routing of surface water. Adjusting the water volume fractions for the cells in which water is added is straightforward. The boundary modified water volume fractions, ϕ'_w , are obtained using:

$$\phi'_w = \frac{h\phi_w + Q_w \frac{\Delta t}{\Delta x^2}}{h + \sum_w Q_w \frac{\Delta t}{\Delta x^2}} \quad (9)$$

for input sources, or:

$$110 \quad \phi'_w = \frac{h\phi_w}{h + \sum_w Q_w \frac{\Delta t}{\Delta x^2}} \quad (10)$$

for other sources, where Q_w is the inflow added to the cell from source w at the start of timestep. Thus, fractions from sources where water is added to the cell are adjusted upwards, while fractions for non-source volumes are adjusted downwards. This means that additional inflow from a certain source results in an increase in the fraction of that source in that cell, which is reflected in a higher value of the water source fraction variable, ϕ'_w ; the opposite occurs for fractions of water from other sources as they are diluted.

It should be noted that, similar to the approach of Qi et al. (2021), for simplicity, this method treats cell water volumes as fully mixed. Consequently, it may be possible for small fractions to propagate quickly in a downstream direction, since fluxes into a cell would be included in the fractions assigned as inflow to a downstream neighbouring cell in the next timestep, via $\phi_w^{t-\Delta t, D}$. As a result, caution should be given to the interpretation of very small water source fractions.

120 2.3 Water tracing implementation

Importantly, within the model code, the additional equations required for the water source tracing presented in Section 2.2 can be piggybacked on top of existing finite volume model code, requiring minimal modification of the original schemes. The water source tracing method was implemented in C#, within CAESAR-Lisflood version 1.9j (Coulthard, 2019). However, the method is readily transferable to other programming languages where different versions of LISFLOOD-FP (Bates et al., 2010) are implemented, or to other similar flow models. The additional C# code added to CAESAR-Lisflood is included in Appendix A. Here, we summarise the algorithms developed.

Our method allows water from different sources to be tracked according to point sources (e.g. a reach input) or from spatial areas that can be user-defined (e.g. to represent different rain zones or subcatchments). CAESAR-Lisflood allows the addition of water as point sources, or via rainfall through a hydrological model based on a spatially distributed version of TOPMODEL (Beven and Kirkby, 1979), for implementation see Coulthard and Skinner (2016) and Coulthard and Van De Wiel (2017). The zonal input also allows tidal sources to be traced, although note that the model is depth-averaged and does not account for the higher density of saltwater. Water tracers are saved as two 3D or stacked arrays of size $W * X * Y$ grid cells, for the current and previous timestep, which are initialised as zeros. Additionally, two arrays for $\delta h \delta t$ in the x and y directions are used to save the volumes of water moving between cells in units of change in depth in the timestep.

135 The main functional flow of CAESAR-Lisflood as related to water source tracing is shown in Figure 1. For each time step, inflows from various sources are first added. The addition of traced water requires code to be modified such that, after the addition of water from each source, the water source fractions are updated to account for the increase in volume

from a source (Eq. 9 and 10). In CAESAR-Lisflood, inflows to the modelled domain may reflect reach inputs, rainfall inputs and tidal or stage inputs, which are added in three separate functions (`reach_water_and_sediment_input()`,
 140 `catchment_water_input_and_hydrology()` and `stage_tidal_input()`, respectively). Each of these are updated in a similar way using Algorithm 1.

Following the addition of inputs from sources, the implementation in CAESAR-Lisflood copies the water depths and water tracers into arrays which represent the previous timestep, h_{t-1} and ϕ_{t-1} . For the water source tracing implementation, the tracer states are saved via the function `save_tracer_states()` (Figure A3). Next, flows are updated in the function
 145 `qroute()`, for which no modifications are required (meaning that the water source tracing does not affect flow). Depths are then updated via `depth_update()` with no modifications except that volumes of water moving between cells are stored to the $\delta h \delta t$ in x and y arrays, calculated using:

$$\delta h \delta t^{t,D} = Q^{t,D} \frac{\Delta t}{\Delta x} \quad (11)$$

for a single direction (C# code in Figure A4). This is used as part of the solution to Eq. (6) and (7) to update the water source
 150 tracers, enabling a simplified form to be implemented for the tracer update:

$$\phi_w^t = \frac{h_{Q_{[out]}}^t \phi_w^{t-\Delta t} + \sum_D (\delta h \delta t_{[in]}^{t,D} \phi_w^{t-\Delta t,D})}{h^t} \quad (12)$$

where:

$$h_{Q_{[out]}}^t = h^{t-\Delta t} - \sum_D \delta h \delta t_{[out]}^{t,D}. \quad (13)$$

Water source tracers are updated in the function `update_tracer_states()`, which is the main addition to the CAESAR-
 155 Lisflood code. Algorithm 2 provides details of the procedure used. For every cell in the model which contains water ($h_{i,j}^t > 0.0$), the depth remaining in the cell after outflows ($h_{Q_{[out]}}^t$) is first calculated by subtracting outflows from each of the four flow directions. We sum $\delta h \delta t$ from each direction (previously calculated in `depth_update()`), which represent contributions to depth from the right (x) or up (y): outflows will be negative for the right and up directions and positive in the left and down directions.

The procedure then updates each source for the cell, by first calculating the sum of depths added from this source (i.e.
 160 $\sum_D (\delta h \delta t_{[in]}^{t,D} \phi_w^{t-\Delta t,D})$), again by scanning the $\delta h \delta t$ arrays in each direction. Finally, the fraction is then calculated by dividing the total new depth from the source by the depth from all sources, h^t .

2.4 Water source visualisation

Visualisations of flood model outputs are often produced for depths in the form of animated maps. Here, we derived a simple
 165 colour scaling which permits up to three water sources to be visualised in RGB colour-space. For each cell, the RGB colour index in the range 0 to 255 is obtained for the desired water source, w , using:

Algorithm 1 Updating water source fractions after adding input sources. Inputs required are the depth in the cell for the previous iteration (h^{t-1}), a vector of all water sources for the cell for the previous iteration (ϕ^{t-1}), input from this source (Q_w), the index of this source (w), the number of sources (W), the cell size (Δx) and the timestep (Δt). A C# implementation is shown in Figure A2.

Input: $h^{t-1}, \phi^{t-1}, Q_w, w, W, \Delta x, \Delta t$

Output: ϕ^t

$\delta h \delta t_w \leftarrow Q_w * \Delta t / \Delta x^2$ {get change in depth resulting from this source}

$h^t \leftarrow h^{t-1} + \delta h \delta t_w$ {get new depth after adding input from this source}

if $h^t > 0.0$ **then**

if $h^t = \delta h \delta t_w$ **then**

$\phi_w^t \leftarrow 1.0$ {if depth was zero, then all water in cell is from this source}

else if $\phi_w^{t-1} < 1.0$ {if cell contains multiple sources} **then**

$h_w^t \leftarrow \phi_w^{t-1} * h^{t-1}$ {get depth after addition of this source}

$\phi_w^t \leftarrow (h_w^t + \delta h \delta t_w) / h^t$ {update this water source fraction}

for $src = 1$ to W **do**

if $src \neq w$ **then**

$\phi_{src}^t \leftarrow (\phi_{src}^{t-1} * h^{t-1}) / h^t$ {update fraction of other water sources}

end if

end for

end if

end if

$$RGB_{i,j} = 255 \cdot \phi_{i,j,w}^\beta \quad (14)$$

The power term, β , enables visual enhancement of lower water fractions, in the range ~ 0.1 to 1.0 , where 1 would represent no enhancement. In order to allow water depth to be resolved through the use of reduced lightness for deeper water, (14) may be modified to:

$$RGB_{i,j} = ((1 - h_{i,j} / h_{[range]}) \cdot 127) + 128 \cdot \phi_{i,j,w}^\beta \quad (15)$$

where $h_{i,j}$ is the cell depth and $h_{[range]}$ is the range of depths to scale the visualisation to. Thus, the RGB value for a cell which has only one source of water in it will range from 128 for deeper water where $h = h_{[range]}$, towards 255 for shallow depths close to zero. Figure 2 provides a detailed illustration of RGB values obtained using (14) and (15) for different values of ϕ , β and h , and the resulting colour scales obtained when visualising multiple sources. Mixing of water sources with red and blue shading gives a pink colour scale; green and blue gives cyan; red and green give yellow; and shades towards white

Algorithm 2 Updating water source fractions after flow routing and depth update. Inputs required are the updated depth in the cell (h^t), water sources for the previous iteration (ϕ^{t-1}), depth contributions horizontally ($\delta h\delta tx$) and vertically ($\delta h\delta ty$), the number of sources (W), and number of cells in the grid horizontally (X) and vertically (Y). A C# implementation is shown in Figure A5.

Input: $h^t, \phi^{t-1}, \delta h\delta tx, \delta h\delta ty, W, X, Y$

Output: ϕ^t

for all i, j cells in ranges $1 \leq i \leq X$ and $1 \leq j \leq Y$ **do**

if $h_{i,j}^t > 0.0$ **then**

$\delta h\delta tsum_{Q_{[out]}} \leftarrow 0.0$ {obtain total change in depth after flows out (source not important)}

if $\delta h\delta tx_{i+1,j} < 0.0$, **then** $\delta h\delta tsum_{Q_{[out]}} \leftarrow \delta h\delta tsum_{Q_{[out]}} + \delta h\delta tx_{i+1,j}$; **end if** {right, -ve = outflow}

if $\delta h\delta tx_{i,j} > 0.0$, **then** $\delta h\delta tsum_{Q_{[out]}} \leftarrow \delta h\delta tsum_{Q_{[out]}} - \delta h\delta tx_{i,j}$; **end if** {left, +ve = outflow}

if $\delta h\delta ty_{i,j+1} < 0.0$, **then** $\delta h\delta tsum_{Q_{[out]}} \leftarrow \delta h\delta tsum_{Q_{[out]}} + \delta h\delta ty_{i,j+1}$; **end if** {up, -ve = outflow}

if $\delta h\delta ty_{i,j} > 0.0$, **then** $\delta h\delta tsum_{Q_{[out]}} \leftarrow \delta h\delta tsum_{Q_{[out]}} - \delta h\delta ty_{i,j}$; **end if** {down, +ve = outflow}

$h_{Q_{[out]}}^t \leftarrow h^{t-1} + \delta h\delta tsum_{Q_{[out]}}$ {get depth remaining in cell after removal of outflows}

for $src = 1$ to W **do**

$\delta h\delta tsum_{Q_{[in]}} \leftarrow 0.0$ {obtain total change in depth after for inflows of this source (ignoring outflows)}

if $\delta h\delta tx_{i+1,j} > 0.0$, **then** $\delta h\delta tsum_{Q_{[in]}} \leftarrow \delta h\delta tsum_{Q_{[in]}} + \delta h\delta tx_{i+1,j} * \phi_{i+1,j,src}^{t-1}$; **end if** {right, +ve = inflow}

if $\delta h\delta tx_{i,j} < 0.0$, **then** $\delta h\delta tsum_{Q_{[in]}} \leftarrow \delta h\delta tsum_{Q_{[in]}} - \delta h\delta tx_{i,j} * \phi_{i-1,j,src}^{t-1}$; **end if** {left, -ve = inflow}

if $\delta h\delta ty_{i,j+1} > 0.0$, **then** $\delta h\delta tsum_{Q_{[in]}} \leftarrow \delta h\delta tsum_{Q_{[in]}} + \delta h\delta ty_{i,j+1} * \phi_{i,j+1,src}^{t-1}$; **end if** {up, +ve = inflow}

if $\delta h\delta ty_{i,j} < 0.0$, **then** $\delta h\delta tsum_{Q_{[in]}} \leftarrow \delta h\delta tsum_{Q_{[in]}} - \delta h\delta ty_{i,j} * \phi_{i,j-1,src}^{t-1}$; **end if** {down, -ve = inflow}

if $\delta h\delta tsum_{Q_{[in]}} = 0$ and $\phi_{src}^{t-1} = 0$ **then**

$\phi_{i,j,src}^t \leftarrow 0.0$ {if there is no contribution or existing water from this source}

else

$\phi_{i,j,src}^t \leftarrow (h_{Q_{[out]}}^t * \phi_{i,j,src}^{t-1}) + \delta h\delta tsum_{Q_{[in]}} / h_{i,j}^t$ {([src depth in cell] + [src depth added]) / [updated depth]}

end if

end for

end if

end for

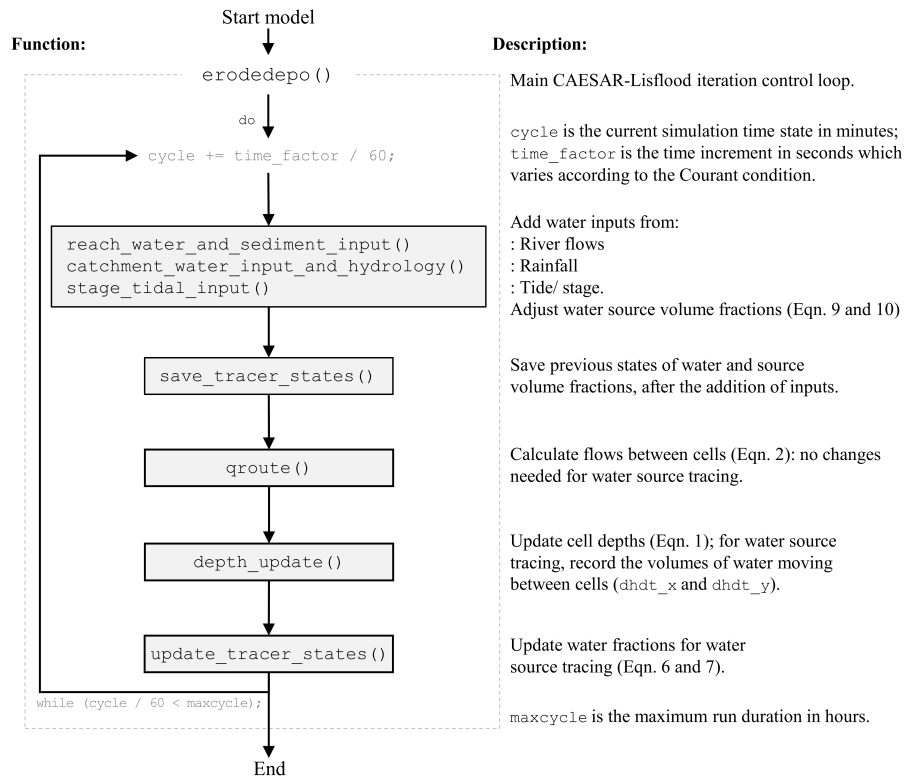


Figure 1. The main CAESAR-Lisflood control showing additions for water source tracing. Additional functions related to erosion and deposition are not shown.

would indicate mixing of all three sources. Note that, while it is possible to trace an arbitrary number of water sources using the method described in Section 2.2, this visualisation method is limited to a maximum of three water sources. However, using Eq. (15), if a cell only contains water from sources different to those selected for visualisation, depths can still be resolved in greyscale in the RGB value range 0 to 127. This also means that it is possible to visualise only one water source at a time in a selected primary colour.

2.5 Evaluating performance overhead

In order to test computational performance of the water tracing code, a simple planar test case was developed, consisting of a constant 0.001 m/m slope of length 2000 m and width 1000 m, on a grid with a spatial resolution of 5 m, giving a total of 80,000 cells (Figure 3a). Manning’s roughness, n , was set at 0.05. At 250 m intervals down slope, 1 m “walls” were added across the slope, each with between 4 and 8 gaps of 5 m width added to allow water to flow through. This was done to ensure that water mixed as it flowed downslope. Simulations were conducted for a period of 24-hours with constant inflow of $10 \text{ m}^3/\text{s}$ to 8 locations at the top of the slope. Eight simulations were conducted in total: one with no tracing and seven with

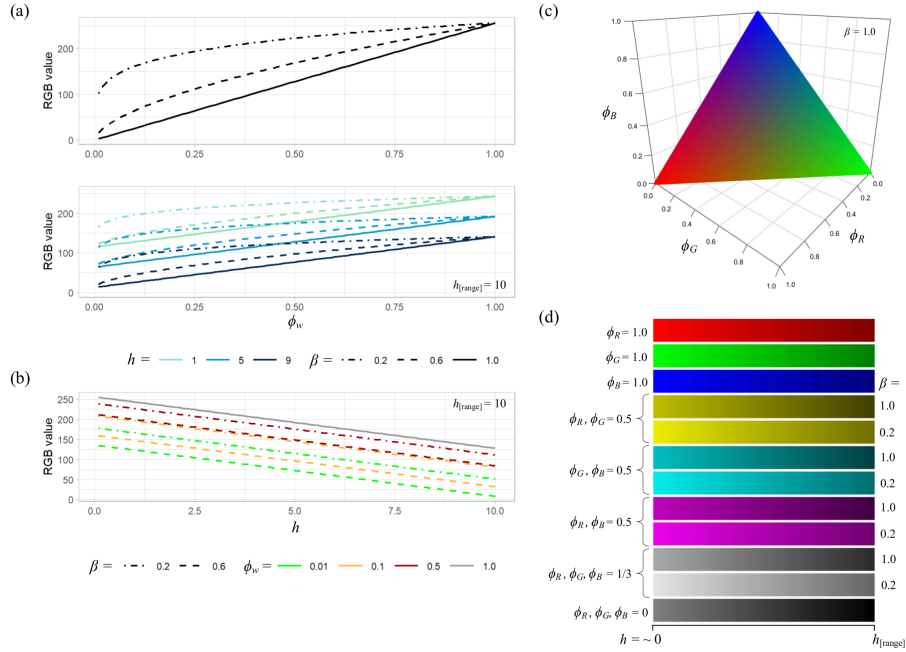


Figure 2. Illustration of RGB colour scaling used for visualisation of water source fractions: (a) RGB values for water fractions ϕ from source w , obtained using (14) (upper plot, no depth visualisation) and (15) (lower plot, with depth visualisation, where $h_{[\text{range}]} = 10$), and visual enhancement of lower water fractions using β ; (b) RGB values with changing depth, h , for different values of ϕ_w and β ; (c) colour rendering resulting from (14) for three water sources, R , G and B (note that $\phi_R + \phi_G + \phi_B = 1.0$); (d) colour scales obtained for various combinations of water sources using (15), with and without enhancement of lower water fractions, showing reduced lightness as water depth approaches $h_{[\text{range}]}$. Note that the bottom colour scale is used for rendering in the absence of any water from sources selected for visualisation (i.e. where more than three sources are present in the simulation).

190 between 2 and 8 water sources being traced. To ensure that each of these simulations had identical total inflow, sources were grouped for tracing purposes, allowing the variation in computation requirements to be assessed. The simulations conducted are summarised in Table 1. Furthermore, to benchmark model performance in a real world scenario, the effect of the number of tracers on model performance was tested on the Carlisle example described below.

3 Results

195 Firstly, we demonstrate water source tracing and visualisation for three flood inundation case studies that are examples of flooding at three different spatial scales in three contrasting contexts: (1) a major flood event in 2005 at Carlisle, United Kingdom, fluvial flooding in an urban area which is situated at the confluence of three rivers, (2) a shallow estuary in Christchurch, New Zealand, combining tides with inflow from two small rivers, and (3) flooding at the tributary junction of two large rivers

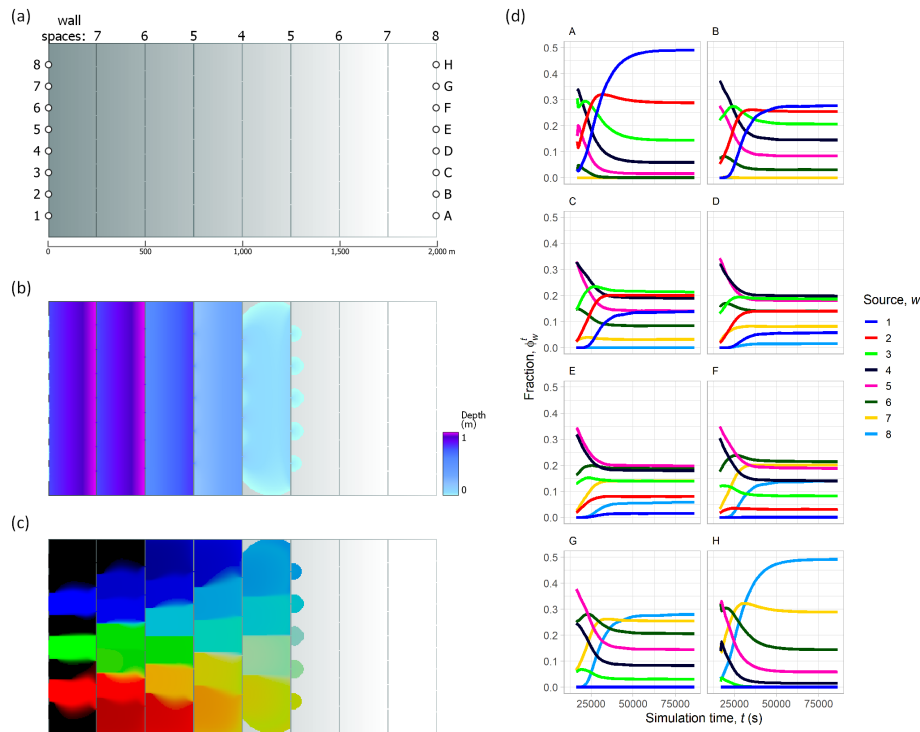


Figure 3. Planar test case setup and results: (a) the 2000 by 1000 m planar slope (0.001 m/m) elevation model (5 m grid spacing, 400 x 200 cells), with 1 m “walls” added across the slope at 250 m intervals (each wall had between 4 and 8 evenly-spaced gaps of 5 m, as indicated by the numbering along the top of the grid); injection points for each of the 8 water sources are indicated by numbering on the left; (b) water depth prediction at $t = 8400$ s (140 minutes), with a constant inflow of $10 \text{ m}^3/\text{s}$ and $n = 0.05$; (c) visualisation of water sources numbered 2 (red), 4 (green) and 6 (blue) at $t = 8400$ s, using (14) with $\beta = 0.2$; (d) water source fractions throughout the 24-hour simulation for each of 1-8 sources at locations A-H indicated in (a). For an animated version, please see: <https://youtu.be/DTw8ysJtx8o>.

on the Amazon floodplain, Brazil. Secondly, we present the computational performance of the method for the planar test case and Carlisle example.

200 3.1 Carlisle, United Kingdom

The city of Carlisle in northern England experienced significant flooding in 2005 (estimated annual exceedance probability 0.5% to 0.57%) that resulted from heavy rains in the headwater catchments of rivers running through the city and affecting more than 2500 properties (Environment Agency, 2006). With the benefit of an extensive set of observational data obtained from field collection, the 2005 flood event at Carlisle event has been used extensively as a test case for hydraulic model
205 development (Horritt et al., 2010; Neal et al., 2009). Here, the site is of particular interest as it is at the confluence of three

Table 1. Planar slope test case simulations. In each of the eight simulations, the total volume of inflow was identical: each of the eight sources was a constant $10 \text{ m}^3/\text{s}$ (where a source was used for multiple inflow points, its total volume was added to all). Inflow points are shown in Figure 3a.

Number of tracers	Inflow point/ source number								Computation cost (s/s)		Total computation time (s)	Difference to no tracing (s)	Ratio to no tracing
	1	2	3	4	5	6	7	8	Mean	Std. dev.			
No tracing	1								9.27E-03	2.51E-03	800.63	-	-
2	1	2							15.8E-03	4.38E-03	1362.46	561.83	1.70
3	1	2	3					16.8E-03	4.70E-03	1452.47	651.84	1.81	
4	1	2	3	4				18.0E-03	5.04E-03	1558.91	758.28	1.95	
5	1	2	3	4	5			19.2E-03	5.48E-03	1659.41	858.78	2.07	
6	1	2	3	4	5	6		20.3E-03	5.90E-03	1750.80	950.17	2.19	
7	1	2	3	4	5	6	7	20.8E-03	6.13E-03	1799.12	998.49	2.25	
8	1	2	3	4	5	6	7	8	22.3E-03	6.58E-03	1925.20	1124.57	2.40

separate rivers: the main River Eden, which runs from east to west through the city, is joined by the Rivers Petteril and Caldew which flow into the city from the south (Figure 4).

A simulation was run using a model grid of 5 m (domain size: 951×612 cells, 14.6 km^2), topography from LiDAR and inflows from gauging station records. The simulation began on 08 January 2005, 00:00, for 120 hours (5 days). Visualisations of the model output are shown in Figure 5. Flood water mixing is shown in RGB colour space, using Eq. (15) to enable darker shades to indicate deeper water. The mixing of Eden (blue) and Petteril (red) gives pink shades, which as it moves downstream transitions towards purple due to the larger volume of flow on the Eden; water from the Caldew is shaded in green and contributes to the greyer shades in the floodplains close to the main channel as the three waters are mixed.

The ability to trace inputs from discrete tributaries allows us to determine how different sourced flood waters contributed to the flooding. This is especially pertinent to the Carlisle 2005 flood events, where most flood damage was considered to have come from the two tributary inputs, the Caldew and Petteril (Environment Agency, 2006). For example, the time-series plots in Figure 5 illustrate locations where water is mixed from multiple sources. The larger volume of water from the River Eden dominates, but at point A, a railway embankment prevents flooding from the Eden but the area is flooded by the Caldew. Points B and D are initially flooded by the Caldew and Petteril, respectively, until flooding from the Eden arrives. This is likely due to the timing of the flood peaks (~ 11.5 hours earlier on the Petteril than the Eden; ~ 17 hours earlier on the Caldew).

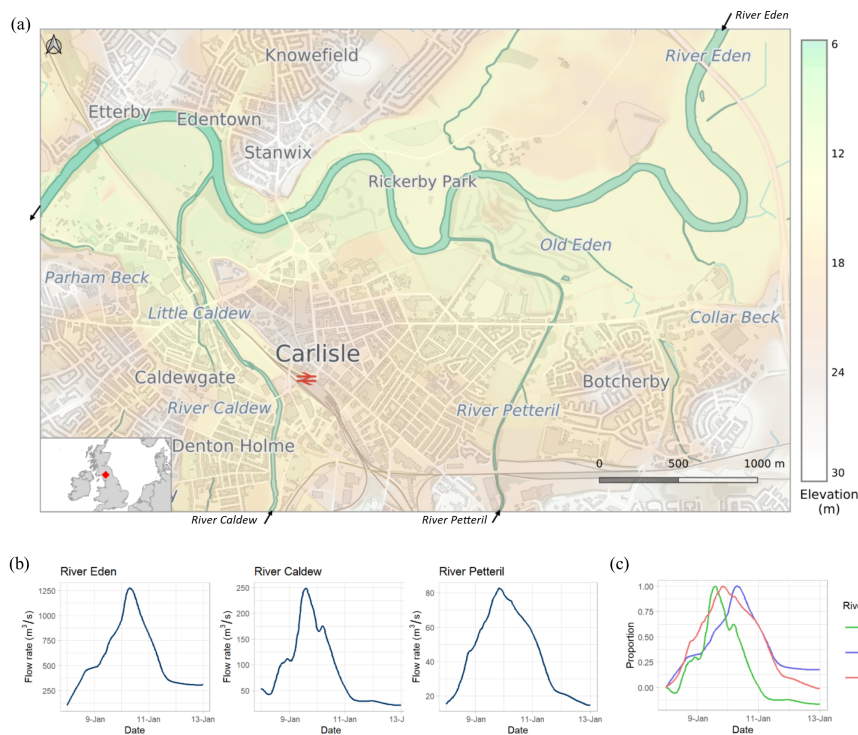


Figure 4. (a) Study site 1 at Carlisle, UK, at the confluence of the Rivers Caldew, Petteril and Eden, showing elevation from LiDAR. The plots in (b) show river flows for the January 2005 flood event simulated. The plot in (c) shows the relative level of the three rivers (calculated as a proportion of the difference between the flow on 8 January and the flood peak), indicates that the River Caldew reached flood peak ~ 5.5 hours ahead of the River Petteril, and ~ 17 hours ahead of the River Eden. Contains OS data © Crown copyright and database right (2020).

3.2 Avon-Heathcote estuary, Christchurch, New Zealand

On the eastern edge of the city of Christchurch, New Zealand, the estuary of the Avon and Heathcote Rivers (Figure 6) is a large ($\sim 8 \text{ km}^2$), shallow (mean depth $\sim 1.4 \text{ m}$ at spring high tide and a tidal range of $\sim 1.7\text{-}2.2 \text{ m}$) intertidal area, with about 85% of its elevation above the spring low tide level (Findlay and Kirk, 1988). The estuary is semi-enclosed and separated from the Pacific Ocean by a $\sim 4.5 \text{ km}$ long spit (Christchurch suburbs of New Brighton/ Southshore. It has been designated as a site of ecological significance in the Christchurch District Plan (Christchurch City Council, 2016) and is internationally recognised for its importance as a habitat for migratory bird species (Woodley, 2018). The estuary acts as a sediment trap for inflows from the Avon and Heathcote Rivers, the catchments of which cover a combined area of 188 km^2 which is largely urbanised, meaning that urban pollution is a considerable issue (Vopel et al., 2012).

Here, we demonstrate water source tracing and visualisation for the Avon-Heathcote estuary for the month of July, 2017, using a model grid of 10 m (domain size: 483×675 cells, 32.6 km^2). The sources of water included were the two rivers, with inflow from the Avon River from the north and inflow from the Heathcote from the south-west, and a downstream tide

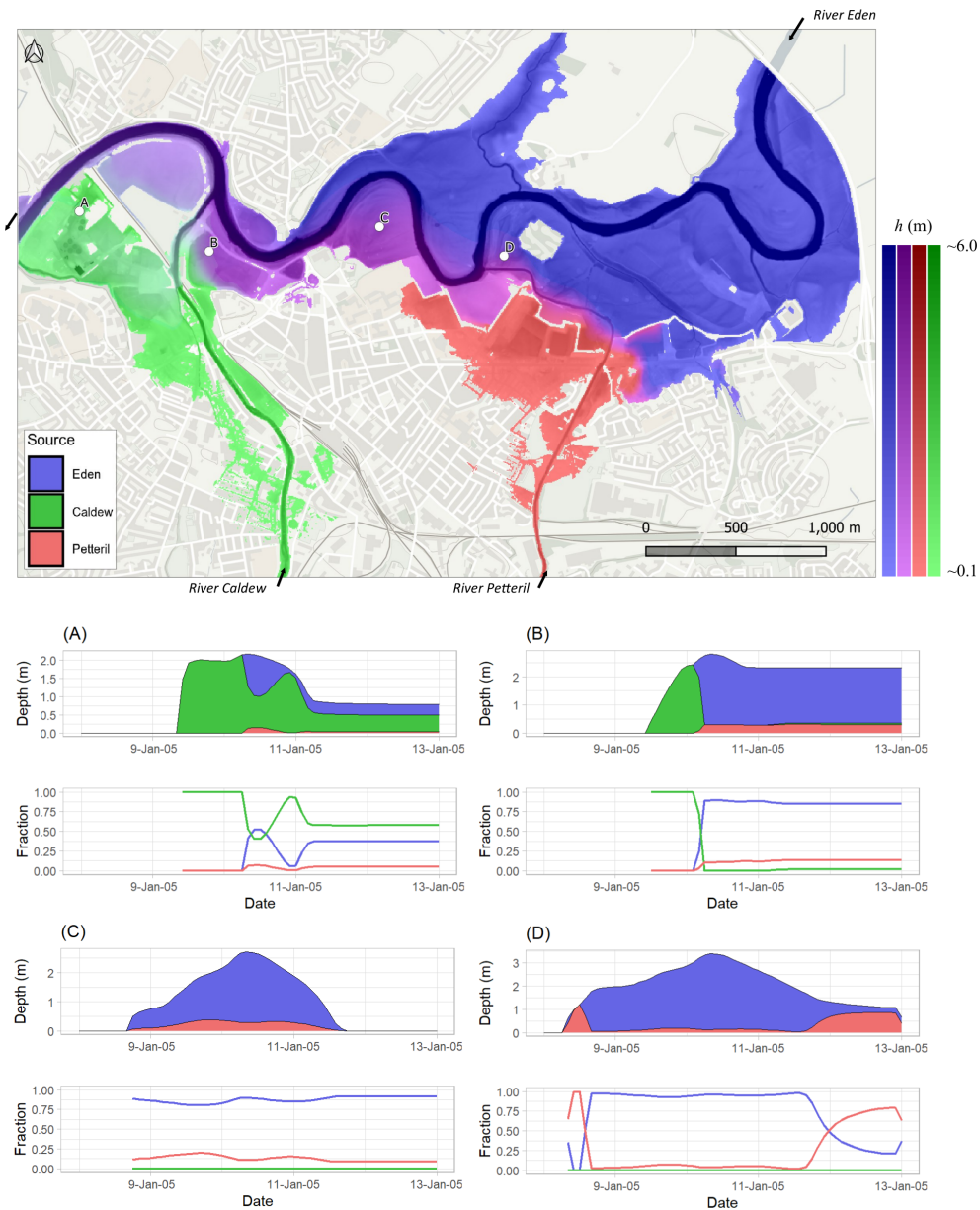


Figure 5. Model results for Carlisle, showing flood extent on 10 January 2005, 06:00 AM, close to the flood peak. Map colours indicate mixing of water from different sources, with darker shades indicating increased depth. Colour scales show depths with selected source combinations (left to right): $\phi_{[Eden]} = 1.0$ (blues); $\phi_{[Eden]} = 0.8$, $\phi_{[Petteril]} = 0.2$ (pinks/purples); $\phi_{[Petteril]} = 1.0$ (reds); and $\phi_{[Caldew]} = 1.0$ (greens). $\beta = 0.2$ is used to emphasise lower water fractions from the Caldew and Petteril Rivers. Depths and fractions for four selected locations, marked A-D, are shown. Contains OS data © Crown copyright and database right (2020). For an animated version, please see: <https://youtu.be/xOtOi06cXvA>.

boundary condition at the estuary outlet at the south-east (Figure 6b). The simulated period of July 2017 included both neap and spring tides and a high flow event on 22 July on both rivers, where the Avon River peaked at 13:00 with $14.7 \text{ m}^3/\text{s}$ of flow, close to the mean annual flood level (Environment Canterbury, 2023), and Heathcote River peaked at 14:00 with $28.1 \text{ m}^3/\text{s}$ of flow, an Annual Exceedance Probability of less than 0.1 (Environment Canterbury, 2023).

As noted in Section 2.3, as a depth-averaged model, CAESAR-Lisflood does not account for the higher density of the saline tidal water compared to fresh riverine water, meaning that any variations in the vertical salinity profile of estuarine water is not accounted for. However, given that the Avon-Heathcote estuary receives only small volumes of riverine inflow, with mean inflow from the Avon and Heathcote rivers 1.87 and $1.04 \text{ m}^3/\text{s}$, respectively (LAWA, 2023), compared with tidal inflow rates of up to $500\text{-}800 \text{ m}^3/\text{s}$ during an incoming tide (van der Peet and Measures, 2015), it is likely that it is well-mixed with little vertical salinity difference (Hansen and Rattray, 1966).

Results of the model application are shown in Figure 7. During low flow conditions during at low-tide on 8 July 2017 (image A), the estuary is mostly drained, with the water remaining in the estuary containing a greater proportion of water from the Avon River as a result of its higher baseflow. Shortly after spring-high tide on 16 July (image B), it can be seen that water from both the Avon and Heathcote is pushed back by the tide, particularly along the eastern shoreline. If accurate, this situation may play a significant role in determining where pollutants, such as those from stormwater runoff which are then discharged from the Avon and Heathcote Rivers (e.g., see Vopel et al., 2012) are deposited. This would affect human health through various activities in the estuary, such as the gathering of food sources such as fish and shellfish which accumulate heavy metals contained in riverine discharge (e.g. McMurtrie, 2015).

During the high flow conditions on 22 July shortly after high tide and inflow peak (image C) and low tide (image D), results indicate substantially greater riverine contribution to the estuary, such that, after the fall of the tide, the estuary remained substantially inundated but with water almost all from riverine sources. After high tide, Avon and Heathcote waters are largely confined by the tide to the western shore, with a clear boundary between the two river sources visible. After low tide, this boundary is sharper due to the absence of tidal mixing, and gradually dissipates as water mixes towards the estuary outlet.

3.3 Amazon River, Brazil

The flow of the central Amazon River is characterized by a large annual flood wave of around 10 m amplitude, resulting primarily from the distinctive wet and dry seasons (Trigg et al., 2009). Each year during the wet season, the Amazon rises and inundates its low lying floodplain forests, creating an internationally significant wetland ecosystem which reaches its maximum extent around June or July (Mitsch and Gosselink, 2015), with the extensive surface water flow recognised as a key factor in the functioning of the habitats created and exerting a strong control on biological and biogeochemical processes (Richey et al., 2002; Wittmann et al., 2004). Inter-annual variability in the flood level and flood wave timings creates spatial and temporal complexities on the floodplain (Melack and Hess, 2011), with the source of water recognised as a key determinant for sediment transport (Vauchel et al., 2017) and trace element concentration (Baronas et al., 2017) dynamics across the basin.

We applied the model of Wilson et al. (2007) to a ~ 300 km reach of the Solimões River (mainstem Amazon River) at its confluence with the Purus River (Figure 8), using a model grid of ~ 278 m (domain size: 966×479 cells, $\sim 35,650 \text{ km}^2$) for

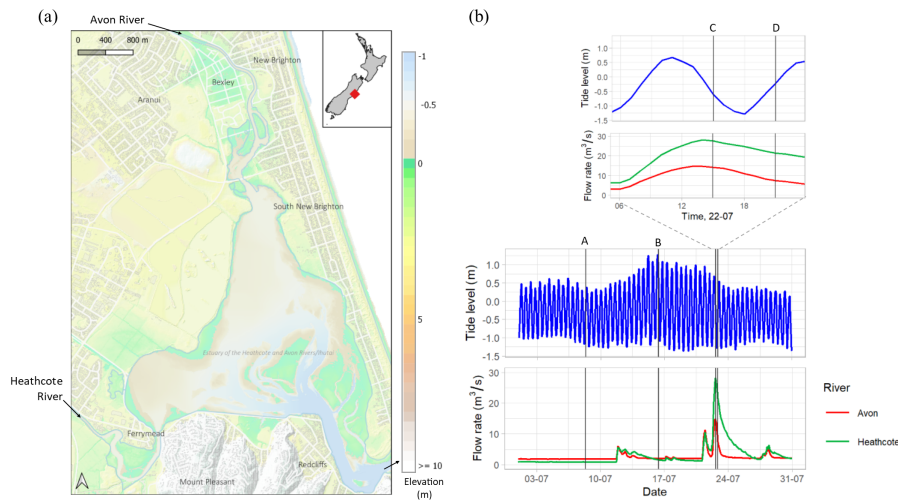


Figure 6. (a) Study site 2 at the Avon-Heathcote estuary in Christchurch, New Zealand showing elevation from LiDAR; (b) inflow and downstream tide levels for the period simulated in July 2017, which includes a high-flow event on 22 July. The four vertical lines labelled A-D represent the timing of the images shown in Figure 7. Tide data are from the NIWA Sumner Head gauge, around 1 km from the estuary outlet; flow data are from the Environment Canterbury gauges at Gloucester St. (Avon) and Buxton Terrace (Heathcote). Contains data sourced from the LINZ Data Service licensed for reuse under CC BY 4.0.

the period of October 2013 through December 2014. Operating at a far larger spatial scale to examples 1 and 2, here water source tracing results show that, downstream (west) of the river confluence, the southern floodplain is primarily inundated with water from the River Purus (indicated by green), while the floodplain to the north contains a mix of water from the Rivers Solimões and the Purus (indicated by orange) (Figure 9). The shared floodplain upstream of the confluence displays a clear gradient transition between the two water sources, passing from red (Solimões), through yellow (equal mix) to green (Purus). The cross-section profile plots in Figure 9 show that, after flowing into the Solimões, water from the Purus remains largely on the right (southern) bank, but mixes with the water from the Solimões as the river progresses downstream. As the Purus peaks sooner than the Solimões, the proportion of water from the Purus close to the right bank decreases through the Solimões flood peak (C) and mid-falling water (D). These demonstrate the ability of the LISFLOOD-FP and the new tracing functions to simulate the convergence and mixing of water from these two major river systems. The proposed water source tracing method therefore provides the means to assess the complex dynamics of variable contributions in river-floodplain systems such as those on the Amazon, enabling the estimation of important variables which are associated with each water source through time, such as nutrient availability. Further, it may enable a rapid assessment of issues of importance for human health, such as identifying areas which may be susceptible to mercury contamination from gold mining activities in the Amazon basin, for which the dynamics of fluvial and pluvial waters are key factors (Maurice-Bourgoin et al., 2003; Maia et al., 2009). However, for a robust analysis, it is likely that additional tracing of sediment erosion, transportation and deposition is required (e.g. Haddadchi et al., 2019).

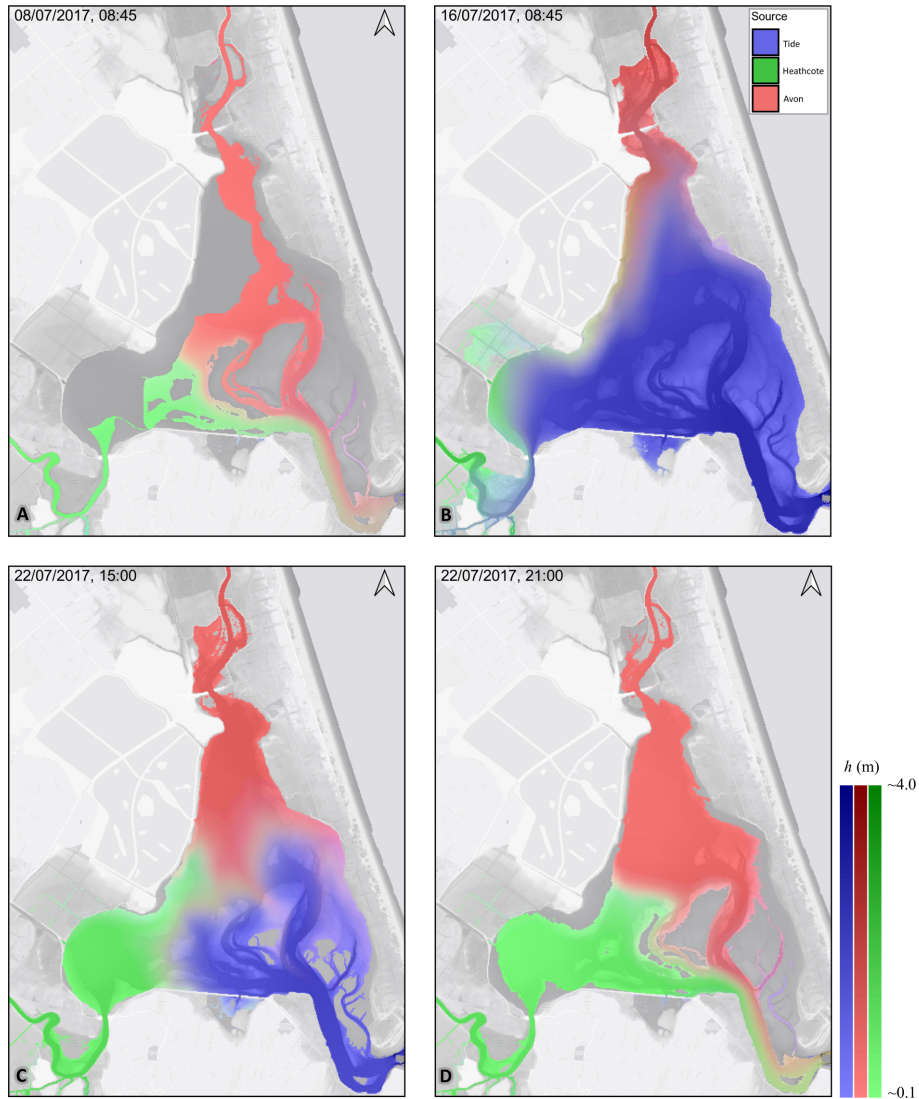


Figure 7. Model results for the Avon-Heathcote estuary: low flow conditions during (A) low-tide on 8 July 2017 and (B) after spring-high tide on 16 July; high flow conditions on 22 July shortly after high tide (C) and low tide (D). The images were produced with $\beta = 0.2$; their timing and flow/ tide levels are shown in Figure 6. Map colours indicate the mixing of water from different sources with darker shades reflecting increased depth. Colour scales show depths for individual sources (left to right): $\phi_{[\text{Tide}]} = 1.0$ (blues); $\phi_{[\text{Avon}]} = 1.0$ (reds); and $\phi_{[\text{Heathcote}]} = 1.0$ (greens). The background images contain the NationalMap Basemap (CC-BY-ND license) and LiDAR data shaded in grey. For an animated version, please see: <https://youtu.be/Fczz5tczzXU>.

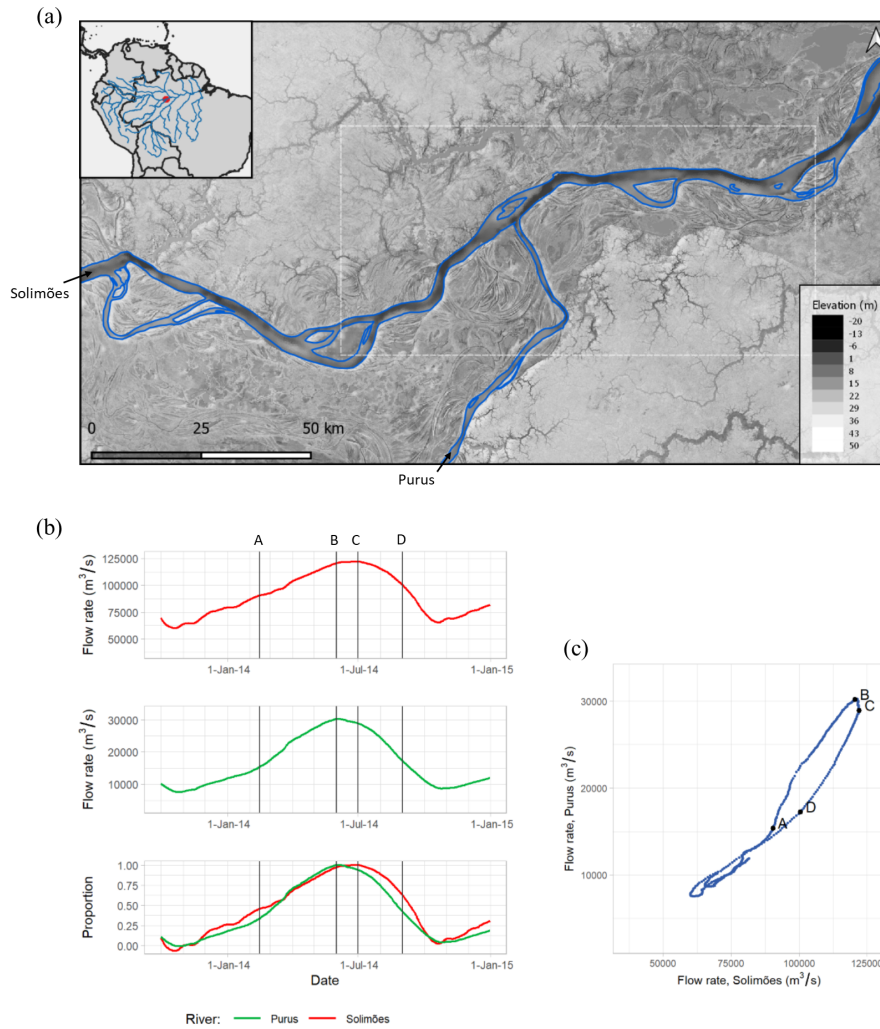


Figure 8. (a) Study site 3 at the confluence of the Solimões (mainstem Amazon) and Purus rivers in the central Amazon, Brazil, showing elevation derived from SRTM (O’Loughlin et al., 2016) and bathymetry (Wilson et al., 2007). The plots in (b) and (c) show river flows for the period simulated from October 2013 through December 2014. The lower plot of (b), which shows the relative level of Solimões and Purus flow (calculated as a proportion of the difference between the flow on 1 November 2013 and the 2014 peak flow), indicates that the Solimões rises more steadily and before the Purus, which has a later, steep rise from around mid-February onwards. Peak flow levels on the Purus (indicated by letter B) occurred around one month earlier than peak flow on the Solimões. The dotted box in (a) and letters A-D in (b) and (c) indicate the location and timing of the model results shown in Figure 9. Contains Natural Earth data in the public domain.

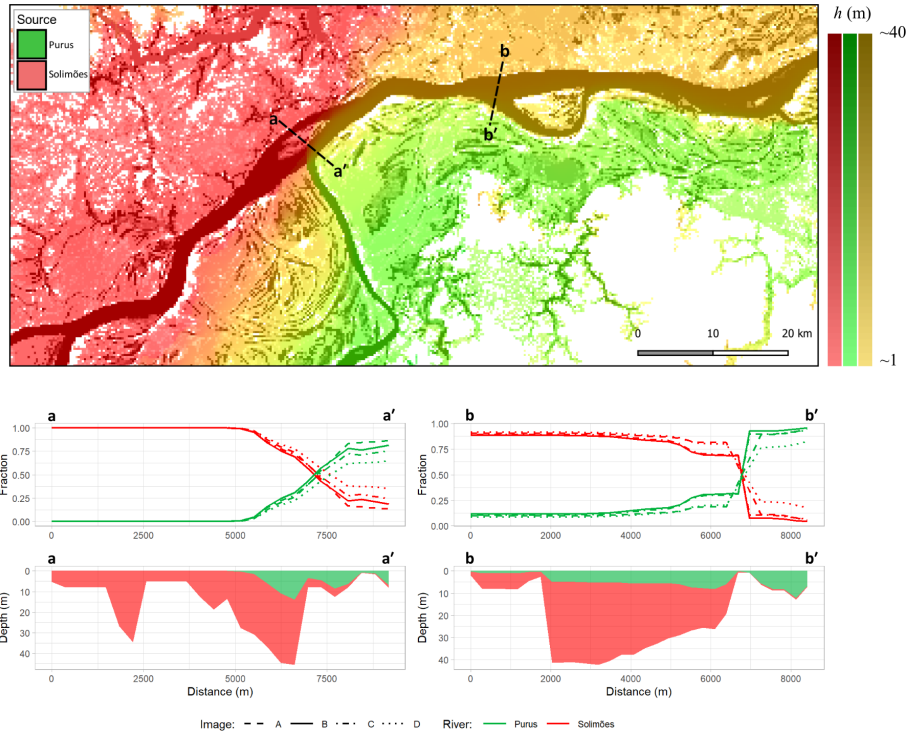


Figure 9. Model results for the Amazon, with colours on the map at the Purus flood peak (top) indicating the mixing of the waters along the channel and across the floodplain. Map colours indicate the mixing of water from each source with darker shades reflecting increased depth. Colour scales show depths with selected source combinations (left to right): $\phi_{[\text{Solimões}]} = 1.0$ (reds); $\phi_{[\text{Purus}]} = 1.0$ (greens); and $\phi_{[\text{Solimões}]} = 0.75$, $\phi_{[\text{Purus}]} = 0.25$ (yellows). Channel cross-section plots (bottom) at locations indicated by a-a' and b-b' show the water source fractions (upper plots) for each channel (A = mid-rising; B = Purus flood peak; C = Solimões flood peak; D = mid-falling), and depth/source profiles (lower plots) for image B (Purus flood peak). For an animated version, please see: https://youtu.be/PknAL_8fdII.

3.4 Computational performance

285 Results of the planar test case are shown in Figure 3b-d. Flow depth at $t = 8400$ s is shown in Figure 3b, and a water source
 visualisation at the same time for the simulation with all 8 sources is shown in Figure 3c. Here, flood water mixing is shown
 in RGB colour space, as per Eq. (14) i.e. the mixing of sources 2 (red) and 4 (green) gives yellow; mixing source 4 and 6
 (blue) gives cyan. Other water sources are shown in black. As the water flows down the slope, it becomes increasingly mixed
 within each section, helped by water being forced to flow through the gaps left in the walls placed across the slope. Once water
 290 flow reaches the bottom of the slope, a high proportion of the domain contains water (77,901 out of 80,000 cells). The flow
 is constrained to flow out of the domain through eight gaps in the downstream boundary wall, marked A-H in Figure 3a. The
 fractions of water sources 1-8, at locations A-H, throughout the simulation are shown in Figure 3d. As the domain has mirror
 symmetry along the west to east axis at $y = 500$ m, the fractions at each of the locations are also symmetrical with respect

to water sources. For example, at location A, water from source 1 increases to a fraction of around 0.5 of the water flowing through this location at steady-state, while water from source 8 does not reach it at all; the reverse is true for these water sources at location H. For the two central locations, D and E, all water sources are present with steady-state fractions ranging from around 0.02 (for source 8 at location D or source 1 at location E), to 0.2 (for sources 4 and 5).

Code profiling using diagnostic tools of Microsoft® Visual Studio 2019 compiler software (version 16.11.2), based on this test application with 3 sources, indicates that `update_tracer_states()` uses around 17.9% of the CPU resources allocated to CAESAR-Lisflood during a simulation, with 3.0% used for `save_tracer_states()`. This compares to 39.6% for `qroute()` and 11.5% for `depth_update()`. This profiling was completed on a Microsoft® Windows® 10 (build 18363) computer system with an Intel® Xeon® E-2278G CPU running at 3.4 GHz base (5.0 GHz max. turbo) frequency with 8 cores/ 16 threads, 128 Gb of system memory (4 x 32 Gb Samsung M391A4G43MB1-CTD ECC UDIMM running at 2,666 Mbps), writing outputs to a Samsung NVMe Solid State Disk (MZVLB1T0). All simulations presented in this paper were completed on this computer system.

The total time of each of the eight simulations is presented in Table 1, ranging from 1362.5 s with 2 tracers, up to 1925.2 s with 8 tracers, as compared to 800.6 s without water source tracing. The ratio of computation time for the full simulations with tracing, against computation time without tracing, ranges from 1.7 for two sources to 2.4 for eight. Mean computational requirements time ranged from 0.016 s/s for 2 tracers to 0.022 s/s with 8 tracers, compared to 0.009 s/s without water source tracing. In addition, the variability in computational costs increases with the number of sources being traced, likely due to the complexity of the mixing introduced by constraining flow through gaps within this test case.

Table 2 summarises each of the domains and simulations completed for the Carlisle, Avon-Heathcote and Amazon study sites. Although the computational cost for the Amazon simulation was highest (~32 days of computation time), when normalising for the larger number of flooded cells and the longer simulation period, it had the lowest computational cost. This higher computational efficiency likely results from the longer model timestep used, due to the larger cell size ($\Delta x = 277.6$ m). For the Avon-Heathcote domain ($\Delta x = 10$ m), the computational cost per flooded cell per day of period simulated was 2.4 times the cost for Amazon; for the Carlisle domain ($\Delta x = 5$ m), this ratio increased to 4.2.

Figure 10 illustrates the computational efficiency of our scheme for the Carlisle flood model, with and without water source tracing. Computational requirements for the simulation with water source tracing were found to be between 1.2x and 1.5x the simulation without tracing, which is less than the 1.8 ratio found for the planar test case with 3 water sources. As with the planar test case, the computational requirements of water source tracing were found to increase with the area of inundation. Early in the simulation, when the flood area was around 1 km² (40,000 cells), the computational overhead of water source tracing was approximately 0.01 s/s. This increased nearly linearly to ~0.05 s/s as the flood extent reached its peak extent of around 5 km² (200,000 cells).

Table 2. Summary of the simulations completed for each of the three study sites presented, and their computational costs.

Domain	Area (km ²)	Period simulated (days)	Cell size, Δx (m)	Total cells	Flooded cells	Proportion flooded	Computation time (hours)	Cost*	Cost per flooded cell*
Carlisle	12.7	5	5.0	508,012	190,019	0.37	27.7	5.54	2.92E-05
Avon-Heathcote	32.6	31	10.0	326,024	76,088	0.23	40.2	1.30	1.70E-05
Amazon	35,657.6	457	277.6	462,714	240,200	0.52	768.5	1.68	7.00E-06

* Number of computation hours needed per day of period simulated

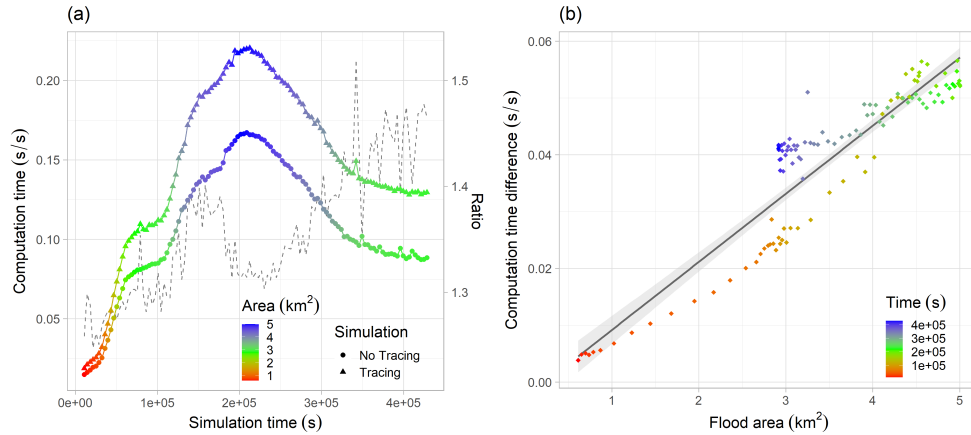


Figure 10. Computational efficiency of water source tracing for the Carlisle simulations with and without water source tracing: (a) computation time required per second of the 5-day (432,000 s) simulation, with colours indicating the area of inundation; the dashed line shows the ratio between the two (secondary y-axis); (b) computation time difference (i.e. cost of tracing) against flood area, with a linear model fitted for reference; colours indicate the simulation time.

325 4 Discussion

Our method for water tracing is simple, effective and has a low additional computational overhead of 1.2-1.5 for our real world test cases. The three case studies above show that the approach is flexible, applicable in urban, coastal and fluvial environments over a wide range of spatial scales. An important advantage of the method is that the number of water sources which may be traced is limited only by computational constraints. Furthermore, as the formulation records the proportion of different tracers or water sources per cell, it is fully independent of the hydraulic calculations, meaning it is straightforward to add to existing
 330 finite volume codes and similar 2D flow models to LISFLOOD-FP. This also means that predicted water levels with or without the tracers are identical.

However, it is important to remember that the speed and simplicity of the method is at the expense of treating cell water volumes as being fully mixed. This means that it is possible for small fractions of a tracer/water from different sources to

335 propagate quickly downstream, since fluxes into a cell would be included for **all** the fractions assigned as an inflow to a downstream neighbouring cell. In effect, this represents a tiny amount of numerical diffusion and the volumes moved are very small, but as a result caution should be applied to the interpretation of very small water source fractions. This is also an issue for tracing functions in other codes such as TELEMAC (e.g. Ch. 9.5 Ata et al., 2014). Additionally, as each cell is treated as fully mixed we cannot yet incorporate the effects of different water densities, such as saline water.

340 These issues notwithstanding, this method provides excellent opportunities for simplified simulation of water, solute and water borne fluxes across river catchments and in estuaries. In particular, with the CAESAR-Lisflood implementation combining a hydrological and hydraulic model, the contributing effects of sub basins on flooding can easily be simulated. Furthermore, the ability to combine both point source (e.g. from combined sewer outflows) and diffuse source (e.g. fields) contaminants within a computationally fast model opens up many opportunities to simulate water quality and pathogen/contaminant issues.

345 Assessments of water sources may be especially useful for other fluvial or estuarine sites with similar human health considerations to the examples presented here. For example, Robins et al. (2019) assessed water quality risks from viral dispersal from the Conwy catchment, north Wales, and highlighted the importance of river flow contributions to exposure risk. Therefore, this simple and efficient water tracing algorithm within the open source CAESAR-Lisflood model provides a powerful tool for the studying water quality and contaminant issues on environmental and human health.

350 **5 Conclusions**

We developed a simple method for tracing water sources through a flood inundation model and demonstrated its application for a simple test case and three example case studies at different spatial and temporal scales. A key advantage of the approach lies in its independence from the hydraulic methodology used, meaning that it is relatively straightforward to add to existing in finite volume codes. The method enables effective and informative visualisation of flood inundation, providing additional

355 insight into flood dynamics. In addition, it may potentially provide the ability to simulate the movement of solute contaminants and pathogens within a computationally efficient model, although additional testing is required to verify the reliability of the method, given the assumption of full mixing within cells.

Code and data availability. The CAESAR-Lisflood v1.9j-WS source code is freely available for download from Zenodo under the GNU General Public License v3.0, along with the planar test case and a 15 m version of the Carlisle model at <https://zenodo.org/record/7589023>

360 (Wilson and Coulthard, 2023).

Video supplement. Animations for each of the case studies are available at the YouTube links provided in the manuscript, and from Zenodo at <https://doi.org/10.5281/zenodo.5548535> (Wilson and Coulthard, 2021).

Appendix A: Code description

The tracing component requires a series of additional variables representing the water state prior to the routing (Figure A1).
365 The variable `water_depth_prev` is an array of $X * Y$ grid cells containing the depth from the previous time step; `dhdt_x`
and `dhdt_y` are arrays containing the change in cell depth in the last time step in for columns and rows, respectively. The
fraction of each cell from each source (i.e. the water tracers) are recorded in a series of three-dimensional ($W * X * Y$
grid cells) or stacked arrays containing the tracer fractions per cell for present and previous iterations (`watertracer`,
`watertracer_prev`) the rain zonations (`watertracerRainZone`, `watertracerRainZone_prev`) and a series
370 of flags to enable or disable tracing. Note that the rainfall source as a whole (i.e. from any zone) is contained within the main
`watertracer` arrays, while the fraction of rainfall from each zone is recorded in the `watertracerRainZone` arrays.

```
1 public static double[,] water_depth_prev, dhdt_x, dhdt_y; //water state prior to routing
2 public static double[,] watertracer, watertracer_prev, watertracerRainZone, watertracerRainZone_prev;
3 // stacked arrays for tracing water sources
4 public static int[,] rainzonation; // rainfall zonation for routing
5 public static int nSources = 0, nRainZones = 0; //number of water sources for tracing, rain zones
6 bool isTraceWater = false; // Water source tracing (default to off)
7 bool isTraceRainZonation = false; // Water source tracing: rainfall zonation
8 public int[] sourceIDs; // to identify different sources where they are split over several cells
9 public static int[] rainZones; // list of rainfall zones
```

Figure A1. Additional variables required for water source tracing.

The addition to the reach inputs is shown in Figure A2, from the function `reach_water_and_sediment_input()` (rainfall inputs and tidal or stage inputs are added similarly but code is omitted for brevity). In this function, the updated water source fractions for the water source being added to the cell (Eq. 9) and other sources already in the cell (Eq. 10) are
375 implemented on lines 33 and 40, respectively.

After the addition of boundary condition inputs from each source, the new tracer states (prior to surface water routing) are saved within the function `save_tracer_states()`, in which the `waterdepth`, `watertracer`, and `watertracerRainZone` arrays are copied into the `waterdepth_prev`, `watertracer_prev` and `watertracerRainZone_prev` arrays, respectively (Figure A3).

380 Flow rates between all cells are then calculated as normal in the function `qroute()` (i.e. solving Eq. 2 between all cells), with no modifications needed to the code for water source tracing. Once flows are calculated, depths are updated according to Eq. (1) in the function `depth_update()`. Here, the only modification required for water source tracing is that the volumes of water moving between cells is recorded in the `dhdt_x` and `dhdt_y` arrays (Figure A4). Here, the `dhdt_x` and `dhdt_y` arrays are updated on lines 18-24, before the `water_depth` array is updated according to Eq. (1) on line 27. For brevity, the
385 code presented in Figure A4 omits some additional processing for updates to suspended sediment and error checking.

Finally, the main addition to the CAESAR Lisflood code for water source tracing is within the function `update_tracer_states()`, that deals with the mixing component and updates the different source tracer fractions as water is moved between cells during each iteration (Figure A5). In the `update_tracer_states()` code, the cell depth after removal of outflows, $h_{Q_{out}}^t$ (Eq. 7), is first calculated (lines 31-43). Then, the updated volume fractions (Eq. 6) obtained for each source are calculated

```

1  for (int n = 0; n <= number_of_points - 1; n++)
2  {
3      int x = inpoints[n, 0];
4      int y = inpoints[n, 1];
5      double interpolated_input1 = inputfile[n, (int)(cycle / input_time_step), 1];
6      double interpolated_input2 = inputfile[n, (int)(cycle / input_time_step) + 1, 1];
7      double proportion_between_timeland2 =
8          (((int)(cycle / input_time_step) + 1) * input_time_step - cycle) / input_time_step;
9
10     double input = interpolated_input1 +
11         ((interpolated_input2 - interpolated_input1) * (1 - proportion_between_timeland2));
12     double dhdt = 0.0, h_from_this_source = 0.0, prev_depth = 0.0; // Needed for new water tracing fractions
13
14     prev_depth = water_depth[x, y]; // Save previous depth prior to updating
15     dhdt = (input / div_inputs) / (DX * DX) * local_time_factor; // Additional depth from this source
16     water_depth[x, y] += dhdt; // Update depth for cell x,y
17
18     if ((isTraceWater == true) && (water_depth[x, y] > 0.0))
19     {
20         int thissrc = sourceIDs[n + 1] + 2; // identify the source of this input
21
22         if (water_depth[x, y] == dhdt) // if depth was zero, all water in this cell is from this input
23         {
24             watertracer[x, y, thissrc] = 1.0; // this source layer
25         }
26         else if (watertracer[x, y, thissrc] < 1.0) // if all water is already from this source (i.e. == 1.0), no
27             // need to update
28         {
29             h_from_this_source = watertracer[x, y, thissrc] * prev_depth; // amount of water from this source
30                                     // already in cell
31
32             // update this layer water fraction - i.e. increase
33             watertracer[x, y, thissrc] = (h_from_this_source + dhdt) / water_depth[x, y]; // Eqn. 9
34
35             // update other layers water fraction - i.e. reduce
36             for (int src = 1; src <= nSources; src++)
37             {
38                 if (src != thissrc) // skip this source layer
39                 {
40                     watertracer[x, y, src] = (watertracer[x, y, src] * prev_depth) / water_depth[x, y]; // Eqn. 10
41                 }
42             }
43         }
44     }
45 }

```

Figure A2. Updating cell water fractions according to Eq. (9) and (10), from the function reach_water_and_sediment_input().

```

1  void save_tracer_states()
2  {
3      // Save previous states of water and source fractions, after the addition of inputs
4      var options = new ParallelOptions { MaxDegreeOfParallelism = Environment.ProcessorCount * 4 };
5      Parallel.For(1, ymax + 1, options, delegate(int y)
6      {
7          int inc = 1;
8          while (down_scan[y, inc] > 0)
9          {
10             int x = down_scan[y, inc];
11             inc++;
12
13             water_depth_prev[x, y] = water_depth[x, y];
14             for (int z = 1; z <= nSources; z++)
15             {
16                 watertracer_prev[x, y, z] = watertracer[x, y, z];
17             }
18             if (isTraceRainZonation == true)
19             {
20                 for (int z = 1; z <= nRainZones; z++)
21                 {
22                     watertracerRainZone_prev[x, y, z] = watertracerRainZone[x, y, z];
23                 }
24             }
25         }
26     });
27 }

```

Figure A3. save_tracer_states()


```

1 void depth_update()
2 {
3     double local_time_factor = time_factor;
4     if (local_time_factor > (courant_number * (DX / Math.Sqrt(gravity * (maxdepth))))
5         local_time_factor = courant_number * (DX / Math.Sqrt(gravity * (maxdepth)));
6     // ...
7
8     var options = new ParallelOptions { MaxDegreeOfParallelism = Environment.ProcessorCount * 4 };
9     Parallel.For(1, ymax+1, options, delegate(int y)
10    {
11        int inc = 1;
12        // ...
13        while (down_scan[y, inc] > 0)
14        {
15            int x = down_scan[y, inc];
16            inc++;
17
18            if (isTraceWater == true) // for water tracing, record the volumes of water moving between cells
19            {
20                dhdt_x[x + 1, y] = local_time_factor * qx[x + 1, y] / DX;
21                dhdt_x[x, y] = local_time_factor * qx[x, y] / DX;
22                dhdt_y[x, y + 1] = local_time_factor * qy[x, y + 1] / DX;
23                dhdt_y[x, y] = local_time_factor * qy[x, y] / DX;
24            }
25
26            // update water depths
27            water_depth[x,y] += local_time_factor * (qx[x + 1, y] - qx[x, y] + qy[x, y + 1] - qy[x, y]) / DX;
28
29            // ...
30        }
31        // ...
32    });
33    // ...
34 }

```

Figure A4. Modified depth_update () function

390 (lines 45-81), with the total volume contributed from each source first calculated (lines 47-58), then the updated cell volume fractions obtained (lines 77-79). Finally, the function will update the volume fractions for each rainfall zone source in a similar way (code omitted for brevity).

Author contributions. MW designed the methods, developed the code and performed the model simulations. TC verified and validated the methods and code. MW and TC jointly prepared the manuscript.

395 *Competing interests.* The authors declare no competing interests.

Acknowledgements. An earlier version of this work was presented at the GeoComputation 2019 conference in Queenstown, New Zealand (Wilson and Coulthard, 2019). Research was co-funded by UKRI NERC grant numbers NE/K008668/1, NE/R009007/1 and NE/V004247/1. LiDAR elevation data and river flow data for the Carlisle site were provided by DEFRA/ the Environment Agency under the Open Government Licence. For the Avon-Heathcote site, LiDAR data and mapping data were provided by Land Information New Zealand (LINZ),
400 river flow data were provided by Environment Canterbury, and tide data were provided by the National Institute for Water and Atmospheric Research Ltd. (NIWA). For the Amazon site, Shuttle Radar Topography Mission were used, corrected for vegetation by O’Loughlin et al. (2016), with additional bathymetry data from Wilson et al. (2007); river flow and stage data were provided by the Agência Nacional de Águas

```

1 void update_tracer_states()
2 {
3 // Update water fractions for water source tracing. Note - we only need to
4 // deal with inflows for each cell as it is assumed that the water in a cell is mixed,
5 // so the fraction from each source in outflow will be the same as in the cell itself.
6 //
7 // 1. Get depth after outflows only - check not to get -ve depths
8 // 2. Get dhdt added by each inflow and scale for each water source
9 // 3. In main cell, work out the sum of depth from each source:
10 //    : the fraction of remaining water from each source, plus
11 //    : the sum of dhdt from each source
12 // 4. Update the fractions from each source: divide by the new depth
13
14 var options = new ParallelOptions { MaxDegreeOfParallelism = Environment.ProcessorCount * 4 };
15 Parallel.For(1, ymax + 1, options, delegate(int y)
16 {
17     int inc = 1;
18     while (down_scan[y, inc] > 0)
19     {
20         int x = down_scan[y, inc];
21         inc++;
22
23         if (water_depth[x, y] > 0.0) // assess all cells which contain water
24         {
25             double dhdt_sumOut, depth_after_outflows, raindepth_after_outflows, raindepth;
26             double[] dhdt_sumInSrc;
27             dhdt_sumInSrc = new Double[nSources + 1];
28             double[] dhdt_sumInSrcRainZone = new Double[nRainZones + 1];
29
30             // work out total outflows for this cell - source not important here
31             dhdt_sumOut = 0.0; // start Eqn. 7
32             if (dhdt_x[x + 1, y] < 0.0) {
33                 dhdt_sumOut += dhdt_x[x + 1, y]; } // Flow from right: -ve = outflow
34             if (dhdt_x[x, y] > 0.0) {
35                 dhdt_sumOut -= dhdt_x[x, y]; } // Flow from left: +ve = outflow
36             if (dhdt_y[x, y + 1] < 0.0) {
37                 dhdt_sumOut += dhdt_y[x, y + 1]; } // Flow from up: -ve = outflow
38             if (dhdt_y[x, y] > 0.0) {
39                 dhdt_sumOut -= dhdt_y[x, y]; } // Flow from down: +ve = outflow
40             // n.b. sum of outflows will be negative
41
42             // get depth of cell from previous iteration after outflows
43             depth_after_outflows = water_depth_prev[x, y] + dhdt_sumOut; // end Eqn. 7
44
45             for (int src = 1; src <= nSources; src++) // start Eqn. 6
46             {
47                 dhdt_sumInSrc[src] = 0.0;
48
49                 // work out the total inflow from neighbouring cells for this source of water:
50                 // ignore outflows
51                 if (dhdt_x[x + 1, y] > 0.0) { dhdt_sumInSrc[src] +=
52                     dhdt_x[x + 1, y] * watertracer_prev[x + 1, y, src]; } // Flow from right: +ve = inflow
53                 if (dhdt_x[x, y] < 0.0) { dhdt_sumInSrc[src] -=
54                     dhdt_x[x, y] * watertracer_prev[x - 1, y, src]; } // Flow from left: -ve = inflow
55                 if (dhdt_y[x, y + 1] > 0.0) { dhdt_sumInSrc[src] +=
56                     dhdt_y[x, y + 1] * watertracer_prev[x, y + 1, src]; } // Flow from up: +ve = inflow
57                 if (dhdt_y[x, y] < 0.0) { dhdt_sumInSrc[src] -=
58                     dhdt_y[x, y] * watertracer_prev[x, y - 1, src]; } // Flow from down: -ve = inflow
59
60                 // update sources at this location
61                 if ((dhdt_sumInSrc[src] == 0.0) & (watertracer_prev[x, y, src] == 0.0))
62                 // if there is no contribution or existing water from this source
63                 {
64                     watertracer[x, y, src] = 0.0;
65                 }
66                 else // if there are inflows or existing water from this source, update fractions
67                 {
68                     if (depth_after_outflows < 0) // just in case
69                     {
70                         watertracer[x, y, src] = dhdt_sumInSrc[src] / (water_depth[x, y] -
71                             depth_after_outflows); // fractions assigned based only on incoming water
72                     }
73                     else
74                     {
75                         // [(depth of water from this source still in cell) + (depth of water from this
76                         // source flowing in)] / [total depth now in cell]
77                         watertracer[x, y, src] = ((depth_after_outflows * watertracer_prev[x, y, src]) +
78                             dhdt_sumInSrc[src]) / water_depth[x, y];
79                     }
80                 }
81             } // end Eqn. 6
82             // deal with rain zones
83             if (isTraceRainZonation == true && watertracer[x, y, 1] > 0.0)
84             {
85                 // ...
86             }
87         }
88     }
89 });
90 }

```

Figure A5. The main water source tracing calculations within the update_tracer_states () function

(ANA), Brazil. We gratefully acknowledge Rob Thomas for his comments on an earlier version of the manuscript. We would also like to thank the two anonymous referees for their time and effort; we appreciate their constructive comments which were valuable in helping us to improve the quality of the manuscript.

References

- Adams, J. M., Gasparini, N. M., Hobley, D. E. J., Tucker, G. E., Hutton, E. W. H., Nudurupati, S. S., and Istanbuloglu, E.: The Landlab v1.0 OverlandFlow component: a Python tool for computing shallow-water flow across watersheds, *Geosci. Model Dev.*, 10, 1645–1663, <https://doi.org/10.5194/gmd-10-1645-2017>, 2017.
- 410 Ata, R., Goeur, C., and Hervouet, J.: TELEMAC-2D Software Release 7.0 User Manual, Tech. rep., EDF-R&D, <http://opentelemac.org/index.php/manuals/summary/13-telemac-2d/1058-telemac-2d-user-manual-en-v7p0>, 2014.
- Baronas, J. J., Torres, M. A., Clark, K. E., and West, A. J.: Mixing as a driver of temporal variations in river hydrochemistry: 2. Major and trace element concentration dynamics in the Andes-Amazon transition, *Water Resour. Res.*, 53, 3120–3145, <https://doi.org/10.1002/2016WR019729>, 2017.
- 415 Bates, P. and De Roo, A.: A simple raster-based model for flood inundation simulation, *J. Hydrol.*, 236, 54–77, [https://doi.org/10.1016/S0022-1694\(00\)00278-X](https://doi.org/10.1016/S0022-1694(00)00278-X), 2000.
- Bates, P. D., Horritt, M. S., and Fewtrell, T. J.: A simple inertial formulation of the shallow water equations for efficient two-dimensional flood inundation modelling, *J. Hydrol.*, 387, 33–45, <https://doi.org/10.1016/j.jhydrol.2010.03.027>, 2010.
- Beven, K. J. and Kirkby, M. J.: A physically based, variable contributing area model of basin hydrology / Un modèle à base physique de zone d'appel variable de l'hydrologie du bassin versant, *Hydrol. Sci. B.*, 24, 43–69, <https://doi.org/10.1080/02626667909491834>, 1979.
- 420 Christchurch City Council: Christchurch District Plan, Site of Ecological Significance: Site Significance Statement - Avon Heathcote Estuary/ Ihutai & Environs, Tech. rep., Christchurch City Council, <https://districtplan.ccc.govt.nz/Images/DistrictPlanImages/Site%20of%20Ecological%20Significance/SES%20LP%2014.pdf>, 2016.
- Coulthard, T. J.: CAESAR-Lisflood landscape evolution model version 1.9j, <https://sourceforge.net/projects/caesar-lisflood/>, last access: 8 April 2023, 2019.
- 425 Coulthard, T. J. and Macklin, M. G.: Modeling long-term contamination in river systems from historical metal mining, *Geology*, 31, 451, [https://doi.org/10.1130/0091-7613\(2003\)031<0451:MLCIRS>2.0.CO;2](https://doi.org/10.1130/0091-7613(2003)031<0451:MLCIRS>2.0.CO;2), 2003.
- Coulthard, T. J. and Skinner, C. J.: The sensitivity of landscape evolution models to spatial and temporal rainfall resolution, *Earth Surf. Dynam.*, 4, 757–771, <https://doi.org/10.5194/esurf-4-757-2016>, 2016.
- 430 Coulthard, T. J. and Van De Wiel, M. J.: Modelling long term basin scale sediment connectivity, driven by spatial land use changes, *Geomorphology*, 277, 265–281, <https://doi.org/10.1016/j.geomorph.2016.05.027>, 2017.
- Coulthard, T. J., Macklin, M. G., and Kirkby, M. J.: A cellular model of Holocene upland river basin and alluvial fan evolution, *Earth Surf. Proc. Land.*, 27, 269–288, <https://doi.org/10.1002/esp.318>, 2002.
- Coulthard, T. J., Neal, J. C., Bates, P. D., Ramirez, J., de Almeida, G. A. M., and Hancock, G. R.: Integrating the LISFLOOD-FP 2D hydrodynamic model with the CAESAR model: implications for modelling landscape evolution, *Earth Surf. Proc. Land.*, 38, 1897–1906, <https://doi.org/10.1002/esp.3478>, 2013.
- 435 de Almeida, G. A. M. and Bates, P.: Applicability of the local inertial approximation of the shallow water equations to flood modeling, *Water Resour. Res.*, 49, 4833–4844, <https://doi.org/10.1002/wrcr.20366>, 2013.
- de Almeida, G. A. M., Bates, P., Freer, J. E., and Souvignet, M.: Improving the stability of a simple formulation of the shallow water equations for 2-D flood modeling, *Water Resour. Res.*, 48, <https://doi.org/10.1029/2011WR011570>, 2012.
- 440 Dottori, F., Salamon, P., Bianchi, A., Alfieri, L., Hirpa, F. A., and Feyen, L.: Development and evaluation of a framework for global flood hazard mapping, *Adv. Water Resour.*, 94, 87–102, <https://doi.org/10.1016/j.advwatres.2016.05.002>, 2016.

- Dottori, F., Alfieri, L., Bianchi, A., Skoien, J., and Salamon, P.: A new dataset of river flood hazard maps for Europe and the Mediterranean Basin, *Earth Syst. Sci. Data*, 14, 1549–1569, <https://doi.org/10.5194/essd-14-1549-2022>, 2022.
- 445 Environment Agency: Cumbria Floods Technical Report—Factual report on meteorology, hydrology and impacts of January 2005 flooding in Cumbria., Tech. rep., Environment Agency Bristol, UK, 2006.
- Environment Canterbury: River flow data, <https://www.ecan.govt.nz/data/riverflow/>, last access: 8 April, 2023.
- Findlay, R. H. and Kirk, R. M.: Post-1847 changes in the Avon-Heathcote Estuary, Christchurch: A study of the effect of urban development around a tidal estuary, *New Zeal. J. Mar. Fresh.*, 22, 101–127, <https://doi.org/10.1080/00288330.1988.9516283>, 1988.
- 450 Galland, J.-C., Goutal, N., and Hervouet, J.-M.: TELEMAC: A new numerical model for solving shallow water equations, *Adv. Water Resour.*, 14, 138–148, [https://doi.org/10.1016/0309-1708\(91\)90006-A](https://doi.org/10.1016/0309-1708(91)90006-A), 1991.
- Haddadchi, A., Hicks, M., Olley, J. M., Singh, S., and Srinivasan, M.: Grid-based sediment tracing approach to determine sediment sources, *Land Degrad. Dev.*, 30, 2088–2106, <https://doi.org/10.1002/ldr.3407>, 2019.
- Hansen, D. and Rattray, M.: New dimensions in estuary classification, *Limnol. Oceanogr.*, 11, 319–326,
 455 <https://doi.org/10.4319/lo.1966.11.3.0319>, 1966.
- Horritt, M. S., Bates, P. D., Fewtrell, T. J., Mason, D. C., and Wilson, M. D.: Modelling the hydraulics of the Carlisle 2005 flood event, *P. I. Civil Eng.-Wat. M.*, 163, 273–281, <https://doi.org/10.1680/wama.2010.163.6.273>, 2010.
- Hunter, N. M., Bates, P. D., Horritt, M. S., and Wilson, M. D.: Simple spatially-distributed models for predicting flood inundation: A review, *Geomorphology*, 90, 208–225, <https://doi.org/10.1016/j.geomorph.2006.10.021>, 2007.
- 460 Kopmann, R. and Markofsky, M.: Three-dimensional water quality modelling with TELEMAC-3D, *Hydrol. Process.*, 14, 2279–2292, [https://doi.org/10.1002/1099-1085\(200009\)14:13<2279::AID-HYP28>3.0.CO;2-7](https://doi.org/10.1002/1099-1085(200009)14:13<2279::AID-HYP28>3.0.CO;2-7), 2000.
- LAWA: Land, Air, Water Aotearoa, <https://www.lawa.org.nz/>, last access: 8 April, 2023.
- Maia, P. D., Maurice, L., Tessier, E., Amouroux, D., Cossa, D., Pérez, M., Moreira-Turcq, P., and Rhéault, I.: Mercury distribution and exchanges between the Amazon River and connected floodplain lakes., *Sci. Total Environ.*, 407, 6073–6084,
 465 <https://doi.org/10.1016/j.scitotenv.2009.08.015>, 2009.
- Maurice-Bourgoin, L., Quemerai, B., Moreira-Turcq, P., and Seyler, P.: Transport, distribution and speciation of mercury in the Amazon River at the confluence of black and white waters of the Negro and Solimões Rivers, *Hydrol. Process.*, 17, 1405–1417, <https://doi.org/10.1002/hyp.1292>, 2003.
- McMurtrie, S.: Heavy Metals in Christchurch Fish and Shellfish: 2014 Survey, Tech. Rep. 08002-ENV01-04, EOS Ecology, New Zealand,
 470 <https://api.ecan.govt.nz/TrimPublicAPI/documents/download/2270056>, 2015.
- Melack, J. M. and Hess, L. L.: Remote sensing of the distribution and extent of wetlands in the amazon basin, in: Amazonian Floodplain Forests, edited by Junk, W. J., Piedade, M. T. F., Wittmann, F., Schöngart, J., and Parolin, P., vol. 210 of *Ecological Studies*, pp. 43–59, Springer Netherlands, Dordrecht, https://doi.org/10.1007/978-90-481-8725-6_3, 2011.
- Mitsch, W. J. and Gosselink, J. G.: *Wetlands*, Wiley, Hoboken, NJ, 5 edn., 2015.
- 475 Neal, J., Villanueva, I., Wright, N., Willis, T., Fewtrell, T., and Bates, P.: How much physical complexity is needed to model flood inundation?, *Hydrol. Process.*, 26, 2264–2282, <https://doi.org/10.1002/hyp.8339>, 2012.
- Neal, J., Dunne, T., Sampson, C., Smith, A., and Bates, P.: Optimisation of the two-dimensional hydraulic model LISFLOOD-FP for CPU architecture, *Environ. Modell. Softw.*, 107, 148–157, <https://doi.org/10.1016/j.envsoft.2018.05.011>, 2018.

- 480 Neal, J. C., Bates, P. D., Fewtrell, T. J., Hunter, N. M., Wilson, M. D., and Horritt, M. S.: Distributed whole city water level measurements from the Carlisle 2005 urban flood event and comparison with hydraulic model simulations, *J. Hydrol.*, 368, 42–55, <https://doi.org/10.1016/j.jhydrol.2009.01.026>, 2009.
- O’Loughlin, F., Paiva, R., Durand, M., Alsdorf, D., and Bates, P.: A multi-sensor approach towards a global vegetation corrected SRTM DEM product, *Remote Sens. Environ.*, 182, 49–59, <https://doi.org/10.1016/j.rse.2016.04.018>, 2016.
- 485 O’Loughlin, F., Neal, J., Schumann, G., Beighley, E., and Bates, P.: A LISFLOOD-FP hydraulic model of the middle reach of the Congo, *J. Hydrol.*, 580, 124–203, <https://doi.org/10.1016/j.jhydrol.2019.124203>, 2020.
- Qi, W., Ma, C., Xu, H., Chen, Z., Zhao, K., and Han, H.: Low Impact Development Measures Spatial Arrangement for Urban Flood Mitigation: An Exploratory Optimal Framework based on Source Tracking, *Water Resour. Manag.*, 35, 3755–3770, <https://doi.org/10.1007/s11269-021-02915-2>, 2021.
- 490 Qi, W., Ma, C., Xu, H., and Zhao, K.: Urban flood response analysis for designed rainstorms with different characteristics based on a tracer-aided modeling simulation, *J. Clean. Prod.*, 355, 131–179, <https://doi.org/10.1016/j.jclepro.2022.131797>, 2022.
- Richey, J. E., Melack, J. M., Aufdenkampe, A. K., Ballester, V. M., and Hess, L. L.: Outgassing from Amazonian rivers and wetlands as a large tropical source of atmospheric CO₂, *Nature*, 416, 617–620, <https://doi.org/10.1038/416617a>, 2002.
- Robins, P. E., Lewis, M. J., Simpson, J. H., Howlett, E. R., and Malham, S. K.: Future variability of solute transport in a macrotidal estuary, *Estuar. Coast. Shelf S.*, 151, 88–99, <https://doi.org/10.1016/j.ecss.2014.09.019>, 2014.
- 495 Robins, P. E., Farkas, K., Cooper, D., Malham, S. K., and Jones, D. L.: Viral dispersal in the coastal zone: A method to quantify water quality risk, *Environ. Int.*, 126, 430–442, <https://doi.org/10.1016/j.envint.2019.02.042>, 2019.
- Sampson, C. C., Smith, A. M., Bates, P. D., Neal, J. C., Alfieri, L., and Freer, J. E.: A high-resolution global flood hazard model, *Water Resour. Res.*, 51, 7358–7381, <https://doi.org/10.1002/2015WR016954>, 2015.
- Shaw, J., Kesserwani, G., Neal, J., Bates, P., and Sharifian, M. K.: LISFLOOD-FP 8.0: the new discontinuous Galerkin shallow-water solver 500 for multi-core CPUs and GPUs, *Geosci. Model Dev.*, 14, 3577–3602, <https://doi.org/10.5194/gmd-14-3577-2021>, 2021.
- Trigg, M. A., Wilson, M. D., Bates, P. D., Horritt, M. S., Alsdorf, D. E., Forsberg, B. R., and Vega, M. C.: Amazon flood wave hydraulics, *J. Hydrol.*, 374, 92–105, <https://doi.org/10.1016/j.jhydrol.2009.06.004>, 2009.
- Van De Wiel, M., Coulthard, T., Macklin, M., and Lewin, J.: Embedding reach-scale fluvial dynamics within the CAESAR cellular automaton landscape evolution model, *Geomorphology*, 90, 283–301, 2007.
- 505 van der Peet, M. and Measures, R.: Avon-Heathcote Tidal Barrier Pre-Feasibility Study, Tech. rep., Christchurch City Council, Christchurch, New Zealand, <https://www.ccc.govt.nz/assets/Documents/Environment/Water/Tidal-Barrier/Avon-Heathcote-Estuary-Tidal-Barrier-Pre-Feasibility-Study.pdf>, 2015.
- Vauchel, P., Santini, W., Guyot, J. L., Moquet, J. S., Martinez, J. M., Espinoza, J. C., Baby, P., Fuertes, O., Noriega, L., Puita, O., Sondag, F., Fraizy, P., Armijos, E., Cochonneau, G., Timouk, F., de Oliveira, E., Filizola, N., Molina, J., and Ronchail, J.: A reassessment of the 510 suspended sediment load in the Madeira River basin from the Andes of Peru and Bolivia to the Amazon River in Brazil, based on 10 years of data from the HYBAM monitoring programme, *J. Hydrol.*, 553, 35–48, <https://doi.org/10.1016/j.jhydrol.2017.07.018>, 2017.
- Vopel, K., Wilson, P. S., and Zeldis, J.: Sediment-seawater solute flux in a polluted New Zealand estuary, *Mar. Pollut. Bull.*, 64, 2885–2891, <https://doi.org/10.1016/j.marpolbul.2012.08.011>, 2012.
- Vousdoukas, M. I., Bouziotas, D., Giardino, A., Bouwer, L. M., Mentaschi, L., Voukouvalas, E., and Feyen, L.: Understanding episodic 515 uncertainty in large-scale coastal flood risk assessment for present and future climates, *Nat. Hazard. Earth Sys.*, 18, 2127–2142, <https://doi.org/10.5194/nhess-18-2127-2018>, 2018.

- Wilson, M. and Coulthard, T.: Tracing and visualisation of contributing water sources in a model of flood inundation. *GeoComputation* 2019, The University of Auckland, <https://doi.org/10.17608/k6.auckland.9869972.v2>, 2019.
- Wilson, M., Bates, P., Alsdorf, D., Forsberg, B., Horritt, M., Melack, J., Frappart, F., and Famiglietti, J.: Modeling large-scale inundation of Amazonian seasonally flooded wetlands, *Geophys. Res. Lett.*, 34, <https://doi.org/10.1029/2007GL030156>, 2007.
- 520 Wilson, M. D. and Coulthard, T. J.: Tracing and visualisation of contributing water sources in a model of flood inundation: video supplement, *Zenodo*, <https://doi.org/10.5281/zenodo.5548535>, 2021.
- Wilson, M. D. and Coulthard, T. J.: CAESAR-Lisflood v1.9j-WS (water source tracing and visualisation), *Zenodo*, <https://doi.org/10.5281/zenodo.7589023>, 2023.
- 525 Wing, O. E. J., Bates, P. D., Sampson, C. C., Smith, A. M., Johnson, K. A., and Erickson, T. A.: Validation of a 30 m resolution flood hazard model of the conterminous United States, *Water Resour. Res.*, <https://doi.org/10.1002/2017WR020917>, 2017.
- Wittmann, F., Junk, W. J., and Piedade, M. T.: The várzea forests in Amazonia: flooding and the highly dynamic geomorphology interact with natural forest succession, *Forest Ecol. Manag.*, 196, 199–212, <https://doi.org/10.1016/j.foreco.2004.02.060>, 2004.
- Woodley, K.: Avon-Heathcote Estuary / Ihutai New Zealand: Site Information Sheet on East Asian-Australasian Flyway Network Sites (SIS) –2017 version, Tech. rep., Partnership for the East Asian - Australasian Flyway (EAAFP), https://eaaflyway.net/wp-content/uploads/2018/07/EAAF137_SIS_Avon-Heathcote-Estuary_Ihutai.pdf, 2018.
- 530 Yu, D. and Coulthard, T. J.: Evaluating the importance of catchment hydrological parameters for urban surface water flood modelling using a simple hydro-inundation model, *J. Hydrol.*, 524, 385–400, <https://doi.org/10.1016/j.jhydrol.2015.02.040>, 2015.