

Order of magnitude wall time improvement of variational methane inversions by physical parallelization: a demonstration using TM5-4DVAR

5 Sudhanshu Pandey^{1,*}, Sander Houweling², Arjo Segers³

¹SRON Netherlands Institute for Space Research, Utrecht, the Netherlands

²Department of Earth Sciences, Vrije Universiteit Amsterdam, Amsterdam, the Netherlands

³TNO Department of Climate, Air and Sustainability, Utrecht, The Netherlands

10 *now at Jet Propulsion Laboratory, California Institute of Technology, Pasadena, CA, USA

Correspondence to: Sudhanshu Pandey (s.pandey@sron.nl)

Abstract. Atmospheric inversions are used to constrain emissions of trace gases using atmospheric mole fraction measurements. The four-dimensional variational (4DVAR) inversion approach allows optimization of emissions at a higher temporal and spatial resolution than ensemble or analytical approaches but provides limited opportunities for scalable parallelization because it is an iterative optimization method. Multidecadal variational inversions are needed to optimally extract information from the long measurement records of long-lived atmospheric trace gases like carbon dioxide and methane. However, the wall time needed—up to months—complicates these multidecadal inversions. The physical parallelization (PP) method introduced by Chevallier (2013) addresses this problem for carbon dioxide inversions by splitting the period of the chemical transport model into blocks and running them in parallel. Here we present a new implementation of the PP method which is suitable for methane inversions as it accounts for the chemical sink of methane. The performance of the PP method is tested in an 11-year inversion using a TM5-4DVAR inversion setup that assimilates surface observations to optimize methane emissions at grid-scale. Our PP implementation improves the wall time performance by a factor of 5 and shows excellent agreement with a full serial inversion in an identical configuration (global mean emissions difference = 0.06 % with an interannual variation correlation $R = 0.99$; regional mean emission difference < 5 % and interannual variation $R > 0.94$). The wall time improvement of the PP method increases with the size of the inversion period. The PP method is planned to be used in future releases of the Copernicus Atmosphere Monitoring Service (CAMS) multidecadal methane reanalysis.

1 Introduction

Methane (CH₄) is the second-most important greenhouse gas after carbon dioxide (CO₂), and its atmospheric abundance has increased by more than a factor of 2.5 since preindustrial times. Methane is responsible for 25 % of the anthropogenic radiative forcing despite its 200 times lower abundance than CO₂ due to its strong global warming potential (Myhre et al., 2013). Atmospheric inversions provide methane emission estimates by optimally combining the information in atmospheric

observations and bottom-up emissions (estimates using process-based models and inventories) along with corresponding error characteristics. Chemical transport models (CTM's) simulate the spatiotemporal distribution of the methane mole fractions in the atmosphere for a given set of emissions while also accounting for its atmospheric sink. Inversions use CTM's to disentangle the influences of atmospheric transport from the influences of emissions and sinks on the observed mole fractions (Naus et al., 2019, Pandey et al., 2019). Inversions have been performed on multidecadal scales to assess the information content of long records of methane mole fractions. For example, "The Global Methane Budget 2000–2017" (Saunio et al., 2020) presents regional emission estimates from nine different inversion setups. The methane emissions reanalysis project under the Copernicus Atmosphere Monitoring Service (CAMS) performs multidecadal inversions using the TM5-4DVAR variational approach to provide regularly updated gridded methane emissions (Segers and Houweling, 2020).

Trace gas inversions adjust a state vector, which includes gridded emissions (and sometimes initial mole fraction field and other parameters), to improve the agreement between model simulations and observations. The inversions minimize a Bayesian cost function that is defined based on the difference between the modelled and observed mole fractions as well as the magnitude of the emission adjustments, weighted with respective error covariances. There are three main approaches used in atmospheric inverse modelling: analytical, ensemble and variational. The analytical approach is based on a closed-form solution of Bayes' theorem (Gurney et al., 2002). It requires the calculation of observation-sensitivities of each of the state vector elements separately. The large computational cost involved restricts its application to small size state vectors. The ensemble approach improves the computational performance by parameterizing the state vector sensitivities using a statistical ensemble (Peters et al., 2005). Still only a relatively small size state vector can be afforded using this approach.

The variational inversion approach was introduced to lift the state vector size restriction (Chevallier et al., 2005). In this approach, the cost function minimum is computed using an iterative procedure, with each iteration comprising of a forward and an adjoint CTM run. The method has the advantage over the analytical approach in that it can be applied to non-linear inverse problems. Truncated posterior uncertainties can be obtained from variational inversions using the conjugate gradient minimizer for linear inverse problems (Meirink et al., 2008). A more robust, but computationally expensive, estimate of posterior uncertainties can be obtained using a Monte Carlo method (Chevallier et al., 2007, Pandey et al., 2016). However, as each iteration of a variational inversion uses the output of the previous iteration, the calculations can take months depending on the spatial and temporal resolution. This long wall time limits the resolution, duration, and number of iterations that can be used in multidecadal variational inversions. To reduce this long wall time for carbon dioxide (CO₂) inversions, Chevallier (2013) introduced the physical parallelization (PP) method. In this method, the full inversion period is split into a number of blocks, and the CTM runs for the blocks are performed in parallel within each iteration. Corrections are added to the simulated CO₂ mole fractions in a block to account for emissions adjustments (iteration minus prior emissions) in earlier blocks. This method reduced the wall time by an order of magnitude (seven-fold improvement for a 32-year inversion) while keeping the inversion-derived emission adjustments statistically consistent with a serial inversion. However, the original implementation

of the PP method cannot be used for a reactive trace gas like methane as the method does not account for atmospheric chemical sink.

70 Here we present an improved PP method that accounts for the limited atmospheric lifetime of reactive trace gases such as methane, which has an atmospheric lifetime of about 9 years (mainly due to oxidation by the OH radicals). The intention is to use this new PP implementation for the Copernicus Atmosphere Monitoring Service (CAMS) methane flux reanalysis, which aims to provide annually updated multidecadal emission estimates, within a production cycle of only a few months. In the next section, we present our PP method. The method's performance is tested using an 11-year inversion setup presented in Section 3. The wall time and optimized emissions of a PP inversion are compared to a serial inversion in an identical configuration. In 75 Section 4, we discuss possible future improvements and applications of the PP method. Our conclusions are summarized in Section 5.

2 Physical parallelization for methane inversions

An inversion of an atmospheric trace gas minimizes a Bayesian cost function of the state vector \mathbf{x} :

80
$$J(\mathbf{x}) = \frac{1}{2} [\mathbf{x} - \mathbf{x}^a] \mathbf{B}^{-1} [\mathbf{x} - \mathbf{x}^a] + \frac{1}{2} [\mathbf{m} - \mathbf{y}] \mathbf{R}^{-1} [\mathbf{m} - \mathbf{y}]. \quad \dots\dots\dots(1).$$

Here \mathbf{y} is the observation vector, and \mathbf{x}^a is the prior state vector. \mathbf{B} and \mathbf{R} are the error covariance matrices of the prior emissions and the observations, respectively. The vector \mathbf{m} constitutes the modelled mole fractions corresponding to \mathbf{y} . It is 85 computed using a CTM operator H , which simulates the mole fractions given the emissions in the state \mathbf{x} and the initial mole fraction field \mathbf{c}_0 .

$$\mathbf{m} = H(\mathbf{c}_0, \mathbf{x}) \dots\dots\dots(2).$$

90 In a variational inversion setup, the posterior solution of Equation (1) is obtained by minimizing J using an iterative procedure that computes a new emission update \mathbf{x}^{i+1} in each iteration i using the gradient

$$\nabla J(\mathbf{x}^i) = \mathbf{B}^{-1} [\mathbf{x}^i - \mathbf{x}^a] + H^* (\mathbf{R}^{-1} [\mathbf{m}^i - \mathbf{y}]) \dots\dots\dots(3).$$

95 H^* represents the adjoint CTM operator, which is implemented using the adjoint code of the CTM. The inversion finishes when a predefined convergence criterion is met, such as a desired gradient norm reduction or simply a maximum number of iterations.

In the PP method presented in Chevallier (2013), the full period of the inversion is split into r overlapping time blocks, which can be run in parallel. Figure 1 schematically represents the main steps in the PP method used in the forward mode to calculate \mathbf{m}^i . At the start of the inversion, a serial CTM run (without segmentation) is performed to calculate initial mole fraction fields \mathbf{c}_k^a for each block k using the prior emissions \mathbf{x}^a . In an iteration, mole fractions for the iteration \mathbf{m}_k^i is computed using the block observation operator H_k , based on the emission estimate from the previous iteration \mathbf{x}_k^i , the initial mole fraction for this block, and a mole fraction correction n_k^i :

105

$$\mathbf{m}_k^i = H_k (\mathbf{c}_k^a, \mathbf{x}_k^i) + n_k^i \dots\dots\dots(4).$$

Here the scalar n_k^i accounts for the emission differences between the prior and the iteration in the period preceding the block. The error due to this simplification is further reduced by using an overlap period between consecutive blocks, where modelled mole fractions from the succeeding block are discarded. The overlap period CTM run distributes the emission differences uniformly through the Earth's atmosphere. The PP method by Chevallier (2013) was applied to CO₂ inversions, where n_k^i was simply calculated as the sum of the emission differences from each preceding block:

115

$$n_k^i = \sum_{l=1}^{k-1} f [|\mathbf{x}_l^i - \mathbf{x}_l^a|] \dots (5).$$

Here $|\mathbf{x}|$ denotes the global sum over elements of \mathbf{x} . f is a scalar used to convert emissions to mole fractions assuming a uniform distribution of the emitted trace gas throughout the Earth's atmosphere. f is calculated simply as the ratio between the number of moles in a unit emission and the number of moles of air in the atmosphere.

120 Methane has an atmospheric lifetime of about 9 years. Unlike CO₂, a large fraction of methane emission differences will be chemically removed within the duration of a multidecadal inversion as well as within a PP inversion block. Therefore, in our new implementation of the PP, we use a mole fraction correction vector \mathbf{n}_k^i (with size of \mathbf{m}_k^i) instead of the scalar n_k^i to apply separate corrections to each observation. We account for the limited lifetime of methane by implementing an atmospheric sink operator S . In addition, we use a CTM block sensitivity vector \mathbf{h}_k distribute global emission changes more precisely, taking into account the full 3D atmospheric transport and the sink rather than assuming a globally uniform distribution. \mathbf{h}_k is computed at the start of the inversion by running H_k in forward mode with a unit initial mole fraction field and zero emissions, i.e., $\mathbf{h}_k = H_k (\mathbf{c}_k = 1, \mathbf{x}_k = 0)$. \mathbf{n}_k^i is computed as

$$\mathbf{n}_k^i = \mathbf{h}_k \sum_{l=1}^{k-1} S_{l,k} (f [|\mathbf{x}_l^i - \mathbf{x}_l^a|]) \dots\dots\dots(6).$$

130

$S_{l,k}$ accounts for the impact of atmospheric sinks on the global uniform concentration change at the start of block k , induced by emission differences within block l . Within block k itself, the impact of atmospheric sinks is accounted for by \mathbf{h}_k .

Each iteration of a variational inversion computes a departures vector $\delta\mathbf{m}$:

135

$$\delta\mathbf{m} = \mathbf{R}^{-1}[\mathbf{m} - \mathbf{y}] \dots\dots\dots (7).$$

The adjoint CTM H^* is run with $\delta\mathbf{m}$ to compute the local gradient of the cost function (Equation 2). In the PP method, H^* is split into blocks covering the same periods as used for the forward CTM simulation. In an iteration, each adjoint block is first run with the respective departures. Then, the modelled adjoint sensitivities of a block $\delta\mathbf{x}_k^i$ are adjusted for the effects of departures of succeeding blocks by adding adjoint mole fraction correction scalar g_k^i :

140

$$g_k^i = f \sum_{l=k+1}^r S_{k,l}^* (\mathbf{h}_l^T \delta\mathbf{m}_l^i) \quad (8),$$

145 The correct adjoint implementation of the PP method can be verified using the adjoint test (Meirink et al., 2008). The test checks for the equality

$$\langle M(\mathbf{a}), \mathbf{b} \rangle = \langle \mathbf{a}, M^*(\mathbf{b}) \rangle \dots\dots\dots (9),$$

150 where M and M^* denote the forward and adjoint model operators, $\langle \rangle$ denotes the inner product. \mathbf{a} and \mathbf{b} are the arbitrary forward and adjoint model states.

In a PP inversion, the initial mole fraction field \mathbf{c}_0 needs to be consistent with the observations as a discrepancy between the two leads to large emission differences in the early months of the inversion period. This issue can easily be dealt with in a serial inversion using a spin-up period and rejecting this period from the posterior solution. However, in a PP inversion, the large emission differences may result in large mole fraction corrections, which increases the error in the PP approximation (see Equations 4 & 5). This can be avoided by taking a realistic \mathbf{c}_0 from another inversion covering the period before the PP inversion.

155

160 In summary, the main steps of the PP methane inversion are as follows:

1. Construct an initial mole fraction field \mathbf{c}_0 consistent with observations at the start of the inversion.
2. Split the full period of the inversion into r overlapping time blocks.
3. To calculate \mathbf{c}_k^a , run the forward CTM serially with prior emissions \mathbf{x}^a and save the simulated mole fraction fields at the start time of each block.
- 165 4. Calculate the CTM block sensitivities \mathbf{h}_k by running the CTM over each block with a uniform initial mole fraction field of 1 and zero emissions, and sample the model output at the observation time and locations.
5. Perform the inversion by iteratively minimizing the cost function until the convergence condition is met using a forward and an adjoint run in each iteration:
 - a. Forward run:
 - 170 i. Run all forward CTM blocks in parallel with the initial mole fraction fields from step 3.
 - ii. Account for the emission changes relative to the prior in preceding blocks by adding the corrections \mathbf{n}_k^i (Equation 5).
 - b. Adjoint run:
 - i. Run all adjoint CTM blocks in parallel to calculate the adjoint emission sensitivities.
 - 175 ii. Add the adjoint correction g_k^i to account for the effect of departures in successive blocks (Equation 8).

The CTM runs in the steps 4, 5.a.i and 5.b.i are performed in parallel. The steps without CTM run (1, 2, 5.a.ii and 5.b.ii) require very little wall time. Step 3 is the most time-consuming because a full serial CTM run is performed in the step. To reduce the wall time, this run can be performed at a coarse CTM resolution. This will not have a major impact on the inversion's performance as the coarse resolution mole fraction fields would be consistent with the source, sink and large-scale atmospheric transport patterns, and \mathbf{m} is sampled after the coarse field is transported by a high-resolution CTM block runs during the overlap periods.

3 PP performance test

We evaluate the performance of the PP method by comparing a PP inversion with a serial methane inversion. Both inversions are performed for an 11-year period (1999-2010) with identical observations and prior emissions. We use the TM5-4DVAR inversion system (Bergamaschi et al., 2010; Meirink et al., 2008, Krol et al., 2005) with the settings used in Pandey et al. (2016). The TM5 CTM is run at $6^\circ \times 4^\circ$ horizontal resolution and 25 vertical hybrid sigma-pressure levels from the surface to the top of the atmosphere. The meteorological fields for this offline model are taken from the European Centre for Medium-Range Weather Forecasts (ECMWF) ERA-Interim reanalysis (Dee et al., 2011). We optimize a single category ('total') of methane emissions at $6^\circ \times 4^\circ$ spatial resolution and monthly temporal resolution. The posterior emissions of the two inversions are compared after integrating over the TRANSCOM regions shown in Figure 2a.

The inversion assimilates surface observations from the NOAA Earth System Research Laboratory (ESRL) global cooperative air sampling network at on- and off-shore sites (Dlugokencky et al., 2011; Dlugokencky et al., 2020). The locations of the observation sites are shown in Figure 2b. The prior covariance matrix \mathbf{B} is constructed assuming relative emission uncertainties of 50 % per grid box per month. The emissions are assumed to be correlated temporally using an exponential correlation function with an e-folding time scale of 3 months, and spatially with a Gaussian correlation function using a length scale of 500 km (Houweling et al., 2014). Uncertainties of 1.4 ppb are assigned to methane observations. Our system also assigns a modelling representation error based on simulated local mole fractions gradients (Basu et al., 2013). The prior emissions are taken from the same sources as in Pandey et al. (2016). The emissions in 2008 applied to every year in the inversion period, hence there is no interannual variability in the prior emissions. The cost function J is minimized using the conjugate gradient minimizer, which is based on the Lanczos algorithm (Fisher and Courtier, 1995). The inversions use the convergence criterion of gradient norm reduction by a factor 1000, which is achieved after 19 iterations in both inversions.

In the PP inversion, we split the inversion period of 1999-2010 into 11 blocks of 21 months. The first 9 months of each block is the overlap period used for uniformly mixing the emission changes within the atmosphere, while the last 12 months provide modelled mole fractions for assimilating the observations. We parameterize the sink operator S (Equation 6) with an e-folding decay function with a constant 9-year atmospheric lifetime of methane, sufficient for our test inversion (Section 3). The input emissions of TM5 are mass fluxes (Tg yr^{-1}) and the output is in mole fractions (ppb). The methane emission changes are converted in mole fractions using an $f = 0.361 \text{ ppb/Tg}$. Successful implementations of the PP method in the adjoint mode was verified using the adjoint test (Equation 9). The next section (3.1) evaluates the observation-model mismatches and posterior emissions differences between the PP and serial inversions, and the section thereafter (3.2) presents the wall time improvement achieved by the PP inversion.

3.1 Emission estimation errors

Here we examine the quality of the inversion-optimized fit to the observation. Figure 3 shows the time series of the prior and posterior simulations and the observations for two background sites, representing each hemisphere: Barrow (Alaska) and the South Pole. The prior observation RMSD (root mean square difference) for Barrow (78 ppb) is 3 times higher than for the South Pole (28 ppb). Barrow observations show more high-frequency variations than the South Pole as the Northern Hemisphere station is influenced by methane emissions from wetlands. The mole fractions simulated by the PP inversion are in good agreement with the results obtained from the serial inversion: RMSDs of 2 ppb and 1 ppb for Barrow and the South pole, respectively, which are only 2.5% and 3.2% of the prior observation RMSD. This shows that the PP inversion, starting from an identical prior, is able to match the observations at these sites as good as the serial inversion.

225 Figure 4 shows the average mole fraction differences at all observation sites. The observation-prior RMSD for all observations combined is 67 ppb. The mean mismatch is -58 ppb because the 2008 bottom-up emissions used as the prior are larger than the mean posterior emission over 1999-2010. The average data uncertainty (mean of the square root of the diagonal elements of \mathbf{R}) is 19 ppb (not shown). For both inversions, a good model fit to the observations is achieved with a gradient norm reduction of 1000. The posterior simulation of both the serial and PP inversions reduce the RMSD to 20 ppb (mean = -2 ppb).
230 The RMSD between PP and serial is 1.9 ppb (mean = -0.1 ppb), which is an order of magnitude smaller than the posterior-prior RMSD of 62 ppb (mean = -55 ppb). This shows that the implementation of the PP method has little impact on the inversion's ability to fit the observations.

A good agreement between observations and posterior models does not guarantee that the inversions have produced similar
235 posterior emissions. The physically parallelized CTM used in the PP inversion has lost some of the consistency of the full CTM used in the serial inversion. If the impact of this simplification is small, the posterior emissions of the two inversions should be in good agreement. Figure 5 shows mean emissions (averaged over 1999-2010) from the inversions integrated over the globe and over TRANSCOM regions. The serial inversion adjusts the global mean prior emissions of 544 ± 11 Tg yr $^{-1}$ by -22 Tg yr $^{-1}$. The PP inversion is in excellent agreement with the serial inversion in this respect. The two differ by 0.3 Tg yr $^{-1}$
240 (0.06%), which is 1% of the difference between prior and posterior emissions from the serial inversion. The global methane emissions are in general well constrained by the NOAA observations in a serial inversion, and the additional error introduced by the PP method does not seem to have a significant impact on the global emissions. At regional scales, the serial inversion adjustment is the smallest for Australia: $+0.4$ Tg yr $^{-1}$ for a prior of 6.6 ± 0.4 Tg yr $^{-1}$. The PP inversion adjusts the prior here by 0.5 Tg yr $^{-1}$, implying that the difference with the serial inversion (0.1 Tg yr $^{-1}$) is well within the prior emission uncertainty.
245 The serial inversion changes the Eurasian temperate emissions the most, by -58 Tg yr $^{-1}$, where prior emissions are 135 ± 8 Tg yr $^{-1}$. The PP inversion changes these emissions by -60 Tg yr $^{-1}$, i. e., a difference of 2 Tg yr $^{-1}$ and well within the prior uncertainty also. The South American temperate region has the largest difference between the serial and PP emission estimates of 2 Tg yr $^{-1}$. The serial emissions for this region are 6.5 Tg yr $^{-1}$ higher than the prior of 36 ± 2.4 Tg yr $^{-1}$. In summary, mean PP emission estimates for the TRANSCOM regions deviate within $< 5\%$ from the serial emissions.

250
Figure 6 shows the inter-annual variability of the emission estimates. The global emissions time series of the PP and serial inversions show a very good agreement with a correlation coefficient $R = 0.99$, explained by the large observational constraint. Over the TRANSCOM regions, the North American temperate region has the best agreement ($R = 1.0$). All other regions have R higher than 0.98 except for Australia (0.96) and Europe (0.94). Figure 7 shows the intra-annual variations of the emissions.
255 At the global scale, the PP and serial time series match very well with $R = 1.00$, whereas R between prior and serial is 0.93. The agreement between PP and serial time series is also very good for all TRANSCOM regions ($R > 0.98$) despite low correlations between prior and serial emissions for some regions, for example, $R = 0.13$ for the South American temperate region. This shows that the PP inversion is able to reproduce the seasonal cycle of the emissions very well. In summary, the

combination of small differences in the mean emissions, and the high correlations between intra- and inter-annual time series, shows that the PP inversion can effectively reproduce results of the serial inversion.

3.2 Wall time

Table 1 compares the wall times used by the PP and serial inversions. The TM5 model in our inversion setup uses OpenMP parallelization and gives the best wall time performance on 4 CPUs on a single node. Using more CPUs reduces the performance as the communication overhead within the CPUs becomes the bottleneck (Note that the TM5-MP version described in Williams et al., 2017, with improved parallel scaling, was not used in this study). In this configuration, a forward or adjoint TM5 CTM run of one year took about 15 minutes. Hence an iteration of the serial inversion, consisting of 11 years forward and adjoint runs, required 5 hours. The PP inversion iterations were performed in 11 parallel blocks of 21 months each on 4 CPUs. A single PP iteration took 55 mins, which is > 5 times faster than the serial inversion. The main steps of PP implementation are listed in Section 2. In our inversion test, the initial mole fraction fields c_0 (step 1) were taken from an inversion using surface measurements that was not performed in this study. Steps 1, 2, 5.a.ii and 6.a.ii took negligible time. Step 3 took 2.5 hours because it consists of a full serial TM5 forward run. Steps 4, 5.a.i and 6.a.i consist of 11 TM5 run over blocks of 21 months which were run in parallel and took 25 minutes each. Note that an iteration took longer than the sum of the forward and adjoint block runs because of a few minutes waiting time for the computer cores to become available again. In total, the PP inversion took 20 hours, 5 times less than the serial inversion which took 101 hours. Note that although the PP inversion took a shorter wall time, it needed extra CPU core hours for the additional 9-month overlap, CTM block sensitivity and initial mole fraction computation runs. The PP inversion used a total of 700 CPU core hours, whereas the serial inversion used about 400 CPU core hours. Table 1 also provides a projection of the wall time improvement of a hypothetical 35-year inversion (not performed in this study) based on the TM5-4DVAR inversion setup used in this study. A PP inversion would be 15 times faster for such a long period.

Overall, we find that the PP method, which accounts for the atmospheric lifetime of methane, is able to effectively reproduce the posterior emissions of a traditional 11-year serial inversion 5 times faster.

4 Discussion

The utility of the PP method for inversion of a trace gas depends on the time scale of the influence of emissions on observations within the spatial domain of the CTM. Therefore, PP is mainly useful in global inversions of trace gases that have atmospheric lifetime of a year or longer in the atmosphere. For a trace gas with a shorter lifetime, such as of carbon monoxide with 2 months lifetime, emission perturbations last for a short duration. A multidecadal inversion of such a trace gas can be broken into many short inversions. These short inversions can be performed in parallel, and the posterior emission can be combined thereafter.

A similar approach can be used for regional inversions of short-and long-lived trace gases because emission perturbations are quickly advected out of the regional CTM domain and hence do not influence observations for a long period.

290 **4.1 Current CAMS inversion setup**

In the future, the PP method will be implemented in the CAMS multidecadal methane emissions reanalysis setup. The European Commission has anticipated the need for reliable information about atmospheric composition of greenhouse gases through development of numerical systems that combine sophisticated physical models with measurements from a wide range of observing systems for an operational service, which is being implemented. The current CAMS methane flux reanalysis
295 product (Segers and Houweling, 2020) uses the TM5-4DVAR inverse modelling system and provides measurement-informed monthly methane emission estimates. The latest release has two sets of methane emissions: (1) release v19r1 for 1990-2019 using surface observation; (2) release v19r1s for 2010-2019 using surface and also GOSAT satellite observations. The surface observations are mainly from the NOAA network (Dlugokencky et al., 2011). Methane emissions are optimized at $3^\circ \times 2^\circ$ spatial resolution and monthly temporal resolution using TM5 with 34 vertical layers. If performed in serial mode each iteration
300 of the 1990-2019 inversion would take about 5-10 days, and the full inversion will require multiple months to finish. Segers and Houweling (2020) circumvent this issue by breaking the full inversion into smaller inversions of 3-year time windows that are performed in parallel. The target inversion on high resolution ($3^\circ \times 2^\circ$ degrees, 34 layers) is preceded by a coarse resolution inversion ($6^\circ \times 4^\circ$, 25 layers) that provides the initial mole fraction fields and is processed serially. The high-resolution inversion optimizes only the emissions and uses initial mole fractions for each 3-year block obtained from mole fraction fields
305 of a coarse resolution inversion, which optimizes both emission and initial mole fractions. The 1990-2019 inversion using this approach still takes 3-4 months to finish and requires about 40 smaller inversions to provide the end result. These numbers depend of course on the parallel efficiency of the model and the computing server, but even if these are improved, the need for a serial sequence of inversions to provide a time series of initial mole fractions imposes a limitation to the model resolution that can be used. With the implementation of the PP method presented in this study, the wall time performance of the CAMS
310 reanalysis inversions will improve in future.

4.2 Possible further improvements

The PP method accounts for changes in the background mole fractions due to emission changes in preceding blocks using a sink operator S , a CTM block sensitivity h , and an overlap between the consecutive blocks. In our test experiment, S is assumed
315 to be an e-folding decay function with an atmospheric lifetime of methane of 9 years, which we found to be sufficient for the annually-repeating OH field used in our 11-year CTM runs. Methane lifetime within the duration of a longer multidecadal inversion will vary due to climatological influences as well as possible trends and interannual variations in the hydroxyl radical abundance. In such cases, S can be defined as a function of an annual lifetime vector for the specific CTM run. The lifetime

vector can be calculated as the ratio of the annual sink and global methane burden simulated by the serial CTM run in step 3
320 of the PP method.

The overlap period between consecutive blocks in the PP method allows methane emission perturbations to mix within the CTM domain according to atmospheric transport. We used a 9-month overlap in our test inversion setup. It was sufficient for optimizing emissions from large TRANSCOM regions using the surface observations. The 6-month overlap used by Chevalier et al. (2013) for CO₂ inversion was found to be insufficient for a PP methane inversion, likely because of the differences
325 between the source and sink distributions of methane and CO₂. Increasing the overlap period to 9-month and using CTM block sensitivity vector solved this issue. We expect that a 1-year overlap, equal to the interhemispheric mixing time, would be more than sufficient for all tracers irrespective of their source-sink distribution and lifetime. A shorter overlap would improve the computational efficiency and wall time but reduce the accuracy of the physical parallelization of the CTM. The PP accuracy could be maintained with shorter overlap periods by using a mole fraction correction vector per hemisphere rather than the
330 single global vector used in this study. However, the computational resources and wall time saved by this would be partially spent on the additional block sensitivity runs. Our test inversions are performed at a relatively coarse horizontal resolution of 6° × 4° with 25 vertical hybrid sigma-pressure levels. We do not expect the performance of the PP method to degrade significantly for higher resolution inversions if there is sufficient overlap between the blocks and the mole fraction corrections are parameterized correctly. Furthermore, the performance gained by performing the inversions at higher resolution because
335 of the improved computational performance will likely outweigh the accuracy loss due to the assumptions made in the PP method.

The PP method reduced the wall time of the CTM simulations in a variational inversion but introduces additional model errors because of the simplifications made. For our test inversion setup, these PP-CTM model errors are minor as the posterior PP emission estimates are in good agreement with the serial estimates. In future PP implementations, these PP-CTM errors can
340 be accounted for in the observation error matrix \mathbf{R} . The PP-CTM error can be calculated as the difference between the model output of a PP and a serial forward CTM run with randomly perturbed prior emissions.

4.3 Methane sink optimization

The hydroxyl radical OH is the main sink of methane in the atmosphere. Zhang et al. (2018) showed that the satellite-observed
345 atmospheric signature of the methane sink is sufficiently distinct from that of methane emissions, hence OH mole fractions can be optimized using synthetic shortwave infrared (SWIR) and thermal infrared (TIR) satellite observations. Following up on this, Maasackers et al. (2019) and Zhang et al. (2021) used methane observations from the GOSAT satellite to optimize atmospheric OH fields along with methane emissions. These studies assume a quasi-linearity for the inversion as changes to

the methane mole fractions are expected to remain small compared to the mean. Under a quasi-linear assumption, OH can be optimized in a PP methane inversion by introducing annual OH scaling factors in the state vector and the methane lifetimes in the sink operator can be scaled in each iteration to reflect the corresponding OH adjustments. Such an implementation can also be used in inversions optimizing OH using methyl chloroform (Naus et al., 2021).

5 Conclusions

Regular surface observations of methane mole fractions started in early 1984, and by now the measurement record spans more than 35 years (Dlugokencky et al., 2011). An atmospheric inversion with a very large state vector is needed to properly utilize the information in such long measurement records. The variational inversion approach allows for optimization of a much larger state vector than the ensemble or analytical approaches. However, each iteration of a variational inversion uses the output of the previous iteration, limiting the opportunity for scalable parallelization. At the same time, an increase in the spatiotemporal resolution of CTMs needed to take full advantage of the rapidly improving precision and coverage of surface and satellite measurements results in a rapid increase in wall time.

We have developed the PP method for methane inversions which improves the wall time of variational methane inversions by physical CTM parallelization while accounting for the atmospheric lifetime in forward and adjoint variational modes. We have tested the performance of this method using an 11-year TM5-4DVAR inversion setup that consists of a traditional serial inversion and a PP inversion in an identical configuration. The PP method reduced the wall time by a factor of 5 while still showing excellent agreement with the posterior emissions from the serial inversion. The wall time improvement of using PP will be even larger for longer inversions, for example, by a factor of 15 for a 35-year inversion. The PP method makes multidecadal global inversions of long-lived atmospheric trace gases more feasible. It will be implemented in the CAMS reanalysis setup which provides regular updates of multidecadal emission estimates by assimilating surface and satellite observations.

Data Availability. NOAA ESRL methane observations used in this study are available on Zenodo in the input folder of the TM5-4DVAR-PP code (<https://doi.org/10.5281/zenodo.6326373>, Pandey et al., 2022).

Code availability. The TM5-4DVAR-PP version 1.0-beta-1 code used in this study for the simulations can be downloaded from Zenodo (<https://doi.org/10.5281/zenodo.6326373>, Pandey et al., 2022). The TM5 model is described in detail on <http://tm5.sourceforge.net/>.

380

Author contributions. The study was designed by SH and AJ. SP and AJ developed the PP. SP implemented the PP method on TM5-4DVAR and did the performance test simulations. SP wrote the manuscript using contributions from all the co-authors.

385 *Acknowledgements.* We thank the efforts of NOAA and other surface observations networks for producing and maintaining the vital long record of global methane observations. The computations for this study were carried out on the Dutch national supercomputer Cartesius (<https://userinfo.surfsara.nl/systems/cartesius>; last access: 27-03-2020) maintained by SURFSara. SP and AJ were funded for this study by the Copernicus Atmosphere Monitoring Service, implemented by the European Centre for Medium-Range Weather Forecasts on behalf of the European Commission (grant no. CAMS73).

390 *Competing interests.* The authors declare that they have no competing interests.

References

Basu, S., Guerlet, S., Butz, A., Houweling, S., Hasekamp, O., Aben, I., Krummel, P., Steele, P., Langenfelds, R., Torn, M., Biraud, S., Stephens, B., Andrews, A., and Worthy, D.: Global CO₂ fluxes estimated from GOSAT retrievals of total column CO₂, *Atmos. Chem. Phys.*, 13, 8695–8717, doi:10.5194/acp-13-8695-2013, 2013.

400 Bergamaschi, P., Krol, M., Meirink, J. F., Dentener, F., Segers, A., van Aardenne, J., Monni, S., Vermeulen, A. T., Schmidt, M., Ramonet, M., Yver, C., Meinhardt, F., Nisbet, E. G., Fisher, R. E., O’Doherty, S., and Dlugokencky, E. J.: Inverse modeling of European CH₄ emissions 2001–2006, *J. Geophys. Res.*, 115, D22309, doi:10.1029/2010JD014180, 2010.

Chevallier, F., Fisher, M., Peylin, P., Serrar, S., Bousquet, P., Bréon, F. M., Chédin, A. and Ciais, P.: Inferring CO₂ sources and sinks from satellite observations: Method and application to TOVS data, *J. Geophys. Res. Atmos.*, 110(24), 1–13, doi:10.1029/2005JD006390, 2005.

405 Chevallier, F., Breon, F.-M., and Rayner, P. J.: Contribution of the Orbiting Carbon Observatory to the estimation of CO₂ sources and sinks: Theoretical study in a variational data assimilation framework, *J. Geophys. Res.-Atmos.*, 112, d09307, <https://doi.org/10.1029/2006JD007375>, 2007.

Chevallier, F.: On the parallelization of atmospheric inversions of CO₂ surface fluxes within a variational framework, *Geosci. Model Dev.*, 6, 783–790, <https://doi.org/10.5194/gmd-6-783-2013>, 2013.

- Dee, D. P., Uppala, S. M., Simmons, A. J., Berrisford, P., Poli, P., Kobayashi, S., Andrae, U., Balmaseda, M. A., Balsamo, G., Bauer, P., Bechtold, P., Beljaars, A. C. M., van de Berg, L., Bidlot, J., Bormann, N., Delsol, C., Dragani, R., Fuentes, M., Geer, A. J., Haimberger, L., Healy, S. B., Hersbach, H., Hólm, E. V., Isaksen, L., Kållberg, P., Köhler, M., Matricardi, M.,
415 McNally, A. P., Monge-Sanz, B. M., Morcrette, J.-J., Park, B.-K., Peubey, C., de Rosnay, P., Tavolato, C., Thépaut, J.-N., and Vitart, F.: The ERA-Interim reanalysis: Configuration and performance of the data assimilation system, *Q. J. Roy. Meteor. Soc.*, 137, 553–597, 2011.
- Dlugokencky, E. J., Nisbet, E. G., Fisher, R. and Lowry, D.: Global atmospheric methane: Budget, changes and dangers,
420 *Philos. Trans. R. Soc. A Math. Phys. Eng. Sci.*, 369(1943), 2058–2072, doi:10.1098/rsta.2010.0341, 2011.
- Dlugokencky, E. J., Crotwell, A. M., Mund, J. W., Crotwell, M. J., and Thoning, K. W.: Atmospheric Methane Dry Air Mole Fractions from the NOAA GML Carbon Cycle Cooperative Global Air Sampling Network, Version: 2020-07, <https://doi.org/10.15138/VNCZ-M766>, 2020.
425
- Fisher, M. and Courtier, P.: Estimating the covariance matrices of analysis and forecast error in variational data assimilation, in: ECMWF Technical Memorandum 220, ECMWF, Reading, UK, doi:10.21957/1dxrasjit, 1995
- 430 Gurney, K., Law, R., Denning, A., Rayner, P., Baker, D., Bousquet, P., Bruhwiler, L., Chen, H., Ciais, P., Fan, S., Fung, I., Gloor, M., Heimann, M., Higuchi, K., John, J., Maki, T., Maksyutov, S., Ken, M., Peylin, P., Prather, M., Pak, B. C., Rander-son, J., Sarmiento, J., Taguchi, S., Takahashi, T., and Yuen, C.-W.: Towards robust regional estimates of CO₂ sources and sinks using atmospheric transport models, *Nature*, 415, 626–630, doi:10.1038/415626a, 2002.
- 435 Houweling, S., Krol, M., Bergamaschi, P., Frankenberg, C., Dlugokencky, E. J., Morino, I., Notholt, J., Sherlock, V., Wunch, D., Beck, V., Gerbig, C., Chen, H., Kort, E. A., Röckmann, T. and Aben, I.: A multi-year methane inversion using SCIAMACHY, accounting for systematic errors using TCCON measurements, *Atmos. Chem. Phys.*, 14(8), 3991–4012, doi:10.5194/acp-14-3991-2014, 2014.
- 440 Krol, M., Houweling, S., Bregman, B., van den Broek, M., Segers, A., van Velthoven, P., Peters, W., Dentener, F., and Bergamaschi, P.: The two-way nested global chemistry-transport zoom model TM5: algorithm and applications, *Atmos. Chem. Phys.*, 5, 417–432, doi:10.5194/acp-5-417-2005, 2005.
- Maasackers, J. D., Jacob, D. J., Sulprizio, M. P., Scarpelli, T. R., Nesser, H., Sheng, J. X., Zhang, Y., Hersher, M., Anthony
445 Bloom, A., Bowman, K. W., Worden, J. R., Janssens-Maenhout, G. and Parker, R. J.: Global distribution of methane emissions,

emission trends, and OH concentrations and trends inferred from an inversion of GOSAT satellite data for 2010-2015, *Atmos. Chem. Phys.*, 19(11), 7859–7881, doi:10.5194/acp-19-7859-2019, 2019.

450 Myhre, G., Shindell, D., Bréon, F.-M., Collins, W., Fuglestedt, J., Huang, J., Koch, D., Lamarque, J.-F., Lee, D., Mendoza, B., Nakajima, T., Robock, A., Stephens, G., Takemura, T., and Zhang, H.: Anthropogenic and Natural Radiative Forcing, in: *Climate Change 2013: The Physical Science Basis. Contribution of Working Group I to the Fifth Assessment Report of the Intergovernmental Panel on Climate Change*, Cambridge University Press, Cambridge, UK and New York, NY, USA, 2013.

455 Meirink, J. F., Bergamaschi, P., and Krol, M. C.: Four- dimensional variational data assimilation for inverse modelling of atmospheric methane emissions: method and comparison with synthesis inversion, *Atmos. Chem. Phys.*, 8, 6341–6353, doi:10.5194/acp-8-6341-2008, 2008.

460 Naus, S., Montzka, S. A., Pandey, S., Basu, S., Dlugokencky, E. J. and Krol, M.: Constraints and biases in a tropospheric two-box model of OH, *Atmos. Chem. Phys.*, 407–424, 2019.

Naus, S., Montzka, S. A., Patra, P. K. and Krol, M. C.: A three-dimensional-model inversion of methyl chloroform to constrain the atmospheric oxidative capacity, *Atmos. Chem. Phys.*, 21(6), 4809–4824, doi:10.5194/acp-21-4809-2021, 2021.

465 Pandey, S., Houweling, S., Krol, M., Aben, I., Chevallier, F., Dlugokencky, E. J., Gatti, L. V., Gloor, E., Miller, J. B., Detmers, R., Machida, T. and Röckmann, T.: Inverse modeling of GOSAT-retrieved ratios of total column CH₄ and CO₂ for 2009 and 2010, *Atmos. Chem. Phys.*, 16(8), 5043–5062, doi:10.5194/acp-16-5043-2016, 2016.

470 Pandey, S., Houweling, S., Krol, M. and Aben, I.: Influence of Atmospheric Transport on Estimates of Variability in the Global Methane Burden *Geophysical Research Letters*, *Geophys. Res. Lett.*, doi:10.1029/2018GL081092, 2019.

Pandey, Sudhanshu, Houweling, Sander, and Segers, Arjo. TM5-4DVAR-PP Version 1.0-beta.1. Zenodo. <https://doi.org/10.5281/zenodo.6326373>, 2022

475 Peters, W., Miller, J. B., Whitaker, J., Denning, A. S., Hirsch, A., Krol, M. C., Zupanski, D., Bruhwiler, L., and Tans, P. P.: An ensemble data assimilation system to estimate CO₂ surface fluxes from atmospheric trace gas observations, *J. Geophys. Res.*, 110, D24304, doi:10.1029/2005JD006157, 2005.

480 Saunois, M., R. Stavert, A., Poulter, B., Bousquet, P., G. Canadell, J., B. Jackson, ... and Zhuang, Q.: The global methane budget 2000-2017, *Earth Syst. Sci. Data*, 12(3), 1561–1623, doi:10.5194/essd-12-1561-2020, 2020.

Segers, A. and Houweling, S.: Validation of the CH₄ surface flux inversion - reanalysis 1990-2017, 1–40, 2020. Available at https://atmosphere.copernicus.eu/sites/default/files/2021-02/CAMS73_2018SC2_D73.2.4.1-2020_202012_validation_CH4_1990-2019_v2.pdf Last access: 27-3-2021

Williams, J. E., Boersma, K. F., Le Sager, P., and Verstraeten, W. W.: The high-resolution version of TM5-MP for optimized satellite retrievals: description and validation, *Geosci. Model Dev.*, 10, 721–750, <https://doi.org/10.5194/gmd-10-721-2017>, 490 2017.

Zhang, Y., Jacob, D. J., Maasakkers, J. D., Sulprizio, M. P., Sheng, J.-X., Gautam, R., and Worden, J.: Monitoring global tropospheric OH concentrations using satellite observations of atmospheric methane, *Atmos. Chem. Phys.*, 18, 15959–15973, <https://doi.org/10.5194/acp-18-15959-2018>, 2018.

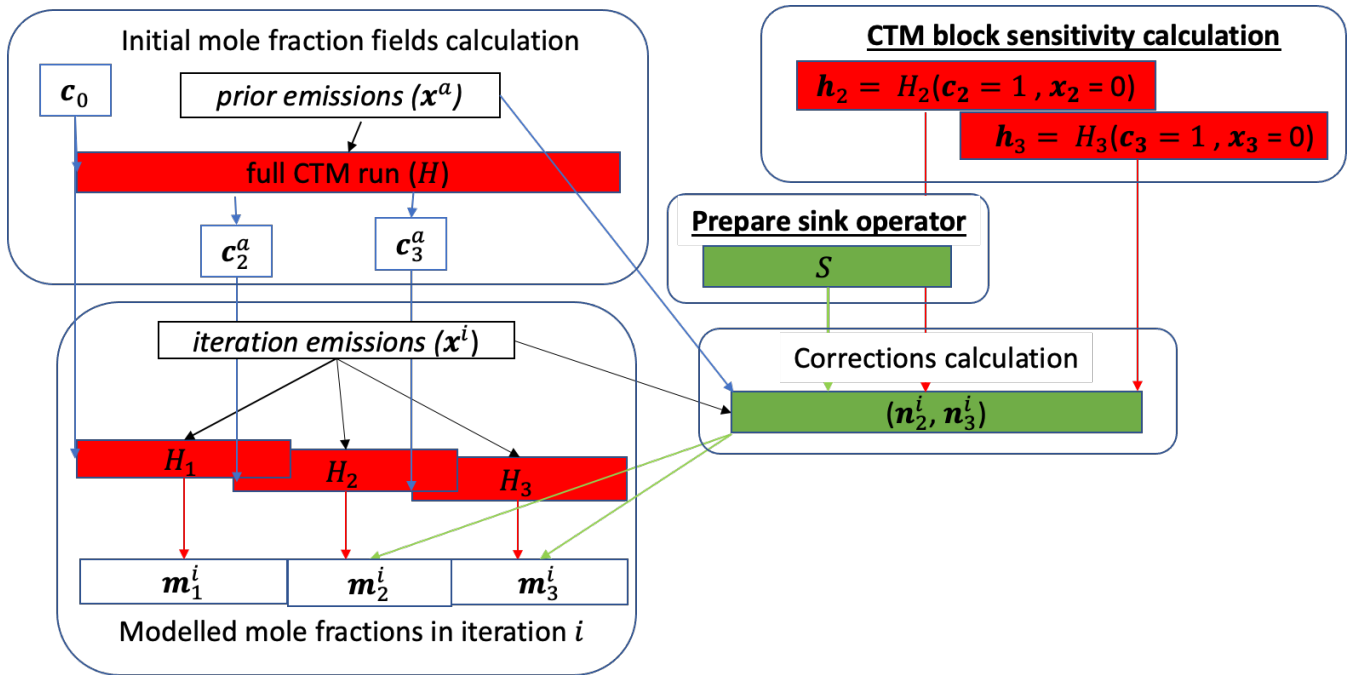
495 Zhang, Y., J. Jacob, D., Lu, X., D. Maasakkers, J., R. Scarpelli, T., Sheng, J. X., Shen, L., Qu, Z., P. Sulprizio, M., Chang, J., Anthony Bloom, A., Ma, S., Worden, J., J. Parker, R. and Boesch, H.: Attribution of the accelerating increase in atmospheric methane during 2010-2018 by inverse analysis of GOSAT observations, *Atmos. Chem. Phys.*, 21(5), 3643–3666, doi:10.5194/acp-21-3643-2021, 2021.

500

Table 1 Wall time comparison for the inversions performed in this study. Wall time projections for a hypothetical 35-year inversion are also given.

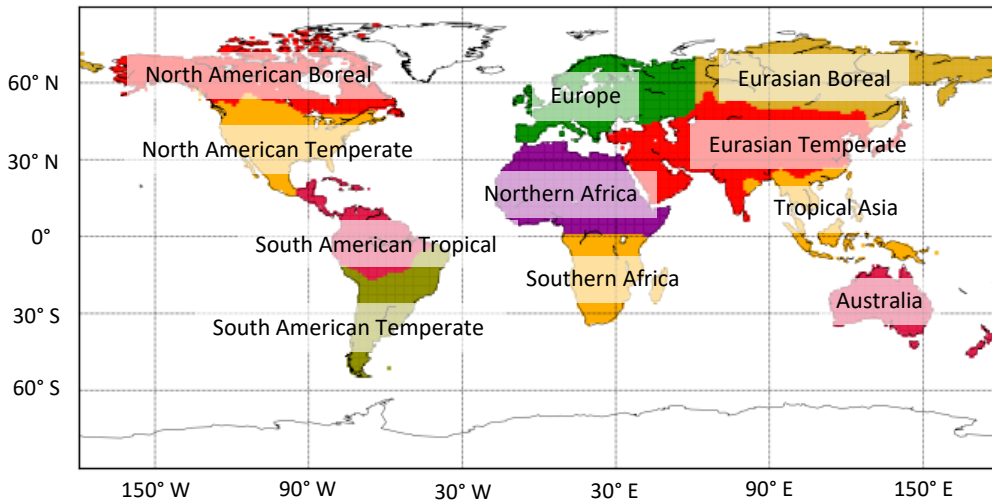
Model runs		Serial	PP
One year forward or adjoint run		15 minutes	
1999-2010 inversion	1 iteration (forward + adjoint TM5 run)	5 hours	55 minutes
	Inversion with 19 iterations	101 hours	20 hours
1985-2020 inversion*	1 iteration (forward + adjoint TM5 run)	16 hours	55 minutes
	Inversion with 50 iterations	34 days	56 hours

505 *Projection based on the 1999-2010 inversion

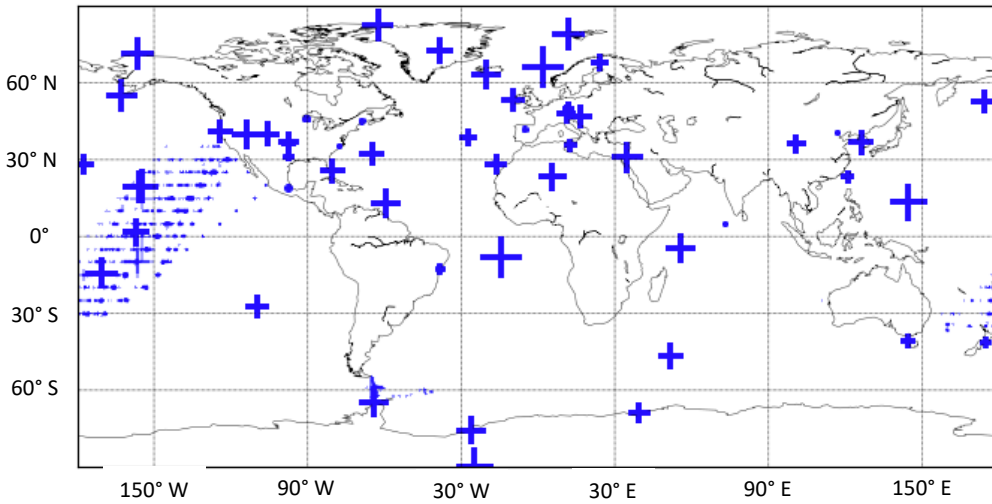


510 **Figure 1** Schematic diagram of a PP methane inversion's forward mode, which computes mole fractions m^i in iteration i . The
subscripts denote the block numbers (except for c_0 , which is the initial mole fraction field at the start of the inversion). For
block 1, the initial mole fraction field ($c_1^a = c_0$) and mole fraction correction vector (n^i) is not needed. The overlap between
the successive blocks (H_1, H_2, H_3) represent the overlap period, where the modelled mole fractions from the preceding block
are used in the inversion. The "CTM block sensitivity calculation" and "Prepare sink operator" steps of the PP method are
515 implemented in this study, whereas the rest are from Chevallier (2013).

(a) TRANSCOM regions



(b) NOAA observations



520 **Figure 2** (a) Definition of the TRANSCOM regions (Gurney et al., 2002). (b) Locations of NOAA methane observation sites used in this study. The size of the symbol “+” is proportional to the number of observations assimilated from each site.

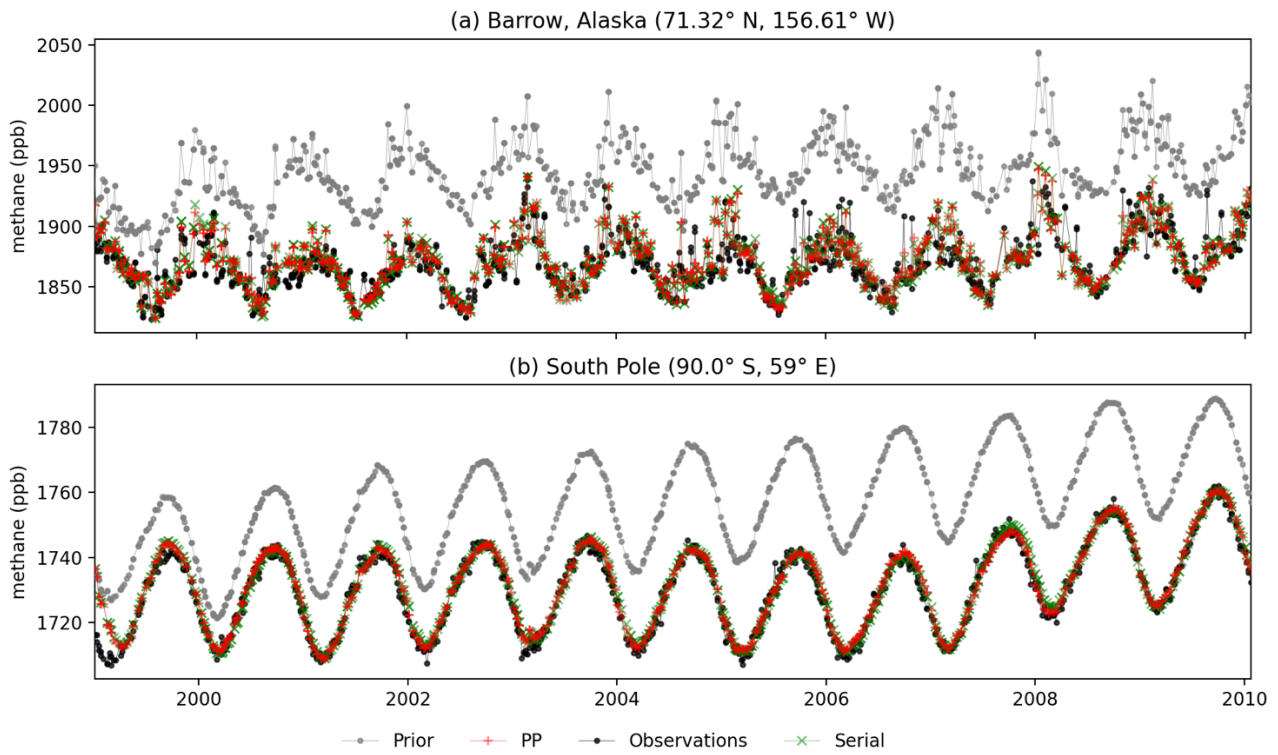


Figure 3 Modelled and observed methane mole fractions at the two remote background NOAA stations. Barrow, Alaska is shown in panel (a), and the South Pole is shown in panel (b).

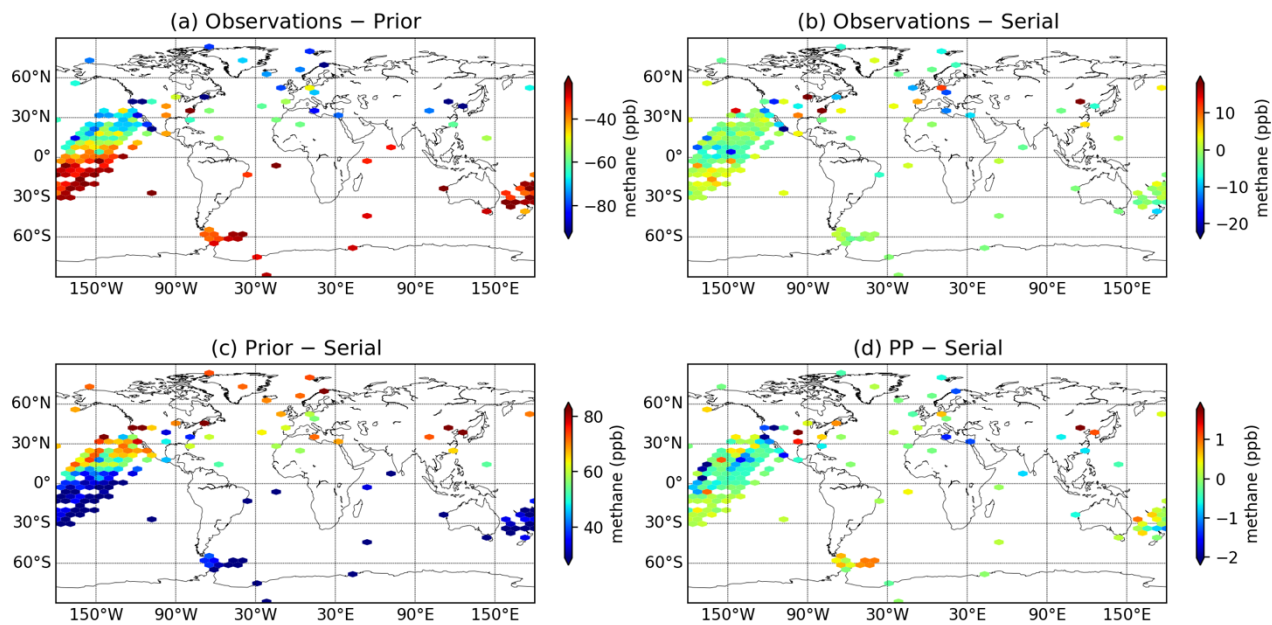
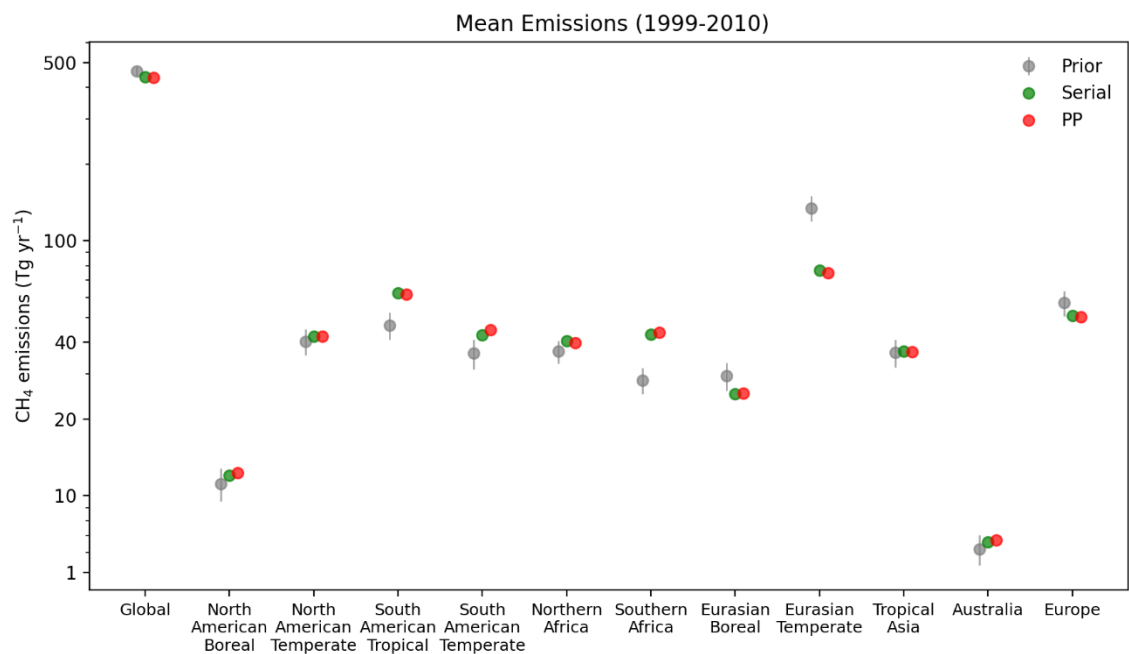
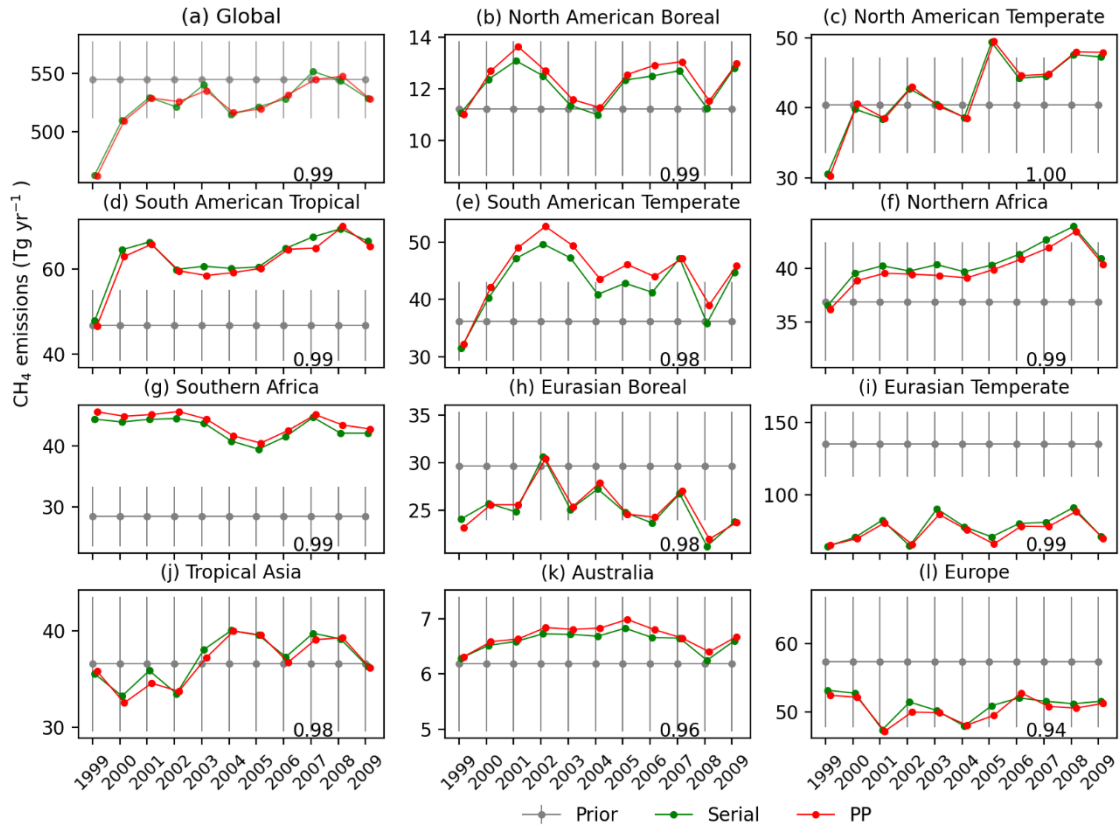


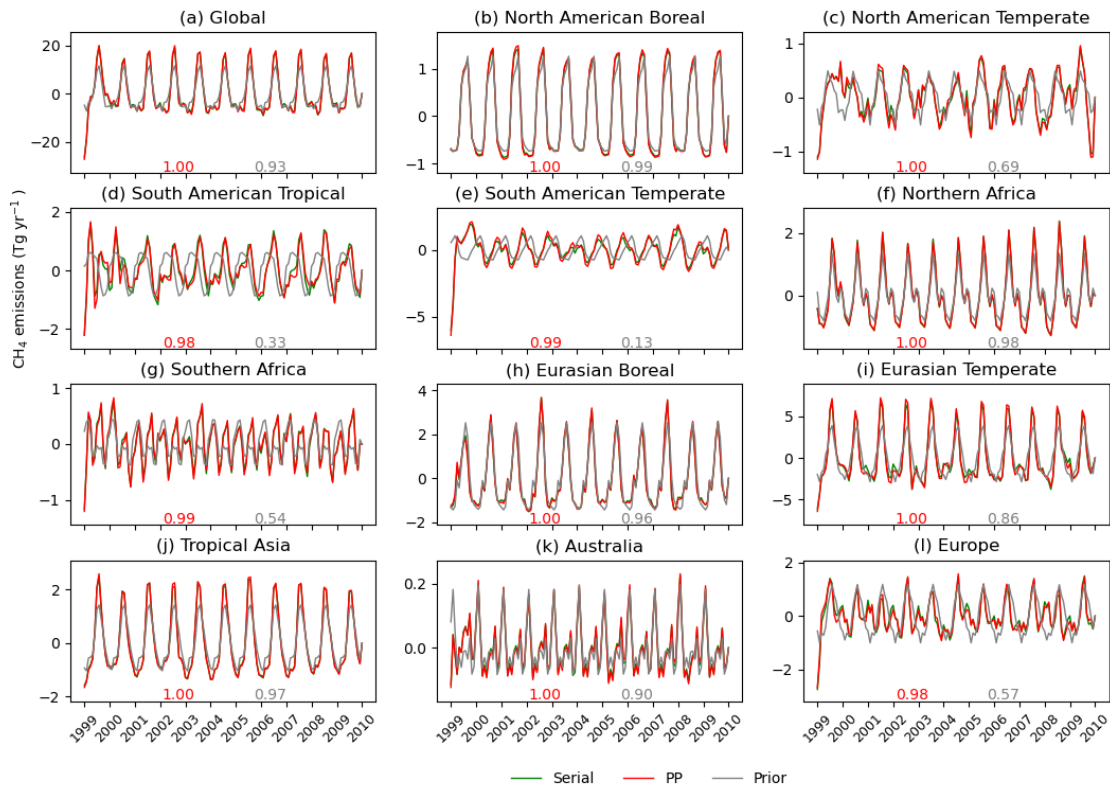
Figure 4 Methane mole fraction differences at the observation sites (see Figure 2.b). Panel (a), (b), (c) and (d) show the average difference between observations and prior, observation and serial, prior and serial, and PP and serial, respectively. The color scale range is set at mean ± 1 standard deviation of the plotted values.



535 **Figure 5** Total methane emission estimates of the inversions for the globe and TRANSCOM regions, averaged over 1999-2010 (see Figure 1). The vertical lines on the markers show the $\pm 2\sigma$ uncertainties of the prior emissions.



540 **Figure 6** Annual methane emission estimates of the PP and serial inversions for the globe and the TRANSCOM regions. The vertical bars show the $\pm 2\sigma$ uncertainties of the prior emissions. The correlation coefficients of PP and serial time series are given at the bottom of each panel.



545

Figure 7 Intra-annual variation of the PP and serial emissions for the TRANSCOM regions. The correlation coefficients of the PP (red) and prior (grey) time series with the serial time series are given at the bottom of each panel.