

Representing Low-Intensity Fire Sensible Heat Output in a Mesoscale Atmospheric Model with a Canopy Submodel: A Case Study with ARPS-CANOPY (version 5.2.12)

Michael T. Kiefer¹, Warren E. Heilman², Shiyuan Zhong¹, Joseph J. Charney², Xindi Bian², Nicholas S. Skowronski³, Kenneth L. Clark⁴, Michael R. Gallagher⁴, John L. Hom², and Matthew Patterson³

¹Department of Geography, Environment, and Spatial Sciences, Michigan State University, East Lansing, MI 48824, USA

²USDA Forest Service, Northern Research Station, Lansing, MI 48910, USA

³USDA Forest Service, Northern Research Station, Morgantown, WV 26505, USA

⁴USDA Forest Service, Northern Research Station, New Lisbon, NJ 08064, USA

Correspondence: Michael T. Kiefer (mtkiefer@msu.edu)

Abstract. Mesoscale models are a class of atmospheric numerical model designed to simulate atmospheric phenomena with horizontal scales of about 2-200 km, although they are also applied to microscale phenomena, with horizontal scales less than about 2 km. Mesoscale models are capable of simulating wildland fire impacts on atmospheric flows if combustion by-products (e.g., heat, smoke) are properly represented in the model. One of the primary challenges encountered in applying a mesoscale model to studies of fire-perturbed flows is the representation of the fire sensible heat source in the model. Two primary methods have been implemented previously: turbulent sensible heat flux, either in the form of an exponentially-decaying vertical heat flux profile or surface heat flux; and soil temperature perturbation. In this study, the ARPS-CANOPY model, a version of the Advanced Regional Prediction System (ARPS) model with a canopy submodel, is utilized to simulate the turbulent atmosphere during a low-intensity operational prescribed fire in the New Jersey Pine Barrens. The study takes place in two phases: model assessment and model sensitivity. In the model assessment phase, analysis is limited to a single control simulation in which the fire sensible heat source is represented as an exponentially-decaying vertical profile of turbulent sensible heat flux. In the model sensitivity phase, a series of simulations are conducted to explore the sensitivity of model-observation agreement to (i) the method used to represent the fire sensible heat source in the model and (ii) parameters controlling the magnitude and vertical distribution of the sensible heat source. In both phases, momentum and scalar fields are compared between the model simulations and data obtained from six flux towers located within and adjacent to the burn unit. The multi-dimensional model assessment confirms that the model reproduces the background and fire-perturbed atmosphere as depicted by the tower observations, although the model underestimates the turbulent kinetic energy at the top of the canopy at several towers. The model sensitivity tests reveal that the best agreement with observations occurs when the fire sensible heat source is represented as a turbulent sensible heat flux profile, with surface heat flux magnitude corresponding to the peak 1-min mean observed heat flux averaged across the flux towers, and an e-folding extinction depth corresponding to the average canopy height in the burn unit. The study findings provide useful guidance for improving the representation of the sensible heat released from low-intensity prescribed fires in mesoscale models.

1 Introduction

Studies of wildland fire-perturbed atmospheric flows have relevance for our understanding of fire behavior, smoke transport and dispersion, and ecological effects such as tree mortality. Previous studies have generally focused on higher-intensity fires, including wildfires and prescribed fires (e.g., Coen et al., 2004; Clements et al., 2007; Pimont et al., 2011). In contrast, perturbation of atmospheric flows by low-intensity prescribed fires in forested landscapes has received less attention overall and remains poorly resolved in numerical modeling tools used by land managers despite the nearly 2:1 dominance of prescribed fire over wildfire in terms of area impacted, most of which is of low intensity (Melvin, 2018; Hiers et al., 2020; Melvin, 2020; Heilman et al., 2021). This importance is further underscored by the implementation of more than 1 million prescribed fires burning more than 24 million ha in the US between 2000 and 2019 (National Interagency Fire Center, 2019). Prediction of atmospheric flows associated with low-intensity fires in forested environments is complicated by the influence of a number of interrelated factors, including near-surface meteorological conditions, local topography, forest overstory vegetation structure, and atmospheric turbulence within and above forest overstory layers (Kiefer et al., 2014; Heilman et al., 2015; Clark et al., 2020). Since prescribed fires can impact public health and safety in nearby communities, as well as the health and safety of operational fire management personnel, improved prediction of atmospheric flows during low-intensity fires in forested environments is potentially of great benefit. Furthermore, improving the prediction of atmospheric flows during low-intensity fires may permit the refinement and operationalization of process-based modeling tools used during prescribed burning and wildland fire management operations (e.g., smoke dispersion models).

The fire-perturbed atmosphere has been studied via field experiments (e.g., Clark et al., 1999; Hiers et al., 2009; Heilman et al., 2015; Clements et al., 2019; Clark et al., 2020) and numerical modeling (e.g., Pimont et al., 2011; Hoffman et al., 2015; Kiefer et al., 2018; Kochanski et al., 2018; Linn et al., 2021). As research tools, numerical models are used to fill in gaps in our knowledge and to help answer questions that field experiments alone are unable to address (due to, for example, spatial and temporal limitations in observational data coverage, degrees of freedom that are difficult to control, and limits on repeatability). Broadly speaking, all atmospheric numerical models solve a set of partial differential equations derived from the Navier-Stokes equations for conservation of momentum, mass, and thermodynamic energy, and parameterize physical processes too small to be explicitly resolved by the model (i.e., subgrid-scale processes). Mesoscale models are a class of atmospheric model designed to simulate atmospheric phenomena with horizontal scales of about 2-200 km, although they are also applied to microscale phenomena, with horizontal scales less than about 2 km (e.g., Kiefer et al., 2014; Peace et al., 2016; Charney et al., 2019). Although Coen (2018) refers to the modeling of microscale phenomena, in the context of coupled atmosphere-fire models, as either “convective-scale modeling” (scales about 100 m to less than 2 km) or “large-eddy simulation modeling” (scales of less than 1 m to about 100 m), the term “mesoscale model” is used exclusively here since the models in question were originally designed for mesoscale applications. However, caution is advised when applying mesoscale models to microscale phenomena, as turbulence and other physical processes are partially resolved on the model grid and partially parameterized; the corresponding range of grid spacings is sometimes referred to as the terra incognita or gray zone to highlight the challenges of modeling at such scales (Wyngaard, 2004; Chow et al., 2019). [It is worth noting that the use of a mesoscale model with grid spacing that](#)



allows for some scales of turbulence to be explicitly resolved is a departure from traditional mesoscale model applications in which most or all turbulence is parameterized (Michioka and Chow, 2008; Kiefer et al., 2013; Chow et al., 2019).

Mesoscale models are capable of simulating wildland fire impacts on atmospheric flows tens of meters to hundreds of kilometers away from the fire, if combustion by-products (e.g., heat, smoke) are properly represented in the model. Examples of such mesoscale models are the Clark coupled atmosphere-fire model (e.g., Clark et al., 1996, 2004; Coen, 2005), Active Tracer High Resolution Atmospheric Model (ATHAM) (e.g., Trentmann et al., 2006; Luderer et al., 2006), Weather Research and Forecasting (WRF)-SFIRE (e.g., Mandel et al., 2011; Kochanski et al., 2016), Meso-Non-Hydrostatic (Meso-NH)/ForeFire (e.g., Filippi et al., 2013), Advanced Regional Prediction System (ARPS) with fire heat source (e.g., Kiefer et al., 2008, 2009, 2010), ARPS plus forest canopy submodel (ARPS-CANOPY) with fire heat source (e.g., Kiefer et al., 2014, 2015, 2016, 2018), and High-Resolution Rapid Refresh (HRRR)-Smoke (e.g., Ahmadov et al., 2017, 2021). They are positioned in between computational fluid dynamics models with combustion submodels, such as the High-Resolution Model for Strong Gradient Applications (HIGRAD)/FIRETEC (Linn et al., 2002), and global-regional models that do not include combustion heat or other byproducts, such as the Global Forecast System (GFS) (Wang et al., 2019). Mesoscale models are able to simulate a broader range of atmospheric scales than computational fluid dynamics models due to the use of fewer limiting assumptions in the derivation of model prognostic equations and the inclusion of a broader suite of physical parameterizations. However, this comes at the expense of explicit simulation of fine-scale flows near the fireline, due to the use of grid spacing too coarse to resolve smaller-scale turbulence, the use of numerical smoothing at scales near that of the model grid spacing, and the lack of an explicit combustion model (Coen, 2018). Mesoscale models must be provided synthesized information about the combustion sensible heat source and forest overstory vegetation structure to accurately simulate mean and turbulent flows associated with wildland fires in forested environments.

The primary way that atmospheric flows are impacted by wildland fires is through heat and momentum exchanges between the fire and atmosphere (Jenkins et al., 2001; Kremens et al., 2012). Sensible heat flux has received the bulk of attention in previous studies of fire-induced atmospheric perturbations (e.g., Hiers et al., 2009; Heilman et al., 2015; Clark et al., 2020), a focus that is supported by the conclusion of Luderer et al. (2009) that latent heat flux plays a much smaller role in the development of buoyant plumes above wildland fires than sensible heat flux. One of the primary challenges encountered in applying a mesoscale model to studies of fire-perturbed flows is the representation of the fire sensible heat source in the model. Because combustion occurs at scales too small to be resolved on the mesoscale model grid, the fire sensible heat source in the model is entirely subgrid-scale. Critically, there is no standard method for representing the sensible heat released from wildland fire combustion in a mesoscale model (Clark et al., 1996, 2004; Sun et al., 2006; Kochanski et al., 2013; Kiefer et al., 2014; Kartsios et al., 2017; Kochanski et al., 2018). This is true of two-way coupled atmosphere-fire models, such as WRF-SFIRE, in which fire-induced changes to the simulated wind field feed back on the fire (and vice-versa), and simpler one-way coupled models, such as ARPS-CANOPY with fire heat source, in which the fire perturbs the simulated wind field, but atmospheric perturbations do not feed back on the fire. Two primary methods have been implemented previously: turbulent sensible heat flux (method 1), either in the form of a heat flux profile (method 1a, HFP; e.g., Sun et al., 2006; Mandel et al., 2011; Kiefer et al., 2014) or surface heat flux (method 1b, SHF; e.g., Trentmann et al., 2006; Sun et al., 2006; Kiefer et al.,

2009, 2010; Filippi et al., 2013; Kiefer et al., 2015, 2016, 2018); and soil temperature perturbation or “hotplate” (method 2, HP; e.g., Heilman and Fast, 1992; Kiefer et al., 2008; Filippi et al., 2013). Beyond the methods themselves, the poorly defined nature of the model parameters used in the fire sensible heat source methods serves as motivation for exploring the sensitivity of model-observation agreement to these parameters.

In this study, ARPS and ARPS-CANOPY are utilized to simulate background and fire-perturbed atmospheric conditions during a low-intensity operational prescribed fire in the New Jersey Pine Barrens (NJPB; Heilman et al., 2021). The prescribed fire was conducted in March 2019 as part of a US Department of Defense–Strategic Environmental Research Program (SERDP)-funded project focused on multi-scale analyses of wildland-fire combustion processes in open-canopied forests (<https://www.serdp-estcp.org/Program-Areas/Resource-Conservation-and-Resiliency/Air-Quality/Fire-Emissions/RC-2641>, accessed 30 Sep 2021). This study is one part of a broader effort within the SERDP project to explore how atmospheric dynamics, including ambient, fire-induced, and forest canopy-induced turbulence regimes within and near the fire environment affect fire propagation, energy exchange, and fuel consumption. The objective of this study is to provide useful guidance for improving the representation of sensible heat released from low-intensity prescribed fires in mesoscale models, through a comparison of model simulations with the combustion sensible heat source methods outlined above and a suite of observations collected during the fire. Although this study focuses exclusively on low-intensity fires, the study findings may have relevance to mesoscale model simulations of higher-intensity fires, including wildfires. The availability of an extensive observational dataset from a low-intensity prescribed fire, and the previous application of ARPS-CANOPY to low-intensity fires, motivates this focus.

The remainder of this manuscript is organized as follows: the prescribed fire field experiment is described briefly in Sect. 2; an overview of mesoscale model fire sensible heat source methods is provided in Sect. 3; the numerical experiment methodology is discussed in Sect. 4, including descriptions of the model (4.1), model configuration and experiment design (4.2), and analysis methodology (4.3); results and discussion are presented in Sect. 5, including details of the model assessment (5.1) and model sensitivity study (5.2) phases; and the paper is concluded in Sect. 6.

2 Field Experiment

The prescribed fire was conducted on 13 March 2019 in an 11.2-ha burn unit located in the NJPB at the Silas Little Experimental Forest (39.9156° N, 74.5956° W) in south-central New Jersey, USA (Fig. 1) (Heilman et al., 2021). The burn unit was situated in a mixed oak - pine stand, with chestnut (*Q. prinus* L.), black (*Q. velutina* Lam.), white (*Q. alba* L.), and scarlet (*Q. coccinea* Münchh.) oaks, and shortleaf (*P. echinata* Mill.) and pitch (*P. rigida* Mill.) pines forming the forest overstory. Dominant trees in the area were approximately 105 years old, and the maximum height of the overstory vegetation was ~20 m. Basal area was approximately 15.5 m²ha⁻¹, with oak trees and saplings and pine trees and saplings accounting for 62% and 38% of the total, respectively (Clark et al., 2018). Understory vegetation consisted of shrubs, primarily huckleberry (*Gaylussacia* spp.) and blueberry (*Vaccinium* spp.). Bear (*Q. ilicifolia* Wengenh.) and blackjack (*Q. marilandica* Münchh.) oak, sedges (*Carex pensylvanica* Lam.), and mosses were also present. The litter layer consisted of mixed fine litter of oaks, pines and understory vegetation, fine stems, and reproductive material, primarily pine cones. [Pre-burn loading of fine litter, woody](#)

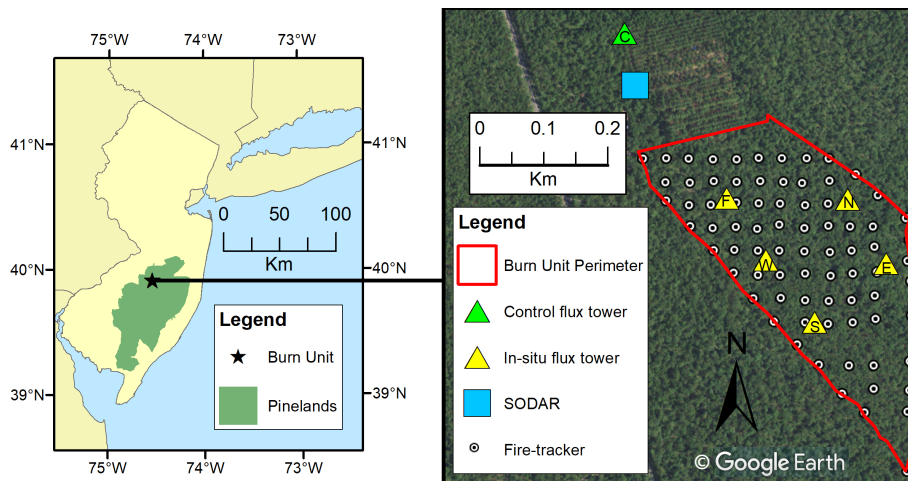


Figure 1. Location of the burn unit within the New Jersey Pine Barrens (NJPB) and portions of the northeastern US (left panel), and the locations of instrumentation deployed during the 13 March 2019 NJPB prescribed fire experiment (right panel); see legend in right panel for an explanation of instrumentation symbols.

125 [fuels on the forest floor, and understory vegetation, estimated from 0.5 m² harvest plots, was 946 ± 85, 114 ± 11, and 287 ± 28 gm⁻² \(mean ± one standard error; n = 12\), respectively. Post-burn loading of fine litter, woody fuels, and understory vegetation was 631 ± 34, 118 ± 7 and 261 ± 36 gm⁻², respectively, and consumption was estimated as 33%, -3%, and 9%, respectively; very little overstory fuel was consumed.](#)

Instrumentation consisted of a network of “fire-tracker” and multi-spectral sensors to measure flame arrival times, intensity, and radiative heat flux; and six instrumented flux towers (Fig. 1). Fuel loading, moisture contents, and consumption were estimated from a combination of LiDAR and harvest measurements. To spatially characterize the spread of the prescribed fire through the burn unit, an array of 68 fire-tracker sensors was installed at ground level throughout the plot in a grid with approximately 40-m spacing between sensors (Fig. 1). The sensors consisted of 1.5-mm diameter K-type thermocouples attached to Arduino Feather data loggers (2796, Adafruit, New York, NY, USA) with thermocouple amplifiers (269, Adafruit) and GPS antennas (746, Adafruit) to time stamp and provide location for each sensor. The fire-trackers were buried such that the tip of the thermocouple protruded through the surface fuels. All fire-tracker data were logged at a frequency of 2 Hz.

The flux towers consisted of a control tower (TWR_C), located approximately 180 m north-northwest of the northern burn unit perimeter, to characterize the ambient wind velocities and temperatures during the experiment, and five in-situ towers (east: TWR_E, flux: TWR_F, south: TWR_S, north: TWR_N, and west: TWR_W), to measure turbulent fluctuations and sensible (i.e., convective) heat flux at multiple heights above the flame fronts. On the flux towers, sonic anemometers (Model 81000V, R. M. Young, Inc., Traverse City, MI, USA) were mounted at 3, 10, and 19 m above ground level (AGL) (hereafter, referred to as the lower, middle, and upper tower levels), and aligned in the true-north direction to measure variations in the three-dimensional wind velocity components (west-east, south-north, and vertical) and air temperature; TWR_S was instrumented

with sonic anemometers at the lower and upper tower levels only. Data were recorded at 10 Hz using Campbell Scientific
145 CR3000 data loggers (Campbell Scientific, Inc., Logan, UT, USA). Additional temperature measurements were made using
thermocouples (Omega SSRTC-GG-K-36, Omega Engineering, Inc., Stamford, CT, USA) mounted at 0.25, 0.5, 1.0, 2.5, 5.0,
10.0, and 15.0 m AGL (all towers except TWR_S, where instruments were mounted at 0.5 m AGL and every meter from 1-10 m
AGL). Also, a SONic Detection And Ranging (SODAR) wind profiler (Remtech PA0, The Villages, FL, USA) was deployed
about 80 m south of TWR_C to characterize planetary boundary layer wind speed and direction up to about 400 m AGL.

150 At 14:57 Eastern Daylight Time (EDT) on 13 March 2019, personnel from the New Jersey Forest Fire Service ignited a
line fire using drip torches along the westernmost boundary of the burn unit, proceeding from south to north, with the first
detection by the fire-tracker array at 14:59 EDT. The line fire was allowed to spread with the wind (i.e., a head fire) from
the southwestern boundary through the burn unit and beneath the in-situ towers in a generally northeastward direction until
reaching the eastern boundary at approximately 16:30 EDT. Burning was confined to the surface and understory fuels; very little
155 overstory vegetation was burned. Active burning was completed at about 16:45 EDT, with smoldering continuing thereafter,
and the final detection by the fire-tracker array was at 17:38 EDT.

3 Fire sensible heat source methods

As stated in Sect. 1, there are two primary ways in which the fire sensible heat source has been represented in previous
mesoscale modeling studies: turbulent sensible heat flux (method 1a, HFP; method 1b, SHF), and hotplate (method 2, HP).
160 The choice of method determines to what degree fire-specific model parameterizations are used to represent vertical sensible
heat transport from the fire by unresolved fire-induced turbulent eddies, and to what degree the mesoscale model's native (i.e.,
non-fire condition) land-surface and subgrid-scale turbulence parameterizations are relied on to perform this function. From
HFP to SHF to HP, progressively more of the model's native parameterizations are engaged to represent vertical sensible heat
transport from the fire.

165 With the profile form of the turbulent sensible heat flux approach (method 1a, HFP), an exponential decay of turbulent
sensible heat flux (H) with height (z) is prescribed as a function of a surface value (H_S) and an extinction coefficient (K_E),

$$H(z) = H_S e^{-K_E z} \quad (1)$$

Equation (1) first appeared in Sun et al. (2006), and is based on Beer's law (Pfeiffer and Liebhafsky, 1959). At the height
above the ground where the fire-induced subgrid-scale turbulent sensible heat flux becomes negligible, the turbulent sensible
170 heat flux is computed by the model via small-eddy theory (heat flux is proportional to the local vertical gradient of potential
temperature; Stull, 1988), as is standard in subgrid-scale turbulence parameterizations in mesoscale models (e.g., ARPS, WRF;
Xue et al., 2000; Powers et al., 2017),

$$H = \overline{w'\theta'} = -K \frac{\partial \theta}{\partial z} \quad (2)$$

where w and θ are vertical velocity and potential temperature, respectively, K is eddy diffusivity, and $()'$ and $\overline{()}$ indicate
 175 perturbations and grid-volume averages, respectively. In ARPS-CANOPY, K is parameterized as a function of subgrid-scale
 turbulent kinetic energy (TKE) and a turbulent length scale, the latter a function of grid spacing and atmospheric stability,
 and separate K values are computed for horizontal and vertical turbulent mixing (Xue et al., 2000; Kiefer et al., 2013). With
 the surface flux form of the turbulent sensible heat flux approach (method 1b; SHF), the combustion sensible heat flux is
 implemented only at the surface level (H_S), and small-eddy theory is used at all grid points above the lowest atmospheric
 180 level.

Both forms of the turbulent sensible heat flux method were examined by Sun et al. (2006) via a comparison of model
 simulations to data collected during the Meteoron experiment (Benech, 1976). The authors found that depositing all of the
 sensible heat released from the fire within the lowest model grid layer above the ground (i.e., SHF method) led to an unrealistic
 spike in near-surface buoyancy flux within the buoyant plume above the fire. They also found that prescribing an exponentially-
 185 decaying sensible heat flux profile with an arbitrary e-folding extinction depth of 50 m resulted in an underestimation of
 near-surface buoyancy flux and vertical velocity within the buoyant plume (for reference, e-folding refers to a reduction of
 heat flux to e^{-1} times the surface value). They suggested that an e-folding extinction depth tied to the density of soot above
 the fire might provide more realistic plume quantities, but acknowledged that the e-folding extinction depth is likely to vary
 depending on a number of parameters, including fire intensity, flame height, and the environment surrounding the fire (e.g.,
 190 atmospheric conditions, forest overstory). The poorly defined nature of the extinction coefficient (e.g., Kiefer et al., 2014;
 Kartsios et al., 2017; Kochanski et al., 2018) serves as motivation for exploring the sensitivity of model-observation agreement
 to this parameter (Sect. 5.2).

Because of the previous implementation of the HP approach in mesoscale model studies of wildland fires (e.g., Heilman
 and Fast, 1992; Kiefer et al., 2008), this method is also explored in this study. With this method, sensible heat released from
 195 the fire is incorporated via a soil temperature perturbation from ambient conditions. Sensible heat is communicated to the
 atmosphere via a bulk aerodynamic formula, standard in mesoscale model land-surface parameterizations, in which the surface
 sensible heat flux (H_S) is a product of the wind speed at the lowest atmospheric level (M_0) and heat exchange represented by
 an exchange coefficient (C_h) and the potential temperature difference between the lowest atmospheric level and the ground
 ($\theta_0 - \theta_G$) (Stull, 1988),

$$200 \quad H_S = \overline{w'\theta'}_S = -C_h M_0 (\theta_0 - \theta_G) \quad (3)$$

As with the SHF approach, turbulent sensible heat flux at all vertical grid levels above the lowest atmospheric level is
 computed via small-eddy theory [Eq. (2)]. It is critical to point out that outside of the burn unit, and outside of the fire sensible
 heat source application period for within-burn unit grid cells, the model's native land-surface and subgrid-scale turbulence
 parameterizations are employed.

4.1 Model Description

For numerical simulations of the NJPB prescribed fire, ARPS and ARPS-CANOPY are utilized. ARPS is a three-dimensional, compressible, nonhydrostatic atmospheric model with a terrain-following coordinate system (Xue et al., 2000, 2001). ARPS has been applied across a range of spatial scales, from studies of turbulent flows, using grid spacing as fine as $O(1)$ m (Dupont and Brunet, 2008), to studies of mesoscale and synoptic-scale phenomena, utilizing grid spacing of $O(1-10)$ km (e.g., Xue et al., 2001; Parker and Johnson, 2004; Michioka and Chow, 2008). In ARPS the bulk effect of a vegetation canopy on the atmosphere is represented within a single layer, beneath the lowest model grid point (as is standard in mesoscale models, e.g., WRF; Powers et al., 2017). Hereafter, this model is referred to as original ARPS to distinguish it from ARPS-CANOPY.

ARPS-CANOPY is a version of the ARPS model with a canopy submodel in which the effects of vegetation elements (e.g., branches and leaves) on drag, turbulence production/dissipation, radiation transfer, and the surface energy budget are accounted for through modifications to the ARPS model equations (Kiefer et al., 2013). Such changes allow for explicit simulation of airflow through a multi-level forest canopy. The vertical profile of plant area density (A_p), defined as the one-sided area of plant material per unit volume, is utilized in ARPS-CANOPY to represent the bulk effects of the canopy on various atmospheric processes (e.g., drag and radiative heating/cooling). For a full description of ARPS-CANOPY, see Kiefer et al. (2013).

A 1.5-order local turbulence parameterization with a prognostic equation for subgrid-scale TKE is utilized in original ARPS and ARPS-CANOPY, with the addition of canopy source and sink terms in the momentum and subgrid-scale TKE equations in ARPS-CANOPY. In all simulations, the original ARPS anisotropic turbulence option is used in which both horizontal and vertical components of eddy viscosity and diffusivity are computed; this option is recommended when vertical grid spacing is considerably smaller than horizontal grid spacing (Xue et al., 2000). This subgrid-scale turbulence parameterization has been tested extensively and has been found to produce the correct vertical structure of mean variables and turbulent statistics with and without a forest canopy (e.g., Dupont and Brunet, 2008; Kiefer et al., 2013, 2014). Furthermore, a land-surface model based on Noilhan and Planton (1989) and Pleim and Xiu (1995), and radiation physics following Chou (1990, 1992) and Chou and Suarez (1994) are utilized [with the addition of a canopy heat source term and with canopy shading effects on the ground energy budget accounted for (ARPS-CANOPY only)]. Lastly, for simulations with horizontal grid spacing larger than 100 m, a non-local turbulence parameterization based on Sun and Chang (1986) is also utilized, in addition to the local turbulence parameterization.

4.2 Model Configuration and Experiment Design

A multiscale modeling strategy is utilized to capture a range of atmospheric scales of motion, from synoptic (>2000 km) to mesoscale (2-2000 km) to microscale (<2 km). A series of one-way nested simulations are performed using original ARPS and ARPS-CANOPY, with horizontal grid spacing ranging from 4 km in the outermost domain to 30 m in the innermost domain (Fig. 2, Table 1). Initial and lateral boundary conditions for the outermost domain are obtained from the 12-km North American Mesoscale (NAM) model (Rogers et al., 2009). As shown in Fig. 2, the outermost domain (D1) covers the northeastern United

Table 1. Nested domain summary. In the model column, “Ao” and “Ac” refer to original ARPS and ARPS-CANOPY, respectively. [The order of dimensions in the grid and domain size columns is x, y, z.](#)



Domain	Grid size	Domain size [km]	Dx, Dy [m]	Dz min [m]	Init. time [EDT]	Duration [h]	Model
D1	300x300 <u>300 x 300 x 50</u>	1200.0 x 1200.0 <u>x 20.0</u>	4000 <u>4000.0</u>	50.0	08:00	12	Ao
D2	200x200 <u>200 x 200 x 50</u>	266.6 x 266.6 <u>x 20.0</u>	1333 <u>1333.0</u>	25.0	08:00	12	Ao
D3	125x125 <u>125 x 125 x 50</u>	55.5 x 55.5 <u>x 20.0</u>	444 <u>444.0</u>	12.5	08:00	12	Ao
D4	250x250 <u>250 x 250 x 50</u>	22.5 x 22.5 <u>x 10.0</u>	90 <u>90.0</u>	2.0	10:00	10	Ac
D5	250x250 <u>250 x 250 x 80</u>	7.5 x 7.5 <u>x 10.0</u>	30 <u>30.0</u>	2.0	12:00	6	Ac

States, while the innermost domain (D5) covers only the area within about 4 km of the NJPB burn unit. A distinction needs to be made here between D1-D3, in which the original ARPS model is employed, and D4 and D5, in which ARPS-CANOPY is applied; note that the fire parameterization is only introduced in D5. Because of this one-way nesting strategy, D1-D3 simulates synoptic- to mesoscale processes and provides boundary conditions for D4, the domain with the canopy submodel but no fire sensible heat source, which in turn provides boundary conditions for D5, the domain with both the canopy submodel and fire sensible heat source.

The vegetation canopy is represented in ARPS-CANOPY as a height-varying A_p profile specified at each grid point. Whereas a meaningful estimation of A_p is challenging at even the scale of single tree stands, it has been demonstrated that LiDAR-derived canopy height profiles can be utilized to characterize the three-dimensional canopy structure (e.g., canopy bulk density, kgm^{-3}) at high horizontal and vertical resolutions on spatial scales $O(10 \text{ km})$ (Skowronski et al., 2011; Kiefer et al., 2014). Here, we have derived A_p on grids with 90- and 30-m (horizontal) and 2-m (vertical) grid spacing from previously acquired aerial LiDAR data (Skowronski et al., 2020; Warner et al., 2020) [D5 dataset shown in Fig. 3; D4 dataset not shown]. The A_p dataset provides ARPS-CANOPY with critical information about the horizontal and vertical variability of the forest overstory vegetation (Figs. 3a-c). The resulting canopy profiles at the nearest ARPS-CANOPY grid points to the six flux towers are displayed in Figs. 3d-i.

The instrumentation deployed during the field experiment (fire-tracker array and flux towers) allows the evolution of the prescribed fire to be described in detail in the model. Data from the fire-tracker array was processed, yielding contoured maps of fire front position every 30 s (Eric Mueller, personal communication). Using GIS software, the period of fire presence within each D5 grid cell was determined. The heat source was applied in a particular burn-unit grid cell if the fire front was located anywhere within the grid cell. The heat source was applied steadily during the grid-cell fire window, with the heat source ramped up and down at the beginning and end of the fire window (total ramp-up/ramp-down period set to 10% of the fire window). A summary of the fire sensible heat source is provided in Fig. 4, beginning with a depiction of the heat source methods (and their vertical distributions) in Fig. 4a. Fireline positions at four times, corresponding to the times of peak 1-min

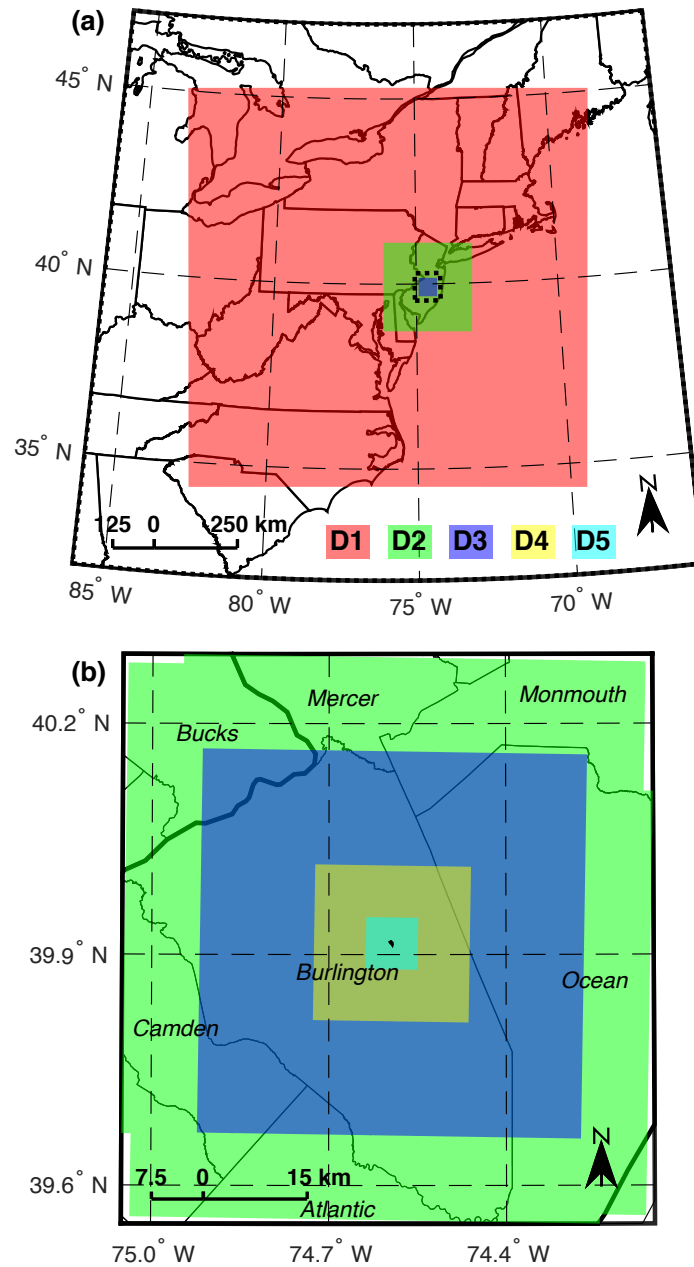


Figure 2. Model nesting strategy overview, at two zoom levels: (a) outer zoom with original ARPS domains D1-D3, (b) inner zoom with original ARPS domains D2-D3 and ARPS-CANOPY domains D4-D5. The dashed rectangle in (a) denotes the outline of the area displayed in (b). See Table 1 for details of each domain. Burn unit denoted by small polygon in center of domain D5. For reference, counties are labeled in (b).

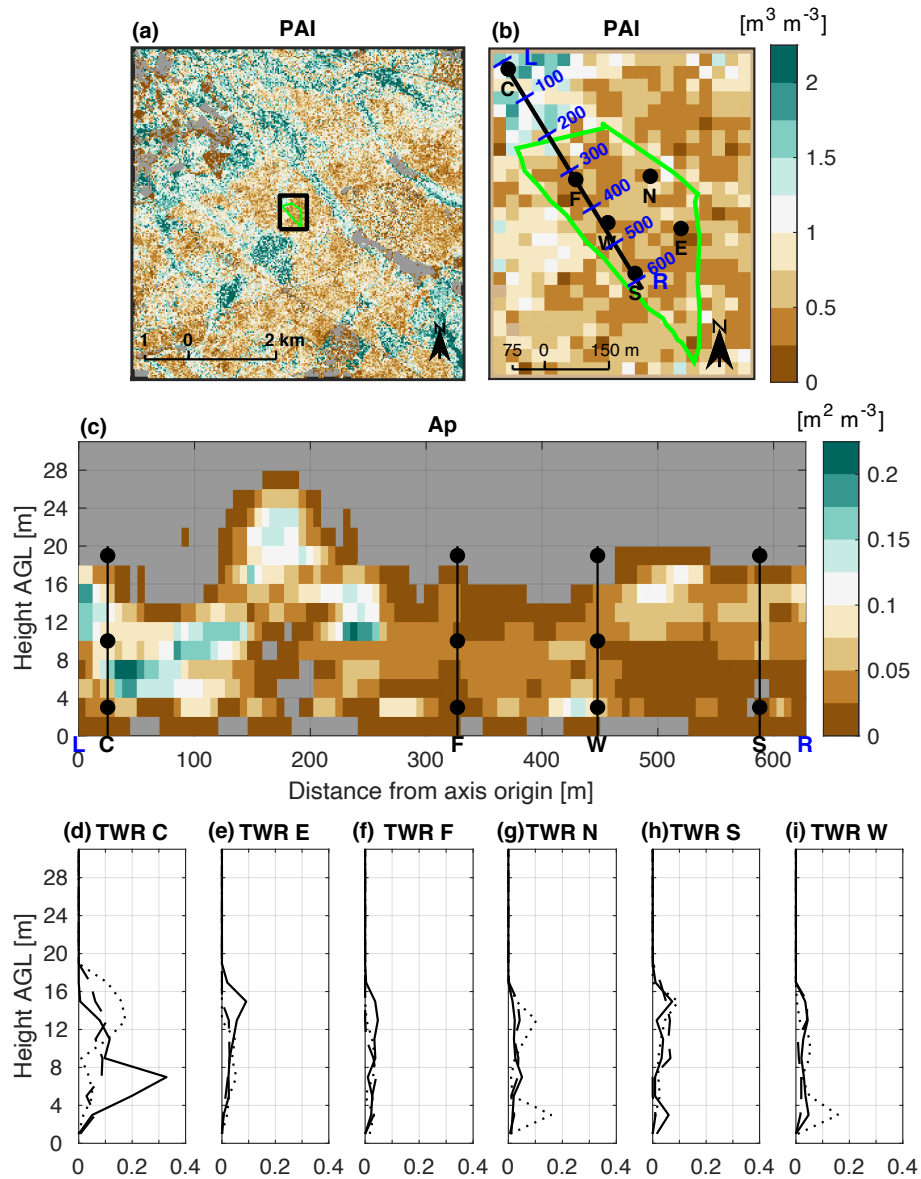


Figure 3. Summary of plant area density (Ap) dataset implemented in ARPS-CANOPY domain D5, derived from previously acquired aerial LiDAR data (Skowronski et al., 2020; Warner et al., 2020). The top panels depict horizontal plan views of vertically-integrated Ap [i.e., plant area index (PAI)] at two zoom levels: (a) across domain D5, and (b) within a 450-m x 450-m area centered on the burn unit; the black rectangle in (a) denotes the outline of the area displayed in (b). The middle panel (c) depicts a vertical cross section of Ap along the axis denoted by the black line in (b), with flux towers and sonic anemometer heights indicated with vertical lines and black circles, respectively. The bottom panels (d-i) depict vertical profiles of Ap ($\text{m}^2 \text{m}^{-3}$) at the three model grid points nearest to each of the six flux towers; tower locations are depicted in (b). Gray shading in (a-c) denotes $\text{Ap}=0$.

mean turbulent sensible heat flux at towers TWR_S , TWR_E , TWR_F , and TWR_N are depicted in Figs. 4b-e, along with the 1-min mean heat fluxes measured at all six flux towers. The time evolution of the model fire heat source area is depicted in Fig. 4f. Similar to the LiDAR-based Ap dataset, the fire-related data provides ARPS-CANOPY with important information about the spatiotemporal variability of the fire sensible heat source.

265 The study focuses on the D5 simulations and takes place in two phases: model assessment and model sensitivity. In the model assessment phase, analysis is limited to a control simulation ($HFP_{2.4L}$; Fig. 4a, Table 2) in which the fire sensible heat source is represented as an exponentially-decaying turbulent sensible heat flux profile (method 1a, HFP). For reference, case names in this study consist of the heat source method acronym (e.g., HFP) and an alphanumeric subscript with the number denoting the heat source magnitude (e.g., 2.4 for 2.4 kWm^{-2}), and the letter denoting the e-folding extinction depth [“L” for low (4.4
270 m), “H” for high (18 m); HFP only]. The purpose of this phase is to assess the ability of ARPS-CANOPY to reproduce the background and fire-perturbed atmosphere during the prescribed fire, as sampled by the six flux towers. Method 1a was chosen due to its successful application in a 2011 prescribed fire study in the NJPB (Kiefer et al., 2014; Heilman et al., 2015; Charney et al., 2019). Consistent with Kiefer et al. (2014), the heat flux magnitude implemented in the control simulation (2.4 kWm^{-2}) is 10% of the observed peak 1-min mean turbulent sensible heat flux, averaged across the in-situ towers (24 kWm^{-2}). This
275 ensures that the heat released from the meters-wide fireline and measured at the flux towers (i.e., single points) is diluted before it is implemented in each 30-m x 30-m burn-unit grid cell. An e-folding extinction depth of 4.4 m (“L” in case name subscript) is utilized, corresponding to approximately 25% of the average canopy height in the burn unit (18 m). The 4.4-m e-folding extinction depth is based on the assumption that the interception and break-down of small-scale turbulent eddies by the forest overstory vegetation will yield negligible fire-induced subgrid-scale turbulent sensible heat flux at canopy top. This e-folding
280 extinction depth is considerably shallower than the 41-m depth used in Kiefer et al. (2014); however, the depth in that study was chosen based on sensitivity experiments and had no physical basis. Sun et al. (2006) suggested that the e-folding extinction depth may be proportional to fire intensity: the choice of a 4.4-m e-folding extinction depth in this study is consistent with the lower-intensity nature of the 2019 NJPB prescribed fire (peak 1-min mean turbulent sensible heat flux: 26.7 kWm^{-2} vs. 155.5 kWm^{-2} during the 2011 NJPB fire).

285 In the model sensitivity phase, a series of sensitivity experiments (including the control simulation, $HFP_{2.4L}$) are conducted in an effort to explore the sensitivity of model-observation agreement to (i) the method used to represent the fire sensible heat source in the model [turbulent sensible heat flux (method 1a, HFP; method 1b, SHF) and soil temperature perturbation (method 2, HP)]; and (ii) HFP parameters [surface value and e-folding extinction depth] (Fig. 4a, Table 2). In the set of HFP simulations, the surface value of turbulent sensible heat flux is varied between 2.4 and 24 kWm^{-2} ; and the e-folding extinction depth (a
290 measure of how sharply the heat flux decays with height) is varied between 4.4 and 18 m; the larger the e-folding depth, the more gradually the heat flux decays away from the surface. For the SHF simulation (SHF_{24}), a 24 kWm^{-2} surface sensible heat flux is implemented, and for the HP simulation (HP_{400}), the soil temperature perturbation is set to 400 K, corresponding to the 68-sensor–median peak fire-tracker temperature deviation from pre-fire conditions.

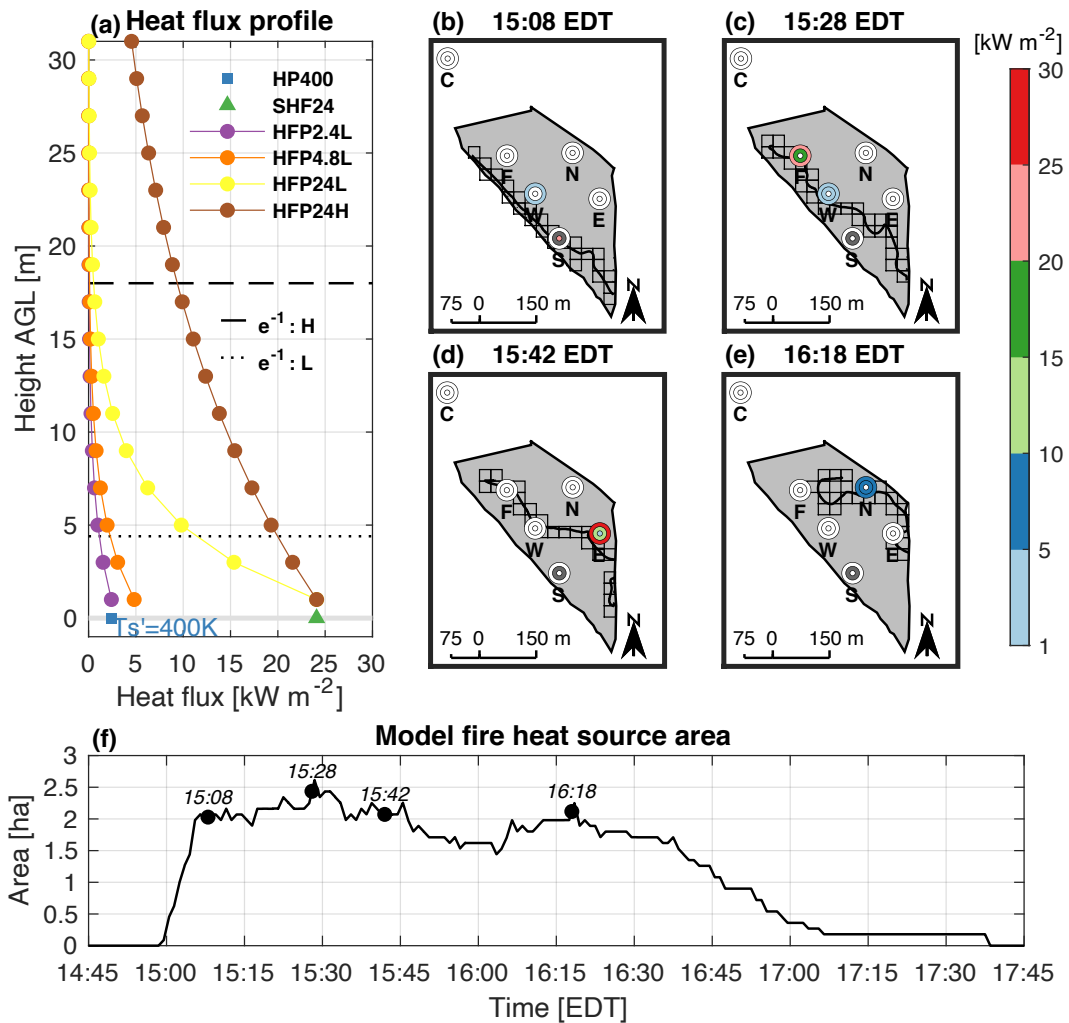


Figure 4. Summary of fire sensible heat source implementation in ARPS-CANOPY domain D5. Panel (a) depicts vertical profiles of ARPS-CANOPY instantaneous turbulent sensible heat flux, with the turbulent sensible heat flux method indicated by either a solid line with filled circles [method 1a, heat flux profile (HFP)] or a green triangle positioned at the surface [method 1b, surface heat flux (SHF)], and the hotplate method (method 2, HP) is indicated with a blue square positioned at the surface [with 400 K soil temperature perturbation (T'_s)]; panels (b-e) depict fire-tracker-derived fireline position (thick line) and tower-observed 1-min mean turbulent sensible heat flux (concentric circles), at the time of peak heat flux at (b) TWR_S , (c) TWR_F , (d) TWR_E , and (e) TWR_N , with ARPS-CANOPY grid cells subject to the sensible heat source overlaid; panel (f) depicts the time series of ARPS-CANOPY total heat source area, smoothed with a 1-min moving average filter. The dotted and dashed horizontal lines in panel (a) depict e -folding extinction depths of 4.4 m (“Low”) and 18 m (“High”), respectively. For the concentric circles in panels (b)-(e): instrument height increases with distance from center, white shading is used to denote values less than 1 kW m^{-2} , and dark gray shading is used to denote the absence of middle tower level measurements at TWR_S .

Table 2. Numerical experiment summary for all D5 simulations. Two primary methods are used to represent the fire sensible heat source: turbulent sensible heat flux [either a heat flux profile (method 1a, HFP) or a surface heat flux (method 1b, SHF)], and hotplate (method 2, HP). The no-fire (NF) simulation is used as the background for computing perturbations and as a reference simulation for the model sensitivity phase of the study, and simulation HFP_{2.4L} is defined as the control simulation. Fire sensible heat source magnitude units are kWm^{-2} , except for the HP method, wherein units are K. The HFP e-folding extinction depth is either 4.4 m (“Low”) or 18 m (“High”).

Simulation	Method	Magnitude	HFP e-folding depth
HFP _{2.4L}	HFP	2.4	4.4 (L)
HFP _{4.8L}	HFP	4.8	4.4 (L)
HFP _{24L}	HFP	24.0	4.4 (L)
HFP _{24H}	HFP	24.0	18.0 (H)
SHF ₂₄	SHF	24.0	—
HP ₄₀₀	HP	400	—
NF ₀	NF	0	—

4.3 Analysis methodology

295 In this study, ARPS-CANOPY simulations are assessed using sonic anemometer measurements of the background and fire-
 perturbed atmosphere. Although the tower thermocouple and SODAR data have been analyzed (not shown), the sonic anemome-
 300 ter data are the exclusive focus of this study since unlike the former data sources, sonic anemometer measurements provide
 us the ability to evaluate model-simulated variances (i.e., TKE) as well as mean quantities. For observational data and model
 output, 1-min means are computed from instantaneous time series (10 Hz sampling frequency for observations; 1 Hz output
 frequency for model). For observations, quality control and assurance is performed in a four-step procedure. First, tower data
 are subjected to a despiking and filtering routine to remove erroneous data and values exceeding six standard deviations from
 running 1-h means (Heilman et al., 2015). Second, a double-rotation tilt-correction routine is applied to the vertical wind-
 velocity component data to correct the raw data for systematic errors originating from errors in the physical leveling of sonic
 305 anemometers in the field (Wilczak et al., 2001). Third, means computed from fewer than 90% of possible instantaneous obser-
 vations (i.e., fewer than 540/600 values) are masked. Finally, manual quality control is performed, resulting in the masking of
 lower tower level temperature at TWR_C and TWR_F , and upper tower level wind direction at TWR_F .

In the model assessment phase, box-whisker plot vertical profiles, time series, vertical cross-sections, and three-dimensional
 surface plots of 1-min mean temperature, wind speed, wind direction, vertical velocity, and TKE, are compared between the
 control simulation (HFP_{2.4L}) and observations at all six towers. The multi-dimensional approach taken in this study phase
 310 allows for a more comprehensive assessment of simulated and observed variables than point comparisons alone. The approach
 provides helpful context for the assessment of differences between the model simulation and observations at the individual

tower locations; for example, contoured plots can help identify spatial displacement errors (i.e., correct magnitude but incorrect location; Brown et al., 2011). As in Kiefer et al. (2014), the assessment of the control simulation in this phase is qualitative. However, the multi-dimensional nature of the analysis and greater number of flux towers in this study distinguishes this ARPS-
 315 CANOPY assessment from that of Kiefer et al. (2014).

In the model sensitivity phase, box-whisker plot vertical profiles and time series of 1-min mean temperature, wind speed, vertical velocity, and TKE, from all D5 simulations (Table 2), are compared to observations at TWR_W. This tower is chosen for the model sensitivity analysis as it is one of three towers (TWR_E, TWR_F, and TWR_W) where the control simulation was found to considerably underestimate TKE at the upper tower level (Sect. 5.1); evaluation statistics at the other towers show similar model
 320 sensitivity to that at TWR_W (cf. Tables 3-5 to Tables S1-S3 in supplemental material). The focus on TKE prediction is justified by the important role that turbulence plays in affecting fire behavior (Banerjee et al., 2020) and in controlling fire effects such as tree mortality (e.g., Kavanagh et al., 2010) and smoke dispersion (e.g., Charney et al., 2019). For the model sensitivity analysis, wind direction is omitted to enable larger figure panels that can accommodate the simultaneous plotting of all seven sensitivity tests (Table 2). The evaluation of the D5 simulations in this phase is part qualitative and part quantitative. First, a
 325 qualitative evaluation of box-whisker plot vertical profiles and time series is conducted. Second, a quantitative evaluation of the model simulations is performed using three statistics: mean difference, expressed as a percentage of the range of observed values,

$$MD = \frac{\frac{1}{n} \sum_{i=1}^n (M_i - O_i)}{O_{max} - O_{min}} \quad (4)$$

root-mean-square difference, also expressed as a percentage of the range of observed values,

$$330 \quad RMSD = \frac{\sqrt{\frac{1}{n} \sum_{i=1}^n (M_i - O_i)^2}}{O_{max} - O_{min}} \quad (5)$$

and index of agreement (Willmott, 1981),

$$IA = 1 - \left[\frac{\sum_{i=1}^n (M_i - O_i)^2}{\sum_{i=1}^n (|M_i - \bar{O}| + |O_i - \bar{O}|)^2} \right] \quad (6)$$

where O is the observed time series, M is the model-simulated time series, n is the number of values, $||$ indicates the absolute value, and max , min , and $\bar{()}$ indicates the time series maximum, minimum, and mean, respectively. The normalization of
 335 MD and RMSD using the range of observed values allows for a direct comparison of statistics among variables with different units. For reference, an IA value of 1 indicates perfect agreement between model simulation and observation, and a value of 0 indicates complete disagreement. This set of statistics allows for a quantitative evaluation of systematic (MD and IA) and random (RMSD and IA) model error, and includes statistics with varying degrees of outlier sensitivity (more sensitive: RMSD and IA, due to the use of squared differences; less sensitive: MD).

340 For both study phases, box-whisker plot vertical profiles and time series are constructed from 40 1-min mean values, 20
before and 20 after the time of peak turbulent sensible heat flux at each tower; model evaluation statistics are computed over the
same 40-min period. The choice of a 40-min analysis period is a compromise between two goals: the time period should be long
enough to include the pre- and post-fire front passage periods, and yield a large enough sample size for meaningful statistics,
but short enough that the fire frontal passage period is not overly diluted. For the vertical cross-sections and three-dimensional
345 surface plots presented in the model assessment phase, plots are constructed from the 1-min mean values corresponding to the
time of peak turbulent sensible heat flux at each tower. It is important to state that the purpose in comparing plots of 1-min mean
values between the model simulations and tower observations is to judge overall model performance. There is no expectation
here that the model simulation and observations will agree 100% on a minute-to-minute basis. At spatial scales on the order
of 100 m or smaller, turbulence limits the accuracy of deterministic predictions, necessitating the use of model ensembles and
350 probabilistic verification techniques (Weigel, 2011; Coen, 2018; Chow et al., 2019). However, the computational expense of
running operational model ensembles in real (or near-real) time at such small spatiotemporal scales justifies this assessment of
deterministic model predictions.

5 Results and Discussion

5.1 Model Assessment

355 Examination of the control simulation (HFP_{2,4L}) begins with an assessment of box-whisker plot vertical profiles of simulated
and observed temperature, wind speed, wind direction, vertical velocity, and TKE, at each tower (Fig. 5). This assessment
centers on three questions regarding model – observation agreement: (1) Does the model capture the vertical variability sampled
by the lower, middle, and upper tower level sonic anemometers? (2) Does the model capture the range of values observed during
the 40-min analysis window? (3) Which variable(s) does the model simulate with highest fidelity to observations and which
360 variable(s) does it simulate with lowest fidelity? Regarding (1), the model is able to generally reproduce the observed vertical
variability for all five variables, at all six towers. The model depicts a statically unstable atmosphere above the fire with light
southerly winds increasing in magnitude with height, and increasing vertical velocity magnitude and turbulence intensity with
height through the overstory vegetation layer. Regarding (2), while the model generally captures the range of values during
the 40-min window, there is a tendency to underestimate values on the right side of the box-whisker plot. Consistent with
365 observations, the range of values simulated during the 40-min window generally decreases with height for temperature and
wind direction, and increases with height for wind speed, vertical velocity, and TKE. Regarding (3), of the five variables,
wind speed and vertical velocity appear to be simulated with highest fidelity, and temperature and TKE simulated with lowest
fidelity. The model captures the vertical wind speed profile shape, including the positive wind shear between the middle and
upper tower level sonic anemometers, and captures the increase in vertical velocity magnitude with height. However, the model
370 exhibits a negative temperature bias, even outside the burn unit at TWR_C, and the model considerably underestimates TKE at
the upper tower level, in particular at towers TWR_E, TWR_F, and TWR_W.

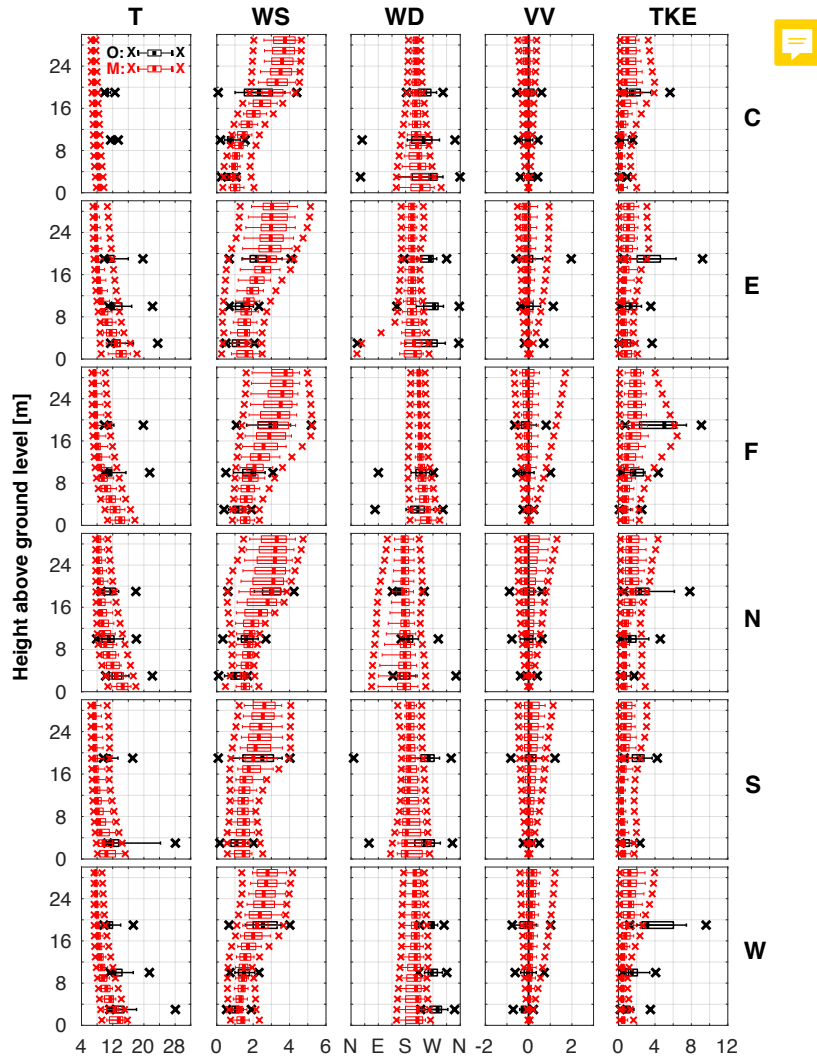


Figure 5. Box-whisker plot vertical profiles of 1-min mean temperature (T; $^{\circ}\text{C}$), wind speed (WS; ms^{-1}), wind direction (WD; deg), vertical velocity (VV; ms^{-1}), and turbulent kinetic energy (TKE; m^2s^{-2}), for control simulation (HFP_{2.4L}), at all towers (labeled along right axis). Box-whisker plots are constructed from 40 1-min mean values, ± 20 min from the time of peak 1-min mean observed heat flux, except for TWR_C wherein 15:20 EDT is chosen arbitrarily: TWR_E, 15:42 EDT; TWR_F, 15:28 EDT; TWR_N, 16:20 EDT; TWR_S, 15:08 EDT; TWR_W, 15:38 EDT. For each box-whisker plot, the thick line denotes the median, the boxes extend outward to the 25th and 75th percentiles, the whiskers extend outward to the 10th and 90th percentiles, and the “x” symbols indicate the minimum and maximum values. Tower observations (O) and model-simulated values (M) are indicated by black and red colors, respectively (see legend in upper-left panel). Vertical black line in VV panels corresponds to zero vertical velocity. The x-axis in the WD column is labeled as follows: N (0/360), E (90), S (180), W(270). Manual quality control of tower observations results in the exclusion of three data points: lower tower level T at TWR_C and TWR_F, and upper tower level WD at TWR_F.

Proceeding to the time series of simulated and observed variables (Fig. 6), the focus of the analysis shifts to an assessment of temporal variability and overall agreement in the timing of fire-induced variations (relative to the time of peak 1-min mean observed turbulent sensible heat flux). In examining Fig. 6, it is critical to keep in mind that the timing and duration of enhanced values of sensible heat flux (“fire window”) in each ARPS-CANOPY grid cell is informed by the fire-tracker data, not the flux tower data. The fire window within each model grid cell is generally longer than the fire window observed at the towers, and the model and tower-observed fire windows may begin and end at different times. Examining Fig. 6, the model is found to generally capture the temporal variability and range of wind speed, wind direction, and to a lesser degree vertical velocity, but not temperature and TKE. For the latter two variables, the magnitudes are considerably underestimated, and the timing of the fire-induced peak in simulated and observed variables does not generally agree. It is worth noting that the relative timing of the peaks in *observed* turbulent sensible heat flux, temperature, and TKE differ from tower to tower. For example, at TWR_N peak temperature occurs approximately 2.5 min *after* the time of peak turbulent sensible heat flux (vertical black line), whereas peak TKE occurs about 10 min *before* the time of peak turbulent sensible heat flux. At TWR_W peak temperature and TKE occur simultaneously about 2.5 min *before* the time of peak turbulent sensible heat flux (vertical black line). The differences in timing of peaks among different flux towers and different variables underscores some of the challenges of deterministic model assessment at the microscale.

To provide context for the assessment of ARPS-CANOPY at the flux towers, vertical cross-sections are presented in Fig. 7, along the same northwest–southeast oriented axis used earlier for the Ap vertical cross-section (Fig. 3b-c), and 3D surface plots are presented in Fig. 8. These multi-dimensional plots are intended to help identify displacement errors that can result when the model correctly simulates the magnitude, but not the location, of fire-induced perturbations. Errors in both magnitude and location complicate the model assessment process (see Fig. 6.3 in Brown et al., 2011). Analysis begins with the vertical cross-sections in Fig. 7: from northwest to southeast, the approximately 600-m-long cross-section axis intersects TWR_C, TWR_F, TWR_W, and TWR_S. Examining Fig. 7 as a whole, evidence of displacement error is found in most panels, but in particular the temperature, wind speed, and TKE panels. An example of spatial displacement error is seen in the left panel of the second row (see wind speed at TWR_C): observed wind speed is less than 0.5 ms⁻¹ and simulated wind speed is 1-2 ms⁻¹; however, values around 0.5 ms⁻¹ are simulated about 150 m southeast of TWR_C (a distance of about five grid cells). As a further example, in the bottom center and bottom right panels (see TKE at TWR_F and TWR_W), maxima are simulated by the model adjacent to but not colocated with the towers. Although the simulated maxima are still less than what is observed at the towers, the values are 1-2 m²s⁻² higher than the simulated values interpolated to the tower locations (Fig. 5). One-dimensional analyses like vertical profiles and time series (Figs. 5-6), although certainly useful for model assessment purposes, fail to fully characterize model-observation agreement due to their inherent inability to detect spatial displacement error.

Assessment of the control simulation concludes with an examination of horizontal slices of 1-min mean variables at the time of peak heat flux at TWR_W (15:38 EDT), rendered in 3D space (Fig. 8). Comparing the fireline position, derived from the fire-tracker array, to the positions of simulated variable maxima and minima, enhanced values of temperature (Fig. 8a), wind speed (Fig. 8b), and to a lesser degree, TKE (Fig. 8e), are found downwind (northeast) of the fireline at the 3 and 9 m model grid levels. For the other variables, and at the 19 m model grid level for all variables, it is difficult to discern any relationship

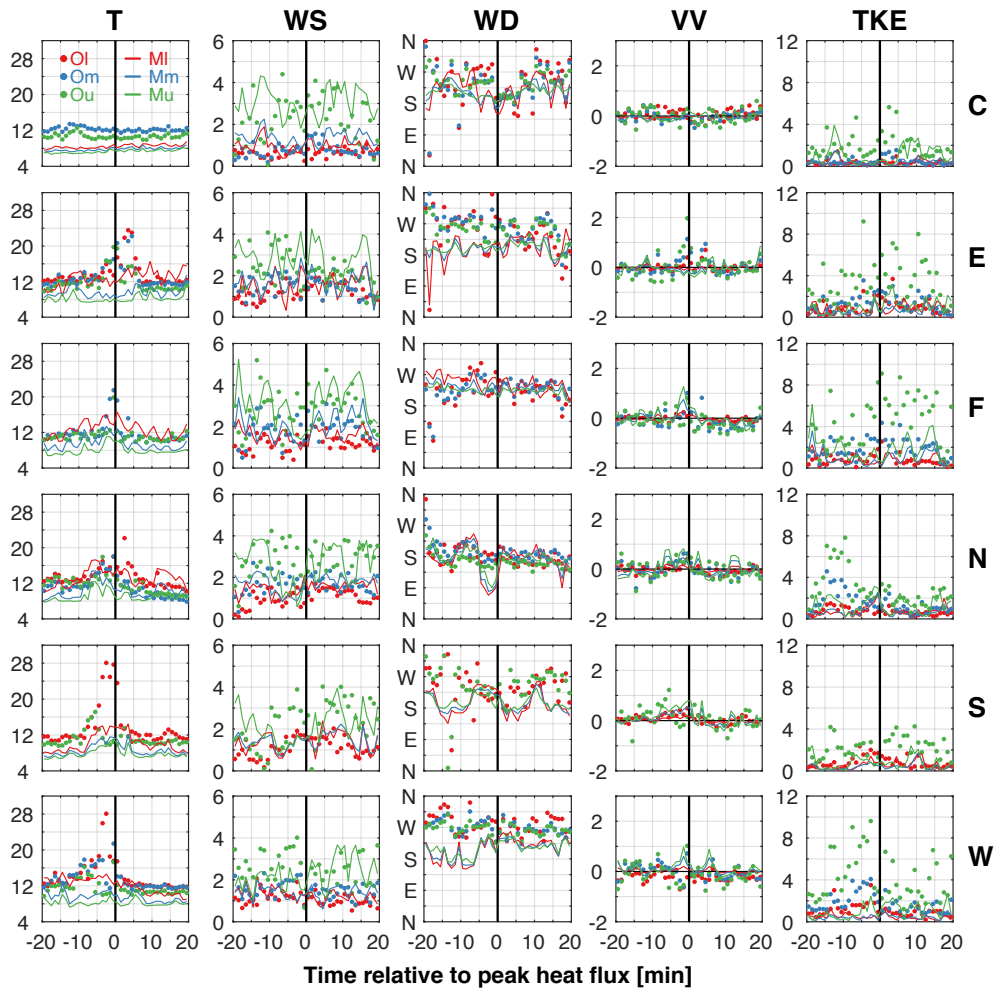


Figure 6. Time series of 1-min mean temperature (T; $^{\circ}\text{C}$), wind speed (WS; ms^{-1}), wind direction (WD; deg), vertical velocity (VV; ms^{-1}), and turbulent kinetic energy (TKE; m^2s^{-2}), for control simulation (HFP_{2,4L}), at all towers (labeled along right axis). Time series are constructed from 40 1-min mean values, ± 20 min from the time of peak 1-min mean observed heat flux, except for TWR_C wherein 15:20 EDT is chosen arbitrarily: TWR_E, 15:42 EDT; TWR_F, 15:28 EDT; TWR_N, 16:20 EDT; TWR_S, 15:08 EDT; TWR_W, 15:38 EDT. Observed (O) and model (M)-simulated values (vertically interpolated to sonic anemometer levels) are indicated by filled circles and lines, respectively, and lower (l), middle (m), and upper (u) tower levels are indicated with red, blue, and green colors, respectively (see legend in top-left panel). Vertical black line in each panel indicates time of peak 1-min mean observed heat flux; horizontal black line in VV panels corresponds to zero vertical velocity. The y-axis in the WD column is labeled as follows: N (0/360), E (90), S (180), W(270). Manual quality control of tower observations results in the exclusion of three data points: lower tower level T at TWR_C and TWR_F, and upper tower level WD at TWR_F.

between the simulated variables and the fireline. Linear structures in the wind speed (Fig. 8b), vertical velocity (Fig. 8d), and TKE (Fig. 8e) panels, most noticeable at 19 m AGL, are suggestive of planetary boundary layer structures aligned with the

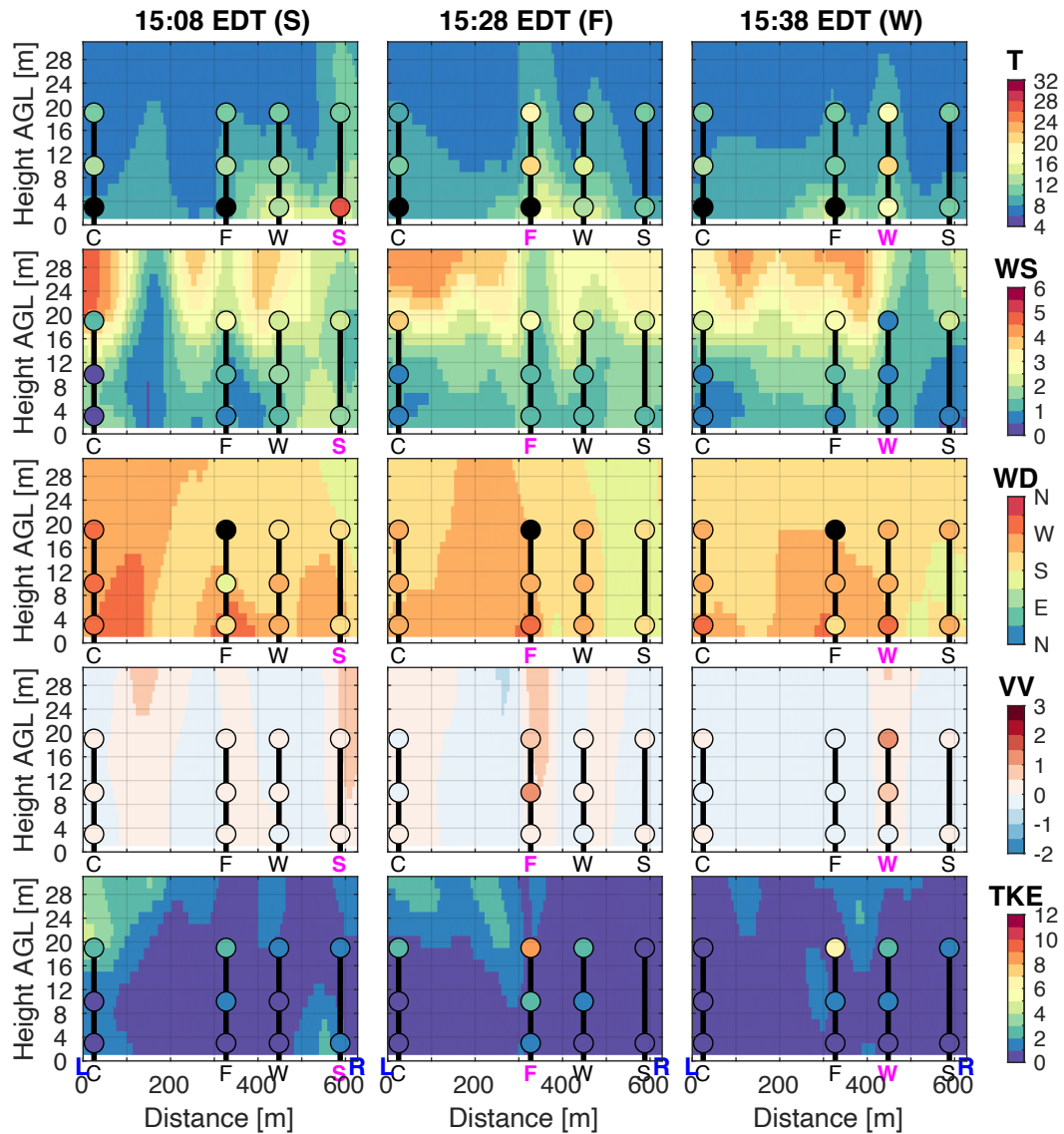


Figure 7. Vertical cross-sections of 1-min mean temperature (T ; $^{\circ}\text{C}$), wind speed (WS ; ms^{-1}), wind direction (WD ; deg), vertical velocity (VV ; ms^{-1}), and turbulent kinetic energy (TKE ; m^2s^{-2}), for control simulation ($\text{HFP}_{2.4\text{L}}$), along the axis shown in Fig. 3b. Times displayed correspond (from left to right) to the time of peak turbulent sensible heat flux observed at the three in-situ towers intersected by the cross-section axis, TWR_S (15:08 EDT), TWR_F (15:28 EDT), and TWR_W (15:38 EDT); corresponding tower initial highlighted with magenta font. Tower observations and model-simulated values are indicated by filled circles and shading, respectively. Color bar in WD row is labeled as follows: N (0/360), E (90), S (180), W (270). Manual quality control of tower observations results in the exclusion of three data points: lower tower level T at TWR_C and TWR_F , and upper tower level WD at TWR_F .

mean wind (oriented southwest-northeast). Regarding TKE specifically, Fig. 8e reveals 1-min mean simulated TKE values of
410 $5\text{-}7\text{ m}^2\text{s}^{-2}$ at 19 m AGL within and adjacent to the burn unit at a moment when observed upper tower level TKE values at the
five in-situ towers are between 1.8 and $9.2\text{ m}^2\text{s}^{-2}$. Although this comparison is encouraging, it is important to note that this
does not necessarily imply that the model is correctly capturing the processes yielding the observed TKE values at the towers.
What Figs. 5-8 do suggest is that the model is reproducing the overall background and fire-perturbed atmosphere depicted by
the tower observations. The shortcoming in accurately simulating upper tower level TKE values at TWR_E , TWR_F , and TWR_W
415 motivates the model sensitivity tests that follow.

5.2 Model Sensitivity

In this study phase, box-whisker plot vertical profiles and time series of simulated temperature, wind speed, vertical velocity,
and TKE from all seven D5 simulations are examined at TWR_W (Figs. 9-10), along with model evaluation statistics (Tables
3-5). Recall from Sect. 4.3 that this tower is chosen for the model sensitivity analysis as it is one of three towers (TWR_E ,
420 TWR_F , and TWR_W) where the control simulation ($\text{HFP}_{2.4L}$) was found to considerably underestimate TKE at the upper tower
level (Figs 5-8). The reader is reminded that this evaluation of simulations with different fire sensible heat source methods
is intended to ultimately provide guidance for improving the representation of the sensible heat released from low-intensity
prescribed fires in mesoscale models. The relevance of temperature, wind speed, and vertical velocity to predictions of, for
example, smoke dispersion and fire behavior, motivates the examination of these variables in addition to TKE.

425 Beginning the model sensitivity evaluation with box-whisker plot vertical profiles of temperature (Fig. 9a), all simulations
correctly depict decreasing median and range of temperature, with height. However, a broad range of lower tower level tem-
peratures (and consequently, buoyancy) during the 40-m analysis period is found among the simulations. The NF_0 , $\text{HFP}_{2.4L}$,
 $\text{HFP}_{4.8L}$, and HP_{400} simulations yield temperatures in relatively narrow ranges of $8.4\text{-}10.8$, $9.2\text{-}15.8$, $8.9\text{-}20.2$, and $9.2\text{-}19.4$
 $^\circ\text{C}$, respectively, whereas the $\text{HFP}_{2.4L}$ and SHF_{24} simulations yield temperatures in the much broader ranges of $9.3\text{-}49.4$ $^\circ\text{C}$
430 and $9.8\text{-}63.8$ $^\circ\text{C}$, respectively. The simulation that most closely agrees with the observed $11.3 - 28.1$ $^\circ\text{C}$ range at the lower
tower level is $\text{HFP}_{2.4H}$, with a range of $9.1\text{-}24.2$ $^\circ\text{C}$. Proceeding to wind speed (Fig. 9b), the observed vertical variation in
wind speed median and range is reproduced in all simulations, with the important exception of select simulations at the lower
tower level. In three of the simulations ($\text{HFP}_{2.4L}$, $\text{HFP}_{2.4H}$, and SHF_{24}), lower tower level wind speeds are overestimated by $1\text{-}2$
 ms^{-1} . It appears that excessive near-surface wind speed results when model simulations are forced by a turbulent sensible heat
435 flux corresponding to 100% of the peak 1-min mean observed heat flux averaged across the flux towers inside the burn unit,
regardless of how the heat flux is distributed vertically.

Proceeding to vertical velocity (Fig. 9c), it appears that all simulations capture the observed increase in vertical velocity
median and range with height, including the simulations with no or weak sensible heat sources (NF_0 , $\text{HFP}_{2.4L}$, $\text{HFP}_{4.8L}$, and
 HP_{400}), yielding maximum positive values of about 0.2 , 0.7 , and 1 ms^{-1} at the lower, middle, and upper tower levels, respec-
440 tively. Although the model correctly simulates median vertical velocity of about 0 and -0.1 ms^{-1} at the middle and upper tower
levels, respectively, none of the simulations capture the median vertical velocity of about -0.25 ms^{-1} at the lower tower level,
or the maximum negative values of $-0.6\text{-} -0.75\text{ ms}^{-1}$ at all three levels. The inability of the model to adequately simulate

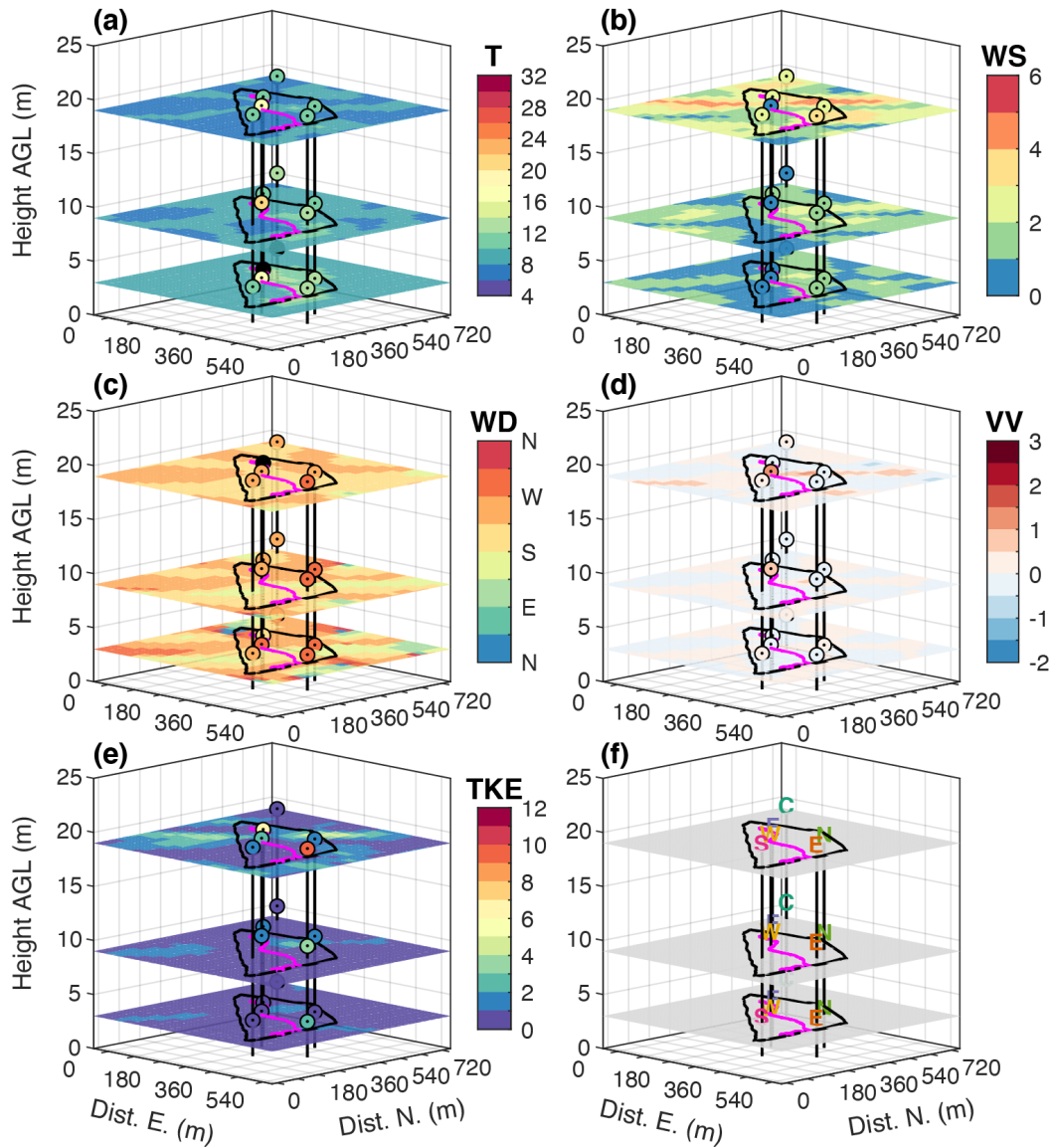


Figure 8. Horizontal slices of 1-min mean temperature (T ; $^{\circ}\text{C}$), wind speed (WS ; ms^{-1}), wind direction (WD ; deg), vertical velocity (VV ; ms^{-1}), and turbulent kinetic energy (TKE ; m^2s^{-2}), for control simulation ($\text{HFP}_{2,4L}$), at 3, 9, and 19 m model grid levels. All panels correspond to the time of peak turbulent sensible heat flux observed at TWR_W (15:38 EDT). Observed and model-simulated values are indicated by filled circles and shading, respectively. Magenta line inside burn unit is the fireline position derived from the fire-tracker array. See bottom-right reference panel (f) for tower names. Color bar in WD panel (c) is labeled as follows: N (0/360), E (90), S (180), W(270). Spacing between x- and y-axis tick marks is 90 m. Manual quality control of tower observations results in the exclusion of three data points: lower tower level T at TWR_C and TWR_F , and upper tower level WD at TWR_F (denoted by black circles).

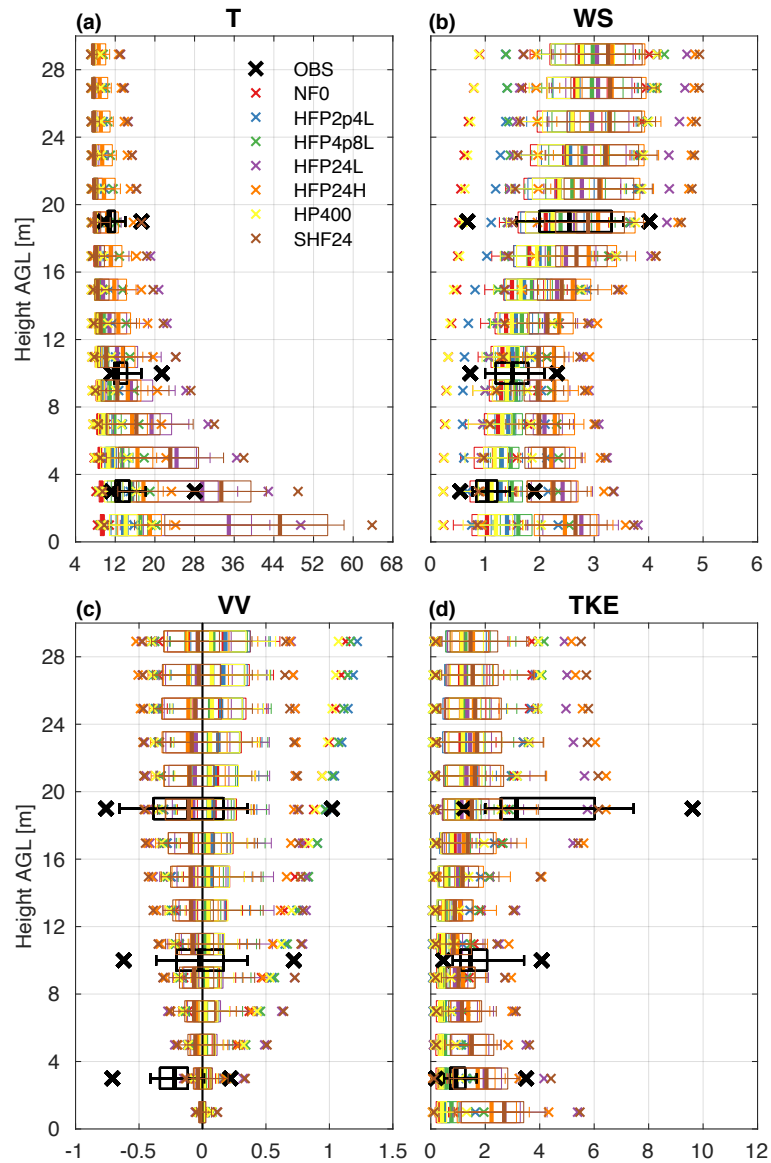


Figure 9. Box-whisker plot vertical profiles of 1-min mean temperature (T ; $^{\circ}\text{C}$), wind speed (WS ; ms^{-1}), vertical velocity (VV ; ms^{-1}), and turbulent kinetic energy (TKE ; m^2s^{-2}), for all D5 simulations, at TWR_w . Box-whisker plots are constructed from 40 1-min mean values, ± 20 min from the time of peak 1-min mean observed heat flux: 15:38 EDT. For each box-whisker plot, the thick line denotes the median, the boxes extend outward to the 25th and 75th percentiles, the whiskers extend outward to the 10th and 90th percentiles, and the “x” symbols indicate the minimum and maximum values. See legend in (a) for symbol color correspondence to tower observations and model simulations. Vertical black line in VV panel (c) corresponds to zero vertical velocity.

negative vertical velocity is also apparent in Fig. 5, particularly at TWR_N and TWR_S , in addition to the aforementioned model deficiency at TWR_W . The negative vertical velocity observed at these towers may be evidence of downdrafts directly behind the fire front, identified previously in Heilman et al. (2015).

Finally, examination of TKE (Fig. 9d) reveals that although the observed vertical variation of TKE median and range with height is generally reproduced among the seven simulations, there is considerable sensitivity of TKE to the choice of fire sensible heat source method and heat flux profile parameters, especially at the upper tower level. At this level, the peak simulated TKE is $\sim 6 \text{ m}^2\text{s}^{-2}$ in HFP_{24L}, HFP_{24H}, and SHF₂₄, but less than $3 \text{ m}^2\text{s}^{-2}$ in the other simulations. Although none of the simulations achieve the observed peak of $\sim 9.5 \text{ m}^2\text{s}^{-2}$, and the peak simulated values correspond approximately to the 75th percentile of observed values, it is clear that the simulations with 100% of the peak 1-min mean observed heat flux implemented best capture the TKE near or just above the top of the forest overstory. However, each of these three simulations (HFP_{24L}, HFP_{24H}, and SHF₂₄) overestimate TKE at the lower tower level, with the HFP_{24H} simulation closest to the observed values.

The model sensitivity exercise concludes with a qualitative evaluation of 1-min mean time series (Fig. 10) and a corresponding quantitative evaluation of model verification statistics: mean difference [Eq. (4)], root mean square difference [Eq. (5)], and index of agreement [Eq. (6)] (Tables 3-5). Beginning with the time series of temperature (Fig. 10), three aspects of model-observation agreement stand out: first, all simulations exhibit a cold bias that increases with height (see especially the post-fire period); second, the timing and duration of the temperature peak varies between the simulations, with the peak occurring earliest in simulations with the most intense heat source (e.g., HFP_{24L}); third, the two HFP simulations with 100% of the peak 1-min mean observed heat flux concentrated at or near the surface (HFP_{24L} and SHF₂₄) exhibit pronounced and persistent warm biases at the lower tower level. Proceeding to the wind speed panels in Fig. 10, the sensitivity to the sensible heat source method and parameters is shown to increase from the top of the tower to the bottom. At the upper tower level, all simulations depict similar temporal variability and magnitudes. However, at the middle and especially at the lower tower level, the seven simulations are found to cluster in two groups: the three simulations with 100% of the peak 1-min mean observed turbulent sensible heat flux implemented (HFP_{24L}, HFP_{24H}, and SHF₂₄) form a “strong” wind speed group (wind speed $\sim 1.5\text{-}3 \text{ ms}^{-1}$), with the other simulations clustered in a “weak” wind speed group (wind speed $\sim 0.5\text{-}2.5 \text{ ms}^{-1}$). It is worth noting that despite differences in the vertical distribution of the sensible heat source in the “strong” wind speed group, wind speed differs little between the three simulations.

Examining vertical velocity in Fig. 10, only modest sensitivity to the sensible heat source method and parameters is noted. The most noticeable aspect of the vertical velocity panels is the general lack of negative values at the lower tower level. Regardless of sensible heat source implementation, none of the simulations capture the magnitude of negative vertical velocity observed at TWR_W . This shortcoming may reflect the inability of the model to fully resolve, with 30-m horizontal grid spacing and 2-m vertical grid spacing, turbulent eddies with spacial scales on the order of meters or less. Finally, the TKE panels depict a similar relationship between the simulations as for wind speed. With decreasing height, the simulations with 100% of the peak 1-min mean observed turbulent sensible heat flux implemented (HFP_{24L}, HFP_{24H}, and SHF₂₄) increasingly cluster in one group, and all other simulations cluster in a second group. The time series of wind speed and TKE at the lower tower level

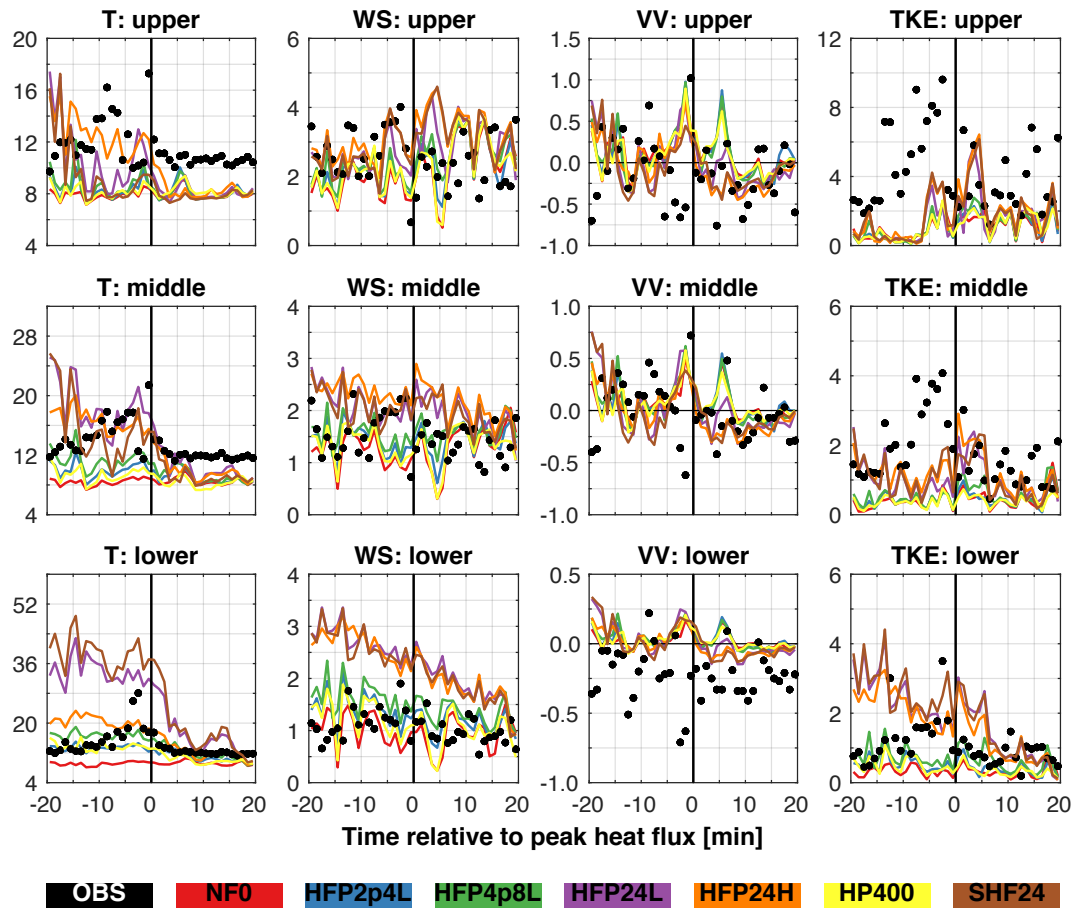


Figure 10. Time series of 1-min mean temperature (T; °C), wind speed (WS; ms^{-1}), vertical velocity (VV; ms^{-1}), and turbulent kinetic energy (TKE; m^2s^{-2}), for all D5 simulations, at TWR_w . Time series are constructed from 40 1-min mean values, ± 20 min from the time of peak 1-min mean observed heat flux: 15:38 EDT. Observed and model-simulated values (vertically interpolated to sonic anemometer levels) are indicated by filled circles and lines, respectively. Vertical black line in each panel indicates time of peak 1-min mean observed heat flux; horizontal black line in VV panels corresponds to zero vertical velocity. Note the difference in y-axis limits between rows. See legend at bottom for color correspondence to tower observations and model simulations.

480 closely correspond, with the first simulation group exhibiting persistently large TKE. It is important to note a critical model shortcoming: at the upper tower level, observed (simulated) TKE is persistently (briefly) large, relative to the background state; at the lower tower level, the opposite is found. Thus, simulations with 100% of the peak 1-min mean observed turbulent sensible heat flux implemented (HFP_{24L}, HFP_{24H}, and SHF₂₄) yield peak 1-min mean TKE values comparable to the observed values, but the persistence (or lack thereof) is not well captured. When longer time averages are computed, the simulated TKE values are generally largest at the lower tower level and smallest at the upper tower level.

Table 3. Mean difference (simulation – observation) for 1-min mean temperature (T; °C), wind speed (WS; ms⁻¹), vertical velocity (VV; ms⁻¹), and turbulent kinetic energy (TKE; m²s⁻²), expressed as a percentage of the range of observed values at TWR_w (bottom row), for all D5 simulations. Statistics are computed from 40 1-min mean values, ±20 min from the time of peak 1-min mean observed heat flux: 15:38 EDT. For each variable, the three values correspond to the lower, middle, and upper tower levels, respectively. See Table 2 for description of simulations.

Simulation	T	WS	VV	TKE
HFP _{2.4L}	-12.3, -39.0, -43.3	14.8, -4.6, -7.6	27.4, 6.1, 12.4	-18.3, -37.3, -38.5
HFP _{4.8L}	0.6, -31.2, -40.9	30.3, 3.9, -2.5	27.5, 5.9, 11.6	-12.1, -34.3, -37.0
HFP _{24L}	65.7, 10.7, -26.1	89.1, 32.7, 7.2	26.3, 2.4, 6.1	23.5, -21.2, -32.6
HFP _{24H}	12.9, -1.9, -13.3	84.7, 45.7, 17.5	24.2, -0.3, 4.2	17.0, -17.0, -29.0
HP ₄₀₀	-13.2, -45.2, -44.0	3.7, -10.9, -8.9	27.3, 5.5, 11.3	-19.9, -38.5, -38.0
SHF ₂₄	84.7, -7.6, -35.7	83.6, 30.8, 12.6	25.3, -0.3, 3.5	26.9, -20.0, -30.1
NF ₀	-30.0, -49.3, -47.1	-7.0, -14.2, -11.2	26.6, 5.3, 12.5	-22.7, -37.9, -38.4
<i>O_{max}-O_{min}</i>	16.8, 10.2, 7.6	1.4, 1.6, 3.3	0.9, 1.3, 1.8	3.3, 3.6, 8.4

The model sensitivity exercise concludes with a quantitative evaluation of the ARPS-CANOPY simulations using the model verification statistics presented in Tables 3-5. Examining MD and RMSD first, the largest percent differences are found for temperature and wind speed, with the largest positive temperature differences coinciding with the largest positive wind speed differences (cf. Tables 3-4 and Fig. 9). Lower tower level vertical velocity is consistently overestimated by ARPS-CANOPY, and upper tower level TKE is consistently underestimated. Examining IA second, the lowest overall values are found for the lower and middle tower levels, with IA as low as about 0.25 (recall from Sect. 4.3 that IA values of 0 and 1 correspond to complete disagreement and complete agreement between model and observations, respectively). Considering simultaneously all three statistics, all four variables and all three tower levels, HFP_{24H} exhibits the smallest overall error (lowest percent MD and RMSD, and highest IA). Overall, the statistics indicate poorest agreement with observations for simulations with 100% of the peak 1-min mean observed heat flux concentrated at the surface or in the lowest few grid levels (SHF₂₄ and HFP_{24L}), in agreement with Sun et al. (2006). However even for HFP_{24H}, individual variables and levels exhibit percent MD and RMSD of 80-90% or higher and IA of about 0.25 (e.g., lower tower level wind speed).

6 Summary and Conclusions

In this study, we have examined different methods used to represent the sensible heat release from low-intensity prescribed fires in mesoscale models. Such fires are prevalent during prescribed fire operations in the eastern US and can impact the health and safety of both fire personnel and the general public. A series of simulations conducted with the ARPS and ARPS-CANOPY

Table 4. As in Table 3, but for root mean square difference.

Simulation	T	WS	VV	TKE
HFP _{2.4L}	21.8, 45.6, 50.0	35.3, 34.9, 31.9	34.7, 26.5, 30.1	27.1, 45.4, 46.8
HFP _{4.8L}	19.4, 39.5, 48.6	43.4, 33.7, 30.5	35.0, 26.9, 30.1	25.0, 44.3, 45.9
HFP _{24L}	84.4, 47.4, 46.5	99.2, 48.1, 33.6	36.2, 31.1, 30.2	42.2, 38.2, 44.4
HFP _{24H}	29.1, 32.2, 35.2	94.0, 56.0, 37.1	33.0, 25.9, 26.8	33.8, 33.8, 42.4
HP ₄₀₀	22.9, 50.7, 50.2	35.4, 36.9, 32.8	34.7, 26.0, 29.4	27.5, 46.0, 46.1
SHF ₂₄	106.1, 48.7, 50.5	94.3, 45.5, 35.6	35.6, 30.4, 27.5	43.9, 35.0, 42.7
NF ₀	36.5, 54.6, 52.5	34.6, 40.2, 33.6	33.7, 24.6, 29.1	29.8, 46.3, 46.8
<i>O_{max}-O_{min}</i>	16.8, 10.2, 7.6	1.4, 1.6, 3.3	0.9, 1.3, 1.8	3.3, 3.6, 8.4

Table 5. As in Table 3, but for index of agreement (Willmott, 1981).

Simulation	T	WS	VV	TKE
HFP _{2.4L}	0.54, 0.41, 0.35	0.38, 0.25, 0.39	0.41, 0.36, 0.38	0.40, 0.43, 0.45
HFP _{4.8L}	0.70, 0.45, 0.35	0.37, 0.22, 0.36	0.41, 0.39, 0.37	0.36, 0.41, 0.45
HFP _{24L}	0.32, 0.50, 0.35	0.25, 0.37, 0.32	0.36, 0.35, 0.38	0.31, 0.39, 0.45
HFP _{24H}	0.61, 0.65, 0.52	0.27, 0.39, 0.33	0.40, 0.45, 0.47	0.41, 0.44, 0.45
HP ₄₀₀	0.55, 0.40, 0.35	0.39, 0.28, 0.39	0.40, 0.34, 0.36	0.42, 0.44, 0.46
SHF ₂₄	0.29, 0.41, 0.36	0.26, 0.39, 0.33	0.36, 0.38, 0.45	0.36, 0.45, 0.45
NF ₀	0.40, 0.37, 0.35	0.32, 0.27, 0.40	0.41, 0.37, 0.40	0.40, 0.42, 0.45

500 models have been evaluated using observations collected during a low-intensity prescribed fire in the NJPB. Although this study focused exclusively on low-intensity fires, the study findings may have relevance to mesoscale model simulations of higher-intensity fires, including wildfires.

A two-phase model assessment and sensitivity test approach was utilized in which a control simulation (HFP_{2.4L}) was examined first, followed by a comparison of simulations with different sensible heat source methods and parameters. The multi-dimensional model assessment confirmed that the model reproduced the background and fire-perturbed atmosphere as depicted by measurements made at the six towers. However, the model was found to underestimate the upper tower level TKE values at some of the towers. The model sensitivity tests revealed that the best agreement with observations occurred when the fire sensible heat release was represented as a turbulent sensible heat flux profile (method 1a) with 100% of the peak 1-min

mean observed heat flux averaged across the in-situ flux towers and an e-folding extinction depth of 18 m (100% of the average
510 canopy height in the burn unit) (HFP_{24H}). The poorest agreement was found when (i) 100% of the peak 1-min mean observed
heat flux was concentrated at the surface or in the lowest few grid levels (SHF_{24} and HFP_{24L}), or (ii) the peak 1-min mean
observed heat flux value was heavily diluted (10-20% of peak 1-min mean observed value) before implementation in the model
($HFP_{2.4L}$ and $HFP_{4.8L}$).

The findings of this study have provided useful insight into the representation of the sensible heat source from a low-
515 intensity fire in a mesoscale model. The findings suggest that methods that rely more heavily on the mesoscale model's native
land-surface and subgrid-scale turbulence parameterizations to move heat vertically through the near-surface atmosphere (SHF
and HFP with small e-folding extinction depth), can lead to a concentration of heat near the surface, excessively large near-
surface temperatures, and consequently an overestimation (underestimation) of near-surface (forest overstory) fire-perturbed
wind speeds and TKE. On the other hand, implementing a turbulent sensible heat flux in the model corresponding to 10-20%
520 of the peak 1-min mean observed value (i.e., heavily diluting the point heat flux measurement), as in Kiefer et al. (2014), can
lead to an overall underestimation of TKE near or just above the top of the forest overstory.

As with any study, limitations must be kept in mind when considering study findings and any potential applications. First,
the study findings derive from simulations performed with a single mesoscale model, ARPS-CANOPY, and its parent model,
ARPS. It is expected that the findings will be applicable to other mesoscale models, but this will need be confirmed by the
525 broader model community, particularly for two-way coupled atmosphere-fire models like WRF-SFIRE. Although efforts to
couple a fire behavior model with ARPS-CANOPY are underway, the model at this time is still one-way coupled. Second, the
model simulations were evaluated with observations from a single low-intensity fire experiment. In future work, model simu-
lations will need to be evaluated using observations from fires spanning different intensities, in different forest environments,
and with different synoptic-mesoscale conditions. Third, this study examined only two extinction depths (4.4 and 18 m), with
530 a more complete examination of the extinction depth parameter space left to future work. Finally, the choice of e-folding ex-
tinction depth used in a particular mesoscale model simulation may ultimately depend on the intended model application. An
e-folding extinction depth that yields satisfactory agreement with flux tower measurements of mean TKE may prove too large
or too small in the context of smoke dispersion or fire behavior predictions (e.g., Kartsios et al., 2017; Kochanski et al., 2018).

Code and data availability. Data sets and software code associated with this study have been uploaded to the Harvard Dataverse (Kiefer
535 et al., 2021). Data are available under the terms of the Creative Commons Zero "No rights reserved" data waiver (CC0 1.0 Public domain
dedication).

Author contributions. The following authors participated in the conceptualization of this study: MTK, WEH, SZ, and JJC. The methodology
and numerical analyses were developed by MTK, and WEH, SZ, JJC, and XB participated in the interrogation and refinement of the analyses.
MTK was responsible for writing and preparing the original draft of the manuscript, and all co-authors provided review and editing. NSS,

540 KLC, MRG, JLH, and MP, were instrumental in the collection and preparation of the field data that provided the basis for validating the results presented in this study. MTK served as the curator of the model study data archive.

Competing interests. The authors declare that they have no conflict of interest.

Acknowledgements. This research was funded by the US Department of Defense - Strategic Environmental Research and Development Program (SERDP) project #RC-2641. Special thanks are given to the New Jersey Forest Fire Service for conducting the burn, and Eric 545 Mueller (National Institute of Standards and Technology) for processing the raw fire-tracker data. The color maps used in all figures except Figs. 1, 2, and 5 were developed by Cynthia Brewer at the Pennsylvania State University (<http://colorbrewer2.org/>).

References

- Ahmadov, R., Grell, G., James, E., Freitas, S., Pereira, G., Csiszar, I., Tsidulko, M., Pierce, B., McKeen, S., Peckham, S., Alexander, C., Saide, P., and Benjamin, S.: A High-Resolution Coupled Meteorology-Smoke Modeling System HRRR-Smoke to Simulate Air Quality
550 over the CONUS Domain in Real Time, *Geophysical Research Abstracts*, 19, EGU2017–10 841, <https://meetingorganizer.copernicus.org/EGU2017/EGU2017-10841.pdf>, 2017.
- Ahmadov, R., James, E., Grell, G., Alexander, C., and McKeen, S.: Operational Implementation of the Smoke Forecasting Capability in the RAP/HRRR Numerical Weather Prediction System, in: *EGU General Assembly 2021*, pp. EGU21–14 268, European Geosciences Union, online, <https://doi.org/10.5194/egusphere-egu21-14268>, 2021.
- 555 Banerjee, T., Heilman, W., Goodrick, S., Hiers, J. K., and Linn, R.: Effects of Canopy Midstory Management and Fuel Moisture on Wildfire Behavior, *Sci. Rep.*, 10, 17 312, <https://doi.org/10.1038/s41598-020-74338-9>, 2020.
- Benech, B.: Experimental Study of an Artificial Convective Plume Initiated From the Ground., *J. Appl. Meteorol. Clim.*, 15, 127–137, [https://doi.org/10.1175/1520-0450\(1976\)015<0127:ESOAAC>2.0.CO;2](https://doi.org/10.1175/1520-0450(1976)015<0127:ESOAAC>2.0.CO;2), 1976.
- Brown, B. G., Gilleland, E., and Ebert, E. E.: Forecasts of Spatial Fields, in: *Forecast Verification : A Practitioner’s Guide in Atmospheric*
560 *Science*, edited by Jolliffe, I. T. and Stephenson, D. B., pp. 95–117, John Wiley & Sons, 2011.
- Charney, J. J., Kiefer, M. T., Zhong, S., Heilman, W. E., Nikolic, J., Bian, X., Hom, J. L., Clark, K. L., Skowronski, N. S., Gallagher, M. R., Patterson, M., Liu, Y., and Hawley, C.: Assessing Forest Canopy Impacts on Smoke Concentrations Using a Coupled Numerical Model, *Atmosphere*, 10, 273, <https://doi.org/10.3390/atmos10050273>, 2019.
- Chou, M.-D.: Parameterization for the Absorption of Solar Radiation by O₂ and CO₂ with Application to Climate Studies, *J. Clim.*, 3,
565 209–217, [https://doi.org/10.1175/1520-0442\(1990\)003<0209:PFTAOS>2.0.CO;2](https://doi.org/10.1175/1520-0442(1990)003<0209:PFTAOS>2.0.CO;2), 1990.
- Chou, M.-D.: A Solar Radiation Model for Use in Climate Studies, *J. Atmos. Sci.*, 49, 762–772, [https://doi.org/10.1175/1520-0469\(1992\)049<0762:ASRMFU>2.0.CO;2](https://doi.org/10.1175/1520-0469(1992)049<0762:ASRMFU>2.0.CO;2), 1992.
- Chou, M.-D. and Suarez, M. J.: An Efficient Thermal Infrared Radiation Parameterization for use in General Circulation Models, *Tech. Rep. Tech. Memo 104606*, NASA, [Available from NASA Center for Aerospace Information, 800 Elkridge Landing Road, Linthicum Heights,
570 MD 21090-2934], 1994.
- Chow, F. K., Schär, C., Ban, N., Lundquist, K. A., Schlemmer, L., and Shi, X.: Crossing Multiple Gray Zones in the Transition from Mesoscale to Microscale Simulation over Complex Terrain, *Atmosphere*, 10, 274, <https://doi.org/10.3390/atmos10050274>, 2019.
- Clark, K. L., Renninger, H. J., Skowronski, N., Gallagher, M., and Schäfer, K. V. R.: Decadal-Scale Reduction in Forest Net Ecosystem Production Following Insect Defoliation Contrasts with Short-Term Impacts of Prescribed Fires, *Forests*, 9, 145,
575 <https://doi.org/10.3390/f9030145>, 2018.
- Clark, K. L., Heilman, W. E., Skowronski, N. S., Gallagher, M. R., Mueller, E., Hadden, R. M., and Simeoni, A.: Fire Behavior, Fuel Consumption, and Turbulence and Energy Exchange during Prescribed Fires in Pitch Pine Forests, *Atmosphere*, 11, 242, <https://doi.org/10.3390/atmos11030242>, 2020.
- Clark, T. L., Jenkins, M. A., Coen, J., and Packham, D. R.: A Coupled Atmosphere-Fire Model: Convective Feedback on Fire-Line Dynamics,
580 *J. Appl. Meteorol.*, 35, 875–901, [https://doi.org/10.1175/1520-0450\(1996\)035<0875:ACAMCF>2.0.CO;2](https://doi.org/10.1175/1520-0450(1996)035<0875:ACAMCF>2.0.CO;2), 1996.
- Clark, T. L., Radke, L., Coen, J., and Middleton, D.: Analysis of Scale-Scale Convective Dynamics in a Crown Fire Using Infrared Video Camera Imagery, *J. Appl. Meteorol.*, 38, 1401–1420, [https://doi.org/10.1175/1520-0450\(1999\)038<1401:AOSSCD>2.0.CO;2](https://doi.org/10.1175/1520-0450(1999)038<1401:AOSSCD>2.0.CO;2), 1999.

- Clark, T. L., Coen, J., and Latham, D.: Description of a Coupled Atmosphere-Fire Model, *Int. J. Wildland Fire*, 13, 49–63, <https://doi.org/10.1071/WF03043>, 2004.
- 585 Clements, C. B., Zhong, S., Goodrick, S., Li, J., Potter, B. E., Bian, X., Heilman, W. E., Charney, J. J., Perna, R., Jang, M., Lee, D., Patel, M., Street, S., and Aumann, G.: Observing the Dynamics of Wildland Grass Fires: FireFlux – A Field Validation Experiment, *Bull. Am. Meteorol. Soc.*, 88, 1369–1382, <https://doi.org/10.1175/BAMS-88-9-1369>, 2007.
- Clements, C. B., Kochanski, A. K., Seto, D., Davis, B., Camacho, C., Lareau, N. P., Contezac, J., Restaino, J., Heilman, W. E., Krueger, S. K., Butler, B., Ottmar, R. D., Vihnanek, R., Flynn, J., Filippi, J.-B., Barboni, T., Hall, D. E., Mandel, J., Jenkins, M. A., O'Brien, J., Hornsby, B., and Teske, C.: The FireFlux II Experiment: A Model-Guided Field Experiment to Improve Understanding of Fire–Atmosphere Interactions and Fire Spread, *Int. J. Wildland Fire*, 28, 308–326, <https://doi.org/10.1071/WF18089>, 2019.
- 590 Coen, J., Mahalingam, S., and Daily, J.: Infrared Imagery of Crown-Fire Dynamics during FROSTFIRE, *J. Appl. Meteorol.*, 43, 1241–1259, [https://doi.org/10.1175/1520-0450\(2004\)043<1241:IIOCDD>2.0.CO;2](https://doi.org/10.1175/1520-0450(2004)043<1241:IIOCDD>2.0.CO;2), 2004.
- Coen, J. L.: Simulation of the Big Elk Fire Using Coupled Atmosphere-Fire Modeling, *Int. J. Wildland Fire*, 14, 49–59, <https://doi.org/10.1071/WF04047>, 2005.
- 595 Coen, J. L.: Some Requirements for Simulating Wildland Fire Behavior Using Insight from Coupled Weather–Wildland Fire Models, *Fire*, 1, 6, <https://doi.org/10.3390/fire1010006>, 2018.
- Dupont, S. and Brunet, Y.: Influence of Foliar Density Profile on Canopy Flow: A Large-Eddy Simulation Study, *Agric. For. Meteorol.*, 148, 976–990, <https://doi.org/10.1016/j.agrformet.2008.01.014>, 2008.
- 600 Filippi, J.-B., Pialat, X., and Clements, C. B.: Assessment of Fire/Meso-NH for Wildland Fire/Atmosphere Coupled Simulation of the FireFlux Experiment, *Proc. Combust. Inst.*, 34, 2633–2640, <https://doi.org/10.1016/j.proci.2012.07.022>, 2013.
- Heilman, W. E. and Fast, J. D.: Simulations of Horizontal Roll Vortex Development Above Lines of Extreme Surface Heating, *Int. J. Wildland Fire*, 2, 55–68, <https://doi.org/10.1071/WF9920055>, 1992.
- Heilman, W. E., Clements, C. B., Seto, D., Bian, X., Clark, K. L., Skowronski, N. S., and Hom, J. L.: Observations of Fire-Induced Turbulence Regimes During Low-Intensity Wildland Fires in Forested Environments: Implications for Smoke Dispersion, *Atmos. Sci. Lett.*, 16, 453–460, <https://doi.org/10.1002/asl.581>, 2015.
- 605 Heilman, W. E., Clark, K. L., Bian, X., Charney, J. J., Zhong, S., Skowronski, N. S., Gallagher, M. R., and Patterson, M.: Turbulent Momentum Flux Behavior above a Fire Front in an Open-Canopied Forest, *Atmosphere*, 12, 956, <https://doi.org/10.3390/atmos12080956>, 2021.
- 610 Hiers, J. K., Ottmar, R., Butler, B. W., Clements, C., Vihnanek, R., Dickinson, M. B., and O'Brien, J.: An Overview of the Prescribed Fire Combustion and Atmospheric Dynamics Research Experiment (Rx-CADRE), in: 4th International Fire Ecology and Management Congress: Fire as a Global Process, edited by Rideout-Hanzak, S., Savannah, Georgia, 2009.
- Hiers, J. K., O'Brien, J. J., Varner, J. M., Butler, B. W., Dickinson, M., Furman, J., Gallagher, M., Godwin, D., Goodrick, S. L., Hood, S. M., Hudak, A., Kobziar, L. N., Linn, R., Loudermilk, E. L., McCaffrey, S., Robertson, K., Rowell, E. M., Skowronski, N., Watts, A. C., and Yedinak, K. M.: Prescribed Fire Science: The Case for a Refined Research Agenda, *Fire Ecol.*, 16, 11, <https://doi.org/10.1186/s42408-020-0070-8>, 2020.
- 615 Hoffman, C. M., Linn, R., Parsons, R., Sieg, C., and Winterkamp, J.: Modeling Spatial and Temporal Dynamics of Wind Flow and Potential Fire Behavior Following a Mountain Pine Beetle Outbreak in a Lodgepole Pine Forest, *Agric. For. Meteorol.*, 204, 79–93, <https://doi.org/10.1016/j.agrformet.2015.01.018>, 2015.

- 620 Jenkins, M. A., Clark, T., and Coen, J.: Coupling Atmospheric and Fire Models, in: *Forest Fire: Behavior and Ecological Effects*, edited by Johnson, E. A. and Miyanishi, K., pp. 257–302, Academic Press, 2001.
- Kartsios, S., Karacostas, T. S., Pytharoulis, I., and Dimitrakopoulos, A. P.: The Role of Heat Extinction Depth Concept to Fire Behavior: An Application to WRF-SFIRE Model, in: *Perspectives on Atmospheric Sciences*, edited by Karacostas, T., Bais, A., and Nastos, P. T., pp. 137–142, Springer International Publishing, 2017.
- 625 Kavanagh, K., Dickinson, M. B., and Bova, A. S.: A Way Forward for Fire-Caused Tree Mortality Prediction: Modeling a Physiological Consequence of Fire, *Fire Ecol.*, 6, 80–94, <https://doi.org/10.4996/fireecology.0601080>, 2010.
- Kiefer, M. T., Lin, Y.-L., and Charney, J. J.: A Study of Two-Dimensional Dry Convective Plume Modes with Variable Critical Level Height, *J. Atmos. Sci.*, 65, 448–469, <https://doi.org/10.1175/2007JAS2301.1>, 2008.
- Kiefer, M. T., Parker, M. D., and Charney, J. J.: Regimes of Dry Convection Above Wildfires: Idealized Numerical Simulations and Dimensional Analysis, *J. Atmos. Sci.*, 66, 806–836, <https://doi.org/10.1175/2008JAS2896.1>, 2009.
- 630 Kiefer, M. T., Parker, M. D., and Charney, J. J.: Regimes of Dry Convection Above Wildfires: Sensitivity to Fireline Details, *J. Atmos. Sci.*, 67, 611–632, <https://doi.org/10.1175/2009JAS3226.1>, 2010.
- Kiefer, M. T., Zhong, S., Heilman, W. E., Charney, J. J., and Bian, X.: Evaluation of an ARPS-Based Canopy Flow Modeling System for use in Future Operational Smoke Prediction Efforts, *J. Geophys. Res.*, 118, 6175–6188, <https://doi.org/10.1002/jgrd.50491>, 2013.
- 635 Kiefer, M. T., Heilman, W. E., Zhong, S., Charney, J. J., Bian, X., Skowronski, N. S., Hom, J. L., Clark, K. L., Patterson, M., and Gallagher, M. R.: Multiscale Simulation of a Prescribed Fire Event in the New Jersey Pine Barrens using ARPS-CANOPY, *J. Appl. Meteorol. Clim.*, 53, <https://doi.org/10.1175/JAMC-D-13-0131.1>, 793–812, 2014.
- Kiefer, M. T., Heilman, W. E., Zhong, S., Charney, J. J., and Bian, X.: Mean and Turbulent Flow Downstream of a Low-Intensity Fire: Influence of Canopy and Background Atmospheric Conditions, *J. Appl. Meteorol. Clim.*, 54, 42–57, <https://doi.org/10.1175/JAMC-D-14-0058.1>, 2015.
- 640 Kiefer, M. T., Heilman, W. E., Zhong, S., Charney, J. J., and Bian, X.: A Study of the Influence of Forest Gaps on Fire-Atmosphere Interactions, *Atmos. Chem. Phys.*, 16, 8499–8509, <https://doi.org/10.5194/acp-16-8499-2016>, 2016.
- Kiefer, M. T., Zhong, S., Heilman, W. E., Charney, J. J., and Bian, X.: A Numerical Study of Atmospheric Perturbations Induced by Heat From a Wildland Fire: Sensitivity to Vertical Canopy Structure and Heat Source Strength, *J. Geophys. Res.*, 123, 2555–2572, <https://doi.org/10.1002/2017JD027904>, 2018.
- 645 Kiefer, M. T., Heilman, W. E., Zhong, S., Charney, J. J., Bian, X., Skowronski, N. S., Clark, K. L., Gallagher, M. R., Hom, J. L., and Patterson, M.: Representing Low-Intensity Fire Sensible Heat Output in a Mesoscale Atmospheric Model with a Canopy Submodel: A Case Study with ARPS-CANOPY (version 5.2.12) [Data set], V1. Harvard Dataverse, <https://doi.org/10.7910/DVN/JJCPND>, 2021.
- Kochanski, A. K., Jenkins, M. A., Mandel, J., Beezley, J. D., Clements, C. B., and Krueger, S.: Evaluation of WRF-SFIRE Performance with Field Observations from the FireFlux Experiment, *Geosci. Model Dev.*, 6, 1109–1126, <https://doi.org/10.5194/gmd-6-1109-2013>, 2013.
- 650 Kochanski, A. K., Jenkins, M. A., Yedinak, K., Mandel, J., Beezley, J., and Lamb, B.: Toward an Integrated System for Fire, Smoke and Air Quality Simulations, *Int. J. Wildland Fire*, 25, 534–546, <https://doi.org/10.1071/WF14074>, 2016.
- Kochanski, A. K., Fournier, A., and Mandel, J.: Experimental Design of a Prescribed Burn Instrumentation, *Atmosphere*, 9, 296, <https://doi.org/10.3390/atmos9080296>, 2018.
- 655 Kremens, R. L., Dickinson, M. B., and Bova, A. S.: Radiant Flux Density, Energy Density and Fuel Consumption in Mixed-Oak Forest Surface Fires, *Int. J. Wildland Fire*, 21, 722–730, <https://doi.org/10.1071/WF10143>, 2012.

- Linn, R., Reisner, J., Colman, J. J., and Winterkamp, J.: Studying Wildfire Behavior Using FIRETEC, *Int. J. Wildland Fire*, 11, 233–246, <https://doi.org/10.1071/WF02007>, 2002.
- 660 Linn, R. R., Winterkamp, J. L., Furman, J. H., Williams, B., Hiers, J. K., Jonko, A., O'Brien, J. J., Yedinak, K. M., and Goodrick, S.: Modeling Low Intensity Fires: Lessons Learned from 2012 RxCADRE, *Atmosphere*, 12, 139, <https://doi.org/10.3390/atmos12020139>, 2021.
- Luderer, G., Trentmann, J., Winterrath, T., Textor, C., Herzog, M., Graf, H.-F., and Andreae, M. O.: Modeling of Biomass Smoke Injection into the Lower Stratosphere by a Large Forest Fire (Part II): Sensitivity Studies, *Atmos. Chem. Phys.*, 6, 5261–5277, <https://doi.org/10.5194/acp-6-5261-2006>, 2006.
- 665 Luderer, G., Trentmann, J., and O, A. M.: A New Look at the Role of Fire-Released Moisture on the Dynamics of Atmospheric Pyro-Convection, *Int. J. Wildland Fire*, 18, 554–562, <https://doi.org/10.1071/WF07035>, 2009.
- Mandel, J., Beezley, J. D., and Kochanski, A. K.: Coupled Atmosphere-Wildland Fire Modeling with WRF 3.3 and SFIRE 2011, *Geosci. Mod. Devel.*, 4, 591–610, <https://doi.org/10.5194/gmd-4-591-2011>, 2011.
- Melvin, M. A.: 2018 National Prescribed Fire Use Survey Report, Tech. Rep. Tech. Rep. 03-18, Coalition of Prescribed Fire Councils Inc., available online at <https://www.stateforesters.org/wp-content/uploads/2018/12/2018-Prescribed-Fire-Use-Survey-Report-1.pdf> (accessed 30 Sep 2021), 2018.
- 670 Melvin, M. A.: 2020 National Prescribed Fire Use Report, Tech. Rep. Tech. Bull. 04-20, Coalition of Prescribed Fire Councils Inc., available online at <https://www.stateforesters.org/wp-content/uploads/2020/12/2020-Prescribed-Fire-Use-Report.pdf> (accessed 30 Sep 2021), 2020.
- 675 Michioka, T. and Chow, F. K.: High-Resolution Large-Eddy Simulations of Scalar Transport in Atmospheric Boundary Layer Flow over Complex Terrain, *J. Appl. Meteorol. Clim.*, 47, 3150–3169, <https://doi.org/10.1175/2008JAMC1941.1>, 2008.
- National Interagency Fire Center: Prescribed Fire and Acres by Agency, Available online at <https://www.nifc.gov/fire-information/statistics/prescribed-fire> (accessed 30 Sep 2021), 2019.
- Noilhan, J. and Planton, S.: A Simple Parameterization of Land Surface Processes for Meteorological Models, *Mon. Weather Rev.*, 117, 536–549, [https://doi.org/10.1175/1520-0493\(1989\)117<0536:ASPOLS>2.0.CO;2](https://doi.org/10.1175/1520-0493(1989)117<0536:ASPOLS>2.0.CO;2), 1989.
- 680 Parker, M. D. and Johnson, R. H.: Structures and Dynamics of Quasi-2D Mesoscale Convective Systems, *J. Atmos. Sci.*, 61, 545–567, [https://doi.org/10.1175/1520-0469\(2004\)061<0545:SADOQM>2.0.CO;2](https://doi.org/10.1175/1520-0469(2004)061<0545:SADOQM>2.0.CO;2), 2004.
- Peace, M., Mattner, T., Mills, G., Kepert, J., and McCaw, L.: Coupled Fire-Atmosphere Simulations of the Rocky River Fire Using WRF-SFIRE, *J. Appl. Meteorol. Clim.*, 55, 1151–1168, <https://doi.org/10.1175/JAMC-D-15-0157.1>, 2016.
- 685 Pfeiffer, H. G. and Liebhaftsky, H. A.: The Origins of Beer's Law, *J. Chem. Educ.*, 28, 123–125, <https://doi.org/10.1021/ed028p123>, 1959.
- Pimont, F., Dupuy, J. L., Linn, R. R., and Dupont, S.: Impacts of Tree Canopy Structure on Wind Flows and Fire Propagation Simulated with FIRETEC, *Ann. For. Sci.*, 68, 523–530, <https://doi.org/10.1007/s13595-011-0061-7>, 2011.
- Pleim, J. E. and Xiu, A.: Development and Testing of a Surface Flux and Planetary Boundary Layer Model for Application in Mesoscale Models, *J. Appl. Meteorol.*, 34, 16–32, <https://www.jstor.org/stable/26187192>, 1995.
- 690 Powers, J. G., Klemp, J. B., Skamarock, W. C., Davis, C. A., Dudhia, J., Gill, D. O., Coen, J. L., Gochis, D. J., Ahmadov, R., Peckham, S. E., Grell, G. A., Michalakes, J., Trahan, S., Benjamin, S. G., Alexander, C. R., Dimego, G. J., Wang, W., Schwartz, C. S., Romine, G. S., Liu, Z., Snyder, C., Chen, F., Barlage, M. J., Yu, W., and Duda, M. G.: The Weather Research and Forecasting Model: Overview, System Efforts, and Future Directions, *Bull. Am. Meteorol. Soc.*, 98, 1717–1737, <https://doi.org/10.1175/BAMS-D-15-00308.1>, 2017.

- Rogers, E., DiMego, G., Black, T., Ek, M., Ferrier, B., Gayno, G., Janjic, Z., Lin, Y., Pyle, M., Wong, V., and Wan-Shu, W.:
695 The NCEP North American Mesoscale Modeling System: Recent Changes and Future Plans, in: 23rd Conf. on Weather Analy-
sis and Forecasting / 19th Conf. on Numerical Weather Prediction, p. 2A.4, Am. Meteorol. Soc., Omaha, NE, [Available online at
<http://ams.confex.com/ams/pdfpapers/154114.pdf> (accessed 30 Sep 2021)], 2009.
- Skowronski, N. S., Clark, K. L., Duvencek, M., and Hom, J.: Three-Dimensional Canopy Fuel Loading Predicted Using Upward and Down-
ward Sensing LiDAR Systems, *Remote Sens. Environ.*, 115, 703–714, <https://doi.org/10.1016/j.rse.2010.10.012>, 2011.
- 700 Skowronski, N. S., Gallagher, M. R., and Warner, T. A.: Decomposing the Interactions between Fire Severity and Canopy Fuel Structure
Using Multi-Temporal, Active, and Passive Remote Sensing Approaches, *Fire*, 3, 7, <https://doi.org/10.3390/fire3010007>, 2020.
- Stull, R. B.: *An Introduction to Boundary Layer Meteorology*, Kluwer Academic, 1988.
- Sun, R., Jenkins, M. A., Krueger, S. K., Mell, W., and Charney, J. J.: An Evaluation of Fire-plume Properties Simulated with the Fire
Dynamics Simulator (FDS) and the Clark Coupled Wildfire Model, *Can. J. For. Res.*, 36, 2894–2908, <https://doi.org/10.1139/x06-138>,
705 2006.
- Sun, W.-Y. and Chang, C.-Z.: Diffusion Model for a Convective Layer: Part I: Numerical Simulation of Convective Boundary Layer, *J. Clim.*
Appl. Meteorol., 25, 1445–1453, [https://doi.org/10.1175/1520-0450\(1986\)025<1445:DMFACL>2.0.CO;2](https://doi.org/10.1175/1520-0450(1986)025<1445:DMFACL>2.0.CO;2), 1986.
- Trentmann, J., Luderer, G., Winterrath, T., Fromm, M. D., Servranckx, R., Textor, C., Herzog, M., Graf, H.-F., and Andreae, M. O.: Modeling
of Biomass Smoke Injection into the Lower Stratosphere by a Large Forest Fire (Part I): Reference Simulation, *Atmos. Chem. Phys.*, 6,
710 5247–5260, <https://doi.org/10.5194/acp-6-5247-2006>, 2006.
- Wang, J.-W. A., Sardeshmukh, P. D., Compo, G. P., Whitaker, J. S., Slivinski, L. C., McColl, C. M., and Pegion, P. J.: Sensitivities of the
NCEP Global Forecast System, *Mon. Weather Rev.*, 147, 1237–1256, <https://doi.org/10.1175/MWR-D-18-0239.1>, 2019.
- Warner, T. A., Skowronski, N. S., and La Puma, I.: The Influence of Prescribed Burning and Wildfire on Lidar-Estimated Forest Structure of
the New Jersey Pinelands National Reserve, *Int. J. Wildland Fire*, 29, 1100–1108, <https://doi.org/10.1071/WF20037>, 2020.
- 715 Weigel, A. P.: Ensemble Forecasts, in: *Forecast Verification : A Practitioner’s Guide in Atmospheric Science*, edited by Jolliffe, I. T. and
Stephenson, D. B., pp. 141–166, John Wiley & Sons, 2011.
- Wilczak, J. M., Oncley, S. P., and Stage, S. A.: Sonic Anemometer Tilt Correction Algorithms, *Boundary-Layer Meteorol.*, 99, 127–150,
<https://doi.org/10.1023/A:1018966204465>, 2001.
- Willmott, C. J.: On the validation of models, *Phys. Geo.*, 2, 184–194, <https://doi.org/10.1080/02723646.1981.10642213>, 1981.
- 720 Wyngaard, J. C.: Toward Numerical Modeling in the “Terra Incognita”, *J. Atmos. Sci.*, 61, 1816–1826, [https://doi.org/10.1175/1520-0469\(2004\)061<1816:TNMITT>2.0.CO;2](https://doi.org/10.1175/1520-0469(2004)061<1816:TNMITT>2.0.CO;2), 2004.
- Xue, M., Droegemeier, K. K., and Wong, V.: The Advanced Regional Prediction System (ARPS) – A Multi-Scale Nonhydrostatic
Atmosphere Simulation and Prediction Model. Part I: Model Dynamics and Verification, *Meteorol. Atmos. Phys.*, 75, 463–485,
<https://doi.org/10.1007/s007030070003>, 2000.
- 725 Xue, M., Droegemeier, K. K., Wong, V., Shapiro, A., Brewster, K., Carr, F., Weber, D., Liu, Y., and Wang, D.: The Advanced Regional
Prediction System (ARPS) – A Multi-Scale Nonhydrostatic Atmosphere Simulation and Prediction Tool. Part II: Model Physics and
Applications, *Meteorol. Atmos. Phys.*, 76, 143–165, <https://doi.org/10.1007/s007030170027>, 2001.