

CondiDiag1.0: A flexible online diagnostic tool for conditional sampling and budget analysis in the E3SM atmosphere model (EAM)

Hui Wan¹, Kai Zhang¹, Philip J. Rasch¹, Vincent E. Larson^{1,2}, Xubin Zeng³, Shixuan Zhang¹, and Ross Dixon⁴

¹Atmospheric Sciences and Global Change Division, Pacific Northwest National Laboratory, Richland, Washington, USA

²Department of Mathematical Sciences, University of Wisconsin–Milwaukee, Milwaukee, Wisconsin, USA

³Department of Hydrology and Atmospheric Sciences, University of Arizona, Tucson, Arizona, USA

⁴Department of Earth and Atmospheric Sciences, University of Nebraska–Lincoln, Lincoln, Nebraska, USA

Correspondence: Hui Wan (Hui.Wan@pnnl.gov)

Abstract. Numerical models used in weather and climate prediction take into account a comprehensive set of atmospheric processes ([i.e., phenomena](#)) such as the resolved and unresolved fluid dynamics, radiative transfer, cloud and aerosol life cycles, and mass or energy exchanges with the Earth’s surface. In order to identify model deficiencies and improve predictive skills, it is important to obtain process-level understanding of the interactions between different processes. Conditional sampling and budget analysis are powerful tools for process-oriented model evaluation, but they often require tedious ad hoc coding and large amounts of instantaneous model output, resulting in inefficient use of human and computing resources. This paper presents an online diagnostic tool that addresses this challenge by monitoring model variables in a generic manner as they evolve within the time integration cycle.

The tool is convenient to use. It allows users to select sampling conditions and specify monitored variables at run time. Both the evolving values of the model variables and their increments caused by different atmospheric processes can be monitored and archived. Online calculation of vertical integrals is also supported. Multiple sampling conditions can be monitored in a single simulation in combination with unconditional sampling. The paper explains in detail the design and implementation of the tool in the Energy Exascale Earth System Model (E3SM) version 1. The usage is demonstrated through three examples: a global budget analysis of dust aerosol mass concentration, a composite analysis of sea salt emission and its dependency on surface wind speed, and a conditionally sampled relative humidity budget. The tool is expected to be easily portable to closely related atmospheric models that use the same or similar data structures and time integration methods.

1 Introduction

Atmospheric general circulation models (AGCMs) used in climate research and weather prediction are simplified mathematical representations of the complex physical and chemical processes ([phenomena](#)) driving the evolution of the Earth’s atmosphere. Despite the necessity of simplification due to ~~limited~~ [the limitation in](#) computing resources, it is highly desirable that, to the extent possible and practical, models should be based on first principles and robust quantitative relationships in atmospheric

physics and chemistry, so that the same models can reliably provide good accuracy under historically observed atmospheric conditions as well as in the climate of the future. Many tools have been used for assessing the behavior and fidelity of the atmospheric processes represented in atmospheric-numerical models. Among those, budget analyses are a useful method for
25 quantifying relationships between atmospheric-different processes, and composite analyses are useful for revealing the characteristics of atmospheric phenomena-in-conditions and their changes under specific situations. Both methods have been widely used in process-oriented model evaluation to help identify model deficiencies and improve predictive skills. Carrying out such analyses, however, often requires tedious ad hoc coding.

Consider, for example, a model evaluation study aiming at understanding the role of various processes in influencing the
30 simulated atmospheric water cycle, which involves specific humidity q_v as a prognostic variable of the AGCM. The typical way to obtain a budget of q_v is to review the model source code, manually add extra lines of code and variables into subroutines representing parameterizations and the dynamical core to save the rate of change (i.e., tendency) of q_v caused by each process of interest, and then archive those tendencies in model output. Since modern AGCMs are sophisticated, a complete budget analysis with the finest granularity will likely involve a number of tendency terms. If a researcher wishes to obtain several different views
35 of the q_v budget with different levels of granularity (e.g., considering all stratiform cloud processes as a single q_v tendency term in one budget but breaking it down to evaluating condensation/evaporation and rain-formation processes separately in a second view), then the tendencies of coarser granularity will either need to be computed from the fine-grained terms during post-processing or be calculated online and saved in additional model variables. Modern AGCMs often include multiple water species as prognostic variables and tens to hundreds more variables representing aerosol and gas species. Some models also
40 include diagnostic variables such as isotopes and tagged water or aerosol species originating from different geographical regions (e.g., Wang et al., 2014; Zhang et al., 2015; Singh et al., 2016; Bailey et al., 2019; Wang et al., 2020). The lines of code and additional variables that are needed to monitor, assess, and diagnose tendency terms can quickly add up to a huge number, increasing code complexity, computational overhead, and the potential for bugs both in the code and during post-processing.

An AGCM also often contains many diagnostic variables that are needed in the equations of a parameterization. For example,
45 the relative humidity with respect to ice (RHI) is often used in the prediction of formation of cloud ice crystals (cf. Sect. 6.3). While an AGCM might only calculate RHI once or a few times during each time step, a detailed budget analysis of the-terms-influencing-RHI RHI tracking all mechanisms affecting the air temperature, pressure, and specific humidity can provide useful insights into the atmospheric processes that contribute to or compete with ice cloud formation. These types of diagnostic variables appear frequently in AGCMs, and supporting budget analyses for them would require inserting many new model
50 variables and output, which often leads to a dilemma in source code management: that if a user throws away the ad hoc coding-code after their study is completed, other users interested in similar topics will need to reinvent the wheel or at least re-do the coding; on the other hand, if users commit study-specific code to the model's central repository, clutter will accumulate quickly.

Similar challenges are encountered in studies involving composite analysis, the essence of which is to define a criterion,
55 conditionally sample some model variables, and then analyze the stratified data to look for relationships occurring under specific-conditions the specific condition. Conditional sampling in AGCM simulations is often carried out by first archiving a

large amount of instantaneous model fields at a sufficiently high frequency – and then using post-processing to produce the conditionally sampled composite (see, e.g., Ghan et al., 2016; Gryspeerdt et al., 2020). This not only can lead to inefficient use of computing time (due to I/O bottleneck) but also creates challenges in data storage and transfer. Occasionally, conditional sampling is carried out online (i.e., during a simulation) so that only the temporal averages of model variables meeting the sampling condition need to be archived. With this approach, ad hoc coding is often used for each combination of sampling condition and monitored variable, which again results in challenges in code management.

Authors of the present paper recently started an effort to identify and address numerical artifacts in ~~time integration related to the time integration methods used by~~ physics parameterizations and process coupling in version 1 of the ~~E3SM-atmosphere model (Rasch et al., 2019; Xie et al., 2018)~~ atmosphere component of the Energy Earth System Model (EAMv1, Rasch et al., 2019; Xie et al., 2018; Golaz et al., 2019). The study of Wan et al. (2021) and its follow-up investigations have involved monitoring not only EAM’s prognostic variables but also non-standard output fields such as various measures of supersaturation and atmospheric instability. Those investigations constantly require the use of composite and budget analyses, motivating our development of a new, general, and user-friendly online diagnostic tool to facilitate the investigations. This paper presents the first version of the new tool, which we refer to as CondiDiag1.0.

Assuming the physical quantities to be monitored already exist in EAM, configuring a simulation to activate CondiDiag will normally require only setting a small number of switches in the model’s input file (currently using Fortran namelist, cf. Sect. 5.2). A minimal amount of special-purpose code might be required from the user if existing model variables need to be monitored at new locations in the model’s time loop, ~~or~~ if the variables exist within a parameterization or the dynamical core but need to be made available in the data structures accessible by our tool; ~~the~~, or if a quantity of interest is not available in the original EAM and needs to be calculated from the existing variables. The coding required in such cases will be ~~simple~~, relatively simple. To facilitate budget analyses, the tool provides the flexibility to monitor and archive both the evolving values of model variables and their increments caused by different atmospheric processes. Vertical integrals ~~can be calculated online~~ are calculated online when they are requested through namelist. Multiple sampling conditions can be used in the same simulation. Unconditional sampling and mixtures of conditional and unconditional sampling are also supported.

The new tool ~~has been was~~ designed for and implemented in EAMv1 ~~and ported to a development version of~~. It has been ported to EAMv2 ~~–It should also and also to a few code versions in between. We expect it to~~ be straightforward to port ~~it the tool~~ to EAMv1’s recent predecessors, e.g., the Community Atmosphere Model versions 5 and 4 (CAM5 and CAM4, Neale et al., 2012, 2010), as well as their other descendants (CAM6, Craig et al., 2021), as these models use the same Fortran derived data types for organizing information passed through the physics parameterizations suite. Examples of such Fortran data types include the “physics state”, “physics buffer”, atmosphere “import” and “export” variables ~~–(cf. Sect. 2.1)~~. It is also possible to revise our tool for implementation in other models, as the underlying design concepts are generalizable ~~–(cf. Sect. 4.4)~~.

The remainder of the paper is organized as follows: Section 2 introduces ~~features of~~ EAMv1’s code and data structures as well as the features of the model’s time integration ~~schemes~~ and output capability that our tool makes use of. Section 3 introduces the key concepts and basic design of our tool. Section 4 describes the implementation of CondiDiag our tool in EAMv1 and Sect. 5 provides a brief user’s guide. Section 6 presents three concrete examples to further demonstrate the usage of the tool: a

global budget analysis of dust aerosol mass concentration, a composite analysis of sea salt ~~emission and its emissions and their~~ dependency on surface wind speed, and a conditionally sampled relative humidity budget. Section 7 summarizes the paper and points out possible future improvements and extensions of the tool.

95 2 Host model features

Here, “host model” refers to the AGCM in which our new tool is embedded, in this case EAMv1. We ~~summarize EAM~~provide some background information about EAMv1’s code structure and data structure in Sect. 2.1 to help explain the implementation and portability of our tool in later sections. We summarize EAMv1’s choice of method for coupling atmospheric processes in Sect. 2.2 and briefly describe how model variables are archived on output files in Sect. 2.3. These features of the host mode are
100 used by our tool.

2.1 Data and code structures

EAMv1 is an AGCM consisting of a dynamical core describing the mesh-resolved fluid dynamics and a suite of parameterizations describing various subgrid-scale processes. EAMv1 is also the atmosphere component of the coupled Earth system model E3SMv1 (Golaz et al., 2019) and as such, it communicates with the coupler cpl7 (Craig et al., 2012) to exchange information
105 with the other components of E3SMv1 such as the ocean model, the land model, and the sea ice model, etc. Reflecting both perspectives, the atmosphere model code can be understood as consisting of the four compartments depicted by gray shaded boxes in Fig. 1: the dynamical core, the coupler, and two groups of parameterizations calculated before or after the communication with the coupler, respectively. The driver subroutines for the before-coupling and after-coupling parameterization groups are named tphysbc and tphysac, respectively (Fig. 1). tphysbc and tphysac each contains a series of subroutine
110 calls corresponding to various parameterizations. The white boxes with solid outlines in Fig. 1 are examples of such parameterizations. tphysbc and tphysac also contain code blocks for numerical treatments (e.g., total energy fixers or mass fixers) or for diagnosing quantities of interests. In the remainder of the paper, we refer to those subroutines and code blocks as code compartments, too, although these are sub-compartments of tphysbc and tphysac. The driver subroutines tphysbc and tphysac and the code compartments therein are arguably the code units in EAM that researchers of atmospheric physics
115 most often work with.

EAM’s dynamical core and physics driver subroutines use different data structures. The following derived data types are defined to pass information among the four compartments shown in Fig. 1 and between parameterizations: The physics_state type contains variables describing the atmospheric state that are passed between the physics and dynamics and between parameterizations. Examples of such state variables include air temperature, zonal and meridional winds, vertical velocity,
120 air pressure, pressure layer thickness, geopotential height, surface pressure, and surface geopotential. The physics_tend type contains the total tendencies of temperature and horizontal winds caused by all sub-grid processes as well as a few water and energy fluxes that are passed from the parameterization suite to the dynamical core. The import state type cam_in_t and export state type cam_out_t contain the fields of physical quantities that are provided to EAM by the coupler and to the

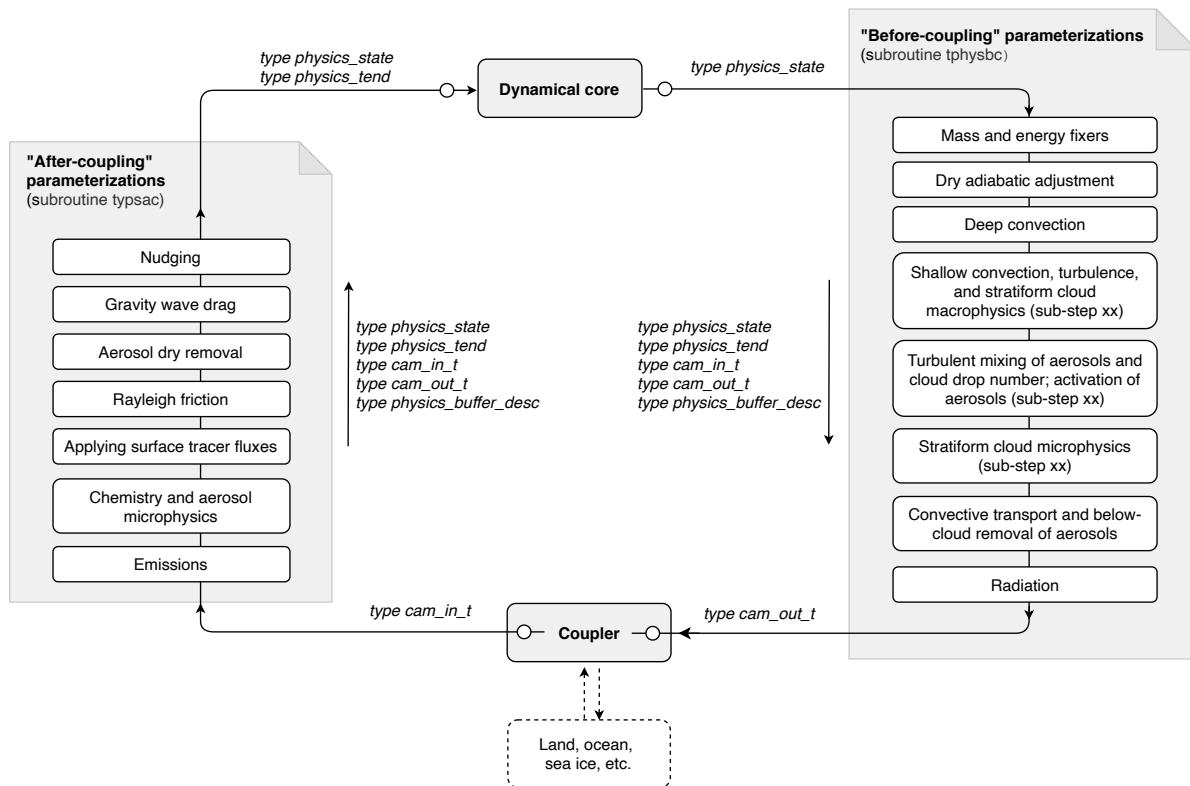


Figure 1. A schematic showing the four compartments (gray boxes) of the EAMv1 code: the dynamical core, the coupler, and two groups of parameterizations calculated before or after the communication with the coupler, respectively. The derived data types used for passing information among these compartments and within the two groups of parameterizations are shown in italics. The two small circles shown next to the dynamical core and the two circles placed inside the coupler box represent transfer of information to or from data structures internal to the dynamical core or the coupler. The white boxes with solid outlines shown in the “before-coupling” and “after-coupling” parameterization groups are examples (not complete lists) of parameterizations and numerical treatments included in typical EAM simulations.

125 coupler by EAM, respectively (cf. Chapter 4 in Eaton, 2015). The `physics_buffer_desc` type is defined for constructing
the physics buffer that contains fields passed between parameterizations. Dummy variables of these five derived types are
available in subroutines `tphysbc` and `tphysac`; collectively, they describe the characteristics of the model atmosphere that
vary in space and evolve with time.

130 A subroutine called by `tphysbc` or `tphysac` may again be a driver for a set of closely related parameterizations and
hence calls a number of sub-subroutines. For example, the chemistry driver in `tphysac` has multiple levels of subroutines
that correspond to various processes related to chemical gases and aerosol microphysics. Depending on how those lower-level
subroutines are organized, EAM variables of the derived type `physics_state` or `physics_buffer_desc` etc. may be
available in those lower-level subroutines.

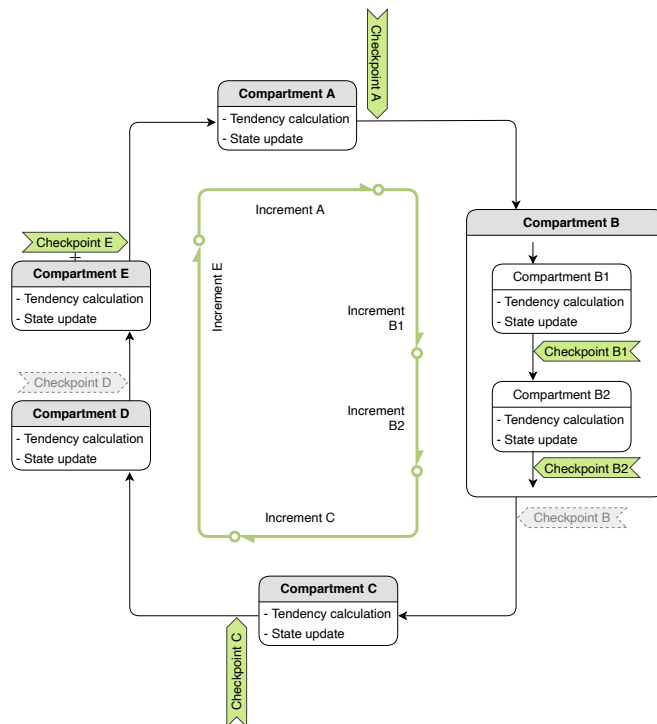


Figure 2. A schematic showing a time step of model simulation involving five hypothetical `model-components-code compartments`, A to E, either resolved or unresolved by the model’s computational mesh, that are numerically coupled using isolated sequential splitting (cf. Sect. 2.2). Also shown are various tags of locations (referred to as checkpoints, cf. Sect. 3.1) within a time step that are introduced to facilitate diagnostics using the new tool. When the tool is used in a simulation, some checkpoints are activated (i.e., selected by the user and indicated in green here), and others are inactive and indicated in gray. No information is monitored at inactive checkpoints. The green lines with a circle on one end and an arrowhead on the other end depict how increments of model variables are defined. Further details can be found in Sects. 2.2 and 3.1.

2.2 Sequential process coupling

135 EAMv1 solves a set of integral-differential equations to simulate the spatial variation and temporal evolution of the state of the atmosphere. Distinct physical and chemical processes are represented by different model components, e.g., the dynamical core that describes the large-scale fluid dynamics and tracer transport processes resolved by the model's computational grid, and various parameterizations that describe smaller-scale fluid processes (e. g., turbulence and convection) and non-fluid phenomena (e. g., radiative transfer, cloud and aerosol microphysics).

140 For time integration, the EAMv1 solves a set of integral-differential equations to simulate the spatial variation and temporal evolution of the state of the atmosphere. Distinct physical and chemical processes (phenomena) are represented by different compartments of the model code. The primary method used in EAMv1 for component coupling coupling those compartments is a method we refer to as isolated sequential splitting (Figure Fig. 2). In this method, a model-component-code compartment produces an estimate of the rate of change of the atmospheric state by considering a single or a set of closely related physical or chemical processes in isolation (i.e., ignoring all other processes represented by other model components). The estimated rate
145 of change, often referred to as a tendency, tendency is used to update the atmospheric state, and then the updated state is passed to the next model-component-code compartment. Since EAMv1 contains many components has many code compartments, the atmospheric state is updated multiple times within one full time step. Here a full time step is defined as the smallest time integration cycle in which the effects of all physical processes considered in a simulation have been used to update the model state at least once in advancing the solution in time. This full time step is often loosely referred to as the “physics time step”
150 in EAMv1 and its predecessors. In a discussion on time stepping and sub-cycling in EAMv1, Wan et al. (2021) referred to the full time steps as the “main process-coupling time steps” and denoted their length by $\Delta t_{\text{CPLmain}}$. The same notation is used in this paper for consistency and clarity. The so-called low-resolution configuration of EAMv1 (with 1 degree horizontal grid spacing) uses $\Delta t_{\text{CPLmain}} = 30$ min by default. Fig. 2 provides a schematic showing a full time step consisting of 5 hypothetical processes label five hypothetical code compartments labeled as A to E.

155 A model-component-code compartment in EAMv1 might contain sub-components sub-compartments that are also connected using the isolated sequential splitting method, like process-the compartment B depicted in Fig. 2. An example in A concrete example from EAMv1 is deep convection, which consists of the parameterization by Zhang and McFarlane (1995) that describes impact of convective activities on temperature and humidity and a parameterization of the convective momentum transport from Richter and Rasch (2008). These convection-related atmospheric processes are sequentially split within the deep
160 convection parameterization.

Another situation that can also be depicted by the hypothetical process-compartment B in Fig. 2 is sub-cycling. For example, in EAMv1, the parameterizations of turbulence, shallow convection, and stratiform cloud macrophysics and microphysics are sub-cycled 6-six times within each 30 min full time step. In this case, each sub-cycle can be viewed as a sub-process sub-compartment depicted in Fig. 2 (i.e., sub-cycle 1 corresponds to process-compartment B1, sub-cycle 2 corresponds to
165 process-compartment B2, etc.).

2.3 History output

EAMv1 inherited from its predecessors a flexible mechanism for handling model output (~~see, e.g., Eaton, 2010~~) (see, e.g., Chapter 8 in Craig et al., 2021). The data files that contain the temporal and spatial distribution of model-simulated physical quantities are called history files. The model can write multiple series of history files with different write frequencies; these series are referred to as history tapes in the source code. Different history tapes can contain different output variables (fields). Whether the values written out should be instantaneous, time-averaged, maximum or minimum during the output time window can be specified for each tape on a field-by-field basis.

The software infrastructure for history output uses internal data types and functions that handle the storage of fields to be written out and perform the calculation of required statistics (e.g., time averages). Typically, researchers focusing on physical or computational aspects of the model do not need to care about the internal ~~working-workings~~ of this software infrastructure. Rather, they use a subroutine named `outfld` to transfer the values of a model variable to the infrastructure. To provide a context for some descriptions in later sections, we note that while a model variable can change its value multiple times in a time step of $\Delta t_{\text{CPLmain}}$, the value being recorded for output is the snapshot made when the `outfld` subroutine is called. The location in the time integration cycle at which the `outfld` subroutine is called can differ from model variable to variable.

180 3 Nomenclature and design concepts for CondiDiag

We now introduce the key concepts and design features of the new tool. The description in this section is kept general, only referring to EAM when necessary, as the methodology can be applied to or revised for other AGCMs. Details of the implementation in EAMv1 are provided in Sect. 4.

3.1 Checkpoints, field values, and increments

185 In order to discuss the implementation of our tool in the context of the sequential process splitting described in Sect. 2.2, we introduce the following nomenclature:

- A *checkpoint* is a location in the time integration cycle where a snapshot of a model variable can be obtained (cf. Fig. 2). At a checkpoint, the value of a model variable can be retrieved from data structures ~~in the standard EAMv1 introduced in Sect. 2.1~~. Additional quantities can be computed from available variables. Those retrieved or computed variables at ~~that the~~ checkpoint can be saved in the data structure ~~of specific to~~ our tool and ~~be~~ transferred to the output-handling infrastructure of the standard EAM (cf. Sect. 2.3). If ~~a process is sub-eyed sub-cycles~~ with respect to $\Delta t_{\text{CPLmain}}$ ~~are used~~, then the end of each sub-cycle is considered to be a different checkpoint.
- The value of a model variable at a checkpoint is referred to as a *field value*. For example, the air temperature after ~~process compartment~~ A in Fig. 2 is referred to as the field value of temperature at checkpoint A.

195 – ~~Checkpoints available in the model are active or inactive in a simulation: Active checkpoints are selected by user at run time. No~~ All checkpoints are inactive by default, meaning no information is retrieved, calculated, or archived by our tool ~~at inactive checkpoints.~~ A checkpoint becomes active when the user selects it at run time (through namelist, cf. Sect. 5.2.3). This flexibility allows a user to focus only on the checkpoints relevant to their specific study; it also saves memory and disk space, as inactive checkpoints will not consume memory or produce information in the model’s output files.

200

- The difference between values of the same model variable at two different checkpoints is referred to as an *increment*. Since there can be inactive checkpoints, an increment calculated by our tool is the difference between the field value at the current checkpoint and the field value at the previous active checkpoint. For example, in Fig. 2, increment E is the difference between checkpoints E and C, with the inactive checkpoint D ignored.

205 3.2 Composite analysis

For a composite analysis, our tool expects the user to specify one or more conditional sampling criteria via run time input (e.g., namelist parameters). The handling of multiple conditions is described later in Sect. 3.3. Here we first explain the handling of a single sampling condition.

During each time integration cycle of length $\Delta t_{\text{CPLmain}}$, values of user-selected variables at active checkpoints are obtained and copied to a data structure internal to our tool. Increments and vertical integrals are calculated if requested. The sampling condition is evaluated at each grid cell in the global domain. Depending on whether the condition is met, the copy ~~(including of the user-selected variables in our tool’s internal data structure, including their~~ increments and integrals ~~)~~ if requested by the user, is assigned either the model-computed values or a fill value, resulting in a conditionally sampled copy. This sampled copy, together with information about the sampling condition, is then transferred to the output handling infrastructure. In the next model time step, the sampling condition is re-evaluated and ~~selected~~ the user-selected model variables re-sampled. The details are explained below.

215

3.2.1 Defining a condition

A key element of a sampling strategy is the atmospheric condition to be used to categorize data. Necessary elements in the definition of a condition include (1) a *metric* (which can be any 2D or 3D field, e.g., air temperature or surface pressure), (2) a *threshold* (which is a number, e.g., $-40\text{ }^{\circ}\text{C}$ or 500 hPa), and (3) a *comparison type* (e.g., smaller than or equal to). In our tool, a metric can be any prognostic or diagnostic variables in the host model or a quantity that can be diagnosed from existing variables. Currently supported comparison types include (i) $<$, (ii) \leq , (iii) $>$, (iv) \geq , and (v) equal to within a tolerance. Type (v) can be used to select values within a range. For example, choosing a threshold of $-20\text{ }^{\circ}\text{C}$ and a tolerance of $20\text{ }^{\circ}\text{C}$ would allow the user to sample grid cells with air temperature between $-40\text{ }^{\circ}\text{C}$ and $0\text{ }^{\circ}\text{C}$. The user’s choices of metric, threshold, comparison type, and tolerance (if applicable) are expected to be specified through run time input.

225

Another key element of the definition of the sampling condition is the location in the time integration cycle at which the sampling condition should be evaluated. As explained earlier in Sect. 2.2, the atmospheric state defined by the prognostic variables of EAM's governing equations is updated multiple times within one full time step of $\Delta t_{\text{CPLmain}}$ due to the sequential splitting method used for process coupling. ~~While some~~ For diagnostic quantities (e.g., relative humidity) ~~are calculated only once or a few times per $\Delta t_{\text{CPLmain}}$ when they are needed by a calculation (e.g., a parameterization), their values that are~~ the values consistent with the ~~model's prognostic state effectively~~ prognostic state also evolve within each time step. ~~To avoid ambiguity, even though the arrays in the programming language can temporarily contain inconsistent values until the next time of calculation. Because of such evolutions within a time step,~~ our tool requires the user to specify at which checkpoint (cf. Sect. 3.1) a sampling condition should be evaluated. The implementation of this aspect in EAMv1 is discussed in more detail in Sect. 5.2.1. Also because of the evolution of model variables within a time step, one needs to be cautious when obtaining values of diagnostic quantities for use by our diagnostic tool. This point is further explained in Sect. 4.1.2.

3.2.2 Condition metric and field of flags

In this first version of our tool, the metric used in defining a sampling condition can be one of the following types of model variables:

- 240 – a 2D field that covers the entire horizontal domain of the model, such as the surface pressure or total cloud cover;
- a 3D field defined at layer mid-points or as layer averages, e.g., air temperature, cloud fraction, or the mass mixing ratio of a tracer in EAMv1,
- a 3D field defined at the interfaces between adjacent layers, e.g., the convective mass flux predicted by the deep convection parameterization or the net longwave radiative flux calculated by the radiation scheme in EAMv1.

245 For each condition metric, a flag field with the same spatial dimensions is defined in the data structure internal to our tool. After a sampling condition is evaluated at a grid cell in the 2D or 3D domain, the flag field is assigned a value of 1 if the condition is met and a value of 0 otherwise. The flag field, when averaged over time, quantifies equals the frequency of occurrence of meeting the sampling condition at each individual grid cell. The flags at different grid cells can be averaged in space, either over the entire 2D or 3D domain or over a subdomain, to calculate the frequency of occurrence of the sampling condition in the corresponding domain, but the spatial averages are expected to be done during post-processing instead of during model integration. A use case example involving both temporal and spatial averaging can be found in Sect. 6.3.

255 After the sampling condition is evaluated over the entire 2D or 3D domain, the condition metric itself is sampled, meaning that the field of values transferred to the output-handling software contains the model-computed values where the condition is met and a fill value of zero where the condition is not met. In other words, the masking indicated by the flag field is applied to the condition metric as well. Recall that the output-handling infrastructure of EAM supports both instantaneous and time-averaged model output. Since EAM is a climate model, time-averaged output is expected to be more often used more often. Our tool uses a fill value of zero for archiving the condition metric and the other monitored model variables to make

sure that time steps in which the sampling condition is not met make zero contributions to the time average. Later on, during post-processing, when a time average of a condition metric is divided by the time average of the corresponding flag, we get the composite mean, i.e., the average over the time steps when the condition is met.

3.2.3 Monitored model variables

Our tool allows for multiple model variables to be monitored under the same sampling condition. To distinguish those monitored variables from the condition metric, the monitored variables are referred to as the quantities of interest (QoIs) in the remainder of this paper and in our code. QoIs monitored under the same condition can have different vertical dimension sizes:

- 265 – When the QoI has the same dimension size as the condition metric, the masking indicated by the flag field can be applied in a straightforward manner.
- If the metric is 2D and the QoI is 3D, then the same 2D masking is applied to all vertical layers or interfaces.
- ~~If the metric and the QoI are both 3D but have different numbers of vertical layers (e.g., the metric is the air temperature defined at layer midpoints while the QoI is the net longwave radiative flux defined at layer interfaces), then masking will be skipped, meaning this specific QoI will be captured for output as if no conditional sampling had happened.~~
- 270 – If the metric is 3D and the QoI is 2D, then a grid cell in the 2D domain is selected if any layer midpoint or interface in that column is selected. For example, to quantify the shortwave cloud radiative effect (the QoI) in the presence of ice clouds, one can choose a sampling condition of non-zero ice crystal concentration. Then, if ice crystals occur in any layer in a grid column, then the shortwave cloud radiative effect of that grid column will be sampled.

275 Like the archiving of the condition metric explained in Sect. 3.2.2, a QoI gets a fill value of zero at grid cells where the condition is not met, so that the composite mean can be derived by dividing the time-averaged QoI by the time-averaged flag field.

3.2.4 Time window of validity of an evaluated condition

Our tool is designed to evaluate a sampling condition once per each $\Delta t_{\text{CPLmain}}$ at a user-specified checkpoint X and the tool can monitor QoIs at multiple checkpoints within $\Delta t_{\text{CPLmain}}$. By default, the masking resulting from a condition evaluated at checkpoint X is applied retrospectively to all active checkpoints from X until just before the previous encounter of X (i.e., X in the previous time step). This is illustrated by condition (1) shown in purple in Fig. 3, where the sampling condition is evaluated at checkpoint C and the masking is applied retrospectively to checkpoints B2, B1, A, and E.

To provide more flexibility, our tool also allows the user to specify a different checkpoint as the end-of-validity mark for a sampling condition, which we indicate with double-bars in Fig. 3. A hypothetical example is given as condition (2) shown in brown in the figure. There, the end-of-validity mark (brown double-bar) is placed at checkpoint A while the sampling condition is evaluated at checkpoint E. The masking determined at E is applied to E and the subsequent checkpoint A, as well as retrospectively to checkpoints C, B2, and B1 before E. An example from EAMv1 showing such a usage can be found in Sect. 6.3.

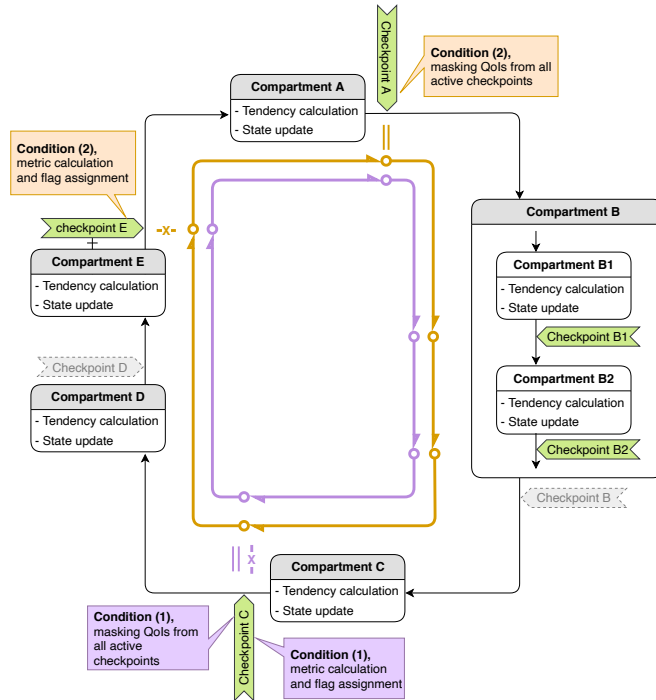


Figure 3. A schematic showing two sampling conditions indicated in brown and purple. The “-X-” marks indicate locations in the time integration cycle where the condition metrics are evaluated. The double-bars indicate the end of validity of the evaluated sampling conditions. More details can be found in Sect. 3.2.4. Like in Fig. 2, green tags are active checkpoints being monitored by the tool. Gray tags with dashed borderlines are inactive checkpoints, which are ignored in the simulation.

3.3 Multiple sampling conditions in one simulation

290 A single sampling condition is defined by a combination of (i) a metric, (ii) a threshold, (iii) a comparison type, (iv) a tolerance if the comparison type is “equal to”, (v) a condition-evaluation checkpoint, and (vi) an end-of-condition-validity checkpoint. Changing any of ~~the~~ these elements will result in a new sampling condition. Our tool allows for multiple conditions to be used in a single simulation (cf. Fig. 3), and these multiple sampling conditions can use different condition metrics.

For software simplicity, the current implementation only allows one and the same set of QoIs and checkpoints to be monitored under all sampling conditions. In the example illustrated in Fig. 3 where two conditions ~~(1) and (2)~~, and five active checkpoints (A, B1, B2, C, and E) are activated, let us assume the user has chosen to monitor four QoIs, T , q_v , u , and v . The same four QoIs and five checkpoints will be monitored for both sampling conditions. The current implementation does not allow, for example, monitoring only T and q_v at checkpoint A and C under condition (1) and only u and v at checkpoints A, B1, and B2 under condition (2), although this kind of flexibility can be considered for future versions of CondiDiag if needed.

300 Since the current implementation monitors the same QoIs for all sampling conditions in the same simulation, one can run into a situation where the metric and the QoI are both 3D fields but have different numbers of vertical layers (e.g., the metric

is the air temperature defined at layer midpoints while the QoI is the net longwave radiative flux defined at layer interfaces). In such a case, masking will be skipped, meaning this specific QoI will be captured for output as if no conditional sampling had happened.

305 **3.4 Mass-weighted vertical integral of QoIs**

For spatially 3D QoIs defined at layer midpoints or as cell averages, the vertical integral weighted by air mass can be calculated during the time integration and then conditionally sampled and written out as 2D variables. This applies to both field values and their increments.

One note of caveat is that in EAM's physics parameterizations, the mixing ratios of water species (vapor, cloud liquid and 310 ice, rain and snow) are defined relative to the mass of moist air (i.e., dry air plus water vapor) while the mixing ratios of aerosols and chemical gases are defined with respect to dry air. Our tool expects the user to specify which kind of air mass (moist or dry) should be used for each QoI when vertical integrals is requested (cf Sect. 5.2.4).

~~Furthermore, while the physics parameterizations suite uses different mixing ratio definitions for different tracers, the numerical schemes for large-scale transport assume all tracers concentrations are "wet" mixing ratios (i. e., defined relative to moist air), and the wet-to-dry and dry-to-wet conversions occur during each model time step of size $\Delta t_{\text{CPLmain}}$. Therefore, our tool also allows a user to (1) specify the type of air mass to be used for vertical integral at each checkpoint, and (2) clarify whether the air mass type specified for the QoI or the checkpoint should take precedence for each QoI-checkpoint combination. The corresponding namelist parameters are explained in Sect. 5.2.4.~~

4 Implementation in EAMv1

320 This section explains how the design features described in Sect. 3 are implemented in EAMv1. We ~~start with~~ provide an overview of the new Fortran modules added specifically for the tool (Sect. 4.1), introduce a general-purpose diagnostics module (Sect. 4.2), and ~~a summary of~~ summarize the changes made to the original EAMv1 code (Sect. 4.3). We keep these sections brief but provide two versions of the EAMv1 code on Zenodo ([DOI: 10.5281/zenodo.5530188](https://doi.org/10.5281/zenodo.5530188)) corresponding to the GitHub commits before and after the implementation of CondiDiag1.0, so that readers can review the details of the code changes if 325 needed. The Zenodo archive also contains a third tar ball containing only the source files that were added or revised during the implementation of CondiDiag1.0, as well as a copy of the original version of the revised EAMv1 files.

4.1 CondiDiag-specific new modules

Four new modules are added to define data structures and support key functionalities of our diagnostic tool. These are briefly described below.

330 4.1.1 Data structure module

The module `conditional_diag` contains definitions of the basic data structures used by our tool and subroutines for initializing the corresponding Fortran variables.

A Fortran variable `cnd_diag_info` of the derived type `cnd_diag_info_t` contains the metadata that describes the user's conditional sampling strategy and ~~for~~ budget analyses configuration. A namelist `conditional_diag_nl` (cf. Sect. 5.2) is also defined in this module, and a subroutine `cnd_diag_readnl` parses the user's namelist input and populates the information to ~~end_diag_info~~ `cnd_diag_info`.

A second derived type `cnd_diag_t` is defined for storing the values of the metrics, flags, ~~as well as QoI and the~~ field values and increments of QoIs. The corresponding Fortran variable is an array named `phys_diag`; the array is defined in a different module (explained in Sect. 4.3.1). The subroutines that allocate memory for elements of `phys_diag` and their components are included in module `conditional_diag`.

4.1.2 Key algorithm module

The module `conditional_diag_main` contains the key subroutine of our tool, named `cnd_diag_checkpoint`, which obtains the values of the condition metrics and QoIs, calculates the QoI increments, evaluates the sampling conditions, applies conditional sampling, and transfers the sampled fields to the output-handling infrastructure of EAM. Examples showing how the subroutine is invoked in EAM is explained in Sect. 4.3.2.

As mentioned earlier in Sect. 3.1, the condition metrics and QoIs can be existing components of EAM's state variable, physics buffer, and the ~~cam_in and cam_out data structures. Taking air temperature as an example, the~~ atmosphere import and export data structures (cf. Sect. 2.1; note that the `physics_tend` type is not used by our tool). For example, air temperature is a component of the atmosphere state variable; hence the values are retrieved in subroutine `get_values` in module `conditional_diag_main` by

```
case ('T')
  arrayout(1:ncol,:) = state%t(1:ncol,:)
```

Condition metrics and QoIs can also be physical quantities that need to be calculated from components of EAM's existing data structures. For example, the relative humidity with respect to ice is obtained by

```
355 case ('RHI')
    call relhum_ice_percent( &
      ncol, pver,          &! intent(in)
      state%t(:ncol,:),   &! intent(in)
      state%pmid(:ncol,:), &! intent(in)
360 state%q(:ncol,:,1),   &! intent(in)
      arrayout(:ncol,:)  )! intent(out)
```

In these examples, “T” and “RHI” need to be unique names within the module `conditional_diag_main`; these will also be the metric or QoI names that the users refer to in the namelist `conditional_diag_nl` (cf. Sect. 5.2). The currently implemented metric and QoI names are listed in Table A1 in Appendix A. Additional metrics and QoIs can be added following the existing examples. We note that some of the variable names in Table A1 coincide with EAM’s standard history variable names but the coincidence has no significance. Because a QoI can be monitored at different checkpoints and under different conditions, those different combinations will each correspond to a distinct variable name in the history files, as explained in Sect. 4.1.3.

Here, it is worth pointing out one important caveat for obtaining values of diagnostic quantities in the host model. As mentioned in Sect. 3.2.1, the values of diagnostic quantities that are consistent with the prognostic state effectively evolves within a full model time step but the arrays in the programming language might have only one or a few updates per full time step and hence can temporarily have inconsistent values. Care is needed to handle the corresponding code blocks in subroutine `get_values` of module `conditional_diag_main`. Let us assume the host model has a diagnostic quantity whose value is saved in the physics buffer under the name `ABC`.

If the user’s intention is to *understand the host model’s code* by tracking when the physics buffer’s component `ABC` is updated within a full model time step, a code block like the following is needed:

```
case('ABC'/'_PBUF')
  idx = pbuf_get_index('ABC')
  call pbuf_get_field(pbuf, idx, ptr2d)
  arrayout(:, :) = ptr2d
```

If the user’s intention is to *understand the physics* by monitoring the values of `ABC` that are consistent with the evolving prognostic state, a code block like the following is needed which recalculates the value of `ABC` from the state variable:

```
case('ABC'/'_EVOL')
  call calculate_abc(state, ..., arrayout)
```

The RHI budget example shown in Section 6.3 falls into the second category.

4.1.3 History output module

The module `conditional_diag_output_utils` is responsible for adding the following items to EAM’s master list of history output variables:

- the conditionally sampled metric field named with the pattern `cnd<index>_<metric_name>` where `<index>` is a two-digit number (e.g., `cnd01_T` if the first sampling condition uses air temperature as the metric);
- the flag field (see Sect. 3.2.2) named `cnd<index>_<metric_name>_flag`;
- one output variable corresponding to each QoI at each active checkpoint under each sampling condition, named with the pattern `cnd<index>_<QOI_name>_<checkpoint_name>`. For example, `cnd01_CLDLIQ_DYNEND` is the

395 stratiform cloud liquid mixing ratio monitored at checkpoint DYNEND under condition 1. If increments of the QoI are calculated and archived, these will be named similar to the QoIs but with a suffix `_inc` append, e.g., `cnd01_CLDLIQ_DYNEND_inc` for the increment of CLDLIQ at checkpoint DYNEND under condition 1.

- If the mass-weighted vertical integral is requested for a QoI, then a suffix `_v` will be appended to the QoI name. For example, `cnd01_CLDLIQ_v_DYNEND` is the column burden of CLDLIQ at checkpoint DYNEND under condition 1 and `cnd01_CLDLIQ_v_DYNEND_inc` is the corresponding increment.

400 We expect that users of our tool should not need to touch the `conditional_diag_output_utils` module unless they want to revise the naming conventions for variables in the history files.

It is worth noting that for any of the output variables added by our tool, EAM's standard history output functionalities apply (cf. Sect. 2.3). For example, each variable can be added to or excluded from one or multiple history tapes and be written out at the user-specified frequencies. For temporal statistics, both instantaneous and time-averages can be used in the current
405 implementation. Maximum and minimum values etc. need to be used with care as unselected grid cells are filled with zeros. In future versions, we will consider allowing the user to specify what missing values-value should be assigned to each QoI.

4.1.4 Restart module

Because our diagnostic tool uses its own data structure, new subroutines have been included to add additional contents to EAM's restart files. These subroutines are placed in the module `conditional_diag_restart`. As long as ~~users do a~~
410 user does not change the data structures defined in module `conditional_diag`, there should be no need to touch the restart module even if they add new metrics and QoIs to the key algorithm modules `conditional_diag_main` and `misc_diagnostics`.

4.2 General-purpose diagnostics module

~~In case a user provides~~ We imagine a user might want to provide their own subroutines to calculate new metrics or QoIs
415 ~~that are not available in the host model or recalculate diagnostic quantities to obtain values consistent with the evolving prognostic state~~ (like `relhum_ice_percent` in the code snippet ~~above~~in Section 4.1.2). In such cases, we recommend those subroutines be placed in the module `misc_diagnostics` rather than in `conditional_diag_main`, because we view those user-provided subroutines as general-purpose diagnostic utilities that could also be used by other parts of EAM (e.g., ~~some parameterizations~~in some parameterizations for diagnostic purposes).

4.3 Other code changes in EAMv1

~~Other than~~ Apart from adding the five modules explained in Sections 4.1 and 4.2, the implementation of our tool in EAMv1 only involved a very small number of code changes, as described below.

4.3.1 The `phys_diag` array and its elements

Our tool ~~has the~~ uses its own derived data type `cnd_diag_t` for storing values of the condition metrics, flags, and ~~QoI field~~
425 ~~values as well as increments~~ the field values, increments, and vertical integrals ~~, while the~~ of QoIs (cf. Sect. 4.1.1). The data
storage closely follows the handling of EAM's model state variable: ~~a Fortran array of,~~

To explain the background, we note that in order to parallelize the parameterization calculations on supercomputers, EAM's
global domain is divided into "chunks" of grid columns. A chunk contains a compile-time configurable number of columns
that are not necessarily neighbors in the geographical sense. Each call of `tphysbc` or `tphysac` performs calculations of
430 the corresponding parameterizations in a single grid chunk, while each MPI (Message Passing Interface) process on the
supercomputer typically performs calculations for multiple chunks (cf. Chapter 4 in Eaton, 2015). In `tphysbc` and `tphysac`,
the dummy variable `state` is declared as a scalar of type `physics_state`, and this scalar contains data for a single
grid chunk. The parent routines of `tphysbc` and `tphysac` declare rank-one arrays (of type `physics_state`) named
`phys_state` for storing data for all chunks handled by the same MPI process.

435 ~~Similarly, for implementing our tool in EAMv1, rank-one arrays of type `cnd_diag_t` is declared as an array of rank~~
~~one with the different array elements corresponding to different grid-cell chunks handled by the same CPU. The subroutines~~
~~named `phys_diag` are declared in parent routines of `tphysbc` and `tphysac` that organize the invocation of individual~~
~~parameterizations and their coupling operates on a single grid-cell chunk; the~~ The scalar variable of type `cnd_diag_t` in
`tphysbc` ~~and or~~ `tphysac` is named `diag`.

440 4.3.2 Checkpoints

~~Most of the~~ The checkpoints listed in Tables B1 and B2 ~~are added to subroutines in the Appendices have been added to~~
`tphysbc` and `tphysac` by inserting code lines like

```
call cnd_diag_checkpoint( diag, &! intent(inout)  
    'DYNEND', state, pbuf, &! intent(in)  
445     cam_in, cam_out )! intent(in)  
call cnd_diag_checkpoint( diag, &! inout  
    'DYNEND', state, pbuf, &! in  
    cam_in, cam_out )! in
```

~~where~~ (These code lines are inserted after the white boxes with solid outlines shown in Fig. 1.) Here, `diag` is the scalar
450 variable of type `cnd_diag_t` explained in Sect. 4.3.1 ~~and~~; "DYNEND" is the unique string identifying this checkpoint; ~~;~~
`state`, `cam_in` and `cam_out` are scalar variables of derived types declared in the original EAM code.

~~Checkpoints have also~~ As mentioned in Sect. 2.1, the EAM code has a hierarchical structure; the `state`, `cam_in` and
`cam_out` variables as well as the `physics` buff are available also in some lower-level routines called by the physics drivers
`tphysbc` and `tphysac`. Checkpoints can be added to those lower-level routines. To demonstrate this point, in `CondiDiag1.0`,

455 [checkpoints have](#) been included in the stratiform cloud macrophysics driver subroutine `clubb_tend_cam` in the form of, e.g.,

```
call end_diag_checkpoint( diag, &! intent(inout)  
  'CLUBB'//char_macmic_it, &! intent(in)  
  state1, pbuf, cam_in, cam_out )! intent(in)  
460 call end_diag_checkpoint( diag, &! inout  
  'CLUBB'//char_macmic_it, &! in  
  state1, pbuf, cam_in, cam_out )! in
```

where the character string `char_macmic_it` labels the sub-steps within a full time step $\Delta t_{\text{CPLmain}}$. It is worth emphasizing that `state1` (instead of `state`) is referred to in the code snippet quoted above because `state1` is the atmospheric state variable that is sequentially updated by various [subprocesses code blocks \(compartments\)](#) in `clubb_tend_cam`.

4.4 [Portability](#)

[Our new tool was originally developed for and implemented in version 1 of EAM and was then tested in v2 and some in-between versions. The porting turned out to be straightforward as the basic code and data structures in EAM had not changed. To implement CondiDiag in models outside the EAM/CAM model families will require some significant adaptation. Some thoughts are shared here.](#)

470 [We assume the host model has a few high-level driver subroutines \(or one driver\) that organizes code compartments corresponding to various atmospheric processes. This, to our knowledge, is common in AGCMs.](#)

[Our code also makes use of the fact that the drivers use derived data types to organize a large number of model variables of interest for physics-oriented or numerics-focused studies. These derived data types make our code more flexible and compact, especially for conditional sampling.](#)

475 [For performing budget analysis, our current algorithm assumes the sequential splitting method is used in the host model. For models that use different coupling methods \(e.g. parallel splitting or a mixture of methods\), it might be possible to obtain the budget terms directly from the tendencies saved in existing model variables.](#)

480 [The four new modules CondiDiag introduces to EAM \(cf. Sect. 4.1\) all use some EAM-specific data structures and software functionalities. For porting to a new model, some parts of these modules will be straightforward to port and the other parts will need a rewrite.](#)

485 [The `conditional_diag` module has the weakest dependency on EAM. The meta-data handling part \(i.e., parsing the user's choices of QoIs, metrics, etc.\) is independent of EAM's data structures. The module also contains a few subroutines that allocate memory for the derived-type arrays used for storing the QoIs, metrics, etc.. The code therein assumes a chunk-based domain decomposition, which likely will need to be adapted to the new host's data structure.](#)

[The `conditional_diag_main` module contains subroutines for retrieving field values, deriving increments, calculating vertical integrals, and performing conditional sampling, etc. The subroutines assume all QoIs and condition metrics can be](#)

retrieved or recalculated from EAM-specific data structures described in Sect. 2.1, hence the dummy variables and their usage will need to be adapted for a new host model.

490 Module conditional_diag_output_utils and module conditional_diag_restart will each need a rewrite for a new host. The key task of the subroutines therein is to do I/O for all components of the derived type cnd_diag_t. We expect that one needs to follow the host model's way of handling I/O for 2D and 3D variables. The rewrite will likely be somewhat tedious but presumably not difficult.

5 User's guide

495 The new tool is expected to be useful for a wide range of simulations routinely performed by the model developers and users, including debugging simulations that are a few time steps long, short few-day simulations for preliminary testing or weather forecast style simulations for comprehensive evaluations of the model physics following protocols like Transpose-AMIP (e.g., Phillips et al., 2004; Williams et al., 2013; Williamson et al., 2005; Martin et al., 2010; Xie et al., 2012; Ma et al., 2013, 2014), as well as more traditional multi-year to multi-decade simulations.

500 To obtain process-level understanding of model behavior, it can be useful to use the new tool in an iterative manner. For example, for a study like Zhang et al. (2018) where one needs to identify ~~model-processes-code~~ compartments that result in negative values of specific humidity, we can start by carrying out a few-day or one-month simulation with unconditional sampling, choosing a large number of checkpoints to monitor ~~model-processes-code~~ compartments that are expected to affect humidity or might inadvertently do so because of computational artifacts or code bugs. We let the tool diagnose and archive
505 time averages of the specific humidity and its increment at these checkpoints to get a sense of typical values of the state variable and identify sources and sinks of moisture. In a second step of investigation, we eliminate from the previous selection any checkpoints that have been confirmed to not ~~see-show~~ humidity change in any grid cell or time step in the few-day or one-month simulation. From the shorter list, we can pick one or multiple ~~model-processes-code~~ compartments as suspected culprits of negative specific humidity. If m suspects are selected for further investigation, then m sampling conditions can be specified
510 in the next simulation, all using $q_v < 0$ as the sampling criterion but each evaluated after a different suspect. We can also select some QoIs (e.g., temperature, specific and relative humidity, wind, total cloud fraction, cloud liquid and ice mixing ratios, etc.) ~~-to-be-monitored-to-monitor~~ both right before and right after the ~~model-processes-code~~ compartments that are suspected to cause negative water vapor. We can request both the field values and increments of these QoIs to be archived, as time averages or instantaneous values(~~or both~~), or both. This second step might provide useful clues of the typical meteorological conditions
515 under which negative water vapor is predicted in the model. If pathological conditions are identified, then we can carry out additional simulations using relevant sampling conditions to further investigate the causes of those pathologies.

This section explains how investigations described above can be performed using our tool. We first present a typical workflow in Sect. 5.1 to illustrate the steps that a user needs to go through when designing an analysis and setting up an EAM simulation using our tool. We then explain the namelist parameters of our tool in Sect. 5.2.

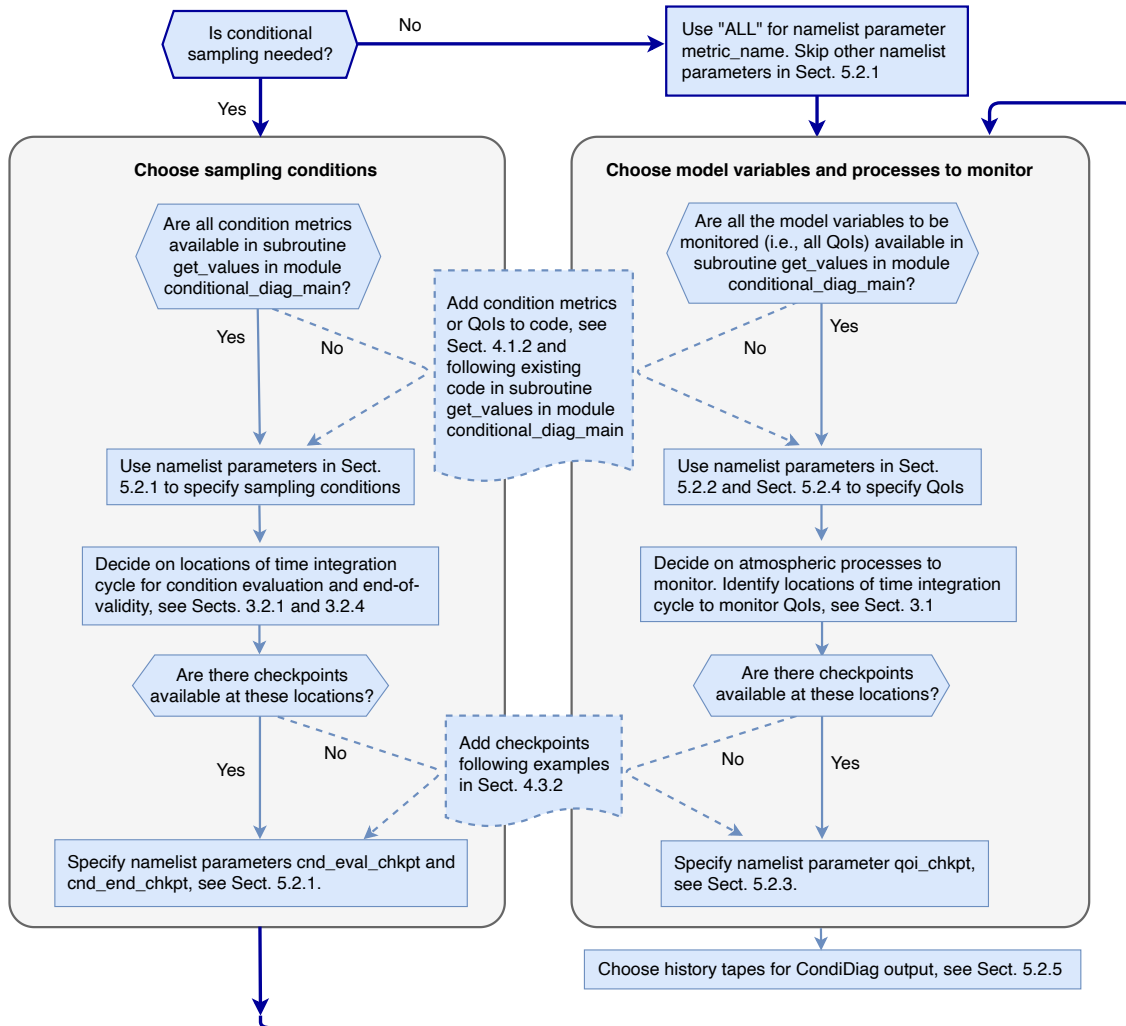


Figure 4. A schematic showing a typical workflow to illustrate the typical steps that a user needs to go through when for setting up an EAM simulation with online conditional sampling or budget analysis enabled using our tool. Dashed lines indicate places where code changes or additions are needed from the user.

520 5.1 User workflow

The schematic in Fig. 4 summarizes the steps to take when for designing a composite or budget analysis using our tool. It also points to relevant concepts explained in earlier sections and namelist parameters explained below.

5.2 Namelist conditional_diag_nl

525 Users specify their conditional sampling and budget analysis strategy via the namelist conditional_diag_nl, which consists of five groups of parameters.

5.2.1 Specifying sampling conditions

For specifying the specification of sampling conditions, we have

- metric_name, a character ~~string~~-array containing the names of the condition metrics to be used in a simulation;
- metric_nver, an integer array specifying the number of vertical levels of each metric~~is defined with~~. This is meant to help distinguish physical quantities that (1) have no vertical dimension, (2) are defined at layer mid-points, and (3) are defined at layer interfaces. Valid values for metric_nver are 1, pver (e.g., 72), and pverp (e.g., 73), where pver and pverp are EAM's variable names for the number of vertical layers and interfaces, respectively.
- metric_cmpr_type, an integer array specifying the types of comparison to be used for each condition (one entry per condition): 0 for "equal to within a tolerance", 1 for "greater than", 2 for "greater than or equal to", -1 for "less than", and -2 for "less than or equal to";
- metric_thereshold, a double-precision floating-point array specifying the threshold values that the metrics will be compared to (one threshold for each condition);
- metric_tolerance, a double-precision floating-point array specifying the tolerances for conditions with comparison type 0 (one tolerance for each condition; the value will have no effect for conditions with a non-zero comparison type);
- 540 - cnd_eval_chkpt, a character ~~string~~-array specifying at which checkpoints the conditions will be evaluated (see Sect. 3.2.1; one checkpoint for each condition).
- cnd_end_chkpt, a character ~~string~~-array specifying the checkpoints defining the end of validity of an evaluated condition (see Sect. 3.2.4; one checkpoint per condition). If not specified by user, the end-of-time-step checkpoint will be set to the condition-evaluation checkpoint (cnd_eval_chkpt).

545 5.2.2 Specifying monitored model variables

The QoIs to be monitored are specified via a character ~~string~~-array qoi_name~~, and the~~. The number of vertical levels of each QoI is given by specified through the integer array qoi_nver. If no QoIs are specified but some sampling condition have been chosen, then conditional sampling will only be applied to the metrics.

The monitoring of QoI field values are turned on by the logical scalar l_output_state. A second logical scalar, 550 l_output_incrm, is used to turn on or off the monitoring of QoI increments. Users' choice for the two switches will be applied to all QoIs.

5.2.3 Choosing checkpoints

The checkpoints at which the QoIs will be monitored are specified by a character ~~string~~-array `qoi_chkpt`. The sequence in which they are mentioned in the namelist has no significance. Note that the same checkpoints ~~will be~~ are applied to all
555 QoIs. Also note that if the user specifies a checkpoint name that does not match any checkpoint implemented in the code (e.g., because of a typographical error), then our tool will act as if the wrong checkpoint is an inactive one - in the sense that it will get ignored when the tool attempts to obtain QoI field values and calculate increments as the simulation proceeds; the history files will contain output variables corresponding to the incorrect checkpoint name but those output variables will contain zeros.

5.2.4 Turning on vertical integral

560 The calculation of mass-weighted vertical integrals of QoIs ~~are enabled by two integer arrays~~ can be enabled by the integer array `qoi_x_dp` ~~and~~ `chkpt_x_dp`:

~~`chkpt_x_dp` is expected to be specified in relation to `qoi_chkpt` (one value of `chkpt_x_dp` for each checkpoint. A value of 1 tells our tool the mass of moist air should be used while a value of 2 indicates dry air mass should be used. Any other values assigned to `chkpt_x_dp` will be interpreted as no specification.~~

565 ~~`qoi_x_dp` is expected to be~~. The values are specified in relation to `qoi_name`, i.e., one value of `qoi_x_dp` for each QoI. 0 is interpreted as no integral; the QoI will be sampled and written out as a 3D field. If 1 (moist) or 2 (dry) are selected, the corresponding (moist or dry) air mass will be used for vertical integral of that QoI at all active checkpoints in the simulation. ~~If a value of 101 (moist) or 102 (dry) is used, the the corresponding air mass will be used for that QoI at all active checkpoints except where `chkpt_x_dp` indicates a different specification for a checkpoint. For example, let us assume~~
570 ~~we set `qoi_x_dp` = 102 for the coarse mode dust mass mixing ratio; we choose to monitor checkpoints A, B, and C and set `chkpt_x_dp` = 0,0,1. Then, when our tool calculates the coarse mode dust burden, the dry air mass will be used for checkpoints A and B while the moist air mass will be used for checkpoint C. In other words, a value of `qoi_x_dp` larger than 100 means using $\text{mod}(qoi_x_dp, 100)$ in general but giving `chkpt_x_dp` precedence when the latter is set to non-zero at a checkpoint.~~

575 If the user wishes to monitor both a 3D QoI and its vertical integral, they can specify the same QoI twice in `qoi_name` ; ~~and then~~ and set one of the corresponding elements in the `qoi_x_dp` element array to 0 and the other to an appropriate value (1 for moist and 2 for dry) to request vertical integral. ~~An~~ A use case example is provided in Sect. 6.1.

For budget analyses in which mass conservation error is an important topic, there are some nuances related to the fact that the aerosol and chemical gas mixing ratios are converted from drying mixing ratios to moist mixing ratios close to the end of
580 `tphysac`. This is further discussed in Appendix C.

5.2.5 Turning on history output

A user might want to write out multiple copies of the conditional diagnostics or budget diagnostics to different history files ~~that correspond~~ corresponding to different output frequencies ~~and/or~~ temporal averaging. To facilitate support such needs, the

integer array `hist_tape_with_all_output` specifies which history files will contain the full set of output variables
585 from our tool. For example, `hist_tape_with_all_output = 1, 3` will include the output to the `h0` and `h2` files. Again,
we note that the standard output functionalities in EAM explained in Sect. 2.3 still apply.

5.3 Using unconditional sampling

One of the main motivations for creating our tool is to facilitate budget analysis. If an analysis is to be carried out for the entire
computational domain and all time steps, then a special metric named `ALL` can be used. In such a case, the user can ignore
590 (skip) the other namelist parameters in 5.2.1. When `ALL` is used, the condition evaluation will be skipped during the model's
integration (see example in Sect. 6.1). Another way to use unconditional sampling is to specify a condition that will always be
fulfilled (e.g., relative humidity higher than -1%)[a. A](#) use case example is provided in Sect. 6.3).

6 Use case examples

This section demonstrates the usage of the new tool using three concrete examples:

595 The first example is a global budget analysis without conditional sampling. It demonstrates how to request unconditional
sampling and how to request that increments of model variables be calculated and archived as time averages. This first example
also demonstrates that with our tool, it is convenient to obtain both vertical profiles and vertical integrals of the budget terms.

The second example is a composite analysis without budget terms. It demonstrates how to use multiple sampling conditions
in the same simulation and also shows that the tool can be used to perform a univariate probability distribution analysis.

600 In the third example, the increment diagnosis and conditional sampling capabilities are combined to perform a conditional
budget analysis. The example demonstrates how metrics and monitored QoIs can be chosen to be physical quantities that need
to be calculated from the host model's state variables using user-provided subroutines.

The examples shown here use 1-month simulations of October 2009 with monthly (or monthly and daily) output. All sim-
ulations were carried out with active atmosphere and land surface as well as prescribed sea surface temperature and sea ice
605 concentration, at 1 degree horizontal resolution with out-of-the-box parameters and time integration configurations of EAMv1.

6.1 A global budget analysis of dust aerosol mass mixing ratio and burden

The first example is a global dust aerosol mass budget analysis without conditional sampling. The simulation is designed to
provide insight into the atmospheric processes that change the burden (vertical integrals) of dust aerosols in two size ranges
(accumulation mode and coarse mode). In particular, we are interested in dust emission, dry removal (i.e., sedimentation and
610 dry deposition at the Earth's surface), resolved-scale transport, subgrid-scale turbulent transport and activation (i.e., nucleation
scavenging), as well as the wet removal caused by precipitation collecting particles by impaction, and resuspension caused by
evaporation of precipitation.

Table 1. Namelist setup used in the dust budget analysis example in Sect. 6.1.

```
metric_name = 'ALL'

qoi_chkpt = 'CFLXAPP', 'AERDRYRM',
            'PBCINI', 'STCLD', 'AERWETRM'

qoi_name = 'dst_a1', 'dst_a1', 'dst_a3', 'dst_a3'
qoi_nver = 72,      72,      72,      72
qoi_x_dp = 0,      2,      0,      2

l_output_state = .false.
l_output_incrm = .true.

hist_tape_with_all_output = 1, 2
nhtfrq                    = 0, -24
mfilt                     = 1, 31
```

Table 2. For the dust budget analysis example in Sect. 6.1: atmospheric processes corresponding to increments diagnosed at the checkpoints selected in the namelist shown in Table 1.

Checkpoint	Atmospheric processes
CFLXAPP	Surface fluxes of aerosol and chemical tracers
AERDRYRM	Dry removal of aerosols
PBCINI	Resolved transport
STCLD	Turbulent mixing and aerosol activation
AERWETRM	Wet removal and resuspension of aerosols

6.1.1 Simulation setup

The namelist setup for this study is shown in Table 1. Only one condition is specified: the special metric ALL is used to select the entire model domain and all time steps.

The QoI names `dst_a1` and `dst_a3` are EAM's tracer names for dust mass mixing ratio in the accumulation mode and coarse mode, respectively. Each tracer name is mentioned twice under `qoi_name`, with corresponding `qoi_x_dp` values of 0 and 2, meaning that both the vertical distribution of the tracer and its column burden are monitored. With `l_output_state` set to `.false.` and `l_output_incrm` set to `.true.`, the tool captures the dust mass mixing ratio increments caused by the targeted atmospheric processes but not the mixing ratios. Five checkpoints are chosen for monitoring the dust budget. The corresponding atmospheric processes are listed in Table 2. (We remind the users that, as shown in Fig. 2, the [model-processes code compartments](#) that contribute to increments diagnosed at a checkpoint not only depends on where this checkpoint is located in the time integration cycle but also where the previous active checkpoint is located.)

The full set of fields tracked by our tool are sent to output files 1 (the h0 file) and 2 (the h1 file), with the h0 file containing
625 monthly averages and the h1 file containing daily averages.

6.1.2 Results

Figure 5 shows a one-month mean geographical distribution of the sources and sinks of dust mass in the coarse mode (unit:
kg m⁻² s⁻¹). The values shown are the output variables `cnd01_dst_a3_v_<checkpoint_name>_inc` in the h0 file
630 divided by $\Delta t_{\text{CPLmain}} = 30$ min. Figure 6 shows examples of the globally averaged vertical profiles of the coarse-mode dust
mass mixing ratio tendencies (unit: kg kg⁻¹ s⁻¹). The black curves are monthly averages. The colored horizontal bars indi-
cate variability of the daily averages derived from the 3D increment fields `cnd01_dst_a3_<checkpoint_name>_inc`
written to the h1 file.

6.2 A composite analysis of sea salt emissions in relation to surface wind speed

This example demonstrates the use of composite analysis (without budget terms) to provide insight into wind speed impacts on
635 emission fluxes of sea salt aerosol in various size ranges. The intension is to examine the geographical distribution of sea salt
emission fluxes under weak, medium, and strong wind conditions and quantify their relative contributions to the total emission
fluxes.

Table 3. Namelist setup used in the composite analysis presented in Sect. 6.2.

```
metric_name      = 'U10', 'U10', 'U10', 'U10'
metric_nver      = 1,    1,    1,    1
metric_cmpr_type = -1,   0,    1,    1
metric_threshold = 5,    7.5,  10,   -1
metric_tolerance = 0,    2.5,  0,    0
cnd_eval_chkpt   = 'CHEM', 'CHEM', 'CHEM', 'CHEM'

goi_chkpt = 'CHEM'

goi_name = 'SFnc1_a1', 'SFnc1_a2', 'SFnc1_a3'
goi_nver = 1,          1,          1

l_output_state = .true.
l_output_incrm = .false.

hist_tape_with_all_output = 1
nhtfrq = 0
mfilt = 1
```

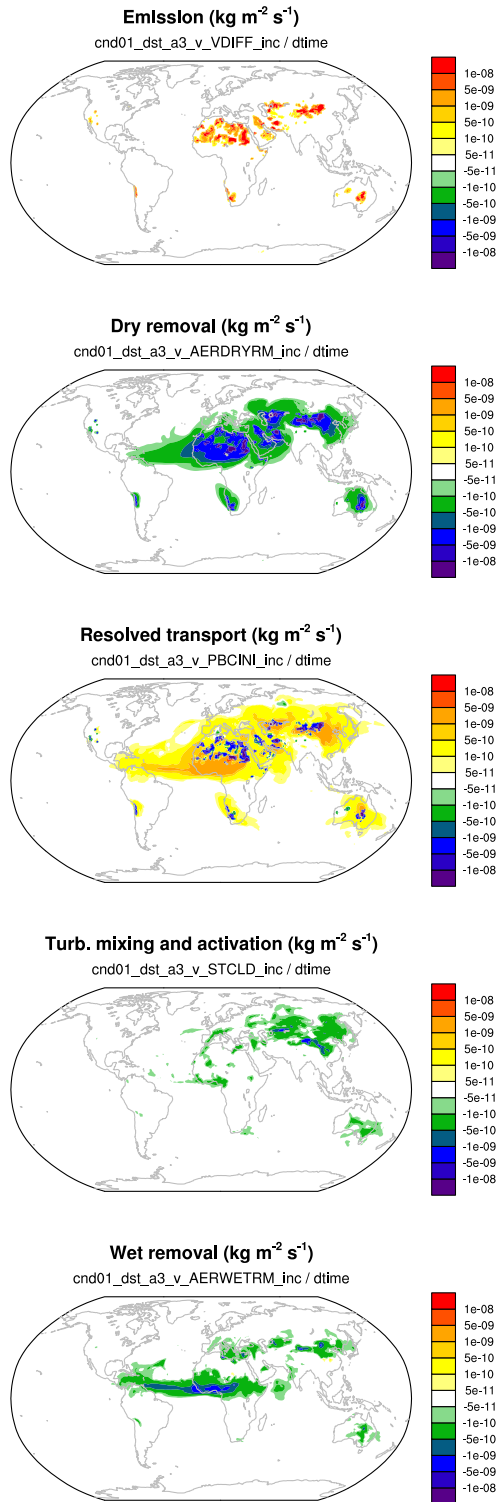


Figure 5. One-month mean tendencies of the vertically integrated coarse mode dust burden (unit: $\text{kg m}^{-2} \text{s}^{-1}$) attributed to different physical processes in EAMv1. The expressions given in thin fonts below panel titles indicate how the presented quantities are calculated from the model's output variables.

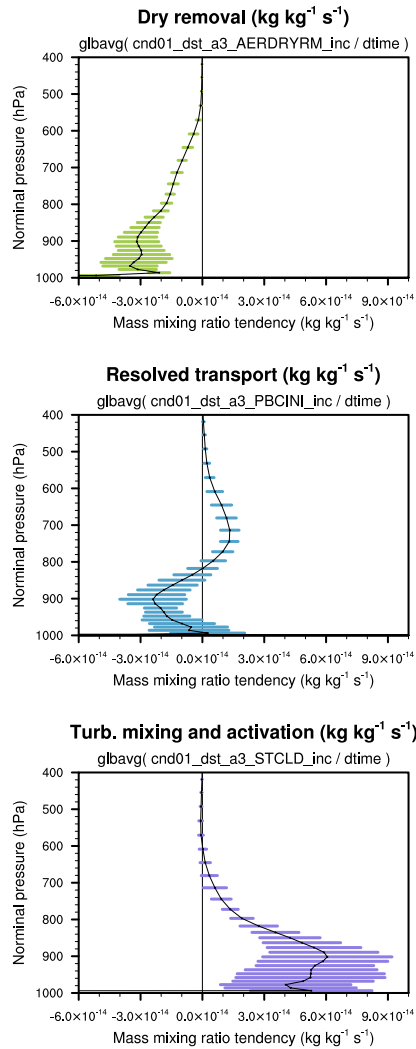


Figure 6. Globally averaged vertical profile of the coarse mode dust mass mixing ratio tendencies (unit: $\text{kg kg}^{-1} \text{s}^{-1}$) attributed to dry removal (top panel), resolved transport (middle panel), as well as [the](#) turbulent mixing and activation of aerosol particles (bottom panel). The black curves are monthly averages. The lengths of the horizontal bars correspond to twice of the standard deviation of the daily averages. The expressions given in thin fonts below panel titles indicate how the global averages are calculated from the model's output variables.

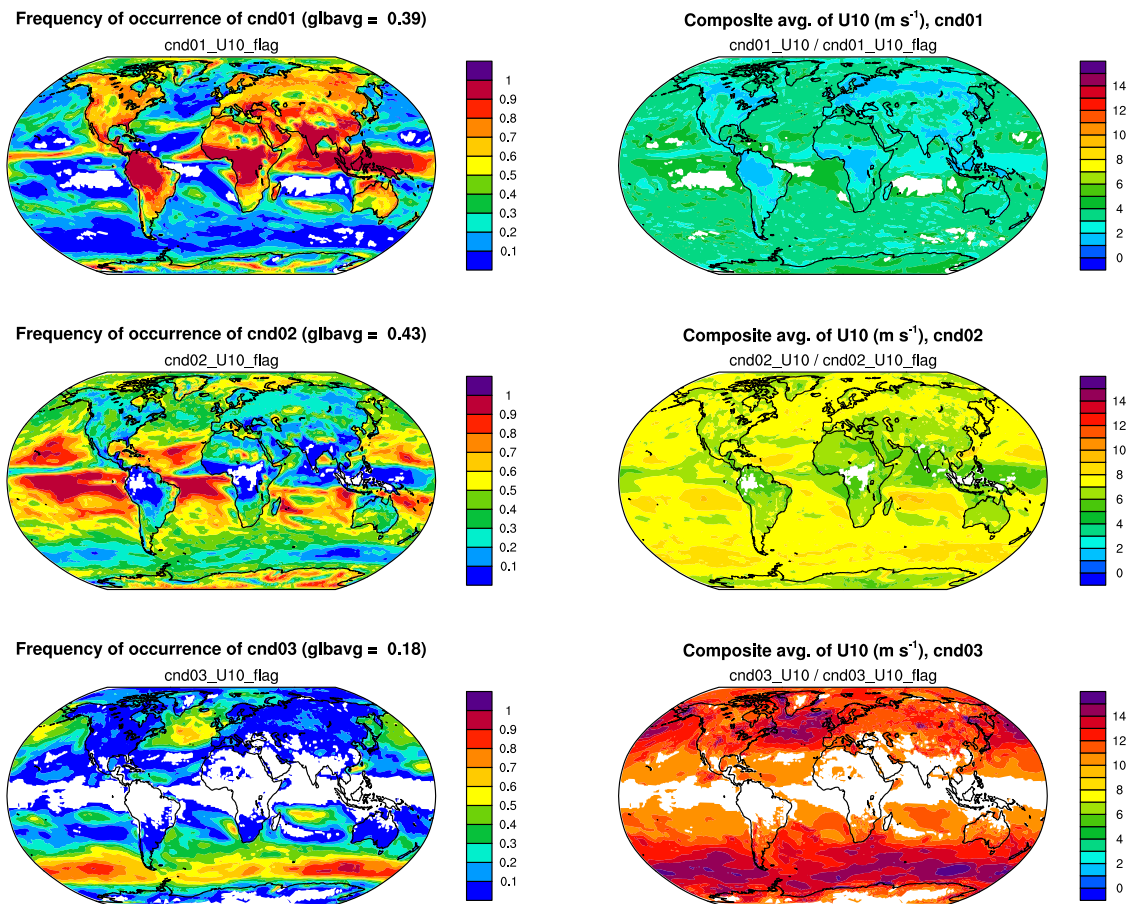


Figure 7. Left column: geographical distributions of the frequency of occurrence of conditions 1–3 corresponding to 10 m wind speed (U10) $< 5 \text{ m s}^{-1}$ (top row), between 5 m s^{-1} and 10 m s^{-1} (middle row) and $> 10 \text{ m s}^{-1}$ (bottom row), respectively. Right column: composite average of U10 under each condition. White areas in the contour plots correspond to no occurrence of condition in the one-month simulation. The expressions given in thin fonts below panel titles indicate how the presented quantities are calculated from the model’s output variables.

6.2.1 Simulation setup

In EAMv1, the emission of sea salt aerosol is parameterized with a scheme from Mårtensson et al. (2003) in which the emission flux is proportional to $(U10)^{3.41}$ with U10 being the wind speed (unit: m s^{-1}) at 10 m above sea level (Zhang et al., 2016; Liu et al., 2012).

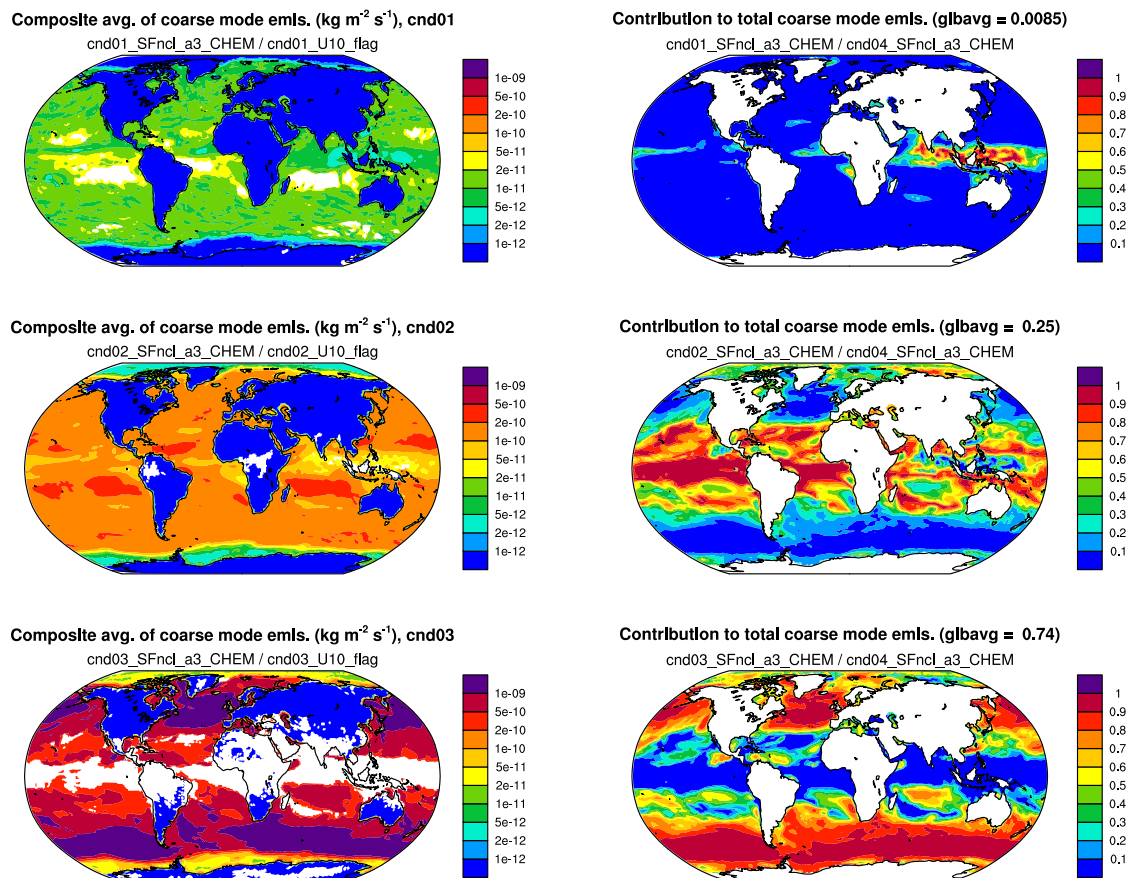


Figure 8. Left column: Composite average of coarse mode sea salt mass emission fluxes under conditions 1–3 corresponding to 10 m wind speed $< 5 \text{ m s}^{-1}$ (top row), between 5 m s^{-1} and 10 m s^{-1} (middle row) and $> 10 \text{ m s}^{-1}$ (bottom row), respectively. Right column: contribute of each condition (1, 2, or 3) to the total coarse mode sea salt emission (condition 4). White areas in the left panels are missing values caused by zero frequency of occurrence of the corresponding conditions. White areas in the right panels are missing values caused by zero total coarse mode sea salt emission. The expressions given in thin fonts below panel titles indicate how the presented quantities are calculated from the model’s output variables.

Four conditions are specified in the namelist setup shown in Table 3. The first three divide the possible 10 m wind speed values into three ranges: lower than 5 m s^{-1} , between 5 m s^{-1} and 10 m s^{-1} , and higher than 10 m s^{-1} . The fourth condition uses the always-fulfilled criterion of $U10 > -1 \text{ m s}^{-1}$ to select all grid points and time steps for comparison.

645 Three QoIs are monitored: SFnc1_a1, SFnc1_a2, SFnc1_a3, which are the surface mass fluxes of sea salt aerosol in the accumulation mode, Aitken mode, and coarse mode, respectively. These variable names are EAMv1’s standard tracer flux names.

U10 in EAMv1 is the grid-box average provided by the coupler (checkpoint MCTCPL). The calculation of sea salt emissions is done in the atmosphere model (checkpoint CHEMEMIS). U10 and the surface fluxes are calculated only once per time step
650 $\Delta t_{\text{CPLmain}}$ and their values remain available as components of the derived-type Fortran variable called `cam_in` (cf. Table A1). Therefore, as long as we select any checkpoint at or after MCTCPL for assessing U10 combined with any checkpoint at or after CHEMEMIS, and before MCTCPL for monitoring the surface fluxes, the results will be equivalent. In Table 3, the same checkpoint CHEM is used for both namelist parameters `cnd_eval_chkpt` and `qoi_chkpt`, as this is the checkpoint right before the surface fluxes are used to update aerosol tracer mixing ratios.

655 For output, variables from our tool are included in the `h0` file as monthly averages.

6.2.2 Results

Figure 7 presents geographical distributions of the frequency of occurrence of conditions 1–3 in the one-month simulation (left column) and the corresponding composite averages of U10 (right column). While composite averages of U10 are shown for a sanity check, the left panels indicate the different characteristic wind speed associated with different surface types (land versus
660 ocean) and cloud regimes (e.g., deep convection active regions, trade cumulus regions, and storm tracks).

Figure 8 shows geographical distributions of the composite mean of the coarse mode sea salt mass emission fluxes under conditions 1–3 (left column) and the relative contribution of each condition to the total (all-condition) fluxes (right column). Here, for demonstration purposes, we only chose 3-three wind speed bins and monitored sea salt mass fluxes. If one refines the wind speed ranges (e.g., use 10 to 20 bins), adds aerosol number fluxes to the QoIs, and adds the calculation of global
665 averages to postprocessing, then diagrams like Fig. 5 in Zhang et al. (2012) can be created to investigate the simulated relationship between wind speed and particle size distribution of the emissions but without having to write out a large amount of instantaneous model output.

6.3 A conditional budget analysis for RHI

The third example demonstrates a combined use of the budget analysis and conditional sampling capabilities using our tool.
670 The example also requires the calculation of a diagnosed quantity (the relative humidity with respect to ice, RHI) that is not a state variable, so additional routines are invoked to calculate it. This quantity would vary before and after ~~various processes~~ code compartments (e.g., atmospheric dynamics, cloud microphysics, radiation etc) that operate on the atmospheric state, so it is sensitive to how and where it is calculated in the model, and ~~it is also a function of the model sub-cycling~~ its value can also change across the sub-cycles used for the parameterizations and their coupling.

675 6.3.1 Simulation setup

The focus QoI in this example is the relative humidity with respect to ice (RHI), which directly affects the formation of new ice crystals. In EAMv1, ice nucleation is calculated after the parameterization of turbulence, shallow convection, and large-scale condensation represented by CLUBB (Cloud Layers Unified By Binormals, Golaz et al., 2002; Larson et al., 2002;

Table 4. Namelist variables pertaining to the new diagnostic tool used in the conditional RHI budget analysis presented in Sect. 6.3.

```

metric_name      = 'RHI',      'RHI'
metric_nver      = 72,        72
metric_cmpr_type = 1,         1
metric_threshold = 125,       -1
cnd_eval_chkpt  = 'CLDMAC01', 'CLDMAC01'
cnd_end_chkpt   = 'PBCDIAG',  'PBCDIAG'

goi_chkpt = 'PBCDIAG', 'RAD',    'PACEND',
            'DYNEND',  'DEEPCU',
            'CLDMAC01', 'CLDMIC01',
            'CLDMAC02', 'CLDMIC02',
            'CLDMAC03', 'CLDMIC03',
            'CLDMAC04', 'CLDMIC04',
            'CLDMAC05', 'CLDMIC05',
            'CLDMAC06', 'CLDMIC06'

goi_name = 'RHI', 'Q', 'QSATI'
goi_nver = 72,   72,  72

l_output_state = .true.
l_output_incrm = .true.

hist_tape_with_all_output = 1
nhfrq = 0
mfilt = 1

```

Table 5. For the conditional RHI budget example presented in Sect. 6.3: atmospheric processes corresponding to increments diagnosed at the checkpoints selected in Table 4.

Checkpoint	Atmospheric processes
PBCDIAG	Wet removal and resuspension of aerosols
RAD	Radiation
PACEND	Rayleigh friction and gravity wave drag
DYNEND	Resolved dynamics and tracer transport
DEEPCU	Deep convection
CLDMAC[01–06]	Turbulence and shallow convection, sub-steps 1–6
CLDMIC[01–06]	Stratiform cloud microphysics, sub-steps 1–6

Larson and Golaz, 2005; Larson, 2017). CLUBB, ice nucleation, droplet nucleation, and other stratiform cloud microphysical processes represented by the parameterization of Gettelman and Morrison (2015) are collectively sub-cycled six times per $\Delta t_{\text{CPLmain}}$. Therefore in the namelist setup shown in Table 4, a checkpoint is selected before each invocation of the ice nucleation parameterization (CLDMAC01,..., CLDMAC06) to identify sources of high RHI. Additional checkpoints are selected after each invocation of the stratiform cloud microphysics (CLDMIC01,..., CLDMIC06) to monitor how RHI decreases due to those processes. A few other checkpoints are also selected to evaluate the impact of atmospheric processes that are known to affect air temperature and specific humidity, for example large-scale dynamics, radiation, and deep convection.

In addition to monitoring RHI, we include the specific humidity (Q) and the saturation specific humidity respect to ice (QSATI) as QoIs to help attribute the diagnosed RHI changes (cf. namelist variable `qoi_name` in Table 4). While Q is one of the prognostic variables in EAMv1, RHI and QSATI need to be diagnosed at each checkpoint using three components of the model's prognostic state: Q, air temperature, and pressure. The diagnostic subroutines are included in the module `misc_diagnostics`.

All of the selected QoIs are 3D variables defined in 72 layers in EAMv1. Unlike in the previous example, `qoi_x_dp` is not specified here; it gets the default values of zeros, therefore no vertical integrals are calculated for the QoIs.

Two sampling conditions are specified: the first one selects grid cells where RHI seen by the first invocation of the ice nucleation parameterization is higher than 125%, which is a necessary although insufficient condition to trigger homogeneous ice nucleation. (For clarification, we note that RHI discussed here is the relative humidity calculated from the grid-box mean specific humidity and grid-box mean air temperature. EAMv1 uses $\text{RHI} > \text{RH}_0$ as a screening condition to determine if homogeneous ice nucleation can occur in a grid box. RH_0 depends on air temperature but has typical values around 125%.)

The second condition effectively selects all grid cells and time steps, but we state the condition as $\text{RHI} > -1\%$ instead of using the special metric "ALL", and select the same condition-evaluation checkpoint as in condition one, so that the conditionally sampled metric `cnd01_RHI` and unconditionally sampled `cnd02_RHI` can be directly and conveniently compared. (Using the special metric "ALL" would result in a metric variable `cnd02_ALL`, which is a constant field of 1.0, being written to the output files.)

The checkpoint before the radiation parameterization is considered the end of a full model time step and hence `cnd_end_chkpt` is set to `PBCDIAG`. Both the field values and increments of the QoIs are monitored and included in model output. The full set of fields tracked by our tool are sent to output tape 1 (the h0 file) which contains the monthly averages.

6.3.2 Results

Figure 9 shows various vertical profiles derived from the simulation. Defining a 2D global average as the average over all grid cells on a sphere weighted by their spherical area, panel (a) in Fig. 9 shows the vertical profile of the 2D global average of the output variable `cnd01_RHI_flag`, which gives the globally and temporally averaged frequency of occurrence of $\text{RHI} > 125\%$ in each grid layer. The other panels in the figure are global averages of different QoIs and checkpoints divided by the global mean frequency of occurrence of the corresponding condition. Recall that our tool assigns a fill value of zero to grid cells and

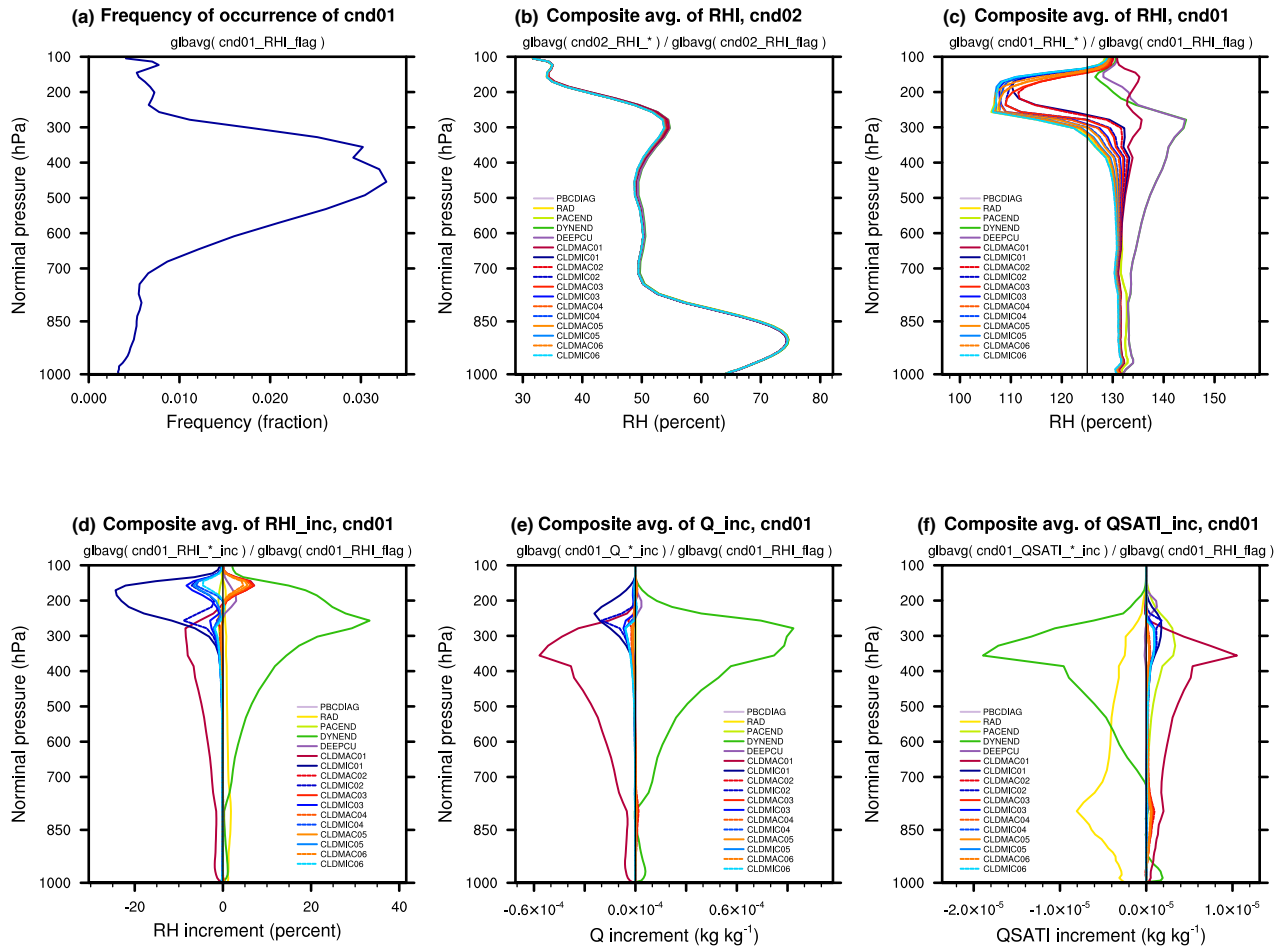


Figure 9. Upper row: (a) The frequency of occurrence of RHI > 125% averaged over one month and the entire globe. (b) RHI at various checkpoints averaged over all time steps of the month and over the entire globe (i.e., RHI under condition 02 – unconditional sampling). (c) Space-and-time mean RHI at various checkpoints under condition 01 (i.e., RHI is higher than 125% before the first ice nucleation calculation during a time step of $\Delta t_{CPLmain} = 30$ min). Lower row: space-and-time mean increments of (d) RHI, (e) specific humidity, and (f) saturation specific humidity with respect ice averaged under condition 01.

time steps that are unselected for a sampling condition. The profiles in Figures 9b-f are therefore spatial and temporal averages of the corresponding composites.

715 Panels (b) and (c) show RHI profiles under conditions 02 and 01, respectively. Sampling using the criterion of RHI > 125% helps to highlight the substantial changes related to ice cloud formation in the upper troposphere. Panel (d) shows the increments of RHI at various checkpoints, allowing for a direct comparison of the signs and magnitudes of RHI changes caused by different physical processes. The increments of specific humidity and saturation specific humidity shown in panels (e) and (f) can further help to understand the physical mechanisms causing the RHI changes.

7 Conclusions and outlook

720 An online diagnostic tool has been designed for and implemented in the global atmospheric circulation model EAMv1. The motivation is to introduce a systematic way to support conditional sampling and budget analysis in EAM simulations, so as to (1) minimize the need for tedious ad hoc coding and hence save code development time and avoid clutter, and to (2) reduce the need for instantaneous model output and hence improve the computational efficiency of EAM simulations in which composite or budget analysis is needed.

725 Building upon the sequential ~~process-splitting~~ splitting method used by EAM's time integration and the flexibility of the model's output functionalities, the new tool adds its own data structures and functionalities to allow the users to select sampling conditions and model variables (also referred to as quantities of interest, QoIs) to monitor at desired locations of the model's time integration cycles. The condition metrics and QoIs can be any physical quantities that are components of EAM's existing derived-type data structures such as the physics state, physics buffer, and the data structures used for information exchanges
730 between the atmosphere and the surface models such as land and ocean. The condition metrics and QoIs can also be any physical quantities that can be diagnosed from components of these existing data structures. Both the evolving values of the QoIs and their increments caused by different atmospheric processes can be monitored and written out as instantaneous or time-averaged values in EAM's output files (also known as history tapes). For QoIs defined at mid-points of the model's vertical grid or as layer averages, the tool also provides the functionality to calculate and output vertical integrals weighted by the mass
735 of dry or moist air. Multiple sampling conditions can be used in a single simulation. Unconditional sampling and mixtures of conditional and unconditional sampling are also supported.

Assuming the user-chosen conditional metrics and QoIs as well as the locations in time integration cycle to monitor these quantities (referred to as checkpoints) are known to the tool, carrying out a composite or budget analysis using the new tool only requires setting a small number of namelist parameters. The addition of new conditional metrics, QoIs, and checkpoints
740 is straightforward if the data to be sampled can be assessed through EAM's existing data structures.

The new tool has been designed for and implemented in EAMv1 and can be easily ported to EAMv1's descendants (e.g., EAMv2) or predecessors (e.g., CAM5) that use similar Fortran data structures and time integration strategies. Details of the design concepts and implementation in EAMv1 are explained in the paper together with three use case examples that demonstrate the usage of the tool.

745 The development of the new tool was motivated by the need to carry out conditional budget analysis to understand sources of time-step sensitivities and time-stepping errors related to EAMv1's physics parameterizations. While the current version of the tool, CondiDiag1.0, fulfills the authors' initial needs in those investigations, we are aware of several aspects in which the tool can be further extended or improved to benefit a wider range of EAM users:

First, if the desired condition metric or QoI is calculated by a lower-level (in software sense) subroutine and is not saved in
750 EAM's derived-type data structures (e.g., physics state, physics buffer, etc.), the most convenient way to pass data to CondiDiag ~~would be to add~~ will be adding the desired physical quantity to the physics buffer. Such cases will be further assessed and alternative methods will be explored. It is worth noting, however, that the E3SM project has been developing a brand new code

base for its version 4 release. The new code uses a single “field manager” for information ~~exchange~~ exchanges between the host model and any resolved or parameterized atmospheric processes. ~~An~~ The implementation of our tool in ~~that~~ the new code
755 base ~~would~~ should make use of ~~(and benefit from)~~ – and will benefit from – this new “field manager”.

Second, the specification of a sampling condition in CondiDiag1.0 takes the form of a logical expression involving the comparison of a single metric with a threshold value. Section 6.2 demonstrated how the tool can be used for a univariate probability distribution analysis. It ~~would~~ will be useful to further extend the tool to support sampling conditions involving multiple metrics and a series of threshold values for each metric, and hence facilitating multivariate probability distribution
760 analysis. Along that line, it might be useful to support sampling conditions involving multiple metrics evaluated at different checkpoints. This ~~would~~ could be useful for investigating forcing-response relationships of multiple atmospheric processes and for evaluating the behavior of sub-stepped ~~model components~~ code compartments.

Third, for simulations that involve multiple sampling conditions, the current tool monitors the same set of QoIs and checkpoints under all conditions. ~~While this will not be difficult to change, we will assess the trade-off between more flexibility and the potential risk of causing confusion for model developers and users~~ It will be useful to provide the flexibility to select different QoIs and checkpoints for different conditions.
765 ~~and the potential risk of causing confusion for model developers and users~~

Beyond the three aspects discussed above, there are some desirable extensions of the tool that will require more substantial revisions of the current design. For example, in CondiDiag1.0, the sampling conditions are re-evaluated (and the QoIs are re-sampled) every model time step. We can, however, imagine cases where a user might want to evaluate a condition at some
770 point of a simulation and monitor the evolution of the atmospheric state in the selected grid cells for longer time periods ~~like~~ such as a few hours or a few days. Supporting such use cases will require introducing an additional mechanism to specify for how long the evaluated sampling condition is valid. Furthermore, anticipating possible modifications to the sequential splitting of atmospheric processes in EAMv1, in particular possible future adoption of parallel splitting or hybrid methods, it will be useful to explore how the current design of CondiDiag can be extended to accommodate other process coupling methods.

775 *Code availability.* The EAMv1 code, run scripts, and postprocessing scripts used in this paper can be found on Zenodo at <https://zenodo.org/record/5530188>. Two versions of the EAM maint-1.0 code are provided: one with CondiDiag1.0 implemented and one without, both of which can be compiled and run on E3SM’s supported computer systems. The Zenodo archive also provides a third, smaller tar ball which contains only the source files that were added or revised during the implementation of CondiDiag1.0. A copy of the corresponding EAMv1 files before the implementation is included in this third tar ball to facilitate comparison.

780 **Appendix A: Candidate metrics and QoIs in CondiDiag1.0**

Tables A1–A3 list the currently available physical quantities that can be used as metrics for conditional sampling or be monitored as QoIs.

Table A1. Candidate condition metrics and QoIs that are directly copied from EAM’s derived-type data structures. “<cnst_name>” refers to tracer names in EAM. “SF<cnst_name>” refers to variables names of tracer surface fluxes in EAM. `pver` and `pverp` are EAM’s variable names for the number of vertical layers and vertical interfaces, respectively. In the standard EAMv1, `pver` is 72 and `pverp` is 73. The rightmost column explains the Fortran derived-type variables and their components from which a metric or QoI’s values are obtained. More candidate metrics and QoIs can be added following the example shown by the first code snippet in Sect. [4.1.2](#).

Name	Explanation	Vertical dimension size	Data source
<cnst_name>	Advected tracers	<code>pver</code>	<code>state%q</code>
T	Air temperature	<code>pver</code>	<code>state%t</code>
U	Zonal wind	<code>pver</code>	<code>state%u</code>
V	Meridional wind	<code>pver</code>	<code>state%v</code>
OMEGA	Vertical velocity	<code>pver</code>	<code>state%omega</code>
PMID	Pressure at layer midpoints	<code>pver</code>	<code>state%pmid</code>
PINT	Pressure at layer interfaces	<code>pverp</code>	<code>state%pint</code>
ZM	Geopotential height at layer midpoints	<code>pver</code>	<code>state%zm</code>
ZI	Geopotential height at layer interfaces	<code>pverp</code>	<code>state%zi</code>
PS	Surface pressure	1	<code>state%ps</code>
SF<cnst_name>	Sfc. flux of advected tracers	1	<code>cam_in%cflx</code>
LWUP	Longwave upward radiative flux from the surface	1	<code>cam_in%lwup</code>
LHF	Latent heat flux from the surface	1	<code>cam_in%lhf</code>
SHF	Sensible heat flux from the surface	1	<code>cam_in%shf</code>
WSX	Surface stress (zonal)	1	<code>cam_in%wsx</code>
WSY	Surface stress (meridional)	1	<code>cam_in%wsy</code>
TREF	Ref. height surface air temp	1	<code>cam_in%tref</code>
QREF	Ref. height specific humidity	1	<code>cam_in%qref</code>
U10	10-m wind speed	1	<code>cam_in%u10</code>
TS	Surface temperature	1	<code>cam_in%ts</code>
SST	Sea surface temperature	1	<code>cam_in%sst</code>
FLWDS	Downward longwave flux at surface	1	<code>cam_out%flwds</code>
NETSW	Downward shortwave flux at surface	1	<code>cam_out%netsw</code>

Table A2. Candidate condition metrics and QoIs that are directly copied from EAM’s “physics buffer” data structure. `pver` and `pverp` are EAM’s variable names for the number of vertical layers and [vertical-layer](#) interfaces, respectively. In the standard v1 model, `pver` is 72 and `pverp` is 73. More candidate metrics and QoIs can be added following existing examples in subroutine `get_values` in module `conditiona_diag_main`.

Name	Explanation	Vertical dimension size	Data source
PBLH	Planetary boundary layer height	1	pbuf
TKE	Turbulent kinetic energy	pverp	pbuf
UPWP	Turbulent momentum flux, east-west component	pverp	pbuf
VPWP	Turbulent momentum flux, north-south component	pverp	pbuf
AST	Stratiform cloud fraction	pver	pbuf
CLD	Total cloud fraction (stratiform plus convective)	pver	pbuf
DEI	Cloud microphysics: effective radius of cloud ice for radiation	pver	pbuf
DES	Cloud microphysics: effective radius of snow for radiation	pver	pbuf
MU	Cloud microphysics: size distribution shape parameter for radiation	pver	pbuf
LAMBDAC	Cloud microphysics: size distribution shape parameter for radiation	pver	pbuf

Table A3. Candidate condition metrics and QoIs that are diagnosed from components of EAM’s derived type data structures. `pver` and `pverp` are EAM’s variable names for the number of vertical layers and vertical interfaces, respectively. In the standard v1 model, `pver` is 72 and `pverp` is 73. “Subroutine name” is the name of the subroutine in module `misc_diagnostics` that calculates the requested quantity. More candidates can be added following the the second code snippet in Sect. [4.1.2](#).

Name	Explanation	Vertical dimension size	Subroutine name
QSATW	Saturation specific humidity w.r.t. water	pver	qsat_water
QSATI	Saturation specific humidity w.r.t. ice	pver	qsat_ice
QSSATW	Supersaturation w.r.t. water given as mixing ratio	pver	supersat_q_water
QSSATI	Supersaturation w.r.t. ice given as mixing ratio	pver	supersat_q_ice
RHW	Relative humidity w.r.t. water in percent	pver	relhum_water_percent
RHI	Relative humidity w.r.t. ice in percent	pver	relhum_ice_percent
CAPE	Convective available potential energy	1	compute_cape

Appendix B: Checkpoints in CondiDiag1.0

Tables B1 and B2 list checkpoints currently implemented in EAM's physics driver subroutines `tphysbc` and `tphysac`.
785 Table B3 lists the **current** checkpoints in the interface subroutine `clubb_tend_cam`.

Table B1. Checkpoints in the parameterization suite calculated before coupling with surface models, i.e., in the `tphysbc` subroutine. [The order of checkpoints in the table is the same as the actual order of the checkpoints in the code.](#)

Model calculations after which checkpoint is implemented	Checkpoint name
Dynamical core and large-scale transport	DYNEND
Mass and energy fixers	PBCINI
Dry adiabatic adjustment	DRYADJ
Deep convection	DEEPCU
Shallow convection (EAMv0 only)	SHCU
CARMA cloud microphysics	CARMA
Stratiform cloud macrophysics, sub-step xx	CLDMACxx
Aerosol activation and mixing, sub-step xx	CLDAERxx
Stratiform cloud microphysics, sub-step xx	CLDMICxx
Stratiform clouds, all substeps	STCLD
Aerosol wet removal and resuspension	AERWETRM
Miscellaneous diagnostics and output	PBCDIAG
Radiative transfer	RAD
Tropopause diagnosis; export state preparation and output	PBCEND

Appendix C: [Additional notes on vertical integrals](#)

[For aerosol and chemical gases which have a dry-to-wet mixing ratio conversion close to the end of `tphysac` \(i.e., before the resolved dynamics and transport\), a user might want to track the mixing ratios before and after the conversion as well as at some other checkpoints. In order to inform our tool to use the appropriate air mass for the calculation of vertical integral, an integer array `chkpt_x_dp` is included in the namelist `conditional_diag_nl`. The values of `chkpt_x_dp` need to be specified in relation to `qoi_chkpt`, i.e., one value of `chkpt_x_dp` for each checkpoint. A value of 1 tells our tool the mass of moist air should be used while a value of 2 indicates dry air mass should be used. Any other values assigned to `chkpt_x_dp` will be interpreted as no specification.](#)

790

[The specifications saved in `chkpt_x_dp` are used by our tool when the namelist parameter `qoi_x_dp` introduced in Sect. 5.2.4 is assigned values larger than 100. If a value of 101 \(moist\) or 102 \(dry\) is specified for an element of the array `qoi_x_dp`, then the corresponding air mass will be used for that QoI at all active checkpoints *except* where `chkpt_x_dp` indicates a different specification. For example, let us assume we set `qoi_x_dp = 102` for the coarse mode dust mass mixing](#)

795

Table B2. Checkpoints in the parameterization suite calculated after coupling with surface models, i.e., in the `tphysac` subroutine. The order of checkpoints in the table is the same as the actual order of the checkpoints in the code.

Model calculations after which checkpoint is implemented	Checkpoint name
Couling to surface models	MCTCPL
Emissions of chemical species	CHEMEMIS
Tracer mass fixers	PACINI
Chemistry and aerosol microphysics	CHEM
Obukov length and friction velocity; Application of surface emissions	CFLXAPP
Rayleigh friction	RAYLEIGH
Aerosol dry deposition	AERDRYRM
Gravity wave drag	GWDRAG
QBO relaxation and ION drag	IONDRAG
Application of nudging	NDG
Dry-to-wet mixing ratio conversion	DRYWET
Various diagnostics	PACEND

Table B3. Checkpoints implemented in the “`clubb_tend_cam`” subroutine. The order of checkpoints in the table is the same as the actual order of the checkpoints in the code.

Model calculations after which checkpoint is implemented	Checkpoint name
Ice saturation adjustment, sub-step xx	ICEMACxx
CLUBB, sub-step xx	CLUBBxx
Convective detrainment, sub-step xx	CUDETxx
Miscellaneous diagnostics, sub-step xx	MACDIAGxx

800 ratio; we choose to monitor checkpoints A, B, and C and set `chkpt_x_dp = 0,0,1`. Then, when our tool calculates the coarse mode dust burden, checkpoints A and B will use the dry air mass as weights (because `chkpt_x_dp = 0` for these two checkpoints means no special treatment while `mod(qoi_x_dp,100) = 2` for the QoI means dry air mass should be used). For checkpoint C, since `qoi_x_dp = 102 > 100` and since `chkpt_x_dp = 1` for the checkpoint, the value 1 from `chkpt_x_dp` will take precedence over `mod(qoi_x_dp,100) = 2`, hence the moist air mass will be used. In other words, a value of `qoi_x_dp` larger than 100 means using `mod(qoi_x_dp,100)` in general but giving `chkpt_x_dp` precedence when the latter is set to non-zero at a checkpoint.

805 We acknowledge that the description above is likely not easy to comprehend. For most studies involving vertical integrals of aerosol or chemical gases, we recommend not using the checkpoints “DRYWET” and “PACEND” listed in Table B2. By doing that, the user will get tracer mixing ratios with consistent definitions at all checkpoints, so that only `qoi_x_dp` (with values 0, 1, or 2) is needed for turning on or off vertical integral.

Last but not least, we clarify that mixing ratios of water species do *not* have this conversion problem.

810 *Author contributions.* HW designed and implemented CondiDiag in EAMv1 with feedback from the coauthors. KZ and HW designed the use case examples. HW carried out the simulations and processed the results. HW wrote the manuscript; all coauthors helped with the revisions.

Competing interests. The authors declare no competing interests.

Acknowledgements. We thank the two anonymous reviewers and Dr. Sean Santos for their constrictive comments which helped to improve the manuscript. Cecile Hannay at NCAR is thanked for her help with various versions and formats of CAM's documentation. Computing resources for the initial development and testing of the new ~~diagnostic~~-tool were provided by the National Energy Research Scientific Computing Center (NERSC), a U.S. Department of Energy (DOE) Office of Science User Facility supported by the Office of Science of the U.S. Department of Energy under Contract No. DE-AC02-05CH11231. Simulations shown as use case examples in this paper were carried out using the DOE Biological and Environmental Research (BER) Earth System Modeling program's Compy computing cluster
820 located at Pacific Northwest National Laboratory (PNNL). PNNL is operated by Battelle Memorial Institute for the U.S. Department of Energy under Contract DE-AC05-76RL01830. The EAMv1 code was obtained from the E3SM project sponsored by DOE BER (DOI: 10.11578/E3SM/dc.20180418.36).

Financial support. This research ~~has been was~~ supported by DOE BER via the Scientific Discovery through Advanced Computing (SciDAC)
825 program (grant no. 70276). KZ was supported by DOE BER through the E3SM project (grant no. 65814).

References

- Bailey, A., Singh, H. K. A., and Nusbaumer, J.: Evaluating a Moist Isentropic Framework for Poleward Moisture Transport: Implications for Water Isotopes Over Antarctica, *Geophysical Research Letters*, 46, 7819–7827, <https://doi.org/https://doi.org/10.1029/2019GL082965>, 2019.
- 830 [Craig, A. P., Vertenstein, M., and Jacob, R.: A new flexible coupler for earth system modeling developed for CCSM4 and CESM1, *The International Journal of High Performance Computing Applications*, 26, 31–42, <https://doi.org/10.1177/1094342011428141>, 2012.](https://doi.org/https://doi.org/10.1177/1094342011428141)
- 835 [Craig, C., Bacmeister, J., Callaghan, P., Eaton, B.: ~~User's Guide to the Community Atmosphere Model~~, Gettelman, A., Goldhaber, S. N., Hannay, C., Herrington, A., Lauritzen, P. H., McInerney, J., Medeiros, B., Mills, M. J., Neale, R., Tilmes, S., Truesdale, J. E., Vertenstein, M., and Vitt, F. M.: ~~CAM-5+CAM6.3 User's Guide~~, 2010. NCAR Technical Note NCAR/TN-571+EDD, National Center for Atmospheric Research, Boulder, Colorado, USA, <https://doi.org/10.5065/Z953-ZC95>, 2021.](https://doi.org/https://doi.org/10.5065/Z953-ZC95)
- [Eaton, B.: CAM Reference Manua](https://www.cesm.ucar.edu/models/cesm1.2/cam/docs/rm5_3/index.html), https://www.cesm.ucar.edu/models/cesm1.2/cam/docs/rm5_3/index.html, 2015.
- Gettelman, A. and Morrison, H.: Advanced two-moment bulk microphysics for global models, Part I: Off-line tests and comparison with other schemes, *Journal of Climate*, 28, 1268–1287, <https://doi.org/10.1175/JCLI-D-14-00102.1>, 2015.
- 840 Ghan, S., Wang, M., Zhang, S., Ferrachat, S., Gettelman, A., Griesfeller, J., Kipling, Z., Lohmann, U., Morrison, H., Neubauer, D., et al.: Challenges in constraining anthropogenic aerosol effects on cloud radiative forcing using present-day spatiotemporal variability, *Proceedings of the National Academy of Sciences*, 113, 5804–5811, 2016.
- Golaz, J.-C., Larson, V., and Cotton, W.: A PDF-Based Model for Boundary Layer Clouds. Part I: Method and Model Description, *J. Atmos. Sci.*, 59, 3540–3551, [https://doi.org/10.1175/1520-0469\(2002\)059<3540:APBMFB>2.0.CO;2](https://doi.org/10.1175/1520-0469(2002)059<3540:APBMFB>2.0.CO;2), 2002.
- 845 [Golaz, J.-C., Caldwell, P. M., Van Roekel, L. P., Petersen, M. R., Tang, Q., Wolfe, J. D., Abeshu, G., Anantharaj, V., Asay-Davis, X. S., Bader, D. C., Baldwin, S. A., Bisht, G., Bogenschutz, P. A., Branstetter, M., Brunke, M. A., Brus, S. R., Burrows, S. M., Cameron-Smith, P. J., Donahue, A. S., Deakin, M., Easter, R. C., Evans, K. J., Feng, Y., Flanner, M., Foucar, J. G., Fyke, J. G., Griffin, B. M., Hannay, C., Harrop, B. E., Hoffman, M. J., Hunke, E. C., Jacob, R. L., Jacobsen, D. W., Jeffery, N., Jones, P. W., Keen, N. D., Klein, S. A., Larson, V. E., Leung, L. R., Li, H.-Y., Lin, W., Lipscomb, W. H., Ma, P.-L., Mahajan, S., Maltrud, M. E., Mamejtanov, A., McClean, J. L., McCoy, R. B., Neale, R. B., Price, S. F., Qian, Y., Rasch, P. J., Reeves Eyre, J. E. J., Riley, W. J., Ringler, T. D., Roberts, A. F., Roesler, E. L., Salinger, A. G., Shaheen, Z., Shi, X., Singh, B., Tang, J., Taylor, M. A., Thornton, P. E., Turner, A. K., Veneziani, M., Wan, H., Wang, H., Wang, S., Williams, D. N., Wolfram, P. J., Worley, P. H., Xie, S., Yang, Y., Yoon, J.-H., Zelinka, M. D., Zender, C. S., Zeng, X., Zhang, C., Zhang, K., Zhang, Y., Zheng, X., Zhou, T., and Zhu, Q.: The DOE E3SM Coupled Model Version 1: Overview and Evaluation at Standard Resolution, *Journal of Advances in Modeling Earth Systems*, 11, 2089–2129, <https://doi.org/https://doi.org/10.1029/2018MS001603>, 2019.](https://doi.org/https://doi.org/10.1029/2018MS001603)
- 855 Gryspeerdt, E., Mülmenstädt, J., Gettelman, A., Malavelle, F. F., Morrison, H., Neubauer, D., Partridge, D. G., Stier, P., Takemura, T., Wang, H., Wang, M., and Zhang, K.: Surprising similarities in model and observational aerosol radiative forcing estimates, *Atmospheric Chemistry and Physics*, 20, 613–623, <https://doi.org/10.5194/acp-20-613-2020>, 2020.
- Larson, V. E.: CLUBB-SILHS: A parameterization of subgrid variability in the atmosphere, arXiv preprint arXiv:1711.03675v3, 2017.
- Larson, V. E. and Golaz, J.-C.: Using Probability Density Functions to Derive Consistent Closure Relationships among Higher-Order Mo-
- 860 ments, *Monthly Weather Review*, 133, 1023–1042, <https://doi.org/10.1175/MWR2902.1>, 2005.

- Larson, V. E., Golaz, J.-C., and Cotton, W. R.: Small-Scale and Mesoscale Variability in Cloudy Boundary Layers: Joint Probability Density Functions, *Journal of the Atmospheric Sciences*, 59, 3519–3539, [https://doi.org/10.1175/1520-0469\(2002\)059<3519:SSAMVI>2.0.CO;2](https://doi.org/10.1175/1520-0469(2002)059<3519:SSAMVI>2.0.CO;2), 2002.
- 865 Liu, X., Easter, R. C., Ghan, S. J., Zaveri, R., Rasch, P., Shi, X., Lamarque, J.-F., Gettelman, A., Morrison, H., Vitt, F., Conley, A., Park, S., Neale, R., Hannay, C., Ekman, A. M. L., Hess, P., Mahowald, N., Collins, W., Iacono, M. J., Bretherton, C. S., Flanner, M. G., and Mitchell, D.: Toward a minimal representation of aerosols in climate models: description and evaluation in the Community Atmosphere Model CAM5, *Geoscientific Model Development*, 5, 709–739, <https://doi.org/10.5194/gmd-5-709-2012>, 2012.
- Ma, H.-Y., Xie, S., Boyle, J. S., Klein, S. A., and Zhang, Y.: Metrics and Diagnostics for Precipitation-Related Processes in Climate Model Short-Range Hindcasts, *J. Clim.*, 26, 1516–1534, <https://doi.org/doi:10.1175/JCLI-D-12-00235.1>, 2013.
- 870 Ma, H.-Y., Xie, S., Klein, S. A., Williams, K. D., Boyle, J. S., Bony, S., Douville, H., Fermepin, S., Medeiros, B., Tyteca, S., Watanabe, M., and Williamson, D.: On the Correspondence between Mean Forecast Errors and Climate Errors in CMIP5 Models, *J. Clim.*, 27, 1781–1798, <https://doi.org/doi:10.1175/JCLI-D-13-00474.1>, 2014.
- Martin, G., Milton, S., Senior, C., Brooks, M., Ineson, S., Reichler, T., and Kim, J.: Analysis and Reduction of Systematic Errors through a Seamless Approach to Modeling Weather and Climate, *J. Clim.*, 23, 5933–5957, <https://doi.org/10.1175/2010JCLI3541.1>, 2010.
- 875 Mårtensson, E. M., Nilsson, E. D., de Leeuw, G., Cohen, L. H., and Hansson, H.-C.: Laboratory simulations and parameterization of the primary marine aerosol production, *Journal of Geophysical Research: Atmospheres*, 108, <https://doi.org/https://doi.org/10.1029/2002JD002263>, 2003.
- Neale, R. B., Richter, J. H., Conley, A. J., Park, S., Lauritzen, P. H., Gettelman, A., Williamson, D. L., Rasch, P. J., Vavrus, S. J., Taylor, M. A., Collins, W. D., Zhang, M., and Lin, S.-J.: Description of the NCAR Community Atmosphere Model (CAM4.0), NCAR Technical Note NCAR/TN-485+STR, National Center for Atmospheric Research, Boulder, Colorado, USA, http://www.cesm.ucar.edu/models/ccsm4.0/cam/docs/description/cam4_desc.pdf, 2010.
- 880 Neale, R. B., Chen, C. C., Gettelman, A., Lauritzen, P. H., Park, S., Williamson, D. L., Conley, A. J., Garcia, R., Kinnison, D., Lamarque, J. F., Marsh, D., Mills, M., Smith, A. K., Tilmes, S., Vitt, F., Morrison, H., Cameron-Smith, P., Collins, W. D., Iacono, M. J., Easter, R. C., Ghan, S. J., Liu, X. H., Rasch, P. J., and Taylor, M. A.: Description of the NCAR Community Atmosphere Model (CAM5.0), NCAR Technical Note NCAR/TN-486+STR, National Center for Atmospheric Research, Boulder, Colorado, USA, <http://www.cesm.ucar.edu/models/cesm1.0/cam/>, 2012.
- 885 Phillips, T. J., Potter, G. L., Williamson, D. L., Cederwall, R. T., Boyle, J. S., Fiorino, M., Hnilo, J. J., Olson, J. G., Xie, S., and Yio, J. J.: Evaluating Parameterizations in General Circulation Models: Climate Simulation Meets Weather Prediction, *Bull. Amer. Meteor. Soc.*, 85, 1903–1916, <https://doi.org/10.1175/BAMS-85-12-1903>, 2004.
- 890 Rasch, P. J., Xie, S., Ma, P.-L., Lin, W., Wang, H., Tang, Q., Burrows, S. M., Caldwell, P., Zhang, K., Easter, R. C., Cameron-Smith, P., Singh, B., Wan, H., Golaz, J.-C., Harrop, B. E., Roesler, E., Bacmeister, J., Larson, V. E., Evans, K. J., Qian, Y., Taylor, M., Leung, L. R., Zhang, Y., Brent, L., Branstetter, M., Hannay, C., Mahajan, S., Mamejtanov, A., Neale, R., Richter, J. H., Yoon, J.-H., Zender, C. S., Bader, D., Flanner, M., Foucar, J. G., Jacob, R., Keen, N., Klein, S. A., Liu, X., Salinger, A., Shrivastava, M., and Yang, Y.: An Overview of the Atmospheric Component of the Energy Exascale Earth System Model, *Journal of Advances in Modeling Earth Systems*, 11, 2377–2411, <https://doi.org/10.1029/2019MS001629>, 2019.
- 895 Richter, J. H. and Rasch, P. J.: Effects of Convective Momentum Transport on the Atmospheric Circulation in the Community Atmosphere Model, Version 3, *J. Clim.*, 21, 1487–1499, <https://doi.org/10.5194/gmd-10-2221-2017>, 2008.

- Santos, S. P., Caldwell, P. M., and Bretherton, C. S.: Numerically Relevant Timescales in the MG2 Microphysics Model, *Journal of Advances in Modeling Earth Systems*, 12, e2019MS001972, <https://doi.org/https://doi.org/10.1029/2019MS001972>, e2019MS001972, 2020.
- Santos, S. P., Caldwell, P. M., and Bretherton, C. S.: Cloud Process Coupling and Time Integration in the E3SM Atmosphere Model, *Journal of Advances in Modeling Earth Systems*, 13, e2020MS002359, <https://doi.org/https://doi.org/10.1029/2020MS002359>, e2020MS002359, 2020MS002359, 2021.
- Singh, H. A., Bitz, C. M., Nusbaumer, J., and Noone, D. C.: A mathematical framework for analysis of water tracers: Part 1: Development of theory and application to the preindustrial mean state, *Journal of Advances in Modeling Earth Systems*, 8, 991–1013, <https://doi.org/https://doi.org/10.1002/2016MS000649>, 2016.
- Wan, H., Zhang, S., Rasch, P. J., Larson, V. E., Zeng, X., and Yan, H.: Quantifying and attributing time step sensitivities in present-day climate simulations conducted with EAMv1, *Geoscientific Model Development*, 14, 1921–1948, <https://doi.org/10.5194/gmd-14-1921-2021>, 2021.
- Wang, H., Rasch, P. J., Easter, R. C., Singh, B., Zhang, R., Ma, P.-L., Qian, Y., Ghan, S. J., and Beagley, N.: Using an explicit emission tagging method in global modeling of source-receptor relationships for black carbon in the Arctic: Variations, sources, and transport pathways, *Journal of Geophysical Research: Atmospheres*, 119, 12,888–12,909, <https://doi.org/https://doi.org/10.1002/2014JD022297>, 2014.
- Wang, H., Fyke, J. G., Lenaerts, J. T. M., Nusbaumer, J. M., Singh, H., Noone, D., Rasch, P. J., and Zhang, R.: Influence of sea-ice anomalies on Antarctic precipitation using source attribution in the Community Earth System Model, *The Cryosphere*, 14, 429–444, <https://doi.org/10.5194/tc-14-429-2020>, 2020.
- Williams, K. D., Bodas-Salcedo, A., Déqué, M., Fermepin, S., Medeiros, B., Watanabe, M., Jakob, C., Klein, S. A., Senior, C. A., and Williamson, D. L.: The Transpose-AMIP II Experiment and Its Application to the Understanding of Southern Ocean Cloud Biases in Climate Models, *Journal of Climate*, 26, 3258 – 3274, <https://doi.org/10.1175/JCLI-D-12-00429.1>, 2013.
- Williamson, D. L., Boyle, J., Cederwall, R., Fiorino, M., Hnilo, J., Olson, J., Phillips, T., Potter, G., and Xie, S. C.: Moisture and temperature balances at the Atmospheric Radiation Measurement Southern Great Plains Site in forecasts with the Community Atmosphere Model (CAM2), *J. Geophys. Res.*, 110, 1–17, <https://doi.org/10.1029/2004JD005109>, 2005.
- Xie, S., Ma, H.-Y., Boyle, J. S., Klein, S. A., and Zhang, Y.: On the Correspondence between Short- and Long-Time-Scale Systematic Errors in CAM4/CAM5 for the Year of Tropical Convection, *Journal of Climate*, 25, 7937–7955, <https://doi.org/10.1175/JCLI-D-12-00134.1>, 2012.
- Xie, S., Lin, W., Rasch, P. J., Ma, P., Neale, R., Larson, V. E., Qian, Y., Bogenschutz, P. A., Caldwell, P., Cameron?Smith, P., Golaz, J., Mahajan, S., Singh, B., Tang, Q., Wang, H., Yoon, J., Zhang, K., and Zhang, Y.: Understanding cloud and convective characteristics in version 1 of the E3SM atmosphere model, *J. Adv. Model. Earth Syst.*, 10, 2618–2644, <https://doi.org/https://doi.org/10.1029/2018MS001350>, 2018.
- Zhang, G. J. and McFarlane, N. A.: Sensitivity of climate simulations to the parameterization of cumulus convection in the Canadian Climate Centre general circulation model, *Atmos. Ocean*, 33, 407–446, <https://doi.org/10.1080/07055900.1995.9649539>, 1995.
- Zhang, K., O’Donnell, D., Kazil, J., Stier, P., Kinne, S., Lohmann, U., Ferrachat, S., Croft, B., Quaas, J., Wan, H., Rast, S., and Feichter, J.: The global aerosol-climate model ECHAM-HAM, version 2: sensitivity to improvements in process representations, *Atmospheric Chemistry and Physics*, 12, 8911–8949, <https://doi.org/10.5194/acp-12-8911-2012>, 2012.
- Zhang, K., Zhao, C., Wan, H., Qian, Y., Easter, R. C., Ghan, S. J., Sakaguchi, K., and Liu, X.: Quantifying the impact of sub-grid surface wind variability on sea salt and dust emissions in CAM5, *Geoscientific Model Development*, 9, 607–632, <https://doi.org/10.5194/gmd-9-607-2016>, 2016.

Zhang, K., Rasch, P. J., Taylor, M. A., Wan, H., Leung, R., Ma, P.-L., Golaz, J.-C., Wolfe, J., Lin, W., Singh, B., Burrows, S., Yoon, J.-H., Wang, H., Qian, Y., Tang, Q., Caldwell, P., and Xie, S.: Impact of numerical choices on water conservation in the E3SM Atmosphere Model version 1 (EAMv1), *Geosci. Model Dev.*, 11, 1971–1988, <https://doi.org/10.5194/gmd-11-1971-2018>, 2018.

940 Zhang, R., Wang, H., Hegg, D. A., Qian, Y., Doherty, S. J., Dang, C., Ma, P.-L., Rasch, P. J., and Fu, Q.: Quantifying sources of black carbon in western North America using observationally based analysis and an emission tagging technique in the Community Atmosphere Model, *Atmospheric Chemistry and Physics*, 15, 12 805–12 822, <https://doi.org/10.5194/acp-15-12805-2015>, 2015.