

# Regional evaluation of the performance of the global CAMS chemical modeling system over the United States (IFS cycle 47r1)

5 Jason E. Williams<sup>1</sup>, Vincent Huijnen<sup>1</sup>, Idir Bouarar<sup>2</sup>, Mehdi Meziane<sup>3</sup>, Timo Schreurs<sup>1</sup>, Sophie Pelletier<sup>3</sup>, Virginie Marécal<sup>3</sup>, Beatrice Josse<sup>3</sup> and Johannes Flemming<sup>4</sup>

1 R&D Weather and Climate Modeling, Royal Netherlands Meteorological Institute, De Bilt, the Netherlands

2 Max Planck Institute for Meteorology, Hamburg, Germany

10 3 Centre National de Recherches Météorologiques, Université de Toulouse, Météo-France, CNRS, Toulouse, France

4 ECMWF, Shinfield Park, Reading, UK

Correspondance to: Jason. E Williams (Jason.Williams@knmi.nl)

15 **Abstract** The Copernicus Atmosphere Monitoring Service (CAMS) provides routine analyses and forecasts of trace gases and aerosols on a global scale. The core is the ECMWF Integrated Forecast System (IFS), where modules for atmospheric chemistry and aerosols have been introduced, and which allows data-assimilation of satellite retrievals of composition.

20 We have updated both the homogeneous and heterogeneous NO<sub>x</sub> chemistry applied in the three independent tropospheric-stratospheric chemistry modules maintained within CAMS, referred to as IFS(CB05BASCOE), IFS(MOCAGE) and IFS(MOZART). Here we focus on the evaluation of main trace gas products from these modules that are of interest as markers of air quality, namely lower tropospheric O<sub>3</sub>, NO<sub>2</sub> and CO, with a regional focus over the contiguous United States.

25 Evaluation against lower tropospheric composition reveals overall good performance, with chemically induced biases within 10 ppb across species for regions within the US with respect to a range of observations. The versions show overall equal or better performance than the CAMS Reanalysis which includes data assimilation. Evaluation of surface air quality aspects shows that annual cycles are captured well, albeit with variable seasonal biases. During wintertime conditions there is a large model spread between chemistry schemes in lower-tropospheric O<sub>3</sub> (~10-35%) and, in turn, oxidative capacity related to NO<sub>x</sub> lifetime differences. Analysis of differences in the HNO<sub>3</sub> and PAN formation, which act as reservoirs for reactive nitrogen, revealed a general underestimate in PAN formation over polluted regions likely due to too low organic precursors. Particularly during wintertime, the fraction of NO<sub>2</sub> sequestered into PAN has a variability of 100% across chemistry modules indicating the need for further constraints. Notably a considerable uncertainty in HNO<sub>3</sub> formation associated with wintertime N<sub>2</sub>O<sub>5</sub> conversion on wet particle surfaces remains.

35 In summary this study has indicated that the chemically induced differences in the quality of CAMS forecast products over the United States depends on season, trace gas, altitude and region. Whilst analysis of the three chemistry modules in CAMS provide a strong handle on uncertainties associated with chemistry modeling, the further improvement of operational products additionally requires coordinated development involving emissions handling, chemistry and aerosol modeling, complemented with data-assimilation efforts.

## 1 Introduction

Poor air quality has a significant impact on visibility, human health and lifespan, crop production and ecosystems, while this impact is expected to be accentuated due to climatic change (Silva et al., 2017; Reddington et al., 2019; Schneidemesser et al., 2020). High concentrations of pollutants induce premature mortality (e.g Lelieveld et al., 2015) and spark episodes in people with asthma. For these reasons a predictive capability at local scale is deemed desirable to provide forewarning of intense pollution episodes and to perform retrospective monitoring of annual exposure. Thus, like for forecasting weather events, during the last decades there has been a focus on integrating interactive chemistry and aerosol modules into global weather-forecasting models such as the European Centre for Medium Range Weather Forecasts (ECMWF) Integrated Forecasting System (IFS) (Benedetti et al., 2009; Morcrette et al., 2009; Flemming et al., 2015; Huijnen et al., 2016; 2019; Rémy et al., 2019) amongst others for the purpose of providing short-term Air-Quality Forecasts (AQF) at global scale, in the framework of the Copernicus Atmosphere Monitoring Service (CAMS). The IFS system is upgraded frequently, allowing the fast benefit of advances in meteorological aspects to be included for the chemistry modeling and its interactions. Note that besides the global system, there is also an operational suite of regional-scale models for providing timely AQF for Europe (Marécal et al., 2015). For other domains such as the United States (US), AQF are provided by the global CAMS system (<http://atmosphere.copernicus.eu>; last access 28.09.21), updated twice daily and run at a resolution of approximately  $0.4^\circ \times 0.4^\circ$  on 137 vertical levels. The operational configuration relies on data assimilation of trace gases and aerosols for a suite of satellite retrievals, combined with a state-of-the-art atmospheric chemistry and aerosol model. Forecasting services for the US are also provided by the National Air Quality Forecasting Capability (NAQFC,) for ozone ( $O_3$ ), dust and smoke (e.g Chai et al., 2013; Lee et al., 2017), which utilizes the CMAQ model (Byun and Schere, 2006) driven by WRF-NMM meteorological model (e.g Eder et al, 2009), provided at a 12 x 12km resolution. The model is regional meaning that prescription of boundary conditions is necessary to account for effects of long-range transport. One other notable system for AQF is the NASA GEOS Composition Forecast Modeling System (GEOS-CF v1.0; Keller et al, 2021), which is a global system similar to CAMS using the GEOS-chem chemical module coupled to the GEOS atmospheric model (v5) run at a global resolution of 25 x 25km.

Until recently, model development of the CAMS global system has focused on the performance at global scale with emphasis on more pristine regions and conditions (Huijnen et al., 2019). Only limited attention has been made for regions directly affected by high anthropogenic emission sources such as the US for which AQF are provided. This gives motivation for the study presented here, which assesses the quality of the CAMS global chemistry modeling regarding the seasonal mean performance in tropospheric pollutants for a typical year, as compared against a suite of independent measurements for the US. The availability of both continuous and seasonally focused observations allows a more rigorous validation compared to either China or Europe.

For the operational suite, the CAMS system adopts the IFS(CB05) version of the model which is based on tropospheric chemistry originating from the TM5 chemistry transport model (Huijnen et al., 2010; Williams et al., 2013) without the explicit modeling of the stratospheric  $O_3$  chemistry. This allows for convenience with respect to stability and run time, recognizing thus far the focus of CAMS products is mainly on the troposphere, while stratospheric ozone can be well constrained by a linear model combined with  $O_3$  data assimilation, e.g. Inness et al. (2020). Another application of this system has been the production of a consistent, long-term reanalysis dataset from 2003 to present (Inness et al., 2019; Wagner et al., 2021), which can be used to analyze interannual variability in atmospheric composition (Huijnen et al., 2020). One constraint towards any update is that whatever changes are adopted there should be a net improvement of key products, such as tropospheric  $O_3$ , as measured with respect to a comprehensive set of reference observations. Key trace gases from the reanalysis dataset (hereafter referred to as CAMSRA) have recently been compared against a host of different aircraft data to allow an assessment of biases at global scale over multiple years (Wang et al., 2020). For CO and  $O_3$ , regional negative biases of between 15-30% were found, where large biases have also been found in both OH and  $HO_2$  radicals which act as key oxidants in the troposphere. For CO there is typically an underestimation in the simulated surface concentration (Huijnen et al., 2019), albeit for regions far away from high emission sources, while this is efficiently corrected by the data assimilation in CAMSRA. For the surface over the North Hemispheric mid-latitude continents, CAMSRA typically shows seasonal biases in the monthly mean  $O_3$ , with a negative bias during wintertime and a positive bias during summertime (Wagner et al., 2021). A similar performance is noticed for its control simulation which

excludes data assimilation of trace gases. This indicates that further improvements can be attained by focusing on improving the relevant chemical processes included in the CAMS operational system because the impact of the data assimilation of atmospheric composition is limited at the model surface and does not constrain many key species. However, attributing the differences in performance of chemical updates against CAMSRA is complicated by the absence of chemical data assimilation adopted here, and by simultaneous changes in IFS cycle and emission estimates since CAMSRA was produced.

To date within the CAMS global modeling system three independent atmospheric chemistry modules are maintained apart from the operational configuration, as described in Huijnen et al. (2019). These are the modules based on the modified CB05 scheme (Williams et al., 2013; 2017), optionally coupled to the BASCOE stratospheric chemistry as described in Huijnen et al. (2016); the RACM/REPROBUS module originating from MOCAGE (Lacressonnière et al., 2012, Cussac et al., 2020) and the MOZART module (Kinnison et al., 2007, Emmons et al., 2010). One main difference is that the CB05 uses a reactive group lumping approach for a selection of Volatile Organic Compounds (VOCs), whereas the other schemes describe the degradation of organic compounds more explicitly for e.g. aromatic organics. Other important differences concern the parameterization of photolysis rates and details associated with the parameterization of inorganic chemistry. Huijnen et al. (2019) has highlighted the importance of heterogeneous reactions, especially the conversion of  $N_2O_5$  to  $HNO_3$ , to explain differences. When applied in the IFS, excluding data assimilation, these mechanisms have been shown to lead to differences of ~10% for tropospheric  $O_3$  and ~20% for tropospheric CO, due to the diverse treatment of VOCs and variability in oxidative capacity via differences in the hydroxyl radical (OH) (Huijnen et al., 2019). To date global validation has been focused on background conditions, with assessment of seasonal averages on a continental scale. Furthermore, by applying all three model versions with largely independent chemistry modules, hereafter referred to as a chemistry mini-ensemble, uncertainty ranges due to inaccuracies in the chemical component of the forecast can be estimated. Such information could be provided operationally on the condition that the runtimes of forecasts for each member are similar, and that such a model spread is meaningful.

Tropospheric  $O_3$  is principally formed via the photolysis of nitrogen dioxide ( $NO_2$ ), with the regeneration of  $NO_2$  occurring via the oxidation of nitric oxide (NO) with peroxy-radicals ( $HO_2$ ,  $CH_3O_2$ ,  $RO_2$ ) and the titration of  $O_3$ . The chain length of this cycle is determined by the loss of  $NO_2$  into more stable nitrogen compounds, namely nitric acid ( $HNO_3$ ), peroxy-acetyl nitrate (PAN) and organic nitrates (commonly referred to as  $NO_y$  species), where a large fraction of  $HNO_3$  is formed via the heterogeneous conversion of nitrogen pentoxide ( $N_2O_5$ ) on wet surfaces (e.g. Brown et al., 2009).  $HNO_3$  is soluble and is lost via wet deposition and/or the formation of inorganic aerosol particles in the form of nitrate ( $NO_3^-$ ), whereas PAN exists in a thermal equilibrium. It can dissociate to release  $NO_2$  allowing transport of reactive  $NO_x$  away from the source regions (Fischer et al., 2014). The length of the  $NO_x$  cycle depends on both the chemical mechanism and the rate parameters employed, determining the regional  $O_3$  production efficiency. Therefore, to fully understand differences in  $O_3$  production efficiency between the various chemical schemes requires analysis of the major  $NO_y$  components.

In this study we present an evaluation of key trace gas products (tropospheric  $O_3$ ,  $NO_2$ , CO) simulated by the chemistry modules implemented in the CAMS system for the contiguous United States. This evaluation is performed for the years 2014-2015, spanning an entire summer and winter period. We also include the corresponding products from the CAMS Reanalysis dataset (Inness et al., 2019) to provide an anchor point towards this previous model version. In Sect. 2 we provide details of the chemistry modules employed in the CAMS system, with emphasis on recent updates to all three chemical mechanisms. In Sect. 3 we provide details of the observations used for evaluating the regional performance across the United States. In Sect. 4, we present analyses for the three main chosen gases and for  $NO_y$ . Finally in Sect. 5 we present our conclusions. Additional information in support of the main findings is also provided in the supplementary material.

## 2 Model Description

In this section we provide a brief description of the various configurations of the CAMS system for global atmospheric chemistry modeling. Here we focus on the upgrades which have been made to the three chemistry modules (CB05BASCOE, MOCAGE, MOZART) available in the IFS as compared to the extensive description of each of the modules as provided in Huijnen et al. (2019). Hereafter we refer to these model configurations as IFS(CBA), IFS(MOC) and IFS(MOZ), respectively.

145 A brief overview of the contents and parameterized differences for each of the various chemical modules is provided in Table 1, below. For details pertaining to the CAMSRA reanalysis dataset the reader is referred to Innes et al. (2019). There is significant variability in the number of thermal (photolytic) reactions across schemes, with IFS(MOC)/IFS(MOZ) being the most explicit/condensed, respectively. Different photolytic data is used for each of chemistry configurations. Compared to Huijnen et al. (2019), the heterogenous scavenging and conversion for N<sub>2</sub>O<sub>5</sub> and HO<sub>2</sub> has also been homogenized across the different schemes. As in previous versions, the calculation of photolysis rates is characteristic for each scheme, where a recent inter-comparison has been conducted by Hall et al. (2018) showing differences in the key photolysis frequencies (*J* values) of ~5%, where the percentage cloud-cover and droplet size provided by the IFS is identical throughout. Heterogeneous conversion and scavenging are described using the approach of Chang et al. (2011), where the loss of HO<sub>2</sub> and NO<sub>3</sub> also occur as pseudo-first-order sink processes.

**Table 1:** An overview of the three chemistry modules included in the IFS for this study with main updates compared to Huijnen et al. (2019).

	IFS(CBA)	IFS(MOC)	IFS(MOZ)
Tropospheric chemistry	CBM	RACM	CAM4-Chem
Stratospheric chemistry	BASCOE	REPROBUS	MOZART3
Number of Species	120	123	132
Number of thermal reactions	219	333	291
Number of photolysis rates	72	56	78
Complexity of organic chemistry	Updated C <sub>5</sub> H <sub>8</sub> degradation	Detailed lumping approach	Explicit degradation pathways up to C10
Complexity of inorganic chemistry	Extended for HONO and CH <sub>3</sub> O <sub>2</sub> NO <sub>2</sub>	Extended including HONO	As for CBA
Aerosol interaction in the troposphere	N <sub>2</sub> O <sub>5</sub> , NO <sub>3</sub> and HO <sub>2</sub> heterogeneous reactions on aerosol and cloud AOD influences <i>J</i> values.	Revised heterogeneous chemistry on aerosol and cloud as in CBA	Revised heterogeneous chemistry on aerosol included as in CBA
Loss on clouds and ice particles	Yes	Yes	No.
Photolysis parameterization	Modified Band Approach (Trop) online photolysis (Strat)	Look-up Table	Look-up Table (Trop), explicit transmission function (Strat)
Solver	3 <sup>rd</sup> Order Rosenbrock	3 <sup>rd</sup> Order Rosenbrock	Explicit forward and implicit backward Euler

## 2.1 IFS(CB05BASCOE)

160 IFS(CB05BASCOE), or IFS(CBA) in short, is a merge of tropospheric chemistry originally based on a modified version of the CB05 mechanism (Yarwood et al., 2005), combined with stratospheric chemistry originating from BASCOE (Skachko et al., 2016). The CB05 tropospheric chemistry in the IFS, of primary relevance in this study, adopts a lumping approach for organic species by defining a single separate generic tracer species (Williams et al., 2013; Flemming et al., 2015).

165 The modified band approach (MBA), which is adopted for the computation of tropospheric photolysis rates  
 (Williams et al., 2012), uses 7 absorption bands across the spectral range 202–695 nm. In the MBA, the radiative  
 transfer calculation is performed with a two-stream solver using the absorption and scattering components  
 introduced by gases, aerosols and clouds is computed on-line for each of the predefined band intervals.  
 170 Heterogeneous reactions and photolysis rates are calculated using CAMS IFS-AER aerosol model (Rémy et al.,  
 2019). The reaction rates follow the recommendations given in either Burkholder et al. (2015) or the latest  
 recommendations by IUPAC (<http://iupac.pole-ether.fr>; last access 21 Sept 2021).

**Table 2:** Updates to the NO<sub>x</sub> reaction chemistry in CBA as compared to Huijnen et al (2019). [1] Atkinson et al.,  
 2004; updated according to <http://iupac.pole-ether.fr> (last access : 21 sept 2021), [2] JPL 2015, [3] Atkinson et al.,  
 2006; updated according to <http://iupac.pole-ether.fr> (last access : 21 Sept 2021). Key to abbreviations: T –  
 175 Temperature (°K), K<sup>0</sup> - Low Pressure Limiting Rate Constant, K<sup>∞</sup> - High Pressure Limiting Rate Constant, QY –  
 Quantum Yield and R – product yield.

Reaction	Rate expression	Reference
NO + HO <sub>2</sub> → NO <sub>2</sub> + OH	$3.3 \times 10^{-12} \times \exp(270/T)$	[1]
NO <sub>3</sub> + HO <sub>2</sub> → HNO <sub>3</sub>	$4.0 \times 10^{-12}$	[1]
NO <sub>2</sub> + OH → HNO <sub>3</sub>	$K^0 = 3.2 \times 10^{-10} \times (300/T)^{4.5}$ $K^\infty = 3.0 \times 10^{-11}$	[1]
OH + NO → HONO	$K^0 = 7.0 \times 10^{-31} \times (300/T)^{2.4}$ $K^\infty = 3.6 \times 10^{-11} \times (300/T)^{-0.3}$	[2]
HONO + <i>hν</i> → OH + NO	Explicit	[1]
OH + HONO → NO <sub>2</sub>	$2.5 \times 10^{-12} \times \exp(260/T)$	[2]
NO <sub>2</sub> + CH <sub>3</sub> OO <sub>2</sub> → PAN	$K^0 = 9.7 \times 10^{-29} \times (300/T)^{5.6}$ $K^\infty = 9.3 \times 10^{-12} \times (300/T)^{1.5}$	[2]
PAN → NO <sub>2</sub> + CH <sub>3</sub> OO <sub>2</sub>	$9.9 \times 10^{-29} \times \exp(14000/T)$	[2]
PAN + <i>hν</i> → CH <sub>3</sub> OO <sub>2</sub> + NO <sub>2</sub>	QY	[1]
PAN + <i>hν</i> → CH <sub>3</sub> O <sub>2</sub> + NO <sub>3</sub>	(1-QY)	[1]
CH <sub>3</sub> O <sub>2</sub> + NO <sub>2</sub> → CH <sub>3</sub> O <sub>2</sub> NO <sub>2</sub>	$K^0 = 1.0 \times 10^{-30} \times (300/T)^{4.8}$ $K^\infty = 7.2 \times 10^{-12} \times (300/T)^{2.1}$	[2]
CH <sub>3</sub> O <sub>2</sub> NO <sub>2</sub> → CH <sub>3</sub> O <sub>2</sub> + NO <sub>2</sub>	$9.5 \times 10^{-29} \times \exp(11234/T)$	[2]
NO <sub>2</sub> + O <sub>3</sub> → NO <sub>3</sub>	$1.4 \times 10^{-13} \times \exp(-2470/T)$	[1]
NO + NO <sub>3</sub> → NO <sub>2</sub> + NO <sub>2</sub>	$1.8 \times 10^{-11} \times \exp(110/T)$	[1]
CH <sub>3</sub> O <sub>2</sub> + HO <sub>2</sub> → CH <sub>3</sub> OOH	$3.8 \times 10^{-13} \times \exp(750/T) \times R$	[1]
CH <sub>3</sub> O <sub>2</sub> + HO <sub>2</sub> → HCHO	$3.8 \times 10^{-13} \times \exp(750/T) \times (1.-R)$	[1]
O <sub>3</sub> + C <sub>2</sub> H <sub>4</sub> → CH <sub>2</sub> O + 0.26 HO <sub>2</sub> + 0.12 OH + 0.43 CO	$6.82 \times 10^{-14} \times \exp(-2500/T)$	[3]
NO <sub>3</sub> + C <sub>3</sub> H <sub>8</sub> → 0.2 ISPD + XO <sub>2</sub> + 0.8 HO <sub>2</sub> + 0.8 ORGNTR + 0.8 ALD2 + 2.4 PAR + 0.2 NO <sub>2</sub>	$2.95 \times 10^{-12} \times \exp(465/T)$	[3]

$\text{HNO}_4 + \text{OH} \rightarrow \text{NO}_2$	$3.2 \times 10^{-13} \times \exp(690/T)$	[1]
$\text{NO}_2 + \text{HO}_2 \rightarrow \text{HO}_2\text{NO}_2$	$K_0 = 1.4 \times 10^{-31} \times (300/T)^{3.1}$ $K_\infty = 4.0 \times 10^{-12}$	[1]
$\text{HO}_2\text{NO}_2 \rightarrow \text{NO}_2 + \text{HO}_2$	$K_0 = 4.1 \times 10^{-5} \times \exp(-10650/T)$ $K_\infty = 6.0 \times 10^{15} \exp(-11170/T)$	[1]
$\text{NO}_2 + \text{NO}_3 \rightarrow \text{N}_2\text{O}_5$	$K_0 = 3.6 \times 10^{-30} \times (300/T)^{4.1}$ $K_\infty = 1.9 \times 10^{-12} \times (300/T)^{-0.2}$	[1]

For IFS(CBA) there have been extensive modifications to four main components of the tropospheric chemistry module, namely: (i) the inclusion of HONO and  $\text{CH}_3\text{O}_2\text{NO}_2$  into the  $\text{NO}_x$  reaction cycle, (ii) the replacement of the isoprene ( $\text{C}_5\text{H}_8$ ) oxidation scheme with a hybrid from the literature, (iii) the coupling of the formation of Secondary Organic Aerosol (SOA) to oxidation products of aromatics and (iv) the inclusion of hydrogen cyanide (HCN) and acetonitrile ( $\text{CH}_3\text{CN}$ ) from Biomass Burning (BB) sources. This tropospheric chemistry version is referenced as ‘tc06f’ and is further described below.

The updated rate data for  $\text{NO}_x$  chemistry and  $\text{NO}_y$  components are listed in Table 2 and are based on the updates tested in the chemistry transport model TM5 (Williams et al., 2017). One important update is the use of the new recommendation for the formation of  $\text{HNO}_3$  (Mollner et al., 2010) that has been shown to have significant effects on the tropospheric  $\text{O}_3$  burden (Søvde et al., 2011). HONO acts as an important source of OH and NO during the early morning from efficient photolytic destruction after nocturnal build-up (Stutz et al., 2004), whereas  $\text{CH}_3\text{O}_2\text{NO}_2$  alters the  $\text{NO}_y$  chemistry in the free troposphere (Browne et al., 2011). Additionally, updates have also been made to the reaction data for  $\text{O}_3 + \text{C}_2\text{H}_4$  and  $\text{NO}_3 + \text{C}_5\text{H}_8$ .

To date IFS(CBA) has only included a very simplistic parameterization for the oxidation of  $\text{C}_5\text{H}_8$ . To improve the realism of the product distribution from the oxidation of  $\text{C}_5\text{H}_8$  by OH, we have developed a mechanism which is a hybrid of that developed by Stavrou et al. (2010) and Lamarque et al. (2012). This new hybrid method includes the direct formation of glyoxal (CHOCHO), hydroxy-aldehydes (HPALD1, HPALD2), a peroxy-product (ISOPOOH), glycolaldehyde (GLYALD), hydroxy-acetone (HYAC) and methyl-glyoxal ( $\text{CH}_3\text{COCHO}$ ). Explicit  $J$  values are calculated online for these products using the latest recommendations for absorption data, as for other species. Most of these intermediates are soluble with Henry solubility analogous to ALD2 except CHOCHO, where the approach of Ip et al. (2009) is used. We still retain the ISPD intermediate representative of methyl-vinylketone and methacrolein from previous versions of the scheme. Reaction rates in this mechanism have been updated following latest recommendations, as aligned with the mechanism described by Myriokefalitakis et al. (2020).

Validation of this updated component of the IFS(CBA) is beyond the scope of this study, but we have found that OH-recycling increases over forested regions with high biogenic emission fluxes like that shown in Stavrou et al (2010) thus affecting atmospheric lifetime of individual trace gases for regions with high resident mixing ratios of  $\text{C}_5\text{H}_8$ . It should be noted that for  $\text{O}_3$  and  $\text{NO}_3$  we still adopt the original stoichiometry for the product distribution as in previous versions of IFS(CBA) (Huijnen et al., 2016). We provide details related to this extensive update in the supplementary material in Table S1.

To date aromatics were not explicitly treated in IFS(CBA), but rather as part of the generic paraffinic bond tracer PAR, which has now been updated. For this we follow the work of Karl et al. (2009), who describe the oxidation of the aromatic species toluene (TOL) and xylene (XYL), allowing a coupling to SOA formation. In addition, in our model version the product distributions and rate expressions for NO and  $\text{HO}_2$  radical-radical reactions are taken from Myriokefalitakis et al. (2020). This links the aromatic species towards oxidant loss ( $\text{O}_3$ , OH,  $\text{NO}_3$ ), the production of CHOCHO/ $\text{CH}_3\text{COCHO}$  and allows the introduction of gas-phase precursors for SOA formation (SOG) from anthropogenic and BB sources. We provide details on the extension to the aromatic chemistry in IFS(CBA) in the supplementary material in Table S2.

Finally in Table S3 of the supplementary material, we provide the rate data used for the oxidation of HCN and  $\text{CH}_3\text{CN}$  by OH. For  $\text{CH}_3\text{CN}$  we define a fraction (30%) to be converted to HCN, following Li et al. (2009) but alternatively we prescribe it as a purely chemical sink process in the troposphere, on top of the loss at the surface

220 due to ocean uptake. This allows it to be used as a tracer for selected air-masses with the dominant emission  
sources being open burning fires (Li et al., 2000). Again, the validation of these new tracers is not relevant to this  
study therefore not presented here.

## 2.2 IFS(MOCAGE)

225 The IFS(MOCAGE) chemical scheme, hereafter called IFS(MOC), is a merge of reactions of the tropospheric  
RACM scheme (Stockwell et al., 1997) with the reactions relevant to the stratospheric chemistry of REPROBUS  
(Lefèvre et al., 1994; Lefèvre et al., 1998). As in the IFS(CBA) implementation, IFS(MOC) uses a lumping  
approach for organic trace gas species. IFS(MOC) initial tropospheric RACM chemistry scheme was extended  
and now includes the sulfur cycle in the troposphere leading to the introduction of DMSO and NH<sub>3</sub> gas species  
(Ménégoz et al., 2009; Guth et al., 2016). The current version of the IFS(MOC) chemistry scheme includes 123  
230 species, including long-lived and short-lived species, family groups and a polar stratospheric clouds (PSC) tracer,  
319 gas-phase thermal reactions, 56 photolysis reactions and 14 heterogeneous reactions (9 for the stratosphere  
and 5 for the troposphere). The version adopted here is as that reported in Huijnen et al. (2019) with four major  
differences.

235 Firstly, in IFS(MOC), the formation of nitrate, ammonium and sulfate particles from NH<sub>3</sub>, SO<sub>2</sub> and HNO<sub>3</sub> gaseous  
species is now activated in an analogous way to what is used in IFS(CBA). The nitrate and ammonium formation  
depends on resident sulphate concentrations (c.f. Huijnen et al., 2019; Rémy et al., 2019). This primarily affects  
the modeled NH<sub>3</sub> and HNO<sub>3</sub> atmospheric burdens, but indirectly also affects the other trace gases through  
heterogeneous reactions.

240 Secondly, the formation of gaseous secondary organic aerosol precursors (SOG) from biogenic and anthropogenic  
and BB VOCs was implemented in IFS(MOC) following the simplified approach proposed by Spracklen et al.  
(2011). While biogenic sources (namely C<sub>3</sub>H<sub>8</sub> and monoterpenes) are provided by the IFS(MOC) chemistry  
scheme, anthropogenic and BB emissions were scaled from the corresponding CO emissions. In this simplified  
approach, only two SOG low-volatility classes are considered, one for biogenic SOG and the other gathering both  
245 the anthropogenic and BB contributions. As in IFS(CBA), this SOG chemistry is coupled in IFS(MOC) with the  
aerosol module by solving the equilibrium of the partitioning between gas and aerosol phase.

Recent developments in IFS(MOC) also include the modeling of the HCN and CH<sub>3</sub>CN tracers with chemical loss  
being limited to oxidation by OH and photolysis in the stratosphere, using the same rate data as those used in  
250 IFS(CBA) (see Table S3), but with no products defined. As already stated for IFS(CBA), validation of these new  
tracers is not relevant to this study and therefore not presented here.

255 Last, the heterogeneous scavenging on aerosol, cloud droplets and ice particles for N<sub>2</sub>O<sub>5</sub>, HO<sub>2</sub> and NO<sub>3</sub> has been  
fully updated and made consistent with the IFS(CBA) configuration, which are based on the latest  
recommendations. For the sake of simplicity, the heterogeneous reaction probabilities ( $\gamma$ ) are for most surfaces  
considered constant, as summarized in Table 3. The reaction probability  $\gamma$ (HO<sub>2</sub>) is computed following Thornton  
et al. (2008), taking the role of pH and partition between the gaseous HO<sub>2</sub> and the dissociated form (O<sub>2</sub><sup>-</sup>) into  
account, adopting a constant pH of 5.5. It follows the description given in Huijnen et al. (2014), where further  
details are given.

260 **Table 3:** Heterogeneous  $\gamma$  values used for prescribing conversion rates on atmospheric cloud droplets, ice and  
aerosols. ‘T08’ refers to Thornton et al. (2008) and ‘NC’ indicates Not Considered.

Particle type	$\gamma$ (N <sub>2</sub> O <sub>5</sub> )	$\gamma$ (HO <sub>2</sub> )	$\gamma$ (NO <sub>3</sub> )
Cloud droplets	$2.7 \cdot 10^{-5} \exp(1800/T)$	T08	NC
Ice	0.02	0.025	NC
Desert Dust	0.01	0.06	0.01
Sea-Salt	0.02	T08	0.01
Organic Matter	0.02	T08	0.01
Black Carbon	0.01	T08	0.01

SO <sub>4</sub>	0.02	T08	0.01
-----------------	------	-----	------

### 2.3 IFS(MOZART)

265 The IFS(MOZART), hereafter referred to as IFS(MOZ), is based on the Model of Ozone and Related chemical Tracers (MOZART) mechanism (Kinnison et al., 2007; Emmons et al., 2010) and includes additional species and reactions from the Community Atmosphere Model with interactive chemistry, referred to as CAM4-chem, a component of the Community Earth System Model (CESM) (Tilmes et al., 2016).

270 The IFS(MOZ) version used here is comparable to that described and evaluated in Huijnen et al. (2019) with few additional updates. The TOL lumped aromatic used in the previous version has been replaced by the separate species Benzene, TOL and XYL, allowing accounting for their different lifetimes and oxidation products. The current version also includes formic acid (HCOOH) and ethyne (C<sub>2</sub>H<sub>2</sub>) and their oxidation products. The reaction rates have been updated to follow the recommendations from IUPAC (<http://iupac.pole-ether.fr>; last access: 21 Sept 2021) or JPL-2015 (Burkholder et al., 2015). Updates have also been introduced to the photolysis look-up table, which includes explicit calculations of photolysis frequencies for most of the IFS(MOZART) species.

275 The heterogeneous chemistry in the troposphere is implemented according to the corresponding module from IFS(CBA) to account for heterogeneous uptake of N<sub>2</sub>O<sub>5</sub>, HO<sub>2</sub> and NO<sub>3</sub> on aerosols as described in the previous section. However, the heterogeneous uptake on ice and cloud droplets is currently not included in IFS(MOZ).

Finally, nitrate, ammonium and sulphate particle formation have been introduced in IFS(MOZ) analogous to IFS(CBA) and IFS(MOC) (Rémy et al., 2019), involving gaseous SO<sub>2</sub>, NH<sub>3</sub> and HNO<sub>3</sub>, as described above.

### 280 2.4 Setup of model simulations

The model simulations using the new developments described above have been performed with IFS cycle 47r1. The simulations were run using 137 vertical levels and a horizontal resolution of T<sub>L</sub>255, corresponding to ~0.7° x 0.7°, excluding data assimilation of atmospheric composition. A model top of 1Pa is defined for these vertical grid settings.

285 The simulations evaluated here are executed as a series of 24 h hindcasts, daily initialized at 0h UTC from ERA5 meteorology (Hersbach et al., 2020). A 30-minute time step was used. A four-month spin-up period is employed to allow the system to reach chemical equilibrium during September to December 2013, after which an 18-month simulation was performed to allow the use of winter-time measurements for deriving some seasonality in the analysis. To limit the volume of data, outputs of 3D chemical fields are archived at a 3-hourly time interval and subsequently interpolated to the relevant time stamp of each measurement. The experiments are archived with experiment identifiers b28w for IFS(CBA), b0ov for IFS(MOC) and b0yw for IFS(MOZ).

290

For comparison, the CAMS Reanalysis (CAMSRA), which includes data assimilation of O<sub>3</sub>, CO, NO<sub>2</sub> and Aerosol Optical Depth (AOD), uses IFS cycle 42r1. CAMSRA was run at the same horizontal resolution (T<sub>L</sub>255) as the experiments presented here, but with only 60 model levels, a model top of 0.1hPa (Inness et al., 2019). Different emission estimates were also employed for the CAMSRA dataset meaning that interpretation of differences need to be done with care.

295

The emissions adopted in this configuration are taken from CAMS\_GLOB\_ANT v4.2-R1.1 (Granier et al, 2019; <https://eccad.aeris-data.fr/>), which is a modification of the v4.2 global anthropogenic emission dataset used operationally in CAMS, with reduced emission strength over China. Biogenic emissions are taken from the CAMS\_GLOB\_BIO v1.1 dataset (Doubalova et al., 2018; <http://eccad.aeris-data.fr/>), and BB emissions are taken from GFAS v1.2 (Kaiser et al., 2012) which are applied using the methodology as described in Ye et al. (2021). As GFAS does not provide separate estimates for HCN and CH<sub>3</sub>CN emissions, we scale them from the CO emissions. Other (oceanic, natural) emissions are taken from the standard configuration in IFS (see Huijnen et al., 2019).

300

305 Apart from BB and SO<sub>2</sub>, all emissions are applied in the lowest model level. Information on emission totals used in the simulations is given in Table 4 for IFS(CBA). This corresponds essentially to the emissions as adopted in IFS(MOZ) and IFS(MOC), with small variations in the partitioning of some of the lumped VOCs such as the



310 higher alkanes, alkenes and aldehydes, as well as the aromatics. When comparing emission totals with those used in Huijnen et al. (2019) main differences are 10% lower primary emissions for anthropogenic CO and SO<sub>2</sub>, a 20% increase in anthropogenic NH<sub>3</sub>, approximately equal NO<sub>x</sub> emissions and most importantly, a 20% reduction in C<sub>5</sub>H<sub>8</sub>. The variability in the emission estimates compared to previous studies are due to both the use of different data in the derivation of fluxes and trends in the annual emission estimates (2014 versus 2019).

315 **Table 4:** Global annual mean emissions for 2014 as adopted in current IFS(CBA) model simulations [Tg species/year]. No direct emissions of HONO are included. For NO, also the aircraft (AC) and lightning NO<sub>x</sub> (LiNO) emissions are given as anthropogenic and biogenic contributions, respectively.

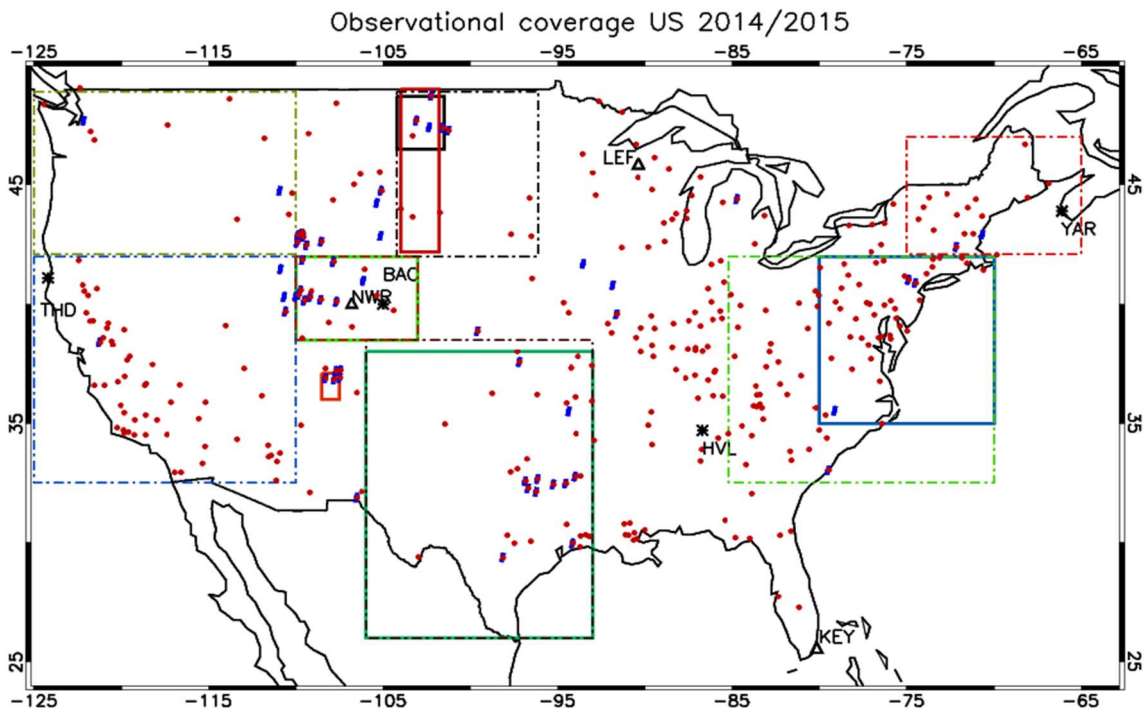
Species	Anthropogenic	Biogenic/Oceanic	Biomass Burning
CO	532	65/20	355
NO	71.9 + 2.1AC	10.6 + 10.3 LiNO	9.4
HCHO	4.4	3.3	5.4
CH <sub>3</sub> OH	14	99	11
C <sub>2</sub> H <sub>6</sub>	4.8	0.3/1.0	2.5
CH <sub>3</sub> CH <sub>2</sub> OH	2.3	13.6	0.
C <sub>2</sub> H <sub>4</sub>	6.9	21.9/1.4	4.8
C <sub>3</sub> H <sub>8</sub>	6.1	0.03/1.3	0.3
C <sub>3</sub> H <sub>6</sub>	3.2	13/1.5	3.3
CH <sub>3</sub> CHO and higher aldehydes	9.2	15.9	5.0
CH <sub>3</sub> COCH <sub>3</sub>	6.7	32.5/27.8	3.0
butanes and higher alkanes	40.0	0.8	0.3
butenes and higher alkenes	2.5	0.5	0.8
toluene	17.1	1.1	7.9
xylenes	11.1	0	8.1
C <sub>5</sub> H <sub>8</sub>	0	381	0
terpenes	0	78	0
SO <sub>2</sub>	89.7	14.8	1
DMS	0	38.0	0
NH <sub>3</sub>	53.8	2.3/8.1	10.8
HCN	1.18	0	1.7
CH <sub>3</sub> CN	0.44	0	1.14

### 3 Observations

320 In this section we provide an overview of all the observational data used to evaluate the performance of the three IFS versions for the years 2014 and 2015. Figure 1 shows the location of all the measurement stations and regions covered by the aircraft campaigns utilized for assessing the different versions of the IFS.

#### 3.1 Surface flasks and soundings for CO and O<sub>3</sub>

325 For tropospheric O<sub>3</sub> we use seasonal composites from four individual sites from the World Ozone and Ultraviolet Radiation Data Center (WOUDC; <http://woudc.org>), namely Yarmouth (43.9°N, 66.0°W), Boulder (40.0°N, 105.0°W), Trinidad Head (41.1°N, 124.2°W) and Huntsville (34.7°N, 86.7°W). Each station samples a different region, allowing the assessment of performance at continental scale, with an associated error of around ±10% (Komhyr et al., 1995; Steinbrecht et al., 1998). The location of each station is shown in Figure 1.



330 **Figure 1:** The location of surface measurement stations and areas sampled during the numerous aircraft campaigns. The ozonesonde locations are shown as \* and the GMDL surface sites as Δ. Key to air-shed: —  
335 North Dakota (May 2014), — New Mexico (June 2014), — Colorado (July/Aug 2014), — Colorado (July/Aug 2014; Mar/Apr 2015), — Eastern Coast (Feb/March 2015) and — South Central US (Apr 2015). The areas outlined by the dashed-dotted borders are associated with the regions for which the AirNow observations are analysed, with the reader being referred to Table 10. The individual stations for the AirNow network are shown as the red dots (O<sub>3</sub>) and blue dots (NO<sub>2</sub>) for rural stations only.

340 For evaluating the surface mixing ratios of O<sub>3</sub>, we compare monthly mean mixing ratios against corresponding values taken from three measurement sites at Trinidad Head (41.1°N, 124.2°W), Boulder (40.0°N, 105.0°W) and Niwot Ridge (40.1°N, 106.5°W). These observations are taken from the long-term measurement network maintained by the NOAA Earth System Laboratories (ESRL) Global Monitoring Laboratory. Correspondingly, for CO we use surface observations from the ESRL stations Park Falls (LEF, 45.9°N, 90.4°W), Niwot Ridge (NWR, 40.1°N, 105.6°W) and Key West (KEY, 25.6°N, 80.2°W). These observations have an associated uncertainty of between 1-3 ppb (Novelli et al., 2003).

345

### 3.2 Aircraft Observations

Figure 1 also shows the predefined air-sheds used to evaluate the lower troposphere (LT) over various regions across the US during 2014 and 2015. There is a paucity of aircraft data over the western part of the US, as most aircraft campaigns focus on industrial regions or those influenced by energy production techniques such as fracking for the chosen evaluation year. Data from the following campaigns are used:

- TOPDOWN (May/June 2014): Springtime campaign focusing on emissions from rural fracking sites located in North Dakota and New Mexico: (<https://csl.noaa.gov/groups/csl7/measurements/2014topdown/> ; last access: 28 Sept 2021).
- Front Range Air Pollution and Photochemistry Experiment (FRAPPÉ) / Deriving Information on Surface conditions from Column and Vertically Resolved Observations Relevant to Air Quality (DISCOVER-AQ) (July/Aug 2014): Summer campaign investigating O<sub>3</sub> exceedances due to regional VOC and NO<sub>x</sub> emissions in Colorado (Dingle et al., 2016; McDuffie et al., 2016; Flocke et al., 2019). More details related to DISCOVER-AQ can be found at <https://www.nasa.gov/larc/2014-discoveraq-campaign/> (last access: 28 Sept. 2021).
- Wintertime INvestigation of Transport, Emissions, and Reactivity (WINTER): Winter campaign over the East Coast to investigate O<sub>3</sub> and NO<sub>x</sub> chemistry (Feb/Mar 2015) over Virginia and North Carolina (McDuffie et al., 2018; Jaeglé et al., 2018).
- Studying the Atmospheric Effects of Changing Energy Use in the U.S. at the Nexus of Air Quality and Climate Change (SONGNEX): Spring study on effects of shale and natural gas extraction on air quality across the US (<https://csl.noaa.gov/projects/songnex/>; last access: 28 Sept 2021, Peischl et al., 2018; Koss et al., 2017).

**Table 4:** Details of the various aircraft measurement campaigns in 2014/2015 used in this study.

Campaign	Date	Trace species	US state	Regional domain (Lat, Lon)
TOPDOWN	May/June 2014	O <sub>3</sub> , CO	North Dakota (ND) New Mexico (NM)	46.5-48.7°N, 101.5-104.2°W 36-37.1°N, 107.5-108.5°W
DISCOVER-AQ	July/August 2014	O <sub>3</sub> , CO, NO <sub>2</sub> , NO HNO <sub>3</sub> , PAN	Colorado (COL)	39.5-40.6°N, 104.5-105.3°W
FRAPPE	July/August 2014	O <sub>3</sub> , CO, NO <sub>2</sub> , NO HNO <sub>3</sub> , PAN	Colorado (COL)	38.5-42°N, 103-110°W
WINTER	Feb/March 2015	O <sub>3</sub> , CO, NO <sub>2</sub> , NO N <sub>2</sub> O <sub>5</sub> , HNO <sub>3</sub> , PAN	Eastern US (EC)	38.5-42°N, 70-80°W
SONGNEX	March/April 2015	O <sub>3</sub> , CO, NO <sub>2</sub> , NO HNO <sub>3</sub> , PAN	North Dakota (ND) Colorado (COL) South Central (SC)	42-50°N, 101.8-104°W 38.5-42°N, 103-110°W 26-38.5°N, 93-106°W

The aircraft campaigns, whose regional coverage and trace species are given in Table 4, are either segregated into different legs for different US states or sample air over a wide area for different days. In the latter case we segregate spatially during the analysis to provide more regional coverage. Lower limits for the trace gases NO<sub>2</sub> and NO<sub>y</sub> are placed on the observations as determined by the detection limits of the instrumentation of 40 ppt as stipulated in the data files. For NO<sub>2</sub>, HNO<sub>3</sub> and PAN dual measurements are available from different instruments, which are merged to increase the available sampling frequency. For N<sub>2</sub>O<sub>5</sub>, a maximum of 1.3 ppb is placed on the observations for the comparisons presented to avoid spurious values.

We interpolate 3-hourly data from the model simulations using the time, geolocation and pressure of the observations, then average over predefined pressure bins of around 50hPa ensuring that there are a sufficient number of observations per bin. We also calculate mean bias statistics for the LT using selected pressure tops of 815 hPa (Col), 900 hPa (EC), 880 hPa (ND) and 965 hPa (TX) accounting for the variable orography and to include enough points as to be statistically robust. The resulting mean bias values and associated standard deviation from the mean are presented in the Supplementary Material as Tables S4 and S5 for O<sub>3</sub> and CO, and Tables S7 and S8 for NO<sub>2</sub> and NO.

### 3.3 Surface air quality networks for O<sub>3</sub>, CO and NO<sub>2</sub>

For evaluating surface concentrations from the model we exploit observations of O<sub>3</sub>, CO and NO<sub>2</sub> from the AirNow ([www.airnow.gov](http://www.airnow.gov); last access: 28 Sept 2021) air quality observations network. Within the AirNow centralized system, hourly measurements of O<sub>3</sub>, NO<sub>2</sub>, CO, PM2.5 and PM10 are collected from measurement locations across the U.S., submitted by state or local monitoring agencies and made available in near real time, after preliminary data quality assessments have been performed. Here we use data collected over the 2014 period for the designated domains, which includes 570, 222 and 123 monitoring stations for O<sub>3</sub>, NO<sub>2</sub> and CO, respectively. The list and definition of each of the sub-domains over which statistical scores are provided is given in Table 5, together with the number of stations used in the current study. Each station is designated a classification being either urban, suburban or rural depending on the location of each station in order to differentiate between clean and polluted sampling locations. Only clean background comparisons are shown due to the difficulty of global models representing small scale gradients in concentrations typically found near roads and industrial point sources. We use version v1.0.3 of the evaltools statistical package available online (<https://opensource.umr-cnrm.fr/projects/evaltools>; last access 20-12-2021).

**Table 5:** Details of the various regions defined for assessing simulated surface concentrations for O<sub>3</sub>, CO and NO<sub>2</sub> using data from the AirNow measurement network. The total number of individual stations for each respective species is given in the right most column.

Region	Regional domain (Lat/Lon)	Total no. of stations (O <sub>3</sub> /CO/NO <sub>2</sub> )
New England	42-47°N, 65-75°W	55/10/37
North/South Dakota	42-50°N, 96.1-104.2°W	18/2/7
Colorado	38.5-42°N, 103-110°W	27/9/12
Pacific NorthWest	42-50°N, 110-125°W	57/23/46
California/Nevada	32.5-42°N, 110-125°W	221/47/64
South Central US	26-38.5°N, 96.1-104.2°W	47/4/20
Eastern US	32.4-42°N, 70-85.2°W	145/28/36

Additionally, a filtering procedure was applied to the data before computing the daily mean values to remove stations where the time series displayed more than 50% of identical values, denoting a failure in the measurement sensor. Moreover, for CO the observational values < 50 µg m<sup>-3</sup> and >1200 µg m<sup>-3</sup> were filtered out at the rural stations to avoid spurious instrumental effects. Three-hourly model output was spatially interpolated from the model grid to the stations network. Time-series of daily mean composites were then obtained by computing the daily mean values across stations with identical station classification for each domain, using both the observed and simulated data during 2014, providing a spatial mean of the concentrations. For brevity we do not show any

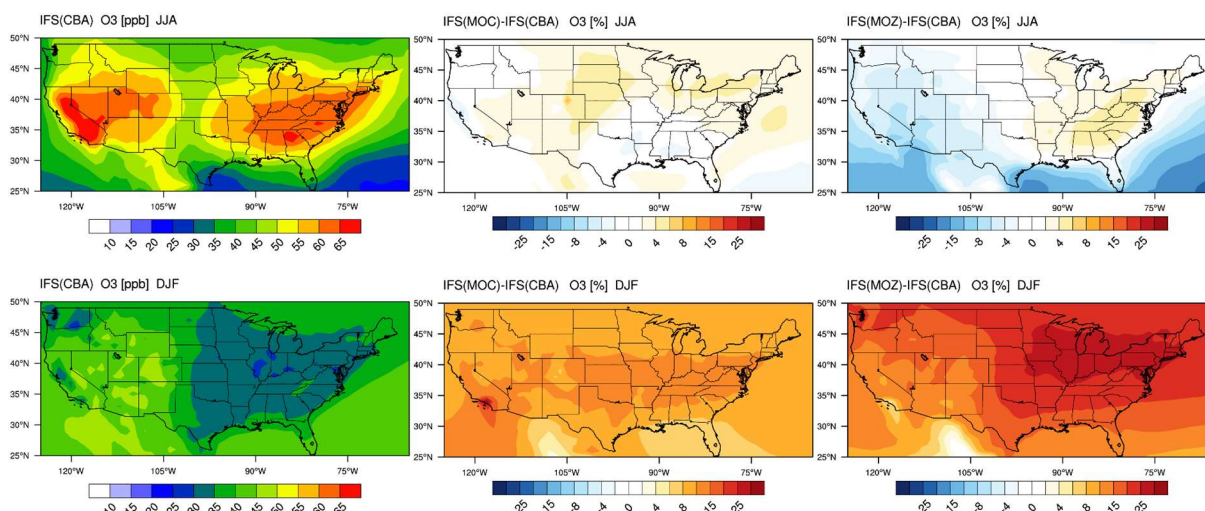
comparisons for 2015. Details on the accuracy of the instrumentation used across the network can be found in Williams et al. (2014).

### 3.4 Surface network for HNO<sub>3</sub>

415 Finally in order to evaluate the near-surface concentrations of HNO<sub>3</sub>, we use the near-surface mixing ratios taken from the Clean Air Status and Trends Network (CASTNET; <https://www.epa.gov/castnet> ; last access 30 Sept 2021), which provides filter pack measurements at weekly intervals for 87 individual sites located in rural locations away from strong NO<sub>x</sub> emission sources. This dataset is therefore a measure of the chemical processing which occurs in transported air-masses at regional scale. The inferred mixing ratios result from the application of the Multilayer Model (Finkelstein et al., 2000) to these samples, which uses site specific meteorological parameters to determine deposition values. We only use the near-surface mixing ratios here, as assessing the wet deposition component of the chemical modules is beyond the scope of this manuscript and more associated with the aerosol modules applied in IFS. For brevity, we aggregate and compare seasonal mean values of the mixing ratios as interpolated from the model data using the location and height of each station for correct interpolation. It should be noted that from an intercomparison of gaseous HNO<sub>3</sub> values, CASTNET data were found to be typically lower than those of other measurement networks (Lavery et al., 2009). However, CASTNET data composites are typically used for assessing the performance of deposition processes in global transport models and is an established dataset.

## 4 Results

### 4.1 Tropospheric O<sub>3</sub>



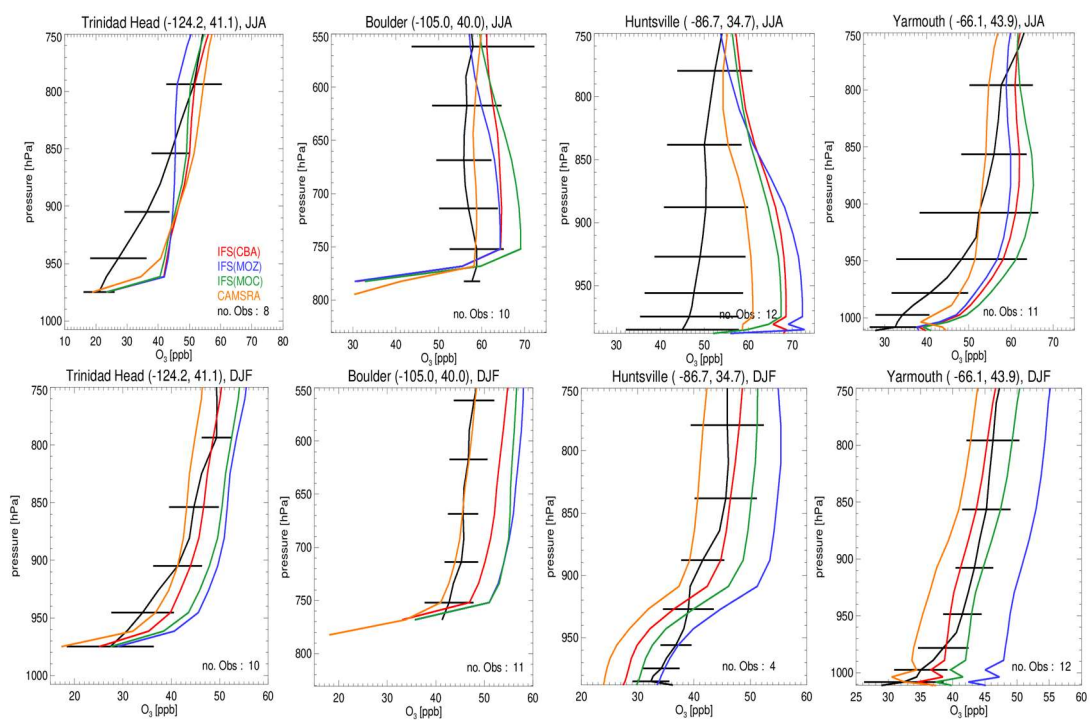
435 **Figure 2:** The horizontal seasonal mean for tropospheric O<sub>3</sub> below 1km over the US domain for JJA 2014 (top) and DJF 2014/2015 (bottom).

The seasonal horizontal mean distribution of tropospheric O<sub>3</sub> in IFS(CBA), and the associated relative differences for the IFS(MOC) and IFS(MOZ) against IFS(CBA), are shown for seasons June-July-August (JJA) and December-January-February (DJF) over the US in Figure 2. We select all levels below 1km for calculating the seasonal means, which allows a direct comparison for coastlines and elevated regions (namely Colorado). For DJF we choose 2014-2015 data to be fully conversant with the validation of the vertical profiles (see later) and when the system has achieved chemical equilibrium for longer lived species.

445 For JJA, the seasonal distribution shows higher mixing ratios exceeding 65 ppb at both the East and West coasts driven by regional NO<sub>x</sub> and VOC emissions. There is a minimum in Central rural regions around Kansas/Nebraska and North/South Dakota, with a variability of between 35-45 ppb in IFS(CBA). Examining regional differences shows that when enhancements in (near-)surface O<sub>3</sub> typically occur, both IFS(MOC) and IFS(MOZ) show a ±5% variability with respect to IFS(CBA), with maximal differences on the east coast of +4-6%. Especially for the ocean off the Pacific NorthWest, IFS(MOZ) exhibits a decrease in mixing ratios of between 5-10 ppb due to the transport of cleaner air-masses compared with IFS(CBA). During DJF the model shows a weak west-east gradient

with a lower range of mixing ratios of 30-50 ppb. For DJF, the range of the differences is substantially higher (~8-35%) than for JJA, with IFS(MOZ) having a significant excess in O<sub>3</sub> towards the east coast with respect to IFS(CBA). Therefore, under identical NO<sub>x</sub> emissions, the O<sub>3</sub> production efficiency via the reactive NO<sub>x</sub> cycle is highest for IFS(MOZ) indicating a lower rate of termination towards NO<sub>y</sub> (See Sect. 6). This subsequently increases mixing ratios of the OH from the primary production term involving photolysis of O<sub>3</sub> in the presence of water vapour (H<sub>2</sub>O) (see Fig S1).

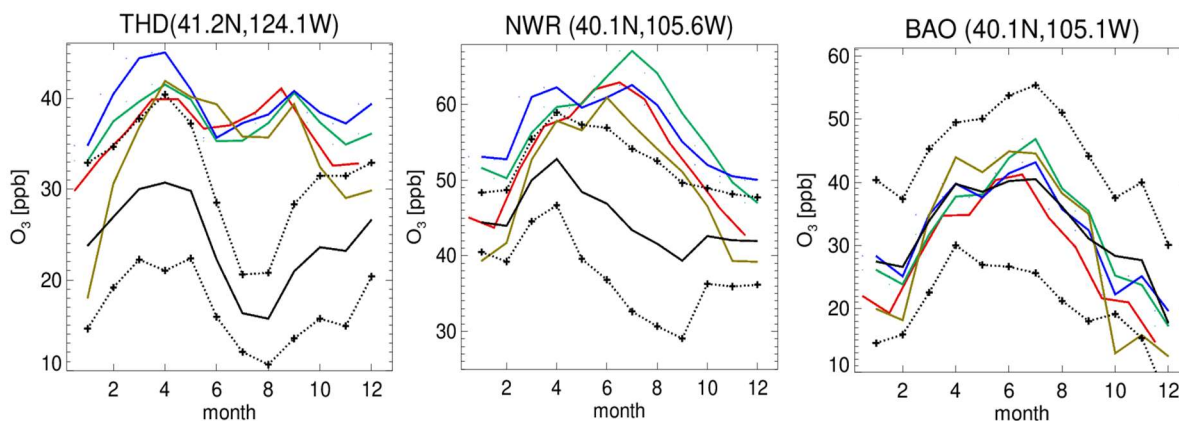
Evaluations against seasonal ozonesonde composites of all available measurements for JJA and DJF located across the US for the lower troposphere, as shown in Figure 3, also exhibits a signature of the seasonal mean differences as discussed for Fig. 2. For JJA there are positive biases near the surface for Yarmouth (east coast), whereas for Trinidad Head (west coast) biases are smaller therefore agreement more favorable. The highest bias is shown for Huntsville in Alabama of between 10-20 ppb, where the station is affected by the transported plumes from nearby cities (Newchurch et al., 2003). In general, the correct profile shape is captured for most sites, except for Trinidad Head where a steep gradient is observed. For DJF, there is more variability across the chemical modules where IFS(MOZ) exhibits the highest mixing ratios towards the east coast leading to a positive bias of 15 ppb at Yarmouth. Again, profile shapes are captured well across the stations.



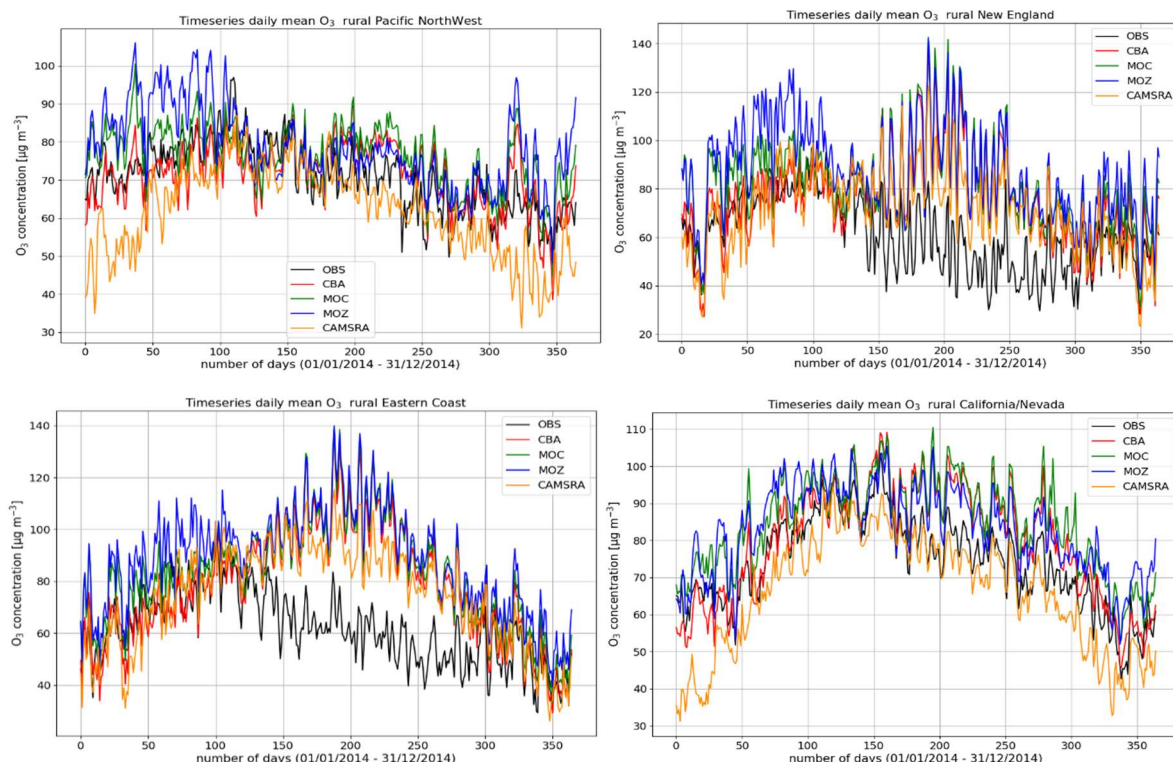
**Figure 3:** Seasonal O<sub>3</sub> sonde comparisons for seasons JJA (top) and DJF (bottom) for the lower troposphere. Stations shown are Trinidad Head, Boulder, Huntsville and Yarmouth which are situated across the US/Canada. The observational composites are shown in black, with the colour key provided in the top left panel. The geolocation of each site is given in the title of each panel and number of observations used bottom right.

In Figure 4 the corresponding annual cycle in monthly mean mixing ratios for surface O<sub>3</sub> at the three continuous measurement sites available in the US are shown, with Boulder Atmospheric Observatory (BAO) and Trinidad Head (THD) being co-located in the vicinity of the sonde measurements. For THD, which is situated at the outermost west coast of the US, the observed monthly mean mixing ratios are very low. This indicates the absence of significant local NO<sub>x</sub> emissions, therefore being influenced by land-sea air movements allowing the sampling of clean pacific air (Oltmans et al., 2008). For most months in THD and Niwot Ridge (NWR), there is a bias of up to 100% across the different chemical modules with a more muted amplitude in monthly variability than observed, indicating difficulties of the global model configuration towards capturing the correct seasonal cycle. Apart from model resolution effects, the transport of air from out of the US could be too efficient as described by the transport processes, or the production and loss over the ocean surface is not in the correct equilibrium. Comparing IFS(CBA) and CAMSRA there has been an increase of between 2-10 ppb in surface O<sub>3</sub> mixing ratios, increasing the simulated biases somewhat.

Even though the stations BAO and NWR are relatively close together there is a diverse shape in the annual cycle showing the influence of regional NO<sub>x</sub> chemistry, topography, meteorology, and station height (1.5km versus 2.9km above sea level). Transport of pollutants from the Denver region affects O<sub>3</sub> mixing ratios at NWR (Chin et al., 1994; McDuffie et al., 2016), thus representative of a chemically aged air-mass. The BAO site is also influenced by anthropogenic emissions with measurements sampling the boundary layer (Gilman et al., 2013; McDuffie et al., 2016). At BAO the annual cycle and maximal mixing ratios are captured well across simulations. For NWR, which samples air at an elevated site, there is no strong annual cycle in the measurements, whereas for the CAMSRA and the mini-ensemble a maximum occurs during JJA with a bias of between ~50-70%.



**Figure 4:** Comparisons of surface O<sub>3</sub> measurements for 2014 for the three GFDL stations situated in the US, namely: THD, NWR and BAO. The color key to the various ensemble members is given in the left panel. The observational means and the corresponding 1-σ variability are shown as the black solid and dashed lines, respectively.



**Figure 5:** Comparisons of the daily mean variability surface O<sub>3</sub> for 2014 against regional composites assembled from measurement sites for rural locations contributing to the AirNow network. Regions shown (top left to bottom right) are Pacific North West, New England, Eastern US and California-Nevada.

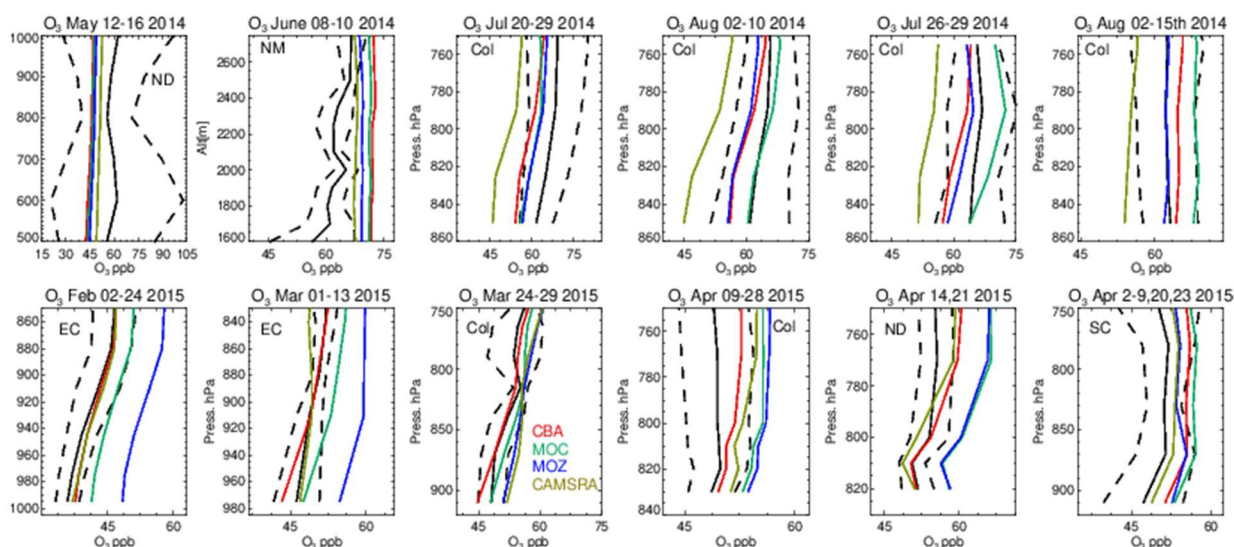
The variability in the daily mean values in surface O<sub>3</sub> simulated by the chemistry modules are evaluated against selected regional composites of measurements taken from the AirNow network assembled for 2014, see Figure

5. Comparisons are performed for the regions defined in Table 5 (Sect. 3), where only those stations which are classified as rural (i.e. away from urban conurbations) are used. The associated Annual Mean Biases (AMB) and Pearson's R coefficients are provided in Table 6. Model performance is regionally dependent, with larger biases for regions exhibiting strong seasonality on the meteorology and the length of day (e.g. California-Nevada). During the first few months of 2014 a significant mean positive bias exists for more northerly regions across the chemical modules, with IFS(MOZ) (IFS(CBA)) biases typically being 40-60  $\mu\text{g m}^{-3}$  (0-20  $\mu\text{g m}^{-3}$ ) for these first few months. For CAMSRA, the corresponding mean biases are negative up to 40  $\mu\text{g m}^{-3}$  (Pacific NorthWest). The corresponding AMB values show that positive biases exist for most regions, except for Colorado. The degree of correlation is variable, being only moderately correlated for e.g., North/South Dakota ( $R=0.48-0.68$ ) whilst being highly correlated for e.g. California/Nevada ( $R=0.77-0.88$ ). When comparing regions, small biases of a few  $\mu\text{g m}^{-3}$  and higher correlation exists for the South of the US.

**Table 6:** Annual Mean biases (black) and Pearson's R (red) values for the comparison of surface  $\text{O}_3$  versus AirNow data for 2014.

Region	CAMSRA	IFS(CBA)	IFS(MOC)	IFS(MOZ)
New England	10.0/0.53	14.9/0.42	20.8/0.51	26.8/0.65
North/South Dakota	-2.5/0.68	1.1/0.58	6.9/0.54	10.2/0.48
Pacific NorthWest	30.0/0.54	29.1/0.47	23.0/0.49	1.8/0.47
Eastern US	13.0/0.60	16.5/0.48	22.0/0.52	27.3/0.60
Colorado	-18.0/0.75	-4.3/0.77	0.8/0.74	1.2/0.57
California/Nevada	-7.9/0.89	5.6/0.90	10.7/0.89	9.2/0.88
South Central US	1.2/0.88	8.2/0.77	11.7/0.77	14.4/0.75

Vertical profiles in the LT from both the aircraft and simulations across the various US regions are shown in Figure 6, with the boundaries of various regions given in Fig. 1 and Table 3. The corresponding mean bias statistics are documented in Table S4. The shallow to moderate gradients in LT  $\text{O}_3$  seen in the observations are simulated relatively well across the various chemistry modules, albeit with changing variability and bias across the regions. For summertime, most comparisons are for the Colorado region over Denver and the surrounding area, where  $\text{O}_3$  production is heavily influenced by oil and natural gas production and Industry (Cheadle et al., 2017) exhibiting mean values 60-65 ppb for the (near)-surface. During July the region experienced a strong cyclonic front, whereas in August non-cyclonic conditions occurred (Vu et al., 2016) resulting in different transport dynamics for each period although little impact is seen in the mean value. Here, the monthly negative biases are of the order of -2 to -10 ppb, indicating too low regional  $\text{NO}_x$  emissions (c.f. Table S3) and showing that the persistent positive bias seen at more globally remote regions (Huijnen et al., 2019) does not occur during summertime for more polluted urban regions. For CAMSRA more significant negative biases exist of between 10-15 ppb.



**Figure 6:** Comparisons of lower tropospheric  $\text{O}_3$  profiles for 2014/2015 against composites of aircraft measurements for the regional domains shown in Figure 1. The 1- $\sigma$  standard deviation of the mean for the

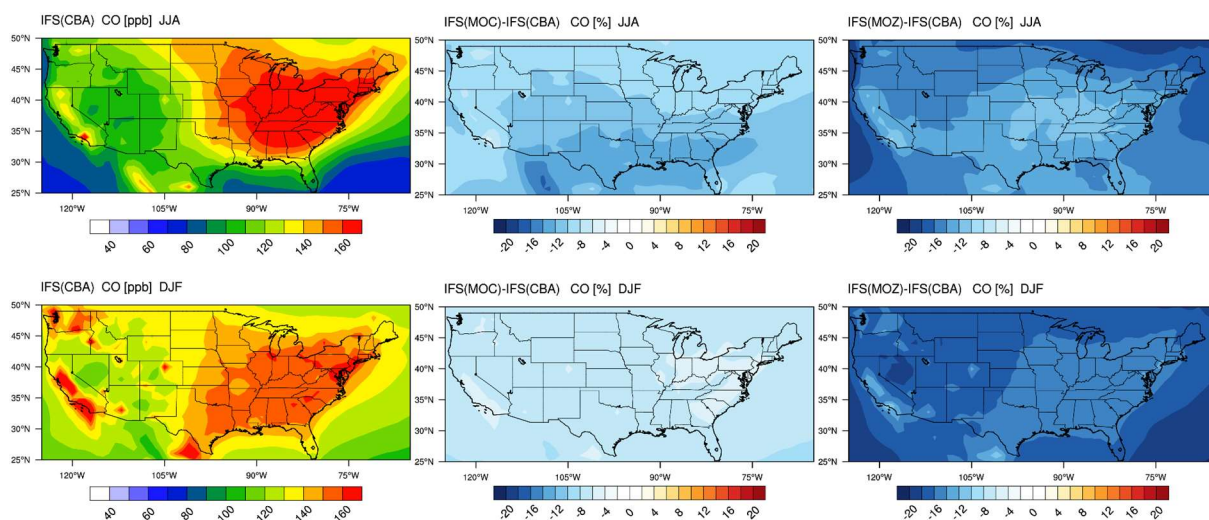


observational values are shown as the dashed line. Campaigns shown (top left to bottom right) are TOPDOWN, DISCOVER-AQ, FRAPPE, WINTER and SONGNEX.

535 The evaluation during boreal wintertime over the East Coast, which has lower observed O<sub>3</sub> mixing ratios of 38-45  
ppb, reveals there is more divergence across the chemistry modules under these conditions, with IFS(MOZ)  
showing high positive biases of ~10 ppb, whereas IFS(CBA) captures the observational mean profile well within  
a few ppb. This leads to high oxidative capacity for IFS(MOZ) which has a subsequent impact on tropospheric CO  
(see next section). This evaluation highlights differences in model performance in the lower troposphere compared  
540 to those presented for the surface O<sub>3</sub> analysis. In that vertical mixing has occurred means that this analysis is not  
subject to the representation of locational issues with measurement sites (local emission sources such as roads, the  
effects of building on transport, etc.). For springtime over Colorado mixing ratios are somewhat lower than  
summertime (~50 ppb), where IFS(CBA) shows a small negative bias of a few ppb, with the positive bias for  
IFS(MOZ) persisting (5 ppb). For South Central US, a positive bias of 5 ppb occurs across chemistry modules,  
with the CAMSRA dataset having similar biases throughout regions during springtime.

#### 545 4.2 Tropospheric CO

The corresponding US continental distribution for seasonal mean tropospheric CO for IFS(CBA) for JJA and DJF  
are shown in the top and bottom left panels of Figure 7, respectively. A distinct east-west gradient exists with  
550 ~50% higher mixing ratios towards the East coast reaching ~150-160 ppb. No distinct burning regions are visible  
towards the west coast associated with comparatively low BB activity for 2014 in the US (Petetin et al., 2018).  
The two other chemistry modules have consistently lower mixing ratios under identical primary CO emissions,  
indicating differences in the chemical production rate from the oxidation of formaldehyde (CH<sub>2</sub>O) and higher  
VOC, combined with differences in the chemical lifetimes because of OH variability (Huijnen et al., 2019). For  
IFS(MOZ) we diagnose a comparatively low tropospheric CO burden associated with a fast oxidation rate due to  
555 higher mixing ratios of OH in the LT of between 20-50% (c.f. Fig S1). This is directly associated with the higher  
O<sub>3</sub> (c.f. Fig 2) in IFS(MOZ). For DJF, a much shallower continental gradient exists with average mean mixing  
ratios of between 100-120 ppb, with IFS(MOC) and IFS(MOZ) again exhibiting negative differences compared  
to IFS(CBA). The distribution of CO for this season in IFS(CBA) shows signatures of increased pollution visible  
over large urban centers in e.g. California, Washington state and New York state, in line with figures presented  
560 for LT O<sub>3</sub> related to regional NO<sub>x</sub> emissions (See next section).

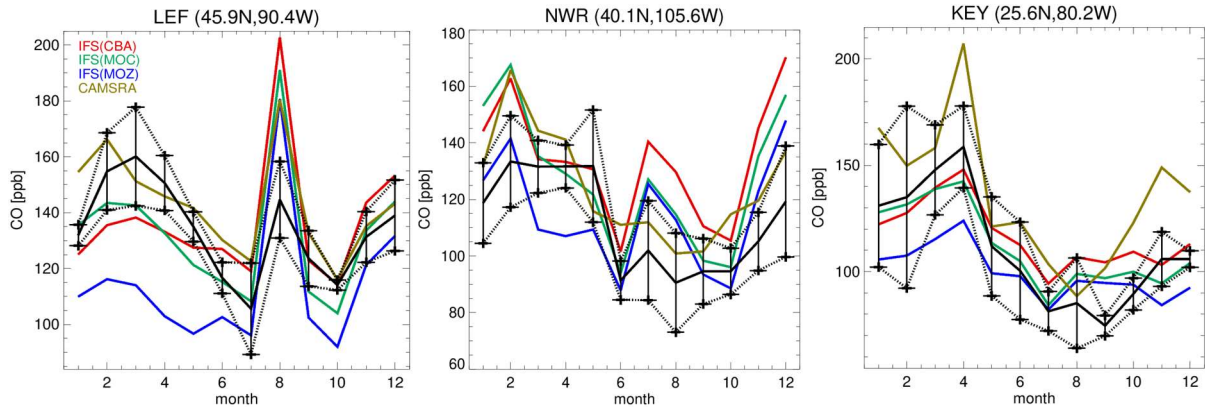


**Figure 7:** The horizontal mean cross-section of CO below 1km over the US domain for JJA 2014 (top) and DJF (2014/2015).

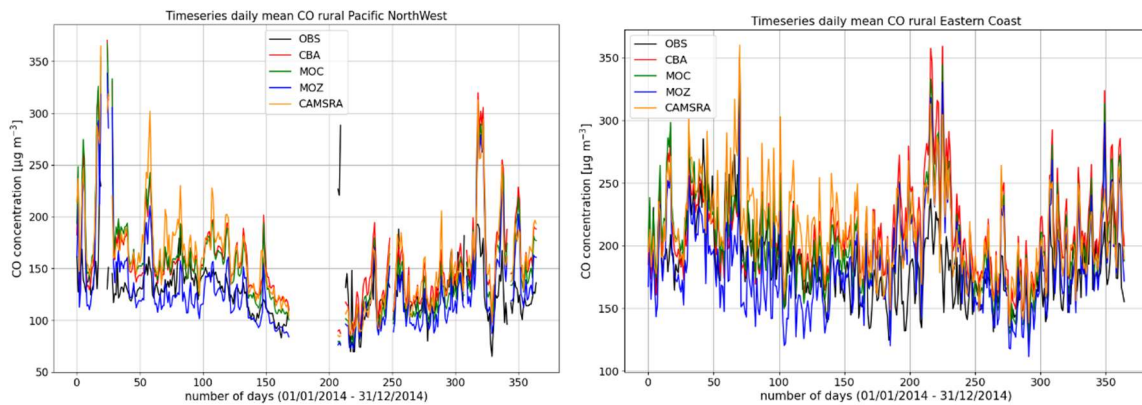
565 The seasonal cycle in surface CO mixing ratios is compared against monthly mean composites from the ESRL  
observational network. The seasonal cycle is somewhat determined by the regional CO emissions as exemplified  
by the increase observed for July at Park Falls (LEF), which is possibly due to local BB events for this year  
(Blunden and Arndt, 2015). A signature exists at NWR from the chemical processing of polluted air masses from  
the Denver region during summertime (McDuffie et al., 2016), where all members show similar positive biases,  
570 where sampling accounts for the elevated station height. For Key West (KEY) the seasonal cycle is representative

of the outflow from the continental US, where all members capture the monthly variability quite well. For many of the individual months, IFS(CBA) shows a mild improvement when compared to the CAMSRA dataset, which shows a persistent positive bias especially during boreal wintertime. IFS(MOZ) exhibits the largest negative bias across stations in line with the lower mixing ratios shown in Fig.7. In some instances, biases are of the order of 100% especially for winter months where OH is typically lower (c.f. Fig S1), and pollution is less mixed into the free troposphere.

575



**Figure 8.** Comparisons of monthly mean surface CO mixing ratios at three separate surface measurement sites across the US. The observational monthly means with the variability are shown in black.



580

**Figure 9.** Comparisons of the daily variability of surface CO for 2014 against regional composites assembled from measurement sites participating in the AirNow network. Regions shown are (left) Pacific NorthWest and (right) the Eastern Coast as determined by the number of available measurements for the rural classification.

**Table 7:** Annual Mean biases (black) and Pearson’s R (red) values for the comparison of simulations versus AirNow data. Unlike O<sub>3</sub>, most regions do not have enough CO stations designated as rural for a valid comparison.

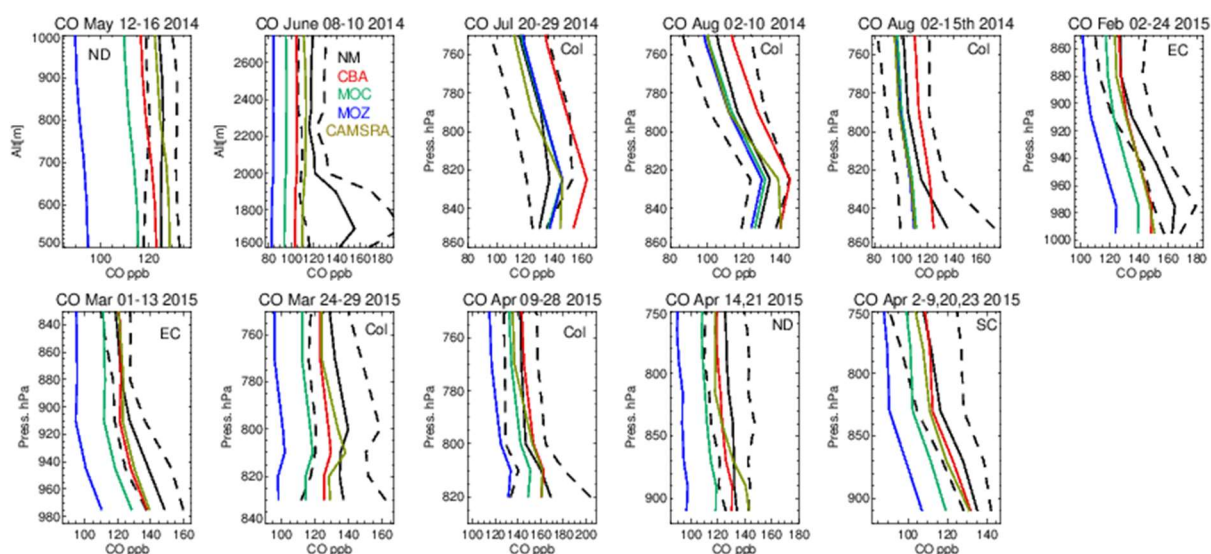
585

Region	CAMSRA	IFS(CBA)	IFS(MOC)	IFS(MOZ)
New England	7.4/0.64	8.2/0.63	1.4/0.72	-19.9/0.65
Pacific NorthWest	30.0/0.54	29.1/0.47	23.0/0.49	1.8/0.47
Eastern Coast	26.7/0.69	26.6/0.53	18.9/0.66	0.3/0.51

More extended regional composites for surface CO have been assembled using data available from the AirNow measurement network, with two regional comparisons of the daily variability in surface CO at rural locations for the Pacific NorthWest and Eastern US being shown in Figure 9. The number of stations used for the comparison is lower than that used for the other species as limited by data availability (c.f. Table 5) and, for some regions, an insufficient number of rural classified stations exist therefore no comparison is possible. No significant annual cycle is present for the domains shown. For boreal wintertime, again IFS(MOZ) (IFS(CBA)) exhibits the largest (smallest) negative bias as seen for the ESRL comparisons (Fig. 8 above). Table 7 provides the corresponding

590

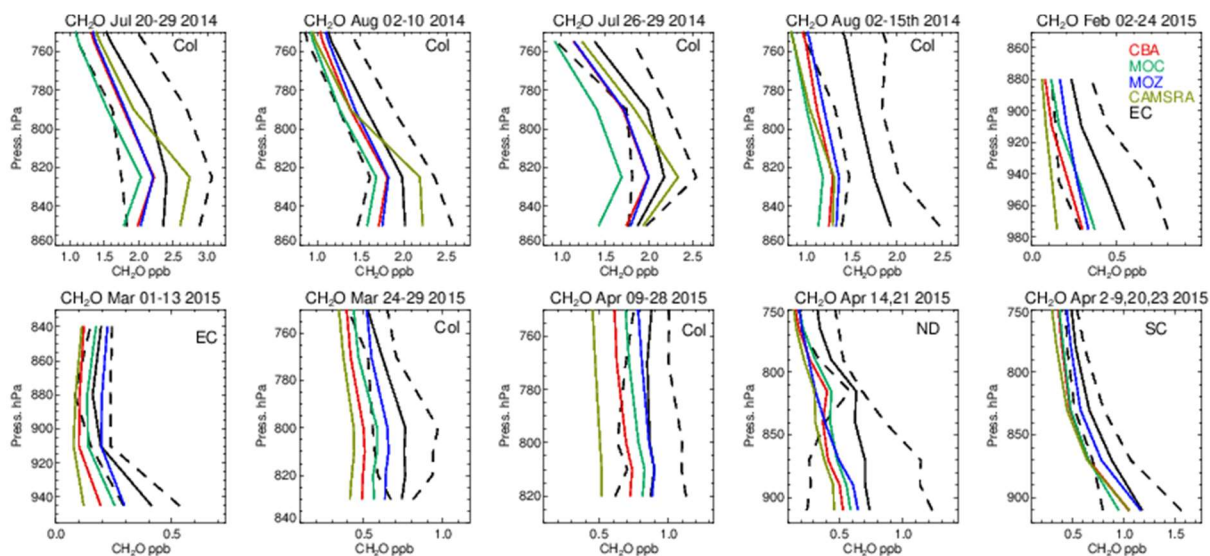
595 AMB and Pearson's R values, where generally there are positive biases across regions apart from IFS(MOZ) for the Pacific NorthWest. There is a moderate correlation for the Pacific NorthWest, and only a weak correlation for the Eastern US which is influenced more by anthropogenic emissions.



600 **Figure 10.** As for Fig. 6 except for tropospheric CO. Campaigns shown (top left to bottom right) are TOPDOWN, DISCOVER-AQ, FRAPPE, WINTER and SONGNEX.

Tropospheric CO profiles in the LT are compared against the corresponding aircraft composites across the various campaigns in Figure 10. As for O<sub>3</sub>, the shape of the vertical profiles is captured well (i.e. gradients and the inflection between the boundary layer and free troposphere) with a significant variability in mixing ratios across the ensemble as shown in the seasonal mean comparisons in Figure 7. For NM the convex bulge seen in the LT is not captured well by the ensemble with high negative biases (c.f. Table S5), most probably due to missing emissions from energy production (fracking) which was the focus of this measurement campaign (Peischl et al., 2018). High negative biases of 35-60 ppb occur for June 2014, showing a significant underestimation in either primary emissions or VOC precursors (no measurements available) for this region. For boreal summertime over Colorado mean values between 100-130 ppb exist, where IFS(CBA) exhibits positive biases of 5-20 ppb (c.f. Table S5). Comparing IFS(CBA) against CAMSRA shows there is only a modest difference in CO, with slight increases in the associated negative biases. Biases presented in Table S2 shows that, assuming comparable data quality, the influence of local effects related to positioning and selection of stations can result in more extreme biases. For the aircraft composites surface effects are not so important where mixing in the boundary layer provides a more homogenized value. For both wintertime and springtime the higher observed mean values of 130-175 ppb are not captured by the mini-ensemble with underestimates of 10-40 ppb depending on the month and region suggesting too low primary emissions over a wide area, with CAMSRA exhibiting the lowest biases.

One dominant precursor for the chemical production of CO is the oxidation of CH<sub>2</sub>O (e.g. Zeng et al., 2015). The corresponding comparisons of CH<sub>2</sub>O for all chemical modules are shown in Figure 11, with associated biases in Table S6. In the LT during boreal summertime conditions, C<sub>5</sub>H<sub>8</sub> acts as a dominant source of CH<sub>2</sub>O resulting in high mixing ratios over Colorado of 1.7-2.5 ppb. Generally, all chemical modules exhibit negative biases, except for the CAMSRA dataset, associated with the higher C<sub>5</sub>H<sub>8</sub> emissions which are applied (MEGAN-MACC; Sindelarova et al., 2014). There is a higher variability associated with the simulations than that observed showing the sensitivity towards both photolysis and dissolution into cloud droplets, which introduces complications in short-term (daily) modeling of CH<sub>2</sub>O. Note that the higher CH<sub>2</sub>O in CAMSRA is not directly correlated with higher CO, due to effective CO data assimilation being applied.

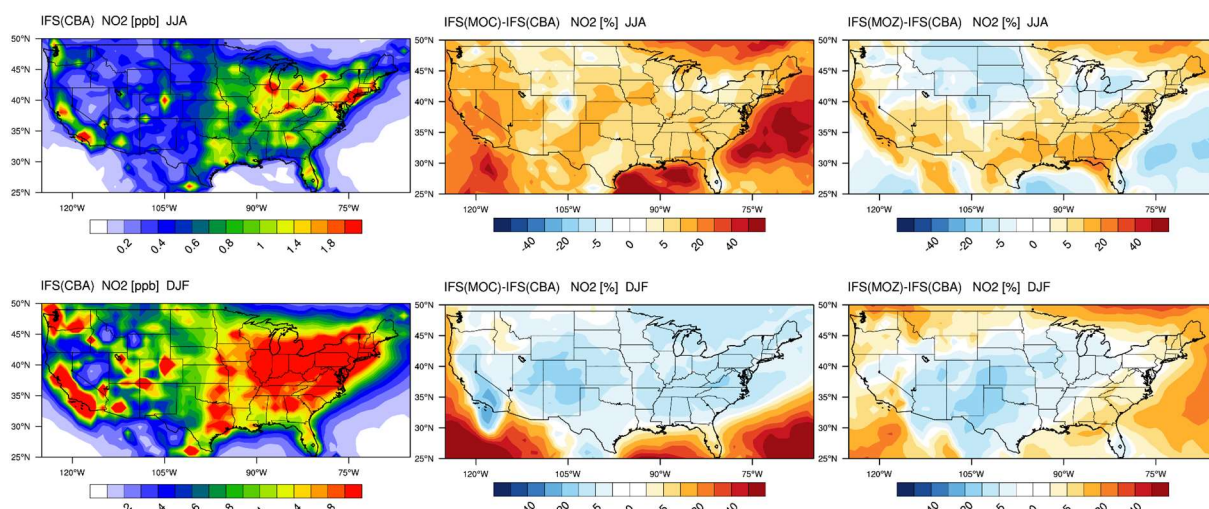


630 **Figure 11.** Comparisons of lower tropospheric CH<sub>2</sub>O profiles for 2014/2015 against composites of aircraft  
 635 measurements for the regional domains shown in Figure 1. Campaigns shown (top left to bottom right) are  
 DISCOVER-AQ, FRAPPE, WINTER and SONGNEX

During wintertime biogenic fluxes are low due to the seasonality in biogenic activity, thus CO comparisons shown  
 for February and March can be considered to be representative of the background supplemented with regional  
 635 anthropogenic emission sources, considering the tropospheric lifetime of 1-2 months (e.g. Williams et al., 2017).  
 This results in the resident mean CH<sub>2</sub>O value being only a quarter of those seen for boreal summertime over  
 Colorado. Under these conditions, the relative negative biases for CH<sub>2</sub>O increase to ~40-60% across the chemical  
 modules, with IFS(CBA) having twice the negative bias compared to IFS(MOZ). Given the low biogenic  
 640 precursors, the overall negative bias suggests a deficit in the chemical production term of CH<sub>2</sub>O likely from the  
 limited oxidation of other VOCs or peroxy-radical termination reactions, combined with missing direct HCHO  
 emissions (Green et al., 2021). For springtime, relative biases are higher than in boreal summertime for Colorado  
 across chemical modules, with values for the Southern US being simulated with low relative biases of around 20%.

### 4.3 Tropospheric NO<sub>2</sub>

645

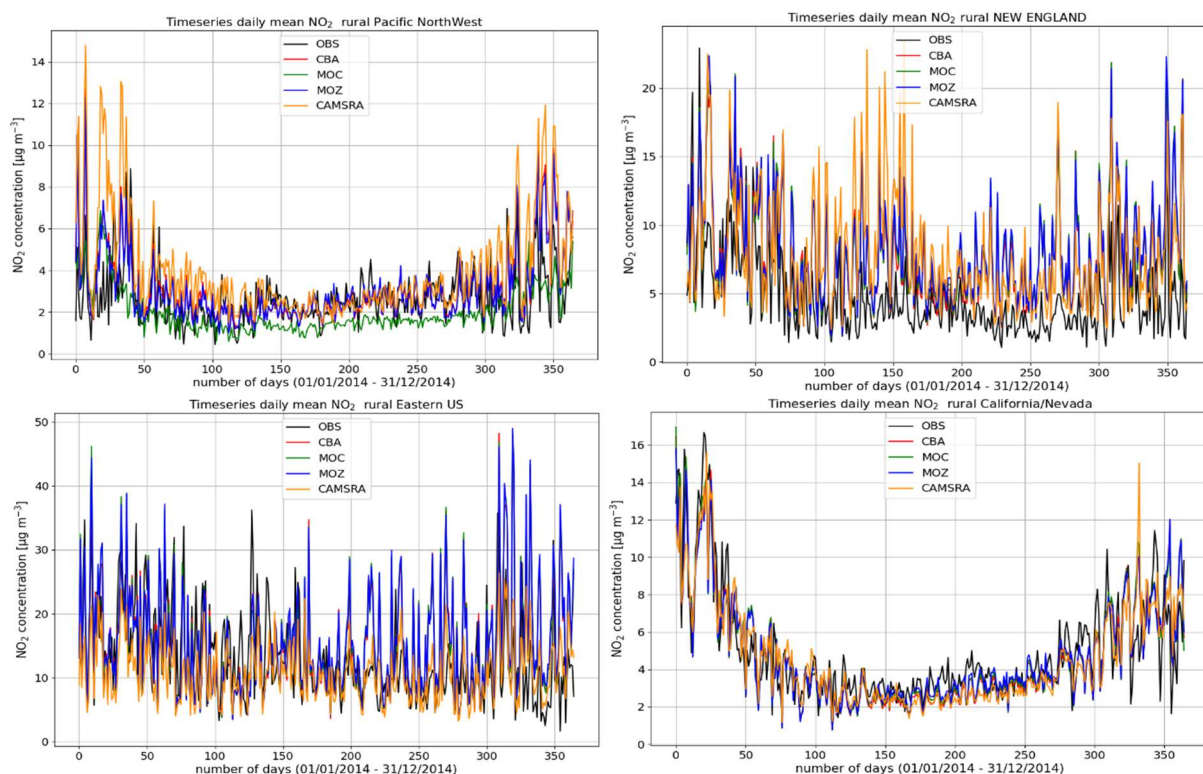


**Figure 12.** The horizontal mean cross-section of NO<sub>2</sub> below 1km over the US domain for JJA 2014 (top) and DJF  
 (2014/2015).

650 The seasonal horizontal mean distributions of tropospheric NO<sub>2</sub> for IFS(CBA) for JJA and DJF are shown in the left panels of Figure 12. The large spatial variability in NO<sub>x</sub> emissions can be clearly seen resulting in much more distinct regional differences compared to the corresponding plot for CO (Fig 7) for both seasons. For JJA, higher (near-)surface values occur on the Eastern and Western seaboard, as well as Colorado and South Central US, associated with urban conurbations. Comparing differences shows that the export of NO<sub>2</sub> out of the source regions is more effective in IFS(MOC) associated with the conversion of a large regional fraction of NO<sub>2</sub> into PAN under conditions of high VOC fluxes (see Sect 5; Fig S6; Fischer et al., 2014). Thus, increases of > 40% occur in the surrounding oceans as a result of long-range transport of NO<sub>x</sub> out of the continent.

660 A contributory factor to the simulated differences is the application of the new recommendation for HNO<sub>3</sub> formation which results in a ~10% lower gas-phase formation rate in IFS(CBA) (Stavrakou et al., 2013) under identical OH availability. The higher regional OH (c.f. Fig. S1) results in a stronger termination flux into HNO<sub>3</sub>, which is typically over-estimated in the region (c.f. Fig S5). Colorado is the only region where a negative offset occurs with respect to IFS(CBA), indicating locally higher conversion of NO<sub>2</sub> into other NO<sub>y</sub> components due to high regional VOC fluxes. For IFS(MOZ) lower NO<sub>2</sub> mixing ratios occur in the North US, with less export and high mixing ratios in the Southern US. Some of these differences exist due to differences in the flux of the NO + HO<sub>2</sub> recycling term between chemical modules as a result of a difference in the HO<sub>x</sub> chemistry (c.f. Fig S1).

670 The associated seasonal mean distribution for NO is shown in the supplement (Fig S2), where maximal mixing ratios (0.3-0.4 ppb) occur over the more polluted urban areas. Substantially higher NO is simulated in the LT in IFS(MOC) and IFS(MOZ) compared to IFS(CBA), with continental increases of between 40-50%. Higher NO increases the direct titration term for O<sub>3</sub>, with IFS(MOZ) having the lowest biases in O<sub>3</sub> for boreal summertime as diagnosed in the aircraft campaigns (Table S1). Moreover, the higher OH for JJA in both IFS(MOC) and IFS(MOZ) (c.f. Fig S1) also increases direct gas-phase conversion of NO<sub>2</sub> into HNO<sub>3</sub> (c.f. Fig S4). Heterogeneous conversion of N<sub>2</sub>O<sub>5</sub> to HNO<sub>3</sub> on wet surfaces and particles during nighttime is another important pathway for reducing NO<sub>x</sub> recycling, as analyzed in more detail in the next section.



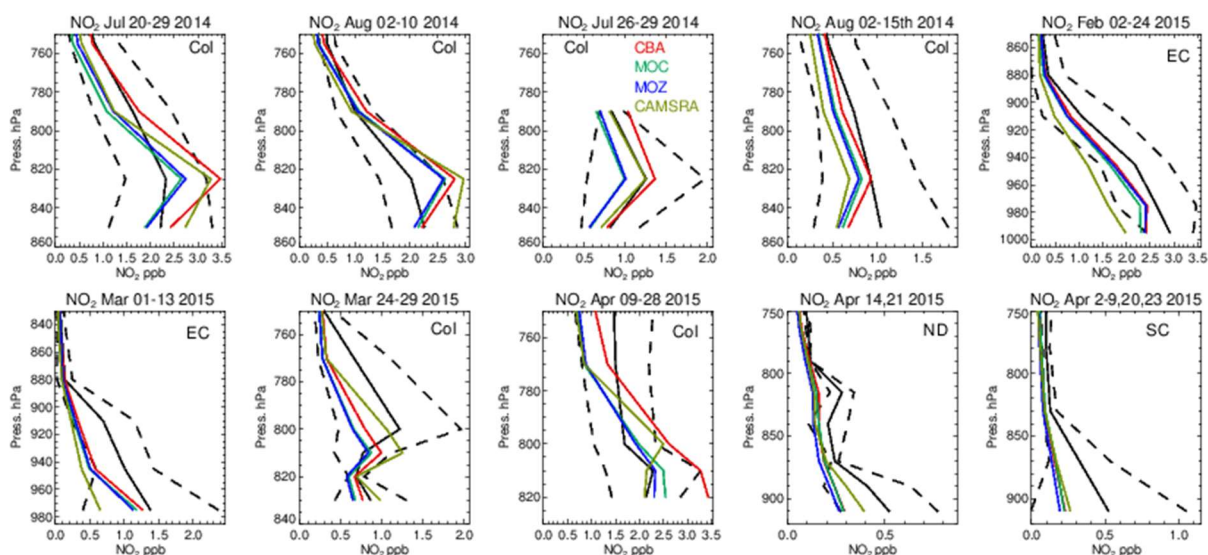
675 **Figure 13.** As for Fig. 5 except for surface NO<sub>2</sub>.

In Figure 13 we show comparisons of the daily mean variability in surface NO<sub>2</sub> in the simulations against daily mean composites assembled from the AirNow network for selected regions using rural stations only as defined in Table 5. The corresponding AMB and Pearson's R co-efficients for all domains are provided in Table 8. The number of stations used for assembling the observational composite is lower (higher) than that used for surface O<sub>3</sub> (CO) and typically not measured at the same location (c.f. Fig. 1 and Table 5). The uncertainty in the observations

is higher than for the other longer-lived species and dependent on the instrumentation used in the local networks, especially for the lower concentrations. Except for the Eastern US, New England and Colorado (not shown), there is a notable annual cycle, with minima occurring during boreal summertime which is captured across the simulations. Mean daily biases for the various chemical modules are region specific showing the influence of the chemical mechanisms across different chemical regimes. The AMB varies significantly across regions, with biases towards the Western US being lower than the Eastern US following the distribution of NO<sub>x</sub> emissions. The highest correlation exists for California/Nevada (R=0.84-0.86) and the lowest correlation for the Eastern US (0.42-0.46).

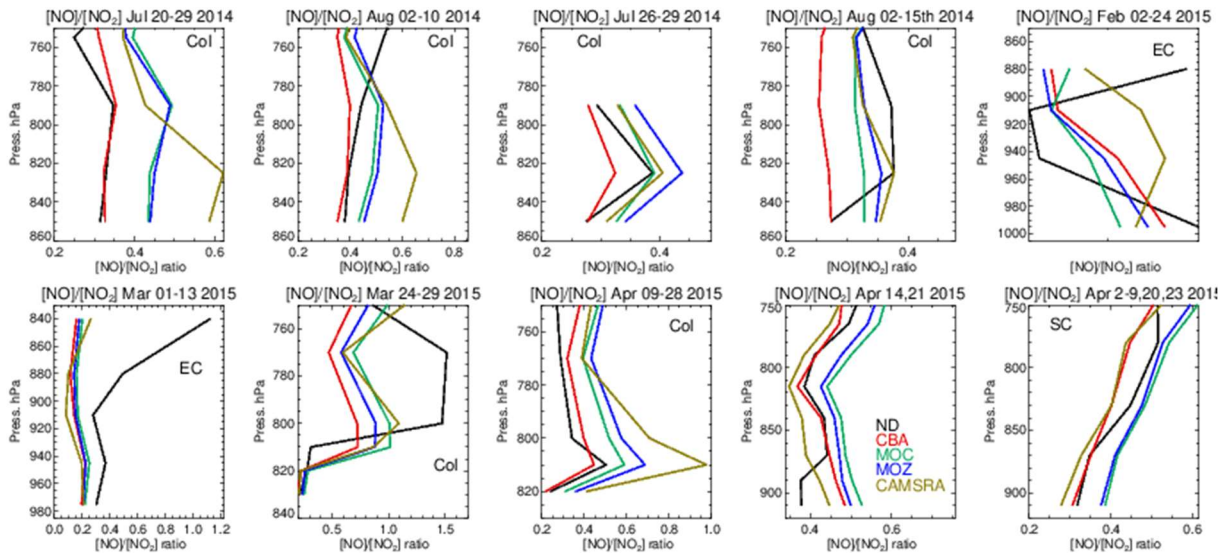
**Table 8:** Annual Mean biases ( $\mu\text{g m}^{-3}$ ; black) and Pearson's R (red) values for the comparison of surface NO<sub>2</sub> versus AirNow data for 2014.

Region	CAMSRA	IFS(CBA)	IFS(MOC)	IFS(MOZ)
New England	3.24/0.45	3.17/0.62	3.18/0.61	3.38/0.59
North/South Dakota	-0.24/0.52	-0.56/0.53	-0.62/0.53	-0.68/0.52
Pacific North West	1.32/0.53	0.44/0.61	-0.65/0.38	0.41/0.62
Eastern US	-2.06/0.46	2.27/0.44	2.37/0.43	2.59/0.42
Colorado	0.01/0.79	1.31/0.86	1.34/0.84	1.31/0.83
California/Nevada	0.31/0.84	0.28/0.86	0.23/0.86	0.19/0.86
South Central US	-0.09/0.61	-1.55/0.66	-1.54/0.67	-1.44/0.64



**Figure 14.** As for Fig. 6 except for tropospheric NO<sub>2</sub>. Campaigns shown (top left to bottom right) are DISCOVER-AQ, FRAPPE, WINTER and SONGNEX.

As for other species, tropospheric NO<sub>2</sub> profiles are compared against the corresponding aircraft composites for the various campaigns in Figure 14, with the quantification of the biases given in Table S5. The corresponding profiles for tropospheric NO are shown in the Supplementary Material (Figure S2 and Table S7). As for the other trace gases, the shape is captured relatively well, with the profile exhibiting a negative gradient with respect to pressure. Comparing the observational mean values in Table S4 shows that both Colorado and the Eastern US have similar environments for NO<sub>x</sub> levels (around 1.0-2.5 ppb). Model biases increase from summertime to wintertime under such NO<sub>x</sub> rich conditions. For IFS(CBA) there is no significant change in the biases for many months when compared to CAMSRA. In the various aircraft composites for Colorado, the mini-ensemble shows a significant peak around ~820-830 hPa that is typically not seen in the observations and can result in positive bias in the LT. For NO, the corresponding biases are lower than for NO<sub>2</sub> with only marginal differences between chemical modules as shown in the supplementary material. This suggests that differences shown in Fig S2 are driven by nighttime chemistry which is outside the observational sampling window for most aircraft campaigns. For springtime, for Colorado and South Central US there are significant positive biases for both NO and NO<sub>2</sub>, especially for IFS(CBA) which over-estimates by ~50%.

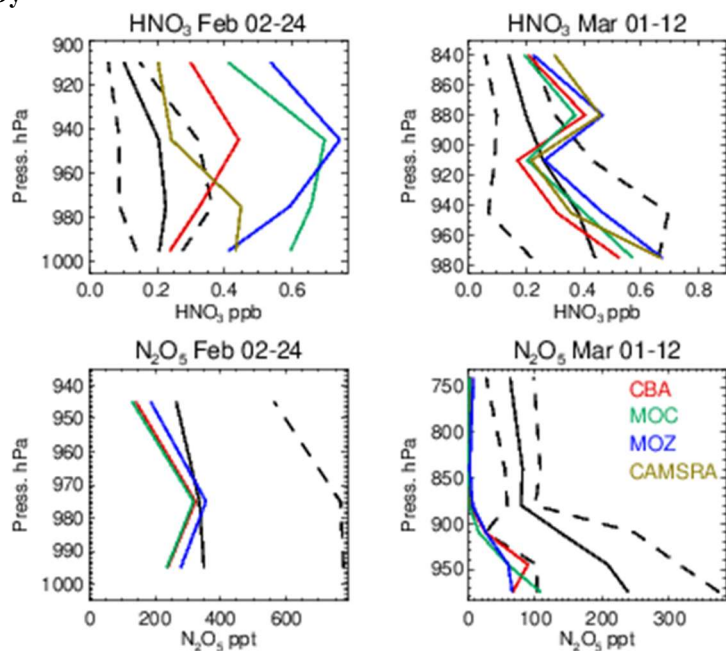


710 **Figure 15.** Comparisons of the  $[NO]/[NO_2]$  ratio for the lower troposphere from the various aircraft campaigns, with observational values being shown in black. Campaigns shown (top left to bottom right) are DISCOVER-AQ, FRAPPE, WINTER and SONGNEX.

715 The  $[NO]/[NO_2]$  ratio ( $S$ ) is an indication of the equilibrium position of the  $NO_x$  chemical system, as determined by the balance between fast titration of  $O_3$  by  $NO$  plus conversion by peroxy-radicals, and its photochemical production from  $NO_2$  photolysis. Low values for  $S$  are indicative of an equilibrium which favors  $O_3$  production and high values correspond to an equilibrium which favors  $O_3$  destruction. A comparison of  $S$  between the different chemistry modules and those derived from in-situ aircraft observations for the chosen campaigns are shown in Figure 15. For summertime over Colorado the variability in  $S$  across the various campaigns ranges from 0.3-0.6, with significant differences across chemical modules. The profile shapes of  $S$  in the LT are captured well, although with a lower variability in the chemical modules than in the observations. IFS(CBA) captures the correct  $S$  value in the LT for many of the months whilst both other chemistry modules have a higher  $S$ , which moderates the  $O_3$  biases shown in Table S1. Also, CAMSRA has higher  $S$  values typically overestimating resident  $NO$  mixing ratios (c.f. Table S5), despite the application of data assimilation for  $NO_2$ . For the wintertime near the East Coast,  $S$  is influenced by both daytime (high  $S$ ) and nighttime (low  $S$ ) measurements for February and mostly nighttime measurements for March, resulting in diverse behaviour between the two months shown. Model biases of  $\sim 0.1$ -0.2 occur across chemistry modules near the boundary layer. Interestingly there is a significant increase in  $S$  in the measurements once in the Free Troposphere ( $> 1.0$ ) which is not captured by any of the chemical modules, which is associated with an underestimation of  $NO$  in the model.

720 For springtime over Colorado there is marked difference in profile shape compared to the summertime, with much more vertical variability showing differences in transport and mixing patterns for this season not captured by the simulations. For other regions performance is better with a very good agreement for South Central US showing that for the correct conditions (chemical regime and transport) the chemical modules can capture a realistic description of the chemical system.

#### 4.4 Tropospheric NO<sub>y</sub>



735

**Figure 16.** Comparisons of N<sub>2</sub>O<sub>5</sub> and HNO<sub>3</sub> for the WINTER campaign using nighttime flights. The black line represents the observational mean value with the associated standard deviation being shown as the dashed line.

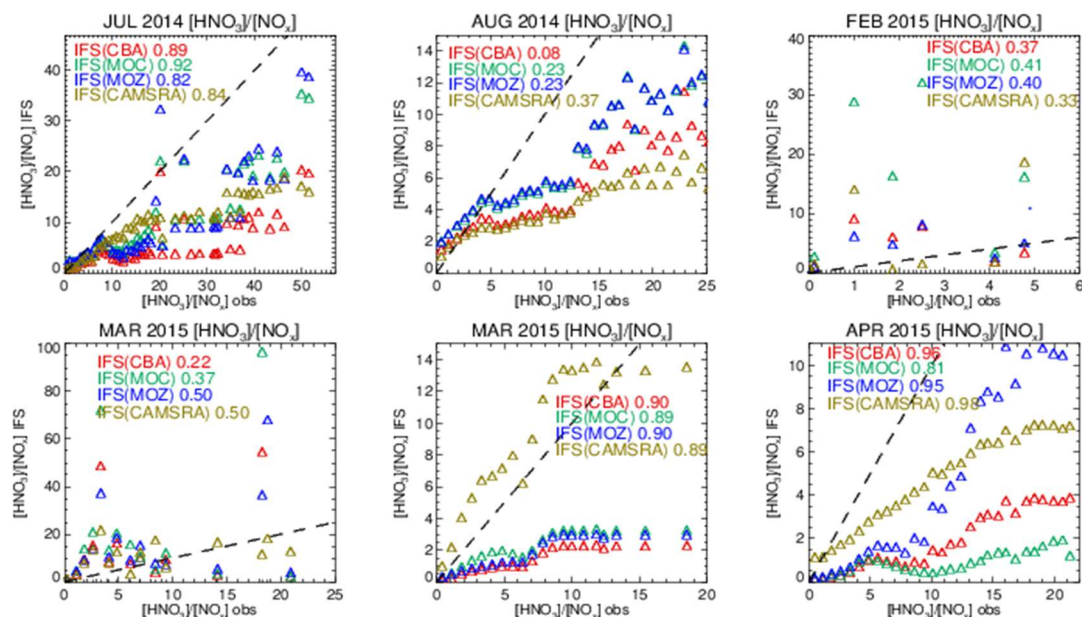
The formation of O<sub>3</sub> is determined by the resident NO<sub>x</sub> mixing ratios and the chain-length in the chemical recycling between NO and NO<sub>2</sub> before termination to HNO<sub>3</sub> occurs. One rapid loss route for HNO<sub>3</sub> production is the conversion of nitrogen pentoxide (N<sub>2</sub>O<sub>5</sub>) on wet surfaces and aerosols, which has been directly observed during the WINTER campaign (Kenagy et al., 2018). For this campaign, N<sub>2</sub>O<sub>5</sub> hydrolysis was shown to account for 58% of the chemical loss of NO<sub>x</sub> (Jaegle et al., 2018), with reaction of NO<sub>2</sub> with OH accounting for another third (thus the two most dominant chemical processes). In-situ observations of N<sub>2</sub>O<sub>5</sub> are rare, where daytime mixing ratios are typically of the order of tens of ppt due to the efficient loss by photolysis, and, therefore, subject to high measurement uncertainty. During nighttime, surface observations range from 50-3000 ppt, with high daily variability (e.g. Wood et al., 2005; Brown et al., 2009). The WINTER campaign includes observations taken during night, where accumulations of N<sub>2</sub>O<sub>5</sub> occur, allowing model evaluations to be made.

Evaluations against the nighttime N<sub>2</sub>O<sub>5</sub> measurements from the WINTER campaign are shown in Figure 16, along with the corresponding profiles of HNO<sub>3</sub>. Unfortunately, no model data was available for N<sub>2</sub>O<sub>5</sub> in the CAMSRA dataset for comparison. The formation of N<sub>2</sub>O<sub>5</sub> involves the NO<sub>3</sub> radical, principally formed by the slow oxidation process from the reaction of NO<sub>2</sub> with O<sub>3</sub> during nighttime. Their relatively small biases for the WINTER campaign (c.f. Fig 6 and Fig 14) provide some confidence in the flux of NO<sub>3</sub> production, where different reaction kinetics for thermal equilibrium are applied in each chemical module. Little difference exists across the chemistry modules for the simulated mixing ratios of N<sub>2</sub>O<sub>5</sub>, although a signature does exist for February regarding IFS(MOZ), which has higher mixing ratios in the LT by 10-20%. For IFS(MOZ) no N<sub>2</sub>O<sub>5</sub> conversion on cloud particles and ice droplets is assumed, unlike the other chemistry modules.

For February a positive bias exists across chemical modules with respect to HNO<sub>3</sub> observations, where, counterintuitively, IFS(MOZ) has higher mixing ratios and biases (similar to IFS(MOC)) in spite of less efficient heterogeneous conversion. The corresponding N<sub>2</sub>O<sub>5</sub> profiles indicate strong negative biases thus suggesting too rapid hydrolysis into HNO<sub>3</sub>. As described in Sec. 2.2, the conversion rate is computed in the IFS from the available Surface Area Density (SAD) of clouds and aquated aerosols, and the conversion frequency  $\gamma$  on these particles, (Brown et al., 2009), which is here assumed in the range of 0.01-0.02 depending on aerosol type, see Table 3. Derivations of  $\gamma$ (N<sub>2</sub>O<sub>5</sub>) from a chemical box modeling study based on the measurements across regions and scenarios taken during the WINTER campaign found a median value of 0.0143, with a spread of two orders of magnitude (~0.001-0.1, McDuffie et al., 2018). This suggests that to reconcile the negative N<sub>2</sub>O<sub>5</sub> model bias shown here the adopted  $\gamma$ (N<sub>2</sub>O<sub>5</sub>), needs to be made more variable. The inclusion of N<sub>2</sub>O<sub>5</sub> conversion on clouds and ice particles for IFS(MOZ) would not improve on the biases shown here, without modification of the efficiency of other N<sub>2</sub>O<sub>5</sub> loss routes.



770 Comparing the  $[\text{HNO}_3]/[\text{N}_2\text{O}_5]$  ratios to assess the efficiency of conversion whilst screening for very low and high values, Figure S9 shows that the  $[\text{HNO}_3]/[\text{N}_2\text{O}_5]$  derived from the chemical modules are only weakly correlated with those observed ( $R=0.2-0.5$ ), with the range of observational values being typically an order of magnitude lower than those seen in the mini-ensemble. For IFS(MOZ) during February there is a negative  $R$  value possibly linked to the lack of  $\text{N}_2\text{O}_5$  conversion on clouds, with IFS(CBA) and IFS(MOC) having positive  $R$  values albeit with binned values which exceed 50 (too efficient conversion). For March IFS(MOZ) has the highest correlation and lowest mean bias which suggests conversion on aerosol surfaces dominates for this month and region. Table S4 shows that  $\text{NO}_2$  has a small negative bias for these months, although no validation of the nitrate radical ( $\text{NO}_3$ ) can be performed to determine whether the deficit in  $\text{N}_2\text{O}_5$  is only due to heterogeneous processes. IFS(MOC) exhibits the most occurrences of high ratios for February ( $> 20$ ), whilst for March both IFS(MOC) and IFS(CBA) have a similar incidence of high ratios ( $> 50$ ).



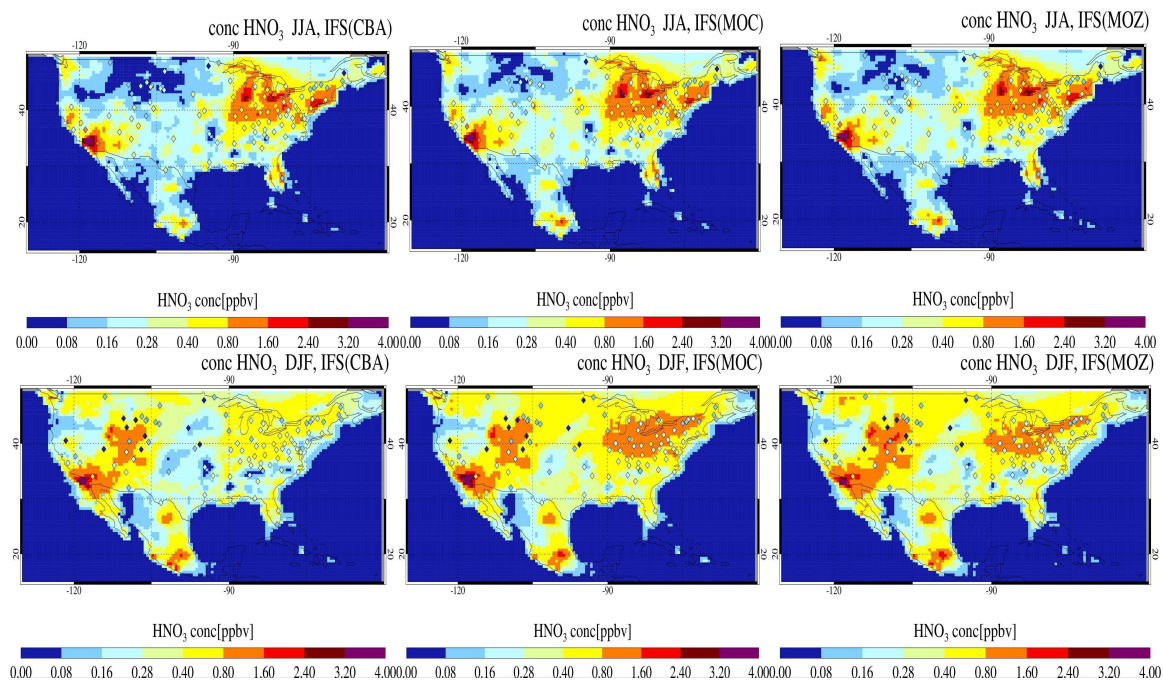
780 **Figure 17.** Comparisons of the observed  $[\text{HNO}_3]/[\text{NO}_x]$  ratio for selected months against the corresponding values from the ensemble members below 800hPa. The values are binned with respect to the observations using a bin-width of 0.75 with respect to  $[\text{HNO}_3]/[\text{NO}_x]$  and the correlation coefficients provided in each panel. Measurements are taken from FRAPPE, WINTER and SONGNEX campaigns to cover seasonality and location.

785 The length of the  $\text{NO}_x$ -cycle can be determined by examining the ratio between resident  $\text{HNO}_3$  mixing ratios with the associated  $\text{NO}_x$  mixing ratios (denoted as  $R'=[\text{HNO}_3]/[\text{NO}_x]$ ), where high values are indicative of a large fraction of N that has been made inert (in the form of  $\text{HNO}_3$ ). The resulting comparisons of  $R'$  calculated by accumulating values from selected days for each month (as for the vertical profile comparisons) for pressure levels below 800 hPa are shown in Figure 17. A bin-width of 0.75 in  $R'$  is used to calculate mean values in each respective  
 790 bin. The resulting Pearson's R correlation coefficients are given in each panel.

For the spring and summer months over Colorado there is a high degree of correlation between measured and modelled  $R'$ , with correlations in the range 0.8-0.9, except for August 2014, where the simulations become uncorrelated. For low  $R'$  values there is a tight agreement between the mini-ensemble members and the observational values. For higher  $R'$  values ( $> 10$ ) the chemical modules exhibit low biases under high  $\text{NO}_x$   
 795 emissions, although with variable biases for  $\text{HNO}_3$  (c.f. Fig S5 and Table S9). Previous derivations of  $R'$  have found values in the range 0.8-10.4 for low  $\text{NO}_x$  environments (Huebert et al., 1990), which is in the range of those observed in the remote free-troposphere. Biases for CAMSRA are overall much lower than those from the three recent chemistry modules during springtime.

Both daytime and nighttime measurements are used for deriving the wintertime (February-March) correlations,  
 800 where the observational range in  $R'$  is approximately half that derived for summertime. Correlations become much weaker and the  $R'$  values are an order of magnitude higher for the mini-ensemble than those in the observations, indicating that the  $\text{NO}_x$  chain-length for the chemistry versions is shorter than observed. One main difference is

805 that uncertainties associated with heterogeneous conversion of  $\text{N}_2\text{O}_5$  plays a dominant role in  $\text{HNO}_3$  production during nighttime, which may explain the reduced correlation. For CAMSRA, the high  $R'$  values ( $> 30$ ) during February in the three chemistry modules, does not occur.



810 **Figure 18.** The Seasonal mean distribution of surface mixing ratios for gas phase  $\text{HNO}_3$  across the US for (top) JJA and (bottom) DJF against seasonal composites of observations taken from the CASTNET network. The observational mean values and locations of the measurement stations are given as the diamonds located in each panel.

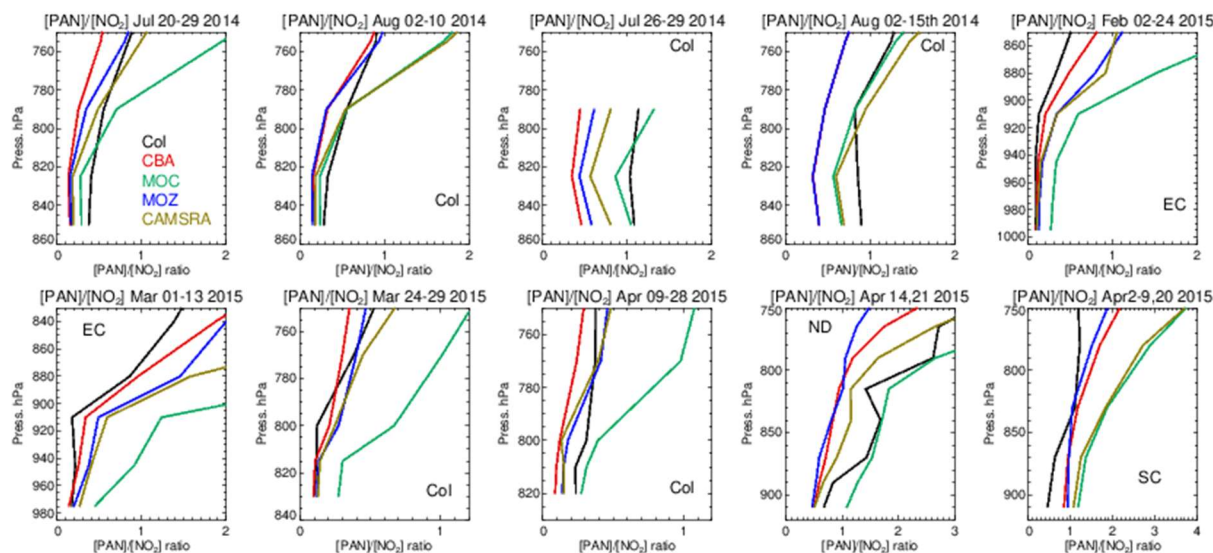
815 To further evaluate the regional differences in  $\text{HNO}_3$  across the chemical modules, we make seasonal comparisons of surface  $\text{HNO}_3$  mixing ratios against observational composites taken from the CASTNET network throughout the US, Figure 18. The maximal mixing ratios for  $\text{HNO}_3$  occur near regions with high  $\text{NO}_x$  emissions. For JJA differences between configurations are modest, with the largest percentual spread over the comparatively clean northern part. Comparing seasons shows that for IFS(CBA) during DJF much more  $\text{HNO}_3$  exists towards the western US than for JJA. Instead, there is a significant reduction in IFS(CBA) during DJF on the East Coast that is larger than for the other two modules.

820 Despite relatively small absolute values in OH mixing ratios during DJF, the significant percentual differences between modules (Fig S1), could be responsible for differences in the direct production term across chemical modules, with overall higher  $\text{HNO}_3$  mixing ratios in IFS(MOZ) and IFS(MOC) than IFS(CBA). Also, there are uncertainties in  $\text{HNO}_3$  loss through nitrate aerosol formation and deposition contribute to uncertainties in  $\text{HNO}_3$  burden, e.g. Nowak et al. (2010).

825 Spatial correlations  $r$  between the seasonal mean modeled and observed mixing ratios for the Eastern and Western US are approximately  $r=0.5$  for each of the chemistry modules for JJA. For this season the chemistry modules show an associated mean positive bias of between 0.3-0.4 ppb for the Eastern US and almost no significant mean bias for the Western US, due to some cancellation of positives and negatives for different locations.

830 The corresponding seasonal mean values for DJF show more divergence in correlation statistics with  $r$  ranging from 0.07-0.24 for the Eastern US to 0.54-0.65 for the Western US for the three chemistry modules. Associated mean biases are in the range 0.17-0.43 ppb (Eastern US) and 0.41-0.51 ppb (Western US), respectively. These evaluations indicate significant uncertainty regarding surface  $\text{HNO}_3$  model capabilities, with overall positive biases. We refrain from further analysis of  $\text{HNO}_3$ , as this involves assessment of deposition, and nitrate formation. Finally, it should be acknowledged that the CASTNET measurement network has been shown to have rather low mixing ratios when compared to alternative measurement networks (Lavery et al., 2009).

835 The significant differences in the seasonal distribution shown for NO<sub>2</sub> as diagnosed in Sec 4.3 can, in part, be explained by variability in PAN production and loss across the various mini-ensemble members. A particularly large model spread was seen for DJF (Fig S8). Here colder temperatures increase its tropospheric lifetime by suppressing thermal decomposition, but simultaneously decrease its formation in absence of biogenic and BB precursor emissions (Fischer et al., 2014).



840 **Figure 19:** Comparisons of the ratio of [PAN]/[NO<sub>2</sub>] derived from the corresponding mean values derived during each aircraft campaign. Campaigns shown (top left to bottom right) are DISCOVER-AQ, FRAPPE, WINTER and SONGNEX.

845 Figure S7 compares resident mixing ratios of PAN against composites for the different aircraft campaigns, as those used to evaluate NO<sub>2</sub>. It shows that for JJA, IFS(CBA) and CAMSRA typically under-estimate PAN mixing ratios in the LT, where biases decrease as the temperatures get colder for the wintertime. For December-March, IFS(MOC) shows a positive biases of up to 100% indicating that PAN is too stable under cold conditions. This points at different reaction data employed compared to IFS(CBA) and IFS(MOZ), and a lower photolysis frequency. As a result, a significant overestimation in the fraction of NO<sub>x</sub> exported out of the source regions will occur, as shown in the seasonal zonal mean PAN distributions in Figure S8, where twice as much northerly transport occurs for IFS(MOC) compared to the other chemistry modules.

850 The ratio  $F$  defined as  $F=[PAN]/[NO_2]$  can be used to examine the ability of the chemical modules towards capturing the correct partitioning of resident NO<sub>x</sub> into PAN, which can then be transported out the source regions by convective uplift and long-range transport affecting background O<sub>3</sub> budgets (Fischer et al., 2014). In general, the observations show an increase in  $F$  with respect to altitude, with  $F$  typically ranging between 0-1 during summertime and 0-2 during wintertime, Figure 19. For most months and regions, IFS(CBA) and IFS(MOZ) provide accurate simulations of the vertical variability in  $F$  values between 850 hPa and the surface. IFS(MOC) generally has a positive bias in  $F$ , particularly during wintertime, where  $F$  is up to a factor 2 higher than that observed. This is indicative for a too stable PAN in this chemistry version, which affects the O<sub>3</sub> production efficiency via the availability and distribution of NO<sub>2</sub>.

855 During summertime over Colorado IFS(MOC) exhibits good agreement in  $F$  in the lower atmosphere, with IFS(CBA) and IFS(MOZ) under-estimating by 0.03-0.05. Despite the updates of the NO<sub>x</sub> chemistry in IFS(CBA), CAMSRA has slightly lower biases for summertime. For wintertime (springtime) towards the East Coast (Colorado)  $F$  ratios for IFS(MOC) are nearly double those observed. However, agreement is quite good for North/South Dakota (ND) for April showing the regional variability in performance of the chemical modules. As PAN is transported out of the boundary layer the contribution of the loss rate due to photolysis increases (albeit with a low frequency thus allowing long transport lifetimes). This highlights the importance of a correct parameterization of the photolysis frequency across the various chemistry modules. The reaction towards the colder temperatures in the FT markedly affects lifetime, where different reaction kinetics are applied across chemical modules.

## 5 Conclusions

In this study we have presented a detailed description of the recent updates which have been made to the chemistry modules that are integrated in the ECMWF IFS global model for the purpose of performing global air quality forecasts. We have evaluated a set of three simulations covering the years 2014/2015, using the latest model configuration as developed in an experimental version of the ECMWF IFS cycle 47R1. This provides insight in the performance of the modeling of trace gases (here excluding data assimilation) in the CAMS global system. This study has focused on lower tropospheric composition for the contiguous United States with an emphasis on tropospheric O<sub>3</sub>, NO<sub>2</sub> and CO. We also included comparisons against the most recent reanalysis dataset that is based on a previous CAMS configuration (CAMSRA). This provides a reference to assess the performance of the current model configurations compared to this established dataset.

By comparing seasonal means in the lower troposphere between the various chemistry modules we have shown a strong seasonality in the regional inter-model differences for O<sub>3</sub>, CO and NO<sub>2</sub> in the US. For O<sub>3</sub> these differences are limited to ±5% during boreal summertime, during which higher mixing ratios occur. The ability to capture the regional seasonality in surface concentrations for the background is somewhat region dependent, with relatively good agreement for the Pacific North West and an overestimation towards the Eastern Coast. Comparing seasonal composites against ozonesondes shows that there is generally good agreement in more remote locations and high positive biases of 10-30 ppb for more polluted regions, especially at the surface near the Eastern Coast. Comparisons for more southerly regions show lower mean daily biases in South Central US and California-Nevada with limited correlation in the daily variability. For the Colorado region, there are biases of ±6 ppb across chemistry modules (±10-15%). At the surface there are small negative biases of around 5 μgm<sup>-3</sup> for IFS(CB05BASCOE) and 15 μgm<sup>-3</sup> for CAMSRA. For boreal wintertime a significant variability in the O<sub>3</sub> production efficiency occurs across chemistry modules resulting in IFS(MOCAGE) and IFS(MOZART) exhibiting increases in mixing ratios of +6-15% and +20-25% across a wide region as compared to IFS(CB05BASCOE), especially in the Northern US. A significant positive bias in surface concentrations occurs for 2014 in the Northern US indicating too efficient O<sub>3</sub> production, whereas CAMSRA exhibits a significant negative bias. Other regions show less difference across the simulations.

Associated differences occur for the OH radical for both seasons, which leads to significant differences in the tropospheric distribution of CO of between 8-20%, especially during wintertime. In general, the seasonal cycle at the surface is captured well when compared to both ESRL background observations and surface AirNow, with IFS(MOZART) exhibiting the largest negative biases in Northern US regions. When compared against aircraft observations positive biases in CO of 10-20 ppb occur for the Colorado region during boreal summertime for IFS(CB05BASCOE), with IFS(MOCAGE) agreeing relatively well and IFS(MOZART) underestimating by a few ppb. These biases turn negative for wintertime and spring, reaching underestimates of up to 10-35 ppb across the simulations for different regions and months. This leads to deficits of 30-35 ppb in the lower troposphere for IFS(MOZART). Analysing similar aircraft comparisons for CH<sub>2</sub>O for both seasons shows negative biases of CH<sub>2</sub>O between 5-40% depending on the region, which contributes to the negative CO biases. Biases of CO for all chemical modules are typically larger than the CAMSRA dataset which is strongly constrained by assimilation of CO observations from satellite retrievals.

As was the case for O<sub>3</sub>, also NO<sub>x</sub> shows a seasonal variation in the simulated inter-model differences within the order of 5-10% for NO<sub>2</sub> and up to 50% for NO. Comparing profiles for both trace gases against aircraft measurements shows significant negative biases exist for both NO and NO<sub>2</sub> for the NO<sub>x</sub>-rich environment of Colorado across all chemical modules indicating regional emissions which are too low. The performance of the three chemistry versions is overall better than for CAMSRA, which can be understood by the fact of the limited impact of NO<sub>2</sub> data assimilation in the CAMS reanalysis. Comparisons against AirNow surface observations shows that the regional annual cycles are captured well across the simulations with negative biases and showing only a weakly correlated daily variability.

Examining [NO]/[NO<sub>2</sub>] ratios shows that the equilibrium between NO and NO<sub>2</sub> is mostly captured well by IFS(CB05BASCOE) in the boundary layer, with the other chemical modules overestimating the fraction of NO (albeit with lower NO<sub>x</sub> mixing ratios). A strong correlation exists in the [HNO<sub>3</sub>]/[NO<sub>x</sub>] ratio across days for boreal summertime between the modelled and measured fields (R > 0.9), albeit with a negative model bias of ~50%. This is indicative of a lower NO<sub>y</sub> burden in the simulations due to cumulative differences in emissions, chemistry, aerosol formation and deposition processes. For CAMSRA, the [HNO<sub>3</sub>]/[NO<sub>x</sub>] ratio is overall better. For nighttime

under cold conditions, the  $[\text{NO}]/[\text{NO}_2]$  ratio is typically underestimated implying a lack of NO regeneration by slow redox reactions.

925 There is generally an overestimation in  $\text{HNO}_3$ , both at surface and in the free troposphere, which may be due to too efficient  $\text{N}_2\text{O}_5$  hydrolysis on wet surfaces under some conditions. Model analysis suggests that this conversion on cloud surfaces is not a dominating term with respect to associated  $\text{N}_2\text{O}_5$  comparisons for the East Coast during the wintertime period.

930 One dominating factor on the seasonal distributions of  $\text{NO}_2$  is the fraction stored as PAN and transported out the source regions. For boreal summertime, IFS(MOZART) simulates 20-50% less resident PAN than IFS(CB05BASCOE), which contributes to the more efficient  $\text{O}_3$  formation in IFS(MOZART). When comparing against aircraft profiles around Colorado for July and August, there is generally an underestimation in resident PAN of 40-60% across chemical modules, suggesting a lack of VOC precursors and subsequent acetyl-peroxy radicals, in line with previous studies (Huijnen et al., 2019). For boreal wintertime, when there is an extended tropospheric lifetime under cold temperatures, significant positive biases in regional PAN were diagnosed as compared against aircraft profiles for IFS(MOCAGE), pointing at differences in model assumptions regarding the stability of PAN, as determined by the rate data employed. This is also reflected by the  $[\text{PAN}]/[\text{NO}_2]$  ratios which show a strong overestimate in IFS(MOCAGE) and requires future developments.

940 As presented in this manuscript, a significant divergence of key air quality products simulated by each of the chemistry modules exists, depending on seasonal and regional conditions. These are due to fundamental differences associated with the oxidative capacity and the regional efficiency for the production of tropospheric  $\text{O}_3$ , which are in turn determined by the chemical mechanism, the parametrizations that are adopted and the rate data used. In future studies attention should be made towards (i) improvement of variability in surface  $\text{O}_3$ , CO and  $\text{NO}_2$ , with respect to air quality observations, by a joint effort of improving the emissions and deposition handling, and improved diagnostics, (ii) further homogenization of the physical conversion processes across modules with respect to radicals and  $\text{N}_2\text{O}_5$ , (iii) improve on the VOC tropospheric burdens to provide sufficient peroxy-radicals for better PAN formation and (iv) further investigate what determines PAN mixing ratios under cold/low light conditions in term of dissociation and stability. Evaluation of model performance for other important polluted world regions, such as Europe and East Asia, will be the focus of future studies.

945 Whilst analysis of the three chemistry modules in CAMS provide a strong handle on uncertainties associated with chemistry modeling, the further improvement of operational products additionally requires coordinated development involving emissions handling, chemistry, and aerosol modeling, complemented with data-assimilation efforts.

### *Author Contributions*

955 JEW and VH were principal authors of the paper and conducted most of the evaluation against observational datasets. VH, IB, SP, BJ and VM performed the three individual simulations which were used for the evaluation. MM and TS helped with the evaluation against the AirNow surface observations. JF contributed to the interpretation of results.

### *Code availability*

960 Model codes developed at ECMWF are the intellectual property of ECMWF and its member states, and therefore the IFS code is not publicly available. ECMWF member-state weather services and their approved partners will get access granted. Access to a version of the IFS (OpenIFS) that includes this experimental cycle may be obtained from ECMWF under an OpenIFS licence. More details at <https://confluence.ecmwf.int/display/OIFS/OpenIFS+Home> (last access: 28 Sept 2021)

### *Data availability*

The CAMS reanalyses data are freely available from <https://atmosphere.copernicus.eu/> (last access: 28 Sept 2021).

### *Competing Interests*

970 The authors declare that they have no conflict of interest

*Acknowledgements*

975 We acknowledge funding from the Copernicus Atmosphere Monitoring Service (CAMS) under contract CAMS\_42\_II, which is funded by the European Union's Copernicus Programme. We acknowledge the World Ozone and Ultraviolet Radiation Data Centre (WOUDC) for providing ozone-sonde observations and the Earth System Research Laboratories network for providing the surface measurements of carbon monoxide and ozone. We acknowledge the AirNow monitoring network for allowing access to surface observational data for carbon monoxide, nitrogen dioxide and ozone. Finally, we acknowledge NOAA and NASA for access to the multiple aircraft campaigns used in this manuscript.

## References

980

Atkinson, R., Baulch, D. L., Cox, R. A., Crowley, J. N., Hampson, R. F., Hynes, R. G., Jenkin, M. E., Rossi, M. J., and Troe, J.: Evaluated kinetic and photochemical data for atmospheric chemistry: Volume I - gas phase reactions of O<sub>x</sub>, HO<sub>x</sub>, NO<sub>x</sub> and SO<sub>x</sub> species, *Atmos. Chem. Phys.*, 4, 1461–1738, <https://doi.org/10.5194/acp-4-1461-2004>, 2004.

985

Atkinson, R., Baulch, D. L., Cox, R. A., Crowley, J. N., Hampson, R. F., Hynes, R. G., Jenkin, M. E., Rossi, M. J., Troe, J., and IUPAC Subcommittee: Evaluated kinetic and photochemical data for atmospheric chemistry: Volume II – gas phase reactions of organic species, *Atmos. Chem. Phys.*, 6, 3625–4055, <https://doi.org/10.5194/acp-6-3625-2006>, 2006.

990

Benedetti, A., Morcrette, J.-J., Boucher, O., Dethof, A., Engelen, R. J., Fisher, M., Flentje, H., Huneeus, N., Jones, L., Kaiser, J. W., Kinne, S., Mangold, A., Razinger, M., Simmons, A. J. and Suttie, M.: Aerosol analysis and forecast in the European Centre for Medium-Range Weather Forecasts Integrated Forecast System: 2. Data assimilation, *J. Geophys. Res.*, 114, D13205, doi:10.1029/2008JD011115, 2009.

Blunden, J. and D. S. Arndt, Eds.: State of the Climate in 2014. *Bull. Amer. Meteor. Soc.*, 96 (7), S1– S267, 2015.

995

Brown, S. S., Dube, W. P., Fuchs, H., Ryerson, T. B., Wollny, A. G., Brock, C. A., Bahreini, R., Middlebrook, A. M., Neuman, J. A., Atlas, E., Roberts, J. M., Osthoff, H. D., Trainer, M., Fehsenfeld, F. C. and Ravishankara, A. R.: Reactive uptake coefficients for N<sub>2</sub>O<sub>5</sub> determined from aircraft measurements during the Second Texas Air Quality Study: Comparison to current model parameterizations, *J. Geophys. Res.*, 114, D00F10, doi:10.1029/2008JD011679, 2009.

1000

Browne, E. C., Perring, A. E., Wooldridge, P. J., Apel, E., Hall, S. R., Huey, L. G., Mao, J., Spencer, K. M., Clair, J. M. St., Weinheimer, A. J., Wisthaler, A., and Cohen, R. C.: Global and regional effects of the photochemistry of CH<sub>3</sub>O<sub>2</sub>NO<sub>2</sub>: evidence from ARCTAS, *Atmos. Chem. Phys.*, 11, 4209–4219, doi:10.5194/acp-11-4209-2011, 2011.

1005

Byun, D. and Schere, K. L.: Review of the governing equations, computational algorithms, and other components of the Models-3 Community Multiscale Air Quality (CMAQ) Modeling System, *Appl. Mech. Rev.*, 59, 51–77, 2006.

Chang, W.L., Bhave, P. V., Brown, S. S., Riemer, N., Stutz, J. and Dabdub, D.: Heterogeneous Atmospheric Chemistry, Ambient Measurements, and Model Calculations of N<sub>2</sub>O<sub>5</sub>: A Review, *Aerosol Science and Technology*, 45:6, 665-695, DOI: 10.1080/02786826.2010.551672, 2011.

1010

Chai, T., H.-C. Kim, H.-C., Lee, P., Tong, D., Pan, L., Tang, Y., J. Huang, J., J. McQueen, J., M. Tsidulko, M., and Stajner, I.: Evaluation of the United States National Air Quality Forecast Capability experimental real-time predictions in 2010 using Air Quality System ozone and NO<sub>2</sub> measurements, *Geosci. Model Dev.*, 6, 1831–1850, doi:10.5194/gmd-6-1831-2013, 2013.

1015

Cheadle, L.C., Oltmans, S. J., G. Pétron, G., Schnell, R. C., Mattson, E. J., Herndon, S. C., A. M. Thompson, A. M., Blake, D. R., McClure-Begley, A.: Surface ozone in the Colorado northern Front Range and the influence of oil and gas development during FRAPPE/DISCOVER-AQ in summer 2014. *Elem Sci Anth*, 5: 61. doi: <https://doi.org/10.1525/elementa.254>, 2017.

1020

Chin, M., Jacob, D. J., Munger, J. W., Parrish, D. D. and Doddridge, B. G.: Relationship of ozone and carbon monoxide over North America, *J. Geophys. Res. Atmos.*, 99, 14565-14573, doi:10.1029/94JD00907, 1994.

Cooper O. R., Stohl, A., Eckhardt, S., Parrish, D. D., Oltmans, S. J., B. J. Johnson, B. J., P. Nedelec, P., Schmidlin, F. J., Newchurch, M. J., Kondo, Y. and Kita, K.: A springtime comparison of tropospheric ozone and transport pathways on the east and west coasts of the United States, *J. Geophys. Res.*, 110, D05S90, doi:10.1029/2004JD005183, 2005.

- 1025 Cussac, M., V. Marécal, V. Thouret, B. Josse and B. Sauvage, The impact of biomass burning on upper tropospheric carbon monoxide: A study using MOCAGE global model and IAGOS airborne data, *Atmos. Chem. Phys.*, 20, 9393–9417, <https://doi.org/10.5194/acp-20-9393-2020>, 2020.
- Dingle, J. H., Vu, K., Bahreini, R., Apel, E. C., Campos, T. L., Flocke, F., Fried, A., Herndon, S., Hills, A. J., Hornbrook, R. S., Huey, G., Kaser, L., Montzka, D. D., Nowak, J. B., Reeves, M., Richter, D., Roscioli, J. R., Shertz, S., Stell, M., Tanner, D., Tyn-dall, G., Walega, J., Weibring, P. and Weinheimer, A.: Aerosol optical extinction during the Front Range Air Pollution and Photochemistry Experiment (FRAPPE) 2014 summertime field campaign, Colorado, USA, *Atmos. Chem. Phys.*, 16, 11207–11217, <https://doi.org/10.5194/acp-16-11207-2016>, 2016.
- 1030
- Doubalova, J., Sindelarova, K., Granier, C., Darras, S. and Lawrence, P.: Long-term changes in biogenic VOC emissions due to changing land-cover, *iCACGP-IGAC 2018*, doi:10.13140/RG.2.2.18870.75848, 2018.
- 1035
- Eder, B., Kang, D., Mathur, R., Pleim, J., Yu, S., Otte, T., and Pouliot, G.: A performance evaluation of the National Air Quality Forecast Capability for the summer of 2007, *Atmos. Environ.*, 43, 2312–2320, <https://doi.org/10.1016/j.atmosenv.2009.01.033>, 2009.
- Emmons, L. K., Walters, S., Hess, P. G., Lamarque, J.-F., Pfister, G. G., Fillmore, D., Granier, C., Guenther, A., Kinnison, D., Laepple, T., Orlando, J., Tie, X., Tyndall, G., Wiedinmyer, C., Baughcum, S. L., and Kloster, S.: Description and evaluation of the Model for Ozone and Related chemical Tracers, version 4 (MOZART-4), *Geosci. Model Dev.*, 3, 43–67, <https://doi.org/10.5194/gmd-3-43-2010>, 2010.
- 1040
- Finkelstein, P. L., Ellestad, T.G., Clarke, J.F., Meyers, T.P., Schwede, D.B., Hebert, E.O. and Neal, J. A.: Ozone and sulfur dioxide dry deposition to forests: observations and model evaluation, *J. of Geophys Res*, 105 (D12), pp. 15365-15377, 2000.
- 1045
- Flemming, J., Huijnen, V., Arteta, J., Bechtold, P., Beljaars, A., Blechschmidt, A.-M., Diamantakis, M., Engelen, R. J., Gaudel, A., Inness, A., Jones, L., Josse, B., Katragkou, E., Marecal, V., Peuch, V.-H., Richter, A., Schultz, M. G., Stein, O. and Tsikerdekis, A.: Tropospheric chemistry in the Integrated Forecasting System of ECMWF, *Geosci. Model Dev.*, 8(4), 975–1003, doi:10.5194/gmd-8-975-2015, 2015.
- 1050
- Flocke, F., Pfister, G., Crawford, J. H., Pickering, K. E., Pierce, G., Bon, D. and Reddy, P.: Air Quality in the Northern Colorado Front Range Metro Area: The Front Range Air Pollution and Photochemistry Experiment (FRAPPE), *J. of Geophys. Res. Atmospheres*, 125, e2019JD031197. <https://doi.org/10.1029/2019JD031197>, 2019.
- Fischer, E. V., Jacob, D. J., Yantosca, R. M., Sulprizio, M. P., Millet, D. B., Mao, J., Paulot, F., Singh, H. B., Roiger, A., Ries, L., Talbot, R. W., Dzepina, K., and Pandey Deolal, S.: Atmospheric peroxyacetyl nitrate (PAN): a global budget and source attribution, *Atmos. Chem. Phys.*, 14, 2679–2698, <https://doi.org/10.5194/acp-14-2679-2014>, 2014.
- 1055
- Gilman, J. B., Lerner, B.M., Kuster, W.C. and de Gouw, J. A.: Source Signature of Volatile Organic Compounds from Oil and Natural Gas Operations in Northeastern Colorado, *Environ. Sci. Technol.*, 47, 1297–1305, [dx.doi.org/10.1021/es304119a](https://doi.org/10.1021/es304119a), 2013.
- 1060
- Granier, C., Darras, S., Denier van der Gon, H., Doubalova, J., Elguindi, N., Galle, B., Gauss, M., Guevara, M., Jalkanen, J.-P., Kuenen, J., Liousse, C., Quack, B., Simpson, D. and Sindelarova, K. The Copernicus Atmosphere Monitoring Service global and regional emissions, Reading, United Kingdom: Copernicus Atmosphere Monitoring Service, <https://doi.org/10.24380/d0bn-kx16>, 2019.
- 1065
- Green, J. R., Fiddler, M. N., Fibiger, D. L., McDuffie, E. E., Aquino, J., Campos, T., ... & Brown, S. S. (2021). Wintertime Formaldehyde: Airborne Observations and Source Apportionment Over the Eastern United States. *Journal of Geophysical Research: Atmospheres*, 126(5), e2020JD033518.
- Guth, J., B. Josse, V. Marécal, M. Joly, and P. D. Hamer: First implementation of secondary inorganic aerosols in the MOCAGE version R2.15.0 chemistry transport model, *Geosci. Mod. Dev.*, 9, 137-160, 2016.
- 1070
- Hall, S. R., Ullmann, K., Prather, M. J., Flynn, C. M., Murray, L. T., Fiore, A. M., Correa, G., Strode, S. A., Steenrod, S. D., Lamarque, J.-F., Guth, J., Josse, B., Flemming, J., Huijnen, V., Abraham, N. L., and Archibald, A. T.: Cloud impacts on photochemistry: building a climatology of photolysis rates from the Atmospheric Tomography mission, *Atmos. Chem. Phys.*, 18, 16809-16828, <https://doi.org/10.5194/acp-18-16809-2018>, 2018.



- 1075 He, H., Liang, X.-Z., Sun, C., Tao, Z. and Tong, D. Q.: The long-term trend and production sensitivity change in the US ozone pollution from observations and model simulations, *Atmos. Chem. Phys.*, 20, 3191–3208, <https://doi.org/10.5194/acp-20-3191-2020>, 2020.
- Hersbach, H., Bell, B., Berrisford, P., Hirahara, S., Horanyi, A., Muñoz-Sabater, J., et al.: The ERA5 global reanalysis. *Quart. J. of the Royal Met. Soc.*, 146, 1999–2049, <https://doi.org/10.1002/qj.3803>, 2020.
- 1080 Hodzic, A., Kasibhatla, P. S., Jo, D. S., Cappa, C. D., Jimenez, J. L., Madronich, S., and Park, R. J.: Rethinking the global secondary organic aerosol (SOA) budget: stronger production, faster removal, shorter lifetime, *Atmos. Chem. Phys.*, 16, 7917–7941, <https://doi.org/10.5194/acp-16-7917-2016>, 2016.
- Huebert, B. J., Vanbramer, S. E., Lebel, P. J., Vay, S. A., Torres, A. L., Schiff, H. I., D., Hubler, G., Bradshaw, J. D., Carroll, M. A., Davis, D. D., Ridley, B. A. et al., Measurements of the nitric acid to NO<sub>x</sub> ratio in the troposphere, <https://doi.org/10.1029/JD095iD07p10193>, 1990.
- 1085 Huijnen, V., Williams, J. E., and Flemming, J.: Modeling global impacts of heterogeneous loss of HO<sub>2</sub> on cloud droplets, ice particles and aerosols, *Atmos. Chem. Phys. Discuss.*, 14, 8575–8632, <https://doi.org/10.5194/acpd-14-8575-2014>, 2014.
- Huijnen, V., Flemming, J., Chabrillat, S., Errera, Q., Christophe, Y., Blechschmidt, A.-M., Richter, A., and Eskes, H.: C-IFS-CB05-BASCOE: stratospheric chemistry in the Integrated Forecasting System of ECMWF, *Geosci. Model Dev.*, 9, 3071–3091, <https://doi.org/10.5194/gmd-9-3071-2016>, 2016.
- 1090 Huijnen, V., Pozzer, A., Arteta, J., Brasseur, G., Bouarar, I., Chabrillat, S., Christophe, Y., Doumbia, T., Flemming, J., Guth, J., Josse, B., Karydis, V. A., Marécal, V., and Pelletier, S.: Quantifying uncertainties due to chemistry modelling – evaluation of tropospheric composition simulations in the CAMS model (cycle 43R1), *Geosci. Model Dev.*, 12, 1725–1752, <https://doi.org/10.5194/gmd-12-1725-2019>, 2019.
- 1095 Huijnen, V., Miyazaki, K., Flemming, J., Inness, A., Sekiya, T., and Schultz, M. G.: An intercomparison of tropospheric ozone reanalysis products from CAMS, CAMS interim, TCR-1, and TCR-2, *Geosci. Model Dev.*, 13, 1513–1544, <https://doi.org/10.5194/gmd-13-1513-2020>, 2020.
- Ip, H.S.S., Huang, X. H. H. and Yu, J. Z.: Effective Henry's law constants of glyoxal, glyoxylic acid and glycolic acid, *Geophys. Res. Letts.*, 36 L01802, doi:10.1029/2008GL036212, 2009.
- 1100 Inness, A., Ades, M., Agustí-Panareda, A., Barré, J., Benedictow, A., Blechschmidt, A.-M., Dominguez, J. J., Engelen, R., Eskes, H., Flemming, J., Huijnen, V., Jones, L., Kipling, Z., Massart, S., Parrington, M., Peuch, V.-H., Razinger, M., Remy, S., Schulz, M., and Suttie, M.: The CAMS reanalysis of atmospheric composition, *Atmos. Chem. Phys.*, 19, 3515–3556, <https://doi.org/10.5194/acp-19-3515-2019>, 2019.
- 1105 Inness, A., Chabrillat, S., Flemming, J., Huijnen, V., Langenrock, B., Nicolas, J., Polichtchouk, I. and Razinger, M.: Exceptionally low Arctic stratospheric ozone in spring 2020 as seen in the CAMS reanalysis. *J. Geophys Res Atmos.* 125(23), <https://doi.org/10.1029/2020JD033563>, 2020.
- 1110 Jaeglé, L., Shah, V., Thornton, J. A., Lopez-Hilfiker, F. D., Lee, B. H., McDuffie, E. E., et al. (2018). Nitrogen oxides emissions, chemistry, deposition, and export over the Northeast United States during the WINTER aircraft campaign, *Journal of Geophysical Research: Atmospheres*, 123, 12,368–12,393., <https://doi.org/10.1029/2018JD029133>, 2018.
- Karl, M., Tsigaridis, K., Vignati, E., and Dentener, F.: Formation of secondary organic aerosol from isoprene oxidation over Europe, *Atmos. Chem. Phys.*, 9, 7003–7030, <https://doi.org/10.5194/acp-9-7003-2009>, 2009.
- 1115 Kaiser, J. W., Heil, A., Andreae, M. O., Benedetti, A., Chubarova, N., Jones, L., Morcrette, J.-J., Razinger, M., Schultz, M. G., Suttie, M. and van der Werf, G. R.: Biomass burning emissions estimated with a global fire assimilation system based on observed fire radiative power, *Biogeosciences*, 9(1), 527–554, doi:10.5194/bg-9-527-2012, 2012.
- 1120 Keller, C. A., Knowland, K. E., Duncan, B. N., Liu, J., Anderson, D.C., Das, S., Lucchesi, R. A., Lundgren, E. W., Nicely, J. M., Nielsen, E., Ott, L. E., Saunders, E., Strode, S. A., Wales, P. A., Jacob, D. J., and Pawson, S.: Description of the NASA GEOS Composition Forecast Modeling System GEOS-CF v1.0, *J. Adv. Modeling Earth Systems*, 13, <https://doi.org/10.1029/2020MS002413>, 2021.

- 1125 Kinnison, D. E., Brasseur, G. P., Walters, S., Garcia, R. R., Marsh, D. R., Sassi, F., Harvey, V. L., Randall, C. E., Emmons, L., Lamarque, J. F., Hess, P., Orlando, J. J., Tie, X. X., Randel, W., Pan, L. L., Gettelman, A., Granier, C., Diehl, T., Niemeier, U. and Simmons, A. J.: Sensitivity of Chemical Tracers to Meteorological Parameters in the MOZART-3 Chemical Transport Model, *J. Geophys. Res.*, 112, D03303, <https://doi.org/10.1029/2008JD010739>, 2007.
- Komhyr, W. D., Barnes, R. A., Borthers, G. B., Lathrop, J. A., Kerr, J. B., and Opperman, D. P.: Electrochemical concentration cell ozonesonde performance evaluation during STOIC 1989, *J. Geophys. Res.*, 100, 9231–9244, 1995.
- 1130 Koss, A., Yuan, B., Warneke, C., Gilman, J. B., Lerner, B. M., Veres, P. R., Peischl, J., Eilerman, S., Wild, R., Brown, S. S., Thompson, C. R., Ryerson, T., Hanisco, T., Wolfe, G. M., Clair, J. M. St., Thayer, M., Keutsch, F. N., Murphy, S., and de Gouw, J.: Observations of VOC emissions and photochemical products over US oil- and gas-producing regions using high-resolution H<sub>3</sub>O<sup>+</sup> CIMS (PTR-ToF-MS), *Atmos. Meas. Tech.*, 10, 2941–2968, <https://doi.org/10.5194/amt-10-2941-2017>, 2017.
- 1135 Kenagy, H. S., Sparks, T. L., Ebben, C. J., Wooldrige, P. J., Lopez-Hilfiker, F. D., Lee, B. H., et al.: NO<sub>x</sub> lifetime and NO<sub>y</sub> partitioning during WINTER. *J. Geophys. Res. Atmos.*, 123, 9813–9827. <https://doi.org/10.1029/2018JD028736>, 2018.
- 1140 Lacressonnière, G., Peuch, V.-H., Arteta, J., Josse, B., Joly, M., Marécal, V., Saint Martin, D., Déqué, M., and Watson, L.: How realistic are air quality hindcasts driven by forcings from climate model simulations?, *Geosci. Model Dev.*, 5, 1565–1587, <https://doi.org/10.5194/gmd-5-1565-2012>, 2012.
- Lee, P., J. McQueen, I. Stajner, J. Huang, L. Pan, D. Tong, H. Kim, Y. Tang, S. Kondragunta, M. Ruminski, S. Lu, E. Rogers, R. Saylor, P. Shafran, H. Huang, J. Gorline, S. Upadhayay, and R. Artz: NAQFC Developmental Forecast Guidance for Fine Particulate Matter (PM<sub>2.5</sub>). *Weather and Forecasting*, 32, 343–360, doi: 10.1175/WAF-D-15-0163.1, 2017.
- 1145 McDuffie, E. E., Fibiger, D. L., Dubé, W. P., Lopez-Hilfiker, F., Lee, B. H., Thornton, J. A., et al.: Heterogeneous N<sub>2</sub>O<sub>5</sub> Uptake During Winter: Aircraft Measurements During the 2015 WINTER Campaign and Critical Evaluation of Current Parameterizations, *J. Geophys. Res. Atmos.*, 123, 4345–4372. <https://doi.org/10.1002/2018JD028336>, 2018
- 1150 Lamarque, J.-F., Emmons, L. K., Hess, P. G., Kinnison, D. E., Tilmes, S., Vitt, F., Heald, C. L., Holland, E. A., Lauritzen, P. H., Neu, J., Orlando, J. J., Rasch, P. J., and Tyndall, G. K.: CAM-chem: description and evaluation of interactive atmospheric chemistry in the Community Earth System Model, *Geosci. Mod. Dev.*, 5, 369–411, 2012.
- 1155 Lavery, T. F., Rogers, C. M., Baumgardner, R. and Mishoe, K. P.: Intercomparison of Clean Air Status and Trends Network Nitrate and Nitric Acid Measurements with Data from Other Monitoring Programs, *Journal of the Air & Waste Mana. Assoc.*, 59:2, 214–226, DOI: 10.3155/1047-3289.59.2.214, 2009.
- Lefèvre, F., G. P. Brasseur, I. Folkins, A. K. Smith, and P. Simon: Chemistry of the 1991–1992 stratospheric winter: three-dimensional model simulations, *J. Geophys. Res.*, 99 (D4), 8183–8195, 1994.
- 1160 Lefèvre, F., F. Figarol, K. S. Carslaw and T. Peter: The 1997 ozone hole quantified from three dimensional model simulations, *J. Geophys. Res. Lett.*, 25, vol 13, 2425–2428, 1998.
- Lelieveld, J., Evans, J. S., Fnais, D., Giannadaki, D. and Pozzer, A.: The contribution of outdoor air pollution sources to premature mortality on a global scale, *Nature*, 525, 367–371, 2015.
- 1165 Li, Q., Jacob, D. J., Bey, I., Yantosca, R. M., Zhao, Y., Kondo, Y. and Northolt, J.: Atmospheric Hydrogen Cyanide (HCN): Biomass Burning Source, Ocean Sink?, *J. Geophys. Res. Lett.*, 27(3), 357–360, 2000.
- Li, Q., Palmer, P. I., Pumphrey, H. C., Bernath, P., and Mahieu, E.: What drives the observed variability of HCN in the troposphere and lower stratosphere?, *Atmos. Chem. Phys.*, 9, 8531–8543, <https://doi.org/10.5194/acp-9-8531-2009>, 2009.
- 1170 McDuffie, E. E., Edwards, P. M., Gilman, J. B., Lerner, B. M., Dubé, W. P., Trainer, M., Wolfe, D. E., Angevine, W. M., de Gouw, J., Williams, E. J., Tevlin, A. G., Murphy, J. G., Fischer, E. V., McKeen, S., Thomas B. Ryerson, T. B., Peischl, J., John S. Holloway, J. S., Aikin, K., Langford, A. O., Senff, C. J., Alvarez II, R. J., Hall, S. R.,

- Ullmann, K., Lantz, K. O. and Brown, S. S.: Influence of oil and gas emissions on summertime ozone in the Colorado Northern Front Range, *J. Geophys. Res. Atmos.*, 121, 8712–8729, doi:10.1002/2016JD025265, 2016.
- 1175 McDuffie, E. E., Fibiger, D. L., Dubé, W. P., Lopez-Hilker, F., Lee, B. H., Thornton, J. A., et al. : Heterogeneous N<sub>2</sub>O<sub>5</sub> uptake during winter: Aircraft measurements during the 2015 WINTER campaign and critical evaluation of current parameterizations. *Journal of Geophysical Research: Atmospheres*, 123, 4345–4372, <https://doi.org/10.1002/2018JD028336>, 2018.
- 1180 Ménégoz, M., D. Salas y Melia, M. Legrand, H. Teysseire, M. Michou, V.-H. Peuch, M. Martet, B. Josse, and I. Dombrowski-Etchevers: Equilibrium of sinks and sources of sulphate over Europe: comparison between a six-year simulation and EMEP observations, *Atmos. Chem. Phys.*, 9, 4505–4519, <https://doi.org/10.5194/acp-9-4505-2009>, 2009.
- 1185 Möllner, A. K., Valluvadasan, S., Feng, L. Sprague, M. K., Okumura, M., Milligan, D. B., Bloss, W. J., Sander, S. P., Martien, P. T., Harley, R. A., McCoy, A. B., and Carter, W. P. L.: Rate of Gas Phase Association of Hydroxyl Radical and Nitrogen Dioxide, *Science*, 330, 646–649, doi:10.1126/science.1193030, 2010.
- Morcrette, J.-J., Boucher, O., Jones, L., Salmond, D., Bechtold, P., Beljaars, A., Benedetti, A., Bonet, A., Kaiser, J. W., Razinger, M., Schulz, M., Serrar, S., Simmons, A. J., Sofiev, M., Suttie, M., Tompkins, A. M. and Untch, A.: Aerosol analysis and forecast in the ECMWF Integrated Forecast System, Part I: Forward modelling, *J. Geophys. Res.*, 114, D06206, <https://doi.org/10.1029/2008JD011235>, 2009.
- 1190 Myriokefalitakis, S., Daskalakis, N., Gkouvousis, A., Hilboll, A., van Noije, T., Williams, J. E., Le Sager, P., Huijnen, V., Houweling, S., Bergman, T., Nüß, J. R., Vrekoussis, M., Kanakidou, M., and Krol, M. C.: Description and evaluation of a detailed gas-phase chemistry scheme in the TM5-MP global chemistry transport model (r112), *Geosci. Model Dev.*, 13, 5507–5548, <https://doi.org/10.5194/gmd-13-5507-2020>, 2020.
- 1195 Newchurch, M. J., M. A. Ayoub, S. Oltmans, B. Johnson, and F. J. Schmidlin, Vertical distribution of ozone at four sites in the United States, *J. Geophys. Res.*, 108(D1), 4031, doi:10.1029/2002JD002059, 2003.
- 1200 Novelli, P. C., Masarie, K. A., Lang, P. M., Hall, B. D., Myers, R. C., and Elkins, J. W.: Reanalysis of tropospheric CO trends: effects of the 1997–1998 wildfires, *J. Geophys. Res.*, 108, 4464, <https://doi.org/10.1029/2002JD003031>, 2003.
- 1205 Nowak, J. B., Neuman, J. A., Bahreini, R., Brock, C. A., Middlebrook, A. M., Wollny, A. G., Holloway, J. A., Peischl, J., Ryerson, T. B. and Fehsenfeld, F. C., Airborne observations of ammonia and ammonium nitrate formation over Houston, Texas, *J. Geophys. Res.*, 115, D22304, doi:10.1029/2010JD014195, 2010.
- Oikawa, P., Ge, C., Wang, J., Eberwein, J. R., Liang, L. L., Allsman, L. A., Grantz, D. A. and Jenerette, G. D.: Unusually high soil nitrogen oxide emissions influence air quality in a high-temperature agricultural region. *Nat Commun* 6, 8753, <https://doi.org/10.1038/ncomms9753>, 2015.
- 1210 Oltmans, S. J., Lefohn, A. S., Harris, J.M. and Shadwick, D. S.: Background ozone levels of air entering the west coast of the US and assessment of longer-term changes, *Atmos. Environ.*, <https://doi.org/10.1016/j.atmosenv.2008.03.034>, 6020-6038, 2008.
- 1215 Peischl, J., Eilerman, S. J., Neuman, J. A., Aikin, K. C., de Gouw, J., Gilman, J. B., et al. : Quantifying methane and ethane emissions to the atmosphere from central and western U.S. oil and natural gas production regions, *J. Geophys. Res. Atmos.*, 123, 7725–7740, <https://doi.org/10.1029/2018JD028622>, 2018.
- 1220 Petetin, H., Sauvage, B., Parrington, M., Clark, H., Fontaine, A., Athier, G., Blot, R., Boulanger, D., Cousin, J.-M., Nédélec, P., and Thouret, V.: The role of biomass burning as derived from the tropospheric CO vertical profiles measured by IAGOS aircraft in 2002–2017, *Atmos. Chem. Phys.*, 18, 17277–17306, <https://doi.org/10.5194/acp-18-17277-2018>, 2018.
- 1225 Reddington, C. L., Conibear, L., Knute, C., Silver, B. J., Li, Y. J., Chan, C. K., Arnold, S. R., and Spracklen, D. V.: Exploring the impacts of anthropogenic emission sectors on PM<sub>2.5</sub> and human health in South and East Asia, *Atmos. Chem. Phys.*, 19, 11887–11910, <https://doi.org/10.5194/acp-19-11887-2019>, 2019.
- Rémy, S., Kipling, Z., Flemming, J., Boucher, O., Nabat, P., Michou, M., Bozzo, A., Ades, M., Huijnen, V., Benedetti, A., Engelen, R., Peuch, V.-H., and Morcrette, J.-J.: Description and evaluation of the tropospheric

- 1230 aerosol scheme in the European Centre for Medium-Range Weather Forecasts (ECMWF) Integrated Forecasting System (IFS-AER, cycle 45R1), *Geosci. Model Dev.*, 12, 4627–4659, <https://doi.org/10.5194/gmd-12-4627-2019>, 2019.
- 1235 Sander, S. P., Abbatt, J., Barker, J. R., Burkholder, J. B., Friedl, R. R., Golden, D. M., Huie, R. E., Kolb, C. E., Kurylo, M. J., Moortgat, G. K., Orkin, V. L., and Wine, P. H.: Chemical Kinetics and Photochemical Data for Use in Atmospheric Studies, Evaluation No. 17, Tech. Rep. 10-06, Jet Propulsion Laboratory, Pasadena, California Institute of Technology, <http://jpldataeval.jpl.nasa.gov/>, 2011.
- 1240 Von Schoneidmesser, E., Driscoll, C., Rieder, H. E. and Schiferl, L. D.: How will air quality effects on human health, crops and ecosystems change in the future?, *Phil. Trans. Royal. Soc. A*, <https://doi.org/10.1098/rsta.2019.0330>, 2020.
- Silva, R., West, J., Lamarque, J.F. *et al.* Future global mortality from changes in air pollution attributable to climate change. *Nature Clim Change* 7, 647–651, <https://doi.org/10.1038/nclimate3354>, 2017.
- 1245 Sindelarova, K., Granier, C., Bouarar, I., Guenther, A., Tilmes, S., Stavrou, T., Müller, J.-F., Kuhn, U., Stefani, P., and Knorr, W.: Global data set of biogenic VOC emissions calculated by the MEGAN model over the last 30 years, *Atmos. Chem. Phys.*, 14, 9317–9341, <https://doi.org/10.5194/acp-14-9317-2014>, 2014.
- 1250 Skachko, S., Ménard, R., Errera, Q., Christophe, Y., and Chabrilat, S.: EnKF and 4D-Var data assimilation with chemical transport model BASCOE (version 05.06), *Geosci. Model Dev.*, 9, 2893–2908, <https://doi.org/10.5194/gmd-9-2893-2016>, 2016.
- 1255 Søvde, O. A., Hoyle, C. R., Myhre, G., and Isaksen, I. S. A.: The HNO<sub>3</sub> forming branch of the HO<sub>2</sub> + NO reaction: pre-industrial-to-present trends in atmospheric species and radiative forcings, *Atmos. Chem. Phys.*, 11, 8929–8943, <https://doi.org/10.5194/acp-11-8929-2011>, 2011.
- 1260 Spracklen, D. V., J. L. Jimenez, K. S. Carslaw, D. R. Worsnop, M. J. Evans, G. W. Mann, Q. Zhang, M. R. Canagaratna, J. Allan, H. Coe, G. McFiggans, A. Rap, and P. Forster: Aerosol mass spectrometer constraint on the global secondary organic aerosol budget, *Atmos. Chem. Phys.*, 11, 12109–12136, <https://doi.org/10.5194/acp-11-12109-2011>, 2011.
- Stavrou, T., Peeters, J., and Müller, J.-F.: Improved global modelling of HO<sub>x</sub> recycling in isoprene oxidation: evaluation against the GABRIEL and INTEX-A aircraft campaign measurements, *Atmos. Chem. Phys.*, 10, 9863–9878, <https://doi.org/10.5194/acp-10-9863-2010>, 2010.
- 1265 Stavrou, T., Müller, J.-F., Boersma, K. F., van der A, R. J., Kurokawa, J., Ohara, T., and Zhang, Q.: Key chemical NO<sub>x</sub> sink uncertainties and how they influence top-down emissions of nitrogen oxides, *Atmos. Chem. Phys.*, 13, 9057–9082, <https://doi.org/10.5194/acp-13-9057-2013>, 2013.
- 1270 Steinbrecht, W., Shwartz, R., and Claude, H.: New pump correction for the Brewer-Mast ozone sonde: Determination from experiment and instrument intercomparisons, *J. Atmos. Ocean. Tech.*, 15, 144–156, 1998.
- Stockwell, W.R. *et al.*: A new mechanism for regional atmospheric chemistry modelling, *J. Geophys. Res.*, 102, 25847–25879, 1997.
- 1275 Stutz, J., B. Alicke, R. Ackermann, A. Geyer, S. Wang, A. B. White, E. J. Williams, C. W. Spicer, and J. D. Fast: Relative humidity dependence of HONO chemistry in urban areas, *J. Geophys. Res.*, 109, D03307, [doi:10.1029/2003JD004135](https://doi.org/10.1029/2003JD004135), 2004.
- 1280 Thornton, J. A., Jaeglé, L., and McNeill, V. F.: Assessing known pathways for HO<sub>2</sub> loss in aqueous atmospheric aerosols: Regional and global impacts on tropospheric oxidants, *J. Geophys. Res.*, 113, D05303, [doi:10.1029/2007JD009236](https://doi.org/10.1029/2007JD009236), 2008.
- 1285 Tilmes, S., Lamarque, J.-F., Emmons, L. K., Kinnison, D. E., Marsh, D., Garcia, R. R., Smith, A. K., Neely, R. R., Conley, A., Vitt, F., Val Martin, M., Tanimoto, H., Simpson, I., Blake, D. R., and Blake, N.: Representation of the Community Earth System Model (CESM1) CAM4-chem within the ChemistryClimate Model Initiative (CCMI), *Geosci. Model Dev.*, 9, 1853–1890, <https://doi.org/10.5194/gmd-9-1853-2016>, 2016.

- 1290 Vu, K. T., Dingle, J. H., Bahreini, R., Reddy, P. J., Apel, E. C., Campos, T. L., DiGangi, J. P., Diskin, G. S., Fried, A., Herndon, S. C., Alan J. Hills, A. J., Hornbrook, R. S., Huey, G., Kaser, L., Montzka, D. D., Nowak, J. B., Pusede, S. E., Richter, D., Roscioli, J. R., Sachse, G. W., Shertz, S., Stell, M., Tanner, D., Tyndall, G. S., Walega, J., Weibring, P., Weinheimer, A. J., Pfister, G., and Flocke, F.: Impacts of the Denver Cyclone on regional air quality and aerosol formation in the Colorado Front Range during FRAPPÉ 2014, *Atmos. Chem. Phys.*, 16, 12039–12058, doi:10.5194/acp-16-12039-2016, 2016.
- 1295 Wagner, A., Y. Bennouna, A.-M. Blechschmidt, G. Brasseur, S. Chabrillat, Y. Christophe, Q. Errera, H. Eskes, J. Flemming, K. M. Hansen, A. Inness, J. Kapsomenakis, B. Langerock, A. Richter, N. Sudarchikova, V. Thouret, C. Zerefos; Comprehensive evaluation of the Copernicus Atmosphere Monitoring Service (CAMS) reanalysis against independent observations: Reactive gases. *Elementa: Science of the Anthropocene* 9 (1): 00171. doi: <https://doi.org/10.1525/elementa.2020.00171>, 2021.
- 1300 Wang, Y., Ma, Y.-F., Eskes, H., Inness, A., Flemming, J. and Brasseur, G. P.: Evaluation of the CAMS global atmospheric trace gas reanalysis 2003–2016 using aircraft campaign observations, *Atmos. Chem. Phys.*, 20, 4493–4521, <https://doi.org/10.5194/acp-20-4493-2020>, 2020.
- Wood, E. C., T. H. Bertram, T. H., P. J. Wooldridge, P. J., and Cohen, R. C. : Measurements of N<sub>2</sub>O<sub>5</sub>, NO<sub>2</sub>, and O<sub>3</sub> east of the San Francisco Bay, *Atmos. Chem. Phys.*, 5, 483–491, 2005.
- 1305 Williams, J. E., Strunk, A., Huijnen, V., and van Weele, M.: The application of the Modified Band Approach for the calculation of on-line photodissociation rate constants in TM5: implications for oxidative capacity, *Geosci. Model Dev.*, 5, 15–35, <https://doi.org/10.5194/gmd-5-15-2012>, 2012.
- Williams, J. E., van Velthoven, P. F. J., and Brenninkmeijer, C. A. M.: Quantifying the uncertainty in simulating global tropospheric composition due to the variability in global emission estimates of Biogenic Volatile Organic Compounds, *Atmos. Chem. Phys.*, 13, 2857–2891, <https://doi.org/10.5194/acp13-2857-2013>, 2013.
- 1310 Williams, R., R. Long, M. Beaver, A. Kaufman, F. Zeiger, M. Heimbinder, I. Hang, R. Yap, B. Acharya, B. Ginwald, K. Kupcho, S. Robinson, O. Zaouak, B. Aubert, M. Hannigan, R. Piedrahita, N. Masson, B. Moran, M. Rook, P. Heppner, C. Cogar, N. Nikzad, AND W. Griswold. Sensor Evaluation Report. U.S. Environmental Protection Agency, Washington, DC, EPA/600/R-14/143 (NTIS PB2015-100611), 2014.
- 1315 Williams, J. E., Boersma, K. F., Le Sager, P. and Verstraeten, W. W.: The high-resolution version of TM5-MP for optimized satellite retrievals: description and validation, *Geosci. Model Dev.*, 10, 721–750, doi:10.5194/gmd-10-721-2017, 2017.
- Yarwood, G., Rao, S., Yocke, M., and Whitten, G.: Updates to the carbon bond chemical mechanism: CB05. Final report to the US EPA, EPA Report Number: RT-0400675, available at: <http://www.camx.com> (last access: 28 Sept 2021), 2005.
- 1320 Ye, X., Arab, P., Ahmadov, R., James, E., Grell, G. A., Pierce, B., Kumar, A., Makar, P., Chen, J., Davignon, D., Carmichael, G., Ferrada, G., McQueen, J., Huang, J., Kumar, R., Emmons, L., Herron-Thorpe, F. L., Parrington, M., Engelen, R., Peuch, V.-H., da Silva, A., Soja, A., Gargulinski, E., Wiggins, E., Hair, J. W., Fenn, M., Shingler, T., Kondragunta, S., Lyapustin, A., Wang, Y., Holben, B., Giles, D., and Saide, P. E.: Evaluation and intercomparison of wildfire smoke forecasts from multiple modeling systems for the 2019 Williams Flats fire, *Atmos. Chem. Phys. Discuss.* [preprint], <https://doi.org/10.5194/acp-2021-223>, in review, 2021.
- 1325 Zeng, G., Williams, J. E., Fisher, J. A., Emmons, L. K., Jones, N. B., Morgenstern, O., Robinson, J., Smale, D., Paton-Walsh, C., and Griffith, D. W. T.: Multi-model simulation of CO and HCHO in the Southern Hemisphere: comparison with observations and impact of biogenic emissions, *Atmos. Chem. Phys.*, 15, 7217–7245, <https://doi.org/10.5194/acp-15-7217-2015>, 2015.
- 1330 Zhuang, J., Jacob, D. J., and Eastham, S. D., The importance of vertical resolution in the free troposphere for modeling intercontinental plumes, *Atmos. Chem. Phys.*, 18, 6039–6055, 2018.