

Supporting materials for “Sensitivity of different BVOC emission schemes in WRF-Chem to vegetation distributions and its impacts over East China”

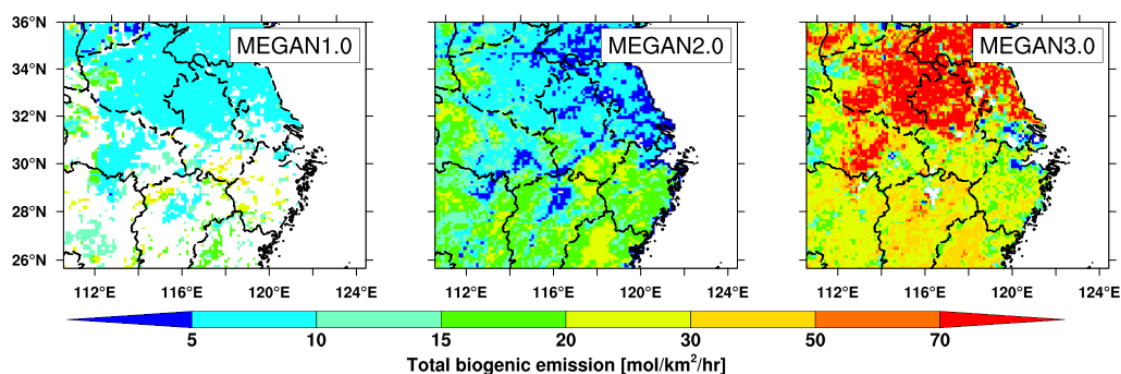


Figure S1. Spatial distribution of total biogenic emissions in July using the VEG-2015 vegetation date set.

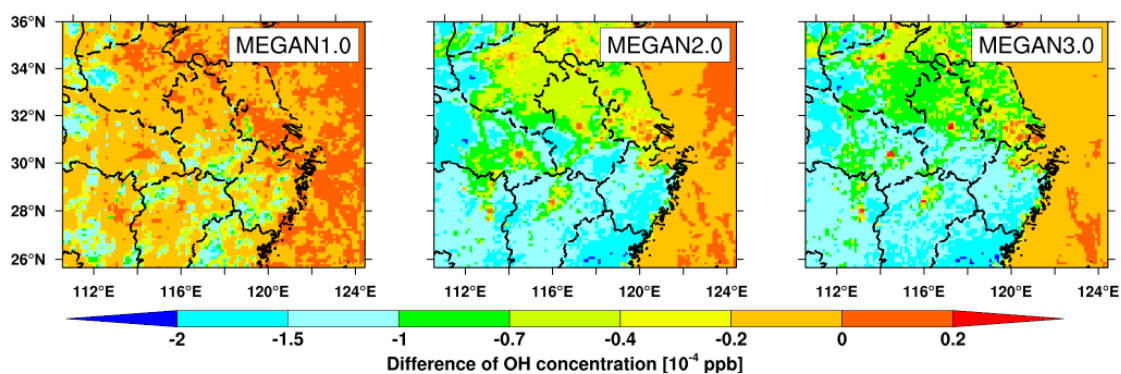


Figure S2. Spatial distribution of OH concentration due to the biogenic emissions near the surface in July using the VEG-2015 vegetation dataset.

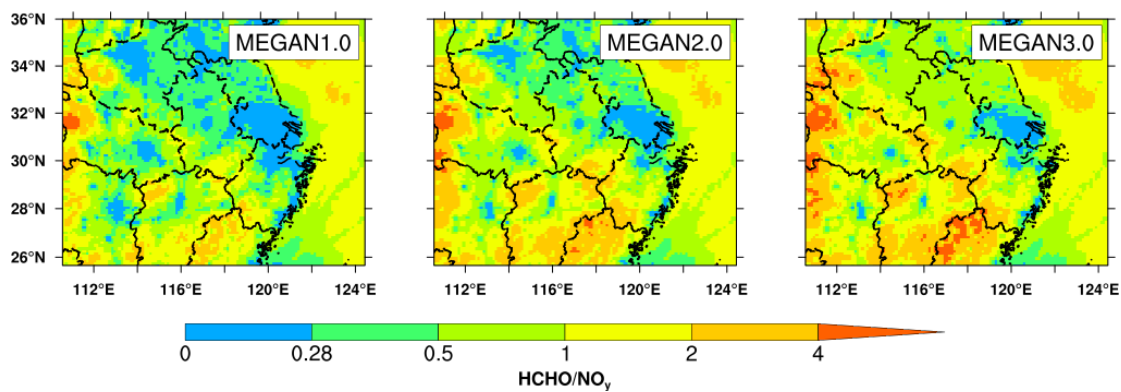


Figure S3. The ratio of monthly mean CH₂O and NO_y concentration for July 2015 over the simulation domain. The ozone production sensitivity can be roughly determined by the ratio of CH₂O and NO_y, where NO_y represent for total reactive nitrogen. Ozone production is sensitive to NO_x concentrations in NO_x sensitive region if the ratio is large, otherwise, ozone production is more sensitive to VOCs concentrations.