

iHydroSlide3D v1.0: an advanced hydrological-geotechnical model for hydrological simulation and three-dimensional landslide prediction

Guoding Chen^{1,3}, Ke Zhang^{1,2,3,4}, Sheng Wang^{1,2,3}, Yi Xia^{1,3}, and Lijun Chao^{1,2,3,5}

5 ¹State Key Laboratory of Hydrology-Water Resources and Hydraulic Engineering, Hohai University, Nanjing, Jiangsu, 210098, China

²Yangtze Institute for Conservation and Development, Hohai University, Nanjing, Jiangsu, 210098, China

³College of Hydrology and Water Resources, Hohai University, Nanjing, Jiangsu, 210098, China

⁴CMA-HHU Joint Laboratory for Hydrometeorological Studies, Hohai University, Nanjing, Jiangsu, 210098, China

10 ⁵College of Agricultural Science and Engineering, Hohai University, Nanjing, Jiangsu, 210098, China

Correspondence to: Ke Zhang (kzhang@hhu.edu.cn)

Abstract. Forecasting flood–landslide cascading disasters in flood- and landslide-prone regions is an important topic within the scientific community. Existing hydrological-geotechnical models mainly employ infinite or static 3D stability model and very few models have incorporated the 3D landslide model into a distributed hydrological model. In this work, we modified a
15 3D landslide model to account for slope stability under various soil wetness states and then coupled it with the Coupled Routing and Excess Storage (CREST) distributed hydrology model, forming a new modelling system called iHydroSlide3D v1.0. The model features the feasibility of applying flexibly different simulating resolutions for hydrological and slope stability submodules by embedding a soil moisture downscaling method. For a large-scale application, we paralleled the code and elaborated several computational strategies. The model produces a relatively comprehensive and reliable diagnosis for flood-
20 landslide events, including (i) complete hydrological components (*e.g.*, soil moisture and streamflow), (ii) a landslide susceptibility assessment (factor of safety and probability of occurrence), and (iii) a landslide hazard analysis (geometric properties of potential failures). We evaluated the plausibility of the model by testing it in a large and complex geographical area, the Yuehe River Basin, China, where we attempted to reproduce cascading flood–landslide events. The results are well verified at both hydrological and geotechnical levels. iHydroSlide3D v1.0 is therefore appropriately used as an innovative tool
25 for assessing and predicting cascading flood–landslide events once the model is well calibrated.

1 Introduction

Landslides represent mass-movement processes in hilly and mountainous environments and pose significant threats to human lives and properties (Hong et al., 2006; He et al., 2016). Rainfall events characterized by short-duration but high-intensity precipitation can substantially change the soil state of un lithified soil mantle or regolith (Srivastava and Yeh, 1991; Iverson, 2000; Baum et al., 2010), and thus affect hillslope stability and cause flash floods in channels. Forecasting flood–landslide
30

hazards and correspondingly evacuating people from hazardous zones in advance are widely regarded as a critical risk reduction strategy (Abraham et al., 2021). However, to date, it is still challenging to accurately and reasonably forecast the landslides due to the complex natural processes and the interweaving hydrological, geomorphic, and geotechnical mechanisms (Sidle and Bogaard, 2016;Guzzetti, 2021).

35 Modelling of landslide susceptibility can be appropriately accomplished by adopting a variety of approaches, including statistical methods (Guzzetti et al., 2007;Segoni et al., 2018), physically-based models (Baum et al., 2010;He et al., 2016;Zhang et al., 2016), and geotechnical approaches (van Westen et al., 2006) among others. Among them, the deterministic and physically-based models (PBMs) are popularly used for modelling the spatiotemporal susceptibility of landslides. Some of these approaches attempt to define a direct correlation between rainfall depth and slope stability under some simplified 40 hypotheses (Montrasio and Valentino, 2008;Liao et al., 2010). These models are useful for regional landslide stability assessment but fail to reproduce cascading flood–landslide disasters in catchments. More recently, efforts have been devoted to coupling the sound hydrological models with more or less complex landslide models (Baum and Godt, 2010;Lepore et al., 2013;He et al., 2016;Zhang et al., 2016;Aristizábal et al., 2016;Wang et al., 2020). Literatures have shown the contributions of hydrological-geotechnical models to real-world applications, such as improvements of disaster preparedness and hazard 45 management in North Carolina, US (Zhang et al., 2016) and long-term vulnerability estimates in Shaanxi Province, China (Wang et al., 2020), to name a few. Such hydrological-geotechnical These models include physical representations of precipitation, evapotranspiration, infiltration with continuous soil moisture accounting, runoff routing, and the slope stability module. However, most of them rely on infinite slope stability models (*i.e.*, one-dimensional models), which are based on the assumption of planar shallow failures and fail to capture the complexity of landslide geometry in many landscapes where 50 shallow- and deep-seated landslides inherently coexist (Zêzere et al., 2005;Mergili et al., 2014b;Tran et al., 2018). To this end, three-dimensional slope stability models (3D models) are proposed to cope with more complex scenarios (Mergili et al., 2014a;Reid et al., 2015).

Until now, as reviewed by Vandromme et al. (2020), the existing hazard software for the implementation of spatial PBMs mainly employs the one-dimensional (1D) or two-dimensional (2D) methods for slope stability calculation. The 3D 55 approaches like Scoops3D (Reid et al., 2015) and r.slope.stability (Mergili et al., 2014a) are only practical for static conditions such as imposed water level and fully saturated soil state. Researchers have attempted to combine the hydrological part of the Transient Rainfall Infiltration and Grid-Based Regional Slope-Stability (TRIGRS, a well-known, publicly available software) model (Baum et al., 2010) with a 3D model and analyzed the hillslope stability on a regional scale (Tran et al., 2018;He et al., 2021). As a matter of fact, to the best of our knowledge, there are still very few fully coupled hydrological-geotechnical models 60 that are capable of performing in a large scale and producing 3D information of landslide disasters. The progress is hindered by complicated model structures and considerable computational loads. The latter is inevitable and is an inherent feature for PBMs when the applications are conducted at a large scale using the 3D models (Zieher et al., 2017). Another problem that will be involved is the selection of computational spatial resolution. Hydrological modelling with a coarse spatial resolution (*e.g.*, 1 km resolution or coarser) but a large-scale coverage has been widely available with the increasing availability of

65 meteorological and land surface data (Xue et al., 2013a;Chao et al., 2019;Chao et al., 2021). However, such a resolution is insufficient to capture the slope failures on hillslope scales, particularly for the landslide events that usually occur within an area of only tens or hundreds of squared meters (Chen et al., 2017). Moreover, it is not wise to unlimitedly refine the mesh resolution of the hydrological model over a relatively large region. A strategy to tackle the differential needs for computational resolutions among the submodules is essential (Wang et al., 2020).

70 A comprehensive assessment for landslide disasters is generally composed of three parts (Vandromme et al., 2020): a landslide inventory, a landslide susceptibility analysis (usually denotes factor of safety (FS) and probability of occurrence), and a landslide hazard analysis (*i.e.*, magnitude that takes into account the area and volume of failure). Among them, the landslide hazard analysis is not very common as the ordinary 1D models cannot represent the geometric properties of landslides. Previous studies for this purpose are more inclined to use available landslide datasets (Guzzetti et al., 2009;Brunetti et al.,
75 2009;Klar et al., 2011) and advanced sensing and photogrammetric methods and techniques (*e.g.*, aerial photograph interpretation, high-resolution imagery, and LiDAR interpretation) (Lacroix, 2016). However, in many cases, the landslide data are not well documented or insufficient data is unfavourable to support such analysis (*e.g.*, only failure locations are recorded). Performing the landslide hazard analysis in such cases is necessary but difficult to implement.

In this work, we developed an innovative physically-based integrated hydrological processes and 3D slope stability
80 modelling framework, which is called the **integrated Hydrological processes and 3-Dimensional landSlide** prediction model (iHydroSlide3D v1.0), by coupling a distributed hydrological model with a newly-developed 3D geotechnical model. To alleviate the chronic contradiction of mesh resolutions required for hydrological and landslide simulations, we adopted the soil downscaling method to handle the soil moisture. The iHydroSlide3D v1.0 is built on a parallel computational design, allowing the code to run efficiently on a multi-core machine. The code was tested in a large and complex geographical area, the Yuehe
85 River Basin of western China, where we attempted to reproduce cascading flood–landslide events.

The paper is organized as follows. We first describe the basic theories of submodules and main features of the framework in Section 2. In addition, we also elaborate the strategies for model implementation in Section 2. In Section 3, we introduce a case study and associated materials required for model simulation and evaluation. Results are presented in Section 4, which are mainly focused on the evolution processes of a historical storm triggered cascading flood-landslide events. Finally,
90 we discuss the results and summarize the conclusions in Section 5.

2 The integrated hydrological-geotechnical model framework: iHydroSlide3D v1.0

2.1 Overall structure

iHydroSlide3D v1.0 is a physically-based modelling framework that accounts for both hydrological and geotechnical processes. The model mainly includes the following modules: (i) a distributed hydrological model based on the Coupled Routing and
95 Excess Storage (CREST) model, (ii) a newly developed 3D landslide model, and (iii) a soil moisture downscaling method. The model can currently process two sets of data with different resolutions, allowing to simultaneously modelling hydrological

and geotechnical processes with different spatial resolutions. iHydroSlide3D v1.0 is coded in MATLAB and is capable of running in a parallel manner, currently supported by the Linux and Windows operating systems. Detailed descriptions of the model are presented as follows.

100 2.2 Hydrological model: the Coupled Routing and Excess Storage Model

A physically-based hydrological model, *i.e.*, the Coupled Routing and Excess Storage (CREST) (Wang et al., 2011;Khan et al., 2011;Shen et al., 2016;Xue et al., 2013b) is adopted to simulate hydrological processes that trigger the rainstorm-induced landslide events. The CREST model was first developed by University of Oklahoma (<http://hydro.ou.edu>) and NASA SERVIR Project Team (www.servir.net) and served for predictions of flash floods caused by rainfalls on its early-version stage (Wang et al., 2011). The model is further enhanced by considering the Multi-Radar Multi-Sensor (MRMS) forcing data and has been used for hydroclimatology studies such as extreme hydrological events (*e.g.*, floods and droughts) (Zhang et al., 2015;Khan et al., 2011) and statistical and hydrological evaluation in ungauged basins (Xue et al., 2013a). The CREST is run in a distributed fashion via a cell-to-cell design concept, while the coupling between overland flow generation and routing scheme allows a realistic and detailed simulation of hydrological variables such as soil moisture, which plays a major role in determining the stability of a slope. More recently, several coupled hydrological-geotechnical models based on the CREST model such as CRESLIDE (He et al., 2016) and iCRESTRIGRS (Zhang et al., 2016) have emerged as the application evolves. These models, counting on the hydrological simulation of the CREST, have achieved their capability of back-calculation and/or prediction for rainfall-triggered landslides. As a consequence, CREST has been comprehensively and extensively evaluated regarding its hydrological simulation skill and its flexibility for coupling. A detailed description of the CREST can be found in Wang et al. (2011) and Xue et al. (2015). For better understanding the work of this study, it is still important to briefly review the principal theories of the CREST model here.

The CREST is driven by precipitation and potential or actual evapotranspiration. The rainfall-runoff generation processes are computed at each cell, starting with accounting for its received precipitation at each time step (P). After P passes the canopy layer and deducts canopy interception, the excess precipitation (P_{soil}) then reaches the soil surface. A conceptual variable infiltration curve (VIC), originated from the Xinanjiang Model (Zhao, 1992) and later adopted by the VIC model (Liang et al., 1994), is used to further divide the P_{soil} into excess rain (R) and infiltration water (I). The CREST assumes that each soil column is capable to store a maximum water depth, which is regarded as the infiltration capacity (i) and varies over an area in the following relationship:

$$i = i_m \left[1 - (1 - a)^{\frac{1}{b}} \right], \quad (1)$$

125 where the i_m is the maximum infiltration capacity of a cell and strongly depends on the soil properties; a is a fraction number of a grid cell and b is an empirical shape parameter. Under this assumption, the amount of water available for excess rain (R) and infiltration (I) can be further expressed as:

$$I = \begin{cases} W_m - W, i + P_{\text{soil}} \geq i_m \\ (W_m - W) + W_m \cdot \left[1 - \frac{i + P_{\text{soil}}}{i_m}\right]^{1+b}, i + P_{\text{soil}} < i_m \end{cases} \quad (2)$$

$$R = P_{\text{soil}} - I, \quad (3)$$

130 where W_m denotes the maximum water capacity of a cell; W represents the total mean water of the three soil layers. R can be further partitioned into overland and subsurface flows by comparing P_{soil} to the infiltration rate of the first layer (K), which is closely related to the soil saturated hydraulic conductivity (K_{sat}). Then CREST adopts the multi-linear reservoir method to simulate the cell-to-cell routing of overland and subsurface runoff at each time step. The model can better take into account the interaction between the surface and subsurface flows by coupling the runoff-generation process and the routing scheme
135 (Wang et al., 2011).

2.3 3D stability model based on sliding surface

The 3D slope-stability analysis model was originally derived to describe the characteristics of a potential failure (Hovland, 1979). This model has no iteration procedure but computes the FS directly compared to the slope-stability models established based on Bishop (1955) and Janbu et al. (1956). Embedded in geographic information systems (GIS), the model composes a
140 slope failure with column units, expressed as grid cells in GIS (software like 3DSlopeGIS) (Xie et al., 2003; Xie et al., 2004; Xie et al., 2006). More recently, progress has been made in a more sophisticated software r.slope.stability (Mergili et al., 2014a; Mergili et al., 2014b) that have the capacity to perform on a regional scale via a parallel computational technique. More importantly, the 3D slope-stability model demonstrates to be effective on both shallow and deep landslides, thus better behaves as a robust geotechnical tool and has a potential for wide applications (Zieher et al., 2017; Palacio Cordoba et al., 2020).

145 However, to implement on a large scale, the previous versions of the 3D stability model treat the hydrological component (e.g., transient soil moisture and water level) as static or imposed inputs, failing to consider the time-dependent hydrological processes (Mergili et al., 2014b; Mergili et al., 2014a). In this work, the model is extended to take into account spatiotemporal variations of water fluxes and storages on regular grids by introducing the hydrological module. Following an assumption of being ellipsoidal or truncated in shape, the potential slope failures are randomly generated over a whole study
150 region. When applied in a regional assessment, the theory of the model can be mainly divided into the following two parts.

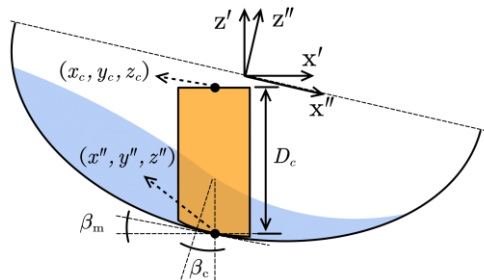


Figure 1: Coordinate systems involved in an arbitrary ellipsoid.

2.3.1 Coordinate transformation and geometric derivation

Three levels of the coordinate system involved in this model are (i) GIS coordinate system (x,y,z) over the whole study area (Fig. 1), (ii) Cartesian coordinate (x',y',z') of each potential failure, and (iii) ellipsoid coordinate system (x'',y'',z'') along the direction of the steepest slope in a single ellipsoid. The center of each ellipsoid (x_c,y_c,z_c) is randomly generated within the study area, while the GIS coordinate system is simultaneously transformed to the Cartesian coordinate from a ground perspective (Mergili et al., 2014b):

$$x' = (x-x_c)\cos\alpha + (y-y_c)\sin\alpha, \quad (4)$$

$$y' = (y-y_c)\cos\alpha - (x-x_c)\sin\alpha, \quad (5)$$

where α is the main dip direction of the ellipsoid; x'' is easily derived as $x'' = \frac{x'}{\cos\beta}$ (β is the main inclination of the ellipsoid, see in Fig. 2); y'' is identical to the y' axis; z'' is identical to the z axis (Fig. 1). Then we need to filter the grid cells encompassed by this random ellipsoid, meeting the following condition:

$$\frac{x'^2}{a_e^2} + \frac{y'^2}{b_e^2} \leq 1, \quad (6)$$

where a_e and b_e are half axes of the ellipsoid, following the x'' and y'' axes, respectively. These geometric lengths are randomly generated within user-defined ranges. To facilitate the derivation, we give a value of another half axes of the ellipsoid (c_e) beforehand, which, in fact, is highly dependent on failure depth and should be reconsidered in following sections. Hence, with regard to an ideal ellipsoid, the above variables need to satisfy the basic equation of the ellipsoid:

$$\frac{(x'' + \Delta x'')^2}{a_e^2} + \frac{y''^2}{b_e^2} + \frac{\Delta x''^2}{c_e^2(\tan\beta)^2} = 1. \quad (7)$$

By solving the intermediate variable $\Delta x''$, the z'' can be computed as:

$$z'' = \frac{\Delta x''}{\tan\beta}. \quad (8)$$

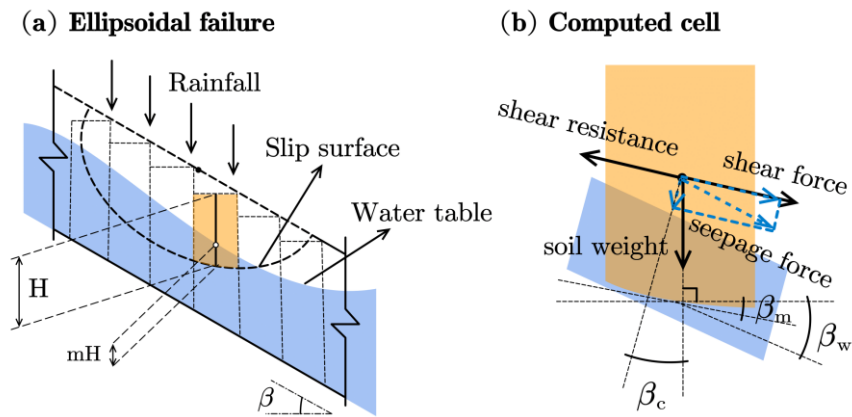


Figure 2: Typical longitudinal section of an ellipsoid used as slip surface in iHydroSlide3D v1.0: (a) overall features involved in a potential failure, and (b) forces acting at each column considering the groundwater effect.

175 Finally, we transformed it back into the GIS coordinate system:

$$z_{\text{slip}} = z_c + \frac{(z'' - x' \sin \beta)}{\cos \beta}, \quad (9)$$

where z_{slip} is the elevation of the considered cell in the ellipsoid. Hereto we get all coordinates once a random ellipsoid is generated. We further note that such procedure is required for each random ellipsoid (*i.e.*, each random loop) and thus is time-consuming particularly in a regional map system. The countermeasures will be introduced in the following sections.

180 2.3.2 Basic hydrogeological mechanics

This study adopted a conceptual parameter m to better simulate the soil moisture of each considered column in a random ellipsoid (see in Fig. 2). The parameter originated from Montrasio and Valentino (2008) and were later represented in further applications (Liao et al., 2010; He et al., 2016). The parameter m is a distributed value ranging from 0 to 1 and is controlled by hydrologic mechanisms (Fig. 2), which further impacts the matric suction and results in occurrences of landslides (Baum et al., 2010). More specifically, the apparent cohesion is strongly dependent on matric suction, which in turn is related to the degree of saturation of the soil column (S_r) (Montrasio and Valentino, 2008):

$$c_{\psi}(t) = \delta \cdot S_r \cdot (1 - S_r)^{\lambda} \cdot (1 - m)^{\alpha}, \quad (10)$$

where δ is a soil-type parameter and mainly refers to the peak shear stress at a failure layer; α and λ are numerical parameters to estimate the extreme points of the shear strength curve versus S_r and versus the degree of saturation of the soil, respectively. Then the total cohesion (C') is computed as follow:

$$C' = c' + c_{\psi}(t), \quad (11)$$

where c' is effective cohesion depending on soil type and is treated as a constant value associated with each grid cell. The failures may take place in both partially and fully saturated scenarios (Lu and Likos, 2006; Lu and Godt, 2013); the latter should take the seepage force (S) into account (Collins and Znidarcic, 2004). Considering the inter-slice forces in this model, the seepage force is computed according to the hydraulic gradient, reflecting a more general situation in the hillslope (King, 1989; Mergili et al., 2014b). Note that the seepage force is only considered in soil columns satisfying $m > 0$. Besides, the grid cell that has a low elevation is excluded from the considered ellipsoid by comparing z_{slip} and z_c :

$$D_c = z_c - z_{\text{slip}}. \quad (12)$$

For the soil column satisfying both of the conditions: $m > 0$ and $D_c > 0$, the seepage force can be approximated by the slope (β_w) and aspect (α_w) of the groundwater table (Fig. 2), acting in the direction of the hydraulic gradient (Mergili et al., 2014b; Mergili et al., 2014a):

$$S = \gamma_w \cdot dx \cdot dy \cdot mH \cdot \sin \beta_w, \quad (13)$$

where γ_w is the specific weight of water; dx and dy are the cell size, depending on the resolution of input data. To further transfer the seepage force from hydraulic gradient to sliding direction, S is first divided into horizontal (S_h) and vertical (S_v) components (Fig. 2):

$$S_h = S \cos \beta_w \text{ and } S_v = S \sin \beta_w. \quad (14)$$

S_v is irrelevant to the direction, while S_h needs to be further projected according to the dip direction of grid column (α_c) and the main inclination direction of the slip surface given by:

$$S_{ch} = S_h \cos(\alpha_w - \alpha_c) \text{ and } S_{mh} = S_h \cos(\alpha_w - \alpha). \quad (15)$$

210 Conforming to the orthogonality rule, the projected seepage force (S_c, S_m) and their vertical angle (β_{sc}, β_{sm}) can be expressed as:

$$\begin{aligned} S_c &= \sqrt{S_v^2 + S_{ch}^2}; S_m = \sqrt{S_v^2 + S_{mh}^2} \\ \cos \beta_{sc} &= \frac{S_{ch}}{S_c}; \beta_{sm} = \frac{S_{mh}}{S_m} \end{aligned} \quad (16)$$

The final expression of the seepage force acting on each grid column can be written as normal and slope-parallel components:

$$N_s = S_c \sin(\beta_{sc} - \beta_c); T_s = S_m \cos(\beta_{sm} - \beta_m). \quad (17)$$

215 The soil weight (G'), considering the variant degree of saturation and under the condition of $D_c > 0$, is derived as:

$$G' = dx \cdot dy \cdot [\gamma_d D_c + \gamma_w \cdot mH \cdot (n-1) + \gamma_w (D_c - mH)nS_r], \quad (18)$$

where γ_d is the unit weight of the dry soil; n and S_r represent the porosity and soil saturation degree, respectively. Based on the limited equilibrium condition, the model assesses the critical scenarios by calculating the FS , which can be mechanically subject to the stabilizing and destabilizing actions. Summarizing the derivations above, the extended version of the 3D slope-

220 stability equation can be written as follow:

$$FS = \frac{\sum_c [(C' + \delta \cdot S_r \cdot (1 - S_r)^\lambda \cdot (1 - m)^\alpha) \cdot A + (G' \cos \beta_c + N_s) \tan \varphi] \cos \beta_m}{\sum_c (G' \sin \beta_m + T_s) \cos \beta_m}, \quad (19)$$

where φ is the friction angle; β_c and β_m denote the dip and apparent dip of the slip surface at a considered soil column, respectively; A is the slip surface area of each column and can be computed as:

$$A = dx \cdot dy \frac{\sqrt{1 - (\sin \beta_{xz})^2 (\sin \beta_{yz})^2}}{\cos \beta_{xz} \cos \beta_{yz}}, \quad (20)$$

225 where β_{xz} and β_{yz} are apparent dips of x- and y-axis, respectively. The relationships between the apparent dips and main sliding direction assigned to each soil column can be expressed as (Xie et al., 2003):

$$\begin{aligned} \tan \beta_m &= \tan \beta_c |\cos(\alpha_c - \alpha)| \\ \tan \beta_{xz} &= \tan \beta_c \sin \alpha_c \\ \tan \beta_{yz} &= \tan \beta_c \cos \alpha_c \end{aligned} \quad (21)$$

The model diagnoses whether the landslide is stable or not by comparing the value of FS with a critical value that usually set to 1. At the same time, for each random ellipsoid, the volume and area of a failure can be approximated by:

$$230 \quad V_L = \sum D_c \cdot dx \cdot dy, \quad (22)$$

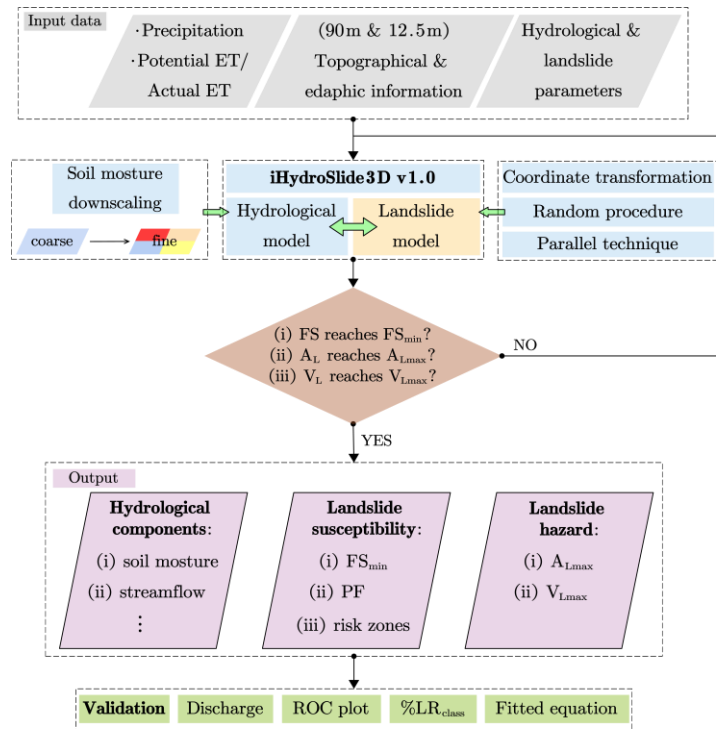
$$A_L = \sum dx \cdot dy. \quad (23)$$

It is worth noting that the model can serve in a stand-alone manner by directly imposing soil moisture and groundwater table. However, in a more practical sense, the landslide model is coupled with the hydrological model.

2.4 Soil moisture downscaling method

A near-conservative downscaling method of soil moisture (Droesen, 2016; Wang et al., 2020) is adopted here to link different-resolution-based submodules in the iHydroSlide3D v1.0, *i.e.*, the relatively coarse-resolution hydrological model and the fine-resolution 3D slope-stability model. The method relates the soil moisture with the topographic wetness index (TWI) by proposing a conversion parameter, the wetness coefficient (K_w). Readers may refer to Wang et al. (2020) for more detailed descriptions. This method helps the hydrological module produce soil moisture with a higher resolution that can be seamlessly utilized by the landslide module. The method has demonstrated its effectiveness (Wang et al., 2020) and is necessary for a hydrogeological-type model to balance the tedious computational tasks and accuracy.

2.5 Coupling strategy and model implementation



245

Figure 3: Flow chart illustrating the work process of the iHydroSlide3D v1.0 model.

The iHydroSlide3D v1.0 mainly consists of three sub-modules: (i) hydrological model CREST, (ii) soil moisture downscaling method, and (iii) 3D landslide-stability model (Fig. 3). The CREST undertakes the complete computational tasks of hydrologic processes, including interception by vegetation, water infiltration, runoff generation, cell-to-cell routing, and re-infiltration on

each grid cell in the course of excess surface runoff moving from upstream to downstream, of which the infiltration and re-
 250 infiltration play the most important role on the coupled hydrology-slope stability processes. The landslide model inherits the
 hydrological variables from the hydrological model and acts as a slope-stability monitor. The complete simulation cycle is
 seamlessly facilitated by the downscaling module. To elucidate the implementation of the iHydroSlide3D v1.0 model, we
 present the logical framework in Fig. 3 and summarize the detailed coupling strategy in the following aspects:

1. Instead of directly linking the soil moisture with rainfall intensity, the model takes the water loss into account due
 255 to the interception and evapotranspiration. The hydrological module helps to better simulate antecedent conditions such as soil
 moisture and cumulative infiltration. As a consequence, the parameter m is updated as a spatiotemporal variable (m_t) (He et
 al., 2016):

$$m_t = \frac{W_t}{nD_t(1 - S_r)}, \quad (24)$$

where W_t is the mean water amount of the three soil layers on a given grid cell. S_r can be computed as:

$$S_r = \frac{W_t}{W_m}. \quad (25)$$

D_t is the landslide's initiation depth for various soil states and is largely impacted by soil heterogeneity and hydraulic properties
 (Lu and Godt, 2008). Therefore, D_t is determined by infiltration processes at time t (He et al., 2016):

$$D_t = \sqrt{\frac{2K_s H_c t}{\theta_n - \theta_0}}, \quad (26)$$

where K_s is saturated hydraulic conductivity; H_c is capillary pressure; θ_n is volumetric water content of the saturated soil; θ_0
 265 is initial water content of the soil. Note that the m_t , S_r , and D_t are gridded values.

2. We prepare two sets of data with different resolutions: a relatively coarser hydrological resolution and a finer
 landslide resolution. Once the soil moisture is calculated for all coarser grid cells, the soil moisture downscaling module is
 activated to calculate a new soil moisture map in a finer resolution to fit the spatial resolution of the landslide model
 ($SM_{\text{Hydro}} \rightarrow SM_{\text{Land}}$).

3. In each simulation time step, the model generates a large number of ellipsoidal tested landslides with random
 270 geometric center and ellipsoid length and width. The latter is constrained by the range of maximum and minimum values,
 which are determined from field investigation and regarded as the input parameters. Each random ellipsoid adopts maximum
 soil depth as another geometric length (c_e) among the encompassed cells ($D_t = \max\{D_{\text{cell}_1}, D_{\text{cell}_2}, D_{\text{cell}_3}, \dots\}$). The coordinate
 transformation and related geometric derivation are then tackled according to Sect. 2.3.1. Next, each tested landslide slip
 275 surface corresponds to a FS value, based on the mechanical analysis described in Sect. 2.3.2.

4. Attributable to random strategy in the model architecture, any tested landslide will be possibly overlapped by
 another one, resulting in the confusing values of FS for each considered grid cell. In other words, each grid cell has a chance
 to be stable or unstable. For instance, as illustrated in Fig. 4, grid cell #a is estimated to be unstable in a tested landslide #3 but

stable in the tested landslides #4 and #5. In this work, we assign the minimum value of FS (FS_{\min} , Fig. 4b) ~~and failure~~
 280 ~~probability~~ (PF , Fig. 4a) to each grid cell (Mergili et al., 2014b). Each FS calculation is treated as an independent event, the failure probability (PF , Fig. 4a) is determined by counting the failure tests in all possible outcomes:

$$FS_t = \min\{FS_{L_1}, FS_{L_2}, FS_{L_3}, \dots\}, \quad (27)$$

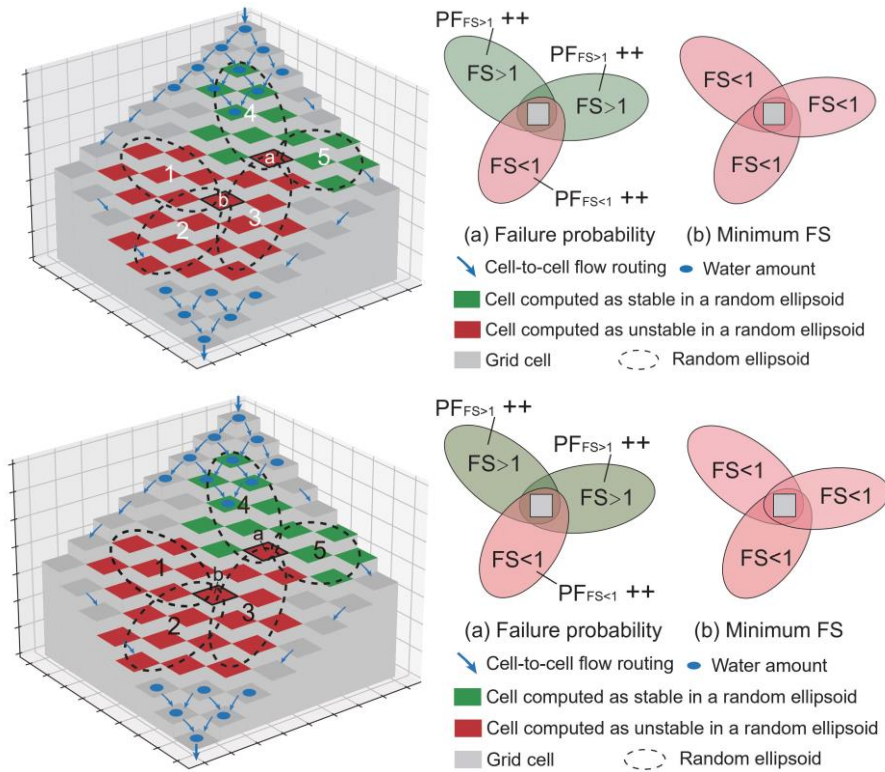
$$PF_t = \frac{\sum PF_{FS < 1}}{\sum PF_{FS < 1} + \sum PF_{FS > 1}}. \quad (28)$$

The model counts all possible values of FS and, based on a sufficiently large number of ellipsoids (reasonable density value,
 285 Eq. 31) and possible ellipsoid dimensions, determine the final values of FS and PF for each considered grid cell. Similarly, each grid cell belongs to a maximum value of volume and area of a failure:

$$V_{Lmax} = \max\{V_{L_1}, V_{L_2}, V_{L_3}, \dots\}, \quad (29)$$

$$A_{Lmax} = \max\{A_{L_1}, A_{L_2}, A_{L_3}, \dots\}. \quad (30)$$

The records of these values are only effective in the current simulation moment and will be reset as the simulation time moves
 290 forward. As the hydrological process evolves, the model is able to dynamically assess the slope stability and treats the slope-stability assessment indices as variables.



295 **Figure 4: Cell-to-cell routing scheme and potential landslides generated across the grid in the iHydroSlide3D v1.0 model: (a) and (b) illustrate the definitions of PF and FS within the framework, respectively.**

We believe that the above variables will reach the computational convergence provided the number of tested ellipsoid is sufficient enough. As a requirement, the “density” of ellipsoids is recommended to reflect the total number over the study area (Mergili et al., 2014b):

$$d_s = n \frac{A_p}{A_s} = n \frac{\pi(a_{e|max} + a_{e|min})(b_{e|max} + b_{e|min})c_t}{16A_s}, \quad (31)$$

300 where n is the chosen total number of tested landslide; A_p is average vertical projection of area of a single tested landslide; A_s is the extent of the study area; $a_{e|max}$, $a_{e|min}$, $b_{e|max}$, and $b_{e|min}$ are the upper and lower limits for randomization of ellipsoid length and width; c_t is a dimensionless correction factor and is set to the average cosine of the slope (Mergili et al., 2014a). Note that the d_s is strongly related to constraints of the random length and width and resolution of the digital elevation model, for which should be tested and set to an appropriate value before meaningful application. We also acknowledge that the model
305 outcomes the worst-case situation (FS_{min} , V_{max} , and A_{max}), however, along with the probability of the failure (PF).

2.6 Auxiliary computational strategy

There are two main computational bottlenecks in the model, which causes a large computational burden: (i) the operation of coordination transformation described in Sect. 2.3.1 is required for each random ellipsoid and, even in a single simulation time, will be executed n times (see in Eq. 31); (ii) the 3D slope stability model is inherently complicated and is also repeatedly
310 calculated for n times, leading to tedious computational tasks. To cope with the above computation-intensive problems, the following strategies are adopted in this work:

1. We use the smallest and variable "moving window" to just encompass a single ellipsoid being tested. Each ellipsoid can correspond to a small coordinate matrix, in which the coordination transform occurs, to avoid computing the entire study area.
- 315 2. iHydroSlide3D v1.0 is built upon a parallel computing framework and has a capacity of running on multicore processors or computer clusters. The model also provides the option to call the local maximum or a user-defined number of cores up to the limit of the hardware. The model divides the study area into user-defined number of tiles and each of them is processed independently in parallel. All computing tasks need to be queued until there are free computing cores. The slope-stability information is computed and counted for each tile and is stored in the computer memory. At the end of each simulation
320 time step, the model combines all tiles and recalculates the overlapping part of the margin of each "moving window", and then outputs the final results. The model clears the computer memory after the procedure and repeats the above operations in the next simulation period.

2.7 Model validation

iHydroSlide3D v1.0 can be mainly evaluated on the hydrological and landslide event levels (Fig. 3). Streamflow observations
325 from the local gauge stations are utilized for validation of the modeled discharge. The statistical metrics such as Nash–Sutcliffe

coefficient of efficiency (NSCE), Pearson correlation coefficient (CC), and relative bias are computed to measure the model performance. Furthermore, more than a single gauge station is necessary when the very large scale or multiple basins are involved. We also expect that the hydrologic process can be further calibrated by soil moisture data if the measurements are available, since soil moisture is more related to slope stability and thus is recommended (Lepore et al., 2013). To validate the model's predicative capability for landslides, *in situ* measurements (*e.g.*, L , W , V , and A of failures) will be ideal data for model validation and refinement. Such data not only serve for evaluation but also provide more hints for the constraint of random procedure and model preparation. However, in most cases, only point-like landslides are available for assessing the performance of initiation location prediction. Two existing synthetic indices $\%LR_{class}$ (Park et al., 2013; Tran et al., 2018) and Receiver Operating Characteristic (ROC) curve (Fawcett, 2006) are used for measure the model performance. Lack of the specific time for all landslide occurrences, we evaluated the model performance in the worst case of the hydrological conditions. In another word, we would consider a successful prediction if the recorded landslide sites were estimated as failures during the complete rainfall event.

2.8 Model inputs and outputs

The model inputs can be summarized into four types (given in Table 1): meteorological forcing data, land surface feature data, simulation parameters, and calibration/verification data. The detailed description, value/resolution, and source can be found in Sect. 3. The abbreviations of input data correspond the file name in simulating folders, helping users quickly identify and prepare necessary documents. The input data includes precipitation and evapotranspiration, digital elevation models (DEM), and soil texture and land cover maps, while the observed river streamflow and the inventory of landslide events are used to calibrate and validate the model. Additional topographic information such as slope angle and direction, which are also needed for the landslide model, are directly derived from the DEM data. Several hydrological parameters like W_m should be carefully prepared before the simulation and will be displayed in the following section. The output variables include all typical hydrological components (*e.g.*, overland runoff, soil moisture, and infiltration information) and landslide assessments (FS , PF , V_L , and A_L). Note that model output is controlled by a user-defined "GlobalControlFile" and the components are thus selected based on the interest of the user. The model calls for two sets of topographic data (see in Sect. 2.5) and all gridded data are either downscaled or aggregated to an objective spatial resolution to ensure the forcing and auxiliary data matching with each other. iHydroSlide3D v1.0 currently supports several different options for file formats (ASCII, TIFF, and TXT) and map projections, of which the Geographic Tagged Image File Format (GeoTIFF) is preferred for its distinct advantage of containing native compression capabilities, making the file sizes smaller.

Table 1: Overview of inputs datasets needed in iHydroSlide3D v1.0

<u>Input</u>	<u>Datasets</u>	<u>Derived datasets/parameters</u>
<u>Topographic</u>	<u>Digital elevation model (DEM)</u>	<u>Flow direction (FDR)</u> <u>Flow accumulation (FAC)</u>

		<u>Topographic wetness index (TWI)</u>
<u>Land cover (LANDCOVER)</u>	<u>Land surface cover</u>	<u>Percentage impervious area (ISA)</u>
<u>Soil texture (SOIL)</u>	<u>Soil lookup table</u>	<u>All soil-related parameters</u>
<u>Forcing data</u>	<u>Precipitation (Rain) and evapotranspiration (Pet) data</u>	<u>NA</u>
<u>Simulation parameters</u>	<u>Previous literature, documents, and calibration results</u>	<u>NA</u>
<u>Calibration/verification data</u>	<u>Recorded floods and landslides</u>	<u>NA</u>

355 3 Materials and model setup

We test the iHydroSlide3D v1.0 code in the Yuehe River Basin, Shaanxi Province, China (Fig. 5). The basin has an elevation between 270 to 2700 m a.s.l. and covers a total area of 1100 km². The terrain in this basin is characterized by steep hills, gullies, and valleys, while its flood season is usually accompanied by heavy and frequent rainfall. As a result, this basin is highly susceptible to slope instability and sliding (Zhang et al., 2019; Wang et al., 2020). In this area, 54 slope failure locations were reported during a rainstorm from July 3th to 4th in 2012 (have no more specific time record). In addition, the discharge of the flash flood was also observed at the outlet of the basin.

Hourly precipitation data were provided by China Meteorological Administration (CMA) based on the observations of gauge stations and were interpolated into a spatial resolution of 3 arc sec (~ 90 m). The potential evapotranspiration (PET) data were derived from Global Land Data Assimilation System (GLDAS). The 3-h, 0.25° PET data were first downscaled to a resolution of 3" using bilinear interpolation and further downscaled to an hourly scale using linear interpolation. Two different resolutions of DEM (90 m and 12.5 m) from the NASA Shuttle Radar Topography Mission (SRTM) Version 3.0 (SRTM3) DEM and Advanced Land Observing Satellite (ALOS) DEM are used for hydrological and landslide modelling (introduced in Sect. 2.5), respectively. The flow direction (FDR) and flow accumulation maps (FAC) are necessary for hydrological simulation and can be derived from the DEM map. The slope angle map is optional for hydrological modelling but required for landslide modelling, which can be directly computed through a built-in slope angle calculation function in iHydroSlide3D v1.0. The TWI data were derived using the ESRI ArcGIS and its ArcHydro toolbox. The land cover data were derived from the 30m GlobeLand30-2010 data (Chen et al., 2015). Soil texture was classified into the 12 United States Department of Agriculture (USDA) soil texture types from the Harmonized World Soil Database (HWSD v1.2) (Wieder et al., 2014) based on a lookup table (Table 2+) shared by both hydrological and landslide modules.

The parameters used for this model are largely related to *a priori* map of soil information and have been generated by Wang et al. (2020) and Zhang et al. (2016). W_m corresponds to available water capacity between field capacity and wilting point (Table 2+) and is distributed according to both topography and soil texture (Yao et al., 2012; Wang et al., 2020). Saturated hydraulic conductivity (k_s) strongly depends on the soil type and is determined through the pedotransfer look-up table (Table

24). Impervious surface area (ISA) can obviously affect the hydrological process such as infiltration and runoff generation and is calculated for each grid cell by considering the fractions of artificial surface and wetland in land cover map. For the landslide module, the constraints of the random landslides are regarded as priori parameters depending on the inventory. The inventory did not record the dimensional information (length and width) for all landslides but a few of them, from which we picked the maximum and minimum values to comprise the constraints. Considering the random interval equals the spatial resolution, the constraint boundaries were rounded to the integer for further simplification. The total tiles divided from the entire area, along with the landslide density and user-defined number of cores, are summarized as related to parallel computational parameters. All about the basic materials and parameters are briefly listed in Tables 32 and 43.

We run the model on the High-Performance (HP) cluster with 1 manage node and 8 computational nodes (Intel(R) Xeon(R) CPU E5-2660 v4 @2.00GHz). Each node operates a CentOS with 28 cores and 64GB RAM and reaches a total of 56 threads based on the hyper-threading technology.

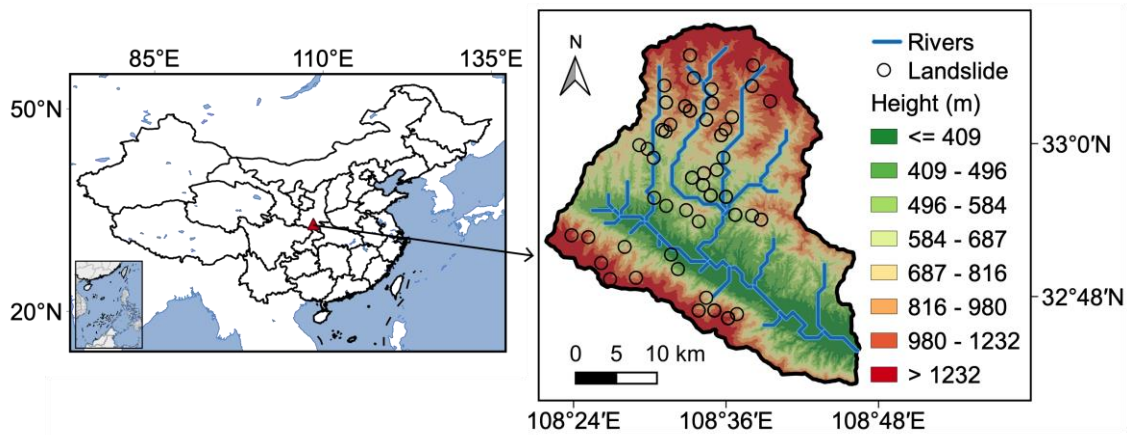


Figure 5: Locations of the Yuehe River Basin with its elevation and the reported landslide events.

Table 21: Lookup table of key parameters for different soil types used in this study (refer to Wang et al. (2020) and Zhang et al. (2016)).

USDA Soil Type	Soil Cohesion (kPa)	Saturated Hydraulic Conductivity (m/s)	Porosity	Friction Angle (degree)	Soil Unit Weight (kN/m ³)	Dry Field Capacity (m ³ /m ³)	Wilting Point (m ³ /m ³)
Silty clay	30	1.06×10^{-6}	0.49	18.5	18	0.36	0.21
Clay	40	1.31×10^{-6}	0.47	16.5	19.5	0.36	0.21
Silty clay loam	50	1.44×10^{-6}	0.48	16.5	14	0.34	0.19
Clay loam	35	2.72×10^{-6}	0.46	20	14	0.34	0.21

Silt	9	2.05×10^{-6}	0.52	26.5	16.5	0.32	0.165
Silt loam	9	2.50×10^{-6}	0.46	24	14	0.3	0.15
Sandy clay	24.5	4.31×10^{-6}	0.41	22.5	18.5	0.31	0.23
Loam	10	4.53×10^{-6}	0.43	22.5	13	0.26	0.12
Sandy clay loam	29	6.59×10^{-6}	0.39	20	15	0.33	0.175
Sandy loam	6	1.02×10^{-5}	0.4	32	15	0.23	0.1
Loamy sand	7.5	1.78×10^{-5}	0.42	28.5	20.5	0.14	0.06
Sand	5	2.44×10^{-5}	0.43	40	21	0.12	0.04

395

Table 32: ~~Description~~ Detailed information of basic input data used in iHydroSlide3D v1.0.

Model input	Value/resolution	Data source
Rain (<u>mm</u>)	Downscaled to hourly and of 3" resolution	China Meteorological Administration (CMA) based on gauge stations
Pet (<u>mm</u>)	Downscaled to hourly and of 3" resolution	Global Land Data Assimilation System (GLDAS)
DEM (<u>m</u>)	90 m and 12.5 m for hydrological and landslide modelling, respectively	SRTM3 DEM (NASA v2.1) and ALOS DEM (Alaska Satellite Facility)
FDR (<u>°</u>)	90 m resolution	Derived from the DEM data using the ESRI ArcGIS ArcHydro toolbox
FAC (<u>-</u>)	90 m resolution	Derived from the DEM data using the ESRI ArcGIS ArcHydro toolbox
LANDCOVER (<u>-</u>)	Aggregated to 90 m resolution	GlobeLand30-2010 (Chen et al., 2015)
SOIL (<u>-</u>)	USDA soil code from 1 to 12 with 90 m resolution	Harmonized World Soil Database (HWSD v1.2, (Wieder et al., 2014)) and the Natural Resources Conservation Service (NRCS) of the US Department of Agriculture
TWI (<u>-</u>)	Derived using ESRI ArcGIS and the ArcHydro toolbox based on the slope and the upstream contributing area; Both 90 m and 12.5 m resolution are necessary	NA

Table 43: Description of ~~simulation model~~ parameters used in iHydroSlide3D v1.0.

Parameters	Description	Value/resolution	Source
TimeStep (s)	Time step of the simulation (s)	Defined by user	NA
ISA (%)	Percentage impervious area (%)	Computed based on land cover map	NA
Ksat (mmh⁻¹)	Saturated hydraulic conductivity (mmh⁻¹)	Derived from soil texture map	NA
WM (mm)	Available water capacity (mm)	Computed from topography and soil texture	Wang et al. (2020)
B (-)	Exponent of the infiltration curve	Determined by soil texture	Flamig et al. (2020)
Ncores (-)	Number of parallel computational cores	Defined by user and limited by hardware	NA
LandslideDensity (-)	Density of the random ellipsoid over the area	Defined in Eq. (31) and chosen as a appropriate after testing	Refer to Mergili et al. (2014a)
TotalTile (-)	Number of divisions of study area	Defined by user and should refer to Ncores	NA
MAXae (m)	The maximum length of a random ellipsoid (m)	200	Landslide inventory
MINae (m)	The minimum length of a random ellipsoid (m)	50	Landslide inventory
MAXbe (m)	The maximum width of a random ellipsoid (m)	150	Landslide inventory
MINbe (m)	The minimum width of a random ellipsoid (m)	50	Landslide inventory

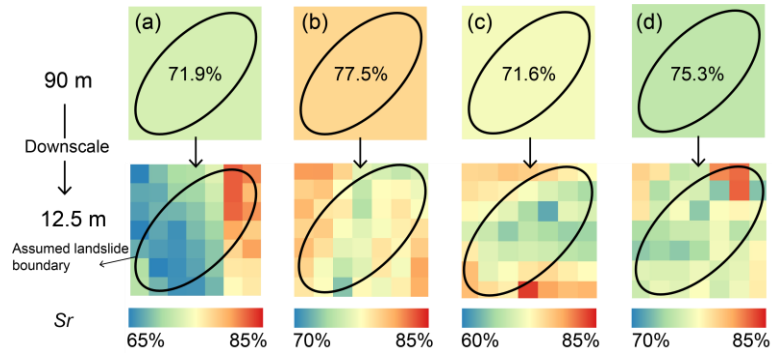
4 Results

400 4.1 Evaluation of the soil moisture downscaling method

We first evaluated the impacts and effectiveness of the soil moisture downscaling method, which provides more detailed soil water information (groundwater) for landslide modelling, and may directly impact the stability assessments. Compared to the infinite landslide model (Wang et al., 2020), the 3D model can fully consider the grid cells encompassed by an assumed landslide boundary (elliptical outline, see in Fig. 6). The cells were chosen from the 90-m resolution datasets with different antecedent soil water amount, of which the single value was converted to a range among over the 7 × 7 map with a 12.5-m

405

spatial resolution (Fig. 6). The long axis (a_e) of the tested ellipse reaches the diagonal of the square as far as possible to encompass more soil columns, and the potential depth of a failure is set to 2 m. The downscaled soil moisture values are irregularly distributed (Fig. 6) because they are contributed by several factors with local slope angle as the major one (Wang et al., 2020). As a consequence, the factor of safety was computed to a different value when using the single or composed soil moisture values for an assumed landslide (Table 54). In these four test sites, the risks are computed as the worse case situations. However, in reality, such effects will be more uncertain due to the fact that the location and geometry of a landslide and associated hydrological conditions are all variable during the modelling. We argue that this downscaling method is necessary when we perform the iHydroSlide3D v1.0 in a cross-scale manner.



415 **Figure 6: Soil moisture downscaling results from a coarser resolution (90 m) to a finer resolution (12.5 m). (a)~(d) are four grid cells selected from the 90-m resolution map. The ellipse is the assumed landslide boundary and encompasses the grid cells with the 12.5 m resolution.**

Table 54: Impacts of soil moisture downscaling on the potential slope failures in terms of the computed FS value.

Test cases	Original soil moisture (m^3/m^3)	Downscaled soil moisture (m^3/m^3)	Original FS	FS from downscaled soil moisture
1	71.9%	66.3%~83.6%	1.65	1.97
2	77.5%	71.2%~84.5%	1.45	1.81
3	71.6%	62.6%~86.2%	1.96	2.35
4	75.3%	68.3%~87.3%	1.46	1.78

4.2 Testing landslide density

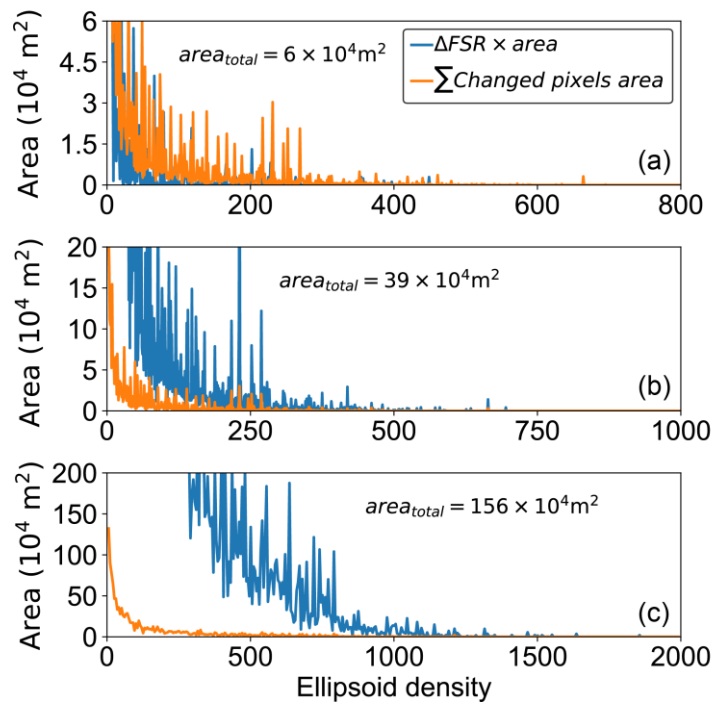
420 The model requires an appropriate user-defined landslide density that is highly related to model computation efficiency. This value is determined to satisfy the convergence of the results over the study area and, meanwhile, an acceptable level of the running time. Similar work has been done in the previous research (Mergili et al., 2014b) and, equally important, here we further study the relationship between the tile size and random ellipsoid density required. We carried out the convergence tests for three different sizes of a divided tile: 20×20 , 50×50 , and 100×100 (number of grid cells). For each scenario, we increased the d_s (see in Eq. (31)) value and compared the spatial pattern with the previous d_s step. Two computational targets,

425

the cumulative changed area over the entire region (\sum changed pixels area) and cumulative changed FS multiplied by area ($\Delta FSR \times area$), were used to evaluate the quantity of the convergence results (Mergili et al., 2014b). The total changed pixels area is easier to satisfy the convergence condition, *i.e.* all pixels have been assigned relatively invariant value of FS , while another target is strongly affected by the area of the tile (Fig. 7). In general, all the scenarios have similar convergence processes

430 in term of \sum changed pixels area (around the 500 in Fig. 7). $\Delta FSR \times area$ is more difficult to converge with the increase of the total area because this cumulative value is closely related the total number of the cells. We note that there exists no theoretical value of landslide density due to the fact that the generation of the potential landslide is totally random. Strictly speaking, $d_s = \infty$ will be an optimum value; however, there will always be a trade-off between the quality and efficiency of the calculation. Further, the increase for overall quality of the prediction cannot be found with a larger adopted density when

435 the \sum changed pixels area has converged, which in turn, can significantly increase the computational burden (Mergili et al., 2014a). Besides, the density is mainly determined by constraints for the randomization of ellipsoid dimensions, for which the value would be set based on necessary tests if the model is applied to a new area. For the application in this study area, we consider $d_s = 500$ a sufficiently reasonable approximation. The computing time for simulation is 55432 s, with 328 s per time step.



440

Figure 7: Landslide density tests for tiles with (a) 20×20 , (b) 50×50 , and (c) 100×100 grid cells. The total areas for the three scenarios are also presented. Two targets are computed during an interval of $\Delta d_s = 1$.

4.3 Characteristics of rainfall and flood events

445 Provided the essential parameters and datasets are appropriately prepared for iHydroSlide3D v1.0, we choose June 20, 00:00 to July 15, 00:00 as the simulation period, which is defined by two factors: (i) the period must include the main rainstorm triggering the flood and slope failures; and (ii) the period should be longer than the observation period to exclude the effect of initial conditions (Zhang et al., 2016; Wang et al., 2020). As illustrated in Fig. 8, the rainstorm started around July 4, 00:00 and reached the peak rate (exceeded 25 mm/h) within 5 hours, and lasted for about a day across the region. The peak discharge was observed a few hours after the peak-rainfall moment, reaching a value close to 1000 m³/s. The comparison between the modeled and observed discharge shows a generally good agreement with Bias=37.9%, NSEC=0.77, and CC=0.93, respectively (Fig. 8). The slightly large bias implies there is likely some uncertainty in routing or flow concentration processes depicted by the hydrological module in iHydroSlide3D v1.0. Moreover, the model behaves sensitive to the rainfall data (before July 4, 02:00 and after July 7, 14:00). As a result, uncertainty in the rainfall data may contribute to the bias in the simulated stream flow. Nevertheless, the above results indicate that the iHydroSlide3D v1.0 is generally capable of simulating the flood events and runoff processes when the model is calibrated.

455

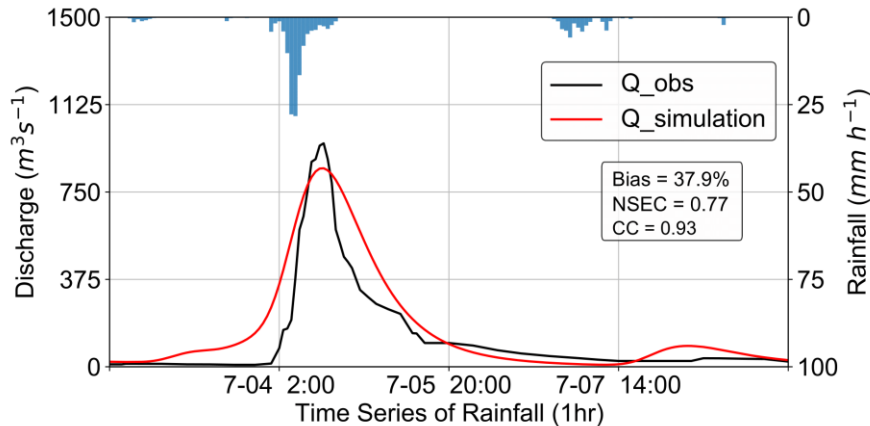


Figure 8: Basin-average rainfall rates and modeled hydrographs against the observed streamflow.

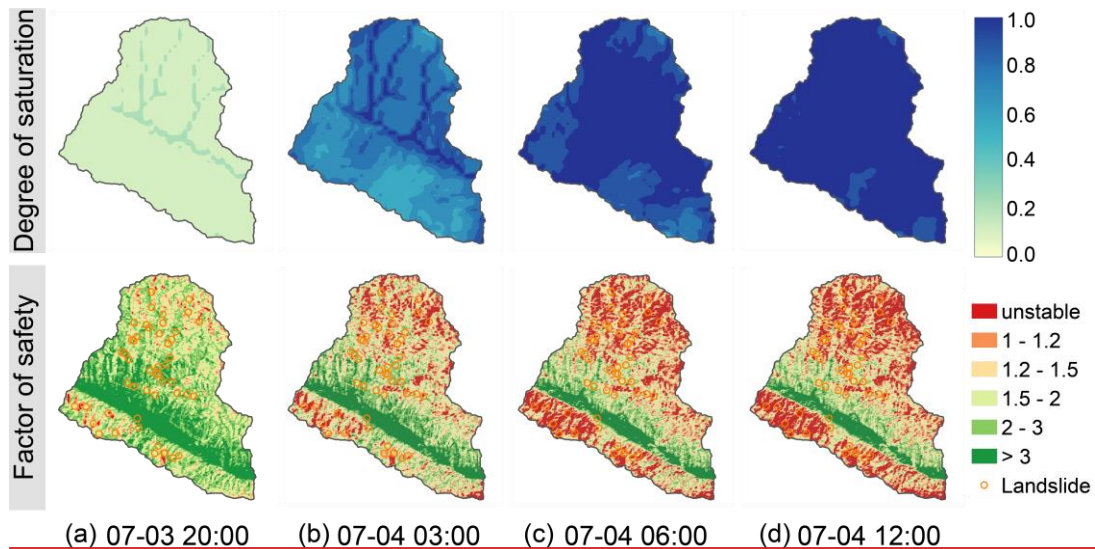
4.4 Evolution of landslide risk responding to hydrological process

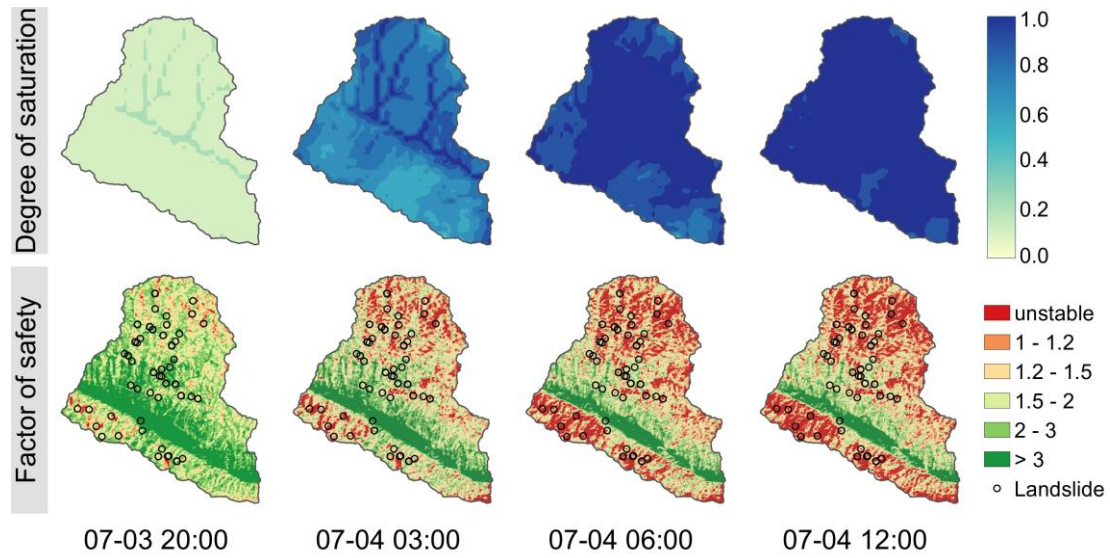
4.4.1 Soil moisture and factor of safety

460 The evolutions of the soil moisture and landslide susceptibility are illustrated in Fig. 9. There is a small part of this region being predicted as unstable areas (Fig. 9a) in the beginning of the storm and can be explained by (i) the effect of antecedent rainfall or initial hydrological conditions, and (ii) some grid cells that have steep slopes and are extremely unstable (Arnone et al., 2011; Aristizábal et al., 2016). These grid cells, generally located on very steep slopes, are more easily calculated as unstable areas in terms of *FS* value according to Eq. (19), which may bring some overestimation in the iHydroSlide3D v1.0. However, we have attempted to avoid such weakness by using wetting front concept with regard to slope failure depth (Eq. (26)), which

465

is subject to hydrologic infiltration process and remains very small at the early stage of the rainfall event. As a result, a very small portion is estimated (Fig. 9a). The soil moisture drastically increases when the rainstorm starts, particularly for the computational elements (streaks in Fig. 9a and b) belonging to main routing channels of the drainage network. Based on the cell-to-cell flow routing rule, at the early stage of the storm, these cells have more chances to experience re-infiltration of excess surface runoff from upstream cells. As a consequence, they are more likely to reach a saturated condition. This phenomenon emphasizes the contribution of topography to the evolution of soil moisture at the early stage of a rainstorm, when the saturated hydraulic conductivity is relatively similar. In accordance with the soil moisture, more conditional unstable grid cells are predicted compared to the spatial pattern before rainfall starts. Soil moisture and landslide risk still continue to increase 3 hours later and after the rainstorm reaches its peak; as a result, most of the study area is fully saturated and unstable cells are substantially increased (Fig. 9c). Different from the early stage, the excess portion of rainfall cannot effectively be absorbed by soil anymore but contributes to runoff instead, leading to the flood along the river channel (Fig. 8). No significant difference can be observed between Fig. 9c and d, as the water amount of the rainfall has exceeded the infiltration demand and water capacity.





480

Figure 9: Spatiotemporal evolutions of the soil wetness (*i.e.*, degree of saturation) and factor of safety. (a)~(d) are four moments that span the complete rainfall event.

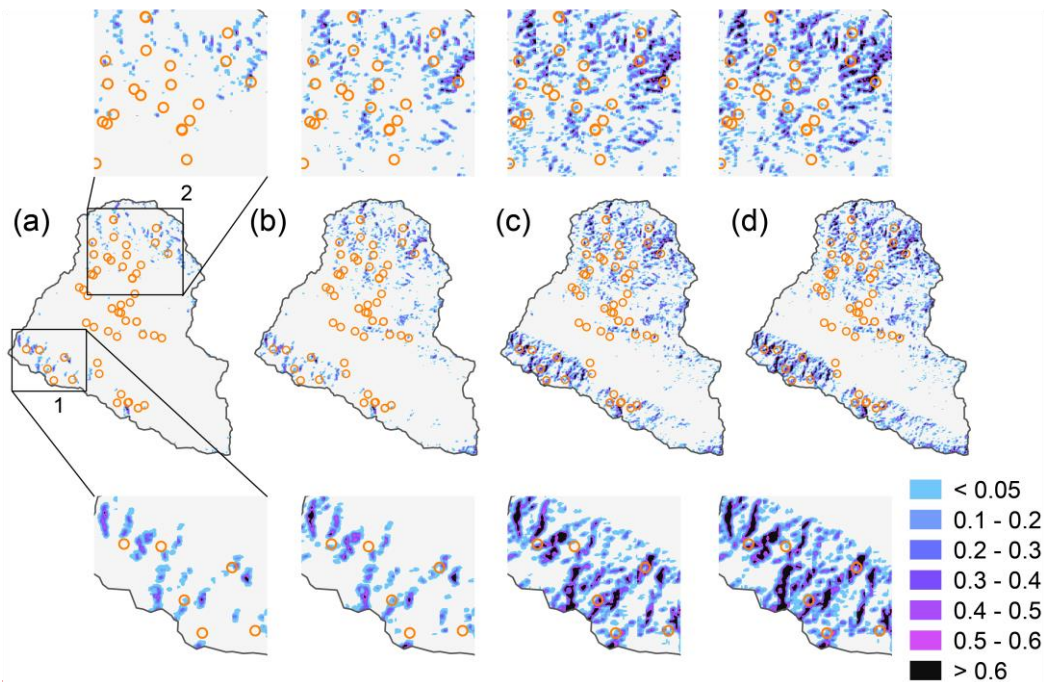
4.4.2 Probability of failure

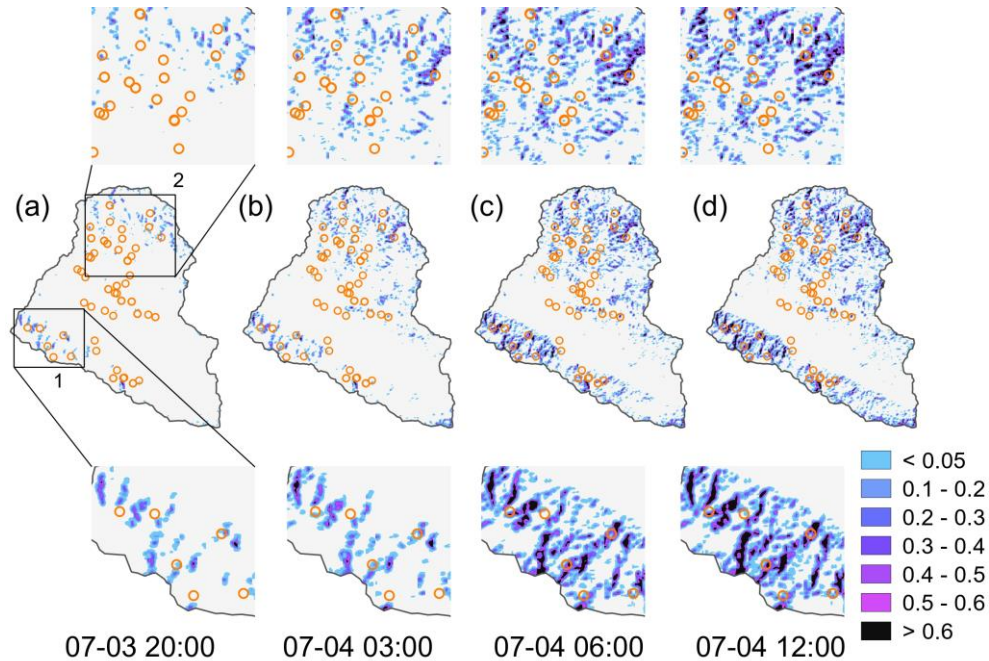
The model estimates the probability of failure for each grid cell due to the random operation of potential landslide generation (Sect. 2.7), although soil properties and hydrological conditions are deterministic. The original unstable areas were further reclassified to a different degree of probability (Fig. 10). We specifically divided the risk zones in terms of the PF values referring to the available classification (Lizárraga and Buscarnera, 2020; Vandromme et al., 2020): low ($0 < PF < 5\%$), moderate ($5\% < PF < 30\%$), high ($30\% < PF < 60\%$), and very high ($PF > 60\%$). As shown in Fig. 10a, most of the unconditional unstable areas fell in zones of low and moderate susceptibility whilst the others were estimated as the risks of high or very high. The former grid cells (*e.g.*, inset 2 in Fig. 10), affected by the cell with a steep slope, might be computed as unstable because iHydroSlide3D v1.0 assesses the slope stability using the 3D landslide model (Eq. (19)) and then outputs the minimum FS after random tests. In this work, relying on the PF classification, we can infer there are only a few steep grid cells (includes themselves) near the grid cells with small values of PF , at least they are attenuated by the flat terrain. On the other side, for the grid cells with large PF values (*e.g.*, inset 1 in Fig. 10, zones of high or very high), the local topography is more likely to be continuous steep slopes that can be repeatedly calculated as unstable and thus cause larger PF values (Eq. 28). However, very few landslides are observed in the areas with steep slopes (Fig. 9 and 10). These areas may be covered by no or very thin colluvium or regolith; under this circumstance, soil depth tends to be negatively related to slope angle according to field survey or available soil thickness models (Ho et al., 2012; Lanni et al., 2012; Alvioli and Baum, 2016; Tran et al., 2018). In this way, hazards like rockfall or avalanche are more expected instead of rainfall-induced landslides for these areas with extremely steep slope angles. Spatiotemporal evolution of the PF value shows that the probabilistic approach is capable of not only identifying the stable or unstable areas but also monitoring the unstable area in a more reliable and informative way.

500

Compared to the binary assessment (stable & unstable), this method can help to better understand the relationship of landslide risk with local topography and dynamic hydrological conditions.

iHydroSlide3D v1.0 depicted the evolutions of unstable area and all risk zones (in percent of the whole region) introduced above over the computational time (curves in Fig. 11). These two areas are controlled by the patterns of FS and PF , respectively. Overall, the unstable area holds its leading position during the complete rainstorm. More specifically, FS values respond more dramatically to the rainfall event than PF values, which makes the unstable area increase more rapidly at the peak stage of the rainfall. This is not surprising because changing the value of PF should obey stricter rules (Eqs. (27) and (28)) and experience repeatedly random tests. Among the various classes of the probability, the percent area and sensitivity to rainfall decrease with increasing PF -class value (see in Fig. 11). At the early stage, the unconditional unstable area is computed less than 5%, followed by percent area according to the PF values, particularly for $PF > 60\%$ (close to zero, precisely 0.12%). At the end of the rainfall (the soil is nearly fully saturated and the curves are steady), the percent area with $PF > 5\%$ is about 10% less than the total unstable area, followed by the other zones of risk. A slight increase is observed for $PF > 60\%$ (zone of very high) and most of them are contributed by unconditional unstable, which is immune to hydrological process (Aristizábal et al., 2016). The rest of the curves lie between them. The spatiotemporal classification of the landslide probability, as well as the traditional binary state of slope stability, are meaningful for landslide risk delineation and monitoring the area with a specific failure probability of interest.





520 **Figure 10: Spatiotemporal evolutions of the landslide occurrence probability. (a)~(d) are four moments that span the complete rainfall event.**

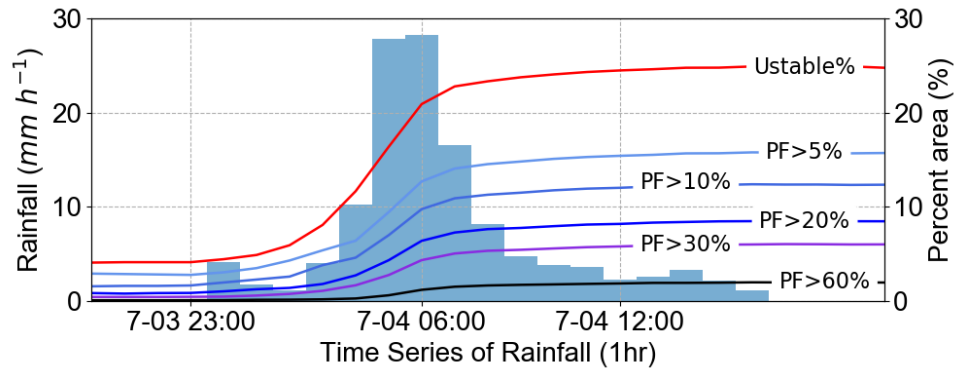


Figure 11: Evolution of percent area computed as unstable or various failure probabilities as the rainfall continues.

4.5 Spatial performance of model

525 We evaluated the spatial performance of the iHydroSlide3D v1.0 during the study period as presented in Table 65. We also compare our model with the previous coupled model CRESLIDE, of which the infinite slope stability is adopted (Fig. 12). Results show that 33 out of 54 landslides were successfully predicted, falling into the area with $FS < 1$ and $PF > 1$. For the zones of landslide risk, most of the failures (reaches 53.7%) are observed in low and moderate risk zones, whilst the remainder are in the zones with high and very high risks. The value of $\%LRclass$ index is evaluated as 82.91% when using factor of safety for prediction, and the same index reaches 94.05% when we add up the values for all four risk zones. To be less

530

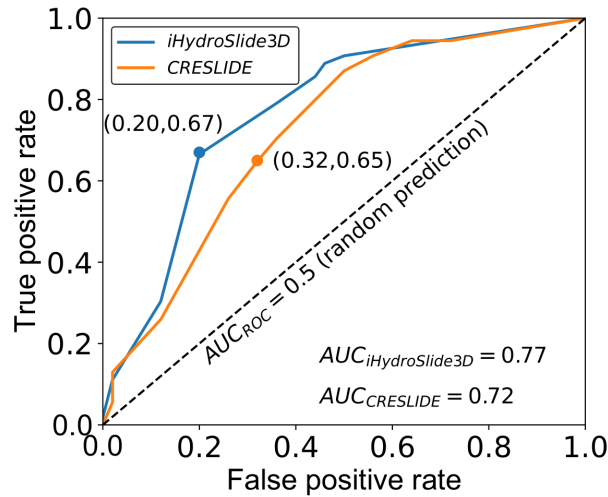
conservative, the %*LRclass* index for *PF* prediction can be 82.79%, which is close to the value by *FS* prediction, if we only consider the landslide risk from low to high. This result can be explained by the number of landslides per unit area, *i.e.*, the binary approach would cover more extensive areas to contain the landslide locations. By adopting the probabilistic approach to identify classified risk zones, we can focus on the area of interest and make more targeted and efficient predictions.

535 The ROC analysis demonstrates that the iHydroSlide3D v1.0 generally has a higher hit rate and lower false positive rate relative to the CRESLIDE model that is coupled with the infinite landslide model. The Area Under the ROC Curve (AUC) values for them are 0.77 and 0.72, respectively, suggesting that iHydroSlide3D v1.0 outperforms CRESLIDE in this case study. As mentioned in Sect. 2.3.2, the most significant difference between the two models is the assumption of landslide geometry. The 3D model takes the neighbouring cells into account and thus provides a comprehensive *FS* value (Eq. (19)), while the
 540 infinite models abruptly solve the limit equilibrium equation on a solo raster cell and are strongly conditioned by the local topography (Mergili et al., 2014b). This explains why the infinite-type models have a tendency to provide more conservative results (*i.e.*, lower stability or worst situation) (Xie et al., 2006; Tran et al., 2018; Mergili et al., 2014b; Chakraborty and Goswami, 2016; He et al., 2021), indicated by higher false positive rates (*e.g.*, 0.32 for CRESLIDE versus 0.20 for iHydroSlide3D when the threshold equals 1) in this study.

545

Table 65: Comparison of *LRclass* and %*LRclass* obtained from *FS* and *PF* values. The unstable areas are further divided into several risk zones with regard to their *PF* values.

FS class	Number of events (<i>a</i>)	Ratio to total events ($c = \frac{a}{b}$)	% predicted area ($d = \frac{cell_{class}}{cell_{total}}$)	<i>LRclass</i> ($e = \frac{c}{d}$)	% <i>LRclass</i> ($= e/f$)
FS < 1	33	61.11	24.46	2.50	82.91
FS > 1	21	38.89	75.54	0.51	17.09
Total events	54 (<i>b</i>)	100	100	3.01 (<i>f</i>)	100
<i>PF</i> = 0 (Null)	21	38.89	75.54	0.51	5.95
0 < <i>PF</i> < 5% (Low)	13	24.07	9.04	2.66	30.76
5% < <i>PF</i> < 30% (Moderate)	16	29.63	9.6	3.09	35.66
30% < <i>PF</i> < 60% (High)	3	5.56	3.92	1.42	16.37
<i>PF</i> > 60% (Very high)	1	1.85	1.9	0.97	11.26
Total events	54	100	100	8.66	100



550

Figure 12: ROC plot comparing slope-stability results from the CRESLIDE and iHydroSlide3D v1.0 models. The points on curves correspond to $FS = 1$ for both models. The AUC values are also shown in the plot.

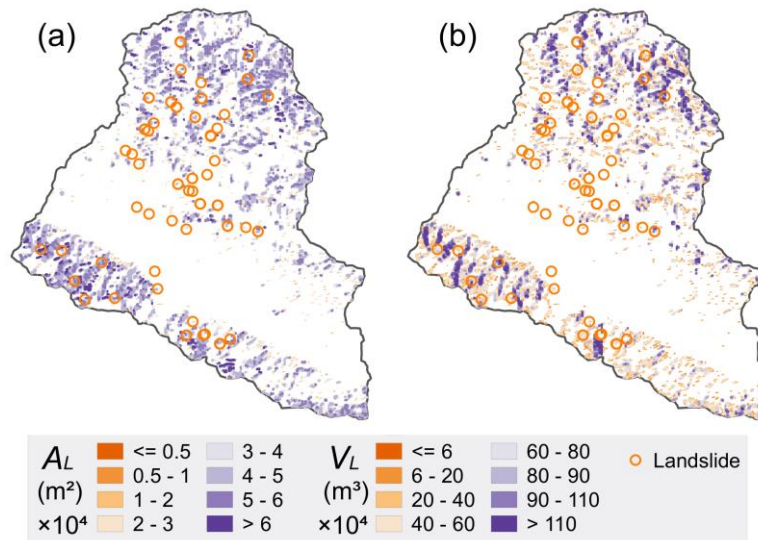
4.6 Landslide hazard analysis

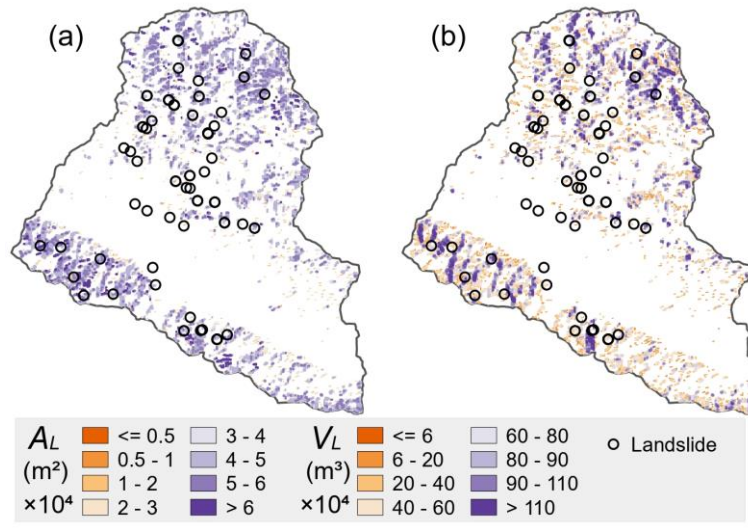
The iHydroSlide3D v1.0 is capable of computing the extent (*i.e.*, the area A_L and volume V_L) of potential landslides, which is essential for landslide hazard assessment. Compared to the visual techniques (*e.g.*, aerial photograph interpretation and high-resolution imagery) or *in-situ* investigation, the model estimates the A_L and V_L in a physics-based manner and strongly depends on the restrictions of random ellipsoids. In this way, A_L is simply determined by the number of encompassed raster cells, while V_L is computed by the soil columns and the failure depth associated with hydrological infiltration (Eq. 26). Therefore, there exist common phenomena that the values of V_L are more variable than that of the A_L , *i.e.*, one unique A_L may correspond to multiple V_L . Further, the adjacent cells may share the same value of A_L and V_L because they are possible to fall into the same potential landslide. In this work, we recorded and presented the max value of the A_L and V_L as the worst scenario across the unstable area (see in Fig. 13) after the sufficient random tests. Results show that most of the areas range from $4 \times 10^4 \text{m}^2$ to $5 \times 10^4 \text{m}^2$, while the volumes are more variable with a maximum value of around 1.1 million m^3 . The relatively large value of V_L may be resulted from (i) a relatively large A_L that contains more soil columns or (ii) deep-seated landslides involved. It is worth noting that the areas with extremely large values of V_L (Fig. 13b) are roughly overlapped by the areas with relatively large PF (Fig. 10d). This can be explained by that, in our pursuit of the minimum of the FS , a relatively thick failure depth was adopted in these areas, which caused an overprediction for landslide areas (Ho et al., 2012). Although the maximum magnitudes (A_L and V_L) of landslide hazards provide more conservative assessments, we expect that they are acceptable in slope engineering assessment (Tran et al., 2018).

570

Due to lack of historical documents for real A_L and V_L in this field, we evaluate the landslide hazard results by fitting the relationships of the A_L and V_L and comparing them with the existing relationships reported in previous literature. As the nature of these two geometrical properties introduced above, we did not collect all the values for each pixel. Here we prepared

the fitted source into six data sets according to the combinations of A_L and V_L (source data in Table 76). All possible V_L values referred to the cases with PF_{min} and PF_{max} , and four risk zones. We further fitted these six sets by power law and counted the R-square number (see in Table 76). Moreover, as a comparison, we collected four available relationships from previous literature computed using field measurements in their study (Table 76, ID 7 to 10). We then plotted them by substituting the A_L values in this work (See in Fig. 14). Obviously, relatively less data is plotted in Fig. 14a and b, which, as we have pointed above, shows all possible areas for potential landslides without duplicate value. The values of V_L estimated with PF_{max} (Fig. 14b) are relatively larger than that with PF_{min} (Fig. 14a) because the deeper slip depth tends to obtain a smaller FS , which in turn inevitably results in a larger volume of a failure. The fitted curves are close to the available equations in terms of trend, among which the Abele (1974) model overestimated the V_L in cases with ID 1 and 2. The efficiency of the fitted equations is generally good in terms of R^2 , reaching 0.992. However, such a power model has low efficiency for cases of ID 3 to 6 with low R^2 and abnormally wide confidence intervals. Although these cases adopt the unique combinations of A_L and V_L , it is still very likely to accept the samples with identical A_L and consequently get more dots in $A_L \sim V_L$ graph (Fig. 14c, d, e, and f), which further pose hinders to fit them as functions (*i.e.*, a binary relation between two sets that associates every element of the first set to exactly one element of the second set). In other words, they are regarded as sampling error when the power model is considered. We acknowledge that, in this work, we can only provide relatively ideal geometrical information (with regular and limited characteristics) in a mathematical manner, which is determined by cell size and random procedure. Even so, we appropriately consider the power models in the cases of ID 1 and 2 where unique values of A_L are applied. We further note that such relationships are not only limited to the maximum and minimum PF value but also any value of interest on the users' side. For those applications limited by field measurements, the method proposed here is expected to roughly assess the magnitude of landslide hazards.





595 **Figure 13: Spatial patterns of the max values of (a) A_L and (b) V_L for model-predicted landslides.**

Table 76: Relationships linking maximum landslide area A_L to landslide volume V_L .

ID	Equation	$A_{Lmin}(m^2)$	$A_{Lmax}(m^2)$	Source data used to fit	R^2
1	$V_L = 285.5 \times A_L^{0.687}$	5.47×10^3	9×10^4	Unique A_L and V_L with PF_{min}	0.992
2	$V_L = 146.4 \times A_L^{0.766}$	5.47×10^3	9×10^4	Unique A_L and V_L with PF_{max}	0.992
3	$V_L = 26.727 \times A_L^{1.061}$	5.47×10^3	9×10^4	Unique combination of A_L and V_L in the zone of low	0.599
4	$V_L = 80.29 \times A_L^{0.842}$	7.19×10^3	8.83×10^4	Unique combination of A_L and V_L in the zone of moderate	0.184
5	$V_L = 513.4 \times A_L^{0.684}$	6.25×10^3	8.83×10^4	Unique combination of A_L and V_L in the zone of high	0.13
6	$V_L = 154.1 \times A_L^{0.806}$	6.25×10^3	8.58×10^4	Unique combination of A_L and V_L in the zone of very high	0.221
7	$V_L = 0.074 \times A_L^{1.450}$	2×10^0	1×10^9	Guzzetti et al. (2009)	
8	$V_L = 0.39 \times A_L^{1.31}$	1×10^1	3×10^3	Imaizumi and Sidle (2007)	
9	$V_L = 0.242 \times A_L^{1.307}$	2×10^5	6×10^7	Abele (1974)	
10	$V_L = 12.273 \times A_L^{1.047}$	3×10^5	3.9×10^{10}	Haflidason et al. (2005)	

Column 1 lists the equation number. Column 2 shows the fitted equations in this work (ID 1 to 6) and available equations (ID 7 to 10) selected from previous literature. Columns 2 and 3 list the ranges of A_L applied for equations; the data for ID 1 to 6 is from this work; data for ID 7 to 10 is from literature. Column 4 gives the data source. Column 5 lists the commonly statistical measure R-squared (R^2).

600

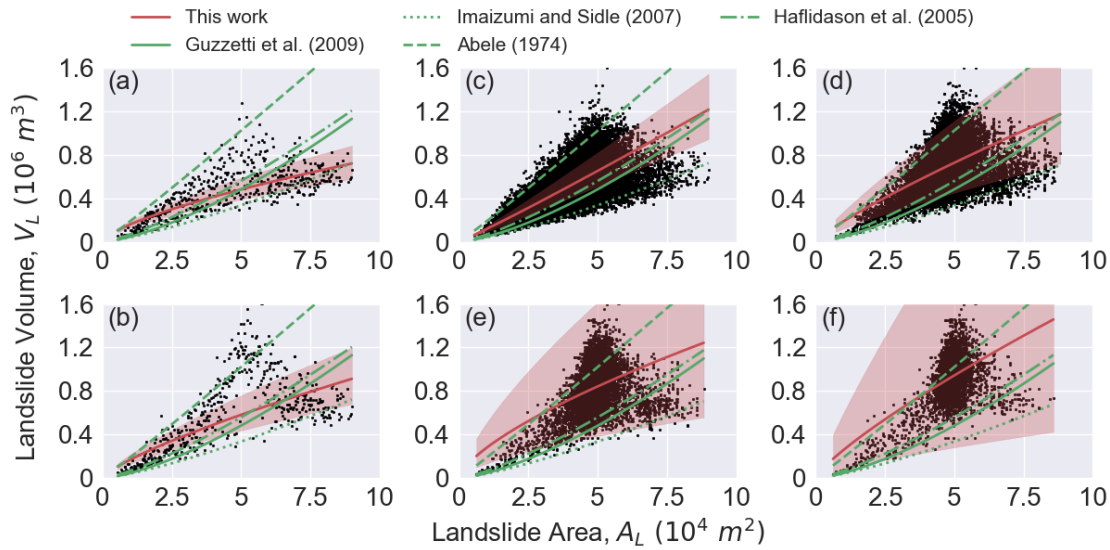


Figure 14: Six sets of source data (ID 1 to 6 in Table 76) are plotted and fitted in this work. All available equations (ID 7 to 10 in Table 76) are plotted by substituting the A_L values in this work. Red zone shows 95% confidence intervals.

5 Discussion and conclusions

605 We have modified the 3D landslide model to make it applicable for more general situations (*i. e.*, all possible soil moisture state). To this end, we incorporated the distributed hydrological model CREST to undertake the computational task of hydrological components, forming a new coupled hydrological-geotechnical model called iHydroSlide3D v1.0. The model is capable of assessing the spatiotemporal landslide susceptibility (FS and PF), performing hazard analysis (geometric properties of landslides, A_L and V_L), and predicting flash floods driven by rainfall processes. Considering differential needs for

610 computational resolutions by the hydrological and landslide modules, we embedded the soil downscaling method to seamlessly execute the code within such a sophisticated framework containing two resolutions datasets. For the purpose that the `modelcode` is practicably performed in the case of large scale ~~and, meanwhile, the computational time is at an acceptable level, we program the code in a parallel manner and run it on a multi-core machine, we parallelized the program for efficiency. We then tested and evaluated the model in a region suffering recorded rainstorm and slope failures. We would like to roughly~~

615 ~~evaluate our computational efficiency by comparing with two available parallel codes TRIGRS v2.1 (Alvioli and Baum, 2016) and r.slope.stability (Mergili et al., 2014a). The runtime for the single time step is 328 s for the present code, while it is 110 s and 1900 s for TRIGRS v2.1 and r.slope.stability, respectively in their descriptive literatures. Such a comparison is unfair because the runtime was not obtained under the same testing prerequisites. Moreover, differences in model structure prevent them from being treated equally. TRIGRS v2.1 uses a simple infinite-slope description and r.slope.stability dose not include~~

620 ~~the hydrological simulation. We show them here only for the general impression, upon which users may estimate the computational cost based on hardware and simulation scale.~~

Prior information on parameters is necessary for this model and need to be handled with the utmost care. As a matter of fact, most of the parameters are determined by available datasets and field records, while few of them are calibrated manually based on computational experimental tests. In particular, we want to point out that landslide density could significantly affect the output results and, even worse, a small value may yield meaningless results and unwanted consequences. Thus, the landslide density is necessary to be regularly tested when the code is applied for a new region. However, we would preliminarily recommend $d_s = 500$ for a rough assessment as it has been tested in detail in this study and a study by Mergili et al. (2014a). We conclude that the converged density value tends to be irrelevant to the tile area once the constraints of the landslide's shape are determined. We also argue that the soil downscaling method is necessary when we run the hydrological and landslide modules at different resolutions, because the uneven soil moisture patterns exactly impact the slope stability assessment. In particular, the 3D stability model should sufficiently consider the spatial distribution of soil moisture within an objective slip surface. This is a typical difference when we adopt the downscaling method comparing to the infinite stability model (Wang et al., 2020).

In this work, we have prepared the observed river streamflow from the gauge and the point-like landslide locations. Although we have gotten a generally good agreement with the observations in terms of discharge and similar efforts have been done in previous studies (He et al., 2016;Zhang et al., 2016;Wang et al., 2020), the results cannot directly prove that the soil moisture is accurately estimated, which is truly associated with slope stability, per se. Other soil moisture data through site measurement (Lepore et al., 2013) or satellite (Zhuo et al., 2019a;Zhuo et al., 2019b) can be used to further validate the model performance. However, field measurements are usually not available and even many boreholes can only cover some of the many grid cells in a large-scale region (Marin et al., 2021), making the representativeness of ground observations questionable. The observation from the satellite is useful for soil moisture in shallow depth, hindering the application for landslide predictions at a deep depth (Zhuo et al., 2019a). Therefore, we consider the soil moisture as an intermediate hydrological component, of which the spatial pattern is simulated at each time step.

The model advantageously provides a spatiotemporal perspective for the evolution of hydrological processes, as well as the landslide assessments and hazards. Together with the random operation, the model can simultaneously assign the unstable grid cells with factor of safety and failure probability. We expect such a combination of landslide assessment analysis is effective and more targeted. Moreover, temporal monitoring of the process evolution is useful for dynamic management of unstable areas subject to rainfall events. The overall performance of the model is generally satisfactory based on the statistical metrics of both hydrological (Bias, NSEC, CC) and landslide aspects ($\%LR_{class}$, $ROC - AUC$). We further recommend that the $\%LR_{class}$ index can be appropriately used to evaluate the landslides within various zones of risk determined by PF ranges. Note that we did not distinguish the unconditional stable and unstable grid cells beforehand, although they can inherently occur in the landslide models built upon the limit equilibrium principle (Aristizábal et al., 2016). However, iHydroSlide3D v1.0 defined the failure depth by adopting the wetting front concept that is subject to the infiltration process. The model, therefore, can better target the rainfall event and reasonably handles the hydrologic initial conditions. In addition, the results also indicate that the 3D landslide model can ameliorate the overprediction problem, known to be present in the infinite landslide models.

The comprehensive assessments (in both flood and landslide) possibly contribute to land management and disaster risk management with professional analysis. The landslide susceptibility and hazard zoning are able to manage landslide hazard in urban/rural areas by excluding development in higher hazard areas, and requiring hydro-geotechnical assessment in the planning stage (Fell et al., 2008). The conception has been introduced across some countries such as France (Fell et al., 2008) and Switzerland (Leroi et al., 2005). A recent work corroborated existing hypotheses that urbanization increases landslide hazards (Johnston et al., 2021). Our model could be used as a tool to study the importance of considering interactions with urbanization when predicting landslide hazards under climate change scenarios. The current modular framework and flexibility of modelling setup also make it feasible to link with other numerical weather prediction models and real-time forcings. We would like to stress that these complicated applications generally require extraordinary computing resources to support.

~~In the present work, we produced the geometric properties of potential landslides; however,~~ The verification for landslide geometric output (volume and surface area)of results is still limited by the available measured data (*e.g.* landslide scars used in Arnone et al. (2011)). Instead, we evaluated them with the fitted power-law equations, which, together with the available relationships in previous studies, are used as statistical tools for analysis of regional landslide magnitude. As a matter of fact, we haven't unveiled the fundamental geotechnical mechanics of landslide in terms of 3D geometry of the sliding surface, which need be solved through field investigation. The work we have done here is similar to that of Marchesini et al. (2009) based on the limit equilibrium method and iteration. What makes progress is that we perform the model in a large region and obtained more detailed results.

Another limitation is the geotechnical parameters extracted from the available datasets. Determining their values in this way cannot consider geotechnical uncertainty due to inherent temporal and spatial variability of terrain materials (Hicks and Spencer, 2010;Griffiths et al., 2011;Mergili et al., 2014a). One way to overcome the problem is adopting the Monte Carlo approach, of which the examples can be found in literature (Raia et al., 2014;Mergili et al., 2014a;Vandromme et al., 2020). Such embedded probabilistic method, no doubt, will considerably bring additional computational burden. In addition, we associate the failure depth with the infiltration process in this work, neglecting the spatial distribution of soil thickness in a terrain, which shall be a subject of future studies by supplying different soil-thickness assumptions.

In summary, a new hydrological-geotechnical model, iHydroSlide3D v1.0, coupling a distributed hydrological model (CREST) and a three-dimensional slope stability model (3D landslide model), was described and tested in this study. The model is capable of simulating the spatiotemporal evolutions of hydrological components and landslide susceptibility and hazard. In order to coordinate the different resolution of datasets required for hydrological and landslide modules, the soil downscaling module is embedded to ensure that the code can be seamlessly executed. For efficiency, we program the code within a parallel framework and, together with the auxiliary efforts, make it possible to run in a large region. The model comprehensively presented the consequences of rainfall-triggered landslides at the watershed scale. With the evaluations from both hydrological and landslide aspects, we highlight the performance of iHydroSlide3D v1.0 on back-analysis and the potential for predicting cascading flood-landslide disasters. The produced zones of risk and landslide geometric properties are valuable for disaster prevention and risk management. The modelling system presented in this work is also designed as a

690 framework and has the potential to adopt other hydrological or land surface model (LSM) schemes and landslide models as alternatives. Moreover, iHydroSlide3D v1.0 can be further improved by optimizing geotechnical parameters and adopting other soil-thickness assumptions.

695 *Code and data availability.* The source code to iHydroSlide3D v1.0 is available on GitHub at <https://github.com/GuodingChen/iHydroSlide3D-v1.0/tree/v1.0> <https://github.com/GuodingChen/iHydroSlide3D-v1.0> and on Zenodo at <https://zenodo.org/record/4577536> with a DOI of <http://doi.org/10.5281/zenodo.4577536>. The data of results displayed in this paper are provided, along with the plot code, on GitHub at <https://github.com/GuodingChen/Data-Plot-code/tree/Data&plot-code> and on Zenodo at <https://zenodo.org/record/4559938> with a DOI of <http://doi.org/10.5281/zenodo.4559938>.

700 *Author contributions.* KZ and GdC designed this study; GdC, KZ and SW developed the model code and performed the simulations; LjC provided the original datasets; GdC and KZ prepared the manuscript with contributions from all co-authors; KZ acquired fundings for this study.

Competing interests. The authors declare that they have no conflict of interest.

705

Acknowledgements. This study was supported by the National Natural Science Foundation of China (51879067), the National Key Research and Development Program of China (2018YFC1508101), the Natural Science Foundation of Jiangsu Province (BK20180022), Six Talent Peaks Project in Jiangsu Province (NY-004), and the Fundamental Research Funds for the Central Universities of China (B200204038).

710 **References**

- Abele, G.: Bergstürze in den alpen: ihre verbreitung, morphologie und folgeerscheinungen, 1974.
- Abraham, M. T., Satyam, N., Rosi, A., Pradhan, B., and Segoni, S.: Usage of antecedent soil moisture for improving the performance of rainfall thresholds for landslide early warning, CATENA, 200, 105147, 10.1016/j.catena.2021.105147, 2021.
- 715 Alvioli, M., and Baum, R. L.: Parallelization of the TRIGRS model for rainfall-induced landslides using the message passing interface, Environmental Modelling & Software, 81, 122–135, 10.1016/j.envsoft.2016.04.002, 2016.
- Aristizábal, E., Vélez, J. I., Martínez, H. E., and Jaboyedoff, M.: SHIA_Landslide: A distributed conceptual and physically based model to forecast the temporal and spatial occurrence of shallow landslides triggered by rainfall in tropical and mountainous basins, Landslides, 13, 497–517, 10.1007/s10346-015-0580-7, 2016.
- 720 Arnone, E., Noto, L. V., Lepore, C., and Bras, R. L.: Physically-based and distributed approach to analyze rainfall-triggered landslides at watershed scale, Geomorphology, 133, 121-131, 2011.

- Baum, R. L., and Godt, J. W.: Early warning of rainfall-induced shallow landslides and debris flows in the USA, *Landslides*, 7, 259–272, 10.1007/s10346-009-0177-0, 2010.
- 725 Baum, R. L., Godt, J. W., and Savage, W. Z.: Estimating the timing and location of shallow rainfall-induced landslides using a model for transient, unsaturated infiltration, *Journal of Geophysical Research: Earth Surface*, 115, 10.1029/2009JF001321, 2010.
- Bishop, A. W.: The use of the Slip Circle in the Stability Analysis of Slopes, *Géotechnique*, 5, 7–17, 10.1680/geot.1955.5.1.7, 1955.
- 730 Brunetti, M. T., Guzzetti, F., and Rossi, M.: Probability distributions of landslide volumes, *Nonlinear Processes in Geophysics*, 16, 179–188, 10.5194/npg-16-179-2009, 2009.
- Chakraborty, A., and Goswami, D. D.: State of the art: Three Dimensional (3D) Slope-Stability Analysis, *International Journal of Geotechnical Engineering*, 10, 493–498, 10.1080/19386362.2016.1172807, 2016.
- 735 Chao, L., Zhang, K., Li, Z., Wang, J., Yao, C., and Li, Q.: Applicability assessment of the CASCade Two Dimensional SEDiment (CASC2D-SED) distributed hydrological model for flood forecasting across four typical medium and small watersheds in China, *Journal of Flood Risk Management*, 12, e12518, 10.1111/jfr3.12518, 2019.
- Chao, L., Zhang, K., Yang, Z.-L., Wang, J., Lin, P., Liang, J., Li, Z., and Gu, Z.: Improving flood simulation capability of the WRF-Hydro-RAPID model using a multi-source precipitation merging method, *Journal of Hydrology*, 592, 125814, 10.1016/j.jhydrol.2020.125814, 2021.
- 740 Chen, C.-W., Oguchi, T., Hayakawa, Y. S., Saito, H., and Chen, H.: Relationship between landslide size and rainfall conditions in Taiwan, *Landslides*, 14, 1235–1240, 10.1007/s10346-016-0790-7, 2017.
- Chen, J., Chen, J., Liao, A., Cao, X., Chen, L., Chen, X., He, C., Han, G., Peng, S., Lu, M., and others: Global land cover mapping at 30 m resolution: A POK-based operational approach, *ISPRS Journal of Photogrammetry and Remote Sensing*, 103, 7–27, 2015.
- 745 Collins, B. D., and Znidarcic, D.: Stability analyses of rainfall induced landslides, *Journal of geotechnical and geoenvironmental engineering*, 130, 362-372, 2004.
- Droesen, J. M.: Downscaling soil moisture using topography : The evaluation and optimisation of a downscaling approach, 2016.
- Fawcett, T.: An introduction to ROC analysis, *Pattern Recognition Letters*, 27, 861–874, 10.1016/j.patrec.2005.10.010, 2006.
- 750 Fell, R., Corominas, J., Bonnard, C., Cascini, L., Leroi, E., and Savage, W. Z.: Guidelines for landslide susceptibility, hazard and risk zoning for land-use planning, *Engineering geology*, 102, 99-111, 2008.
- Flamig, Z. L., Vergara, H., and Gourley, J. J.: The Ensemble Framework For Flash Flood Forecasting (EF5) v1.2: Description and case study, *Geoscientific Model Development*, 13, 4943–4958, 10.5194/gmd-13-4943-2020, 2020.
- Griffiths, D. V., Huang, J., and Fenton, G. A.: Probabilistic infinite slope analysis, *Computers and Geotechnics*, 38, 577–584, 10.1016/j.comptgeo.2011.03.006, 2011.

- 755 Guzzetti, F., Peruccacci, S., Rossi, M., and Stark, C. P.: Rainfall thresholds for the initiation of landslides in central and southern Europe, *Meteorology and Atmospheric Physics*, 98, 239–267, 10.1007/s00703-007-0262-7, 2007.
- Guzzetti, F., Ardizzone, F., Cardinali, M., Rossi, M., and Valigi, D.: Landslide volumes and landslide mobilization rates in Umbria, central Italy, *Earth and Planetary Science Letters*, 279, 222–229, 10.1016/j.epsl.2009.01.005, 2009.
- Guzzetti, F.: On the Prediction of Landslides and Their Consequences, in: *Understanding and Reducing Landslide Disaster Risk: Volume 1 Sendai Landslide Partnerships and Kyoto Landslide Commitment*, edited by: Sassa, K., Mikoš, M., Sassa, S., Bobrowsky, P. T., Takara, K., and Dang, K., ICL Contribution to Landslide Disaster Risk Reduction, Springer International Publishing, Cham, 3–32, 2021.
- 760 Haflidason, H., Lien, R., Sejrup, H. P., Forsberg, C. F., and Bryn, P.: The dating and morphometry of the Storegga Slide, *Marine and Petroleum Geology*, 22, 123–136, 10.1016/j.marpetgeo.2004.10.008, 2005.
- 765 He, J., Qiu, H., Qu, F., Hu, S., Yang, D., Shen, Y., Zhang, Y., Sun, H., and Cao, M.: Prediction of spatiotemporal stability and rainfall threshold of shallow landslides using the TRIGRS and Scoops3D models, *CATENA*, 197, 104999, 10.1016/j.catena.2020.104999, 2021.
- He, X., Hong, Y., Vergara, H., Zhang, K., Kirstetter, P.-E., Gourley, J. J., Zhang, Y., Qiao, G., and Liu, C.: Development of a coupled hydrological-geotechnical framework for rainfall-induced landslides prediction, *Journal of Hydrology*, 543, 395–770 405, 10.1016/j.jhydrol.2016.10.016, 2016.
- Hicks, M. A., and Spencer, W. A.: Influence of heterogeneity on the reliability and failure of a long 3D slope, *Computers and Geotechnics*, 37, 948–955, 10.1016/j.compgeo.2010.08.001, 2010.
- Ho, J.-Y., Lee, K. T., Chang, T.-C., Wang, Z.-Y., and Liao, Y.-H.: Influences of spatial distribution of soil thickness on shallow landslide prediction, *Engineering Geology*, 124, 38–46, 10.1016/j.enggeo.2011.09.013, 2012.
- 775 Hong, Y., Adler, R., and Huffman, G.: Evaluation of the potential of NASA multi-satellite precipitation analysis in global landslide hazard assessment, *Geophysical Research Letters*, 33, 10.1029/2006GL028010, 2006.
- Hovland, H. J.: THREE-DIMENSIONAL SLOPE STABILITY ANALYSIS METHOD, *Journal of Geotechnical and Geoenvironmental Engineering*, 105, 1979.
- Imaizumi, F., and Sidle, R. C.: Linkage of sediment supply and transport processes in Miyagawa Dam catchment, Japan, 780 *Journal of Geophysical Research: Earth Surface*, 112, 10.1029/2006JF000495, 2007.
- Iverson, R. M.: Landslide triggering by rain infiltration, *Water Resources Research*, 36, 1897–1910, 10.1029/2000WR900090, 2000.
- Janbu, N., Bjerrum, L., and Kjaernsli, B.: *Soil mechanics applied to some engineering problems*, Norwegian Geotechnical Institute, 1956.
- 785 Johnston, E. C., Davenport, F. V., Wang, L., Caers, J. K., Muthukrishnan, S., Burke, M., and Diffenbaugh, N. S.: Quantifying the effect of precipitation on landslide hazard in urbanized and non-urbanized areas, *Geophysical Research Letters*, 10.1029/2021GL094038, 2021.

- Khan, S. I., Adhikari, P., Hong, Y., Vergara, H., F Adler, R., Policelli, F., Irwin, D., Korme, T., and Okello, L.: Hydroclimatology of Lake Victoria region using hydrologic model and satellite remote sensing data, *Hydrology and Earth System Sciences*, 15, 107–117, 10.5194/hess-15-107-2011, 2011.
- 790 King, G. J. W.: Revision of effective-stress method of slices, *Géotechnique*, 39, 497–502, 10.1680/geot.1989.39.3.497, 1989.
- Klar, A., Aharonov, E., Kalderon-Asael, B., and Katz, O.: Analytical and observational relations between landslide volume and surface area, *Journal of Geophysical Research: Earth Surface*, 116, 10.1029/2009JF001604, 2011.
- Lacroix, P.: Landslides triggered by the Gorkha earthquake in the Langtang valley, volumes and initiation processes, *Earth, Planets and Space*, 68, 46, 10.1186/s40623-016-0423-3, 2016.
- 795 Lanni, C., Borga, M., Rigon, R., and Tarolli, P.: Modelling shallow landslide susceptibility by means of a subsurface flow path connectivity index and estimates of soil depth spatial distribution, *Hydrol. Earth Syst. Sci.*, 16, 3959-3971, 2012.
- Lepore, C., Arnone, E., Noto, L. V., Sivandran, G., and Bras, R. L.: Physically based modeling of rainfall-triggered landslides: a case study in the Luquillo forest, Puerto Rico, *Hydrol. Earth Syst. Sci.*, 17, 3371-3387, 2013.
- 800 Leroi, E., Bonnard, C., Fell, R., and McInnes, R.: Risk assessment and management, *Landslide risk management*, 159198, 2005.
- Liang, X., Lettenmaier, D. P., Wood, E. F., and Burges, S. J.: A simple hydrologically based model of land surface water and energy fluxes for general circulation models, *Journal of Geophysical Research: Atmospheres*, 99, 14415–14428, 10.1029/94JD00483, 1994.
- 805 Liao, Z., Hong, Y., Wang, J., Fukuoka, H., Sassa, K., Karnawati, D., and Fathani, F.: Prototyping an experimental early warning system for rainfall-induced landslides in Indonesia using satellite remote sensing and geospatial datasets, *Landslides*, 7, 317–324, 10.1007/s10346-010-0219-7, 2010.
- Lizárraga, J. J., and Buscarnera, G.: Probabilistic modeling of shallow landslide initiation using regional scale random fields, *Landslides*, 10.1007/s10346-020-01438-y, 2020.
- 810 Lu, N., and Likos, W. J.: Suction stress characteristic curve for unsaturated soil, *Journal of geotechnical and geoenvironmental engineering*, 132, 131-142, 2006.
- Lu, N., and Godt, J.: Infinite slope stability under steady unsaturated seepage conditions, *Water Resources Research*, 44, 10.1029/2008WR006976, 2008.
- Lu, N., and Godt, J. W.: *Hillslope Hydrology and Stability*, Cambridge University Press, 2013.
- 815 Marchesini, I., Cencetti, C., and De Rosa, P.: A preliminary method for the evaluation of the landslides volume at a regional scale, *GeoInformatica*, 13, 277–289, 10.1007/s10707-008-0060-5, 2009.
- Marin, R. J., Velásquez, M. F., and Sánchez, O.: Applicability and performance of deterministic and probabilistic physically based landslide modeling in a data-scarce environment of the Colombian Andes, *Journal of South American Earth Sciences*, 108, 103175, 10.1016/j.jsames.2021.103175, 2021.

- 820 Mergili, M., Marchesini, I., Alvioli, M., Metz, M., Schneider-Muntau, B., Rossi, M., and Guzzetti, F.: A strategy for GIS-Based 3-D slope stability modelling over large areas, *Geoscientific Model Development*, 7, 2969–2982, 10.5194/gmd-7-2969-2014, 2014a.
- Mergili, M., Marchesini, I., Rossi, M., Guzzetti, F., and Fellin, W.: Spatially distributed three-dimensional slope stability modelling in a raster GIS, *Geomorphology*, 206, 178–195, 10.1016/j.geomorph.2013.10.008, 2014b.
- 825 Montrasio, L., and Valentino, R.: A model for triggering mechanisms of shallow landslides, *Nat Hazard Earth Sys*, 8, 1149–1159, 2008.
- Palacio Cordoba, J., Mergili, M., and Aristizábal, E.: Probabilistic landslide susceptibility analysis in tropical mountainous terrain using the physically based r.Slope.Stability model, *Natural Hazards and Earth System Sciences*, 20, 815–829, 10.5194/nhess-20-815-2020, 2020.
- 830 Park, D. W., Nikhil, N. V., and Lee, S. R.: Landslide and debris flow susceptibility zonation using TRIGRS for the 2011 Seoul landslide event, *Natural Hazards and Earth System Sciences*, 13, 2833–2849, 10.5194/nhess-13-2833-2013, 2013.
- Raia, S., Alvioli, M., Rossi, M., Baum, R. L., Godt, J. W., and Guzzetti, F.: Improving predictive power of physically based rainfall-induced shallow landslide models: a probabilistic approach, *Geosci Model Dev*, 7, 495–514, 2014.
- Reid, M. E., Christian, S. B., Brien, D. L., and Henderson, S. T.: Scoops3D: Software to analyze 3D slope stability throughout
835 a digital landscape, U.S. Geological Survey, Reston, VA, USGS Numbered Series 14-A1, 236, 2015.
- Segoni, S., Piciullo, L., and Gariano, S. L.: A review of the recent literature on rainfall thresholds for landslide occurrence, *Landslides*, 15, 1483–1501, 10.1007/s10346-018-0966-4, 2018.
- Shen, X., Hong, Y., Zhang, K., and Hao, Z.: Refining a distributed linear reservoir routing method to improve performance of the CREST model, *Journal of Hydrologic Engineering*, doi:10.1061/(ASCE)HE.1943-5584.0001442,
840 10.1061/(ASCE)HE.1943-5584.0001442, 2016.
- Sidle, R. C., and Bogaard, T. A.: Dynamic earth system and ecological controls of rainfall-initiated landslides, *Earth-Science Reviews*, 159, 275–291, 10.1016/j.earscirev.2016.05.013, 2016.
- Srivastava, R., and Yeh, T.-C. J.: Analytical solutions for one-dimensional, transient infiltration toward the water table in homogeneous and layered soils, *Water Resources Research*, 27, 753–762, 10.1029/90WR02772, 1991.
- 845 Tran, T. V., Alvioli, M., Lee, G., and An, H. U.: Three-dimensional, time-dependent modeling of rainfall-induced landslides over a digital landscape: A case study, *Landslides*, 15, 1071–1084, 10.1007/s10346-017-0931-7, 2018.
- van Westen, C. J., van Asch, T. W. J., and Soeters, R.: Landslide hazard and risk Zonation—Why is it still so difficult?, *Bulletin of Engineering Geology and the Environment*, 65, 167–184, 10.1007/s10064-005-0023-0, 2006.
- Vandromme, R., Thiery, Y., Bernardie, S., and Sedan, O.: ALICE (Assessment of Landslides Induced by Climatic Events): A
850 single tool to integrate shallow and deep landslides for susceptibility and hazard assessment, *Geomorphology*, 367, 107307, 10.1016/j.geomorph.2020.107307, 2020.

- Wang, J., Hong, Y., Li, L., Gourley, J. J., Khan, S. I., Yilmaz, K. K., Adler, R. F., Policelli, F. S., Habib, S., Irwn, D., Limaye, A. S., Korme, T., and Okello, L.: The coupled routing and excess storage (CREST) distributed hydrological model, *Hydrological Sciences Journal*, 56, 84–98, 10.1080/02626667.2010.543087, 2011.
- 855 Wang, S., Zhang, K., van Beek, L. P. H., Tian, X., and Bogaard, T. A.: Physically-based landslide prediction over a large region: Scaling low-resolution hydrological model results for high-resolution slope stability assessment, *Environmental Modelling & Software*, 124, 104607, 10.1016/j.envsoft.2019.104607, 2020.
- Wieder, W., Boehnert, J., Bonan, G., and Langseth, M.: RegridDED harmonized world soil database v1. 2, ORNL DAAC, 2014.
- Xie, M., Esaki, T., Zhou, G., and Mitani, Y.: Three-dimensional stability evaluation of landslides and a sliding process
860 simulation using a new geographic information systems component, *Environmental Geology*, 43, 503–512, 10.1007/s00254-002-0655-3, 2003.
- Xie, M., Esaki, T., and Zhou, G.: GIS-Based Probabilistic Mapping of Landslide Hazard Using a Three-Dimensional Deterministic Model, *Natural Hazards*, 33, 265–282, 10.1023/B:NHAZ.0000037036.01850.0d, 2004.
- Xie, M., Esaki, T., Qiu, C., and Wang, C.: Geographical information system-based computational implementation and
865 application of spatial three-dimensional slope stability analysis, *Computers and Geotechnics*, 33, 260–274, 10.1016/j.compgeo.2006.07.003, 2006.
- Xue, X., Hong, Y., Limaye, A. S., Gourley, J. J., Huffman, G. J., Khan, S. I., Dorji, C., and Chen, S.: Statistical and hydrological evaluation of TRMM-Based Multi-Satellite Precipitation Analysis over the Wangchu Basin of Bhutan: Are the latest satellite precipitation products 3B42V7 ready for use in ungauged basins?, *Journal of Hydrology*, 499, 91–99,
870 10.1016/j.jhydrol.2013.06.042, 2013a.
- Xue, X. W., Hong, Y., Limaye, A. S., Gourley, J. J., Huffman, G. J., Khan, S. I., Dorji, C., and Chen, S.: Statistical and hydrological evaluation of TRMM-based Multi-satellite Precipitation Analysis over the Wangchu Basin of Bhutan: Are the latest satellite precipitation products 3B42V7 ready for use in ungauged basins?, *J. Hydrol.*, 499, 91-99, 2013b.
- Yao, C., Li, Z., Yu, Z., and Zhang, K.: A priori parameter estimates for a distributed, grid-based Xinanjiang model using
875 geographically based information, *Journal of Hydrology*, 468, 47–62, 2012.
- Zêzere, J. L., Trigo, R. M., and Trigo, I. F.: Shallow and deep landslides induced by rainfall in the Lisbon region (Portugal): Assessment of relationships with the North Atlantic Oscillation, *Natural Hazards and Earth System Sciences*, 5, 331–344, 10.5194/nhess-5-331-2005, 2005.
- Zhang, K., Xue, X., Hong, Y., Gourley, J. J., Lu, N., Wan, Z., Hong, Z., and Wooten, R.: iCRESTRIGRS: A coupled modeling
880 system for cascading Flood–Landslide disaster forecasting, *Hydrology and Earth System Sciences*, 20, 5035–5048, 10.5194/hess-20-5035-2016, 2016.
- Zhang, K., Wang, S., Bao, H., and Zhao, X.: Characteristics and influencing factors of rainfall-induced landslide and debris flow hazards in Shaanxi Province, China, *Natural Hazards and Earth System Sciences*, 19, 93–105, 10.5194/nhess-19-93-2019, 2019.

- 885 Zhang, Y., Hong, Y., Wang, X., Gourley, J. J., Xue, X., Saharia, M., Ni, G., Wang, G., Huang, Y., Chen, S., and Tang, G.: Hydrometeorological Analysis and Remote Sensing of Extremes: Was the July 2012 Beijing Flood Event Detectable and Predictable by Global Satellite Observing and Global Weather Modeling Systems?, *Journal of Hydrometeorology*, 16, 381–395, 10.1175/JHM-D-14-0048.1, 2015.
- Zhao, R.-J.: The xinjiang model applied in china, *J. of Hydrol.*, 135, 371–381, 1992.
- 890 Zhuo, L., Dai, Q., Han, D., Chen, N., and Zhao, B.: Assessment of simulated soil moisture from WRF Noah, Noah-MP, and CLM land surface schemes for landslide hazard application, *Hydrology and Earth System Sciences*, 23, 4199–4218, 10.5194/hess-23-4199-2019, 2019a.
- Zhuo, L., Dai, Q., Han, D., Chen, N., Zhao, B., and Berti, M.: Evaluation of remotely sensed soil moisture for landslide hazard assessment, *IEEE Journal of Selected Topics in Applied Earth Observations and Remote Sensing*, 12, 162–173, 2019b.
- 895 Zieher, T., Schneider-Muntau, B., and Mergili, M.: Are real-world shallow landslides reproducible by physically-based models? Four test cases in the Laternser valley, Vorarlberg (Austria), *Landslides*, 14, 2009–2023, 10.1007/s10346-017-0840-9, 2017.