

# Evaluation of a forest parameterization to improve boundary layer flow simulations over complex terrain. A case study using WRF-LES V4.0.1

Julian Quimbayo-Duarte<sup>1</sup>, Johannes Wagner<sup>2</sup>, Norman Wildmann<sup>2</sup>, Thomas Gerz<sup>2</sup>, and Juerg Schmidli<sup>1</sup>

<sup>1</sup>Institute for Atmospheric and Environmental Sciences, Goethe University Frankfurt, Frankfurt am Main, Germany

<sup>2</sup>Deutsches Zentrum für Luft- und Raumfahrt e.V., Institut für Physik der Atmosphäre, Oberpfaffenhofen, Germany

**Correspondence:** Julian Quimbayo-Duarte (quimbayo-duarte@iau.uni-frankfurt.de)

**Abstract.** We evaluate the influence of a forest parametrization on the simulation of the boundary layer flow over moderate complex terrain in the context of the Perdigão 2017 field campaign. The numerical simulations are performed using the Weather research and forecasting model in large eddy simulation mode (WRF-LES). The short-term high resolution (40 m horizontal grid spacing) and long-term (200 m horizontal grid spacing) WRF-LES are evaluated for an integration time of 12 hours and 1.5 months, respectively, with and without forest parameterization. The short-term simulations focus on low-level jet events over the valley, while the long-term simulations cover the whole intensive observation period (IOP) of the field campaign. The results are validated using lidar and meteorological tower observations. The mean diurnal cycle during the IOP shows a significant improvement of the along-valley wind speed and the wind direction when using the forest parametrization. However, the drag imposed by the parametrization results in an underestimation of the cross-valley wind speed, which can be attributed to a poor representation of the land surface characteristics. The evaluation of the high-resolution WRF-LES shows a positive influence of the forest parametrization on the simulated winds in the first 500 m above the surface.

## 1 Introduction

In recent years the rising computational power allowed numerical weather prediction models to run with higher spatial resolutions in real case mode. **The finer numerical grids helps to better resolve the turbulent processes in the atmosphere with techniques such as large eddy simulation (LES). LES explicitly simulate the resolved dominant turbulent scales in a three-dimensional computer domain (Shaw and Schumann, 1992).** LES makes it possible to describe the interaction of a turbulent flow with obstacles affecting the development of the boundary layer such as hills, forest-, urban canopies, etc (Dupont and Brunet, 2008).

Moreover, when the model vertical and horizontal resolution decrease to tens (or hundreds) of metres, the representation of the surface obstacles becomes critical (Aumond et al., 2013). The classical representation of such obstacles is normally introduced into mesoscale models using a bulk approach such as a characteristic roughness length ( $Z_o$ ) in each grid cell. However, the effect of the ground obstacles should be taken into account not only through surface schemes, but also within the dynamic equations of the numerical model such as in the drag force approach (Zaïdi et al., 2013).

Several works have successfully implemented the drag force approach in LES to deal with the impact of vegetation canopies on the flow development over both flat and complex terrain. In an early attempt, Shaw and Schumann (1992), investigated the flow interaction with an idealized canopy layer expressed as vertical distributions of drag and heat sources. Results qualitatively agree with the main characteristics of experimental data specific to tall canopies. The main features of the observed turbulence patterns match well with those typically found in the atmosphere near forest sites. In a following work using a similar setup, Dwyer et al. (1997) evaluated all terms of the resolved-scale turbulent kinetic energy budget for airflow within and above a forest canopy. A key finding was that pressure driven transport is the major source of turbulent kinetic energy in the lower levels of the canopy (in particular under convective atmospheric conditions). The latter indicates that pressure transport may be important in the turbulent kinetic energy balance of a plant canopy, especially in the lower part, where it drives the turbulent movements.

Shaw and Patton (2003) explored the contributions of wake-scale effects to canopy turbulence using a high resolution numerical model. A new variable was introduced to represent the unresolved kinetic energy associated with the wakes behind canopy elements. Results suggest that the wake effects on the dissipation process can be ignored when calculated from wake-scale kinetic energy, meaning that is unnecessary to carry a wake energy variable in the simulation. However, it is worth noting that the process of conversion of SGS energy to wake-scale energy needs to be included in the simulation because the action of wakes is to enhance the dissipation of SGS energy. Dupont et al. (2008) implemented the drag-force approach by adding a pressure and a viscous drag term in the momentum equation to account for vegetation in the numerical domain (using the Advanced Regional Prediction System, ARPS). Results from the LES of turbulent flow within and above a forested canopy, in a controlled environment, were validated against pressure and velocity data from a wind tunnel experiment.

Mazoyer et al. (2017) used LES to simulate a radiation fog event observed during the ParisFog experiment. The model included the drag effect of a tree barrier by introducing an additional term into the momentum and turbulent kinetic energy (TKE) equations (using the Meso-NH model). The model performance was satisfactory, as it produced a reasonably good agreement with the near-surface measurements and liquid water path.

Liu et al. (2016) studied the drag effects from vegetation in airflow over real terrain. The vegetation canopy was modelled by adding a friction term in the momentum equation. Results from the LES showed satisfactory agreement with the experiments. The model predicted well the non-isotropic characteristics of turbulence in the wake region.

In addition, different authors found a significant improvement in the performance of numerical simulations when using a canopy drag scheme (even if LES is not used). Ross and Vosper (2005) found that simulations using a forest canopy (within moderately complex terrain) performs better than simulations using the roughness-length parameterization when coupled with experimental wind tunnel data. The roughness-length parameterization generally leads to a significant underprediction of the pressure drag compared to an explicit representation of the canopy using a canopy drag scheme. Finnigan et al. (2020) highlight the fact that mechanisms of "separated sheltering" in flow over low hills, which is the dominant mechanism for drag over low hills and is increased with a canopy, may double the topographic drag if a roughness-length scheme is replaced by a forest canopy scheme. Wagner et al. (2019a) explored a set of long-term numerical simulations using a forest parametrization base on the drag-force approach. The results agree with observations, although the authors did not present model results without

forest parameterization. An evaluation of model performance with/without forest parameterization is still needed to measure  
60 its impact on model performance.

In the present work, we evaluate the performance of **high-resolution mesoscale numerical simulations using an LES-type  
turbulence closure along with a forest canopy parametrization. We acknowledge that to resolve the turbulent motions in the  
inertial subrange of the flow, fine grids in the order of 5 m would be required, especially for the nocturnal stable boundary layer  
(Cuxart, 2015). Nevertheless, we refer to the simulations as LES, because an LES-type turbulence closure is used and during  
65 daytime the large eddies are well resolved on the finest grid used.** The simulations are designed to run in the context of the  
Perdigão 2017 field campaign (Fernando et al., 2019). For this purpose, a configuration similar to that presented in Wagner et al.  
(2019a) is used with the addition of a subsequent inner domain with a horizontal resolution of 40 m. Numerical simulations  
with/without the forest parametrization using the Weather Forecast and Research model (WRF) version 4.0.1 (Skamarock  
et al., 2019) are presented. Results are validated and tested against observational data retrieved during the campaign’s intensive  
70 observational period (IOP) comprised between May and June 2017. In here, we take up the work of Wagner et al. (2019b) and  
further explore the effect of the forest parametrization in the WRF-LES long/short term simulations.

The paper is organised as follows. A brief description of the instrumentation used to validate the model is given in section 2  
along with a description of the model and the forest parametrization. The results are presented and discussed in section 3. The  
conclusions are drawn in section 4.

## 75 **2 Materials and Methods**

### **2.1 The Perdigão Field Campaign**

The Perdigão 2017 field experiment was an international effort with the goal of studying the microscale flow over two nearly  
parallel mountain ridges located in central Portugal (see Fig. 1a). The campaign is part of the New European Wind Atlas  
(NEWA) project (Mann et al., 2017). The two mountain ridges are oriented approximately  $35^\circ$  from north in the counterclock-  
80 wise direction separated from each other by about 1400 m. Both ridges are located at about 460 m above the ground level  
(AGL), while the near surrounding terrain at 260 m AGL. Based on the long-term measurements performed before the field  
campaign, the wind direction is observed to be primary from the southwest, perpendicular to the ridge orientation. A secondary  
pattern, mainly occurring during the nighttime, is wind from northeast, which is also perpendicular to the ridges Fernando et al.  
(2019). The campaign included an intensive observation period (IOP) between 1 May and 15 June 2017.

85 A large amount of instrumentation were deployed in the area near the parallel mountain ridges. The instrumentation included  
meteorological towers, lidars, microwave radiometers, radiosondes, wind profilers, radio acoustic sounding systems and micro-  
phones providing a unique data pool of meteorological observations in complex terrain (Fernando et al., 2019). In the present  
work, we use data from the meteorological towers and the lidars to evaluate the numerical model. All the instruments used  
in the present work are listed in table 2.1, and their location is shown in Fig. 1c. Further information on all instrumentation  
90 available during the field campaign can be found at the campaign’s official web-page <https://perdigao.fe.up.pt/> (re3data.org,  
2019).

<i>Instrument</i>	<i>Name</i>	<i>Location</i>
100 m Met tower	T20 (tse04)	7°44'37.37"W 39°42'21.47"N
100 m Met tower	T25 (tse09)	7°44'5.40"W 39°42'40.36"N
100 m Met tower	T29 (tse13)	7°43'49.38"W 39°42'48.97"N
Scanning LIDAR	WS1	7°44'38.95"W 39°42'22.08"N
Scanning LIDAR	WS2	7°44'36.01"W 39°42'23.58"N
Scanning LIDAR	WS3	7°43'49.68"W 39°42'48.69"N
Scanning LIDAR	WS4	7°43'47.47"W 39°42'50.12"N
Scanning LIDAR	CLAMPS	7°44'13.65"W 39°42'45.35"N

**Table 1.** List of the instrumentation used in the present work along with its location (WSG84 coordinates). The location of each instrument is showed in Fig. 1c.

Data from the 100 m meteorological towers along the southeast transect (TSE; equal to transect 2 in Fernando et al. (2019)) are used to evaluate the numerical simulations with and without forest parameterization. The towers were equipped with sonic anemometers at 20, 40 ,60, 80 and 100m AGL.

95 Four of the wind scanners (WS1 to WS4) were performing range-height indicator (RHI) scans across the double ridge parallel to a wind direction of 234.68°, which defines TSE. The scanning strategy was such that WS1 and WS3 were scanning towards the southwest using an azimuth angle of 234.68°, while WS2 and WS4 were scanning towards the northeast with an azimuth angle of 54.68°. Note that WS2 and WS4 are not shown in Fig. 1c, as they are located close to WS1 and WS3 respectively. The combination of the four lidars enables to produce lidar composites of radial velocities perpendicular to the double ridge (Menke et al., 2019). The latter is called "cross-valley" direction, and the direction parallel to the double-ridge is called "along-valley" in the present study.

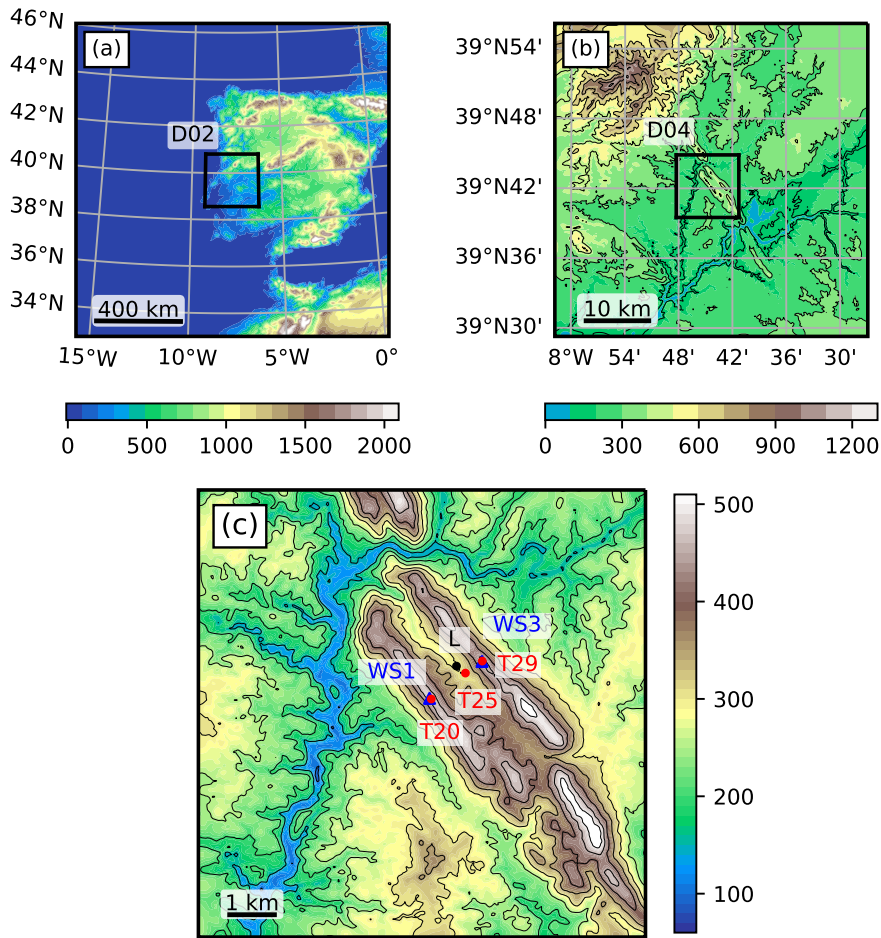
105 The University of Oklahoma deployed a Halo Photonics Stream Line scanning lidar as part of the Collaborative Lower Atmospheric Mobile Profiling System (CLAMPS, see Wagner et al. (2019c)). The instrument was set to different scanning scenarios, but in the present study we use the data from a regular sequence of velocity azimuth display (VAD) scans every two minutes (see Fig. 1c).

## 2.2 Numerical simulation setup

The numerical simulations were performed using the WRF model version 4.0.1 (Skamarock et al., 2019). Two sets of LES have been conducted, which differ from each other in the horizontal grid spacing of the innermost domain and the total integration time. The first set consists of long term simulations ran for 49 days using the same setup as in Wagner et al. (2019a) with three nested domains D01, D02 and D03 with a horizontal grid spacing of 5 km, 1 km and 200 m, respectively (see Fig. 1a and Fig. 1b).

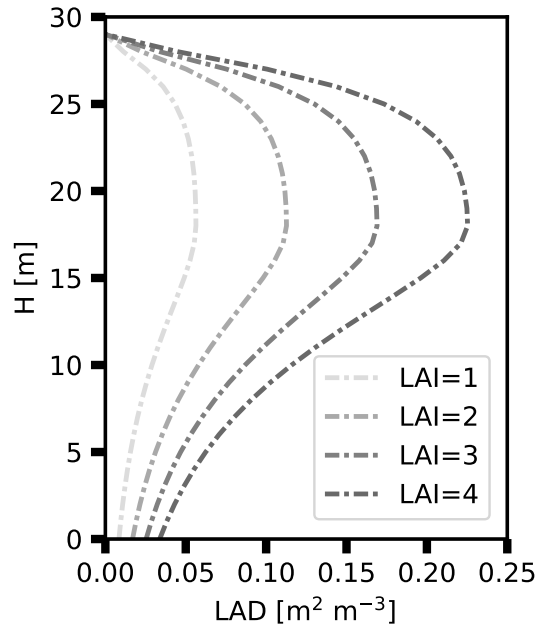
The second set was identical to the first, but it included a fourth nested domain D04 with a horizontal grid spacing of 40 m (see Fig. 1c). The second set, however, has been ran for selected periods (below described). Domains D01 and D02 were run in RANS (Reynolds Averaged Navier Stokes) mode, while domains D03 and D04 were run in LES mode. The high resolution of D04 was chosen to better resolve the double ridge. As in Wagner et al. (2019a) vertical nesting was applied to define individual levels in the vertical for each model domain. For the domains D01 to D04, 36, 57, 70 and 82 vertically stretched levels were used and the respective lowest mass point was set at 80 m, 50 m, 15 m and 10 m AGL. Previous work has shown that a first model level at 20 m is adequate for this kind of high resolution mesoscale simulations (Quimbayo-Duarte et al., 2021a; Umek et al., 2021). The model top was set at 200 hPa (about 12 km height). In the RANS domains (D01 and D02) the Mellor-Yamada-Janjic turbulent kinetic energy (TKE) scheme was used (Mellor and Yamada, 1982). In contrast, the simulations in Wagner et al. (2019a) used the YSU-scheme (Hong and Kim, 2008). The Eta Similarity (Monin-Obukhov-Janjic) scheme is used to couple the atmosphere and the land surface. The scheme provides the lower boundary conditions for the Level 2.5 model (Janjic, 1996). The Beljaars (1995) correction is applied in order to avoid singularities in the case of free convection and vanishing wind speed (and consequently  $u$ ). The other physics parameterizations were the same as in Wagner et al. (2019a).

Initial and boundary conditions were provided by the ECMWF operational analyses on 137 model levels with a horizontal grid spacing of 9 km and a temporal resolution of 6 hours. The Global 30 Arc-Second Elevation (GTOPO30) digital elevation model and the U.S. Geological Survey (USGS) landuse data set were used for D01 and D02, while for D03 and D04, we used the Advanced Spaceborne Thermal Emission and Reflection Radiometer (ASTER) topography data set (Schmugge et al., 2003) with a horizontal grid spacing of 30 m and the Coordination of Information on the Environment (CORINE) land cover data provided in 2012 with a horizontal grid spacing of 100 m. A Five- and ten-minute output interval was set for both LES domains (D03 and D04), respectively. To improve the boundary layer flow, a forest parameterization was implemented in the model, which will be described in more detail in the following section.



**Figure 1.** Topographic map of the WRF domains (colour contours). (a) Mesoscale domain D01 using a horizontal grid spacing of 5 km. The extent of D02 is indicated by the black line box. (b) LES Domain D03 using a horizontal grid spacing of 200 m. The extend of D02 is indicated by the black line box. (c) LES Domain D04 using a horizontal grid spacing of 40 m. The locations of the meteorological towers T20, T25 and T29, and the VAD Lidar are marked with dots. The DTU wind scanners WS1 and WS3 are indicated with blue triangles located at the side of towers T20 and T29 (see text for a detailed description). WS2 and WS4 are located at the site of WS1 and WS3 respectively (not shown).

Both LES were run with the forest parametrization (WRF\_d03F, WRF\_d04F) and without (WRF\_d03NF, WRF\_d04NF). Both WRF\_d03F and WRF\_d03NF were run for 49 days and provided the initial and boundary conditions for the innermost domain simulations WRF\_d04F and WRF\_d04NF. The high-resolution D04 LES WRF\_d04F and WRF\_d04NF were run for three selected low-level jet (LLJ) episodes observed during the IOP. Each of the simulations ran for 12 hours starting at 18h UTC on 6, 7 and 22 May 2017, respectively. From now on, all times will be given in UTC.



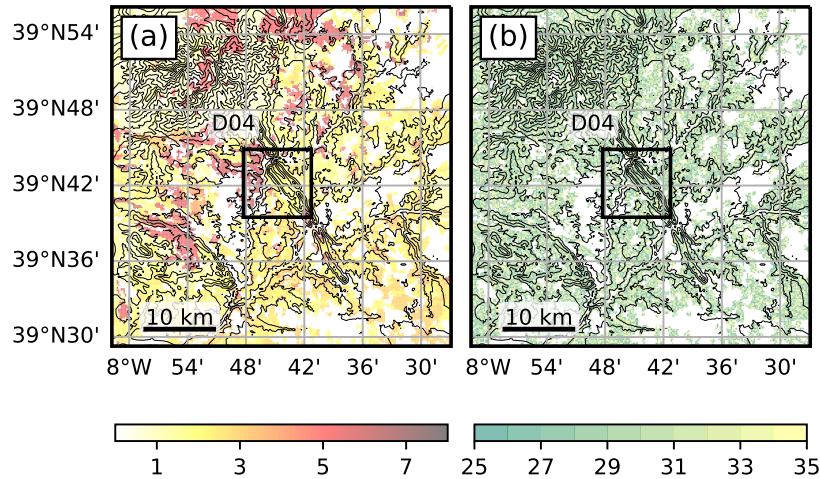
**Figure 2.** Leaf area density profiles (LAD) for four example values of the leaf area index (LAI) used to parameterize the forest drag. The LAD-profiles represent a pine tree canopy.

### 2.3 Forest parametrization implementation

140 The total drag can be modelled by adding the contribution of the orographic pressure (form) drag, the canopy drag and the (surface) frictional drag. In the standard WRF-LES model, three-dimensional roughness elements like trees are not explicitly considered and are only characterized by the roughness length  $Z_o$  (directly obtained from the landuse data set), implying that mainly the frictional drag is considered. The explicit treatment of forest drag in numerical models is of special importance for the realistic development of wind profiles, including inflexion points over forested areas.

145 In the present work, the forest parameterization proposed by Shaw and Schumann (1992) is implemented in the WRF model to study its impact on boundary layer flows over forested and complex terrain. The additional forest drag term  $F_i^f$  (direct sink term in the momentum equation), acting on the lowermost model levels is defined as

$$F_i = -C_d LAD |V| u_i, \quad (1)$$



**Figure 3.** Distribution of (a) leaf area index (LAI) and (b) forest height for domain D03. White areas show regions that are not covered by a forest. The topographical height is indicated with contour lines. The extent of D04 is indicated by the black box.

150 where  $|V|$  is the magnitude of the three dimensional wind vector,  $u_i$  is one of the three wind components,  $C_d = 0.15$  is a constant drag coefficient, and  $LAD$  is the leaf area density profile characterising the trees. The  $LAD$  depends on the tree type and the height of the trees, meaning that the strength of  $F_i$  varies as one moves in the vertical inside the canopy. The tree type is defined by means of the leaf area index ( $LAI$ ). Standard similarity expressions hold for the first model level, as the parametrization only introduce a momentum sink, it still needs to couple the atmosphere and the surface. It is worth noting  
 155 that the momentum is mostly absorbed by the canopy, meaning that the details of the lower boundary condition becomes less important in this case (Ross and Vosper, 2005). The  $LAD$ -profile is computed according to Lalic and Mihailovic (2004) at all grid cells where trees are present as

$$LAD(z) = L_m \left( \frac{h - z_m}{h - z} \right)^n \exp \left[ n \left( 1 - \frac{h - z_m}{h - z} \right) \right], \quad (2)$$

160

with

$$n = \begin{cases} 6 & 0 \leq z < z_m \\ 0.5 & z_m \leq z \leq h \end{cases}, \quad (3)$$

where  $h$  is the tree height,  $L_m = (LAI/h) * 1.69$  is the maximum  $LAD$  at height  $z_m = 0.6h$  following Mohr et al. (2014).  
 165 Example  $LAD$ -profiles are plotted in Fig. 2 for several  $LAI$  using a tree height of 30 m. With increasing  $LAI$ , the  $LAD$  of the treetop becomes more dominant. The  $LAI$  is retrieved from the CORINE landuse data set for the present WRF simulations.



The LAD profile is computed according to equation (2.3) in regions classified as forest. The forest height is an unknown as it is not included in the landuse data. We used a randomly uniformly distributed tree height of  $30 \text{ m} \pm 5 \text{ m}$ . The tree height used is slightly higher than the trees covering the area, which is about 15 to 20 m, but it ensures that the lowermost two to three model levels remain within the canopy layer. The profile proposed by Lalic and Mihailovic (2004) is chosen due to its flexibility to represent a broad range of forest canopies by only choosing the appropriated value for the  $z_m$  parameter. The Kolic (1978) forest classification, based on  $z_m$  and  $h$  parameters, lets us divide forest canopies into three groups: (1)  $z_m = 0.2h$  (oak and silver birch), (2)  $0.2h < z_m < 0.4h$  (common maple), and (3)  $z_m = 0.4h$  (pine). The parametrization is adaptable for several cases. Following the latter two studies, the empirical relation for the LAD can be applied for a broad range of forest canopies. The site at Perdigão presents an irregular vegetation coverage, made of no or low-height vegetation and patches of eucalyptus and pine trees (Vasiljević et al., 2017). The selection of  $z_m$ , consisted with Mohr et al. (2014), is based on the idea of a forest canopy combination between pines and taller eucalyptus trees. We set the LAD to zero in regions not classified as forest. Figure 3a shows the distribution of the LAI for forested regions in the domain D03 as given by the CORINE data set. Figure 3b shows the randomly distributed forest height. White regions mark areas without forest. In the model, the double ridge is completely covered with trees according to the CORINE dataset, which does not fully match the observed forest distribution in the area during the campaign.

### 3 Results

In the following, we present an evaluation of the WRF-LES simulations (D03 and D04) with/without the forest parametrization in the context of the Perdigão 2017 field campaign. The analysis is divided into two subsections. First, we evaluate the performance of the long-term simulations (D03). Second, a set of LLJ events is analysed through the short-term simulations (D04) to investigate the impact of the forest parametrization on the LLJ structure over the double ridge. The analysis and evaluation of the model focus on the performance of the model in simulating the wind field. The simulations showed only small differences in the thermal structure of the atmosphere (not shown).

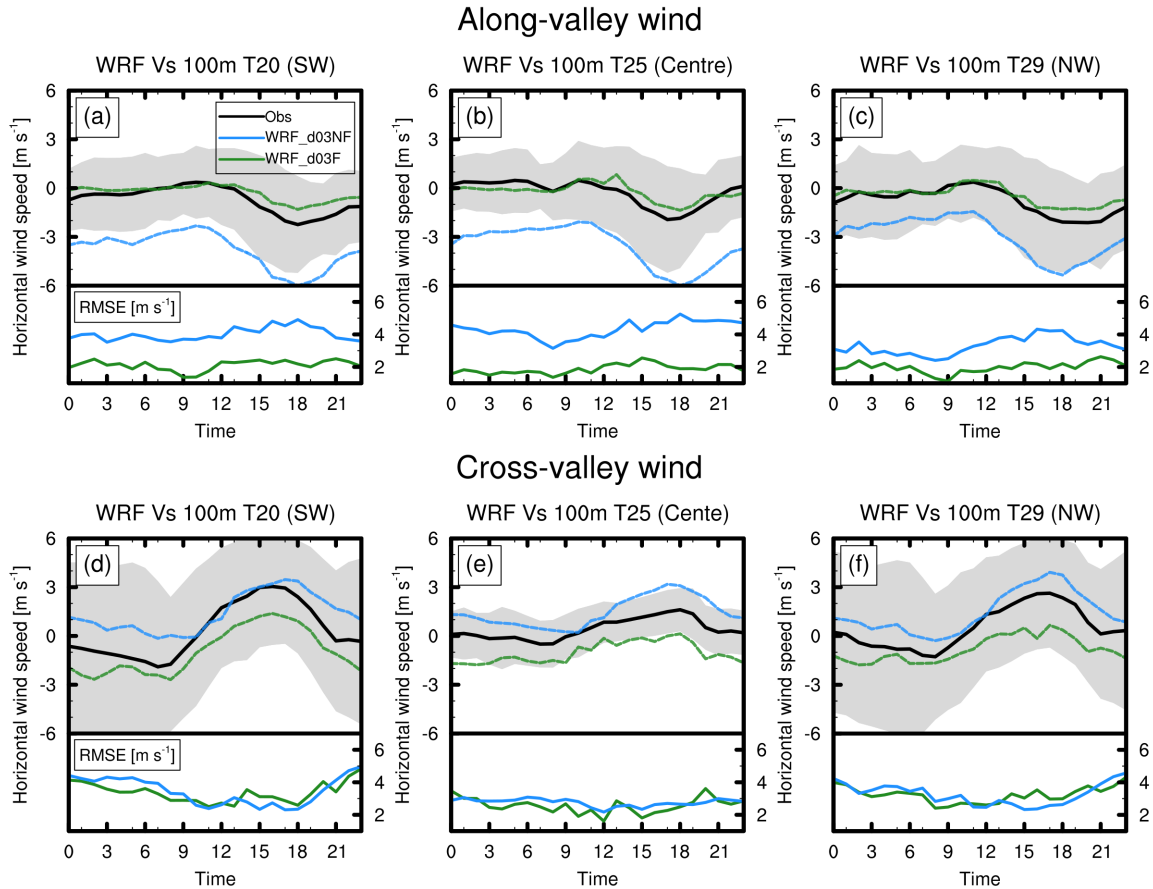
#### 3.1 Evaluation of the long-term simulations

Figure 4 shows the observed and simulated mean diurnal cycle of both the along- and cross-valley wind speeds averaged over the 49-day period covering the IOP for towers T20, T25 and T29. The root mean square error (RMSE) is showed in the bottom panel for each frame. In the observations, the along-valley wind tends to be very weak in the morning hours. In the afternoon, the wind accelerates to a maximum mean of about  $2 \text{ m s}^{-1}$  at 18h in all three locations. A significant improvement in the along-valley wind speed is visible when the forest parametrization is used (WRF\_d03F). At all three towers, the RMSE is typically less than half of its original value for the simulation without the forest parametrization (WRF\_d03NF).

In the cross-valley direction, the wind observed in the early morning is weak at all three locations. At around 18h, at the crest towers (T20 and T29), the mean cross-valley wind speed reaches its maximum at about  $3 \text{ m s}^{-1}$ . In the valley bottom,

the maximum wind speed reaches out about  $1.5 \text{ m s}^{-1}$ . After the evening transition, the flow slows down, and at midnight it is nearly zero. As noted by Wagner et al. (2019a), the observations showed the presence of a clear daily cycle due to the dominant synoptically calm conditions enhancing the evolution of thermally driven flow systems during the second part of the IOP.

The cross-valley wind speed in the WRF\_d03NF simulation is overestimated throughout the day (see the bottom row in Fig. 4). The introduction of the forest parametrization in the WRF\_d03F simulation addresses this problem. However, the effect is too strong, and the wind speed is underestimated at all three towers. In terms of the RMSE, there is no significant difference between the two simulations. Both simulations remain in the range of the standard deviation of observations (shaded areas).

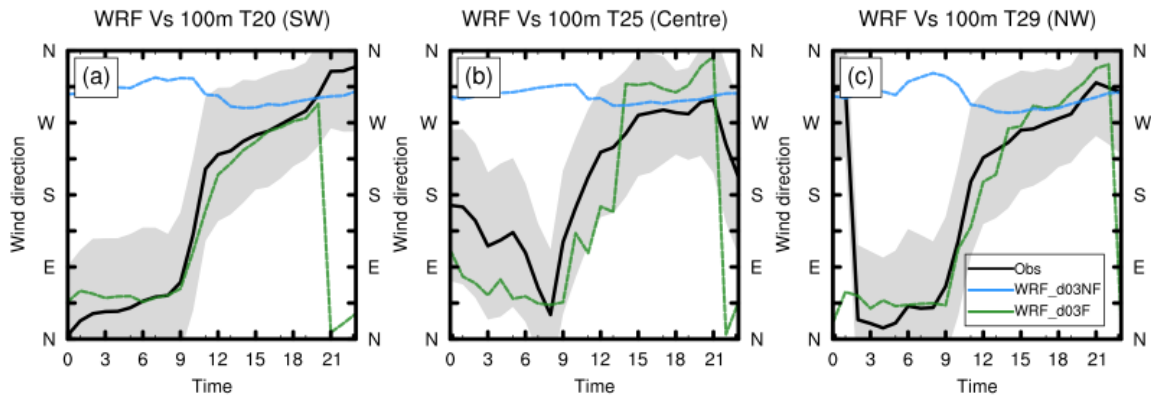


**Figure 4.** Average diurnal cycle of the along- (upper panels) and cross-valley (bottom panels) wind speed for the 49-day IOP for WRF D03 simulation (left axes) (with and without forest parametrization) and the RMSE for the WRF D03 simulations (right axes) at the three tower locations (T20, T25 and T29, see Fig. 1). The black lines represent values for observations (100 m level), the blue lines represent the simulation WRF\_d03NF, and the green lines represent the WRF\_d03F. The shaded area corresponds to the standard deviation range from observations.

Figure 5 shows the mean diurnal cycle of the wind direction, vector-averaged through the 49-day simulation (and observations) covering the IOP for towers T20, T25 and T29. It is important to note that this is a cyclic measure, both top and bottom ends of the figures represent wind coming from the north. In both crest towers, the wind blows from the north-east in the morning hours. Around noon, it changes the direction to become north-west at the end of the day. In the valley, tower (T25), the flow is channelled in the up-valley direction (south-east) through the early morning until 08h00. In the following hours, the wind slowly turns to become down-valley (north-west) in the afternoon until late at night (about 22h00).

In the WRF\_d03NF simulation, the model cannot accurately represent the wind direction in the morning hours. The flow is always northwesterly through the day. This issue is corrected in the WRF\_d03F simulation, where the flow follows the trend in the observations during the morning and afternoon hours at all three towers.

The underestimation of the wind speed in the cross-valley direction in WRF\_d03F simulation may indicate that the use of tree heights of  $30 \text{ m} \pm 5 \text{ m}$  is too high, and an improvement in the landuse data with a more realistic LAI and forest height distribution is necessary. Menke et al. (2020) used data from two pairs of scanning lidars operated in a dual-Doppler mode during the Perdigão 2017 field campaign to evaluate the performance of WRF-LES along the ridges (using a similar configuration to WRF\_d03F). Their results evidence a high sensitivity to the parametrization of surface friction. The model fails to reproduce the correct signal for the wind amplitude along the ridges both with/without the forest parametrization, although an improvement in the results is observed for the simulation using the forest parametrization. The authors suggested that the model performance can be improved with a more realistic description of the horizontal distribution of forested areas and tree heights in the numerical domain.



**Figure 5.** As in Fig 4, but for the diurnal cycle of the vector- averaged wind direction.

### 225 3.2 Evaluation short-term simulations

LLJ events, which are mostly a night-time phenomena, are frequently observed above the double ridge. During the IOP, LLJs are mainly the product of thermally driven flows generated by the surrounding mountainous area under synoptically calm atmospheric conditions. The jets from the northeast occurred more frequently than jets from the southwest (Wagner et al., 2019a).

230 Short-term high-resolution numerical simulations with the forest parametrization (WRF\_d04F) and without (WRF\_d04NF) are evaluated for three LLJ events observed during the IOP and highlighted in Wagner et al. (2019a). North-east LLJ events during the nights of 7 and 8 May 2017, and a south-west LLJ event on the night of 22 May 2017 are selected to be analysed in the present work. These events are selected as the jets observed are very stationary.

Panel (a) in figures 6, 8 and 9 shows lidar composites of the four DTU wind scanners WS1 to WS4 to represent the valley  
235 cross-section horizontal wind structure. Panels (b) to (e) show snapshots of the cross-valley wind speed (colour contours) and potential temperature of simulations using the forest parametrization (WRF\_d03F and WRF\_d04F) and without (WRF\_d03NF and WRF\_d04NF) for the same time as the respective observed cross-valley winds.

The LLJ event on the early morning of 7 May is observed in the Lidar composite (see Fig. 6a). The flow comes from the north-east with strong wind speeds (about  $5 \text{ m s}^{-1}$ ) close to the topography (starting at about 0.5 km a.s.l.) and easterly winds  
240 above. In the lee of the topography, the signature of internal gravity waves is observed ( $-2.5 < x < 0 \text{ km}$ ). The horizontal wavelength is similar to that of the valley (about 1.4 km).

Both WRF\_d03NF and WRF\_d04NF capture the main features of the LLJ episode. The LLJ and the internal gravity wave structure on the lee side of the topography (for  $-4 < x < 0 \text{ km}$ ) can be observed in the snapshots of both simulations without using the forest parametrization. However, WRF\_d03NF and WRF\_d04NF cannot represent the observed southwest flow near  
245 the ground, between the surface and 0.25 km a.s.l., on the leeward side of the topography (positive wind in Fig. 6). This feature is better observed in Fig. 7a where vertical profiles for wind speed for both simulations and observations are displayed at  $x = 3 \text{ km}$ . The observations show a weak wind above the surface followed by a positive wind of about  $1 \text{ m s}^{-1}$  up to 0.4 km a.s.l. The simulations without the forest parametrization (blue line in Fig. 7) fail to capture such a feature. On the other hand, simulations using the forest parametrization (green lines in Fig. 7) capture the quiet wind close to the ground and compare  
250 better with observations in the first 0.5 km a.s.l.

On the lee side, the wave amplitude is too large (wave crest up to 1 km a.s.l.) in simulations WRF\_d03NF and WRF\_d04NF when compared with observations where the wave crest only reaches 0.75 km a.s.l. Simulations using the forest parametrization better represent the wave structure, especially WRF\_d04F, where the simulations nicely capture the wave structure (for  $-2.5 < x < -1.5 \text{ km}$ ) for both wave length (about 1.4 km) and wave amplitude (0.5 km).  
255

On the following day (8 May), another northeasterly LLJ event was observed, but with a southwesterly upper-level wind (see orange colours above 0.7 km a.s.l.). The signature of orographically induced gravity waves is visible in the lidar observations near the topography in Fig. 8a. All simulations fail to simulate the southwesterly upper-level wind, which seems to be related to large scale phenomena coming from the boundary conditions driving the model. The simulations using the forest parametrization better capture the near the surface-atmosphere by reproducing the LLJ and the southwesterly wind between the  
260 ground and the LLJ (see Fig. 8c and Fig. 8e). Simulations without the forest parametrization show a deep LLJ reaching down to the ground on the lee side of the topography, which is not observed in the Lidar data. Figure 7b details the wind structure on the lee side at  $x = -1.8 \text{ km}$ . Simulations without the forest parametrization show an erroneous negative wind (which may be very strong up to  $6 \text{ m s}^{-1}$ ) close to the surface. On the other hand, simulations using the forest parametrization compare well

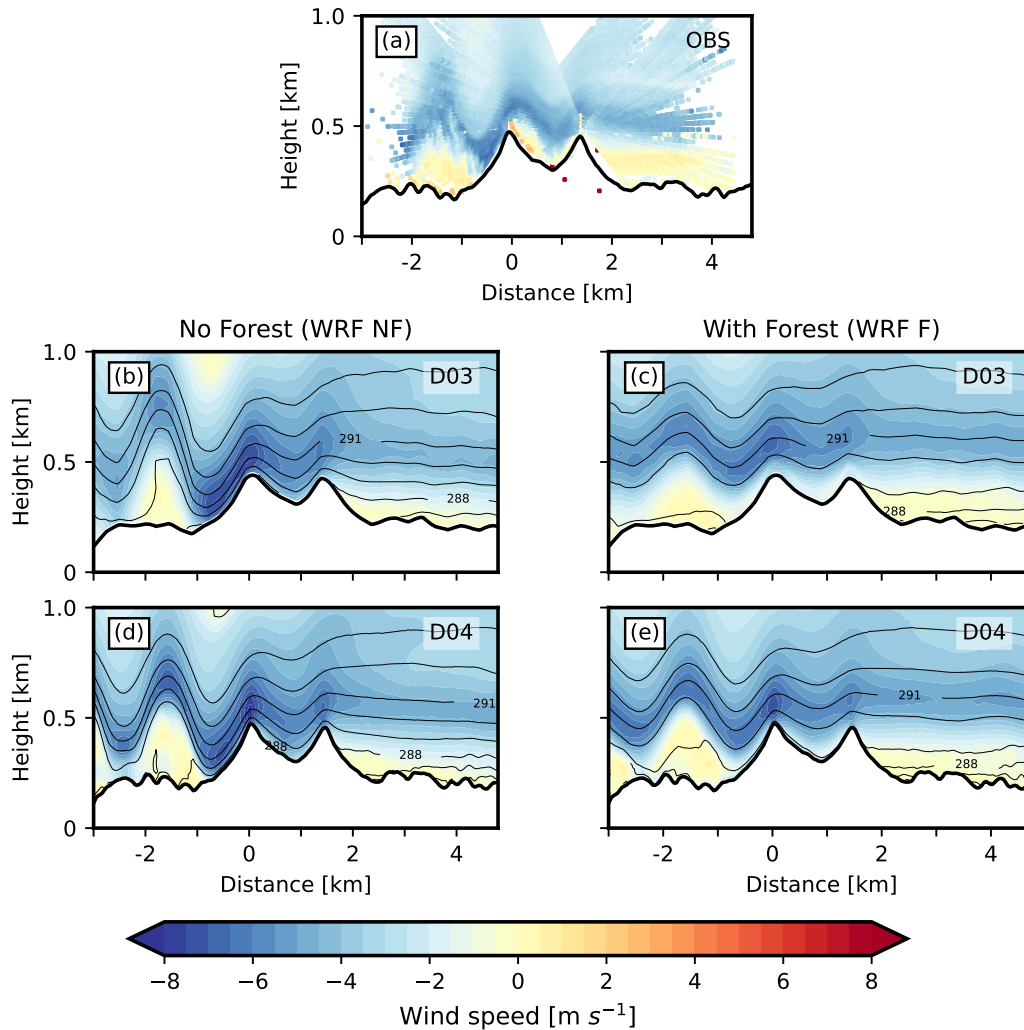
with the observations near the ground up to 0.4 km a.s.l., especially WRF\_d04F.

265

The third LLJ event occurred in the early morning of 22 May (see Fig. 9). The event corresponds to a southwesterly LLJ. The LLJ layer is deeper (about 700 m deep) when compared to the other two episodes. Again, the signature of gravity waves is observed in the lidar data on the lee side of the topography. In this event, all simulations reproduce the main features of the LLJ. The wind direction and magnitude seems to be appropriate in all simulations. However, the forest parametrization in WRF\_d04F seems to prevent the LLJ to flow along the lee slope as observed in the Lidar data. Figure 7c detailed the wind structure at mid lee slope ( $x = 1.8$  km). The simulations without the forest parametrization fit better with observations in the first metres above the ground by representing a positive strong wind reaching about  $6 \text{ m s}^{-1}$  as observed in the Lidar data. Simulations using the forest parametrization worked specially well above 200 m a.s.l., where both lines (green lines) fit well with the observations. However, close to the surface the simulations using the forest parametrization underestimates the flow where only a weak flow (less than  $2 \text{ m s}^{-1}$ ) is simulated. In this case, it seems that the forest parameterisation works better when the flow is from the northeast than from the southwest. The latter can be explained by the fact that at the northeast-facing slope of the downwind ridge the tree population is not well described in the model (which in reality is mainly covered by low vegetation), resulting in higher drag, which accounts for the lower wind speed simulated.

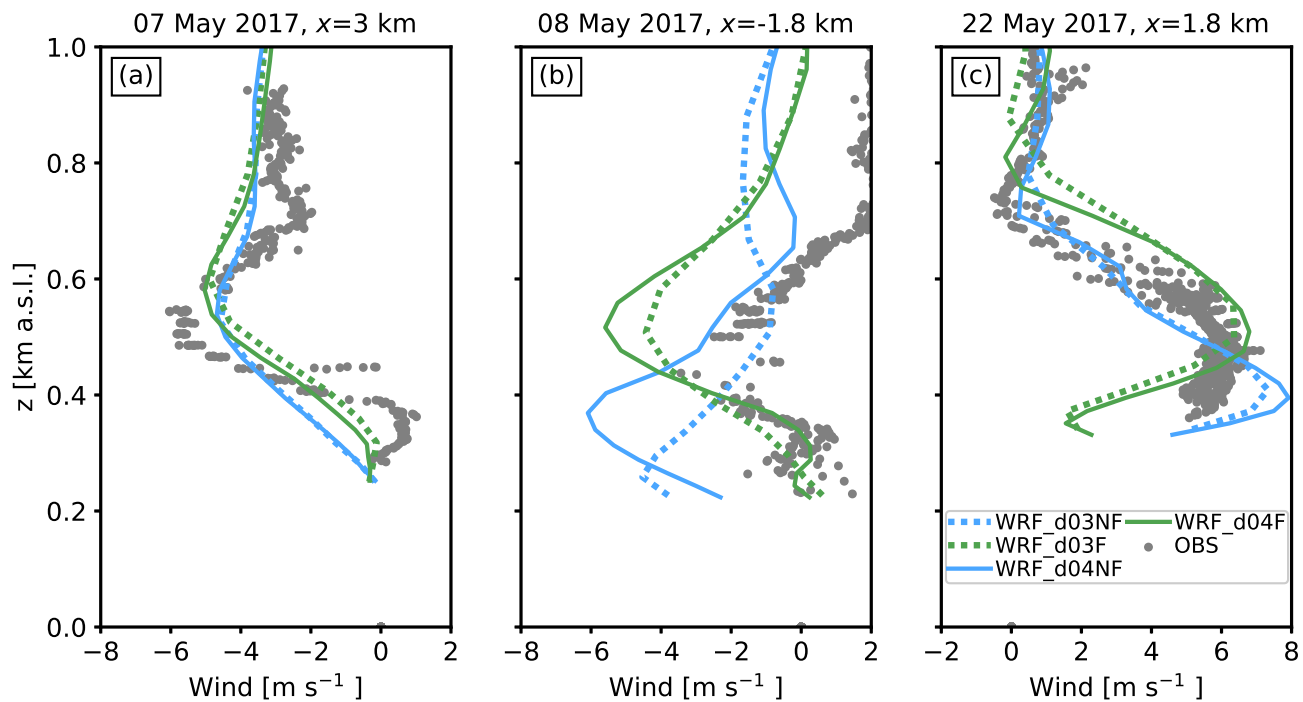
270

275

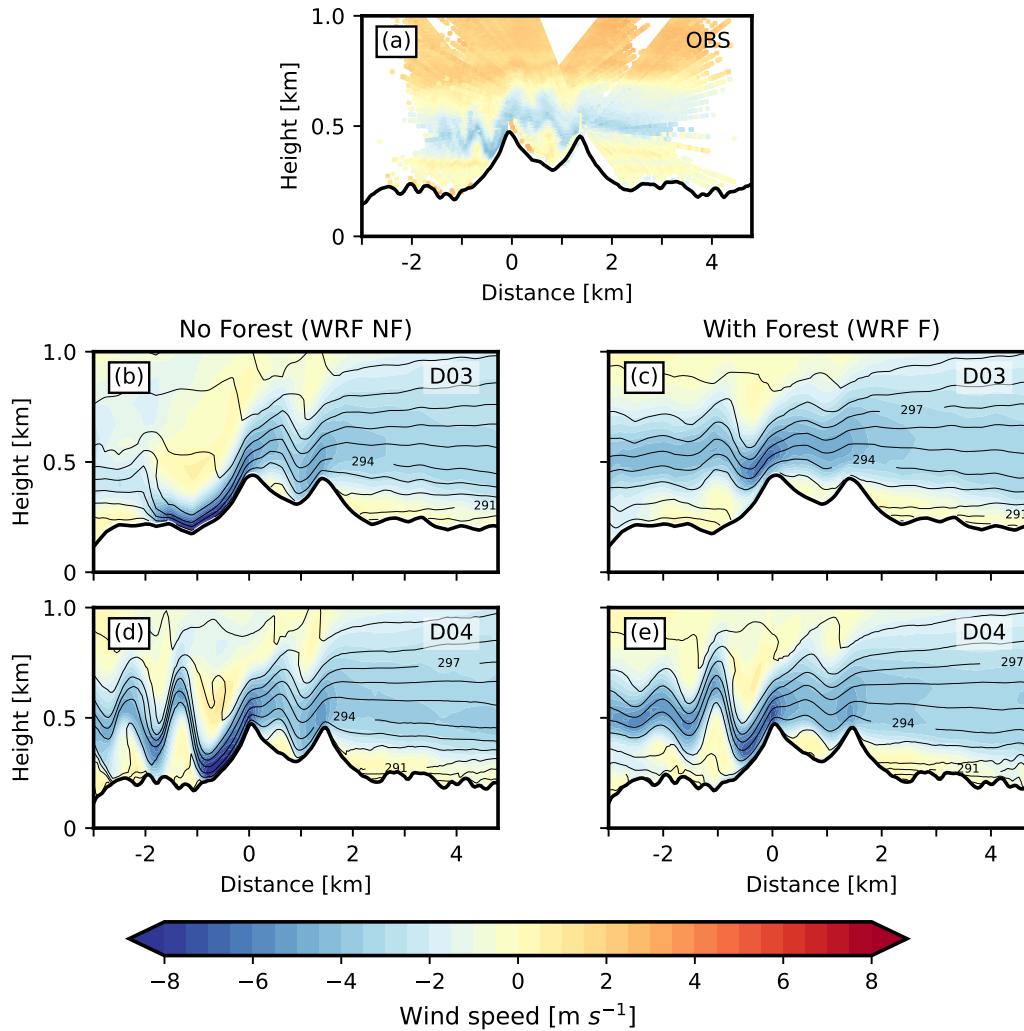


**Figure 6.** Cross sections of cross-valley wind speed (horizontal wind component across the double ridge) for the low-level jet (LLJ) event from NE on 07 May 2017 at 04h00. The x-axis is centred at the location of WS1. Negative velocities indicate flow from NE. (a). Observed winds retrieved from radial velocity composite of DTU Lidars WS1 to WS4. Colour contour interval:  $0.5 \text{ m s}^{-1}$ . The topography illustrated is identical to that used for D04. (b) – (e) Simulated winds and potential temperature from WRF numerical model. Model data was interpolated to the same cross-section as for the observations, which was defined by the location of WS1 and the azimuth scanning angle of  $234.68^\circ$ . WRF simulations without the forest parametrization are displayed in left column, simulations using the forest parametrization are displayed in the right column, for domain D03 (upper row) and D04 (lower row).

280 In general, the jet structure and the flow close to the surface agrees better with lidar observations when the forest parametrization is switched on (with the exception of the last event in the lee slope). Surface winds are reduced, recirculation zones develop and the amplitudes of the gravity waves agree better with lidar observations. A better representation of the surface friction has a significant impact on the formation and wavelength of trapped lee waves (Stiperski and Grubišić, 2011).



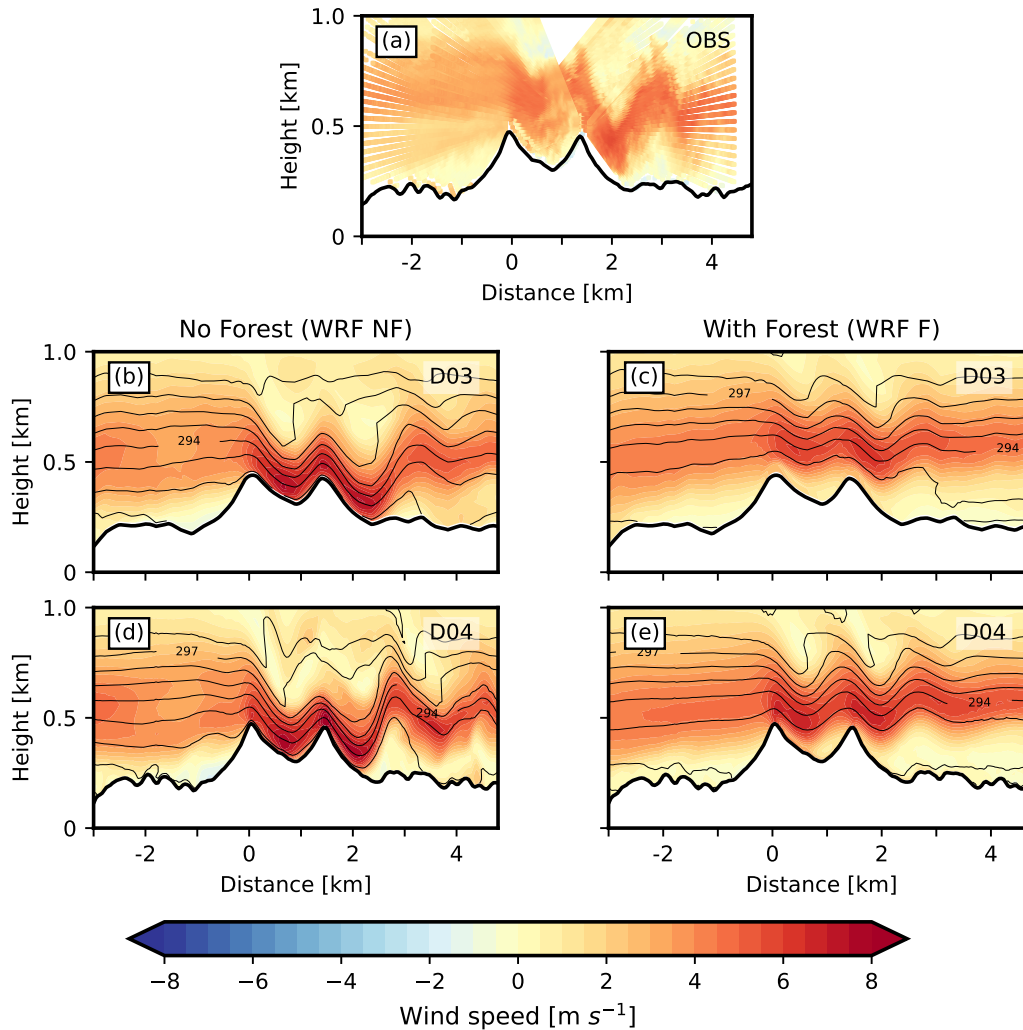
**Figure 7.** Vertical profiles of the wind speed parallel to the cross sections (see Figs. 6, 8, 9) during the low-level-Jet (LLJ) events for both simulations (colour lines) and Lidar observations (grey dots). Panel a) presents the first LLJ event (07 May 2017 04:00:00) on the leeward side of the topography ( $x = 3\text{km}$ ). Panel b) presents the second LLJ event (08 May 2017 05:30:00) on the lee side of the topography ( $x = -1.8\text{km}$ ). Panel c) presents the third LLJ event (22 May 2017 04:00:00) on the leeward side of the topography ( $x = 1.8\text{km}$ ).



**Figure 8.** As in Fig. 6, but for Low Level Jet case on 08 May 2017 05:30:00 .

Up to this stage, the evaluation of the high-resolution LES has been carried out for single time snaps to capture the main  
 285 features of the atmosphere in a cross valley section. In the following, the model performance is evaluated for the period between  
 7 and 8 May, which comprises the first two LLJ events in a single tower location (T25).





**Figure 9.** As in Fig. 6, but for Low Level Jet case on 22 May 2017 04:00:00 .

Figure 10 shows the temporal evolution of the wind speed vertical profiles at the valley centre between 00h00 on 7 May and 06h00 on 8 May for both the observations and the numerical simulations. Figure 10a presents the data from the tower T25 (20 - 100 m AGL) and the VAD wind profiling scans (100 - 1000 m AGL). The instruments are located 250 m from each other.

290 During the early hours of 7 May (00h00 - 06h00), the lower atmosphere is characterised by a 100 m deep weak flow layer (below  $3 \text{ m s}^{-1}$ , see dark blue colours near the surface in Fig. 10a). The LLJ signature is observed aloft (between 150 and 400 m a.g.l.) reaching wind speeds of about  $8 \text{ m s}^{-1}$  between 02h00 and 06h00 . After 06h00, the near surface layer of weak wind increases to a depth of over 200 m at 09h00. During midday and afternoon (11h00 - 18h00), the whole layer becomes turbulent, and a convective signal is observed until 18h00 when turbulence begins to vanish and the nocturnal stable boundary

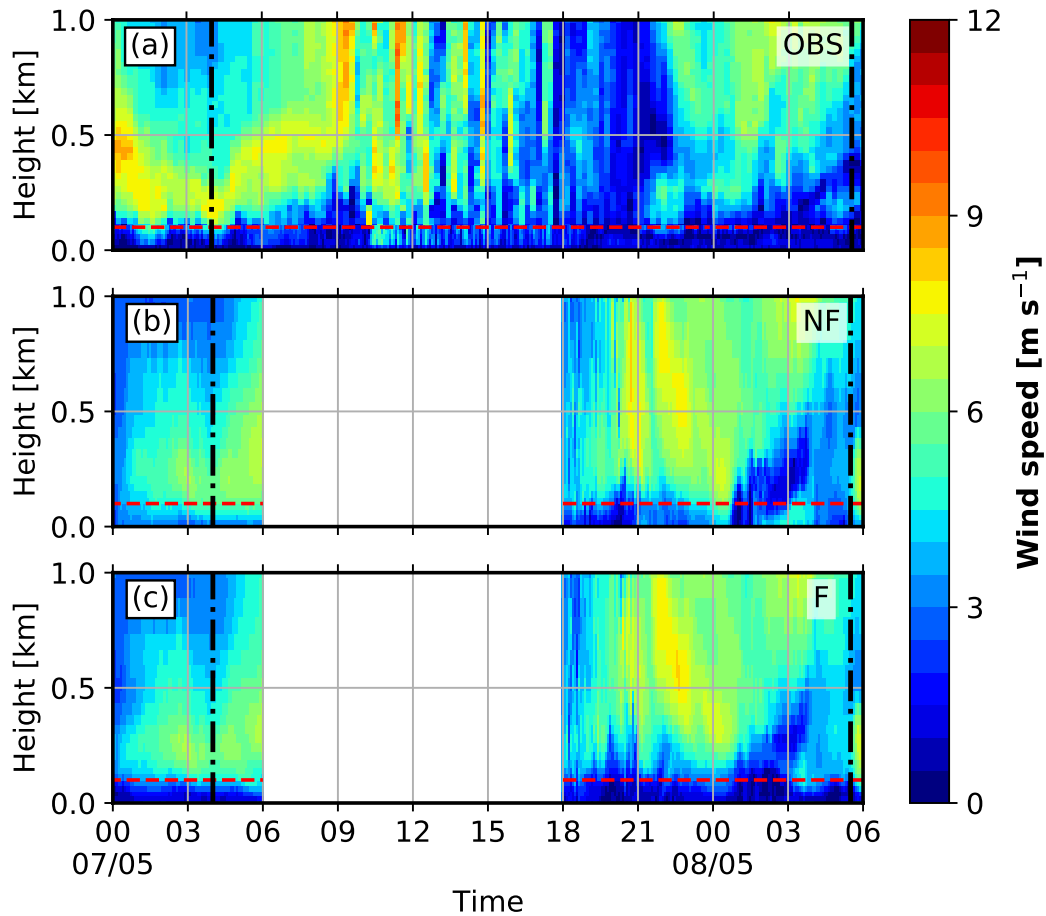
295 layer dominates after 22h.

In the early hours of 8 May (00h00 - 03h00) the LLJ is hardly visible. The weak flow layer close to the ground is deeper than the day before (as deep as 200 m), and the wind close to the surface remains weak. At 03h00 the flow layer starts to deepen, reaching 500 m at 6h00 while maintaining the magnitude of the wind speed.

300 Panels (b) and (c) in Fig. 10 presents the results for WRF\_d04NF and WRF\_d04F, respectively, at the location of the tower T25. Both simulations ran for 12 hours between 18h00 and 06h00 for 6 and 7 May, respectively. The simulations capture the main features observed in the tower and the Lidar data. However, important differences can be noted. The LLJ event observed in the early morning of 7 May (00h00 - 06h00) is reproduced by both simulations, but weaker than observed. WRF\_d04NF fails to correctly reproduce the layer of weak flow close to the ground (shallower than observations, about 50 m deep). This issue is addressed by WRF\_d04F. The introduction of the forest parametrization helps in slowing down the flow close to the ground. Thus improving the representation of the near surface winds by creating a deeper flow layer (100 m) between 00h00 and 06h00 (see Fig. 10c), which is not represented in WRF\_d04NF (see Fig. 10b).

In the second simulation period (18h00 7 May - 06h00 8 May), both simulations overestimate the magnitude of the LLJ between 18h00 and midnight by showing wind speeds as high as  $8 \text{ m s}^{-1}$ , while the observations showed a quiet wind barely reaching  $3 \text{ m s}^{-1}$ .

310 WRF\_d04NF better represents the near-surface flow layer (200 m deep) than the previous night (00h00 06h00 7 May). Again, WRF\_d04F better captures the weak character of such a layer. WRF\_d04F well simulated the 200 m deep flow layer above the ground between 18h00 and midnight, showing a weak  $1 \text{ m s}^{-1}$  flow as evidenced in the observations. At about 02h00, the atmosphere becomes quiet and the ground flow layer linearly grows reaching 600 m at 05h00 in both simulations and observations.



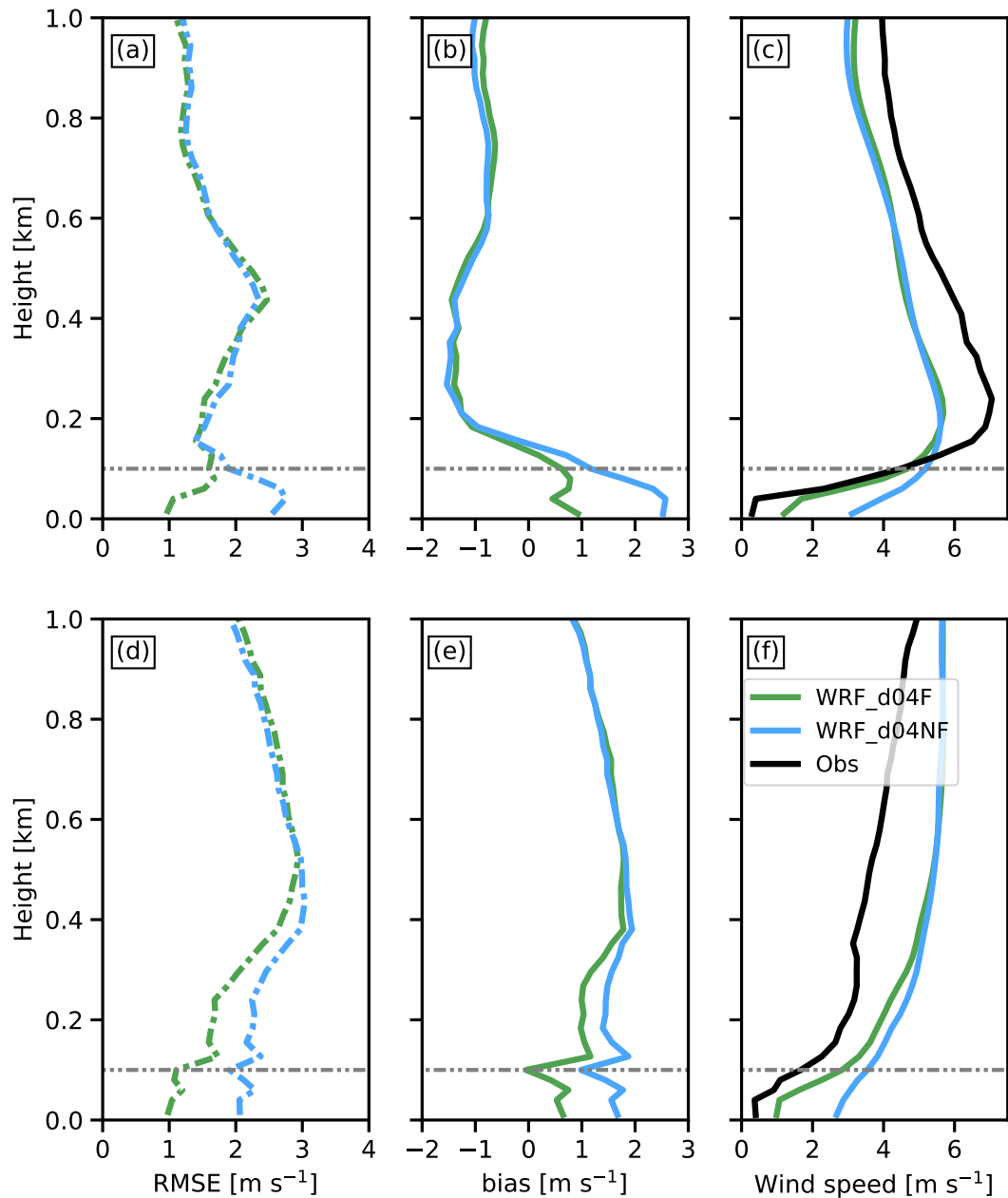
**Figure 10.** Vertical/temporal structure of the horizontal wind speed from observations using data from the tower T25 up to 100 m, and the University of Oklahoma’s VAD wind profiling scans from 100 m up to 1000 m (a). Simulation without the forest parametrization (WRF\_d04NF) (b) and with the forest parametrization (WRF\_d04F) (c). The results for the WRF simulations have been taken at the nearest grid point to location where the University of Oklahoma’s wind profiler scan was located during the field campaign (see fig. 1c). Red dashed line in the plots represent the 100 m above ground height. Dash-dotted vertical black line represents the time at which LLJ events are observed (see text for reference).

315 To quantify the impact of the forest parametrization on the wind profile, the RMSE, the bias and the average wind speed are  
 calculated at the T25 tower location. The calculation is based on the two simulated periods; between 00h00 to 06h00 7 May  
 (top panels in fig 11) and 7 May at 18h00 to 8 May at 06h00 (bottom panels in fig 11). Figure 11 shows the results for both  
 WRF\_d04NF and WRF\_d04F simulations.

320 The influence of the forest parametrization in the first 100 m AGL is important for both simulated periods. The WRF\_d04F  
 performance is consistently better than WRF\_d04NF having the largest difference near the surface, where WRF\_d04F presents  
 $1.5 \text{ m s}^{-1}$  and  $1 \text{ m s}^{-1}$  difference to WRF\_d04NF in terms of the RMSE (see Fig. 11a and Fig. 11d) for first and second period

respectively. The effect of the parametrization vanishes with height, however, its effect can be observed up to 500 m AGL, especially during the second period.

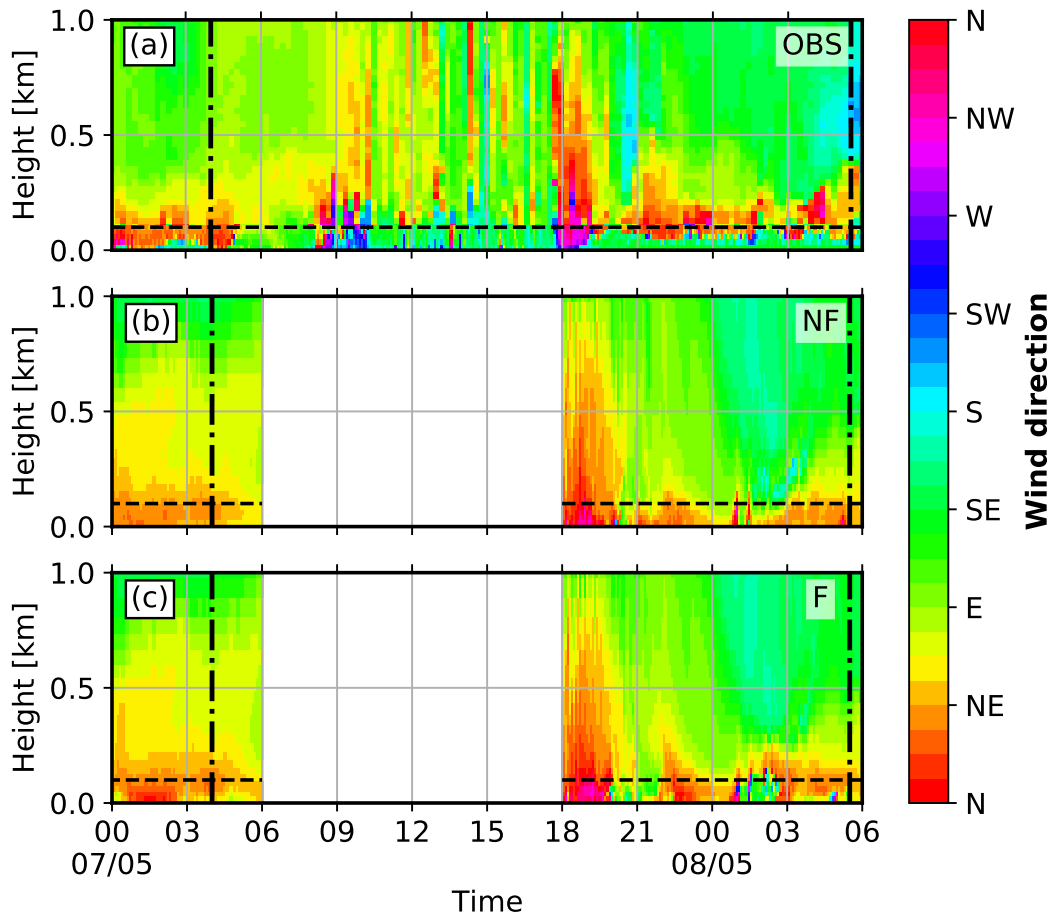
For the bias a similar behaviour is found (see Fig. 11b and e). WRF\_d04F improves the model performance for the first few  
325 hundreds metres above the ground. It is worth noting that both simulations overestimate the wind speed through the first 100  
m AGL. The forest parametrization adds drag which helps to slow down the near surface wind, leading to smaller error. The  
latter is well summarized in Fig. 11c and 11f where the average vertical profiles of the wind speed show the overestimation of  
the wind speed close to the ground (up to 200 m) in both simulations. However, the simulation using the forest parametrization  
better fits the observations in the first 150 m for the first period, and 400 m above the ground for the second period, improving  
330 the model performance. The effect of the forest parametrization evolve as the atmospheric conditions vary. For the first period,  
the effect it is as deep as 150 m, while it is three times deeper for the second period.



**Figure 11.** Vertical profiles of the root-mean-squared-error (RMSE, a and d), bias (b and e), averaged vertical profiles of the of wind speed (c and f) for WRF\_d04NF (blue lines), and WRF\_d04F (green lines). The observations of the wind speed in panel c) and F) are displayed with the black line. From the ground up to 100 m, data from the tower T25 is used, while from 100 m to 1000 m data from the University of Oklahoma’s VAD wind profiling scans is used. The grey dashed line marks the 100 m level. The results are computed between 7 May 00h00 - 06h00 (a, b and c) and 7 May 18h00 - 8 May 06h00 (d, e and f).

Figure 12 shows the temporal evolution of the wind direction at tower T25 location for both the observations and the numerical simulations. Observations show an upper level wind from the southeast throughout the whole period. The LLJ event observed in the early morning of 7 May 00h00 to 06h00 corresponds to a northeasterly cross-valley wind. Near the ground (below 100 m a.g.l.), a wind from the north/northeast dominates (cross-valley). During the day hours (06h00 to 18h00), the up-valley wind (southeast) dominates the convective atmosphere with some turbulent burst of north/south winds. During the following night, the up-valley wind (southeast) near the ground (below 80 m a.g.l.) does not change direction and remains up-valley until the end of the simulated period at 06h00. Immediately above the ground flow layer (between 100 and 300 m a.g.l.), a cross-valley wind (north-east) is observed, which may be interpreted as the signature of the LLJ.

Both WRF\_d04NF and WRF\_d04F simulations capture the main features of the flow. A northeasterly wind is simulated at 100 m AGL between 00h00 and 06h00 7 May. However, during this period both simulations failed to capture the southeasterly flow above 200 m a.g.l. Instead, a northeasterly wind was simulated. A constant up-valley wind near the ground was observed through out the period, which is not represented in the WRF\_d04NF simulation and only partially simulated for some short periods of time (see for instance 8th May between 20h00 and 22h00) in WRF\_d04F. During the second night (8th May), both simulations captured the southeasterly wind observed above 200 m a.g.l. between 21h00 and 06h00.



**Figure 12.** As in Fig. 10, but for the wind direction.

It is worth noting that the wind speed near the surface is very weak (below  $3 \text{ m s}^{-1}$ ), which makes the task to capture the proper wind direction challenging. Above the near-surface flow layer, where the wind is stronger, the model displays a better performance. Since at low wind speeds wind direction fluctuations are important, statistics of this quantity have not been calculated due to the possible large RMSE values that may lead to misinterpretation of the results (Chow et al., 2006).

#### 350 4 Conclusions

The performance of high resolution mesoscale simulations using the Weather Research and Forecasting (WRF-V4.0.1) model (Skamarock et al., 2019) with/without the implementation of a forest parametrization has been tested in the context of the Perdigão 2017 field campaign (Fernando et al., 2019). A similar configuration to that presented in Wagner et al. (2019a) is used with the addition of a subsequent inner domain with a horizontal grid spacing of 40 m. Results are validated and tested  
 355 against observational data retrieved during the campaign’s intensive observational period (IOP) between April and June 2017.

Long-term simulations (49-day) covering the IOP were conducted using a horizontal grid spacing of 200 m. The mean diurnal cycle during the IOP shows a significant improvement of the along-valley wind speed and wind direction when using the forest parametrization (WRF\_d03F). However, the drag imposed by the parametrization results in an underestimation of the cross-valley wind speed. This may indicate that the specified tree heights of  $30 \text{ m} \pm 5 \text{ m}$  is too high, and an improvement  
360 in the landuse data with a more realistic leaf area index (LAI) and forest height distribution is necessary.

Low-level jets (LLJ) events, which are mostly night-time phenomena, are frequently observed above the double ridge (Wagner et al., 2019a). Short-term high-resolution numerical simulations, using a 40 m horizontal grid spacing, with the forest parametrization (WRF\_d04F) and without (WRF\_d04NF) are evaluated for three LLJ events observed during the IOP.

The simulations using the forest parametrization better capture the main features of the observed LLJ than the simulations  
365 without it. The additional drag from the forest parametrization helps to better reproduce the near-surface flow structure with re-circulation zones near the slopes that agree better with the Lidar observations.

The model performance is further evaluated for the period comprising the first two LLJ events for the valley tower site (T25). The forest parametrization systematically improves the representation of the wind near the surface, both the wind magnitude and the wind direction, throughout the LLJ events. Although the parametrization is only applied to the first three model levels  
370 (about 30 m AGL), its positive impact is visible up to a height of 500 m above the ground, in terms of a reduced RMSE and bias.

In general, the simulations using the forest parametrization better capture the main features of the observed LLJ than the simulations without it. The additional drag from the forest parametrization helps to better reproduce the near-surface flow structure with the observed re-circulation zones near the slopes. A representation of the forest as a roughness element with  
375 an increased value of  $z_0$  seems to be inappropriate in this high resolution mesoscale simulations. The addition of a forest parametrization can positively influence the simulation of the winds in the boundary layer over moderately complex terrain.

Further improvement might be achieved with the use of more accurate landuse data with a more realistic LAI and forest height distribution. The investigation of the benefit of a forest parametrization for other atmospheric conditions and different locations is left for future work.

380 *Code and data availability.* The WRF source code is available at: <http://www2.mmm.ucar.edu/wrf/users/>. The model output to produce the figures displayed in the present work, along with the WRF namelist to perform the numerical simulations are openly available in Zenodo at Quimbayo-Duarte et al. (2021b). The observational data used in this work can be openly found in Zenodo at Quimbayo-Duarte et al. (2021b). The full field experiment dataset can be found in the official Perdigião 2017 field campaign repository at (re3data.org, 2019)

385 *Author contributions.* Julian Quimbayo-Duarte performed the model evaluation and wrote the manuscript. Johannes Wagner performed the WRF simulations, implemented the forest parameterization in the model and helped in the data post-processing. Norman Wildmann



conducted lidar observations during the Perdigão campaign provided lidar data and helped to analyse observation data. Thomas Gerz took part in the Perdigão campaign and assisted in analysing the results. Juerg Schmidli assisted in analysing the results and manuscript writing. All authors contributed to the paper by discussing the results and by proofreading the manuscript.

390 *Competing interests.* All authors declare to have no competing interests.

*Acknowledgements.* We thank José Palma, University of Porto, José Carlos Matos and the INEGI team, as well as the research groups from DTU and NCAR for the successful collaboration and realization of the Perdigão campaign. Additionally, we thank the municipalities of Alvaiade and Vila Velha de Rodão in Portugal for local support. Thanks a lot to R. Menke and J. Mann from DTU for providing the wind scanner data and to NCAR EOL for the tower data.

- Aumond, P., Masson, V., Lac, C., Gauvreau, B., Dupont, S., and Berengier, M.: Including the drag effects of canopies: real case large-eddy simulation studies, *Boundary-layer meteorology*, 146, 65–80, 2013.
- Beljaars, A. C. M.: The parametrization of surface fluxes in large-scale models under free convection, *Quarterly Journal of the Royal Meteorological Society*, 121, 255–270, <https://doi.org/https://doi.org/10.1002/qj.49712152203>, 1995.
- 400 Chow, F. K., Weigel, A. P., Street, R. L., Rotach, M. W., and Xue, M.: High-resolution large-eddy simulations of flow in a steep Alpine valley. Part I: Methodology, verification, and sensitivity experiments, *Journal of Applied Meteorology and Climatology*, 45, 63–86, 2006.
- Cuxart, J.: When can a high-resolution simulation over complex terrain be called LES?, *Frontiers in Earth Science*, 3, 87, 2015.
- Dupont, S. and Brunet, Y.: Impact of forest edge shape on tree stability: a large-eddy simulation study, *Forestry*, 81, 299–315, 2008.
- Dupont, S., Brunet, Y., and Finnigan, J. J.: Large-eddy simulation of turbulent flow over a forested hill: Validation and coherent structure  
405 identification, *Quarterly Journal of the Royal Meteorological Society*, 134, 1911–1929, 2008.
- Dwyer, M. J., Patton, E. G., and Shaw, R. H.: Turbulent kinetic energy budgets from a large-eddy simulation of airflow above and within a forest canopy, *Boundary-Layer Meteorology*, 84, 23–43, 1997.
- Fernando, H., Mann, J., Palma, J., Lundquist, J. K., Barthelmie, R. J., Belo-Pereira, M., Brown, W., Chow, F., Gerz, T., Hocut, C., et al.: The Perdigo: Peering into microscale details of mountain winds, *Bulletin of the American Meteorological Society*, 100, 799–819, 2019.
- 410 Finnigan, J., Ayotte, K., Harman, I., Katul, G., Oldroyd, H., Patton, E., Poggi, D., Ross, A., and Taylor, P.: Boundary-layer flow over complex topography, *Boundary-Layer Meteorology*, 177, 247–313, 2020.
- Hong, S.-Y. and Kim, S.-W.: Stable boundary layer mixing in a vertical diffusion scheme, in: 18th Symposium on Boundary Layers and Turbulence B, vol. 16, 2008.
- Janjic, Z.: The Mellor-Yamada level-2.5 scheme in the NCEP Eta model, in: Preprint, 11< th> AMS Conference on Numerical Weather  
415 Prediction, Norfolk, VA, 1996, 1996.
- Kolic, B.: Forest ecoclimatology, University of Belgrade, 295, 1978.
- Lalic, B. and Mihailovic, D. T.: An empirical relation describing leaf-area density inside the forest for environmental modeling, *Journal of Applied Meteorology*, 43, 641–645, 2004.
- Liu, Z., Ishihara, T., He, X., and Niu, H.: LES study on the turbulent flow fields over complex terrain covered by vegetation canopy, *Journal  
420 of Wind Engineering and Industrial Aerodynamics*, 155, 60–73, 2016.
- Mann, J., Angelou, N., Arnqvist, J., Callies, D., Cantero, E., Arroyo, R. C., Courtney, M., Cuxart, J., Dellwik, E., Gottschall, J., et al.: Complex terrain experiments in the new european wind atlas, *Philosophical Transactions of the Royal Society A: Mathematical, Physical and Engineering Sciences*, 375, 20160 101, 2017.
- Mazoyer, M., Lac, C., Thouron, O., Bergot, T., Masson, V., and Musson-Genon, L.: Large eddy simulation of radiation fog: impact of  
425 dynamics on the fog life cycle, *Atmospheric Chemistry and Physics*, 17, 13 017–13 035, 2017.
- Mellor, G. L. and Yamada, T.: Development of a turbulence closure model for geophysical fluid problems, *Reviews of Geophysics*, 20, 851–875, 1982.
- Menke, R., Vasiljević, N., Mann, J., and Lundquist, J. K.: Characterization of flow recirculation zones at the Perdigo site using multi-lidar measurements, *Atmospheric Chemistry and Physics*, 19, 2713–2723, 2019.
- 430 Menke, R., Vasiljević, N., Wagner, J., Oncley, S. P., and Mann, J.: Multi-lidar wind resource mapping in complex terrain, *Wind Energy Science*, 5, 1059–1073, 2020.

- Mohr, M., Jayawardena, W., Arnqvist, J., and Bergström, H.: Wind energy estimation over forest canopies using WRF model, European Wind Energy Association, EWEA, 2014.
- 435 Quimbayo-Duarte, J., Chemel, C., Staquet, C., Troude, F., and Arduini, G.: Drivers of severe air pollution events in a deep valley during wintertime: a case study from the Arve river valley, France, *Atmospheric Environment*, 247, 118 030, 2021a.
- Quimbayo-Duarte, J., Wagner, J., Wildmann, N., Gerz, T., and Schmidli, J.: Data accompanying the paper titled: Evaluation of a forest parameterization to improve boundary layer flow simulations over complex terrain., <https://doi.org/10.5281/zenodo.5566933>, 2021b.
- re3data.org: Perdigao Field Experiment; editing status 2020-03-20; re3data.org - Registry of Research Data Repositories, <http://doi.org/10.17616/R31NJMN4>, 2019.
- 440 Ross, A. and Vosper, S.: Neutral turbulent flow over forested hills, *Quarterly Journal of the Royal Meteorological Society: A journal of the atmospheric sciences, applied meteorology and physical oceanography*, 131, 1841–1862, 2005.
- Schmugge, T. J., Abrams, M. J., Kahle, A. B., Yamaguchi, Y., and Fujisada, H.: Advanced spaceborne thermal emission and reflection radiometer (ASTER), in: *Remote Sensing for Agriculture, Ecosystems, and Hydrology IV*, vol. 4879, pp. 1–12, International Society for Optics and Photonics, 2003.
- 445 Shaw, R. H. and Patton, E. G.: Canopy element influences on resolved-and subgrid-scale energy within a large-eddy simulation, *Agricultural and forest meteorology*, 115, 5–17, 2003.
- Shaw, R. H. and Schumann, U.: Large-eddy simulation of turbulent flow above and within a forest, *Boundary-Layer Meteorology*, 61, 47–64, 1992.
- Skamarock, W. C., Klemp, J. B., Dudhia, J., Gill, D. O., Liu, Z., Berner, J., Wang, W., Powers, J. G., Duda, M. G., Barker, D. M., et al.: A description of the advanced research WRF model version 4, National Center for Atmospheric Research: Boulder, CO, USA, p. 145, 2019.
- 450 Stiperski, I. and Grubišić, V.: Trapped lee wave interference in the presence of surface friction, *Journal of the atmospheric sciences*, 68, 918–936, 2011.
- Umek, L., Gohm, A., Haid, M., Ward, H., and Rotach, M.: Large-eddy simulation of foehn–cold pool interactions in the Inn Valley during PIANO IOP 2, *Quarterly Journal of the Royal Meteorological Society*, 147, 944–982, 2021.
- 455 Vasiljević, N., LM Palma, J. M., Angelou, N., Carlos Matos, J., Menke, R., Lea, G., Mann, J., Courtney, M., Frölen Ribeiro, L., and MGC Gomes, V. M.: Perdigão 2015: methodology for atmospheric multi-Doppler lidar experiments, *Atmospheric Measurement Techniques*, 10, 3463–3483, 2017.
- Wagner, J., Gerz, T., Wildmann, N., and Gramitzky, K.: Long-term simulation of the boundary layer flow over the double-ridge site during the Perdigão 2017 field campaign, *Atmospheric Chemistry and Physics*, 19, 1129–1146, 2019a.
- 460 Wagner, J., Wildmann, N., and Gerz, T.: Improving boundary layer flow simulations over complex terrain by applying a forest parameterization in WRF, *Wind Energy Science Discussions*, 2019, 1–25, <https://doi.org/10.5194/wes-2019-77>, 2019b.
- Wagner, T. J., Klein, P. M., and Turner, D. D.: A new generation of ground-based mobile platforms for active and passive profiling of the boundary layer, *Bulletin of the American Meteorological Society*, 100, 137–153, 2019c.
- Zäidi, H., Dupont, E., Milliez, M., Musson-Genon, L., and Carissimo, B.: Numerical simulations of the microscale heterogeneities of turbulence observed on a complex site, *Boundary-layer meteorology*, 147, 237–259, 2013.
- 465