

WRF v.3.9 sensitivity to land surface model and horizontal resolution changes over North America

Almudena García-García^{1,2}, Francisco José Cuesta-Valero^{1,2}, Hugo Beltrami¹, Fidel González-Rouco³, and Elena García-Bustamante⁴

¹Climate & Atmospheric Sciences Institute, St. Francis Xavier University, Antigonish, Nova Scotia, Canada

² Department of Remote Sensing, Helmholtz Centre for Environmental Research – UFZ, Leipzig, Germany

³Physics of the Earth and Astrophysics Department, IGEO (UCM-CSIC), Universidad Complutense de Madrid, Spain.

⁴Research Center for Energy, Environment and Technology (CIEMAT), Madrid, Spain.

Correspondence: Hugo Beltrami (hugo@stfx.ca)

Abstract. Understanding the differences between regional simulations of land-atmosphere interactions and near-surface conditions is crucial for a more reliable representation of past and future climate. Here, we explore the effect of changes in the model's horizontal resolution on the simulated energy balance at the surface and near-surface conditions using the Weather Research and Forecasting (WRF) model. To this aim, an ensemble of twelve simulations using three different horizontal resolutions (25 km, 50 km and 100 km) and four different Land Surface Model (LSM) configurations over North America from 1980 to 2013 is developed. Our results show that finer resolutions lead to higher surface net shortwave radiation and maximum temperatures at mid- and high latitudes. At low latitudes over coastal areas, an increase in resolution leads to lower values of sensible heat flux and higher values of latent heat flux, as well as lower values of surface temperatures and higher values of precipitation and soil moisture in summer. The use of finer resolutions leads then to an increase in summer values of latent heat flux, convective and non-convective precipitation and soil moisture at low latitudes. The effect of the LSM choice is larger than the effect of horizontal resolution on the near-surface temperature conditions. By contrast, the effect of the LSM choice on the simulation of precipitation is weaker than the effect of horizontal resolution, showing larger differences among LSM simulations in summer and over regions with high latent heat flux. Comparison between observations and the simulation of daily maximum and minimum temperatures and accumulated precipitation indicates that the CLM4 LSM yields the lowest biases in maximum and minimum mean temperatures, but the highest biases in extreme temperatures. Increasing horizontal resolution leads to larger biases in accumulated precipitation over all regions particularly in summer. The reasons behind relate the partition between convective and non-convective precipitation, specially noticeable over western US.

1 Introduction

Most assessments of climate change impacts on ecosystems and societies are based on projections
25 performed by Regional Climate Models (RCMs) and/or Earth System Models (ESMs, IPCC, 2013;
Arneth, 2019). Exploring inter-model differences in present climate simulations is necessary to un-
derstand their contribution to the spread in future climate projections, and ultimately to better char-
acterize or even reduce the uncertainty in the simulation of the response to a given scenario (Cubasch
et al., 2013). Understanding inter-model differences is also important for paleoclimatic studies re-
30 lying on regional climate model simulations to bridge the gap between the local character of proxy
reconstructions and ESM global simulations (e.g. PALEOLINK, Gómez-Navarro et al., 2018).

The representation of land-atmosphere interactions within climate models has received consider-
able attention during the last decades due to their influence on surface climate, vegetation and soil
hydrology, and therefore, on climate variability (e.g. Lorenz et al., 2016; Vogel et al., 2017). For ex-
35 ample, energy and water exchanges between the lower atmosphere and the ground surface have been
shown to alter surface conditions, particularly during extreme weather events in summer (Seneviratne
et al., 2006; Hirschi et al., 2011; Miralles et al., 2012; Hauser et al., 2016). Land-atmosphere
interactions have also been studied in the evaluation of climate model simulations, applying sev-
eral metrics to characterize surface energy fluxes and near-surface conditions (Koven et al., 2013;
40 Dirmeyer et al., 2013; Sippel et al., 2017; García-García et al., 2019).

The representation of near-surface conditions (e.g. air and soil temperatures, soil moisture...) and
energy and water exchanges at the land surface in a climate model depends on the processes sim-
ulated by the atmospheric and soil model components, and on the degree of coupling implemented
between both model components (Koster et al., 2006; Melo-Aguilar et al., 2018). Different Land
45 Surface Models (LSMs) include varying levels of realism in the representation of soil physics, land
cover type, soil water content, snow cover, drip, runoff or infiltration . Thus, each LSM simulates
somewhat different surface water and energy fluxes (e.g. Lawrence et al., 2019). For example, the
representation of surface albedo, evaporative resistance and aerodynamic roughness by each LSM
alters the simulation of the surface energy balance and consequently affects the evolution of surface
50 temperatures (Laguë et al., 2019; MacDougall and Beltrami, 2017). The dependence of the simulated
land-atmosphere interactions on the LSM has been shown in previous studies using global (García-
García et al., 2019), and regional climate model simulations over North America (Pei et al., 2014;
García-García et al., 2020). There are examples of these studies at local scales (Mooney et al., 2013;
Wharton et al., 2013; Chen et al., 2014; Van Den Broeke et al., 2018; Liu et al., 2019; Zhuo et al.,
55 2019) and at continental scales for Europe (Davin and Seneviratne, 2012; Mooney et al., 2013).

Horizontal resolution is another factor to take into account in the study of land-atmosphere interactions in climate model simulations. ESMs are limited by computational resources, using horizontal resolutions from approximately 250 to 100 km (e.g. CMIP5 models, Taylor et al., 2012), while RCMs allow for using much finer resolutions. Analogously, the range of horizontal resolutions employed in RCMs for climate studies is usually limited to approximately 50-25 km (e.g. CORDEX models, Giorgi and Gutowski Jr., 2015). In spite of this enhanced resolution, RCM ability to reproduce temporal variability like that of precipitation at daily time scales is still limited, being greatly improved by using resolutions of ~ 4 km and convection resolving RCMs (Sun et al., 2016). Previous studies have shown some resolution-induced improvements in the simulation of precipitation, wind and high altitude temperatures at local and regional scales with possible implications for the simulation of climate dynamics (Ban et al., 2014; Gómez-Navarro et al., 2015; Messmer et al., 2017; Hahmann et al., 2020; Vegas-Cañás et al., 2020). Small scale weather phenomena such as sea breezes, snowstorms induced by the presence of lakes, local winds, tropical cyclones, and mesoscale convective systems can be better represented with increased resolution (Wehner et al., 2010). Some studies have also suggested a resolution-induced improvement in the representation of interactions between small and large scale dynamical processes, ultimately leading to better large-scale atmospheric flow (Lucas-Picher et al., 2017). Thus, the difference in the resolution employed in RCMs and GCMs is expected to improve the representation of land-atmosphere interactions in RCMs through a more adequate discretization of equations, as well as through a more realistic representation of small-scale processes and topographical features (Xue et al., 2014; Rummukainen, 2016; Vegas-Cañás et al., 2020). The improved representation of land-atmosphere interactions associated with finer resolutions is also expected to induce an improvement in the simulation of near-surface conditions, especially in the simulation of extreme events (Prein et al., 2013; Di Luca et al., 2015; Rummukainen, 2016; Demory et al., 2014).

Although the literature on the impact of the LSM choice and changes in resolution on climate simulations is extensive, most studies are focused on small domains and meteorological events, providing little information about the impact of the LSM choice and horizontal resolution changes on long-term climatological variability. Here, we evaluate and compare the influence of both factors, the LSM choice and horizontal resolution, on the representation of energy and water fluxes at the surface and consequently on the simulation of near-surface conditions over North America for a climatological period spanning the time interval 1980-2013. We use the WRF model (version 3.9, Michalakes et al., 2001), that allows for testing a number of LSM schemes, each varying in physical parameterization complexities. An ensemble of twelve simulations was generated using three different horizontal resolutions (25 km, 50 km and 100 km), four different LSM configurations and two vegetation options, i.e. prescribed or dynamical vegetation.

The WRF representation of climate at different resolutions is expected to affect the simulation of atmospheric and surface phenomena in several ways, through different representation of cloud formation, or through different level of details in the description of orography and land cover. Simulations with different LSMs provide information about the advantages of using a comprehensive
95 LSM, such as the CLM4 LSM (Oleson et al., 2010), or a simpler LSM component, such as the NOAH LSM (Tewari et al., 2004). Additionally, the comparison of two identical model configurations except for the prescribed or dynamical vegetation mode provides information about the effect of a realistic evolution of vegetation cover on the energy and water balance at the surface. Thus, soil and near-surface variables from these twelve simulations are compared and also evaluated against
100 temperature and precipitation observations to explore two questions: 1) How do changes in horizontal resolution within WRF affect the simulation of land-atmosphere interactions and near-surface conditions? 2) How do LSM differences in the simulation of land-atmosphere interactions translate into different near-surface conditions?

The descriptions of the WRF experiments and the methodology applied for the analysis are included in Section 2 and 3, respectively. Section 4 presents the results of the analysis, which are
105 discussed using the available literature in Section 5. The conclusions and importance of this work are summarized in Section 6.

2 Description of the modelling experiment

We performed three sets of regional simulations (twelve simulations in total) over North America
110 from 1980 to 2013 using the Advanced Research WRF model (WRF v3.9, Michalakes et al., 2001) with initial and boundary conditions from the North American Regional Reanalysis product (NARR, Mesinger et al., 2006). The NARR product was generated by the NCEP Eta atmospheric model (Zi, 1997), the NOAH LSM component (Mitchell, 2005) and the Regional Data Assimilation System (RDAS Mesinger et al., 2006). The NARR data were obtained from the National Center for Environmental Information (NOAA) archive and provides data over a 32 km grid with a three-hourly
115 temporal resolution. No nudging techniques were applied within the domain of the simulation. The use of nudging techniques imposes large scale variability within the inner scales of the domain of simulation, thus partially muting the generation of local and regional scale dynamical responses in favour of representing the large scale flow of the driving conditions. Avoiding nudging, therefore,
120 allows for more clearly expressing the influences of increased resolution and of changing the LSM component (von Storch et al., 2000).

The three sets of simulations were performed using a Lambert type projection with resolutions of 25×25 km, 50×50 km, and 100×100 km. Each set includes four simulations using three different

125 LSM components: the NOAH LSM (NOAH, Tewari et al., 2004), the NOAH LSM with multiparam-
eterizations options (NOAH-MP, Niu et al., 2011), and the Community Land Model version 4 LSM
(CLM4, Oleson et al., 2010). The fourth simulation included in each set was performed using the
NOAH-MP LSM with dynamic vegetation (NOAH-MP-DV), while vegetation was prescribed for
the other simulations. The rest of the WRF options remained the same for all simulations, employ-
130 ing 27 atmospheric levels, land cover categories from the Moderate Resolution Imaging Spectroradi-
ometer (MODIS, Barlage et al., 2005), the WRF Single Moment (WSM) 6-class graupel scheme
for the microphysics (Hong and Lim, 2006), the Grell-Freitas ensemble scheme (Grell and Freitas,
2014), the Yonsei University scheme for the description of the planetary boundary layer scheme
(YSU, Hong et al., 2006), the revised MM5 monin-Obukhov scheme (Jiménez et al., 2012), and the
Community Atmosphere Model (CAM) scheme (Collins et al., 2004). The use of different horizon-
135 tal resolutions requires the use of different time steps for performing our WRF simulations, as well
as different time intervals for computing radiation physics (radt option in WRF namelist). Table 1
summarizes the differences between all simulations employed in this analysis.

The LSM schemes used in this study differ in parameterization complexity, being the NOAH the
most basic amongst the three selected LSMs. The NOAH LSM describes soil and vegetation pro-
140 cesses for the closure of the water and energy budgets, discretizing the soil into four soil layers that
reach a total of 2m of depth (Tewari et al., 2004). Some limitations have been associated in this soil
model with the represented bulk layer of canopy, snow and soil, its system to drain water at the bot-
tom of the soil column and its simple snow melt dynamics (Wharton et al., 2013). The NOAH-MP
version of the NOAH LSM improves soil hydrology and the representation of terrestrial biophysical
145 processes (Niu et al., 2011). This scheme includes a separate vegetation canopy with a compre-
hensive description of vegetation properties. The NOAH-MP also includes a multi-layer snow pack
description with liquid water storage and melting and refreezing capabilities. It includes the same
soil structure than the NOAH LSM (four soil layers, down to 2 m).The CLM4 LSM incorporates a
comprehensive representation of biogeophysics and hydrology, including a single-layer vegetation
150 canopy, a five-layer snowpack, and a ten-layer soil column down to a depth of 3.802 m. This scheme
also characterizes each grid cell into five primary sub-grid land cover types (glacier, lake, wetland,
urban, and vegetated), using up to 4 plant functional types (PFTs) to describe vegetation physiology
and structure.

3 Methodology

155 We study the impact of changing horizontal resolution on surface energy fluxes and near-surface
conditions as simulated by the WRF model with different LSM components. For this purpose, we

estimated the temporal averages of surface energy fluxes for the analysis period (1980-2013) focusing on the following energy components: net shortwave radiation (SNET, W/m^2), net longwave radiation (LNET, W/m^2), net radiation absorbed by the soil (RNET, W/m^2), latent heat flux (LH, W/m^2), sensible heat flux (HFX, W/m^2) and ground heat flux (GHF, W/m^2). The temporal averages of near-surface conditions are estimated using outputs of 2 m air temperatures (SAT, $^{\circ}C$), daily maximum SAT (TASMAX, $^{\circ}C$), daily minimum SAT (TASMIN, $^{\circ}C$), soil temperature at 1m depth (GST 1m, $^{\circ}C$), accumulated convective and non-convective precipitation at the surface (PRECIP C and PRECIP NC, mm/day), soil moisture contained in the first soil meter (SM 1m, m^3/m^3) and total cloud fraction (TCLDFR, %). All values are computed using the annual and seasonal (boreal winter, DJF; summer, JJA) averages over the 34-year period (1980-2013) after discarding the first year of the simulation (1979) as spin up, which is enough to avoid the effect of initial conditions (García-García et al., 2020). Thus, we estimated the anomalies of all outputs for each LSM simulation relative to the multi-model mean (the mean of CLM4, NOAH, NOAH-MP, and NOAH-MP-DV outputs) for each set of simulations with different resolution (25 km, 50 km and 100km). Similarly, we estimated the change in the simulation of all variables between the 100 km and 50 km simulations and between the 50 km and 25 km simulations for all LSM configurations. When required, outputs of all WRF experiments were mapped to the grid of the observational reference employed in this study by selecting the nearest model grid point. A Student's t-test considering autocorrelation was used to identify significant differences between simulations with different LSMs and horizontal resolutions at the 95% confidence level.

Additionally, we evaluate the WRF performance in the simulation of maximum and minimum air temperature and accumulated precipitation against the Climatic Research Unit Time-Series product version 4.03 (CRU, Harris et al., 2014). The CRU database provides monthly data at a resolution of approximately 50 km. Previous studies have reported inconsistencies between different observational products, particularly important for the evaluation of model simulations with different resolutions (e.g. Iles et al., 2019). To avoid this issue, we included another observational database in the analysis; the Daily Surface Weather Data version 3 (DAYMET Thornton et al., 2016), with daily data at approximately 1 km resolution over North America. This allows the comparison of uncertainties associated with the choice of the observational product and the uncertainties arising from the model configuration. We calculated annual and seasonal WRF and DAYMET biases in these variables relative to the CRU data for the analysis period averaging over six subregions, due to the large climate differences over North America. These six subregions cover Central and North America (NA) and are adapted from Giorgi and Francisco (2000): Central America, CAM; Western North America, WNA; Central North America, CNA; Eastern North America, ENA; Alaska, ALA; and Greenland, GRL (Figure 1). The impact of horizontal resolution is expected to be larger on the

simulation of extreme events than on surface climatologies (Prein et al., 2013; Di Luca et al., 2015; Rummukainen, 2016). We examined this by calculating the bias in the 95th percentile of maximum and minimum temperature and accumulated precipitation within all experiments using the DAYMET product as reference.

4 Results

4.1 LSM influences on surface energy fluxes and near-surface conditions

The net radiation absorbed by the ground surface enhances turbulent (latent and sensible) fluxes at the surface and/or warms the soil surface, which leads to an increase in the emitted longwave radiation (Bonan, 2002). The relationship between these variables is shown by their corresponding ensemble mean of LSM simulations, indicating similar latitudinal patterns in net radiation, turbulent fluxes and near-surface temperatures with higher fluxes and temperatures at lower latitudes (see for example Figure 2 for the LSM ensemble mean of the 50 km experiments). The net radiation results from adding net shortwave and longwave radiations, whose mean values have similar spatial distributions but with opposite sign (Figure 2a). This indicates that more shortwave radiation reaches the land surface than is reflected due to surface albedo, while the radiation emitted from the soil due to its surface temperature, is higher than the longwave radiation reaching the soil surface (Figure 2a). The energy proportion of net radiation that is propagated through the soil is much smaller than the rest of surface energy fluxes (Figure 2b). Areas with high latent heat flux coincide with areas with high convective precipitation rates at low and middle latitudes (Figure 2b and d). The soil moisture map shows high values southward the Great Lakes region and low values in dry areas such as Florida and the southwest US, in agreement with both convective and non-convective precipitation (Figure 2d and e).

The use of a different LSM component in WRF affects the representation of soil and vegetation properties and processes in the simulation, resulting in noticeable differences in the simulated energy fluxes across the domain (Figure 3). For instance, the spatial pattern of the LSM anomalies relative to the multi-model mean in longwave net radiation is similar to the minimum temperature anomalies (Figures 3b and 4b), and the anomalies in latent heat flux show similar LSM differences to the convective precipitation maps at low latitudes (Figures 3d and 5a). The spatial pattern of the LSM anomalies in sensible and latent heat fluxes shows opposite values around the mean. For example over the boreal forest, the LSMs reaching the highest values of latent heat flux also reaches the lowest values of sensible heat flux at the same locations (Figure 3d and f).

LSM differences in the simulation of surface fluxes and near-surface conditions are similar among the experiments with different resolutions (Figures 3, 4, 5, S2, S4 and S6). For example, based on

225 the differences between each LSM simulation with 50 km resolution and the 50 km multi-model
mean (Figure 2), we can identify the CLM4 as the LSM component simulating the highest net short-
wave radiation over most of North America for the annual, DJF and JJA means (SNET in Figures
3a and S1). Meanwhile, the NOAH-MP-DV simulation reaches the lowest net shortwave radiation
over the same areas (Figure 3a). The WRF simulation of net longwave radiation reaches negative
230 values (Figure 2a) with the maximum values simulated by the NOAH LSM and the minimum values
simulated by the CLM4 LSM (Figure 3b). The upward (negative) component of the net longwave
radiation results from the Stefan-Boltzmann equation, from which the out-going long-wave radia-
tion $LW \uparrow$ is proportional to σT_s^4 , where T_s is surface temperature and σ is the Stefan-Boltzmann
constant. Thus, the CLM4 simulation produces the largest outgoing longwave radiation (see Figure
235 S7), shown in Figure 3b by the largest negative anomalies and therefore the highest air and soil tem-
peratures (Figure 4). The opposite behaviour is performed by the NOAH LSM, yielding the lowest
upward longwave radiation (Figures 3b and S7), and one of the coldest temperature climatologies
relative to the multi-model mean (Figure 4). The relationship between the radiation and temperature
anomalies is also supported by high spatial correlation coefficients (Table S1). These correlation
240 coefficients show the link of maximum temperatures to both shortwave and longwave net radiation,
particularly in summer, while minimum temperatures show higher correlation with longwave net
radiation than with shortwave net radiations in most of LSM simulations (Table S1).

The simulation of sensible heat flux reaches the highest values using the CLM4 configuration over
the boreal forest and the lowest values in western US. Meanwhile, the NOAH simulation reaches the
245 lowest sensible heat fluxes over the boreal forest and the highest values in western US (Figure 3e).
The spatial patterns of LSM anomalies in sensible heat flux are similar to the LSM anomalies in net
shortwave radiation and daily maximum temperatures (Figures 3a and 4a), which is also shown by
high spatial correlation coefficients, particularly in summer (Table S1). LSM differences in ground
heat flux are smaller than for the rest of the energy fluxes due to the small magnitude of the GHF
250 in comparison with the rest of energy components (Figure 2g). The NOAH LSM reaches the lowest
ground heat flux values for the annual mean in most of the domain, showing nonetheless the highest
ground heat flux values in summer at high latitudes (Figures 3f and S1). The spatial pattern of LSM
differences in ground heat flux differ from the soil temperature results, whose spatial correlation
coefficients are higher with the longwave net radiation mainly in summer. LSM differences are
255 larger for the simulation of soil temperatures than for the simulation of air temperatures particularly
at high latitudes in summer where LSM differs largely in the simulation of shortwave net radiation,
probably due to different estimates of surface albedo under different land cover and soil moisture
values (Figures 2a, 4c-d, 5c, and S3).

The CLM4 simulation produces the highest latent heat flux values and convective precipitation rates, particularly over southwestern NA, while the NOAH simulation provides the lowest latent heat flux and convective precipitation values over the same areas (Figures 3d and 5a). LSM differences in latent heat flux, convective and non-convective precipitation are larger in summer (Figures S1 and S5). LSM differences in JJA convective precipitation rates are particularly large at low latitudes, where the CLM4 LSM produces high latent heat flux over the western part of the domain and low latent heat flux over the eastern NA relative to the multi-model mean (Figure S1 and S5). This differences between the east and west in the CLM4 simulation of latent heat flux are not reflected in the values of convective precipitation rates, hence the low spatial correlation coefficients between both variables (Table S2). There are also LSM differences in the non-convective term of precipitation, with larger anomalies in summer than in winter (Figures 5b and S5). Thus, the NOAH LSM produces the highest precipitation anomaly at mid-latitudes, where the same LSM produces high values of total cloud fraction relative to the multi-model mean (Figure 5b and d). This relationship between non-convective precipitation and cloud cover is also shown by high spatial correlation coefficients (Table S2). There are large LSM differences in the simulation of soil moisture, with the CLM4 LSM generating the driest conditions and the NOAH-MP experiments the wettest soils (Figures 5c and S5). Although the LSM differences are large in the representation of humid conditions, the relationship between precipitation, latent heat flux, soil moisture and cloud fraction is weaker than the relationship between radiation and temperatures in the WRF experiments.

Larger LSM differences in the simulation of shortwave and longwave radiations and temperatures are found over very vegetated areas such as the boreal forest and eastern US (Figures 3 and 4). The comparison of the NOAH-MP experiments with prescribed and dynamic vegetation also show larger differences in air temperatures over these areas. This suggests that the different representation of vegetation in each LSM yields to different estimates of soil properties, such as surface albedo, evaporative resistance and aerodynamic roughness, affecting the simulation of radiation and temperatures. The LSM differences in latent heat flux and convective precipitation are larger at low latitudes, with the NOAH LSM yielding the most different values relative to the rest of LSMs. This can be associated with the issues identified in the NOAH LSM to simulate soil hydrology (Wharton et al., 2013).

4.2 Resolution impact on surface energy fluxes and near-surface conditions

The response of surface energy fluxes and near-surface conditions to changes in spatial resolution varies considerably with the season, while they behave similarly using different LSM components (Figures 6, S8 - S13). We consider the results of the NOAH-MP-DV experiments as example to minimize the number of figures in the manuscript. Changes in resolution alter the surface energy fluxes

in DJF mainly over regions of complex topography and coastal areas, while in JJA the simulation of energy fluxes is affected by resolution over the whole domain except over a region in the central
295 US and northern areas of Hudson Bay (Figure 6). In JJA, the use of coarser horizontal resolutions induces a decrease in the net radiation absorbed by soil at high latitudes, mainly caused by a decrease in net shortwave radiation (Figure 6a and c). The decrease in net radiation induced by coarser resolutions limits the energy available for turbulent energy fluxes at high latitudes. Thus, values of latent and sensible heat fluxes also decrease at coarser resolutions at high latitudes (Figure 6d and
300 e). The use of coarser resolutions also induces higher sensible heat fluxes at low latitudes, which is balanced by lower latent heat flux (Figure 6d and e).

Changes in downward shortwave radiation at the surface are mainly driven by changes in cloud cover, but changes in atmospheric water vapor and aerosols may also affect the shortwave radiation reaching the ground surface (Hatzianastassiou et al., 2005). Changes in surface albedo also lead
305 to changes in the upward component of shortwave radiation, thus affecting SNET. The resolution differences in estimating albedo and land-use/land-cover in our results are smaller than those associated with the cloud cover and the microphysics of the model, particularly in JJA. Thus, the effect of resolution on the downward component of shortwave radiation, which is dependent on cloud formation and atmospheric composition, is larger than the resolution effect on the upward component of
310 shortwave radiation, which is dependent on albedo values (Figure S14). The resolution changes in winter SNET at southern latitudes of the Rocky Mountains that are not related to cloud cover seem to be associated with the upward component of shortwave radiation and therefore with the resolution effect on surface albedo values (Figure 6a, 8d and S14).

Consistently with the effect of LSM differences on near-surface conditions (Section 4.1), the spa-
315 tial pattern of the resolution impact on net shortwave radiation is similar to the resolution-induced changes in daily maximum temperatures (Figures 6a and 7a). The response of minimum temperature to changing resolution is, however, smaller than for maximum temperatures at mid-high latitudes (Figure 7b). Over eastern North America, JJA minimum temperature increases with the use of coarser resolutions, while it decreases over western North America (Figure 7b). The response of
320 mean temperature to resolution is mainly driven by the resolution impact on maximum temperatures, since both show similar spatial patterns (Figure 7c). Although the impact of resolution on air and soil temperature shows similar spatial patterns, in winter air temperatures are more affected by changes in resolution than soil temperatures, particularly at high latitudes and elevation where snow may be present (Figure 7c and d). Thus, soil temperatures are more sensible to JJA changes in the
325 energy budget induced by reducing resolution, while in DJF soil temperature remains insulated from resolution-induced changes in surface conditions, probably because of the insulating effect of snow cover (García-García et al., 2019).

Non convective precipitation increases with the use of coarser horizontal resolutions over the Rocky Mountains, particularly in winter, where the model also represents higher percentage of cloud cover with coarser resolutions (Figure 8b and d). Over the east coast of the US, the use of coarser resolutions leads to lower non-convective precipitation rates (Figure 8b). This behaviour is also present in JJA over the arctic areas of our domain (Figure 8b). Although the response of convective precipitation to resolution in winter is not significant, in JJA the use of coarser horizontal resolutions yields a decrease in convective precipitation over coastal areas and the Rocky Mountains, where the simulation also reaches lower latent heat flux values (Figures 6d and 8a). Although the spatial pattern of soil moisture is very patchy in DJF and JJA, soil moisture tends to decrease at low latitudes in JJA with the use of coarser resolutions (Figure 8c). At mid-latitudes, however, the use of coarser resolution leads to an increase in soil moisture during the year at most locations (Figure 8c).

In summary, at low NA latitudes the JJA values of the three variables associated with the surface water balance (LH, PRECIP and SM 1m) decrease with the use of coarser horizontal resolutions, although showing large spatial variability (Figures 6d and 8a and c). At mid- and high NA latitudes, there are differences in the response of the water balance variables to the use of coarser resolutions. For example, soil moisture increases with coarser resolutions over a large area at mid-latitudes, while convective precipitation increases just over a few grid cells in central NA, decreasing over most coastal areas (Figure 8a and c). Latent heat flux decreases with the use of coarser resolutions over most regions at high and mid-latitudes, particularly over coastal areas (Figure 6d).

4.3 Comparison of temperature and precipitation against observations

For the comparison of the effect of LSM and horizontal resolution changes on climate simulations, we estimate the bias in all WRF simulations relative to the CRU observational product (Harris et al., 2014). As a measure of the possible uncertainties in observational databases, we also estimate the bias in the DAYMET product relative to the CRU data. The inconsistencies between both observational data are noticeably smaller than the biases in the WRF experiments for all variables in all regions, except for minimum temperatures in the CAM region and for precipitation in the ALA region (Figure 9, see a representation of the regions in Figure 1).

The WRF model underestimates annual and seasonal means of daily maximum temperatures over most of North America at all resolutions, comparing grid-cell by grid-cell (Figure S15) and on average over subdomains (Figure 9a). These biases are generally less pronounced for the experiments using the CLM4 LSM at most locations and in all seasons. The impact of horizontal resolution on these values is weaker than the LSM dependence over each domain, showing a larger effect of resolution on maximum temperatures in summer than in winter over western North America and at high latitudes (WNA, ALA and GRL in Figure 9a). Over these areas, finer horizontal resolutions are

associated with warmer JJA maximum temperatures, reducing the bias relative to the CRU dataset at middle latitudes (Figures 7a and 9a). In the ALA and GRL regions, the WRF model with the CLM4 and the NOAH-MP LSM components overestimates JJA maximum temperatures, increasing
365 the bias in these simulations with the use of finer resolution (Figure 9a). The WRF bias in maximum temperatures in winter is greatly improved over the boreal forest and the Rocky areas by using the CLM4 as LSM (Figure S15). Over the same areas the CLM4 simulated very high values of short-wave net radiation and sensible heat flux in comparison with the rest of land surface models (Figure 3a and e), which may be related to the CLM4 albedo estimate. Despite the WRF underestimation of
370 mean maximum temperature, extreme maximum temperatures are overestimated by the WRF model, particularly at high latitudes and using the CLM4 LSM (Figure 10a). As expected based on the literature, the resolution effect on the bias in extreme maximum temperatures is larger than on the bias in mean maximum temperatures, however LSM differences are still larger than resolution-induced changes.

375 The performance of the WRF model in reproducing daily minimum temperatures from the CRU observations is slightly better than reproducing maximum temperatures at mid- and low latitudes, but it is worse at high latitudes particularly in DJF (Figure 9b). Experiments using the CLM4 LSM yield a warmer climatology over most areas and for all seasons than the experiments with the other LSM components, implying smaller biases in the CLM4 simulations for most of regions (Figure
380 9b). The WRF bias in minimum temperature is large in winter over the central and eastern areas of North America and at mid- and high latitudes (subdomains ALA, GRL, CNA and ENA in Figure 9b). The resolution impact on these results is again weaker than the effect of the LSM component. In summer, the WRF-NOAH experiments show a large negative bias in minimum temperatures over the NA southeastern coast (Figure S16), areas where the same experiments also shown high values
385 of longwave net radiation and low values of sensible heat flux (Figure 3b and e). The simulation of extreme minimum temperatures is also overestimated for all experiments and regions except for the CAM region in summer, showing particularly large biases in winter (Figure 10b). Thus, although the WRF model underestimates mean maximum and minimum temperatures, it overestimates the intensity of hot extremes associated with minimum and maximum temperatures. The effect of dynamic
390 vegetation (NOAH-MP vs NOAH-MP-DV) on the biases in extreme and mean maximum and minimum temperatures remains constant using different resolutions, reaching larger biases and colder maximum and minimum temperatures with dynamic vegetation than with prescribed vegetation for most of the regions (Figure 9a and b).

The WRF model simulates large positive biases in daily accumulated precipitation at the surface
395 over most of North America during all seasons, with larger biases in summer (Figures 9c and S17). A negative bias is also present in all experiments over the southeastern US and the eastern coast

of North America in summer and winter (Figure S17). Dry biases are reduced when using finer horizontal resolutions, while wet biases are larger when using smaller scales (Figure 9c). This is due to the intensification of the water cycle with the use of finer horizontal resolutions discussed in section 4.2 and presented in Figures 6d and 8. For example in winter, the dry bias shown in all experiments over the southeastern NA is associated with an increase in non-convective precipitation using finer resolutions (Figures S17 and 8b). In summer, the bias in precipitation is larger using finer resolutions over most of coastal areas where an increase in convective precipitation and latent heat flux were shown with the use of finer resolutions (Figures 6d, 8a and S17). The impact of resolution on the accumulated precipitation is stronger than the effect of the LSM component, which affects precipitation mainly in summer (Figure 9). The results show larger bias in extreme precipitation than for the mean accumulated precipitation, but yielding similar conclusions (Figure 10).

In summary, the LSM impact on temperatures is larger than the resolution effect, while the opposite is true for precipitation climatologies, i.e. differences in precipitation arising from changes in resolution are larger than LSM differences (Figure 9). The influence of both the LSM choice and resolution intensifies in summer comparing with the rest of seasons, probably because of the larger energy exchanges and the consequent intensification of land-atmosphere coupling in summer (Zhang et al., 2008; Mei and Wang, 2012). The CLM4 LSM generates the smallest biases relative to the CRU database in the WRF simulation of mean maximum and minimum temperature, however it also yields the larger biases in extreme maximum and minimum temperatures. The use of finer resolutions leads to slightly larger or smaller biases in the simulation of maximum and minimum temperatures depending on the LSM component and the region, while the use of finer resolutions implies larger biases in mean and extreme precipitation at low and mid-latitudes for all LSM components, particularly in summer.

420 5 Discussion

The dependence of climate simulations on the LSM component shown in this study agrees with conclusions drawn from previous analyses at different temporal and spatial scales (Chen et al., 2014; Van Den Broeke et al., 2018; Liu et al., 2019; Zhuo et al., 2019; Davin and Seneviratne, 2012; Mooney et al., 2013; Laguë et al., 2019; García-García et al., 2020). For example, using the Consortium for Small-scale Modeling (COSMO) and WRF RCMs, Davin and Seneviratne (2012) and Mooney et al. (2013) identified a LSM sensitivity of temperature and precipitation conditions over Europe, which intensifies in summer. Additionally, our analysis has shown that the impact of the LSM choice on the WRF simulation of precipitation is weaker than its impact on temperature, in agreement with studies over a small region in Italy (Zhuo et al., 2019), over Europe (Mooney et al., 2013) and over

430 the western and central US at seasonal scales (Jin et al., 2010; Chen et al., 2014; Van Den Broeke et al., 2018). The implementation and calculation of surface properties (albedo, surface roughness and evaporative resistances) by each LSM can be the cause of the LSM differences in the simulation of energy fluxes (Laguë et al., 2019). Thus, LSM differences in SNET are probably related to albedo values within each LSM. The large LSM differences in sensible heat flux over the boreal forest are
435 likely related to the LSM estimates of surface roughness. While the large latent heat flux differences at low latitudes are probably associated with different estimates of evaporative resistances and the treatment of soil water in each LSM.

The large WRF sensitivity of precipitation rates to resolution is also supported by the literature (e.g. Pieri et al., 2015). Our results also shown large seasonal differences, mainly caused by the
440 different contribution of convective precipitation in summer and winter. In summer at middle and low latitudes, the use of finer grid cells leads to a change in the energy partition into sensible and latent heat flux, increasing latent heat and decreasing sensible heat (Figure 6). This increase in latent heat flux over these areas is probably the caused of the higher values of convective precipitation (Figure 8a). This resolution-induced increase in precipitation through changes in convective processes has
445 also been suggested in the literature (Prein et al., 2016). At high latitudes both turbulent heat fluxes increase in summer with the use of finer resolutions, mainly due to the increase in shortwave net radiation probably related to the decrease in cloud cover shown in Figure 8d. These changes in cloud cover with resolution may be caused by the performance of the microphysical parameterizations at different resolutions and the improvement in the representation of orography (Pieri et al., 2015; Prein
450 et al., 2016).

Previous evaluations of RCMs using several soil models over different domains reached the conclusion that the most complex LSM components, that is, the LSM components representing more physical phenomena, outperform others (Chen et al., 2014; Van Den Broeke et al., 2018; Liu et al., 2019). Over North America, our results indicate that the WRF simulation of temperature conditions
455 using the CLM4 LSM outperforms the simulation of mean maximum and minimum temperatures generated by the NOAH and NOAH-MP LSMs, but it yields larger biases in extreme maximum and minimum temperatures (Figures 9 and 10). The simulation of precipitation in summer is, however, slightly better represented by the NOAH LSM than by the other LSM components (Figure 9). Nonetheless, the comparison of all WRF experiments with observations shows overestimated values
460 of precipitation over most of North America in agreement with other studies using WRF over the western US (Jin et al., 2010; Chen et al., 2014) and over Europe (Pieri et al., 2015). Atmospheric parameterizations were not tested in our study; however, other WRF sensitivity experiments using several microphysics schemes over Europe found a positive bias in precipitation for all simulations, which was considerably reduced in summer within a convective permitting simulation (Pieri et al.,

465 2015). That is, the positive bias in precipitation has been reported in WRF simulations over different
domains using several LSM components, horizontal resolutions, microphysics parameterizations,
and reanalysis products as initial and boundary conditions (Figures 9 in this manuscript, Pieri et al.,
2015; Chen et al., 2014; Jin et al., 2010). Therefore, the results included here together with the re-
470 sults reported in the literature suggest that the use of finer resolutions may raise precipitation biases
in WRF simulations over North America, but the implementation of convective-permitting processes
and other atmospheric parameterizations could reduce this bias.

6 Conclusions

This study has shown the effect of changes in horizontal resolution and LSM choice on the sim-
ulation of energy fluxes at the surface and temperature and water conditions in the near-surface.
475 The effect of both model choices intensifies in summer, due to the increase in energy and water ex-
changes between the lower atmosphere and the land surface. Enhancing horizontal resolution leads
to higher precipitation climatologies for all LSMs over coastal areas at low latitudes, mainly due to
an increase in convective precipitation also associated with an increase in latent heat flux. Our results
highlight the important role of the LSM choice in the WRF representation of the energy partition
480 at the surface, which mainly affects the simulation of near-surface temperatures over North Amer-
ica. Additionally, these results demonstrate the impact of the LSM choice on simulated atmospheric
conditions, showing LSM dependent differences in the simulated cloud fraction and non-convective
precipitation rates. This is probably associated with land-atmospheric coupled character of our sim-
ulations and the interactions between small and large scale dynamical processes.

485 The evaluation of the WRF simulations against observations supports the use of the CLM4 LSM
as the best choice within the evaluated options for WRF simulations over North America, although
it may overestimate temperature extreme events. The use of finer resolutions yield a small im-
provement in the representation of minimum temperatures within WRF at mid- and high latitudes.
Nonetheless, the use of finer resolutions should be implemented with caution since it may increase
490 the WRF bias in mean and extreme precipitation. Further sensitivity experiments using other atmo-
spheric parameterizations and other resolutions fine enough for convective-permitting processes (<
5 km) or for altering the hydrostatic balance of the model (≈ 10 km) are necessary to determine the
best WRF configuration for downscaling climate simulations over North America for paleoclimate
and climate change studies. However, the large computational resources required to perform a sen-
495 sitivity analysis including permitting-convective processes would require a reduction in the area of
interest or in the length of the simulation.

Information provided by downscaling studies are used for building climate change policies, through the information collected in assessment reports (IPCC, 2013; Mbow et al., 2017; Reidmiller et al., 2019). Thus, sensitivity studies like the one presented here, are crucial to understand and ultimately
500 restrict uncertainties in climate simulations, with direct benefits to society and environment. Particularly, these results should be considered for downscaling studies over North America aimed at projecting future or past conditions and informing policy-makers.

Code and data availability. The source code of the Weather Research and Forecasting model (WRF v.3.9) is http://www2.mmm.ucar.edu/wrf/users/download/get_source.html (access date: August, 2017). The outputs of
505 all simulations together with the code used to estimate the presented results are available at <https://doi.org/10.5281/zenodo.5106087>. The NARR product was obtained from <https://www.ncei.noaa.gov/data/north-american-regional-reanalysis/access/3-hourly/> (access date: July, 2021). The CRU TS4.03 database can be downloaded from the University of East Anglia webpage (<https://crudata.uea.ac.uk/cru/data/hrg/>, access date: July 2021). The DAYMET V3 database is available at <https://daymet.ornl.gov/> (access date: December 2019).

510 *Author contributions.* AGG designed the modeling experiment, performed the simulations and analyzed model outputs. All authors contributed to the interpretation and discussion of results. AGG wrote the manuscript with continuous feedback from all authors.

Acknowledgements. We thank to the Mesoscale and Microscale Meteorology (MMM), the National Center for atmospheric Research (NCAR), the National Oceanic and Atmospheric Administration (NOAA), the Climatic
515 Research Unit (CRU) at the University of East Anglia, and the Oak Ridge National Laboratory Distributed Active Archive Center (ORNL DAAC) for making the WRF code and the NARR, CRU and DAYMET datasets available. This analysis contributes to the PALEOLINK project (<http://www.pastglobalchanges.org/science/wg/2k-network/projects/paleolink/intro>, last access: 4 May 2021), part of the PAGES 2k Network. All WRF simulations were performed in the computational facilities provided by the Atlantic Computational Excellence
520 Network (ACENET-Compute Canada). This work was supported by grants from the Natural Sciences and Engineering Research Council of Canada Discovery Grant (NSERC DG 140576948), the Canada Research Chairs Program (CRC 230687), and the Canada Foundation for Innovation (CFI) to HB. During the elaboration of this analysis, AGG and FJCV were partially funded by HB's Canada Research Chair program, the School of Graduate Students at Memorial University of Newfoundland and the Research Office at St. Francis Xavier University.
525 FJCV is also funded by the Alexander von Humboldt Foundation.

Competing interests. The authors declare that they have no conflict of interest

References

- Arnell, A. e. a., ed.: Summary for Policymakers, pp. 1–43, Cambridge University Press, Cambridge, United Kingdom and New York, NY, USA, www.ipcc.ch/report/srcl/, 2019.
- 530 Ban, N., Schmidli, J., and Schär, C.: Evaluation of the convection-resolving regional climate modeling approach in decade-long simulations, *Journal of Geophysical Research: Atmospheres*, 119, 7889–7907, <https://doi.org/10.1002/2014JD021478>, 2014.
- Barlage, M., Zeng, X., Wei, H., and Mitchell, K. E.: A global 0.05° maximum albedo dataset of snow-covered land based on MODIS observations, *Geophysical Research Letters*, 32, <https://agupubs.onlinelibrary.wiley.com/doi/abs/10.1029/2005GL022881>, 2005.
- 535 Bonan, G. B.: *Ecological climatology: concepts and applications*, Cambridge University Press, 2002.
- Chen, F., Liu, C., Dudhia, J., and Chen, M.: A sensitivity study of high-resolution regional climate simulations to three land surface models over the western United States, *Journal of Geophysical Research: Atmospheres*, 119, 7271–7291, <https://doi.org/10.1002/2014JD021827>, 2014.
- 540 Collins, W. D., Rasch, P. J., Boville, B. A., Hack, J. J., McCaa, J. R., Williamson, D. L., Kiehl, J. T., Briegleb, B., Bitz, C., and Lin, S.-J.: Description of the NCAR community atmosphere model (CAM 3.0), NCAR Tech. Note NCAR/TN-464+ STR, 226, 2004.
- Cubasch, U., Wuebbles, D., Chen, D., Facchini, M., Frame, D., Mahowald, N., and Winther, J.-G.: Introduction, book section 1, pp. 119–158, Cambridge University Press, Cambridge, United Kingdom and New York, NY, USA, <https://doi.org/10.1017/CBO9781107415324.007>, 2013.
- 545 Davin, E. L. and Seneviratne, S. I.: Role of land surface processes and diffuse/direct radiation partitioning in simulating the European climate, *Biogeosciences*, 9, 1695–1707, <https://doi.org/10.5194/bg-9-1695-2012>, 2012.
- Demory, M.-E., Vidale, P. L., Roberts, M. J., Berrisford, P., Strachan, J., Schiemann, R., and Mizielinski, M. S.: The role of horizontal resolution in simulating drivers of the global hydrological cycle, *Climate Dynamics*, 42, 2201–2225, <https://doi.org/10.1007/s00382-013-1924-4>, 2014.
- 550 Di Luca, A., de Elía, R., and Laprise, R.: Challenges in the Quest for Added Value of Regional Dynamical Downscaling, *Current Climate Change Reports*, 1, 10–21, <https://doi.org/10.1007/s40641-015-0003-9>, 2015.
- 555 Dirmeyer, P. A., Jin, Y., Singh, B., and Yan, X.: Trends in Land–Atmosphere Interactions from CMIP5 Simulations, *Journal of Hydrometeorology*, 14, 829–849, <https://doi.org/10.1175/JHM-D-12-0107.1>, 2013.
- García-García, A., Cuesta-Valero, F. J., Beltrami, H., and Smerdon, J. E.: Characterization of Air and Ground Temperature Relationships within the CMIP5 Historical and Future Climate Simulations, *Journal of Geophysical Research: Atmospheres*, pp. 3903–3929, <https://doi.org/https://doi.org/10.1029/2018JD030117>, 560 2019.
- García-García, A., Cuesta-Valero, F. J., Beltrami, H., González-Rouco, J. F., García-Bustamante, E., and Finnis, J.: Land Surface Model influence on the simulated climatologies of extreme temperature and precipitation

- events within the WRF v.3.9 model over North America, *Geoscientific Model Development* (In Discussion), <https://doi.org/https://doi.org/10.5194/gmd-2020-86>, 2020.
- 565 Giorgi, F. and Francisco, R.: Uncertainties in regional climate change prediction: a regional analysis of ensemble simulations with the HADCM2 coupled AOGCM, *Climate Dynamics*, 16, 169–182, <https://doi.org/10.1007/PL00013733>, 2000.
- Giorgi, F. and Gutowski Jr., W. J.: Regional Dynamical Downscaling and the CORDEX Initiative, *Annual Review of Environment and Resources*, 40, 467–490, <https://doi.org/10.1146/annurev-environ-102014-021217>,
570 2015.
- Gómez-Navarro, J. J., Raible, C. C., and Dierer, S.: Sensitivity of the WRF model to PBL parametrisations and nesting techniques: evaluation of wind storms over complex terrain, *Geoscientific Model Development*, 8, 3349–3363, <https://doi.org/10.5194/gmd-8-3349-2015>, 2015.
- Gómez-Navarro, J. J., Ludwig, P., and Zorita, E.: The PALEOLINK working project: The missing link in the
575 Past-Downscaling paleoclimatic Earth System Models, in: EGU General Assembly Conference Abstracts, p. 14961, 2018.
- Grell, G. A. and Freitas, S. R.: A scale and aerosol aware stochastic convective parameterization for weather and air quality modeling, *Atmos. Chem. Phys.*, 14, 5233–5250, <https://doi.org/https://doi.org/10.5194/acp-14-5233-2014>, 2014, 2014.
- 580 Hahmann, A. N., Sile, T., Witha, B., Davis, N. N., Dörenkämper, M., Ezber, Y., García-Bustamante, E., González Rouco, J. F., Navarro, J., Olsen, B. T., and Söderberg, S.: The Making of the New European Wind Atlas, Part 1: Model Sensitivity, *Geoscientific Model Development Discussions*, 2020, 1–33, <https://doi.org/10.5194/gmd-2019-349>, 2020.
- Harris, I., Jones, P., Osborn, T., and Lister, D.: Updated high-resolution grids of monthly climatic observations – the CRU TS3.10 Dataset, *International Journal of Climatology*, 34, 623–642, <https://rmets.onlinelibrary.wiley.com/doi/abs/10.1002/joc.3711>, 2014.
- 585 Hatzianastassiou, N., Matsoukas, C., Fotiadi, A., Pavlakis, K. G., Drakakis, E., Hatzidimitriou, D., and Vardavas, I.: Global distribution of Earth’s surface shortwave radiation budget, *Atmospheric Chemistry and Physics*, 5, 2847–2867, <https://doi.org/10.5194/acp-5-2847-2005>, 2005.
- 590 Hauser, M., Orth, R., and Seneviratne, S. I.: Role of soil moisture versus recent climate change for the 2010 heat wave in western Russia, *Geophysical Research Letters*, 43, 2819–2826, <https://doi.org/10.1002/2016GL068036>, 2016.
- Hirschi, M., Seneviratne, S. I., Alexandrov, V., Boberg, F., Boroneant, C., Christensen, O. B., Formayer, H., Orłowsky, B., and Stepanek, P.: Observational evidence for soil-moisture impact on hot extremes in south-eastern Europe, *Nature Geosci.*, 4, 17–21, <http://dx.doi.org/10.1038/ngeo1032>, 2011.
- 595 Hong, S.-Y. and Lim, J.-O. J.: The WRF single-moment 6-class microphysics scheme (WSM6), *J. Korean Meteor. Soc.*, 42, 129–151, 2006.
- Hong, S.-Y., Noh, Y., and Dudhia, J.: A New Vertical Diffusion Package with an Explicit Treatment of Entrainment Processes, *Monthly Weather Review*, 134, 2318–2341, <https://doi.org/10.1175/MWR3199.1>, 2006.

- 600 Iles, C. E., Vautard, R., Strachan, J., Joussaume, S., Eggen, B. R., and Hewitt, C. D.: The benefits of increasing resolution in global and regional climate simulations for European climate extremes, *Geosci. Model Dev. Discuss.*, 2019, 1–39, <https://doi.org/10.5194/gmd-2019-253>, 2019.
- IPCC: Climate Change 2013: The Physical Science Basis. Contribution of Working Group I to the Fifth Assessment Report of the Intergovernmental Panel on Climate Change, Cambridge University Press, Cambridge, 605 United Kingdom and New York, NY, USA, <https://doi.org/10.1017/CBO9781107415324>, 2013.
- Jiménez, P. A., Dudhia, J., González-Rouco, J. F., Navarro, J., Montávez, J. P., and García-Bustamante, E.: A Revised Scheme for the WRF Surface Layer Formulation, *Monthly Weather Review*, 140, 898–918, <https://journals.ametsoc.org/doi/abs/10.1175/MWR-D-11-00056.1>, 2012.
- Jin, J., Miller, N. L., and Schlegel, N.: Sensitivity Study of Four Land Surface Schemes in the WRF Model, 610 *Advances in Meteorology*, p. 11, <https://doi.org/https://doi.org/10.1155/2010/167436>, 2010.
- Koster, R. D., Sud, Y. C., Guo, Z., Dirmeyer, P. A., Bonan, G., Oleson, K. W., Chan, E., Verseghy, D., Cox, P., Davies, H., Kowalczyk, E., Gordon, C. T., Kanae, S., Lawrence, D., Liu, P., Mocko, D., Lu, C.-H., Mitchell, K., Malyshev, S., McAvaney, B., Oki, T., Yamada, T., Pitman, A., Taylor, C. M., Vasic, R., and Xue, Y.: GLACE: The Global Land–Atmosphere Coupling Experiment. Part I: Overview, *Journal of Hydrometeorology*, 7, 590–610, <https://doi.org/10.1175/JHM510.1>, 2006. 615
- Koven, C. D., Riley, W. J., and Stern, A.: Analysis of Permafrost Thermal Dynamics and Response to Climate Change in the CMIP5 Earth System Models, *Journal of Climate*, 26, 1877–1900, <https://doi.org/10.1175/JCLI-D-12-00228.1>, 2013.
- Laguë, M. M., Bonan, G. B., and Swann, A. L. S.: Separating the impact of individual land surface properties 620 on the terrestrial surface energy budget in both the coupled and un-coupled land-atmosphere system, *Journal of Climate*, 32, 5725–5744, <https://journals.ametsoc.org/doi/abs/10.1175/JCLI-D-18-0812.1>, 2019.
- Lawrence, D. M., Fisher, R. A., Koven, C. D., Oleson, K. W., Swenson, S. C., Bonan, G., Collier, N., Ghimire, B., van Kampenhout, L., Kennedy, D., Kluzek, E., Lawrence, P. J., Li, F., Li, H., Lombardozzi, D., Riley, W. J., Sacks, W. J., Shi, M., Vertenstein, M., Wieder, W. R., Xu, C., Ali, A. A., Badger, A. M., Bisht, G., 625 van den Broeke, M., Brunke, M. A., Burns, S. P., Buzan, J., Clark, M., Craig, A., Dahlin, K., Drewniak, B., Fisher, J. B., Flanner, M., Fox, A. M., Gentine, P., Hoffman, F., Keppel-Aleks, G., Knox, R., Kumar, S., Lenaerts, J., Leung, L. R., Lipscomb, W. H., Lu, Y., Pandey, A., Pelletier, J. D., Perket, J., Rander-son, J. T., Ricciuto, D. M., Sanderson, B. M., Slater, A., Subin, Z. M., Tang, J., Thomas, R. Q., Val Mar- 630 tin, M., and Zeng, X.: The Community Land Model Version 5: Description of New Features, Benchmarking, and Impact of Forcing Uncertainty, *Journal of Advances in Modeling Earth Systems*, 11, 4245–4287, <https://doi.org/https://doi.org/10.1029/2018MS001583>, 2019.
- Liu, L., Ma, Y., Menenti, M., Zhang, X., and Ma, W.: Evaluation of WRF Modeling in Relation to Different Land Surface Schemes and Initial and Boundary Conditions: A Snow Event Simulation Over the Tibetan Plateau, *Journal of Geophysical Research: Atmospheres*, 124, 209–226, 635 <https://doi.org/10.1029/2018JD029208>, 2019.
- Lorenz, R., Argüeso, D., Donat, M. G., Pitman, A. J., van den Hurk, B., Berg, A., Lawrence, D. M., Chéry, F., Ducharme, A., Hagemann, S., Meier, A., Milly, P. C. D., and Seneviratne, S. I.: Influence of land-atmosphere

- feedbacks on temperature and precipitation extremes in the GLACE-CMIP5 ensemble, *Journal of Geophysical Research: Atmospheres*, 121, 607–623, <https://doi.org/10.1002/2015JD024053>, 2016.
- 640 Lucas-Picher, P., Laprise, R., and Winger, K.: Evidence of added value in North American regional climate model hindcast simulations using ever-increasing horizontal resolutions, *Climate Dynamics*, 48, 2611–2633, <https://doi.org/10.1007/s00382-016-3227-z>, 2017.
- MacDougall, A. H. and Beltrami, H.: Impact of deforestation on subsurface temperature profiles: implications for the borehole paleoclimate record, *Environmental Research Letters*, 12, 074 014, 645 <https://doi.org/10.1088/1748-9326/aa7394>, 2017.
- Mbow, H.-O. P., Reisinger, A., Canadell, J., and O'Brien, P.: Special Report on climate change, desertification, land degradation, sustainable land management, food security, and greenhouse gas fluxes in terrestrial ecosystems (SR2), Ginevra, IPCC, 2017.
- Mei, R. and Wang, G.: Summer Land–Atmosphere Coupling Strength in the United States: Comparison 650 among Observations, Reanalysis Data, and Numerical Models, *Journal of Hydrometeorology*, 13, 1010–1022, <https://doi.org/10.1175/JHM-D-11-075.1>, 2012.
- Melo-Aguilar, C., González-Rouco, J. F., García-Bustamante, E., Navarro-Montesinos, J., and Steinert, N.: Influence of radiative forcing factors on ground–air temperature coupling during the last millennium: implications for borehole climatology, *Climate of the Past*, 14, 1583–1606, [https://doi.org/10.5194/cp-14-1583-](https://doi.org/10.5194/cp-14-1583-2018) 655 2018, 2018.
- Mesinger, F., DiMego, G., Kalnay, E., Mitchell, K., Shafran, P. C., Ebisuzaki, W., Jovic, D., Woollen, J., Rogers, E., Berbery, E. H., et al.: North American regional reanalysis, *Bulletin of the American Meteorological Society*, 87, 343–360, <https://doi.org/https://doi.org/10.1175/BAMS-87-3-343>, 2006.
- Messmer, M., Gómez-Navarro, J. J., and Raible, C. C.: Sensitivity experiments on the response of Vb 660 cyclones to sea surface temperature and soil moisture changes, *Earth System Dynamics*, 8, 477–493, <https://doi.org/10.5194/esd-8-477-2017>, 2017.
- Michalakes, J., Chen, S., Dudhia, J., Hart, L., Klemp, J., Middlecoff, J., and Skamarock, W.: Development of a next generation regional weather research and forecast model, vol. 1, World Scientific, 2001.
- Miralles, D. G., den Berg, M. J., Teuling, A. J., and Jeu, R. A. M.: Soil moisture-temperature coupling: A multi- 665 scale observational analysis, *Geophysical Research Letters*, 39, <https://agupubs.onlinelibrary.wiley.com/doi/abs/10.1029/2012GL053703>, 2012.
- Mitchell, K.: The community Noah land-surface model (LSM), User's Guide, 7, ftp://ftp.emc.ncep.noaa.gov/mmb/gcp/ldas/noahlsm/ver_2.7.1, 2005.
- Mooney, P. A., Mulligan, F. J., and Fealy, R.: Evaluation of the Sensitivity of the Weather Research and Forecast- 670 ing Model to Parameterization Schemes for Regional Climates of Europe over the Period 1990–95, *Journal of Climate*, 26, 1002–1017, <https://doi.org/10.1175/JCLI-D-11-00676.1>, 2013.
- Niu, G.-Y., Yang, Z.-L., Mitchell, K. E., Chen, F., Ek, M. B., Barlage, M., Kumar, A., Manning, K., Niyogi, D., Rosero, E., Tewari, M., and Xia, Y.: The community Noah land surface model with multiparameterization options (Noah-MP): 1. Model description and evaluation with local-scale measurements, *Journal of* 675 *Geophysical Research: Atmospheres*, 116, 2156–2202, <https://doi.org/10.1029/2010JD015139>, 2011.

- Oleson, K. W., Lawrence, D. M., Bonan, G. B., Flanner, M. G., Kluzek, E., Lawrence, P. J., Levis, S., Swenson, S. C., Thornton, P. E., Dai, A., Decker, M., Dickinson, R., Feddema, J., Heald, C. L., Hoffman, F., Lamarque, J.-F., Mahowald, N., Niu, G.-Y., Qian, T., Randerson, J., Running, S., Sakaguchi, K., Slater, A., Stockli, R., Wang, A., Yang, Z.-L., Zeng, X., and Zeng, X.: Technical description of version 4.0 of the Community Land Model (CLM), Tech. rep., NCAR, Boulder, 2010.
- 680 Pei, L., Moore, N., Zhong, S., Luo, L., Hyndman, D. W., Heilman, W. E., and Gao, Z.: WRF Model Sensitivity to Land Surface Model and Cumulus Parameterization under Short-Term Climate Extremes over the Southern Great Plains of the United States, *Journal of Climate*, 27, 7703–7724, <https://journals.ametsoc.org/doi/abs/10.1175/JCLI-D-14-00015.1>, 2014.
- 685 Pieri, A. B., von Hardenberg, J., Parodi, A., and Provenzale, A.: Sensitivity of Precipitation Statistics to Resolution, Microphysics, and Convective Parameterization: A Case Study with the High-Resolution WRF Climate Model over Europe, *Journal of Hydrometeorology*, 16, 1857–1872, <https://doi.org/10.1175/JHM-D-14-0221.1>, 2015.
- Prein, A., Gobiet, A., Truhetz, H., Keuler, K., Goergen, K., Teichmann, C., and et al.: Precipitation in the EURO-CORDEX 0.11° and 0.44° simulations: high resolution, high benefits?, *Climate Dynamics*, 46, 383–412, <https://doi.org/doi:10.1007/s00382-015-2589-y>, 2016.
- Prein, A. F., Gobiet, A., Suklitsch, M., Truhetz, H., Awan, N. K., Keuler, K., and Georgievski, G.: Added value of convection permitting seasonal simulations, *Climate Dynamics*, 41, 2655–2677, <https://doi.org/10.1007/s00382-013-1744-6>, 2013.
- 695 Reidmiller, D., Avery, C., Easterling, D., Kunkel, K., Lewis, K., Maycock, T., and Stewart, B.: Fourth national climate assessment, Volume II: Impacts, Risks, and Adaptation in the United States, 2019.
- Rummukainen, M.: Added value in regional climate modeling, *Wiley Interdisciplinary Reviews: Climate Change*, 7, 145–159, <https://doi.org/10.1002/wcc.378>, 2016.
- Seneviratne, S. I., Lüthi, D., Litschi, M., and Schär, C.: Land–atmosphere coupling and climate change in Europe, *Nature*, 443, 205–209, 2006.
- 700 Sippel, S., Zscheischler, J., Mahecha, M. D., Orth, R., Reichstein, M., Vogel, M., and Seneviratne, S. I.: Refining multi-model projections of temperature extremes by evaluation against land–atmosphere coupling diagnostics, *Earth System Dynamics*, 8, 387–403, <https://doi.org/10.5194/esd-8-387-2017>, 2017.
- Sun, X., Xue, M., Brotzge, J., McPherson, R. A., Hu, X.-M., and Yang, X.-Q.: An evaluation of dynamical downscaling of Central Plains summer precipitation using a WRF-based regional climate model at a convection-permitting 4 km resolution, *Journal of Geophysical Research: Atmospheres*, 121, 13,801–13,825, <https://doi.org/10.1002/2016JD024796>, 2016.
- 705 Taylor, K. E., Stouffer, R. J., and Meehl, G. A.: An overview of CMIP5 and the experiment design, *Bulletin of the American Meteorological Society*, 93, 485–498, 2012.
- 710 Tewari, M., Chen, F., Wang, W., Dudhia, J., LeMone, M., Mitchell, K., Ek, M., Gayno, G., Wegiel, J., and Cuenca, R.: Implementation and verification of the unified NOAA land surface model in the WRF model, 20th conference on weather analysis and forecasting/16th conference on numerical weather prediction, pp. 11-15, 2004.

- Thornton, P., Thornton, M., Mayer, B., Wei, Y., Devarakonda, R., Vose, R., and Cook, R.: Daymet: Daily Surface
715 Weather Data on a 1-km Grid for North America, Version 3, ORNL DAAC, Oak Ridge, Tennessee, USA,
<https://doi.org/https://doi.org/10.3334/ORNLDAAC/1328>, 2016.
- Van Den Broeke, M. S., Kalin, A., Alavez, J. A. T., Oglesby, R., and Hu, Q.: A warm-season comparison of
WRF coupled to the CLM4.0, Noah-MP, and Bucket hydrology land surface schemes over the central USA,
Theoretical and Applied Climatology, 134, 801–816, <https://doi.org/10.1007/s00704-017-2301-8>, 2018.
- 720 Vegas-Cañas, C., González-Rouco, J. F., Navarro-Montesinos, J., García-Bustamante, E., Lucio-Eceiza, E. E.,
García-Pereira, F., Rodríguez-Camino, E., Chazarra-Bernabé, A., and Álvarez-Arévalo, I.: An Assess-
ment of Observed and Simulated Temperature Variability in Sierra de Guadarrama, *Atmosphere*, 11, 985,
<https://doi.org/10.3390/atmos11090985>, 2020.
- Vogel, M. M., Orth, R., Cheruy, F., Hagemann, S., Lorenz, R., Hurk, B. J. J. M., and Seneviratne, S. I.: Regional
725 amplification of projected changes in extreme temperatures strongly controlled by soil moisture-temperature
feedbacks, *Geophysical Research Letters*, 44, 1511–1519, <https://doi.org/10.1002/2016GL071235>, 2017.
- von Storch, H., Langenberg, H., and Feser, F.: A Spectral Nudging Technique for Dynamical
Downscaling, *Monthly Weather Review*, 128, 3664–3673, [https://doi.org/https://doi.org/10.1175/1520-0493\(2000\)128<3664:ASNTFD>2.0.CO;2](https://doi.org/https://doi.org/10.1175/1520-0493(2000)128<3664:ASNTFD>2.0.CO;2), 2000.
- 730 Wehner, M. F., Smith, R. L., Bala, G., and Duffy, P.: The effect of horizontal resolution on simulation of
very extreme US precipitation events in a global atmosphere model, *Climate Dynamics*, 34, 241–247, <https://doi.org/10.1007/s00382-009-0656-y>, 2010.
- Wharton, S., Simpson, M., Osuna, J., Newman, J., and Biraud, S.: Assessment of Land Surface Model Per-
formance in WRF for Simulating Wind at Heights Relevant to the Wind Energy Community, Tech. rep.,
735 Lawrence Livermore National Lab.(LLNL), Livermore, CA (United States), 2013.
- Xue, Y., Janjic, Z., Dudhia, J., Vasic, R., and Sales, F. D.: A review on regional dynamical downscaling in in-
traseasonal to seasonal simulation/prediction and major factors that affect downscaling ability, *Atmospheric
Research*, 147-148, 68 – 85, <https://doi.org/https://doi.org/10.1016/j.atmosres.2014.05.001>, 2014.
- Zhang, J., Wang, W.-C., and Leung, L. R.: Contribution of land-atmosphere coupling to summer cli-
740 mate variability over the contiguous United States, *Journal of Geophysical Research: Atmospheres*, 113,
<https://doi.org/10.1029/2008JD010136>, 2008.
- Zhuo, L., Dai, Q., Han, D., Chen, N., and Zhao, B.: Assessment of simulated soil moisture from WRF Noah,
Noah-MP, and CLM land surface schemes for landslide hazard application, *Hydrology and Earth System
Sciences*, 23, 4199–4218, <http://eprints.whiterose.ac.uk/153002/>, 2019.
- 745 ZI, J.: Advection scheme for passive substances in the NCEP Eta model, *Research Activities in Atmospheric and
Oceanic Modelling*, WMO, Geneva, CAS=JSCWGNE, 3.14, 1997.

Table 1. Summary of the regional simulations performed in this analysis.

NAME	LSM	Resolution	Vegetation Mode	Simulation Time Step	Radiation Time Step
NOAH 25 km	NOAH	25 km	Prescribed	2.5 min	6 min
NOAH 50 km		50 km	Prescribed	5 min	20 min
NOAH 100 km		100 km	Prescribed	10 min	20 min
NOAH-MP 25 km	NOAH-MP	25 km	Prescribed	2.5 min	6 min
NOAH-MP 50 km		50 km	Prescribed	5 min	20 min
NOAH-MP 100 km		100 km	Prescribed	10 min	20 min
NOAH-MP-DV 25 km	NOAH-MP	25 km	Dynamic	2.5 min	6 min
NOAH-MP-DV 50 km		50 km	Dynamic	5 min	20 min
NOAH-MP-DV 100 km		100 km	Dynamic	10 min	20 min
CLM4 25 km	CLM4	25 km	Prescribed	2.5 min	6 min
CLM4 50 km		50 km	Prescribed	5 min	20 min
CLM4 100 km		100 km	Prescribed	10 min	20 min

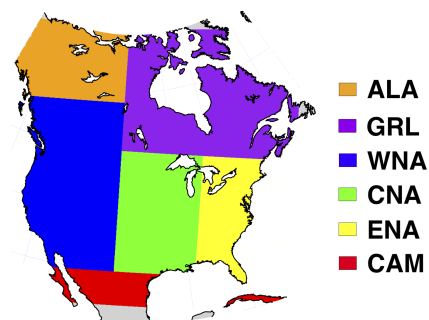


Figure 1. Subregions employed for the bias analysis, adapted from Giorgi and Francisco (2000): Central America, CAM; Western North America, WNA; Central North America, CNA; Eastern North America, ENA; Alaska, ALA; and Greenland, GRL.

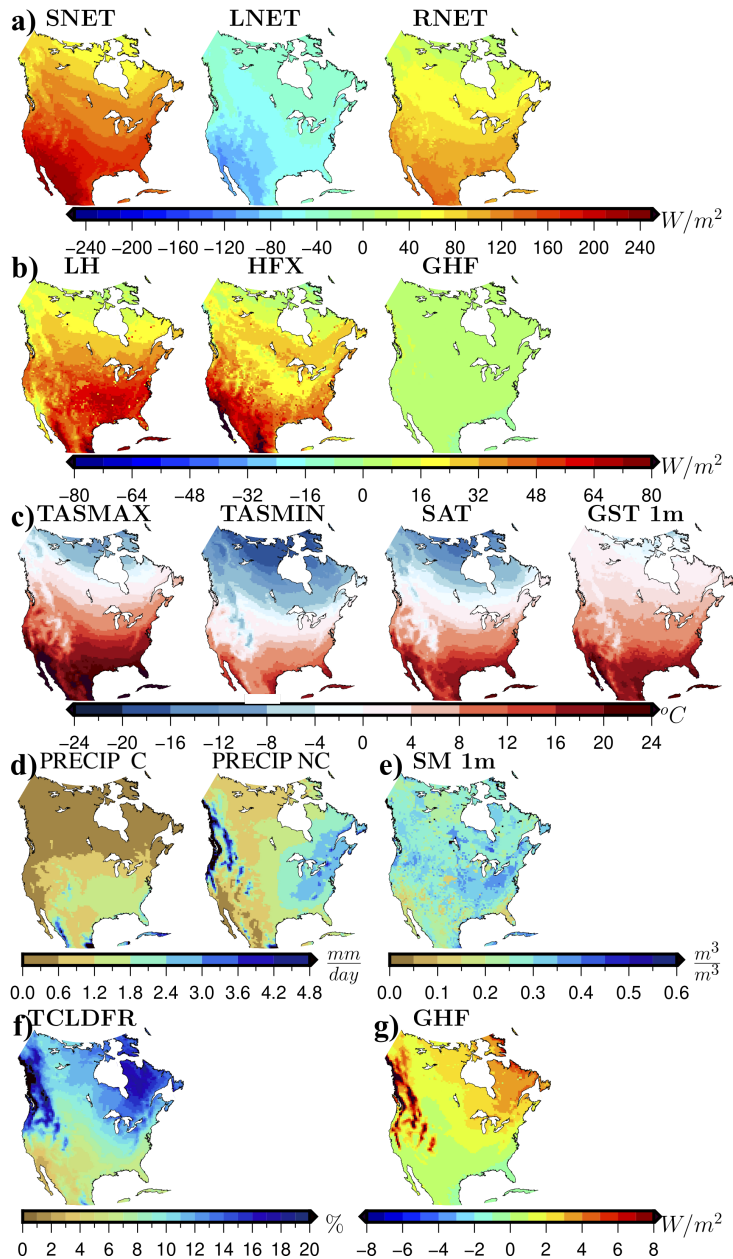


Figure 2. Ensemble mean of the LSM simulations for the surface energy fluxes and near-surface conditions (net shortwave radiation SNET; net longwave radiation LNET; surface net radiation RNET (a); latent heat flux LH; sensible heat flux HFX; ground heat flux GHF (b); maximum temperature TASMAX; minimum temperature TASMINT; surface air temperature SAT; soil temperature at 1m depth GST 1m (c); accumulated convective and non convective precipitation at the surface (PRECIP C and PRECIP NC, d); soil moisture contained in the first soil meter SM 1m (e); and total cloud cover fraction (TCLDFR, f) for the WRF ensemble mean. GHF results are also represented using its own color scale (g). Mean values are estimated as the temporal average for the period 1980-2013 using simulations performed with 50 km resolution.

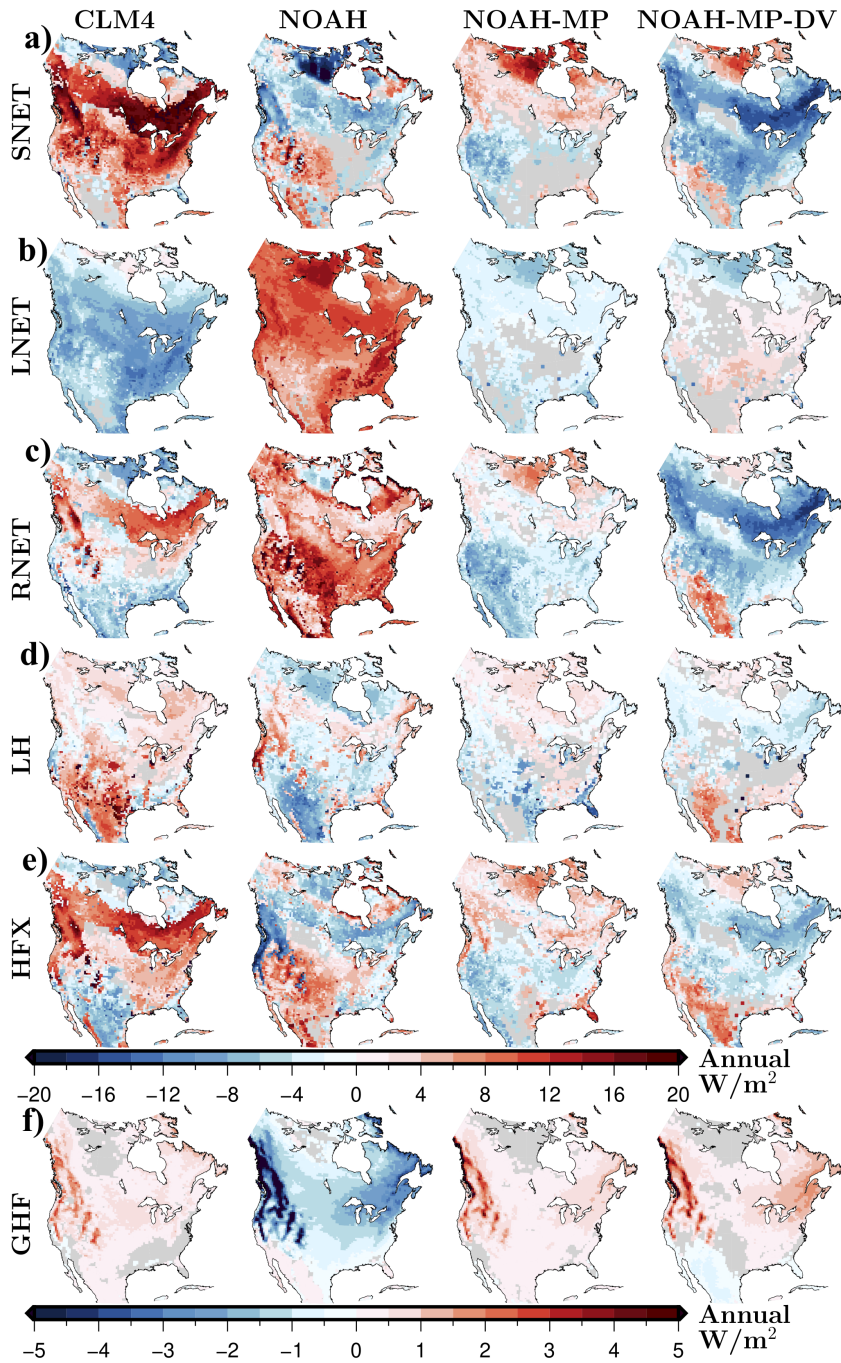


Figure 3. Anomalies of energy fluxes at the surface: a) net shortwave radiation SNET, b) net longwave radiation LNET, c) soil net radiation RNET, d) latent heat flux LH, f) sensible heat flux HFX, and g) ground heat flux GHF for each LSM simulation relative to the LSM ensemble mean. Mean values are estimated as the temporal average for the period 1980-2013 using simulations performed with 50 km resolution. Grid cells with a non-significant change at the 5% significant level are masked in grey.

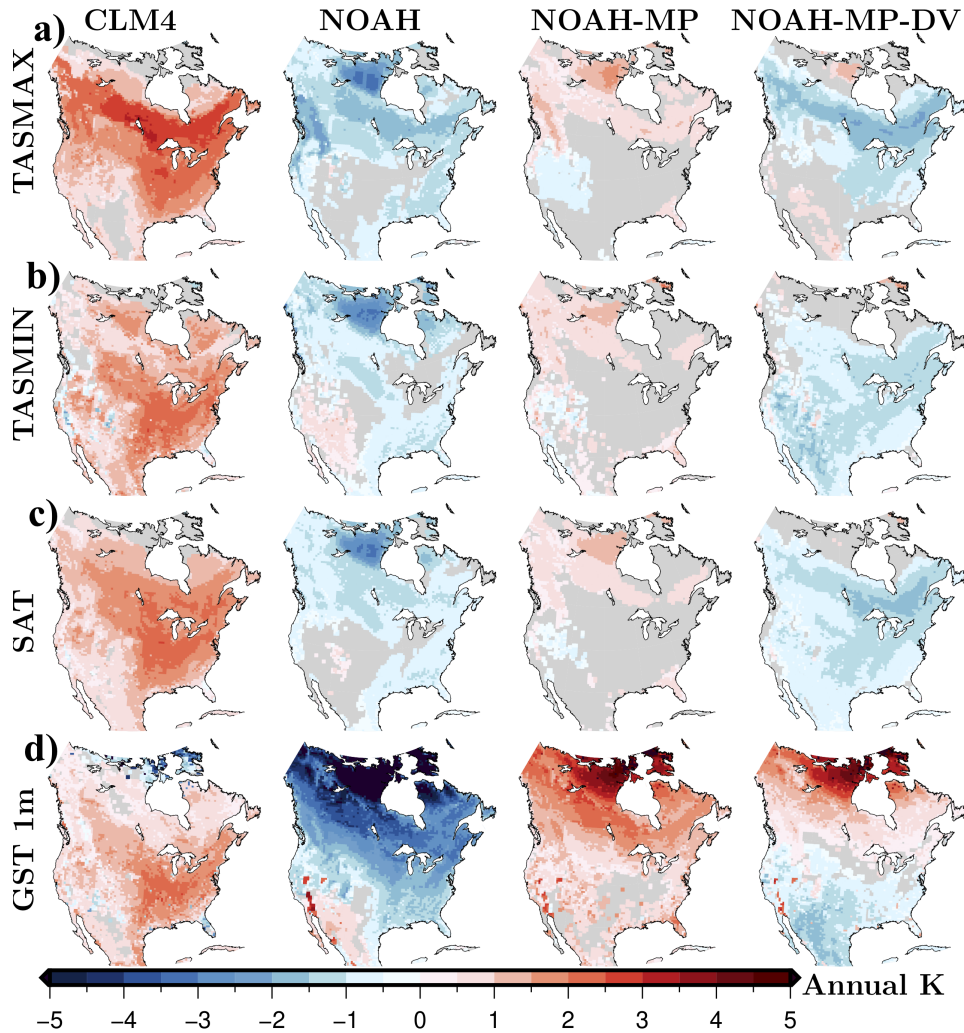


Figure 4. Anomalies of near-surface temperature conditions: a) daily maximum temperature TASMAX, b) daily minimum temperature TASMIN, c) surface air temperature SAT, and d) soil temperature at 1m depth GST 1m for each LSM simulation relative to the LSM ensemble mean. Mean values are estimated as the temporal average for the period 1980-2013 using simulations performed with 50 km resolution. Grid cells with a non-significant change at the 5% significant level are masked in grey.

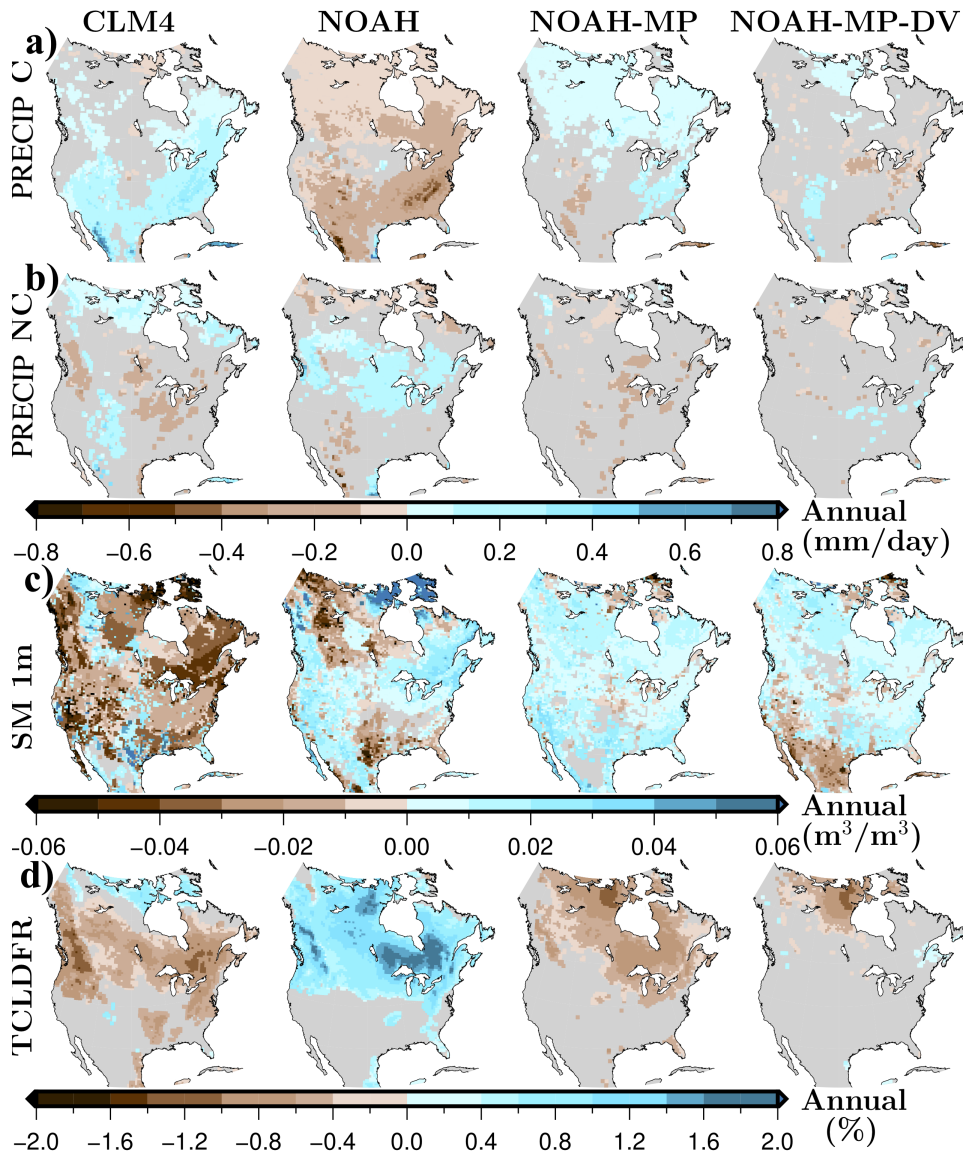


Figure 5. Anomalies of near-surface humid conditions: a) accumulated convective and b) non-convective precipitation at the surface PRECIP C and PRECIP NC, c) soil moisture contained in the first soil meter SM 1m, and d) total cloud fraction TCLDFR for each LSM simulation relative to the LSM ensemble mean. Mean values are estimated as the temporal average for the period 1980-2013 using simulations performed with 50 km resolution. Grid cells with a non-significant change at the 5% significant level are masked in grey.

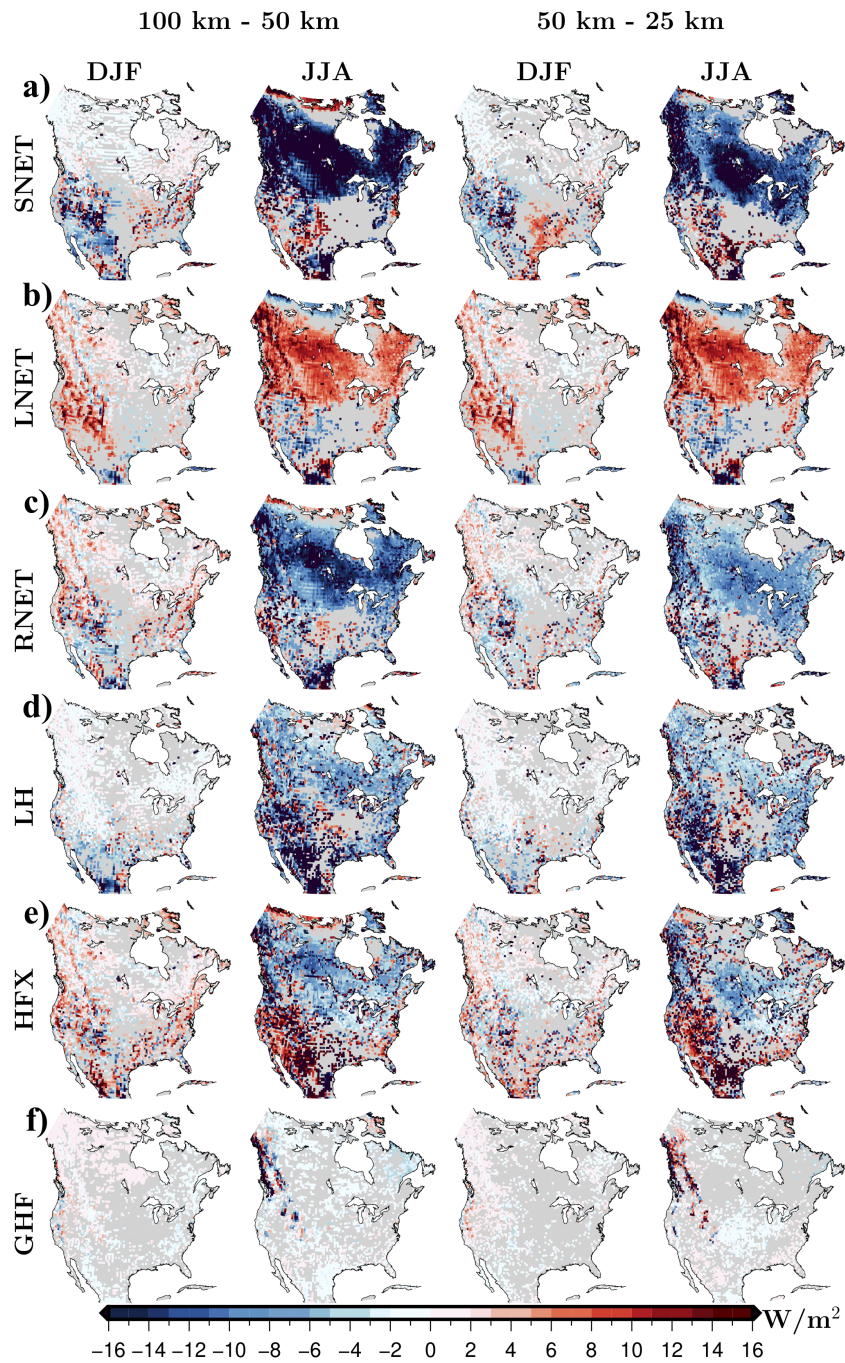


Figure 6. Seasonal mean difference in surface energy fluxes between the 100 km and 50 km simulations (left) and between the 50 km and 25 km simulations (right). All outputs are from the NOAH-MP-DV simulations for the period 1980-2013. Grid cells with a non-significant change at the 5% significant level are masked in grey. All outputs from the 25, 50 and 100 km simulations were mapped to a common grid (CRU grid) using the nearest model grid point.

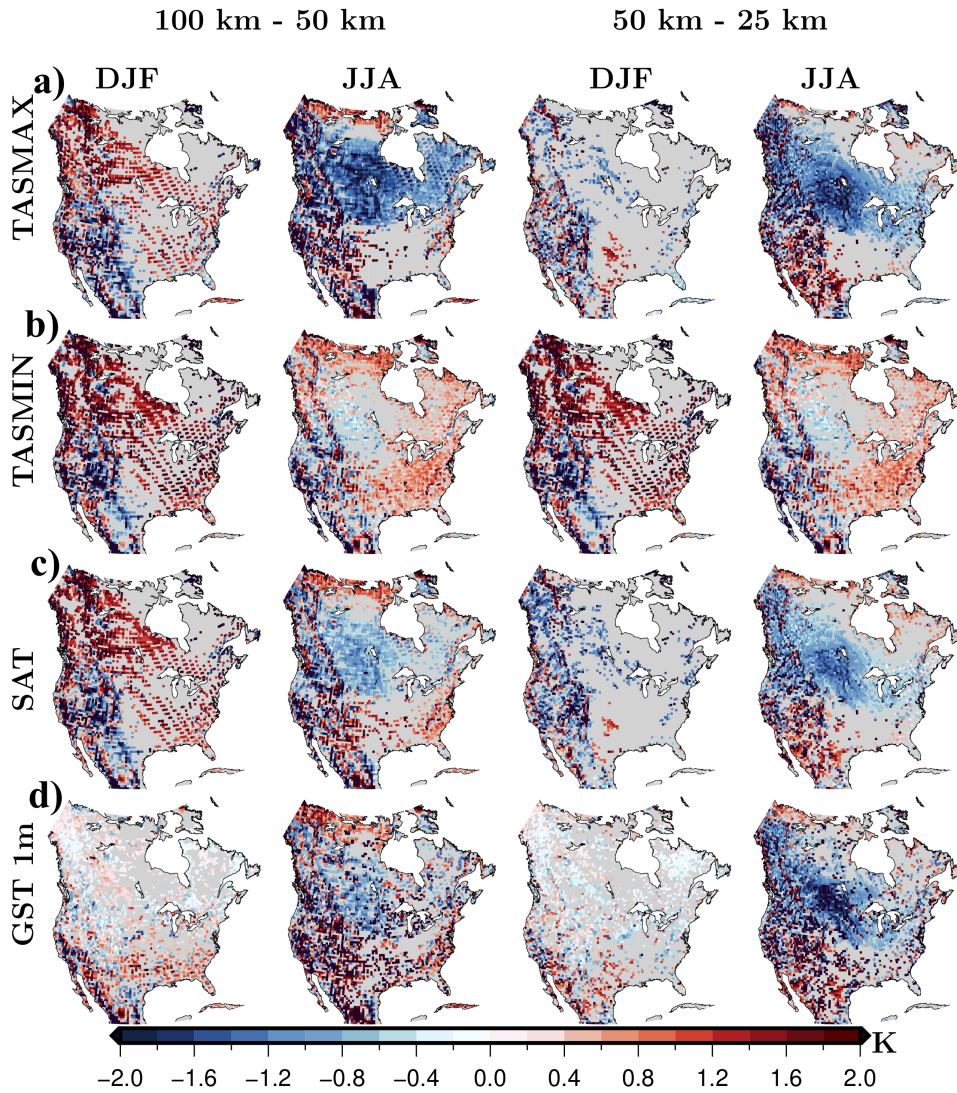


Figure 7. Seasonal mean difference in near-surface temperature conditions between the 100 km and 50 km simulations (left) and between the 50 km and 25 km simulations (right). All outputs are from the NOAH-MP-DV simulations for the period 1980-2013. Grid cells with a non-significant change at the 5% significant level are masked in grey. All outputs from the 25, 50 and 100 km simulations were mapped to a common grid (CRU grid) using the nearest model grid point.

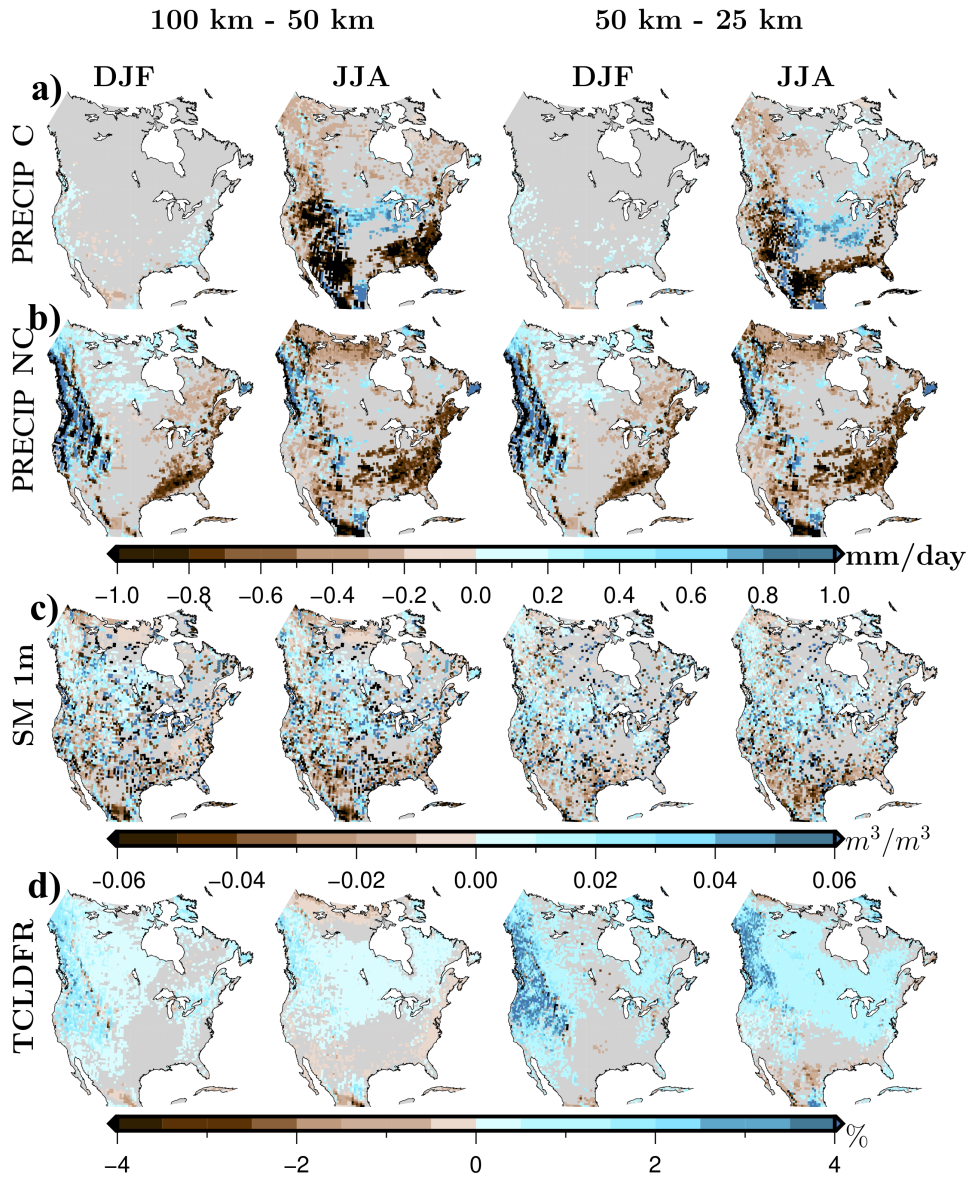


Figure 8. Seasonal mean difference in near-surface humid conditions between the 100 km and 50 km simulations (left) and between the 50 km and 25 km simulations (right). All outputs are from the NOAA-MP-DV simulations for the period 1980-2013. Grid cells with a non-significant change at the 5% significant level are masked in grey. All outputs from the 25, 50 and 100 km simulations were mapped to a common grid (CRU grid) using the nearest model grid point.

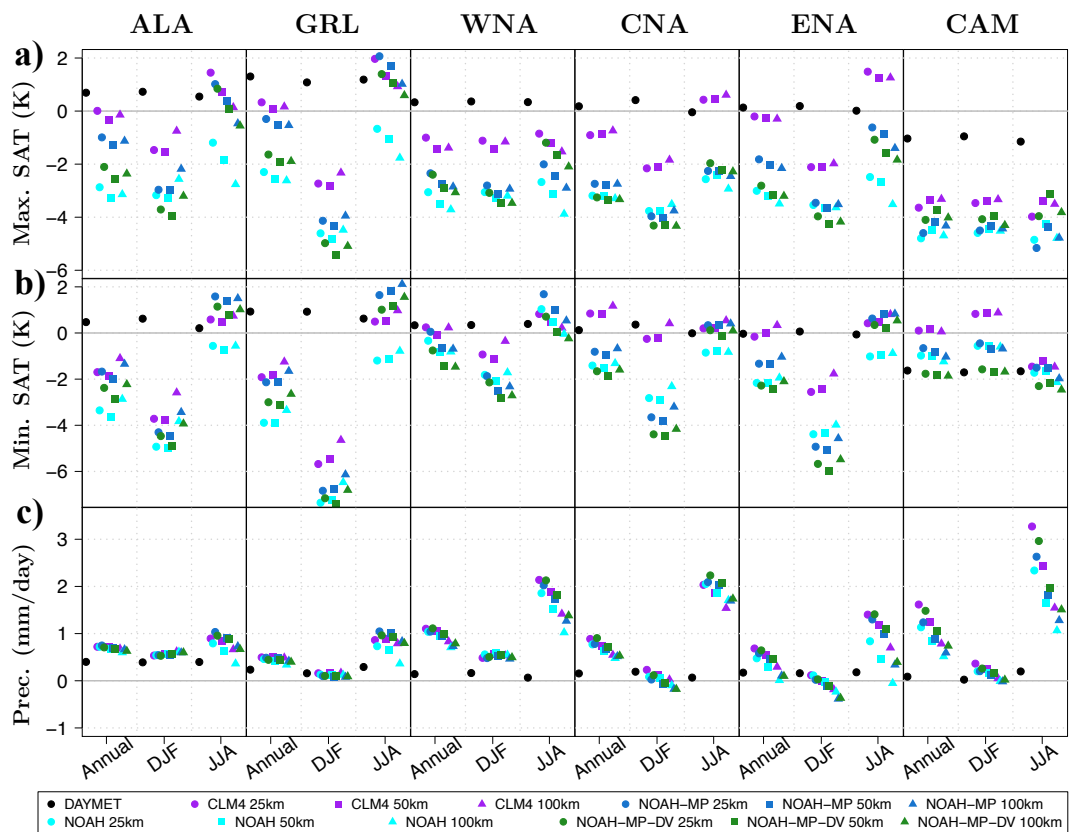


Figure 9. Regional mean annual and seasonal bias in maximum and minimum temperature ($^{\circ}C$) and in accumulated precipitation (mm/day) for all experiments and the DAYMET data product relative to the CRU database from 1980 to 2013. Biases are estimated averaging over six subregions (Figure 1) adapted from Giorgi and Francisco (2000): Central America, CAM; Western North America, WNA; Central North America, CNA; Eastern North America, ENA; Alaska, ALA; and Greenland, GRL.

Extreme Climate

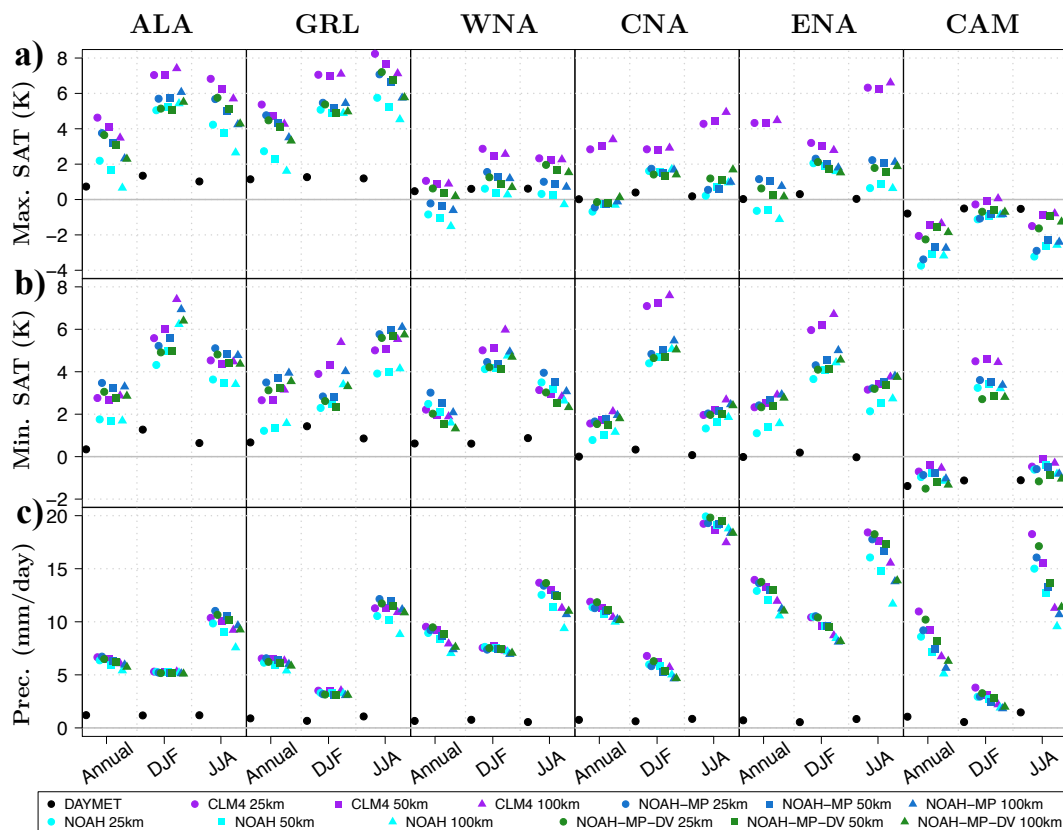


Figure 10. Regional mean annual and seasonal bias in extreme maximum and minimum temperature ($^{\circ}C$) and in extreme precipitation (mm/day) for all experiments and the DAYMET data product relative to the CRU database from 1980 to 2013. Extremes are calculated as the 95th percentile of the annual and seasonal temporal series at each grid cell. Biases are estimated averaging over six subregions (Figure 1) adapted from Giorgi and Francisco (2000): Central America, CAM; Western North America, WNA; Central North America, CNA; Eastern North America, ENA; Alaska, ALA; and Greenland, GRL.