

# The improvements to the regional South China Sea Operational Oceanography Forecasting System (SCSOFSv1)

Xueming Zhu<sup>1,\*</sup>, Ziqing Zu<sup>2†</sup>, Shihe Ren<sup>2†\*</sup>, Miaoyin Zhang<sup>2†</sup>, Yunfei Zhang<sup>2†</sup>, Hui Wang<sup>3,2†\*</sup>, Ang Li<sup>2†</sup>

<sup>1</sup> [Southern Marine Science and Engineering Guangdong Laboratory \(Zhuhai\), Zhuhai, 519000, China](#)  
~~[National Marine Environmental Forecasting Center, Key Laboratory of Marine Hazards Forecasting, Ministry of Natural Resources, Beijing, 100081, China](#)~~

<sup>2</sup> [National Marine Environmental Forecasting Center, Key Laboratory of Marine Hazards Forecasting, Ministry of Natural Resources, Beijing, 100081, China](#)  
~~[Southern Marine Science and Engineering Guangdong Laboratory \(Zhuhai\), Zhuhai, 519000, China](#)~~

<sup>3</sup>Institute of Marine Science and Technology, Shandong University, Qingdao, Shandong, 266237, China

*Correspondence to:* Shihe Ren (rensh@nmefc.cn), Hui Wang(wangh@nmefc.cn)

**Abstract.** South China Sea Operational Oceanography Forecasting System (SCSOFS) had been constructed and operated in National Marine Environmental Forecasting Center of China to provide daily updated hydrodynamic forecasting in SCS for the future 5 days since 2013. This paper presents recent comprehensive updates of the configurations of the physical model and data assimilation scheme in order to improve SCSOFS forecasting skills. It highlights three of the most sensitive updates, including sea surface atmospheric forcing method, tracers advection discrete scheme, and modification of data assimilation scheme. Inter-comparison and accuracy assessment among five versions during the whole upgrading processes are performed by employing OceanPredict Inter-comparison and Validation Task Team Class4 metrics. The results indicate that remarkable improvements have been achieved in SCSOFSv2 with respect to the original version known as SCSOFSv1. Domain averaged monthly mean root mean square errors decrease from 1.21 °C to 0.52 °C for sea surface temperature, from 21.6cm to 8.5cm for sea level anomaly, respectively.

## 1. Introduction

The South China Sea (SCS) is located between  $2^{\circ}30'S \sim 23^{\circ}30'N$  and  $99^{\circ}10'E \sim 121^{\circ}50'E$ , the largest in area and the deepest in depth, a semi-closed marginal sea in the western Pacific. Its area is about 3.5 million  $\text{km}^2$ , and its maximum depth is about 5300 m at the central region. It connects to the East China Sea by the Taiwan Strait to the northeast, to the North Pacific Ocean by the Luzon Strait (LUS) to the east, to the Java Sea by the Karimata Strait to the south. Numerous islands, irregular and complex coastal boundaries, and drastic changes in bottom topography all together contribute to the great complex distribution of topography in the SCS.

The upper-layer basin-scale ocean circulations of the SCS are mainly controlled by the East Asian Monsoon (Hellerman and Rosenstein, 1983), showing a cyclonic gyre in winter and an anti-cyclonic gyre in summer (Mao et al., 1999; Chu and Li, 2000). The multi-scale oceanic circulation dynamical processes of the SCS are affected by various factors, i.e. the Kuroshio intrusion through the LUS (Nan et al., 2015; Farris and Wimbush, 1996; Liu et al., 2019), internal waves (Li et al., 2011; Li et al., 2015) or internal solitary waves (Zhang et al., 2018; Zhao and Alford, 2006; Cai et al., 2014) generated in the LUS and propagating in the northern SCS, the SCS throughflow as a branch of the Pacific to Indian Ocean throughflow (Wei et al., 2019; Wang et al., 2011), and energetic mesoscale eddy activities (Zu et al., 2019; Xu et al., 2019; Zhang et al., 2016; Zheng et al., 2017; Hwang and Chen, 2000; Wang et al., 2020). The multi-scale dynamical mechanisms in the SCS are too complex to understand clearly as yet, it has always been a challenge to simulate or reproduce the ocean circulations, not to mention forecast future oceanic status by Operational Oceanography Forecasting System (OOFS).

Within coordination and leadership of Global Ocean Data Assimilation Experiment ([GODAE](#)) OceanView (GOV, <https://www.godae-oceanview.org>; Tonani et al., 2015; Dombrowsky et al., 2009), in recent decade or two, several regional OOFSs have been developed and operated based on the state-of-the-art community numerical ocean models in different regions of the ocean. Tonani et al. (2015) summarized that there were 19 regional systems running operationally in total till 2015.

For instance, Canadian Operational Network of Coupled Environmental Prediction Systems ([CONCEPTS](#)) from Canada was built based on the Nucleus for European Modelling of the Ocean

(NEMO) 3.1, whose domain covered the Arctic and North Atlantic with  $1/12^\circ$  horizontal resolution; the Real-Time Ocean Forecast System (~~RTOFS~~)—from US National Oceanic and Atmospheric Administration (NOAA) National Centers for Environmental Prediction (NCEP) was designed based on the HYbrid Coordinate Ocean Model (~~HYCOM~~) and implemented in the North Atlantic on a curvilinear coordinate, with the resolution ranging from 4 km to 18 km in horizontal; The Meteorological Research Institute (MRI) of Japan Meteorological Agency (~~JMA~~) developed the Multivariate Ocean Variational Estimation System/MRI Community Ocean Model (MOVE/MRI.COM) coastal monitoring and forecasting system based on the MRI.COM (T sujino et al., 2006). The model consists of a fine-resolution (2km) coastal model around Japan and an eddy-resolving (10km) Western North Pacific (~~WNP~~) model with one-way nesting; the Chinese Global operational Oceanography Forecasting System (~~CGOFS~~) was developed and operated based on the Regional Ocean Modelling System (ROMS, Shchepetkin and McWilliams, 2005) and NEMO by National Marine Environmental Forecasting Center, covering 6 subdomains from global to polar regions, Indian Ocean, Northwest Pacific, Yellow Sea and East China Sea (Kourafalou et al., 2015), South China Sea (Zhu et al., 2016), with their horizontal resolutions ranging from  $1/12^\circ$  to  $1/30^\circ$ . It is worth noting that there are considerable differences among those systems in many aspects, such as the model codes, area coverage, horizontal/vertical resolutions, data assimilation schemes, and so on, according to the user needs or regional ocean characteristics.

In order to better satisfy end users' needs, OOFSSs need to be updated and improved continuously since operation. In general, most improvements of OOFSSs are implemented by increasing horizontal or vertical grid resolution, changing the data assimilation schemes from a simple one to sophisticated one, assimilating more amounts and types of observation data, by benefiting from the growth of high-performance computing power and global or regional observation network. Initially, the MOVE/MRI.COM was developed based on a three-dimensional variational (~~3DVAR~~) analysis scheme and implemented in 2008 (Usui et al., 2006), then it is updated to the four-dimensional variational (~~4DVAR~~) analysis scheme to provide better representation of mesoscale processes (Usui et al., 2017). Mercator Ocean International (MOI) global monitoring and forecasting system had been routinely operated in real time with an intermediate-resolution at  $1/4^\circ$  and 50 vertical levels since early 2001. An

80 upgrading of increasing horizontal resolution was implemented in December 2010, to consist a 1/12°  
nested model over the Atlantic and Mediterranean. Real time daily services with a global 1/12° high-  
resolution eddy-resolving analysis and forecasting were delivered by an updated system, since 19  
October, 2016. Moreover, MOI also continues to implement regularly update by increasing system's  
complexity, such as expanding the geographical coverage, improving models and assimilating schemes,  
85 and have developed several versions for the various milestones of the MyOcean project and the  
Copernicus Marine Environment Monitoring Service (~~CMEMS~~, Lellouche et al., 2013; ~~Lellouche et al.~~,  
2018).

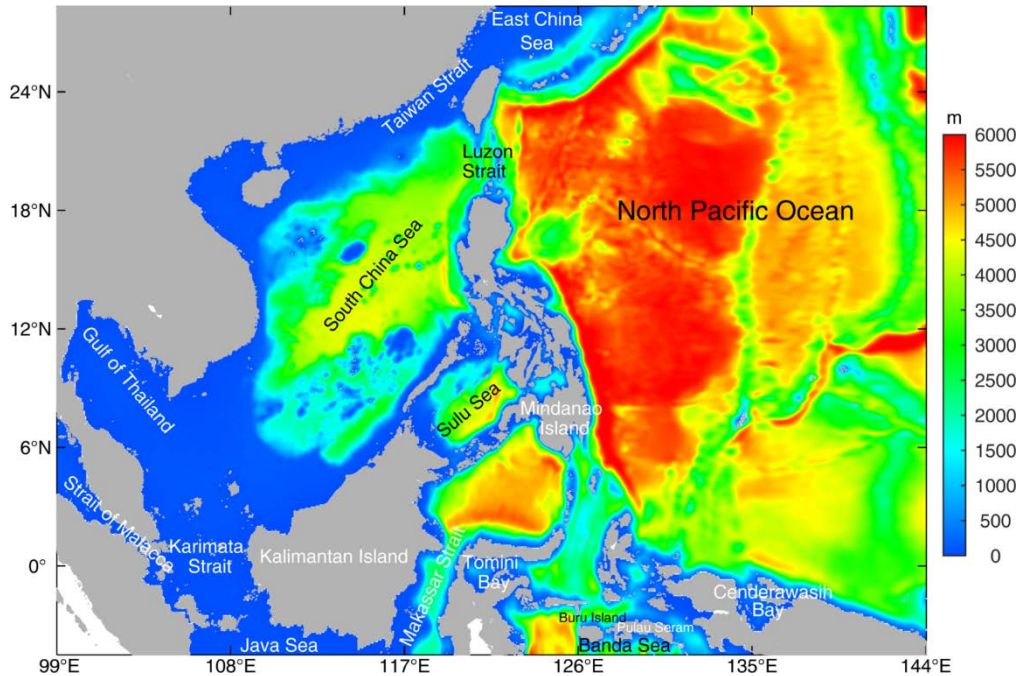
As mentioned in the literature of Zhu et al. (2016), the regional SCS Operational Oceanography  
Forecasting System (SCSOFS, here after named it as SCSOFSv1) has been developed and routinely  
90 operated in real time since the beginning of 2013. It has continued to be upgraded by modifying model  
settings in many aspects, such as mesh distributions, surface atmospheric field forcing, open boundary  
inputs, and so on, and improving data assimilation scheme according to the results of comparing and  
validating from Zhu et al. (2016), in order to provide better services. The primary purpose of this paper  
is to introducing updates applied to SCSOFS, but only show the highest impact on the system. The other  
95 results from routine system updates or improvements will not be illustrated or discussed in detail.

This paper is organized as follows. A detailed description of some general/basic updates applied to  
SCSOFS will be provided in Section 2. Some highlights and sensitive updates and their impacts to the  
performance of system are shown in Section 3. Results of the inter-comparison and assessment for  
different SCSOFS versions during the upgrading processes based on the 'Class 4 metrics' verification  
100 framework (Hernandez et al., 2009) will be shown in Section 4. Section 5 contains a summary of the  
scientific improvements and future plans for the next step.

## 2. Physical model description, updates and input\_ datasets

This section describes some general updates applied to the SCSOFSv1 in recent couple years. The newly  
updated system is named as SCSOFSv2 here after. In order to isolate the contribution of one modification,  
105 different simulations were performed for respective updates. However, some updates have been

implemented directly according to model experiences or theory knowledges, without standalone evaluation. The performances from a few integrated updates will be shown in Section 4 for different upgrading stages.



110 **Figure 1: The model domain and bathymetry of SCSOFSv2**

The SCSOFSv2 is still built based on ROMS, while whose version has been updated from v3.5 (svn trunk revision 648 in 2013) to v3.7 (svn trunk revision 874 in 2017). ROMS v3.7 incorporates some changes for the model settings, which facilitating the operational running especially, besides of the major overhaul of the nonlinear, tangent linear, representor, multiple-grid nesting and adjoint numerical kernels.

115 Firstly, we redistributed the land-sea grid mask layout to enable systems mesh land boundary fit the actual coastline better (Fig.1). By comparing with the Fig. 1 from Zhu et al. (2016), a few ~~sea~~ areas had been changed from land to sea or inverse, e.g. along the coast of China mainland, the Vietnam and the Gulf of Thailand, around the coast of the Kalimantan Island and the Mindanao Island. In addition, the Strait of Malacca had been opened to connect with the Karimata Strait, and the western lateral boundary was treated as open boundary across the Strait of Malacca along 99°E, instead of closed boundary as in  
 120 SCSOFSv1; along the south lateral open boundary, the Java Sea was connected to the Makassar Strait in

the southeast of the Kalimantan Island, the Banda Sea was connected across the south of Buru Island and Pulau Seram; and involved the Tomini Bay and the Cenderawasih Bay. It is obvious that the land-sea masks changing can generate significant effects on the sea water volume transportation in the model domain, thus would contribute to better simulation of ocean circulations.

The bathymetry is replaced by the General Bathymetric Chart of the Oceans (GEBCO\_2014 Grid) global continuous terrain model for ocean and land, which is with 30 arc-second spatial resolution in SCSOFSv2, from ETOPO1 data set in SCSOFSv1, which is with 1 arc-minute grid resolution from U.S. National Geophysical Data Center (NGDC) . It is also merged with the measured topographic data in the coastal areas along China mainland, and adjusted with the tidal range. Then it is smoothed by applying a selective filter 8 times to reduce the isolated seamounts on the deep ocean, so that the “slope parameter”  $r=\Delta h/2h$  is lower than a maximum value  $r_0=0.2$  for each grid (Beckmann and Haidvogel, 1993; Marchesiello et al., 2009), in order to suppress the computational errors of the pressure-gradient (Shchepetkin and McWilliams, 2003). Then the two grid stiffness ratios parameters, slope parameter ( $r$ ) and Haney number, change from 0.22 and 9.78 in SCSOFSv1 to 0.17 and 13.80 in SCSOFSv2, respectively. The maximum depth is set to be 6000m still, but the minimum depth changed from 10m in SCSOFSv1 to 5m in SCSOFSv2 (Wang, 1996). The final smoothed bathymetry is shown in Fig.1.

For the vertical terrain-following coordinate, it has been increased from 36  $s$ -coordinate layers in SCSOFSv1 to 50 layers in SCSOFSv2. The transformation equation from the original formulation is also changed to an improved solution (Shchepetkin and McWilliams, 2005). The original vertical stretching function (Song and Haidvogel, 1994) is replaced with an improved double stretching function (Shchepetkin and McWilliams, 2005), to make it preserve a sufficient resolution in the upper 300m in order to resolve the thermocline well. In this case, the thinnest layer changes from 0.16m in SCSOFSv1 to 0.09m in SCSOFSv2 near the surface.

The new initial temperature and salinity (T/S) fields in SCSOFSv2 are extracted from the Generalized Digital Environmental Model Version 3.0 (GDEMv3, Carnes, 2009) global climatology monthly mean in January, to substitute the version 2.2.4 of Simple Ocean Data Assimilation (SODA, Carton and Giese, 2008) datasets. All four lateral boundaries are open, whose temperature, salinity, velocity and elevation

are prescribed by spatial interpolation from the new SODA 3.3.1 for the running 2005-2015 and SODA  
150 3.3.2 for the running 2016-2018 datasets (Carton et al., 2018), instead of the original SODA 2.2.4. In this  
present, we use the SODA 3.3.1/2 monthly mean ocean state variables, which are mapped onto the regular  
1/2°×1/2° Mercator horizontal grid from the original approximately 1/4°×1/4° displaced pole non-  
Mercator horizontal grid at 50 z vertical levels.

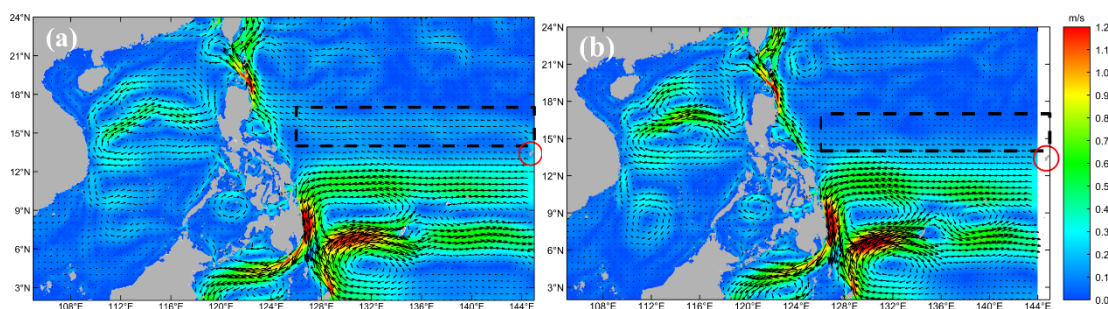
For the surface atmospheric forcing, we replace the dataset from the NCEP Reanalysis 2 provided by the  
155 NOAA/OAR/ESRL PSL, Boulder, Colorado, USA, accessible from their website at <https://psl.noaa.gov/>  
(Kanamitsu et al., 2002), with 6-hourly Climate Forecast System Reanalysis (CFSR, Saha et al., 2010)  
for 2005-2011 and Climate Forecast System Version 2 (CFSv2, Saha et al., 2014) for 2011-2018. Both  
are archived at the National Center for Atmospheric Research (NCAR), Computational and Information  
Systems Laboratory, Boulder, Colorado, with a 0.2°-0.3° significantly higher horizontal grid than the  
160 2.5°×2.5° resolution for NCEP Reanalysis 2.

The net surface heat flux correction is still following Barnier et al. (1995)'s method in SCSOFSv2, but  
the parameter ( $dQ/dSST$ ) of kinematic surface net heat flux sensitivity to sea surface temperature (SST)  
is calculated using SST, sea surface atmospheric temperature, atmospheric density, wind speed and sea  
level specific humidity, instead of setting a constant number of  $-30 \text{ W m}^2 \text{ K}^{-1}$  for the whole domain as in  
165 SCSOFSv1. So the parameter  $dQ/dSST$  varies temporally and spatially. Meanwhile, we use the infrared  
Advanced Very High Resolution Radiometer (AVHRR) satellite data in SCSOFSv2, which is an analysis  
constructed by combining observations from different platforms on a regular grid via optimum  
interpolation and provided by National Centers for Environmental Information (NCEI), instead of using  
the merged satellite's infrared sensors and microwave sensor, and *in-situ* (buoy and ship) data global  
170 daily SST (MGDSST) obtained from the Office of Marine Prediction of the Japan Meteorological  
Agency ([JMA](#)) in SCSOFSv1.

The North Equatorial Current (NEC) is an interior Sverdrup steady current in the subtropical NP and  
located at about 10°N-20°N, and usually bifurcates into two branches after encountering the western  
boundary along the Philippine coast in the west of 130°E (Qiu and Chen, 2010). However, the NEC *is*  
175 separated into two branches in SCSOFSv1 affected by model eastern lateral boundary setting, its main



branch located at about 9.5°N-13°N, the other branch located at 14.5°N-17°N (Fig. 2a), which is clearly not in line with the fact. The cause for above result is that the Guam Island (shown in red circle in Fig. 2, located about 13°26'N, 144°43'E) is included in SCSOFSv1, whose location is too close to the eastern lateral boundary. It changes the bathymetry from over 3500m to below 500m suddenly, as a big block to the NEC once flowing into the model domain from eastern lateral boundary. To resolve this problem, the eastern lateral boundary has been moved westward from 145°E to 144°E to narrow the model domain and exclude the Guam Island in SCSOFSv2. It is found that the simulated NEC keeps the form of one main current until 130°E, then bifurcates into the southward-flowing Mindanao Current and the northward-flowing Kuroshio in SCSOFSv2 (Fig. 2b). Also, it is shown that the Kuroshio of eastern Philippine Island and ocean circulations of northeastern SCS get stronger while the island of Guam removed. It indicates that the location of lateral open boundary is very important to the results of model's simulation and would better be set to far away from island enough, especially while the island located in the major ocean circulations.



190 **Figure 2: The multi-year monthly mean sea surface currents (color shaded for current speed (m s<sup>-1</sup>), arrows for current direction) with vertical averaged above 100m in May. The left panel (a) is from SCSOFSv1 with the model domain including the Guam Island, the right panel (b) is from SCSOFSv1.2 with the eastern lateral boundary moving 1 deg westward.**

For the advection schemes of momentum, third-order upstream and fourth-order centered schemes are used in both horizontal and vertical, respectively. Harmonic mixing scheme is used for both viscosity for momentum and diffusion for tracers in horizontal. Mellor-Yamada Level-2.5 vertical turbulent mixing closure scheme is used for both momentum and tracers. All of them in SCSOFSv2 are set to be same as in SCSOFSv1. Table 1 summarizes the main different characteristics between SCSOFSv1 and SCSOFSv2 after upgrading.



Table 1 The main different characteristics between SCSOFSv1 and SCSOFSv2

<u>System settings</u>		<u>SCSOFSv1</u>	<u>SCSOFSv2</u>
<u>ROMS version</u>		<u>V3.5</u>	<u>V3.7</u>
<u>Bathymetry</u>		<u>ETOPO1</u>	<u>GEBCO_08</u>
<u>Initial conditions</u>		<u>SODA2.2.4</u>	<u>GDEMv3</u>
<u>Open boundary Conditions</u>		<u>SODA 2.2.4 climatological monthly mean</u>	<u>SODA3.3.1 and SODA 3.3.2 monthly mean</u>
<u>Sea surface atmospheric forcing</u>	<u>Data</u>	<u>NCEP Reanalysis 2</u>	<u>CFSR</u>
	<u>Method</u>	<u>Directly fluxes forcing</u>	<u>COARE3.0 BulkFormula</u>
<u>The parameter of dQ/dSST</u>		<u>Constant (-60)</u>	<u>Calculated with spatiotemporal variations</u>
<u>Observed SST data used for net surface heat flux correction</u>		<u>MGDSST</u>	<u>AVHRR</u>
<u>The position of eastern lateral boundary</u>		<u>145°E</u>	<u>144°E</u>
<u>Vertical layers</u>		<u>36</u>	<u>50</u>
<u>Horizontal advection scheme of tracers</u>		<u>Third-order upstream</u>	<u>Fourth-order Akima</u>
<u>Vertical advection scheme of tracers</u>		<u>Fourth-order centered</u>	<u>Fourth-order Akima</u>
<u>Horizontal mixing surface</u>		<u>Constant density</u>	<u>Geopotential surfaces</u>
<u>Assimilated observation data</u>		<u>SLA</u>	<u>SLA, AVHRR, Argo T/S profiles</u>

The SCSOFSv2 is run with 5s time step for the external mode, and 150s for the internal mode under all new configurations mentioned above and in Section 3. The reason for modifying time step is related to the change of the discrete schemes, which will be illustrated in Section 3. A 26 years climatology run is conducted for spinning-up at first, and followed by a hindcast run from 2005 to 2018 (Wang et al., 2012). The daily mean of model results is archived and used for subsequent evaluation.

### 3. Highlights and sensitive updates and their impacts

Most of bias or errors in the operational systems are mainly induced by some major recurring problems, for example [sea surface atmospheric external](#) forcing, intrinsic deficiencies of numerical model (e.g., discrete schemes, parameterization schemes for sub-grid scale), initial errors, and the assimilation schemes. In this section, we elaborate solutions, that are not mentioned in Sect.2, to such problems applied in SCSOFSv2. [All of them have significantly improved the model skill of SCSOFS from different aspects, such SST, three dimensional temperature and salinity structures, comprehensive simulating skill especially for the meso-scale processes.](#)

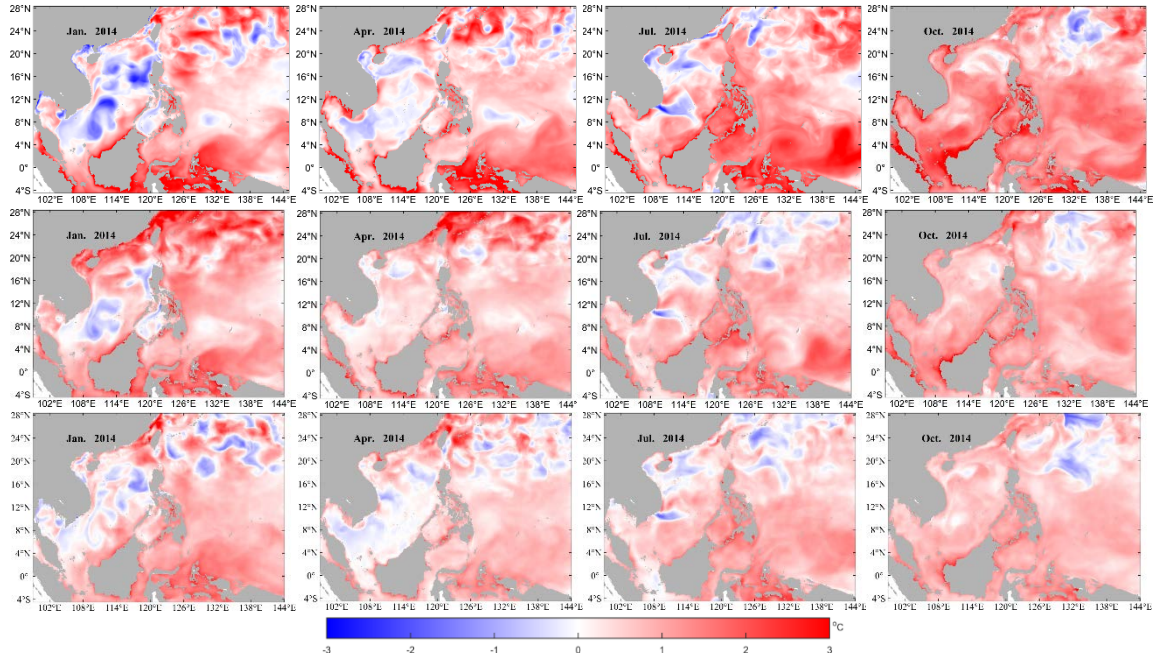
### 215 3.1 Sea surface atmospheric forcing

The air-sea interaction is one of the most essential physical processes that affect vertical mixing and thermal structure of the upper-ocean. The air-sea fluxes mainly include momentum flux, fresh water flux and heat flux. SST is an important indicator of ocean circulation, ocean front, upwelling and sea water mixing, whose variation mainly depending on the air-sea interaction, the ocean thermal and dynamical factors (Bao et al., 2002). Thus, for OIFS and ocean numerical modelling, simulation and forecast accuracy of SST is one important metric to evaluate the modelling and forecasting performance.

The accurate input of sea surface atmospheric forcing plays a key role to excel in model simulation of SST. ROMS provides two methods to introduce sea surface atmospheric forcing: one is directly forcing ocean model by providing momentum fluxes (wind stress), net fresh water fluxes, net heat fluxes and shortwave radiation fluxes from atmospheric datasets; the other is employing the COARE3.0 bulk algorithm (Fairall et al., 2003) to calculate air-sea momentum, fresh water and heat turbulent fluxes using the set of atmospheric variables from atmospheric datasets including wind speed at 10m above sea surface, mean sea level air pressure, air temperature at 2m above sea surface, air relative humidity at 2m above sea surface, downward longwave radiation flux, precipitation rate and shortwave radiation fluxes (Large and Yeager, 2009). The calculation for the air-sea fluxes, sensible heat flux, latent heat flux, and longwave radiation can be referenced to Li et al. (2021). Since the SST using in the calculation of those three air-sea fluxes is extracted from ocean model, the increase of SST induces the ~~ir variations of sensible heat flux, latent heat flux, and longwave radiation~~ as a result, which then lead to increasing loss of ocean heat, and inhibiting further increase of SST, and vice versa. It means that an effective negative feedback mechanism could form between SST and SST-related heat fluxes. In this case, it is much easier to maintain the simulated SST ~~could maintain~~ at a reasonable level. The first method is employed in SCSOFSv1, and the second, bulk algorithm, is employed in SCSOFSv2.

In order to evaluate the performances of different sea surface atmospheric forcing methods, we conduct a special experiment by changing the method based on SCSOFSv1, here named the experiment as BulkFormula. In this experiment, we use the merged satellite SST analysis with a multi-scale optimal interpolation called the Operational SST and Sea Ice Analysis (OSTIA) system, which globally coverage

on a daily basis at a horizontal grid resolution of  $1/20^\circ$  ( $\sim 6$  km) and produced by the Met Office (Donlon et al., 2012), to verify the results of SCSOFS.

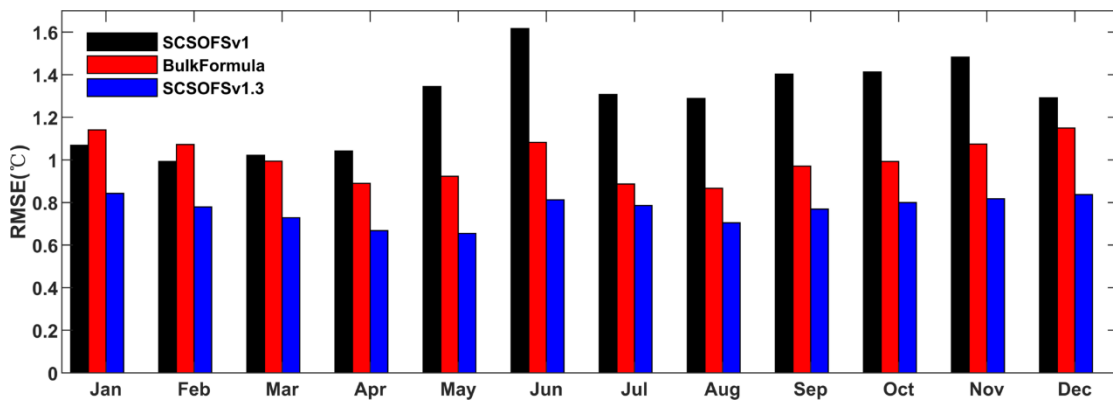


245 **Figure 3: The monthly mean SST differences in January, April, July, and October, 2014: SCSOFSv1 minus OSTIA SST (upper panels), BulkFormula minus OSTIA SST (middle panels), SCSOFSv1.32 minus OSTIA SST (lower panels)**

Figure3 shows the distributions of monthly mean SST differences in January, April, July, and October, 2014 to stand for Winter, Spring, Summer, and Autumn, respectively. SST differences are calculated with SCSOFSv1, BulkFormula, and SCSOFSv1.32 subtracts OSTIA SST, respectively. It is found that the simulated SST are higher than OSTIA SST for all three sets of results. The difference from SCSOFSv1 is pronouncedly higher than the differences from BulkFormula and SCSOFSv1.32. The maximum differences mainly occur near coast (Fig.3 upper panels), especially for a few bays embedded into the mainland which is hard to be resolved well with 2-3 horizontal grids at  $1/30^\circ$  resolution and in very shallow water depth in SCSOFSv1. This is because sea surface atmospheric forcing data is not accurate enough near the coast, and provide abnormally more heat to ocean causing the continuously heating up of coastal water. Thus, simulated SST is beyond normal level in SCSOFSv1. This phenomenon can be alleviated significantly by introducing the effective negative feedback mechanism

260

between model's SST and air-sea heat flux by employing the COARE 3.0 bulk algorithm, which is employed in both BulkFormula and SCSOFSv2 (Fig.3 middle and lower panels).



**Figure 4: Domain averaged monthly mean SST RMSE comparison among SCSOFSv1(black), BulkFormula (red), SCSOFSv1.3 (blue) and OSTIA SST in January, April, July, and October, 2014**

265

Figure 4 shows bars of domain averaged Root-Mean-Square Error (RMSE) of monthly mean SST differences of SCSOFSv1, BulkFormula, SCSOFSv1.3 with respect to OSTIA datasets in each month of 2014. It is found that the domain averaged RMSE of monthly mean SST differences from SCSOFSv1 is about 0.99-1.62°C, the annual mean value is about 1.27°C. The highest (1.62°C) is in June, the lowest (0.99°C) is in February. Monthly mean RMSE for BulkFormula run is about 0.87-1.15°C, the annual mean value is about 1.00°C, the maximum value (1.15°C) is in January and December, the minimum value (0.87°C) is in August. The performance of model skill for the annual mean SST RMSE can be improved by about 21% only by changing the method of sea surface atmospheric forcing from directly forcing to COARE 3.0 bulk algorithm due to effective negative feedback mechanism.

270

However, domain averaged RMSE of monthly mean SST differences from SCSOFSv1 is lower than that from BulkFormula in January and February, especially in the shallow region around the Taiwan Island.

275

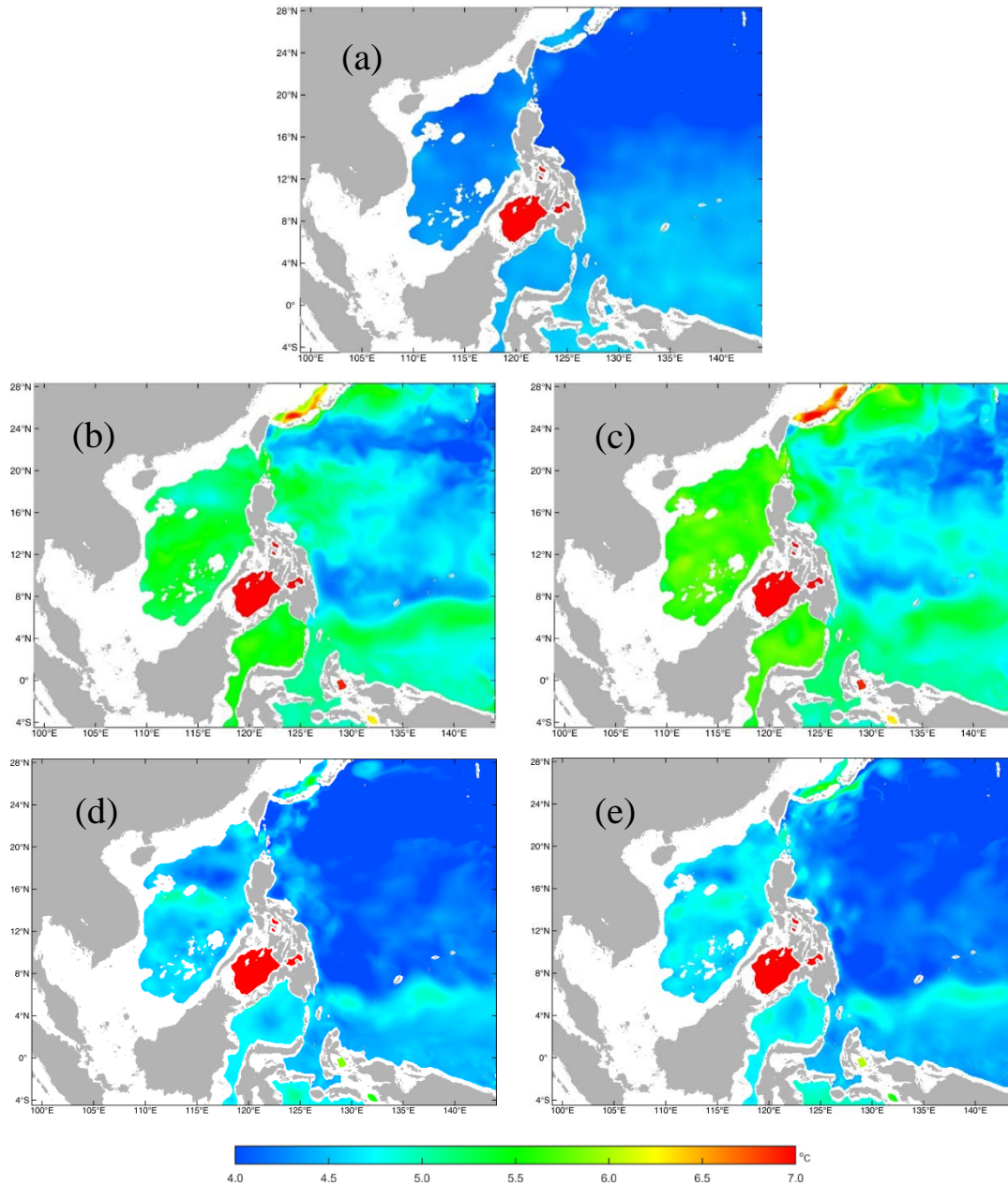
It indicates that COARE 3.0 bulk algorithm does not work better than direct forcing at all time or everywhere, even with effective negative feedback mechanism. This may be surface forcing field data dependent, and the accurate dataset of sea surface atmospheric forcing is more effective than the forcing methodology selection (Li et al., 2019). It also may suffer from the complicated air-sea interactions and tidal mixing missed in the model.

## 280 3.2 Tracers advection term discrete schemes

Spurious diapycnal mixing is one of traditional errors in state-of-the-art atmospheric and oceanic model, especially for the terrain-following coordinate regional models including both the continental slope and deep ocean (Marchesiello et al., 2009; Naughten et al., 2017; Barnier et al., 1998). Marchesiello et al. (2009) identified the problem of the erosion of salinity from the southwest Pacific model with steep reef slopes and distinct intermediate water masses based on ROMS. They found that ROMS cannot preserve the large-scale water masses while using the third-order upstream advection scheme during the spin-up phase of the model, and proposed a rotated split upstream third-order scheme (~~RSUP3~~) to decrease dispersion and diffusion by splitting diffusion from advection. They implemented [the rotated split upstream third-order scheme RSUP3](#) by employing a rotated biharmonic diffusion scheme with flow-dependent hyper diffusivity satisfying the Peclet constraint.

285  
290

For SCSOFSv1, a third-order upstream horizontal advection scheme (~~hereafter referred to as U3H~~), a fourth-order centered vertical advection scheme (~~hereafter referred to as C4V~~), and the scheme of



295 **Figure 5: The distributions of monthly mean temperature at 1000m layer in January from GDEMv3 climatology (a), the fifth (b) and the eleventh (c) model year by using the scheme combination of UCI based on SCSOFSv1 for other model settings, the fifth (d) and the eleventh (e) model year by using the scheme combination of AAG based on SCSOFSv2 for other model settings.**

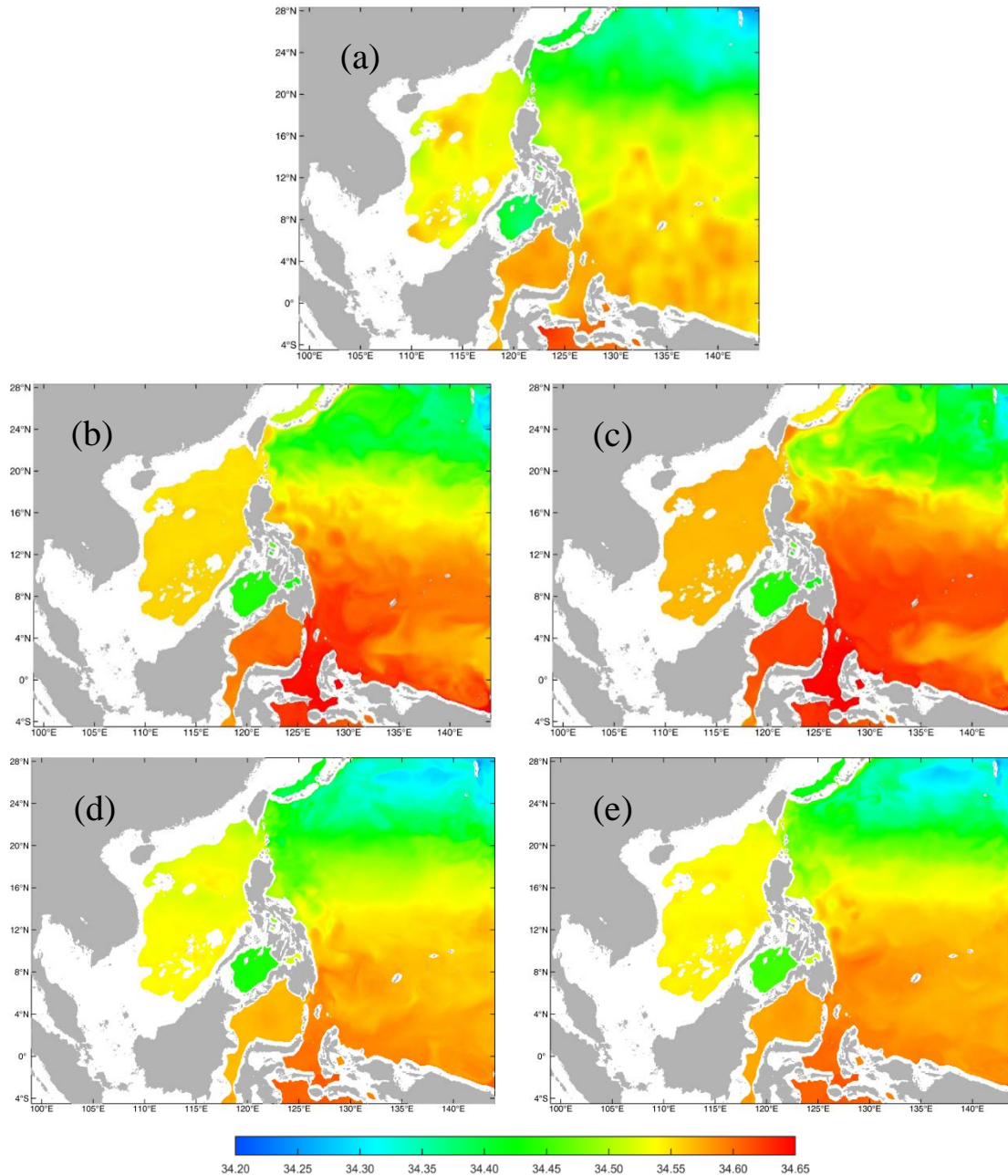
horizontal mixing on epi-neutral (constant density, [hereafter referred to as ISO](#)) surfaces for tracers are selected (Shchepetkin and McWilliams, 2005). We have encountered same problem with Marchesiello  
 300 et al. (2009) for temperature (Fig.5b and 5c) and salinity (Fig.6b and 6c) in deep layer. Figure 5 and 6 show the distributions of monthly mean temperature and salinity at 1000m layer in January from

GDEMv3 climatological initial fields, and the simulated results from the fifth and the eleventh model years by using the scheme combination of [third-order upstream horizontal advection](#)U3H, [fourth-order centered vertical advection](#)C4V and [horizontal mixing on epi-neutral surfaces](#)ISO (hereafter referred to as UCI) and the combination of the fourth-order Akima scheme (Shchepetkin and McWilliams, 2005) for both horizontal and vertical advection terms and the scheme of horizontal mixing along Geopotential surfaces (constant Z) for tracers (hereafter referred to as AAG), respectively, and other settings are identical with SCSOFSv2. Figure 7 shows the comparisons of time series of domain averaged monthly mean temperature and salinity at 1000 m layer simulated using the scheme combinations of UCI in SCSOFSv1 and AAG in SCSOFSv2, respectively. In order to save computation costs, we only run the model with scheme combination of UCI for over 16 years till it reaches stable status.

The fourth-order Akima scheme is a little different from the fourth-order centered scheme by replacing the simple mid-point average with harmonic averaging in the calculation of curvature term. Since the time stepping is done independently from spatial discretization in ROMS, the Akima scheme represents its advantage of reducing spurious oscillations, which arises with nonsmoothed advected fields, with respect to the fourth-order centered (Shchepetkin and McWilliams, 2003, 2005).

During the spin-up phase of the model from the initial conditions derived from GDEMv3, the temperature at 1000 m increases from 3.0-12.0°C in initial (Fig.5a) to 3.0-17.2°C (Fig.5b), and the domain averaged monthly mean value quickly increases from 4.4 °C in initial to 5.1 °C (Fig.7a) in





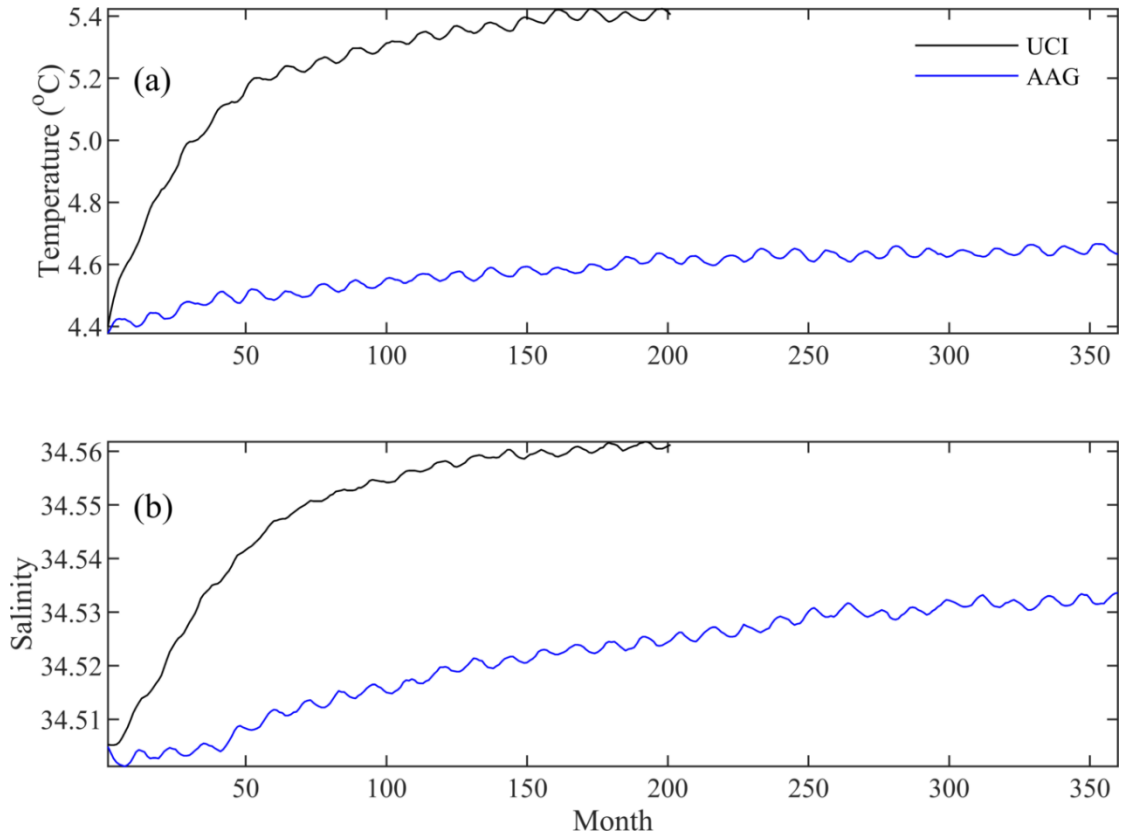
320

**Figure 6: The same as Fig.5, but for salinity.**

January of the fifth model year; the salinity at 1000 m increases from 34.26-34.62 in initial (Fig.6a) to 34.27-34.68 (Fig.6b), and the domain averaged monthly mean value increases rapidly from 34.50 in initial to 34.54 (Fig.7b) in January of the fifth model year too. Especially, the increasing of domain

325 averaged monthly mean value is almost linearly for both temperature and salinity in the first 50 months, indicating a fast increasing speed and strong spurious diapycnal mixing (Fig.7). Those values are even higher in January of the eleventh model year, the ranges (minimum and maximum value) reach to 3.0-

17.3°C for temperature (Fig.5c) and 34.26-34.73 for salinity (Fig.6c). The domain averaged values are 5.3 °C for temperature and 34.56 for salinity (Fig.7), respectively. The areas with increasing temperature and salinity are mainly located at steep slopes and nearby regions, e.g. the central basin of SCS, the Sulawesi Sea and the equatorial Pacific Ocean.



**Figure 7: The timeseries of domain averaged monthly mean temperature (a) and salinity (b) at 1000 m layer simulated by using the scheme combinations of UCI (black line) and AAG (blue line), respectively**

To fix this problem, we tested various model settings and compiling options available in ROMS, such as increasing the number of vertical levels, changing the advection and diffusion schemes, horizontal mixing surfaces for tracers, horizontal mixing schemes. Details of how tested model settings effect on the spurious diapycnal mixing are beyond the scope of this paper, which will be discussed in a separate paper. ~~Based on test results, we conclude that the spurious diapycnal mixing problem can be suppressed significantly by employing AAG scheme combination (Fig.5d, e and Fig.6d, e) in SCSOFSv2.~~

The monthly mean temperature at 1000 m layer from SCSOFSv2 varies from 3.0-12.0°C in initial condition to 3.0-11.5°C (Fig.5d), and the domain averaged monthly mean value increases slightly from

4.4 °C in initial to 4.5 °C (Fig.7a) in January of the fifth model year. The salinity at 1000 m varies from 34.26-34.62 in initial condition to 34.24-34.63 (Fig.6d), and the domain averaged monthly mean value only slightly varies from 34.505 in initial to 34.509 (Fig.7b) in January of the fifth model year. Those values show little variation till January of the eleventh model year, the ranges are 3.0-11.3°C for temperature (Fig.5e) and 34.25-34.63 for salinity (Fig.6e), and the domain averaged values are 4.6 °C for temperature and 34.52 for salinity (Fig.7), respectively. For the increment of domain averaged values, temperature is about 0.2°C and salinity is about 0.03, yet remaining stable after 20 model years (Fig.7).

It is suggested that spurious diapycnal mixing has been suppressed significantly by AAG scheme combination, which can preserve the characteristics of water masses in deep ocean well. Meantime, the temperature and salinity bias in the subsurface layer have been improved significantly, which will be shown in later of this paper.

In addition, it is found that the model skill for SST has also been improved significantly while the new AAG scheme employed in SCSOFSv1.32 (Fig.3 and Fig.4). The maximum of monthly mean differences between simulated SST by SCSOFSv1.32 and OSTIA is about 3-4°C, which is obviously smaller than the results from BulkFormula. Comparing with the results of SCSOFSv1 and BulkFormula, smaller SST hot bias versus The results of SCSOFSv2 show much more areas with lower SST than OSTIA is found in the central Pacific Ocean for the result of SCSOFSv1.32, comparing to the results of SCSOFSv1 and BulkFormula, which can be attributed to the new scheme combination. For the domain averaged RMSE of monthly mean SST of SCSOFSv1.32 is about 0.65-0.84°C, with an annual mean value of 0.77°C, the maximum value (0.84°C) is in January and December, the minimum value (0.65°C) is in May. Comparing with the results of BulkFormula, the performance of model skill judging from the annual mean SST RMSE is improved by about 23% due to employing new combination scheme in SCSOFSv1.32. It indicates that subsurface or deep layer processes can affect surface layer significantly by vertical heat transport.

### 3.3 Data assimilation scheme

As mentioned as Zhu et al. (2016), the original SCSOFSv1 had employed the multivariate Ensemble Optimal Interpolation (EnOI, Evensen, 2003; Oke et al., 2008) method to assimilate the along track

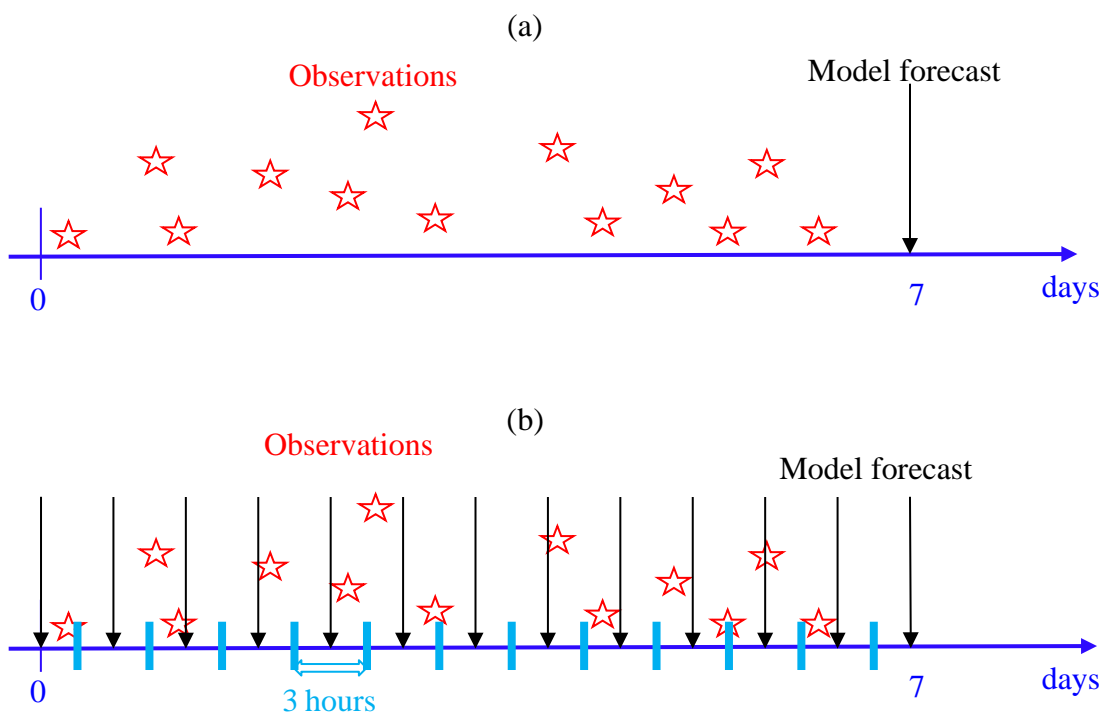
370 altimeter Sea Level Anomaly (SLA) data produced by SSALTO/DUACS and distributed by AVISO with support from Center National D'études Spatiales. During this upgrading process, we also improved some functions of EnOI scheme, and developed a new "Multi-source Ocean data Online Assimilation System" (MOOAS).

375 Firstly, SCSOFSv1 assimilated the along track SLA data only, while SCSOFSv2 is additionally able to assimilate satellite AVHRR SST and in-situ temperature and salinity (T/S) vertical profiles data from the Argo arrays, simultaneously. It is conducted by constructing all innovations (difference between the assimilated observation and the model forecast), background error covariances, and observation errors for four different variables to one array, respectively. It is worth to pointing out that, the SLA data assimilated in SCSOFS is near real time along-track L3 product for assimilation specially, which is filtered but not subsampled and with Dynamic Atmospheric Correction, ocean tide, long wavelength error correction applied (CMEMS-SL-QUID-008-032-051, <http://marine.copernicus.eu/documents/QUID/CMEMS-SL-QUID-008-032-051.pdf>). The filtering processing consists in a low-pass filtering with a cut-off wavelength of 65 km and 20-day period using a Lanczos filter. Residual noise and small scale signals are then removed by filtering. For the ~~observation measurement~~ errors in SCSOFSv2, we ~~simply~~ set those of SLA ~~and SST~~ as constants of ~~0.093 cm~~ according to Taburet et al. (2018), and use the estimated error standard deviation of analysed AVHRR SST directly ~~0.5 °C~~, respectively; as for those of Argo T/S, assuming they are represented as a function of water depth ( $D$ ) following Xie and Zhu (2010) as  $ERR_T(D)=0.05+0.45\exp(-0.002D)$ ,  $ERR_S(D)=0.02+0.10\exp(-0.008D)$ .

380  
385  
390 Secondly, we have introduced the method of computing the anomalies of ensemble numbers used for constructing the background error covariance following Lellouche et al. (2013). In SCSOFSv1, the anomalies are computed by subtracting a 10-year average from a long-term (typically 10 years) model free run snapshots with 5-day interval for the ocean state, i.e. sea surface height and three-dimensional temperature, salinity, zonal velocity, and meridional velocity. And the ensemble is selected within a 60 d window around the target assimilation date from each year, adding up to about 130 members in total  
395 (Ji et al., 2015; Zhu et al., 2016). However, in SCSOFSv2, a Hanning low-pass filter is employed to create running mean according to Lellouche et al. (2013) in order to get intra-seasonal variability in the

400

ocean state. Thus the anomalies are computed by subtracting the running mean with 20-day time window from a 10-year (2008-2017) free run daily averaged results. Especially, it is pointed out that the daily averaged free run results are selected within 60 d window, ~~with 30 days before and after~~ around the target assimilation date from each year of 2008-2017 and used to compose ensemble members, thus about 590 members totally in SCSOFSv2. It means that the background error covariances rely on a fixed basis and intra-seasonally variable ensemble of anomalies, which improves the dynamic dependency.



405

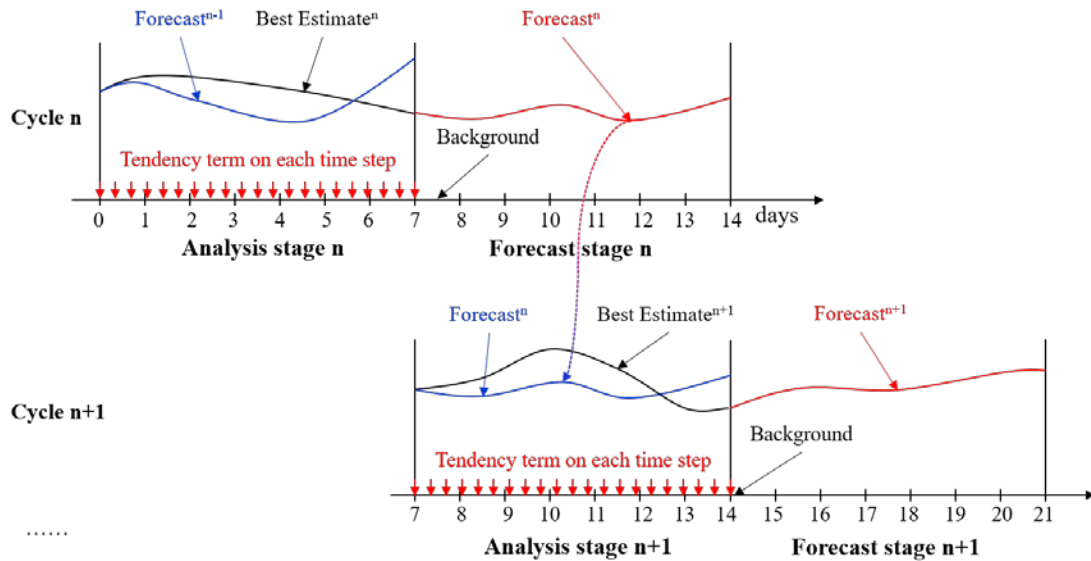
**Figure 8: Schematic representation of the FGAT method not used in SCSOFSv1 (a) and used in SCSOFSv2 (b). Red stars stand for observations, black arrows stand for archived snapshots of model forecast**

410

Thirdly, for each analysis step with a 7-day assimilation cycle, all observations of SLA within the 7-day time window before the analysis time are treated as observed at the analysis time in SCSOFSv1, with assumption of all observations were still valid at the analysis time. The time misfit between the observation and model forecast would cause non-negligible biases ~~whenfor the~~ calculationg of innovations. Actually, it is inconvenient to calculate the synchronous innovations between the observation and model forecast entirely, since the spatio and temporal distributions of along-track SLA

and Argo data are irregular and variable at each analysis step. In order to alleviate this deficiency, the First Guess at Appropriate Time (FGAT) method (Lee and Barker, 2005; Cummings, 2005; Lee et al., ~~22-25 June~~ 2004; Sandery, 2018) is used in SCSOFSv2. Considering the intense computing and storage cost, we have divided the 7-day time window into 56 3-hour time slots (Fig.8), and archived 57 snapshots with a 3-hour interval while model forecast run following the previous analysis run. Then the innovations can be calculated within each 3-hour time slot by using the observations subtracts the nearest model forecast. It means that the maximum temporal misfit of the innovations between the observation and model forecast would be decreased from 7 days to 1.5 hours by using FGAT. Meanwhile, the localization is still used with the radius set to be 150 km as in SCSOFSv1.

In SCSOFSv1, the analysis increments of sea surface height and three-dimensional temperature, salinity, zonal and meridional velocities produced by each analysis of data assimilation are applied to the model initial fields at one time step. It would induce model significant initial shock and spurious high-frequency oscillation due to the imbalance between the increments and the model physics inevitably (Lellouche et al., 2013; Ourmières et al., 2006), and usually causes a rapid growth of forecast error and even model blow up after a few assimilation cycles or one or two-year period after the intermittent assimilation run. It is a threat to the stability and robustness of OIFS. Therefore, we introduced the incremental analysis update (IAU) method (Bloom et al., 1996; Ourmières et al., 2006) to apply each analysis increment to the model integration as a forcing term in a gradual manner in SCSOFSv2 to diminish the negative impact. In our case, we get the tendency term by dividing the increments with the total number of time steps within an assimilation cycle as in most IAU methodologies, in order to make sure the time integral of tendency term equals the analysis increment calculated by EnOI.



435 **Figure 9: Schematic representation of the data assimilation procedure for two consecutive cycles, n and n+1 in SCSOFSv2, while considering the FGAT and IAU methods.**

Once including the FGAT and IAU methods in EnOI scheme, the whole system integral strategy has to be adjusted by adding one more model integration over the assimilation time window (Lellouche et al., 2013). In SCSOFSv1, only one time model integration is needed. It means that once physical ocean model finishes 7 days run (does not need to archive snapshot fields) and outputs a restart field, the EnOI data assimilation module starts to calculate the analysis increments at the restart field time and adds it to the restart field, then the physical ocean model makes a hot-start from the updated restart field to run 7 days for next cycle.

445 However, in SCSOFSv2, two times model integration is needed due to considering the FGAT and IAU methods (Fig.8). It means that physical ocean model needs to be integrated 14 days in each assimilation cycle, to add the tendency term to the model prognostic equations due to the IAU method used during the first 7 days run (referred to as “Analysis Stage”), to output restart field at the end of 7th day for hot starting ocean model in next cycle, and to output 3-hourly snapshots forecast fields during the second 7 days run (referred to as “Forecast Stage”) to be used in next cycle by FGAT method. The model outputs from the Analysis Stage are referred to as “Best Estimate”, and from the Forecast Stage are referred to as “Forecast”. The analysis increments are defined at the 3.5th day, but not at the end of 7th day as in



SCSOFSv1, with the observed SLA and Argo T/S vertical profiles data within the 7-day time window and AVHRR SST data on the 4th day used by FGAT method.

#### 4. Inter-comparison and accuracy assessment

455 In order to show the improvements of different SCSOFS sub-versions during the upgrading process, the results of inter-comparison and assessment are shown in this section, by using the GOV Inter-comparison and Validation Task Team (IV-TT) Class 4 verification framework (Hernandez et al., 2009). Class 4 metrics are used for inter-comparison and validation among different global or regional OOFSS or assimilation systems originally (Ryan et al., 2015; Hernandez et al., 2015; Divakaran et al., 2015). It  
 460 includes four metrics, namely, bias for consistency, RMSE for quality or accuracy, Anomaly Correlation (AC) for pattern of the variability and skill scores for the utility of a forecast. They are calculated according to differences between model values and reference measurements in observations space for each variable over a given period and spatial domain. The physical variables used in Class 4 metrics are SST, SLA, T/S profiles, surface currents and sea ice. Reference measurements, providing ocean “truth”,  
 465 are selected as follow, SST from *in-situ* drifting BUOY, SLA from AVISO along-track data, temperature and salinity from Argo profiles, respectively. They are assembled by GOV IV-TT participating partners on a daily basis (Ryan et al., 2015).

It is virtually impossible to test and validate exhaustively performances of all upgrades mentioned in Section 2 and 3. Here, we separate the whole upgrading procedure from SCSOFSv1 to SCSOFSv2 into  
 470 four stages with three more sub-versions (v1.1, v1.2, v1.3) according to the reality. By respecting to the previous version, the major upgrades in each new version are listed in Table 24.

Table 24 The major upgrades with respect to the previous version

SCSOFS versions	Settings updates
v1→v1.1	<b>ROMS version</b> shifting from v3.5 to v3.7; <b>land-sea mask</b> redistribution; <b>bathymetry</b> substitution ETOPO1 with GEBCO_08; <b>initial T/S conditions</b> changing from SODA2.2.4 to GDEMv3; <b>open boundary data</b> changing from climatological monthly mean to monthly mean from 1990 to 2008 with SODA

	2.2.4; <b>sea surface atmospheric forcing data</b> changing from NCEP Reanalysis 2 to CFSR; <b>the parameter dQ/dSST</b> changing from constant to temporal and spatial varying values; <b>sea surface atmospheric forcing method</b> changing from directly fluxes forcing to BulkFormula
v1.1→v1.2	<b>Open boundary data</b> of SODA 2.2.4 monthly mean extending from 2008 to 2010; <b>the eastern lateral boundary</b> moving westward; <b>the observed SST data</b> for net surface heat flux correction changing from MGDSST to AVHRR
v1.2→v1.3	Considering <b>mean seal level atmospheric pressure</b> effect, increasing <b>vertical layers</b> from 36 to 50; changing <b>the transform and stretching function</b> ; <b>tracers advection discrete schemes</b> changing from UCI to AAG; <b>Changing the open boundary data from SODA 2.2.4 monthly mean to SODA 3.3.1 and 3.3.2</b>
v1.3→v2	Including the MOOAS

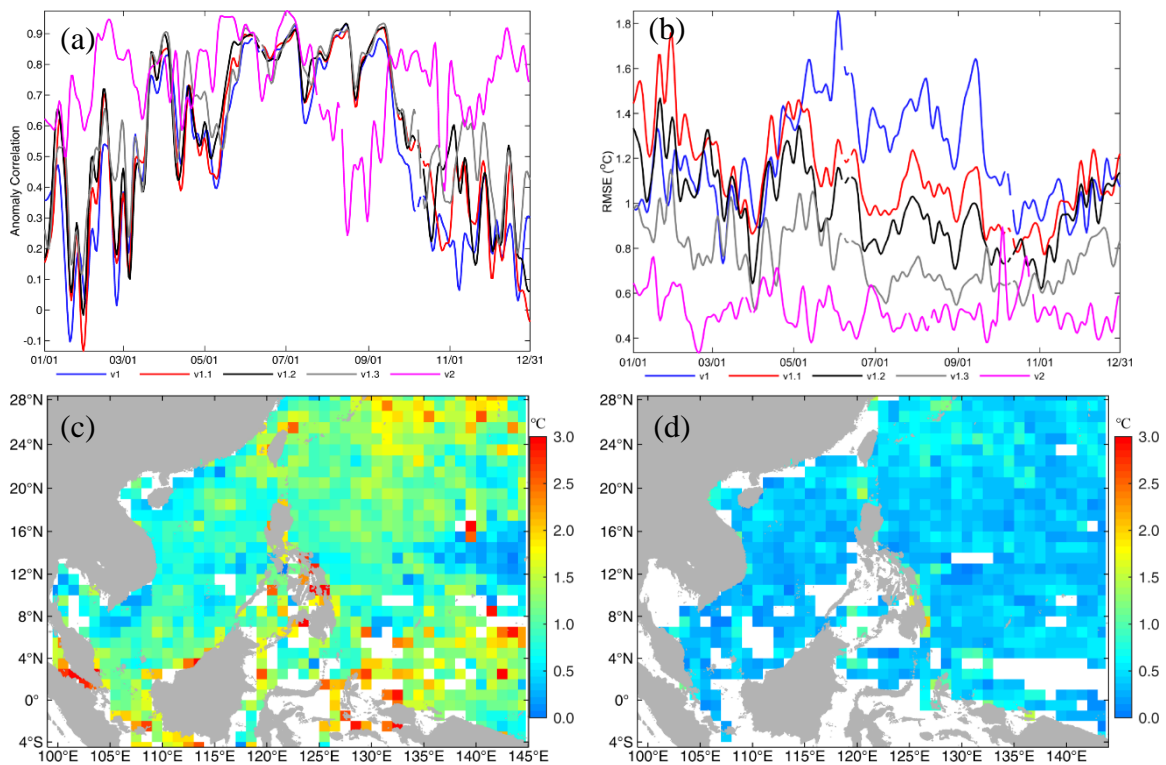
In this paper, we use Class 4 metrics and select the first four physical variables, SST, SLA and T/S, to inter-compare and assess the accuracy among different sub-versions of SCSOFS (Table 32). Since all the reference measurements data mentioned above have not been used in SCSOFS for those sub-versions without data assimilation, they are independent reference observation from SCSOFS except for SCSOFSv2. The inter-comparison and validation among those sub-versions without data assimilation are conducted for the model free-run results in 2013, and between v1.3 and v2 are conducted in 2018 to validate the performance of MOOAS.

**Table 32 Mean values of each metric of the four physical variables for the best estimates of each sub-version**

Variables	Metrics	v1	v1.1	v1.2	v1.3		v2
SST	AC	0.52	0.56	0.58	0.62	0.64	0.74
	Bias(°C)	0.77	0.88	0.70	0.40	0.34	0.24
	RMSE(°C)	1.21	1.12	0.98	0.76	0.66	0.52
SLA	AC	—	—	—	—	0.67	0.85
	Bias (cm)	-7.0	-5.5	-7.0	-7.4	-5.2	-3.1
	RMSE (cm)	21.6	20.8	16.7	14.8	12.9	8.5
T Profile	AC	0.01	0.04	-0.12	0.48	0.38	0.57
	Bias (°C)	0.98	0.75	0.30	-0.15	-0.08	0.15
	RMSE (°C)	1.75	1.60	1.44	1.03	0.96	0.67
S Profile	AC	-0.01	-0.02	0.02	0.44	0.30	0.51
	Bias	0.06	0.05	0.06	0.02	0.013	0.009
	RMSE	0.14	0.14	0.13	0.10	0.11	0.08
Year		2013			2018		

## 4.1 SST

The accuracy of SST is continuously increasing from version v1 to v2, with AC increased from 0.52 in v1 to 0.74 in v2 with percentage increase (PI) being 29.7%, RMSE is decreasing from 1.21°C in v1 to 0.52°C in v2 with PI being 57.0%, for the annual mean of whole model domain averaged in 2013 (or v1.3 and v2 in 2018) (Table 32). For the versions v1, v1.1, v1.2, v1.3, their AC show significant seasonal variations, with high AC in summer and low AC in winter. It is also indicated that the accuracy of SST can be benefited from the sea surface atmospheric forcing method, more accurate observed SST data used for sea surface heat flux correction, temperature advection discrete scheme, and SST data assimilation.



**Figure 10: Anomaly correlation (a) and RMSE (b) timeseries of SST best estimates for each version against observations as a function of time (7-day low pass filter applied), v1, v1.1, v1.2, v1.3 without data assimilation in 2013, and v2 with data assimilation in 2018. Horizontal distribution of SST RMSE in a 1°x1°bin for the version v1 (c) and v2(d), the calculation was performed for year round in 2013 and 2018, respectively**

The improvement of SST due to sea surface atmospheric forcing method changing mainly occurred in summer time, showing the same pattern as the result of the year 2014 in Fig. 3 and 4. But sea surface

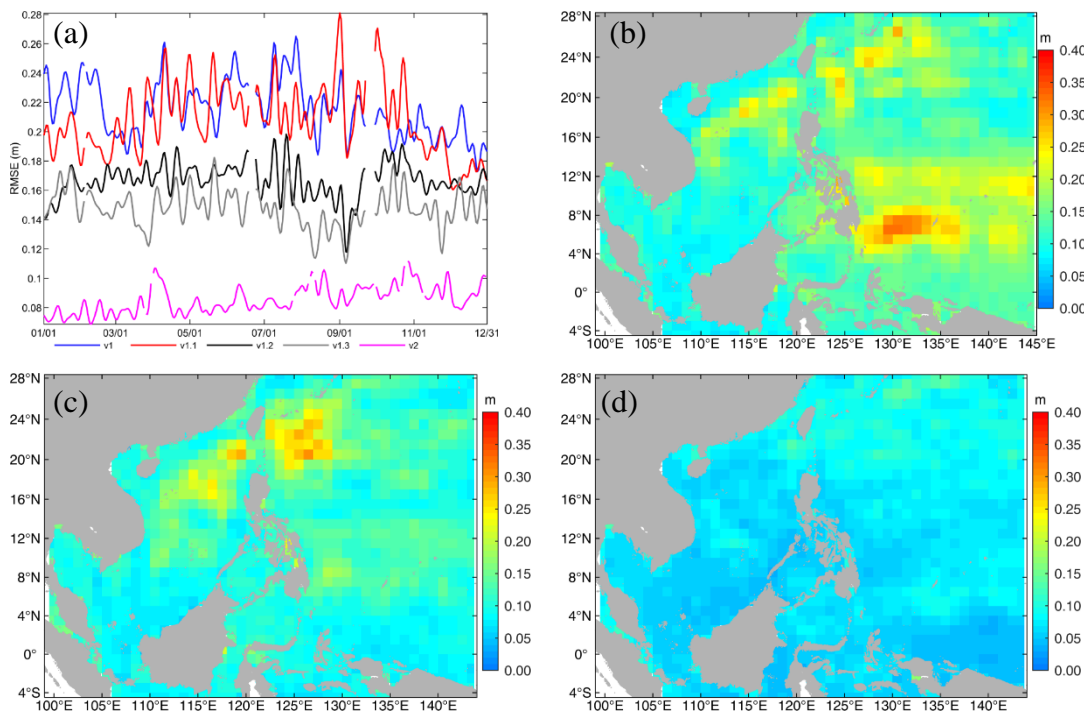
heat flux correction with more accurate observed SST data can improve accuracy of SST simulation for the whole year (v1.2 in Fig.10b). We also found that OISST data is closer to OSTIA than MGDSST (figure not shown). Due to benefit from those changes, the maximum and minimum value of SST RMSE have decreased from 1.92°C and 0.71°C in v1 to 1.52°C and 0.60°C in v1.2 for the whole year 2013, respectively. It is worth mentioning that AAG schemes combination not only improves the deep layer temperature, but also contributes to the improvement of SST due to internal baroclinic vertical heat transport. The maximum and minimum value of SST RMSE is 1.21°C and 0.52°C in v1.3. For the results with data assimilation in v2, the maximum and minimum value of SST RMSE is only 1.13°C and 0.32°C, respectively. It is better than the result in v1.3 year-round.

For the horizontal distribution of SST RMSE, large values are mainly located at the areas near equator, coast areas and northern lateral boundary, with most of values larger than 1.5°C and maximum value about 6.67°C in v1 (Fig.10c). In v1.3, due to the contributions of all the above model updates, the pattern of RMSE is similar with v1 basically without significant variations, but the maximum value decreases to 3.91°C and most of values are less than 1.2°C. After applying MOOAS in v2 (Fig.10d), only a few large RMSE values are located at the eastern coast of Philippine island with the maximum value of 2.09°C and most of values lower than 0.8°C. It indicates that the performance of SST in SCSOFSv2 has been improved significantly due to all the updates mentioned above.

## 4.2 SLA

For the whole improving process, the accuracy of SLA is also continuously increasing from version v1 to v2, with RMSE decreasing from 21.6cm in v1 to 8.5cm in v2 with PI being 60.6%, for the annual mean of whole model domain averaged in 2013 (or in 2018 for v1.3 and v2) (Table 32). Since there was an ongoing problem with the SLA climatology variable provided by GODA~~EV~~ IV-TT during 2013-2015, we could not calculate AC for SLA in 2013 and had feedbacked this issue to GO~~VDAE~~ IV-TT. But from the result of SLA AC in 2018, we can find that it increases from 0.67 in v1.3 to 0.85 in v2, showing significant improvement for the correlation of pattern of the variability between the model results and climatology.

From Fig.11(a), there is a slight decrease of RMSE in v1.1 with respect to v1, which mainly occurs in winter time, and rarely in summer time. This maybe because no direct or intrinsic relationship between winter time, and rarely in summer time. This maybe because no direct or intrinsic relationship between those model updates from v1 to v1.1 and SLA in physics, and those updates mainly focus on horizontal and temporal resolution of the datasets. However, the improvement of SLA accuracy is obvious in v1.2 with respect to v1.1, with the minimum and maximum of daily-mean RMSE values change from 0.12cm and 0.31cm in v1.1 to 0.11cm and 0.23cm in v1.2, respectively. Their annual mean value decreases from 20.8cm in v1.1 to 16.7cm in v1.2, with PI of 19.7%. This may be resulted from well representing of NEC pattern due to change of model eastern lateral boundary. With respect to v1.2, accuracy of SLA in v1.3 slightly increases with annual mean value 14.8cm and PI 11.4%. It may be resulted from the mean sea level air pressure correction and modification of T/S baroclinic structures due to AAG employed. In addition, the most significant improvement for SLA is introduced by MOOAS, with minimum and maximum of daily-mean RMSE value are 6.1cm and 12.1cm in v2, respectively. The annual mean RMSE decreases to 8.5cm and PI reaches to 34.1% with respect to v1.3 and to 60.6% with respect to v1. It is undoubtedly that this significant improvement is introduced by along-track SLA being assimilated into the system by MOOAS.

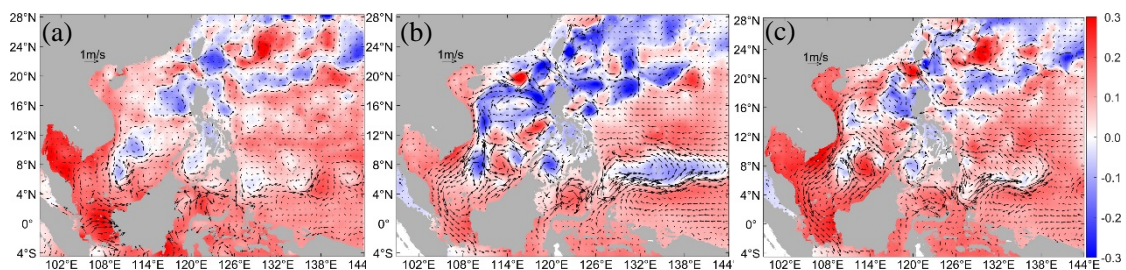


540 **Figure 11: (a) similar to Fig.10(b) but for SLA. (b), (c), (d) similar to Fig.10(c) or (d), but for SLA in v1, v1.3(in 2013) and v2, respectively.**

For the horizontal distribution of SLA RMSE, large values over 20 cm are mainly located in the area of NEC pathway, continental shelf of the northeastern SCS and northeast of LUS, with maximum value of 32.7cm in v1(Fig.11b). In v1.3 (Fig.11c), large values in the area of NEC pathway almost disappeared, the maximum RMSE is 30.3cm and most of values are less than 20cm, which may be interpreted as better representing of NEC pattern due to movement of model's eastern lateral boundary. By comparing with v1.3 or even v1, SLA RMSE decreases dramatically for the whole model domain and does not show areas with obvious large values in v2, and its maximum value is only 18.2cm, with most of values less than 10cm. It is well known that plenty mesoscale eddies occur in each side of the Luzon Strait, northeastern SCS and western Pacific (Fig. 12a), large SLA RMSE in Fig. 11b and Fig. 11c indicating that pure physical ocean model cannot capture meso-scale process well without SLA data assimilated (Fig.12b). However, Fig. 11d shows significant reduction with SLA RMSE, indicating that meso-scale eddies can be represented by SCSOFSv2 with along-track SLA data assimilated and agreement with satellite observations well (Fig. 12c).

545

550



555 **Figure 12: Daily averaged SLA (color shaded) and surface velocity anomaly (vector) on January 15, 2018, from AVISO, SCSOFSv1.3, and SCSOFSv2, respectively**

### 4.3 T/S profiles

For 3D T/S distribution, by comparing model results with climatology T/S profiles, the results from first three versions show poor correlation with observations (Fig.13a and Fig.14a) and large RMSE (Fig.13b and Fig.14b), i.e. 1.44-1.75°C for T and 0.13-0.14 for S (Table 32), even if they decrease with model updates. Especially, for the vertical distribution, the RMSE can reach to larger than 3°C for T and 0.3 for S in thermocline and halocline, respectively, and remained larger than 1°C for T in deep layer and 0.1

560

for S above 700m depth (Fig.13d and Fig.14d). This may result from spurious diapycnal mixing due to UCI schemes combination employed. Those updates in v1.1 and v1.2 can only slightly improve 3D T/S, and cannot contribute to their intrinsic improvements, neither for surface forcing nor for lateral boundary conditions, except for surface layer of shallower than 100m.

However, once AAG schemes combination employed in v1.3, the improvements to 3D T/S are obvious with respect to the first three versions (Fig.13a,b and Fig.14a,b). The AC increases to 0.38-0.48 for T and 0.30-0.44 for S, and RMSE decreases to 0.96-1.03°C for T and 0.10-0.11 for S, respectively (Table 32). For the vertical distribution, the AC remains around 0.4 for both T and S in the whole water column, and over 0.6 for T in the surface layer (Fig.13c and Fig.14c), RMSEs significantly decrease to less than 2°C for T in thermocline and 0.25 for S in halocline, and less than 1°C for T and 0.1 for S in deep layer (Fig.13d and Fig.14d).

For the horizontal distribution of 3D T/S RMSE, RMSE of T is more likely being more than 1.5°C with maximum and minimum values being 4.45°C and 0.49°C (Fig.13e), and RMSE of S is larger than 0.1, with

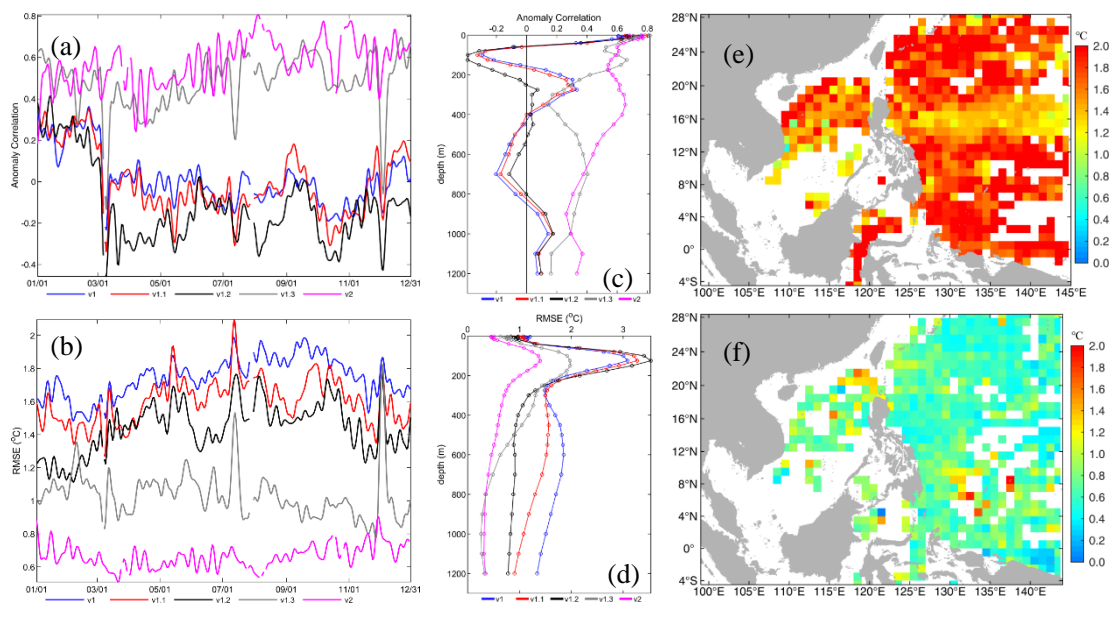


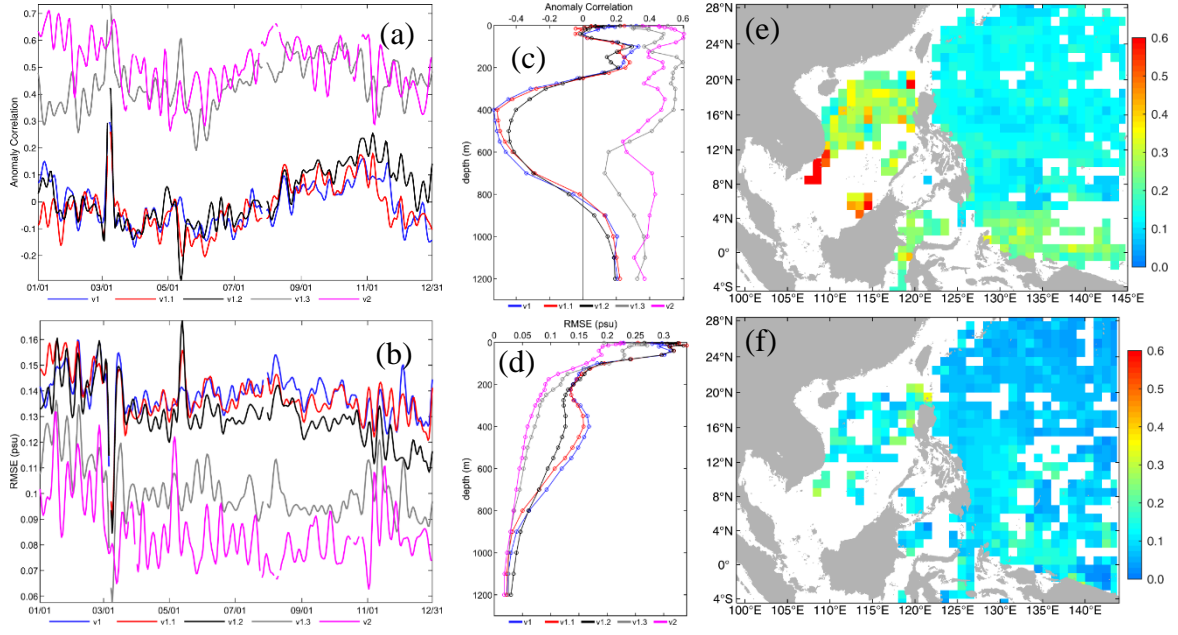
Figure 13: (a) and (b) similar to Fig.10(a) and (b) but for T profile, respectively. (c) and (d) vertical distribution of best estimates for each sub-version against observations as a function of depth, v1, v1.1, v1.2,



580 **v1.3 without data assimilation in 2013, and v2 with data assimilation in 2018. (e) and (f) similar to Fig.10(c) and (d), but for T profile in v1 and v2, respectively.**

maximum and minimum values being 0.81 and 0.06 (Fig.14e), in v1. Large values for S mainly locate in the SCS and near equator in the Pacific Ocean. The trend is same with timeseries of RMSE, the horizontal distribution of T/S RMSE shows slight decrease from version v1 to v1.2, but dramatic decrease in v1.3  
585 (Figures not shown). Since it is benefited from AAG schemes combination in v1.3, most of T RMSE is lower than 1.0°C, with maximum and minimum values being 1.72°C and 0.11°C, and most of S RMSE is less than 0.1 with maximum and minimum values being 0.62 and 0.03 in 2013, respectively.

By employing MOOAS, accuracy of 3D T/S has been improved continuously in v2 compare to v1.3 for all the metrics in 2018 (Fig.13 and Fig.14). The mean AC has increased from 0.38 to 0.57 for T, and  
590 from 0.30 to 0.51 for S. The mean RMSE has decreased from 0.96°C to 0.67°C for T, and from 0.11 to 0.08 for S (Table 32). For vertical distribution of AC for T, it's over 0.6 in surface, over 0.4 above 600m, and over 0.3 in deep layer (Fig.13c). RMSE of T is less than 1.5°C for the whole vertical profile, and the maximum value is located at the thermocline similar with other versions, but the error decreases dramatically (Fig.13d). Unlike T, vertical AC of S does not show significant improvement in v2 with  
595 respect to v1.3 below 200m, and it shows a little higher than which in v1.3 (Fig.14c) in above 200m. S RMSE is less than 0.25 for the whole vertical profile, with the maximum value located at surface and decreasing with depth, and decrease to less than 0.05 below 600m (Fig.14d).



**Figure 14: Similar to Fig.13, but for S profile.**

600 For the horizontal RMSE distribution in v2, most of T RMSE is larger than  $0.8^{\circ}\text{C}$  with maximum and minimum values being  $1.96^{\circ}\text{C}$  and  $0.03^{\circ}\text{C}$  (Fig.13f); and most of S RMSE is greater than 0.1, with maximum and minimum values being 0.35 and 0.01 (Fig.14f), respectively, in 2018.

### 5. Conclusions

This study illustrates major updates applied on SCSOFSv1 in both physical model settings, inputs and  
 605 EnOI data assimilation scheme in recent couple years following the recommendations of Zhu et al. (2016), such as land-water grid mask redistribution, data sources for bathymetry, initial condition, sea surface forcing and open boundary condition changing to higher spatial and temporal resolution, moving the eastern lateral boundary westward, increasing vertical layers of model, and so on.

Three most significant updates are highlighted in this paper. Firstly, sea surface atmospheric forcing  
 610 method has been changed from direct forcing to BulkFormula to acquire effective negative feedback mechanism of air-sea interaction by using COARE3.0 bulk algorithm. Upgrades lead to more reasonable SST simulation with eliminating of abnormal values, significantly dropping of the maximum value of monthly mean differences between simulated SST and OSTIA, and decreasing of domain averaged

RMSE of monthly mean SST from 0.99-1.62°C in SCSOFSv1 to 0.87-1.15°C in BulkFormula run. The  
615 annual mean value decreases from 1.27°C to 1.00°C, indicating that the performance of model skill has  
improved by about 21%.

Secondly, tracers advection term discrete scheme UCI has been substituted with AAG in order to  
suppress spurious diapycnal mixing problem. After this substitution, the domain averaged monthly mean  
620 temperature at 1000m layer decreases from 5.1°C to 4.5°C, and which of salinity decreases from 34.54  
to 34.509, in January of the fifth model year, respectively. Even after 20 model years, domain averaged  
values of temperature and salinity increments are about 0.2°C and 0.03, suggesting that AAG schemes  
combination can well preserve the characteristics of water masses in deep ocean. In addition, model skill  
for SST also can benefit from AAG schemes combination with annual mean domain averaged RMSE  
decreasing from 1.00°C to 0.77°C, showing 23% improving rate for the performance.

625 Thirdly, the original EnOI method in SCSOFSv1 has been upgraded to new MOOAS by adding four new  
functions. The multi-source observation data (SST, SLA, and Argo T/S profiles) can be assimilated  
simultaneously; Hanning high-pass filter is applied to ensemble members from 10 years free run while  
calculating the background error covariances to improve the dynamic dependency; FGAT method with  
3-hour time slot is used to calculate the innovations; and IAU technique is employed with 7-day time  
630 window to apply analysis increment to the model integration in a gradual manner.

Moreover, inter-comparison and accuracy assessment among five versions are conducted based on GOV  
IV-TT Class 4 metrics for four physical variables, SST, SLA, and T/S profiles. The improvement of  
accuracy of simulated SST mainly attributes to more accurate observed SST data source used for sea  
surface heat flux correction, BulkFormula method for sea surface atmospheric forcing, AAG temperature  
635 advection discrete scheme. The improvement of SLA accuracy mainly benefits from good  
representations of NEC pattern caused by modification of model eastern lateral boundary, mean sea level  
air pressure correction, and T/S baroclinic structures improvement due to AAG employed. The  
improvement of 3D T/S mainly benefits from AAG non-spurious diapycnal mixing schemes combination  
employed.

640 At last, remarkable improvements for all above four variables are also benefited from MOOAS application. With respect to v1.3, domain averaged annual mean SST RMSE decreases from 0.66°C to 0.52°C with PI being 21.2%, SLA RMSE decreases from 12.9cm to 8.5cm with PI being 34.1%, T profile RMSE decreases from 0.96°C to 0.67°C with PI being 30.2%, S profile RMSE decreases from 0.11 to 0.08 with PI being 27.3%, in v2 while using MOOAS.

645 Although SCSOFSv2 has improved greatly comparing to the previous versions, some biases still exist, such as in surface and the structures of temperature and salinity in subsurface, especially for the thermocline and halocline. We plan to continue to improve the system in both physical model settings and data assimilation scheme for next step, such as sub-grid parameterization scheme for unresolved physical processes, vertical turbulent mixing scheme to consider wave mixing, more accurate input and forcing data source, and assimilating more or new types of observations (glider or mooring T/S, drifting buoys, *in-situ* velocity from moorings) into the system.

650

*Code and Data availability.* The latest version of the source code for EnOI and ROMS trunk used to produce the results in this paper can be accessed via <https://doi.org/10.5281/zenodo.5215783>. GEBCO\_2014 Grid, [https://www.bodc.ac.uk/data/open\\_download/gebco/GEBCO\\_30\\_SEC/zip/](https://www.bodc.ac.uk/data/open_download/gebco/GEBCO_30_SEC/zip/), last access 3 January 2021; SODA 3.3.1, [https://www2.atmos.umd.edu/~ocean/index\\_files/soda3.3.1\\_mn\\_download.htm](https://www2.atmos.umd.edu/~ocean/index_files/soda3.3.1_mn_download.htm), last access 3 January 2021; SODA3.3.2, <https://dsrs.atmos.umd.edu/DATA/soda3.3.2/REGRIDED/ocean/>, last access 3 January 2021; CFSR, <http://rda.ucar.edu/datasets/ds093.0>, last access 3 January 2021; CFSv2, <http://rda.ucar.edu/datasets/ds094.0>, last access 3 January 2021; NCEP\_Reanalysis 2, <https://www.psl.noaa.gov/data/gridded/data.ncep.reanalysis2.html>, last access 3 January 2021; AVHRR, <http://www.ncei.noaa.gov/data/sea-surface-temperature-optimum-interpolation/v2.1/access/avhrr/>, last access 3 January 2021; OSTIA, SST of *in-situ* drifting BUOY, AVISO along-track SLA, and Argo temperature and salinity profiles, <https://marine.copernicus.eu/>, last access 3 January 2021.

655

660

*Author Contributions.* XZ performed the physical model improvement and free-run simulations, designed and wrote the paper. XZ and ZZ updated MOOAS and performed the data assimilation

665

simulations. SR and AL analysed and assessed model results. SR, HW and YZ helped in reading and commenting on the paper. MZ helped in polishing the paper.

*Competing interests.* The authors declare that they have no conflict of interest.

670 *Acknowledgements.* This work was supported by the project of Southern Marine Science and Engineering Guangdong Laboratory (Zhuhai) (No. SML2020SP008, [311020004](#)), ~~“The Program on Marine Environmental Safety Guarantee” of “The National Key Research and Development Program of China” (No. 2016YFC1401605) and~~ the National Natural Science Foundation of China (NO. [42176029](#), 41806003). We would like to thank the anonymous reviewers for their careful reading of the manuscript and for providing constructive comments to improve the manuscript.

## 675 **References**

Bao, X., Wan, X., Gao, G., and Wu, D.: The characteristics of the seasonal variability of the sea surface temperature field in the Bohai Sea, the Huanghai Sea and the East China Sea from AVHRR data, *Acta Oceanol. Sin.*, 24, 125-133, 2002.

680 Barnier, B., Siefridt, L., and Marchesiello, P.: Thermal forcing for a global ocean circulation model using a three-year climatology of ECMWF analyses, *J. Mar. Syst.*, 6, 363-380, 10.1016/0924-7963(94)00034-9, 1995.

Barnier, B., Patrick, M., Miranda, A. P. D., Molines, J.-M., and Coulibaly, M.: A sigma-coordinate primitive equation model for studying the circulation in the South Atlantic. Part I: Model configuration with error estimates, *Deep Sea Res. (I Oceanogr. Res. Pap.)*, 45, 543-572, 1998.

685 Bloom, S. C., Takacs, L. L., Silva, A. M. D., and Ledvina, D.: Data Assimilation using incremental Analysis Updates, *Monthly Weather Review*, 124, 1256-1271, 1996.

Beckmann, A., Haidvogel, D.B.: Numerical simulation of flow around a tall isolated seamount. Part I: problem formulation and model accuracy. *J. Phys. Oceanogr.* 23, 1737-1753, 1993.

690 Cai, S., Xie, J., Xu, J., Wang, D., Chen, Z., Deng, X., and Long, X.: Monthly variation of some parameters about internal solitary waves in the South China sea, *Deep Sea Res. Pt I*, 84, 73-85, 10.1016/j.dsr.2013.10.008, 2014.

Carnes, M. R.: Description and Evaluation of GDEM-V3.0, Stennis Space Center, MS, 2009.

- Carton, J. A., and Giese, B. S.: A Reanalysis of Ocean Climate Using Simple Ocean Data Assimilation (SODA), *Monthly Weather Review*, 136, 2999-3017, 10.1175/2007MWR1978.1, 2008.
- 695 Carton, J. A., Chepurin, G. A., and Chen, L.: SODA3: A New Ocean Climate Reanalysis, *J. Clim.*, 31, 6967-6983, 10.1175/JCLI-D-18-0149.1, 2018.
- Chu, P. C., and Li, R.: South China Sea isopycnal-surface circulation, *J. Phys. Oceanogr.*, 30, 2419-2438, 10.1175/1520-0485(2000)030, 2000.
- Cummings, J. A.: Operational multivariate ocean data assimilation, *Quart. J. R. Met. Soc.*, 131, 700 10.1256/qj.05.105, 2005.
- Divakaran, P., Brassington, G. B., Ryan, A. G., Regnier, C., Spindler, T., Mehra, A., Hernandez, F., Smith, G. C., Liu, Y., and Davidson, F.: GODAE OceanView Inter-comparison for the Australian Region, *Journal of Operational Oceanography*, 8, s112-s126, 10.1080/1755876X.2015.1022333, 2015.
- Dombrowsky, E., Bertino, L., Brassington, G. B., Chassignet, E. P., Davidson, F., Hurlburt, H. E., 705 Kamachi, M., Lee, T., Martin, M. J., Mei, S., and Tonani, M.: GODAE systems in operation, *Oceanography*, 22, 80-95, 10.5670/oceanog.2009.68, 2009.
- Donlon, C. J., Martin, M., Stark, J., Roberts-Jones, J., Fiedler, E., and Wimmer, W.: The Operational Sea Surface Temperature and Sea Ice Analysis (OSTIA) system, *Remote Sens. Environ.*, 116, 140-158, 10.1016/j.rse.2010.10.017, 2012.
- 710 Evensen, G.: The Ensemble Kalman Filter: Theoretical formulation and practical implementation, *Ocean Dynam.*, 53, 343-367, 10.1007/s10236-003-0036-9, 2003.
- Fairall, C. W., Bradley, E. F., Hare, J. E., Grachev, A. A., and Edson, J. B.: Bulk Parameterization of Air-Sea Fluxes: Updates and Verification for the COARE Algorithm, *J. Clim.*, 16, 571-591, 2003.
- Farris, A., and Wimbush, M.: Wind-induced Kuroshio intrusion into the South China Sea, *J. Oceanogr.*, 715 52, 771-784, 10.1007/BF02239465, 1996.
- Hellerman, S., and Rosenstein, M.: Normal Monthly Wind Stress Over the World Ocean with Error Estimates, *J. Phys. Oceanogr.*, 13, 1093-1104, 1983.
- Hernandez, F., Bertino, L., Brassington, G. B., Chassignet, E., Cummings, J., Davidson, F., Drevillon, M., Garric, G., Kamachi, M., Lellouche, J.-M., Mahdon, R., Martin, M. J., Ratsimandresy, A., and

- 720 Regnier, C.: Validation and intercomparison studies within GODAE, *Oceanography*, 22, 128-143, 10.5670/oceanog.2009.71, 2009.
- Hernandez, F., Blockley, E., Brassington, G. B., Davidson, F., Divakaran, P., Drévilion, M., Ishizaki, S., Garcia-Sotillo, M., Hogan, P. J., Lagemaa, P., Levier, B., Martin, M., Mehra, A., Mooers, C., Ferry, N., Ryan, A., Regnier, C., Sellar, A., Smith, G. C., Sofianos, S., Spindler, T., Volpe, G., Wilkin, J., Zaron, E. D., and Zhang, A.: Recent progress in performance evaluations and near real-time assessment of operational ocean products, *J. Operat. Oceanogr.*, 8, s221-s238, 10.1080/1755876X.2015.1050282, 2015.
- 725 Hwang, C., and Chen, S.-A.: Circulations and eddies over the South China Sea derived from TOPEX/Poseidon altimetry, *J. Geophys. Res.*, 105, 23943-23965, 10.1029/2000JC900092, 2000.
- Ji, Q., Zhu, X., Wang, H., Liu, G., Gao, S., Ji, X., and Xu, Q.: Assimilating operational SST and sea ice analysis data into an operational circulation model for the coastal seas of China. *Acta Oceanol. Sin.*, 34, 54-64, 10.1007/s13131-015-0691-y, 2015.
- 730 Kanamitsu, M., Ebisuzaki, W., Woollen, J., Yang, S.-K., Hnilo, J. J., Fiorino, M., and Potter, G. L.: Ncep-Doe Amip-II reanalysis (R-2), *Bull. Amer. Meteor. Soc.*, 83, 1631-1643, 10.1175/BAMS-83-11-1631, 2002.
- 735 Kourafalou, V. H., Mey, P. D., Hénaff, M. L., Charria, G., Edwards, C. A., He, R., Herzfeld, M., Pascual, A., Stanev, E. V., Tintoré, J., Usui, N., Westhuysen, A. J. v. d., Wilkin, J., and Zhu, X.: Coastal Ocean Forecasting: system integration and evaluation, *J. Oper. Oceanogr.*, 8, s127-s146, 10.1080/1755876X.2015.1022336, 2015.
- Large, W. G., and Yeager, S. G.: The global climatology of an interannually varying air-sea flux data set, *Clim. Dynam.*, 33, 341-364, 10.1007/s00382-008-0441-3, 2009.
- 740 Lee, M.-S., Barker, D., Huang, W., and Kuo, Y.-H.: First Guess at Appropriate Time (FGAT) with WRF 3DVAR, Preprints for WRF/MM5 Users' Workshop, Boulder, CO, 22-25 June 2004.
- Lee, M.-S., and Barker, D.: Preliminary Tests of First Guess at Appropriate Time (FGAT) with WRF 3DVAR and WRF Model, *Asia-Pac. J. Atmos. Sci.*, 41, 495-505, 2005.
- 745 Lellouche, J.-M., Galloudec, O. L., Drevillon, M., Regnier, C., Greiner, E., Garric, G., Ferry, N., Desportes, C., Testut, C.-E., Bricaud, C., Bourdalle-Badie, R., Tranchant, B., Benkiran, M., Drillet, Y.,



- Daudin, A., and Nicola, C. D.: Evaluation of global monitoring and forecasting systems at Mercator Ocean, *Ocean Sci.*, 9, 57-81, 10.5194/os-9-57-2013, 2013.
- 750 Lellouche, J.-M., Greiner, E., Galloudec, O. L., Garric, G., Regnier, C., Drevillon, M., Benkiran, M., Testut, C.-E., Bourdalle-Badie, R., Gasparin, F., Hernandez, O., Levier, B., Drillet, Y., Remy, E., and Traon, P.-Y. L.: Recent updates to the Copernicus Marine Service global ocean monitoring and forecasting real-time 1/12° high-resolution system, *Ocean Sci.*, 14, 1093-1126, 10.5194/os-14-1093-2018, 2018.
- 755 Li, A., Zhang, M., Zhu, X., Zu, Z., Wang, H.: A research on the optimal approach of CFSR surface flux data correction based on different surface forcing modes. *Haiyang Xuebao*, 2019, 41(11): 51–63, doi:10.3969/j.issn.0253-4193.2019.11.006 (In Chinese with English abstract)
- [Li, A., Zhu, X., Zhang, Y., Ren, S., Zhang, M., Zu, Z., Wang, H.: Recent improvements to the physical model of the Bohai Sea, the Yellow Sea and the East China Sea Operational Oceanography Forecasting System, \*Acta Oceanologica Sinica\*, 2021, 40\(9\): 1-17, doi: 10.1007/s13131-021-1840-0.](#)
- 760 Li, B., Cao, A., and Lv, X.: Three-dimensional numerical simulation of M2 internal tides in the Luzon Strait, *Acta Oceanol. Sin.*, 34, 10.1007/s13131-015-0748-y, 2015.
- Li, H., Song, D., Chen, X., Qian, H., Mu, L., and Song, J.: Numerical study of M2 internal tide generation and propagation in the Luzon Strait, *Acta Oceanol. Sin.*, 30, 23-32, 10.1007/s13131-011-0144-1, 2011.
- 765 Liu, Z., Chen, X., Yu, J., Xu, D., and Sun, C.: Kuroshio intrusion into the South China Sea with an anticyclonic eddy: evidence from underwater glider observation, *J. Oceanol. Limnol.*, 37, 1469-1480, 10.1007/s00343-019-8290-y, 2019.
- Mao, Q., Shi, P., and Qi, Y.: Sea surface dynamic topography and geostrophic current over the South China Sea from Geosat altimeter observation, *Acta Oceanol. Sin.*, 21, 11-16, 1999.
- 770 Marchesiello, P., Debreu, L., and Couvelard, X.: Spurious diapycnal mixing in terrain-following coordinate models: The problem and a solution, *Ocean Model.*, 26, 156-169, 10.1016/j.ocemod.2008.09.004, 2009.
- Nan, F., Xue, H., and Yu, F.: Kuroshio intrusion into the South China Sea: A review, *Prog. Oceanogr.*, 137, 314-333, 10.1016/j.pocean.2014.05.012, 2015.

- Naughten, K. A., Galton-Fenzi, B. K., Meissner, K. J., England, M. H., Brassington, G. B., Colberg, F.,  
775 Hattermann, T., and Debernard, J. B.: Spurious sea ice formation caused by oscillatory ocean tracer  
advection schemes, *Ocean Model.*, 116, 108-117, 10.1016/j.ocemod.2017.06.010, 2017.
- Oke, P. R., Brassington, G. B., Griffin, D. A., and Schiller, A.: The Bluelink ocean data assimilation  
system (BODAS), *Ocean Model.*, 21, 46-70, 10.1016/j.ocemod.2007.11.002, 2008.
- Ourmières, Y., BRANKART, J.-M., BERLINE, L., BRASSEUR, P., and VERRON, J.: Incremental  
780 Analysis Update Implementation into a Sequential Ocean Data Assimilation System, *J. Atmos. Ocean.  
Technol.*, 23, 1729-1744, 2006.
- Qiu, B., and Chen, S.: Interannual-to-Decadal Variability in the Bifurcation of the North Equatorial  
Current off the Philippines, *J. Phys. Oceanogr.*, 40, 2525-2538, 10.1175/2010JPO4462.1, 2010.
- Ryan, A. G., Regnier, C., Divakaran, P., Spindler, T., Mehra, A., Smith, G. C., Davidson, F., Hernandez,  
785 F., Maksymczuk, J., and Liu, Y.: GODAE OceanView Class 4 forecast verification framework: global  
ocean inter-comparison, *J. Oper. Oceanogr.*, 8, s98-s111, 10.1080/1755876X.20151022330, 2015.
- Saha, S., Moorthi, S., Pan, H. L., Wu, X., Wang, J., Nadiga, S., Tripp, P., Kistler, R., Woollen, J.,  
Behringer, D., Liu, H., Stokes, D., Grumbine, R., Gayno, G., Wang, J., Hou, Y. T., Chuang, H. Y., Juang,  
H. M. H., Sela, J., Iredell, M., Treadon, R., Kleist, D., Van Delst, P., Keyser, D., Derber, J., Ek, M.,  
790 Meng, J., Wei, H., Yang, R., Lord, S., Van Den Dool, H., Kumar, A., Wang, W., Long, C., Chelliah, M.,  
Xue, Y., Huang, B., Schemm, J. K., Ebisuzaki, W., Lin, R., Xie, P., Chen, M., Zhou, S., Higgins, W.,  
Zou, C. Z., Liu, Q., Chen, Y., Han, Y., Cucurull, L., Reynolds, R. W., Rutledge, G., and Goldberg, M.:  
The NCEP climate forecast system reanalysis, *Bull. Amer. Meteor. Soc.*, 91, 1015-1057,  
10.1175/2010BAMS3001.1, 2010.
- 795 Saha, S., Moorthi, S., Wu, X., WANG, J., NADIGA, S., TRIPP, P., BEHRINGER, D., HOU, Y.-T.,  
CHUANG, H.-Y., IREDELL, M., EK, M., MENG, J., YANG, R., MENDEZ, M. P., DOOL, H. V. D.,  
ZHANG, Q., WANG, W., CHEN, M., and BECKER, E.: The NCEP Climate Forecast System Version  
2, *J. Clim.*, 27, 10.1175/JCLI-D-12-00823.1, 2014.
- Sandery, P.: Data assimilation cycle length and observation impact in mesoscale ocean forecasting,  
800 *Geoscientific Model Development*, 11, 4011-4019, 10.5194/gmd-11-4011-2018, 2018.

- Shchepetkin, A. F., and McWilliams, J. C.: A method for computing horizontal pressure-gradient force in an oceanic model with a nonaligned vertical coordinate, *J. Geophys. Res.*, 108, 3090, 10.1029/2001JC001047, 2003.
- Shchepetkin, A. F., and McWilliams, J. C.: The regional oceanic modeling system (ROMS): a split-explicit, free-surface, topography-following-coordinate oceanic model, *Ocean Model.*, 9, 347-404, 10.1016/j.ocemod.2004.08.002, 2005.
- Song, Y., and Haidvogel, D.: A Semi-implicit Ocean Circulation Model Using a Generalized Topography-Following Coordinate System, *J. Comp. Phys.*, 115, 228-244, 10.1006/jcph.1994.1189, 1994.
- 810 [Taburet, G., SL-TAC team. Quality Information Document for Sea Level TAC DUACS Products, Copernicus Marine Environment Monitoring Service, 2.4, 2018.](#)
- Tonani, M., Balmaseda, M., Bertino, L., Blockley, E., Brassington, G. B., Davidson, F., Drillet, Y., Hogan, P., Kuragano, T., Lee, T., Mehra, A., Paranathara, F., Tanajura, C. A. S., and Wang, H.: Status and future of global and regional ocean prediction systems, *J. Oper. Oceanogr.*, 8, s201-s220, 10.1080/1755876X.2015.1049892, 2015.
- 815 Tsujino, H., Usui, N., and Nakano, H.: Dynamics of Kuroshio path variations in a high-resolution general circulation model, *J. Geophys. Res.*, 111, C11001, 10.1029/2005JC003118, 2006.
- Usui, N., Ishizaki, S., Fujii, Y., Tsujino, H., Yasuda, T., and Kamachi, M.: Meteorological Research Institute multivariate ocean variational estimation (MOVE) system: Some early results, *Adv. Space Res.*, 820 37, 806-822, 10.1016/j.asr.2005.09.022, 2006.
- Usui, N., Wakamatsu, T., Tanaka, Y., Hirose, N., Toyoda, T., Nishikawa, S., Fujii, Y., Takatsuki, Y., Igarashi, H., Nishikawa, H., Ishikawa, Y., Kuragano, T., and Kamachi, M.: Four-dimensional variational ocean reanalysis: a 30-year high-resolution dataset in the western North Pacific (FORA-WNP30), *J. Oceanogr.*, 73, 205-233, 10.1007/s10872-016-0398-5, 2017.
- 825 Wang, J.: Global Linear Stability of the Two-Dimensional Shallow-Water Equations: An Application of the Distributive Theorem of Roots for Polynomials on the Unit Circle, *Mon. Weather Rev.*, 124, 1301-1310, 1996.

- Wang, Q., Zeng, L., Chen, J., He, Y., Zhou, W., and Wang, D.: The Linkage of Kuroshio Intrusion and Mesoscale Eddy Variability in the Northern South China Sea: Subsurface Speed Maximum, *Geophys. Res. Lett.*, 47, 10.1029/2020GL087034, 2020.
- 830 Wang, W., Wang, D., Zhou, W., Liu, Q., Yu, Y., and Li, C.: Impact of the South China Sea Throughflow on the Pacific Low-Latitude Western Boundary Current: A Numerical Study for Seasonal and Interannual Time Scales, *Adv. Atmos. Sci.*, 28, 1367-1376, 10.1007/s00376-011-0142-4, 2011.
- Wei, Z., Li, S., Susanto, R. D., Wang, Y., Fan, B., Xu, T., Sulistiyono, B., Adi, T. R., Setiawan, A., Kuswardani, A., and Fang, G.: An overview of 10-year observation of the South China Sea branch of the Pacific to Indian Ocean throughflow at the Karimata Strait, *Acta Oceanol. Sin.*, 38, 1-11, 10.1007/s13131-019-1410-x, 2019.
- Xie, J., Zhu, J.: Ensemble optimal interpolation schemes for assimilating Argo profiles into a hybrid coordinate ocean model, *Ocean Modelling*, 33(3-4): 283-298, 10.1016/j.ocemod.2010.03.002.
- 840 Xu, D., Zhuang, W., and Yan, Y.: Could the two anticyclonic eddies during winter 2003/2004 be reproduced and predicted in the northern South China Sea?, *Ocean Sci.*, 15, 97-111, 10.5194/os-15-97-2019, 2019.
- Zhang, S., Qiu, F., Zhang, J., Shen, J., and Cha, J.: Monthly variation on the propagation and evolution of internal solitary waves in the northern South China Sea, *Cont. Shelf Res.*, 171, 21-29, 10.1016/j.csr.2018.10.014, 2018.
- 845 Zhang, Z., Tian, J., Qiu, B., Zhao, W., Chang, P., Wu, D., and Wan, X.: Observed 3D Structure, Generation, and Dissipation of Oceanic Mesoscale Eddies in the South China Sea, *Sci. Rep.*, 6, 24349, 10.1038/srep24349, 2016.
- Zhao, Z., and Alford, M. H.: Source and propagation of internal solitary waves in the northeastern South China Sea, *J. Geophys. Res.*, 111, 1-14, 10.1029/2006JC003644, 2006.
- 850 Zheng, Q., Xie, L., Zheng, Z., and Hu, J.: Progress in Research of Mesoscale Eddies in the South China Sea, *Adv. Mar. Sci.*, 35, 131-158, 10.3969/j.issn.1671-6647.2017.02.001, 2017.

Zhu, X., Wang, H., Liu, G., Régnier, C., Kuang, X., DakuiWang, Ren, S., Jing, Z., and Drévilion, M.:  
Comparison and validation of global and regional ocean forecasting systems for the South China Sea,  
855 Nat. Hazards Earth Syst. Sci., 16, 1639-1655, 10.5194/nhess-16-1639-2016, 2016.

Zu, Y., Sun, S., Zhao, W., Li, P., Liu, B., and Fang, Y.: Seasonal characteristics and formation mechanism  
of the thermohaline structure of mesoscale eddy in the South China Sea, Acta Oceanol. Sin., 38, 29-38,  
10.1007/s13131-018-1222-4, 2019.