



The CAMS volcanic forecasting system utilizing near-real time data assimilation of S5P/TROPOMI SO₂ retrievals

Antje Inness¹, Melanie Ades¹, Dimitris Balis³, Dmitry Efremenko², Johannes Flemming¹, Pascal Hedelt², Maria-Elissavet Koukoulis³, Diego Loyola², and Roberto Ribas¹

5 ¹European Centre for Medium-Range Weather Forecasts (ECMWF), Shinfield Park, Reading, RG2 9AX, UK.

²Deutsches Zentrum für Luft und Raumfahrt (DLR), Institut für Methodik der Fernerkundung (IMF), Oberpfaffenhofen, Germany.

³Laboratory of Atmospheric Physics, Aristotle University of Thessaloniki, Greece

Correspondence to: Antje Inness (antje.inness@ecmwf.int)

10 Abstract.

The Copernicus Atmosphere Monitoring Service (CAMS), operated by the European Centre for Medium-Range Weather Forecasts on behalf of the European Commission, provides daily analyses and 5-day forecasts of atmospheric composition, including forecasts of volcanic sulphur dioxide (SO₂) in near-real time. CAMS currently assimilates total column SO₂ retrievals from the GOME-2 instruments on MetOp-B and -C and the TROPOMI instrument on Sentinel-5P which give
15 information about the location and strength of volcanic plumes. However, the operational TROPOMI and GOME-2 retrievals do not provide any information about the height of the volcanic plumes and therefore some prior assumptions need to be made in the CAMS data assimilation system about where to place the resulting SO₂ increments in the vertical. In the current operational CAMS configuration, the SO₂ increments are placed in the mid-troposphere, around 550 hPa or 5 km. While this gives good results for the majority of volcanic emissions, it will clearly be wrong for eruptions that inject SO₂ at
20 very different altitudes, in particular exceptional events where part of the SO₂ plume reaches the stratosphere.

A new algorithm, developed by DLR for GOME-2 and TROPOMI and optimized in the frame of the ESA-funded Sentinel-5P Innovation-SO₂ Layer Height Project, the Full-Physics Inverse Learning Machine (FP_ILM) algorithm, retrieves SO₂ layer height from TROPOMI in NRT in addition to the SO₂ column. CAMS is testing the assimilation of these data, making
25 use of the NRT layer height information to place the SO₂ increments at a retrieved altitude. Assimilation tests with the TROPOMI SO₂ layer height data for the Raikoke eruption in June 2019 show that the resulting CAMS SO₂ plume heights agree better with IASI plume height retrievals than operational CAMS runs without the TROPOMI SO₂ layer height information and that making use of the additional layer height information leads to improved SO₂ forecasts than when using the operational CAMS configuration. By assimilating the SO₂ layer height data the CAMS system can predict the overall
30 location of the Raikoke SO₂ plume up to 5 days in advance for about 20 days after the initial eruption.

1 Introduction

Volcanoes can cause serious disruptions for society, not just for people living near them, but also further afield when ash and sulphur dioxide (SO₂) emitting from highly explosive eruptions reach the upper troposphere or stratosphere, above the
35 clouds, and therefore are transported over vast distances by the prevailing winds. Ash and SO₂ are a serious concern for the aviation industry, reducing visibility and in severe cases can lead to engine failure or cause permanent damage to aircraft engines (Prata et al., 2019). The immediate danger to the aircraft comes mainly from the emitted ash, although SO₂ is also an aviation hazard, potentially causing long-term damage via corrosion and sulfidation of the engines (Schmidt et al., 2014). In
40 the short-term, SO₂ in the aircraft cabin is the biggest issue leading to respiratory problems for passengers and crew. Planes



therefore try to avoid volcanic plumes and after the 2010 eruption of the Icelandic Eyjafjallajökull volcano (e.g. Stohl et al., 2011; Dacre et al., 2011; Thomas and Prata, 2011) European air traffic was grounded for several days. Forecasts of the location and the altitude of volcanic SO₂ or ash plumes can therefore provide important information for the aviation industry. Satellite retrievals of volcanic ash and SO₂ can help to track volcanic plumes, as done by the Support to Aviation Control
45 Service (sacs.aeronomie.be; Brenot et al., 2014) and the EUNADICS (European Natural Airborne Disaster Information and Coordination System for Aviation) prototype Early Warning System (Brenot et al., 2021). These services, as well as plume dispersion modelling (e.g. de Leeuw et al., 2020; Harvey and Dacre, 2016), are used by the Volcanic Ash Advisory Centres (VAACs) to advise civil aviation authorities in case of volcanic eruptions. While SO₂ is often used as a proxy for ash, the SO₂ and ash plumes can be located at different altitudes and be transported in different directions as was the case for the
50 Icelandic Grímsvötn eruption in 2011 (Moxnes et al., 2013, Prata et al., 2017).

The Copernicus Atmosphere Monitoring Service (CAMS), operated by the European Centre for Medium-Range Weather Forecasts (ECMWF) on behalf of the European Commission, provides daily analyses and 5-day forecasts of atmospheric composition, including forecasts of volcanic SO₂ in near-real time (NRT). However, the assimilation and forecasting of
55 volcanic SO₂ plumes in NRT is difficult. Since the CAMS forecast system runs within 3 hours of the observations being taken, information about volcanic SO₂ emission strength and the altitude of SO₂ plumes is usually not available, with only the total column-integrated SO₂ amount (TCSO₂) able to be provided to adjust the model's predictions. CAMS assimilates near-real-time TCSO₂ using the method described in Flemming and Inness (2013) in its operational NRT system to routinely assimilate TCSO₂ retrievals from the Global Ozone Monitoring Experiment-2 (GOME-2) instruments produced
60 by Eumetsat's Satellite Application Facility on Atmospheric Composition Monitoring (ACSAF) and from the Sentinel-5P Tropospheric Monitoring Instrument (TROPOMI) provided by the European Space Agency (ESA). Both are using retrievals developed by the German Aerospace Centre (DLR) which give information about the emitted volcanic SO₂ and their horizontal location in NRT but do not provide any information about the altitudes of the volcanic plumes. Prior assumptions therefore need to be made in the CAMS data assimilation system about where in the vertical the resulting SO₂ increments
65 should be placed. In the absence of NRT height information, the default is to place the SO₂ increments in the mid-troposphere, around 550 hPa or 5 km. Although clearly a simplified approach, the method is a reasonable approximation to the real situation, using the data assimilation procedure as a mid-tropospheric SO₂ source in areas of elevated volcanic TCSO₂. The SO₂ analysis field will then be transported by the model's prevailing winds and thereby result in quite realistic volcanic SO₂ plumes. While this method produces good results for a large number of volcanic eruptions that inject SO₂ into
70 the mid-troposphere, it will clearly be wrong for eruptions that inject SO₂ at very different altitudes, in particular for the most explosive events where part of the SO₂ reaches the stratosphere. In those cases, the CAMS system will not be able to forecast the SO₂ transport well, because the model SO₂ plume will be located at the wrong altitude where the prevailing winds might transport the SO₂ in the wrong direction or height. The availability and use of NRT information about the altitude of the volcanic plumes would greatly improve the quality of the CAMS SO₂ analysis and subsequent forecasts.

75 For hindcasts of volcanic eruptions with a system that does not run in NRT it is easier to make use of better injection height information. In this case, observations about injection height and emission strength might be available. Furthermore, CAMS can run an ensemble of SO₂ tracers emitted at different altitudes and determine the best altitude and emission strength from comparisons of the resulting model fields with the available TCSO₂ observations, using a method described in Flemming and
80 Inness (2013). The parameters (plume height and emission flux) derived in this way can subsequently be used to provide a volcanic SO₂ source term in the CAMS forecast model and can also be used in the data assimilation system to modify the SO₂ background error standard deviation to peak at the corresponding model level. However, this is not possible in NRT.



A new algorithm, developed by DLR for GOME-2 and adapted to TROPOMI, which is currently being optimized in the
85 frame of the ESA-funded Sentinel-5P (S5P) Innovation–SO₂ Layer Height Project (S5P+I: SO₂LH), the Full-Physics Inverse
Learning Machine (FP_ILM) algorithm (Hedelt et al., 2019), retrieves SO₂ layer height (LH) information from TROPOMI in
NRT in addition to the SO₂ column. This is different from the operational ESA NRT TROPOMI retrieval which does not
provide plume height information. CAMS is testing the assimilation of the FP_ILM data, making use of the NRT LH
information. In this paper we document the current use of the operational TCSO₂ data in the CAMS data assimilation
90 system, present results from assimilation tests with the FP_ILM TROPOMI SO₂ LH data for the eruption of the Raikoke
volcano in June 2019 and show that making use of the NRT LH information leads to improved SO₂ analyses and in
particular SO₂ forecasts.

This paper is structured in the following way. Section 2 describes the SO₂ datasets used in this study and Section 3 describes
95 the CAMS model and SO₂ data assimilation setup. Section 4 presents the results from the assimilation of TROPOMI data for
eruption of Raikoke in June 2019, including sensitivity studies to evaluate choices made for the SO₂ background errors, and
evaluates the quality of the resulting SO₂ analyses and forecasts with and without LH information. Section 5 presents the
conclusions.

2 Datasets

100 The SO₂ satellite data currently used in the CAMS NRT system are the operational TCSO₂ retrievals from TROPOMI on
S5P produced by ESA and from the GOME-2 instruments on MetOp-B and MetOp-C produced by Eumetsat's ACSAF.
These retrievals come with a volcanic flag, i.e. the data producers mark the pixels that are affected by volcanic SO₂, and only
pixels that are flagged as volcanic are assimilated in the CAMS system. Using TROPOMI in addition to GOME-2 has two
advantages: (1) TROPOMI has better spatial coverage and a lower detection limit than GOME-2 and (2) because TROPOMI
105 has a different overpass time (9.30 UTC for MetOp, 13.30 UTC for S5P) using both instruments improves the chances of
having an overpass over a volcano when an eruption happens or shortly afterwards.

2.1 NRT TROPOMI TCSO₂ retrieval

TROPOMI on board the S5P satellite provides high-resolution spectral measurements in the ultraviolet (UV), visible (Vis),
near infrared and shortwave-infrared parts of the spectrum, allowing several atmospheric trace gases to be retrieved,
110 including SO₂ from the UV–Vis part of the spectrum. The horizontal resolution of TROPOMI for the UV–Vis is 5.5 km x 3.5
km (7 km x 3.5 km before 6 August 2019) with daily global coverage. The theoretical baseline for the operational
TROPOMI SO₂ retrieval is described in Theys et al. (2017) and further information can be found in Algorithm Theoretical
Basis Document (ATBD), Product User Manual (PUM) and readme files available from the TROPOMI website
(<http://www.tropomi.eu/documents/>). The atmospheric SO₂ vertical column density is retrieved in three fitting windows
115 (312–326 nm, 325–335 nm and 360–390 nm) using a Differential Optical Absorption Spectroscopy (DOAS) method (Platt
and Stutz, 2008; Platt, 2017), in which the slant SO₂ column is retrieved and converted into vertical columns by using air
mass factors. The log-ratio of the observed UV-visible spectrum of radiation backscattered from the atmosphere and an
observed reference spectrum are used to derive a slant column density, which represents the SO₂ concentration integrated
along the mean light path through the atmosphere. This is performed by fitting SO₂ absorption cross-sections to the
120 measured reflectance in a given spectral interval. In a second step, slant columns are corrected for possible biases. Finally,
the slant columns are converted into vertical columns by means of air mass factors obtained from radiative transfer
calculations, accounting for the viewing geometry, clouds, surface properties and prior SO₂ vertical profile shapes. A
volcano activity detection algorithm going back to Brenot et al. (2014) is used to identify elevated SO₂ values from volcanic



eruptions (see Table 1). CAMS only assimilates SO₂ pixels that have flag values of 1 (enhanced SO₂ detection) or 2
125 (enhanced SO₂ detection in vicinity of known volcano). Furthermore, only TROPOMI SO₂ pixels with values greater than 5
DU are assimilated in the operational CAMS system to avoid assimilating SO₂ from outgassing volcanoes which are covered
by SO₂ emissions in the CAMS model. The TROPOMI SO₂ data are averaged to the model resolution (TL511, about 40km)
before being used in the CAMS system.

Flag value	Description
0	No detection
1	Enhanced SO ₂ detection
2	Enhanced SO ₂ detection in vicinity of known volcano
3	Enhanced SO ₂ in vicinity of anthropogenic source
4	Enhanced SO ₂ in SAA or for SZA>70°

130 **Table 1: Volcanic SO₂ flags implemented in TROPOMI SO₂ retrieval. The same flags are also used for TROPOMI SO₂LH data
and GOME-2C GPD4.9 SO₂ data.**

2.2 FP_ILM NRT TROPOMI Layer Height retrieval

135 Hedelt et al. (2019) have developed an algorithm called 'Full-Physics Inverse Learning Machine' (FP_ILM) for the retrieval
of the SO₂ LH based on Sentinel-5 precursor/TROPOMI data using a coupled Principal Component Analysis and Neural
Network approach including regression. This algorithm is an improvement of the original FP_ILM algorithm developed by
Efremenko et al. (2017) for the retrieval of the SO₂ LH based on GOME-2 data using a Principal Component Regression
technique. Recently, this algorithm has also been adapted to retrieve SO₂ LH data from the Ozone Monitoring Instrument
140 (OMI) on the Aura satellite (Fedkin et al., 2021). Furthermore, the FP_ILM algorithm has been used for the retrieval of
ozone profile shapes (Xu et al., 2017) and the retrieval of surface properties accounting for bidirectional reflectance
distribution function effects (Loyola et al., 2020). In general, the FP_ILM algorithm creates a mapping between the spectral
radiance and atmospheric parameter using machine learning methods. The time-consuming training phase of the algorithm
using radiative transfer model calculations is performed off-line, and only the inversion operator has to be applied to satellite
145 measurements which makes the algorithm extremely fast, and it can thus be used in NRT processing environments. SO₂ LH
is retrieved in NRT from TROPOMI UV earthshine spectra in the wavelength range 311-335 nm with an accuracy of better
than 2 km for SO₂ columns greater than 20 DU. In this paper we use v3.1 of the FP_ILM SO₂ LH retrieval.

2.3 NRT GOME-2 TCSO₂ retrieval

150 GOME-2 (Munro et al., 2016) on board the MetOp-A, -B and -C satellites measures in the UV and Vis part of the spectrum
(240-790 nm). MetOp-B and -C have a swath of 1920 km at 40 km x 80 km ground pixel resolution, while MetOp-A has a
narrower swath of 960 km at 40 km x 40 km. Global coverage with GOME-2 is achieved within 1.5 days. The GOME-2
measurements allow for the retrieval of ozone and a range of atmospheric trace gases, including SO₂ which is retrieved with
the GOME Data Processor (GDP) developed by DRL that uses a DOAS method. GDP4.8 is used for GOME-2A and
155 GOME-2B (with a fitting window from 315-326 nm) and GDP4.9 for GOME-2C (with a fitting window of 312-326 nm to
include the strong SO₂ line at 313 nm). Input parameters for the DOAS fit include the absorption cross section of SO₂ and
the absorption cross sections of interfering gases, ozone and NO₂, and a correction is made in the DOAS fit to account for
the ring effect (rotational Raman scattering). An empirical interference correction is applied to the SO₂ slant column values



to reduce the interference from ozone absorption (Rix et al., 2012). To reduce the interference from ozone absorption, the
160 retrieval includes the fitting of two pseudo ozone cross-sections following the approach of Puķīte et al. (2010). As in the case
for the TROPOMI dataset, a volcano activity detection algorithm is used to identify elevated SO₂ values from volcanic
eruptions. Such flags were implemented in GDP4.8 (see Table 2) and further improved in GDP4.9 to use the same flagging
as for TROPOMI (see Table 1). CAMS only assimilates the GOME-2 SO₂ data that are flagged as volcanic (value=1 for
GDP4.8; value=1 or 2 for GDP4.9) and assimilates GOME-2B and GOME-2C in the NRT system operational in 2021. In
165 this paper only SO₂ data from GOME-2B are used.

Flag value	Description
0	No detection
1	Elevated SO ₂ value due to a volcanic SO ₂ plume
2	Elevated SO ₂ value in a region with known increased background level (either anthropogenic pollution or SAA region)

Table 2: Volcanic SO₂ flags implemented in GDP4.8 used for GOME-2A and -2B SO₂ retrievals.

2.4 IASI SO₂ plume altitude retrieval

170 The Infrared Atmospheric Sounding Instrument (IASI) is flying on board of EUMETSAT's MetOp-A (since 2006), MetOp-
B (since 2012) and MetOp-C (since 2017) satellite platforms (Clerbaux et al., 2015). The instruments measure the upwelling
radiances in the thermal infrared spectral range extending from 645 to 2760 cm⁻¹, with high radiometric quality, 0.5 cm⁻¹
spectral resolution. A total of 120 views are collected over a swath of ~ 2200 km using a stare-and-stay mode of 30 arrays of
4 individual elliptical pixels, each of which is 12 km diameter at nadir, increasing at the larger viewing angles. IASI provides
175 global monitoring of total ozone, carbon monoxide, methane, ammonia, nitric acid and SO₂, among others atmospheric
constituents.

The IASI/MetOp SO₂ columnar data are operationally provided by the EUMETSAT's ACSAF. In Clarisse et al. (2012) a
novel algorithm for the sounding of volcanic SO₂ plumes above ~5 km altitude was presented and applied to IASI
180 observations. The algorithm is able to view a wide variety of total column ranges (from 0.5 to 5000 D.U.), exhibits a low
theoretical uncertainty (3–5 %) and near real time applicability which was demonstrated for the recent eruptions of Sarychev
in Russia, Kasatochi in Alaska, Grimsvötn in Iceland, Puyehue-Cordon Caulle in Chile and Nabro in Eritrea (Tournigand et
al., 2020.) A validation of this algorithm on the Nabro eruption observations using forward trajectories and
CALIOP/CALIPSO space-born lidar coincident measurements is presented in Clarisse et al. (2014) where the expansion of
185 the algorithm to also provide SO₂ plume altitudes is further described. The IASI/MetOp SO₂ ACSAF product includes five
SO₂ column data at assumed layer heights of 7, 10, 13, 16 and 25 km, as well as a retrieved best estimate for the SO₂ plume
altitude and associated SO₂ column. Note that the SO₂ plume altitudes provided by this algorithm are quantized every 0.5km.
This dataset is publicly available from https://iasi.aeris-data.fr/SO2_iasi_arch/.

190 For the requirements of the validation against the CAMS experiments, all available IASI SO₂ plume altitude retrievals for
the Raikoke volcano 2019 eruption were gridded onto a 1x1° grid at 3h intervals per day. The equivalent CAMS SO₂ plume
altitude, i.e. the altitude where the maximum SO₂ load occurs in the CAMS SO₂ profiles, was chosen for the collocations. In
the case where two CAMS altitudes provided the same SO₂ load, the mean was assigned as the CAMS SO₂ plume altitude.



195 **3 CAMS model and data assimilation system**

3.1 CAMS model

The chemical mechanism of ECMWF's Integrated Forecast System (IFS) is a modified and extended version of the Carbon Bond 2005 chemistry scheme (CB05, Yarwood et al. 2005) chemical mechanism for the troposphere, as also implemented in the chemical transport model (CTM) TM5 (Huijnen et al., 2010). CB05 is a tropospheric chemistry scheme with 57 species and 131 reactions. The chemistry module of the IFS is documented in more detail in Flemming et al. (2015) and Flemming et al. (2017) and more recent updates in Inness et al. (2019). The CB05 chemistry scheme is coupled to the AER aerosol bulk scheme (Remy et al. 2019) for the simulation of sulphate, nitrate and ammonium aerosols. More up-to-date information is available from atmosphere.copernicus.eu. In the model version used in this paper, the CAMS system uses the CAMS-GLOBANTv4.2 anthropogenic emissions (Granier et al., 2019) which include anthropogenic SO₂, as well as a climatology of SO₂ outgassing volcanic emissions based on satellite retrievals (Carn et al., 2016).

3.2 CAMS data assimilation system

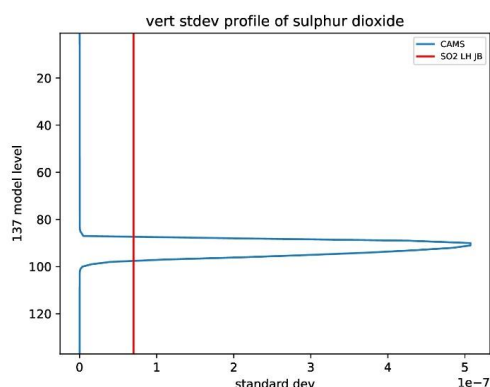
The IFS uses an incremental four-dimensional variational (4D-Var) data assimilation system (Courtier et al. 1994). SO₂ is one of the atmospheric composition fields that is included in the control vector and minimized together with the meteorological control variables in the CAMS system (Inness et al., 2015, Flemming and Inness, 2013). The current operational CAMS configuration uses a weak constraint formulation of 4D-Var which includes a model error term for the meteorological variables (Laloyaux et al., 2020) that corrects mainly the stratospheric temperature bias and also improves slightly the stratospheric winds. In the CAMS 4D-Var system, the control variables are the initial conditions at the beginning of the assimilation window, with the aim of providing the best initial conditions for the subsequent forecast. The background error covariance matrix in the ECMWF data assimilation system is given in a wavelet formulation (Fisher 2004, 2006). This allows both spatial and spectral variations of the horizontal and vertical background error covariances. The CAMS background errors are constant in time. The horizontal resolution of the NRT CAMS 2021 operational system as well as that of the data assimilation experiments presented in this paper is approximately 40 km, corresponding to a triangular truncation of TL511 or a reduced Gaussian grid with a resolution of N256 (more information can be found at <https://confluence.ecmwf.int/display/FCST/Gaussian+grids>). The operational CAMS system uses two minimisations (the so-called inner loops) at reduced horizontal resolution, currently at TL95 and TL159 corresponding to horizontal resolutions of about 210 km and 125 km. This means that wavenumbers up to 95/159 can be represented in the wavelet formulation for the background errors. For the experiments presented in this paper, slightly higher horizontal resolutions of TL159/TL255 were used for the inner loops (corresponding to about 125 and 80 km, respectively). The CAMS model and data assimilation system has 137 model levels in the vertical, between the surface and 0.01 hPa and uses a 12-hour 4D-Var configuration with assimilation windows from 3 to 15 UTC and from 15-3 UTC.

3.2.1 CAMS NRT TCSO₂ assimilation configuration (baseline configuration)

The SO₂ data assimilated in the CAMS NRT configuration are total column values. To calculate the model equivalent of the observations the CAMS SO₂ field is interpolated to the time and location of the measurements and the CAMS SO₂ columns are calculated as a simple vertical integral between the surface and the top of the atmosphere. While the background error statistics for most of the atmospheric composition fields (Inness et al., 2015) were either calculated with the National Meteorological Center (NMC) method (Parrish and Derber, 1992) or from an ensemble of forecast differences (following a method described by Fisher and Andersson, 2001), the background errors for SO₂ are prescribed by an analytical vertical standard deviation profile and horizontal correlations. SO₂ observations are currently only assimilated in the CAMS system



235 in the event of volcanic eruptions, i.e. when the observed SO₂ concentrations are considerably larger than the atmospheric
background values. An NMC or ensemble approach would not give useful SO₂ background error statistics in these cases as
the forecast model does not have information about individual volcanic eruptions, even though it does include emissions
from outgassing volcanoes. SO₂ background error standard deviations calculated with the NMC or ensemble methods peak
near the surface where anthropogenic SO₂ concentrations are largest and will hence lead to the largest analysis increments
240 near the surface. Therefore, for the assimilation of volcanic SO₂ data, background error statistics for SO₂ were constructed by
prescribing a background error standard deviation profile that is a delta function and peaks in the mid troposphere around
model level 98 (about 550 hPa) in the 137 level model version, corresponding to an SO₂ injection height of about 5 km (see
blue profile in Figure 1).



245 **Figure 1: Vertical profile of SO₂ background error standard deviation in kg/kg used in the operational CAMS configuration (blue) and for the main LH experiment (red, LHexp). The y-axis shows model levels. Level 1 is the top of the atmosphere, level 137 the surface.**

The SO₂ wavelet file in the NRT CAMS configuration (also called baseline configuration in this paper) is formed of
250 diagonal vertical wavenumber correlation matrices, with the value on the diagonal controlled by a horizontal Gaussian
correlation function with a standard deviation of 250 km and a globally constant vertical standard deviation profile. The
values of the elements on the diagonal of the vertical correlation matrix are the same at every level but vary for each
wavenumber. If TCSO₂ data are assimilated the largest correction to the model's background will be applied where the
background errors are largest, i.e. in the mid-troposphere around 550 hPa. The CAMS SO₂ analysis is univariate, i.e. there
255 are no cross correlations between SO₂ background errors and the other atmospheric composition control variables.

3.2.2 Data assimilation configuration for TCSO₂ LH data

If information about the altitude of the volcanic SO₂ layer is known in NRT a different approach can be followed. In this
case, we use a background error standard deviation profile that is constant in height (e.g. red line in Fig. 1) and calculate the
260 SO₂ column not between the surface and the top of the atmosphere, but between the pressure values that correspond to the
bottom and the top of the retrieved volcanic SO₂ layer. The depth of this layer is currently set in the FP_ILM retrieval as 2
km, which corresponds to the uncertainty of the retrieved layer height. This approach mimics the procedure of using
averaging kernels with box profiles given for the SO₂ layer. Results from sensitivity studies regarding the choice of the
constant background error standard deviation value are given below in Section 4.2.

265



4. Assimilation of TROPOMI TCSO₂ data for 2019 Raikoke eruption

4.1 Raikoke eruption June 2019

The Raikoke volcano, located on the Kuril Islands south of the Kamchatka peninsula, erupted around 18 UTC on 21 June 2019 and emitted SO₂ and ash in a series of explosive events until about 6 UTC on 22 July. The SO₂ and ash plume rose to around 8–18 km (Muser et al., 2020; Grebennikov et al., 2020) meaning a considerable amount of the SO₂ reached the stratosphere. The volcanic cloud was transported around much of the northern hemisphere, was observed by TROPOMI and GOME-2 for about a month and was also observed with ground-based measurements (Vaughan et al., 2021; Grebennikov et al., 2020) and other satellites (Muser et al., 2020). Figure 2 shows the TCSO₂ burden from the Raikoke eruption as calculated from NRT TROPOMI and GOME-2B data. The satellite data were gridded onto a 1°x1° degree grid and the area of all grid cells with SO₂ values greater than the listed threshold values was calculated. For a threshold of 1 DU the SO₂ burdens from TROPOMI and GOME-2B were around 1.5 Tg and 1.1 Tg, respectively. These values agree with findings by de Leeuw et al. (2020) and make the eruption the largest since the eruption of the Nabro volcano in 2011 (de Leeuw et al., 2020; Goitom et al., 2015; Clarisse et al., 2014). The ‘dip’ in the TROPOMI SO₂ burden after the initial peak is an artefact that results from missing observations in the TROPOMI NRT data.

280

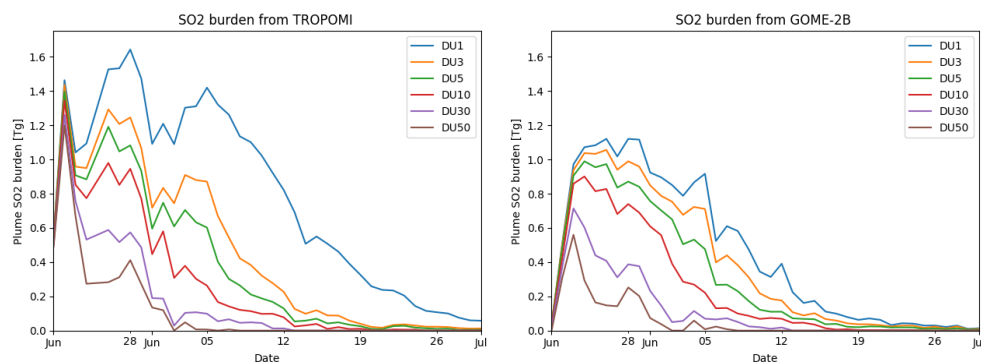
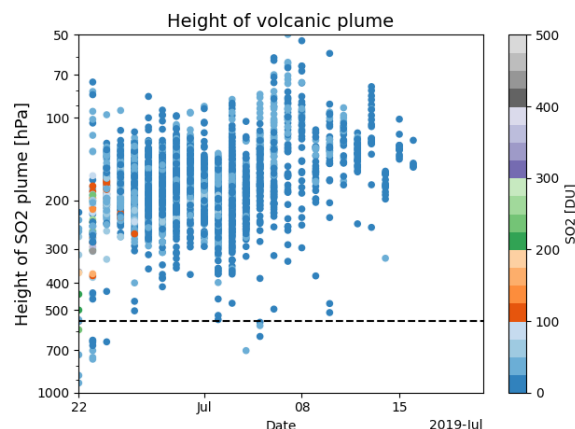


Figure 2: SO₂ burden (in Tg) from TROPOMI (left) and GOME-2B (right) from 22 June to 31 July 2019. The values are calculated by gridding the data on a 1°x1° grid and selecting the grid cells with TCSO₂ values greater than thresholds of 1, 3, 5, 10, 30 and 50 DU in the area 30–90°N.

285

Figure 3 shows a timeseries of the SO₂ LH information that was retrieved for the Raikoke plume from TROPOMI with the FP_ILM retrieval. It shows that volcanic SO₂ can be detected and the SO₂ LH information retrieved for about 3 weeks after the eruption. The bulk of the SO₂ was located above 300 hPa, (about 9 km) with a considerable amount above 200 hPa (about 12 km). This is considerably higher than the 550 hPa that is assumed as the plume location in the CAMS operational (baseline) configuration. Large TCSO₂ values (>100 DU) were observed in the first days after the eruption.

290



295 **Figure 3:** Timeseries of the height of the Raikoke volcanic plume (averaged over 30-90°N) in hPa from TROPOMI SO₂ LH data from 22 June to 21 July 2019. The colours show the corresponding TCSO₂ values in DU. The dashed horizontal line at 550 hPa shows the altitude where the CAMS baseline configuration places the maximum SO₂ increment.

4.2 Sensitivity studies for assimilation of TCSO₂ data

Several data assimilation experiments were run for the period 22 June to 21 July 2019 to test the assimilation of the SO₂ LH data and to compare the results with the CAMS baseline configuration, listed in Table 3. The baseline experiment (BLexp)

300

Experiment Abbreviation	Experiment ID, DOI	Assimilated SO ₂ data	Bg-error stdv [kg/kg]	Bg-error hcor [km]	Resolution of minimisations
BLexp	hhu5, 10.21957/cygt-xf49	S5P NRT > 5DU	CAMS (see Fig. 2)	250	TL159, TL255
LHexp	hgze, 10.21957/qfam-7474	S5P LH > 20DU	$0.7e^{-7}$	100	TL159, TL255
LH50	hhbu, 10.21957/zpdt-f079	S5P LH > 20DU	$1e^{-7}$	50	TL159, TL255
LH100	hhtm, 10.21957/jraa-s174	S5P LH > 20DU	$1e^{-7}$	100	TL159, TL255
LH250	hhtn, 10.21957/ddxs-2v95	S5P LH > 20DU	$1e^{-7}$	250	TL159, TL255
LH1.4	hgz7, 10.21957/81bh-7h58	S5P LH > 20DU	$1.4e^{-7}$	100	TL159, TL255

Table 3: List of SO₂ assimilation experiments used in this paper. The main experiments discussed in Section 4 are the baseline experiment (BLexp) and the layer height experiment (LHexp). The additional experiments are used in the sensitivity studies in Section 4.2. Bg-error denotes background error, stdv standard deviation and hcor horizontal correlation length scale.

305 which assimilated NRT TROPOMI TCSO₂ data with the operational CAMS configuration and the layer height experiment (LHexp) which uses the FP_ILM S5P LH data with a horizontal background error correlation length of 100 km and background error standard deviation values of $0.7e^{-7}$ kg/kg are the main experiments used in this paper (Section 4.3 below) to assess if the assimilation of the SO₂ LH data improves the CAMS SO₂ analyses and forecasts. The other LH experiments assess the impact of using different horizontal SO₂ background error correlation length scales and various SO₂ background

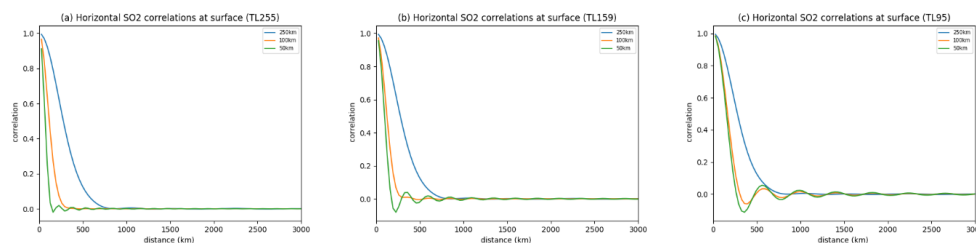


error standard deviation values. In all these experiments GOME-2 SO₂ data were not assimilated, and GOME-2B is used as a
 310 fully independent dataset for the validation.

The low resolution of the minimisation (TL95/TL159 in the CAMS system operational in 2021) is a factor that limits the
 ability of the SO₂ analysis to reproduce small-scale SO₂ features seen in the observations because it gives a lower limit for
 the length scale of the horizontal background error correlations that can be used, i.e. for the operational CAMS configuration
 315 only wavenumbers up to 95/159 can be represented. The smallest wavelength (λ_{min}) that can be represented by two grid
 points on a linear grid is

$$\lambda_{min} = \frac{2\pi R}{n_{max}} \quad (1)$$

where R is the radius of the Earth and n_{max} the maximum wavenumber of the truncation (95 or 159 for the inner loops in the
 operational CAMS configuration), i.e. twice the size of a grid box. This means that the minimum wavelengths which can be
 320 represented with two grid points for TL95, TL159 and TL255 are about 420 km, 250 km, 160 km, respectively and smaller
 scale horizontal structures cannot be represented in the background error wavelet formulation. Figure 4 illustrates this and
 shows horizontal SO₂ correlations at the surface for horizontal background error length scales of 50km, 100km and 250 km
 for truncations of TL95, TL159 and TL255. The ‘wiggles’ seen in the TL95 (and to a lesser extent in the TL159) plots show
 that the shorter background error correlations length scales cannot be properly resolved at these truncations. Even at TL255
 325 some minor oscillations are still visible for horizontal correlation length scales of 50 km. Therefore, to properly resolve
 smaller-scale plumes the resolutions of the inner loops would need to be even higher than TL255. Figure 4 also illustrates
 how far an increment from a single SO₂ observation would be spread out in the horizontal and therefore affect grid points
 away from the observation.



330 **Figure 4: SO₂ background error horizontal surface correlations at different truncations: (a) TL255, (b) TL159 and (c) TL95 if the horizontal length scales are specified as Gaussian correlation function with length scales of 250 km (blue), 100 km (orange) and 50 km (green).**

The operational NRT CAMS configuration uses minimisations at TL95/TL159 and a length scale of 250 km for the
 335 horizontal SO₂ background error correlations. For the data assimilation experiments shown in this paper we use inner loops
 of TL159/TL255 to allow us to use a Gaussian correlation function with a length scale of 100 km and therefore resolve
 slightly smaller-scale features than in the operational NRT CAMS system. Figure 5 shows the CAMS TCSO₂ analysis fields
 on 27 June 2019 resulting from the assimilation of the TROPOMI SO₂ LH data when horizontal background error
 correlation length scales of 50, 100 and 250 km were used (experiments LH50, LH100, LH250), while using the same
 340 background error standard deviation profile of $1e^{-7}$ kg/kg in all cases. Also shown are the NRT TROPOMI and GOME-2B
 TCSO₂ retrievals for that day. The figure illustrates the large impact of the horizontal background error correlation length
 scale on the SO₂ analysis, as the SO₂ plume is considerably more spread out in the CAMS analysis when longer horizontal
 correlations are used, and that better agreement with the features seen in the observations is found for shorter horizontal
 correlations. Figure 6 shows timeseries of SO₂ burden and plume area for a threshold of 5 DU from TROPOMI, GOME-2B
 345 and the three SO₂ LH experiments to further assess the impact on the SO₂ analysis of changing the horizontal correlation

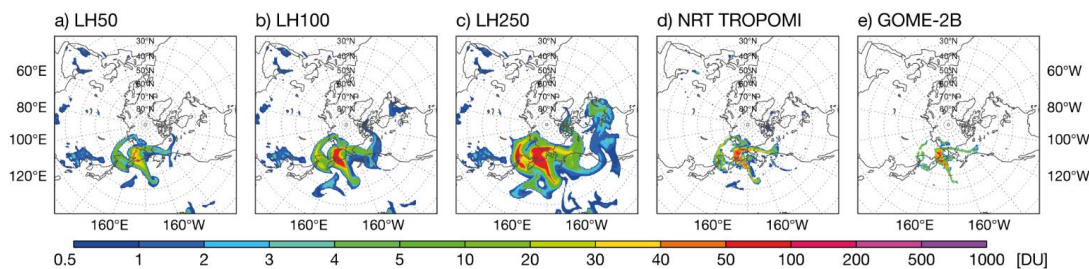


Figure 5: TCSO₂ analyses on 27 June 2019 at 0z obtained by assimilating SO₂ LH data using a background standard deviation profile of 10⁻⁷ kg/kg and background errors with horizontal correlations of (a) 50 km, (b) 100 km and (c) 250 km. Also shown are (d) NRT TROPOMI and (e) GOME-2B TCSO₂ values.

350 length scale. We see that the SO₂ burden and plume area calculated from the observations are overestimated by all three
 CAMS TCSO₂ analyses. This overestimation is a well-known feature usually seen in the operational NRT CAMS volcanic
 SO₂ assimilation. Figure 6 illustrates that a major factor causing this overestimation is the choice of the horizontal
 background error correlation length scale and that by choosing a length scale of 250 km the SO₂ burden and plume area are
 about 6 times larger than for a length scale of 50 km. This implies that a limiting factor for correctly reproducing the SO₂
 355 burden and plume area in the CAMS analysis is the resolution of the inner loops as it limits the horizontal correlation length
 scale that can be chosen for the background errors. A coarser inner loop resolution requires a longer horizontal length scale
 because shorter wavelengths cannot be resolved properly. If the aim is to reproduce finer-scale volcanic plumes with the
 CAMS data assimilation system, the horizontal resolution of the inner loops will have to be increased. For the main LH
 experiment used in this paper we decided to use a horizontal correlation length scale of 100 km which can be represented
 360 properly if the resolutions of the inner loops are TL159/TL255.

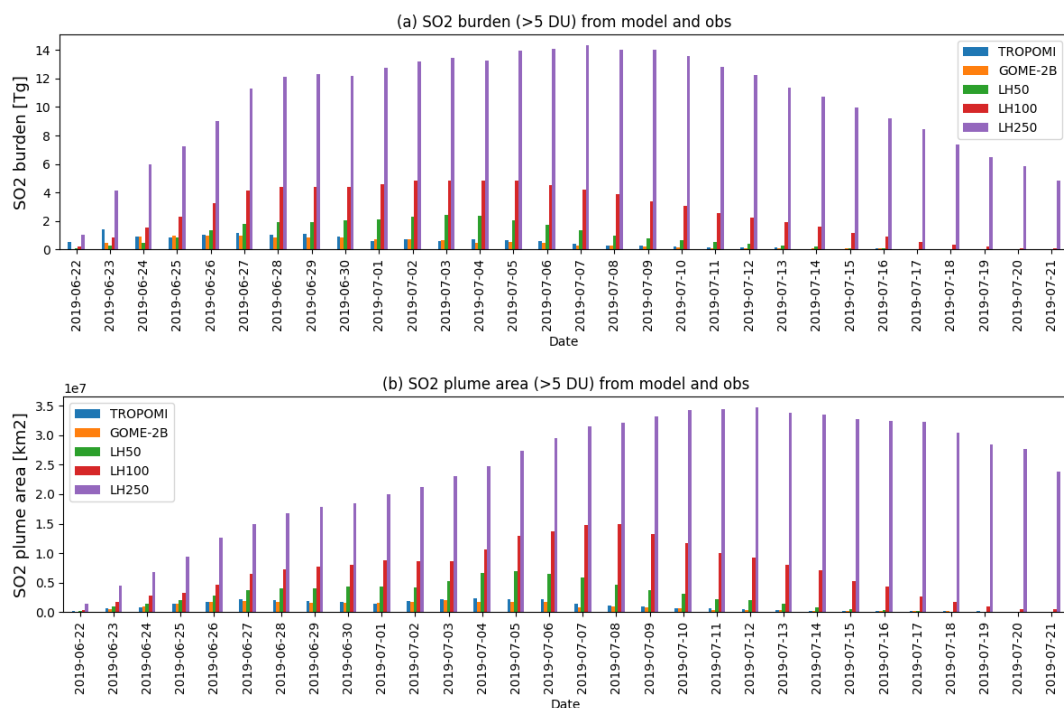


Figure 6: (a) SO₂ burden in Tg and (b) plume area in 1e⁷ km² from TROPOMI, GOME-2B and three SO₂ LH experiments at 0z
 365 with horizontal background error length scales of 50 km (LH50), 100km (LH100) and 250 km (LH250) for the Raikoke eruption
 (22 June to 21 July 2019). The values are calculated by gridding the data on a 1°x1° grid and selecting the grid cells with TCSO₂
 values greater than 5 DU in the area 30-90°N.



Another factor that influences the results of the SO₂ analysis is the value of the background error standard deviation profile. This is illustrated in Figure 7 which shows time series of SO₂ burden and plume area from TROPOMI, GOME-2B and three SO₂ LH experiments with varying background error standard deviation values ($0.7e^{-7}$, $1.0e^{-7}$, $1.4e^{-7}$ kg/kg). All experiments used a horizontal background error correlation length scale of 100 km. The larger the background error standard deviation, the larger the correction that is made by the SO₂ analysis and the larger the SO₂ burden and plume area become. However, the impact of changing the background error standard deviation is not as big as changing the horizontal background error correlation length scale and increasing the standard deviation value from $0.7e^{-7}$ kg/kg to $1.4e^{-7}$ kg/kg doubles the SO₂ burden and plume area.

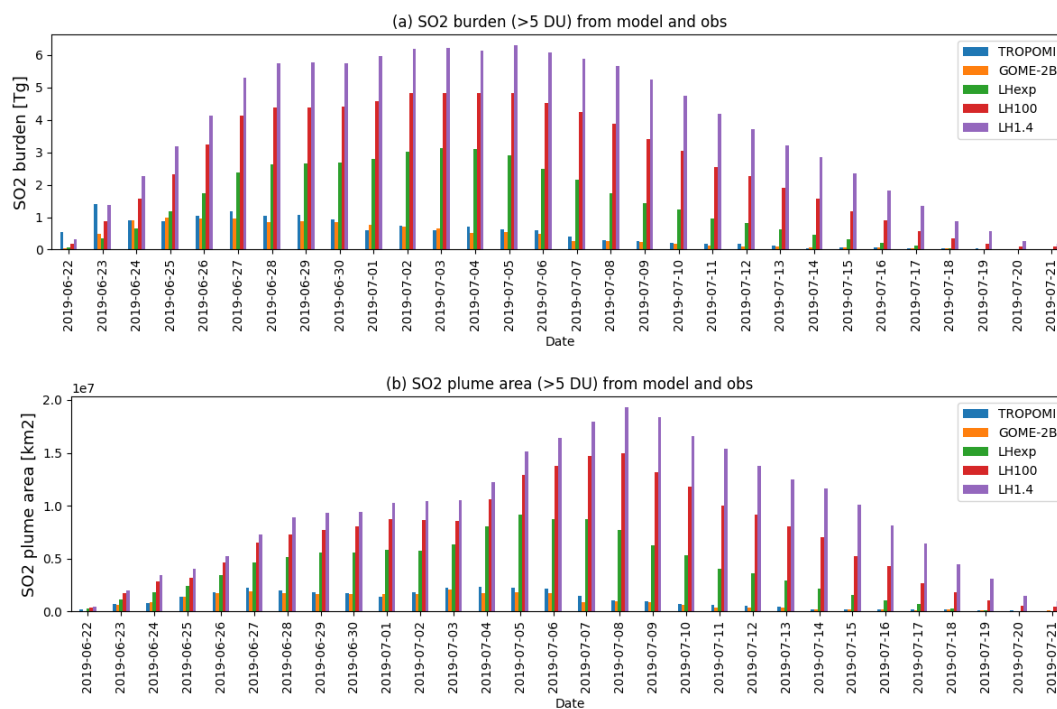


Figure 7: (a) SO₂ burden in Tg and (b) plume area in $1e^7$ km² from TROPOMI, GOME-2B and three SO₂ LH experiments at 0z with background error standard deviation values of $0.7e^{-7}$ (LHexp), $1e^{-7}$ (LH100) and $1.4e^{-7}$ kg/kg (LH1.4) for the Raikoke eruption (22 June to 21 July 2019). The values are calculated by gridding the data on a $1^\circ \times 1^\circ$ grid and selecting the grid cells with TCSO₂ values greater than 5 DU in the area 30-90°N.

For the remainder of this paper the LH experiment that uses a value of $0.7e^{-7}$ kg/kg for the background error standard deviation and a horizontal background error correlation length scale of 100 km is used (abbreviated as LHexp).

4.3 Results of TCSO₂ assimilation tests for the Raikoke 2019 eruption

The SO₂ analysis fields and 5-day forecasts for the Raikoke eruption from the SO₂ layer height experiment (LHexp) and the baseline experiment with the CAMS configuration (BLeXP) are now assessed in more detail. This assessment includes (1) a visual inspection of the SO₂ analysis, (2) the assessment of the vertical location of the analysis SO₂ plume by comparison with independent IASI/ MetOp plume height observations and (3) the assessment of the quality of the 5-day SO₂ forecasts that are started from the LHexp and BLeXP SO₂ analyses.



We evaluate the SO₂ analyses and forecasts against GOME-2B and TROPOMI NRT TCSO₂ retrievals. GOME-2B TCSO₂ data are fully independent because they are not used in our SO₂ assimilation experiments, and TROPOMI NRT TCSO₂ retrievals are useful to demonstrate in how far the analyses manage to reproduce the TROPOMI TCSO₂ values. It has to be kept in mind that the version of the FP_ILM SO₂ LH retrieval used in this study (v3.1) attains its optimal accuracy of 2km for SO₂ columns greater than 20 DU and hence, in LHexp, no TCSO₂ observations below 20 DU are assimilated. For the evaluation, the SO₂ analyses and forecasts, as well as the satellite data, are gridded onto a 1°x1° grid. Figure 8 shows a timeseries of the number of observations that are actively assimilated in both experiments, i.e. the number of 1°x1° grid points with active observations, and illustrates that there are more active data in BLexp where NRT TROPOMI SO₂ data with values greater than 5 DU are assimilated (i.e. as done in the operational CAMS system) than in LHexp where only data with LH TCSO₂ greater than 20 DU are assimilated.

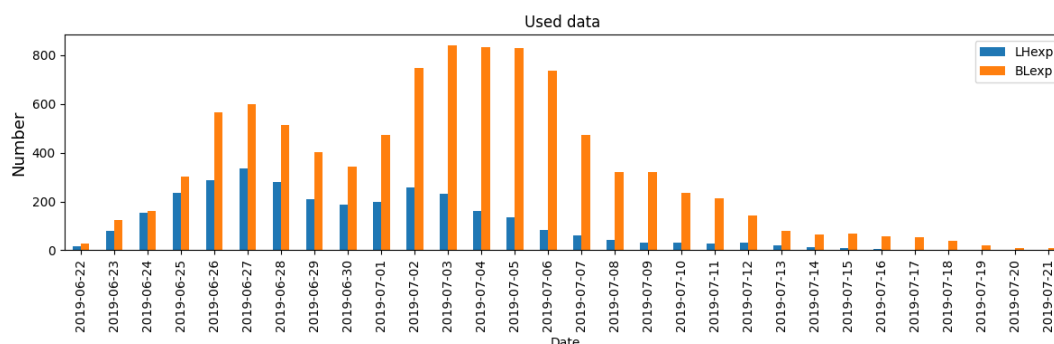


Figure 8: Timeseries of number of active TROPOMI SO₂ observations assimilated in LHexp (blue) and BLexp (orange) both gridded on a 1°x1° grid.

405

4.3.1 Evaluation of TCSO₂ analyses

Figure 9 shows TCSO₂ maps from LHexp and BLexp as well as maps of TCSO₂ from NRT TROPOMI, GOME-2B and FP_ILM TROPOMI SO₂LH retrievals for 4 days: 22, 25, 29 June and 4 July 2019. The maps on 22 June capture the beginning of the eruption and show that the TCSO₂ values from the first analysis cycle in both experiments are lower than the observations. It also illustrates that even at this initial time the extent of the SO₂ plume is overestimated in both experiments. By 25 and 29 June the SO₂ plume already covers a big part of the North Pacific and by 4 July SO₂ from the eruption is detected in half the northern hemisphere. LHexp captures the structures of the SO₂ plumes seen in the observations better than BLexp, but overall, both experiments capture the horizontal extent of the plume reasonably well. Figure 9 also illustrates that GOME-2B and NRT TROPOMI TCSO₂ show the same features of the plume, however the TROPOMI NRT lower detection limit facilitates the retrieval of smaller TCSO₂ values around the edges of the plumes. The FP_ILM SO₂LH retrieval (v3.1) does not provide reliable information for TCSO₂ < 20 DU and therefore only picks up those parts of the plume that are associated with the highest SO₂ load. This also explains the lower number of active observations seen in Fig.8. Especially during the later stages of the eruption parts of the plume are missed by the FP_ILM SO₂ LH retrieval. Nevertheless, when assimilating the FP_ILM SO₂ LH data we find good agreement with the NRT TROPOMI data and the GOME-2B data in LHexp (Fig. 9, column 1) when the CAMS analysis reports SO₂ values < 20DU.

420

Figure 10 shows timeseries of the SO₂ burden from NRT TROPOMI, GOME-2B and the two experiments calculated for threshold values of 5 DU and 30 DU, and Figure 11 shows the corresponding timeseries of the plume areas. For the lower



threshold of 5 DU both the SO₂ burden and the plume area are overestimated in LHexp and BLexp. This confirms what was

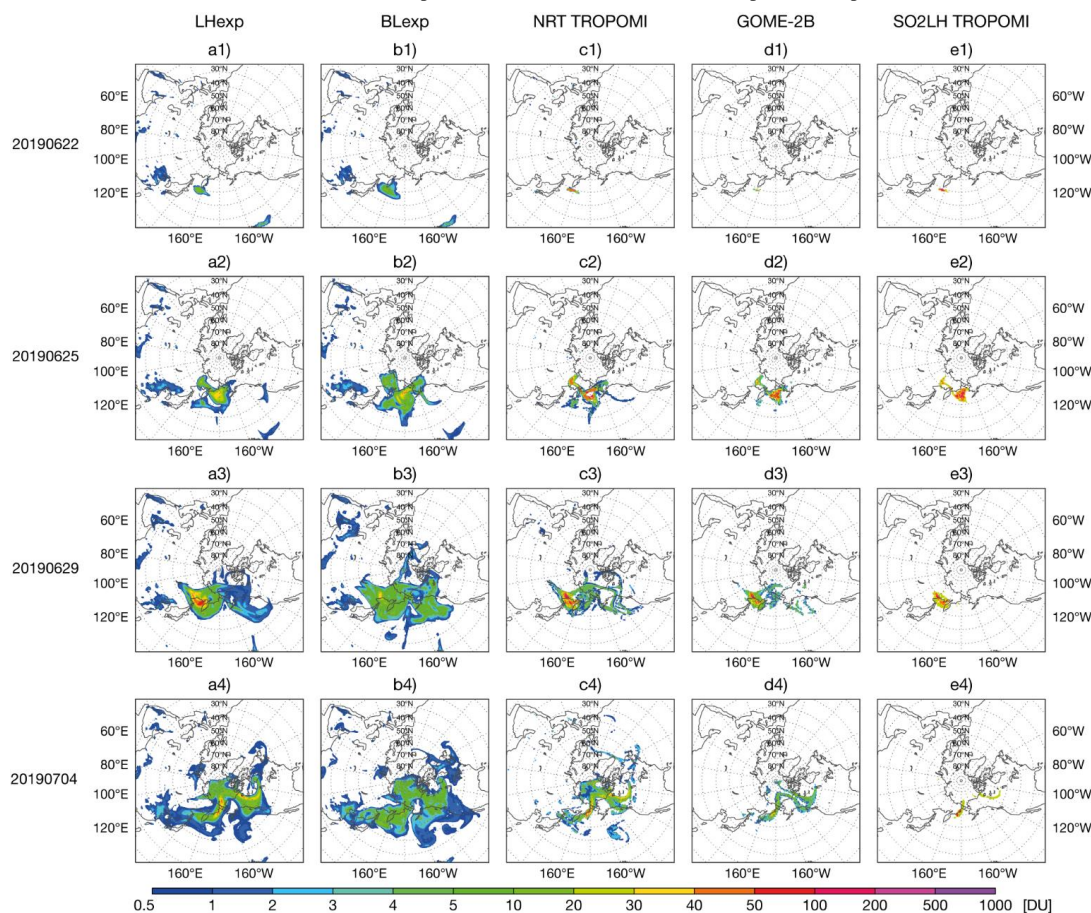
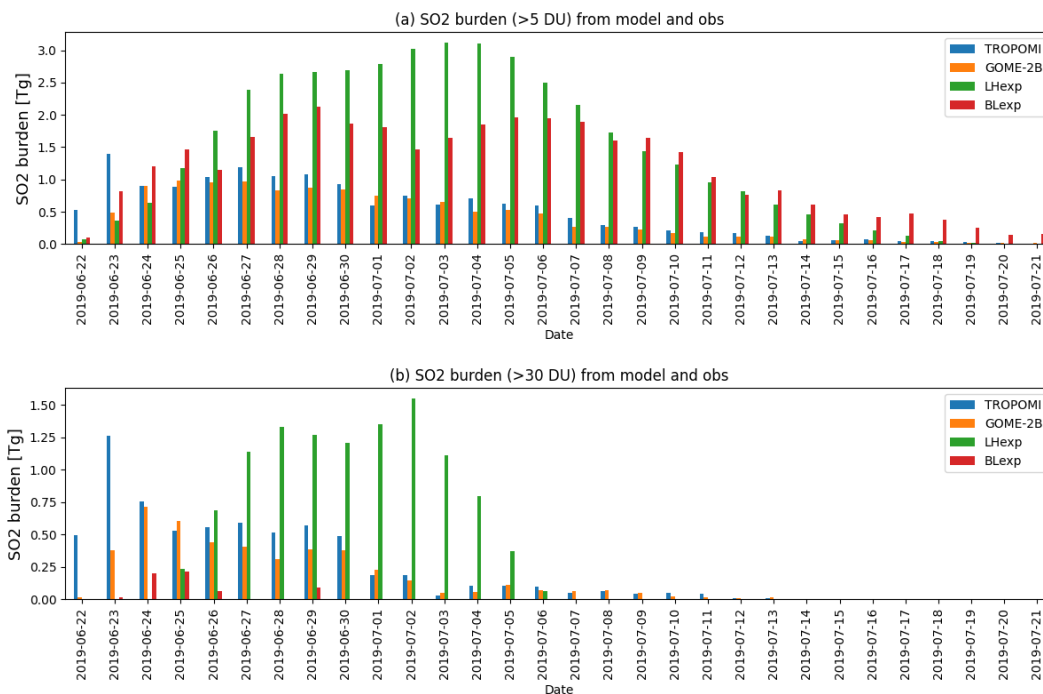


Figure 9: TCSO₂ analysis fields at 0z from LH exp (a), BL experiment (b), NRT TROPOMI (c), NRT GOME-2B (d) and TROPOMI SO₂LH (e) on 22 June (row 1), 25 June (row 2), 29 June (row 3) and 4 July (row 4) in DU.

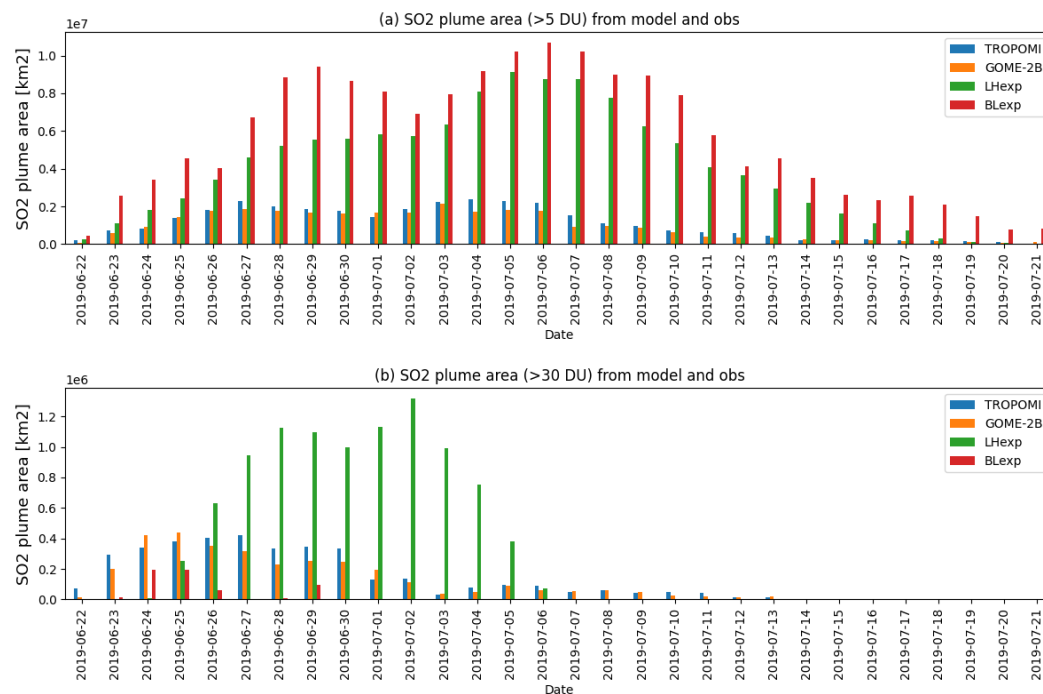
already seen in Figures 6 to 8, namely that the plumes are more spatially dispersed in the analysis than in the observations.
 430 The overestimation of the SO₂ burden is larger in LHexp than in BLexp with maximum values of 3 Tg and 2 Tg, respectively, compared to 1.5 and 1.2 Tg for NRT TROPOMI and GOME-2B. However, the plume area is larger in BLexp with maximum extent of about 1e⁷ km², compared to 0.8e⁷ km² in LHexp and 0.2e⁷km² calculated from the observations. BLexp fails to capture the higher SO₂ column values, leading to an underestimation of plume area and SO₂ burden for a threshold of 30 DU, while LHexp does have TCSO₂ values > 30 DU but overestimates both plume area and SO₂ burden.

435 To quantify the realism of the SO₂ analyses and the quality of the SO₂ forecasts appropriate error measures need to be defined and used in addition to the visual inspection of the SO₂ plumes. Statistical measures such as bias and root mean square error are not well suited because of the specific event character of the SO₂ plumes. In addition to looking at the plume area and SO₂ burden, we use threshold-based measures based on the number of hits (grid boxes where both model and observations detect the plume), misses (grid boxes where there is a plume in the observations but not in the model) or false alarms (grid boxes where the model has volcanic SO₂ that is not seen in the observations) to quantify the error in the plume position. In Flemming and Inness (2013) we used hits and plume area measures for various thresholds. In this paper we
 440 combine the information about hits and misses and use as score the probability of detection (POD)



445

Figure 10: SO₂ burden in Tg from TROPOMI, GOME-2B, LHexp and BLexp TCSO₂ analysis at 0z for the Raikoke eruption (22 June to 21 July 2019). The values are calculated by gridding the data on a 1°x1° grid and selecting the grid cells with TCSO₂ values greater than (a) 5 DU and (b) 30 DU in the area 30-90°N.



450

Figure 11: SO₂ plume area [km²] from TROPOMI, GOME-2B, LHexp and BLexp TCSO₂ analysis at 0z for the Raikoke eruption (22 June to 21 July 2019). The values are calculated by gridding the data on a 1°x1° grid and selecting the grid cells with TCSO₂ values greater than (a) 5 DU and (b) 30 DU in the area 30-90°N.



455

$$\text{POD} = \text{hits} / (\text{hits} + \text{misses}) \quad (2)$$

which lies between 0 and 1, with a value of 1 indicating a perfect score. We also use the critical success index (CSI), defined as

$$\text{CSI} = \text{hits} / (\text{hits} + \text{misses} + \text{false alarms}) \quad (3)$$

460 which additionally considers the number of false alarms and again has values between 0 and 1 with 1 indicating a perfect score (Nurmi, 2003). These are point based comparisons and might score badly for features that are close but slightly misplaced between observations and model.

465

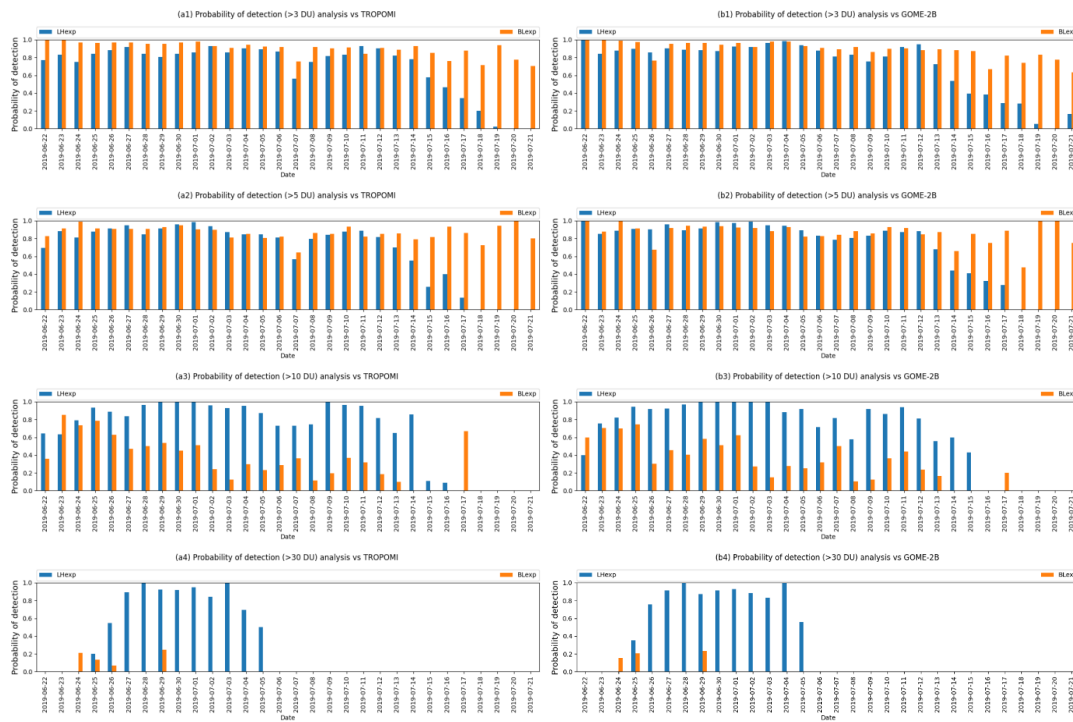


Figure 12: Timeseries of POD for TCSO₂ analysis fields (at 0z) against (a) NRT TROPOMI and (b) GOME-2B for TCSO₂ thresholds of (1) 3DU, (2) 5 DU, (3) 10 DU and (4) 30 DU. Values for LHexp are shown in blue, values for BLexp in orange.

470

Figure 12 shows the POD from LHexp and BLexp for various TCSO₂ analysis thresholds (3, 5, 10, 30 DU) scored against NRT TROPOMI and GOME-2B data. The results are very similar for both satellites. The parts of the plume with lower TCSO₂ values are well captured by both experiments with POD values above 0.9 for BLexp for most of the period and POD values above 0.8 for LHexp. The POD in LHexp decreases towards the end of the depicted period because the number of assimilated data drops strongly (see Fig. 8), while more observations are assimilated in BLexp at the later stage of the episode. BLexp, however, does not capture the higher values observed by NRT TROPOMI and GOME-2B well while LHexp has a much higher POD for those parts of the plume. No values above 30 DU are detected after 5 July 2019.

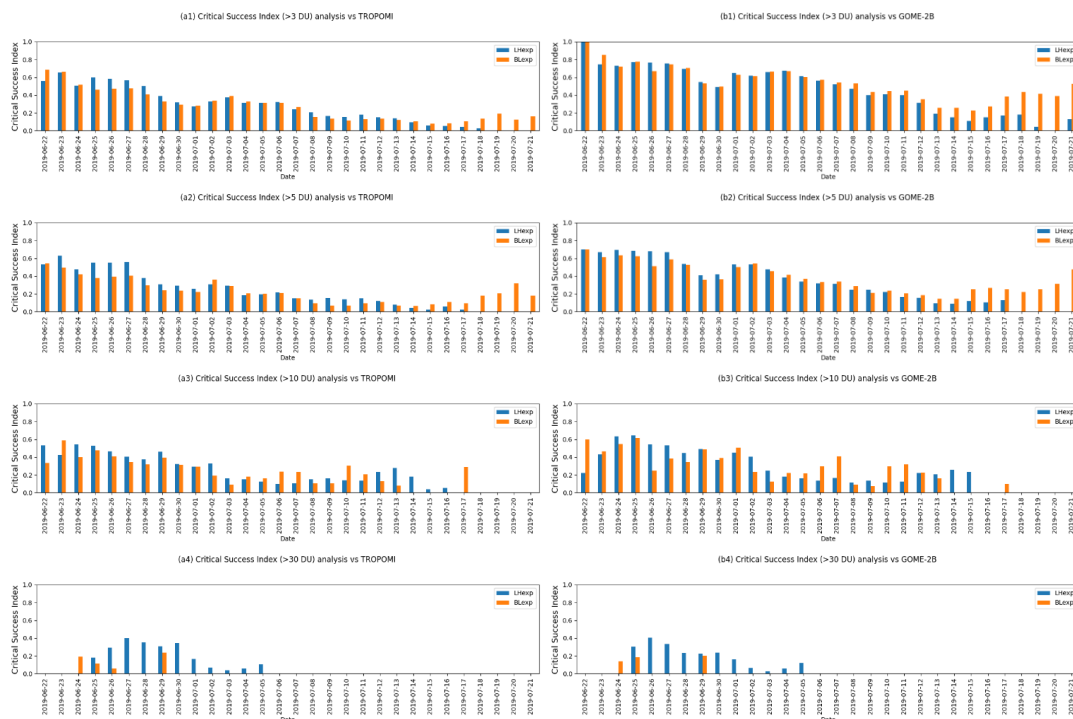
475

Figure 13 shows the CSI from LHexp and BLexp, the measure that also penalises the false alarms. As expected, these values are considerably lower than the POD (with maximum values around 0.6) because plume area and SO₂ burden are

480



overestimated in both experiments (see Fig. 9) leading to numerous false alarms. Both experiments behave similarly for the lower thresholds but TCSO₂ values greater than 30 DU are again captured better in LHexp.



485

Figure 13: Timeseries of CSI for TCSO₂ analysis fields (at 0z) against (a) NRT TROPOMI and (b) GOME-2B for TCSO₂ thresholds of (1) 3DU, (2) 5 DU, (3) 10 DU and (4) 30 DU. Values for LHexp are shown in blue, values for BLexp in orange.

490 In summary, as far as the TCSO₂ analysis fields are concerned the performance of LHexp and BLexp is similar for TCSO₂ columns below 10 DU, but BLexp does not capture the higher SO₂ values as well as LHexp. Both experiments overestimate the SO₂ burden and the plume area compared to the TROPOMI NRT and GOME-2B observations.

4.3.2 Vertical location of the SO₂ plume

495 While the TCSO₂ analyses from LHexp and BLexp score similarly in the detection of the TCSO₂ plume observations by GOME-2B and NRT TROPOMI, at least for values less than 10 DU, the vertical distributions of the SO₂ plumes from the experiments differ considerably. Figure 14 shows vertical cross sections along 60°N between 120-300°E through the SO₂ plume on 29 June 2019 from LHexp and BLexp. The figure illustrates that the bulk of the SO₂ plume is located between 200-100 hPa in LHexp while it is located much lower, between 600-400 hPa, in BLexp. To assess which vertical distribution is more realistic, in Figure 15 we compare the plume heights from the experiments with SO₂ altitudes derived from IASI
 500 LATMOS ULB data (Clarisse et al., 2012) for the period 22 to 29 June 2019. The CAMS plume altitude was calculated as the altitude where the highest SO₂ value were found in the CAMS SO₂ profiles. The figure shows that the plume height in LHexp agrees well with the independent IASI plume altitude with a mean bias of 0.4±2.2 km, while BLexp underestimates the plume altitude with a mean bias of -5.1±2.1 km. Figure 15 illustrates that the altitude of the Raikoke SO₂ plume in the
 505 CAMS analysis is considerably improved if SO₂LH data are used than when using the baseline configuration.

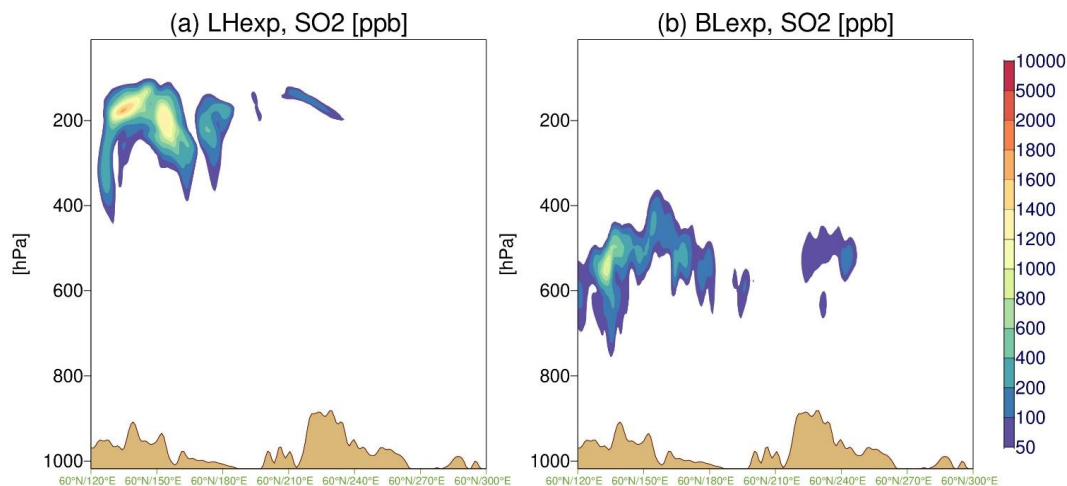
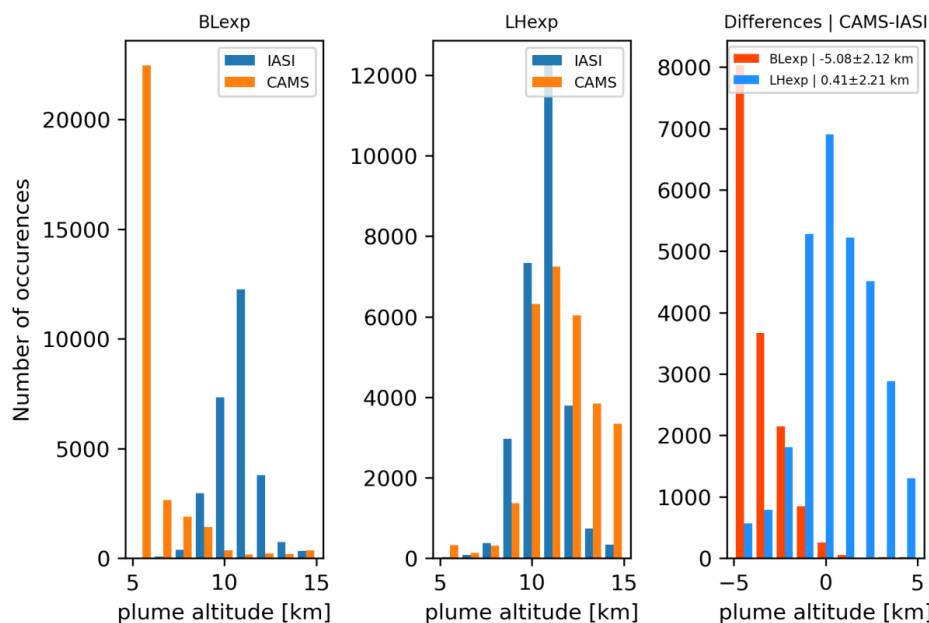


Figure 14: Vertical cross sections along 60°N between 120–300°E showing the SO₂ analysis field (in ppb) from (a) LHexp and (b) BLexp on 29 June 2019, 0z.



510

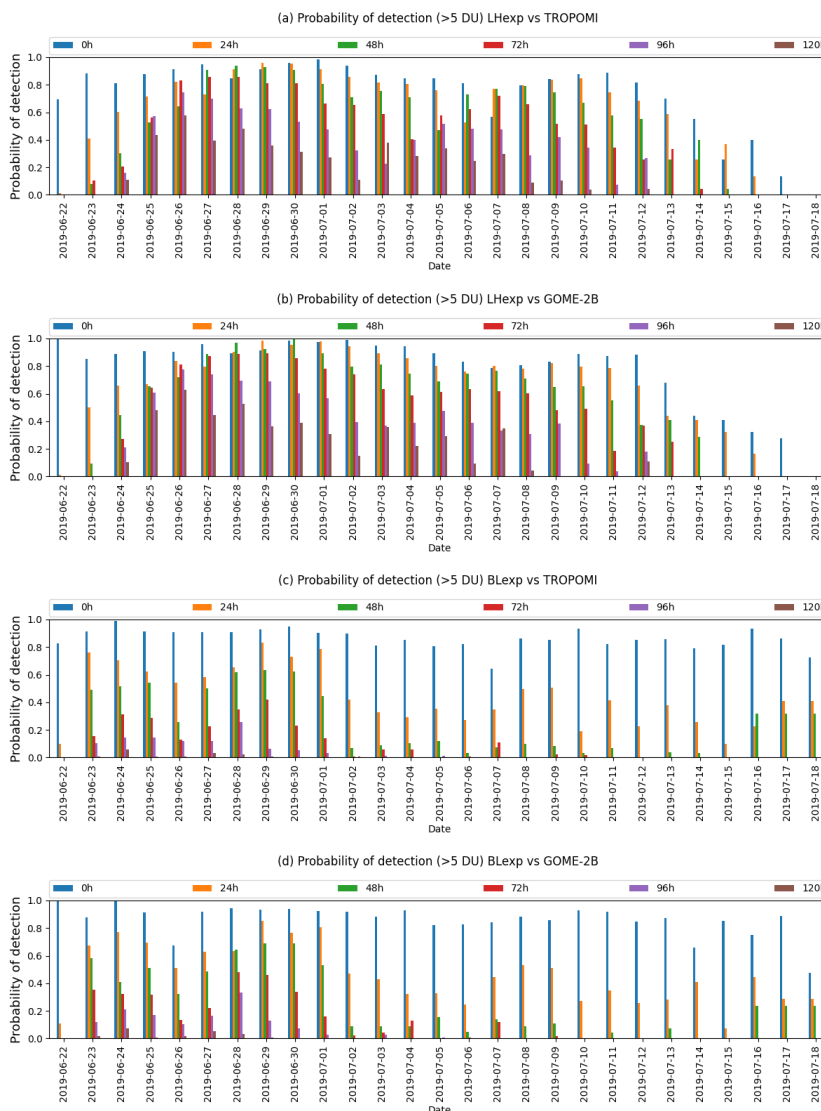
Figure 15: Comparison of plume altitude from IASI ULB LATMOS data with the altitude of maximum SO₂ concentration from the LHexp (middle panel) and BLexp (left panel) for the period 22–29 June 2019. The right panel shows a histogram of the differences of the plume altitudes (CAMS minus IASI) for LHexp (blue) and BLexp (red).

515 4.3.3 Quality of the 5-day TCSO₂ forecasts

Next, we assess the quality of the 5-day TCSO₂ forecasts started from the LHexp and BLexp SO₂ analyses. Figure 16 shows a timeseries of POD for a TCSO₂ threshold of 5 DU from LHexp and BLexp for NRT TROPOMI and GOME-2B for the initial SO₂ analysis and forecasts valid on the same day at different lead-times (24 to 120 hours). The figure shows that the skill decreases with increasing forecast lead-time in both experiments, but that the degradation of skill with forecast lead-



520 time is considerably large in BLexp. For the 72-hour forecasts LHexp has POD values between 0.6 and 0.8 and even the 96-hour forecast still has values of 0.4. In contrast, BLexp only has POD values between 0.2 and 0.4 for the 72-hour forecasts



525

Figure 16: Probability of detection of LHexp against (a) NRT TROPOMI and (b) GOME-2B, as well as BLexp against (c) NRT TROPOMI and (d) GOME-2B for the period 22 June to 18 July 2021 for analysis at 0z (blue), 24-hour forecast (orange), 48-hour forecast (green), 72-hour forecast (red), 96-hour forecast (purple) and 120-hour forecast (brown).

530 during June while values drop considerably during July when even the short 24-hour forecasts from BLexp only have POD values between 0.2 and 0.4. In other words, in BLexp the skill of forecasting the location of the SO₂ plumes seen by GOME-2B and the NRT TROPOMI one day in advance is similar to the skill of forecasting the SO₂ plumes 4 days in advance in LHexp. The main reason for the lower forecast quality in BLexp is the fact that the SO₂ plumes are located at the wrong altitude (see Fig. 15) so that the prevailing winds will not transport the SO₂ in the correct direction.

535 To further assess the forecast skill, we use the fractional skill score (FSS) which is a spatial comparison. It was originally used to assess the quality of precipitation forecasts (Roberts and Lean, 2007) but has more recently also been used to assess



the skill of dispersion models to capture volcanic plumes (de Leeuw et al., 2020; Dacre et al., 2016; Harvey and Dacre, 2016). The FSS is calculated using the ratio of the modelled and observed fractional coverage of the SO₂ plume at each location for various horizontal scales (neighbourhoods) and thresholds, and it assesses how the skill of the forecast varies depending on those parameters. To calculate it we grid the model TCSO₂ analyses and forecasts at various lead-times and the NRT TROPOMI and GOME-2B TCSO₂ observations on a 1°x1° grid and create binary fields for the chosen thresholds (in our case for TCSO₂ > 1, 3, 5, 10, 20, 30, 50 DU). Then, for each grid point, the fraction of surrounding grid points that exceed the threshold is calculated from the model field and the observations. To establish at which horizontal scale the SO₂ analysis or forecast is useful we repeat this exercise with neighbourhoods of varying scales (i.e. 1, 3, 5°, corresponding to neighbourhoods of 1, 9 and 25 grid boxes, respectively). An FSS of 1 means perfect alignment of the features in the observations and the model and an FSS of 0 a total mismatch. We use values of FSS greater than 0.5 to define a simulation that has some skill. This value was also used by de Leeuw et al. (2020) and Harvey and Dacre (2016). The FSS for a neighbourhood of length n is calculated following Roberts and Lean (2007) as

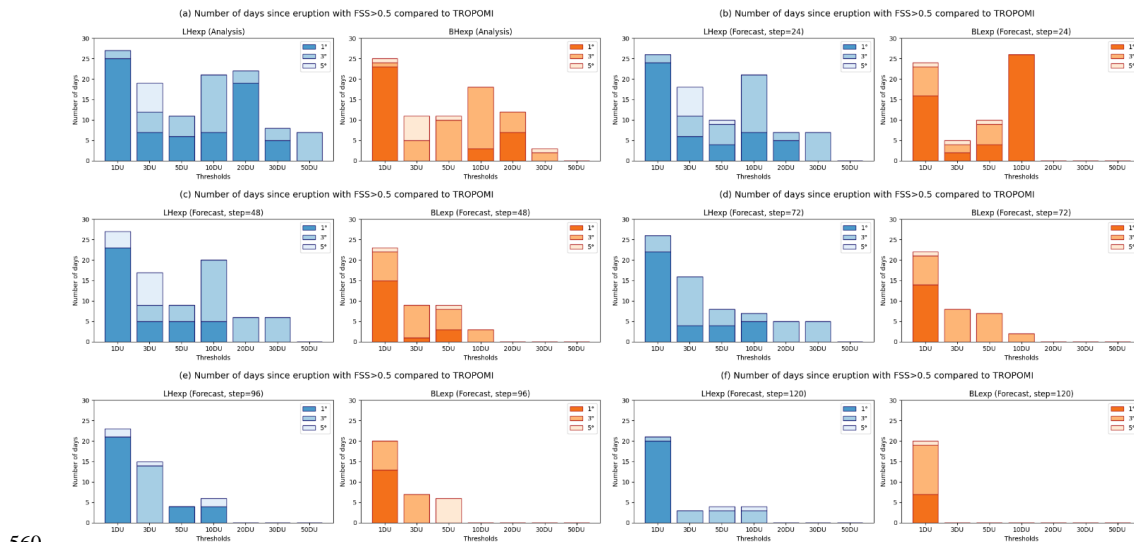
$$FSS_{(n)} = 1 - \frac{MSE_{(n)}}{MSE_{(n)ref}} \quad (4)$$

550

where MSE is the Mean Square Error and MSE_(n)=0 for a perfect forecast of neighbourhood with length n. The reference MSE for each neighbourhood length n is given by:

$$MSE_{(n)ref} = \frac{1}{N_x N_y} \left[\sum_{i=1}^{N_x} \sum_{j=1}^{N_y} O_{(n)i,j}^2 + \sum_{i=1}^{N_x} \sum_{j=1}^{N_y} M_{(n)i,j}^2 \right] \quad (5)$$

Here i=1, N_x with N_x the number of columns in the domain and j=1, N_y with N_y the number of rows. M_{(n)i,j} is the field of model fractions obtained from the model binary field for a square of length n and O_{(n)i,j} the corresponding field of observed fractions. MSE_{(n)ref} can be interpreted as the largest possible MSE that can be obtained from the model and observed fractions.



560

Figure 17: Number of days since the eruption on 22 June 2019 that the LHexp (blue) and BLexp (orange) (a) analyses and forecasts at steps (b) 24, (c) 48, (d) 72, (e) 96 and (f) 120-hours have some skill (FSS>0.5) compared to NRT TROPOMI TCSO₂ data for neighbourhood sizes of 1°, 3° and 5° and thresholds of 1, 3, 5, 10, 20, 30, 50 DU.

Figure 17 shows the number of days after the eruption that have FSS>0.5 when comparing LHexp and BLexp with NRT TROPOMI data for the various thresholds, to give some indication of a skill timescale, i.e. how long the analyses and the forecasts started from them can be considered as useful after the initial eruption. Also shown (in the lighter shadings) are the additional useful forecast days that are gained when the neighbourhood size is increased to 3° or 5°. The main findings of the

565



figure are (1) the skill timescale is longer for the smaller thresholds, i.e. the overall shape of the plume is easier to reproduce than smaller scale filaments with higher TCSO₂ values, (2) the skill timescale drops with lead-time, (3) the skill timescale increases if the neighbourhood size is increased, with a larger increase for higher thresholds, pointing to errors in the location of structures with higher TCSO₂, which are reduced with a larger grid, and (4) that the skill timescale is greater in LHexp than in BLexp, leading to better forecasts of the plume longer in advance, as already seen in Fig. 16.

We now look at the individual panels in more detail. Figure 17a shows the skill timescales of the TCSO₂ analyses from LHexp and BLexp against NRT TROPOMI and illustrates as already seen in Section 4.3.1 that these give similarly useful TCSO₂ fields (especially for the lower thresholds), but that the number of useful days is slightly larger in LHexp and that BLexp fails to capture the highest TCSO₂ values. It is interesting to see the large number of days with FSS>0.5 for the threshold of 20 DU in LHexp, because this is the value below which no TCSO₂ data are assimilated in LHexp. Figure 17b shows that the 24-hour forecasts in LHexp have similar skill to the analysis, which a skill timescale of 24 days for the 1 DU threshold and a neighbourhood size of 1°, illustrating that the 24-hour from the LHexp analysis can predict the overall location of the SO₂ plume very well. For higher thresholds (> 30 DU) this drops to about 5 days after the eruption, and there is no skill for a threshold of 50 DU. The skill of the 48 and 72-hour forecasts (Fig. 17c and d) are similar to that of the 24-hour one for the thresholds up to 10 DU, but at a neighbourhood size of 1° the higher values (>20 DU) have no skill anymore. As there is still skill on a 5-day timescale for these forecasts for a neighbourhood size of 3°, this suggests that it is the location of the filaments with high TCSO₂ values that is not correct rather than the forecast not maintaining any of the higher TCSO₂ values. Even the 96 and 120-hour forecasts (Fig. 17e and f) in LHexp have a skill timescale of slightly more than 20 days for the 1 DU threshold at 1°, but the skill drops markedly for the higher thresholds, and for the 120-hour forecasts skill is only found for thresholds up to 10 DU at 3° for up to 3 days after the eruption. Nevertheless, Fig. 17 shows that by assimilating SO₂ LH data the CAMS system can predict the overall location of the SO₂ plume up to 5 days in advance for about 20 days after the initial eruption. This corresponds to the time when the FP_ILMSO₂ LH retrieval does not detect volcanic SO₂ anymore (see Fig. 8).

Figure 17 shows that the BLexp analysis has skill timescales similar to LHexp, confirming what was already seen in Figures 12 and 13. Despite placing the SO₂ cloud at the wrong altitude, the overall shape of the SO₂ plume is still captured by the SO₂ analysis. However, for higher thresholds the number of useful days after the eruption is smaller in BLexp and the forecast skill drops more steeply with forecast lead-time than in LHexp. There is no skill for the 24-hour forecast at 1° for thresholds greater than 20 DU, and for the 48-hour forecasts the skill timescale for a 1 DU threshold at 1° is 15 days, compared to 23 days in LHexp. The skill timescale remains around 14 days in BLexp for the 72 and 96-hour forecasts for a 1 DU threshold at 1° and then drops to 6 days at 120-hours. For the 72 to 120-hour forecasts there is no skill for the higher thresholds for a neighbourhood size of 1°, pointing to a worse misplacement of the smaller scale features of the plume with higher TCSO₂ values than in LHexp.

Figure 18 shows the skill timescale for LHexp and BLexp analyses and forecasts against GOME-2B data. For GOME-2B the number of useful forecast days are generally slightly lower, especially for a threshold of 1 DU which might just be an artefact because GOME-2B does not detect so many volcanic pixels with low values. For thresholds of 3-30 DU the GOME-2 results for a neighbourhood size of 1° or 3° are very similar to the TROPOMI results for all the forecast ranges, with skill timescales of about 10 days for forecast lead times up to 72 hour and around 5 days for the 96-hour forecasts. Again, the performance of BLexp is worse than of LHexp and for the 48-hour forecasts there is almost no skill in BLexp for the 1° neighbourhoods.



610

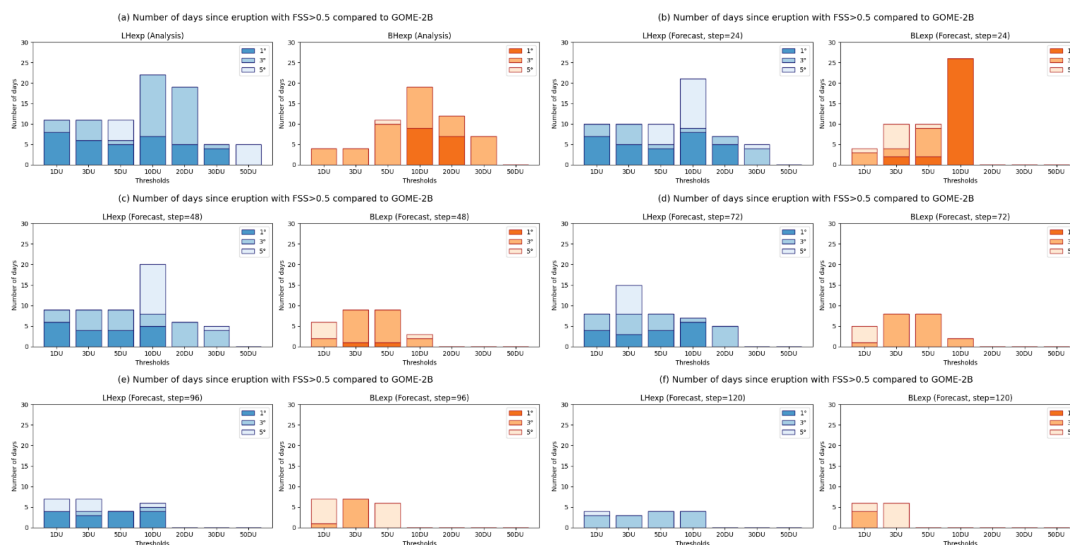


Figure 18: As Figure 17 but for GOME-2B TCSO₂.

5 Conclusions

615 In this paper we document the procedure used to assimilate near-real time TCSO₂ retrievals from the TROPOMI and GOME-2 instruments in the operational CAMS NRT data assimilation system and explore the use of TROPOMI SO₂ layer height data provided by the ESA-funded Sentinel-5P Innovation-SO₂ Layer Height Project and produced with the Full-Physics Inverse Learning Machine algorithm (v3.1) developed by DLR. The assimilation of the FP_ILM SO₂ LH data was tested for the 2019 Raikoke eruption and compared with results obtained when assimilating NRT TROPOMI TCSO₂ data

620 with the operational CAMS configuration.

While the operational CAMS approach of placing the SO₂ increment in the mid-troposphere around 550 hPa gives surprisingly good results for the TCSO₂ analyses and short-range forecasts in a lot of situation (including this case), the vertical distribution of SO₂ in the baseline analysis is clearly wrong for the Raikoke eruption which injected a copious

625 amount of SO₂ into the stratosphere. By using the FP_ILM TROPOMI SO₂ LH data this can be much improved as comparison with the independent SO₂ plume heights retrieved from IASI show. While the LH experiment agrees well with the IASI LATMOS ULB plume altitude retrievals, with a mean bias of 0.4±2.2 km, the baseline experiment underestimates the plume altitude with a mean bias of -5.1±2.1 km. Consequently, the assimilation of the FP_ILM LH data leads to much improved SO₂ forecasts and should improve the usefulness of the CAMS SO₂ forecasts for users and also for the aviation

630 industry.

In the baseline experiment the forecast skill drops much more for longer forecast lead-times than in the LH experiment, which is seen when comparing point skill scores such as probability of detection and critical success index and when using the fractional skill score that also assesses spatial skill. Timeseries of the Probability of Detection score show that in the

635 baseline experiment, the skill of forecasting the location of the Raikoke SO₂ plume seen by GOME-2B and the NRT TROPOMI one day in advance is similar to the skill of forecasting the SO₂ plume 4 days in advance in LHexp. The FSS shows that compared to NRT TROPOMI, even the 120-hour forecasts of the LH experiment have a significant skill up to 20 days after the initial eruption for the prediction of TCSO₂ for a 1 DU threshold and a neighbourhood size of 1°, suggesting that the overall location of the SO₂ plume is well reproduced. The skill is smaller for higher TCSO₂ thresholds (about 5 days



640 for forecast ranges up to 96-hours on a 1° grid), illustrating that it is more difficult to accurately predict the location of areas
with higher SO_2 columns which usually have smaller spatial scales. The skill timescale is shorter for the baseline experiment,
with values around 15 days after the initial eruption for the 1 DU threshold for forecast ranges up to 96-hours and 5 days for
the 120-hours forecasts, but there is no skill for any of the higher thresholds at a neighbourhood size of 1° from 72-hour
forecasts onwards. By assimilating FP_ILM SO_2 LH data the CAMS system can predict the overall location of the Raikoke
645 SO_2 plume up to 5 days in advance for about 20 days after the initial eruption.

Our study also documents some issues of the CAMS TCSO₂ assimilation approach, namely the overestimation of the SO_2
burden and plume area by the data assimilation system, both in the operational configuration and when using the FP_ILM
 SO_2 LH data. The main reason for this overestimation is the coarse horizontal resolution used in the minimisations (currently
650 TL95 and TL159 in the operational CAMS system) which limits the wavenumbers that can be resolved in the wavelet
formulation of the SO_2 background errors. This in turn limits the horizontal correlation length scale that can be used for the
 SO_2 background errors and that determines how for the increments from individual observations are spread out in the
horizontal. In this paper we used TL159/TL255 as the resolutions for the minimisations, but to properly resolve small scale
structures the resolutions of the minimisations would have to be even higher. Obviously, this would increase the numerical
655 cost of running the minimisation.

Other reasons that can contribute to an overestimation of the SO_2 burden or plume area in the CAMS SO_2 analysis could be
the use of anthropogenic SO_2 emissions in the CAMS model as the satellite data used for the comparisons are only the
volcanic pixels. However, tests run without the anthropogenic emissions (not shown in this paper) did not show large
660 differences compared to the experiments presented here, suggesting that this is not a big effect for the Raikoke eruption.
Another possibility could be the fact that the satellite might miss a plume or part of a plume, but that the whole plume is
present in the model. Finally, for the FP_ILM LH data the retrieval is limited to TCSO₂ > 20 DU (in v3.1) and lower values
that might correct an overestimation from the previous analysis cycle are not used. In future we hope to also test the
assimilation of IASI SO_2 retrievals with plume height information that would add extra information in the CAMS system.
665

One limitation in using the TROPOMI SO_2 LH data is that the version of the FP_ILM retrieval used in this study (v3.1) only
produces reliable information for TCSO₂ > 20 DU so that most of the smaller volcanic eruptions that happen on a more
regular basis than big explosive eruptions would be missed if only the FP_ILM TROPOMI SO_2 LH data were assimilated in
the CAMS NRT system. Improvements to the FP_ILM retrieval algorithm are on-going so that it should be possible to lower
670 this limit in the future.

Code and Data availability

The model data used in this paper are available from <https://apps.ecmwf.int/research-experiments/expver/> using the
following DOIs for the 6 experiments:

- hhu5: 10.21957/cygt-xf49
- 675 • hgze: 10.21957/qfam-7474
- hhbu: 10.21957/zpdt-f079
- hhtm: 10.21957/jraa-s174
- hhtn: 10.21957/ddxs-2v95
- hg7: 10.21957/81bh-7h58



680 Acknowledgements

The Copernicus Atmosphere Monitoring Service is operated by the European Centre for Medium-Range Weather Forecasts on behalf of the European Commission as part of the Copernicus program (<http://copernicus.eu>) and CAMS data are freely available from atmosphere.copernicus.eu/data. The SO₂ analysis and forecast experiments used in this paper are available from <https://apps.ecmwf.int/research-experiments/expver/> (see DOIs in Table 3). The FP_ILM TROPOMI SO₂ LH product
685 was developed in the framework of the ESA Sentinel-5p Innovation project. MEK would like to acknowledge the Aristotle University of Thessaloniki (AUTH) High Performance Computing Infrastructure and Resources and the help of the AUTH IT Center. MEK further acknowledges the use of the Atmospheric Toolbox®. IASI is a joint mission of EUMETSAT and the Centre National d'Etudes Spatiales (CNES, France). The authors acknowledge the AERIS data infrastructure, <https://en.aeris-data.fr/>, for providing access to the IASI SO₂ plume height data used in this study and ULB-LATMOS for
690 the development of the retrieval algorithms. Thanks to Anabel Bowen for improving Figures 5 and 9.

Author Contributions

AI prepared the code to assimilate the SO₂ LH data, ran the analysis experiments, carried out most of the validation and wrote the paper. MA helped with the construction of the background error matrices. JF provided help with the modelling framework and RR wrote the converter software to transfer the SO₂ LH data from their native netcdf format to the BUFR
695 format used in the ECMWF data assimilation system. MEK and DB performed the validation against the IASI/MetOp SO₂ plume altitude data and provided Fig. 15. PH provided the SO₂ LH data and developed the FP_ILM algorithm. DE and DL also contributed to the FP_ILM developments. All co-authors provided useful feedback on the paper.

References

- Brenot, H., Theys, N., Clarisse, L., van Geffen, J., van Gent, J., Van Roozendael, M., van der A, R., Hurtmans, D., Coheur,
700 P.-F., Clerbaux, C., Valks, P., Hedelt, P., Prata, F., Rason, O., Sievers, K., and Zehner, C.: Support to Aviation Control Service (SACS): an online service for near-real-time satellite monitoring of volcanic plumes, *Nat. Hazards Earth Syst. Sci.*, 14, 1099-1123, doi:10.5194/nhess-14-1099-2014, 2014.
- Brenot, H., Theys, N., Clarisse, L., van Gent, J., Hurtmans, D. R., Vandenbussche, S., Papagiannopoulos, N., Mona, L.,
705 Virtanen, T., Uppstu, A., Sofiev, M., Bugliaro, L., Vázquez-Navarro, M., Hedelt, P., Parks, M. M., Barsotti, S., Coltelli, M., Moreland, W., Arnold-Arias, D., Hirtl, M., Peltonen, T., Lahtinen, J., Sievers, K., Lipok, F., Rüfenacht, R., Haefele, A., Hervo, M., Wagenaar, S., Som de Cerff, W., de Laat, J., Apituley, A., Stammes, P., Laffineur, Q., Delcloo, A., Lennart, R., Rokitansky, C.-H., Vargas, A., Kerschbaum, M., Resch, C., Zopp, R., Plu, M., Peuch, V.-H., Van Roozendael, M., and Wotawa, G.: EUNADICS early warning system dedicated to support aviation in case of crisis from natural airborne hazard
710 and radionuclide cloud, *Nat. Hazards Earth Syst. Sci. Discuss.* [preprint], <https://doi.org/10.5194/nhess-2021-105>, in review, 2021.
- Carn, S.A., Clarisse, L. and Prata, A.J.: Multi-decadal Satellite Measurements of Global Volcanic Degassing. *Journal of Volcanology and Geothermal Research*, 311, 99-134. doi:10.1016/j.jvolgeores.2016.01.002, 2016.
715
- Clarisse, L., Hurtmans, D., Clerbaux, C., Hadji-Lazaro, J., Ngadi, Y., and Coheur, P.-F.: Retrieval of sulphur dioxide from the infrared atmospheric sounding interferometer (IASI), *Atmos. Meas. Tech.*, 5, 581–594, <https://doi.org/10.5194/amt-5-581-2012>, 2012.



720 Clarisse, L., Coheur, P.-F., Theys, N., Hurtmans, D., and Clerbaux, C.: The 2011 Nabro eruption, a SO₂ plume height analysis using IASI measurements, *Atmos. Chem. Phys.*, 14, 3095–3111, <https://doi.org/10.5194/acp-14-3095-2014>, 2014.

Clerbaux, C., Hadji-Lazaro, J., Turquety, S., et al., Tracking pollutants from space: Eight years of IASI satellite observation, *Comptes Rendus Geoscience*, Volume 347, Issue 3, Pages 134–144, <https://doi.org/10.1016/j.crte.2015.06.001>, 2015.

725

Courtier, P., Thépaut, J.-N., and Hollingsworth, A.: A strategy for operational implementation of 4D-Var, using an incremental approach, *Q. J. Roy. Meteor. Soc.*, 120, 1367–1388, 1994.

Dacre, H. F., et al. (2011), Evaluating the structure and magnitude of the ash plume during the initial phase of the 2010 Eyjafjallajökull eruption using lidar observations and NAME simulations, *J. Geophys. Res.*, 116, D00U03, doi:10.1029/2011JD015608.

730

de Leeuw, J., Schmidt, A., Witham, C. S., Theys, N., Taylor, I. A., Grainger, R. G., Pope, R. J., Haywood, J., Osborne, M., and Kristiansen, N. I.: The 2019 Raikoke volcanic eruption: Part 1 Dispersion model simulations and satellite retrievals of volcanic sulfur dioxide, *Atmos. Chem. Phys. Discuss.* [preprint], <https://doi.org/10.5194/acp-2020-889>, in review, 2020.

735

Harvey, N. J. and Dacre, H. F.: Spatial evaluation of volcanic ash forecasts using satellite observations, *Atmos. Chem. Phys.*, 16, 861–872, <https://doi.org/10.5194/acp-16-861-2016>, 2016.

Efremenko, D. S., Loyola R., D. G., Hedelt, P., and Spurr, R. J. D.: Volcanic SO₂ plume height retrieval from UV sensors using a full-physics inverse learning machine algorithm, *Int. J. Remote Sens.*, 38, 1–27, <https://doi.org/10.1080/01431161.2017.1348644>, 2017.

740

Fedkin, N. M., Li, C., Krotkov, N. A., Hedelt, P., Loyola, D. G., Dickerson, R. R., and Spurr, R.: Volcanic SO₂ effective layer height retrieval for the Ozone Monitoring Instrument (OMI) using a machine-learning approach, *Atmos. Meas. Tech.*, 14, 3673–3691, <https://doi.org/10.5194/amt-14-3673-2021>, 2021.

745

Fisher, M. and Andersson, E.: Developments in 4D-Var and Kalman Filtering, ECMWF Technical Memorandum 347, available from ECMWF, Shinfield Park, Reading, Berkshire, RG2 9AX, UK, 2001, <https://www.ecmwf.int/sites/default/files/elibrary/2001/9409-developments-4d-var-and-kalman-filtering.pdf>

750

Fisher, M.: Generalized frames on the sphere with application to background error covariance modelling, Seminar on recent developments in numerical methods for atmospheric and ocean modelling, 6–10 September 2004, Proceedings, ECMWF, pp.87–101, available from ECMWF, Shinfield Park, Reading, Berkshire, RG2 9AX, UK, 2004.

755 Fisher, M.: Wavelet Jb – A new way to model the statistics of back-ground errors, *ECMWF Newsletter*, 106, 23–28, available from ECMWF, Shinfield Park, Reading, Berkshire, RG2 9AX, UK, 2006.

Flemming, J., and Inness, A. (2013), Volcanic sulfur dioxide plume forecasts based on UV satellite retrievals for the 2011 Grímsvötn and the 2010 Eyjafjallajökull eruption, *J. Geophys. Res. Atmos.*, 118, 10,172– 10,189, doi:10.1002/jgrd.50753.

760



- Flemming, J., Huijnen, V., Arteta, J., Bechtold, P., Beljaars, A., Blechschmidt, A.-M., Diamantakis, M., Engelen, R. J., Gaudel, A., Inness, A., Jones, L., Josse, B., Katragkou, E., Marecal, V., Peuch, V.-H., Richter, A., Schultz, M. G., Stein, O., and Tsikerdekis, A.: Tropospheric chemistry in the Integrated Forecasting System of ECMWF, *Geosci. Model Dev.*, 8, 975–1003, <https://doi.org/10.5194/gmd-8-975-2015>, 2015.
- 765
- Flemming, J., Benedetti, A., Inness, A., Engelen, R. J., Jones, L., Huijnen, V., Remy, S., Parrington, M., Suttie, M., Bozzo, A., Peuch, V.-H., Akritidis, D., and Katragkou, E.: The CAMS interim Reanalysis of Carbon Monoxide, Ozone and Aerosol for 2003–2015, *Atmos. Chem. Phys.*, 17, 1945–1983, <https://doi.org/10.5194/acp-17-1945-2017>, 2017
- 770
- Goitom, B., Oppenheimer, C., Hammond, J. O. S., Grandin, R., Barnie, T., Donovan, A., Ogubazghi, G., Yohannes, E., Kibrom, G., Kendall, J.-M., et al.: First recorded eruption of Nabro volcano, Eritrea, 2011, *B. Volcanol.*, 77, 85, <https://doi.org/10.1007/s00445-015-0966-3>, 2015
- Granier, C., S. Darras, H. Denier van der Gon, J. Doubalova, N. Elguindi, B. Galle, M. Gauss, M. Guevara, J.-P. Jalkanen, J. Kuenen, C. Liousse, B. Quack, D. Simpson, K. Sindelarova, The Copernicus Atmosphere Monitoring Service global and regional emissions (April 2019 version), Copernicus Atmosphere Monitoring Service (CAMS) report, 2019, doi:10.24380/d0bn-kx16.
- 775
- Grebennikov, V.S., Zubachev, D.S., Korshunov, V.A. et al. Observations of Stratospheric Aerosol at Rosgidromet Lidar Stations after the Eruption of the Raikoke Volcano in June 2019. *Atmos Ocean Opt* 33, 519–523 (2020). <https://doi.org/10.1134/S1024856020050097>
- Hedelt, P., Efremenko, D. S., Loyola, D. G., Spurr, R., and Clarisse, L.: Sulfur dioxide layer height retrieval from Sentinel-5 Precursor/TROPOMI using FP_ILM, *Atmos. Meas. Tech.*, 12, 5503–5517, <https://doi.org/10.5194/amt-12-5503-2019>, 2019.
- 785
- Huijnen, V., Williams, J., van Weele, M., van Noije, T., Krol, M., Dentener, F., Segers, A., Houweling, S., Peters, W., de Laat, J., Boersma, F., Bergamaschi, P., van Velthoven, P., Le Sager, P., Eskes, H., Alkemade, F., Scheele, R., Nédélec, P., and Pätz, H.-W.: The global chemistry transport model TM5: description and evaluation of the tropospheric chemistry version 3.0, *Geosci. Model Dev.*, 3, 445–473, <https://doi.org/10.5194/gmd-3-445-2010>, 2010.
- 790
- Inness, A., Blechschmidt, A.-M., Bouarar, I., Chabrilat, S., Crepulja, M., Engelen, R. J., Eskes, H., Flemming, J., Gaudel, A., Hendrick, F., Huijnen, V., Jones, L., Kapsomenakis, J., Katragkou, E., Keppens, A., Langerock, B., de Mazière, M., Melas, D., Parrington, M., Peuch, V. H., Razinger, M., Richter, A., Schultz, M. G., Suttie, M., Thouret, V., Vrekoussis, M., Wagner, A., and Zerefos, C.: Data assimilation of satellite-retrieved ozone, carbon monoxide and nitrogen dioxide with ECMWF's Composition-IFS, *Atmos. Chem. Phys.*, 15, 5275–5303, <https://doi.org/10.5194/acp-15-5275-2015>, 2015.
- 795
- Inness, A., Ades, M., Agustí-Panareda, A., Barré, J., Benedictow, A., Blechschmidt, A.-M., Dominguez, J. J., Engelen, R., Eskes, H., Flemming, J., Huijnen, V., Jones, L., Kipling, Z., Massart, S., Parrington, M., Peuch, V.-H., Razinger, M., Remy, S., Schulz, M., and Suttie, M.: The CAMS reanalysis of atmospheric composition, *Atmos. Chem. Phys.*, 19, 3515–3556, <https://doi.org/10.5194/acp-19-3515-2019>, 2019.
- 800
- Laloyaux P., Bonavita M., Chrust M., Gürol S. Exploring the potential and limitations of weak-constraint 4D-Var. *Q J R Meteorol Soc.* 2020;146:4067–4082. [org/10.1002/qj.3891](https://doi.org/10.1002/qj.3891)



805 Loyola, D. G., Xu, J., Heue, K.-P., and Zimmer, W.: Applying FP_ILM to the retrieval of geometry-dependent effective Lambertian equivalent reflectivity (GE_LER) daily maps from UVN satellite measurements, *Atmos. Meas. Tech.*, 13, 985–999, <https://doi.org/10.5194/amt-13-985-2020>, 2020.

Moxnes, E. D., Kristiansen, N. I., Stohl, A., Clarisse, L., Durant, A., Weber, K., and Vogel, A. (2014), Separation of ash and sulfur dioxide during the 2011 Grímsvötn eruption, *J. Geophys. Res. Atmos.*, 119, 7477–7501, doi:10.1002/2013JD021129.

Munro, R., Lang, R., Klaes, D., Poli, G., Retscher, C., Lindstrot, R., Huckle, R., Lacan, A., Grzegorski, M., Holdak, A., Kokhanovsky, A., Livschitz, J., and Eisinger, M.: The GOME-2 instrument on the Metop series of satellites: instrument design, calibration, and level 1 data processing – an overview, *Atmos. Meas. Tech.*, 9, 1279–1301, 815 <https://doi.org/10.5194/amt-9-1279-2016>, 2016.

Muser, L. O., Hoshyaripour, G. A., Bruckert, J., Horváth, Á., Malinina, E., Wallis, S., Prata, F. J., Rozanov, A., von Savigny, C., Vogel, H., and Vogel, B.: Particle aging and aerosol–radiation interaction affect volcanic plume dispersion: evidence from the Raikoke 2019 eruption, *Atmos. Chem. Phys.*, 20, 15015–15036, <https://doi.org/10.5194/acp-20-15015-2020>, 2020.

820

Nurmi (2003): Recommendations on the verification of local weather forecasts. ECMWF Technical Memorandum, no. 430, <https://www.ecmwf.int/node/11401>

Parrish, D. F. and Derber, J. C.: The National Meteorological Center's spectral statistical-interpolation analysis scheme, 825 *Mon. Weather Rev.*, 120, 1747–1763, 1992.

Platt, U. and Stutz, J.: *Differential Optical Absorption Spectroscopy (DOAS): Principle and Applications*, Springer, Berlin, 2008

830 Platt, U. (2017). Air Monitoring by Differential Optical Absorption Spectroscopy. In *Encyclopedia of Analytical Chemistry*, R.A. Meyers (Ed.). <https://doi.org/10.1002/9780470027318.a0706.pub2>

Prata, F., Woodhouse, M., Huppert, H. E., Prata, A., Thordarson, T., and Carn, S.: Atmospheric processes affecting the separation of volcanic ash and SO₂ in volcanic eruptions: inferences from the May 2011 Grímsvötn eruption, *Atmos. Chem. Phys.*, 17, 10709–10732, <https://doi.org/10.5194/acp-17-10709-2017>, 2017. 835

Rémy, S., Kipling, Z., Flemming, J., Boucher, O., Nabat, P., Michou, M., Bozzo, A., Ades, M., Huijnen, V., Benedetti, A., Engelen, R., Peuch, V.-H., and Morcrette, J.-J.: Description and evaluation of the tropospheric aerosol scheme in the European Centre for Medium-Range Weather Forecasts (ECMWF) Integrated Forecasting System (IFS-AER, cycle 45R1), 840 *Geosci. Model Dev.*, 12, 4627–4659, <https://doi.org/10.5194/gmd-12-4627-2019>, 2019.

Rix, M., Valks, P., Hao, N., Loyola, D., Schlager, H., Huntrieser, H., Flemming, J., Koehler, U., Schumann, U., and Inness, A.: Volcanic SO₂, BrO and plume height estimations using GOME-2 satellite measurements during the eruption of Eyjafjallajökull in May 2010, *J. Geophys. Res.-Atmos.*, 117, D00U19, <https://doi.org/10.1029/2011JD016718>, 2012

845



- Schmidt, A., et al. (2014), Assessing hazards to aviation from sulfur dioxide emitted by explosive Icelandic eruptions, *J. Geophys. Res. Atmos.*, 119, 14,180–14,196, doi:10.1002/2014JD022070.
- 850 Stohl, A., Prata, A. J., Eckhardt, S., Clarisse, L., Durant, A., Henne, S., Kristiansen, N. I., Minikin, A., Schumann, U.,
Seibert, P., Stebel, K., Thomas, H. E., Thorsteinsson, T., Tørseth, K., and Weinzierl, B.: Determination of time- and height-
resolved volcanic ash emissions and their use for quantitative ash dispersion modeling: the 2010 Eyjafjallajökull eruption,
Atmos. Chem. Phys., 11, 4333–4351, <https://doi.org/10.5194/acp-11-4333-2011>, 2011.
- 855 Theys, N., Smedt, I. D., Yu, H., Danckaert, T., Gent, J. v., Hörmann, C., Wagner, T., Hedelt, P., Bauer, H., Romahn, F., et
al.: Sulfur dioxide retrievals from TROPOMI onboard Sentinel-5 Precursor: algorithm theoretical basis., *Atmos. Meas.
Tech.*, 10, <https://doi.org/10.5194/amt-10-119-2017>, 2017.
- 860 Thomas, H. E., and A. J. Prata (2011), Sulphur dioxide as a volcanic ash proxy during the April–May 2010 eruption of
Eyjafjallajökull Volcano, Iceland, *Atmos. Chem. Phys.*, 11, 6871–6880, doi:10.5194/acp-11-6871-2011.
- Tournigand, P.-Y., Cigala, V., Lasota, E., Hammouti, M., Clarisse, L., Brenot, H., Prata, F., Kirchengast, G., Steiner, A. K.,
and Biondi, R.: A multi-sensor satellite-based archive of the largest SO₂ volcanic eruptions since 2006, *Earth Syst. Sci. Data*,
12, 3139–3159, <https://doi.org/10.5194/essd-12-3139-2020>, 2020.
- 865 Vaughan, G., Wareing, D., and Ricketts, H.: Measurement Report: Lidar measurements of stratospheric aerosol following
the 2019 Raikoke and Ulawun volcanic eruptions, *Atmos. Chem. Phys.*, 21, 5597–5604, <https://doi.org/10.5194/acp-21-5597-2021>, 2021.
- 870 Xu, J., Schüssler, O., Loyola R., D., Romahn, F., and Doicu, A.: A novel ozone profile shape retrieval using Full-Physics
Inverse Learning Machine (FP-ILM), *IEEE J. Sel. Topics Appl. Earth Observ. Remote Sens.*, 10, 5442–5457,
<https://doi.org/10.1109/JSTARS.2017.2740168>, 2017.
- 875 Yarwood, G., Rao, S., Yocke, M., and Whitten, G.: Updates to the carbon bond chemical mechanism: CB05, Final report to
the US EPA, EPA Report Number: RT-0400675, available at: <http://www.camx.com> (last access: 18 May 2021), 2005.