

# A dynamic local scale vegetation model for ~~lycophytes~~lycopsids (LYCOM v1.0)

Suman Halder<sup>1</sup>, Susanne K. M. Arens<sup>2</sup>, Kai Jensen<sup>3,\*</sup>, Tais Wittchen Dahl<sup>4,\*</sup>, and Philipp Porada<sup>5</sup>

<sup>1</sup>Universität Hamburg, Institut für Pflanzenwissenschaften und Mikrobiologie, Ohnhorststraße 18 22609 Hamburg, Tel.: +49 40 42816-579

<sup>2</sup>University of Copenhagen, Øster Voldgade 5-7, 1350 København K, Tel.: +45 35 33 09 27

<sup>3</sup>Universität Hamburg, Institut für Pflanzenwissenschaften und Mikrobiologie Angewandte Pflanzenökologie Ohnhorststr. 18 22609 Hamburg, Tel.: +49 40 42816-576

<sup>4</sup>University of Copenhagen, Øster Voldgade 5-7, 1350 København K, Tel.: +45 35 32 23 56

<sup>5</sup>Universität Hamburg, Institut für Pflanzenwissenschaften und Mikrobiologie Angewandte Pflanzenökologie Ohnhorststraße 18 22609 Hamburg, Tel.: +49 40 42816-577

**Correspondence:** Suman Halder (suman.halder@uni-hamburg.de)

**Abstract.** ~~Lycophytes (club-mosses)~~Lycopsids represent a distinct lineage of vascular plants with a long evolutionary history including numerous extant and extinct species which started out as tiny herbaceous plants and later ~~evolved into woody plants~~went on to grow into forests with tree-like structures. They enriched the soil carbon pool through newly developed root-like structures and promoted soil microbial activity by providing organic matter. These plants enhanced soil carbon dioxide (CO<sub>2</sub>) via root respiration and also modified soil hydrology. These effects had the potential to promote the dissolution of silicate minerals, thus intensifying silicate weathering. The weathering of silicate rocks is considered one of the most significant geochemical regulators of atmospheric CO<sub>2</sub> on a long (hundreds of thousands to millions of years) timescale. The motivation for this study is to achieve an increased understanding of the realized impacts of vascular plants, represented by modern relatives to the most basal plants with vascular tissue and shallow root system, on silicate weathering and past climate. To this end, it is necessary to quantify physiological characteristics, spatial distribution, carbon balance, and the hydrological impacts of early ~~lycophytes~~lycopsids. These properties, however, cannot be easily derived from proxies such as fossil records, for instance. Hence, as a first step, a process-based model is developed ~~here~~to estimate net carbon uptake by these organisms at the local scale, ~~considering~~. The model includes key features such as ~~biomass distribution~~the distribution of biomass above and below ground, along with a plausible root distribution in ~~soil-regulating the soil affecting~~ water uptake by plants~~besides~~. The stomatal regulation of water loss and ~~photosynthesis, and not withholding respiration in roots~~its immediate implications for photosynthesis are considered. Moreover, root respiration plays a crucial role in the model by affecting soil carbon dioxide and weathering rates. The model features ranges of key physiological traits of ~~lycophytes~~lycopsids to predict the emerging characteristics of the ~~lycophyte-class~~Lycopsida community under any given climate by implicitly simulating the process of selection. In this way, also extinct plant communities can be represented. In addition to physiological properties, the model also simulates weathering rates using a simple limit-based approach and estimates the biotic enhancement of weathering by ~~lycophytes~~these plants. We run the ~~Lycophyte-Lycopsid~~ model, called LYCOM, at seven sites encompassing various climate zones under today's climatic conditions. LYCOM ~~is able to~~can simulate realistic properties of ~~lycophyte~~lycosid communities

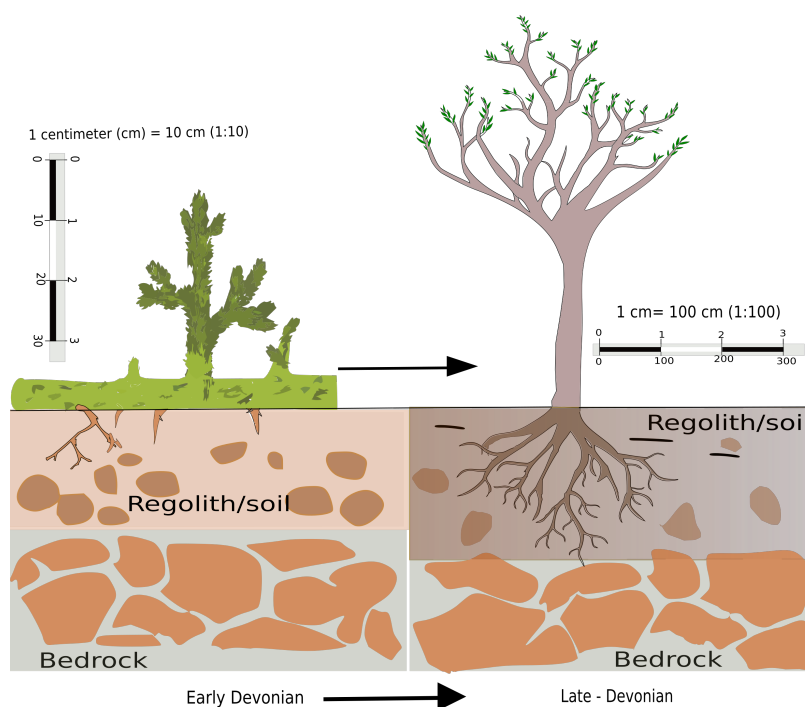
at the respective locations and estimates values of Net Primary Production (NPP) ranging from 126 g carbon m<sup>-2</sup> year<sup>-1</sup> to 245 g carbon m<sup>-2</sup> year<sup>-1</sup>. Our limit-based weathering model predicts a mean chemical weathering rate ranging from 5.3 to 45.1 cm ka<sup>-1</sup> rock with ~~lycophytes-lycopsids~~ varying between different sites, as opposed to 0.6 - 8.3 cm rock ka<sup>-1</sup> without ~~lycophytes~~these plants, thereby highlighting the potential importance of such vegetation at the local scale for enhancing chemical weathering. Our modeling study establishes a basis for assessing biotic enhancement of weathering by ~~lycophytes-lycopsids~~ at the global scale and also for the geological past. Although our method is associated with limitations and uncertainties, it represents a novel, complementary approach towards estimating the impacts of ~~lycophytes-lycopsids~~ on biogeochemistry and climate.

## 1 Introduction

The increasing carbon dioxide (CO<sub>2</sub>) content of the atmosphere is one of the most discussed topics in climate research pertaining to the rising concerns over the aggravating impacts of its greenhouse effect. Since societal well-being closely connects to the level of CO<sub>2</sub> in the atmosphere, it is important to look at the past developments and understand the key events which ensued changes in the level of CO<sub>2</sub> in the atmosphere. ~~Foster et al. (2017) showed the fluctuation of~~The fluctuations in atmospheric CO<sub>2</sub> content of the Earth 's atmosphere through the history of Earth and there have been several attempts to explain the rapid depletion have been significant (Bernier, 1998; Lenton et al., 1998; Foster et al., 2017). A rapid drawdown of Carbon dioxide is observed around 420 million years ago. It was around the same time when the before present, around a similar timeline, the advent of the earliest lycophytes was recorded from the study of fossils (Matsunaga and Tomescu, 2016; Thomas and Watson, 1976) lycopsids were recorded (Garratt et al., 1984). Very few attempts have been made to explain this dip and Silicate weathering have often been cited as an important factor contributing to this rapid fall in CO<sub>2</sub> through geologic time-scales (Hilley and Porder, 2008; Col but the influence of these evolving fauna has not explored in details.

~~Lycophytes or club mosses~~Lycopsids are regarded as one of the earliest forms of extant vascular plants (tracheophytes) with a long evolutionary history (Dahl and Arens, 2020). This ancient group of vascular plants (Kenrick and Crane, 1997; Qiu et al., 2006; Wickett et al., 2014) dates back to the ~~Mid Ordovician (Rubinstein et al., 2010; Steemans et al., 2009), and later evolved Silurian (Garratt et al., 1984; Kotyk et al., 2002) and were relatively simple, but later evolved into~~ tree stature in the Mid-Devonian (Stein et al., 2012) before surpassing a height of 50 meters during the Carboniferous period (~~Gensel and Berry, 2001; Taylor et al. (Thomas and Watson, 1976; Taylor et al., 2009).~~ This long transformative history along with a rich fossil record and extant diversity have made studies of ~~lycophytes-lycopsids~~ central to plant evolution. In any case, ~~Lycophytes-Lycopsids~~ were not only abundant during the Carboniferous period but became ecologically significant much earlier in the late ~~Silurian (Wellman et al., 2013) and soon-Silurian- Early Devonian (Wellman et al., 2013) and later~~ dominated the flora. The dominant role of ~~lycophytes these plants~~ as terrestrial vegetation in those periods could be attributed to the appearance of root-like structures (Matsunaga and Tomescu, 2016) coupled with stomatal control (Brodribb and McAdam, 2011) for controlling water loss.

**Figure 1.** A conceptual diagram of evolution of roots from its earliest stage in the Silurian era to a sophisticated form during the Devonian



55 Root evolution has been a gradual process and Fig. 1 depicts the transformation from its early elementary stages of appearance in [lycophytes-lycopsids](#) to a sophisticated structure comparable to the roots of modern plants during the [DevonianLate Devonian](#) ([Hetherington and Dolan, 2017](#); [Matsunaga and Tomescu, 2016](#)). It is without a doubt that the transformation took place over a considerable period. In fact, this evolution led to the foundation of modern plants and trees which are characterized by complex tissue structure allowing transport of water and nutrients, thus making high rates of Net Primary Production (NPP)

60 possible. Root-like structures have been observed in fossil records dating back to as early as 413 million years (Hao et al., 2010) in the early Devonian (Gensel et al., 2001). This innovation might have been central to the dominance of flora on the planet and enabled plants to grow in size as well as overcome the physiological drawback of their dependence on moist habitats (Bateman et al., 1998).

Roots provided the [lycophytes-lycopsids](#) with a key interface for interaction with the terrestrial environment for their nutrient and water supply as they could utilize the underground reserves which remained untouched before. Roots provided an anchor, which may have been a precondition for the development of the first trees. This effect also increased soil stability, hence it potentially reduced the erosion rate (Vannoppen et al., 2017). Roots influenced hydrological processes ~~such as water uptake and enhanced water loss through~~ [through transpiration due to the evolution of deep roots which accessed groundwater that would otherwise would remain shielded from uptake and or subject to loss through evapotranspiration from](#) plants according to the atmospheric and physiological demand, ~~thereby altering the water cycle.~~ [This potentially could enhance weathering \(Lee and Boyce, 2010\).](#) The other notable consequence of root development is believed to be an enhancement of chemical weathering [\(Algeo and Scheckler, 1998, 2010\)](#), which could have had strong impacts on atmospheric CO<sub>2</sub> content and the global carbon budget [\(Le Hir et al., 2011\)](#).

In general, the weathering regime is often influenced by several factors, and plants, and their associated microorganisms have been suggested to have a substantial impact on weathering, through respiration in the soil, hence increasing the partial pressure of soil CO<sub>2</sub> to several-fold greater than the atmospheric CO<sub>2</sub> level (Kelly et al., 1998; Montanez, 2013). In addition to plant-derived organic matter respired by these microorganisms, the root respiration also adds to the soil CO<sub>2</sub> content, thus increasing soil acidity and influencing weathering rates ~~(Moulton et al., 2000; Andrews and Schlesinger, 2001; Berner et al., 2003)~~ [\(Moulton et al., 2000; Andrews and Schlesinger, 2001; Berner et al., 2003; Ibarra et al., 2019\)](#).

Roots were not the only suite of innovations from these kinds of plants, they further developed stomatal control [\(Kenrick and Strullu-Derrier, 2012\)](#) of water loss to be able to photosynthesize under adverse climatic conditions which might have given [lycophytes-lycopsids](#) yet another advantage over their contemporaries. The evolution of stomata followed the innovation of roots closely, ~~around 400 at least 420~~ million years before the present [\(Chater et al., 2011; Ruzsala et al., 2011\)](#). Water loss and NPP are regulated by the opening and closing of stomata [\(McAdam and Brodribb, 2013\)](#). By changing the aperture of the stomata, plants inhibit water loss to prevent desiccation, at the cost of reduced photosynthetic productivity. The combination of adjustable stomata with an internal water transport system i.e. vascularity, was a turning point in plant evolution that might have enabled vascular plants to invade most terrestrial environments, tolerating water stress and exploiting favorable conditions (Raven, 2002). The development of such traits in [lycophytes-lycopsids](#) was gradual and was initially, relatively primitive. Brodribb and McAdam (2011) suggested that lycophyte [\(a broader classification encompassing lycopsids\)](#) and fern stomata lacked key responses to abscisic acid and epidermal cell turgor, making stomatal behavior highly predictable. The stomatal regulation of water loss was determined solely by the surrounding environmental conditions due to a poorly developed hydraulic system (Boyce and Lee, 2010), unlike today's plants which have a more complex mechanism driving the stomatal control.

The stomatal development primarily impacted and regulated water loss through transpiration, which may have had a significant role in altering the global water cycle, in particular by increasing the land surface area affected by precipitation through the recycling of water vapor (Berner, 1992; Drever, 1994; Ibarra et al., 2019). This may have then indirectly contributed to the alteration of weathering rates via an enhancement of local and global water recycling as well as increasing the area available for weathering in the interiors of continents (Shukla and Mintz, 1982; Boyce and Lee, 2010, 2017). The moisture recycling likely also increased plant productivity, thus increasing soil CO<sub>2</sub> content across continents. Consequently, the presence of land plants

increased the quantity of water in continental interiors available for weathering and increased primary productivity, further contributing to an increase in global weathering.

Silicate weathering is considered as one of the most significant geochemical regulators of atmospheric CO<sub>2</sub> on a long (hundreds of thousands to millions of years) timescale (Berner, 1990). Silicate weathering is primarily mediated by the hydrological cycle (Walker et al., 1981; Bluth and Kump, 1994; Maher, 2011; Maher and Chamberlain, 2014; Green et al., 2017; Ibarra et al., 2019) and it serves as a dominant carbon sink for Earth in the long run (Berner, 1998; Bergman et al., 2004; Gibling et al., 2014). A precondition for the weathering reactions is the production of weak carbonic acid from rainwater and soil CO<sub>2</sub>, which dissociates into bicarbonate (HCO<sub>3</sub><sup>-</sup>) ions during the dissolution of silicate minerals. The ions subsequently enter streams via runoff and eventually the oceans where they are used by various organisms to build shells and skeletons. These then serve as a long-term carbon sink after sedimentation. Hence the weathering of silicate rocks corresponds closely to the flux of carbon from the atmosphere into seafloor sediments (Algeo and Scheckler, 1998; Elick et al., 1998).

This so-called silicate weathering feedback might have been significantly influenced over various periods of Earth's history following the further evolution of plants and the development of roots and stomata. The increased soil carbon pool had the potential to promote the dissolution of silicate minerals (Walker et al., 1981). The study by Matsunaga and Tomescu (2016) demonstrates a substantial plant-substrate interaction that was already underway in the Devonian, causing weathering by root penetration (Algeo and Scheckler, 1998), and thereby confirming the significance of such an advent of vascular vegetation. Further studies have already claimed an enhancement of chemical weathering by vascular plants to have exceeded six-folds as compared to their earlier counterpart, i.e. non-vascular vegetation (Cochran and Berner, 1993), along with an improved pedogenesis (Quirk et al., 2015).

Although ~~lycophytes-lycopsids~~ were abundant in the ~~Silurian~~, Upper and Middle Devonian, these plants thrived even in the Lower Devonian, but their effects on weathering rates remain unclear. Detailed information on physiology, productivity, spatial distribution, and hydrological properties of these early plants, which is crucial to determine their effects on weathering rates in the root zone, is lacking. This makes it difficult to estimate the impacts of early ~~lycophytes-lycopsids~~ on the climate of the past. ~~Moreover, since many of the Palaeozoic lycophyte species, notably the tree lycophytes are now extinct, it is not straightforward to infer their geochemical impacts directly from recent extant lycophytes~~ Lycopsids today are primarily represented by Lycopodiaceae (club mosses), Selaginellaceae (spike mosses) and Isoetaceae (quillworts) and are typically found as an undergrowth beneath the forest canopy (Spencer et al., 2021). They are morphologically quite different from those of the past. Also, fossil records and proxy studies, which provide key information on morphological properties of early ~~lycophytes-lycopsids~~ and their approximate geographical distribution, are usually not sufficient to derive the extent of biogeochemical impacts of early vegetation in a quantitative way. It is thus necessary to develop an approach that can estimate vegetation properties for the ~~Silurian~~ Late Silurian - Early Devonian, based on available information, such as climate reconstructions and known physiological mechanisms.

Here, we introduce a process-based model, called LYCOM, which simulates ~~lycophyte-lycopsid~~ properties and is able to simulate diverse extinct plant communities based on given climatic conditions. This is complemented by a simple limit-based weathering model (Arens and Kleidon, 2011) which is utilized to determine the biotic enhancement of weathering

by ~~lycophytes~~these plants. We test if the model can predict realistic ~~lycophyte-lycopsid~~ properties for a range of prescribed  
135 current climatic conditions, and assess whether the organisms have a significant impact on weathering rates. The current study  
focuses on the impacts of roots and stomata of ~~lycophytes-Lycopsida~~ on hydrological processes as well as weathering of  
rocks for today, as the first step to a more quantitative understanding of the impacts of early vascular vegetation on global  
biogeochemical cycles and climate of the past.

## 2 Methods

### 140 2.1 ~~Lycophyte-Lycopsid~~ Model (LYCOM)

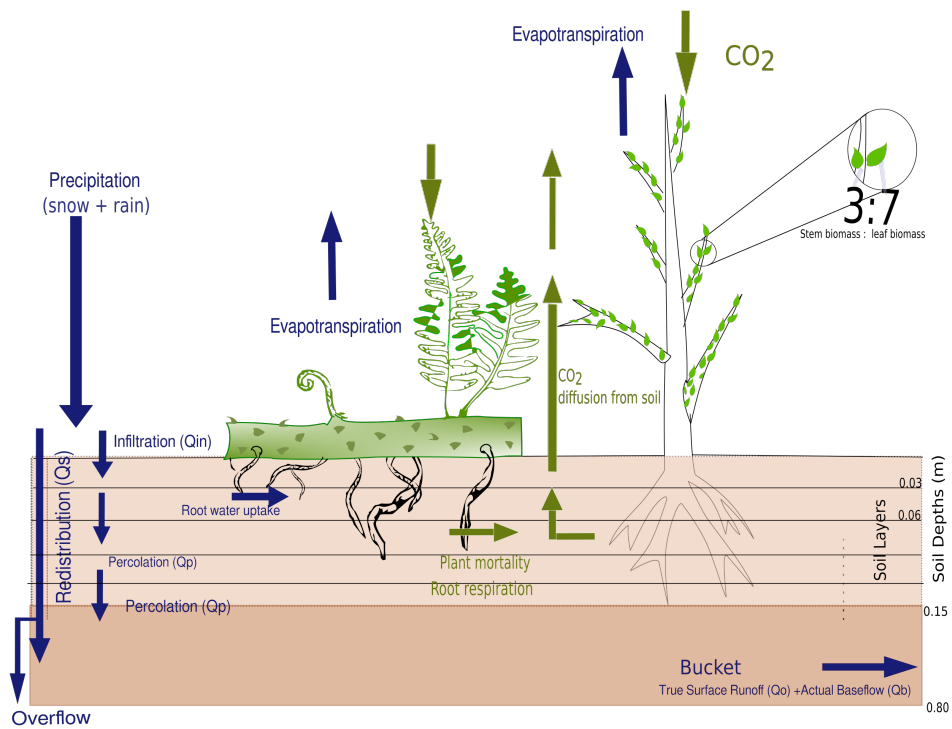
The process-based vegetation model used in the current study aims at a general representation of ~~lycophytes-lycopsids~~ for  
estimating the productivity and physiological properties of these organisms under a broad climatic range. LYCOM follows  
other dynamic global vegetation models (DGVMs) closely regarding the representation of plant properties and functioning  
(Randerson et al., 2009). Vegetation is represented as a set of carbon pools, namely below and above ground, corresponding to  
145 the roots and shoots with leaves. The balance of these pools depends on Net Primary Productivity (NPP), which is simulated  
as a function of climate forcing.

The current version of LYCOM differs from other vegetation models in some aspects. Stomatal conductance, for instance,  
is described as a function of soil water content and potential evaporation, instead of using the Vapor Pressure Deficit (VPD)  
as the controlling factor for the calculation of photosynthesis (Sellers et al., 1996; Lawson et al., 2010). The ~~main reason for~~  
150 ~~this choice is that~~ use of VPD, fails to accurately capture the fact that a plant's stomata may also react to water loss due to  
transpiration into saturated air, which is warmed up by radiation and thus may take up water while staying close to saturation  
during this process. Hence, VPD does not capture the possibility of water stress of plants due to transpiration of water into  
saturated air (at low VPD), which is driven by the energy balance, and also water stress due to low soil moisture. Hence, an  
efficient handling of a broader range of environmental conditions is possible. Since we ultimately want to apply LYCOM to the  
155 ~~Silurian-Devonian~~ period, we prefer a general approach that considers all relevant factors affecting stomatal conductance over  
a specific parameterization, which may be more accurate for the present day, but might not hold for the geological past.

Another difference between LYCOM and other DGVMs is the representation of leaves and stems. To account for the  
~~particular morphology of lycophytes~~accurate morphology of lycopsids, the above-ground biomass is distributed in the form of  
inclined cylinders, representing the stems, with small-sized leaves attached to the sides (see Fig. 2) instead of a detailed and  
160 complicated branching structure occurring in most plants. The vertical distribution of roots simulated in LYCOM is similar to  
other DGVMs with an exponential decrease in biomass distribution with depth.

In contrast to most global vegetation models, which use plant functional types, LYCOM explicitly represents physiological  
variation concerning several key characteristics of plants. This means that the ranges of observed physiological parameters  
derived from literature are sampled by a Monte-Carlo algorithm to generate hypothetical “species” which will be referred to as  
165 strategies in the article. These do not correspond directly to any particular ~~lycophytes-lycopsids~~ in the real world but represent  
the diversity of physiological strategies for ~~lycophytes instead-~~

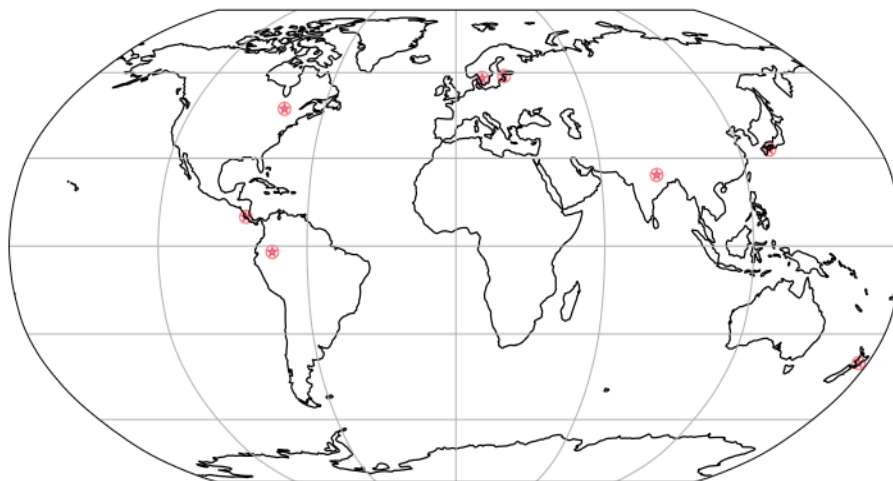
**Figure 2.** The rootprofile and general soil scheme comprising of the 5 layered top soil upto 15 cm followed by a bucket extending upto 0.80 meters is represented along with the hydrological profile and carbon pathways



lycopsids instead.

In this way, the response of a plant community of unknown composition with regard to a large range of environmental conditions can be simulated, and the effects of the adapted community on biogeochemical processes can be estimated. This modeling approach is more flexible compared to simulating a low number of “average” functional types with fixed properties,

**Figure 3.** The locations used for the simulations are found in the following regions: United States of America (USA)[47° N 78° W], Costa Rica (CR) [10° N 85° W], Sweden (Swe) [58° N 13° E], Estonia (Est) [58.75° N 24° E],Japan (Jap) [33° N 133° E], New Zealand (NZ)[40° S 176° E], Peru [2° S 74° W]



and it has already been successfully implemented in the JeDi-DGVM (Pavlick et al., 2013), and was further developed in the LiBry-DGVM for lichens and bryophytes (Porada et al., 2013). LYCOM is based in parts on the LiBry model. Another advantage of simulating diversity explicitly is the possibility to represent extinct species in the model for which direct current analogs are lacking. The LiBry model, for instance, has already been applied to simulate biogeochemical effects of early non-vascular vegetation in the Ordovician period (Porada et al., 2016).

Variation in the physiological features of different [lycophyte-lycopsid](#) strategies in LYCOM results in differences regarding their carbon balance. To acquire new carbon, [lycophytes-lycopsids](#) have to invest their carbon resources into structures for carbon uptake. Since carbon can be allocated to different parts of the plant (leaves, roots) this represents a trade-off. The various strategies simulated by the model differ in their carbon allocation and are thus adapted to different climatic conditions.



180 Hence, through analyzing the relative performance of each strategy, we can identify the key ecophysiological properties which determine the distribution of [lycophytes](#) [lycopsids](#) under any given recent or past climate.

## 2.2 Model Description

To determine both the spatial distribution of [lycophytes](#) [lycopsids](#) as well as their impacts on weathering rates, it is necessary to quantify the carbon balance of the organisms and its dependence on climatic conditions. LYCOM includes three carbon  
185 pools for [lycophytes](#) [lycopsids](#): below-ground (root) biomass and above-ground biomass, which is subdivided into a pool for leaves and another for stems. Gains in biomass result from Net primary production (NPP), while losses are due to mortality, which includes both above-ground litterfall and root turnover. NPP is calculated as the difference between photosynthesis and respiration (partitioned into leaf and root respiration), which are computed in LYCOM as functions of environmental climatic  
190 conditions, such as available water, light, and temperature. Thereby, root water uptake and subsequent transpiration through leaves connect the carbon to the water balance in the model. In the following sections, we describe the various equations aimed to describe biochemical and physical processes in LYCOM.

### 2.2.1 Soil scheme and hydrology

To simulate the water balance at the land surface and its connection to vegetation processes, we developed a hybrid soil scheme, consisting of a root zone, which is subdivided into 5 layers, and a “bucket” below the root zone. The layers have a thickness of  
195 3 cm each and the bucket has a depth of 65 cm, resulting in a total depth of 0.8 m. This scheme aims to take into account the effects of the vertical distribution of soil water on the success of simulated strategies of [lycophytes](#) [class Lycopsida](#) that differ in their root profiles. Since extant [lycophytes](#) [lycopsids](#), however, can only reach a maximum rooting depth of approximately 15 cm (Matsunaga and Tomescu, 2016), we resolve the soil water profile and its effects on the root profile up to this depth (Fig. 2). The inclusion of a bucket as water storage below the layers is necessary to simulate a realistic overall partitioning of rainfall  
200 at the land surface into evapotranspiration and runoff, i.e. avoid overestimation of runoff due to frequent saturation of the soil.

Rainfall serves as the primary water source for the soil and enters the first layer of the root zone. From there, water percolates down into the next layer, as a function of the relative water content of the respective layer, limited to the actual amount of water contained in the layer (equation 1-3). This sequence is repeated until the bucket is reached. In each layer, surplus water, which results from the exceeded water storage capacity of a layer, directly enters the bucket. This is justified by the spatial resolution of  
205 the model, which is designed to ultimately run at the regional or global scale. If the surface soil is saturated locally, overflowing water usually infiltrates into the surrounding soil, and does not immediately contribute to surface runoff. Only in case, the soil is saturated at a large scale, which corresponds to the bucket being near saturation, surface runoff is generated in the model, which then contributes to total runoff.

$$Q_{in} = Rainfall + snowmelt(.layer1) \quad (1)$$

$$Wu = WO + (Q_{in} - Q_p) \cdot p_{dt} \quad (2)$$

$$Q_p = \min(Q_{p0} \cdot S, Wu/p_{dt}) \quad (3)$$

where,  $Q_{in}$ = Incoming water into layers (rain + slow melt - Interception by surrounding vegetation (for first layer)),  $p_{dt}$   
 215 = timestep,  $Q_p$ =percolation(which becomes the  $Q_{in}$  for the following layer) ,  $Q_{p0}$ = (0.5e-7 [m/s]) Percolation under water  
 saturated condition,  $S$ = relative water saturation level of the layer,  $Wu$ = updated layer Water content,  $WO$ = Initial layer water  
 content

In addition to infiltration and percolation, root water uptake changes the water content of the layered soil in the model.  
 Uptake of water by roots is calculated for each layer as a function of potential evapotranspiration (Monteith, 1981), which is  
 220 then modified depending on the share of the root biomass contained in the respective layer on the total root biomass (equation  
 4). Additionally, root uptake is limited to the available water in each layer.

$$QR = \min(QR_{pot} \cdot Br / \text{sum}(Br), Wu/p_{dt}) \quad (4)$$

where,  $QR$  = root uptake from Layer,  $QR_{pot}$  = Potential Evapotranspiration [m/s],  $Br$  = layer biomass content,  $\text{sum}(Br)$  =  
 Total root biomass,  $Wu$  = Water content of layer

$$225 \quad Q_b = \min(Q_{b0} \cdot S_2, W_x/p_{dt}) \quad (5)$$

where,  $Q_b$  = Base flow,  $Q_{b0}$  = Base runoff rate [m/s],  $S_2$  = average saturation of the bucket soil part,  $W_x$  = Water content of  
 bucket

The water balance of the bucket is then calculated according to the following equation:

$$W_x = W_{Ix} + (Q_p + Q_s - Q_b - Q_o) \cdot p_{dt} \quad (6)$$

230 where,  $W_x$  = Updated bucket water content,  $W_{Ix}$ = Initial bucket water content,  $Q_p$ = Percolation from the upper layers,  $Q_s$ =  
 Overflow from top layer,  $Q_b$ =Actual base flow ,  $Q_o$ = Large scale runoff comprising of the excess water from the saturated  
 bucket

### 2.2.2 Stomatal Conductance

In LYCOM, stomatal conductance depends on two main factors: Firstly, it is controlled by the evapotranspiration ratio (ETratio),  
 235 which means the ratio of the potential evapotranspiration at a given time of the day and the average potential evapotranspiration

for the overall timeframe (eq. 8). Through the ERatio (eq. 7), a normalized estimate of the atmospheric water demand (and, thus, potential water stress) is defined, which is independent of empirical parameters and considers both the vapor pressure deficit and net radiation as drivers of evaporation. The motivation for this approach is the potential dependence of empirical parameterizations on recent climatic conditions and also on physiological properties of the current vegetation community, which is likely adapted to the climate. Consequently, when applied to the geological past, these parameterizations may not be valid anymore. Our approach is flexible enough to be applied to palaeo-climatic scenarios. It thereby depends on the assumption that the plant community is adapted to the prevailing average conditions, and thus using our normalized measure for atmospheric water demand will lead to a realistic response of stomatal conductance to short-term variations in the climate forcing.

The average atmospheric evaporation demand for the full-time span of the run is determined in the pre-processing. The run-time atmospheric demand is then evaluated using the following equation 7.

$$ERatio = ETdata / ETdavg \quad (7)$$

*ERatio=Relative atmospheric demand to the whole run-time, ETdata= run-time atmospheric water demand, ETdavg=average atmospheric water demand for the whole runtime*

The stomatal conductance is then computed as:

$$gsleaf = gs0, \text{ when, } ERatio \leq 1, \\ \text{ else,} \\ gsleaf = (gs0) / (ERatio)^{\log p_{gs1} / \log ETrmax} \quad (8)$$

where,  $gs0$  = maximum stomatal conductance ([maximum derived from Soni et al. \(2012\) and minimum value derived from 20 percent over the actual value of Pteridium aquilinum \(Tosens et al., 2016\)](#)),  $ERatio$  = (Potential evapotranspiration at the given timestep/ Average evapotranspiration),  $p_{gs1}$  = shape parameter,  $ETrmax$  = Maximum ERatio for the entire simulation,  $gsleaf$  = stomatal conductance due to atmospheric demand

Secondly, stomatal conductance is limited by maximum conductance (dependent on species) and soil water availability in our model. To this end, the conductivity for water flow at the soil root interface is computed, which is proportional to the soil water content (eq. 10). The realized stomatal conductance is then limited to root conductance. In this way, also the impacts of soil water stress on stomatal conductance can be taken into account, in addition to the atmospheric drivers.

$$gsroot = gs0 \cdot S1 \quad (9)$$

$$gsfinal = \min(gsleaf, gsroot) \quad (10)$$

where,  $gsroot$  = stomatal conductance determined by average layer water content,  $gsfinal$  = stomatal conductance limited both by soil water availability and atmospheric demand,  $S1$  = average saturation of the layered soil part.

### 2.2.3 Above and below ground biomass

265 In LYCOM, plant growth corresponds to Net Primary Production (NPP), which is based on the simulated net photosynthesis averaged over one month. Thereby, net photosynthesis is computed as gross photosynthesis minus respiration according to Farquhar and Von Caemmerer (1982).

$$f_{GPP,L} = \frac{J \cdot (CO_2 - P)}{4.5 \cdot CO_2 + 10.5 \cdot P} \quad (11)$$

270 
$$f_{GPP,CO_2} = vcm \cdot \frac{(CO_2 - P)}{CO_2 + Kc \cdot \frac{1.0 + O_2}{K_o}} \quad (12)$$

where,  $f_{GPP,L}$  = Light limited gross primary production,  $f_{GPP,CO_2}$  = Carbon dioxide limited gross primary production,  $vcm$  = maximum specific carboxylation rate,  $J$  = actual rate of electron transport,  $CO_2$  =  $CO_2$  concentration in the chloroplast,  $O_2$  = Oxygen concentration in the chloroplast,  $P$  =  $CO_2$  compensation point,  $Kc, K_o$  = Michaelis-Menten constants of carboxylation and oxygenation reactions

275 Gross photosynthesis is simulated as the minimum of a light-limited and a  $CO_2$ -limited rate. The light-limited rate is an increasing function of the absorption of light and is constrained by the maximum rate of the electron flux ( $J_{max}$ ). The  $CO_2$ -limited rate is an increasing function of the  $CO_2$  concentration in the chloroplasts and saturates at high values of  $CO_2$  concentration, the maximum rate being  $VC_{max}$ . The detailed formulation can be found in Porada et al. (2013).

$$GPP = \min(f_{GPP,L}, f_{GPP,CO_2}) \quad (13)$$

280 where,  $GPP$  = Gross primary production

Photosynthesis peaks around an optimum surface temperature estimated for the individual strategies (June et al., 2004), and the estimation of respiration is done using a common empirical temperature response framework with respect to  $Q_{10}$  (eq. 15) (Vanderwel et al., 2015). The Gross and Net Primary Production (GPP and NPP) are calculated:

$$NPP = GPP - R \quad (14)$$

285

$$R = R_0 \cdot Q_{10}^{((T - T_{opt})/10.0)} \quad (15)$$

where,  $NPP$  = Net primary production,  $R$  = Respiration,  $R_0$  = Reference respiration rate at  $10^\circ C$  (Tosens et al., 2016; Soni et al., 2012; C...),  $Q_{10}$  =  $Q_{10}$  value of respiration (Atkin et al., 2005; Hanson and Rice, 2014),  $T$  = Temperature on the surface of the plant,  $T_{opt}$  = Optimum temperature

290 The pore space  $CO_2$  concentration inside the leaves is a function of the stomatal conductance which is in turn controlled by the water availability in soil (eq. 10). Thereafter, we have considered a steady-state assumption of pore space  $CO_2$  between diffusion and the net photosynthesis which is in turn dependent on the respiration. This drives the light and  $CO_2$  limited

Farquhar and Von Caemmerer (1982) assimilation model of photosynthesis. The rest of the scheme is analogous to the LiBry model (Porada et al., 2013).

295 Plant growth is often limited by water availability, which causes the organisms to invest carbon from NPP into root structures to increase access to soil water. Since plant growth is also limited by light, carbon needs to be invested into stems and leaves, too. This leads to a trade-off regarding the allocation of the assimilated carbon to either above- or below-ground biomass. To address this key physiological trade-off, LYCOm includes a flexible allocation scheme that is adaptive to the prevailing atmospheric conditions, i.e. whether the plant photosynthesizes under light-limited or CO<sub>2</sub>-limited (i.e. water-limited) conditions. The light-  
300 limited photosynthesis enhances allocation of NPP into shoot and leaves while the CO<sub>2</sub> limitation leads to the accumulation of root biomass (equation 16,17 and 18). The distribution and amount of root biomass and also above-ground biomass is key to the quantitative estimation of impacts of vegetation on multiple biogeochemical processes, such as microbial respiration of soil organic matter which is linked closely to chemical weathering.

Equation 16 and 17 determine the amount of assimilated carbon (NPP) assigned to root biomass with depth depending on the  
305 relative amount of limiting factors for photosynthesis. The available root biomass  $B_{root}$  is then distributed layer-wise ( $B_{root_i}$  in equation 18), with decreasing fractions at increasing depth, which is determined by the  $fracR_0$  factor (Fan et al., 2016). This ensures a decreasing cumulative root distribution profile with depth.

$$B_{root_{in}} = NPP \cdot (1.0 - fracL) \cdot (layer1) \quad (16)$$

$$B_{root_{in}} = (1.0 - fracR_0) \cdot B_{root} \cdot (layersbelow) \quad (17)$$

310 where  $NPP$  = Net primary productivity,  $fracL$  = fraction of time where light limitation dominates during photosynthesis. In this case we allocate more biomass into leaves in order to capture more light for photosynthesis,  $fracR_0$  = shape constant [0.25] for a exponential decrease of root biomass allocation with depth,  $B_{root}$  = available root biomass which is still available for allocation in this layer

$$B_{root_i} = IB_{root_i} + fracR_0 \cdot B_{root_{in}} - Mortality_i \quad (18)$$

315 where,  $B_{root_i}$  = root biomass of the layer  $i$ ,  $IB_{root_i}$  = initial root biomass of the  $i^{th}$  layer,  $B_{root_{in}}$  = Root biomass available,  $Mortality_i$  = a term based on baseline mortality and the biomass allocation in soil layers

The assigning of root biomass to litterfall (equation 19) is an important aspect to focus on as it determines the silicate weathering in the soil. When the soil layer reaches its maximum root biomass holding capacity, the excess is directly assigned to litterfall (Eqn. 19). This adds to the mortality calculated in equation 18 which is in turn utilized to determine the soil carbon  
320 pool and later the weathering regime.

LYCOM considers the root respiration as well, which potentially could further affect the soil CO<sub>2</sub> content (equation 20). Root respiration (equation 20) is basically comprised of root maintenance respiration, which is used for keeping roots alive, root growth respiration for growing new roots as well as new root tissues, along with microbial respiration.

$$RtoM = \max(0.0, B_{root_i} - Brmax_i) \quad (19)$$

325  $RtoM =$  Root to direct litterfall,  $B_{root_i} =$  root biomass of layer,  $Brmax_i =$  Maximum layer root biomass.

$$R_{resp} = R0 \cdot Q_{10}^{((T-T_{opt})/10.0)} \cdot (B_{root_i} / \text{sum}(B_{root})) \quad (20)$$

$R_{resp} =$  Root respiration,  $R0 =$  Respiration determined by strategy-specific parameters,  $Q_{10} =$  Q10 value,  $T =$  Soil temperature,  $T_{opt} =$  Optimum temperature,  $B_{root_i} =$  Root biomass of layer,  $\text{sum}(B_{root}) =$  Total root biomass

Besides roots, the hypothetical plants in the model also consist of a shoot and leaf partitioned in three to seven ratio of the total available above-ground biomass which is represented as a cylinder to emulate the vertical structure of the given plant strategies along with Leaf Area Index (LAI). The leaf to shoot ratio is analogous to the horizontal to vertical biomass ratio value derived from Zier et al. (2015). ~~Lycophytes exhibit Lycopsids exhibit root bearing axes and~~ true roots, ~~stems, and also leafy shoot axes, along with~~ scale-like leaves called microphylls ~~which cover covering~~ the above-ground part of the plant ~~Hetherington et al. (2021)~~. In contrast to trees or shrubs, the scale-like nature of leaves is hard to distinguish from the stem in the model and hence we assume that photosynthesizing parts of the plant in the model approximately comprise 70 % of the above-ground biomass.

This is a distinct feature of the model which departs from the traditional simple LAI approach while representing the above-ground share of biomass.

The leaf biomass (Eqn. 21) is used thereafter to estimate the LAI which is computed using equation 22.

$$340 \quad Bl = Bli + NPP \cdot \text{fracL} - \text{Mortality}_{shoot} \quad (21)$$

where  $Bl =$  leaf biomass,  $Bli =$  initial leaf biomass,  $\text{Mortality}_{shoot} =$  a term based on baseline mortality and the biomass production and allocation into above ground biomass

$$LAI = (\text{TotalLeafArea} / \text{GrA}) \quad (22)$$

345  $\text{Total Leaf Area} = \text{Aleaf} \cdot (Bl / \text{Drw})$ ,  $\text{Aleaf} =$  Leaf area using measurement from Valdespino (2015a) and  $\text{Drw} =$  Dry leaf weight as measured in Leopold et al. (1981),  $\text{GrA} =$  Ground area (below)

The projection of the ground area covered by plants used for the calculation of the LAI used in the model assumes a random value ranging between 30 to 50 square centimeters. The range is close to the reconstruction of *Zosterophyllum shengfengense* (Hao et al., 2010) but we assume a maximum coverage of a lateral area equivalent of a square of 70 mm edge.

#### 2.2.4 Weathering and soil carbon dioxide

350 To estimate chemical weathering rates and their biotic enhancement, we apply a simple limit-based approach Arens and Kleidon (2011), which has already been used in other studies to quantify large-scale weathering, both for the current climate and also for the geological past (Porada et al., 2016). This approach assumes that chemical weathering can be derived from the minimum of a supply-limited rate, which corresponds to the provision of primary minerals into the dynamic soil profile via uplift, and a transport-limited rate, which describes the removal of dissolved weathering products from the soil via runoff, named the  
355 eco-hydrological limit. Without runoff, the soil solution would remain in a state of chemical saturation, and the weathering reactions would stop. Consequently, the chemical weathering rate cannot exceed the rate of weathering products exported via runoff. Furthermore, the rate of chemical weathering cannot exceed the rate of exposure of unweathered rock material at the surface, which is equal in the steady-state to the erosion rate (see table 4).

While the supply limit is not affected by biotic processes, unless the impact of vegetation on erosion and uplift are considered,  
360 the transport limit may be altered through the effect of CO<sub>2</sub> in the soil solution on the equilibrium concentration of weathering products, and also through the effects of vegetation on runoff. The erosion is simply a function of the elevation of the sites (see table 2) which is derived from the database of the National Center for Atmospheric Research called "TerrainBase" (TBASE). The current run consider modern day elevation and climate and not for the past.

Plants affect soil CO<sub>2</sub> mainly via two processes: Firstly, they directly release CO<sub>2</sub> into the soil as a result of root respiration,  
365 and, secondly, they enhance microbial respiration due to decomposition of plant biomass originating from root turnover and litter input into the soil. In LYCOM, we assume a steady-state between the incoming soil CO<sub>2</sub> via mortality (equation 16 - 18) and root respiration (equation 19), and the outgassing of the CO<sub>2</sub> from the soil. The overall carbon going into the soil as litter is subject to diffusion and this is the primary carbon pool responsible for facilitating the weathering. Subsequently, the concentration of CO<sub>2</sub> in the soil can be determined from the known atmospheric CO<sub>2</sub>-concentration and a soil diffusivity  
370 equation (Jabro et al., 2012) as shown in Eqn. 23.

$$Soil_C = (B_r) \cdot S_d / (D_c) \cdot p_a + (CO_{2p}) \cdot S_d / (D_c) \cdot p_a + CO_2 \quad (23)$$

where,  $B_r$  = root turnover and litter input to the soil,  $D_c = T \cdot \epsilon \cdot D_0 \cdot h_{mon}$ ,  $T = 0.66$  (tortuosity constant),  $D_0 = 0.05$ ,  $\epsilon$  = is the air-filled soil porosity,  $h_{mon}$  = hours in month,  $CO_{2p}$  = Soil Carbon dioxide concentration from previous timestep,  $p_a = 22.71108/44$  (Conversion constant from mass to ppm),  $CO_2$  = atmospheric CO<sub>2</sub> content,  $S_d$  = Max root depth

#### 375 2.3 Physiological strategies

The variation of physiological properties in the model is summarised in table 1. Some photosynthetic parameters such as the stomatal conductance responsible for the diffusion of atmospheric CO<sub>2</sub> into the leaves is limited as shown in the aforementioned table. The upper limit of the optimal temperature is limited between 0 and 50° C along with a restricted Q<sub>10</sub> value between 1.5 - 2.3. The Rubisco kinetic limits are adjusted from Galmes et al. (2014). This is done keeping in mind that the current model

380 serves as a basis for paleoclimate ([OrdovicianDevonian](#)) simulations when the [lycophytes-lycopsids](#) were abundant and the mean surface temperature was comparatively higher than today ([Cocks and Torsvik, 2020](#))([Song et al., 2019](#)). Furthermore, the physical realism of the [lycophytes-lycopsid](#) is asserted by constraining certain parameters ranges such as the leaf area ([Valdespino, 2015b](#)) or the dry weight of leaves ([Leopold et al., 1981](#)) based on literature that includes various taxonomic details of [lycophyteslycopsids](#). The rest of the scheme is analogous to the model described in ([Porada et al., 2013](#)).

**Table 1.** Parameters used to define the [lycophyte-lycopsid](#) specific model

| Parameter          | Description                                  | Range                                 | Unit  | Reference                                       |
|--------------------|--|---------------------------------------|---|---|
| Aleaf              | Specific Leaf area                           | 0.01-0.15                             | mm <sup>2</sup>                             | Eq. 22  |
| Drw                | Specific dry weight of lycopsid leaf         | 0.1-1                                 | mg  | Eq. 22  |
| GrA                | Specific projected area of lycopsids         | 30-50                                 | cm <sup>2</sup>                             | Eq. 22  |
| fracTransm         | Reduction of light in leaves                 | 0.6-0.75                              |   | Zhang et al. (2014); Hikosaka and Hirose (1997) |
| gSO                | Maximum Stomatal Conductance                 | 0.2-0.35                              | $\mu\text{mol m}^{-2}\text{s}^{-2}$         | Eq. 8   |
| Vcm                | Molar carboxylation rate of Rubisco          | 0.0139-26.8                           | s <sup>-1</sup>                             | Galmes et al. (2014); Savir et al. (2010)       |
| Vom                | Molar oxygenation rate of Rubisco            | 0.391-2.5                             | s <sup>-1</sup>                             | Galmes et al. (2014); Savir et al. (2010)       |
| R0                 | Reference maintenance respiration            | $1 \cdot 10^{-8} - 8.5 \cdot 10^{-7}$ | $\text{mol CO}_2$<br>(kg C s) <sup>-1</sup> | Eq. 15,20                                       |
| Q10                | Q10 value of respiration                     | 1.5-2.3                               |   | Eq. 15  |
| Topt               | Optimum temperature of photosynthesis        | 273-323                               | K   | Eq. 15,20                                       |
| EactK <sub>c</sub> | Enzyme activation energy of K <sub>C</sub>   | $5 \cdot 10^4 - 12 \cdot 10^4$        | J mol <sup>-1</sup>                         | Medlyn et al. (2002)                            |
| EactK <sub>o</sub> | Enzyme activation energy of K <sub>o</sub>   | $1 \cdot 10^4 - 5 \cdot 10^4$         | J mol <sup>-1</sup>                         | Medlyn et al. (2002)                            |
| Eactv <sub>m</sub> | Enzyme activation energy of Vc <sub>m</sub>  | $4 \cdot 10^4 - 11 \cdot 10^4$        | J mol <sup>-1</sup>                         | Kattge and Knorr (2007)                         |
| EactJ <sub>m</sub> | Enzyme activation energy of J <sub>max</sub> | $3 \cdot 10^4 - 8 \cdot 10^4$         | J mol <sup>-1</sup>                         | Kattge and Knorr (2007)                         |

## 385 2.4 Weighting scheme

The weighting scheme used to calculate the resulting productivity depends on the allocation of root and above-ground biomass (equation 24, 25, 26). For obtaining a representative value we scale the productivity of all surviving strategies by their weights. This yields an averaged representative NPP (table 3 ) and soil CO<sub>2</sub> which would be difficult once the dominant species is solely chosen for the purpose. To eliminate overestimation, we consider the root as well as Leaf biomass for the weighing scheme. In  
390 table A1 a comparative chart of the productivity by weighted mean, mean, and that of the dominant species is summarised.

$$weightedNPP = \sum(NPP_{ji} \cdot W_i) \quad (24)$$

$$NPP_j = \frac{1}{30} \sum_{n=1}^{30} (NPP_{n,j}), j = 1, 2, \dots, 12 \quad (25)$$



$$395 \quad W_i = \frac{(M_i/\bar{M}) + (Lai_i/\bar{Lai})}{\sum((M_i/\bar{M}) + (Lai_i/\bar{Lai}))} \quad (26)$$

where,  $NPP_{ji}$  = monthly mean NPP of species  $i$ ,  $W_i$  = Weight calculated for species  $i$ ,  $NPP_j$  = monthly NPP averaged over 30 years,  $M_i$  = Root biomass accumulated over 30 simulation years,  $\bar{M}$  = Mean Rootbiomass for all surviving species,  $Lai_i$  = Leaf area Index at the last time step,  $\bar{Lai}$  = mean LAI of the surviving species at the final time step

### 3 Model setup and validation

400 The performance of LYCOM is assessed using gas exchange measurements of photosynthesis by [lyeophytes-lycopsids](#) under varying ambient conditions, such as temperature, carbon dioxide concentration, and photosynthetic photon flux density (PPFD) (Soni et al., 2012). The data used for the purpose is obtained for *Selaginella bropteris* (see figure 4 dashed lines). This aims to confirm the ability of LYCOM to replicate real species and affirms the realism of our approach. Moreover, certain parameters ranges, for example, the habitable temperature range ( $T_{opt}$  in table 1) of [lyeophytes-lycopsids](#) are determined using  
405 the data derived from Soni et al. (2012).

#### 3.1 Model Setup

We run LYCOM locally for seven locations (listed in table 2) with a 2.812-degree spatial resolution data for 30 years between 1958 through 1989 with an hourly time step, simulating 100 different physiological strategies one at a time and evaluate their survival rates. The meteorological forcing data set used for the purpose is derived from WATCH Forcing Data (WFD) by  
410 making use of the ERA-Interim reanalysis data (Weedon et al., 2018). Besides, the model setup is initialized with close to present atmospheric composition of  $CO_2$  concentration of 400 ppm and an oxygen content of 210000 ppm. The soil porosity is constrained to a relative value of 0.45 with a percolation rate of  $0.5 \times 10^{-7} \text{ m s}^{-1}$  between the layers and an average baseflow of  $1.0 \times 10^{-8} \text{ m s}^{-1}$  from the bucket.

#### 3.2 Model validation

415 The chosen study sites encompass various climate zones, to assess if the model can capture the productivity and viability of the local [lyeophyte-lycopsid](#) communities. The chosen sites are characterized by a high occurrence of [lyeophyteslycopsids](#), as determined based on the Global Biodiversity Information Facility (GBIF, [www.gbif.org](http://www.gbif.org)).

The study by Ghiggi et al. (2019) provides data that is suitable to evaluate the hydrological cycle achieved via the hybrid soil hydrological scheme in LYCOM.

420 Although the physiological evolution of [lyeophytes-lycopsids](#) is well documented there is a significant lack of literature concerning biochemical properties and also the characteristic productivity range of [lyeophytes-lycopsids](#) under various climate regimes. Hence, our validation of the model is limited. However, the on-site measurements of productivities of *Lycopodium annotinum* and *Lycopodium clavatum* in Estonia by Tosens et al. (2016) in May and early June provides an order-of-magnitude

estimate in this regard, which improves our ability to evaluate LYCOM. Both *Lycopodium annotinum* and *Lycopodium clavatum* have a widespread distribution across several continents today and are the most common species in Estonia (gbif.org). A Similar study by Company et al. (2019) in Costa Rica affirms a robust model performance.

### 3.3 Parameters of LYCOM

As described in the methods section, LYCOM represents the physiological diversity of **lyeophytes-lycopsids** via generating multiple strategies, which are closely analogous to thriving **lyeophyte-lycopsid** species and the intra-specific diversity of **lyeophytes-lycopsids** is accounted for in the physiological processes implemented in the LYCOM model. The distinguishing features of **lyeophyte-lycopsid** strategies are represented by 14 parameters and their corresponding ranges. To generate the **lyeophyte-lycopsid** strategies, these 14 characteristic parameters are assigned through randomly sampling ranges of possible values (table 1). Assignment of parameter values is performed in two steps: (a) for each strategy, a set of 14 random numbers uniformly distributed between 0 and 1 is sampled. The random numbers are generated by a Latin Hypercube algorithm (McKay et al., 2000). (b) These random numbers are used to map values of the parameters from permissible ranges particular to **lyeophytes-lycopsids** which are derived from literature. The particulars of the equations utilized in the model are briefly described in Table 1.

**Table 2.** Various characteristics of the sites where the model is run including the local relief, and a comparison of the runoffs from the model and historical runoff data between 1958 and 1988

| Location | Elevation (m) | Runoff, historical:<br>(mm/yr/m <sup>2</sup> ) | Runoff, model:<br>(mm/yr/m <sup>2</sup> ) |
|----------|---------------|--|---|
| USA      | 168           | 446  | 536                                       |
| CR       | 700           | 1545   | 2134                                      |
| Swe      | 260           | 442  | 544                                       |
| Est      | 175           | 199  | 282.3                                     |
| Jap      | 523           | 774  | 823                                       |
| NZ       | 550           | 536  | 523                                       |
| Peru     | 250           | 1837   | 2605                                      |

## 4 Results

The modeled **lyeophytes-lycopsids** cope well at all the sites except in India, where the plants die due to water stress. The aforementioned run is undertaken to incorporate the microclimate of *Selaginella bryopteris* from where the sample was collected by Soni et al. (2012). The study forms the basis of the light, CO<sub>2</sub>, and temperature dependence of productivity, for model calibration (Figure 5). Out of 100 strategies a maximum of 46 species survive in New Zealand followed by the USA which features 41 surviving strategies. The climate of Sweden suits 24 varieties of the generated species, and that in Costa Rica the number

fixates to 30. The prevailing weather conditions in Japan and Peru support 32 and 24 strategies respectively. In India, none of  
 445 the strategies survive 30 simulation years as shown in Table 2, and Estonia features the least number of surviving strategies of  
 18.

The measured productivity of *Lycopodium clavatum* and *Lycopodium annotinum* in Estonia by Tosens et al. (2016) range  
 around  $1.4 \mu\text{mol CO}_2 \text{ m}^{-2} \text{ s}^{-1}$  and  $1.7 \mu\text{mol CO}_2 \text{ m}^{-2} \text{ s}^{-1}$  for the respective species. The productivity range in LYCOM  
 model varies from  $0.5 \mu\text{mol CO}_2 \text{ m}^{-2} \text{ s}^{-1}$  to  $1.23 \mu\text{mol CO}_2 \text{ m}^{-2} \text{ s}^{-1}$  in May and early June for five dominant species  
 450 possessing the maximum weights (Eqn. 26). The ecophysiological study of *Selaginella*, an early lineage vascular plant group  
 from a tropical forest understorey in Costa Rica (Campany et al., 2019) in June exhibits a range of net photosynthesis from 1.8  
 to  $5.8 \mu\text{mol CO}_2 \text{ m}^{-2} \text{ s}^{-1}$ . The mean productivity of the top ten strategies (by weights) over the thirty-year simulation period  
 for June varies between 1.07 and  $2.42 \mu\text{mol CO}_2 \text{ m}^{-2} \text{ s}^{-1}$  in the model. The higher productivity range in the study results  
 from the prevailing atmospheric temperature, which ranges between 24 and  $29^\circ \text{C}$  during the on-site measurement while in  
 455 the model the temperature range in June varied from 13 to  $25^\circ \text{C}$  between 1958 and 1988 with a mean temperature of  $21^\circ \text{C}$   
 which is significantly lower than the aforementioned study.

In general, the LYCOM simulates high weighted yearly productivity (see table 3) at the tropical site in Costa Rica of 20.45  
mol CO<sub>2</sub> m<sup>-2</sup> (245.37 gC per-m<sup>2</sup>-per-year<sup>-2</sup>), followed closely by the area in New Zealand estimating around 14.86 mol  
CO<sub>2</sub> m<sup>-2</sup> (178.35 gC per m<sup>2</sup>-per-year<sup>-2</sup>) which shows a reverse seasonality compared to other locations (Figure 4) which are  
 460 situated in the Northern hemisphere. The mainland around the great lakes in the USA shows annual productivity of 10.68 mol  
CO<sub>2</sub> m<sup>-2</sup> (128 gC per-m<sup>2</sup>-m<sup>-2</sup>) and that in Sweden and Estonia ranging around 12.22 mol CO<sub>2</sub> m<sup>-2</sup> (146.7 and-gC m<sup>-2</sup>) and  
10.5 mol C m<sup>-2</sup> (126.03 gC per-m<sup>2</sup>-m<sup>-2</sup>), respectively which is comparatively low as a result of the local climate that restricts  
 the high productivity to the summer and renders a poor productivity in other times of the year. Peru with a higher average  
 year-round temperature provides a reasonably better climate for lycophytes-lycopsids resulting in productivity of 14.17 mol  
 465 CO<sub>2</sub> m<sup>-2</sup> (170.09 gC per m<sup>2</sup>-per<sup>2</sup>) a year.

**Table 3.** LYCOM outputs: survival rates, Leaf area index (LAI), weighted Net primary production and a weighted Soil CO<sub>2</sub> content

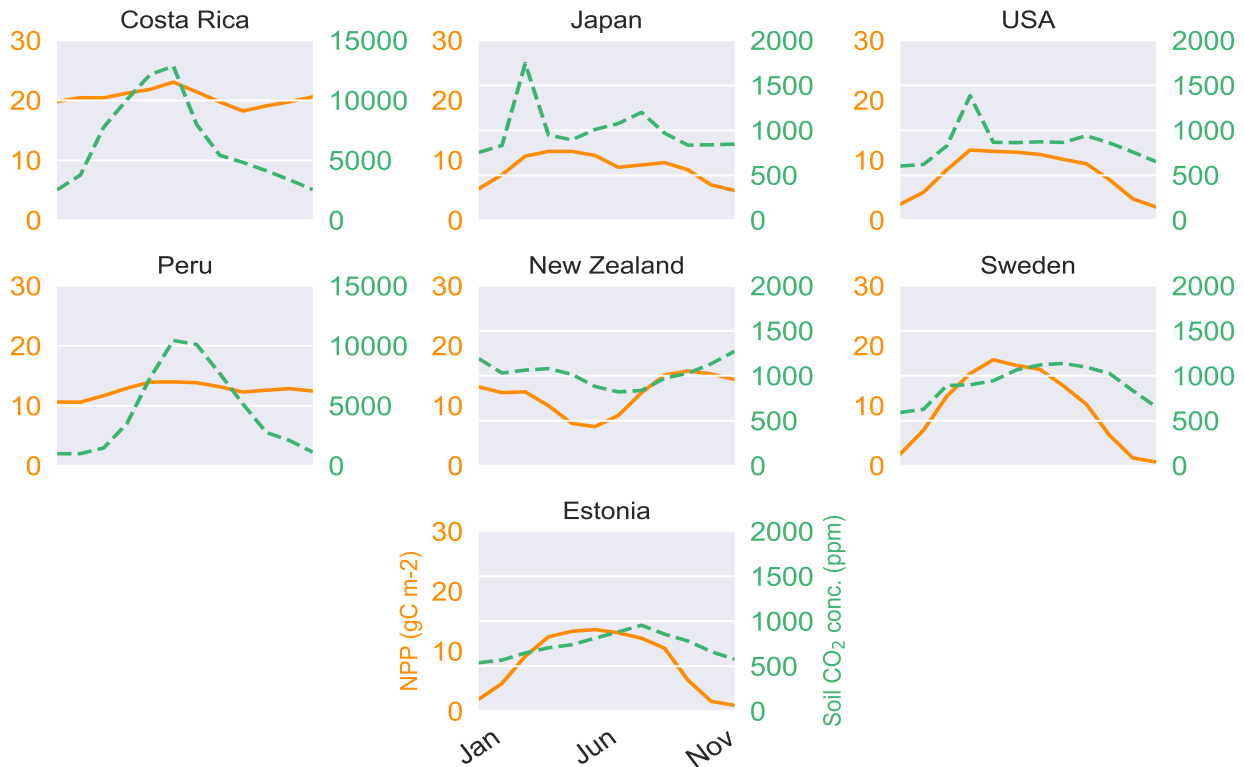
| Sites | Survival rate | LAI  | NPP  | Soil CO <sub>2</sub> (ppm) |
|-------|---------------|------|--|----------------------------|
|       | (%)           |      | (mol CO <sub>2</sub> /m <sup>2</sup> / Yr) | Yearly Average             |
| USA   | 41            | 1.88 | 10.68                                      | 10104                      |
| CR    | 30            | 4.51 | 20.45                                      | 77330                      |
| Swe   | 24            | 1.73 | 12.22                                      | 10880                      |
| Est   | 18            | 0.83 | 10.5                                       | 8710                       |
| India | 0             | 0.00 | 0.00                                       | 400.00                     |
| Jap   | 32            | 2.17 | 11.02                                      | 11940                      |
| NZ    | 46            | 3.91 | 14.86                                      | 12320                      |
| Peru  | 24            | 2.46 | 14.17                                      | 53640                      |

We averaged the weighted monthly productivity over a 30-year seasonal cycle to obtain an average measure of annual plant growth (table 3). We use a weighting scheme (see methods) to generate weighted NPP to obtain a mean seasonal cycle over 30 years (Figure 4). LYCOM can capture the seasonality with the highest productivity over the summer months. The productivity is solely a function of the local climate and is clear from figure 4.

470 The assessment of the net assimilation rate is undertaken to evaluate the model performance as mentioned in the section model calibration, to verify its capability to reproduce the [lyeophyte-specific-lycopsid-specific](#) lab measurements with our newly imposed parameter ranges (Table 2). The model performs reasonably and increased photosynthetic productivity is observed with an increase in photosynthetic photon flux density (PPFD) and reached saturation at  $600 \mu\text{mol m}^{-2} \text{s}^{-1}$  for all strategies with a steeper slope as opposed to Soni et al. (2012) where they observed a saturation around  $800 \mu\text{mol m}^{-2} \text{s}^{-1}$ .  
475 The temperature response studies in Soni et al. (2012) showed a gradual increase until  $40^\circ \text{C}$  and dropped marginally beyond that, a behavior well captured in our calibration (see Fig. 3) with a slightly lower maximum (around  $7 \mu\text{mol m}^{-2} \text{s}^{-1}$ ) in all strategies. Photosynthetic response to carbon dioxide levels is in close consistency with that of *Selaginella bryopteris* for strategy 53, while the rest of the strategies exhibit saturation at higher maxima. We use four strategies to calibrate since the generated strategies are not a direct representation of a single species of [lyeophyte](#)[lycopsid](#). This gives a relatively good idea  
480 of the model behavior under various conditions for unique strategies.

Runoff is generated in LYCOM when water input by rainfall or snowmelt exceeds the water-storage capacity of the soil, with consideration of water loss via plants according to the climatic demand and stomatal regulation. Hence climate and vegetation are pivotal to the calculation of the runoff of the model. Table 2 confirms the realistic nature of our hydrological approximations and we obtain values of runoff (mean yearly runoff) from LYCOM which are comparable to historical runoff data between 1958  
485 and 1988 Ghiggi et al. (2019). In general, the model runoff is overestimated when compared with literature (Ghiggi et al., 2019) except for the location in New Zealand where LYCOM slightly underestimates the annual runoff per unit area ( $\text{m}^2$ ). The model renders an average runoff of 2605 mm per year in Peru and 2134 mm per year for Costa Rica, followed by 823 mm in Japan (see table 2). This overestimation can be attributed to the fact that only the layered topsoil is subject to transpirational loss as opposed to the conditions in a real forest or vegetated regions since the roots of modern plants penetrate deeper soils. The loss  
490 by transpiration is several folds higher than we capture in the current model which simulates only one kind of vegetation i.e. [lyeophytes](#)[lycopsids](#). In addition, the soil water saturation determines the amount of  $\text{CO}_2$  diffusing out of the soil. The water in the soil acts as an inhibitor to the diffusion of  $\text{CO}_2$  through pathways of available pore space. The more the soil saturates, the lower are the  $\text{CO}_2$  emissions. The concentration of soil  $\text{CO}_2$  (see fig 4) is thus coherently linked with the rainy season and productivity (see 4). This effect can be prominently noticed at some locations, namely, in Costa Rica, when both the productive  
495 season and most rainfall coincide leading to a high content of soil  $\text{CO}_2$  in June. The effect of both productivity and rainfall on carbon content in soil can be seen in some cases as well, such as in Sweden and Estonia, where the most productive months for [lyeophytes](#)[lycopsids](#) are May and June but soil  $\text{CO}_2$  peaks slightly in August in the rainy months.

The resulting soil  $\text{CO}_2$  concentration after diffusion forms the basis of the weathering estimate in the post-processing of the model.



**Figure 4.** Annual cycle of weighted net primary productivity (solid lines) and Carbon dioxide concentration (dashed) in the soil

500 Soil CO<sub>2</sub> (see table 3) concentration, which is primarily a function of the productivity and soil water saturation, is seen to reach the maximum level in Costa Rica on a yearly average scale of 77330 ppm followed closely by the location in Peru where the average carbon dioxide content in soil is averaged at 53640 ppm on a yearly scale (table 3) over 30 years. Even though the seasonality of the soil CO<sub>2</sub> show a close relationship with productivity (Figure 4), we identify a broad range of soil CO<sub>2</sub> values over the study sites with the overall minimum at the study site in the USA where the NPP is low as well.

505 The supply-limited calculation of weathering rates (Arens and Kleidon, 2011) is a unique approach, where chemical weathering of silicate minerals in the soil is limited either by erosion rate or by runoff, the latter being the so-called eco-hydrological limit. Furthermore, LYCOM accounts for the effect of soil CO<sub>2</sub> on the maximum saturation state of the soil solution (see section 2.2.4). At the respective sites, the chemical weathering is evaluated using the soil CO<sub>2</sub> and runoff from LYCOM along with erosion. The eco-hydrological limits play a crucial role in determining the chemical weathering rates at all sites except for

510 Peru and Costa Rica, where the weathering is limited by erosion. Areas with shallow relief structures result in a consequently low erosion such as lowland Peru where weathering by [lycophytes](#) [lycopsids](#) becomes limited by a layer of highly weathered material blocking the access to unweathered rock substrate. We represent this potential limitation of chemical weathering implicitly by calculating the erosion rate which is essentially a function of elevation of the location. Maximum ecohydrologically

limited weathering rate of 0.418 and 0.451 mm rock per year for every square meter is found in Costa Rica and Peru which is representative of the high levels of productivity. The weathering in the areas is strictly restricted by erosion (see table 4). The area of study in Japan exhibits a weathering rate of 0.086 mm rock m<sup>-2</sup> per year which is comparatively higher than the simulated areas in the USA, Sweden, and New Zealand which showcase 0.045, 0.055, and 0.055 mm rock m<sup>-2</sup> weathering every year respectively.

A regional influence of ecohydrologically limited weathering is conceived in the sensitivity runs undertaken to get an insight into the influence of lycophytes-lycopsids on weathering. In addition to the runs with (a) vegetation (lycophyteslycopsids), we run the model in (b) a vegetation-free scenario. The model run with no lycophyte-lycopsid is undertaken to determine the large-scale runoff and the soil CO<sub>2</sub> concentration is assumed to be in equilibrium with that of the atmosphere for computation of the weathering when the location is devoid of vegetation (scenario (b) in table 5). In general, an elevated level (see table 5) of weathering is observed at all sites with vegetation as compared to the case without vegetation. The weathering was observed to be six-folds higher in Costa Rica and almost five times in Peru with vegetation. The location-specific enhancement due to vegetation is a result of different levels of productivity and varying hydrology. The least enhancement is recorded in around the great lakes in the USA, followed by Sweden and Japan.

**Table 4.** Weathering regimes post processed using Arens and Kleidon (2011) approach from LYCOM products

| Location | Chemical weathering | Erosion         | Weathering rates      |
|----------|---------------------|-----------------|-----------------------|
|          | (mm Rock/yr), 1     | (mm Rock/yr), 2 | (mm Rock/yr) min(1,2) |
| USA      | 0.053               | 0.045           | 0.045                 |
| CR       | 0.418               | 0.310           | 0.310                 |
| Swe      | 0.055               | 0.069           | 0.055                 |
| Est      | 0.026               | 0.047           | 0.026                 |
| Jap      | 0.086               | 0.183           | 0.086                 |
| NZ       | 0.055               | 0.201           | 0.055                 |
| Peru     | 0.451               | 0.067           | 0.067                 |

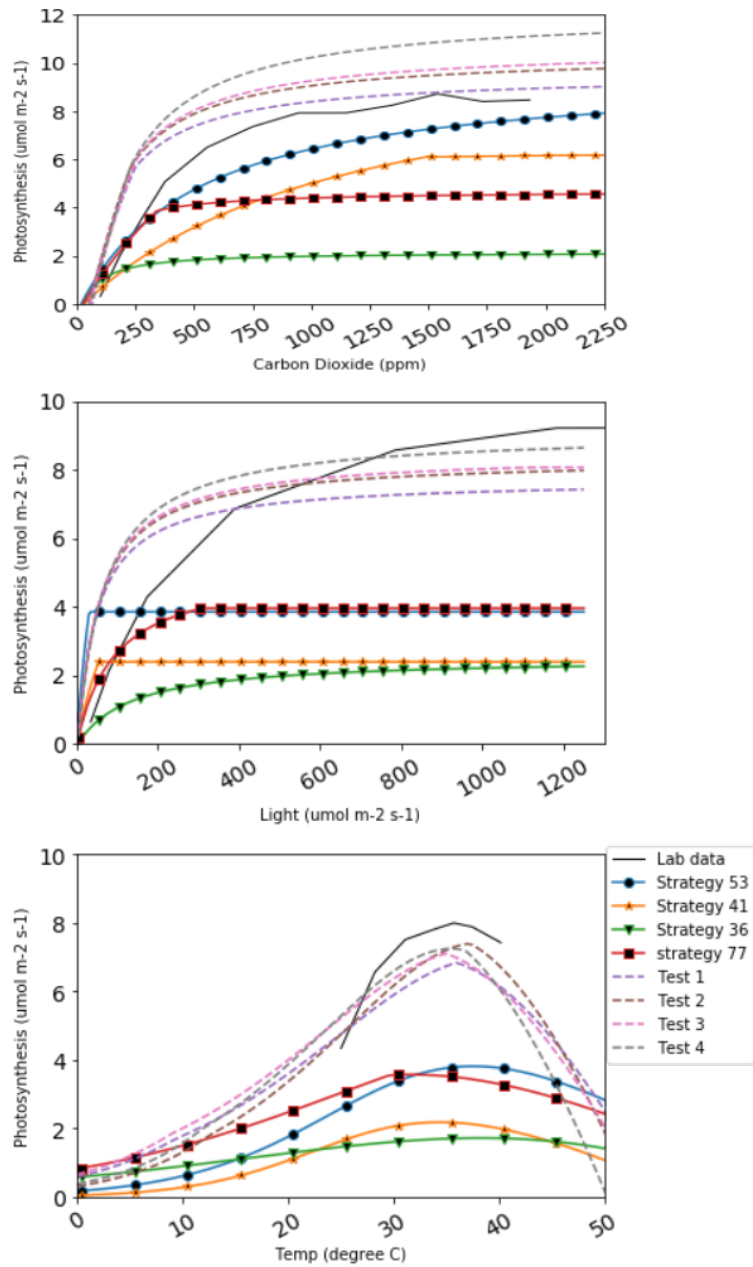
## 5 Discussion

LYCOM represents a community of [lycophytes-lycopsids](#) at several local sites. The respective locations provide suitable climatic conditions for the growth of [lycophytes-lycopsids](#) (GBIF), and the model shows relatively high survival rates there, as pointed out in table 2. The tropical climate of Costa Rica and Peru ensure continuous productivity throughout the year, while the temperate climate in the rest of the sites results in a strong seasonal pattern (see fig. 4). Increased productivity in warmer months as compared to colder months varies over latitudes as well. Indirectly, differences in climatic conditions between the locations affect productivity levels of the plants also through soil water availability. Besides, a prominent impact of soil water can be noticed in the soil CO<sub>2</sub> concentration. The microclimate at the site chosen for emulating the lab sample in India is likely to be substantially different from the large-scale climate derived from the global dataset. The climate of the region is markedly drier compared to the other chosen locations in the study. Therefore, the rainfall is insufficient for the sustenance of the generated [lycophyte-lycopsid](#) strategies. As a result, no strategies survive through the whole simulation period at the location.

The runoff in the LYCOM model is comparable to Ghiggi et al. (2019) and the [lycophyte-lycopsid](#) productivity in the model is comparable to Tosens et al. (2016), and Campany et al. (2019) even though the generated strategies in the model are not analogous to the species utilized for observation. This establishes LYCOM as a robust process-based vegetation model with reasonable eco-hydrological representation (table 2) given the complexity of the model. Weathering is classified in LYCOM according to the dominant limiting factor, which is either the supply of parent material or the eco-hydrological conditions. In the sensitivity study, it is apparent that the influence of [Lycophytes-Lycopsids](#) on chemical weathering rates is substantial at the local scale (table 4). It is in fact, significantly higher than ~~their predecessors namely, early forms of~~ lichens and bryophytes, [which colonised terrestrial ecosystem earlier than lycopsids \(Wellman et al., 2003; Wellman and Gray, 2000; Chang and Graham, 2011; Yin-Long, 2008\)](#). Aghamiri and Schwartzman (2002) explores weathering by lichens and bryophytes on rock surfaces and estimates a ranges of 0.0004 to 0.01 mm rock yr<sup>-1</sup> weathering and is comparatively lower than that of [lycophytes-lycopsids](#) which exhibit a greater weathering potential of 0.026 to 0.418 mm rock yr<sup>-1</sup> (see table 4). [The change in weathering potential emphasizes the impacts of lycopsids and their corresponding effects on the biogeochemical cycle.](#)

The approach of simulating strategies encompassing various physiological properties and trade-offs adds flexibility to the model, which is advantageous in representing already extinct or evolving species. In figure 5 four species generated in LYCOM are plotted under varying ambient conditions, against assimilation rates measured in the laboratory by Soni et al. (2012). This figure depicts the potential (test species in figure (dashed lines)) of the model to closely replicate real-world species which can be achieved with an appropriate selection of parameters within the defined ranges of LYCOM.

LYCOM emulates well the behavior of the organisms under local climate at the local scale. The chosen locations as suggested being suitable to such plant communities, however, do not allow for a direct extrapolation of the effects of [lycophytes-lycopsids](#) at the global scale. For further assessment of biogeochemical impacts of [lycophytes-lycopsids](#), it is necessary to extend the model to a large scale. Even though we cannot account for all biochemical processes existing in nature, the model accounts for the most relevant properties of [lycophytes-lycopsids](#) and represents the local interactions sufficiently to a certain degree. It



**Figure 5.** CO<sub>2</sub>, light and temperature responses of 4 lycophte strategies simulated (coloured solid lines) in LYCOM against 4 best test strategies (dashed lines) generated from LYCOM parameterization ranges in order to replicate the lab data (in black solid line (Soni et al., 2012)) as close as possible.



**Table 5.** comparison of supply limited eco-hydrological controlled weathering regimes (a) with and (b) without biota. In addition, the percolation rate is doubled in (a) which incorporates the impact of roots on the soil making it more porous.

| Location | Chemical Weathering                |                                       | a/b |
|----------|------------------------------------|---------------------------------------|-----|
|          | With vegetation<br>(mm Rock/yr), a | without Vegetation<br>(mm Rock/yr), b |     |
| USA      | 0.053                              | 0.0155                                | 3.4 |
| CR       | 0.418                              | 0.0645                                | 6.5 |
| Swe      | 0.055                              | 0.0154                                | 3.6 |
| Est      | 0.026                              | 0.0061                                | 4.2 |
| Jap      | 0.086                              | 0.0233                                | 3.7 |
| NZ       | 0.055                              | 0.0114                                | 4.8 |
| Peru     | 0.451                              | 0.0839                                | 5.3 |

**Lycophyte-Lycopsid induced weathering enhancement**

is crucial to ensure that our modeling approach remains consistent when we upscale it in the future. LYCOM paired with the weathering model forms a crucial component towards understanding the long-term impacts of such plants on Earth’s climate, as influenced by the CO<sub>2</sub> content of the atmosphere. Although our model can provide subsequent insights into the impacts of such plants, the study is restricted by a lack of data on the properties of **lycophyteslycopsids**. Data concerning the plant physiology as well as measurements involving productivity will contribute towards a better optimization and validation of the model. Light, CO<sub>2</sub>, and temperature curves of **lycophyte-lycopsid** species other than *Selaginella bryopteris* would not only strengthen the model performance further but help us constrain parameter ranges with better precision.

One option for improvement would be the use of high-resolution meteorological data to reduce the uncertainty of the model estimates. This would not only provide an enhanced possibility to evaluate the model performance, but also resolve the biogeochemical processes on a finer scale. Local enhancement of weathering rates could be captured better with such a setup since runoff and soil CO<sub>2</sub> concentration are dependent on productivity as well as hydrological balance at the respective sites. Table 6 summarises the sensitivity of weathering with increase and decrease in these components. We do not observe any

**Table 6.** sensitivity of eco-hydrological controlled weathering regime at respective locations with (+) 20 percent enhancement and (-) 20 percent suppression of runoff and Soil CO<sub>2</sub> concentration, relative to the original enhancement due to vegetation from table 5

|        |   | Soil CO <sub>2</sub> Concentration |      |      |      |      |      |      |      |      |      |      |      |      |      |
|--------|---|------------------------------------|------|------|------|------|------|------|------|------|------|------|------|------|------|
|        |   | USA                                |      | CR   |      | Swe  |      | Est  |      | Jap  |      | NZ   |      | Peru |      |
|        |   | +                                  | -    | +    | -    | +    | -    | +    | -    | +    | -    | +    | -    | +    | -    |
| Runoff | + | 1.29                               | 1.13 | 1.27 | 1.11 | 1.27 | 1.11 | 1.33 | 1.16 | 1.28 | 1.12 | 1.29 | 1.13 | 1.3  | 1.13 |
|        | - | 0.86                               | 0.75 | 0.85 | 0.74 | 0.85 | 0.74 | 0.89 | 0.77 | 0.85 | 0.75 | 0.86 | 0.75 | 0.86 | 0.75 |

disproportional enhancement factor in the weathering and thus assume that our weathering estimates are robust. Although we  
575 consider the light and water interception by the surrounding, the influence of the large forests on the water uptake from soil  
and humidity of the surrounding needs to be accounted for explicitly when upscaling our estimates. This may be achieved with  
a higher spatial resolution of the model input data representing environmental conditions.

## 6 Conclusions

~~The process-based lycophyte model LYCOm performs reasonably at the local scale. It is possible for lycophyte traits to survive~~  
580 ~~in various climatic conditions and these can be represented well by the model. The productivity from the model shows strong~~  
~~agreement with the on-site measurements for the contemporary lycophytes~~The LYCOm model draws in information from  
fossil records as it helps in setting the physiological limitations of the extinct species. Modern lycophytes, such as terrestrial  
lineages of the Lycopodiaceae, maintain some degrees of functional and morphological conservatism with respect to Early  
Devonian herbaceous lycopsids and their fore-runners. On this basis, modern lycophytes can be used as a suitable analog  
585 system for widespread elements of Early Devonian plant communities. Lycopsids survive under a variety of climatic conditions  
(Petersen and Burd, 2018) and have been represented well by the local version of the model. The productivity from the model  
shows strong agreement with the on-site measurements for the contemporary ~~lycophytes~~lycopsids. LYCOm, therefore, has the  
potential to be utilized beyond the range of current conditions. The study aims to lay the foundation for a global ~~lycophyte~~  
lycopsid model which could also estimate the variability of atmospheric CO<sub>2</sub> levels and climate on geological time scales  
590 on coupling with a global mass balance model of carbon pools. The current study hints at a potential enhancement of the  
weathering by the ~~lycophytes~~lycopsids considerably higher than that of lichens but requires further exploration especially  
keeping in mind the nutrient limitation that has not been incorporated in LYCOm. ~~Hence, lycophytes could~~This model therefore  
can be applied toward investigations targeting weathering dynamics in early terrestrial ecosystems. Hence, lycopsids could turn  
out to be a crucial contributor to the enhancement of silicate weathering on a global scale, especially, during the periods in  
595 which the species dominated the flora. Hence, this implication of the model to the fossil record is imminent and we therefore  
try to explore the past using information from such records. Further studies delving into the geochemical changes as a result of  
the advent of ~~lycophytes~~lycopsids could give us detailed insights into understanding the gradual evolution of the composition  
of the atmosphere today.

The study is restricted by two primary factors. Firstly, the current coarse resolution of the dataset in use poses a risk of  
600 averaging the real behavior of the plant species and therefore might mask out a higher potential impact of the ~~lycophytes~~  
lycopsids on weathering rates. Secondly, poorly sampled physiological properties of ~~lycophytes~~lycopsids make it difficult  
to evaluate the model. Further enhancement and extension of the ~~lycophyte~~lycosid datasets are thus required, which would  
require a collective effort of the research community. The current work attempts to map out a relatively new field of research  
that has shown to hold a lot of potentials based on this preliminary work. The work aims to draw scientific interest in the field  
605 and try to incorporate these details in works such as the Paleoclimate Modelling intercomparison project (Otto-Bliesner et al.,  
2021).

*Data availability.* The input data can be accessed from Weedon, G. P., G. Balsamo, N. Bellouin, S. Gomes, M. J. Best, and P. Viterbo. 2018. The WFDEI Meteorological Forcing Data. Research Data Archive at the National Center for Atmospheric Research, Computational and Information Systems Laboratory. <https://doi.org/10.5065/486N-8109>.

610 *Code and data availability.* The Model code (LYCOM v1.0) for the discussed article is archived at 10.5281/zenodo.4960947

**Table A1.** The comparison of the Net Primary production (i) mean, which refers to the average of all surviving species (ii) weighted, according to equation 24, averaged by root and leaf biomass (iii) dominant species at the location which accumulates the maximum biomass during the simulation period

| <b>Location</b> | <b>NPP<br/>(Mean)<br/>gC m<sup>-2</sup> yr<sup>-1</sup></b> | <b>NPP<br/>(Weighted)<br/>gC m<sup>-2</sup> yr<sup>-1</sup></b> | <b>NPP<br/>(Dominant)<br/>gC m<sup>-2</sup> yr<sup>-1</sup></b> |
|-----------------|---|---|---|
| Costa Rica      | 216   | 245   | 337   |
| New Zealand     | 142   | 178   | 273   |
| Japan           | 104   | 132   | 195   |
| USA             | 93  | 128   | 191   |
| Sweden          | 115   | 146   | 192   |
| Peru            | 150   | 170   | 253   |
| Estonia         | 98  | 126   | 170   |

*Author contributions.* Suman Halder and Philipp Porada designed the model and Suman Halder carried out model simulations. Suman Halder prepared the manuscript with contributions from all co-authors.

*Competing interests.* No competing interests are present

*Acknowledgements.* This work has been financially supported by the Deutsche Forschungsgemeinschaft (DFG, German Research Foundation)– 408092731. University of Hamburg provided computational resources. Susanne K. M. Arens and Tais Wittchen Dahl acknowledge funding the Danish Council for Independent Research DFF (7014-00295 and 8102-00005b) to Tais Wittchen Dahl.

## References

- Aghamiri, R. R. and Schwartzman, D. W.: Weathering rates of bedrock by lichens: a mini watershed study, *Chemical Geology*, 188, 249–259, 2002.
- 620 Algeo, T. J. and Scheckler, S. E.: Terrestrial-marine teleconnections in the Devonian: links between the evolution of land plants, weathering processes, and marine anoxic events, *Philosophical Transactions of the Royal Society of London. Series B: Biological Sciences*, 353, 113–130, 1998.
- Algeo, T. J. and Scheckler, S. E.: Land plant evolution and weathering rate changes in the Devonian, *Journal of Earth Science*, 21, 75–78, 2010.
- 625 Andrews, J. A. and Schlesinger, W. H.: Soil CO<sub>2</sub> dynamics, acidification, and chemical weathering in a temperate forest with experimental CO<sub>2</sub> enrichment, *Global Biogeochemical Cycles*, 15, 149–162, 2001.
- Arens, S. and Kleidon, A.: Eco-hydrological versus supply-limited weathering regimes and the potential for biotic enhancement of weathering at the global scale, *Applied Geochemistry*, 26, S274–S278, 2011.
- Atkin, O. K., Bruhn, D., Hurry, V. M., and Tjoelker, M. G.: Evans Review No. 2: The hot and the cold: unravelling the variable response of  
630 plant respiration to temperature, *Functional Plant Biology*, 32, 87–105, 2005.
- Bateman, R. M., Crane, P. R., DiMichele, W. A., Kenrick, P. R., Rowe, N. P., Speck, T., and Stein, W. E.: Early evolution of land plants: phylogeny, physiology, and ecology of the primary terrestrial radiation, *Annual Review of Ecology and Systematics*, 29, 263–292, 1998.
- Bergman, N. M., Lenton, T. M., and Watson, A. J.: COPSE: a new model of biogeochemical cycling over Phanerozoic time, *American Journal of Science*, 304, 397–437, 2004.
- 635 Berner, E., Berner, R., and Moulton, K.: Plants and mineral weathering: present and past, *Treatise on geochemistry*, 5, 605, 2003.
- Berner, R. A.: Atmospheric carbon dioxide levels over Phanerozoic time, *Science*, 249, 1382–1386, 1990.
- Berner, R. A.: Weathering, plants, and the long-term carbon cycle, *Geochimica et Cosmochimica Acta*, 56, 3225–3231, 1992.
- Berner, R. A.: The carbon cycle and carbon dioxide over Phanerozoic time: the role of land plants, *Philosophical Transactions of the Royal Society of London. Series B: Biological Sciences*, 353, 75–82, 1998.
- 640 Bluth, G. J. and Kump, L. R.: Lithologic and climatologic controls of river chemistry, *Geochimica et Cosmochimica Acta*, 58, 2341–2359, 1994.
- Boyce, C. K. and Lee, J.-E.: An exceptional role for flowering plant physiology in the expansion of tropical rainforests and biodiversity, *Proceedings of the Royal Society B: Biological Sciences*, 277, 3437–3443, 2010.
- Boyce, C. K. and Lee, J.-E.: Plant evolution and climate over geological timescales, *Annual Review of Earth and Planetary Sciences*, 45,  
645 61–87, 2017.
- Brodribb, T. J. and McAdam, S. A.: Passive origins of stomatal control in vascular plants, *Science*, 331, 582–585, 2011.
- Campany, C. E., Martin, L., and Watkins Jr, J. E.: Convergence of ecophysiological traits drives floristic composition of early lineage vascular plants in a tropical forest floor, *Annals of Botany*, 123, 793–803, 2019.
- Carriquí, M., Roig-Oliver, M., Brodribb, T. J., Coopman, R., Gill, W., Mark, K., Niinemets, Ü., Perera-Castro, A. V., Ribas-Carbó, M., Sack,  
650 L., et al.: Anatomical constraints to nonstomatal diffusion conductance and photosynthesis in lycophytes and bryophytes, *New Phytologist*, 222, 1256–1270, 2019.
- Chang, Y. and Graham, S. W.: Inferring the higher-order phylogeny of mosses (Bryophyta) and relatives using a large, multigene plastid data set, *American journal of botany*, 98, 839–849, 2011.

- Chater, C., Kamisugi, Y., Movahedi, M., Fleming, A., Cuming, A. C., Gray, J. E., and Beerling, D. J.: Regulatory mechanism controlling stomatal behavior conserved across 400 million years of land plant evolution, *Current Biology*, 21, 1025–1029, 2011.
- Cochran, M. F. and Berner, R. A.: Enhancement of silicate weathering rates by vascular land plants: quantifying the effect, *Chemical geology*, 107, 213–215, 1993.
- Cocks, L. R. M. and Torsvik, T. H.: Ordovician palaeogeography and climate change, *Gondwana Research*, 2020.
- Colbourn, G., Ridgwell, A., and Lenton, T.: The time scale of the silicate weathering negative feedback on atmospheric CO<sub>2</sub>, *Global Biogeochemical Cycles*, 29, 583–596, 2015.
- Dahl, T. W. and Arens, S. K.: The impacts of land plant evolution on Earth's climate and oxygenation state—An interdisciplinary review, *Chemical Geology*, 547, 119–165, 2020.
- Drever, J. I.: The effect of land plants on weathering rates of silicate minerals, *Geochimica et Cosmochimica Acta*, 58, 2325–2332, 1994.
- Elick, J. M., Driese, S. G., and Mora, C. I.: Very large plant and root traces from the Early to Middle Devonian: Implications for early terrestrial ecosystems and atmospheric p (CO<sub>2</sub>), *Geology*, 26, 143–146, 1998.
- Fan, J., McConkey, B., Wang, H., and Janzen, H.: Root distribution by depth for temperate agricultural crops, *Field Crops Research*, 189, 68–74, 2016.
- Farquhar, G. D. and Von Caemmerer, S.: Modelling of photosynthetic response to environmental conditions, in: *Physiological plant ecology II*, pp. 549–587, Springer, 1982.
- Foster, G. L., Royer, D. L., and Lunt, D. J.: Future climate forcing potentially without precedent in the last 420 million years, *Nature communications*, 8, 1–8, 2017.
- Galmes, J., Kapralov, M. V., Andralojc, P. J., Conesa, M. À., Keys, A. J., Parry, M. A., and Flexas, J.: Expanding knowledge of the Rubisco kinetics variability in plant species: environmental and evolutionary trends, *Plant, Cell & Environment*, 37, 1989–2001, 2014.
- Garratt, M., Tims, J., Rickards, R., Chambers, T., and Douglas, J.: The appearance of Baragwanathia (Lycophytina) in the Silurian, *Botanical Journal of the Linnean Society*, 89, 355–358, 1984.
- Gensel, P. G. and Berry, C. M.: Early lycophyte evolution, *American Fern Journal*, 91, 74–98, 2001.
- Gensel, P. G., Kotyk, M. E., and Basinger, J. F.: Morphology of Above- and Below-Ground Structures in Early Devonian (Pragian–Emsian) Plants, *Plants invade the land: evolutionary and environmental perspectives*, p. 83, 2001.
- Ghiggi, G., Humphrey, V., Seneviratne, S. I., and Gudmundsson, L.: GRUN: an observation-based global gridded runoff dataset from 1902 to 2014, *Earth System Science Data*, 11, 1655–1674, 2019.
- Gibling, M., Davies, N., Falcon-Lang, H., Bashforth, A. R., DiMichele, W. A., Rygel, M., and Ielpi, A.: Palaeozoic co-evolution of rivers and vegetation: a synthesis of current knowledge, *Proceedings of the Geologists' Association*, 125, 524–533, 2014.
- Green, J. K., Konings, A. G., Alemohammad, S. H., Berry, J., Entekhabi, D., Kolassa, J., Lee, J.-E., and Gentile, P.: Regionally strong feedbacks between the atmosphere and terrestrial biosphere, *Nature geoscience*, 10, 410–414, 2017.
- Hanson, D. T. and Rice, S. K.: *Photosynthesis in bryophytes and early land plants*, Springer, 2014.
- Hao, S., Xue, J., Guo, D., and Wang, D.: Earliest rooting system and root: shoot ratio from a new Zosterophyllum plant, *New Phytologist*, 185, 217–225, 2010.
- Hetherington, A. J. and Dolan, L.: The evolution of lycopsid rooting structures: conservatism and disparity, *New Phytologist*, 215, 538–544, 2017.
- Hetherington, A. J., Bridson, S. L., Jones, A. L., Hass, H., Kerp, H., and Dolan, L.: An evidence-based 3D reconstruction of *Asteroxylon mackiei* the most complex plant preserved from the Rhynie chert, *bioRxiv*, 2021.

- Hikosaka, K. and Hirose, T.: Leaf angle as a strategy for light competition: optimal and evolutionarily stable light-extinction coefficient within a leaf canopy, *Ecoscience*, 4, 501–507, 1997.
- 695 Hilley, G. E. and Porder, S.: A framework for predicting global silicate weathering and CO<sub>2</sub> drawdown rates over geologic time-scales, *Proceedings of the National Academy of Sciences*, 105, 16 855–16 859, 2008.
- Ibarra, D. E., Rugenstein, J. K. C., Bachan, A., Baresch, A., Lau, K. V., Thomas, D. L., Lee, J.-E., Boyce, C. K., and Chamberlain, C. P.: Modeling the consequences of land plant evolution on silicate weathering, *American Journal of Science*, 319, 1–43, 2019.
- Jabro, J. D., Sainju, U. M., Stevens, W. B., and Evans, R. G.: Estimation of CO<sub>2</sub> diffusion coefficient at 0–10 cm depth in undisturbed and tilled soils, *Archives of Agronomy and Soil Science*, 58, 1–9, 2012.
- 700 June, T., Evans, J. R., and Farquhar, G. D.: A simple new equation for the reversible temperature dependence of photosynthetic electron transport: a study on soybean leaf, *Functional plant biology*, 31, 275–283, 2004.
- Kattge, J. and Knorr, W.: The temperature dependence of photosynthetic capacity in a photosynthesis model acclimates to plant growth temperature: a re-analysis of data from 36 species, *Plant Cell Environ*, 30, 1176–1190, 2007.
- Kelly, E. F., Chadwick, O. A., and Hilinski, T. E.: The effect of plants on mineral weathering, *Biogeochemistry*, 42, 21–53, 1998.
- 705 Kenrick, P. and Crane, P. R.: The origin and early evolution of plants on land, *Nature*, 389, 33–39, 1997.
- Kenrick, P. and Strullu-Derrien, C.: The origin and early evolution of roots, *Plant physiology*, 166, 570–580, 2014.
- Kotyk, M. E., Basinger, J. F., Gensel, P. G., and de Freitas, T. A.: Morphologically complex plant macrofossils from the Late Silurian of Arctic Canada, *American Journal of Botany*, 89, 1004–1013, 2002.
- Lawson, T., von Caemmerer, S., and Baroli, I.: Photosynthesis and stomatal behaviour, in: *Progress in botany* 72, pp. 265–304, Springer, 710 2010.
- Le Hir, G., Donnadieu, Y., Godd ris, Y., Meyer-Berthaud, B., Ramstein, G., and Blakey, R. C.: The climate change caused by the land plant invasion in the Devonian, *Earth and Planetary Science Letters*, 310, 203–212, 2011.
- Lee, J.-E. and Boyce, K.: Impact of the hydraulic capacity of plants on water and carbon fluxes in tropical South America, *Journal of Geophysical Research: Atmospheres*, 115, 2010.
- 715 Lenton, T., Berner, R., Tester, M., and Beerling, D.: The carbon cycle and CO<sub>2</sub> over Phanerozoic time: the role of land plants-Discussion, 1998.
- Leopold, A. C., Musgrave, M. E., and Williams, K. M.: Solute leakage resulting from leaf desiccation, *Plant Physiology*, 68, 1222–1225, 1981.
- Maher, K.: The role of fluid residence time and topographic scales in determining chemical fluxes from landscapes, *Earth and Planetary 720 Science Letters*, 312, 48–58, 2011.
- Maher, K. and Chamberlain, C.: Hydrologic regulation of chemical weathering and the geologic carbon cycle, *science*, 343, 1502–1504, 2014.
- Matsunaga, K. K. and Tomescu, A. M.: Root evolution at the base of the lycophyte clade: insights from an Early Devonian lycophyte, *Annals of botany*, 117, 585–598, 2016.
- 725 McAdam, S. A. and Brodrribb, T. J.: Ancestral stomatal control results in a canalization of fern and lycophyte adaptation to drought, *New Phytologist*, 198, 429–441, 2013.
- McKay, M. D., Beckman, R. J., and Conover, W. J.: A comparison of three methods for selecting values of input variables in the analysis of output from a computer code, *Technometrics*, 42, 55–61, 2000.

- Medlyn, B., Loustau, D., and Delzon, S.: Temperature response of parameters of a biochemically based model of photosynthesis. I. Seasonal changes in mature maritime pine (*Pinus pinaster* Ait.), *Plant, Cell & Environment*, 25, 1155–1165, 2002.
- Montanez, I. P.: Modern soil system constraints on reconstructing deep-time atmospheric CO<sub>2</sub>, *Geochimica et Cosmochimica Acta*, 101, 57–75, 2013.
- Monteith, J.: Evaporation and surface temperature, *Quarterly Journal of the Royal Meteorological Society*, 107, 1–27, 1981.
- Moulton, K. L., West, J., and Berner, R. A.: Solute flux and mineral mass balance approaches to the quantification of plant effects on silicate weathering, *American Journal of Science*, 300, 539–570, 2000.
- Otto-Bliesner, B. L., Brady, E. C., Zhao, A., Brierley, C. M., Axford, Y., Capron, E., Govin, A., Hoffman, J. S., Isaacs, E., Kageyama, M., et al.: Large-scale features of Last Interglacial climate: results from evaluating the lig127k simulations for the Coupled Model Intercomparison Project (CMIP6)–Paleoclimate Modeling Intercomparison Project (PMIP4), *Climate of the Past*, 17, 63–94, 2021.
- Pavlick, R., Drewry, D. T., Bohn, K., Reu, B., and Kleidon, A.: The Jena Diversity-Dynamic Global Vegetation Model (JeDi-DGVM): a diverse approach to representing terrestrial biogeography and biogeochemistry based on plant functional trade-offs, *Biogeosciences*, 10, 4137–4177, 2013.
- Petersen, K. B. and Burd, M.: The adaptive value of heterospory: Evidence from *Selaginella*, *Evolution*, 72, 1080–1091, 2018.
- Porada, P., Weber, B., Elbert, W., Pöschl, U., and Kleidon, A.: Estimating global carbon uptake by lichens and bryophytes with a process-based model, *Biogeosciences*, 10, 6989–6989, 2013.
- Porada, P., Lenton, T., Pohl, A., Weber, B., Mander, L., Donnadieu, Y., Beer, C., Pöschl, U., and Kleidon, A.: High potential for weathering and climate effects of non-vascular vegetation in the Late Ordovician, *Nature Communications*, 7, 1–13, 2016.
- Qiu, Y.-L., Li, L., Wang, B., Chen, Z., Knoop, V., Groth-Malonek, M., Dombrowska, O., Lee, J., Kent, L., Rest, J., et al.: The deepest divergences in land plants inferred from phylogenomic evidence, *Proceedings of the National Academy of Sciences*, 103, 15 511–15 516, 2006.
- Quirk, J., Leake, J. R., Johnson, D. A., Taylor, L. L., Saccone, L., and Beerling, D. J.: Constraining the role of early land plants in Palaeozoic weathering and global cooling, *Proceedings of the Royal Society B: Biological Sciences*, 282, 20151 115, 2015.
- Randerson, J. T., Hoffman, F. M., Thornton, P. E., Mahowald, N. M., Lindsay, K., LEE, Y.-H., Nevison, C. D., Doney, S. C., Bonan, G., Stöckli, R., et al.: Systematic assessment of terrestrial biogeochemistry in coupled climate–carbon models, *Global Change Biology*, 15, 2462–2484, 2009.
- Raven, J. A.: Selection pressures on stomatal evolution, *New Phytologist*, 153, 371–386, 2002.
- Rubinstein, C. V., Gerrienne, P., de la Puente, G. S., Astini, R. A., and Steemans, P.: Early Middle Ordovician evidence for land plants in Argentina (eastern Gondwana), *New Phytologist*, 188, 365–369, 2010.
- Ruszala, E. M., Beerling, D. J., Franks, P. J., Chater, C., Casson, S. A., Gray, J. E., and Hetherington, A. M.: Land plants acquired active stomatal control early in their evolutionary history, *Current biology*, 21, 1030–1035, 2011.
- Savir, Y., Noor, E., Milo, R., and Tlustý, T.: Cross-species analysis traces adaptation of Rubisco toward optimality in a low-dimensional landscape, *Proceedings of the National Academy of Sciences*, 107, 3475–3480, 2010.
- Sellers, P., Randall, D., Collatz, G., Berry, J., Field, C., Dazlich, D., Zhang, C., Collelo, G., and Bounoua, L.: A revised land surface parameterization (SiB2) for atmospheric GCMs. Part I: Model formulation, *Journal of climate*, 9, 676–705, 1996.
- Shukla, J. and Mintz, Y.: Influence of land-surface evapotranspiration on the earth’s climate, *Science*, 215, 1498–1501, 1982.
- Song, H., Wignall, P. B., Song, H., Dai, X., and Chu, D.: Seawater temperature and dissolved oxygen over the past 500 million years, *Journal of Earth Science*, 30, 236–243, 2019.

- Soni, D. K., Ranjan, S., Singh, R., Khare, P. B., Pathre, U. V., and Shirke, P. A.: Photosynthetic characteristics and the response of stomata to environmental determinants and ABA in *Selaginella bryopteris*, a resurrection spike moss species, *Plant science*, 191, 43–52, 2012.
- 770 Spencer, V., Nemeček, Z., and Harrison, C. J.: What can lycophytes teach us about plant evolution and development? Modern perspectives on an ancient lineage, *Evolution & Development*, 23, 174–196, 2021.
- Stemans, P., Le Hérisse, A., Melvin, J., Miller, M. A., Paris, F., Verniers, J., and Wellman, C. H.: Origin and radiation of the earliest vascular land plants, *Science*, 324, 353–353, 2009.
- Stein, W. E., Berry, C. M., Hernick, L. V., and Mannolini, F.: Surprisingly complex community discovered in the mid-Devonian fossil forest at Gilboa, *Nature*, 483, 78–81, 2012.
- 775 Taylor, E. L., Taylor, T. N., and Krings, M.: *Paleobotany: the biology and evolution of fossil plants*, Academic Press, 2009.
- Thomas, B. A. and Watson, J.: A rediscovered 114-foot *Lepidodendron* from Bolton, Lancashire, *Geological Journal*, 11, 15–20, 1976.
- Tosens, T., Nishida, K., Gago, J., Coopman, R. E., Cabrera, H. M., Carriquí, M., Laanisto, L., Morales, L., Nadal, M., Rojas, R., et al.: The photosynthetic capacity in 35 ferns and fern allies: mesophyll CO<sub>2</sub> diffusion as a key trait, *New Phytologist*, 209, 1576–1590, 2016.
- Valdespino, I.: Two New Species and a New Record of *Selaginella* (Selaginellaceae) from Bolivia, *Novon*, 24, 780 <https://doi.org/10.3417/2011022>, 2015a.
- Valdespino, I. A.: Two new species and a new record of *Selaginella* (Selaginellaceae) from Bolivia, *Novon: A Journal for Botanical Nomenclature*, 24, 96–105, 2015b.
- Vanderwel, M. C., Slot, M., Lichstein, J. W., Reich, P. B., Kattge, J., Atkin, O. K., Bloomfield, K. J., Tjoelker, M. G., and Kitajima, K.: Global convergence in leaf respiration from estimates of thermal acclimation across time and space, *New Phytologist*, 207, 1026–1037, 785 2015.
- Vannoppen, W., De Baets, S., Keeble, J., Dong, Y., and Poesen, J.: How do root and soil characteristics affect the erosion-reducing potential of plant species?, *Ecological Engineering*, 109, 186–195, 2017.
- Walker, J. C., Hays, P., and Kasting, J. F.: A negative feedback mechanism for the long-term stabilization of Earth's surface temperature, *Journal of Geophysical Research: Oceans*, 86, 9776–9782, 1981.
- 790 Weedon, G. P., Balsamo, G., Bellouin, N., Gomes, S., Best, M. J., and Viterbo, P.: The WFDEI Meteorological Forcing Data, <https://doi.org/10.5065/486N-8109>, 2018.
- Wellman, C. H. and Gray, J.: The microfossil record of early land plants, *Philosophical Transactions of the Royal Society of London. Series B: Biological Sciences*, 355, 717–732, 2000.
- Wellman, C. H., Osterloff, P. L., and Mohiuddin, U.: Fragments of the earliest land plants, *Nature*, 425, 282–285, 2003.
- 795 Wellman, C. H., Stemans, P., and Vecoli, M.: Palaeophytogeography of Ordovician–Silurian land plants, *Geological Society, London, Memoirs*, 38, 461–476, 2013.
- Wickett, N. J., Mirarab, S., Nguyen, N., Warnow, T., Carpenter, E., Matasci, N., Ayyampalayam, S., Barker, M. S., Burleigh, J. G., Gitzendanner, M. A., et al.: Phylotranscriptomic analysis of the origin and early diversification of land plants, *Proceedings of the National Academy of Sciences*, 111, E4859–E4868, 2014.
- 800 Yin-Long, Q.: Phylogeny and evolution of charophytic algae and land plants, *Journal of systematics and evolution*, 46, 287–306, 2008.
- Zhang, L., Hu, Z., Fan, J., Zhou, D., and Tang, F.: A meta-analysis of the canopy light extinction coefficient in terrestrial ecosystems, *Frontiers of earth science*, 8, 599–609, 2014.
- Zier, J., Belanger, B., Trahan, G., and Watkins, J. E.: Ecophysiology of four co-occurring lycophyte species: an investigation of functional convergence, *AoB Plants*, 7, 2015.