

High-resolution modeling the distribution of surface air pollutants and their intercontinental transport by a global tropospheric atmospheric chemistry source-receptor model (GNAQPMS-SM)

Qian Ye^{1,2}, Jie Li^{1,2,3,*}, Xueshun Chen^{1,3}, Huansheng Chen¹, Wenyi Yang^{1,3}, Huiyun Du¹, Xiaole Pan^{1,3},
5 Xiao Tang^{1,3}, Wei Wang⁴, Lili Zhu⁴, Jianjun Li⁴, Zhe Wang¹, Zifa Wang^{1,2,3,*}

¹State Key Laboratory of Atmospheric Boundary Layer Physics and Atmospheric Chemistry, Institute of Atmospheric Physics, Chinese Academy of Sciences, Beijing 100029, China

²College of Earth and Planetary Sciences, University of Chinese Academy of Sciences, Beijing 100049, China

³Center for Excellence in Regional Atmospheric Environment, Institute of Urban Environment, Chinese Academy of Science, Xiamen 361021, China

⁴China National Environmental Monitoring Center, Beijing 100012, China

Correspondence to: Jie Li (lijie8074@mail.iap.ac.cn), Zifa Wang (zifawang@mail.iap.ac.cn)

Abstract. Many efforts have been devoted to quantifying the impact of intercontinental transport on global air quality by using global chemical transport models with horizontal resolutions of hundreds of kilometers in recent decades. In this study, a global online air quality source-receptor model (GNAQPMS-SM) is designed to effectively compute the contributions of various regions to ambient pollutant concentrations. The newly developed model is able to quantify source-receptor (S-R) relationships in one simulation without introducing errors by nonlinear chemistry. We calculate the surface and planetary boundary layer (PBL) S-R relationships in 19 regions over the whole globe for ozone (O₃), black carbon (BC) and non-sea-salt sulphate (nss-sulphate) by conducting a high-resolution (0.5°×0.5°) simulation for the year 2018. The model exhibits a realistic capacity in reproducing the spatial distributions and seasonal variations of tropospheric O₃, carbon monoxide, and aerosols at global and regional scales – Europe (EUR), North America (NAM) and East Asia (EA). The correlation coefficient (R) and normalized mean bias (NMB) for seasonal O₃ at global background and urban-rural sites ranged from 0.49 to 0.87 and -2% to 14.97%, respectively. For aerosols, the R and NMB in EUR, NAM, and EA mostly exceed 0.6 and are within ±15%. These statistical parameters based on this global simulation can match those of regional models in key regions. The simulated tropospheric nitrogen dioxide and aerosol optical depths are generally in agreement with satellite observations. The model overestimates ozone concentrations in the upper troposphere and stratosphere in the tropics, mid-latitude and polar regions of the Southern Hemisphere due to the use of a simplified stratospheric ozone scheme and/or biases in estimated stratosphere-troposphere exchange dynamics. We find that surface O₃ can travel a long distance and contributes a nonnegligible fraction to downwind regions. Nonlocal source transport explains approximately 35-60% of surface O₃ in EA, South Asia (SAS), EUR and NAM. The O₃ exported from EUR can also be transported across the Arctic Ocean to the North Pacific and contributes nearly 5-7.5% to the North Pacific. BC₁ is directly linked to local emissions, and each BC source region mainly contributes to itself and surrounding regions. For nss-sulphate, contributions of long-range transport account for 15-30% within the PBL in EA, SAS,

删除了: , which largely reduces the computation costs compared to the brute force method.

删除了: ozone

删除了: (

删除了:)

删除了: ozone

删除了: Europe

删除了: orth America

删除了: ast Asia

删除了: mixing ratios

删除了: in the surface layer

删除了: ast Asia

删除了: Europe

删除了: orth America

删除了: Europe

删除了: , as a primary aerosol,

删除了: ast Asia

删除了: outh Asia

EUR and NAM. Our estimated international transport of BC and nss-sulphate is lower than that from the Hemispheric Transport of Air Pollution (HTAP) assessment report in 2010, but most surface O₃ results are within the range. This difference may be related to the different simulation years, emission inventories, vertical and horizontal resolutions and S-R revealing methods. Additional emission sensitivity simulation shows a negative O₃ response in receptor region EA in January from EA. The difference between two methods in estimated S-R relationships of nss-sulphate and O₃ are mainly due to ignoring the nonlinearity of pollutants during chemical processes. The S-R relationship of aerosols within EA subcontinent is also assessed. The model that we developed creates a link between the scientific community and policymakers. Finally, the results are discussed in the context of future model development and analysis opportunities.

删除了: urope

删除了: orth America

删除了: is

删除了: In this study, local contributions to surface nss-sulphate and BC exceed the ranges given in the HTAP model, while local contributions to nss-sulphate and BC within the PBL are mainly within the ranges.

删除了:

删除了: the

删除了: ast Asia

1 Introduction

60 For decades, under the influence of human activities, the concentrations of particulate matter, ozone, and their important precursors have greatly changed even in the most remote regions. Pollutants transported over long distances can have a negative impact on urban air quality, human health and climate change (Fan et al., 2016). The hemispheric and intercontinental transport of air pollutants has always been an important international issue. For this reason, many countries and institutions around the world have launched a series of cooperative projects to study transboundary transportation, such as LRTAP (Long-range

65 Transboundary Air Pollution), TRACE-A (Transport and Chemical Evolution over the Atlantic), LTP (Long-range Transboundary Air Pollutants in Northeast Asia), TRACE-P (Transport and Chemical Evolution over the Pacific; Carmichael et al., 2003), TF HTAP (Task Force on Hemispheric Transport of Air Pollution). To better address and control global air pollution, it is vital to understand and quantify the sources of air pollutants from a global perspective.

Large-scale observation systems, including ground observations, aircraft, laser radars, and satellites, have been used to

70 investigate the contributions from individual source regions to surface pollution (Venkatram and Karamchandani, 1986). Cooper et al. (2004) explained that air pollution can be transported across the North Pacific Ocean under the control of warm conveyor belts by using in situ measurements from an aircraft platform. Pal et al. (2020) used airborne in situ measurements of greenhouse gases (GHGs) to expound the important role of mid-latitude cyclones in transporting GHGs across the eastern United States. An extensive dust event that originated in Africa and transported dust to South America was observed and

75 tracked by CALIPSO lidar (Liu et al., 2008). However, because of the short duration of field observation activities and limited research area of observations, it is difficult to clarify the seasonal or interannual changes and attribute pollutants to specific source regions by only observation methods (Fiore et al., 2009). Recently, numerical global chemical transport models have been widely employed (Fiore et al., 2009) to quantify intercontinental source-receptor (S-R) relationships, as well as high-concentration pollution caused by local emissions. To a large extent, the quantitative assessment of intercontinental transport

80 still depends on the model.

Many global chemical transport models have been used to study the distribution of air pollutants and estimate their intercontinental transport (Wai et al., 2016; Yang et al., 2017a). Sensitivity simulation, a numerical method, is widely used

设置了格式: 字体颜色: 深红

because of its relatively simple operation. It mainly refers to the reduction in emissions in the source region by a certain extent, such as 15% or 20%, or even directly returning to zero. Numerous studies have applied this method to assess S-R relationships, including black carbon (BC) transport to the Arctic (Sobhani et al., 2018, using a sulfur transport and deposition model (STEM)) and ozone transport among the Northern Hemisphere (Nopmongcol et al., 2017, using the Comprehensive Air Quality Model with Extensions (CAMx); Li et al., 2014b, using Model for Ozone and Related chemical Tracers, version 4 (MOZART-4); Zhu et al., 2017b, using the Goddard Earth Observing System model coupled to chemistry (GEOS-Chem)). These results all prove the hemispheric and intercontinental transport of air pollutants and highlight the importance of transboundary transport research from a broader perspective. However, sensitivity simulation methods usually ignore the nonlinearity of pollutants during chemical processes, which causes some errors in their estimated S-R relationships of secondary aerosols and O₃.

Sensitivity simulation also requires expensive computational resources, which results in most global simulations of pollutants running at coarse horizontal resolutions ranging from 1°×1° to 5°×5°, such as 4°×5° in Zhu et al. (2017a), 2°×2.5° in Han et al. (2020), 1°×1° in Crippa et al. (2019), and 2.8°×2.8° in Nagashima et al. (2017), and S-R relationships are limited to a few regions (e.g., Europe, North America, East Asia, South Asia). Many recent studies have revealed that horizontal resolution has a considerable influence on model performance in air quality simulations (Lin et al., 2010; Tao et al., 2020). Urban-scale pollution plumes are often unresolved in global model simulations with lower resolution, which tend to underestimate the magnitude of pollution formation and destruction, especially in urban areas (Huijnen et al., 2010). Consequently, the contribution of local emissions, especially from urban areas and regions with large coastlines, has been underestimated (Van Dingenen et al., 2018; Dentener et al., 2010; Fenech et al., 2018).

The tagged tracer method has proven to be a useful tool to investigate S-R relationships because of its better treatment of nonlinear chemistry and low computational cost (Nagashima et al., 2010; Li et al., 2014b). This method has already been implemented in CHASER ([a chemical atmospheric general circulation model for study of atmospheric environment and radiative forcing](#)) to calculate the relative contributions to surface ozone over Japan from a global perspective (Nagashima et al., 2010; 2017). Van Dingenen et al. (2018) developed a global reduced-form air quality source-receptor model based on a two-way nested global chemical transport model TM5 ([Tracer Model version 5](#)) and assessed the S-R relationships of 58 regions at a resolution of 6°×4°. Due to the limitation of computational efficiency or defects of models, many studies focus on a single species. Therefore, global high-resolution simulations of multiple air pollutants and their S-R relationships covering wider regions are needed and could play a key role in policy development (Amann et al., 2011).

In this study, [by coupling an online S-R relationship module into the Global Nested Air Quality Prediction Modeling System \(GNAQPMS\)](#), we developed a global tropospheric atmospheric chemistry source-receptor model (GNAQPMS-SM), and then conducted a 1-year high-resolution (0.5°×0.5°) simulation for 2018. Then, an extensive evaluation study was performed to assess the performance of the GNAQPMS with multiple platform observations. Using this module with GNAQPMS, we analysed transport inside and outside East Asia in 19 regions over a global scale, allowing us to simultaneously identify the S-R relationships of O₃, PM_{2.5}, BC and non-sea-salt sulphate (nss-sulphate).

删除了： by coupling an online S-R relationship module into the Global Nested Air Quality Prediction Modeling System (GNAQPMS)...

This study is organized as follows: in Sect. 2, we introduce the model configurations, module descriptions, model domain, emission inventories, meteorological fields and the observations and statistical parameters used in the evaluation. Section 3 presents the comparison of the model simulations with background observations, both at the surface and aloft. Model performances in three key regions are also displayed in Sect. 3. Section 4 illustrates the intercontinental transport of pollutants both in the surface layer and within the planetary boundary layer, and compares the results with the HTAP report [and emission sensitivity simulation results](#). The discussions are summarized in Sect. 5.

135 2 Model description

GNAQPMS-SM includes two parts: GNAQPMS and an on-line source-receptor relationship module.

2.1 GNAQPMS

GNAQPMS is an off-line global chemical transport model developed by the Institute of Atmospheric Physics, Chinese Academy of Sciences, and was briefly described by Wang et al. (2001), Li et al. (2008) and Chen et al. (2015). It includes horizontal and vertical advection (Walcek and Aleksic, 1998), diffusion (Byun and Dennis, 1995), detailed tropospheric O₃-NO_x-hydrocarbon gaseous (CBM-Z) chemistry (Zaveri and Peters, 1999), aqueous (RADM) chemistry (Stockwell et al., 1990), parameterization of dry and wet deposition (Zhang et al., 2003; Stockwell et al., 1990), heterogeneous chemistry (Li et al., 2012) and a unique dust particle deflation module (Wang et al., 2002). The horizontal resolution of the model is variable, and terrain-following coordinates are used vertically. Subgrid vertical transport of chemical species in GNAQPMS, including convection and boundary layer diffusion, are calculated by Emanuel's (1991) scheme and Byun and Dennis (1995) deriving from Global Weather Research and Forecasting (GWRP) model output variables, respectively. An aerosol thermodynamic model (ISORROPIA1.7) is applied to compute the composition and phase state of the inorganic aerosol system in aerosol chemistry (Nenes et al., 1998). A hybrid volatility basis set (VBS) approach (Koo et al., 2014) is introduced to simulate organic aerosols (OAs), combining the simplicity of the 1D VBS with the ability to represent the evolution of OAs in the 2D space of oxidation state and volatility (Yang et al., 2019). The UV radiative transfer (TUV) model is coupled for the online calculation of 20 photolysis rates, including the aerosol, cloud, and gaseous species effects on photolysis (Li et al., 2011). A computationally efficient Mie algorithm-based scheme is adopted to calculate the single scattering albedo, Angstrom coefficient, and aerosol optical depth online for input into the TUV model (Yu et al., 2012). Recently, a sectional microphysics aerosol model (APM, Yu and Luo, 2009) was coupled into GNAQPMS, and APM includes microphysics describing nucleation, condensation, coagulation, and thermodynamic equilibrium with local humidity in more detail (Chen et al., 2019). In APM, it is assumed that the aerosol mixing state is semi-external; that is, nucleated secondary particles are internally mixed, while primary particles, including BC, primary organic carbon, dust, and sea salt, are presumed to be made up of a seeding core and a secondary species coating. The coating of secondary species can change the hygroscopicity of aerosols and potentially influence their radiative and heterogeneous chemical effects. Both primary emitted particles and their coating species are traced

160 in the model. GNAQPMS can reproduce physical and chemical processes in the atmosphere at both regional and global scales. It has been widely used to simulate the global distribution and international transport of mass and number concentrations of aerosol compositions, gaseous species (O₃ and CO) and mercury (Chen et al., 2015; Wang et al., 2017; Wei et al., 2019; Chen et al., 2019).

2.2 On-line source-receptor relationship module

165 Air quality SR models usually quantify the influence of air pollutant emissions in source regions, considering the impact of atmospheric physical and chemical processes (Van Dingenen et al., 2018). For primary pollutants (e.g., mineral dust, BC and sea salt), only physical processes such as advection, diffusion, and dry and wet deposition can affect their S-R relationships. The response of their concentrations in receptor regions to emissions from source regions is nearly linear, so [emission](#) sensitivity analysis can provide an accurate S-R assessment. For secondary pollutants, the response of concentrations in
170 receptor regions to source emissions is nonlinear because changes in emissions have the potential to influence the chemical formation of various secondary species. An air quality S-R model needs to include a nonlinear function relationship between source and receptor regions. Previous studies have suggested that the tagged tracer approach can prevent the introduction of nonlinear errors during chemical processes and is suitable for evaluating the contributions of different source regions to secondary pollutants (Derwent et al., 2004; Li et al., 2013). In this study, an online source-receptor relationship module based
175 on a tagged tracer approach is coupled into GNAQPMS. In this module, we assume that each [tagged](#) pollutant at each grid from different source regions (C^T) shares the same loss velocities with total pollutants in the host model (e.g., dry and wet depositions, outflow by advection, convection and diffusion). Therefore, the fraction of each tagged pollutant in total concentrations (F_{c^T}) at a given grid cell is not changed by the removal processes. Primary pollutants are tagged by the geographical emitting locations, and F_{c^T} is calculated by Eq. (1):

$$180 \left(\frac{dF_{c^T}}{dt}\right)_{ij} = (E_{ij} + (M_{ij})_{dif+adv+conv})/C \quad (1)$$

where i represents the i^{th} geographical source region and j represents the j^{th} grid cell. C^T is the mass concentration of [tagged](#) pollutant from the i^{th} source region. F_{c^T} is the fraction of [tagged](#) species from the i^{th} region in the total mass concentration of this [tagged](#) species at the j^{th} grid cell. E_{ij} is the pollutants emitted from the i^{th} source region at the j^{th} grid cell; hence, when the j^{th} grid is outside region i , E_{ij} is equal to zero. M_{ij} is the C^T inflows from the neighboring grid cells caused by advection,
185 diffusion and convection and is computed by the inflow fluxes and the i^{th} C^T fraction of those neighboring grid cells. C is the total mass concentration of [tagged](#) species. It is obvious that the contribution of each source region to the receptor region is strictly positive. The sum of all relative contributions from individual sources in the receptor region equals 100%, and the sum of absolute contributions is equal to the total concentrations for each species.

Different from primary pollutants, secondary species are formed through hundreds and thousands of reactions. F_{c^T} is
190 calculated by Eq. (2).

删除了: labeled

删除了: label

删除了: label

删除了: label

195
$$\left(\frac{dF}{dt}c^T\right)_{ij} = (P_{ij} + (M_{ij})_{dif+adv+conv})/C \quad (2)$$

For ozone, O₃ is tagged by the geographical location where it was produced in this module, as shown in Eq. (2). P_{ij} is the gross production of the ith source region at the jth grid cell and is calculated by

$$P_{ij} = \begin{cases} P_{O_3}, & \text{the } j^{\text{th}} \text{ grid is within } i^{\text{th}} \text{ region} \\ 0, & \text{the } j^{\text{th}} \text{ grid is outside } i^{\text{th}} \text{ region} \end{cases} \quad (3)$$

$$P = k_1[HO_2][NO] + k_2[RO_2][NO]$$

200 k₁ and k₂ are the rate coefficients of HO₂+NO and RO₂+NO, respectively. This method mainly focuses on the direct transport of ozone itself, while the photochemical production of precursors from source regions during transport (indirect transport) is considered to be the contribution from ozone production regions. Similar methods were employed to evaluate the long-distance transport of O₃ by Sudo and Akimoto (2007).

For secondary aerosols, all components are directly related to specific precursor species. We assume that all species have 205 the same reactive properties in each given region, period and emission type (e.g., power plant emissions have the same response to transportation emissions). The P_{ij} for irreversibly partitioning species such as sulphate is apportioned to the primary precursor SO₂ as follows:

$$P_{SO_4ij} = \Delta SO_4 \times \frac{c_{SO_2ij}^T}{c_{SO_2j}} \quad (4)$$

210 ΔSO₄ is the change in total mass concentration after chemical transformation. C_{SO₂ij}^T and C_{SO₂j} represent the concentrations of the ith tagged source and total SO₂ in the jth grid, respectively. For reversibly partitioning species such as nitrate, ammonium and semivolatile secondary organic aerosols, the chemical equilibrium for aerosols and their gaseous precursors from each source category (i) is set equal to the equilibrium for the total species concentrations. The P_{ij} for the aerosol phase is described in Eq. (5). More details on aerosols can be found in Wagstrom et al. (2008) and Wu et al. (2017).

$$P_{aerosolij} = (C_{aerosolij}^T + C_{precursorij}^T) \times \frac{c_{aerosolj}}{c_{aerosolj} + c_{precursorj}} - C_{aerosolij}^T \quad (5)$$

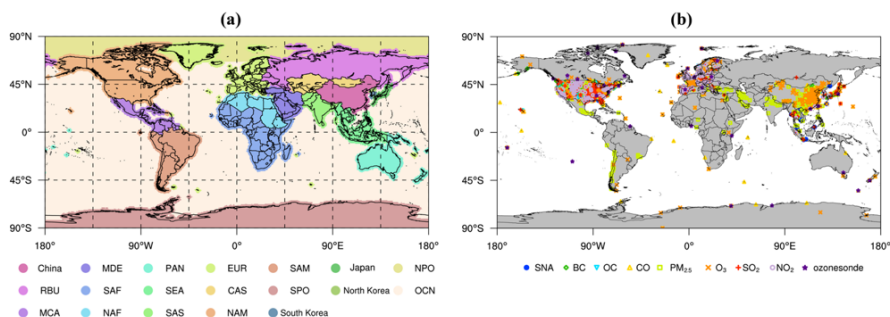
215 This online SR module has been successfully applied in regional studies to estimate the impact of transboundary transport on aerosols and ozone in East Asia in both long-term (Li et al., 2008; Li et al., 2014a; Li et al., 2016) and heavy episodes (Wu et al., 2011; Wu et al., 2017). Recently, it has been coupled to a routine air quality forecast model in China and has demonstrated its key role in policy development. These applications give some confidence in simulating the global S-R relationships of pollutants.

删除了: -

220 2.3 Model domain

To clearly identify different sources of pollutants and quantify the influences of different regions, we separate the global domain into 19 regions, as illustrated in Fig. 1a. Asia is separated into four regions (i.e., South Asia, Southeast Asia, Central Asia, and East Asia). To better analyse the S-R relationships inside and outside East Asia (EA), EA is further divided into four

225 regions: Japan, the Republic of Korea, North Korea, and China. The United States and Canada are merged into one region, North America (NAM). Greenland is included in Europe. The ocean is separated into two regions: the ocean north of 66.5° N and the rest of the ocean. [The definitions of 19 source regions are listed in Table S1.](#) In particular, to reduce the error in calculating the contribution of coastal activities to marine emissions, we extend the land boundary outward by the distance of four grid cells.



230 **Figure 1. (a) Model domain and (b) stations for the evaluation used in this study.**

Simulation is performed for 2018 after an initial model spin-up of 6 months, with a horizontal resolution of 0.5°×0.5°. Twenty vertical layers are divided in this study. The bottom layer is approximately 50 m, and the top layer is approximately 20 km. After calculation of tropospheric height, the monthly stratospheric ozone above the troposphere is taken from the climatic mean output from MOZART v2.4 (Horowitz et al., 2003; Logan, 1999). The model outputs concentrations of air pollutants once an hour.

2.4 Emission inventory

The global anthropogenic emissions of air pollutants except NH₃ and non-methane volatile organic compound (NMVOC) emissions are derived from the Emissions Database for Global Atmospheric Research (EDGAR v5.0; Crippa et al., 2020; data available at https://edgar.jrc.ec.europa.eu/overview.php?v=50_AP) based on 2015 with a resolution of 0.1°×0.1°, while NMVOC is from EDGAR v4.3.2. NH₃ is adopted from the HTAP v2.2 emissions inventory for 2010 (Janssens-Maenhout et al., 2015; data available at https://edgar.jrc.ec.europa.eu/htap_v2/index.php?SECURE=123) [because the NH₃ emissions in China from HTAP v2.2 inventory are more consistent with that from China regional inventories compared with EDGAR v5.0.](#) Anthropogenic emissions are mainly divided into five source categories: residential, agricultural, transportation, industrial, and power sources. The biogenic emissions of CO, isoprene, methanol, pinene and other monoterpenes are provided by the Model of Emissions of Gases and Aerosols from Nature (MEGANv2.1; Guenther et al., 2012) developed by the National Center for Atmospheric Research (NCAR). Emissions from biomass burning are calculated from the Fire Inventory from NCAR (FINN v1) emissions from Wiedinmyer et al. (2011). FINN provides daily global emissions with a resolution of

删除了: , and

250 0.1°×0.1° in 2018 based on satellite observations for detecting active fires as thermal anomalies and land cover change (Wiedinmyer et al., 2011). [Gas flaring emissions ECLIPSE V5a](https://iiasa.ac.at/web/home/research/researchPrograms/air/ECLIPSEv5a.html) (Klimont et al., 2017; <https://iiasa.ac.at/web/home/research/researchPrograms/air/ECLIPSEv5a.html>) are added in the inventory, and this will be mentioned later. Climatic 1°×1° lightning emissions of nitric oxide from the Global Emissions Inventory Activity (GEIA) database are applied in this study (Price et al., 1997). [Soil NO_x emissions are from Global hourly emissions for soil NO_x](http://ftp.as.harvard.edu/gcgrid/data/ExtData/HEMCO/OFFLINE_SOILNOX/v2019-01/) (Hudman et al., 2012; data available at http://ftp.as.harvard.edu/gcgrid/data/ExtData/HEMCO/OFFLINE_SOILNOX/v2019-01/). [Volcanic SO₂ emissions are from](http://ftp.as.harvard.edu/gcgrid/data/ExtData/HEMCO/VOLCANO/v2019-08/) Carn et al. (2015) (data available at <http://ftp.as.harvard.edu/gcgrid/data/ExtData/HEMCO/VOLCANO/v2019-08/>). CO, dimethylsulfide (DMS), CHBr₃, CH₃I, CH₂Br₂ and OCS from the oceans are taken from the CAMS-81 project with a resolution of 0.5° (Granier et al., 2019). Table 1 summarizes the total emissions of anthropogenic and natural sources from several regions used in this study. These results show similar emission magnitudes as those in previous global emission inventories (Badia et al., 2017; Yang et al., 2017a; Klimont et al., 2017).

Table 1. Total emissions from several regions used in the GNAQPMS simulation (Tg/yr).

	NH ₃	SO ₂	OC	BC	NO	NO ₂	CO
China	11.48	32.45	4.42	1.37	17.61	2.89	142.10
RBU	2.62	3.94	1.37	0.21	4.32	1.03	33.03
MCA	2.43	3.21	0.47	0.13	5.29	0.47	35.00
MDE	1.97	9.29	0.26	0.15	5.39	0.89	21.46
SAF	5.25	4.80	8.11	1.19	8.75	2.91	166.98
NAF	1.95	1.90	0.94	0.21	2.01	0.39	25.39
PAN	0.89	1.29	0.42	0.08	2.66	0.38	14.45
SEA	6.07	5.85	4.58	0.72	9.55	2.13	115.04
SAS	12.42	13.25	4.44	1.04	9.08	1.63	110.43
EUR	6.71	6.39	0.84	0.25	6.60	1.05	26.35
CAS	0.75	1.83	0.11	0.03	1.17	0.16	4.78
NAM	5.82	10.10	0.63	0.25	11.25	1.64	60.17
SAM	5.0	3.56	1.21	0.35	8.22	0.62	60.90
South Korea	0.09	0.85	0.04	0.02	1.00	0.16	4.11
Japan	0.58	1.35	0.04	0.05	1.71	0.27	6.30
North Korea	0.09	0.22	0.03	0.006	0.10	0.01	0.96

2.5 Meteorological fields

The GWRF Model version 3.6 was used to generate essential input meteorological data for GNAQPMS. GWRF is an extension of the mesoscale Weather Research and Forecasting (WRF) model and was developed for global weather research and forecasting applications (Zhang et al., 2012b). Compared to traditional general circulation models (GCMs), GWRF enables

a unified framework for the modeling of atmospheric processes and their interactions across scales spanning from global to local scales through 1-way or 2-way nesting. In this study, the GWRP model is driven by National Centers for Environmental Prediction (NCEP) Final Analysis (FNL) data. The global horizontal spatial resolution is $0.5^\circ \times 0.5^\circ$. Vertically, the GWRP data require interpolation for input into GNAQPMS. The comparison between simulated meteorological fields and reanalysis data is shown in Fig. S1 in the Supplement. GWRP can simulate the spatial distribution of wind speed well, with deviations of less than 1 m/s in most regions. Compared with Global Precipitation Climatology Project (GPCP) reanalysis data, the simulated precipitation field may be underestimated by approximately 30%, which is similar to previous results (Sugiura et al., 2006; Mori et al., 2020).

2.6 Observation data and statistical parameters

The ground sites used for comparison are shown in Fig. 1b. Observations for CO are collected from the World Data Center for Greenhouse Gas (WDCGG; data available at <https://gaw.kishou.go.jp/search>). The measurement data for O₃ in Europe are obtained from the European Monitoring and Evaluation Programme (EMEP; data available at <http://ebas.nilu.no/>), those in the U.S. are from the United States Environment Protection Agency (EPA; data available at https://aqs.epa.gov/aqsweb/airdata/download_files.html), and those in East Asia are from the Acid Deposition Monitoring Network in East Asia (EANET; data available at <https://www.eanet.asia/>) and the Chinese National Environment Monitoring Center (CNEMC; data available at <http://www.cnemc.cn>). The vertical observation data of O₃ come from the World Ozone and Ultraviolet Radiation Data Centre (WUOUDC; data available at <https://www.woudc.org/home.php>). The observation data for PM_{2.5} and PM_{2.5} components in different regions are collected from IQAir (data available at <https://www.iqair.cn/en/world-air-quality-report>), CNEMC, EANET, EMEP and the United States Interagency Monitoring of Protected Visual Environment (IMPROVE; data available at <http://views.cira.colostate.edu/fed/QueryWizard/Default.aspx>). The SO₂ observations are collected from EANET, EPA and EMEP. NO₂ columns are compared with tropospheric NO₂ column concentration data from [the Tropospheric Monitoring Instrument \(TROPOMI; van Geffen et al. \(2020\); data available at <http://www.temis.nl/airpollution/no2.php>](#)), and the resolution of [monthly TROPOMI NO₂ data from the Royal Netherlands Meteorological Research Institute \(KNMI\) used in our paper](#) is $0.125^\circ \times 0.125^\circ$. The aerosol optical depth (AOD) from [the level-3 atmosphere monthly global product \(MOD08_M3; Platnick \(2015\); data available at \[https://ladsweb.modaps.eosdis.nasa.gov/archive/allData/61/MOD08_M3/\]\(https://ladsweb.modaps.eosdis.nasa.gov/archive/allData/61/MOD08_M3/\)](#)), retrieved from MODIS Terra, is used to evaluate the simulated AOD and the horizontal resolution is $1^\circ \times 1^\circ$. We compared the spatial distribution of AOD and NO₂ columns through one-by-one correspondence between the simulation time and the MODIS, TROPOMI observed time, the model grid cell and MODIS, TROPOMI data grid cell. Note that the concentration of PM_{2.5} mentioned below refers to the total concentration of sulphate, nitrate, ammonium, primary PM_{2.5}, organic mass (OM), BC, dust and sea salt. We multiplied all organic carbon (OC) values by a conversion factor of 1.8 to obtain OM, and SNA mentioned below refers to the sum of sulphate, nitrate and ammonium.

删除了: version 1.0

删除了: (

删除了: MODIS satellite data

If observations in the above datasets are available in 2018, the observation data in 2018 are used. If not, the multiyear observation average is used. When focusing on seasonal variations, the year is divided into four seasons: March-April-May (MAM), June-July-August (JJA), September-October-November (SON), and December-January-February (DJF). The statistical parameters used in the evaluation include FAC2, the correlation coefficient (R), and the normalized mean bias (NMB). FAC2 refers to the proportion of the simulated results falling between 0.5 and 2 times of the observed results, and the formulas for R and NMB are as follows:

$$R = \frac{\sum_{i=1}^n (sim_i - \overline{sim})(obs_i - \overline{obs})}{\sqrt{\sum_{i=1}^n (sim_i - \overline{sim})^2} \sqrt{\sum_{i=1}^n (obs_i - \overline{obs})^2}} \quad (6)$$

$$NMB = \frac{\sum_{i=1}^n (sim_i - obs_i)}{\sum_{i=1}^n obs_i} \quad (7)$$

where sim_i and \overline{sim} are the simulation results of the i^{th} station and the average of the simulations of all stations, respectively, and obs_i and \overline{obs} are the observation value of the i^{th} station and the average of the observations of all stations, respectively.

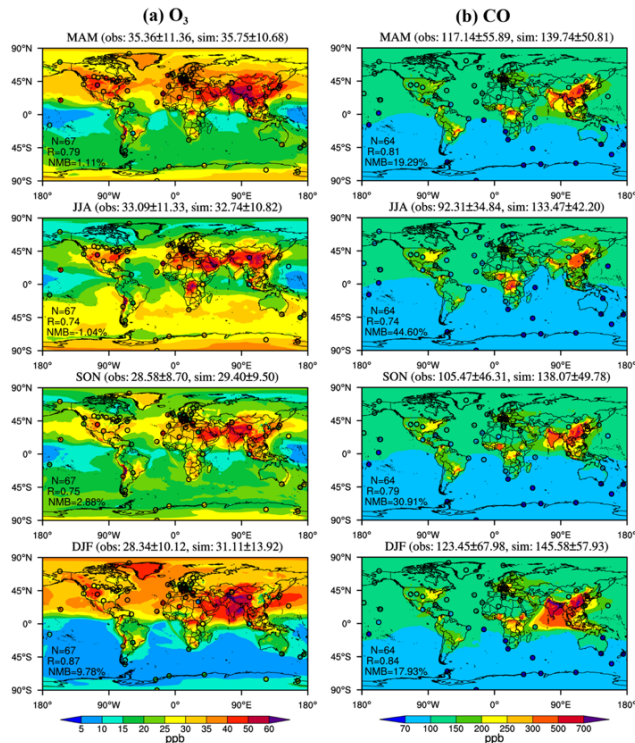
3 Global distribution and evaluation

Detailed evaluation of GNAQPMS annual and seasonal results with observations is central for assessing the ability of GNAQPMS to study S-R relationships. In this section, we compare the measured and simulated seasonal or annual concentrations of surface ozone, CO, PM_{2.5} and its components.

3.1 Model evaluation against background concentrations

To investigate the model performance in background stations, we selected more than 60 stations over the world from WDCGG.

3.1.1 O₃

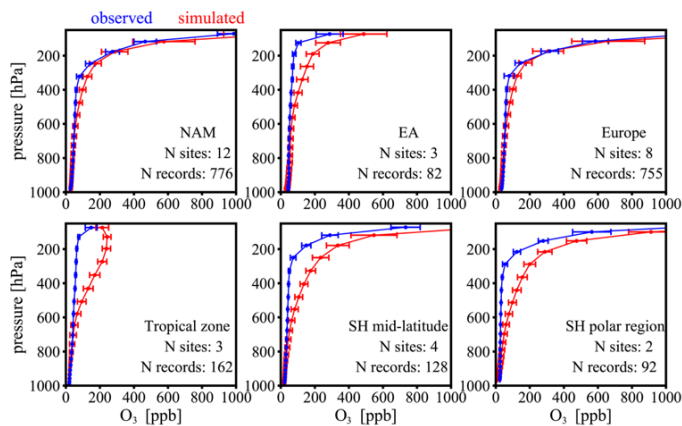


320 **Figure 2. Spatial distributions of simulated (shaded) surface (a) O₃ and (b) CO concentrations compared with WDCGG observations (solid circles).**

325 Figure 2a shows a snapshot of the simulated seasonal surface O₃ concentration against WDCGG observations at background stations from a global perspective in 2018. In general, the observed magnitudes and seasonal variations of O₃ are reasonably reproduced by the model, with R values of 0.74–0.87 and NMBs of -1–10% in the four seasons (N=67). The model performance is similar to the BCC-GEOS-Chem ([an online global atmospheric model, by coupling the GEOS-Chem chemical transport model as an atmospheric chemistry component in the Beijing Climate Center atmospheric general circulation model](#)) performance reported by Lu et al. (2020). Among the four seasons, the model shows the lowest model biases of -0.35–0.39 ppb relative to WDCGG surface observations in MAM and JJA. In MAM, the model captured a band of high O₃ with values

330 of 30 ppb or higher in most Northern Hemisphere and southern polar regions. The highest values reached 40-60 ppb, extending from North Africa to East and South Asia. In JJA, this simulated high ozone band in the Northern Hemisphere was focused over northern mid-latitude (30-45°N) continents as a result of intensive photochemical production involving anthropogenic NO_x and VOCs. Interestingly, O₃ mixing ratios in the Southern Hemisphere significantly increase to 35-40 ppb due to the injection of stratospheric O₃, which is consistent with observations [as shown in Fig. S2](#). The model tends to overestimate tropospheric ozone levels in DJF, with an NMB of 9.78%. This overestimation is more prominent in the northern high latitudes because of the overestimation of the stratosphere to troposphere in this model, as will be discussed later.

335 Simulated vertical profiles of ozone are compared with ozonesonde observations in 6 regions from WOUDC in Fig. 3. The simulated magnitude and vertical gradient of ozone are generally in good agreement with observations throughout the depth of the middle-lower troposphere (surface-500 hPa). Model results and observations generally fell within one standard deviation of each other. In EUR and NAM, the simulation also accurately characterizes the vertical variation in O₃ in the whole troposphere. However, the simulation overestimated O₃ mixing ratios in the upper troposphere and stratosphere (500-200 hPa) in other regions. This is likely caused by the simplified treatment of the stratosphere to the troposphere in our model. In the model, stratospheric O₃ is constrained by relaxation towards zonally and monthly averaged values from ozone climatologies from Logan (1999) [and Horowitz et al. \(2003\)](#). These monthly values may cause the model to produce virtual stratosphere to troposphere events that are not observed by low-frequency ozonesonde in WOUDC (only one sample every 1-2 weeks). The coarse vertical resolution in the upper troposphere and stratosphere introduces errors in the modeling dynamics of ozone exchange between the stratosphere and the troposphere. Similar phenomena have also been reported in previous studies (Horowitz et al., 2003; Miyazaki et al., 2020; Verstraeten et al., 2013), which reported that representations of the stratosphere-troposphere exchange in four models caused a large overestimation of ozone at 500 hPa-90 hPa.



设置了格式: 字体颜色: 深红

删除了: Note that the model overestimation in the upper troposphere does not affect our analysis of surface O₃ and its origins because O₃ in the upper troposphere has little effect on the surface O₃ concentration. ...

350

355 **Figure 3. Comparisons of GNAQPMS-simulated annual mean ozone vertical profiles with ozonesonde observations averaged over some regions. Blue and red horizontal bars are the standard deviations of observations and simulations, respectively.**

3.1.2 Carbon monoxide (CO)

The annual mean concentration of CO simulated by GNAQPMS compared with WDCGG observations is shown in Fig. 2b. CO concentrations are well correlated with observations, with R values of 0.74-0.84 year round (N=64), while simulated concentrations are slightly higher, with NMBs ranging from 17.93% to 44.60%. The lowest model biases compared to surface observations are 22.13-22.6 ppb in DJF and MAM. The seasonal variation in CO is not obvious in the ocean, while it is significant on the continents. High values are always found in the regions with significant emissions from industrial sources, such as U.S., Europe, South Asia (SAS) and EA these fossil fuel combustion regions, and in those with significant emissions from biomass burning, such as Central Africa, South America and Southeast Asia (SEA), in all four seasons. The seasonal results show that the CO concentration over EA and SAS peaks during DJF, followed by MAM and SON, since there is more fossil fuel combustion for heating, whereas Central Africa experiences a maximum in JJA, which is mainly due to the stronger biomass burning and biogenic emissions. The positive biases in JJA reach 41.16 ppb, which is in part due to the lower OH levels and higher CO direct emission. The anthropogenic emission of CO in this study is 686.7 Tg/yr, which is higher than values in other studies, e.g., Horowitz et al. (2020) used 612.4 Tg/yr for year 2014. The main sink of CO is by reaction with OH. The tropospheric mean concentration of OH in our model is 11.9×10^5 molecules/cm³, which is in good agreement with previous studies, e.g., Badia et al. (2017) with 11.5×10^5 molecules/cm³ and Voulgarakis et al. (2013) with $11.1 \pm 1.8 \times 10^5$ molecules/cm³ from 14 models for 2000. Therefore, the overestimation of CO is mainly due to high CO anthropogenic emissions.

3.1.3 Nitrogen dioxide (NO₂)

375 Tropospheric NO₂ columns from TROPOMI data are compared with GNAQPMS in Fig. 4. As shown in Fig. 4, the column concentration of NO₂ has a range of $0.4\text{-}15 \times 10^{15}$ molecules/cm² over most of the land, the magnitude of which is well reproduced. Because of the short lifetime of NO_x, tropospheric NO₂ columns are considered to be closely sensitive to land surface NO_x emissions. As shown in Fig. 4a, the anthropogenic source areas of EA, Europe, and the eastern U.S. are the major NO_x emission sources, with high values in SON and DJF. The model satisfactorily captures seasonality and high-value regions of NO₂ columns in the vertical troposphere. The largest differences are found for eastern China, where GNAQPMS reaches levels of 15×10^{15} molecules/cm², whereas observations are on average 10×10^{15} molecules/cm². This overestimation is likely because China implemented the toughest-ever clean air policy in 2013-2017 and reduced NO_x emissions by 7.95 Tg (Zhang et al., 2019). This is not reflected by the EDGAR v5.0 emission inventory. A negative bias for TROPOMI data compared to the ground-based measurements (Verhoelst et al., 2021) may also be a reason for our model positive biases.

删除了: satellite

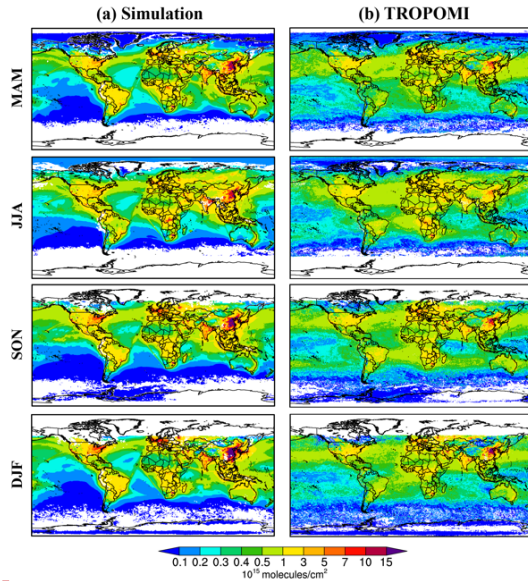
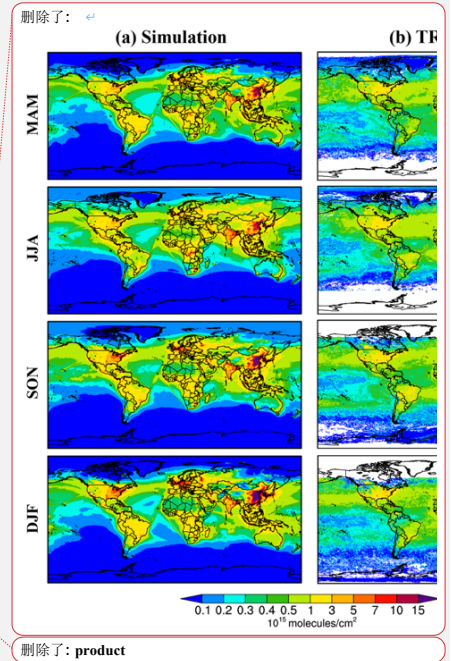


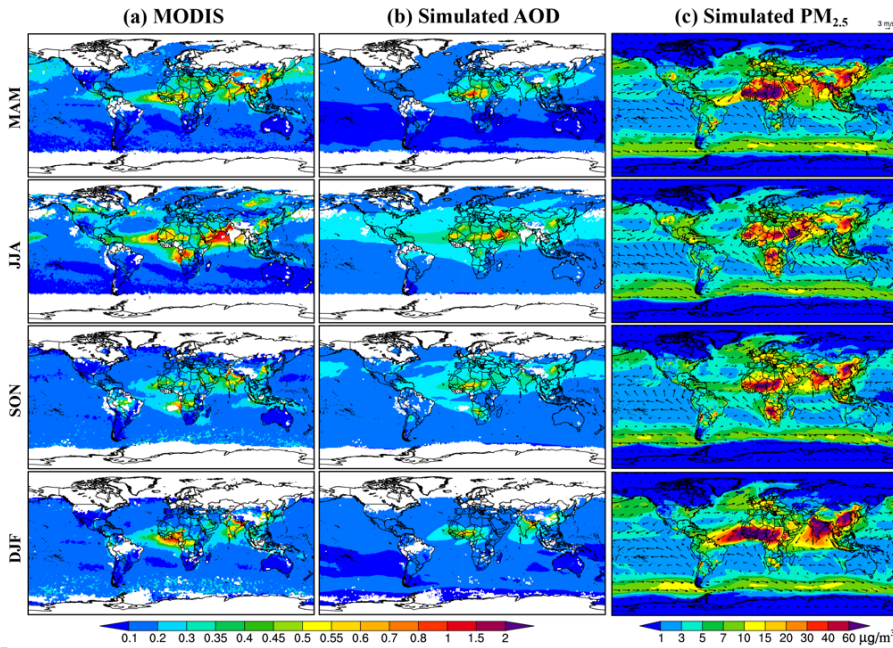
Figure 4. Spatial distributions of seasonal mean NO₂ columns from (a) GNAQPMS averaged in 2018 and (b) the TROPOMI data.

3.1.4 PM_{2.5} and aerosol optical depth

Figure 5c displays the seasonal variation in PM_{2.5}. The concentrations over the continents are higher than those over the ocean in most regions, and the simulated PM_{2.5} is less than 1 μg/m³ in the northern and southern polar regions, as shown in Fig. 5c. There is a high PM_{2.5} band with values of approximately 10 μg/m³ in the southern mid-latitudes, which is mainly caused by sea salt. The major PM_{2.5} hotspots are over India, East Asia, and Central Africa, and PM_{2.5} reaches a peak during DJF, followed by lower values during MAM, and the lowest values are during JJA and SON since there is higher biomass and fossil fuel burning for heating. less precipitation and strengthened positive feedback between aerosols and PBL (Petaja et al., 2016) during DJF. AOD, which is the total column aerosol extinction, is positively correlated with the total aerosol mass concentration in an atmospheric column. We compare the annual AOD with MODIS satellite data in Fig. 5a-b. The AOD over the ocean ranges from 0.1 to 0.3, which is mainly related to sea salt. The high AOD regions are Central and West Africa and South and East Asia, and AOD reaches a maximum in JJA and connects into a high band at mid-latitudes in the Northern Hemisphere. The maximum in Central Africa and West Africa in Fig. 5a is due to the tremendous amount of carbonaceous aerosol emitted by biomass burning, which often takes place in JJA. The model reproduces this distribution well, although there is a slightly negative bias in high-value regions, especially in JJA. The high AOD in South and East Asia related to high



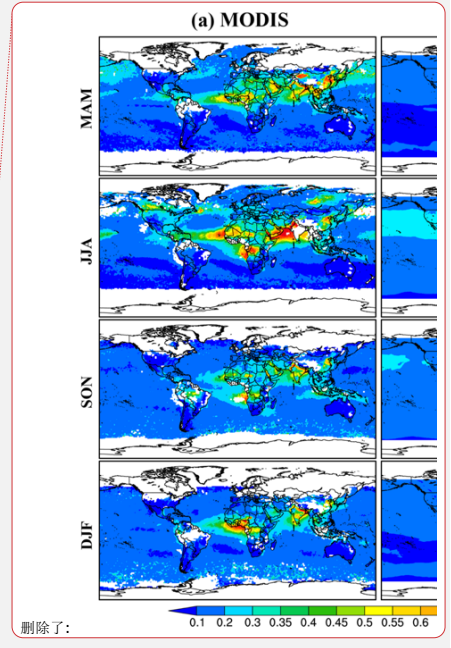
anthropogenic emissions is underestimated. The major hotspots of AOD are consistent with those of $PM_{2.5}$. GNAQPMS shows a weaker AOD in most regions, which may be related to the low $PM_{2.5}$ in the simulation, as will be discussed later, and may be due in part to uncertainty in satellite AOD datasets (Li et al., 2009).



410 Figure 5. Spatial distributions of seasonal mean AOD at 550 nm from (a) MODIS data and (b) GNAQPMS averaged in 2018 and (c) $PM_{2.5}$ in GNAQPMS.

3.2 Model evaluation against regional/urban concentrations

O_3 and other secondary pollutants significantly vary in regions with large gradients in emissions of NO_x and other precursor emissions. This requires a model with sufficient spatial and temporal resolution, and coarse grids usually do not adequately
 415 capture urban-scale pollutant levels and gradients when the urban area occupies only a fraction of the grid cell (Huijnen et al., 2010). In this study, GNAQPMS employs a fine resolution of $0.5^\circ \times 0.5^\circ$ and outputs hourly data, which provides us with a good opportunity to investigate detailed air pollutant distributions and their origins in key regions from a global perspective. Here, we evaluate surface O_3 , $PM_{2.5}$ and its compositions in East Asia, Europe, and North America from the CNEMC, EANET, EMEP and IMPROVE air quality networks.



删除了:

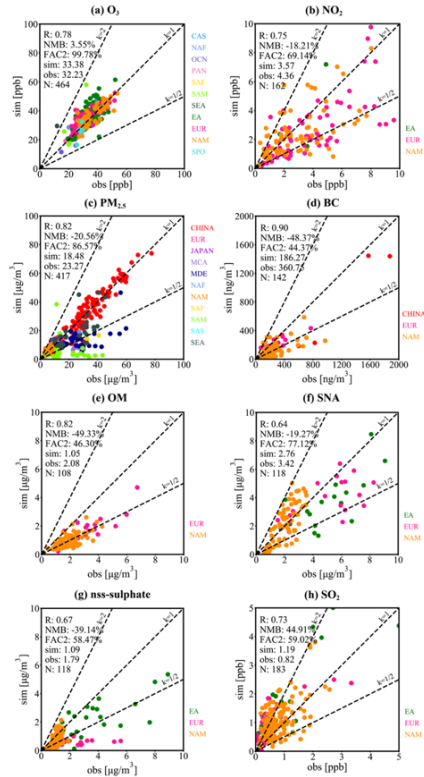


Figure 6. Scatterplots of simulated (sim) and observed (obs) annual mean concentrations. The black dotted lines are the 2:1, 1:1, and 1:2 reference lines from left to right. Different regions are plotted with circles in different colors.

Figure 6 shows a comparison of the annual surface mean simulated O_3 , NO_2 , $PM_{2.5}$, $PM_{2.5}$ components and SO_2 concentrations with ground-based observations in different regions, and detailed information on R and NMB is provided in Table S2. As shown in Fig. 6a, surface O_3 shows remarkable agreement with the observations. The annual average simulated O_3 concentration of all stations worldwide is 33.38 ppb, while the mean of the observed data is 32.23 ppb, with an NMB of 3.55% and an FAC2 of 99.78%. For NO_2 , GNAQPMS shows high correlations with observations and no significant annual biases in EA, EUR and NAM. The simulated and observed NO_2 values are 3.57 ppb and 4.36 ppb, respectively, and 69.14% of stations are within a factor of 2 of observations, with R values of 0.89, 0.87, and 0.56 and NMBs of -25.69%, -31.15%, and 2.49% for EA, EUR, and NAM respectively (see Fig. 6b and Table S2). NO_2 has a short lifetime and is greatly affected by

删除了: 1

删除了: 1

435 local sources, and the model shows stronger spatial correlations with observations than previous studies in East Asia (Li et al.,
2012) and Europe (Mar et al., 2016; Karamchandani et al., 2017). In addition, the annual average NMB of -18.21% with respect
to NO₂ is also in line with previously published studies (Zhang et al., 2013).

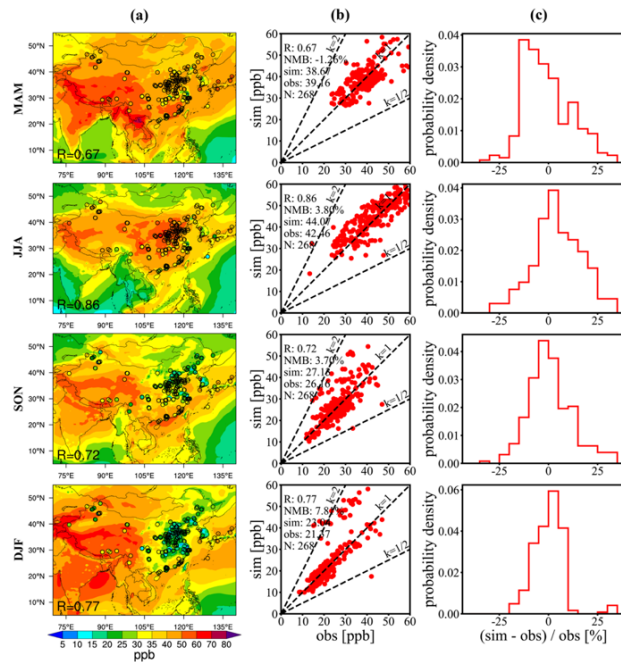
In Fig. 6c, the modeled PM_{2.5} is 18.48 µg/m³, while the mean of the measured data is 23.27 µg/m³, with an NMB of -20.56%
and an FAC2 of 86.57%. Simulated versus observed PM_{2.5} concentrations across 417 stations highlight the underprediction of
PM_{2.5}. Due to the large contribution of biomass burning and fossil fuel combustion, PM_{2.5} is higher in China and SEA than in
440 EUR and NAM, as shown in Fig. 6c. The concentration in SAM is obviously underestimated, which may be related to the
uncertainty of the emission inventory in SAM. At present, most models generally underestimate the concentration of BC
(Shindell et al., 2008), and the difficulties of BC simulation are the parameterization scheme selection of BC aging and wet
scavenging processes, as well as the lack of BC emission sources. According to a previous study, adding gas flaring emissions
can improve the surface BC concentration biases, especially in the Arctic (Huang et al., 2015); therefore, we add the ECLIPSE
445 V5a flaring emissions in the inventory. However, the simulated concentration of BC is 186.27 ng/m³, which is underestimated
by approximately 174 ng/m³, with an NMB of -48.37%, while the R value is up to 0.9 (Fig. 6d). Only approximately 44% of
stations are within a factor of 2 of observations. NMB values are -52.08%, -20.30% and -49.97% over EA, EUR and NAM,
respectively. The performance for Europe is in agreement with BC simulations using GEOS-Chem in Europe, showing that
BC concentrations are underpredicted by approximately 30% (Huang et al., 2015; Wang et al., 2014), whereas the performance
450 for EA and NAM is unsatisfactory. Similar to BC, the model can accurately capture the observed spatial distribution (R=0.82)
but underestimates the levels of OM, with NMB and FAC2 values of -49.33% and 46.3%, respectively (Fig. 6e). This
underestimation of BC and OM is more severe over NAM. However, the spatial correlation of BC and OM is better than the
result in Carter et al. (2020). In Fig. 6f, simulated SNA shows better agreement with observations than carbonaceous aerosols.
The simulated and observed values are 2.76 µg/m³ and 3.42 µg/m³, respectively, and 77.12% of stations are within a factor of
455 2 of observations. GNAQPMS tends to underestimate the concentration of sulphate, with an NMB value of -39.14% (Fig. 6g).
Compared with an NMB of -1.53% in EA in Uno et al. (2017) and an NMB of -3.9% from GEOS-Chem results in the U.S. in
Zhang et al. (2012a), our performance of sulphate needs to be improved. This negative bias could also be attributed to ignoring
subgrid aerosol variations in the model (Qian et al., 2010; Yang et al., 2017a) and heterogeneous chemistry on aerosol surfaces,
460 (Bauer and Koch, 2005; Andreae and Crutzen, 1997) and could still be related to the positive bias of SO₂ with an NMB of
44.91%, as shown in Fig. 6h. Partial incomplete oxidation and a low rate of conversion from SO₂ gas to sulphate particles in
GNAQPMS could lead to the high concentration of SO₂ and low concentration of sulphate in the atmosphere. Generally,
GNAQPMS has good capability in reproducing the magnitudes of pollutants in regions.

删除了: (Klimont et al., 2017; data available at
[https://iiasa.ac.at/web/home/research/researchPrograms/air/ECLIPSE
v5a.html](https://iiasa.ac.at/web/home/research/researchPrograms/air/ECLIPSEv5a.html)). ...

设置了格式: 字体颜色: 深红

设置了格式: 字体颜色: 深红

3.2.1 East Asia



470 **Figure 7. Comparison of surface O₃ in East Asia. (a) Spatial distribution of simulated (shaded) surface O₃ concentrations compared with observations (solid circles). (b) Scatterplots of simulated (sim) and observed (obs) seasonal mean O₃. The black dotted lines are the 2:1, 1:1, and 1:2 reference lines from left to right. (c) The probability density functions of NMB.**

In Fig. 7, the observations from CNEMC and EANET are used. GNAQPMS captures the surface O₃ seasonal variation in eastern and western China. Year-round O₃ concentrations averaged over eastern China are approximately 20 ppb lower than those over western China. Surface O₃ over Southwest China reaches a maximum in DJF and MAM and a minimum in JJA and SON, whereas that over eastern China reaches a peak in JJA and a trough in DJF, and this seasonality is determined by abundant photochemical reactions in JJA and the East Asian monsoon. [The enhanced titration of O₃ with the increase of NO_x in DJF could also be a possible reason.](#) The model also captures the high values during MAM in Japan. The peak in the Western Pacific is consistent with the high values in Japan. Figure 7b shows scatter plots of simulated and observed seasonal surface concentrations of O₃. As shown in Fig. 7b, the O₃ simulations at most sites are within a factor of 2 of observations, with R ranging from 0.67 to 0.86 and NMB ranging from -1.26% to 7.81% in different seasons. The observed seasonal mean O₃

480 concentration in EA is between 21.37 ppb and 42.46 ppb, while the simulated concentration is between 23.04 ppb and 44.07
 ppb. The simulation annual and seasonal results of O_3 in EA match those of regional models participating in the Model Inter-
 Comparison Study for Asia Phase III (MICS-Asia III) (Li et al., 2019). Figure 7c shows the frequency of O_3 NMB values,
 distributed as a function of NMB. NMB of O_3 in MAM is most frequently between -15% and -10% in EA, and the frequency
 of occurrence of lower O_3 NMB values dramatically decreases. The NMBs in the other three seasons are most frequently
 485 within $\pm 5\%$ and show an approximately normal distribution.

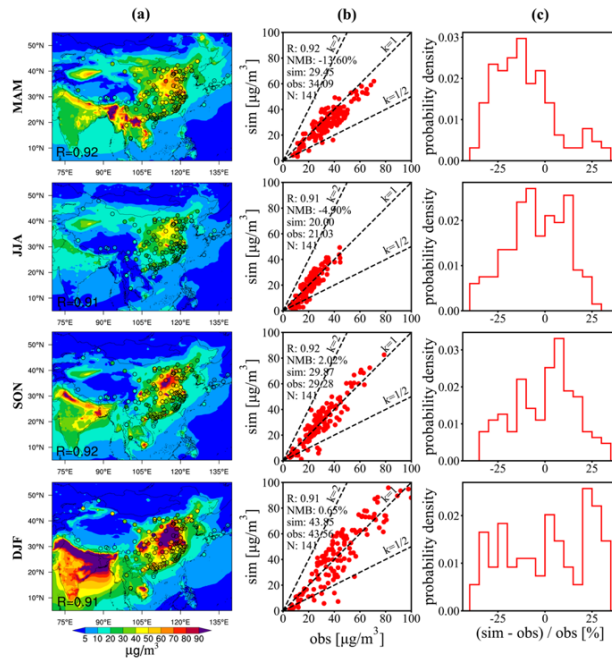


Figure 8. Comparison of surface $PM_{2.5}$ in East Asia. (a) Spatial distribution of simulated (shaded) surface $PM_{2.5}$ concentrations compared with observations (solid circles). (b) Scatterplots of simulated (sim) and observed (obs) seasonal mean $PM_{2.5}$. The black dotted lines are the 2:1, 1:1, and 1:2 reference lines from left to right. (c) The probability density functions of NMB.

490 Figure 8 displays that the seasonal mean simulated $PM_{2.5}$ concentration is between $20 \mu g/m^3$ and $43.85 \mu g/m^3$, while the
 observed data range from $21.03 \mu g/m^3$ to $43.56 \mu g/m^3$ in EA. The model shows good spatial correlations with observations
 and little seasonal bias, with R values ranging from 0.91-0.92 and NMB values within $\pm 15\%$. [The frequent spring dust storms
 in northern China are an important reason for the larger \$PM_{2.5}\$ biases in MAM.](#) GNAQPMS reproduces the spatial distribution
 of $PM_{2.5}$, including low concentrations over western China and high concentrations over eastern China, as well as $5-30 \mu g/m^3$

495 concentrations over the Western Pacific due to sea salt. The North China Plain, central China and the Sichuan Basin are the major hotspots, and PM_{2.5} concentrations reach a maximum during DJF, with average concentrations above 90 µg/m³, which is related to stronger gradients in population density in these regions and more fossil fuel combustion for heating in DJF. Compared with that of O₃ NMBs, the probability density function (PDF) of PM_{2.5} NMBs is not centralized and shows a nonnormal distribution, as displayed in Fig. 8c, especially in DJF.

500 3.2.2 Europe

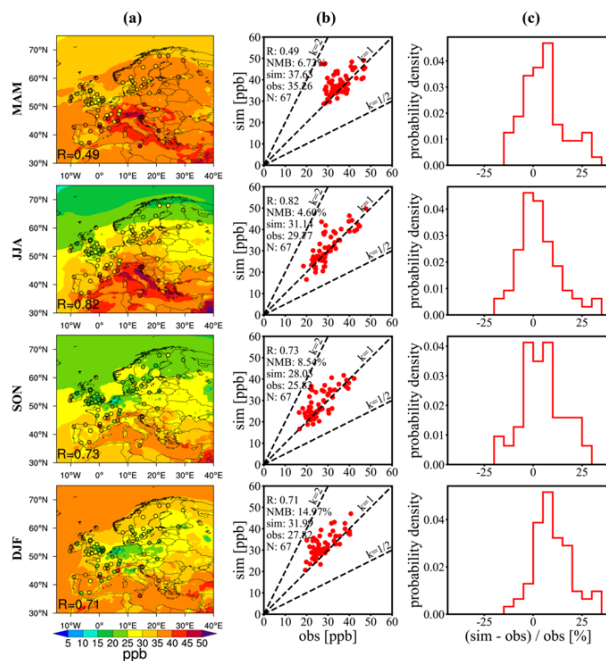


Figure 9. Same as Fig. 7 but in Europe.

Figure 9 shows the validation of GNAQPMS simulations against EMEP observations. GNAQPMS captures the distribution of the surface layer O₃ concentration fairly well. The seasonal pattern of O₃ in Europe is characterized by higher values in MAM and lower values in SON. The high ozone area is mainly located in southern Europe (especially near Italy and Greece), and the peak ozone concentration is up to 40 ppb near the Mediterranean in JJA. The model reproduces the ground-based north-south gradient. The seasonal R values are all above 0.7 except 0.49 in MAM, and NMB values range from 4.6% to 14.97%

删除了: EMEP observations

删除了: GNAQPMS simulations

510 with a relative overestimation during DJF in northern and western Europe. This performance is similar to MOZART ($R=0.53-0.55$, $NMB=-19\%-6\%$) and RADM2 ($R=0.49-0.58$, $NMB=-33\%--23\%$) model simulations over Europe in Mar et al. (2016). The PDF in Fig. 9c shows that the NMBs in MAM and DJF are most frequently between 0 and 10%, and those in JJA and SON approximately obey a normal distribution.

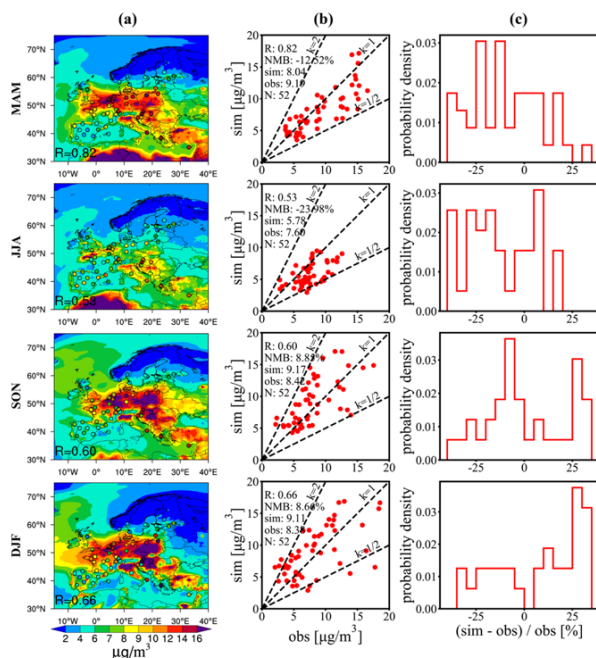


Figure 10. Same as Fig. 8 but in Europe.

515 The seasonal observed and simulated station PM_{2.5} values are within 10 µg/m³ in Europe, as shown in Fig. 10. Mean values of PM_{2.5} in Europe are fairly similar in all seasons, with a slightly lower concentration in JJA. There is no significant model bias in the seasonal mean concentrations except for a 20% low bias in JJA. The model does not capture the observed high values in southern and central Europe during JJA. During the other three seasons, the maximum PM_{2.5} in central Europe is well pronounced. The annual NMB value of -4.47% in Table S2 at EMEP sites is less than the previously mentioned negative biases of -30.4% in the WRF/Polyphemus model (Zhang et al., 2013) and -19.7% in the CAMx model (Karamchandani et al., 2017).

删除了: 1

3.2.3 North America

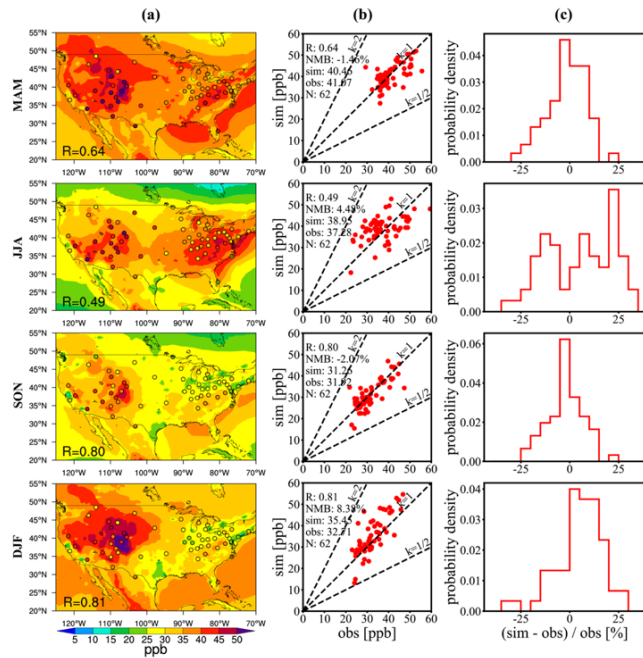


Figure 11. Same as Fig. 7 but in the United States.

525

530

535

Figure 11 shows the seasonal mean surface O₃ concentration in the U.S. compared with observations from EPA network sites. The seasonal R values are between 0.49 and 0.81, with slightly poor spatial correlation in JJA, and NMB values range from -2.0% to 8.38%. The seasonalities of ozone in the eastern and western U.S. are inconsistent. The model can simulate the high tail of the O₃ distribution in the western U.S. during MAM and DJF but tends to overestimate O₃ levels by approximately 5-10 ppb in the eastern U.S. during JJA, which also always appears in other regional or corresponding large-domain, CMAQ or GEOS-Chem simulations (Hogrefe et al., 2018; Fiore et al., 2002; Guo et al., 2018). Several small-scale high-value stations in western cities, notably in California, are underestimated, which are affected by the coarser model resolution relative to finer regional resolution. In general, the simulation level in the U.S. matches well with levels of other regional models (Hogrefe et al., 2018; Nopmongcol et al., 2017). As shown in Fig. 11c, the NMBs in MAM and SON are within ±5% and are normally distributed.

删除了: scale

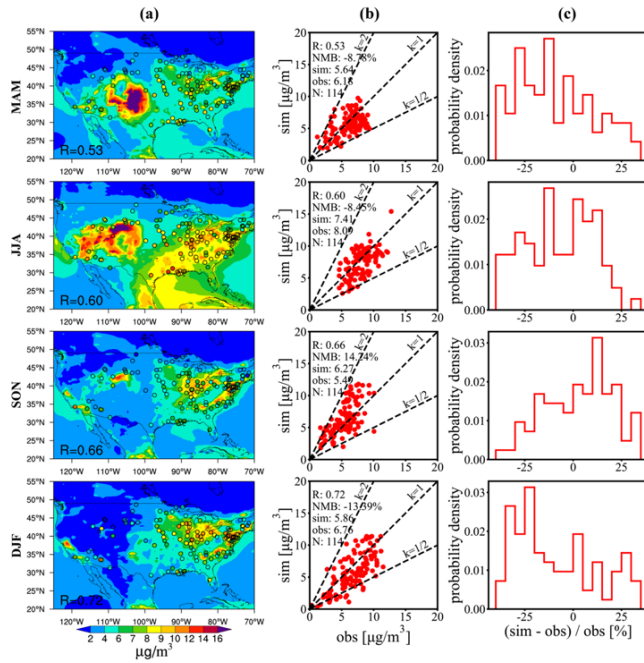


Figure 12. Same as Fig. 8 but in the United States.

540 As shown in Fig. 12, the seasonal mean modeled surface $PM_{2.5}$ concentrations over the U.S. are between $5.64 \mu\text{g}/\text{m}^3$ and $7.41 \mu\text{g}/\text{m}^3$. Similar to Europe, the seasonal observed and simulated $PM_{2.5}$ concentrations are within $9 \mu\text{g}/\text{m}^3$, and the seasonal variation is inconspicuous. The U.S. can be split into the western and eastern parts of the country for discussion. In the west, the hotspot is located in the central region and peaks during MAM. In the east, the larger high-value zones reach a maximum during JJA. Except for SON, there is a slight tendency to underestimate the concentration. This performance over the U.S. is similar to the GEOS-Chem results in Kim et al. (2015).

4 Results of S-R relationships

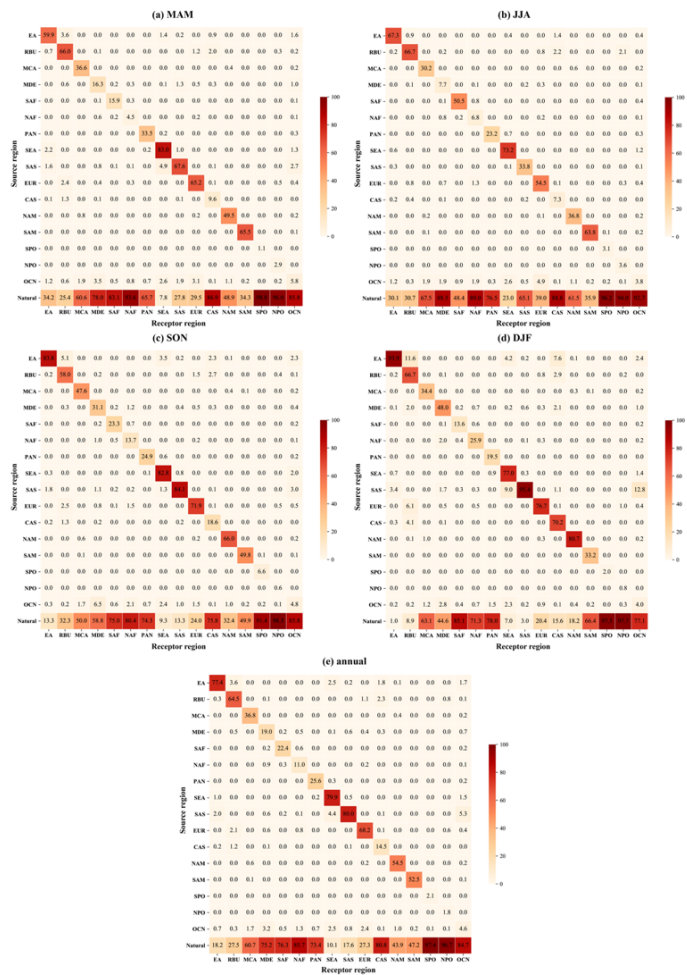
4.1 S-R relationships in the surface layer

We have evaluated annual and seasonal model performance thoroughly. This laid a good foundation for the S-R relationship analysis that follows. The contributions of different source regions are calculated and discussed in this section.

删除了: Results

4.1.1 Surface PM_{2.5} source-receptor relationships

PM_{2.5} has anthropogenic and natural emission sources. All of sand dust and sea salt are considered to be from natural emissions. Figure 13 shows the annual and seasonal estimates of the contributions to surface PM_{2.5} (in percent) from source regions to receptor regions on a global scale. The transport distance of surface PM_{2.5} is limited. Local and natural sources play major roles, with contributions of nearly more than 90%, while the contribution of external sources is small (Fig. 13e). The yearly contribution from EA to itself is 77.4%, and the contributions from natural emissions, SAS, and SEA to EA are 18.2%, 2.0%, and 1.0%, respectively. Sources in the EA explain approximately 3.6% of the PM_{2.5} concentration in RBU and 2.5% in SEA. The PM_{2.5} in EUR is generally more sensitive to local emissions (68.2%) than to natural emissions (27.3%). OCN and RBU also contribute 2.4% and 1.1% to EUR, respectively. These contributions show seasonal variations. As shown in Fig. 13a-d, local emissions from EA contribute approximately 59.9-93.9% of the surface PM_{2.5} concentration over EA in all seasons, and local emissions from SAS contribute approximately 33.8-95.4% over SAS, which peaks in DJF due to greatly increased biomass and fossil fuel burning for heating. The export of PM_{2.5} from EA contributes approximately 0.9-11.6% over RBU and CAS, and these contributions are high in DJF, mainly due to the large emissions and concentrations of PM_{2.5}. Similarly, exports from SAS contribute 0.1-9.0% over EA and SEA in the four seasons due to westerly winds. Desert dust of MDE, NAF, and CAS (Mongolia is included in CAS) plays an important role in MAM and JJA, which is caused by their desert terrain, more dust storm activity and higher PM_{2.5} surface concentration. Because marine emissions can also make a considerable contribution to air pollution, local sea salt emissions cause natural emissions to make more than 90% and 75% contributions to NPO and OCN, respectively. Antarctica (SPO) has a low population, and transportation sources are also small, so the contribution of natural sources is larger than that in other regions. Local anthropogenic sources contribute more than 50% to the PM_{2.5} concentrations in EA, RBU, SEA, SAS, EUR, NAM and SAM and even exceed natural emissions. SAS contributes 2% to the EA surface PM_{2.5} contribution annually, while EA contributes 0.2% to SAS. Although SAS is controlled by the South Asian winter monsoon in DJF, the northeast wind in DJF is weaker than the southwest wind in JJA. In addition, the PM_{2.5} concentration of SAS in DJF is higher than that in JJA, so the contribution to EA from SAS is largest in DJF among the four seasons. These mid-latitude regions are dominated by westerly winds and therefore can make a greater contribution to the downwind receptor region. PM_{2.5} can also transport across regions between high latitudes and low latitudes, such as PM_{2.5} from EUR traveling south to NAF, especially in JJA. Because of the deposition, PM_{2.5} mainly contributes to its surrounding receptor regions and cannot be transported over long distances in the surface layer. The near-surface downwind transport is not easy to cross the Pacific and the Atlantic. For example, only 0.1% of PM_{2.5} in NAM is from EA and 0.2% of PM_{2.5} in EUR is from NAM annually.



580

Figure 13. Annual and seasonal estimates of the contributions to surface PM_{2.5} (%) from source regions to receptor regions.

To better quantify the S-R relationships for PM_{2.5} in EA, we split EA into China, Japan, South Korea, and North Korea. We select 5 cities, Busan (128.58° E, 35.09° N), Seoul (126.97° E, 37.55° N), Osaka (135.05° E, 34.07° N), Tokyo (139.77° E,

35.7° N), and Fukuoka (130.58° E, 33.6° N) to compute the yearly contributions of China, South Korea, Japan and local anthropogenic emissions. As shown in Table 2, local anthropogenic emissions are the most prominent source of surface PM_{2.5} in Busan, Seoul, Osaka, Tokyo, and Fukuoka, which contribute 63.89%, 52.83%, 61.27%, 78.69% and 44%, respectively. [Long-term studies that analysed long-range transport of PM_{2.5} seasonally or annually in South Korea and Japan reported that local contributions ranged from 30% to 60%, depending on the season, and local contribution was higher in the metropolises of Japan and South Korea \(Kim et al., 2017; Yim et al., 2019; Lee et al., 2017\). There is no significant difference between their studies and our results.](#) Natural emissions explain ~10% of PM_{2.5} concentrations in the 5 cities. China makes a greater contribution to Busan and Seoul (18.61% and 25.56%, respectively) in closer South Korea than to Osaka and Tokyo (8.64% and 2.28%, respectively) in farther Japan. Compared with the other two cities in Japan, Fukuoka is located in southwestern Japan and is closer to China and South Korea; thus, the contributions from China and South Korea reach 18.14% and 17.14%, respectively. This is also related with meteorological conditions controlled by westerly winds, as mentioned above. China's contribution to South Korea, which is closer to China, is generally greater than that to Japan. Japan is located in the downwind area of South Korea, so Japan's contribution to Busan and Seoul (1.05% and 0.13%, respectively) is less than that of Korea to Osaka, Tokyo and Fukuoka (5.93%, 0.77% and 17.14%, respectively).

Table 2. Contributions from China, South Korea, and Japan to surface PM_{2.5} (in percent) in 5 cities.

	China	South Korea	Japan	Natural	Concentration (µg/m ³)
Busan	18.61%	63.89%	1.05%	10.94%	18.50
Seoul	25.56%	52.83%	0.13%	8.70%	23.22
Osaka	8.64%	5.93%	61.27%	16.02%	10.13
Tokyo	2.28%	0.77%	78.69%	12.86%	12.38
Fukuoka	18.14%	17.14%	44%	13.14%	13.22

600 4.1.2 Surface O₃ source-receptor relationships

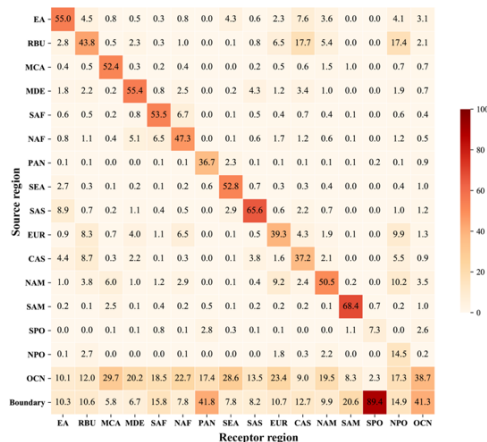


Figure 14. Annual estimates of the contributions to surface O₃ (%) from source regions to receptor regions.

Different from PM_{2.5}, O₃ S-R relationships are affected by many precursors that are emitted, reacted, and then generated, which are also attributed to the influence of photochemical reactions, and show a stronger nonlinearity. In our SR module, primary pollutants and secondary aerosols are tagged by their or their precursor emitting locations, and other secondary species like O₃ are tagged by the produced locations. Therefore, we calculate the O₃ contribution of a source region that was chemically produced inside this source region and then transported to another receptor region, inevitably including amounts of O₃ produced inside this source region from precursors emitted in neighboring source regions and transported to this source region. As shown in Fig. 14, sources from EA, MCA, MDE, SAF, SEA, SAS, NAM, and SAM have contributed more than 50% to themselves in the surface layer. Similar to PM_{2.5}, the transport of O₃ in the mid-latitude regions of the Northern Hemisphere is also controlled by the prevailing westerly wind. The contribution of RBU surface O₃ from the EUR source region averages 8.3% over the year, while the contribution of EUR surface O₃ from the RBU source region averages 6.5%. Compared with PM_{2.5}, O₃ has a longer surface transport distance and greater contribution of transboundary transport, which is above 30% and generally approximately 50%. Nearly 25% of global anthropogenic NO_x emissions originated from shipping, plus the NO_x transported to OCN, and the influence of local photochemical reactions on O₃ is significant in OCN (38.7%). O₃ can be transported across the ocean through the surface layer. The export of O₃ from NAM contributes 9.2% of surface O₃ concentrations in EUR under the control of the westerly jet crossing the North Atlantic and contributes approximately 6% in MCA due to northerly winds. NAM also contributes significantly (10.2%) to NPO O₃. Affected by the South Asian monsoon, O₃ originating from SAS can be transported to EA (8.9%) and across the Bay of Bengal to SEA (2.9%). Sources in EA explain approximately 3.6% of O₃ effectively crossing the North Pacific to NAM. The exported surface O₃ from RBU can travel to

删除了: local
 删除了:
 删除了: local
 删除了: source emissions

删除了: The

EUR, with a relative contribution (6.5%) exceeding that to NAM (5.4%) and EA (2.8%). Surface concentrations over NPO have a close association with emissions from source regions. The largest contribution in NPO is from RBU, and the contributions from EUR and NAM are similar in magnitude. Basically, O₃ is transported to NPO from every source region, even from PAN in the Southern Hemisphere. The contribution of the top boundary is large in SPO due to the low tropopause of SPO and the simplified treatment of the stratosphere, while the contribution of the top boundary is smaller in Northern Hemisphere, receptor regions, compared with the contribution of photochemical reactions.

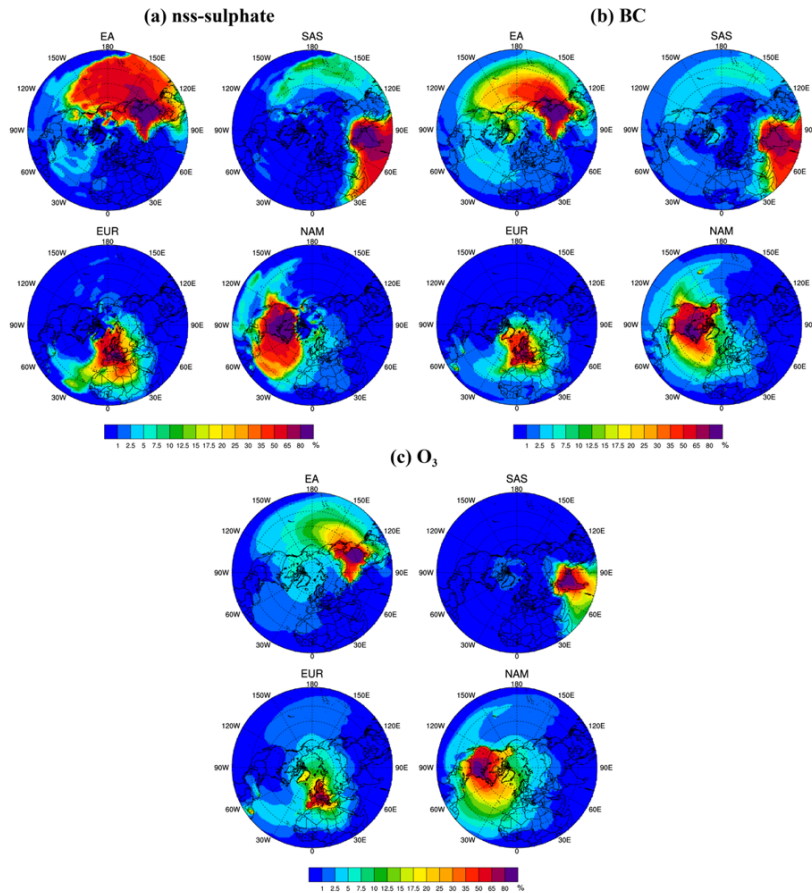
630

删除了: other

删除了:

删除了: and therefore has little effect on the S-R relationships

设置了格式: 英语(美国)



635 **Figure 15. Spatial distribution of source region contributions to (a) nss-sulphate; (b) BC concentration within the PBL and (c) O₃ (%) in the surface layer.**

Then, we choose 4 source regions to focus on: EA, SAS, EUR and NAM. Figure 15c presents the spatial distribution of the relative contribution to surface O₃ from these regions. Due to westerly winds in the middle latitudes, nonlocal source transport accounts for less than 20% in the eastern part of EA and NAM but contributes approximately 30% in the western part of NAM and more than 50% in western EA, considering the lifetime of O₃ and meteorology, where surface O₃ is vulnerable to the

influence of external sources. As shown in Fig. 15c, surface O₃ can be transported on a hemispheric scale. Exports from EUR can explain approximately 5-10% over North Asia and the Northeast Atlantic, and approximately 5-15% over NPO. Surface O₃ can even be transported across NPO to the North Pacific, making a nearly 5-7.5% contribution. Similarly, O₃ from EA can be transported south to SEA, west to the North Pacific, north to RBU and across NPO to the North Atlantic.

4.2 Nss-sulphate and BC source-receptor relationships within the planetary boundary layer (PBL)

Figure 16 displays the yearly relative contributions to nss-sulphate and BC within the PBL. The transport characteristics of nss-sulphate and BC are similar to those of PM_{2.5}, exhibiting a dominant traveling from west to east. However, the relative contribution from source regions varies by pollutants, regions and heights. The contributions of long-range transport explain approximately 15-30% of nss-sulphate and 20-35% of BC in EA, SAS, EUR, and NAM. Nss-sulphate is one of the secondary aerosols that is mainly formed by SO₂ oxidation; hence, the concentration of nss-sulphate is mostly affected by source regions with high anthropogenic SO₂ emissions, such as EA, SAS, EUR, and NAM. The exports from EA and EUR are responsible for approximately 20% of nss-sulphate within the PBL over RBU, the sum of which is comparable to the contribution from RBU local sources (40.9%). The nonlocal source contribution is similar to the results in Yang et al. (2017a) based on CESM for 2010-2014, where the contributions of EA and EUR to RBU are 15% and 12.5%, respectively. EA and SAS each account for more than 20% of nss-sulphate over SEA, and their sum is larger than the local contribution from SEA (37.2%). Nss-sulphate from EA can be effectively transported to the surrounding regions with considerable contributions to RBU (17.4%), SEA (22.2%), CAS (18.3%), and OCN (21.4%). The NPO nss-sulphate is more sensitive to emissions from EUR (45.2%), RBU (14.4%), and NAM (8.5%) than local emissions (7.1%). Distinct from nss-sulphate, BC is the primary aerosol, and its concentration is directly related to BC source emissions, such as biomass burning and gas flaring. Therefore, the contribution of 'Other', which considers natural emissions in RBU, SAF, PAN, SEA and SPO, to BC is relatively large. RBU, EUR and NAM have a relative contribution of nearly 40% to NPO BC within the PBL. The contribution of NAM nss-sulphate and BC concentration within the PBL from the EA source region is 1.6% and 5.7%, respectively. The contribution of EUR nss-sulphate and BC concentration within the PBL from the NAM source region is 3.6% and 6.7%, respectively. The transport distances of nss-sulphate and BC in the PBL are still limited, and they need to be uplifted into the upper free troposphere for longer distance transport.

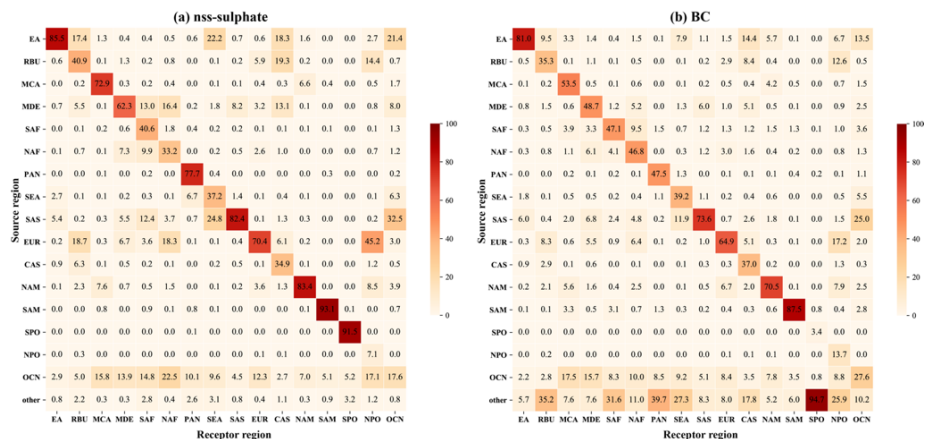


Figure 16. Annual estimates of the contributions to (a) nss-sulphate and (b) BC (%) within the PBL from source regions to receptor regions. 'Other' refers to the effects of natural emissions and the boundary layer.

670 Figure 15a-b displays the spatial plots of yearly relative contributions to nss-sulphate and BC concentration within the PBL for the EA, SAS, EUR and NAM receptor regions. Relatively speaking, BC is transported longer distances than nss-sulphate, which can also be found in Fig. 16. Note that the relative contribution in Fig. 16 is the annual mean contribution of the entire region. The influences of both BC and nss-sulphate extend throughout more than half of the Northern Hemisphere, as shown in Fig. 15. BC in the Arctic has always been a concern, and it is clear that the largest contributions over NPO within the PBL are from EUR, which is similar to previous studies (Sobhani et al., 2018). The concentrations of BC are dominated by local sources in eastern China, while more than 50% of the BC concentration within the PBL in western China is from emissions outside China. EA emissions have up to 7.5-12.5% and 7.5-17.5% contributions to the western U.S. and western Canada BC concentrations, respectively. The yearly contribution to the western U.S. is comparable to the average contribution of 8% over the western U.S. based on the CESM model in Yang et al. (2017b). Among regions outside EA, EA makes a very large contribution to the Northwest Pacific, with relative values between 35% and 50%. Due to the influence of the southwest monsoon in summer and northeast monsoon in winter, the BC from SAS can be transported southward and westward, with a wide range of transport. Because EUR is close to NPO, the contribution to some parts of NPO could reach up to 35%. In addition to being transported to EUR, BC from NAM can also travel westward, affecting the Northeast Pacific. Although nss-sulphate travels shorter distances than BC, its relative contribution to the receptor regions is greater. Nss-sulphate from the EA source region contributes almost 50% to the North Pacific, and nss-sulphate from SAS could also make an approximately 7.5% contribution to the North Pacific. There is significant southward sulphate transport to NAF from EUR. Moreover, the influence

675

680

685

of nss-sulphate from NAM extends to the Northwest Pacific, ranging from 35-50%. Due to the elevated topography of Southwest China, both BC and nss-sulphate from SAS cannot reach eastern China within the PBL.

4.3 Comparison with HTAP results

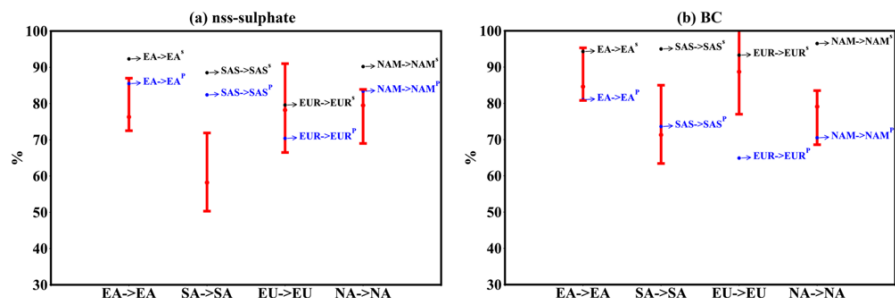


Figure 17. Contributions of (a) nss-sulphate and (b) BC in the surface layer and within the PBL from the HTAP report and GNAQPMS-SM. HTAP results with red error bars are based on the annual averages in 2001 from 6 global models. GNAQPMS-SM results in the surface layer are shown as black dots, and those within the PBL are shown as blue dots. (The region shown in the x-axis of the horizontal coordinate is the result of HTAP division, which is slightly different from the region defined in this paper)

Despite wide variations in nss-sulphate and BC surface concentrations among the different models, S-R relationships have some similar characteristics. We compare the S-R relationships of surface nss-sulphate and BC in our study with annual averages in 2001 from 6 models from part A of the HTAP report (Dentener et al., 2010), as illustrated in Fig. 17. More detailed comparisons are listed in Table 3. Because the height of the surface layer in the models in the HTAP report is not given, we also evaluated the contributions within the PBL. Although the surface contributions from local regions in our study are higher than the HTAP results, they are of the same magnitude. Compared with that of nss-sulphate, the contribution of BC in the surface layer or in the PBL in our study is closer to that in HTAP, which may be related to the inactive chemical properties of BC. Nss-sulphate, as a secondary pollutant, its S-R relationships in the surface layer are affected by precursors, photochemical processes, physical loss processes and mixing during transport. Therefore, there are some disagreements on surface nss-sulphate contributions. However, the results of nss-sulphate within the PBL are more consistent with the results in the HTAP report. For the transport within the PBL, the contribution from local sources is smaller than that for surface transport due to the inseparable transport height and distance.

Table 3. Relative contributions (%) compared with those in the HTAP report (Dentener et al., 2010). The median and range of the annual averages of the 6 models are given below.

		Receptor region ^a											
		EA		SA		EU		NA					
		HTAP	surface	PBL	HTAP	surface	PBL	HTAP	surface	PBL	HTAP	Surface	PBL
Nss-Sulphate:													

删除了: ↵

删除了: reference

删除了: reference

删除了: reference

删除了: reference

from EA	76.3 (72.5-87.0)	92.0	85.5	6.1 (1.9-9.6)	0.3	0.7	0.8 (0.0-1.6)	0.1	0.6	4.4 (0.0-5.3)	0.2	1.6
from SA	1.8 (1.5-3.2)	3.0	5.4	58.2 (50.3-71.9)	88.4	82.4	1.3 (0.0-6.8)	0.0	0.1	0.5 (0.0-0.7)	0.0	0.3
from EU	5.0 (0.3-9.8)	0.0	0.2	16.2 (12.1-22.1)	0.1	0.4	78.2 (66.5-91.0)	80.1	70.4	2.6 (0.8-4.6)	0.0	0.2
from NA	0.7 (0.1-2.5)	0.0	0.1	1.1 (0.3-3.5)	0.0	0.2	2.2 (1.1-4.6)	0.4	3.6	79.5 (69.0-83.9)	90.7	83.4
BC:												
from EA	84.6 (81.1-95.0)	94.0	81.0	4.8 (3.7-19.5)	0.1	1.1	1.0 (0.09-4.2)	0.0	1.5	2.7 (0.6-4.9)	0.0	5.7
from SA	2.9 (1.7-5.8)	2.3	6.0	71.3 (57.2-90.6)	95.0	73.6	1.2 (0.5-11.1)	0.0	0.7	0.7 (0.09-2.8)	0.0	1.8
from EU	1.0 (0.5-3.9)	0.0	0.3	4.3 (3.2-10.6)	0.0	1.0	88.7 (76.7-96.6)	93.5	64.9	1.4 (0.2-6.1)	0.0	0.3
from NA	0.2 (0.02-0.5)	0.0	0.2	0.5 (0.04-0.8)	0.0	0.5	1.1 (0.2-2.1)	0.0	6.7	79.1 (54.5-98.2)	96.5	70.5

* Note that there are some different definitions between the regions used in the table heading and in our study. The definitions of the regions in the table are stipulated by HTAP. Approximately, EA in HTAP is equal to EA in this paper, SA to SAS, EU to EUR, and NA to NAM.

We also compare the contributions to receptor region NAM and EA surface O₃ with Fiore et al. (2009) study which is related to HTAP report studies as shown in Fig. S3. When extrapolated to a 100% source contribution, the Fiore et al. (2009) results suggest that EUR and EA contribute from 0.3-2.1 ppb and 0.3-2.0 ppb to surface O₃ in NAM and EUR and NAM contribute from 0.4-2.9 ppb and 0.3-2.0 ppb to surface O₃ in EA, respectively. Although most of our results are within the range, NAM's contribution to EA in our results are consistently lower, and the contributions from EUR and EA to NAM are lower in JJA.

In addition to the uncertainties caused by different processes represented in models, different simulation years, and S-R calculation methods, emission inventories could also affect the S-R relationship. With the rapid development of the economy in the past 20 years, the emissions in many source regions have changed significantly, which has influenced the spatial distribution of pollutants and the S-R relationship. The uncertainties of pollutants between emission inventories are large and can affect our comparison of S-R relationships. The inadequate vertical grid resolution cannot properly resolve plume gradients which could also introduce uncertainties (Eastham and Jacob, 2017). Furthermore, when the horizontal resolution is coarser, it may be responsible for the lower contribution from source regions to themselves because of the absence of some local point sources. Additionally, due to the average effect caused by the coarser grid cell, the transport distance of pollutants could be overestimated, and the nonlocal source contribution could also be overpredicted. Finally, the different definitions of source region between this study and HTAP can also influence the results. Because cleaner Greenland is included in EUR and cleaner Canada is included in NAM in this study compared with EU and NA in HTAP, the regional and annual average surface concentrations in Europe and North America are lower in our simulation.

4.4 Comparison with emission sensitivity simulation results

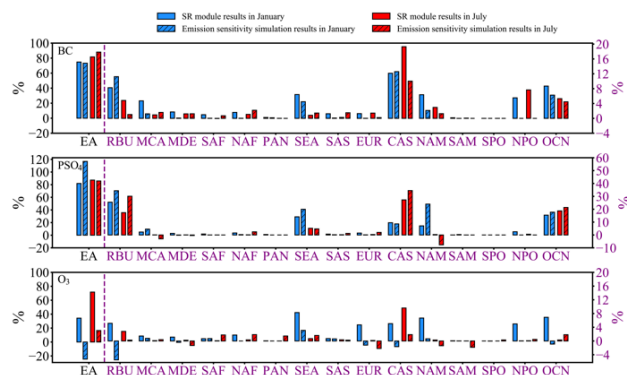


Figure 18. BC, nss-sulphate within the PBL and surface O₃ contribution from SR module results and full response from emission sensitivity simulation results from EA source region in January and July. The Y-axis of receptor region EA is the coordinate axis on the left shown in black, and the Y-axis of other receptor regions is the coordinate axis on the right shown in purple.

EA is an emission hot spot in the world. To better isolate the S-R calculation methods' effects of other possible reasons, e.g., horizontal and vertical resolution, emission inventories, models, we have carried out an additional emission sensitivity simulation with 20% reduction of anthropogenic emissions in EA in January and July of 2018. Pollutant response is defined as the ratio between the concentration difference between the baseline scenario and the perturbation scenarios and the concentration of the baseline scenario, based on the average of all grid cells in the receptor region. We make the hypothesis that -20% perturbation responses can be extrapolated towards -100% perturbation range, as an approximation of full response from the source region EA and compare with our SR module results as shown in Fig. 18. The SR module results are consistently higher than the emission sensitivity simulation results, except in few regions, partly reflecting the SR module method pays attention to all global sources instead of anthropogenic component from regions we focus on, the conclusion of which is consistent with HTAP report (Dentener et al., 2010). There is no significant difference on BC, suggesting that BC levels are largely driven by local emissions and long-range transport. Nss-sulphate and O₃ responses exist negative values, suggesting that regional nss-sulphate and O₃ levels are also driven by precursor emissions besides local emissions and long-range transport. Compared with O₃, the difference between two methods on nss-sulphate is smaller. O₃ shows more negative response and larger difference. Especially in receptor region EA in January, the O₃ response are negative due to the strong non-linearity in O₃ chemistry. In our SR module method, all contributions are strictly positive. However, in emission sensitivity method, the impacts are computed and may appear negative values, particularly in higher emission regions in DJF, which is also reported in Li et al. (2008) and Grewe (2004). The differences between two S-R revealing methods in estimated S-R relationships of secondary aerosols and O₃ are mainly due to the ignorance of the nonlinearity of pollutants during chemical processes.

删除了: ←

760 **5 Summary and future plans**

In this study, an online S-R relationship module based on a tagged tracer approach was coupled into the global tropospheric model GNAQPMS. The developed model can help us better quantify the contributions of multiple air pollutants from various source regions at the same time without introducing the nonlinear error of atmospheric chemistry. A global high-resolution (0.5°×0.5°) simulation of air pollutants in 2018 was conducted with EDGAR v5.0 and other emission inventories. The global tropospheric atmospheric chemistry source-receptor model will be useful to clarify the S-R relationships of various pollutants from a global perspective and to help creating a link between the scientific community and policymakers.

GNAQPMS generally captures the distribution and seasonality of air pollutants at global and regional scales (EA, EUR and NAM). The model reproduces the seasonal distribution of surface O₃ at background stations from WDCGG and vertical variation of ozonesonde observed O₃ in the middle-lower troposphere from WOUDC. The overestimation of O₃ mixing ratios in the upper troposphere and stratosphere in the tropics, mid-latitude and polar region of the Southern Hemisphere could be attributed to the lack of explicit simulation of stratosphere chemistry and the simplified treatment of the exchange of stratosphere with troposphere in GNAQPMS. The mean concentration of tropospheric OH is 11.9×10^5 molecules/cm³, which is similar to previous studies. The seasonalities of NO₂ columns and AOD are well captured. The concentration of surface O₃ is in good agreement with observations from global background and urban-rural sites, with spatial correlations ranging from 0.49 to 0.87 and NMB values ranging from -2.07% to 14.97%. Although the model tends to underestimate the surface concentrations of NO₂, BC, OC and sulphate, simulated PM_{2.5} and SNA show strong correlations and no significant biases with observations over EA, EUR and NAM. In general, the performances of the high-resolution global model and regional model are well matched.

The relative contributions of 19 source regions to pollutants show some similarities and vary with species, regions and heights. Transport in the mid-latitudes is dominated in west-east direction under the control of westerly winds. Only a small minority of PM_{2.5} can be transported across the Pacific and Atlantic through the surface layer. The PM_{2.5} generated or emitted in the source region mainly contributes to itself and its surrounding regions. For the S-R relationships inside EA, local anthropogenic emissions from Busan, Seoul, Osaka, Tokyo, and Fukuoka are the major contributors to their own surface PM_{2.5}. Contributions from nonlocal sources account for approximately 20-55% of surface PM_{2.5}. South Korea is closer to downwind of China; thus, China's contribution to South Korea is greater than that to Japan. Compared with surface PM_{2.5}, surface O₃ can be transported on a hemispheric scale (e.g., from PAN in the Southern Hemisphere to NPO). Nonlocal source transport explains approximately 35-60% of surface O₃ in EA, SAS, EUR and NAM. O₃ from EUR can be transported across NPO to the North Pacific and contributes nearly 5-7.5% to the North Pacific. BC, as a primary aerosol, is directly linked to emissions. As a result, in the RBU, SAF, PAN, and SEA regions, where biomass burning emissions are large, natural emissions make a significant contribution to BC within the PBL. In contrast to BC, nss-sulphate is mainly generated by the oxidation of SO₂, the S-R relationship of which is mainly influenced by source regions with high local emissions. The contributions of long-range transport account for 15-30% within the PBL in EA, SAS, EUR, and NAM. The transport distance of nss-sulphate and BC is

795 limited in the PBL and they need to be lifted above the PBL for longer distance transport. The contributions of long-range transport can explain less than approximately 20% of pollutant concentrations over the mid-latitude continental regions of the eastern part of EA and NAM due to the control of westerly winds, while they can explain approximately 30% over the western part of NAM and more than 50% over western EA.

800 In comparison with HTAP report results, local contributions from source regions to surface nss-sulphate and BC in GNAQPMS-SM exceed the range given in the HTAP report. When considering the relative contributions within the PBL, the local contributions decrease and are basically within the range. Compared with Fiore's results, most of our results are within the range, except that NAM's contribution to EA surface O₃ in our results are consistently lower, and the contributions from EUR and EA to NAM surface O₃ are lower in JJA. These differences may be related to different simulation years, S-R revealing methods, and emission inventories. Different regional definitions and model vertical and horizontal resolutions may also be responsible, among which the nonlocal source contribution could be overestimated and the local source contribution could be underestimated when the horizontal resolution is coarser. The reasons should be discussed in detail in future work. We plan to
805 conduct a coarser horizontal resolution simulation in GNAQPMS-SM to clarify the sensitivity of S-R relationships to different resolutions. The impact of uncertainties from emissions and meteorological fields (wind field and precipitation field) on S-R relationships could also be quantified in the next step. We also plan to carry out global simulations of future and historical periods to explore the changes in S-R relationships and uncertainties, focusing on S-R relationships.

810 Additional emission sensitivity simulation shows a negative O₃ response in receptor region EA in January from EA. The difference between two S-R revealing methods in estimated S-R relationships of secondary aerosols and O₃ are mainly due to ignoring the nonlinearity of pollutants during chemical processes. The SR module results are consistently higher than the emission sensitivity simulation results, except in few regions, partly reflecting the SR module method pays attention to all global sources instead of anthropogenic component from regions we focus on.

815 The development of an online SR module embedded in GNAQPMS and the analysis of global S-R relationships represent an important step for China. The S-R relationships of both primary and secondary pollutants can be calculated in one simulation. We give our opinions on the controversial topic of the intercontinental transport of pollutants. The model that we developed creates a link between the scientific community and policymakers.

Code and data availability

820 The source code of GNAQPMS can be found online via ZENODO (<https://doi.org/10.5281/zenodo.4777796>). The observational data used in our evaluation are provided in the main text.

删除了: is

删除了: ↵

Acknowledgements

This work is funded by the National Natural Science Foundation of China (Grant No. 91744203, 92044302, 41907200, 825 41571130034), the Strategic Priority Research Program of the Chinese Academy of Sciences (Grant No. XDA19040202), and the China National Key R&D Program (Grant No. 2018YFC0213205, 2020YFA0607803). We thank the National Key Scientific and Technological Infrastructure project “Earth System Science Numerical Simulator Facility” (EarthLab). We thank the anonymous reviewers for their constructive suggestions that helped improve the manuscript.

Author contributions

830 Qian Ye prepared the input data, conducted the simulation and carried out the S-R relationship analysis. Jie Li conceived the idea of the article and modified the model code. Jie Li and Xueshun Chen revised the paper and provided scientific guidance through all research advances. Qian Ye wrote the paper, and all authors gave valuable suggestions. All listed authors have read and approved the final manuscript.

Competing interests

835 The authors declare that they have no conflicts of interest.

References

- Amann, M., Bertok, I., Borcken-Kleefeld, J., Cofala, J., Heyes, C., Hoglund-Isaksson, L., Klimont, Z., Nguyen, B., Posch, M., Rafaj, P., Sandler, R., Schopp, W., Wagner, F., and Winiwarter, W.: Cost-effective control of air quality and greenhouse gases in Europe: Modeling and policy applications, *Environ. Modell. Softw.*, 26, 1489-1501, 10.1016/j.envsoft.2011.07.012, 2011.
- 840 Andreae, M. O., and Crutzen, P. J.: Atmospheric aerosols: Biogeochemical sources and role in atmospheric chemistry, *Science*, 276, 1052-1058, 10.1126/science.276.5315.1052, 1997.
- Badia, A., Jorba, O., Voulgarakis, A., Dabdub, D., Perez Garcia-Pando, C., Hilboll, A., Goncalves, M., and Janjic, Z.: Description and evaluation of the Multiscale Online Nonhydrostatic Atmosphere Chemistry model (NMMB-MONARCH) version 1.0: gas-phase chemistry at global scale, *Geoscientific Model Development*, 10, 609-638, 10.5194/gmd-10-609-2017, 845 2017.
- Bauer, S. E., and Koch, D.: Impact of heterogeneous sulfate formation at mineral dust surfaces on aerosol loads and radiative forcing in the Goddard Institute for Space Studies general circulation model, *Journal of Geophysical Research-Atmospheres*, 110, 15, 10.1029/2005jd005870, 2005.
- Byun, D. W., and Dennis, R.: DESIGN ARTIFACTS IN EULERIAN AIR-QUALITY MODELS - EVALUATION OF THE 850 EFFECTS OF LAYER THICKNESS AND VERTICAL PROFILE CORRECTION ON SURFACE OZONE CONCENTRATIONS, *Atmospheric Environment*, 29, 105-126, 10.1016/1352-2310(94)00225-a, 1995.
- Carmichael, G. R., Tang, Y., Kurata, G., Uno, I., Streets, D., Woo, J. H., Huang, H., Yienger, J., Lefer, B., Shetter, R., Blake, D., Atlas, E., Fried, A., Apel, E., Eisele, F., Cantrell, C., Avery, M., Barrick, J., Sachse, G., Brune, W., Sandholm, S., Kondo, Y., Singh, H., Talbot, R., Bandy, A., Thornton, D., Clarke, A., and Heikes, B.: Regional-scale chemical transport modeling in 855 support of the analysis of observations obtained during the TRACE-P experiment, *Journal of Geophysical Research-Atmospheres*, 108, 10.1029/2002jd003117, 2003.

- Carn, S. A., Yang, K., Prata, A. J., and Krotkov, N. A.: Extending the long-term record of volcanic SO₂ emissions with the Ozone Mapping and Profiler Suite nadir mapper, *Geophys. Res. Lett.*, 42, 925-932, 10.1002/2014gl062437, 2015.
- 860 Carter, T. S., Heald, C. L., Jimenez, J. L., Campuzano-Jost, P., Kondo, Y., Moteki, N., Schwarz, J. P., Wiedinmyer, C., Darmenov, A. S., da Silva, A. M., and Kaiser, J. W.: How emissions uncertainty influences the distribution and radiative impacts of smoke from fires in North America, *Atmospheric Chemistry and Physics*, 20, 2073-2097, 10.5194/acp-20-2073-2020, 2020.
- Chen, H. S., Wang, Z. F., Li, J., Tang, X., Ge, B. Z., Wu, X. L., Wild, O., and Carmichael, G. R.: GNAQPMS-Hg v1.0, a global nested atmospheric mercury transport model: model description, evaluation and application to trans-boundary transport of Chinese anthropogenic emissions, *Geoscientific Model Development*, 8, 2857-2876, 10.5194/gmd-8-2857-2015, 2015.
- 865 Chen, X. S., Yang, W. Y., Wang, Z. F., Li, J., Hu, M., An, J. L., Wu, Q. Z., Wang, Z., Chen, H. S., Wei, Y., Du, H. Y., and Wang, D. W.: Improving new particle formation simulation by coupling a volatility-basis set (VBS) organic aerosol module in NAQPMS plus APM, *Atmospheric Environment*, 204, 1-11, 10.1016/j.atmosenv.2019.01.053, 2019.
- 870 Cooper, O. R., Forster, C., Parrish, D., Trainer, M., Dunlea, E., Ryerson, T., Hubler, G., Fehsenfeld, F., Nicks, D., Holloway, J., de Gouw, J., Warneke, C., Roberts, J. M., Flocke, F., and Moody, J.: A case study of transpacific warm conveyor belt transport: Influence of merging airstreams on trace gas import to North America, *Journal of Geophysical Research-Atmospheres*, 109, 10.1029/2003jd003624, 2004.
- 875 Crippa, M., Janssens-Maenhout, G., Guizzardi, D., Van Dingenen, R., and Dentener, F.: Contribution and uncertainty of sectorial and regional emissions to regional and global PM_{2.5} health impacts, *Atmospheric Chemistry and Physics*, 19, 5165-5186, 10.5194/acp-19-5165-2019, 2019.
- Crippa, M., Solazzo, E., Huang, G., Guizzardi, D., Koffi, E., Muntean, M., Schieberle, C., Friedrich, R., and Janssens-Maenhout, G.: High resolution temporal profiles in the Emissions Database for Global Atmospheric Research, *Sci Data*, 7, 121, 10.1038/s41597-020-0462-2, 2020.
- 880 Dentener, F., Keating, T., and Akimoto, H.: Hemispheric Transport of Air Pollution 2010, United Nations, 2010.
- Derwent, R. G., Stevenson, D. S., Collins, W. J., and Johnson, C. E.: Intercontinental transport and the origins of the ozone observed at surface sites in Europe, *Atmospheric Environment*, 38, 1891-1901, 10.1016/j.atmosenv.2004.01.008, 2004.
- Eastham, S. D., and Jacob, D. J.: Limits on the ability of global Eulerian models to resolve intercontinental transport of chemical plumes, *Atmospheric Chemistry and Physics*, 17, 2543-2553, 10.5194/acp-17-2543-2017, 2017.
- 885 Emanuel, K. A.: A SCHEME FOR REPRESENTING CUMULUS CONVECTION IN LARGE-SCALE MODELS, *J. Atmos. Sci.*, 48, 2313-2335, 10.1175/1520-0469(1991)048<2313:Asfrcc>2.0.Co;2, 1991.
- Fan, J. W., Wang, Y., Rosenfeld, D., and Liu, X. H.: Review of Aerosol-Cloud Interactions: Mechanisms, Significance, and Challenges, *J. Atmos. Sci.*, 73, 4221-4252, 10.1175/jas-d-16-0037.1, 2016.
- Fenech, S., Doherty, R. M., Heaviside, C., Vardoulakis, S., Macintyre, H. L., and O'Connor, F. M.: The influence of model spatial resolution on simulated ozone and fine particulate matter for Europe: implications for health impact assessments, *Atmospheric Chemistry and Physics*, 18, 5765-5784, 10.5194/acp-18-5765-2018, 2018.
- 890 Fiore, A. M., Jacob, D. J., Bey, I., Yantosca, R. M., Field, B. D., Fusco, A. C., and Wilkinson, J. G.: Background ozone over the United States in summer: Origin, trend, and contribution to pollution episodes, *Journal of Geophysical Research-Atmospheres*, 107, 27, 10.1029/2001jd000982, 2002.
- 895 Fiore, A. M., Dentener, F. J., Wild, O., Cuvelier, C., Schultz, M. G., Hess, P., Textor, C., Schulz, M., Doherty, R. M., Horowitz, L. W., MacKenzie, I. A., Sanderson, M. G., Shindell, D. T., Stevenson, D. S., Szopa, S., Van Dingenen, R., Zeng, G., Atherton, C., Bergmann, D., Bey, I., Carmichael, G., Collins, W. J., Duncan, B. N., Faluvegi, G., Folberth, G., Gauss, M., Gong, S., Hauglustaine, D., Holloway, T., Isaksen, I. S. A., Jacob, D. J., Jonson, J. E., Kaminski, J. W., Keating, T. J., Lupu, A., Marmor, E., Montanaro, V., Park, R. J., Pitari, G., Pringle, K. J., Pyle, J. A., Schroeder, S., Vivanco, M. G., Wind, P., Wojcik, G., Wu, S., and Zuber, A.: Multimodel estimates of intercontinental source-receptor relationships for ozone pollution, *Journal of Geophysical Research-Atmospheres*, 114, 21, 10.1029/2008jd010816, 2009.
- 900 Granier, C., Darras, S., van der Gon, H. D., Jana, D., and Elguindi, N.: The Copernicus Atmosphere Monitoring Service global and regional emissions (April 2019 version), [Research Report] Copernicus Atmosphere Monitoring Service, 10.24380/d0bn-kx16, 2019.
- 905 Grewé, V.: Technical Note: A diagnostic for ozone contributions of various NO_x emissions in multi-decadal chemistry-climate model simulations, *Atmospheric Chemistry and Physics*, 4, 729-736, 10.5194/acp-4-729-2004, 2004.

- Guenther, A. B., Jiang, X., Heald, C. L., Sakulyanontvittaya, T., Duhl, T., Emmons, L. K., and Wang, X.: The Model of Emissions of Gases and Aerosols from Nature version 2.1 (MEGAN2.1): an extended and updated framework for modeling biogenic emissions, *Geoscientific Model Development*, 5, 1471-1492, 10.5194/gmd-5-1471-2012, 2012.
- 910 Guo, J. J., Fiore, A. M., Murray, L. T., Jaffe, D. A., Schnell, J. L., Moore, C. T., and Milly, G. P.: Average versus high surface ozone levels over the continental USA: model bias, background influences, and interannual variability, *Atmospheric Chemistry and Physics*, 18, 12123-12140, 10.5194/acp-18-12123-2018, 2018.
- Han, H., Wu, Y., Liu, J., Zhao, T. L., Zhuang, B. L., Wang, H. L., Li, Y. C., Chen, H. M., Zhu, Y., Liu, H. N., Wang, Q. G., Li, S., Wang, T. J., Xie, M., and Li, M. M.: Impacts of atmospheric transport and biomass burning on the inter-annual variation in black carbon aerosols over the Tibetan Plateau, *Atmospheric Chemistry and Physics*, 20, 13591-13610, 10.5194/acp-20-13591-2020, 2020.
- 915 Hogrefe, C., Liu, P., Pouliot, G., Mathur, R., Roselle, S., Flemming, J., Lin, M. Y., and Park, R. J.: Impacts of different characterizations of large-scale background on simulated regional-scale ozone over the continental United States, *Atmospheric Chemistry and Physics*, 18, 3839-3864, 10.5194/acp-18-3839-2018, 2018.
- 920 Horowitz, L. W., Walters, S., Mauzerall, D. L., Emmons, L. K., Rasch, P. J., Granier, C., Tie, X. X., Lamarque, J. F., Schultz, M. G., Tyndall, G. S., Orlando, J. J., and Brasseur, G. P.: A global simulation of tropospheric ozone and related tracers: Description and evaluation of MOZART, version 2, *Journal of Geophysical Research-Atmospheres*, 108, 29, 10.1029/2002jd002853, 2003.
- 925 Horowitz, L. W., Naik, V., Paulot, F., Ginoux, P. A., Dunne, J. P., Mao, J. Q., Schnell, J., Chen, X., He, J., John, J. G., Lin, M. Y., Lin, P., Malyshev, S., Paynter, D., Shevliakova, E., and Zhao, M.: The GFDL Global Atmospheric Chemistry-Climate Model AM4.1: Model Description and Simulation Characteristics, *J. Adv. Model. Earth Syst.*, 12, 26, 10.1029/2019ms002032, 2020.
- Huang, K., Fu, J. S., Prikhodko, V. Y., Storey, J. M., Romanov, A., Hodson, E. L., Cresko, J., Morozova, I., Ignatieva, Y., and Cabaniss, J.: Russian anthropogenic black carbon: Emission reconstruction and Arctic black carbon simulation, *Journal of Geophysical Research-Atmospheres*, 120, 11306-11333, 10.1002/2015jd023358, 2015.
- 930 Hudman, R. C., Moore, N. E., Mebust, A. K., Martin, R. V., Russell, A. R., Valin, L. C., and Cohen, R. C.: Steps towards a mechanistic model of global soil nitric oxide emissions: implementation and space based-constraints, *Atmospheric Chemistry and Physics*, 12, 7779-7795, 10.5194/acp-12-7779-2012, 2012.
- 935 Huijnen, V., Williams, J., van Weele, M., van Noije, T., Krol, M., Dentener, F., Segers, A., Houweling, S., Peters, W., de Laat, J., Boersma, F., Bergamaschi, P., van Velthoven, P., Le Sager, P., Eskes, H., Alkemade, F., Scheele, R., Nedelec, P., and Patz, H. W.: The global chemistry transport model TM5: description and evaluation of the tropospheric chemistry version 3.0, *Geoscientific Model Development*, 3, 445-473, 10.5194/gmd-3-445-2010, 2010.
- Janssens-Maenhout, G., Crippa, M., Guizzardi, D., Dentener, F., Muntean, M., Pouliot, G., Keating, T., Zhang, Q., Kurokawa, J., and Wankmüller, R.: HTAP_v2.2: a mosaic of regional and global emission grid maps for 2008 and 2010 to study hemispheric transport of air pollution, *Atmospheric Chemistry and Physics*, 15, 12867-12909, 2015.
- 940 Karamchandani, P., Long, Y., Pirovano, G., Balzarini, A., and Yarwood, G.: Source-sector contributions to European ozone and fine PM in 2010 using AQMEII modeling data, *Atmospheric Chemistry and Physics*, 17, 5643-5664, 10.5194/acp-17-5643-2017, 2017.
- Kim, H. C., Kim, E., Bae, C., Cho, J. H., Kim, B. U., and Kim, S.: Regional contributions to particulate matter concentration in the Seoul metropolitan area, South Korea: seasonal variation and sensitivity to meteorology and emissions inventory, *Atmospheric Chemistry and Physics*, 17, 10315-10332, 10.5194/acp-17-10315-2017, 2017.
- 945 Kim, P. S., Jacob, D. J., Fisher, J. A., Travis, K., Yu, K., Zhu, L., Yantosca, R. M., Sulprizio, M. P., Jimenez, J. L., Campuzano-Jost, P., Froyd, K. D., Liao, J., Hair, J. W., Fenn, M. A., Butler, C. F., Wagner, N. L., Gordon, T. D., Welti, A., Wennberg, P. O., Crouse, J. D., St Clair, J. M., Teng, A. P., Millet, D. B., Schwarz, J. P., Markovic, M. Z., and Perring, A. E.: Sources, seasonality, and trends of southeast US aerosol: an integrated analysis of surface, aircraft, and satellite observations with the GEOS-Chem chemical transport model, *Atmospheric Chemistry and Physics*, 15, 10411-10433, 10.5194/acp-15-10411-2015, 2015.
- 950 Klimont, Z., Kupiainen, K., Heyes, C., Purohit, P., Cofala, J., Rafaj, P., Borken-Kleefeld, J., and Schopp, W.: Global anthropogenic emissions of particulate matter including black carbon, *Atmospheric Chemistry and Physics*, 17, 8681-8723, 10.5194/acp-17-8681-2017, 2017.

- 955 Koo, B., Knipping, E., and Yarwood, G.: 1.5-Dimensional volatility basis set approach for modeling organic aerosol in CAMx and CMAQ, *Atmospheric Environment*, 95, 158-164, 10.1016/j.atmosenv.2014.06.031, 2014.
- Lee, H. M., Park, R. J., Henze, D. K., Lee, S., Shim, C., Shin, H. J., Moon, K. J., and Woo, J. H.: PM2.5 source attribution for Seoul in May from 2009 to 2013 using GEOS-Chem and its adjoint model, *Environmental Pollution*, 221, 377-384, 10.1016/j.envpol.2016.11.088, 2017.
- 960 Li, J., Wang, Z., Akimoto, H., Yamaji, K., Takigawa, M., Pochanart, P., Liu, Y., Tanimoto, H., and Kanaya, Y.: Near-ground ozone source attributions and outflow in central eastern China during MTX2006, *Atmospheric Chemistry and Physics*, 8, 7335-7351, 10.5194/acp-8-7335-2008, 2008.
- Li, J., Wang, Z., Wang, X., Yamaji, K., Takigawa, M., Kanaya, Y., Pochanart, P., Liu, Y., Irie, H., Hu, B., Tanimoto, H., and Akimoto, H.: Impacts of aerosols on summertime tropospheric photolysis frequencies and photochemistry over Central Eastern China, *Atmospheric Environment*, 45, 1817-1829, 10.1016/j.atmosenv.2011.01.016, 2011.
- 965 Li, J., Wang, Z. F., Zhuang, G., Luo, G., Sun, Y., and Wang, Q.: Mixing of Asian mineral dust with anthropogenic pollutants over East Asia: a model case study of a super-duststorm in March 2010, *Atmospheric Chemistry and Physics*, 12, 7591-7607, 10.5194/acp-12-7591-2012, 2012.
- Li, J., Wang, Z. F., Huang, H. L., Hu, M., Meng, F., Sun, Y. L., Wang, X. Q., Wang, Y. S., and Wang, Q.: Assessing the effects of trans-boundary aerosol transport between various city clusters on regional haze episodes in spring over East China, *Tellus Series B-Chemical and Physical Meteorology*, 65, 14, 10.3402/tellusb.v65i0.20052, 2013.
- 970 Li, J., Yang, W., Wang, Z., Chen, H., Hu, B., Li, J., Sun, Y., and Huang, Y.: A modeling study of source-receptor relationships in atmospheric particulate matter over Northeast Asia, *Atmospheric Environment*, 91, 40-51, 10.1016/j.atmosenv.2014.03.027, 2014a.
- 975 Li, J., Yang, W. Y., Wang, Z. F., Chen, H. S., Hu, B., Li, J. J., Sun, Y. L., Fu, P. Q., and Zhang, Y. Q.: Modeling study of surface ozone source-receptor relationships in East Asia, *Atmos. Res.*, 167, 77-88, 10.1016/j.atmosres.2015.07.010, 2016.
- Li, J., Nagashima, T., Kong, L., Ge, B. Z., Yamaji, K., Fu, J. S., Wang, X. M., Fan, Q., Itahashi, S., Lee, H. J., Kim, C. H., Lin, C. Y., Zhang, M. G., Tao, Z. N., Kajino, M., Liao, H., Li, M., Woo, J. H., Kurokawa, J., Wang, Z., Wu, Q. Z., Akimoto, H., Carmichael, G. R., and Wang, Z. F.: Model evaluation and intercomparison of surface-level ozone and relevant species in East Asia in the context of MICS-Asia Phase III - Part I: Overview, *Atmospheric Chemistry and Physics*, 19, 12993-13015, 10.5194/acp-19-12993-2019, 2019.
- 980 Li, X. Y., Liu, J. F., Mauzerall, D. L., Emmons, L. K., Walters, S., Horowitz, L. W., and Tao, S.: Effects of trans-Eurasian transport of air pollutants on surface ozone concentrations over Western China, *Journal of Geophysical Research-Atmospheres*, 119, 12338-12354, 10.1002/2014jd021936, 2014b.
- 985 Li, Z., Zhao, X., Kahn, R., Mishchenko, M., Remer, L., Lee, K. H., Wang, M., Laszlo, I., Nakajima, T., and Maring, H.: Uncertainties in satellite remote sensing of aerosols and impact on monitoring its long-term trend: a review and perspective, *Ann. Geophys.*, 27, 2755-2770, 10.5194/angeo-27-2755-2009, 2009.
- Lin, M., Holloway, T., Carmichael, G. R., and Fiore, A. M.: Quantifying pollution inflow and outflow over East Asia in spring with regional and global models, *Atmospheric Chemistry and Physics*, 10, 4221-4239, 10.5194/acp-10-4221-2010, 2010.
- 990 Liu, Z., Omar, A., Vaughan, M., Hair, J., Kittaka, C., Hu, Y., Powell, K., Treppe, C., Winker, D., Hostetler, C., Ferrare, R., and Pierce, R.: CALIPSO lidar observations of the optical properties of Saharan dust: A case study of long-range transport, *Journal of Geophysical Research-Atmospheres*, 113, 10.1029/2007jd008878, 2008.
- Logan, J. A.: An analysis of ozonesonde data for the troposphere: Recommendations for testing 3-D models and development of a gridded climatology for tropospheric ozone, *Journal of Geophysical Research-Atmospheres*, 104, 16115-16149, 10.1029/1998jd100096, 1999.
- 995 Lu, X., Zhang, L., Wu, T. W., Long, M. S., Wang, J., Jacob, D. J., Zhang, F., Zhang, J., Eastham, S. D., Hu, L., Zhu, L., Liu, X., and Wei, M.: Development of the global atmospheric chemistry general circulation model BCC-GEOS-Chem v1.0: model description and evaluation, *Geoscientific Model Development*, 13, 3817-3838, 10.5194/gmd-13-3817-2020, 2020.
- Mar, K. A., Ojha, N., Pozzer, A., and Butler, T. M.: Ozone air quality simulations with WRF-Chem (v3.5.1) over Europe: model evaluation and chemical mechanism comparison, *Geoscientific Model Development*, 9, 3699-3728, 10.5194/gmd-9-3699-2016, 2016.
- 1000 Miyazaki, K., Bowman, K. W., Yumimoto, K., Walker, T., and Sudo, K.: Evaluation of a multi-model, multi-constituent assimilation framework for tropospheric chemical reanalysis, *Atmospheric Chemistry and Physics*, 20, 931-967, 10.5194/acp-20-931-2020, 2020.

- 1005 Mori, T., Kondo, Y., Ohata, S., Zhao, Y., Sinha, P. R., Oshima, N., Matsui, H., Moteki, N., and Koike, M.: Seasonal Variation of Wet Deposition of Black Carbon in Arctic Alaska, *Journal of Geophysical Research-Atmospheres*, 125, 10.1029/2019jd032240, 2020.
- Nagashima, T., Ohara, T., Sudo, K., and Akimoto, H.: The relative importance of various source regions on East Asian surface ozone, *Atmospheric Chemistry and Physics*, 10, 11305-11322, 10.5194/acp-10-11305-2010, 2010.
- 1010 Nagashima, T., Sudo, K., Akimoto, H., Kurokawa, J., and Ohara, T.: Long-term change in the source contribution to surface ozone over Japan, *Atmospheric Chemistry and Physics*, 17, 8231-8246, 10.5194/acp-17-8231-2017, 2017.
- Nenes, A., Pandis, S. N., and Pilinis, C.: ISORROPIA: A new thermodynamic equilibrium model for multiphase multicomponent inorganic aerosols, *Aquat. Geochem.*, 4, 123-152, 10.1023/a:1009604003981, 1998.
- Nopmongcol, U., Liu, Z., Stoeckenius, T., and Yarwood, G.: Modeling intercontinental transport of ozone in North America with CAMx for the Air Quality Model Evaluation International Initiative (AQMEII) Phase 3, *Atmospheric Chemistry and Physics*, 17, 9931-9943, 10.5194/acp-17-9931-2017, 2017.
- Pal, S., Davis, K. J., Lauvaux, T., Browell, E. V., Gaudet, B. J., Stauffer, D. R., Obland, M. D., Choi, Y., DiGangi, J. P., Feng, S., Lin, B., Miles, N. L., Pauly, R. M., Richardson, S. J., and Zhang, F. Q.: Observations of Greenhouse Gas Changes Across Summer Frontal Boundaries in the Eastern United States, *Journal of Geophysical Research-Atmospheres*, 125, 19, 10.1029/2019jd030526, 2020.
- 1020 Petaja, T., Jarvi, L., Kerminen, V. M., Ding, A. J., Sun, J. N., Nie, W., Kujansuu, J., Virkkula, A., Yang, X. Q., Fu, C. B., Zilitinkevich, S., and Kulmala, M.: Enhanced air pollution via aerosol-boundary layer feedback in China, *Sci Rep*, 6, 6, 10.1038/srep18998, 2016.
- Platnick, S.: MODIS Atmosphere L3 Monthly Product, NASA MODIS Adaptive Processing System, 1025 http://dx.doi.org/10.5067/MODIS/MOD08_M3.006, 2015.
- Price, C., Penner, J., and Prather, M.: NOx from lightning .1. Global distribution based on lightning physics, *Journal of Geophysical Research-Atmospheres*, 102, 5929-5941, 10.1029/96jd03504, 1997.
- Qian, Y., Gustafson, W. I., Jr., and Fast, J. D.: An investigation of the sub-grid variability of trace gases and aerosols for global climate modeling, *Atmospheric Chemistry and Physics*, 10, 6917-6946, 10.5194/acp-10-6917-2010, 2010.
- 1030 Shindell, D. T., Chin, M., Dentener, F., Doherty, R. M., Faluvegi, G., Fiore, A. M., Hess, P., Koch, D. M., MacKenzie, I. A., Sanderson, M. G., Schultz, M. G., Schulz, M., Stevenson, D. S., Teich, H., Textor, C., Wild, O., Bergmann, D. J., Bey, I., Bian, H., Cuvelier, C., Duncan, B. N., Folberth, G., Horowitz, L. W., Jonson, J., Kaminski, J. W., Marmer, E., Park, R., Pringle, K. J., Schroeder, S., Szopa, S., Takemura, T., Zeng, G., Keating, T. J., and Zuber, A.: A multi-model assessment of pollution transport to the Arctic, *Atmospheric Chemistry and Physics*, 8, 5353-5372, 10.5194/acp-8-5353-2008, 2008.
- 1035 Sobhani, N., Kulkarni, S., and Carmichael, G. R.: Source sector and region contributions to black carbon and PM2.5 in the Arctic, *Atmospheric Chemistry and Physics*, 18, 18123-18148, 10.5194/acp-18-18123-2018, 2018.
- Stockwell, W. R., Middleton, P., Chang, J. S., and Tang, X.: The second generation regional acid deposition model chemical mechanism for regional air quality modeling, *Journal of Geophysical Research: Atmospheres*, 95, 16343, 1990.
- Sudo, K., and Akimoto, H.: Global source attribution of tropospheric ozone: Long-range transport from various source regions, 1040 *Journal of Geophysical Research-Atmospheres*, 112, 21, 10.1029/2006jd007992, 2007.
- Sugiura, K., Ohata, T., and Yang, D.: Catch characteristics of precipitation gauges in high-latitude regions with high winds, *Journal of Hydrometeorology*, 7, 984-994, 10.1175/jhm542.1, 2006.
- Tao, Z. N., Chin, M., Gao, M., Kucsera, T., Kim, D., Bian, H. S., Kurokawa, J. I., Wang, Y. S., Liu, Z. R., Carmichael, G. R., Wang, Z. F., and Akimoto, H.: Evaluation of NU-WRF model performance on air quality simulation under various model resolutions - an investigation within the framework of MICS-Asia Phase III, *Atmospheric Chemistry and Physics*, 20, 2319-2339, 10.5194/acp-20-2319-2020, 2020.
- 1045 Uno, I., Osada, K., Yumimoto, K., Wang, Z., Itahashi, S., Pan, X., Hara, Y., Kanaya, Y., Yamamoto, S., and Fairlie, T. D.: Seasonal variation of fine- and coarse-mode nitrates and related aerosols over East Asia: synergetic observations and chemical transport model analysis, *Atmospheric Chemistry and Physics*, 17, 14181-14197, 10.5194/acp-17-14181-2017, 2017.
- 1050 Van Dingenen, R., Dentener, F., Crippa, M., Leitaol, J., Marmer, E., Rao, S., Solazzo, E., and Valentini, L.: TM5-FASST: a global atmospheric source-receptor model for rapid impact analysis of emission changes on air quality and short-lived climate pollutants, *Atmospheric Chemistry and Physics*, 18, 16173-16211, 10.5194/acp-18-16173-2018, 2018.

- van Geffen, J., Boersma, K. F., Eskes, H., Sneep, M., ter Linden, M., Zara, M., and Veefkind, J. P.: SSP TROPOMI NO₂ slant column retrieval: method, stability, uncertainties and comparisons with OMI, *Atmospheric Measurement Techniques*, 13, 1315-1335, 10.5194/amt-13-1315-2020, 2020.
- 1055 Venkatram, A., and Karamchandani, P.: SOURCE-RECEPTOR RELATIONSHIPS, *Environmental Science & Technology*, 20, 1084-1091, 10.1021/es00153a002, 1986.
- Verhoelst, T., Compernelle, S., Pinardi, G., Lambert, J. C., Eskes, H. J., Eichmann, K. U., Fjaeraa, A. M., Granville, J., Niemeijer, S., Cede, A., Tiefengraber, M., Hendrick, F., Pazmino, A., Bais, A., Bazureau, A., Boersma, K. F., Bogner, K., Dehn, A., Donner, S., Elokhor, A., Gebetsberger, M., Goutail, F., de la Mora, M. G., Gruzdev, A., Gratsea, M., Hansen, G. H., Irie, H., Jepsen, N., Kanaya, Y., Karagkiozidis, D., Kivi, R., Kreher, K., Levelt, P. F., Liu, C., Muller, M., Comas, M. N., Pipers, A. J. M., Pommereau, J. P., Portafaix, T., Prados-Roman, C., Puenteadura, O., Querel, R., Remmers, J., Richter, A., Rimmer, J., Cardenas, C. R., de Miguel, L. S., Sinyakov, V. P., Stremme, W., Strong, K., Van Roozendaal, M., Veefkind, J. P., Wagner, T., Wittrock, F., Gonzalez, M. Y., and Zehner, C.: Ground-based validation of the Copernicus Sentinel-5P TROPOMI NO₂ measurements with the NDACC ZSL-DOAS, MAX-DOAS and Pandonia global networks, *Atmospheric Measurement Techniques*, 14, 481-510, 10.5194/amt-14-481-2021, 2021.
- 1060 Verstraeten, W. W., Boersma, K. F., Zomer, J., Allaart, M. A. F., Bowman, K. W., and Worden, J. R.: Validation of six years of TES tropospheric ozone retrievals with ozonesonde measurements: implications for spatial patterns and temporal stability in the bias, *Atmospheric Measurement Techniques*, 6, 1413-1423, 10.5194/amt-6-1413-2013, 2013.
- Voulgarakis, A., Naik, V., Lamarque, J. F., Shindell, D. T., Young, P. J., Prather, M. J., Wild, O., Field, R. D., Bergmann, D., Cameron-Smith, P., Cionni, I., Collins, W. J., Dalsoren, S. B., Doherty, R. M., Eyring, V., Faluvegi, G., Folberth, G. A., Horowitz, L. W., Josse, B., MacKenzie, I. A., Nagashima, T., Plummer, D. A., Righi, M., Rumbold, S. T., Stevenson, D. S., Strode, S. A., Sudo, K., Szopa, S., and Zeng, G.: Analysis of present day and future OH and methane lifetime in the ACCMIP simulations, *Atmospheric Chemistry and Physics*, 13, 2563-2587, 10.5194/acp-13-2563-2013, 2013.
- 1075 Wagstrom, K. M., Pandis, S. N., Yarwood, G., Wilson, G. M., and Morris, R. E.: Development and application of a computationally efficient particulate matter apportionment algorithm in a three-dimensional chemical transport model, *Atmospheric Environment*, 42, 5650-5659, 10.1016/j.atmosenv.2008.03.012, 2008.
- Wai, K. M., Wu, S. L., Li, X. L., Jaffe, D. A., and Perry, K. D.: Global Atmospheric Transport and Source-Receptor Relationships for Arsenic, *Environmental Science & Technology*, 50, 3714-3720, 10.1021/acs.est.5b05549, 2016.
- 1080 Walcek, C. J., and Aleksic, N. M.: A simple but accurate mass conservative, peak-preserving, mixing ratio bounded advection algorithm with Fortran code, *Atmospheric Environment*, 32, 3863-3880, 10.1016/s1352-2310(98)00099-5, 1998.
- Wang, H., Chen, H. S., Wu, Q. Z., Lin, J. M., Chen, X. S., Xie, X. W., Wang, R. R., Tang, X., and Wang, Z. F.: GNAQPMS v1.1: accelerating the Global Nested Air Quality Prediction Modeling System (GNAQPMS) on Intel Xeon Phi processors, *Geoscientific Model Development*, 10, 2891-2904, 10.5194/gmd-10-2891-2017, 2017.
- 1085 Wang, Q. Q., Jacob, D. J., Spackman, J. R., Perring, A. E., Schwarz, J. P., Moteki, N., Marais, E. A., Ge, C., Wang, J., and Barrett, S. R. H.: Global budget and radiative forcing of black carbon aerosol: Constraints from pole-to-pole (HIPPO) observations across the Pacific, *Journal of Geophysical Research-Atmospheres*, 119, 195-206, 10.1002/2013jd020824, 2014.
- Wang, Z. F., Maeda, T., Hayashi, M., Hsiao, L. F., and Liu, K. Y.: A nested air quality prediction modeling system for urban and regional scales: Application for high-ozone episode in Taiwan, *Water Air and Soil Pollution*, 130, 391-396, 10.1023/a:1013833217916, 2001.
- 1090 Wang, Z. F., Akimoto, H., and Uno, I.: Neutralization of soil aerosol and its impact on the distribution of acid rain over east Asia: Observations and model results, *Journal of Geophysical Research-Atmospheres*, 107, 10.1029/2001jd001040, 2002.
- Wei, Y., Chen, X. S., Chen, H. S., Li, J., Wang, Z. F., Yang, W. Y., Ge, B. Z., Du, H. Y., Hao, J. Q., Wang, W., Li, J. J., Sun, Y. L., and Huang, H. L.: IAP-AACM v1.0: a global to regional evaluation of the atmospheric chemistry model in CAS-ESM, *Atmospheric Chemistry and Physics*, 19, 8269-8296, 10.5194/acp-19-8269-2019, 2019.
- 1095 Wiedinmyer, C., Akagi, S. K., Yokelson, R. J., Emmons, L. K., Al-Saadi, J. A., Orlando, J. J., and Soja, A. J.: The Fire INventory from NCAR (FINN): a high resolution global model to estimate the emissions from open burning, *Geoscientific Model Development*, 4, 625-641, 10.5194/gmd-4-625-2011, 2011.
- 1100 Wu, J.-B., Wang, Z., Wang, Q., Li, J., Xu, J., Chen, H., Ge, B., Zhou, G., and Chang, L.: Development of an on-line source-tagged model for sulfate, nitrate and ammonium: A modeling study for highly polluted periods in Shanghai, China, *Environmental Pollution*, 221, 168-179, 10.1016/j.envpol.2016.11.061, 2017.

- Wu, Q. Z., Wang, Z. F., Gbaguidi, A., Gao, C., Li, L. N., and Wang, W.: A numerical study of contributions to air pollution in Beijing during CAREBeijing-2006, *Atmospheric Chemistry and Physics*, 11, 5997-6011, 10.5194/acp-11-5997-2011, 2011.
- 1105 Yang, W. Y., Li, J., Wang, W. G., Li, J. L., Ge, M. F., Sun, Y. L., Chen, X. S., Ge, B. Z., Tong, S. R., Wang, Q. Q., and Wang, Z. F.: Investigating secondary organic aerosol formation pathways in China during 2014, *Atmospheric Environment*, 213, 133-147, 10.1016/j.atmosenv.2019.05.057, 2019.
- Yang, Y., Wang, H., Smith, S. J., Easter, R., Ma, P.-L., Qian, Y., Yu, H., Li, C., and Rasch, P. J.: Global source attribution of sulfate concentration and direct and indirect radiative forcing, *Atmospheric Chemistry and Physics*, 17, 8903-8922, 10.5194/acp-17-8903-2017, 2017a.
- 1110 Yang, Y., Wang, H. L., Smith, S. J., Ma, P. L., and Rasch, P. J.: Source attribution of black carbon and its direct radiative forcing in China, *Atmospheric Chemistry and Physics*, 17, 4319-4336, 10.5194/acp-17-4319-2017, 2017b.
- Yim, S. H. L., Gu, Y. F., Shapiro, M., and Stephens, B.: Air quality and acid deposition impacts of local emissions and transboundary air pollution in Japan and South Korea, *Atmospheric Chemistry and Physics*, 19, 13309-13323, 10.5194/acp-19-13309-2019, 2019.
- 1115 Yu, F., and Luo, G.: Simulation of particle size distribution with a global aerosol model: contribution of nucleation to aerosol and CCN number concentrations, *Atmospheric Chemistry and Physics*, 9, 7691-7710, 10.5194/acp-9-7691-2009, 2009.
- Yu, F., Luo, G., and Ma, X.: Regional and global modeling of aerosol optical properties with a size, composition, and mixing state resolved particle microphysics model, *Atmospheric Chemistry and Physics*, 12, 5719-5736, 10.5194/acp-12-5719-2012, 2012.
- 1120 Zaveri, R. A., and Peters, L. K.: A new lumped structure photochemical mechanism for large-scale applications, *Journal of Geophysical Research-Atmospheres*, 104, 30387-30415, 10.1029/1999jd900876, 1999.
- Zhang, L., Brook, J. R., and Vet, R.: A revised parameterization for gaseous dry deposition in air-quality models, *Atmospheric Chemistry and Physics*, 3, 2067-2082, 10.5194/acp-3-2067-2003, 2003.
- 1125 Zhang, L., Jacob, D. J., Knipping, E. M., Kumar, N., Munger, J. W., Carouge, C. C., van Donkelaar, A., Wang, Y. X., and Chen, D.: Nitrogen deposition to the United States: distribution, sources, and processes, *Atmospheric Chemistry and Physics*, 12, 4539-4554, 10.5194/acp-12-4539-2012, 2012a.
- Zhang, Q., Zheng, Y. X., Tong, D., Shao, M., Wang, S. X., Zhang, Y. H., Xu, X. D., Wang, J. N., He, H., Liu, W. Q., Ding, Y. H., Lei, Y., Li, J. H., Wang, Z. F., Zhang, X. Y., Wang, Y. S., Cheng, J., Liu, Y., Shi, Q. R., Yan, L., Geng, G. N., Hong, C. P., Li, M., Liu, F., Zheng, B., Cao, J. J., Ding, A. J., Gao, J., Fu, Q. Y., Huo, J. T., Liu, B. X., Liu, Z. R., Yang, F. M., He, K. B., and Hao, J. M.: Drivers of improved PM_{2.5} air quality in China from 2013 to 2017, *Proc. Natl. Acad. Sci. U. S. A.*, 116, 24463-24469, 10.1073/pnas.1907956116, 2019.
- 1130 Zhang, Y., Hemperly, J., Meskhidze, N., and SkamarockJoshua, W. C.: The Global Weather Research and Forecasting (GWRf) Model: Model Evaluation, Sensitivity Study, and Future Year Simulation, *Atmospheric and Climate Sciences*, 2, 231-253, 10.4236/acs.2012.23024, 2012b.
- 1135 Zhang, Y., Sartelet, K., Zhu, S., Wang, W., Wu, S. Y., Zhang, X., Wang, K., Tran, P., Seigneur, C., and Wang, Z. F.: Application of WRF/Chem-MADRID and WRF/Polyphemus in Europe - Part 2: Evaluation of chemical concentrations and sensitivity simulations, *Atmospheric Chemistry and Physics*, 13, 6845-6875, 10.5194/acp-13-6845-2013, 2013.
- Zhu, J., Liao, H., Mao, Y. H., Yang, Y., and Jiang, H.: Interannual variation, decadal trend, and future change in ozone outflow from East Asia, *Atmospheric Chemistry and Physics*, 17, 3729-3747, 10.5194/acp-17-3729-2017, 2017a.
- 1140 Zhu, Y., Liu, J., Wang, T. J., Zhuang, B. L., Han, H., Wang, H. M., Chang, Y., and Ding, K.: The Impacts of Meteorology on the Seasonal and Interannual Variabilities of Ozone Transport From North America to East Asia, *Journal of Geophysical Research-Atmospheres*, 122, 10612-10636, 10.1002/2017jd026761, 2017b.